



DEPARTMENT OF REGULATORY AND ECONOMIC RESOURCES (RER)
BOARD AND CODE ADMINISTRATION DIVISION
NOTICE OF ACCEPTANCE (NOA)

MIAMI-DADE COUNTY
PRODUCT CONTROL SECTION
11805 SW 26 Street, Room 208
Miami, Florida 33175-2474
T (786) 315-2590 F (786) 315-2599
www.miamidade.gov/economy

Quality Engineered Products Co., Inc.
4506 Quality Lane
Tampa, FL 33634

SCOPE:

This NOA is being issued under the applicable rules and regulations governing the use of construction materials. The documentation submitted has been reviewed and accepted by Miami-Dade County RER -Product Control Section to be used in Miami Dade County and other areas where allowed by the Authority Having Jurisdiction (AHJ).

This NOA shall not be valid after the expiration date stated below. The Miami-Dade County Product Control Section (In Miami Dade County) and/or the AHJ (in areas other than Miami Dade County) reserve the right to have this product or material tested for quality assurance purposes. If this product or material fails to perform in the accepted manner, the manufacturer will incur the expense of such testing and the AHJ may immediately revoke, modify, or suspend the use of such product or material within their jurisdiction. RER reserves the right to revoke this acceptance, if it is determined by Miami-Dade County Product Control Section that this product or material fails to meet the requirements of the applicable building code.

This product is approved as described herein and has been designed to comply with the Florida Building Code, including the High Velocity Hurricane Zone.

DESCRIPTION: Series 16 ga Outswing Double Flush Steel Doors-Impact

APPROVAL DOCUMENT: Drawing titled "8'-0" X 8'-0" Double/Single Flush Door (outswing)", sheets 1 through 9 of 9, dated 11/23/2015 and Last revised on 10/20/20, prepared by manufacturer, signed and sealed by Cody C. Davis, P. E. , bearing the Miami-Dade County Product Control Revision stamp with the Notice of Acceptance number and expiration date by the Miami-Dade County Product Control Section.

MISSILE IMPACT RATING: Large and Small Missile Impact Resistant

Limitations:

1. The alternate Stainless-Steel Doors shall be min 16 ga (.063" thk. Min.) w/ Tensile yield strength of min. 50.5 ksi and ultimate strength=98.5 ksi.
2. Doors w/ Pemko 2001AV threshold (item 5A) are not rated for water infiltration.
3. Fiberglass insulation shall have current approval or shall meet the FBC requirements.

LABELING: Each unit shall bear a permanent label with the manufacturer's name or logo, city, state and series and following statement: "Miami-Dade County Product Control Approved", noted herein.

RENEWAL of this NOA shall be considered after a renewal application has been filed and there has been no change in the applicable building code negatively affecting the performance of this product.

TERMINATION of this NOA will occur after the expiration date or if there has been a revision or change in the materials, use, and/or manufacture of the product or process. Misuse of this NOA as an endorsement of any product, for sales, advertising or any other purposes shall automatically terminate this NOA. Failure to comply with any section of this NOA shall be cause for termination and removal of NOA.

ADVERTISEMENT: The NOA number preceded by the words Miami-Dade County, Florida, and followed by the expiration date may be displayed in advertising literature. If any portion of the NOA is displayed, then it shall be done in its entirety.

INSPECTION: A copy of this entire NOA shall be provided to the user by the manufacturer or its distributors and shall be available for inspection at the job site at the request of the Building Official.

This NOA **revises & renews** NOA # 17-1102.01 and consists of this page 1 and evidence pages E-1 & E-2, as well as approval document mentioned above.

The submitted documentation was reviewed by **Ishaq I. Chanda, P.E.**



NOA No. 20-0722.04
Expiration Date: October 13, 2025
Approval Date: November 19, 2020
Page 1

NOTICE OF ACCEPTANCE: EVIDENCE SUBMITTED

1. Evidence submitted in previous files

A. DRAWINGS

1. Manufacturer's die drawings and sections (Submitted under files below)
2. Drawing titled "8'-0" X 8'-0" Double/Single Flush Door (outswing)", sheets 1 through 9 of 9, dated 11/23/2015, prepared by manufacturer, signed and sealed by Cody C. Davis, P. E.

B. TESTS (Submitted under file #12-1115.13 /# 10-0629.03)

1. Test reports on
 - 1) Air Infiltration Test, per FBC TAS 202-94
 - 2) Uniform Static Air Pressure Test, Loading per FBC, TAS 202.
 - 3) Water Resistance Test per FBC, TAS 202-94 (See threshold type).
 - 4) Large Missile Impact Test per FBC, TAS 201-94
 - 5) Cyclic Wind Pressure Loading per FBC, TAS 203-94
 - 6) Forced Entry Test, per FBC and TAS 202-94

Along with marked-up drawings and installation diagram of double Outswing Flush Steel Doors, prepared by Certified Testing Lab Inc., Test Report No. **CTLA-1998W**, dated 04/07/10, signed and sealed by Ramesh Patel, P.E.

C. CALCULATIONS

1. Anchor verification calculations complying w/ FBC 2014(5th Edition), dated 10/21/2015 and last revised on 11/20/2015, prepared, signed and sealed by Cody C. Davis, P.E.

D. QUALITY ASSURANCE

1. Miami Dade Department of Regulatory and Economic Resources (RER)

E. MATERIAL CERTIFICATIONS (Except item #1, submitted under files #12-1115.13 /# 10-0629.03)


1. Technical Strength data sheet of ATI 304 Stainless Steel issued by ATI Allegheny Ludlum.
2. Tensile test report prepared by prepared by Certified Testing Lab Inc., Test Report No. **CTLA-1998W**, tested per ASTM E8/A370, dated 08/19/10 signed and sealed by Ramesh Patel, P. E.
3. Notice of Acceptance No. **06-0823.09** issued to Dow Corning for "Fold Form Insulation", expiring on 05/31/2012.
4. Underwriter test report file # R3576 (Proj #09NK13240) dated Nov 16, 2009 for Surface Burning Characteristics for Fiberglass Batts & Blanket per ANSI/UL-723 & ASTM E-84, issued to Owens Corning, Toledo, OH.

F. STATEMENTS

1. Statement letter of conformance to FBC 2014(5th Edition) and "no financial interest", dated 09/30/15, signed and sealed by Cody C. Davis, P. E.
2. Statement letter of compliance, as a part of the above referenced test reports.

G. OTHER

1. This revises & renews NOA # 12-1115.13, expiring October 13, 2020.


Ishaq I. Chanda, P.E.
Product Control Unit Supervisor
NOA No. 20-0722.04
Expiration Date: October 13, 2025
Approval Date: November 19, 2020

NOTICE OF ACCEPTANCE: EVIDENCE SUBMITTED

2. Evidence submitted in previous NOA(s).

A. DRAWINGS

1. None.

B. Test

1. None.

C. CALCULATIONS

1. None

D. QUALITY ASSURANCE

1. Miami Dade Department of Regulatory and Economic Resources (RER).

E. MATERIAL CERTIFICATIONS

1. None.

F. STATEMENTS

1. Statement letter of conformance to FBC 2017 (6th Edition) and "No financial interest" dated 12/01/17, prepared by Master Consulting Inc., signed and sealed by Cody C. Davis, P.E.

G. OTHER

1. This NOA revises NOA # 15-0422.02, expiring 10/13/20.

3. New Evidence submitted.

A. DRAWINGS

1. Drawing titled "8'-0" X 8'0" Double/Single Flush Door (outswing)", sheets 1 through 9 of 9, dated 11/23/2015 and Last revised on 10/20/20, prepared by manufacturer, signed and sealed by Cody C. Davis, P. E.

B. Test

1. None.

C. CALCULATIONS

1. None

D. QUALITY ASSURANCE

1. Miami Dade Department of Regulatory and Economic Resources (RER).

E. MATERIAL CERTIFICATIONS

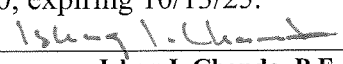
1. None.

F. STATEMENTS

1. Statement letter of conformance to FBC 2020 (7th Edition) and "No financial interest" dated 10/20/2020, prepared by Master Consulting Inc., signed and sealed by Cody C. Davis, P.E.

G. OTHER

1. This NOA revises NOA # 17-1102.01 and updates for FBC 2020, expiring 10/13/25.


Ishaq I. Chanda, P.E.
Product Control Unit Supervisor
NOA No. 20-0722.04
Expiration Date: October 13, 2025
Approval Date: November 19, 2020

INSTALLATION NOTES:

1. ONE (1) ANCHOR IS REQUIRED AT EACH ANCHOR LOCATION SHOWN.
2. THE NUMBER OF ANCHORS DEPICTED IS THE MINIMUM NUMBER OF ANCHORS TO BE USED FOR PRODUCT INSTALLATION.
3. SHIM AS REQUIRED AT EACH ANCHOR WITH LOAD BEARING SHIM(S). MAXIMUM ALLOWABLE SHIM STACK TO BE 1/4 INCH. SHIM WHERE SPACE OF 1/16 INCH OR GREATER OCCURS. SHIM(S) SHALL BE CONSTRUCTED OF HIGH DENSITY PLASTIC OR BETTER.
4. FOR INSTALLATION INTO WOOD FRAMING USE 1/2 INCH DIAMETER WOOD LAG SCREWS OF SUFFICIENT LENGTH TO ACHIEVE 2 1/2 INCH MINIMUM EMBEDMENT INTO WOOD SUBSTRATE. WOOD LAG SCREWS TO BE USED IN 3/4 INCH EMT PIPE SLEEVE. MIN EDGE DIST. = 3 IN. (SEE SHEETS 6 & 7)
5. FOR INSTALLATION THROUGH 1x BUCK TO CONCRETE/MASONRY, OR DIRECTLY INTO CONCRETE/MASONRY, USE 3/8 INCH DIAMETER DYNABOLT SLEEVE ANCHOR BY ITW/REDHEAD OF SUFFICIENT LENGTH TO ACHIEVE 1 7/8 INCH MINIMUM EMBEDMENT. MIN EDGE DIST. = 3 IN. (SEE SHEETS 6 & 7)
6. FOR INSTALLATION INTO STRUCTURAL STEEL, USE 3/8" DIA. SCREW THRU EMP PIPE SLEEVE CONFORMING TO SAE GRADE 2 OR EQUAL. MINIMUM MATERIAL THICKNESS = 3/8" THICK CONFORMING TO A36 STEEL. (SEE SHEET 6 & 7)
7. MINIMUM EMBEDMENT AND EDGE DISTANCE EXCLUDE WALL FINISHES, INCLUDING BUT NOT LIMITED TO STUCCO, FOAM, BRICK VENEER, AND SIDING.
8. INSTALLATION ANCHORS AND ASSOCIATED HARDWARE MUST BE MADE OF CORROSION RESISTANT MATERIAL OR HAVE A CORROSION RESISTANT COATING.
9. FOR GROUT FILLED BLOCK, DO NOT INSTALL INSTALLATION ANCHORS INTO MORTAR JOINTS. EDGE DISTANCE IS MEASURED FROM FREE EDGE OF BLOCK OR EDGE OF MORTAR JOINT INTO FACE SHELL OF BLOCK.
10. INSTALLATION ANCHORS SHALL BE INSTALLED IN ACCORDANCE WITH ANCHOR MANUFACTURER'S INSTALLATION INSTRUCTIONS. ANCHORS SHALL NOT BE USED IN SUBSTRATES WITH STRENGTHS LESS THAN THE MINIMUM STRENGTH SPECIFIED BY THE ANCHOR MANUFACTURER.
11. INSTALLATION ANCHOR CAPACITIES FOR PRODUCTS HEREIN ARE BASED ON SUBSTRATE MATERIALS WITH THE FOLLOWING PROPERTIES:
- A. WOOD - MINIMUM SPECIFIC GRAVITY OF 0.55.
- B. CONCRETE - MINIMUM COMPRESSIVE STRENGTH OF 3000 PSI.
- C. MASONRY - STRENGTH CONFORMANCE TO ASTM C-90, GRADE N, TYPE 1 (OR GREATER).
- D. STRUCTURAL STEEL - MEMBER TO COMPLY WITH AISC 360. ADEQUACY OF METAL STRUCTURE TO BE REVIEWED BY BUILDING OFFICIAL

DESIGN PRESSURE RATING		
	WHERE WATER FILTRATION REQUIREMENT IS NEEDED (HAGER 434V THRESHOLD)	WHERE WATER FILTRATION REQUIREMENT IS NOT NEEDED (PEMCO 2005AV THRESHOLD)
POSITIVE	+80.0 PSF	+80.0 PSF
NEGATIVE	-80.0 PSF	-80.0 PSF

QUALITY ENGINEERED PRODUCTS

8'-0" x 8'-0" DOUBLE/SINGLE FLUSH DOOR (OUTSWING)

GENERAL NOTES:

1. THE PRODUCT SHOWN HEREIN IS DESIGNED AND MANUFACTURED TO COMPLY WITH THE (SEVENTH EDITION) 2020 FLORIDA BUILDING CODE (FBC), INCLUDING HVHZ AND HAS BEEN EVALUATED ACCORDING TO THE FOLLOWING:
- TAS 201-94/TAS 202-94 (STRUCTURAL ONLY)/TAS 203-94
2. ADEQUACY OF THE EXISTING STRUCTURAL CONCRETE/MASONRY/METAL STUD AND 2X FRAMING AS A MAIN WIND FORCE RESISTING SYSTEM CAPABLE OF WITHSTANDING AND TRANSFERRING APPLIED PRODUCT LOADS TO THE FOUNDATION IS THE RESPONSIBILITY OF THE ENGINEER OR ARCHITECT OF RECORD FOR THE PROJECT.
3. (2) 2X BUCKS (WHEN USED) SHALL BE DESIGNED AND ANCHORED TO PROPERLY TRANSFER ALL LOADS TO THE STRUCTURE. BUCK DESIGN AND INSTALLATION IS THE RESPONSIBILITY OF THE ENGINEER OR ARCHITECT OF RECORD FOR THE PROJECT.
4. THE INSTALLATION DETAILS DESCRIBED HEREIN ARE GENERIC AND MAY NOT REFLECT ACTUAL CONDITIONS FOR A SPECIFIC SITE. IF SITE CONDITIONS CAUSE INSTALLATION TO DEVIATE FROM THE REQUIREMENTS DETAILED HEREIN, A LICENSED ENGINEER OR ARCHITECT SHALL PREPARE SITE SPECIFIC DOCUMENTS FOR USE WITH THIS DOCUMENT. ARCHITECT SHALL PREPARE SITE SPECIFIC DOCUMENTS FOR USE WITH THIS DOCUMENT FOR NON-HVHZ. ONE TIME APPROVAL IS REQUIRED FROM MIAMI-DADE COUNTY.
5. THIS PRODUCT IS LARGE AND SMALL MISSILE IMPACT RESISTANT APPROVED. IMPACT PROTECTIVE SYSTEM **IS NOT REQUIRED** ON THIS PRODUCT IN AREAS REQUIRING IMPACT RESISTANCE.
6. DOOR & FRAME MATERIAL: 16 GA. OR 14 GA. STEEL. MEETING FyMIN = 46.3 KSI; FuMIN = 52.1 KSI OR STAINLESS STEEL FyMIN = 50.5 KSI; FuMIN = 98.5 KSI. MIL-CERTIFICATE REQUIRED FOR VERIFICATION OF AVAILABLE STRENGTH.

TABLE OF CONTENTS		
SHEET	REVISION	SHEET DESCRIPTION
1	-	INSTALLATION NOTES, GENERAL NOTES, & BILL OF MATERIALS
2	-	ELEVATIONS
3	-	INTERNAL ELEVATIONS & DETAILS
4	-	VERTICAL SECTIONS
5	-	HORIZONTAL SECTIONS
6	-	ANCHOR LOCATIONS
7	-	ANCHOR LOCATIONS
8	-	DETAILS
9	-	DETAILS

BILL OF MATERIALS		
MARK	QUANTITY	DESCRIPTION
1	1	16 GA (.063") MIN. (14 GA MAX) STEEL HOLLOW METAL FRAME FyMIN. = 46.3 KSI; FuMIN = 52.1 KSI (OR STAINLESS STEEL MEETING FyMIN = 50.5 KSI; FuMIN = 98.5 KSI)
2	1 OR 2	16 GA (.063") MIN. (14 GA MAX) STEEL HOLLOW METAL DOORS FyMIN. = 46.3 KSI; FuMIN = 52.1 KSI (OR STAINLESS STEEL MEETING FyMIN = 50.5 KSI; FuMIN = 98.5 KSI)
3	8	HAGER HINGES BB1279 4-1/2" x 4-1/2" x .134" THICK
4	SHEET 6 & 7	1/2" DIA. DYNABOLT ITW/REDHEAD SLEEVE ANCHOR (3/8" DIA BOLT) X 4-1/2" SLEEVE ANCHOR W/ 3/4" DIA. WELDED PIPE SLEEVE W/ 1-7/8" MIN. EMBEDMENT & 3" MIN. EDGE DISTANCE INTO 3 KSI CONCRETE OR GROUT FILLED BLOCK
4A	SHEET 6 & 7	1-3/4" x 5-3/4" x 12" T-ANCHORS (SEE SHEET 7)
4B	SHEET 6 & 7	1/2" x 5-1/2" WOOD LAG SCREWS (2-1/2" MIN. EMBEDMENT) W/ 3/4" EMT PIPE SLEEVE
4C	SHEET 6 & 7	0.187" DIA WIRE ANCHOR
4D	SHEET 6 & 7	3/8" DIA. SCREW THRU EMP PIPE SLEEVE CONFORMING TO SAE GRADE 2 OR EQUAL
5	1	HAGER 434V THRESHOLD W/ 1/4" x 2" ITW/REDHEAD TAPCONS (Fu = 125 KSI, Fy = 100 KSI) @ 12" O/C W/ 1-3/4" MIN. EMBEDMENT INTO CONC. (SEE ELEV. PER SHEET 6)
5A	1	2005 AV THRESHOLD W/ 1/4" x 2" ITW/REDHEAD TAPCONS (Fu = 125 KSI, Fy = 100 KSI) @ 12" O/C W/ 1-3/4" MIN. EMBEDMENT INTO CONC. (NOT RATED FOR WATER INFILTRATION)
6	AS REQ.	NATIONAL GUARD WEATHERSTRIP 160VA W/ #6 x 5/8" SCREWS @ 6" O/C
7	1	PEMCO 347A TOP DRIP W/ #6 x 5/8" SCREWS @ 6" O/C (ONLY REQUIRED IF WATER RESISTANCE IS NEEDED)
8	1	PEMCO 68A TOP WEATHERSTRIP W/ #6 x 5/8" SCREWS @ 6" O/C (ONLY REQUIRED IF WATER RESISTANCE IS NEEDED)
9	2	PEMCO 375CR ASTRAGAL (EXTERIOR ONLY IF WATER RESISTANCE IS NEEDED)
10	8	7 GA. STEEL FRAME HINGE REINFORCEMENT (1-1/4" x 10")
11	8	7 GA. STEEL DOOR HINGE REINFORCEMENT (1-1/4" x 10")
12	2 OR 4	16 GA. TOP & BOTTOM CHANNEL, SPOT WELD 4" O/C
13	AS REQ.	20 GA. STEEL HAT STIFFENER, SPOT WELD 5" O/C
14	AS REQ.	OWENS CORNING FIBERGLASS INSULATION
16	2	12 GA STEEL 1-1/2" x 4-1/2" FULL HEIGHT LOCK REINFORCEMENT
17	2	ROCKWOOD 585 SURFACE BOLTS (DOUBLE DOOR INACTIVE PANEL ONLY)
18	2	18 GA STEEL TOP CAP, TACK WELD & CAULK (3/4" x 1-1/2")
19	AS REQ.	16 GA (.063") MIN. HINGE CHANNEL REINFORCEMENT 3/8" x 5/8" x 1-1/4"
20	1	MARKS 195 SERIES W/ DEADBOLT OR BEST 93K W/ 83T DEADBOLT (CYLINDRICAL)
21	1	BEST 45H SERIES OR MARKS 5 SERIES MORTISE LOCKSET
22	1	1-1/4" x .375" CELL FOAM (WHERE WATER RESISTANCE IS NEEDED)

NOTE: ITEM 15 NOT USED

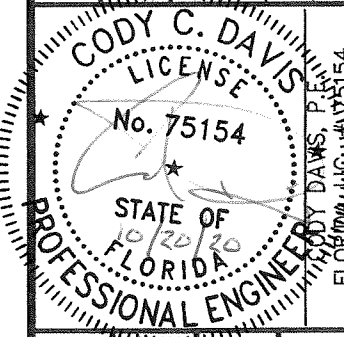
Quality
Engineered
Products
Co., Inc.

4506 QUALITY LN.
TAMPA, FL 33634
PH: (813) 885-1693 FX: (813) 884-2673

TITLE:
8'-0" x 8'-0"
DOUBLE/ SINGLE
FLUSH DOOR
INSTALLATION & GENERAL
NOTES, & BILL OF MATERIALS

REVISIONS

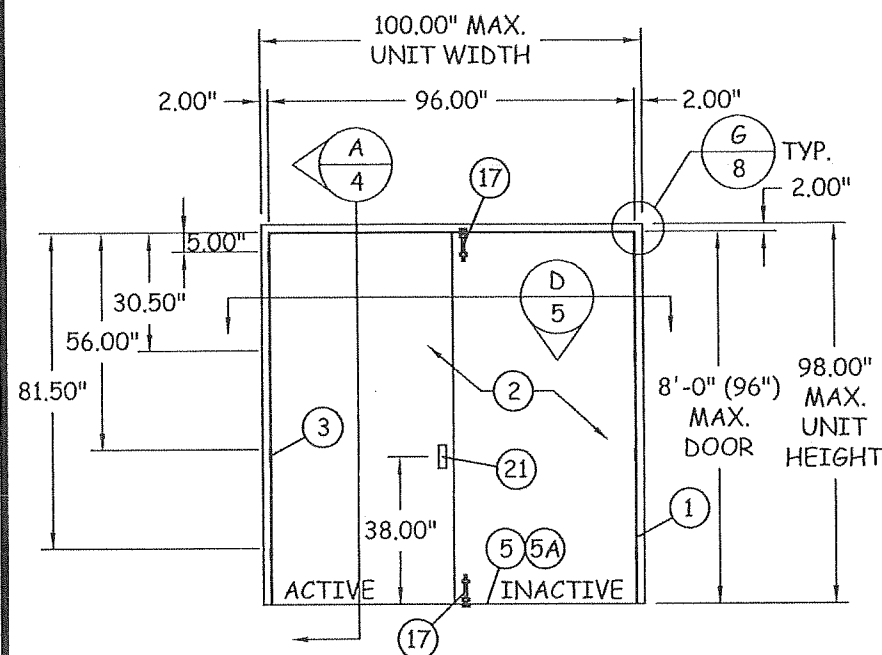
NO.	DESCRIPTION	BY	DATE
1	REVISION	CD	11.23.15
2	REVISION	TA	09.27.20



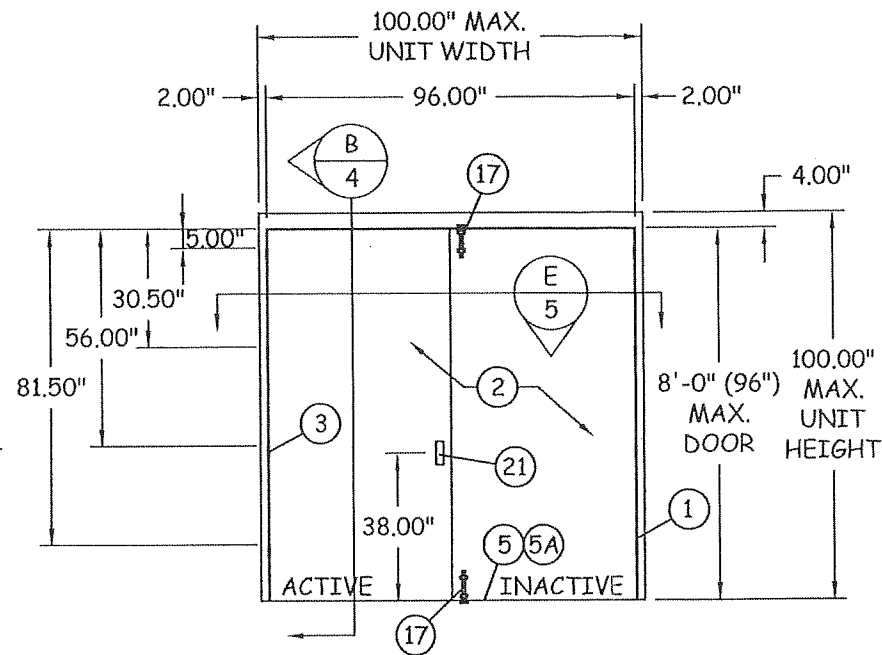
DATE: 11.23.15	DWN BY: KRM	CHK BY: CCD	SCALE: NTS
-------------------	----------------	----------------	---------------

SHEET:

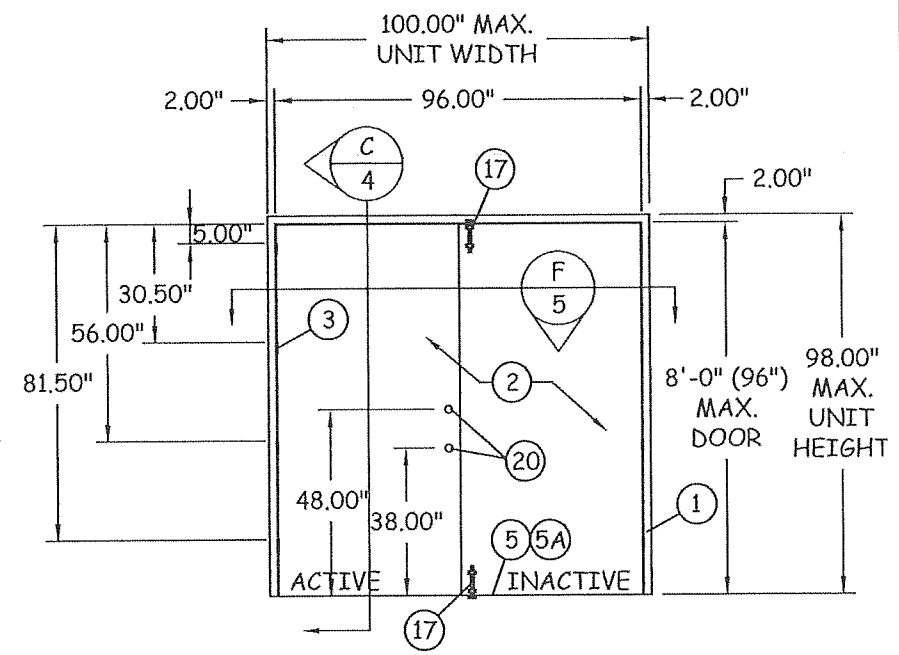
1 OF 9



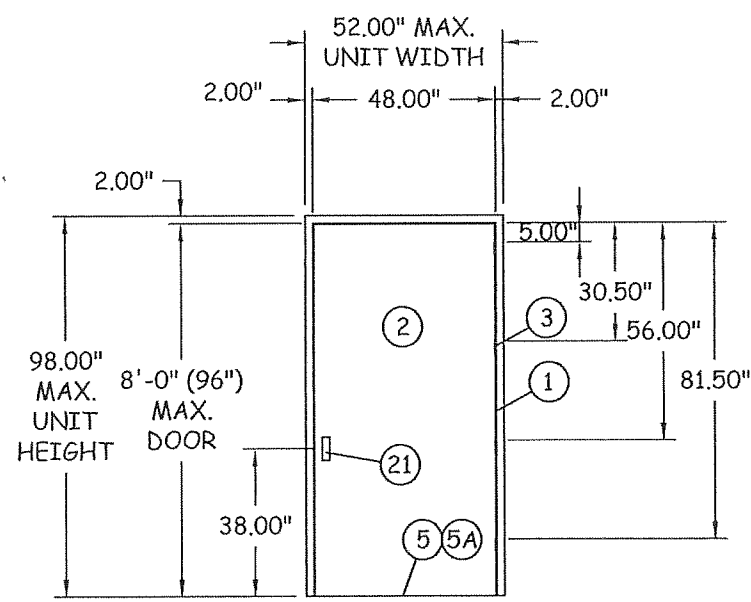
**DOUBLE OUTSWING DOOR
(INTERIOR VIEW)**



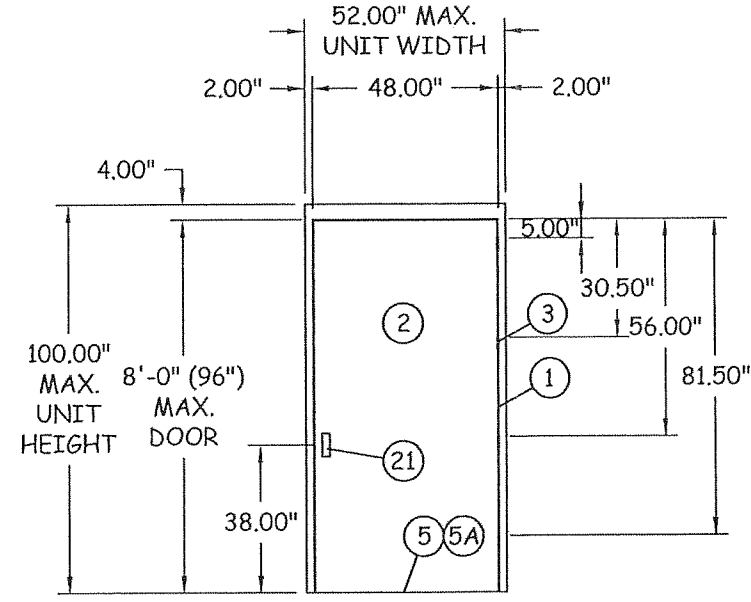
**DOUBLE OUTSWING DOOR
(INTERIOR VIEW)**



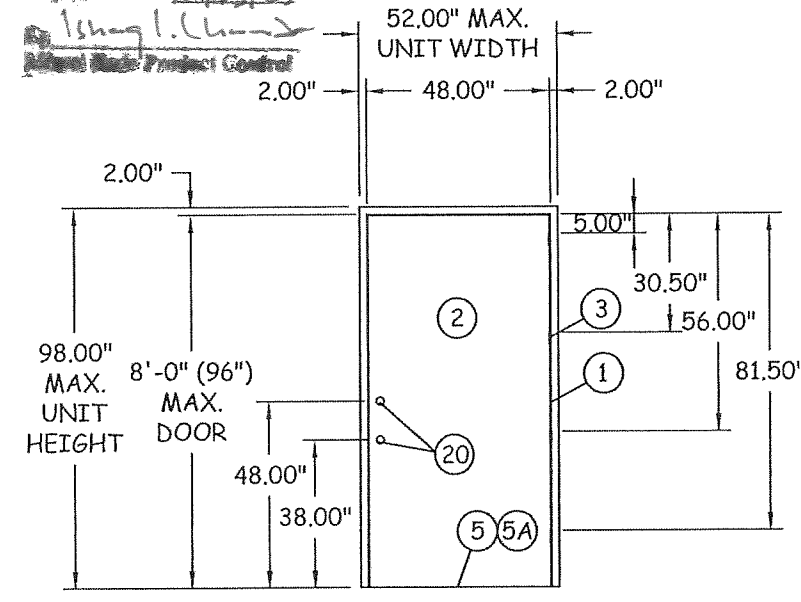
**DOUBLE OUTSWING DOOR
(INTERIOR VIEW)**



**SINGLE OUTSWING DOOR
(INTERIOR VIEW)**



**SINGLE OUTSWING DOOR
(INTERIOR VIEW)**



**SINGLE OUTSWING DOOR
(INTERIOR VIEW)**

PRODUCT REVISED
as complying with the Florida
Building Code
Acceptance No. 20-0722.04
Expiration Date 10/13/25
By: [Signature]
Project Control

*Quality
Engineered
Products
Co., Inc.*

4506 QUALITY LN.
TAMPA, FL 33634
PH: (813) 885-1693 FX: (813) 884-2673

TITLE:
8'-0" x 8'-0"
DOUBLE/ SINGLE
FLUSH DOOR

ELEVATIONS

REVISIONS		NO.	DESCRIPTION	BY	DATE
		1	REVISION	CD	11.23.15
		2	REVISION	TA	09.27.20

CODY C. DAVIS
LICENSE
No. 75154
STATE OF
FLORIDA
PROFESSIONAL ENGINEER

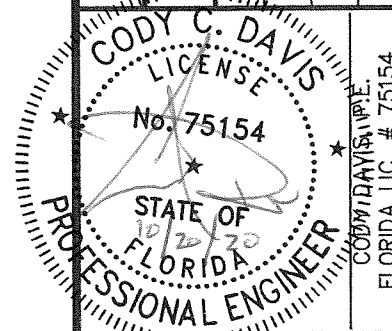
DATE: 11.23.15	DWN BY: KRM	CHK BY: CCD	SCALE: NTS	
-------------------	----------------	----------------	---------------	--

SHEET:
2 OF 9

TITLE:
8'-0" x 8'-0"
DOUBLE/ SINGLE
FLUSH DOOR
INTERNAL ELEVATIONS
& DETAILS

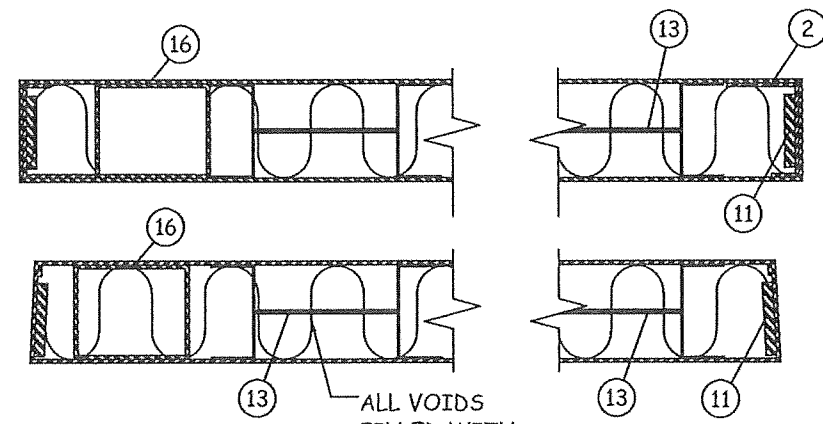
REVISIONS

NO.	DESCRIPTION	BY	DATE
1	REVISION	CD	11.23.15
2	REVISION	TA	09.27.20

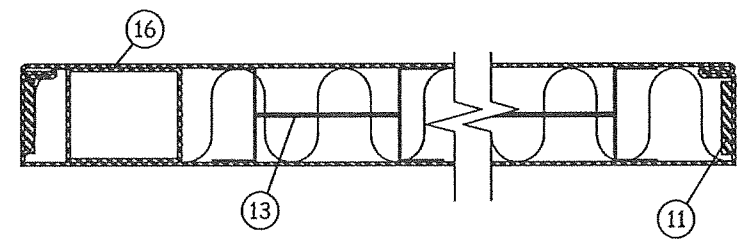


DATE: 11.23.15	DWN BY: KRM	CHK BY: CCD	SCALE: NTS
-------------------	----------------	----------------	---------------

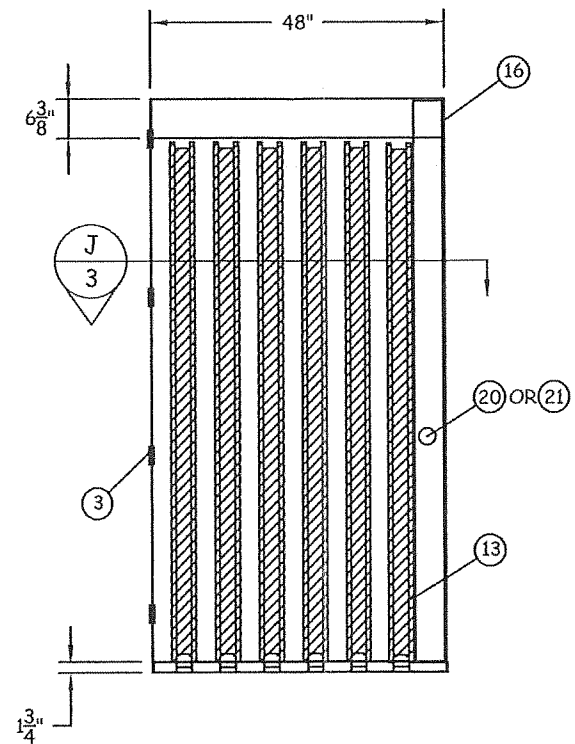
SHEET:
3 OF 9



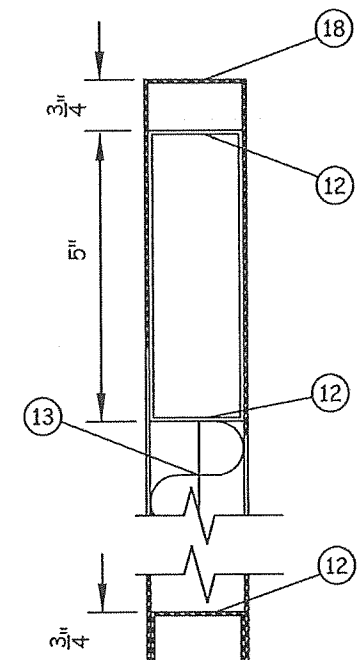
H
3
SEAMLESS EDGE DOOR



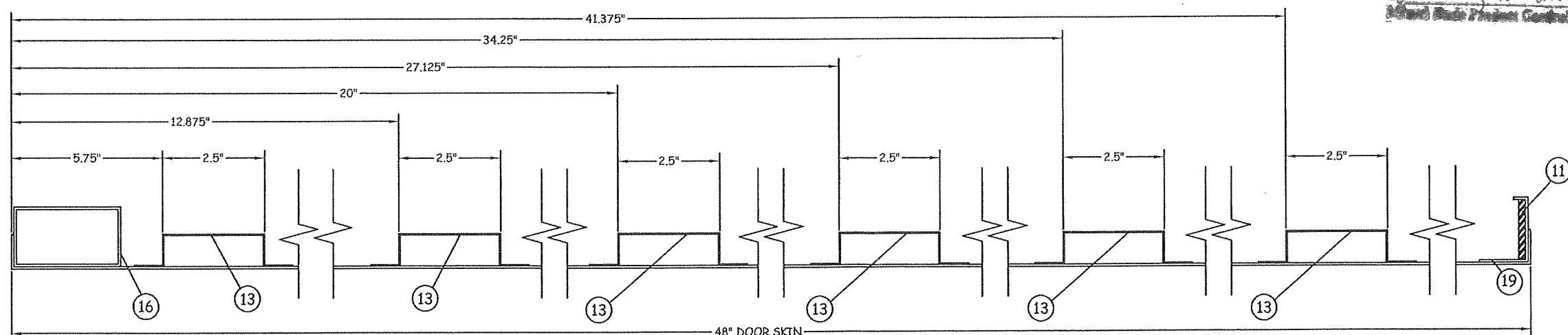
I
3
EDGE SEAM DOOR



J
3
INTERNAL ELEVATION
HAT CHANNEL REINFORCED
DOOR PANEL ILLUSTRATION

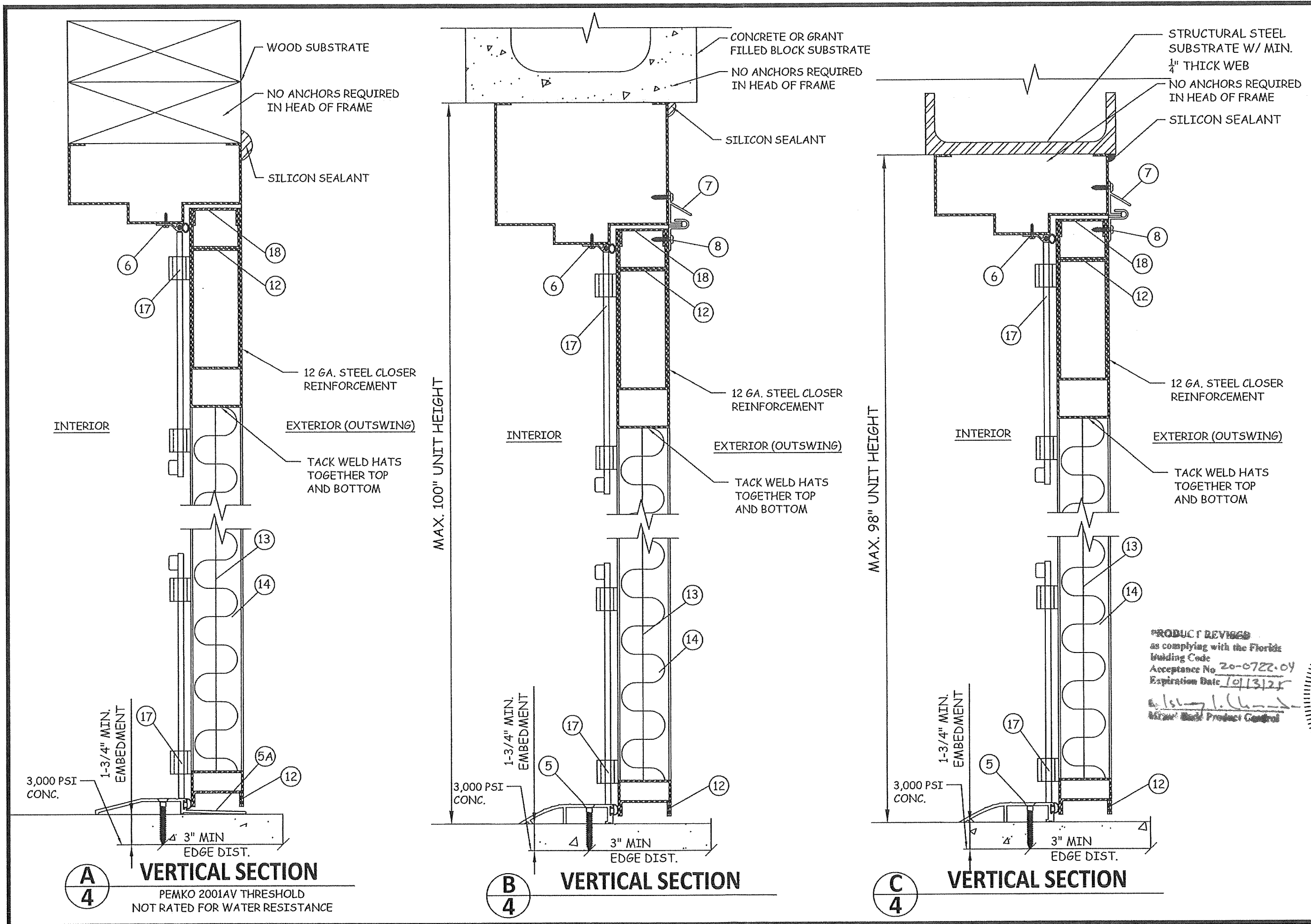


K
3
VERTICAL DOOR SECTION



J
3
INTERNAL SECTION
REINFORCEMENT SPACING

PRODUCT REVISED
as complying with the Florida
Building Code
Acceptance No. 20-0722-04
Expiration Date 10/13/25
By: [Signature]
Product Control



*Quality
Engineered
Products
Co., Inc.*

4506 QUALITY LN.
TAMPA, FL. 33634
PH: (813) 885-1693 FX: (813) 884-2673

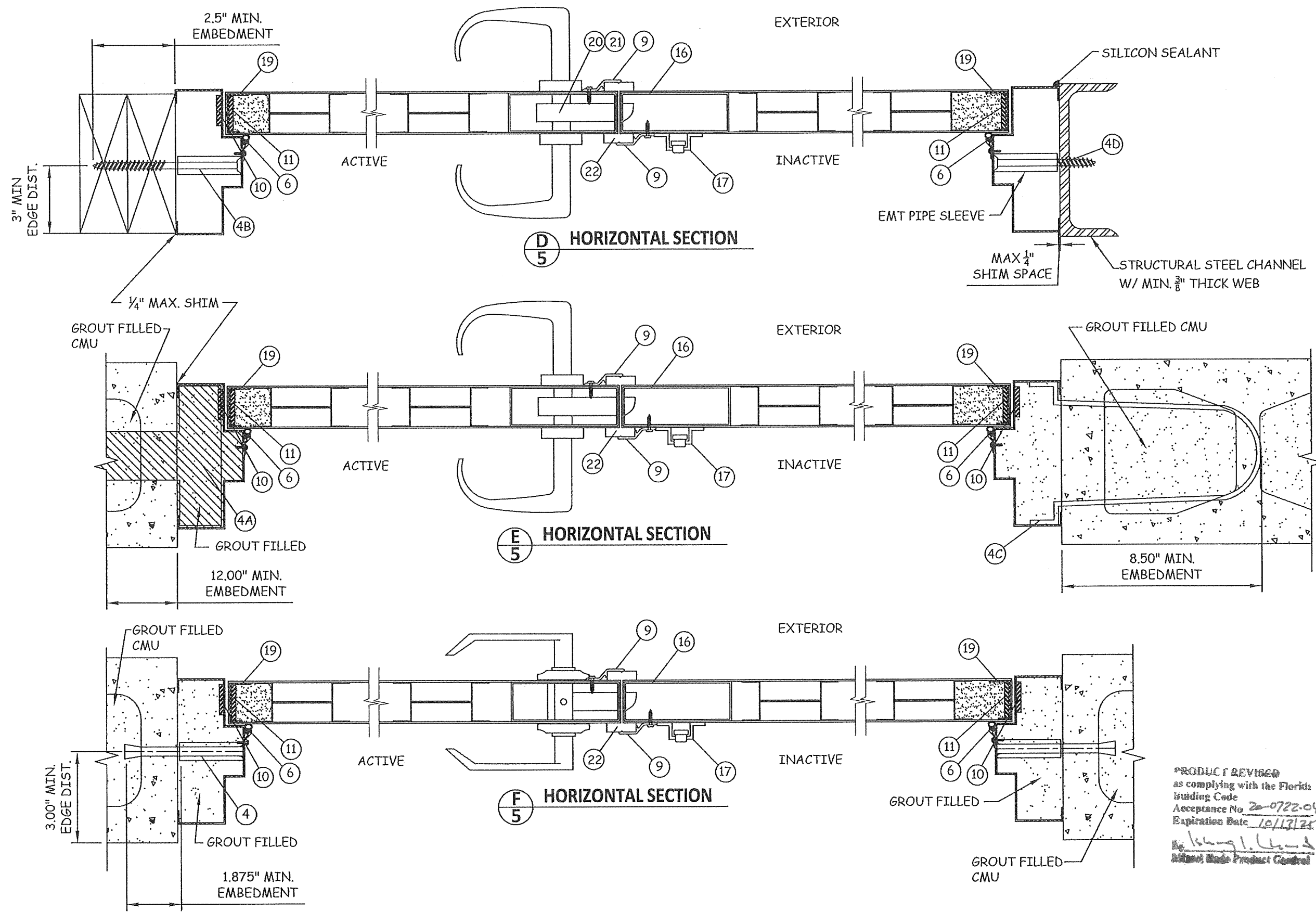
TITLE:
8'-0" x 8'-0"
DOUBLE/ SINGLE
FLUSH DOOR
VERTICAL SECTIONS

REVISIONS		DESCRIPTION	BY	DATE
NO.	1	REVISION	CD	11.23.15
NO.	2	REVISION	TA	09.27.20

CODY C. DAVIS
LICENSE
No. 75154
STATE OF
FLORIDA
PROFESSIONAL ENGINEER
10/20/20
Cody Davis, P.E.
FLORIDA LIC# 175154

DATE: 11.23.15
DWN BY: KRM
CHK BY: CCD
SCALE: NTS

SHEET:
4 OF 9



Quality
Engineered
Products
Co., Inc.

4506 QUALITY LN.
TAMPA, FL 33634
PH: (813) 885-1693 FX: (813) 884-2673

TITLE:
8'-0" x 8'-0"
DOUBLE/ SINGLE
FLUSH DOOR
HORIZONTAL SECTIONS

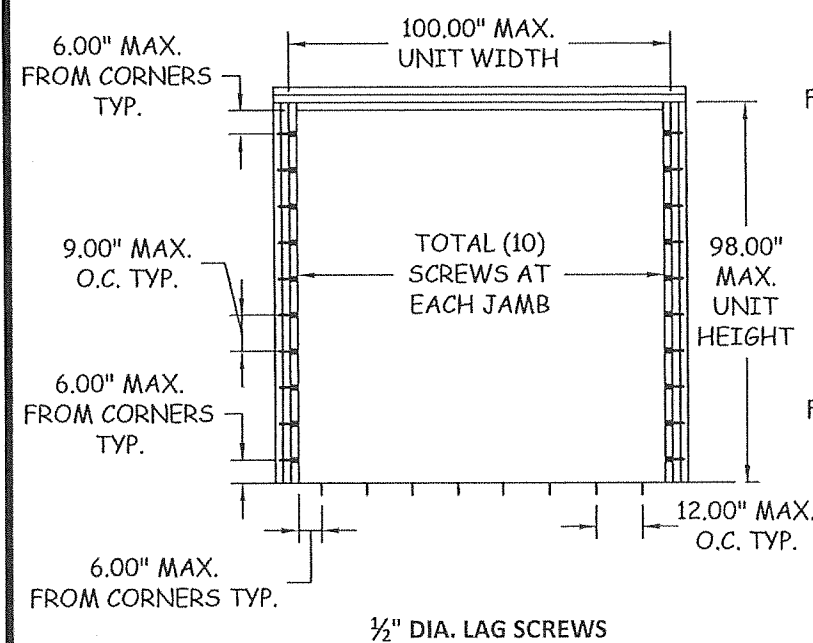
REVISIONS			DESCRIPTION	BY	DATE
NO.	1	2	REVISION	CD	11.23.15
			REVISION	TA	09.27.20

CODY C. DAVIS
LICENSE
No. 75154
STATE OF
FLORIDA
PROFESSIONAL ENGINEER
CODY C. DAVIS, P.E.
FLORIDA LIC. # 75154

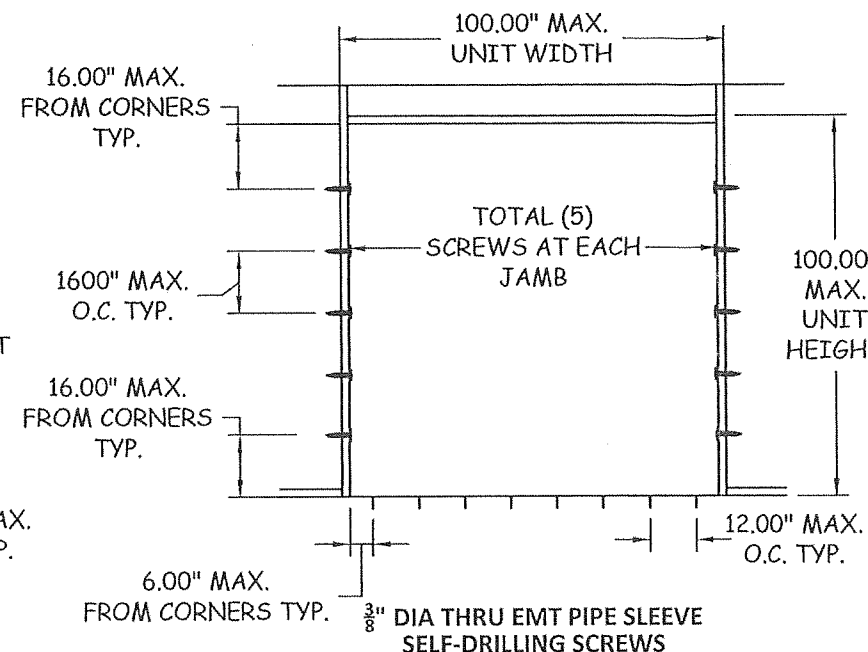
PRODUCT REVISED
as complying with the Florida
Building Code
Acceptance No. 20-0722-04
Expiration Date 10/13/21
By: [Signature]
Quality Engineered Products Control

DATE:	11.23.15	DWN BY:	KRM	CHK BY:	CCD	SCALE:	NTS
-------	----------	---------	-----	---------	-----	--------	-----

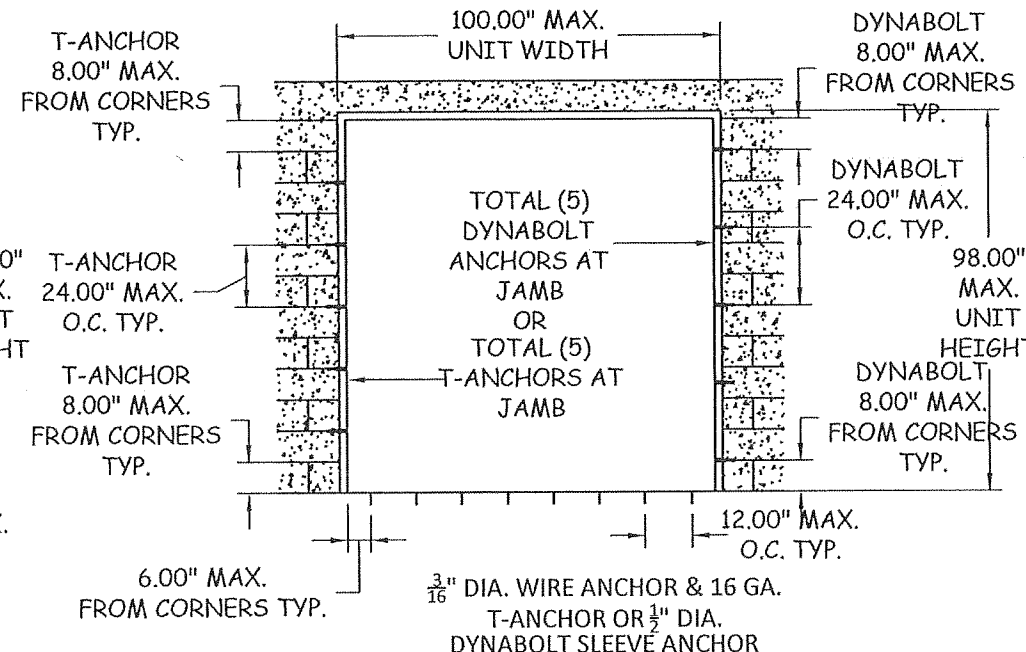
SHEET:
5 OF 9



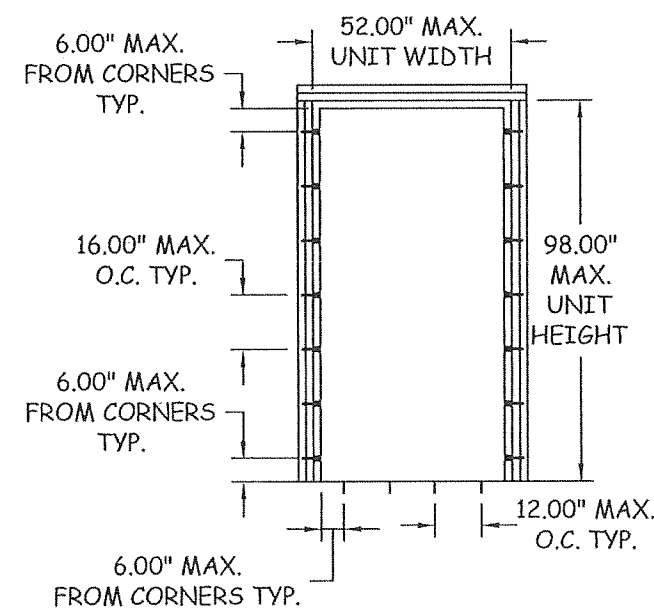
ANCHOR LOCATION
INSTALLATION INTO WOOD STRUCTURE



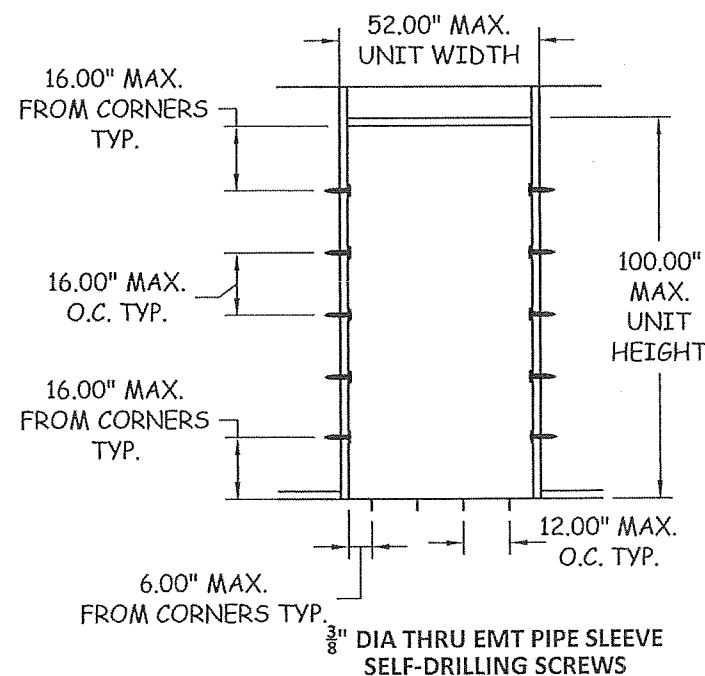
ANCHOR LOCATION
INSTALLATION INTO STRUCTURAL STEEL



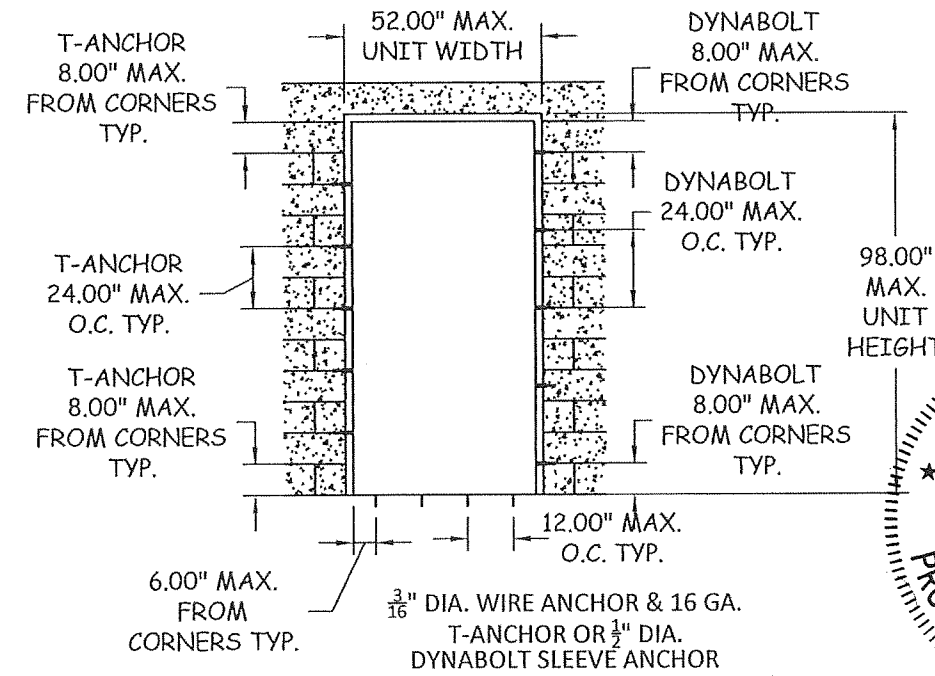
ANCHOR LOCATION
INSTALLATION INTO EXIST. MASONRY
(GROUT FILLED BLOCKS)



ANCHOR LOCATION
INSTALLATION INTO WOOD STRUCTURE



ANCHOR LOCATION
INSTALLATION INTO STRUCTURAL STEEL



ANCHOR LOCATION
INSTALLATION INTO EXIST. MASONRY
(GROUT FILLED BLOCKS)

PRODUCT REVISED
as complying with the Florida
Building Code
Acceptance No. 20-0722-04
Expiration Date 10/13/25
By: [Signature]
Miner: [Signature] Product Control

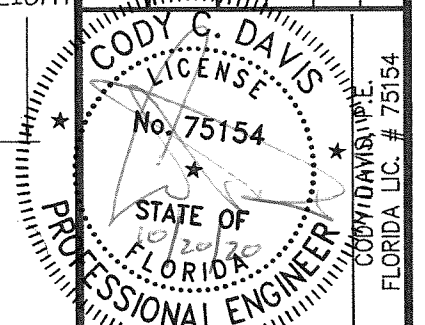
Quality
Engineered
Products
Co., Inc.

4506 QUALITY LN.
TAMPA, FL 33634
PH: (813) 885-1693 FX: (813) 884-2673

TITLE:
8'-0" x 8'-0"
DOUBLE/ SINGLE
FLUSH DOOR
ANCHOR LOCATIONS

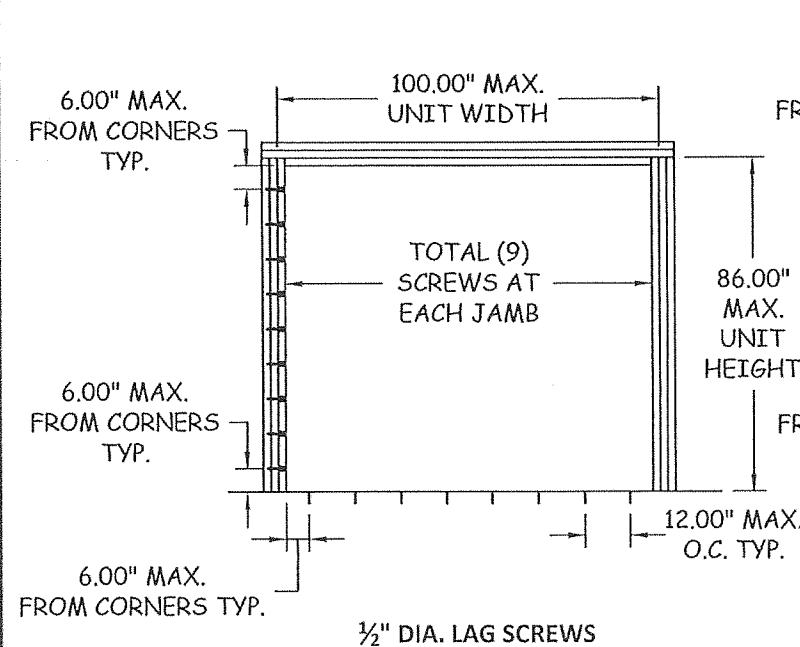
REVISIONS

NO.	DESCRIPTION	BY	DATE
1	REVISION	CD	11.23.15
2	REVISION	TA	09.27.20

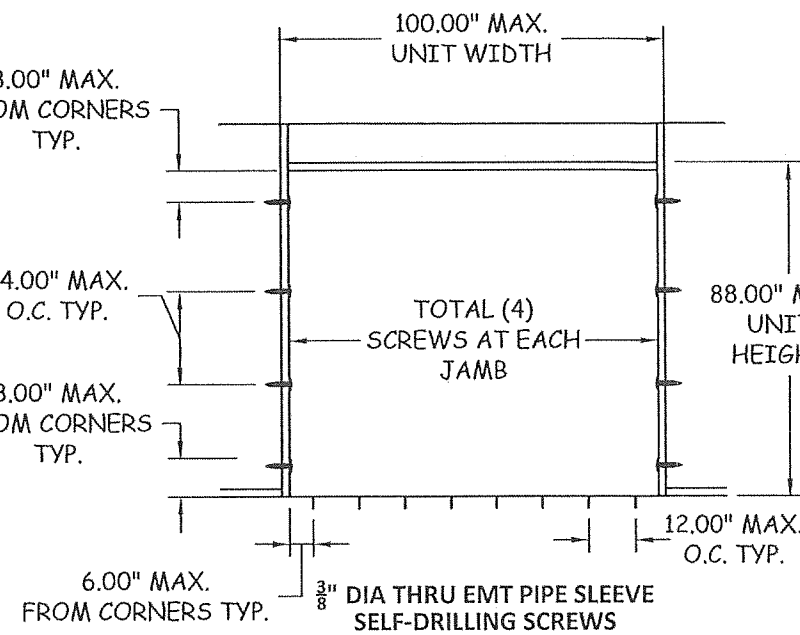


DATE: 11.23.15	DWN BY: KRM	CHK BY: CCD	SCALE: NTS
-------------------	----------------	----------------	---------------

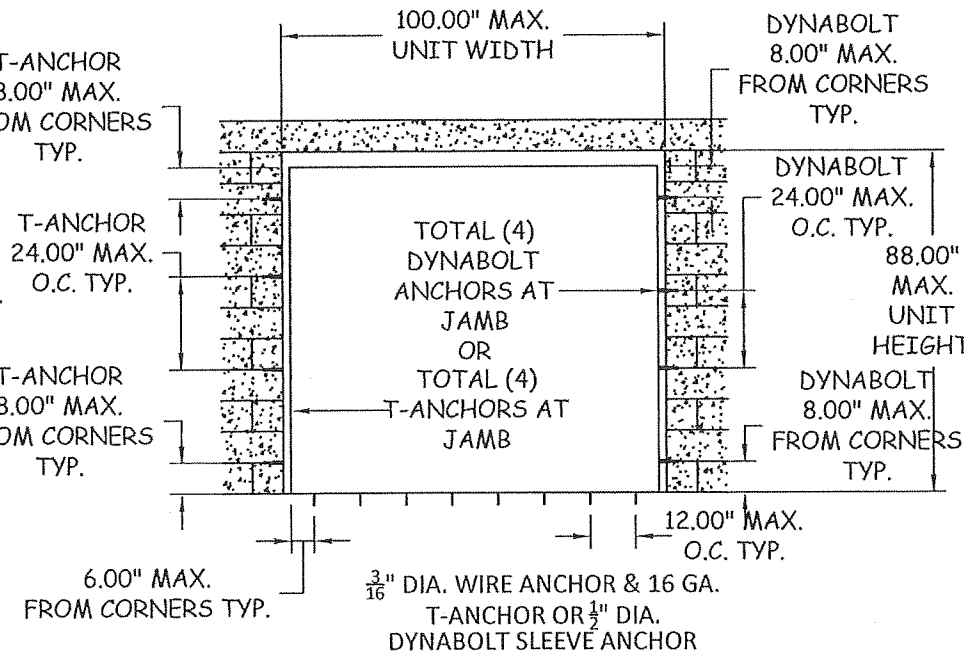
SHEET:
6 OF 9



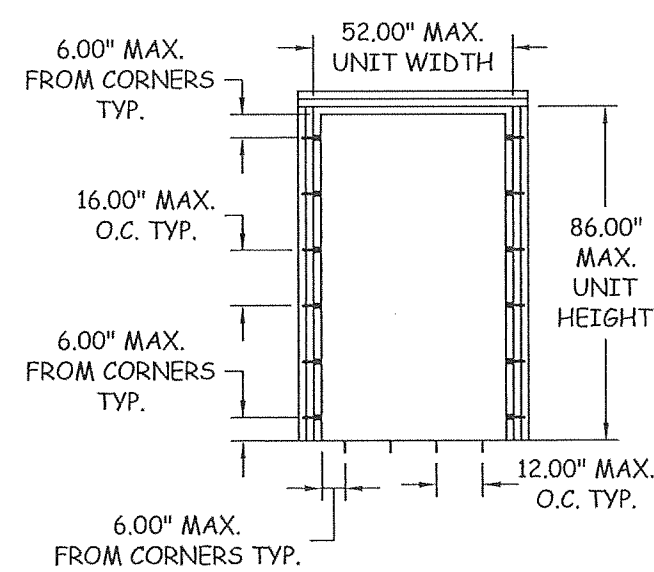
ANCHOR LOCATION
INSTALLATION INTO WOOD STRUCTURE



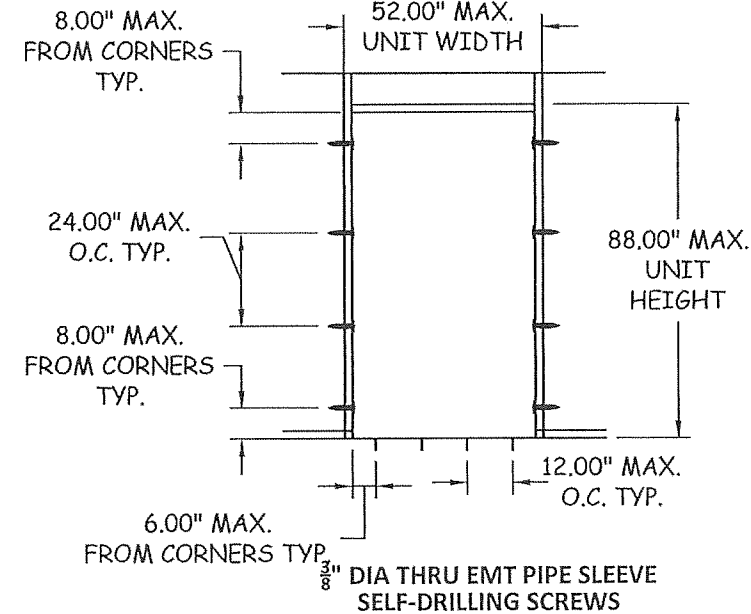
ANCHOR LOCATION
INSTALLATION INTO STRUCTURAL STEEL



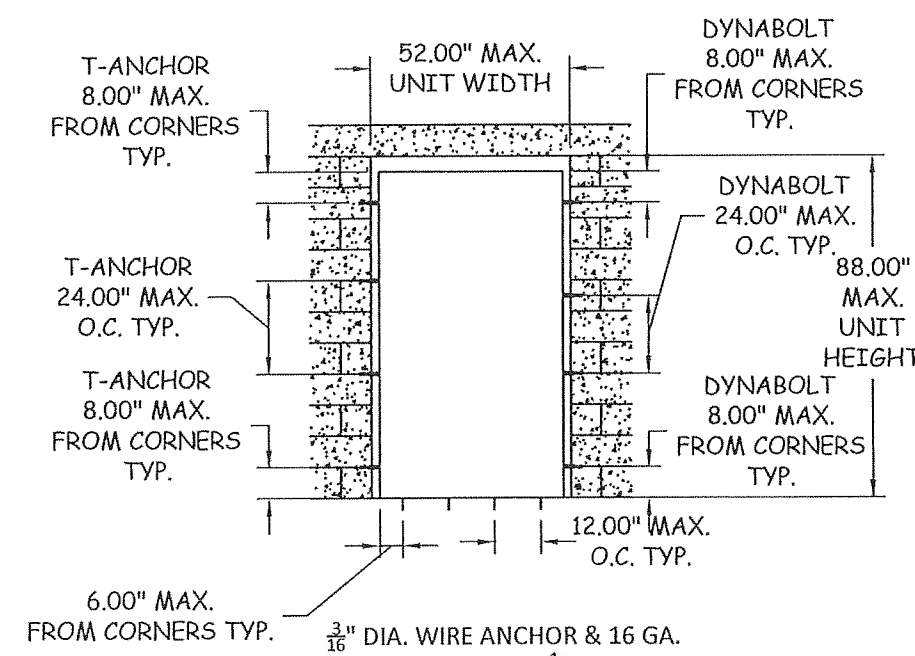
ANCHOR LOCATION
INSTALLATION INTO EXIST. MASONRY
(GROUT FILLED BLOCKS)



ANCHOR LOCATION
INSTALLATION INTO WOOD STRUCTURE



ANCHOR LOCATION
INSTALLATION INTO STRUCTURAL STEEL



ANCHOR LOCATION
INSTALLATION INTO EXIST. MASONRY
(GROUT FILLED BLOCKS)

PRODUCT REVISED
as complying with the Florida
Building Code
Acceptance No. 20-0722-04
Expiration Date 10/13/25
Ismael I. Luna
Miami Trade Product Control

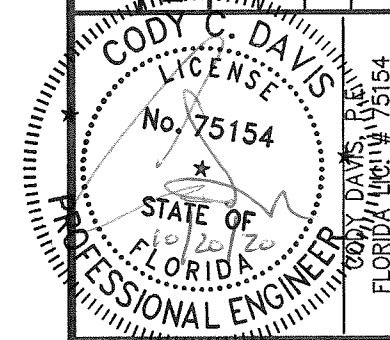
Quality
Engineered
Products
Co., Inc.

4506 QUALITY LN.
TAMPA, FL 33634
PH: (813) 885-1693 FX: (813) 884-2673

TITLE:
7'-0" x 8'-0"
DOUBLE/ SINGLE
FLUSH DOOR
ANCHOR LOCATIONS

REVISIONS

NO.	DESCRIPTION	BY	DATE
1	REVISION	CD	11.23.15
2	REVISION	TA	09.27.20



DATE: 11.23.15	DWN BY: KRM	CHK BY: CCD	SCALE: NTS
-------------------	----------------	----------------	---------------

SHEET:
7 OF 9

Quality
Engineered
Products
Co., Inc.

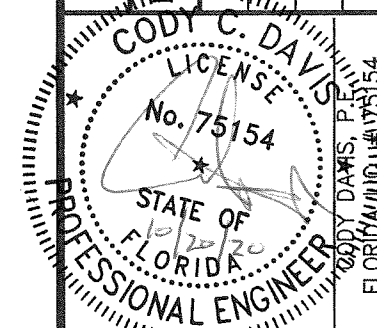
4506 QUALITY LN.
TAMPA, FL. 33634
PH: (813) 885-1693 FX: (813) 884-2673

TITLE:
8'-0" x 8'-0"
DOUBLE/ SINGLE
FLUSH DOOR

DETAILS

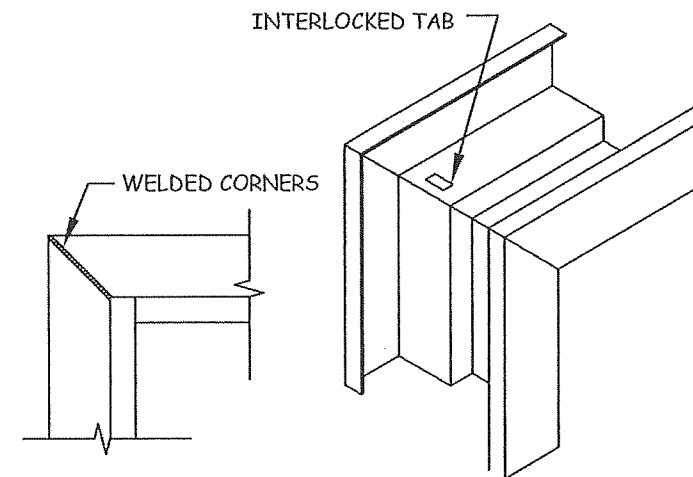
REVISIONS

NO.	DESCRIPTION	BY	DATE
1	REVISION	CD	11.23.15
2	REVISION	TA	09.27.20

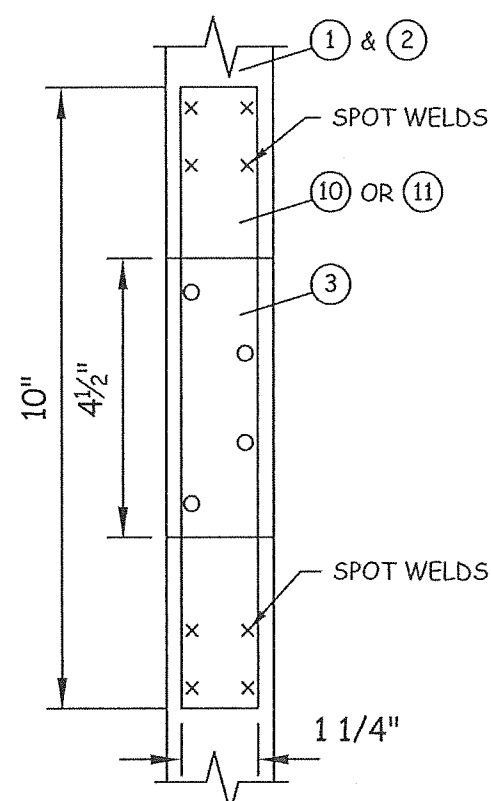


DATE: 11.23.15	DWN BY: KRM	CHK BY: CCD	SCALE: NTS
-------------------	----------------	----------------	---------------

SHEET:
8 OF 9

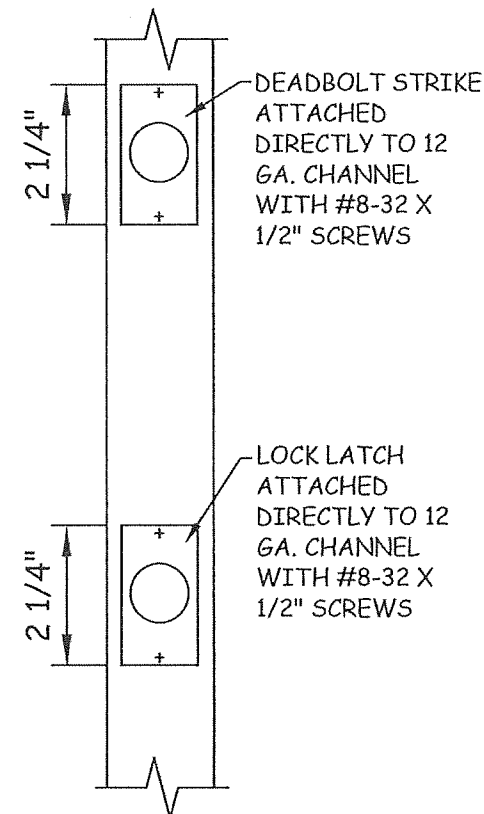


G
8 TYP. CORNER DETAIL

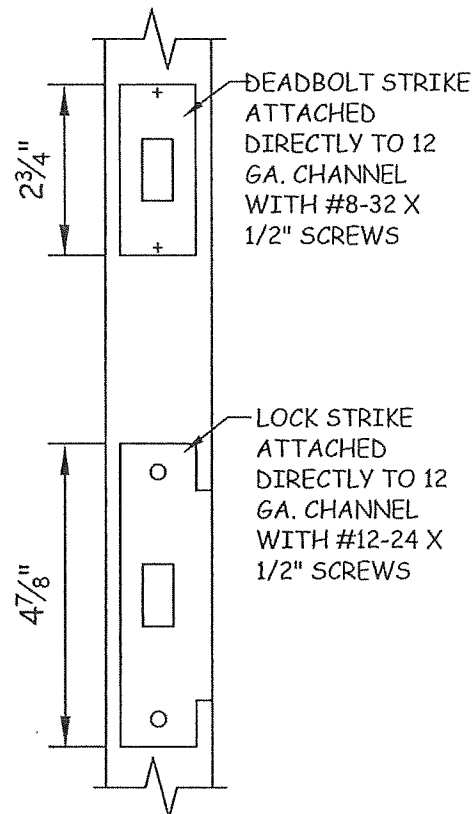


**DOOR/HINGE
STEEL HINGE
PLATE REINF.**

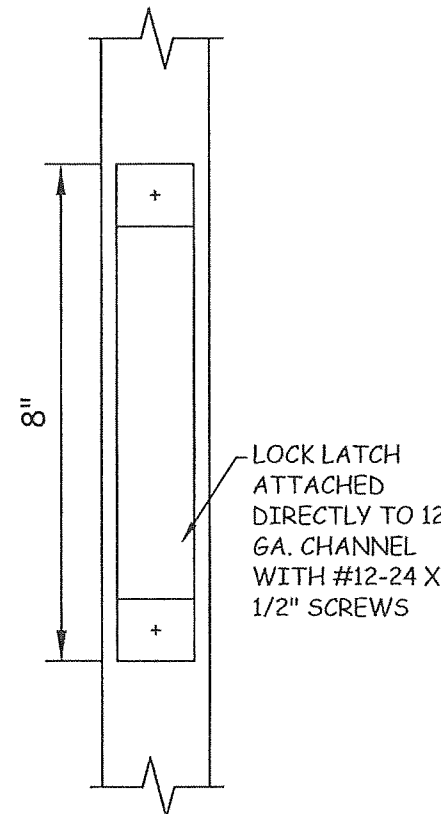
7 GAUGE X 1-1/4" X 10"



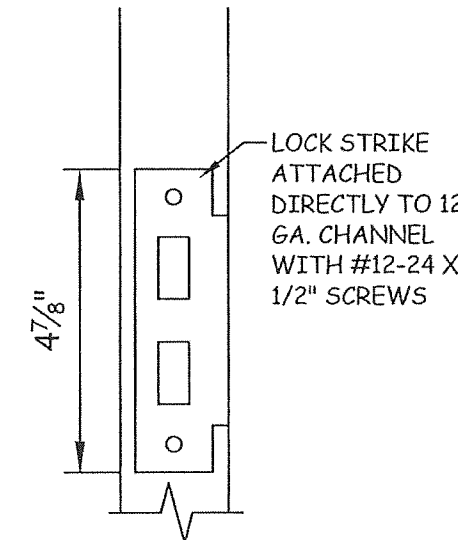
ACTIVE DOOR
LOCK/DEAD BOLT REINFORCEMENT



INACTIVE DOOR
LOCK/DEAD BOLT STRIKE PLATE
REINFORCEMENT

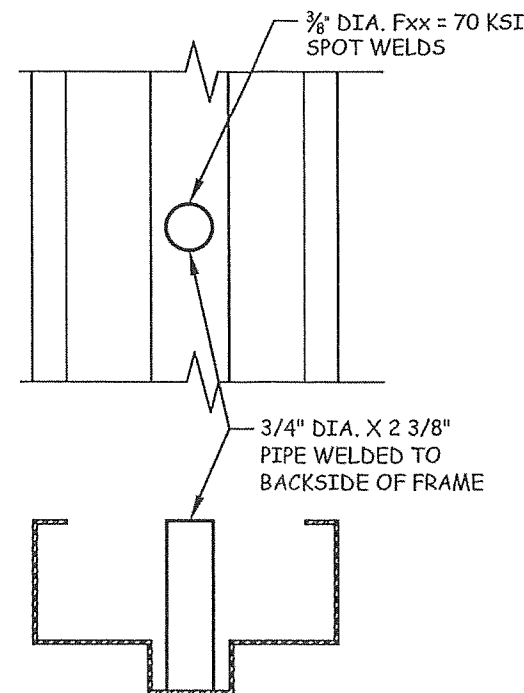
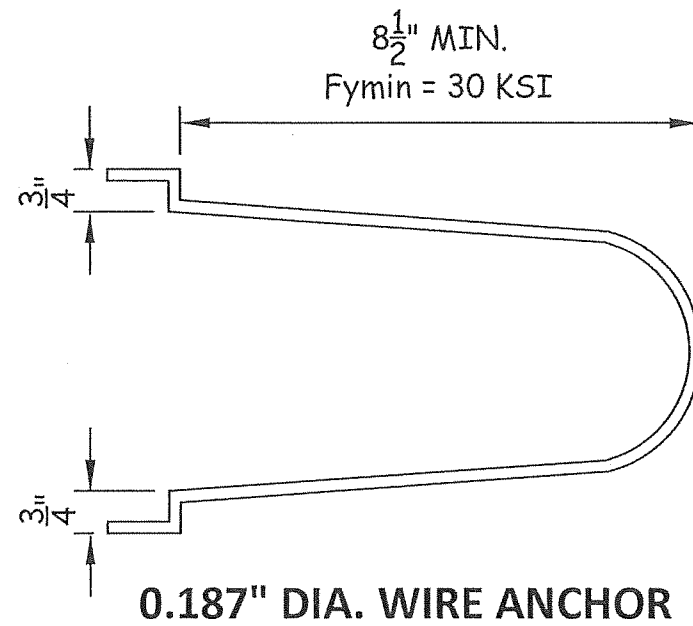


ACTIVE DOOR
MORTISE LOCK REINFORCEMENT

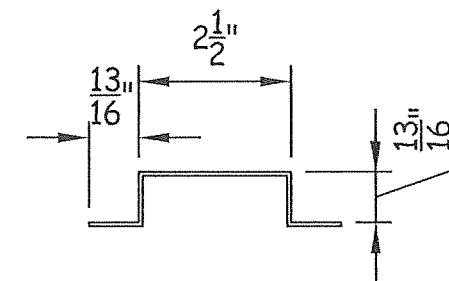


INACTIVE DOOR
MORTISE LOCK STRIKE PLATE
REINFORCEMENT

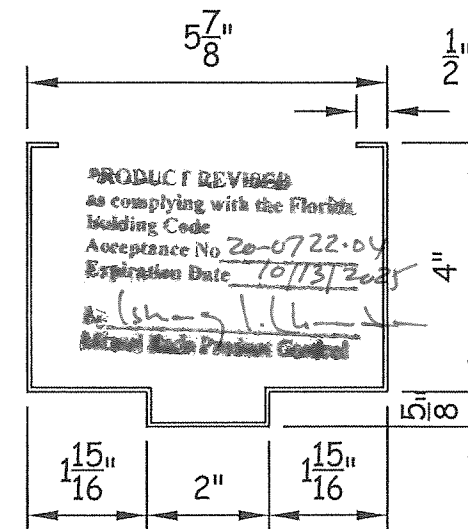
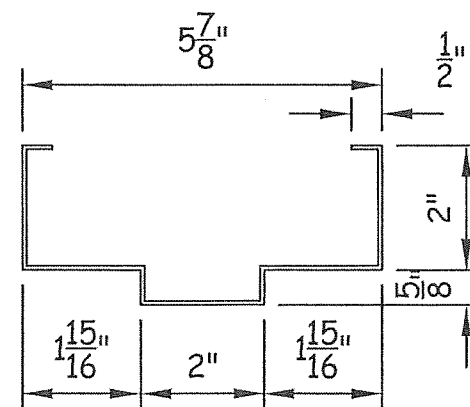
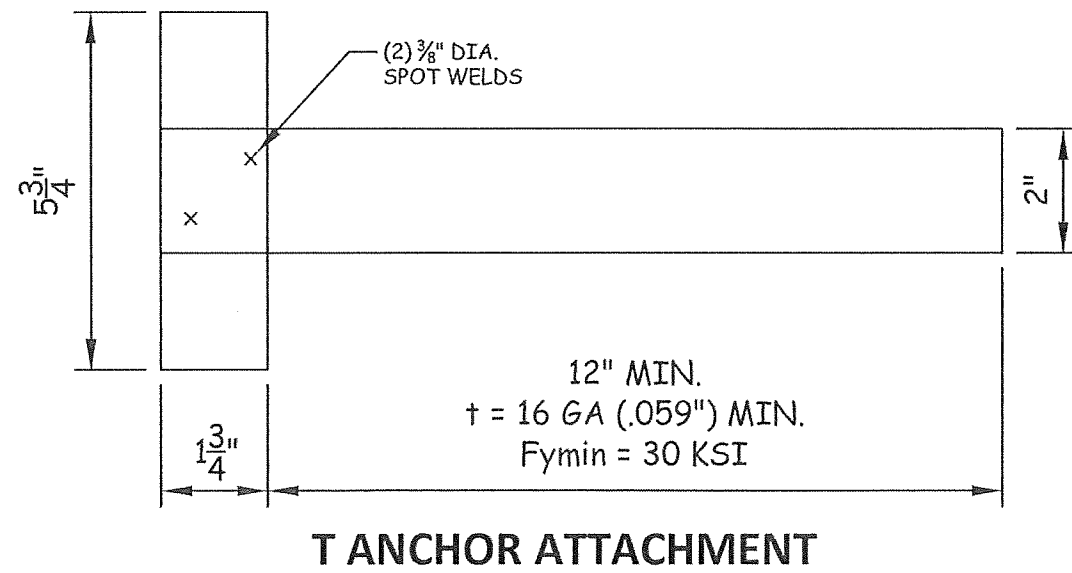
PRODUCT REVISED
as complying with the Florida
Building Code
Acceptance No. 20-0722.04
Expiration Date 10/13/25
By: [Signature]
Michael Bode Product Control



PIPE SLEEVE DETAIL



20 GA. STEEL HAT STIFFEN
SPOT WELD 6" O.C. FULL
HEIGHT OF DOOR



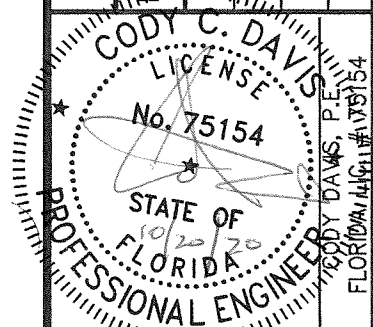
Quality
Engineered
Products
Co., Inc.

4506 QUALITY LN.
TAMPA, FL. 33634
PH: (813) 885-1693 FX: (813) 884-2673

TITLE:
8'-0" x 8'-0"
DOUBLE/ SINGLE
FLUSH DOOR
DETAILS

REVISIONS

DESCRIPTION	BY	DATE
REVISION	CD	11.23.15
REVISION	TA	09.27.20



DATE:	11.23.15
DWN BY:	KRM
CHK BY:	CCD
SCALE:	NTS

SHEET:
9 OF 9