



DEPARTMENT OF REGULATORY AND ECONOMIC RESOURCES (RER)
BOARD AND CODE ADMINISTRATION DIVISION

NOTICE OF ACCEPTANCE (NOA)

MIAMI-DADE COUNTY
PRODUCT CONTROL SECTION
11805 SW 26 Street, Room 208
Miami, FL 33175
T (786) 315-2590 F (786) 315-2599
www.miamidade.gov/economy

WinDoor, Inc.
104 Triple Diamond Blvd.
North Venice, FL 34275

SCOPE:

This NOA is being issued under the applicable rules and regulations governing the use of construction materials. The documentation submitted has been reviewed and accepted by Miami-Dade County RER - Product Control Section to be used in Miami Dade County and other areas where allowed by the Authority Having Jurisdiction (AHJ).

This NOA shall not be valid after the expiration date stated below. The Miami-Dade County Product Control Section (In Miami-Dade County) and/or the AHJ (in areas other than Miami-Dade County) reserve the right to have this product or material tested for quality assurance purposes. If this product or material fails to perform in the accepted manner, the manufacturer will incur the expense of such testing and the AHJ may immediately revoke, modify, or suspend the use of such product or material within their jurisdiction. RER reserves the right to revoke this acceptance, if it is determined by Miami-Dade County Product Control Section that this product or material fails to meet the requirements of the applicable building code.

This product is approved as described herein, and has been designed to comply with the Florida Building Code, including the High Velocity Hurricane Zone.

DESCRIPTION: Series "560" Aluminum Sliding Glass Door (3-tracks) w/ wo Reinforcements – S.M.I.

APPROVAL DOCUMENT: Drawing No. **560-3T-SM-NOA**, titled Series "560 Aluminum Sliding Glass Door -3T (SMI)", sheets 1 through 16 of 16, prepared by manufacturer, dated 06/10/20, signed and sealed by Anthony Lynn Miller, P. E., bearing the Miami-Dade County Product Control Revision stamp with the Notice of Acceptance number and Expiration date by the Miami-Dade County Product Control Section.

MISSILE IMPACT RATING: Small Missile Impact Resistant

LABELING: Each unit shall bear a permanent label with the manufacturer's name or logo, city, state, model/series, and following statement: "Miami-Dade County Product Control Approved", unless otherwise noted herein.

RENEWAL of this NOA shall be considered after a renewal application has been filed and there has been no change in the applicable building code negatively affecting the performance of this product.

TERMINATION of this NOA will occur after the expiration date or if there has been a revision or change in the materials, use, and/or manufacture of the product or process. Misuse of this NOA as an endorsement of any product, for sales, advertising or any other purposes shall automatically terminate this NOA. Failure to comply with any section of this NOA shall be cause for termination and removal of NOA.

ADVERTISEMENT: The NOA number preceded by the words Miami-Dade County, Florida, and followed by the expiration date may be displayed in advertising literature. If any portion of the NOA is displayed, then it shall be done in its entirety.

INSPECTION: A copy of this entire NOA shall be provided to the user by the manufacturer or its distributors and shall be available for inspection at the job site at the request of the Building Official.

This NOA **revised 18-0926.12** and consists of this page 1 and evidence page E-1 and E-2, as well as approval document mentioned above.

The submitted documentation was reviewed by **Sifang Zhao, P.E.**



S.Z.
11/26/2020

NOA No. 20-0729.10
Expiration Date: June 26, 2023
Approval Date: November 26, 2020
Page 1

NOTICE OF ACCEPTANCE: EVIDENCE SUBMITTED

A. DRAWINGS

1. Manufacturer's die drawings and sections (*See NOA #20-0729.04*)
2. Drawing No. 560-3T-SM-NOA, titled Series "560 Aluminum Sliding Glass Door -3T (SMI)", sheets 1 through 16 of 16, prepared by manufacturer, dated 06/10/20, signed and sealed by Anthony Lynn Miller, P. E.

B. TESTS

1. Test reports on: 1) Air Infiltration Test, per FBC, TAS 202-94
2) Uniform Static Air Pressure Test, Loading per FBC, TAS 202-94
3) Water Resistance Test, per FBC, TAS 202-94
4) Small Missile Impact Test per FBC, TAS 201-94
5) Large Missile Impact Test per FBC, TAS 201-94
6) Cyclic Wind Pressure Loading per FBC, TAS 203-94

along with marked-up drawings and installation diagram of all CGI Windows and Doors, Inc. and PGT Industries, Inc., representative units listed below and tested to qualify **Dowsil 791** and **Dowsil 983** silicones, per Proposal #19-1155TP, prepared by Fenestration Testing Lab, Inc., Test Reports No.:

CGI Windows and Doors Inc. test specimens:

FTL-20-2108.1, CGI SH360 Aluminum Single Hung Window (unit 1 in proposal) **FTL-20-2108.2**, CGI CA238 Alum. Outswing Casement Window (unit 2 in proposal) **FTL-20-2108.3**, CGI SGD560 Aluminum Sliding Glass Door (unit 3 in proposal) **FTL-20-2108.4**, CGI PW410 Aluminum Fixed Window (unit 4 in proposal) and **FTL-20-2108.5**, CGI SH360 Aluminum Single Hung Window (unit 5 in proposal) all dated 08/24/20 and signed and sealed by Idalmis Ortega, P.E.

PGT Industries, Inc. test specimens:

FTL-7897, PGT PW5520 PVC Fixed Window (unit 6 in proposal), dated 09/03/14 **FTL-20-2107.1**, PGT SGD780 Aluminum Sliding Glass Door (unit 7 in proposal) **FTL-20-2107.2**, PGT CA740 Alum. Outswing Casement Window (unit 8 in proposal) **FTL-20-2107.3**, PGT PW7620A Aluminum Fixed Window (unit 9 in proposal) and **FTL-20-2107.4**, PGT PW7620A Aluminum Fixed Window (unit 10 in proposal) all dated 07/13/20 and signed and sealed by Idalmis Ortega, P.E.

C. CALCULATIONS

1. Anchor verification calculations and structural analysis, complying with **FBC 7th Edition (2020)**, dated 07/20/20, prepared by manufacturer, signed and sealed by Anthony Lynn Miller, P.E.
2. Glazing complies with **ASTM E1300-04, -09, -12 and -16**.

D. QUALITY ASSURANCE

1. Miami Dade Department of Regulatory and Economic Resources (RER).



Sifang Zhao, P.E.
Product Control Examiner
NOA No. 20-0729.10
Expiration Date: June 26, 2023
Approval Date: November 26, 2020

NOTICE OF ACCEPTANCE: EVIDENCE SUBMITTED

E. MATERIAL CERTIFICATIONS

1. Notice of Acceptance No. **15-1201.11** issued to Eastman Chemical Company (MA) for their “**Saflex Clear and Color Glass Interlayers**”, expiring on 05/21/2021.
2. Notice of Acceptance No. **19-0305.02** issued to Kuraray America, Inc. for their “**Trosifol® Ultraclear, Clear and Color PVB Glass Interlayers**”, expiring on 07/08/24.

F. STATEMENTS

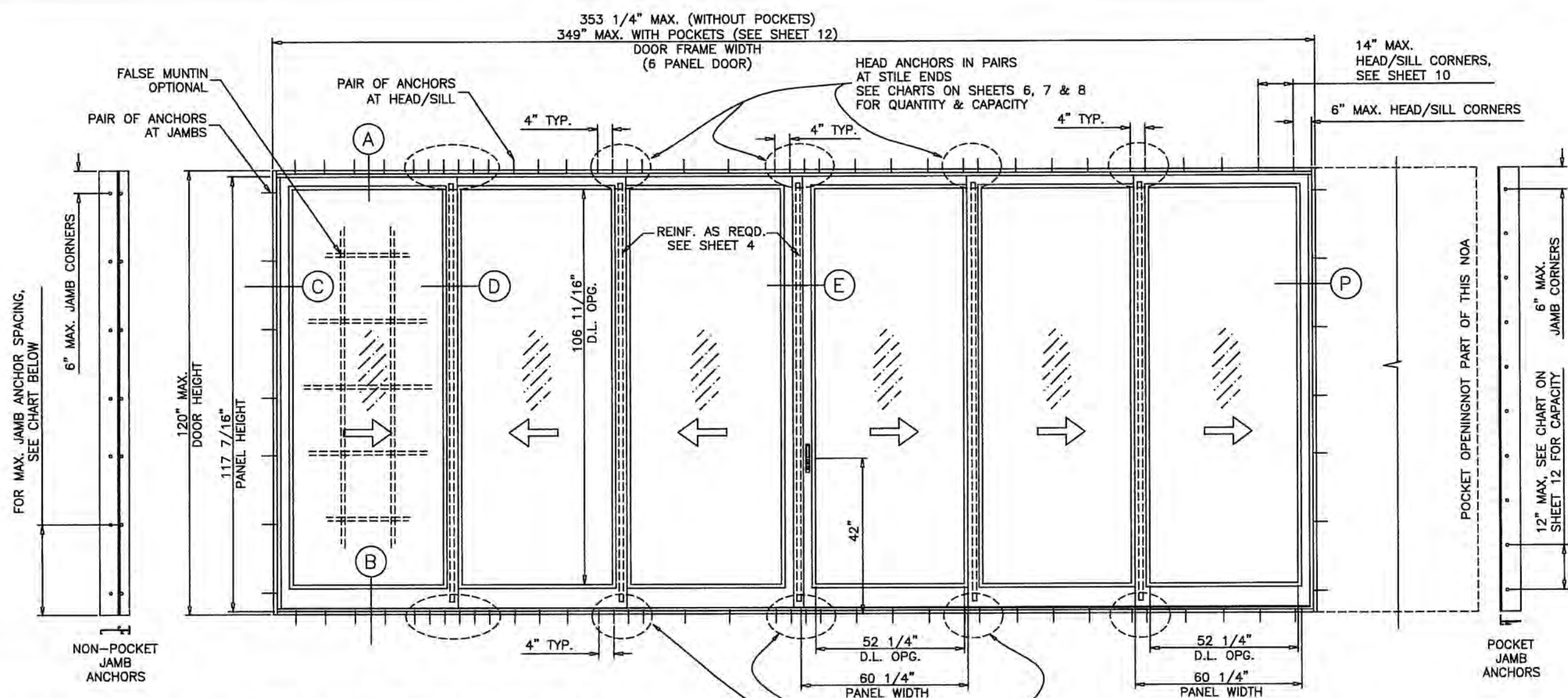
1. Statement letters of conformance to FBC 2020(7th Edition), dated 07/20/2, prepared, signed & sealed by Lynn Miller, P. E.
2. Notification of Successor Engineer per the Florida Administrative Code Section 61G15-27.001, notifying original engineer that the successor engineer is assuming full professional and legal responsibility for all engineering documents pertaining to this NOA, dated 07/20/20, signed and sealed by A. Lynn Miller, P.E.

D. OTHERS

1. Private labeling agreement between WinDoor, Inc. and CGI Windows and Doors, Inc. document in conformance of RER guideline dated 09/12/2018.
(Submitted under NOA #18-1128.10)
2. Notice of Acceptance No. **18-0926.12**, issued to Windoor, Inc. for their Series “560” Aluminum Sliding Glass Door (3-tracks) w/ wo Reinforcements – S.M.I., approved on 09/12/19 and expiring on 06/26/23.
3. Notice of Acceptance No. **20-0729.04**, issued to CGI Windows and Doors, Inc. for their Series “560” Aluminum Sliding Glass Door (3-tracks) w/ wo Reinforcements – S.M.I., approved on 11/05/2020 and expiring on 06/26/23.



Sifang Zhao, P.E.
Product Control Examiner
NOA No. 20-0729.10
Expiration Date: June 26, 2023
Approval Date: November 26, 2020



SERIES SGD560A ALUMINUM SLIDING GLASS DOOR 3-TRACK, SMALL MISSILE

1) THIS PRODUCT HAS BEEN DESIGNED AND TESTED TO COMPLY WITH THE REQUIREMENTS OF THE 2017 (6TH EDITION)/2020 (7TH EDITION) FLORIDA BUILDING CODE INCLUDING THE HIGH VELOCITY HURRICANE ZONE (HVHZ).

2) 1BY OR 2BY WOOD BUCKS & BUCK FASTENERS BY OTHERS, MUST BE DESIGNED AND INSTALLED ADEQUATELY TO TRANSFER APPLIED PRODUCT LOADS TO THE BUILDING STRUCTURE.

3) ANCHORS SHALL BE CORROSION RESISTANT, SPACED AS SHOWN ON DETAILS AND INSTALLED PER MANUF'S INSTRUCTIONS. SPECIFIED EMBEDMENT TO BASE MATERIAL SHALL BE BEYOND WALL DRESSING OR STUCCO.

4) A LOAD DURATION INCREASE IS USED IN DESIGN OF ANCHORS INTO WOOD ONLY.

5) ALL SHIMS TO BE HIGH IMPACT, NON-METALLIC AND NON-COMPRESSIBLE.

6) MATERIALS INCLUDING BUT NOT LIMITED TO STEEL/METAL SCREWS, THAT COME INTO CONTACT WITH OTHER DISSIMILAR MATERIALS SHALL MEET THE REQUIREMENTS OF THE 2017/2020 FLORIDA BUILDING CODE & ADOPTED STANDARDS.

7) THIS PRODUCT APPROVAL IS GENERIC AND DOES NOT PROVIDE INFORMATION FOR A SITE SPECIFIC PROJECT, I.E. LIFE SAFETY OF THIS PRODUCT, ADEQUACY OF STRUCTURE RECEIVING THIS PRODUCT AND SEALING AROUND OPENING FOR WATER INFILTRATION RESISTANCE ETC. CONDITIONS NOT SHOWN IN THIS DRAWING ARE TO BE ANALYZED SEPARATELY, AND TO BE REVIEWED BY BUILDING OFFICIAL.

8) EGRESS REQUIREMENTS TO BE REVIEWED BY BUILDING OFFICIAL.

TYPICAL ELEVATION
ALTERNATE SIZE UNITS: SEE SHEETS 2 & 3

INSTRUCTIONS: USE CHARTS AS FOLLOWS.

- STEP 1** DETERMINE DESIGN WIND LOAD REQUIREMENT BASED ON WIND VELOCITY, BLDG. HEIGHT, WIND ZONE USING APPLICABLE ASCE 7 STANDARD.
- STEP 2** DETERMINE DOOR CAPACITY FROM TABLES ON SHEET 4 FOR THE GLASS TYPE AND REINFORCING TO USE.
- STEP 3** USING CHARTS ON SHEETS 6, 7 & 8 SELECT ANCHOR OPTION WITH DESIGN RATING MORE THAN DESIGN LOAD SPECIFIED IN STEP 1 ABOVE.
- STEP 4** (IF REQUIRED) FOR SIDE BY SIDE DOORS WITH VERTICAL MULLION SELECT 2X6 OR 2X8 TUBE FROM CHART ON SHEET 13 WITH LOAD RATING HIGHER THAN REQUIRED. SELECT ANCHORS AS PER STEP 3.
- STEP 5** THE LOWEST VALUE RESULTING FROM STEPS 2, 3 AND 4 SHALL APPLY TO ENTIRE SYSTEM.

MAX. JAMB ANCHOR SPACINGS (NON-POCKET)					
SHIM SPACE	ANCHOR TYPE				
	'A' & 'B'	'C'	'D' & 'E'	'AA' & 'BB'	
1/4"	18-1/2"	18-1/2"	18-1/2"	18-1/2"	
3/8"	18-1/2"	-	18-1/2"	18-1/2"	
1/2"	9-1/4"	-	9-1/4"	18-1/2"	

D.L. OPENING
D.L.O. HEIGHT = DOOR HEIGHT - 13 5/16"
D.L.O. WIDTH = PANEL WIDTH - 8"

THESE DOORS ARE RATED FOR SMALL MISSILE IMPACT. MIAMI-DADE COUNTY APPROVED IMPACT RESISTANT SHUTTERS REQUIRED FOR INSTALLATIONS UPTO 30 FT. OF GRADE. SHUTTERS NOT REQD. FOR INSTALLATIONS UP TO 30 FT. OF GRADE.

**LAMINATED GLASS AND
LAMINATED INSULATING GLASS
SMALL MISSILE IMPACT**

PRODUCT REVISED
as complying with the Florida
Building Code
NOA-No. **20-0729.10**

Expiration Date **06/26/2023**

By
Miami-Dade Product Control

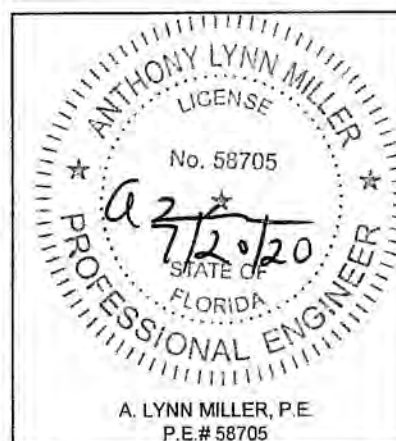
REVISION:
REVISED FOR 2020 FBC,
ADDED GEN. NOTES,
ANCHOR TYPE,
BACKBEDDING TYPES &
REFORMATTED - JR - 6/11/20

PREPARED BY A. LYNN MILLER
1070 TECHNOLOGY DRIVE
N. VENICE, FL 34275
(941) 480-1600

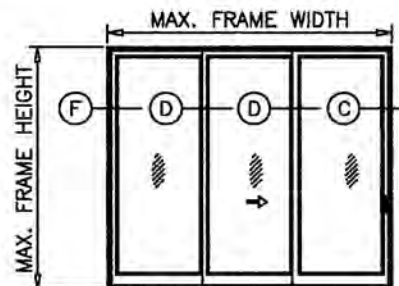
REGISTRATION #29296

Rev.	Date	By	No.	DWG	Sheet	Config	Series
A	06/10/2020	J ROSOWSKI	560-3T-SM-NOA	1 OF 16	3-TRACK, SMI	SGD560A	

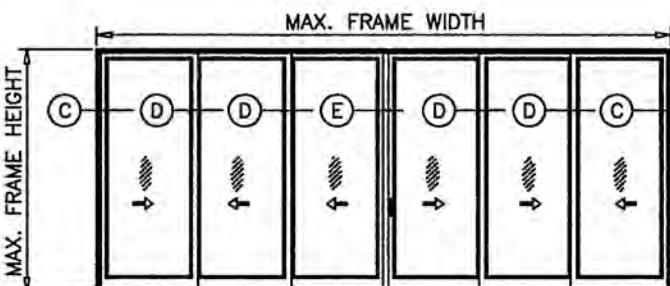
WinDoor®
INCORPORATED
104 TRIPLE DIAMOND BLVD.
N. VENICE, FL 34275
(833) 554-5432



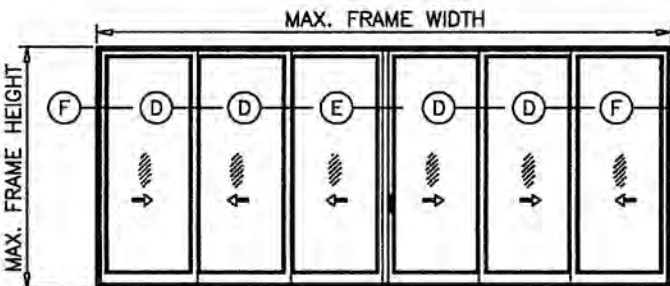
APPROVED CONFIGURATIONS
NON-POCKETED DOORS



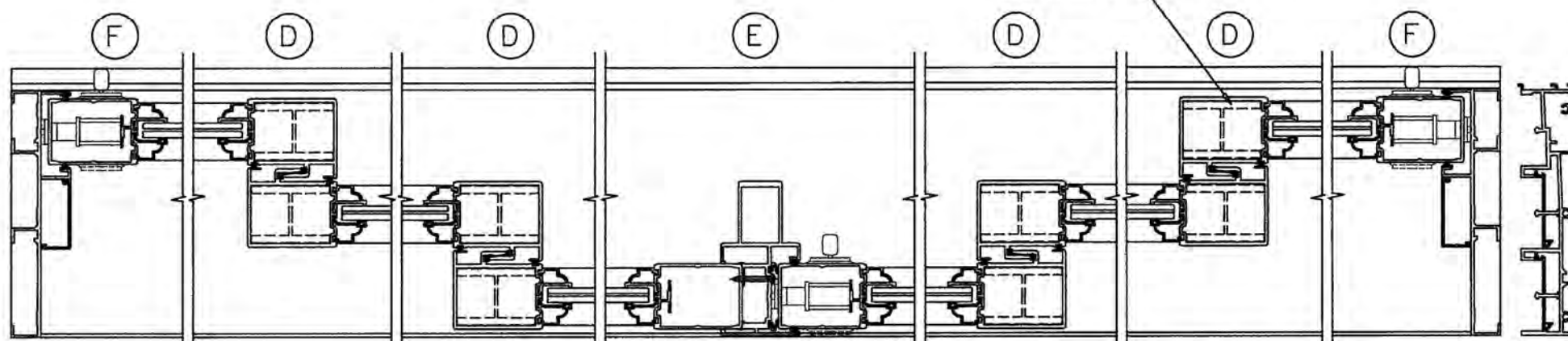
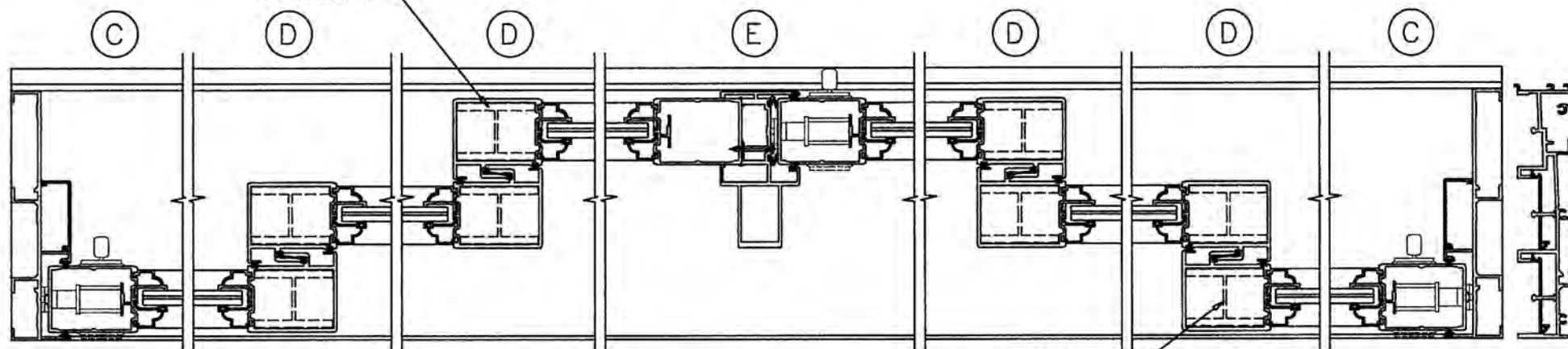
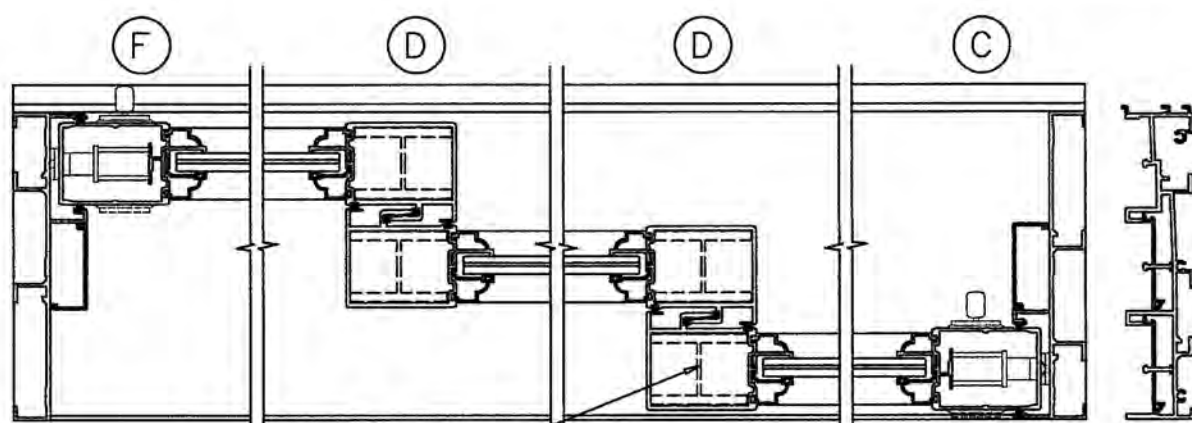
XXX (SHOWN)
OXX
XXO



XXXXXX (SHOWN)
OXXXXO



XXXXXX (SHOWN)
OXXXXO



Over-all Door Frame Width based on Panel Width

Panel Width	3 Panel Door Frame Width	6 Panel Door Frame Width
24 1/4"	69 1/4"	137 1/2"
30 1/4"	87 1/4"	173 1/2"
36 1/4"	105 1/4"	209 1/2"
42 1/4"	123 1/4"	245 1/2"
48 1/4"	141 1/4"	281 1/2"
54 1/4"	159 1/4"	317 1/2"
60 1/4"	177 1/4"	353 1/2"

MAXIMUM DOOR HEIGHT = 120"

Formula to convert Door Width to Panel Width

For 3 Panel Doors: $(\text{Door Width} + 3 \frac{1}{2})/3 = \text{Panel Width}$
For 6 Panel Doors: $(\text{Door Width} + 8)/6 = \text{Panel Width}$

Formula to convert Panel Width to Door Width

For 3 Panel Doors: $\text{Panel Width} \times 3 - 3 \frac{1}{2} = \text{Door Width}$
For 6 Panel Doors: $\text{Panel Width} \times 6 - 8 = \text{Door Width}$

Panel Height Formula

$\text{Door Height} - 2 \frac{9}{16} = \text{Panel Height}$

MAX. FRAME DOOR AREA NOT TO EXCEED:
441.25 SQ. FT. FOR LOADS UP TO 105 PSF
351.56 SQ. FT. FOR LOADS ABOVE 105 PSF

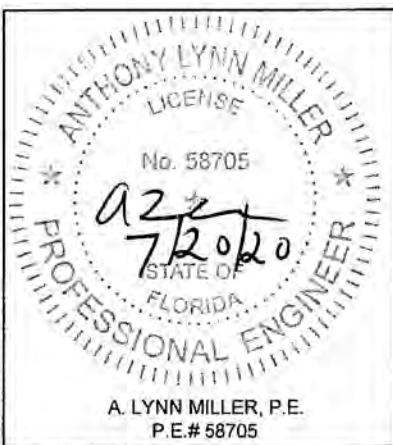
D.L. OPENING

D.L.O HEIGHT = DOOR HEIGHT - $13 \frac{5}{16}$ "
D.L.O. WIDTH = PANEL WIDTH - 8"

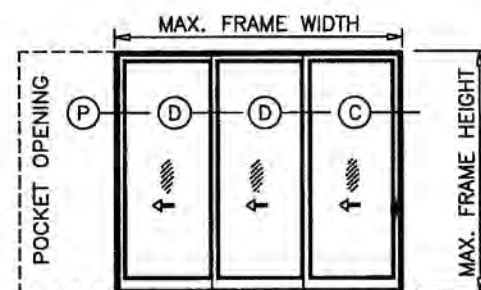
PRODUCT REVISED
as complying with the Florida
Building Code
NOA-No. **20-0729.10**
Expiration Date **06/26/2023**
By
Miami-Dade Product Control

Revision:

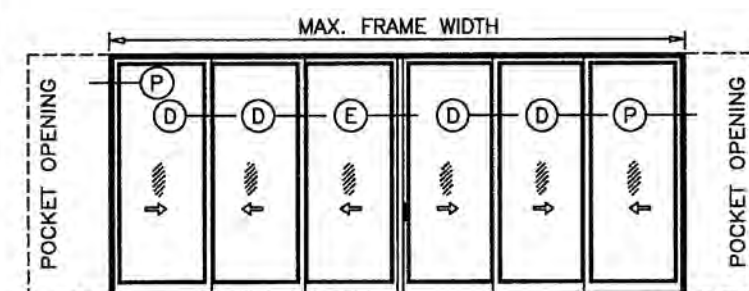
PREPARED BY A. LYNN MILLER 1070 TECHNOLOGY DRIVE N. VENICE, FL 34275 (941) 480-1600	REGISTRATION #29296	Date	06/10/2020	Rev	A
		By	J ROSOWSKI	DWG No.	560-3T-SM-NOA
		Sheet	2 OF 16		
		Config	3-TRACK, SMI		
WinDoor® INCORPORATED 104 TRIPLE DIAMOND BLVD. N. VENICE, FL 34275 (833) 554-5432	560SGDA ALUM. SLIDING GLASS DOOR, 3T (SMI)	X-SECTIONS, NON-POCKETED	SGD560A	Series Desc. Title	



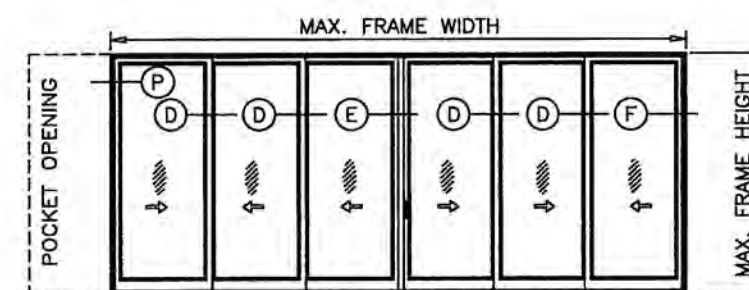
APPROVED CONFIGURATIONS
POCKETED DOORS



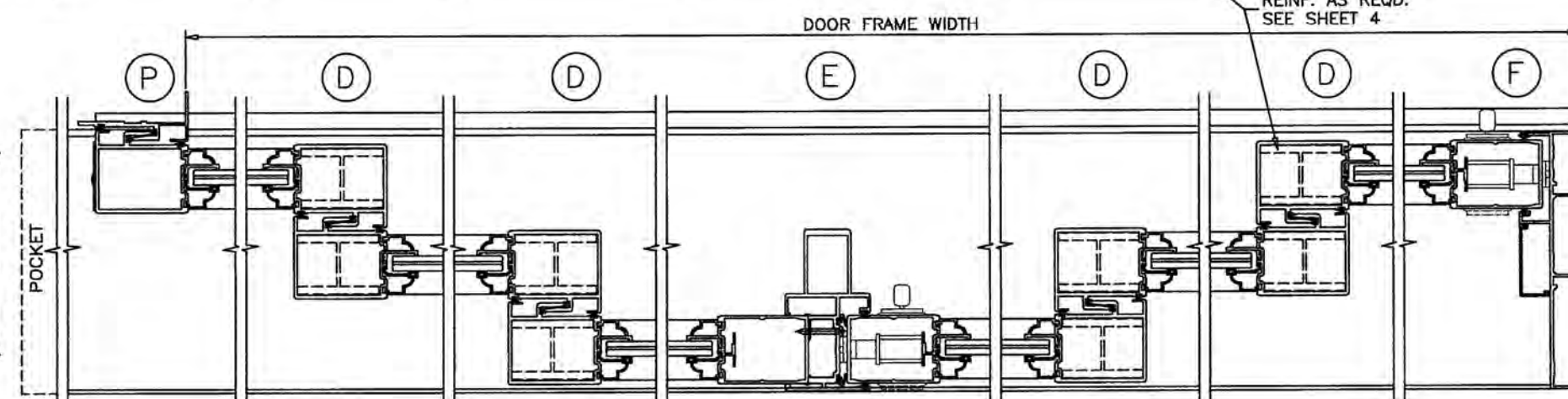
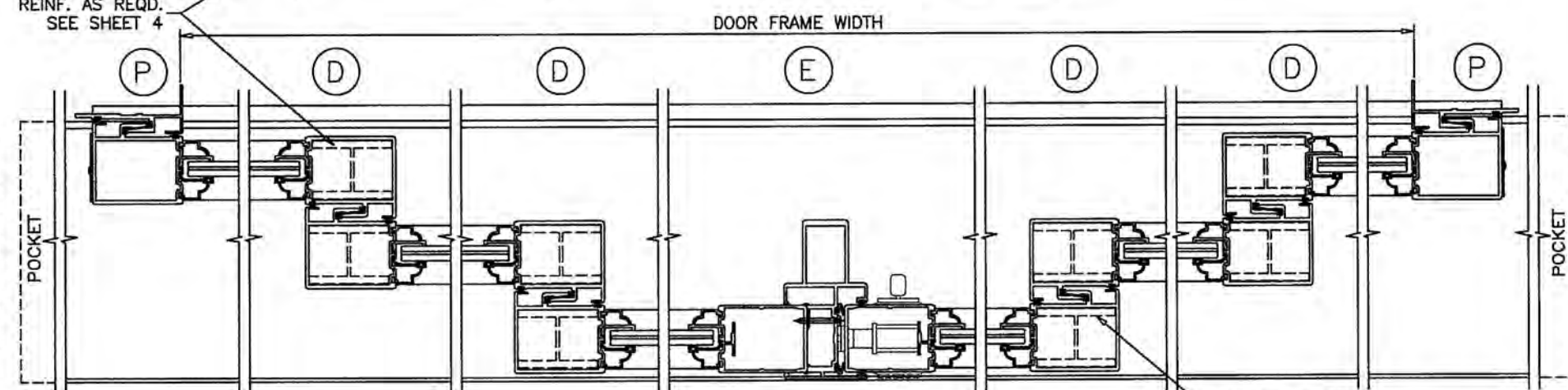
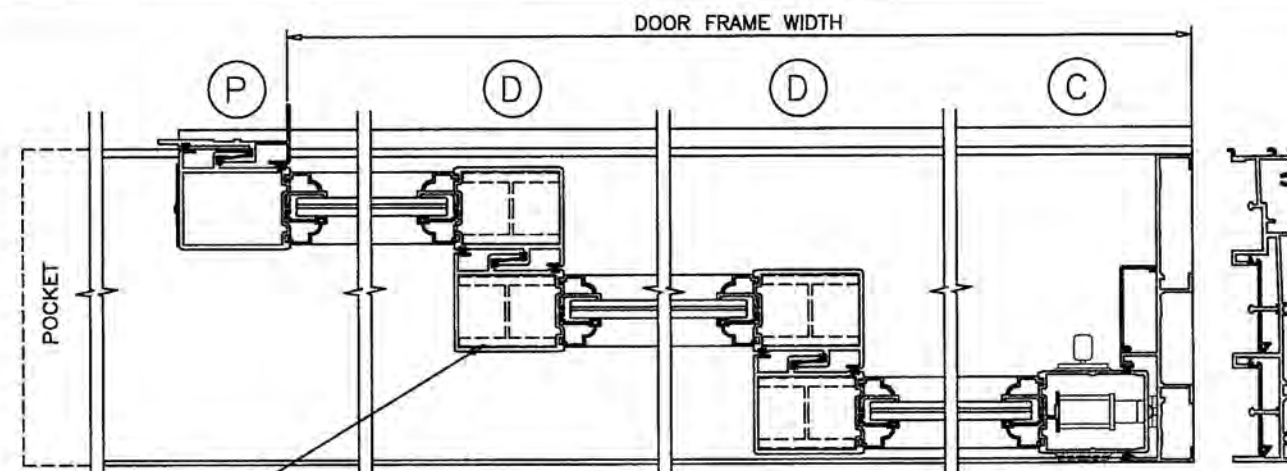
PXXX(SHOWN)
XXXP



PXXXXXXP (SHOWN)



PXXXXXX(SHOWN), XXXXXXP
PXXXXXO, OXXXXXP



Over-all Door Width based on Panel Width

Panel Width	PXXX, XXXP Door Width	PXXXXXXP Door Width	PXXXXXX Door Width
24 1/4"	65 1/4"	129 3/8"	133 7/16"
30 1/4"	83 1/4"	165 3/8"	169 7/16"
36 1/4"	101 1/4"	201 3/8"	205 7/16"
42 1/4"	119 1/4"	237 3/8"	241 7/16"
48 1/4"	137 1/4"	273 3/8"	277 7/16"
54 1/4"	155 1/4"	309 3/8"	313 7/16"
60 1/4"	173 1/4"	345 3/8"	349 7/16"

MAXIMUM DOOR HEIGHT = 120"

Formula to convert Door Width to Panel Width

For PXXX: $(\text{Door Width} + 7 \frac{1}{2}) / 3 = \text{Panel Width}$
 For PXXXXXXP: $(\text{Door Width} + 16 \frac{1}{8}) / 6 = \text{Panel Width}$
 For PXXXXXX: $(\text{Door Width} + 12 \frac{1}{16}) / 6 = \text{Panel Width}$

Formula to convert Panel Width to Door Width

For PXXX: $\text{Panel Width} \times 3 - 7 \frac{1}{2} = \text{Door Width}$
 For PXXXXXXP: $\text{Panel Width} \times 6 - 16 \frac{1}{8} = \text{Door Width}$
 For PXXXXXX: $\text{Panel Width} \times 6 - 12 \frac{1}{16} = \text{Door Width}$

Panel Height Formula

Door Height - $2 \frac{9}{16}$ " = Panel Height

MAX. FRAME DOOR AREA NOT TO EXCEED:
 441.25 SQ. FT. FOR LOADS UPTO 105 PSF
 351.56 SQ. FT. FOR LOADS ABOVE 105 PSF

D.L. OPENING

D.L.O HEIGHT = DOOR HEIGHT - $13 \frac{5}{16}$ "
 D.L.O. WIDTH = PANEL WIDTH - 8"

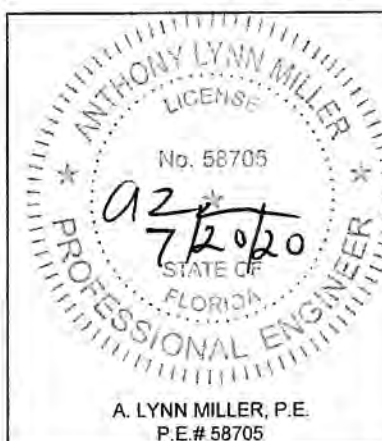
PRODUCT REVISED
 as complying with the Florida
 Building Code
 NOA-No. **20-0729.10**

Expiration Date **06/26/2023**

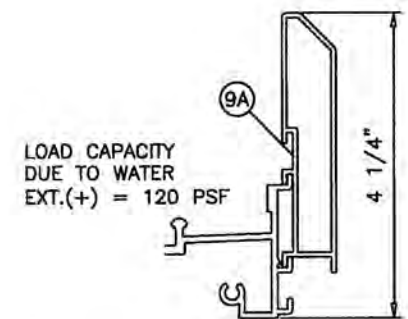
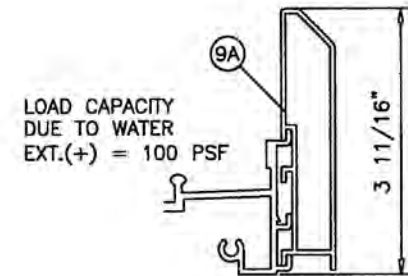
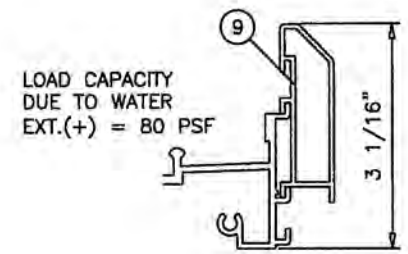
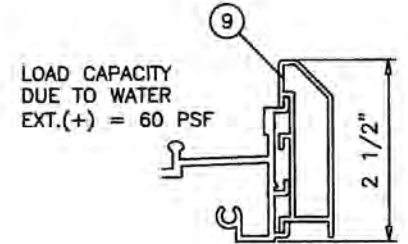
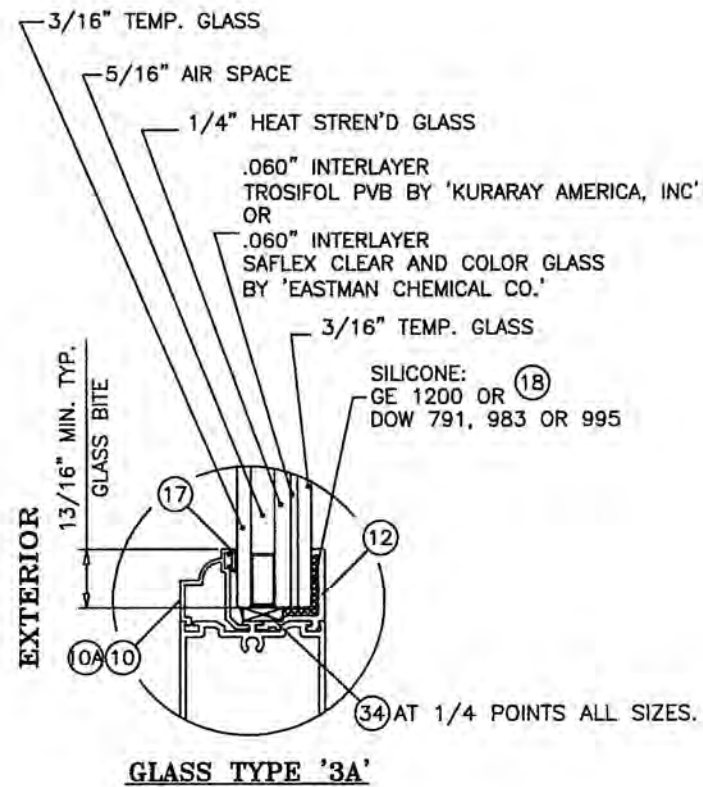
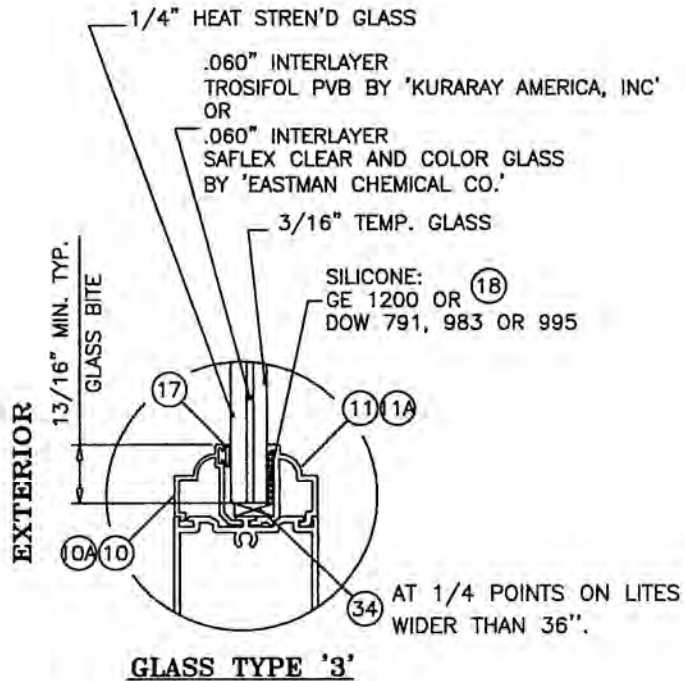
By
 Miami-Dade Product Control

Revision:

<div>PREPARED BY A. LYNN MILLER 1070 TECHNOLOGY DRIVE N. VENICE, FL 34275 (941) 480-1600</div>				<div>REGISTRATION #29296</div>			
<div>560SGDA ALUM. SLIDING GLASS DOOR, 3T (SMI)</div>				Date	06/10/2020		
<div>X-SECTIONS - POCKETED</div>				Drawn By	J ROSOWSKI		
<div>SGD560A</div>				3-TRACK, SMI	3 OF 16	Rev. A	
<div>Sheet</div>				560-3T-SM NOA			
<div>Series Desc. Title</div>							



GLAZING OPTIONS



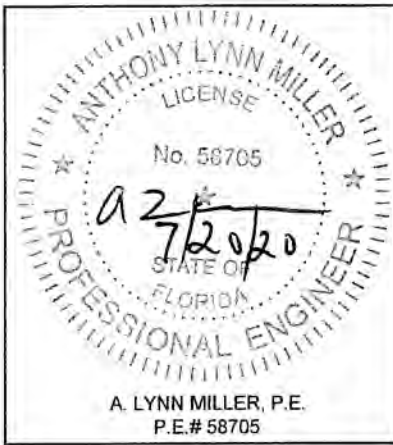
LOAD CAPACITIES SHOWN IN CHARTS ON SHEETS 4 ARE FOR DOORS USING 4-1/4" SILL HEIGHTS. FOR DOORS USING LOWER SILL HEIGHTS LIMIT EXTERIOR(+) LOADS AS SHOWN ABOVE.

NOTE:
3/16" AND 1/4" PIECES OF GLASS ON THE 1/2" LAMINATED UNIT ARE INTERCHANGEABLE
(EX: 3/16" + 1/4" OR 1/4" + 3/16") LIMIT MAX PANEL AREA TO 40.2 SQ. FT.
FOR PANEL AREAS > 40.2 SQ. FT. LAMINATED PLIES MUST BE 1/4" + 3/16" (AS SHOWN IN DETAILS).

PRODUCT REVISED
as complying with the Florida Building Code
NOA-No. **20-0729.10**
Expiration Date **06/26/2023**
By
Miami-Dade Product Control

Revision: ADDED BACKBEDDING TYPES - JR - 6/11/20

WinDoor® INCORPORATED 104 TRIPLE DIAMOND BLVD. N. VENICE, FL 34275 (833) 554-5432		PREPARED BY A. LYNN MILLER 1070 TECHNOLOGY DRIVE N. VENICE, FL 34275 (941) 480-1600	
560SGDA ALUM. SLIDING GLASS DOOR, 3T (SMI)		REGISTRATION #29296	
		Date	06/10/2020
GLAZING DETAILS		By	J ROSOWSKI
SGD560A		DWG	560-3T-SM-NOA
3-TRACK, SMI		No.	5 OF 16
Conf		Sheet	Rev
Series		A	
Desc. Title			



PANEL WIDTH INCHES	DOOR HEIGHT INCHES	ANCHORS TYPE 'A'			ANCHORS TYPE 'B'			ANCHORS TYPE 'A' & 'B'				ANCHORS TYPE 'A' & 'B'				ANCHORS TYPE 'C'		
		1/4" SHIM SPACE			1/4" SHIM SPACE			3/8" SHIM SPACE				1/2" SHIM SPACE				1/4" SHIM SPACE		
		CLUSTER OF			CLUSTER OF			CLUSTER OF				CLUSTER OF				CLUSTER OF		
		4	6	8	4	6	8	4	6	8	10	6	8	10	12	4	6	8
24-1/4	80	140.0	140.0	140.0	140.0	140.0	140.0	119.2	140.0	140.0	140.0	139.0	140.0	140.0	-	140.0	140.0	140.0
30-1/4		121.9	140.0	140.0	134.7	140.0	140.0	95.5	140.0	140.0	140.0	111.5	140.0	140.0	-	140.0	140.0	140.0
36-1/4		140.0	140.0	140.0	140.0	140.0	140.0	119.6	140.0	140.0	140.0	124.0	140.0	140.0	140.0	140.0	140.0	140.0
42-1/4		130.9	140.0	140.0	140.0	140.0	140.0	102.6	136.8	140.0	140.0	106.4	133.0	140.0	140.0	140.0	140.0	140.0
48-1/4		114.6	140.0	140.0	126.7	140.0	140.0	89.8	119.8	140.0	140.0	93.2	116.5	139.8	140.0	140.0	140.0	140.0
54-1/4		101.9	124.5	124.5	112.7	124.5	124.5	79.9	106.5	124.5	124.5	82.9	103.6	124.3	124.5	124.5	124.5	124.5
60-1/4		91.8	112.1	112.1	101.5	112.1	112.1	72.0	95.9	112.1	112.1	74.9	93.3	111.9	112.1	112.1	112.1	112.1
24-1/4	84	140.0	140.0	140.0	140.0	140.0	140.0	113.5	140.0	140.0	140.0	132.4	140.0	140.0	-	140.0	140.0	140.0
30-1/4		116.1	140.0	140.0	128.3	140.0	140.0	91.0	136.5	140.0	140.0	106.2	140.0	140.0	-	140.0	140.0	140.0
36-1/4		140.0	140.0	140.0	140.0	140.0	140.0	113.9	140.0	140.0	140.0	118.1	140.0	140.0	140.0	140.0	140.0	140.0
42-1/4		124.6	140.0	140.0	137.8	140.0	140.0	97.7	130.3	140.0	140.0	101.3	126.7	140.0	140.0	140.0	140.0	140.0
48-1/4		109.1	140.0	140.0	120.7	140.0	140.0	85.6	114.1	140.0	140.0	88.7	110.9	113.1	140.0	136.9	140.0	140.0
54-1/4		97.1	124.5	124.5	107.3	124.5	124.5	76.1	101.5	124.5	124.5	78.9	98.7	118.4	124.5	121.7	124.5	124.5
60-1/4		87.4	112.1	112.1	96.6	112.1	112.1	68.5	91.4	112.1	112.1	71.1	88.8	106.6	112.1	109.6	112.1	112.1
24-1/4	90	135.1	140.0	140.0	140.0	140.0	140.0	105.9	140.0	140.0	140.0	123.6	140.0	140.0	-	140.0	140.0	140.0
30-1/4		108.3	140.0	140.0	119.7	140.0	140.0	84.9	127.4	140.0	140.0	99.1	132.1	140.0	-	135.8	140.0	140.0
36-1/4		135.6	140.0	140.0	140.0	140.0	140.0	106.3	140.0	140.0	140.0	110.2	137.8	140.0	140.0	140.0	140.0	140.0
42-1/4		116.3	140.0	140.0	128.6	140.0	140.0	91.2	121.6	140.0	140.0	94.6	118.2	140.0	140.0	14.0	140.0	140.0
48-1/4		101.9	135.8	140.0	112.6	140.0	140.0	79.9	106.5	133.1	140.0	82.8	103.5	124.2	140.0	127.7	140.0	140.0
54-1/4		90.6	120.8	124.5	100.2	124.5	124.5	71.0	94.7	118.4	124.5	73.7	92.1	110.5	124.5	113.6	124.5	124.5
60-1/4		81.6	108.8	112.1	90.2	112.1	112.1	64.0	85.3	106.6	112.1	66.3	82.9	99.5	112.1	102.3	112.1	112.1
24-1/4	96	126.7	140.0	140.0	140.0	140.0	140.0	99.3	140.0	140.00	140.0	115.9	140.0	140.0	-	140.0	140.0	140.0
30-1/4		101.6	140.0	140.0	112.3	140.0	140.0	79.6	119.4	140.00	140.0	92.9	123.8	140.0	-	127.3	140.0	140.0
36-1/4		127.1	140.0	140.0	140.0	140.0	140.0	99.7	132.9	140.0	140.0	103.3	129.2	140.0	140.0	140.0	140.0	140.0
42-1/4		109.1	140.0	140.0	120.6	140.0	140.0	85.5	114.0	140.0	140.0	88	110.8	133.0	140.0	136.8	140.0	140.0
48-1/4		95.5	127.3	140.0	105.6	140.0	140.0	74.9	99.8	124.8	140.0	77.6	97.1	116.5	135.9	119.8	140.0	140.0
54-1/4		84.9	113.3	124.5	93.9	124.5	124.5	66.6	88.8	111.0	124.5	69.1	86.3	103.6	120.9	106.5	124.5	124.5
60-1/4		76.5	102.0	112.1	84.5	112.1	112.1	60.0	79.9	99.9	112.1	62.2	77.7	93.3	108.8	95.9	112.1	112.1
24-1/4	102	119.2	140.0	140.0	131.8	140.0	140.0	93.5	140.0	140.0	140.0	109.1	140.0	140.0	-	140.0	140.0	140.0
30-1/4		95.6	140.0	140.0	105.7	140.0	140.0	74.9	112.4	140.0	140.0	87.4	116.6	140.0	-	119.8	140.0	140.0
36-1/4		119.6	140.0	140.0	132.3	140.0	140.0	93.8	125.1	140.0	140.0	97.3	121.6	140.0	140.0	140.0	140.0	140.0
42-1/4		102.6	136.9	140.0	113.5	140.0	140.0	80.5	107.3	134.1	140.0	83.5	104.3	125.2	140.0	128.7	140.0	140.0
48-1/4		89.9	119.8	140.0	99.4	132.5	140.0	70.5	94.0	174.4	140.0	73.1	91.3	109.6	127.9	112.7	140.0	140.0
54-1/4		79.9	106.6	124.5	88.4	117.8	124.5	62.7	83.6	104.5	124.5	65.0	81.2	97.5	113.7	100.2	124.5	124.5
60-1/4		72.0	96.0	105.0	79.6	105.0	105.0	56.4	75.2	94.1	105.0	58.5	73.2	87.8	90.0	90.3	105.0	105.0
24-1/4	108	112.6	140.0	140.0	124.5	140.0	140.0	88.3	132.4	140.0	140.0	103.0	137.3	140.0	-	140.0	140.0	140.0
30-1/4		90.3	135.4	140.0	99.8	140.0	140.0	70.8	106.2	140.0	140.0	82.6	110.1	137.6	140.0	113.2	140.0	140.0
36-1/4		113.0	140.0	140.0	124.9	140.0	140.0	88.6	118.1	140.0	140.0	91.9	114.8	137.8	140.0	140.0	140.0	140.0
42-1/4		96.9	129.3	140.0	107.2	140.0	140.0	76.0	101.3	126.7	140.0	78.8	98.5	118.2	137.9	121.6	140.0	140.0
48-1/4		84.9	113.2	140.0	93.8	125.1	140.0	66.6	88.7	110.9	133.1	69.0	86.3	103.5	120.8	106.4	140.0	140.0
54-1/4		75.5	100.7	105.0	83.5	105.0	105.0	59.2	78.9	98.7	105.0	61.4	76.7	90.0	90.0	94.7	105.0	105.0
60-1/4		68.0	90.6	105.0	75.2	100.2	105.0	53.3	71.1	88.8	105.0	55.3	69.1	82.9	90.0	85.2	105.0	105.0
24-1/4	114	106.7	140.0	140.0	117.9	140.0	140.0	83.6	125.5	140.0	140.0	97.6	130.1	140.0	-	133.8	140.0	140.0
30-1/4		85.5	128.3	140.0	94.5	140.0	140.0	67.0	100.6	134.1	140.0	78.2	104.3	130.4	140.0	107.2	140.0	140.0
36-1/4		107.0	140.0	140.0	118.3	140.0	140.0	83.9	111.9	139.9	140.0	87.0	108.8	130.5	140.0	134.2	140.0	140.0
42-1/4		91.8	122.5	140.0	101.5	135.4	140.0	72.0	96.0	120.0	140.0	74.7	93.3	112.0	130.7	115.2	140.0	140.0
48-1/4		80.4	107.2	134.0	88.9	118.5	140.0	63.1	84.1	105.1	126.1	65.4	81.7	98.1	114.4	100.8	134.5	140.0
54-1/4		71.5	95.4	105.0	79.1	105.0	105.0	56.1	74.8	93.5	105.0	58.2	72.7	87.2	90.0	89.7	105.0	105.0
60-1/4		64.4	85.9	105.0	71.2	94.9	105.0	50.5	67.3	84.2	101.0	52.4	65.5	78.5	90.0	80.8	105.0	105.0
24-1/4	120	101.3	140.0	140.0	112.0	140.0	140.0	79.5	119.2	140.0	140.0	92.7	123.6	140.0	-	127.1	140.0	140.0
30-1/4		81.2	121.9	140.0	89.8	134.7	140.0	63.7	95.5	127.4	140.0	74.3	99.1	123.8	140.0	101.9	140.0	140.0
36-1/4		101.7	135.6	140.0	112.4	140.0	140.0	79.7	106.3	132.9	140.0	82.7	103.3	124.0	140.0	127.5	140.0	140.0
42-1/4		87.3	116.3	140.0	96.5	128.6	140.0	68.4	91.2	114.0	136.8	70.9	88.7	106.4	124.1	109.4	140.0	140.0
48-1/4		76.4	101.9	127.3	84.5	112.6	140.0	59.9	79.9	99.8	119.8	62.1	77.6	93.2	108.7	95.8	127.7	140.0
54-1/4		68.0	90.6	105.0	75.1	100.2	105.0	53.3	71.0	88.8	105.0	55.2	69.1	82.9	90.0	85.2	105.0	105.0
60-1/4		61.2	81.6	105.0	67.6	90.2	105.0	48.0	64.0	79.9	95.9	49.7	62.2	74.6	87.1	76.7	102.3	105.0

INTERPOLATION BETWEEN WIDTHS AND HEIGHTS ACCEPTABLE

NOTE:
SEE SHEET 10 FOR ANCHOR TYPES
AND DETAILS.
ANCHOR CAPACITIES LISTED ON THIS
SHEET TO BE USED IN CONJUNCTION
WITH GLASS/REINFORCING AND MULLION
CHARTS IN THIS DOCUMENT.
LOWER APPLICABLE VALUES CONTROL.

PRODUCT REVISED
as complying with the Florida
Building Code
NOA-No. **20-0729.10**

Expiration Date **06/26/2023**

By 
Miami-Dade Product Control

Revision:

<div>WINDOOR[®]</div> <div>INCORPORATED</div> <div>104 TRIPLE DIAMOND BLVD. N. VENICE, FL 34275 (833) 554-5432</div>	560SGDA ALUM. SLIDING GLASS DOOR, 3T (SMI)		Date	06/10/2020
	DP PER ANCHORS AND SHIM SPACE		By	J ROSOWSKI
	SGD560A	3-TRACK, SMI	6 OF 16	560-3T-SM-NOA

PANEL WIDTH INCHES	DOOR HEIGHT INCHES	ANCHORS TYPE 'D' 1/4" SHIM SPACE			ANCHORS TYPE 'E' 1/4" SHIM SPACE			ANCHORS TYPE 'D' & 'E' 3/8" SHIM SPACE				ANCHORS TYPE 'D' & 'E' 1/2" SHIM SPACE			
		CLUSTER OF			CLUSTER OF			CLUSTER OF				CLUSTER OF			
		4	6	8	4	6	8	4	6	8	10	6	8	10	12
24-1/4	80	140.0	140.0	140.0	140.0	140.0	140.0	140.0	140.0	140.0	140.0	140.0	140.0	140.0	-
30-1/4		134.2	140.0	140.0	140.0	140.0	140.0	120.7	140.0	140.0	140.0	140.0	140.0	140.0	-
36-1/4		140.0	140.0	140.0	140.0	140.0	140.0	140.0	140.0	140.0	140.0	140.0	140.0	140.0	140.0
42-1/4		140.0	140.0	140.0	140.0	140.0	140.0	129.6	140.0	140.0	140.0	135.2	140.0	140.0	140.0
48-1/4		126.2	140.0	140.0	140.0	140.0	140.0	113.5	140.0	140.0	140.0	118.4	140.0	140.0	140.0
54-1/4		112.3	124.5	124.5	124.5	124.5	124.5	100.9	124.5	124.5	124.5	105.3	124.5	124.5	124.5
60-1/4	84	101.1	112.1	112.1	112.1	112.1	112.1	90.9	112.1	112.1	112.1	94.8	112.1	112.1	112.1
24-1/4		140.0	140.0	140.0	140.0	140.0	140.0	140.0	140.0	140.0	140.0	140.0	140.0	140.0	-
30-1/4		127.8	140.0	140.0	140.0	140.0	140.0	114.9	140.0	140.0	140.0	134.9	140.0	140.0	-
36-1/4		140.0	140.0	140.0	140.0	140.0	140.0	140.0	140.0	140.0	140.0	140.0	140.0	140.0	140.0
42-1/4		137.3	140.0	140.0	140.0	140.0	140.0	123.4	140.0	140.0	140.0	128.8	140.0	140.0	140.0
48-1/4		120.2	140.0	140.0	140.0	140.0	140.0	108.1	140.0	140.0	140.0	112.8	140.0	140.0	140.0
54-1/4		106.9	124.5	124.5	124.5	124.5	124.5	96.1	124.5	124.5	124.5	100.3	124.5	124.5	124.5
60-1/4	90	96.3	112.1	112.1	112.1	112.1	112.1	86.6	112.1	112.1	112.1	90.3	112.1	112.1	112.1
24-1/4		140.0	140.0	140.0	140.0	140.0	140.0	133.8	140.0	140.0	140.0	140.0	140.0	140.0	-
30-1/4		119.3	140.0	140.0	140.0	140.0	140.0	107.3	140.0	140.0	140.0	125.9	140.0	140.0	-
36-1/4		140.0	140.0	140.0	140.0	140.0	140.0	134.3	140.0	140.0	140.0	140.0	140.0	140.0	140.0
42-1/4		128.2	140.0	140.0	140.0	140.0	140.0	115.2	140.0	140.0	140.0	120.2	140.0	140.0	140.0
48-1/4		112.2	140.0	140.0	133.7	140.0	140.0	100.9	134.5	140.0	140.0	105.3	131.6	140.0	140.0
54-1/4	96	99.8	124.5	124.5	118.9	124.5	124.5	89.7	119.6	124.5	124.5	93.6	117.0	124.5	124.5
60-1/4		89.9	112.1	112.1	107.1	112.1	112.1	80.8	107.7	112.1	112.1	84.3	105.4	112.1	112.1
24-1/4		139.5	140.0	140.0	140.0	140.0	140.0	125.4	140.0	140.0	140.0	140.0	140.0	140.0	-
30-1/4		111.9	140.0	140.0	133.3	140.0	140.0	100.6	140.0	140.0	140.0	118.1	140.0	140.0	-
36-1/4		140.0	140.0	140.0	140.0	140.0	140.0	125.9	140.0	140.0	140.0	131.4	140.0	140.0	140.0
42-1/4		120.1	140.0	140.0	140.0	140.0	140.0	108.0	140.0	140.0	140.0	112.7	140.0	140.0	140.0
48-1/4	102	105.2	140.0	140.0	125.3	140.0	140.0	94.6	126.1	140.0	140.0	98.7	123.4	140.0	140.0
54-1/4		93.6	124.5	124.5	111.5	124.5	124.5	84.1	112.1	124.5	124.5	87.8	109.7	124.5	124.5
60-1/4		84.2	112.1	112.1	100.4	112.1	112.1	75.7	101.0	112.1	112.1	79.0	98.8	112.1	112.1
24-1/4		131.3	140.0	140.0	140.0	140.0	140.0	118.1	140.0	140.0	140.0	138.6	140.0	140.0	-
30-1/4		105.3	140.0	140.0	125.4	140.0	140.0	94.6	140.0	140.0	140.0	111.1	140.0	140.0	-
36-1/4		131.8	140.0	140.0	140.0	140.0	140.0	118.5	140.0	140.0	140.0	123.6	140.0	140.0	140.0
42-1/4	108	113.1	140.0	140.0	134.7	140.0	140.0	101.6	135.5	140.0	140.0	106.1	132.6	140.0	140.0
48-1/4		99.0	132.0	140.0	118.0	140.0	140.0	89.0	118.7	140.0	140.0	92.9	116.1	140.0	140.0
54-1/4		88.1	117.4	124.5	104.9	124.5	124.5	79.2	105.6	124.5	124.5	82.6	103.3	124.5	124.5
60-1/4		79.3	105.0	105.0	94.5	105.0	105.0	71.3	95.0	105.0	105.0	74.4	90.0	105.0	105.0
24-1/4		124.0	140.0	140.0	140.0	140.0	140.0	111.5	140.0	140.0	140.0	130.9	140.0	140.0	-
30-1/4		99.4	140.0	140.0	118.5	140.0	140.0	89.4	134.1	140.0	140.0	104.9	139.9	140.0	-
36-1/4	114	124.5	140.0	140.0	140.0	140.0	140.0	111.9	140.0	140.0	140.0	116.8	140.0	140.0	140.0
42-1/4		106.8	140.0	140.0	127.2	140.0	140.0	96.0	128.0	140.0	140.0	100.2	125.2	140.0	140.0
48-1/4		93.5	124.7	140.0	111.4	140.0	140.0	84.1	112.1	140.0	140.0	87.7	109.7	140.0	140.0
54-1/4		83.2	105.0	105.0	99.1	105.0	105.0	74.8	99.7	105.0	105.0	78.0	90.0	105.0	105.0
60-1/4		74.9	99.9	105.0	89.2	105.0	105.0	67.3	89.8	105.0	105.0	70.2	8738.0	105.0	105.0
24-1/4		117.5	140.0	140.0	140.0	140.0	140.0	105.6	140.0	140.0	140.0	124.0	140.0	140.0	-
30-1/4	120	94.2	140.0	140.0	112.1	140.0	140.0	84.7	127.0	140.0	140.0	99.4	132.6	140.0	-
36-1/4		117.9	140.0	140.0	140.0	140.0	140.0	106.0	140.0	140.0	140.0	110.6	138.3	140.0	140.0
42-1/4		101.2	134.9	140.0	120.5	140.0	140.0	90.9	121.3	140.0	140.0	94.9	118.6	140.0	140.0
48-1/4		88.6	118.1	140.0	105.6	140.0	140.0	79.6	106.2	132.7	140.0	83.1	103.9	124.7	140.0
54-1/4		78.8	105.0	105.0	93.9	105.0	105.0	70.8	94.4	105.0	105.0	73.9	90.0	105.0	105.0
60-1/4		70.9	94.6	105.0	84.5	105.0	105.0	63.8	85.0	105.0	105.0	66.6	83.2	99.8	105.0
24-1/4	120	111.6	140.0	140.0	133.0	140.0	140.0	100.4	140.0	140.0	140.0	117.8	140.0	140.0	-
30-1/4		89.5	134.2	140.0	106.6	140.0	140.0	80.4	120.7	140.0	140.0	94.4	125.9	140.0	-
36-1/4		112.0	140.0	140.0	133.5	140.0	140.0	100.7	134.3	140.0	140.0	105.1	131.4	140.0	140.0
42-1/4		96.1	128.2	140.0	114.5	140.0	140.0	86.4	115.2	140.0	140.0	90.2	112.7	135.2	140.0
48-1/4		84.2	112.2	140.0	100.3	133.7	140.0	75.7	100.9	126.1	140.0	78.9	98.7	118.4	138.2
54-1/4		74.9	99.8	105.0	89.2	105.0	105.0	67.3	89.7	105.0	105.0	70.2	87.8	105.0	105.0
60-1/4	120	67.4	89.9	105.0	80.3	105.0	105.0	60.6	80.8	105.0	105.0	63.2	79.0	94.8	105.0

INTERPOLATION BETWEEN WIDTHS AND HEIGHTS ACCEPTABLE

NOTE:
SEE SHEET 10 FOR ANCHOR TYPES
AND DETAILS.
ANCHOR CAPACITIES LISTED ON THIS
SHEET TO BE USED IN CONJUNCTION
WITH GLASS/REINFORCING AND MULLION
CHARTS IN THIS DOCUMENT.
LOWER APPLICABLE VALUES CONTROL.

PRODUCT REVISED
as complying with the Florida
Building Code
NOA-No. **20-0729.10**

Expiration Date **06/26/2023**

By 
Miami-Dade Product Control

Revision:

PREPARED BY A. LYNN MILLER
1070 TECHNOLOGY DRIVE
N. VENICE, FL 34275
(941) 480-1600

REGISTRATION #29296

WinDoor®
INCORPORATED
104 TRIPLE DIAMOND BLVD.
N. VENICE, FL 34275
(833) 554-5432

Date 06/10/2020

By J ROSOWSKI

Drawn

No. 560-3T-SM-NOA A

DWG

7 OF 16

Sheet

3-TRACK, SM

SGD560A

Config

Series

Desc.

Title



A. LYNN MILLER, P.E.
P.E.# 58705

PANEL WIDTH INCHES	DOOR HEIGHT INCHES	ANCH. TYPE AA		ANCH. TYPE BB		ANCH. TYPE AA & BB			ANCHORS TYPE AA & BB			
		1/4" SHIM		1/4" SHIM		3/8" SHIM SPACE			1/2" SHIM SPACE			
		CLUSTER OF		CLUSTER OF		CLUSTER OF			CLUSTER OF			
		5	7	5	7	4	6	8	4	6	8	10
24-1/4	80	140.0	140.0	140.0	140.0	140.0	140.0	140.0	140.0	140.0	140.0	-
30-1/4		140.0	140.0	140.0	140.0	124.3	140.0	140.0	140.0	140.0	140.0	-
36-1/4		140.0	140.0	140.0	140.0	140.0	140.0	140.0	140.0	140.0	140.0	140.0
42-1/4		140.0	140.0	140.0	140.0	0.0	140.0	140.0	140.0	140.0	140.0	140.0
48-1/4		140.0	140.0	140.0	140.0	133.5	140.0	140.0	122.7	140.0	140.0	140.0
54-1/4		124.5	124.5	124.5	124.5	116.9	124.5	124.5	109.1	124.5	124.5	124.5
60-1/4	84	112.1	112.1	112.1	112.1	104.0	112.1	112.1	98.3	112.1	112.1	112.1
24-1/4		140.0	140.0	140.0	140.0	140.0	140.0	140.0	140.0	140.0	140.0	-
30-1/4		140.0	140.0	140.0	140.0	118.4	140.0	140.0	139.8	140.0	140.0	-
36-1/4		140.0	140.0	140.0	140.0	140.0	140.0	140.0	140.0	140.0	140.0	140.0
42-1/4		140.0	140.0	140.0	140.0	127.1	140.0	140.0	133.5	140.0	140.0	140.0
48-1/4		140.0	140.0	140.0	140.0	111.3	140.0	140.0	116.9	140.0	140.0	140.0
54-1/4	90	124.5	124.5	124.5	124.5	99.0	124.5	124.5	104.0	124.5	124.5	124.5
60-1/4		112.1	112.1	112.1	112.1	89.1	112.1	112.1	93.6	112.1	112.1	112.1
24-1/4		140.0	140.0	140.0	140.0	137.8	140.0	140.0	140.0	140.0	140.0	-
30-1/4		140.0	140.0	140.0	140.0	110.5	140.0	140.0	130.5	140.0	140.0	-
36-1/4		140.0	140.0	140.0	140.0	138.3	140.0	140.0	140.0	140.0	140.0	140.0
42-1/4		140.0	140.0	140.0	140.0	118.7	140.0	140.0	124.6	140.0	140.0	140.0
48-1/4	96	136.5	140.0	140.0	140.0	103.9	138.5	140.0	109.1	136.4	140.0	140.0
54-1/4		121.4	124.5	124.5	124.5	92.4	123.2	124.5	97.0	121.3	124.5	124.5
60-1/4		109.3	112.1	112.1	112.1	83.2	110.9	112.1	87.4	109.2	112.1	112.1
24-1/4		140.0	140.0	140.0	140.0	129.2	140.0	140.0	140.0	140.0	140.0	-
30-1/4		136.1	140.0	140.0	140.0	103.6	140.0	140.0	122.3	140.0	140.0	-
36-1/4		140.0	140.0	140.0	140.0	129.6	140.0	140.0	136.1	140.0	140.0	140.0
42-1/4	102	140.0	140.0	140.0	140.0	111.2	140.0	140.0	116.8	140.0	140.0	140.0
48-1/4		128.0	140.0	140.0	140.0	97.4	129.9	140.0	102.3	127.8	140.0	140.0
54-1/4		113.8	124.5	124.5	124.5	86.6	115.5	124.5	91.0	113.7	124.5	124.5
60-1/4		102.5	112.1	112.1	112.1	78.0	104.0	112.1	81.9	102.4	112.1	112.1
24-1/4		140.0	140.0	140.0	140.0	121.6	140.0	140.0	140.0	140.0	140.0	-
30-1/4		128.1	140.0	140.0	140.0	97.5	140.0	140.0	115.1	140.0	140.0	-
36-1/4	108	140.0	140.0	140.0	140.0	122.0	140.0	140.0	128.1	140.0	140.0	140.0
42-1/4		137.5	140.0	140.0	140.0	104.7	139.6	140.0	109.9	137.4	140.0	140.0
48-1/4		120.4	140.0	140.0	140.0	91.7	122.2	140.0	96.3	120.3	140.0	140.0
54-1/4		107.1	124.5	124.5	124.5	81.5	108.7	124.5	85.6	107.0	124.5	124.5
60-1/4		96.4	105.0	105.0	105.0	73.4	97.9	105.0	77.1	90.0	105.0	105.0
24-1/4		140.0	140.0	140.0	140.0	114.8	140.0	140.0	135.7	140.0	140.0	-
30-1/4	114	120.9	140.0	140.0	140.0	92.1	138.1	140.0	108.7	140.0	140.0	-
36-1/4		140.0	140.0	140.0	140.0	115.2	140.0	140.0	121.0	140.0	140.0	140.0
42-1/4		129.9	140.0	140.0	140.0	98.9	131.8	140.0	103.8	129.8	140.0	140.0
48-1/4		113.7	140.0	140.0	140.0	86.6	115.4	140.0	90.9	113.6	140.0	140.0
54-1/4		101.2	105.0	105.0	105.0	77.0	102.7	105.0	80.9	90.0	105.0	105.0
60-1/4		91.1	105.0	105.0	105.0	69.3	92.5	105.0	72.8	90.0	105.0	105.0
24-1/4	120	140.0	140.0	140.0	140.0	108.8	140.0	140.0	128.5	140.0	140.0	-
30-1/4		114.6	140.0	134.3	140.0	87.2	103.8	140.0	103.0	137.4	140.0	-
36-1/4		140.0	140.0	140.0	140.0	109.2	140.0	140.0	114.6	140.0	140.0	140.0
42-1/4		123.1	140.0	140.0	140.0	93.7	124.9	140.0	98.3	122.9	140.0	140.0
48-1/4		107.8	140.0	126.3	140.0	82.0	109.4	136.7	86.1	107.6	129.2	140.0
54-1/4		95.8	105.0	105.0	105.0	73.0	97.3	105.0	76.6	90.0	105.0	105.0
60-1/4	120	86.3	105.0	101.1	105.0	103.4	87.6	105.0	69.0	86.2	103.5	105.0
24-1/4		135.8	140.0	140.0	140.0	103.4	140.0	140.0	122.1	140.0	140.0	-
30-1/4		108.9	140.0	127.6	140.0	82.9	124.3	140.0	97.9	130.5	140.0	-
36-1/4		136.3	140.0	140.0	140.0	103.7	138.3	140.0	108.9	136.1	140.0	140.0
42-1/4		116.9	140.0	137.0	140.0	89.0	118.7	140.0	93.4	116.8	140.0	140.0
48-1/4		102.4	136.5	120.0	140.0	77.9	103.9	129.9	81.8	102.0	122.7	140.0
54-1/4	120	91.0	105.0	105.0	105.0	69.3	92.4	105.0	72.8	90.0	105.0	105.0
60-1/4		82.0	105.0	96.1	105.0	62.4	83.2	105.0	65.5	81.9	98.3	105.0

INTERPOLATION BETWEEN WIDTHS AND HEIGHTS ACCEPTABLE

NOTE:

SEE SHEET 10 FOR ANCHOR TYPES AND DETAILS.
ANCHOR CAPACITIES LISTED ON THIS SHEET TO BE USED IN CONJUNCTION WITH GLASS/REINFORCING AND MULLION CHARTS IN THIS DOCUMENT.
LOWER APPLICABLE VALUES CONTROL.

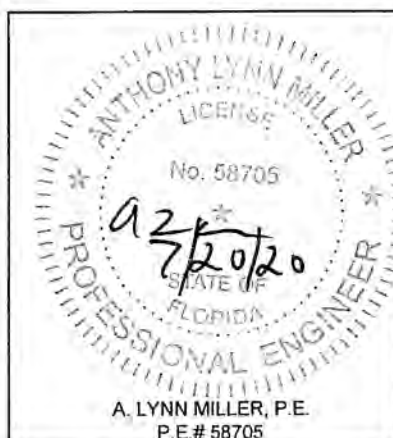
PRODUCT REVISED
as complying with the Florida
Building Code
NOA-No. **20-0729.10**

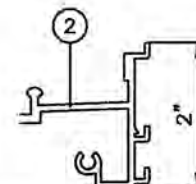
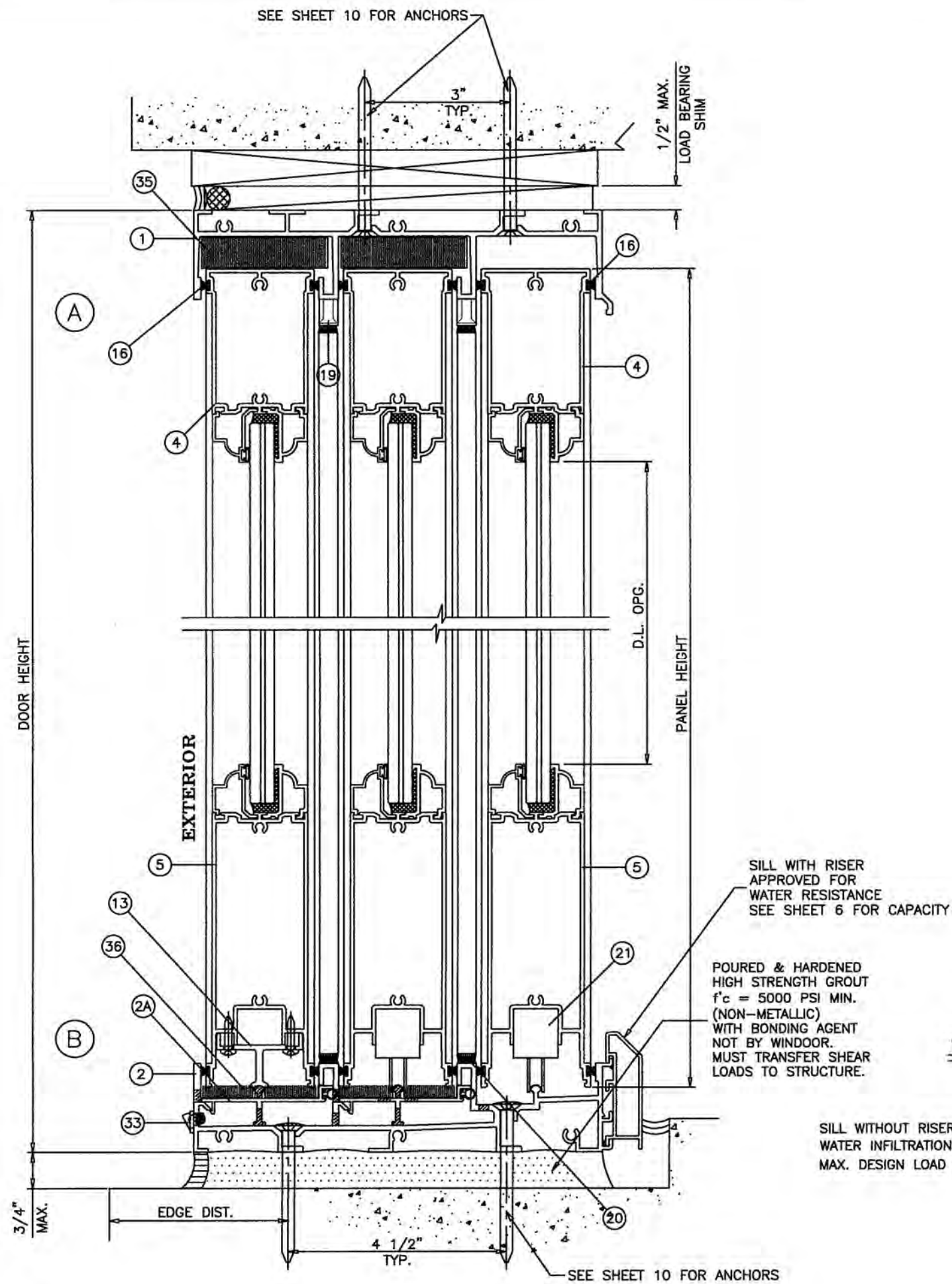
Expiration Date **06/26/2023**

By 
Miami-Dade Product Control

Revision:

PREPARED BY A. LYNN MILLER 1070 TECHNOLOGY DRIVE N. VENICE, FL 34275 (941) 480-1600 REGISTRATION #29296	Date	06/10/2020	By	J ROSOWSKI	Rev.	A
					No.	560-3T-SM-NOA
					DWG	8 OF 16
					Sheet	3-TRACK, SMI
WinDoor® INCORPORATED 104 TRIPLE DIAMOND BLVD. N. VENICE, FL 34275 (833) 554-5432	Title	560SGDA ALUM. SLIDING GLASS DOOR, 3T (SMI)	Desc.	DP PER ANCHORS AND SHIM SPACE	Series	SGD560A

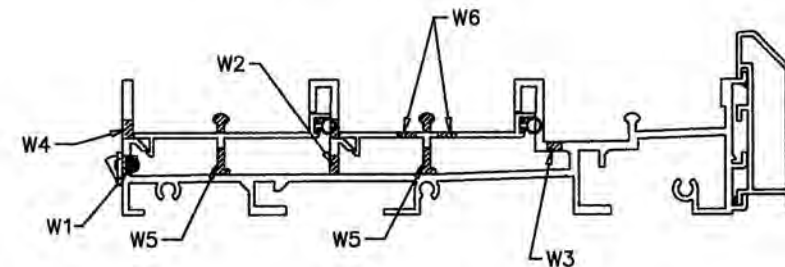




SILL WITHOUT RISER NOT APPROVED FOR INSTALLATIONS WHERE WATER INFILTRATION RESISTANCE IS REQUIRED.
MAX. DESIGN LOAD FOR THIS SILL IS THE SAME AS 4-1/4\" RISER.

WEEPS:

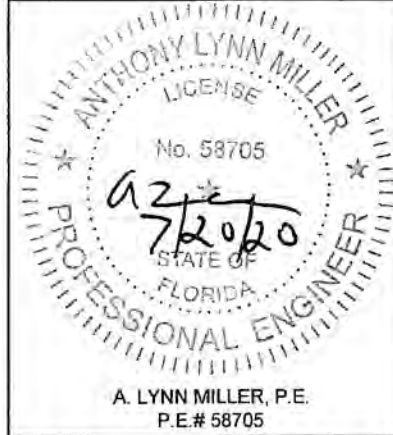
- W1 = .30\" X 1-5/8\" WEEP SLOTS WITH PLASTIC COVER AT 9\" FROM EACH END AND ± 48 \" O.C.
- W2 = 1/4\" X 2\" WEEP SLOTS AT 4\" FROM EACH END AND ± 12 \" O.C.
- W3 = 1/4\" X 5/8\" WEEP HOLES AT 9\" FROM EACH END AND ± 48 \" O.C.
- W4 = 1/4\" X 2\" WEEP SLOTS AT 4\" FROM EACH END AND ± 12 \" O.C.
- W5 = .35\" X 5/8\" WEEP HOLES AT ± 18 \" O.C.
- W6 = 1/4\" X 5/8\" WEEP HOLES AT ± 18 \" O.C.



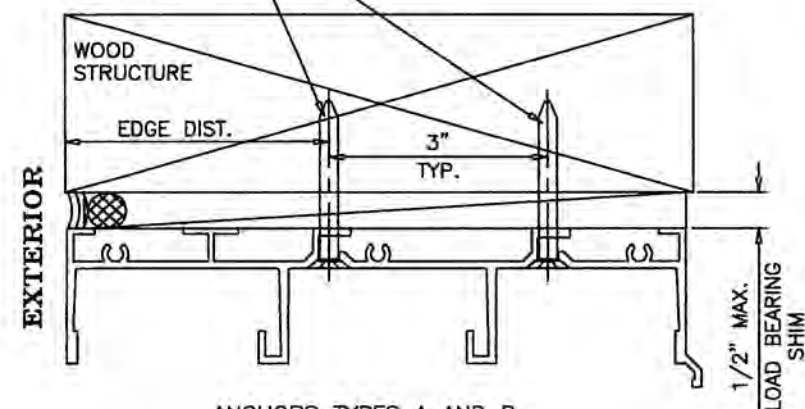
1BY OR 2BY WOOD BUCKS AND METAL STRUCTURES, NOT BY WINDOOR AND MUST SUSTAIN LOADS IMPOSED BY GLAZING SYSTEM AND TRANSFER THEM TO THE BUILDING STRUCTURE.

PRODUCT REVISED
as complying with the Florida Building Code
NOA-No. **20-0729.10**
Expiration Date **06/26/2023**
By
Miami-Dade Product Control

PREPARED BY A. LYNN MILLER 1070 TECHNOLOGY DRIVE N. VENICE, FL 34275 (941) 480-1600		REGISTRATION #29296	
560SGDA ALUM. SLIDING GLASS DOOR, 3T (SMI)		Date	06/10/2020
INSTALLATION DETAILS		By	J ROSOWSKI
SGD560A	3-TRACK, SMI	DWG No.	560-3T-SM-NOA
9 OF 16	Sheet	Rev.	A

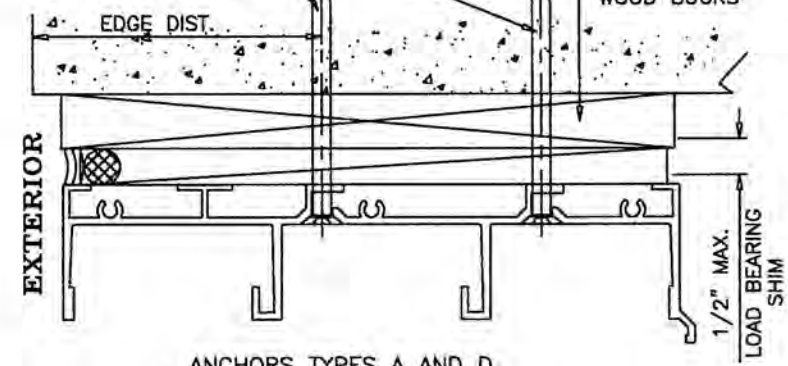


TYPICAL ANCHORS
IN CLUSTERS
AT MTG. STILE
& INTERLOCK ENDS
SEE SHEETS 6, 7 & 8
FOR QUANTITIES



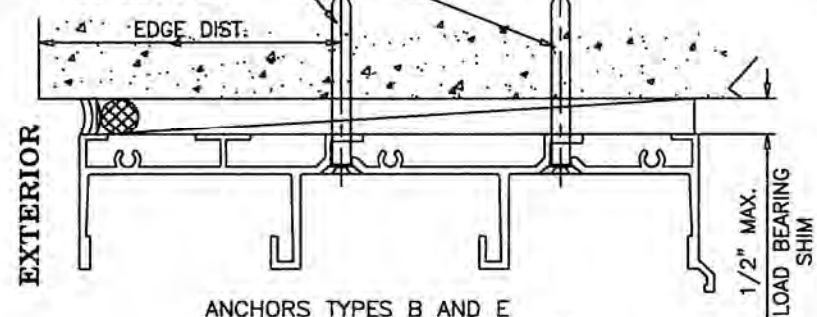
ANCHORS TYPES A AND D
INTO WOOD STRUCTURES

TYPICAL ANCHORS
IN CLUSTERS
AT MTG. STILE
& INTERLOCK ENDS
SEE SHEETS 6, 7 & 8
FOR QUANTITIES



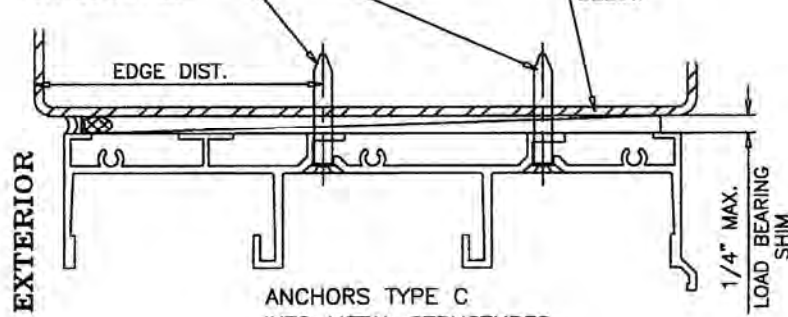
ANCHORS TYPES A AND D
THRU PROPERLY SECURED 1BY OR 2BY
WOOD BUCKS INTO 3 KSI CONCRETE

TYPICAL ANCHORS
IN CLUSTERS
AT MTG. STILE
& INTERLOCK ENDS
SEE SHEETS 6, 7 & 8
FOR QUANTITIES



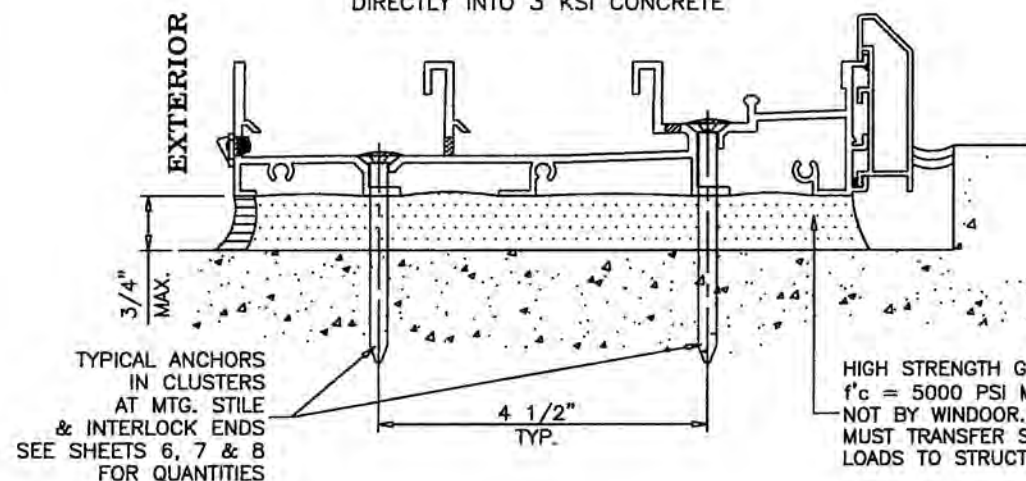
ANCHORS TYPES B AND E
DIRECTLY INTO 3 KSI CONCRETE

TYPICAL ANCHORS
IN CLUSTERS
AT MTG. STILE
& INTERLOCK ENDS
SEE SHEETS 6, 7 & 8
FOR QUANTITIES



ANCHORS TYPE C
INTO METAL STRUCTURES
OR APPROVED MULLIONS

ANCHORS TYPE B
DIRECTLY INTO 3 KSI CONCRETE



1BY OR 2BY WOOD BUCKS AND METAL
STRUCTURES, NOT BY WINDOOR AND
MUST SUSTAIN LOADS IMPOSED BY
GLAZING SYSTEM AND TRANSFER THEM
TO THE BUILDING STRUCTURE.

HIGH STRENGTH GROUT
 $f'_c = 5000$ PSI MIN.
NOT BY WINDOOR.
MUST TRANSFER SHEAR
LOADS TO STRUCTURE

TYPICAL ANCHORS: SEE ELEV. FOR SPACING

TYPE 'A' - $1/4"$ DIA ULTRACON BY 'ELCO' ($F_u=177$ KSI, $F_y=155$ KSI)
INTO WOOD STRUCTURES
WITH 2" MIN. PENETRATION INTO WOOD (HEAD/JAMBS/SILL)
THRU 1BY OR 2BY WOOD BUCKS INTO CONC. OR BLOCKS
WITH $1-1/4"$ MIN. EMBED INTO CONCRETE (HEAD/JAMBS/SILL)
WITH $1-1/4"$ MIN. EMBED INTO BLOCKS (JAMBS)

TYPE 'B' - $1/4"$ DIA ULTRACON BY 'ELCO' ($F_u=177$ KSI, $F_y=155$ KSI)
DIRECTLY INTO CONC. OR BLOCKS
2" MIN. EMBED INTO CONCRETE (HEAD/JAMBS/SILL)
2" MIN. EMBED INTO GROUT FILLED BLOCKS (JAMBS)

TYPE 'C' - #14 SMS OR SELF DRILLING SCREWS ST/ST (GRADE 2 CRS)
INTO MIAMI-DADE COUNTY APPROVED MULLIONS
OR
INTO METAL STRUCTURES (HEAD/JAMBS)
(3) THREADS MIN. TO EXTEND BEYOND METAL THICKNESS
STEEL : 12 GA. MIN. ($F_y = 36$ KSI MIN.)
ALUMINUM : $1/8"$ THK. MIN. (6063-T5 MIN.)
(STEEL IN CONTACT WITH ALUMINUM TO BE PLATED OR PAINTED)

TYPE 'D' - $1/4"$ DIA HILTI KWIK-CON II ($F_u=138$ KSI, $F_y=137$ KSI)
INTO WOOD STRUCTURES
WITH 2" MIN. PENETRATION INTO WOOD (HEAD/JAMBS/SILL)
THRU 1BY OR 2BY WOOD BUCKS INTO CONC. OR BLOCKS
WITH $1-1/4"$ MIN. EMBED INTO CONCRETE (HEAD/JAMBS/SILL)
WITH $1-1/4"$ MIN. EMBED INTO BLOCKS (JAMBS)

TYPE 'E' - $1/4"$ DIA HILTI KWIK-CON II ($F_u=138$ KSI, $F_y=137$ KSI)
DIRECTLY INTO CONC. OR BLOCKS
2" MIN. EMBED INTO CONCRETE (HEAD/JAMBS/SILL)
2" MIN. EMBED INTO GROUT FILLED BLOCKS (JAMBS)

$1/4"$ DIA DEWALT ULTRACON+ ($F_u=164$ KSI, $F_y=148$ KSI) $1/4"$ MAX. SHIM SPACE
DIRECTLY INTO CONCRETE OR HOLLOW CMU
WITH $1-3/4"$ MIN. EMBED INTO CONCRETE
WITH $1-1/4"$ MIN. EMBED INTO HOLLOW CMU

THRU 1BY WOOD BUCKS INTO CONCRETE OR HOLLOW CMU
WITH $1-3/4"$ MIN. EMBED INTO CONCRETE
WITH $1-1/4"$ MIN. EMBED INTO HOLLOW CMU

TYPE 'AA' - $5/16"$ DIA ULTRACON BY 'ELCO' ($F_u=177$ KSI, $F_y=155$ KSI)
INTO WOOD STRUCTURES
WITH $1-7/8"$ MIN. PENETRATION INTO WOOD (HEAD/JAMBS/SILL)
THRU 1BY OR 2BY WOOD BUCKS INTO CONC. OR BLOCKS
WITH $1-3/4"$ MIN. EMBED INTO CONCRETE (HEAD/JAMBS/SILL)
WITH $1-3/4"$ MIN. EMBED INTO GROUT FILLED BLOCKS (JAMBS)

TYPE 'BB' - $5/16"$ DIA ULTRACON BY 'ELCO' ($F_u=177$ KSI, $F_y=155$ KSI)
DIRECTLY INTO CONC. OR BLOCKS
 $1-3/4"$ MIN. EMBED INTO CONCRETE (HEAD/JAMBS/SILL)
 $1-3/4"$ MIN. EMBED INTO GROUT FILLED BLOCKS (JAMBS)

ANCHOR EDGE DISTANCES (UNLESS OTHERWISE NOTED)

INTO CONCRETE AND BLOCKS = $2-1/2"$ MIN.
INTO WOOD STRUCTURE = 1" MIN. ($1/4"$ DIA. ANCHORS)
= $1-1/4"$ MIN. ($5/16"$ DIA. ANCHORS)
INTO METAL STRUCTURE = $1/2"$ MIN.

WOOD AT HEAD, JAMBS OR SILL SG = 0.55 MIN.
CONCRETE AT HEAD, SILL OR JAMBS $f'_c = 3000$ PSI MIN.
C-90 HOLLOW/FILLED BLOCK AT JAMBS $f'_m = 2000$ PSI MIN.

$1/4"$ ULTRACON+ ANCHORS BY 'DEWALT' ARE LIMITED TO A
MAXIMUM $1/4"$ SHIM SPACE. ALL OTHER ANCHORS MAY USE
 $1/4"$, $3/8"$ OR $1/2"$ SHIM SPACE.

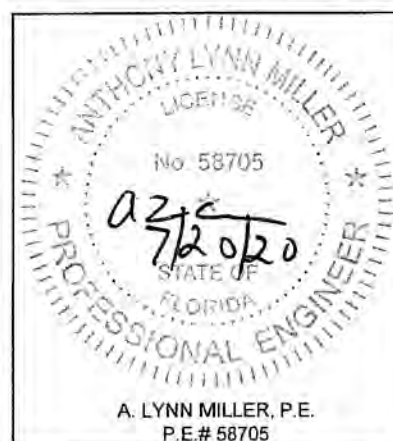
PRODUCT REVISED
as complying with the Florida
Building Code
NOA-No. **20-0729.10**

Expiration Date **06/26/2023**

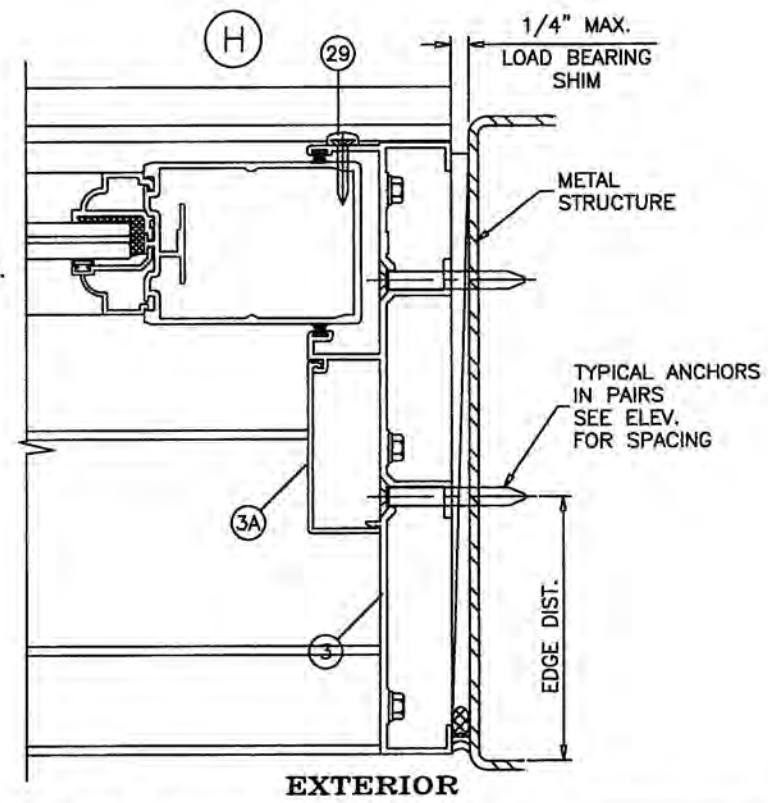
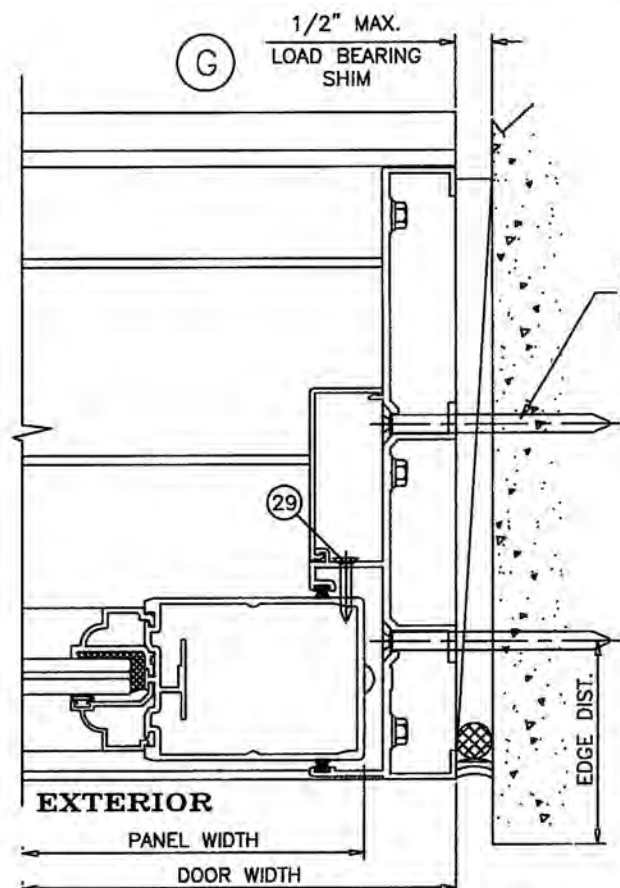
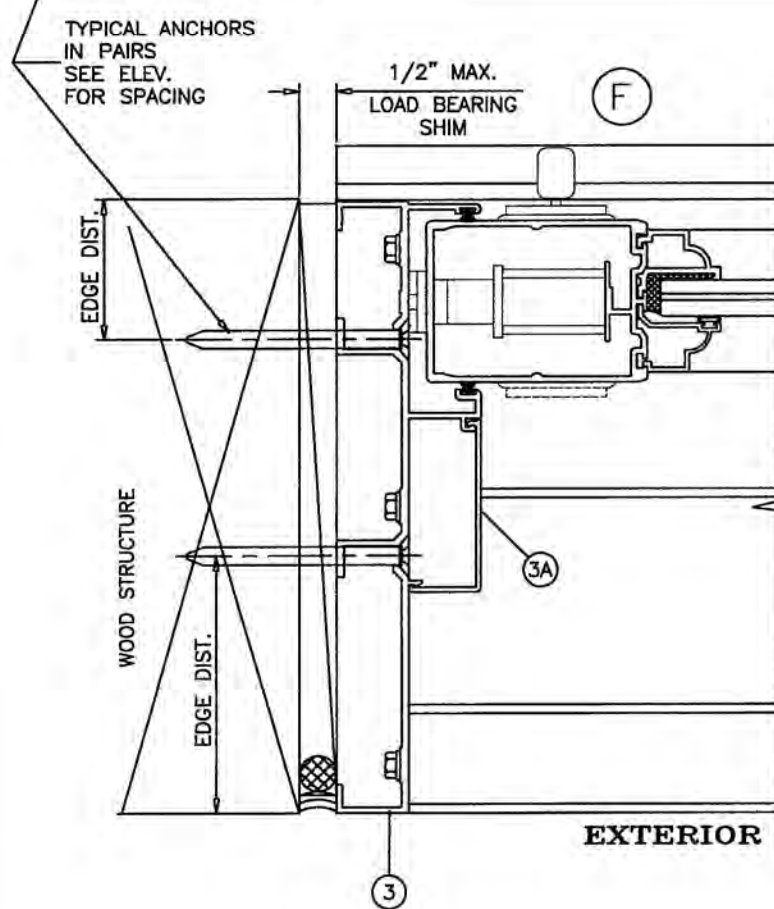
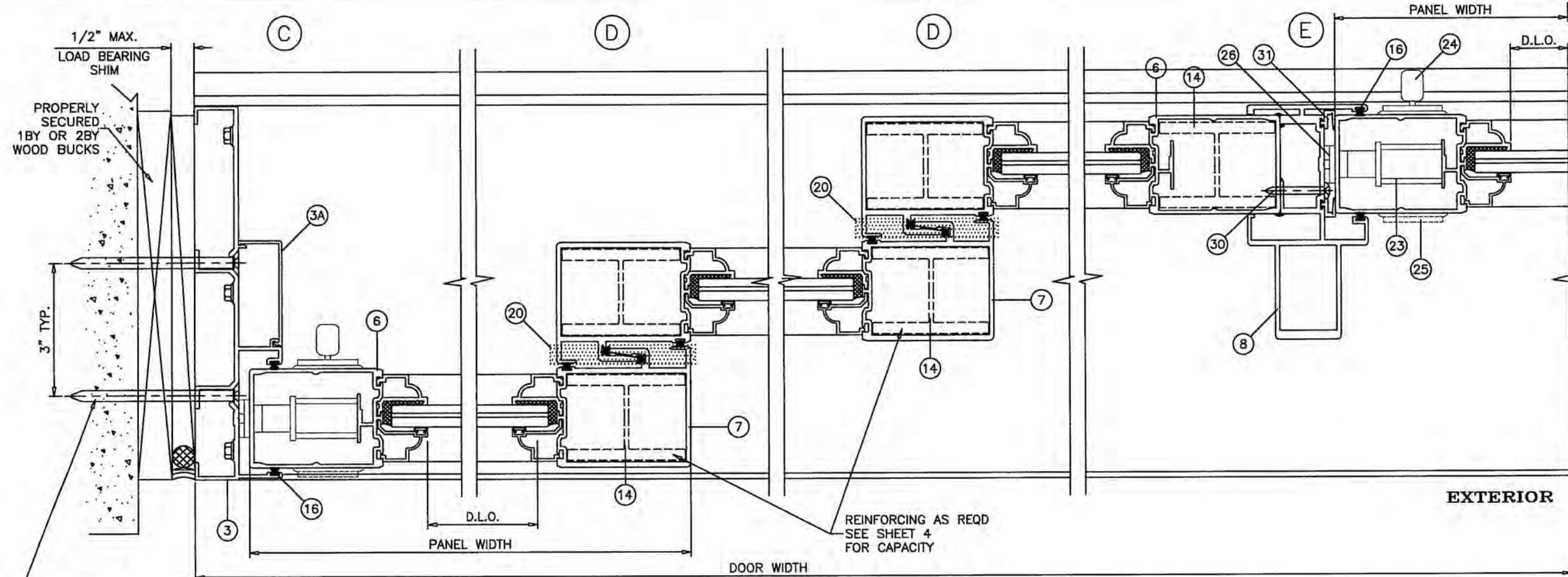
By 
Miami-Dade Product Control

ADDED ANCHOR TYPE
- JR - 6/11/20

PREPARED BY A. LYNN MILLER 1070 TECHNOLOGY DRIVE N. VENICE, FL 34275 (941) 480-1600	REGISTRATION #29296	DATE 06/10/2020	DRAWN BY J. ROSOWSKI	NO. 560-3T-SM-NOA-A	Rev.
					A
					DWG
					10 OF 16
WINDOOR® INCORPORATED 104 TRIPLE DIAMOND BLVD. N. VENICE, FL 34275 (833) 554-5432	560SGDA ALUM. SLIDING GLASS DOOR, 3T (SMI)	INSTALLATION DETAILS	3-TRACK, SMI	SGD560A	Sheet
					10 OF 16
					DWG
					10 OF 16



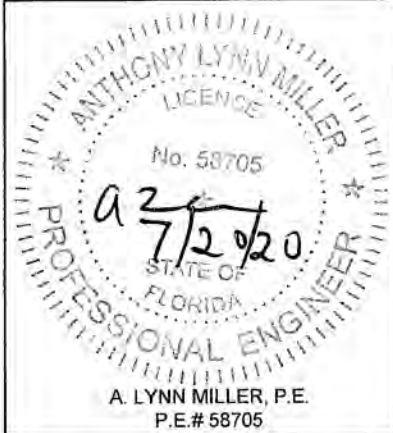
A. LYNN MILLER, P.E.
P.E.# 58705



WOOD BUCKS AND METAL STRUCTURES NOT BY WINDOOR AND MUST SUSTAIN LOADS IMPOSED BY GLAZING SYSTEM AND TRANSFER THEM TO THE BUILDING STRUCTURE.

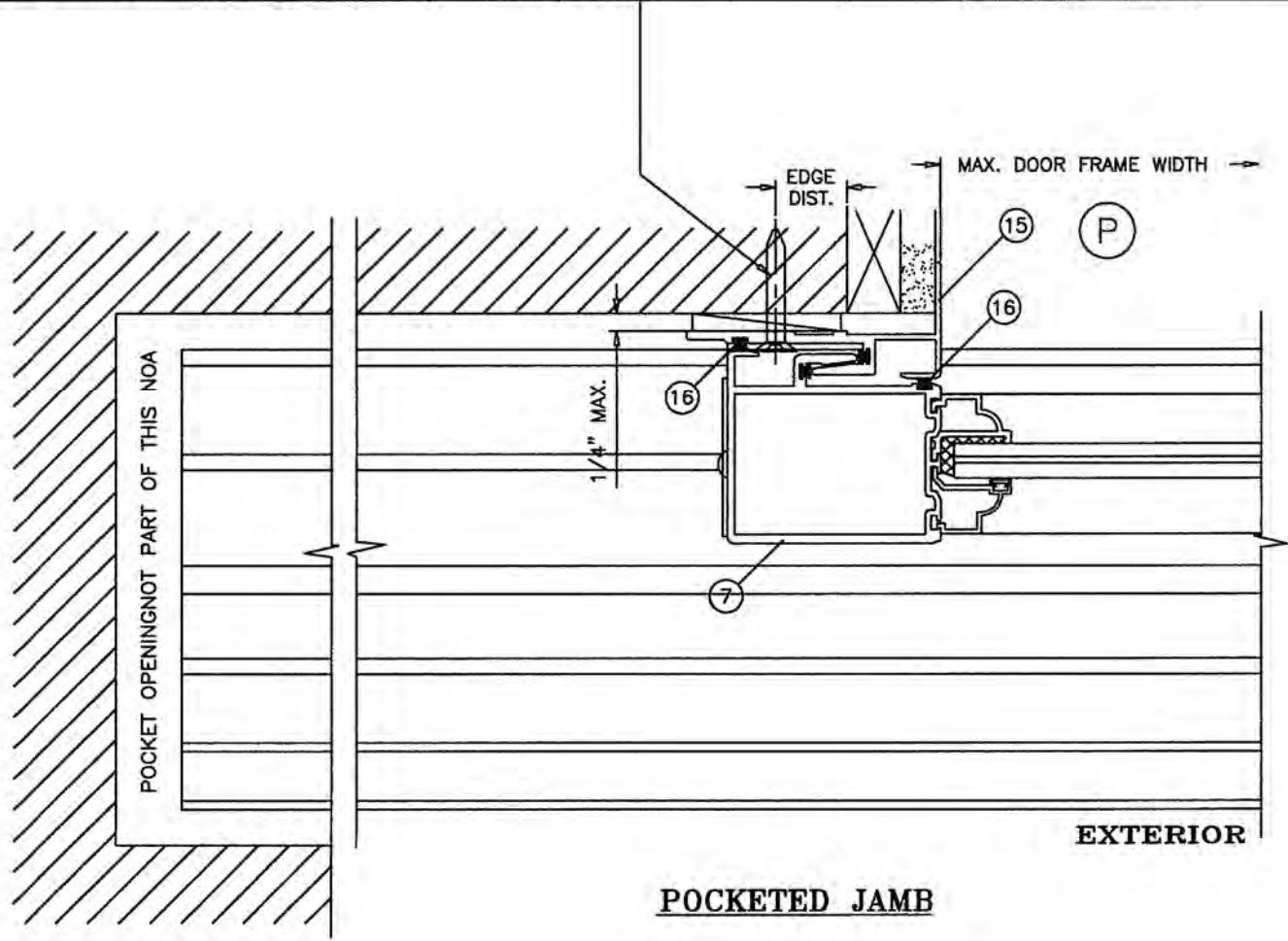
PRODUCT REVISED
as complying with the Florida Building Code
NOA-No. **20-0729.10**
Expiration Date **06/26/2023**
By
Miami-Dade Product Control

WINDOOR® <u>INCORPORATED</u> 104 TRIPLE DIAMOND BLVD. N. VENICE, FL 34275 (833) 554-5432		PREPARED BY A. LYNN MILLER 1070 TECHNOLOGY DRIVE N. VENICE, FL 34275 (941) 480-1600		REGISTRATION #29296		06/10/2020	
560SGDA ALUM. SLIDING GLASS DOOR, 3T (SMI)		J ROSOWSKI		By		Date	
INSTALLATION DETAILS		11 OF 16		DWG No		560-3T-SM-NOA	
SGD560A		3-TRACK, SMI		Sheet		Rev.	
Series		Config		Desc.		Title	



POCKET HOOK ANCHOR CAPACITY - PSF													
ANCHORS TYPE	SUBSTRATE	MIN. EMBED.	MIN. EDGE DIST.	PANEL WIDTHS									
				36-1/4"		42-1/4"		48-1/4"		54-1/4"		60-1/4"	
				EXT. (+)	INT. (-)	EXT. (+)	INT. (-)	EXT. (+)	INT. (-)	EXT. (+)	INT. (-)	EXT. (+)	INT. (-)
1/4" DIA. ULTRACONS+ BY 'DEWALT' (Fu=164 KSI, Fy=148 KSI) OR 1/4" DIA. ULTRACONS BY 'ELCO' (Fu=177 KSI, Fy=155 KSI)	MASONRY	1-1/4"	1"	55.8	55.8	47.9	47.9	41.9	41.9	37.3	37.3	33.6	33.6
	CONCRETE	1-3/4"	1"	140.0	140.0	140.0	140.0	137.8	137.8	122.5	122.5	110.3	110.3
#14 SMS (GRADE 2 OR 5 CRS)	WOOD	1-3/4"	3/4"	140.0	140.0	140.0	140.0	131.0	131.0	116.5	116.5	104.9	104.9


ABOVE CHART IS FOR 12" TYP. ANCHOR SPACING
FOR 6" SPACING MULTIPLY CAPACITY X2.



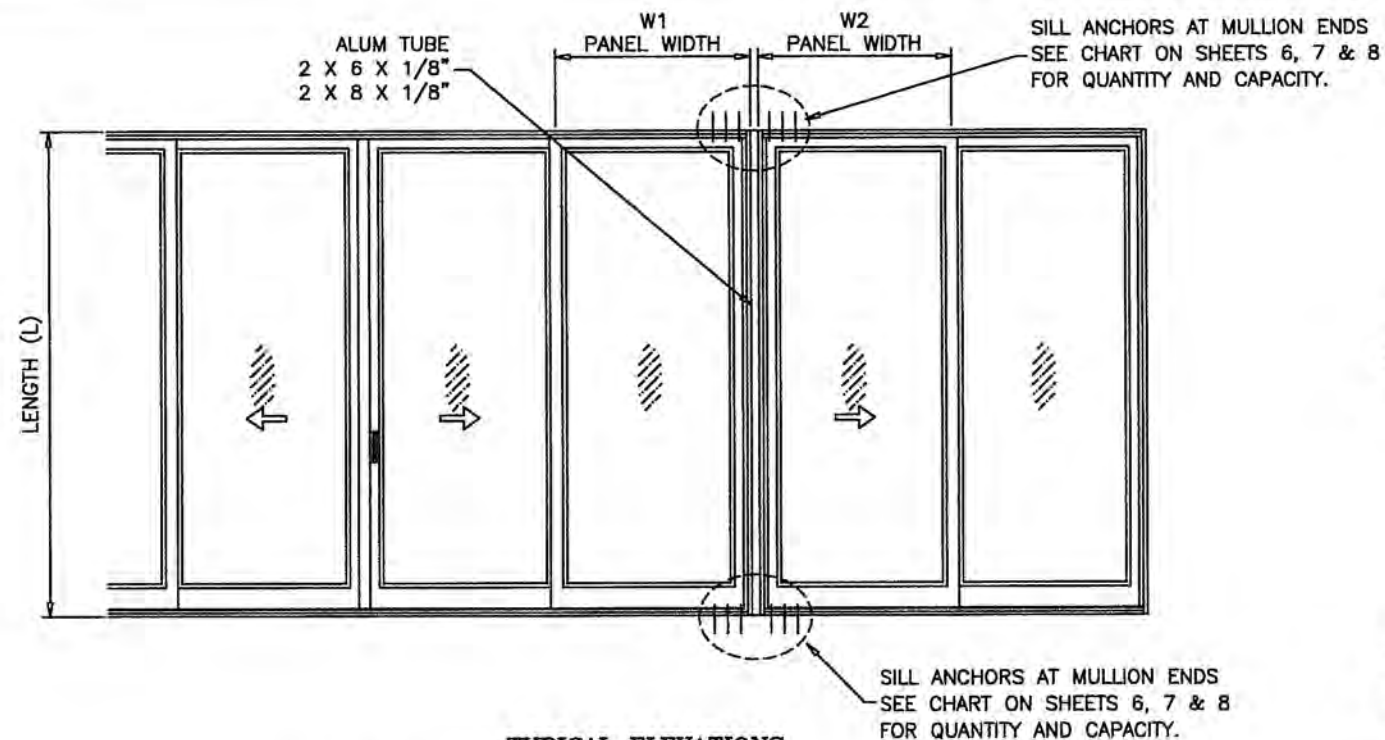
PRODUCT REVISED
as complying with the Florida
Building Code
NOA-No. **20-0729.10**
Expiration Date **06/26/2023**
By 
Miami-Dade Product Control

Revision:
ADDED ANCHOR TYPE
- JR - 6/11/20

PREPARED BY A. LYNN MILLER 1070 TECHNOLOGY DRIVE N. VENICE, FL 34275 (941) 480-1600 REGISTRATION #29296	Date	06/10/2020	Rev.	A
	By	J ROSOWSKI	DWG	560-3T-SM-NOA
	No.	12 OF 16	Sheet	3-TRACK, SMI
	Config	SGD560A	Series	
WinDoor® INCORPORATED 104 TRIPLE DIAMOND BLVD. N. VENICE, FL 34275 (833) 554-5432		560SGDA ALUM. SLIDING GLASS DOOR, 3T (SMI) INSTALLATION DETAILS, POCKET		


 A. LYNN MILLER, P.E.
 P.E.# 58705

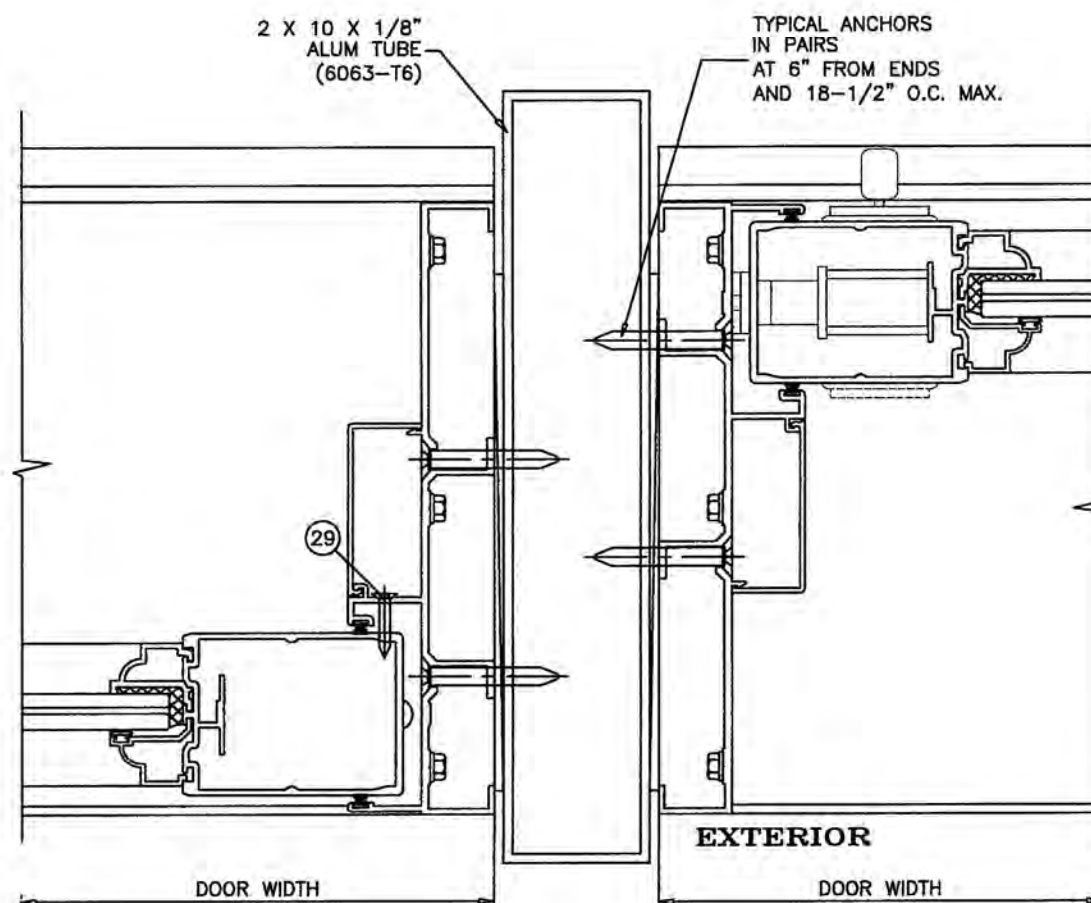
MULLION LOAD CAPACITY - PSF		
DIMS.		2 X 10 X 1/8"
WIDTH (W) INCHES	LENGTH (L) INCHES	EXT.(+) INT.(-)
26-1/4	84	140.0
32-1/4		140.0
38-1/4		140.0
44-1/4		140.0
50-1/4		140.0
56-1/4		140.0
62-1/4		140.0
26-1/4	90	140.0
32-1/4		140.0
38-1/4		140.0
44-1/4		140.0
50-1/4		140.0
56-1/4		140.0
62-1/4		140.0
26-1/4	96	140.0
32-1/4		140.0
38-1/4		140.0
44-1/4		140.0
50-1/4		140.0
56-1/4		140.0
62-1/4		140.0
26-1/4	102	140.0
32-1/4		140.0
38-1/4		140.0
44-1/4		140.0
50-1/4		140.0
56-1/4		140.0
62-1/4		140.0
26-1/4	108	140.0
32-1/4		140.0
38-1/4		140.0
44-1/4		140.0
50-1/4		140.0
56-1/4		140.0
62-1/4		140.0
26-1/4	114	140.0
32-1/4		140.0
38-1/4		140.0
44-1/4		140.0
50-1/4		140.0
56-1/4		140.0
62-1/4		140.0
26-1/4	120	140.0
32-1/4		140.0
38-1/4		140.0
44-1/4		140.0
50-1/4		140.0
56-1/4		140.0



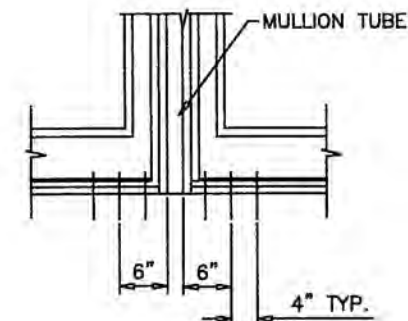
TYPICAL ELEVATIONS
SIDE BY SIDE S.G. DOOR
SIDE BY SIDE APPLIES TO TWO OR MORE DOORS

$$\text{WIDTH (W)} = \frac{W1 + W2}{2} + 2$$

W1 = SGD PANEL WIDTH
W2 = SGD PANEL WIDTH



UNCLIPPED MULLION



CLUSTER OF ANCHORS
HEAD/SILL

NOTES:

1. USE CHART ON THIS SHEET FOR SIDE BY SIDE CONNECTION CAPACITY OF DOOR MULLION.
2. FOR SLIDING GLASS DOOR CAPACITY SEE SHEET 4.
3. USE CHART ON SHEETS 6, 7 & 8 TO SELECT ANCHOR ARRANGEMENT AT MULLION ENDS.
4. LOWER VALUES FROM STEPS 1, 2 OR 3 WILL APPLY TO ENTIRE SYSTEM.

PRODUCT REVISED
as complying with the Florida
Building Code
NOA-No. **20-0729.10**

Expiration Date **06/26/2023**

By 
Miami-Dade Product Control

PREPARED BY A. LYNN MILLER
1070 TECHNOLOGY DRIVE
N. VENICE, FL 34275
(941) 480-1600

REGISTRATION #29296

Date 06/10/2020
By J ROSOWSKI

Drawn J ROSOWSKI

Rev. A

DWG No. 560-3T-SM-NOA

Sheet 13 OF 16

3-TRACK, SMI

SGD560A

DP FOR MULLION

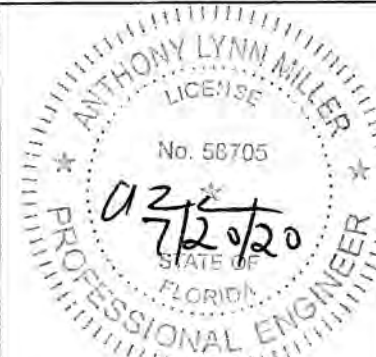
560SGDA ALUM. SLIDING GLASS DOOR, 3T (SMI)

104 TRIPLE DIAMOND BLVD.
N. VENICE, FL 34275
(833) 554-5432

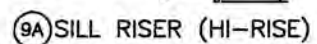
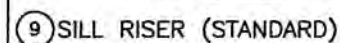
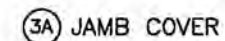
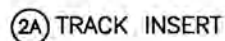
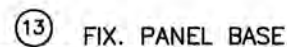
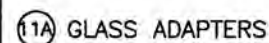
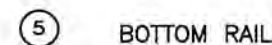
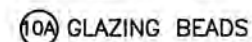
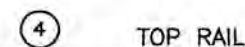
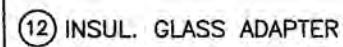
WINDOOR®

INCORPORATED

Series Desc. Title



A. LYNN MILLER, P.E.
P.E.# 58705



A. LYNN MILLER, P.E.
P.E.# 58705

ITEM #	PART #	QUANTITY	DESCRIPTION	MATERIAL	MANF./SUPPLIER/REMARKS
1	CGI-572	1	FRAME HEAD	6063-T6	-
2	CGI-573	1	FRAME SILL	6063-T6	-
2A	CGI-575	AS REQD.	TRACK INSERT	6063-T6	-
3	CGI-574	2	FRAME JAMB	6063-T6	-
3A	CGI-576	AS REQD.	JAMB COVER	6063-T6	-
4	CGI-574	1/ PANEL	TOP RAIL	6063-T6	-
5	CGI-556	1/ PANEL	BOTTOM RAIL	6063-T6	-
6	CGI-557	2/ PANEL	JAMB/LOCK STILE	6063-T6	-
7	CGI-558	AS REQD.	INTERLOCK	6063-T6	-
8	CGI-559	AS REQD.	ASTRAGAL STILE	6063-T6	-
9	CGI-553	AS REQD.	SILL RISER (STANDARD)	6063-T5	-
9A	CGI-554	AS REQD.	SILL RISER (HI-RISE)	6063-T5	-
10	CGI-561	AS REQD.	GLAZING BEAD (COLONIAL)	6063-T5	-
10A	CGI-563	AS REQD.	GLAZING BEAD (SQUARE)	6063-T5	-
11	CGI-562	AS REQD.	GLASS ADAPTER (COLONIAL)	6063-T5	-
11A	CGI-564	AS REQD.	GLASS ADAPTER (SQUARE)	6063-T5	-
12	CGI-565	AS REQD.	GLASS ADAPTER (INSUL. LAM. GLASS)	6063-T6	-
13	CGI-585	2/ FIX. PANEL	FIX. PANEL BASE, 2" LONG	6063-T5	ATTACHED WITH #8 X 3/4" PH PH TEKS
14	CGI-560	AS REQD.	STILE REINFORCING	6063-T6	LENGTH = DOOR HT. - 14"
15	CGI-577	AS REQD.	POCKET DOOR HOOK	6063-T6	-

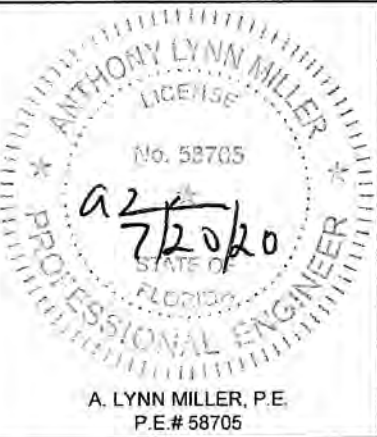
ITEM #	PART #	QUANTITY	DESCRIPTION	MATERIAL	MANF./SUPPLIER	REMARKS
16	VARIES	VARIES	WOOL PILE WEATHERSTRIPPING WITH FIN	PILE	ULTRAFAB OR EQUAL	.187" BASE X .290" TRI-FIN (USED HORIZONTALLY) .187" BASE X .290" SINGLE CENTER FIN (USED VERT.)
17	CGI-382V	VARIES	GLAZING BEAD BULB	VINYL	CUSTOM EXTRUDED	
18	SILICONE	VARIES	STRUCTURAL SILICONE	RUBBER	GE 1200 OR DOW 995	
19	CGI-584	1	ANTI-LIFT BLOCK	GL RF NYLON	CUSTOM CGI PART	ABOVE INTERLOCK ATTACHED W/ (2) #10 X 1" SMS
20	CGI-586	1	ADHESIVE BACKED PILE PAD (.300" HIGH)	PILE	ULTRAFAB OR EQUAL	AT BOTTOM OF EACH INTERLOCK
21	TA-51 OR TA-84	2/ MOV. PANEL	TANDEM S/S ROLLER	S/S	BUILDERS HRDW. OR EQUAL	ATTACHED WITH #8 X 3/4" PH PH TEKS
23	CH-200	1	M.S. COMMERCIAL HOOK BOLT LOCK	S/S MECH.	CUSTOM PART	INCLUDES CGI-580 FACE PLATE TRIM
24	CH-107	1	BRASS THUMBTURN	BRASS/ZINC	CUSTOM PART	1 REQUIRED PER HOOK BOLT
25	CH-109	OPT.	BRASS KEYED EXTERIOR CYLINDER	BRASS/ZINC	CUSTOM PART	OPTIONAL PART
26	CGI-581	1	850" X 3-7/8" S/S KEEPER	S/S	CUSTOM PART	ATTACHED W/ (3) #10 X 1" TRUSS HEAD SMS
27	SCREW (FRAME)	12	#12 X 1-1/4" HEX HEAD S/S SMS	S/S	VARIOUS	3 SCREWS PER FRAME CORNER
28	SCREW (PANEL)	8	#10 X 1-1/4" PAN HEAD S/S SMS	S/S	VARIOUS	2 SCREWS PER PANEL CORNER
29	SCREW	2	#8 X 1-1/2" FLAT HEAD TEKS S/S	S/S	VARIOUS	(2) PER FIXED PANEL AT MAXIMUM OF 24" FROM TOP & BOTTOM MOUNTED ON PLASTIC COVER
30	SCREW	VARIES	#10 X 1-1/2" PAN HEAD TEKS S/S	S/S	VARIOUS	AT 6" FROM ENDS AND 24" ON CENTER MAX.
31	CGI-599	VARIES	RUBBER SEAL	RUBBER/FOAM	CUSTOM PART	
32	SIDELITE JAMB CLIP	1/SCREW	3" LONG CLIP (AT "O" CONFIGURATION)	ALUM	CUSTOM PART	CONSISTS OF 1/8" X 3-1/8" X 3" LG PLATE GLUED TO 3/4" X 1-1/2" X 1/8" THK X 3" LG. TUBE
33	HI-FLO WEEPER	VARIES	WEEP HOLE AND COVER	NYLON	PEP	1 WEEP AND COVER AT 9" FROM ENDS AND AT CENTER LINE OF INTERLOCK OR ASTRAGAL
34	-	2/LITE	SETTING BLOCK	EPDM	-	1 REQUIRED PER HOOK BOLT
35	WS-578	AS REQD.	ADHESIVE BACKED PILE PAD (2.75" X .3" X .69")	PILE	ULTRAFAB OR EQUAL	AT HEAD NTERLOCK, EXTERIOR SIDE
36	WS-597	AS REQD.	ADHESIVE BACKED PILE PAD (1.1" X .54" X .32")	PILE	ULTRAFAB OR EQUAL	AT SILL, EXTERIOR SIDE

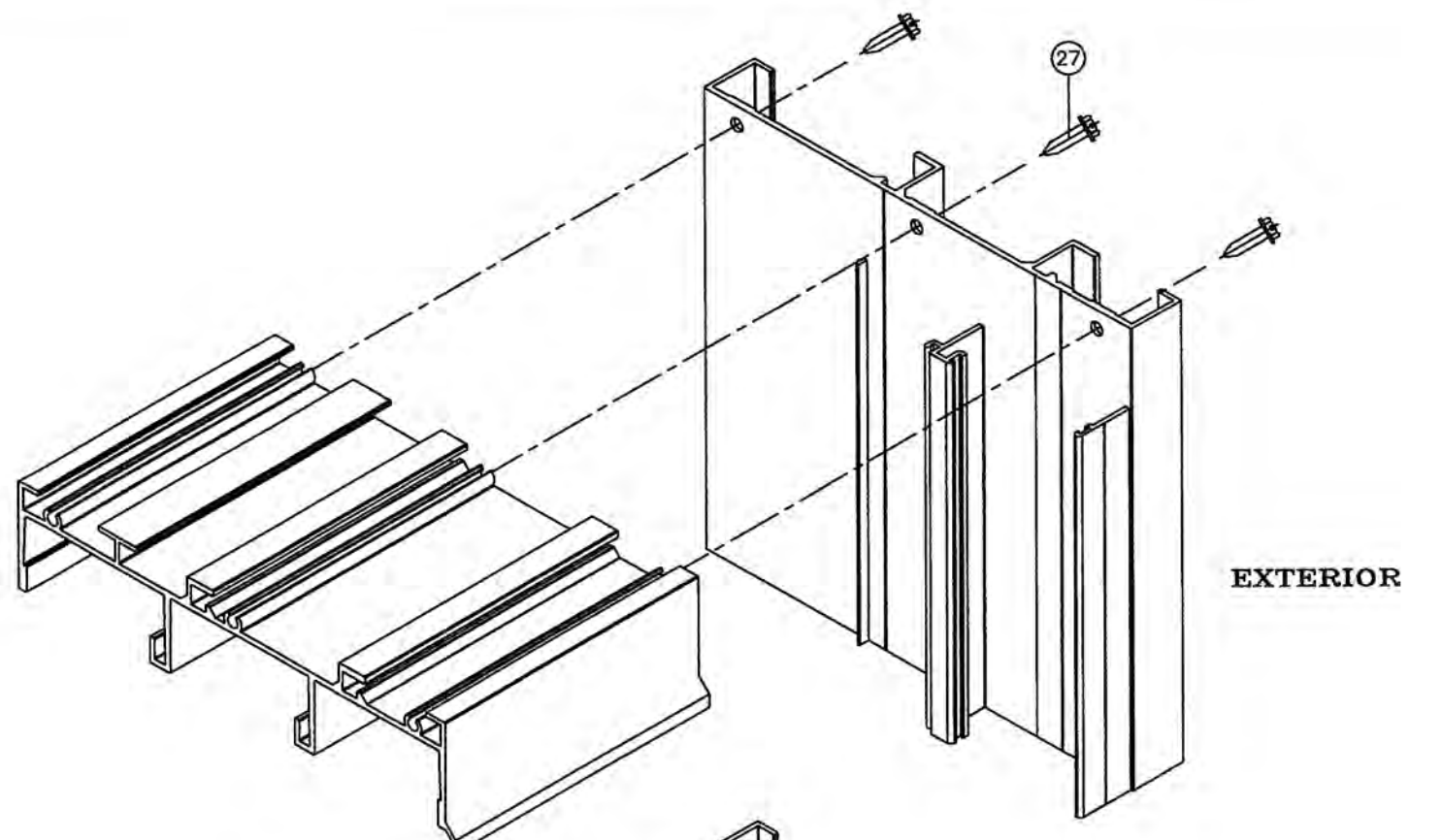
SEALANTS:

ALL FRAME AND PANEL JOINT, INSTALLATION SCREWS AND HEADS OF ANCHOR SCREWS AT SILL TO BE SEALED WITH WHITE/ALUM COLORED SILICONE.

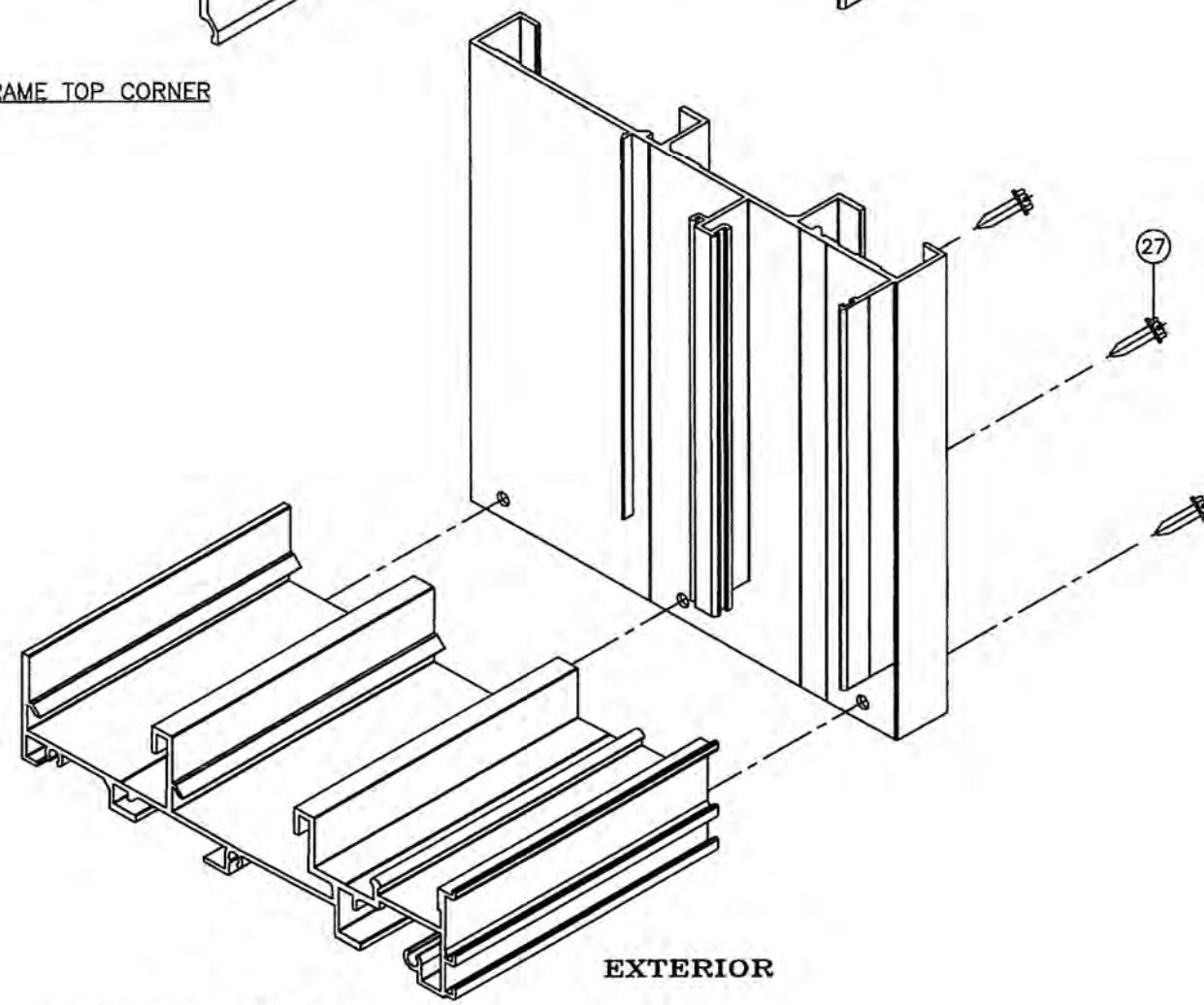
PRODUCT REVISED
as complying with the Florida
Building Code
NOA-No. **20-0729.10**
Expiration Date **06/26/2023**
By 
Miami-Dade Product Control

Revision:		By		Date		Rev.	
		J ROSOWSKI		06/10/2020		A	
		Drawn		560-3T-SM-NOA		No.	
		15 OF 16		Sheet		3-TRACK, SMI	
		SGD560A		Config		Title	
PREPARED BY A. LYNN MILLER 1070 TECHNOLOGY DRIVE N. VENICE, FL 34275 (941) 480-1600		REGISTRATION #29296 560SGDA ALUM. SLIDING GLASS DOOR, 3T (SMI)		BILL OF MATERIALS 3-TRACK, SMI		Series Desc. Title	



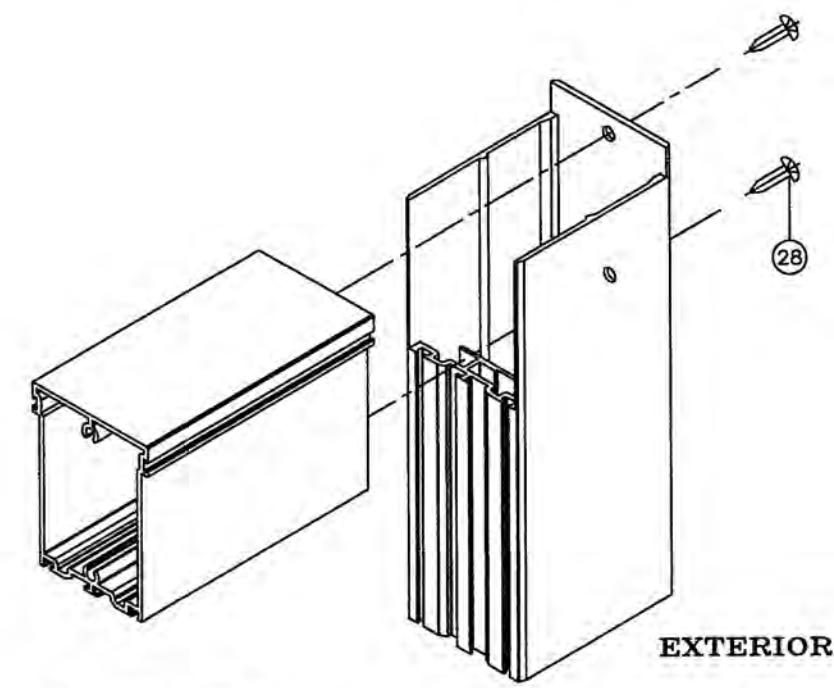


FRAME TOP CORNER



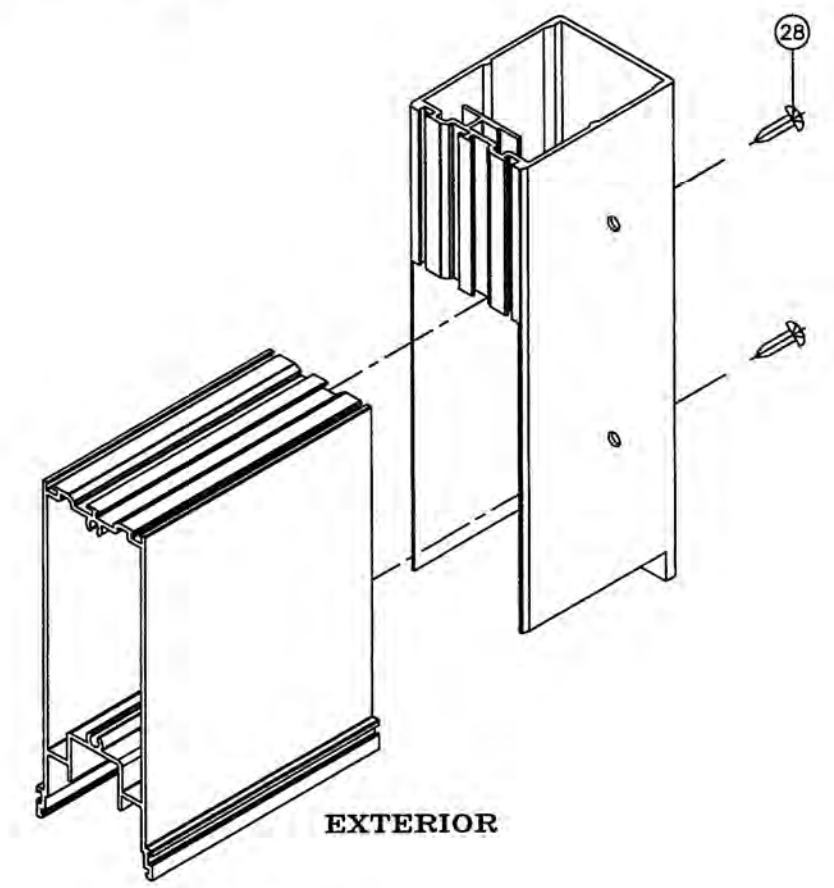
FRAME BOTTOM CORNER

EXTERIOR




PANEL TOP CORNER

EXTERIOR



PANEL BOTTOM CORNER

EXTERIOR

PRODUCT REVISED
as complying with the Florida
Building Code
NOA-No. **20-0729.10**
Expiration Date **06/26/2023**
By 
Miami-Dade Product Control

Revision:

PREPARED BY A. LYNN MILLER 1070 TECHNOLOGY DRIVE N. VENICE, FL 34275 (941) 480-1600 REGISTRATION #29296	Date	06/10/2020	By	J ROSOWSKI	Rev.	A
	DWG No.	16 OF 16	Sheet	3-TRACK, SMI	560-3T-SM-NOA	
	Series	SGD560A	Desc.	CORNER DETAILS		
	Title	560SGDA ALUM. SLIDING GLASS DOOR, 3T (SMI)				

