



DEPARTMENT OF REGULATORY AND ECONOMIC RESOURCES (RER)
BOARD AND CODE ADMINISTRATION DIVISION
NOTICE OF ACCEPTANCE (NOA)

MIAMI-DADE COUNTY, FLORIDA
PRODUCT CONTROL SECTION
11805 SW 26 Street, Room 208
Miami, FL 33175-2474
T (786) 315-2590 F (786) 315-2599
www.miamidade.gov/economy

WinDoor, Inc.
104 Triple Diamond Blvd.
North Venice, FL 34275

SCOPE:

This NOA is being issued under the applicable rules and regulations governing the use of construction materials. The documentation submitted has been reviewed and accepted by Miami-Dade County RER-Product Control Section to be used in Miami-Dade County and other areas where allowed by the Authority Having Jurisdiction (AHJ).

This NOA shall not be valid after the expiration date stated below. The Miami-Dade County Product Control Section (In Miami-Dade County) and/ or the AHJ (in areas other than Miami-Dade County) reserve the right to have this product or material tested for quality assurance purposes. If this product or material fails to perform in the accepted manner, the manufacturer will incur the expense of such testing and the AHJ may immediately revoke, modify, or suspend the use of such product or material within their jurisdiction. RER reserves the right to revoke this acceptance, if it is determined by Miami-Dade County Product Control Section that this product or material fails to meet the requirements of the applicable building code.

This product is approved as described herein and has been designed to comply with the Florida Building Code, including the High Velocity Hurricane Zone.

DESCRIPTION: Series "9063" Thermally Broken Aluminum Fixed Window – L.M.I.

APPROVAL DOCUMENT: Drawing No. 9063-NOA, titled Series "9063 Fixed Thermally Broken Window (LM)", sheets 01 through 10 of 10, dated 08/15/19, with Rev "A" dated 07/13/20 prepared, signed and sealed Anthony Lynn Miller, P. E., prepared, signed and sealed by Anthony Lynn Miller, P.E., bearing the Miami-Dade County Product Control Section Revision stamp with the Notice of Acceptance number and expiration date by the Miami-Dade County Product Control Section.

MISSILE IMPACT RATING: Large and Small Missile Impact Resistant

LABELING: Each unit shall bear a permanent label with the manufacturer's name or logo, city, state, series, and following statement: "Miami-Dade County Product Control Approved", unless otherwise noted herein.

RENEWAL of this NOA shall be considered after a renewal application has been filed and there has been no change in the applicable building code negatively affecting the performance of this product.

TERMINATION of this NOA will occur after the expiration date or if there has been a revision or change in the materials, use, and/ or manufacture of the product or process. Misuse of this NOA as an endorsement of any product, for sales, advertising or any other purposes shall automatically terminate this NOA. Failure to comply with any section of this NOA shall be cause for termination and removal of NOA.

ADVERTISEMENT: The NOA number preceded by the words Miami-Dade County, Florida, and followed by the expiration date may be displayed in advertising literature. If any portion of the NOA is displayed, then it shall be done in its entirety.

INSPECTION: A copy of this entire NOA shall be provided to the user by the manufacturer or its distributors and shall be available for inspection at the job site at the request of the Building Official.

This NOA **revises NOA#19-0821.01** and consists of this page 1 and evidence page E-1 and E-2, as well as approval document mentioned above.

The submitted documentation was reviewed by **Sifang Zhao, P. E.**



S.Z.
11/12/2020

NOA No. 20-0729.11
Expiration Date: October 16, 2024
Approval Date: November 12, 2020
Page 1

NOTICE OF ACCEPTANCE: EVIDENCE SUBMITTED

1. EVIDENCE SUBMITTED UNDER PREVIOUS NOAs

A. DRAWINGS

1. Manufacturer's die drawings and sections. *(Submitted under NOA No. 14-0107.13)*
2. Drawing No. **08-02252**, titled Series "9063 Fixed Thermally Broken Window Single & Twin – LMI", sheets 01 through 10 of 10, dated 11/04/13 with revision **B** dated 02/19/18, prepared by manufacture, signed and sealed by Luis R. Lomas, P. E.

B. TESTS

1. Test reports on: 1) Air Infiltration Test, per FBC, TAS 202-94
2) Uniform Static Air Pressure Test, Loading per FBC, TAS 202-94
3) Water Resistance Test, per FBC, TAS 202-94
4) Large Missile Impact Test per FBC, TAS 201-94
5) Cyclic Wind Pressure Loading per FBC, TAS 203-94
along with marked-up drawings and installation diagram of an aluminum fixed window, prepared by National Certified Testing Laboratories, Inc., Test Report No. **NCTL-210-3881-01**, dated 09/13/13, signed and sealed by Gerard J. Ferrara, P. E.
(Submitted under NOA No. 14-0107.13)

C. CALCULATIONS

1. Anchor verification calculations and structural analysis, complying with **FBC-2010** and with **FBC 5th Edition (2014)**, dated 11/26/13, prepared, signed, sealed and dated 10/02/14 by Luis R. Lomas, P. E. *(Submitted under NOA No. 14-0107.13)*
2. Anchor verification, complying with **FBC 6th edition (2017)** dated 11/29/17, prepared, signed and sealed by Luis R. Lomas, P.E. *(Submitted under NOA No. 17-1219.21)*
3. **Glazing complies with ASTM E1300-04/ 09**

D. QUALITY ASSURANCE

1. Miami-Dade Department of Regulatory and Economic Resources (RER).

E. MATERIAL CERTIFICATIONS

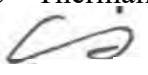
1. NOA No. 17-0808.02 issued to Kuraray America, Inc. for their "SentryGlas® (Clear and White) Glass Interlayers" dated 12/28/17, expiring on 07/04/23

F. STATEMENTS

1. Statement letter of conformance, complying with FBC 6th Edition (2017), and of no financial interest, dated 08/15/19, issued, signed and sealed by Anthony Lynn Miller, P.E
2. Successor Engineer letter to Luis R. Lomas, P.E. from Anthony Lynn Miller, P.E. dated 08/16/19. *(Submitted under NOA No. 19-0821.01)*

G. OTHERS

1. NOA No. 17-1219.21, issued to WinDoor, Inc. for their Series "9063" Thermally Broken Aluminum Fixed Window - L.M.I. expiring on 10/16/19.



Sifang Zhao, P. E.
Product Control Examiner
NOA No. 20-0729.11
Expiration Date: October 16, 2024
Approval Date: November 12, 2020

NOTICE OF ACCEPTANCE: EVIDENCE SUBMITTED

2. NEW EVIDENCE SUBMITTED

A. DRAWINGS

1. Drawing No. **9063-NOA**, titled Series “9063 Fixed Thermally Broken Window (LM)”, sheets 01 through 10 of 10, dated 08/15/19, with Rev “A” dated 07/13/20 prepared, signed and sealed Anthony Lynn Miller, P. E.

B. TESTS

1. Test reports on:
 - 1) Air Infiltration Test, per FBC, TAS 202-94
 - 2) Uniform Static Air Pressure Test, Loading per FBC, TAS 202-94
 - 3) Water Resistance Test, per FBC, TAS 202-94
 - 4) Large Missile Impact Test per FBC, TAS 201-94
 - 5) Cyclic Wind Pressure Loading per FBC, TAS 203-94

along with marked-up drawings and installation diagram of WinDoor, Inc. representative units listed below and tested to qualify Dowsil 791 and Dowsil 983 silicones, per Proposal #19-1155TP.

Test Report	Product Name		Unit in TP	Signed and Sealed	Date
FTL 20-1078.1	WinDoor	PW3000 Aluminum Fixed Lite	11	Idalmis Ortega, P.E.	08/24/20
FTL 20-1078.2	WinDoor	HR9470 Thermally Broken Aluminum Horizontal Roller	12	Idalmis Ortega, P.E.	08/24/20
FTL 20-1078.3	WinDoor	SGD8100 Aluminum Sliding Glass Door	13	Idalmis Ortega, P.E.	08/24/20
FTL 20-1078.4	WinDoor	HR9470 Thermally Broken Aluminum Horizontal Roller	14	Idalmis Ortega, P.E.	08/24/20
FTL 20-1078.5	WinDoor	PW9020 Thermally Broken Aluminum Fixed Lite	15	Idalmis Ortega, P.E.	08/24/20
FTL 20-1078.6	WinDoor	PW9020 Thermally Broken Aluminum Fixed Lite	16	Idalmis Ortega, P.E.	08/24/20

C. CALCULATIONS

1. None.

D. QUALITY ASSURANCE

1. Miami-Dade Department of Regulatory and Economic Resources (RER).

E. MATERIAL CERTIFICATIONS

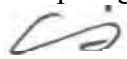
1. NOA No. 17-0808.02 issued to Kuraray America, Inc. for their “SentryGlas® (Clear and White) Glass Interlayers” dated 12/28/17, expiring on 07/04/23.

F. STATEMENTS

1. Statement letter of conformance, of complying with FBC 6th Edition (2017), and FBC 7th Edition (2020), and of no financial interest, dated July 17, 2020, issued by manufacturer, signed and sealed by Anthony Lynn Miller, P.E.
2. Proposal No. 19-1155 TP issued by the Product Control Section, dated January 10, 2020, signed by Ishaq Chanda, P.E.

G. OTHERS

1. NOA No. **19-0821.01**, issued to WinDoor, Inc. for their Series “9063” Thermally Broken Aluminum Fixed Window - L.M.I. approved on 09/12/19 and expiring on 10/16/24.



Sifang Zhao, P. E.
Product Control Examiner
NOA No. 20-0729.11
Expiration Date: October 16, 2024
Approval Date: November 12, 2020


NOTES:

- 1. THE PRODUCT SHOWN HEREIN IS DESIGNED AND MANUFACTURED TO COMPLY WITH REQUIREMENTS OF THE FLORIDA BUILDING CODE 6TH EDITION (2017) AND 7TH EDITION (2020) INCLUDING THE HVHZ.
- 2. WOOD FRAMING AND MASONRY OPENING TO BE DESIGNED AND ANCHORED TO PROPERLY TRANSFER ALL LOADS TO STRUCTURE. FRAMING AND MASONRY OPENING IS THE RESPONSIBILITY OF THE ARCHITECT OR ENGINEER OF RECORD.
- 3. 1X BUCK OVER MASONRY/CONCRETE IS OPTIONAL.
- 4. WHERE SHIM OR BUCK THICKNESS IS LESS THAN 1-1/2" WINDOW UNITS MUST BE ANCHORED THROUGH THE FRAME IN ACCORDANCE WITH MANUFACTURER'S PUBLISHED INSTALLATION INSTRUCTIONS. ANCHORS SHALL BE SECURELY FASTENED DIRECTLY INTO MASONRY, CONCRETE OR OTHER STRUCTURAL SUBSTRATE MATERIAL.
- 5. WHERE WOOD BUCK THICKNESS IS 1-1/2" OR GREATER, BUCK SHALL BE SECURELY FASTENED TO MASONRY, CONCRETE OR OTHER STRUCTURAL SUBSTRATE. WINDOW UNITS SHALL BE ANCHORED THROUGH FRAME TO SECURED WOOD BUCK IN ACCORDANCE WITH MANUFACTURER'S PUBLISHED INSTALLATION INSTRUCTIONS.
- 6. WHERE 1X BUCK IS NOT USED DISSIMILAR MATERIALS MUST BE SEPARATED WITH APPROVED COATING OR MEMBRANE. SELECTION OF COATING OR MEMBRANE IS THE RESPONSIBILITY OF THE ARCHITECT OR ENGINEER OF RECORD.
- 7. BUCKS SHALL EXTEND BEYOND WINDOW INTERIOR FACE SO THAT FULL FRAME SUPPORT IS PROVIDED.
- 8. SHIM AS REQUIRED AT EACH INSTALLATION ANCHOR WITH LOAD BEARING SHIM. SHIM WHERE SPACE OF 1/16" OR GREATER OCCURS. MAXIMUM ALLOWABLE SHIM STACK TO BE 1/4".
- 9. SHIMS SHALL BE MADE FROM MATERIALS CAPABLE OF SUSTAINING APPLICABLE LOADS, LOCATED AND APPLIED IN A THICKNESS CAPABLE OF SUSTAINING APPLICABLE LOADS.
- 10. WIND LOAD DURATION FACTOR Cd=1.6 WAS USED FOR WOOD ANCHOR CALCULATIONS.
- 11. FRAME MATERIAL: ALUMINUM 6063-T6.
- 12. UNITS MUST BE GLAZED PER ASTM E1300-04, SEE SHEET 4 FOR GLASS OPTIONS.
- 13. APPROVED IMPACT PROTECTIVE SYSTEM IS NOT REQUIRED FOR THIS PRODUCT IN WIND BORNE DEBRIS REGIONS.
- 14. FOR ANCHORING INTO WOOD FRAMING OR PROPERLY SECURED 2X BUCK USE #14 WOOD SCREWS GRADE 5 WITH A 1" MINIMUM EDGE DISTANCE AND SUFFICIENT LENGTH TO ACHIEVE A 1 7/16" MINIMUM EMBEDMENT INTO SUBSTRATE. LOCATE ANCHORS AS SHOWN IN ELEVATIONS AND INSTALLATION DETAILS.

- 15. FOR ANCHORING INTO MASONRY/CONCRETE USE 1/4" ITW TAPCONS WITH SUFFICIENT LENGTH TO ACHIEVE A 1 1/4" MINIMUM EMBEDMENT INTO SUBSTRATE WITH 2 1/2" MINIMUM EDGE DISTANCE. LOCATE ANCHORS AS SHOWN IN ELEVATIONS AND INSTALLATION DETAILS.
- 16. FOR ANCHORING INTO METAL STRUCTURE USE #14 SMS OR SELF DRILLING SCREWS WITH SUFFICIENT LENGTH TO ACHIEVE 3 THREADS MINIMUM BEYOND STRUCTURE INTERIOR WALL. LOCATE ANCHORS AS SHOWN IN ELEVATIONS AND INSTALLATION DETAILS.
- 17. ALL FASTENERS TO BE CORROSION RESISTANT.
- 18. INSTALLATION ANCHORS SHALL BE INSTALLED IN ACCORDANCE WITH ANCHOR MANUFACTURER'S INSTALLATION INSTRUCTIONS AND ANCHORS SHALL NOT BE USED IN SUBSTRATES WITH STRENGTHS LESS THAN THE MINIMUM STRENGTH SPECIFIED BELOW:
 - A. WOOD – MINIMUM SPECIFIC GRAVITY OF G=0.42
 - B. CONCRETE – MINIMUM COMPRESSIVE STRENGTH OF 3,192 PSI.
 - C. MASONRY – STRENGTH CONFORMANCE TO ASTM C-90-10, GRADE N, TYPE 1 (OR GREATER) CONCRETE MASONRY UNITS (CMU'S WITH NORMAL WEIGHT AND COMPRESSION STRENGTH Fc OF 1.9KSI MINIMUM).
 - D. METAL STRUCTURE: STEEL 16GA, (.0635") 33KSI OR ALUMINUM 6063-T5 1/8" THICK MINIMUM.


TABLE OF CONTENTS	
SHEET NO.	DESCRIPTION
1	NOTES
2-3	ELEVATIONS AND DP CHARTS
4-5	BOM, CROSS SECTIONS AND GLAZING DETAILS
6-9	INSTALLATION DETAILS
10	EXTRUSIONS AND ASSEMBLY DETAILS

PRODUCT REVISED
as complying with the Florida
Building Code
NOA-No. 20-0729.11
Expiration Date 10/16/2024

By 
Miami-Dade Product Control

Revision: A) UPDATES FOR 2020 FBC.
UPDATED MANUFACTURING
ADDRESS. EK 7/13/20

PREPARED BY A. LYNN MILLER
1070 TECHNOLOGY DRIVE
N. VENICE, FL 34275
(941) 480-1600
REGISTRATION #29296


WINDOOR INCORPORATED
104 TRIPLE DIAMOND BLVD.
NORTH VENICE, FL 34275
(833) 554-5432

08/15/19
Date

ALAN KINNE
By


9063-NOA
No.

1 OF 10
Sheet

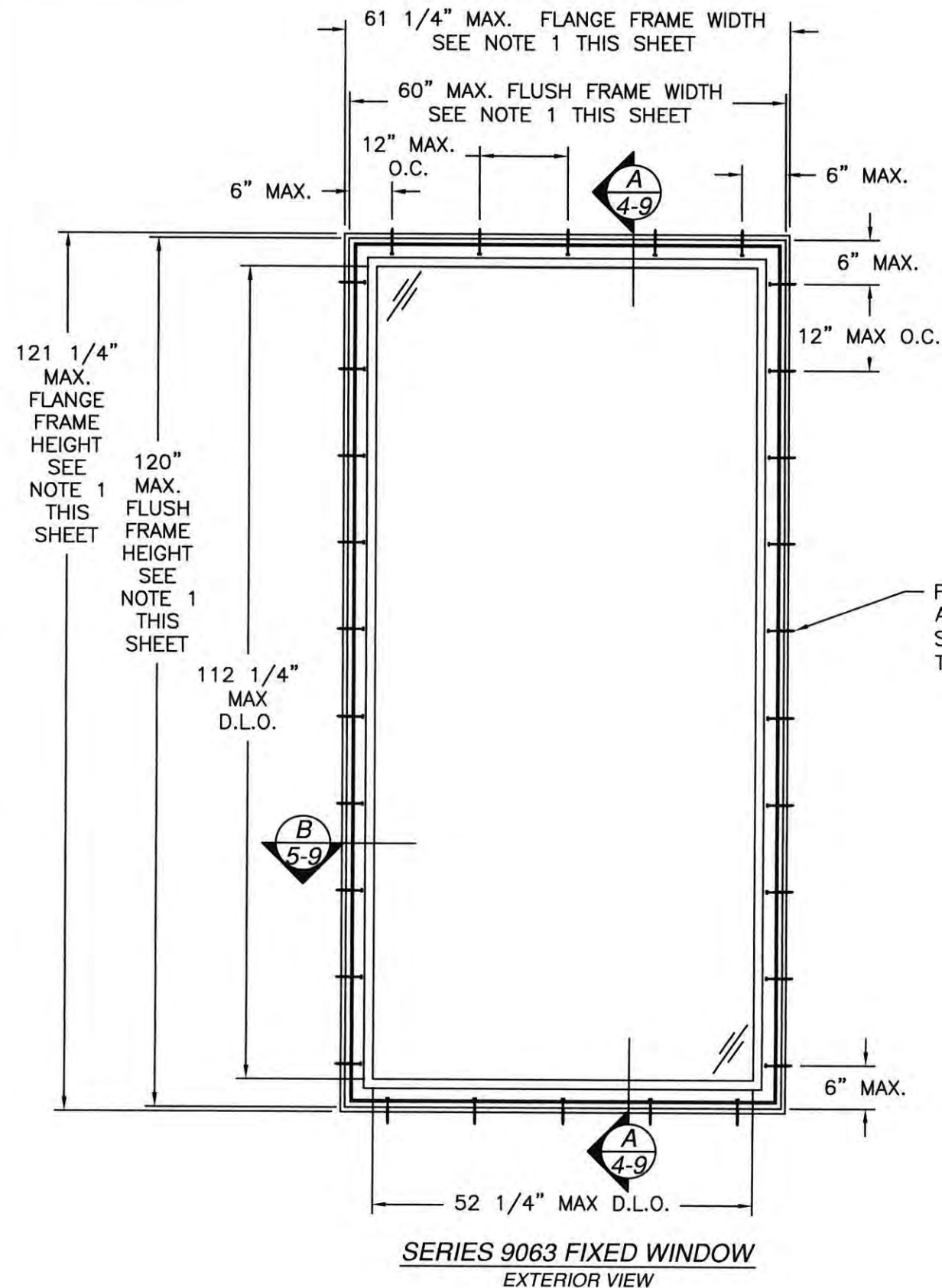
PW9063T
Series

FIXED THERMALLY BROKEN WINDOW (LM)
Title

NOTES
Desc.



A. LYNN MILLER, P.E.
P.E.# 58705



SERIES 9063 FIXED WINDOW
EXTERIOR VIEW

- NOTES:
1. DIMENSIONS SHOWN DO NOT INCLUDE FLANGE. FOR UNIT DIMENSIONS FOR FLANGE FRAME ADD 1-1/4\"


CHART #1

Maximum Design Pressure Capacity Chart (psf)												
Frame Height (in)	Frame Width (in)											
	30.0		36.0		42.0		48.0		54.0		60.0	
	Pos	Neg	Pos	Neg	Pos	Neg	Pos	Neg	Pos	Neg	Pos	Neg
66.0	135.0	135.0	135.0	135.0	135.0	135.0	132.6	132.6	126.9	126.9	123.8	123.8
72.0	135.0	135.0	135.0	135.0	135.0	135.0	126.6	126.6	120.0	120.0	115.7	115.7
78.0	135.0	135.0	135.0	135.0	132.0	132.0	121.9	121.9	114.7	114.7	109.7	109.7
84.0	135.0	135.0	135.0	135.0	128.6	128.6	118.1	118.1	110.5	110.5	105.0	105.0
90.0	135.0	135.0	135.0	135.0	125.8	125.8	115.1	115.1	107.1	107.1	101.3	101.3
96.0	135.0	135.0	135.0	135.0	123.4	123.4	112.5	112.5	104.3	104.3	98.2	98.2
102.0	135.0	135.0	135.0	135.0	121.4	121.4	110.3	110.3	102.0	102.0	95.6	95.6
108.0	135.0	135.0	135.0	135.0	119.7	119.7	108.5	108.5	100.0	100.0	93.5	93.5
114.0	135.0	135.0	133.6	133.6	118.2	118.2	106.9	106.9	98.3	98.3	91.6	91.6
120.0	135.0	135.0	132.4	132.4	116.9	116.9	105.5	105.5	96.8	96.8	90.0	90.0
126.0	135.0	135.0	131.3	131.3	115.7	115.7	104.2	104.2	95.5	95.5	-	-
132.0	135.0	135.0	130.3	130.3	114.7	114.7	103.1	103.1	94.3	94.3	-	-
138.0	135.0	135.0	129.4	129.4	113.7	113.7	102.1	102.1	-	-	-	-
144.0	135.0	135.0	128.6	128.6	112.9	112.9	101.3	101.3	-	-	-	-

LARGE & SMALL MISSILE IMPACT

CHART #2

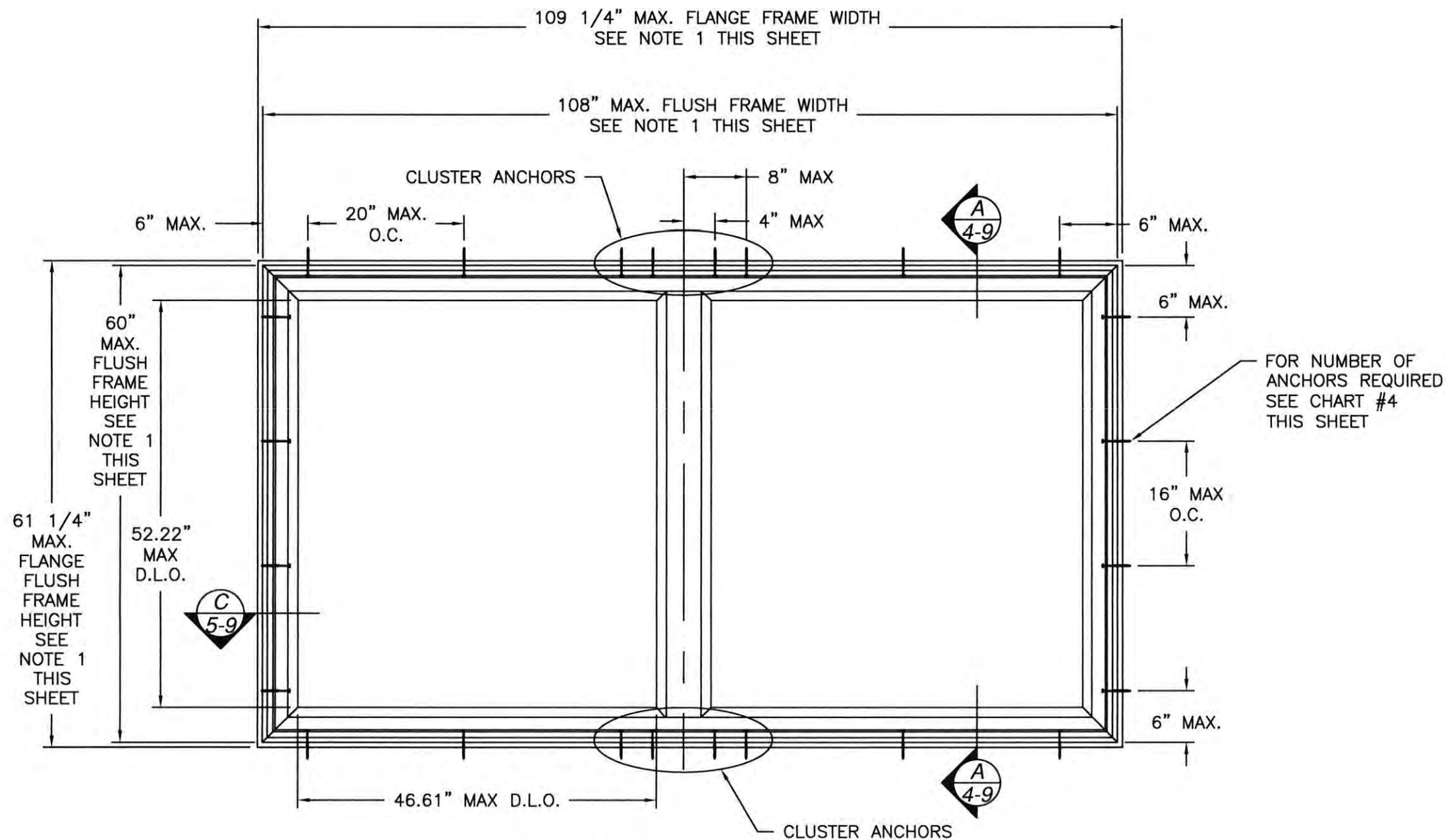
Number of Anchors Required												
Frame Height (in)	Frame Width (in)											
	30.0		36.0		42.0		48.0		54.0		60.0	
	Pos	Neg	Pos	Neg	Pos	Neg	Pos	Neg	Pos	Neg	Pos	Neg
66.0	3	6	3	6	4	6	4	6	5	6	5	6
72.0	3	6	3	6	4	6	4	6	5	6	5	6
78.0	3	7	3	7	4	7	4	7	5	7	5	7
84.0	3	7	3	7	4	7	4	7	5	7	5	7
90.0	3	8	3	8	4	8	4	8	5	8	5	8
96.0	3	8	3	8	4	8	4	8	5	8	5	8
102.0	3	9	3	9	4	9	4	9	5	9	5	9
108.0	3	9	3	9	4	9	4	9	5	9	5	9
114.0	3	10	3	10	4	10	4	10	5	10	5	10
120.0	3	10	3	10	4	10	4	10	5	10	5	10
126.0	3	11	3	11	4	11	4	11	5	11	-	-
132.0	3	11	3	11	4	11	4	11	5	11	-	-
138.0	3	12	3	12	4	12	4	12	-	-	-	-
144.0	3	12	3	12	4	12	4	12	-	-	-	-

PRODUCT REVISED
as complying with the Florida Building Code
NOA-No. 20-0729.11
Expiration Date 10/16/2024
By 
Miami-Dade Product Control

Revision: A) NO CHANGES THIS SHEET.
EK 7/13/20

<div>WINDOOR[®]</div> <div>INCORPORATED</div> <div>WINDOOR INCORPORATED 104 TRIPLE DIAMOND BLVD. NORTH VENICE, FL 34275 (833) 554-5432</div>	PREPARED BY A. LYNN MILLER 1070 TECHNOLOGY DRIVE N. VENICE, FL 34275 (941) 480-1600 REGISTRATION #29296				
	FIXED THERMALLY BROKEN WINDOW (LM)				
	ELEVATION AND DP - SINGLE				
	PW9063T				
Sheet	2 OF 10	DWG No.	9063-NOA	Rev.	A
Sens Desc.	Title		Drawn By	ALAN KINNE	Date
					08/15/19

ANTHONY LYNN MILLER
LICENSE
No. 58705
7/17/20
STATE OF FLORIDA
PROFESSIONAL ENGINEER
A. LYNN MILLER, P.E.
P.E.# 58705



SERIES 9063 FIXED WINDOW
EXTERIOR VIEW

NOTES:
1. DIMENSIONS SHOWN DO NOT INCLUDE FLANGE. FOR UNIT DIMENSIONS FOR FLANGE FRAME ADD 1-1/4\"

CHART #3

Maximum Design Pressure Capacity Chart (psf)										
Frame Height (in)	Frame Width (in)									
	60.0		72.0		84.0		96.0		108.0	
	Pos	Neg	Pos	Neg	Pos	Neg	Pos	Neg	Pos	Neg
30.0	150.0	150.0	150.0	150.0	150.0	150.0	150.0	150.0	150.0	150.0
36.0	150.0	150.0	150.0	150.0	150.0	150.0	150.0	150.0	150.0	150.0
42.0	150.0	150.0	150.0	150.0	150.0	150.0	150.0	150.0	150.0	150.0
48.0	150.0	150.0	150.0	150.0	150.0	150.0	150.0	150.0	150.0	150.0
54.0	150.0	150.0	150.0	150.0	150.0	150.0	150.0	150.0	150.0	150.0
60.0	150.0	150.0	150.0	150.0	150.0	150.0	150.0	150.0	150.0	150.0

LARGE & SMALL MISSILE IMPACT

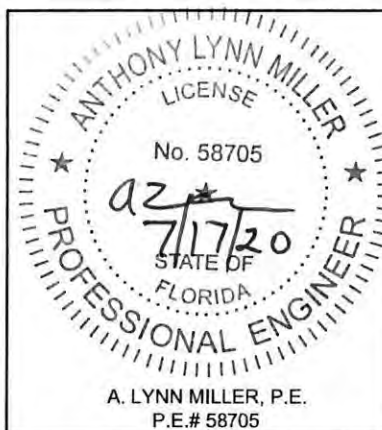
CHART #4

Number of Anchors Required															
Frame Height (in)	Frame Width (in)														
	60.0			72.0			84.0			96.0			108.0		
	H&S	Jamb	Cluster	H&S	Jamb	Cluster	H&S	Jamb	Cluster	H&S	Jamb	Cluster	H&S	Jamb	Cluster
30.0	2	2	2	2	2	2	3	2	2	3	2	2	3	2	2
36.0	2	2	2	2	2	2	3	2	2	3	2	2	4	2	2
42.0	2	3	3	2	3	3	3	3	3	3	3	3	4	3	3
48.0	2	3	3	2	3	3	3	3	3	3	3	3	4	3	3
54.0	2	4	3	2	4	4	3	4	4	3	4	4	4	4	4
60.0	2	4	4	2	4	4	3	5	5	3	5	5	4	5	5

PRODUCT REVISED
as complying with the Florida Building Code
NOA-No. 20-0729.11
Expiration Date 10/16/2024
By
Miami-Dade Product Control

Revision: A) NO CHANGES THIS SHEET. EK 7/13/20

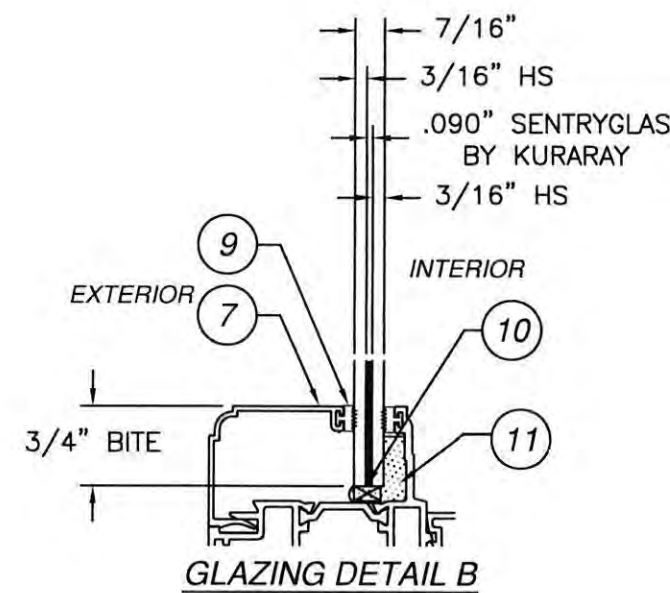
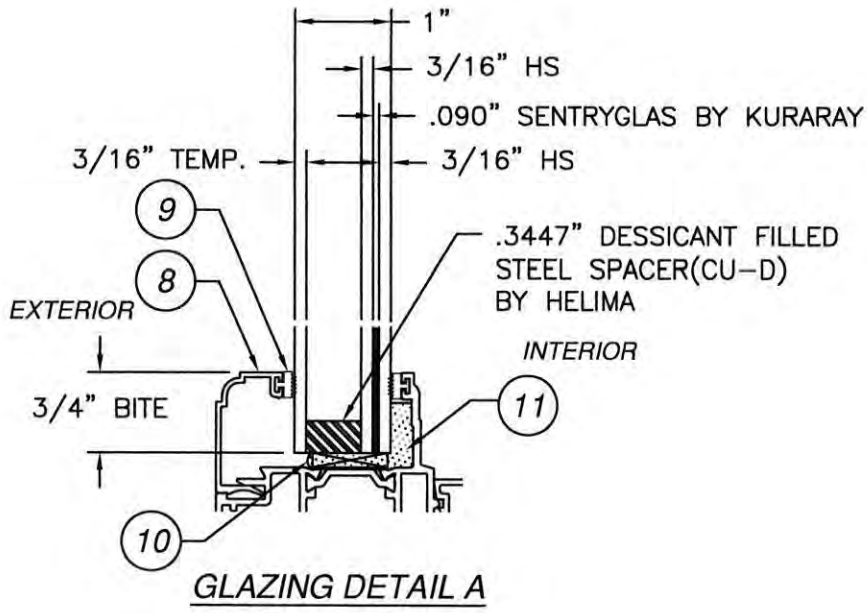
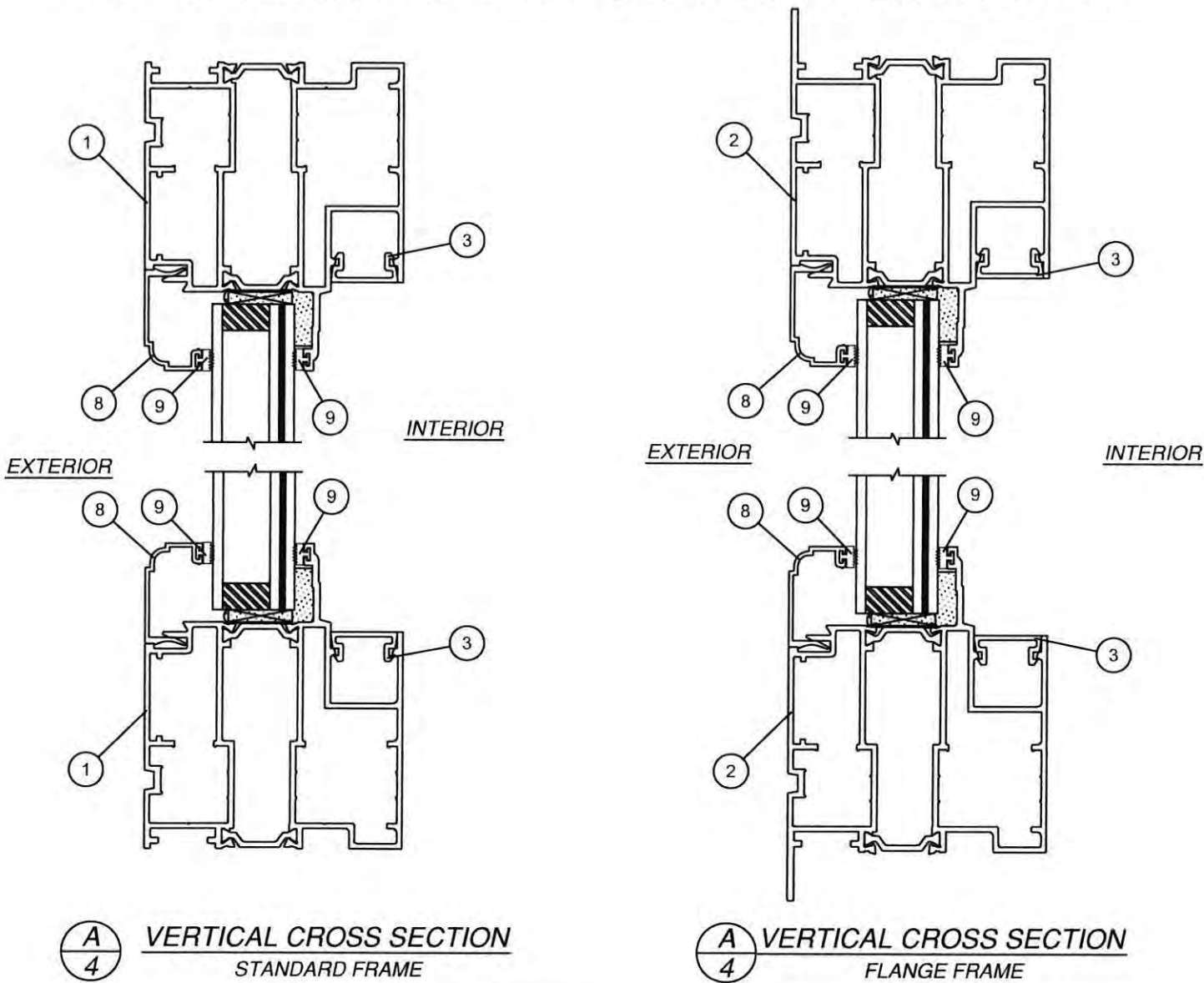
PREPARED BY A. LYNN MILLER 1070 TECHNOLOGY DRIVE N. VENICE, FL 34275 (941) 480-1600 REGISTRATION #29296	Date	08/15/19	Rev.	A
	By	ALAN KINNE	DWG No.	9063-NOA
	Series	PW9063T	Sheet	3 OF 10
	Title	FIXED THERMALLY BROKEN WINDOW (LM)	Desc.	ELEVATION AND DP - TWIN



BILL OF MATERIALS

ITEM NO.:	PART NUMBER	DESCRIPTION	MANUFACTURER	MATERIAL
1	9063A1-WDI	FLUSH FRAME ASSEMBLY	KEYMARK	ALUM. 6063-T6
2	9063A2-WDI	FLANGE FRAME ASSEMBLY	KEYMARK	ALUM. 6063-T6
3	FD-01882	FRAME INSERT	KEYMARK	ALUM. 6063-T6
4	9063A3-WDI	COMMON POST	KEYMARK	ALUM. 6063-T6
5	FH-07440	EXTERIOR FRAME CORNER KEY	KEYMARK	ALUM. 6063-T6
6	FS-07440	INTERIOR FRAME CORNER KEY	KEYMARK	ALUM. 6063-T6
7	S-46329	GLASS STOP 7/16"-9/16"	KEYMARK	ALUM. 6063-T6
8	S-46084	GLASS STOP 1"	KEYMARK	ALUM. 6063-T6
9	TP1051	#6 GLAZING VINYL	TEAM PLASTICS	DUROMETER 85
10	01-100-7755-002	GLASS SHIM DUROMETER 80	FRANKE LOWE	DUROMETER 80
11		SILICONE	SIKA/DOW	SIKAFLEX552, DOW791, DOW983
12	968600	THERMAL STRUT	ENSINGER	POLYAMIDE
13	H-13751	INTERIOR SHEAR BLOCK	KEYMARK	ALUM. 6005A-T61
14	H-13749	EXTERIOR SHEAR BLOCK	KEYMARK	ALUM. 6005A-T61
15		#10x3/4" PFH SCREW		STAINLESS STEEL
16		#10x2" PPH SCREW		STAINLESS STEEL
17		#10x3" PPH SCREW		STAINLESS STEEL

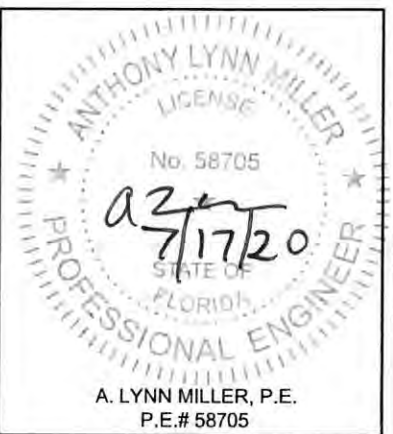
FOR ILLUSTRATION PURPOSES ONLY
FOR INSTALLATION DETAILS REFER TO SHEETS 6 - 9



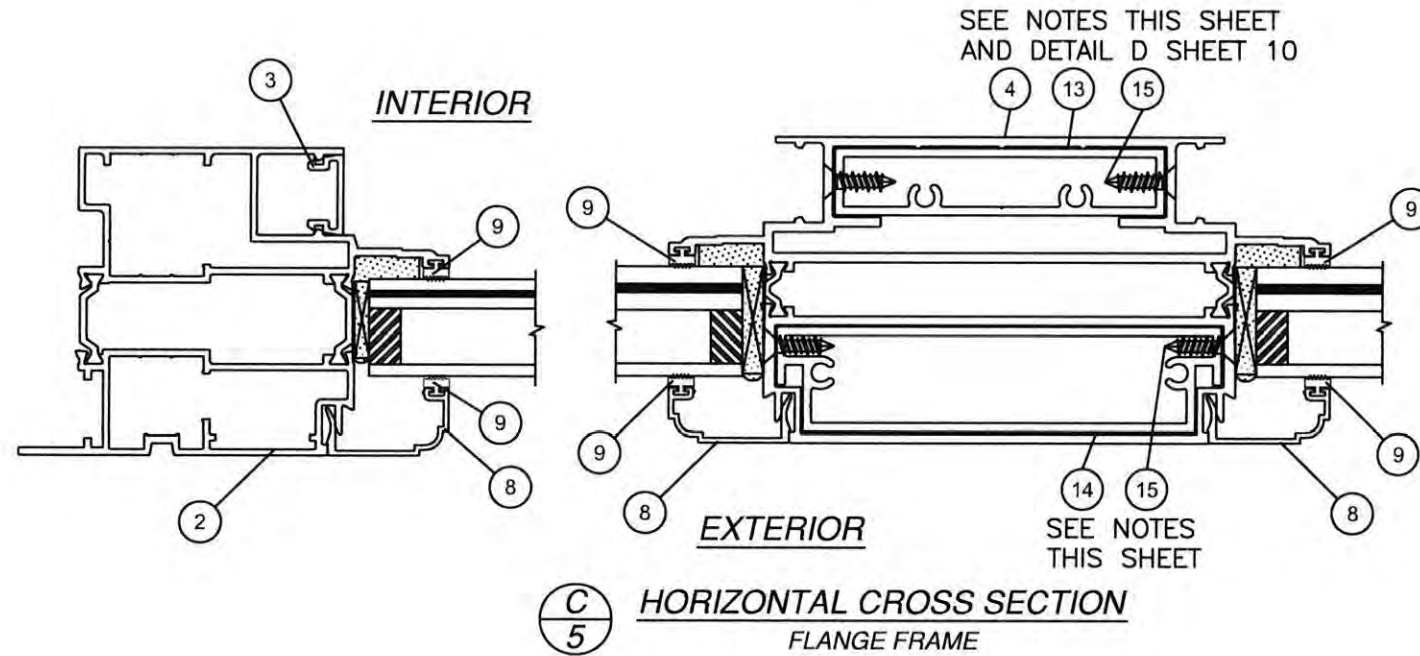
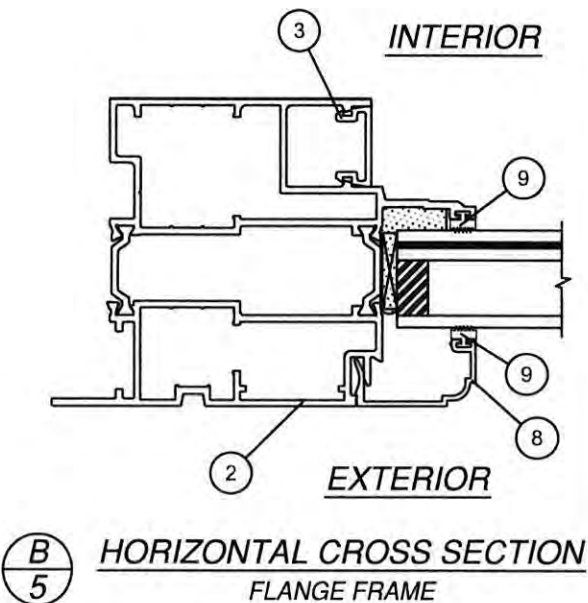
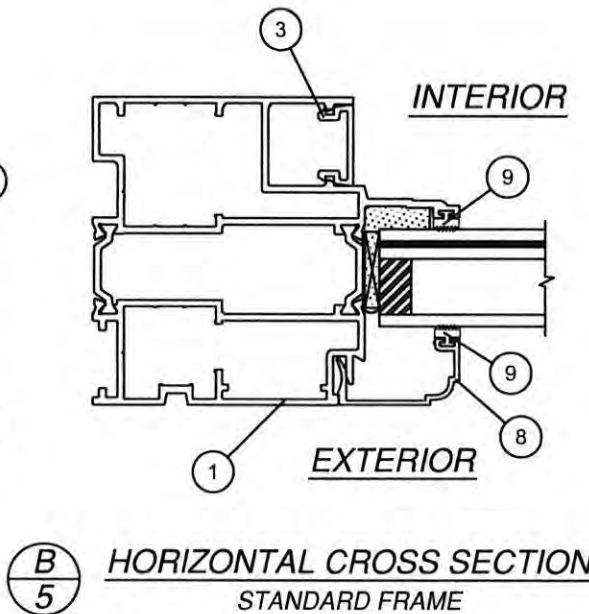
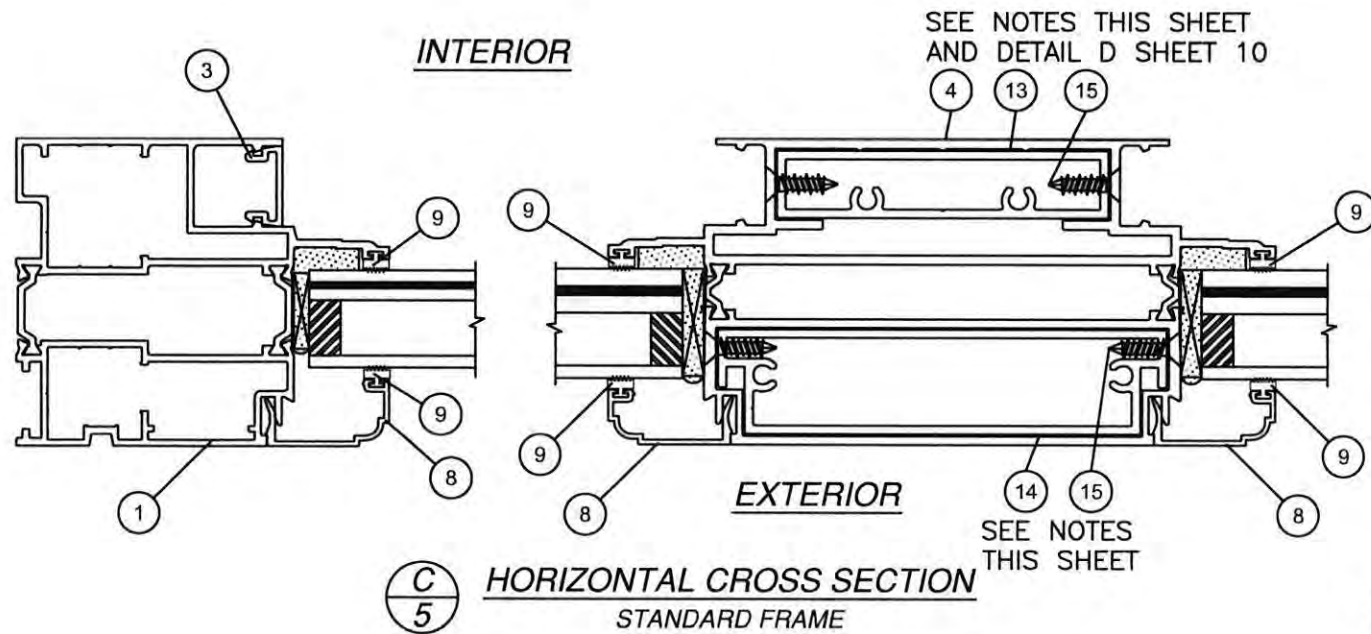
PRODUCT REVISED
as complying with the Florida
Building Code
NOA-No. 20-0729.11
Expiration Date 10/16/2024
By
Miami-Dade Product Control

Revision: A) UPDATED BOM - ADDED
DOW 791 & 983. EK 7/13/20

PREPARED BY A. LYNN MILLER 1070 TECHNOLOGY DRIVE N. VENICE, FL 34275 (941) 480-1600 REGISTRATION #29296	Date	08/15/19	Rev.	A
	Drawn By	ALAN KINNE	DWG No.	9063-NOA
WINDOOR® INCORPORATED WINDOOR INCORPORATED 104 TRIPLE DIAMOND BLVD. NORTH VENICE, FL 34275 (833) 554-5432	Sheet	4 OF 10	Series	PW9063T
	FIXED THERMALLY BROKEN WINDOW (LM) BOM, CROSS SECTIONS, GLAZING DETAILS			



FOR ILLUSTRATION PURPOSES ONLY
FOR INSTALLATION DETAILS REFER TO SHEETS 6 - 9



NOTES:

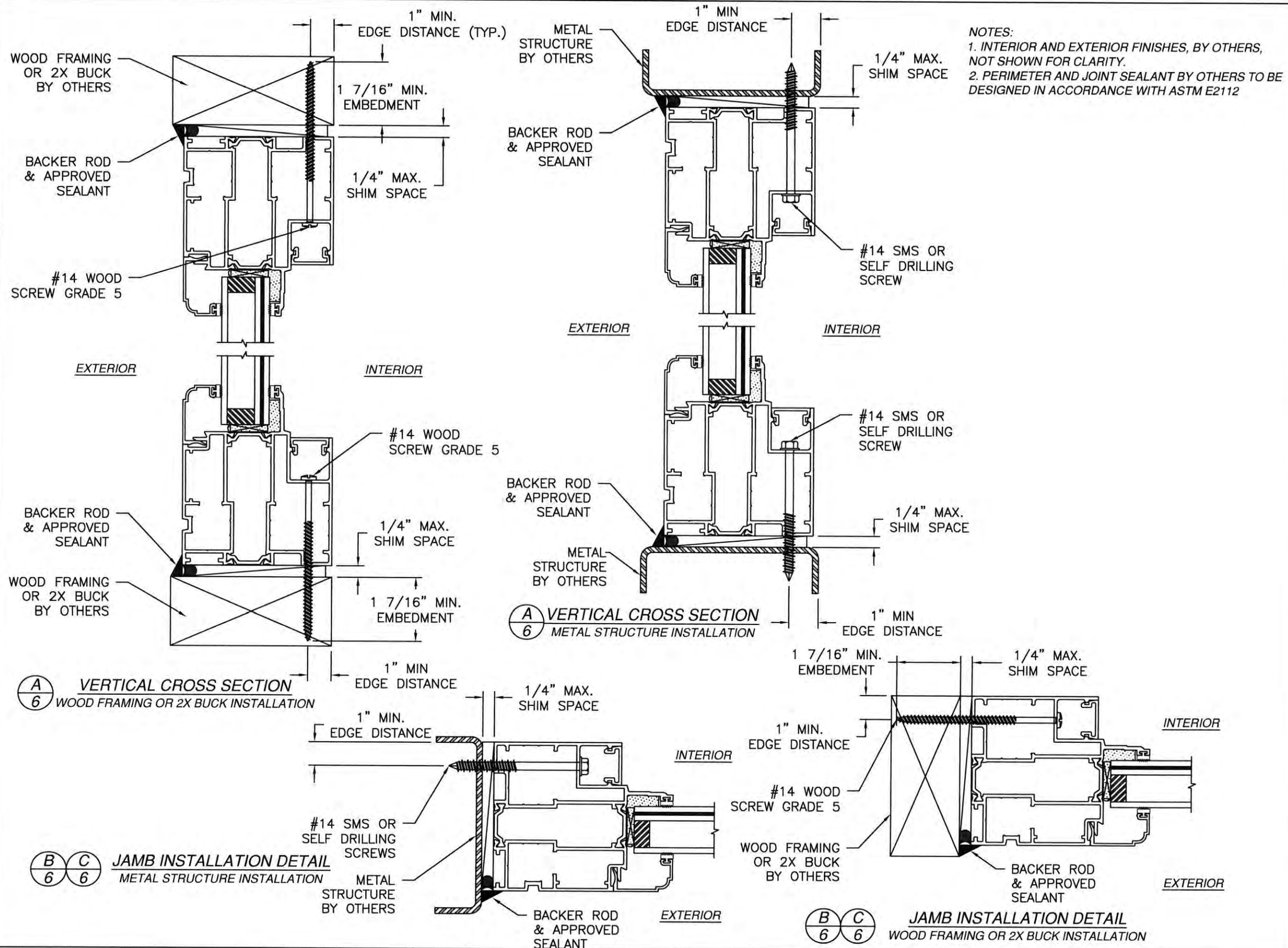
1. COMMON POST, ITEM #4, IS SECURED TO FRAME USING INTERIOR, ITEM #13, AND EXTERIOR, ITEM #14, SHEAR BLOCKS.
2. INTERIOR AND EXTERIOR SHEAR BLOCKS ARE SECURED TO FRAME USING (2) #10X3" PPH SCREW.
3. COMMON POST IS SECURED TO SHEAR BLOCKS WITH (2), ITEM #15, #10X3/4" PFH SCREWS (1) ON EACH SIDE.

PRODUCT REVISED
as complying with the Florida
Building Code
NOA-No. 20-0729.11
Expiration Date 10/16/2024
By
Miami-Dade Product Control

Revision: A) NO CHANGES THIS SHEET.
EK 7/13/20

PREPARED BY A. LYNN MILLER 1070 TECHNOLOGY DRIVE N. VENICE, FL 34275 (941) 480-1600 REGISTRATION #29296	WINDOOR [®] INCORPORATED WINDOOR INCORPORATED 104 TRIPLE DIAMOND BLVD. NORTH VENICE, FL 34275 (833) 554-5432	FIXED THERMALLY BROKEN WINDOW (LM) HORIZONTAL CROSS SECTIONS PW9063T	Date 08/15/19 By ALAN KINNE DWG No. 9063-NOA Sheet 5 OF 10	Rev. A

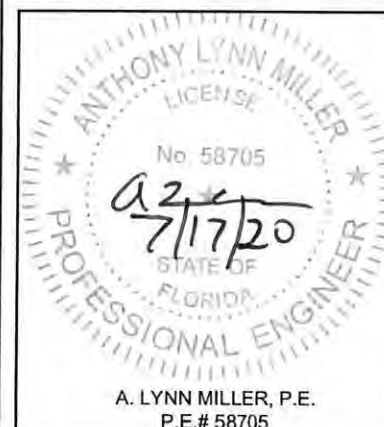
ANTHONY LYNN MILLER
LICENSE
No 58705
A 2/17/20
PROFESSIONAL ENGINEER
FLORIDA
A. LYNN MILLER, P.E.
P.E.# 58705

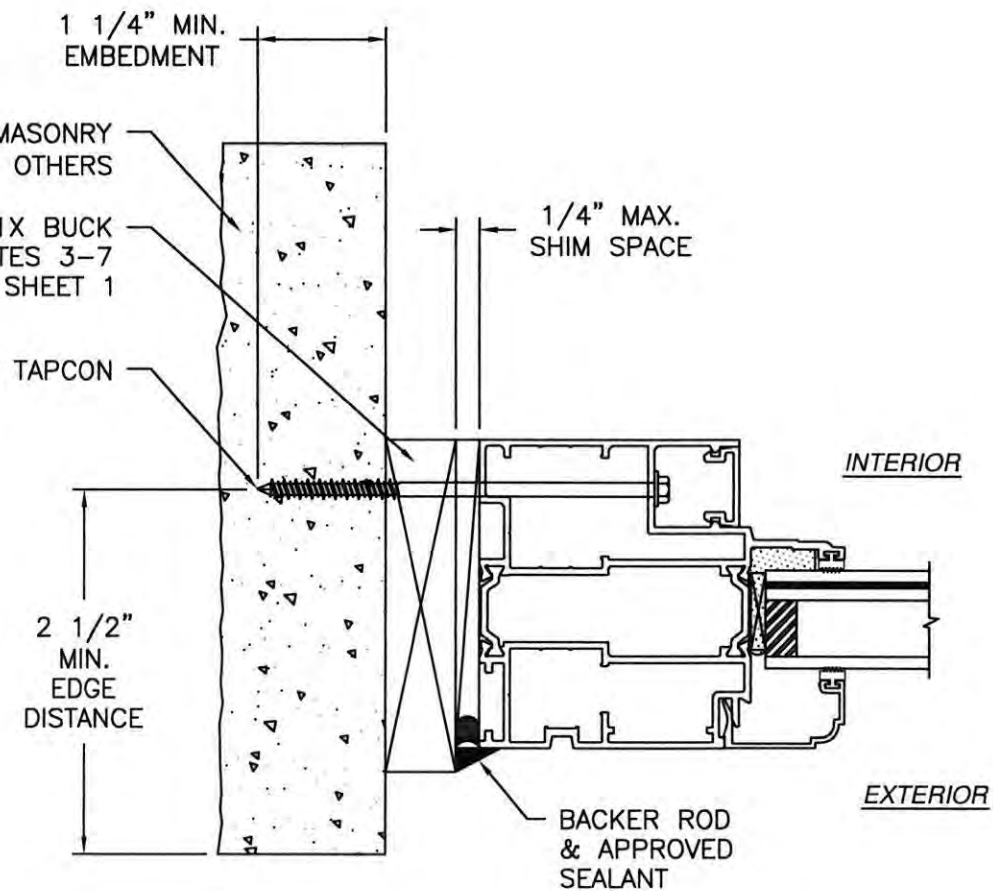
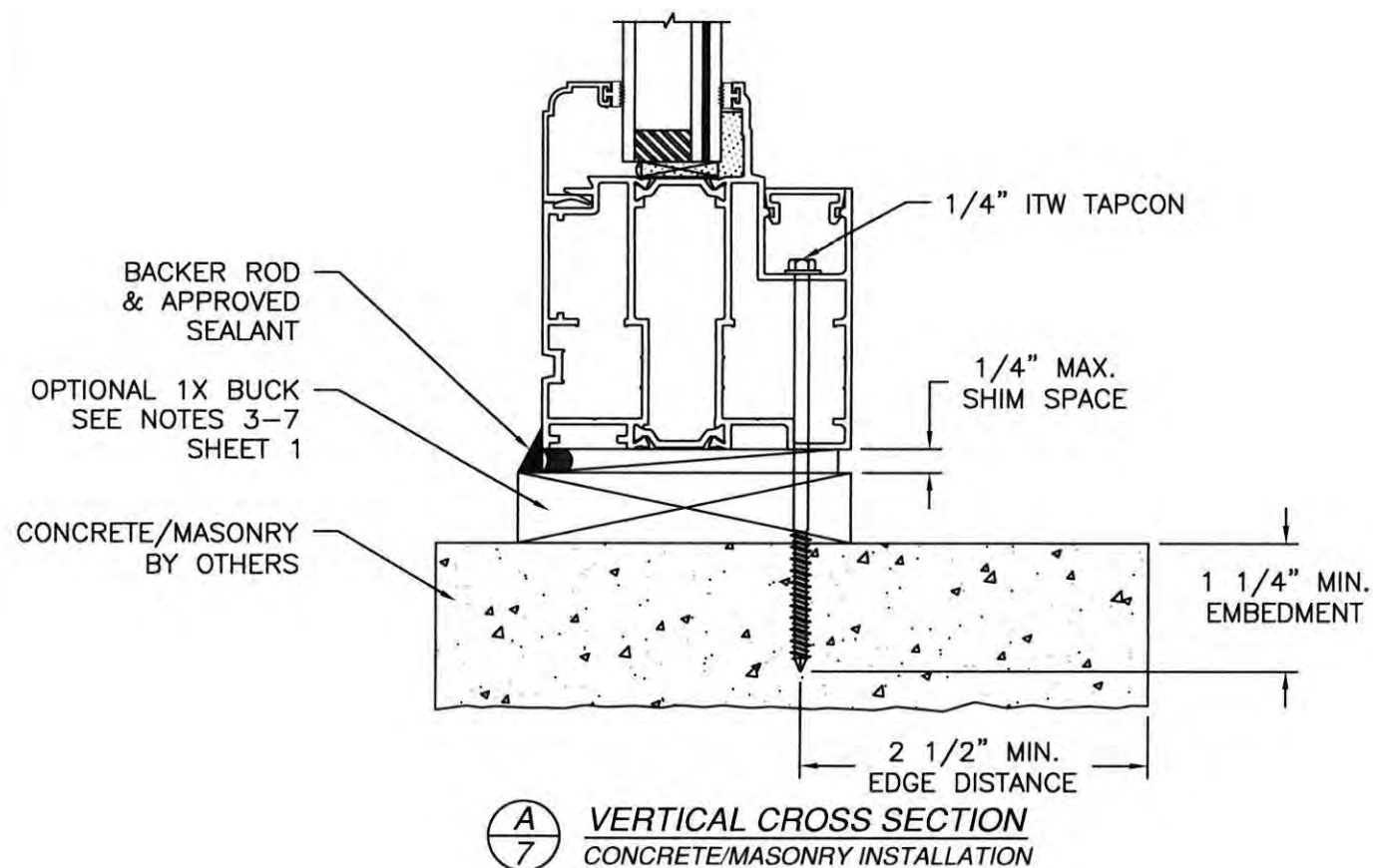
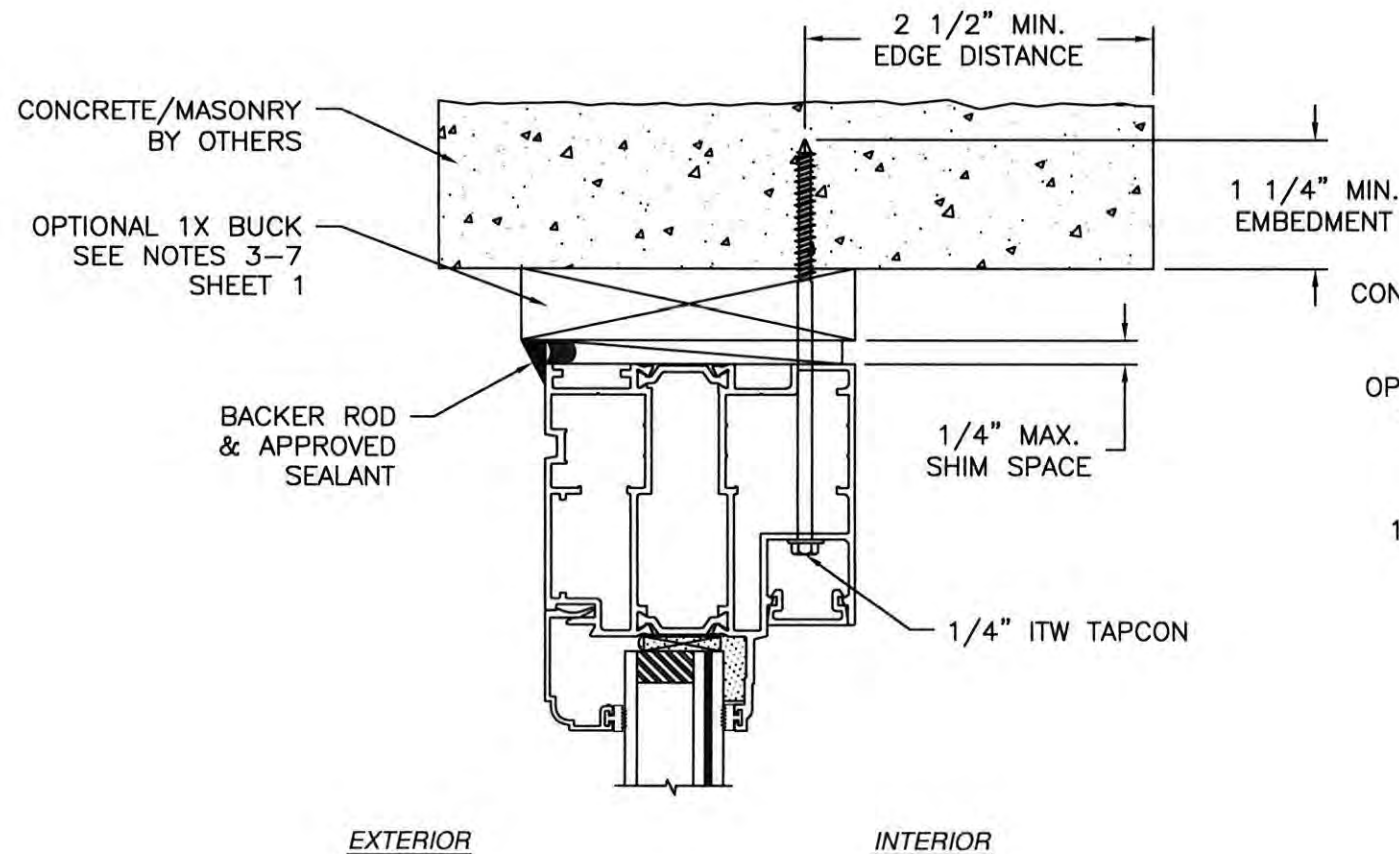


PRODUCT REVISED
as complying with the Florida Building Code
NOA-No. 20-0729.11
Expiration Date 10/16/2024
By
Miami-Dade Product Control

Revision: A) NO CHANGES THIS SHEET.
EK 7/13/20

PREPARED BY A. LYNN MILLER 1070 TECHNOLOGY DRIVE N. VENICE, FL 34275 (941) 480-1600 REGISTRATION #29296	Date 08/15/19		Rev. A
	By ALAN KINNE		
	Dwg. No. 9063-NOA		
	Sheet 6 OF 10		
WINDOOR[®] INCORPORATED WINDOOR INCORPORATED 104 TRIPLE DIAMOND BLVD. NORTH VENICE, FL 34275 (933) 554-5432	FIXED THERMALLY BROKEN WINDOW (LM) FLUSH INSTALLATION DETAILS PW9063T		





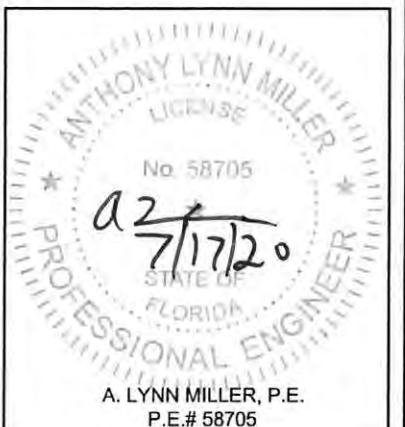
JAMB INSTALLATION DETAIL
CONCRETE/MASONRY INSTALLATION

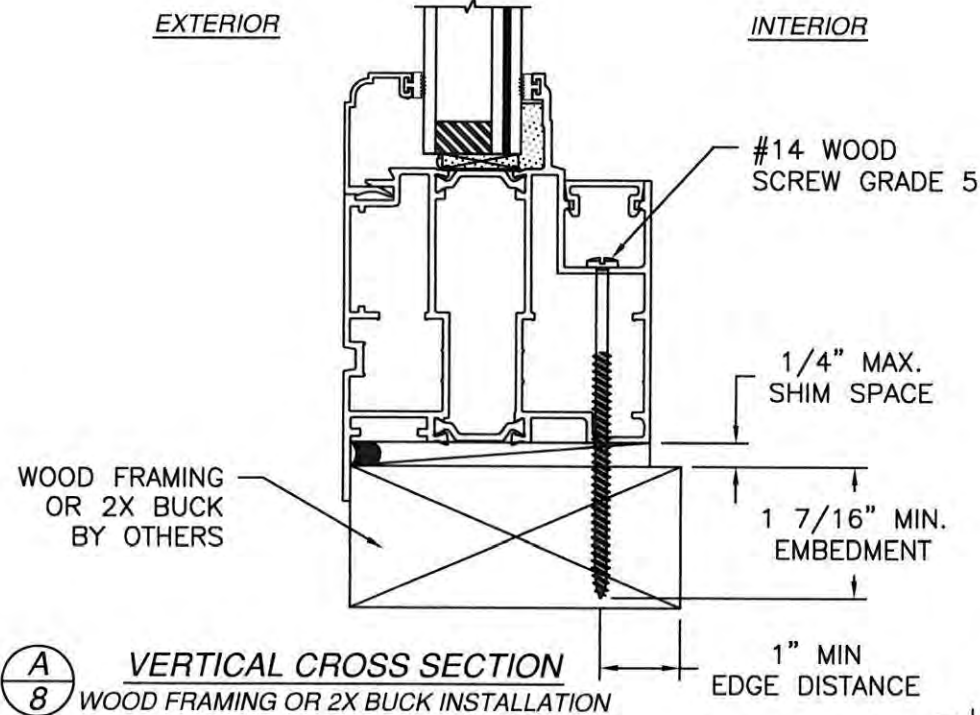
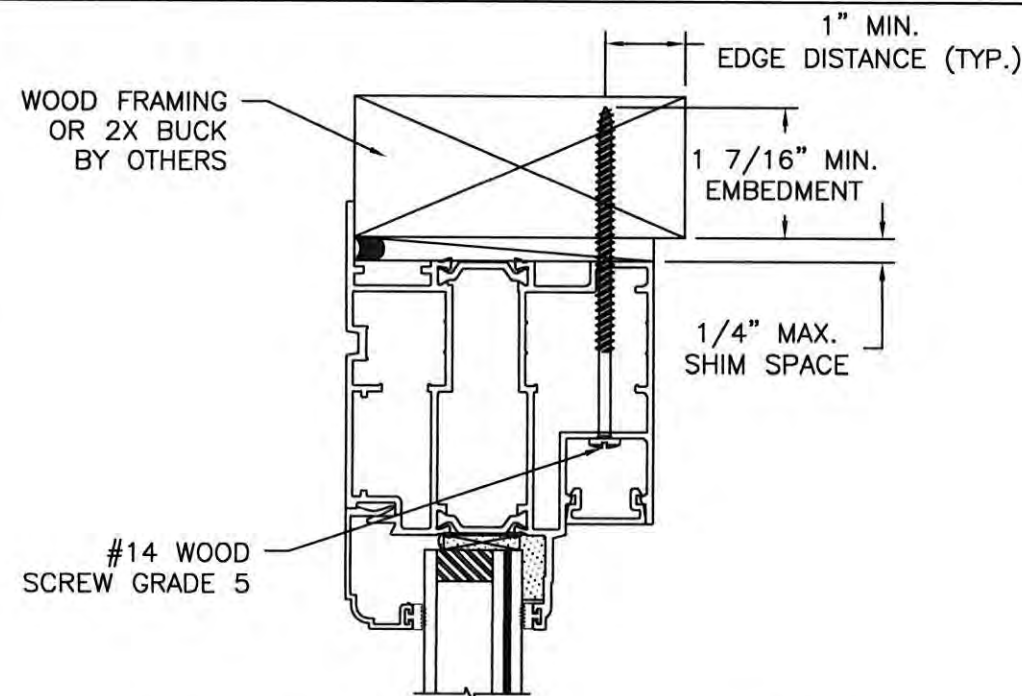
NOTES:
1. INTERIOR AND EXTERIOR FINISHES, BY OTHERS, NOT SHOWN FOR CLARITY.
2. PERIMETER AND JOINT SEALANT BY OTHERS TO BE DESIGNED IN ACCORDANCE WITH ASTM E2112

PRODUCT REVISED
as complying with the Florida
Building Code
NOA-No. 20-0729.11
Expiration Date 10/16/2024
By
Miami-Dade Product Control

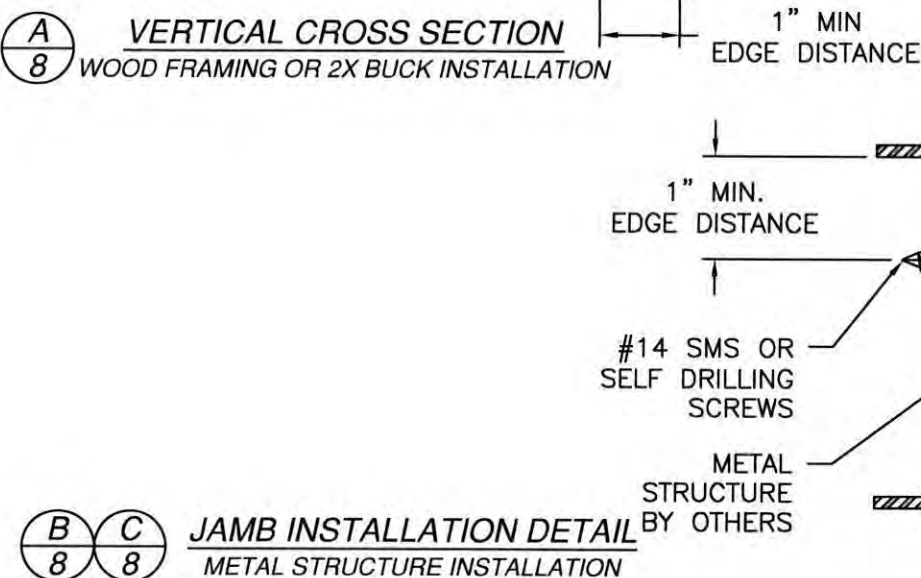
Revision: A) NO CHANGES THIS SHEET.
EK 7/13/20

WinDoor® INCORPORATED WINDOOR INCORPORATED 104 TRIPLE DIAMOND BLVD. NORTH VENICE, FL 34275 (833) 554-5432	PREPARED BY A. LYNN MILLER 1070 TECHNOLOGY DRIVE N. VENICE, FL 34275 (941) 480-1600 REGISTRATION #29296		08/15/19	A Rev. 9063-NOA DWC No. 7 OF 10 Sheet PW9063T
	FIXED THERMALLY BROKEN WINDOW (LM)			
	FLUSH INSTALLATION DETAILS			
	ALAN KINNE			

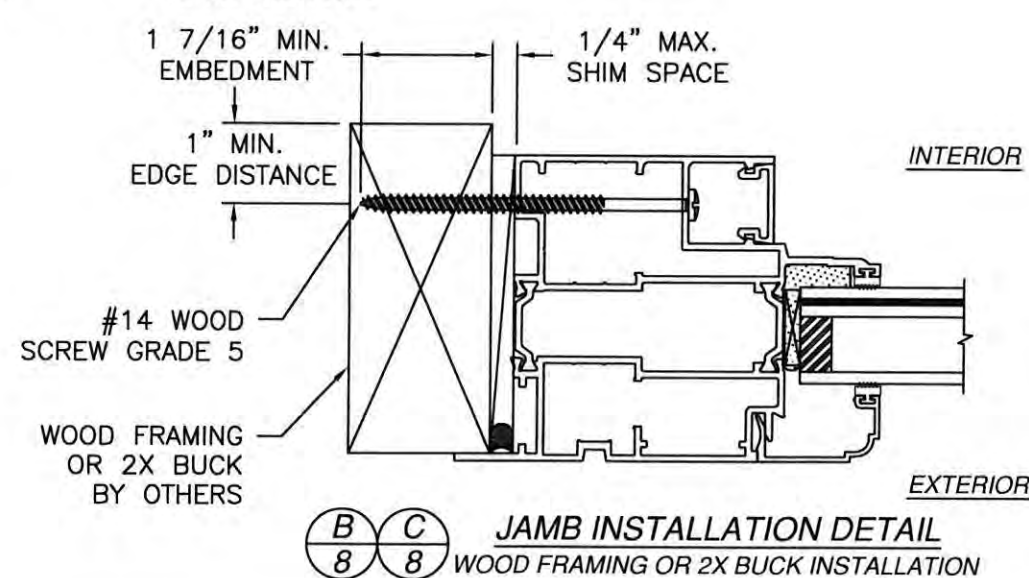
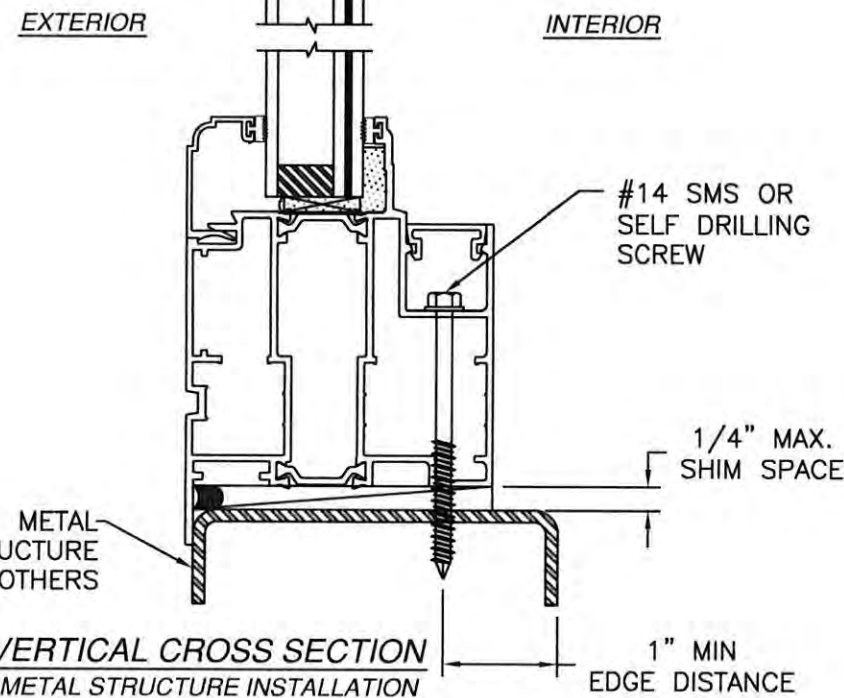
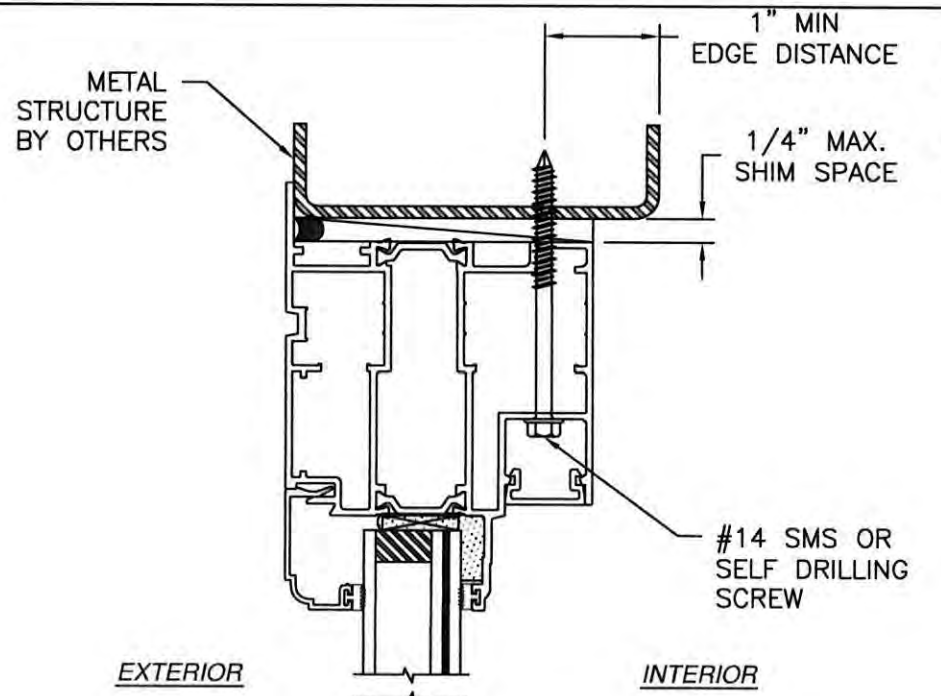




A
8 VERTICAL CROSS SECTION
METAL STRUCTURE INSTALLATION



B **C**
8 8 JAMB INSTALLATION DETAIL
METAL STRUCTURE INSTALLATION



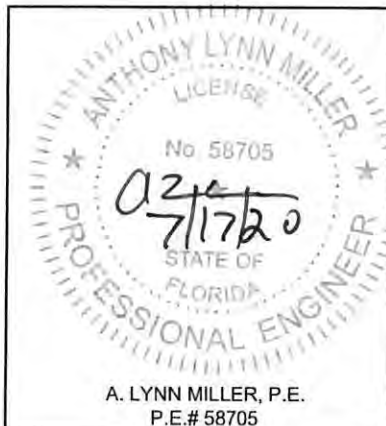
B **C**
8 8 JAMB INSTALLATION DETAIL
WOOD FRAMING OR 2X BUCK INSTALLATION

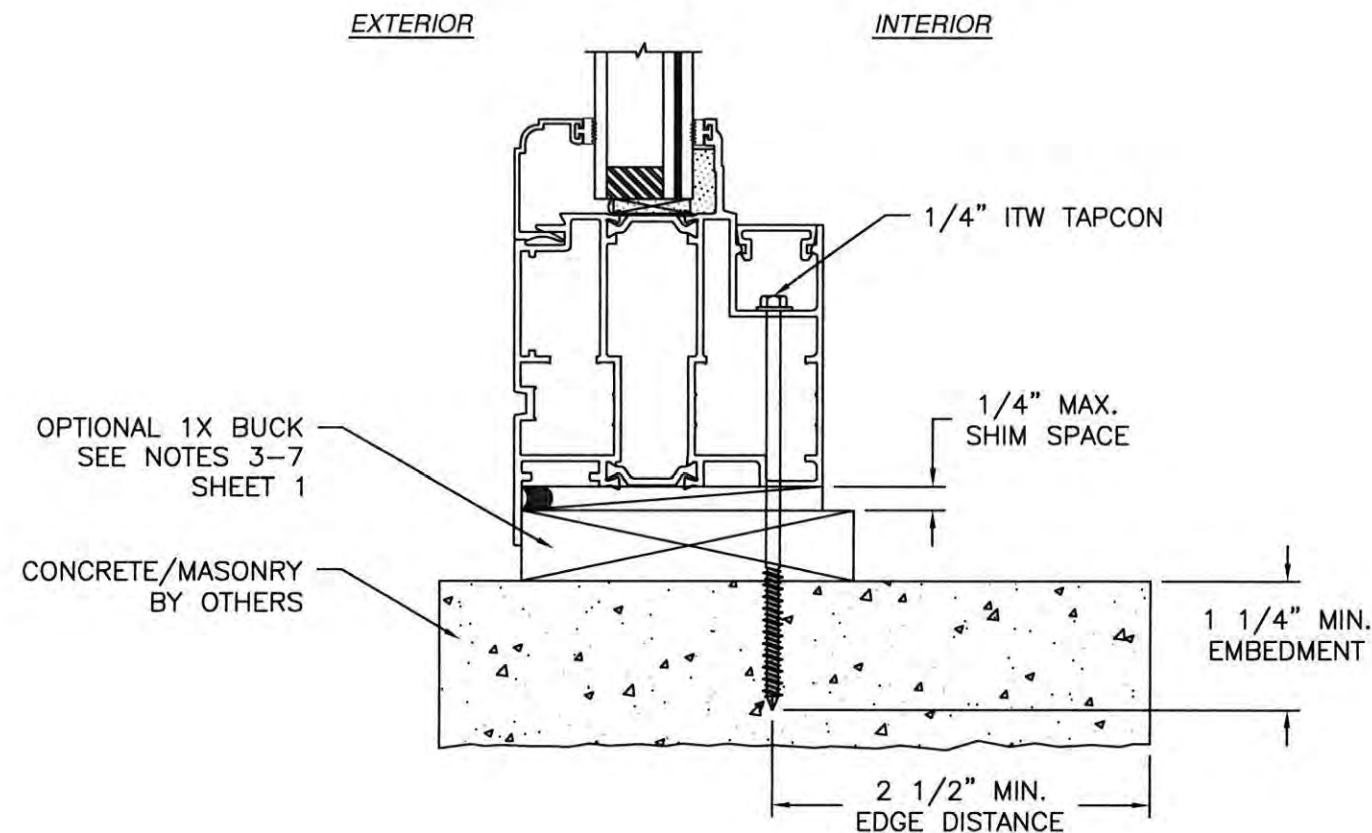
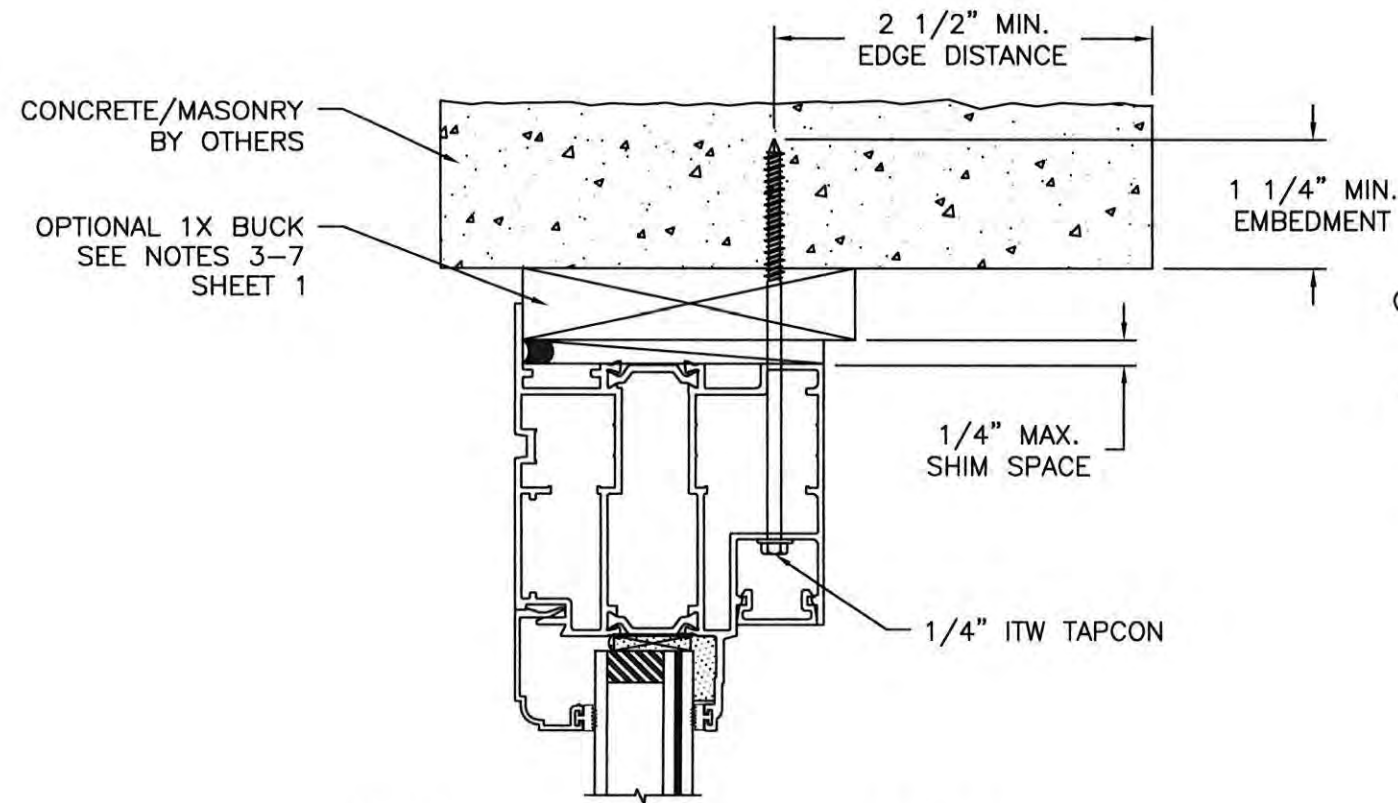
NOTES:
1. INTERIOR AND EXTERIOR FINISHES, BY OTHERS, NOT SHOWN FOR CLARITY.
2. PERIMETER AND JOINT SEALANT BY OTHERS TO BE DESIGNED IN ACCORDANCE WITH ASTM E2112

PRODUCT REVISED
as complying with the Florida
Building Code
NOA-No. 20-0729.11
Expiration Date 10/16/2024
By Miami-Dade Product Control

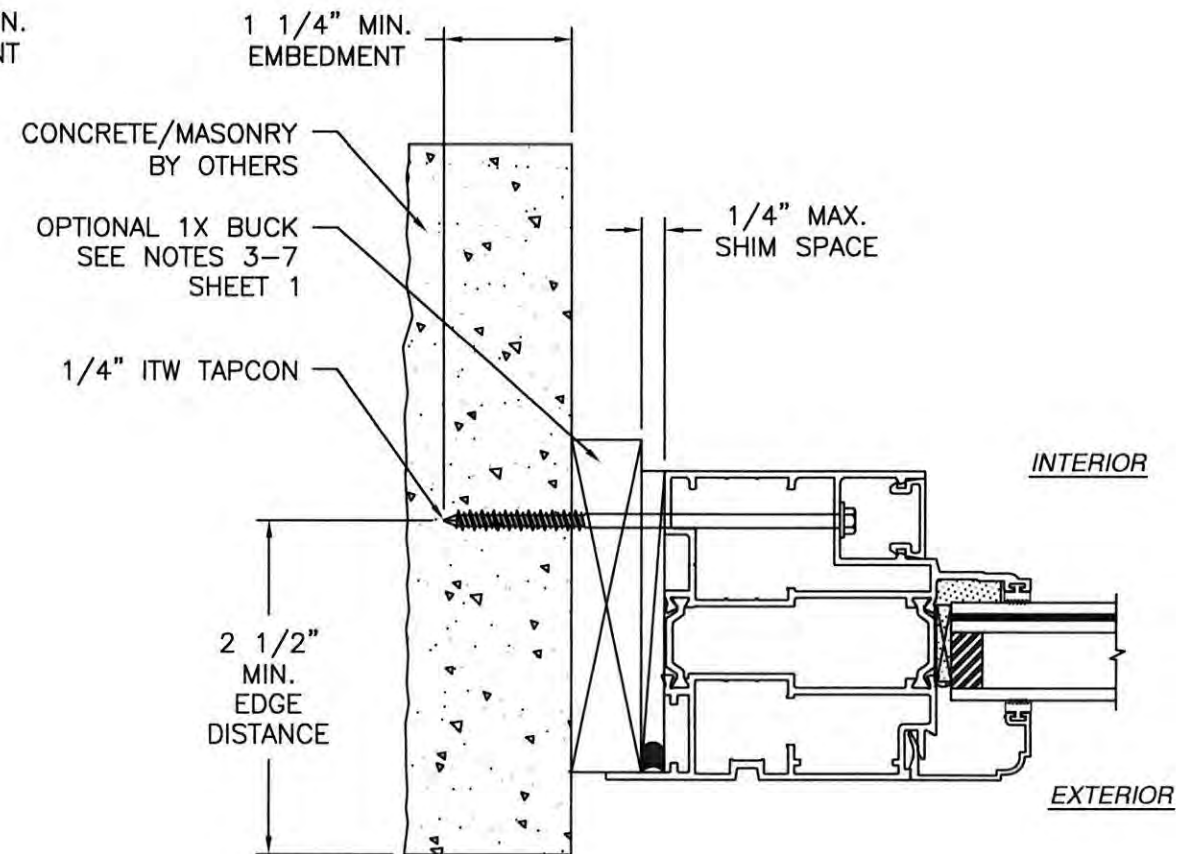
Revision: A) NO CHANGES THIS SHEET.
EK 7/13/20

WinDoor® INCORPORATED WINDOOR INCORPORATED 104 TRIPLE DIAMOND BLVD. NORTH VENICE, FL 34275 (833) 554-5432	PREPARED BY A. LYNN MILLER 1070 TECHNOLOGY DRIVE N. VENICE, FL 34275 (941) 480-1600 REGISTRATION #29296		08/15/19	A
	FIXED THERMALLY BROKEN WINDOW (LM)		Date	
	FLANGE INSTALLATION DETAILS		By	
	PW9063T		Drawn	
8 OF 10		No.	9063-NOA	A
8 OF 10		DWG		
8 OF 10		Rev.		
8 OF 10		Rev.		





A
9 VERTICAL CROSS SECTION
CONCRETE/MASONRY INSTALLATION



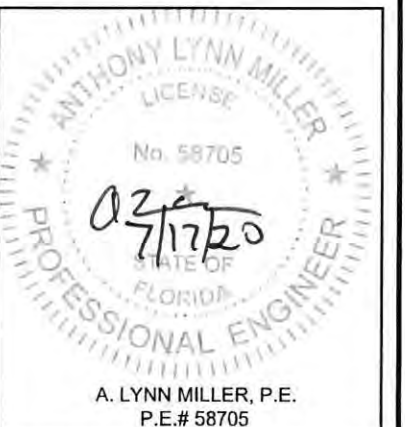
B **C**
9 9 JAMB INSTALLATION DETAIL
CONCRETE/MASONRY INSTALLATION

NOTES:
1. INTERIOR AND EXTERIOR FINISHES, BY OTHERS, NOT SHOWN FOR CLARITY.
2. PERIMETER AND JOINT SEALANT BY OTHERS TO BE DESIGNED IN ACCORDANCE WITH ASTM E2112

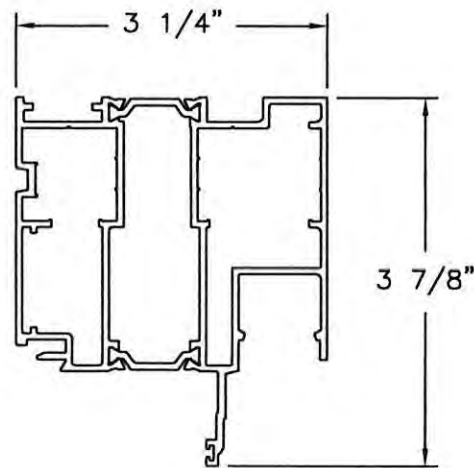
PRODUCT REVISED
as complying with the Florida
Building Code
NOA-No. 20-0729.11
Expiration Date 10/16/2024
By
Miami-Dade Product Control

Revision: A) NO CHANGES THIS SHEET.
EK 7/13/20

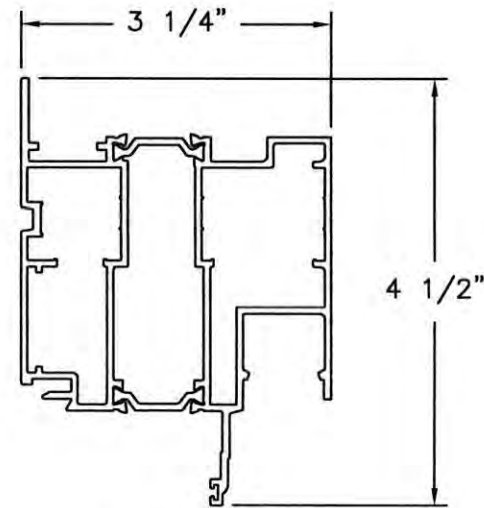
WinDoor® INCORPORATED WINDOOR INCORPORATED 104 TRIPLE DIAMOND BLVD. NORTH VENICE, FL 34275 (833) 554-5432	PREPARED BY A. LYNN MILLER 1070 TECHNOLOGY DRIVE N. VENICE, FL 34275 (941) 480-1600 REGISTRATION #29296		08/15/19	A Rev. 9063-NOA DWC No. 9 OF 10 Sheet
	FIXED THERMALLY BROKEN WINDOW (LM)		Date	
	FLANGE INSTALLATION DETAILS		By	
	ALAN KINNE		Drawn	



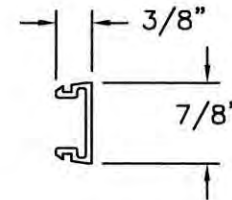
A. LYNN MILLER, P.E.
P.E.# 58705



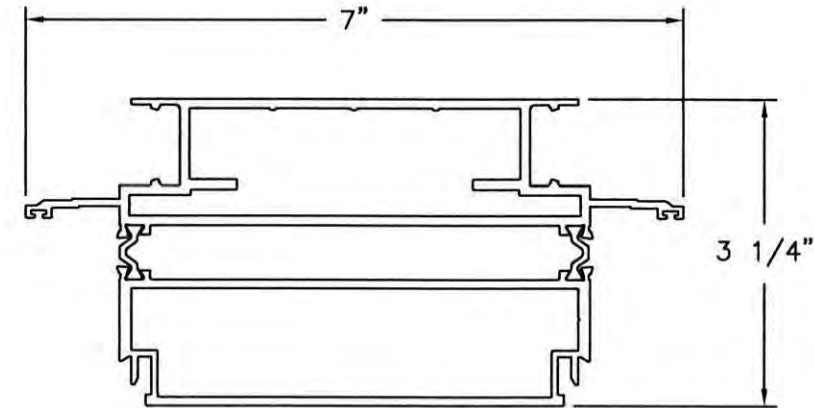
① **FLUSH FRAME**
ALUMINUM 6063-T6 .065" THICK



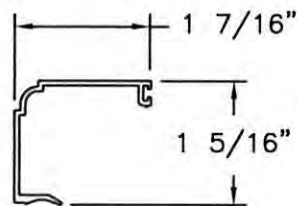
② **FLANGE FRAME**
ALUMINUM 6063-T6 .065" THICK



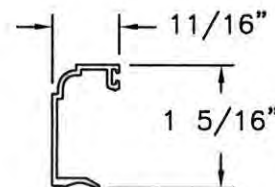
③ **FRAME HEAD INSERT**
ALUMINUM 6063-T6 .090" THICK



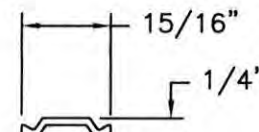
④ **COMMON POST**
ALUMINUM 6063-T6 .0125" THICK



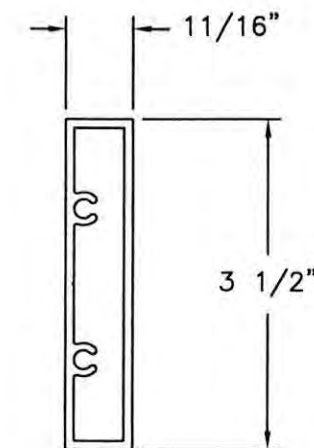
⑦ **GLAZING BEAD**
ALUMINUM 6063-T6 .050" THICK



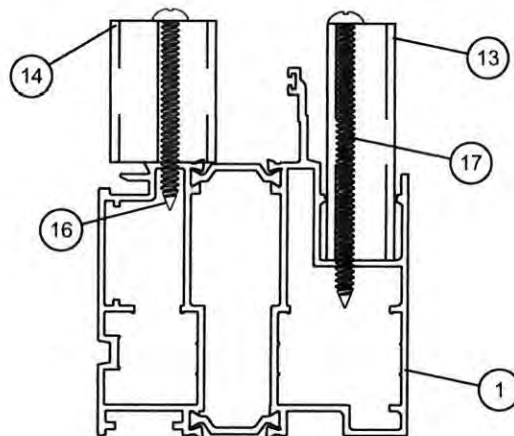
⑧ **GLAZING BEAD**
ALUMINUM 6063-T6 .050" THICK



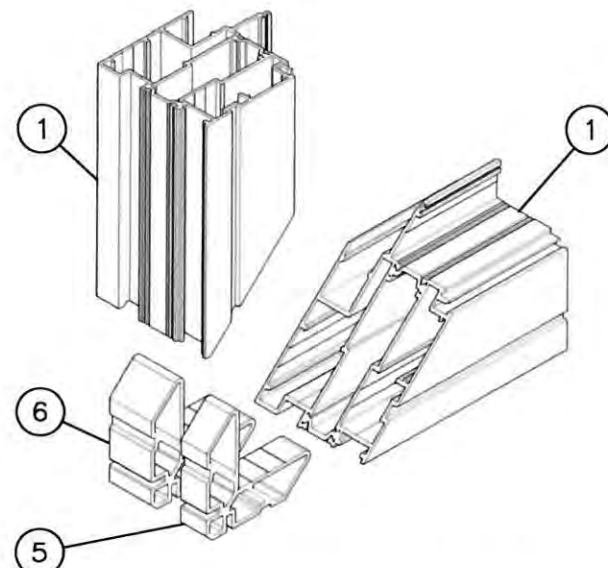
⑫ **THERMAL STRUT**
NYLON POLYAMIDE .070" THICK
TENSILE STRENGTH 10,390PSI



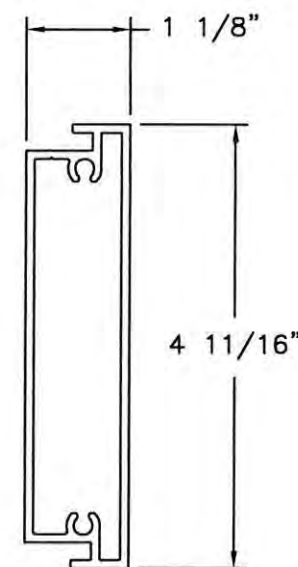
⑬ **INTERIOR SHEAR BLOCK**
ALUMINUM 6005A-T61 .090" THICK



D
10 **SHEAR BLOCK INSTALLATION**



CORNER CONSTRUCTION DETAIL



⑭ **EXTERIOR SHEAR BLOCK**
ALUMINUM 6005A-T61 .090" THICK

PRODUCT REVISED
as complying with the Florida
Building Code
NOA-No. 20-0729.11
Expiration Date 10/16/2024
By
Miami-Dade Product Control

Revision: A) NO CHANGES THIS SHEET.
EK 7/13/20

<div>WINDOOR®</div> <div>INCORPORATED</div> <div>WINDOOR INCORPORATED</div> <div>104 TRIPLE DIAMOND BLVD.</div> <div>NORTH VENICE, FL 34275</div> <div>(833) 554-5432</div>	PREPARED BY A. LYNN MILLER 1070 TECHNOLOGY DRIVE N. VENICE, FL 34275 (941) 480-1600 REGISTRATION #29296			Date	08/15/19	Rev. A
	FIXED THERMALLY BROKEN WINDOW (LM)			By	ALAN KINNE	
	EXTRUSIONS & ASSEMBLY DETAILS			9063-NOA		
	PW9063T			DWG No.	10 OF 10	

