



DEPARTMENT OF REGULATORY AND ECONOMIC RESOURCES (RER)

BOARD AND CODE ADMINISTRATION DIVISION

NOTICE OF ACCEPTANCE (NOA)

MIAMI-DADE COUNTY, FLORIDA
PRODUCT CONTROL SECTION

11805 SW 26 Street, Room 208

Miami, FL 33175

T (786) 315-2590 F (786) 315-2599

www.miamidade.gov/economy

WinDoor, Incorporated 104

Triple Diamond Blvd.

North Venice, FL 34275

SCOPE:

This NOA is being issued under the applicable rules and regulations governing the use of construction materials. The documentation submitted has been reviewed and accepted by Miami-Dade County RER-Product Control Section to be used in Miami-Dade County and other areas where allowed by the Authority Having Jurisdiction (AHJ).

This NOA shall not be valid after the expiration date stated below. The Miami-Dade County Product Control Section (In Miami-Dade County) and/ or the AHJ (in areas other than Miami-Dade County) reserve the right to have this product or material tested for quality assurance purposes. If this product or material fails to perform in the accepted manner, the manufacturer will incur the expense of such testing and the AHJ may immediately revoke, modify, or suspend the use of such product or material within their jurisdiction. RER reserves the right to revoke this acceptance, if it is determined by Miami-Dade County Product Control Section that this product or material fails to meet the requirements of the applicable building code.

This product is approved as described herein, and has been designed to comply with the Florida Building Code, including the High Velocity Hurricane Zone.

DESCRIPTION: Series "7000" Aluminum Sliding Glass Door W/ WO Reinforcements – L.M.I.

APPROVAL DOCUMENT: Drawing No. **7000 HP LMI NOA**, titled "Aluminum Sliding Glass Door (LMI) sheet 1 through 16 of 16, dated 07/22/20, prepared, signed and sealed by Anthony Lynn Miller, P.E., bearing the Miami-Dade County Product Control Section Revision stamp with the Notice of Acceptance number and expiration date by the Miami-Dade County Product Control Section.

MISSILE IMPACT RATING: Large Missile Impact Resistant

LABELING: Each unit shall bear a permanent label with the manufacturer's name or logo, city, state, series, and following statement: "Miami-Dade County Product Control Approved", unless otherwise noted herein.

RENEWAL of this NOA shall be considered after a renewal application has been filed and there has been no change in the applicable building code negatively affecting the performance of this product.

TERMINATION of this NOA will occur after the expiration date or if there has been a revision or change in the materials, use, and/ or manufacture of the product or process. Misuse of this NOA as an endorsement of any product, for sales, advertising or any other purposes shall automatically terminate this NOA. Failure to comply with any section of this NOA shall be cause for termination and removal of NOA.

ADVERTISEMENT: The NOA number preceded by the words Miami-Dade County, Florida, and followed by the expiration date may be displayed in advertising literature. If any portion of the NOA is displayed, then it shall be done in its entirety.

INSPECTION: A copy of this entire NOA shall be provided to the user by the manufacturer or its distributors and shall be available for inspection at the job site at the request of the Building Official.

This NOA **revises NOA No. 17-1219.08** and consists of this page 1 and evidence pages E-1 and E-2, as well as approval document mentioned above.

The submitted documentation was reviewed by **Sifang Zhao, P. E.**



11/12/2020

NOA No. 20-0806.04

Expiration Date: June 06, 2023

Approval Date: November 12, 2020

Page 1

NOTICE OF ACCEPTANCE: EVIDENCE SUBMITTED

1. EVIDENCE SUBMITTED UNDER PREVIOUS NOA'S

A. DRAWINGS

1. Manufacturer's die drawings and sections. (*Submitted under NOA No. 12-820.09*)
2. Drawing No. 08-01663, titled "7000 HP Series LMI Reinforced & Non-Reinforced", sheets 1, 2, 2A, 2B and 3 through 14 of 14, prepared by manufacturer, dated 07/03/12 with Revision E dated 11/30/17, signed and sealed by Luis R. Lomas, P.E.

B. TESTS

1. Test reports on: 1) Air Infiltration Test, per FBC, TAS 202-94
2) Uniform Static Air Pressure Test, Loading per FBC TAS 202-94
3) Water Resistance Test, per FBC, TAS 202-94
4) Large Missile Impact Test per FBC, TAS 201-94
5) Cyclic Wind Pressure Loading per FBC, TAS 203-94
6) Forced Entry Test, per FBC 2411 3.2.1, TAS 202-94
along with marked-up drawings and installation diagram of Aluminum Sliding Glass with and without Reinforcements, prepared by National Certified Testing Laboratories, Inc., Test Report No. **NCTL-210-3779-1**, dated 05/08/12 signed and sealed by Gerald J, Ferrara, P.E. (*Submitted under NOA No. 12-820.09*)

C. CALCULATIONS

1. Anchor verification calculations complying with **FBC 5th Edition (2014)**, dated 07/10/15 with last revised on 04/04/16, prepared, signed and sealed by Luis R. Lomas, P.E.
2. Anchor verification calculations complying with FBC 6th Edition (2017), dated 11/30/17, prepared, signed and sealed by Luis R. Lomas, P.E.
3. Glazing complies with ASTM E1300-04/ 09

D. QUALITY ASSURANCE

1. Miami-Dade Department of Regulatory and Economic Resources (RER).

E. MATERIAL CERTIFICATIONS

1. Notice of Acceptance No. **14-0916.10** issued to **Kuraray America, Inc.**, for "**Kuraray Butacite ® PVB Glass Interlayer**", expiring on 12/11/2016.

F. STATEMENTS

1. Statement letter of conformance, complying with **FBC 5th Edition (2014)** and of no financial interest, issued, prepared, signed, sealed and dated 06/08/15 by Luis R. Lomas, P. E.

G. OTHERS

1. This NOA revises and renews NOA #15-0723.11, expiring on 06/06/18.



Sifang Zhao, P. E.
Product Control Examiner
NOA No. 20-0806.04
Expiration Date: June 06, 2023
Approval Date: November 12, 2020

NOTICE OF ACCEPTANCE: EVIDENCE SUBMITTED

2. NEW EVIDENCE SUBMITTED

A. DRAWINGS

1. Drawing No. 7000 HP LMI NOA, titled “Aluminum Sliding Glass Door (LMI) sheet 1 through 16 of 16, dated 07/22/20, prepared, signed and sealed by Anthony Lynn Miller, P.E

B. TESTS

1. Test reports on:
 - 1) Air Infiltration Test, per FBC, TAS 202-94
 - 2) Uniform Static Air Pressure Test, Loading per FBC, TAS 202-94
 - 3) Water Resistance Test, per FBC, TAS 202-94
 - 4) Large Missile Impact Test per FBC, TAS 201-94
 - 5) Cyclic Wind Pressure Loading per FBC, TAS 203-94

along with marked-up drawings and installation diagram of WinDoor, Inc. representative units listed below and tested to qualify Dowsil 791 and Dowsil 983 silicones, per Proposal #19-1155TP.

Test Report	Product Name		Unit in TP	Signed and Sealed	Date
FTL 20-1078.1	WinDoor	PW3000 Aluminum Fixed Lite	11	Idalmis Ortega, P.E.	08/24/20
FTL 20-1078.2	WinDoor	HR9470 Thermally Broken Aluminum Horizontal Roller	12	Idalmis Ortega, P.E.	08/24/20
FTL 20-1078.3	WinDoor	SGD8100 Aluminum Sliding Glass Door	13	Idalmis Ortega, P.E.	08/24/20
FTL 20-1078.4	WinDoor	HR9470 Thermally Broken Aluminum Horizontal Roller	14	Idalmis Ortega, P.E.	08/24/20
FTL 20-1078.5	WinDoor	PW9020 Thermally Broken Aluminum Fixed Lite	15	Idalmis Ortega, P.E.	08/24/20
FTL 20-1078.6	WinDoor	PW9020 Thermally Broken Aluminum Fixed Lite	16	Idalmis Ortega, P.E.	08/24/20

C. CALCULATIONS

1. None.

D. QUALITY ASSURANCE

1. Miami-Dade Department of Regulatory and Economic Resources (RER).

E. MATERIAL CERTIFICATIONS

1. NOA No. 19-0305.02 issued to Kuraray America, Inc. for their “Trosifol® Ultraclear, Clear and Color PVB Glass Interlayers” dated 05/09/19, expiring on 07/08/24.

F. STATEMENTS

1. Statement letter of conformance, of complying with FBC 6th Edition (2017), and FBC 7th Edition (2020), and of no financial interest, dated July 29, 2020, issued by manufacturer, signed and sealed by Anthony Lynn Miller, P.E.
2. Notification of Successor Engineer for manufacturer’s NOA document per **Section 61G15-27.001** of the **Florida Administrative Code** dated July 29, 2020, signed and sealed by Anthony Lynn Miller, P.E.
3. Proposal No. 19-1155 TP issued by the Product Control Section, dated January 10, 2020, signed by Ishaq Chanda, P.E.

G. OTHERS


1. This NOA revises NOA #17-1219.08 expiring on 06/06/23.



Sifang Zhao, P. E.
Product Control Examiner
NOA No. 20-0806.04
Expiration Date: June 06, 2023
Approval Date: November 12, 2020

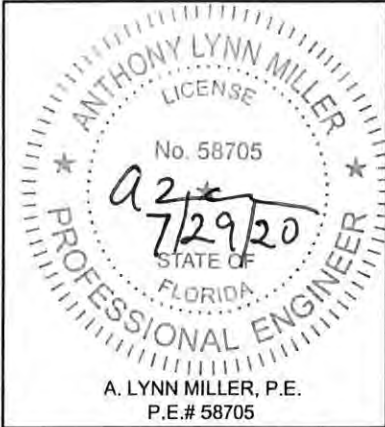
- NOTES:
- 1. THE PRODUCT SHOWN HEREIN IS DESIGNED AND MANUFACTURED TO COMPLY WITH REQUIREMENTS OF THE FLORIDA BUILDING CODE 6TH EDITION (2017) AND 7TH EDITION (2020) INCLUDING THE HVHZ.
 - 2. WOOD FRAMING, 20 GA. WOOD BACKED STEEL STUD AND MASONRY/CONCRETE OPENING TO BE DESIGNED AND ANCHORED TO PROPERLY TRANSFER ALL LOADS TO STRUCTURE. WOOD FRAMING, 20 GA. WOOD BACKED STEEL STUD AND MASONRY OPENING IS THE RESPONSIBILITY OF THE ARCHITECT OR ENGINEER OF RECORD.
 - 3. 1X BUCK OVER MASONRY/CONCRETE IS OPTIONAL. WHERE 1X BUCK IS NOT USED DISSIMILAR MATERIALS MUST BE SEPARATED WITH APPROVED COATING OR MEMBRANE. SELECTION OF COATING OR MEMBRANE IS THE RESPONSIBILITY OF THE ARCHITECT OR ENGINEER OF RECORD. 1X BUCK TO BE PROPERLY SECURED.
 - 4. ALLOWABLE STRESS INCREASE OF 1/3 WAS NOT USED IN THE DESIGN OF THE PRODUCT SHOWN HEREIN. WIND LOAD DURATION FACTOR Cd=1.6 WAS USED FOR WOOD ANCHOR CALCULATIONS.
 - 5. FRAME MATERIAL: EXTRUDED 6063-T6 ALUMINUM.
 - 6. UNITS MUST BE GLAZED AND COMPLY PER ASTM E1300-04/09, SEE SHEET 6 FOR GLAZING OPTIONS.
 - 7. APPROVED IMPACT PROTECTIVE SYSTEM IS NOT REQUIRED FOR THIS PRODUCT IN WIND BORNE DEBRIS REGIONS.
 - 8. SHIM AS REQUIRED AT EACH INSTALLATION ANCHOR WITH LOAD BEARING SHIM. SHIM WHERE SPACE OF 1/16" OR GREATER OCCURS. MAXIMUM ALLOWABLE SHIM STACK TO BE 1/4".
 - 9. FOR ANCHORING INTO WOOD FRAMING, 2X BUCK OR WOOD BACKED STEEL STUD, USE #12 WOOD SCREWS (GRADE 5) WITH SUFFICIENT LENGTH TO ACHIEVE A 1 5/8" MINIMUM EMBEDMENT INTO SUBSTRATE. LOCATE ANCHORS AS SHOWN IN ELEVATIONS AND INSTALLATION DETAILS.
 - 10. FOR ANCHORING INTO MASONRY/CONCRETE USE 1/4" ELCO CRETE-FLEX SS4 WITH SUFFICIENT LENGTH TO ACHIEVE A 1 1/4" MINIMUM EMBEDMENT INTO SUBSTRATE WITH 2 1/2" MINIMUM EDGE DISTANCE. LOCATE ANCHORS AS SHOWN IN ELEVATIONS AND INSTALLATION DETAILS.
 - 11. ALL FASTENERS TO BE CORROSION RESISTANT.
 - 12. INSTALLATION ANCHORS SHALL BE INSTALLED IN ACCORDANCE WITH ANCHOR MANUFACTURER'S INSTALLATION INSTRUCTIONS AND ANCHORS SHALL NOT BE USED IN SUBSTRATES WITH STRENGTHS LESS THAN THE MINIMUM STRENGTH SPECIFIED BELOW:
 - A. WOOD - MINIMUM SPECIFIC GRAVITY OF G=0.42
 - B. CONCRETE - MINIMUM COMPRESSIVE STRENGTH OF 3,350 PSI.
 - C. MASONRY - STRENGTH CONFORMANCE TO ASTM C-90, NORMAL WEIGHT W/2KSI.
 - D. METAL FRAMING - 20 GA. (.040) MINIMUM THICKENSS (TO BE USED WITH WOOD FRAMING).
 - 13. APPROVED CONFIGURATIONS (4 PANELS OR LESS) X, XX, OX, XO, XXX, OXO, XXO, OXX, XXXX, OXXX, XXXO.
 - 14. SGD TO COMPLY WITH FBC EGRESS REQUIREMENTS AS APPLICABLE.

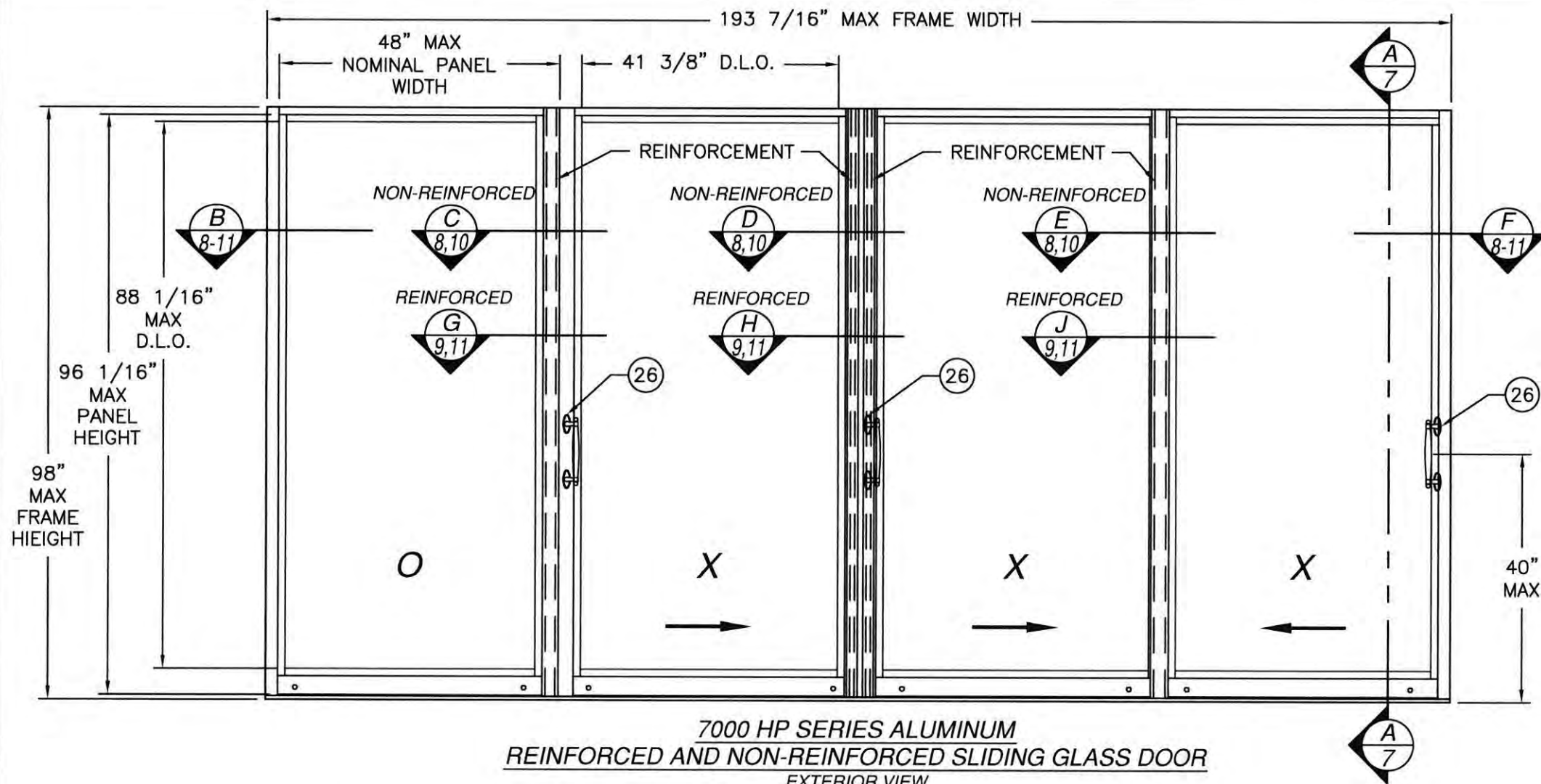
TABLE OF CONTENTS	
SHEET NO.	DESCRIPTION
1	GENERAL NOTES
2	ELEVATION
2-3	DP CHARTS
4	SILL RISERS
5	ANCORAGE DETAILS
6	BOM AND GLAZING DETAILS
7-11	SECTION VIEWS
12-14	INSTALLATION DETAILS
15-16	EXTRUSIONS

PRODUCT REVISED
as complying with the Florida
Building Code
NOA-No. 20-0806.04
Expiration Date 06/06/2023
By 
Miami-Dade Product Control

Revision: UPDATES FOR 2020 FBC.
UPDATED MANUFACTURING
ADDRESS.

PREPARED BY A. LYNN MILLER 1070 TECHNOLOGY DRIVE NORTH VENICE, FL 34275 (941) 480-1600 REGISTRATION #29296	ALUMINUM SLIDING GLASS DOOR (LM)	ERIN KOSS	7000 HP LMI NOA	Rev
				Date
				By
				No.
WINDOOR® INCORPORATED WINDOOR INCORPORATED 104 TRIPLE DIAMOND BLVD. NORTH VENICE, FL 34275 (833) 554-5432	GENERAL NOTES	SGD7000A	1 OF 16	DWG
				Sheet
				Title
				Desc.





FOR MASONRY/ CONCRETE INSTALLATION

NON-REINFORCED UNITS 2-1/2", 3-1/8" & 4-1/4" SILL RISERS

DESIGN PRESSURE RATING	IMPACT RATING
+60.0/-70.0 PSF	LARGE AND SMALL MISSILE IMPACT

MISSILE LEVEL D, WIND ZONE 4 AND HVHZ
SEE CHART 1 SHEET 3 FOR SMALLER UNIT SIZES AND RATINGS

REINFORCED UNITS 3-1/8" & 4-1/4" SILL RISERS

DESIGN PRESSURE RATING	IMPACT RATING
+80.0/-90.0 PSF	LARGE AND SMALL MISSILE IMPACT

MISSILE LEVEL D, WIND ZONE 4 AND HVHZ
SEE CHART 2 SHEET 3 FOR SMALLER UNIT SIZES AND RATINGS

FOR WOOD INSTALLATION

NON-REINFORCED UNITS 2-1/2", 3-1/8" & 4-1/4" SILL RISERS

DESIGN PRESSURE RATING	IMPACT RATING
±47.4PSF	LARGE AND SMALL MISSILE IMPACT

MISSILE LEVEL D, WIND ZONE 4 AND HVHZ
SEE CHART 3 SHEET 3 FOR SMALLER UNIT SIZES AND RATINGS

REINFORCED UNITS 3-1/8" & 4-1/4" SILL RISERS

DESIGN PRESSURE RATING	IMPACT RATING
±47.4PSF	LARGE AND SMALL MISSILE IMPACT

MISSILE LEVEL D, WIND ZONE 4 AND HVHZ
SEE CHART 4 SHEET 3 FOR SMALLER UNIT SIZES AND RATINGS

FORMULAS FOR PANEL & D.L.O.:
 PANEL HEIGHT = FRAME HEIGHT - 1 15/16"
 D.L.O. HEIGHT = PANEL HEIGHT - 8"
 D.L.O. WIDTH = PANEL WIDTH - 7 1/4"

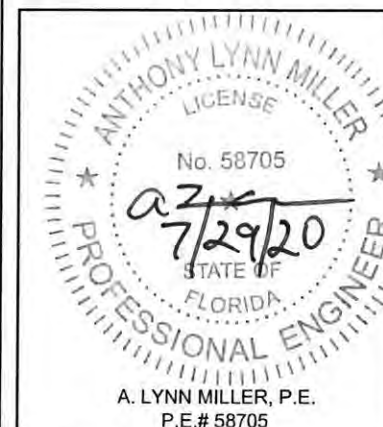
PANEL CONSTRUCTION:
 PANELS ARE CONSTRUCTED FROM EXTRUDED 6063-T6 ALUMINUM. VERTICAL STILES ARE NOTCHED TO RECEIVE HORIZONTAL RAILS. EACH RAIL IS SECURED TO STILES WITH (3) #10 x 1 1/4" SQ. DRIVE SCREW AT EACH END. ALL PANELS HAVE AN INTERIOR FIXED GLAZING STOP AND AN EXTERIOR APPLIED GLAZING STOP.

FRAME CONSTRUCTION:
 EACH FRAME CORNER IS NOTCHED AND BUTTED. HEAD AND SILL ARE SECURED TO JAMBS WITH #7 x 1" TYPE F SCREW. (2) AT EACH CORNER ON 2 TRACK FRAME, (3) AT EACH CORNER ON 3 TRACK FRAME AND (4) AT EACH CORNER ON 4 TRACK FRAME.

PRODUCT REVISED
 as complying with the Florida
 Building Code
 NOA-No. 20-0806.04
 Expiration Date 06/06/2023
 By
 Miami-Dade Product Control

NO CHANGES THIS SHEET.

PREPARED BY A. LYNN MILLER 1070 TECHNOLOGY DRIVE NORTH VENICE, FL 34275 (941) 480-1600 REGISTRATION #29296	Date	07/22/20	Rev.	
	By	ERIN KOSS	DWG	7000 HP LMI NOA
	No.		Sheet	2 OF 16
	ALUMINUM SLIDING GLASS DOOR (LM) ELEVATION & DP AT MAX SIZE SGD7000A			



FOR MASONRY/ CONCRETE INSTALLATION

CHART #1
NON-REINFORCED UNITS
2-1/2", 3-1/8" & 4-1/4" SILL RISERS

Maximum Design Pressure Capacity Chart (psf)										
Frame Height (in)	Panel Width (in)									
	24.0		30.0		36.0		42.0		48.0	
	Pos	Neg	Pos	Neg	Pos	Neg	Pos	Neg	Pos	Neg
80.0	60.0	90.0	60.0	90.0	60.0	90.0	60.0	90.0	60.0	85.8
84.0	60.0	90.0	60.0	90.0	60.0	90.0	60.0	90.0	60.0	91.7
96.0	60.0	90.0	60.0	90.0	60.0	90.0	60.0	81.7	60.0	71.5
98.0	60.0	90.0	60.0	90.0	60.0	90.0	60.0	80.0	60.0	70.0

CHART #2
REINFORCED UNITS
3-1/8" & 4-1/4" SILL RISERS

Maximum Design Pressure Capacity Chart (psf)										
Frame Height (in)	Panel Width (in)									
	24.0		30.0		36.0		42.0		48.0	
	Pos	Neg	Pos	Neg	Pos	Neg	Pos	Neg	Pos	Neg
80.0	80.0	90.0	80.0	90.0	80.0	90.0	80.0	90.0	80.0	90.0
84.0	80.0	90.0	80.0	90.0	80.0	90.0	80.0	90.0	80.0	90.0
96.0	80.0	90.0	80.0	90.0	80.0	90.0	80.0	90.0	80.0	90.0
98.0	80.0	90.0	80.0	90.0	80.0	90.0	80.0	90.0	80.0	90.0


FOR WOOD INSTALLATION

CHART #3
NON-REINFORCED UNITS
2-1/2", 3-1/8" & 4-1/4" SILL RISERS

Maximum Design Pressure Capacity Chart (psf)										
Frame Height (in)	Panel Width (in)									
	24.0		30.0		36.0		42.0		48.0	
	Pos	Neg	Pos	Neg	Pos	Neg	Pos	Neg	Pos	Neg
80.0	60.0	90.0	60.0	86.3	60.0	75.4	60.0	67.9	60.0	62.6
84.0	60.0	90.0	60.0	81.3	60.0	70.8	60.0	63.6	58.4	58.4
96.0	60.0	83.4	60.0	69.2	59.9	59.9	53.4	53.4	48.7	48.7
98.0	60.0	81.5	60.0	67.5	58.4	58.4	52.0	52.0	47.4	47.4

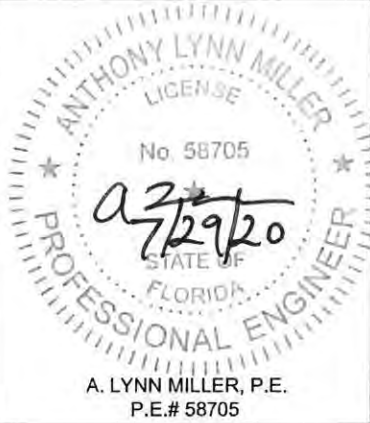
CHART #4
REINFORCED UNITS
3-1/8" & 4-1/4" SILL RISERS

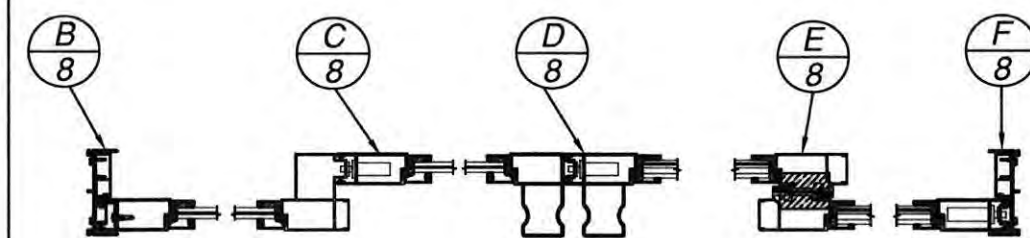
Maximum Design Pressure Capacity Chart (psf)										
Frame Height (in)	Panel Width (in)									
	24.0		30.0		36.0		42.0		48.0	
	Pos	Neg	Pos	Neg	Pos	Neg	Pos	Neg	Pos	Neg
80.0	80.0	90.0	80.0	86.3	75.4	75.4	67.9	67.9	62.6	62.6
84.0	80.0	90.0	80.0	81.3	70.8	70.8	63.6	63.6	58.4	58.4
96.0	80.0	83.4	69.2	69.2	59.9	59.9	53.4	53.4	48.7	48.7
98.0	80.0	81.5	69.5	67.5	58.4	58.4	52.0	52.0	47.4	47.4

PRODUCT REVISED
as complying with the Florida Building Code
NOA-No. 20-0806.04
Expiration Date 06/06/2023
By 
Miami-Dade Product Control

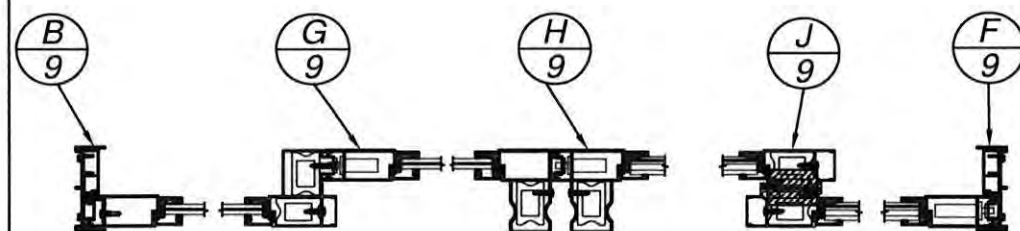
NO CHANGES THIS SHEET.

PREPARED BY A. LYNN MILLER 1070 TECHNOLOGY DRIVE NORTH VENICE, FL 34275 (941) 480-1600 REGISTRATION #29296	07/22/20		ERIN KOSS	7000 HP LMI NOA		
	Date	Rev.				
	ALUMINUM SLIDING GLASS DOOR (LM)					
	Drawn By					
WINDOOR [®] INCORPORATED WINDOOR INCORPORATED 104 TRIPLE DIAMOND BLVD. NORTH VENICE, FL 34275 (833) 554-5432	3 OF 16		DP CHARTS	SGD7000A		
	Sheet					
	DWC					
	No.					
Series Desc. Title						

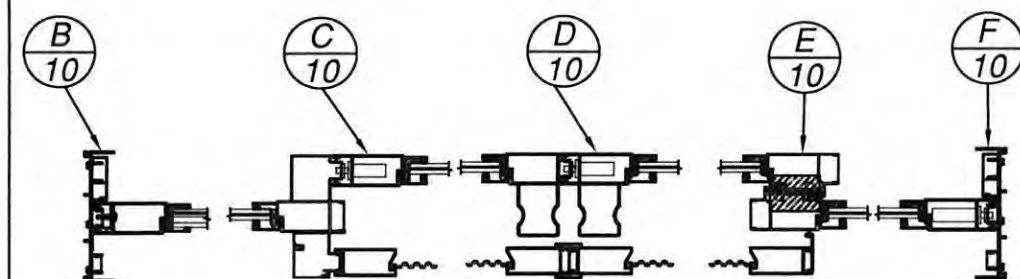




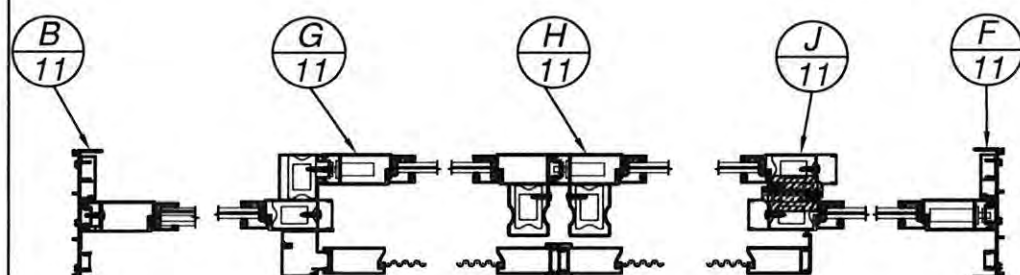
EXTERIOR
HORIZONTAL CROSS SECTION
2 TRACK NON-REINFORCED



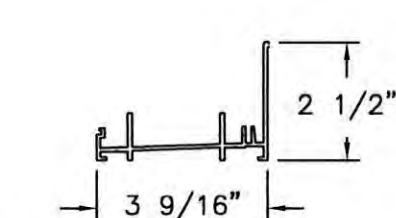
EXTERIOR
HORIZONTAL CROSS SECTION
2 TRACK REINFORCED



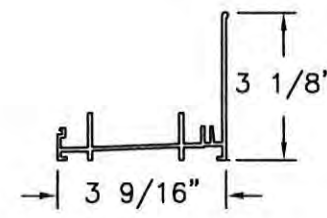
EXTERIOR
HORIZONTAL CROSS SECTION
3 TRACK NON-REINFORCED



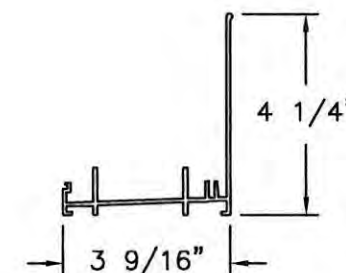
EXTERIOR
HORIZONTAL CROSS SECTION
3 TRACK REINFORCED



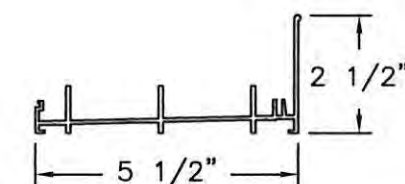
③ 2T SILL PAN
2-1/2" RISER
6063-T6 ALUMINUM
.075" THICK



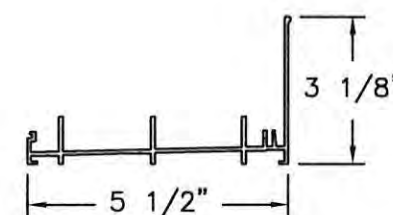
④ 2T SILL PAN
3-1/8" RISER
6063-T6 ALUMINUM
.075" THICK



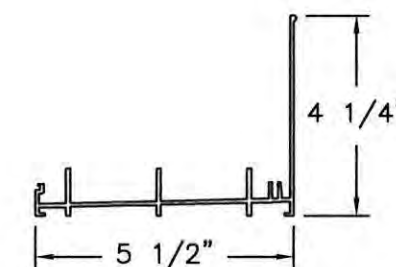
⑤ 2T SILL PAN
4-1/4" RISER
6063-T6 ALUMINUM
.075" THICK



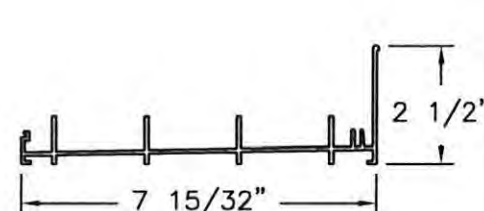
⑤② 3T SILL PAN
2-1/2" RISER
6063-T6 ALUMINUM
.075" THICK



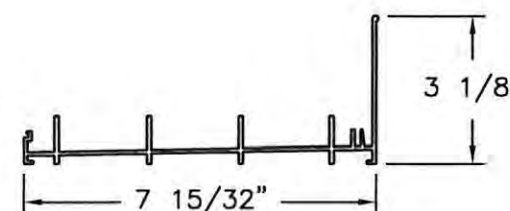
⑤③ 3T SILL PAN
3-1/8" RISER
6063-T6 ALUMINUM
.075" THICK



⑤④ 3T SILL PAN
4-1/4" RISER
6063-T6 ALUMINUM
.075" THICK



⑥③ 4T SILL PAN
2-1/2" RISER
6063-T6 ALUMINUM
.075" THICK



⑥④ 4T SILL PAN
3-1/8" RISER
6063-T6 ALUMINUM
.075" THICK

SILL RISERS
SEE DP RATINGS IN SHEETS 2-3

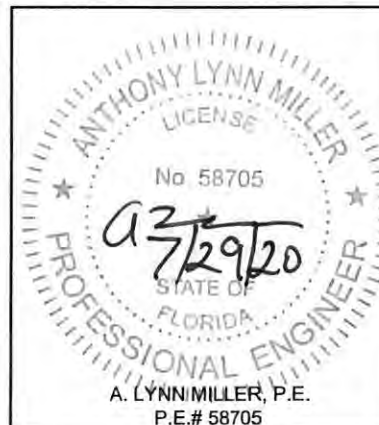
PRODUCT REVISED
as complying with the Florida
Building Code
NOA-No. 20-0806.04
Expiration Date 06/06/2023
By
Miami-Dade Product Control

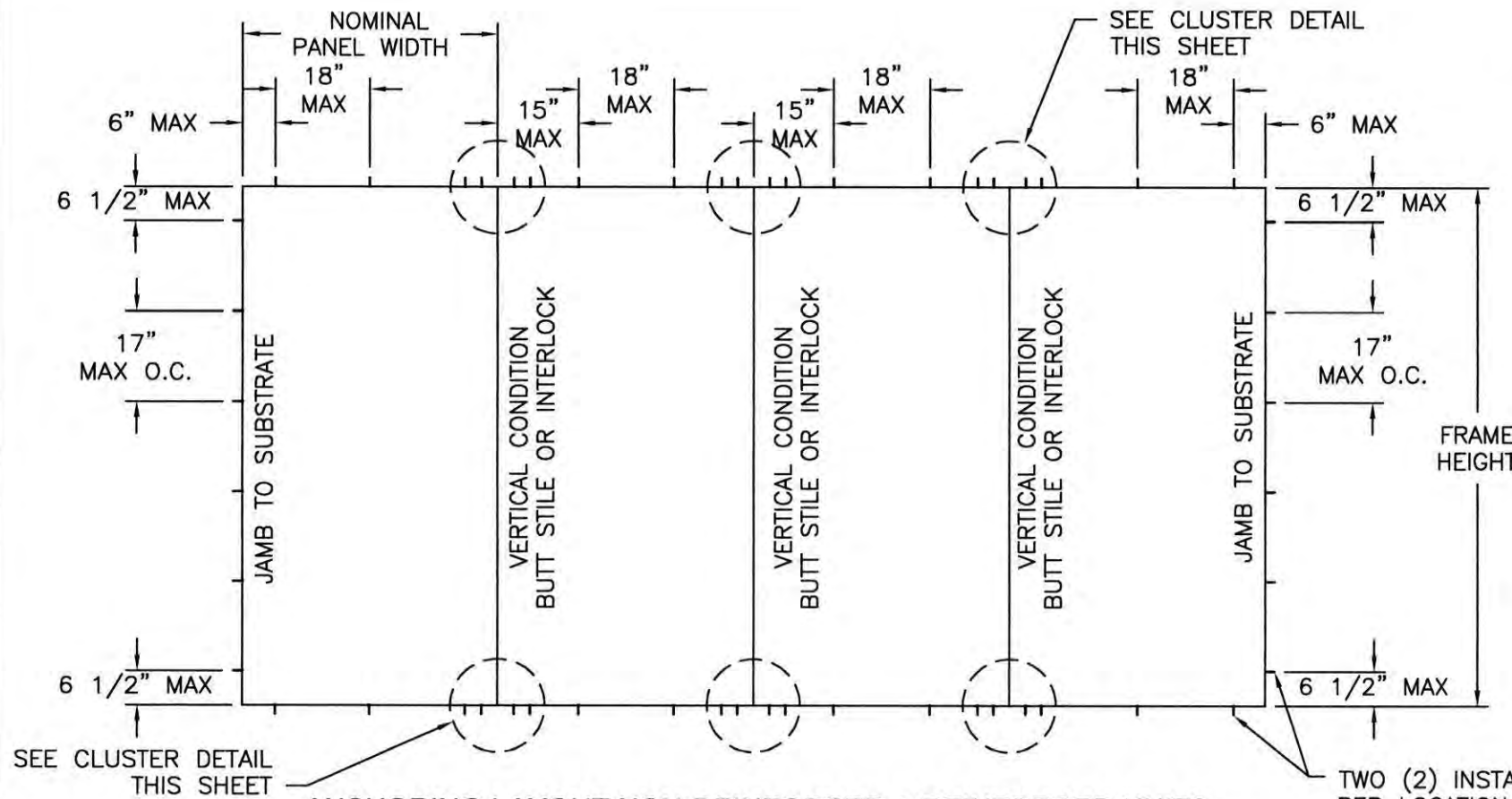
NO CHANGES THIS SHEET.

PREPARED BY A. LYNN MILLER
1070 TECHNOLOGY DRIVE
NORTH VENICE, FL 34275
(941) 480-1600
REGISTRATION #29296

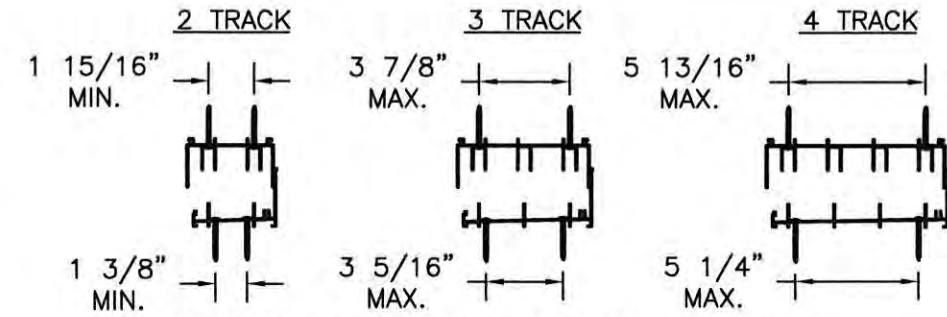
WINDOOR®
INCORPORATED
WINDOOR INCORPORATED
104 TRIPLE DIAMOND BLVD.
NORTH VENICE, FL 34275
(833) 554-5432

Rev.	07/22/20
Date	07/22/20
Drawn By	ERIN KOSS
No.	7000 HP LMI NOA
DWG	4 OF 16
Sheet	SGD7000A
Series	ALUMINUM SLIDING GLASS DOOR (LM)
Desc.	SILL RISERS

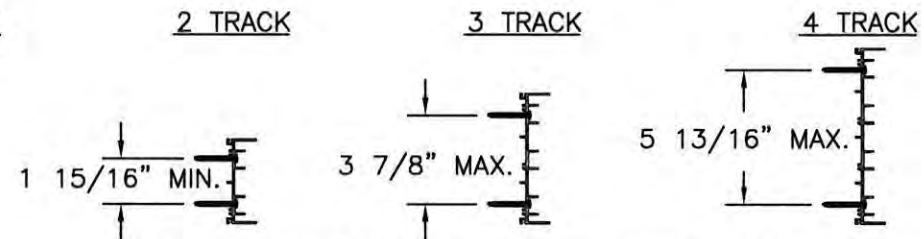




ANCHORING LAYOUT NON-REINFORCED & REINFORCED UNITS
4 PANEL UNIT SHOWN, APPLICABLE TO ALL 4 PANEL OR LESS CONFIGURATIONS USING SAME ANCHOR CLUSTER & PATTERN



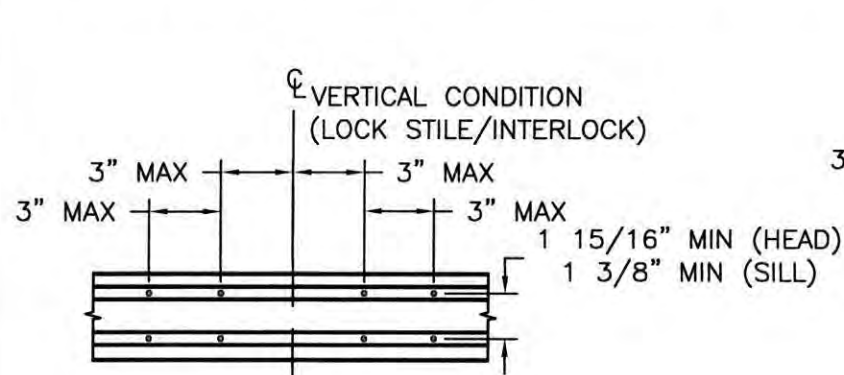
ANCHORAGE LOCATIONS NON-REINFORCED AND REINFORCED AT HEAD AND SILL.
(FOR FURTHER DETAILS SEE SHEETS 12-14)



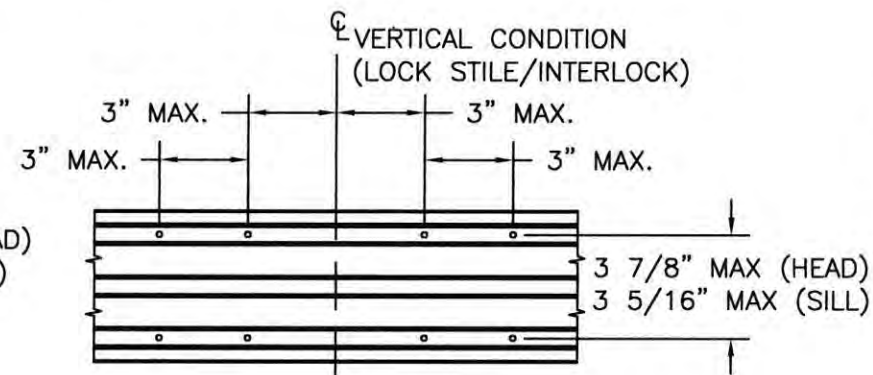
ANCHORAGE LOCATIONS NON-REINFORCED AND REINFORCED AT JAMBS.
(FOR FURTHER DETAILS SEE SHEETS 12-14)

TWO (2) INSTALLATION ANCHORS PER LOCATION AT HEAD, SILL & JAMBS

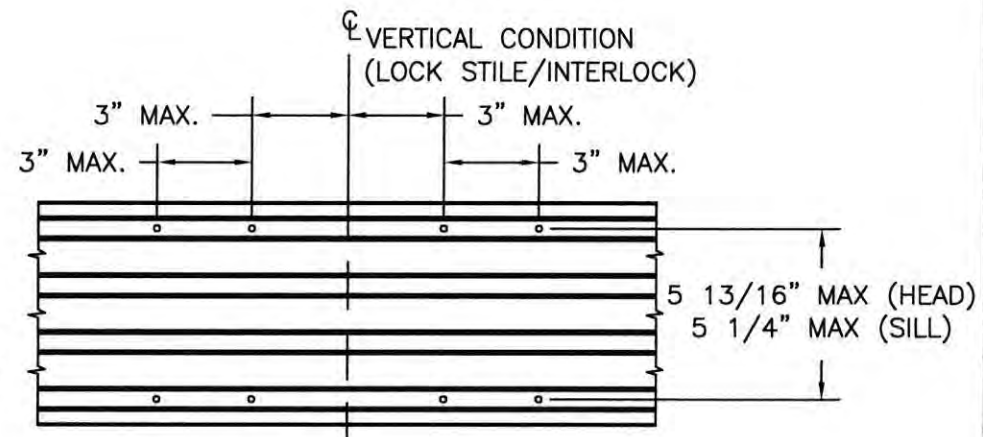
Number of Anchor Locations Required (Pairs)																
Frame Height (in)	Panel Width (in)															
	24.0			30.0			36.0			42.0			48.0			
	H&S	Jamb	Cluster	H&S	Jamb	Cluster	H&S	Jamb	Cluster	H&S	Jamb	Cluster	H&S	Jamb	Cluster	
80.0	1	5	4	1	5	4	2	5	4	2	5	4	2	5	4	
84.0	1	6	4	1	6	4	2	6	4	2	6	4	2	6	4	
96.0	1	6	4	1	6	4	2	6	4	2	6	4	2	6	4	
98.0	1	7	4	1	7	4	2	7	4	2	7	4	2	7	4	



CLUSTER DETAIL (HEAD/SILL)
2-TRACK



CLUSTER DETAIL (HEAD/SILL)
3-TRACK

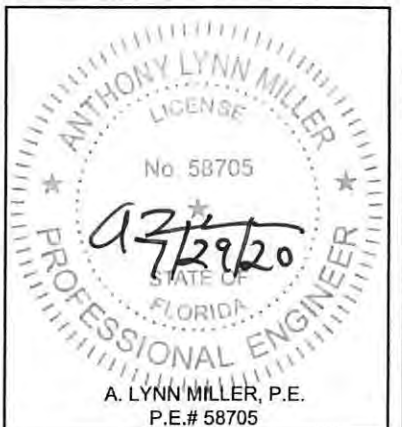


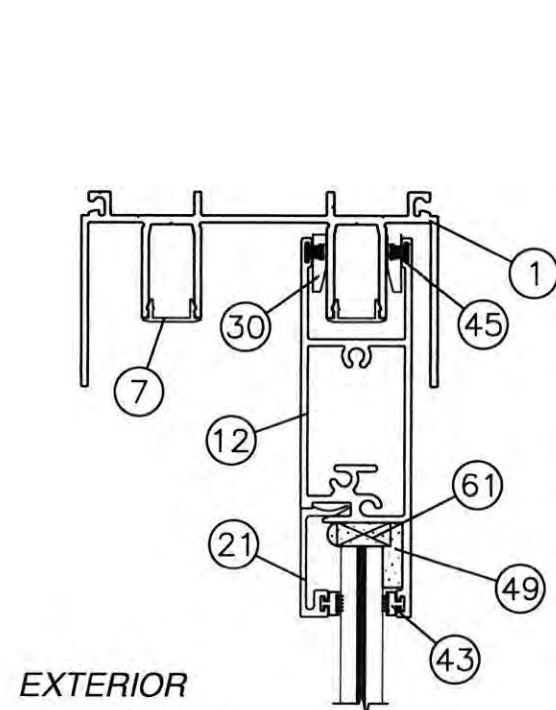
CLUSTER DETAIL (HEAD / SILL)
4-TRACK SYSTEM

PRODUCT REVISED
as complying with the Florida Building Code
NOA-No. 20-0806.04
Expiration Date 06/06/2023
By
Miami-Dade Product Control

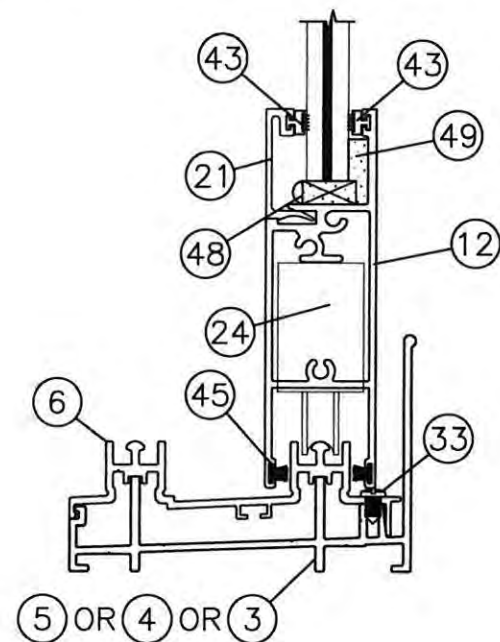
NO CHANGES THIS SHEET.

WINDOOR® INCORPORATED WINDOOR INCORPORATED 104 TRIPLE DIAMOND BLVD. NORTH VENICE, FL 34275 (833) 554-5432	PREPARED BY A. LYNN MILLER 1070 TECHNOLOGY DRIVE NORTH VENICE, FL 34275 (941) 480-1600 REGISTRATION #29296		Date: 07/22/20	Drawn By: ERIN KOSS	Rev.
	ALUMINUM SLIDING GLASS DOOR (LM)			7000 HP LMI NOA	
	ANCHORAGE DETAILS			5 OF 16	
	SGD7000A				

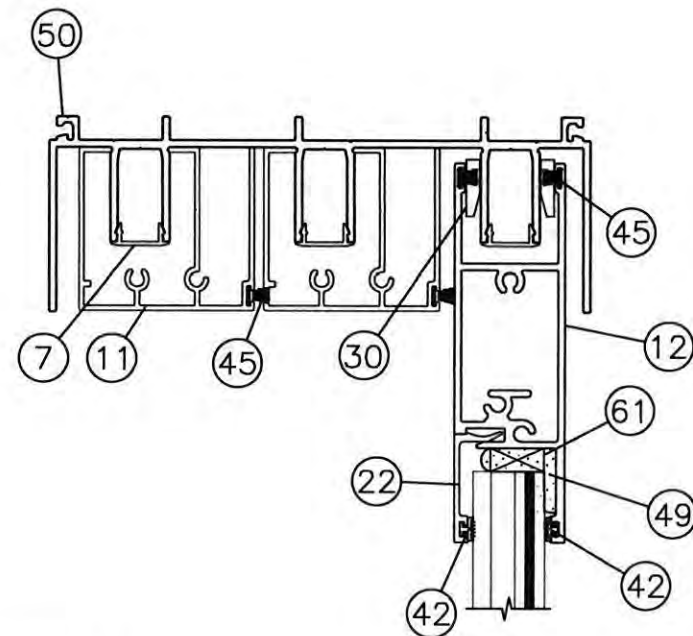




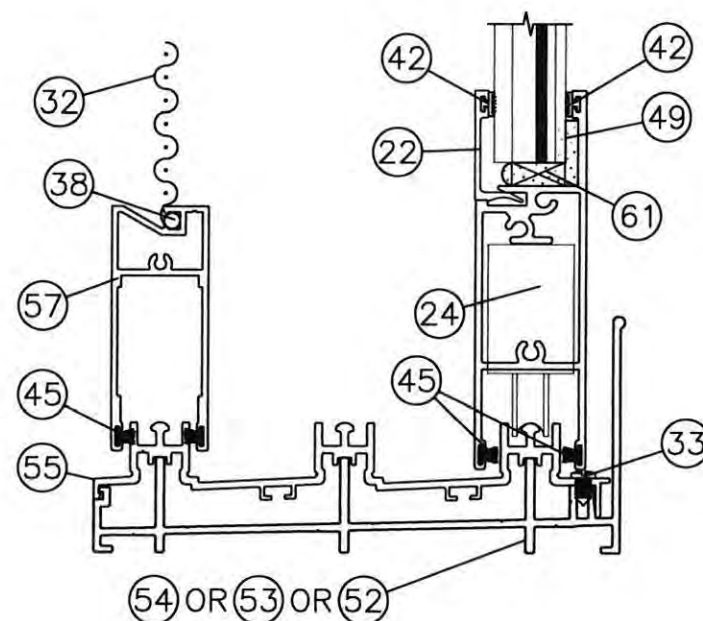
EXTERIOR



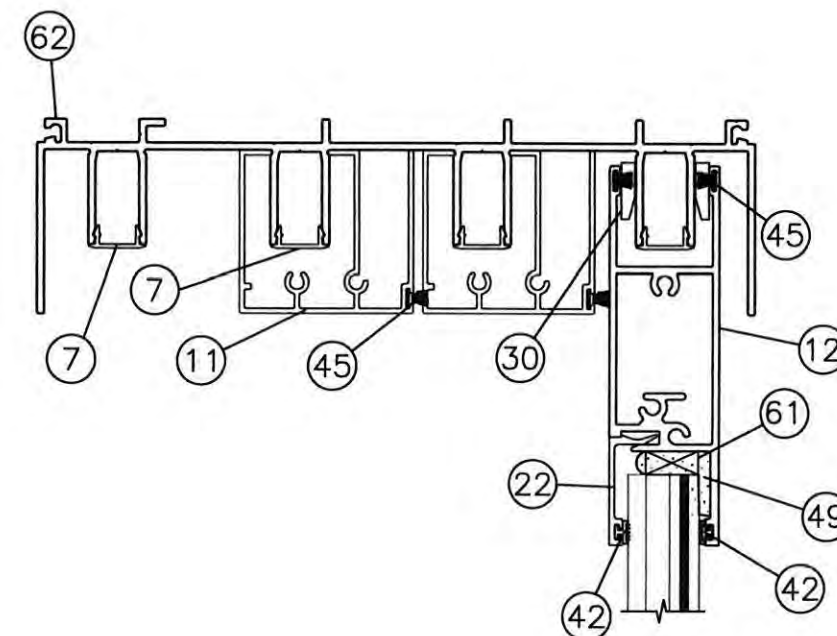
A
7 VERTICAL CROSS SECTION
2 TRACK FRAME



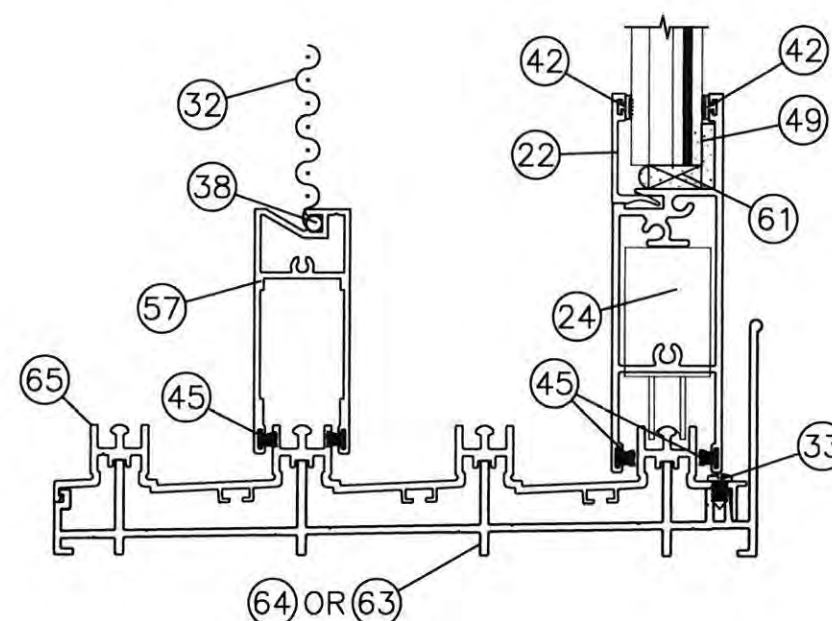
EXTERIOR




A
7 VERTICAL CROSS SECTION
3 TRACK FRAME
UNITS MAY BE INSTALLED WITHOUT SCREEN



EXTERIOR

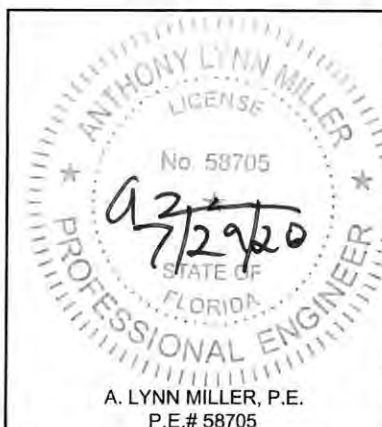


A
7 VERTICAL CROSS SECTION
4 TRACK FRAME
UNITS MAY BE INSTALLED WITHOUT SCREEN

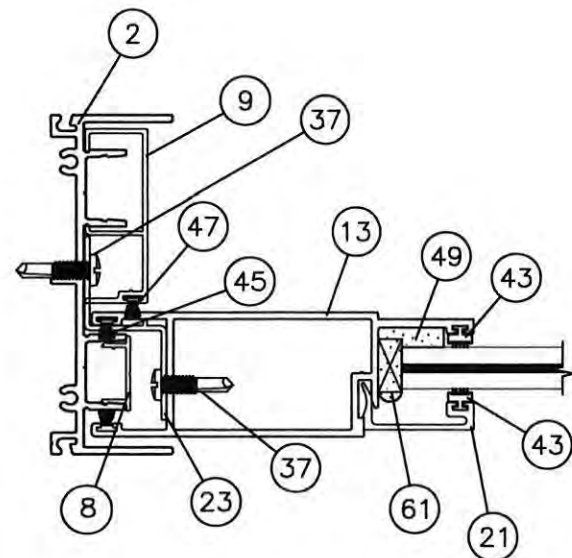
PRODUCT REVISED
as complying with the Florida
Building Code
NOA-No. 20-0806.04
Expiration Date 06/06/2023
By 
Miami-Dade Product Control

NO CHANGES THIS SHEET.

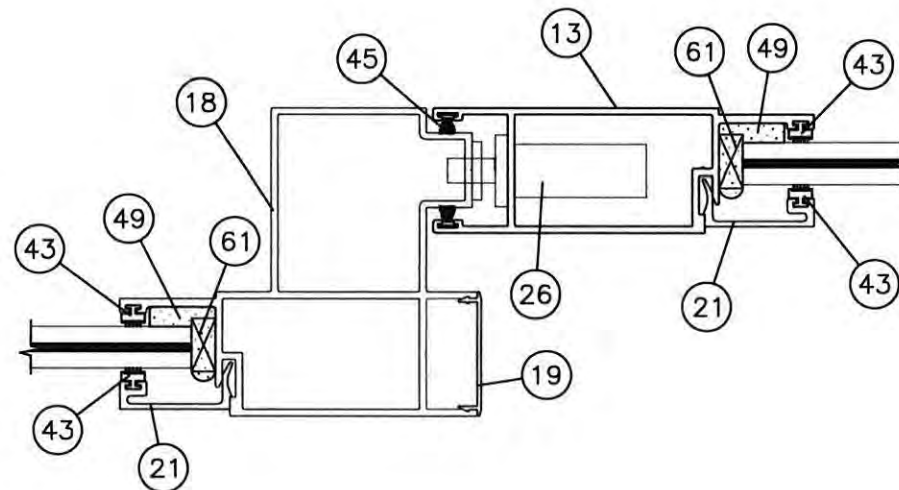
<div>WinDoor®</div> <div>INCORPORATED</div> <div>WINDOOR INCORPORATED 104 TRIPLE DIAMOND BLVD. NORTH VENICE, FL 34275 (833) 554-5432</div>	PREPARED BY A. LYNN MILLER 1070 TECHNOLOGY DRIVE NORTH VENICE, FL 34275 (941) 480-1600 REGISTRATION #29296			
	ALUMINUM SLIDING GLASS DOOR (LM)			
	SECTION VIEWS - VERTICAL		By Drawn	ERIN KOSS
	SGD7000A	7 OF 16	DWG No.	7000 HP LMI NOA
	Sheet		Rev.	
	Access Desc		Date	
Title		07/22/20		



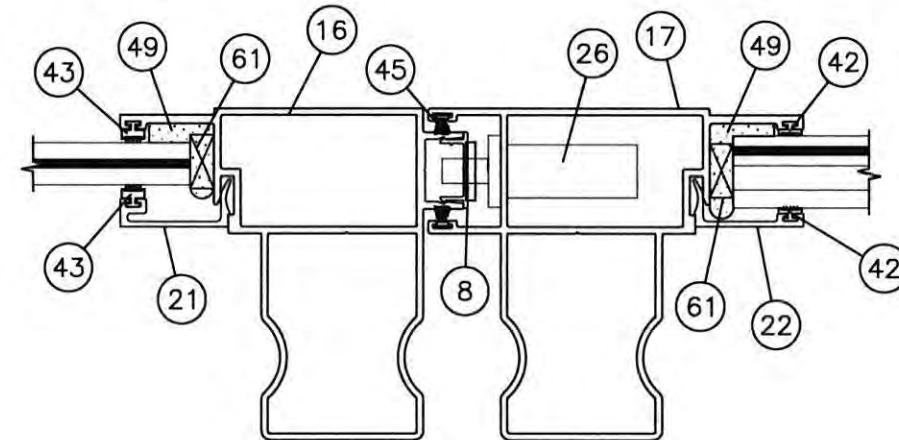
FOR ILLUSTRATION ONLY
FOR INSTALLATION SEE DETAILS IN SHEETS 12-14



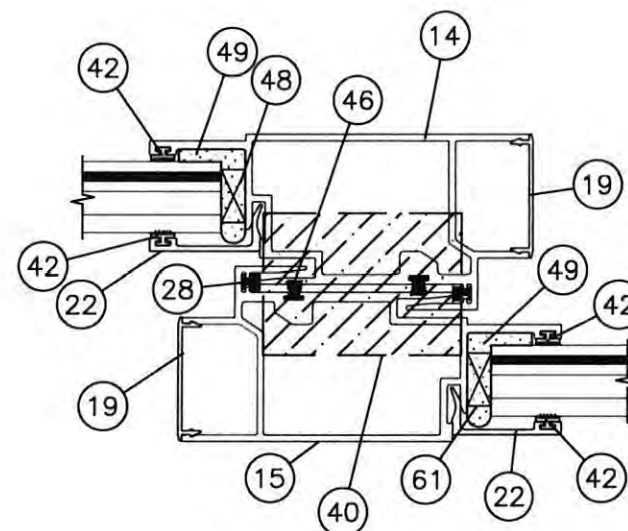
B
8 FIXED PANEL JAMB
SEE SHEET 6 FOR Z-CLIP
ATTACHMENT DETAIL



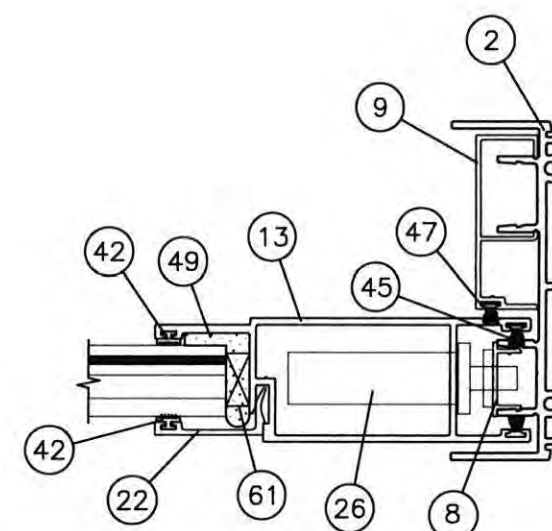
C
8 FIXED PANEL INTERLOCK



D
8 LOCK STILES



E
8 INTERLOCK



F
8 OPERABLE PANEL JAMB

HORIZONTAL CROSS SECTIONS
2 TRACK NON-REINFORCED

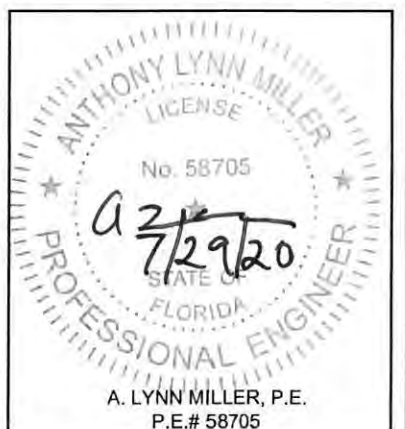
EXTERIOR
↓

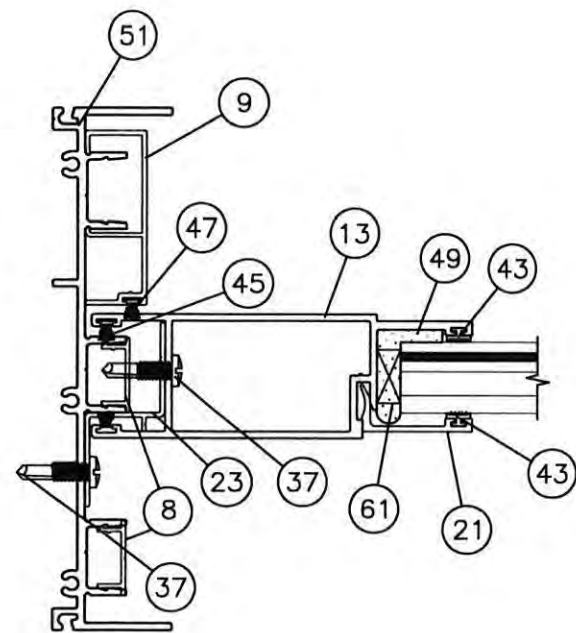
FOR ILLUSTRATION ONLY
FOR INSTALLATION SEE DETAILS IN SHEETS 12-14

PRODUCT REVISED
as complying with the Florida
Building Code
NOA-No. 20-0806.04
Expiration Date 06/06/2023
By *[Signature]*
Miami-Dade Product Control

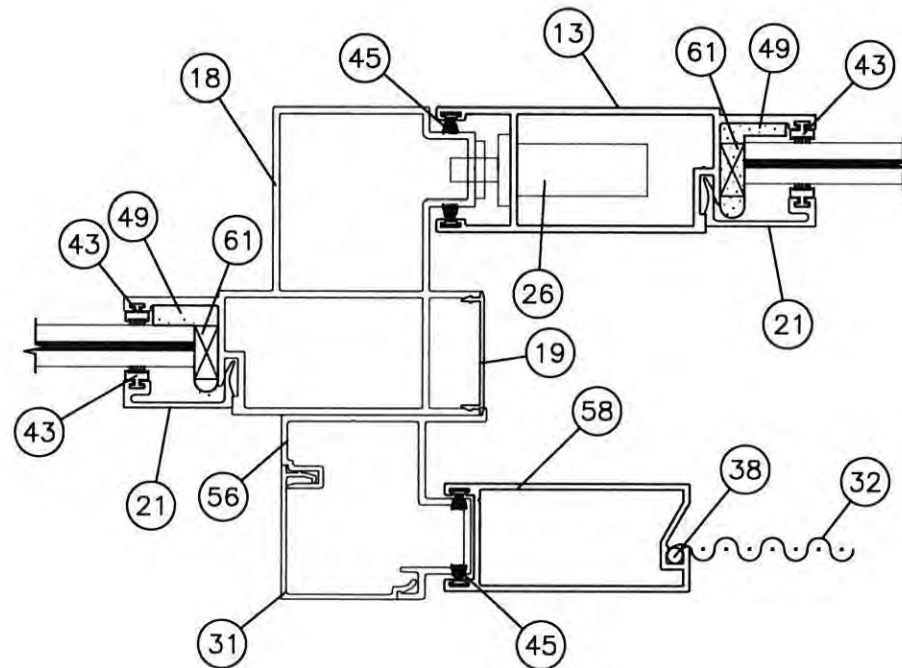
Revision: NO CHANGES THIS SHEET.

PREPARED BY A. LYNN MILLER 1070 TECHNOLOGY DRIVE NORTH VENICE, FL 34275 (941) 480-1600 REGISTRATION #29296	07/22/20 Date	ERIN KOSS By	7000 HP LMI NOA No.	8 OF 16 Sheet	SGD7000A Series	SECTION VIEWS - HORIZONTAL 2T Desc.	ALUMINUM SLIDING GLASS DOOR (LM) Title
WINDOOR® INCORPORATED WINDOOR INCORPORATED 104 TRIPLE DIAMOND BLVD. NORTH VENICE, FL 34275 (833) 554-5432							

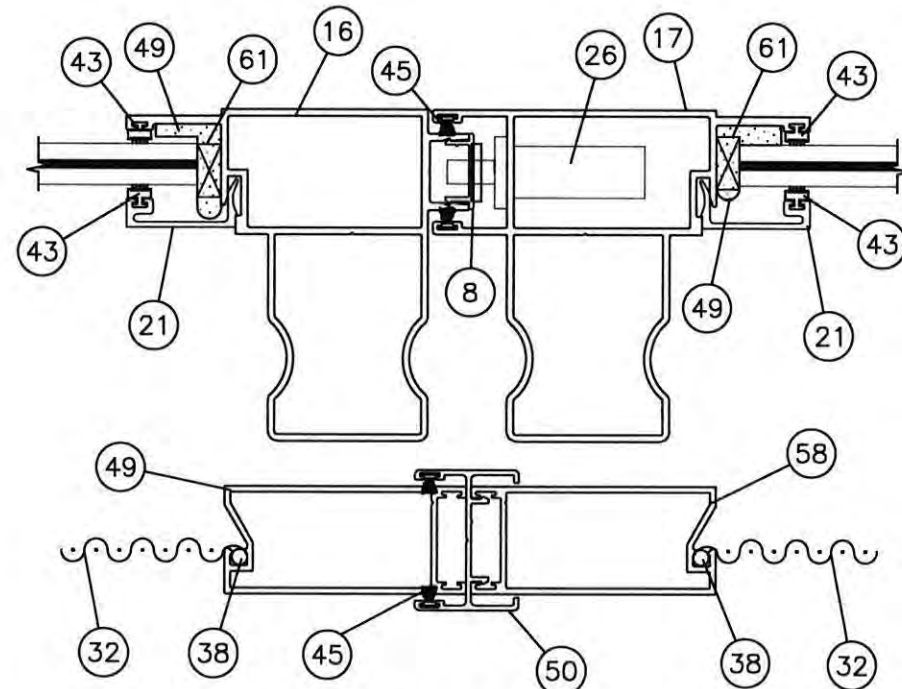




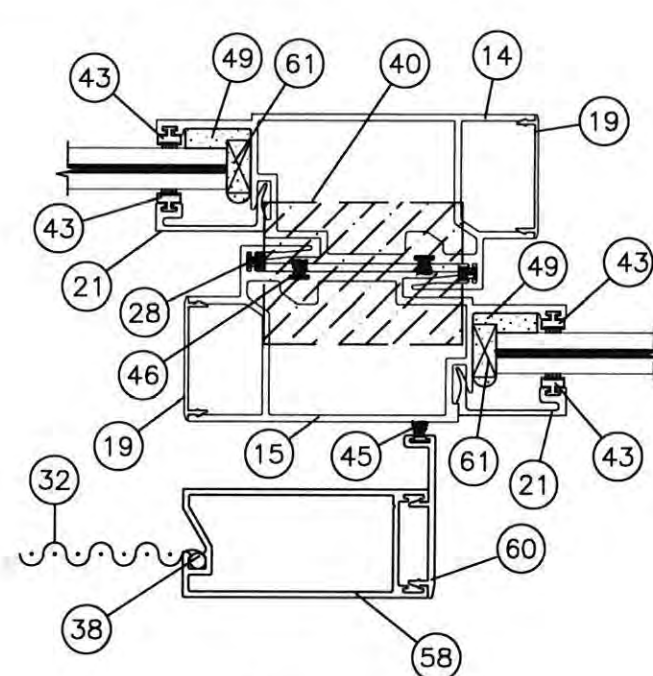
B
10 FIXED PANEL JAMB
SEE SHEET 6 FOR Z-CLIP
ATTACHMENT DETAIL



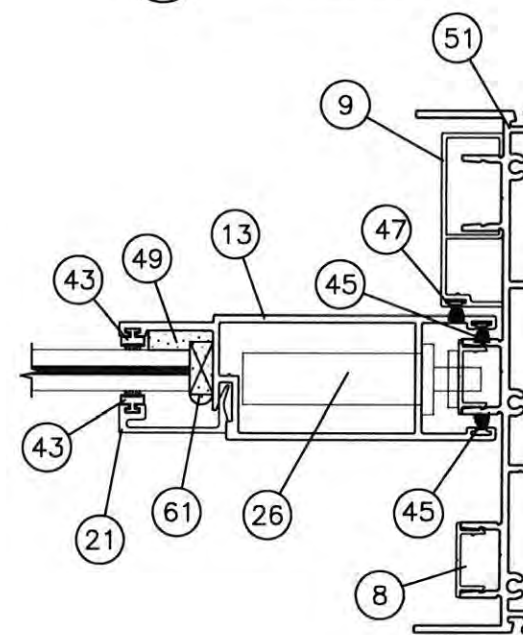
C
10 FIXED PANEL INTERLOCK



D
10 LOCK STILES



E
10 INTERLOCK




F
10 OPERABLE PANEL JAMB

HORIZONTAL CROSS SECTIONS
3 TRACK NON-REINFORCED
UNITS MAY BE INSTALLED WITHOUT SCREEN

EXTERIOR
↓

FOR ILLUSTRATION ONLY
FOR INSTALLATION SEE DETAILS IN SHEETS 12-14

PRODUCT REVISED
as complying with the Florida
Building Code
NOA-No. 20-0806.04
Expiration Date 06/06/2023
By 
Miami-Dade Product Control

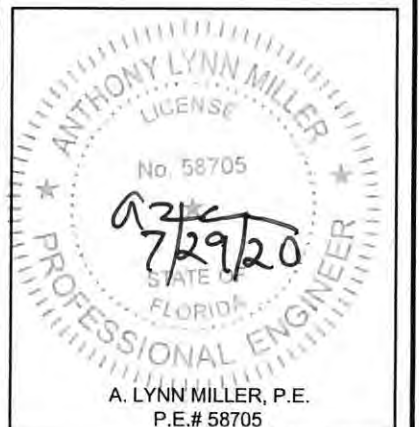
NO CHANGES THIS SHEET.

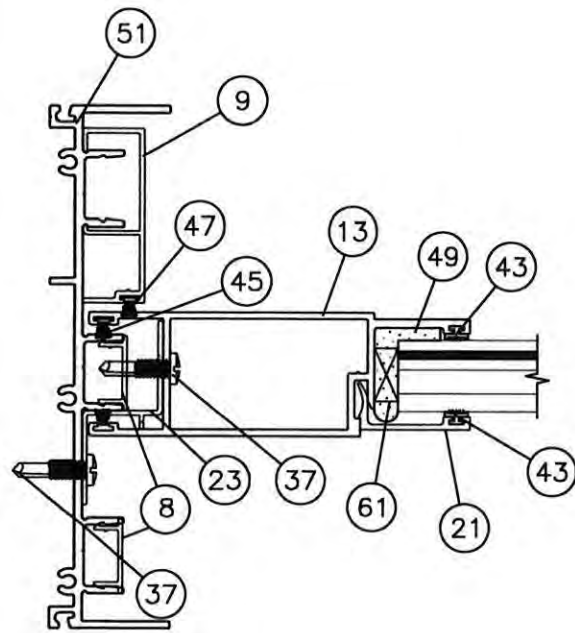
Revision:

PREPARED BY A. LYNN MILLER
1070 TECHNOLOGY DRIVE
NORTH VENICE, FL 34275
(941) 480-1600
REGISTRATION #29296

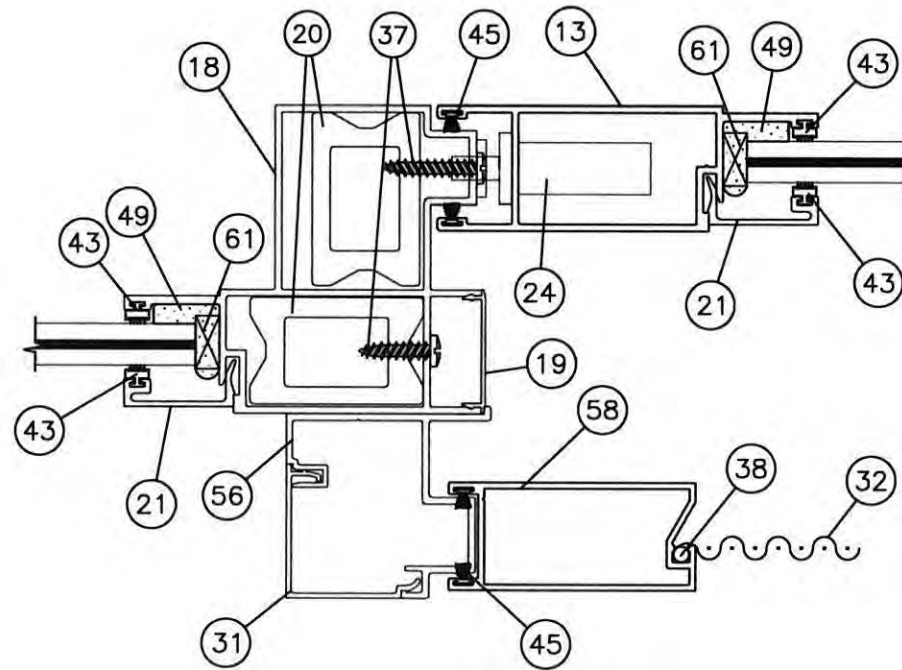
WINDOOR®
INCORPORATED
104 TRIPLE DIAMOND BLVD.
NORTH VENICE, FL 34275
(833) 554-5432

Series	Desc	Title	By	Date	Rev.
SGD7000A	SECTION VIEWS - HORIZONTAL 3T	ALUMINUM SLIDING GLASS DOOR (LM)	ERIN KOSS	07/22/20	
10 OF 16	DWG	No.	7000 HP LMI NOA		

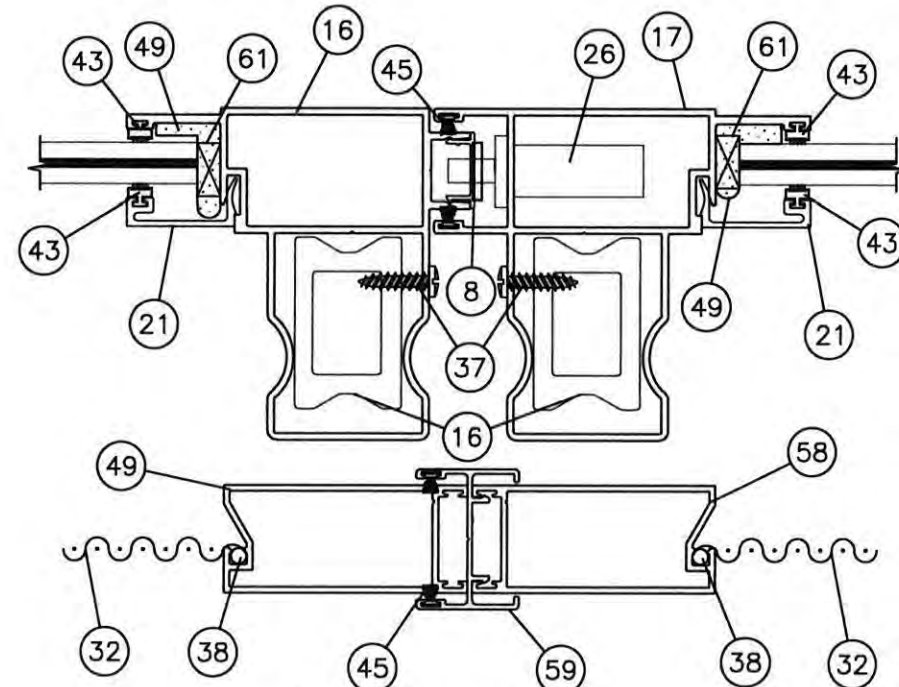




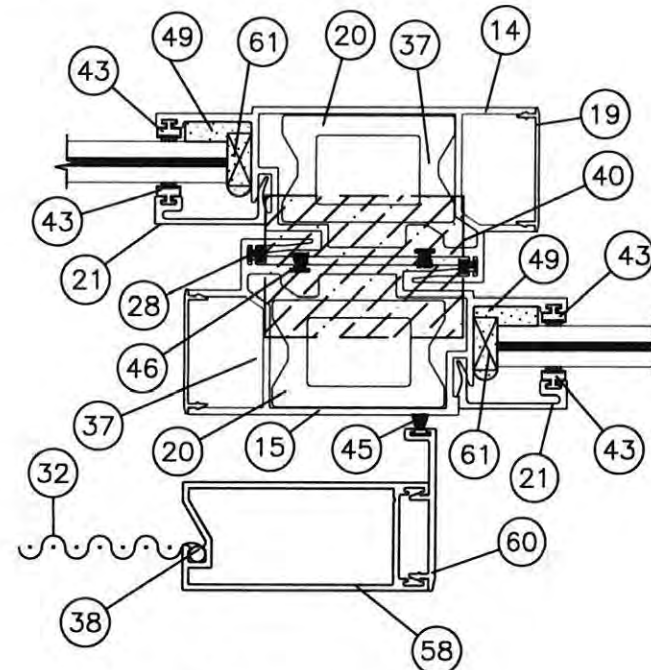
B
11 **FIXED PANEL JAMB**
SEE SHEET 6 FOR Z-CLIP
ATTACHMENT DETAIL



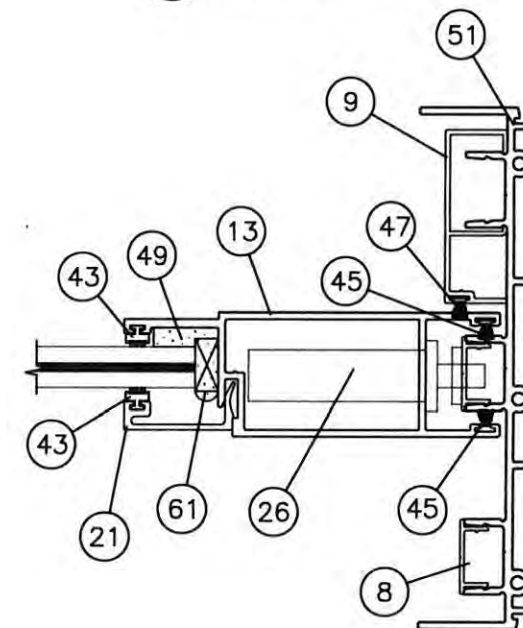
C
11 **FIXED PANEL INTERLOCK**



D
11 **LOCK STILES**

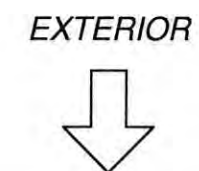


E
11 **INTERLOCK**



F
11 **OPERABLE PANEL JAMB**

HORIZONTAL CROSS SECTIONS
3 TRACK REINFORCED
UNITS MAY BE INSTALLED WITHOUT SCREEN



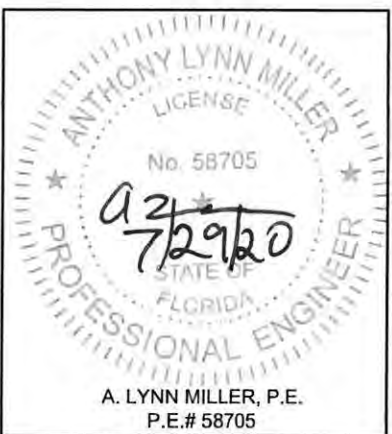
FOR ILLUSTRATION ONLY
FOR INSTALLATION SEE DETAILS IN SHEETS 12-14

PRODUCT REVISED
as complying with the Florida
Building Code
NOA-No. 20-0806.04
Expiration Date 06/06/2023
By
Miami-Dade Product Control

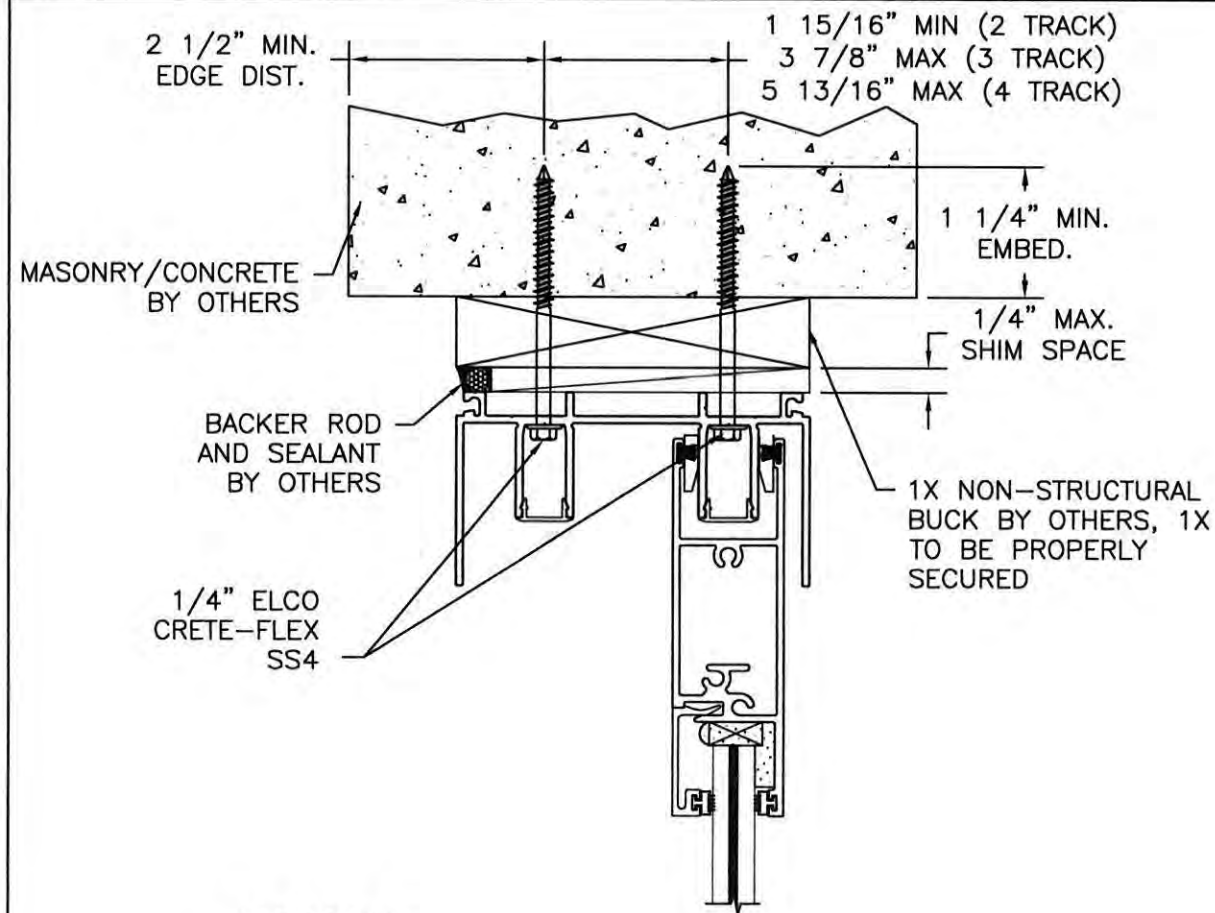
NO CHANGES THIS SHEET.

Revision:

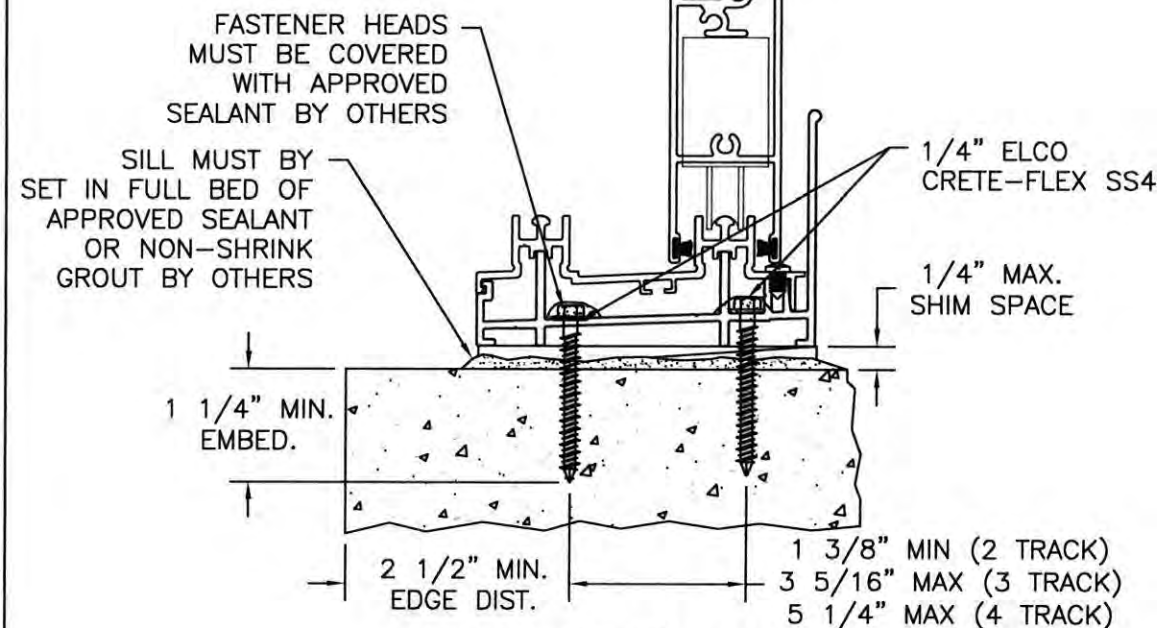
WINDOOR® INCORPORATED		PREPARED BY A. LYNN MILLER 1070 TECHNOLOGY DRIVE NORTH VENICE, FL 34275 (941) 480-1600 REGISTRATION #29296	
WINDOOR INCORPORATED 104 TRIPLE DIAMOND BLVD. NORTH VENICE, FL 34275 (833) 554-5432		ALUMINUM SLIDING GLASS DOOR (LM)	
Title		Date	07/22/20
Section Desc.		By	ERIN KOSS
SGD7000A		7000 HP LMI NOA	
Sheet		DWG No.	Rev.
11 OF 16			



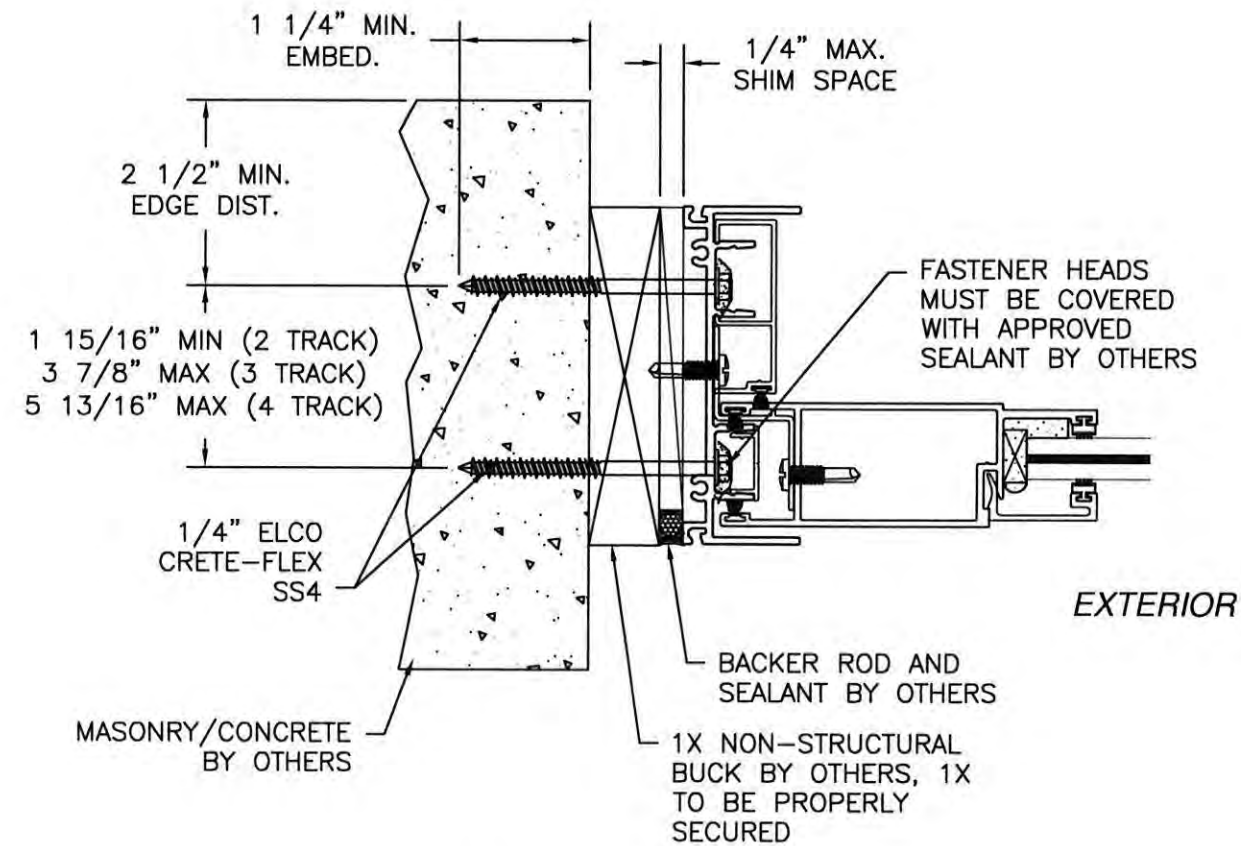
A. LYNN MILLER, P.E.
P.E.# 58705



EXTERIOR




2 TRACK VERTICAL SECTION
MASONRY/CONCRETE INSTALLATION
2 TRACK SHOWN 3 & 4 TRACK SIMILAR
SEE ANCHOR LAYOUT SHEET 5



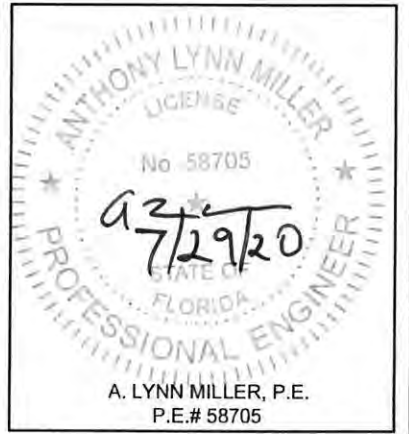
2 TRACK FRAME JAMB
1X BUCK TO MASONRY/CONCRETE INSTALLATION,
2TRACK SHOWN 3 & 4 TRACK SIMILAR
SEE ANCHOR LAYOUT SHEET 5

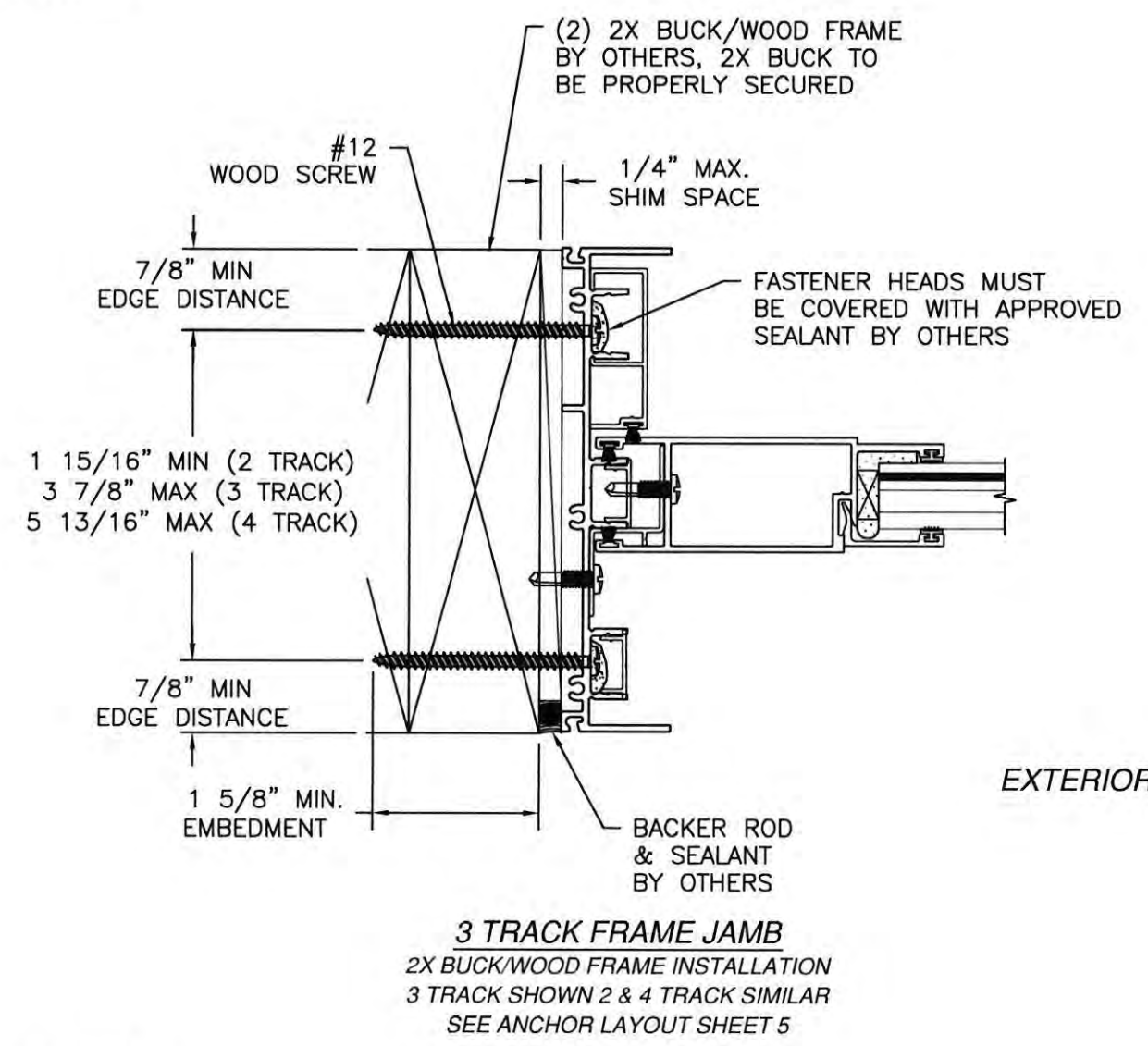
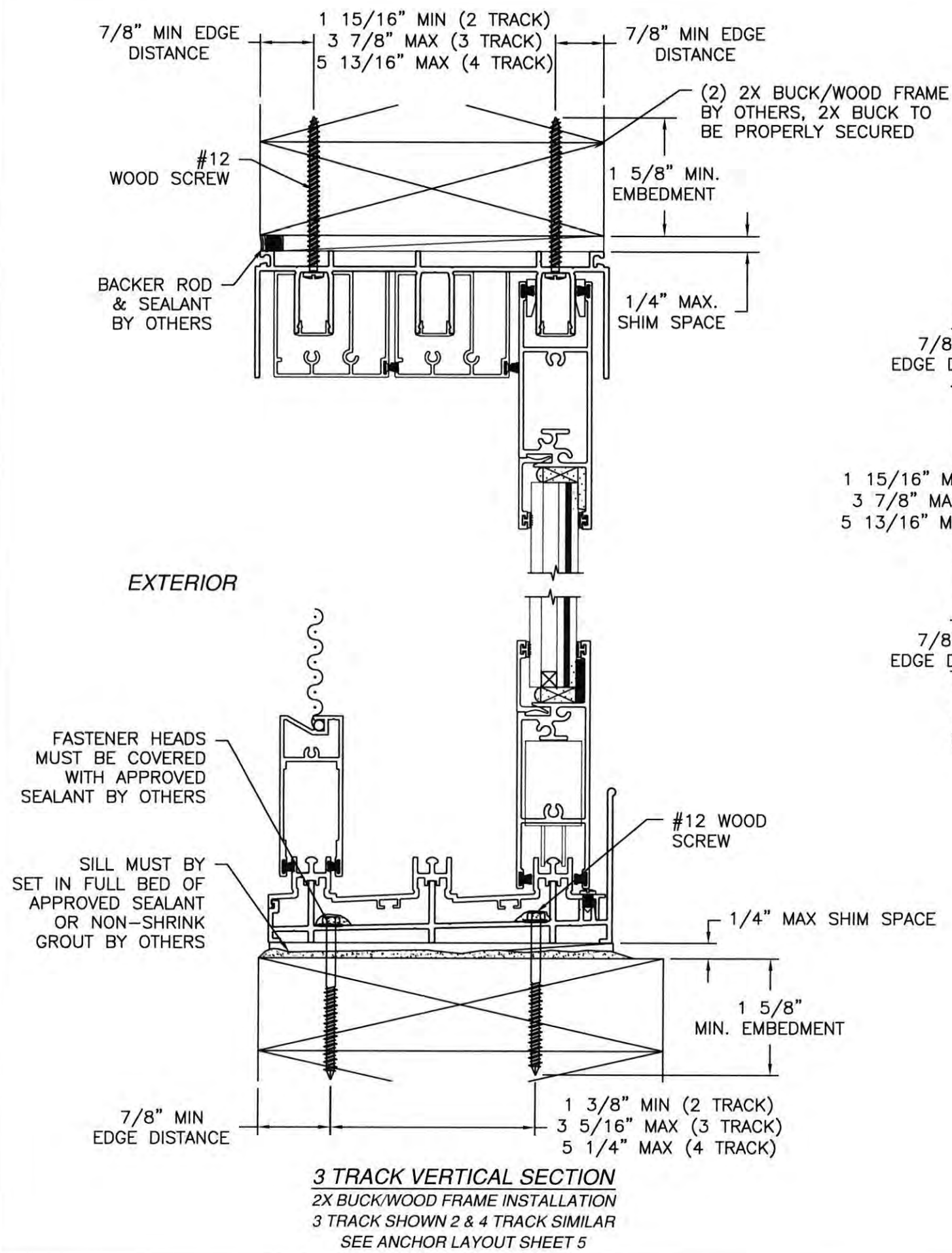
- NOTES:
1. INTERIOR AND EXTERIOR FINISHES, BY OTHERS, NOT SHOWN FOR CLARITY.
 2. PERIMETER AND JOINT SEALANT BY OTHERS TO BE DESIGNED IN ACCORDANCE WITH ASTM E2112.

PRODUCT REVISED
as complying with the Florida
Building Code
NOA-No. 20-0806.04
Expiration Date 06/06/2023
By 
Miami-Dade Product Control

Revision: NO CHANGES THIS SHEET.

WINDOOR® INCORPORATED WINDOOR INCORPORATED 104 TRIPLE DIAMOND BLVD. NORTH VENICE, FL 34275 (833) 554-5432	PREPARED BY A. LYNN MILLER 1070 TECHNOLOGY DRIVE NORTH VENICE, FL 34275 (941) 480-1600 REGISTRATION #29296	ALUMINUM SLIDING GLASS DOOR (LM)	INSTALLATION DETAILS-MASONRY	ERIN KOSS	07/22/20	Rev.
						Date
						By
						No.
SGD7000A	12 OF 16	7000 HP LMI NOA	DWG	7000 HP LMI NOA	07/22/20	Rev.
						Date
						By
						No.



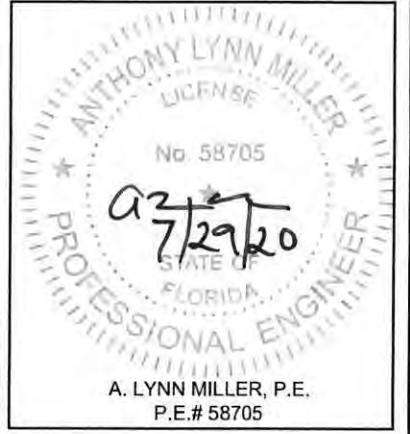


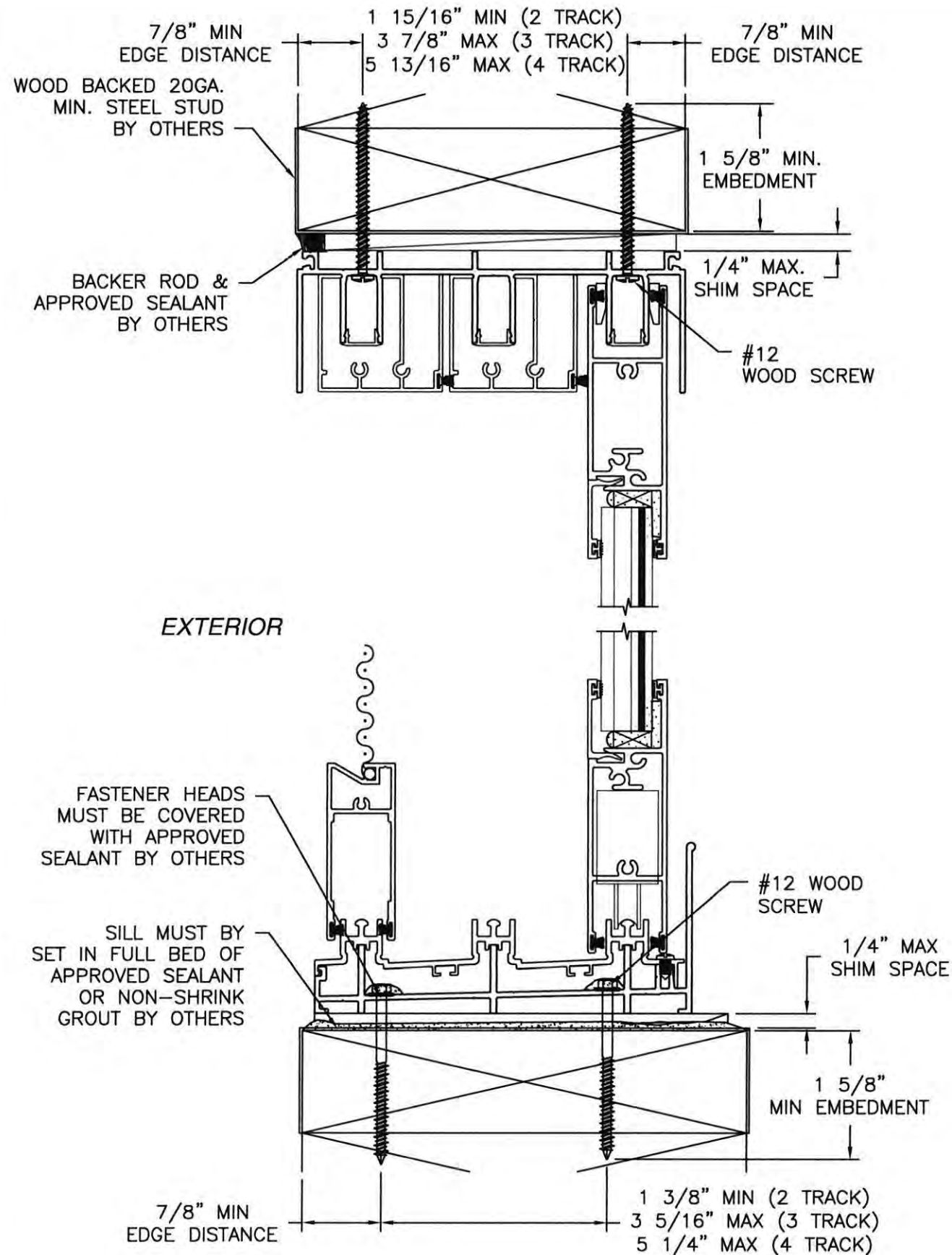
- NOTES:
1. INTERIOR AND EXTERIOR FINISHES, BY OTHERS, NOT SHOWN FOR CLARITY.
 2. PERIMETER AND JOINT SEALANT BY OTHERS TO BE DESIGNED IN ACCORDANCE WITH ASTM E2112.

PRODUCT REVISED
as complying with the Florida
Building Code
NOA-No. 20-0806.04
Expiration Date 06/06/2023
By
Miami-Dade Product Control

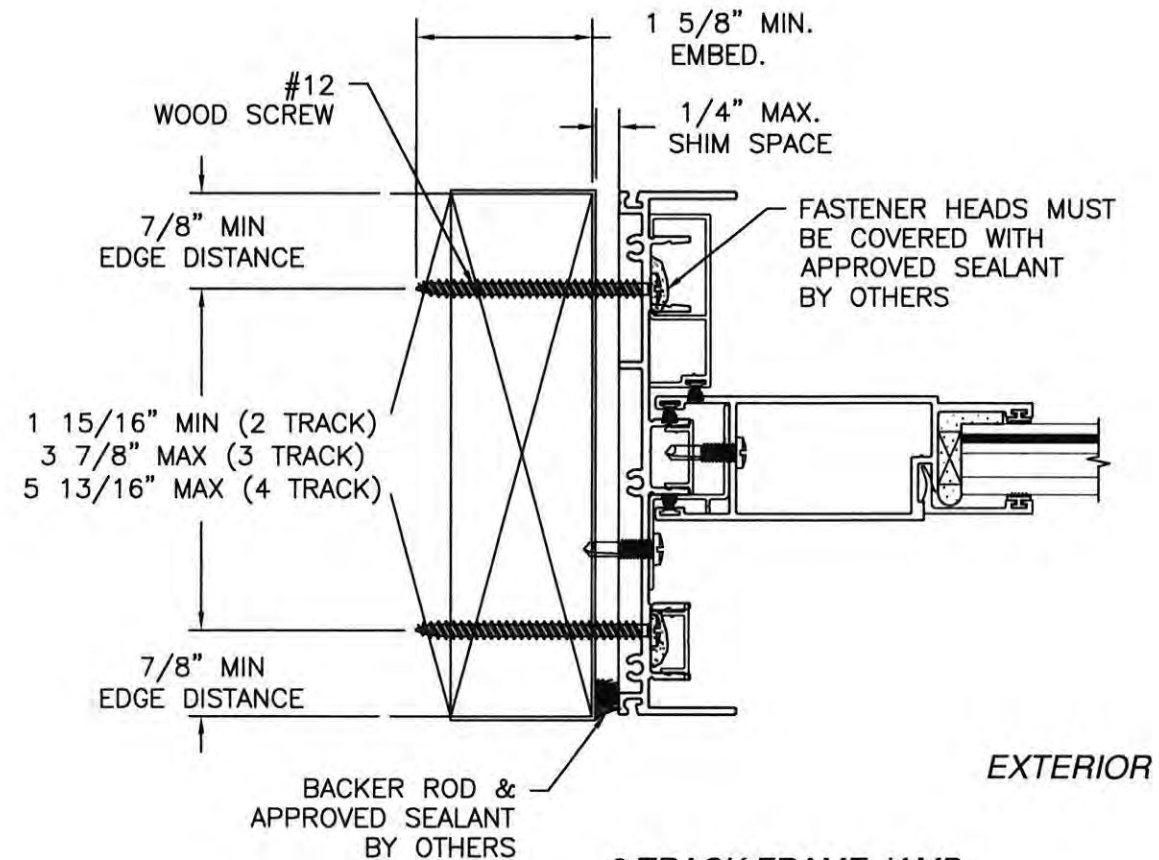
Revision: NO CHANGES THIS SHEET.

PREPARED BY A. LYNN MILLER 1070 TECHNOLOGY DRIVE NORTH VENICE, FL 34275 (941) 480-1600 REGISTRATION #29296	07/22/20 Date	ERIN KOSS By	7000 HP LMI NOA No.	Rev.
WINDOOR® INCORPORATED WINDOOR INCORPORATED 104 TRIPLE DIAMOND BLVD. NORTH VENICE, FL 34275 (833) 554-5432	ALUMINUM SLIDING GLASS DOOR (LM)	INSTALLATION DETAILS - WOOD	13 OF 16 Sheet	SGD7000A Series





3 TRACK VERTICAL SECTION
WOOD BACKED 20GA. STEEL STUD INSTALLATION
3 TRACK SHOWN 2 & 4 TRACK SIMILAR
SEE ANCHOR LAYOUT SHEET 5



3 TRACK FRAME JAMB
WOOD BACKED 20GA. STEEL STUD INSTALLATION
3 TRACK SHOWN 2 & 4 TRACK SIMILAR
SEE ANCHOR LAYOUT SHEET 5

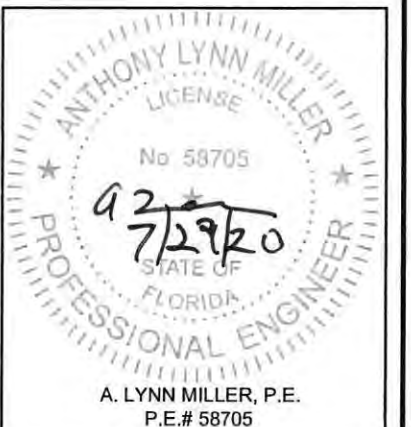
NOTES:

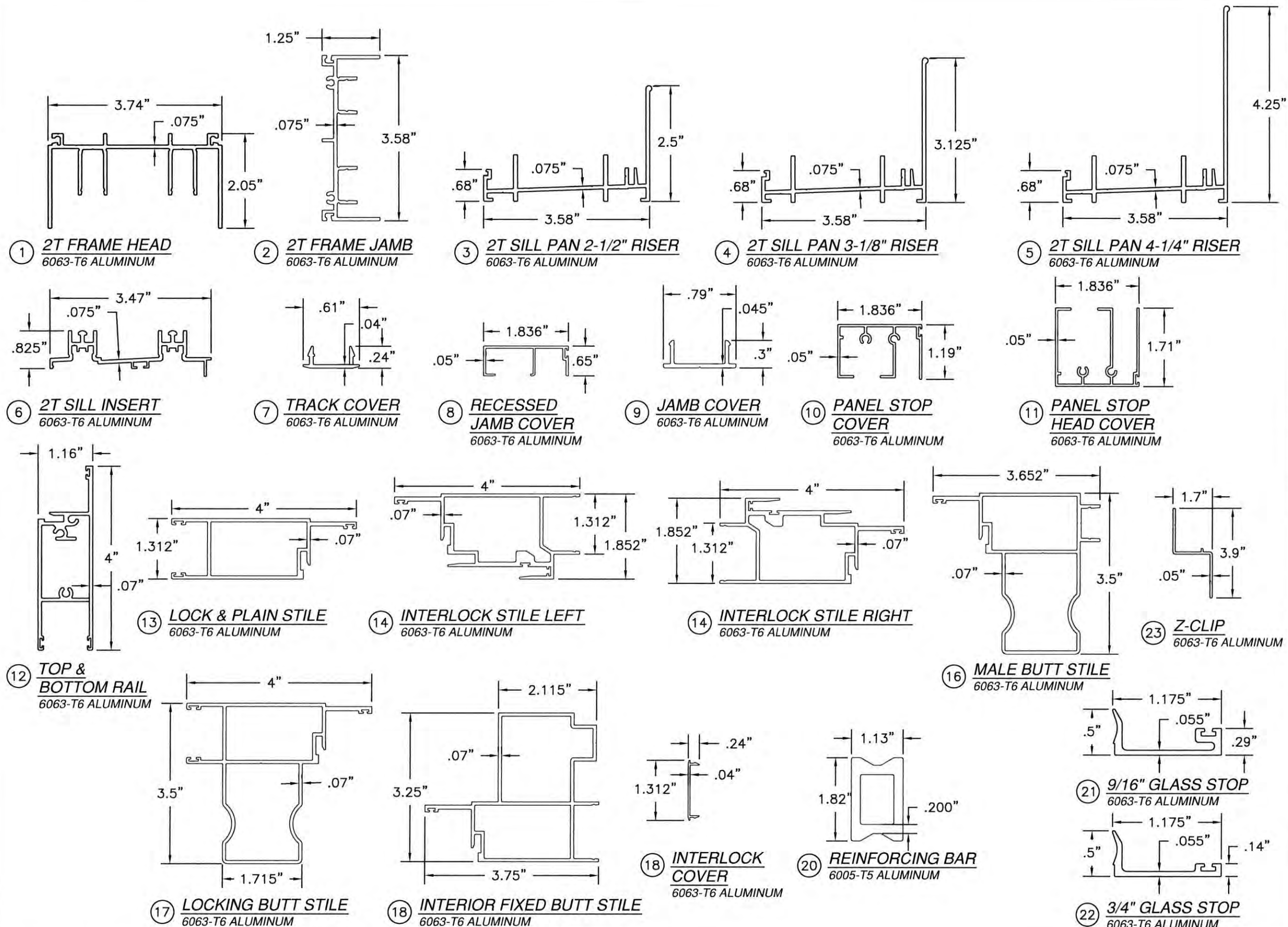
1. INTERIOR AND EXTERIOR FINISHES, BY OTHERS, NOT SHOWN FOR CLARITY.
2. PERIMETER AND JOINT SEALANT BY OTHERS TO BE DESIGNED IN ACCORDANCE WITH ASTM E2112.

PRODUCT REVISED
as complying with the Florida Building Code
NOA-No. 20-0806.04
Expiration Date 06/06/2023
By
Miami-Dade Product Control

NO CHANGES THIS SHEET.

PREPARED BY A. LYNN MILLER 1070 TECHNOLOGY DRIVE NORTH VENICE, FL 34275 (941) 480-1600 REGISTRATION #29296	07/22/20 Date	ERIN KOSS By	7000 HP LMI NOA No.	14 OF 16 Sheet	SGD7000A Series Desc. Title

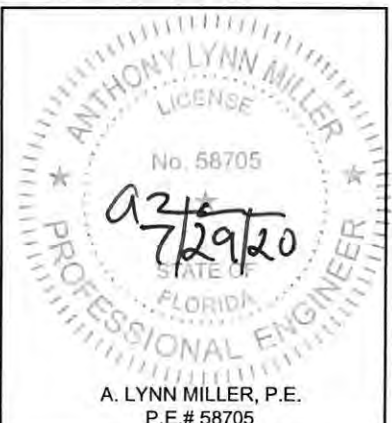


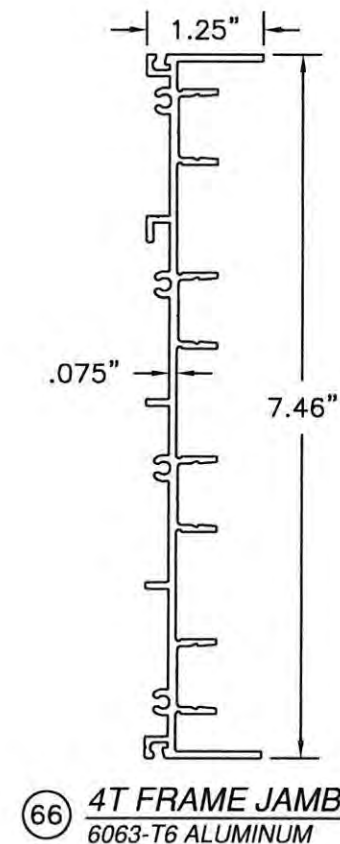
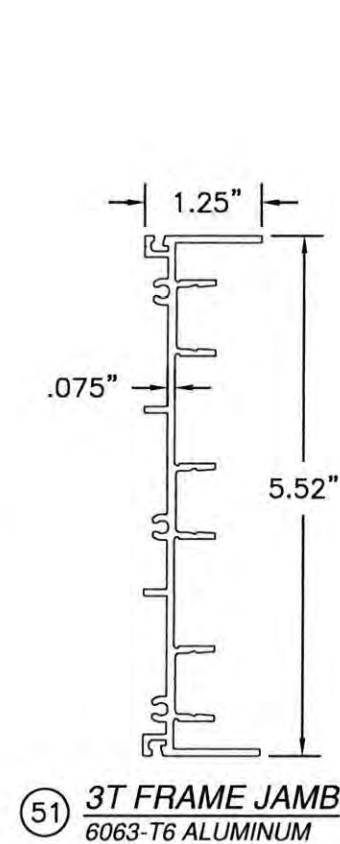
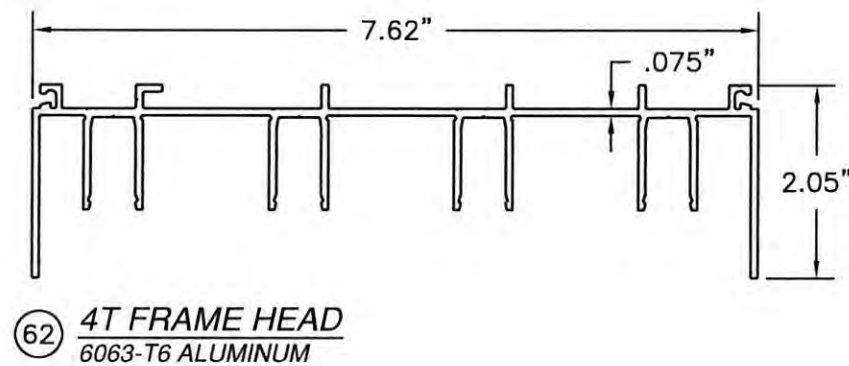
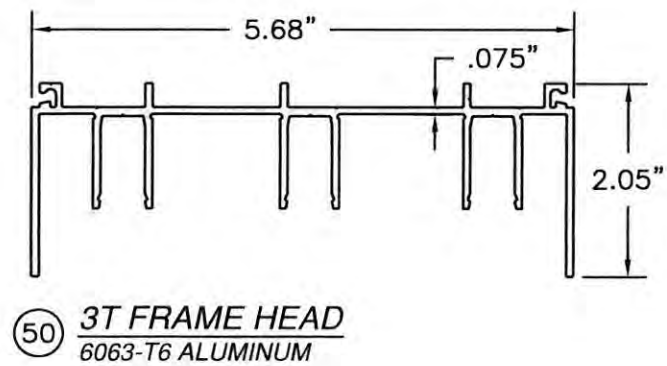
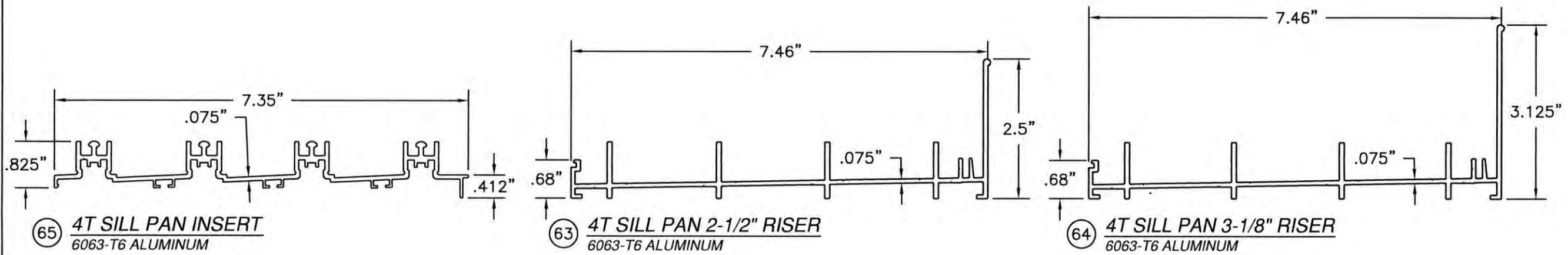
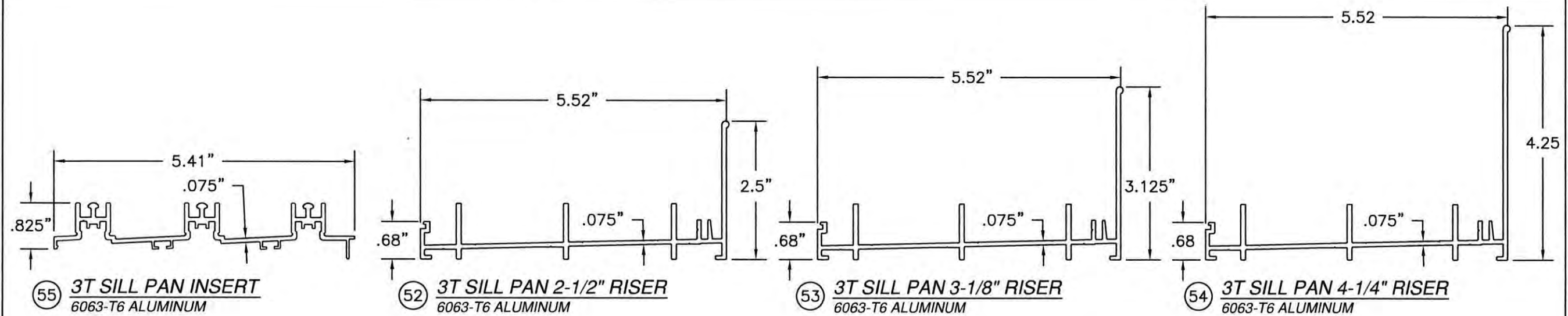


PRODUCT REVISED
as complying with the Florida
Building Code
NOA-No. 20-0806.04
Expiration Date 06/06/2023
By
Miami-Dade Product Control

NO CHANGES THIS SHEET.

PREPARED BY A. LYNN MILLER 1070 TECHNOLOGY DRIVE NORTH VENICE, FL 34275 (941) 480-1600 REGISTRATION #29296	ALUMINUM SLIDING GLASS DOOR (LM)	EXTRUSIONS SGD7000A	15 OF 16	DWG No. 7000 HP LM NOA	Rev
					By
					Date
					07/22/20





PRODUCT REVISED
as complying with the Florida
Building Code
NOA-No. 20-0806.04
Expiration Date 06/06/2023
By
Miami-Dade Product Control

NO CHANGES THIS SHEET.

PREPARED BY A. LYNN MILLER 1070 TECHNOLOGY DRIVE NORTH VENICE, FL 34275 (941) 480-1600 REGISTRATION #29296	07/22/20 Date	ERIN KOSS By	7000 HP LMI NOA Rev.
WinDoor® INCORPORATED WINDOOR INCORPORATED 104 TRIPLE DIAMOND BLVD. NORTH VENICE, FL 34275 (833) 554-5432	ALUMINUM SLIDING GLASS DOOR (LM)	EXTRUSIONS	16 OF 16 Sheet
SCD7000A	Title	Desc.	No.

A. LYNN MILLER, P.E.
P.E.# 58705