



DEPARTMENT OF REGULATORY AND ECONOMIC RESOURCES (RER)
BOARD AND CODE ADMINISTRATION DIVISION

NOTICE OF ACCEPTANCE (NOA)

MIAMI-DADE COUNTY
PRODUCT CONTROL SECTION
11805 SW 26 Street, Room 208
Miami, FL 33175
T (786) 315-2590 F (786) 315-2599
www.miamidade.gov/economy

WinDoor, Inc.
104 Triple Diamond Blvd.
North Venice, FL 34275

SCOPE:

This NOA is being issued under the applicable rules and regulations governing the use of construction materials. The documentation submitted has been reviewed and accepted by Miami-Dade County RER - Product Control Section to be used in Miami Dade County and other areas where allowed by the Authority Having Jurisdiction (AHJ).

This NOA shall not be valid after the expiration date stated below. The Miami-Dade County Product Control Section (In Miami-Dade County) and/or the AHJ (in areas other than Miami-Dade County) reserve the right to have this product or material tested for quality assurance purposes. If this product or material fails to perform in the accepted manner, the manufacturer will incur the expense of such testing and the AHJ may immediately revoke, modify, or suspend the use of such product or material within their jurisdiction. RER reserves the right to revoke this acceptance, if it is determined by Miami-Dade County Product Control Section that this product or material fails to meet the requirements of the applicable building code.

This product is approved as described herein, and has been designed to comply with the Florida Building Code, including the High Velocity Hurricane Zone.

DESCRIPTION: Series "9066 Thermally Broken" Aluminum Awning Window – L.M.I.

APPROVAL DOCUMENT: Drawing No. **9066-LMI-NOA**, titled "Series AW9066T Thermally Broken" Aluminum Awning (LMI)", sheets 1 through 12 of 12, dated 08/11/2020, prepared, signed and sealed by Anthony Lynn Miller, P.E., bearing the Miami-Dade County Product Control Revision stamp with the Notice of Acceptance number and expiration date by the Miami-Dade County Product Control Section.

MISSILE IMPACT RATING: Large and Small Missile Impact Resistant

LABELING: Each unit shall bear a permanent label with the manufacturer's name or logo, city, state, model/series, and following statement: "Miami-Dade County Product Control Approved", unless otherwise noted herein.

RENEWAL of this NOA shall be considered after a renewal application has been filed and there has been no change in the applicable building code negatively affecting the performance of this product.

TERMINATION of this NOA will occur after the expiration date or if there has been a revision or change in the materials, use, and/or manufacture of the product or process. Misuse of this NOA as an endorsement of any product, for sales, advertising or any other purposes shall automatically terminate this NOA. Failure to comply with any section of this NOA shall be cause for termination and removal of NOA.

ADVERTISEMENT: The NOA number preceded by the words Miami-Dade County, Florida, and followed by the expiration date may be displayed in advertising literature. If any portion of the NOA is displayed, then it shall be done in its entirety.

INSPECTION: A copy of this entire NOA shall be provided to the user by the manufacturer or its distributors and shall be available for inspection at the job site at the request of the Building Official.

This NOA **revises NOA# 17-1219.15** and consists of this page 1 and evidence pages E-1, E-2 and E-3, as well as approval document mentioned above.

The submitted documentation was reviewed by **Sifang Zhao, P.E.**



S.Z.
11/19/2020

NOA No. 20-0826.12
Expiration Date: August 08, 2023
Approval Date: November 19, 2020
Page 1

NOTICE OF ACCEPTANCE: EVIDENCE SUBMITTED

1. EVIDENCE SUBMITTED UNDER PREVIOUS NOA's

A. DRAWINGS

1. Manufacturer's die drawings and sections. *(Submitted under NOA# 13-0129.26)*
2. Drawing No. 08-01892, titled "Series 9066 Awning Window - Large Missile Impact", sheets 1 through 12 of 12, dated 01/14/13, with revision G dated 12/04/17, prepared by manufacturer, signed and sealed by Luis R. Lomas, P.E.

B. TESTS

1. Test reports on: 1) Air Infiltration Test, per FBC, TAS 202-94
2) Uniform Static Air Pressure Test, Loading per FBC, TAS 202-94
3) Water Resistance Test, per FBC, TAS 202-94
4) Large Missile Impact Test per FBC, TAS 201-94
5) Cyclic Wind Pressure Loading per FBC, TAS 203-94
6) Forced Entry Test, per FBC 2411.3.2.1, and TAS 202-94
along with marked-up drawings and installation diagram of a thermally broken aluminum awning window, prepared by National Certified Testing Laboratories, Inc., Test Report No. **NCTL-210-3847-2**, dated 12/14/12, signed and sealed by Gerard J. Ferrara, P.E.
(Submitted under NOA# 13-0129.26)

C. CALCULATIONS

1. Anchor calculations and structural analysis, complying with **FBC 6th edition (2017)**, dated 12/04/17, prepared, signed and sealed by Luis R. Lomas, P.E.
(Submitted under NOA# 17-1219.15)
2. Glazing complies with **ASTM E1300-04**

D. QUALITY ASSURANCE

1. Miami-Dade Department of Regulatory and Economic Resources (RER)

E. MATERIAL CERTIFICATIONS

1. NOA No. **17-1114.14** issued to **Kuraray America, Inc.** for their "**Trosifol® Ultraclear, clear and color PVB Glass Interlayer**" expiring on 07/08/2019.
2. NOA No. **17-0808.02** issued to **Kuraray America, Inc.** for their "**SentryGlas® (Clear and White) Glass Interlayers**" dated 12/28/2017, expiring on 07/04/2023.
3. Test Report No. **ATI-61261.01-106-18**, prepared by Architectural Testing, Inc., dated 12/13/05, revised dated 01/04/06, issued to Technoform, for their I-Strut Thermal Barrier plastic per **ASTM D635-03** "Standard Test Method for Rate of Burning and/ or Extent and Time of Burning of Plastics in a Horizontal Position" and **ASTM D2843-99** "Standard Test Method for the Density of Smoke from the Burning Decomposition of Plastics", signed and sealed by Allen N. Reeves, P.E.
(Submitted under NOA# 13-0129.26)



Sifang Zhao, P.E.
Product Control Examiner
NOA No. 20-0826.12
Expiration Date: August 08, 2023
Approval Date: November 19, 2020

NOTICE OF ACCEPTANCE: EVIDENCE SUBMITTED

E. MATERIAL CERTIFICATIONS (CONTINUED)

4. Test Report No. **ETC-08-1043-20974.0**, prepared by ETC Laboratories, Inc., dated 07/01/08, issued to Technoform, for their I-Strut Thermal Barrier Plastic PA 66 GF25 per **ASTM D1929-96** (2001) "Standard Test Method for Ignition Properties of Plastics", signed by Gurijinder Dliami, Dir. *(Submitted under NOA# 13-0129.26)*
5. Test Report No. **ETC-07-1043-19094.0**, prepared by ETC Laboratories, Inc., dated 02/18/08, issued to Technoform Bautech N.A., Inc., for their 18.6mm Flat I-Strut Thermal Barrier/ **ETC07021** per **ASTM D638-03** "4500 exposed Xenon Arch" & tensile strength **ASTM D638-03** "Tensile Strength" and per **ASTMD G26-96** "Practice for Operating Light-Exposure Apparatus (Xenon-Arc Type) With and Without Water for Exposure of Nonmetallic Materials", dated 03/06/08, signed and sealed by Joseph Labora Doldan, P.E. *(Submitted under NOA# 13-0129.26)*
6. Technoform Bautech N.A., Inc. Part No. **968600** 18.6mm Flat I-Strut Thermal Barrier Plastic PA 66 GF25 complying with **ASTM D3418-03** "Standard Test Method for Transition Temperatures and Enthalpies of Fusion and Crystallization of Polymers by Differential Scanning Calorimetric", **ASTM D792-03** "Standard Test Methods for Density and Specific Gravity (Relative Density) of Plastics by Displacement", **ASTM D2240-05** "Standard Test Method for Rubber Property—Durometer Hardness" and **ASTM D638-03** "4500 exposed Xenon Arch & Tensile Strength". *(Submitted under NOA# 13-0129.26)*

F. STATEMENTS

1. Statement letter of conformance, complying with **FBC 6th edition (2017)**, and of no financial interest, dated 12/04/17, issued, signed and sealed by Luis R. Lomas, P.E.
2. Laboratory compliance letter for Test Report No. **NCTL-210-3847-2**, issued by National Certified Testing Laboratories, Inc., dated 12/14/12, signed and sealed by Gerard J. Ferrara, P.E. *(Submitted under NOA# 13-0129.26)*

G. OTHERS

1. Notice of Acceptance No. **15-0723.02**, issued to WinDoor, Inc. for their Series "9066" Thermally Broken Aluminum Awning Window – L.M.I., approved on 12/31/15 and expiring on 08/08/18.



Sifang Zhao, P.E.
Product Control Examiner
NOA No. 20-0826.12
Expiration Date: August 08, 2023
Approval Date: November 19, 2020

WinDoor, Inc.

NOTICE OF ACCEPTANCE: EVIDENCE SUBMITTED

2. NEW EVIDENCE SUBMITTED

A. DRAWINGS

1. Drawing No. 9066-LMI-NOA, titled "Series AW9066T Thermally Broken" Aluminum Awning (LMI)", sheets 1 through 12 of 12, dated 08/11/2020, prepared, signed and sealed by Anthony Lynn Miller, P.E.

B. TESTS

1. Test reports on:
 - 1) Air Infiltration Test, per FBC, TAS 202-94
 - 2) Uniform Static Air Pressure Test, Loading per FBC, TAS 202-94
 - 3) Water Resistance Test, per FBC, TAS 202-94
 - 4) Large Missile Impact Test per FBC, TAS 201-94
 - 5) Cyclic Wind Pressure Loading per FBC, TAS 203-94

along with marked-up drawings and installation diagram of WinDoor, Inc. representative units listed below and tested to qualify Dowsil 791 and Dowsil 983 silicones, per Proposal #19-1155TP.

Test Report	Product Name		Unit in TP	Signed and Sealed	Date
FTL 20-1078.1	WinDoor	PW3000 Aluminum Fixed Lite	11	Idalmis Ortega, P.E.	08/24/20
FTL 20-1078.2	WinDoor	HR9470 Thermally Broken Aluminum Horizontal Roller	12	Idalmis Ortega, P.E.	08/24/20
FTL 20-1078.3	WinDoor	SGD8100 Aluminum Sliding Glass Door	13	Idalmis Ortega, P.E.	08/24/20
FTL 20-1078.4	WinDoor	HR9470 Thermally Broken Aluminum Horizontal Roller	14	Idalmis Ortega, P.E.	08/24/20
FTL 20-1078.5	WinDoor	PW9020 Thermally Broken Aluminum Fixed Lite	15	Idalmis Ortega, P.E.	08/24/20
FTL 20-1078.6	WinDoor	PW9020 Thermally Broken Aluminum Fixed Lite	16	Idalmis Ortega, P.E.	08/24/20

C. CALCULATIONS

1. None.

D. QUALITY ASSURANCE

1. Miami-Dade Department of Regulatory and Economic Resources (RER).

E. MATERIAL CERTIFICATIONS

1. None.

F. STATEMENTS

1. Statement letter of conformance, of complying with FBC 6th Edition (2017), and FBC 7th Edition (2020), and of no financial interest, dated August 11, 2020, issued by manufacturer, signed and sealed by Anthony Lynn Miller, P.E.
2. Notification of Successor Engineer for manufacturer's NOA document per **Section 61G15-27.001** of the **Florida Administrative Code**, notifying original engineer that the successor engineer is assuming full professional and legal responsibility for all engineering documents pertaining to this NOA, dated August 11, 2020, signed and sealed by Anthony Lynn Miller, P.E.
3. Proposal No. 19-1155 TP issued by the Product Control Section, dated January 10, 2020, signed by Ishaq Chanda, P.E.

G. OTHERS

1. This NOA revises NOA #17-1219.15, expiring on 08/08/2023.



Sifang Zhao, P.E.
Product Control Examiner
NOA No. 20-0826.12
Expiration Date: August 08, 2023
Approval Date: November 19, 2020


NOTES:

1. THE PRODUCT SHOWN HEREIN IS DESIGNED AND MANUFACTURED TO COMPLY WITH REQUIREMENTS OF THE FLORIDA BUILDING CODE 6TH EDITION (2017) AND 7TH EDITION (2020), INCLUDING THE HVHZ.
2. WOOD FRAMING, 2X WOOD BUCK, 1X WOOD BUCK AND MASONRY OPENING TO BE DESIGNED AND ANCHORED TO PROPERLY TRANSFER ALL LOADS TO STRUCTURE. FRAMING AND MASONRY OPENING IS THE RESPONSIBILITY OF THE ARCHITECT OR ENGINEER OF RECORD. 2X WOOD BUCK TO BE PROPERLY SECURED.
3. 1X BUCK OVER MASONRY/CONCRETE IS OPTIONAL.
4. WHERE SHIM OR BUCK THICKNESS IS LESS THAN 1-1/2" WINDOW UNITS MUST BE ANCHORED THROUGH THE FRAME IN ACCORDANCE WITH MANUFACTURER'S PUBLISHED INSTALLATION INSTRUCTIONS. ANCHORS SHALL BE SECURELY FASTENED DIRECTLY INTO MASONRY, CONCRETE OR OTHER STRUCTURAL SUBSTRATE MATERIAL.
5. WHERE WOOD BUCK THICKNESS IS 1-1/2" OR GREATER, BUCK SHALL BE SECURELY FASTENED TO MASONRY, CONCRETE OR OTHER STRUCTURAL SUBSTRATE. WINDOW UNITS MAY BE ANCHORED THROUGH FRAME TO SECURED WOOD BUCK IN ACCORDANCE WITH MANUFACTURER'S PUBLISHED INSTALLATION INSTRUCTIONS.
6. WHERE 1X BUCK IS NOT USED DISSIMILAR MATERIALS MUST BE SEPARATED WITH APPROVED COATING OR MEMBRANE. SELECTION OF COATING OR MEMBRANE IS THE RESPONSIBILITY OF THE ARCHITECT OR ENGINEER OF RECORD.
7. BUCKS SHALL EXTEND BEYOND WINDOW INTERIOR FACE SO THAT FULL FRAME SUPPORT IS PROVIDED.
8. FOR FIN INSTALLATION SHIM AS NEEDED. FOR FRAME INSTALLATION SHIM AS REQUIRED AT EACH ANCHOR LOCATION WITH LOAD BEARING SHIM. SHIM WHERE SPACE OF 1/16" OR GREATER OCCURS. MAXIMUM ALLOWABLE SHIM STACK TO BE 1/4".
9. SHIMS SHALL BE LOCATED, APPLIED AND MADE FROM MATERIALS AND THICKNESS CAPABLE OF SUSTAINING APPLICABLE LOADS.
10. WIND LOAD DURATION FACTOR Cd=1.6 WAS USED FOR WOOD ANCHOR CALCULATIONS.
11. FRAME MATERIAL: ALUMINUM 6063-T6.
12. UNITS MUST BE GLAZED PER ASTM E1300-04, SEE SHEET 4 FOR GLASS OPTIONS.
13. APPROVED IMPACT PROTECTIVE SYSTEM IS NOT REQUIRED FOR THIS PRODUCT IN WIND BORNE DEBRIS REGIONS.
14. FOR ANCHORING INTO WOOD FRAMING OR 2X BUCK USE #14 WOOD SCREWS WITH 7/8" MINIMUM EDGE DISTANCE AND SUFFICIENT LENGTH TO ACHIEVE A 1 7/16" MINIMUM EMBEDMENT INTO SUBSTRATE. LOCATE ANCHORS AS SHOWN IN ELEVATIONS AND FLUSH INSTALLATION DETAILS.
15. FOR ANCHORING INTO MASONRY/CONCRETE USE 1/4" CRETE-FLEX SS4 WITH SUFFICIENT LENGTH TO ACHIEVE A 1 1/4" MINIMUM EMBEDMENT INTO SUBSTRATE WITH 2 1/2" MINIMUM EDGE DISTANCE. LOCATE ANCHORS AS SHOWN IN ELEVATIONS AND FLUSH INSTALLATION DETAILS.
16. FOR ANCHORING INTO METAL STRUCTURE USE #14 SMS OR SELF DRILLING GRADE 5 SCREWS WITH 1" MINIMUM EDGE DISTANCE AND SUFFICIENT LENGTH TO ACHIEVE 3 THREADS MINIMUM BEYOND STRUCTURE INTERIOR WALL. LOCATE ANCHORS AS SHOWN IN ELEVATIONS AND FLUSH INSTALLATION DETAILS.
17. ALL FASTENERS TO BE CORROSION RESISTANT.
18. INSTALLATION ANCHORS SHALL BE INSTALLED IN ACCORDANCE WITH ANCHOR MANUFACTURER'S INSTALLATION INSTRUCTIONS AND ANCHORS SHALL NOT BE USED IN SUBSTRATES WITH STRENGTHS LESS THAN THE MINIMUM STRENGTH SPECIFIED BELOW:
- A. WOOD - MINIMUM SPECIFIC GRAVITY OF G=0.42
- B. CONCRETE - MINIMUM COMPRESSIVE STRENGTH OF 3,192 PSI.
- C. MASONRY - STRENGTH CONFORMANCE TO ASTM C-90, GRADE N, TYPE 1 (OR GREATER).
- D. METAL STRUCTURE: STEEL 18GA, 33KSI OR ALUMINUM 6063-T5 1/8" THICK MINIMUM
19. SEALANT DETAILS TO BE DESIGNED IN ACCORDANCE WITH ASTM E 2112. SEALANT DETAILS DESIGN ARE THE RESPONSIBILITY OF THE GENERAL CONTRACTOR, OR THE ARCHITECT OR ENGINEER OF RECORD.

CORNER CONSTRUCTION:

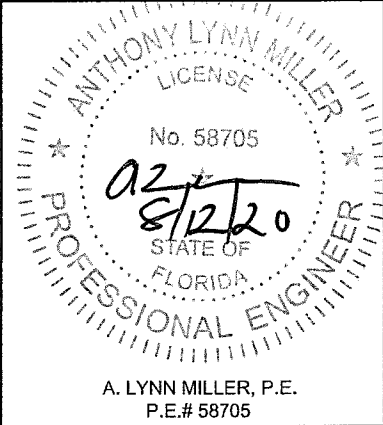
1. FRAME CORNERS ARE ASSEMBLED USING AN INTERIOR CORNER KEY (ITEM 23) AND AN EXTERIOR CORNER KEY (ITEM 24). SEE DETAILS IN SHEET 5.
2. SASH CORNERS ARE ASSEMBLED USING AN INTERIOR KEY (ITEM 22) AND AN EXTERIOR KEY (ITEM 23). SEE DETAILS IN SHEET 5.

TABLE OF CONTENTS	
SHEET NO.	DESCRIPTION
1	GENERAL NOTES
2-3	ELEVATIONS & CHARTS
4	BOM & GLAZING DETAILS
5	SECTION VIEWS
6-9	INSTALLATION DETAILS
10	EXTRUSIONS
11-12	HARDWARE LAYOUTS

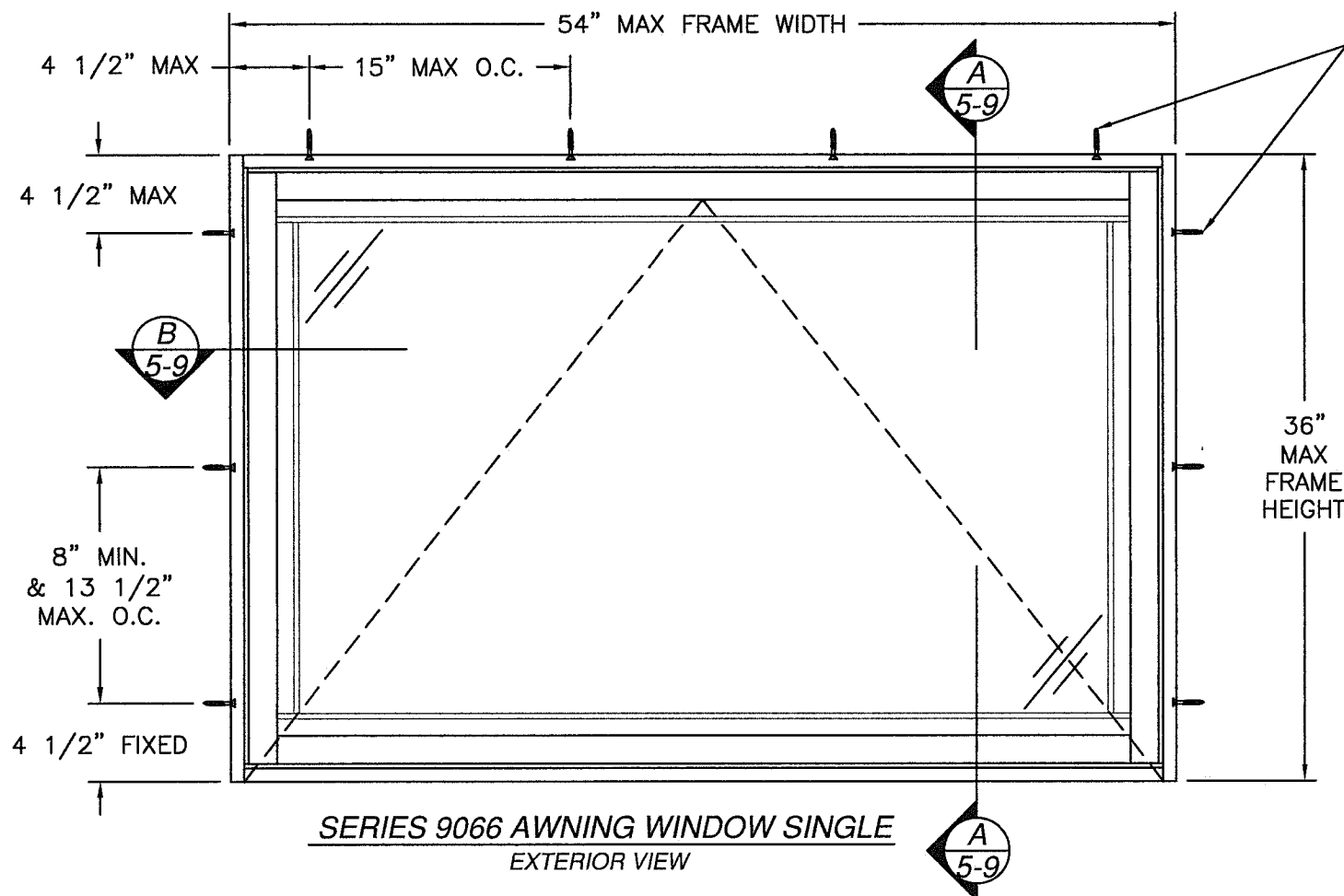
PRODUCT REVISED
as complying with the Florida
Building Code
NOA-No. 20-0826.12
Expiration Date 08/08/2023
By 
Miami-Dade Product Control

Revision: UPDATES FOR 2020 FBC.
UPDATED MANUFACTURING
ADDRESS.

PREPARED BY A. LYNN MILLER 1070 TECHNOLOGY DRIVE N. VENICE, FL 34275 (941) 480-1600 REGISTRATION #29296	08/11/20	Date	ERIN KOSS	By	9066-LMI-NOA	Rev.
WINDOOR® INCORPORATED WINDOOR INCORPORATED 104 TRIPLE DIAMOND BLVD. NORTH VENICE, FL 34275 (833) 554-5432	THERMALLY BROKEN ALUM. AWNING (LM)	GENERAL NOTES	1 OF 12	DWC	No.	Sheet
AW9066T		Series Desc. Title				



A. LYNN MILLER, P.E.
P.E.# 58705



ANCHORS TO BE
EQUALLY SPACED
FOR NUMBER OF
ANCHORS REQUIRED
REFER TO ANCHOR
CHARTS THIS SHEET

SERIES 9066 AWNING WINDOW SINGLE
EXTERIOR VIEW

CHART #1

AW9066 Single Window with PVB Interlayer (Glazing C & D)												
Maximum Design Pressure Capacity Chart (psf)												
Frame Height (in)	Frame Width (in)											
	24.0		30.0		36.0		42.0		48.0		54.0	
	Pos	Neg	Pos	Neg	Pos	Neg	Pos	Neg	Pos	Neg	Pos	Neg
18.0	90.0	90.0	90.0	90.0	90.0	90.0	90.0	90.0	90.0	90.0	90.0	90.0
24.0	90.0	90.0	90.0	90.0	90.0	90.0	90.0	90.0	90.0	90.0	90.0	90.0
30.0	90.0	90.0	90.0	90.0	90.0	90.0	90.0	90.0	90.0	90.0	90.0	90.0
36.0	90.0	90.0	90.0	90.0	90.0	90.0	90.0	90.0	90.0	90.0	90.0	90.0

CHART #2


AW9066 Single Window with PVB Interlayer (Glazing C & D)												
Number of Anchor Locations Required												
Frame Height (in)	Frame Width (in)											
	24.0		30.0		36.0		42.0		48.0		54.0	
	Head	Jamb	Head	Jamb	Head	Jamb	Head	Jamb	Head	Jamb	Head	Jamb
18.0	2	2	3	2	3	2	4	2	4	2	4	2
24.0	2	3	3	3	3	3	4	3	4	3	4	3
30.0	2	3	3	3	3	3	4	3	4	3	4	3
36.0	2	3	3	3	3	3	4	3	4	3	4	3

CHART #3

AW9066 Single Window with SG Interlayer (Glazing A & B)												
Maximum Design Pressure Capacity Chart (psf)												
Frame Height (in)	Frame Width (in)											
	24.0		30.0		36.0		42.0		48.0		54.0	
	Pos	Neg	Pos	Neg	Pos	Neg	Pos	Neg	Pos	Neg	Pos	Neg
18.0	100.0	150.0	100.0	150.0	100.0	150.0	100.0	150.0	100.0	150.0	100.0	150.0
24.0	100.0	150.0	100.0	150.0	100.0	150.0	100.0	150.0	100.0	150.0	100.0	150.0
30.0	100.0	150.0	100.0	150.0	100.0	150.0	100.0	149.3	100.0	139.6	100.0	132.9
36.0	100.0	150.0	100.0	150.0	100.0	150.0	100.0	140.0	100.0	128.0	100.0	120.0

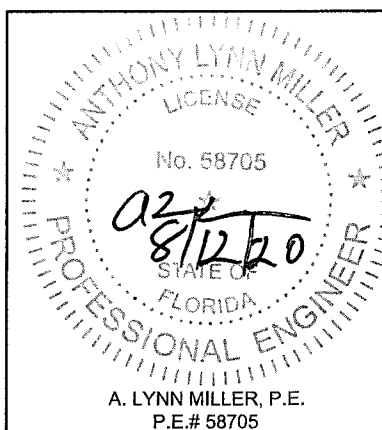
CHART #4

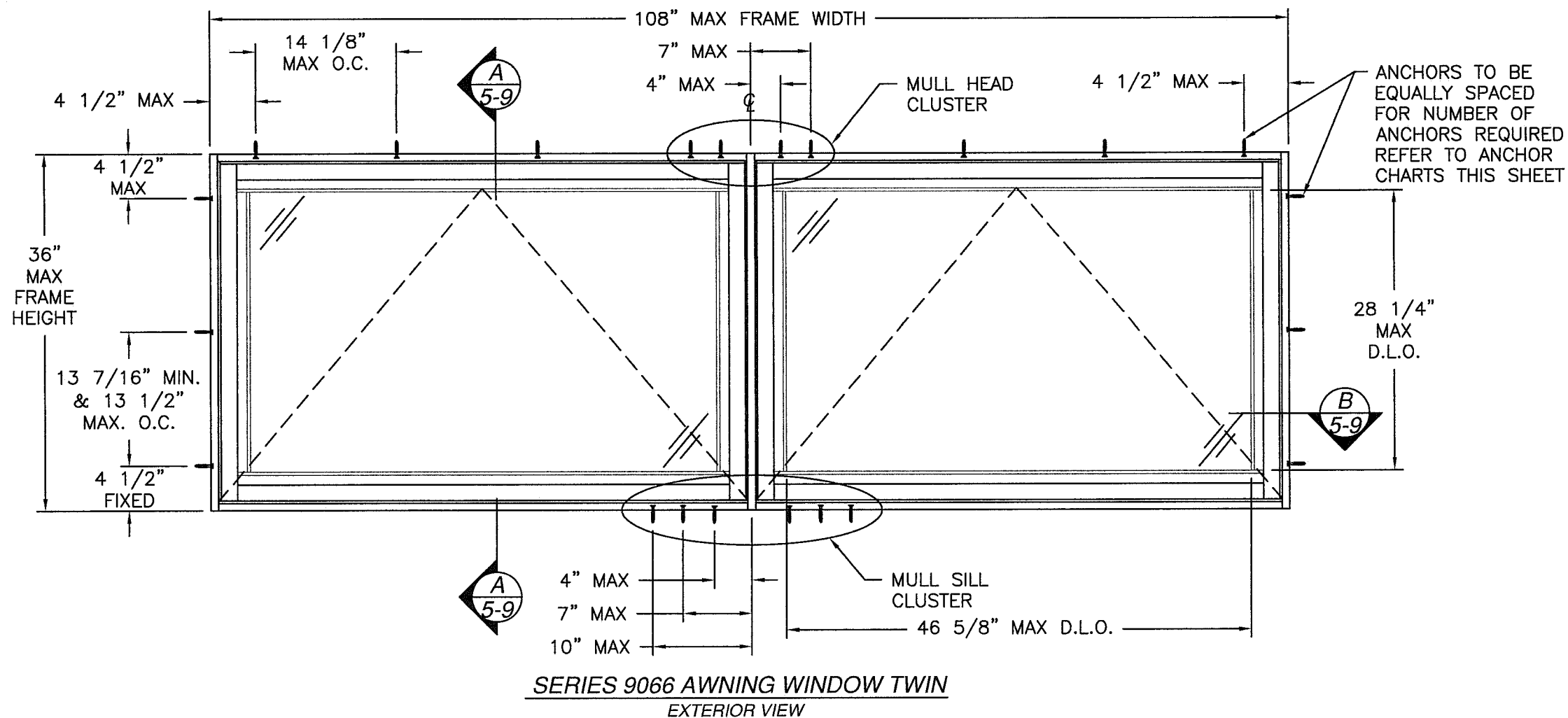
AW9066 Single Window with SG Interlayer (Glazing A & B)												
Number of Anchor Locations Required												
Frame Height (in)	Frame Width (in)											
	24.0		30.0		36.0		42.0		48.0		54.0	
	Head	Jamb	Head	Jamb	Head	Jamb	Head	Jamb	Head	Jamb	Head	Jamb
18.0	2	2	3	2	3	2	4	2	4	2	4	2
24.0	2	3	3	3	3	3	4	3	4	3	4	3
30.0	2	3	3	3	3	3	4	3	4	3	4	3
36.0	2	3	3	3	3	3	4	3	4	3	4	3

PRODUCT REVISED
as complying with the Florida
Building Code
NOA-No. 20-0826.12
Expiration Date 08/08/2023
By 
Miami-Dade Product Control

Revision: NO CHANGES THIS SHEET.

WINDOOR[®] INCORPORATED WINDOOR INCORPORATED 104 TRIPLE DIAMOND BLVD. NORTH VENICE, FL 34275 (833) 554-5432	PREPARED BY A. LYNN MILLER 1070 TECHNOLOGY DRIVE N. VENICE, FL 34275 (941) 480-1600 REGISTRATION #29296		Date	08/11/20	By	ERIN KOSS	Rev.	
	THERMALLY BROKEN ALUM. AWNING (LM)							
	ELEVATION & CHARTS - SINGLE							
	AW9066T		Sheet	2 OF 12	DWG No.	9066-LMI-NOA		





SERIES 9066 AWNING WINDOW TWIN
EXTERIOR VIEW

CHART #5

AW9066 Twin Window with PVB Interlayer (Glazing C & D)										
Maximum Design Pressure Capacity Chart (psf)										
Frame Height (in)	Frame Width (in)									
	60.0		72.0		84.0		96.0		108.0	
	Pos	Neg	Pos	Neg	Pos	Neg	Pos	Neg	Pos	Neg
18.0	90.0	90.0	90.0	90.0	90.0	90.0	90.0	90.0	90.0	90.0
24.0	90.0	90.0	90.0	90.0	90.0	90.0	90.0	90.0	90.0	90.0
30.0	90.0	90.0	90.0	90.0	90.0	90.0	90.0	90.0	90.0	90.0
36.0	90.0	90.0	90.0	90.0	90.0	90.0	90.0	90.0	90.0	90.0

CHART #7

AW9066 Twin Window with SG Interlayer (Glazing A & B)										
Maximum Design Pressure Capacity Chart (psf)										
Frame Height (in)	Frame Width (in)									
	60.0		72.0		84.0		96.0		108.0	
	Pos	Neg	Pos	Neg	Pos	Neg	Pos	Neg	Pos	Neg
18.0	100.0	150.0	100.0	150.0	100.0	150.0	100.0	150.0	100.0	150.0
24.0	100.0	150.0	100.0	150.0	100.0	150.0	100.0	150.0	100.0	150.0
30.0	100.0	150.0	100.0	150.0	100.0	150.0	100.0	150.0	100.0	150.0
36.0	100.0	123.4	100.0	120.0	100.0	120.0	100.0	120.0	100.0	120.0

CHART #6

AW9066 Twin Window with PVB Interlayer (Glazing C & D)																				
Number of Anchor Locations Required																				
Frame Height (in)	Frame Width (in)																			
	60.0				72.0				84.0				96.0				108.0			
	Head	Jamb	MHC	MSC	Head	Jamb	MHC	MSC	Head	Jamb	MHC	MSC	Head	Jamb	MHC	MSC	Head	Jamb	MHC	MSC
18.0	4	2	4	4	4	2	4	4	6	2	4	4	6	2	4	4	6	2	4	4
24.0	4	3	4	4	4	3	4	4	6	3	4	4	6	3	4	4	6	3	4	4
30.0	4	3	4	4	4	3	4	4	6	3	4	4	6	3	4	4	6	3	4	4
36.0	4	3	4	4	4	3	4	4	6	3	4	4	6	3	4	4	6	3	4	4

MHC = Mull Head Cluster MSC = Mull Sill Cluster

CHART #8

AW9066 Twin Window with SG Interlayer (Glazing A & B)																				
Number of Anchor Locations Required																				
Frame Height (in)	Frame Width (in)																			
	60.0				72.0				84.0				96.0				108.0			
	Head	Jamb	MHC	MSC	Head	Jamb	MHC	MSC	Head	Jamb	MHC	MSC	Head	Jamb	MHC	MSC	Head	Jamb	MHC	MSC
18.0	4	2	4	4	4	2	4	4	6	2	4	4	6	2	4	4	6	2	4	4
24.0	4	3	4	4	4	3	4	4	6	3	4	4	6	3	4	4	6	3	4	4
30.0	4	3	4	4	4	3	4	4	6	3	4	4	6	3	4	4	6	3	4	6
36.0	4	3	4	4	4	3	4	4	6	3	4	4	6	3	4	4	6	3	4	4

MHC = Mull Head Cluster MSC = Mull Sill Cluster

PRODUCT REVISED
as complying with the Florida Building Code
NOA-No. 20-0826.12
Expiration Date 08/08/2023
By
Miami-Dade Product Control

Revision: NO CHANGES THIS SHEET.

PREPARED BY A. LYNN MILLER
1070 TECHNOLOGY DRIVE
N. VENICE, FL 34275
(941) 480-1600
REGISTRATION #29296

WinDoor®
INCORPORATED
WINDOOR INCORPORATED
104 TRIPLE DIAMOND BLVD.
NORTH VENICE, FL 34275
(833) 554-5432

08/11/20
Date

ERIN KOSS
By

9066-LMI-NOA
DWC No.

3 OF 12
Sheet

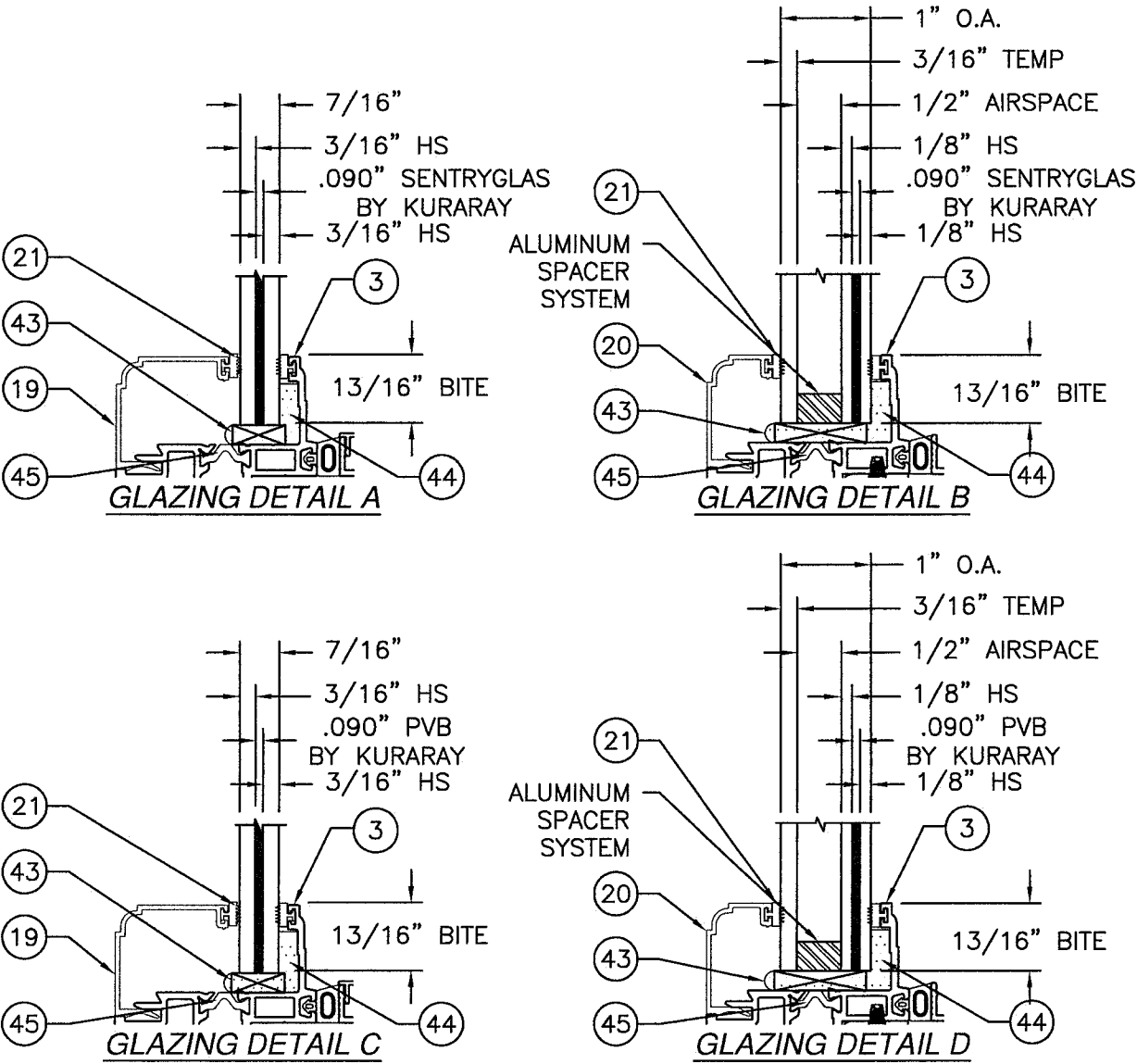
AW9066T
Series

AWNING (LM)
Title

ELEVATION & CHARTS - TWIN
Desc.

ANTHONY LYNN MILLER
LICENSE
No. 58705
8/12/20
STATE OF FLORIDA
PROFESSIONAL ENGINEER
A. LYNN MILLER, P.E.
P.E.# 58705

BILL OF MATERIALS				
NO.	PART NUMBER	DESCRIPTION	MANUFACTURER	MATERIAL
1	9060A02	FLUSH FRAME ASSEMBLY	KEYMARK	ALUMINUM 6063-T6
2	9060A04	FLANGE FRAME ASSEMBLY	KEYMARK	ALUMINUM 6063-T6
3	9060A01	SASH ASSEMBLY	KEYMARK	ALUMINUM 6063-T6
4	9060A03	COMMON POST	KEYMARK	ALUMINUM 6003-T6
5	S51989	HORIZONTAL SCREEN ADAPTER	KEYMARK	ALUMINUM 6003-T6
6	S51990	VERTICAL SCREEN ADAPTER	KEYMARK	ALUMINUM 6063-T6
7	115677.00.0520	OPERATOR TRACK & SLIDER ASSY	TRUTH	
8	851 112 8046	HINGE STORM B 16X	BRONZE CRAFT	
9	51.10.00.521	OPERATOR ENCORE S AWNING SS	TRUTH	
10	126.14XX	HDL/COVER (LH) S ENCORE TANGO	TRUTH	
11	21306	SPLINE CAP	TRUTH	
12	24.30.XX 004	LOCK ASSEMBLY	TRUTH	
13	23050.00.0500	LOCK SUPPORT PLATE	TRUTH	
14	9000LH-HD	KEEPER LEFT HAND - HD	SELJAN	SS 300 SERIES
15	9000RH-HD	KEEPER RIGHT HAND - HD	SELJAN	SS 300 SERIES
16	11914	TIE BAR	TRUTH	
17	12075P001	TIE BAR GUIDE	TRUTH	
18	900130	FRAME & SASH SNUBBER	ROTO	
19	S46329	GLASS STOP 7/16" - 9/16"	KEYMARK	ALUMINUM 6063-T6
20	S46084	GLASS STOP 1"	KEYMARK	ALUMINUM 6063-T6
21	TP1051	#6 GLAZING VINYL	TEAM PLASTICS	85 DUROMETER
22	FS07438	INTERIOR SASH CORNER KEY	KEYMARK	ALUMINUM 6003-T6
23	FS07440	SASH & FRAME CORNER	KEYMARK	ALUMINUM 6063-T6
24	FS07439	EXTERIOR FRAME CORNER KEY	KEYMARK	ALUMINUM 6063-T6
25	FH07574	SCREEN FRAME	KEYMARK	ALUMINUM 6063-T6
26	FH05838	SCREEN FLANGE FRAME	KEYMARK	ALUMINUM 6063-T6
27	SI 0010-BL-2200R	SCREEN SPLINE	KEYMARK	
28	SBV-XX-0600Z	SCREEN CLOTH	KEYMARK	
29	QEZ 376	Q-LON FOAM FLAP SEAL	SCHLEGEL	
30	54076	CLOSED CELL EPDM SPONGE	LAUREN MFG.	EPDM SPONGE
31	54578	CLOSED CELL EPDM RUBBER	LAUREN MFG.	EPDM RUBBER
32	121998	.187"X200" FIN SEAL	ULTRA FAB	
33		#8 X 3/8" PHILLIPS PH		
34		#8 X 1/2" PHILLIPS FH		
35		#8 x 1/2" PHILLIPS FH		
36		#8 X 1/2" PHILLIPS FH		
37		#8 X 1 1/4" PHILLIPS PH		
38		#10 X 1/2" PHILLIPS FH		
39		#10 X 1/2" PHILLIPS FH		
40		#10 X 1/2" PHILLIPS PH		
41		#10 X 1 1/4" FH		
42		#10 X 3" PH SELF-DRILLING		
43	01-100-7755-002	NEOPRENE GLASS SHIMS	FRANK LOWE	DUROMETER 80
44		SIKA 552, DOW 791, DOW 983	SIKA / DOW	POLYURETHANE/SILICONE
45	968600	THERMAL STRUT	TECHNOFORM	POLYAMIDE



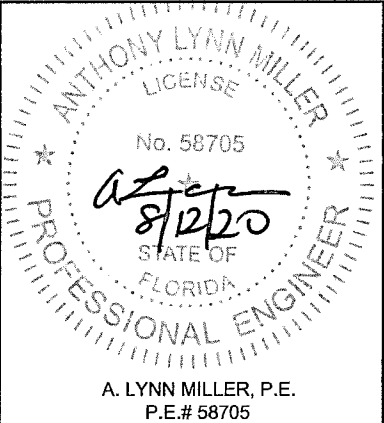
EXTERIOR



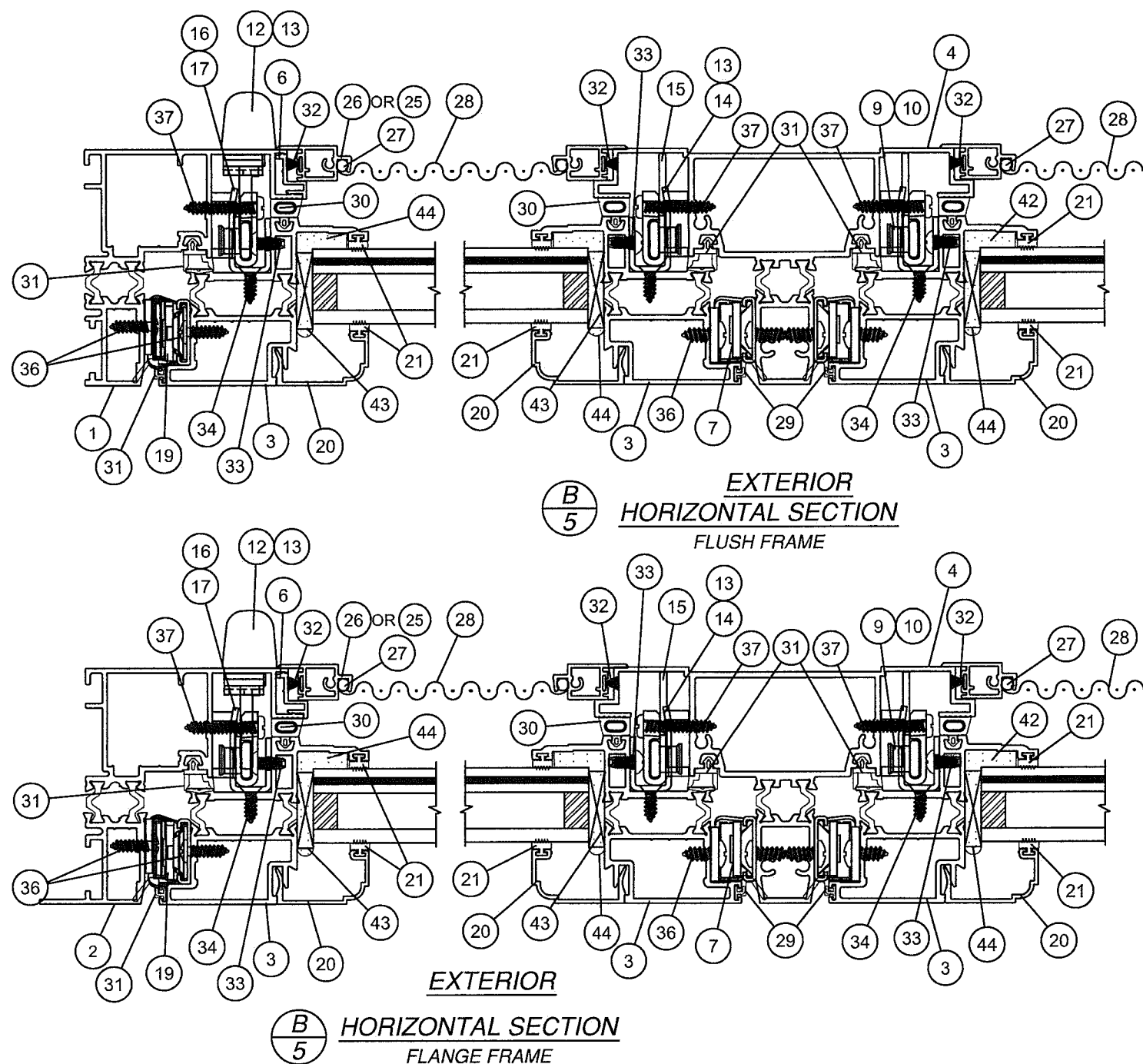
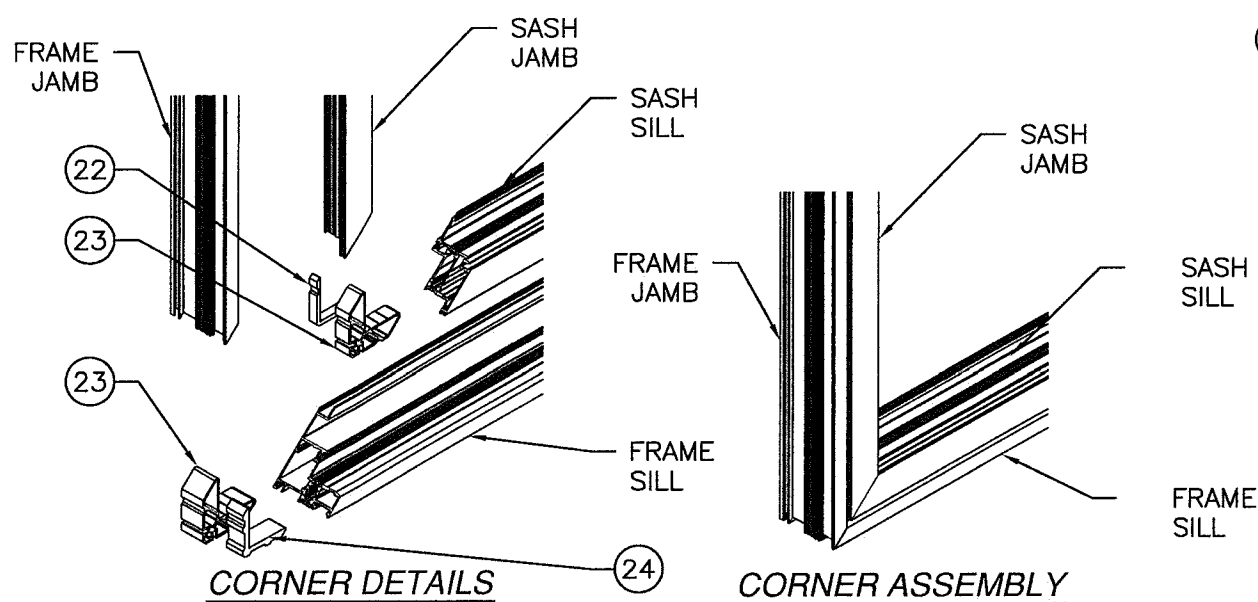
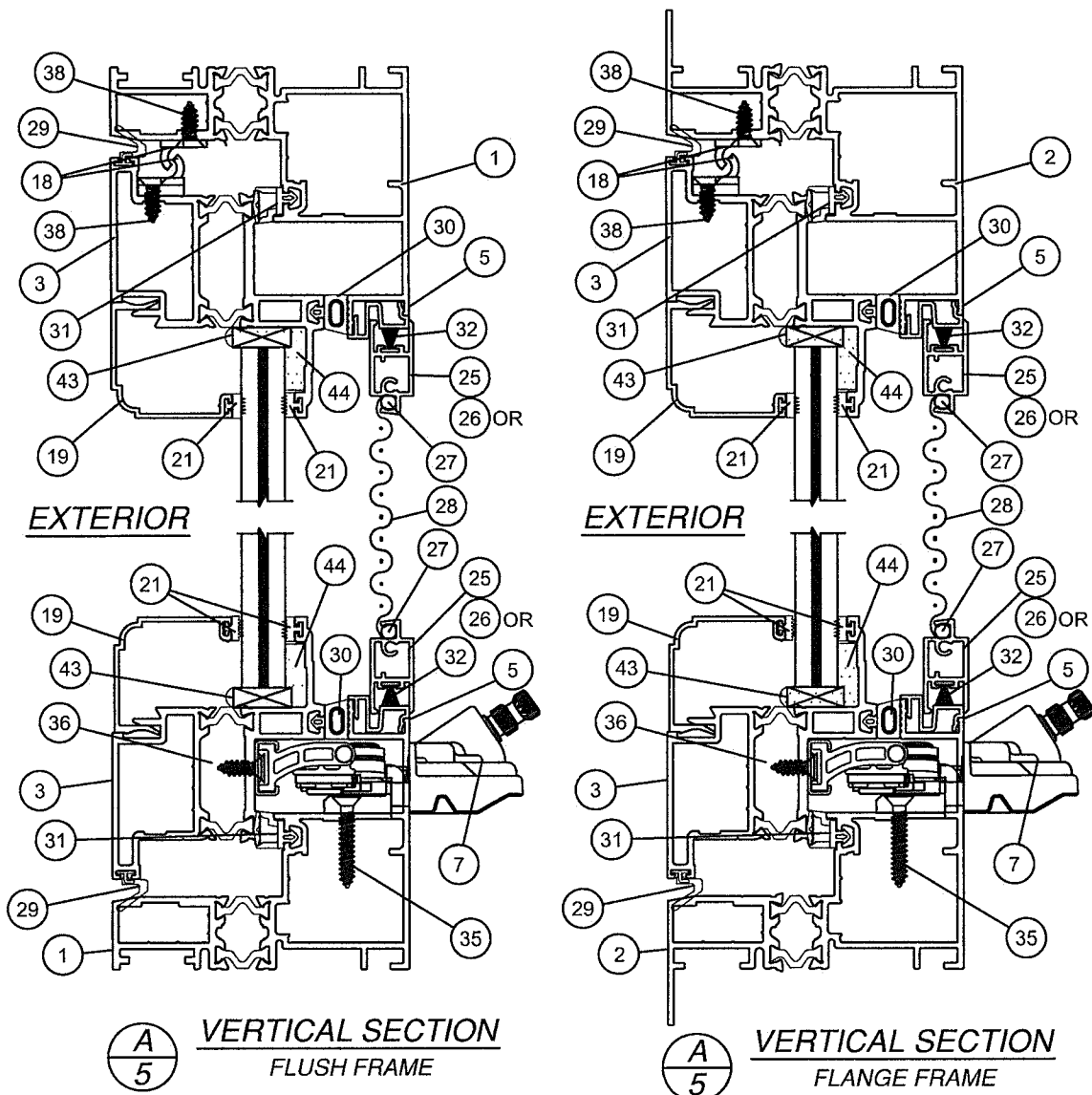
PRODUCT REVISED
as complying with the Florida
Building Code
NOA-No. 20-0826.12
Expiration Date 08/08/2023
By 
Miami-Dade Product Control

Revision: ADDED DOW 791 & DOW 983
TO BOM.

Windo[®]oor INCORPORATED WINDOOR INCORPORATED 104 TRIPLE DIAMOND BLVD. NORTH VENICE, FL 34275 (833) 554-5432	WINDOOR THERMALLY BROKEN ALUM. AWNING (LM)	Date08/11/20 ByERIN KOSS Drawn	DWC No.9066-LMI-NOA 4 OF 12 Sheet	Rev.



FOR ILLUSTRATION PURPOSES ONLY. FOR INSTALLATION DETAILS REFER TO SHEETS 6-9.

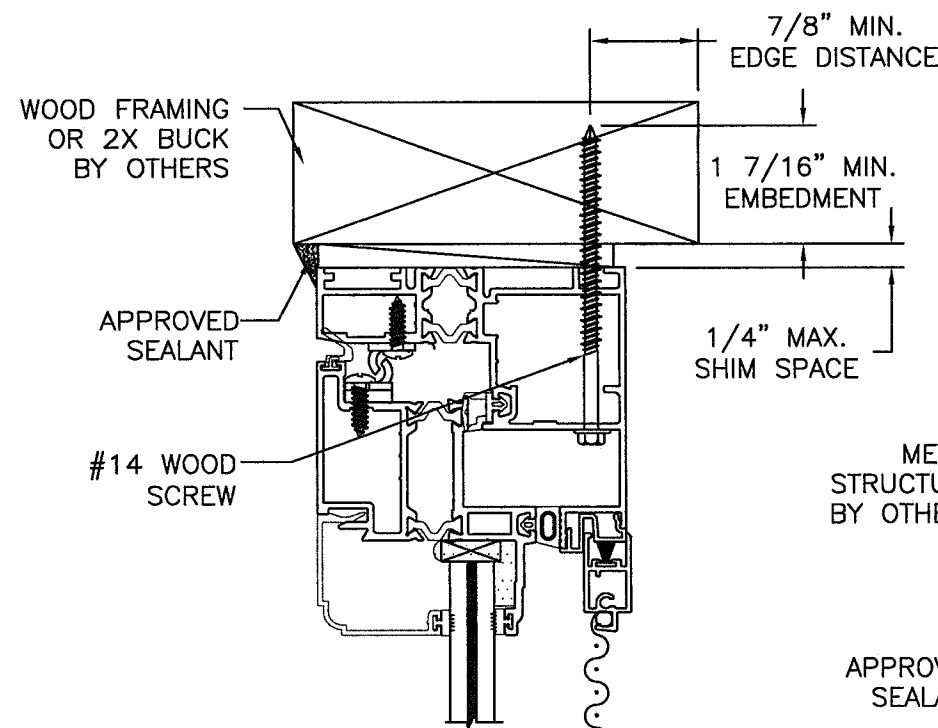


PRODUCT REVISED
as complying with the Florida
Building Code
NOA-No. 20-0826.12
Expiration Date 08/08/2023
By
Miami-Dade Product Control

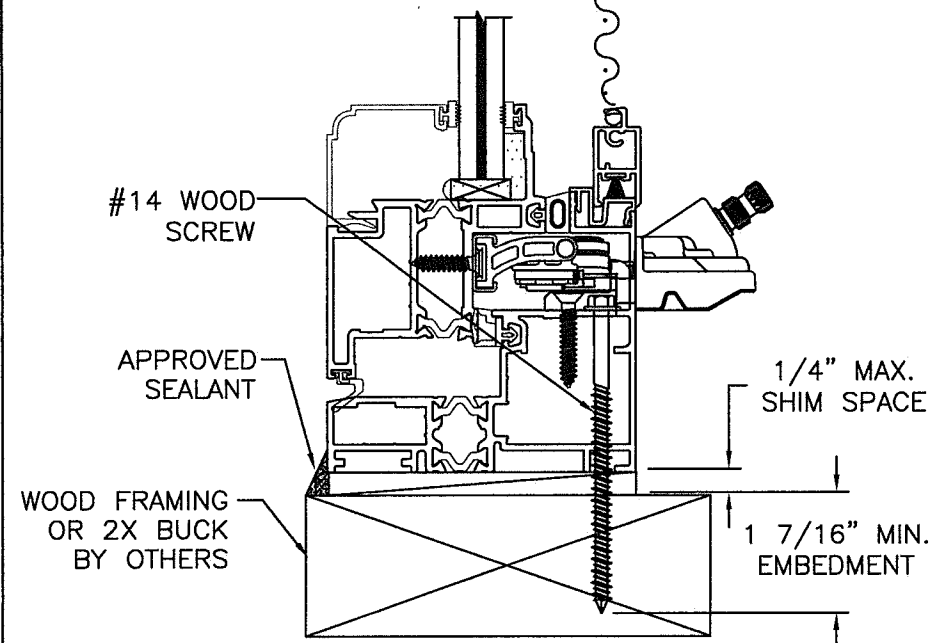
NO CHANGES THIS SHEET.

WINDOOR [®] INCORPORATED		PREPARED BY A. LYNN MILLER 1070 TECHNOLOGY DRIVE N. VENICE, FL 34275 (941) 480-1600 REGISTRATION #29296	
WINDOOR INCORPORATED 104 TRIPLE DIAMOND BLVD. NORTH VENICE, FL 34275 (833) 554-5432			
THERMALLY BROKEN ALUM. AWNING (LM)		Date	08/11/20
SECTION VIEWS		Drawn By	ERIN KOSS
AW9066T	5 OF 12	DWG No.	9066-LMI-NOA
Sheet		Rev.	

ANTHONY LYNN MILLER
LICENSE
No. 58705
8/12/20
STATE OF
FLORIDA
PROFESSIONAL ENGINEER
A. LYNN MILLER, P.E.
P.E.# 58705

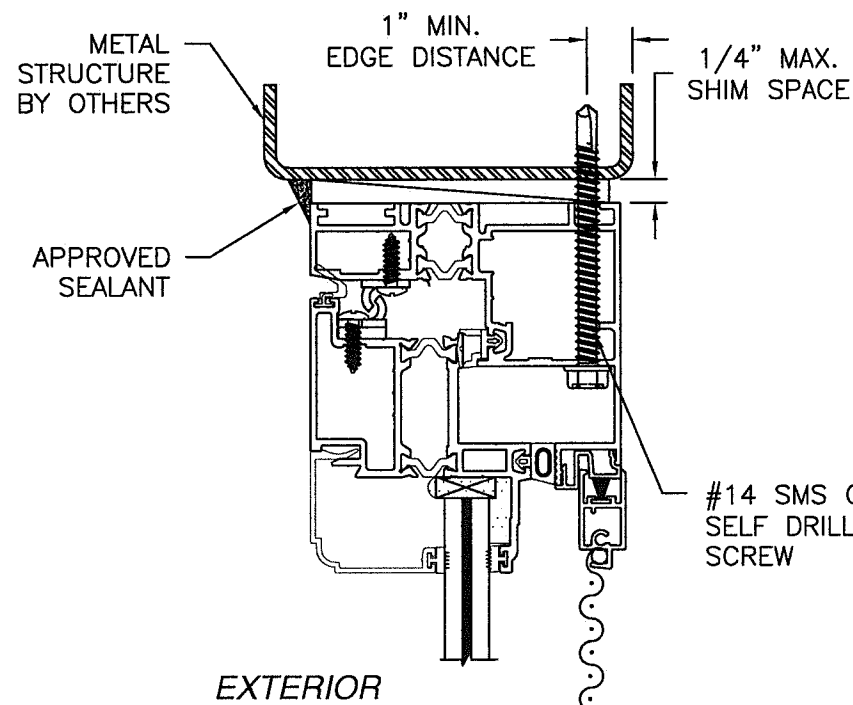


EXTERIOR

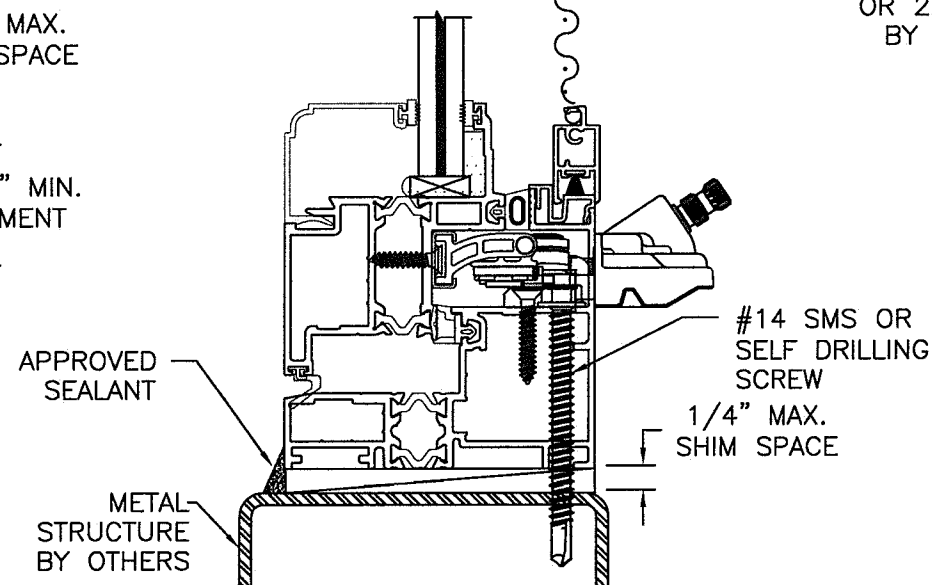


A
6

VERTICAL CROSS SECTION
WOOD FRAMING OR 2X BUCK INSTALLATION

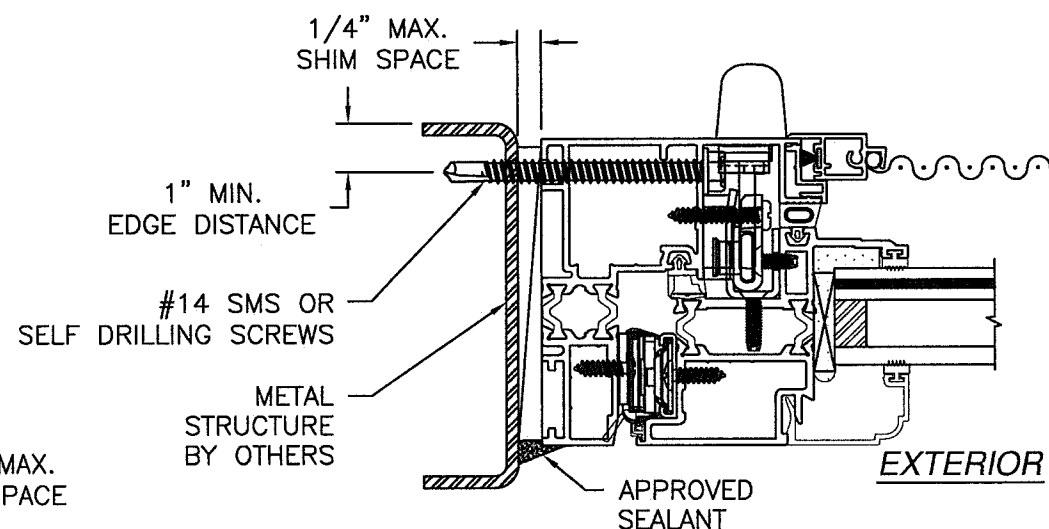


EXTERIOR



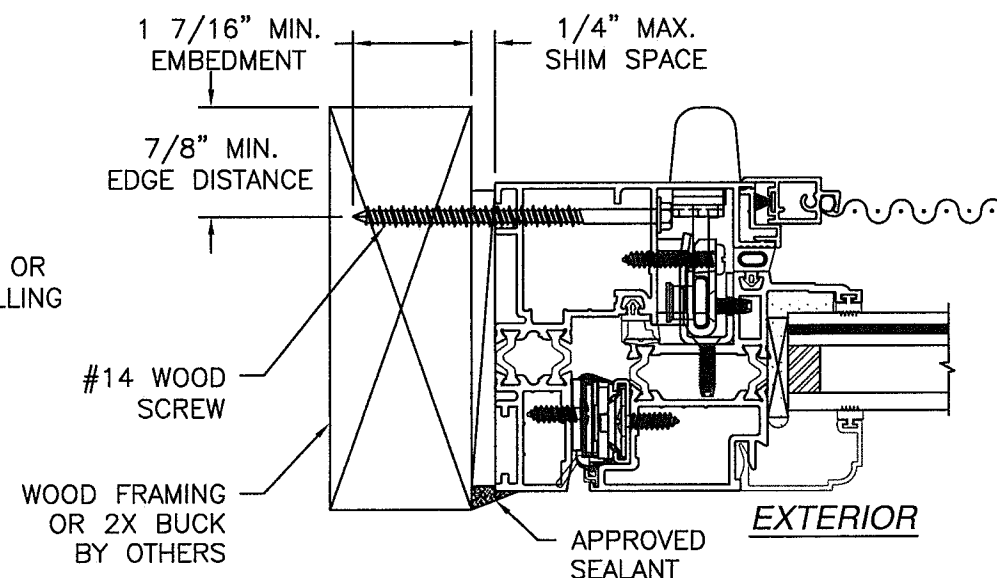
A
6

VERTICAL CROSS SECTION
METAL STRUCTURE INSTALLATION



B
6

JAMB INSTALLATION DETAIL
METAL STRUCTURE INSTALLATION



B
6

JAMB INSTALLATION DETAIL
WOOD FRAMING OR 2X BUCK INSTALLATION

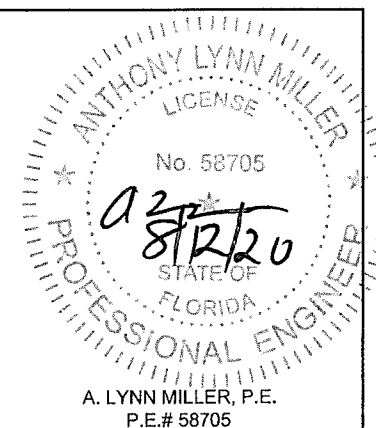
NOTES:

1. INTERIOR AND EXTERIOR FINISHES, BY OTHERS, NOT SHOWN FOR CLARITY.
2. SEALANT JOINT BY OTHERS TO BE IN ACCORDANCE WITH ASTM E2112.

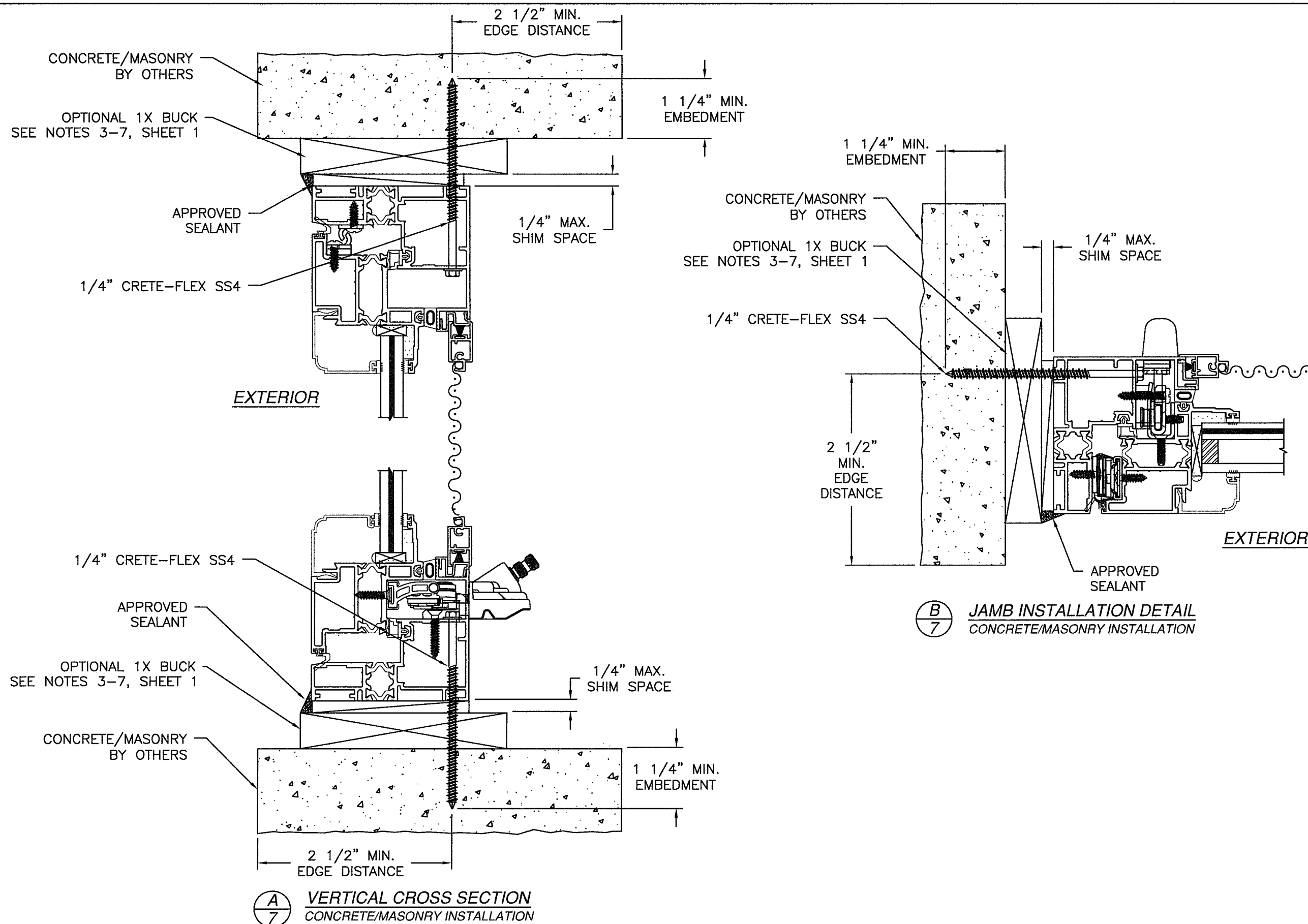
PRODUCT REVISED
as complying with the Florida
Building Code
NOA-No. 20-0826.12
Expiration Date 08/08/2023
By *[Signature]*
Miami-Dade Product Control

NO CHANGES THIS SHEET.

WinDoor® INCORPORATED WINDOOR INCORPORATED 104 TRIPLE DIAMOND BLVD. NORTH VENICE, FL 34275 (833) 554-5432	PREPARED BY A. LYNN MILLER 1070 TECHNOLOGY DRIVE N. VENICE, FL 34275 (941) 480-1600 REGISTRATION #29296	Rev.	08/11/20
		Date	08/11/20
		By	ERIN KOSS
		No.	9066-LMI-NOA
WinDoor® INCORPORATED WINDOOR INCORPORATED 104 TRIPLE DIAMOND BLVD. NORTH VENICE, FL 34275 (833) 554-5432	THERMALLY BROKEN ALUM. AWNING (LM)	DWG	6 OF 12
		Sheet	6 OF 12
		Series	AW9066T
		Desc.	INSTALLATION DETAILS - EQUAL LEG



A. LYNN MILLER, P.E.
P.E.# 58705

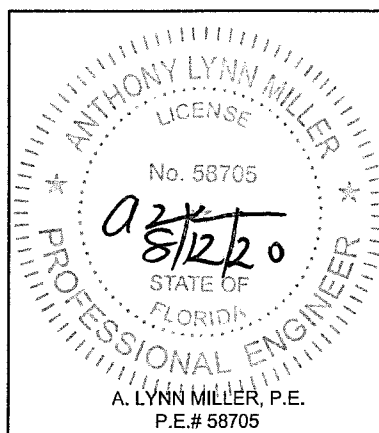


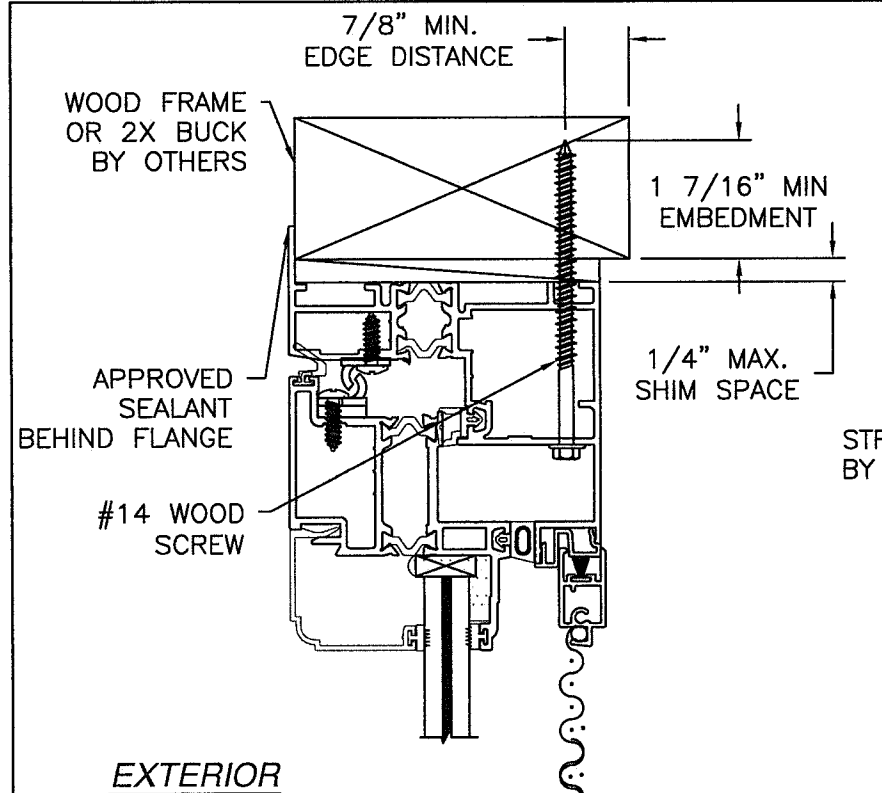
- NOTES:
1. INTERIOR AND EXTERIOR FINISHES, BY OTHERS, NOT SHOWN FOR CLARITY.
 2. SEALANT JOINT BY OTHERS TO BE IN ACCORDANCE WITH ASTM E2112.

PRODUCT REVISED
 as complying with the Florida
 Building Code
 NOA-No. 20-0826.12
 Expiration Date 08/08/2023
 By *[Signature]*
 Miami-Dade Product Control

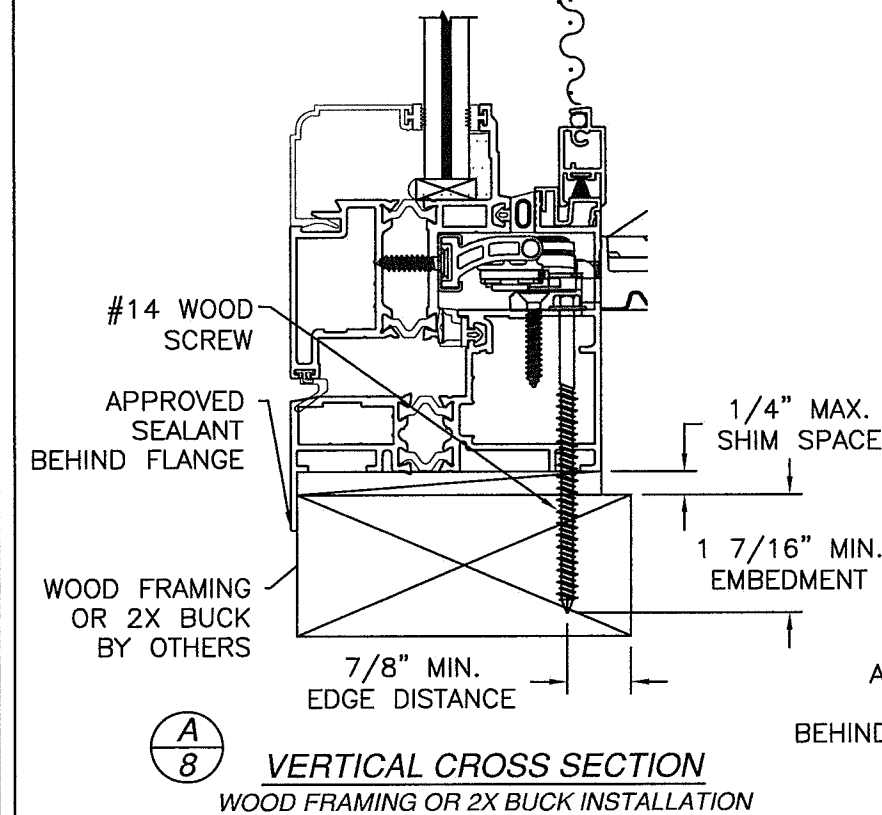
Revision: NO CHANGES THIS SHEET.

WINDOOR® INCORPORATED WINDOOR INCORPORATED 104 TRIPLE DIAMOND BLVD. NORTH VENICE, FL 34275 (833) 554-5432	PREPARED BY A. LYNN MILLER 1070 TECHNOLOGY DRIVE N. VENICE, FL 34275 (941) 480-1600 REGISTRATION #29296	Date	08/11/20	Rev.	
		Drawn By	ERIN KOSS	DWG No.	9066-LMI-NOA
		INSTALLATION DETAILS - EQUAL LEG			7 OF 12
		THERMALLY BROKEN ALUM. AWNING (LM)			AW9066T

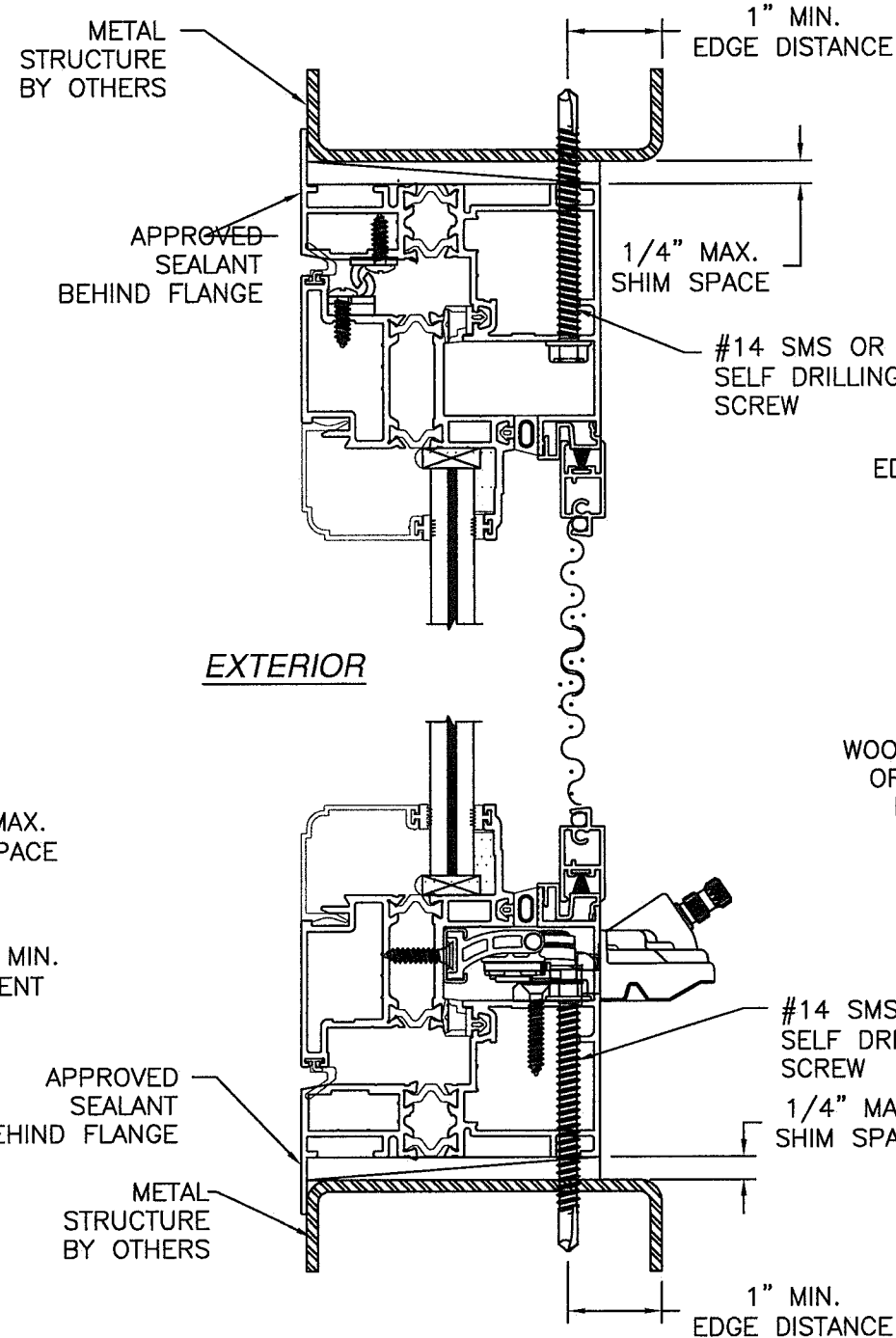




EXTERIOR

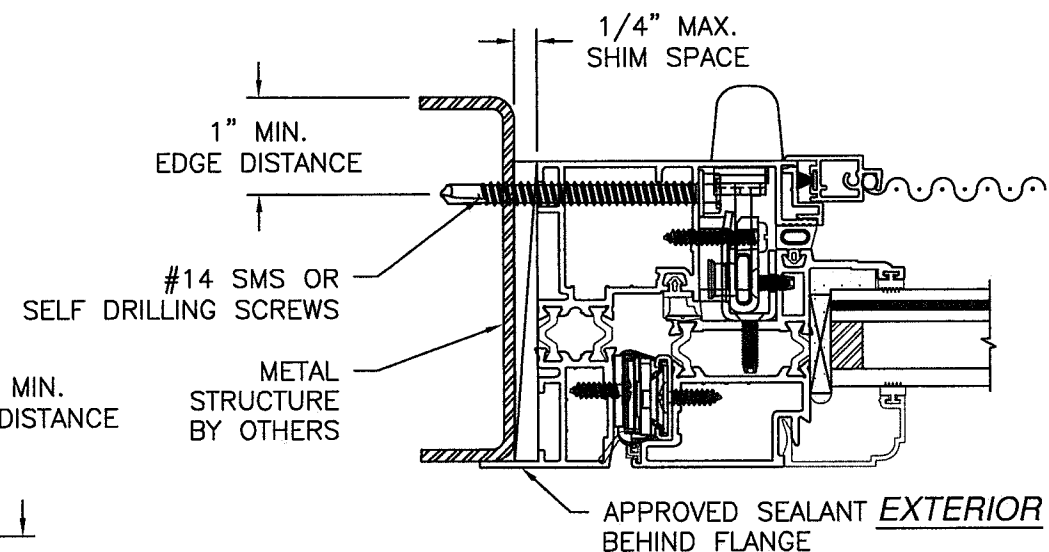


A
8
VERTICAL CROSS SECTION
WOOD FRAMING OR 2X BUCK INSTALLATION

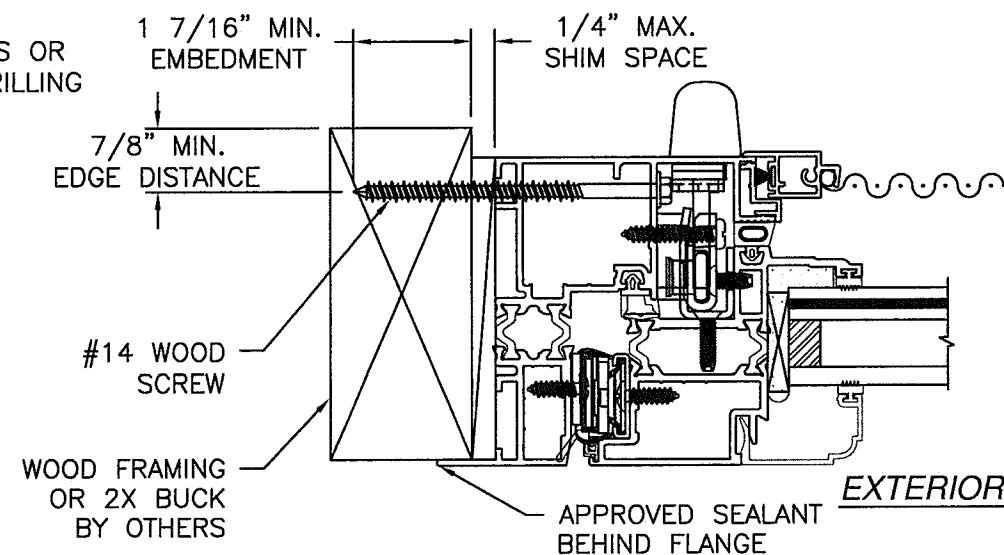


EXTERIOR

A
8
VERTICAL CROSS SECTION
METAL STRUCTURE INSTALLATION




B
8
JAMB INSTALLATION DETAIL
METAL STRUCTURE INSTALLATION



B
8
JAMB INSTALLATION DETAIL
WOOD FRAMING OR 2X BUCK INSTALLATION

NOTES:

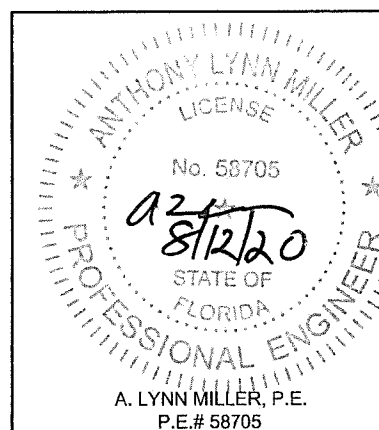
1. INTERIOR AND EXTERIOR FINISHES, BY OTHERS, NOT SHOWN FOR CLARITY.
2. SEALANT JOINT BY OTHERS TO BE IN ACCORDANCE WITH ASTM E2112.

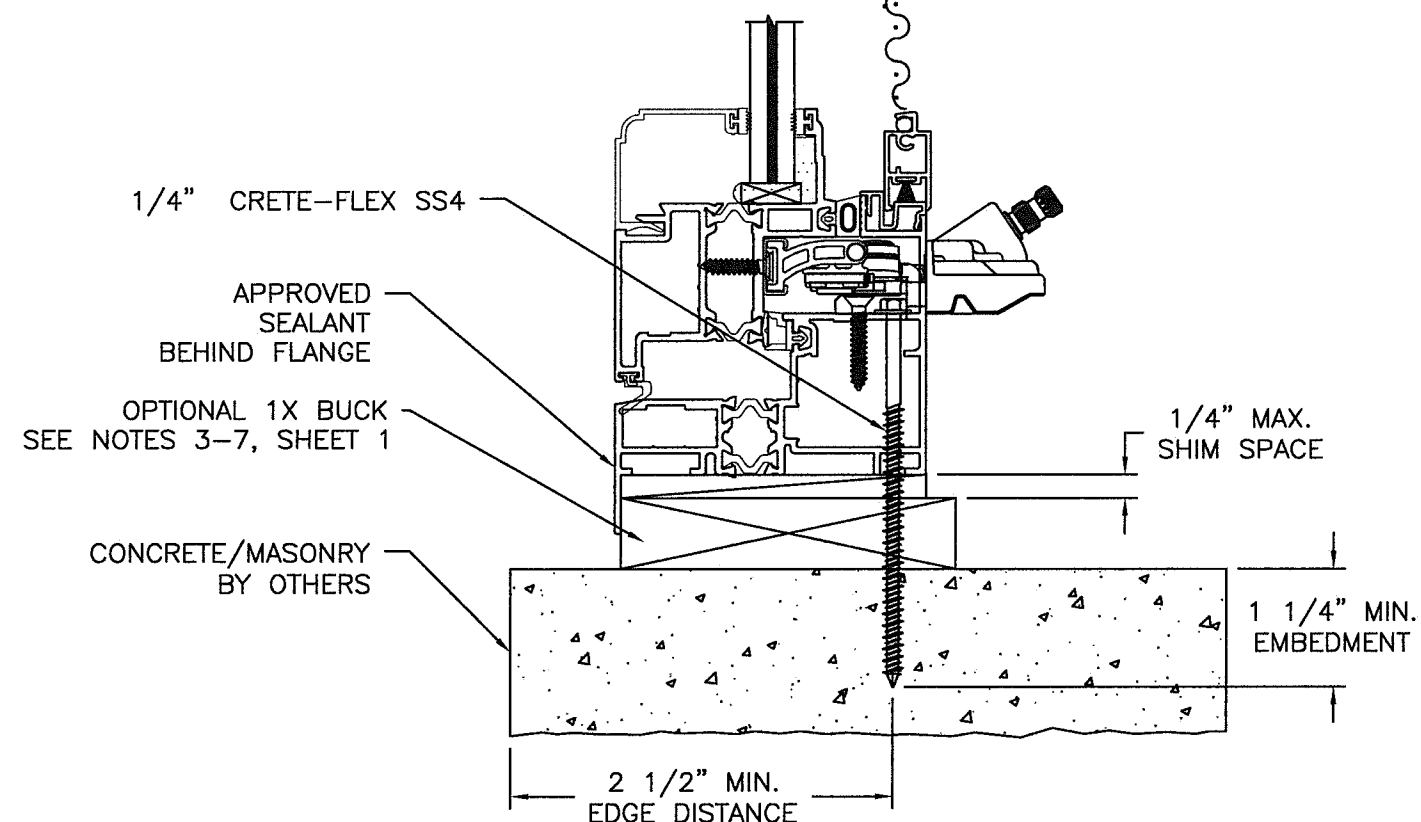
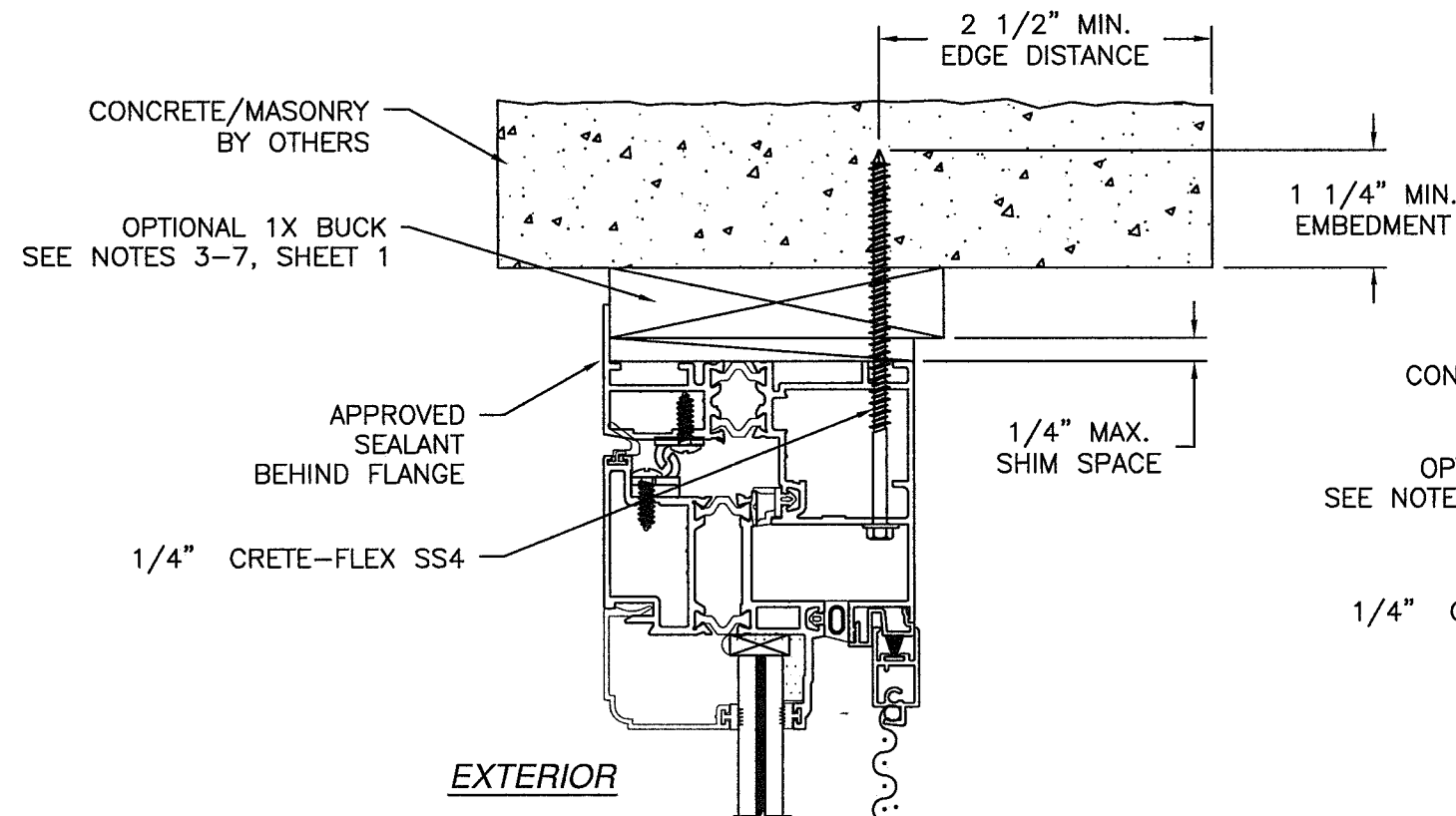
PRODUCT REVISED
as complying with the Florida
Building Code
NOA-No. 20-0826.12
Expiration Date 08/08/2023
By 
Miami-Dade Product Control

NO CHANGES THIS SHEET.

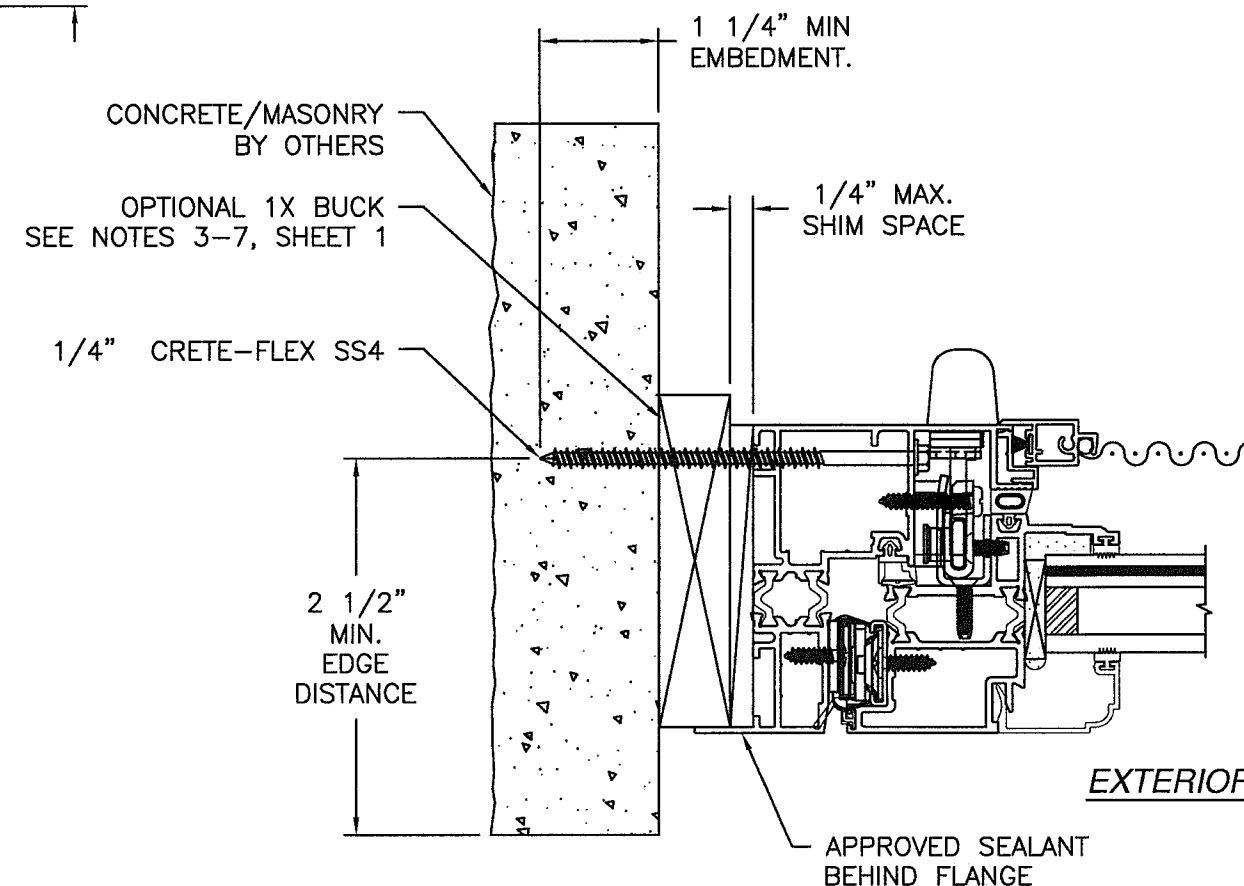
Revision:

WINDOOR® INCORPORATED WINDOOR INCORPORATED 104 TRIPLE DIAMOND BLVD. NORTH VENICE, FL 34275 (833) 554-5432	PREPARED BY A. LYNN MILLER 1070 TECHNOLOGY DRIVE N. VENICE, FL 34275 (941) 480-1600 REGISTRATION #29296	Date	08/11/20	Rev.	
		Drawn By	ERIN KOSS	DWG No.	9066-LMI-NOA
		Installation Details - Flange		Sheet	8 OF 12
		Series	AW9066T		





A
9 **VERTICAL CROSS SECTION**
CONCRETE/MASONRY INSTALLATION



B
9 **JAMB INSTALLATION DETAIL**
CONCRETE/MASONRY INSTALLATION

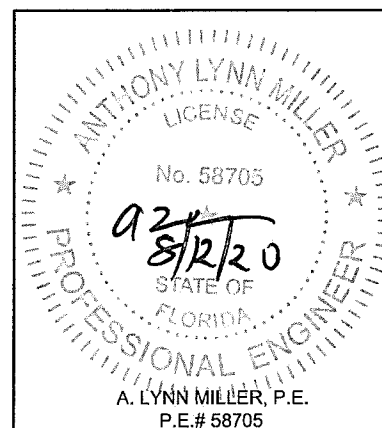
NOTES:

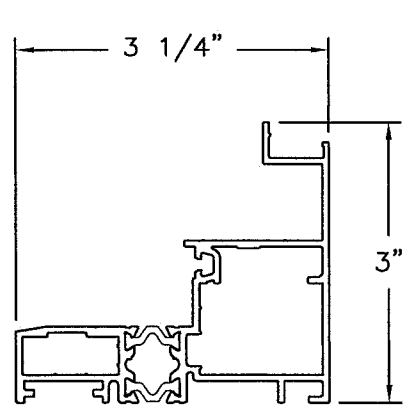
1. INTERIOR AND EXTERIOR FINISHES, BY OTHERS, NOT SHOWN FOR CLARITY.
2. SEALANT JOINT BY OTHERS TO BE IN ACCORDANCE WITH ASTM E2112.

PRODUCT REVISED
as complying with the Florida
Building Code
NOA-No. 20-0826.12
Expiration Date 08/08/2023
By
Miami-Dade Product Control

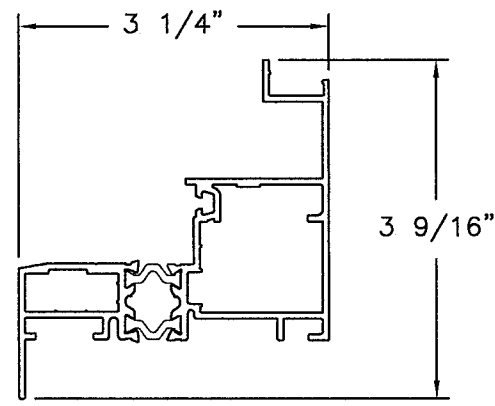
NO CHANGES THIS SHEET.

<div>WINDOOR® INCORPORATED</div> <div>WINDOOR INCORPORATED 104 TRIPLE DIAMOND BLVD. NORTH VENICE, FL 34275 (833) 554-5432</div>	PREPARED BY A. LYNN MILLER 1070 TECHNOLOGY DRIVE N. VENICE, FL 34275 (941) 480-1600 REGISTRATION #29296			
	THERMALLY BROKEN ALUM. AWNING (LM)			
	INSTALLATION DETAILS - FLANGE			
	ERIN KOSS			
	Date 08/11/20			
	By Draw			
AW9066T	9 OF 12	DWG No.	9066-LMI-NOA	Rev.
Series	Sheet			

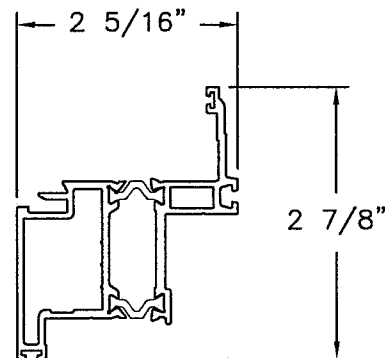




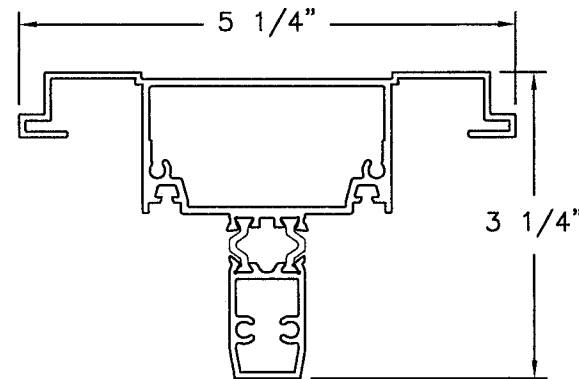
① **FRAME**
ALUMINUM 6063-T6 .065" THICK



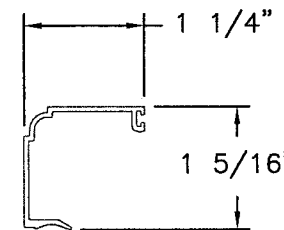
② **FLANGE FRAME**
ALUMINUM 6063-T6 .065" THICK



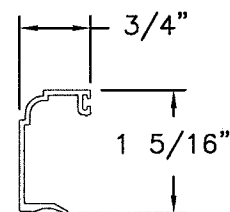
③ **SASH ASSEMBLY**
ALUMINUM 6063-T6 .070" THICK



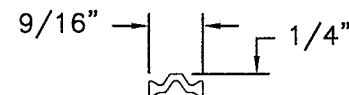
④ **COMMON POST**
ALUMINUM 6063-T6 .075" THICK



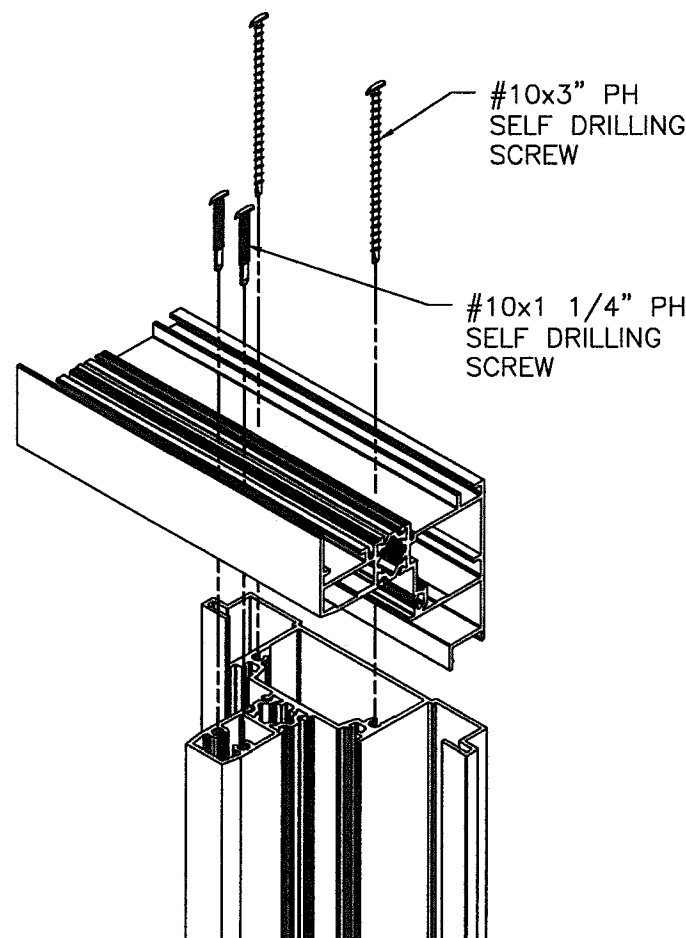
①⑨ **GLASS STOP**
ALUMINUM 6063-T6 .050" THICK



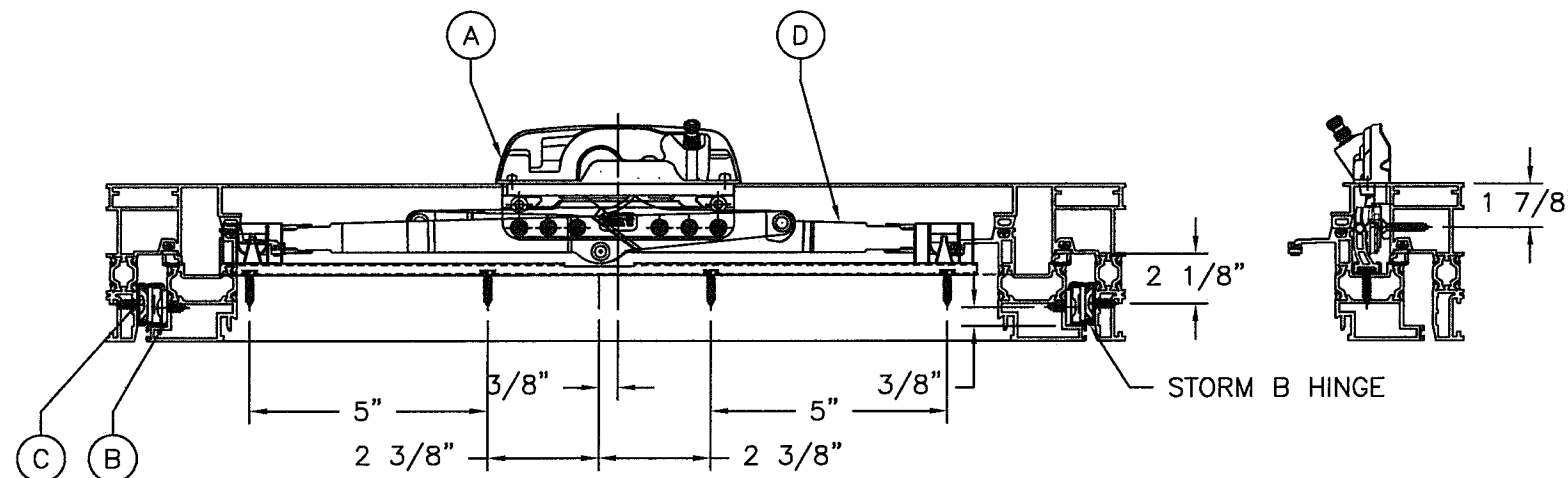
②① **GLASS STOP**
ALUMINUM 6063-T6 .050" THICK



④⑤ **THERMAL STRUT**
NYLON POLYAMIDE .070" THICK
TENSILE STRENGTH 10,390 PSI




COMMON POST ATTACHMENT DETAIL



HARDWARE DETAIL

HARDWARE SCHEDULE

A	(1) 51.10.00.521 OPER, ENCORE S AWN SS
B	(1) 12614.XX HDL/CVR, (LH) S ENCORE TANGO
C	(2) 851 112 8046 STORM B HINGE, 4BAR, BY BRONZE CRAFT
D	(1) 11577.00.0520 OPERATOR TRACK & SLIDER ASSY

PRODUCT REVISED
as complying with the Florida
Building Code
NOA-No. 20-0826.12
Expiration Date 08/08/2023
By 
Miami-Dade Product Control

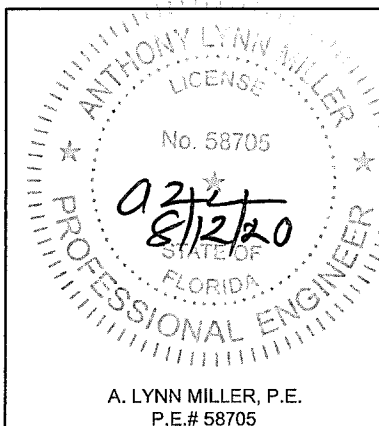
NO CHANGES THIS SHEET.

PREPARED BY A. LYNN MILLER
1070 TECHNOLOGY DRIVE
N. VENICE, FL 34275
(941) 480-1600
REGISTRATION #29296

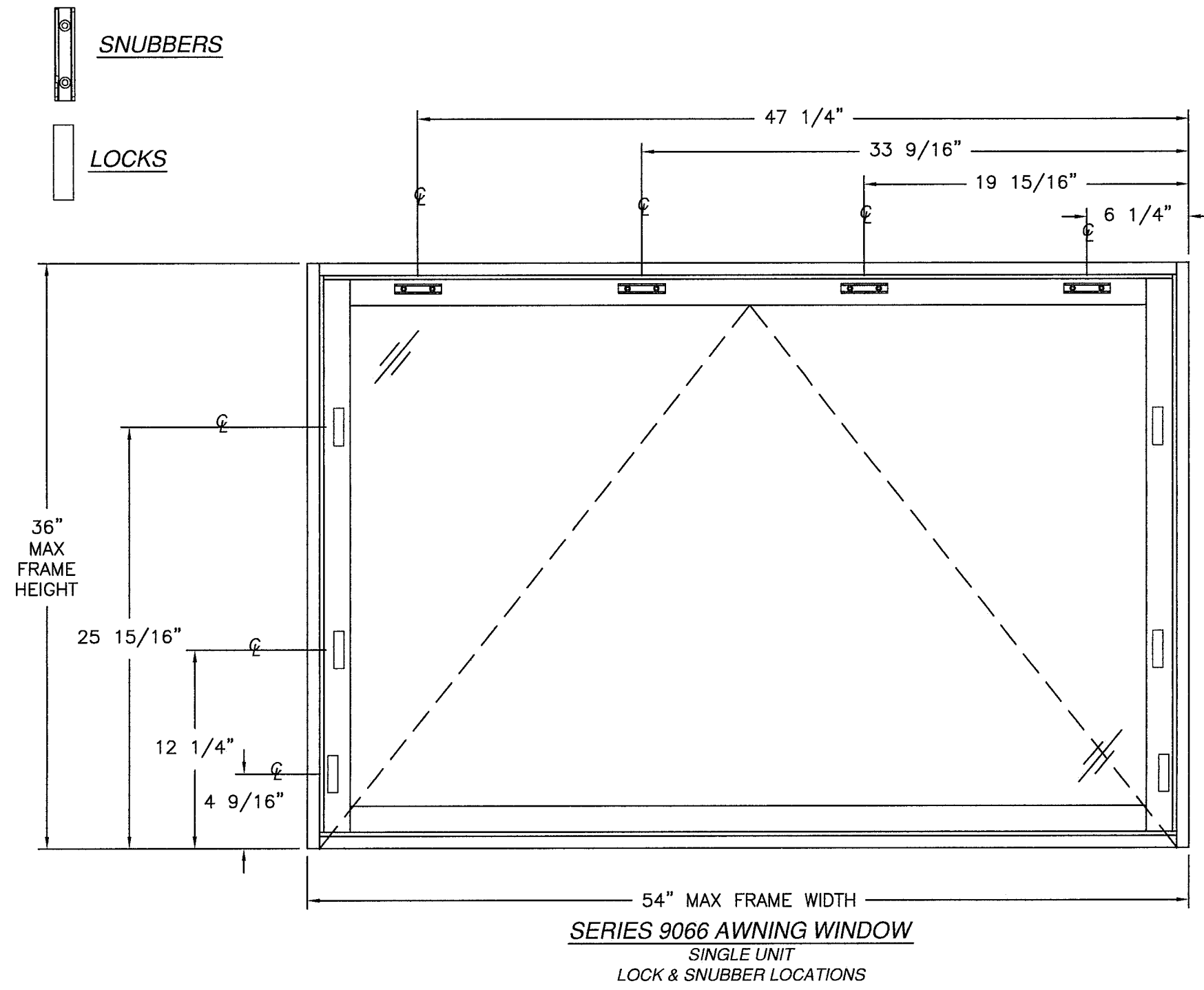
WINDOOR®
INCORPORATED
WINDOOR INCORPORATED
104 TRIPLE DIAMOND BLVD.
NORTH VENICE, FL 34275
(833) 554-5432

THERMALLY BROKEN ALUM. AWNING (LM)
EXTRUSIONS
AW9066T

Rev.	Date	By	No.	Sheet
	08/11/20	ERIN KOSS	9066-LMI-NOA	10 OF 12



A. LYNN MILLER, P.E.
P.E.# 58705

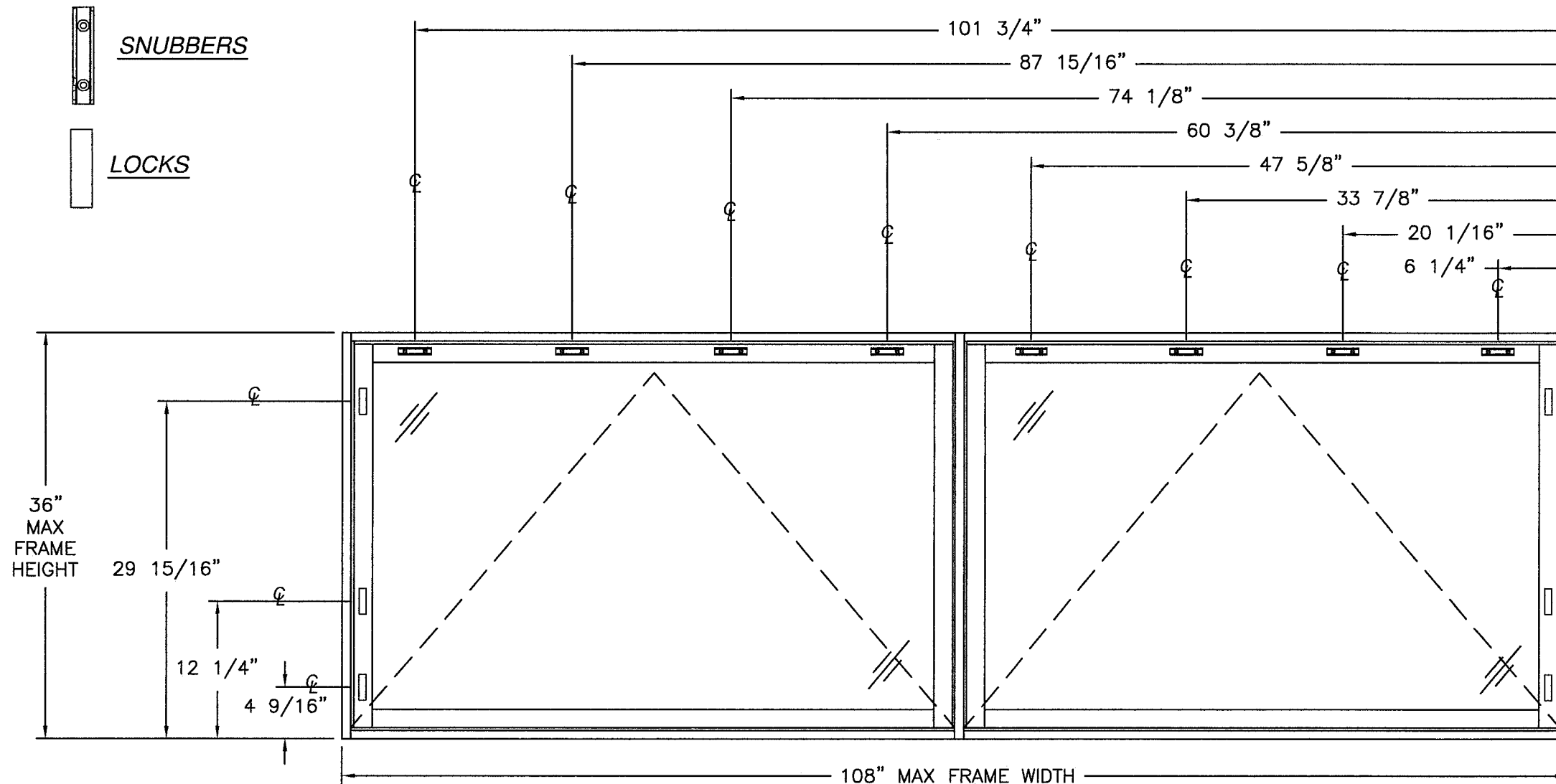


PRODUCT REVISED
as complying with the Florida
Building Code
NOA-No. 20-0826.12
Expiration Date 08/08/2023
By *[Signature]*
Miami-Dade Product Control

Revision: NO CHANGES THIS SHEET.

PREPARED BY A. LYNN MILLER 1070 TECHNOLOGY DRIVE N. VENICE, FL 34275 (941) 480-1600 REGISTRATION #29296		Date	08/11/20	Rev.
		By	ERIN KOSS	
WINDOOR® INCORPORATED WINDOOR INCORPORATED 104 TRIPLE DIAMOND BLVD. NORTH VENICE, FL 34275 (833) 554-5432		DWG No.	9066-LMI-NOA	
		Sheet	11 OF 12	
THERMALLY BROKEN ALUM. AWNING (LM)		ERIN KOSS		
HARDWARE LAYOUT - SINGLE		AW9066T		

ANTHONY LYNN MILLER
LICENSE
No. 58705
02/8/20
STATE OF FLORIDA
PROFESSIONAL ENGINEER
A. LYNN MILLER, P.E.
P.E.# 58705



SERIES 9066 AWNING WINDOW
TWIN UNIT
LOCK & SNUBBER LOCATIONS

PRODUCT REVISED
as complying with the Florida
Building Code
NOA-No. 20-0826.12
Expiration Date 08/08/2023
By *[Signature]*
Miami-Dade Product Control

Revision: NO CHANGES THIS SHEET.

WINDOOR [®] <u>INCORPORATED</u> WINDOOR INCORPORATED 104 TRIPLE DIAMOND BLVD. NORTH VENICE, FL 34275 (833) 554-5432		PREPARED BY A. LYNN MILLER 1070 TECHNOLOGY DRIVE N. VENICE, FL 34275 (941) 480-1600 REGISTRATION #29296		
THERMALLY BROKEN ALUM. AWNING (LM)		Date	08/11/20	
HARDWARE LAYOUT - TWIN		Drawn By	ERIN KOSS	
AW9066T	12 OF 12	DWG No.	9066-LMI-NOA	
Series	Sheet	Rev.		

ANTHONY LYNN MILLER
LICENSE
No. 58705
8/12/20
STATE OF
FLORIDA
PROFESSIONAL ENGINEER
A. LYNN MILLER, P.E.
P.E.# 58705