



DEPARTMENT OF REGULATORY AND ECONOMIC RESOURCES (RER)
BOARD AND CODE ADMINISTRATION DIVISION

NOTICE OF ACCEPTANCE (NOA)

MIAMI-DADE COUNTY
PRODUCT CONTROL SECTION

11805 SW 26 Street, Room 208
Miami, Florida 33175-2474
T (786) 315-2590 F (786) 315-2599

www.miamidade.gov/economy

Clopay Corporation
8585 Duke Boulevard
Mason, OH 45040

SCOPE:

This NOA is being issued under the applicable rules and regulations governing the use of construction materials. The documentation submitted has been reviewed and accepted by Miami-Dade County RER-Product Control Section to be used in Miami-Dade County and other areas where allowed by the Authority Having Jurisdiction (AHJ).

This NOA shall not be valid after the expiration date stated below. The Miami-Dade County Product Control Section (In Miami-Dade County) and/or the AHJ (in areas other than Miami-Dade County) reserve the right to have this product or material tested for quality assurance purposes. If this product or material fails to perform in the accepted manner, the manufacturer will incur the expense of such testing and the AHJ may immediately revoke, modify, or suspend the use of such product or material within their jurisdiction. RER reserves the right to revoke this acceptance, if it is determined by Miami-Dade County Product Control Section that this product or material fails to meet the requirements of the applicable building code.

This product is approved as described herein and has been designed to comply with the Florida Building Code, including the High Velocity Hurricane Zone.

DESCRIPTION: Custom Reserve EPS Insulated W8 DP47 Wood Sectional Garage Door up to 9ft.- 0in. Wide w/ Optional Impact Resistant Lites

APPROVAL DOCUMENT: Drawing No. **104939**, titled “Custom Reserve Wood Door up to 9’0” Wide”, sheet 1 thru 4 of 4, dated 10/10/2017, with revision 02 dated 09/10/2020, prepared by Clopay Corporation, signed and sealed by Mark Westerfield, P.E. on 09/10/2020, bearing the Miami-Dade County Product Control revision stamp with the Notice of Acceptance number and expiration date by the Miami-Dade County Product Control Section.

MISSILE IMPACT RATING: Large and Small Missile Impact Resistant

LABELING: A permanent label with the manufacturer’s name or logo, manufacturing address, model number, the positive and negative design pressure rating, indicate impact rated if applicable, installation instruction drawing reference number, approval number (NOA), the applicable test standards, and the statement reading ‘Miami-Dade County Product Control Approved’ is to be located on the door’s side track, bottom angle, or inner surface of a panel.

RENEWAL of this NOA shall be considered after a renewal application has been filed and there has been no change in the applicable building code negatively affecting the performance of this product.

TERMINATION of this NOA will occur after the expiration date or if there has been a revision or change in the materials, use, and/or manufacture of the product or process. Misuse of this NOA as an endorsement of any product, for sales, advertising or any other purposes shall automatically terminate this NOA. Failure to comply with any section of this NOA shall be cause for termination and removal of NOA.

ADVERTISEMENT: The NOA number preceded by the words Miami-Dade County, Florida, and followed by the expiration date may be displayed in advertising literature. If any portion of the NOA is displayed, then it shall be done in its entirety.

INSPECTION: A copy of this entire NOA shall be provided to the user by the manufacturer or its distributors and shall be available for inspection at the job site at the request of the Building Official.

This NOA **revises NOA # 17-1020.07** and consists of this page 1 and evidence pages E-1 and E-2, as well as approval document mentioned above.

The submitted documentation was reviewed by **Carlos M. Utrera, P.E.**



NOA-No. 20-0922.22
Expiration Date: August 23, 2023
Approval Date: November 05, 2020
Page 1

NOTICE OF ACCEPTANCE: EVIDENCE SUBMITTED

1. EVIDENCE SUBMITTED UNDER PREVIOUS NOA # 17-1020.07

A. DRAWINGS

1. Drawing No. **104939**, titled “Custom Reserve Wood Door up to 9’0” Wide”, sheet 1 thru 4 of 4, dated 10/10/2017, with revision 01 dated 01/22/2018, prepared by Clopay Building Products Company, signed and sealed by Mark Westerfield, P.E. on 07/25/2018.

B. TESTS

1. Test reports on 1) Uniform Static Air Pressure Test, Loading per FBC, TAS 202
2) Large Missile Impact Test per FBC, TAS 201
3) Cyclic Wind Pressure Loading per FBC, TAS 203
4) Forced Entry Test per FBC, TAS 202-94
along with marked-up drawings and installation diagram of Clopay 9’x 7’ Wood Garage Door, Model CRD1CC, prepared by American Testing Lab, Inc., Test Report No. **ATLNC 0123.01-14**, dated 09/03/2014, signed and sealed by David W. Johnson, P.E.

C. CALCULATIONS

1. Anchoring calculations prepared by Clopay Building Products Company, dated 10/10/2017, signed and sealed by Mark Westerfield, P.E.

D. QUALITY ASSURANCE

1. Miami-Dade Department of Regulatory and Economic Resources (RER)

E. MATERIAL CERTIFICATIONS

1. Test report on Surface Burning Characteristics (Flame Spread and Smoke Developed indexes) per ASTM E84 of 2” thick C578 Type I Flint Hills Resources 5654 Resin EPS Foam samples, issued to Atlas Roofing Corp., prepared by UL LLC, Test Report No. **R6705/4788441837**, dated 06/06/2018, signed and sealed by Karen Foxx-Smith and James Smith.
2. Test report on Self-Ignition Temperature of Atlas EPS per ASTM D 1929-16, Test Report No. **102609488MID-002**, prepared by Intertek, dated 06/13/2016, signed and sealed by Frederick D. Curkeet, P.E.
3. Notice of acceptance issued to Eastman Chemical Company for its Saflex Clear and Color Glass Interlayer, NOA #17-0712.05 issued on 09/07/2017 and expires on 05/21/2021.

F. STATEMENTS

1. Statement letter of code conformance to the 6th edition (2017) FBC issued by Clopay Building Products Company, dated 10/10/2017, signed and sealed by Mark Westerfield, P.E.
2. Statement letter of no financial interest issued by Clopay Building Products Company, dated 10/10/2017, signed and sealed by Mark Westerfield, P.E.



Carlos M. Utrera, P.E.
Product Control Examiner
NOA-No. 20-0922.22
Expiration Date: August 23, 2023
Approval Date: November 05, 2020

NOTICE OF ACCEPTANCE: EVIDENCE SUBMITTED

2. NEW EVIDENCE SUBMITTED

A. DRAWINGS

1. Drawing No. **104939**, titled “Custom Reserve Wood Door up to 9’0” Wide”, sheet 1 thru 4 of 4, dated 10/10/2017, with revision **02** dated 09/10/2020, prepared by Clopay Corporation, signed and sealed by Mark Westerfield, P.E. on 09/10/2020.

B. TESTS

1. None.

C. CALCULATIONS

1. None.

D. QUALITY ASSURANCE

1. Miami-Dade Department of Regulatory and Economic Resources (RER)

E. MATERIAL CERTIFICATIONS

1. None.

F. STATEMENTS

1. Statement letters of code conformance to **6th Edition (2017) and 7th Edition (2020) FBC**, issued by Clopay Corporation, dated 09/10/2020, signed and sealed by Mark Westerfield, P.E.
2. Certificate of amendment changing the company name from Clopay Building Products Company, Inc. to Clopay Corporation, issued by the State of Delaware, dated 08/27/2019.



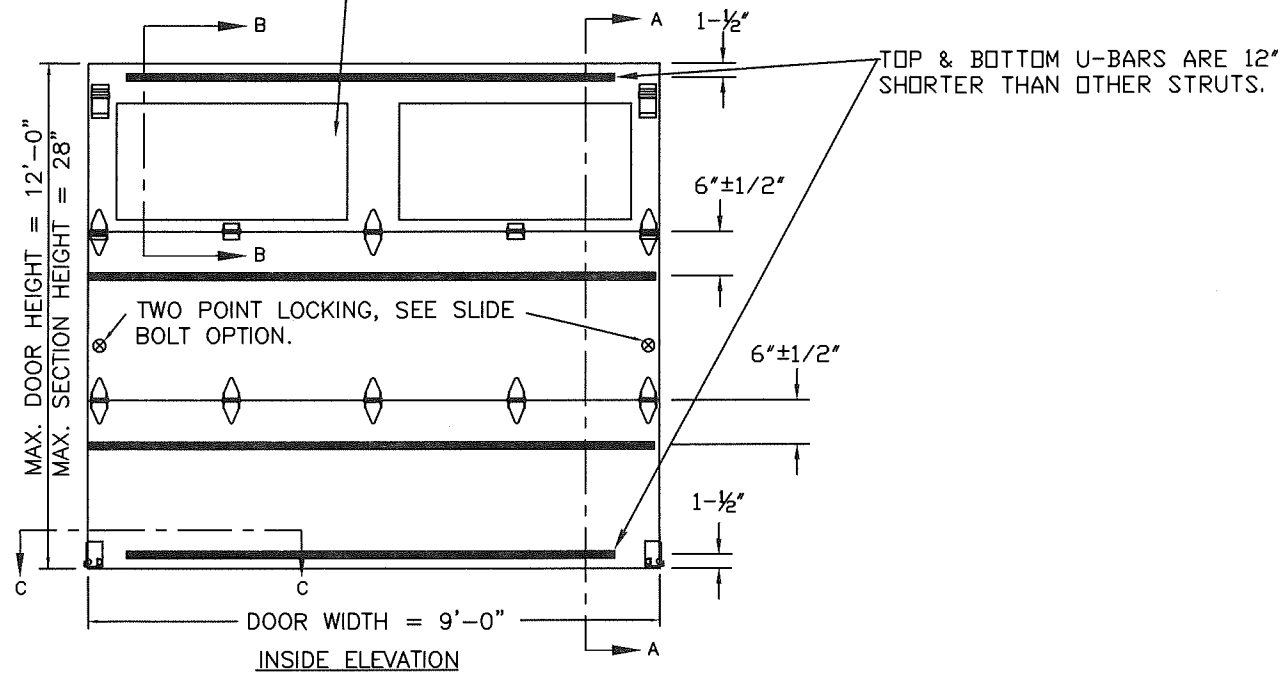
Carlos M. Utrera, P.E.
Product Control Examiner
NOA-No. 20-0922.22
Expiration Date: August 23, 2023
Approval Date: November 05, 2020

CUSTOM RESERVE COLLECTION
 CUSTOM MODELS CR800, MR800, CH900, CRDnnn.
 NOTE THAT "nnn" REPRESENTS THE ARRANGEMENT
 OF THE DECORATIVE CLADDING AND OVERLAYS.

SHEET:
 1 OF 4

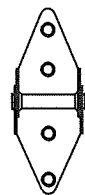
REVISIONS					
REV. NO.	ZONE:	DATE:	ECN NO.	APPVD:	DESCRIPTION
00	-	10/10/17	-	MWW	INITIAL RELEASE
01		1/22/18		MWW	REVISIONS BASED ON MIAMI-DADE REVIEW
02	-	9/10/20	-	SH	UPDATED TITLE BLOCK AND COMPLIANCE STATEMENT TO 7TH EDITION

OPTIONAL IMPACT RESISTANT
 LITES. SEE SECTION B-B ON
 SHEET 2 FOR DETAILS.

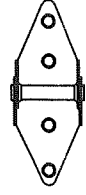


U-BAR NOTE: MOUNT (2) 1/4" x 1" LAG
 SCREWS AT EACH END AND CENTER HINGE
 LOCATIONS WHEN MOUNTING U-BARS. DRILL
 (2) 9/32" CLEARANCE HOLES IN U-BAR FOR
 MOUNTING IF HOLES DO NOT EXIST IN U-BAR.
 DRILL 3/16" PILOT HOLES IN WOOD FOR
 MOUNTING 1/4" LAG SCREWS.

NOTE: WHEN INSTALLING LAG SCREWS, DRILL
 3/16" PILOT HOLES IN ALL LOCATIONS THAT
 DO NOT CONTAIN PRE-DRILLED HOLES.



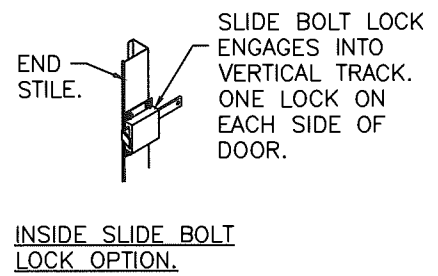
14 GA. END HINGE
 (4) 1/4"x 1" LAG SCREWS
 PER END HINGE.



14 GA. CENTER HINGE
 (4) 1/4"x 1" LAG SCREWS



14 GA. WINDOW HALF HINGE
 (4) 1/4"x 1" LAG SCREWS



PRODUCT REVISED
 as complying with the Florida
 Building Code
 NOA-No. 20-0922.22
 Expiration Date 08/23/2023

By *[Signature]*
 Miami-Dade Product Control
 THIS PRODUCT CONFORMS
 TO THE REQUIREMENTS OF
 6TH AND 7TH EDITION OF
 THE FLORIDA BUILDING
 CODE

MANUFACTURING PRODUCT CODE
 W-1G899

PART NO.: N/A

WINDLOAD RATING
 W8 DP47

DESIGN LOADS: +47.0 PSF & -55.0 PSF

Unless Stated Otherwise TOLERANCES are	8585 Duke Boulevard Mason, OH 45040 USA Tel. No. 513-770-4800 Fax No. 513-770-4853
.0 = ±.031	Clopay CORPORATION DESCRIPTION: CUSTOM RESERVE WOOD DOOR UP TO 9'0" WIDE DRAWN BY: SH DATE: 8/28/15 SCALE: NTS DWG. B CHECKED BY: MWW DATE: 10/10/17 SHEET 1 OF 4 DWG. NO.: 104939 VER: M-D
.00 = ±.015	
.000 = ±.005	
.0000 = ±.001	
Degrees = ±1/2°	
Unless Stated Otherwise DIMENSIONS ARE IN INCHES.	

DESIGN ENGINEER:
 MARK WESTERFIELD, P.E.
 FLORIDA LICENSE No. 48495

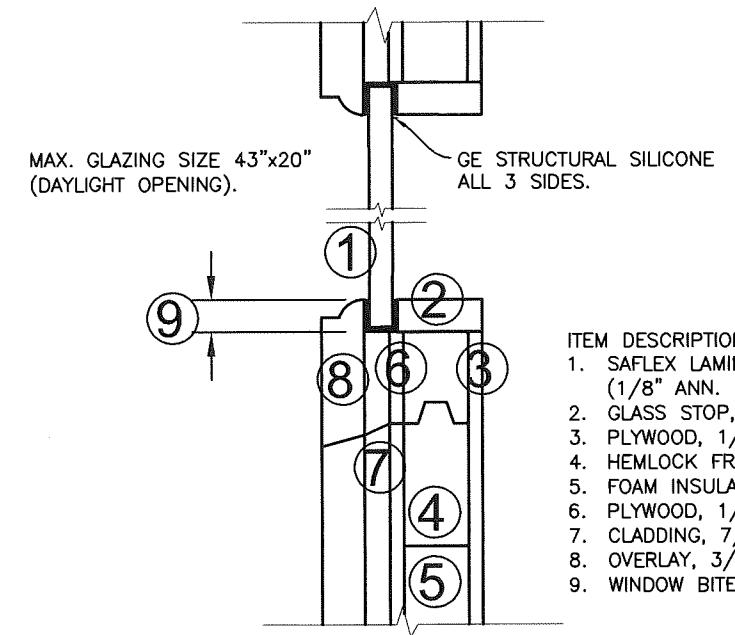
CUSTOM RESERVE COLLECTION
 CUSTOM MODELS CR800, MR800, CH900, CRDnnn.
 NOTE THAT "nnn" REPRESENTS THE ARRANGEMENT
 OF THE DECORATIVE CLADDING AND OVERLAYS.

SHEET:
 2 OF 4

REVISIONS					
REV. NO.	ZONE:	DATE:	ECN NO.	APPVD:	DESCRIPTION
02	-	-	-	-	SEE REVISION HISTORY ON SHEET ONE.

IMPACT-RESISTANT CONSTRUCTION:
 SOLID DOORS (NO GLAZING) OR DOORS WITH OPTIONAL IMPACT-RESISTANT GLAZING ARE IMPACT-RESISTANT. THE ENTIRE DOOR ASSEMBLY INSTALLED IN COMPLIANCE WITH THIS SECTION MEETS THE WIND LOAD REQUIREMENTS OF THE FLORIDA BUILDING CODE AND INTERNATIONAL BUILDING CODE AND IS LARGE- AND SMALL-MISSILE IMPACT RESISTANT.

SECTION B-B (IMPACT-RESISTANT GLAZING OPTION)



- ITEM DESCRIPTIONS AND NOMINAL DIMENSIONS
1. SAFLEX LAMINATED SAFETY GLASS, 3/8" (1/8" ANN. - 090" PVB - 1/8" ANN.)
 2. GLASS STOP, 16/32"
 3. PLYWOOD, 1/4"
 4. HEMLOCK FRAME, 1-1/8"
 5. FOAM INSULATION, 1-1/8"
 6. PLYWOOD, 1/4"
 7. CLADDING, 7/16"
 8. OVERLAY, 3/4"
 9. WINDOW BITE, 7/16"

PRODUCT REVISED
 as complying with the Florida Building Code
 NOA-No. 20-0922.22
 Expiration Date 08/23/2023
 By *[Signature]*
 Miami-Dade Product Control

MANUFACTURING PRODUCT CODE
 W-1G899

PART NO.: N/A

WINDLOAD RATING
 W8 DP47

DESIGN LOADS: +47.0 PSF & -55.0 PSF

Unless Stated Otherwise
 TOLERANCES are
 .0 = ±.031
 .00 = ±.015
 .000 = ±.005
 .0000 = ±.001
 Degrees = ±1/2'
 Unless Stated Otherwise
 DIMENSIONS ARE IN INCHES.

Clopay CORPORATION
 8585 Duke Boulevard
 Mason, OH 45040 USA
 Tel. No. 513-770-4800
 Fax No. 513-770-4853

DESCRIPTION: CUSTOM RESERVE WOOD DOOR UP TO 9'0" WIDE

DRAWN BY: SH DATE: 8/28/15 SCALE: NTS DWG. B
 CHECKED BY: MWW DATE: 10/10/17 SHEET 2 OF 4 SIZE B
 DWG. NO.: 104939 VER: M-D

[Signature]
 DESIGN ENGINEER
 MARK WESTERFIELD, P.E.
 FLORIDA LICENSE No. 48495

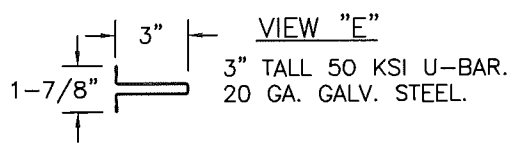
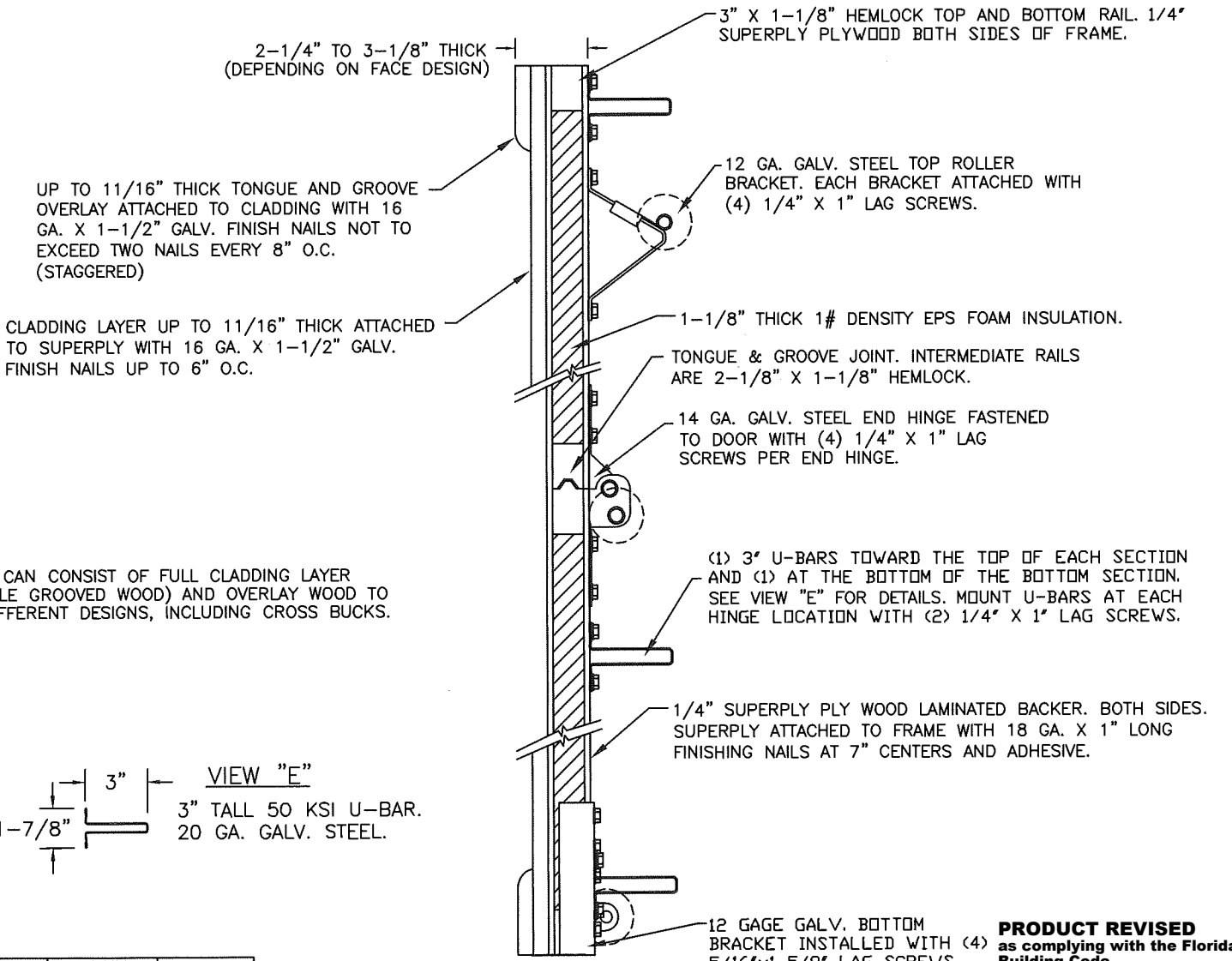
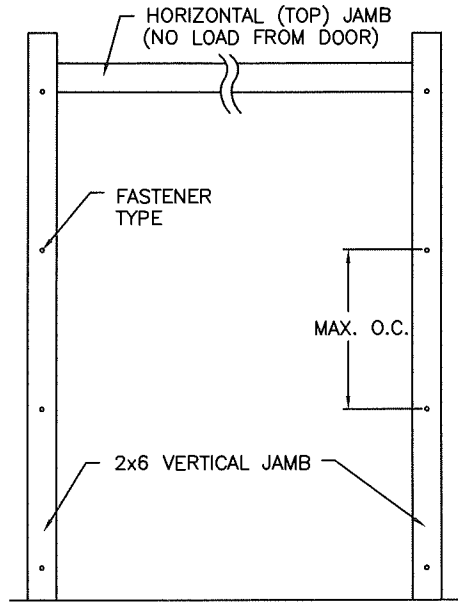
CUSTOM RESERVE COLLECTION
 CUSTOM MODELS CR800, MR800, CH900, CRDnnn.
 NOTE THAT "nnn" REPRESENTS THE ARRANGEMENT
 OF THE DECORATIVE CLADDING AND OVERLAYS.

SHEET: 3 OF 4		REVISIONS				
REV. NO.	ZONE:	DATE:	ECN NO.	APPVD:	DESCRIPTION	
02	-	-	-	-	SEE REVISION HISTORY ON SHEET ONE.	

JAMB TO SUPPORTING STRUCTURE ATTACHMENT

- NOTES:**
1. ALL THE LOAD FROM THE DOOR IS TRANSFERRED TO THE TRACK AND THEN FROM THE TRACK TO THE 2x6 VERTICAL SYP (GRADE #2 OR BETTER) JAMBS. NO LOAD FROM THE DOOR IS TRANSFERRED TO THE HORIZONTAL (TOP) JAMB.
 2. EACH VERTICAL JAMB SEES A MAXIMUM DESIGN LOAD OF +211.5 LB & -247.5 LB. PER LINEAR FOOT OF JAMB.
 3. ALL JAMB FASTENERS MAY BE (BUT ARE NOT REQUIRED TO BE) COUNTERSUNK TO PROVIDE A FLUSH MOUNTING SURFACE.
 4. A 1/3 STRESS INCREASE FOR WIND LOAD WAS NOT USED IN THE CALCULATION OF ALLOWABLE LOADS FOR ANCHORS AND FASTENERS FOR STEEL, CONCRETE AND MASONRY.

NOTE: 2x6 WOOD JAMBS ARE NOT REQUIRED WITH CONTINUOUS ANGLE MOUNT TRACK. HOWEVER, IF DESIRED ON STEEL JAMBS OR CONCRETE OR BLOCK WALLS, APPROVED FASTENERS AS DETAILED BELOW SHOULD BE INCREASED IN LENGTH BY 1-1/2" AND INSTALLED DIRECTLY THROUGH THE ANGLE AND 2x6 WOOD JAMBS INTO THE STEEL JAMBS OR CONCRETE OR BLOCK WALLS. ANCHORS CAN BE (BUT ARE NOT REQUIRED TO BE) COUNTERSUNK TO PROVIDE A FLUSH MOUNTING SURFACE. CONTINUOUS ANGLE TRACK CAN BE ANCHORED DIRECTLY TO GROUT REINFORCED BLOCK WALL OR 3,000 PSI MIN. CONCRETE COLUMN OR STEEL JAMBS.



FASTENER ATTACHMENT TO SUPPORTING STRUCTURE SCHEDULES

BUILDING TYPE	FASTENER TYPE	MAXIMUM ON-CENTER DISTANCE BETWEEN FASTENERS*	STEEL WASHERS REQUIRED?
HOLLOW BLOCK WALL	1/4" x 1-1/4" MIN. EMBED ULTRACON CONCRETE ANCHOR	7-3/4"	1" O.D.
GROUT FILLED BLOCK WALL	1/4" x 1-3/4" MIN. EMBED ULTRACON CONCRETE ANCHOR	13"	1" O.D.
3000 PSI MIN. CONCRETE	1/4" x 1-3/4" MIN. EMBED ULTRACON CONCRETE ANCHOR	24"	1" O.D.
2000 PSI MIN. CONCRETE	1/4" x 1-3/4" MIN. EMBED TAPCON CONCRETE ANCHOR	24"	1" O.D.
2000 PSI MIN. CONCRETE	3/8" x 1-3/4" MIN. EMBED WEJ-IT ANKR TITE SLEEVE ANCHOR	23-3/4"	INCLUDED
4000 PSI MIN. CONCRETE	3/8" x 1-3/4" MIN. EMBED WEJ-IT ANKR TITE SLEEVE ANCHOR	24"	INCLUDED
WOOD FRAME (SYP 0.55 SG)	1/2" x 3" LAG SCREW (ASTM A307, GRADE A) 1-5/8" EMBED INTO STRUCTURE	24"	1" O.D.

* FIRST (BOTTOM) ANCHOR STARTING AT NO MORE THAN HALF OF THE MAXIMUM ON-CENTER DISTANCE. HIGHEST ANCHOR INSTALLED AT LEAST AS HIGH AS THE DOOR OPENING.
 CLOPAY DOES NOT SUPPLY JAMB ATTACHMENT FASTENERS.
 MINIMUM DISTANCE BETWEEN CENTER OF ANCHOR AND EDGE OF CONCRETE BLOCK: 2-1/2", EXCLUDING STUCCO THICKNESS.

SECTION A-A (SIDE VIEW)

DESIGN LOADS: +47.0 PSF & -55.0 PSF

PRODUCT REVISED
 as complying with the Florida Building Code
 NOA-No. 20-0922.22
 Expiration Date 08/23/2023
 By *[Signature]*
 Miami-Dade Product Control

MANUFACTURING PRODUCT CODE
 W-1G899

PART NO.: N/A

WINDLOAD RATING
 W8 DP47

Unless Stated Otherwise
 TOLERANCES are
 .0 = ±.031
 .00 = ±.015
 .000 = ±.005
 .0000 = ±.001
 Degrees = ±1/2"
 Unless Stated Otherwise
 DIMENSIONS ARE IN INCHES.

Clopay CORPORATION
 8585 Duke Boulevard
 Mason, OH 45040 USA
 Tel. No. 513-770-4800
 Fax No. 513-770-4853

DESCRIPTION: CUSTOM RESERVE WOOD DOOR UP TO 9'0" WIDE	DATE: 8/28/15	SCALE: NTS	DWG. SIZE B
DRAWN BY: SH	DATE: 10/10/17	SHEET 3 OF 4	
CHECKED BY: MWW			
DWG. NO.: 104939		VER: M-D	

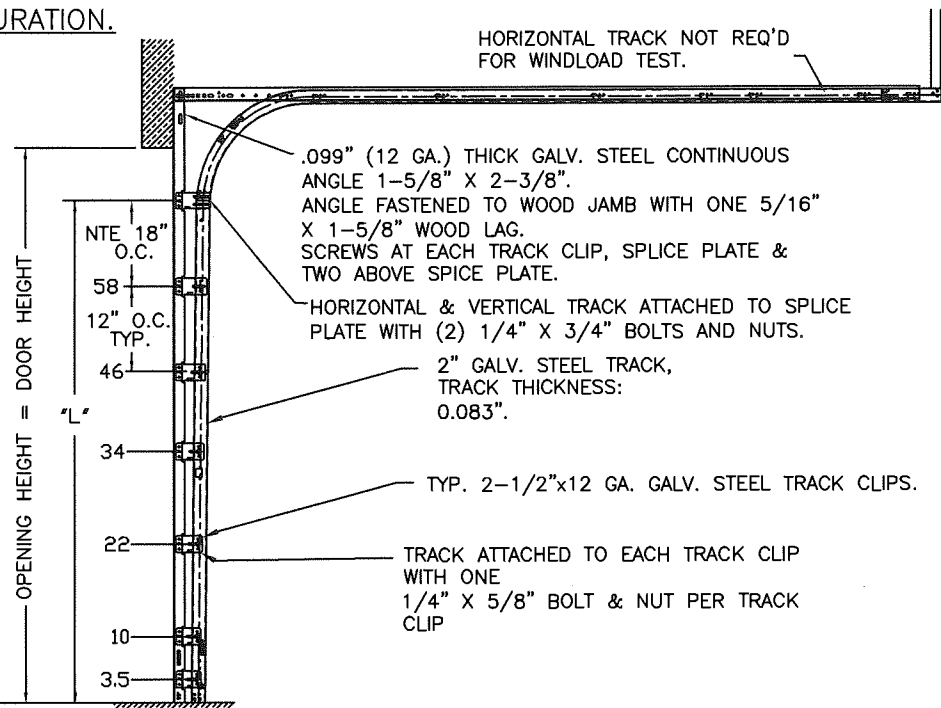
DESIGN ENGINEER:
 MARK WESTERFIELD, P.E.
 FLORIDA LICENSE No. 48495

CUSTOM RESERVE COLLECTION
 CUSTOM MODELS CR800, MR800, CH900, CRDnnn.
 NOTE THAT "nnn" REPRESENTS THE ARRANGEMENT
 OF THE DECORATIVE CLADDING AND OVERLAYS.

SHEET: 4 OF 4	REVISIONS					
	REV. NO.	ZONE:	DATE:	ECN NO.	APPVD:	DESCRIPTION
	02	-	-	-	-	SEE REVISION HISTORY ON SHEET ONE.

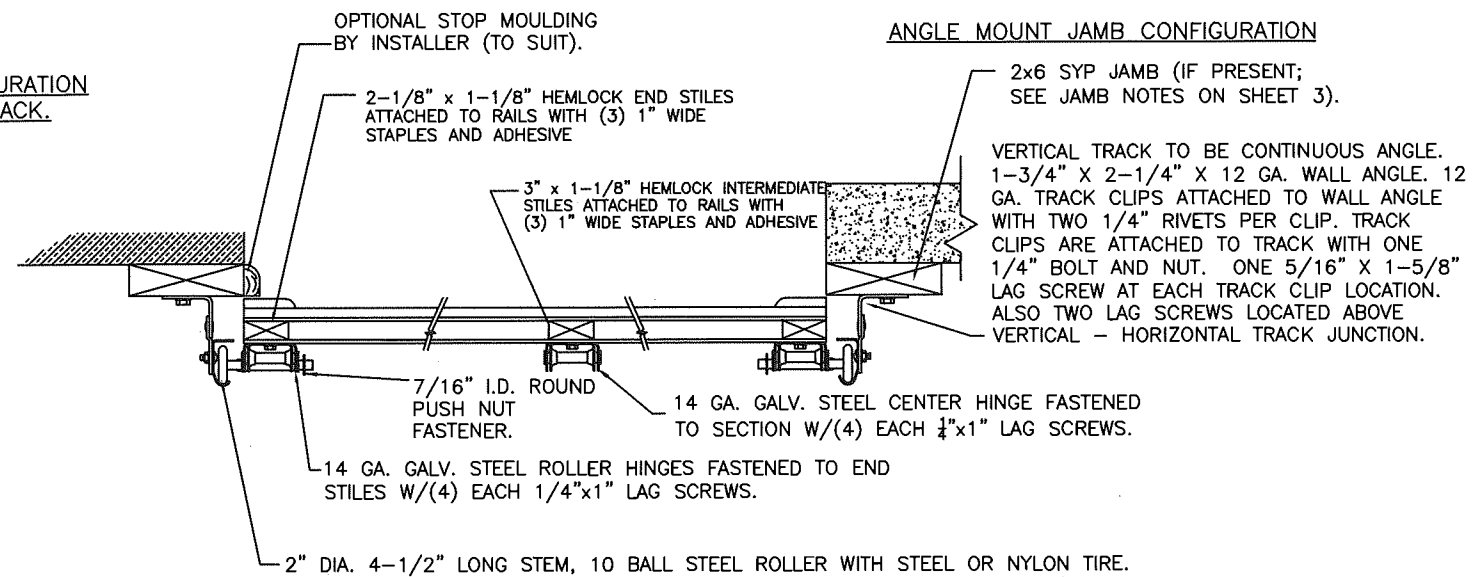
2" TRACK CONFIGURATION.

NOTE DOUBLE TRACK HEADROOM, HI-LIFT TRACK, FOLLOW-THE-ROOF TRACK, AND VERTICAL LIFT TRACK ARE AVAILABLE OPTIONS. TRACK CONFIGURATION ABOVE THE DOOR OPENING DOES NOT AFFECT THE WIND LOAD RATING.



DOOR HEIGHT	"L"
6'-6"	70"
7'-0"	76"
7'-6"	82"
8'-0"	88"
8'-6"	94"
9'-0"	100"
9'-6"	106"
10'-0"	112"
10'-6"	118"
11'-0"	124"
11'-6"	130"
12'-0"	136"

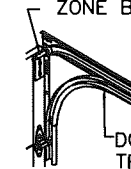
JAMB CONFIGURATION FOR 2" TRACK.



SECTION C-C

PREPARATION OF JAMBS BY OTHERS.

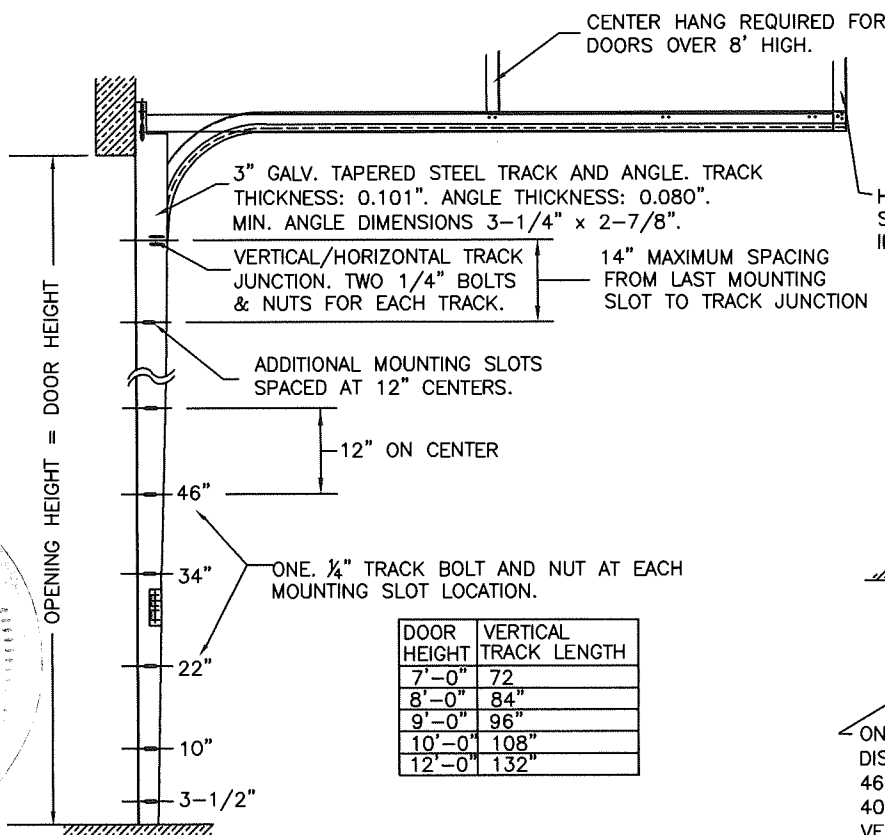
LHR BRACKET (2-1/2" x 5-3/4" x 12GA) ATTACHED WITH (2) 1/4" x 3/4" SELF TAPPING SCREWS. NOTE THAT LHR BRACKETS ARE ALSO USED WITH "DOUBLE END STILE" AS SHOWN IN ZONE B-3 SHEET 1.



DOUBLE TRACK LOW HEADROOM OPTION (AVAIL. FOR BOTH 2" AND 3" TRACK)

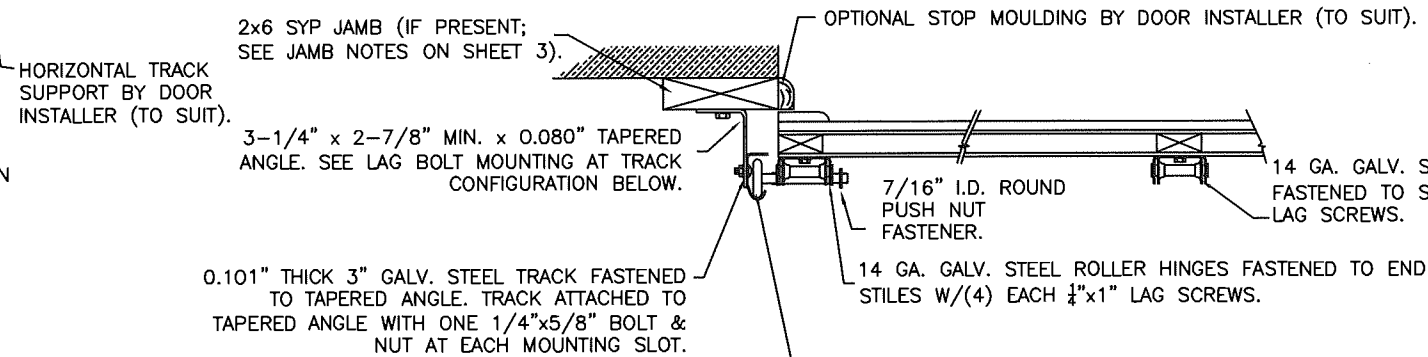
3" TRACK CONFIGURATION.

NOTE DOUBLE TRACK HEADROOM, HI-LIFT TRACK, FOLLOW-THE-ROOF TRACK, AND VERTICAL LIFT TRACK ARE AVAILABLE OPTIONS. TRACK CONFIGURATION ABOVE THE DOOR OPENING DOES NOT AFFECT THE WIND LOAD RATING.



DOOR HEIGHT	VERTICAL TRACK LENGTH
7'-0"	72"
8'-0"	84"
9'-0"	96"
10'-0"	108"
12'-0"	132"

JAMB CONFIGURATION FOR 3" TRACK.



SECTION C-C

PREPARATION OF JAMBS BY OTHERS.

DESIGN LOADS: +47.0 PSF & -55.0 PSF

Unless Stated Otherwise TOLERANCES are
 .0 = ±.031
 .00 = ±.015
 .000 = ±.005
 .0000 = ±.001
 Degrees = ±1/2°
 Unless Stated Otherwise DIMENSIONS ARE IN INCHES.

Clopay CORPORATION
 8585 Duke Boulevard
 Mason, OH 45040 USA
 Tel. No. 513-770-4800
 Fax No. 513-770-4853

PRODUCT REVISED
 as complying with the Florida Building Code
 NOA-No. 20-0922.22
 Expiration Date 08/23/2023

By *[Signature]*
Miami-Dade Product Control
 MANUFACTURING PRODUCT CODE
 W-1G899

PART NO.: N/A
 WINDLOAD RATING
W8 DP47

DESCRIPTION: CUSTOM RESERVE WOOD DOOR UP TO 9'0" WIDE
 DRAWN BY: SH DATE: 8/28/15 SCALE: NTS DWG. B
 CHECKED BY: MWW DATE: 10/10/17 SHEET 4 OF 4 SIZE B
 DWG. NO.: 104939 VER: M-D

DESIGN ENGINEER:
 MARK WESTERFIELD, P.E.
 FLORIDA LICENSE No. 48495

