



DEPARTMENT OF REGULATORY AND ECONOMIC RESOURCES (RER)
BOARD AND CODE ADMINISTRATION DIVISION
NOTICE OF ACCEPTANCE (NOA)

MIAMI-DADE COUNTY
PRODUCT CONTROL SECTION
11805 SW 26 Street, Room 208
Miami, Florida 33175-2474
T (786) 315-2590 F (786) 315-2599
www.miamidade.gov/economy

Clopay Corporation
8585 Duke Boulevard
Mason, OH 45040

SCOPE:

This NOA is being issued under the applicable rules and regulations governing the use of construction materials. The documentation submitted has been reviewed and accepted by Miami-Dade County RER-Product Control Section to be used in Miami Dade County and other areas where allowed by the Authority Having Jurisdiction (AHJ).

This NOA shall not be valid after the expiration date stated below. The Miami-Dade County Product Control Section (In Miami Dade County) and/or the AHJ (in areas other than Miami Dade County) reserve the right to have this product or material tested for quality assurance purposes. If this product or material fails to perform in the accepted manner, the manufacturer will incur the expense of such testing and the AHJ may immediately revoke, modify, or suspend the use of such product or material within their jurisdiction. RER reserves the right to revoke this acceptance if it is determined by Miami-Dade County Product Control Section that this product or material fails to meet the requirements of the applicable building code.

This product is approved as described herein and has been designed to comply with the Florida Building Code, including the High Velocity Hurricane Zone.

DESCRIPTION: Coachman/Canyon Ridge 2” Intellicore W6 DP38T Steel Sectional Garage Door up to 18’-2” Wide w/ Optional Impact Resistant Lites

APPROVAL DOCUMENT: Drawing No. **104951**, titled “Coachman/Canyon Ridge Intellicore W6 18’ Wide”, sheets 1 through 3 of 3, dated 08/14/2015, with revision 4 dated 08/01/2020, prepared by Clopay Building Products Company, signed and sealed by Mark Westerfield, P.E., bearing the Miami-Dade County Product Control revision stamp with the Notice of Acceptance number and expiration date by the Miami-Dade County Product Control Section.

MISSILE IMPACT RATING: Large and Small Missile Impact Resistant

LABELING: A permanent label with the manufacturer’s name or logo, manufacturing address, model number, the positive and negative design pressure rating, indicate impact rated if applicable, installation instruction drawing reference number, approval number (NOA), the applicable test standards, and the statement reading ‘Miami-Dade County Product Control Approved’ is to be located on the door’s side track, bottom angle, or inner surface of a panel.

RENEWAL of this NOA shall be considered after a renewal application has been filed and there has been no change in the applicable building code negatively affecting the performance of this product.

TERMINATION of this NOA will occur after the expiration date or if there has been a revision or change in the materials, use, and/or manufacture of the product or process. Misuse of this NOA as an endorsement of any product, for sales, advertising or any other purposes shall automatically terminate this NOA. Failure to comply with any section of this NOA shall be cause for termination and removal of NOA.

LIMITATION: This approval requires the manufacturer to do testing of all coils used to fabricate door panels. A minimum of 2 specimens shall be cut from each coil and tensile tested according to ASTM E-8 by a Miami-Dade County approved laboratory. Every 3 months, the manufacturer shall mail to this office a copy of the tested reports. Only coils with average yield strength of 32,000 psi or more shall be used to make door panels for Miami-Dade County under this Notice of Acceptance.

ADVERTISEMENT: The NOA number preceded by the words Miami-Dade County, Florida, and followed by the expiration date may be displayed in advertising literature. If any portion of the NOA is displayed, then it shall be done in its entirety.

INSPECTION: A copy of this entire NOA shall be provided to the user by the manufacturer or its distributors and shall be available for inspection at the job site at the request of the Building Official.

This NOA **renews** and **revises** **NOA # 17-0809.28** and consists of this page 1 and evidence pages E-1, E-2 and E-3, as well as approval document mentioned above.

The submitted documentation was reviewed by **Carlos M. Utrera, P.E.**



NOA No 20-0922.24
Expiration Date: October 29, 2025
Approval Date: October 15, 2020
Page 1

NOTICE OF ACCEPTANCE: EVIDENCE SUBMITTED

1. EVIDENCE SUBMITTED UNDER NOA #15-0908.08

A. DRAWINGS

1. Drawing No. **104951**, titled "Coachman/Canyon Ridge Intellicore W6 18' Wide", sheets 1 through 3 of 3, dated 08/14/2015, prepared by Clopay Building Products Company, signed and sealed by Mark Westerfield, P.E.

B. TESTS

1. Addendum letter to Test Report No. **ATLNC 0812.01-14**, dated 05/06/2015, signed and sealed by David W. Johnson, P.E.
2. Test reports on 1) Uniform Static Air Pressure Test, Loading per FBC TAS 202-94
2) Large Missile Impact Test per FBC, TAS 201-94
3) Cyclic Wind Pressure Loading per FBC, TAS 203-94
4) Forced Entry Test, per FBC, TAS 202-94
5) Tensile Test per ASTM E8
along with marked-up drawings and installation diagram of 18'2"x 8', 27ga steel garage door Coachman Model CGU11W6 with Lexan polycarbonate windows, prepared by American Test Lab, Inc., Test Report No. **ATLNC 0812.01-14**, dated 09/03/2014, signed and sealed by David W. Johnson, P.E.
3. Test reports on 1) Uniform Static Air Pressure Test, Loading per FBC TAS 202-94
2) Large Missile Impact Test per FBC, TAS 201-94
3) Cyclic Wind Pressure Loading per FBC, TAS 203-94
4) Forced Entry Test, per FBC, TAS 202-94
5) Tensile Test per ASTM E8
along with marked-up drawings and installation diagram of 16'2"x 8', 27ga steel garage door Model GD2LPW8 with MAK SL and/or MAK 15 windows, prepared by American Test Lab, Inc., Test Report No. **ATLNC 1105-01-13**, dated 01/14/2014, signed and sealed by David W. Johnson, P.E.
4. Test report on Salt Spray per ASTM B117 of painted G40 galvanized painted and G90 panels, prepared by Fenestration Testing Laboratory, Inc., Test Report No. **7890**, dated 10/01/2014, signed by Idalmis Ortega, P.E.

C. CALCULATIONS

1. Jamb anchor calculations prepared by Clopay Building Products Company, dated 08/14/2015, signed and sealed by Mark Westerfield, P.E.

D. QUALITY ASSURANCE

1. Miami-Dade Department of Regulatory and Economic Resources (RER)



Carlos M. Utrera, P.E.
Product Control Examiner
NOA No 20-0922.24
Expiration Date: October 29, 2025
Approval Date: October 15, 2020

NOTICE OF ACCEPTANCE: EVIDENCE SUBMITTED

E. MATERIAL CERTIFICATIONS

1. Notice of Acceptance No. **15-0915.08** issued to SABIC Innovative Plastics, US LLC for their Lexan Polycarbonate Sheet Products, approved on 12/10/2015, expiring on 07/17/2018.
2. Notice of Acceptance No. **17-0410.01** issued to Covestro LLC for their Makrolon Polycarbonate Sheets, approved on 06/08/2017, expiring on 08/27/2022.
3. Test report on Surface Burning Characteristics, per ASTM E84 of the polyurethane foam insulation, prepared by QAI Laboratories, Test Report No. **RJ2814-3**, dated 10/14/2013, signed by Greg Banasky.
4. Test report on Ignition Temperature of Plastics of the polyurethane foam insulation per ASTM D1929, prepared by UL LLC, Test Report No. **4786399941/ R5692**, dated 05/20/2014, signed by James Smith.

F. STATEMENTS

1. Statement letter of code conformance to 5th edition (2014) FBC issued by Clopay Building Products Company, dated 08/14/2015, signed and sealed by Mark Westerfield, P.E.
2. Statement letter of no financial interest issued by Clopay Building Products Company, dated 08/14/2015, signed and sealed by Mark Westerfield, P.E.

2. EVIDENCE SUBMITTED UNDER NOA # 17-0809.28

A. DRAWINGS

1. Drawing No. **104951**, titled "Coachman/Canyon Ridge Intellicore W6 18' Wide", sheets 1 through 3 of 3, dated 08/14/2015, with revision 3 dated 07/18/2017, prepared by Clopay Building Products Company, signed and sealed by Mark Westerfield, P.E.

B. TESTS

1. None.

C. CALCULATIONS

1. None.

D. QUALITY ASSURANCE

1. Miami-Dade Department of Regulatory and Economic Resources (RER)

E. MATERIAL CERTIFICATIONS

1. None.

F. STATEMENTS

1. Statement letter of code conformance to 2010, 5th Edition (2014) and 6th Edition (2017) FBC issued by Clopay Building Products Company, dated 08/02/2017, signed and sealed by Mark Westerfield, P.E.



Carlos M. Utrera, P.E.
Product Control Examiner
NOA No 20-0922.24
Expiration Date: October 29, 2025
Approval Date: October 15, 2020

NOTICE OF ACCEPTANCE: EVIDENCE SUBMITTED

3. NEW EVIDENCE SUBMITTED

A. DRAWINGS

1. Drawing No. **104932**, titled “Coachman/Canyon Ridge Intellicore W6 Double Car”, sheets 1 through 3 of 3, dated 08/05/2015, with revision 4 dated 08/01/2020, prepared by Clopay Corporation, signed and sealed by Mark Westerfield, P.E.

B. TESTS

1. None.

C. CALCULATIONS

1. None.

D. QUALITY ASSURANCE

1. Miami-Dade Department of Regulatory and Economic Resources (RER)

E. MATERIAL CERTIFICATIONS

1. None.

F. STATEMENTS

1. Statement letter of code conformance to the 6th Edition (2017) and 7th Edition (2020) of the FBC issued by Clopay Corporation, dated 08/10/2020, signed and sealed by Mark Westerfield, P.E.
2. Statement letter of no financial interest issued by Clopay Corporation, dated 08/10/2020, signed and sealed by Mark Westerfield, P.E.
3. Certificate of amendment changing the company name from Clopay Building Products Company, Inc. to Clopay Corporation, issued by the State of Delaware, dated 08/27/2019.

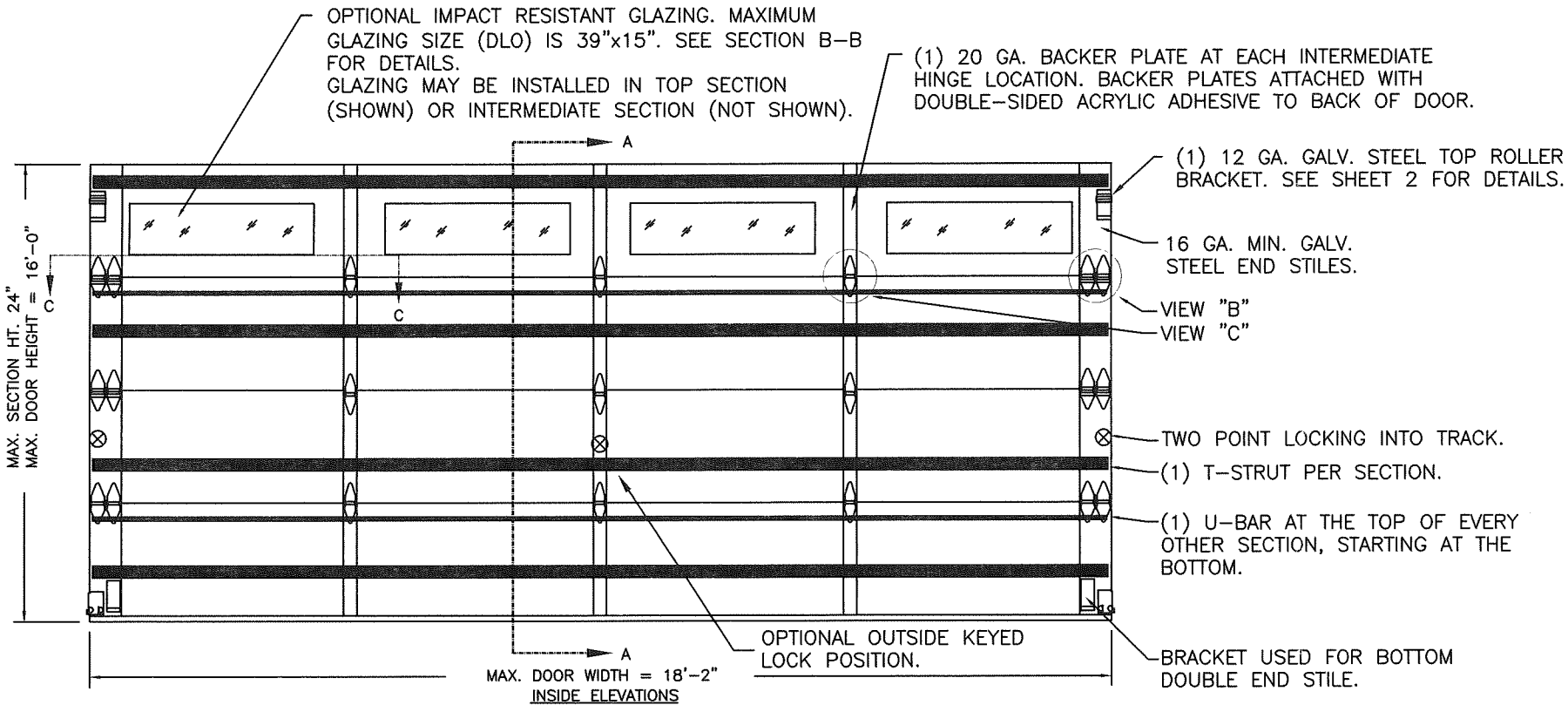


Carlos M. Utrera, P.E.
Product Control Examiner
NOA No 20-0922.24
Expiration Date: October 29, 2025
Approval Date: October 15, 2020

SHEET:
1 OF 3

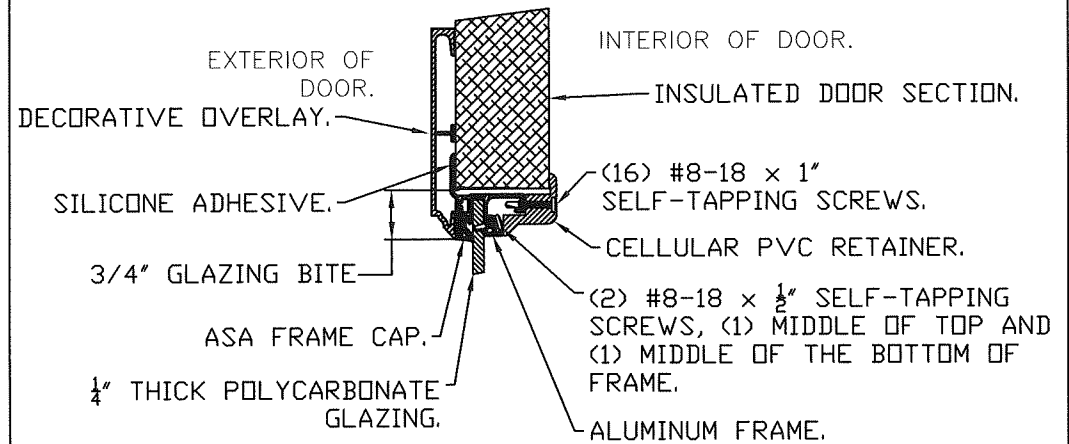
REVISIONS					
REV. NO.	ZONE	DATE	ECN NO.	APPVD:	DESCRIPTION
02	-	08/14/15	-		UPDATED FOR MIAMI-DADE APPLICATION
03	-	7/18/17	-	SH	UPDATED CODE COMPLIANCE STATEMENT TO ADD 6TH EDITION FBC.
04	-	8/1/20	-	MWW	UPDATED TITLE BLOCK AND COMPLIANCE STATEMENT TO 7TH EDITION

CLOPAY CANYON RIDGE SERIES: CAN2nn-XX, COACHMAN SERIES: CGUnn, CXUnn
 HOLMES GLENMOOR SERIES: GLN2nn-XX, SETTLERS SERIES: SXUnn
 IDEAL CARRIAGE HOUSE CUSTOM WOOD-LOOK SERIES: MWL2nn-XX, AFFINITY SERIES AGUnn
 MODEL DESIGNATION NOTE 1: "nn" REPRESENTS THE ARRANGEMENT OF THE DECORATIVE OVERLAYS.
 COACHMAN-TYPES DOORS ARE 2-5/8" THICK.
 MODEL DESIGNATION NOTE 2: "XX" REPRESENTS THE TYPE OF CLADDING. IF "XX" IS "MN" "PN" "CN" OR "NC" THE DOOR HAS EITHER CLADDING OR OVERLAYS AND IS 2-1/2" THICK OVERALL. ANY OTHER VALUE FOR "XX" INDICATES THAT THE DOOR HAS CLADDING AND OVERLAYS ON THE 2" BASE DOUBLE-SKIN INSULATED DOOR AND IS 3" THICK OVERALL.



IMPACT-RESISTANT CONSTRUCTION:
 SOLID DOORS (NO GLAZING) OR DOORS WITH OPTIONAL IMPACT-RESISTANT GLAZING ARE IMPACT-RESISTANT. OPTIONAL IMPACT RESISTANT ASSEMBLY CONSISTS OF ALUMINUM FRONT FRAME AND SABIC IP LEXAN 9034 (VERSIONS ALSO APPROVED: MR10, 9030, 90318, 90316, 90317, 90311, 90314, 90355) OR BAYER MAKROLON GP (VERSIONS ALSO APPROVED: SL, AR, 15), APPROVED CC1 PLASTICS IN ACCORDANCE WITH IBC/FBC 2606 AND APPROVED C1 PLASTICS IN ACCORDANCE WITH FBC 2612. THE ENTIRE DOOR ASSEMBLY INSTALLED IN COMPLIANCE WITH THIS SECTION MEETS THE WIND LOAD REQUIREMENTS OF THE FLORIDA BUILDING CODE AND INTERNATIONAL BUILDING CODE AND IS LARGE- AND SMALL-MISSILE IMPACT RESISTANT.

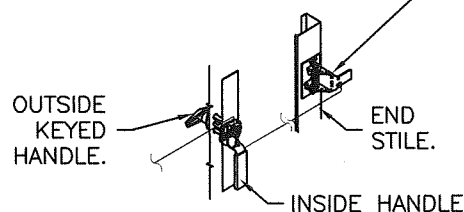
SECTION B-B (IMPACT-RESISTANT GLAZING OPTION)



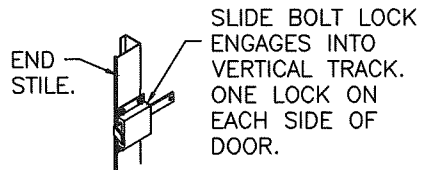
IMPACT-RESISTANT GLAZING DETAILS

DOOR HEIGHT	# OF SECTIONS
UP TO 8'0"	4
8'3" TO 10'0"	5
10'3" TO 12'0"	6
12'3" TO 14'0"	7
14'3" TO 16'0"	8
MAX SECTION HEIGHT: 24"	

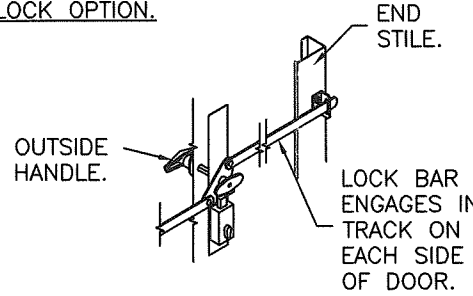
SNAP LATCH ENGAGES ONTO VERTICAL TRACK. ONE SNAP LATCH ON EACH SIDE OF DOOR.



OUTSIDE KEYED LOCK WITH SNAP LATCH LOCK OPTION.



INSIDE SLIDE BOLT LOCK OPTION.



OUTSIDE KEYED LOCK WITH LOCK BAR LOCKING.



DESIGN ENGINEER:
 MARK WESTERFIELD, P.E.
 FLORIDA P.E. #48495

THIS PRODUCT CONFORMS TO THE REQUIREMENTS OF 6TH AND 7TH EDITION OF THE FLORIDA BUILDING CODE

PRODUCT REVISED
 as complying with the Florida Building Code
 NOA-No. 20-0922.24
 Expiration Date 10/29/2025
 By *[Signature]*
 Miami-Dade Product Control

MANUFACTURING PRODUCT CODE
 COACHMAN: DSIUD-1M479
 CANYON RIDGE: DSIUD-1K479
 PART NO.: N/A

DESIGN LOADS: +38.0 P.S.F. & -42.0 P.S.F.

Unless Stated Otherwise TOLERANCES are
 .0 = ±.031
 .00 = ±.015
 .000 = ±.005
 .0000 = ±.001
 Degrees = ±1/2°
 Unless Stated Otherwise DIMENSIONS ARE IN INCHES.

Clopay CORPORATION
 8585 Duke Boulevard
 Mason, OH 45040 USA
 Tel. No. 513-770-4800
 Fax No. 513-770-4853
 DESCRIPTION: COACHMAN/CANYON RIDGE INTELLICORE W6 - 18' WIDE
 DRAWN BY: SH DATE: 07/30/14 SCALE: NTS
 CHECKED BY: MW DATE: 8/14/15 SHEET 1 OF 3
 DWG. NO.: 104951 VER: M-D

WINDLOAD RATING
W6 DP38T
 DWG. SIZE B

SHEET: 2 OF 3		REVISIONS			
REV. NO.	ZONE:	DATE:	ECN NO.	APPVD:	DESCRIPTION
04	-	-	-		SEE REVISION HISTORY ON SHEET ONE.

CLOPAY CANYON RIDGE SERIES: CAN2nn-XX, COACHMAN SERIES: CGUnn, CXUnn
 HOLMES GLENMOOR SERIES: GLN2nn-XX, SETTLERS SERIES: SXUnn
 IDEAL CARRIAGE HOUSE CUSTOM WOOD-LOOK SERIES: MWL2nn-XX, AFFINITY SERIES AGUnn
 MODEL DESIGNATION NOTE 1: "nn" REPRESENTS THE ARRANGEMENT OF THE DECORATIVE OVERLAYS.
 COACHMAN-TYPES DOORS ARE 2-5/8" THICK.
 MODEL DESIGNATION NOTE 2: "XX" REPRESENTS THE TYPE OF CLADDING. IF "XX" IS "MN" "PN" "CN" OR "NC" THE DOOR HAS EITHER CLADDING OR OVERLAYS AND IS 2-1/2" THICK OVERALL. ANY OTHER VALUE FOR "XX" INDICATES THAT THE DOOR HAS CLADDING AND OVERLAYS ON THE 2" BASE DOUBLE-SKIN INSULATED DOOR AND IS 3" THICK OVERALL.

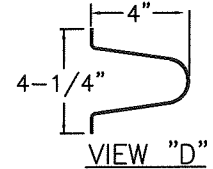
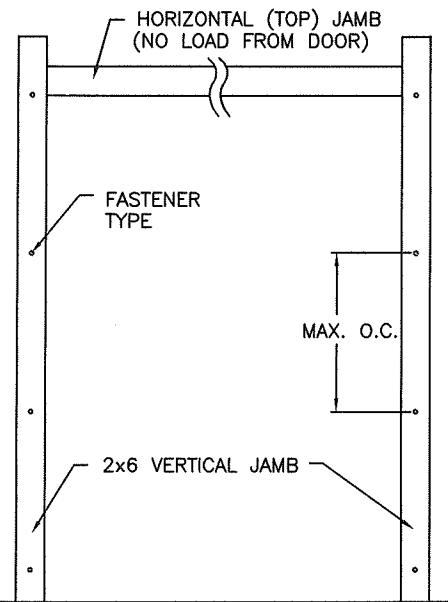
JAMB TO SUPPORTING STRUCTURE ATTACHMENT

NOTES:

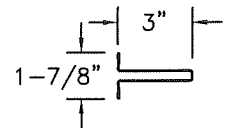
1. ALL THE LOAD FROM THE DOOR IS TRANSFERRED TO THE TRACK AND THEN FROM THE TRACK TO THE 2x6 VERTICAL SYP (GRADE #2 OR BETTER) JAMBS. NO LOAD FROM THE DOOR IS TRANSFERRED TO THE HORIZONTAL (TOP) JAMB.
2. EACH VERTICAL JAMB SEES A MAXIMUM DESIGN LOAD OF +342 LB & -378 LB. PER LINEAR FOOT OF JAMB.
3. ALL JAMB FASTENERS MAY BE (BUT ARE NOT REQUIRED TO BE) COUNTERSUNK TO PROVIDE A FLUSH MOUNTING SURFACE.
4. A 1/3 STRESS INCREASE FOR WIND LOAD WAS NOT USED IN THE CALCULATION OF ALLOWABLE LOADS FOR ANCHORS AND FASTENERS FOR STEEL, CONCRETE AND MASONRY.

PREPARATION OF JAMBS BY OTHERS

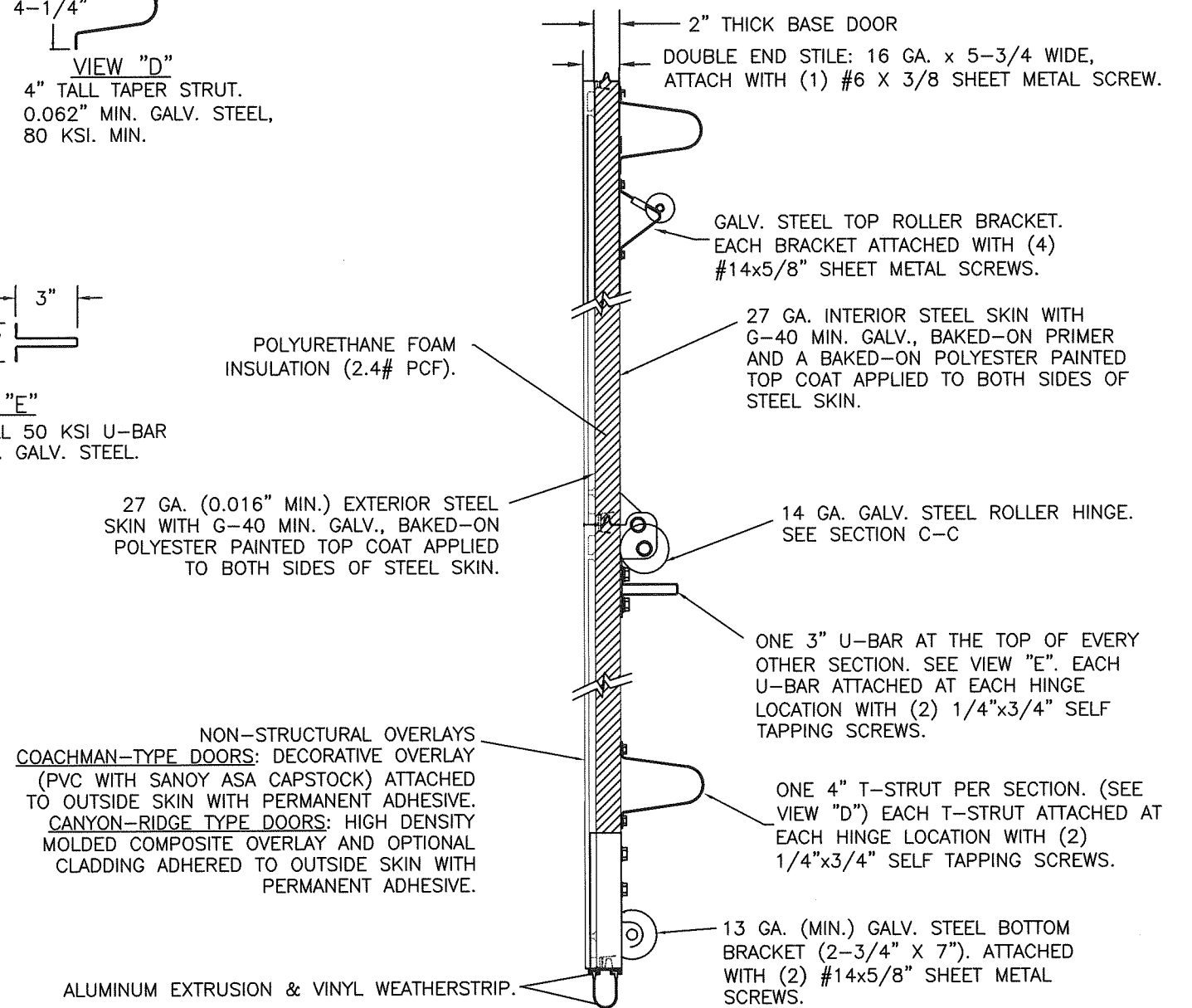
NOTE: THE DESIGN OF THE SUPPORTING STRUCTURAL ELEMENTS SHALL BE THE RESPONSIBILITY OF THE PROFESSIONAL OF RECORD FOR THE BUILDING OR STRUCTURE AND IN ACCORDANCE WITH CURRENT BUILDING CODES FOR THE LOADS LISTED ON THIS DRAWING.



VIEW "D"
 4" TALL TAPER STRUT.
 0.062" MIN. GALV. STEEL,
 80 KSI. MIN.



VIEW "E"
 3" TALL 50 KSI U-BAR
 20 GA. GALV. STEEL.

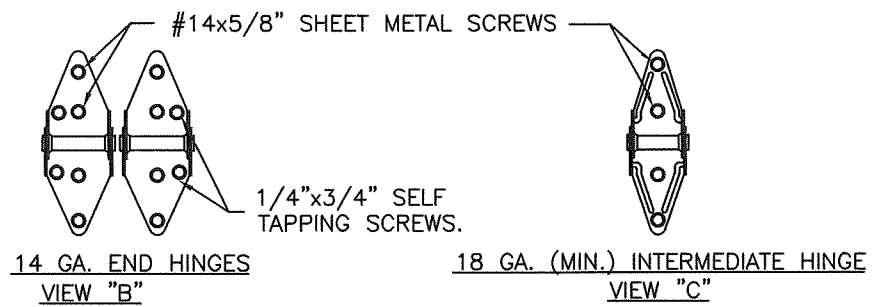


SECTION A-A (SIDE VIEW)

2x6 JAMB TO SUPPORTING STRUCTURE ATTACHMENT
 (NOT TO BE USED FOR ATTACHMENT OF TRACK ANGLE TO 2x6 VERTICAL JAMBS OR SUPPORTING STRUCTURE)

BUILDING TYPE	FASTENER TYPE	MAXIMUM ON-CENTER DISTANCE BETWEEN FASTENERS*	STEEL WASHERS REQUIRED
HOLLOW CMU BLOCK WALL	1/4" x 1-1/4" MIN. EMBED ULTRACON CONCRETE ANCHOR	4-3/4"	1' O.D.
GROUT-FILLED CMU BLOCK	1/4" x 1-3/4" MIN. EMBED ULTRACON CONCRETE ANCHOR	8"	1' O.D.
2000 PSI MIN. CONCRETE	1/4" x 1-3/4" MIN. EMBED ULTRACON CONCRETE ANCHOR	16-1/2"	1' O.D.
2000 PSI MIN. CONCRETE	1/4" x 1-3/4" MIN. EMBED TAPCON CONCRETE ANCHOR	15-1/2"	1' O.D.
2000 PSI MIN. CONCRETE	3/8" X 1-3/4" MIN. EMBED WEJ-IT ANKR TITE SLEEVE ANCHOR	14-1/2"	INCLUDED
4000 PSI MIN. CONCRETE	3/8" X 1-3/4" MIN. EMBED WEJ-IT ANKR TITE SLEEVE ANCHOR	24"	INCLUDED
WOOD FRAME (SYP 0.55 SG)	1/2" x 3" LAG SCREW (ASTM A307, GRADE A) 1-5/8" EMBED INTO STRUCTURE	15-3/4"	1' O.D.

* FIRST (BOTTOM) ANCHOR STARTING AT NO MORE THAN HALF OF THE MAXIMUM ON-CENTER DISTANCE. HIGHEST ANCHOR INSTALLED AT LEAST AS HIGH AS THE DOOR OPENING.
 CLOPAY DOES NOT SUPPLY JAMB ATTACHMENT FASTENERS.
 MINIMUM DISTANCE BETWEEN CENTER OF ANCHOR AND EDGE OF CONCRETE BLOCK: 2-1/2", EXCLUDING STUCCO THICKNESS.



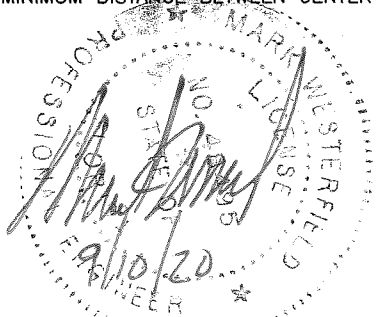
DESIGN LOADS: +38.0 P.S.F. & -42.0 P.S.F.

PRODUCT REVISED
 as complying with the Florida Building Code
 NOA-No. 20-0922.24
 Expiration Date 10/29/2025
 By [Signature]
 Miami-Dade Product Control

Unless Stated Otherwise TOLERANCES are
 .0 = ±.031
 .00 = ±.015
 .000 = ±.005
 .0000 = ±.001
 Degrees = ±1/2"
 Unless Stated Otherwise DIMENSIONS ARE IN INCHES.

Clopay CORPORATION
 8585 Duke Boulevard
 Mason, OH 45040 USA
 Tel. No. 513-770-4800
 Fax No. 513-770-4853

MANUFACTURING PRODUCT CODE COACHMAN: DSIUD-1M479 CANYON RIDGE: DSIUD-1K479	PART NO.: N/A
WINDLOAD RATING W6 DP38T	
DESCRIPTION: COACHMAN/CANYON RIDGE INTELLICORE W6 - 18' WIDE	
DRAWN BY: SH	DATE: 07/30/14
CHECKED BY: MW	DATE: 08/14/15
DWG. NO.: 104951	VER: M-D



DESIGN ENGINEER
 MARK WESTERFIELD, P.E.
 FLORIDA P.E. #48495

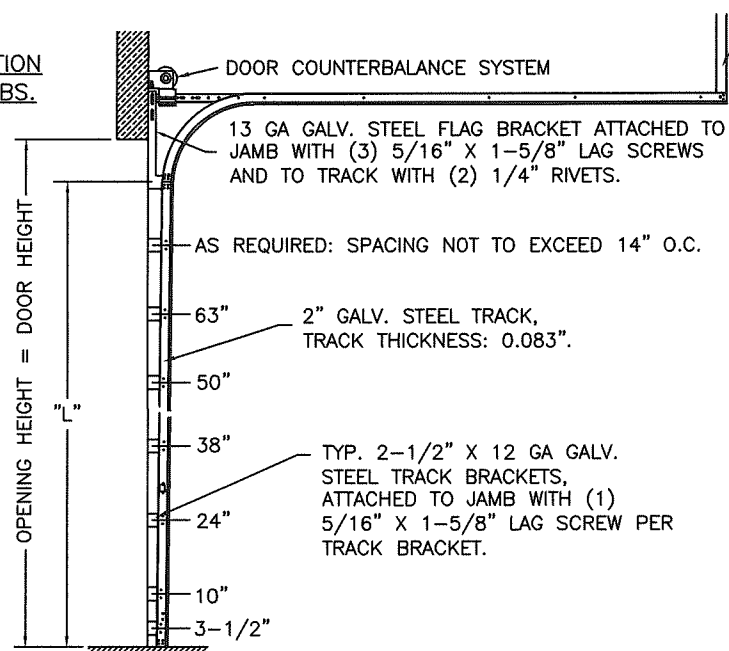
CLOPAY CANYON RIDGE SERIES: CAN2nn-XX, COACHMAN SERIES: CGUnn, CXUnn
 HOLMES GLENMOOR SERIES: GLN2nn-XX, SETTLERS SERIES: SXUnn
 IDEAL CARRIAGE HOUSE CUSTOM WOOD-LOOK SERIES: MWL2nn-XX, AFFINITY SERIES AGUnn
MODEL DESIGNATION NOTE 1: "nn" REPRESENTS THE ARRANGEMENT OF THE DECORATIVE OVERLAYS.
 COACHMAN-TYPES DOORS ARE 2-5/8" THICK.
MODEL DESIGNATION NOTE 2: "XX" REPRESENTS THE TYPE OF CLADDING. IF "XX" IS "MN" "PN" "CN" OR "NC" THE DOOR HAS EITHER CLADDING OR OVERLAYS AND IS 2-1/2" THICK OVERALL. ANY OTHER VALUE FOR "XX" INDICATES THAT THE DOOR HAS CLADDING AND OVERLAYS ON THE 2" BASE DOUBLE-SKIN INSULATED DOOR AND IS 3" THICK OVERALL.

SHEET:
3 OF 3

REVISIONS					DESCRIPTION
REV. NO.	ZONE:	DATE:	ECN NO.	APPVD:	
04	-	-	-	MW	SEE REVISION HISTORY ON SHEET ONE.

PRODUCT REVISED
 as complying with the Florida Building Code
 NOA-No. 20-0922.24
 Expiration Date 10/29/2025
 By *[Signature]*
 Miami-Dade Product Control

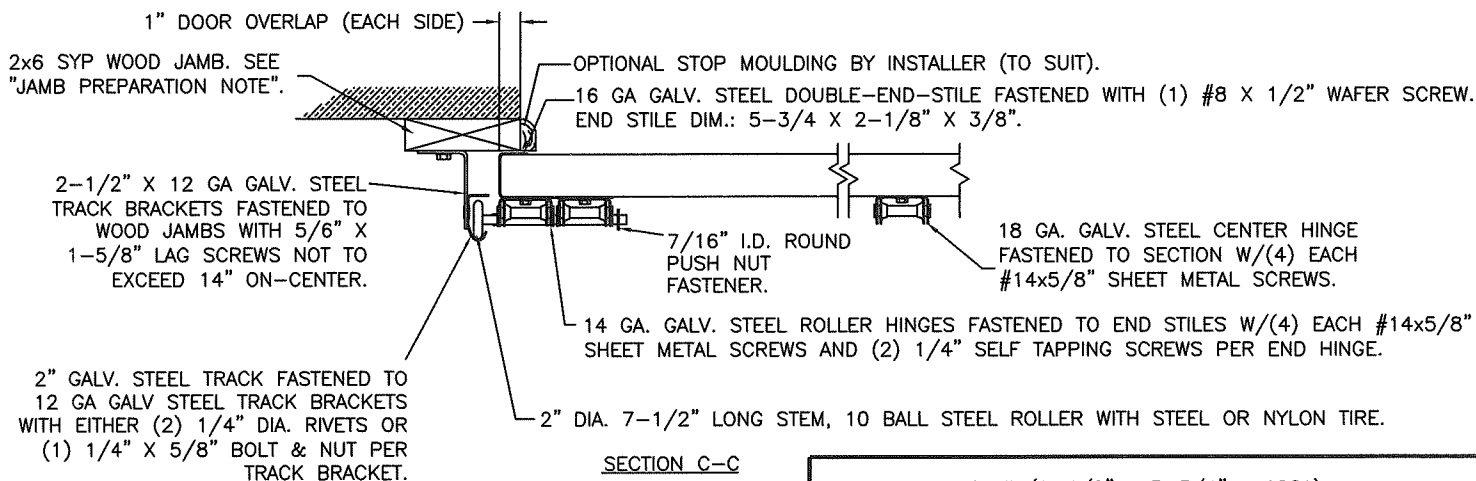
2" TRACK CONFIGURATION
DOORS UP TO 800 LBS.



HORIZONTAL TRACK SUPPORT BY DOOR INSTALLER (TO SUIT).

DOOR HEIGHT	"L"
6'-6"	70"
7'-0"	76"
7'-6"	82"
8'-0"	88"
8'-6"	94"
9'-0"	100"
9'-6"	106"
10'-0"	112"
10'-6"	118"
11'-0"	124"
11'-6"	130"
12'-0"	136"
12'-6"	142"
13'-0"	148"
13'-6"	154"
14'-0"	160"
14'-6"	166"
15'-0"	172"
15'-6"	178"
16'-0"	184"

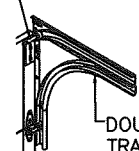
JAMB CONFIGURATION
DOORS UP TO 800 LBS.



NOTE: DOUBLE TRACK LOW HEADROOM, HIGH LIFT TRACK, FOLLOW-THE-ROOF TRACK, AND VERTICAL LIFT TRACK ARE AVAILABLE OPTIONS. TRACK CONFIGURATION ABOVE THE DOOR OPENING DOES NOT AFFECT THE WIND LOAD RATING.

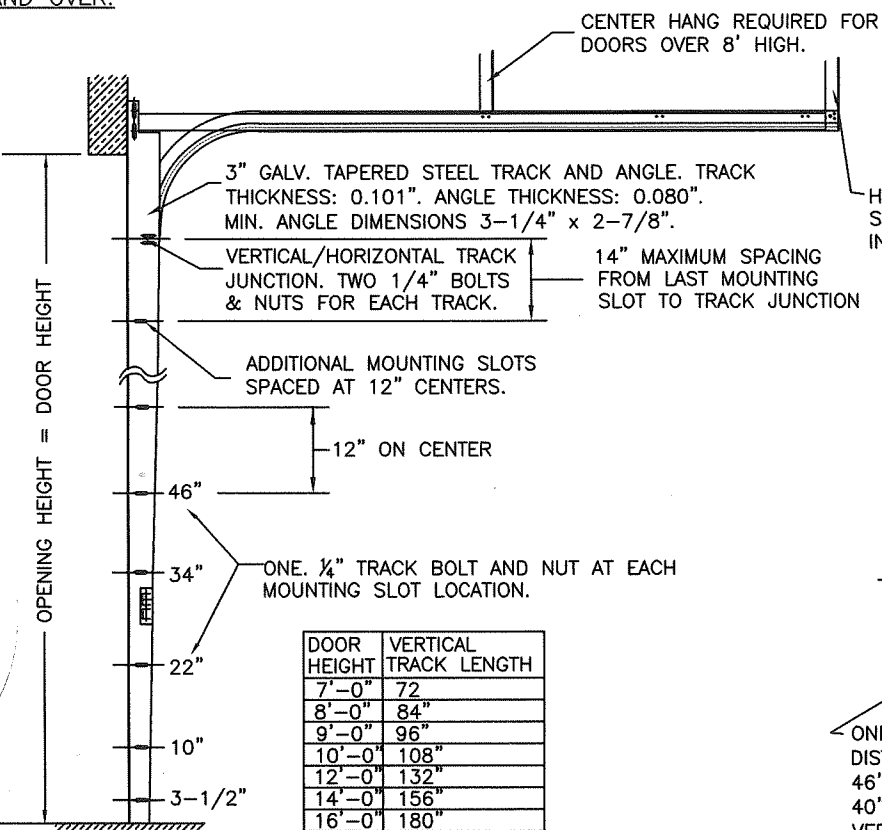
PREPARATION OF JAMBS BY OTHERS.

LHR BRACKET (2-1/2" x 5-3/4" x 12GA) ATTACHED WITH (2) 1/4" x 3/4" SELF TAPPING SCREWS. NOTE THAT LHR BRACKETS ARE ALSO USED WITH "DOUBLE END STILE" AS SHOWN IN ZONE B-3 SHEET 1.

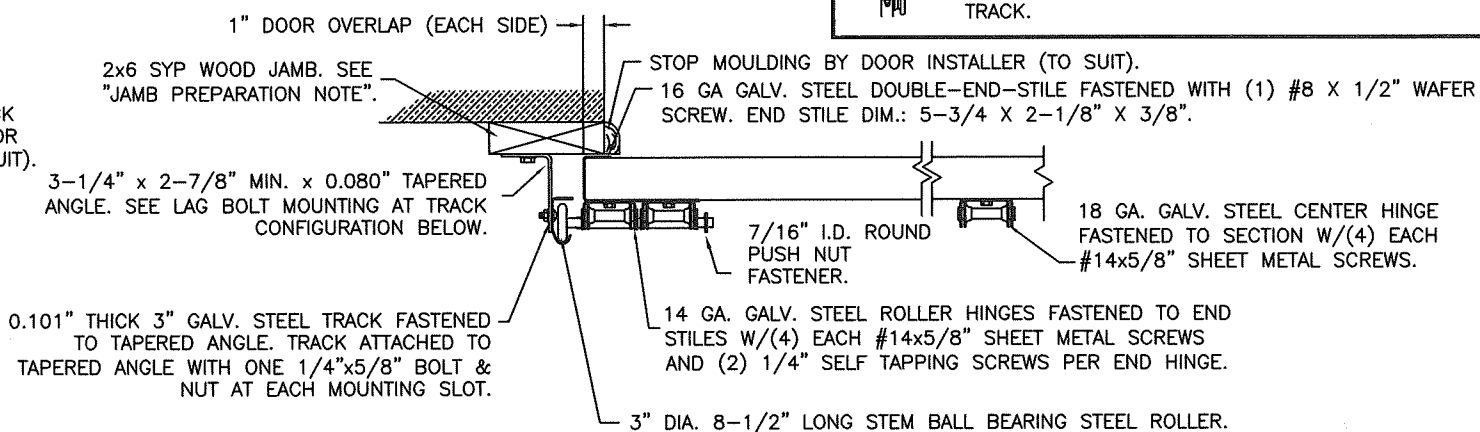


DOUBLE TRACK LOW HEADROOM OPTION (AVAIL. FOR BOTH 2" AND 3" TRACK)

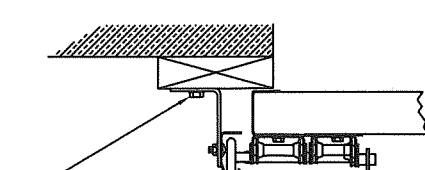
3" TRACK CONFIGURATION
DOORS 800 LBS AND OVER.



JAMB CONFIGURATION
DOORS 800 LBS AND OVER.



SECTION C-C
PREPARATION OF JAMBS BY OTHERS.



ONE 5/16" x 1-5/8" LAG SCREW SPACED AT THE SAME DISTANCES AS THE TRACK BOLTS (I.E. 3-1/2", 10", 22", 34", 46", ETC.). ADDITIONAL LAG SCREWS LOCATED AT 16", 28", & 40" FROM BOTTOM. TWO LAG SCREWS ALSO LOCATED ABOVE VERTICAL/HORIZONTAL TRACK JUNCTION.

NOTE: DOUBLE TRACK LOW HEADROOM, HIGH LIFT TRACK, FOLLOW-THE-ROOF TRACK, AND VERTICAL LIFT TRACK ARE AVAILABLE OPTIONS. TRACK CONFIGURATION ABOVE THE DOOR OPENING DOES NOT AFFECT THE WIND LOAD RATING.

DOOR HEIGHT	VERTICAL TRACK LENGTH
7'-0"	72"
8'-0"	84"
9'-0"	96"
10'-0"	108"
12'-0"	132"
14'-0"	156"
16'-0"	180"

DESIGN LOADS: +38.0 P.S.F. & -42.0 P.S.F.

Unless Stated Otherwise TOLERANCES are

.0	= ±.031
.00	= ±.015
.000	= ±.005
.0000	= ±.001
Degrees	= ±1/2°

Unless Stated Otherwise DIMENSIONS ARE IN INCHES.

Clopay CORPORATION

8585 Duke Boulevard
Mason, OH 45040 USA
Tel. No. 513-770-4800
Fax No. 513-770-4853

MANUFACTURING PRODUCT CODE
COACHMAN: DSIUD-1M479
CANYON RIDGE: DSIUD-1K479

PART NO.: N/A

WINDLOAD RATING
W6 DP38T

DESCRIPTION: COACHMAN/CANYON RIDGE INTELICORE W6 - 18' WIDE	DRAWN BY: SH	DATE: 05/14/14	SCALE: NTS	DWG. SIZE: B
DWG. NO.: 104951	CHECKED BY: MW	DATE: 08/14/15	SHEET 3 OF 3	VER: M-D



DESIGN ENGINEER:
MARK WESTERFIELD, P.E.
FLORIDA P.E. #48495