



DEPARTMENT OF REGULATORY AND ECONOMIC RESOURCES (RER)
 BOARD AND CODE ADMINISTRATION DIVISION
NOTICE OF ACCEPTANCE (NOA)

MIAMI-DADE COUNTY
 PRODUCT CONTROL SECTION
 11805 SW 26 Street, Room 208
 Miami, Florida 33175-2474
 T (786) 315-2590 F (786) 315-2599
www.miamidade.gov/economy

Clopay Corporation
8585 Duke Boulevard
Mason, OH 45040

SCOPE:

This NOA is being issued under the applicable rules and regulations governing the use of construction materials. The documentation submitted has been reviewed and accepted by Miami-Dade County RER-Product Control Section to be used in Miami-Dade County and other areas where allowed by the Authority Having Jurisdiction (AHJ).

This NOA shall not be valid after the expiration date stated below. The Miami-Dade County Product Control Section (In Miami-Dade County) and/or the AHJ (in areas other than Miami-Dade County) reserve the right to have this product or material tested for quality assurance purposes. If this product or material fails to perform in the accepted manner, the manufacturer will incur the expense of such testing and the AHJ may immediately revoke, modify, or suspend the use of such product or material within their jurisdiction. RER reserves the right to revoke this acceptance, if it is determined by Miami-Dade County Product Control Section that this product or material fails to meet the requirements of the applicable building code.

This product is approved as described herein and has been designed to comply with the Florida Building Code, including the High Velocity Hurricane Zone.

DESCRIPTION: 2in Gallery EPS Insulated W8 DP46T Steel Sectional Garage Door up to 16ft-2in Wide w/ Optional Impact Resistant Lites

APPROVAL DOCUMENT: Drawing No. **104786**, titled “2” Gallery EPS Doors 16’2”W”, sheet 1 through 4 of 4, dated 04/10/2013, with revision **07** dated 08/28/2020, prepared by Clopay Corporation, dated 09/10/2020, signed and sealed by Scott Hamilton, P.E., bearing the Miami-Dade County Product Control revision stamp with the Notice of Acceptance number and expiration date by the Miami-Dade County Product Control Section.

MISSILE IMPACT RATING: Large and Small Missile Impact Resistant

LABELING: A permanent label with the manufacturer’s name or logo, manufacturing address, model number, the positive and negative design pressure rating, indicate impact rated if applicable, installation instruction drawing reference number, approval number (NOA), the applicable test standards, and the statement reading ‘Miami-Dade County Product Control Approved’ is to be located on the door’s side track, bottom angle, or inner surface of a panel.

RENEWAL of this NOA shall be considered after a renewal application has been filed and there has been no change in the applicable building code negatively affecting the performance of this product.

TERMINATION of this NOA will occur after the expiration date or if there has been a revision or change in the materials, use, and/or manufacture of the product or process. Misuse of this NOA as an endorsement of any product, for sales, advertising or any other purposes shall automatically terminate this NOA. Failure to comply with any section of this NOA shall be cause for termination and removal of NOA.

ADVERTISEMENT: The NOA number preceded by the words Miami-Dade County, Florida, and followed by the expiration date may be displayed in advertising literature. If any portion of the NOA is displayed, then it shall be done in its entirety.

INSPECTION: A copy of this entire NOA shall be provided to the user by the manufacturer or its distributors and shall be available for inspection at the job site at the request of the Building Official.

This NOA revises NOA # **18-0510.03** and consists of this page 1 and evidence pages E-1, E-2, E-3, E-4 and E-5, as well as approval document mentioned above.

The submitted documentation was reviewed by **Carlos M. Utrera, P.E.**



NOA-No. 20-0922.33
 Expiration Date: July 18, 2023
 Approval Date: November 25, 2020
 Page 1

Clopay Corporation

NOTICE OF ACCEPTANCE: EVIDENCE SUBMITTED

1. EVIDENCE SUBMITTED UNDER PREVIOUS NOA's

A. DRAWINGS “Submitted under NOA #15-0225.20”

1. Drawing No. **104786**, titled “2” Gallery EPS Doors 16’2”W”, sheet 1 through 4 of 4, dated 04/10/2013, with revision **05** dated 2/2015, prepared by Clopay Building Products Company, signed and sealed by Scott Hamilton, P.E.

B. TESTS “Submitted under NOA #14-0203.06”

1. Test reports on
 - 1) Uniform Static Air Pressure Test, Loading per FBC TAS 202-94
 - 2) Large Missile Impact Test per FBC, TAS 201-94
 - 3) Cyclic Wind Pressure Loading per FBC, TAS 203-94
 - 4) Forced Entry Test per FBC, TAS 202-94
 - 5) Tensile Test per ASTM E8

Along with marked-up drawings and installation diagram of 16’2”x 8’, 27ga steel garage door Model GD2LPW8 with windows, prepared by American Test Lab, Inc., Test Report No. **ATLNC 1202.02-13**, dated 01/14/2014, signed and sealed by David W. Johnson, P.E.

“Submitted under NOA #13-0423.16”

2. Test reports on
 - 1) Uniform Static Air Pressure Test, Loading per FBC TAS 202-94
 - 2) Large Missile Impact Test per FBC, TAS 201-94
 - 3) Cyclic Wind Pressure Loading per FBC, TAS 203-94
 - 4) Forced Entry Test, per FBC, TAS 202-94
 - 5) Tensile Test per ASTM E8

Along with marked-up drawings and installation diagram of 16’2”x 8’, 27ga steel garage door Model GD2LPW8 with windows, prepared by American Test Lab, Inc., Test Report No. **ATLNC 0117-01-13R**, dated 03/18/2013, signed and sealed by David W. Johnson, P.E.

“Submitted under NOA #12-1108.01”

3. Test reports on
 - 1) Uniform Static Air Pressure Test, Loading per FBC TAS 202-94
 - 2) Large Missile Impact Test per FBC, TAS 201-94
 - 3) Cyclic Wind Pressure Loading per FBC, TAS 203-94
 - 4) Forced Entry Test, per FBC, TAS 202-94
 - 5) Tensile Test per ASTM E8

Along with marked-up drawings and installation diagram of 16’2”x 8’, 27ga steel garage door Model 4300 with windows, prepared by American Test Lab, Inc., Test Report No. **ATLNC 0827-01-12**, dated 10/09/2012, signed and sealed by David W. Johnson, P.E.

4. Test report on Salt Spray per ASTM B117 of painted G40 galvanized coated panels, prepared by Stork Materials Technology, Test Report No. **30160-04-63365**, dated 01/26/2005, signed by John D. Lee, P.E.



Carlos M. Utrera, P.E.
Product Control Examiner
NOA-No. 20-0922.33
Expiration Date: July 18, 2023
Approval Date: November 25, 2020

Clopay Corporation

NOTICE OF ACCEPTANCE: EVIDENCE SUBMITTED

C. CALCULATIONS “Submitted under NOA # 13-0423.16”

1. Jamb anchor calculations prepared by Clopay Building Products Company, dated 04/15/2013, signed and sealed by Scott Hamilton, P.E.

D. QUALITY ASSURANCE

1. Miami-Dade Department of Regulatory and Economic Resources (RER).

E. MATERIAL CERTIFICATIONS

1. Notice of Acceptance No. **13-0717.01** issued to SABIC Innovative Plastics for their Lexan Polycarbonate Sheet Products, approved on 11/28/2013, expiring on 07/17/2018.
2. Test report on Surface Burning Characteristics, per ASTM E84 of Type I EPS, Test Report No. **3082960-500**, prepared by Intertek Testing Services, NA, Inc., dated 10/04/2005, signed by Javier Trevino.
3. Test report on Ignition Properties of Plastics per ASTM D1929 of Type I EPS, Test Report No. **3082959-500**, prepared by Intertek Testing Services, NA, Inc., dated 09/16/2005, signed by C. Anthony Peñaloza.

F. STATEMENTS “Submitted under NOA # 15-0225.20”

1. Statement letter of code conformance with the 2010 and the 5th edition (2014) FBC issued by Clopay Building Products Company, dated 02/18/2015, signed and sealed by Scott Hamilton, P.E.

“Submitted under NOA # 13-0423.16”

2. Statement letters of code conformance to 2010 FBC and no financial interest, both issued by Clopay Building Products Company, dated 04/15/2013, signed and sealed by Scott Hamilton, P.E.



Carlos M. Utrera, P.E.
Product Control Examiner
NOA-No. 20-0922.33
Expiration Date: July 18, 2023
Approval Date: November 25, 2020

Clopay Corporation

NOTICE OF ACCEPTANCE: EVIDENCE SUBMITTED

2. EVIDENCE SUBMITTED UNDER PREVIOUS NOA's

A. DRAWINGS “Submitted under NOA # 17-1016.20”

1. Drawing No. **104786**, titled “2” Gallery EPS Doors 16’2”W”, sheet 1 through 4 of 4, dated 04/10/2013, with revision **06** dated 7/2017, prepared by Clopay Building Products Company, signed and sealed by Scott Hamilton, P.E.

B. TESTS

1. None.

C. CALCULATIONS

1. None.

D. QUALITY ASSURANCE

1. Miami-Dade Department of Regulatory and Economic Resources (RER).

E. MATERIAL CERTIFICATIONS “Submitted under NOA # 17-1016.20”

1. Notice of Acceptance No. **15-0915.08** issued to SABIC Innovative Plastics US, LLC for their Lexan Polycarbonate Sheet Products, approved on 12/10/2015, expiring on 07/17/2018.

F. STATEMENTS “Submitted under NOA # 17-1016.20”

1. Statement letter of code conformance to **6th Edition (2017) FBC**, issued by Clopay Building Products Company, dated 10/04/2017, signed and sealed by Scott Hamilton, P.E.
2. Statement letter of no financial interest, issued by Clopay Building Products Company, dated 10/04/2017, signed and sealed by Scott Hamilton, P.E.



Carlos M. Utrera, P.E.
Product Control Examiner
NOA-No. 20-0922.33
Expiration Date: July 18, 2023
Approval Date: November 25, 2020

Clopay Corporation

NOTICE OF ACCEPTANCE: EVIDENCE SUBMITTED

3. EVIDENCE SUBMITTED UNDER PREVIOUS NOA # 18-0510.03

A. DRAWINGS

1. Drawing No. **104786**, titled “2” Gallery EPS Doors 16’2”W”, sheet 1 through 4 of 4, dated 04/10/2013, with revision **06** dated 7/2017, prepared by Clopay Building Products Company, dated 04/27/2018, signed and sealed by Scott Hamilton, P.E.

B. TESTS

1. None.

C. CALCULATIONS

1. None.

D. QUALITY ASSURANCE

1. Miami-Dade Department of Regulatory and Economic Resources (RER).

E. MATERIAL CERTIFICATIONS

2. None.

F. STATEMENTS

1. Statement letter of code conformance to **6th Edition (2017) FBC**, issued by Clopay Building Products Company, dated 04/27/2018, signed and sealed by Scott Hamilton, P.E.
2. Statement letter of no financial interest, issued by Clopay Building Products Company, dated 04/27/2018, signed and sealed by Scott Hamilton, P.E.



Carlos M. Utrera, P.E.
Product Control Examiner
NOA-No. 20-0922.33
Expiration Date: July 18, 2023
Approval Date: November 25, 2020

Clopay Corporation

NOTICE OF ACCEPTANCE: EVIDENCE SUBMITTED

4. NEW EVIDENCE SUBMITTED

A. DRAWINGS

1. Drawing No. **104786**, titled “2” Gallery EPS Doors 16’2”W”, sheet 1 through 4 of 4, dated 04/10/2013, with revision **07** dated 08/28/2020, prepared by Clopay Corporation, dated 09/10/2020, signed and sealed by Scott Hamilton, P.E.

B. TESTS

1. None.

C. CALCULATIONS

1. None.

D. QUALITY ASSURANCE

1. Miami-Dade Department of Regulatory and Economic Resources (RER).

E. MATERIAL CERTIFICATIONS

3. None.

F. STATEMENTS

1. Statement letters of code conformance to **6th Edition (2017) and 7th Edition (2020) FBC**, issued by Clopay Corporation, dated 09/15/2020, signed and sealed by Scott Hamilton, P.E.
2. Certificate of amendment changing the company name from Clopay Building Products Company, Inc. to Clopay Corporation, issued by the State of Delaware, dated 08/27/2019.



Carlos M. Utrera, P.E.
Product Control Examiner
NOA-No. 20-0922.33
Expiration Date: July 18, 2023
Approval Date: November 25, 2020

MODELS	SHORT	LONG
CLOPAY GALLERY	GD2SP, GR2SP	GD2LP, GR2LP
HOLMES ARTISTRY IDEAL EXPRESSIONS	AR2SP	AR2LP
	ED2SP	ED2LP

MODELS	FLUSH
CLOPAY CLASSIC	4302
HOLMES CLASSIC	6202
IDEAL CLASSIC	SFC68

SHEET:
1 OF 4

REVISIONS					
REV. NO.	ZONE:	DATE:	ECN NO.	APPVD:	DESCRIPTION
04	-	1/14	-	SH	REVISED TOP BRACKETS.
05	-	2/2015	-	SH	ADDED CODE COMPLIANCE STATEMENT.
06	-	7/2017	-	SH	UPDATED CODE COMPLIANCE STATEMENT TO ADD 6TH EDITION FBC.
07	-	8/28/20	-	SH	UPDATED TITLE BLOCK AND CODE COMPLIANCE STATEMENT TO 7TH

OPTIONAL IMPACT RESISTANT GLAZING. MAXIMUM GLAZING SIZE (DLO) IS 38-1/2" X 13". SEE SECTION B-B ON SHEET TWO FOR DETAILS. SMALLER WINDOWS OR GLAZING MAY BE USED WITH THE SAME FRAMING CONDITIONS AND FASTENING SYSTEM.

(1) 20 GA. BACKER PLATE AT EACH INTERMEDIATE HINGE LOCATION. BACKER PLATES ATTACHED WITH DOUBLE-SIDED ACRYLIC ADHESIVE TO BACK OF DOOR.

(1) 12 GA. GALV. STEEL TOP ROLLER BRACKET. SEE SECTION A-A ON SHEET THREE FOR DETAILS.

16 GA. MIN. GALV. STEEL END STILES.

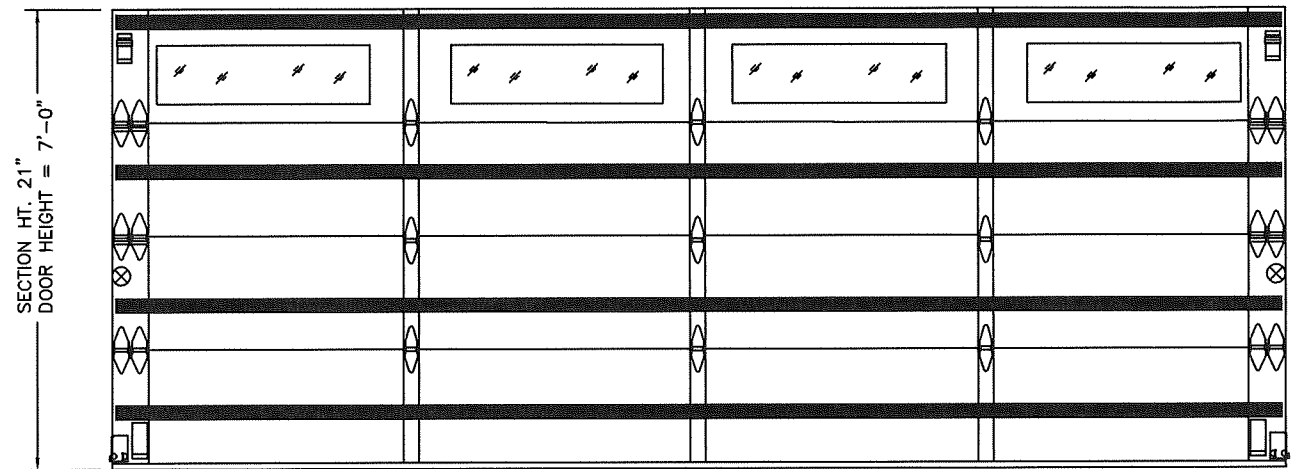
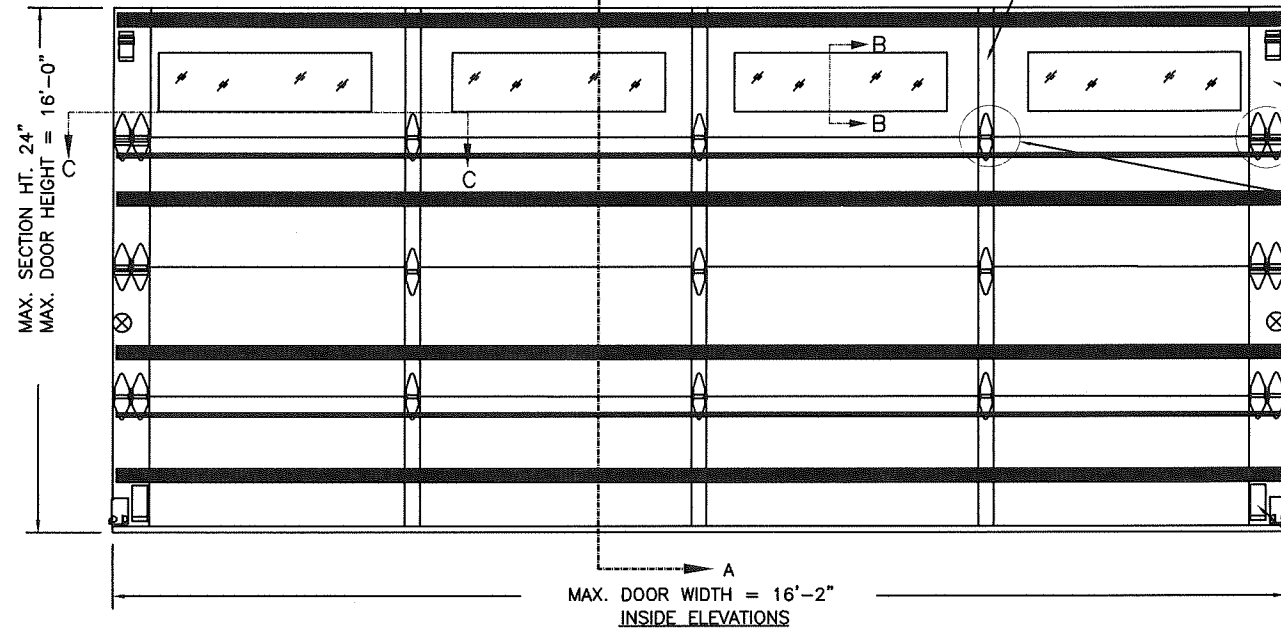
VIEW "B"
VIEW "C"

ONE 4" T-STRUT PER SECTION.

TWO POINT LOCKING INTO TRACK.

3" 20 GAGE 80 KSI MIN. U-BARS. ONE AT THE TOP OF EVERY OTHER SECTION, STARTING AT THE BOTTOM. U-BARS ARE NOT REQUIRED FOR DOORS 7'0" TALL.

(2) STACKED 12 GA. 1-1/2" X 5" LHR BRACKET.



7' DOOR HEIGHT: (4) 21" SECTIONS. (1) 4" T-STRUT PER SECTION. NO U-BARS REQUIRED.

DOOR HEIGHT	# OF SECTIONS
UP TO 8'0"	4
8'3" TO 10'0"	5
10'3" TO 12'0"	6
12'3" TO 14'0"	7
14'3" TO 16'0"	8
MAX SECTION HEIGHT: 24'	

THIS PRODUCT CONFORMS TO THE REQUIREMENTS OF 6TH AND 7TH EDITION OF THE FLORIDA BUILDING CODE

PRODUCT REVISED
as complying with the Florida Building Code
NOA-No. 20-0922.33

Expiration Date 07/18/2023

By *[Signature]*
Miami-Dade Product Control

MANUFACTURING PRODUCT CODE
DSIE-1F471

PART NO.: N/A

WINDLOAD RATING
W8 DP46T

DESIGN LOADS: +46.0 P.S.F. & -52.0 P.S.F.

Unless Stated Otherwise TOLERANCES are

- .0 = ±.031
- .00 = ±.015
- .000 = ±.005
- .0000 = ±.001
- Degrees = ±1/2'

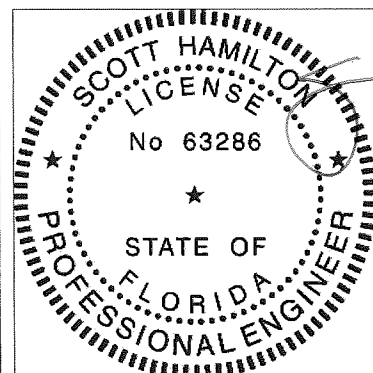
Unless Stated Otherwise DIMENSIONS ARE IN INCHES.

Clopay CORPORATION
8585 Duke Boulevard
Mason, OH 45040 USA
Tel. No. 513-770-4800
Fax No. 513-770-4853

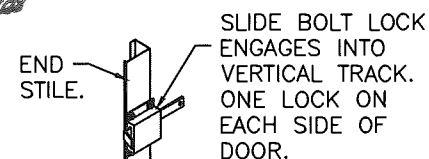
DESCRIPTION: 2" GALLERY EPS DOORS 16'2"W (SEE TABLE)

DRAWN BY: SH	DATE: 4/10/13	SCALE: NTS	DWG. SIZE B
CHECKED BY: SH	DATE: 4/10/13	SHEET 1 OF 4	

DWG. NO.: 104786 VER: MD

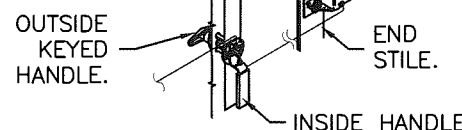


DESIGN ENGINEER:
SCOTT HAMILTON, P.E.
FLORIDA LICENSE No. 63286

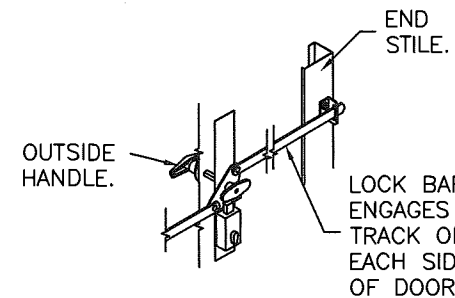


INSIDE SLIDE BOLT LOCK OPTION.

SNAP LATCH ENGAGES ONTO VERTICAL TRACK. ONE SNAP LATCH ON EACH SIDE OF DOOR.



OUTSIDE KEYED LOCK WITH SNAP LATCH LOCK OPTION.



OUTSIDE KEYED LOCK WITH LOCK BAR LOCKING.

MODELS	SHORT	LONG
CLOPAY GALLERY	GD2SP, GR2SP	GD2LP, GR2LP
HOLMES ARTISTRY	AR2SP	AR2LP
IDEAL EXPRESSIONS	ED2SP	ED2LP

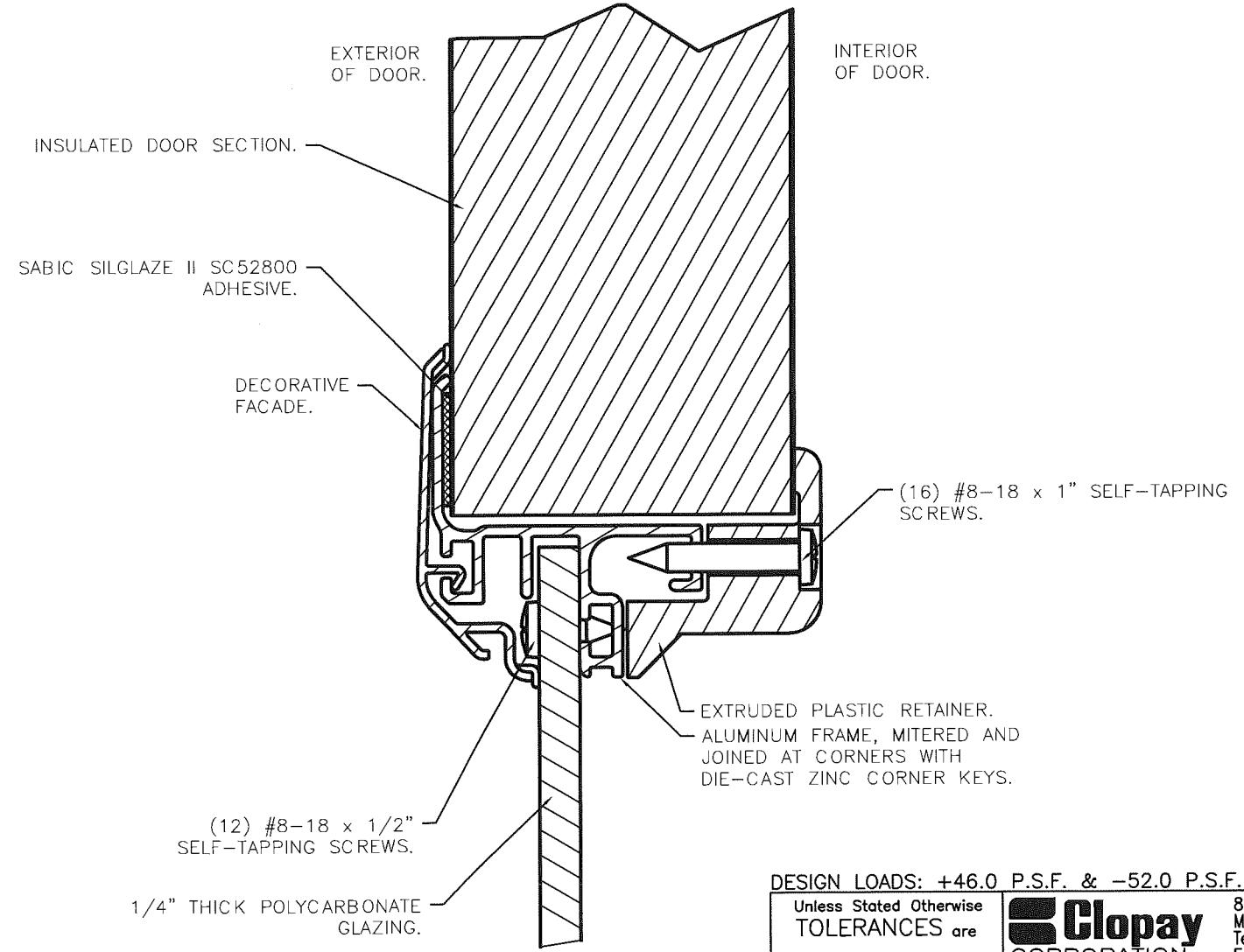
MODELS	FLUSH
CLOPAY CLASSIC	4302
HOLMES CLASSIC	6202
IDEAL CLASSIC	SFC68

SHEET:
2 OF 4

REVISIONS					
REV. NO.	ZONE:	DATE:	ECN NO.	APPVD:	DESCRIPTION
07	-	-	-	-	SEE REVISION HISTORY ON SHEET ONE.

IMPACT-RESISTANT CONSTRUCTION:
 SOLID DOORS (NO GLAZING) OR DOORS WITH OPTIONAL IMPACT-RESISTANT GLAZING ARE IMPACT-RESISTANT. OPTIONAL IMPACT RESISTANT ASSEMBLY CONSISTS OF ALUMINUM FRONT FRAME AND SABIC INNOVATIVE PLASTICS LEXAN MR10, AN APPROVED CC1 PLASTIC IN ACCORDANCE WITH IBC/FBC 2606 AND AN APPROVED C1 PLASTIC IN ACCORDANCE WITH FBC 2612.
 THE ENTIRE DOOR ASSEMBLY INSTALLED IN COMPLIANCE WITH THIS SECTION MEETS THE WIND LOAD REQUIREMENTS OF THE FLORIDA BUILDING CODE AND INTERNATIONAL BUILDING CODE AND IS LARGE- AND SMALL-MISSILE IMPACT RESISTANT.

SECTION B-B (IMPACT-RESISTANT GLAZING OPTION)



PRODUCT REVISED
 as complying with the Florida Building Code
 NOA-No. 20-0922.33

Expiration Date 07/18/2023

By *[Signature]*
 Miami-Dade Product Control

MANUFACTURING PRODUCT CODE
 DSIE-1F471

PART NO.: N/A

WINDLOAD RATING
 W8 DP46T

DESIGN LOADS: +46.0 P.S.F. & -52.0 P.S.F.

Unless Stated Otherwise
 TOLERANCES are
 .0 = ±.031
 .00 = ±.015
 .000 = ±.005
 .0000 = ±.001
 Degrees = ±1/2'

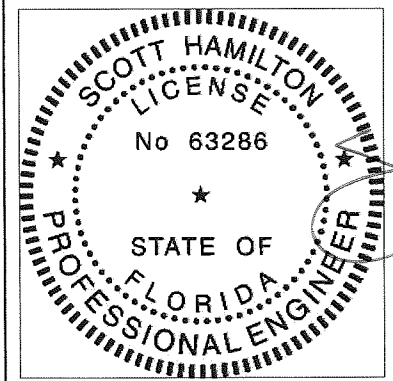
Unless Stated Otherwise
 DIMENSIONS ARE IN INCHES.

Clopay
 CORPORATION
 8585 Duke Boulevard
 Mason, OH 45040 USA
 Tel. No. 513-770-4800
 Fax No. 513-770-4853

DESCRIPTION: 2" GALLERY EPS DOORS 16'2"W (SEE TABLE)

DRAWN BY: SH	DATE: 4/10/13	SCALE: NTS	DWG. SIZE B
CHECKED BY: SH	DATE: 4/10/13	SHEET 2 OF 4	

DWG. NO.: 104786	VER: MD
------------------	---------



DESIGN ENGINEER:
 SCOTT HAMILTON, P.E.
 FLORIDA LICENSE No. 63286

MODELS	SHORT	LONG
CLOPAY GALLERY	GD2SP, GR2SP	GD2LP, GR2LP
HOLMES ARTISTRY	AR2SP	AR2LP
IDEAL EXPRESSIONS	ED2SP	ED2LP

MODELS	FLUSH
CLOPAY CLASSIC	4302
HOLMES CLASSIC	6202
IDEAL CLASSIC	SFC68

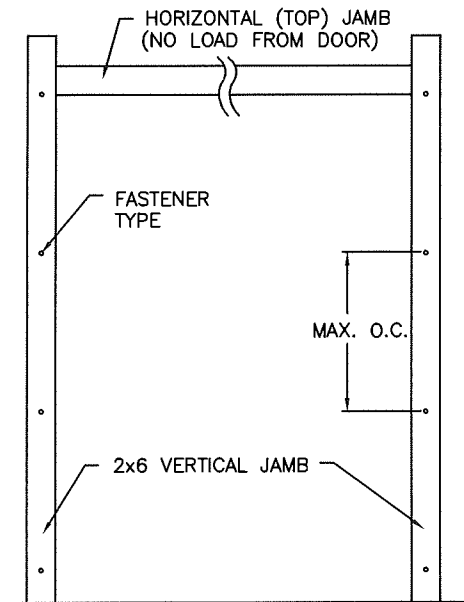
SHEET: 3 OF 4

REVISIONS						DESCRIPTION
REV. NO.	ZONE	DATE	ECN NO.	APPVD.		
07	-	-	-	-		SEE REVISION HISTORY ON SHEET ONE.

JAMB TO SUPPORTING STRUCTURE ATTACHMENT

NOTES:

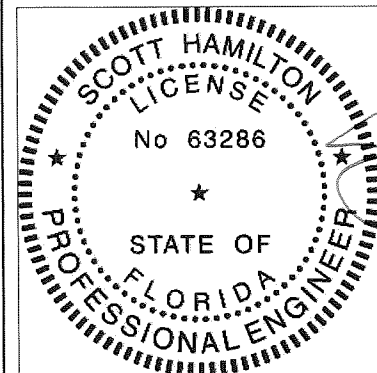
1. ALL THE LOAD FROM THE DOOR IS TRANSFERRED TO THE TRACK AND THEN FROM THE TRACK TO THE 2x6 VERTICAL SYP (GRADE #2 OR BETTER) JAMBS. NO LOAD FROM THE DOOR IS TRANSFERRED TO THE HORIZONTAL (TOP) JAMB.
2. EACH VERTICAL JAMB SEES A MAXIMUM DESIGN LOAD OF +368 LB & -416 LB. PER LINEAR FOOT OF JAMB.
3. ALL JAMB FASTENERS MAY BE (BUT ARE NOT REQUIRED TO BE) COUNTERSUNK TO PROVIDE A FLUSH MOUNTING SURFACE.
4. A 1/3 STRESS INCREASE FOR WIND LOAD WAS NOT USED IN THE CALCULATION OF ALLOWABLE LOADS FOR ANCHORS AND FASTENERS FOR STEEL, CONCRETE AND MASONRY.



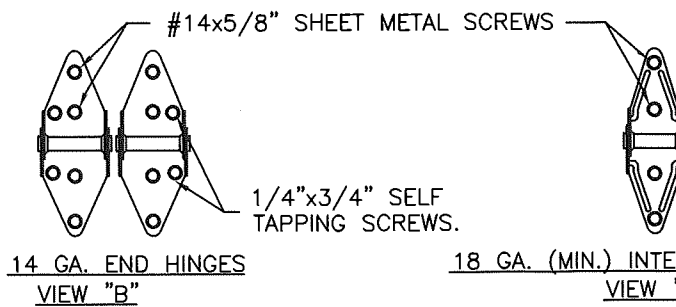
2x6 JAMB TO SUPPORTING STRUCTURE ATTACHMENT
(NOT TO BE USED FOR ATTACHMENT OF TRACK ANGLE TO 2x6 VERTICAL JAMBS OR SUPPORTING STRUCTURE)

BUILDING TYPE	FASTENER TYPE	MAXIMUM ON-CENTER DISTANCE BETWEEN FASTENERS*	STEEL WASHERS REQUIRED?
HOLLOW CMU BLOCK WALL	1/4" x 1-1/4" MIN. EMBED ULTRACON CONCRETE ANCHOR	4-1/2"	1" O.D.
GROUT-FILLED CMU BLOCK	1/4" x 1-3/4" MIN. EMBED ULTRACON CONCRETE ANCHOR	7-1/2"	1" O.D.
2000 PSI MIN. CONCRETE	1/4" x 1" MIN. EMBED ULTRACON CONCRETE ANCHOR	6-1/4"	1" O.D.
2000 PSI MIN. CONCRETE	1/4" x 1" MIN. EMBED TAPCON CONCRETE ANCHOR	3-3/4"	1" O.D.
2000 PSI MIN. CONCRETE	3/8" x 1-3/4" MIN. EMBED WEJ-IT ANKR TITE SLEEVE ANCHOR	13-1/2"	INCLUDED
4000 PSI MIN. CONCRETE	3/8" x 1-3/4" MIN. EMBED WEJ-IT ANKR TITE SLEEVE ANCHOR	24"	INCLUDED
WOOD FRAME (SYP 0.55 SG)	1/2" x 3" LAG SCREW (ASTM A307, GRADE A) 1-5/8" EMBED INTO STRUCTURE	14-3/4"	1" O.D.

* FIRST (BOTTOM) ANCHOR STARTING AT NO MORE THAN HALF OF THE MAXIMUM ON-CENTER DISTANCE. HIGHEST ANCHOR INSTALLED AT LEAST AS HIGH AS THE DOOR OPENING.
CLOPAY DOES NOT SUPPLY JAMB ATTACHMENT FASTENERS.
MINIMUM DISTANCE BETWEEN CENTER OF ANCHOR AND EDGE OF CONCRETE BLOCK: 2-1/2", EXCLUDING STUCCO THICKNESS.

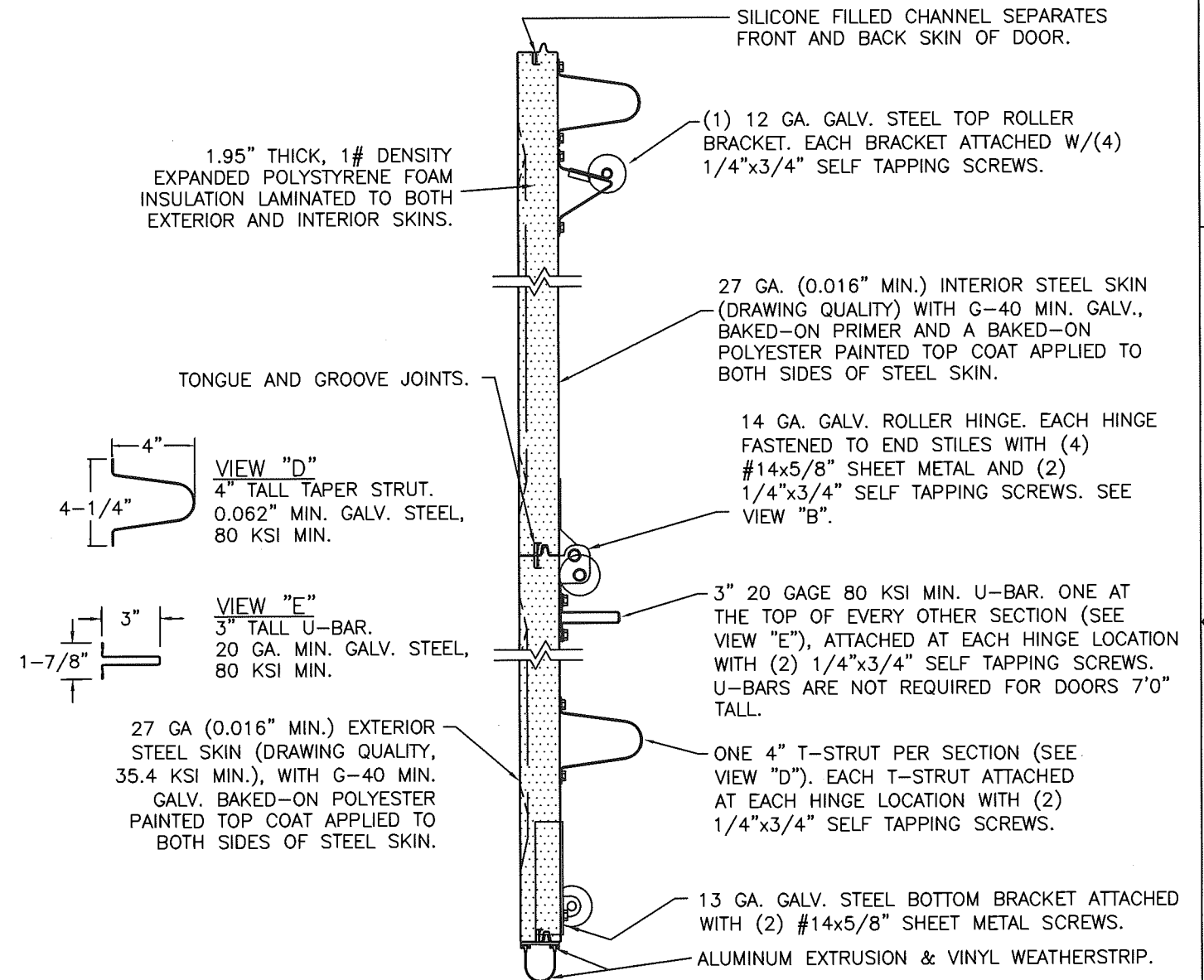


DESIGN ENGINEER:
SCOTT HAMILTON, P.E.
FLORIDA LICENSE No. 63286



PRODUCT REVISED
as complying with the Florida Building Code
NOA-No. 20-0922.33
Expiration Date 07/18/2023
By *[Signature]*
Miami-Dade Product Control

SECTION A-A (SIDE VIEW)



DESIGN LOADS: +46.0 P.S.F. & -52.0 P.S.F.

Unless Stated Otherwise
TOLERANCES are
.0 = ±.031
.00 = ±.015
.000 = ±.005
.0000 = ±.001
Degrees = ±1/2°
Unless Stated Otherwise
DIMENSIONS ARE IN INCHES.

8585 Duke Boulevard Mason, OH 45040 USA Tel. No. 513-770-4800 Fax No. 513-770-4853		MANUFACTURING PRODUCT CODE DSIE-1F471	
Clopay CORPORATION		PART NO.: N/A	
WINDLOAD RATING W8 DP46T			
DESCRIPTION: 2" GALLERY EPS DOORS 16'2"W (SEE TABLE)			
DRAWN BY: SH	DATE: 4/10/13	SCALE: NTS	DWG. SIZE B
CHECKED BY: SH	DATE: 4/10/13	SHEET 3 OF 4	
DWG. NO.: 104786		VER: MD	

MODELS	SHORT	LONG
CLOPAY GALLERY	GD2SP, GR2SP	GD2LP, GR2LP
HOLMES ARTISTRY IDEAL EXPRESSIONS	AR2SP	AR2LP
	ED2SP	ED2LP

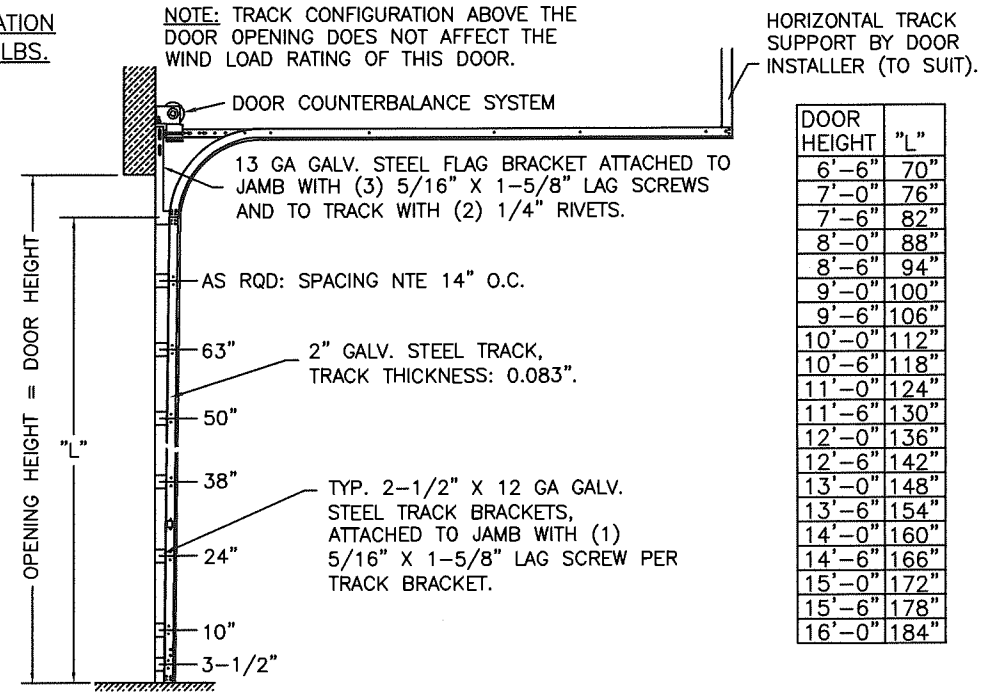
MODELS	FLUSH
CLOPAY CLASSIC	4302
HOLMES CLASSIC	6202
IDEAL CLASSIC	SFC68

SHEET:
4 OF 4

REVISIONS						DESCRIPTION
REV. NO.	ZONE	DATE	ECN NO.	APPVD		
07	-	-	-	-		SEE REVISION HISTORY ON SHEET ONE.

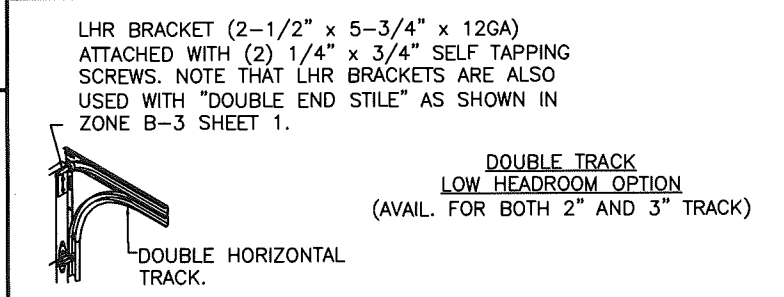
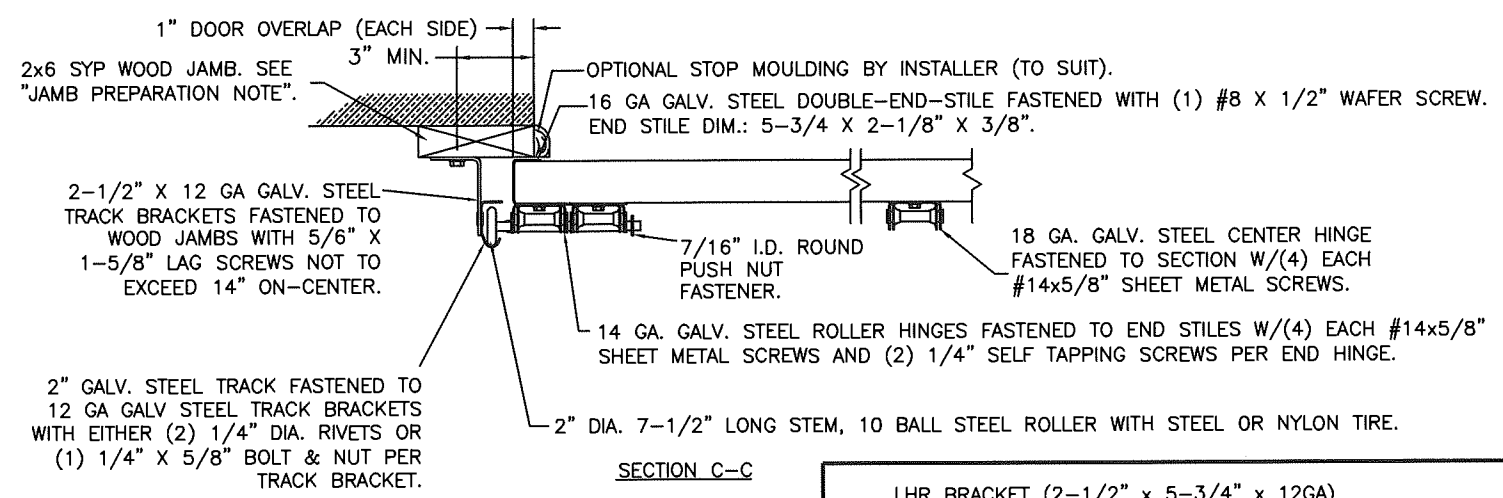
PRODUCT REVISED
as complying with the Florida Building Code
NOA-No. 20-0922.33
Expiration Date 07/18/2023
By *[Signature]*
Miami-Dade Product Control

2" TRACK CONFIGURATION
DOORS UP TO 800 LBS.

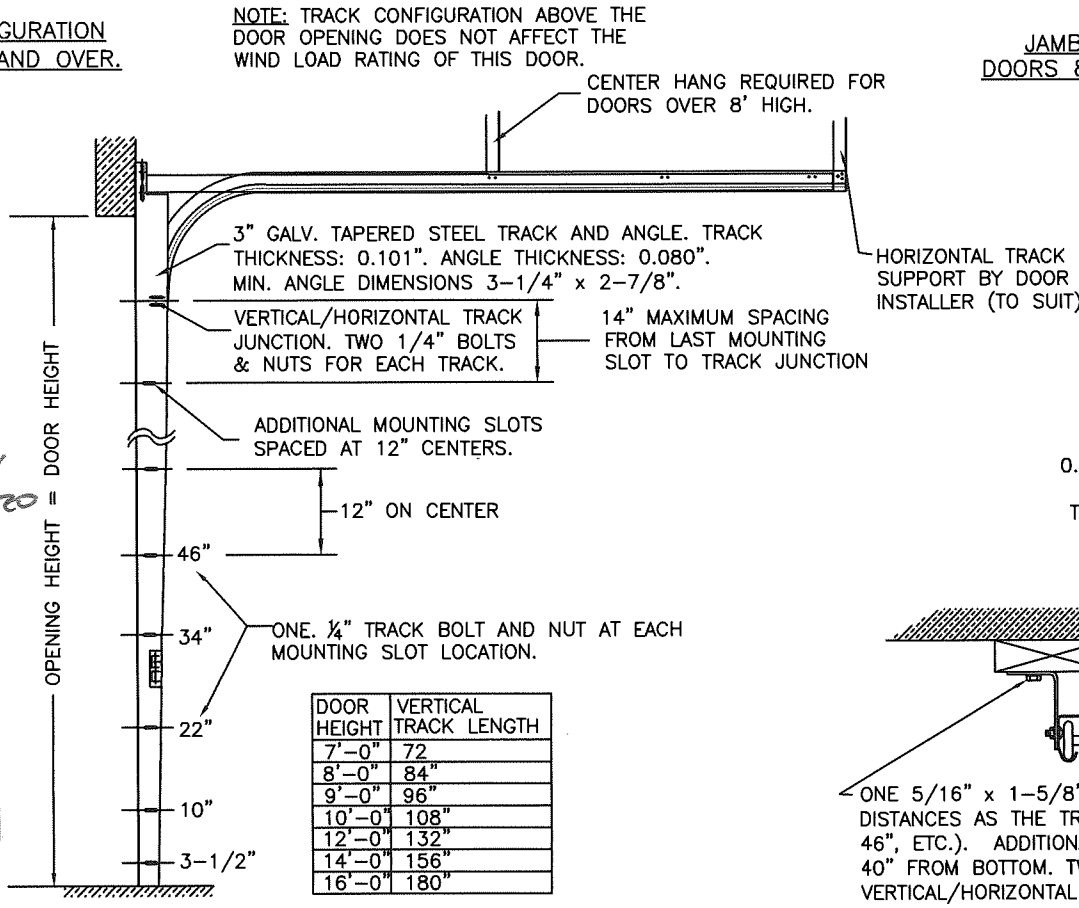


DOOR HEIGHT	"L"
6'-6"	70"
7'-0"	76"
7'-6"	82"
8'-0"	88"
8'-6"	94"
9'-0"	100"
9'-6"	106"
10'-0"	112"
10'-6"	118"
11'-0"	124"
11'-6"	130"
12'-0"	136"
12'-6"	142"
13'-0"	148"
13'-6"	154"
14'-0"	160"
14'-6"	166"
15'-0"	172"
15'-6"	178"
16'-0"	184"

JAMB CONFIGURATION
DOORS UP TO 800 LBS.

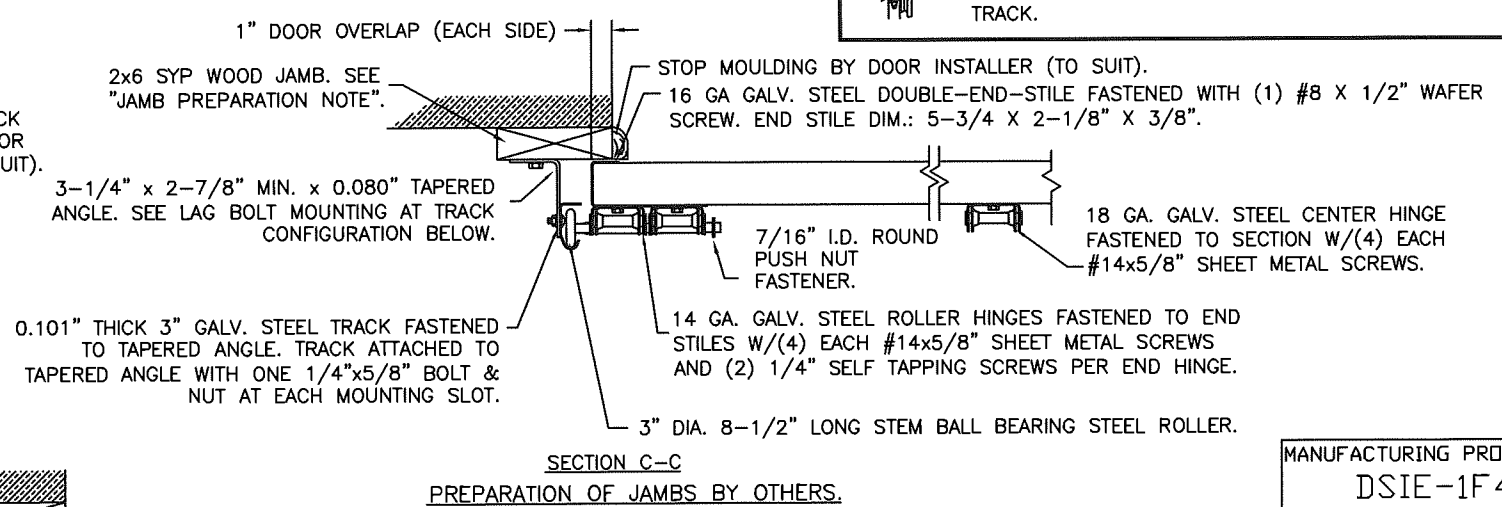


3" TRACK CONFIGURATION
DOORS 800 LBS AND OVER.



DOOR HEIGHT	VERTICAL TRACK LENGTH
7'-0"	72"
8'-0"	84"
9'-0"	96"
10'-0"	108"
12'-0"	132"
14'-0"	156"
16'-0"	180"

JAMB CONFIGURATION
DOORS 800 LBS AND OVER.



DESIGN LOADS: +46.0 P.S.F. & -52.0 P.S.F.

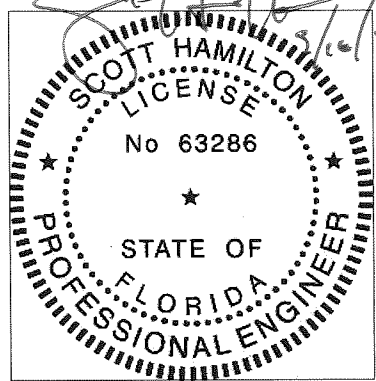
Unless Stated Otherwise
TOLERANCES are
.0 = ±.031
.00 = ±.015
.000 = ±.005
.0000 = ±.001
Degrees = ±1/2°
Unless Stated Otherwise
DIMENSIONS ARE IN INCHES.

Clopay CORPORATION
8585 Duke Boulevard
Mason, OH 45040 USA
Tel. No. 513-770-4800
Fax No. 513-770-4853

MANUFACTURING PRODUCT CODE
DSIE-1F471

PART NO.: N/A
WINDLOAD RATING
W8 DP46T

DESCRIPTION: 2" GALLERY EPS DOORS 16'2"W (SEE TABLE)	DRAWN BY: SH	DATE: 4/10/13	SCALE: NTS	DWG. NO.: 104786
	CHECKED BY: SH	DATE: 4/10/13	SHEET 4 OF 4	VER: MD
			SIZE B	



DESIGN ENGINEER:
SCOTT HAMILTON, P.E.
FLORIDA LICENSE No. 63286