



**MIAMI-DADE COUNTY
PRODUCT CONTROL SECTION**

11805 SW 26 Street, Room 208
Miami, Florida 33175-2474
T (786) 315-2590 F (786) 315-2599

**DEPARTMENT OF REGULATORY AND ECONOMIC RESOURCES (RER)
BOARD AND CODE ADMINISTRATION DIVISION**

www.miamidade.gov/economy

NOTICE OF ACCEPTANCE (NOA)

**Clopay Building Products Company
8585 Duke Boulevard
Mason, OH 45040**

SCOPE:

This NOA is being issued under the applicable rules and regulations governing the use of construction materials. The documentation submitted has been reviewed and accepted by Miami-Dade County RER-Product Control Section to be used in Miami-Dade County and other areas where allowed by the Authority Having Jurisdiction (AHJ).

This NOA shall not be valid after the expiration date stated below. The Miami-Dade County Product Control Section (In Miami-Dade County) and/or the AHJ (in areas other than Miami-Dade County) reserve the right to have this product or material tested for quality assurance purposes. If this product or material fails to perform in the accepted manner, the manufacturer will incur the expense of such testing and the AHJ may immediately revoke, modify, or suspend the use of such product or material within their jurisdiction. RER reserves the right to revoke this acceptance, if it is determined by Miami-Dade County Product Control Section that this product or material fails to meet the requirements of the applicable building code.

This product is approved as described herein, and has been designed to comply with the Florida Building Code, including the High Velocity Hurricane Zone.

DESCRIPTION: Commercial Ribbed Steel Pan W8 DP52T Sectional Garage Door up to 12'-2" Wide

APPROVAL DOCUMENT: Drawing No. **104813**, titled "Commercial Ribbed Door, +52/58 PSF Design Load", sheet 1 of 1, dated 05/16/2013, with revision **03** dated 08/28/2020, prepared by Clopay Building Products Company, signed and sealed by Scott Hamilton, P.E., bearing the Miami-Dade County Product Control revision stamp with the Notice of Acceptance number and expiration date by the Miami-Dade County Product Control Section.

MISSILE IMPACT RATING: Large and Small Missile Impact Resistant

LABELING: A permanent label with the manufacturer's name or logo, manufacturing address, model number, the positive and negative design pressure rating, indicate impact rated if applicable, installation instruction drawing reference number, approval number (NOA), the applicable test standards, and the statement reading 'Miami-Dade County Product Control Approved' is to be located on the door's side track, bottom angle, or inner surface of a panel.

RENEWAL of this NOA shall be considered after a renewal application has been filed and there has been no change in the applicable building code negatively affecting the performance of this product.

TERMINATION of this NOA will occur after the expiration date or if there has been a revision or change in the materials, use, and/or manufacture of the product or process. Misuse of this NOA as an endorsement of any product, for sales, advertising or any other purposes shall automatically terminate this NOA. Failure to comply with any section of this NOA shall be cause for termination and removal of NOA.

ADVERTISEMENT: The NOA number preceded by the words Miami-Dade County, Florida, and followed by the expiration date may be displayed in advertising literature. If any portion of the NOA is displayed, then it shall be done in its entirety.

INSPECTION: A copy of this entire NOA shall be provided to the user by the manufacturer or its distributors and shall be available for inspection at the job site at the request of the Building Official.

This NOA **revises NOA # 19-0124.02** and consists of this page 1 and evidence pages E-1 and E-2, as well as approval document mentioned above.

The submitted documentation was reviewed by **Sifang Zhao, P.E.**



S.Z.

12/17/2020

**NOA No 20-0922.37
Expiration Date: March 6, 2024
Approval Date: December 17, 2020
Page 1**

Clopay Building Products Company

NOTICE OF ACCEPTANCE: EVIDENCE SUBMITTED

1. Evidence submitted under previous NOA's

A. DRAWINGS

1. Drawing No. **104813**, titled "Commercial Ribbed Door. +52/58 PSF Design Load", sheet 1 of 1, dated 05/16/2013, with revision 01 dated 2/2015, prepared by Clopay Building Products Company, signed and sealed by Scott Hamilton, P.E. "*Submitted under NOA # 15-0225.19*"
2. Drawing No. **104813**, titled "Commercial Ribbed Door. +52/58 PSF Design Load", sheet 1 of 1, dated 05/16/2013, with revision **02** dated 7/2017, prepared by Clopay Building Products Company, signed and sealed by Scott Hamilton, P.E. "*Submitted under NOA # 17-1016.19*"
3. Drawing No. **104813**, titled "Commercial Ribbed Door. +52/58 PSF Design Load", sheet 1 of 1, dated 05/16/2013, with revision **02** dated 7/2017, prepared by Clopay Building Products Company, signed and sealed by Scott Hamilton, P.E. on 01/15/2019. "*Submitted under NOA # 19-0124.02*"

B. TESTS

1. Test reports on
 - 1) Uniform Static Air Pressure Test, Loading per FBC TAS 202-94
 - 2) Large Missile Impact Test per FBC, TAS 201-94
 - 3) Cyclic Wind Pressure Loading per FBC, TAS 203-94
 - 4) Forced Entry Test, per FBC TAS 202-94
 - 5) Tensile Test per ASTM E8

Along with marked-up drawings and installation diagram of Clopay 12'-2"x 8', 24 ga. steel garage door, Model 524, prepared by American Test Lab, Inc., Test Report No. **ATLNC 0610.01-13**, dated 01/14/2014, signed and sealed by David W. Johnson, P.E.

"Submitted under NOA # 14-0128.04"

2. Test report on Salt Spray per ASTM B117 of painted G40 galvanized coated panels, prepared by Stork Materials Technology, Test Report No. **30160-04-63365**, dated 01/26/2005, signed by John D. Lee, P.E. "*Submitted under NOA # 14-0128.04*"

C. CALCULATIONS

1. Anchoring calculations, prepared by Clopay Building Products Company, dated 01/22/2014, signed and sealed by Scott Hamilton, P.E. "*Submitted under NOA # 14-0128.04*"

D. QUALITY ASSURANCE

1. Miami-Dade Department of Regulatory and Economic Resources (RER)

E. MATERIAL CERTIFICATIONS

1. None.

F. STATEMENTS

1. Statement letter of code conformance with 2010 and the 5th edition (2014) FBC issued by Clopay Building Products Company, dated 02/18/2015, signed and sealed by Scott Hamilton, P.E. "*Submitted under NOA # 15-0225.19*"
2. Statement letter of code conformance to 2010 FBC and Statement letter of no financial interest dated 01/22/2014, signed and sealed by Scott Hamilton, P.E. "*Submitted under NOA #14-0128.04*"



Sifang Zhao, P.E.
Product Control Examiner
NOA No 20-0922.37
Expiration Date: March 06, 2024
Approval Date: December 17, 2020

Clopay Building Products Company

NOTICE OF ACCEPTANCE: EVIDENCE SUBMITTED

F. STATEMENTS (CONTINUED)

3. Statement letter of code conformance to 6th edition (2017) FBC and Statement letter of no financial interest issued by Clopay Building Products Company, dated 10/04/2017, signed and sealed by Scott Hamilton, P.E. *“Submitted under NOA # 17-1016.19”*
4. Statement letter of code conformance to 6th edition (2017) FBC and Statement letter of no financial interest issued by Clopay Building Products Company, dated 01/15/2019, signed and sealed by Scott Hamilton, P.E. *“Submitted under NOA # 19-0124.02”*

2. New evidence submitted

A. DRAWINGS

1. Drawing No. **104813**, titled “Commercial Ribbed Door. +52/58 PSF Design Load”, sheet 1 of 1, dated 05/16/2013, with revision **03** dated 08/28/2020, prepared by Clopay Building Products Company, signed and sealed by Scott Hamilton, P.E.

B. TESTS

1. None.

C. CALCULATIONS

1. None.

D. QUALITY ASSURANCE

1. Miami-Dade Department of Regulatory and Economic Resources (RER)

E. MATERIAL CERTIFICATIONS

1. None.

F. STATEMENTS

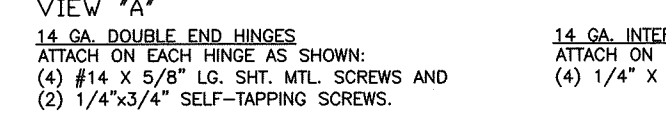
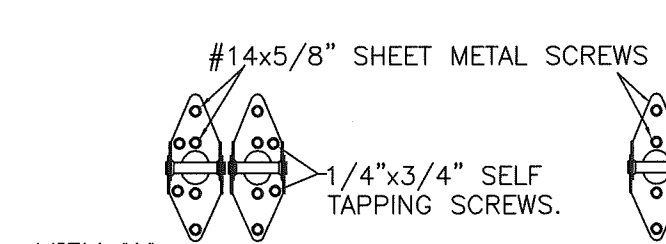
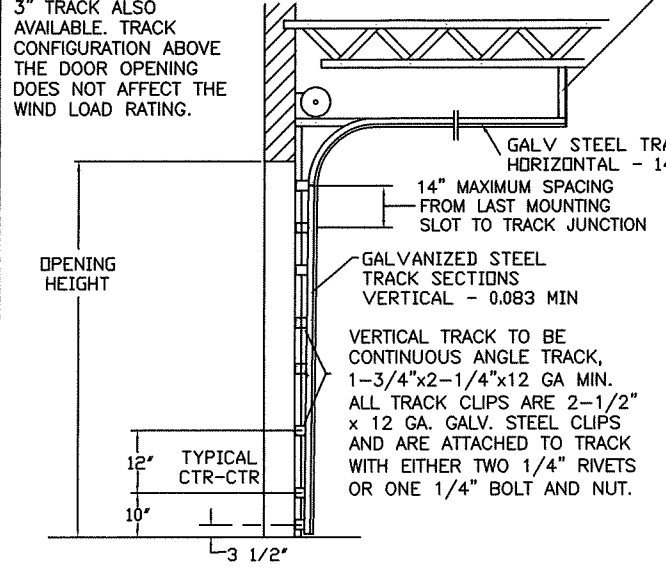
1. Statement letter of code conformance to 7th edition (2020) FBC and Statement letter of no financial interest issued by Clopay Building Products Company, dated 01/15/2019, signed and sealed by Scott Hamilton, P.E.



Sifang Zhao, P.E.
Product Control Examiner
NOA No 20-0922.37
Expiration Date: March 06, 2024
Approval Date: December 17, 2020

NOTE DOUBLE TRACK HEADROOM, HI-LIFT TRACK, FOLLOW-THE-ROOF TRACK, AND VERTICAL LIFT TRACK ARE AVAILABLE OPTIONS. 3" TRACK ALSO AVAILABLE. TRACK CONFIGURATION ABOVE THE DOOR OPENING DOES NOT AFFECT THE WIND LOAD RATING.

HORIZONTAL TRACK SUPPORT BY DOOR INSTALLER (TO SUIT). CENTER HANG (NOT SHOWN) REQUIRED ON DOORS OVER 8' HIGH.



NOTE: 2x6 WOOD JAMBS ARE NOT REQUIRED. HOWEVER, IF DESIRED ON STEEL JAMBS OR CONCRETE OR BLOCK WALLS, APPROVED FASTENERS AS DETAILED BELOW SHOULD BE INCREASED IN LENGTH BY 1-1/2" AND INSTALLED DIRECTLY THROUGH THE ANGLE AND 2x6 WOOD JAMBS INTO THE STEEL JAMBS OR CONCRETE OR BLOCK WALLS. ANCHORS CAN BE (BUT ARE NOT REQUIRED TO BE) COUNTERSUNK TO PROVIDE A FLUSH MOUNTING SURFACE. CONTINUOUS ANGLE TRACK CAN BE ANCHORED DIRECTLY TO GROUT REINFORCED BLOCK WALL OR 3,000 PSI MIN. CONCRETE COLUMN OR STEEL JAMBS.

FASTENER ATTACHMENT TO SUPPORTING STRUCTURE SCHEDULES

| BUILDING TYPE | FASTENER TYPE | MAXIMUM ON-CENTER DISTANCE BETWEEN FASTENERS* | STEEL WASHERS REQUIRED? |
|--------------------------|----------------------------------------------------------------------|-----------------------------------------------|-------------------------|
| HOLLOW BLOCK WALL | 1/4" x 1-1/4" MIN. EMBED ULTRACON CONCRETE ANCHOR | 5-1/4" | 1" O.D. |
| GROUT FILLED BLOCK WALL | 1/4" x 1-3/4" MIN. EMBED ULTRACON CONCRETE ANCHOR | 8-3/4" | 1" O.D. |
| 2000 PSI MIN. CONCRETE | 1/4" x 1" MIN. EMBED ULTRACON CONCRETE ANCHOR | 7-1/2" | 1" O.D. |
| 2000 PSI MIN. CONCRETE | 1/4" x 1" MIN. EMBED TAPCON CONCRETE ANCHOR | 6-1/2" | 1" O.D. |
| 2000 PSI MIN. CONCRETE | 3/8" x 1-3/4" MIN. EMBED WEJ-IT ANKR TITE SLEEVE ANCHOR | 16" | INCLUDED |
| 4000 PSI MIN. CONCRETE | 3/8" x 1-3/4" MIN. EMBED WEJ-IT ANKR TITE SLEEVE ANCHOR | 24" | INCLUDED |
| WOOD FRAME (SYP 0.55 SG) | 1/2" x 3" LAG SCREW (ASTM A307, GRADE A) 1-5/8" EMBED INTO STRUCTURE | 17-1/2" | 1" O.D. |
| 14GA STEEL (0.060" MIN.) | 1/4"-14 x 1" ITW BUILDEX TEKS SELF-DRILLING FASTENER | 7-1/4" | 1" O.D. |
| 12GA STEEL (0.105" MIN.) | 1/4"-14 x 1" ITW BUILDEX TEKS SELF-DRILLING FASTENER | 12-3/4" | 1" O.D. |
| 1/8" STEEL | 1/4"-14 x 1" ITW BUILDEX TEKS SELF-DRILLING FASTENER | 15-1/4" | 1" O.D. |

* FIRST (BOTTOM) ANCHOR STARTING AT NO MORE THAN HALF OF THE MAXIMUM ON-CENTER DISTANCE. HIGHEST ANCHOR INSTALLED AT LEAST AS HIGH AS THE DOOR OPENING. CLOPAY DOES NOT SUPPLY JAMB ATTACHMENT FASTENERS. MINIMUM DISTANCE BETWEEN CENTER OF ANCHOR AND EDGE OF CONCRETE BLOCK: 2-1/2", EXCLUDING STUCCO THICKNESS.

12'-2" WIDE X 18'-0" HIGH (MAX.)

MODELS AVAILABLE (CLOPAY/ HOLMES/ IDEAL)
MODELS 524W8, 520W8 / 224W8 / C4STW8, COSTW8

| DOOR WIDTH | NUMBER OF CENTER STILES |
|--------------------|-------------------------|
| UP TO 6' 2" | 2 |
| 6'-3" THRU 8'-2" | 3 |
| 8'-3" THRU 10'-2" | 4 |
| 10'-3" THRU 12'-2" | 5 |

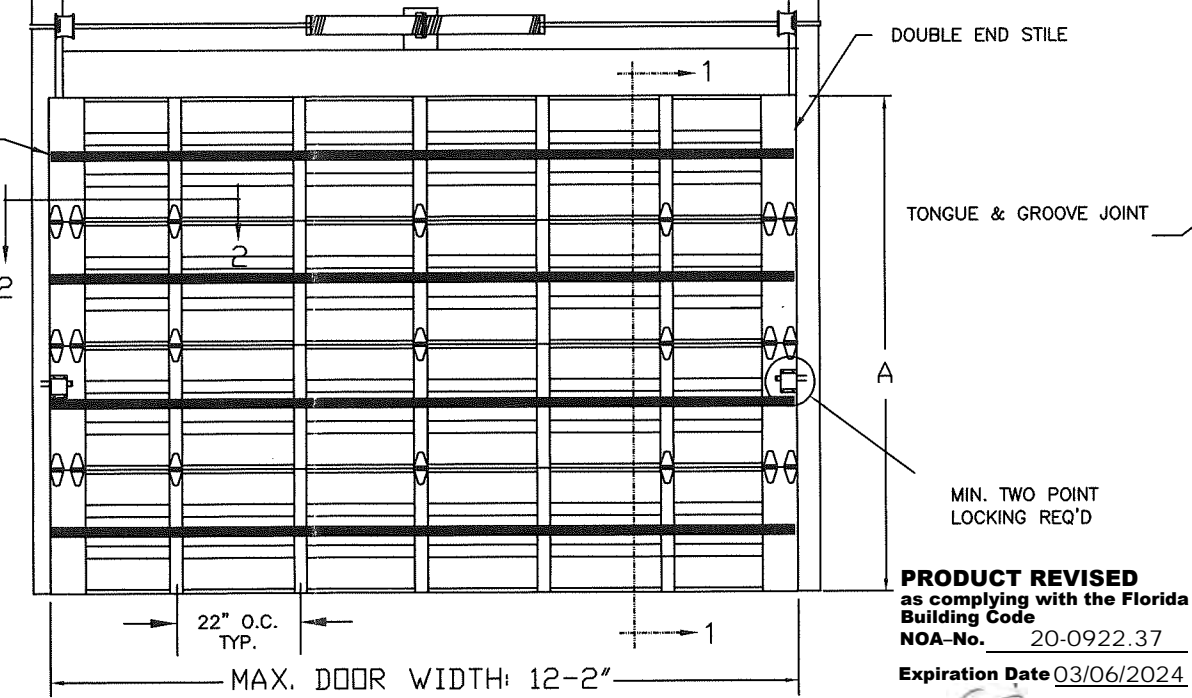
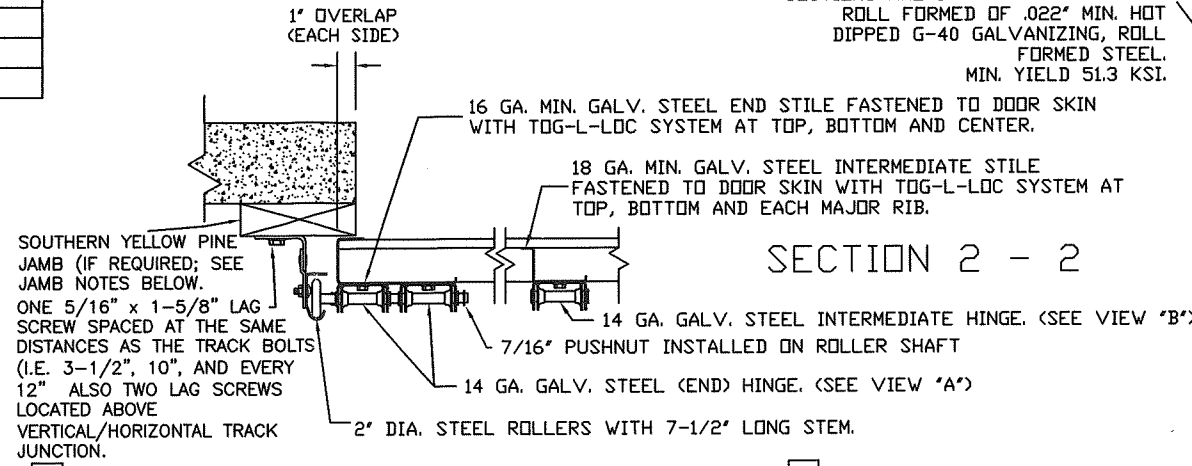
JAMB TO SUPPORTING STRUCTURE ATTACHMENT

- NOTES:
- ALL THE LOAD FROM THE DOOR IS TRANSFERRED TO THE TRACK AND THEN FROM THE TRACK TO THE 2x6 VERTICAL SYP (GRADE #2 OR BETTER) JAMBS. NO LOAD FROM THE DOOR IS TRANSFERRED TO THE HORIZONTAL (TOP) JAMB.
 - EACH VERTICAL JAMB SEES A MAXIMUM DESIGN LOAD OF +312 LB & -348 LB. PER LINEAR FOOT OF JAMB.
 - ALL JAMB FASTENERS MAY BE (BUT ARE NOT REQUIRED TO BE) COUNTERSUNK TO PROVIDE A FLUSH MOUNTING SURFACE.
 - A 1/3 STRESS INCREASE FOR WIND LOAD WAS NOT USED IN THE CALCULATION OF ALLOWABLE LOADS FOR ANCHORS AND FASTENERS FOR STEEL, CONCRETE AND MASONRY.

T-STRUT. SEE SECTION 1-1 FOR MOUNTING DETAILS AND SPECIFICATIONS.

| DOOR HEIGHT 'A' | NUMBER OF SECTIONS |
|--------------------|--------------------|
| 6'-3" THRU 8'-0" | 4 |
| 8'-3" THRU 10'-0" | 5 |
| 10'-3" THRU 12'-0" | 6 |
| 12'-3" THRU 14'-0" | 7 |
| 14'-3" THRU 16'-0" | 8 |
| 16'-3" THRU 18'-0" | 9 |

MAX. 24" SECTION HEIGHT.



FASTENER ATTACHMENT TO SUPPORTING STRUCTURE SCHEDULES

| BUILDING TYPE | FASTENER TYPE | MAXIMUM ON-CENTER DISTANCE BETWEEN FASTENERS* | STEEL WASHERS REQUIRED? |
|--------------------------|----------------------------------------------------------------------|-----------------------------------------------|-------------------------|
| HOLLOW BLOCK WALL | 1/4" x 1-1/4" MIN. EMBED ULTRACON CONCRETE ANCHOR | 5-1/4" | 1" O.D. |
| GROUT FILLED BLOCK WALL | 1/4" x 1-3/4" MIN. EMBED ULTRACON CONCRETE ANCHOR | 8-3/4" | 1" O.D. |
| 2000 PSI MIN. CONCRETE | 1/4" x 1" MIN. EMBED ULTRACON CONCRETE ANCHOR | 7-1/2" | 1" O.D. |
| 2000 PSI MIN. CONCRETE | 1/4" x 1" MIN. EMBED TAPCON CONCRETE ANCHOR | 6-1/2" | 1" O.D. |
| 2000 PSI MIN. CONCRETE | 3/8" x 1-3/4" MIN. EMBED WEJ-IT ANKR TITE SLEEVE ANCHOR | 16" | INCLUDED |
| 4000 PSI MIN. CONCRETE | 3/8" x 1-3/4" MIN. EMBED WEJ-IT ANKR TITE SLEEVE ANCHOR | 24" | INCLUDED |
| WOOD FRAME (SYP 0.55 SG) | 1/2" x 3" LAG SCREW (ASTM A307, GRADE A) 1-5/8" EMBED INTO STRUCTURE | 17-1/2" | 1" O.D. |
| 14GA STEEL (0.060" MIN.) | 1/4"-14 x 1" ITW BUILDEX TEKS SELF-DRILLING FASTENER | 7-1/4" | 1" O.D. |
| 12GA STEEL (0.105" MIN.) | 1/4"-14 x 1" ITW BUILDEX TEKS SELF-DRILLING FASTENER | 12-3/4" | 1" O.D. |
| 1/8" STEEL | 1/4"-14 x 1" ITW BUILDEX TEKS SELF-DRILLING FASTENER | 15-1/4" | 1" O.D. |

* FIRST (BOTTOM) ANCHOR STARTING AT NO MORE THAN HALF OF THE MAXIMUM ON-CENTER DISTANCE. HIGHEST ANCHOR INSTALLED AT LEAST AS HIGH AS THE DOOR OPENING. CLOPAY DOES NOT SUPPLY JAMB ATTACHMENT FASTENERS. MINIMUM DISTANCE BETWEEN CENTER OF ANCHOR AND EDGE OF CONCRETE BLOCK: 2-1/2", EXCLUDING STUCCO THICKNESS.

| REVISIONS | | | | | |
|-----------|-------|----------|---------|--------|-----------------------------------------------------------|
| REV. NO. | ZONE: | DATE: | ECN NO. | APPVD: | DESCRIPTION |
| 00 | - | 12/30/13 | - | - | INITIAL RELEASE. |
| 01 | - | 2/2015 | - | SH | ADDED CODE COMPLIANCE STATEMENT. |
| 02 | - | 7/2017 | - | SH | UPDATED CODE COMPLIANCE STATEMENT TO ADD 6TH EDITION FBC. |
| 03 | - | 8/28/20 | - | SH | UPDATED TITLE BLOCK AND CODE COMPLIANCE STATEMENT TO 7TH |

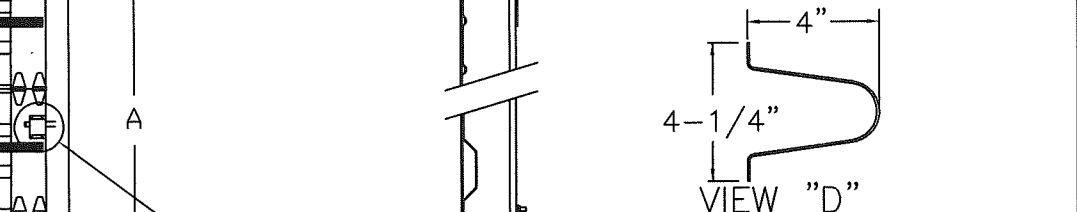
SECTIONS ARE 1-7/8" THICK PANELS ROLL FORMED OF .022" MIN. HOT DIPPED G-40 GALVANIZING, ROLL FORMED STEEL. MIN. YIELD 51.3 KSI.

16 GA. MIN. GALV. STEEL END STILE FASTENED TO DOOR SKIN WITH T&G-L-LOC SYSTEM AT TOP, BOTTOM AND CENTER.
18 GA. MIN. GALV. STEEL INTERMEDIATE STILE FASTENED TO DOOR SKIN WITH T&G-L-LOC SYSTEM AT TOP, BOTTOM AND EACH MAJOR RIB.

14 GA. GALV. STEEL INTERMEDIATE HINGE. (SEE VIEW 'B')
7/16" PUSHNUT INSTALLED ON ROLLER SHAFT
14 GA. GALV. STEEL (END) HINGE. (SEE VIEW 'A')
2" DIA. STEEL ROLLERS WITH 7-1/2" LONG STEM.

DOUBLE END STILE
TONGUE & GROOVE JOINT
MIN. TWO POINT LOCKING REQ'D
PRODUCT REVISED as complying with the Florida Building Code
NOA-No. 20-0922.37
Expiration Date 03/06/2024
By Miami-Dade Product Control
BOTTOM SECTION REINFORCED WITH TEMPERED ALUMINUM EXTRUSION WITH INTEGRAL RETAINER FOR FLEXIBLE VINYL ASTRAGAL

ADJUSTABLE TOP ROLLER BRACKET OF 12 GA. GALV. STEEL, INSTALLED ON DOOR WITH (4) #14 X 5/8" LG SHEET METAL SCREWS
ONE 4" T-STRUT PER SECTION. (SEE VIEW "D") EACH T-STRUT ATTACHED AT EACH STILE LOCATION WITH (2) 1/4"x3/4" SELF TAPPING SCREWS.
END HINGE. SEE DETAILS AT VIEW "A".



4" TALL TAPER STRUT. 0.057" MIN. GALV. STEEL, 50 KSI. MIN.
(2) STACKED LHR BRACKETS, USED AS INNER BOTTOM BRACKET. (NOT SHOWN). BOTTOM ROLLER BRACKET OF 12 GA. MIN. GALV. STEEL, FASTENED WITH (4) #14 X 5/8" LG SHEET METAL SCREWS.

THIS PRODUCT CONFORMS TO THE REQUIREMENTS OF 6TH AND 7TH EDITION OF THE FLORIDA BUILDING CODE

THIS DOOR MEETS THE REQUIREMENTS OF THE LARGE MISSILE IMPACT AND CYCLIC TESTING.

THE DESIGN OF THE SUPPORTING STRUCTURAL ELEMENTS IS THE RESPONSIBILITY OF THE BUILDING ENGINEER OR ARCHITECT OF RECORD.

Unless Stated Otherwise TOLERANCES are
.0 = ±.031
.00 = ±.015
.000 = ±.005
.0000 = ±.001
Degrees = ±1/2"
Unless Stated Otherwise DIMENSIONS ARE IN INCHES.

8585 Duke Boulevard
Mason, OH 45040 USA
Tel. No. 513-770-4800
Fax No. 513-770-4853

Clopay CORPORATION

DESIGNER: SCOTT HAMILTON, P.E. FLORIDA LICENSE No. 63286
DESIGNER'S SEAL

W8-DP52T

DESCRIPTION: COMMERCIAL RIBBED DOOR, +52/-58 PSF DESIGN LOAD

| | | | |
|------------------|---------------|---------------|--------------|
| DRAWN BY: SH | DATE: 5/15/13 | SCALE: N/A | DWG. SIZE: B |
| CHECKED BY: SH | DATE: 5/16/13 | SHEET: 1 OF 1 | VER: M-D |
| DWG. NO.: 104813 | | VER: M-D | |