



MIAMI-DADE COUNTY  
**PRODUCT CONTROL SECTION**  
 11805 SW 26 Street, Room 208  
 Miami, Florida 33175-2474  
 T (786) 315-2590 F (786) 315-2599  
[www.miamidade.gov/economy](http://www.miamidade.gov/economy)

DEPARTMENT OF REGULATORY AND ECONOMIC RESOURCES (RER)  
 BOARD AND CODE ADMINISTRATION DIVISION  
**NOTICE OF ACCEPTANCE (NOA)**

**Clopay Corporation**  
**8585 Duke Boulevard**  
**Mason, OH 45040**

**SCOPE:**

This NOA is being issued under the applicable rules and regulations governing the use of construction materials. The documentation submitted has been reviewed and accepted by Miami-Dade County RER-Product Control Section to be used in Miami Dade County and other areas where allowed by the Authority Having Jurisdiction (AHJ).

This NOA shall not be valid after the expiration date stated below. The Miami-Dade County Product Control Section (In Miami Dade County) and/or the AHJ (in areas other than Miami Dade County) reserve the right to have this product or material tested for quality assurance purposes. If this product or material fails to perform in the accepted manner, the manufacturer will incur the expense of such testing and the AHJ may immediately revoke, modify, or suspend the use of such product or material within their jurisdiction. RER reserves the right to revoke this acceptance, if it is determined by Miami-Dade County Product Control Section that this product or material fails to meet the requirements of the applicable building code.

This product is approved as described herein and has been designed to comply with the Florida Building Code, including the High Velocity Hurricane Zone.

**DESCRIPTION: Commercial Ribbed W8 DP52T Steel Sectional Garage Door up to 14'-2" Wide**

**APPROVAL DOCUMENT:** Drawing No. **103288**, titled "Commercial Ribbed Doors up to 14'2" W", sheets 1 through 3 of 3, dated 01/02/2015, with revision 7 dated 09/09/2020, prepared by Clopay Building Products Company, signed and sealed by Mark Westerfield, P.E., bearing the Miami-Dade County Product Control revision stamp with the Notice of Acceptance number and expiration date by the Miami-Dade County Product Control Section.

**MISSILE IMPACT RATING: Large and Small Missile Impact Resistant**

**LABELING:** A permanent label with the manufacturer's name or logo, manufacturing address, model number, the positive and negative design pressure rating, indicate impact rated if applicable, installation instruction drawing reference number, approval number (NOA), the applicable test standards, and the statement reading 'Miami-Dade County Product Control Approved' is to be located on the door's side track, bottom angle, or inner surface of a panel.

**RENEWAL** of this NOA shall be considered after a renewal application has been filed and there has been no change in the applicable building code negatively affecting the performance of this product.

**TERMINATION** of this NOA will occur after the expiration date or if there has been a revision or change in the materials, use, and/or manufacture of the product or process. Misuse of this NOA as an endorsement of any product, for sales, advertising or any other purposes shall automatically terminate this NOA. Failure to comply with any section of this NOA shall be cause for termination and removal of NOA.

**ADVERTISEMENT:** The NOA number preceded by the words Miami-Dade County, Florida, and followed by the expiration date may be displayed in advertising literature. If any portion of the NOA is displayed, then it shall be done in its entirety.

**INSPECTION:** A copy of this entire NOA shall be provided to the user by the manufacturer or its distributors and shall be available for inspection at the job site at the request of the Building Official.

This NOA **revises NOA #20-0128.01** and consists of this page 1 and evidence pages E-1 and E-2, as well as approval document mentioned above.

The submitted documentation was reviewed by **Sifang Zhao, P.E.**



*S.Z.*  
 12/24/2020

NOA No 20-0922.48  
**Expiration Date: April 16, 2025**  
**Approval Date: December 24, 2020**  
 Page 1

**NOTICE OF ACCEPTANCE: EVIDENCE SUBMITTED**

**1. Evidence submitted under previous NOAs**

**A. DRAWINGS**

1. Drawing No. **103288**, titled “Commercial Ribbed Doors up to 14’2” W”, sheets 1 through 3 of 3, dated 01/02/2015, with revision 6 dated 01/13/2020, prepared by Clopay Corporation, signed and sealed by Mark Westerfield, P.E.  
*“Submitted under NOA # 20-0128.01”*

**B. TESTS**

1. Test reports on 1) Uniform Static Air Pressure Test, Loading per FBC TAS 202-94  
2) Large Missile Impact Test per FBC, TAS 201-94  
3) Cyclic Wind Pressure Loading per FBC, TAS 203-94  
4) Forced Entry Test, per FBC TAS 202-94  
5) Tensile Test per ASTM E8

Along with marked-up drawings and installation diagram of Clopay 14’-2”x 8’, 24 ga. steel garage door, Model 524W8, prepared by American Test Lab, Inc., Test Report No. **ATLNC 0310.01-14**, dated 03/31/2014, signed and sealed by David W. Johnson, P.E.  
*“Submitted under NOA # 15-0211.03”*

2. Test report on Salt Spray per ASTM B117 of painted G40 galvanized painted and G90 panels, prepared by Fenestration Testing Laboratory, Inc., Test Report No. **7890**, dated 10/01/2014, signed by Idalmis Ortega, P.E. *“Submitted under NOA # 15-0211.03”*

**C. CALCULATIONS**

1. Anchoring calculations, prepared by Clopay Building Products Company, dated 01/02/2015, signed and sealed by Mark Westerfield, P.E.  
*“Submitted under NOA # 15-0211.03”*

**D. QUALITY ASSURANCE**

1. Miami-Dade Department of Regulatory and Economic Resources (RER)

**E. MATERIAL CERTIFICATIONS**

1. None.

**F. STATEMENTS**

1. Statement letter of code conformance to 2010, 5<sup>th</sup> Edition (2014) and 6<sup>th</sup> Edition (2017) FBC and Statement letter of no financial interest issued by Clopay Building Products Company, dated 08/02/2017, signed and sealed by Mark Westerfield, P.E.  
*“Submitted under NOA # 20-0128.01”*
2. Certificate of amendment changing the company name from Clopay Building Products Company, Inc. to Clopay Corporation, issued by the State of Delaware, dated 08/27/2019. *“Submitted under NOA # 20-0128.01”*



---

**Sifang Zhao, P.E.**  
**Product Control Examiner**  
**NOA No 20-0922.48**  
**Expiration Date: April 16, 2025**  
**Approval Date: December 24, 2020**

**Clopay Corporation**

**NOTICE OF ACCEPTANCE: EVIDENCE SUBMITTED**

**2. New evidence submitted**

**A. DRAWINGS**

1. Drawing No. **103288**, titled “Commercial Ribbed Doors up to 14’2” W”, sheets 1 through 3 of 3, dated 01/02/2015, with revision 7 dated 09/09/2020, prepared by Clopay Corporation, signed and sealed by Mark Westerfield, P.E.

**B. TESTS**

1. None.

**C. CALCULATIONS**

1. None.

**D. QUALITY ASSURANCE**

1. Miami-Dade Department of Regulatory and Economic Resources (RER)

**E. MATERIAL CERTIFICATIONS**

1. None.

**F. STATEMENTS**

1. Statement letter of code conformance to the 6<sup>th</sup> Edition (2017) FBC and 7<sup>th</sup> Edition (2020) FBC and Statement letter of no financial interest issued by Clopay Corporation, dated 09/15/2020, signed and sealed by Mark Westerfield, P.E.



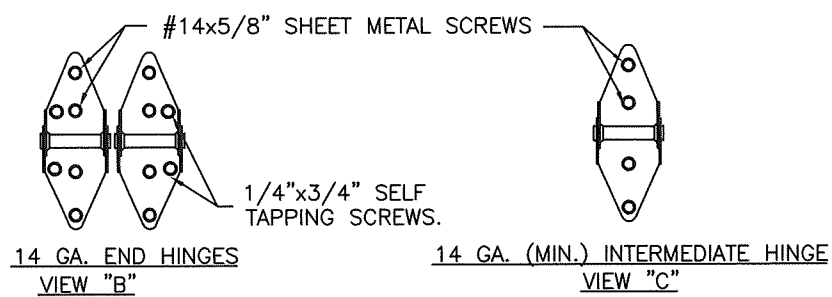
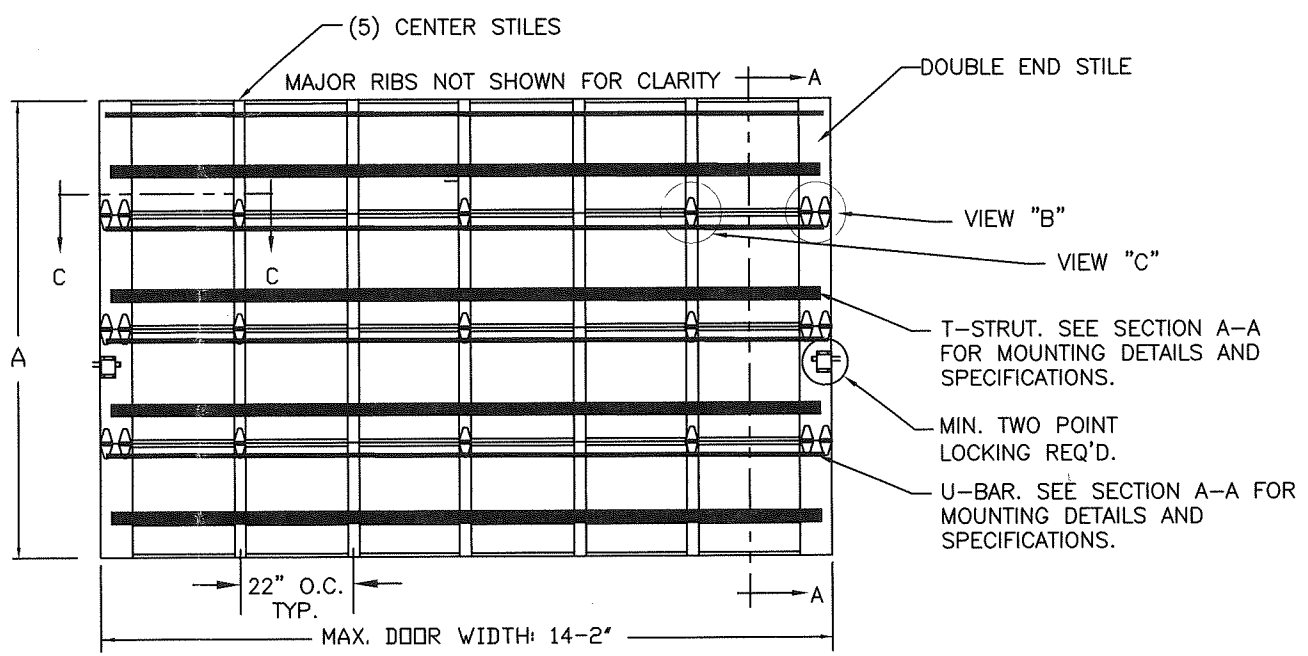
---

**Sifang Zhao, P.E.**  
**Product Control Examiner**  
**NOA No 20-0922.48**  
**Expiration Date: April 16, 2025**  
**Approval Date: December 24, 2020**

MODELS AVAILABLE (CLOPAY/ HOLMES/ IDEAL)  
 524 (24 ga.), 520 (20 ga.) / 224 (24 ga.)/ C4ST (24 ga.), C0ST (20 ga.)

SHEET:  
 1 OF 3

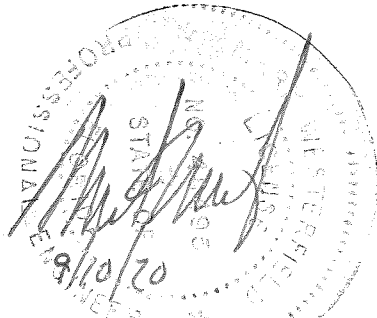
REVISIONS					
REV. NO.	ZONE:	DATE:	ECN NO.	APPVD:	DESCRIPTION
05	-	1/2/15	-	SH	UPDATED CODE COMPLIANCE STATEMENT TO ADD 6TH EDITION FBC.
06	-	1/13/20	-	MW	UPDATED TITLE BLOCK
07	-	9/9/20	-	SH	UPDATED CODE COMPLIANCE STATEMENT TO 7TH EDITION FBC



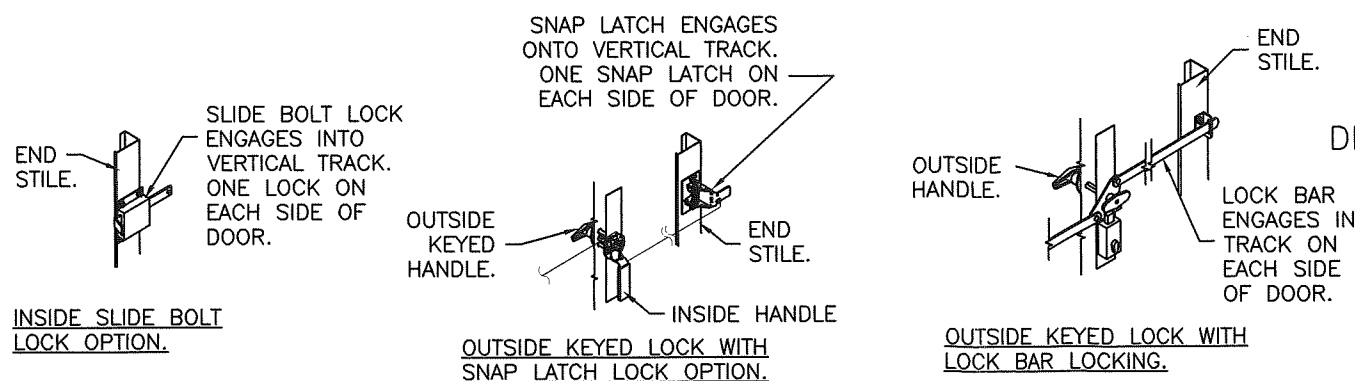
DOOR HEIGHT 'A'	NUMBER OF SECTIONS
UP TO 8'-0"	4
8'-3" THRU 10'-0"	5
10'-3" THRU 12'-0"	6
12'-3" THRU 14'-0"	7
14'-3" THRU 16'-0"	8
16'-3" THRU 18'-0"	9

**PRODUCT REVISED**  
 as complying with the Florida Building Code  
 NOA-No. 20-0922.48  
 Expiration Date 04/16/2025  
 By *[Signature]*  
 Miami-Dade Product Control

THIS PRODUCT CONFORMS TO THE REQUIREMENTS OF 6TH AND 7TH EDITION OF THE FLORIDA BUILDING CODE



DESIGN ENGINEER:  
 MARK WESTERFIELD, P.E.  
 FLORIDA P.E. #48495



DESIGN LOADS: +52.0 P.S.F. & -58.0 P.S.F.

Unless Stated Otherwise  
 TOLERANCES are  
 .0 = ±.031  
 .00 = ±.015  
 .000 = ±.005  
 .0000 = ±.001  
 Degrees = ±1/2"  
 Unless Stated Otherwise  
 DIMENSIONS ARE IN INCHES.

**Clopay** CORPORATION  
 8585 Duke Boulevard  
 Mason, OH 45040 USA  
 Tel. No. 513-770-4800  
 Fax No. 513-770-4853

DESCRIPTION: COMMERCIAL RIBBED DOORS UP TO 14'2"W			
DRAWN BY: SH	DATE: 3/14/14	SCALE: NTS	DWG. B
CHECKED BY: MWW	DATE: 1/2/15	SHEET 1 OF 3	SIZE B
DWG. NO.: 103288		VER: M-D	

MANUFACTURING PRODUCT CODE C-PAN-1E448
PART NO.: N/A
WINDLOAD RATING W8 DP52T

MODELS AVAILABLE (CLOPAY/ HOLMES/ IDEAL)  
 524 (24 ga.), 520 (20 ga.) / 224 (24 ga.)/ C4ST (24 ga.), COST (20 ga.)

SHEET:  
2 OF 3

REVISIONS

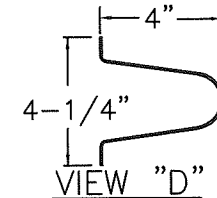
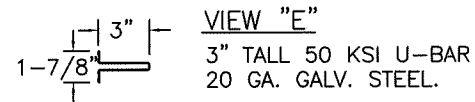
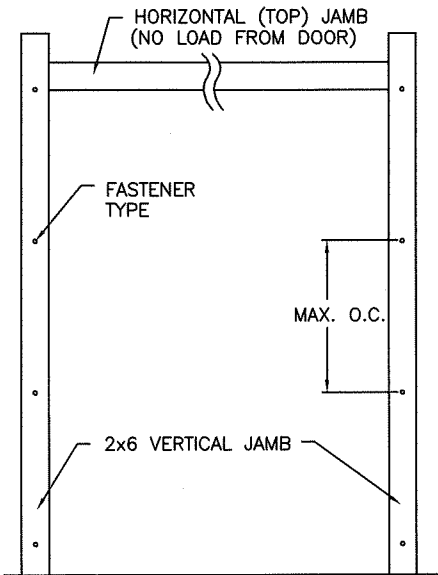
REV. NO.	ZONE:	DATE:	ECN NO.	APPVD:	DESCRIPTION
07	-	-	-	---	SEE REVISION HISTORY ON SHEET ONE.

JAMB TO SUPPORTING STRUCTURE ATTACHMENT

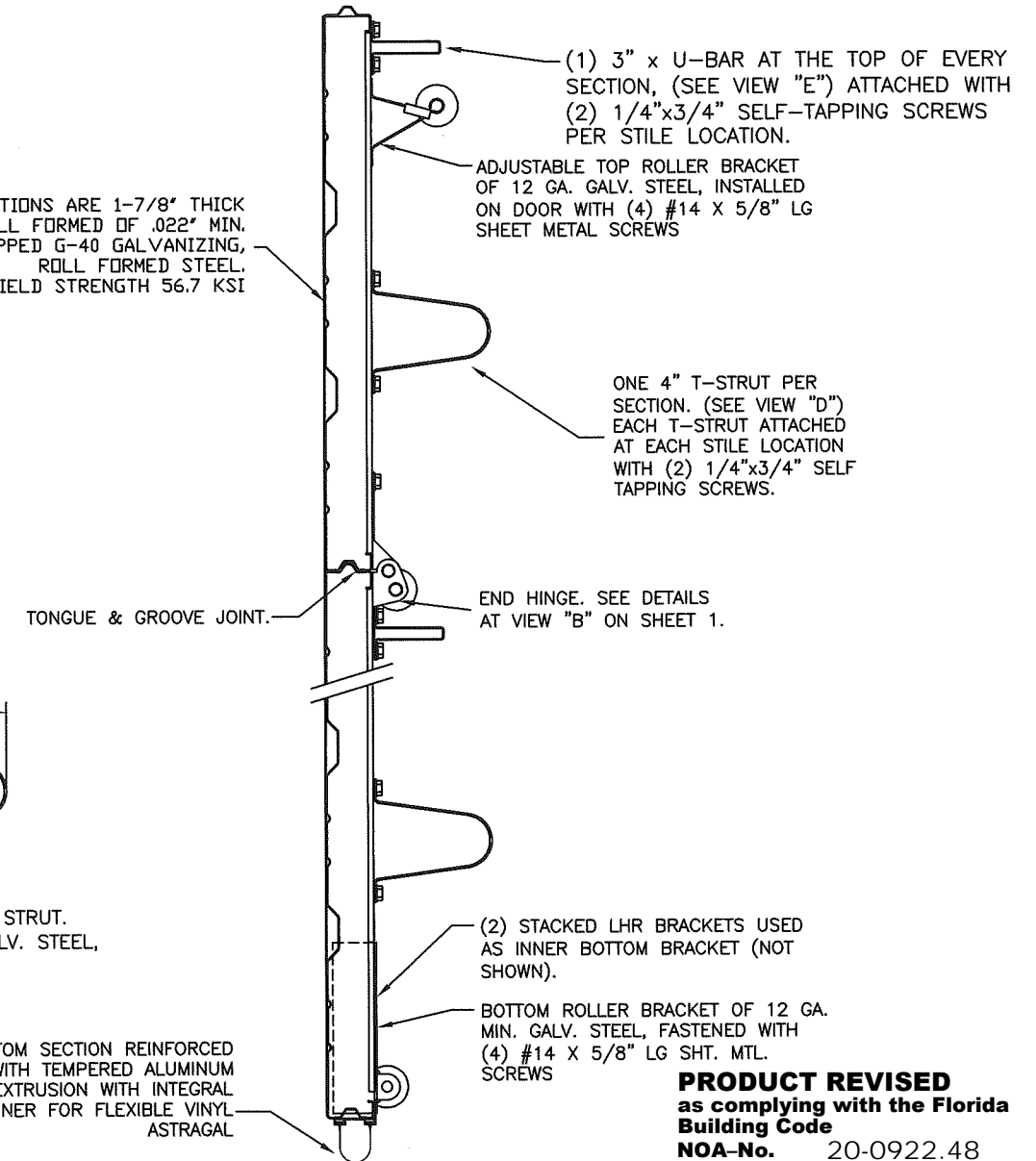
NOTES:

1. ALL THE LOAD FROM THE DOOR IS TRANSFERRED TO THE TRACK AND THEN FROM THE TRACK TO THE 2x6 VERTICAL SYP (GRADE #2 OR BETTER) JAMBS. NO LOAD FROM THE DOOR IS TRANSFERRED TO THE HORIZONTAL (TOP) JAMB.
2. EACH VERTICAL JAMB SEES A MAXIMUM DESIGN LOAD OF +364 LB & -406 LB. PER LINEAR FOOT OF JAMB.
3. ALL JAMB FASTENERS MAY BE (BUT ARE NOT REQUIRED TO BE) COUNTERSUNK TO PROVIDE A FLUSH MOUNTING SURFACE.
4. A 1/3 STRESS INCREASE FOR WIND LOAD WAS NOT USED IN THE CALCULATION OF ALLOWABLE LOADS FOR ANCHORS AND FASTENERS FOR STEEL, CONCRETE AND MASONRY.

NOTE: 2x6 WOOD JAMBS ARE NOT REQUIRED WITH CONTINUOUS ANGLE MOUNT TRACK. HOWEVER, IF DESIRED ON STEEL JAMBS OR CONCRETE OR BLOCK WALLS, APPROVED FASTENERS AS DETAILED BELOW SHOULD BE INCREASED IN LENGTH BY 1-1/2" AND INSTALLED DIRECTLY THROUGH THE ANGLE AND 2x6 WOOD JAMBS INTO THE STEEL JAMBS OR CONCRETE OR BLOCK WALLS. ANCHORS CAN BE (BUT ARE NOT REQUIRED TO BE) COUNTERSUNK TO PROVIDE A FLUSH MOUNTING SURFACE. CONTINUOUS ANGLE TRACK CAN BE ANCHORED DIRECTLY TO GROUT REINFORCED BLOCK WALL OR 3,000 PSI MIN. CONCRETE COLUMN OR STEEL JAMBS.



SECTIONS ARE 1-7/8" THICK  
 PANELS ROLL FORMED OF .022" MIN.  
 HOT DIPPED G-40 GALVANIZING,  
 ROLL FORMED STEEL.  
 MIN. YIELD STRENGTH 56.7 KSI



FASTENER ATTACHMENT TO SUPPORTING STRUCTURE SCHEDULES

BUILDING TYPE	FASTENER TYPE	MAXIMUM ON-CENTER DISTANCE BETWEEN FASTENERS*	STEEL WASHERS REQUIRED?
HOLLOW BLOCK WALL	1/4" x 1-1/4" MIN. EMBED ULTRACON CONCRETE ANCHOR	4-1/2"	1" O.D.
GROUT FILLED BLOCK WALL	1/4" x 1-3/4" MIN. EMBED ULTRACON CONCRETE ANCHOR	7-1/2"	1" O.D.
2000 PSI MIN. CONCRETE	1/4" x 1" MIN. EMBED ULTRACON CONCRETE ANCHOR	6-1/2"	1" O.D.
2000 PSI MIN. CONCRETE	1/4" x 1" MIN. EMBED TAPCON CONCRETE ANCHOR	5-1/2"	1" O.D.
2000 PSI MIN. CONCRETE	3/8" x 1-3/4" MIN. EMBED WEJ-IT ANKR TITE SLEEVE ANCHOR	13-3/4"	INCLUDED
4000 PSI MIN. CONCRETE	3/8" x 1-3/4" MIN. EMBED WEJ-IT ANKR TITE SLEEVE ANCHOR	24"	INCLUDED
WOOD FRAME (SYP 0.55 SG)	1/2" x 3" LAG SCREW (ASTM A307, GRADE A) 1-5/8" EMBED INTO STRUCTURE	14-3/4"	1" O.D.
14GA STEEL (0.060" MIN.)	1/4"-14 x 1" ITW BUILDDEX TEKS SELF-DRILLING FASTENER	6-1/4"	1" O.D.
12GA STEEL (0.105" MIN.)	1/4"-14 x 1" ITW BUILDDEX TEKS SELF-DRILLING FASTENER	11"	1" O.D.
1/8" STEEL	1/4"-14 x 1" ITW BUILDDEX TEKS SELF-DRILLING FASTENER	13"	1" O.D.

\*: FIRST (BOTTOM) ANCHOR STARTING AT NO MORE THAN HALF OF THE MAXIMUM ON-CENTER DISTANCE. HIGHEST ANCHOR INSTALLED AT LEAST AS HIGH AS THE DOOR OPENING.  
 CLOPAY DOES NOT SUPPLY JAMB ATTACHMENT FASTENERS.  
 MINIMUM DISTANCE BETWEEN CENTER OF ANCHOR AND EDGE OF CONCRETE BLOCK: 2-1/2", EXCLUDING STUCCO THICKNESS.

DESIGN LOADS: +52.0 P.S.F. & -58.0 P.S.F.

Unless Stated Otherwise  
 TOLERANCES are  
 .0 = ±.031  
 .00 = ±.015  
 .000 = ±.005  
 .0000 = ±.001  
 Degrees = ±1/2'  
 Unless Stated Otherwise  
 DIMENSIONS ARE IN INCHES.

**Clopay**  
 CORPORATION

8585 Duke Boulevard  
 Mason, OH 45040 USA  
 Tel. No. 513-770-4800  
 Fax No. 513-770-4853

WINDLOAD RATING  
**W8 DP52T**

DESCRIPTION: COMMERCIAL RIBBED DOORS UP TO 14'2"W  
 DRAWN BY: SH DATE: 3/14/14 SCALE: NTS DWG. SIZE B  
 CHECKED BY: MWW DATE: 1/2/15 SHEET 2 OF 3  
 DWG. NO.: 103288 VER: M-D

**PRODUCT REVISED**  
 as complying with the Florida  
 Building Code  
 NOA-No. 20-0922.48

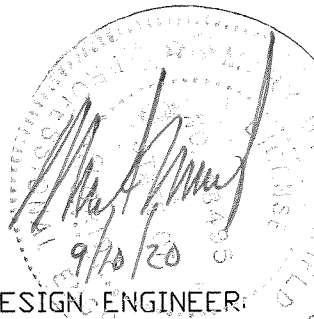
Expiration Date 04/16/2025

By *[Signature]*  
 Miami-Dade Product Control

MANUFACTURING PRODUCT CODE  
 C-PAN-1E448

PART NO.: N/A

DESIGN ENGINEER:  
 MARK WESTERFIELD, P.E.  
 FLORIDA P.E. #48495



MODELS AVAILABLE (CLOPAY/ HOLMES/ IDEAL)  
 524 (24 ga.), 520 (20 ga.) / 224 (24 ga.)/ C4ST (24 ga.), C0ST (20 ga.)

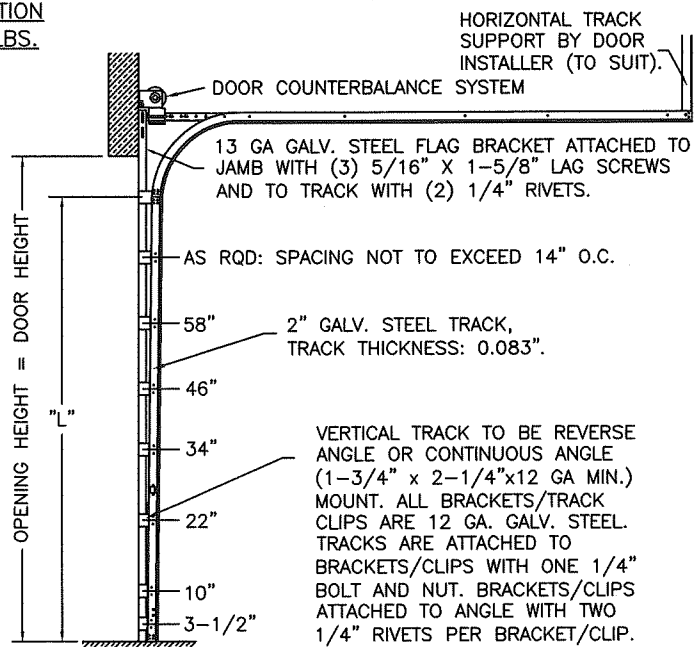
SHEET  
 3 OF 3

REVISIONS

REV. NO.	ZONE	DATE	ECN NO.	APPVD	DESCRIPTION
07	-	-	-	--	SEE REVISION HISTORY ON SHEET ONE.

**2" TRACK CONFIGURATION**  
 DOORS UP TO 800 LBS.

NOTE DOUBLE TRACK HEADROOM, HI-LIFT TRACK, FOLLOW-THE-ROOF TRACK, AND VERTICAL LIFT TRACK ARE AVAILABLE OPTIONS. TRACK CONFIGURATION ABOVE THE DOOR OPENING DOES NOT AFFECT THE WIND LOAD RATING.



DOOR HEIGHT "L"	"L"
6'-6"	70"
7'-0"	76"
7'-6"	82"
8'-0"	88"
8'-6"	94"
9'-0"	100"
9'-6"	106"
10'-0"	112"
10'-6"	118"
11'-0"	124"
11'-6"	130"
12'-0"	136"
12'-6"	142"
13'-0"	148"
13'-6"	154"
14'-0"	160"
14'-6"	166"
15'-0"	172"
15'-6"	178"
16'-0"	184"
16'-6"	190"
17'-0"	196"
17'-6"	202"
18'-0"	208"

**JAMB CONFIGURATION**  
 DOORS UP TO 800 LBS.

2x6 SYP WOOD JAMB. REQUIRED FOR BRACKET MOUNT.

2-1/2" X 12 GA GALV. STEEL TRACK BRACKETS FASTENED TO WOOD JAMBS WITH 5/6" X 1-5/8" LAG SCREWS NOT TO EXCEED 14" ON-CENTER.

0.083" MIN. THICK VERTICAL 2" TRACK

**ANGLE MOUNT JAMB CONFIGURATION**

OPTIONAL STOP MOULDING BY INSTALLER (TO SUIT).

16 GA x 6" x 1-7/8" GALV. STEEL DOUBLE END STILE FASTENED WITH TOG-L-LOC SYSTEM AT TOP, BOTTOM AND CENTER.

7/16" I.D. ROUND PUSH NUT FASTENER.

14 GA. GALV. STEEL ROLLER HINGES FASTENED TO END STILES W/(4) EACH #14x5/8" SHEET METAL SCREWS AND (2) 1/4" SELF TAPPING SCREWS PER END HINGE.

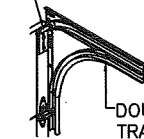
18 GA. x 2" x 1-7/8" x 3/4" GALV. STEEL INTERMEDIATE STILE FASTENED TO DOOR SKIN WITH TOG-L-LOC SYSTEM AT TOP, BOTTOM AND EA. MAJOR RIB.

2x6 SYP JAMB (IF PRESENT; SEE JAMB NOTES ON SHEET 2).

VERTICAL TRACK TO BE CONTINUOUS OR REVERSE ANGLE. 12 GA. TRACK CLIPS ATTACHED TO WALL ANGLE WITH TWO 1/4" RIVETS PER CLIP. TRACK CLIPS ARE ATTACHED TO TRACK WITH EITHER TWO 1/4" RIVETS OR ONE 1/4" BOLT AND NUT. FOR WOOD JAMBS: ONE 5/16" X 1-5/8" LAG SCREW AT EACH TRACK CLIP LOCATION. ALSO TWO LAG SCREWS LOCATED ABOVE VERTICAL/HORIZONTAL TRACK JUNCTION.

14 GA. GALV. STEEL CENTER HINGE FASTENED TO SECTION W/(4) EACH #14x5/8" SHEET METAL SCREWS.

LHR BRACKET (2-1/2" x 5-3/4" x 12GA) ATTACHED WITH (2) 1/4" x 3/4" SELF TAPPING SCREWS. NOTE THAT LHR BRACKETS ARE ALSO USED WITH "DOUBLE END STILE" AS NOTED ON SHEET 2.

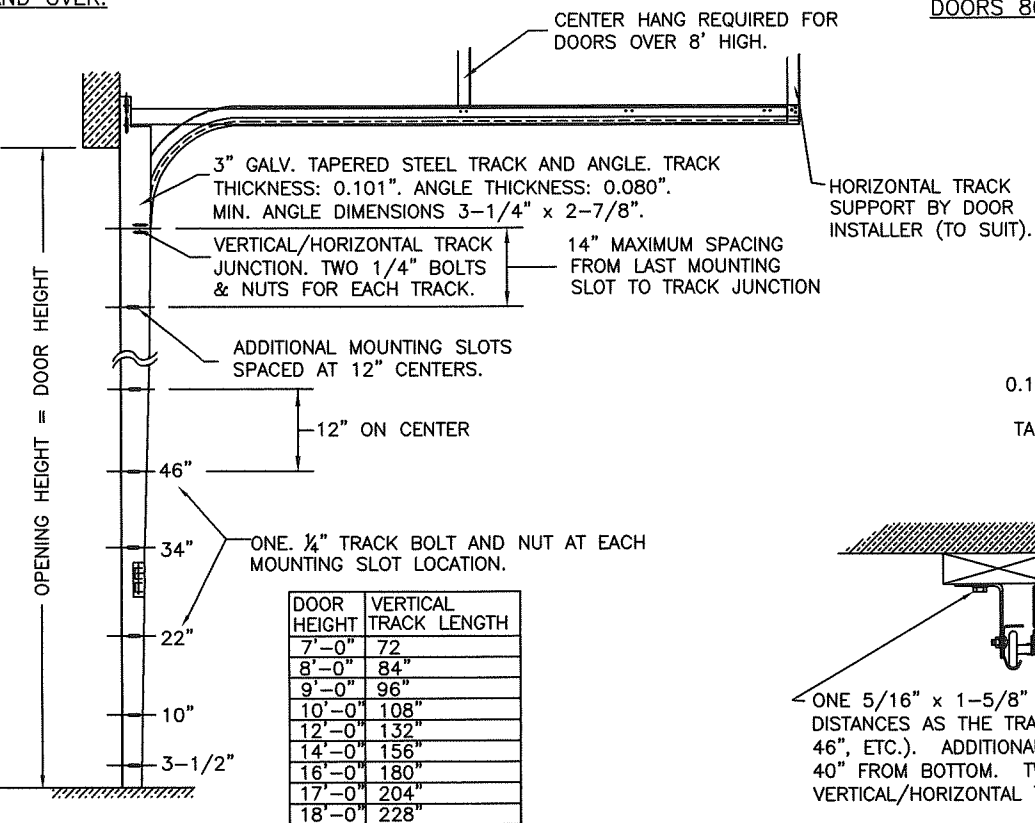


**DOUBLE TRACK LOW HEADROOM OPTION**  
 (AVAIL. FOR BOTH 2" AND 3" TRACK)

SECTION C-C  
 PREPARATION OF JAMBS BY OTHERS.

**3" TRACK CONFIGURATION**  
 DOORS 800 LBS AND OVER.

NOTE DOUBLE TRACK HEADROOM, HI-LIFT TRACK, FOLLOW-THE-ROOF TRACK, AND VERTICAL LIFT TRACK ARE AVAILABLE OPTIONS. TRACK CONFIGURATION ABOVE THE DOOR OPENING DOES NOT AFFECT THE WIND LOAD RATING.



DOOR HEIGHT	VERTICAL TRACK LENGTH
7'-0"	72"
8'-0"	84"
9'-0"	96"
10'-0"	108"
12'-0"	132"
14'-0"	156"
16'-0"	180"
17'-0"	204"
18'-0"	228"

**JAMB CONFIGURATION**  
 DOORS 800 LBS AND OVER.

2x6 SYP JAMB (IF PRESENT; SEE JAMB NOTES ON SHEET 3).

3-1/4" x 2-7/8" MIN. x 0.080" TAPERED ANGLE. SEE LAG BOLT MOUNTING AT TRACK CONFIGURATION BELOW.

0.101" THICK 3" GALV. STEEL TRACK FASTENED TO TAPERED ANGLE. TRACK ATTACHED TO TAPERED ANGLE WITH ONE 1/4"x5/8" BOLT & NUT AT EACH MOUNTING SLOT.

ONE 5/16" x 1-5/8" LAG SCREW SPACED AT THE SAME DISTANCES AS THE TRACK BOLTS (I.E. 3-1/2", 10", 22", 34", 46", ETC.). ADDITIONAL LAG SCREWS LOCATED AT 16", 28", & 40" FROM BOTTOM. TWO LAG SCREWS ALSO LOCATED ABOVE VERTICAL/HORIZONTAL TRACK JUNCTION.

1" DOOR OVERLAP (EACH SIDE)

OPTIONAL STOP MOULDING BY DOOR INSTALLER (TO SUIT).

16 GA x 6" x 1-7/8" GALV. STEEL DOUBLE END STILE FASTENED WITH TOG-L-LOC SYSTEM AT TOP, BOTTOM AND CENTER.

18 GA. x 2" x 1-7/8" x 3/4" GALV. STEEL INTERMEDIATE STILE FASTENED TO DOOR SKIN WITH TOG-L-LOC SYSTEM AT TOP, BOTTOM AND EACH MAJOR RIB.

7/16" I.D. ROUND PUSH NUT FASTENER.

14 GA. GALV. STEEL ROLLER HINGES FASTENED TO END STILES W/(4) EACH #14x5/8" SHEET METAL SCREWS AND (2) 1/4" SELF TAPPING SCREWS PER END HINGE.

3" DIA. 8-1/2" LONG STEM BALL BEARING STEEL ROLLER.

SECTION C-C  
 PREPARATION OF JAMBS BY OTHERS.

DESIGN LOADS: +52.0 P.S.F. & -58.0 P.S.F.

Unless Stated Otherwise TOLERANCES are  
 .0 = ±.031  
 .00 = ±.015  
 .000 = ±.005  
 .0000 = ±.001  
 Degrees = ±1/2"

Unless Stated Otherwise DIMENSIONS ARE IN INCHES.

**Glopay CORPORATION**

8585 Duke Boulevard  
 Mason, OH 45040 USA  
 Tel. No. 513-770-4800  
 Fax No. 513-770-4853

DESCRIPTION: COMMERCIAL RIBBED DOORS UP TO 14'2"W

DRAWN BY: SH DATE: 3/14/14 SCALE: NTS DWG. SIZE B

CHECKED BY: MWW DATE: 1/2/15 SHEET OF 3

DWG. NO.: 103288 VER: M-D

MANUFACTURING PRODUCT CODE  
 C-PAN-1E448

PART NO.: N/A

WINDLOAD RATING  
 W8 DP52T

DESIGN ENGINEER:  
 MARK WESTERFIELD, P.E.  
 FLORIDA P.E. #48495