



**MIAMI-DADE COUNTY  
PRODUCT CONTROL SECTION**

11805 SW 26 Street, Room 208  
Miami, Florida 33175-2474  
T (786) 315-2590 F (786) 315-2599

**DEPARTMENT OF REGULATORY AND ECONOMIC RESOURCES (RER)  
BOARD AND CODE ADMINISTRATION DIVISION**

[www.miamidade.gov/economy](http://www.miamidade.gov/economy)

**NOTICE OF ACCEPTANCE (NOA)**

**Clopay Corporation  
8585 Duke Boulevard  
Mason, OH 45040**

**SCOPE:**

This NOA is being issued under the applicable rules and regulations governing the use of construction materials. The documentation submitted has been reviewed and accepted by Miami-Dade County RER-Product Control Section to be used in Miami Dade County and other areas where allowed by the Authority Having Jurisdiction (AHJ).

This NOA shall not be valid after the expiration date stated below. The Miami-Dade County Product Control Section (In Miami Dade County) and/or the AHJ (in areas other than Miami Dade County) reserve the right to have this product or material tested for quality assurance purposes. If this product or material fails to perform in the accepted manner, the manufacturer will incur the expense of such testing and the AHJ may immediately revoke, modify, or suspend the use of such product or material within their jurisdiction. RER reserves the right to revoke this acceptance, if it is determined by Miami-Dade County Product Control Section that this product or material fails to meet the requirements of the applicable building code.

This product is approved as described herein and has been designed to comply with the Florida Building Code, including the High Velocity Hurricane Zone.

**DESCRIPTION: Commercial 2” Intellicore Insulated W8 DP50T Steel Sectional Garage Door up to 16’-2” Wide w/ Optional Impact Resistant Lites**

**APPROVAL DOCUMENT:** Drawing No. **104900**, titled “2” Intellicore Doors up to 16’2” W”, sheet 1 through 3 of 3, dated 12/11/2014, with revision 6 dated 09/09/2020, prepared by Clopay Building Products Company, signed and sealed by Mark Westerfield, P.E., bearing the Miami-Dade County Product Control revision stamp with the Notice of Acceptance number and expiration date by the Miami-Dade County Product Control Section.

**MISSILE IMPACT RATING: Large and Small Missile Impact Resistant**

**LABELING:** A permanent label with the manufacturer’s name or logo, manufacturing address, model number, the positive and negative design pressure rating, indicate impact rated if applicable, installation instruction drawing reference number, approval number (NOA), the applicable test standards, and the statement reading ‘Miami-Dade County Product Control Approved’ is to be located on the door’s side track, bottom angle, or inner surface of a panel.

**RENEWAL** of this NOA shall be considered after a renewal application has been filed and there has been no change in the applicable building code negatively affecting the performance of this product.

**TERMINATION** of this NOA will occur after the expiration date or if there has been a revision or change in the materials, use, and/or manufacture of the product or process. Misuse of this NOA as an endorsement of any product, for sales, advertising or any other purposes shall automatically terminate this NOA. Failure to comply with any section of this NOA shall be cause for termination and removal of NOA.

**ADVERTISEMENT:** The NOA number preceded by the words Miami-Dade County, Florida, and followed by the expiration date may be displayed in advertising literature. If any portion of the NOA is displayed, then it shall be done in its entirety.

**INSPECTION:** A copy of this entire NOA shall be provided to the user by the manufacturer or its distributors and shall be available for inspection at the job site at the request of the Building Official.

This NOA **revises NOA #20-0203.02** and consists of this page 1 and evidence pages E-1 and E-3, as well as approval document mentioned above.

The submitted documentation was reviewed by **Sifang Zhao, P.E.**



*S.Z.*  
12/24/2020

**NOA No 20-0922.49  
Expiration Date: April 23, 2025  
Approval Date: December 24, 2020  
Page 1**

**NOTICE OF ACCEPTANCE: EVIDENCE SUBMITTED**

**1. EVIDENCE SUBMITTED UNDER PREVIOUS NOAs**

**A. DRAWINGS**

1. Drawing No. **104900**, titled "2" Intellicore Doors up to 16'2" W", sheet 1 through 3 of 3, dated 12/11/2014, with revision 3 dated 02/26/2015, prepared by Clipay Building Products Company, signed and sealed by Mark Westerfield, P.E.  
*"Submitted under NOA #14-1218.03"*

**B. TESTS**

1. Test reports on 1) Uniform Static Air Pressure Test, Loading per FBC TAS 202-94  
2) Large Missile Impact Test per FBC, TAS 201-94  
3) Cyclic Wind Pressure Loading per FBC, TAS 203-94  
4) Forced Entry Test, per FBC, TAS 202-94  
5) Tensile Test per ASTM E8  
along with marked-up drawings and installation diagram of 16'2"x 8', 27ga steel garage door Model 3720W8 with Lexan MR10 windows, prepared by American Test Lab, Inc., Test Report No. **ATLNC 0401.01-14**, dated 04/17/2014, signed and sealed by David W. Johnson, P.E.  
*"Submitted under NOA #14-1218.03"*
2. Test reports on 1) Uniform Static Air Pressure Test, Loading per FBC TAS 202-94  
2) Large Missile Impact Test per FBC, TAS 201-94  
3) Cyclic Wind Pressure Loading per FBC, TAS 203-94  
4) Forced Entry Test, per FBC, TAS 202-94  
5) Tensile Test per ASTM E8  
along with marked-up drawings and installation diagram of 16'2"x 8', 27ga steel garage door Model GD2LPW8 with MAK SL and/or MAK 15 windows, prepared by American Test Lab, Inc., Test Report No. **ATLNC 1105-01-13**, dated 01/14/2014, signed and sealed by David W. Johnson, P.E.  
*"Submitted under NOA #14-1218.03"*
3. Test report on Salt Spray per ASTM B117 of painted G40 galvanized painted and G90 panels, prepared by Fenestration Testing Laboratory, Inc., Test Report No. **7890**, dated 10/01/2014, signed by Idalmis Ortega, P.E. *"Submitted under NOA #14-1218.03"*

**C. CALCULATIONS**


1. Jamb anchor calculations prepared by Clipay Building Products Company, dated 12/11/2014, signed and sealed by Mark Westerfield, P.E.  
*"Submitted under NOA #14-1218.03"*

**D. QUALITY ASSURANCE**

1. Miami-Dade Department of Regulatory and Economic Resources (RER)

**E. MATERIAL CERTIFICATIONS**

1. NOA No. **15-0915.08** issued to SABIC Innovative Plastics, US LLC for their Lexan Polycarbonate Sheet Products, approved on 12/10/2015, expiring on 07/17/2018.
2. NOA No. **17-0410.01** issued to Covestro LLC for their Makrolon Polycarbonate Sheets, approved on 06/08/2017, expiring on 08/27/2022.
3. Test report on Surface Burning Characteristics, per ASTM E84 of the polyurethane foam insulation, prepared by QAI Laboratories, Test Report No. **RJ2814-3**, dated 10/14/2013, signed by Greg Banasky. *"Submitted under NOA #14-1218.03"*

  
\_\_\_\_\_  
**Sifang Zhao, P.E.**  
**Product Control Examiner**  
**NOA No 20-0922.49**  
**Expiration Date: April 23, 2025**  
**Approval Date: December 24, 2020**

**Clopay Corporation**

**NOTICE OF ACCEPTANCE: EVIDENCE SUBMITTED**

**F. STATEMENTS**

1. Statement letter of code conformance to 2010 and 5<sup>th</sup> edition (2014) FBC and Statement letter of no financial interest, issued by Clopay Building Products Company, dated 12/11/2014, signed and sealed by Mark Westerfield, P.E. *“Submitted under NOA #14-1218.03”*
2. Statement letter of code conformance to 2010, 5<sup>th</sup> Edition (2014) and 6<sup>th</sup> Edition (2017) FBC issued by Clopay Building Products Company, dated 08/02/2017, signed and sealed by Mark Westerfield, P.E. *“Submitted under NOA #17-0809.12”*
3. Certificate of amendment changing the company name from Clopay Building Products Company, Inc. to Clopay Corporation, issued by the State of Delaware, dated 08/27/2019. *“Submitted under NOA #20-0203.02”*

**2. New evidence submitted**

**A. DRAWINGS**

1. Drawing No. **104900**, titled “2” Intellicore Doors up to 16’2” W”, sheet 1 through 3 of 3, dated 12/11/2014, with revision 5 dated 01/24/2020, prepared by Clopay Corporation, signed and sealed by Mark Westerfield, P.E.

**B. TESTS**

1. None.

**C. CALCULATIONS**

1. None.

**D. QUALITY ASSURANCE**

1. Miami-Dade Department of Regulatory and Economic Resources (RER)

**E. MATERIAL CERTIFICATIONS**

1. None.

**F. STATEMENTS**

1. Statement letter of code conformance to the 6<sup>th</sup> Edition (2017) FBC, 7<sup>th</sup> Edition (2020) FBC and Statement letter of no financial interest, issued by Clopay Corporation, dated 09/15/2020, signed and sealed by Mark Westerfield, P.E.



---

**Sifang Zhao, P.E.**  
**Product Control Examiner**  
**NOA No 20-0922.49**  
**Expiration Date: April 23, 2025**  
**Approval Date: December 24, 2020**

CLOPAY / IDEAL / HOLMES  
 3720 / C7X20 / 240U / 27GA 2" THICK MINOR RIB  
 3722 / COX22 / -- / 20GA 2" THICK FLUSH  
 3724 / C7X24 / 244U / 24GA 2" THICK MINOR RIB

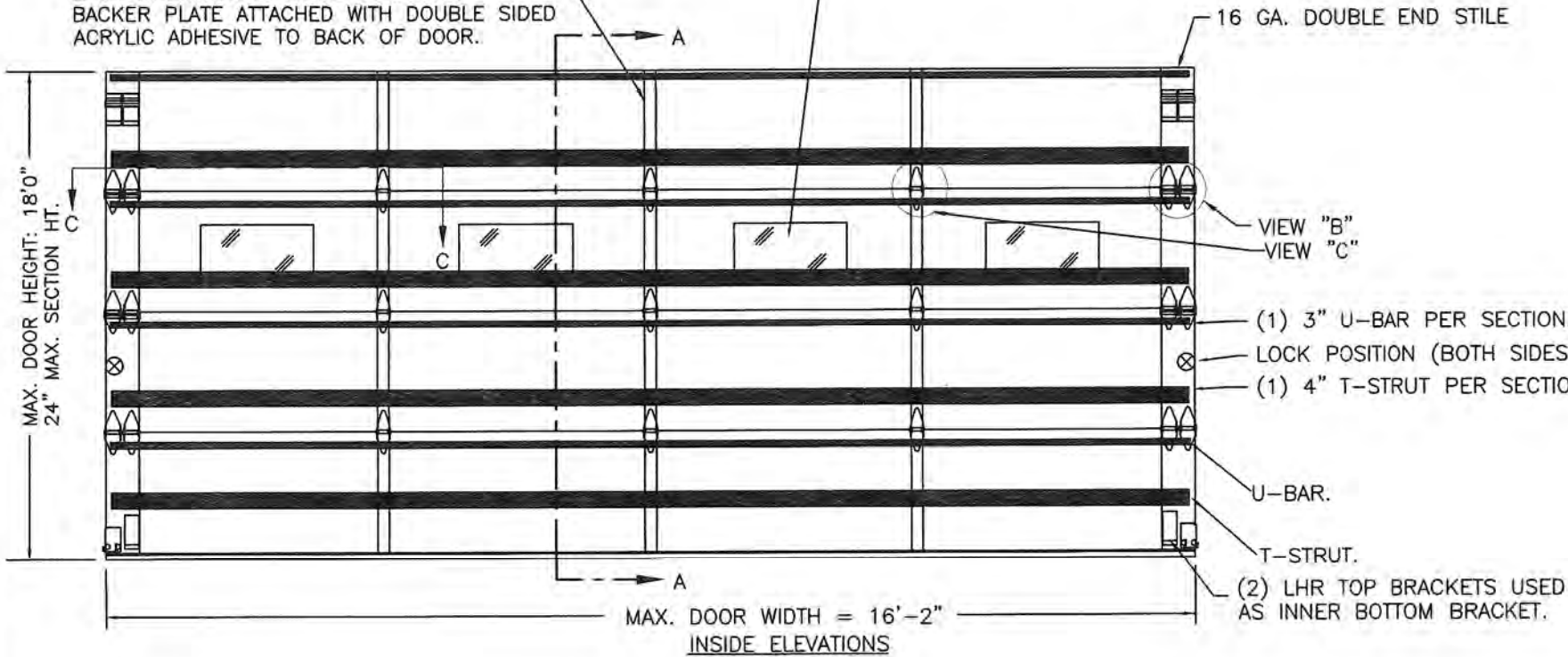
SHEET:  
 1 OF 3

REVISIONS

REV. NO.	ZONE:	DATE:	ECN NO.	APPVD:	DESCRIPTION
01	-	12/11/14	-	MWW	INITIAL SUBMISSION TO MIAMI-DADE
02	PG. 3	2/10/15		MWW	CORRECTED VERT. TRACK THICKNESS AND CLARIFIED R/A & C/A TRACK
03	PG. 1&3	2/26/15		MWW	STILE TABLE UPDATE (p. 1); 2" TRACK UPDATE (p. 3)
04	-	7/17/17		MWW	UPDATED CODE COMPLIANCE STATEMENT TO ADD 6TH EDITION FBC.
05	-	1/24/20		MWW	UPDATED TITLE BLOCK
06	-	9/9/20		SH	UPDATED CODE COMPLIANCE STATEMENT TO 7TH EDITION FBC

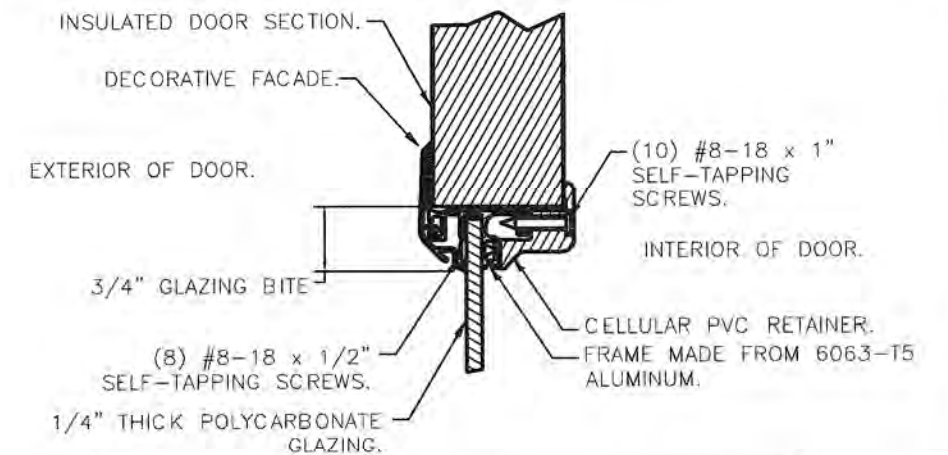
OPTIONAL GLAZING SHALL BE IMPACT RESISTANT GLAZING. MAXIMUM GLAZING SIZE (DLO) IS 22"x9-7/8". SEE SECTION B-B ON FOR DETAILS. GLAZING MAY BE INSTALLED IN TOP SECTION (NOT SHOWN) OR INTERMEDIATE SECTION (SHOWN).

(1) 20 GA. GALV. STEEL BACKER PLATE AT EACH INTERMEDIATE HINGE LOCATION. BACKER PLATE ATTACHED WITH DOUBLE SIDED ACRYLIC ADHESIVE TO BACK OF DOOR.



**IMPACT-RESISTANT CONSTRUCTION:**  
 SOLID DOORS (NO GLAZING) OR DOORS WITH OPTIONAL IMPACT-RESISTANT GLAZING ARE IMPACT-RESISTANT. OPTIONAL IMPACT RESISTANT ASSEMBLY CONSISTS OF ALUMINUM FRONT FRAME AND SABIC IP LEXAN 9034 (VERSIONS ALSO APPROVED: MR10, 9030, 90318, 90316, 90317, 90311, 90314, 90355) OR BAYER MAKROLON GP (VERSIONS ALSO APPROVED: SL, AR, 15), APPROVED CC1 PLASTICS IN ACCORDANCE WITH IBC/FBC 2606 AND APPROVED C1 PLASTICS IN ACCORDANCE WITH FBC 2612. THE ENTIRE DOOR ASSEMBLY INSTALLED IN COMPLIANCE WITH THIS SECTION MEETS THE WIND LOAD REQUIREMENTS OF THE FLORIDA BUILDING CODE AND INTERNATIONAL BUILDING CODE AND IS LARGE- AND SMALL-MISSILE IMPACT RESISTANT.

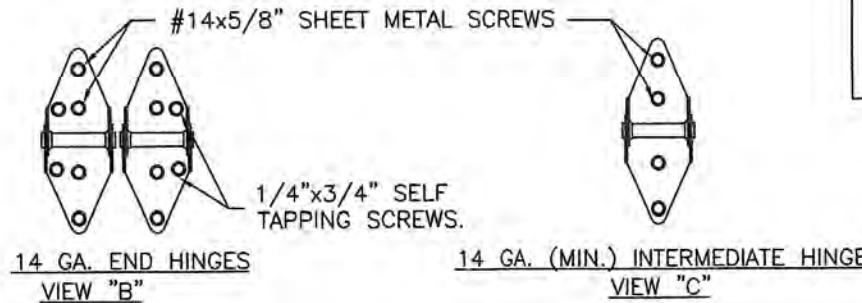
**SECTION B-B (IMPACT-RESISTANT GLAZING OPTION)**



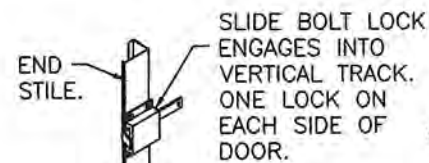
**IMPACT-RESISTANT ASSEMBLY DETAILS**

DOOR HEIGHT 'A'	NUMBER OF SECTIONS
4'-3" THRU 6'-0"	3
6'-3" THRU 8'-0"	4
8'-3" THRU 10'-0"	5
10'-3" THRU 12'-0"	6
12'-3" THRU 14'-0"	7
14'-3" THRU 16'-0"	8
16'-3" THRU 18'-0"	9

DOOR WIDTH	NUMBER OF INTERMEDIATE HINGES/JOINT
9'-3" THRU 12'-2"	2
12'-3" THRU 16'-2"	3



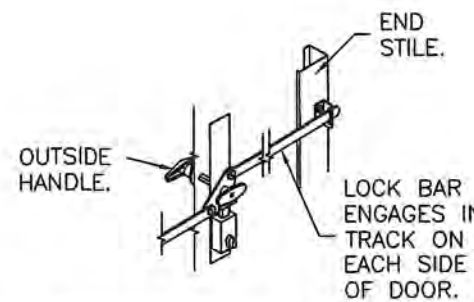
SNAP LATCH ENGAGES ONTO VERTICAL TRACK. ONE SNAP LATCH ON EACH SIDE OF DOOR.



INSIDE SLIDE BOLT LOCK OPTION.



OUTSIDE KEYED LOCK WITH SNAP LATCH LOCK OPTION.



OUTSIDE KEYED LOCK WITH LOCK BAR LOCKING.

**PRODUCT REVISED**  
 as complying with the Florida Building Code  
 NOA-No. **20-0922.49**  
 Expiration Date **04/23/2025**

By *[Signature]*  
 Miami-Dade Product Control

THIS PRODUCT CONFORMS TO THE REQUIREMENTS OF 6TH AND 7TH EDITION OF THE FLORIDA BUILDING CODE

MANUFACTURING PRODUCT CODE  
 C-DSIU-1F477

PART NO.: N/A

WINDLOAD RATING  
**W8 DP50T**

DESIGN LOADS: +50.0 P.S.F. & -58.0 P.S.F.

Unless Stated Otherwise TOLERANCES are  
 .0 = ±.031  
 .00 = ±.015  
 .000 = ±.005  
 .0000 = ±.001  
 Degrees = ±1/2'  
 Unless Stated Otherwise DIMENSIONS ARE IN INCHES.

**Clopay** CORPORATION  
 8585 Duke Boulevard  
 Mason, OH 45040 USA  
 Tel. No. 513-770-4800  
 Fax No. 513-770-4853

DESCRIPTION: 2" INTELICORE DOORS UP TO 16'2"W (SEE TABLE)

DRAWN BY: SH	DATE: 4/10/14	SCALE: NTS	DWG. SIZE B
CHECKED BY: MWW	DATE: 12/11/14	SHEET 1 OF 3	
DWG. NO.: 104900	VER: M-D		

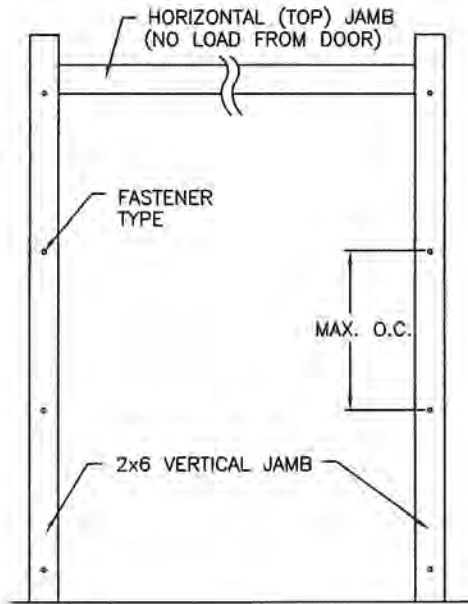


DESIGN ENGINEER:  
 MARK WESTERFIELD, P.E.  
 FLORIDA P.E. #48495

CLOPAY / IDEAL / HOLMES  
 3720 / C7X20 / 240U / 27GA 2" THICK MINOR RIB  
 3722 / COX22 / -- / 20GA 2" THICK FLUSH  
 3724 / C7X24 / 244U / 24GA 2" THICK MINOR RIB

SHEET:  
 2 OF 3

REVISIONS					
REV. NO.	ZONE	DATE	ECN NO.	APPVD:	DESCRIPTION
06	-	1/24/20	-	MWW	SEE REVISION HISTORY ON SHEET ONE.

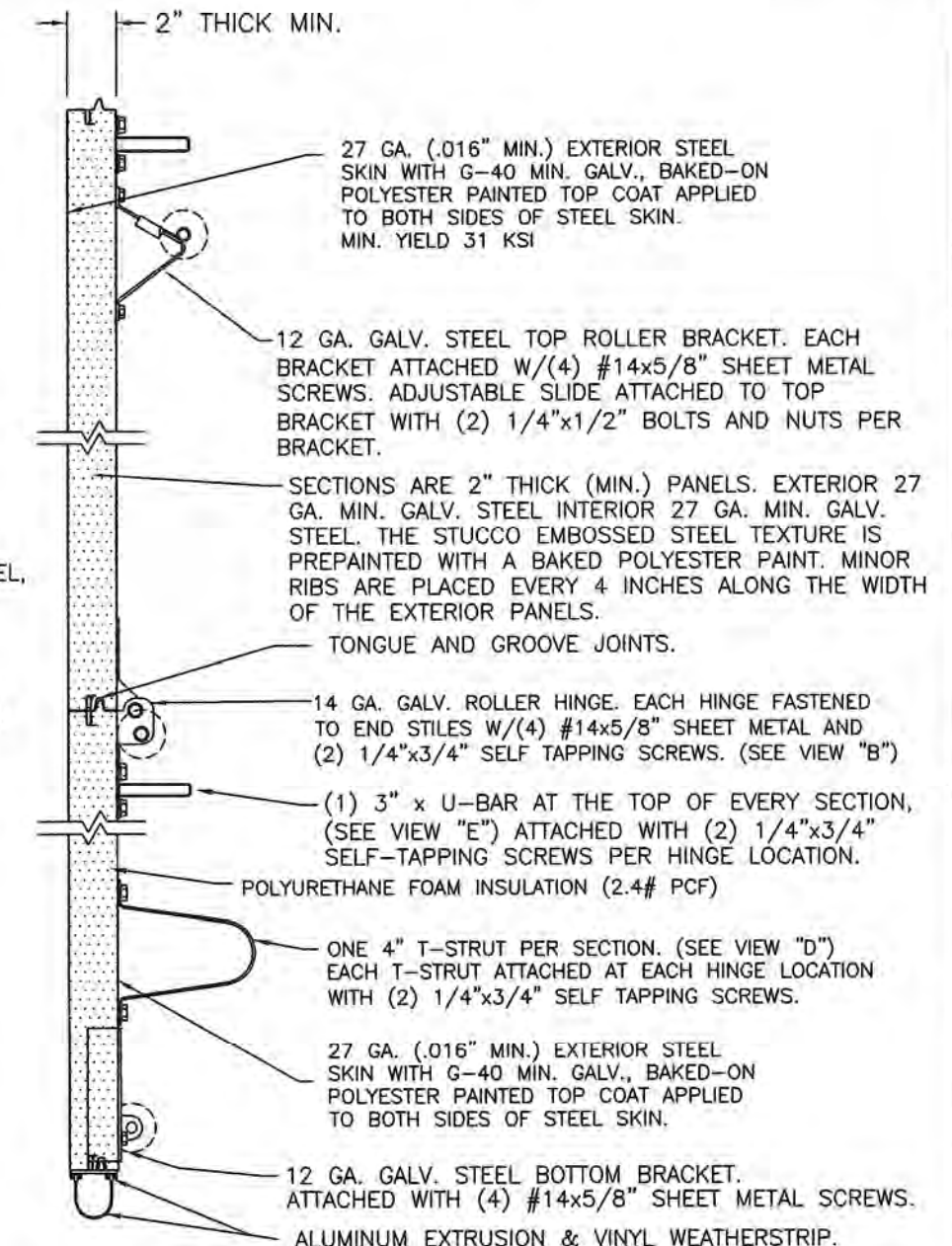
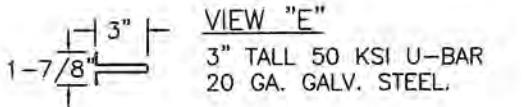
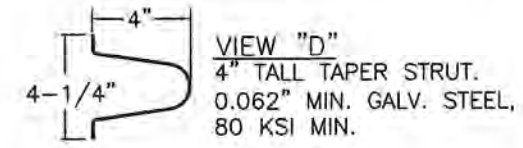


**JAMB TO SUPPORTING STRUCTURE ATTACHMENT**

**NOTES:**

1. ALL THE LOAD FROM THE DOOR IS TRANSFERRED TO THE TRACK AND THEN FROM THE TRACK TO THE 2x6 VERTICAL SYP (GRADE #2 OR BETTER) JAMBS. NO LOAD FROM THE DOOR IS TRANSFERRED TO THE HORIZONTAL (TOP) JAMB.
2. EACH VERTICAL JAMB SEES A MAXIMUM DESIGN LOAD OF +400 LB & -464 LB. PER LINEAR FOOT OF JAMB.
3. ALL JAMB FASTENERS MAY BE (BUT ARE NOT REQUIRED TO BE) COUNTERSUNK TO PROVIDE A FLUSH MOUNTING SURFACE.
4. A 1/3 STRESS INCREASE FOR WIND LOAD WAS NOT USED IN THE CALCULATION OF ALLOWABLE LOADS FOR ANCHORS AND FASTENERS FOR STEEL, CONCRETE AND MASONRY.

**NOTE:** 2x6 WOOD JAMBS ARE NOT REQUIRED WITH CONTINUOUS ANGLE MOUNT TRACK. HOWEVER, IF DESIRED ON STEEL JAMBS OR CONCRETE OR BLOCK WALLS, APPROVED FASTENERS AS DETAILED BELOW SHOULD BE INCREASED IN LENGTH BY 1-1/2" AND INSTALLED DIRECTLY THROUGH THE ANGLE AND 2x6 WOOD JAMBS INTO THE STEEL JAMBS OR CONCRETE OR BLOCK WALLS. ANCHORS CAN BE (BUT ARE NOT REQUIRED TO BE) COUNTERSUNK TO PROVIDE A FLUSH MOUNTING SURFACE. CONTINUOUS ANGLE TRACK CAN BE ANCHORED DIRECTLY TO GROUT REINFORCED BLOCK WALL OR 3,000 PSI MIN. CONCRETE COLUMN OR STEEL JAMBS.



SECTION A-A (SIDE VIEW)

**PRODUCT REVISED**  
 as complying with the Florida Building Code  
 NOA-No. 20-0922.49

Expiration Date **04/23/2025**

By *[Signature]*  
 Miami-Dade Product Control

**FASTENER ATTACHMENT TO SUPPORTING STRUCTURE SCHEDULES**

BUILDING TYPE	FASTENER TYPE	MAXIMUM ON-CENTER DISTANCE BETWEEN FASTENERS*	STEEL WASHERS REQUIRED?
HOLLOW BLOCK WALL	1/4" x 1-1/4" MIN. EMBED ULTRACON CONCRETE ANCHOR	4"	1" O.D.
GROUT FILLED BLOCK WALL	1/4" x 1-3/4" MIN. EMBED ULTRACON CONCRETE ANCHOR	6-3/4"	1" O.D.
2000 PSI MIN. CONCRETE	1/4" x 1" MIN. EMBED ULTRACON CONCRETE ANCHOR	6"	1" O.D.
2000 PSI MIN. CONCRETE	1/4" x 1" MIN. EMBED TAPCON CONCRETE ANCHOR	5"	1" O.D.
2000 PSI MIN. CONCRETE	3/8" x 1-3/4" MIN. EMBED WEJ-IT ANKR TITE SLEEVE ANCHOR	12-1/2"	INCLUDED
4000 PSI MIN. CONCRETE	3/8" x 1-3/4" MIN. EMBED WEJ-IT ANKR TITE SLEEVE ANCHOR	24"	INCLUDED
WOOD FRAME (SYP 0.55 SG)	1/2" x 3" LAG SCREW (ASTM A307, GRADE A) 1-5/8" EMBED INTO STRUCTURE	13-1/2"	1" O.D.
14GA STEEL (0.060" MIN.)	1/4"-14 x 1" ITW BUILDDEX TEKS SELF-DRILLING FASTENER	5-1/2"	1" O.D.
12GA STEEL (0.105" MIN.)	1/4"-14 x 1" ITW BUILDDEX TEKS SELF-DRILLING FASTENER	10"	1" O.D.
1/8" STEEL	1/4"-14 x 1" ITW BUILDDEX TEKS SELF-DRILLING FASTENER	11-3/4"	1" O.D.

\* FIRST (BOTTOM) ANCHOR STARTING AT NO MORE THAN HALF OF THE MAXIMUM ON-CENTER DISTANCE. HIGHEST ANCHOR INSTALLED AT LEAST AS HIGH AS THE DOOR OPENING.  
 CLOPAY DOES NOT SUPPLY JAMB ATTACHMENT FASTENERS.  
 MINIMUM DISTANCE BETWEEN CENTER OF ANCHOR AND EDGE OF CONCRETE BLOCK: 2-1/2", EXCLUDING STUCCO THICKNESS.

DESIGN LOADS: +50.0 P.S.F. & -58.0 P.S.F.

Unless Stated Otherwise  
**TOLERANCES** are  
 .0 = ±.031  
 .00 = ±.015  
 .000 = ±.005  
 .0000 = ±.001  
 Degrees = ±1/2"  
 Unless Stated Otherwise  
 DIMENSIONS ARE IN INCHES.

**Clopay** CORPORATION  
 8585 Duke Boulevard  
 Mason, OH 45040 USA  
 Tel. No. 513-770-4800  
 Fax No. 513-770-4853

MANUFACTURING PRODUCT CODE  
**C-DSIU-1F477**

PART NO.: N/A

WINDLOAD RATING  
**W8 DP50T**

DESCRIPTION: 2" INTELICORE DOORS UP TO 16'2"W (SEE TABLE)			
DRAWN BY: SH	DATE: 4/10/14	SCALE: NTS	DWG. SIZE B
CHECKED BY: MWW	DATE: 12/11/14	SHEET 2 OF 3	
DWG. NO.: 104900	VER: M-D		

DESIGN ENGINEER:  
 MARK WESTERFIELD, P.E.  
 FLORIDA P.E. #48495  
*[Signature]*  
 9/10/20

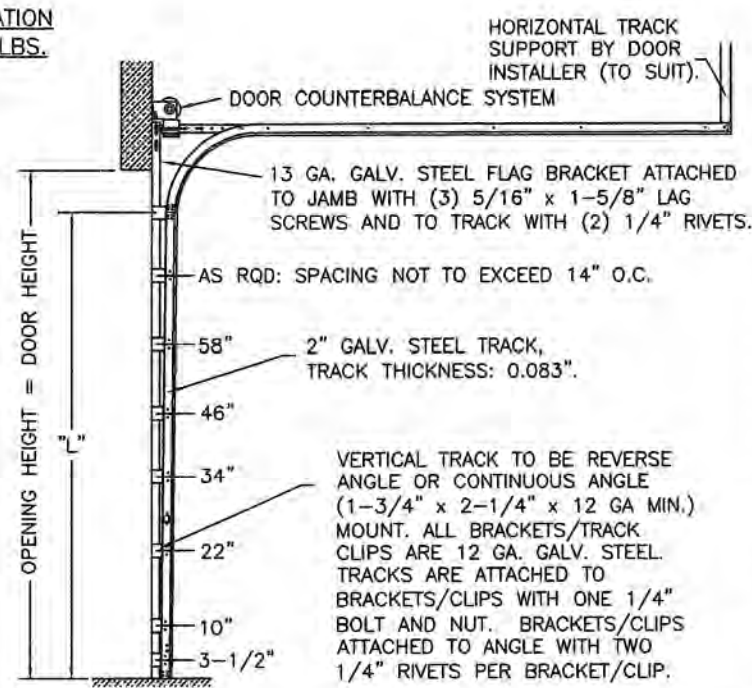
CLOPAY / IDEAL / HOLMES  
 3720 / C7X20 / 240U / 27GA 2" THICK MINOR RIB  
 3722 / COX22 / -- / 20GA 2" THICK FLUSH  
 3724 / C7X24 / 244U / 24GA 2" THICK MINOR RIB

SHEET  
 3 OF 3

REVISIONS					DESCRIPTION
REV. NO.	ZONE	DATE	ECN NO.	APPVD.	
06	-	1/24/20	-	MWW	SEE REVISION HISTORY ON SHEET ONE.

**2" TRACK CONFIGURATION**  
 DOORS UP TO 800 LBS.

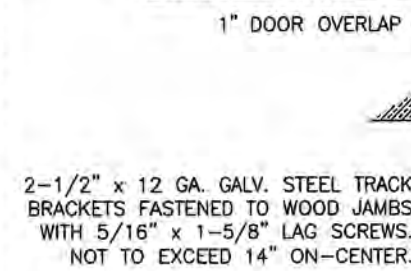
NOTE DOUBLE TRACK HEADROOM, HI-LIFT TRACK, FOLLOW-THE-ROOF TRACK, AND VERTICAL LIFT TRACK ARE AVAILABLE OPTIONS. TRACK CONFIGURATION ABOVE THE DOOR OPENING DOES NOT AFFECT THE WIND LOAD RATING.



DOOR HEIGHT	"L"
6'-6"	70"
7'-0"	76"
7'-6"	82"
8'-0"	88"
8'-6"	94"
9'-0"	100"
9'-6"	106"
10'-0"	112"
10'-6"	118"
11'-0"	124"
11'-6"	130"
12'-0"	136"
12'-6"	142"
13'-0"	148"
13'-6"	154"
14'-0"	160"
14'-6"	166"
15'-0"	172"
15'-6"	178"
16'-0"	184"
16'-6"	190"
17'-0"	196"
17'-6"	202"
18'-0"	208"

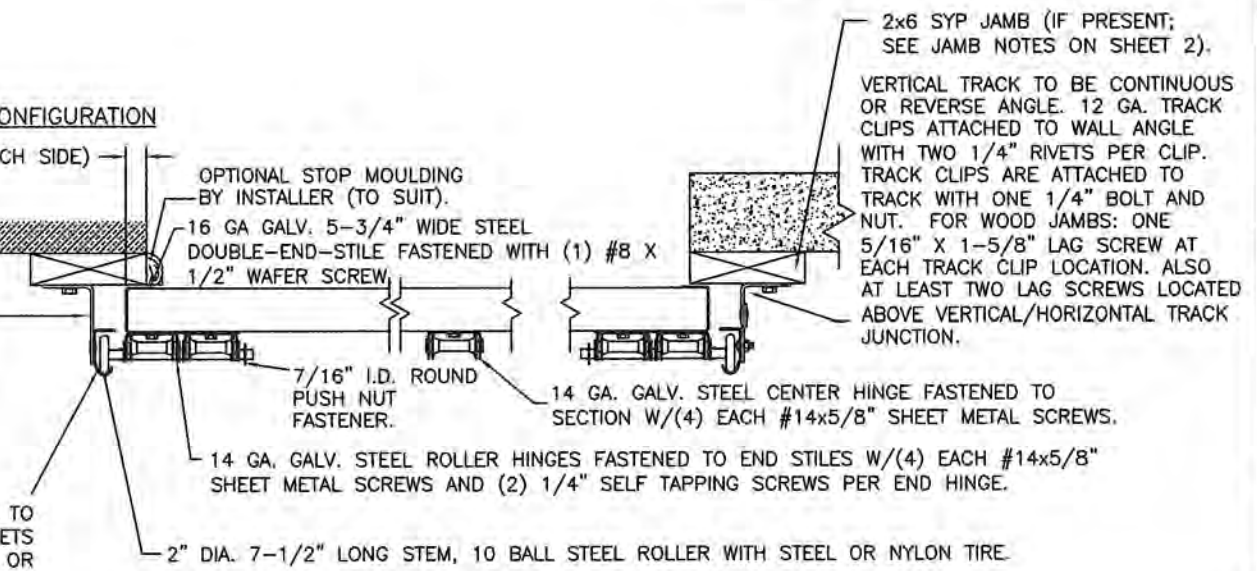
**JAMB CONFIGURATION**  
 DOORS UP TO 800 LBS.

**BRACKET MOUNT JAMB CONFIGURATION**

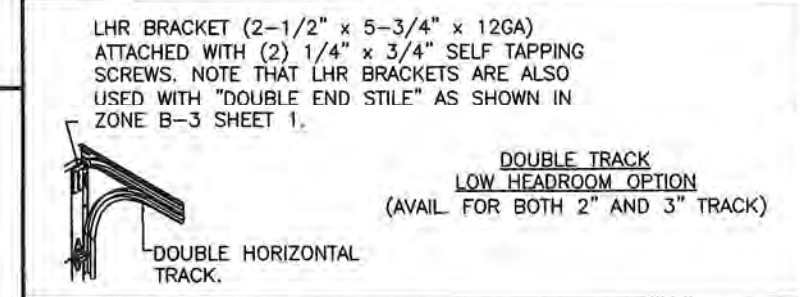


2" GALV. STEEL TRACK FASTENED TO 12 GA. GALV. STEEL TRACK BRACKETS WITH EITHER (2) 1/4" DIA. RIVETS OR (1) 1/4" x 5/8" BOLT & NUT PER TRACK BRACKET.

**ANGLE MOUNT JAMB CONFIGURATION**

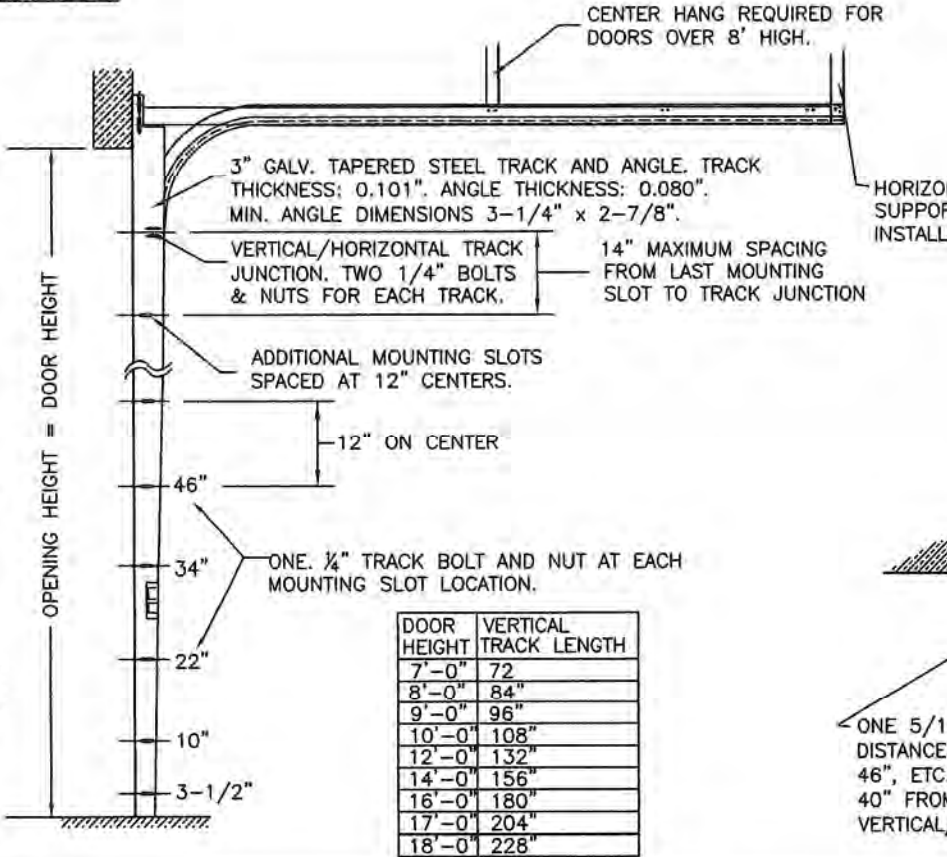


**PRODUCT REVISED**  
 as complying with the Florida Building Code  
 NOA-No. 20-0922.49  
 Expiration Date 04/23/2025  
 By *[Signature]*  
 Miami-Dade Product Control



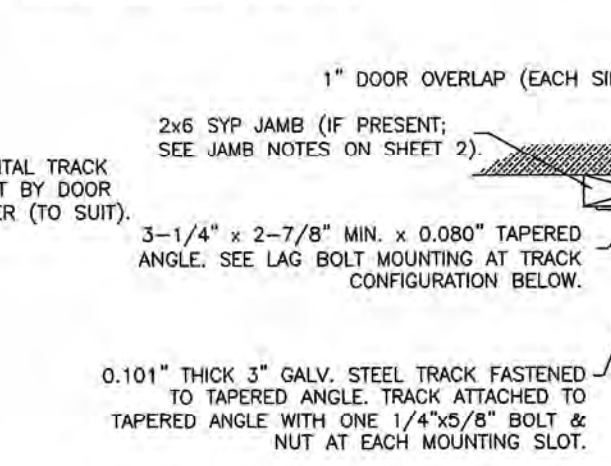
**3" TRACK CONFIGURATION**  
 DOORS 800 LBS AND OVER.

NOTE DOUBLE TRACK HEADROOM, HI-LIFT TRACK, FOLLOW-THE-ROOF TRACK, AND VERTICAL LIFT TRACK ARE AVAILABLE OPTIONS. TRACK CONFIGURATION ABOVE THE DOOR OPENING DOES NOT AFFECT THE WIND LOAD RATING.

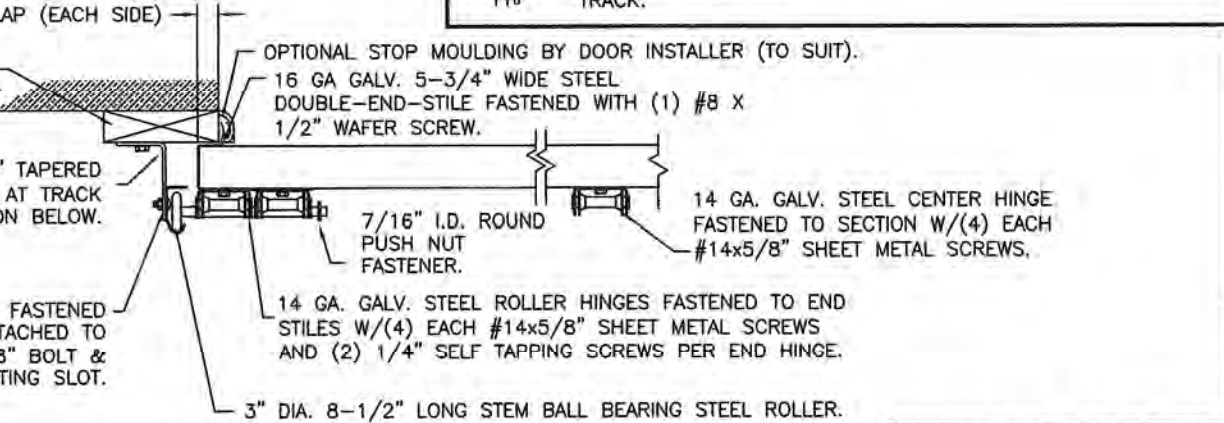


DOOR HEIGHT	VERTICAL TRACK LENGTH
7'-0"	72"
8'-0"	84"
9'-0"	96"
10'-0"	108"
12'-0"	132"
14'-0"	156"
16'-0"	180"
17'-0"	204"
18'-0"	228"

**JAMB CONFIGURATION**  
 DOORS 800 LBS AND OVER.



ONE 5/16" x 1-5/8" LAG SCREW SPACED AT THE SAME DISTANCES AS THE TRACK BOLTS (I.E. 3-1/2", 10", 22", 34", 46", ETC.). ADDITIONAL LAG SCREWS LOCATED AT 16", 28", & 40" FROM BOTTOM. TWO LAG SCREWS ALSO LOCATED ABOVE VERTICAL/HORIZONTAL TRACK JUNCTION.



SECTION C-C  
 PREPARATION OF JAMBS BY OTHERS.

DESIGN LOADS: +50.0 P.S.F. & -58.0 P.S.F.

Unless Stated Otherwise TOLERANCES are

.0	= ±.031
.00	= ±.015
.000	= ±.005
.0000	= ±.001
Degrees	= ±24/20

Unless Stated Otherwise DIMENSIONS ARE IN INCHES.

**Clopay** CORPORATION  
 8585 Duke Boulevard  
 Mason, OH 45040 USA  
 Tel. No. 513-770-4800  
 Fax No. 513-770-4853

DESCRIPTION: 2" INTELICORE DOORS UP TO 16'2"W (SEE TABLE)		WINDLOAD RATING <b>W8 DP50T</b>	
DRAWN BY: SH	DATE: 4/10/14	SCALE: NTS	DWG. SIZE: B
CHECKED BY: MWW	DATE: 12/11/14	SHEET 3 OF 3	
DWG. NO.: 104900	VER: M-D		

DESIGN ENGINEER  
 MARK WESTERFIELD, P.E.  
 FLORIDA P.E. #48495