



MIAMI-DADE COUNTY, FLORIDA
PRODUCT CONTROL SECTION

11805 SW 26 Street, Room 208

Miami, Florida 33175-2474

T (786) 315-2590 F (786) 315-2599

www.miamidade.gov/building

DEPARTMENT OF REGULATORY AND ECONOMIC RESOURCES (RER)
BOARD AND CODE ADMINISTRATION DIVISION
NOTICE OF ACCEPTANCE (NOA)

ECO Window Systems, LLC
8502 NW 80th Street
Medley, FL 33166

SCOPE: This NOA is being issued under the applicable rules and regulations governing the use of construction materials. The documentation submitted has been reviewed and accepted by Miami-Dade County RER -Product Control Section to be used in Miami Dade County and other areas where allowed by the Authority Having Jurisdiction (AHJ).

This NOA shall not be valid after the expiration date stated below. The Miami-Dade County Product Control Section (In Miami-Dade County) and/ or the AHJ (in areas other than Miami-Dade County) reserve the right to have this product or material tested for quality assurance purposes. If this product or material fails to perform in the accepted manner, the manufacturer will incur the expense of such testing and the AHJ may immediately revoke, modify, or suspend the use of such product or material within their jurisdiction. RER reserves the right to revoke this acceptance, if it is determined by Miami-Dade County Product Control Section that this product or material fails to meet the requirements of the applicable building code.

This product is approved as described herein and has been designed to comply with the Florida Building Code, including the High Velocity Hurricane Zone.

DESCRIPTION: Series 1500 Single Aluminum Pivot Door w/wo Sidelites and Transoms - L.M.I.

APPROVAL DOCUMENT: Drawing No. **19-91D Rev A**, titled "Series 1500 Alum. Outswing/Inswing Pivot Door (L.M.I.)", sheets 1 through 14 of 14, dated 08/20/19 and last revised on DEC 30, 2020, prepared by Al-Farooq Corporation, signed and sealed by Jalal Farooq, P.E., bearing the Miami-Dade County Product Control Revision stamp with the Notice of Acceptance number and expiration date by the Miami-Dade County Product Control Section.

MISSILE IMPACT RATING: Large and Small Missile Impact Resistant

Limitations:

1. See glazing option in sheet 1 and approved configuration, size and design pressure in sheet 2, 3 & 4.
2. Transom panel must not exceed 32" high and sidelite not to exceed 45-3/4" wide.

LABELING: A permanent label with the manufacturer's name or logo, manufacturing plant's city and state, model/series, and the statement reading 'Miami-Dade County Product Control Approved' is to be located on the active door panel's Pivot stile.

RENEWAL of this NOA shall be considered after a renewal application has been filed and there has been no change in the applicable building code negatively affecting the performance of this product.

TERMINATION of this NOA will occur after the expiration date or if there has been a revision or change in the materials, use, and/ or manufacture of the product or process. Misuse of this NOA as an endorsement of any product, for sales, advertising or any other purposes shall automatically terminate this NOA. Failure to comply with any section of this NOA shall be cause for termination and removal of NOA.

ADVERTISEMENT: The NOA number preceded by the words Miami-Dade County, Florida, and followed by the expiration date may be displayed in advertising literature. If any portion of the NOA is displayed, then it shall be done in its entirety.

INSPECTION: A copy of this entire NOA shall be provided to the user by the manufacturer or its distributors and shall be available for inspection at the job site at the request of the Building Official.

This NOA revises # **19-1029.05** consists of this page 1 and evidence page E-1 & E-2, as well as approval document mentioned above.

The submitted documentation was reviewed by **Ishaq I. Chanda, P.E.**



Ishaq I. Chanda

NOA No. 20-1007.07
Expiration Date: December 26, 2024
Approval Date: January 07, 2020
Page 1

ECO Window Systems, LLC

NOTICE OF ACCEPTANCE: EVIDENCE SUBMITTED

1. Evidence submitted under previous approval.

A. DRAWINGS

1. Manufacturer's die drawings and sections.
2. Drawing No. **19-91D**, titled "Series 1500 Alum. Outswing/Inswing Pivot Door (L.M.I.)", sheets 1 through 14 of 14, dated 08/20/19, prepared by Al-Farooq Corporation, signed and sealed by Javad Ahmad, P.E. on 10/25/19.

B. TESTS

1. Test reports on: 1) Air Infiltration Test, per FBC, TAS 202-94
2) Uniform Static Air Pressure Test, Loading per FBC TAS 202-94
4) Large Missile Impact Test per FBC, TAS 201-94
5) Cyclic Wind Pressure Loading per FBC, TAS 203-94
6) Forced Entry Test, per FBC 2411 3.2.1, TAS 202-94
along with marked-up drawings and installation diagram of Series 1500 Single Aluminum Outswing/Inswing Pivot Doors w/wo Sidelites and Transoms, prepared by Fenestration Testing Laboratory, Inc., Test Report No. **FTL-10817**, dated 08/29/19, signed and sealed by Idalmis Ortega, P.E.

C. CALCULATIONS

1. Anchor verification calculations and structural analysis, complying with **FBC 6th Edition (2017)**, dated 08/20/19, prepared by Al-Farooq Corporation, signed and sealed by Javad Ahmad, P.E.
2. Glazing complies with **ASTM E1300-04/09**

D. QUALITY ASSURANCE

1. Miami-Dade Department of Regulatory and Economic Resources (RER).

E. MATERIAL CERTIFICATIONS

1. Notice of Acceptance No. **17-0808.02** issued to **Kuraray America, Inc.** for their "**SentryGlas® (Clear and White) Glass Interlayers**" dated 12/28/17, expiring on 07/04/23.

F. STATEMENTS

1. Statement letter of conformance to and of complying with **FBC 6th Edition (2017)** and of no financial interest issued by Al-Farooq Corporation, dated 09/11/19, signed and sealed by Javad Ahmad, P.E.

G. OTHERS

1. Test proposal No. **19-0310** issued to ECO Window Systems, LLC for their Series 1500 Single Aluminum Outswing/Inswing Pivot Door w/wo Sidelites and Transoms - L.M.I., approved on 05/14/19.

— Ishaq I. Chanda

Ishaq I. Chanda, P.E.

Product Control Unit Supervisor

NOA No. 20-1007.07

Expiration Date: December 26, 2024

Approval Date: January 07, 2020

ECO Window Systems, LLC

NOTICE OF ACCEPTANCE: EVIDENCE SUBMITTED

1. New Evidence submitted

A. DRAWINGS

1. Drawing No. **19-91D Rev A**, titled “Series 1500 Alum. Outswing/Inswing Pivot Door (L.M.I.)”, sheets 1 through 14 of 14, dated 08/20/19 and last revised on DEC 30, 2020, prepared by Al-Farooq Corporation, signed and sealed by Jalal Farooq, P.E.

B. TESTS

1. None.

C. CALCULATIONS

1. Anchor verification calculations and structural analysis, complying with **FBC-7th Edition (2020)**, dated 09/30/20, prepared by Al-Farooq Corporation, signed and sealed by Jalal Farooq, P.E.
2. Glazing complies with **ASTME1300-09 &-16**.

D. QUALITY ASSURANCE

1. Miami-Dade Department of Regulatory and Economic Resources (RER).

E. MATERIAL CERTIFICATIONS

1. Notice of Acceptance No. **17-0808.02** issued to **Kuraray America, Inc.** for their “SentryGlas® (Clear and White) Glass Interlayers”, expiring on 07/04/23.

F. STATEMENTS

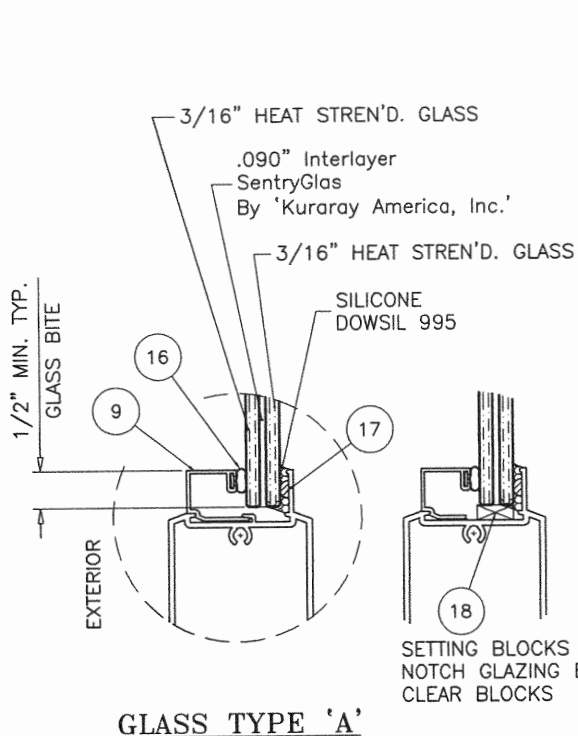
1. Statement letter of conformance to and of complying with **FBC 7th Edition (2020)** and of no financial interest issued by Al-Farooq Corporation, dated 09/30/20, signed and sealed by Jalal Farooq, P.E.

G. OTHERS

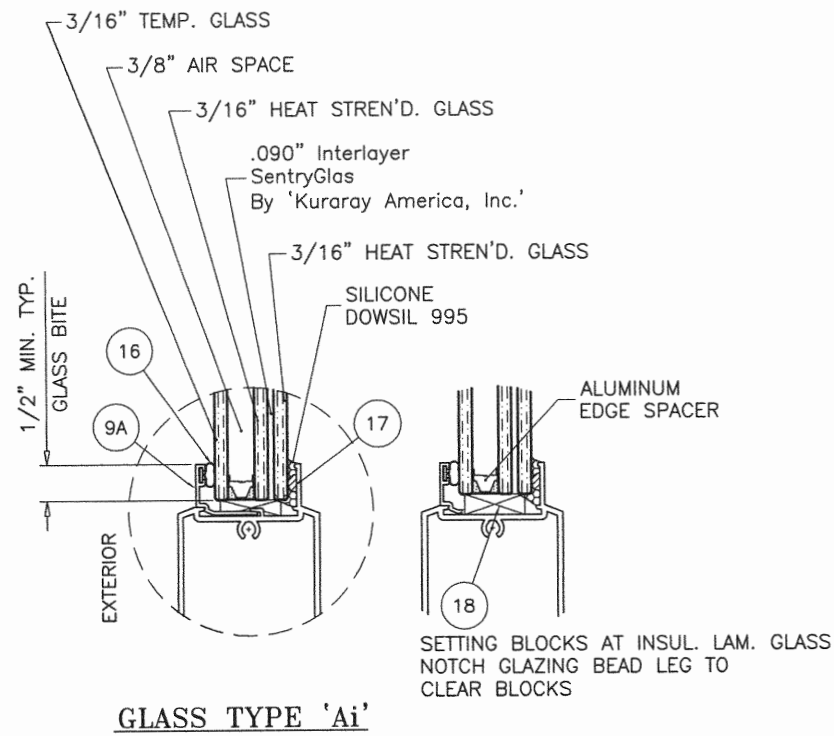
1. This NOA revises # **19-1029.05**, expiring 12/26/24.

Ishaq I. Chanda

Ishaq I. Chanda, P.E.
Product Control Unit Supervisor
NOA No. 20-1007.07
Expiration Date: December 26, 2024
Approval Date: January 07, 2020



GLASS TYPE 'A'



GLASS TYPE 'Ai'

GLAZING OPTIONS

THESE DOORS ARE RATED FOR LARGE & SMALL MISSILE IMPACT.
SHUTTERS ARE NOT REQUIRED.

SERIES 1500

ALUMINUM OUTSWING/INSWING PIVOT DOOR

APPROVAL APPLIES TO SINGLE (X) LEAF DOORS WITHOUT TRANSOM
OR SINGLE (X) LEAF DOORS WITH TRANSOM SEE SHEETS 2.
ALSO SINGLE(O) SIDELITE WITHOUT TRANSOM OR
SINGLE(O) SIDELITE WITH TRANSOM SEE SHEET 3.
ALSO SIDE BY SIDE COMBINATION OF DOOR AND SIDELITE USING
'H' MULLION IN BETWEEN.

DOORS NOT APPROVED FOR INSTALLATIONS WHERE WATER INFILTRATION
RESISTANCE IS REQUIRED.

THIS PRODUCT HAS BEEN DESIGNED AND TESTED TO COMPLY WITH THE
REQUIREMENTS OF THE 2017 (6TH EDITION)/2020 (7TH EDITION) FLORIDA
BUILDING CODE INCLUDING HIGH VELOCITY HURRICANE ZONE (HVHZ).

1BY OR 2BY WOOD BUCKS & BUCK FASTENERS BY OTHERS, MUST BE
DESIGNED AND INSTALLED ADEQUATELY TO TRANSFER APPLIED PRODUCT LOADS
TO THE BUILDING STRUCTURE.

ANCHORS SHALL BE CORROSION RESISTANT, SPACED AS SHOWN ON DETAILS
AND INSTALLED PER MANUF'S INSTRUCTIONS. SPECIFIED EMBEDMENT TO BASE
MATERIAL SHALL BE BEYOND WALL DRESSING OR STUCCO.

A LOAD DURATION INCREASE IS USED IN DESIGN OF ANCHORS INTO WOOD ONLY.

ALL SHIMS TO BE HIGH IMPACT, NON-METALLIC AND NON-COMPRESSIBLE.

MATERIALS INCLUDING BUT NOT LIMITED TO STEEL/METAL SCREWS, THAT
COME INTO CONTACT WITH OTHER DISSIMILAR MATERIALS SHALL MEET THE
REQUIREMENTS OF THE 2017/2020 FLORIDA BLDG. CODE & ADOPTED STANDARDS.

THIS PRODUCT APPROVAL IS GENERIC AND DOES NOT PROVIDE INFORMATION
FOR A SITE SPECIFIC PROJECT, i.e. LIFE SAFETY OF THIS PRODUCT, ADEQUACY
OF STRUCTURE RECEIVING THIS PRODUCT AND SEALING AROUND OPENING FOR
WATER INFILTRATION RESISTANCE ETC.

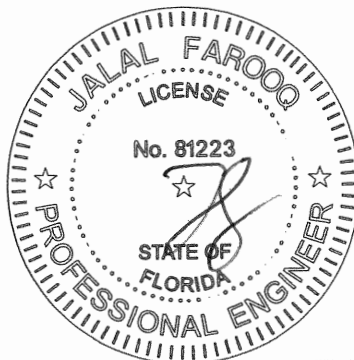
CONDITIONS NOT SHOWN IN THIS DRAWING ARE TO BE ANALYZED SEPARATELY,
AND TO BE REVIEWED BY BUILDING OFFICIAL.

DESIGN LOADS SHOWN ARE BASED ON 'ALLOWABLE STRESS DESIGN (ASD)'.

PRODUCT REVISED
as complying with the Florida
Building Code
NOA-No. 20-1007.07

Expiration Date 12/26/2024

By Ishaq I. Chank
Miami-Dade Product Control



DEC 30 2020

af c

AL-FAROOQ CORPORATION
ENGINEERS & PRODUCT DEVELOPMENT
9360 SUNSET DRIVE, SUITE 220
MIAMI, FLORIDA 33173 (C.A.N. 3538)
TEL. (305) 264-8100 FAX. (305) 262-6978

SERIES 1500 ALUM OUTSWING/INSWING PIVOT DOOR (L.M.I.)

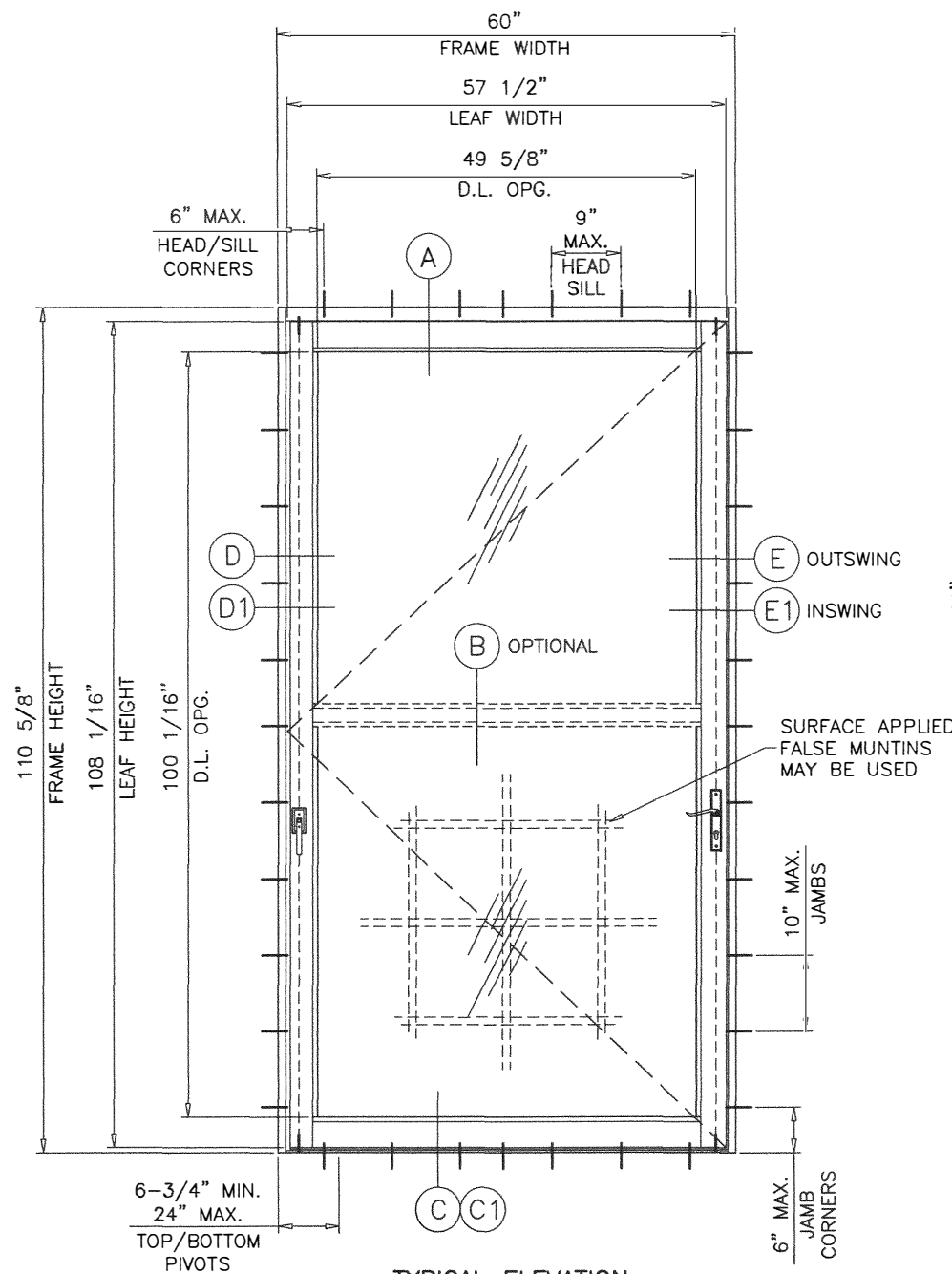
ECO WINDOW SYSTEMS, LLC.

8502 N.W. 80th STREET
MEDLEY, FL. 33166

TEL. (305) 885-5299 FAX (305) 885-5902

revisions:		no	date	by	description
		A	09.30.20		UPDATED TO 2020 FBC
date:	08-20-19	scale:	3/8" = 1"	dr. by:	TARIQ
		chk. by:			
drawing no.		19-91D			
sheet		1 of 14			

COMP-ANL\19-91D-ECO

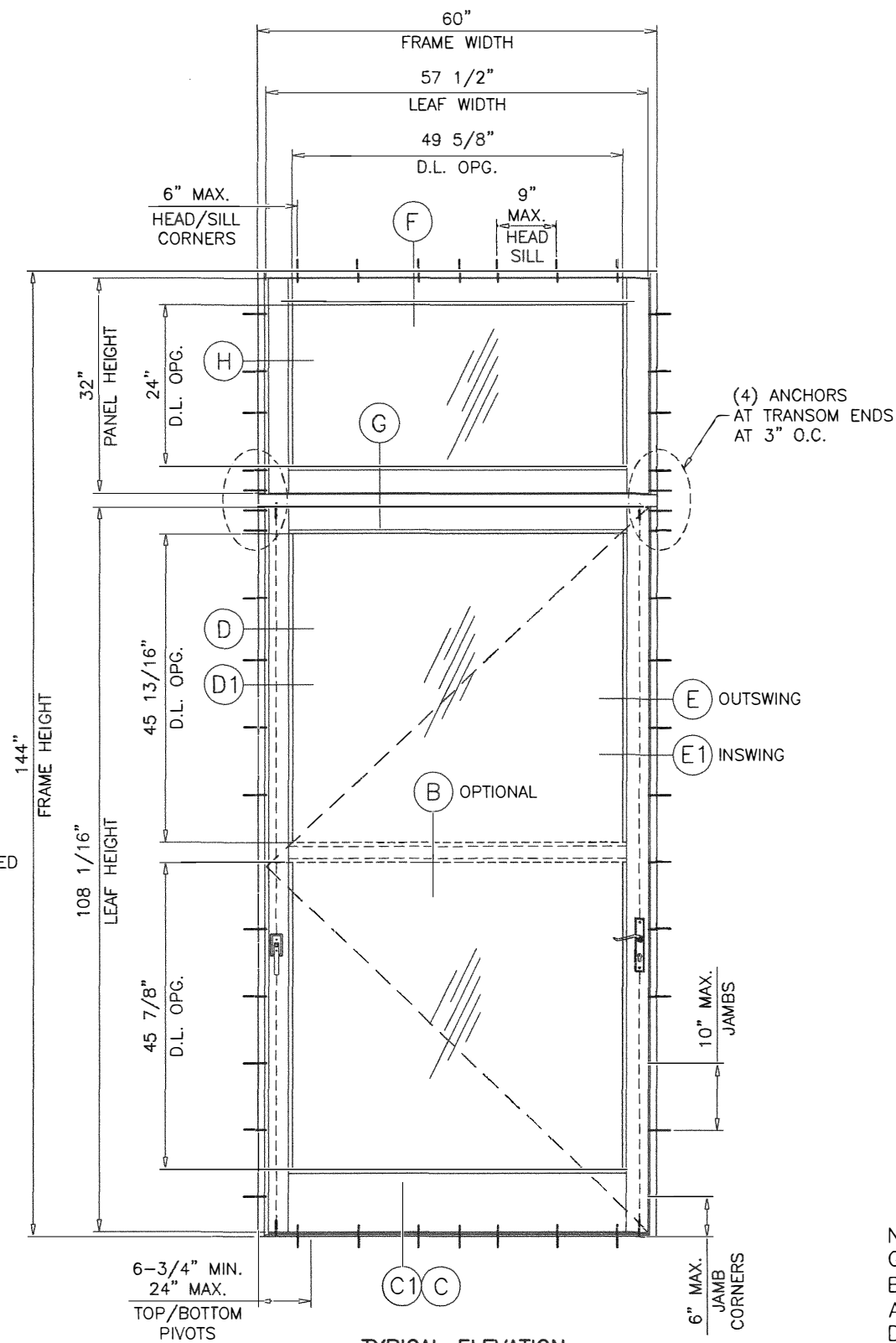


TYPICAL ELEVATION
(X)

MAXIMUM DESIGN LOAD RATING = + 60.0 PSF
(FOR MAX. SIZE SHOWN ABOVE OR SMALLER) - 60.0 PSF
AS PERMITTED BY FBC REQUIREMENTS

NOTE:
APPLICABLE EGRESS REQUIREMENTS TO BE REVIEWED BY AHJ.

GLASS D.L.O. FORMULAE:
D.L.O. WIDTH = FRAME WIDTH - 10.375"
D.L.O. HEIGHT = FRAME HEIGHT - 10.563"



TYPICAL ELEVATION
(O/X)

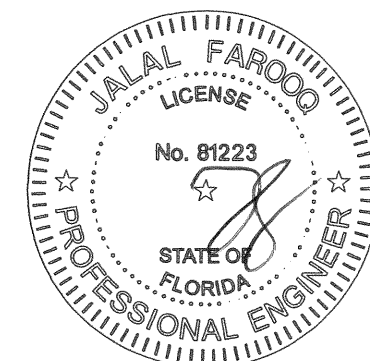
PRODUCT REVISED
as complying with the Florida
Building Code
NOA-No. 20-1007.07

Expiration Date 12/26/2024

By Ismael I. Llanos
Miami-Dade Product Control

NOTE:
GLASS CAPACITIES ON THIS SHEET ARE
BASED ON ASTM E1300-09 (3 SEC. GUSTS)
AND FLORIDA BUILDING COMMISSION
DECLARATORY STATEMENT DCA05-DEC-219

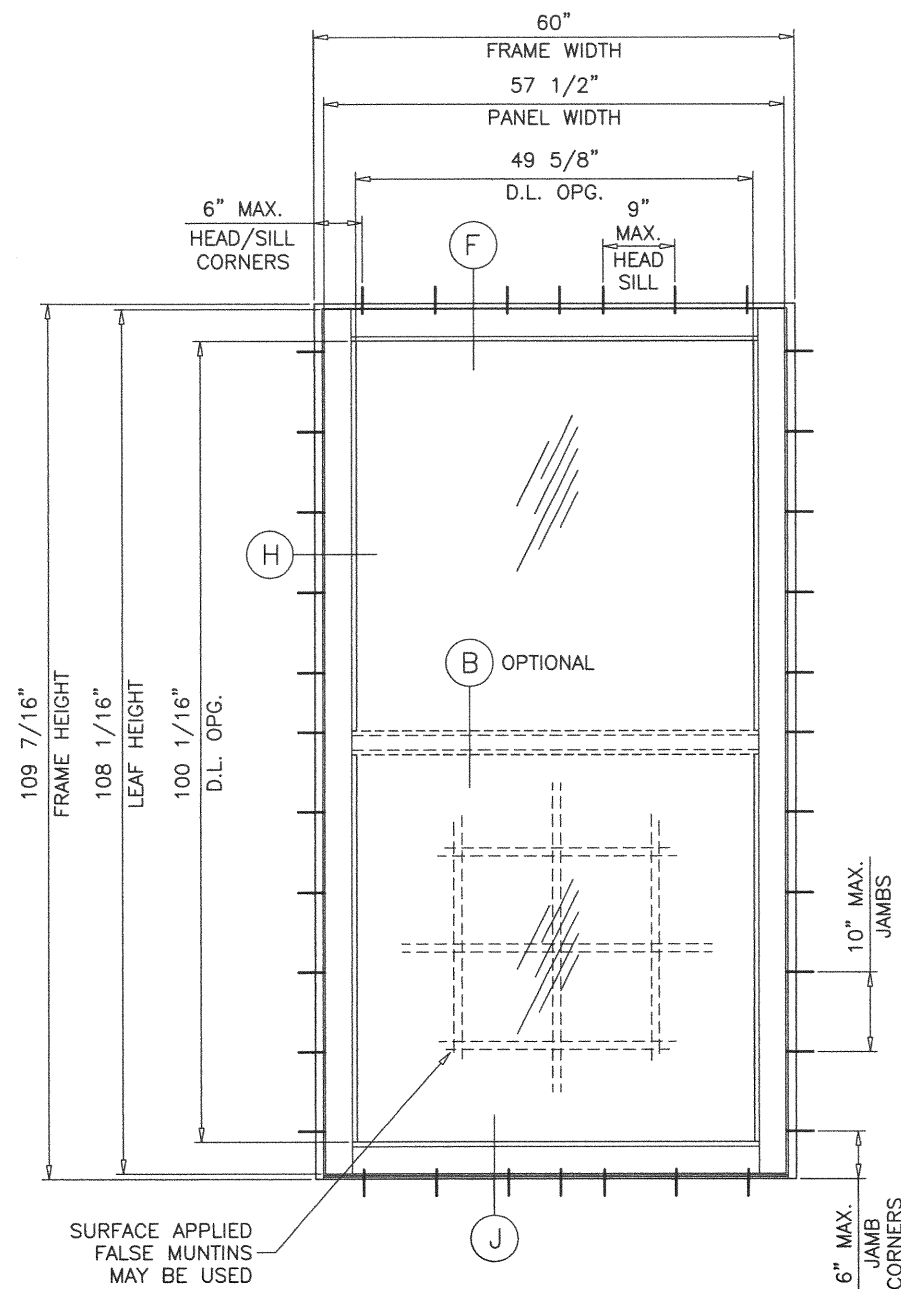
DEC 30 2020



af c
AL-FAROOQ CORPORATION
ENGINEERS & PRODUCT DEVELOPMENT
9360 SUNSET DRIVE, SUITE 220
MIAMI, FLORIDA 33173 (C.A.N. 3538)
TEL. (305) 264-8100 FAX. (305) 262-6978
COMP-ANL 19-91D-ECO

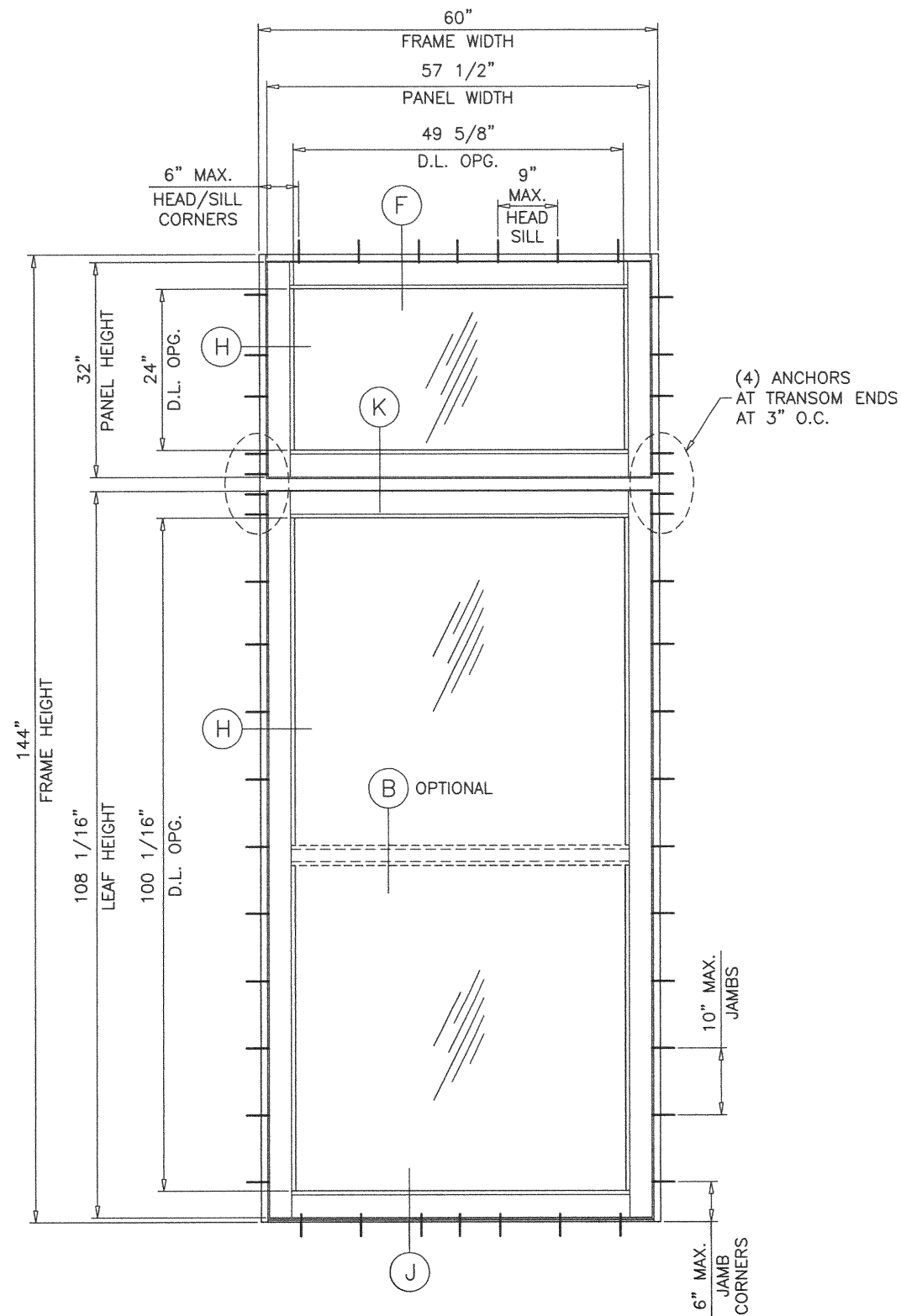
SERIES 1500 ALUM OUTSWING/INSWING PIVOT DOOR (L.M.I.)
ECO WINDOW SYSTEMS, LLC.
8502 N.W. 80th STREET
MEDLEY, FL. 33166
TEL. (305) 885-5299 FAX (305) 885-5902

revisions:		no	date	by	description
		A	08.30.20		UPDATED TO 2020 FBC
date:	08-20-19	scale:	1/2"=1'-0"	dr. by:	TARIQ
chk. by:					
drawing no.	19-91D				
sheet	2 of 14				



TYPICAL ELEVATION
(O)

MAXIMUM DESIGN LOAD RATING = + 60.0 PSF
(FOR MAX. SIZE SHOWN ABOVE OR SMALLER) - 60.0 PSF
AS PERMITTED BY FBC REQUIREMENTS

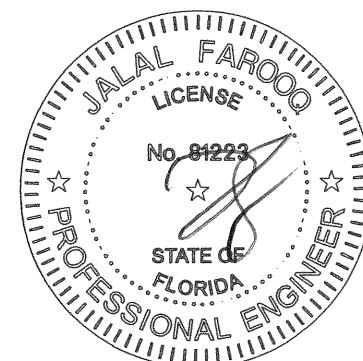


TYPICAL ELEVATION
(O/O)

NOTE:
GLASS CAPACITIES ON THIS SHEET ARE
BASED ON ASTM E1300-09 (3 SEC. GUSTS)
AND FLORIDA BUILDING COMMISSION
DECLARATORY STATEMENT DCA05-DEC-219

PRODUCT REVISED
as complying with the Florida
Building Code
NOA-No. 20-1007.07
Expiration Date 12/26/2024
By Ishaq I. Chande
Miami-Dade Product Control

GLASS D.L.O. FORMULAE:
D.L.O. WIDTH = FRAME WIDTH - 10.375"
D.L.O. HEIGHT = FRAME HEIGHT - 10.563"

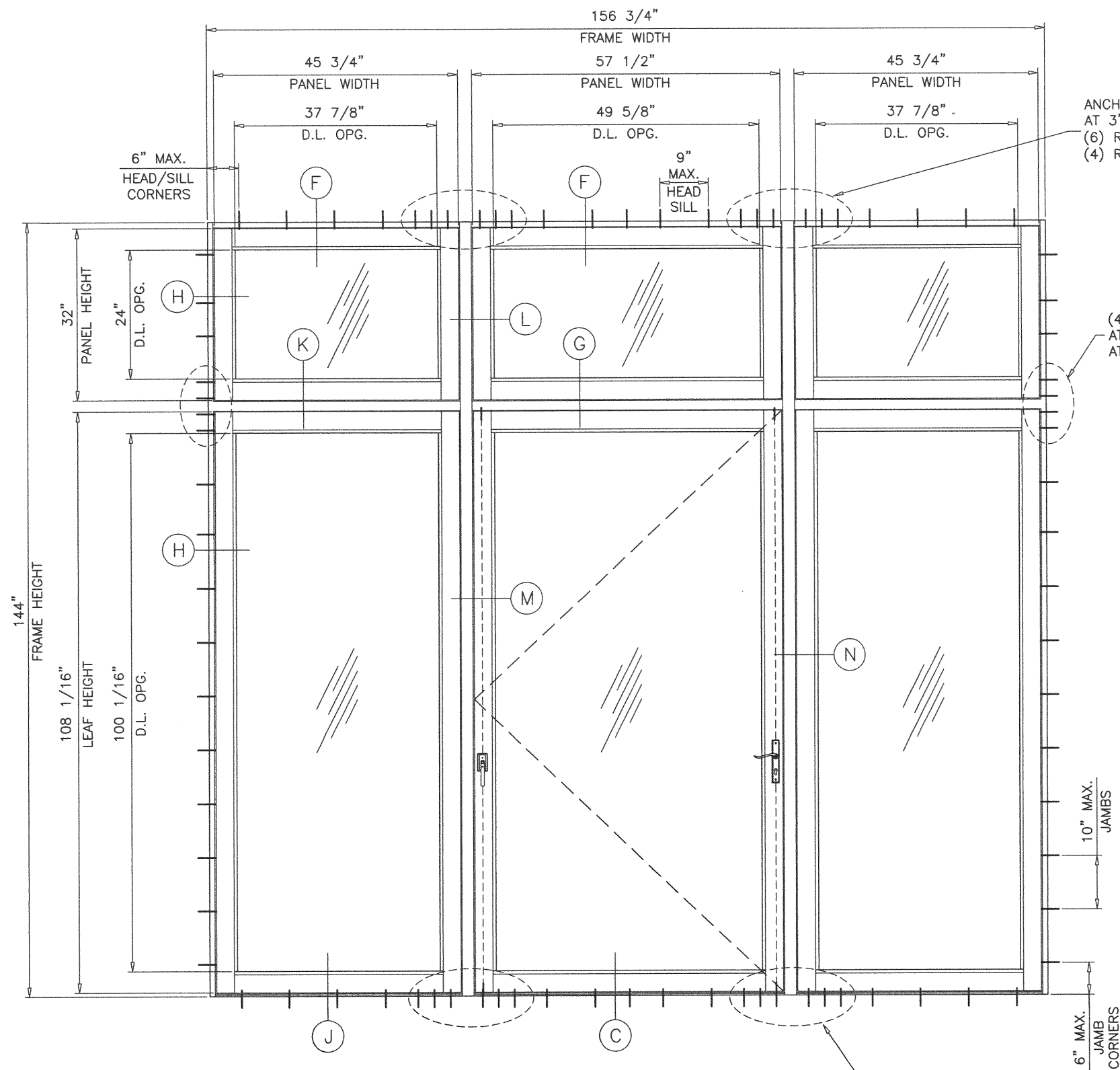


DEC 30 2020

AL-FAROOQ CORPORATION
ENGINEERS & PRODUCT DEVELOPMENT
9360 SUNSET DRIVE, SUITE 220
MIAMI, FLORIDA 33173
TEL. (305) 264-8100 FAX. (305) 262-6978
(C.A.N. 3538)
COMP-ANL\19-91D-ECO

SERIES 1500 ALUM OUTSWING/INSWING PIVOT DOOR (L.M.I.)
ECO WINDOW SYSTEMS, LLC.
8502 N.W. 80th STREET
MEDLEY, FL. 33166
TEL. (305) 885-5299 FAX (305) 885-5902

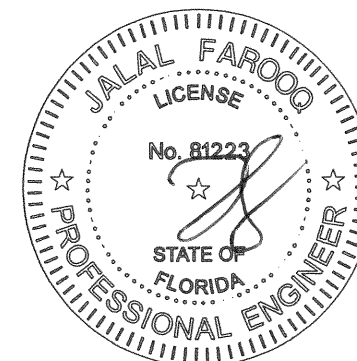
revisions:		no.	date	by	description
		A	09.30.20		UPDATED TO 2020 FBC
date:	08-20-19	scale:	1/2"=1'-0"	dr. by:	TARIQ
		chk. by:			
drawing no.		19-91D			
sheet		3 of 14			



TYPICAL ELEVATION
(O/O-O/X-O/O)

MAXIMUM DESIGN LOAD RATING = + 60.0 PSF
(FOR MAX. SIZE SHOWN ABOVE OR SMALLER) - 60.0 PSF
AS PERMITTED BY FBC REQUIREMENTS

NOTE:
GLASS CAPACITIES ON THIS SHEET ARE
BASED ON ASTM E1300-09 (3 SEC. GUSTS)
AND FLORIDA BUILDING COMMISSION
DECLARATORY STATEMENT DCA05-DEC-219



DEC 30 2020

PRODUCT REVISED
as complying with the Florida
Building Code
NOA-No. 20-1007.07
Expiration Date 12/26/2024
By Ishaq I. Chande
Miami-Dade Product Control

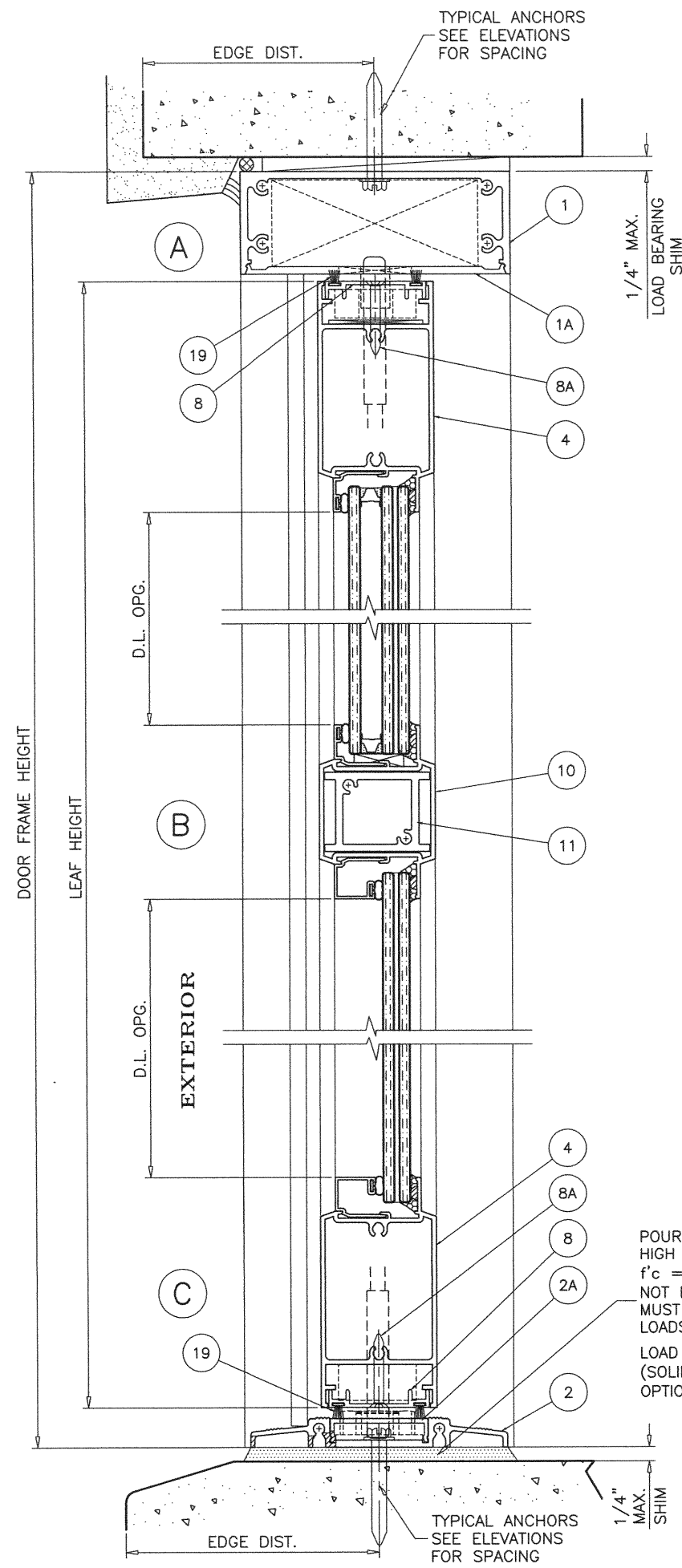
AL-FAROOQ CORPORATION
ENGINEERS & PRODUCT DEVELOPMENT
9360 SUNSET DRIVE, SUITE 220
MIAMI, FLORIDA 33173
TEL. (305) 264-8100 FAX. (305) 262-6978
(C.A.N. 3538)

SERIES 1500 ALUM OUTSWING/INSWING PIVOT DOOR (L.M.I.)
ECO WINDOW SYSTEMS, LLC.
8502 N.W. 80th STREET
MEDLEY, FL. 33166
TEL. (305) 885-5299 FAX (305) 885-5902

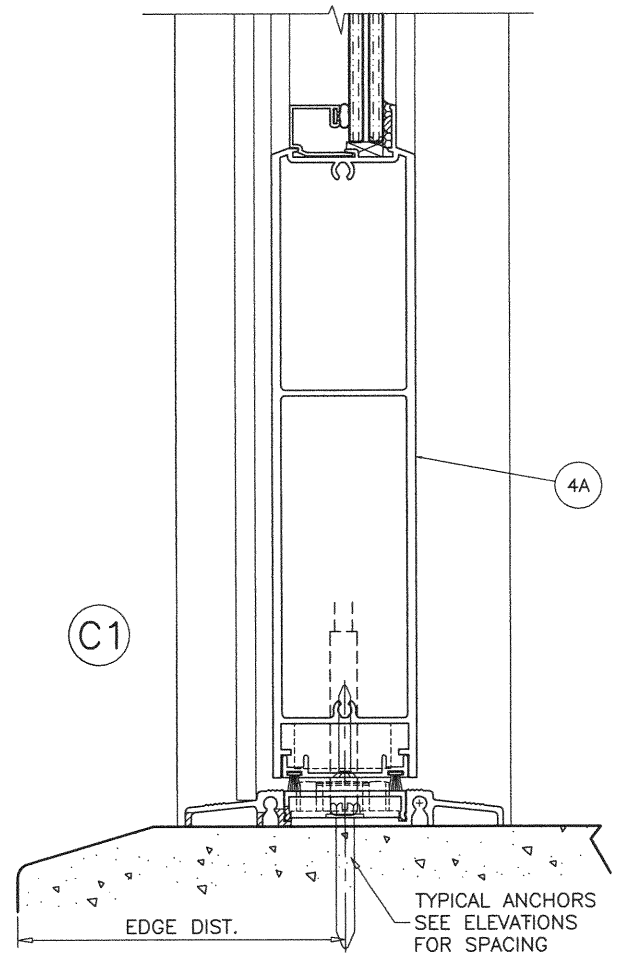
revisions:		no	date	by	description
		A	09.30.20		UPDATED TO 2020 FBC
date:	08-20-19	scale:	1/2"=1'-0"	dr. by:	TARIQ
		chk. by:			

drawing no.
19-91D
sheet 4 of 14

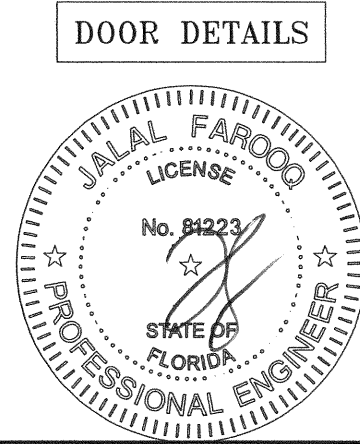
COMP-ANL\19-91D-ECO



POURED & HARDENED
HIGH STRENGTH GROUT
f'c = 5000 PSI MIN.
NOT BY 'ECO WINDOWS'
MUST TRANSFER SHEAR
LOADS TO STRUCTURE
LOAD BEARING
(SOLID SHIMS
OPTIONAL TO GROUT)



PRODUCT REVISED
as complying with the Florida
Building Code
NOA-No. 20-1007.07
Expiration Date 12/26/2024
By Ishaq I. Chande
Miami-Dade Product Control



DEC 30 2020

AL-FAROOQ CORPORATION
ENGINEERS & PRODUCT DEVELOPMENT
9360 SUNSET DRIVE, SUITE 220
MIAMI, FLORIDA 33173
TEL. (305) 264-8100 FAX. (305) 262-6978

af c

COMP-ANL \ 19-91D-ECO

SERIES 1500 ALUM OUTSWING/INSWING PIVOT DOOR (L.M.I.)

ECO WINDOW SYSTEMS, LLC.
8502 N.W. 80th STREET
MEDLEY, FL. 33166
TEL. (305) 885-5299 FAX (305) 885-5902

revisions:

no.	date	by	description
A	09.30.20		UPDATED TO 2020 FBC

date: 08-20-19

scale: 3/8" = 1"

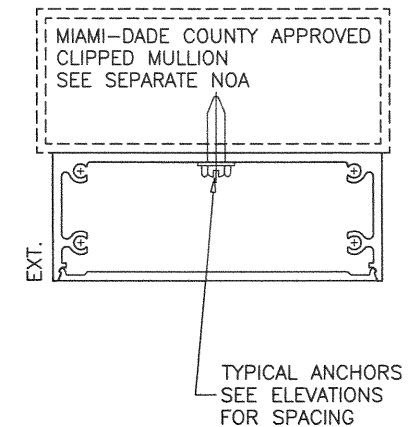
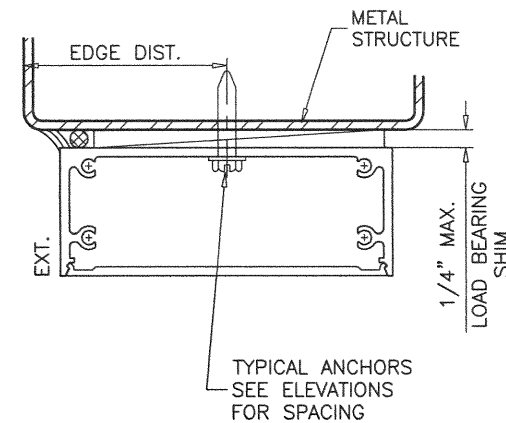
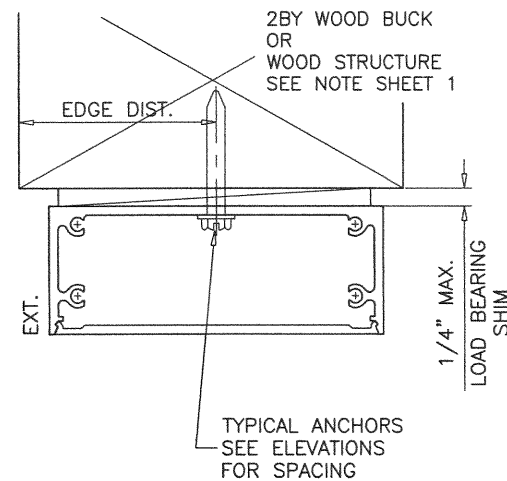
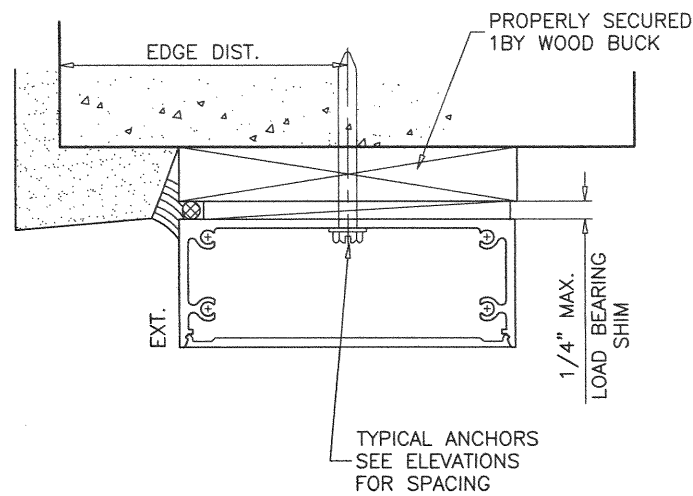
dr. by: TARIQ

chk. by:

drawing no.

19-91D

sheet 5 of 14



WOOD BUCKS AND METAL STRUCTURE NOT BY 'ECO WINDOWS'
MUST SUSTAIN LOADS IMPOSED BY GLAZING SYSTEM
AND TRANSFER THEM TO THE BUILDING STRUCTURE.

TYPICAL ANCHORS: SEE ELEV. FOR SPACING

1/4" DIA. ULTRACON+ BY 'DEWALT' (Fu=164 KSI, Fy=148 KSI)
INTO 2BY WOOD BUCKS OR WOOD STRUCTURES
1-1/2" MIN. PENETRATION INTO WOOD (HEAD/SILL/JAMBS)
THRU 1BY BUCKS INTO CONC. OR BLOCKS
1-1/4" MIN. EMBED INTO CONCRETE (HEAD/SILL/JAMBS)
1-1/4" MIN. EMBED INTO BLOCKS (JAMBS)

DIRECTLY INTO CONCRETE OR BLOCKS
1-1/4" MIN. EMBED INTO CONCRETE (HEAD/SILL/JAMBS)
1-1/4" MIN. EMBED INTO BLOCKS (JAMBS)

#14 SMS OR SELF-DRILLING SCREWS (GRADE 2 CRS)
INTO MIAMI-DADE COUNTY APPROVED MULLIONS
AND
INTO METAL STRUCTURES (HEAD/SILL/JAMBS)
(3) THREADS MIN. TO EXTEND BEYOND METAL THICKNESS
ALUMINUM: 1/8" THK. MIN. (6063-T5 MIN.)
STEEL: 1/8" THK. MIN. (Fy = 36 KSI MIN.)
(STEEL IN CONTACT WITH ALUMINUM TO BE PLATED OR PAINTED)

CRITICAL EDGE DISTANCE

INTO CONCRETE AND BLOCKS = 2-1/2" MIN.
INTO WOOD STRUCTURE = 1" MIN.
INTO METAL STRUCTURE = 3/4" MIN.

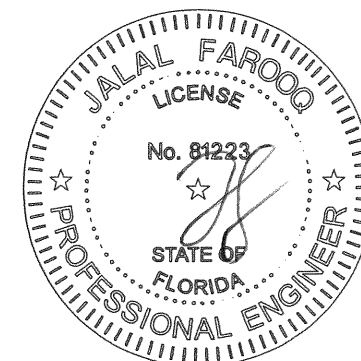
WOOD AT HEAD, SILL OR JAMBS SG = 0.55 MIN.
CONCRETE AT HEAD, SILL OR JAMBS f'c = 3000 PSI MIN.
C-90 HOLLOW/FILLED BLOCK AT JAMBS f'm = 2000 PSI MIN.

PRODUCT REVISED
as complying with the Florida
Building Code
NOA-No. 20-1007.07

Expiration Date 12/26/2024

By *Ishaq I. Chandra*
Miami-Dade Product Control

DOOR DETAILS



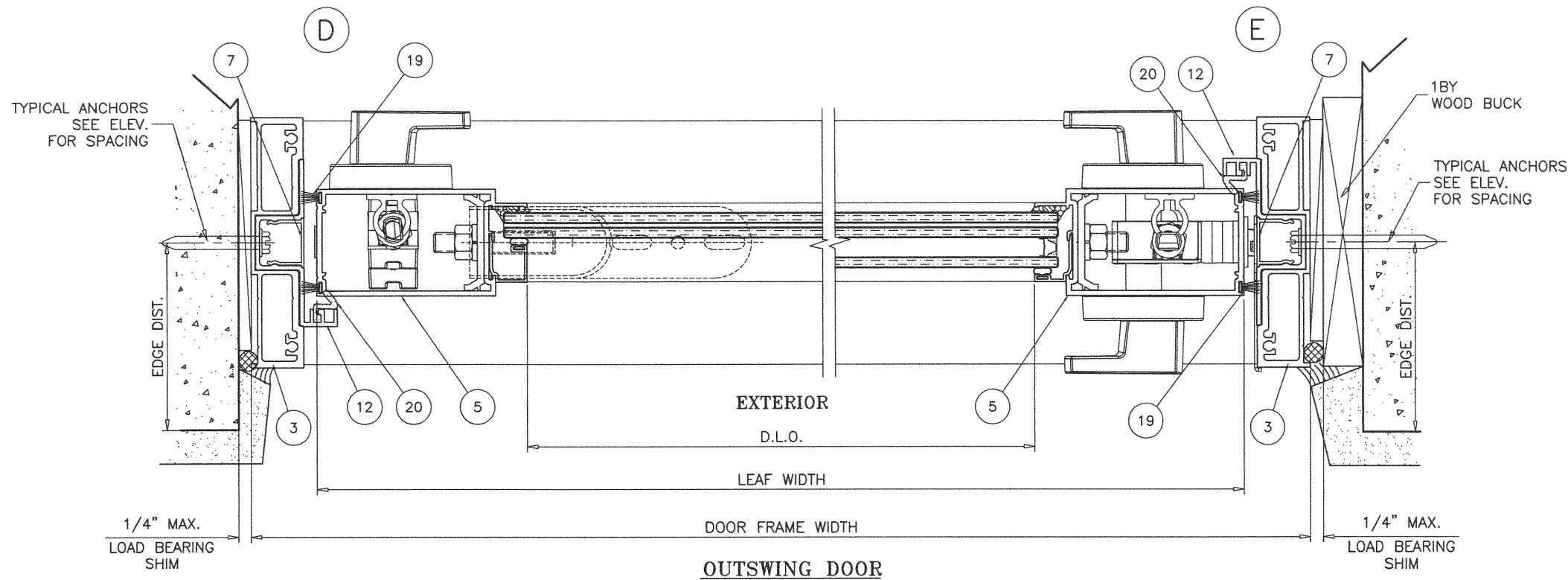
DEC 30 2020

af c
AL-FAROOQ CORPORATION
ENGINEERS & PRODUCT DEVELOPMENT
9360 SUNSET DRIVE, SUITE 220
MIAMI, FLORIDA 33173
TEL. (305) 264-8100 FAX. (305) 262-6978
(C.A.N. 3538)

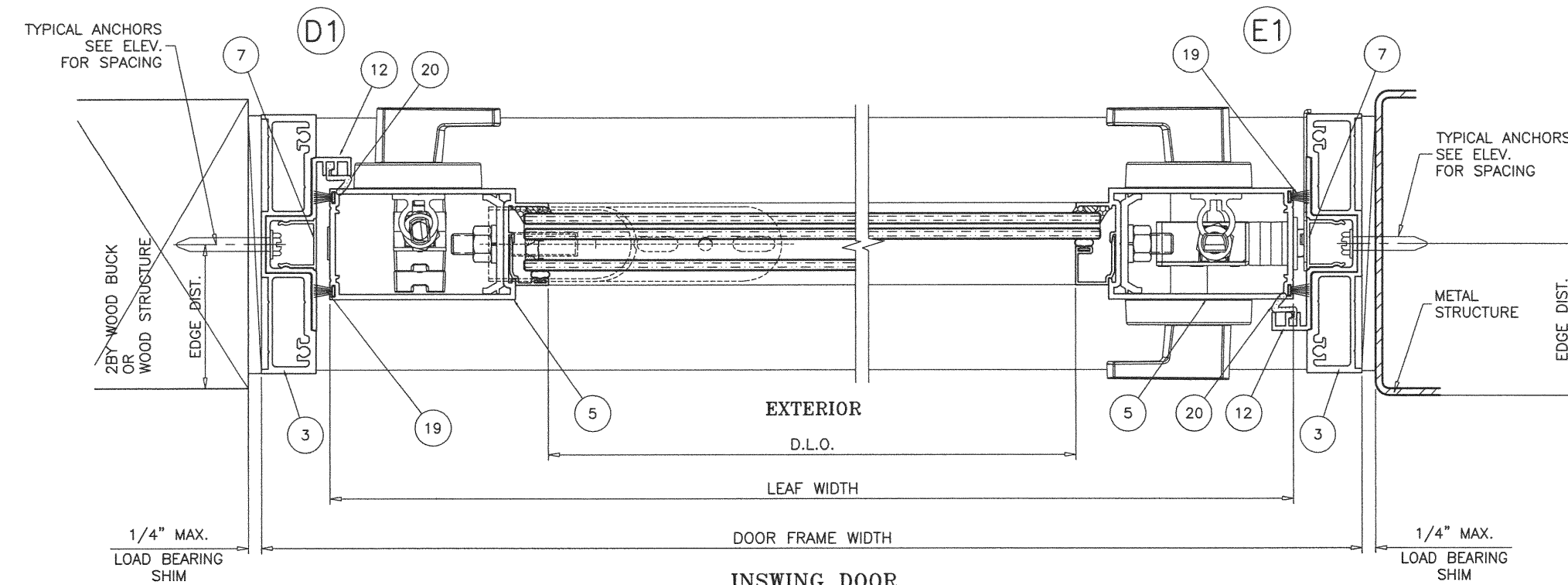
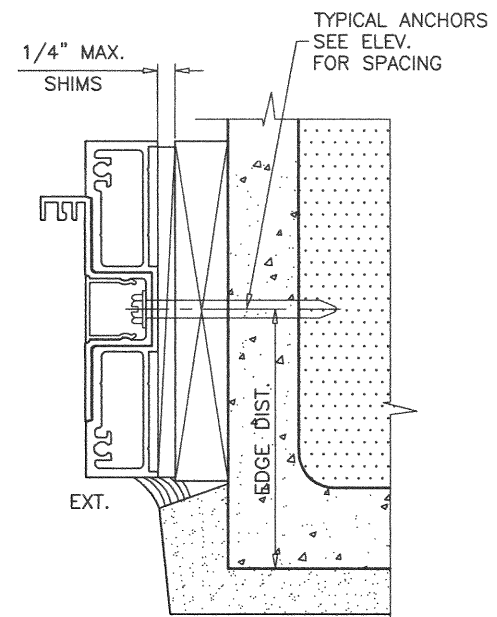
SERIES 1500 ALUM OUTSWING/INSWING PIVOT DOOR (L.M.I.)
ECO WINDOW SYSTEMS, LLC.
8502 N.W. 80th STREET
MEDLEY, FL. 33166
TEL. (305) 885-5299 FAX (305) 885-5902

revisions:		no	date	by	description
		A	09.30.20		UPDATED TO 2020 FBC
date:	08-20-19	scale:	3/8" = 1"	dr. by:	TARIQ
				chk. by:	
drawing no.		19-91D			
sheet		6 of 14			

COMP-ANL \ 19-91D-ECO



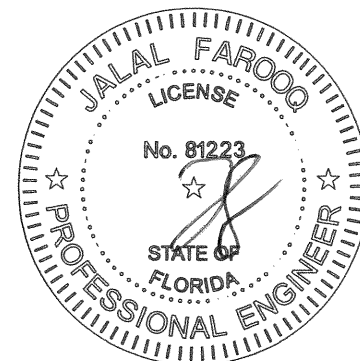
OUTSWING DOOR



INSWING DOOR

PRODUCT REVISED
as complying with the Florida
Building Code
NOA-No. 20-1007.07
Expiration Date 12/26/2024
By Ishaq I. Chanda
Miami-Dade Product Control

DOOR DETAILS



DEC 30 2020

AL-FAROOQ CORPORATION
ENGINEERS & PRODUCT DEVELOPMENT
9360 SUNSET DRIVE, SUITE 220
MIAMI, FLORIDA 33173 (C.A.N. 3538)
TEL. (305) 264-8100 FAX. (305) 262-6978
COMP-ANL \ 19-91D-ECO

SERIES 1500 ALUM OUTSWING/INSWING PIVOT DOOR (L.M.I.)
ECO WINDOW SYSTEMS, LLC.
8502 N.W. 80th STREET
MEDLEY, FL. 33166
TEL. (305) 885-5299 FAX (305) 885-5902

revisions:		no.	date	by	description
A	09.30.20				UPDATED TO 2020 FBC

date: 08-20-19

scale: 3/8" = 1"

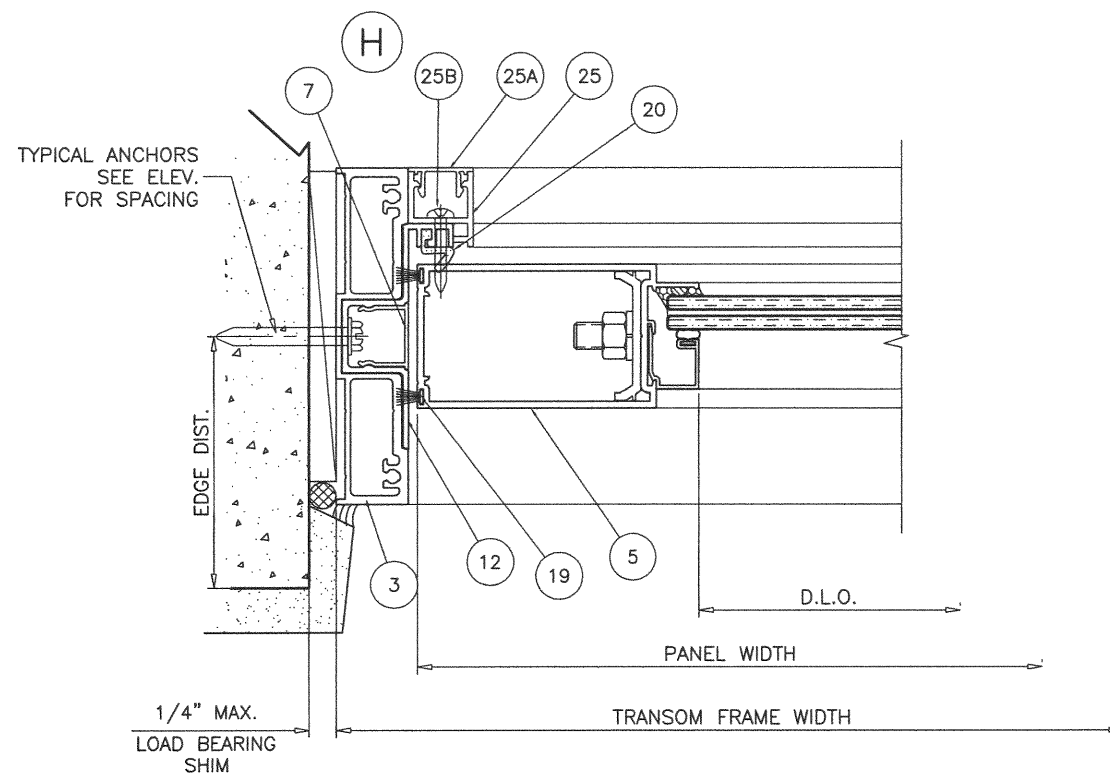
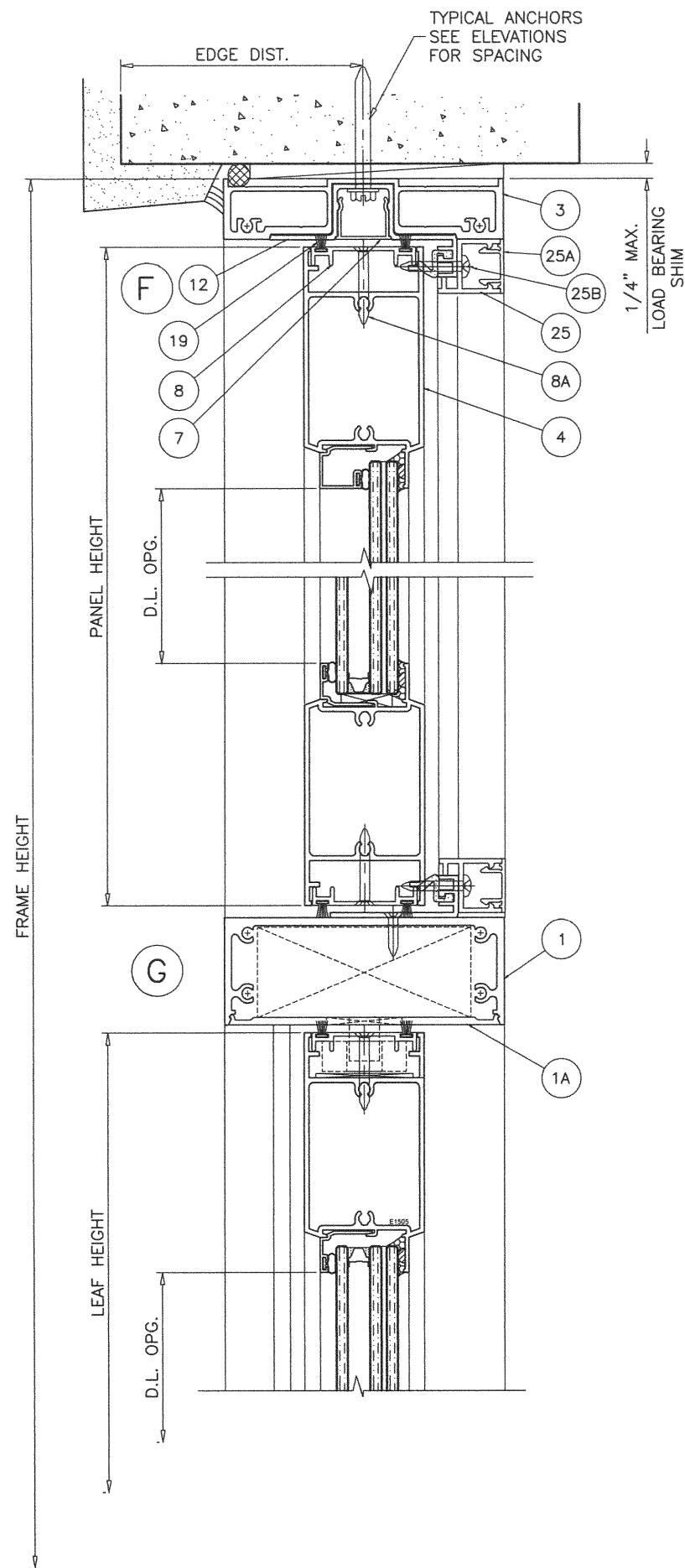
dr. by: TARIQ

chk. by:

drawing no.

19-91D

sheet 7 of 14

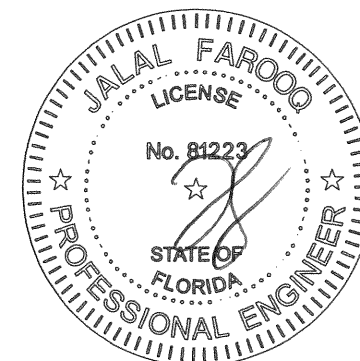


TRANSOMS CAN BE INSTALLED IN ALL SUBSTRATES SHOWN ON SHEETS 5 THRU 7.

PRODUCT REVISED
 as complying with the Florida
 Building Code
 NOA-No. 20-1007.07
 Expiration Date 12/26/2024
 By Ishaq I. Chande
 Miami-Dade Product Control

TRANSOM DETAILS

DEC 30 2020



AL-FAROOQ CORPORATION
 ENGINEERS & PRODUCT DEVELOPMENT
 9360 SUNSET DRIVE, SUITE 220
 MIAMI, FLORIDA 33173 (C.A.N. 3538)
 TEL. (305) 264-8100 FAX. (305) 262-6978
 COMP-ANL \ 19-91D-ECO

SERIES 1500 ALUM OUTSWING/INSWING PIVOT DOOR (L.M.I.)
ECO WINDOW SYSTEMS, LLC.
 8502 N.W. 80th STREET
 MEDLEY, FL. 33166
 TEL. (305) 885-5299 FAX (305) 885-5902

revisions:	no	date	by	description
	A	09.30.20		UPDATED TO 2020 FBC

date: 08-20-19

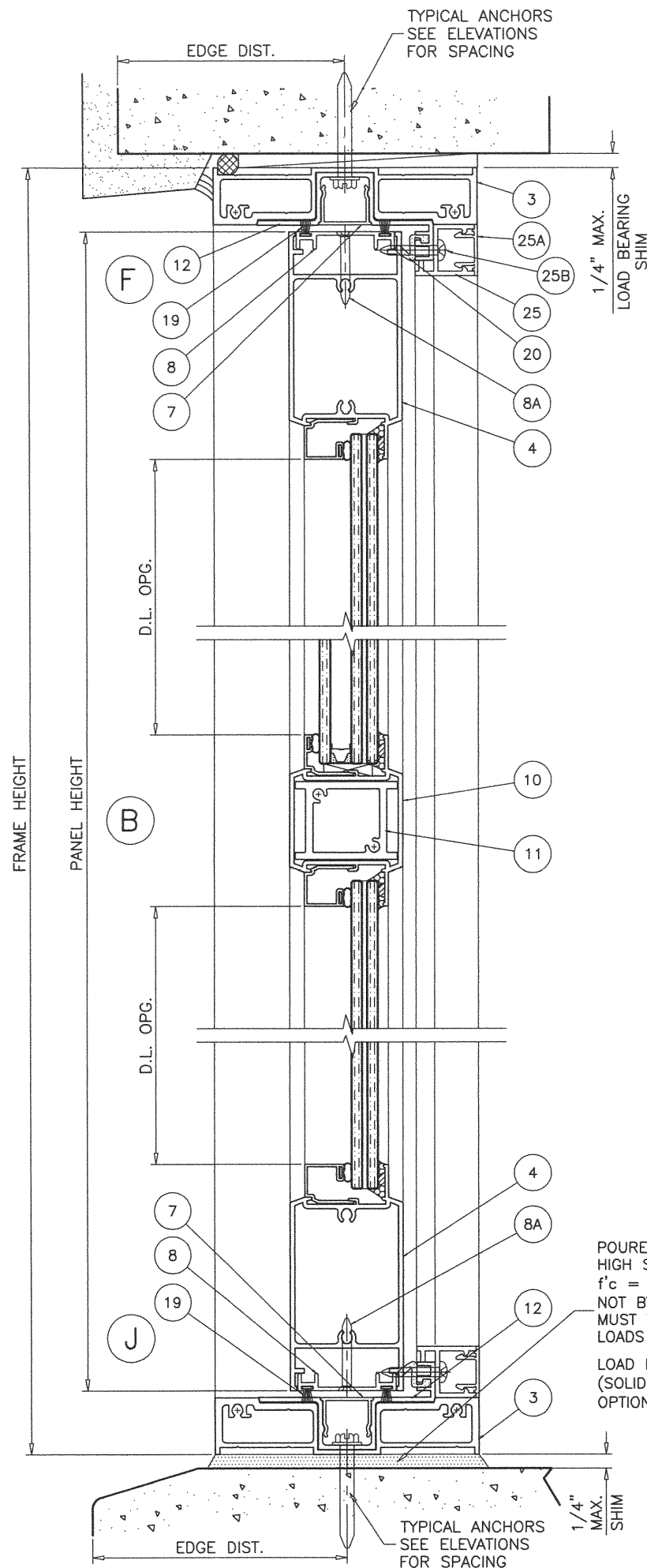
scale: 3/8" = 1"

dr. by: TARIQ

chk. by:

drawing no.
19-91D

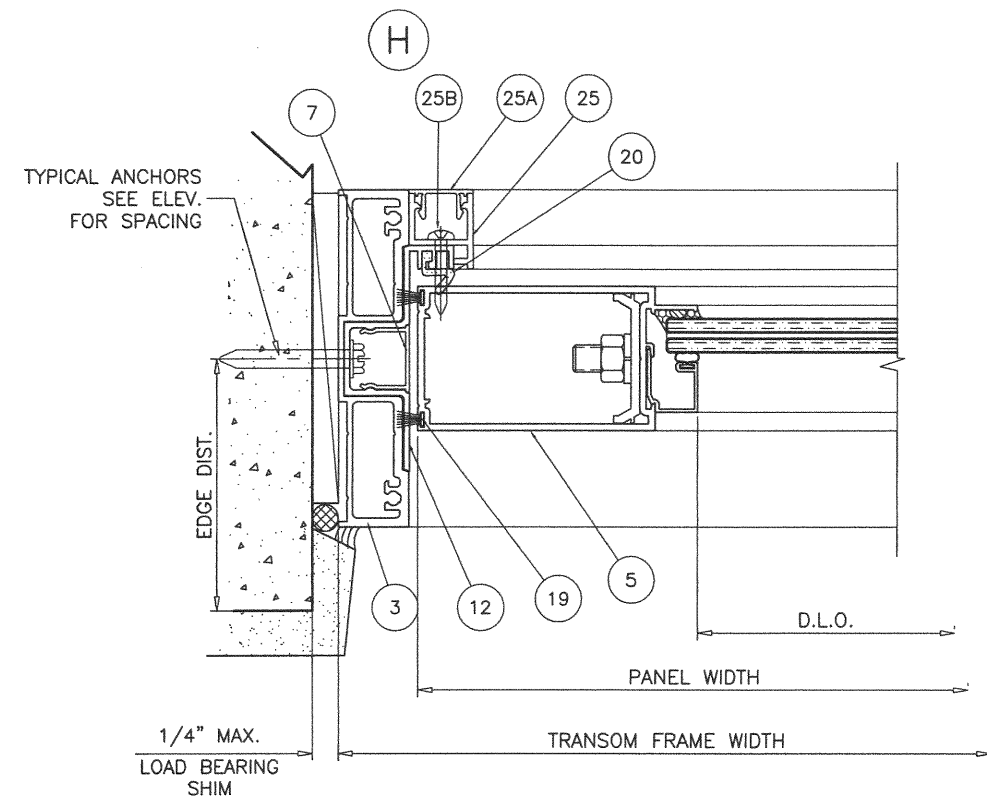
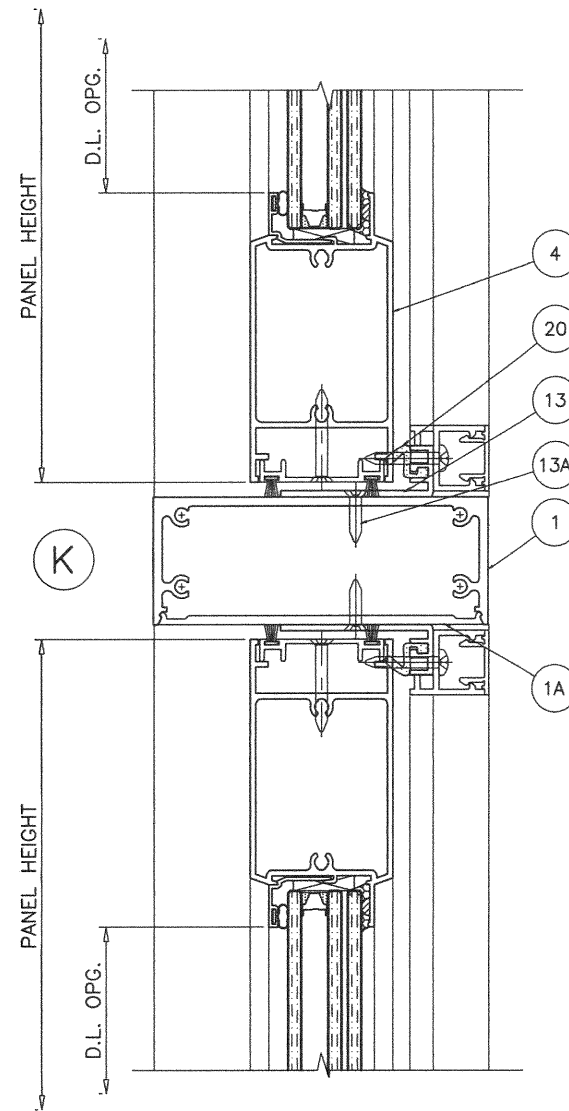
sheet **8** of **14**



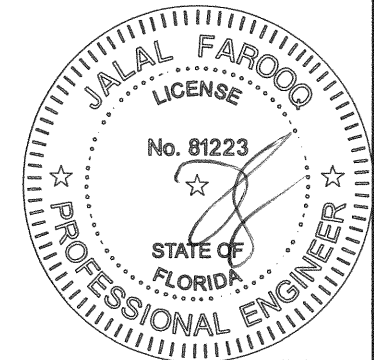
POURED & HARDENED
HIGH STRENGTH GROUT
 $f'_c = 5000$ PSI MIN.
NOT BY 'ECO WINDOWS'
MUST TRANSFER SHEAR
LOADS TO STRUCTURE

LOAD BEARING
(SOLID SHIMS
OPTIONAL TO GROUT)

SIDELITES CAN BE INSTALLED IN ALL SUBSTRATES
SHOWN ON SHEETS 5 THRU 7.



SIDELITE DETAILS



DEC 30 2020

PRODUCT REVISED
as complying with the Florida
Building Code
NOA-No. 20-1007.07
Expiration Date 12/26/2024
By Ismael I. Chandra
Miami-Dade Product Control

AL-FAROOQ CORPORATION
ENGINEERS & PRODUCT DEVELOPMENT
9360 SUNSET DRIVE, SUITE 220
MIAMI, FLORIDA 33173 (C.A.N. 3538)
TEL. (305) 264-8100 FAX. (305) 262-6978
COMP-ANL\19-91D-ECO

SERIES 1500 ALUM OUTSWING/INSWING PIVOT DOOR (L.M.I.)

ECO WINDOW SYSTEMS, LLC.
8502 N.W. 80th STREET
MEDLEY, FL. 33166
TEL. (305) 885-5299 FAX (305) 885-5902

revisions:		date	by	description
no.	date	by	description	
A	09.30.20			UPDATED TO 2020 FBC

date: 08-20-19

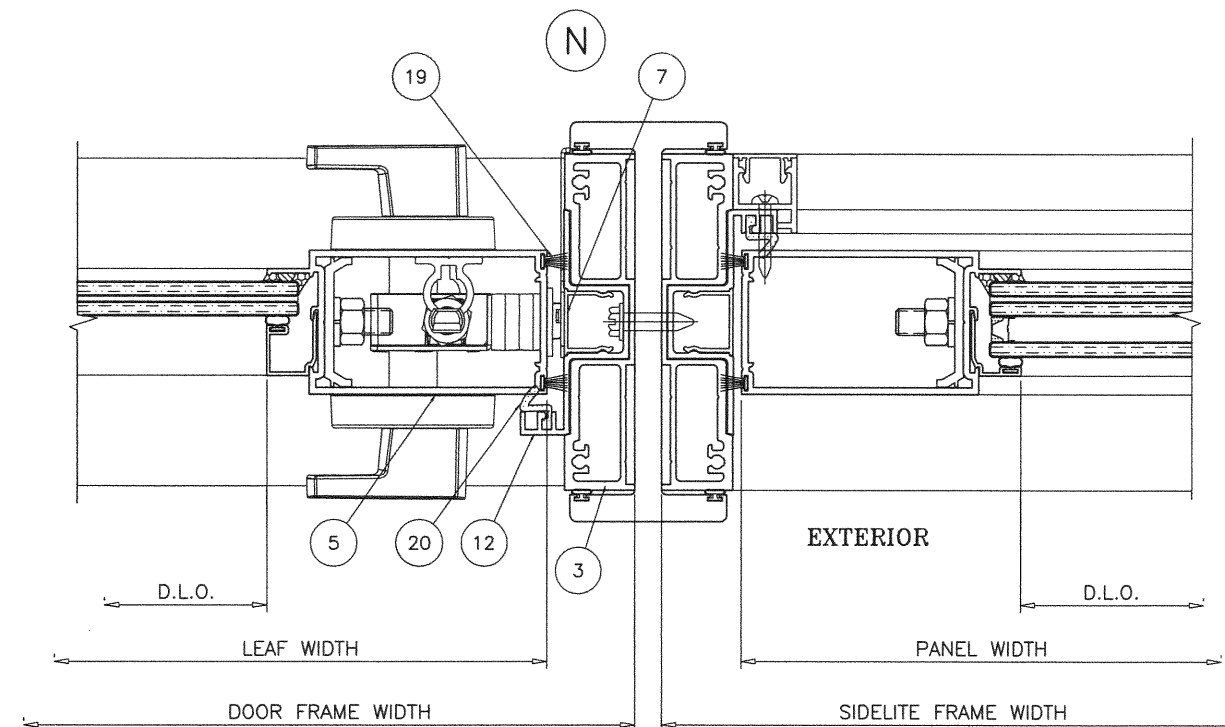
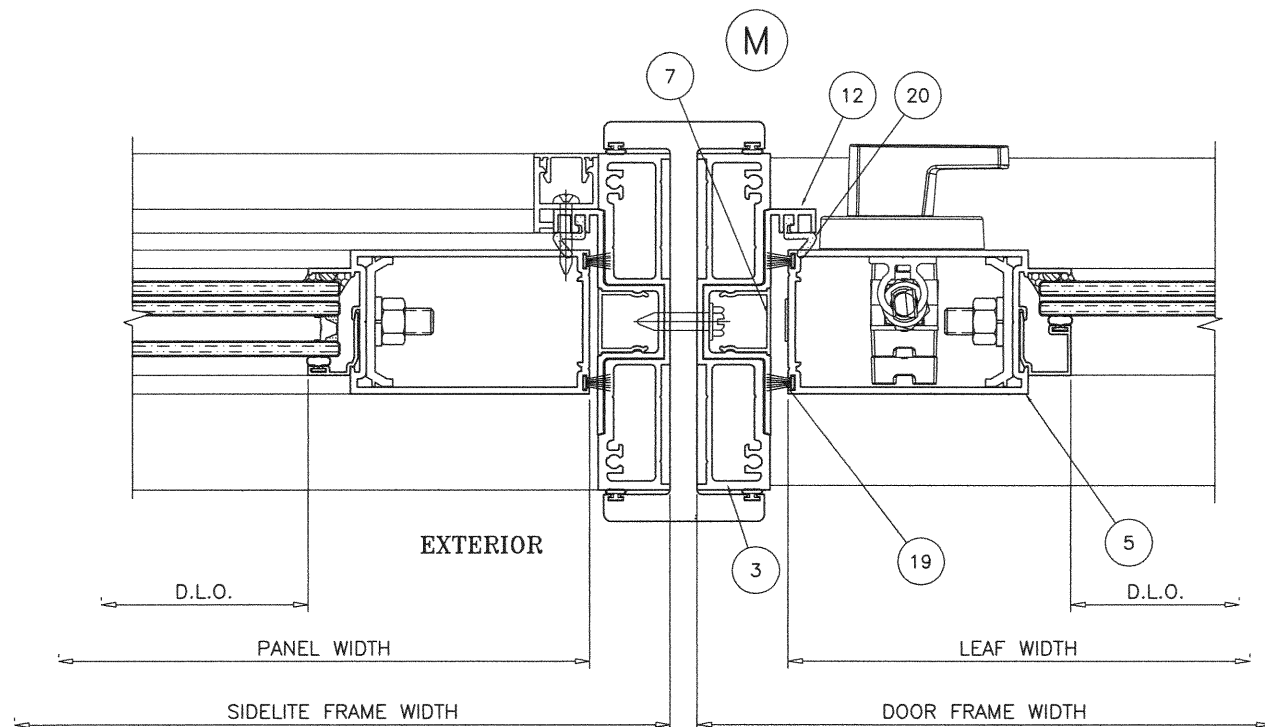
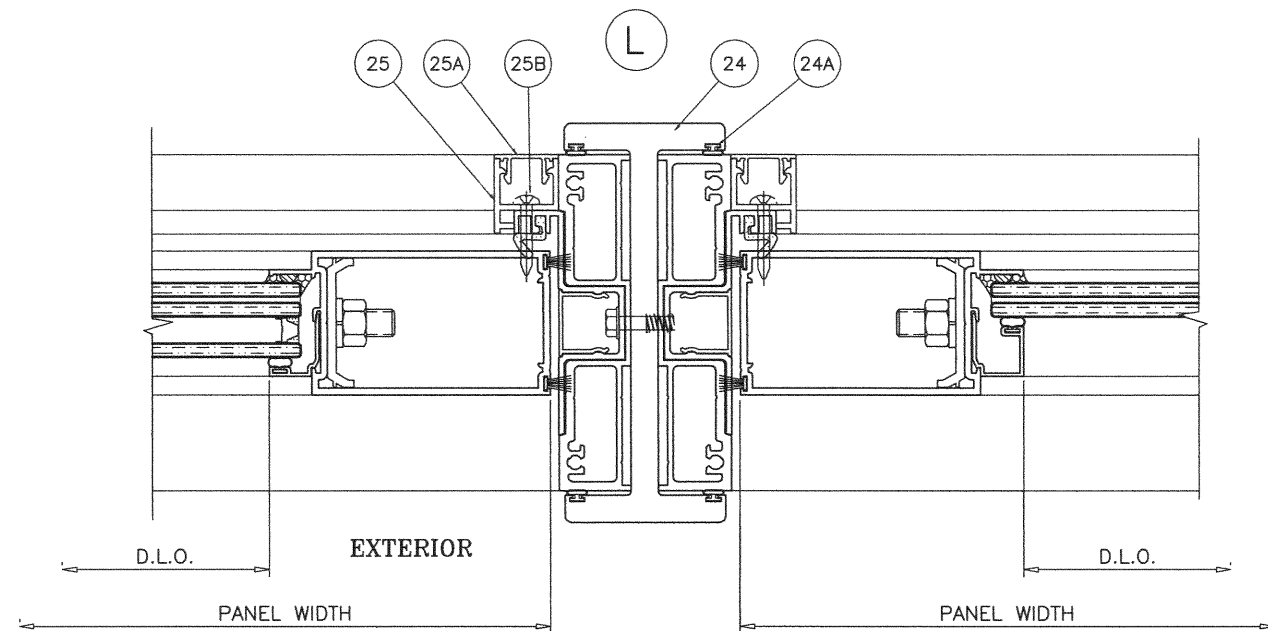
scale: 3/8" = 1"

dr. by: TARIQ

chk. by:

drawing no.
19-91D

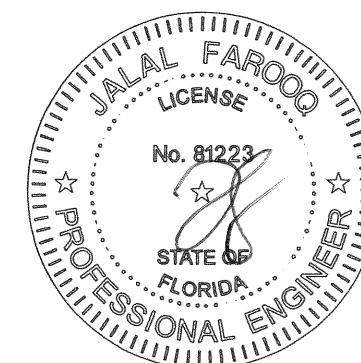
sheet 9 of 14



SIDELITE/DOOR MULLION DETAILS

PRODUCT REVISED
 as complying with the Florida
 Building Code
 NOA-No. 20-1007.07
 Expiration Date 12/26/2024
 By Ishaq I. Chande
 Miami-Dade Product Control

DEC 30 2020



AL-FAROOQ CORPORATION
 ENGINEERS & PRODUCT DEVELOPMENT
 9360 SUNSET DRIVE, SUITE 220
 MIAMI, FLORIDA 33173 (C.A.N. 3538)
 TEL. (305) 264-8100 FAX. (305) 262-6978

COMP-ANL\19-91D-ECO

SERIES 1500 ALUM. OUTSWING/INSWING PIVOT DOOR (L.M.I.)
ECO WINDOW SYSTEMS, LLC.
 8502 N.W. 80th STREET
 MEDLEY, FL. 33166
 TEL. (305) 885-5299 FAX (305) 885-5902

19-91D

no.	date	by	description
A	09.30.20		UPDATED TO 2020 FBC

date: 08-20-19	scale: 3/8" = 1"	dr. by: TARIQ	chk. by:	
----------------	------------------	---------------	----------	--

drawing no. 19-91D

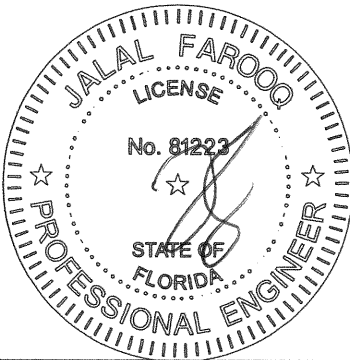
sheet 10 of 14

ITEM #	PART #	REQD.	DESCRIPTION	MATERIAL	MANF./SUPPLIER/REMARKS
1	E1501	1	DOOR HEADER	6063-T6	-
1A	E1502	1	DOOR HEADER COVER	6063-T6	-
2	E1508	1	THRESHOLD	6063-T6	-
2A	E1509	1	THRESHOLD COVER	6063-T6	-
3	E1510	2	SIDELITE/TRANSOM FRAME	6063-T6	-
4	E1505	2/ PANEL	LEAF TOP & BOTTOM RAIL	6063-T6	-
4A	E1504	1	HI-PROFILE LEAF BOTTOM RAIL	6063-T6	-
5	E908	2/ PANEL	LEAF STILE	6063-T6	-
6	E613	AS REQD.	LEAF ALIGNMENT CLIP	6063-T6	-
7	E905	AS REQD.	POCKET COVER	6063-T6	-
8	E908	1/ PANEL	TOP & BOTTOM RAIL SWEEP ADAPTER	6063-T6	-
8A	#10 X 1-1/2"	AS REQD.	SWEEP ADAPTER FASTENERS	ST. STEEL	AT 6" FROM EACH END
9	E913	AS REQD.	GLASS STOP (LAM. GLASS)	6063-T5	-
9A	E912	AS REQD.	GLASS STOP (INSUL. LAM. GLASS)	6063-T5	-
10	E1506	AS REQD.	MID RAIL	6063-T6	-
11	E1507	AS REQD.	SHEAR BLOCK	6063-T6	-
11A	??	2/ BLOCK	SHEAR BLOCK FASTENERS	ST. STEEL	-
12	E1511	AS REQD.	FRAME ADAPTER	6063-T6	-
13	E1503	AS REQD.	TRANSOM ADAPTER	6063-T6	-
13A	#10 X3/4"	AS REQD.	ADAPTER FASTENERS	ST. STEEL	AT 6" FROM ENDS & 12" O.C.
14	E909	AS REQD.	LEAF ALIGNMENT CLIP	6063-T6	-
15	E613	AS REQD.	LEAF CLAMP	6063-T6	-
16	E223	AS REQD.	GLAZING GASKET (DUROMETER 70±5)	SANTOPRENE	ULTRAFAB
17	FLB-50	AS REQD.	GLASS SPACER	SILICONE	FRANK LOWE RUBBER CO.
18	-	2/ LITE	SETTING BLOCKS, AT 1/4 POINTS	EPDM	DUROMETER 85±5 SHORE A
19	W223412G	AS REQD.	FIN SEAL PILE W'STRIPPING	POLYPROPYLENE	ULTRAFAB
20	QW521	AS REQD.	COMPRESSION W'STRIPPING	Q-LON	SCHLEGEL
21	#12 X 1-1/2"	AS REQD.	FRAME AND LEAF ASSEMBLY SCREWS	ST. STEEL	HWH SMS
22	-	-	-	-	-
23	-	2/LEAF	3/8" DIA. THREADED ROD	STEEL	-
24	E1512	AS REQD.	'H' MULLION	6063-T6	-
24A	-	AS REQD.	MULLION W'STRIPPING	VINYL	-
25	??	AS REQD.	SIDELITE ADAPTER	6063-T5	-
25A	??	AS REQD.	SIDELITE ADAPTER CAP	6063-T5	-
25B	#10 X3/4"	AS REQD.	ADAPTER FASTENERS	ST. STEEL	AT 6" FROM ENDS & 12" O.C.
-	-	-	-	-	-

PRODUCT REVISED
as complying with the Florida
Building Code
NOA-No. 20-1007.07

Expiration Date 12/26/2024

By Ishaq I. Chande
Miami-Dade Product Control



DEC 30 2020

af c			
AL-FAROOQ CORPORATION ENGINEERS & PRODUCT DEVELOPMENT 9360 SUNSET DRIVE, SUITE 220 MIAMI, FLORIDA 33173 TEL. (305) 264-8100 FAX. (305) 262-6978 (C.A.N. 3538)			
COMP-ANL\19-91D-ECO			
SERIES 1500 ALUM OUTSWING/INSWING PIVOT DOOR (L.M.I.)			
ECO WINDOW SYSTEMS, LLC. 8502 N.W. 80th STREET MEDLEY, FL. 33166 TEL. (305) 885-5299 FAX (305) 885-5902			
revisions:			
no	date	by	description
A	09.30.20		UPDATED TO 2020 FBC
date:	08-20-19		
scale:	3/8" = 1"		
dr. by:	TARIQ		
chk. by:			
drawing no.		19-91D	
sheet 11 of 14			

DOOR HARDWARE

3 POINT LOCKS AT LOCK STILE

3 POINT LOCK ASSEMBLY BY 'INTERLOCK USA INC.'
WITH LEVER TYPE HANDLE AT 42" FROM BOTTOM
KEY OPERATOR ON EXTERIOR AND THUMB TURN ON INTARIOR
(2) LOCKING POINTS ENGAGING AT INACTIVE LEAF AT STRIKE PLATE
1/2" DIA. THROW BOLT (1) AT TOP ENGAGING FRAME HEAD
AND (1) AT BOTTOM ENGAGING FRAME SILL
THROW BOLTS ATTACHED TO LOCK BY 3/8" CONCEALED
VERTICAL RODS
FASTENED TO ACTIVE LEAF LOCK STILE WITH
(2) 10-24 X 1-7/8" FH MACHINE SCREWS

SURFACE MOUNT METALLIC STRIKE PLATE AT 47" FROM BOTTOM
FACING LOCKING POINTS
FASTENED TO INACTIVE LEAF WITH
(8) #8 X 3/4" FH SELF DRILLING SCREWS

FLUSH BOLT AT PIVOT STILE

2 POINT LOCK ASSEMBLY BY 'INTERLOCK USA INC.'
WITH LEVER TYPE HANDLE AT 42" FROM BOTTOM
1/2" DIA. THROW BOLTS AT TOP AND BOTTOM ENGAGING FRAME
HEAD AND FRAME SILL
THROW BOLTS ATTACHED TO LOCK BY 3/8" CONCEALED
VERTICAL RODS
FASTENED TO STILES WITH
(2) 8-32 X 1-1/8" FH MACHINE SCREWS

KEEPERS FOR THROW BOLT AT SILL:

SURFACE MOUNT ST. STEEL KEEPERS
EACH FASTENED TO FRAME SILL WITH
(2) #8 X 2" FH SMS

PIVOTS AT PIVOT STILE

R500 CLOSER
ATTACHED TO HEADER WITH (4) 1/4-20 X 1-1/4" PFH MACHINE SCREWS.

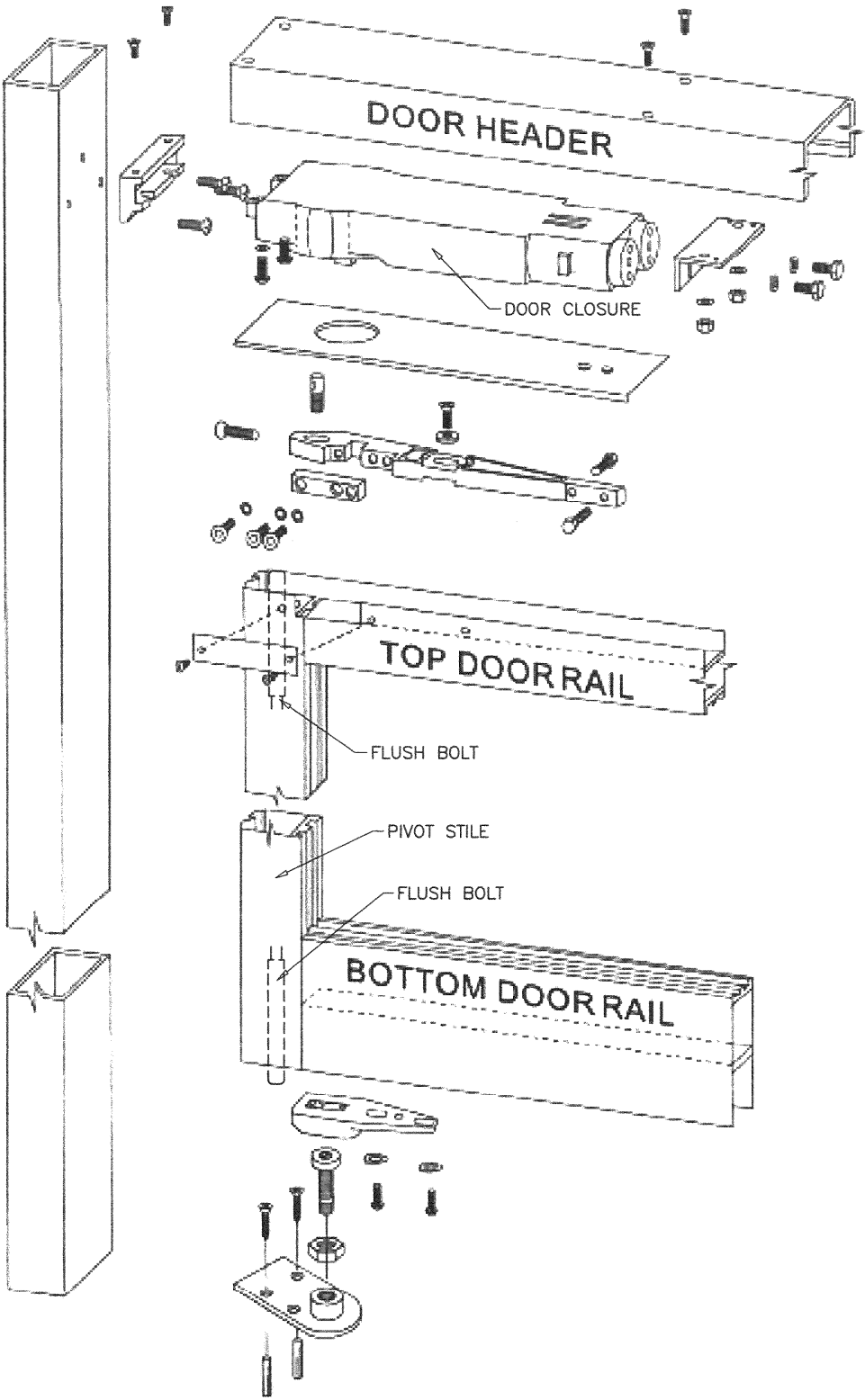
RTS 8852 BOTTOM PIVOT ATTACHED TO FRAME SILL WITH (2) #12 X 5/8" SELF
DRILLING SCREWS

ELECTRICAL FUNCTION IS NOT PART OF THIS APPROVAL.

SEALANT:

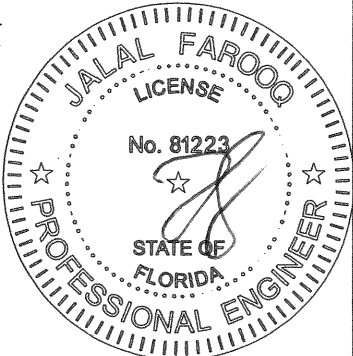
ALL JOINTS AND FRAME CONNECTIONS SEALED WITH
'SCHNEE-MOREHEAD 5504' SEAM SEALER.


PRODUCT REVISED
as complying with the Florida
Building Code
NOA-No. 20-1007.07
Expiration Date 12/26/2024
By Ishag I. Chande
Miami-Dade Product Control



CLOSURE WITH BOTTOM PIVOT

DEC 30 2020

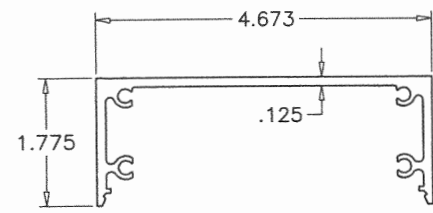


**AL-FAROOQ CORPORATION**
ENGINEERS & PRODUCT DEVELOPMENT
9360 SUNSET DRIVE, SUITE 220
MIAMI, FLORIDA 33173
TEL. (305) 264-8100 FAX. (305) 262-6978
(C.A.N. 3538)

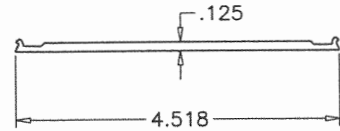
SERIES 1500 ALUM OUTSWING/INSWING PIVOT DOOR (L.M.I.)
ECO WINDOW SYSTEMS, LLC.
8502 N.W. 80th STREET
MEDLEY, FL. 33166
TEL. (305) 885-5299 FAX (305) 885-5902

revisions:	no	date	by	description
	A	09.30.20		UPDATED TO 2020 FBC
date:	08-20-19			
scale:	3/8" = 1"			
dr.	by: TARIQ			
chk.	by:			

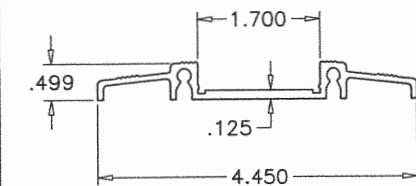
drawing no.
19-91D
sheet 12 of 14



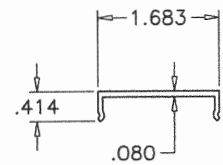
1 DOOR HEADER



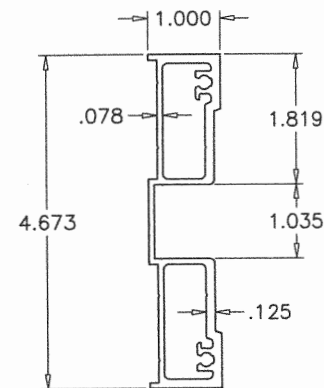
1A DOOR HEADER COVER



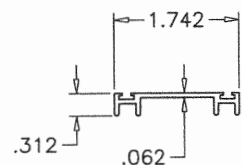
2 THRESHOLD



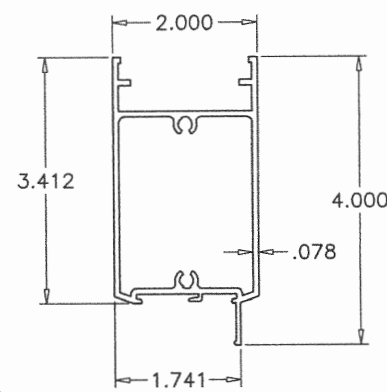
2A THRESHOLD COVER



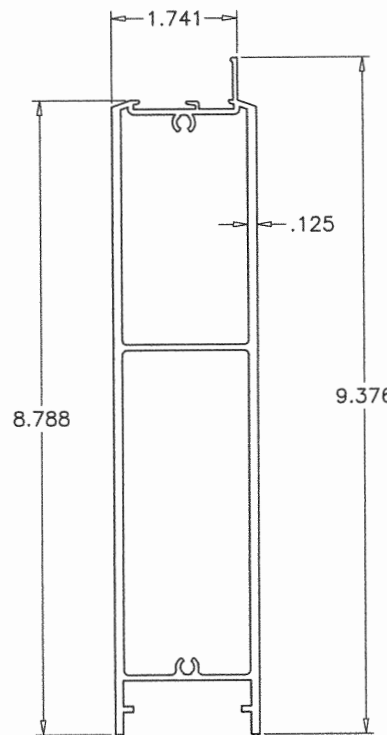
3 SIDELITE/TRANSOM FRAME



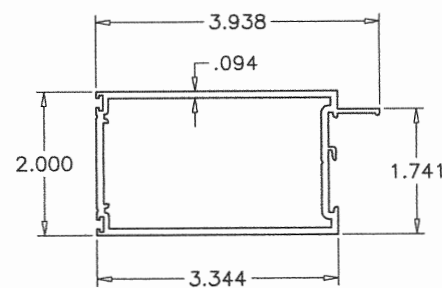
8 SWEEP ADAPTER



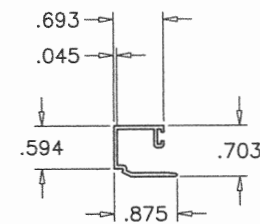
4 LEAF TOP & BOTTOM RAIL



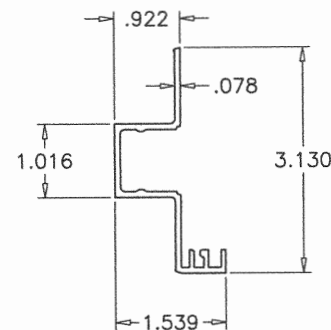
4A LEAF HI-PROFILE BOTTOM RAIL



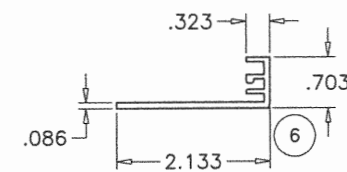
PANEL STILE



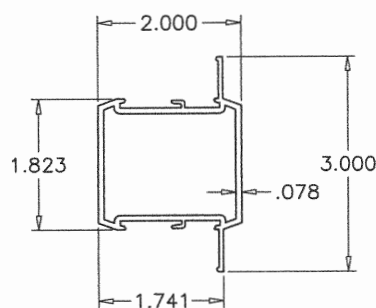
9 GLASS STOP (LAM. GLASS)



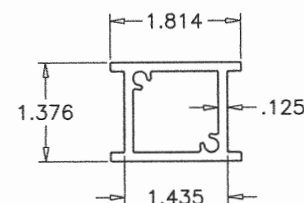
12 FRAME ADAPTER



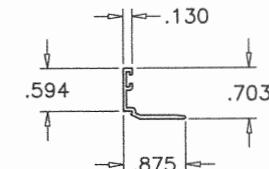
13 TRANSOM ADAPTER



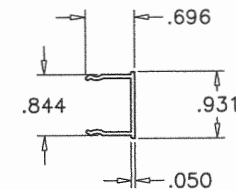
10 MID RAIL



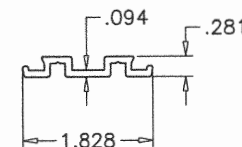
11 SHEAR BLOCK



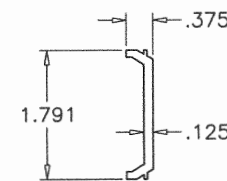
9A GLASS STOP (INSUL. LAM. GLASS)



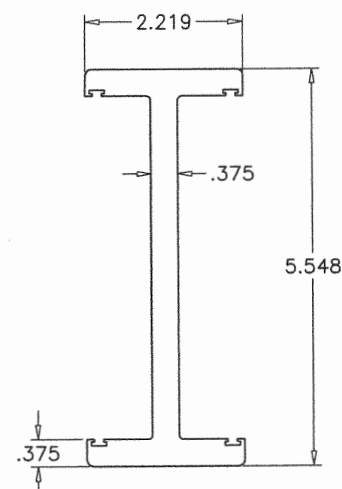
7 POCKET COVER



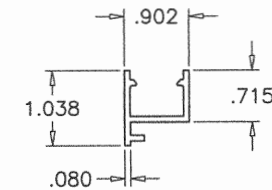
14 LEAF ALIGNMENT CLIP



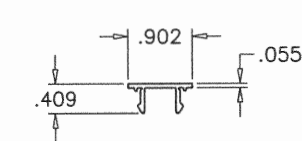
15 LEAF CLAMP



24 'H' MULLION



25 SIDELITE ADAPTER



25A ADAPTER CAP

PRODUCT REVISED
as complying with the Florida
Building Code
NOA-No. 20-1007.07

Expiration Date 12/26/2024

By Ishaq I. Chandra
Miami-Dade Product Control

afC

AL-FAROOQ CORPORATION
ENGINEERS & PRODUCT DEVELOPMENT
9360 SUNSET DRIVE, SUITE 220
MIAMI, FLORIDA 33173 (C.A.N. 3538)
TEL. (305) 264-8100 FAX. (305) 262-6978

COMP-ANL\19-91D-ECO

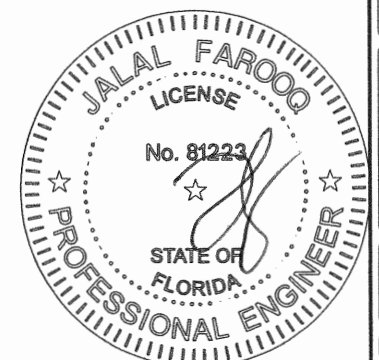
SERIES 1500 ALUM OUTSWING/INSWING PIVOT DOOR (L.M.I.)

ECO WINDOW SYSTEMS, LLC.

8502 N.W. 80th STREET

MEDLEY, FL. 33166

TEL. (305) 885-5299 FAX (305) 885-5902



DEC 30 2020

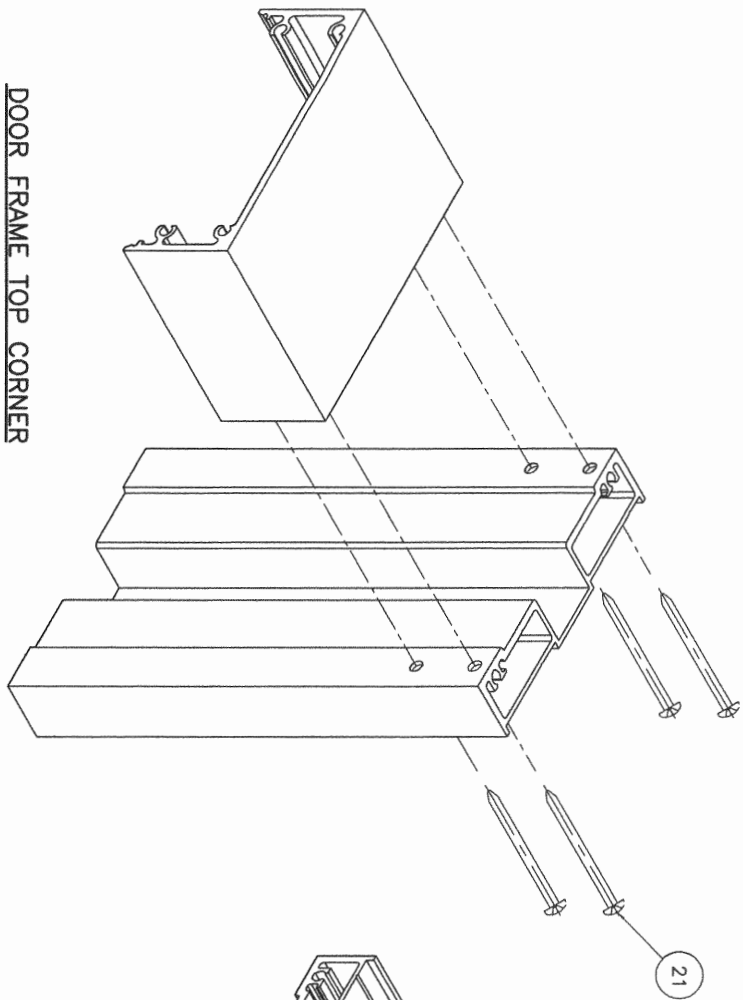
revisions:		no	date	by	description
		A	09.30.20		UPDATED TO 2020 FBC

date: 08-20-19
scale: 3/8" = 1"
dr. by: TARIQ
chk. by:

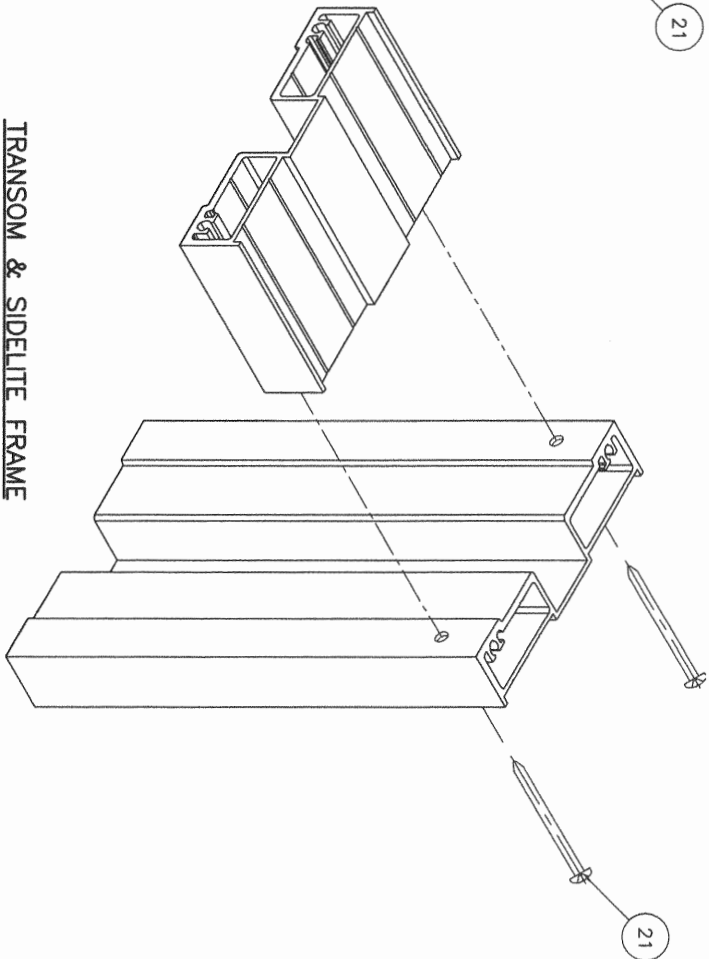
drawing no.

19-91D

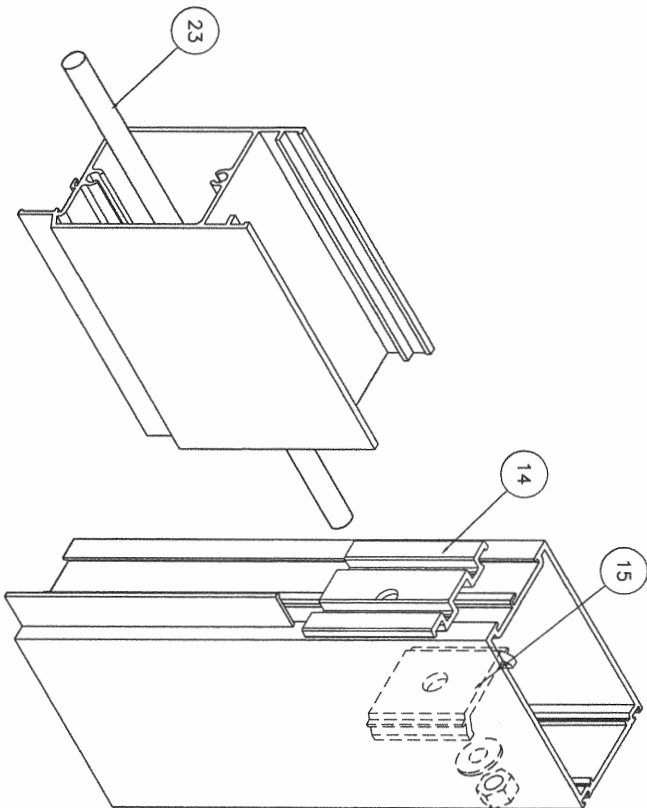
sheet 13 of 14



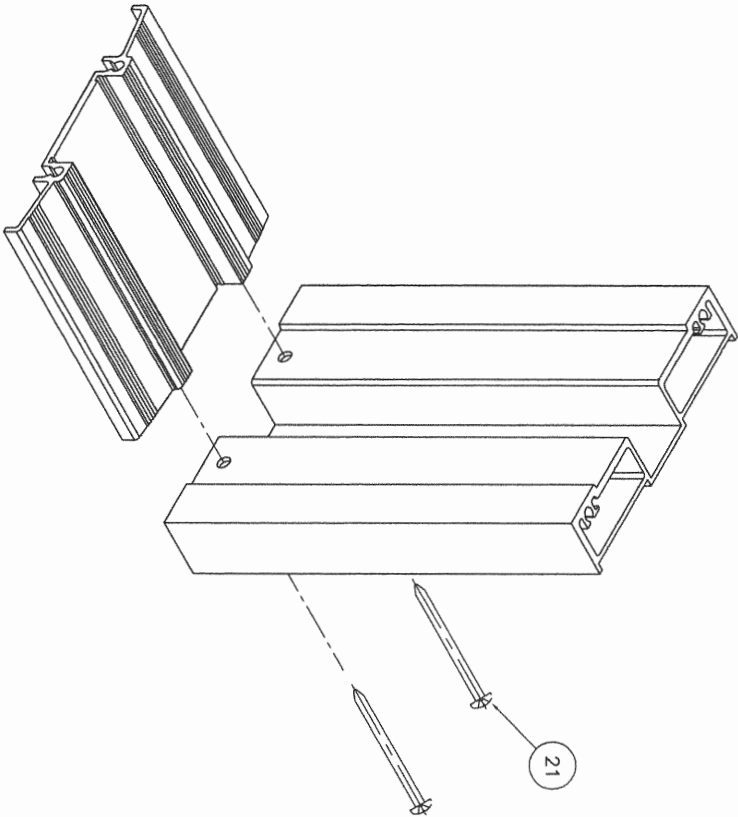
DOOR FRAME TOP CORNER



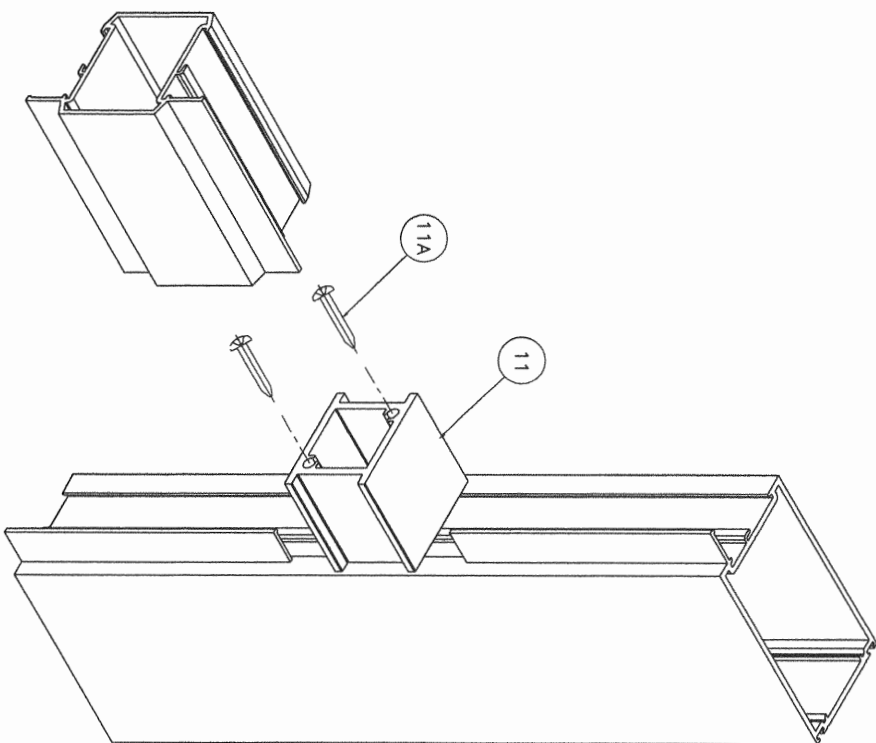
TRANSOM & SIDELITE FRAME
TOP/BOTTOM CORNER



LEAF CORNER



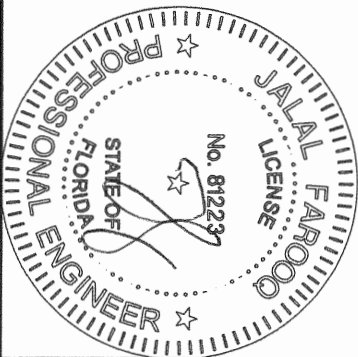
DOOR FRAME BOTTOM CORNER



MID RAIL CORNER

PRODUCT REVISED
as complying with the Florida
Building Code
NOA-No. 20-1007.07
Expiration Date 12/26/2024
By Isaac I. Chirba
Miami-Dade Product Control

DEC 30 2020



date: 08-20-19		revisions:	
scale: 3/8" = 1"		no	date
dr. by: TARIQ		A	09.30.20
chk. by:			

SERIES 1500 ALUM OUTSWING/INSWING PIVOT DOOR (L.M.I.)
ECO WINDOW SYSTEMS, LLC.
8502 N.W. 80th STREET
MEDLEY, FL. 33166
TEL. (305) 885-5299 FAX (305) 885-5902

AL-FAROOQ CORPORATION
ENGINEERS & PRODUCT DEVELOPMENT
9360 SUNSET DRIVE, SUITE 220
MIAMI, FLORIDA 33173
TEL. (305) 264-8100 FAX. (305) 262-6978

a f c

COMP-ANL\19-91D-ECO