



DEPARTMENT OF REGULATORY AND ECONOMIC RESOURCES (RER)
BOARD AND CODE ADMINISTRATION DIVISION
NOTICE OF ACCEPTANCE (NOA)

Quality Engineered Products Co., Inc.
4506 Quality Lane
Tampa, FL 33634

SCOPE:

This NOA is being issued under the applicable rules and regulations governing the use of construction materials. The documentation submitted has been reviewed and accepted by Miami-Dade County RER -Product Control Section to be used in Miami Dade County and other areas where allowed by the Authority Having Jurisdiction (AHJ).

This NOA shall not be valid after the expiration date stated below. The Miami-Dade County Product Control Section (In Miami Dade County) and/or the AHJ (in areas other than Miami Dade County) reserve the right to have this product or material tested for quality assurance purposes. If this product or material fails to perform in the accepted manner, the manufacturer will incur the expense of such testing and the AHJ may immediately revoke, modify, or suspend the use of such product or material within their jurisdiction. RER reserves the right to revoke this acceptance, if it is determined by Miami-Dade County Product Control Section that this product or material fails to meet the requirements of the applicable building code.

This product is approved as described herein and has been designed to comply with the Florida Building Code, including the High Velocity Hurricane Zone.

DESCRIPTION: Series "HMS" Glazed 16 ga Steel Storefront System-Impact

APPROVAL DOCUMENT: Drawing No. QEP004 Rev 2, titled "Storefront System (LMI)", sheets 1 through 16 of 16, prepared by manufacturer, dated 02/26/16 and last revised on 03-03-21, signed and sealed by David M. Schonacher, P. E., bearing the Miami-Dade County Product Control Revision stamp with the Notice of Acceptance number and expiration date by the Miami-Dade County Product Control Section.

MISSILE IMPACT RATING: Large and Small Missile Impact Resistant

Limitations:

1. Louvered Transom, as part of Storefront, is **not** approved where Air & Water infiltration is needed.
2. See approved installation substrates in sheet **8** thru **12**. Item # 5 (Welded pipe Sleeve) is required with 1/2" Sleeve w/ 3/8" bolt anchors (thru storefront frames) into Concrete or grout filled CMU or block substrates. Illustrative frame Hinge Jamb detail A/16 on sheet **16** to be mounted per installation details sheets **8** thru **10**.
4. See Precision Removable door mullion installation details in sheet **10**.
5. See vertical & horizontal 16 ga steel (6" deep) mullion (item#14) details in sheets **7** & **16**.
6. Approved EPS core by Dynaplast (Former Apache) having current NOA.

LABELING: Each unit shall bear a permanent label with the manufacturer's name or logo, city, state and series and following statement: "Miami-Dade County Product Control Approved", noted herein.

RENEWAL of this NOA shall be considered after a renewal application has been filed and there has been no change in the applicable building code negatively affecting the performance of this product.

TERMINATION of this NOA will occur after the expiration date or if there has been a revision or change in the materials, use, and/or manufacture of the product or process. Misuse of this NOA as an endorsement of any product, for sales, advertising or any other purposes shall automatically terminate this NOA. Failure to comply with any section of this NOA shall be cause for termination and removal of NOA.

ADVERTISEMENT: The NOA number preceded by the words Miami-Dade County, Florida, and followed by the expiration date may be displayed in advertising literature. If any portion of the NOA is displayed, then it shall be done in its entirety.

INSPECTION: A copy of this entire NOA shall be provided to the user by the manufacturer or its distributors and shall be available for inspection at the job site at the request of the Building Official.

This NOA **revises** NOA #19-0603.04 and consists of this page 1 and evidence pages E-1, E-2 and E-3, as well as approval document mentioned above.

The submitted documentation was reviewed by **Ishaq I. Chanda, P.E.**



Ishaq I. Chanda

NOA No. 20-1123.19
Expiration Date: August 27, 2024
Approval Date: April 01, 2021
Page 1

NOTICE OF ACCEPTANCE: EVIDENCE SUBMITTED

1. EVIDENCE SUBMITTED under previous NOA

A. DRAWINGS

1. Manufacturer's die drawings and sections (Submitted under files #12-1115.11 /# 09-0617.03)
2. Drawing No. **QEP004**, titled "Storefront System (LMI)", sheets 1 through 13 of 13, prepared by manufacturer, dated 06/10/09 and last revised on 10/07/09, signed and sealed by David M. Schonacher, Jr., P. E.

B. TESTS (Submitted under files #12-1115.11 /# 09-0617.03/ #04-0218.01)

1. Test reports on 1) Air Infiltration Test, per FBC TAS 202-94
2) Uniform Static Air Pressure Test, Loading per FBC TAS 202.
3) Water Resistance Test per FBC TAS 202-94.
4) Large Missile Impact Test per FBC, TAS 201-94
5) Cyclic Wind Pressure Loading per FBC, TAS 203-94
6) Forced Entry Test, per FBC and TAS 202-94

Along with marked-up drawings and installation diagram of glazed steel storefront, prepared by Certified Testing Laboratories Inc., Test Reports No(s). **CTLA 976W-1, 976W-2, 1976W-3 and 1976W-4**, dated December 08,2003, signed & sealed by Ramesh Patel, P. E

Note: This test report has been revised by addendum letter dated May 06, 2004 and 09-15-09, issued by Certified Testing Lab. Inc, signed & sealed by Ramesh Patel, P. E.

C. CALCULATIONS

1. Anchor verification calculations, dated 10-07-09, prepared, signed and sealed by David M. Schonacher, Jr., P.E. (Submitted under file # **09-0617.03**).

D. QUALITY ASSURANCE

1. Miami Dade Department of Regulatory and Economic Resources (RER)

E. MATERIAL CERTIFICATIONS

1. Tensile test report prepared by Certified Testing Laboratories Inc., Test Report No. **CTL 1023J (CTL976W-1, 2, 3 & 4)**, tested per ASTM E-A370-97, dated December 11,2003, signed and sealed by Ramesh Patel, P. E. (Submitted under file # **09-0617.03**)
2. Notice of Acceptance No. **11-0926.07** issued to Dyplastic Products, LLC (former Apache Products Co) for "EPS-Expanded Polystyrene Insulation", expiring on 01/11/2017.
3. Notice of Acceptance No. **13-1126.20** issued to Allnex, USA, Inc. (former Cytec Industries Inc.) for "Uvekol-S Laminated Glass interlayer", expiring on 02/08/2019.

F. STATEMENTS

1. Statement letter of conformance to FBC 2010 and "no financial interest", dated 01/15/13, signed and sealed by David M. Schonacher Jr., P. E.
2. Statesman letter of conformance to FBC 2007 and "No financial interest", dated August 27, 2009, signed and sealed by David M. Schonacher Jr., P. E. (Submitted under file # **09-0617.03**)
3. Statement letter of compliance, as a part of the above referenced test reports.

G. OTHER

1. This revises **NOA # 12-1115.11**, expiring August 27, 2019.
2. Test Proposal by Q. E. P. dated September 19, 2002, approved by BCCO.

Ishaq I. Chanda

Ishaq I. Chanda, P.E.
Product Control Unit Supervisor
NOA No. 20-1123.19
Expiration Date: August 27, 2024
Approval Date: April 01, 2021

Quality Engineered Products Co, Inc.

NOTICE OF ACCEPTANCE: EVIDENCE SUBMITTED

2. EVIDENCE SUBMITTED under file #15-0422.06

A. DRAWINGS

1. Drawing No. **QEP004**, titled “Storefront System (LMI)”, sheets 1 through 13 of 13, prepared by manufacturer, dated 06/10/09 and last revised on 10/07/09, signed and sealed by David M. Schonacher, Jr., P. E.

B. TESTS

1. None.

C. CALCULATIONS

1. None.

D. QUALITY ASSURANCE

- 1 Miami Dade Department of Regulatory and Economic Resources (RER)

E. MATERIAL CERTIFICATIONS

1. Notice of Acceptance No. **16-1129.05** issued to Dyplastic Products, LLC (former Apache Products Co) for “E & R Expanded Rigid Foam Insulation”, expiring on 01/11/2022.
2. Notice of Acceptance No. **17-0919.09** issued to Allnex, USA, Inc. (former Cytec Industries Inc.) for “Uvekool-S Laminated Glass interlayer”, expiring on 02/08/2019.

F. STATEMENTS

1. Statement letter of conformance to FBC 2017 (6th Edition) and “no financial interest”, dated 12/01/17, signed and sealed by David M. Schonacher Jr., P. E.

G. OTHER

1. This **revises** NOA # **15-0422.06**, expiring August 27, 2019.

3. NEW EVIDENCE SUBMITTED

A. DRAWINGS

1. Drawing No. **QEP004**, titled “Storefront System (LMI)”, sheets 1 through 13 of 13, prepared by manufacturer, dated 06/10/09 and last revised on 10/07/09, signed and sealed by David M. Schonacher, J. R., P. E.

B. TESTS

1. None.

C. CALCULATIONS

1. None.

D. QUALITY ASSURANCE

- 1 Miami Dade Department of Regulatory and Economic Resources (RER)

E. MATERIAL CERTIFICATIONS

1. Notice of Acceptance No. **17-0919.09** issued to Allnex, USA, Inc. (former Cytec Industries Inc.) for “Uvekool-S Laminated Glass interlayer”, expiring on 02/08/2019.

F. STATEMENTS (submitted under file #17-1102.04)

1. Statement letter of conformance to FBC 2017 (6th Edition) and “no financial interest”, both dated 12/01/17, signed and sealed by David M. Schonacher Jr., P. E.

G. OTHER

1. This **renews** NOA # **19-0221.01**, expiring 02/08/24.

Ishaq I. Chanda

Ishaq I. Chanda, P.E.
Product Control Unit Supervisor
NOA No. 20-1123.19
Expiration Date: August 27, 2024
Approval Date: April 01, 2021

NOTICE OF ACCEPTANCE: EVIDENCE SUBMITTED

5. NEW EVIDENCE SUBMITTED

A. DRAWINGS

1. Drawing No. **QEP004 Rev 2**, titled “Storefront System (LMI)”, sheets 1 through 16 of 16, prepared by manufacturer, dated 02/26/16 and last revised on 03-03-21, signed and sealed by David M. Schonacher, J. R., P. E.

B. TESTS

1. None.

C. CALCULATIONS

1. None.

D. QUALITY ASSURANCE

- 1 Miami Dade Department of Regulatory and Economic Resources (RER).

E. MATERIAL CERTIFICATIONS

1. Notice of Acceptance No. **20-0901.03** issued to Allnex, USA, Inc. (former Cytec Industries Inc.) for “Uvekol-S Laminated Glass interlayer”, expiring on 02/08/2024.

F. STATEMENTS

1. Statement letter of conformance to FBC 2020 (7th Edition) and “no financial interest”, both dated March 03, 2021, signed and sealed by David M. Schonacher Jr., P. E.

G. OTHER

1. This revises **NOA # 19-0603.04**, expiring 02/08/24.

Ishaq I. Chanda

Ishaq I. Chanda, P.E.
Product Control Unit Supervisor
NOA No. 20-1123.19
Expiration Date: August 27, 2024
Approval Date: April 01, 2021

INSTALLATION NOTES:

1. ONE (1) INSTALLATION ANCHOR IS REQUIRED AT EACH ANCHOR LOCATION SHOWN.
2. THE NUMBER OF INSTALLATION ANCHORS DEPICTED IS THE MINIMUM NUMBER OF ANCHORS TO BE USED FOR PRODUCT INSTALLATION.
3. INSTALL INDIVIDUAL INSTALLATION ANCHORS WITHIN A TOLERANCE OF ±1/2 INCH OF THE DEPICTED LOCATION IN THE ANCHOR LAYOUT DETAIL (I.E., WITHOUT CONSIDERATION OF TOLERANCES). TOLERANCES ARE NOT CUMULATIVE FROM ONE INSTALLATION ANCHOR TO THE NEXT.
4. SHIM AS REQUIRED AT EACH INSTALLATION ANCHOR WITH LOAD BEARING SHIM(S). MAXIMUM ALLOWABLE SHIM STACK TO BE 1/4 INCH. SHIM WHERE SPACE OF 1/16 INCH OR GREATER OCCURS. SHIM(S) SHALL BE CONSTRUCTED OF HIGH DENSITY PLASTIC OR BETTER. (ALUMINUM OR SS)
5. MINIMUM EMBEDMENT AND EDGE DISTANCE EXCLUDE WALL FINISHES, INCLUDING BUT NOT LIMITED TO STUCCO, FOAM, BRICK VENEER, AND SIDING.
6. INSTALLATION ANCHORS AND ASSOCIATED HARDWARE MUST BE MADE OF CORROSION RESISTANT MATERIAL OR HAVE A CORROSION RESISTANT COATING.
7. FOR GROUT FILLED BLOCK, DO NOT INSTALL INSTALLATION ANCHORS INTO MORTAR JOINTS. EDGE DISTANCE IS MEASURED FROM FREE EDGE OF BLOCK OR EDGE OF MORTAR JOINT INTO FACE SHELL OF BLOCK.
8. INSTALLATION ANCHORS SHALL BE INSTALLED IN ACCORDANCE WITH ANCHOR MANUFACTURER'S INSTALLATION INSTRUCTIONS, AND ANCHORS SHALL NOT BE USED IN SUBSTRATES WITH STRENGTHS LESS THAN THE MINIMUM STRENGTH SPECIFIED BY THE ANCHOR MANUFACTURER.
9. INSTALLATION ANCHOR CAPACITIES FOR PRODUCTS HEREIN ARE BASED ON SUBSTRATE MATERIALS WITH THE FOLLOWING PROPERTIES:

A. WOOD - MINIMUM SPECIFIC GRAVITY OF 0.55.

B. CONCRETE -MINIMUM COMPRESSIVE STRENGTH OF 3000 PSI.

C. GROUTED MASONRY - STRENGTH CONFORMANCE TO ASTM C-90, NORMAL WEIGHT WITH 2 KSI STRENGTH (OR GREATER) WITH MINIMUM 3,000 PSI GROUT.

D. STRUCTURAL STEEL - MEMBER TO COMPLY WITH AISC 360. ADEQUACY OF METAL STRUCTURE TO BE REVIEWED BY BUILDING OFFICIAL.

GENERAL NOTES:

1. THE PRODUCT SHOWN HEREIN IS DESIGNED AND MANUFACTURED TO COMPLY WITH THE FLORIDA BUILDING CODE FBC 7th EDITION (2020), INCLUDING HVHZ-ZONE AND HAS BEEN EVALUATED ACCORDING TO THE FOLLOWING:

TAS 201-94

TAS 202-94

TAS 203-94
2. ADEQUACY OF THE EXISTING STRUCTURAL CONCRETE, MASONRY AND STRUCTURAL STEEL AS A HVHZ-ZONE CAPABLE OF WITHSTANDING AND TRANSFERRING APPLIED PRODUCT LOADS TO THE FOUNDATION IS THE RESPONSIBILITY OF THE ENGINEER OR ARCHITECT OF RECORD FOR THE PROJECT OF INSTALLATION.
3. 1X AND 2X BUCKS (WHEN USED) SHALL BE DESIGNED AND ANCHORED TO PROPERLY TRANSFER ALL LOADS TO THE STRUCTURE. BUCK DESIGN AND INSTALLATION IS THE RESPONSIBILITY OF THE ENGINEER OR ARCHITECT OF RECORD FOR THE PROJECT OF INSTALLATION.
4. THE INSTALLATION DETAILS DESCRIBED HEREIN ARE GENERIC AND MAY NOT REFLECT ACTUAL CONDITIONS FOR A SPECIFIC SITE. IF SITE CONDITIONS CAUSE INSTALLATION TO DEVIATE FROM THE REQUIREMENTS DETAILED HEREIN, A LICENSED ENGINEER OR ARCHITECT SHALL PREPARE SITE SPECIFIC DOCUMENTS FOR USE WITH THIS DOCUMENT.
5. THIS PRODUCT IS LARGE AND SMALL MISSILE IMPACT RESISTANT. APPROVED IMPACT PROTECTIVE SYSTEM **IS NOT REQUIRED** ON THIS PRODUCT IN AREAS REQUIRING IMPACT RESISTANCE.
6. DOOR FRAME MATERIAL: 16 GA. OR 14 GA. STEEL MEETING FyMIN=46.3KSI; FuMIN=52.1KSI OR STAINLESS STEEL FyMIN=50.5 KSI; FuMIN=98.5KSI. MIL-CERTIFICATE REQUIRED FOR VERIFICATION OF AVAILABLE STRENGTH.
7. DESIGNATIONS "X" AND "O" STAND FOR THE FOLLOWING:

X: OPERABLE PANEL

O: FIXED PANEL

PRODUCT REVISED

as complying with the Florida

Building Code

NOA-No. 20-1123.19

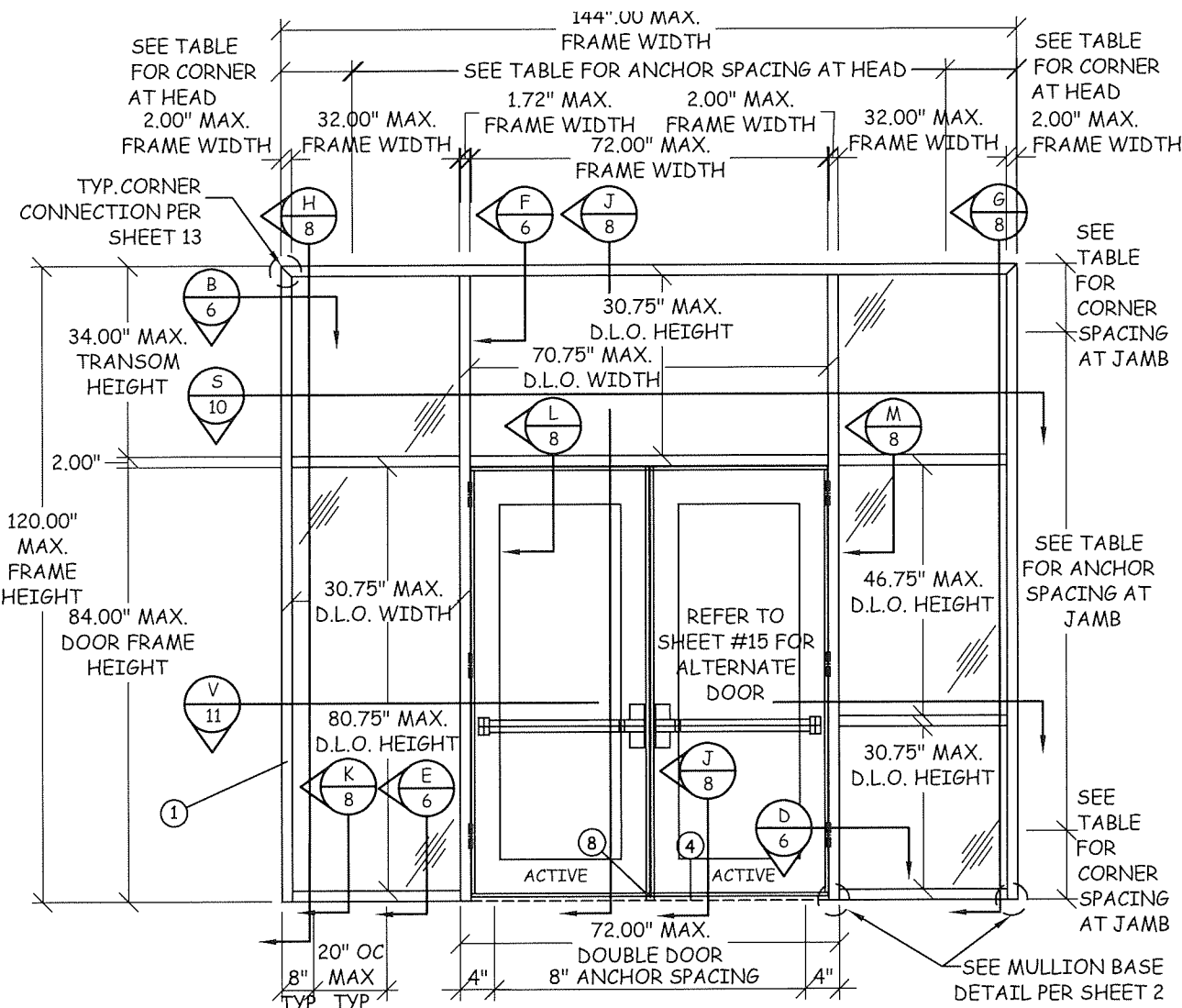
Expiration Date 08/27/2024

By Ishag I. Chande

Miami-Dade Product Control

QUALITY ENGINEERED PRODUCTS

STOREFRONT SYSTEM - IMPACT



OUTSWING DOOR
(INTERIOR VIEW)

Anchor and Spacing Table

ANCHOR	SUBSTRATE	MAX SPACING		JAMB		HEAD	
		JAMB	HEAD	NUMBER OF ANCHORS	MAX CORNER SPACING	NUMBER OF ANCHORS	MAX CORNER SPACING
DYNABOLT	CMU	18"	20"	7 TOTAL	8"	8 TOTAL	8"
SCREW	STEEL	12"	12"	11	6"	13	6"

DESIGN PRESSURE RATING (STOREFRONT SYSTEM)			
	WHERE AIR & WATER INFILTRATION REQUIREMENTS IS NEEDED	WHERE AIR & WATER INFILTRATION REQUIREMENTS IS NOT NEEDED	MISSILE IMPACT RATING
POSITIVE	+60 PSF	+60 PSF	LARGE & SMALL MISSILE IMPACT RATED
NEGATIVE	-60 PSF	-60 PSF	LARGE & SMALL MISSILE IMPACT RATED

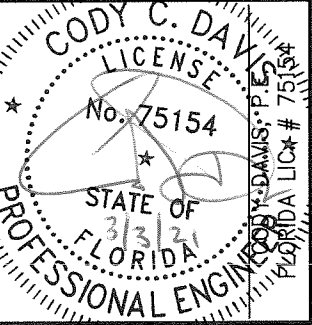
Quality
Engineered
Products Co., Inc.

TITLE: STOREFRONT SYSTEM (LMT)
LOUVER ELEVATION & DETAILS

PREPARED FOR: QUALITY ENGINEERED PRODUCTS
4506 QUALITY LN.
TAMPA, FL 33634

PH: 813.885.1693 FX: 813.884.2673

REVISIONS	DESCRIPTION	BY	DATE
1	2014 FBC	CD	02.26.16
2	2020 FBC	TA	02.15.21



DATE: 02.26.16

DWN BY: GRN

CHK BY: CCD



SCALE: NTS

DWG #: QEP004

SHEET: 1 OF 16

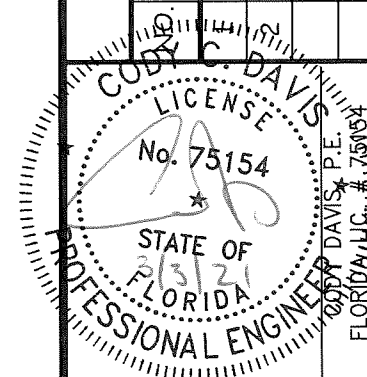


By Ishag I. Lhanda
Miami-Dade Product Control

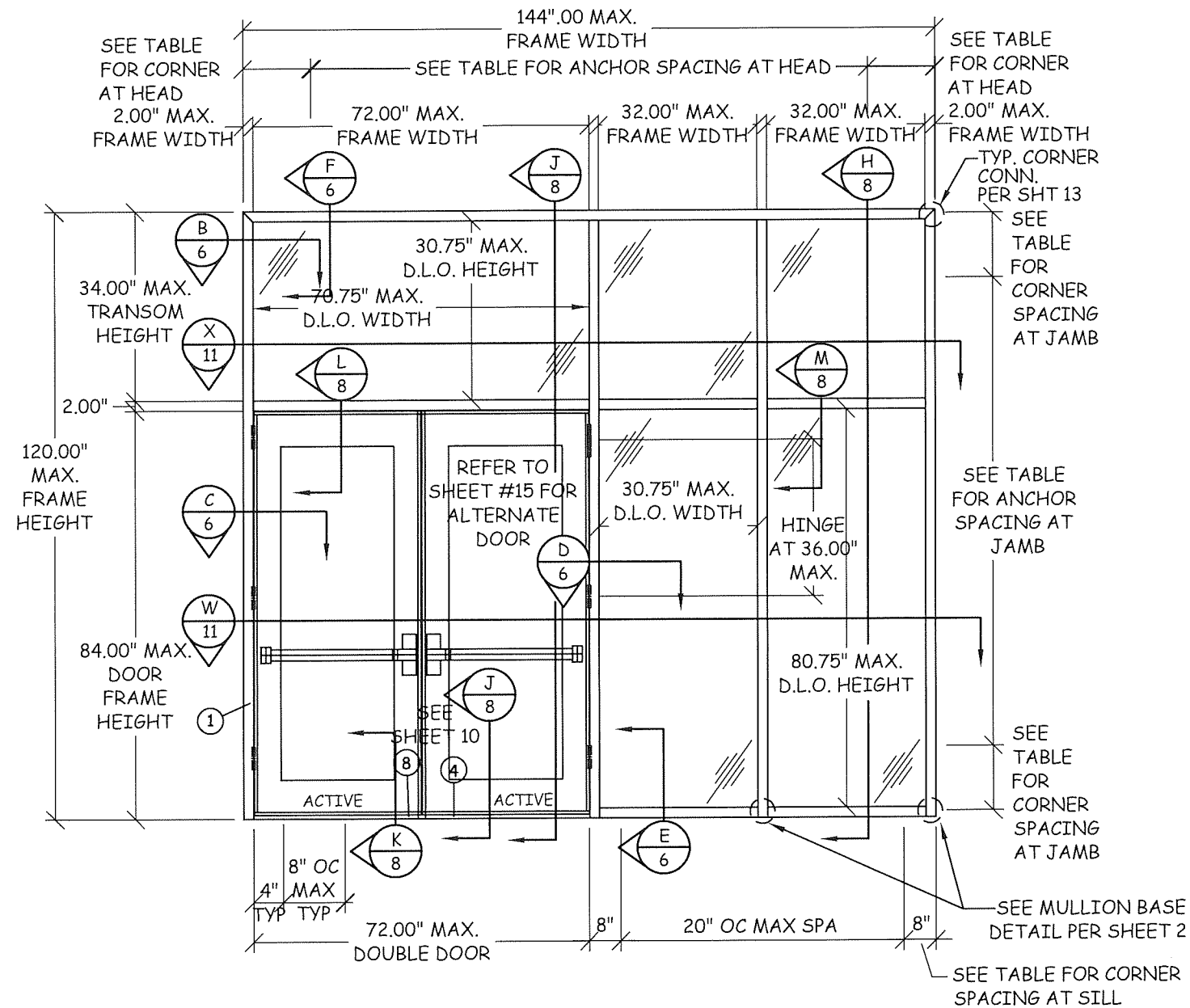
ANCHOR	SUBSTRATE	MAX SPACING		JAMB		HEAD	
		JAMB	HEAD	NUMBER OF ANCHORS	MAX CORNER SPACING	NUMBER OF ANCHORS	MAX CORNER SPACING
 DYNABOLT	CMU	18"	20"	7 TOTAL	8"	8 TOTAL	8"
 SCREW	STEEL	12"	12"	11	6"	13	6"

DESIGN PRESSURE RATING (STOREFRONT SYSTEM)			
	WHERE AIR & WATER INFILTRATION REQUIREMENTS IS NEEDED	WHERE AIR & WATER INFILTRATION REQUIREMENTS IS NOT NEEDED	MISSILE IMPACT RATING
POSITIVE	+60 PSF	+60 PSF	LARGE & SMALL MISSILE IMPACT RATED
NEGATIVE	-60 PSF	-60 PSF	LARGE & SMALL MISSILE IMPACT RATED

REVISIONS			
NO.	DESCRIPTION	BY	DATE
1	2014 FBC	CD	02.26.16
2	2020 FBC	TA	02.15.21



DATE: 02.26.16	DWN BY: GRN	CHK BY: CCD	SCALE: NTS
DWG #: QEP004			
SHEET: 2 OF 16			



PRODUCT REVISED
as complying with the Florida
Building Code
NOA-No. 20-1123.19
Expiration Date 08/27/2024
By Ishaq I. Chande
Miami-Dade Product Control

**OUTSWING DOOR
(INTERIOR VIEW)**

Anchor and Spacing Table

ANCHOR	SUBSTRATE	MAX SPACING		JAMB		HEAD	
		JAMB	HEAD	NUMBER OF ANCHORS	MAX CORNER SPACING	NUMBER OF ANCHORS	MAX CORNER SPACING
DYNABOLT	CMU	18"	20"	7 TOTAL	8"	8 TOTAL	8"
SCREW	STEEL	12"	12"	11	6"	13	6"

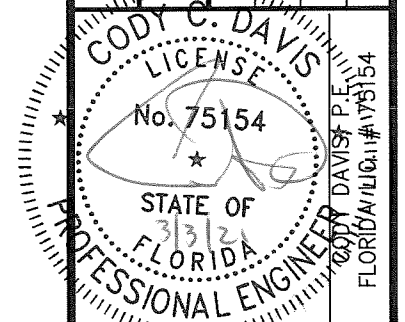
DESIGN PRESSURE RATING (STOREFRONT SYSTEM)			
	WHERE AIR & WATER INFILTRATION REQUIREMENTS IS NEEDED	WHERE AIR & WATER INFILTRATION REQUIREMENTS IS NOT NEEDED	MISSILE IMPACT RATING
POSITIVE	+60 PSF	+60 PSF	LARGE & SMALL MISSILE IMPACT RATED
NEGATIVE	-60 PSF	-60 PSF	LARGE & SMALL MISSILE IMPACT RATED

Quality
Engineered
Products Co., Inc.

TITLE: STOREFRONT SYSTEM (LMI) LOUVER ELEVATION & DETAILS		PREPARED FOR: QUALITY ENGINEERED PRODUCTS 4506 QUALITY LN. TAMPA, FL 33634 PH: 813.885.1693 FX: 813.884.2673	
BY	DATE	CD	02.26.16
TA	02.15.21		

REVISIONS

NO.	DESCRIPTION	BY	DATE
1	2014 FBC	CD	02.26.16
2	2020 FBC	TA	02.15.21



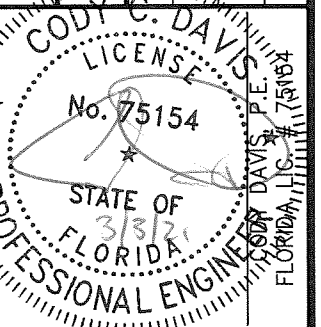
DATE:	02.26.16	DWN BY:	GRN	CHK BY:	CCD	SCALE:	NTS
DWG #:		QEP004		SHEET: 3 OF 16			

TITLE: STOREFRONT SYSTEM (LMT)
LOUVER ELEVATION
& DETAILS

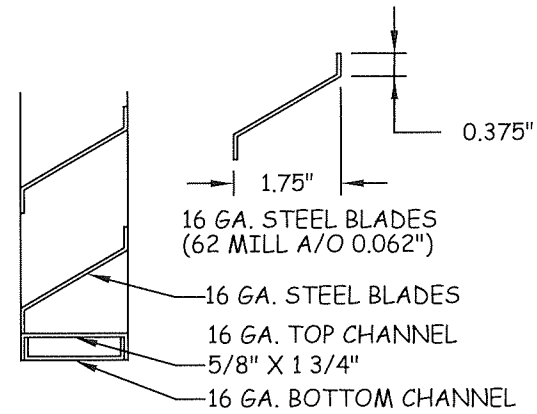
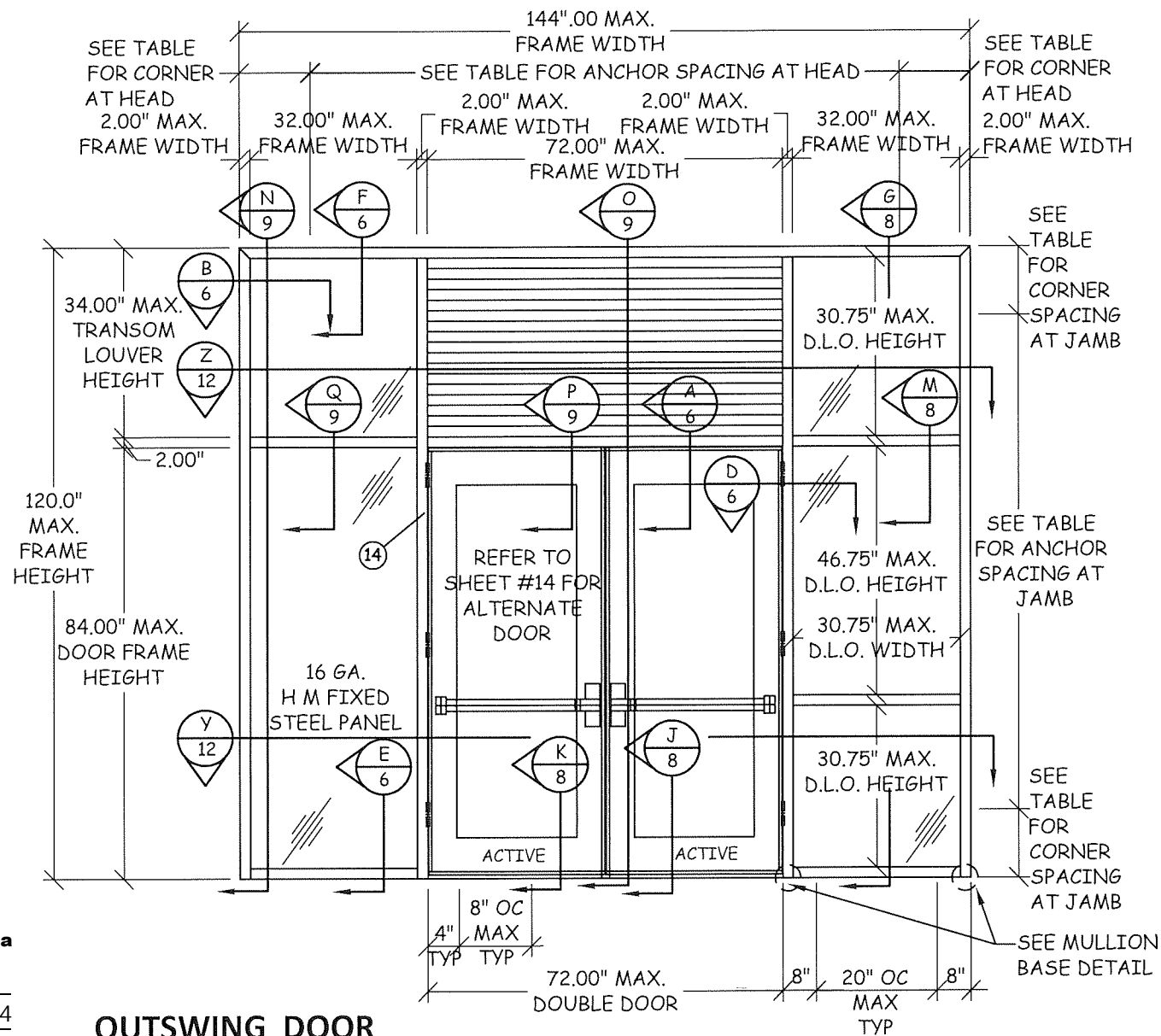
PREPARED FOR:
QUALITY ENGINEERED PRODUCTS
4506 QUALITY LN.
TAMPA, FL 33634
PH: 813.885.1693 FX: 813.884.2673

REVISIONS

NO.	DESCRIPTION	BY	DATE
1	2014 FBC	CD	02.26.16
2	2020 FBC	TA	02.15.21



DATE:	02.26.16	DWN BY:	GRN	CHK BY:	CCD	SCALE:	NTS
DWG #:	QEP004						
SHEET:	4 OF 16						



VERTICAL SECTION

LOUVER INSERT
WELDED TO FRAME

Anchor and Spacing Table

ANCHOR	SUBSTRATE	MAX SPACING		JAMB		HEAD	
		JAMB	HEAD	NUMBER OF ANCHORS	MAX CORNER SPACING	NUMBER OF ANCHORS	MAX CORNER SPACING
DYNABOLT	CMU	18"	20"	7 TOTAL	8"	8 TOTAL	8"
SCREW	STEEL	12"	12"	11	6"	13	6"

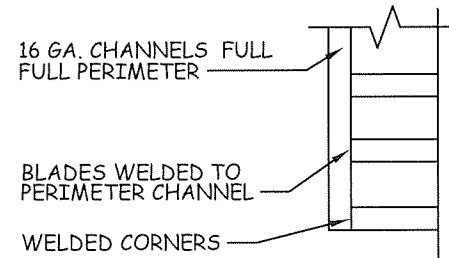
DESIGN PRESSURE RATING (STOREFRONT SYSTEM)			
	WHERE AIR & WATER INFILTRATION REQUIREMENTS IS NEEDED	WHERE AIR & WATER INFILTRATION REQUIREMENTS IS NOT NEEDED	MISSILE IMPACT RATING
POSITIVE	NOT APPROVED	+60 PSF	LARGE & SMALL MISSILE IMPACT RATED
NEGATIVE	NOT APPROVED	-60 PSF	LARGE & SMALL MISSILE IMPACT RATED

PRODUCT REVISED
as complying with the Florida
Building Code
NOA-No. 20-1123.19

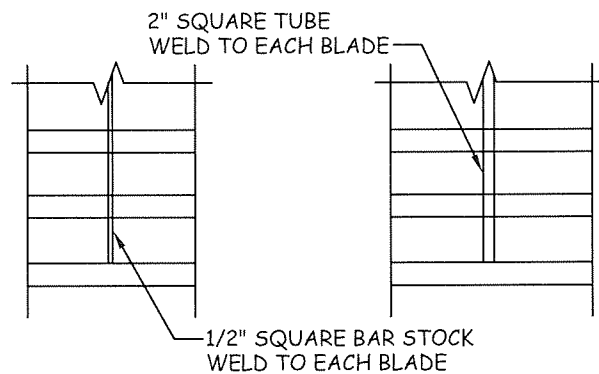
Expiration Date 08/27/2024

By Ishag I. Chande
Miami-Dade Product Control

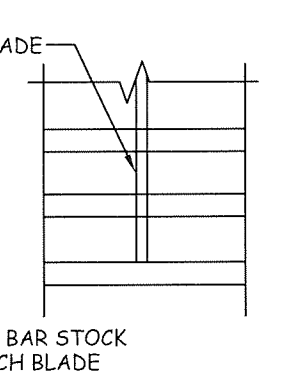
OUTSWING DOOR (INTERIOR VIEW)



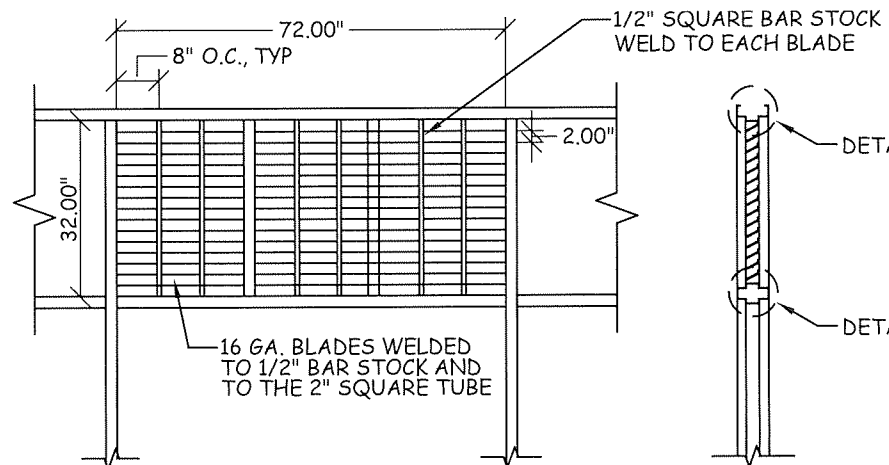
LOUVER INSERT
CORNER DETAIL



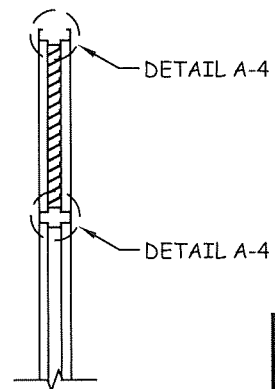
LOUVER INSERT
DETAIL AT
1/2" BAR STOCK



LOUVER INSERT
DETAIL AT
2" SQUARE TUBE



TRANSOM LOUVER INSERT
WELDED TO FRAME

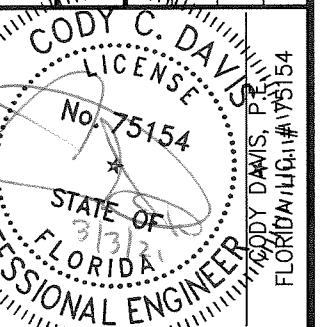


LOUVER SECTION

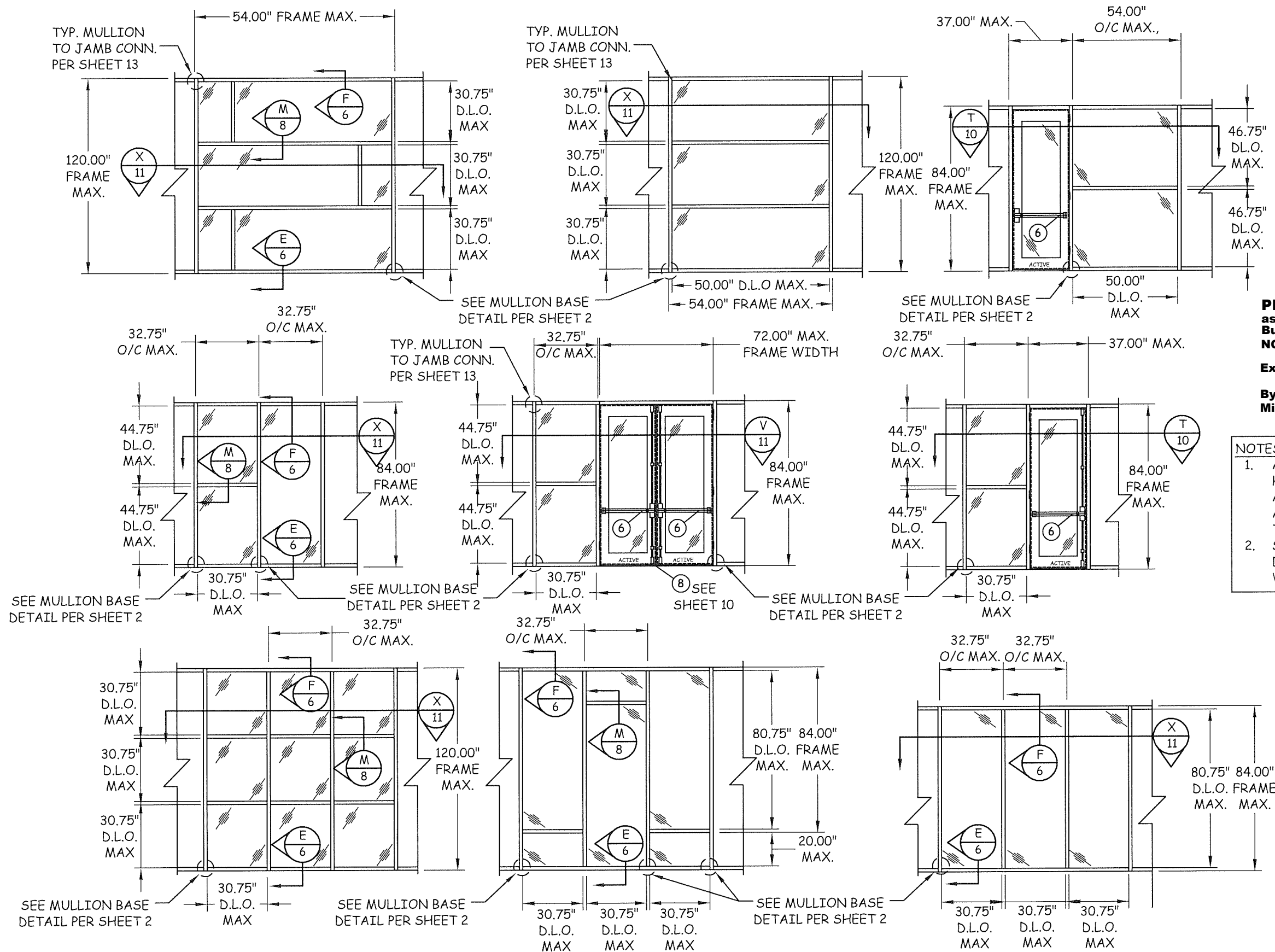
TITLE: STOREFRONT SYSTEM (LMT)
CONFIGURATIONS
PREPARED FOR: QUALITY ENGINEERED PRODUCTS
4506 QUALITY LN.
TAMPA, FL 33634
PH: 813.885.1693 FX: 813.884.2673

REVISIONS

NO.	DESCRIPTION	BY	DATE
1	2014 FBC	CD	02.26.16
2	2020 FBC	TA	02.15.21



DATE: 02.26.16
DWN BY: GRN
CHK BY: CCD
SCALE: NTS
DWG #: QEP004
SHEET: 5 OF 16



PRODUCT REVISED
as complying with the Florida
Building Code
NOA-No. 20-1123.19

Expiration Date 08/27/2024

By Ishag I. Chande
Miami-Dade Product Control

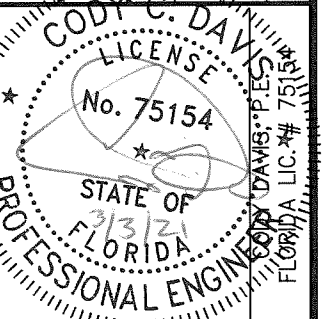
- NOTES:
- ANCHOR SPACING AT HEAD AND SILL TYP. FOR ALL CONDITIONS. SEE ANCHOR AND SPACING TABLE.
 - SEE MULLION BASE DETAIL 2, TYP. AT EACH VERTICAL MULLION.

TITLE: STOREFRONT SYSTEM (LMT)
VERTICAL & HORIZONTAL
SECTIONS & GLZ DETAILS

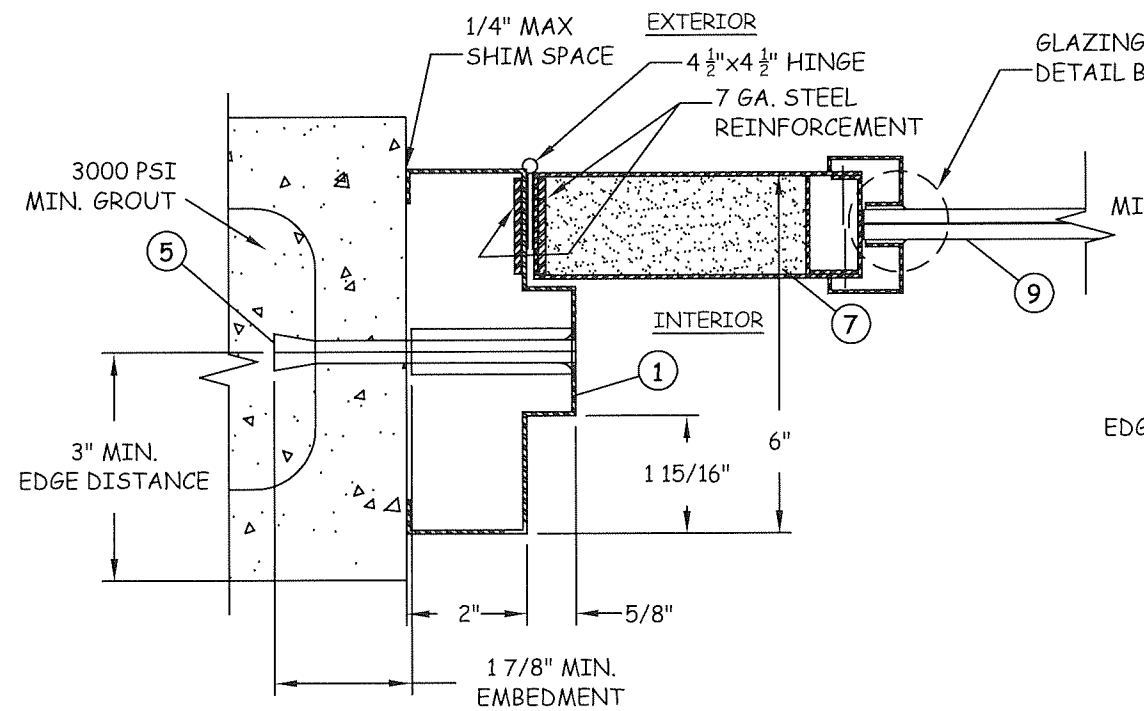
PREPARED FOR:
QUALITY ENGINEERED PRODUCTS
4506 QUALITY LN.
TAMPA, FL 33634
PH: 813.885.1693 FX: 813.884.2673

REVISIONS

NO.	DESCRIPTION	BY	DATE
1		CD	02.26.16
2		TA	02.15.21

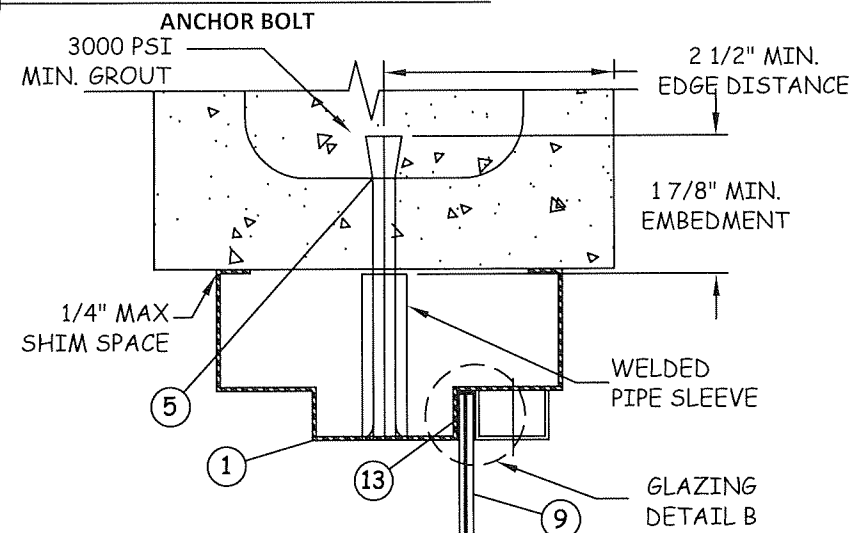


DATE:	02.26.16	DWN BY:	GRN	CHK BY:	CCD	SCALE:	NTS
DWG #:	QEP004						
SHEET:	6 OF 16						



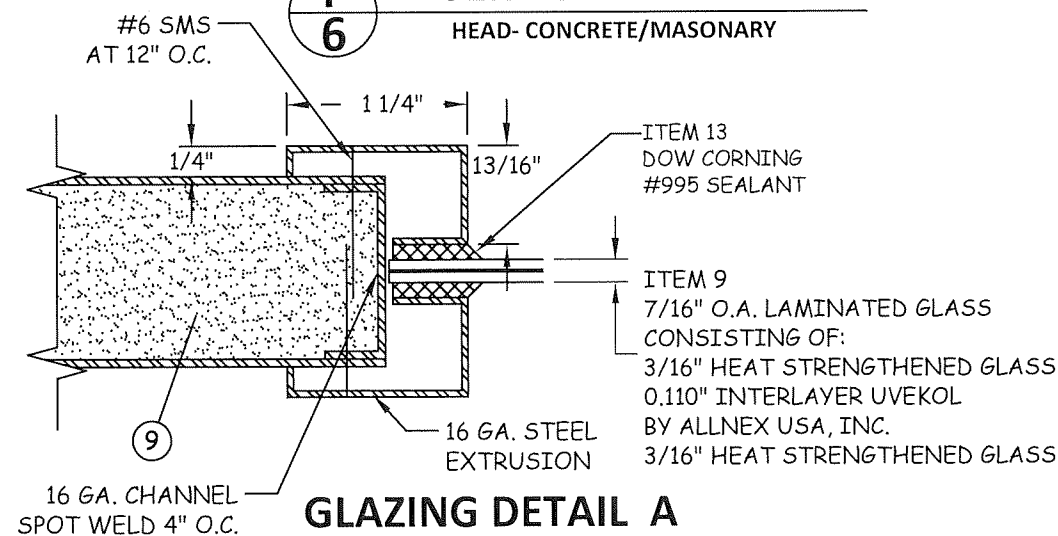
C
6

FRAME JAMB

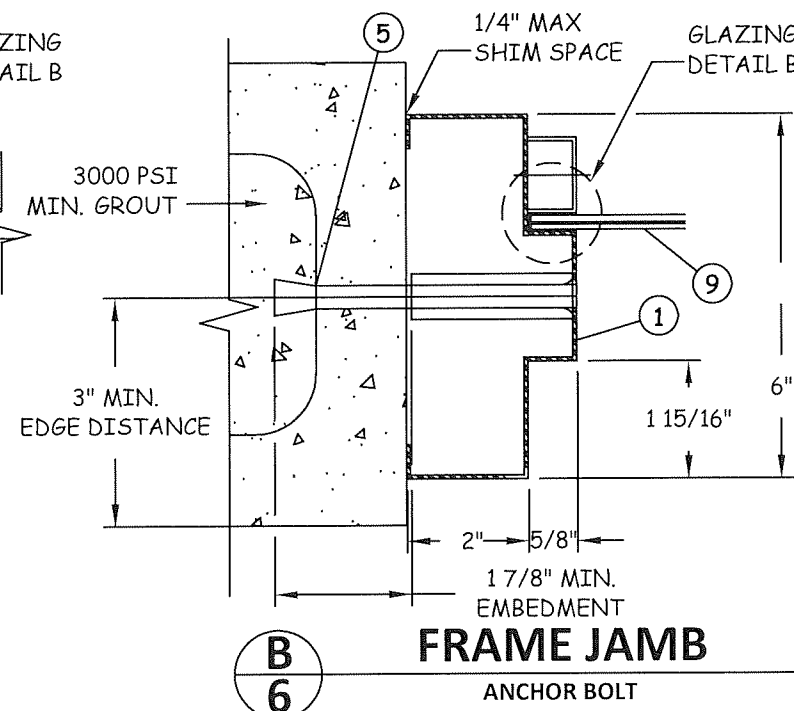


F
6

VERTICAL SECTION HEAD- CONCRETE/MASONARY



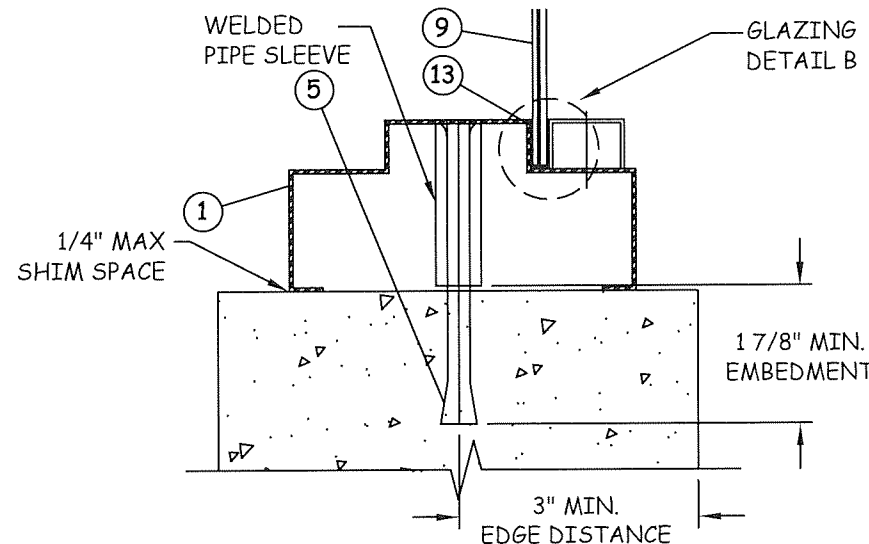
GLAZING DETAIL A



B
6

FRAME JAMB

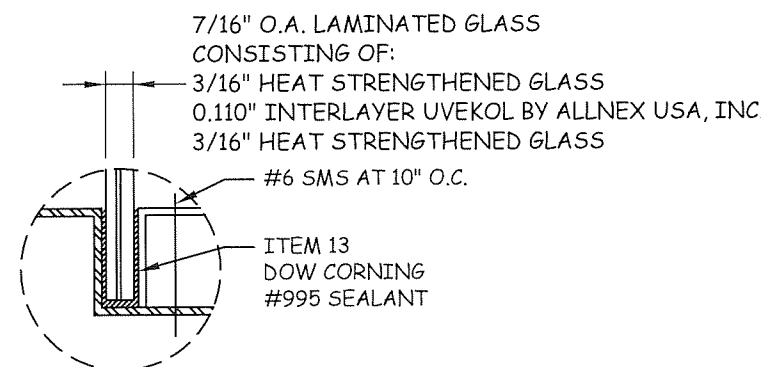
ANCHOR BOLT



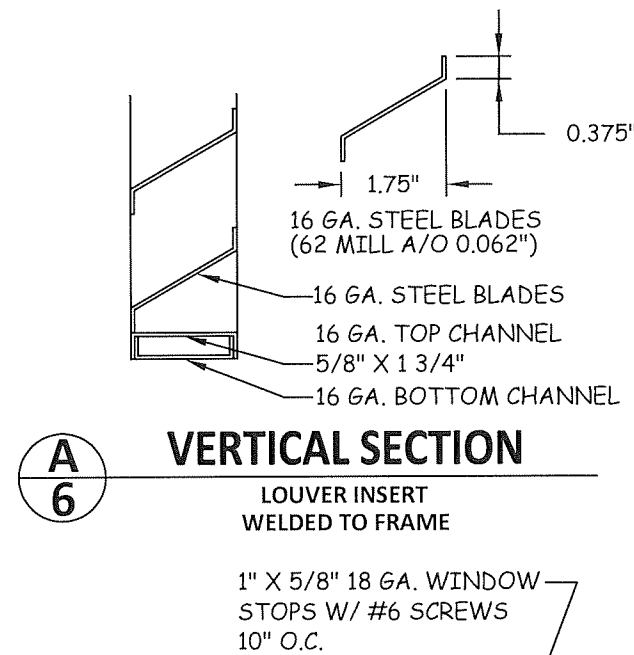
E
6

VERTICAL SECTION

SILL- CONCRETE/MASONARY



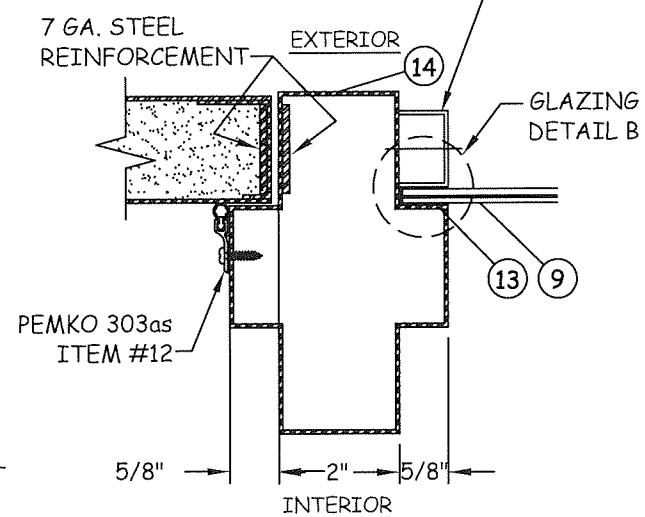
GLAZING DETAIL B



A
6

VERTICAL SECTION

LOUVER INSERT
WELDED TO FRAME



D
6

MULLION

STRIKE JAMB (SINGLE OUTSWING DOORS)
HINGE JAMB (PAIR OUTSWING DOORS)

PRODUCT REVISED
as complying with the Florida
Building Code
NOA-No. 20-1123.19

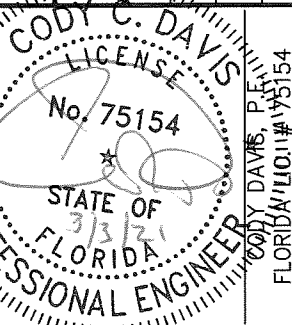
Expiration Date 08/27/2024

By Ishag I. Chank
Miami-Dade Product Control

TITLE: STOREFRONT SYSTEM (LMT)
DOOR &
FRAME REINFORCEMENTS
PREPARED FOR: QUALITY ENGINEERED PRODUCTS
4506 QUALITY LN.
TAMPA, FL 33634
PH: 813.885.1693 FX: 813.884.2673

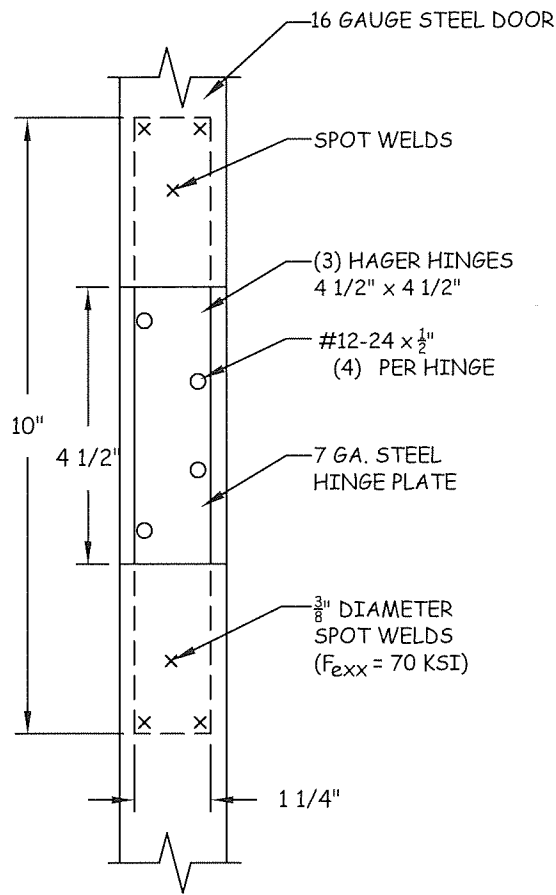
REVISIONS

DESCRIPTION	BY	DATE
2014 FBC	CD	02.26.16
2020 FBC	TA	02.15.21

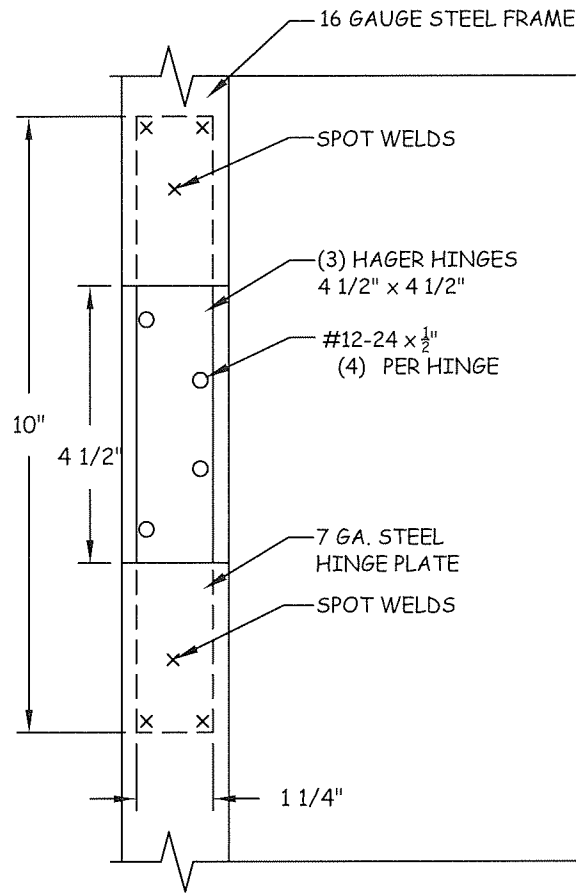


DATE: 02.26.16	DWN BY: GRN	CHK BY: CCD	SCALE: NTS
----------------	-------------	-------------	------------

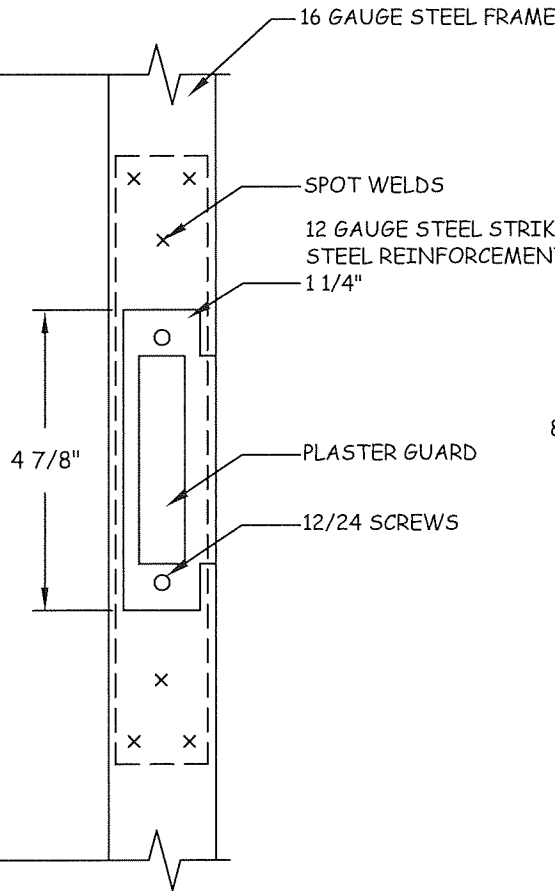
DWG #: QEP004
SHEET: 7 OF 16



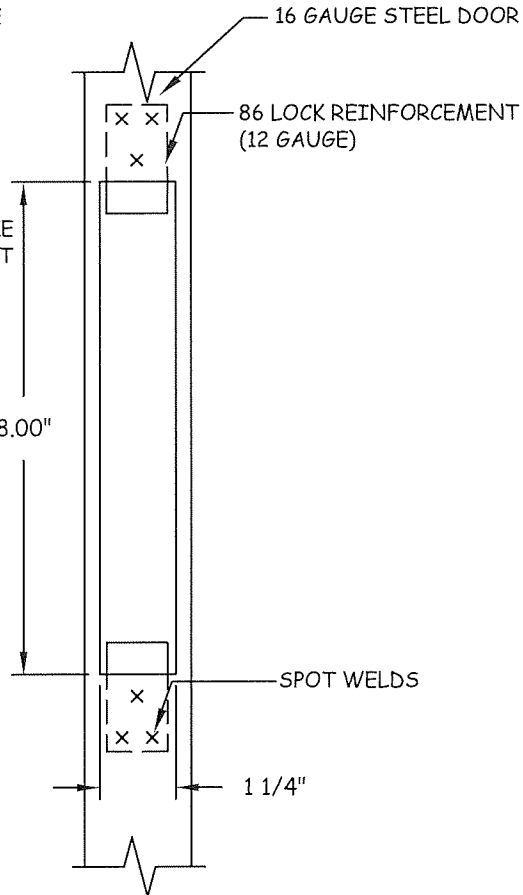
DOOR HINGE STEEL
REINFORCEMENT



DOOR HINGE STEEL
REINFORCEMENT

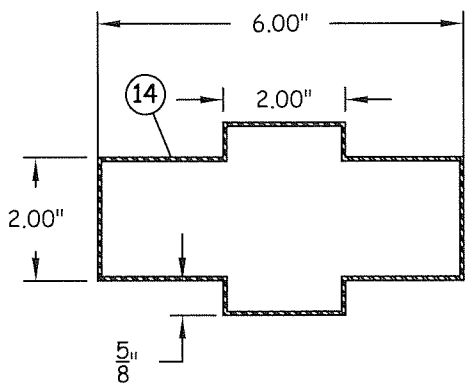


DOOR STRIKE STEEL
REINFORCEMENT

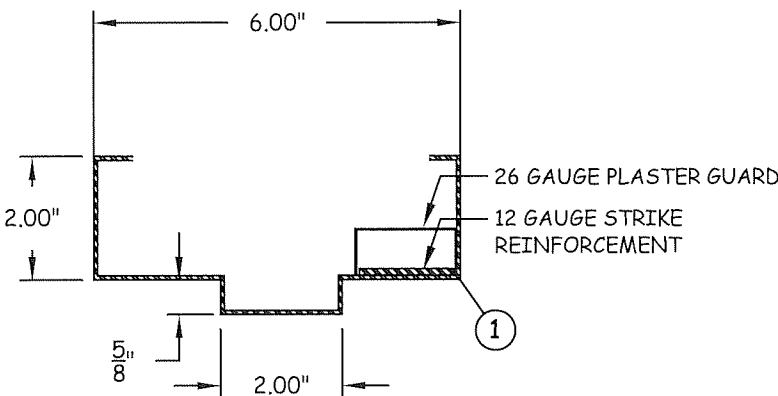


DOOR LOCK STEEL
REINFORCEMENT

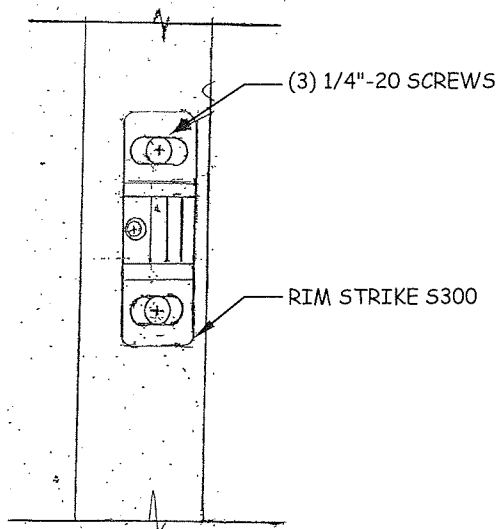
DETAIL A



16 GA. HORIZONTAL &
VERTICAL MULLION



PLASTER GUARD
W/ 16 GA. JAMB



PRECISION 822
REMOVABLE MULLION

PRODUCT REVISED
as complying with the Florida
Building Code
NOA-No. 20-1123.19
Expiration Date 08/27/2024
By Ishag I. Chandra
Miami-Dade Product Control

TITLE: STOREFRONT SYSTEM (LMI)

VERTICAL SECTIONS

PREPARED FOR:

QUALITY ENGINEERED PRODUCTS
4506 QUALITY LN.
TAMPA, FL 33634

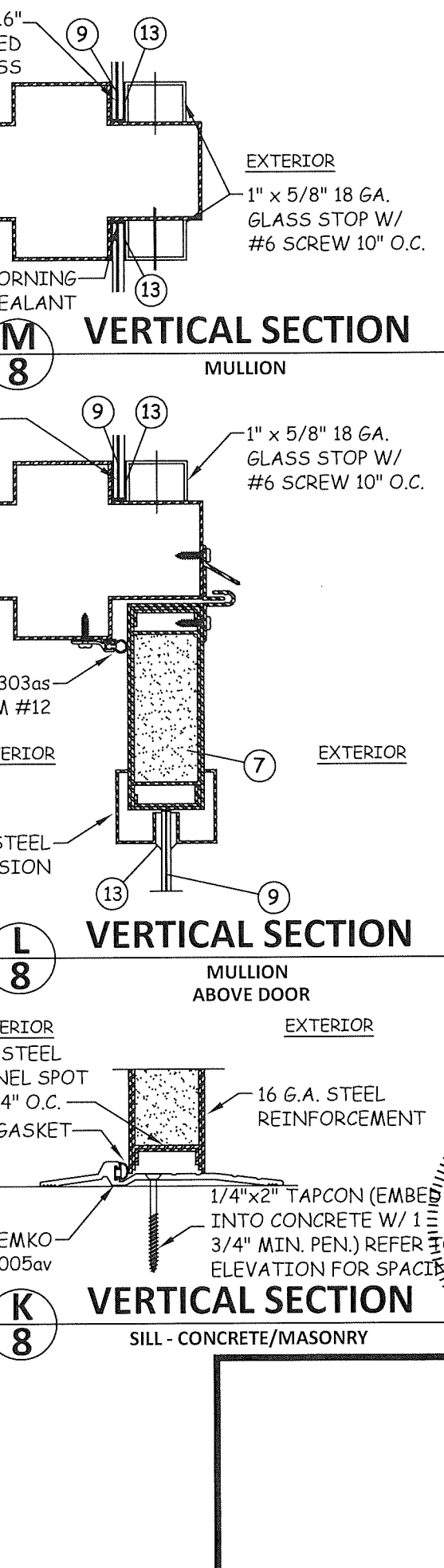
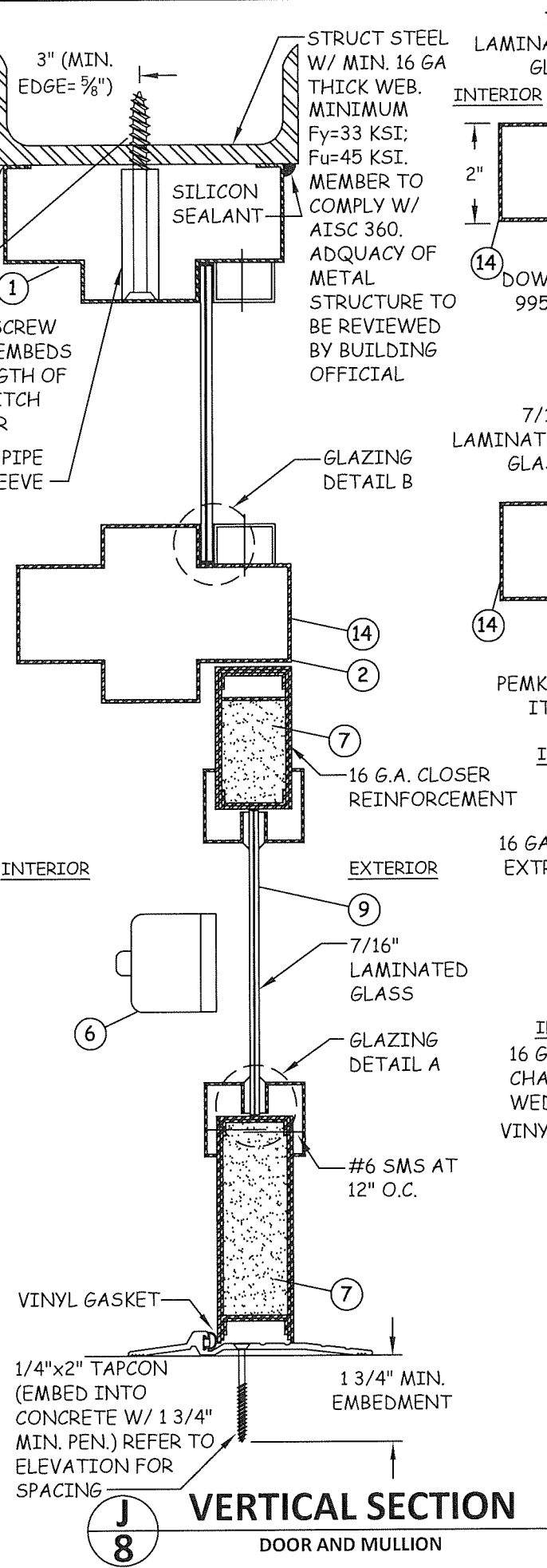
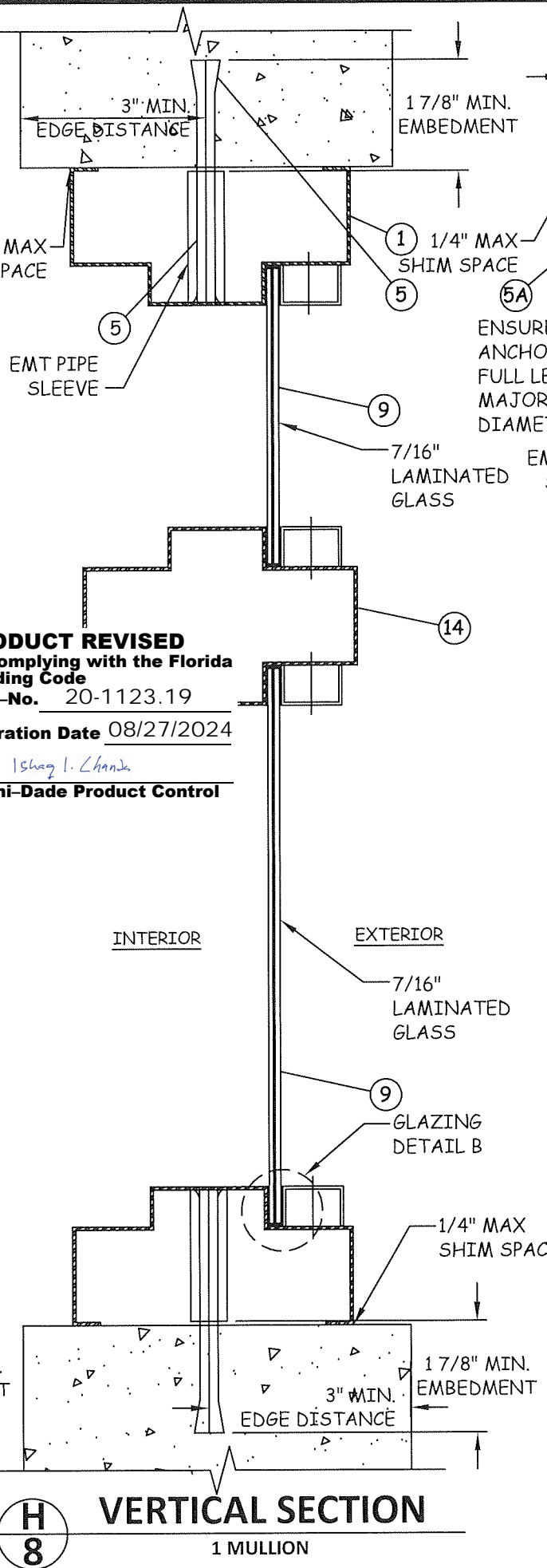
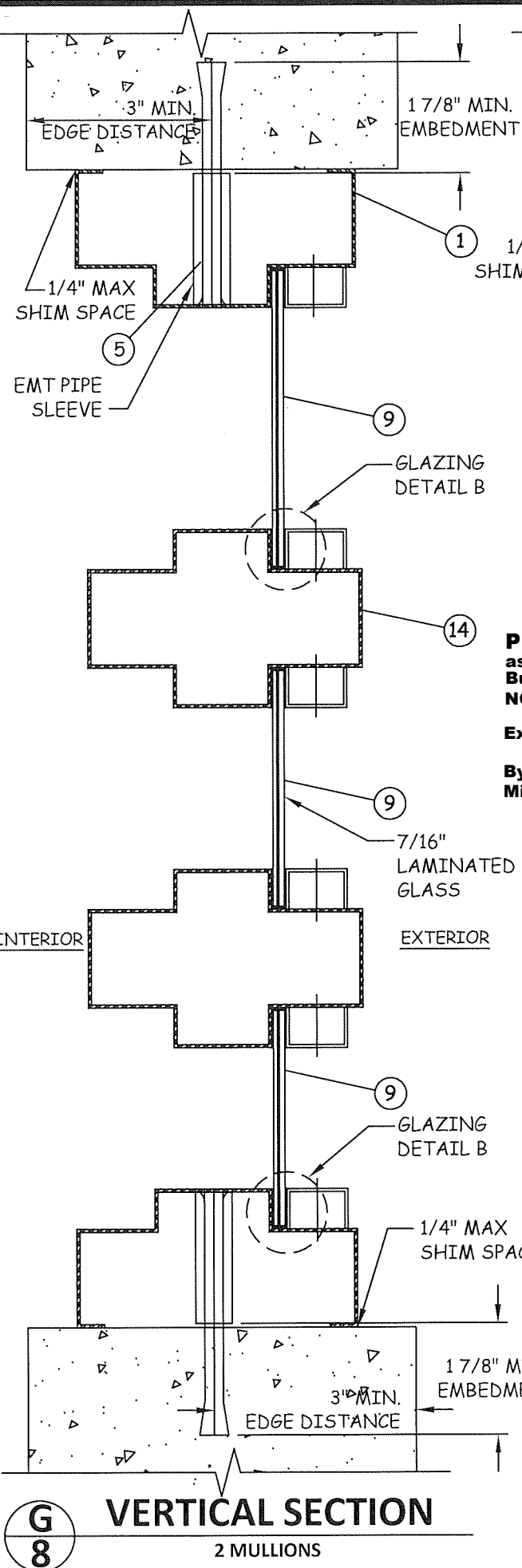
PH: 813.885.1693 FX: 813.884.2673

REVISIONS

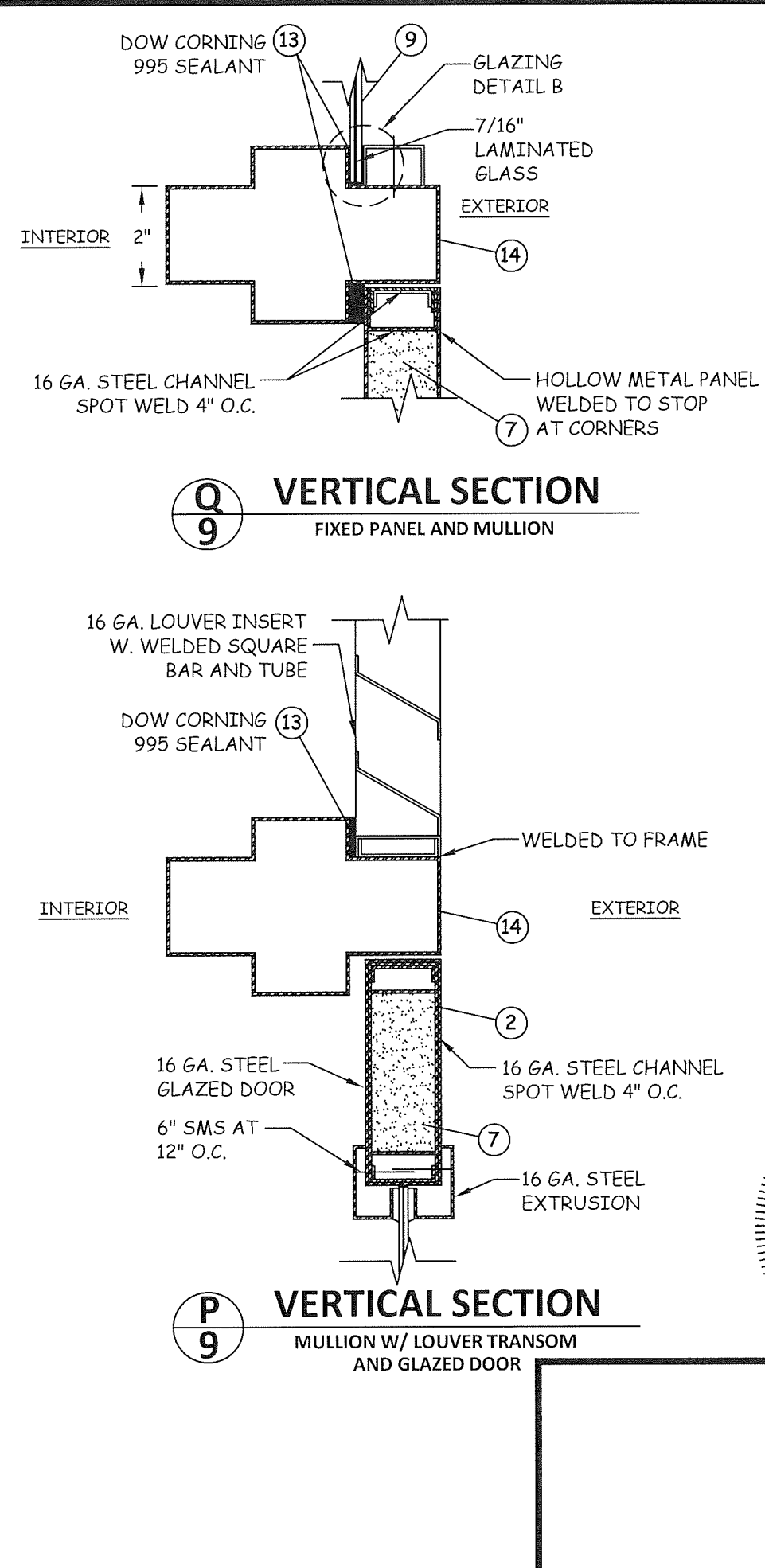
NO.	DESCRIPTION	BY	DATE
1	2014 FBC	CD	02.26.16
2	2020 FBC	TA	02.15.21

CODY C. DAVIS
LICENSE
No. 75154
STATE OF
FLORIDA
PROFESSIONAL ENGINEER
CODY DAVIS, P.E.
FLORIDA #175154

DATE: 02.26.16
DWN BY: GRN
CHK BY: CCD
SCALE: NTS
DWG #: QEP004
SHEET: 8 OF 16



PRODUCT REVISED
as complying with the Florida
Building Code
NOA-No. 20-1123.19
Expiration Date 08/27/2024
By *Ishag I. Chande*
Miami-Dade Product Control



Quality
Engineered
Products Co., Inc.

TITLE:
STOREFRONT SYSTEM (LMI)

VERTICAL SECTIONS

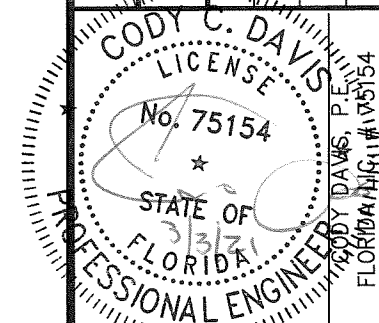
PREPARED FOR:

QUALITY ENGINEERED PRODUCTS
4506 QUALITY LN.

TAMPA, FL 33634

PH: 813.885.1693 FX: 813.884.2673

REVISONS			
NO.	DESCRIPTION	BY	DATE
1	2014 FBC	CD	02.26.16
2	2020 FBC	TA	02.15.21

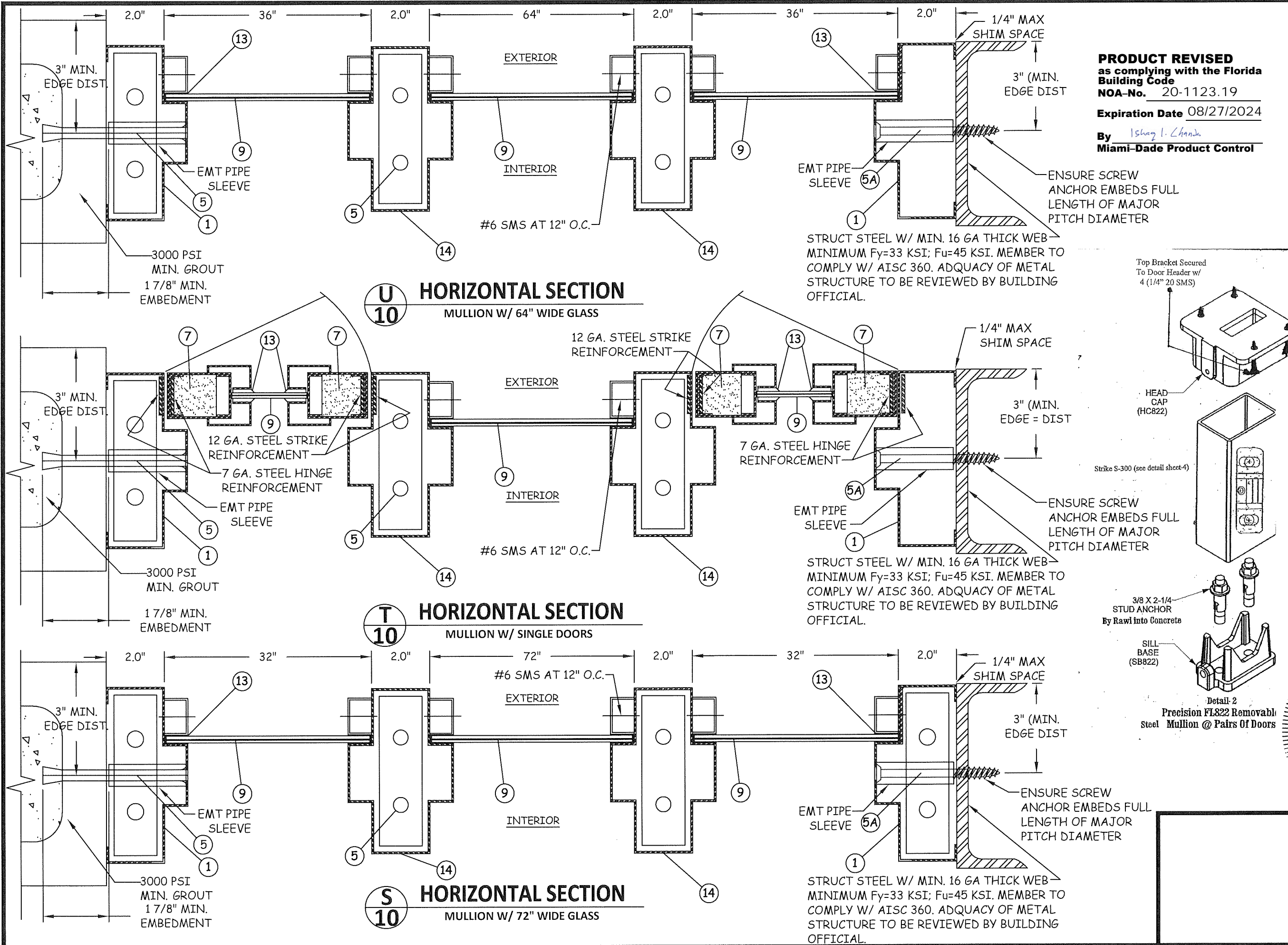


DATE:	02.26.16
DOWN BY:	GRN
CHK BY:	CCD
SCALE:	NTS

DWG #:

QEP004

SHEET: 9 OF 16



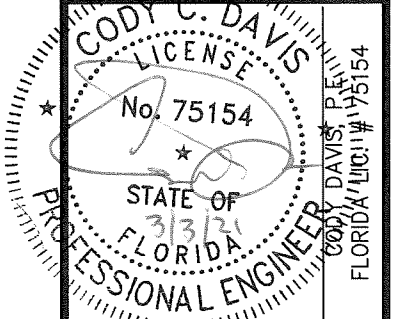
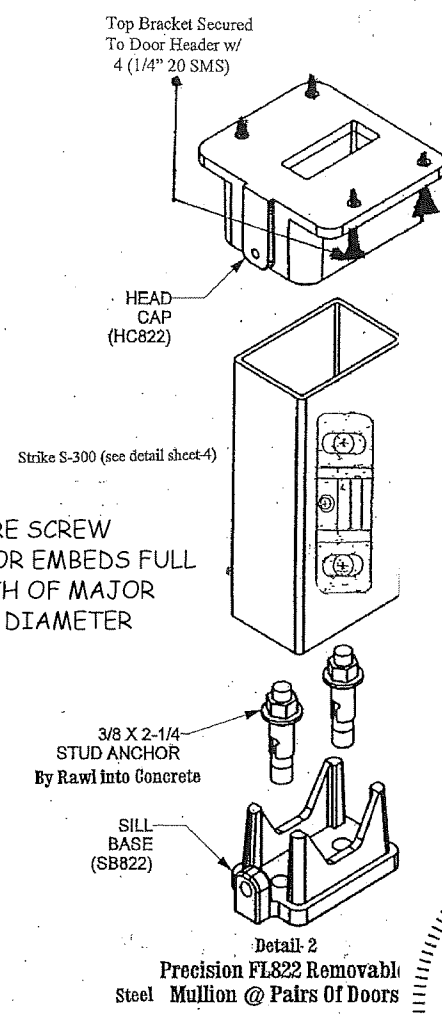
PRODUCT REVISED
as complying with the Florida
Building Code
NOA-No. 20-1123.19
Expiration Date 08/27/2024
By *Ishay L. Chank*
Miami-Dade Product Control

Quality
Engineered
Products Co., Inc.

TITLE: STOREFRONT SYSTEM (LMI)
HORIZONTAL SECTIONS
& DETAILS

PREPARED FOR:
QUALITY ENGINEERED PRODUCTS
4506 QUALITY LN.
TAMPA, FL 33634
PH: 813.885.1693 FX: 813.884.2673

REVISIONS	NO.	DESCRIPTION	BY	DATE
	1	2014 FBC	CD	02.26.16
	2	2020 FBC	TA	02.15.21



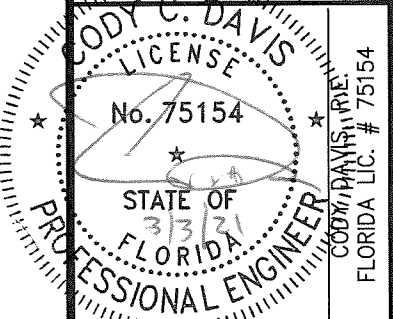
DATE: 02.26.16	DWN BY: GRN	CHK BY: CCD	SCALE: NTS
DWG #: QEP004			
SHEET: 10 OF 16			

TITLE: STOREFRONT SYSTEM (LMT)	HORIZONTAL SECTIONS	
	PREPARED FOR:	QUALITY ENGINEERED PRODUCTS 4506 QUALITY LN. TAMPA, FL 33634
	PH:	813.885.1693
	FX:	813.884.2673

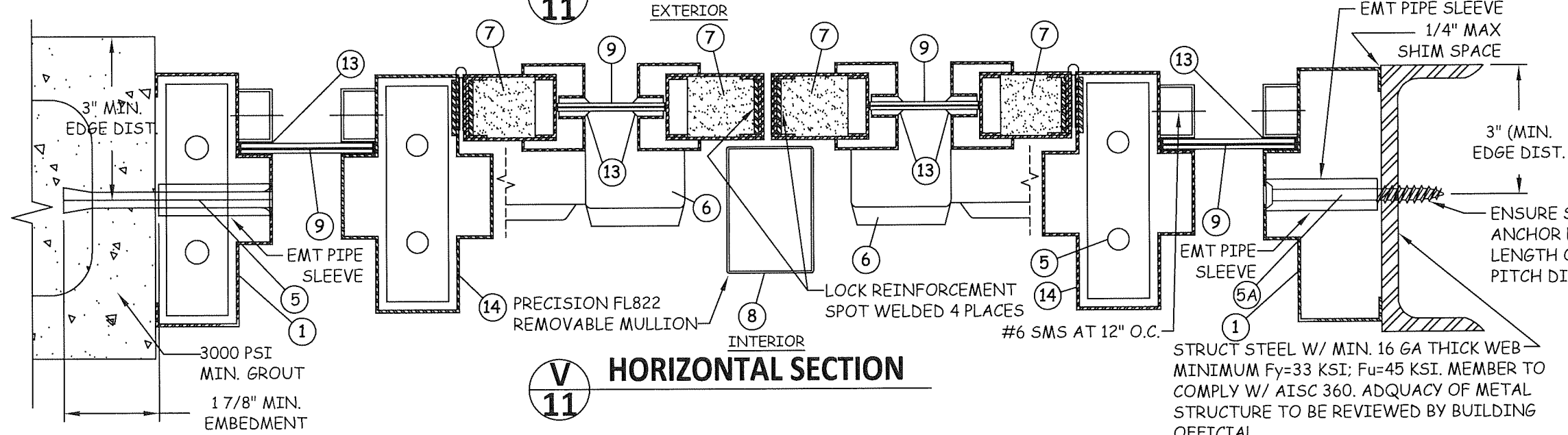
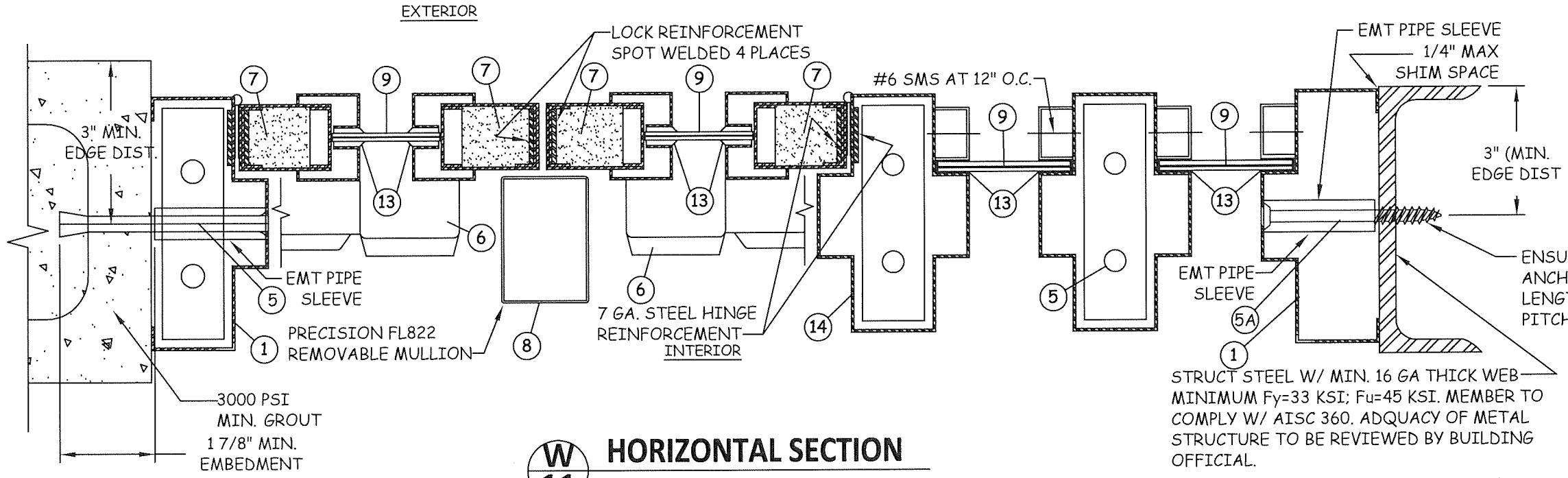
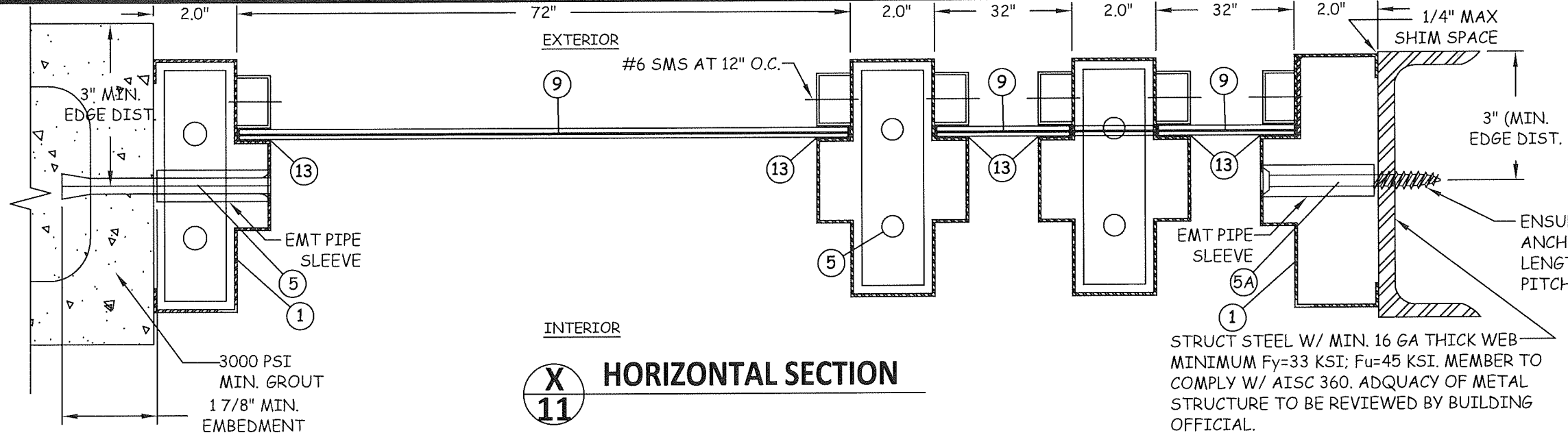
PRODUCT REVISED
as complying with the Florida
Building Code
NOA-No. 20-1123.19
Expiration Date 08/27/2024
By Ishag I. Chande
Miami-Dade Product Control

REVISIONS

DESCRIPTION	BY	DATE
2014 FBC	CD	02.26.16
2020 FBC	TA	02.15.21



DATE:	02.26.16
DWN BY:	GRN
CHK BY:	CCD
SCALE:	NTS
DWG #:	QEP004
SHEET:	11 OF 16

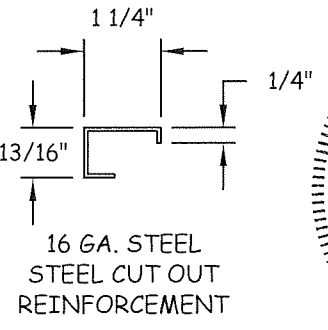
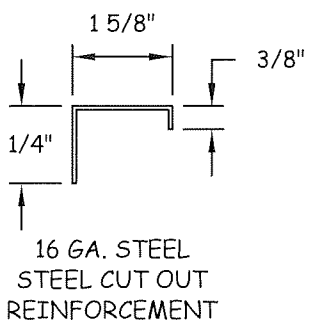
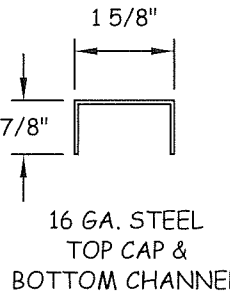
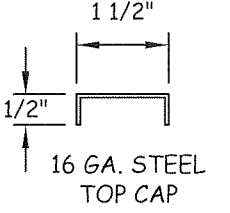
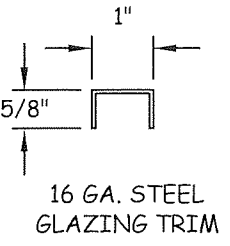
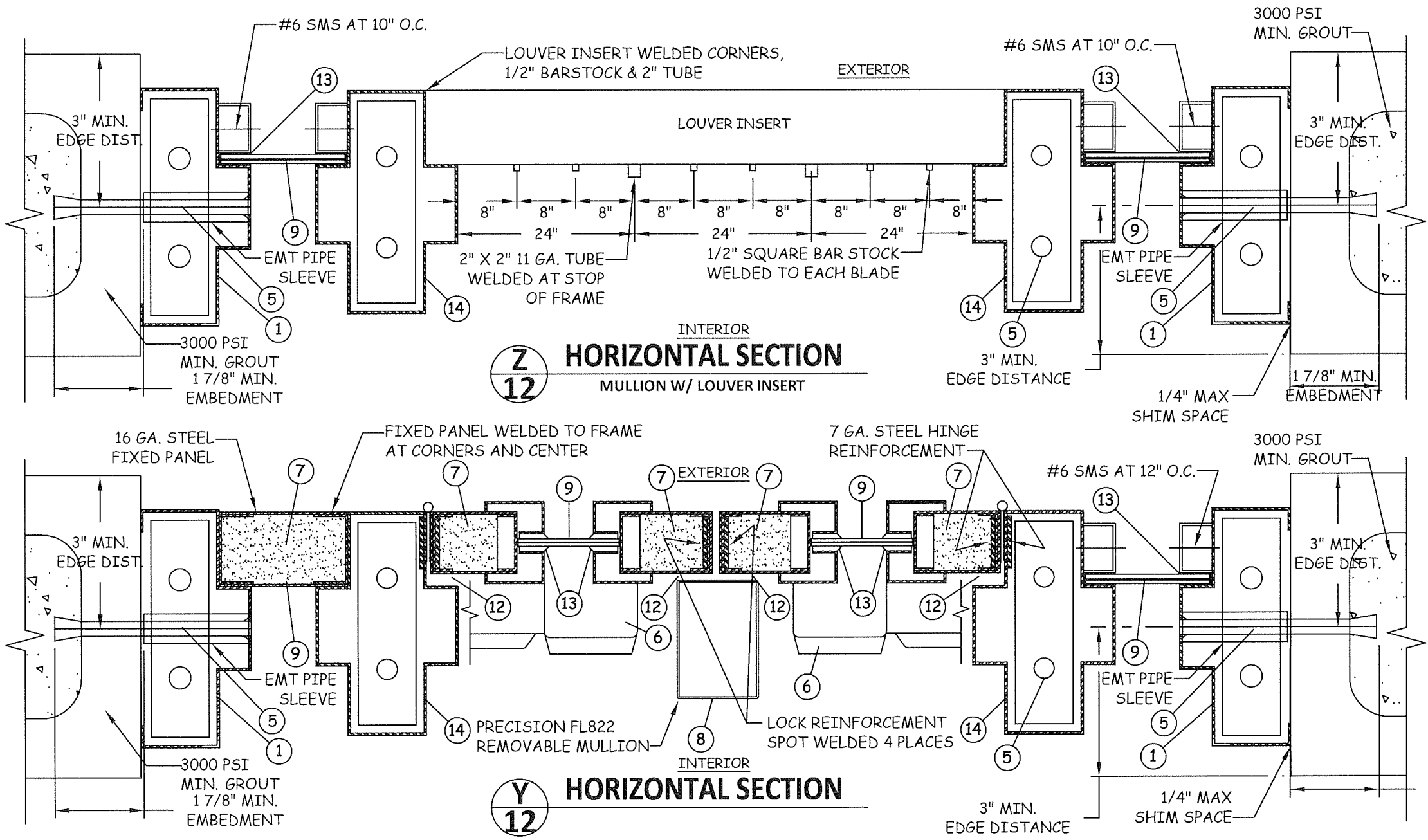


PRODUCT REVISED
as complying with the Florida
Building Code
NOA-No. 20-1123.19

Expiration Date 08/27/2024

By Ishaq I. Chande
Miami-Dade Product Control

BILL OF MATERIALS		
MARK	QUANTITY	DESCRIPTION
1	1	16 GA. (.063") MIN. (14 GA. MAX.) STEEL HOLLOW METAL FRAME
2	2	16 GA. (.063") MIN. (14 GA. MAX.) STEEL HOLLOW METAL DOOR
3	6	HAGER HINGES BB1279 4 1/2" x 0.134"
4	1	PEMCO 2005AV THRESHOLD
5	SEE ELEV.	1/2" DIA. DYNABOLT ITW/REDHEAD SLEEVE ANCHOR (3/8" DIA. BOLT) X 4-1/2" SLEEVE ANCHOR W/ 3/4" DIA. WELDED PIPE SLEEVE W/ 1-7/8" MIN. EMBEDMENT & 3" MIN. EDGE DISTANCE
5A	SEE ELEV.	3/8"Ø SCREW THRU EMT PIPE SLEEVE CONFORMING TO SAE GRADE 2 OR EQUAL
6	2	RIM EXIT DEVICE- PRECISION FL2100 W/ FL822 REMOVABLE MULLION (DOUBLE DOORS)
7	AS REQ.	EPS POLYSTYRENE FOAM CORE BY DYPLAST PRODUCTS W/ CURRENT NOA
8	1	PRECISION 822/KR822 REMOVABLE MULLION (DOUBLE DOORS)
9	AS REQ.	7/16" LAMINATED GLASS (3/16" HEAT STRENGTHENED GLASS - 0.110" UVEKOL INTERLAYER BY CYTEC, LAMINATED BY WEST TAMPA GLASS 3/16" HEAT STRENGTHED GLASS) OR OLDCASTLE STORMGLASS W/ SAFEX INTERLAYER
10	1	PEMCO 347A TOP DRIP
11	2	PEMCO 68A DOOR TOP WEATHERSTRIP
12	3	PEMCO 303AS WEATHERSTRIP
13	AS REQ.	DOW CORNING #995 STRUCTURAL SILICONE SEALANT
14	AS REQ.	16 GA. (.063") MIN. (14 GA. MAX.) STEEL HORIZONTAL & VERTICAL MULLION

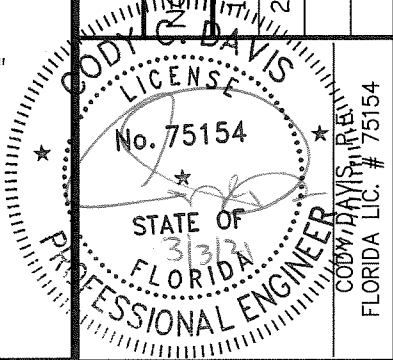


Quality
Engineered
Products Co., Inc.

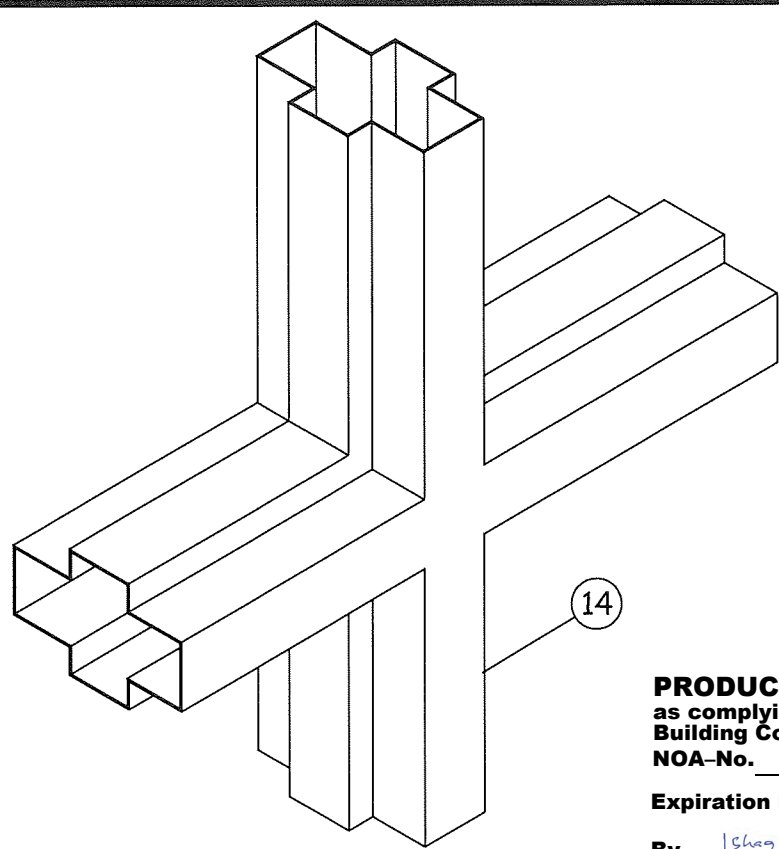
TITLE: STOREFRONT SYSTEM (LMT)
HORIZONTAL SECTIONS,
BILL OF MATERIALS & DETAILS
PREPARED FOR: QUALITY ENGINEERED PRODUCTS
4506 QUALITY LN.
TAMPA, FL 33634
PH: 813.885.1693 FX: 813.884.2673

REVISIONS

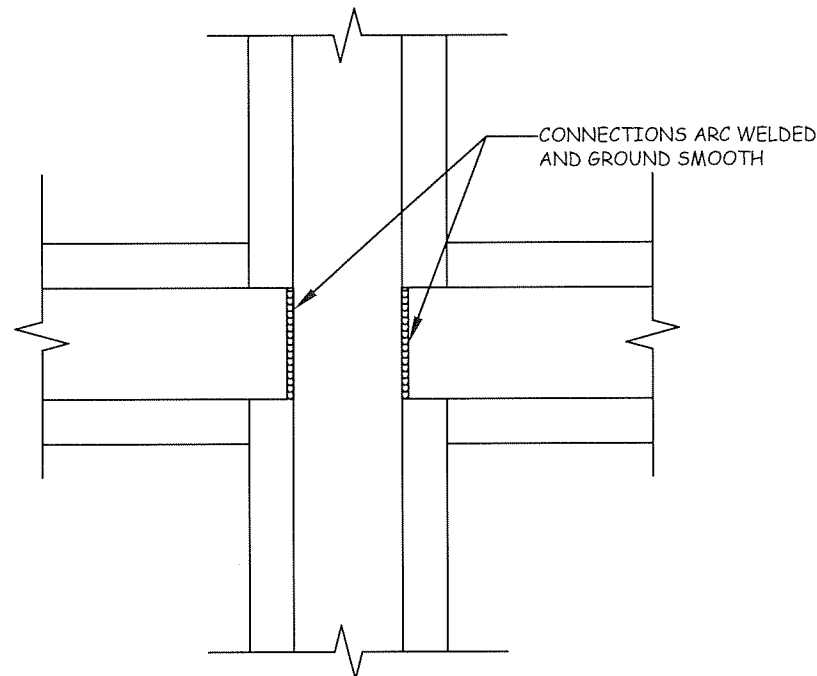
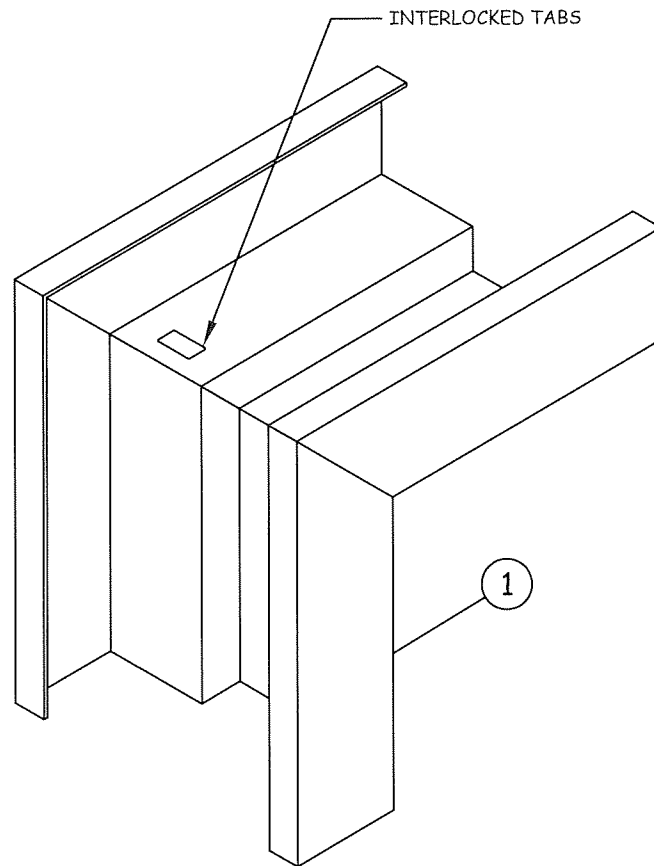
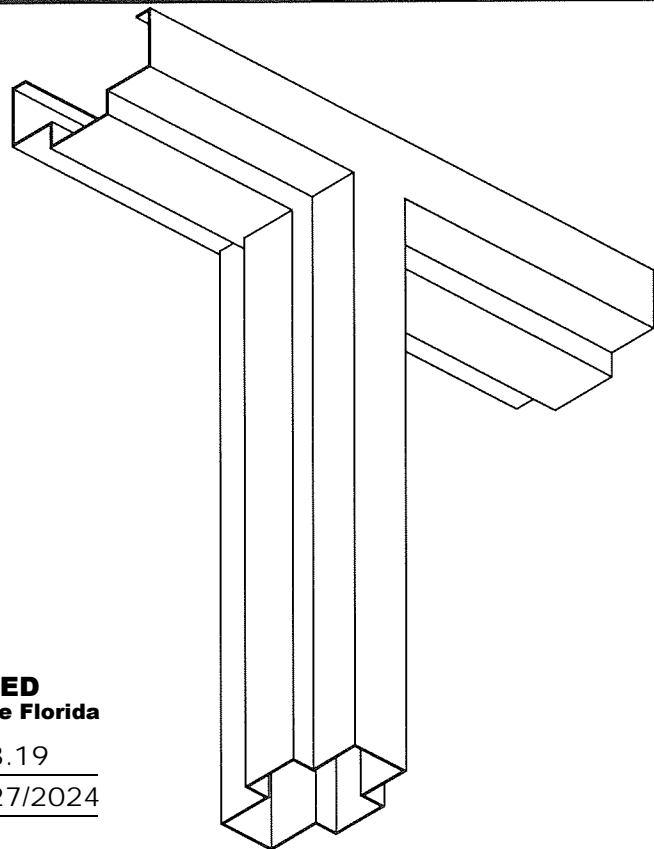
DESCRIPTION	BY	DATE
2014 FBC	CD	02.26.16
2020 FBC	TA	02.15.21



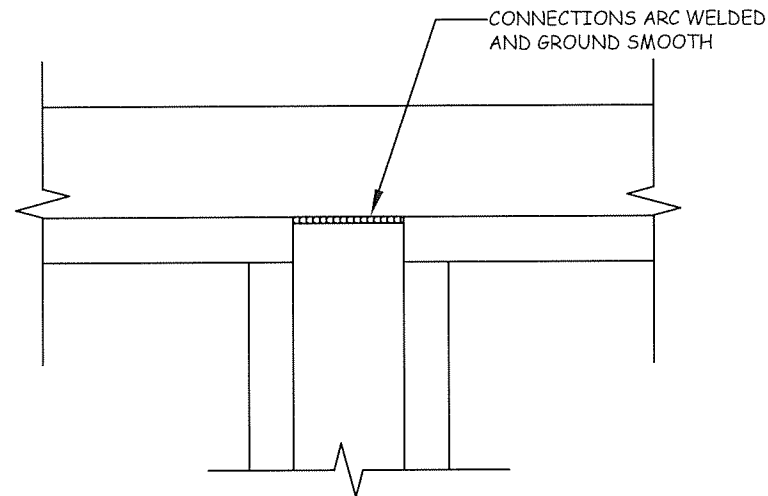
DATE: 02.26.16	DWN BY: GRN	CHK BY: CCD	SCALE: NTS
DWG #: QEP004			
SHEET: 12 OF 16			



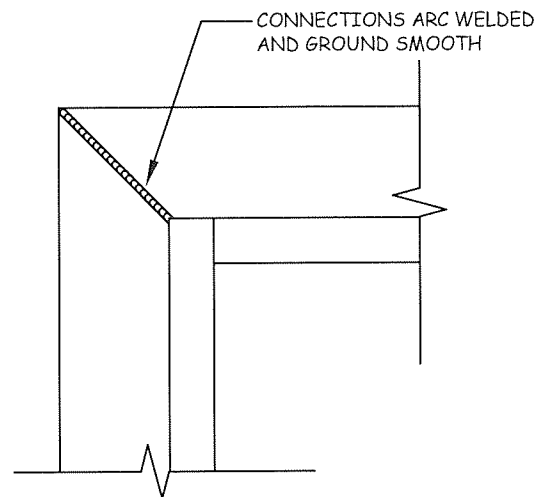
PRODUCT REVISED
as complying with the Florida
Building Code
NOA-No. 20-1123.19
Expiration Date 08/27/2024
By Ishag I. Chande
Miami-Dade Product Control



TYPICAL MULLION
TO MULLION
CONNECTION



TYPICAL MULLION
TO JAMB
CONNECTION



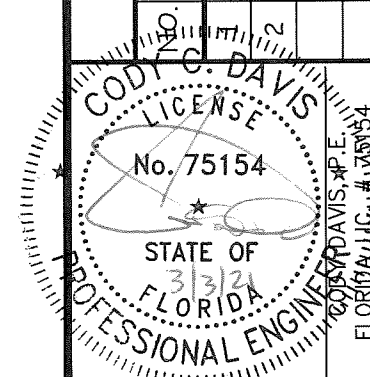
TYPICAL CORNER
CONNECTION

Quality
Engineered
Products Co., Inc.

TITLE: STOREFRONT SYSTEM (LMI)
ISO-METRIC VIEWS
PREPARED FOR:
QUALITY ENGINEERED PRODUCTS
4506 QUALITY LN.
TAMPA, FL 33634
PH: 813.885.1693 FX: 813.884.2673

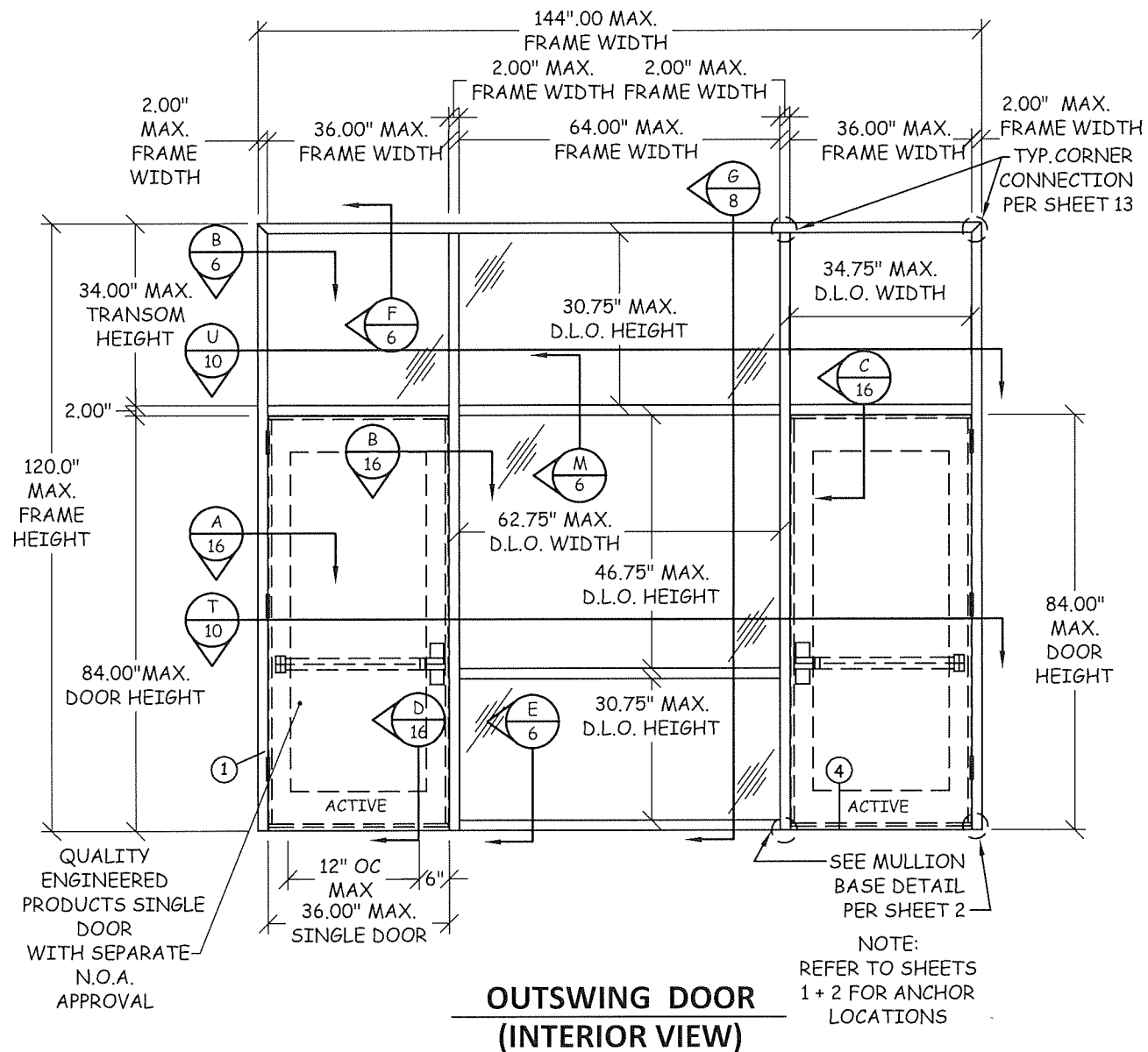
REVISIONS

DESCRIPTION	BY	DATE
2014 FBC	CD	02.26.16
2020 FBC	TA	02.15.21



DATE: 02.26.16	DWN BY: GRN	CHK BY: CCD	SCALE: NTS
-------------------	----------------	----------------	---------------

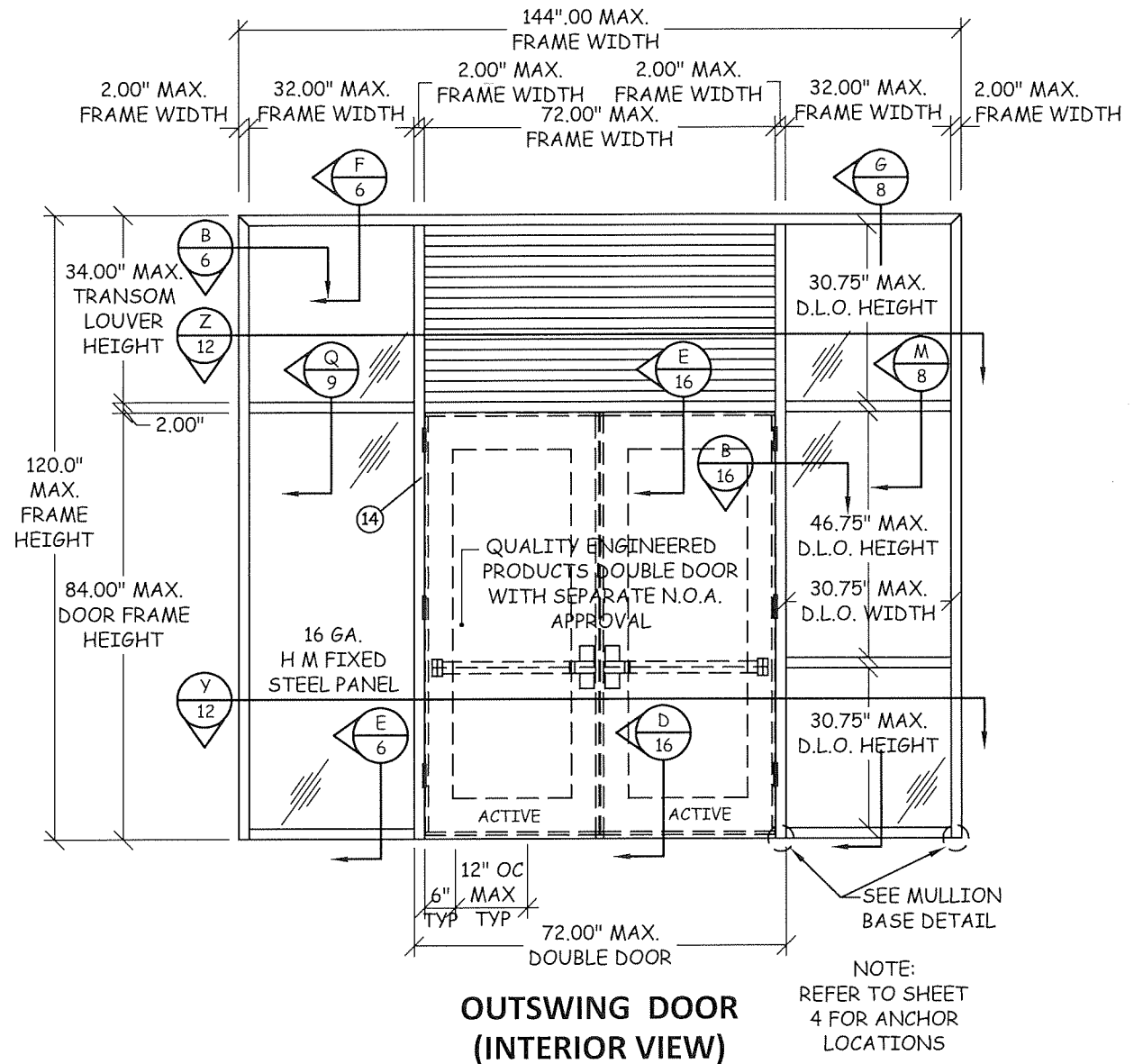
DWG #:
QEP004
SHEET: **13** OF 16



OUTSWING DOOR
(INTERIOR VIEW)

PRODUCT REVISED
as complying with the Florida
Building Code
NOA-No. 20-1123.19
Expiration Date 08/27/2024
By Ishag I. Chandra
Miami-Dade Product Control

NOTE:
LOWER DESIGN PRESSURE OF
ALTERNATE DOOR AND
STOREFRONT SHALL
APPLY TO THE ENTIRE
SYSTEM. ALSO, ANY
LIMITATIONS OF THE
ALTERNATE DOOR WILL
ALSO APPLY TO THE
ENTIRE SYSTEM



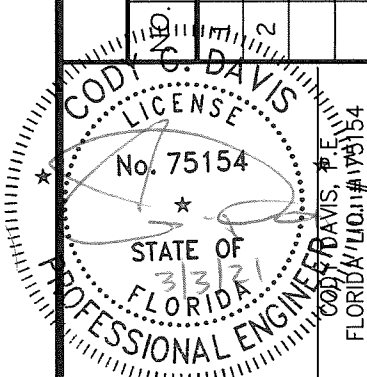
OUTSWING DOOR
(INTERIOR VIEW)

TITLE: STOREFRONT SYSTEM (LMI)
LOUVER ELEVATION
& DETAILS

PREPARED FOR:
QUALITY ENGINEERED PRODUCTS
4506 QUALITY LN.
TAMPA, FL 33634
PH: 813.885.1693 FX: 813.884.2673

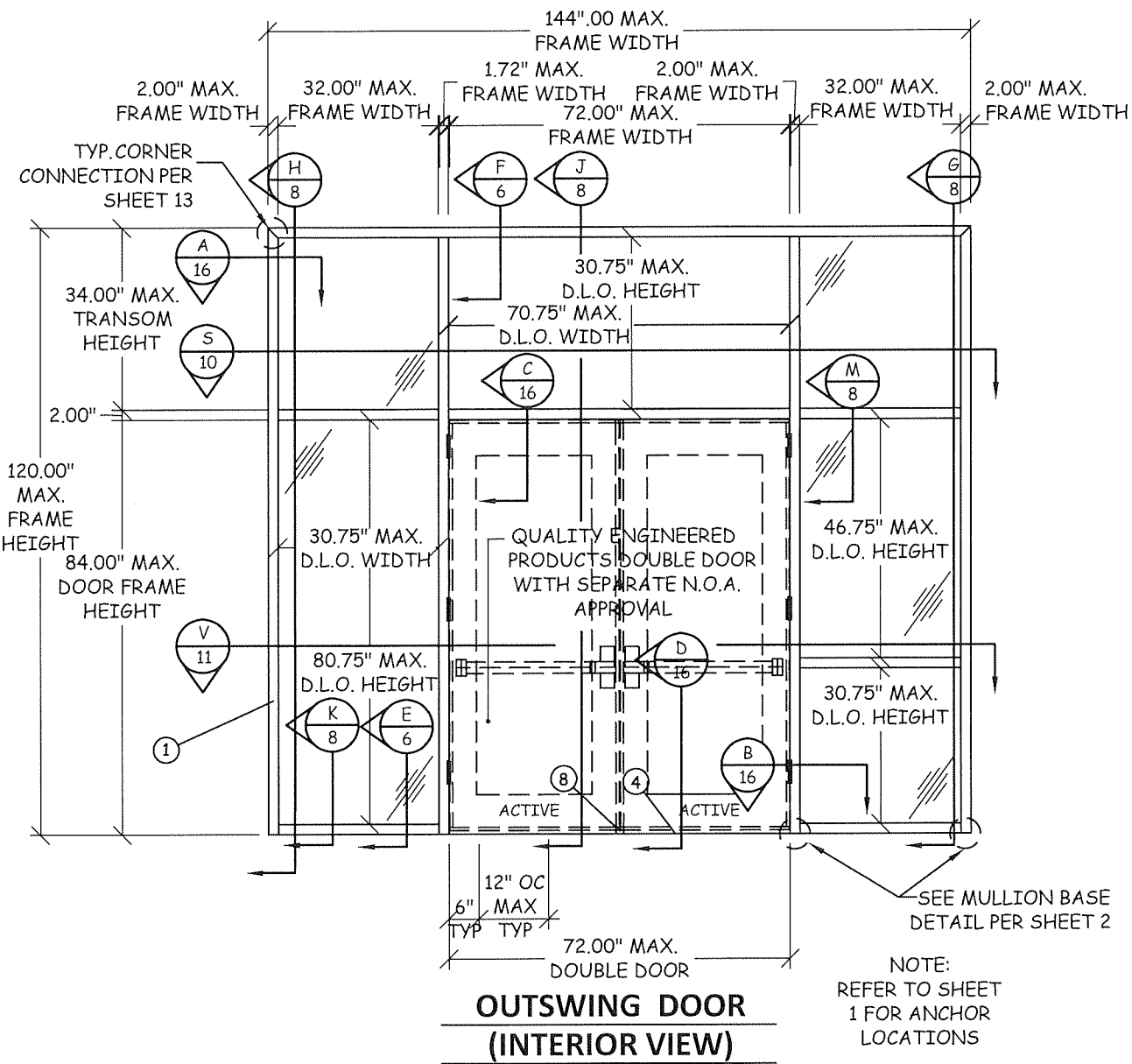
REVISIONS

DESCRIPTION	BY	DATE
2014 FBC	CD	02.26.16
2020 FBC	TA	02.15.21



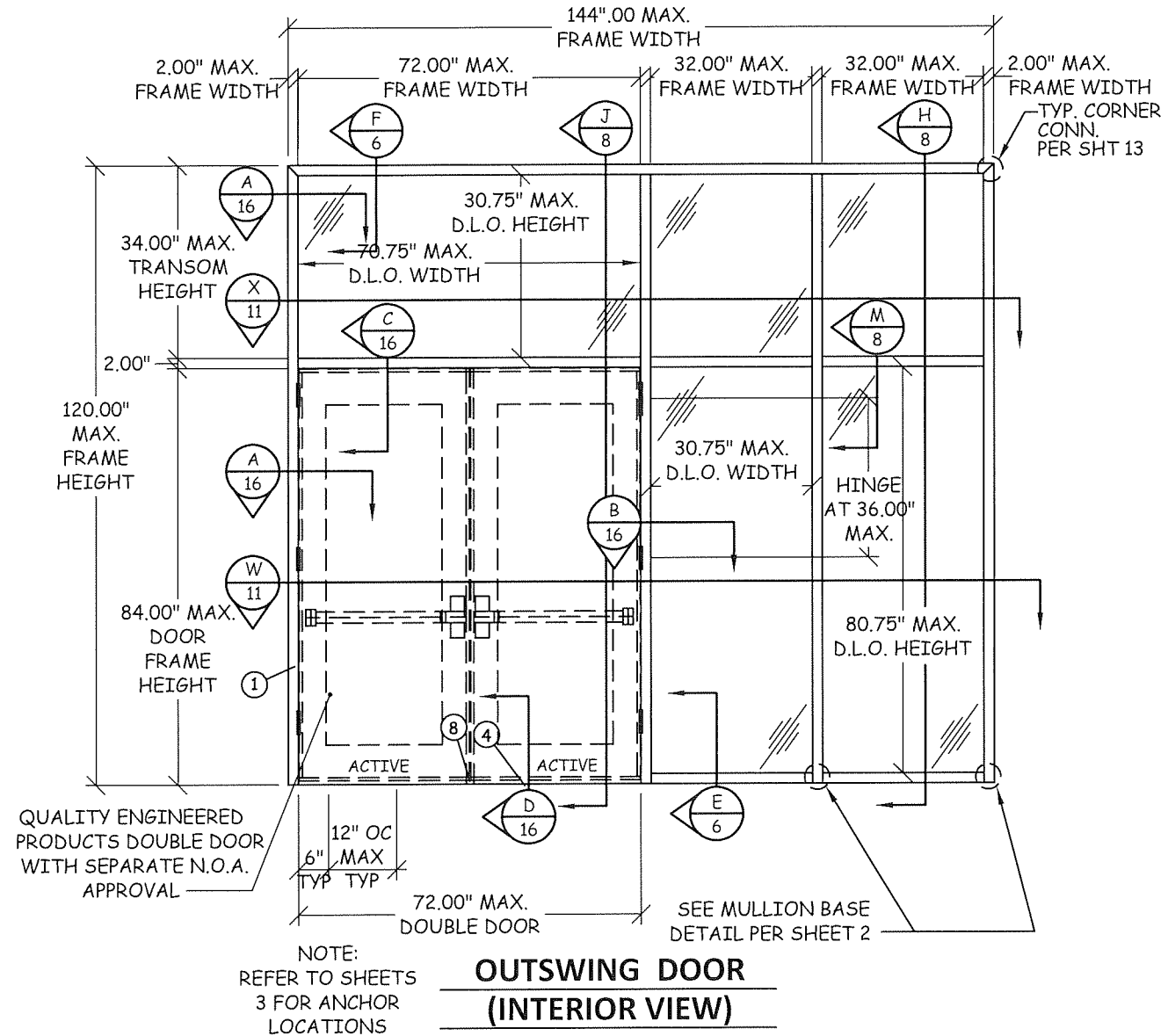
DATE:	02.26.16
DWN BY:	GRN
CHK BY:	CCD
SCALE:	NTS

DWG #:
QEP004
SHEET: 14 OF 16



PRODUCT REVISED
as complying with the Florida
Building Code
NOA-No. 20-1123.19
Expiration Date 08/27/2024
By Ishaq I. Chande
Miami-Dade Product Control

NOTE:
LOWER DESIGN PRESSURE OF
ALTERNATE DOOR AND
STOREFRONT SHALL
APPLY TO THE ENTIRE
SYSTEM. ALSO, ANY
LIMITATIONS OF THE
ALTERNATE DOOR WILL
ALSO APPLY TO THE
ENTIRE SYSTEM

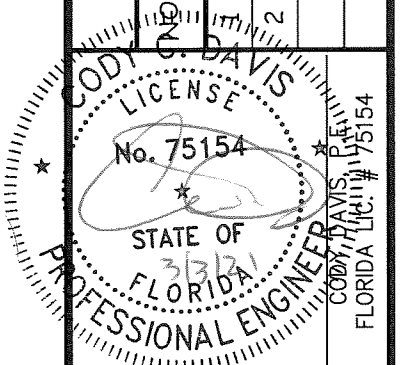


TITLE: STOREFRONT SYSTEM (LMI)
LOUVER ELEVATION
& DETAILS

PREPARED FOR: QUALITY ENGINEERED PRODUCTS
4506 QUALITY LN.
TAMPA, FL 33634

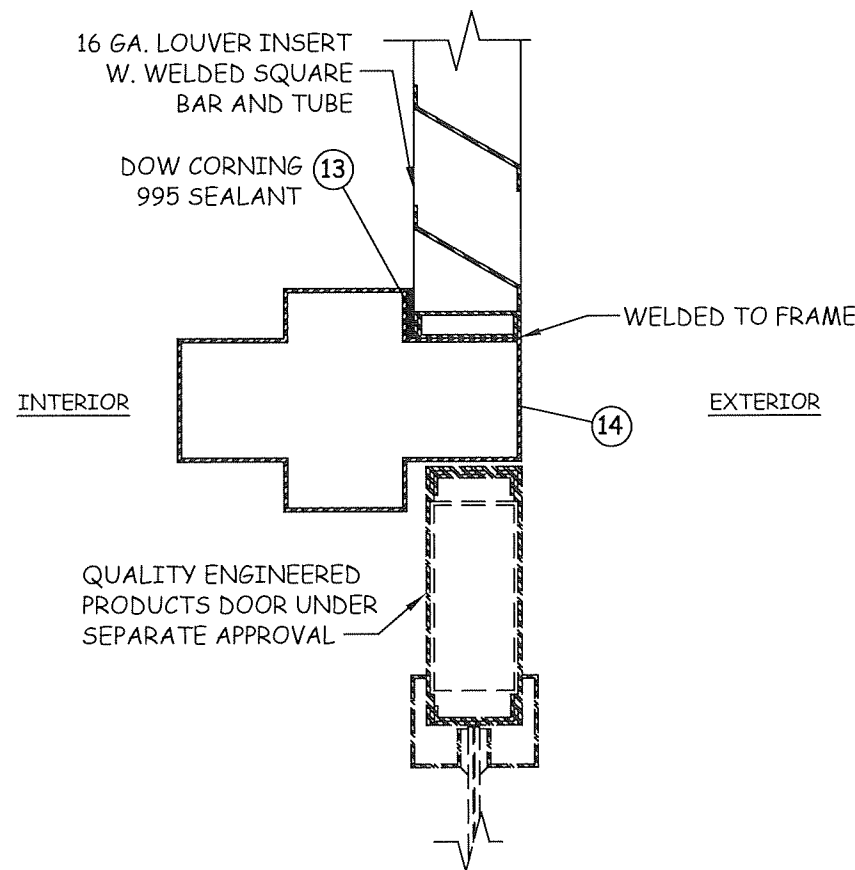
PH: 813.885.1693 FX: 813.884.2673

REVISIONS	DESCRIPTION	BY	DATE
		CD	02.26.16
	2014 FBC	TA	02.15.21
	2020 FBC		

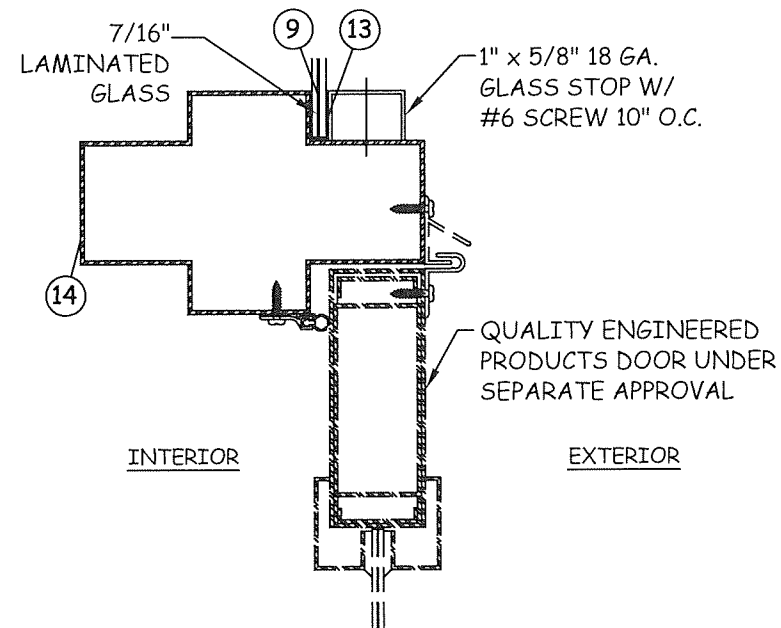


DATE: 02.26.16
DWN BY: GRN
CHK BY: CCD
SCALE: NTS

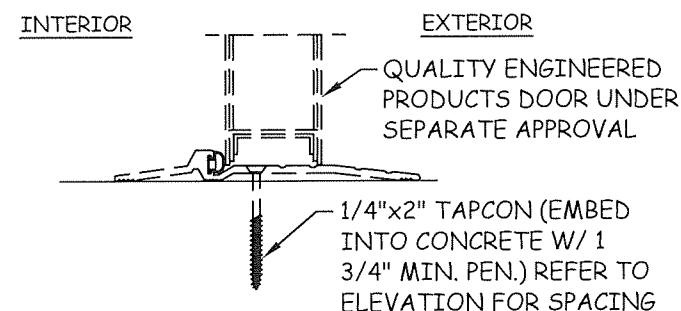
DWG #: **QEP004**
SHEET: **15 OF 16**



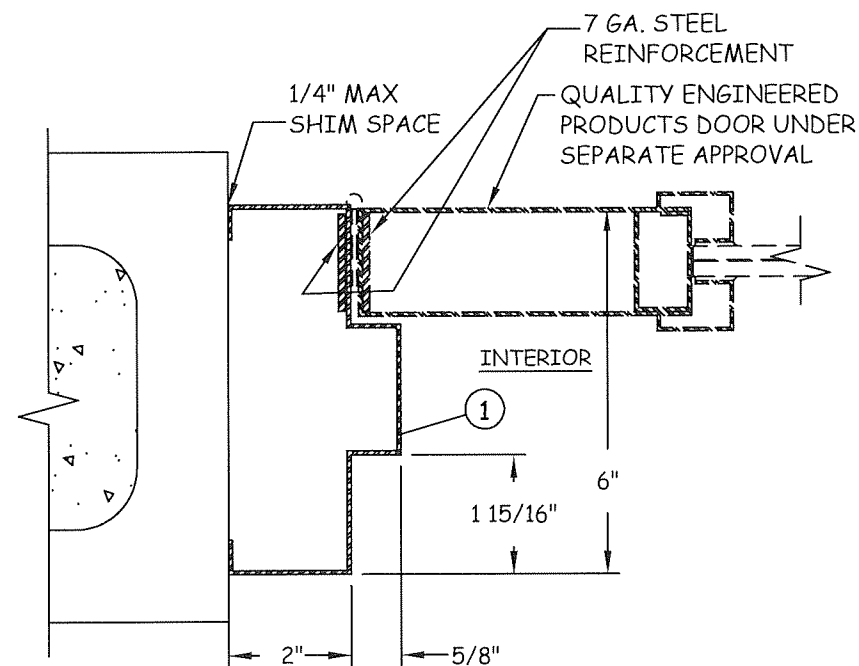
E 16 VERTICAL SECTION
MULLION W/ LOUVER TRANSOM
AND GLAZED DOOR



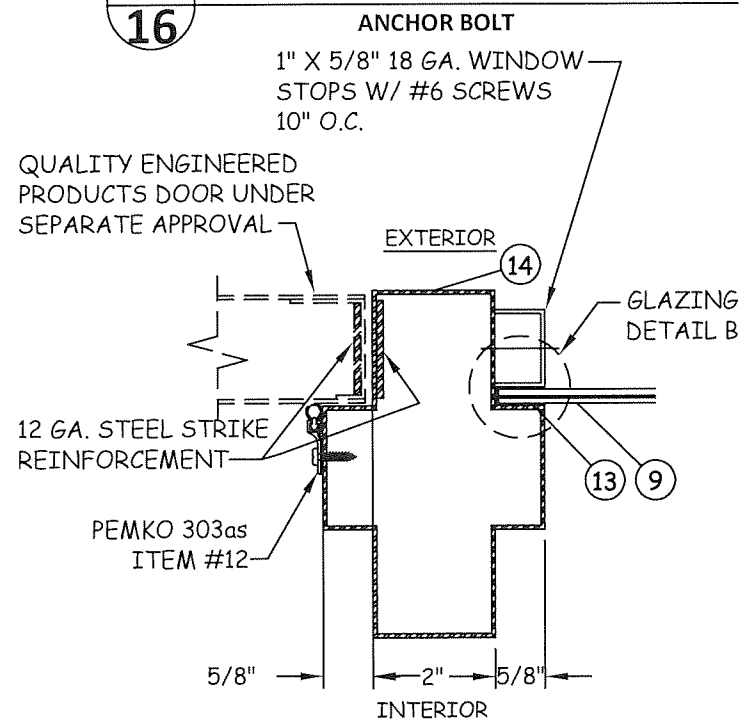
C 16 VERTICAL SECTION
MULLION
ABOVE DOOR



D 16 VERTICAL SECTION
SILL - CONCRETE/MASONRY



A 16 FRAME JAMB AT HINGE



B 16 MULLION AT STRIKE
STRIKE JAMB (SINGLE OUTSWING DOORS)
HINGE JAMB (PAIR OUTSWING DOORS)

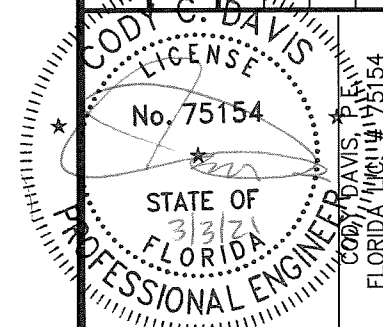
PRODUCT REVISED
as complying with the Florida
Building Code
NOA-No. 20-1123.19
Expiration Date 08/27/2024
By Ishag I. Chande
Miami-Dade Product Control

Quality
Engineered
Products Co., Inc.

TITLE: STOREFRONT SYSTEM (LMT)
VERTICAL & HORIZONTAL
SECTIONS & GLZ DETAILS
PREPARED FOR: QUALITY ENGINEERED PRODUCTS
4506 QUALITY LN.
TAMPA, FL 33634
PH: 813.885.1693 FX: 813.884.2673

REVISIONS

DESCRIPTION	BY	DATE
2014 FBC	CD	02.26.16
2020 FBC	TA	02.15.21



DATE: 02.26.16	DWN BY: GRN	CHK BY: CCD	SCALE: NTS
DWG #: QEP004			
SHEET: 16 OF 16			