



DEPARTMENT OF REGULATORY AND ECONOMIC RESOURCES (RER)

BOARD AND CODE ADMINISTRATION DIVISION

**NOTICE OF ACCEPTANCE (NOA)**

MIAMI-DADE COUNTY  
PRODUCT CONTROL SECTION

11805 SW 26 Street, Room 208

Miami, FL 33175

T (786) 315-2590 F (786) 315-2599

[www.miamidade.gov/economy](http://www.miamidade.gov/economy)

**Eurotech Industries, Inc.**  
**4201 NE 12<sup>th</sup> Terrace**  
**Ft. Lauderdale, FL 33334**

**SCOPE:**

This NOA is being issued under the applicable rules and regulations governing the use of construction materials. The documentation submitted has been reviewed and accepted by Miami-Dade County RER-Product Control Section to be used in Miami-Dade County and other areas where allowed by the Authority Having Jurisdiction (AHJ).

This NOA shall not be valid after the expiration date stated below. The Miami-Dade County Product Control Section (In Miami-Dade County) and/ or the AHJ (in areas other than Miami-Dade County) reserve the right to have this product or material tested for quality assurance purposes. If this product or material fails to perform in the accepted manner, the manufacturer will incur the expense of such testing and the AHJ may immediately revoke, modify, or suspend the use of such product or material within their jurisdiction. RER reserves the right to revoke this acceptance, if it is determined by Miami-Dade County Product Control Section that this product or material fails to meet the requirements of the applicable building code.

This product is approved as described herein, and has been designed to comply with the Florida Building Code, including the High Velocity Hurricane Zone.

**DESCRIPTION: Series "PW-800-62" Aluminum Fixed Window – L.M.I.**

**APPROVAL DOCUMENT:** Drawing No. **W13-61**, titled "Series PW-800-62 Alum Fixed Window (L.M.I.)", sheets 1 through 5 of 5, dated 11/12/13, with revision **D** dated 11/05/20, prepared by Al-Farooq Corporation, signed and sealed by Jalal Farooq, P.E., bearing the Miami-Dade County Product Control Section Revision stamp with the Notice of Acceptance number and expiration date by the Miami-Dade County Product Control Section.

**MISSILE IMPACT RATING: Large and Small Missile Impact Resistant**

**LABELING:** Each unit shall bear a permanent label with the manufacturer's name or logo, city, state, model/ series, and following statement: "Miami-Dade County Product Control Approved", unless otherwise noted herein.

**RENEWAL** of this NOA shall be considered after a renewal application has been filed and there has been no change in the applicable building code negatively affecting the performance of this product.

**TERMINATION** of this NOA will occur after the expiration date or if there has been a revision or change in the materials, use, and/ or manufacture of the product or process. Misuse of this NOA as an endorsement of any product, for sales, advertising or any other purposes shall automatically terminate this NOA. Failure to comply with any section of this NOA shall be cause for termination and removal of NOA.

**ADVERTISEMENT:** The NOA number preceded by the words Miami-Dade County, Florida, and followed by the expiration date may be displayed in advertising literature. If any portion of the NOA is displayed, then it shall be done in its entirety.

**INSPECTION:** A copy of this entire NOA shall be provided to the user by the manufacturer or its distributors and shall be available for inspection at the job site at the request of the Building Official.

This NOA **revises NOA No. 17-1218.19** and consists of this page 1 and evidence pages E-1 and E-2, as well as approval document mentioned above.

The submitted documentation was reviewed by **Sifang Zhao, P.E.**



*S.Z.*

02/25/2021

**NOA No. 20-1203.07**  
**Expiration Date: March 27, 2023**  
**Approval Date: February 25, 2021**  
**Page 1**

**NOTICE OF ACCEPTANCE: EVIDENCE SUBMITTED**

**1. EVIDENCE SUBMITTED UNDER PREVIOUS NOA Nos.**

**A. DRAWINGS**

1. Manufacturer's die drawings and sections. *(Submitted under NOA No. 14-0107.10)*
2. Drawing No **W08-01**, titled "Series PW-800-62 Alum Fixed Window (L.M.I.)", sheets 1 through 5 of 5, dated 11/12/13, with revision **C** dated 11/29/17, prepared by Al-Farooq Corporation, signed and sealed by Javad Ahmad, P.E.

**B. TESTS**

1. Test reports on: 1) Air Infiltration Test, per FBC, TAS 202-94  
2) Uniform Static Air Pressure Test, Loading per FBC, TAS 202-94  
3) Water Resistance Test, per FBC, TAS 202-94  
4) Small Missile Impact Test per FBC, TAS 201-94  
5) Large Missile Impact Test per FBC, TAS 201-94  
6) Cyclic Wind Pressure Loading per FBC, TAS 203-94  
along with marked-up drawings and installation diagram of an aluminum fixed window, prepared by American Test Lab of South Florida, Inc., Test Report No. **ATLSF-0809.01-13**, dated 09/30/13, signed and sealed by Stephen W. Warter, P.E.  
*(Submitted under previous NOA No. 14-0107.10)*

**C. CALCULATIONS**

1. Anchor verification calculations and structural analysis, complying with **FBC 5<sup>th</sup> Edition (2014)**, dated 02/26/15, prepared by Al-Farooq Corporation, signed and sealed by Javad Ahmad, P.E.
2. Glazing complies with **ASTM E1300-09**

**D. QUALITY ASSURANCE**

1. Miami-Dade Department of Regulatory and Economic Resources (RER).

**E. MATERIAL CERTIFICATIONS**

1. Notice of Acceptance No. **17-0808.02** issued to **Kuraray America, Inc.** for their "**SentryGlas® (Clear and White) Glass Interlayers**" dated 12/28/17, expiring on 07/04/23.

**F. STATEMENTS**

1. Statement letter of conformance, complying with **FBC 6<sup>th</sup> Edition (2017)**, and of no financial interest, dated November 10, 2017, issued by Al-Farooq Corporation, signed and sealed by Javad Ahmad, P.E.

**G. OTHERS**

1. Notice of Acceptance No. **15-0416.05**, issued to Eurotech Industries, Inc. for their Series "PW-800-62" Aluminum Fixed Window - L.M.I., approved on 08/06/15 and expiring on 03/27/18.



---

Sifang Zhao, P.E.  
Product Control Examiner  
NOA No. 20-1203.07  
Expiration Date: March 27, 2023  
Approval Date: February 25, 2021

**NOTICE OF ACCEPTANCE: EVIDENCE SUBMITTED**

**2. NEW EVIDENCE SUBMITTED**

**A. DRAWINGS**

1. Drawing No **W08-01**, titled “Series PW-800-62 Alum Fixed Window (L.M.I.)”, sheets 1 through 5 of 5, dated 11/12/13, with revision **D** dated 11/05/20, prepared by Al-Farooq Corporation, signed and sealed by Jalal Farooq, P.E.

**B. TESTS**

1. None.

**C. CALCULATIONS**

1. None.

**D. QUALITY ASSURANCE**

1. Miami-Dade Department of Regulatory and Economic Resources (RER).

**E. MATERIAL CERTIFICATIONS**

1. NOA No. **20-0915.19** issued to **Kuraray America, Inc.** for their “**SentryGlas® (Clear and White) Glass Interlayers**”, expiring on 07/04/23.

**F. STATEMENTS**

1. Statement letter of conformance, complying with **FBC 6th Edition (2017)**, with **FBC 7th Edition (2020)**, and of no financial interest, dated 10/26/2020, prepared by Al-Farooq Corporation, signed and sealed by Jalal Farooq, P.E.

**F. OTHERS**

1. Notice of Acceptance No. **17-1218.19**, issued to Eurotech Industries, Inc. for their Series “PW-800-62” Aluminum Fixed Window - L.M.I., approved on 01/25/18 and expiring on 03/27/23.



---

Sifang Zhao, P.E.  
Product Control Examiner  
NOA No. 20-1203.07  
Expiration Date: March 27, 2023  
Approval Date: February 25, 2021

SERIES PW-800-62 ALUMINUM FIXED WINDOW

DESIGN LOAD RATINGS FOR THESE WINDOWS TO BE AS PER CHARTS SHOWN ON SHEET 2.

APPROVAL APPLIES TO SINGLE UNITS OR SIDE BY SIDE COMBINATIONS OF FIX./FIX. OR FIX. WDW. WITH OTHER MIAMI-DADE COUNTY APPROVED WINDOWS USING MIAMI-DADE COUNTY APPROVED MULLIONS IN BETWEEN.  
LOWER DESIGN PRESSURE FROM WINDOWS OR MULLION APPROVAL WILL APPLY TO ENTIRE SYSTEM.

THIS PRODUCT HAS BEEN DESIGNED AND TESTED TO COMPLY WITH THE REQUIREMENTS OF THE 2017 (6TH EDITION)/2020 (7TH EDITION) FLORIDA BUILDING CODE INCLUDING HIGH VELOCITY HURRICANE ZONE (HVHZ).

1BY OR 2BY WOOD BUCKS & BUCK FASTENERS BY OTHERS, MUST BE DESIGNED AND INSTALLED ADEQUATELY TO TRANSFER APPLIED PRODUCT LOADS TO THE BUILDING STRUCTURE.

ANCHORS SHALL BE CORROSION RESISTANT, SPACED AS SHOWN ON DETAILS AND INSTALLED PER MANUF'S INSTRUCTIONS. SPECIFIED EMBEDMENT TO BASE MATERIAL SHALL BE BEYOND WALL DRESSING OR STUCCO.

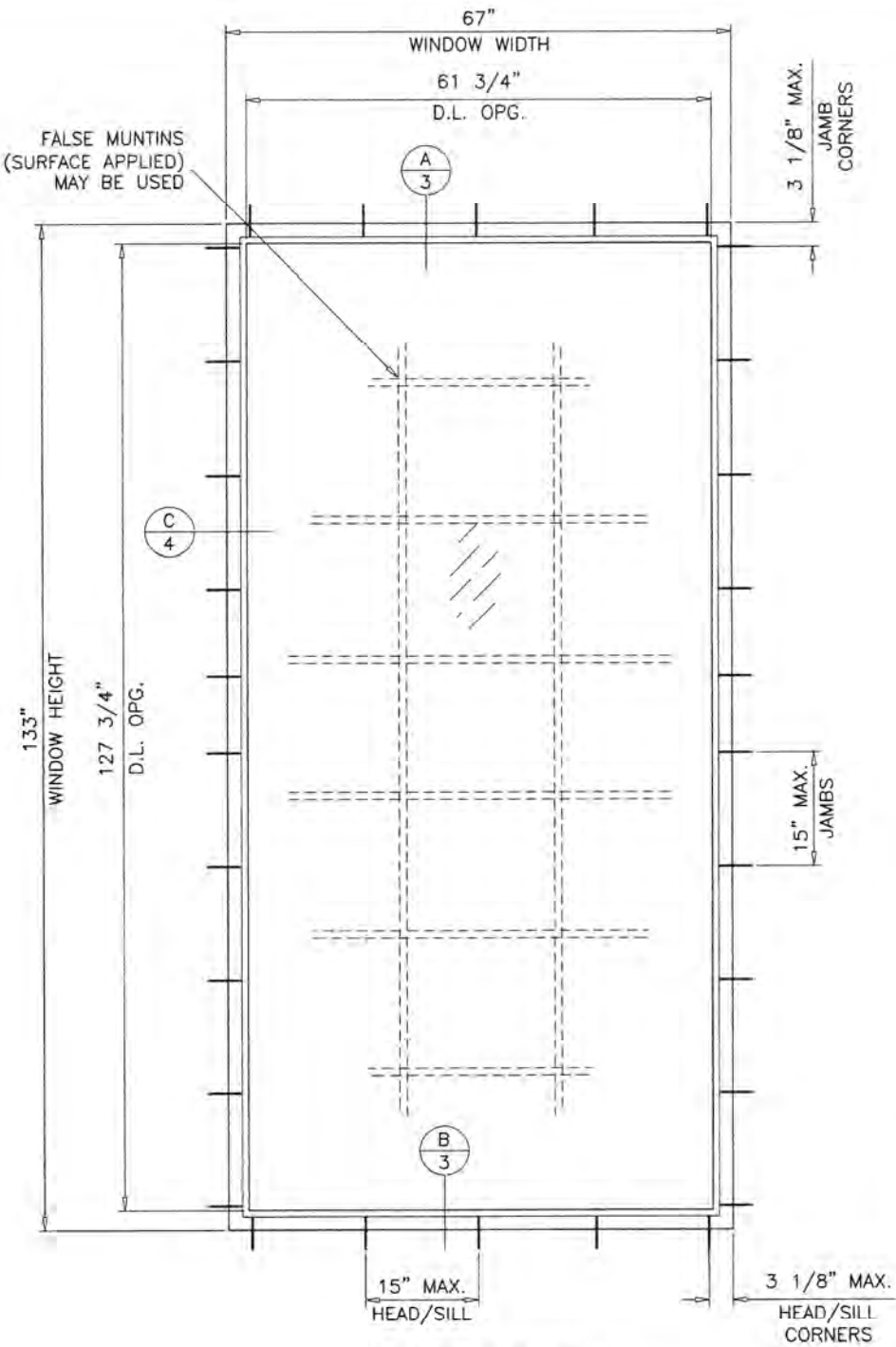
A LOAD DURATION INCREASE IS USED IN DESIGN OF ANCHORS INTO WOOD ONLY.  
ALL SHIMS TO BE HIGH IMPACT, NON-METALLIC AND NON-COMPRESSIBLE.

MATERIALS INCLUDING BUT NOT LIMITED TO STEEL/METAL SCREWS, THAT COME INTO CONTACT WITH OTHER DISSIMILAR MATERIALS SHALL MEET THE REQUIREMENTS OF THE 2017/2020 FLORIDA BLDG. CODE & ADOPTED STANDARDS.

THIS PRODUCT APPROVAL IS GENERIC AND DOES NOT PROVIDE INFORMATION FOR A SITE SPECIFIC PROJECT, i.e. LIFE SAFETY OF THIS PRODUCT, ADEQUACY OF STRUCTURE RECEIVING THIS PRODUCT AND SEALING AROUND OPENING FOR WATER INFILTRATION RESISTANCE ETC.  
CONDITIONS NOT SHOWN IN THIS DRAWING ARE TO BE ANALYZED SEPARATELY, AND TO BE REVIEWED BY BUILDING OFFICIAL.

DESIGN LOADS SHOWN ARE BASED ON 'ALLOWABLE STRESS DESIGN (ASD)'.

THESE WINDOWS ARE RATED FOR LARGE & SMALL MISSILE IMPACT.  
SHUTTERS ARE NOT REQUIRED.



TYPICAL ELEVATION  
TESTED UNIT

DAYLITE OPENINGS:  
D.L.O. HEIGHT = FRAME HEIGHT - 5.250"  
D.L.O. WIDTH = FRAME WIDTH - 5.250"

**PRODUCT REVISED**  
as complying with the Florida Building Code  
NOA-No. **20-1203.07**  
Expiration Date **03/27/2023**  
By   
Miami-Dade Product Control



**AL-FAROOQ CORPORATION**  
ENGINEERS & PRODUCT DEVELOPMENT  
9360 SUNSET DRIVE, SUITE 220  
MIAMI, FLORIDA 33173  
TEL. (305) 264-8100 FAX. (305) 262-6978  
COMP-ANL\W13-61EWD

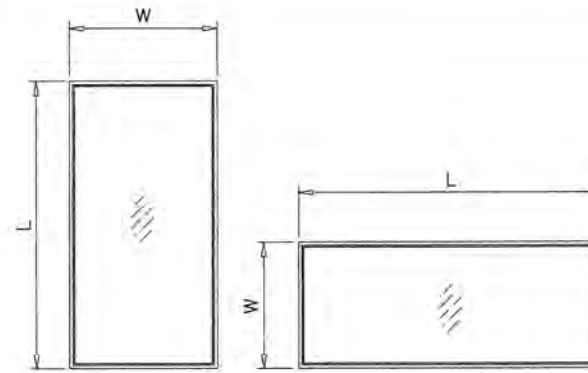
SERIES PW-800-62 ALUM FIXED WINDOW (L.M.I.)  
**Eurotech Industries Inc.**  
4201 N.E. 12th Terrace  
Oakland Park, Florida 33334  
Tel. (954) 630-9967 Fax. (954) 630-0217

Revisions:		date	by	description
no.	date	by	description	
A	02.19.14	REV. PER	COMMENTS	
B	02.27.15	UPDATED TO	2014 FBC	
C	11.29.17	UPDATED TO	2017 FBC	
D	11.05.20	UPDATED TO	2020 FBC	
date:	11-12-13	scale:	1/2"=1'-0"	
dr. by:	TARIQ	chk. by:		
drawing no.	W13-61	sheet	1 of 5	

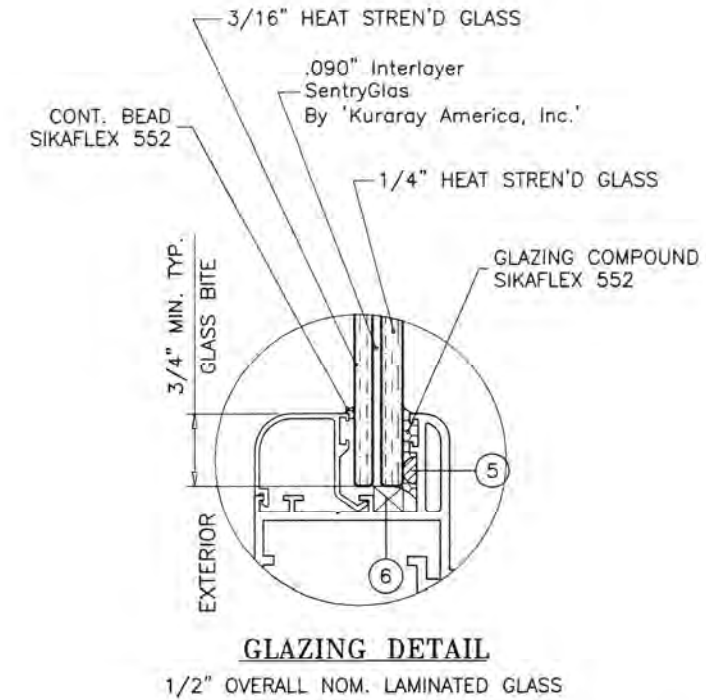
DESIGN LOAD CAPACITY - PSF			
WINDOW DIMS.		1/2" LAM. GLASS	
WIDTH	LENGTH	EXT.(+)	INT.(-)
26-1/2"	26"	80.0	80.0
32"		80.0	80.0
37"		80.0	80.0
42"		80.0	80.0
48"		80.0	80.0
53-1/8"		80.0	80.0
26-1/2"	38-3/8"	80.0	80.0
32"		80.0	80.0
37"		80.0	80.0
42"		80.0	80.0
48"		80.0	80.0
53-1/8"		80.0	80.0
26-1/2"	50-5/8"	80.0	80.0
32"		80.0	80.0
37"		80.0	80.0
42"		80.0	80.0
48"		80.0	80.0
53-1/8"		80.0	80.0
26-1/2"	63"	80.0	80.0
32"		80.0	80.0
37"		80.0	80.0
42"		80.0	80.0
48"		80.0	80.0
53-1/8"		80.0	80.0
26-1/2"	74-1/4"	80.0	80.0
32"		80.0	80.0
37"		80.0	80.0
42"		80.0	80.0
48"		80.0	80.0
53-1/8"		80.0	80.0
26-1/2"	78"	80.0	80.0
32"		80.0	80.0
37"		80.0	80.0
42"		80.0	80.0
48"		80.0	80.0
53-1/8"		80.0	80.0
26-1/2"	84"	80.0	80.0
32"		80.0	80.0
37"		80.0	80.0
42"		80.0	80.0
48"		80.0	80.0
53-1/8"		80.0	80.0
26-1/2"	96"	80.0	80.0
32"		80.0	80.0
37"		80.0	80.0
42"		80.0	80.0
48"		80.0	80.0
53-1/8"		80.0	80.0

DESIGN LOAD CAPACITY - PSF			
WINDOW DIMS.		1/2" LAM. GLASS	
WIDTH	LENGTH	EXT.(+)	INT.(-)
36"	60"	80.0	80.0
42"		80.0	80.0
48"		80.0	80.0
54"		80.0	80.0
60"		80.0	80.0
66"		80.0	80.0
72"		80.0	80.0
78"		80.0	80.0
84"		80.0	80.0
36"	72"	80.0	80.0
42"		80.0	80.0
48"		80.0	80.0
54"		80.0	80.0
60"		80.0	80.0
66"		80.0	80.0
72"		74.4	74.4
78"		74.4	74.4
84"		74.4	74.4
36"	84"	80.0	80.0
42"		80.0	80.0
48"		80.0	80.0
54"		80.0	80.0
60"		80.0	80.0
66"		80.0	80.0
72"		74.4	74.4
78"		68.7	68.7
84"		63.8	63.8
36"	96"	80.0	80.0
42"		80.0	80.0
48"		80.0	80.0
54"		80.0	80.0
60"		80.0	80.0
66"		80.0	80.0
72"		74.4	74.4
78"		68.7	68.7
84"		63.8	63.8
36"	108"	80.0	80.0
42"		80.0	80.0
48"		80.0	80.0
54"		80.0	80.0
60"		80.0	80.0
66"		80.0	80.0
72"		74.4	74.4
78"		68.7	68.7
82"		65.4	65.4
36"	120"	80.0	80.0
42"		80.0	80.0
48"		80.0	80.0
54"		80.0	80.0
60"		80.0	80.0
66"		80.0	80.0
72"		74.4	74.4
74"		72.4	72.4

DESIGN LOAD CAPACITY - PSF			
WINDOW DIMS.		1/2" LAM. GLASS	
WIDTH	LENGTH	EXT.(+)	INT.(-)
36"	133"	80.0	80.0
42"		80.0	80.0
48"		80.0	80.0
54"		80.0	80.0
60"		80.0	80.0
66"		80.0	80.0
67"		80.0	80.0
36"	144"	80.0	80.0
42"		80.0	80.0
48"		80.0	80.0
54"		80.0	80.0
60"		80.0	80.0
61"		80.0	80.0
36"	153"	80.0	80.0
42"		80.0	80.0
48"		80.0	80.0
54"		80.0	80.0
58"		80.0	80.0
36"	156"	80.0	80.0
42"		80.0	80.0
48"		80.0	80.0
54"		80.0	80.0
57"		80.0	80.0



NOTE:  
WIDTH AND LENGTH DIMENSIONS CAN BE ORIENTED  
VERTICALLY OR HORIZONTALLY AS SHOWN ABOVE.



**PRODUCT REVISED**  
as complying with the Florida  
Building Code  
NOA-No. **20-1203.07**  
Expiration Date **03/27/2023**  
By           
Miami-Dade Product Control

NOV 24 2020



**AL-FAROOQ CORPORATION**  
ENGINEERS & PRODUCT DEVELOPMENT  
9360 SUNSET DRIVE, SUITE 220  
MIAMI, FLORIDA 33173 (C.A.N. 3538)  
TEL. (305) 264-8100 FAX. (305) 262-6978

SERIES PW-800-62 ALUM FIXED WINDOW (L.M.I.)

**Eurotech Industries Inc.**  
4201 N.E. 12th Terrace  
Oakland Park, Florida 33334  
Tel. (954) 630-9967 Fax. (954) 630-0217

revisions:	no	date	by	description
	A	02.19.14		NO CHANGE THIS SHEET
	B	02.27.15		UPDATED TO 2014 FBC
	C	11.29.17		UPDATED TO 2017 FBC
	D	11.05.20		UPDATED TO 2020 FBC

date: 11-12-13

scale: 1/2" = 1"

dr. by: TARIQ

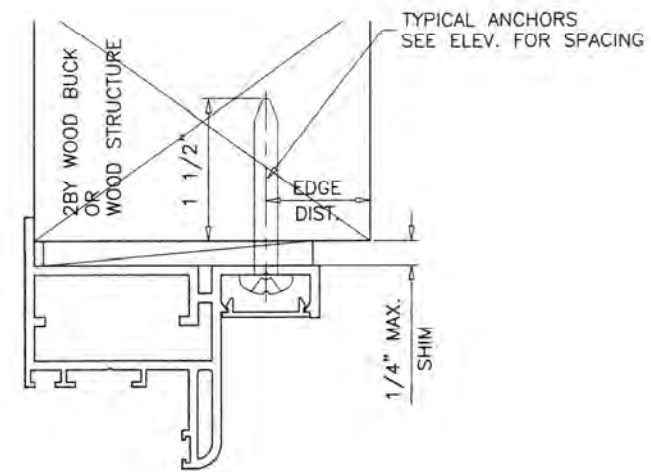
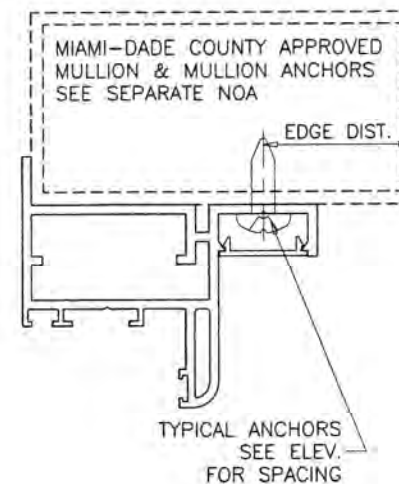
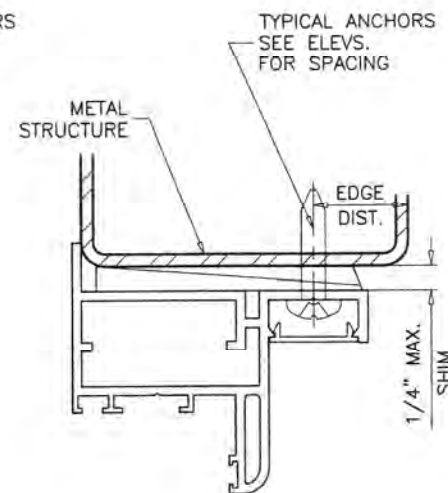
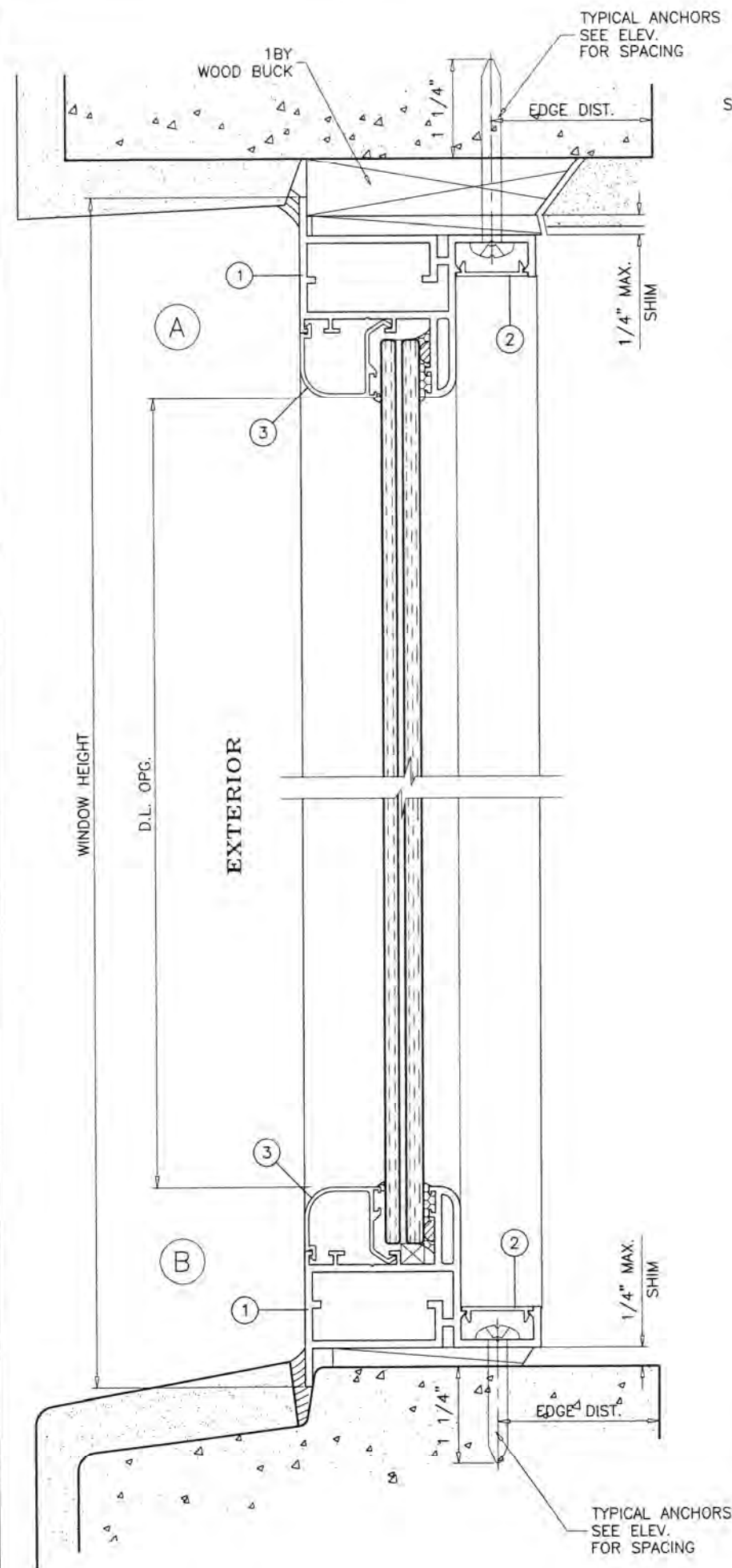
chk. by:

drawing no.  
**W13-61**

sheet 2 of 5

NOTE:  
GLASS CAPACITIES ON THIS SHEET ARE  
BASED ON ASTM E1300-09 (3 SEC. GUSTS).





WOOD BUCKS AND METAL STRUCTURE NOT BY 'EUROTECH' MUST SUSTAIN LOADS IMPOSED BY GLAZING SYSTEM AND TRANSFER THEM TO THE BUILDING STRUCTURE.

**TYPICAL ANCHORS:** SEE ELEV. FOR SPACING

**5/16" DIA. ULTRACON BY 'DEWALT'** ( $F_u=177$  KSI,  $F_y=155$  KSI)  
 INTO 2BY WOOD BUCKS OR WOOD STRUCTURES  
 1-1/2" MIN. PENETRATION INTO WOOD (HEAD/SILL/JAMBS)  
 THRU 1BY BUCKS INTO CONC. OR BLOCKS  
 1-1/4" MIN. EMBED INTO CONCRETE (HEAD/SILL/JAMBS)  
 1-1/4" MIN. EMBED INTO BLOCKS (JAMBS)

DIRECTLY INTO CONCRETE OR BLOCKS  
 1-1/4" MIN. EMBED INTO CONCRETE (HEAD/SILL/JAMBS)  
 1-1/4" MIN. EMBED INTO BLOCKS (JAMBS)

**5/16" DIA. SMS OR SELF DRILLING SCREWS** (GRADE 2 CRS)  
 INTO MIAMI-DADE COUNTY APPROVED MULLIONS  
 OR  
 INTO METAL STRUCTURES (HEAD/SILL/JAMBS)  
 (3) THREADS MIN. TO EXTEND BEYOND METAL THICKNESS  
 ALUMINUM: 1/8" THK. MIN. (6063-T5 MIN.)  
 STEEL: 1/8" THK. MIN. ( $F_y = 36$  KSI MIN.)  
 (STEEL IN CONTACT WITH ALUMINUM TO BE PLATED OR PAINTED)

**TYPICAL EDGE DISTANCE**

INTO CONCRETE AND BLOCKS = 2-1/2" MIN.  
 INTO WOOD STRUCTURE = 1-1/4" MIN.  
 INTO METAL STRUCTURE = 3/4" MIN.

WOOD AT HEAD, SILL OR JAMBS SG = 0.55 MIN.  
 CONCRETE AT HEAD, SILL OR JAMBS  $f'_c = 3000$  PSI MIN.  
 C-90 HOLLOW/FILLED BLOCK AT JAMBS  $f'_m = 2000$  PSI MIN.

**PRODUCT REVISED**  
 as complying with the Florida  
 Building Code  
 NOA-No. **20-1203.07**  
 Expiration Date **03/27/2023**  
 By **Miami-Dade Product Control**

NOV 24 2020



SERIES PW-800-62 ALUM FIXED WINDOW (L.M.I.)

**Eurotech Industries Inc.**

4201 N.E. 12th Terrace  
 Oakland Park, Florida 33334

Tel. (954) 630-9967

Fax. (954) 630-0217

**AL-FAROOQ CORPORATION**  
 ENGINEERS & PRODUCT DEVELOPMENT  
 9360 SUNSET DRIVE, SUITE 220  
 MIAMI, FLORIDA 33173  
 TEL. (305) 264-8100  
 FAX. (305) 262-6978  
 (C.A.N. 3538)

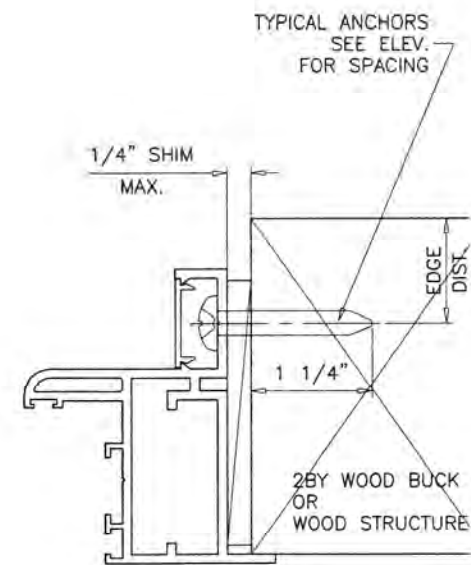
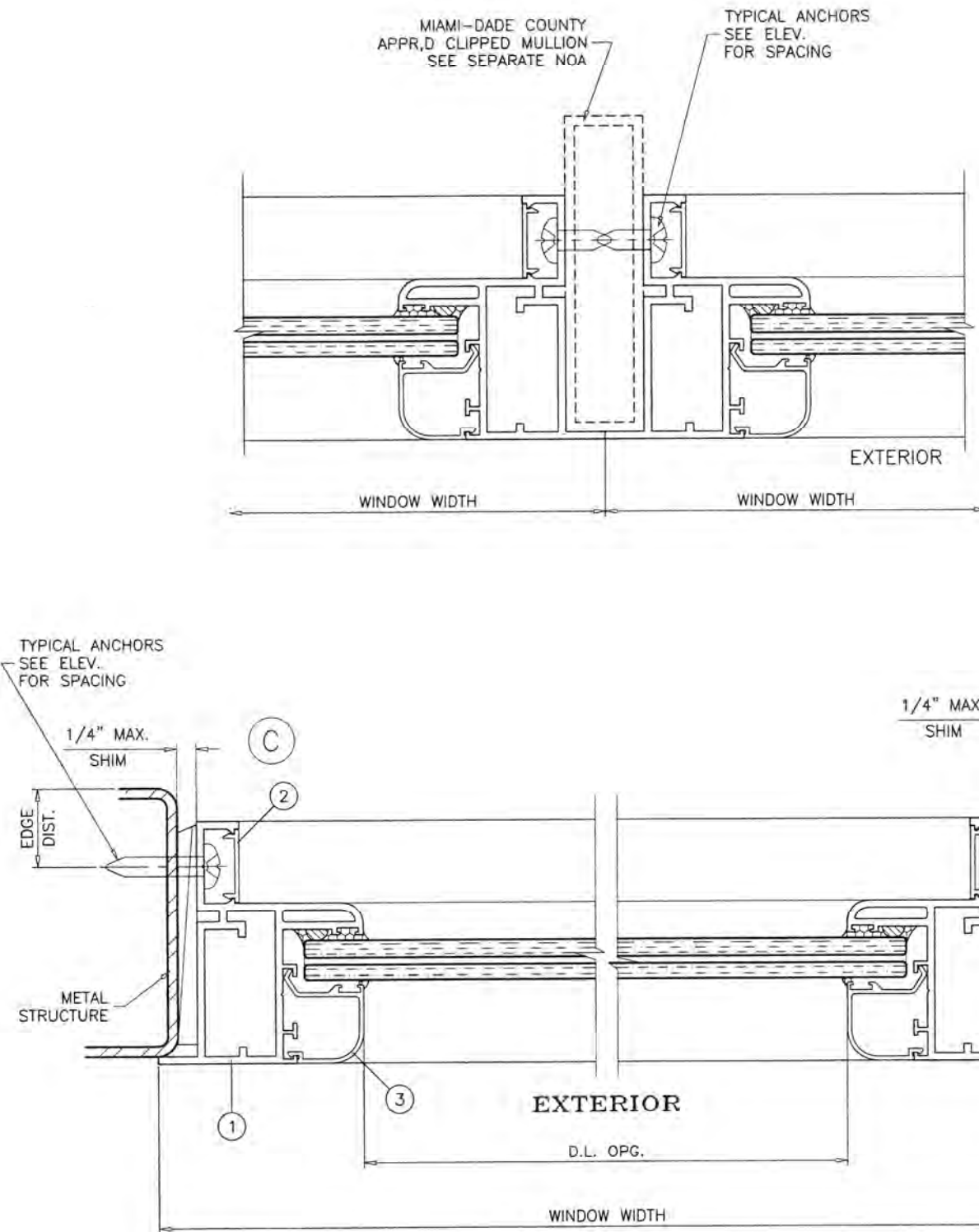
COMP-ANL W13-61EWD

no	date	by	description
A	02.19.14	REV. PER RER COMMENTS	
B	02.27.15	UPDATED TO 2014 FBC	
C	11.29.17	UPDATED TO 2017 FBC	
D	11.05.20	UPDATED TO 2020 FBC	

date: 11-12-13  
 scale: 1/2" = 1"  
 dr. by: TARIQ  
 chk. by:

drawing no.  
**W13-61**

sheet 3 of 5



**PRODUCT REVISED**  
as complying with the Florida  
Building Code  
NOA-No. **20-1203.07**  
Expiration Date **03/27/2023**  
By *[Signature]*  
**Miami-Dade Product Control**

NOV 24 2020



**AL-FAROOQ CORPORATION**  
ENGINEERS & PRODUCT DEVELOPMENT  
9360 SUNSET DRIVE, SUITE 220  
MIAMI, FLORIDA 33173  
TEL. (305) 264-8100 FAX. (305) 262-6978

**a f c**

COMP-ANL\W13-61EWD

---

SERIES PW-800-62 ALUM FIXED WINDOW (L.M.I.)

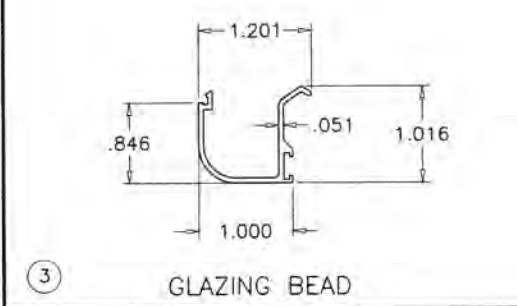
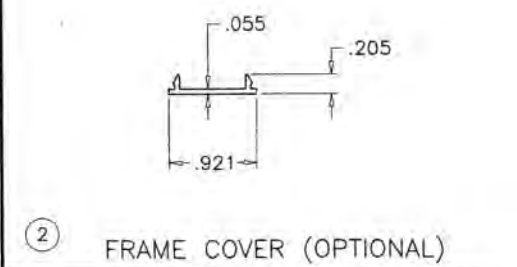
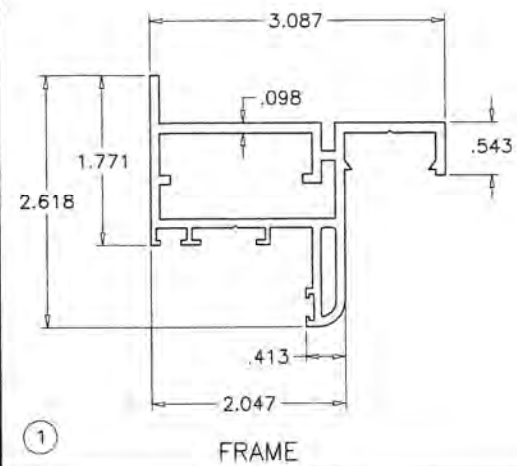
**Eurotech Industries Inc.**  
4201 N.E. 12th Terrace  
Oakland Park, Florida 33334  
Tel. (954) 630-9967 Fax. (954) 630-0217

no	date	by	description
A	02.19.14		NO CHANGE THIS SHEET
B	02.27.15		UPDATED TO 2014 FBC
C	11.29.17		UPDATED TO 2017 FBC
D	11.05.20		UPDATED TO 2020 FBC

---

date: 11-12-13  
scale: 1/2" = 1"  
dr. by: TARIQ  
chk. by:

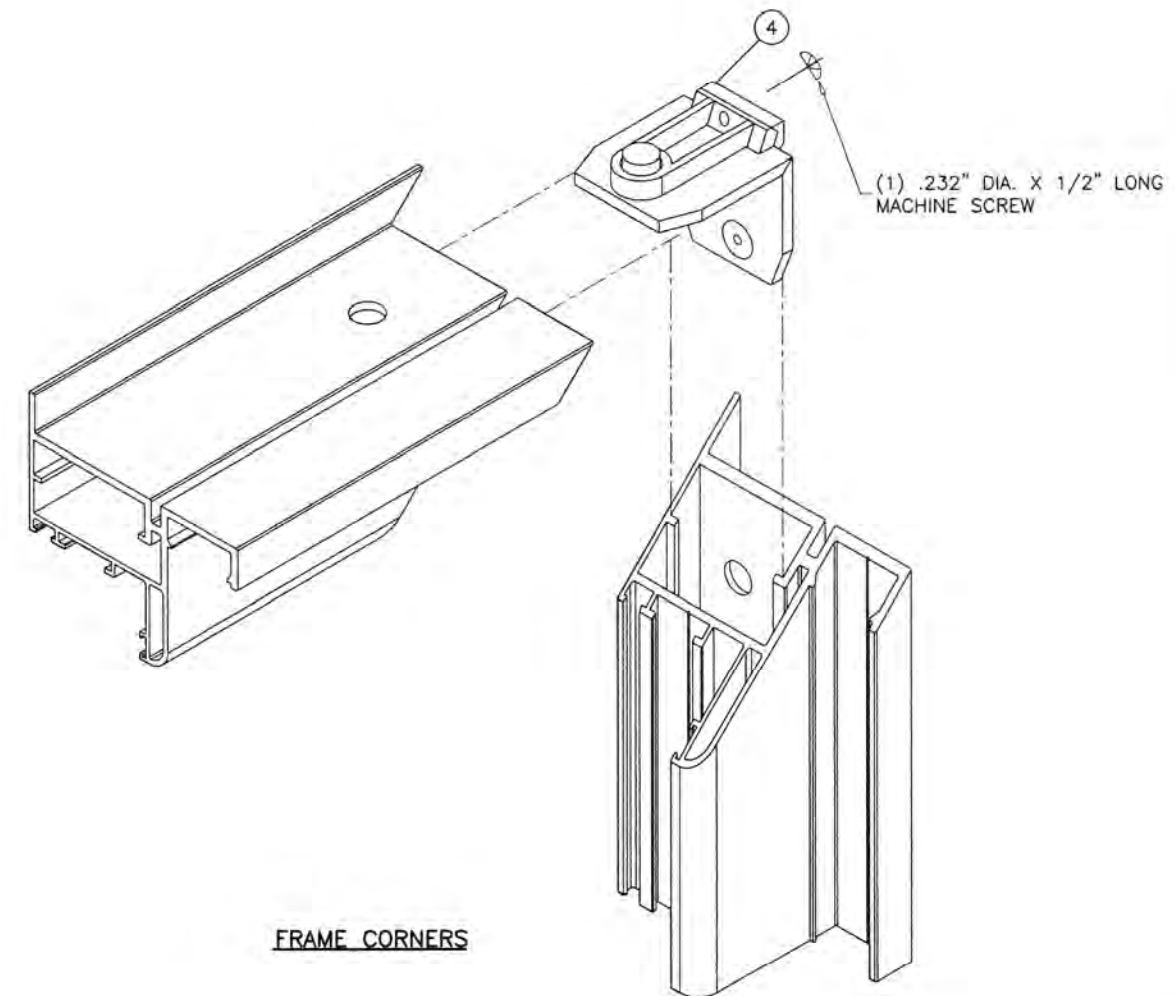
drawing no.  
**W13-61**  
sheet 4 of 5

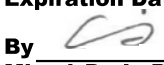


ITEM	PART #	QUANTITY	DESCRIPTION	MATERIAL	MANF./SUPPLIER/REMARKS
1	PW020	4	WINDOW FRAME	6063-T6	-
2	HW 013	4	FRAME COVER (OPTIONAL)	6063-T6	-
3	VZ1535	4	GLAZING BEAD	6063-T6	-
4	1103	1/ CORNER	CLIP-ON CORNER JOINT	ALUMINUM	MONTEBIANCO 3 BY MONTICELLI
5	-	AS REQD.	BUMP ON SPACER	SILICONE	-
6	-	2/ LITE	SETTING BLOCKS AT 1/4 POINTS (1/4" X 1/4" X 2" LONG)	EPDM	DUROMETER 80±5 SHORE A
7	-	-	-	-	-

#### SEALANTS:

ALL JOINTS AND FRAME CONNECTIONS SEALED WITH  
GE SCS2800 SILGLAZE II SEALANT.



**PRODUCT REVISED**  
as complying with the Florida  
Building Code  
NOA-No. **20-1203.07**  
Expiration Date **03/27/2023**  
By   
Miami-Dade Product Control

NOV 24 2020



**af c**  
**AL-FAROOQ CORPORATION**  
ENGINEERS & PRODUCT DEVELOPMENT  
9360 SUNSET DRIVE, SUITE 220  
MIAMI, FLORIDA 33173 (C.A.N. 3538)  
TEL. (305) 264-8100 FAX. (305) 262-6978  
COMP-ANL\W13-61EWD

SERIES PW-800-62 ALUM FIXED WINDOW (L.M.I.)  
**Eurotech Industries Inc.**  
4201 N.E. 12th Terrace  
Oakland Park, Florida 33334  
Tel. (954) 630-9967 Fax. (954) 630-0217

revisions:		no	date	by	description
A	11-12-13	A	02.19.14	REV. PER RER COMMENTS	
		B	02.27.15	UPDATED TO 2014 FBC	
		C	11.29.17	UPDATED TO 2017 FBC	
		D	11.05.20	UPDATED TO 2020 FBC	
date:	11-12-13	scale:	1/2" = 1"	dr. by:	TARIO
		chk. by:			
drawing no.		W13-61			
sheet		5 of 5			