



DEPARTMENT OF REGULATORY AND ECONOMIC RESOURCES (RER)
BOARD AND CODE ADMINISTRATION DIVISION
NOTICE OF ACCEPTANCE (NOA)

MIAMI-DADE COUNTY
PRODUCT CONTROL SECTION
11805 SW 26 Street, Room 208
Miami, Florida 33175-2474
T (786) 315-2590 F (786) 315-2599
www.miamidade.gov/economy

Air Master Awning, LLC
Road PR#2 Interior KM 56.7
Barceloneta, Puerto Rico 00617

SCOPE:

This NOA is being issued under the applicable rules and regulations governing the use of construction materials. The documentation submitted has been reviewed and accepted by Miami-Dade County RER -Product Control Section to be used in Miami Dade County and other areas where allowed by the Authority Having Jurisdiction (AHJ).

This NOA shall not be valid after the expiration date stated below. The Miami-Dade County Product Control Section (In Miami Dade County) and/or the AHJ (in areas other than Miami Dade County) reserve the right to have this product or material tested for quality assurance purposes. If this product or material fails to perform in the accepted manner, the manufacturer will incur the expense of such testing and the AHJ may immediately revoke, modify, or suspend the use of such product or material within their jurisdiction. RER reserves the right to revoke this acceptance, if it is determined by Miami-Dade County Product Control Section that this product or material fails to meet the requirements of the applicable building code.

This product is approved as described herein and has been designed to comply with the Florida Building Code, including the High Velocity Hurricane Zone.

DESCRIPTION: Series "Continental" Aluminum Outswing doors w/wo Sidelites-L.M.I.

APPROVAL DOCUMENT: Drawing No. **AIR002 Rev A**, titled "Series Continental Outswing Aluminum Glass Door", sheets 1 through 8 of 8, dated 07/20/18 and last revised on 04/14/2021, prepared by Building Drops, Inc., signed and sealed by Hermes F. Norero, P.E., bearing the Miami-Dade County Product Control revision stamp with the Notice of Acceptance number and approval date by the Miami-Dade County Product Control Section.

MISSILE IMPACT RATING: Large and Small Missile Impact Resistant

Limitations:

1. See Design Pressure VS unit sizes, max DLO and glazing type in sheet **6**.
2. Water Rating is qualified **only** with Door glazing type **1** (sheet **6**) and Sidelite glazing type **1** (sheet **8**).
3. Four (4) anchors at double door astragal end and mullion end at head & sill required. Max OC spacing at sidelite jambs= 17.07" and at door jambs=13.56" is required. See Elevation, sheets **1** & **7** for anchor installation and anchor specifications in sheet **6**.

LABELING: Each unit shall bear a permanent label with the manufacturer's name or logo, city, state and series and following statement: "Miami-Dade County Product Control Approved", noted herein.

RENEWAL of this NOA shall be considered after a renewal application has been filed and there has been no change in the applicable building code negatively affecting the performance of this product.

TERMINATION of this NOA will occur after the expiration date or if there has been a revision or change in the materials, use, and/or manufacture of the product or process. Misuse of this NOA as an endorsement of any product, for sales, advertising or any other purposes shall automatically terminate this NOA. Failure to comply with any section of this NOA shall be cause for termination and removal of NOA.

ADVERTISEMENT: The NOA number preceded by the words Miami-Dade County, Florida, and followed by the expiration date may be displayed in advertising literature. If any portion of the NOA is displayed, then it shall be done in its entirety.

INSPECTION: A copy of this entire NOA shall be provided to the user by the manufacturer or its distributors and shall be available for inspection at the job site at the request of the Building Official.

This NOA **revises** NOA # **15-0309.02** and consists of this page 1 and evidence pages E-1, E-2 and E-3, as well as approval document mentioned above.

The submitted documentation was reviewed by **Ishaq I. Chanda, P.E.**



Ishaq I. Chanda

NOA No. 21-0205.06
Expiration Date: July 27, 2023
Approval Date: May 13, 2021
Page 1

NOTICE OF ACCEPTANCE: EVIDENCE SUBMITTED

1. Evidence submitted in previous files

A. DRAWINGS

1. Manufacturer's die drawings and sections.
2. Drawing No. **12-203**, titled "Series- Continental Door with Sidelite", sheets 1 through 8 of 8, prepared by Knezevich Associates, dated FEB 28, 2013, signed and sealed by V.J. Knezevich, P.E.

B. TESTS (submitted under file #13-0306.02)

1. Test reports on:
 - 1) Air Infiltration Test, per FBC, TAS 202-94
 - 2) Uniform Static Air Pressure Test, Loading per FBC TAS 202-94
 - 3) Water Resistance Test, per FBC, TAS 202-94
 - 4) Large Missile Impact Test per FBC, TAS 201-94
 - 5) Cyclic Wind Pressure Loading per FBC, TAS 203-94
 - 6) Forced Entry Test, per FBC 2411 3.2.1, TAS 202-94

along with marked-up drawings and installation diagram of aluminum outswing door w/ sidelites, prepared by Blackwater Testing, Inc., Test Report No. **BT-AM-12-005**, dated 12/07/12, signed and sealed by Yamil Kuri, P. E.

Note: This test report has been revised by addendum letter dated May 24, 2013 and July 03, 2013, issued by Blackwater testing, signed & sealed by Yamil Kuri, P. E.

C. CALCULATIONS

1. Anchor verification calculations and structural analysis, complying with FBC-2010, prepared by Knezevich Associates, dated 03/04/13, 05/13/2013 and last revised on 07/01/2013, signed and sealed by V.J. Knezevich, P.E.
2. Glazing complies w/ ASTM E-1300-02 & -04

D. QUALITY ASSURANCE

1. Miami Dade Department of Regulatory and Economic Resources (RER).

E. MATERIAL CERTIFICATIONS

1. Notice of Acceptance No. **12-1231.08** issued to Eastman Chemical Company (MA), Inc. (Former Solutia Inc.) for their "**Seflex CP**: Saflex and sflex HP composite interlayer w/ PET core", expiring on 12/11/18.

F. STATEMENTS

1. Statement letter of conformance and letter of no financial interest, prepared by Knezevich Associates, dated 02/01/13, signed and sealed by V.J. Knezevich, P.E.
2. Lab compliance as part of the above referenced test report.

G. OTHER

1. None.

Ishaq I. Chanda

Ishaq I. Chanda, P.E.
Product Control Unit Supervisor
NOA No. 21-0205.06
Expiration Date: July 25, 2023
Approval Date: May 13, 2021

NOTICE OF ACCEPTANCE: EVIDENCE SUBMITTED

2. Evidence submitted under previous approval

A. DRAWINGS

1. Drawing No. **AIR002** (former **12-203**), titled “Series Continental Outswing Aluminum Glass Door”, sheets 1 through 8 of 8, dated 07/20/18, prepared by Building Drops, Inc., signed and sealed by Hermes F. Norero, P.E.

B. TESTS

1. Test reports on: 1) Air Infiltration Test, per FBC, TAS 202-94
2) Uniform Static Air Pressure Test, Loading per FBC TAS 202-94
3) Water Resistance Test, per FBC, TAS 202-94 (Not conducted)
4) Large Missile Impact Test per FBC, TAS 201-94
5) Cyclic Wind Pressure Loading per FBC, TAS 203-94
6) Forced Entry Test, per FBC 2411 3.2.1, TAS 202-94

along with marked-up drawings and installation diagram of aluminum outswing door, prepared by Blackwater Testing, Inc., Test Report No. **BT-AM-15-002 A**, dated 01/06/16, signed and sealed by Yamil Kuri, P.E.

along with marked-up drawings and installation diagram of aluminum outswing door w/ sidelites, (O-XX) prepared by Blackwater Testing, Inc., Test Report No. **BT-AM-14-001 A** (TAS 202-94 (STR), dated 09/19/14, signed and sealed by Yamil Kuri, P

C. CALCULATIONS

1. Anchor verification calculations and structural analysis, complying with FBC-2017 (6th Edition), prepared by Building Drops, Inc., dated 01/16/16 and last revised on 07/20/2018, signed and sealed by Hermes F. Norero, P.E.
2. Glazing complies w/ ASTM E-1300-02, -04 & -09

D. QUALITY ASSURANCE

1. Miami Dade Department of Regulatory and Economic Resources (RER).

E. MATERIAL CERTIFICATIONS

1. Notice of Acceptance No. **18-0301.06** issued to Eastman Chemical Company (MA), Inc. (Former Solutia Inc.) for their “**Seflex CP**: Saflex and sflex HP composite interlayer w/ PET core”, expiring on 12/11/23.

F. STATEMENTS

1. Statement letter of conformance and letter of no financial interest, prepared by Building Drops, Inc, dated 07/11/18, signed and sealed by Hermes F. Norero, P.E.
2. Statement letter dated 07/11/18 of “adopting another Engineer work, as own” per Florida State rule, chapter G 61, signed and sealed by Hermes F. Norero, P.E.
3. Lab compliance as part of the above referenced test report.

G. OTHER

1. This NOA **revises & renews** NOA # **13-0306.02**, 07/25/2023.
2. Test Proposal # 13-1097 dated 11/07/13, issued by PERA.

Ishaq I. Chanda

Ishaq I. Chanda, P.E.
Product Control Unit Supervisor
NOA No. 21-0205.06
Expiration Date: July 25, 2023
Approval Date: May 13, 2021

NOTICE OF ACCEPTANCE: EVIDENCE SUBMITTED

3. New Evidence submitted

A. DRAWINGS

1. Drawing No. **AIR002** Rev A, titled "Series Continental Outswing Aluminum Glass Door", sheets 1 through 8 of 8, dated 07/20/18 and last revised on 04/14/2021, prepared by Building Drops, Inc., signed and sealed by Hermes F. Norero, P.E.

B. TESTS

1. None.

C. CALCULATIONS

1. None.

D. QUALITY ASSURANCE

1. Miami Dade Department of Regulatory and Economic Resources (RER).

E. MATERIAL CERTIFICATIONS

1. Notice of Acceptance No. **18-0301.06** issued to Eastman Chemical Company (MA), Inc. (Former Solutia Inc.) for their "**Saflex CP**: Saflex and Saflex HP composite interlayer w/ PET core", expiring on 12/11/23.

F. STATEMENTS

1. Statement letter of conformance to FBC 2020 (7th Edition) and letter of no financial interest, prepared by Building Drops, Inc, dated 01/18/21, signed and sealed by Hermes F. Norero, P.E.

G. OTHER

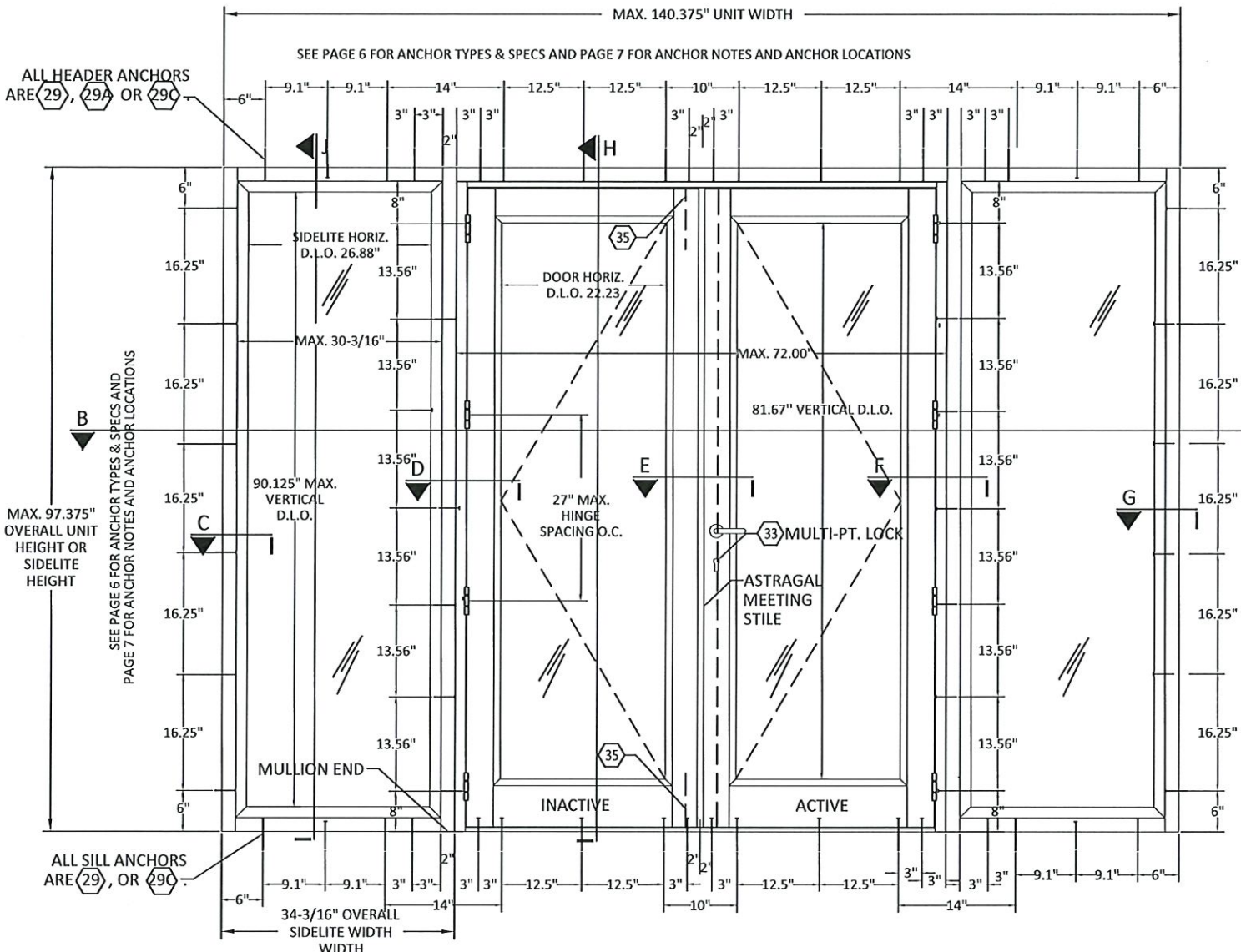
1. This NOA **revises** NOA # **15-0309.02**, expiring 07/25/2023.

Ishaq I. Chanda

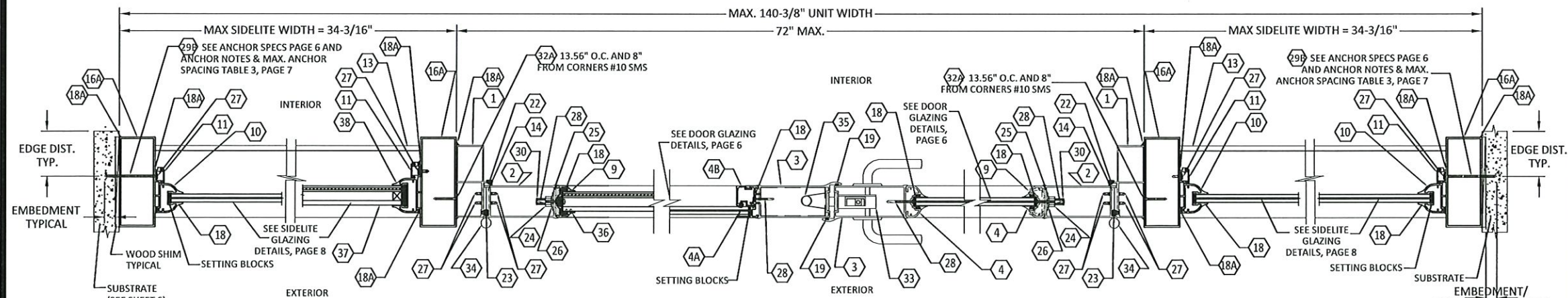
Ishaq I. Chanda, P.E.
Product Control Unit Supervisor
NOA No. 21-0205.06
Expiration Date: July 25, 2023
Approval Date: May 13, 2021

SERIES CONTINENTAL OUTSWING
ALUMINUM GLASS DOOR

- GENERAL NOTES:
- 1. THIS CONTINENTAL SYSTEM HAS BEEN DESIGNED AND TESTED TO COMPLY WITH THE REQUIREMENTS OF THE 7TH EDITION FLORIDA BUILDING CODE (2020 FBC), INCLUDING THE HVHZ, UNDER THE SPECIFIC CONDITIONS SHOWN ON THIS DRAWING. THIS CONTINENTAL DOOR SYSTEM HAS COMPLIED WITH FBC 2411.3.2.1 (ASTM E283, ASTM E331, ASTM F588) AND TAS 201, TAS 202 & TAS 203. THE CONTINENTAL DOOR AND SIDELITE ARE LARGE MISSILE IMPACT RESISTANT.
 - 2. 2x WOOD BUCKS SHALL BE INSTALLED AND PROPERLY ANCHORED SO THAT THE BUILDING RESISTS THE SUPERIMPOSED LOADS IN ACCORDANCE WITH REQUIREMENTS OF FBC.
 - 3. 1x WOOD BUCKS SHALL BE INSTALLED AND PROPERLY ANCHORED SUCH THAT THEY ARE STATIC DURING INSTALLATION & ACT AS SHEAR BLOCKS DURING LOADING TRANSFER FOR FASTENERS THROUGH THE DOOR FRAME TO THE CONCRETE.
 - 4. ANCHOR CONDITIONS NOT DESCRIBED IN THIS DRAWING ARE TO BE ENGINEERED ON A SITE SPECIFIC BASIS.
 - 5. DETERMINE THE POSITIVE AND NEGATIVE DESIGN LOADS TO USE WHEN REFERENCING THESE DOCUMENTS IN ACCORDANCE WITH THE GOVERNING CODE AND GOVERNING WIND VELOCITY. FOR WIND LOAD CALCULATIONS IN ACCORDANCE WITH ASCE 7-16, WIND LOADS MAY BE PERMITTED TO BE MULTIPLIED BY 0.6 FOR CONVERSION FROM LRFD TO ASD LOADS.
 - 6. NO INCREASE IN ALLOWABLE STRESS HAS BEEN USED IN THE DESIGN OF THIS PRODUCT. A WIND LOAD DURATION FACTOR OF 1.6 WAS USED FOR WOOD SCREW ANALYSIS. IN THE PREPARATION OF THESE DOCUMENTS.
 - 7. THESE PRODUCT EVALUATION DOCUMENTS ARE PREPARED BY THE PRODUCT ENGINEER AND ARE GENERIC. THEY DO NOT INCLUDE INFORMATION PREPARED FOR A SPECIFIC SITE.
 - 8. THESE PRODUCT EVALUATION DOCUMENTS ARE SUITABLE TO BE APPLIED BY THE CONTRACTOR PROVIDED THE CONTRACTOR DOES NOT DEVIATE FROM THE CONDITIONS DETAILED HEREIN AND THE CONTRACTOR VERIFIES THE EXISTING STRUCTURE IS CAPABLE OF SUPPORTING THE LOADS.
 - 9. WHEN THE SITE CONDITIONS DEVIATE FROM THESE PRODUCT EVALUATION DOCUMENTS, THE BUILDING OFFICIAL MAY ELECT ONE OF THE FOLLOWING OPTIONS:
 - 9.1 REQUIRE THAT SITE SPECIFIC DOCUMENTS BE PREPARED, SIGNED, DATED AND SEALED BY A LICENSED ENGINEER OR REGISTERED ARCHITECT, WHICH DETAIL AND JUSTIFY THE DEVIATION. SAID DOCUMENTS SHALL BE SUBMITTED TO THE PRODUCT ENGINEER FOR REVIEW AS A CONDITION TO THE BUILDING OFFICIAL GRANTING HIS/HER APPROVAL.
 - 9.2 REQUIRE THAT A ONE-TIME SITE SPECIFIC APPROVAL BE APPLIED FOR AND SECURED FROM THE MIAMI-DADE COUNTY PRODUCT CONTROL SECTION. WHEN THE SITE CONDITION DEVIATIONS OCCUR WITHIN THE HIGH VELOCITY HURRICANE ZONE AREAS ONLY OPTION "B" SHALL BE ACCEPTED BY THE BUILDING OFFICIAL.
 - 10. WHERE THE CONTRACTOR OR THE BUILDING OFFICIAL REQUIRES DOCUMENTS FOR A SITE SPECIFIC APPLICATION, THESE DOCUMENTS SHALL BE PREPARED BY A FLORIDA REGISTERED ENGINEER OR ARCHITECT FOR SAID APPLICATION. ALTERATIONS OR ADDITIONS TO THIS DOCUMENT ARE NOT PERMITTED.
 - 11. SEE SHEET 6 FOR DOOR GLAZING DETAILS AND PAGE 8 FOR SIDELITE GLAZING DETAILS. EITHER MONOLITHIC LAMINATED GLASS OR INSULATING LAMINATED GLASS MAY BE USED AT THE DESIGN PRESSURES GIVE ON PAGE 6.
 - 12. SEE DOOR WITH & WITHOUT SIDELITE SIZE VS DESIGN LOADS & ANCHOR SCHEDULE
 - 12.1 POSITIVE LOAD IS 75 PSF FOR ALL SIZES AND IS BASED ON WATER TEST PRESSURE (DOOR AND SIDELITE GLAZING DETAIL 1) AND BOTH +&- V_e LOAD CONFORMS TO LAMINATED GLASS CHART FIGS.A1.30 & 31 IN ASTM E1300.
 - 12.2 NEGATIVE LOAD IS 75 PSF (SEE TABLES 1 & 2 ON PAGE 6 OF 8).
 - 13. THIS PRODUCT HAS BEEN SUCCESSFULLY TESTED BY BLACKWATER TESTING FOR FLORIDA BUILDING CODE COMPLIANCE.
 - 13.1 BLACKWATER TESTING INC. REPORT NO. BT-AM-12-005 WITH BLACKWATER, TESTING INC. ADDENDUM LETTER OF MAY 24, 2013 REVISING THE PERMANENT SET VALUES AND ADDENDUM LETTER OF JULY 3, 2013 REVISING SIDELITE JAMB TESTED SPACING
 - 13.2 BLACKWATER TESTING INC. REPORT NO. BT-AM-14-001(A) DATED 9/19/14. (NOT TESTED FOR WATER RESISTANCE)
 - 13.3 BLACKWATER TESTING INC. REPORT NO. BT-AM-15-002A DATED 12/23/15. (NOT TESTED FOR WATER RESISTANCE)
 - 14. MATERIALS, INCLUDING, BUT NOT LIMITED TO FASTENERS OR SCREWS THAT COME IN CONTACT WITH DISSIMILAR METALS SHALL MEET THE REQUIREMENTS OF FBC.
 - 15. ALL WOOD IN CONTACT WITH CONCRETE SHALL BE P.T. & COMPATIBLE WITH ALUMINUM.
 - 16. ALSO FASTENERS & SCREWS MUST BE COMPATIBLE WITH CHEMICALS USED FOR PRESSURE TREATMENT OF WOOD.
 - 17. COMPONENTS 1 THROUGH 16A, 36 AND 38 ARE 6063-T5 EXTRUDED ALUMINUM ALLOY, U.O.N.
 - 18. ADDITIONAL PROTECTION FROM WINDBORNE DEBRIS (SHUTTERS) IS NOT REQUIRED ON OPENINGS WHERE THESE PRODUCTS ARE USED.
 - 19. WATER RESISTANT RATING: ONLY DOOR GLAZING DETAIL 1 (SHEET 6) & SIDELITE GLAZING DETAIL 1 (SHEET 8) ARE RATED FOR WATER RESISTANCE WHERE REQUIRED. ALL OTHER GLAZING DETAILS ARE NOT RATED FOR WATER RESISTANCE, UNLESS THE DOOR ASSEMBLIES ARE PROTECTED WITH OVERHANG COMPLYING WITH FBC 2411.3.2(2) REQUIREMENTS.



A EXTERIOR ELEVATION - SERIES CONTINENTAL DOOR WITH SIDELITE
N.T.S. ANCHOR SPACING SHOWN IN (A) IS FOR WOOD, CONCRETE OR CMU FILLED CMU (SEE PAGE 6 FOR OTHER SIZES & ANCHORS SPECIFICATIONS AND SEE PAGE 7 FOR OTHER LAYOUT OPTIONS & MAX. ANCHOR SPACING IN ALL SUBSTRATES TABLE 3)



B SECTION VIEW
N.T.S. (SEE PAGE 6 FOR OTHER SIZES & ANCHOR SPECIFICATIONS AND SEE PAGE 7 FOR OTHER LAYOUT OPTIONS & MAX ANCHOR SPACING TABLE 3)

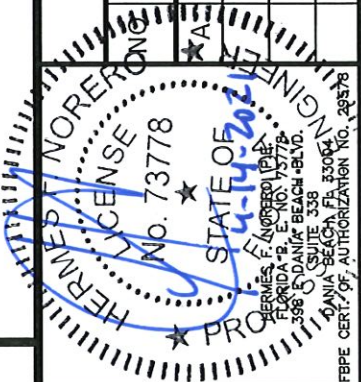
PRODUCT REVISED
as complying with the Florida
Building Code
NOA-NO. 21-0205.06
Expiration Date 07/27/2023
By Ishag I. Chande
Miami-Dade Product Control



P.O. BOX 2097
BARCELONETA, P.R. 00617
WWW.AIRMASTERPR.COM
PH: (787) 846-2110 FX: (787) 623-0085

TITLE: SERIES CONTINENTAL
OUTSWING ALUMINUM GLASS DOOR
ELEVATIONS, PLAN
VIEWS & GENERAL NOTES
PREPARED BY:
BUILDING DROPS
398 E DANIA BEACH BLVD,
SUITE 338
DANIA BEACH, FL 33004
PH: (954) 399-8478 FX: (954) 744-4738

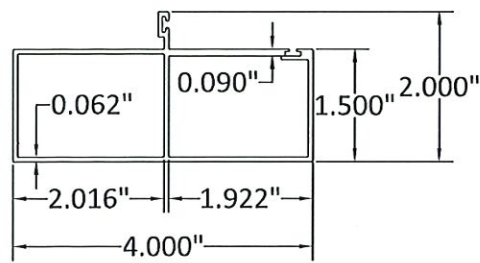
REVISIONS		DESCRIPTION	BY	DATE
		7TH EDITION FBC UPDATE	MS	10.29.20



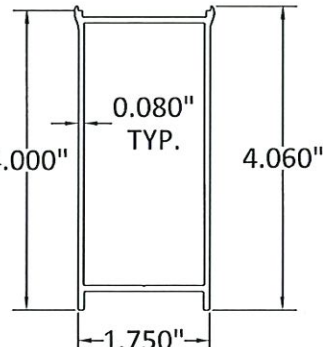
DATE: 05.07.18
DWN BY: SM
CHK BY: HFN
SCALE: NTS
DWG #:
AIR002
SHEET: 1 OF 8

3/31/2021 1:31 PM

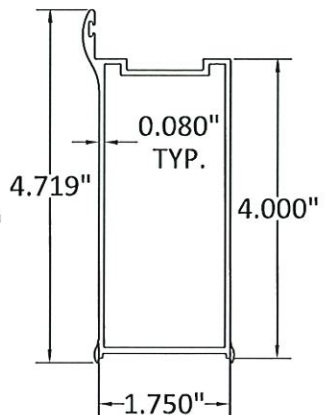
s:\projects\air master windows & doors\cc-20-1037 - fbc 2020 (ver. 7) code change mtd noa update\dwgs\air002.dwg



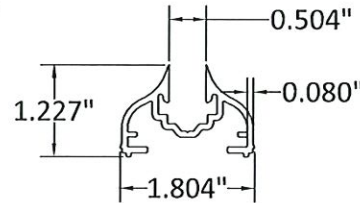
1 DOOR SUB JAMB
SCALE: HALF SIZE



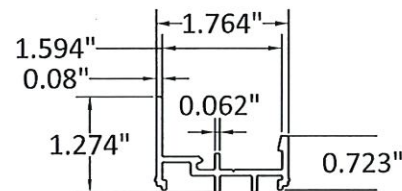
2 DOOR STILE
SCALE: HALF SIZE



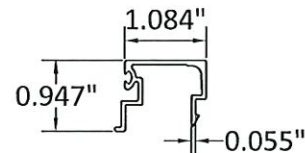
3 DOOR STILE WITH ASTRAGAL
SCALE: HALF SIZE



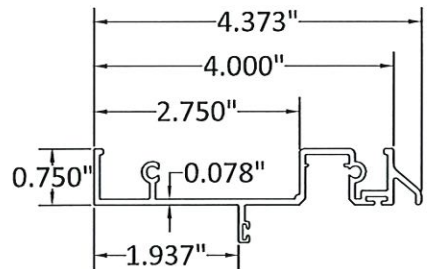
4 7/16" MONOLITHIC GLASS
3er. GEN. GLASS ADAPTER
SCALE: HALF SIZE



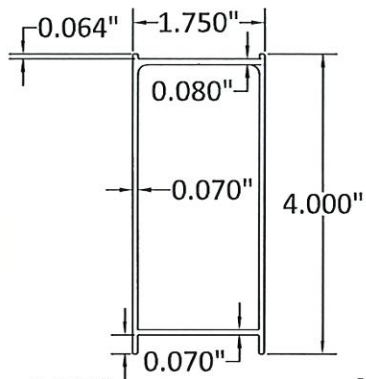
4A 7/16" MONOLITHIC GLASS
ALTERNATE GLASS ADAPTER
SCALE: HALF SIZE



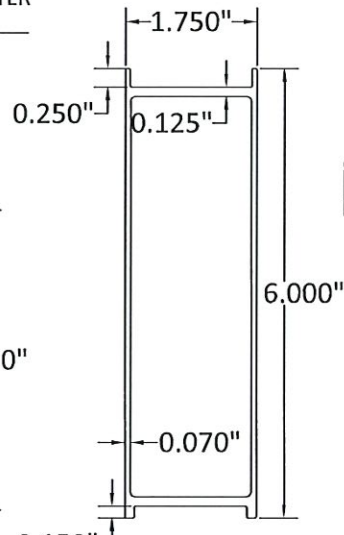
4B ALTERNATE GLASS ADAPTER
GLAZING BEAD
SCALE: HALF SIZE



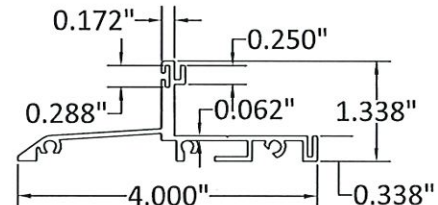
5 DOOR HEAD FRAME
SCALE: HALF SIZE



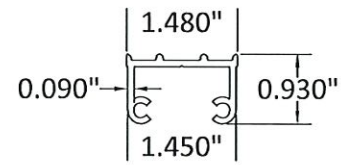
6 TOP RAIL
SCALE: HALF SIZE



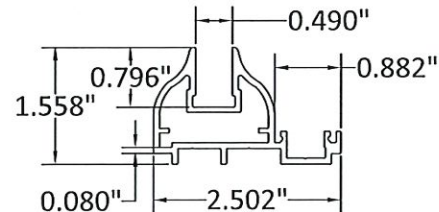
7 BOTTOM RAIL
SCALE: HALF SIZE



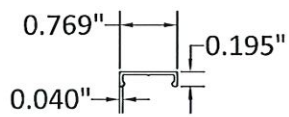
8 THRESHOLD
SCALE: HALF SIZE



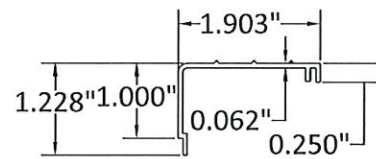
9 CORNER LOCK
SCALE: HALF SIZE



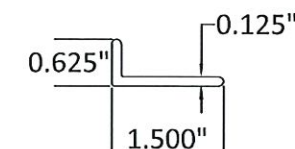
10 PERIMETER SIDELITE 4 GEN. 7/16"
SCALE: HALF SIZE



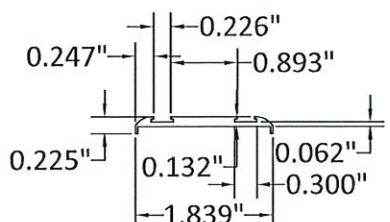
11 SNAP FOR SIDELITE
SCALE: HALF SIZE



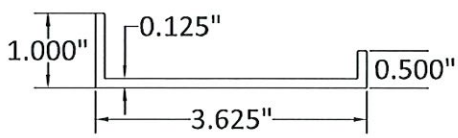
12 THRESHOLD FLAT TAPE COVER
SCALE: HALF SIZE



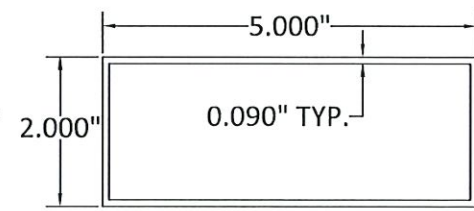
13 ANGLE 1.5"x.625"
SCALE: HALF SIZE



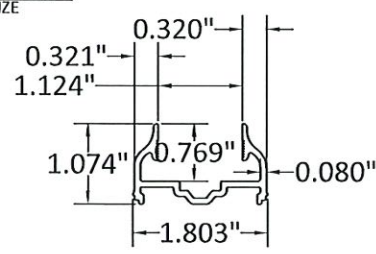
15 ADAPTER DOUBLE FELPA
SCALE: HALF SIZE



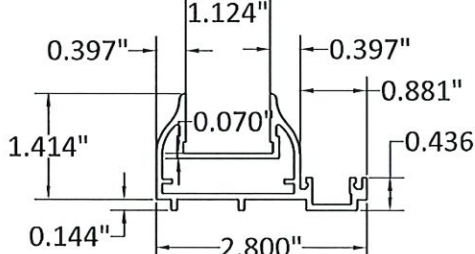
16 DEAD BOLT CHANNEL
SCALE: HALF SIZE



16A SIDELITE/DOOR FRAME JAMB/MULLION
SCALE: HALF SIZE



36 1-1/16" I.G. GLASS
3er. GEN. GLASS ADAPTER
SCALE: HALF SIZE



38 PERIMETER SIDELITE 4 GEN. 1-1/16"
SCALE: HALF SIZE

BILL OF MATERIALS

ITEM #	PART #	ITEM DESCRIPTION	MANUFACTURER/SUPPLIER/NOTES
1	77495	DOOR FRAME JAMBS	FUNDICIONES INDUSTRIALES S.A /6063-T5
2	77534	DOOR STILE	FUNDICIONES INDUSTRIALES S.A /6063-T5
3	77525	DOOR STILE WITH ASTRAGAL	FUNDICIONES INDUSTRIALES S.A /6063-T5
4	13038	7/16" GLASS ADAPTER	FUNDICIONES INDUSTRIALES S.A /6063-T5
4A	76840	7/16" LINEAL GLASS ADAPTER	FUNDICIONES INDUSTRIALES S.A /6063-T5
4B	76841	LINEAL GLASS ADAPTER GLAZING BEAD	FUNDICIONES INDUSTRIALES S.A /6063-T5
36	13039	1-1/16" GLASS ADAPTER	FUNDICIONES INDUSTRIALES S.A /6063-T5
5	77510	DOOR HEAD FRAME	FUNDICIONES INDUSTRIALES S.A /6063-T5
6	77554	TOP RAIL	FUNDICIONES INDUSTRIALES S.A /6063-T5
7	76702	6" MIN BOTTOM RAIL	FUNDICIONES INDUSTRIALES S.A /6063-T5
8	80511	THRESHOLD CONTINENTAL DOOR	FUNDICIONES INDUSTRIALES S.A /6063-T5
9	11081	CORNER LOCK	FUNDICIONES INDUSTRIALES S.A /6063-T5
10	76835	7/16" PERIMETER P/W	FUNDICIONES INDUSTRIALES S.A /6063-T5
38	76849	1-1/16" PERIMETER P/W	FUNDICIONES INDUSTRIALES S.A /6063-T5
11	76830	SNAP FOR PICTURE WINDOW	FUNDICIONES INDUSTRIALES S.A /6063-T5
12	80525	RECT SNAP COVER FOR THRESHOLD	FUNDICIONES INDUSTRIALES S.A /6063-T5
13	96534	ANGLE 1.5"x.625"x.125"	FUNDICIONES INDUSTRIALES S.A /6063-T5
15	13020	ADAPTER DOUBLE FELPA	FUNDICIONES INDUSTRIALES S.A /6063-T5
16	57628	DEAD BOLT CHANNEL L=3.625"	GLOBAL HOLDEX LTD /6063-T5
16A	57525	2"x5" x 0.090" FRAME MULLION	FUNDICIONES INDUSTRIALES S.A /6063-T5
17		IMPACT GLASS 7/16"	TECHNOGLASS
		3/16" ANN - 0.090" SAFLEX CP - SAFLEX OR SAFLEX HP COMPOSITE GLASS INTERLAYERS WITH PET CORE BY EASTMAN CHEMICAL CO. - 3/16" ANN	
		IMPACT GLASS 1-1/16"	TECHNOGLASS
37		1-1/16" O.A.: 3/16" TEMP. EXT - AIR SPACE - 3/16" ANN - 0.090" SAFLEX CP - SAFLEX OR SAFLEX HP COMPOSITE GLASS INTERLAYERS WITH PET CORE BY EASTMAN CHEMICAL CO. - 3/16" ANN	
37A		1-1/16" O.A.: 1/4" TEMP. EXT - AIR SPACE - 3/16" ANN - 0.090" SAFLEX CP - SAFLEX HP COMPOSITE GLASS INTERLAYERS WITH PET CORE BY EASTMAN CHEMICAL CO. - 3/16" ANN	
18	53580	DOW 995 BLACK STRUCTURAL SILICONE	DOW CORNING
18A	76648	SILICONE CLEAR	PACIFIC GLOBAL PACKAGING
19	96823	WEATHER STRIP	ULTRAFAB
20	96824	WEATHER STRIP	ULTRAFAB
21	96825	WEATHER STRIP	ULTRAFAB
22	96980	PERIMETER FRAME VINYL	MSW LLC
23	32010	B/RUBBER/FOAM-W/WEATHER STRIP	MSW LLC
41	96936	GOMA FP-448 BLACK	3M
42	96690	3M VHB TAPE	3M
24	95612	3/8"-16-SS HEX NUT	LA CASA DE LOS TORNILLOS
25	95492	FLAT WASHER 3/8"	LA CASA DE LOS TORNILLOS
26	95493	PRESSURE WASHER 3/8" SS	LA CASA DE LOS TORNILLOS
27	95691	#10-24 x 5/8" PH F/H SS SELF/D	LA CASA DE LOS TORNILLOS
28	95692	#10-24 x 1" FH /PH /SS SELF/D	LA CASA DE LOS TORNILLOS
28B		1/4" ELCO ULTRACON (CMU) PHI P/H F/H	ELCO CONSTRUCTION PRODUCTS
29		#14 WOOD SCREW PHI F/H SS	W/ DISSIMILAR METALS CORROSION COATING
29A		1/4" ELCO ULTRACON IN GROUT FILLED CMU PHI P/H F/H	ELCO CONSTRUCTION PRODUCTS
29B		1/4" ELCO ULTRACON IN CMU PHI P/H F/H	ELCO CONSTRUCTION PRODUCTS
29C		1/4" ELCO ULTRACON, PHI, F/H, P/H	ELCO CONSTRUCTION PRODUCTS
30	76657	3/8"x 72" SS-304 ROD	LA CASA DE LOS TORNILLOS
31	95597	#10 SCREW x 1-1/2" PHI PH S/S T-A	LA CASA DE LOS TORNILLOS
32	95660	#12 SCREW x 3/4" PHI PH S/S T-A	LA CASA DE LOS TORNILLOS
32A		#10 GR. 5 SHEET METAL SCREW (SMS)	ITW BUILDDEX
33	34200	MULTIPOINT LOCK 2230 (TH102)	FRANCISCO R. FARRES, INC. / ATZ
34	76565	4" S/S HINGES	L.D.G. HARDWARE MANUFACTURER
35	76523	FLUSHBOLT 1/8 BACKSET SATIN NIQL	SONFAST CARIBE, INC.
39	76663	THREADED ROD 5/16" X 72" S/S	CENTURY FASTENERS
40	76665	TERMINAL S/S 12x46mm	SALS HARDWARE

PRODUCT REVISED
as complying with the Florida
Building Code
NOA No. 21-0205.06

Expiration Date 07/27/2023

By Ishag I. Chande
Miami-Dade Product Control

AIR MASTER
windows and doors

P.O. BOX 2097
BARCELONETA, P.R. 00617
WWW.AIRMASTERPR.COM
PH: (787) 846-2110 FX: (787) 623-0085

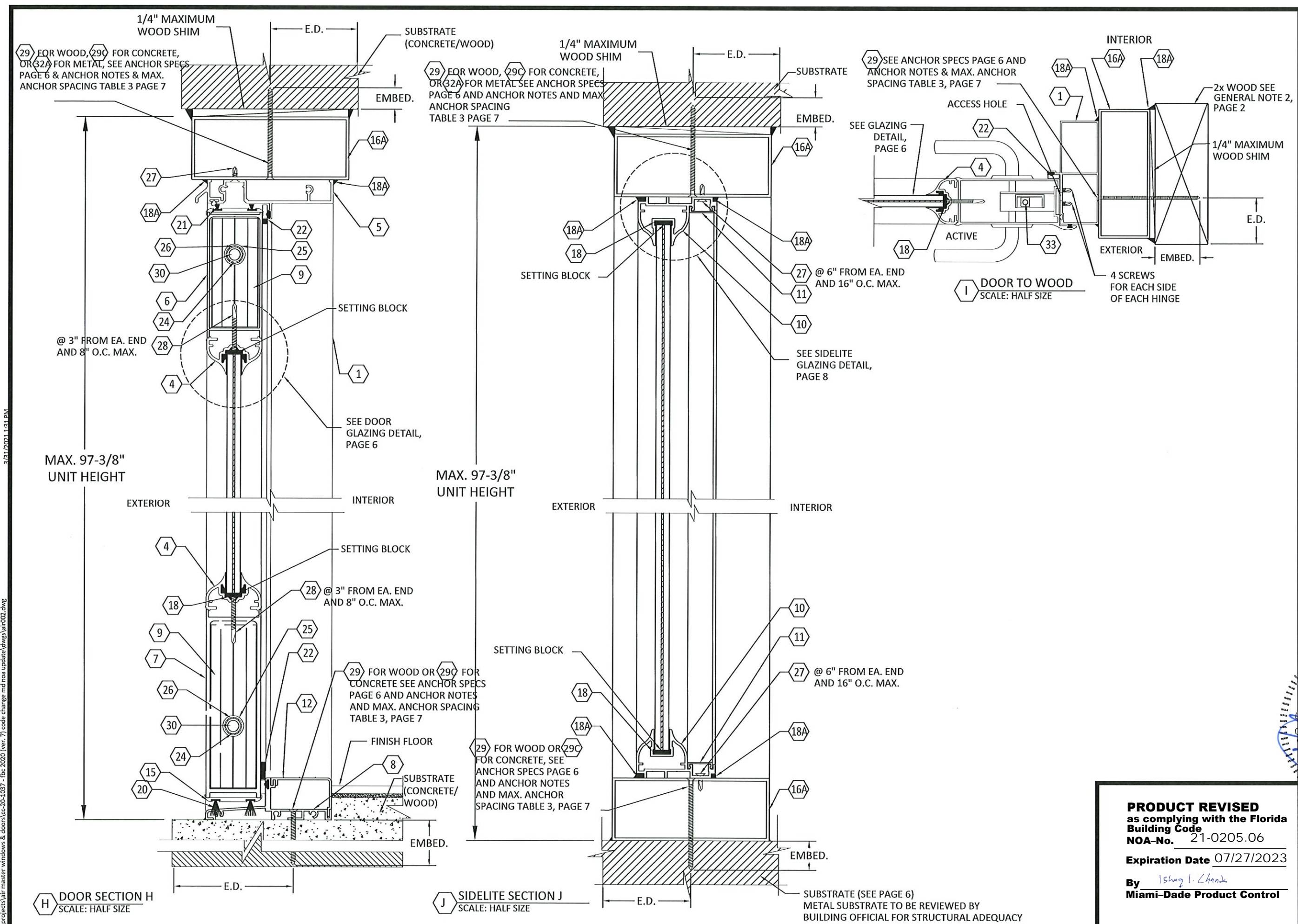
TITLE: SERIES CONTINENTAL
OUTSWING ALUMINUM GLASS DOOR
COMPONENTS AND
B.O.M.
PREPARED BY:
BUILDING DROPS
398 E DANIA BEACH BLVD,
SUITE 338
DANIA BEACH, FL 33004
PH: (954) 399-8478 FX: (954) 744-4738

REVISIONS

NO.	DESCRIPTION	BY	DATE
1	7TH EDITION FBC UPDATE	MS	10.29.20



DATE: 05.07.18
DWN BY: SM
CHK BY: HFN
SCALE: NTS
DWG #: **AIR002**
SHEET: 2 OF 8



AIR MASTER
windows and doors

P.O. BOX 2097
BARCELONETA, P.R. 00617
WWW.AIRMASTERPR.COM
PH: (787) 846-2110 FX: (787) 623-0085

TITLE: SERIES CONTINENTAL
OUTSWING ALUMINUM GLASS DOOR

VERTICAL AND
HORIZONTAL SECTIONS

PREPARED BY:
BUILDING DROPS
398 E DANIA BEACH BLVD,
SUITE 338
DANIA BEACH, FL 33004
PH: (954) 399-8478 FX: (954) 744-4738

REVISIONS	
NO.	DESCRIPTION
1	7TH EDITION FBC UPDATE

DATE: 05.07.18
DWN BY: SM
CHK BY: HFN
SCALE: NTS

DWG #: **AIR002**

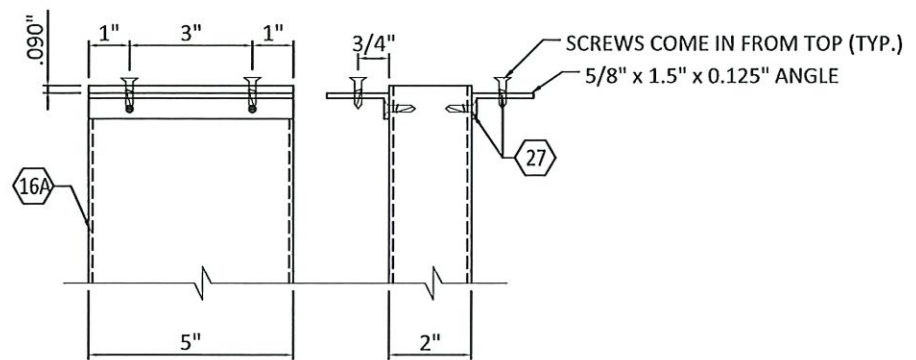
SHEET: **4 OF 8**

PRODUCT REVISED
as complying with the Florida
Building Code
NOA-No. 21-0205.06
Expiration Date 07/27/2023

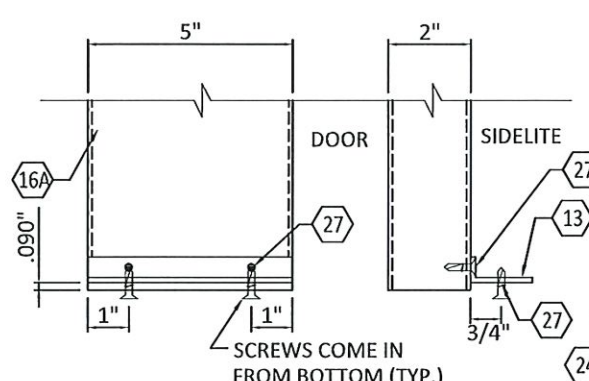
By Ismael I. Chando
Miami-Dade Product Control

HERNANDEZ NORERO
LICENSE No. 73778
STATE OF FLORIDA
PROFESSIONAL ENGINEER
EXPIRATION DATE 07-19-2025
HERNANDEZ NORERO P.E.
FLORIDA P.E. NO. 73778
398 E DANIA BEACH BLVD,
SUITE 338
DANIA BEACH, FL 33004
FBPE CERT. OF AUTHORIZATION No. 239578

s:\projects\air master windows & doors\cc-20-1037 - fbc 2020 (ver. 7) code change md noa update (dwg)\air002.dwg 3/31/2021 1:31 PM



M5 MULLION W/ CLIP ANGLES BETWEEN DOOR & SIDELITE
N.T.S.



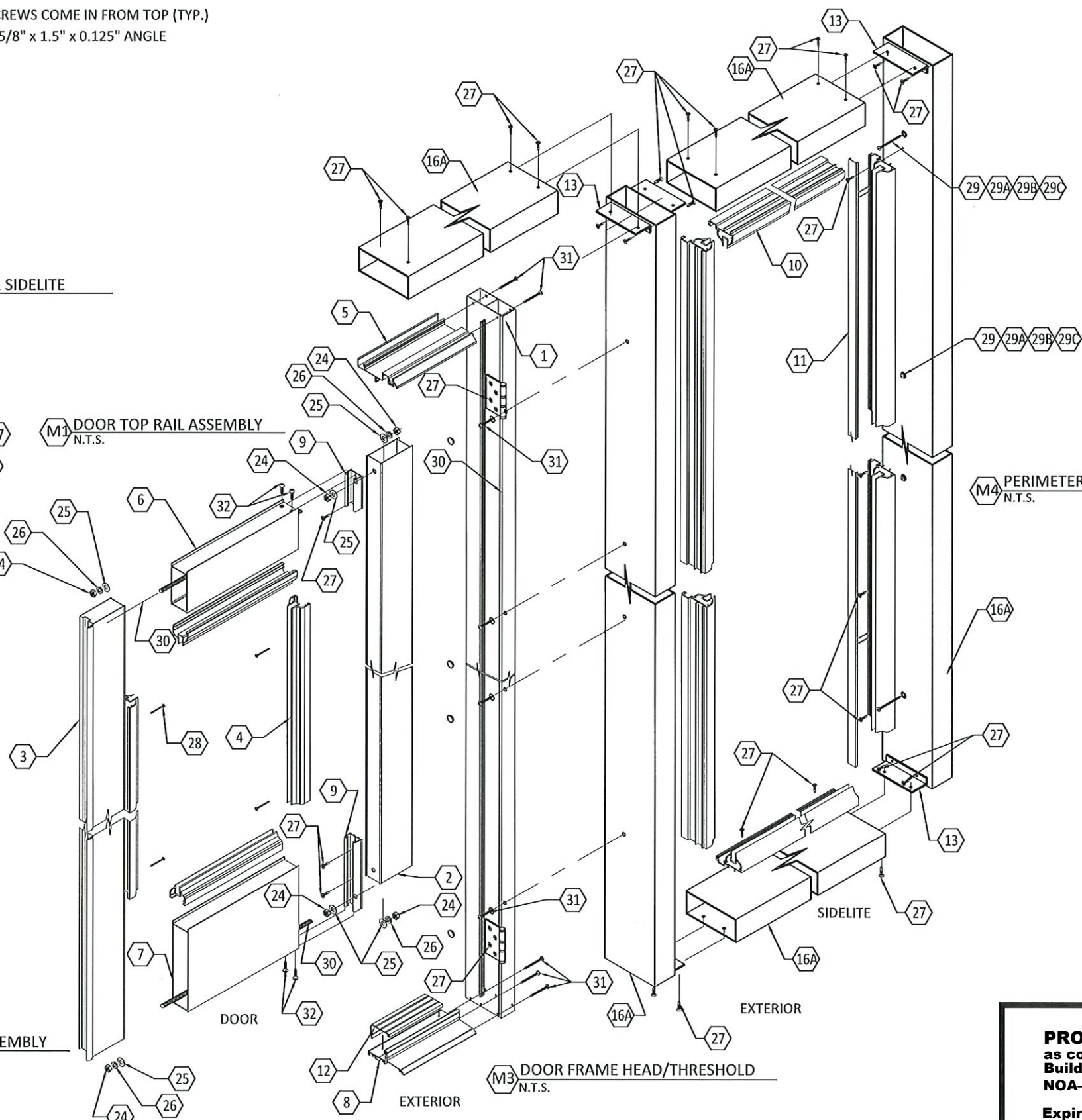
M6 MULLION W/ CLIP BETWEEN DOOR & SIDELITE - BOTTOM
N.T.S.

M1 DOOR TOP RAIL ASSEMBLY
N.T.S.

M2 DOOR BOTTOM RAIL ASSEMBLY
N.T.S.

M3 DOOR FRAME HEAD/THRESHOLD
N.T.S.

M4 PERIMETER SIDELITE ASSEMBLY
N.T.S.



P.O. BOX 2097
BARCELONETA, P.R. 00617
WWW.AIRMASTERPR.COM
PH: (787) 846-2110 FX: (787) 623-0085

TITLE: SERIES CONTINENTAL
OUTSWING ALUMINUM GLASS DOOR
ASSEMBLY EXPLODED VIEW
PREPARED BY:
BUILDING DROPS
398 E DANIA BEACH BLVD,
SUITE 338
DANIA BEACH, FL 33004
PH: (954) 395-8478 FX: (954) 744-4738

REVISIONS		NO.	DESCRIPTION	BY	DATE
		1	7TH EDITION FBC UPDATE	MS	10.29.20



PRODUCT REVISED
as complying with the Florida
Building Code
NOA-No. 21-0205.06
Expiration Date 07/27/2023
By Ishag I. Chande
Miami-Dade Product Control

DATE: 05.07.18
DWN BY: SM
CHK BY: HFN
SCALE: NTS
DWG #: AIR002
SHEET: 5 OF 8

s:\projects\air master windows & doors\cc-20-1037 - fbc 2020 (ver. 7) code change mtd noa update\dwgs\air002.dwg 3/21/2021 1:31 PM

NOTES:

1. SINGLE SIDELITE WHEN USED WITH DOOR SHALL BE LIMITED TO EITHER SIDE OF DOOR

TABLE 2 - SIDELITE UNIT SIZE						
NOM. HEIGHT (in)	NOM. WIDTH (in)	VERTICAL D.L.O. (in)	HORIZONTAL D.L.O. (in)	ACTUAL FINAL SIZES WITH 2"x5" FRAME MULLION		ALLOWABLE POSITIVE & NEGATIVE DESIGN WIND LOAD PSF
				OVERALL SIDELITE HEIGHT (in)	OVERALL SIDELITE WIDTH (in)	
93.25	30	90.13	26.88	97.38	34.13	*75.0
93.25	24	90.13	20.88	97.38	28.13	*75.0
93.25	18	90.13	14.88	97.38	22.13	*75.0
93.25	12	90.13	8.88	97.38	16.13	*75.0
81.25	30	78.13	26.88	85.38	34.13	*75.0
81.25	24	78.13	20.88	85.38	28.13	*75.0
81.25	18	78.13	14.88	85.38	22.13	*75.0
81.25	12	78.13	8.88	85.38	16.13	*75.0
78.00	30	74.88	26.88	82.13	34.13	*75.0
78.00	24	74.88	20.88	82.13	28.13	*75.0
78.00	18	74.88	14.88	82.13	22.13	*75.0
78.00	12	74.88	8.88	82.13	16.13	*75.0

* +75 PSF WATER RATING WITH SIDELITE GLAZING TYPE G1 (SHEET 8)

TABLE 1 - DOOR SIZES & DOOR SIZES W/ SIDELITE SIZES													
1 PANEL DOOR		2 PANEL DOOR (DOUBLE)		DOOR VERTICAL D.L.O. (in)	DOOR HORIZ. D.L.O. (in)	2"x5" FRAME/HEADER AND THRESHOLD OVERALL DOOR HEIGHT (in)	DOOR WITH 2"x5" FRAME HEADER AND THRESHOLD NO SIDELITE OVERALL 1 PANEL DOOR WIDTH (in)	DOOR W/ NO SIDELITE INCLUDES 2"x5" VERTICAL FRAME OVERALL 2 PANEL DOOR WIDTH (in)	ACTUAL FINAL SIZES OF DOORS W/ SIDELITE				ALLOW-ABLE POSITIVE AND NEGATIVE DESIGN WIND LOAD PSF
									OVERALL 2 PANEL DOOR WIDTH W/ SIDELITE 30" ON EACH SIDE (in)	OVERALL 2 PANEL DOOR WIDTH W/ SIDELITE 24" ON EACH SIDE (in)	OVERALL 2 PANEL DOOR WIDTH W/ SIDELITE 18" ON EACH SIDE (in)	OVERALL 2 PANEL DOOR WIDTH W/ SIDELITE 12" ON EACH SIDE (in)	
95.25	36	95.25	72	81.67	22.23	97.38	40.13	76.13	140.38	128.38	116.38	104.38	*75.0
95.25	30	95.25	60	81.67	16.23	97.38	34.13	64.13	128.38	116.38	104.38	92.38	*75.0
95.25	24	95.25	48	81.67	10.23	97.38	28.13	52.13	116.38	104.38	92.38	80.38	*75.0
83.25	36	83.25	72	69.67	22.23	85.38	40.13	76.13	140.38	128.38	116.38	104.38	*75.0
83.25	30	83.25	60	69.67	16.23	85.38	34.13	64.13	128.38	116.38	104.38	92.38	*75.0
83.25	24	83.25	48	69.67	10.23	85.38	28.13	52.13	116.38	104.38	92.38	80.38	*75.0
80.00	36	80.00	72	66.42	22.23	82.13	40.13	76.13	140.38	128.38	116.38	104.38	*75.0
80.00	30	80.00	60	66.42	16.23	82.13	34.13	64.13	128.38	116.38	104.38	92.38	*75.0
80.00	24	80.00	48	66.42	10.23	82.13	28.13	52.13	116.38	104.38	92.38	80.38	*75.0

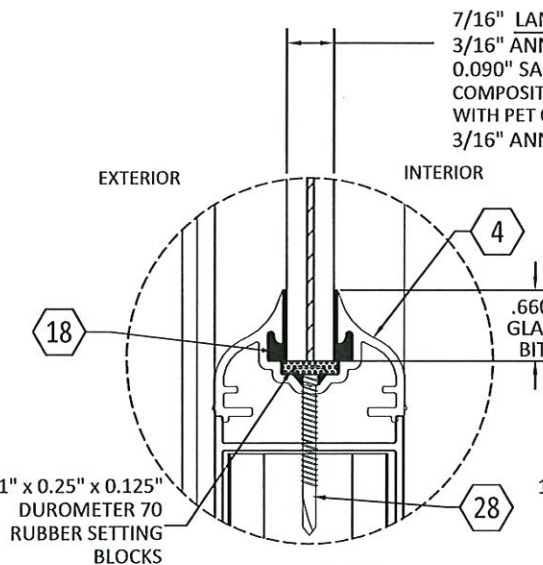
NOTES:

- DOOR FRAME HEIGHT = NOMINAL DOOR HEIGHT + 2.125"
- SIDELITE FRAME HEIGHT = NOMINAL SIDELITE HEIGHT + 4.125"
- APPLICABLE EGRESS REQUIREMENTS TO BE REVIEWED BY BUILDING OFFICIAL

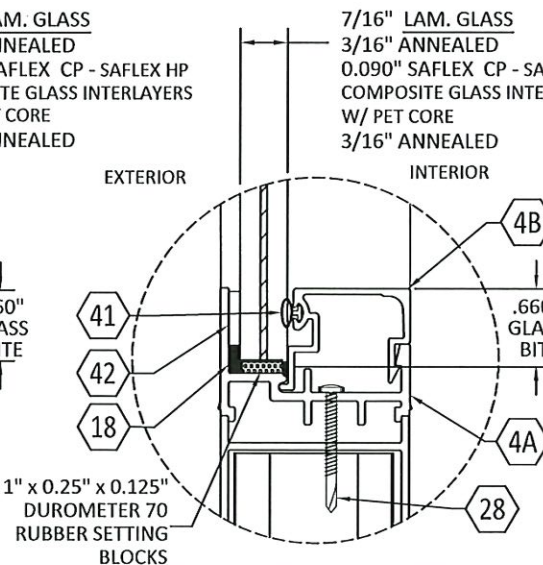
* +75 PSF WATER RATING WITH DOOR GLAZING TYPE G1

ANCHORS SPECIFICATIONS

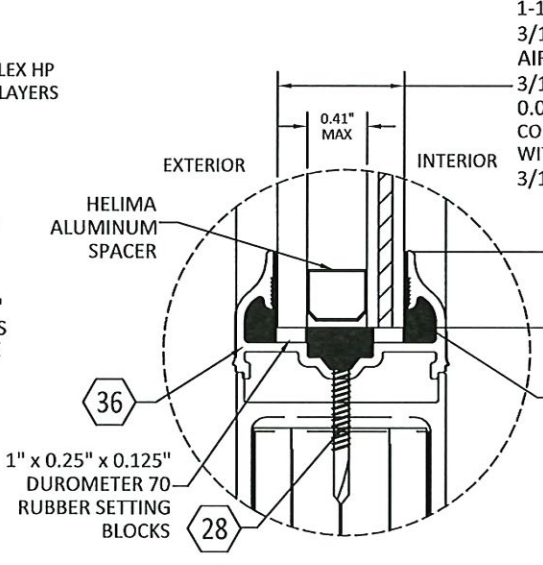
ITEM # 29 29C CONCRETE 32A	SIDELITE HEAD/SILL AND DOOR HEAD FRAME: #14 WOOD SCREW INTO SG=0.55 WOOD WITH 1 1/4" EDGE DISTANCE, MINIMUM SPACING = 1 1/4" AND 1 1/2" EMBEDMENT INTO 2 (2X) (Fyb= 70 KSI) 1/4" Ø ELCO ULTRACON INTO CONCRETE (MIN F'c = 3000 PSI), WITH 2 1/2" EDGE DISTANCE, MINIMUM SPACING = 4" & MIN. EMBEDMENT = 1 3/4" (Fy=155 KSI Fu=177 KSI) #10 GRADE 5 SHEET METAL SCREW (SMS) INTO METAL STRUCTURE a. 6063-T5 ALUMINUM ALLOY, MINIMUM, 0.090- 0.125" THICK b. 12 GAUGE, 36 KSI STEEL-USE G-90 GALVANIZED STEEL OR PAINTED STEEL-SEE FBC DISSIMILAR METAL REQUIREMENTS
29 29C CONCRETE	DOOR THRESHOLD: #14 WOOD SCREW INTO SG=0.55 WOOD WITH 1 1/4" EDGE DISTANCE, MINIMUM SPACING = 1 1/4" & 1 1/2" EMBEDMENT, AT THRESHOLD INTO 2 (2X) (Fyb= 70 KSI) 1/4" Ø ELCO ULTRACON INTO CONCRETE (MIN F'c = 3000 PSI), WITH 2 1/2" EDGE DISTANCE, MINIMUM SPACING = 4" & MIN. EMBEDMENT = 1 3/4" (Fy=155 KSI Fu=177 KSI)
29 29A GROUT FILLED CMU 29B CMU 29C CONCRETE 32A	SIDELITE JAMB/FRAME AND DOOR JAMB/FRAME: #14 WOOD SCREW INTO SG=0.55 WOOD WITH 1 1/4" EDGE DISTANCE, MINIMUM SPACING = 1 1/4" AND 1 1/2" PENETRATION INTO 2 (2X) (Fyb= 70 KSI) 1/4" Ø ELCO ULTRACON INTO GROUT FILLED CMU (COMPLIES W/ ASTM C 90 NORMAL WEIGHT WITH 2 KSI), W/ 2 1/2" EDGE DISTANCE, MIN. SPACING = 4" & MIN. EMBEDMENT = 1 3/4" (Fy=155 KSI Fu=177 KSI) 1/4" Ø ELCO ULTRACON INTO CMU (COMPLIES WITH ASTM C 90 NORMAL WEIGHT WITH 2 KSI), WITH 1" EDGE DISTANCE, MINIMUM SPACING = 6" & MIN. 1 1/4" EMBEDMENT (Fy=155 KSI Fu=177 KSI) 1/4" Ø ELCO ULTRACON INTO CONCRETE (MIN F'c = 3000 PSI), WITH 2 1/2" EDGE DISTANCE, MINIMUM SPACING = 4" & MIN. 1 3/4" EMBEDMENT (Fy=155 KSI Fu=177 KSI) #10 GRADE 5 SHEET METAL SCREW (SMS) INTO METAL STRUCTURE a. 6063-T5 ALUMINUM ALLOY, MINIMUM, 0.090- 0.125" THICK b. 12 GAUGE, 36 KSI STEEL-USE G-90 GALVANIZED STEEL OR PAINTED STEEL-SEE FBC DISSIMILAR METAL REQUIREMENTS
27	CLIP ANGLES AT MULLION BETWEEN DOOR AND SIDELITE (2 TOP ANGLES AND 1 BOTTOM ANGLE ON EACH MULLION): #10 GRADE 5 SHEET METAL SCREW - 2 SMS IN EACH LEG OF THE 0.625" X 1.5" X 0.125" ANGLE



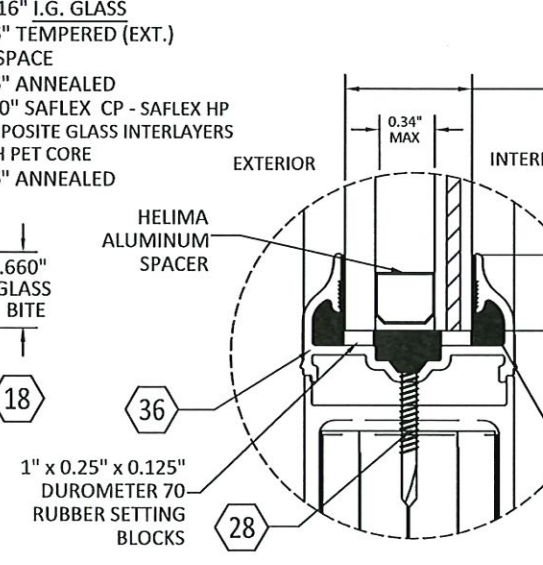
DOOR GLAZING DETAIL 1
(RATED FOR WATER INFILTRATION)



DOOR GLAZING DETAIL 2
(NOT RATED FOR WATER INFILTRATION)



DOOR GLAZING DETAIL 3
(NOT RATED FOR WATER INFILTRATION)



DOOR GLAZING DETAIL 4
(NOT RATED FOR WATER INFILTRATION)

PRODUCT REVISED
as complying with the Florida
Building Code
NOA-No. 21-0205.06
Expiration Date 07/27/2023
By Ishag I. Chande
Miami-Dade Product Control

AIR MASTER
windows and doors

P.O. BOX 2097
BARCELONETA, P.R. 00617
WWW.AIRMASTERPR.COM
PH: (787) 846-2110 FX: (787) 623-0085

TITLE: SERIES CONTINENTAL
OUTSWING ALUMINUM GLASS DOOR
ANCHOR SCHEDULE, SIZE TABLE
AND DOOR GLAZING DETAILS
PREPARED BY: BUILDING DROPS
398 E DANIA BEACH BLVD,
SUITE 338
DANIA BEACH, FL 33004
PH: (954) 399-8478 FX: (954) 744-4738

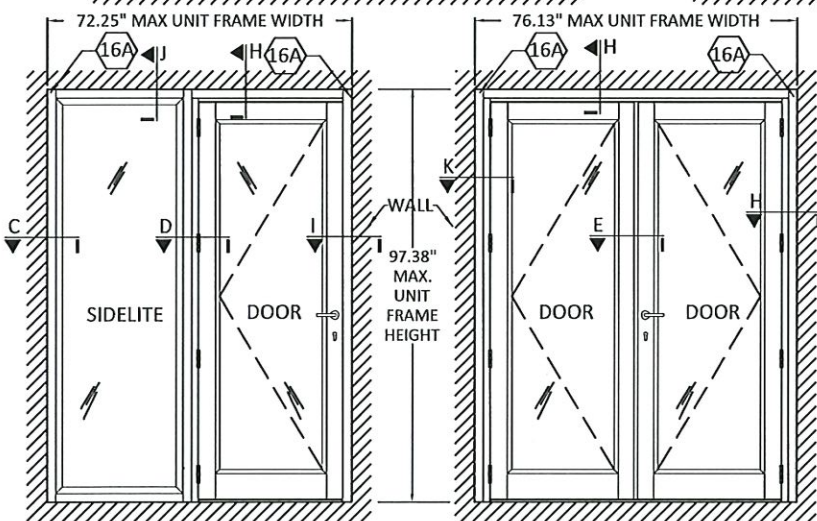
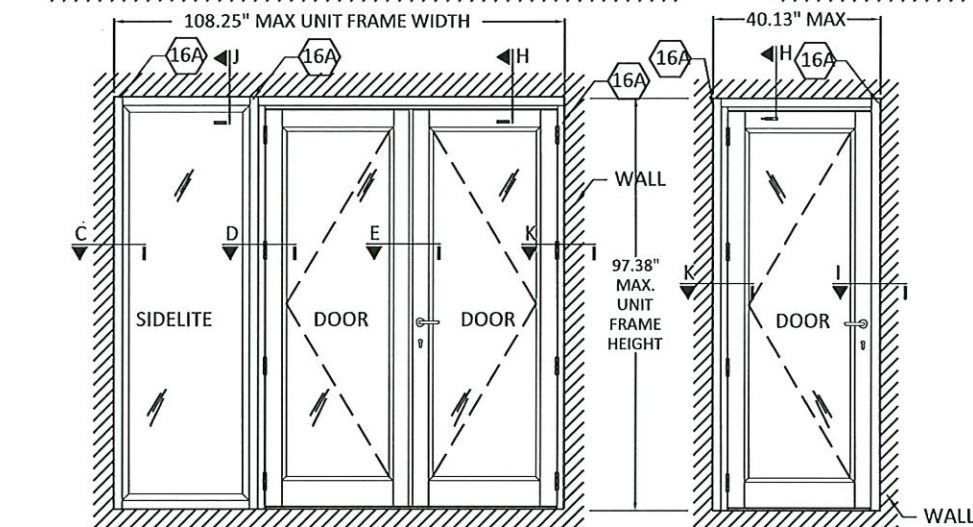
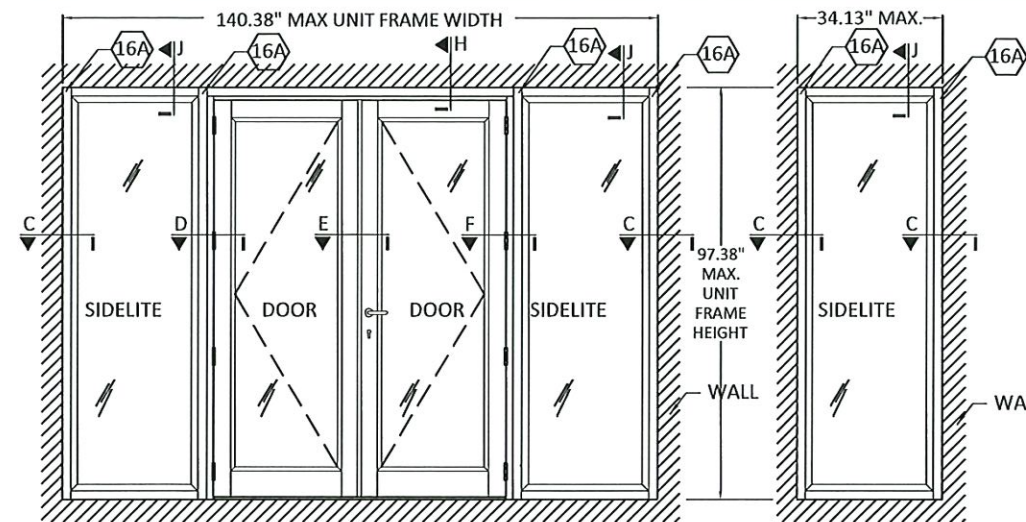
REVISIONS



DATE: 05.07.18
DWN BY: SM
CHK BY: HFN
SCALE: NTS
DWG #: AIR002
SHEET: 6 OF 8

3/31/2021 1:31 PM

s:\projects\air master windows & doors\cc-20-1037 - fbc 2020 (ver. 7) code change mtd noa update\dwgs\air002.dwg



N OPTIONAL INSTALLATION LAYOUTS
N.T.S.

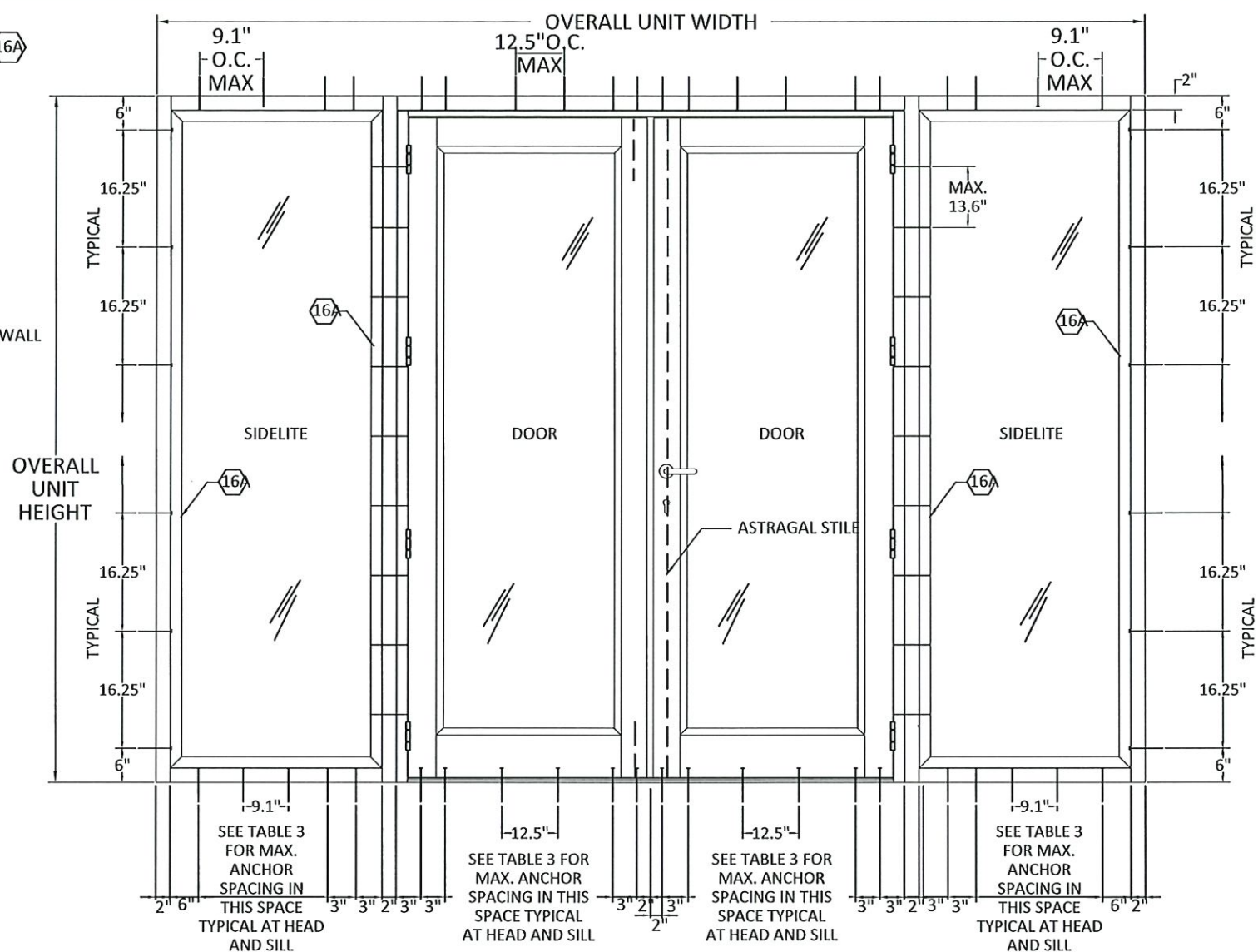
ANCHOR NOTES:

1/4" DIAMETER ELCO ULTRACON WITH 2.5" EDGE DISTANCE, MIN. 4" SPACING & 1 3/4" EMBEDMENT
#14 DIAMETER WOOD SCREW WITH 1.25" EDGE DISTANCE & MIN. 1.25" O.C. SPACING WITH 1.5" PENETRATION

ANCHOR REQUIREMENTS FOR DOOR THRESHOLD AND HEAD ON BOTH SIDES OF MULLION
FOR CONCRETE SUBSTRATES, USE FOUR (4) 1/4" DIAMETER ELCO ULTRACON, ITEM 29C TO THRESHOLD, WITH 1 EACH AT 3" AND 6" FROM EACH END OF THRESHOLD & 1 EACH AT 3" AND 6" FROM EDGE OF MULLION (16A) IN SIDELITE SILL.

FOR WOOD SUBSTRATES, USE TWO (2) #14 DIAMETER WOOD SCREWS WITH 1.5" PENETRATION, INSTALLED AT EACH OF THE SAME LOCATIONS AS DESCRIBED ABOVE FOR CONCRETE SUBSTRATES.

BALANCE OF ANCHORS, FOR CONCRETE AND WOOD SUBSTRATES, BETWEEN STARTER ANCHORS AND CLUSTERS AT MULLION SHALL BE EQUALLY SPACED, BUT SHALL NOT EXCEED THE MAXIMUM ANCHOR SPACING SHOWN IN TABLE 3 ON THIS PAGE.



M EXTERIOR ELEVATION - EXAMPLE
N.T.S.

NOTE:

1. THE DIAGRAM ABOVE SHOWS 1/4"Ø ANCHORS LOCATIONS THAT MUST BE USED FOR ALL DOOR & SIDELITE SIZES. MAXIMUM ANCHOR SPACING BETWEEN THE STARTER ANCHOR & CLUSTER OR MAXIMUM ANCHOR SPACING BETWEEN CLUSTERS CAN BE FOUND IN TABLE 3, THIS PAGE.

**TABLE 3 - DOOR & SIDELITE MAXIMUM ANCHOR PERIMETER SPACING ALLOWED
EXCEPT CLUSTERS AT DOOR ASTRAGAL (MEETING STILES) AND MULLION ENDS (SEE SHEET 1)**

SUBSTRATES	SIDELITE JAMB TO WALL (in)	MIN. 2 ANCHORS		DOOR JAMB OR SIDELITE TO MULLION (in)	MIN. 2 ANCHORS		DOOR THRESHOLD (in)
		SIDELITE HEAD (in)	SIDELITE SILL (in)		DOOR JAMB TO WALL (in)	DOOR HEAD (in)	
SG=0.55 WOOD CONCRETE	16.25	9.1	9.1	13.6	13.6	12.5	12.5
GROUT FILLED CMU HOLLOW CMU	16.25	N/A	N/A	13.6	13.6	N/A	N/A

ANCHOR REQUIREMENTS FOR DOOR THRESHOLD AND HEAD AT ASTRAGAL
FOR CONCRETE INSTALLATIONS, USE TWO (2) ULTRACONS, ITEM 29C, WITH 2 1/2" EDGE DISTANCE & 1 3/4" EMBEDMENT;
ONE AT 2" & 5" ON EACH SIDE OF THE CENTERLINE OF THE 2 DOORS.
FOR WOOD INSTALLATIONS, USE TWO (2) #14 DIAMETER WOOD SCREWS, ITEM 29 WITH 1 1/4" EDGE DISTANCE AND 1
1/2" EMBEDMENT, ONE EACH AT 2" & 5" ON EACH SIDE OF THE CENTERLINE OF THE 2 DOORS, ADDITIONALLY USE ONE
#14 WOOD SCREW ANCHOR AT CENTERLINE OF THE 2 DOORS.

BALANCE OF ANCHORS, FOR CONCRETE AND WOOD SUBSTRATES, BETWEEN STARTER ANCHORS AND CLUSTERS AT
ASTRAGAL SHALL BE EQUALLY SPACED, BUT SHALL NOT EXCEED THE MAXIMUM ANCHOR SPACING SHOWN IN TABLE 3 ON
THIS PAGE.

ANCHOR REQUIREMENTS FOR SIDELITE AND DOOR CONNECTION TO VERTICAL MULLION
ALL #10 GRADE 5 SCREWS, ITEM 31, CONNECTING THE SIDELITE AND OR DOOR TO THE 2" X 5" X 0.090" VERTICAL TUBE
MULLION, ITEM 16A, TO BEGIN AND END AT 8" (STARTER FASTENER) FROM THE TOP AND BOTTOM OF THE 2" X 5" TUBE.
THE BALANCE OF THE #10 GRADE 5 SCREWS BETWEEN THE STARTER FASTENERS SHALL BE EQUALLY SPACED, BUT SHALL
NOT EXCEED THE MAXIMUM ANCHOR/FASTENER SPACING SHOWN IN TABLE 3 ON DRAWING PAGE 7 OF 8.

PRODUCT REVISED
as complying with the Florida
Building Code
NOA-NO. 21-0205.06

Expiration Date 07/27/2023

By Ishag I. Chande
Miami-Dade Product Control

AIR MASTER
windows and doors

P.O. BOX 2097
BARCELONETA, P.R. 00617
WWW.AIRMASTERPR.COM
PH: (787) 846-2110 FX: (787) 623-0085

TITLE: SERIES CONTINENTAL
OUTSWING ALUMINUM GLASS DOOR
INSTALLATION LAYOUTS
AND ANCHOR LAYOUTS
PREPARED BY:
BUILDING DROPS
398 E DANIA BEACH BLVD,
SUITE 338
DANIA BEACH, FL 33004
PH: (954) 399-8478 FX: (954) 744-4738

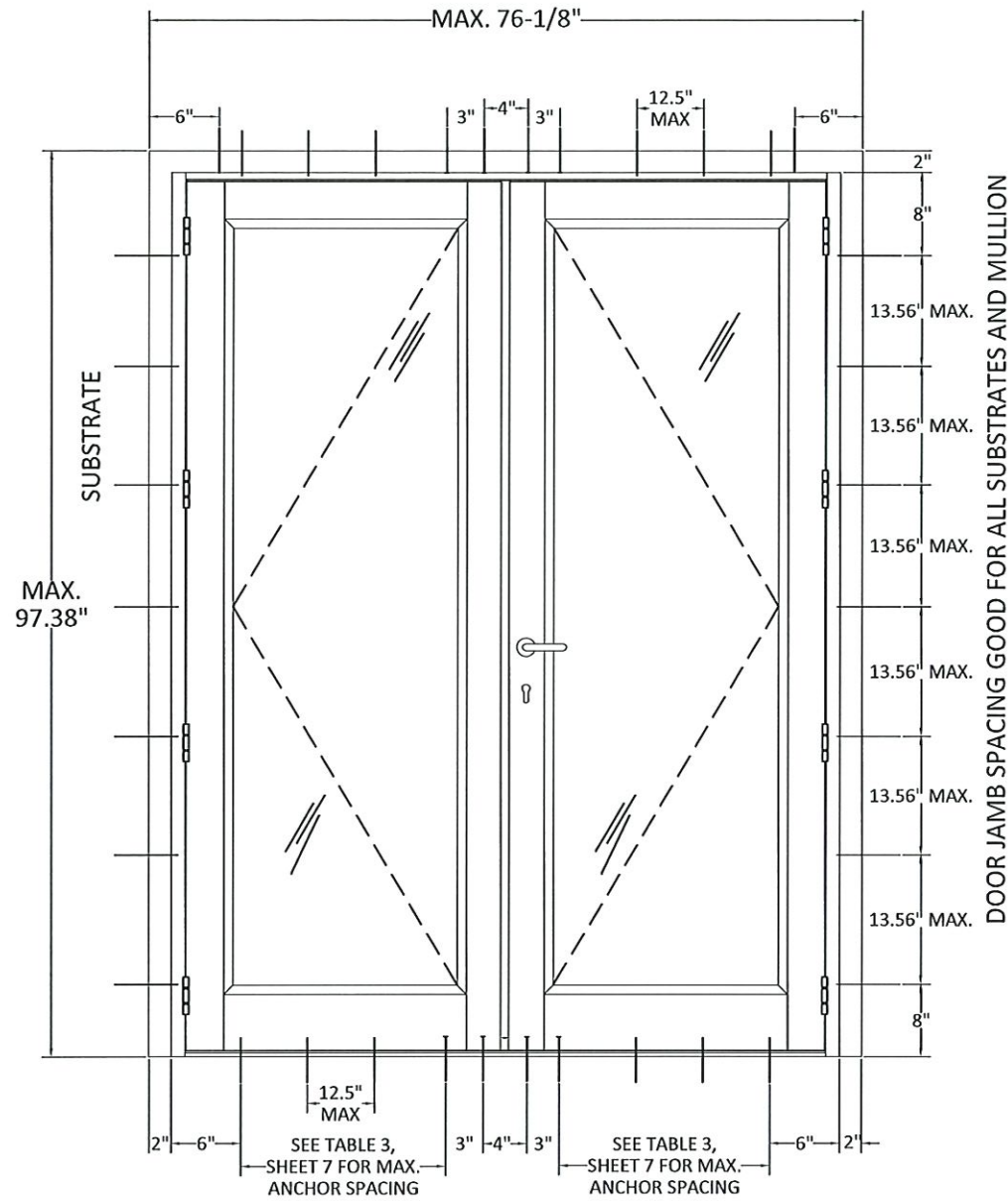
REVISIONS

DESCRIPTION	BY	DATE
7TH EDITION FBC UPDATE	MS	10.29.20

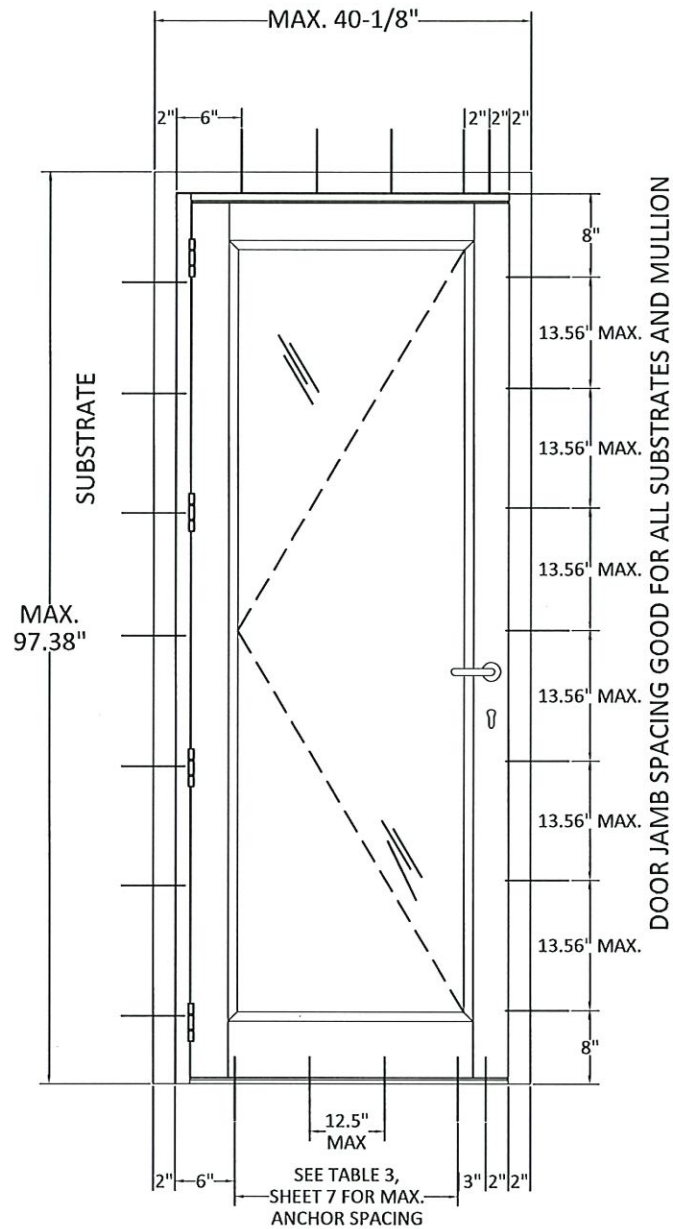


DATE: 05.07.18
DWN BY: SM
CHK BY: HFN
SCALE: NTS
DWG #: **AIR002**
SHEET: **7 OF 8**

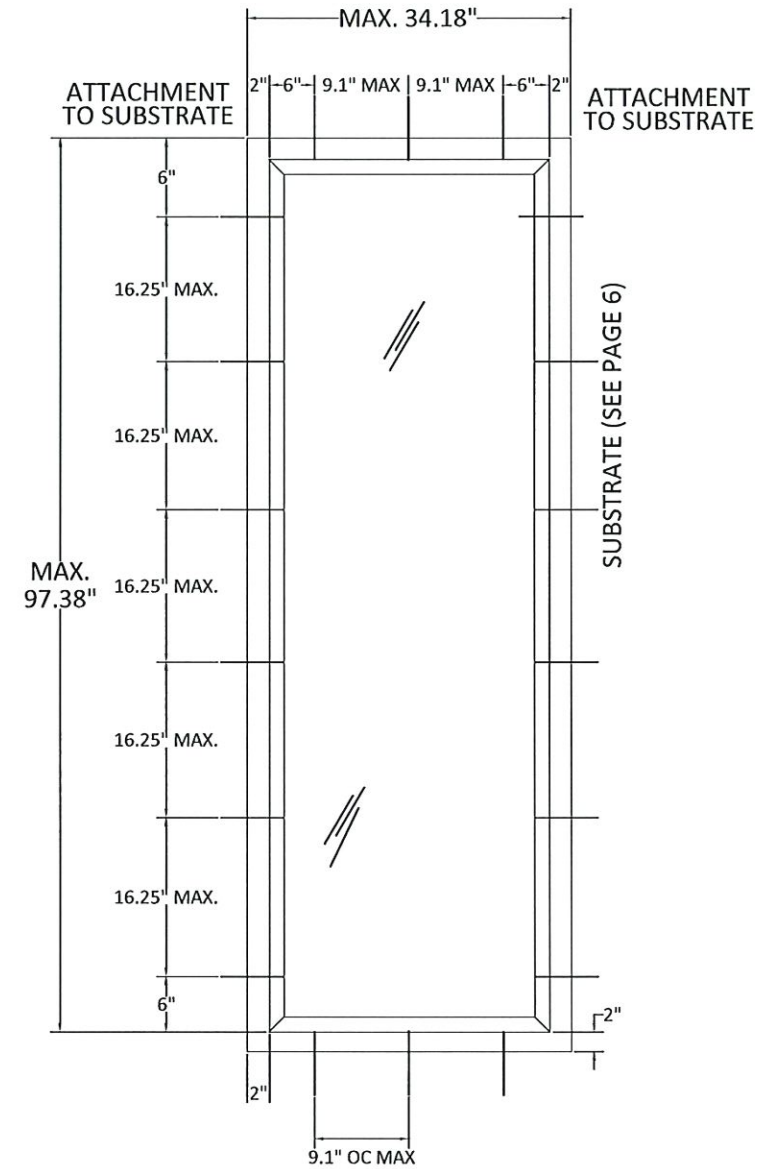
s:\projects\air-master windows & doors\cc-20-1037 - fbc 2020 (ver. 7) code change.mxd noa update\dwgs\air002.dwg 3/31/2021 1:31 PM



Q DOUBLE DOOR
N.T.S.



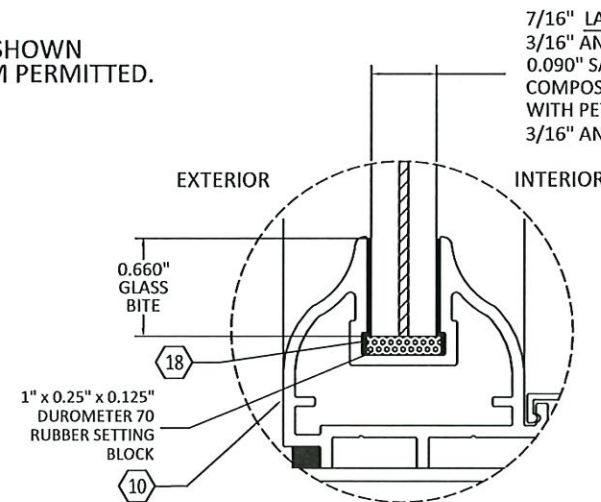
R SINGLE DOOR
N.T.S.



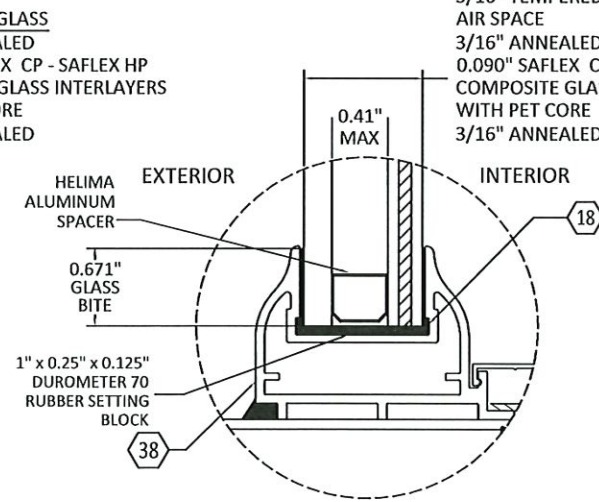
S SINGLE SIDELIGHT
N.T.S.

NOTE:

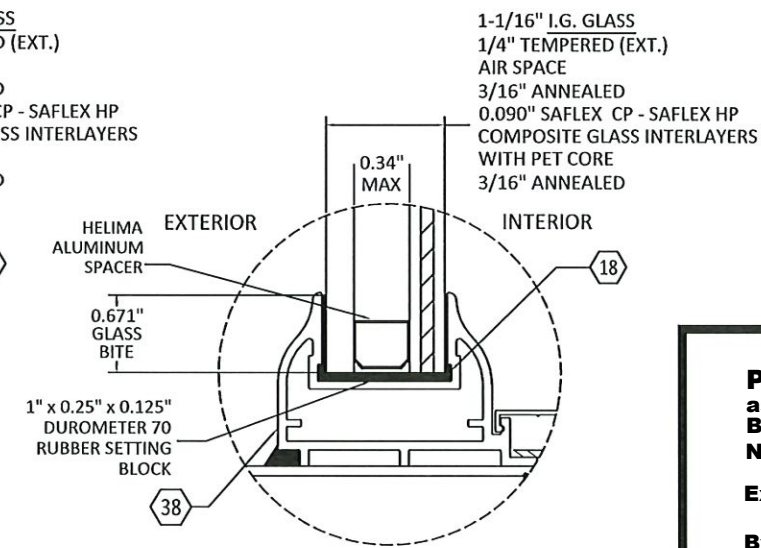
1. ALL ANCHORS SPACING SHOWN ABOVE IS THE MAXIMUM PERMITTED.



SIDELITE GLAZING DETAIL 1
(RATED FOR WATER INFILTRATION)



SIDELITE GLAZING DETAIL 2
(NOT RATED FOR WATER INFILTRATION)



SIDELITE GLAZING DETAIL 3
(NOT RATED FOR WATER INFILTRATION)

PRODUCT REVISED
as complying with the Florida
Building Code
NOA-No. 21-0205.06
Expiration Date 07/27/2023
By Ishag I. Chande
Miami-Dade Product Control



P.O. BOX 2097
BARCELONETA, P.R. 00617
WWW.AIRMASTERPR.COM
PH: (787) 846-2110 FX: (787) 623-0085

TITLE: SERIES CONTINENTAL
OUTSWING ALUMINUM GLASS DOOR
ANCHOR LAYOUTS &
SIDELITE GLAZING DETAILS
PREPARED BY: BUILDING DROPS
398 E DANIA BEACH BLVD,
SUITE 338
DANIA BEACH, FL 33004
PH: (954) 399-8478 FX: (954) 744-4738

REVISIONS		DESCRIPTION	BY	DATE
		7TH EDITION FBC UPDATE	MS	10.29.20



DATE: 05.07.18
DWN BY: SM
CHK BY: HFN
SCALE: NTS
DWG #: AIR002
SHEET: 8 OF 8