



DEPARTMENT OF REGULATORY AND ECONOMIC RESOURCES (RER)
BOARD AND CODE ADMINISTRATION DIVISION

MIAMI-DADE COUNTY
PRODUCT CONTROL SECTION
11805 SW 26 Street, Room 208
Miami, Florida 33175-2474
T (786) 315-2590 F (786) 315-2599
www.miamidade.gov/economy

NOTICE OF ACCEPTANCE (NOA)

CDI-Custom Curb Adapters
6701 N Belt Line Road
Irving, TX 75063

SCOPE:

This NOA is being issued under the applicable rules and regulations governing the use of construction materials. The documentation submitted has been reviewed and accepted by Miami-Dade County RER- Product Control Section to be used in Miami Dade County and other areas where allowed by the Authority Having Jurisdiction (AHJ).

This NOA shall not be valid after the expiration date stated below. The Miami-Dade County Product Control Section (In Miami Dade County) and/or the AHJ (in areas other than Miami Dade County) reserve the right to have this product or material tested for quality assurance purposes. If this product or material fails to perform in the accepted manner, the manufacturer will incur the expense of such testing and the AHJ may immediately revoke, modify, or suspend the use of such product or material within their jurisdiction. RER reserves the right to revoke this acceptance if it is determined by Miami-Dade County Product Control Section that this product or material fails to meet the requirements of the applicable building code.

This product is approved as described herein and has been designed to comply with the High Velocity Hurricane Zone of the Florida Building Code.

DESCRIPTION: Steel Trane Roof-Curb for Trane Series Rooftop Units

APPROVAL DOCUMENT: Drawing No. PG, titled "NOA Trane Curbs", sheets 1 through 5 of 5, prepared by CDI-Custom Curb Adapters, dated February 25, 2021, signed and sealed by Glenn Mouritzen, P.E., on March 08, 2021, bearing the Miami-Dade County Product Control Approval stamp with the Notice of Acceptance number and the approval date by the Miami-Dade County Product Control Section.

MISSILE IMPACT RATING: None

LABELING: Each roof-curb shall bear a permanent label with the manufacturer's name or logo, Rock Hill, SC and the following statement: "Miami-Dade County Product Control Approved", unless otherwise noted herein.

RENEWAL of this NOA shall be considered after a renewal application has been filed and there has been no change in the applicable building code negatively affecting the performance of this product.

TERMINATION of this NOA will occur after the expiration date or if there has been a revision or change in the materials, use, and/or manufacture of the product or process. Misuse of this NOA as an endorsement of any product, for sales, advertising or any other purposes shall automatically terminate this NOA. Failure to comply with any section of this NOA shall be cause for termination and removal of NOA.

ADVERTISEMENT: The NOA number preceded by the words Miami-Dade County, Florida, and followed by the expiration date may be displayed in advertising literature. If any portion of the NOA is displayed, then it shall be done in its entirety.

INSPECTION: A copy of this entire NOA shall be provided to the user by the manufacturer or its distributors and shall be available for inspection at the job site at the request of the Building Official.

This NOA consists of this page 1, evidence submitted page E-1 as well as approval document mentioned above.

The submitted documentation was reviewed by **Helmy A. Makar, P.E., M.S.**

Helmy A. Makar
05/27/2021



NOA No. 21-0312.06
Expiration Date: 05/27/2026
Approval Date: 05/27/2021
Page 1

CDI-Custom Curb Adapters

NOTICE OF ACCEPTANCE: EVIDENCE SUBMITTED

A. DRAWINGS

1. *Drawing No. PG, titled "NOA Trane Curbs", sheets 1 through 5 of 5, prepared by CDI-Custom Curb Adapters, dated February 25, 2021, signed and sealed by Glenn Mouritzen, P.E., on March 08, 2021.*

B. TESTS

1. *None.*

C. CALCULATIONS

1. *Calculation titled "Structural Calculations for C2-00XX-3***NOA Curbs", dated 03/08/2021, 37 sheets, signed & sealed by Glenn Mouritzen, P.E. on 03/08/2021.*

D. QUALITY ASSURANCE

1. *By Miami-Dade County Department of Regulatory and Economic Resources.*

E. MATERIAL CERTIFICATIONS

1. *None.*



Helmy A. Makar, P.E., M.S.

Product Control Section Supervisor

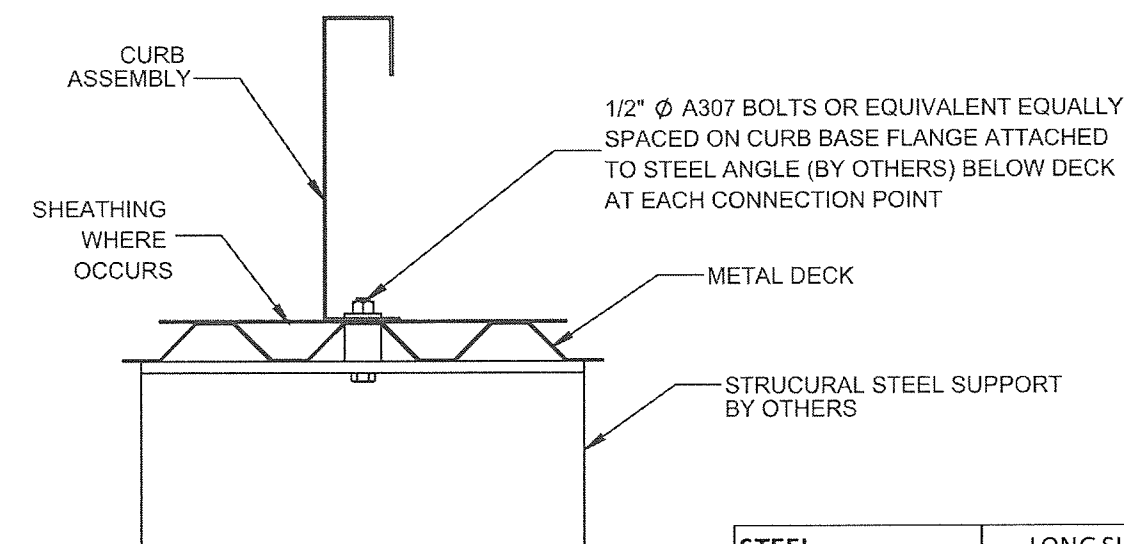
NOA No. 21-0312.06

Expiration Date: 05/27/2026

Approval Date: 05/27/2021

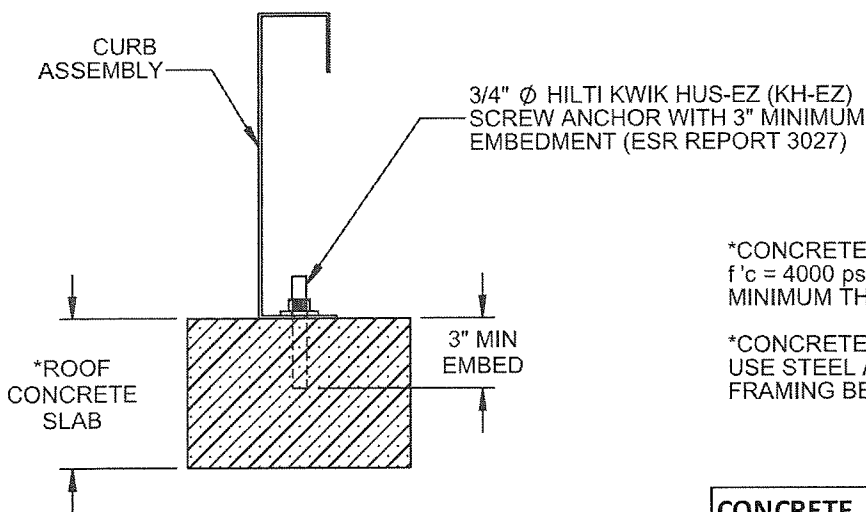
STEEL ATTACHMENT

CONCRETE ATTACHMENT



*6" SPACING FROM END

STEEL	LONG SIDE	SHORT SIDE
C2-00XX-3015 NOA	2 @ 89.88 in o.c.	2 @ 54.63 in o.c.
C2-00XX-3020 NOA	3 @ 52.44 in o.c.	2 @ 68.63 in o.c.
C2-00XX-3040 NOA	2 @ 34 in o.c.	2 @ 26.5 in o.c.
C2-00XX-3041 NOA	2 @ 43.75 in o.c.	2 @ 29.5 in o.c.
C2-00XX-3100 NOA	2 @ 53.19 in o.c.	2 @ 28.75 in o.c.
C2-00XX-3105 NOA	3 @ 35.94 in o.c.	2 @ 37.88 in o.c.
C2-00XX-3110 NOA	4 @ 23.96 in o.c.	3 @ 23.94 in o.c.
C2-00XX-3115 NOA	3 @ 29.44 in o.c.	2 @ 30 in o.c.
C2-00XX-3116 NOA	3 @ 36.41 in o.c.	2 @ 42.63 in o.c.



*6" SPACING FROM END

Approved as complying with the
Florida Building Code
Date 05/27/2021
NOA# 21-0312.06
Miami Dade Product Control
By H. A. M.

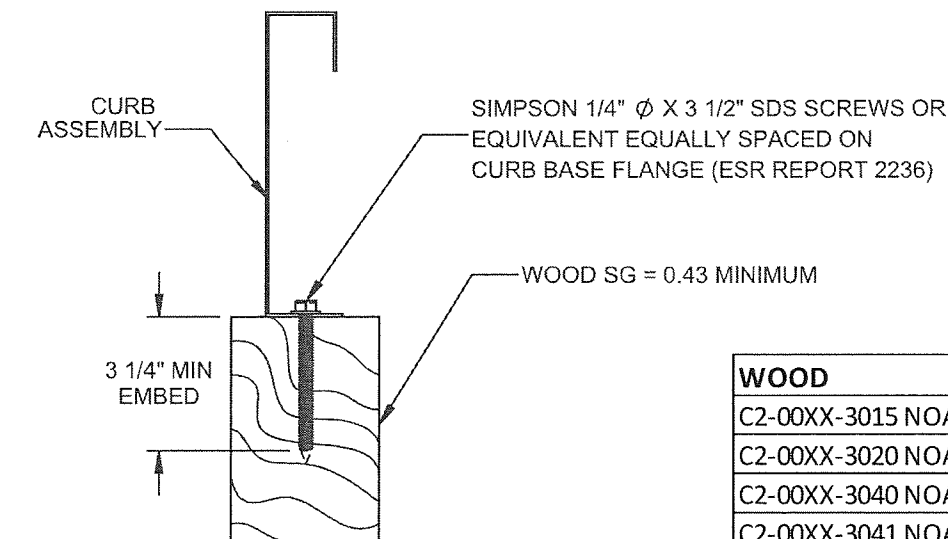
*CONCRETE SLAB:
f'c = 4000 psi MINIMUM NORMAL WEIGHT CONCRETE 6"
MINIMUM THICKNESS, 12" MINIMUM EDGE DISTANCE

*CONCRETE OVER METAL DECK:
USE STEEL ATTACHMENT CONNECTION TO STEEL
FRAMING BELOW DECK

CONCRETE	LONG SIDE	SHORT SIDE
C2-00XX-3015 NOA	3 @ 44.94 in o.c.	2 @ 54.63 in o.c.
C2-00XX-3020 NOA	3 @ 52.44 in o.c.	2 @ 68.63 in o.c.
C2-00XX-3040 NOA	2 @ 34 in o.c.	2 @ 26.5 in o.c.
C2-00XX-3041 NOA	2 @ 43.75 in o.c.	2 @ 29.5 in o.c.
C2-00XX-3100 NOA	2 @ 53.19 in o.c.	2 @ 28.75 in o.c.
C2-00XX-3105 NOA	3 @ 35.94 in o.c.	2 @ 37.88 in o.c.
C2-00XX-3110 NOA	3 @ 35.94 in o.c.	2 @ 47.88 in o.c.
C2-00XX-3115 NOA	2 @ 58.88 in o.c.	2 @ 30 in o.c.
C2-00XX-3116 NOA	2 @ 72.81 in o.c.	2 @ 42.63 in o.c.

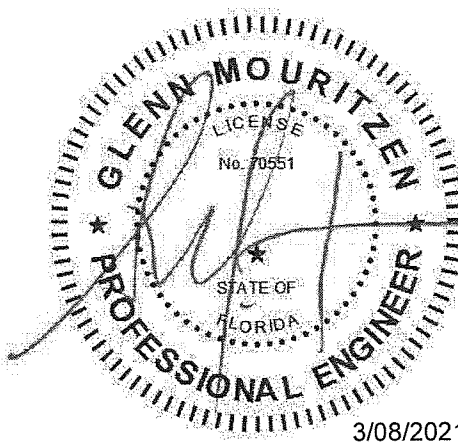
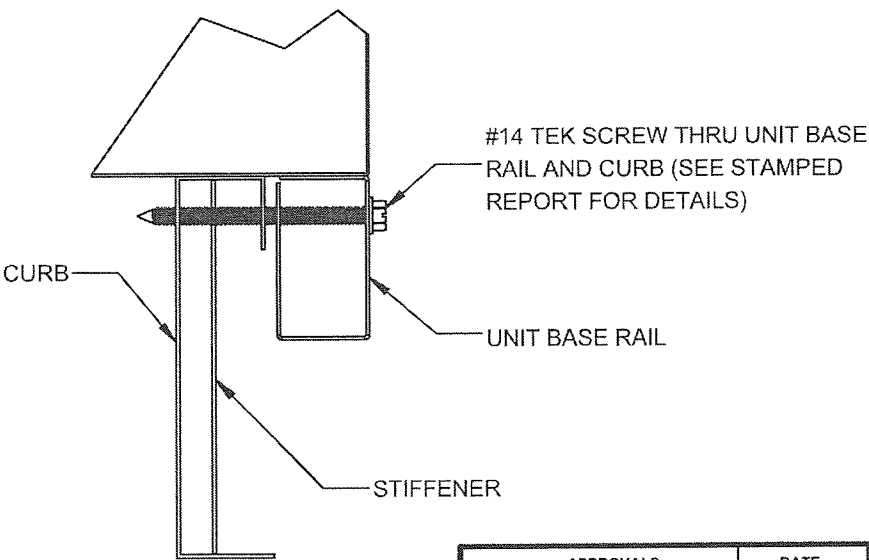
WOOD ATTACHMENT

UNIT TO CURB ATTACHMENT



*4" SPACING FROM END

WOOD	LONG SIDE	SHORT SIDE
C2-00XX-3015 NOA	10 @ 10.43 in o.c.	6 @ 11.73 in o.c.
C2-00XX-3020 NOA	13 @ 9.07 in o.c.	9 @ 9.08 in o.c.
C2-00XX-3040 NOA	5 @ 9.5 in o.c.	4 @ 10.17 in o.c.
C2-00XX-3041 NOA	6 @ 9.55 in o.c.	4 @ 11.17 in o.c.
C2-00XX-3100 NOA	7 @ 9.53 in o.c.	3 @ 16.38 in o.c.
C2-00XX-3105 NOA	9 @ 9.48 in o.c.	5 @ 10.47 in o.c.
C2-00XX-3110 NOA	10 @ 8.43 in o.c.	5 @ 12.97 in o.c.
C2-00XX-3115 NOA	8 @ 8.98 in o.c.	4 @ 11.33 in o.c.
C2-00XX-3116 NOA	9 @ 9.6 in o.c.	5 @ 11.66 in o.c.



APPROVALS		DATE	TITLE/FILE NAME:	
DRAWN: kjones		2/25/2021	CURB-ATTACHMENTS TRANE	
CHECKED:			DRAWING NO.:	
DIMENSIONS ARE AS FOLLOWS: 1/8" IN (25.40 mm)			PG 1	
3RD ANGLE PROJECTION		Contact us @ www.cdicurbs.com OR 1-888-234-7001		REV: 1
CDI		SCALE: 1/25		SHEET: 1 OF 1

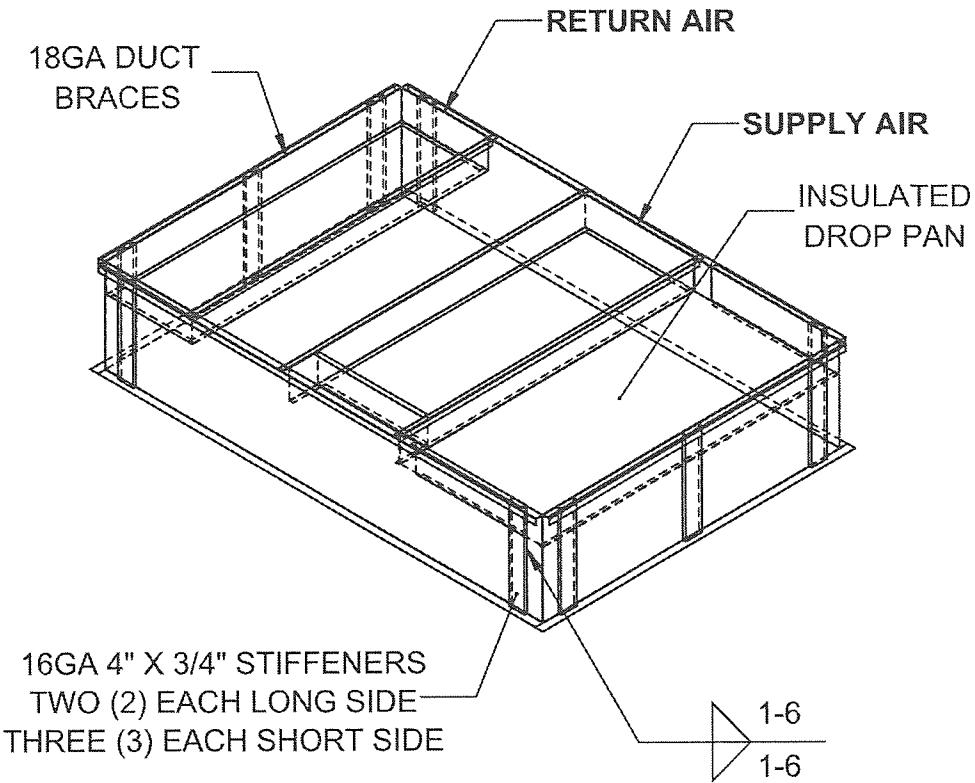
OPTIONS:

MATERIAL: 16 ga. GAL STEEL
1X4 WOOD NAILER (UNDER TOP FLANGE)
NOA APPROVED CURB

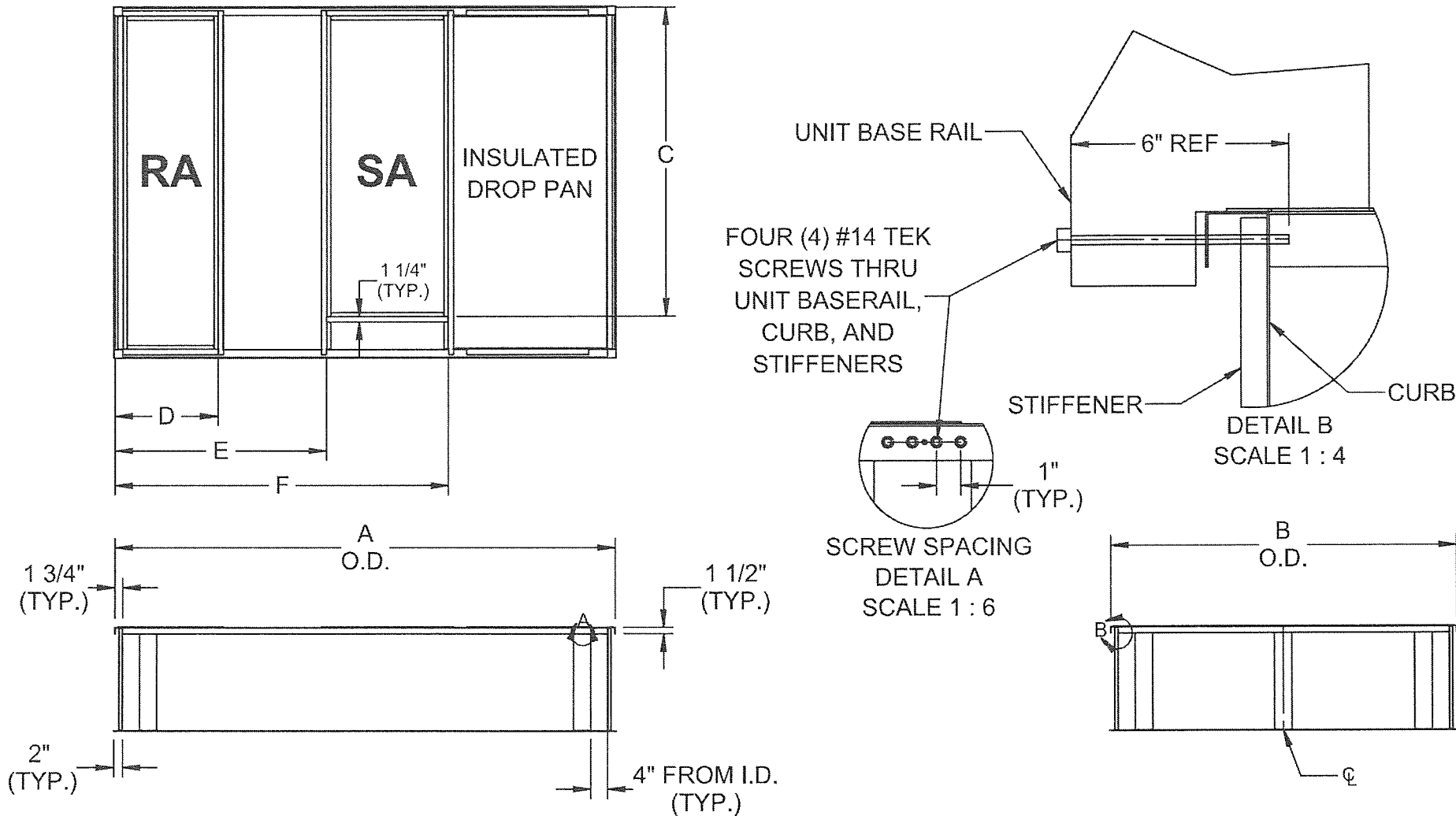
DIMENSIONED AND TOLERENCED PER ANSI Y14.5M-1982

REVISIONS			
REV	DESCRIPTION	DATE	APPROVED
1	INITIAL DRAWING	1/15/21	KJ

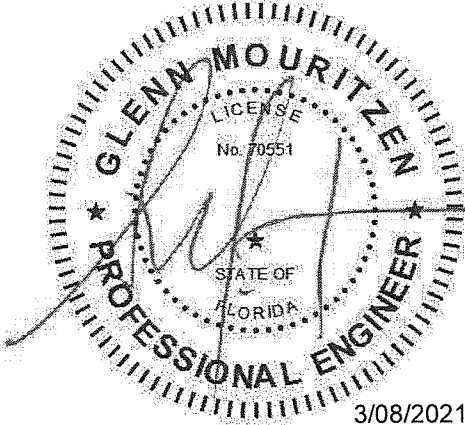
DIMENSIONAL DATA								
UNIT MODEL	UNIT WEIGHT (lb)	CDI CURB NUMBER	A	B	C	D	E	F
T/YSD150	1373 - 1448	C2-00XX-3015 NOA	101 7/8"	66 5/8"	57 5/16"	22 11/16"	41 13/16"	70 5/16"
T/YSD180-301, WSD150-240, T/YHD180-300, E/GBC180-300, T/YZ*150-210	1758 -2323	C2-00XX-3020 NOA	116 7/8"	80 5/8"	71 5/16"	24 1/16"	49 5/16"	77 7/8"



16GA 4" X 3/4" STIFFENERS
TWO (2) EACH LONG SIDE
THREE (3) EACH SHORT SIDE



Approved as complying with the
Florida Building Code
Date 05/27/2021
NOA# 21-0312.06
Miami Dade Product Control
By *Heidi A. M...*



CURB DESIGNED TO MEET WIND LOAD REQUIREMENTS FOR 2017 AND 2020 FBC FLORIDA BUILDING CODE, NOA APPROVED	CURB DESIGNED FOR MAXIMUM WIND PRESSURE ±84.20 PSF	NOA APPROVED 3015 & 3020 ROOF CURB	CURB WEIGHT (LBS.)	APPROVALS	DATE	TITLE:		
			430.89 MAX	DRAWN: kjones		C2-00XX-3015 3020 NOA		
			UNLESS OTHERWISE SPECIFIED, TOLERANCES ARE: X ± 0.05 XX ± 0.03 XXX ± 0.01	CHECKED:	Thursday, February 25, 2021 4:53:29 PM	FILE NAME: C2-00XX-3015 3020 NOA	DRAWING NO.: PG 2	REV: 1
			DIMENSIONS ARE AS FOLLOWS: 1.00 in [25.40 mm]	3RD ANGLE PROJECTION	CDI 17560 TYLER ST NW ELK RIVER, MN 55330 (763)391-7790 (763)391-7851	ECO #:	SCALE: 1:34	SHEET: 1 OF 1

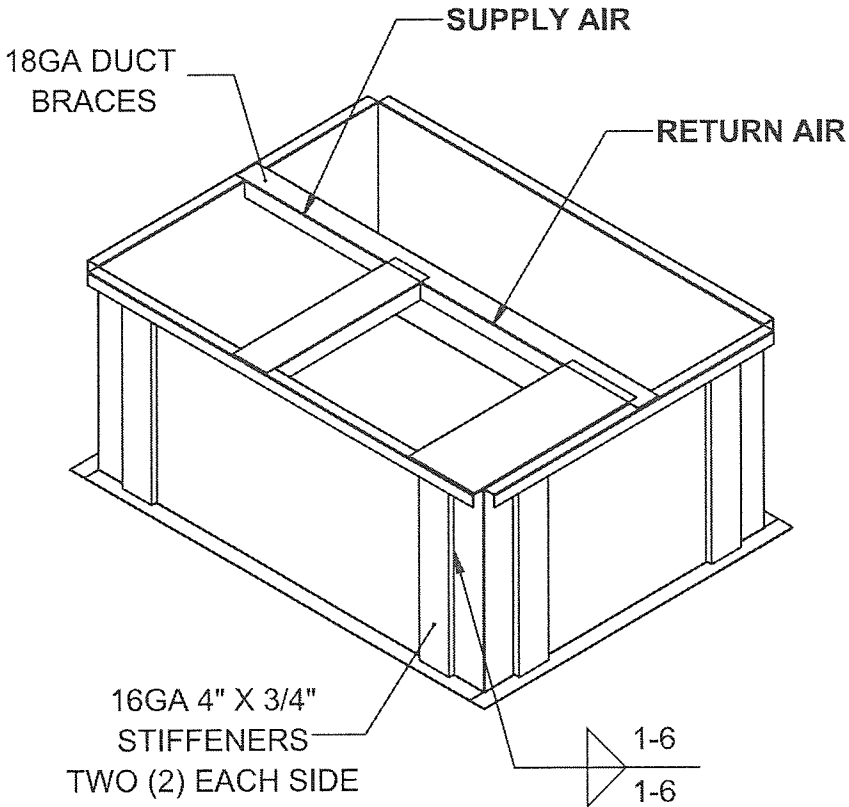
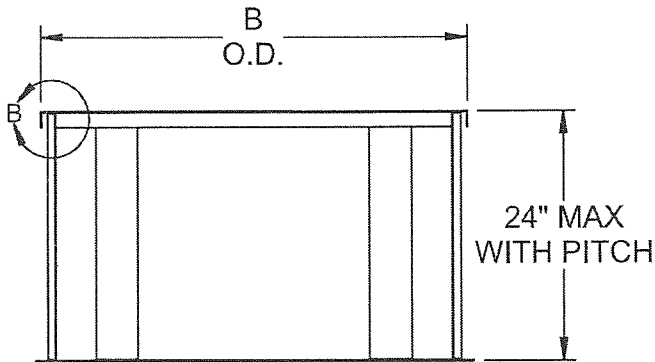
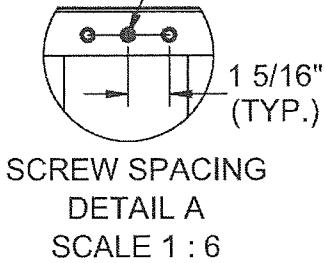
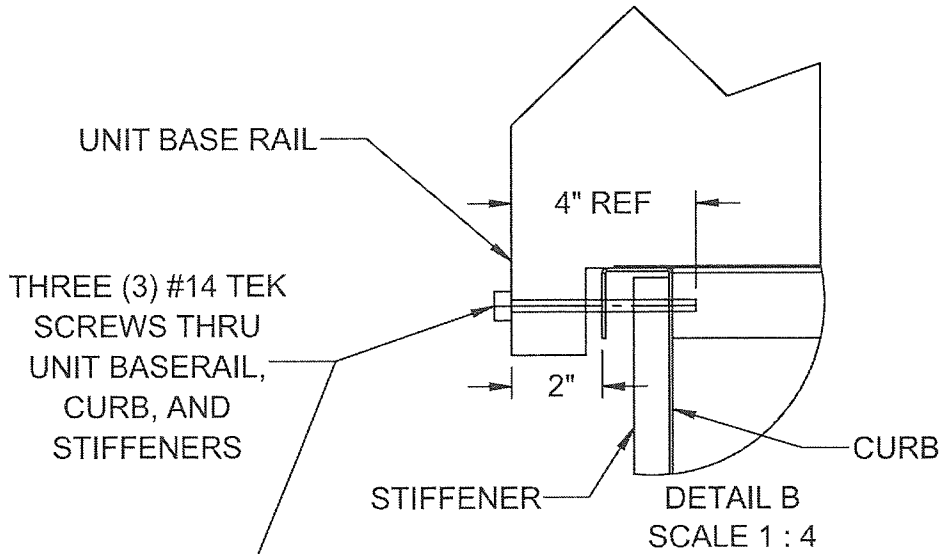
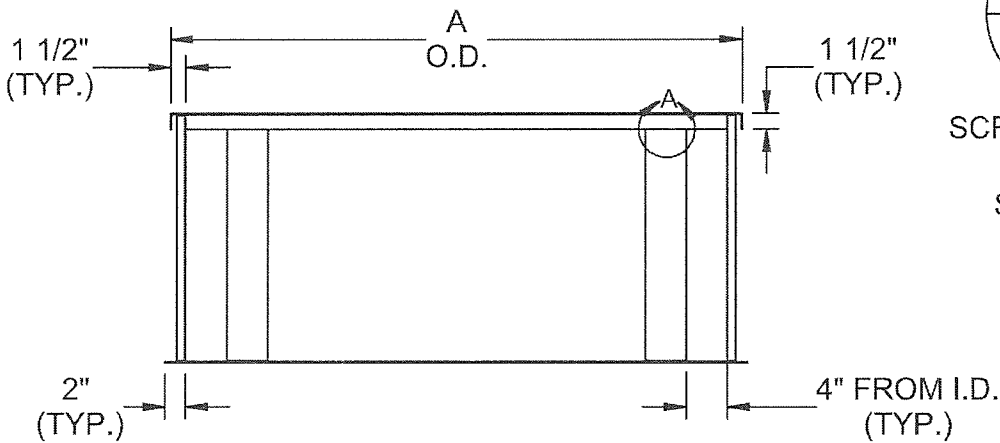
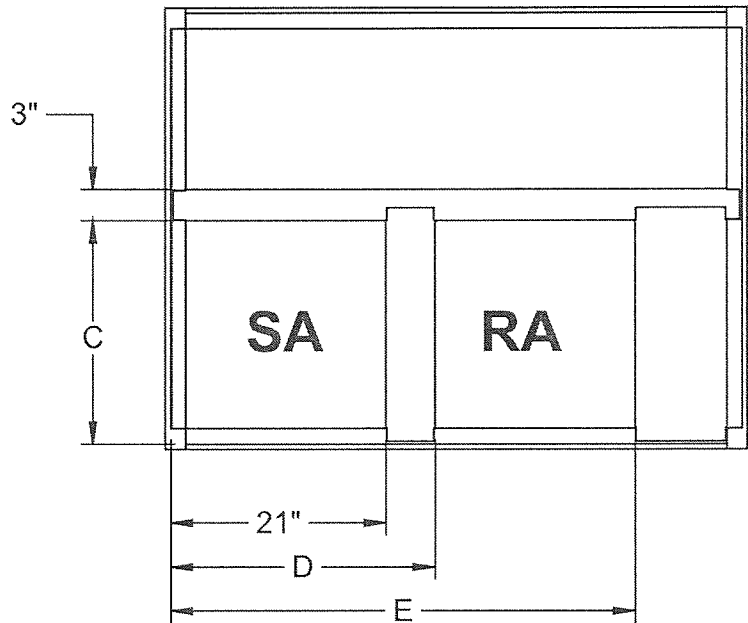
OPTIONS:

MATERIAL: 14 ga. GAL STEEL
1X4 WOOD NAILER (UNDER TOP FLANGE)
NOA APPROVED CURB

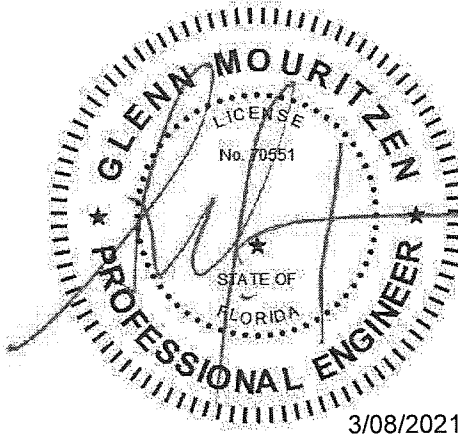
DIMENSIONED AND TOLERENCED PER ANSI Y14.5M-1982

REVISIONS			
REV	DESCRIPTION	DATE	APPROVED
1	INITIAL DRAWING	1/12/21	KJ

DIMENSIONAL DATA							
UNIT MODEL	UNIT WEIGHT (lb)	CDI CURB NUMBER	A	B	C	D	E
2/4YC*,WC*,TC*,DC**018-036A	318 - 397	C2-00XX-3040 NOA	46"	38 1/2"	16 1/2"	23 3/16"	42 11/16"
2/4YC*,WC*,DC*,TC**042-060A	425 - 548	C2-00XX-3041 NOA	55 3/4"	41 1/2"	21 1/2"	25 3/4"	45 1/4"



Approved as complying with the
Florida Building Code
Date 05/27/2021
NOA# 21-0312.06
Miami Dade Product Control
By *[Signature]*



Exp. 02 / 28 / 2023

CURB DESIGNED TO MEET WIND LOAD REQUIREMENTS FOR 2017 AND 2020 FBC FLORIDA BUILDING CODE, NOA APPROVED	CURB DESIGNED FOR MAXIMUM WIND PRESSURE ±84.20 PSF	NOA APPROVED 3040 & 3041 ROOF CURB	CURB WEIGHT (LBS.)	APPROVALS	DATE	TITLE:		
			173.19 MAX	DRAWN: kjones		C2-00XX-3040 3041 NOA		
				CHECKED:				
			UNLESS OTHERWISE SPECIFIED, TOLERANCES ARE: X ± 0.05 XX ± 0.03 XXX ± 0.01			Friday, February 05, 2021 4:44:37 PM		
			DIMENSIONS ARE AS FOLLOWS: 1.00 in [25.40 mm]			CDI 17560 TYLER ST NW ELK RIVER, MN 55330 (763)391-7790 (763)391-7851		
			3RD ANGLE PROJECTION	FILE NAME: C2-00XX-3040 3041 NOA			DRAWING NO.: PG 3	REV: 1
				ECO #:			SCALE: 1:18	SHEET: 1 OF 1

OPTIONS:

MATERIAL: 16 ga. GAL STEEL

1X4 WOOD NAILER (UNDER TOP FLANGE)

NOA APPROVED CURB

DIMENSIONED AND TOLERENCED PER ANSI Y14.5M-1982

REV		DESCRIPTION	DATE	APPROVED
1		INITIAL DRAWING	1/12/21	KJ

DIMENSIONAL DATA									
UNIT MODEL	UNIT WEIGHT (lb)	CDI CURB NUMBER	A	B	C	D	E	F	G
T/YHC036E, T/YHC037E, WSC060ED, T/YZC036E, T/YSC036-060G, WSC036-048H, D/WHC036H	431 - 615	C2-00XX-3100 NOA	65 3/16"	40 3/4"	26 15/16"	19 5/8"	16 5/16"	24 11/16"	41 7/16"
T/YHC047-72E, WSC072-120ED, T/YSC072-120H, T/YHC048-060F, T/YHC072-102F, T/YZC048-120, WSC060-120H, D/WHC048-102H	642 - 1058	C2-00XX-3105 NOA	83 7/8"	49 7/8"	36 1/8"		20 1/4"	28 7/8"	47 3/8"
T/YHC120F, T/YZC120, D/WHC120H	1108 - 1294	C2-00XX-3110 NOA	83 7/8"	59 7/8"	36 1/8"		20 1/4"	28 7/8"	47 3/8"

RA

SA

INSULATED COVER

C

D

E

F

G

A

O.D.

1 3/4" (TYP.)

2" (TYP.)

4" FROM I.D. (TYP.)

1 1/2" (TYP.)

UNIT BASE RAIL

#14 TEK SCREWS THRU UNIT BASERAIL, CURB, AND STIFFENERS

6" REF

STIFFENER

CURB

DETAIL B SCALE 1 : 4

1 5/16" (TYP.)

1" (TYP.)

SCREW SPACING THREE (3) FOR 3100 & 3105

SCREW SPACING FOUR (4) FOR 3110

DETAIL A SCALE 1 : 6

DETAIL C SCALE 1 : 6

B

O.D.

24" MAX WITH PITCH

18GA DUCT BRACES

RETURN AIR

SUPPLY AIR

INSULATED COVER

16GA 4" X 3/4" STIFFENERS TWO (2) EACH SIDE

1-6

1-6

Approved as complying with the Florida Building Code

Date 05/27/2021

NOA# 21-0312.06

Miami Dade Product Control

By H. H. M.

GLENN MOURITZEN

LICENSE No. 70551

STATE OF FLORIDA

PROFESSIONAL ENGINEER

3/08/2021

Exp. 02 / 28 / 2023

CURB DESIGNED TO MEET WIND LOAD REQUIREMENTS FOR 2017 AND 2020 FBC FLORIDA BUILDING CODE, NOA APPROVED

CURB DESIGNED FOR MAXIMUM WIND PRESSURE ±84.20 PSF

NOA APPROVED 3100, 3105, & 3110 ROOF CURB

CURB WEIGHT (LBS.)	APPROVALS	DATE	TITLE:
235.21 MAX	DRAWN: kjones		C2-00XX-3100 3105 3110 NOA
UNLESS OTHERWISE SPECIFIED, TOLERANCES ARE:	CHECKED:	Thursday, February 25, 2021 5:04:30 PM	
X ± 0.05			
XX ± 0.03			
XXX ± 0.01			
CDI	17560 TYLER ST NW	FILE NAME:	DRAWING NO.:
	ELK RIVER, MN 55330	C2-00XX-3100 3105 3110	NOA
	(763)391-7790	ECO #:	PG 4
	(763)391-7851		REV: 1
DIMENSIONS ARE AS FOLLOWS:	3RD ANGLE PROJECTION	SCALE: 1:24	SHEET: 1 OF 1
1/8" IN [25.40 mm]			

S:\CURBS_CURB_ADAPTERS\CX-XXXX-XXXX_CONFORMING\NOA FLORIDA STAMP\NOA C2-XXXX-XXXX_STRAIGHT_PITCHED_KD\NOA C2-XXXX-3XXX_TRANE\3100 3105 3110\

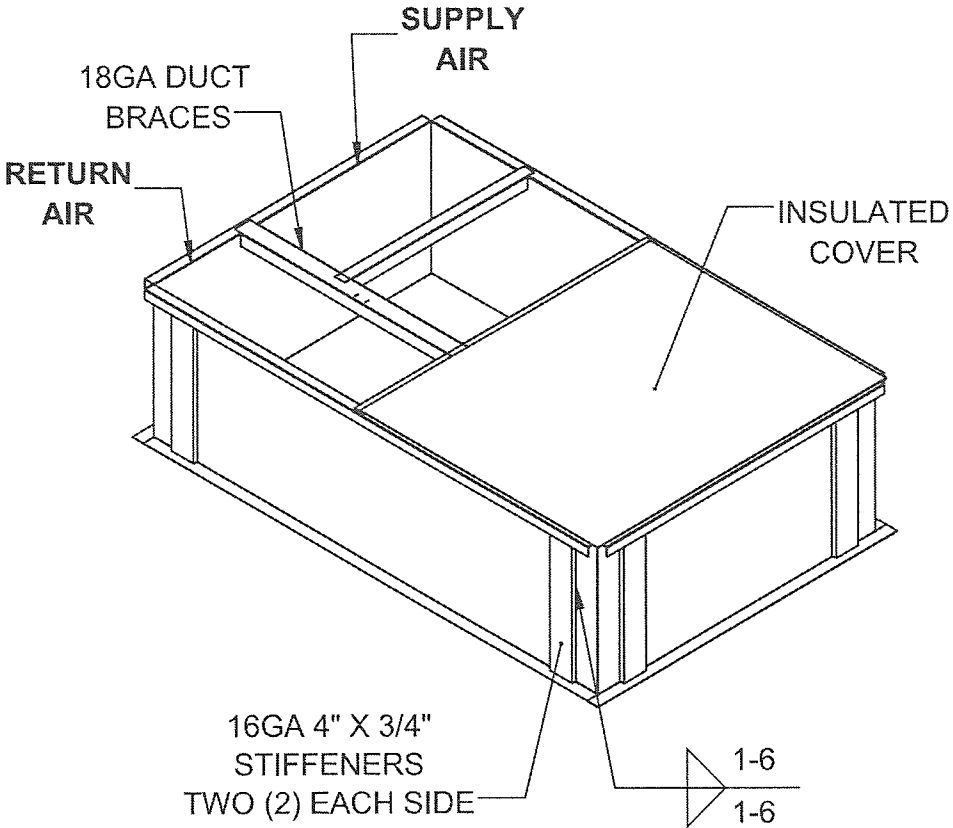
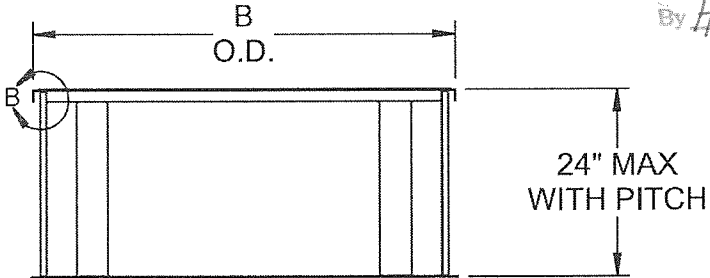
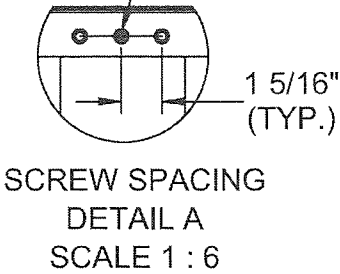
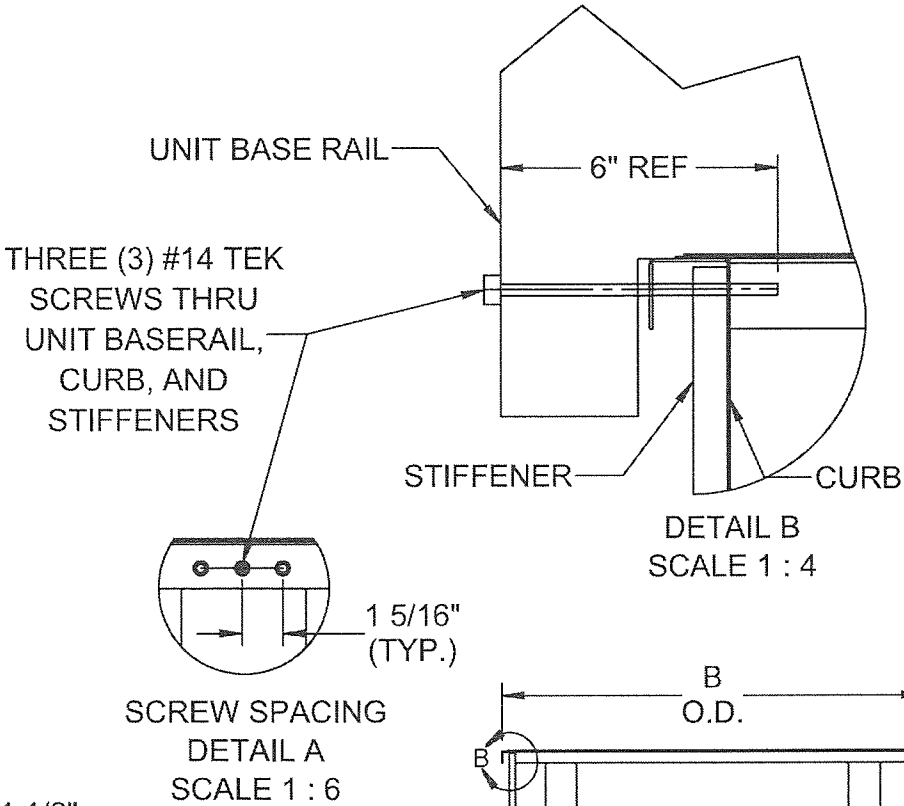
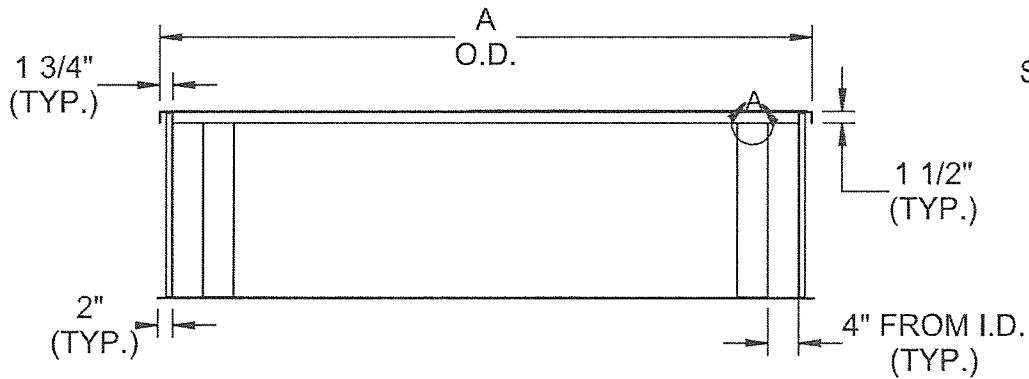
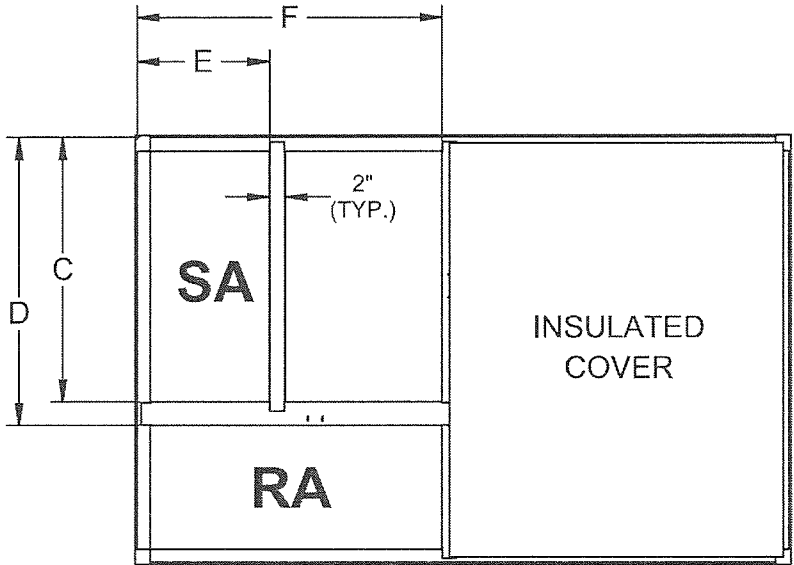
OPTIONS:

MATERIAL: 16 ga. GAL STEEL
1X4 WOOD NAILER (UNDER TOP FLANGE)
NOA APPROVED CURB

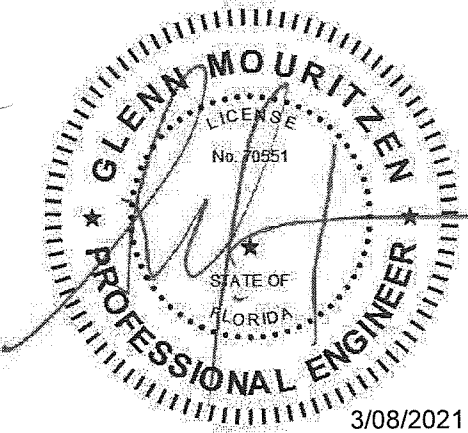
DIMENSIONED AND TOLERENCED PER ANSI Y14.5M-1982

REVISIONS			
REV	DESCRIPTION	DATE	APPROVED
1	INITIAL DRAWING	1/14/21	KJ

DIMENSIONAL DATA								
UNIT MODEL	UNIT WEIGHT (lb)	CDI CURB NUMBER	A	B	C	D	E	F
E/GBC036-060	473 - 586	C2-00XX-3115 NOA	70 7/8"	42"	22 13/16"	25 13/16"	15 3/4"	33 15/16"
E/GBC 090-150	1002 - 1146	C2-00XX-3116 NOA	84 13/16"	54 5/8"	34"	37"	17 1/4"	39 11/16"



Approved as complying with the
Florida Building Code
Date 05/27/2021
NOA# 21-0312.06
Miami Dade Product Control
By *Heidi A. Miller*



Exp. 02/28/2023

CURB DESIGNED TO MEET WIND LOAD REQUIREMENTS FOR 2017 AND 2020
FBC FLORIDA BUILDING CODE, NOA APPROVED

CURB DESIGNED FOR MAXIMUM WIND PRESSURE ±84.20 PSF

NOA APPROVED 3115 & 3116 ROOF CURB

CURB WEIGHT (LBS.)	APPROVALS	DATE
226.41 MAX	DRAWN: kjones	
CHECKED: Friday, February 05, 2021 4:49:50 PM		
CDI 17560 TYLER ST NW ELK RIVER, MN 55330 (763)391-7790 (763)391-7851		

TITLE:		
C2-00XX-3115 3116 NOA		
FILE NAME: C2-00XX-3115 3116 NOA	DRAWING NO.: PG 5	REV: 1
ECO #:	SCALE: 1:24	SHEET: 1 OF 1