



DEPARTMENT OF REGULATORY AND ECONOMIC RESOURCES (RER)
BOARD AND CODE ADMINISTRATION DIVISION
NOTICE OF ACCEPTANCE (NOA)

MIAMI-DADE COUNTY
PRODUCT CONTROL SECTION
11805 SW 26 Street, Room 208
Miami, Florida 33175-2474
T (786) 315-2590 F (786) 315-2599
www.miamidade.gov/building

Loren Cook Company
2015 E. Dale Street
Springfield, MO 65803

SCOPE: This NOA is being issued under the applicable rules and regulations governing the use of construction materials. The documentation submitted has been reviewed and accepted by Miami-Dade County RER-Product Control Section to be used in Miami Dade County and other areas where allowed by the Authority Having Jurisdiction (AHJ).

This NOA shall not be valid after the expiration date stated below. The Miami-Dade County Product Control Section (In Miami Dade County) and/or the AHJ (in areas other than Miami Dade County) reserve the right to have this product or material tested for quality assurance purposes. If this product or material fails to perform in the accepted manner, the manufacturer will incur the expense of such testing and the AHJ may immediately revoke, modify, or suspend the use of such product or material within their jurisdiction. RER reserves the right to revoke this acceptance if it is determined by Miami-Dade County Product Control Section that this product or material fails to meet the requirements of the applicable building code.

This product is approved as described herein and has been designed to comply with the Florida Building Code, including the High Velocity Hurricane Zone.

DESCRIPTION: Model "TCNHBLE" Steel Rooftop Exhaust Fan – L.M.I.

APPROVAL DOCUMENT: Drawing No. **SD140723-05**, titled "TCNHBLE 1x2 for TCNHBLE sizes 100-300", sheet 1 through 13 of 13, dated 07/22/14, with revision A, prepared by manufacturer, signed and sealed by Bradley F. Skidmore, P.E. bearing the Miami-Dade County Product Control Revision stamp with the Notice of Acceptance number and expiration date by the Miami-Dade County Product Control Section.

MISSILE IMPACT RATING: Large and Small Missile Impact Resistant

LABELING: Each unit shall bear a permanent label with the manufacturer's name or logo, manufacturing address, model number, the positive and negative design pressure rating, indicate impact rated if applicable, installation instruction drawing reference number, approval number (NOA), the applicable test standards, and the statement reading 'Miami-Dade County Product Control Approved' is to be located on the door's side track, bottom angle, or inner surface of a panel.

RENEWAL of this NOA shall be considered after a renewal application has been filed and there has been no change in the applicable building code negatively affecting the performance of this product.

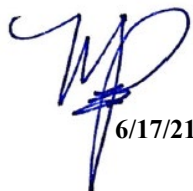
TERMINATION of this NOA will occur after the expiration date or if there has been a revision or change in the materials, use, and/or manufacture of the product or process. Misuse of this NOA as an endorsement of any product, for sales, advertising or any other purposes shall automatically terminate this NOA. Failure to comply with any section of this NOA shall be cause for termination and removal of NOA.

ADVERTISEMENT: The NOA number preceded by the words Miami-Dade County, Florida, and followed by the expiration date may be displayed in advertising literature. If any portion of the NOA is displayed, then it shall be done in its entirety.

INSPECTION: A copy of this entire NOA shall be provided to the user by the manufacturer or its distributors and shall be available for inspection at the job site at the request of the Building Official. This NOA revises **NOA No. 20-0124.03** and consists of this page 1 and evidence page E-1 and E-2, as well as approval document mentioned above.

The submitted documentation was reviewed by **Manuel Perez, P.E.**




6/17/21

NOA No. 21-0405.12
Expiration Date: March 12, 2025
Approval Date: June 24, 2021
Page 1

NOTICE OF ACCEPTANCE: EVIDENCE SUBMITTED

1. EVIDENCE SUBMITTED UNDER PREVIOUS NOA's

A. DRAWINGS

1. Manufacturer's die drawings and sections.
(Submitted under NOA No. 14-0909.12)
2. Drawing No. **SD140723-05**, titled "TCNHBLE 1x2 for TCNHBLE sizes 100-300", sheets 1 through 13 of 13, dated 07/22/14, with revision A, prepared by manufacturer, signed and sealed by Bradley F. Skidmore, P.E.
(Submitted under NOA No. 14-0909.12)

B. TESTS

1. Test reports on: 1) Uniform Static Air Pressure Test, Loading per FBC TAS 202-94
2) Large Missile Impact Test per FBC, TAS 201-94
3) Lateral Force Test per ASTM E72 (Modified)
4) Tensile Strength Test per ASTM E8
along with marked-up drawings and installation diagram of Models TCNHBLE, 100 and 300 rooftop exhaust fans, prepared by Architectural Testing, Inc. Test Report No. **C9440.01-801-18**, dated 01/15/14, signed and sealed by Vinu J. Abraham, P.E.
(Submitted under NOA No. 14-0909.12)

C. CALCULATIONS

1. Wind loads and anchor calculations dated 07/23/14, prepared by manufacturer, signed and sealed by Bradley F. Skidmore, P.E.
(Submitted under NOA No. 14-0909.12)

D. QUALITY ASSURANCE

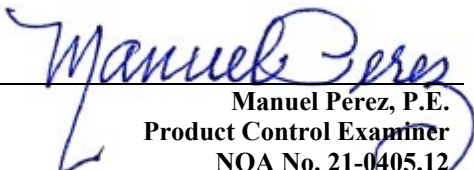
1. Miami-Dade Department of Regulatory and Economic Resources (RER)

E. MATERIAL CERTIFICATIONS

1. None.

F. STATEMENTS

1. Statement letter of conformance, complying with **FBC 6th Edition (2017)** dated 02/05/20, issued by manufacturer, signed and sealed by Bradley F. Skidmore, P.E.
(Submitted under NOA No. 20-0124.03)
2. Statement letter of no financial interest dated 09/02/14, issued by manufacturer, signed and sealed by Bradley F. Skidmore, P.E.
(Submitted under NOA No. 14-0909.12)


Manuel Perez, P.E.
Product Control Examiner
NOA No. 21-0405.12
Expiration Date: March 12, 2025
Approval Date: June 24, 2021

Loren Cook Company.

NOTICE OF ACCEPTANCE: EVIDENCE SUBMITTED

1. EVIDENCE SUBMITTED UNDER PREVIOUS NOA's (CONTINUED)

G. OTHERS

1. Notice of Acceptance No. **14-0909.12**, issued to Loren Cook Company for their Series TCNHBLE Steel Rooftop Exhaust Fans, approved on 03/12/15 and expiring on 03/12/20.

2. NEW EVIDENCE SUBMITTED

A. DRAWINGS

1. None.

B. TESTS

1. None.

C. CALCULATIONS

1. None.

D. QUALITY ASSURANCE

1. Miami-Dade Department of Regulatory and Economic Resources (RER)

E. MATERIAL CERTIFICATIONS

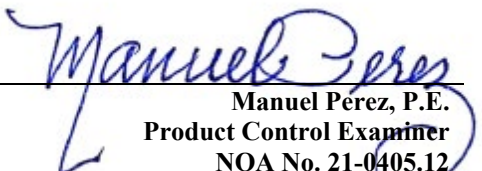
1. None.

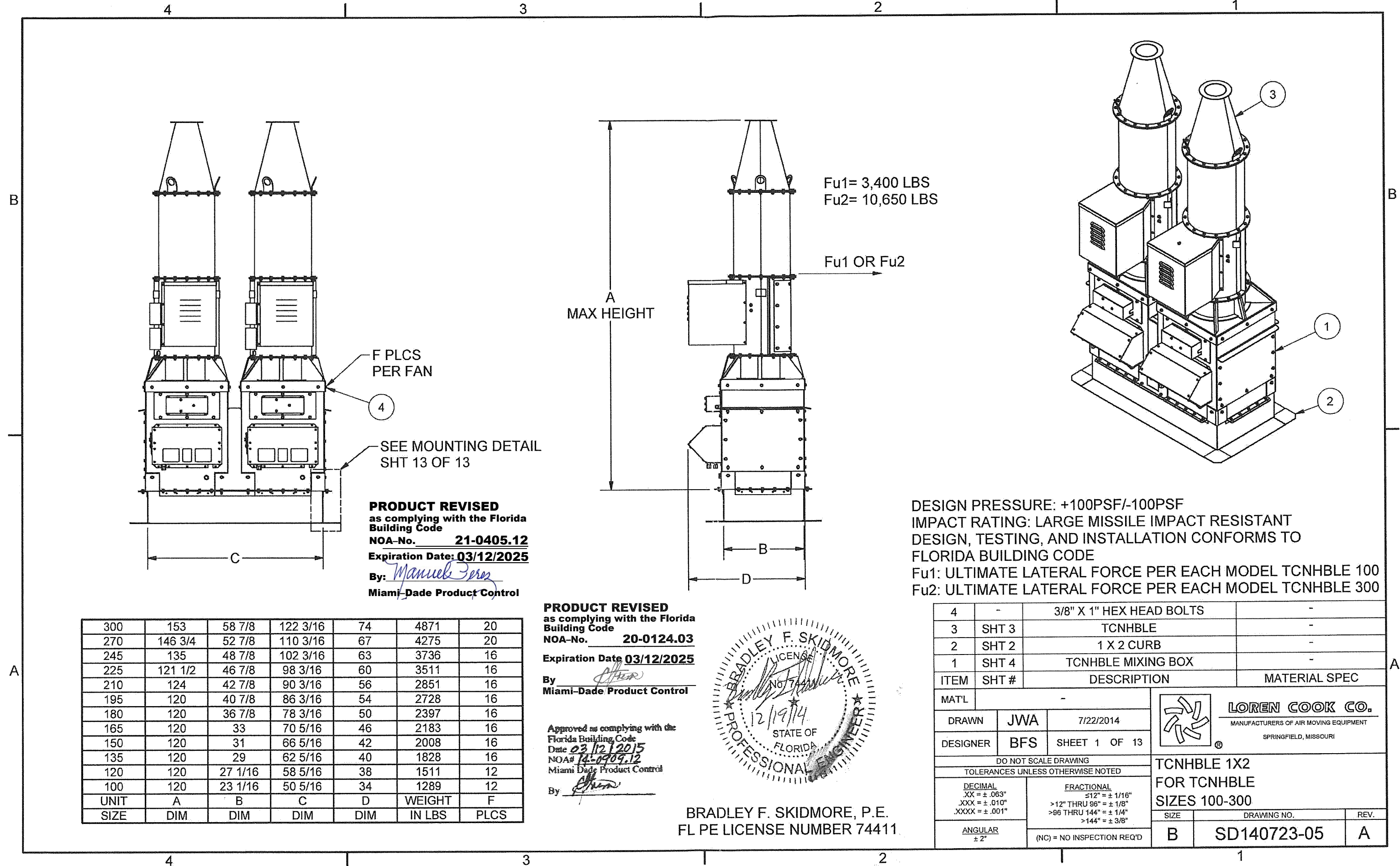
F. STATEMENTS

1. Statement letter of conformance, complying with **FBC 7th Edition (2020)** dated March 19, 2021, issued by manufacturer, signed and sealed by Bradley F. Skidmore, P.E.

G. OTHERS

1. Notice of Acceptance No. **20-0124.03**, issued to Loren Cook Company for their Series TCNHBLE Steel Rooftop Exhaust Fans, approved on 02/13/20 and expiring on 03/12/25.


Manuel Perez, P.E.
Product Control Examiner
NOA No. 21-0405.12
Expiration Date: March 12, 2025
Approval Date: June 24, 2021

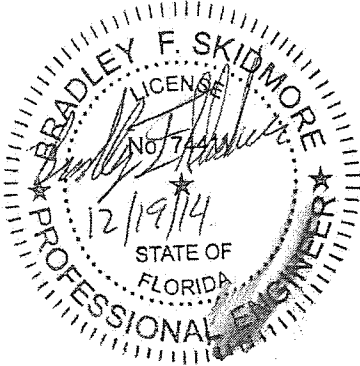


PRODUCT REVISED
as complying with the Florida
Building Code
NOA-No. **21-0405.12**
Expiration Date: **03/12/2025**
By: *Manuel Perez*
Miami-Dade Product Control

300	153	58 7/8	122 3/16	74	4871	20
270	146 3/4	52 7/8	110 3/16	67	4275	20
245	135	48 7/8	102 3/16	63	3736	16
225	121 1/2	46 7/8	98 3/16	60	3511	16
210	124	42 7/8	90 3/16	56	2851	16
195	120	40 7/8	86 3/16	54	2728	16
180	120	36 7/8	78 3/16	50	2397	16
165	120	33	70 5/16	46	2183	16
150	120	31	66 5/16	42	2008	16
135	120	29	62 5/16	40	1828	16
120	120	27 1/16	58 5/16	38	1511	12
100	120	23 1/16	50 5/16	34	1289	12
UNIT	A	B	C	D	WEIGHT	F
SIZE	DIM	DIM	DIM	DIM	IN LBS	PLCS

PRODUCT REVISED
as complying with the Florida
Building Code
NOA-No. **20-0124.03**
Expiration Date **03/12/2025**
By: *[Signature]*
Miami-Dade Product Control

Approved as complying with the
Florida Building Code
Date **03/12/2015**
NOA# **14-0909.12**
Miami-Dade Product Control
By: *[Signature]*



BRADLEY F. SKIDMORE, P.E.
FL PE LICENSE NUMBER 74411

DESIGN PRESSURE: +100PSF/-100PSF
IMPACT RATING: LARGE MISSILE IMPACT RESISTANT
DESIGN, TESTING, AND INSTALLATION CONFORMS TO
FLORIDA BUILDING CODE
Fu1: ULTIMATE LATERAL FORCE PER EACH MODEL TCNHBLE 100
Fu2: ULTIMATE LATERAL FORCE PER EACH MODEL TCNHBLE 300

4	-	3/8" X 1" HEX HEAD BOLTS	-
3	SHT 3	TCNHBLE	-
2	SHT 2	1 X 2 CURB	-
1	SHT 4	TCNHBLE MIXING BOX	-
ITEM	SHT #	DESCRIPTION	MATERIAL SPEC
MAT'L	-	-	-
DRAWN	JWA	7/22/2014	
DESIGNER	BFS	SHEET 1 OF 13	
DO NOT SCALE DRAWING TOLERANCES UNLESS OTHERWISE NOTED			
DECIMAL XX = ± .063" .XXX = ± .010" .XXXX = ± .001"	FRACTIONAL ≤12" = ± 1/16" >12" THRU 96" = ± 1/8" >96 THRU 144" = ± 1/4" >144" = ± 3/8"		
ANGULAR ± 2"	(NC) = NO INSPECTION REQ'D		
		LOREN COOK CO. MANUFACTURERS OF AIR MOVING EQUIPMENT SPRINGFIELD, MISSOURI	
		TCNHBLE 1X2 FOR TCNHBLE SIZES 100-300	
		SIZE	DRAWING NO.
		B	SD140723-05
		REV.	A

4

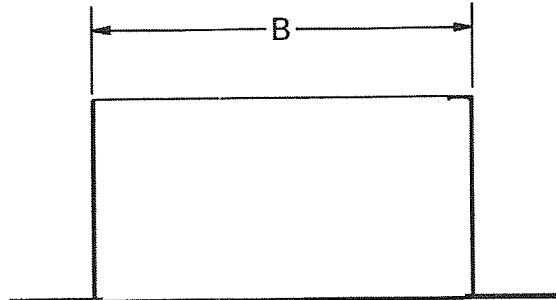
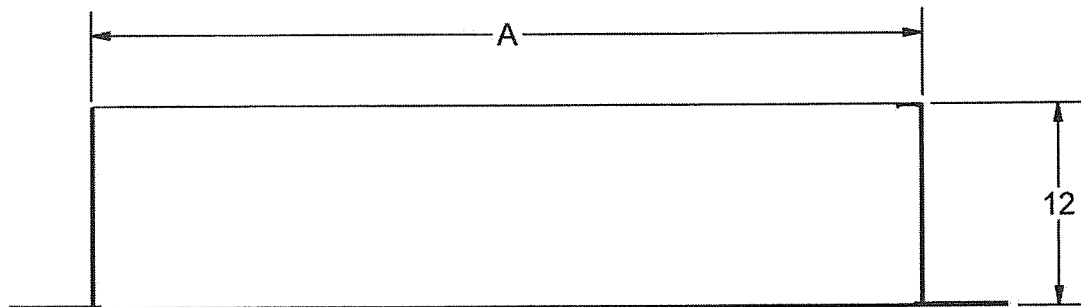
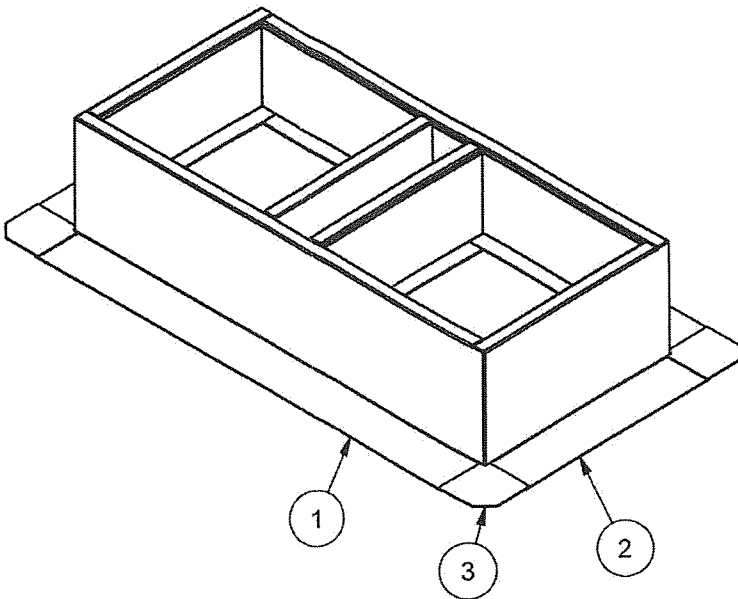
3

2

1

B

B



NOTES:

- 1) THE TCNHBLE REFERRED TO HEREIN REFERS TO ALL LOREN COOK MODEL TCNHBLE MODELS THAT ARE CONSTRUCTED OF THE SAME OUTER HOUSING COMPONENTS AND AVAILABLE AS A SINGLE FANS OR A DUAL FAN INSTALLATIONS EITHER ON MIXING BOXES, ISOLATION BOXES OR MOUNTED DIRECTLY TO LEC ROOF CURB.
- 2) THIS APPROVAL IS FOR THE STRUCTURAL CAPACITY OF THE EXTERIOR HOUSING ONLY, IT DOES NOT INCLUDE ANY INTERIOR MECHANISM OR ELECTRICAL PART.
- 3) THIS PRODUCT HAS NOT BEEN TESTED FOR WATER PENETRATION ACCORDING TO FLORIDA BUILDING CODE TAS 100(A) WIND DRIVEN RAIN TEST. IT CANNOT BE INSTALLED WITHIN RIDGE AREA FBC 1523.6.5.2.13.
- 4) THE INSTALLER IS RESPONSIBLE FOR CHECKING THAT ALL FASTENERS ARE PROPERLY INSTALLED AND ACCESS PANEL ARE IN PLACE BEFORE PUTTING THE UNIT INTO SERVICE.

PRODUCT REVISED
as complying with the Florida
Building Code

NOA-No. **21-0405.12**

Expiration Date: **03/12/2025**

By: *Manuel Perez*
Miami-Dade Product Control

PRODUCT REVISED
as complying with the Florida
Building Code

NOA-No. **20-0124.03**

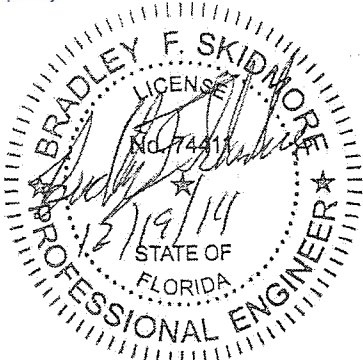
Expiration Date **03/12/2025**

By: *[Signature]*
Miami-Dade Product Control

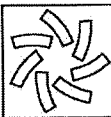
Approved as complying with the
Florida Building Code
Date **03/12/2015**
NOA# **14-0409.12**
Miami Dade Product Control

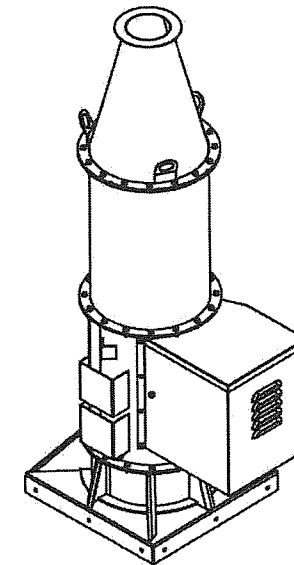
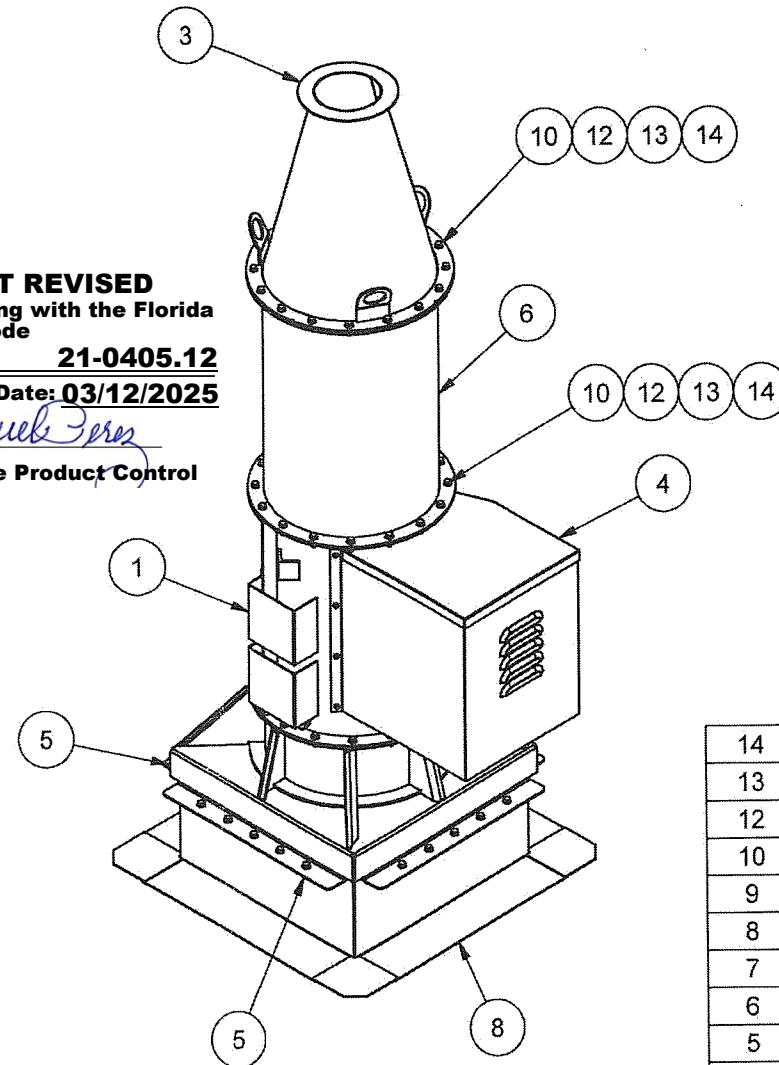
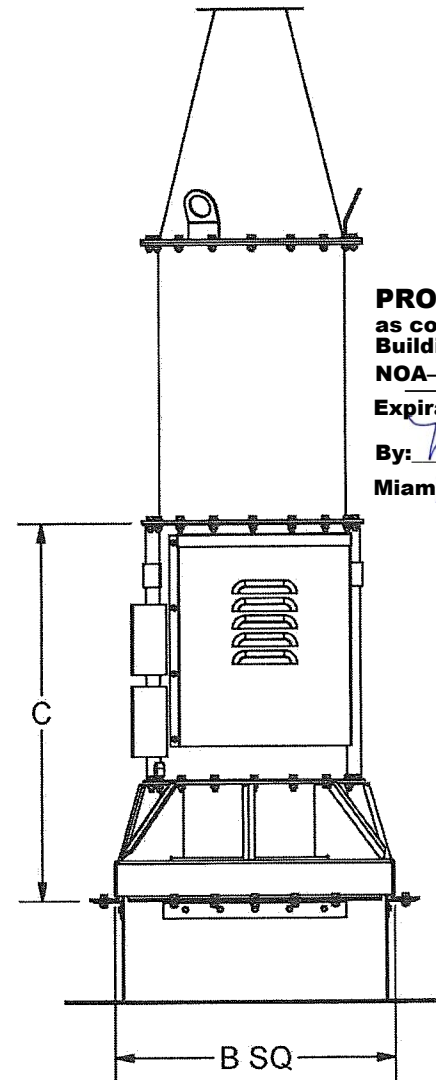
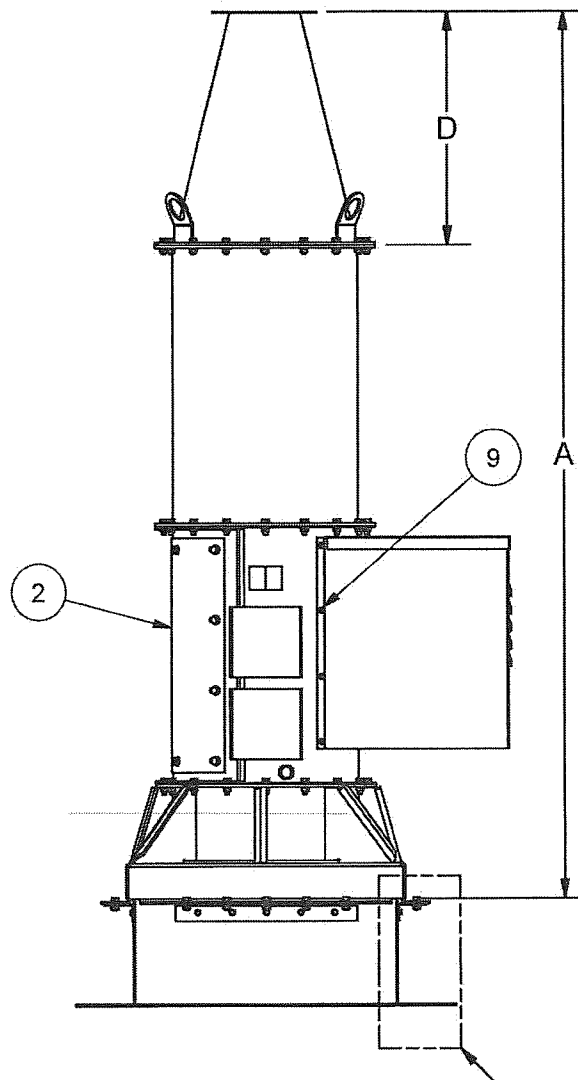
By: *[Signature]*

BRADLEY F. SKIDMORE, P.E.
FL PE LICENSE NUMBER 74411



300	122 3/16	58 7/8	509
270	110 3/16	52 7/8	458
245	102 3/16	48 7/8	423
225	98 3/16	46 7/8	406
210	90 3/16	42 7/8	372
195	86 3/16	40 7/8	355
180	78 3/16	36 7/8	320
165	70 5/16	33	287
150	66 5/16	31	270
135	62 5/16	29	253
120	58 5/16	27 1/16	236
100	50 5/16	23 1/16	201
UNIT	A	B	CURB
SIZE	DIM	DIM	WEIGHT

3	-	LEC CORNER FLANGE		12 GA STEEL	
2	-	LEC SIDE PANEL		12 GA STEEL	
1	-	LEC 1x2 SIDE PANEL		12 GA STEEL	
ITEM	SHT #	DESCRIPTION		MATERIAL SPEC	
MAT'L		<div><div>LOREN COOK CO. MANUFACTURERS OF AIR MOVING EQUIPMENT SPRINGFIELD, MISSOURI</div></div>			
DRAWN	JWA				7/22/2014
DESIGNER	BFS				SHEET 2 OF 13
DO NOT SCALE DRAWING					
TOLERANCES UNLESS OTHERWISE NOTED					
<u>DECIMAL</u> XX = ± .063" XXX = ± .010" XXXX = ± .001"		<u>FRACTIONAL</u> ≤12" = ± 1/16" >12" THRU 96" = ± 1/8" >96 THRU 144" = ± 1/4" >144" = ± 3/8"			
<u>ANGULAR</u> ± 2°		(NC) = NO INSPECTION REQ'D			
1 X 2 CURB FOR TCNHBLE SIZES 100-300					
SIZE		DRAWING NO.		REV.	
B		SD140723-05		A	



PRODUCT REVISED
as complying with the Florida
Building Code
NOA-No. **21-0405.12**
Expiration Date: **03/12/2025**
By: *Manuel Perez*
Miami-Dade Product Control

TCNHBLE FOR MIXING BOX AND ISOLATION BOX

CARBON STEEL: SY MIN=50KSI

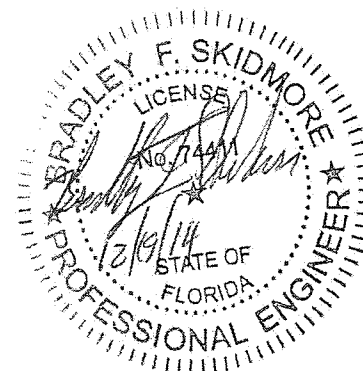
14	-	NUT	-
13	-	LOCKWASHER	-
12	-	WASHER	-
10	-	3/8" X 1" HEX HEAD BOLT	-
9	-	1/4 X 3/4 TEK SCREWS	-
8	SHT 12	1 X 1 CURB	-
7	-	CURB MOUNTING BRACKET	10 GA STEEL
6	SHT 8	DRUM EXTENSION	-
5	SHT 7	CURB CAP WELDMENT	-
4	SHT 6	MOTOR COVER WELDMENT	-
3	SHT 5	TCNHBLE NOZZLE WELDMENT	-
2	-	ACCESS DOOR SIZES 100-210	12 GA STEEL
2	-	ACCESS DOOR SIZES 225-300	10 GA STEEL
1	SHT 10	HOUSING WELDMENT SIZES 225-300	-
1	SHT 9	HOUSING WELDMENT SIZES 100-210	-
ITEM	SHT #	DESCRIPTION	MATERIAL SPEC

SEE MOUNTING DETAIL
SHT 13 OF 13


300	122	60	57 1/2	60
270	120	54	56	56
245	120	50	50 1/2	50
225	120	48	45	44
210	120	44	43 1/2	42
195	120	42	43	39
180	120	38	40 1/2	35
165	120	34	38	30
150	120	32	36 1/2	29
135	120	30	34	26
120	120	28	33	22
100	120	24	32	20
UNIT	A	B	C	D
SIZE	DIM	DIM	DIM	DIM

PRODUCT REVISED
as complying with the Florida
Building Code
NOA-No. **20-0124.03**
Expiration Date **03/12/2025**
By: *[Signature]*
Miami-Dade Product Control

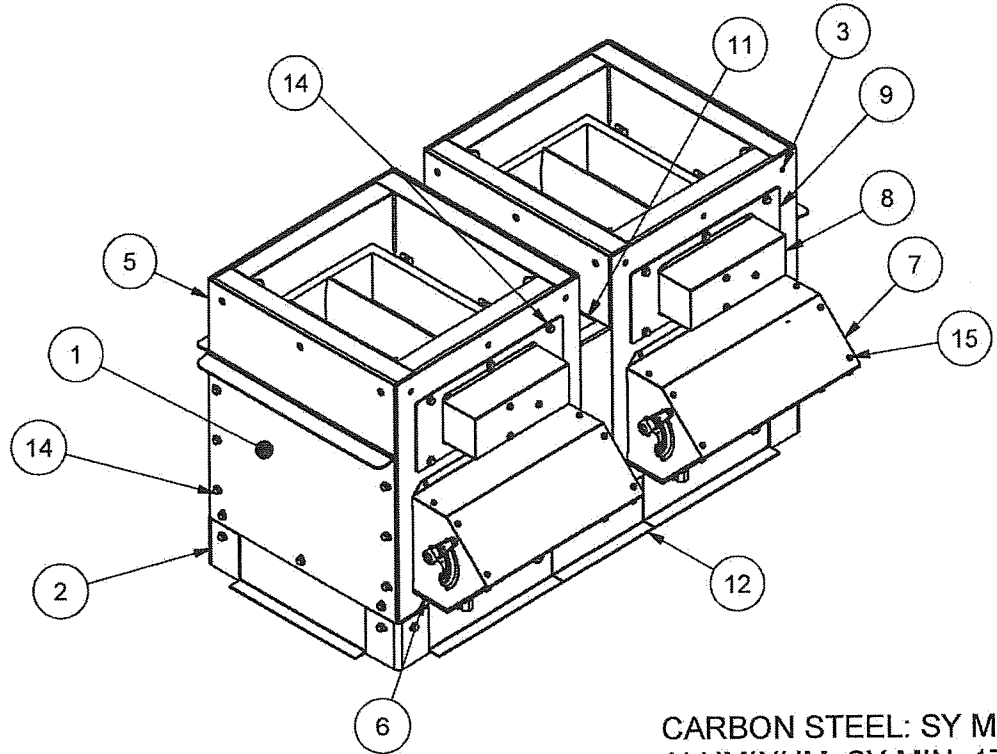
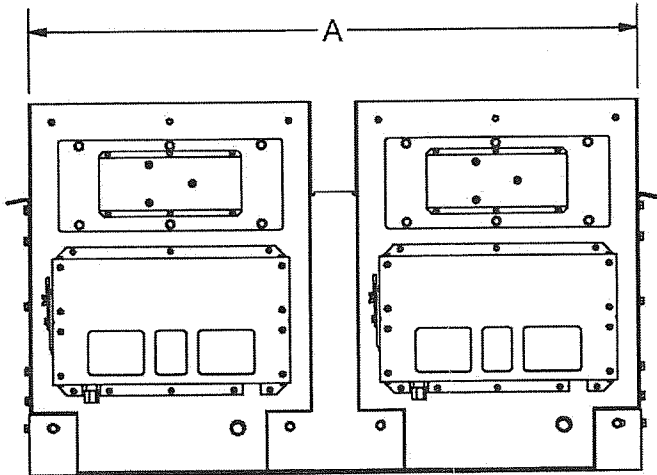
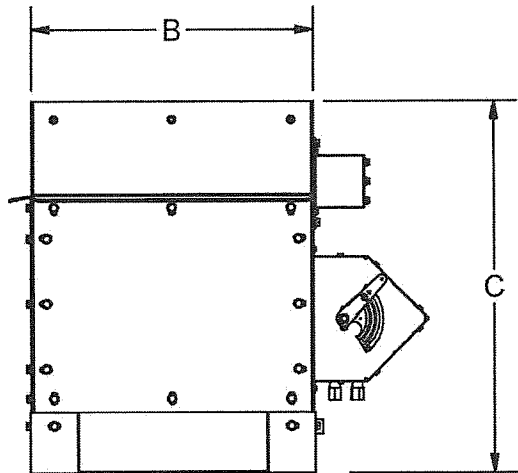
Approved as complying with the
Florida Building Code
Date **03/12/2015**
NOA# **14-0405.12**
Miami-Dade Product Control
By: *[Signature]*



BRADLEY F. SKIDMORE, P.E.
FL PE LICENSE NUMBER 74411

MAT'L			 LOREN COOK CO. MANUFACTURERS OF AIR MOVING EQUIPMENT SPRINGFIELD, MISSOURI
DRAWN	JWA	7/22/2014	
DESIGNER	BFS	SHEET 3 OF 13	
DO NOT SCALE DRAWING TOLERANCES UNLESS OTHERWISE NOTED			TCNHBLE FOR TCNHBLE SIZES 100-300
DECIMAL XX = ± .063" .XXX = ± .010" XXXX = ± .001"		FRACTIONAL ≤12" = ± 1/16" >12" THRU 96" = ± 1/8" >96 THRU 144" = ± 1/4" >144" = ± 3/8"	
ANGULAR ± 2°		(NC) = NO INSPECTION REQ'D	
SIZE	DRAWING NO.		REV.
B	SD140723-05		A

300	123 1/4	59 3/4	38 1/4
270	111 1/4	53 3/4	37 1/2
245	103 1/4	49 3/4	37 1/2
225	99 1/4	47 3/4	35 1/4
210	91 1/4	43 3/4	34 1/4
195	87 1/4	41 3/4	35 3/4
180	79 1/4	37 3/4	35
165	71 1/4	33 3/4	34
150	67 1/4	31 3/4	32 1/2
135	63 1/4	29 3/4	31 3/4
120	59 1/4	27 3/4	31 1/2
100	51 1/4	23 3/4	30 1/2
UNIT	A	B	C
SIZE	DIM	DIM	DIM



CARBON STEEL: SY MIN=50KSI
ALUMINUM: SY MIN=17KSI


15	-	1/4" X 3/4" TEK SCREWS	-
14	-	3/8" X 1" HEX HEAD BOLT	-
13	-	CURB MOUNTING BRACKET	10 GA STEEL
12	-	ADAPTOR PANEL	10 GA STEEL
11	-	TOP CHANNEL, ADAPTOR FRAME	7 GA STEEL
10	-	CURB MOUNTING BRACKET	10 GA STEEL
9	-	DAMPER DOOR	7 GA STEEL
8	-	ACTUATOR COVER, WRAP	18 GA STEEL
7	-	WEATHER HOOD COVER	16 GA STEEL
6	-	WEATHER HOOD SIDE	12 GA STEEL
5	-	UPPER SIDE PANEL	10 GA STEEL
4	-	LOWER FRAME SIDE PANEL	10 GA STEEL
3	-	DAMPER PANEL	10 GA STEEL
2	-	CORNER ANGLE	1/4 STEEL
1	-	ACCESS DOOR SIZES 135-300	.25 ALUM
1	-	ACCESS DOOR SIZES 100-120	.19 ALUM
ITEM	SHT #	DESCRIPTION	MATERIAL SPEC

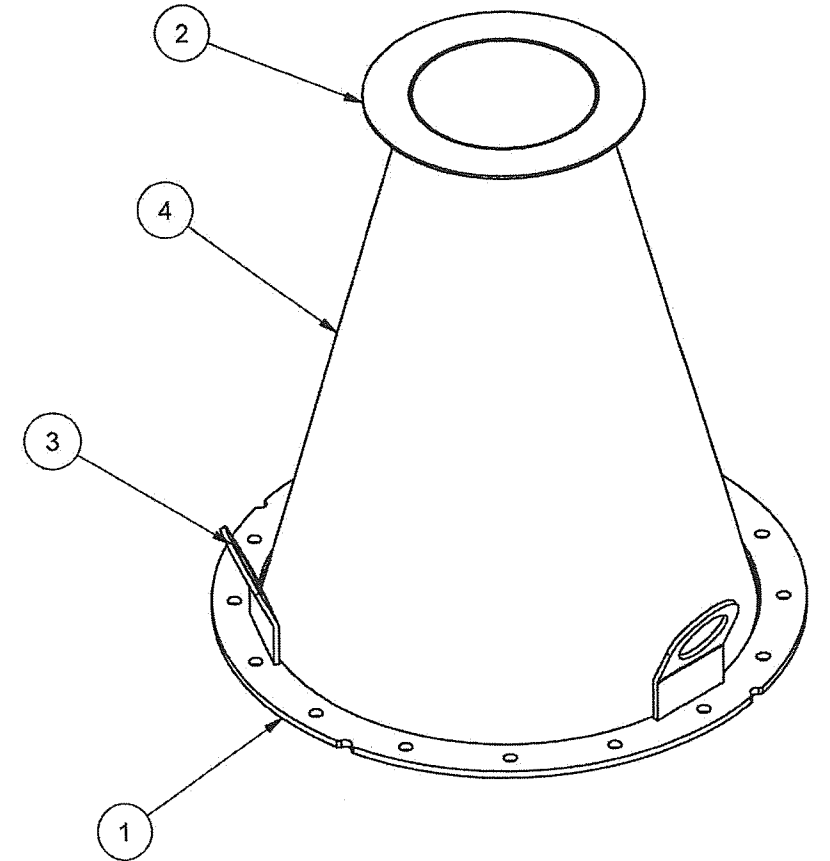
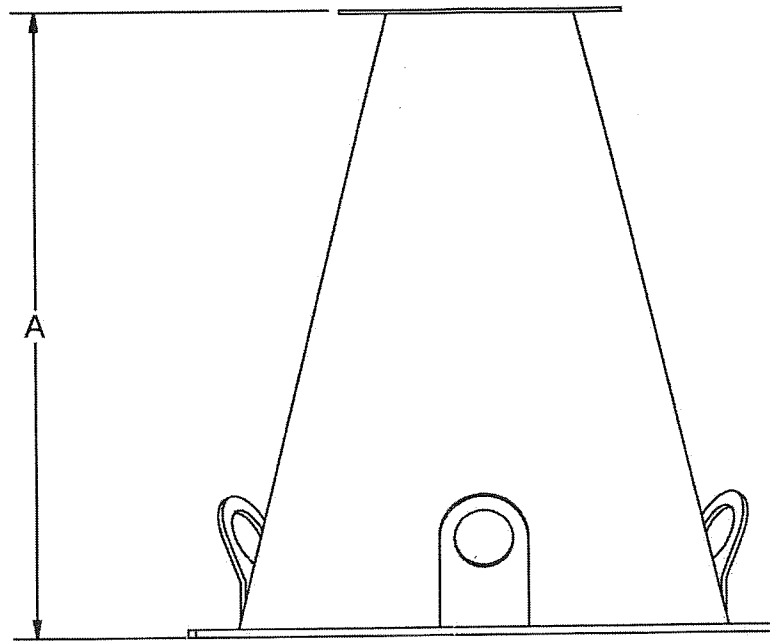
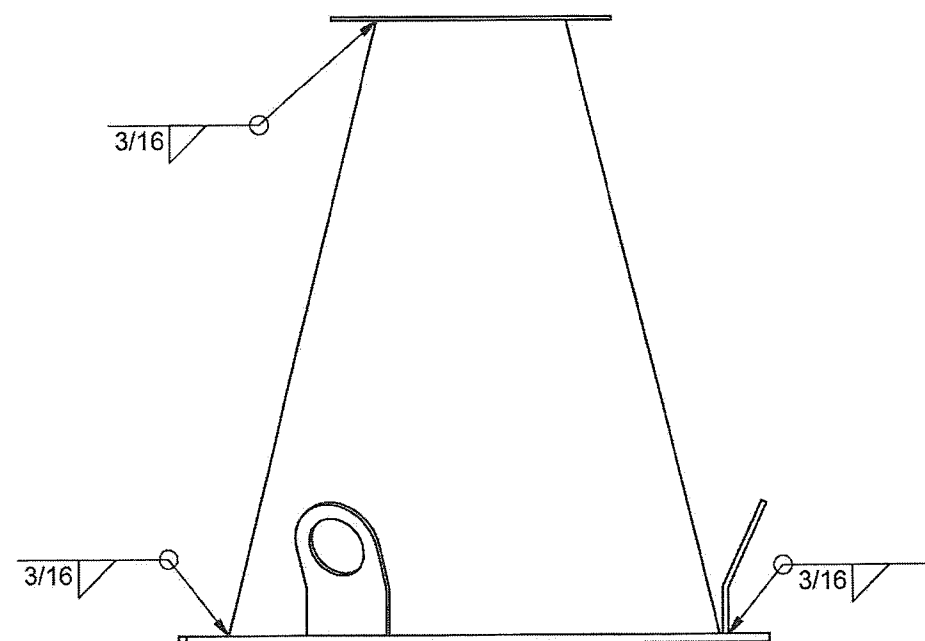
PRODUCT REVISED
as complying with the Florida
Building Code
NOA-No. **21-0405.12**
Expiration Date: **03/12/2025**
By: *Manuel Perez*
Miami-Dade Product Control

PRODUCT REVISED
as complying with the Florida
Building Code
NOA-No. **20-0124.03**
Expiration Date **03/12/2025**
By: *[Signature]*
Miami-Dade Product Control

Approved as complying with the
Florida Building Code
Date **03/12/2015**
NOA# **14-0909.12**
Miami-Dade Product Control
By: *[Signature]*

BRADLEY F. SKIDMORE, P.E.
FL PE LICENSE NUMBER 74411
Professional Engineer
State of Florida
No. 74411
Date 12/19/14

MAT'L					LOREN COOK CO.	
DRAWN		JWA			7/22/2014	
DESIGNER		BFS			SHEET 4 OF 13	
DO NOT SCALE DRAWING					1 X 2 MIXING BOX FOR TCNHBLE SIZES 100-300	
TOLERANCES UNLESS OTHERWISE NOTED						
<u>DECIMAL</u> XX = ± .063" .XXX = ± .010" .XXXX = ± .001"		<u>FRACTIONAL</u> ≤12" = ± 1/16" >12" THRU 96" = ± 1/8" >96 THRU 144" = ± 1/4" >144" = ± 3/8"				
<u>ANGULAR</u> ± 2°		(NC) = NO INSPECTION REQ'D			SIZE	DRAWING NO.
					B	SD140723-05
						REV.
						A



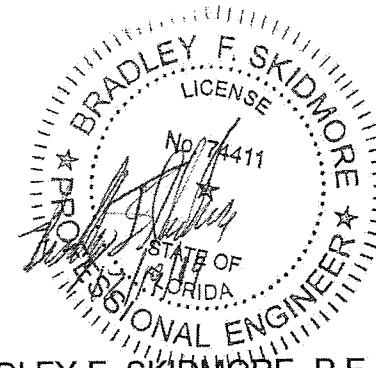
PRODUCT REVISED
as complying with the Florida
Building Code
NOA-No. **21-0405.12**
Expiration Date: **03/12/2025**
By: *Manuel Perez*
Miami-Dade Product Control

300	60
270	56
245	50
225	44
210	42
195	39
180	35
165	30
150	29
135	26
120	22
100	20
UNIT	A
SIZE	DIM


PRODUCT REVISED
as complying with the Florida
Building Code
NOA-No. **20-0124.03**
Expiration Date **03/12/2025**
By: *Bradley F. Skidmore*
Miami-Dade Product Control

Approved as complying with the
Florida Building Code
Date **03/12/2015**
NOA# **14-0909.12**
Miami-Dade Product Control
By: *Bradley F. Skidmore*

BRADLEY F. SKIDMORE, P.E.
FL PE LICENSE NUMBER 74411



CARBON STEEL: SY MIN=50KSI

4	-	TCNHBLE CONE	12 GA STEEL
3	-	LIFTING LUG	10 GA STEEL
2	-	NOZZLE FLANGE	12 GA STEEL
1	-	FLANGE, W/ HOLES	1/4 STEEL
ITEM	SHT #	DESCRIPTION	MATERIAL SPEC
MAT'L	-		 ®
DRAWN	JWA	7/22/2014	
DESIGNER	BFS	SHEET 5 OF 13	
DO NOT SCALE DRAWING			LOREN COOK CO. MANUFACTURERS OF AIR MOVING EQUIPMENT SPRINGFIELD, MISSOURI
TOLERANCES UNLESS OTHERWISE NOTED			
<u>DECIMAL</u> .XX = ± .063" .XXX = ± .010" .XXXX = ± .001"		<u>FRACTIONAL</u> ≤12" = ± 1/16" >12" THRU 96" = ± 1/8" >96 THRU 144" = ± 1/4" >144" = ± 3/8"	TCNHBLE NOZZLE WELDMENT FOR TCNHBLE SIZES 100-300
<u>ANGULAR</u> ± 2°		(NC) = NO INSPECTION REQ'D	
SIZE		DRAWING NO.	REV.
B		SD140723-05	A



4

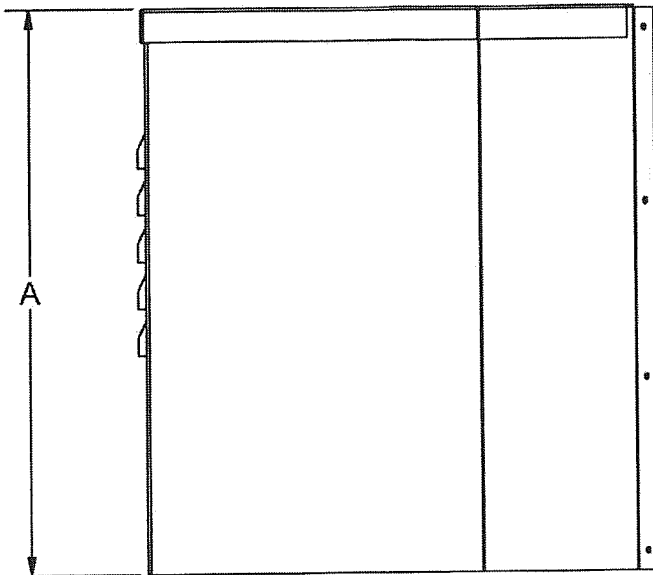
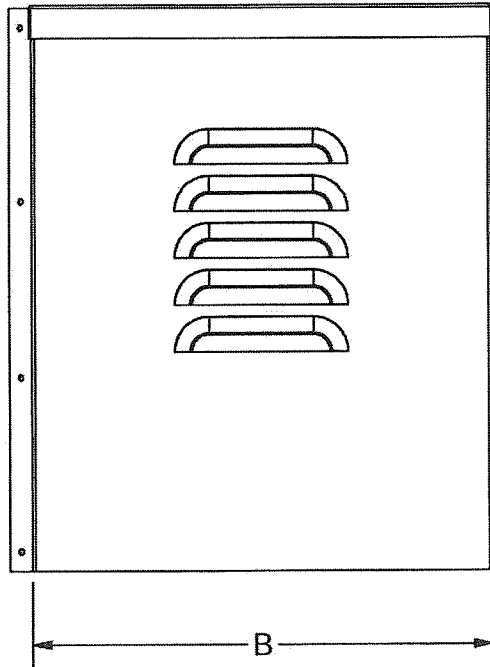
3

2

1

B

B

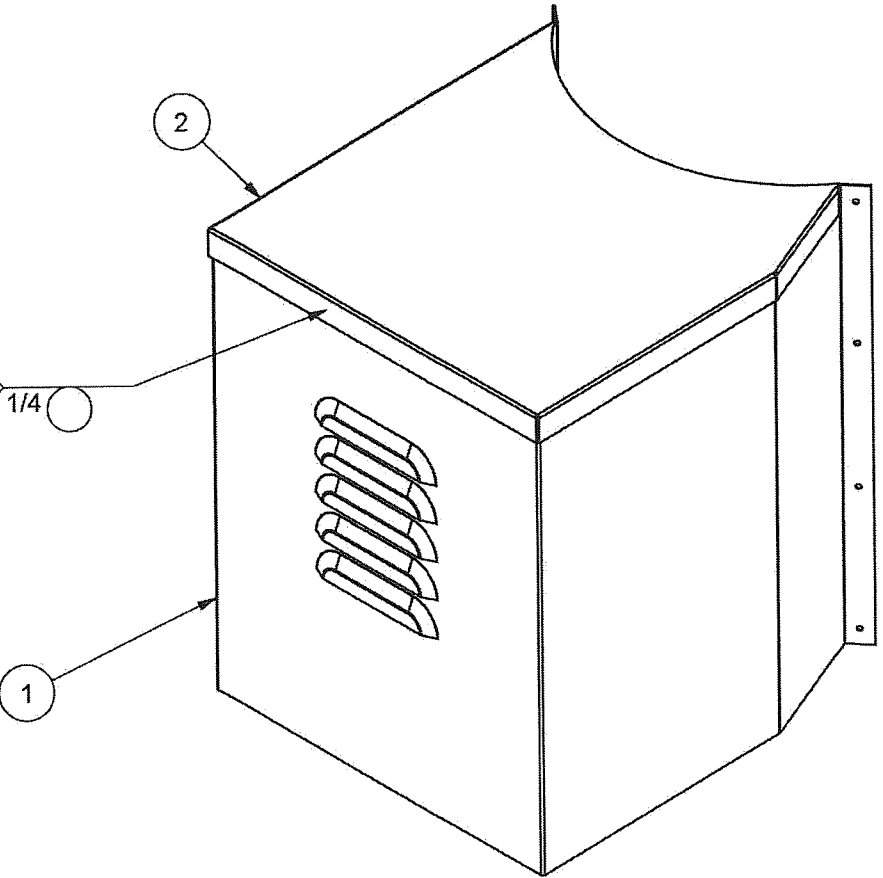


3 SIDES TYP

1/4

1

2

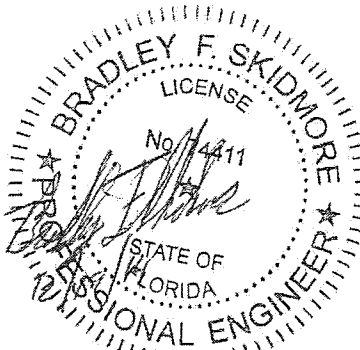


PRODUCT REVISED
as complying with the Florida
Building Code
NOA-No. **21-0405.12**
Expiration Date: **03/12/2025**
By: *Manuel Perez*
Miami-Dade Product Control

PRODUCT REVISED
as complying with the Florida
Building Code
NOA-No. **20-0124.03**
Expiration Date **03/12/2025**
By: *[Signature]*
Miami-Dade Product Control


Approved as complying with the
Florida Building Code
Date **03/12/2015**
NOA# **14-0409.12**
Miami Dade Product Control
By: *[Signature]*

270-300	30 3/32	23
225-245	25 3/32	20
150-210	22 3/32	19
100-135	18 3/32	15
UNIT	A	B
SIZE	DIM	DIM



BRADLEY F. SKIDMORE, P.E.
FL PE LICENSE NUMBER 74411

CARBON STEEL: SY MIN=50KSI

2	-	MOTOR COVER TOP	16 GA STEEL
1	-	MOTOR COVER WRAPPER	16 GA STEEL
ITEM	SHT #	DESCRIPTION	MATERIAL SPEC
MAT'L			 LOREN COOK CO. MANUFACTURERS OF AIR MOVING EQUIPMENT SPRINGFIELD, MISSOURI
DRAWN	JWA	7/22/2014	
DESIGNER	BFS	SHEET 6 OF 13	
DO NOT SCALE DRAWING TOLERANCES UNLESS OTHERWISE NOTED			
<u>DECIMAL</u> XX = ± .063" .XXX = ± .010" .XXXX = ± .001"		<u>FRACTIONAL</u> ≤12" = ± 1/16" >12" THRU 96" = ± 1/8" >96 THRU 144" = ± 1/4" >144" = ± 3/8"	
<u>ANGULAR</u> ± 2°		(NC) = NO INSPECTION REQ'D	
MOTOR COVER WELDMENT FOR TCNHBLE SIZES 100-300			
SIZE		DRAWING NO.	REV.
B		SD140723-05	A

4

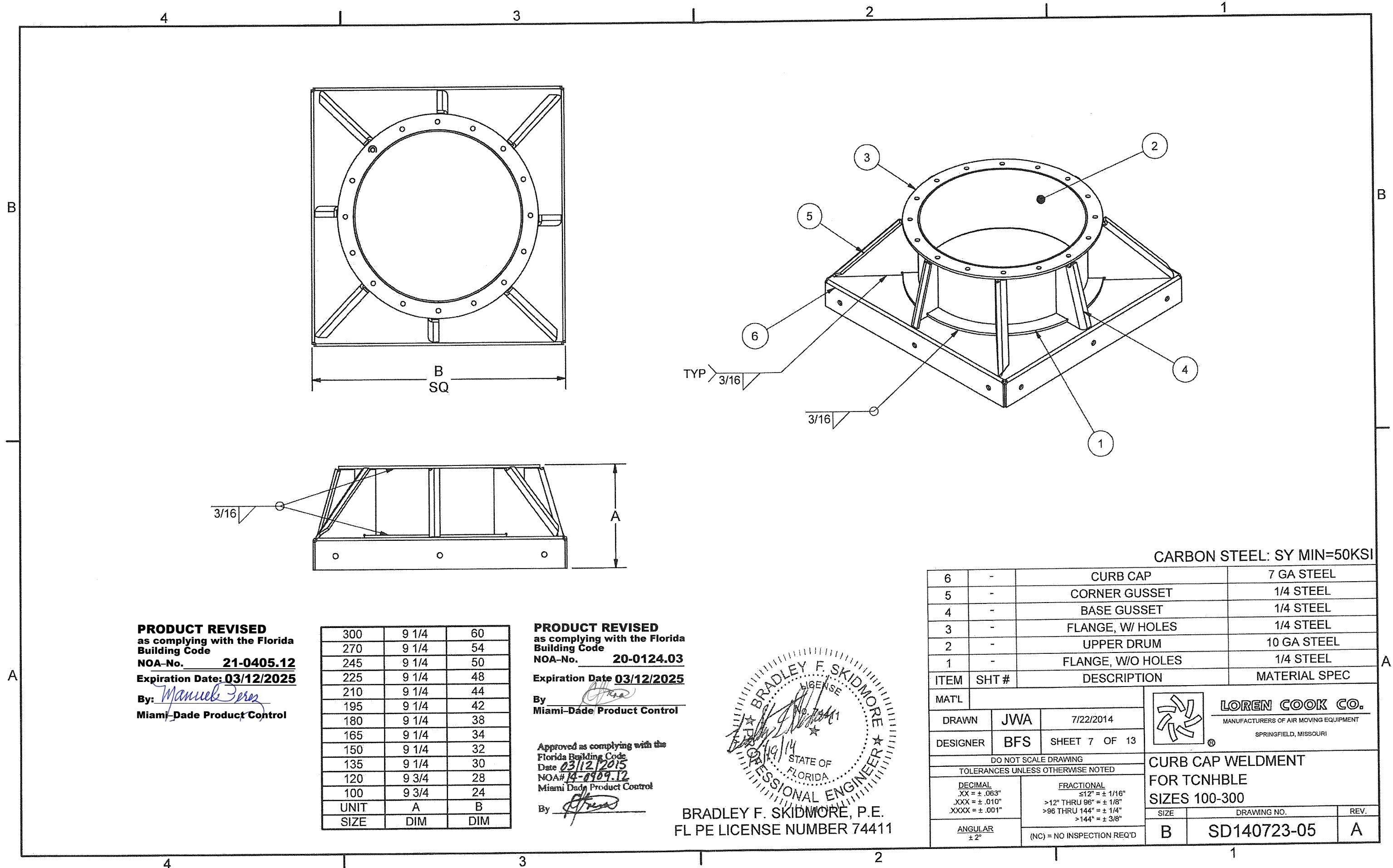
3

2

1

A

A

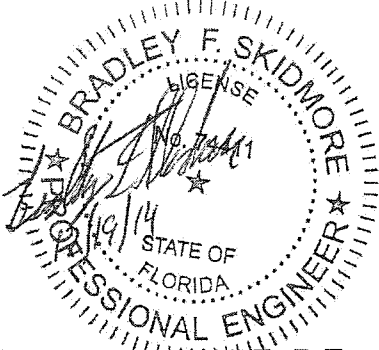


PRODUCT REVISED
as complying with the Florida
Building Code
NOA-No. **21-0405.12**
Expiration Date: **03/12/2025**
By: *Manuel Perez*
Miami-Dade Product Control

300	9 1/4	60
270	9 1/4	54
245	9 1/4	50
225	9 1/4	48
210	9 1/4	44
195	9 1/4	42
180	9 1/4	38
165	9 1/4	34
150	9 1/4	32
135	9 1/4	30
120	9 3/4	28
100	9 3/4	24
UNIT	A	B
SIZE	DIM	DIM

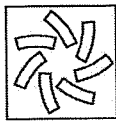
PRODUCT REVISED
as complying with the Florida
Building Code
NOA-No. **20-0124.03**
Expiration Date **03/12/2025**
By: *[Signature]*
Miami-Dade Product Control

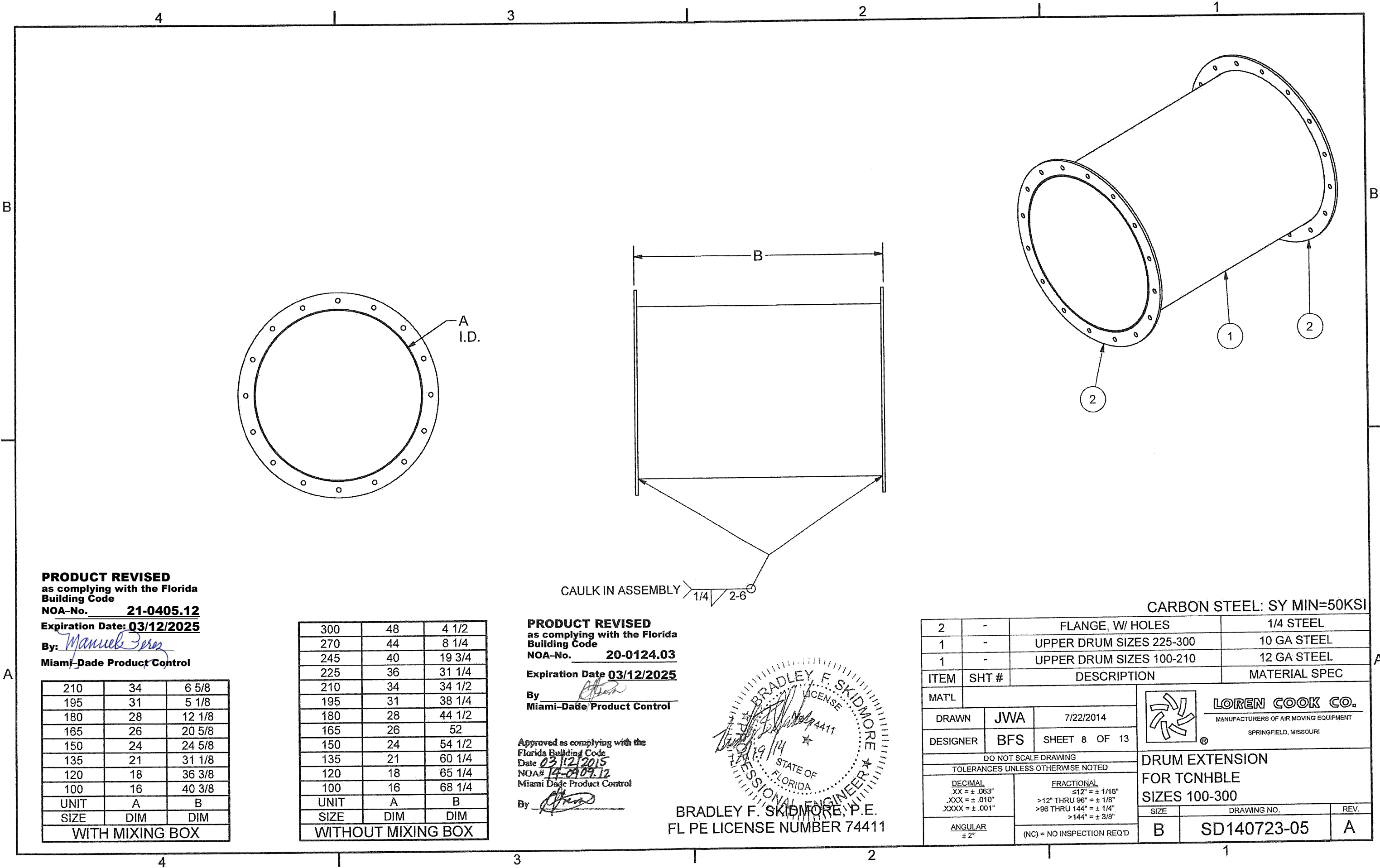
Approved as complying with the
Florida Building Code
Date **03/12/2015**
NOA# **14-0409.12**
Miami Dade Product Control
By: *[Signature]*



BRADLEY F. SKIDMORE, P.E.
FL PE LICENSE NUMBER 74411

CARBON STEEL: SY MIN=50KSI

6	-	CURB CAP	7 GA STEEL
5	-	CORNER GUSSET	1/4 STEEL
4	-	BASE GUSSET	1/4 STEEL
3	-	FLANGE, W/ HOLES	1/4 STEEL
2	-	UPPER DRUM	10 GA STEEL
1	-	FLANGE, W/O HOLES	1/4 STEEL
ITEM	SHT #	DESCRIPTION	MATERIAL SPEC
MAT'L			 LOREN COOK CO. MANUFACTURERS OF AIR MOVING EQUIPMENT SPRINGFIELD, MISSOURI
DRAWN	JWA	7/22/2014	
DESIGNER	BFS	SHEET 7 OF 13	
DO NOT SCALE DRAWING			CURB CAP WELDMENT FOR TCNHBLE SIZES 100-300
TOLERANCES UNLESS OTHERWISE NOTED			
<u>DECIMAL</u> XX = ± .063" .XXX = ± .010" XXXX = ± .001"		<u>FRACTIONAL</u> ≤12" = ± 1/16" >12" THRU 96" = ± 1/8" >96 THRU 144" = ± 1/4" >144" = ± 3/8"	
<u>ANGULAR</u> ± 2°		(NC) = NO INSPECTION REQ'D	
SIZE		DRAWING NO.	
B		SD140723-05	REV. A



PRODUCT REVISED
as complying with the Florida
Building Code
NOA-No. **21-0405.12**
Expiration Date: **03/12/2025**
By: *Manuel Perez*
Miami-Dade Product Control

210	34	6 5/8
195	31	5 1/8
180	28	12 1/8
165	26	20 5/8
150	24	24 5/8
135	21	31 1/8
120	18	36 3/8
100	16	40 3/8
UNIT	A	B
SIZE	DIM	DIM
WITH MIXING BOX		

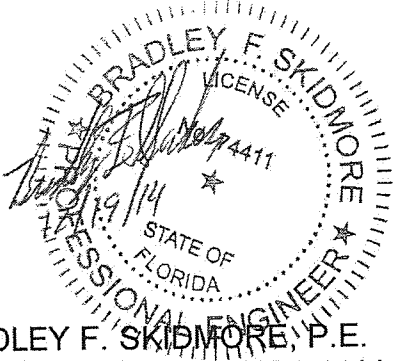
300	48	4 1/2
270	44	8 1/4
245	40	19 3/4
225	36	31 1/4
210	34	34 1/2
195	31	38 1/4
180	28	44 1/2
165	26	52
150	24	54 1/2
135	21	60 1/4
120	18	65 1/4
100	16	68 1/4
UNIT	A	B
SIZE	DIM	DIM
WITHOUT MIXING BOX		

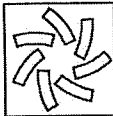
PRODUCT REVISED
as complying with the Florida
Building Code
NOA-No. **20-0124.03**
Expiration Date **03/12/2025**
By: *Bradley F. Skidmore*
Miami-Dade Product Control

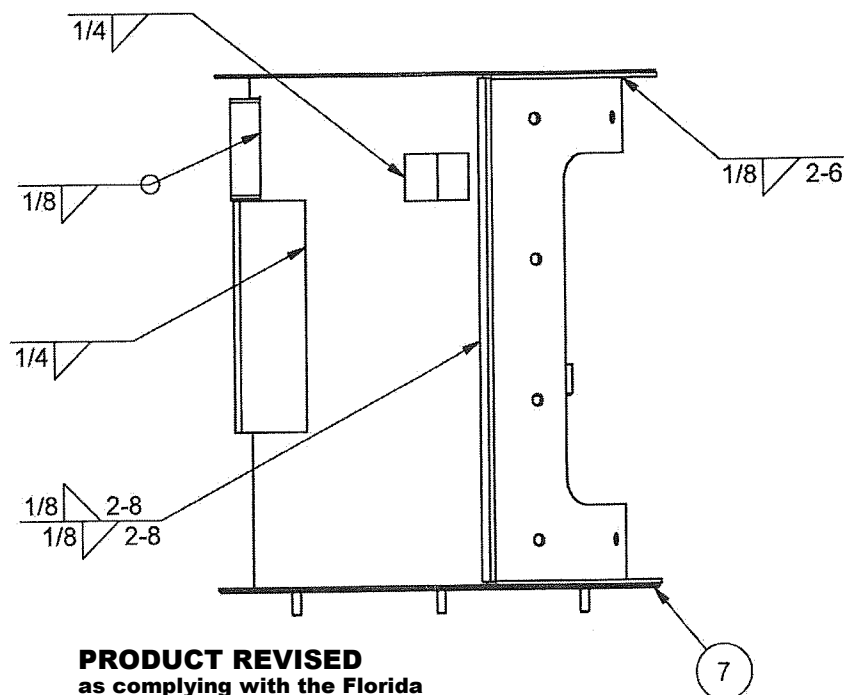
Approved as complying with the
Florida Building Code
Date **03/12/2015**
NOA# **14-0409.12**
Miami-Dade Product Control


By: *Bradley F. Skidmore*

BRADLEY F. SKIDMORE, P.E.
FL PE LICENSE NUMBER 74411



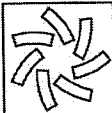
CARBON STEEL: SY MIN=50KSI					
2	-	FLANGE, W/ HOLES	1/4 STEEL		
1	-	UPPER DRUM SIZES 225-300	10 GA STEEL		
1	-	UPPER DRUM SIZES 100-210	12 GA STEEL		
ITEM	SHT #	DESCRIPTION	MATERIAL SPEC		
MAT'L			<div> LOREN COOK CO. MANUFACTURERS OF AIR MOVING EQUIPMENT SPRINGFIELD, MISSOURI</div>		
DRAWN	JWA	7/22/2014			
DESIGNER	BFS	SHEET 8 OF 13			
DO NOT SCALE DRAWING			DRUM EXTENSION FOR TCNHBLE SIZES 100-300		
TOLERANCES UNLESS OTHERWISE NOTED					
<u>DECIMAL</u> XX = ± .063" .XXX = ± .010" .XXXX = ± .001"		<u>FRACTIONAL</u> ≤12" = ± 1/16" >12" THRU 96" = ± 1/8" >96 THRU 144" = ± 1/4" >144" = ± 3/8"			
<u>ANGULAR</u> ± 2°		(NC) = NO INSPECTION REQ'D	SIZE	DRAWING NO.	REV.
			B	SD140723-05	A

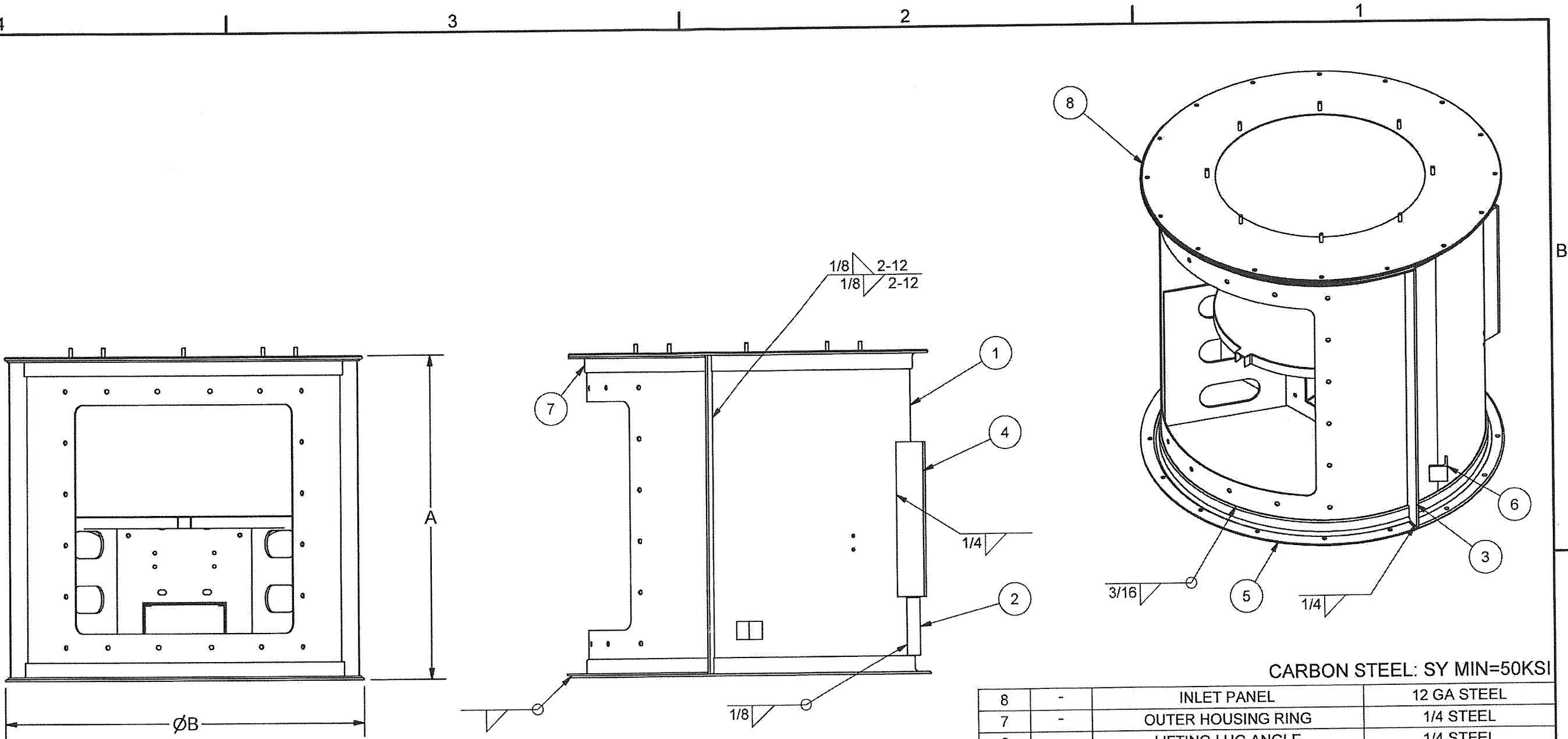


PRODUCT REVISED
as complying with the Florida
Building Code
NOA-No. 20-0124.03
Expiration Date 03/12/2025
By 
Miami-Dade Product Control

Approved as complying with the
Florida Building Code
Date 03/12/2015
NOAH# 14-0909.12
Miami Dept Product Control
By [Signature]

BRADLEY F SKIDMORE P.E.
FL PE LICENSE NUMBER 74411

CARBON STEEL: SY MIN=50KSI				
7		INLET PANEL SIZES 120-210	12 GA STEEL	
7	-	INLET PANEL SIZE 100	14 GA STEEL	
6	-	STIFFENER, ACCESS DOOR	1/4" STEEL	
5	-	FLANGE SECTION	1/4 STEEL	
4	-	LIFTING LUG ANGLE	1/4 STEEL	
3		BELT TUNNEL SIZES 165-210	12 GA STEEL	
3	-	BELT TUNNEL SIZES 100-150	14 GA STEEL	
2	-	MOTOR MOUNT BRACKET	10 GA STEEL	
1	-	HOUSING WITH ACCESS	12 GA STEEL	
ITEM	SHT #	DESCRIPTION	MATERIAL SPEC	
MAT'L		<div> LOREN COOK CO. MANUFACTURERS OF AIR MOVING EQUIPMENT SPRINGFIELD, MISSOURI</div>		
DRAWN	JWA			7/22/2014
DESIGNER	BFS			SHEET 9 OF 13
DO NOT SCALE DRAWING		HOUSING WELDMENT FOR TCNHBLE SIZES 100-210		
TOLERANCES UNLESS OTHERWISE NOTED				
<u>DECIMAL</u> .XX = ± .063" .XXX = ± .010" .XXXX = ± .001"	<u>FRACTIONAL</u> ≤ 12" = ± 1/16" > 12" THRU 96" = ± 1/8" > 96 THRU 144" = ± 1/4" > 144" = ± 3/8"			
<u>ANGULAR</u> ± 2°	(NC) = NO INSPECTION REQ'D	SIZE	DRAWING NO.	REV.
		B	SD140723-05	A



PRODUCT REVISED
as complying with the Florida
Building Code
NOA-No. **21-0405.12**
Expiration Date: **03/12/2025**

By: *Manuel Perez*
Miami-Dade Product Control

300	48 3/8	52 1/4
270	46 5/8	48 1/4
245	41 1/8	44 1/4
225	35 5/8	40 1/4
UNIT	A	B
SIZE	DIM	DIM


PRODUCT REVISED
as complying with the Florida
Building Code
NOA-No. **20-0124.03**
Expiration Date **03/12/2025**
By: *Manuel Perez*
Miami-Dade Product Control

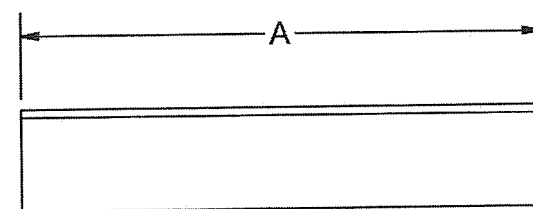
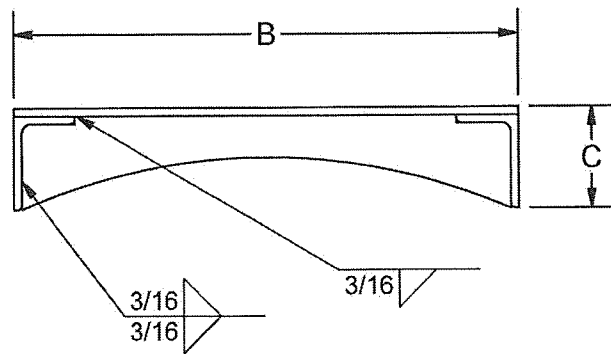
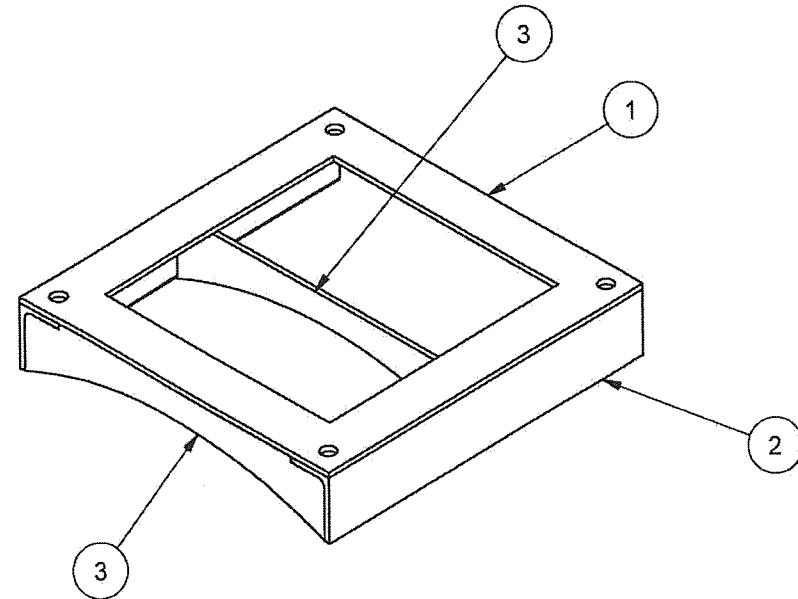
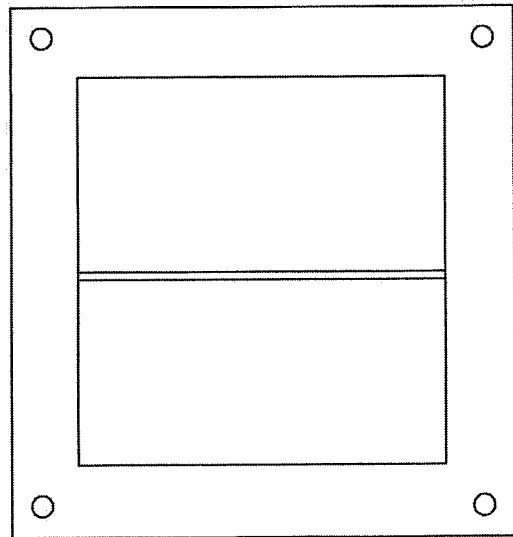
NOTES:
1. THIS SHEET IS FOR HOUSING WELDMENT SIZES 225-300.
FOR HOUSING WELDMENT 100-210 SEE SHEET 9.

Approved as complying with the
Florida Building Code
Date **03/12/2015**
NOA# **14-0404.12**
Miami-Dade Product Control
By: *Bradley F. Skidmore*

BRADLEY F. SKIDMORE, P.E.
FL PE LICENSE NUMBER 74411

CARBON STEEL: SY MIN=50KSI

8	-	INLET PANEL	12 GA STEEL	
7	-	OUTER HOUSING RING	1/4 STEEL	
6	-	LIFTING LUG ANGLE	1/4 STEEL	
5	-	FLANGE SECTION	1/4 STEEL	
4	SHT 11	MOTOR PLATE WELDMENT	-	
3	-	STIFFENER, ACCESS DOOR	1/4 STEEL	
2	-	BELT TUNNEL	12 GA STEEL	
1	-	HOUSING WITH ACCESS	10 GA STEEL	
ITEM	SHT #	DESCRIPTION	MATERIAL SPEC	
MAT'L		 LOREN COOK CO. MANUFACTURERS OF AIR MOVING EQUIPMENT SPRINGFIELD, MISSOURI		
DRAWN	JWA			7/22/2014
DESIGNER	BFS			SHEET 10 OF 13
DO NOT SCALE DRAWING				
TOLERANCES UNLESS OTHERWISE NOTED				
DECIMAL		FRACTIONAL		
.XX = ± .063"		≤12" = ± 1/16"		
.XXX = ± .010"		>12" THRU 96" = ± 1/8"		
.XXXX = ± .001"		>96 THRU 144" = ± 1/4"		
ANGULAR		>144" = ± 3/8"		
± 2°		(NC) = NO INSPECTION REQ'D		
HOUSING WELDMENT FOR TCNHBLE SIZES 225-300				
SIZE		DRAWING NO.	REV.	
B		SD140723-05	A	

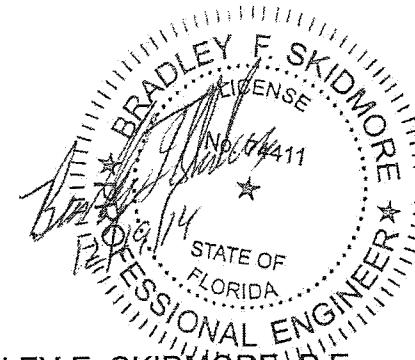


PRODUCT REVISED
as complying with the Florida
Building Code
NOA-No. **21-0405.12**
Expiration Date: **03/12/2025**
By: *Manuel Perez*
Miami-Dade Product Control

PRODUCT REVISED
as complying with the Florida
Building Code
NOA-No. **20-0124.03**
Expiration Date **03/12/2025**
By: *Alfonso*
Miami-Dade Product Control


Approved as complying with the
Florida Building Code
Date **03/12/2015**
NOA# **14-0407.12**
Miami-Dade Product Control

300	18 3/4	19 1/2	3 3/4
270	18 3/4	19 1/2	3 3/4
245	17	16 1/2	3 1/4
225	17	16 1/2	3 1/4
UNIT	A	B	C
SIZE	DIM	DIM	DIM



BRADLEY F. SKIDMORE, P.E.
FL PE LICENSE NUMBER 74411

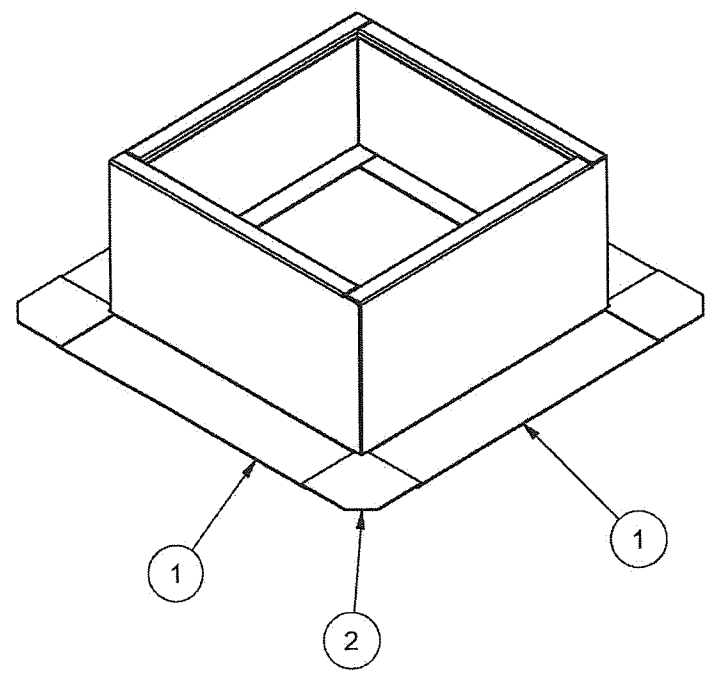
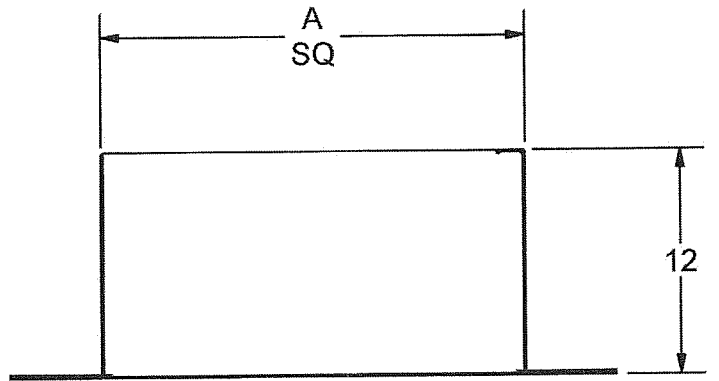
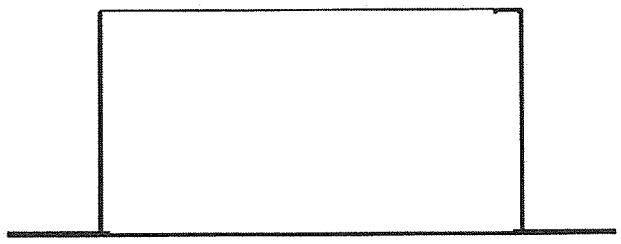
CARBON STEEL: SY MIN=50KSI

3	-	SUPPORT GUSSET	1/4 STEEL		
2	-	MOTOR RAIL	1/4 STEEL		
1	-	MOTOR MOUNT PLATE	1/4 STEEL		
ITEM	SHT #	DESCRIPTION	MATERIAL SPEC		
MAT'L			 LOREN COOK CO. MANUFACTURERS OF AIR MOVING EQUIPMENT SPRINGFIELD, MISSOURI		
DRAWN	JWA	7/22/2014			
DESIGNER	BFS	SHEET 11 OF 13			
DO NOT SCALE DRAWING			MOTOR MOUNT WELDMENT FOR TCNHBLE SIZES 100-300		
TOLERANCES UNLESS OTHERWISE NOTED					
<u>DECIMAL</u> .XX = ± .063" .XXX = ± .010" .XXXX = ± .001"		<u>FRACTIONAL</u> ≤12" = ± 1/16" >12" THRU 96" = ± 1/8" >96 THRU 144" = ± 1/4" >144" = ± 3/8"			
<u>ANGULAR</u> ± 2°		(NC) = NO INSPECTION REQ'D			
			SIZE	DRAWING NO.	REV.
			B	SD140723-05	A

4 3 2 1

B

B

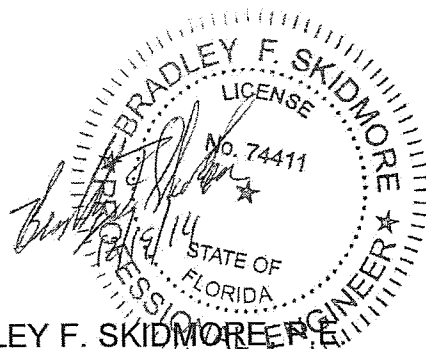


PRODUCT REVISED
as complying with the Florida
Building Code
NOA-No. **21-0405.12**
Expiration Date: **03/12/2025**
By: *Manuel Perez*
Miami-Dade Product Control


PRODUCT REVISED
as complying with the Florida
Building Code
NOA-No. **20-0124.03**
Expiration Date **03/12/2025**
By: *[Signature]*
Miami-Dade Product Control

300	58 7/8	297
270	52 7/8	266
245	48 7/8	246
225	46 7/8	235
210	42 7/8	215
195	40 7/8	205
180	36 7/8	184
165	33	164
150	31	154
135	29	144
120	27 1/16	134
100	23 1/16	113
UNIT	A	WEIGHT
SIZE	DIM	IN LBS

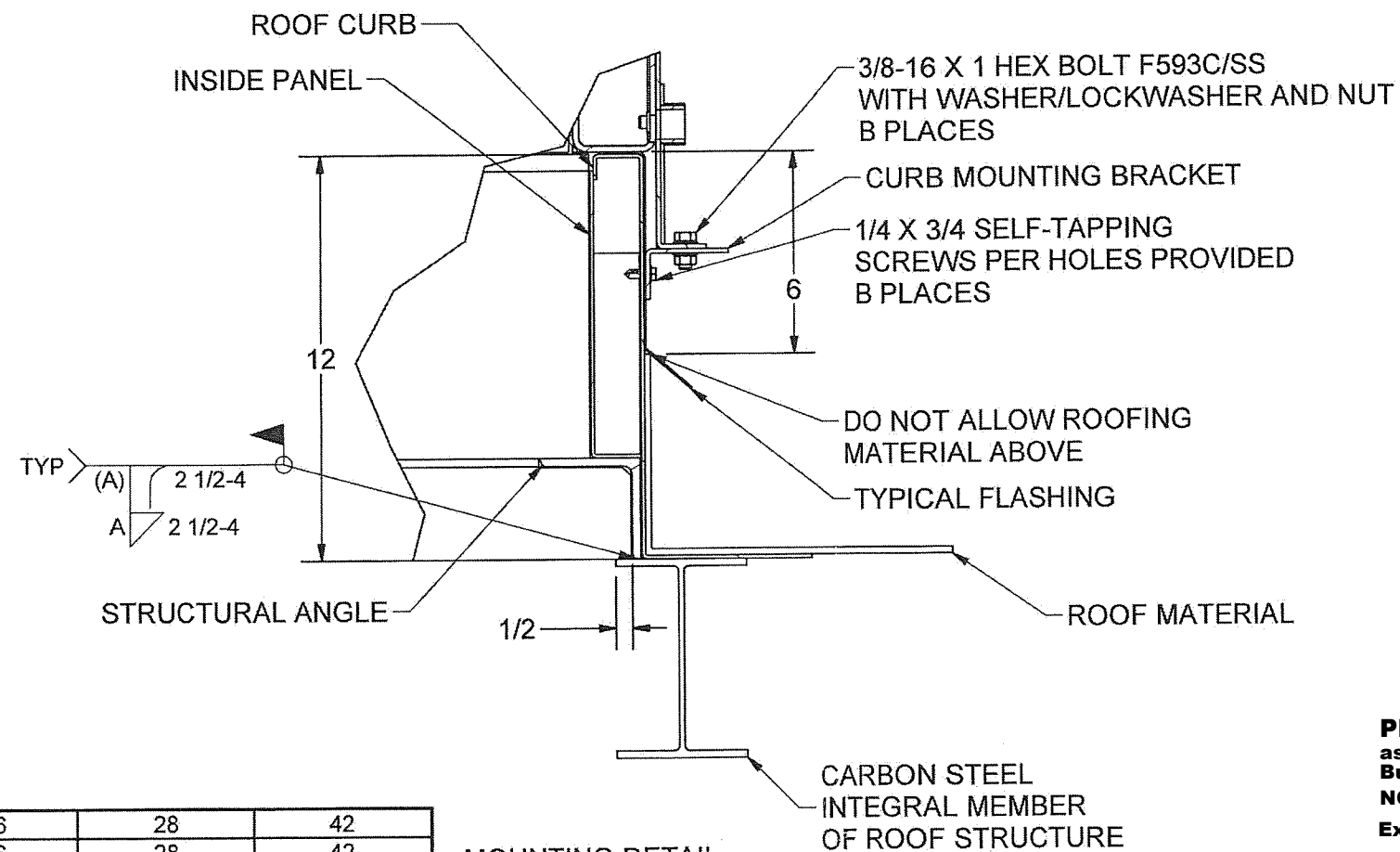
Approved as complying with the
Florida Building Code
Date **03/12/2015**
NOA# **14-0409.12**
Miami Dade Product Control
By: *[Signature]*



BRADLEY F. SKIDMORE
FL PE LICENSE NUMBER 74411

2	-	LEC CORNER FLANGE		7 GA STEEL
1	-	LEC SIDE PANEL		7 GA STEEL
ITEM	SHT #	DESCRIPTION		MATERIAL SPEC
MAT'L				<div></div> <div>LOREN COOK CO.</div> <div>MANUFACTURERS OF AIR MOVING EQUIPMENT</div> <div>SPRINGFIELD, MISSOURI</div>
DRAWN	JWA	7/22/2014		
DESIGNER	BFS	SHEET 12 OF 13		
DO NOT SCALE DRAWING				
TOLERANCES UNLESS OTHERWISE NOTED				
DECIMAL		FRACTIONAL		
.XX = ± .063"		≤12" = ± 1/16"		
.XXX = ± .010"		>12" THRU 96" = ± 1/8"		
.XXXX = ± .001"		>96 THRU 144" = ± 1/4"		
		>144" = ± 3/8"		
ANGULAR		(NC) = NO INSPECTION REQ'D		
± 2°				
1 X 1 CURB FOR TCNHBLE SIZES 100-300				
SIZE		DRAWING NO.		REV.
B		SD140723-05		A

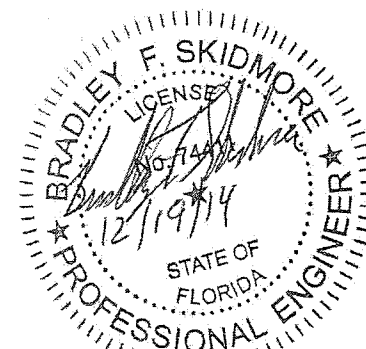
4 3 2 1



300	3/8	56	28	42
270	1/4	56	28	42
245	1/4	56	28	42
225	1/4	40	20	30
210	1/4	40	20	30
195	1/4	40	20	30
180	1/4	40	20	30
165	1/4	40	20	30
150	1/4	40	20	30
135	1/4	40	20	30
120	1/4	40	20	30
100	1/4	40	20	30
UNIT	A	B LESS BOX	B SINGLE BOX	B DUAL BOX
SIZE	MIN	PLACES	PLACES	PLACES

MOUNTING DETAIL


Approved as complying with the
Florida Building Code
Date 03/12/2015
NOA# 14-0909.12
Miami-Dade Product Control
By [Signature]



BRADLEY F. SKIDMORE, P.E.
FL PE LICENSE NUMBER 74411

PRODUCT REVISED
as complying with the Florida
Building Code
NOA-No. 21-0405.12
Expiration Date: 03/12/2025
By: Manuel Perez
Miami-Dade Product Control

PRODUCT REVISED
as complying with the Florida
Building Code
NOA-No. 20-0124.03
Expiration Date 03/12/2025
By: [Signature]
Miami-Dade Product Control

MAT'L		 LOREN COOK CO. MANUFACTURERS OF AIR MOVING EQUIPMENT SPRINGFIELD, MISSOURI		
DRAWN	JWA			7/22/2014
DESIGNER	BFS			SHEET 13 OF 13
DO NOT SCALE DRAWING				
TOLERANCES UNLESS OTHERWISE NOTED				
<u>DECIMAL</u> .XX = ± .063" .XXX = ± .010" .XXXX = ± .001"		<u>FRACTIONAL</u> ≤12" = ± 1/16" >12" THRU 96" = ± 1/8" >96 THRU 144" = ± 1/4" >144" = ± 3/8"		
<u>ANGULAR</u> ± 2°		(NC) = NO INSPECTION REQ'D		
SIZE		DRAWING NO.		
B		SD140723-05		
		REV.		
		A		