



DEPARTMENT OF REGULATORY AND ECONOMIC RESOURCES (RER)
BOARD AND CODE ADMINISTRATION DIVISION

MIAMI-DADE COUNTY
PRODUCT CONTROL SECTION
11805 SW 26 Street, Room 208
Miami, Florida 33175-2474
T (786) 315-2590 F (786) 315-2599

www.miamidade.gov/economy

NOTICE OF ACCEPTANCE (NOA)

CDI-Custom Curb Adapters
6701 N Belt Line Road
Irving, TX 75063

SCOPE:

This NOA is being issued under the applicable rules and regulations governing the use of construction materials. The documentation submitted has been reviewed and accepted by Miami-Dade County RER- Product Control Section to be used in Miami Dade County and other areas where allowed by the Authority Having Jurisdiction (AHJ).

This NOA shall not be valid after the expiration date stated below. The Miami-Dade County Product Control Section (In Miami Dade County) and/or the AHJ (in areas other than Miami Dade County) reserve the right to have this product or material tested for quality assurance purposes. If this product or material fails to perform in the accepted manner, the manufacturer will incur the expense of such testing and the AHJ may immediately revoke, modify, or suspend the use of such product or material within their jurisdiction. RER reserves the right to revoke this acceptance if it is determined by Miami-Dade County Product Control Section that this product or material fails to meet the requirements of the applicable building code.

This product is approved as described herein and has been designed to comply with the High Velocity Hurricane Zone of the Florida Building Code.

DESCRIPTION: Steel York Roof-Curb for York Series Rooftop Units

APPROVAL DOCUMENT: Drawing No. PG, titled "NOA York Curbs", sheets 1 through 6 of 6, prepared by CDI-Custom Curb Adapters, dated December 18, 2020, signed and sealed by Glenn Mouritzen, P.E., bearing the Miami-Dade County Product Control Revision stamp with the Notice of Acceptance number and the expiration date by the Miami-Dade County Product Control Section.

MISSILE IMPACT RATING: None

LABELING: Each roof-curb shall bear a permanent label with the manufacturer's name or logo, Rock Hill, SC and the following statement: "Miami-Dade County Product Control Approved", unless otherwise noted herein.

RENEWAL of this NOA shall be considered after a renewal application has been filed and there has been no change in the applicable building code negatively affecting the performance of this product.

TERMINATION of this NOA will occur after the expiration date or if there has been a revision or change in the materials, use, and/or manufacture of the product or process. Misuse of this NOA as an endorsement of any product, for sales, advertising or any other purposes shall automatically terminate this NOA. Failure to comply with any section of this NOA shall be cause for termination and removal of NOA.

ADVERTISEMENT: The NOA number preceded by the words Miami-Dade County, Florida, and followed by the expiration date may be displayed in advertising literature. If any portion of the NOA is displayed, then it shall be done in its entirety.

INSPECTION: A copy of this entire NOA shall be provided to the user by the manufacturer or its distributors and shall be available for inspection at the job site at the request of the Building Official.

This NOA revises NOA #20-0917.03 and consists of this page 1, evidence submitted page E-1 as well as approval document mentioned above.

The submitted documentation was reviewed by **Helmy A. Makar, P.E., M.S.**



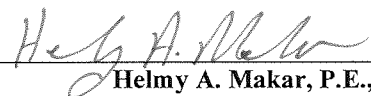
Helmy A. Makar
05/27/2021

NOA No. 21-0408.06
Expiration Date: 02/04/2026
Approval Date: 05/27/2021
Page 1

CDI-Custom Curb Adapters

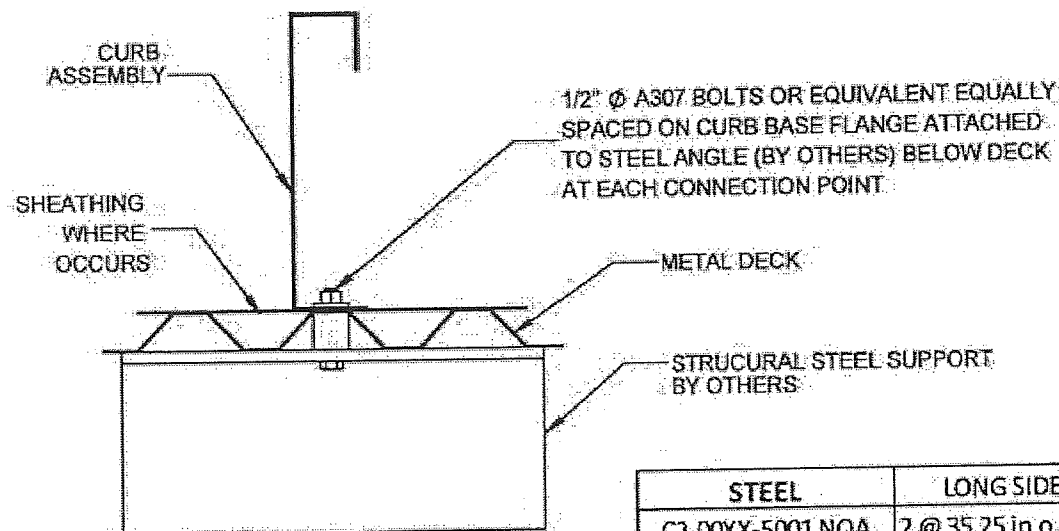
NOTICE OF ACCEPTANCE: EVIDENCE SUBMITTED

- 1. EVIDENCE SUBMITTED UNDER PREVIOUS APPROVAL #20-0917.03**
 - A. DRAWINGS**
 1. *Drawing No. PG, titled "NOA York Curbs", sheets 1 through 6 of 6, prepared by CDI-Custom Curb Adapters, dated December 18, 2020, signed and sealed by Glenn Mouritzen, P.E.*
 - B. TESTS**
 1. *None.*
 - C. CALCULATIONS**
 1. *Calculation titled "Structural Calculations for C2-00XX-5***NOA Curbs", dated 08/07/2020, 51 sheets, signed & sealed by Glenn Mouritzen, P.E. on 08/07/2020.*
 - D. QUALITY ASSURANCE**
 1. *By Miami-Dade County Department of Regulatory and Economic Resources.*
 - E. MATERIAL CERTIFICATIONS**
 1. *None.*
- 2. NEW EVIDENCE SUBMITTED**
 - A. DRAWINGS**
 1. *None.*
 - B. TESTS**
 1. *None.*
 - C. CALCULATIONS**
 1. *None.*
 - D. QUALITY ASSURANCE**
 1. *By Miami-Dade County Department of Regulatory and Economic Resources.*
 - E. MATERIAL CERTIFICATIONS**
 1. *None.*



Helmy A. Makar, P.E., M.S.
Product Control Section Supervisor
NOA No. 21-0408.06
Expiration Date: 02/04/2026
Approval Date: 05/27/2021

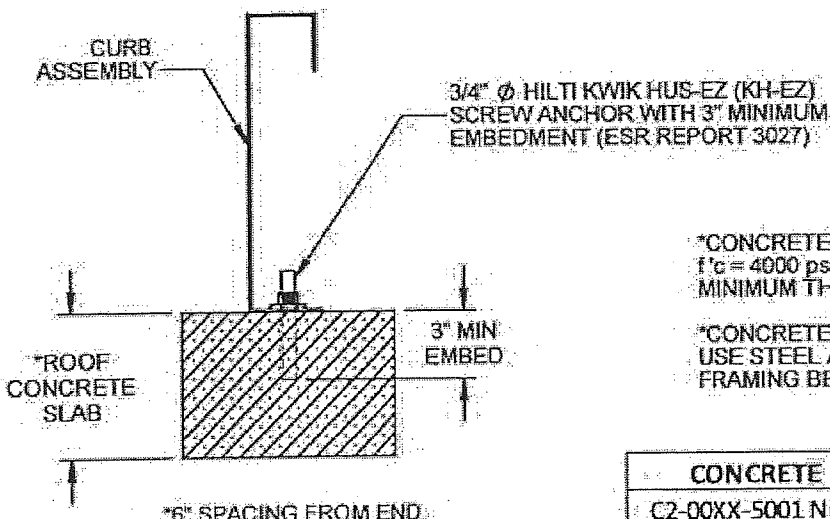
STEEL ATTACHMENT



6" SPACING FROM END

STEEL	LONG SIDE	SHORT SIDE
C2-00XX-5001 NOA	2 @ 35.25 in o.c.	2 @ 19.75 in o.c.
C2-00XX-5002 NOA	2 @ 35.13 in o.c.	2 @ 29.63 in o.c.
C2-00XX-5005 NOA	2 @ 61 in o.c.	2 @ 25.25 in o.c.
C2-00XX-5035 NOA	2 @ 68.63 in o.c.	2 @ 38.5 in o.c.
C2-00XX-5015 NOA	3 @ 51.63 in o.c.	2 @ 72 in o.c.
C2-00XX-5020 NOA	3 @ 57.13 in o.c.	2 @ 72 in o.c.
C2-00XX-5100 NOA	2 @ 58.88 in o.c.	2 @ 28.75 in o.c.
C2-00XX-5105 NOA	2 @ 69.75 in o.c.	2 @ 41.5 in o.c.
C2-00XX-5110 NOA	3 @ 51.63 in o.c.	2 @ 68.63 in o.c.
C2-00XX-5111 NOA	3 @ 57.13 in o.c.	2 @ 68.63 in o.c.
C2-00XX-5112 NOA	3 @ 70 in o.c.	2 @ 68.63 in o.c.

CONCRETE ATTACHMENT



6" SPACING FROM END

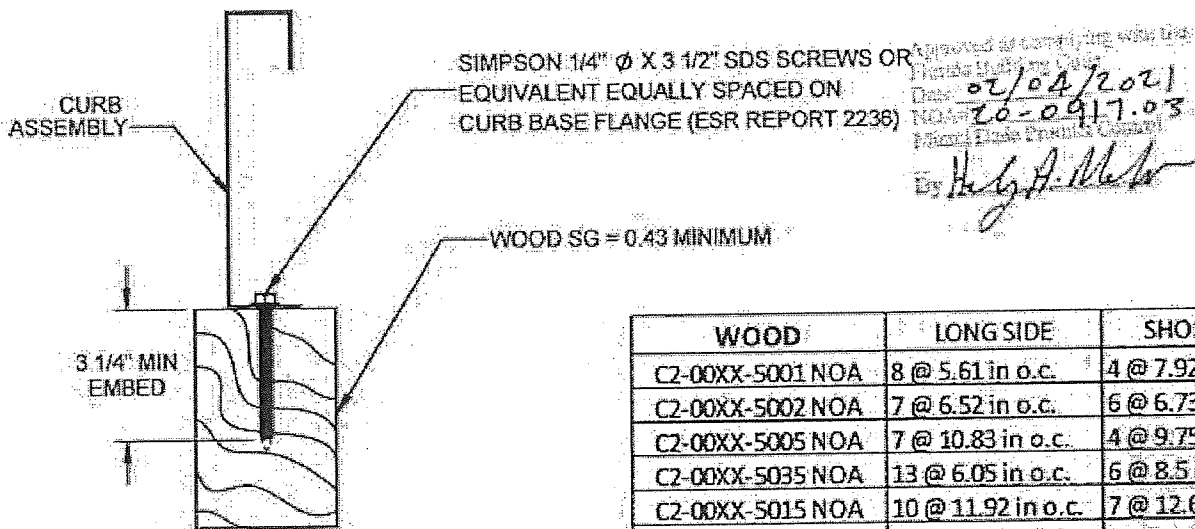
PRODUCT REVISED
as complying with the Florida
Building Code
Acceptance No. 21-0408-06
Expiration Date 02/04/2026
By *Heidi A. Miller*
Miami Dade Product Control

*CONCRETE SLAB:
f'c = 4000 psi MINIMUM NORMAL WEIGHT CONCRETE 6"
MINIMUM THICKNESS, 12" MINIMUM EDGE DISTANCE

*CONCRETE OVER METAL DECK:
USE STEEL ATTACHMENT CONNECTION TO STEEL
FRAMING BELOW DECK

CONCRETE	LONG SIDE	SHORT SIDE
C2-00XX-5001 NOA	2 @ 35.25 in o.c.	2 @ 19.75 in o.c.
C2-00XX-5002 NOA	2 @ 35.13 in o.c.	2 @ 29.63 in o.c.
C2-00XX-5005 NOA	2 @ 61 in o.c.	2 @ 25.25 in o.c.
C2-00XX-5035 NOA	3 @ 34.31 in o.c.	2 @ 38.5 in o.c.
C2-00XX-5015 NOA	3 @ 51.63 in o.c.	2 @ 72 in o.c.
C2-00XX-5020 NOA	3 @ 57.13 in o.c.	2 @ 72 in o.c.
C2-00XX-5100 NOA	2 @ 58.88 in o.c.	2 @ 28.75 in o.c.
C2-00XX-5105 NOA	2 @ 69.75 in o.c.	2 @ 41.5 in o.c.
C2-00XX-5110 NOA	3 @ 51.63 in o.c.	2 @ 68.63 in o.c.
C2-00XX-5111 NOA	3 @ 57.13 in o.c.	2 @ 68.63 in o.c.
C2-00XX-5112 NOA	4 @ 46.67 in o.c.	2 @ 68.63 in o.c.

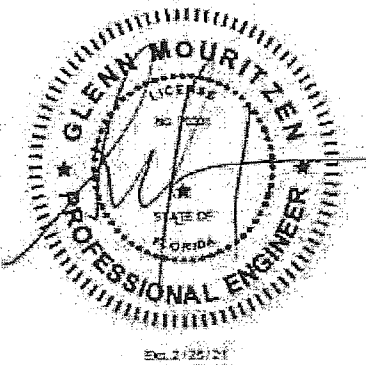
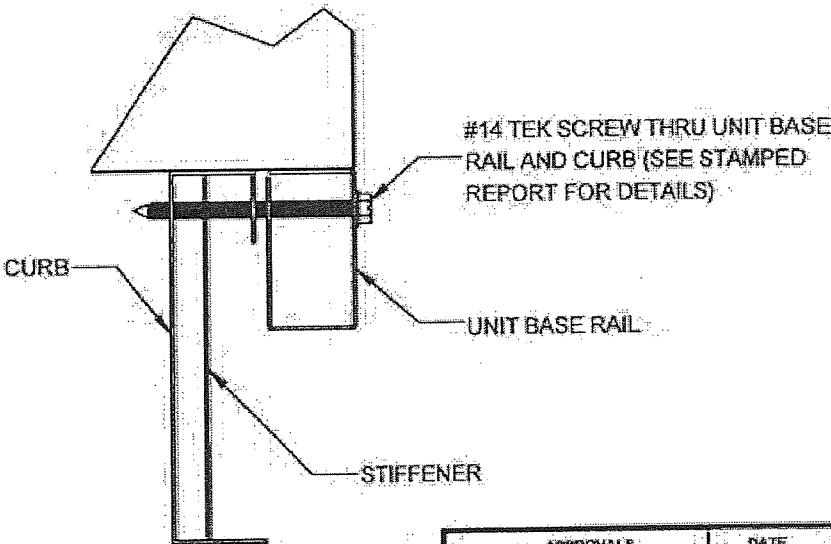
WOOD ATTACHMENT



4" SPACING FROM END

WOOD	LONG SIDE	SHORT SIDE
C2-00XX-5001 NOA	8 @ 5.61 in o.c.	4 @ 7.92 in o.c.
C2-00XX-5002 NOA	7 @ 6.52 in o.c.	6 @ 6.73 in o.c.
C2-00XX-5005 NOA	7 @ 10.83 in o.c.	4 @ 9.75 in o.c.
C2-00XX-5035 NOA	13 @ 6.05 in o.c.	6 @ 8.5 in o.c.
C2-00XX-5015 NOA	10 @ 11.92 in o.c.	7 @ 12.67 in o.c.
C2-00XX-5020 NOA	11 @ 11.83 in o.c.	7 @ 12.67 in o.c.
C2-00XX-5100 NOA	8 @ 8.98 in o.c.	4 @ 10.92 in o.c.
C2-00XX-5105 NOA	9 @ 9.22 in o.c.	5 @ 11.38 in o.c.
C2-00XX-5110 NOA	10 @ 11.92 in o.c.	7 @ 12.1 in o.c.
C2-00XX-5111 NOA	12 @ 10.75 in o.c.	8 @ 10.38 in o.c.
C2-00XX-5112 NOA	14 @ 11.08 in o.c.	8 @ 10.38 in o.c.

UNIT TO CURB ATTACHMENT



APPROVALS	DATE	TITLE/FILE NAME
DRAWN: k.jones	12/18/2020	CURB-ATTACHMENTS
CHECKED:		
DIMENSIONS ARE AS FOLLOWS: 1.00 in (25.40 mm)		
CDI	Contact us @ www.cdicurbs.com or 1-888-234-7001	DRAWING NO.: PG 1
SCALE: 1/25	SHEET 1 OF 1	REV: 1

OPTIONS:

MATERIAL: 14 ga. GAL STEEL

1X4 WOOD NAILER (UNDER TOP FLANGE)

NOA APPROVED CURB

DIMENSIONED AND TOLERENCED PER ANSI Y14.5M-1982

REVISIONS

REV	DESCRIPTION	DATE	APPROVED
1	INITIAL DRAWING	2/21/20	SRP
2	STIFFENERS ADDED	7/21/20	KJ

DIMENSIONAL DATA

UNIT MODEL	UNIT WEIGHT (lb)	CDI CURB NUMBER	A	B	C	D
PCE6A24/30/36/42, PCG6A24/30/36/42 PHE6A24/30/36/42, PHG6A24/30/36/42 PCE4A24/30/36/42, PCG4A24/30/36/42 PHE4A24/30/36/42, PHG4A24/30/36/42	328 - 584	C2-00XX-5001 NOA	47 1/4"	31 3/4"	16 1/8"	31 1/8"
PCE6A48/60, PCG6A48/60 PHE6A48/60, PHG6A48/60 PCE4A48/60, PCG4A48/60 PHE4A48/60, PHG4A48/60	455 - 638	C2-00XX-5002 NOA	47 1/8"	41 5/8"	17 5/16"	29 13/16"

19 1/8"

RA

SA

2" (TYP.)

D

C

UNIT BASE RAIL

THREE (3) #14 TEK SCREWS THRU UNIT BASERAIL, CURB, AND STIFFENER

4" REF

2"

STIFFENER

CURB

DETAIL B SCALE 1:4

1 1/2" (TYP.)

4" FROM I.D. (TYP.)

2" (TYP.)

A O.D.

1" (TYP.)

SCREW SPACING DETAIL A SCALE 1:8

1 5/16"

B O.D.

24" MAX WITH PITCH

18GA DUCT BRACES

RETURN AIR

SUPPLY AIR

16GA 4" X 3/4" STIFFENERS TWO (2) EACH SIDE

1:6

1:6

PRODUCT REVISED as complying with the Florida Building Code

Acceptance No 21-0408.06

Expiration Date 02/04/2026

By *Heidi A. Mohr*

Miami Data Product Control

Approved as complying with the Florida Building Code

Date 02/04/2021

NOA# 20-0917.03

Miami Data Product Control

Heidi A. Mohr

GLENN MOURITZEN

PROFESSIONAL ENGINEER

STATE OF FLORIDA

EM 21021

CURB DESIGNED TO MEET WIND LOAD REQUIREMENTS FOR 2017 AND 2020 FBC FLORIDA BUILDING CODE, NOA APPROVED

CURB DESIGNED FOR MAXIMUM WIND PRESSURE ±84.20 PSF

NOA APPROVED 5001 & 5002 ROOF CURB

CURB WEIGHT (LBS.)

157.89 MAX

APPROVALS

EXAMINE kjones

CHECKED

Friday, December 18, 2020 12:09:19 PM

DATE

TITLE

C2-00XX-5001 5002 NOA

FILE NAME

C2-00XX-5001 5002 NOA

DRAWING NO.

PG 2

REV.

2

SCALE

1:18

SHEET

1 OF 1

CDI

17560 TYLER ST NW

ELK RIVER, MN 55330

(763)391-7790

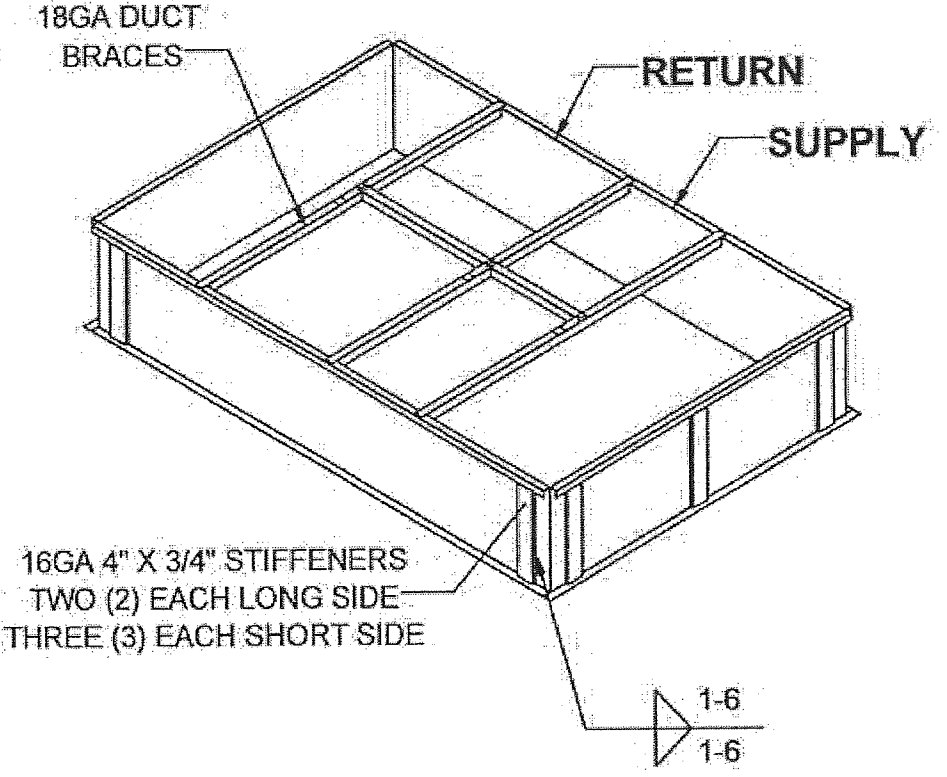
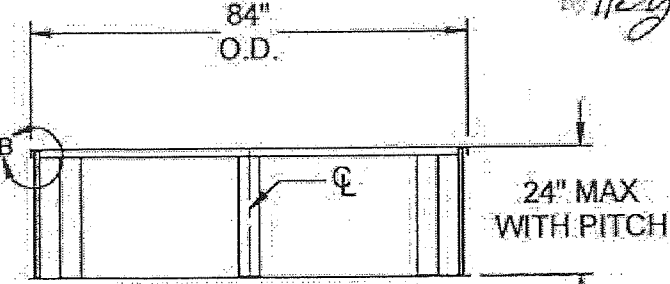
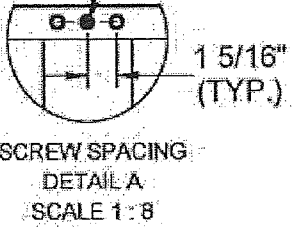
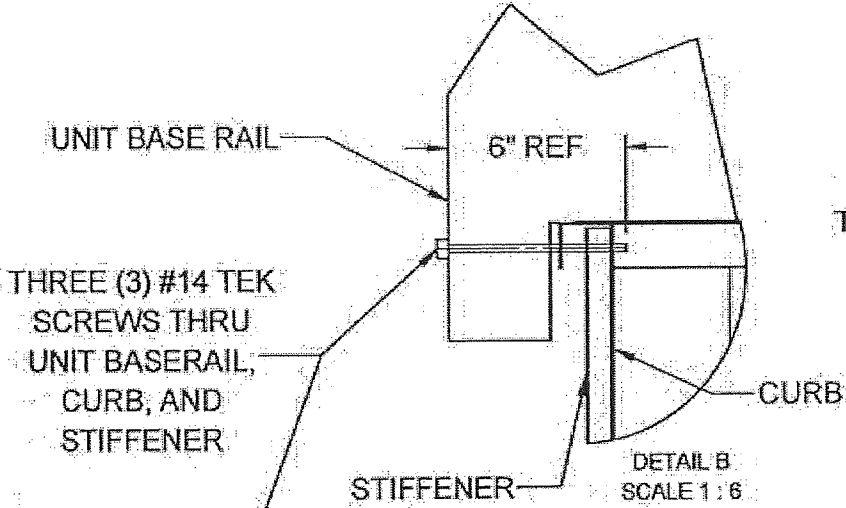
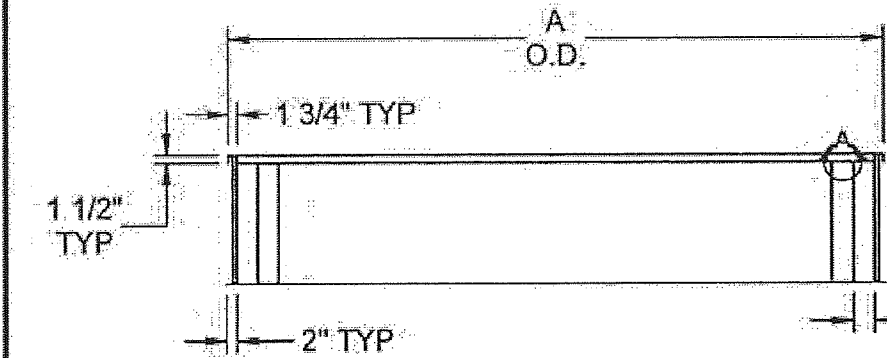
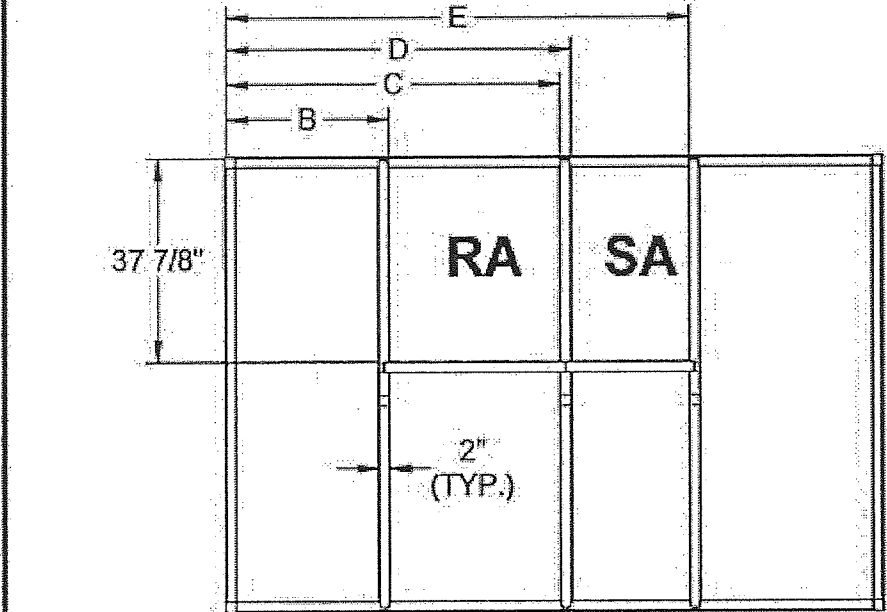
(763)391-7851

S:\CURBS_CURB_ADAPTERS\CDI\XXXX-XXXX_CONFORMING\NOA FLORIDA STAMP\NOA C2-XXXX-XXXX_STRAIGHT_PITCHED_KJONGA C2-XXXX-5001_TYLER\5001-5002

OPTIONS:			DIMENSIONED AND TOLERANCED PER ANSI Y14.1M-1982						REVISIONS			
MATERIAL: 16 ga. GAL STEEL									REV	DESCRIPTION	DATE	APPROVED
INSULATED PANELS (WHERE REQUIRED)									1	INITIAL DRAWING	3/11/20	SRP
1X4 WOOD NAILER (UNDER TOP FLANGE)									2	STIFFENERS ADDED	7/28/20	KJ
DIMENSIONAL DATA												
UNIT MODEL	UNIT WEIGHT (lb)	CDI CURB NUMBER	A	B	C	D	E	F				
ZE036/048/060/072, XE036/048/060/072 XN036/048/060/072, J03/J04/J05/JA6XP J03/J04/J05/JA6ZF, J03/J04/J05/JA6ZR	470-1077	C2-00XX-5005 NOA	73"	37 1/4"	21 1/2"	21 1/2"	26"	45 1/2"				
ZH037/049/061/078/090/102/120/150 ZJ037/049/061/078/090/102/120/150 ZR037/049/061/078/090/102/120/150 ZT037/049/061/078/090/102/120/150 ZB078/090/102/120/150 ZF078/090/102/120/150 J06/J07/J08/J10/J12XP J06/J07/J08/J10/J12ZF JA3/JA4/JA5/J06/J07/J08/J10/J12ZH JA3/JA4/JA5/J06/J07/J08/J10/J12ZJ JA3/JA4/JA5/J06/J07/J08/J10/J12ZR JA3/JA4/JA5/J06/J07/J08/J10/J12ZT J06/J07/J08/J10/J12ZB	701-1598	C2-00XX-5035 NOA	80 5/8"	50 1/2"	32"	22"	28"	48"				
<p>PRODUCT REVISED as complying with the Florida Building Code Acceptance No. 21-0408.06 Expiration Date 02/04/2026 By <i>Heg A. Mohr</i> Glenn Mouritzen Product Control</p>												
<p>Approved as complying with the Florida Building Code Date 02/04/2021 NOA 20-0917.03 Miami-Dade Product Control By <i>Heg A. Mohr</i></p>												
CURB DESIGNED TO MEET WIND LOAD REQUIREMENTS FOR 2017 AND 2020 FBC FLORIDA BUILDING CODE, NOA APPROVED			NOA APPROVED 5005 & 5035 ROOF CURB						CURB WEIGHT (LBS.) 176.70 MAX			
CURB DESIGNED FOR MAXIMUM WIND PRESSURE ±84.20 PSF									APPROVALS DRAWN: <i>Kjones</i> CHECKED: DATE: Friday, December 18, 2020 11:47:24 AM			
									CDI 17560 TYLER ST NW ELK RIVER, MN 55330 (763)391-7790 (763)391-7851			
									FILE NAME: C2-00XX-5005 5035 NOA DRAWING NO.: PG 3 SCALE: 1:24 SHEET: 1 OF 3			

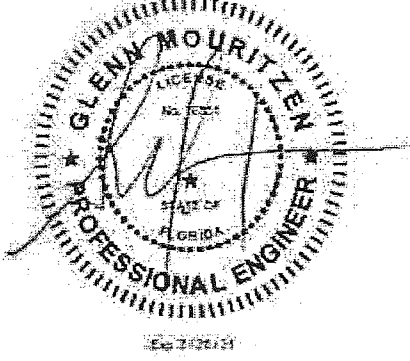
OPTIONS:	REVISIONS		
	REV	DESCRIPTION	DATE
	1	INITIAL DRAWING	3/11/20
MATERIAL: 16 ga. GAL STEEL	2	STIFFENERS ADDED	7/28/20
INSULATED PANELS (WHERE REQUIRED)			APPROVED
1X4 WOOD NAILER (UNDER TOP FLANGE)			SRP
			KJ

DIMENSIONAL DATA							
UNIT MODEL	UNIT WEIGHT (lb)	CDI CURB NUMBER	A	B	C	D	E
ZF180, J15ZF	1870 - 2854	C2-00XX-5015 NOA	115 1/4"	20 1/4"	53 3/8"	55 3/8"	78 1/8"
ZJ180/210/240/300, ZR180/210/240/300 ZF210/240/300, J15/J20XP J15/J18/J20/J25ZJ, J15/J18/J20/J25ZR J15/J18/J20/J25ZF	1875 - 3033	C2-00XX-5020 NOA	126 1/4"	31 1/4"	64 3/8"	66 3/8"	89 1/8"



Approved in compliance with the
Florida Building Code
Date 02/04/2021
By 26-0917-03
Miami Dade Product Control
By Hely A. Mouritzen

PRODUCT REVISED
as complying with the Florida
Building Code
Acceptance No 21-0408.06
Expiration Date 02/04/2026
By Hely A. Mouritzen
Miami Dade Product Control



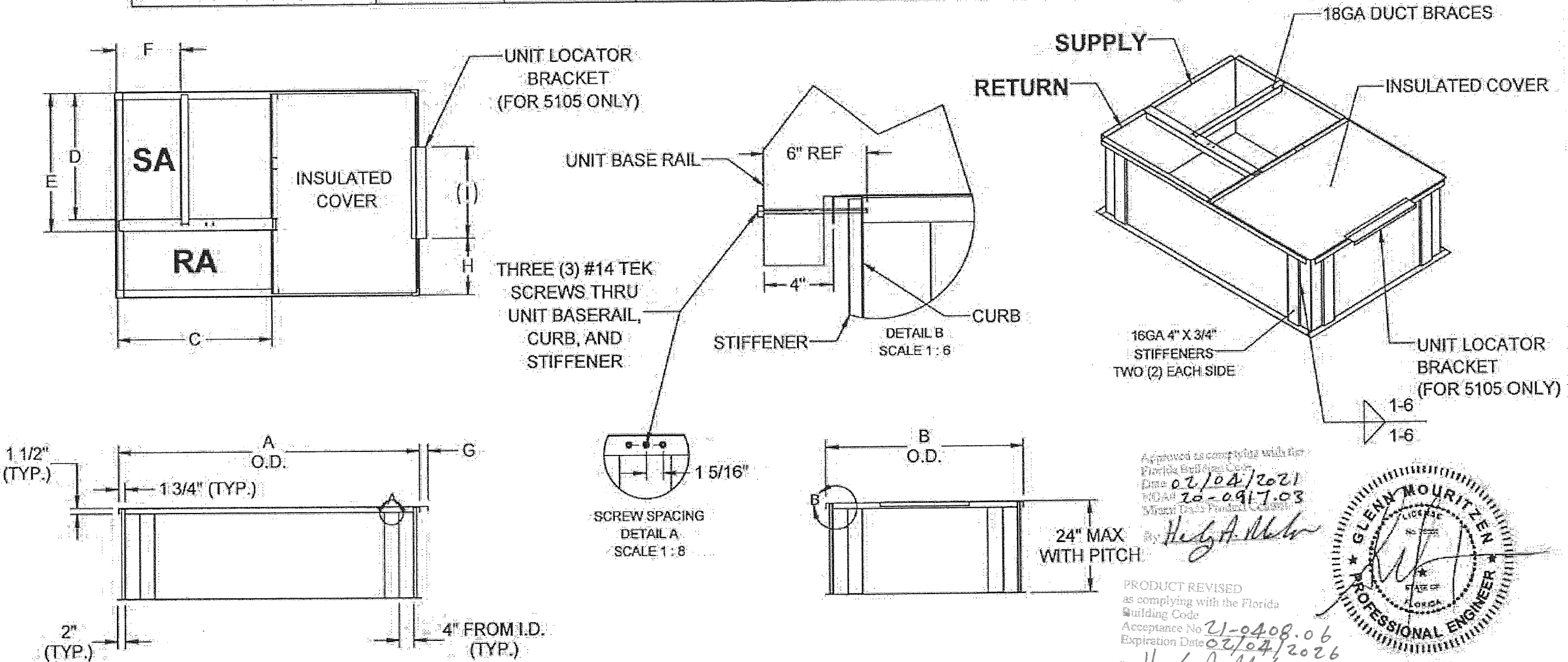
CURB DESIGNED TO MEET WIND LOAD REQUIREMENTS FOR 2017 AND 2020 FBC FLORIDA BUILDING CODE, NOA APPROVED CURB DESIGNED FOR MAXIMUM WIND PRESSURE ±84.20 PSF	NOA APPROVED 5015 & 5020 ROOF CURB	CURB WEIGHT (LBS.)	APPROVALS	DATE	TITLE:		
		236.39 MAX	DRN: k Jones		C2-00XX-5015 5020 NOA		
		EXCEPT WHERE SHOWN OTHERWISE, DIMENSIONS ARE IN INCHES UNLESS OTHERWISE SPECIFIED. DIMENSIONS ARE TO FACE UNLESS OTHERWISE SPECIFIED.	Friday, December 18, 2020 11:48:09 AM		FILE NAME:	DRAWING NO.	REV.
				CDI 17560 TYLER ST NW ELK RIVER, MN 55330 (763)391-7790 (763)391-7851	C2-00XX-5015 5020 NOA	PG 4	2
				SCALE: 1:34	SHEET: 1	OF 3	

OPTIONS:
MATERIAL: 16 ga. GAL STEEL
INSULATED PANELS (WHERE REQUIRED)
1X4 WOOD NAILER (UNDER TOP FLANGE)

DIMENSIONED AND TOLERANCED PER ANSI Y14.1M-1992

REVISIONS			
REV	DESCRIPTION	DATE	APPROVED
1	INITIAL DRAWING	3/11/20	SRP
2	STIFFENERS ADDED	7/29/20	KJ

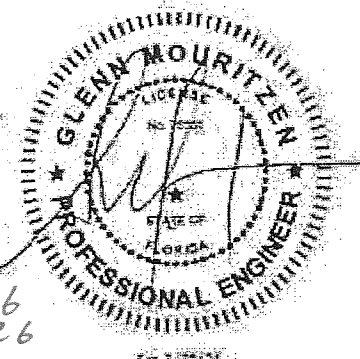
DIMENSIONAL DATA											
UNIT MODEL	UNIT WEIGHT (lb)	CDI CURB NUMBER	A	B	C	D	E	F	G	H	I
ZY04/05/06, ZQ04/05/06, ZXA7, XY04/05, XQ04/05, XY06, XQ06, XXA7	450 - 897	C2-00XX-5100 NOA	70 7/8"	40 11/16"	33 15/16"	15 3/4"	22 1/8"	25 1/8"	N/A	N/A	N/A
ZX08/09/12/14, ZL08/09/12/14, ZYA7, XY07/17, XY08/09, XX08/09/12	791 - 1254	C2-00XX-5105 NOA	81 3/4"	53 1/2"	41 15/16"	17 9/16"	33 1/4"	36 1/4"	2 1/4"	14 3/4"	24"



Approved as complying with the Florida Building Code
Date 02/04/2021
NOA 20-0917-03
Miami Dade Product Control

By *Heidi A. M...*

PRODUCT REVISED
as complying with the Florida
Building Code
Acceptance No 21-0408-06
Expiration Date 02/04/2026
By *Heidi A. M...*
Miami Dade Product Control



CURB DESIGNED TO MEET WIND LOAD REQUIREMENTS FOR 2017 AND 2020 FBC FLORIDA BUILDING CODE, NOA APPROVED CURB DESIGNED FOR MAXIMUM WIND PRESSURE ±84.20 PSF	NOA APPROVED 5100 & 5105 ROOF CURB	CURB WEIGHT (LBS.) 177.12 MAX		APPROVALS Kjones		DATE Friday, December 18, 2020 11:48:46 AM		TITLE C2-00XX-5100 5105 NOA	
		UNLESS OTHERWISE SPECIFIED, TOLERANCES ARE: X 1/8" 1/16" 1/32" 1/64" 1/8" 1/16" 1/32" 1/64"		CDI 17560 TYLER ST NW ELK RIVER, MN 55330 (763)391-7790 (763)391-7851		FILE NAME: C2-00XX-5100 5105 NOA		DRAWING NO. PG 5	

OPTIONS:

MATERIAL: 14 ga. GAL STEEL

INSULATED PANELS (WHERE REQUIRED)

1X4 WOOD NAILER (UNDER TOP FLANGE)

REVISIONS

REV	DESCRIPTION	DATE	APPROVED
1	INITIAL DRAWING	5/14/20	KJ

DIMENSIONAL DATA

UNIT MODEL	UNIT WEIGHT (lb)	CDI CURB NUMBER	A
AV15, AV18, AD15, AD18, CD15, CD18	1750 - 2125	C2-00XX-5110 NOA	115 1/4"
AV20, AV25, AD20, AD25, CD20, CD25	1930 - 2410	C2-00XX-5111 NOA	126 1/4"
AV28, AD28, CD28	2170 - 2535	C2-00XX-5112 NOA	152"

RA

SA

INSULATED COVER

77 3/4"

49 7/8"

23 15/16"

9 7/16"

15"

UNIT BASE RAIL

6" REF

STIFFENER

CURB

FOUR (4) #14 TEK SCREWS THRU UNIT BASERAIL, CURB, AND STIFFENER

DETAIL B SCALE 1:6

SCREW SPACING DETAIL A SCALE 1:8

1"

80 5/8" O.D.

24" MAX WITH PITCH

4" FROM I.D. (TYP.)

1 1/2" (TYP.)

1 3/4" (TYP.)

A O.D.

2" (TYP.)

RETURN

18GA DUCT BRACES

SUPPLY

A.I. CROSS X1 (UNDER COVER)

INSULATED COVERS

16GA 4" X 3/4" STIFFENERS THREE (3) EACH SIDE

1-6

1-6

PRODUCT REVISED as complying with the Florida Building Code

Acceptance No 21-0408.06

Expiration Date 02/04/2026

By Healy A. Mohr

Miami Duct Product Control

Approved as complying with the Florida Building Code

Date 02/04/2021

020-0917.03

Healy A. Mohr

GLENN MOURITZEN

PROFESSIONAL ENGINEER

STATE OF FLORIDA

EXPI 2/26/21

CURB WEIGHT (LBS.)

457.20 MAX

UNLESS OTHERWISE SPECIFIED, TOLERANCES ARE:

1/8" - 1/4"

1/16" - 1/8"

1/32" - 1/16"

1/64" - 1/32"

1/128" - 1/64"

1/256" - 1/128"

1/512" - 1/256"

1/1024" - 1/512"

1/2048" - 1/1024"

1/4096" - 1/2048"

1/8192" - 1/4096"

1/16384" - 1/8192"

1/32768" - 1/16384"

1/65536" - 1/32768"

1/131072" - 1/65536"

1/262144" - 1/131072"

1/524288" - 1/262144"

1/1048576" - 1/524288"

1/2097152" - 1/1048576"

1/4194304" - 1/2097152"

1/8388608" - 1/4194304"

1/16777216" - 1/8388608"

1/33554432" - 1/16777216"

1/67108864" - 1/33554432"

1/134217728" - 1/67108864"

1/268435456" - 1/134217728"

1/536870912" - 1/268435456"

1/1073741824" - 1/536870912"

1/2147483648" - 1/1073741824"

1/4294967296" - 1/2147483648"

1/8589934592" - 1/4294967296"

1/17179869184" - 1/8589934592"

1/34359738368" - 1/17179869184"

1/68719476736" - 1/34359738368"

1/137438953472" - 1/68719476736"

1/274877906944" - 1/137438953472"

1/549755813888" - 1/274877906944"

1/1099511627776" - 1/549755813888"

1/2199023255552" - 1/1099511627776"

1/4398046511104" - 1/2199023255552"

1/8796093022208" - 1/4398046511104"

1/17592186044416" - 1/8796093022208"

1/35184372088832" - 1/17592186044416"

1/70368744177664" - 1/35184372088832"

1/140737488355328" - 1/70368744177664"

1/281474976710656" - 1/140737488355328"

1/562949953421312" - 1/281474976710656"

1/1125899906842624" - 1/562949953421312"

1/2251799813685248" - 1/1125899906842624"

1/4503599627370496" - 1/2251799813685248"

1/9007199254740992" - 1/4503599627370496"

1/18014398509481984" - 1/9007199254740992"

1/36028797018963968" - 1/18014398509481984"

1/72057594037927936" - 1/36028797018963968"

1/144115188075855872" - 1/72057594037927936"

1/288230376151711744" - 1/144115188075855872"

1/576460752303423488" - 1/288230376151711744"

1/1152921504606846976" - 1/576460752303423488"

1/2305843009213693952" - 1/1152921504606846976"

1/4611686018427387904" - 1/2305843009213693952"

1/9223372036854775808" - 1/4611686018427387904"

1/18446744073709551616" - 1/9223372036854775808"

1/36893488147419103232" - 1/18446744073709551616"

1/73786976294838206464" - 1/36893488147419103232"

1/147573952589676412928" - 1/73786976294838206464"

1/295147905179352825856" - 1/147573952589676412928"

1/590295810358705651712" - 1/295147905179352825856"

1/1180591620717411303424" - 1/590295810358705651712"

1/2361183241434822606848" - 1/1180591620717411303424"

1/4722366482869645213696" - 1/2361183241434822606848"

1/9444732965739290427392" - 1/4722366482869645213696"

1/18889465931478580854784" - 1/9444732965739290427392"

1/37778931862957161709568" - 1/18889465931478580854784"

1/75557863725914323419136" - 1/37778931862957161709568"

1/151115727451828646838272" - 1/75557863725914323419136"

1/302231454903657293676544" - 1/151115727451828646838272"

1/604462909807314587353088" - 1/302231454903657293676544"

1/1208925819614629174706176" - 1/604462909807314587353088"

1/2417851639229258349412352" - 1/1208925819614629174706176"

1/4835703278458516698824704" - 1/2417851639229258349412352"

1/9671406556917033397649408" - 1/4835703278458516698824704"

1/19342813113834066795298816" - 1/9671406556917033397649408"

1/38685626227668133590597632" - 1/19342813113834066795298816"

1/77371252455336267181195264" - 1/38685626227668133590597632"

1/154742504910672534362390528" - 1/77371252455336267181195264"

1/309485009821345068724781056" - 1/154742504910672534362390528"

1/618970019642690137449562112" - 1/309485009821345068724781056"

1/1237940039285380274899124224" - 1/618970019642690137449562112"

1/2475880078570760549798248448" - 1/1237940039285380274899124224"

1/4951760157141521099596496896" - 1/2475880078570760549798248448"

1/9903520314283042199192993792" - 1/4951760157141521099596496896"

1/19807040628566084398385987584" - 1/9903520314283042199192993792"

1/39614081257132168796771975168" - 1/19807040628566084398385987584"

1/79228162514264337593543950336" - 1/39614081257132168796771975168"

1/158456325028528675187087900672" - 1/79228162514264337593543950336"

1/316912650057057350374175801344" - 1/158456325028528675187087900672"

1/633825300114114700748351602688" - 1/316912650057057350374175801344"

1/1267650600228229401496703205376" - 1/633825300114114700748351602688"

1/2535301200456458802993406410752" - 1/1267650600228229401496703205376"

1/5070602400912917605986812821504" - 1/2535301200456458802993406410752"

1/10141204801825835211973625643008" - 1/5070602400912917605986812821504"

1/20282409603651670423947251286016" - 1/10141204801825835211973625643008"

1/40564819207303340847894502572032" - 1/20282409603651670423947251286016"

1/81129638414606681695789005144064" - 1/40564819207303340847894502572032"

1/162259276829213363391578010288128" - 1/81129638414606681695789005144064"

1/324518553658426726783156020576256" - 1/162259276829213363391578010288128"

1/649037107316853453566312041152512" - 1/324518553658426726783156020576256"

1/1298074214633706907132624082305024" - 1/649037107316853453566312041152512"

1/2596148429267413814265248164610048" - 1/1298074214633706907132624082305024"

1/5192296858534827628530496329220096" - 1/2596148429267413814265248164610048"

1/10384593717069655257060992658440192" - 1/5192296858534827628530496329220096"

1/20769187434139310514121985316880384" - 1/10384593717069655257060992658440192"

1/41538374868278621028243970633760768" - 1/20769187434139310514121985316880384"

1/83076749736557242056487941267521536" - 1/41538374868278621028243970633760768"

1/166153499473114484112975882535043072" - 1/83076749736557242056487941267521536"

1/332306998946228968225951765070086144" - 1/166153499473114484112975882535043072"

1/664613997892457936451903530140172288" - 1/332306998946228968225951765070086144"

1/1329227995784915872903807060280344576" - 1/664613997892457936451903530140172288"

1/2658455991569831745807614120560689152" - 1/1329227995784915872903807060280344576"

1/5316911983139663491615228241121378304" - 1/2658455991569831745807614120560689152"

1/10633823966279326983230456482242756608" - 1/5316911983139663491615228241121378304"

1/21267647932558653966460912964485513216" - 1/10633823966279326983230456482242756608"

1/42535295865117307932921825928971026432" - 1/21267647932558653966460912964485513216"

1/85070591730234615865843651857942052864" - 1/42535295865117307932921825928971026432"

1/170141183460469231731687303715884105728" - 1/85070591730234615865843651857942052864"

1/340282366920938463463374607431768211456" - 1/170141183460469231731687303715884105728"

1/680564733841876926926749214863536422912" - 1/340282366920938463463374607431768211456"

1/1361129467683753853853498429727072845824" - 1/680564733841876926926749214863536422912"

1/2722258935367507707706996859454145691648" - 1/1361129467683753853853498429727072845824"

1/5444517870735015415413993718908291383296" - 1/2722258935367507707706996859454145691648"

1/10889035741470030830827987437816582766592" - 1/5444517870735015415413993718908291383296"

1/21778071482940061661655974875633165533184" - 1/10889035741470030830827987437816582766592"

1/43556142965880123323311949751266331066368" - 1/21778071482940061661655974875633165533184"

1/87112285931760246646623899502532662132736" - 1/43556142965880123323311949751266331066368"

1/174224571863520493293247799005065324265472" - 1/87112285931760246646623899502532662132736"

1/348449143727040986586495598010130648530944" - 1/174224571863520493293247799005065324265472"

1/696898287454081973172991196020261297061888" - 1/348449143727040986586495598010130648530944"

1/1393796574908163946345982392040522594123776" - 1/696898287454081973172991196020261297061888"

1/2787593149816327892691964784081045188247552" - 1/1393796574908163946345982392040522594123776"

1/5575186299632655785383929568162090376495104" - 1/2787593149816327892691964784081045188247552"

1/11150372599265311570767859136324180752990208" - 1/5575186299632655785383929568162090376495104"

1/22300745198530623141535718272648361505980416" - 1/11150372599265311570767859136324180752990208"

1/44601490397061246283071436545296723011960832" - 1/22300745198530623141535718272648361505980416"

1/89202980794122492566142873090593446023921664" - 1/44601490397061246283071436545296723011960832"

1/178405961588244985132285746181186892047843328" - 1/89202980794122492566142873090593446023921664"

1/356811923176489970264571492362373784095686656" - 1/178405961588244985132285746181186892047843328"

1/713623846352979940529142984724747568191373312" - 1/356811923176489970264571492362373784095686656"

1/1427247692705959881058285969449495136382746624" - 1/713623846352979940529142984724747568191373312"

1/2854495385411919762116571938898990272765493248" - 1/1427247692705959881058285969449495136382746624"

1/5708990770823839524233143877797980545530986496" - 1/2854495385411919762116571938898990272765493248"

1/11417981541647679048466287755595961091061972992" - 1/5708990770823839524233143877797980545530986496"

1/22835963083295358096932575511191922182123945984" - 1/11417981541647679048466287755595961091061972992"

1/45671926166590716193865151022383844364247891968" - 1/22835963083295358096932575511191922182123945984"

1/91343852333181432387730302044767688728495783936" - 1/45671926166590716193865151022383844364247891968"

1/182687704666362864775460604089535377456991567872" - 1/91343852333181432387730302044767688728495783936"

1/365375409332725729550921208179070754913983135744" - 1/182687704666362864775460604089535377456991567872"

1/730750818665451459101842416358141509827966271488" - 1/365375409332725729550921208179070754913983135744"

1/1461501637330902918203684832716283019655932542976" - 1/730750818665451459101842416358141509827966271488"

1/2923003274661805836407369665432566039311865085952" - 1/1461501637330902918203684832716283019655932542976"

1/5846006549323611672814739330865132078623730171904" - 1/2923003274661805836407369665432566039311865085952"

1/11692013098647223345629478661730264157247460343808" - 1/5846006549323611672814739330865132078623730171904"

1/23384026197294446691258957323460528314494920687616" - 1/11692013098647223345629478661730264157247460343808"

1/46768052394588893382517914646921056628989841375232" - 1/23384026197294446691258957323460528314494920687616"

1/93536104789177786765035829293842113257979682750464" - 1/46768052394588893382517914646921056628989841375232"

1/187072209578355573530071658587684226515959365500928" - 1/93536104789177786765035829293842113257979682750464"

1/374144419156711147060143317175368453031918731001856" - 1/187072209578355573530071658587684226515959365500928"

1/748288838313422294120286634350736906063837462003712" - 1/374144419156711147060143317175368453031918731001856"

1/1496577676626844588240573268701473812127674924007424" - 1/748288838313422294120286634350736906063837462003712"

1/2993155353253689176481146537402947624255349848014848" - 1/1496577676626844588240573268701473812127674924007424"

1/5986310706507378352962293074805895248510699696029696" - 1/2993155353253689176481146537402947624255349848014848"

1/11972621413014756705924586149611790497021399392059392" - 1/5986310706507378352962293074805895248510699696029696"

1/23945242826029513411849172299223580994042798784118784" - 1/1197262141301475670592458614961