



DEPARTMENT OF REGULATORY AND ECONOMIC RESOURCES (RER)
BOARD AND CODE ADMINISTRATION DIVISION

MIAMI-DADE COUNTY
PRODUCT CONTROL SECTION
11805 SW 26 Street, Room 208
Miami, Florida 33175-2474
T (786) 315-2590 F (786) 315-2599

www.miamidade.gov/economy

NOTICE OF ACCEPTANCE (NOA)

American Shutter Products, Inc.
(CROCI North America)
11600 Adelmo Lane, Suite 1
Fort Myers, Florida 33966

SCOPE:

This NOA is being issued under the applicable rules and regulations governing the use of construction materials. The documentation submitted has been reviewed and accepted by Miami-Dade County RER - Product Control Section to be used in Miami Dade County and other areas where allowed by the Authority Having Jurisdiction (AHJ).

This NOA shall not be valid after the expiration date stated below. The Miami-Dade County Product Control Section (In Miami Dade County) and/or the AHJ (in areas other than Miami Dade County) reserve the right to have this product or material tested for quality assurance purposes. If this product or material fails to perform in the accepted manner, the manufacturer will incur the expense of such testing and the AHJ may immediately revoke, modify, or suspend the use of such product or material within their jurisdiction. RER reserves the right to revoke this acceptance if it is determined by Miami-Dade County Product Control Section that this product or material fails to meet the requirements of the applicable building code.

This product is approved as described herein and has been designed to comply with the High Velocity Hurricane Zone of the Florida Building Code.

DESCRIPTION: "Croc Extruded" Aluminum Accordion Shutter

APPROVAL DOCUMENT: Drawing No. 20-061, titled "Croc Extruded Aluminum Accordion Shutter", sheets 1 through 12 of 12, prepared by PPMF Inc., dated June 24, 2020, signed and sealed by Pedro De Figueiredo, P.E. on June 29, 2020, bearing the Miami-Dade County Product Control Renewal stamp with the Notice of Acceptance number and the expiration date by the Miami-Dade County Product Control Section.

MISSILE IMPACT RATING: Large and Small Missile Impact Resistant

LABELING: Each unit shall bear a permanent label with the manufacturer's name or logo, city, state, the following statement: "Miami-Dade County Product Control Approved", and NOA number, per TAS-201, TAS-202, and TAS-203, unless otherwise noted herein.

RENEWAL of this NOA shall be considered after a renewal application has been filed and there has been no change in the applicable building code negatively affecting the performance of this product.

TERMINATION of this NOA will occur after the expiration date or if there has been a revision or change in the materials, use, and/or manufacture of the product or process. Misuse of this NOA as an endorsement of any product, for sales, advertising or any other purposes shall automatically terminate this NOA. Failure to comply with any section of this NOA shall be cause for termination and removal of NOA.

ADVERTISEMENT: The NOA number preceded by the words Miami-Dade County, Florida, and followed by the expiration date may be displayed in advertising literature. If any portion of the NOA is displayed, then it shall be done in its entirety.

INSPECTION: A copy of this entire NOA shall be provided to the user by the manufacturer or its distributors and shall be available for inspection at the job site at the request of the Building Official.

This NOA **renews NOA #20-0720.08** and consists of this page 1, evidence submitted pages E-1, E-2, E-3 & E-4 as well as approval document mentioned above.

The submitted documentation was reviewed by **Helmy A. Makar, P.E., M.S.**



Helmy A. Makar
07/22/2021

NOA No. 21-0521.01
Expiration Date: 07/06/2026
Approval Date: 07/22/2021

American Shutter Products, Inc.
(CROCI North America)

NOTICE OF ACCEPTANCE: EVIDENCE SUBMITTED

1. EVIDENCE SUBMITTED UNDER PREVIOUS APPROVAL # 06-0515.01

A. DRAWINGS

1. *Drawing No. 06-150, titled " Croci Extruded Accordion Shutter ", sheets 1 through 6 of 6, prepared by EngCo, Inc., dated May 11, 2006, signed and sealed by Pedro De Figueiredo, P.E. on May 31, 2006.*

B. TESTS

1. *Test report on Large Missile Impact Test, Cyclic Wind Pressure Test and Static Wind Pressure Test of Aluminum Accordion Shutter, prepared by Construction Testing Corporation, Report No. 05-035 TAS, dated November 16, 2005, signed and sealed by Yamil G. Kuri, P.E.*

C. CALCULATIONS

1. *Comparative analysis and anchor calculations, dated May 11, 2006, pages 1 through 28 of 28, prepared by EngCo, Inc., signed and sealed by Pedro De Figueiredo, P.E.*

D. QUALITY ASSURANCE

1. *By Miami-Dade County Building Code Compliance Office.*

E. MATERIAL CERTIFICATIONS

1. *None.*

2. EVIDENCE SUBMITTED UNDER PREVIOUS APPROVAL # 10-0120.05

A. DRAWINGS

1. *Drawing No. 09-227, titled " Croci Extruded Accordion Shutter ", sheets 1 through 8 of 8, prepared by EngCo, Inc., dated December 04, 2009, signed and sealed by Pedro De Figueiredo, P.E. on May 24, 2010.*

B. TESTS

1. *Test report on Large Missile Impact Test, Cyclic Wind Pressure Test and Static Wind Pressure Test of Aluminum Accordion Shutter, prepared by Fenestration Testing Laboratory, Inc., Report No. 09-468, dated December 01, 2009, signed and sealed by Michael R. Wenzel, P.E.*

C. CALCULATIONS

1. *Comparative analysis and anchor calculations, dated 12/05/09, 24 pages, prepared by EngCo, Inc., signed and sealed by Pedro De Figueiredo, P.E.*
2. *Anchor calculations, dated 05/24/10, 2 pages, prepared by EngCo, Inc., signed and sealed by Pedro De Figueiredo, P.E.*



Helmy A. Makar, P.E., M.S.
Product Control Section Supervisor
NOA No. 21-0521.01
Expiration Date: 07/06/2026
Approval Date: 07/22/2021

American Shutter Products, Inc.
(CROCI North America)

NOTICE OF ACCEPTANCE: EVIDENCE SUBMITTED

D. QUALITY ASSURANCE

1. *By Miami-Dade County Building Code Compliance Office.*

E. MATERIAL CERTIFICATIONS

1. *None.*

3. EVIDENCE SUBMITTED UNDER PREVIOUS APPROVAL # 11-0414.14

A. DRAWINGS

1. *Drawing No. 11-035, titled " Croci Extruded Aluminum Accordion Shutter ", sheets 1 through 9 of 9, prepared by EngCo, Inc., dated April 11, 2011, signed and sealed by Pedro De Figueiredo, P.E. on April 11, 2011.*

B. TESTS

1. *Test report on Large Missile Impact Test, Cyclic Wind Pressure Test and Static Wind Pressure Test of Aluminum Accordion Shutter, prepared by Fenestration Testing Laboratory, Inc., Report No. 6489, dated April 08, 2011, signed and sealed by Marlin D. Brinson, P.E.*

C. CALCULATIONS

1. *None.*

D. QUALITY ASSURANCE

1. *By Miami-Dade County Building and Neighborhood Compliance Department.*

E. MATERIAL CERTIFICATIONS

1. *None.*

4. EVIDENCE SUBMITTED UNDER PREVIOUS APPROVAL # 12-0109.02

A. DRAWINGS

1. *Drawing No. 11-242, titled " Croci Extruded Aluminum Accordion Shutter ", sheets 1 through 9 of 9, prepared by EngCo, Inc., dated December 06, 2011, signed and sealed by Pedro De Figueiredo, P.E., on December 06, 2011.*

B. TESTS

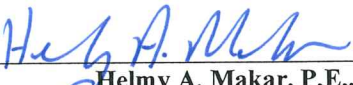
1. *None.*

C. CALCULATIONS

1. *None.*

D. QUALITY ASSURANCE

1. *By Miami-Dade County Department of Permitting, Environment, and Regulatory Affairs (PERA).*



Helmy A. Makar, P.E., M.S.
Product Control Section Supervisor
NOA No. 21-0521.01
Expiration Date: 07/06/2026
Approval Date: 07/22/2021

American Shutter Products, Inc.
(CROCI North America)

NOTICE OF ACCEPTANCE: EVIDENCE SUBMITTED

E. MATERIAL CERTIFICATIONS

1. *None.*

5. EVIDENCE SUBMITTED UNDER PREVIOUS APPROVAL # 16-0407.07

A. DRAWINGS

1. *Drawing No. 16-051, titled " Croci Extruded Aluminum Accordion Shutter ", sheets 1 through 9 of 9, prepared by EngCo, Inc., dated March 01, 2016, signed and sealed by Pedro De Figueiredo, P.E. on March 01, 2016.*

B. TESTS

1. *None.*

C. CALCULATIONS

1. *Anchor calculations, dated 02/26/16, 30 pages, prepared by EngCo, Inc., signed and sealed by Pedro De Figueiredo, P.E.*

D. QUALITY ASSURANCE

1. *By Miami-Dade County Department of Regulatory and Economic Resources.*

E. MATERIAL CERTIFICATIONS

1. *None.*

6. EVIDENCE SUBMITTED UNDER PREVIOUS APPROVAL # 18-0425.02

A. DRAWINGS

1. *Drawing No. 18-249, titled " Croci Extruded Aluminum Accordion Shutter ", sheets 1 through 9 of 9, prepared by PPMF Inc., dated April 12, 2018, signed and sealed by Pedro De Figueiredo, P.E. on April 14, 2018.*

B. TESTS

1. *None.*

C. CALCULATIONS

1. *None.*

D. QUALITY ASSURANCE

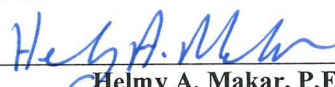
1. *By Miami-Dade County Department of Regulatory and Economic Resources.*

E. MATERIAL CERTIFICATIONS

1. *None.*

F. STATEMENTS

1. *FBC, 2017 Edition compliance letter prepared by PPMF Inc., dated April 14, 2018, signed and sealed by Pedro De Figueiredo, P.E.*

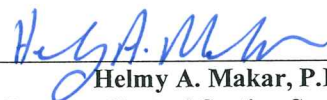


Helmy A. Makar, P.E., M.S.
Product Control Section Supervisor
NOA No. 21-0521.01
Expiration Date: 07/06/2026
Approval Date: 07/22/2021

American Shutter Products, Inc.
(CROCI North America)

NOTICE OF ACCEPTANCE: EVIDENCE SUBMITTED

- 7. EVIDENCE SUBMITTED UNDER PREVIOUS APPROVAL # 20-0720.08**
- A. DRAWINGS**
1. *Drawing No. 20-061, titled " Croci Extruded Aluminum Accordion Shutter ", sheets 1 through 12 of 12, prepared by PPMF Inc., dated June 24, 2020, signed and sealed by Pedro De Figueiredo, P.E. on June 29, 2020.*
- B. TESTS**
1. *Test report on Large Missile Impact, Cyclic Wind Pressure & Static Wind pressure of Aluminum Accordion Shutter, prepared by Fenestration Testing Laboratory, Inc., Report #10878, dated 08/09/2019, signed & sealed by Idalmis Ortega, P.E.*
- C. CALCULATIONS**
1. *Comparative analysis and anchor calculations, dated 08/13/19, 4 pages, prepared by EngCo, Inc., signed and sealed by Pedro De Figueiredo, P.E.*
- D. QUALITY ASSURANCE**
1. *By Miami-Dade County Department of Regulatory and Economic Resources.*
- E. MATERIAL CERTIFICATIONS**
1. *None.*
- F. STATEMENTS**
1. *FBC, 2017 Edition and 2020 Edition compliance letter prepared by PPMF Inc., dated June 29, 2020, signed and sealed by Pedro De Figueiredo, P.E.*
- 8. NEW EVIDENCE SUBMITTED**
- A. DRAWINGS**
1. *None.*
- B. TESTS**
1. *None.*
- C. CALCULATIONS**
1. *None.*
- D. QUALITY ASSURANCE**
1. *By Miami-Dade County Department of Regulatory and Economic Resources.*
- E. MATERIAL CERTIFICATIONS**
1. *None.*
- F. STATEMENTS**
1. *FBC, 2017 & 2020 Editions compliance letter prepared by PPMF Inc., dated 06/29/2020, signed & sealed by Pedro De Figueiredo, P.E.*



Helmy A. Makar, P.E., M.S.
Product Control Section Supervisor
NOA No. 21-0521.01
Expiration Date: 07/06/2026
Approval Date: 07/22/2021

TABLE OF CONTENTS:

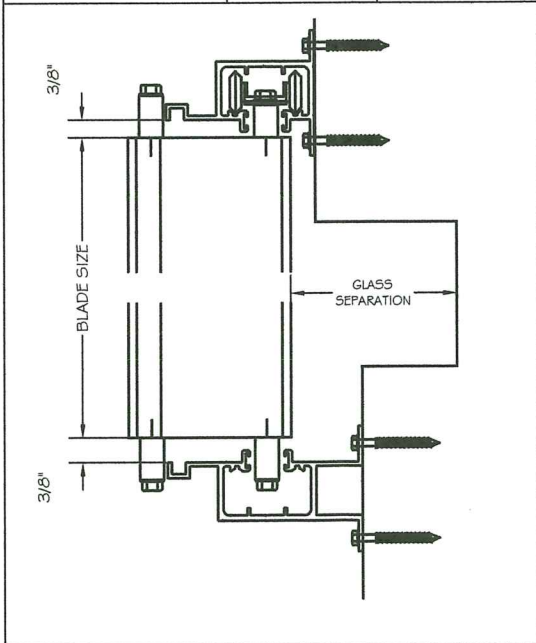
SHEET	DESCRIPTION
1	TABLE OF CONTENTS, GENERAL NOTES, TYPICAL ELEVATION, ALLOWABLE BLADE PRESSURE TABLE 1
2	SECTIONS A, B & C1 WITH ANCHORAGE TABLES
3	SECTIONS A1, B1 & C1.1 WITH ANCHORAGE TABLES
4	SECTIONS D, E, F & G WITH ANCHORAGE TABLES
5	SECTIONS D1, E1, F1 & X WITH ANCHORAGE TABLES
6	SECTIONS C & G1 WITH ANCHORAGE TABLES
7	JAMB SECTIONS J, H, H1, I, K1, K2 & K3
8	LOCK SECTION L, MALE & FEMALE STACK
9	LOCK SECTION L1, UNI-MATE STACK
10	BILL OF MATERIALS, ANCHOR SCHEDULE & BLADE ASSEMBLY.
11	COMPONENTS
12	COMPONENTS

GENERAL NOTES: (FLORIDA BUILDING CODE 2020 - 7TH EDITION)

- 1- DEFINITION: THIS PRODUCT IS AN ACCORDION TYPE SHUTTER; DESIGNED, CONSTRUCTED AND ERECTED TO EASILY ENCLOSE AN AREA, PROVIDING PROTECTION FROM HURRICANE FORCE WINDS AND WIND BORNE DEBRIS (LARGE & SMALL MISSILE) WITHIN THE ALLOWABLE DESIGNED PRESSURES AND LIMITATIONS STATED IN THIS APPROVAL.
- 2- CODE: THIS PRODUCT HAS BEEN TESTED AND DESIGNED IN ACCORDANCE WITH THE 2020 FLORIDA BUILDING CODE, 7TH EDITION, UNDER TAS 201, 202 AND 203.
- 3- POSTING: A PERMANENT LEGIBLE DECAL SHALL BE PLACED AT A READILY VISIBLE LOCATION STATING THE FOLLOWING:
- "CROCI NORTH AMERICA - FT. MYERS - FLORIDA
CROCI EXTRUDED ALUMINUM ACCORDION SHUTTER
MIAMI-DADE COUNTY PRODUCT CONTROL APPROVED"
- 4- LOADS: DESIGNED LOAD CALCULATED BASED ON THE ASCE 7-16 AND PROVIDED BY A PROFESSIONAL ARCHITECT OR ENGINEER FOR EACH SPECIFIC PROJECT. THE CALCULATED DESIGNED PRESSURE MUST NOT EXCEED THE ALLOWABLE PRESSURES FOR EACH SHUTTER COMPONENT TO BE USED.
- 5- MATERIAL: ALL EXTRUDED ALUMINUM SHAPES SHALL BE MADE OF 6063-T6 OR AS NOTED.
- 6- FASTENERS: ASSEMBLY SCREWS AND ANCHORS SHALL BE AS SPECIFIED IN THE CURRENT SET OF DRAWINGS. INSTALLATION AND LOADS AS PER THIS APPROVAL.
- 7- USE: IT SHALL BE THE RESPONSIBILITY OF THE CONTRACTOR, ARCHITECT OR ENGINEER OF RECORD TO VERIFY THE FOLLOWING:
- 7.1- THE STABILITY OF THE STRUCTURE WHERE THE SHUTTER IS TO BE ATTACHED INSURING PROPER ANCHORAGE.
- 7.2- THE SITE SPECIFIC PROJECT CRITERIA, SUCH AS BUT NOT LIMITED TO, WINDLOADS, LOCAL CODE REQUIREMENTS, DESIGNED PRESSURES ETC.
- 7.3- THAT THIS APPROVAL IS ADEQUATE TO THE SPECIFIC PROJECT.
- 8- ANCHORS INTO WOOD DESIGNED WITH 1.6 LOAD DURATION INCREASE IN ACCORDANCE WITH NDS-2018.
- 9- DISSIMILAR MATERIALS: WHERE ALUMINUM IS IN CONTACT OR FASTENED TO DISSIMILAR MATERIALS, INCLUDING BUT NOT LIMITED TO STEEL, INSTALLATION SHALL MEET THE REQUIREMENTS OF CHAPTER M.7 OF THE ALUMINUM DESIGN MANUAL 2015

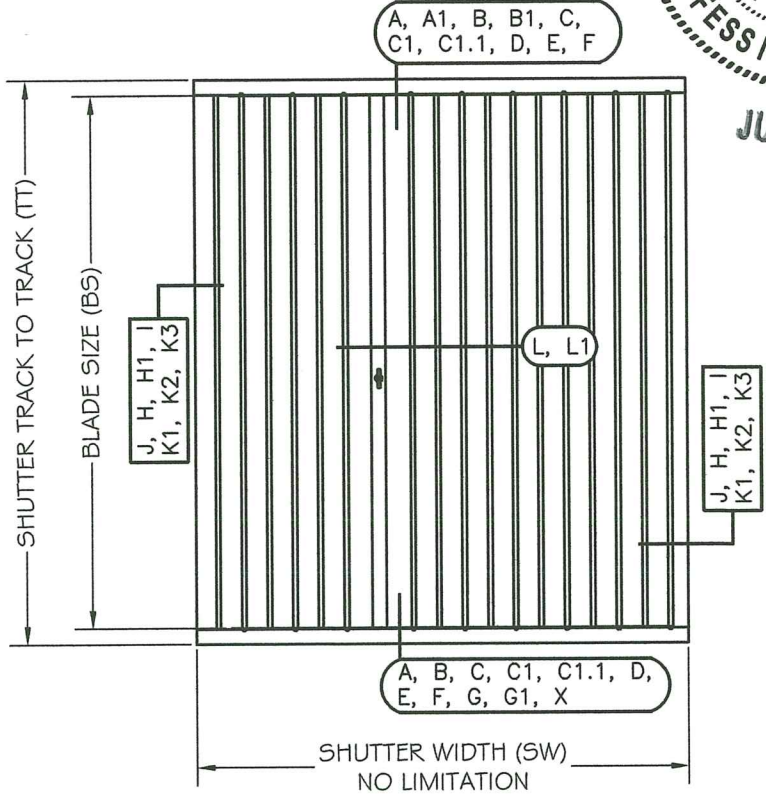
TABLE 1
ALLOWABLE DESIGNED LOADS
X
MAXIMUM BLADE SIZE

BLADE (IN) INCHES	PRESSURE (PSF)	
	POSITIVE	NEGATIVE
60"	188	188
66"	170	170
72"	156	156
78"	144	144
84"	134	134
90"	125	125
96"	117	117
102"	110	110
108"	102	102
114"	92	92
120"	83	83
126"	75	75
132"	69	69
138"	59	63
144"	49	58
150"	42	52



GLASS SEPARATION		
INSTALLATION BELOW 30' ELEVATION	BLADE <= 120" 3 1/2"	BLADE > 120" 4 3/4"
INSTALLATION ABOVE 30' ELEVATION	BLADE <= 120" 3"	BLADE > 120" 3"

TYPICAL ELEVATION

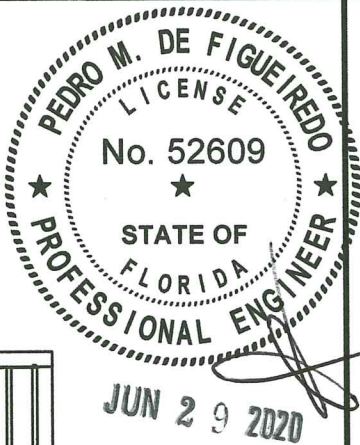


USER INSTRUCTIONS:

- 1- DETERMINE PROJECT DESIGN WIND LOAD PRESSURES AS PER ITEM 4 OF GENERAL NOTES, SHEET 1.
- 2- CHECK BLADE SIZE WITH TABLE 1 ON SHEET 1 FOR ALLOWABLE DESIGN PRESSURE.
- 3- SELECT MOUNT TYPE TO BE USED AS PER SHEETS 2 THROUGH 6. MOUNT TYPES ARE INTERCHANGEABLE.
- 4- CALCULATE ANCHOR SPACING FUNCTION OF BLADE SIZE AND PRESSURE FOR EACH SPECIFIC MOUNT TYPE AS PER SHEETS 2 THROUGH 6. ANCHOR TYPES ON SHEET 8.

PRODUCT RENEWED
as complying with the Florida
Building Code
Acceptance No 21-0521.01
Expiration Date 07/06/2026
By *Hedy A. Mohr*
Miami Dade Product Control

MIAMI-DADE BCCO:
PRODUCT REVISED
as complying with the Florida
Building Code
Acceptance No 20-0720.08
Expiration Date 07/06/2021
By *Hedy A. Mohr*
Miami Dade Product Control



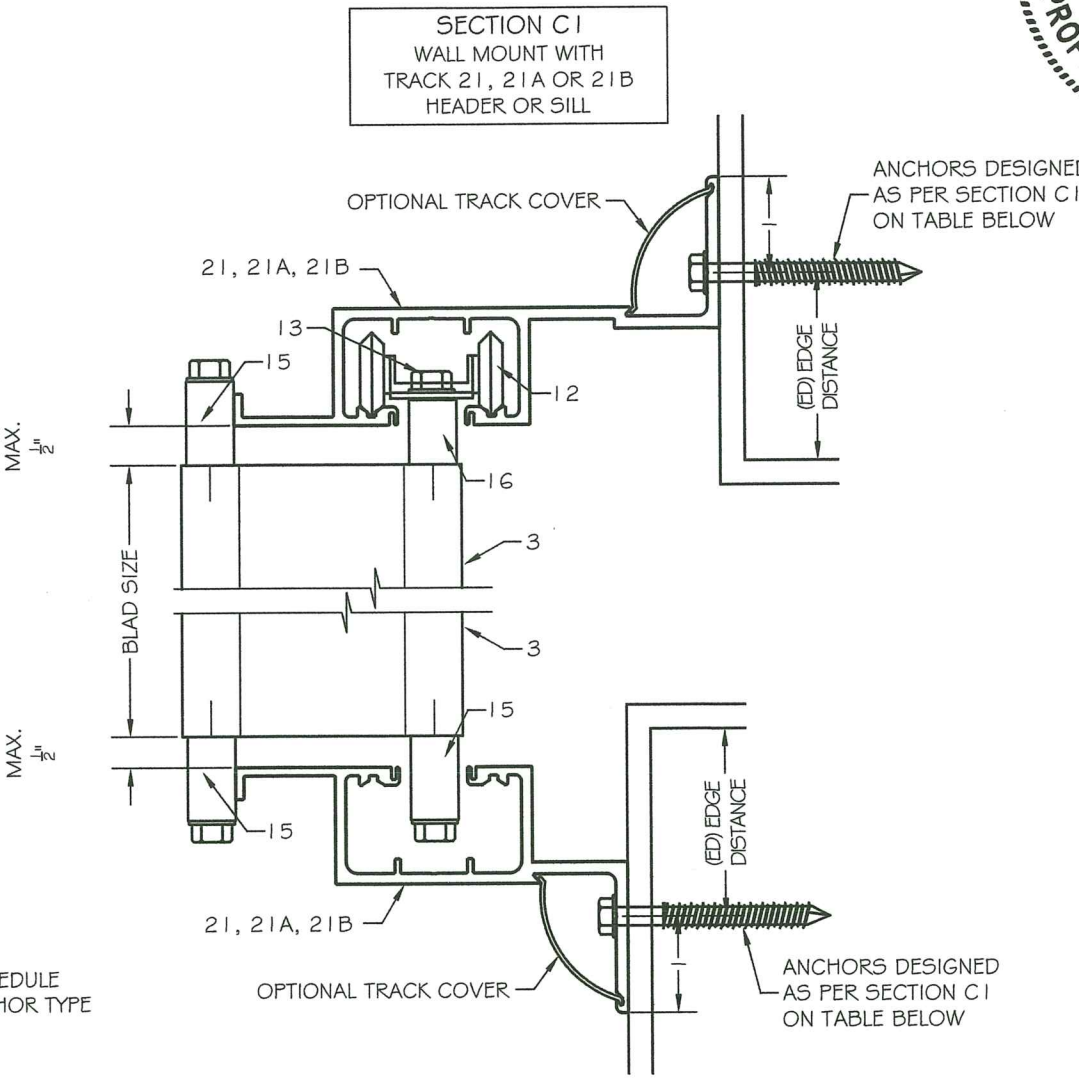
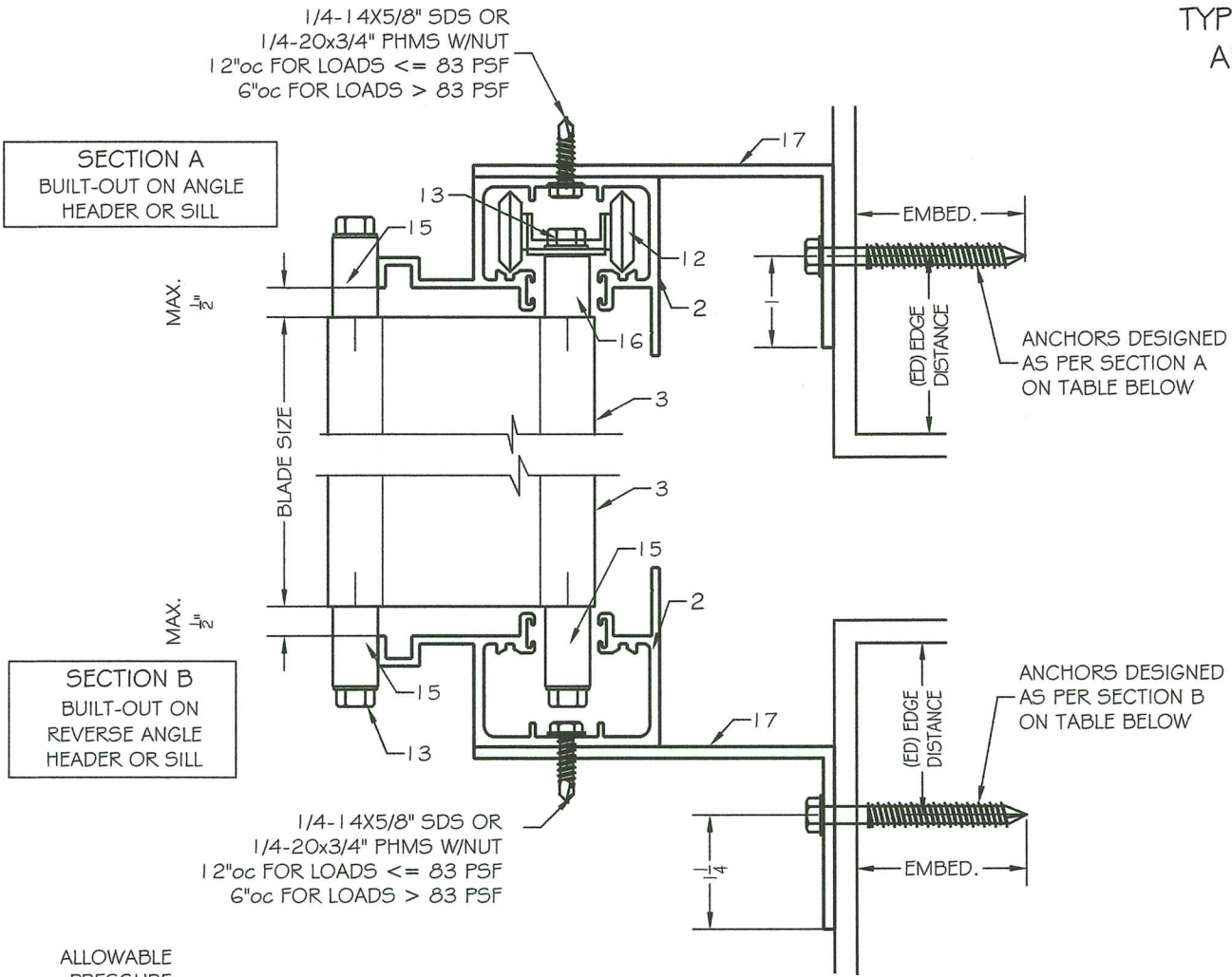
PRODUCT CATEGORY: SHUTTERS
PRODUCT MATERIAL: ALUMINUM
CROCI ACCORDION SHUTTERS
EXTRUDED ALUMINUM FOLDING SHUTTERS

Manufacturer:
CROCI -North America
11600 ADELMO LANE
FORT MYERS, FL 33966
Tel.: (239) 278-3066 - Fax: (239) 278-5977
EMAIL: INFO@CROCIUSA.COM

SCALE:
NA
DATE:
06/24/2020
DRAWING #
20-061
SHEET
1 OF 12

Fast & Present Moving the Future
ENGINEERING SERVICES - CA 32459
9715 W. BROWARD BLVD.
PLANTATION, FL 33324
PPMF@AOL.COM
ENGINEER SEAL
PEDRO DE FIGUEIREDO
PE 52609

TYPICAL VERTICAL SECTIONS
AND ANCHOR SCHEDULE



ALLOWABLE
PRESSURE
(PSF)

MAXIMUM
BLADE SPAN
IN INCHES

		MAXIMUM ANCHORAGE SPACING IN INCHES ON CENTER											
		SECTION A SILL / HEADER				SECTION B SILL / HEADER				SECTION C I SILL / HEADER			
BS	Pd	A	B	C	E	A	B	C	E	A	B	C	E
60	188	9	--	12	7	5	--	7	4	7	--	8	5
	140	12	4	12	10	9	--	11	7	12	--	12	9
	100	12	5	12	12	12	5	12	12	12	5	12	12
	60	12	9	12	12	12	9	12	12	12	9	12	12
90	188	6	--	7	4	--	--	4	--	--	--	4	--
	160	7	--	8	5	4	--	5	3	4	--	5	3
	125	9	--	12	7	5	--	7	4	7	--	8	5
	80	12	4	12	12	12	--	12	9	12	4	12	12
108	35	12	10	12	12	12	10	12	12	12	10	12	12
	125	7	--	9	6	4	--	5	3	5	--	6	4
	100	10	--	12	8	6	--	7	4	7	--	9	5
	80	12	--	12	10	8	--	10	6	11	--	12	8
120	70	12	4	12	11	11	--	12	8	12	4	12	11
	35	12	8	12	12	12	8	12	12	12	8	12	12
	105	8	--	10	6	4	--	6	3	5	--	7	4
	90	10	--	12	8	6	--	7	4	7	--	9	5
150	85	11	--	12	8	6	--	8	5	8	--	10	6
	60	12	4	12	12	12	--	12	9	12	4	12	12
	35	12	8	12	12	12	8	12	12	12	8	12	12
	85	8	--	10	6	4	--	5	3	5	--	7	4
150	65	12	--	12	9	7	--	8	5	9	--	11	6
	55	12	4	12	10	9	--	11	7	12	--	12	9
	45	12	5	12	12	12	4	12	10	12	5	12	12
150	35	12	6	12	12	12	6	12	12	12	6	12	12

REFER TO ANCHOR SCHEDULE
ON SHEET 10 FOR ANCHOR TYPE

NOTES:
1- USE IN CONJUNCTION WITH TABLE 1, THE LOWER OF THE PRESSURE CONTROL DESIGN.
2- LINEAR INTERPOLATION IS ALLOWABLE BETWEEN BLADE SPAN SIZES



Past & Present Moving the Future
ENGINEERING SERVICES - CA 32459
9715 W. BROWARD BLVD.
PLANTATION, FL 33324
ENGINEER SEAL
PEDRO DE FIGUEIREDO
PE 52609
PPMF@AOL.COM

PRODUCT CATEGORY: SHUTTERS
PRODUCT MATERIAL: ALUMINUM
CROCI ACCORDION SHUTTERS
EXTRUDED ALUMINUM FOLDING SHUTTERS

Manufacturer:
CROCI - North America
11600 ADELMO LANE
FORT MYERS, FL 33966
Tel.: (239) 278-3066 - Fax: (239) 278-5977
EMAIL: INFO@CROCIUSA.COM

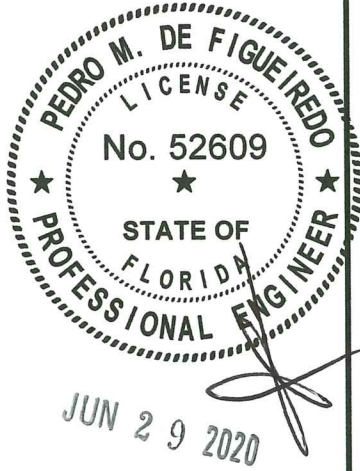
PRODUCT RENEWED
as complying with the Florida
Building Code
Acceptance No. 21-0521.01
Expiration Date 07/06/2026
By *H. G. A. M. M.*
Miami Dade Product Control

MIAMI-DADE BCCO:

PRODUCT REVISED
as complying with the Florida
Building Code
Acceptance No. 20-0720.04
Expiration Date 07/06/2021
By *H. G. A. M. M.*
Miami Dade Product Control

SCALE:
NA
DATE:
06/24/2020
DRAWING #
20-061
SHEET
2 OF 12

TYPICAL VERTICAL SECTIONS
AND ANCHOR SCHEDULE

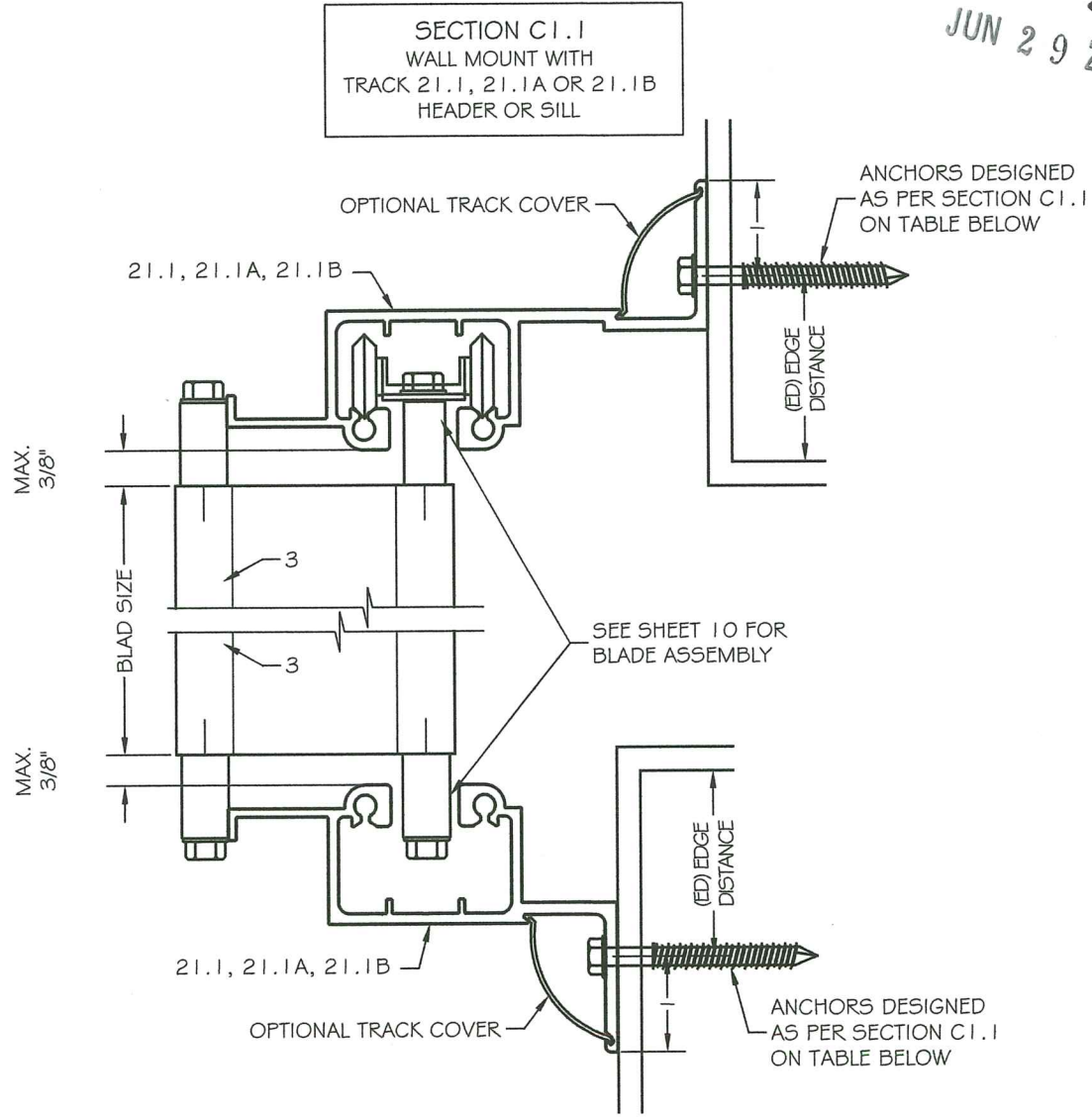
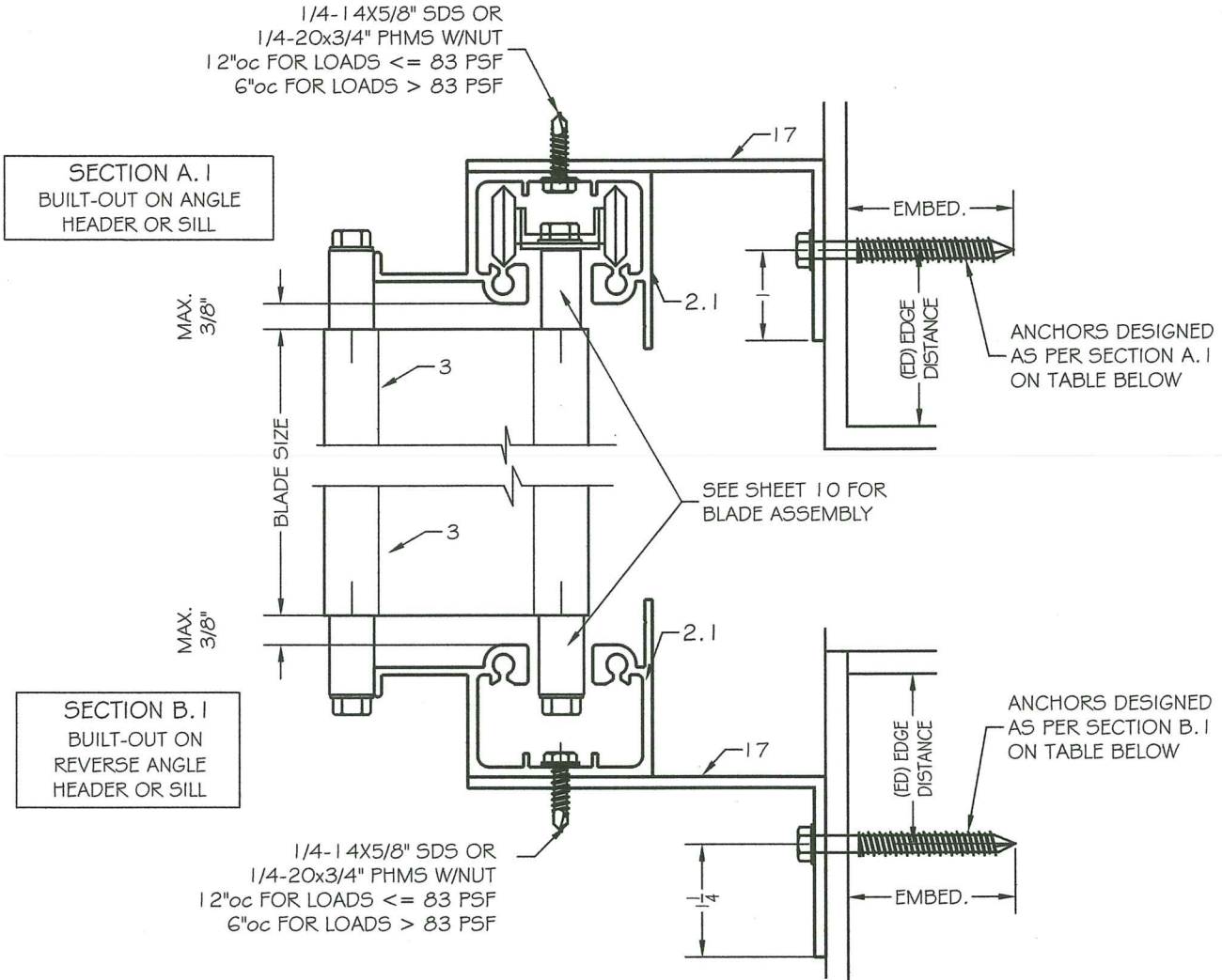


Past & Present Moving the Future
ENGINEERING SERVICES - CA 32459
9715 W. BROWARD BLVD.
PLANTATION, FL 33324
PPMF@AOL.COM
ENGINEER SEAL
PEDRO DE FIGUEIREDO
PE 52609

PRODUCT CATEGORY: SHUTTERS
PRODUCT MATERIAL: ALUMINUM
CROCI ACCORDION SHUTTERS
EXTRUDED ALUMINUM FOLDING SHUTTERS

Manufacturer:
CROCI - North America
11600 ADELMO LANE
FORT MYERS, FL 33966
Tel.: (239) 278-3066 - Fax: (239) 278-5977
EMAIL: INFO@CROCIUSA.COM

SCALE:
NA
DATE:
06/24/2020
DRAWING #
20-061
SHEET
3 OF 12



ALLOWABLE PRESSURE (PSF)		MAXIMUM ANCHORAGE SPACING IN INCHES ON CENTER											
		SECTION A.1 SILL / HEADER				SECTION B.1 SILL / HEADER				SECTION C.1 SILL / HEADER			
BS	Pd	A	B	C	E	A	B	C	E	A	B	C	E
60	188	9	--	12	7	5	--	7	4	7	--	8	5
	140	12	4	12	10	9	--	11	7	12	--	12	9
	100	12	5	12	12	12	5	12	12	12	5	12	12
	60	12	9	12	12	12	9	12	12	12	9	12	12
90	40	12	12	12	12	12	12	12	12	12	12	12	12
	188	6	--	7	4	--	--	4	--	--	--	4	--
	160	7	--	8	5	4	--	5	3	4	--	5	3
	125	9	--	12	7	5	--	7	4	7	--	8	5
108	80	12	4	12	12	12	--	12	9	12	4	12	12
	35	12	10	12	12	12	10	12	12	12	10	12	12
	125	7	--	9	6	4	--	5	3	5	--	6	4
	100	10	--	12	8	6	--	7	4	7	--	9	5
120	80	12	--	12	10	8	--	10	6	11	--	12	8
	70	12	4	12	11	11	--	12	8	12	4	12	11
	35	12	8	12	12	12	8	12	12	12	8	12	12
	105	8	--	10	6	4	--	6	3	5	--	7	4
150	90	10	--	12	8	6	--	7	4	7	--	9	5
	85	11	--	12	8	6	--	8	5	8	--	10	6
	60	12	4	12	12	12	--	12	9	12	4	12	12
	35	12	8	12	12	12	8	12	12	12	8	12	12
	85	8	--	10	6	4	--	5	3	5	--	7	4
	65	12	--	12	9	7	--	8	5	9	--	11	6
	55	12	4	12	10	9	--	11	7	12	--	12	9
	45	12	5	12	12	12	4	12	10	12	5	12	12
	35	12	6	12	12	12	6	12	12	12	6	12	12

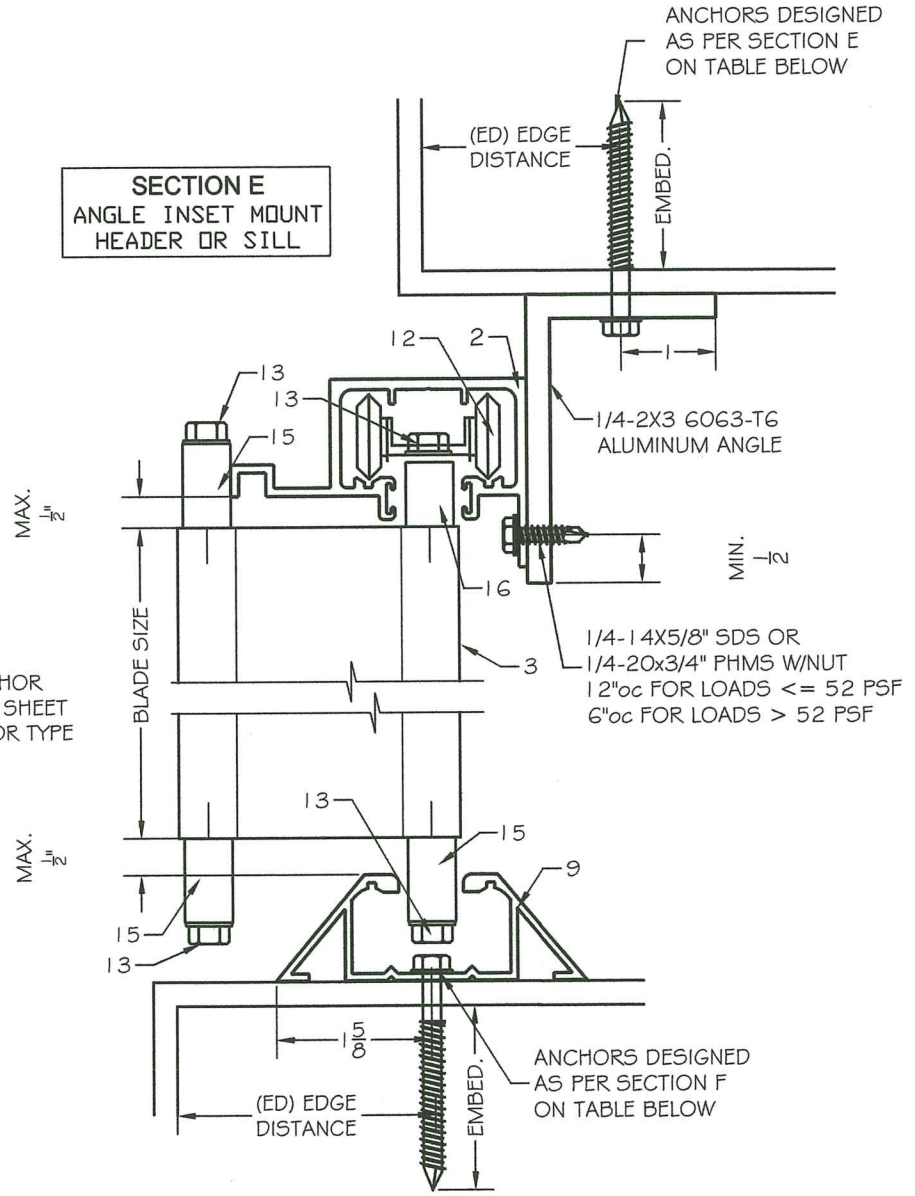
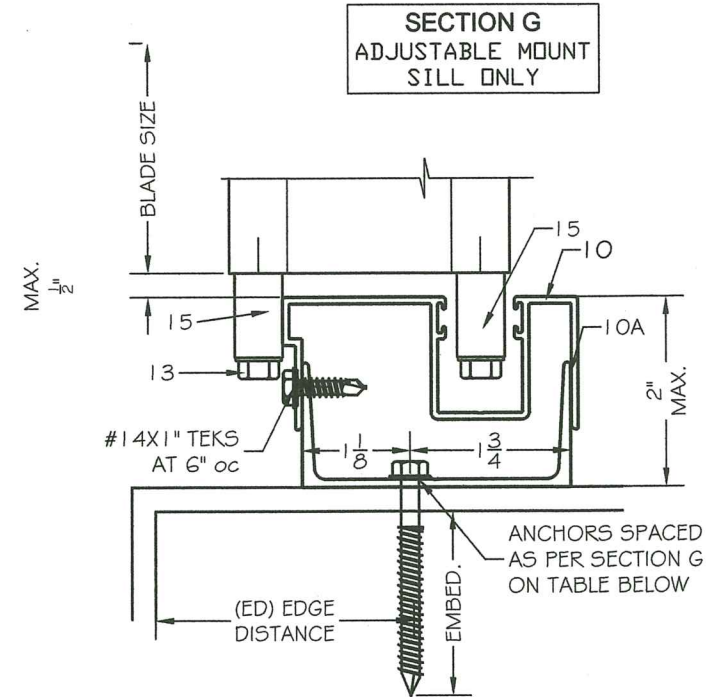
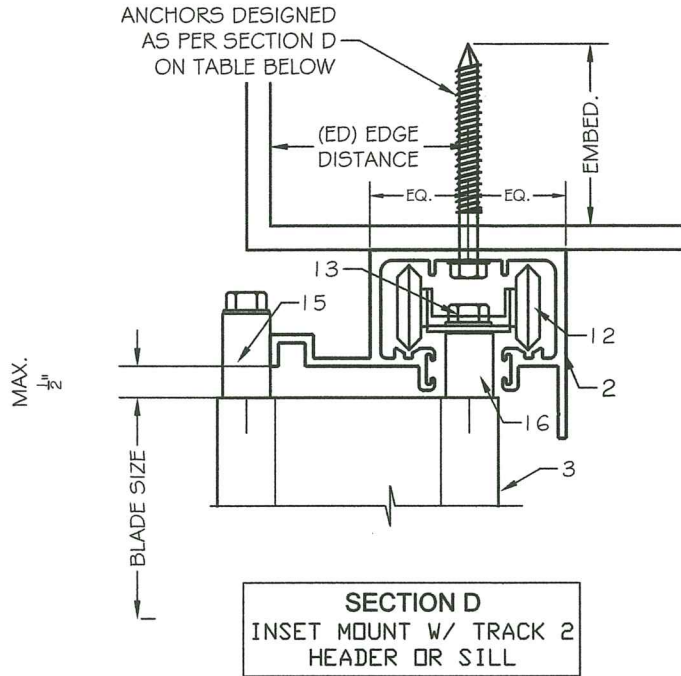
REFER TO ANCHOR SCHEDULE ON SHEET 10 FOR ANCHOR TYPE

NOTES:
1- USE IN CONJUNCTION WITH TABLE 1, THE LOWER OF THE PRESSURE CONTROL DESIGN.
2- LINEAR INTERPOLATION IS ALLOWABLE BETWEEN BLADE SPAN SIZES

PRODUCT RENEWED
as complying with the Florida
Building Code
Acceptance No. 21-0521071
Expiration Date 07/06/2026
By *Hedy A. Mohr*
Miami Dade Product Control

MIAMI-DADE BCCO:
PRODUCT REVISED
as complying with the Florida
Building Code
Acceptance No. 20-072004
Expiration Date 07/06/2024
By *Hedy A. Mohr*
Miami Dade Product Control

TYPICAL VERTICAL SECTIONS AND ANCHOR SCHEDULE



MAX. 1/2\"/>

SECTION F
THRESHOLD TRACK
INSET MOUNT
HEADER OR SILL

PRODUCT RENEWED
as complying with the Florida
Building Code
Acceptance No. 21-052101
Expiration Date 07/06/2026
By *Healy A. Miller*
Miami Dade Product Control

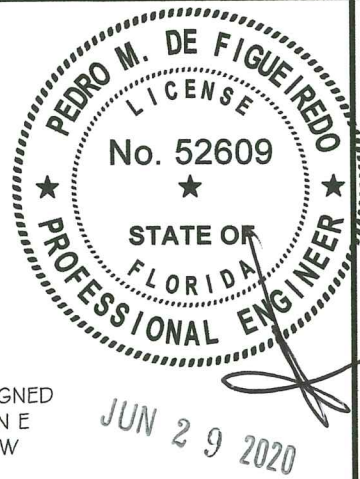
PRODUCT REVISED
as complying with the Florida
Building Code
Acceptance No. 20-0720-08
Expiration Date 07/06/2021
By *Healy A. Miller*
Miami Dade Product Control

ALLOWABLE
PRESSURE
(PSF)
MAXIMUM
BLADE SPAN
IN INCHES

		MAXIMUM ANCHORAGE SPACING IN INCHES ON CENTER																	
		SECTION D SILL / HEADER				SECTION G SILL				SECTION E SILL / HEADER					SECTION F SILL / HEADER				
BS	Pd	A	B	C	E	A	B	C	E	A	B	C	D	E	A	B	C	E	
60	188	5	--	4	10	6	4	4	11	5	--	4	11	12	6	--	4	8	
	140	8	5	6	12	8	5	5	12	8	5	6	12	12	8	5	5	12	
	100	12	8	8	12	12	8	8	12	12	8	9	12	12	12	8	8	16	
	60	12	12	14	12	12	12	12	12	12	12	12	12	12	12	16	13	13	16
	40	12	12	12	12	12	12	12	12	12	12	12	12	12	12	16	16	16	16
90	188	--	--	--	4	--	--	--	5	--	--	--	5	4	--	--	--	4	
	160	4	--	--	6	4	--	3	8	--	--	3	6	6	4	--	3	5	
	125	5	--	4	10	6	4	4	11	5	--	4	11	12	6	--	4	8	
	80	10	6	7	12	10	6	6	12	10	6	7	12	12	10	6	6	14	
	35	12	12	12	12	12	12	12	12	12	12	12	12	12	16	15	15	16	
108	125	4	--	--	7	5	--	3	9	--	--	3	7	7	4	--	3	6	
	100	6	--	4	12	6	4	4	12	5	--	4	12	12	6	4	4	8	
	80	8	5	6	12	8	5	5	12	8	5	6	12	12	8	5	5	11	
	70	9	6	6	12	9	6	6	12	9	6	7	12	12	9	6	6	13	
	35	12	12	12	12	12	12	12	12	12	12	12	12	12	16	13	13	16	
120	105	4	--	--	8	5	--	3	10	4	--	3	8	8	5	--	3	6	
	90	6	--	4	12	6	4	4	12	5	--	4	12	12	6	4	4	8	
	85	6	4	4	12	7	4	4	12	6	4	5	12	12	6	4	4	9	
	60	10	6	7	12	10	6	6	12	10	6	7	12	12	10	6	6	14	
	35	17	11	12	12	12	11	11	12	12	11	12	12	12	16	11	11	16	
150	85	4	--	--	8	5	--	3	10	4	--	3	8	8	5	--	3	6	
	65	7	4	5	12	7	5	5	12	7	4	5	12	12	7	5	5	10	
	55	8	5	6	12	8	5	6	12	8	5	6	12	12	8	5	6	12	
	45	10	7	7	12	10	7	7	12	10	7	8	12	12	10	7	7	14	
	35	12	9	9	12	12	9	9	12	12	9	10	12	12	13	9	9	16	

REFER TO ANCHOR
SCHEDULE ON SHEET
10 FOR ANCHOR TYPE

NOTES:
1- USE IN CONJUNCTION WITH TABLE 1, THE LOWER OF THE PRESSURE CONTROL DESIGN.
2- LINEAR INTERPOLATION IS ALLOWABLE BETWEEN BLADE SPAN SIZES



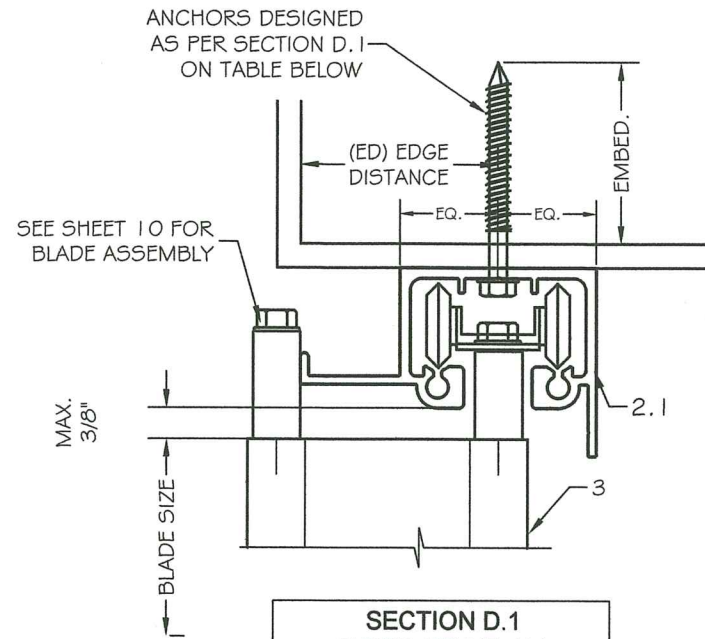
Past & Present Moving the Future
ENGINEERING SERVICES - CA 32459
9715 W. BROWARD BLVD.
PLANTATION, FL 33324
PPMF@AOL.COM
ENGINEER SEAL
PEDRO DE FIGUEIREDO
PE 52609

PRODUCT CATEGORY: SHUTTERS
PRODUCT MATERIAL: ALUMINUM
CROCI ACCORDION SHUTTERS
EXTRUDED ALUMINUM FOLDING SHUTTERS

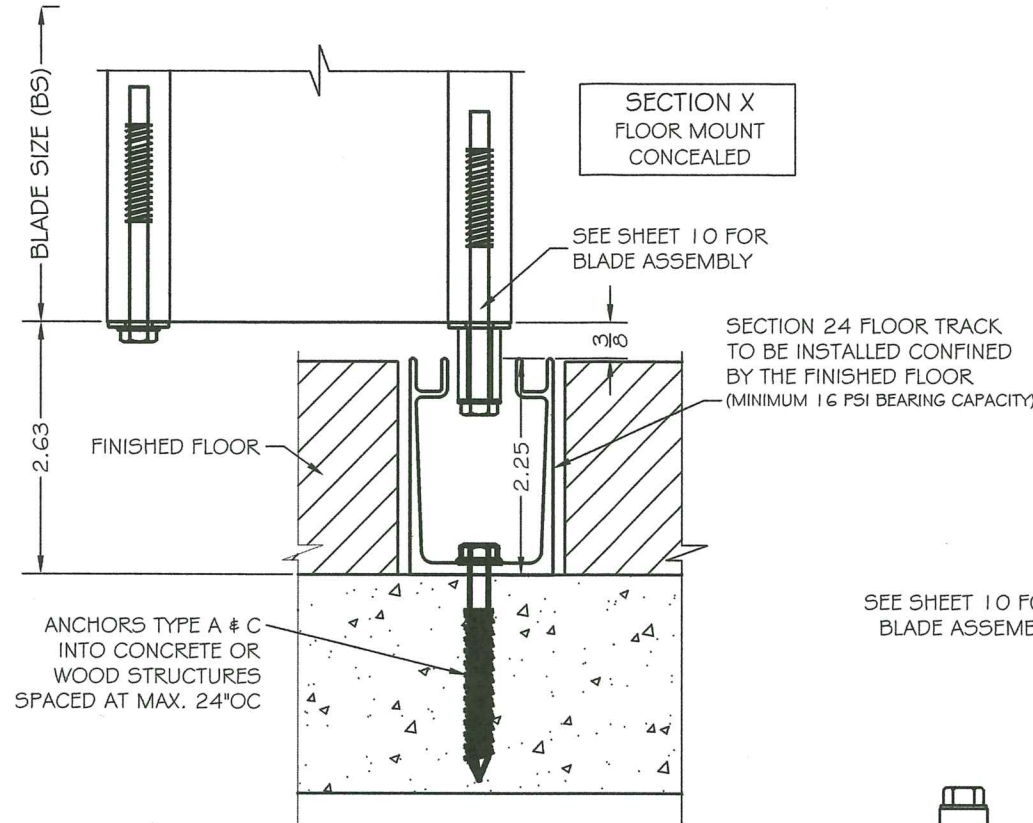
Manufacturer:
CROCI - North America
11600 ADELMO LANE
FORT MYERS, FL 33966
Tel.: (239) 278-3066 - Fax: (239) 278-5977
EMAIL: INFO@CROCIUSA.COM

SCALE:
NA
DATE:
06/24/2020
DRAWING #
20-061
SHEET
4 OF 12

TYPICAL VERTICAL SECTIONS AND ANCHOR SCHEDULE

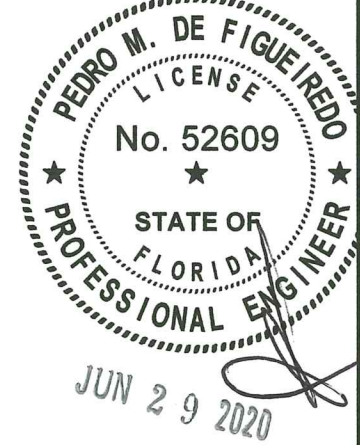
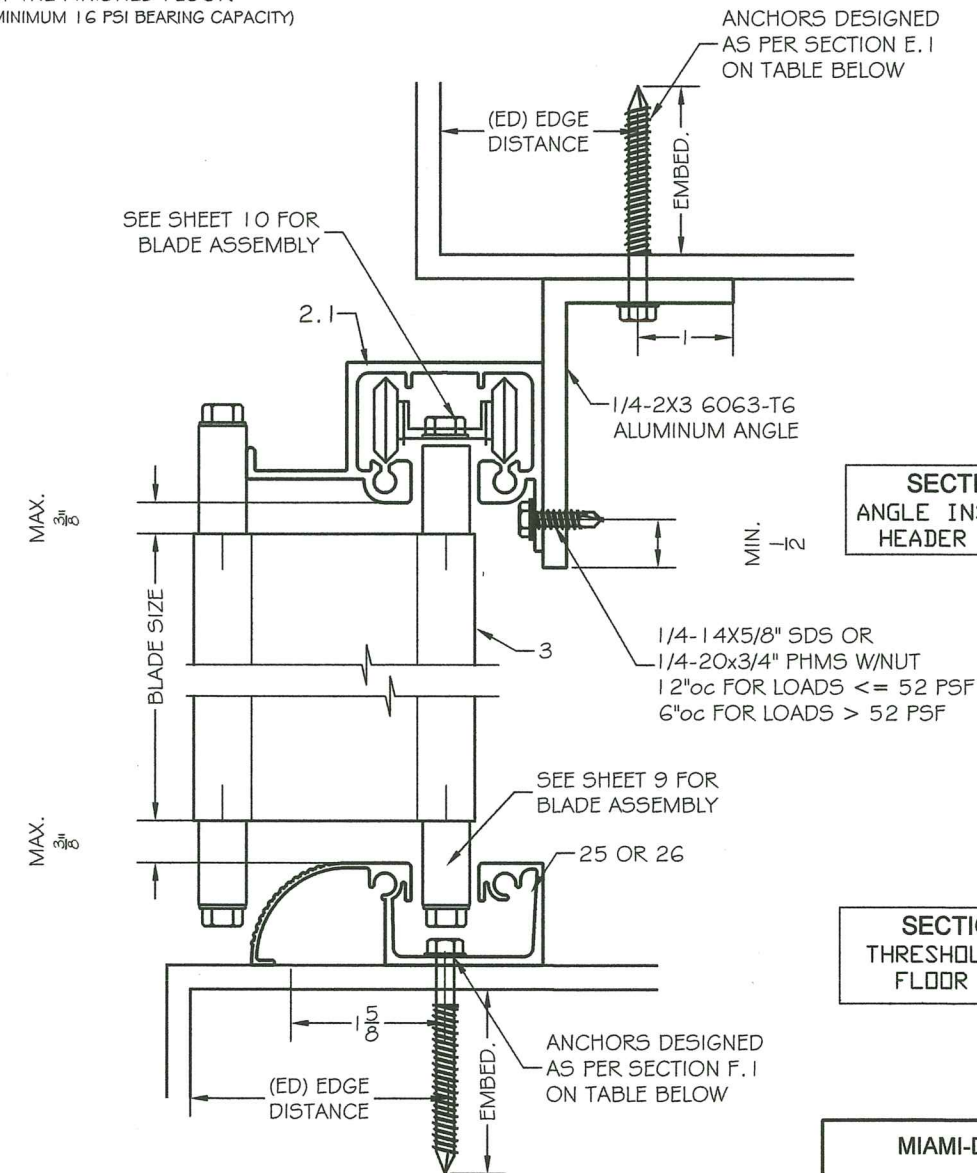


SECTION D.1
INSET MOUNT W/
TRACK 2.1
HEADER OR SILL



ALLOWABLE PRESSURE (PSF)		MAXIMUM ANCHORAGE SPACING IN INCHES ON CENTER												
		SECTION D.1 SILL / HEADER				SECTION E.1 SILL / HEADER					SECTION F.1 SILL / HEADER			
BS	Pd	A	B	C	E	A	B	C	D	E	A	B	C	E
60	188	5	--	4	10	5	--	4	11	12	6	--	4	8
	140	8	5	6	12	8	5	6	12	12	8	5	5	12
	100	12	8	8	12	12	8	9	12	12	12	8	8	16
	60	12	12	14	12	12	12	12	12	12	16	13	13	16
	40	12	12	12	12	12	12	12	12	12	16	16	16	16
90	188	--	--	--	4	--	--	--	5	4	--	--	--	4
	160	4	--	--	6	--	--	3	6	6	4	--	3	5
	125	5	--	4	10	5	--	4	11	12	6	--	4	8
	80	10	6	7	12	10	6	7	12	12	10	6	6	14
	35	12	12	12	12	12	12	12	12	12	16	15	15	16
108	125	4	--	--	7	--	--	3	7	7	4	--	3	6
	100	6	--	4	12	5	--	4	12	12	6	4	4	8
	80	8	5	6	12	8	5	6	12	12	8	5	5	11
	70	9	6	6	12	9	6	7	12	12	9	6	6	13
	35	12	12	12	12	12	12	12	12	12	16	13	13	16
120	105	4	--	--	8	4	--	3	8	8	5	--	3	6
	90	6	--	4	12	5	--	4	12	12	6	4	4	8
	85	6	4	4	12	6	4	5	12	12	6	4	4	9
	60	10	6	7	12	10	6	7	12	12	10	6	6	14
	35	17	11	12	12	12	11	12	12	12	16	11	11	16
150	85	4	--	--	8	4	--	3	8	8	5	--	3	6
	65	7	4	5	12	7	4	5	12	12	7	5	5	10
	55	8	5	6	12	8	5	6	12	12	8	5	6	12
	45	10	7	7	12	10	7	8	12	12	10	7	7	14
	35	12	9	9	12	12	9	10	12	12	13	9	9	16

REFER TO ANCHOR
SCHEDULE ON SHEET
10 FOR ANCHOR TYPE



Past & Present Moving the Future
ENGINEERING SERVICES - CA 32459
9715 W. BROWARD BLVD.
PLANTATION, FL 33324
PPMIF@AOL.COM
ENGINEER SEAL
PEDRO DE FIGUEIREDO
PE 52609

PRODUCT CATEGORY: SHUTTERS
PRODUCT MATERIAL: ALUMINUM
CROCI ACCORDION SHUTTERS
EXTRUDED ALUMINUM FOLDING SHUTTERS

Manufacturer:
CROCI - North America
11600 ADELMO LANE
FORT MYERS, FL 33966
Tel.: (239) 278-3066 - Fax: (239) 278-5977
EMAIL: INFO@CROCIUSA.COM

PRODUCT RENEWED
as complying with the Florida
Building Code
Acceptance No. 21-0521-01
Expiration Date 07/06/2026
By *H. A. M. M.*
Miami Dade Product Control

PRODUCT REVISED
as complying with the Florida
Building Code
Acceptance No. 20-0720-04
Expiration Date 07/06/2021
By *H. A. M. M.*
Miami Dade Product Control

MIAMI-DADE BCCO:

NOTES:
1- USE IN CONJUNCTION WITH TABLE 1, THE LOWER OF THE PRESSURE CONTROL DESIGN.
2- LINEAR INTERPOLATION IS ALLOWABLE BETWEEN BLADE SPAN SIZES

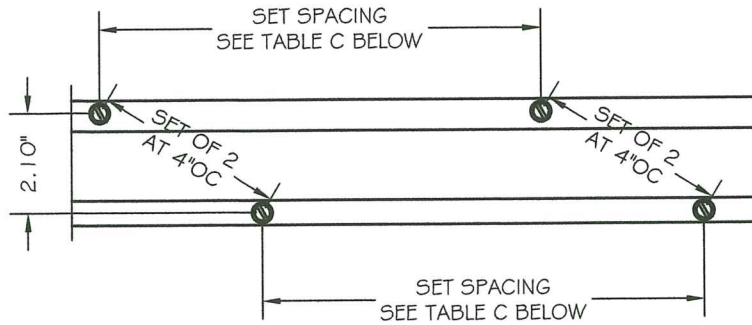
SCALE:
NA
DATE:
06/24/2020
DRAWING #
20-061
SHEET
5 OF 12

TYPICAL VERTICAL SECTIONS
AND ANCHOR SCHEDULE

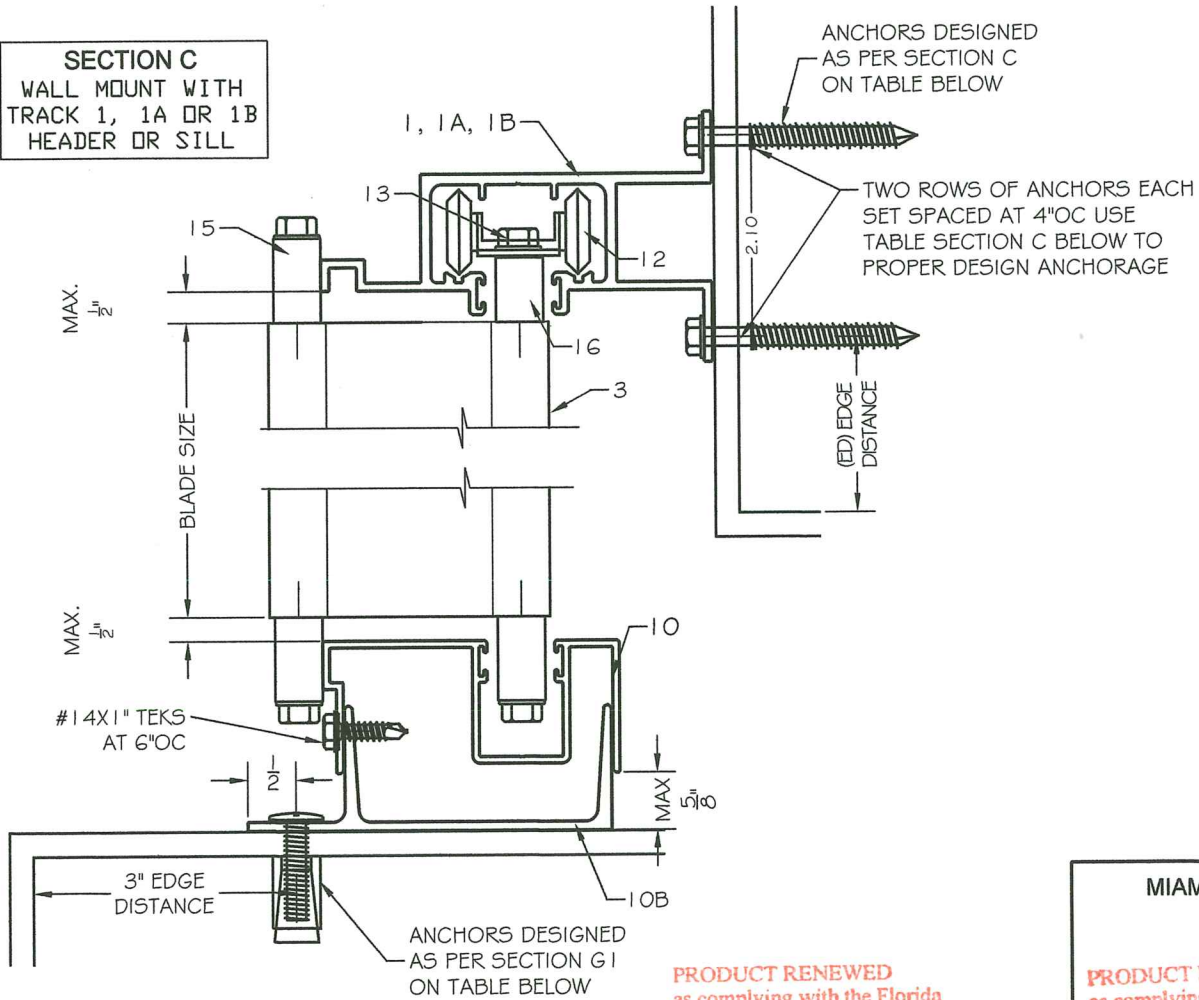
ALLOWABLE
PRESSURE
(PSF)
MAXIMUM
BLADE SPAN
IN INCHES

		MAXIMUM ANCHORAGE SPACING IN INCHES ON CENTER									
		SECTION C SILL / HEADER					SECTION G1 SILL / HEADER				
BS	Pd	A	B	C	E	A	B	C	D	E	
60	188	22	6	24	17	6	4	4	12	11	
	140	24	8	24	21	8	5	5	12	12	
	100	24	11	24	24	12	8	8	12	12	
	60	24	18	24	24	12	12	12	12	12	
	40	24	24	24	24	12	12	12	12	12	
90	188	17	4	21	13	--	--	--	7	5	
	160	19	5	23	14	4	--	3	10	8	
	125	22	6	24	17	6	4	4	12	11	
	80	24	9	24	24	10	6	6	12	12	
	35	24	21	24	24	12	12	12	12	12	
108	125	20	5	24	15	5	--	3	12	9	
	100	22	6	24	17	6	4	4	12	12	
	80	24	7	24	20	8	5	5	12	12	
	70	24	8	24	23	9	6	6	12	12	
	35	24	17	24	24	12	12	12	12	12	
120	105	20	6	24	15	5	--	3	12	10	
	90	22	6	24	17	6	4	4	12	12	
	85	23	6	24	18	7	4	4	12	12	
	60	24	9	24	24	10	6	6	12	12	
	35	24	16	24	24	12	11	11	12	12	
150	85	20	5	24	15	5	--	3	12	10	
	65	24	6	24	18	7	5	5	12	12	
	55	24	8	24	21	8	5	6	12	12	
	45	24	10	24	24	10	7	7	12	12	
	35	24	12	24	24	12	9	9	12	12	

REFER TO ANCHOR
SCHEDULE ON SHEET 10
FOR ANCHOR TYPE



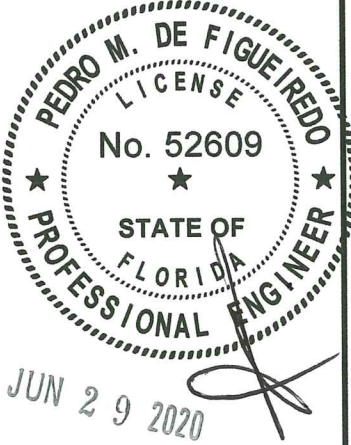
SECTION C
WALL MOUNT WITH
TRACK 1, 1A OR 1B
HEADER OR SILL



SECTION G1
ADJUSTABLE MOUNT
SILL ONLY

PRODUCT RENEWED
as complying with the Florida
Building Code
Acceptance No 21-0521.01
Expiration Date 07/06/2026
By *Heidi A. Miller*
Miami Dade Product Control

PRODUCT REVISED
as complying with the Florida
Building Code
Acceptance No 20-0720.08
Expiration Date 07/06/2021
By *Heidi A. Miller*
Miami Dade Product Control



Past & Present Moving the Future
ENGINEERING SERVICES - CA 32459
9715 W. BROWARD BLVD.
PLANTATION, FL 33324
PPMVF@AOL.COM
ENGINEER SEAL
PEDRO DE FIGUEIREDO
PE 52609

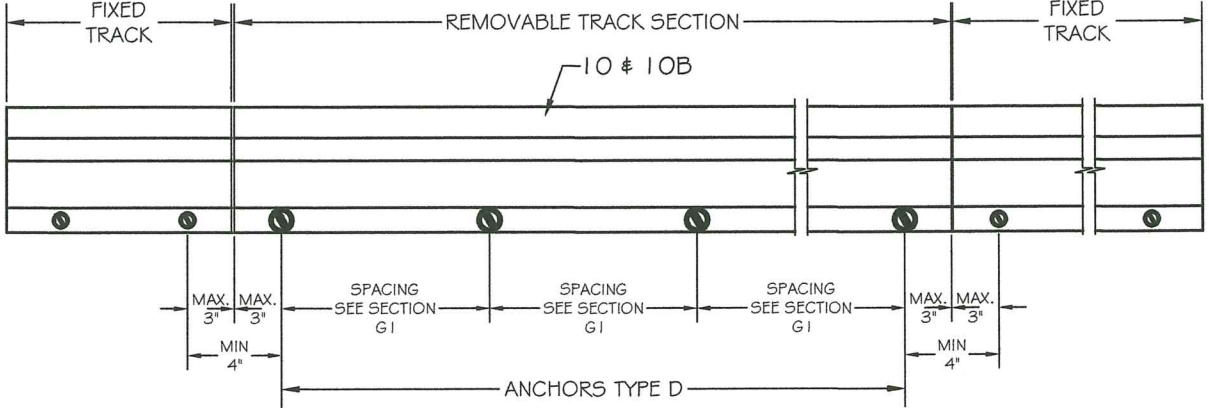
PRODUCT CATEGORY: SHUTTERS
PRODUCT MATERIAL: ALUMINUM
CROCI ACCORDION SHUTTERS
EXTRUDED ALUMINUM FOLDING SHUTTERS

Manufacturer:
CROCI - North America
11600 ADELMO LANE
FORT MYERS, FL 33966
Tel.: (239) 278-3066 - Fax: (239) 278-5977
EMAIL: INFO@CROCIUSA.COM

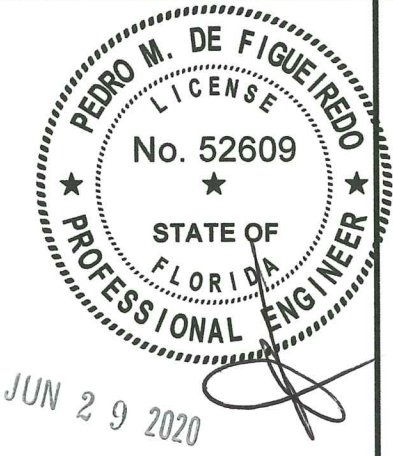
SCALE:
NA
DATE:
06/24/2020
DRAWING #
20-061
SHEET
6 OF 12

NOTES:
1- USE IN CONJUNCTION WITH TABLE 1, THE LOWER OF THE PRESSURE
CONTROL DESIGN.
2- LINEAR INTERPOLATION IS ALLOWABLE BETWEEN BLADE SPAN SIZES

REMOVABLE SILL TRACK



TYPICAL HORIZONTAL SECTIONS
JAMB & CORNER SECTIONS

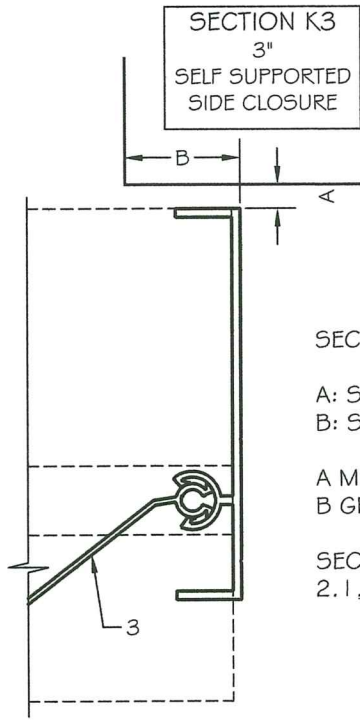
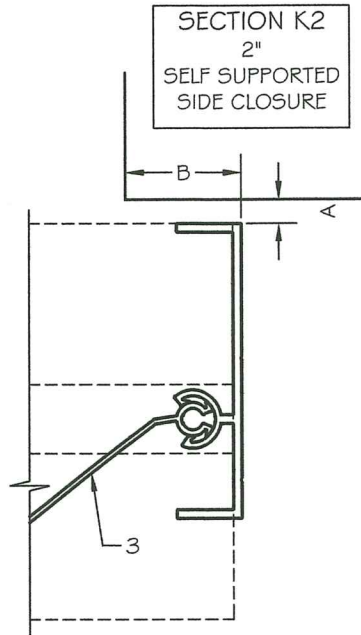
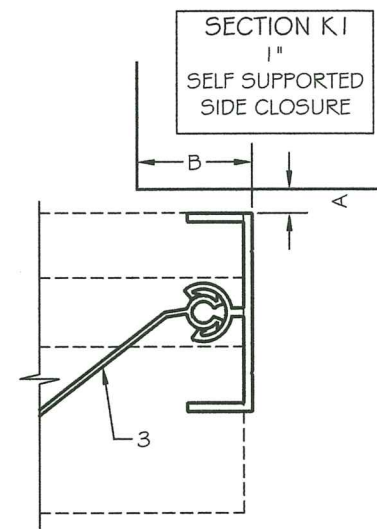
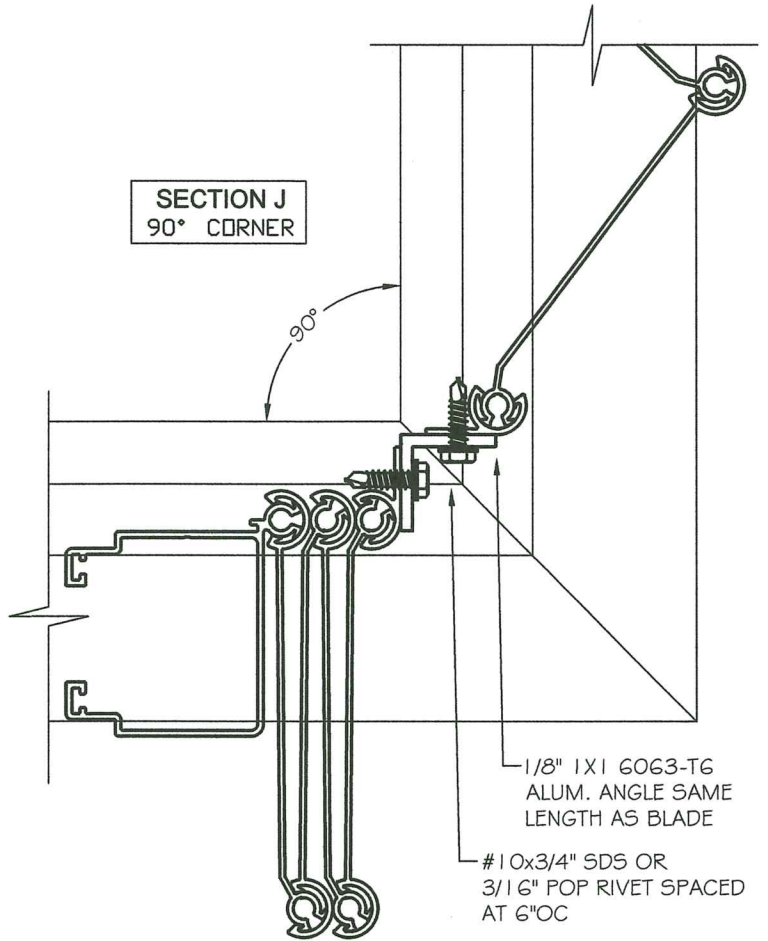


Past & Present Moving the Future
ENGINEERING SERVICES - CA 32459
9715 W. BROWARD BLVD.
PLANTATION, FL 33324
PPMF@AOL.COM
ENGINEER SEAL
PEDRO DE FIGUEIREDO
PE 52609

PRODUCT CATEGORY: SHUTTERS
PRODUCT MATERIAL: ALUMINUM
CROCI ACCORDION SHUTTERS
EXTRUDED ALUMINUM FOLDING SHUTTERS

Manufacturer:
CROCI - North America
11600 ADELMO LANE
FORT MYERS, FL 33966
Tel.: (239) 278-3066 - Fax: (239) 278-5977
EMAIL: INFO@CROCIUSA.COM

SCALE:
NA
DATE:
06/24/2020
DRAWING #
20-061
SHEET
7 OF 12

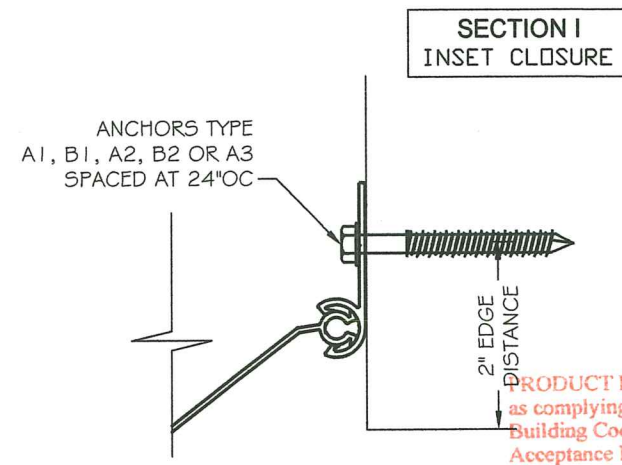
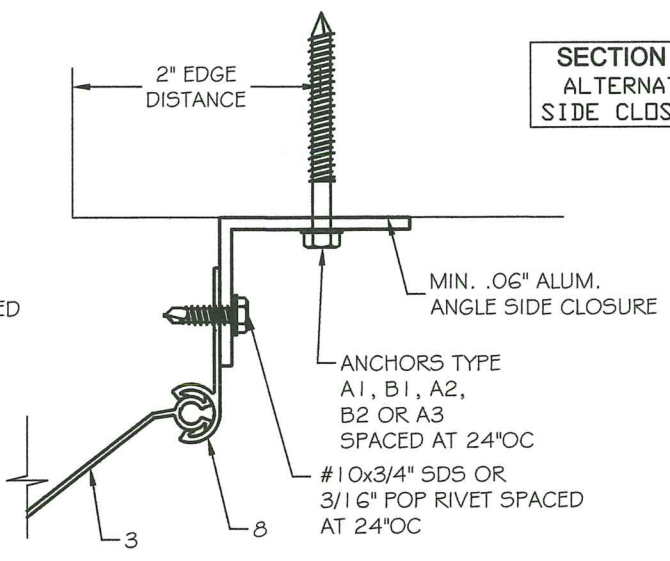
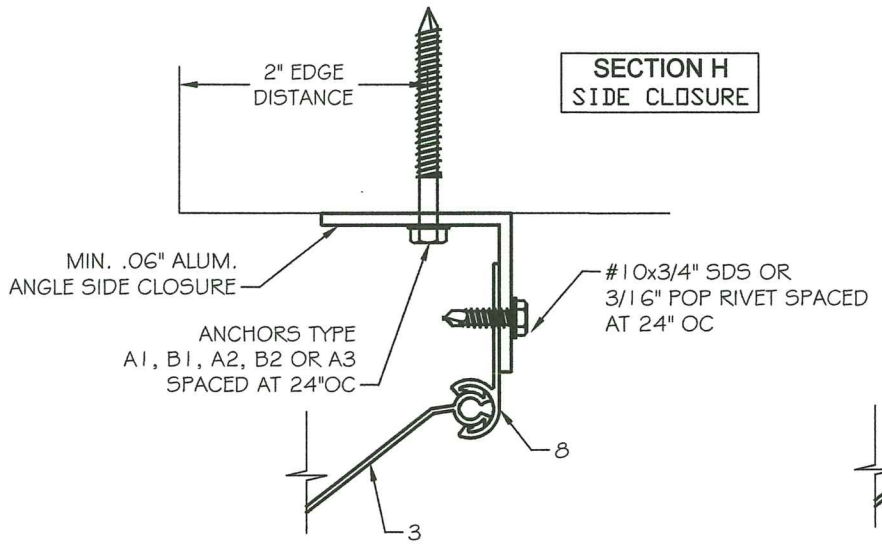


SECTION K - OPENING CLOSURE NOTES:

A: SIDE CLEARANCE
B: SHUTTER OVERLAP

A MUST BE NOT MORE THAN 1/4 INCHES OR
B GREATER THAN 1.5 X A

SECTIONS K1, K2, K3 TO BE USED WITH SHAPES
2.1, 21.1, 21.1A, 21.1B, 25 AND 26



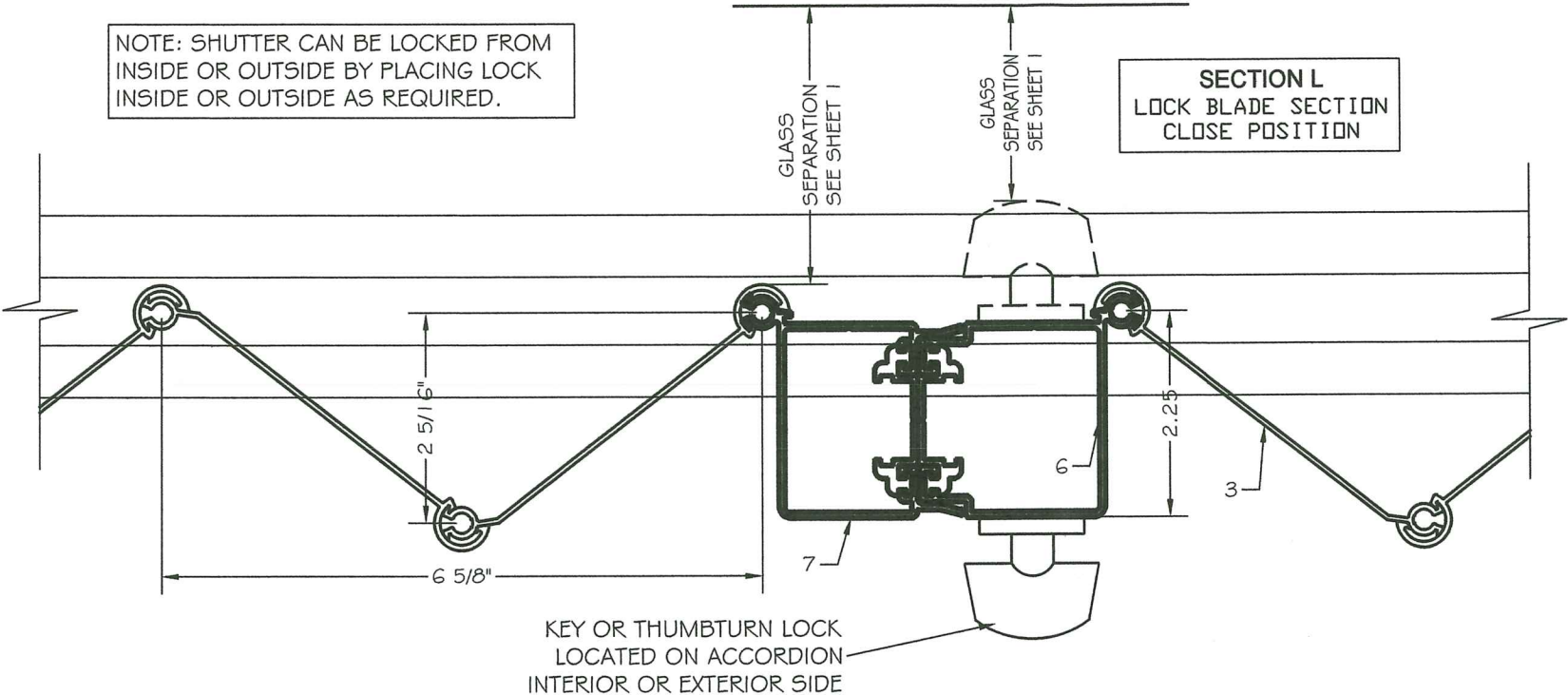
PRODUCT RENEWED
as complying with the Florida
Building Code
Acceptance No. 21-0521.01
Expiration Date 07/06/2021
By *Heidy A. Melar*
Miami Dade Product Control

MIAMI-DADE BCCO:
PRODUCT REVISAL
as complying with the Florida
Building Code
Acceptance No. 20-0720.04
Expiration Date 07/06/2021
By *Heidy A. Melar*
Miami Dade Product Control

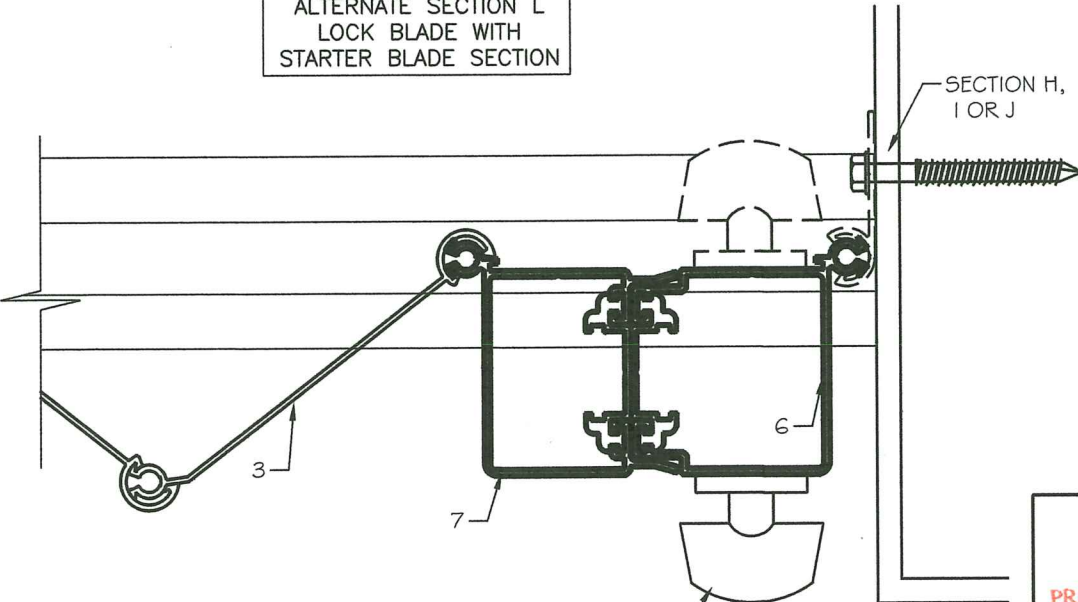
TYPICAL HORIZONTAL SECTIONS
LOCK SECTIONS



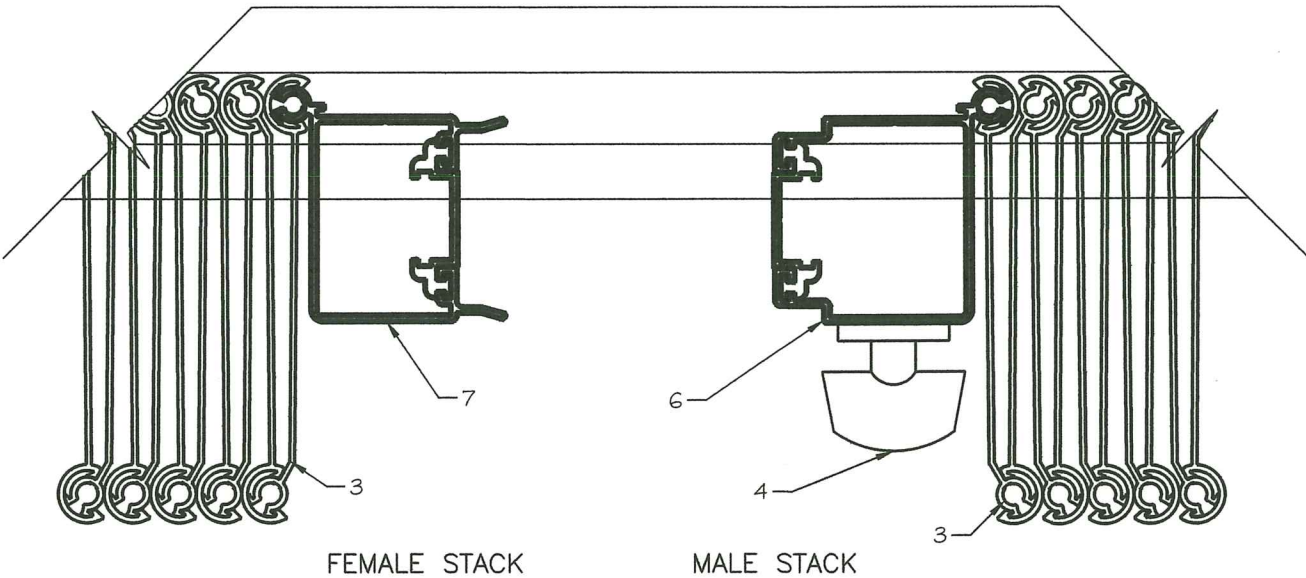
NOTE: SHUTTER CAN BE LOCKED FROM
INSIDE OR OUTSIDE BY PLACING LOCK
INSIDE OR OUTSIDE AS REQUIRED.



ALTERNATE SECTION L
ALTERNATE SECTION L
LOCK BLADE WITH
STARTER BLADE SECTION



SECTION L
LOCK BLADE SECTION
OPEN POSITION



KEY OR THUMBTURN LOCK
LOCATED ON ACCORDION
INTERIOR OR EXTERIOR SIDE

PRODUCT RENEWED
as complying with the Florida
Building Code
Acceptance No. 21-0521.01
Expiration Date 07/06/2025
By *Healy A. Mohr*
Miami Dade Product Control

MIAMI-DADE BCCO:

PRODUCT REVISED
as complying with the Florida
Building Code
Acceptance No. 20-0720.04
Expiration Date 07/06/2021
By *Healy A. Mohr*
Miami Dade Product Control

PRODUCT CATEGORY: SHUTTERS

PRODUCT MATERIAL: ALUMINUM

CROCI ACCORDION SHUTTERS

EXTRUDED ALUMINUM FOLDING SHUTTERS

Manufacturer:

CROCI - North America

11600 ADELMO LANE

FORT MYERS, FL 33966

Tel.: (239) 278-3066 - Fax: (239) 278-5977

EMAIL: INFO@CROCIUSA.COM

ENGINEER SEAL
PEDRO DE FIGUEIREDO
PE 52609

SCALE:

NA

DATE:

06/24/2020

DRAWING #

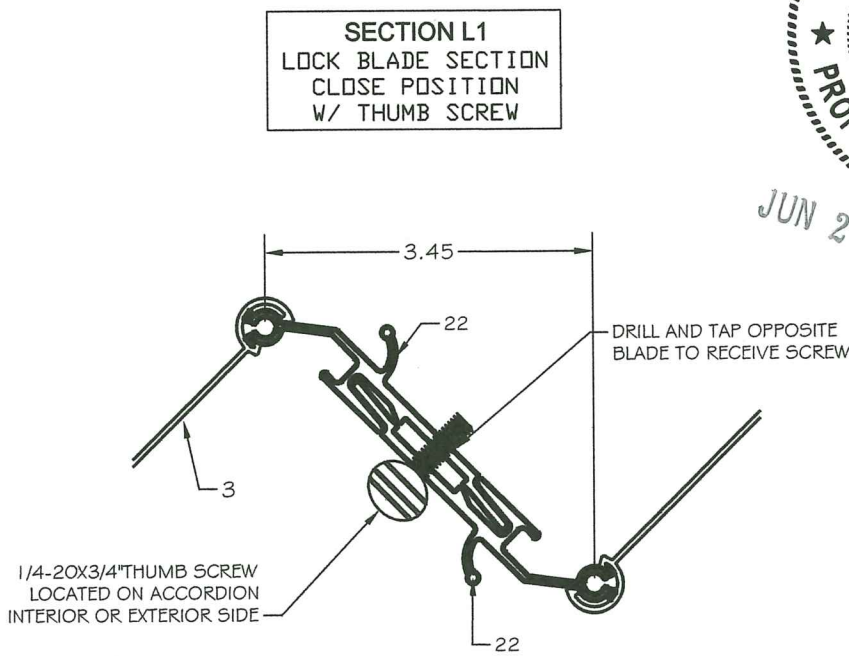
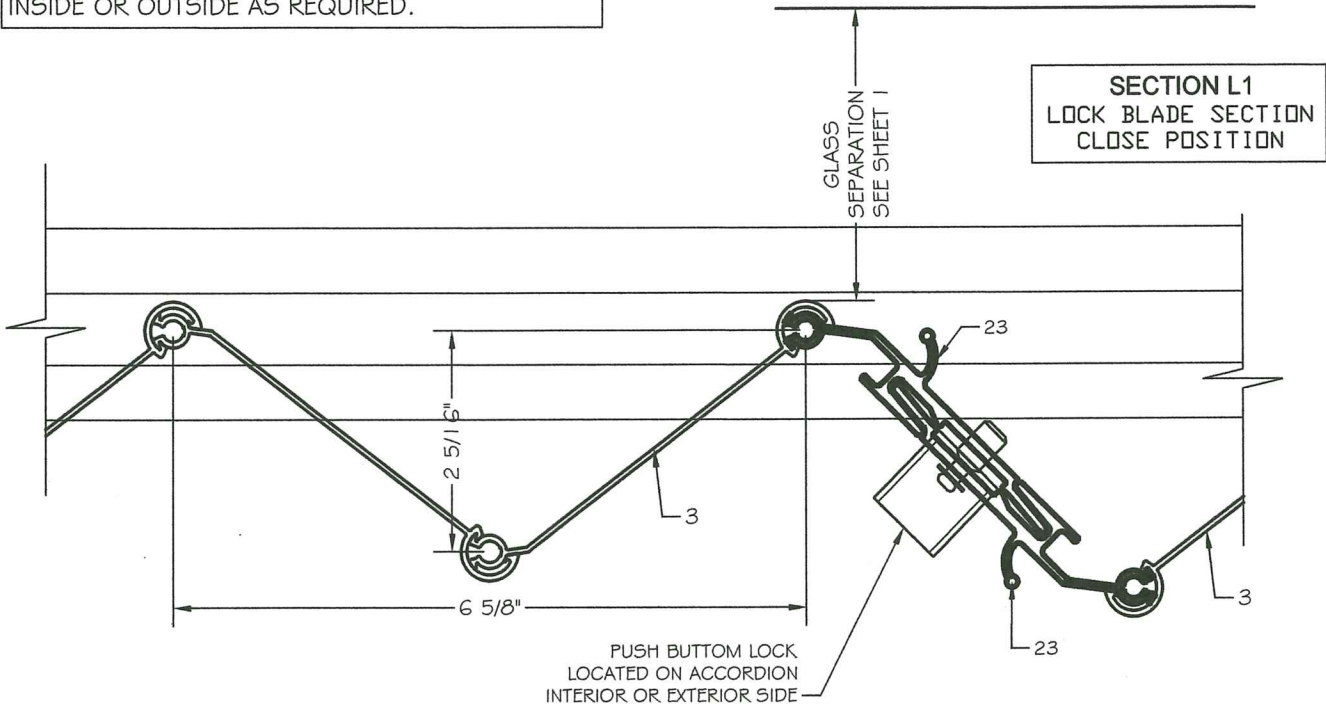
20-061

SHEET

8 OF 12

TYPICAL HORIZONTAL
UNIMATE LOCK SECTIONS

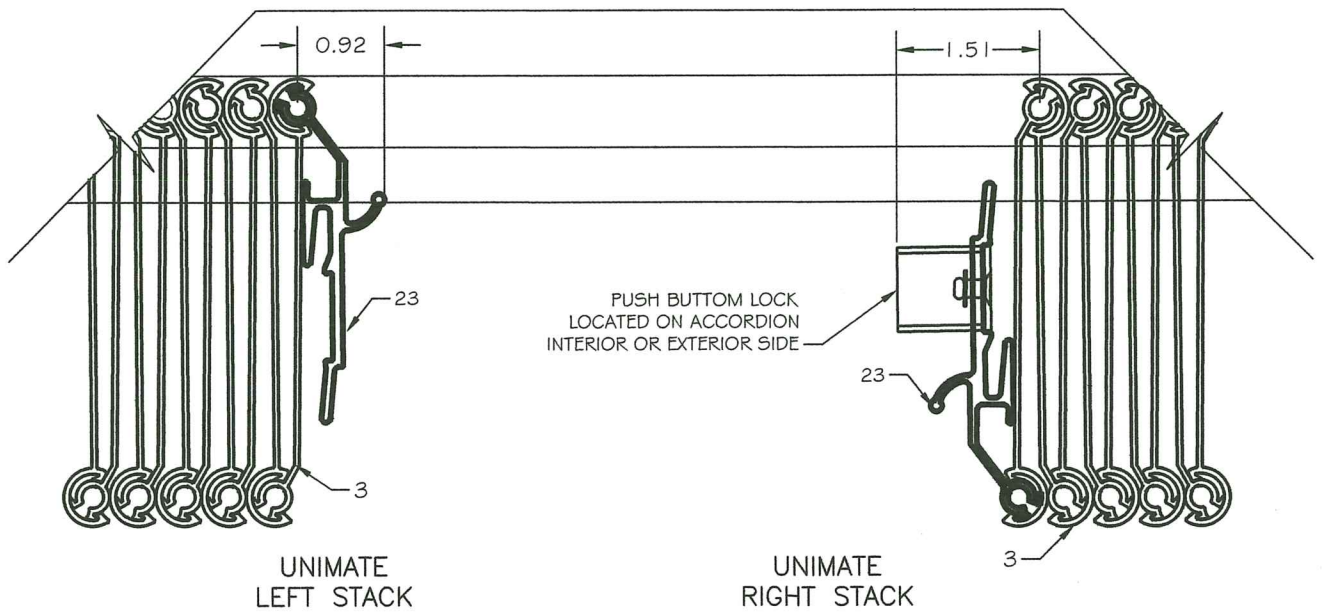
NOTE: SHUTTER CAN BE LOCKED FROM
INSIDE OR OUTSIDE BY PLACING
THE PUSH BUTTON LOCK OR THUMB SCREW
INSIDE OR OUTSIDE AS REQUIRED.



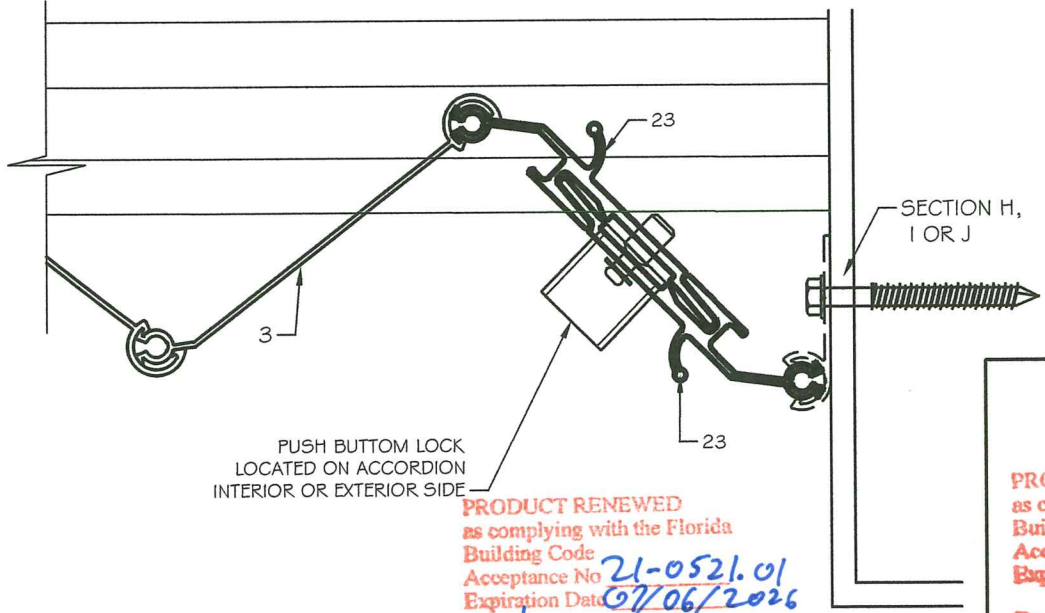
Past & Present Moving the Future
ENGINEERING SERVICES - CA 32459
9715 W. BROWARD BLVD.
PLANTATION, FL 33324
PPMF@AOL.COM
ENGINEER SEAL
PEDRO DE FIGUEIREDO
PE 52609

PRODUCT CATEGORY: SHUTTERS
PRODUCT MATERIAL: ALUMINUM
CROCI ACCORDION SHUTTERS
EXTRUDED ALUMINUM FOLDING SHUTTERS

SECTION L1
LOCK BLADE SECTION
OPEN POSITION



ALTERNATE SECTION L1
UNIMATE LOCK BLADE WITH
STARTER BLADE SECTION



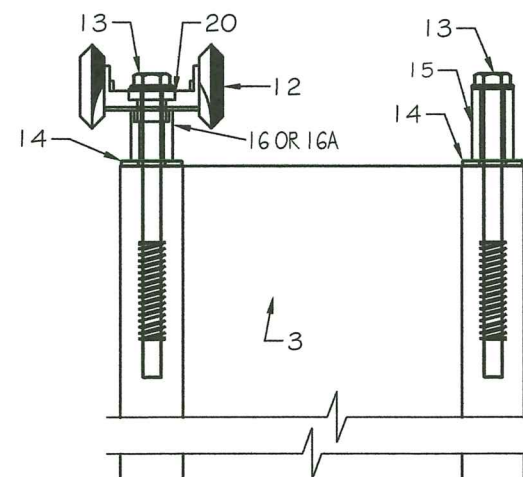
PRODUCT RENEWED
as complying with the Florida
Building Code
Acceptance No. 21-0521.01
Expiration Date 07/06/2026
By *Hely A. Miller*
Miami Dade Product Control

MIAMI-DADE BCCO:

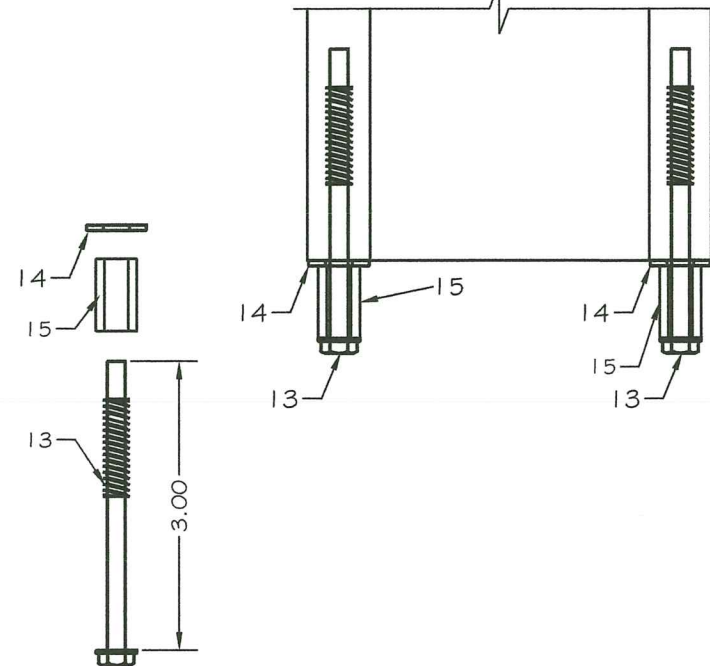
PRODUCT REVISED
as complying with the Florida
Building Code
Acceptance No. 20-0720.07
Expiration Date 07/06/2021
By *Hely A. Miller*
Miami Dade Product Control

Manufacturer:
CROCI - North America
11600 ADELMO LANE
FORT MYERS, FL 33966
Tel.: (239) 278-3066 - Fax: (239) 278-5977
EMAIL: INFO@CROCIUSA.COM

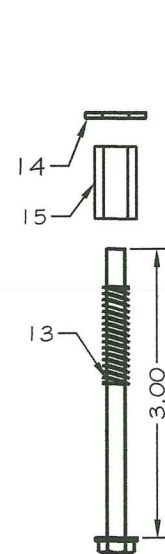
SCALE:
NA
DATE:
06/24/2020
DRAWING #
20-061
SHEET
9 OF 12



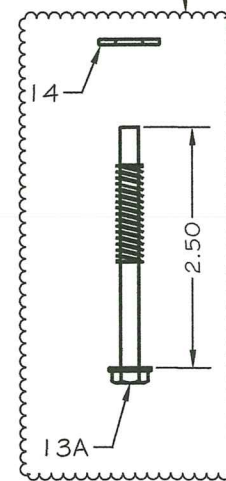
HEADER



SILL



APPLICABLE
FOR X MOUNTS



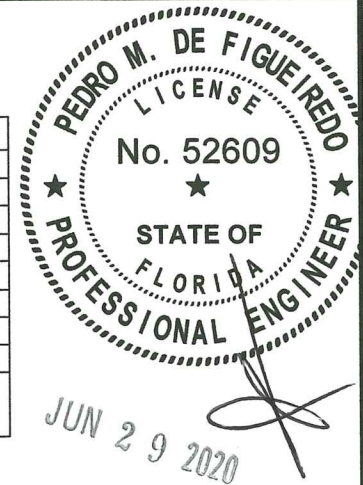
ANCHOR	SUBSTRATE	DESCRIPTION	EMBED.	E.D.	MANUFACTURER
A	3000 PSI CONCRETE	1/4" TAPCON	1-3/4"	2-1/2	ITW
		1/4" ULTRACON	1-3/4"	2-1/2	ELCO
	GF C90 CMU BLOCK	1/4" ULTRACON	2-1/4"	2-1/2	ELCO
B	HOLLOW C90 CMU BLOCK	1/4" TAPCON	1-1/4"	2-1/2	ITW
		1/4" ULTRACON	1-1/4"	2-1/2	ELCO
C	WOOD (SG>=.55)	1/4" TAPCONS/ ULTRACON	1-1/2"	1.0	ITW / ELCO
		#14 WOOD SCREWS	1-1/2"	1.0	GENERIC
D	3000 PSI CONCRETE	1/4-20 SOLID-SET	7/8"	3.0	ALL POINTS
E	.125" ALUMINUM	1/4-14 TAPPING SCREWS	1/8"	3/8	GR5 GENERIC
	.11" 12GA STEEL				

1- ANCHOR TYPE E TO BE INSTALLED IN 6063-T6 ALUMINUM OR ASTM A36 STEEL
2- WOOD MINIMUM SPECIFIC GRAVITY SG=0.55 SOUTHERN PINE OR MIXED MAPLE
3- ANCHORS HAVE BEEN EVALUATED UNDER ALUMINUM DESIGN MANUAL AND AMERICAN WOOD COUNCIL DESIGN MANUAL NDS
4- ANCHORS ARE TO BE 300 SERIES STAINLESS STEEL OR PROTECTED WITH COATING SUFFICIENT TO PROVIDE CORROSION PROTECTION FOR THE INTENDED SERVICE.

ITEM	DESCRIPTION	MATERIAL	MANUFACTURER
1	1" WALL MOUNT TRACK	6063-T6 ALUMINUM	CROCI
1A	2" WALL MOUNT TRACK	6063-T6 ALUMINUM	CROCI
1B	3" WALL MOUNT TRACK	6063-T6 ALUMINUM	CROCI
2	CEILING TRACK	6063-T6 ALUMINUM	CROCI
2.1	CEILING TRACK	6063-T6 ALUMINUM	CROCI
3	ACCORDION BLADE	6063-T6 ALUMINUM	CROCI
4	LOCK		
5	LOCK BLADE INSERT	6063-T6 ALUMINUM	CROCI
6	MALE LOCK BLADE	6063-T6 ALUMINUM	CROCI
7	FEMALE LOCK BLADE	6063-T6 ALUMINUM	CROCI
8	STARTER BLADE	6063-T6 ALUMINUM	CROCI
9	"A" TRACK	6063-T6 ALUMINUM	CROCI
10	ADJUSTABLE TRACK	6063-T6 ALUMINUM	CROCI
10A	ADJUST. CHANNEL	6063-T6 ALUMINUM	CROCI
10B	ADJUST. CHANNEL W/ FLANGE	6063-T6 ALUMINUM	CROCI
11			
12	WHEEL CARRIER	PLATED STEEL/ NYLON	CROCI
13	1/4" X3" SCREW BLADE	410 STAINLESS STEEL	CROCI
13A	1/4" X2.5" SCREW BLADE	410 STAINLESS STEEL	CROCI
14	1/2" SS FLAT WASHER	STAINLESS STEEL	CROCI
15	7/8" x 7/16" BUSHING	NYLON	CROCI
16	1/2" x 1/2" WHEEL BUSHING	NYLON	CROCI
16A	1/2" x 3/4" WHEEL BUSHING	NYLON	CROCI
17	1/8 BUILT-OUT ANGLES	6063-T6 ALUMINUM	CROCI
18	1/4"-2X3 ANGLE	6063-T6 ALUMINUM	CROCI
19	PUSH-BOTTOM LOCK		
20	1/2" x 1/4" WHEEL SPACER	NYLON	CROCI
21	1" WALL MOUNT TRACK	6063-T6 ALUMINUM	CROCI
21.1	1" WALL MOUNT TRACK	6063-T6 ALUMINUM	CROCI
21A	2" WALL MOUNT TRACK	6063-T6 ALUMINUM	CROCI
21.1A	2" WALL MOUNT TRACK	6063-T6 ALUMINUM	CROCI
21B	3" WALL MOUNT TRACK	6063-T6 ALUMINUM	CROCI
21.1B	3" WALL MOUNT TRACK	6063-T6 ALUMINUM	CROCI
22	0.04" OPTIONAL COVER	ALUMINUM BREAK METAL	CROCI
23	UNIMATE LOCK BLADE	6063-T6 ALUMINUM	CROCI
24	1 1/2 X 2 1/4 RECESS TRACK	6063-T6 ALUMINUM	CROCI
24A	DUST COVER	6063-T6 ALUMINUM	CROCI
25	THRESHOLD SILL TRACK	6063-T6 ALUMINUM	CROCI
26	THRESHOLD SILL TRACK	6063-T6 ALUMINUM	CROCI
27	1" END CLOSURE	6063-T6 ALUMINUM	CROCI
28	2" END CLOSURE	6063-T6 ALUMINUM	CROCI
29	3" END CLOSURE	6063-T6 ALUMINUM	CROCI

PRODUCT RENEWED
as complying with the Florida
Building Code
Acceptance No. 21-0521.01
Expiration Date 07/06/2026
By H. G. A. M. W.
Miami-Dade Product Control

PRODUCT REVISED
as complying with the Florida
Building Code
Acceptance No. 20-0720.08
Expiration Date 07/06/2024
By Heidi A. Miller
Miami-Dade Product Control



Past & Present Moving the Future
ENGINEERING SERVICES - CA 32459
9715 W. BROWARD BLVD.
PLANTATION, FL 33324
PPMF@AOL.COM
ENGINEERING
PEDRO T

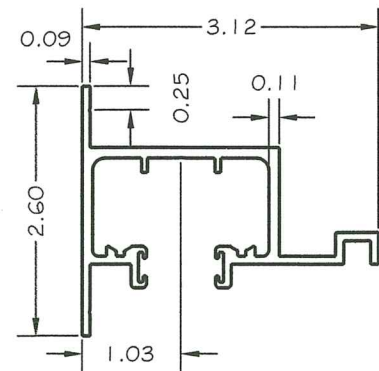


PRODUCT CATEGORY: SHUTTERS
PRODUCT MATERIAL: ALUMINUM
CROCI ACCORDION SHUTTERS
EXTRUDED ALUMINUM FOLDING SHUTTERS

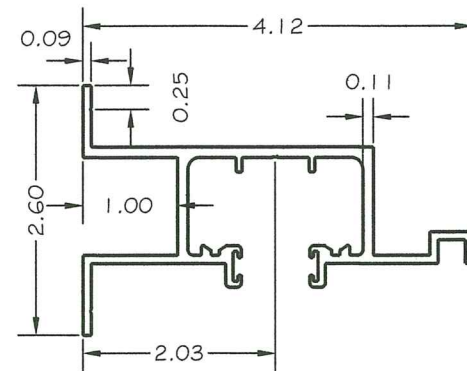
Manufacturer:
CROCI -North America
11600 ADELMO LANE
FORT MYERS, FL 33966
Tel.: (239) 278-3066 • Fax: (239) 278-5977
EMAIL: INFO@CROCIUSA.COM

SCALE: NA
DATE: 06/24/2020
DRAWING # 20-061
SHEET 10 OF 12

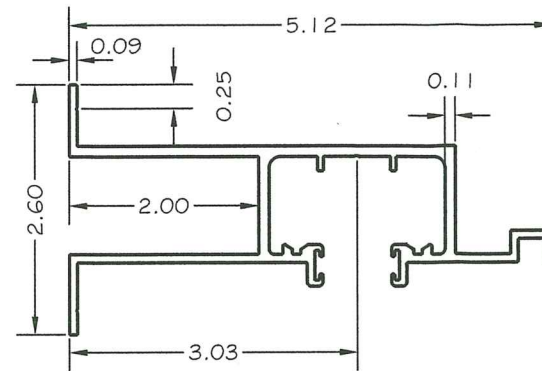
COMPONENTS



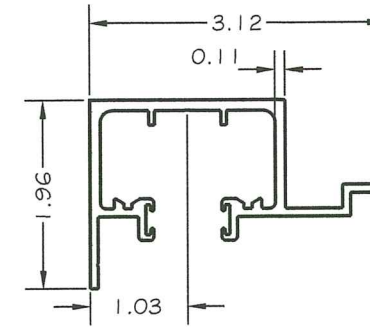
1- 1" WALL MOUNT TRACK



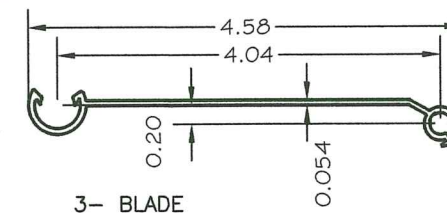
1A- 2" WALL MOUNT TRACK



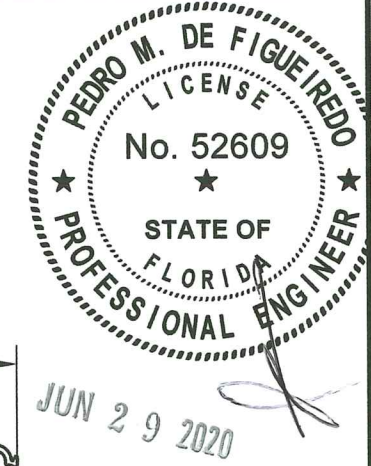
1B- 3" WALL MOUNT TRACK



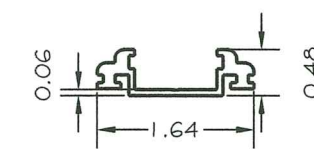
2- CEILING TRACK



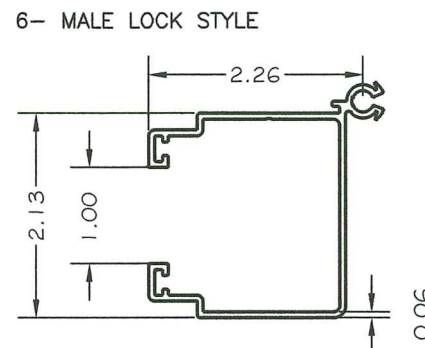
3- BLADE



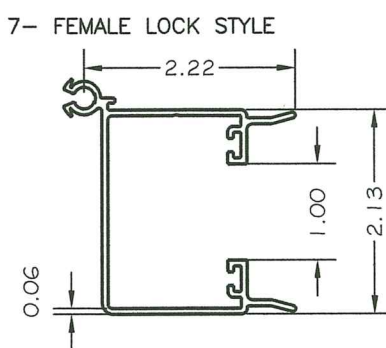
Past & Present Moving the Future
ENGINEERING SERVICES - CA 32459
9715 W. BROWARD BLVD.
PLANTATION, FL 33324
PPMF@AOL.COM
ENGINEER SEAL
PEDRO DE FIGUEIREDO
PE 52609



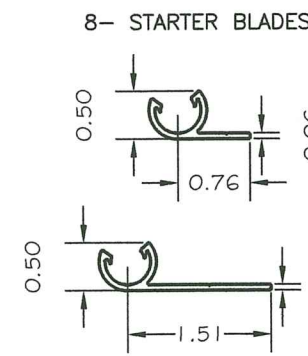
5- LOCK BLADE INSERT



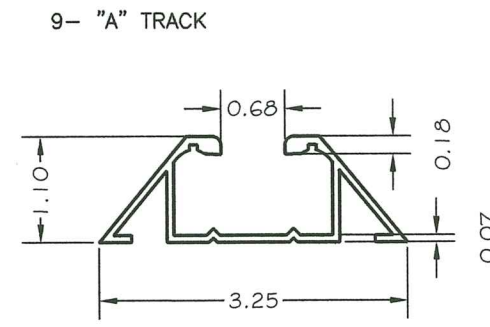
6- MALE LOCK STYLE



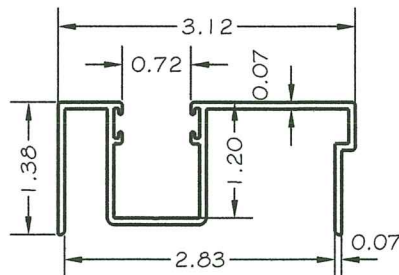
7- FEMALE LOCK STYLE



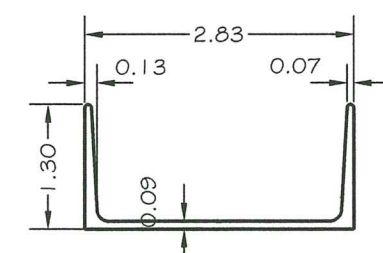
8- STARTER BLADES



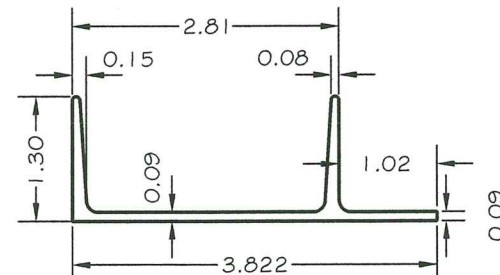
9- "A" TRACK



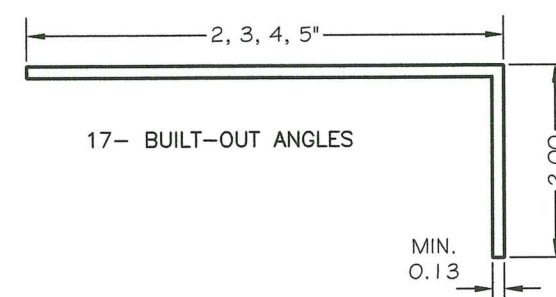
10-ADJUSTABLE SILL TRACK



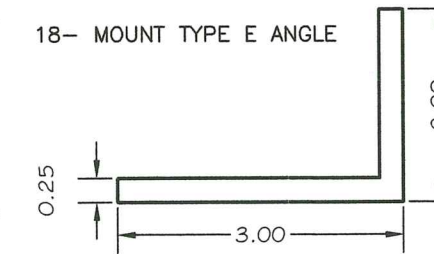
10A- ADJUSTABLE SILL CHANNEL



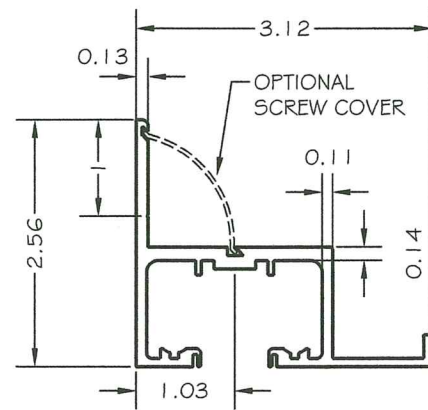
10B- ADJUSTABLE SILL CHANNEL W/ FLANGE



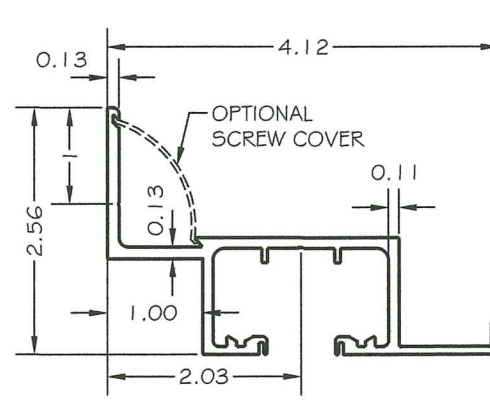
17- BUILT-OUT ANGLES



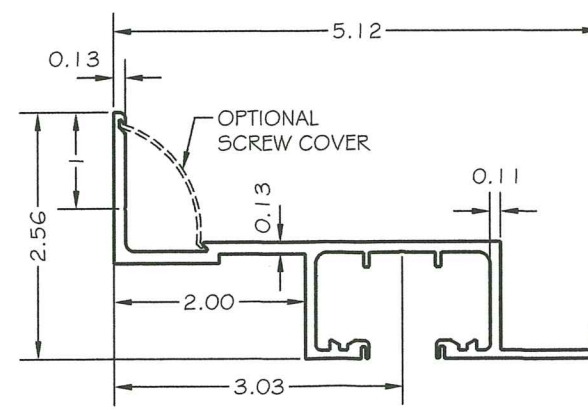
18- MOUNT TYPE E ANGLE



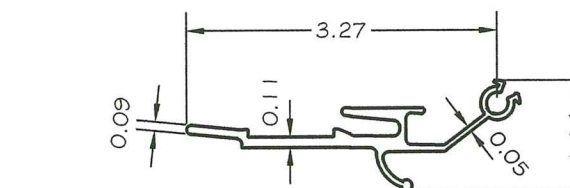
21- 1" WALL MOUNT TRACK



21A- 2" WALL MOUNT TRACK



21B- 3" WALL MOUNT TRACK



23- UNIMATE LOCK STYLE

22- 0.04" BREAK METAL
OPTIONAL SCREW COVER

PRODUCT RENEWED
as complying with the Florida
Building Code
Building Code 21-0521.01
Acceptance No 20-0720.08
Expiration Date 07/06/2021
By Healy Miller
Miami Dade Product Control

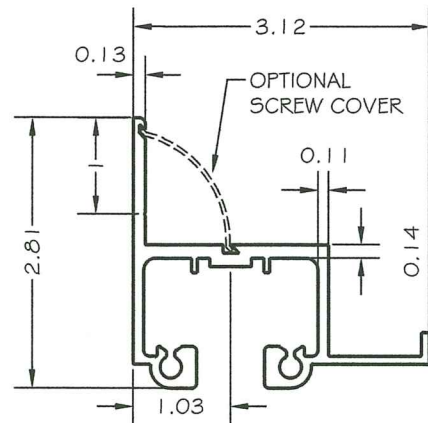
MIAMI-DADE BCCO:
PRODUCT REVISED
as complying with the Florida:
Building Code
Acceptance No 20-0720.08
Expiration Date 07/06/2021
By Healy Miller
Miami Dade Product Control

PRODUCT CATEGORY: SHUTTERS
PRODUCT MATERIAL: ALUMINUM
CROCI ACCORDION SHUTTERS
EXTRUDED ALUMINUM FOLDING SHUTTERS

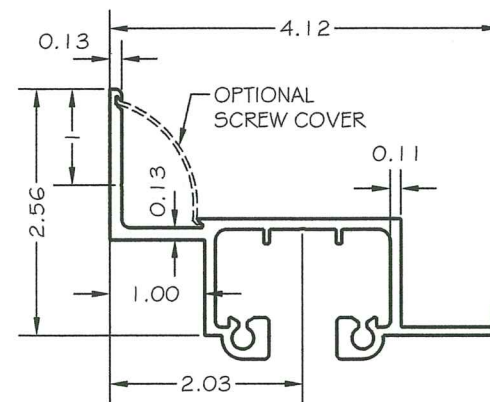
Manufacturer:
CROCI - North America
11600 ADELMO LANE
FORT MYERS, FL 33966
Tel.: (239) 278-3066 - Fax: (239) 278-5977
EMAIL: INFO@CROCIUSA.COM

SCALE:
NA
DATE:
06/24/2020
DRAWING #
20-061
SHEET
11 OF 12

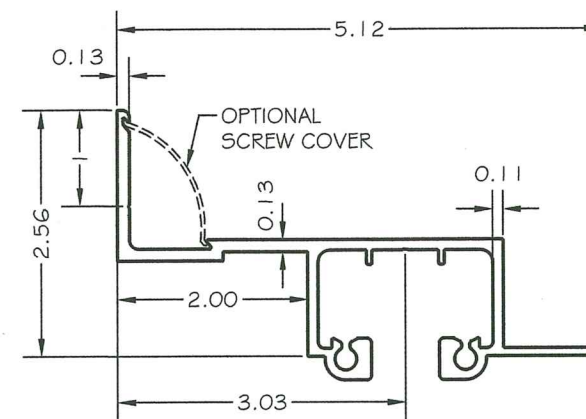
COMPONENTS



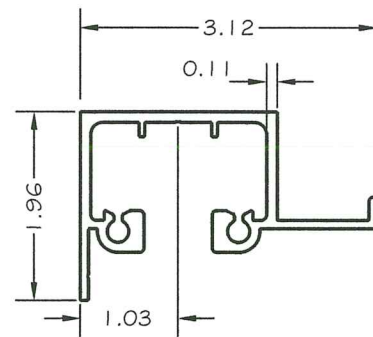
21.1- 1" WALL MOUNT TRACK



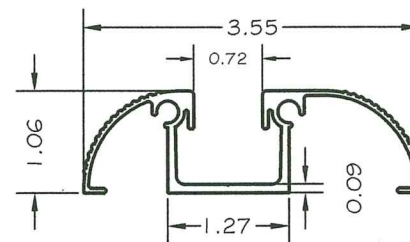
21.1A- 2" WALL MOUNT TRACK



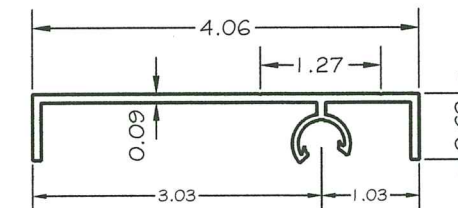
21.1B- 3" WALL MOUNT TRACK



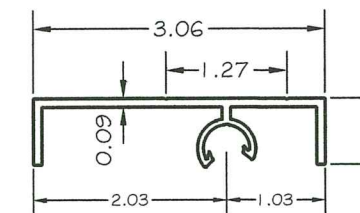
2.1- CEILING TRACK



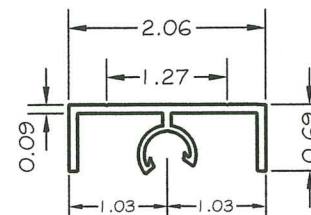
25- THRESHOLD SILL TRACK



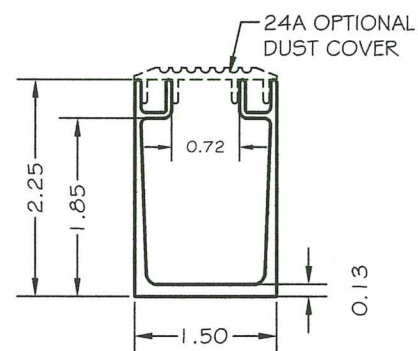
27B- 3" END CLOSURE



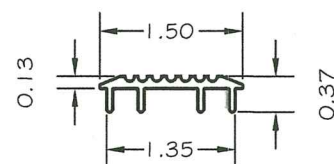
27A- 2" END CLOSURE



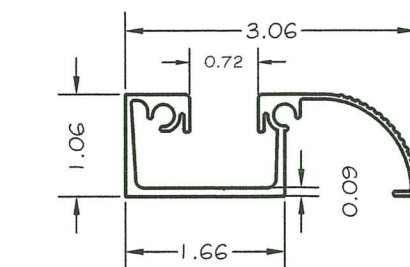
27- 1" END CLOSURE



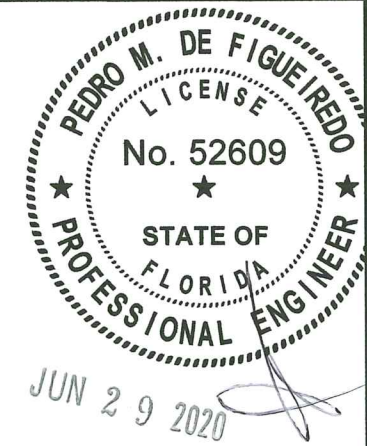
24- RECESS FLOOR TRACK



24A- DUST COVER



26- THRESHOLD SILL TRACK



Past & Present Moving the Future
ENGINEERING SERVICES - CA 32459
9715 W. BROWARD BLVD.
PLANTATION, FL 33324
PPMF@AOL.COM
ENGINEER SEAL
PEDRO DE FIGUEIREDO
PE 52609

PRODUCT CATEGORY: SHUTTERS
PRODUCT MATERIAL: ALUMINUM
CROCI ACCORDION SHUTTERS
EXTRUDED ALUMINUM FOLDING SHUTTERS

Manufacturer:
CROCI - North America
11600 ADELMO LANE
FORT MYERS, FL 33966
Tel.: (239) 278-3066 - Fax: (239) 278-5977
EMAIL: INFO@CROCIUSA.COM

PRODUCT RENEWED
as complying with the Florida
Building Code
Acceptance No. 21-0521.01
Expiration Date 07/06/2026
By He G. A. M. M.
Miami Date Product Control

MIAMI-DADE BCCO:

PRODUCT REVISED
as complying with the Florida
Building Code
Acceptance No. 20-0720.08
Expiration Date 07/06/2021
By He G. A. M. M.
Miami Date Product Control

SCALE:
NA
DATE:
06/24/2020
DRAWING #
20-061
SHEET
12 OF 12