



DEPARTMENT OF REGULATORY AND ECONOMIC RESOURCES (RER)
BOARD AND CODE ADMINISTRATION DIVISION

NOTICE OF ACCEPTANCE (NOA)

MIAMI-DADE COUNTY
PRODUCT CONTROL SECTION

11805 SW 26 Street, Room 208
Miami, Florida 33175-2474
T (786) 315-2590 F (786) 315-2599

www.miamidade.gov/economy

The Airolite Company, LLC
P.O. Box 410
Schofield, WI 54476

SCOPE:

This NOA is being issued under the applicable rules and regulations governing the use of construction materials. The documentation submitted has been reviewed and accepted by Miami-Dade County RER - Product Control Section to be used in Miami Dade County and other areas where allowed by the Authority Having Jurisdiction (AHJ).

This NOA shall not be valid after the expiration date stated below. The Miami-Dade County Product Control Section (In Miami Dade County) and/or the AHJ (in areas other than Miami Dade County) reserve the right to have this product or material tested for quality assurance purposes. If this product or material fails to perform in the accepted manner, the manufacturer will incur the expense of such testing and the AHJ may immediately revoke, modify, or suspend the use of such product or material within their jurisdiction. RER reserves the right to revoke this acceptance, if it is determined by Miami-Dade County Product Control Section that this product or material fails to meet the requirements of the applicable building code.

This product is approved as described herein and has been designed to comply with the Florida Building Code, including the High Velocity Hurricane Zone.

DESCRIPTION: Model K605MD Aluminum Louver

APPROVAL DOCUMENT: Drawing No. **K605MD**, titled "K605MD Louver", sheets 1 through 16 of 16, dated 04/27/2009, prepared by The Airolite Company, LLC, signed and sealed by Chander P. Nangia, P.E. on 01/21/2019, bearing the Miami-Dade County Product Control revision stamp with the Notice of Acceptance number and expiration date by the Miami-Dade County Product Control Section.

MISSILE IMPACT RATING: Large and Small Missile Impact Resistant

LABELING: Each unit shall bear a permanent label with the manufacturer's name or logo, city, state, model/series, and following statement: "Miami-Dade County Product Control Approved", unless otherwise noted herein.

RENEWAL of this NOA shall be considered after a renewal application has been filed and there has been no change in the applicable building code negatively affecting the performance of this product.

TERMINATION of this NOA will occur after the expiration date or if there has been a revision or change in the materials, use, and/or manufacture of the product or process. Misuse of this NOA as an endorsement of any product, for sales, advertising or any other purposes shall automatically terminate this NOA. Failure to comply with any section of this NOA shall be cause for termination and removal of NOA.

ADVERTISEMENT: The NOA number preceded by the words Miami-Dade County, Florida, and followed by the expiration date may be displayed in advertising literature. If any portion of the NOA is displayed, then it shall be done in its entirety.

INSPECTION: A copy of this entire NOA shall be provided to the user by the manufacturer or its distributors and shall be available for inspection at the job site at the request of the Building Official.

This NOA **revises** NOA # **19-0205.07** and consists of this page 1 and evidence pages E-1, E-2 and E-3, as well as approval document mentioned above.

The submitted documentation was reviewed by **Ishaq I. Chanda, P.E.**



Ishaq I. Chanda

NOA No. 21-0526.14
Expiration Date: August 5, 2024
Approval Date: August 12, 2021
Page 1

NOTICE OF ACCEPTANCE: EVIDENCE SUBMITTED

1. Evidence submitted under previous NOA's
- A. **DRAWINGS “Submitted under NOA # 09-0519.15”**
 1. Drawing No. **K605MD**, titled “K605MD Louver”, sheets 1 through 16 of 16, dated 04/27/2009, prepared by The Airolite Company, LLC, signed and sealed by Chander P. Nangia, P.E.
- B. **TESTS “Submitted under NOA # 09-0519.15”**
 1. Test report on 1) Uniform Static Air Pressure Test per FBC, TAS 202-94
2) Large Missile Impact Test per FBC, TAS 201-94,
3) Cyclic Wind Pressure Test per FBC, TAS 203-94,
along with marked-up drawings and installation diagram of Model ESS-502D fixed aluminum louvers, prepared by Architectural Testing, Inc., Test Report No. **89882.01-602-18**, dated 04/30/2009, signed and sealed by Joseph A. Reed, P.E.
- C. **CALCULATIONS “Submitted under NOA # 09-0519.15”**
 1. Structural load calculations, prepared by Greenheck Fan Corporation, dated 04/14/2009, signed and sealed by Chander P. Nangia, P.E.
- D. **QUALITY ASSURANCE**
 1. Miami-Dade Department of Regulatory and Economic Resources (RER)
- E. **MATERIAL CERTIFICATIONS**
 1. None.
- F. **STATEMENTS “Submitted under NOA # 16-0201.17”**
 1. Statement letter of code compliance to the 5th edition (2014) FBC issued by Chander P. Nangia, P.E., dated 01/11/2016, signed and sealed by Chander P. Nangia, P.E.

“Submitted under NOA # 14-0624.17”
 2. Statement letter of code compliance to 2010 FBC issued by Chander P. Nangia, P.E., dated 06/19/2014, signed and sealed by Chander P. Nangia, P.E.

“Submitted under NOA # 09-0519.15”
 3. No financial interest letter issued by Chander P. Nangia, P.E., dated 04/27/2009, signed and sealed by Chander P. Nangia, P.E.

Ishaq I. Chanda

Ishaq I. Chanda, P.E.
Product Control Unit Supervisor
NOA No. 21-0526.14
Expiration Date: August 5, 2024
Approval Date: August 12, 2021

NOTICE OF ACCEPTANCE: EVIDENCE SUBMITTED

2. Evidence submitted under previous approval

A. DRAWINGS

1. Drawing No. **K605MD**, titled “K605MD Louver”, sheets 1 through 16 of 16, dated 04/27/2009, prepared by The Airolite Company, LLC, signed and sealed by Chander P. Nangia, P.E. on 01/21/2019.

B. TESTS

1. None.

C. CALCULATIONS

1. None.

D. QUALITY ASSURANCE

1. Miami-Dade Department of Regulatory and Economic Resources (RER)

E. MATERIAL CERTIFICATIONS

1. None.

F. STATEMENTS

1. Statement letter of code compliance to the 6th edition (2017) FBC and of no financial interest issued by Chander P. Nangia, P.E., dated 01/21/2019, signed and sealed by Chander P. Nangia, P.E.

Ishaq I. Chanda

Ishaq I. Chanda, P.E.
Product Control Unit Supervisor
NOA No. 21-0526.14
Expiration Date: August 5, 2024
Approval Date: August 12, 2021

NOTICE OF ACCEPTANCE: EVIDENCE SUBMITTED

3. New evidence submitted

A. DRAWINGS

1. Drawing No. **K605MD**, titled “K605MD Louver”, sheets 1 through 16 of 16, dated 04/27/2009, prepared by The Airolite Company, LLC, signed and sealed by Chander P. Nangia, P.E. on 01/21/2019.

B. TESTS

1. None.

C. CALCULATIONS

1. None.

D. QUALITY ASSURANCE

1. Miami-Dade Department of Regulatory and Economic Resources (RER)

E. MATERIAL CERTIFICATIONS

1. None.

F. STATEMENTS

1. Statement letter of code compliance to FBC 2020 (7th Edition) and of no financial interest issued by Chander P. Nangia, P.E., dated May 13, 2021, signed and sealed by Chander P. Nangia, P.E.

G. OTHER

1. This NOA revises NOA # **19-0205.07**, expiring **08/05/24**.

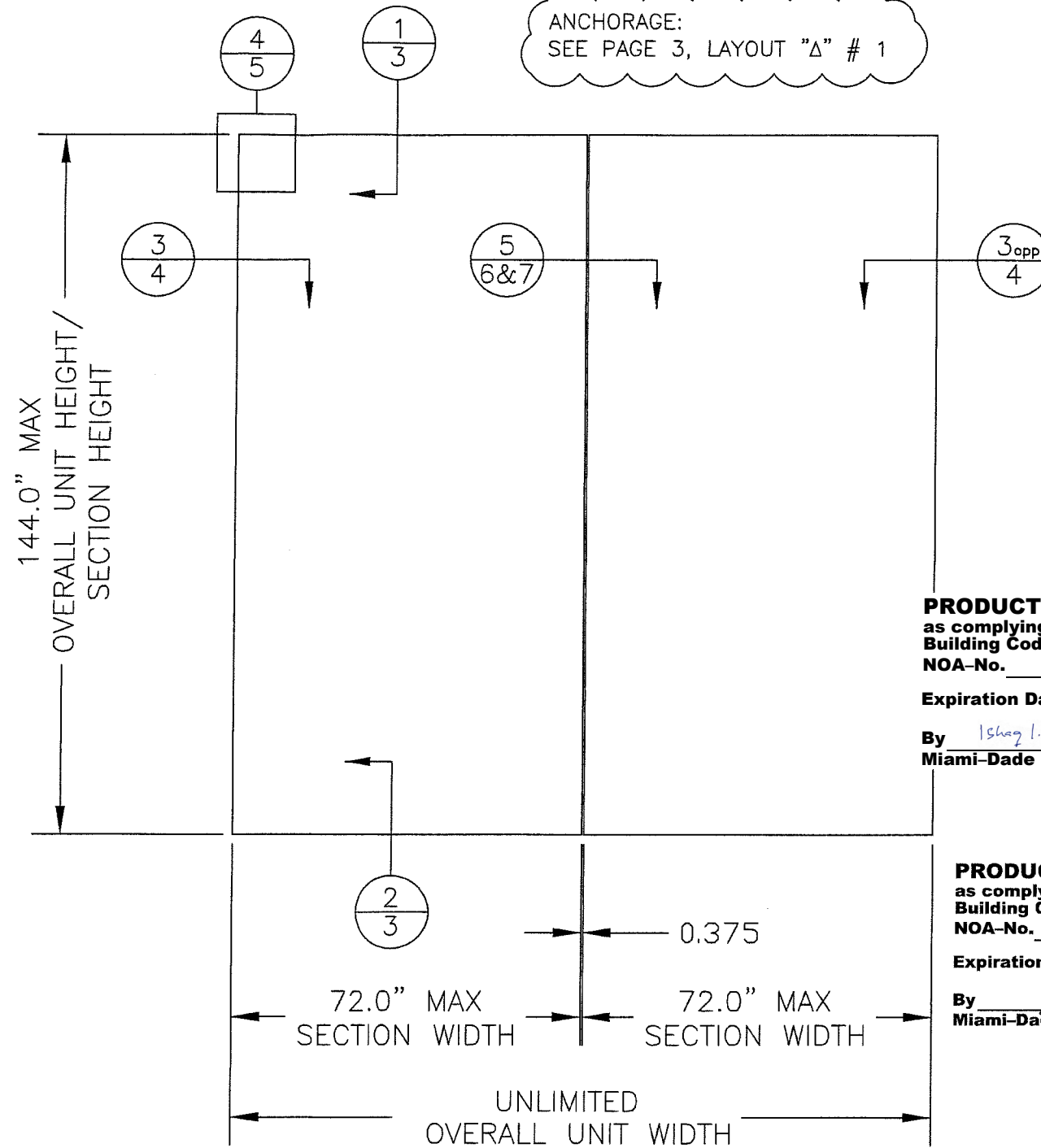
Ishaq I. Chanda

Ishaq I. Chanda, P.E.
Product Control Unit Supervisor
NOA No. 21-0526.14
Expiration Date: August 5, 2024
Approval Date: August 12, 2021

DETAIL #
PAGE #

DETAIL CALLOUT (TYPICAL)

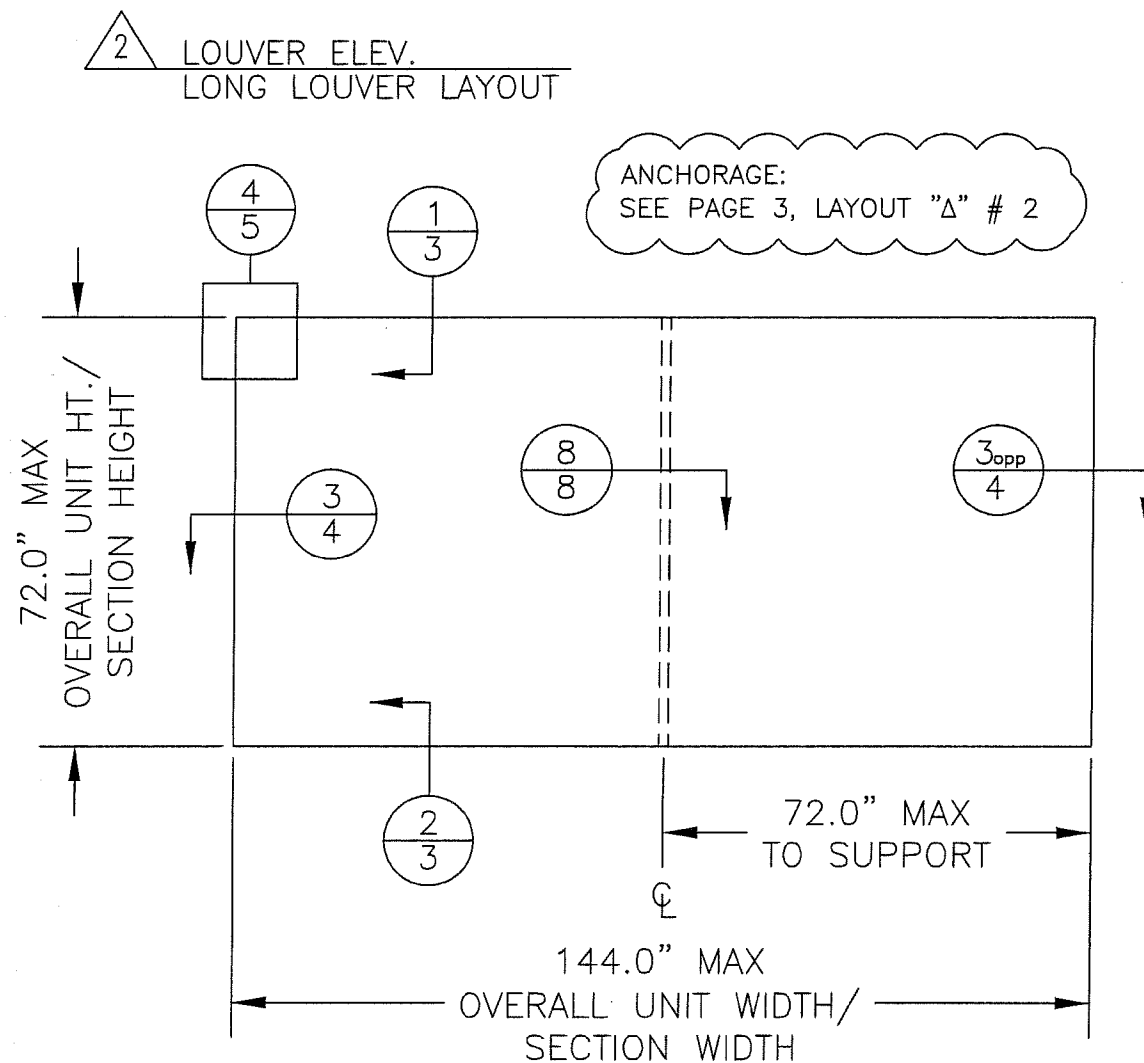
1 LOUVER ELEV.
SHORT LOUVER LAYOUT



PRODUCT REVISED
as complying with the Florida
Building Code
NOA-No. 21-0526.14
Expiration Date 08/05/2024
By Ishag I. Chande
Miami-Dade Product Control

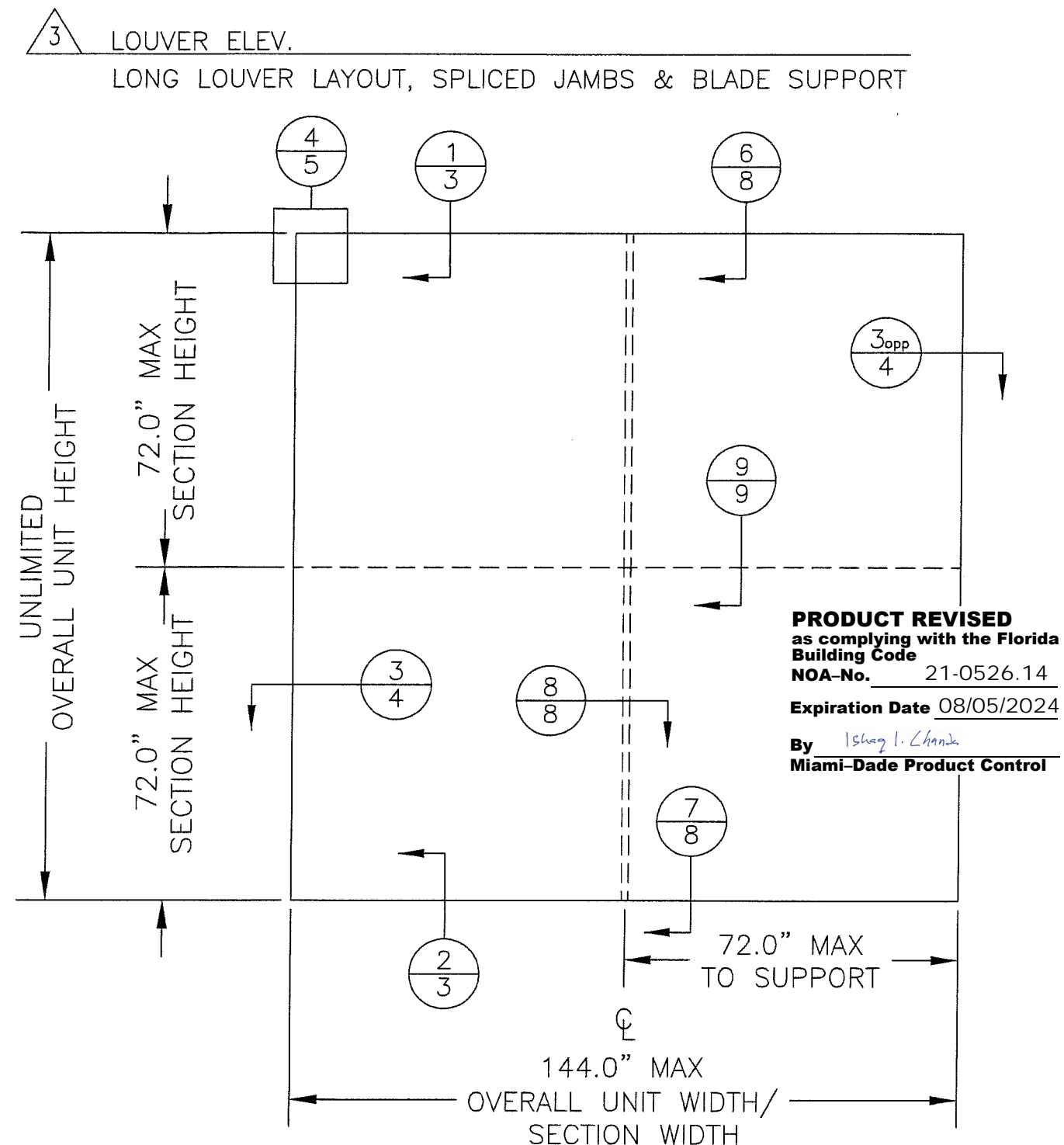
PRODUCT RENEWED
as complying with the Florida
Building Code
NOA-No. 19-0205.07
Expiration Date 08/05/2024
By [Signature]
Miami-Dade Product Control

| | | | | | |
|---|-----------------|--|------------------------|----------------------|---------------------------|
| DRAWN BY M STEELE | DATE 4/27/09 | AIROLITE The look that works™ SCHOFIELD, WISCONSIN 54476 715-359-6171 | TITLE K605MD LOUVER | SHEET NO. 1 OF 16 | CAD DRAWING NO. K605MD |
| SCALE 3/8":1' | | | | | |
| SHORT LOUVER LAYOUT ELEVATION CONFIGURATION | | | | | |
| <div>STRUCTURAL ONLY CHANDER P. NANGIA LICENSE No. 21938 STATE OF FLORIDA PROFESSIONAL ENGINEER JAN 21 2019</div> <div>CHANDER P. NANGIA 7423 HOLLOW RIDGE DR. HOUSTON, TX 77095 FLORIDA PE # 21938</div> | | | | | |



NOTE: BLADE SUPPORT REQUIRED ONLY IF
SECTION WIDTH IS >72".

REV: 01, 1/11/19, ADDED ANCHORAGE NOTES

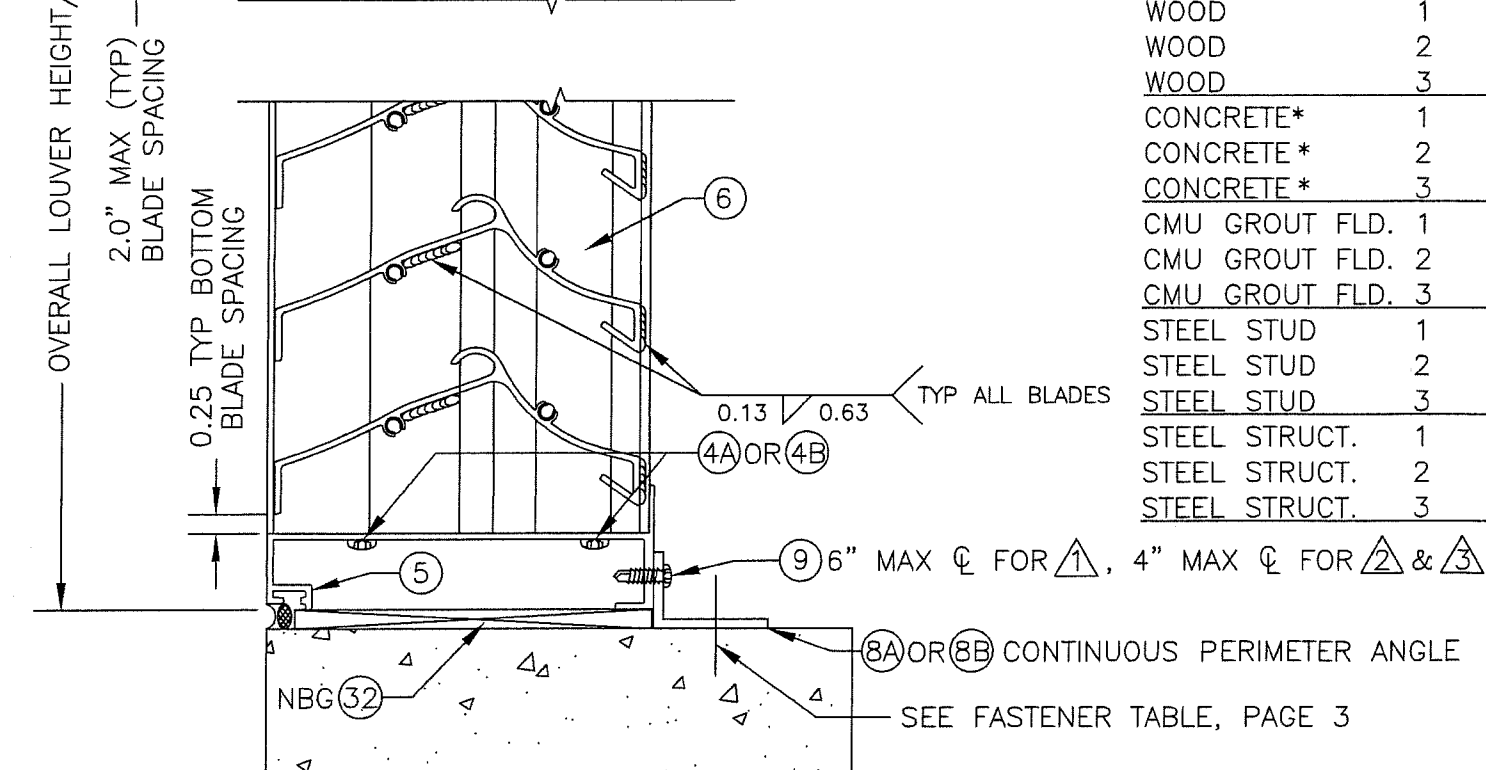
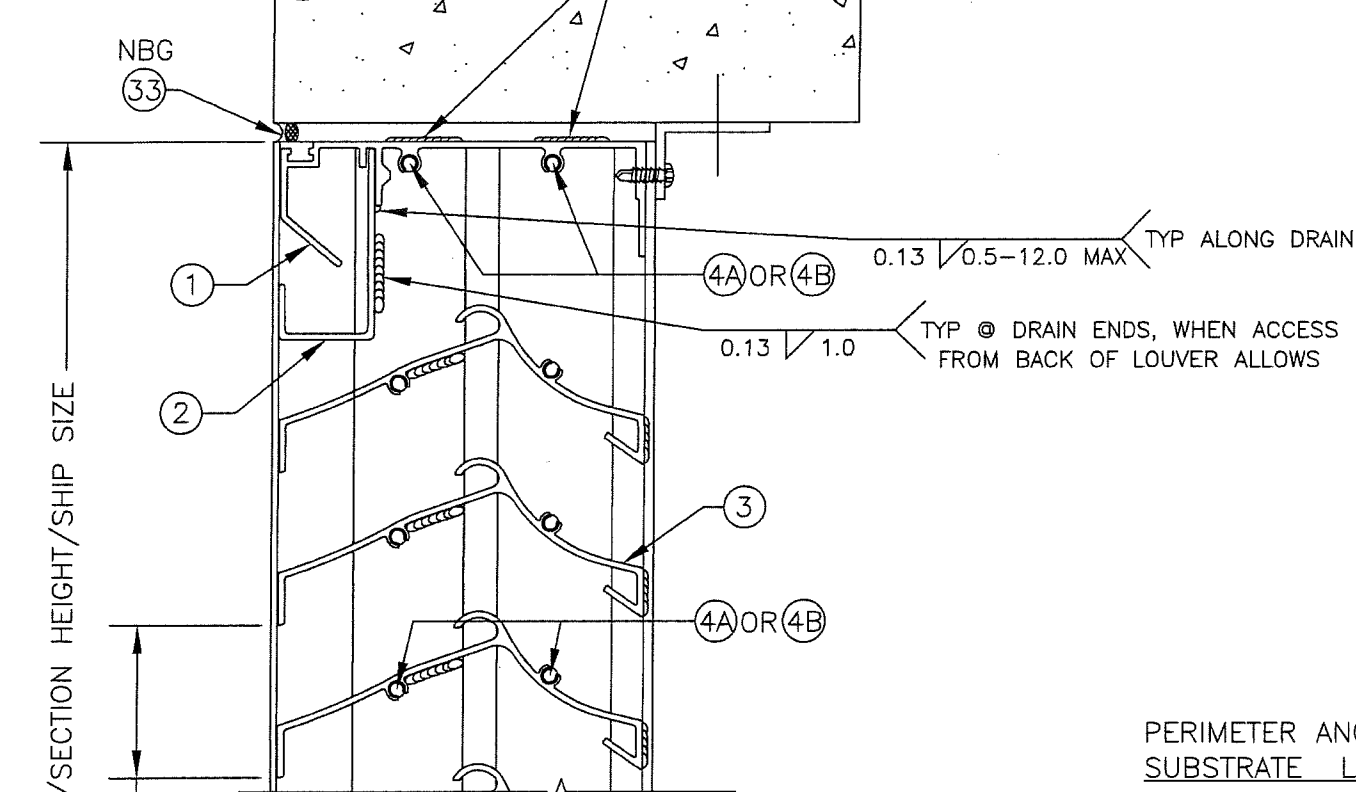


NOTE: BLADE SUPPORT REQUIRED ONLY IF
SECTION WIDTH IS >72".

ANCHORAGE:
SEE PAGE 3, LAYOUT "Δ" # 3

| | | |
|---|----------------------|----------------------|
| AIROLITE The look that works™ SCHOFIELD, WISCONSIN 54476 715-359-6171 | DRAWN BY M STEELE | DATE 4/27/09 |
| | SCALE 3/8"=1' | SHEET NO. 2 OF 16 |
| TITLE K605MD LOUVER | | |
| CAD DRAWING NO. K605MD | | |
| ELEVATION CONFIGURATIONS LONG LOUVER LAYOUT | | |
| CHANDER P. NANGIA LICENSE No. 21938 STATE OF FLORIDA PROFESSIONAL ENGINEER JAN 21 2019 | | |
| PRODUCT RENEWED as complying with the Florida Building Code NOA-No. 19-0205.07 Expiration Date 08/05/2024 By Miami-Dade Product Control | | |

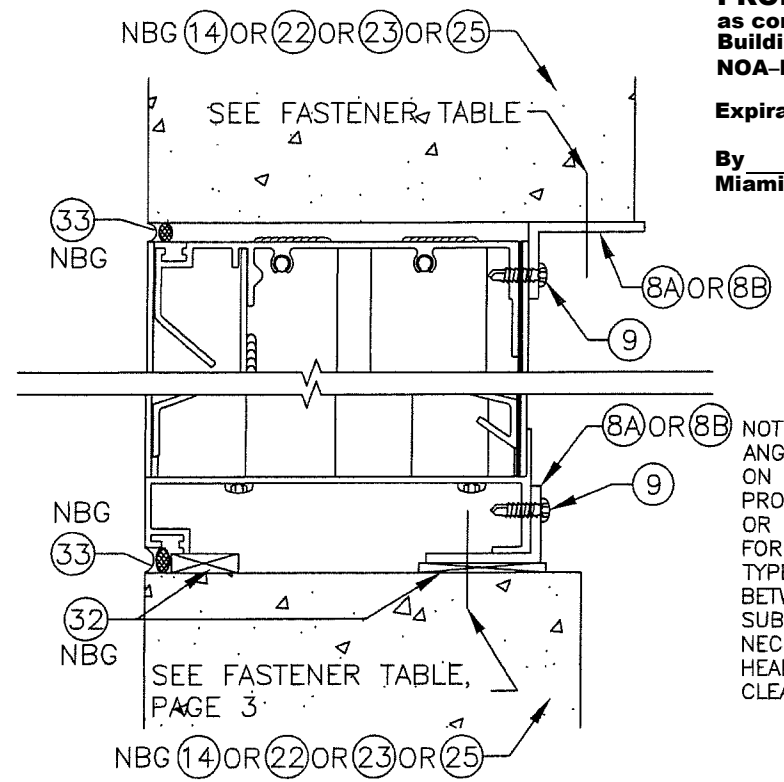
1 HEAD DETAIL
3 SCALE: 1:3



2 SILL DETAIL
3 SCALE: 1:3

NOTE FOR CMU: BLOCK IS GROUT FILLED AROUND OPENING. (MIN 2000PSI)

OPTIONAL CONTINUOUS ANGLE CONFIGURATION, FOR THIS PAGE ONLY



PRODUCT REVISED
as complying with the Florida Building Code
NOA-No. 21-0526.14
Expiration Date 08/05/2024
By *Isaac I. Chan*
Miami-Dade Product Control

NOTE: CONTINUOUS PERIMETER ANGLE MAY BE POSITIONED ON JAMBS WITH ANGLE LEG PROJECTED TOWARD EXTERIOR OR INTERIOR OF WALL. VALID FOR ALL BUILDING SUBSTRATE TYPES. ADDITIONAL SPACING BETWEEN LOUVER AND SUBSTRATE MAY BE NECESSARY DUE TO FASTENER HEAD-LOUVER INSTALLATION CLEARANCE.

| PERIMETER ANGLE SUBSTRATE FASTENER TABLE (FASTENERS NOT BY MANUFACTURER): | | | | | | |
|---|---|---------|----|-----------------------|------------------------|--|
| SUBSTRATE LAYOUT "Δ" MIN FASTENER SPACING & MIN EDGE DISTANCE | | | | | | |
| WOOD | 1 | G=0.55 | 27 | 9" O.C. MAX, 1.5" MIN | WOOD EDGE DISTANCE | |
| WOOD | 2 | G=0.55 | 27 | 4" O.C. MAX, 1.5" MIN | WOOD EDGE DISTANCE | |
| WOOD | 3 | G=0.55 | 27 | 4" O.C. MAX, 1.5" MIN | WOOD EDGE DISTANCE | |
| CONCRETE* | 1 | 2000PSI | 21 | 6" O.C. MAX, 1.5" MIN | CONCRETE EDGE DISTANCE | |
| CONCRETE* | 2 | 2000PSI | 21 | 3" O.C. MAX, 1.5" MIN | CONCRETE EDGE DISTANCE | |
| CONCRETE* | 3 | 2000PSI | 21 | 3" O.C. MAX, 1.5" MIN | CONCRETE EDGE DISTANCE | |
| CMU GROUT FLD. | 1 | 2000PSI | 21 | 6" O.C. MAX, 1.5" MIN | CMU EDGE DISTANCE | |
| CMU GROUT FLD. | 2 | 2000PSI | 21 | 3" O.C. MAX, 1.5" MIN | CMU EDGE DISTANCE | |
| CMU GROUT FLD. | 3 | 2000PSI | 21 | 3" O.C. MAX, 1.5" MIN | CMU EDGE DISTANCE | |
| STEEL STUD | 1 | 14GA | 24 | 6" O.C. MAX, 0.5" MIN | STEEL EDGE DISTANCE | |
| STEEL STUD | 2 | 14GA | 24 | 3" O.C. MAX, 0.5" MIN | STEEL EDGE DISTANCE | |
| STEEL STUD | 3 | 14GA | 24 | 3" O.C. MAX, 0.5" MIN | STEEL EDGE DISTANCE | |
| STEEL STRUCT. | 1 | 0.375 | 24 | 6" O.C. MAX, 0.5" MIN | STEEL EDGE DISTANCE | |
| STEEL STRUCT. | 2 | 0.375 | 24 | 3" O.C. MAX, 0.5" MIN | STEEL EDGE DISTANCE | |
| STEEL STRUCT. | 3 | 0.375 | 24 | 3" O.C. MAX, 0.5" MIN | STEEL EDGE DISTANCE | |

REFERENCES OF Δ, Δ, & Δ, RELATE TO THE ELEVATION LAYOUT TYPE AS NOTED ON PAGES 1 & 2.

* PRODUCT HAS NOT BEEN EVALUATED FOR INSTALLATION INTO CRACKED CONCRETE SUBSTRATE.

DATE

4/27/09

DRAWN BY

M STEELE

SCALE

1:2.5

SHEET NO.

3 OF 16

CAD DRAWING NO.

K605MD

AIROLITE
The look that works™
SCHOFIELD, WISCONSIN 54476
715-359-6171

TITLE

K605MD LOUVER

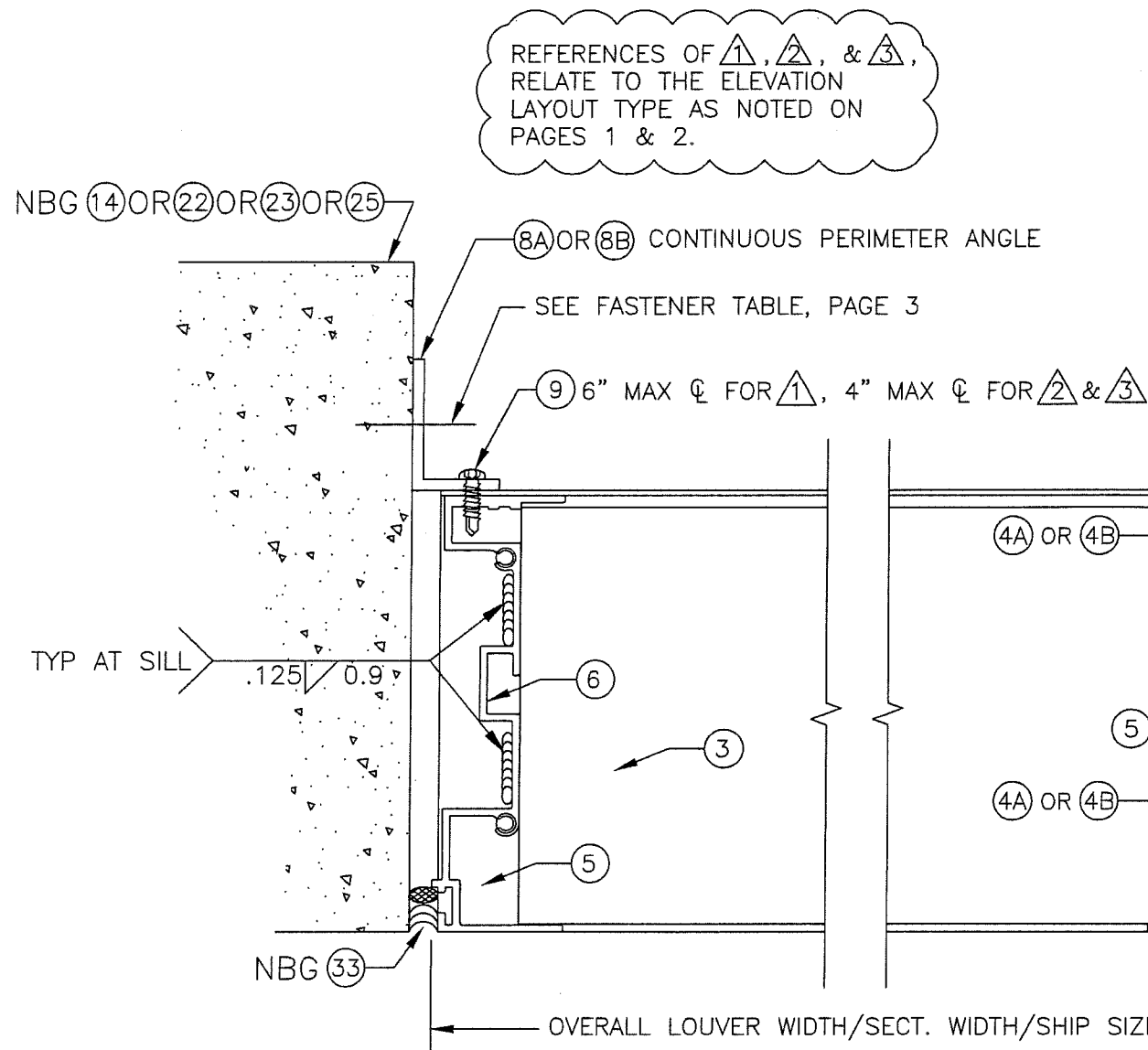
DETAILS - HEAD/SILL

CHANDER P. NANGIA
LICENSE
No. 21938
STATE OF FLORIDA
PROFESSIONAL ENGINEER

JAN 21 2019

PRODUCT RENEWED
as complying with the Florida Building Code
NOA-No. 19-0205.07
Expiration Date 08/05/2024
By *[Signature]*
Miami-Dade Product Control

REV: 01, 1/11/19, ADDED "Δ" CLARIFICATION, ITEM # 8A/8B SPELLING UPDATE, ADDED CRACKED CONCRETE NOTE



REFERENCES OF Δ , \triangle , & \triangle ,
RELATE TO THE ELEVATION
LAYOUT TYPE AS NOTED ON
PAGES 1 & 2.

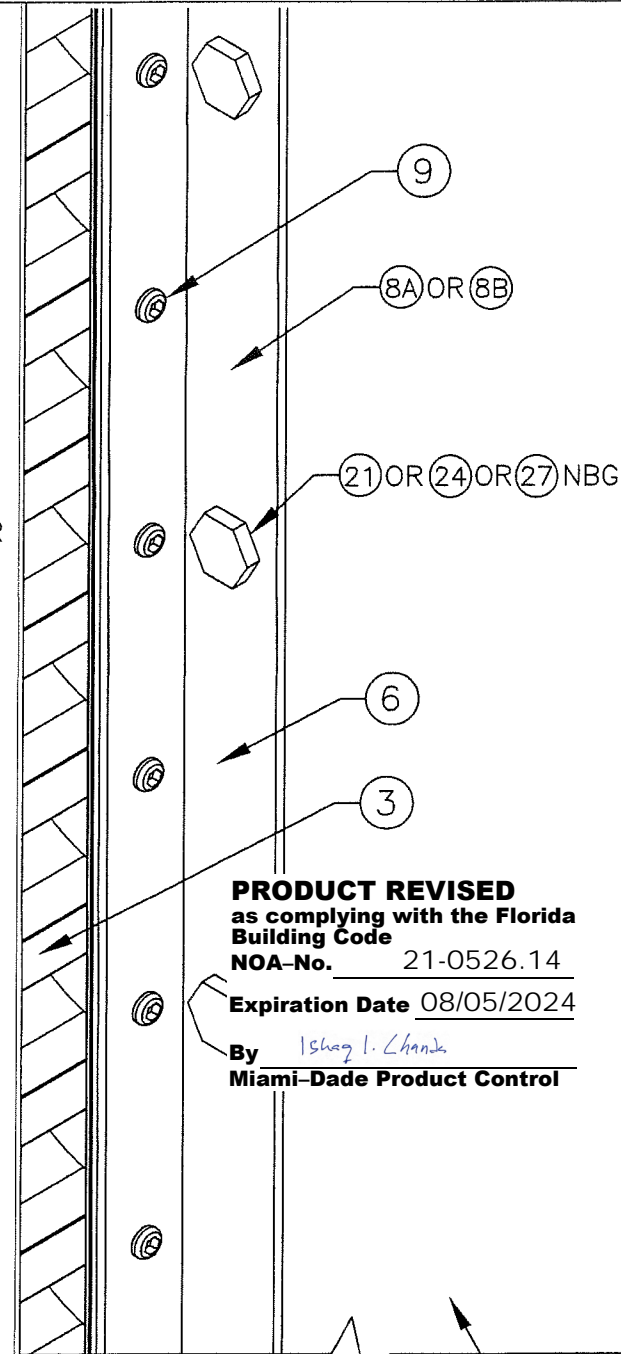
NOTE: CONTINUOUS PERIMETER
ANGLE MAY BE POSITIONED
ON JAMBS WITH ANGLE LEG
PROJECTED TOWARD EXTERIOR
OR INTERIOR OF WALL. VALID
FOR ALL BUILDING SUBSTRATE
TYPES. ADDITIONAL SPACING
BETWEEN LOUVER AND
SUBSTRATE MAY BE
NECESSARY DUE TO FASTENER
HEAD-LOUVER INSTALLATION
CLEARANCE.

SEE FASTENER TABLE,
PAGE 3

NOTE FOR CMU:
BLOCK IS GROUT FILLED
AROUND OPENING. (MIN
2000PSI)

3 JAMB DETAIL
4 SCALE: 1:2
SEE "3 ISO" FOR ISOMETRIC DETAIL




3opp JAMB DETAIL
4 SCALE: 1:2






PRODUCT REVISED
as complying with the Florida
Building Code
NOA-No. 21-0526.14
Expiration Date 08/05/2024
By Ishag I. Chande
Miami-Dade Product Control

3 ISO JAMB DETAIL
4 SCALE: 1:2

| | | |
|---|----------------------|---------------------------|
| AIROLITE The look that works™ SCHOFIELD, WISCONSIN 54476 715-359-6171 | DRAWN BY M STEELE | DATE 4/27/09 |
| | SCALE 1:2 | SHEET NO. 4 OF 16 |
| TITLE K605MD LOUVER | | CAD DRAWING NO. K605MD |
| <div style="text-align: center;"> CHANDER P. NANGIA LICENSE No. 21938 STATE OF FLORIDA PROFESSIONAL ENGINEER </div> | | |
| PRODUCT RENEWED as complying with the Florida Building Code NOA-No. 19-0205.07 Expiration Date 08/05/2024 By <u>[Signature]</u> Miami-Dade Product Control | | |

REFERENCES OF , , & ,
RELATE TO THE ELEVATION
LAYOUT TYPE AS NOTED ON
PAGES 1 & 2.

TRIANGLE  = MILLION UNIT
 TRIANGLE  = LONG BLADE UNIT
 TRIANGLE  = SPLICED UNIT

1
2 & 3

4
5

CONTINUOUS ANGLE, INTERIOR VIEW
SCALE: 1:2

CONTINUOUS PERIMETER ANGLE

VARIES, BUT NEVER MORE THAN MIN FASTENER SPACING

CONTINUOUS PERIMETER ANGLE

VARIES, BUT NEVER MORE THAN MIN FASTENER SPACING

SEE FASTENER TABLE, PAGE 3

SEE FASTENER TABLE, PAGE 3

SEE FASTENER TABLE PAGE 3

6.0 C/L SPACING FOR TRIANGLE 1
4.0 C/L SPACING FOR TRIANGLES 2 & 3

PRODUCT REVISED
as complying with the Florida
Building Code
NOA-No. 21-0526.14

PRODUCT REVISED
as complying with the Florida
Building Code
NOA-No. 21-0526.14
Expiration Date 08/05/2024
By Ishaq I. Chande
Miami-Dade Product Control

CONTINUOUS ANGLE
FASTENER DISTANCES

4

0.81

9

SEE FASTENER TABLE, PAGE 3

8A OR 8B

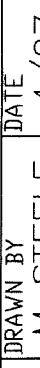
LOUVER
ATTACHMENT LEG


1.0 MIN

BUILDING CONDITION
ATTACHMENT LEG

(BUILDING CONDITION NOT SHOWN)


REV: 01, 1/11/19, ADDED "Δ" CLARIFICATION NOTE, ADDED "Δ" AROUND NINE LAYOUT NUMBERS, SPELLING UPDATE IN TITLE BLOCK

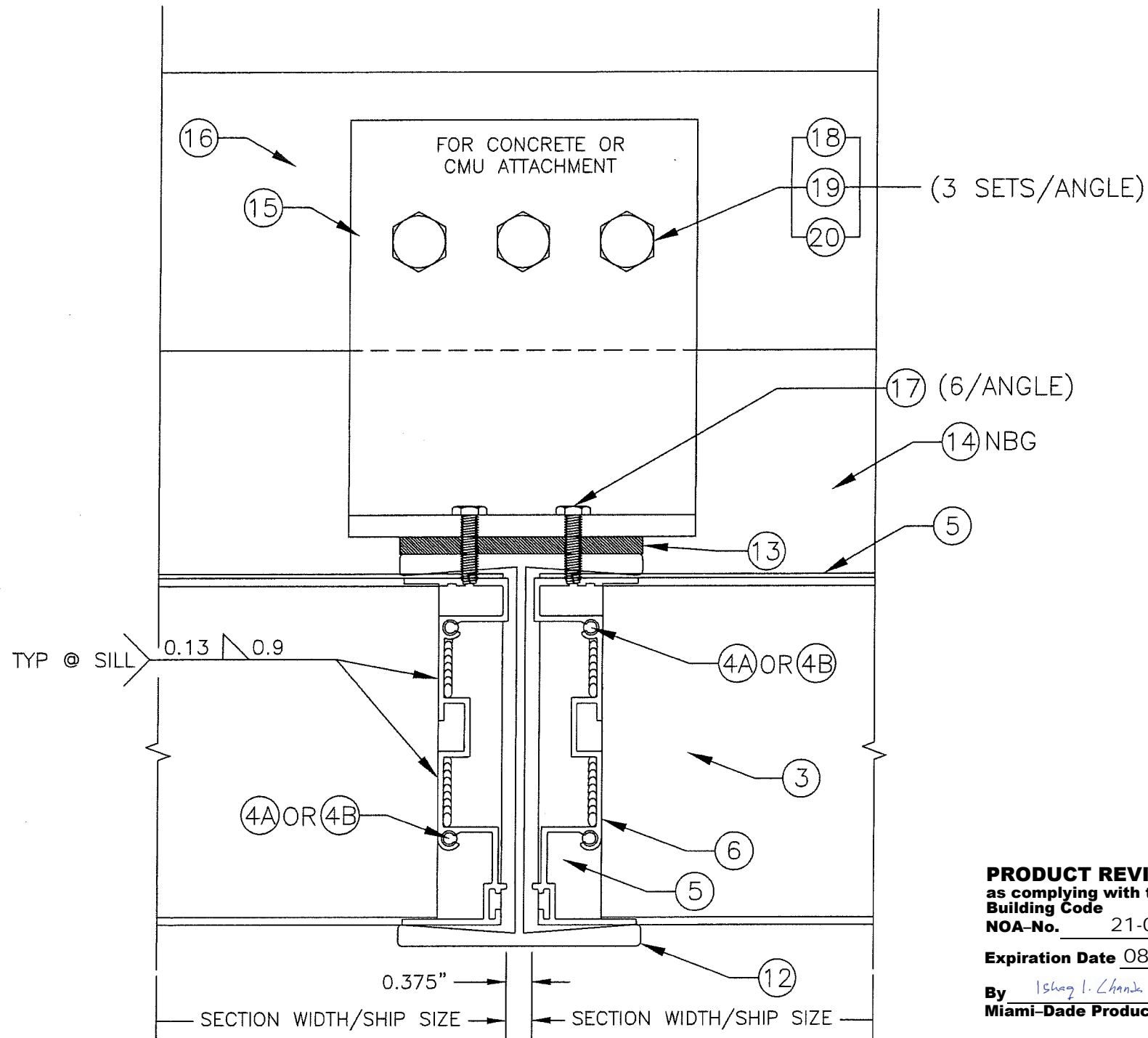
| | | |
|---|----------------------|-----------------|
|  <p>The look that works.[™] SCHOFIELD, WISCONSIN 54476 713-359-6171</p> | DRAWN BY M STEELE | DATE 4/27/09 |
| | SCALE 1:2 | |
| | SHEET NO. 5 OF 16 | |
| TITLE K605MD LOUVER | | |
| CAD DRAWING NO. K605MD | | |
| DETAILS - CONTINUOUS ANGLE | | |



JAN 21 2019

PRODUCT RENEWED
 as complying with the Florida
 Building Code
 NOA-No. **19-0205.07**
 Expiration Date **08/05/2024**

By 
 Miami-Date Product Control



5A
6

"I" MULLION DETAIL

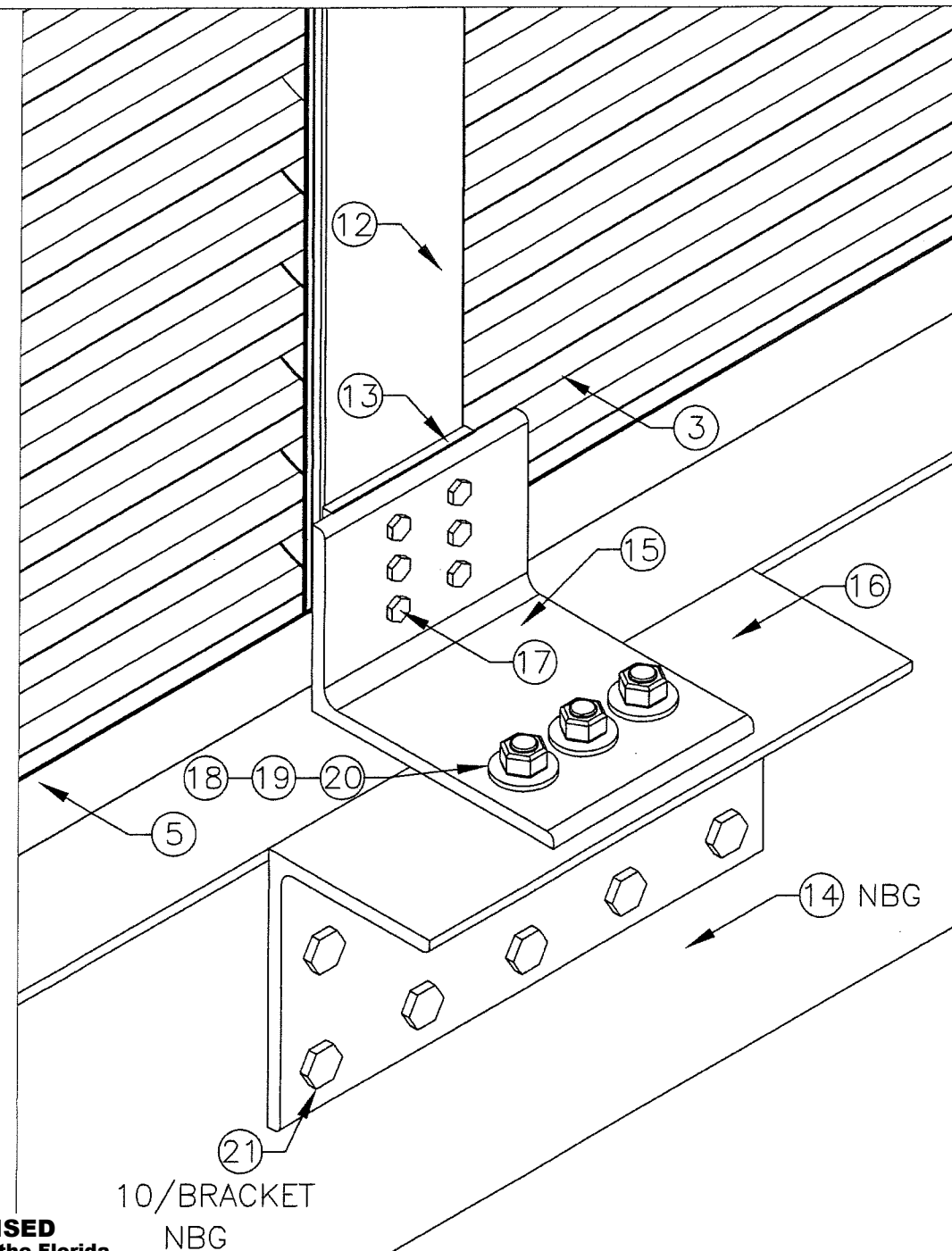
SCALE: 1:2

SEE "5 ISO" FOR ISOMETRIC DETAIL

NOTE: CONTINUOUS PERIMETER
ANGLE NOT SHOWN ON THIS PAGE.

NBG=NOT BY MANUFACTURER

PRODUCT REVISED
as complying with the Florida
Building Code
NOA-No. 21-0526.14
Expiration Date 08/05/2024
By Ishag I. Chande
Miami-Dade Product Control



5A ISO
6

ISOMETRIC (MULLION DETAIL)
(TYPICAL @HEAD AND SILL)

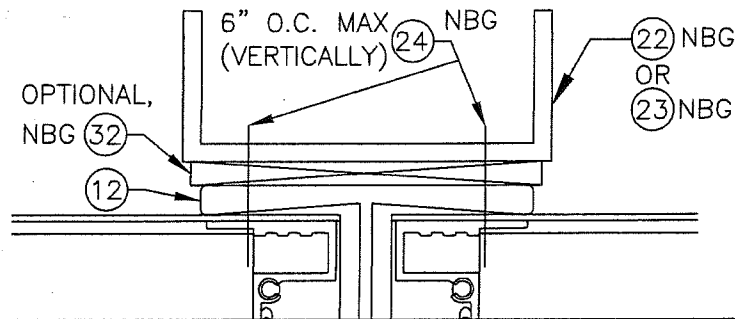
SCALE: 1:3

REV: 01, 1/11/19, ITEM #21 SPELLING UPDATE

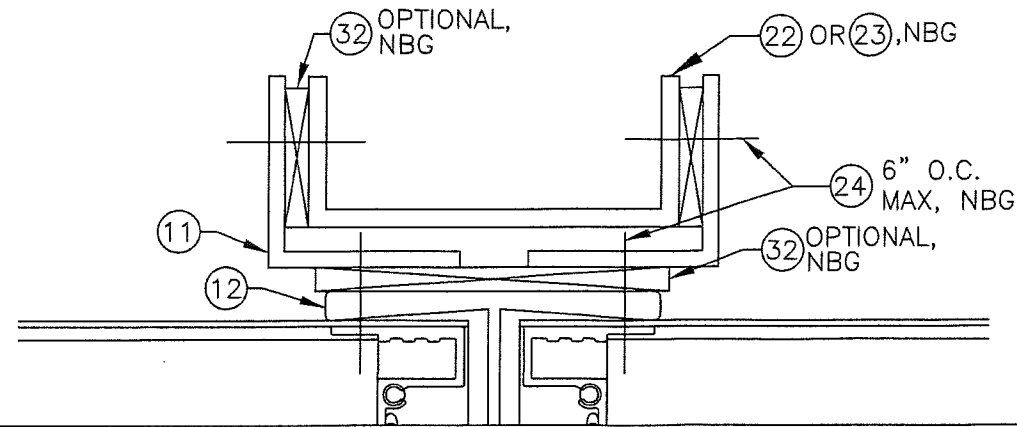
| | | |
|--|----------------------|----------------------|
| AIROLITE The look that works™ SCHOFIELD, WISCONSIN 54476 715-359-6171 | DRAWN BY M STEELE | DATE 4/27/09 |
| | SCALE VARIES | SHEET NO. 6 OF 16 |
| TITLE K605MD LOUVER | | |
| DETAILS - CMU & CONCRETE MULLION SUPPORT | | |
| CAD DRAWING NO. K605MD | | |
| <p>CHANDER P. NANGIA LICENSE No. 21938 STATE OF FLORIDA PROFESSIONAL ENGINEER JAN 21 2019</p> | | |
| <p>PRODUCT RENEWED as complying with the Florida Building Code NOA-No. 19-0205.07 Expiration Date 08/05/2024 By <u>[Signature]</u> Miami-Dade Product Control</p> | | |

5 B STEEL MULLION ATTACHMENT 1
SCALE: 1:2

FOR STRUCTURAL STEEL OR STEEL STUD ATTACHMENT
OPTION ONE



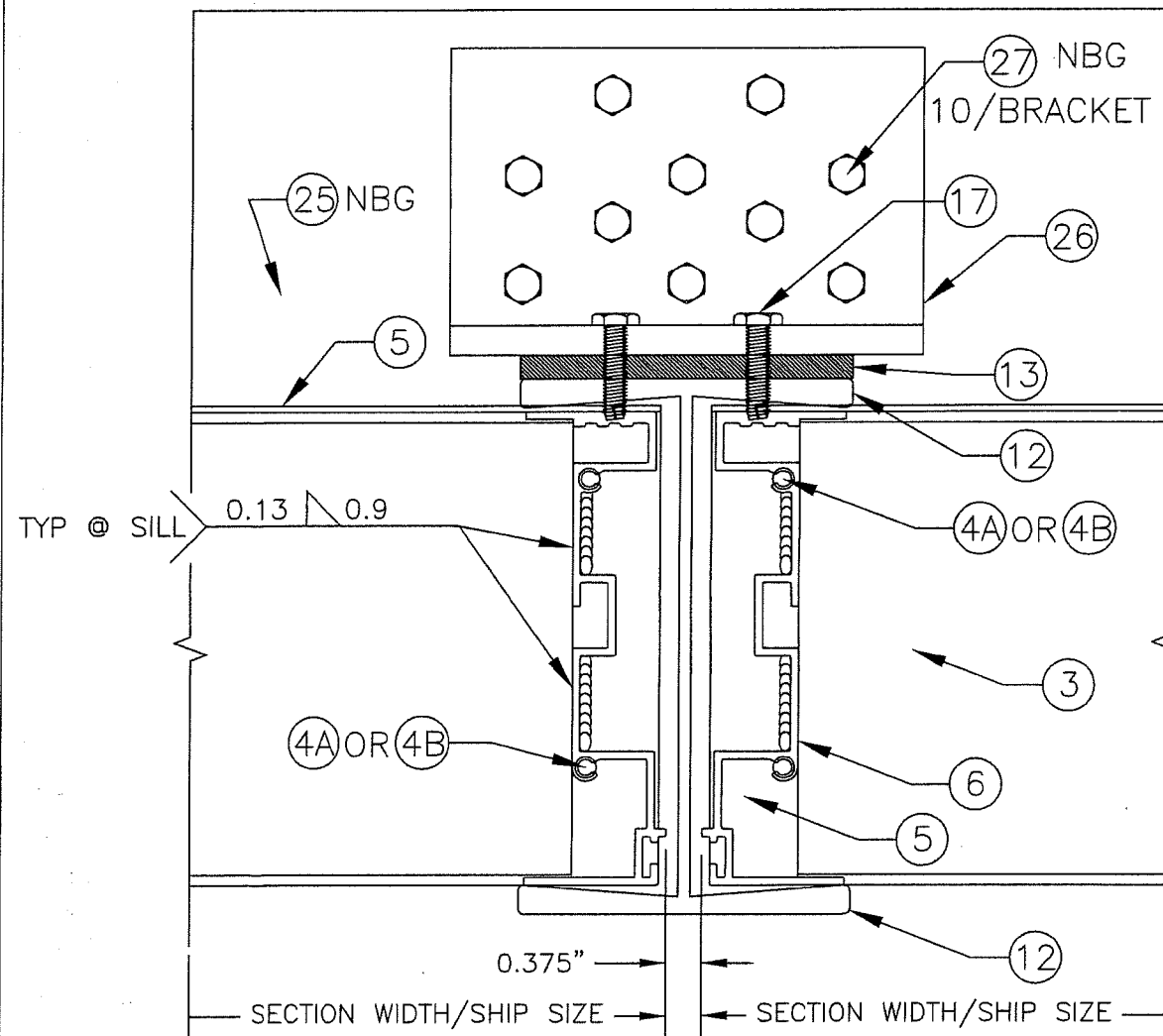
FOR STRUCTURAL STEEL OR STEEL STUD ATTACHMENT
OPTION TWO



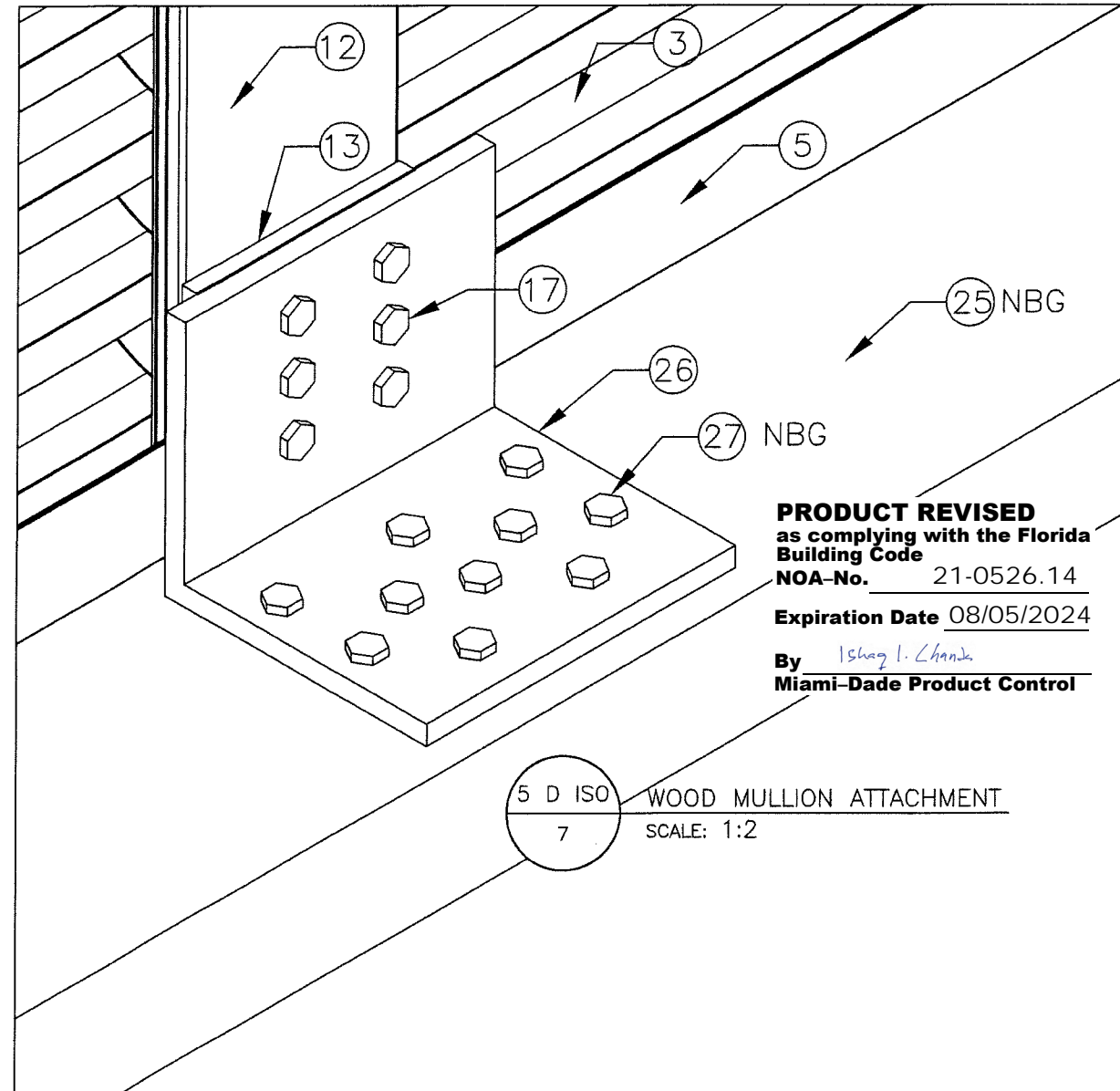
5 C STEEL MULLION ATTACHMENT 2
SCALE: 1:2

NOTE: STRUCTURAL STEEL AND STEEL STUD MULLION SUPPORT TYPES (NOT BY GREENHECK) MUST BE CAPABLE OF WITHSTANDING ALL LOADS TRANSFERRED BY THE LOUVER SECTIONS AT THE TOP AND BOTTOM OF THE VERTICAL MULLION CONDITION(S). THE FORMULA TO DETERMINE THE TRANSFERRED POINT LOAD IN POUNDS IS (SECTION WIDTH FEET X SECTION HEIGHT FEET X 110 PSF)/2.

5 D WOOD MULLION ATTACHMENT
SCALE: 1:2
SEE "5 D ISO" FOR ISOMETRIC DETAIL



NOTE: CONTINUOUS PERIMETER ANGLE NOT SHOWN ON THIS PAGE. NBG=NOT BY MANUFACTURER



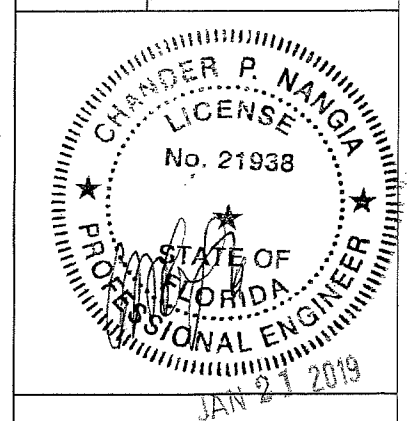
5 D ISO WOOD MULLION ATTACHMENT
SCALE: 1:2

PRODUCT REVISED
as complying with the Florida
Building Code
NOA-No. 21-0526.14
Expiration Date 08/05/2024
By Ishag I. Chanda
Miami-Dade Product Control

AIRROLITE
The look that works™
SCHOFIELD, WISCONSIN 54476
715-359-6171

DRAWN BY M STEELE
DATE 4/27/09
SCALE 1:2

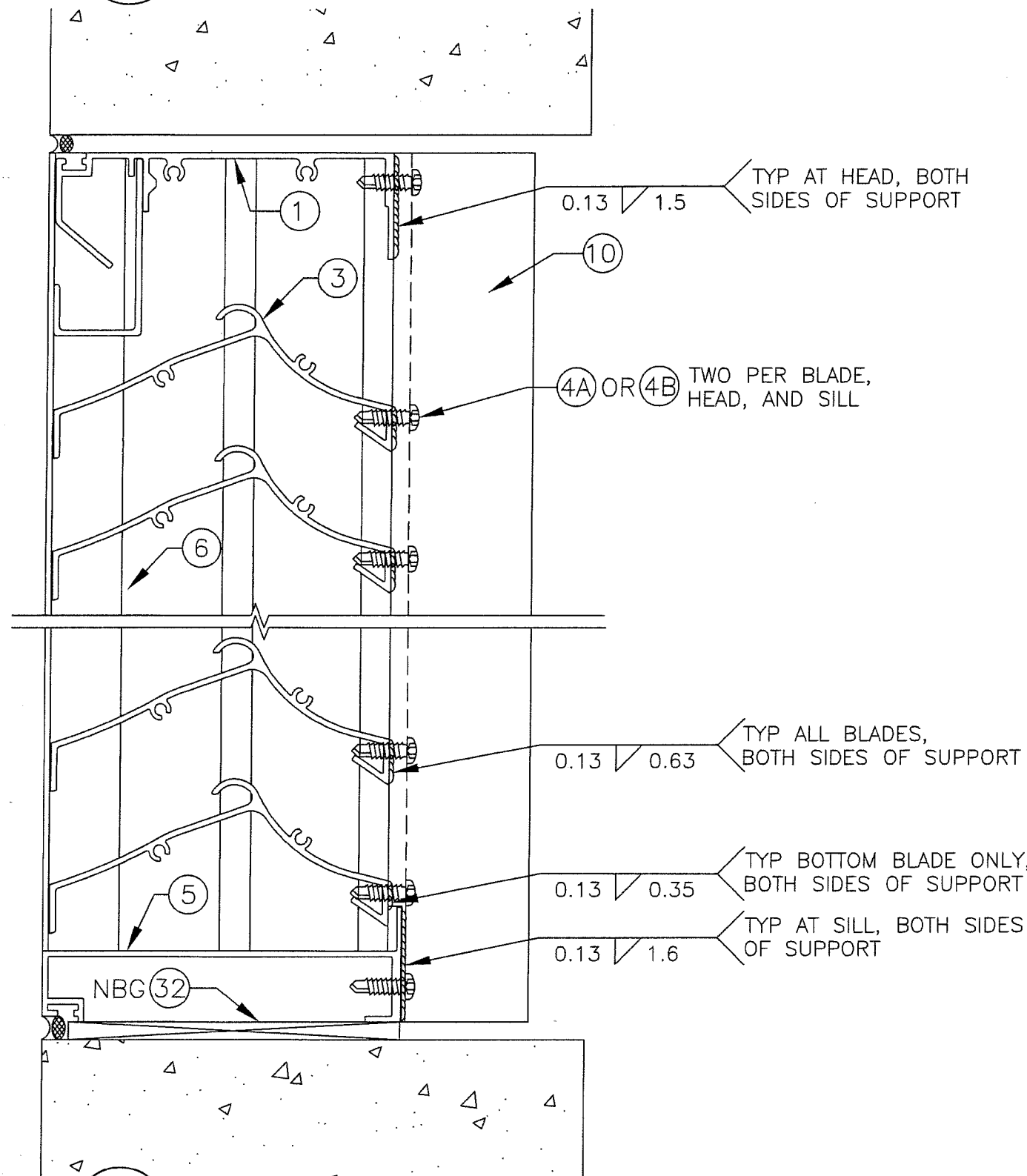
TITLE
K605MD LOUVER
DETAILS - STEEL STUD,
STRUCTURAL STEEL, &
WOOD MULLION SUPPORT



PRODUCT RENEWED
as complying with the Florida
Building Code
NOA-No. 19-0205.07
Expiration Date 08/05/2024
By [Signature]
Miami-Dade Product Control

6
8

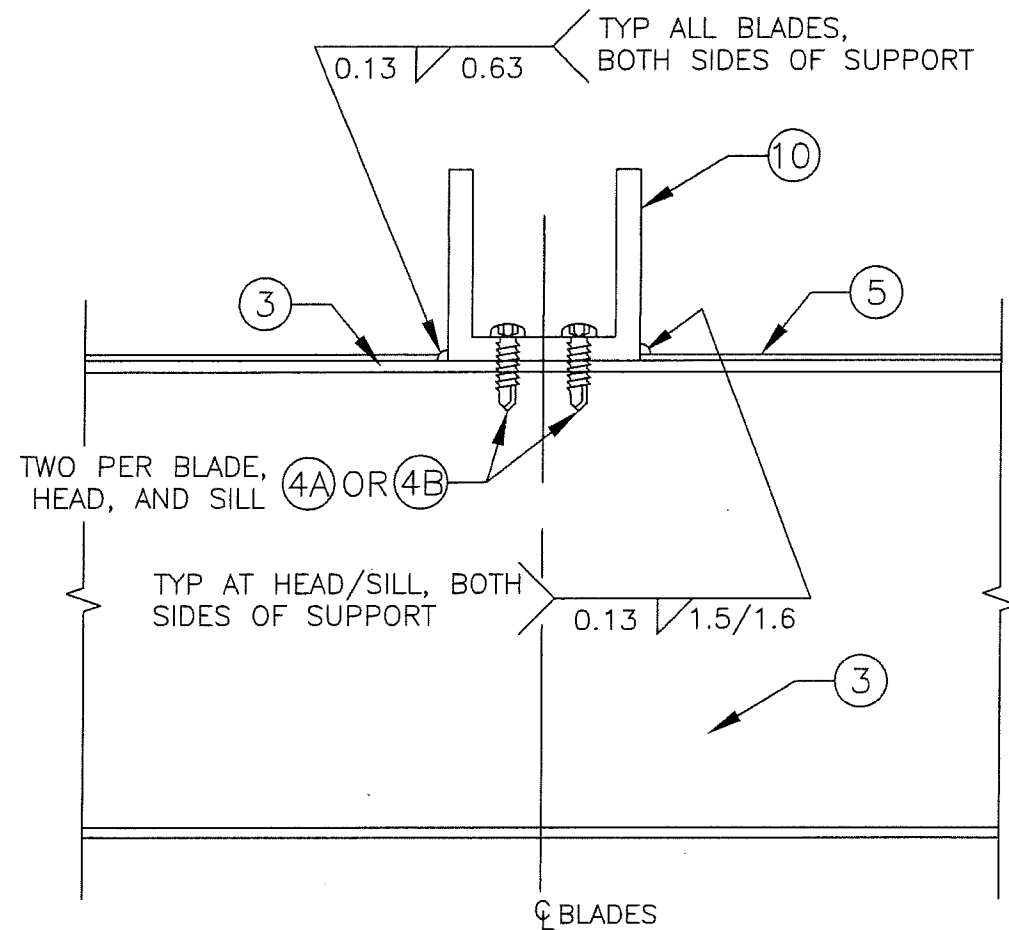
BLADE SUPPORT HEAD DETAIL (SECTIONS >72" WIDE) SIDE VIEW
SCALE: 1:2



7
8

BLADE SUPPORT SILL DETAIL (SECTIONS >72" WIDE) SIDE VIEW
SCALE: 1:2

NBG=NOT BY MANUFACTURER



8
8

BLADE SUPPORT DETAIL (SECTIONS >72" WIDE) TOP VIEW
SCALE: 1:2

PRODUCT REVISED
as complying with the Florida
Building Code
NOA-No. 21-0526.14
Expiration Date 08/05/2024
By Ishag I. Chande
Miami-Dade Product Control

DRAWN BY M STEELE
DATE 4/27/09

SCALE 1:2

SHEET NO.

8 OF 16

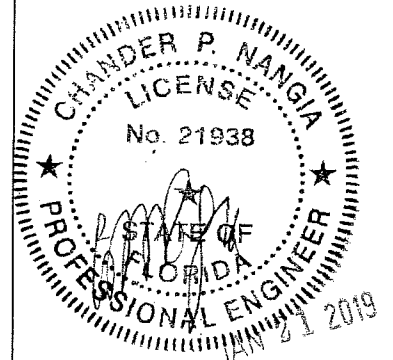
CAD DRAWING NO.

K605MD

AIRROLITE
The look that works™
SCHOFIELD, WISCONSIN 54476
715-359-6171

TITLE K605MD LOUVER

DETAILS - BLADE SUPPORT



PRODUCT RENEWED
as complying with the Florida
Building Code
NOA-No. 19-0205.07
Expiration Date 08/05/2024
By [Signature]
Miami-Dade Product Control

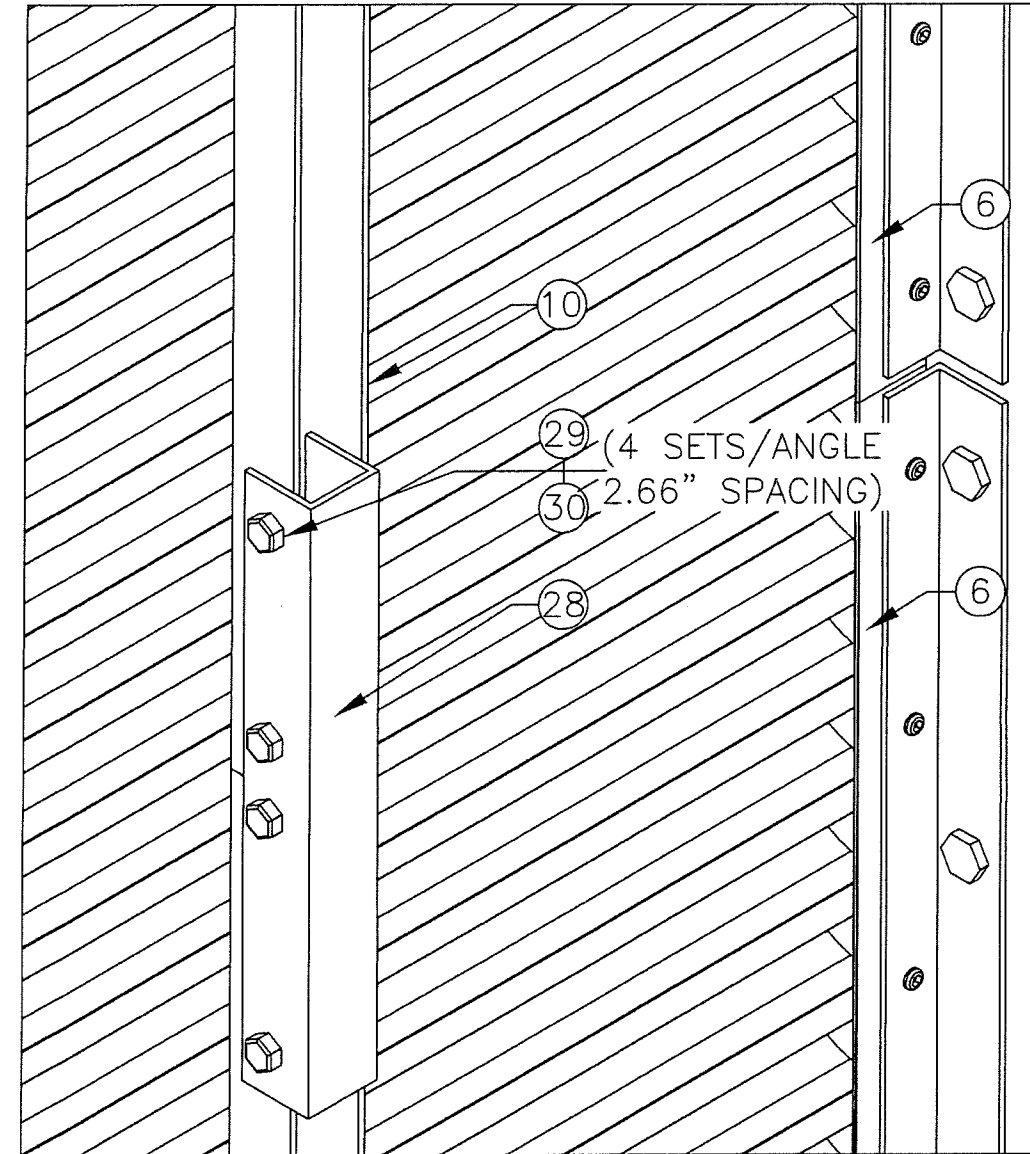
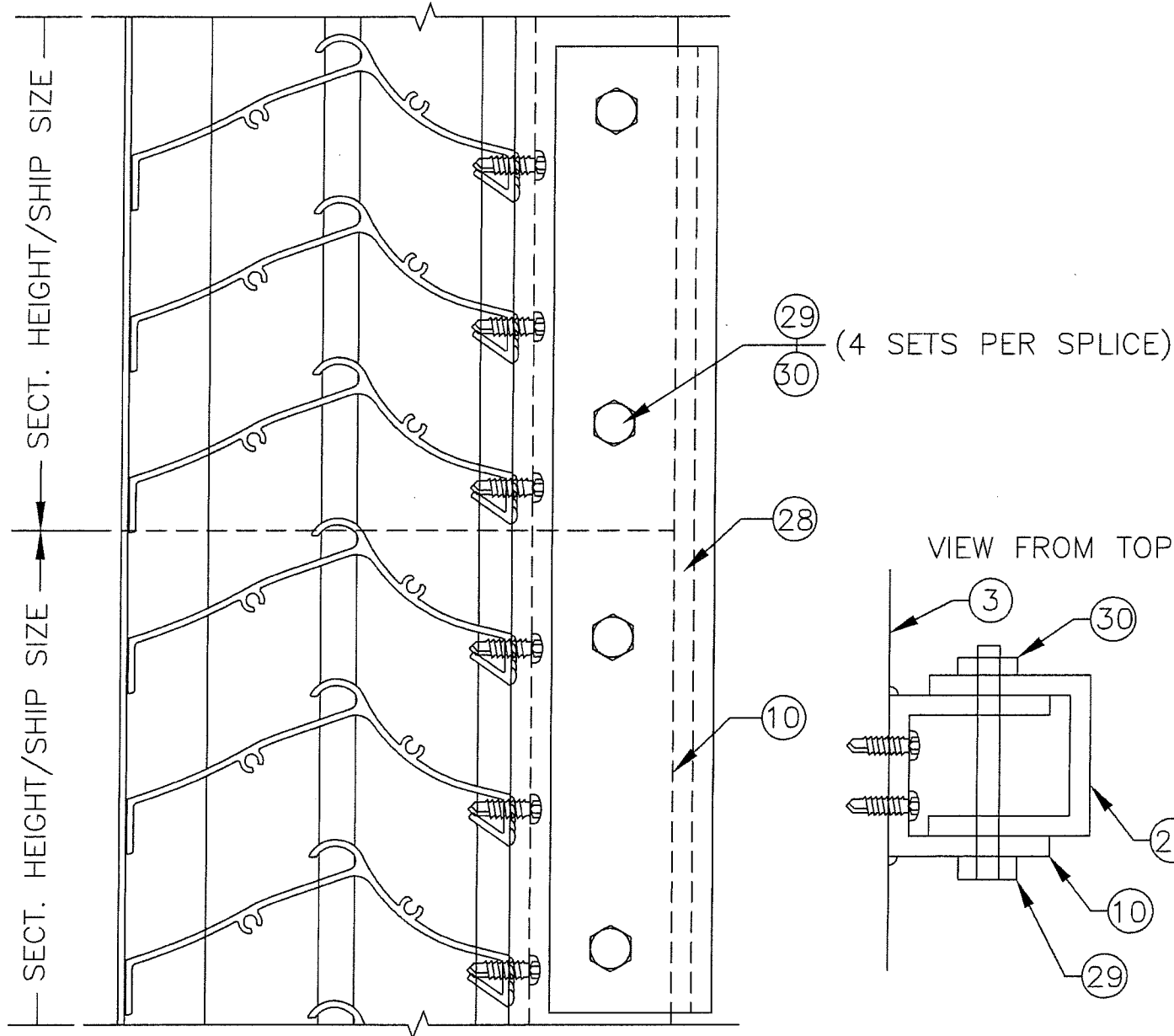
REV: 01, 1/11/19, REMOVED LINE CROSSING OVER ITEM "4A OR 4B" CALLOUT

9
9

VERTICAL SPLICE/STACK DETAIL

SCALE: 1:2

SEE "9 ISO" FOR ISOMETRIC DETAIL



9 ISO
9

ISOMETRIC (SPLICE/STACK DETAIL)

SCALE: 1:3

PRODUCT REVISED
as complying with the Florida
Building Code
NOA-No. 21-0526.14
Expiration Date 08/05/2024
By Ishag I. Chande
Miami-Dade Product Control

PRODUCT RENEWED
as complying with the Florida
Building Code
NOA-No. 19-0205.07
Expiration Date 08/05/2024
By [Signature]
Miami-Dade Product Control

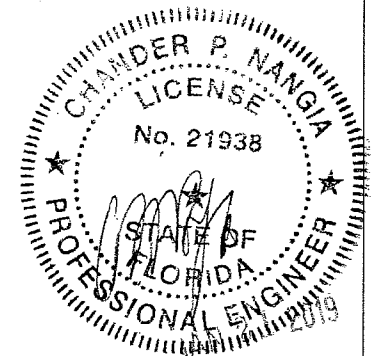
AIROLITE
The look that works™
SCHOFIELD, WISCONSIN 54476
715-359-6171

DRAWN BY M STEELE
DATE 4/27/09
SCALE VARIES
SHEET NO. 9 OF 16

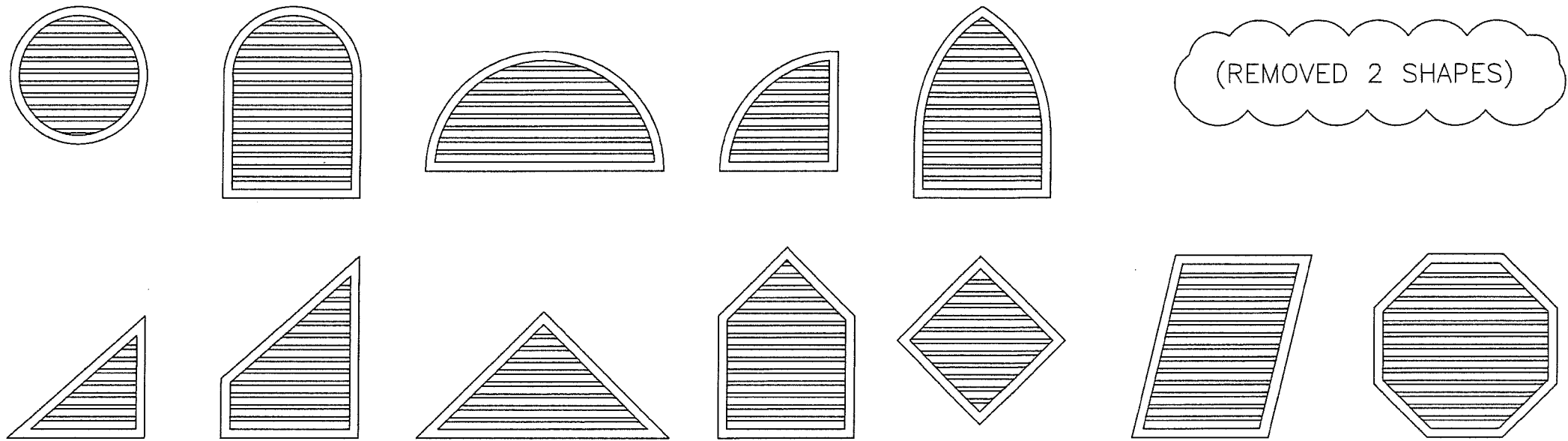
TITLE K605MD LOUVER

DETAILS - SPLICED BLADE
SUPPORT

CAD DRAWING NO.
K605MD



BELOW ARE THE SHAPE UNITS THAT THE NOA WILL ALLOW

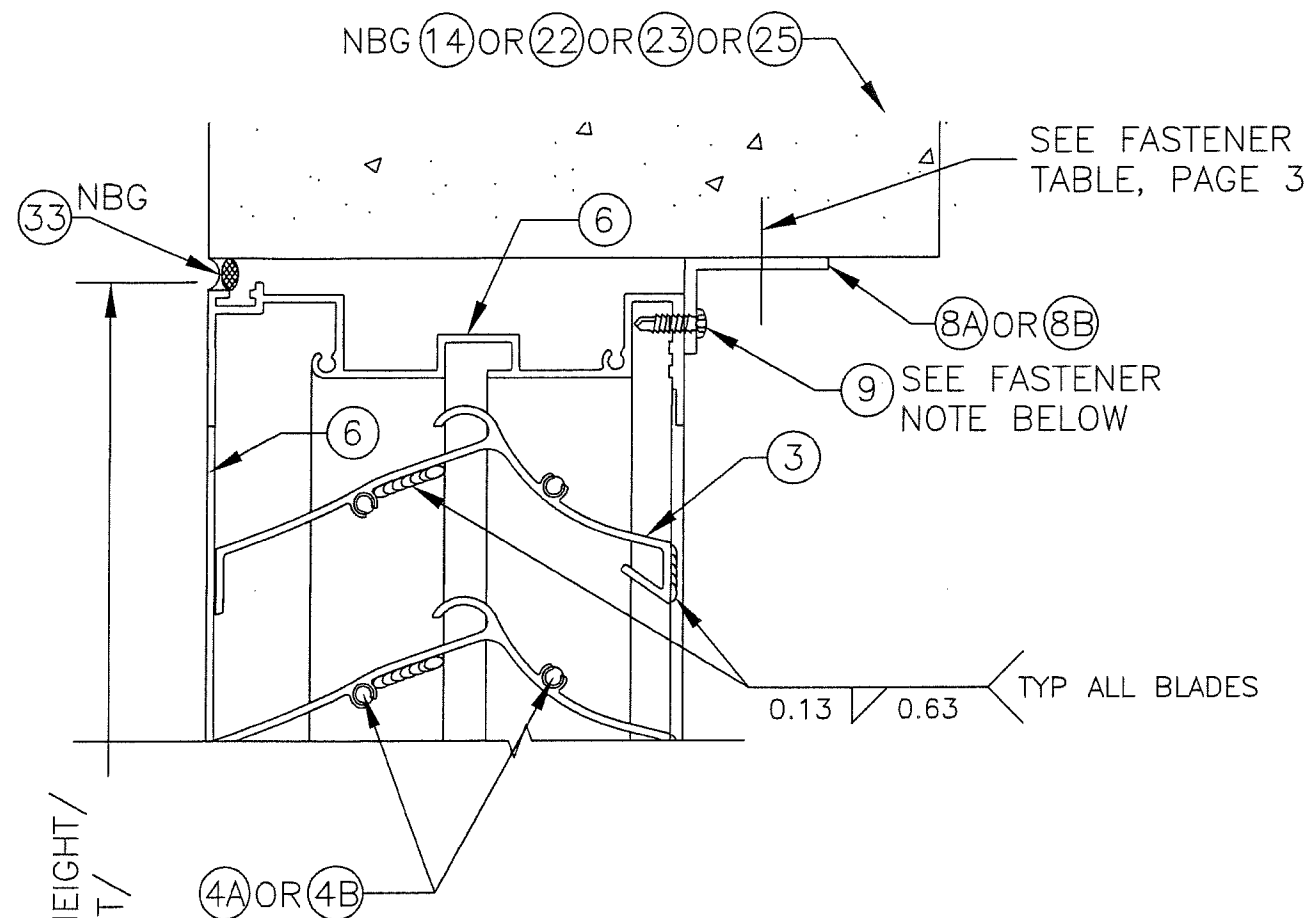
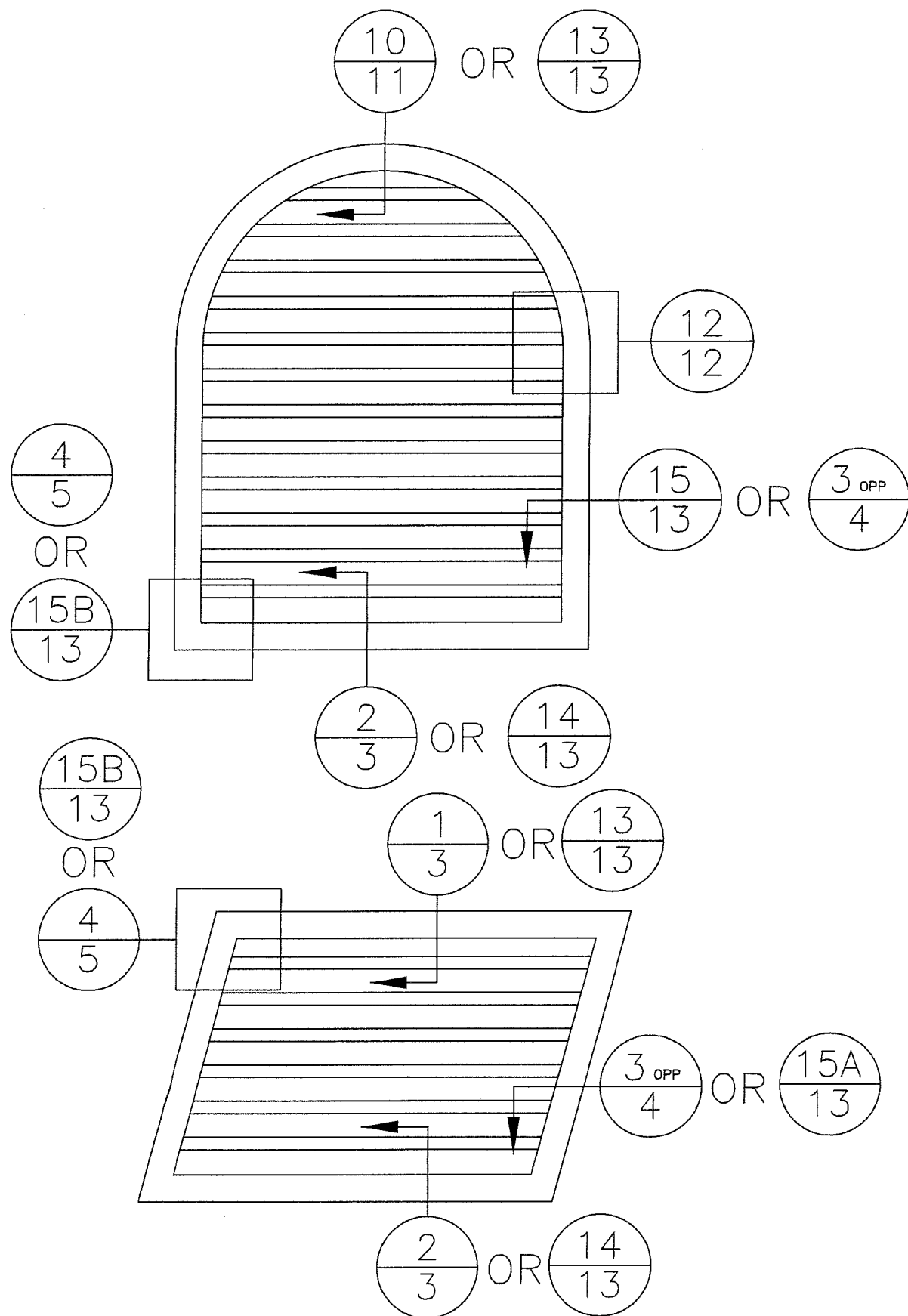


- NOTES:
- 1. OTHER SHAPES MAY APPLY PROVIDING THEY ARE SIMILAR TO THOSE SHOWN AND HAVE CONSTRUCTION AS DESCRIBED IN THIS PACKET.
 - 2. ALL SHAPE LOUVERS ARE TO HAVE THE SAME WIDTH, HEIGHT, AND PRESSURE RESTRICTIONS AS RECTANGULAR LOUVERS, AND MAY BE SPLICED/STACKED VERTICALLY AND HORIZONTALLY (MULLED UNITS) IN THE SAME MANNER AS RECTANGULAR LOUVERS.
 - 3. IF THE SHAPE LOUVER SECTION WIDTH EXCEEDS 72", A BLADE SUPPORT IS REQUIRED.
 - 4. A MULLION REQUIRED FOR SHAPE LOUVERS ONLY IF BOTH OF THE FOLLOWING ARE TRUE: OVERALL UNIT WIDTH IS >72", AND SECTION HEIGHT IS >72".
 - 5. FOLLOW THE SAME GUIDELINES AS NON-SHAPED UNITS FOR FASTENING OF SHAPE UNITS TO THE BUILDING CONDITION.

PRODUCT REVISED
as complying with the Florida
Building Code
NOA-No. 21-0526.14
Expiration Date 08/05/2024
By Ishaq I. Chande
Miami-Dade Product Control

| | | |
|---|----------------------|---------------------------|
| AIROLITE The look that works™ SCHOFIELD, WISCONSIN 54476 715-359-6171 | DRAWN BY M STEELE | DATE 4/27/09 |
| | SCALE 0.5"=1' | SHEET NO. 10 OF 16 |
| TITLE K605MD LOUVER | | CAD DRAWING NO. K605MD |
| SHAPE STYLES, ELEVATION CONFIGURATIONS | | |
| | | |
| PRODUCT RENEWED as complying with the Florida Building Code NOA-No. 19-0205.07 Expiration Date 08/05/2024 By <u>[Signature]</u> Miami-Dade Product Control | | |

4 TYPICAL SHAPE LOUVER CALLOUTS



OVERALL LOUVER HEIGHT/
SECTION HEIGHT/
SHIP SIZE

FASTENER NOTES FOR ⑨:
6" MAX \varnothing FOR ①, 4" MAX \varnothing FOR ② & ③

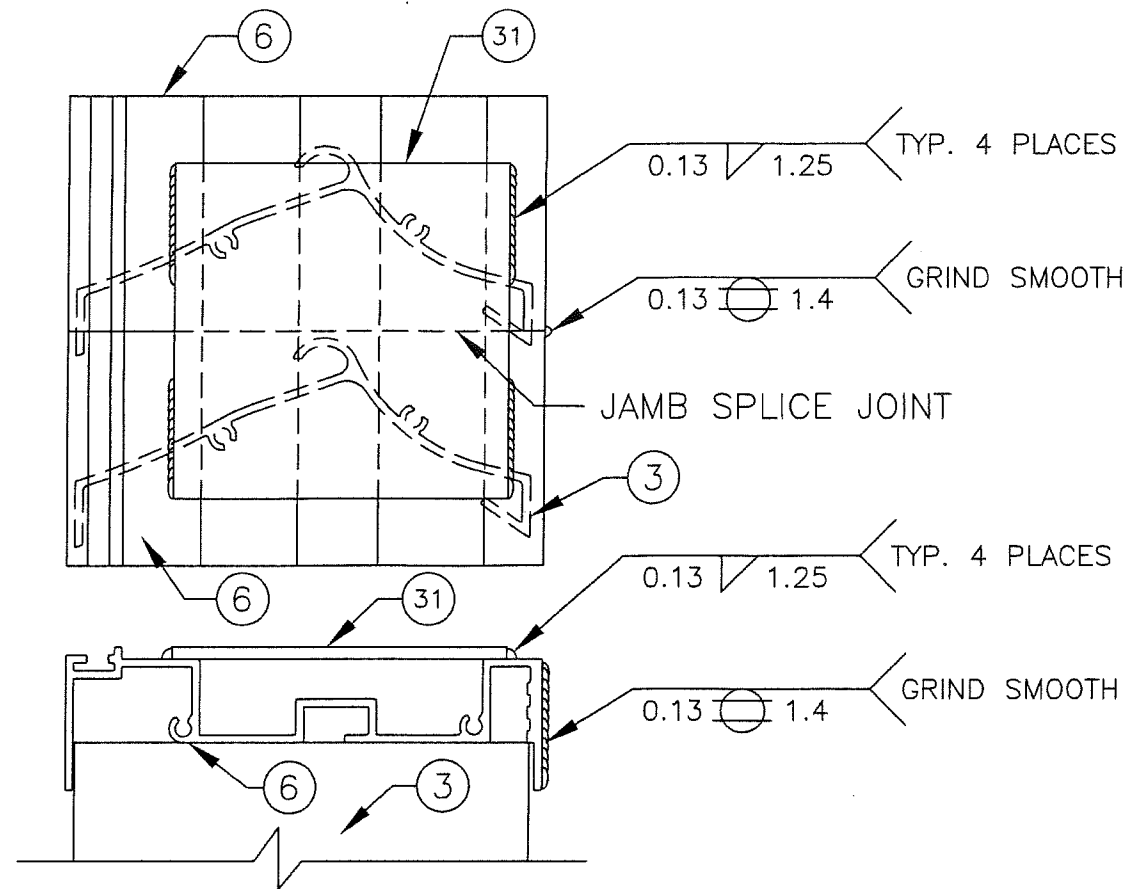
10
11 SHAPES HEAD DETAIL
SCALE: 1:2

PRODUCT REVISED
as complying with the Florida
Building Code
NOA-No. 21-0526.14
Expiration Date 08/05/2024
By Ismael L. Chande
Miami-Dade Product Control

NBG=NOT BY MANUFACTURER

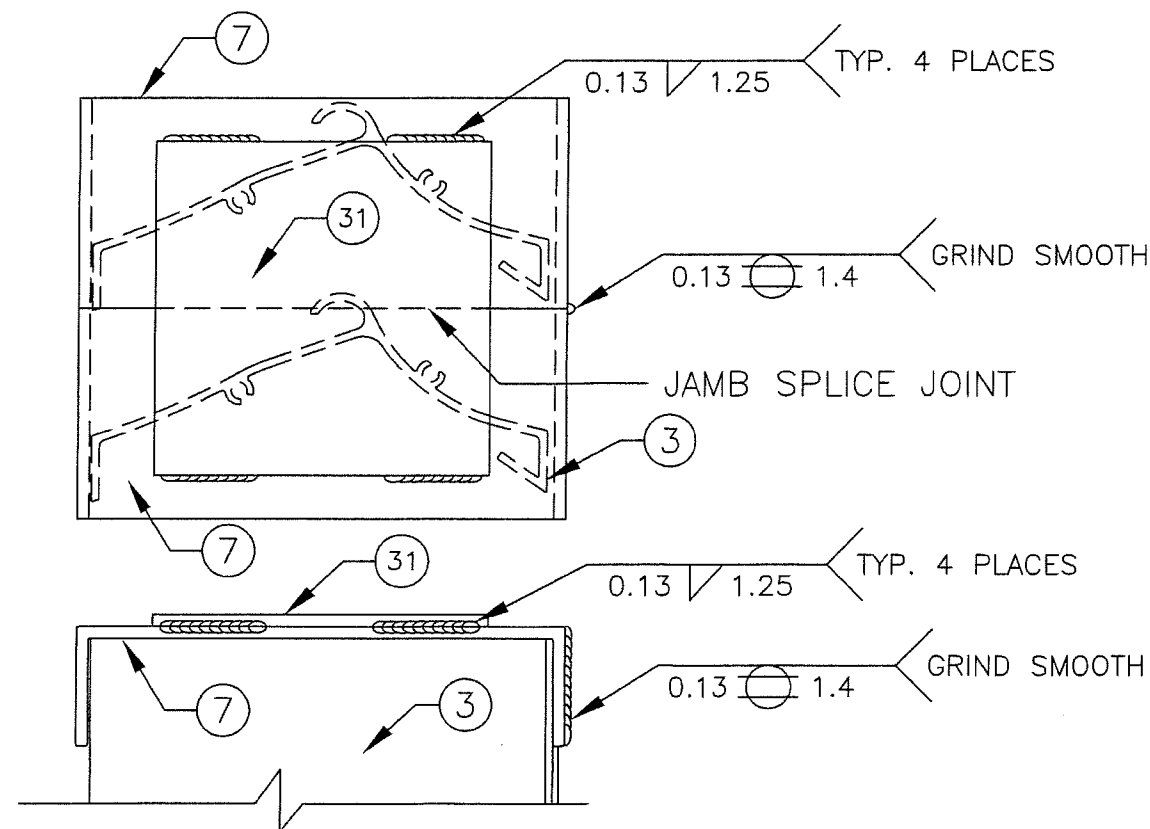
| | | |
|---|----------------------|-----------------------|
| AIROLITE The look that works™ SCHOFIELD, WISCONSIN 54476 715-359-6171 | DRAWN BY M STEELE | DATE 4/27/09 |
| | SCALE VARIES | SHEET NO. 11 OF 16 |
| TITLE K605MD LOUVER | | |
| CAD DRAWING NO. K605MD | | |
| SHAPE ELEVATIONS, DETAILS - SHAPE | | |
| | | |
| PRODUCT RENEWED as complying with the Florida Building Code NOA-No. 19-0205.07 Expiration Date 08/05/2024 By <u>[Signature]</u> Miami-Dade Product Control | | |

12 A JAMB SPLICE DETAIL
SCALE: 1:2



THIS IS ONLY ON SHAPE UNITS WHEN A CURVED EXTRUDED JAMB MEETS A STRAIGHT JAMB (THIS IS NOT FOR A "SPliced" UNIT WHERE ONE LOUVER SIT ON TOP OF ANOTHER).

12 B CHANNEL JAMB SPLICE DETAIL
SCALE: 1:2



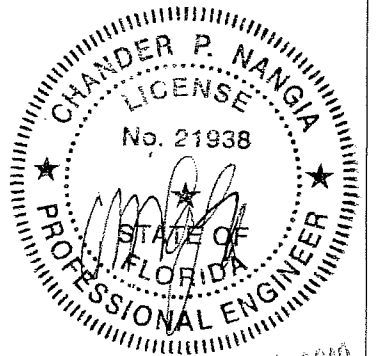
THIS IS ONLY ON SHAPE UNITS WHEN A CURVED C-CHANNEL JAMB MEETS A STRAIGHT JAMB (THIS IS NOT FOR A "SPliced" UNIT WHERE ONE LOUVER SIT ON TOP OF ANOTHER).

PRODUCT REVISED
as complying with the Florida
Building Code
NOA-No. 21-0526.14

Expiration Date 08/05/2024

By Ishag I. Chande
Miami-Dade Product Control

| | | |
|---|----------------------|-----------------------|
| AIROLITE The look that works™ SCHOFIELD, WISCONSIN 54476 715-359-6171 | DRAWN BY M STEELE | DATE 4/27/09 |
| | SCALE 1:2 | SHEET NO. 12 OF 16 |
| TITLE K605MD LOUVER SHAPE LOUVERS, DETAILS - SPliced JAMBS | | |
| CAD DRAWING NO. K605MD | | |



JAN 21 2019

PRODUCT RENEWED
as complying with the Florida
Building Code
NOA-No. 19-0205.07

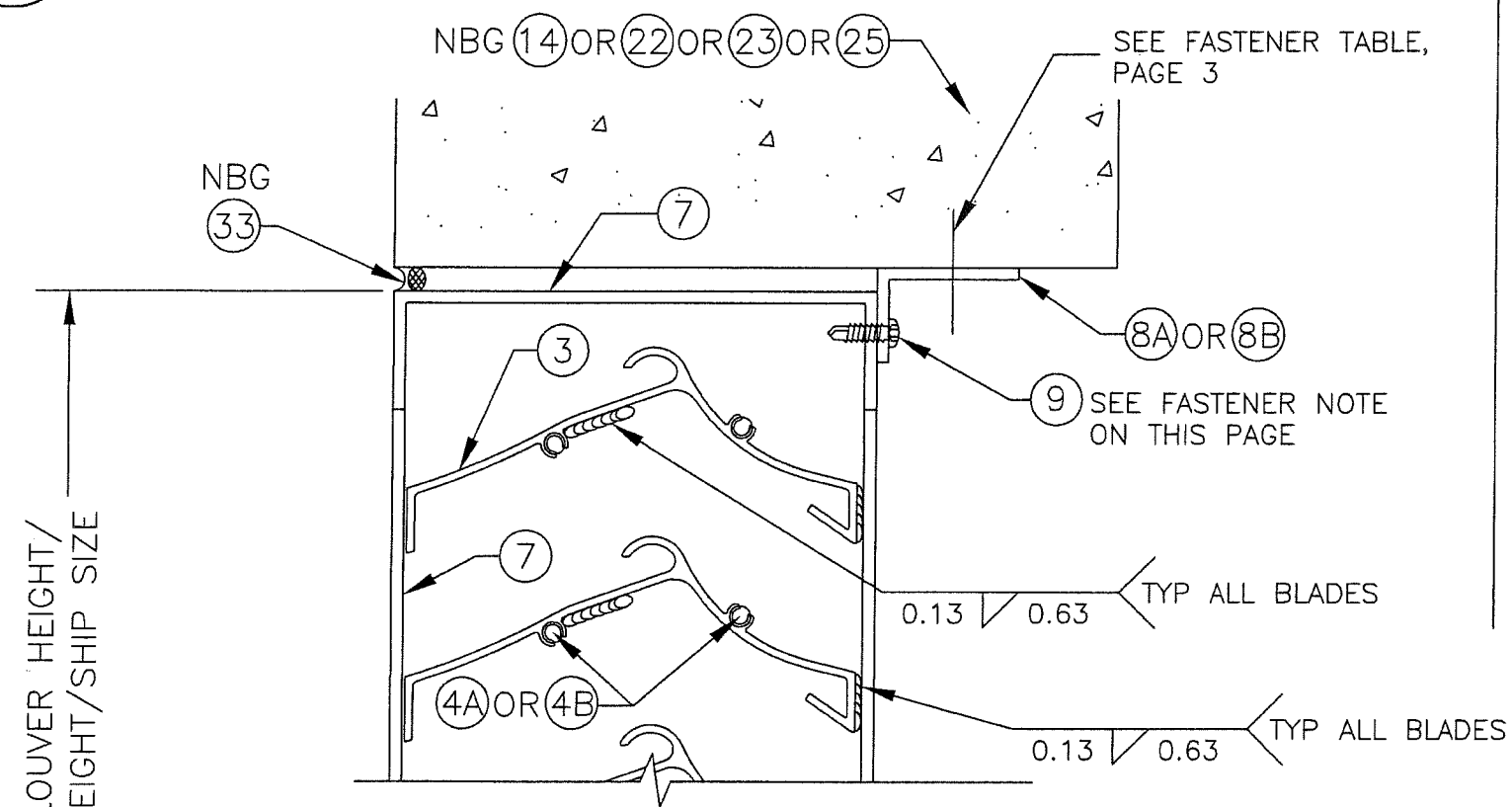
Expiration Date 08/05/2024

By [Signature]
Miami-Dade Product Control

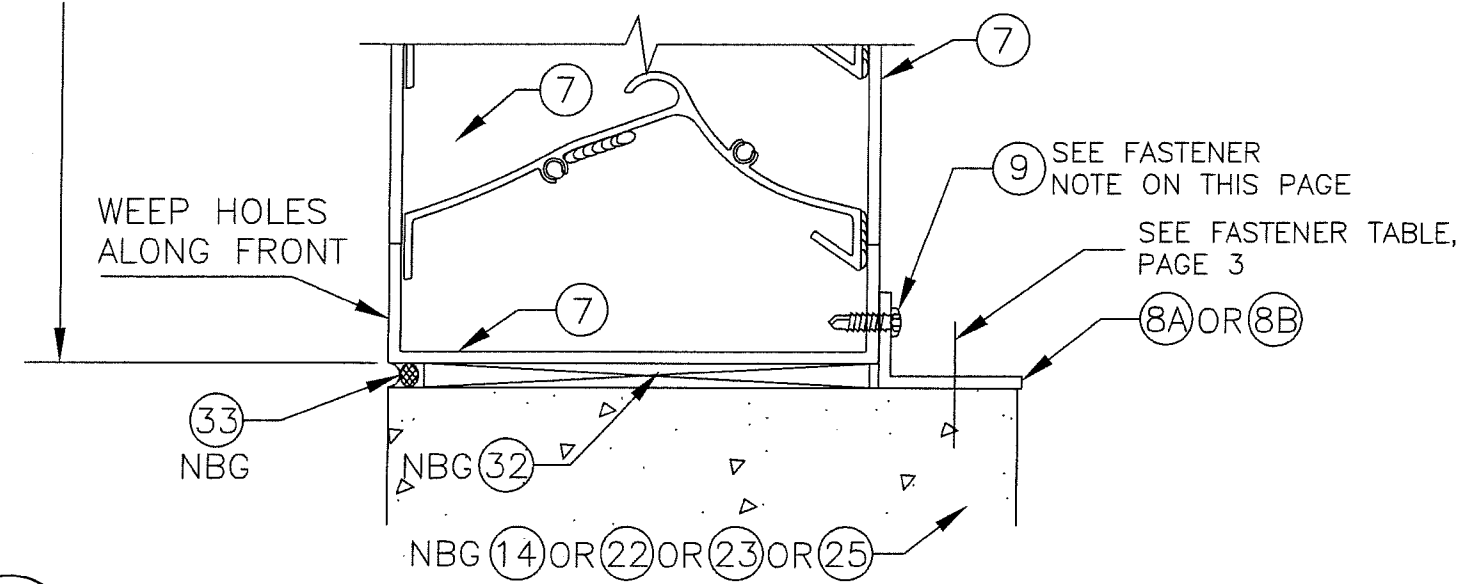
13
13

SHAPES HEAD DETAIL - CHANNEL FRAME
SCALE: 1:2

SETUP FOR OPTIONAL CHANNEL FRAME



FASTENER NOTES FOR (9):
6" MAX \varnothing FOR (1), 4" MAX \varnothing FOR (2) & (3)



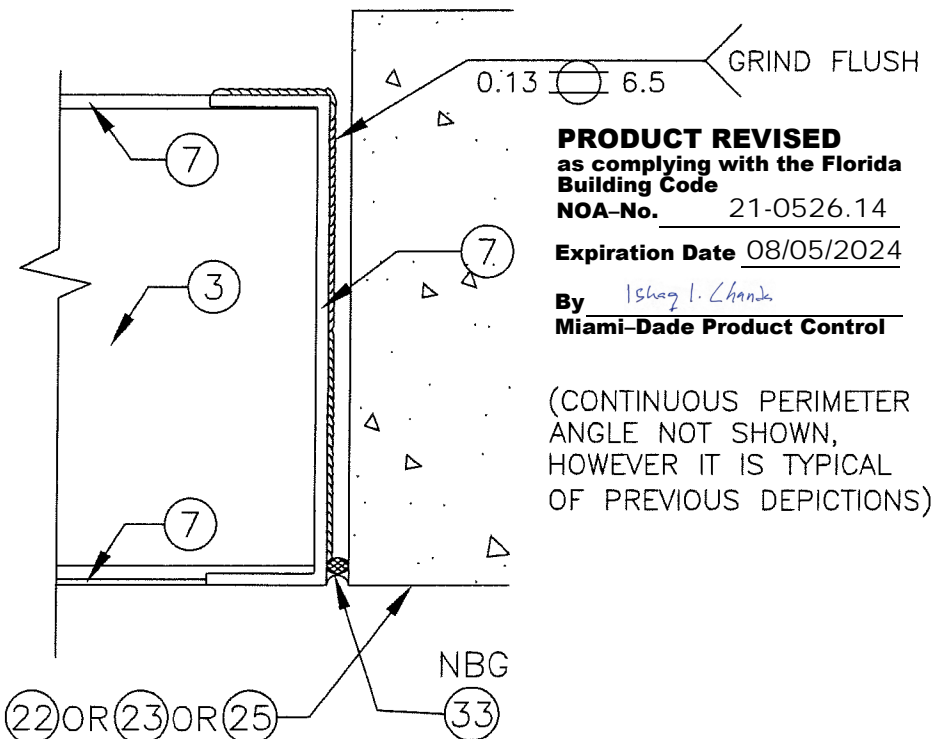
14
13

SHAPES SILL DETAIL - CHANNEL JAMB
SCALE: 1:2

NBG=NOT BY MANUFACTURER

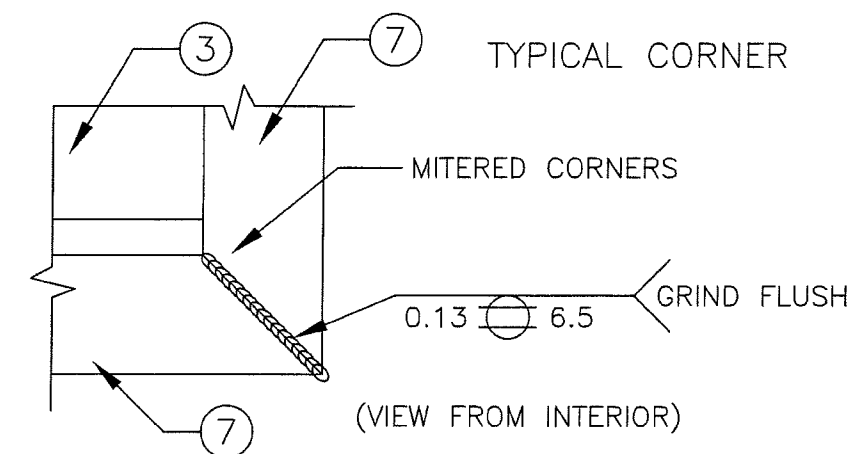
15 A
13

SHAPES CHANNEL JAMB DETAIL
SCALE: 1:2



15 B
13

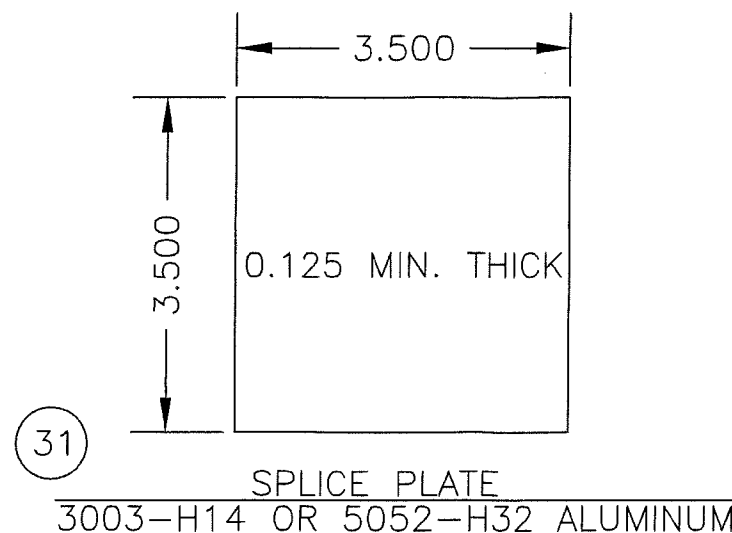
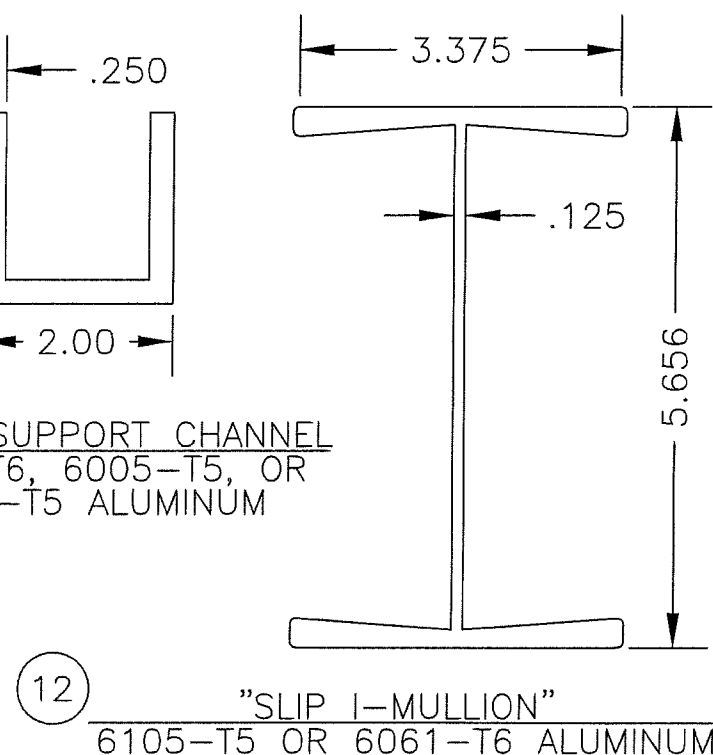
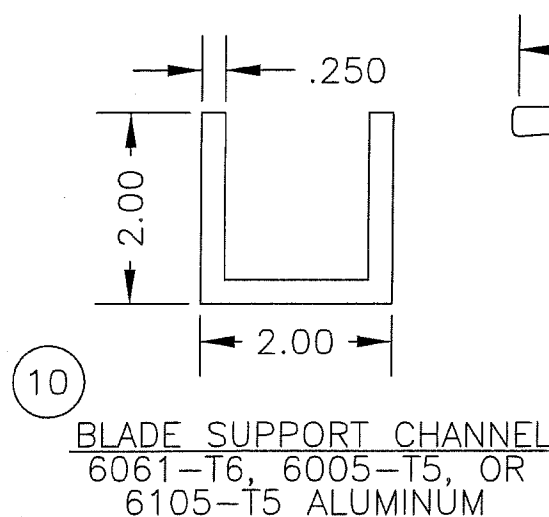
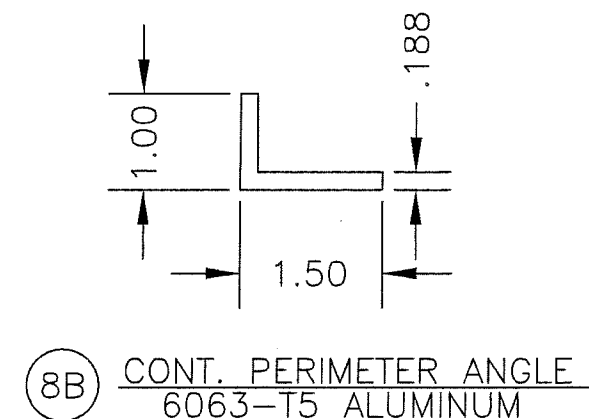
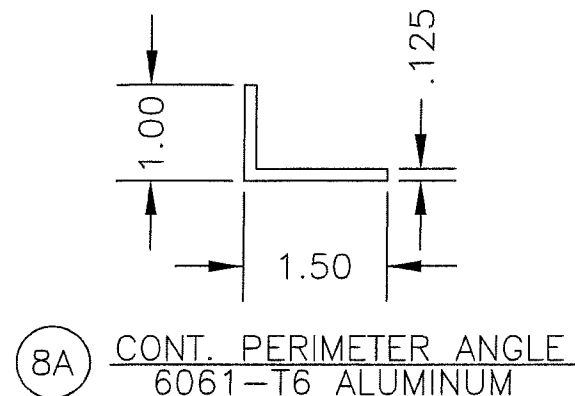
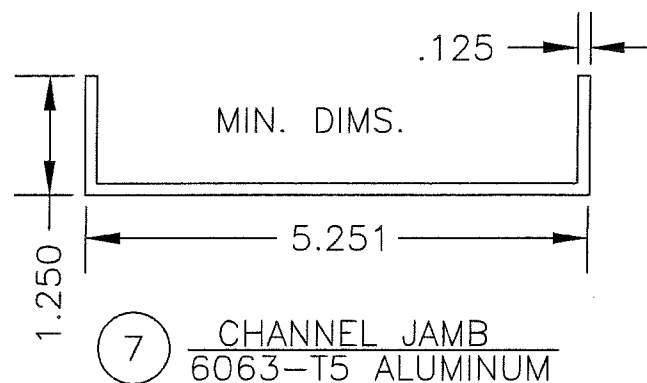
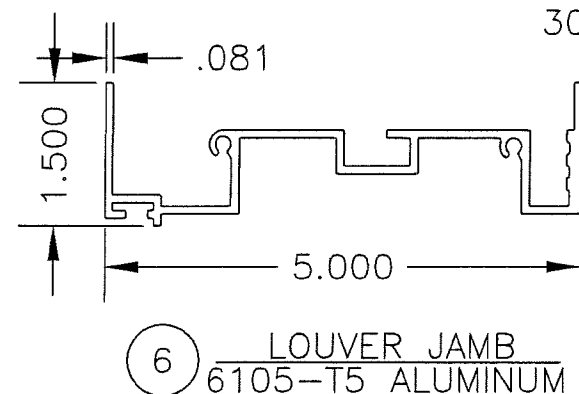
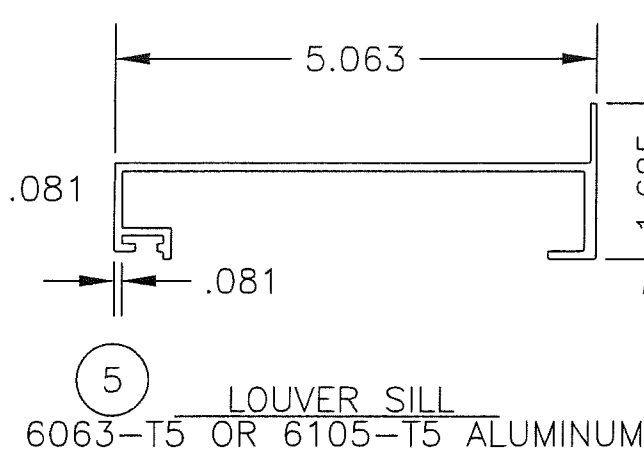
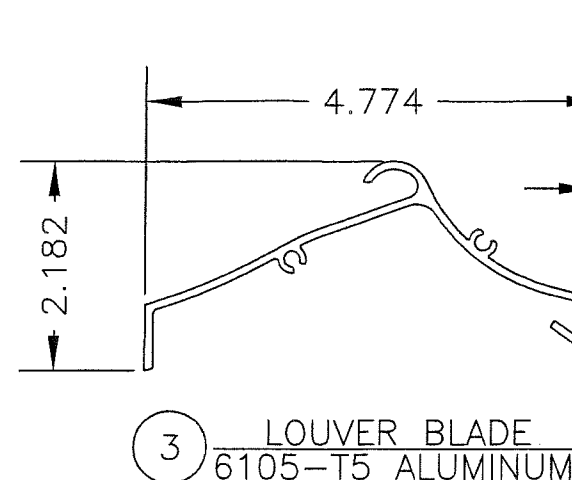
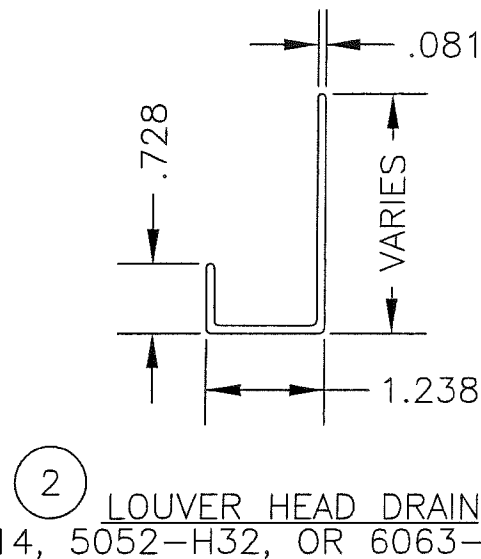
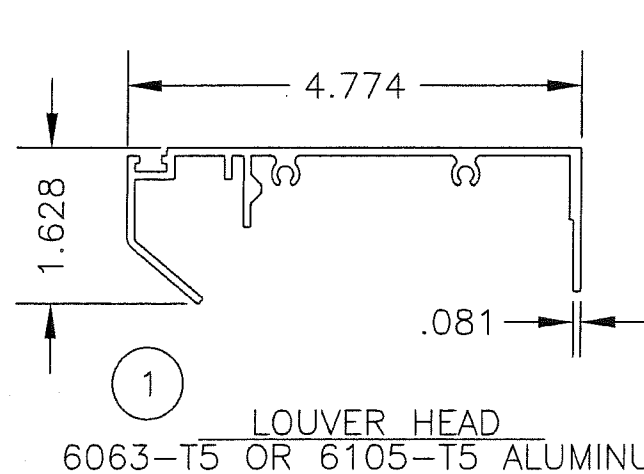
SHAPES SILL DETAIL - CHANNEL JAMB INTERIOR
SCALE: 1:2



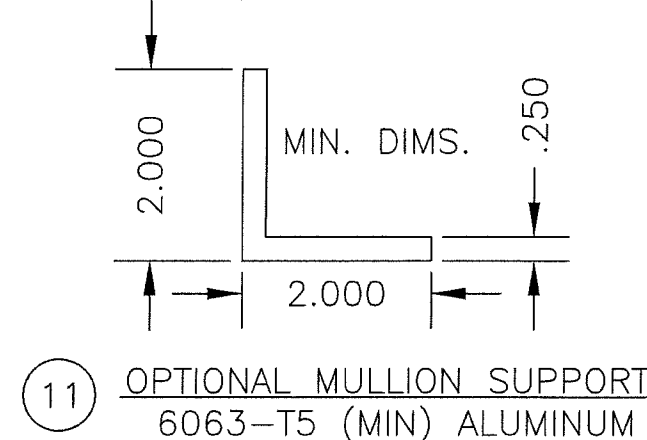
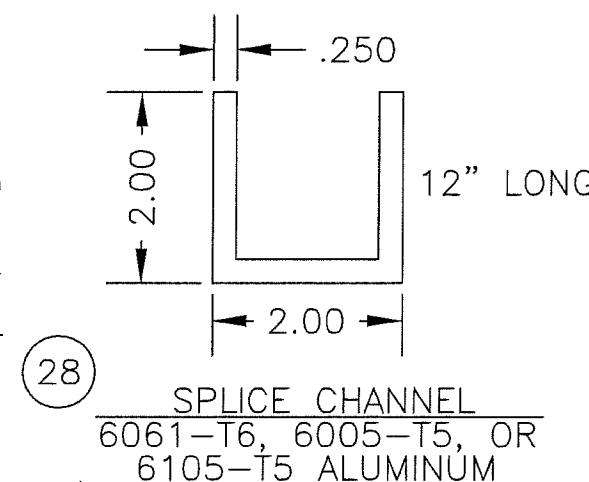
(CONTINUOUS PERIMETER ANGLE & WALL
CONDITION NOT SHOWN, HOWEVER IT IS
TYPICAL OF PREVIOUS DEPICTIONS)

REV: 01, 1/11/19, SPELLING UPDATE IN CONTINUOUS ANGLE NOTES

| | | | | |
|--|-----------------|--------------|-----------------------|---------------------------|
| DRAWN BY M STEELE | DATE 4/27/09 | SCALE 1:2 | SHEET NO. 13 OF 16 | CAD DRAWING NO. K605MD |
| | | | | |
| AIROLITE The look that works™ SCHOFIELD, WISCONSIN 54476 715-359-6171 | | | | |
| TITLE K605MD LOUVER SHAPE LOUVERS, DETAILS - CHANNEL FRAME | | | | |
| <p>CHANDER P. NANGIA LICENSE No. 21938 STATE OF FLORIDA PROFESSIONAL ENGINEER JAN 21 2019</p> | | | | |
| <p>PRODUCT RENEWED as complying with the Florida Building Code NOA-No. 19-0205.07 Expiration Date 08/05/2024 By Miami-Dade Product Control</p> | | | | |

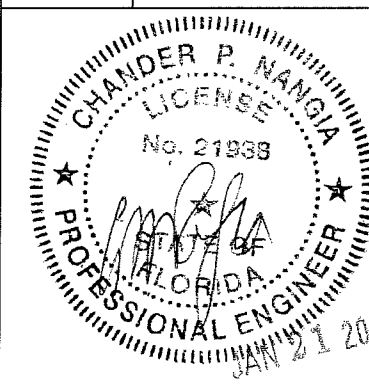


PRODUCT REVISED
as complying with the Florida
Building Code
NOA-No. 21-0526.14
Expiration Date 08/05/2024
By Ishag I. Chande
Miami-Dade Product Control

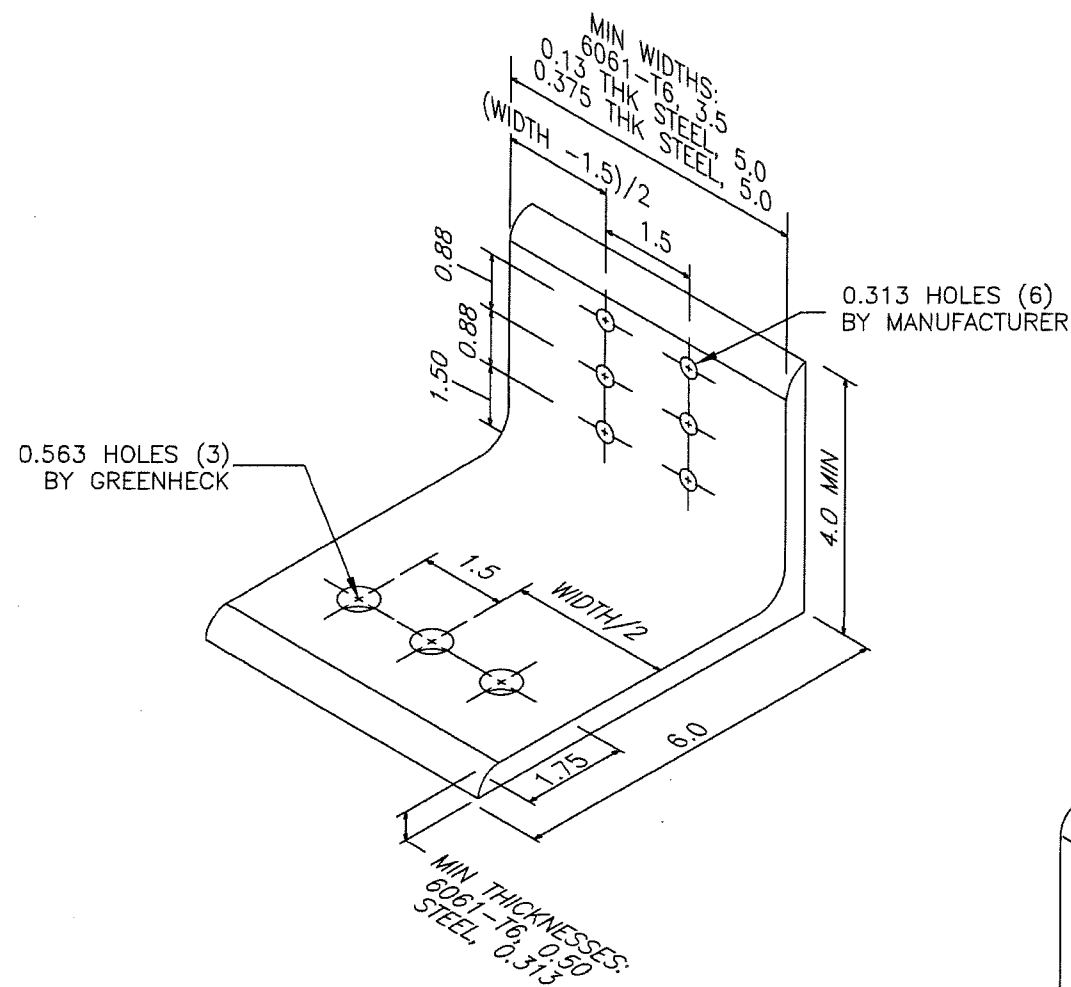


| | | | | |
|----------------------|-----------------|--------------|-----------------------|---------------------------|
| DRAWN BY M STEELE | DATE 4/27/09 | SCALE 1:2 | SHEET NO. 14 OF 16 | CAD DRAWING NO. K605MD |
|----------------------|-----------------|--------------|-----------------------|---------------------------|

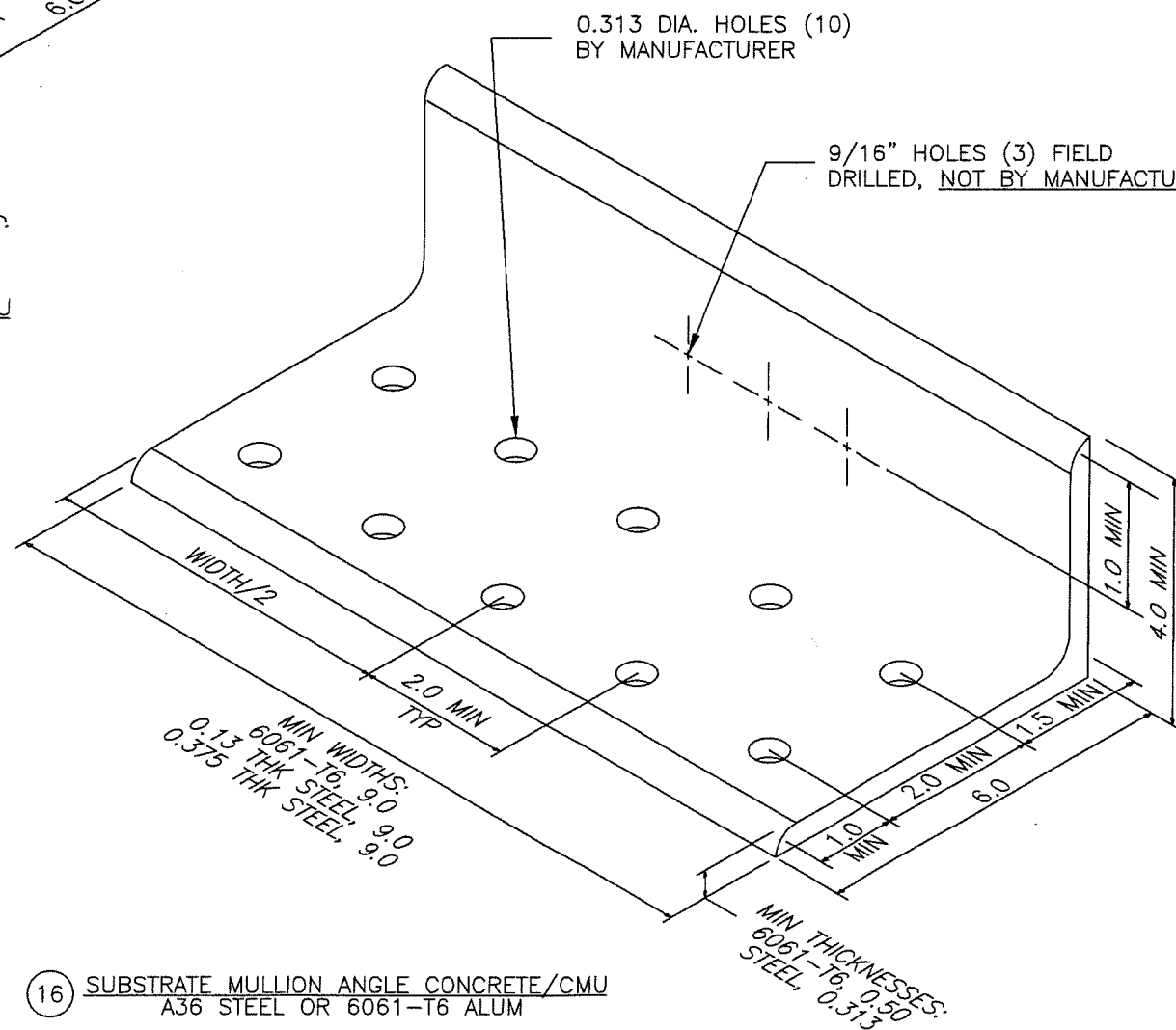
| | | |
|---|------------------------|------------------------|
| AIROLITE The look that works™ SCHOFIELD, WISCONSIN 54476 715-359-6171 | TITLE K605MD LOUVER | DETAILS - PART DETAILS |
|---|------------------------|------------------------|



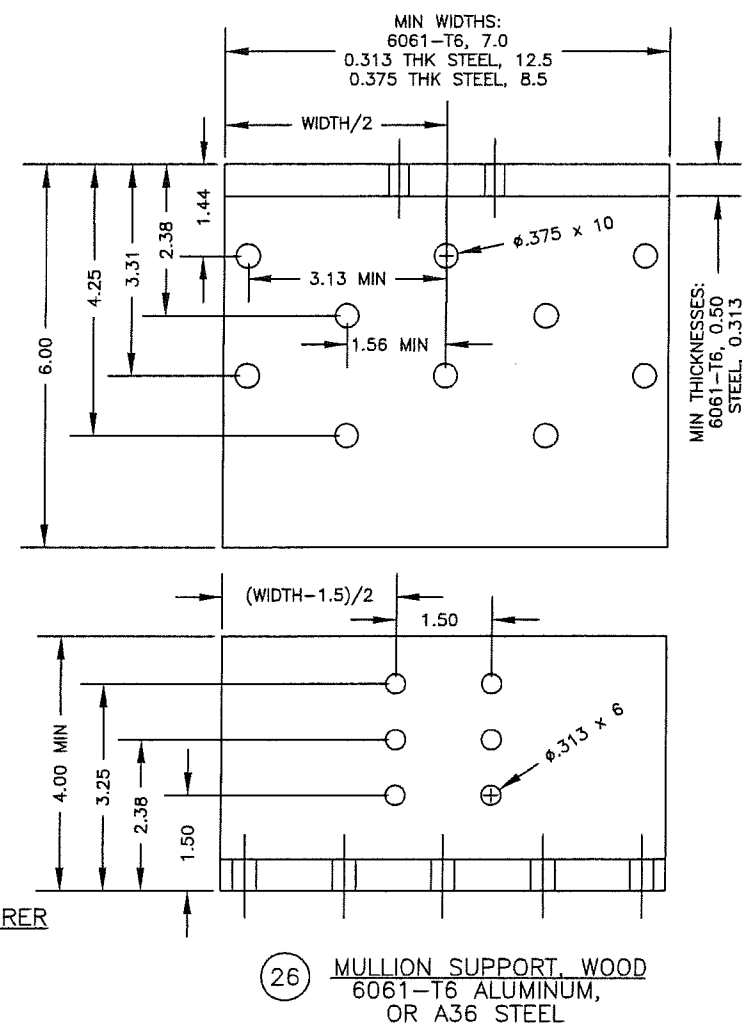
PRODUCT RENEWED
as complying with the Florida
Building Code
NOA-No. 19-0205.07
Expiration Date 08/05/2024
By [Signature]
Miami-Dade Product Control



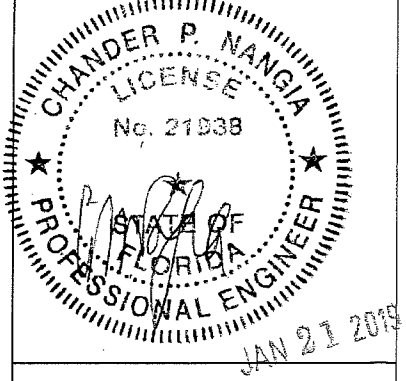
15 LOUVER MULLION ANGLE CONCRETE/CMU
A36 STEEL OR 6061-T6 ALUM



16 SUBSTRATE MULLION ANGLE CONCRETE/CMU
A36 STEEL OR 6061-T6 ALUM



PRODUCT REVISED
as complying with the Florida
Building Code
NOA-No. 21-0526.14
Expiration Date 08/05/2024
By Ishag I. Chande
Miami-Dade Product Control



PRODUCT RENEWED
as complying with the Florida
Building Code
NOA-No. 19-0205.07
Expiration Date 08/05/2024
By [Signature]
Miami-Dade Product Control

REV: 01, 1/11/19, ITEM #16 SPELLING UPDATE


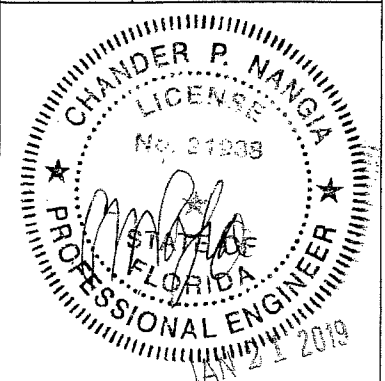
| | | |
|---|----------------------|-----------------|
| AIROLITE The look that works™ SCHOFIELD, WISCONSIN 54476 715-359-6171 | DRAWN BY M STEELE | DATE 4/27/09 |
| | SCALE 1:2 | |
| SHEET NO. 15 OF 16 | | |
| TITLE K605MD LOUVER | | |
| DETAILS - PART DETAILS K605MD | | |

| ITEM | DESCRIPTION | MATERIAL | NOTES |
|------|---|------------|--------------------------|
| 1 | LOUVER HEAD | ALUM | |
| 2 | LOUVER HEAD DRAIN | ALUM | |
| 3 | LOUVER BLADE | ALUM | |
| 4A | #10 x 0.5 MIN THREAD, SCREW, 7075-T6 ALUM | ALUM | USED ON ANODIZED UNITS |
| 4B | #10 OR #12 x 0.5 MIN THREAD, SCREW, STAINLESS | SS | TYPICALLY USED |
| 5 | LOUVER SILL | ALUM | |
| 6 | LOUVER JAMB | ALUM | |
| 7 | OPTIONAL C-CHANNEL JAMB | ALUM | OPTIONAL FOR SHAPE UNITS |
| 8A | CONTINUOUS MTG ANGLE, 1.0x1.5x0.125 MIN, 6061-T6 | ALUM | |
| 8B | CONTINUOUS MTG ANGLE, 1.0x1.5x0.188 MIN, 6063-T5 | ALUM | |
| 9 | #10-24 OR #12-24 x 0.5 MIN THREAD, SCREW | SS | |
| 10 | BLADE SUPPORT CHANNEL, 2x2x2x0.25 | ALUM | |
| 11 | OPTIONAL ADDITIONAL MULLION SUPPORT ANGLE | ALUM | OPTIONAL |
| 12 | SLIP "I" MULLION | ALUM | |
| 13 | GASKET, 3.5x4x0.25 MIN (BY MANUFACTURER) | VARIES | RUBBER/NEOPRENE LIKE |
| 14 | CONCRETE OR GROUT FILLED CMU, 2000 PSI MIN | VARIES | NOT BY MANUFACTURER |
| 15 | LOUVER MULLION ANGLE FOR CONCRETE/CMU | STEEL/ALUM | |
| 16 | SUBSTRATE MULLION ANGLE FOR CONCRETE/CMU | STEEL/ALUM | |
| 17 | 0.25-20x1 MIN, SCREW (BY MANUFACTURER) | SS | |
| 18 | BOLT, 0.5-13x1 MIN (BY MANUFACTURER) | SS | |
| 19 | NUT, 0.5-13 MIN (BY MANUFACTURER) | SS | |
| 20 | WASHER, 0.5 MIN (BY MANUFACTURER) | SS | |
| 21 | 0.25 DIA. ITW BUILDEX TAPCON w/ ADV. THREADFORM, 1.75 MIN EMBEDMENT | SS/STEEL | NOT BY MANUFACTURER |
| 22 | STRUCTURAL STEEL, 0.075 MIN THICKNESS | SS/STEEL | NOT BY MANUFACTURER |
| 23 | STEEL STUD, 14GA MIN | SS/STEEL | NOT BY MANUFACTURER |
| 24 | 0.25 DIAMETER SCREW, MUST FULLY ENGAGE STEEL | SS/STEEL | NOT BY MANUFACTURER |
| 25 | WOOD SUBSTRATE, G=0.55 MIN DENSITY | WOOD | NOT BY MANUFACTURER |
| 26 | MULLION ANGLE FOR WOOD | STEEL/ALUM | |
| 27 | 0.375 DIA. LAG SCREW, 3.0 MIN EMBEDMENT | SS/STEEL | NOT BY MANUFACTURER |
| 28 | SPLICE CHANNEL, 2x2x2x0.25, 12" LONG | ALUM | |
| 29 | BOLT, 0.313x2.5 MIN (BY MANUFACTURER) | SS | |
| 30 | NUT, 0.313(5X16) (BY MANUFACTURER) | SS | |
| 31 | SPLICE PLATE | ALUM | |
| 32 | SHIMS, OPTIONAL, AS REQUIRED, INCOMPRESSABLE | VARIES | NOT BY MANUFACTURER |
| 33 | SEALANT AND BACKER ROD | VARIES | NOT BY MANUFACTURER |

PRODUCT REVISED
as complying with the Florida
Building Code
NOA-No. 21-0526.14
Expiration Date 08/05/2024
By Ishaq I. Chande
Miami-Dade Product Control

GENERAL NOTES:

1. IT SHALL BE THE RESPONSIBILITY OF THE PERMIT HOLDER TO VERIFY THE STRUCTURAL INTEGRITY OF THE EXISTING STRUCTURE TO SUPPORT THE LOADS IMPOSED BY THE PENTHOUSE ASSEMBLY.
2. THE K605MD HAS BEEN DESIGNED AND QUALIFIED IN ACCORDANCE WITH THE FLORIDA BUILDING CODE (FBC) AND TEST PROTOCOLS TAS-201 (IMPACT), TAS-202 (UNIFORM STATIC PRESSURE), AND TAS-203 (CYCLIC FATIGUE) TO A MAXIMUM DESIGN LOAD OF +/- 110 PSF.
3. THE MAXIMUM UNSUPPORTED BLADE LENGTH SHALL NOT EXCEED 72" WITHOUT STIFFENER AND 144" WITH STIFFENER.
4. THE MAXIMUM OVERALL UNIT HEIGHT IS UNLIMITED BY MEANS OF STACKING AND USE OF SPLICED BLADE SUPPORTS. THE MAXIMUM OVERALL UNIT WIDTH IS UNLIMITED BY USE OF MULLIONS.
5. LOUVER CONSTRUCTION: HEAD, SILL, JAMBS, AND BLADES ARE SQUARE CUT AT BOTH ENDS. BLADE SPACING IS 2" MAX. EACH JAMB IS SECURED TO THE SILL WITH (2) SCREWS AND WELDED. BLADES AND HEADS ARE SECURED TO JAMBS WITH (2) SCREWS AND WELDED.
6. ALL WOOD SUBSTRATE SHALL BE G = 0.55 DENSITY OR BETTER.
7. ALL STEEL STUD SUBSTRATE SHALL BE MIN. 14 GA. FY = 50 KSI.
8. ALL STRUCTURAL STEEL SUBSTRATE SHALL BE MIN. 0.075" THICK FY = 36 KSI.
9. ALL CONCRETE SUBSTRATE SHALL BE MIN. 2000 PSI.
10. CONCRETE MASONRY SHALL BE ASTM C90, TYPE II, MIN. 2000 PSI GROUT-FILLED.
11. THE LOUVER MANUFACTURER DOES NOT DETERMINE THE STRUCTURAL INTEGRITY OF THE SUBSTRATE STRUCTURE.
12. THE SYSTEM SHALL ONLY BE INSTALLED IN A LOCATION WHERE THE ENCLOSED AREA/ROOM BEHIND THE LOUVER IS DESIGNED TO DRAIN WATER PENETRATING INTO THE AREA/ROOM, AND THE AREA/ROOM WILL HOUSE WATER RESISTANT/PROOF EQUIPMENT, COMPONENTS, AND/OR SUPPLIES.
13. INSTALLER TO PROVIDE SEPARATION OF DISSIMILAR MATERIALS AS REQUIRED.
14. MATERIAL ALLOYS ON PAGE 14 ARE MINIMUMS.
15. PRODUCT HAS NOT BEEN EVALUATED FOR INSTALLATION INTO CRACKED CONCRETE SUBSTRATE.

| | | | | |
|---|-----------------|--|-----------------------|---------------------------|
| DRAWN BY M STEELE | DATE 4/27/09 | SCALE NA | SHEET NO. 16 OF 16 | CAD DRAWING NO. K605MD |
| | | | | |
|  | | The look that works™ SCHOFIELD, WISCONSIN 54476 715-359-6171 | | |
| TITLE K605MD LOUVER | | ITEMIZED PART LISTING & GENERAL NOTES | | |
|  | | | | |
| PRODUCT RENEWED as complying with the Florida Building Code NOA-No. 19-0205.07 Expiration Date 08/05/2024 By <u>[Signature]</u> Miami-Dade Product Control | | | | |