



DEPARTMENT OF REGULATORY AND ECONOMIC RESOURCES (RER)  
BOARD AND CODE ADMINISTRATION DIVISION  
**NOTICE OF ACCEPTANCE (NOA)**

**Marvair, Division of Airxcel, Inc.**  
**156 Seeding Dr.**  
**Cordele, GA. 31015**

**SCOPE:**

This NOA is being issued under the applicable rules and regulations governing the use of construction materials. The documentation submitted has been reviewed and accepted by Miami-Dade County RER -Product Control Section to be used in Miami Dade County and other areas where allowed by the Authority Having Jurisdiction (AHJ).

This NOA shall not be valid after the expiration date stated below. The Miami-Dade County Product Control Section (In Miami Dade County) and/or the AHJ (in areas other than Miami Dade County) reserve the right to have this product or material tested for quality assurance purposes. If this product or material fails to perform in the accepted manner, the manufacturer will incur the expense of such testing and the AHJ may immediately revoke, modify, or suspend the use of such product or material within their jurisdiction. RER reserves the right to revoke this acceptance, if it is determined by Miami-Dade County Product Control Section that this product or material fails to meet the requirements of the applicable building code.

This product is approved as described here in and has been designed to comply with the Florida Building Code, including the High Velocity Hurricane Zone.

**DESCRIPTION: Series "WAC 2000" Vent Hood Unit mount (Single Steel Door App)-Component Approv-LMI**

**APPROVAL DOCUMENT:** Drawing No. **ID 01664**, titled "Series WAC 2000 Hood Unit mounted on Single Outswing Door (Component Approval)", sheets 1 through 2 of 2, dated 10/05/2020 and last revised on Jul 29, 2021, prepared by Bri-Ko Engineering, Inc., signed and sealed by Brian Schwartz, P.E., bearing the Miami-Dade County Product Control Revision stamp with the Notice of Acceptance number and expiration date by the Miami-Dade County Product Control Section.

**MISSILE IMPACT RATING: Large and Small Missile Impact Resistant**

**Limitations:**

1. The Hood Unit as a Component Approval to be mounted in min 16 ga Steel Single Outswing Door, having a current door system NOA (Under separate approval). See sheet 1 for door system minimum requirement.
2. Lower Design Pressure of this component or Single door may control for the entire assembly. The Hood as a door Component unit is reviewed for wind load only.
3. Electrical/Electronic functions and Fire Rating are not part of the approval, such installation to be reviewed by AHJ.

**LABELING:** Each unit shall bear a permanent label with the manufacturer's name or logo, city, state and series and following statement: "Miami-Dade County Product Control Approved", noted herein.

**RENEWAL** of this NOA shall be considered after a renewal application has been filed and there has been no change in the applicable building code negatively affecting the performance of this product.

**TERMINATION** of this NOA will occur after the expiration date or if there has been a revision or change in the materials, use, and/or manufacture of the product or process. Misuse of this NOA as an endorsement of any product, for sales, advertising or any other purposes shall automatically terminate this NOA. Failure to comply with any section of this NOA shall be cause for termination and removal of NOA.

**ADVERTISEMENT:** The NOA number preceded by the words Miami-Dade County, Florida, and followed by the expiration date may be displayed in advertising literature. If any portion of the NOA is displayed, then it shall be done in its entirety.

**INSPECTION:** A copy of this entire NOA shall be provided to the user by the manufacturer or its distributors and shall be available for inspection at the job site at the request of the Building Official.

This NOA **revises** NOA# **20-0519.02** consists of this page 1 and evidence pages E-1 and E-2, as well as approval document mentioned above.

The submitted documentation was reviewed by **Ishaq I. Chanda, P.E.**



*Ishaq I. Chanda*

NOA No. 21061517  
Expiration Date: October 29, 2025  
Approval Date: September 02, 2021  
Page 1

**NOTICE OF ACCEPTANCE: EVIDENCE SUBMITTED**

**1. EVIDENCE SUBMITTED UNDER PREVIOUS NOA'S**

**A. DRAWINGS**

1. Manufacturer's parts drawings and sections (Submitted under files below)
2. Drawing No. **ID 01664**, titled "Series WAC 2000 Hood Unit mounted on Single Outswing Door (Component Approval)", sheets 1 through 2 of 2, dated 10/05/2020, prepared by Bri-Ko Engineering, Inc., signed and sealed by Brian Schwartz, P.E.

**B. TESTS**

1. Test reports on
  - 1) Air Infiltration Test, per FBC, TAS 202-94(Not performed)
  - 2) Uniform Static Air Pressure Test, Loading per FBC, TAS 202-94
  - 3) Water Resistance Test, per FBC, TAS 202-94 (Not Performed)
  - 4) Large Missile Impact Test per FBC, TAS 201-94
  - 5) Cyclic Wind Pressure Loading per FBC, TAS 203-94
  - 6) Tensile strength of door skin per ASTM E-8

Along with marked-up drawings and installation diagram of series DAW 2000 Hood Unit mounted on 16 ga Steel Single Outswing door. prepared by Intertek, Test Report No. **J 6935.01-801-18-ro**, dated 07/18/20, signed and sealed by Tyler Westerling, P.E.

**C. CALCULATIONS**

1. Wind loading Structural analysis & anchor verification calculation dated 10/05/20, prepared by Bri-Ko Engineering, Inc., signed and sealed by Brian Schwartz, P.E.

**D. QUALITY ASSURANCE**

1. Miami Dade Department of Regulatory and Economic Resources (RER).

**E. MATERIAL CERTIFICATIONS**

1. None.

**F. STATEMENTS**

1. Statement letter of analysis conformance, complying with **FBC-7<sup>th</sup> Edition (2020)**, and of no financial interest, dated 10/05/20, prepared by Bri-Ko Engineering, Inc., signed and sealed by Brian Schwartz, P.E.

**G. OTHER**

1. Test proposal #20-0485 dated 05/15/20, issued by RER.

*Ishaq I. Chanda*

---

**Ishaq I. Chanda, P.E.**  
**Product Control Unit Supervisor**  
**NOA No. 21-0615.17**  
**Expiration Date: October 29, 2025**  
**Approval Date: September 02, 2021**

**NOTICE OF ACCEPTANCE: EVIDENCE SUBMITTED**

**2. New EVIDENCE SUBMITTED**

**A. DRAWINGS**

1. Drawing No. **ID 01664**, titled "Series WAC 2000 Hood Unit mounted on Single Outswing Door (Component Approval)", sheets 1 through 2 of 2, dated 10/05/2020 and last revised on Jul 29, 2021, prepared by Bri-Ko Engineering, Inc., signed and sealed by Brian Schwartz, P.E.

**B. TESTS**

1. None.

**C. CALCULATIONS**

1. None.

**D. QUALITY ASSURANCE**

1. Miami Dade Department of Regulatory and Economic Resources (RER).

**E. MATERIAL CERTIFICATIONS**

1. None.

**F. STATEMENTS**

1. Statement letter of analysis conformance, complying with **FBC 2020 (7<sup>th</sup> Edition)**, and of no financial interest, dated Jul 29, 2021, prepared by Bri-Ko Engineering, Inc., signed and sealed by Brian Schwartz, P.E.

**G. OTHER**

1. This NOA revises NOA# **20-0519.02**, expiring **10/29/25**.
2. Test proposal #20-0485 dated 05/15/20, issued by RER.

*Ishaq I. Chanda*

---

**Ishaq I. Chanda, P.E.**  
**Product Control Unit Supervisor**  
**NOA No. 21-0615.17**  
**Expiration Date: October 29, 2025**  
**Approval Date: September 02, 2021**



SERIES VENT-HOOD WAC2000  
UNIT MOUNTED ON  
SINGLE OUTSWING  
DOORS (COMPONENT  
APPROVAL)

UNIT HOOD CHANNEL  
LOCKS INTO MOUNTING  
PANEL TO ASSIST IN SECURING  
HOOD TO THE DOOR

DETAIL B  
SCALE 1:2

UNIT HOOD ASSEMBLY  
MOUNTING ANGLES  
(TOP, SIDE, & BOTTOM)  
COME PRE-ATTACHED  
TO HOOD  
SILICONE CAULKING  
AROUND HEAD OF  
CARRIAGE BOLT  
6 PLACES

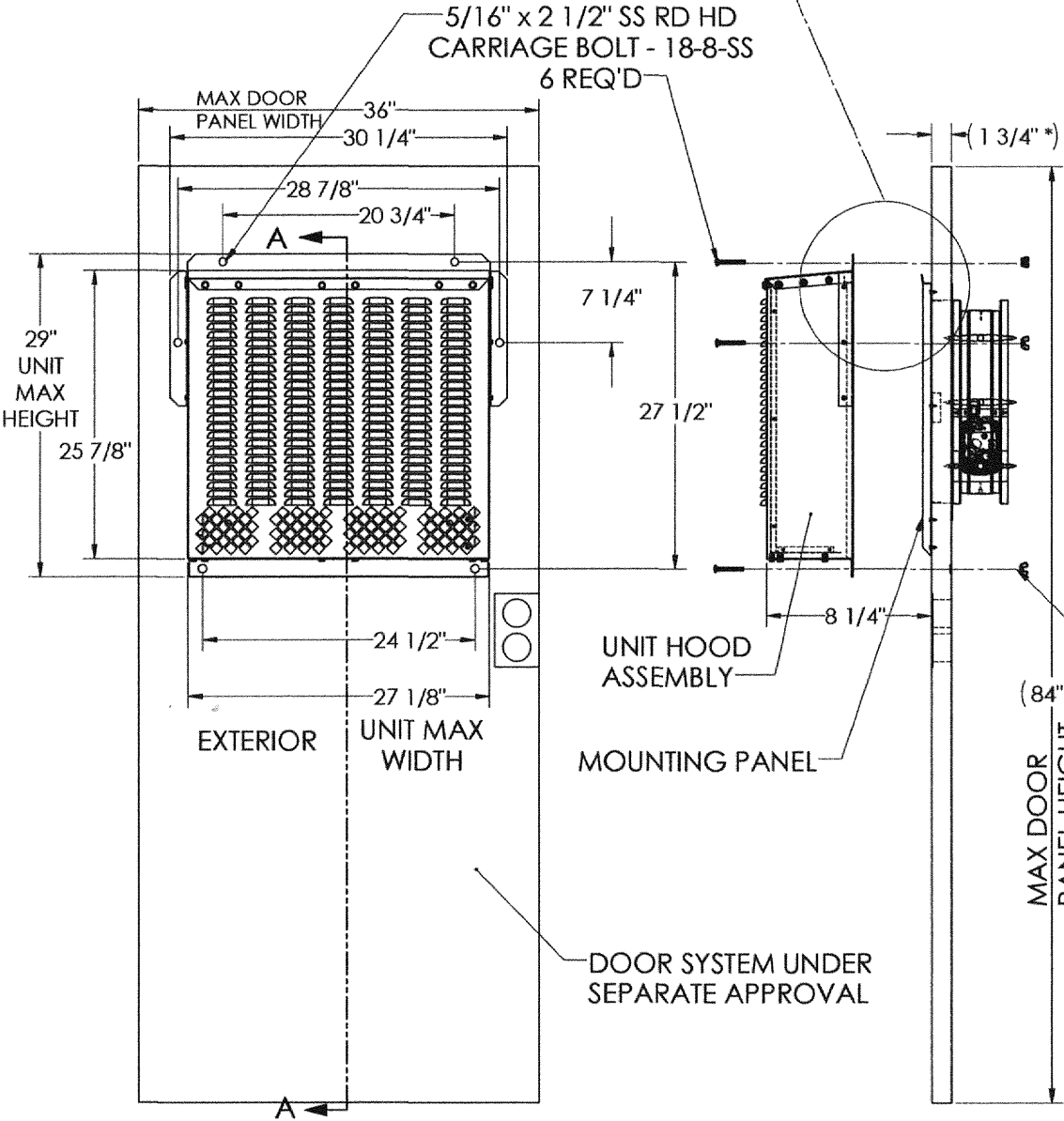
NOTE: SILICONE CAULKING  
SHOWN WITH (THICK GREEN) LINE.

MOUNTING PANEL

SILICONE CAULKING  
AROUND PERIMETER  
OF MOUNTING PLATE  
(EXCESSIVE AMOUNTS  
MAY HINDER THE HOOD  
SEALING TO DOOR)

GENERAL NOTES:

1. THIS ENGINEERING REPORT DOCUMENTS THE ANALYSIS OF VERTICAL MOUNT HOOD AND THE ASSOCIATED ANCHORING SYSTEMS TO RESIST DEAD WEIGHT AND WIND LOAD FORCES.
2. THE ANALYSIS CONFORMS TO THE REQUIREMENTS OF THE FLORIDA BUILDING CODE 7TH EDITION (2020) AND ASCE 7-16.
3. THE HOOD IS MOUNTED ON AN EXTERIOR DOOR OF COMMERCIAL GRADE STEEL WITH SOILID CORE WITH MINIMUM 16 GA (.060") WITH MIN. Fy=36.5 KSI AND 16 GA. DOOR FRAME. (UNDER SEPERATE APPROVAL)
4. THE HOOD IS SECURED TO A MOUNTING FRAME WHICH IS ANCHORED TO THE DOOR. THE MOUNTING FRAME IS ANCHORED AS SHOWN. THESE ANCHORS ARE TYPICALLY MANUFACTURED FROM HEAT-TREATED STEEL AND HAVE CORROSION RESISTANCE AS SPECIFIED BY THE MANUFACTURER.
5. LOCATION AND ANCHOR MOUNTING HOLES ARE DEFINED IN THE MANUFACTURER'S TECHNICAL LITERATURE.
6. DESIGN PLANNED DP FROM THIS COMPONENT APPROVAL OR APPROVED IMPACTED STEEL BOM SHALL CONTROL.
7. ELECTRICAL FUNCTIONS, OPERATION AND GROUNDING ARE NOT PART OF THIS APPROVAL TO BE REVIEWED BY BUILDING INSPECTOR.
8. THE HOOD MOUNT IS REVIEWED FOR WIND LOAD ONLY. ANY SAFETY RELATED ISSUE IS NOT PART OF THIS APPROVAL.



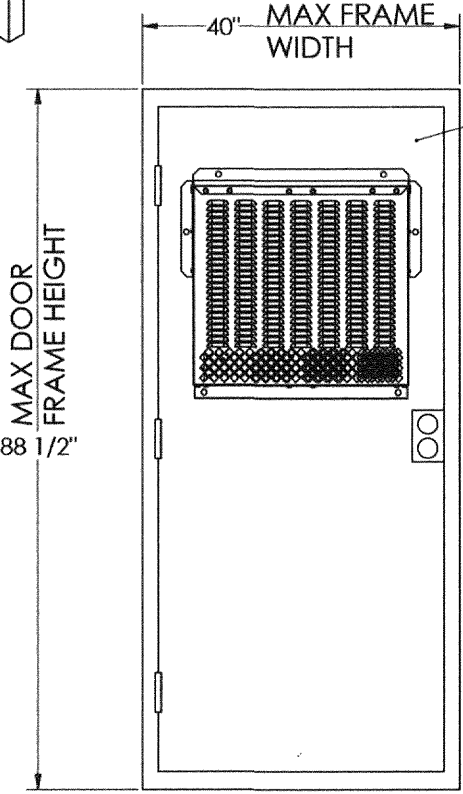
DOOR SHOWN FOR  
ILLUSTRATION ONLY  
(SEE SEPARATE INFO  
SHEET FOR DETAIL)

5/16" x 2 1/2" SS RD HD  
CARRIAGE BOLT - 18-8-SS  
6 REQ'D  
(BACK SIDE OF DOOR  
5/16" WING NUT  
18-8-SS - 6 REQ'D)

5/16" WING NUT  
18-8-SS - 6 REQ'D

**PRODUCT REVISED**  
as complying with the Florida  
Building Code  
NOA-No. 21-0615.17  
Expiration Date 10/29/2025  
By Ishaq I. Chanda  
Miami-Dade Product Control

**MODEL# VENT-HOOD - WAC2000**  
**DIMENSIONS, WEIGHT DOOR, TYPE, & ANCHOR**  
HEIGHT.... 29"  
WIDTH .... 27 1/8"  
DEPTH .... 8 1/4"  
WEIGHT ... 59 LBS  
MOUNTING FRAME SIDE:  
SIDE: "D" (2) ANCHORS  
TOP: "D" (2) ANCHORS  
BOTTOM: (2) ANCHORS  
"D" = 5/16"-18 X 2 1/2"  
CARRIAGE BOLTS



DOOR PRESSURE  
(COMPONENT APPROVAL)  
+ 100 PSF

16. GA. DOOR SYSTEM  
UNDER SEPARATE APPROVAL  
MIN DOOR SYSTEM REQUIREMENT
1. 16 GA STEEL DOOR Fy MIN. = 41 KSI
  2. 16 GA STEEL DOOR FRAME
  3. MIN. (3) HINGES 4.5"X4.5" X .134" BOLT  
4.1 LATCH THROW - 3/4" MIN.  
4.2 DEAD BOLT THROW = 1" MIN.

BRIAN I. SCHWARTZ  
LICENSE  
No. 62081  
CONFORMANCE TO 2020 FBC 7th Ed. (2020)  
BRI-KO ENGINEERING, INC.  
ENGINEERING SERVICES  
email: briko@Reagan.com  
tel: 954-648-6218  
SIGNED  
DATE: JUL 29 2021

WAC-HOOD COMPONENT APPROVAL

16 GA. STEEL OUTSWING DOOR  
SYSTEM  
(UNDER SEPARATE APPROVAL)

TOLERANCES EXCEPT AS NOTED		Marvair		Division of AIRCEL, Inc. Cordale, GA	
DECIMAL	± .03"	VENT-HOOD WAC2000	SCALE	DRAWN BY	TLC
FRACTIONAL	±	VENT-HOOD WAC 2000 HURRICANE APPROVAL	TITLE	APPROVED BY	
ANGULAR	± 1°	DATE	7/13/2020	DRAWING NUMBER	ID01644 PG 1 of 2
		REV			0



# AC UNIT VENT-HOOD OUTSIDE OF DOOR PANEL ONLY

5/16" X 2 1/2"  
CARRIAGE BOLT (2)

MOUNTING  
FLANGE

MOUNTING  
FRAME  
CHANNEL

5/16" X 2 1/2"  
CARRIAGE BOLT (1)

DOOR

MOUNTING  
BRACKETS

BRACKET FASTNERS

5/16" X 2 1/2"  
CARRIAGE BOLT (2)

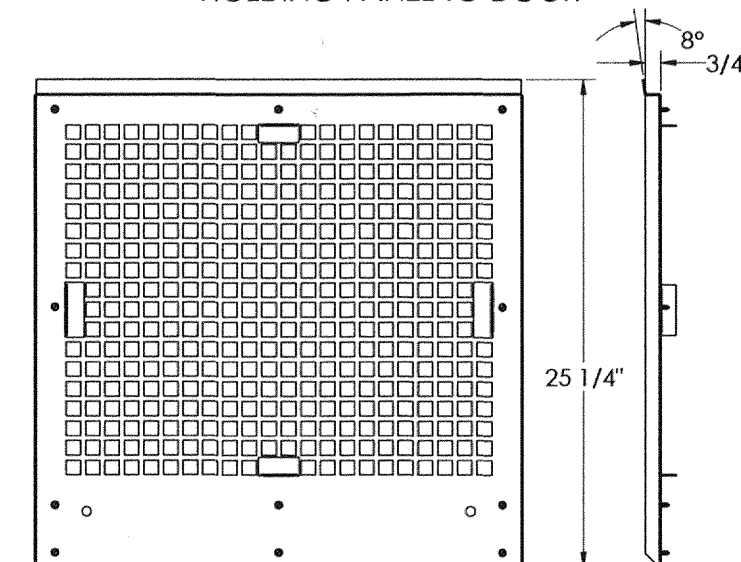
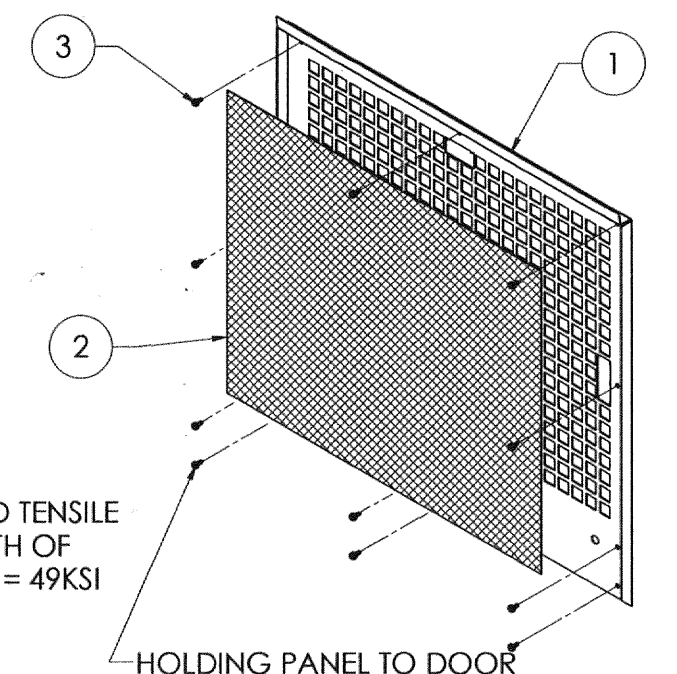
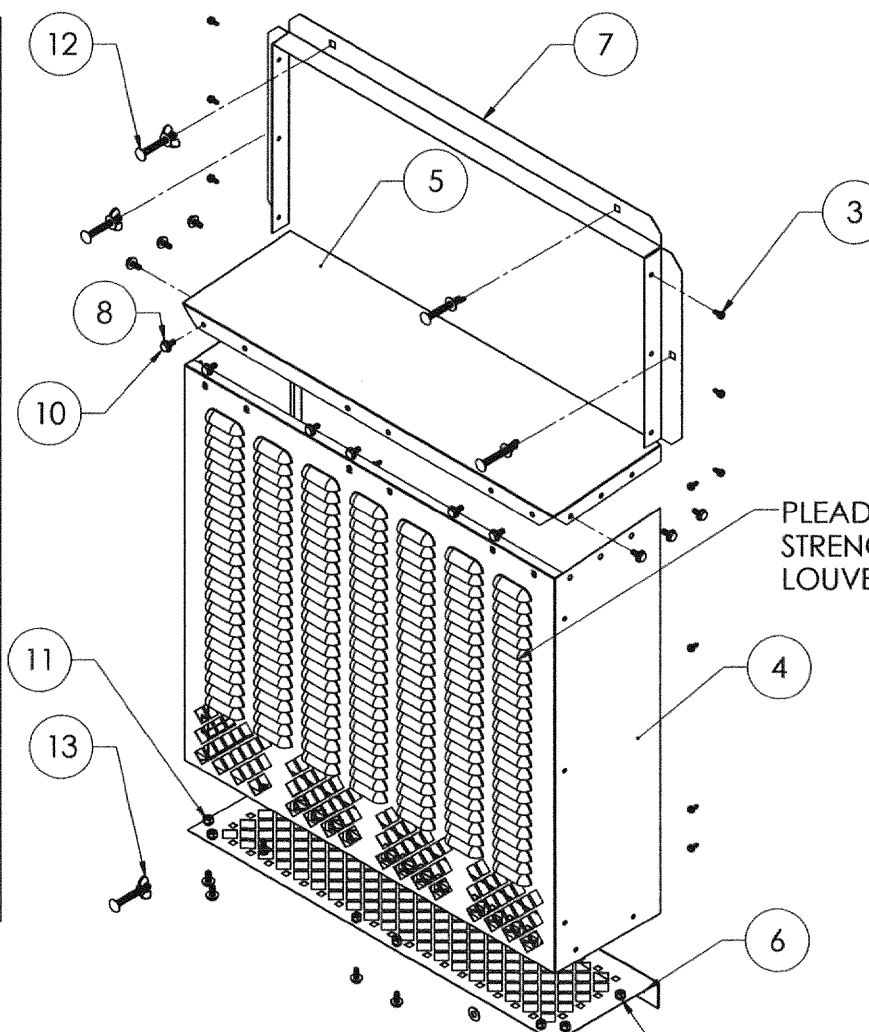
W1

W2

G1

W1max = 690 lbs  
W2max = 157 lbs  
G1max = 59 lbs

ITEM NO.	PART NUMBER	DESCRIPTION	QTY.
1	MD12840	SCREEN - EXHAUST HOOD	2
2	MD14479	MOUNTING PANEL - EXHAUST HOOD	2
3	92855	#10 x 1/2" LG SHEET METAL SCREW	23
4	MD14540	FRONT WRAP - EXHAUST HOOD	1
5	MD14017	TOP PANEL - EXHAUST HOOD	1
6	MD14539	BOTTOM PANEL - EXHAUST HOOD	1
7	MD13928	FLORIDA MOUNTING FLANGE	1
8	92890	WASHER FLAT 1/4 18-8-SS	20
9	92889	WASHER LOCK 1/4 18-8-SS	20
10	92891	BOLT 1/4-20x5/8 SS 18-8	20
11	92264	NUT 1/4"-20 18-8-SS FHN	20
12	92880	BOLT 5/16-18X2 1/2 SS RD HD CARRIAGE 18-8-SS	6
13	92892	NUT, WING 5/16-18 18-8-SS	6



## LATERAL FORCE (SLIDING):

1. THE WIND LOAD ACTING ON THE SIDE OF THE HOOD AND THE DEAD LOAD DOWNWARD.
2. THIS LATERAL FORCE MUST BE RESISTED BY THE SHEAR STRENGTH OF THE SUM OF THE ANCHORS. THE ANCHORS IN THE SUPPORT BRACKET ARE NOT USED IN THE CALCULATIONS.

## MOMENT FORCE (OVERTURN):

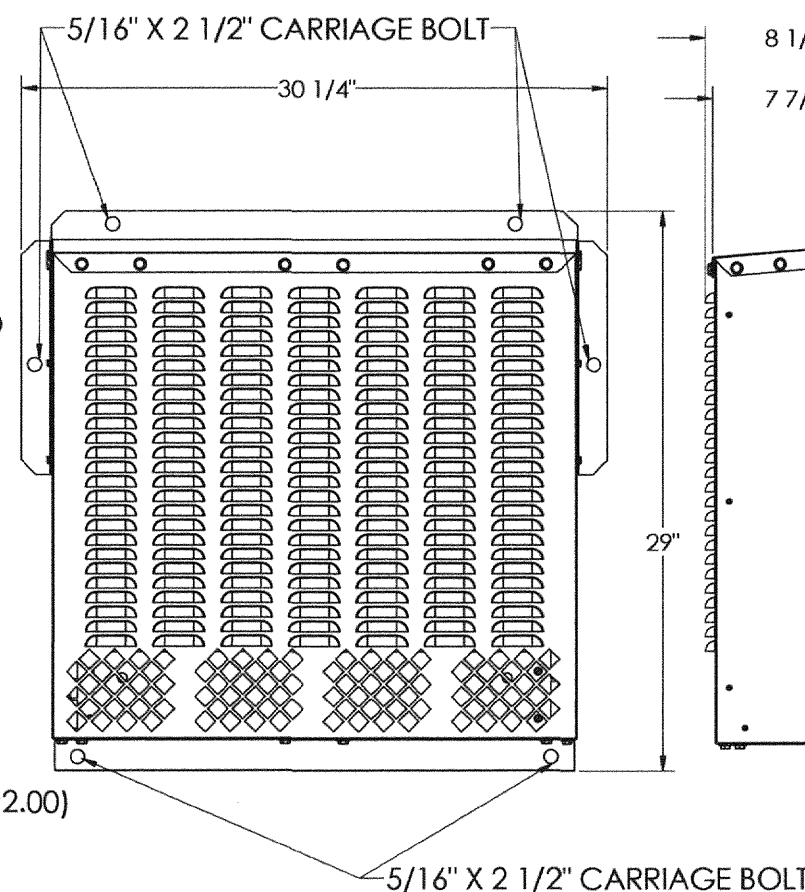
3. THE WIND LOAD ACTING ON THE SIDE AND FRONT OF THE HOOD WILL PIVOT THE HOOD ABOUT THE SIDE. THE FRONT WIND LOAD AND THE DEAD LOAD WILL PIVOT ABOUT THE BOTTOM. A SUM OF VECTORS IS ALSO CALCULATED.
4. THIS PIVOTING FORCE MUST BE RESISTED BY THE WITHDRAWAL STRENGTH OF THE SUM OF THE ANCHORS.

## CLEARANCES:

5. ANCHOR INTO DOOR SKIN MUST BE (5/16" DIA.)

## ANCHOR STRENGTH:Ω

6. LATERAL AND WITHDRAWAL STRENGTHS OF THE DESIGNATED ANCHORS. (RATED LOADS ARE PER SINGLE ANCHOR USING ASD ALLOWABLE STRESS DESIGN. NOTE: FOR LRFD DESIGN ANALYSIS, VALUES X 1.5)  
5/16" DIA RATED SHEAR = 600 LBS RATED TENSION = 1000 LBS (RATED VALUES BASED ON AISC 360-10: MAT'L SS-A307 WITH FNV = 27KSI, FNT = 45KSI, ASD ALLOWABLE VALUE = RN/Ω WHERE Ω=2.00)



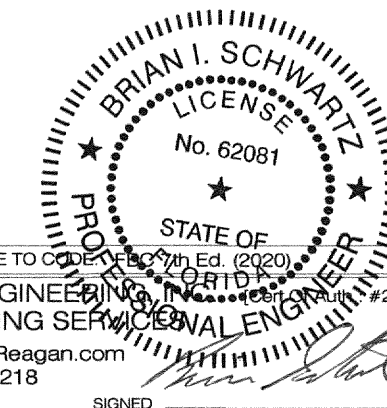
8 1/4"  
7 7/8"

29"

**PRODUCT REVISED**  
as complying with the Florida  
Building Code  
NOA-No. 21-0615.17  
Expiration Date 10/29/2025  
By *Isaac I. Chanda*  
Miami-Dade Product Control

(3) 92855 #10-16 x 5/8" 410 SS SCREWS  
ON 5" C USED ON EACH SIDE (6 TOTAL)  
TO SECURE FLANGE TO HOOD ASS'Y  
AT FACTORY

MD/13928  
MAT'L 20 GA (.035") PRE-PAINT



CONFORMANCE TO CODE OF FC 7th Ed. (2020)  
BRI-KO ENGINEERING, INC. (Lic. No. 27622)  
ENGINEERING SERVICES  
email: briko@Reagan.com  
tel: 954-648-6218  
SIGNED *Brian I. Schwartz*  
BRIAN I SCHWARTZ, PE  
FLORIDA LIC No. 62081  
DATE: JUL 29 2021

TOLERANCES EXCEPT AS NOTED	<b>Marvair</b> Division of AIRXCEL, Inc. Cordele, GA	SCALE	DRAWN BY	TLC
DECIMAL ± .03"	VENT-HOOD WAC2000		APPROVED BY	
FRACTIONAL ±	TITLE VENT-HOOD WAC HURRICANE APPROVAL			
ANGULAR ± 1°	DATE 7/13/2020	DRAWING NUMBER ID01644	PG 2 of 2	REV 0