



DEPARTMENT OF REGULATORY AND ECONOMIC RESOURCES (RER)  
BOARD AND CODE ADMINISTRATION DIVISION  
**NOTICE OF ACCEPTANCE (NOA)**

MIAMI-DADE COUNTY  
PRODUCT CONTROL SECTION  
11805 SW 26 Street, Room 208  
Miami, Florida 33175-2474  
T (786) 315-2590 F (786) 315-2599  
[www.miamidade.gov/building](http://www.miamidade.gov/building)

**Home Factories, Inc. dba Carriage House Door**  
**1571 East Main Street**  
**Old Fort, NC 28762**

**SCOPE:** This NOA is being issued under the applicable rules and regulations governing the use of construction materials. The documentation submitted has been reviewed and accepted by Miami-Dade County RER-Product Control Section to be used in Miami Dade County and other areas where allowed by the Authority Having Jurisdiction (AHJ).

This NOA shall not be valid after the expiration date stated below. The Miami-Dade County Product Control Section (In Miami Dade County) and/or the AHJ (in areas other than Miami Dade County) reserve the right to have this product or material tested for quality assurance purposes. If this product or material fails to perform in the accepted manner, the manufacturer will incur the expense of such testing and the AHJ may immediately revoke, modify, or suspend the use of such product or material within their jurisdiction. RER reserves the right to revoke this acceptance if it is determined by Miami-Dade County Product Control Section that this product or material fails to meet the requirements of the applicable building code.

This product is approved as described herein and has been designed to comply with the Florida Building Code, including the High Velocity Hurricane Zone.

**DESCRIPTION: Model 101 Carriage House Insulated Wood Sectional Garage Door up to 10'-0" Wide**

**APPROVAL DOCUMENT:** Drawing No. **1756**, titled "10' X 8' Carriage House Door +48/-55 PSF", sheets 1 through 5 of 5, dated 06/03/2021, prepared by manufacturer, signed and sealed by John E. Scates, P.E. on 10/17/2021, bearing the Miami-Dade County Product Control approval stamp with the Notice of Acceptance number and approval date by the Miami-Dade County Product Control Section.

**MISSILE IMPACT RATING: Large and Small Missile Impact Resistant**

**LABELING:** Each unit shall bear a permanent label with the manufacturer's name or logo, manufacturing address, model number, the positive and negative design pressure rating, indicate impact rated if applicable, installation instruction drawing reference number, approval number (NOA), the applicable test standards, and the statement reading 'Miami-Dade County Product Control Approved' is to be located on the door's side track, bottom angle, or inner surface of a panel.

**RENEWAL** of this NOA shall be considered after a renewal application has been filed and there has been no change in the applicable building code negatively affecting the performance of this product.

**TERMINATION** of this NOA will occur after the expiration date or if there has been a revision or change in the materials, use, and/or manufacture of the product or process. Misuse of this NOA as an endorsement of any product, for sales, advertising or any other purposes shall automatically terminate this NOA. Failure to comply with any section of this NOA shall be cause for termination and removal of NOA.

**ADVERTISEMENT:** The NOA number preceded by the words Miami-Dade County, Florida, and followed by the expiration date may be displayed in advertising literature. If any portion of the NOA is displayed, then it shall be done in its entirety.

**INSPECTION:** A copy of this entire NOA shall be provided to the user by the manufacturer or its distributors and shall be available for inspection at the job site at the request of the Building Official.

This NOA consists of this page 1 and evidence page E-1, as well as approval document mentioned above. The submitted documentation was reviewed by **Carlos M. Utrera, P.E.**



**NOA No. 21-0702.04**  
**Expiration Date: December 2, 2026**  
**Approval Date: December 2, 2021**  
**Page 1**

**NOTICE OF ACCEPTANCE: EVIDENCE SUBMITTED**

**A. DRAWINGS**

1. Drawing No. **1756**, titled “10’ X 8’ Carriage House Door +48/-55 PSF”, sheets 1 through 5 of 5, dated 06/03/2021, prepared by manufacturer, signed and sealed by John E. Scates, P.E. on 10/17/2021.

**B. TESTS**

1. Test reports on: 1) Uniform Static Air Pressure Test, Loading per FBC, TAS 202-94  
2) Large Missile Impact Test per FBC, TAS 201-94  
3) Cyclic Wind Pressure Loading per FBC, TAS 203-94  
4) Forced Entry Test, per FBC 2411 3.2.1, TAS 202-94  
along with marked-up drawings and installation diagram of Carriage House Door 10’-8” Model 101 Wood Garage Door, prepared by American Test Lab, Inc, Test Report No. **ATLNC 0409.01-18R**, dated 06/12/2018, signed and sealed by David W. Johnson, P.E.

**C. CALCULATIONS**

1. Anchor calculations prepared by John E. Scates, P.E., dated 10/17/2021, signed and sealed by John E. Scates, P.E.

**D. QUALITY ASSURANCE**

1. Miami-Dade Department of Regulatory and Economic Resources (RER).

**E. MATERIAL CERTIFICATIONS**

1. QAI listing per ASTM E84 and ASTM D1929, listing # **B1031-1**, issued to LOGIX Insulated Concrete Forms, dated 09/27/2010 and last revised on 08/24/2015.

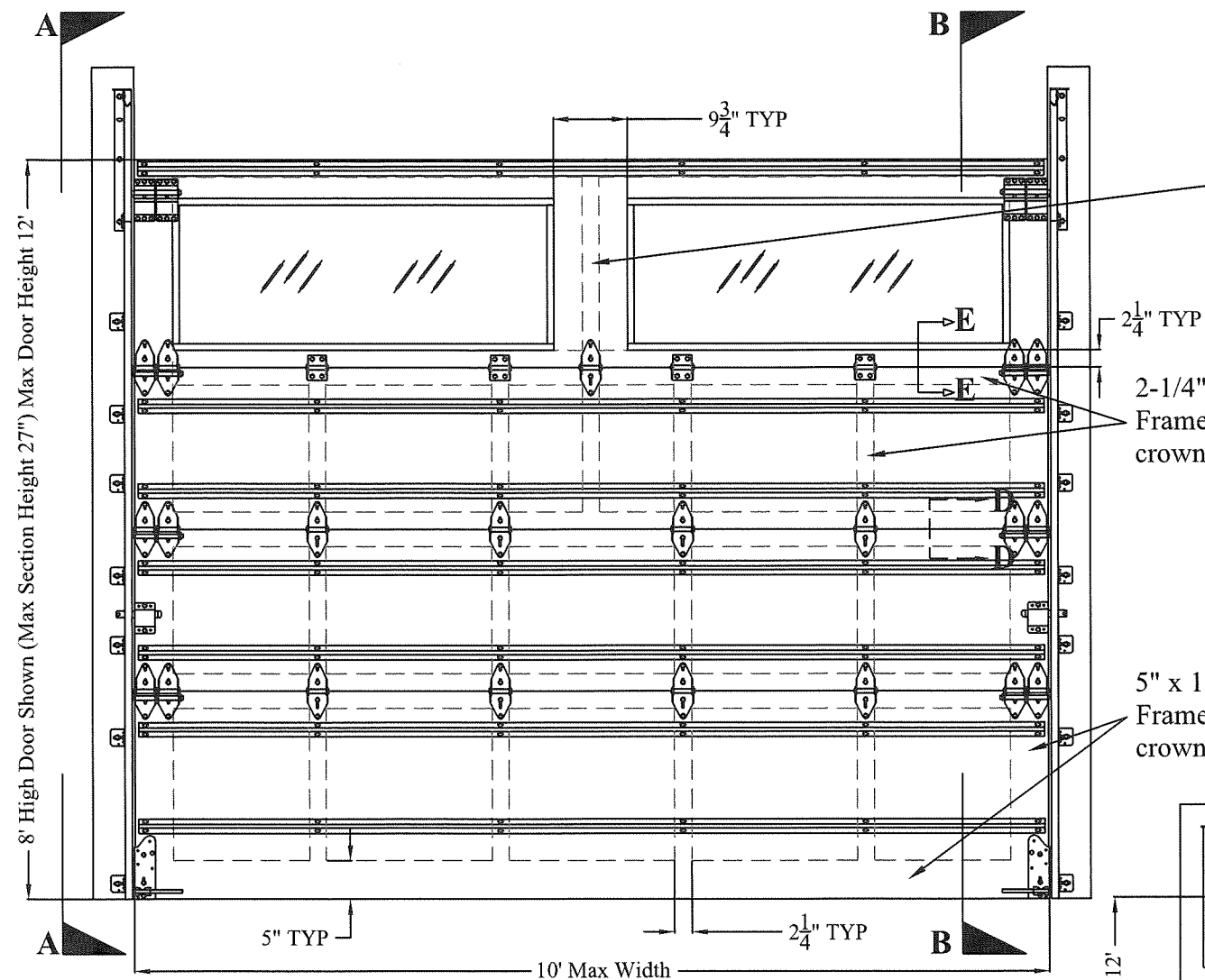
**F. STATEMENTS**

1. Statement letters of conformance, complying with the 7<sup>th</sup> Edition (2020) of the FBC and of no financial interest, both dated 10/17/2021, issued by John E. Scates, P.E, signed and sealed by John E. Scates, P.E.



---

**Carlos M. Utrera, P.E.**  
**Product Control Examiner**  
**NOA No. 21-0702.04**  
**Expiration Date: December 2, 2026**  
**Approval Date: December 2, 2021**

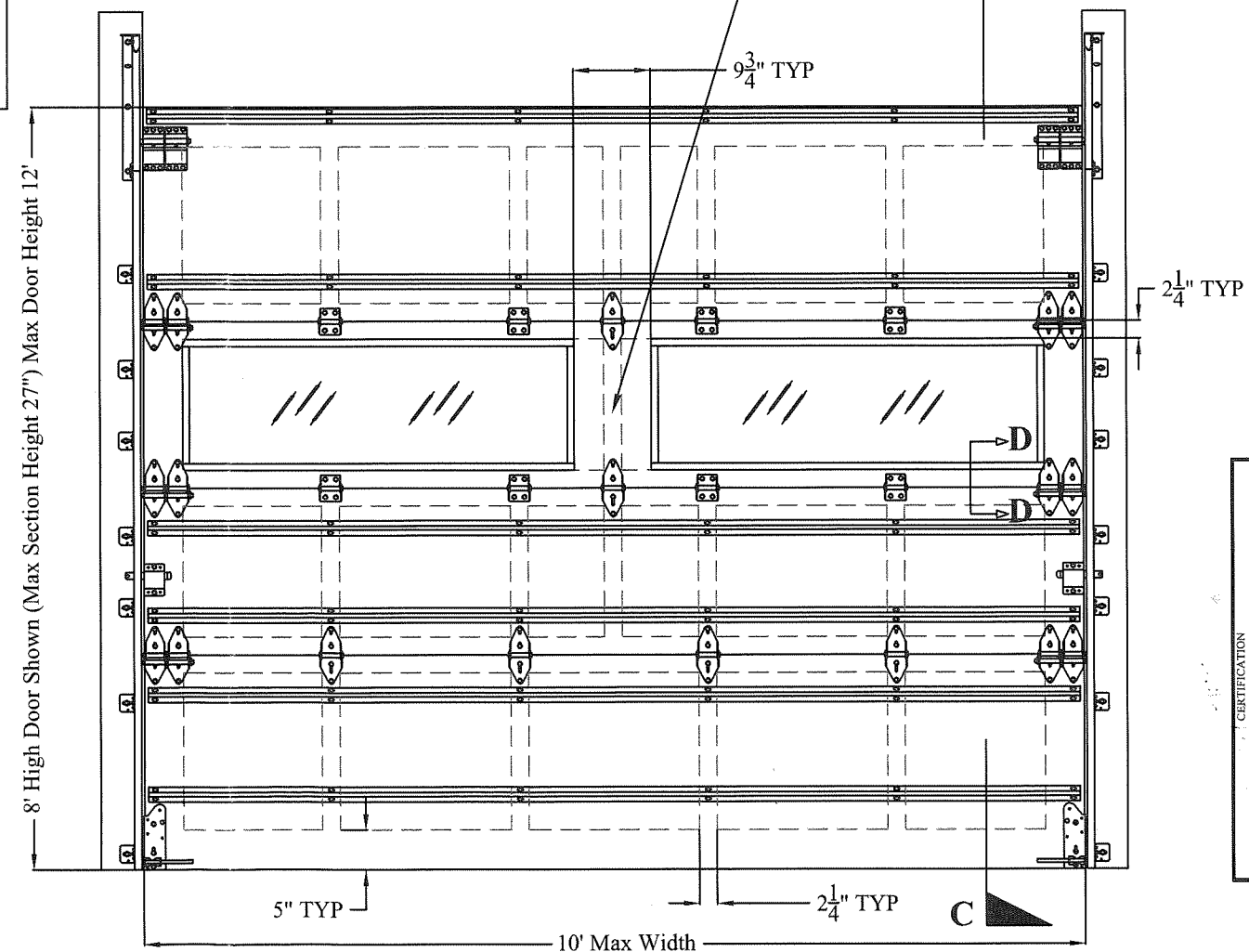



2-1/4" x 1-3/8"  
Vertical Stile Douglas Fir  
Frame. Fastened with 1"X1"  
16 GA crown staples. With  
additional 1-3/8" Douglas  
Fir filler blocking 9-3/4"  
(TYP). Attached with 1"X1"  
16 GA crown staples.

2-1/4" x 1-3/8" Douglas Fir  
➤ Frame. Fastened with 1"X1" 16 GA  
crown staples

5" x 1-3/8" Douglas Fir  
➤ Frame. Fastened with 1"X1" 16 GA  
crown staples

2-1/4" x 1-3/8"  
Vertical Stile Douglas Fir  
Frame. Fastened with 1"X1"  
16 GA crown staples. With  
additional 1-3/8" Douglas  
Fir filler blocking 9-3/4"  
(TYP). Attached with 1"X1"  
16 GA crown staples.



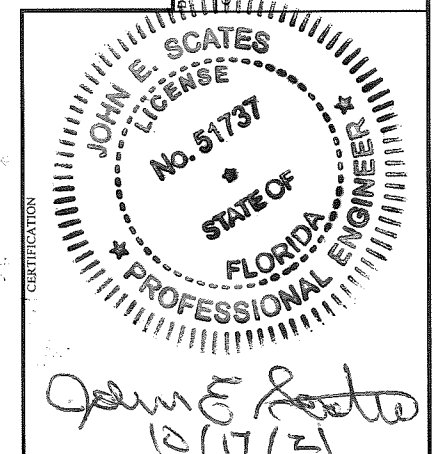
**PRODUCT APPROVED**  
as complying with the Florida  
Building Code  
NOA-No. 21-0702.04  
Approval Date 12/02/2021  
By   
**Miami-Dade Product Control**

Tested in accordance with  
TAS 202 &  
TAS 201/203  
Design Pressure: +48/-55 PSF  
Test Pressure: +72/-82.5 PSF  
Large Missile Impact Resistant  
**Note:** The design of the supporting  
structural elements shall be the  
responsibility of the professional of  
record for the structure and in  
accordance with current building  
codes for the loads listed on this  
document  
**Note:** This drawing provides  
windload assembly details for the  
claimed size and pressures

10 X 8 CARRIAGE HOUSE DOOR +48/-55 PSF

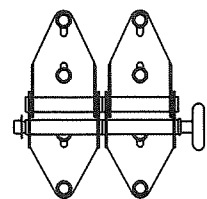
HOME FACTORIES INC.  
dba CARRIAGE HOUSE DOOR  
1517 EAST MAIN ST.  
OLD FORT N.C., 28762  
828-668-1600

JOHN E. SCATES, PE  
2560 KING ARTHUR #124-54  
LEWISVILLE, TX 75056  
FL PE 51737



DRAWING NO.	REV.
1756	

1 OF 5

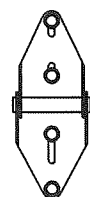


## End Hinge

11 gauge galvanized steel  
double end hinges attached  
with four 1/4" x 2 1/4"  
carriage bolts or four 1/4" x  
1 1/4" lag screws

## Roller

2" steel or nylon roller with a hardened 7" stem and push nut installed (hurricane roller)



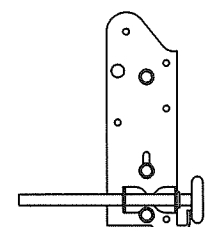
### Center Hinge

11 gauge galvanized  
steel hinge at each  
center stile attached  
with four 1/4" x 2 1/4"  
carriage bolts or four  
1/4" x 1 1/4" lag  
screws



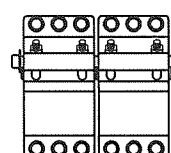
### Short Center Hinge

11 gauge galvanized  
steel hinge at each  
center stile attached  
with four 1/4" x 2 1/4"  
carriage bolts or two  
1/4" x 1 1/4" lag screws  
(for use on glass  
section)



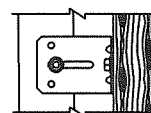
## Bottom Bracket

11 gauge galvanized steel bottom bracket attached to bottom section with three 1/4" x 2 1/4" carriage bolts or three 1/4" x 1 1/4" lag screws (no push nut required on bottom roller)



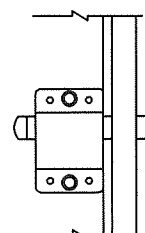
## Top Fixture

12 gauge galvanized  
steel double top fixtures  
attached with six 1/4" x  
1 1/4" lag screws each  
(push nut is required on  
top roller)



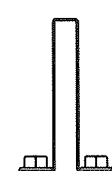
## Track Brackets

12 gauge galvanized steel track bracket attached to wood jamb with one 5/16" x 1 5/8" wood lag screw and to vertical track with one 1/4" x 5/8" track bolt and nut



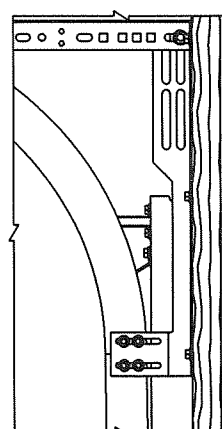
### Locking Mechanism

Doors must have locking device installed. Door may have two slide locks. (inside slide lock shown)



## Struts

3" 20 gauge 50 ksi  
hat strut attached  
with two 1/4" x 1 1/4"  
lag screws per stile and  
located as shown on  
the sections



## Flag Bracket

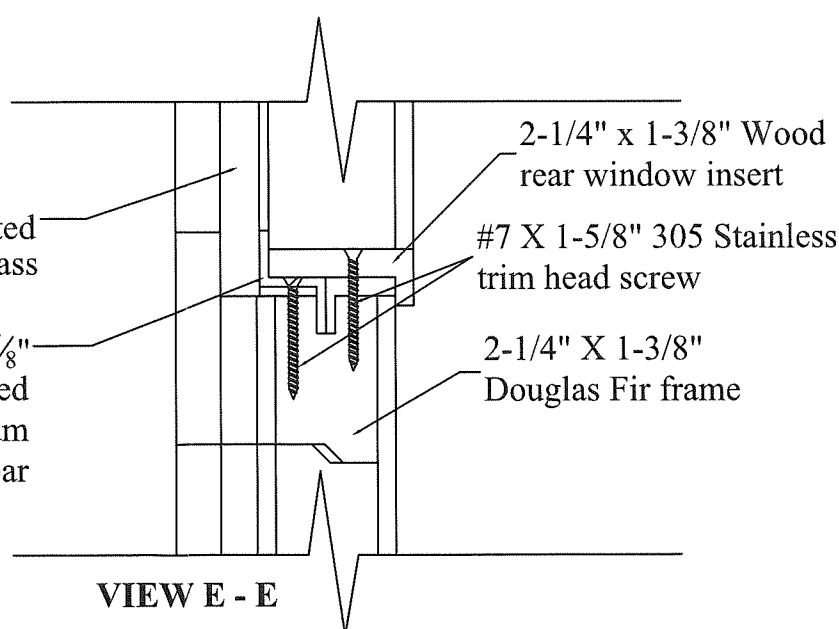
12 gauge galvanized steel flag bracket attached to wood jamb with three 5/16" x 1 5/8" wood lag screws and to the horizontal and vertical tracks with two 1/4" x 3/4" track bolts and nuts each

### Horizontal Track and Angle

Horizontal track and angle to suit

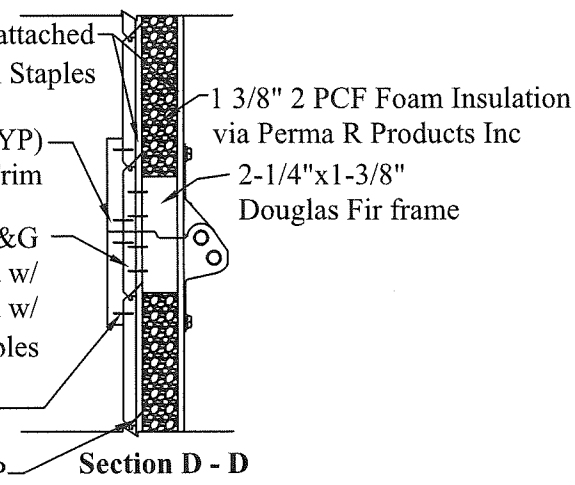
## Vertical Track

2" galvanized steel track with a minimum thickness of .083"



VIEW E - E

ALL FASTENERS AND MATERIALS  
OTHER THAN LISTED ARE  
IDENTICAL AS VIEW D-D

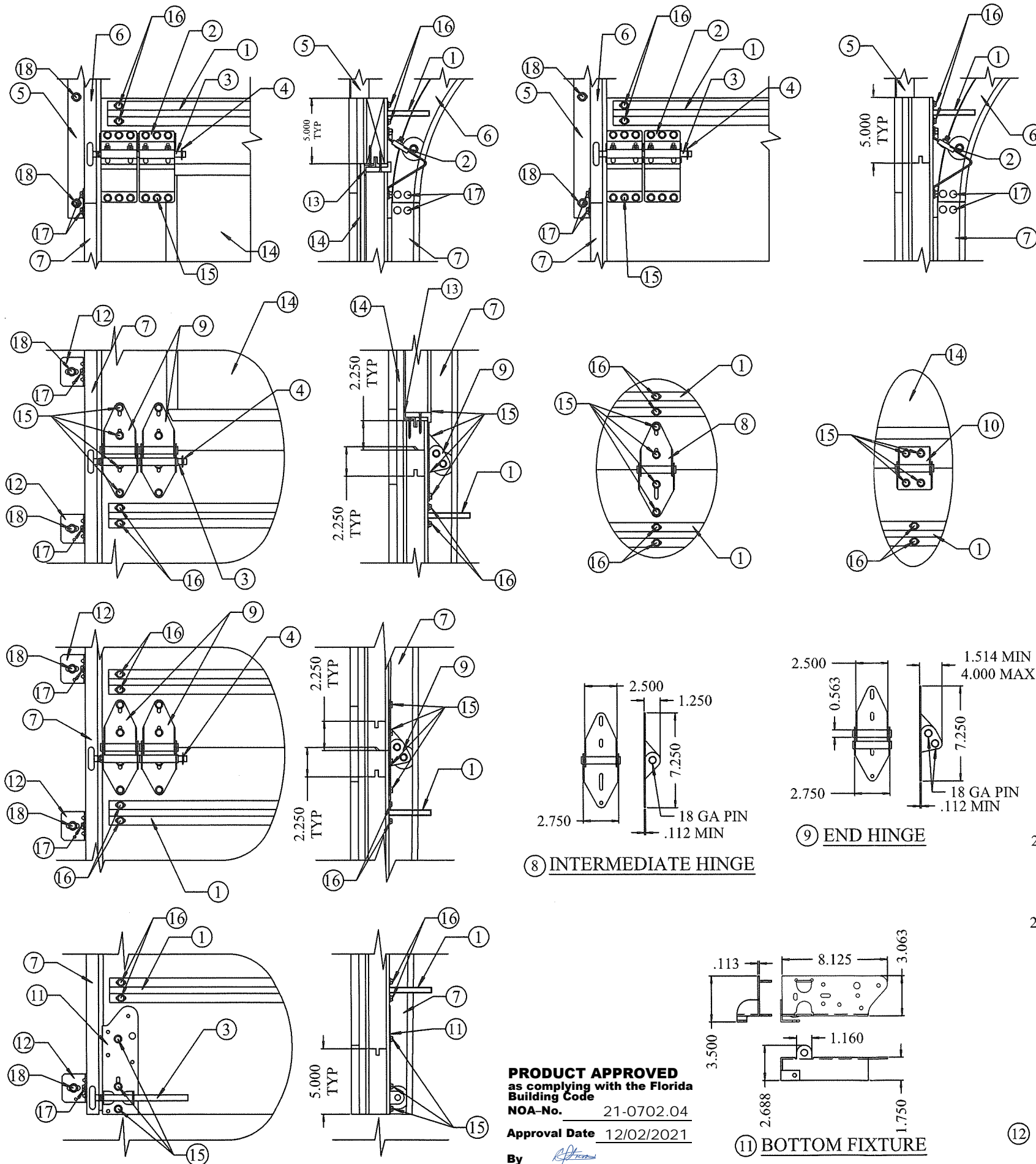


### Windows (optional)

9/16" thick laminated  
1/4" Annealed glass,  
.090" Saflex® Clear  
PVB manufactured by  
SOLUTIA INC. , 1/4"  
Annealed glass.  
Windows with a  
maximum opening of  
47" x 16 5/8" on the  
front and 48 3/4"x 18  
3/8" on the back,  
retained on all four  
sides by an extruded  
aluminum retainer and  
wood rear window  
insert attached with #7  
x 1 5/8" stainless steel  
trim head screws  
(Glass Bite on all four  
sides is 7/8"), and  
sealed on all four  
edges with Dow  
Corning 995 sealant

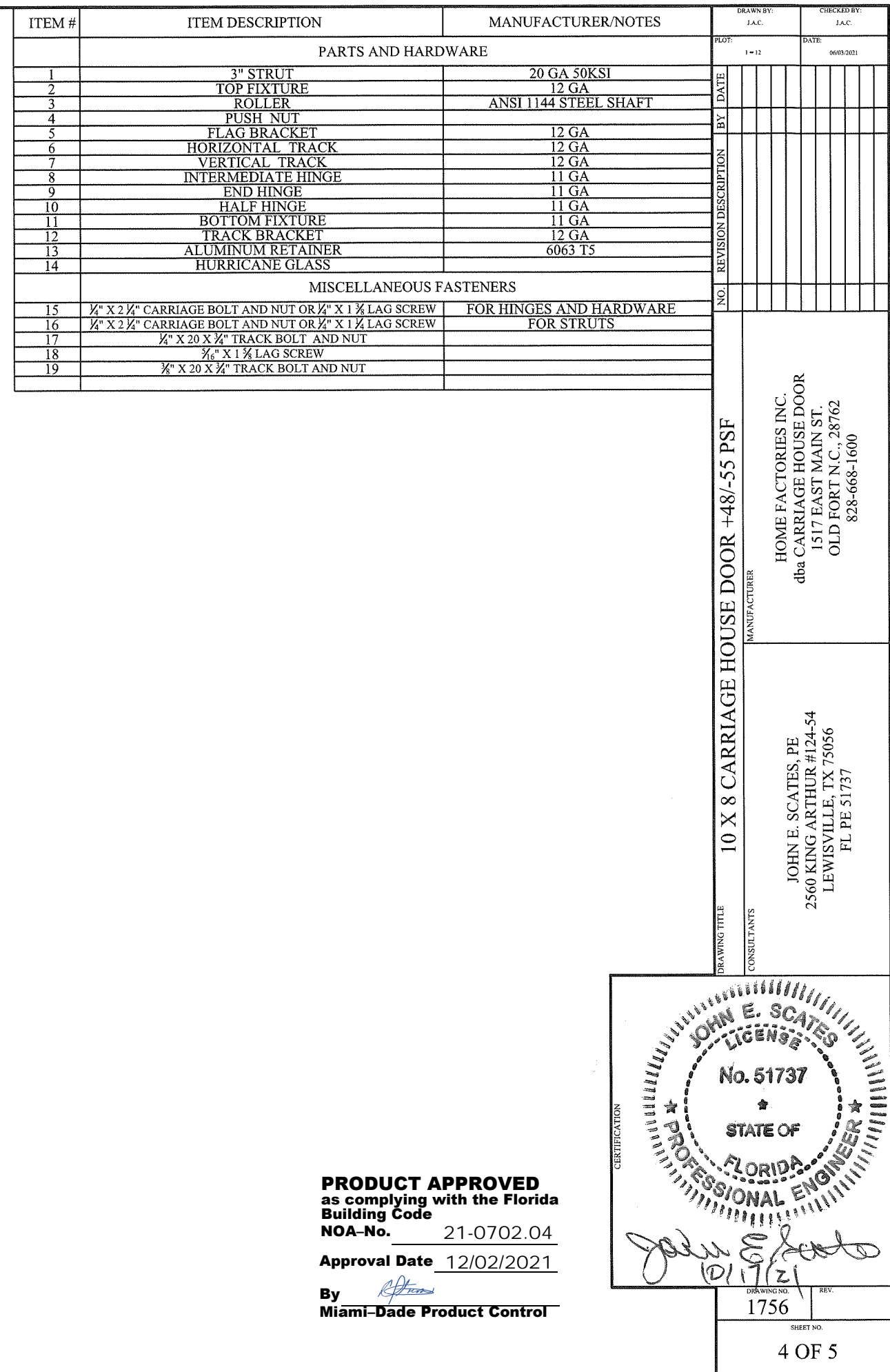
[illegible]





**PRODUCT APPROVED**  
as complying with the Florida  
Building Code  
NOA-No. 21-0702.04  
Approval Date 12/02/2021  
By *[Signature]*  
Miami-Dade Product Control

DRAWN BY: J.A.C.		CHECKED BY: J.A.C.	
PLOT: N/A		DATE: 06/03/2021	
NO.	REVISION DESCRIPTION	BY	DATE
</			



	ITEM #		DRAWN BY: J.A.C.	CHECKED BY: J.A.C.
		2 X 6 (TYP) SOUTHERN PINE (OR BETTER) H-CASE FASTENERS TO STRUCTURE	DATE: N/A	DATE: 06/03/2021
		2500 PSI CONCRETE		
	1	3/8" DEWALT SCREW BOLT + W/1" WASHER Embed 3.5", Min Edge Dist 3.5", Min spacing 9"	DATE	
	2	3/8" POWERS WEDGE BOLT + W/1" WASHER Embed 3.5", Min Edge Dist 3.5", Min spacing 9"	BY	
	3	3/8" HILTI KWIK BOLT 3 W/1" WASHER Embed 2.5", Min Edge Dist 3", Min spacing 6"	REVISION DESCRIPTION	
		FILLED CMU		
	4	3/8" DEWALT SCREW BOLT + W/1" WASHER Embed 3.25", Min Edge Dist 1.5", Min spacing 3"		
	5	3/8" HILTI KWIK BOLT 3 W/1" WASHER Embed 2.5", Min Edge Dist 4", Min spacing 8"		
		WOOD SPRUCE/PINE/FIR S.G. ≥ .042		
6	3/8"x3" LAG SCREW W/ 1-1/4" WASHER ON 24" SPACING	NO.		

3" MIN  
6" MAX

APPROVED LISTED  
FASTENER

24"  
MAX

3" MIN  
6" MAX

OPENING

2X6 Southern  
Pine (TYP)  
Wood Jamb

14'  
MAX

10' MAX

DRAWING TITLE  
10 X 8 CARRIAGE HOUSE DOOR +48/-55 PSF

CONSULTANTS  
JOHN E. SCATES, PE  
2560 KING ARTHUR #124-54  
LEWISVILLE, TX 75056  
FL PE 51737

MANUFACTURER  
HOME FACTORIES INC.  
dba CARRIAGE HOUSE DOOR  
1517 EAST MAIN ST.  
OLD FORT N.C., 28762  
828-668-1600

CERTIFICATION  
JOHN E. SCATES  
LICENSE  
No. 51737  
STATE OF  
FLORIDA  
PROFESSIONAL ENGINEER

PRODUCT APPROVED  
as complying with the Florida  
Building Code  
NOA-No. 21-0702.04  
Approval Date 12/02/2021  
By *[Signature]*  
Miami-Dade Product Control

DRAWING NO. 1756	REV.
SHEET NO. 5 OF 5	