



DEPARTMENT OF REGULATORY AND ECONOMIC RESOURCES (RER)
BOARD AND CODE ADMINISTRATION DIVISION
NOTICE OF ACCEPTANCE (NOA)

MIAMI-DADE COUNTY
PRODUCT CONTROL SECTION
11805 SW 26 Street, Room 208
Miami, Florida 33175-2474
T (786) 315-2590 F (786) 315-2599
www.miamidade.gov/economy

Vision Hollow Metal Limited
400 Zenway Blvd., Unit 1
Woodbridge, Ontario L4H 0S7

SCOPE:

This NOA is being issued under the applicable rules and regulations governing the use of construction materials. The documentation submitted has been reviewed and accepted by Miami-Dade County RER -Product Control Section to be used in Miami Dade County and other areas where allowed by the Authority Having Jurisdiction (AHJ).

This NOA shall not be valid after the expiration date stated below. The Miami-Dade County Product Control Section (In Miami Dade County) and/or the AHJ (in areas other than Miami Dade County) reserve the right to have this product or material tested for quality assurance purposes. If this product or material fails to perform in the accepted manner, the manufacturer will incur the expense of such testing and the AHJ may immediately revoke, modify, or suspend the use of such product or material within their jurisdiction. RER reserves the right to revoke this acceptance, if it is determined by Miami-Dade County Product Control Section that this product or material fails to meet the requirements of the applicable building code.

This product is approved as described herein and has been designed to comply with the Florida Building Code, including the High Velocity Hurricane Zone.

DESCRIPTION: Series LS1875 Outswing Double Steel Doors-LMI

APPROVAL DOCUMENT: Drawing No "AD10-11 Rev #6, titled "Series LS1875 Double/Single Outswing Steel Door", sheets 1 through 7 of 7, prepared by MCY Engineering, Inc., dated 09/24/20 and last revised on SEP 10, 2021, signed and sealed by Yiping Wang, P.E., bearing the Miami-Dade County Product Control Revision stamp with the Notice of Acceptance

number and expiration date by the Miami-Dade County Product Control Section.

MISSILE IMPACT RATING: Large and Small Missile Impact Resistant

Limitations:

1. See anchor options at jamb & threshold on sheet 2. Item #19 at exterior required for Water infiltration rating.
2. Double door with MG950 mullion will require Steel channel **reinforcements** for size exceeding 7' (84") High.
3. Electrical/Electronic function is not part of this approval, such functions to be reviewed and approved by AHJ

LABELING: Each unit shall bear a permanent label with the manufacturer's name or logo, **Woodbridge, Ontario, Canada**, series/model and following statement: "Miami-Dade County Product Control Approved", unless otherwise noted herein.

RENEWAL of this NOA shall be considered after a renewal application has been filed and there has been no change in the applicable building code negatively affecting the performance of this product.

TERMINATION of this NOA will occur after the expiration date or if there has been a revision or change in the materials, use, and/or manufacture of the product or process. Misuse of this NOA as an endorsement of any product, for sales, advertising or any other purposes shall automatically terminate this NOA. Failure to comply with any section of this NOA shall be cause for termination and removal of NOA.

ADVERTISEMENT: The NOA number preceded by the words Miami-Dade County, Florida, and followed by the expiration date may be displayed in advertising literature. If any portion of the NOA is displayed, then it shall be done in its entirety.

INSPECTION: A copy of this entire NOA shall be provided to the user by the manufacturer or its distributors and shall be available for inspection at the job site at the request of the Building Official.

This NOA **revises NOA #20-1005.09** and consists of this page 1 and evidence pages E-1, E-2, E-3 & E-4, as well as approval document mentioned above.

The submitted documentation was reviewed by **Ishaq I. Chanda, P.E.**

NOA No. 21-0708.15
Expiration Date: October 13, 2025
Approval Date: September 16, 2021
Page 1



Ishaq I. Chanda

NOTICE OF ACCEPTANCE: EVIDENCE SUBMITTED

1. Evidence submitted under previous approvals

A. DRAWINGS

1. Manufacturer's die drawings and sections (Submitted under file # **see below**).
2. Drawing No “**AD10-11**”, titled “Series LS1875 Double/Single Outswing Steel Door”, sheets 1 through 7 of 7, prepared by MCY Engineering, Inc., dated JUL01, 2015, signed and sealed by Yiping Wang, P.E.

B. TESTS (Submitted under files #12-0223.30 /#10-0420.02)

1. Test reports on: 1) Air Infiltration Test, per FBC, TAS 202-94
2) Uniform Static Air Pressure Test, Loading per FBC TAS 202-94
3) Water Resistance Test, per FBC, TAS 202-94 (w/Exterior astragal)
4) Large Missile Impact Test per FBC, TAS 201-94
5) Cyclic Wind Pressure Loading per FBC, TAS 203-94
6) Forced Entry Test, per FBC 2411 3.2.1, TAS 202-94

Along with manufacturer's parts and section drawings of double outswing steel doors, marked by Fenestration Testing Lab, Test Report No. **FTL-6222**, dated 05/18/10, signed and sealed by Jorge Causo, P. E.

This test report was revised by an addendum letter issued by Fenestration testing lab, dated June 17, 2010, signed and sealed by Jorge Causo, P. E.

C. CALCULATIONS

1. Anchor verification calculations and structural analysis, complying with FBC2014 (5th Edition), prepared by MCY Engineering, Inc., dated APR 21, 2015, signed and sealed by Yiping Wang, P. E.

D. QUALITY ASSURANCE

1. Miami Dade Department of Department of Regulatory and Economic Resources (RER).

E. MATERIAL CERTIFICATIONS (Submitted under files #12-0223.29/#10-0623.02)

1. Tensile test report # FTL-6222, dated 05/18/10 prepared by fenestration Testing lab, signed & sealed by Jorge Causo, P.E.

F. STATEMENTS

1. Letter of conformance to FBC 2014 (5th edition) and No Financial interest dated May 01, 2015, prepared by MCY Engineering, Inc., signed and sealed by Yiping Wang, P.E.
2. Letter of conformance to FBC 2007 & “No financial interest” dated 05/30/10, signed and sealed by Yiping Wang, P.E. (submitted under file # **10-0623.02**).
3. Lab compliance as part of the above referenced test report.

G. OTHER

1. This **revises & renews NOA #12-0223.30**, expiring on 10/13/20.
2. Distributor Agreement between Vision Hollow Metal Ltd., Ontario Canada and Precision Building Products, Florida USA, dated 04/13/15, signed by Nick Siragusa and Jacques Rousseau, respectively, on behalf of their companies.

Ishaq I. Chanda

Ishaq I. Chanda, P.E.
Product Control Unit Supervisor
NOA No. 21-0708.15
Expiration Date: October 13, 2025
Approval Date: September 16, 2021

Vision Hollow Metal Limited

NOTICE OF ACCEPTANCE: EVIDENCE SUBMITTED

2. Evidence submitted under previous approval.

A. DRAWINGS

1. Drawing No “**AD10-11 Rev #4**”, titled “Series LS1875 Double/Single Outswing Steel Door”, sheets 1 through 7 of 7, prepared by MCY Engineering, Inc., dated FEB 08, 2018, signed and sealed by Yiping Wang, P.E.

Note: This revision 4, consist of FBC code update note on sheet 1, only.

B. TESTS

1. None.

C. CALCULATIONS

1. None.

D. QUALITY ASSURANCE

1. Miami Dade Department of Regulatory and Economic Resources (RER).

E. MATERIAL CERTIFICATIONS

1. None.

F. STATEMENTS

1. Letter of conformance to FBC 2017 (6th edition) and No Financial interest dated February 08, 2018, prepared by MCY Engineering, Inc., signed and sealed by Yiping Wang, P.E.

G. OTHER

1. This NOA revises NOA # 14-0513.04, expiring 10/13/2020.

4. Evidence submitted under previous approval.

A. DRAWINGS

1. Drawing No “**AD10-11 Rev #4**”, titled “Series LS1875 Double/Single Outswing Steel Door”, sheets 1 through 7 of 7, prepared by MCY Engineering, Inc., dated May 14, 2020, signed and sealed by Yiping Wang, P.E.

B. TESTS

1. None.

C. CALCULATIONS

1. None.

D. QUALITY ASSURANCE

1. Miami Dade Department of Regulatory and Economic Resources (RER).

E. MATERIAL CERTIFICATIONS

1. None.

F. STATEMENTS

1. Letter of conformance to FBC 2017 (6th edition) and No Financial interest dated May 14, 2020, prepared by MCY Engineering, Inc., signed and sealed by Yiping Wang, P.E.

G. OTHER

1. This NOA revises NOA # 18-0212.10, expiring 10/13/2025.

Ishaq I. Chanda

Ishaq I. Chanda, P.E.
Product Control Unit Supervisor
NOA No. 20-0510.09
Expiration Date: October 13, 2025
Approval Date: January 07, 2021

NOTICE OF ACCEPTANCE: EVIDENCE SUBMITTED

5. Evidence submitted under previous approval.

A. DRAWINGS

1. Drawing No “**AD10-11 Rev #4**”, titled “Series LS1875 Double/Single Outswing Steel Door”, sheets 1 through 7 of 7, prepared by MCY Engineering, Inc., dated 09-24-2020, signed and sealed by Yiping Wang, P.E.

B. TESTS

1. None.

C. CALCULATIONS

1. None.

D. QUALITY ASSURANCE

1. Miami Dade Department of Regulatory and Economic Resources (RER).

E. MATERIAL CERTIFICATIONS

1. None.

F. STATEMENTS

1. Letter of conformance to FBC 2020 (7th edition) and No Financial interest dated 09-24-2020, prepared by MCY Engineering, Inc., signed and sealed by Yiping Wang, P.E.

G. OTHER

1. This NOA revises NOA # **20-0602.06**, expiring 10/13/2025.

Ishaq I. Chanda

Ishaq I. Chanda, P.E.
Product Control Unit Supervisor
NOA No. 21-0708.15
Expiration Date: October 13, 2025
Approval Date: September 16, 2021

NOTICE OF ACCEPTANCE: EVIDENCE SUBMITTED

6. New Evidence submitted.

A. DRAWINGS

1. Drawing No “**AD10-11 Rev #6**”, titled “Series LS1875 Double/Single Outswing Steel Door”, sheets 1 through 7 of 7, prepared by MCY Engineering, Inc., dated 09-24-2020 and last revised on SEP 10, 2021, signed and sealed by Yiping Wang, P.E.

B. TESTS (submitted under NOA # 21-0216.06 & .07)

1. Test reports on:
 - 1) Air Infiltration Test, per FBC, TAS 202-94
 - 2) Uniform Static Air Pressure Test, Loading per FBC TAS 202-94
 - 3) Water Resistance Test, per FBC, TAS 202-94 (w/Exterior astragal)
 - 4) Large Missile Impact Test per FBC, TAS 201-94
 - 5) Cyclic Wind Pressure Loading per FBC, TAS 203-94
 - 6) Forced Entry Test, per FBC 2411 3.2.1, TAS 202-94

Along with manufacturer's parts and section drawings of double outswing glazed steel doors (Samples B-1, C-1 & D-1, marked by Fenestration Testing Lab, Test Report No. **FTL-8513**, dated 10/22/15, signed and sealed by Idalmis Ortega, P. E.

This test report was revised by an addendum letter w/ revised marked-up Dwgs, issued by Fenestration testing lab, dated Mar 25, 2016, signed by Ms. L. Delgado.

C. CALCULATIONS

1. Comparative analysis for qualification of Surface Vertical Rod (per Test Report No. **FTL-8513**, dated 10/22/150), prepared by MCY Engineering, Inc., dated July 07, 2021, signed and sealed by Yiping Wang, P.E.

D. QUALITY ASSURANCE

1. Miami Dade Department of Regulatory and Economic Resources (RER).

E. MATERIAL CERTIFICATIONS

1. None.

F. STATEMENTS

1. Letter of conformance to FBC 2020 (7th edition) and No Financial interest dated July 07, 2021, prepared by MCY Engineering, Inc., signed and sealed by Yiping Wang, P.E.

G. OTHER

1. This NOA revises **NOA # 20-1005.09**, expiring 10/13/2025.

Ishaq I. Chanda

Ishaq I. Chanda, P.E.
Product Control Unit Supervisor
NOA No. 21-0708.15
Expiration Date: October 13, 2025
Approval Date: September 16, 2021

By Ishaq I. Chande
Miami-Dade Product Control



MAX. DESIGN LOAD
(FOR SIZES SHOWN ABOVE OR SMALLER
AS PERMITTED BY FBC)

SERIES LS1875 DOUBLE/SINGLE PANEL OUTSWING STEEL DOOR (LMI)

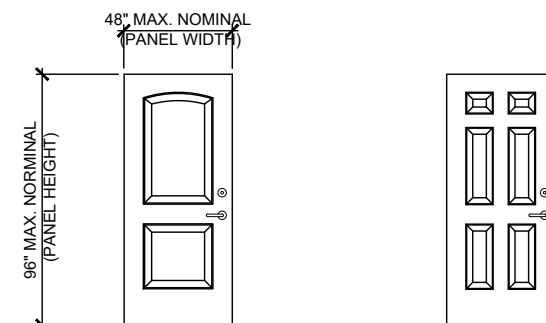
- THIS PRODUCT HAS BEEN DESIGNED AND TESTED TO COMPLY WITH THE REQUIREMENTS OF THE 2020 FLORIDA BUILDING CODE 7TH EDITION INCLUDING HIGH VELOCITY HURRICANE ZONE (HVHZ).
- DOORS RATED FOR LARGE MISSILE IMPACT AND DO NOT REQUIRE SHUTTERS.
- DOORS APPROVED FOR INSTALLATIONS WHERE WATER INFILTRATION RESISTANCE IS REQUIRED.
- ANCHORS SHALL BE AS LISTED, SPACED AS SHOWN ON DETAILS. ANCHORS EMBEDMENT TO BASE MATERIAL SHALL BE BEYOND WALL DRESSING OR STUCCO.
- ANCHORING OR LOADING CONDITIONS NOT SHOWN IN THESE DETAILS ARE NOT PART OF THIS APPROVAL.
- ULTIMATE DESIGN LOAD OBTAINED FROM ASCE-7-16, MULTIPLY BY 0.6 SHALL BE LESS THAN OR EQUAL TO MAX. DESIGN LOAD IN THIS DOCUMENT.
- MATERIALS INCLUDING BUT NOT LIMITED TO STEEL/METAL SCREWS THAT COME INTO CONTACT WITH OTHER DISSIMILAR MATERIALS SHALL MEET THE REQUIREMENTS OF 2020 FLORIDA BUILDING CODE SECTION AS APPLICABLE.

- METAL, CONCRETE OR WOOD STRUCTURES NOT BY VISION HOLLOW METAL LIMITED MUST SUPPORT LOADS IMPOSED BY DOOR SYSTEM AND TRANSFER THEM TO THE BUILDING STRUCTURE.
- A LOAD DURATION FACTOR IN ALLOWABLE STRESS IS USED IN DESIGN OF ANCHORS INTO WOOD ONLY.
- DOOR PANEL: MIN. 18 GA. (0.053") STEEL $F_y = 54$ KSI MIN.
DOOR FRAME: MIN. 18 GA. (0.044") STEEL $F_y = 54$ KSI MIN
- EGRESS REQUIREMENTS TO BE REVIEWED BY BUILDING OFFICIAL
- LOCK OPTIONS FOR DOUBLE DOORS ACTIVE LEAF CAN APPLY FOR SINGLE DOORS



WIRE ANCHOR LAYOUT

TYPE F



OPTIONAL EMBOSSED DOOR LEAF PATTERNS

MIAMI DADE COUNTY

September 10th, 2021

REVISIONS		
NO.	DATE	DESCRIPTION
1	04.28.14	2014 FBC
2	06.28.15	PER PER COMMENTS
3	02.08.17	2017 FBC
4	09.24.20	2020 FBC
5	06.30.21	REVISION

MCY ENGINEERING, INC.
GLAZING CONSULTANTS

12781 MIRAMAR PKWY. STE. 301
GLAZING CONSULTANTS

MIRAMAR, FL. 33027 P: 305.271.0117

www.MCYEngineering.com MCY@mcysengineering.com

SERIES	LS1875	Single/Double	Outswing	Steel	Doors	w/o	Panic devices

VISION HOLLOW METAL LIMITED
400 ZENWAY BLVD UNIT #4

400 ZENWAY BLVD., UNIT #1
WOODBIDGE, ON L4H0S7

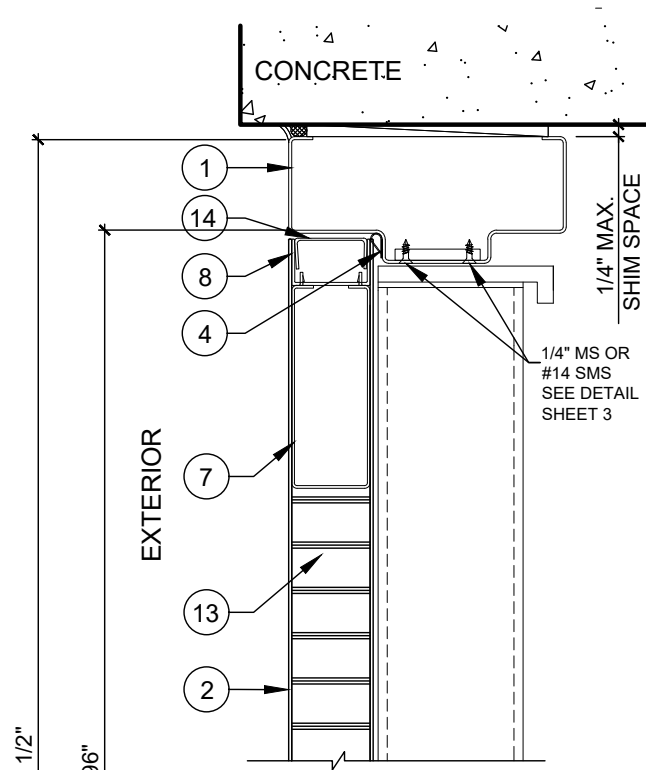
Tel: (877) 984 - 8465 Fax: (905) 851 - 1261



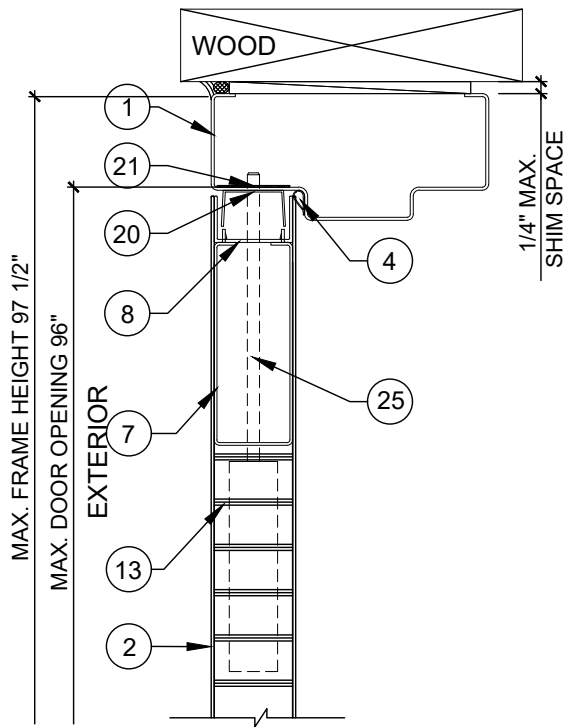
DATE	09-24-2020
SCALE	N.T.S.
DRAWN	J.S
PROJECT	10-04

DRAWING NO.
AD10-11

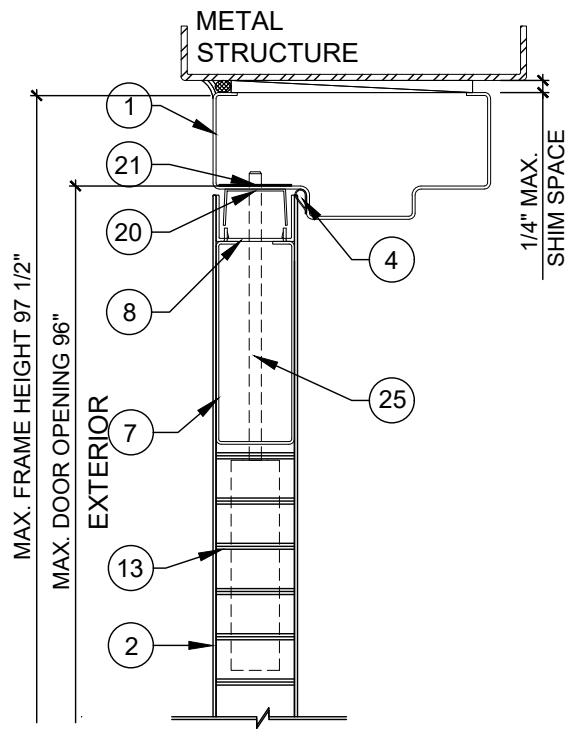
1 OF 8



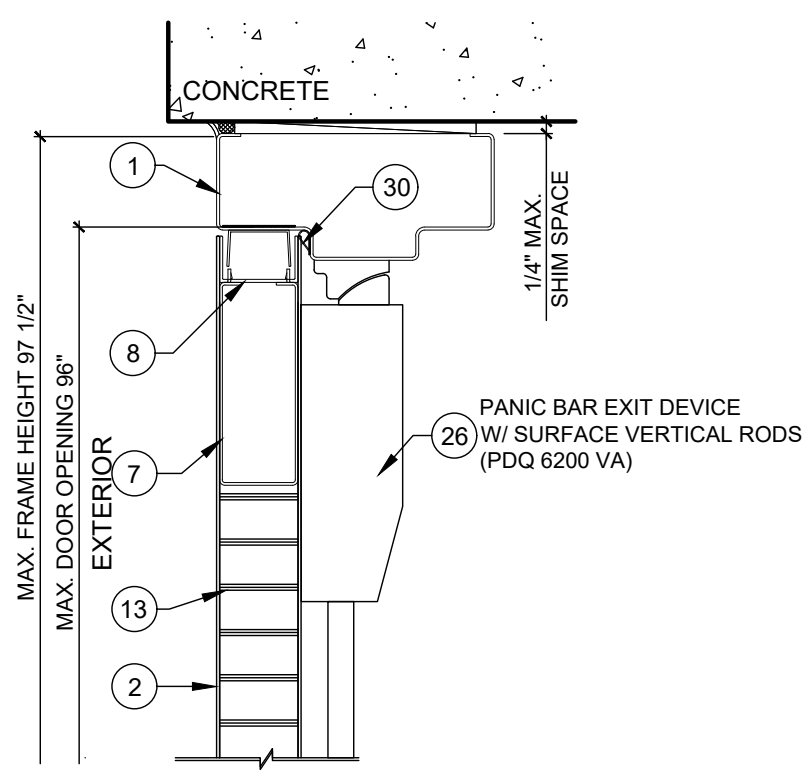
HEAD DETAIL
OPTION 1
DOOR WITH PANIC
DEVICE & MULLION



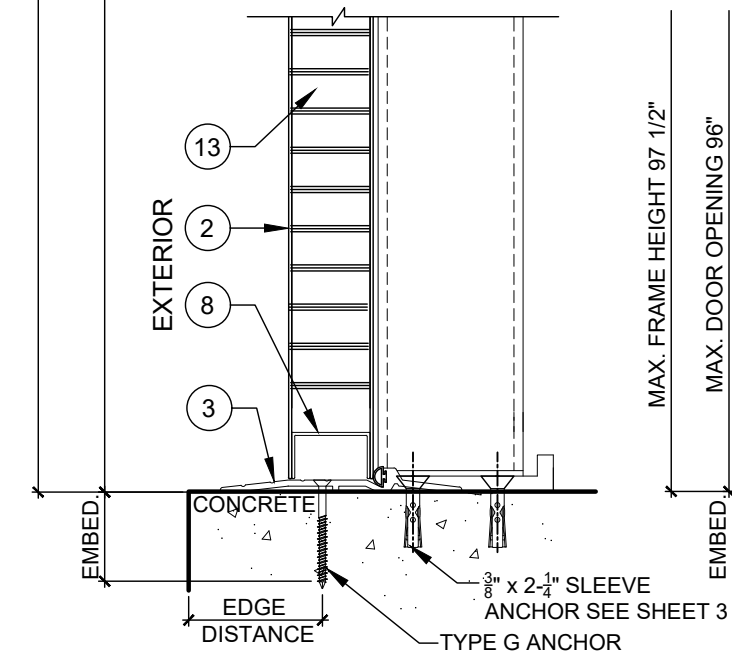
HEAD DETAIL
OPTION 2
DOOR WITH CYLINDRICAL
LOCK & DEAD BOLT



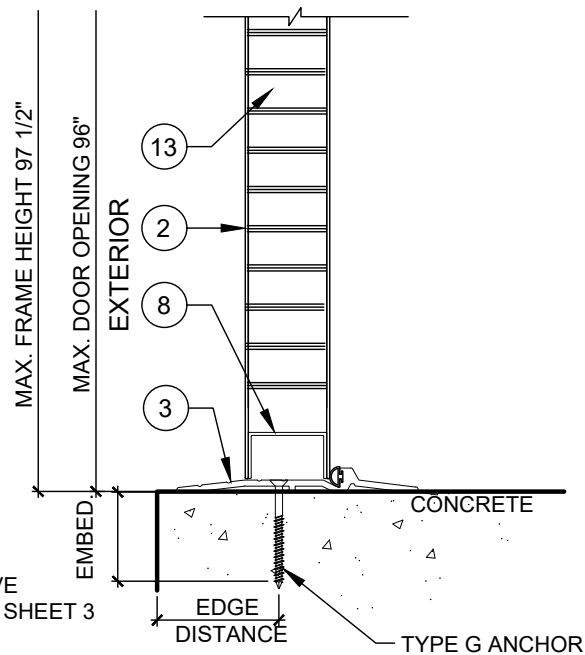
HEAD DETAIL
OPTION 3
DOOR WITH MORTISE
LOCK & DEAD BOLT



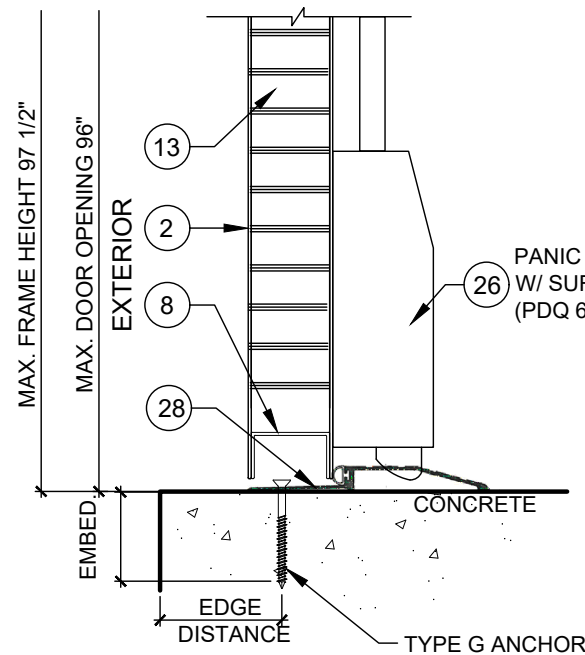
HEAD DETAIL
OPTION 4
DOOR WITH SURFACE
VERTICAL RODS



TYPICAL THRESHOLD
DOOR WITH PANIC
DEVICE & MULLION



TYPICAL THRESHOLD



TYPICAL THRESHOLD

PRODUCT REVISED
as complying with the Florida
Building Code
NOA-No. 21-0708.15
Expiration Date 10/13/2025
By *Ishag I. Chandra*
Miami-Dade Product Control

NO	DATE	DESCRIPTION
1	04.28.14	2014 FBC
2	06.28.15	2015 FBC
3	02.08.17	2017 FBC
4	09.24.20	2020 FBC
5	06.30.21	REVISION

MCY ENGINEERING, INC.
GLAZING CONSULTANTS
12781 MIRAMAR PKWY. STE. 301
MIRAMAR, FL 33027 P: 305.271.0117
www.MCYEngineering.com MCY@mcycyengineering.com

SERIES LS1875 Single/Double Outswing Steel Doors w/wo Panic devices
VISION HOLLOW METAL LIMITED
400 ZENWAY BLVD., UNIT #1
WOODBRIDGE, ON L4H0S7
Tel: (877) 984 - 8465 Fax: (905) 851 - 1261



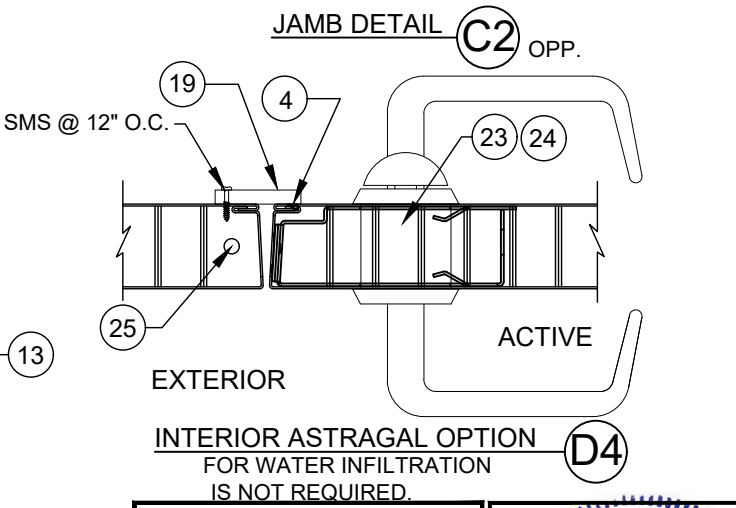
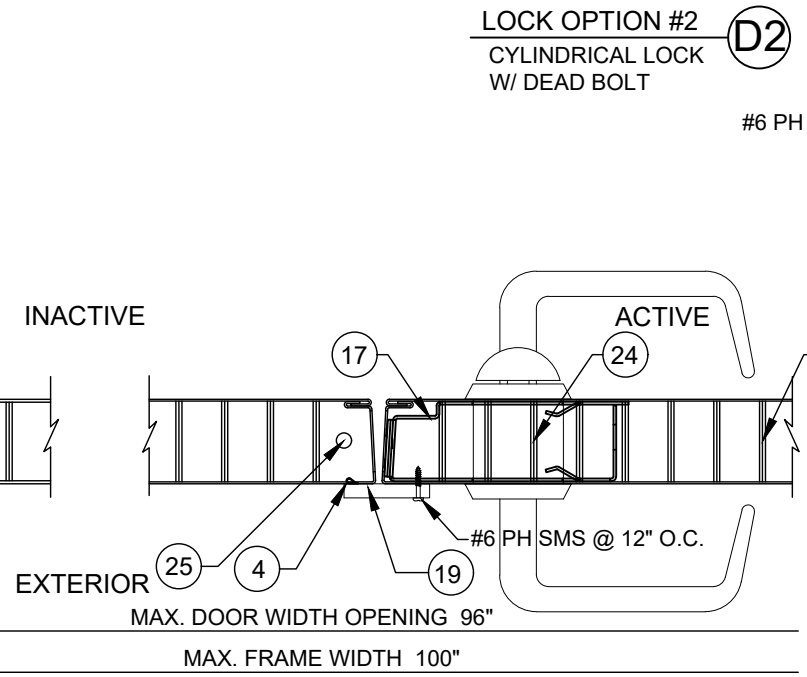
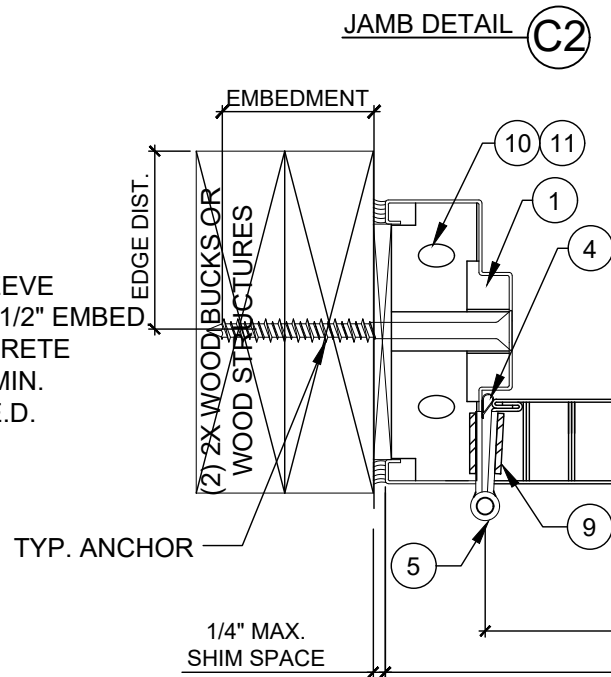
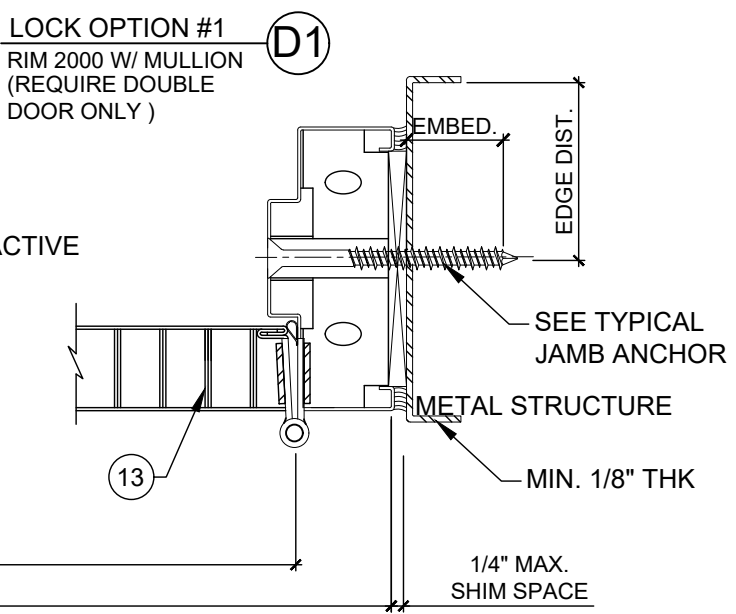
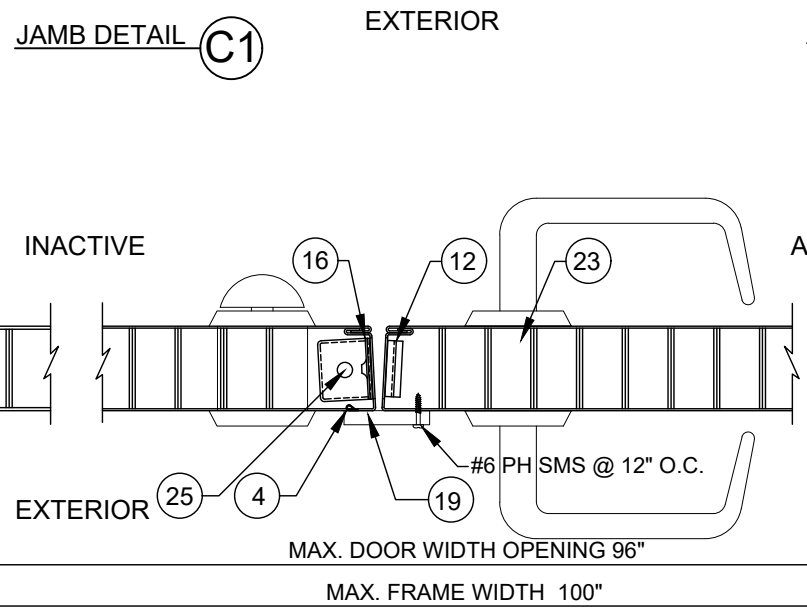
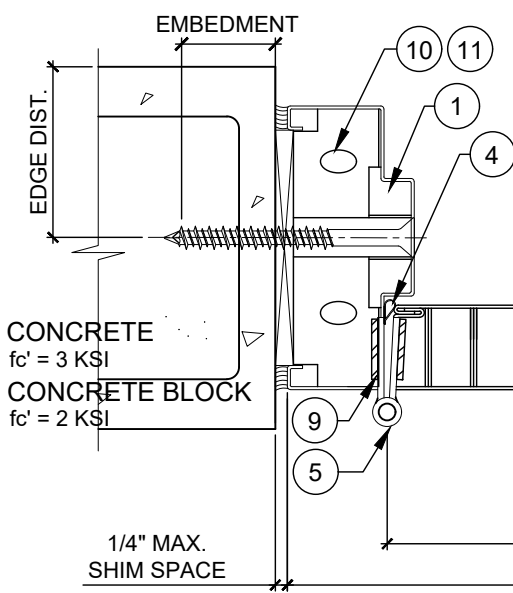
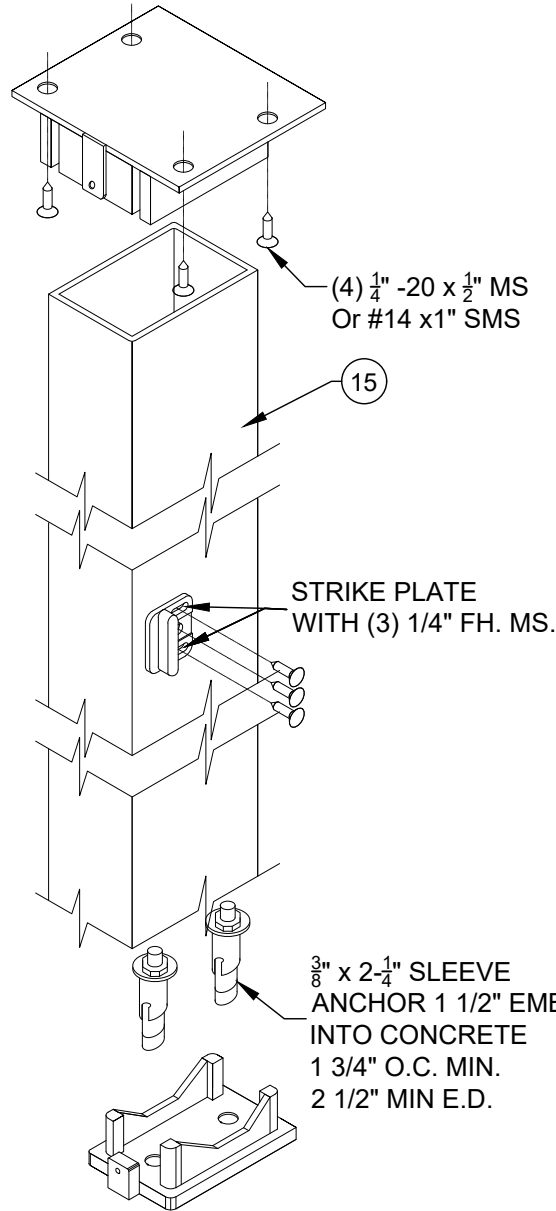
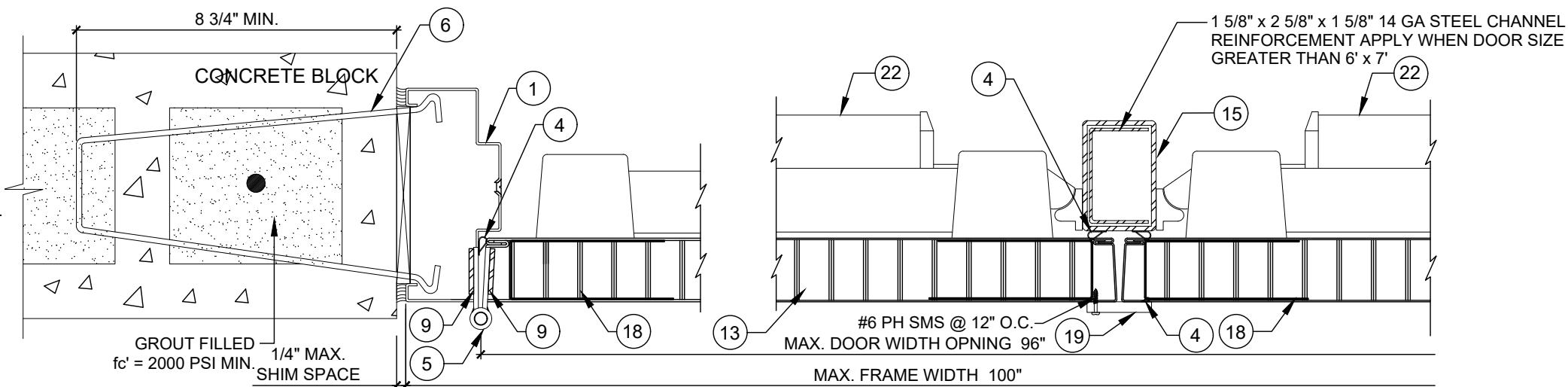
DATE	09-24-2020
SCALE	N.T.S.
DRAWN	J.S.
PROJECT	10-04

DRAWING NO.
AD10-11

2 OF 8

MIAMI DADE COUNTY
September 10th, 2021

PRODUCT REVISED
 as complying with the Florida
 Building Code
 NOA-No. 21-0708.15
 Expiration Date 10/13/2025
 By *Ishaq I. Chande*
 Miami-Dade Product Control



MG950F MULLION
 WITH SERIES 2000 DESIGN
 HARDWARE PANIC DEVICE

JAMB DETAIL C2

LOCK OPTION #3
 MORTISE LOCK W/ DEAD BOLT
 D3

MIAMI DADE COUNTY
 September 10th, 2021

Professional Engineer
 State of Florida
 License No. 55983
 C.P.E. #55983
 C.A.N. 28677

REVISIONS	
NO.	DATE DESCRIPTION
1	04.28.14 2014 FBC
2	06.28.15 PRE REV COMMENTS
3	02.08.17 2017 FBC
4	09.24.20 2020 FBC
5	06.30.21 REVISION

MCY ENGINEERING, INC.
 GLAZING CONSULTANTS
 12781 MIRAMAR PKWY. STE. 301
 MIRAMAR, FL 33027 P: 305.271.0117
 www.MCYEngineering.com MCY@mcycyengineering.com

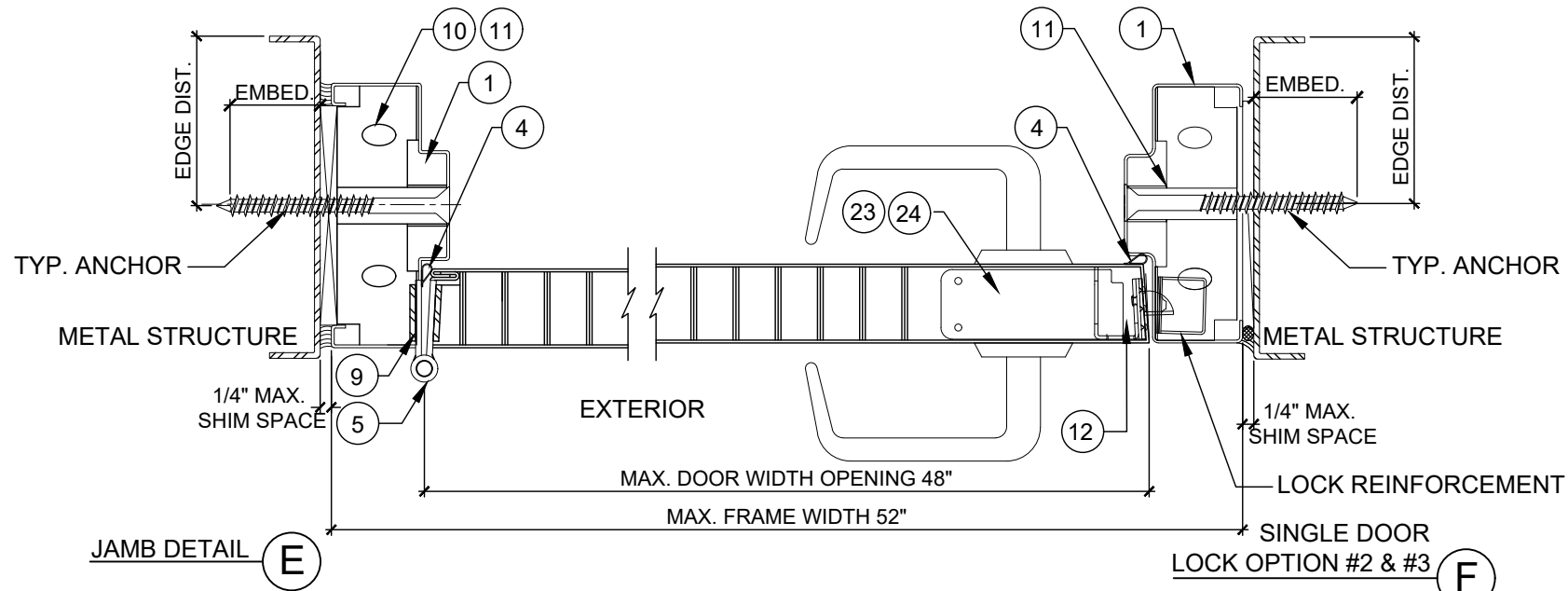
SERIES LS1875 Single/Double Outswing Steel Doors w/wo Panic devices
 VISION HOLLOW METAL LIMITED
 400 ZENWAY BLVD., UNIT #1
 WOODBRIDGE, ON L4H0S7
 Tel: (877) 984 - 8465 Fax: (905) 851 - 1261

VISION
 HOLLOW METAL LIMITED

DATE	09-24-2020
SCALE	N.T.S.
DRAWN	J.S.
PROJECT	10-04

DRAWING NO.
 AD10-11

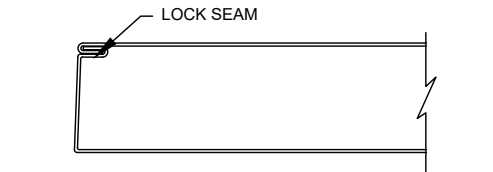
3 OF 8



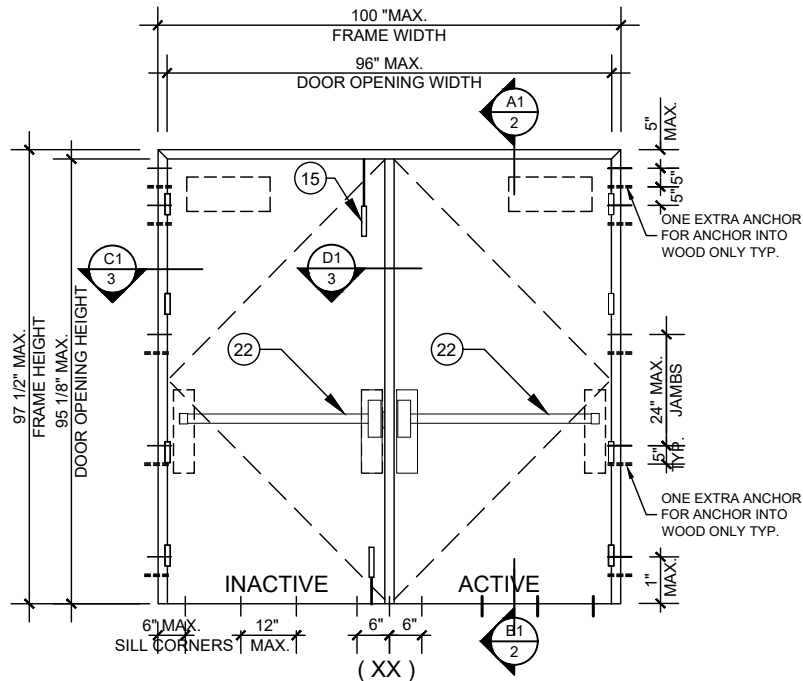
HINGES

STEEL MOTISE HINGES FOUR PER LEAF
AT 10" FROM BOTTOM TO C.L. OF HINGE.
12" FROM TOP TO C.L. OF HINGE AND 26"
O.C. MAX.

ALL HINGES FASTENED TO FRAME WITH
(4) 12-24 x 1/2" FH MS AND TO PANEL WITH
(4) 12-24 x 1/2" FH MS



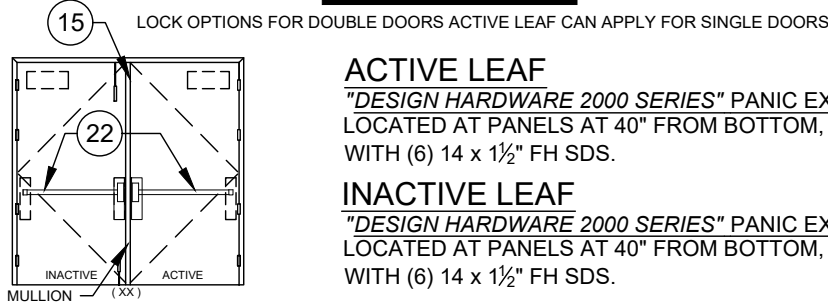
DOOR EDGE CONSTRUCTION



TYP. ELEVATION

W/ LOCK OPTION #1 (RIM PANIC & MULLION)

LOCK OPTIONS



LOCK OPTION #1

DOOR W/ PANIC EXIT
DEVICE & MULLION
(MAX. DESIGN LOAD: ±75 PSF)

ACTIVE LEAF

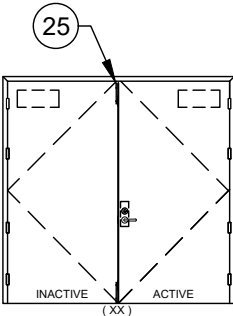
"*DESIGN HARDWARE 2000 SERIES*" PANIC EXIT DEVICE
LOCATED AT PANELS AT 40" FROM BOTTOM, FASTENED
WITH (6) 14 x 1 1/2" FH SDS.

INACTIVE LEAF

"*DESIGN HARDWARE 2000 SERIES*" PANIC EXIT DEVICE
LOCATED AT PANELS AT 40" FROM BOTTOM, FASTENED
WITH (6) 14 x 1 1/2" FH SDS.

MULLION

"*LOCKWOOD 950F MULLION*"
(2) SURFACE MOUNT METALLIC KEEPERS
40" FROM BOTTOM WITH (3) #10 x 1 1/4" FH SDS



LOCK OPTION #3

DOOR W/ MORTISE
LOCK & DEAD BOLT
(MAX. DESIGN LOAD: ±75 PSF)

ACTIVE LEAF

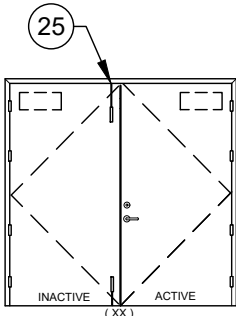
"*SCHLAGE L9453P MORTISE LOCK W/ INTEGRATED DEADBOLT*"
HANDLE LOCATED AT 37 5/16" FROM BOTTOM,
FASTENED WITH (2) 10 x 3/4" MTS.
DEADBOLT LOCATED 40 5/8" FROM BOTTOM
FASTENED WITH (2) 12x1" FH MULTI THREAD SCREWS

INACTIVE LEAF

"*IVES FB458 MORTISE FLUSHBOLTS*"
LOCATED AT TOP AND BOTTOM, FASTENED WITH (4)
8 x 3/4" FH MTS.

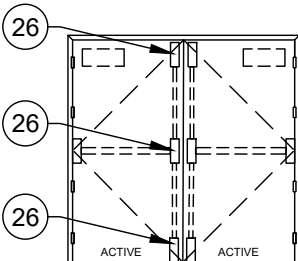
STRIKE PLATE 39-1/2" FROM BOTTOM WITH (2) #12 X1"
FH MULTI THREAD SCREWS

FLUSH MOUNT METALLIC FLUSH BOLT AND FLUSH GUIDE
TOP AND BOTTOM WITH (2) #8 X3/4" FH MULTI THREAD
SCREWS



LOCK OPTION #2

DOOR W/ CYLINDRICAL
LOCK & DEAD BOLT
(MAX. DESIGN LOAD: ±75 PSF)



LOCK OPTION #4

DOOR W/ PANIC BAR EXIT
DEVICE W/ SURFACE VERTICAL
RODS ON THE INTERIOR
(MAX. DESIGN LOAD: ±65 PSF)

ACTIVE LEAF

"*SCHLAGE AL53PD SERIES*"

LOCATED AT 39 1/2" FROM BOTTOM,
FASTENED WITH (2) 8 x 3/4" MTS.

"*SINGLE CYLINDER DEADBOLT LOCK*"

LOCATED AT 47 1/4" FROM BOTTOM WITH (2) 1/4-28 x 1 1/8"
PH MS AND (2) 8 x 3/4" FH SMS.

INACTIVE LEAF

"*IVES FB458 MORTISE FLUSHBOLTS*"

LOCATED AT TOP AND BOTTOM, FASTENED WITH (4)
8 x 3/4" FH MULTI THREAD SCREWS.

STRIKE PLATE 39-1/2" FROM BOTTOM WITH (2) #12 X1" FH
MULTI THREAD SCREWS

STRIKE PLATE AT MIDDLE SPAN OF FRAME HEAD
WITH (2) #8 X3/4" FH MULTI THREAD SCREWS

STRIKE PLATE AT MIDDLE SPAN OF THRESHOLD
WITH (2) #8 X1 1/2" FH MULTI THREAD SCREWS

ACTIVE LEAF

"*PDQ 6200VA*" PANIC BAR EXIT DEVICE W/ SURFACE VERTICAL
RODS ON THE INTERIOR

LOCATED AT PANELS AT 40" FROM BOTTOM, PANIC DEVICE
(4)1/4"-20 BY 3/4" PH MS WITH SEX BOLT, #10-24 BY 7/8" OH MS;
VERTICAL RODS (2) 1/4"-20 BY 3/4" FH MS WITH SEX BOLT.

SURFACE MOUNT METALLIC KEEPERS, ONE AT EACH
VERTICAL ROD LOCATION OF FRAME HEAD, (1) #12 BY 1 1/8"
PH SMS.

SURFACE MOUNT METALLIC STRIKE PLATES, ONE AT EACH
VERTICAL ROD OF THRESHOLD, (3)1/4"-20 BY 3/4" OH MS.

PRODUCT REVISED
as complying with the Florida
Building Code

NOA-No. 21-0708.15

Expiration Date 10/13/2025

By Ishaq I. Chank
Miami-Dade Product Control

NO	DATE	DESCRIPTION
1	04.28.14	2014 FBC
2	06.28.15	2015 FBC COMMENTS
3	02.08.17	2017 FBC
4	09.24.20	2020 FBC
5	06.30.21	REVISION

MCY ENGINEERING, INC.
GLAZING CONSULTANTS
12781 MIRAMAR PKWY. STE. 301
MIRAMAR, FL 33027 P: 305.271.0117
www.MCYEngineering.com MCY@mcycyengineering.com

SERIES LS1875 Single/Double Outswing Steel Doors w/wo Panic devices
VISION HOLLOW METAL LIMITED
400 ZENWAY BLVD., UNIT #1
WOODBIDGE, ON L4H0S7
Tel: (877) 984 - 8465 Fax: (905) 851 - 1261



DATE	06.30.2021
SCALE	N.T.S.
DRAWN	J.S
PROJECT	10-04

DRAWING NO.
AD10-11

4 OF 8

MIAMI DADE COUNTY

September 10th, 2021

TYPICAL ANCHORS @ SIDE JAMB:

(SEE ELEV. FOR SPACING)
(SEE DETAILS ON SHEET 3 & 4)

TYPE A. 3/8" DIA. LAG SCREW (THRU EMA)
INTO 2BY WOOD BUCK OR WOOD STRUCTURAL

1-1/2" MIN. EMBED
1-1/2" MIN. EDGE DISTANCE

TYPE B. 3/8" DIA. HLC SLEEVE ANCHOR BY 'HILTI' (THRU EMA)
DIRECTLY INTO $f_c' = 3000$ PSI CONCRETE, 3" MIN. EDGE DIST.
DIRECTLY INTO $f_c' = 2000$ PSI CONCRETE BLOCK, 3-1/2" MIN. EDGE DIST.

1-1/4" MIN. EMBED

TYPE C. 3/8" DIA. CARBON SLEEVE ANCHOR BY 'WEJ-IT' (THRU EMA)
DIRECTLY INTO $f_c' = 4000$ PSI CONCRETE, 2-3/8" MIN. EMBED
DIRECTLY INTO $f_m' = 2000$ PSI CONCRETE BLOCK, 1-1/4" MIN. EMBED
3-1/2" MIN. EDGE DISTANCE

TYPE D. 3/8" DIA. POWER BOLT BY 'POWERS' (THRU EMA)
DIRECTLY INTO $f_c' = 3000$ PSI CONCRETE
2-1/2" MIN. EMBED
3 1/2" MIN. EDGE DISTANCE

TYPE E. 3/8 DIA. SMS OR MACHINE BOLTS (MIN. GRADE 2 CRS) OR STAINLESS STEEL
(THRU EMA)
INTO METAL STRUCTURES (STEEL OR ALUMINUM 1/8" MIN. THICK.)
STEEL : $f_y = 36$ KSI MIN.
ALUMINUM : 6063-T6 MIN.
(STEEL IN CONTACT WITH ALUMINUM TO BE PLATED OR PAINTED)

TYPE F. WIRE ANCHOR (f_y min. = 60 KSI)
0.173 DIA. STEEL WIRE ANCHORS EMBED INTO CONCRETE FILLED BLOCK
WITH 8.75" EMBED

TYPICAL ANCHORS @ THRESHOLD:

(SEE ELEV. FOR SPACING)

TYPE G. 5/16" DIA. ULTRACON BY 'DEWALT' $f_y = 155$ KSI $f_u = 177$ KSI
OR 1/4" DIA. ULTRACON+ BY 'DEWALT' $f_y = 148$ KSI $f_u = 164$ KSI
DIRECTLY INTO $f_c' = 3000$ PSI MIN. CONCRETE
1-1/2" MIN. EMBED
2-1/2" MIN. EDGE DISTANCE

1/4" TAPCON BY ITW $f_y = 90$ KSI $f_u = 120$ KSI
DIRECTLY INTO $f_c' = 3000$ PSI MIN. CONCRETE
1-1/2" MIN. EMBED
2-1/2" MIN. EDGE DISTANCE

SEALANT:

ALL FRAME JOINTS AND CORNERS TO BE SEALED
WITH SILICONE AT PERIMETER

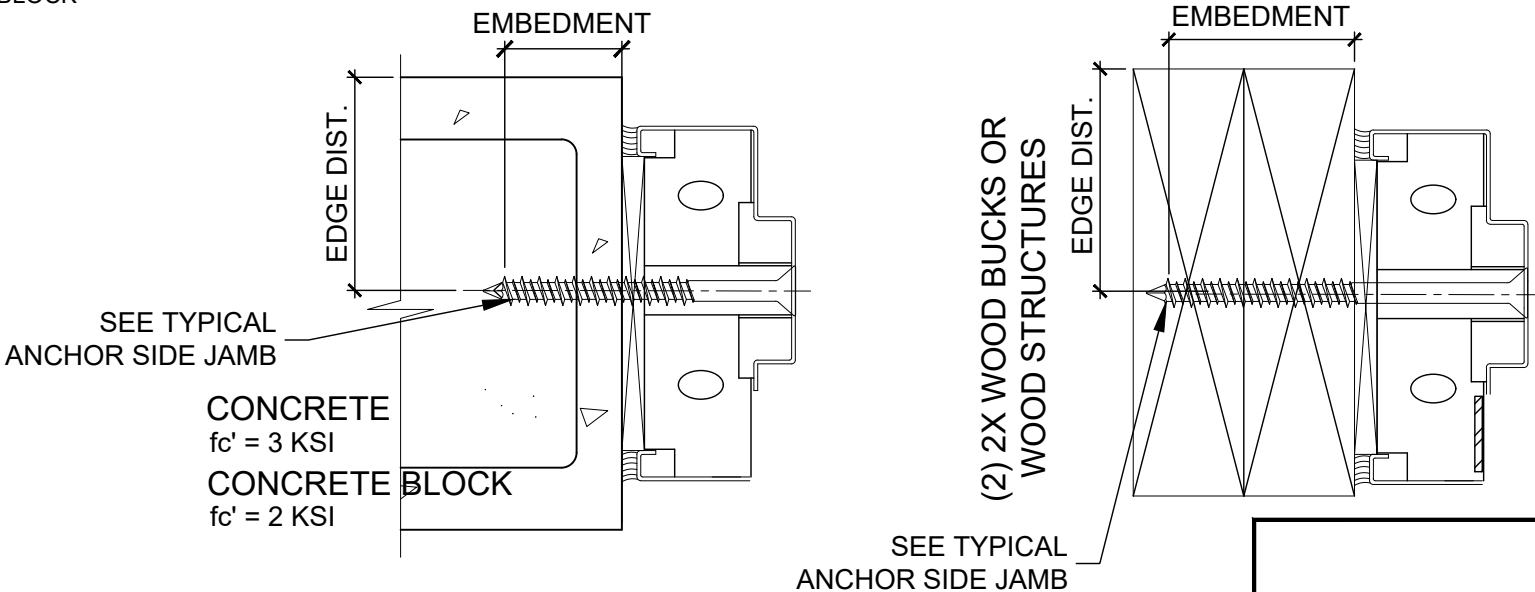
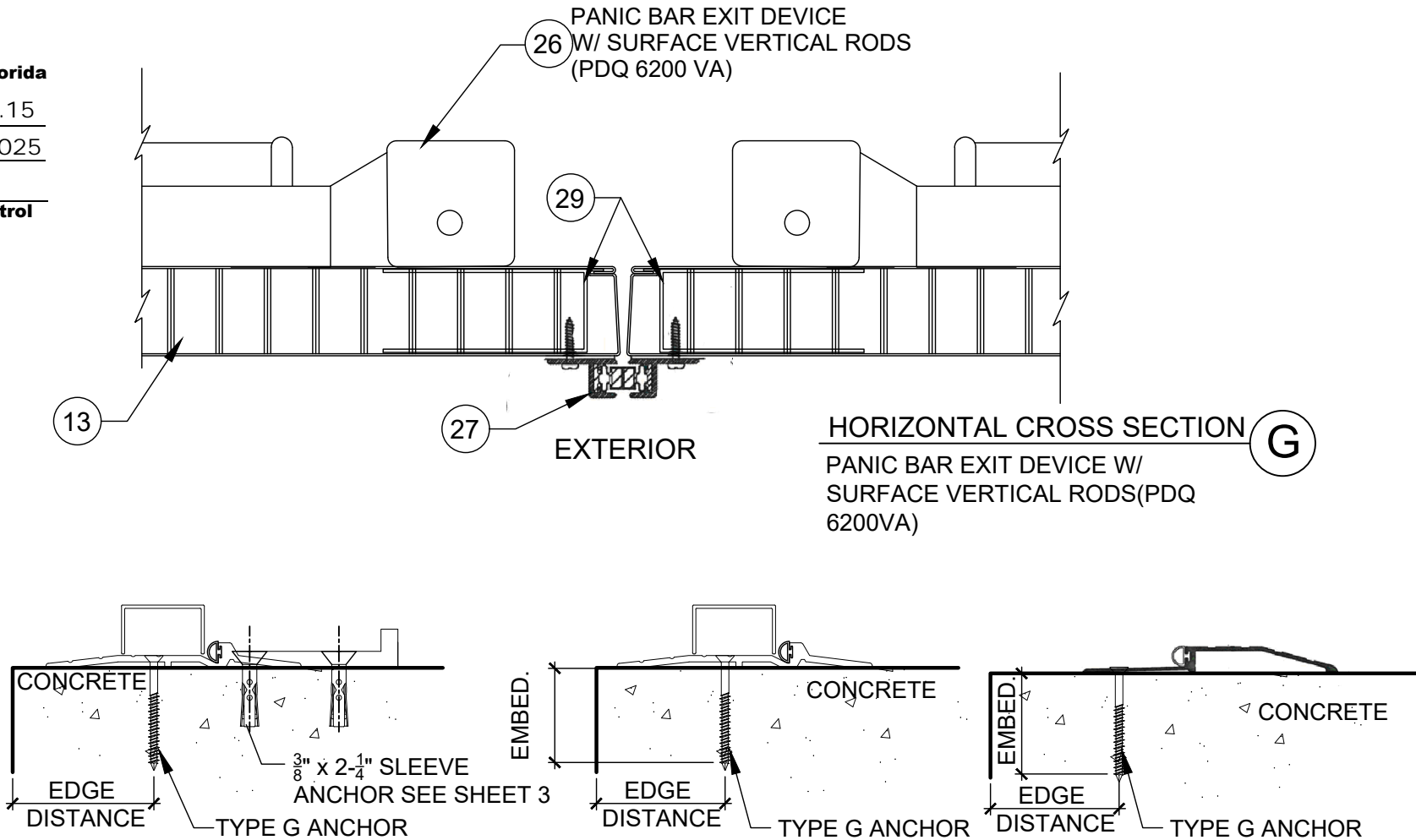
TYPICAL ANCHORS @ HEADER:

NONE

PRODUCT REVISED
as complying with the Florida
Building Code
NOA-No. 21-0708.15

Expiration Date 10/13/2025

By *Ishaq I. Chande*
Miami-Dade Product Control



NO	DATE	DESCRIPTION
1	04.28.14	2014 FBC
2	06.28.15	PRE REV COMMENTS
3	02.08.17	2017 FBC
4	09.24.20	2020 FBC
5	06.30.21	REVISION

MCY ENGINEERING, INC.
GLAZING CONSULTANTS
12781 MIRAMAR PKWY. STE. 301
MIRAMAR, FL 33027 P: 305.271.0117
www.MCYEngineering.com MCY@mcycyengineering.com

SERIES LS1875 Single/Double Outswing Steel Doors w/wo Panic devices
VISION HOLLOW METAL LIMITED
400 ZENWAY BLVD., UNIT #1
WOODBRIDGE, ON L4H0S7
Tel: (877) 984 - 8465 Fax: (905) 851 - 1261



DATE	06.30.2021
SCALE	N.T.S.
DRAWN	J.S
PROJECT	10-04

DRAWING NO.
AD10-11

5 OF 8

MIAMI DADE COUNTY
September 10th, 2021
Professional Engineer
YIPING WANG
FLORIDA REGISTRATION
CPE #55983
C.A.N. 28677

BILL OF MATERIALS					
ITEM NO.	PART NO.	MATERIAL	QUANTITY	DESCRIPTION	MANF./SUPPLIER/REMARKS
①	-	STEEL	AS REQ'D.	FRAME HEAD/JAMB (2" x 5 ¾")	18 GA.(0.053"MIN.) GALVANNEAL STEEL (Fy = 54 KSI MIN.)
②	-	STEEL	AS REQ'D.	DOOR FACE SHEETS (48" x 96" x 0.044")	18 GA.(0.044" MIN.) GALVANNEAL STEEL (Fy = 54 KSI MIN.)
③	520S	ALUMINUM	1	BUMPER TRESHOLD (5" x ½" x 0.094")	HAGER
④	S88_	VINYL	AS REQD.	ADHESIVE VINYL BULB	PEMKO
⑤	-	STEEL	4 PER LEAF	HINGES	HAGER / DESIGN HARDWARE
⑥	-	STEEL		MASONRY WIRE ANCHOR	0.173 DIA. Fy = 60 PSI
⑦	-	STEEL	AS REQ'D.	CLOSER BOX (1 ⅞" x 4¾" x 0.053")	16 GA. GALVANNEAL STEEL
⑧	-	STEEL	AS REQ'D.	END CHANNEL (1 ⅝" x 1 ¾" x 0.053")	16 GA. GALVANNEAL STEEL
⑨	-	STEEL	AS REQ'D.	HINGE REINFORCEMENT	10 GA. GALVANNEAL STEEL
⑩	-	STEEL	AS REQ'D.	EMA 18GA ANCHOR (PIPE)	VISION HOLLOW METAL
⑪	-	STEEL	AS REQ'D.	EMA 18GA ANCHOR OPTION (BUTTERFLY)	VISION HOLLOW METAL
⑫	-	STEEL	1	CYLINDRAL LOCK REINFORCING	-
⑬	-	-	AS REQ'D.	HONEY COMB 1" CELL	-
⑭	-	VINYL/STEEL	AS REQ'D.	TOP CAP OPTIONAL	VISION HOLLOW METAL
⑮	MG 950F	STEEL	AS REQ'D.	2x3x1/8" REMOVABLE MULLION	LOCKWOOD Fy min. = 46 KSI
⑯	A0010	STEEL	AS REQ'D.	ASA STRIKE REINFORCEMENT	VISION HOLLOW METAL
⑰	A0024	STEEL	1	MORTISE BOX REINFORCMENT	VISION HOLLOW METAL
⑱	A0051	STEEL	2 / PANEL	RIM PANIC BOX 14" LG.	VISION HOLLOW METAL
⑲	-	STEEL	AS REQ'D	1 3/4" x 0.12" THK ASTRAGAL	VISION HOLLOW METAL
⑳	-	STEEL	AS REQ'D	FLUSHBOLT GUIDE	VISION HOLLOW METAL
㉑	-	STEEL	AS REQ'D	REVERSABLE FLUSHBOLT HEAD REINFORCEMENT	VISION HOLLOW METAL
㉒	2000	STEEL	AS REQ'D	SERIES 2000 DESIGN HARDWARE PANIC EXIT DEVICE	DESIGN HARDWARE
㉓	AL53PD	STEEL	AS REQ'D	SCHLAGE A1-53 PD CYLINDRICAL LOCK & DEAD BOLT	SCHLAGE
㉔	-	STEEL	AS REQ'D	SCHLAGE L9453 MORTISE LOCK W/ INTEGRATED DEADBOLT	SCHLAGE
㉕	-	STEEL	AS REQ'D	IVES FB458 MANUAL FLASH BOLTS	IVES
㉖	-	STEEL	AS REQ'D	PANIC BAR EXIT DEVICE W/ SURFACE VERTICAL RODS	PDQ 6200VA
㉗	-	-	AS REQ'D	ASTRAGAL GASKET, FRAME WEATHER STRIP ATTACHED W/ #6 X 5/8" PH SMS, LOCATED 2" FROM END & 8" O.C. MAX. SPACING.	HAGER 849S
㉘	-	ALUM	AS REQ'D	OUTSWING BUMP THRESHOLD	HAGER 477S
㉙	-	STEEL	AS REQ'D	RIM PANIC BOX	-
㉚	-	-	AS REQ'D	WEATHER STRIP	HAGER 736 PRESS-ON

MIAMI DADE COUNTY

SEP 10 2021

SEPTEMBER 10th, 2021

REVISIONS

NO	DATE	DESCRIPTION
1	04.28.14	2014 FBC
2	06.28.15	PRE RFR COMMENTS
3	02.08.17	2017 FBC
4	09.24.20	2020 FBC
5	06.30.21	REVISION

MCY ENGINEERING, INC.

GLAZING CONSULTANTS

12781 MIRAMAR PKWY. STE. 301

MIRAMAR, FL 33027

P: 305.271.0117

www.MCYEngineering.com

MCY@mcycengineering.com

SERIES LS1875 Single/Double Outswing Steel Doors w/wo Panic devices

VISION HOLLOW METAL LIMITED

400 ZENWAY BLVD., UNIT #1

WOODBIDGE, ON L4H0S7

Tel: (877) 984 - 8465 Fax: (905) 851 - 1261

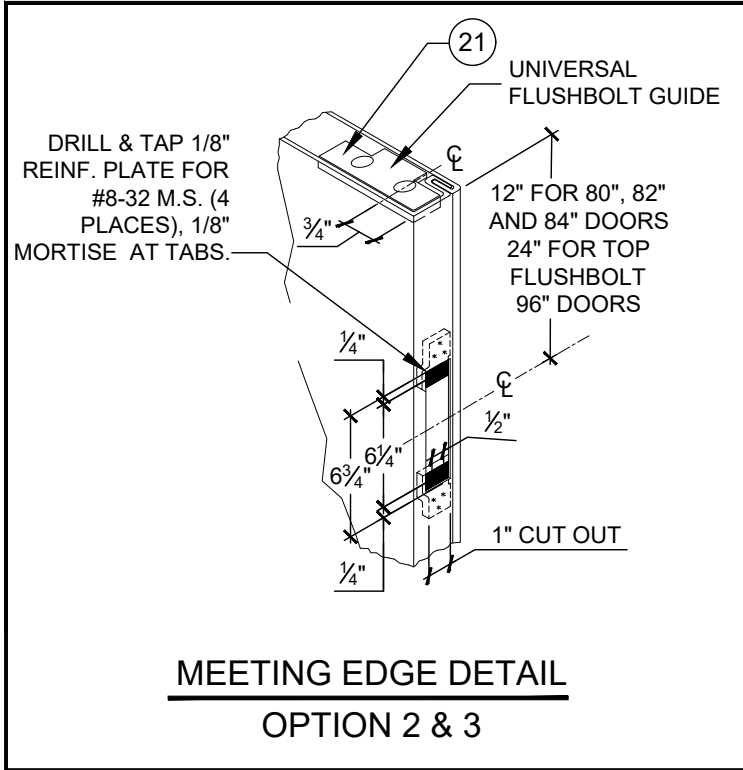
VISION

HOLLOW METAL LIMITED

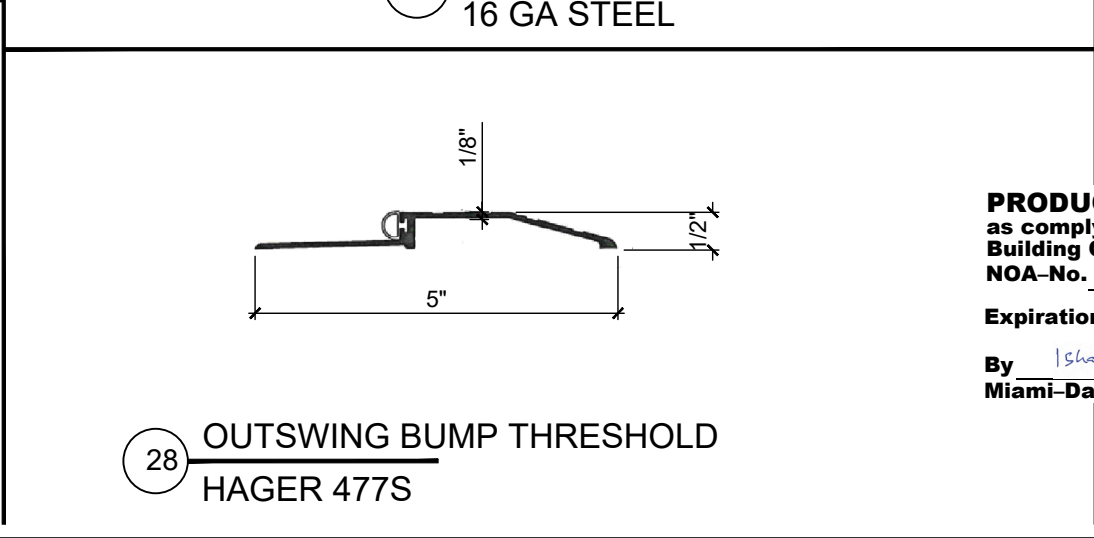
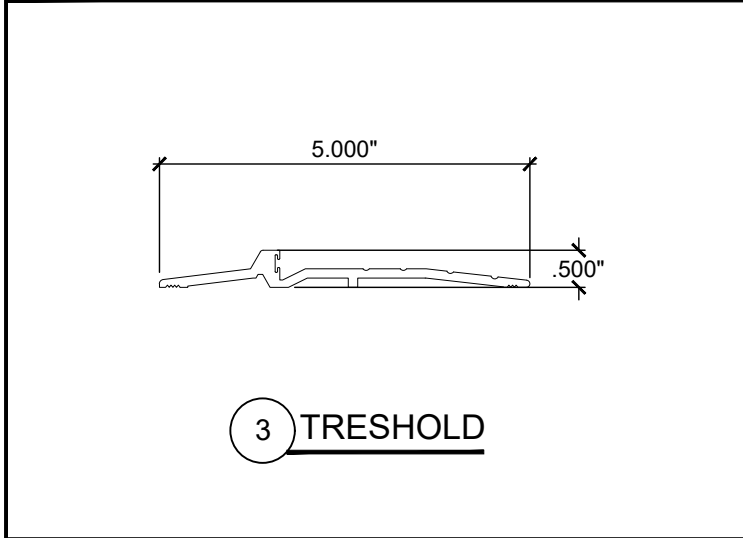
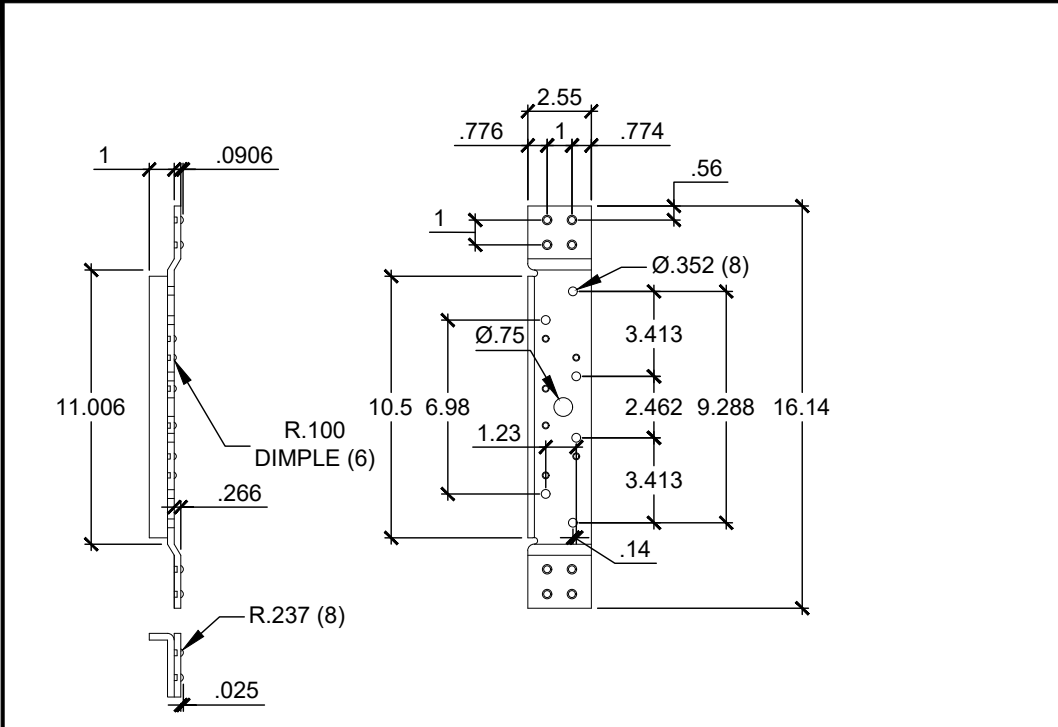
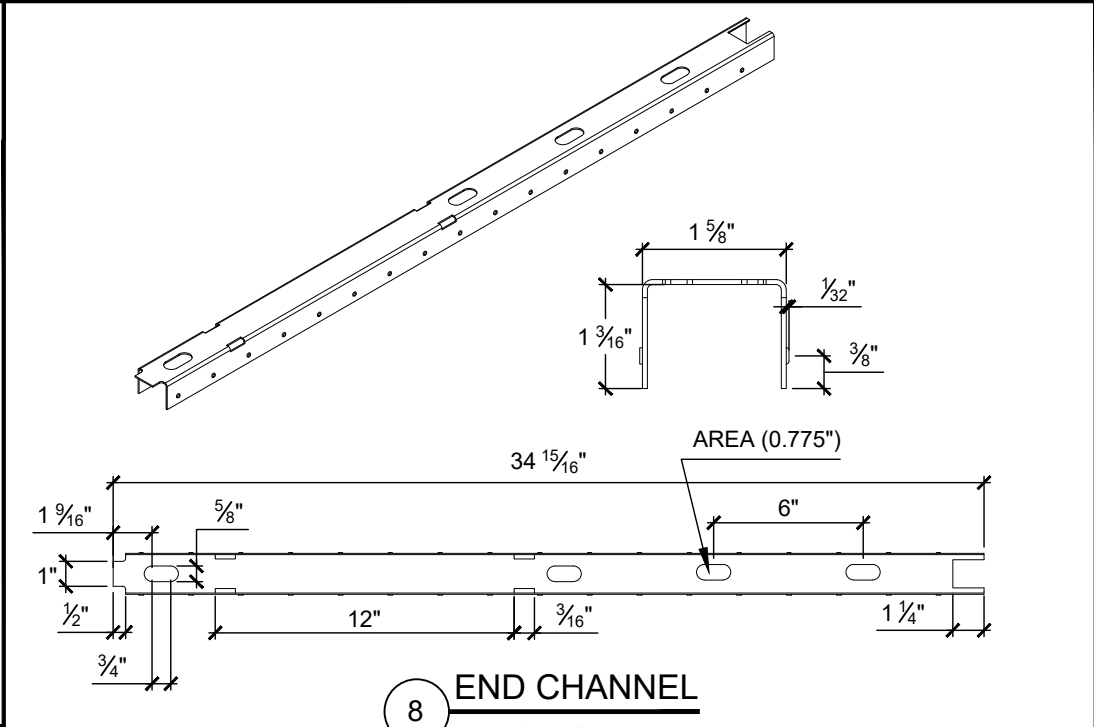
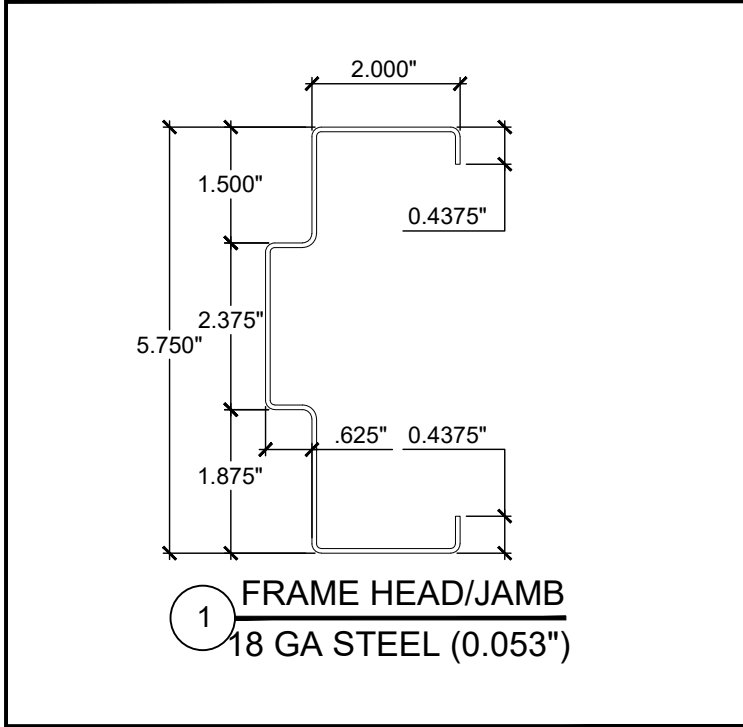
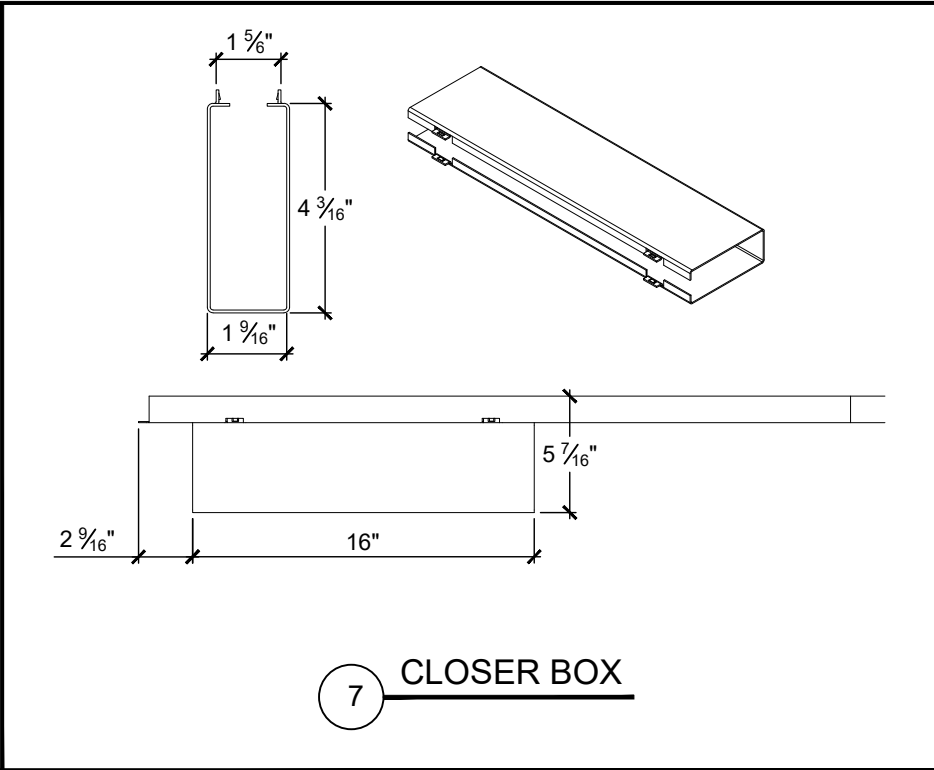
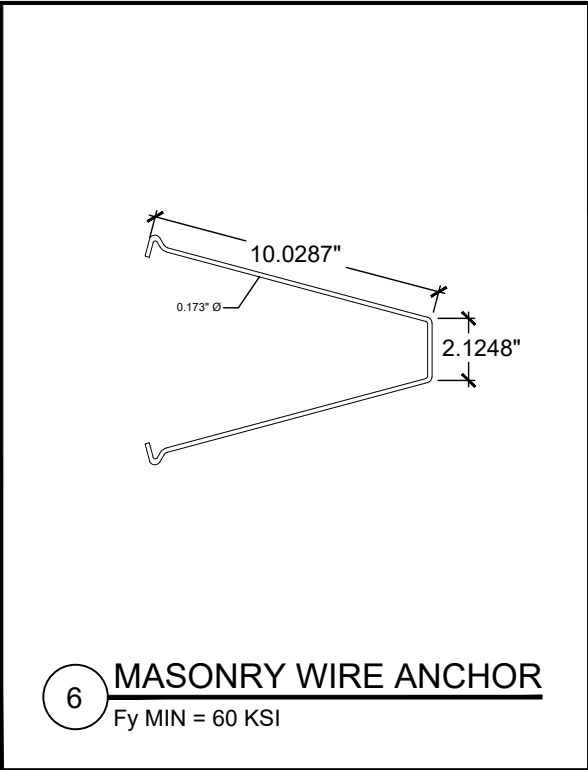
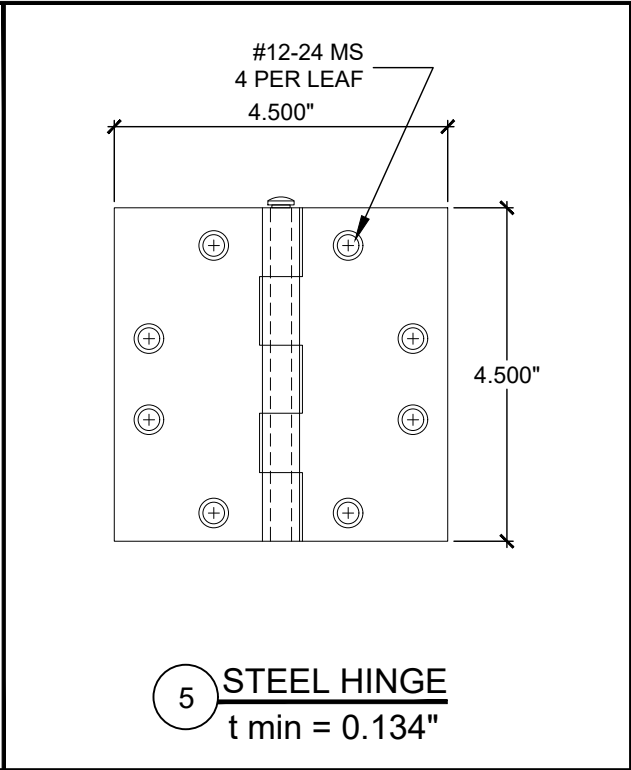
DATE	09-24-2020
SCALE	N.T.S.
DRAWN	J.S
PROJECT	10-04

DRAWING NO.
AD10-11

6 OF 8



MEETING EDGE DETAIL
OPTION 2 & 3



PRODUCT REVISED
as complying with the Florida
Building Code
NOA-No. 21-0708.15
Expiration Date 10/13/2025
By Ishaq I. Chande
Miami-Dade Product Control

MIAMI DADE COUNTY

SEPTEMBER 10TH, 2021

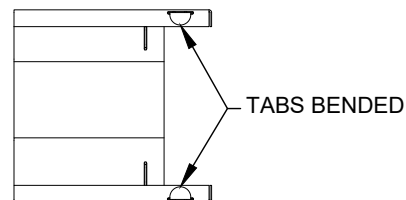
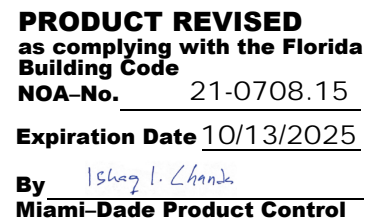
NO	DATE	DESCRIPTION
1	04.28.14	2014 FBC
2	06.28.15	PER COMMENTS
3	02.08.17	2017 FBC
4	09.24.20	2020 FBC
5	06.30.21	REVISION

MCY ENGINEERING, INC.
GLAZING CONSULTANTS
12781 MIRAMAR PKWY. STE. 301
MIRAMAR, FL 33027 P: 305.271.0117
www.MCYEngineering.com MCY@mcycyengineering.com

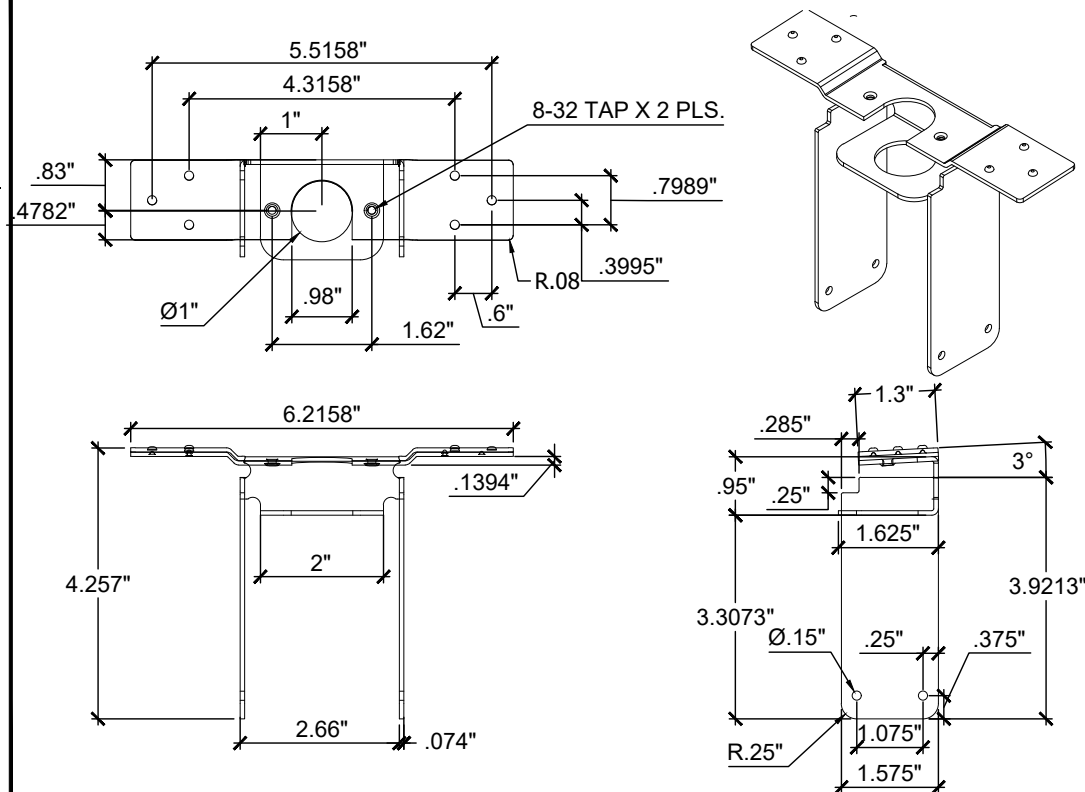
SERIES LS1875 Single/Double Outswing Steel Doors w/wo Panic devices
VISION HOLLOW METAL LIMITED
400 ZENWAY BLVD., UNIT #1
WOODBRIDGE, ON L4H0S7
Tel: (877) 984 - 8465 Fax: (905) 851 - 1261



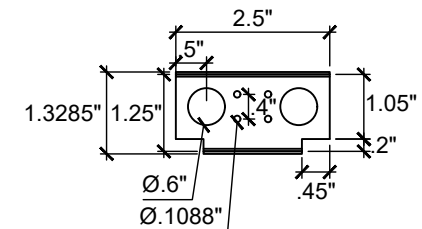
DATE	09-24-2020
SCALE	N.T.S.
DRAWN	J.S.
PROJECT	10-04
DRAWING NO.	AD10-11
	7 OF 8



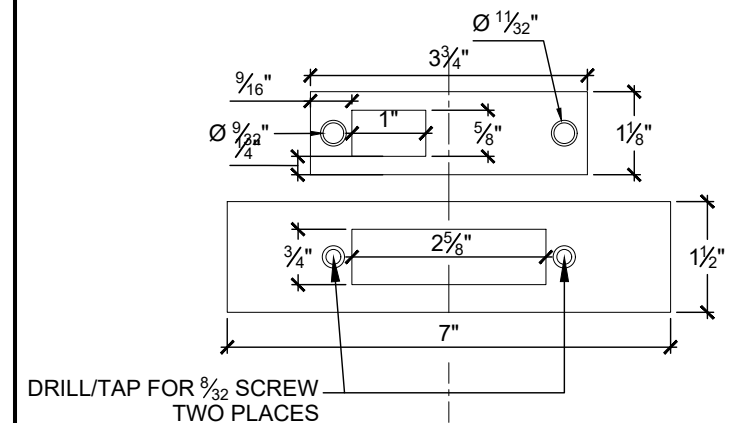
FRAME CORNERS DETAIL



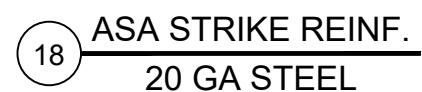
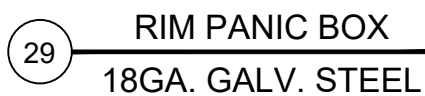
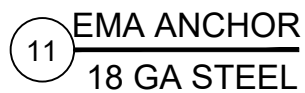
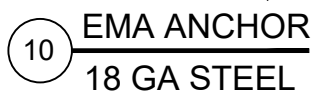
12 CYLINDRICAL LOCK REINFORCING



20 FLUSHBOLT GUIDE



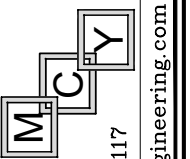
21 REVERSABLE FLUSHBOLT HEAD REINFORCING



MIAMI DADE COUNTY

September 10th, 2021

REVISIONS		
NO	DATE	DESCRIPTION
1	04.28.14	2014 FBC
2	06.28.15	PER RER COMMENTS
3	02.08.17	2017 FBC
4	09.24.20	2020 FBC
5	06.30.21	REVISION



MCY ENGINEERING, INC.
GLAZING CONSULTANTS

GLAZING CONSULTANTS

12781 MIRAMAR PKWY. STE. 301

MIRAMAR, FL. 33027 P: 305.271.0117

www.MCSEngineering.com MCY@mcysengineering.com

SERIES LS1875 Single/Double Outswing Steel Doors w/w/o Panic devices

VISION HOLLOW METAL LIMITED

400 ZENWAY BLVD., UNIT #1

WOODBRIDGE, ON L4H0S7
 (905) 851-1377 Fax: (905) 851-1377

Tel: (811) 984 - 8463 Fax: (905) 831 - 1261



DATE	09-24-2020
SCALE	N.T.S.
DRAWN	J.S
PROJECT	10-04

DRAWING NO.

AD10-11

8 OF 8