



**DEPARTMENT OF REGULATORY AND ECONOMIC RESOURCES (RER)
BOARD AND CODE ADMINISTRATION DIVISION
NOTICE OF ACCEPTANCE (NOA)**

**MIAMI-DADE COUNTY
PRODUCT CONTROL SECTION**
11805 SW 26 Street, Room 208
Miami, Florida 33175-2474
T (786) 315-2590 F (786) 315-2599
www.miamidade.gov/building

**C.H.I. Overhead Doors, LLC
1485 Sunrise Drive
Arthur, IL 61911**

SCOPE: This NOA is being issued under the applicable rules and regulations governing the use of construction materials. The documentation submitted has been reviewed and accepted by Miami-Dade County RER-Product Control Section to be used in Miami Dade County and other areas where allowed by the Authority Having Jurisdiction (AHJ).

This NOA shall not be valid after the expiration date stated below. The Miami-Dade County Product Control Section (In Miami Dade County) and/or the AHJ (in areas other than Miami Dade County) reserve the right to have this product or material tested for quality assurance purposes. If this product or material fails to perform in the accepted manner, the manufacturer will incur the expense of such testing and the AHJ may immediately revoke, modify, or suspend the use of such product or material within their jurisdiction. RER reserves the right to revoke this acceptance, if it is determined by Miami-Dade County Product Control Section that this product or material fails to meet the requirements of the applicable building code.

This product is approved as described herein and has been designed to comply with the Florida Building Code, including the High Velocity Hurricane Zone.

DESCRIPTION: Series Timeless and Contemporary Insulated Steel Pan Sectional Garage Door up to 9'-2" Wide w/ Impact Resistant Windows

APPROVAL DOCUMENT: Drawing No. **MD-2140-0907**, titled "Series Timeless and Contemporary Insulated Steel Pan Sectional Garage Door up to 9'-2" Wide w/ Impact Resistant Windows", sheets 1 through 3 of 3, dated 11/11/2021, prepared by C.H.I. Overhead Doors, LLC, signed and sealed by John E. Scates, P.E., bearing the Miami-Dade County Product Control approval stamp with the Notice of Acceptance number and approval date by the Miami-Dade County Product Control Section.

MISSILE IMPACT RATING: Large and Small Missile Impact Resistant

LABELING: Each unit shall bear a permanent label with the manufacturer's name or logo, manufacturing address, model number, the positive and negative design pressure rating, indicate impact rated if applicable, installation instruction drawing reference number, approval number (NOA), the applicable test standards, and the statement reading 'Miami-Dade County Product Control Approved' is to be located on the door's side track, bottom angle, or inner surface of a panel.

RENEWAL of this NOA shall be considered after a renewal application has been filed and there has been no change in the applicable building code negatively affecting the performance of this product.

TERMINATION of this NOA will occur after the expiration date or if there has been a revision or change in the materials, use, and/or manufacture of the product or process. Misuse of this NOA as an endorsement of any product, for sales, advertising or any other purposes shall automatically terminate this NOA. Failure to comply with any section of this NOA shall be cause for termination and removal of NOA.

ADVERTISEMENT: The NOA number preceded by the words Miami-Dade County, Florida, and followed by the expiration date may be displayed in advertising literature. If any portion of the NOA is displayed, then it shall be done in its entirety.

INSPECTION: A copy of this entire NOA shall be provided to the user by the manufacturer or its distributors and shall be available for inspection at the job site at the request of the Building Official.

This NOA consists of this page 1 and evidence page E-1, as well as approval document mentioned above. The submitted documentation was reviewed by **Carlos M. Utrera, P.E.**



NOA No. 21-0803.04
Expiration Date: December 16, 2026
Approval Date: December 16, 2021
Page 1

NOTICE OF ACCEPTANCE: EVIDENCE SUBMITTED

A. DRAWINGS

1. Drawing No. **MD-2140-0907**, titled "Series Timeless and Contemporary Insulated Steel Pan Sectional Garage Door up to 9'-2" Wide w/ Impact Resistant Windows", sheets 1 through 3 of 3, dated 11/11/2021, prepared by C.H.I. Overhead Doors, LLC, signed and sealed by John E. Scates, P.E.

B. TESTS

1. Test reports on: 1) Uniform Static Air Pressure Test, Loading per FBC, TAS 202-94
2) Large Missile Impact Test per FBC, TAS 201-94
3) Cyclic Wind Pressure Loading per FBC, TAS 203-94
4) Forced Entry Test, per FBC 2411 3.2.1, TAS 202-94
5) Tensile Test per ASTM E8
along with marked-up drawings and installation diagram of C.H.I. 9'-2" x 7' 24 ga. steel garage door Model 2140, prepared by American Test Lab, Inc, Test Report No. **ATLNC 0322.01-21R**, dated 10/11/2021, signed and sealed by David W. Johnson, P.E.
2. Test report on Standard Practice for Operating Salt Spray (fog) Apparatus per ASTM B117-19, prepared by Intertek, Test Report No. **104620228MID-001 R1**, dated 05/28/2021, revised on 10/05/2021, signed and sealed by Vinu J. Abraham, P.E.

C. CALCULATIONS

1. Anchor calculations prepared by John E. Scates, P.E., dated 10/11/2021, signed and sealed by John E. Scates, P.E.

D. QUALITY ASSURANCE

1. Miami-Dade Department of Regulatory and Economic Resources (RER).

E. MATERIAL CERTIFICATIONS

1. Notice of Acceptance issued to Plaskolite, LLC for the TUFFAK Polycarbonate Sheets, NOA # 20-1026.03, approved on 02/11/21 and expiring on 08/27/2022.

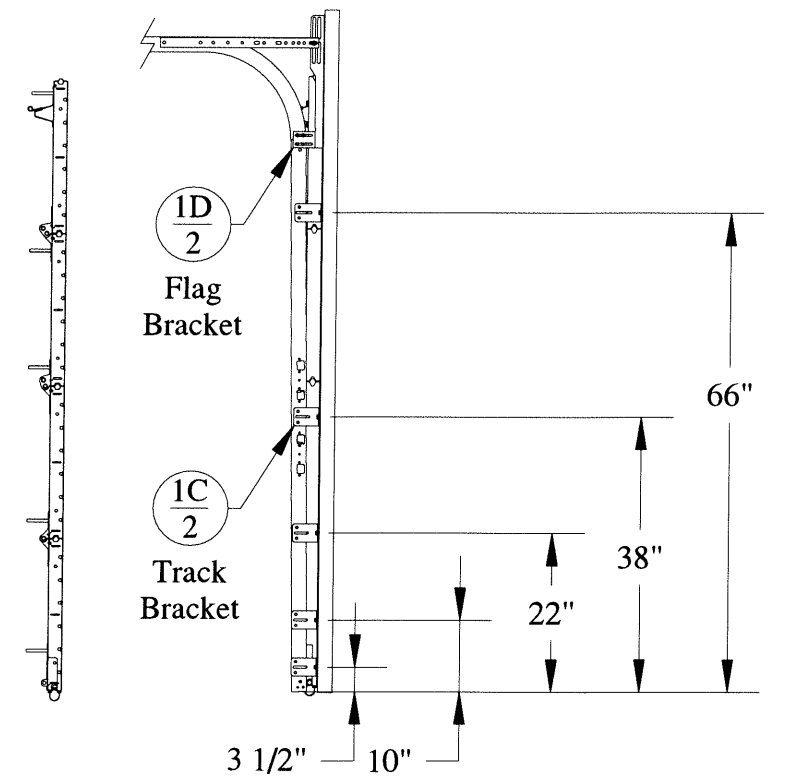
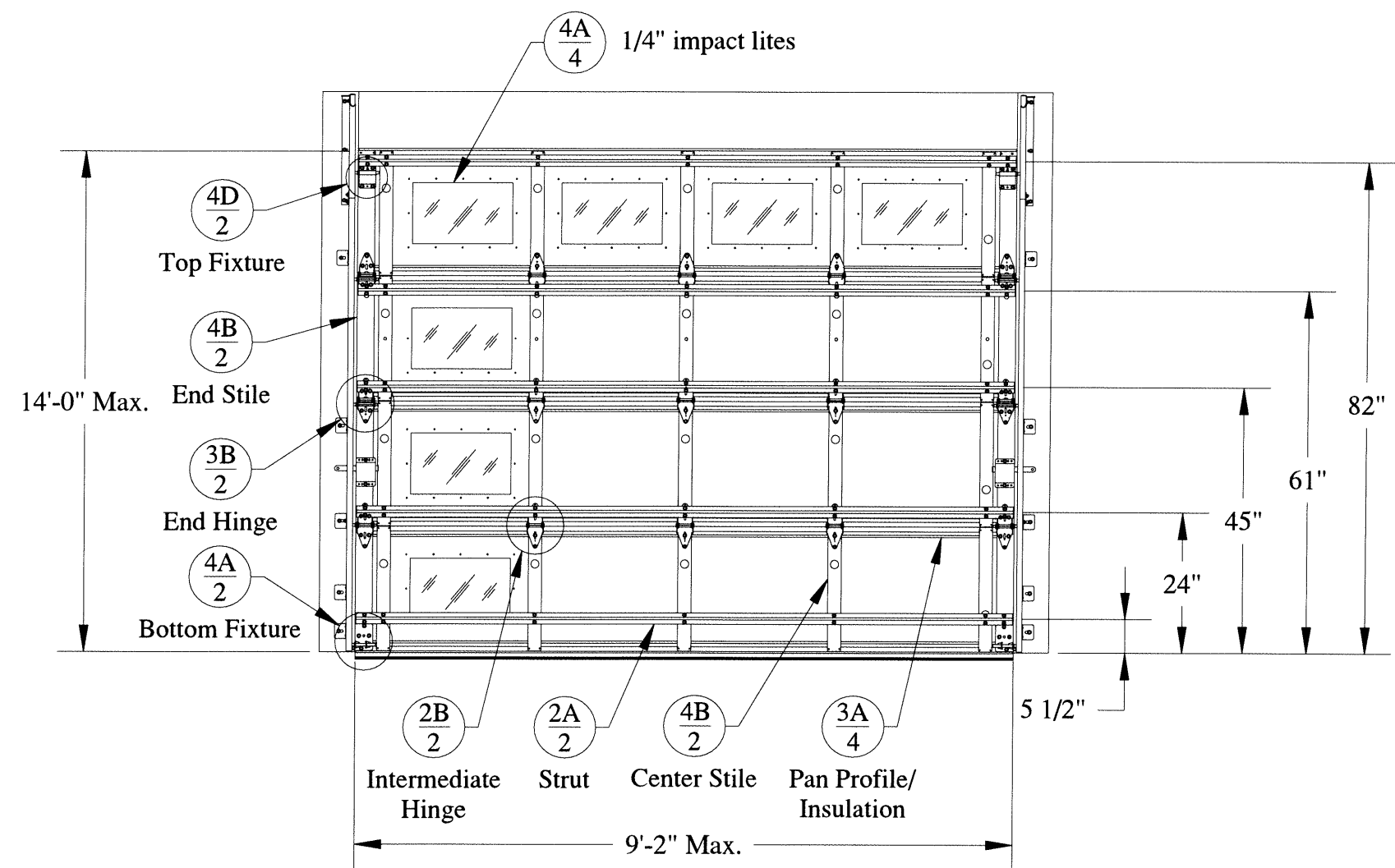
F. STATEMENTS

1. Statement letters of conformance, complying with the 7th Edition (2020) of the FBC and of no financial interest, both dated 10/11/2021, issued by John E. Scates, P.E, signed and sealed by John E. Scates, P.E.



Carlos M. Utrera, P.E.
Product Control Examiner
NOA No. 21-0803.04
Expiration Date: December 16, 2026
Approval Date: December 16, 2021

Door Model	Insulation	Gauge	Decimal
Contemporary: 2140	No	24	.022
Timeless: 2240, 2540, 4240, 5240, 5940	No	24	.022

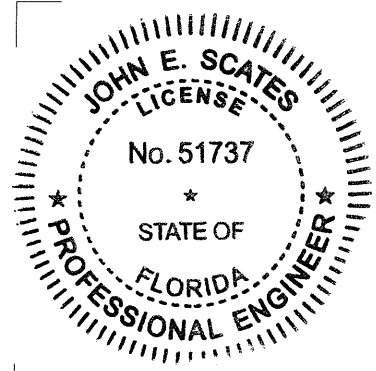


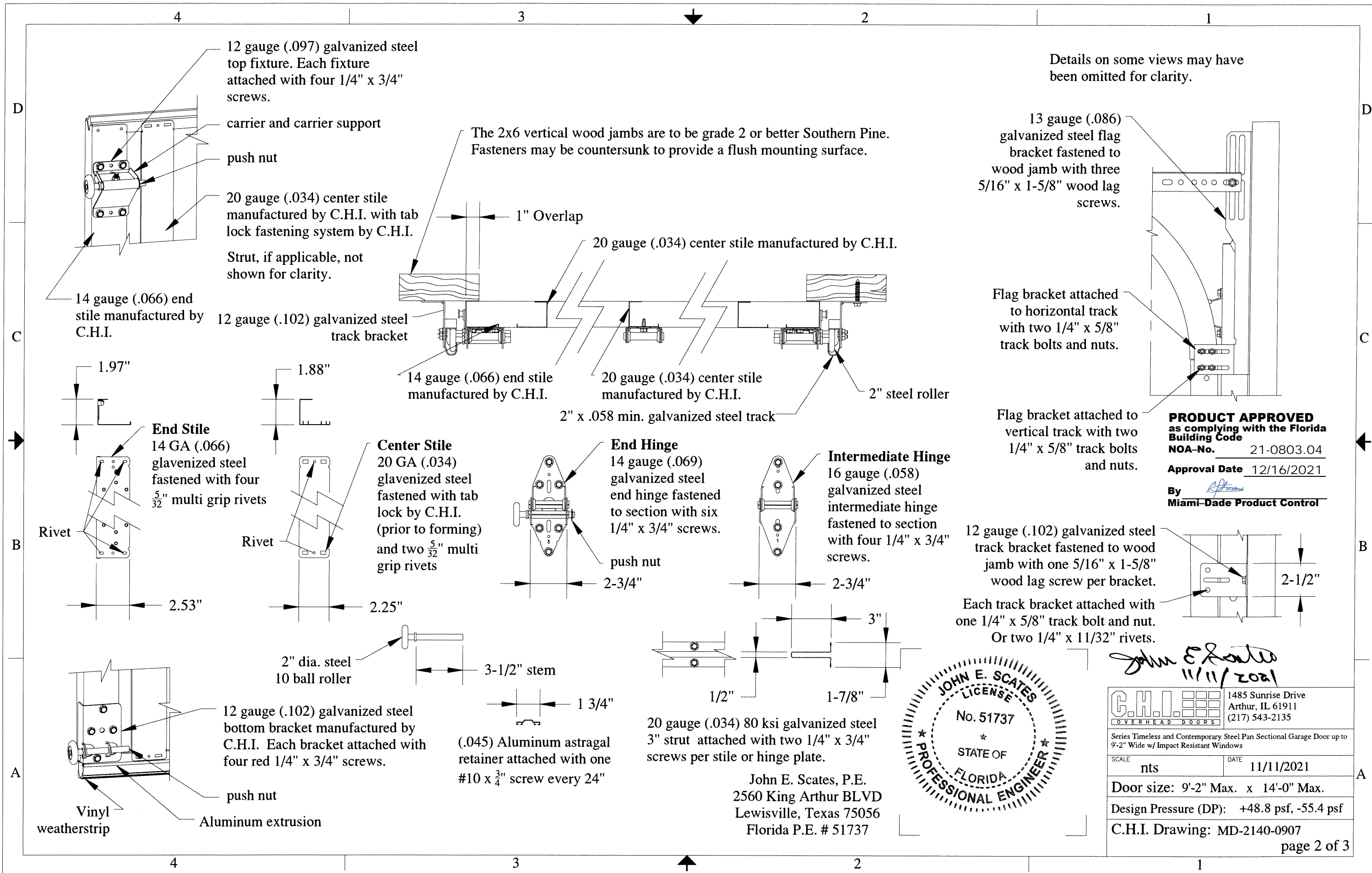
PRODUCT APPROVED
as complying with the Florida
Building Code
NOA-No. 21-0803.04
Approval Date 12/16/2021
By *[Signature]*
Miami-Dade Product Control

C.H.I. OVERHEAD DOORS		1485 Sunrise Drive Arthur, IL 61911 (217) 543-2135
Series Timeless and Contemporary Steel Pan Sectional Garage Door up to 9'-2" Wide w/ Impact Resistant Windows		
SCALE	nts	DATE 11/11/2021
Door size: 9'-2" Max. x 14'-0" Max.		
Design Pressure (DP): +48.8 psf, -55.4 psf		
C.H.I. Drawing: MD-2140-0907		

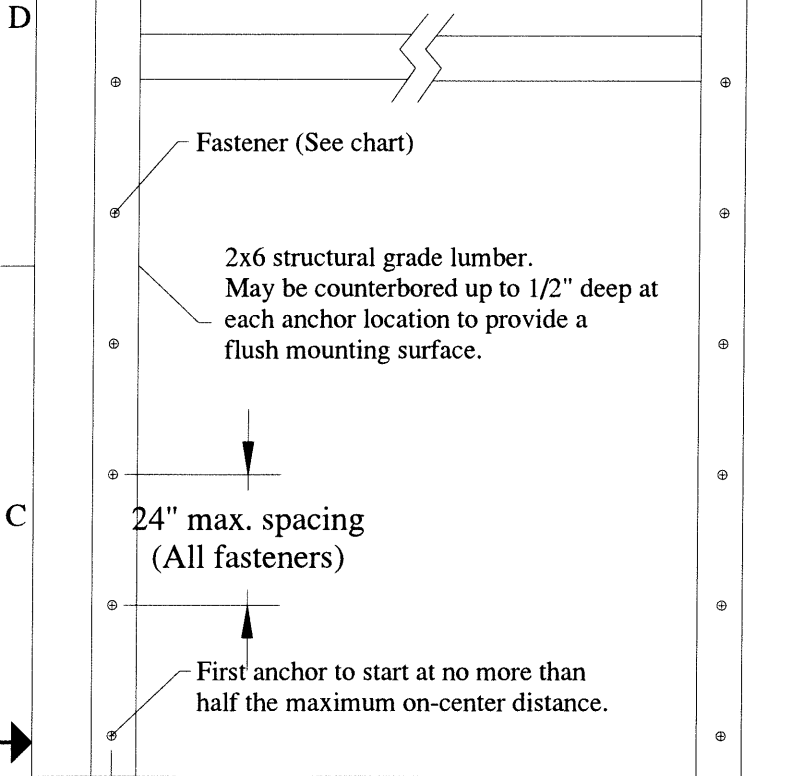
This door has been tested in accordance with TAS-201, TAS-202, and TAS-203
Door and glazing have been tested for windborne debris.
Supporting structural elements shall be designed by a registered professional engineer
for wind loads shown on this drawing.
This drawing provides windload assembly details for the claimed size and pressures.

[Signature]
11/11/2021
John E. Scates, P.E.
2560 King Arthur BLVD
Lewisville, Texas 75056
Florida P.E. # 51737





Wall Buck Fastener Layout.

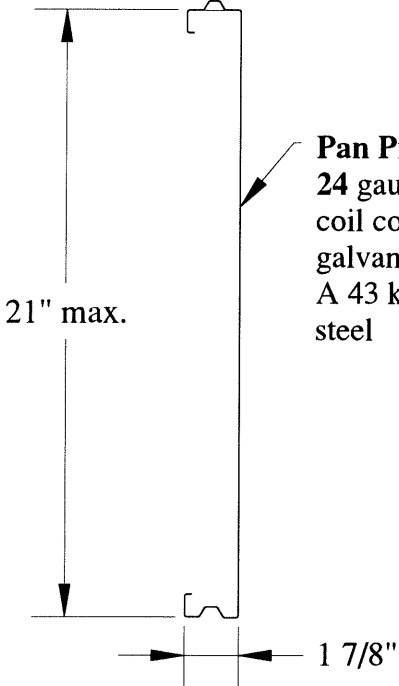
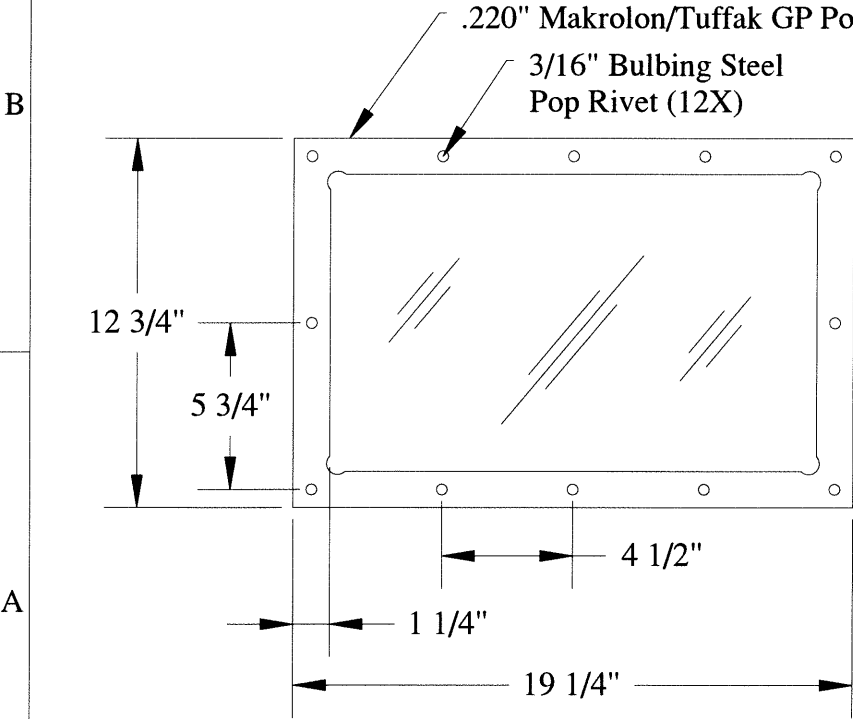


Wall Buck Fastener Applications

Wall Substrate	Fastener	ESR	Fastener Type	Min. Embed. (in.)	Min. O.C. Spacing (in.)	Min. Edge Distance (in.)
Poured Concrete (2500 psi min.)	$\frac{3}{8}$ " DeWALT Screw-Bolt+	ESR-3889	Screw	3-1/2	9	3-1/2
Poured Concrete (2500 psi min.)	$\frac{3}{8}$ " POWERS Wedge-Bolt+	ESR-2526	Screw	3-1/2	9	3-1/2
Poured Concrete (2500 psi min.)	$\frac{3}{8}$ " Hilti KwikBolt3	ESR-2302	Expansion	2-1/2	6	3
C-90 Grouted Block	$\frac{3}{8}$ " DeWALT Screw-Bolt+	ESR-4042	Screw	3-1/4	3	1-1/2
C-90 Grouted Block	$\frac{3}{8}$ " Hilti KwikBolt3	ESR-1385	Expansion	2-1/2	8	4

Lesser spacing may be used to avoid interference with door component system.
1-1/2" O.D. / $\frac{7}{16}$ " I.D. min. washer
Spring pad connection not included.

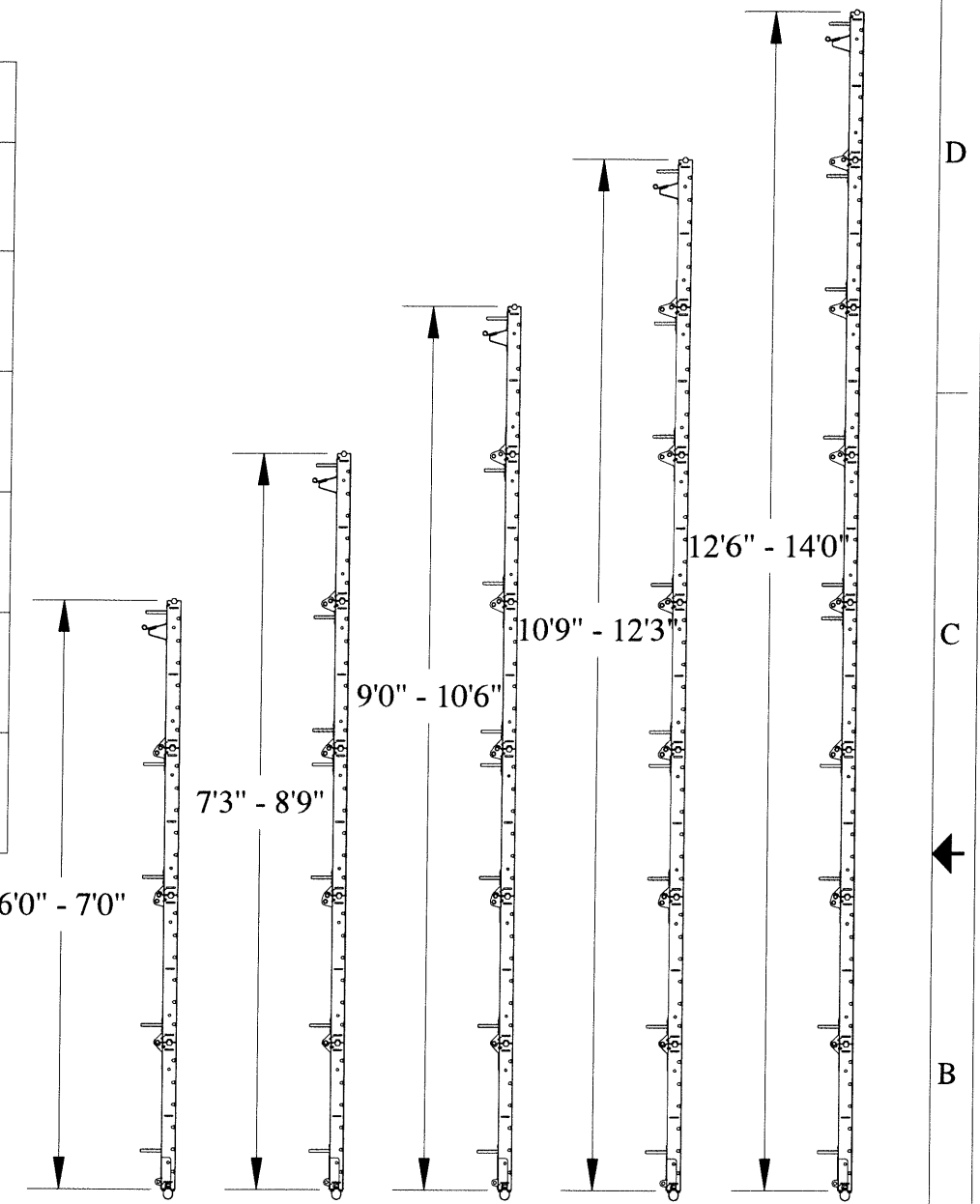
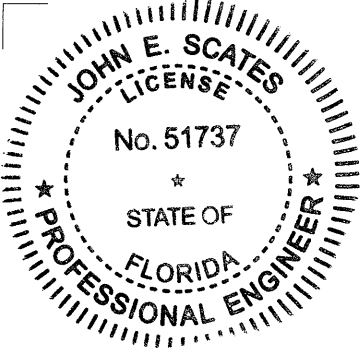
min. Edge Spacing



Pan Profile
24 gauge (.022 min.)
coil coated G-40
galvanized DDS Type
A 43 ksi min. yield
steel

PRODUCT APPROVED
as complying with the Florida
Building Code
NOA-No. 21-0803.04
Approval Date 12/16/2021
By *[Signature]*
Miami-Dade Product Control

John E. Scates
11/11/2021
John E. Scates, P.E.
2560 King Arthur BLVD
Lewisville, Texas 75056
Florida P.E. # 51737



C.H.I. OVERHEAD DOORS	1485 Sunrise Drive Arthur, IL 61911 (217) 543-2135
Series Timeless and Contemporary Steel Pan Sectional Garage Door up to 9'-2" Wide w/ Impact Resistant Windows	
SCALE nts	DATE 11/11/2021
Door size: 9'-2" Max. x 14'-0" Max.	
Design Pressure (DP): +48.8 psf, -55.4 psf	
C.H.I. Drawing: MD-2140-0907	
page 3 of 3	