



DEPARTMENT OF REGULATORY AND ECONOMIC RESOURCES (RER)
BOARD AND CODE ADMINISTRATION DIVISION

NOTICE OF ACCEPTANCE (NOA)

MIAMI-DADE COUNTY
PRODUCT CONTROL SECTION

11805 SW 26 Street, Room 208
Miami, Florida 33175-2474
T (786) 315-2590 F (786) 315-2599

www.miamidade.gov/economy

Sunrun Installation Services, Inc. d/b/a SnapNrack
775 Fiero Lane, Suite 200
San Luis Obispo, CA 93401

SCOPE:

This NOA is being issued under the applicable rules and regulations governing the use of construction materials. The documentation submitted has been reviewed and accepted by Miami-Dade County RER-Product Control Section to be used in Miami-Dade County and other areas where allowed by the Authority Having Jurisdiction (AHJ).

This NOA shall not be valid after the expiration date stated below. The Miami-Dade County Product Control Section (In Miami-Dade County) and/ or the AHJ (in areas other than Miami-Dade County) reserve the right to have this product or material tested for quality assurance purposes. If this product or material fails to perform in the accepted manner, the manufacturer will incur the expense of such testing and the AHJ may immediately revoke, modify, or suspend the use of such product or material within their jurisdiction. RER reserves the right to revoke this acceptance if it is determined by Miami-Dade County Product Control Section that this product or material fails to meet the requirements of the applicable building code.

This product is approved as described herein and has been designed to comply with the Florida Building Code, including the High Velocity Hurricane Zone.

DESCRIPTION: SpeedSeal Foot and SpeedSeal Track Aluminum Solar Mounts

APPROVAL DOCUMENT: Drawing No. **SNR-DC-00480**, titled "UR SpeedSeal Foot, UR Universal Mount and RL Universal SpeedSeal Track", sheets 1 through 10 of 10, prepared by Sunrun Installation Services, Inc. d/b/a SnapNrack, dated on 07/21/2021, signed and sealed by Paul K. Zacher, P.E. on 10/06/2021, bearing the Miami-Dade County Product Control revision stamp with the Notice of Acceptance number and expiration date by the Miami-Dade County Product Control Section.

MISSILE IMPACT RATING: None

LABELING: Each box shall bear a permanent label with the manufacturer's name or logo, Chihuahua, Mexico and following statement: "Miami-Dade County Product Control Approved or MDCPCA", unless otherwise noted herein.

RENEWAL of this NOA shall be considered after a renewal application has been filed and there has been no change in the applicable building code negatively affecting the performance of this product.

TERMINATION of this NOA will occur after the expiration date or if there has been a revision or change in the materials, use, and/or manufacture of the product or process. Misuse of this NOA as an endorsement of any product, for sales, advertising or any other purposes shall automatically terminate this NOA. Failure to comply with any section of this NOA shall be cause for termination and removal of NOA.

ADVERTISEMENT: The NOA number preceded by the words Miami-Dade County, Florida, and followed by the expiration date may be displayed in advertising literature. If any portion of the NOA is displayed, then it shall be done in its entirety.

INSPECTION: A copy of this entire NOA shall be provided to the user by the manufacturer or its distributors and shall be available for inspection at the job site at the request of the Building Official.

This NOA **revises NOA # 20-1104.01** and consists of this page 1, evidence pages E-1 and E-2, as well as approval document mentioned above.

The submitted documentation was reviewed by **Carlos M. Utrera, P.E.**



NOA No: 21-0823.05
Expiration Date: April 22, 2026
Approval Date: November 4, 2021
Page 1

NOTICE OF ACCEPTANCE: EVIDENCE SUBMITTED

1. Evidence submitted under NOA # 20-1104.01

A. DRAWINGS

1. Drawing No. **SNR-DC-00480**, titled “UR SpeedSeal Foot, UR Universal Mount and RL Universal SpeedSeal Track”, sheets 1 through 7 of 7, prepared by Sunrun Installation Services, Inc. d/b/a SnapNrack, dated on 03/25/2021, signed and sealed by Paul K. Zacher, P.E.

B. TESTS

1. Test report on Uplift and Shear Allowable Loads of the Ultra Rail SpeedSeal Foot per ASTM D7147-11, prepared by Intertek, Test Report No. **L0974.02-119-19 R0**, dated 09/15/2020, signed and sealed by Daniel C. Culbert, P.E.
2. Test report on Uplift and Shear Allowable Loads of the RL Universal SpeedSeal Track per ASTM D7147-11, prepared by Intertek, Test Report No. **L0971.02-119-19 R0**, dated 09/15/2020, signed and sealed by Daniel C. Culbert, P.E.
3. Test report on Wind Driven Rain Resistance of the Ultra Rail SpeedSeal Foot per TAS 100(A)-95, prepared by Intertek, Test Report No. **L0974.01-109-18**, dated 08/19/2020, signed and sealed by Daniel C. Culbert, P.E.
4. Test report on Wind Driven Rain Resistance of the RL Universal SpeedSeal Track per TAS 100(A)-95, prepared by Intertek, Test Report No. **L0971.01-109-18**, dated 08/19/2020, signed and sealed by Daniel C. Culbert, P.E.

C. CALCULATIONS

1. Anchor calculations prepared by PZ Structural Engineers, dated 12/30/2020, signed and sealed by Paul K. Zacher, P.E.

D. MATERIAL CERTIFICATIONS

1. None.

E. QUALITY ASSURANCE

1. Miami-Dade Department of Regulatory and Economic Resources (RER).

F. STATEMENTS

1. Statement letter of code conformance to the 7th edition (2020) of the FBC issued by PZ Structural Engineers, dated 12/30/2020, signed and sealed by Paul K. Zacher, P.E.
2. Statement letter of no financial interest issued by PZ Structural Engineers, dated 10/16/2020, signed and sealed by Paul K. Zacher, P.E.
3. Distributor agreement dated 02/16/2021.



Carlos M. Utrera, P.E.
Product Control Examiner
NOA No: 21-0823.05
Expiration Date: April 22, 2026
Approval Date: November 4, 2021

NOTICE OF ACCEPTANCE: EVIDENCE SUBMITTED

2. New evidence submitted

A. DRAWINGS

1. Drawing No. **SNR-DC-00480**, titled “UR SpeedSeal Foot, UR Universal Mount and RL Universal SpeedSeal Track”, sheets 1 through 10 of 10, prepared by Sunrun Installation Services, Inc. d/b/a SnapNrack, dated on 07/21/2021, signed and sealed by Paul K. Zacher, P.E. on 10/06/2021.

B. TESTS

1. Test report on Uplift and Shear Allowable Loads of the RL Universal SpeedSeal Track per ASTM D7147-11, prepared by Intertek, Test Report No. **M2491.03-119-18 R0**, dated 06/03/2021, signed and sealed by Daniel C. Culbert, P.E.
2. Test report on Wind Driven Rain Resistance of the RL Universal SpeedSeal Track per TAS 100(A)-95, prepared by Intertek, Test Report No. **M2491.01-109-18**, dated 05/27/2021, signed and sealed by Daniel C. Culbert, P.E.

C. CALCULATIONS

1. Anchor calculations prepared by PZ Structural Engineers, dated 07/27/2021, signed and sealed by Paul K. Zacher, P.E.

D. MATERIAL CERTIFICATIONS

1. None.

E. QUALITY ASSURANCE

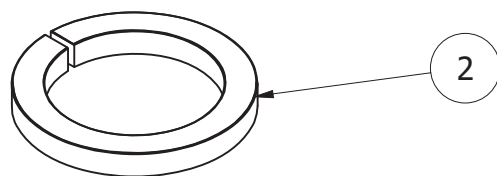
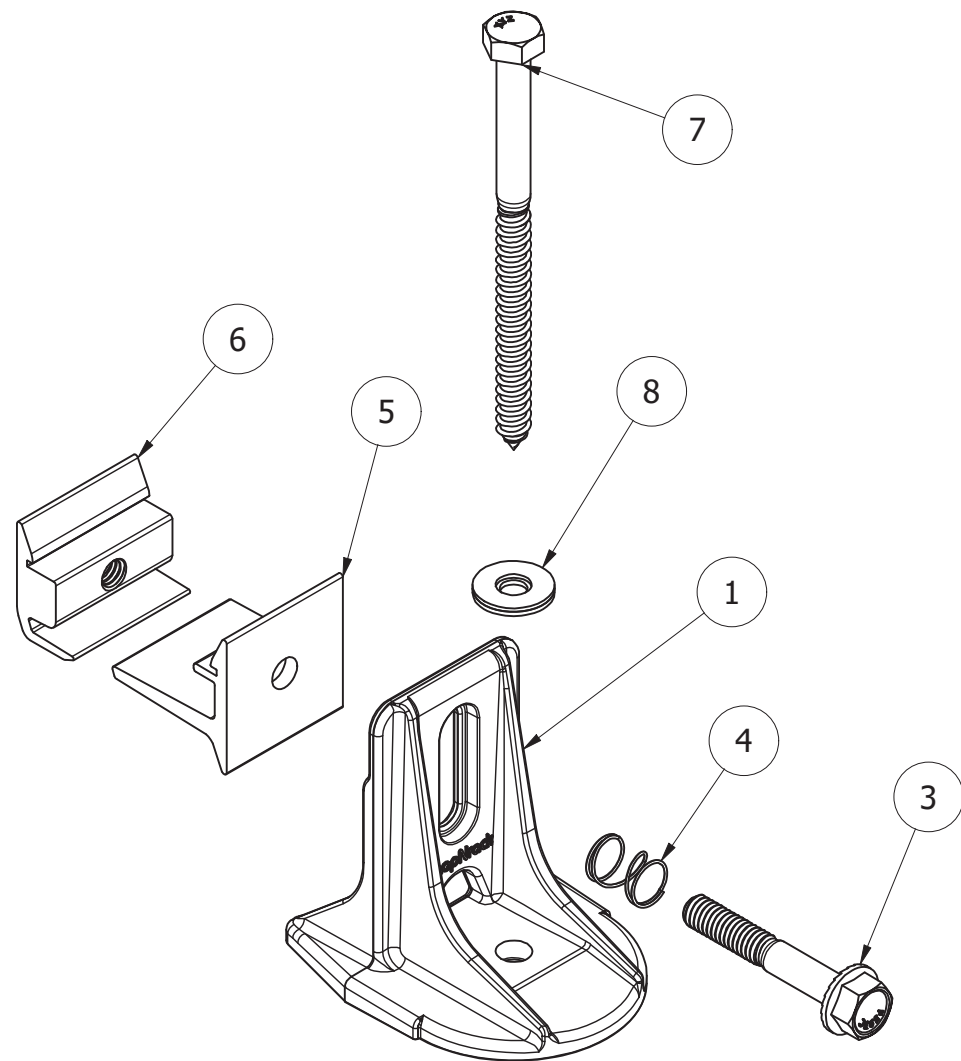
1. Miami-Dade Department of Regulatory and Economic Resources (RER).

F. STATEMENTS

1. Statement letter of code conformance to the 7th edition (2020) of the FBC issued by PZ Structural Engineers, dated 07/27/2021, signed and sealed by Paul K. Zacher, P.E.
2. Statement letter of no financial interest issued by PZ Structural Engineers, dated 07/27/2021, signed and sealed by Paul K. Zacher, P.E.



Carlos M. Utrera, P.E.
Product Control Examiner
NOA No: 21-0823.05
Expiration Date: April 22, 2026
Approval Date: November 4, 2021

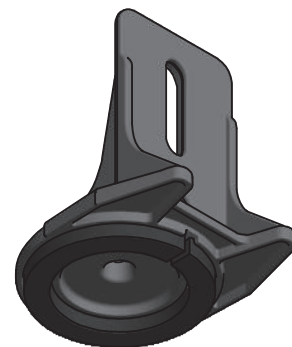


EXPLODED

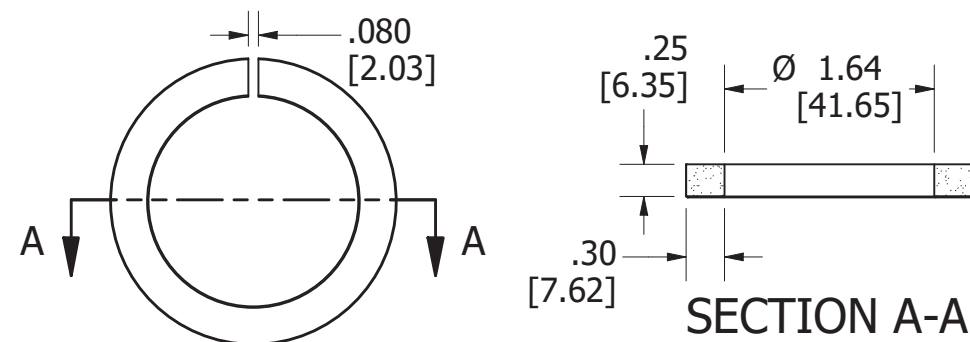
PRODUCT REVISED
as complying with the Florida
Building Code
NOA-No. 21-0823.05
Expiration Date 04/22/2026
By *[Signature]*
Miami-Dade Product Control



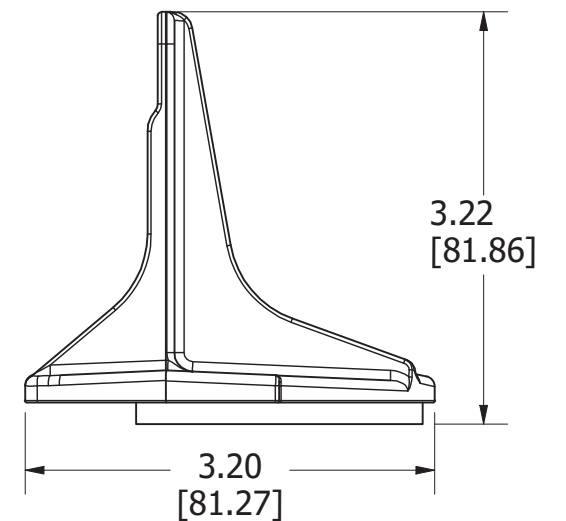
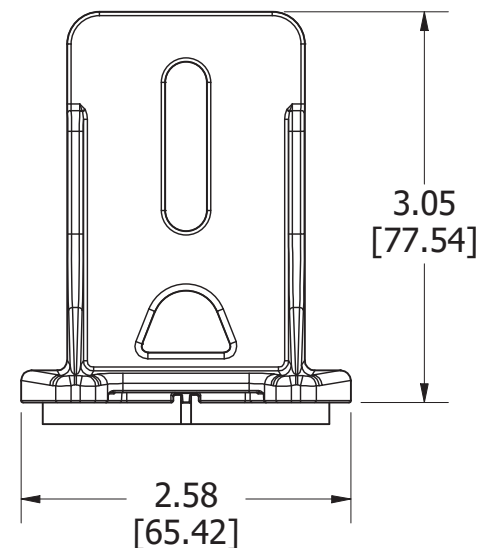
COMPLETE ASSEMBLY



BASE AND DAM ASSEMBLY



DAM DIMENSIONS



BASE WITH DAM DIMENSIONS

PARTS LIST

ITEM	QTY	DESCRIPTION	MASS (LBM)	MATERIAL	MINIMUM YIELD (KSI)	MINIMUM ULTIMATE (KSI)
1	1	SNAPNRACK, SPEEDSEAL FOOT, BASE, SILVER	0.249	HIGH PRESS. DIE CAST A380 AL	22	47
2	1	SNAPNRACK, SPEEDSEAL DAM, TYPE 2, FOAM	0.017	CLOSED CELL FOAM 1231 BU BL ELASTOMERIC BLEND	N/A	N/A
3	1	BOLT, FLANGE, SERRATED, 5-16IN-18 X 2IN, SS	0.062	STAINLESS STEEL	55	95
4	1	SNAPNRACK, RL UNIVERSAL, MOUNT SPRING, SS	0.001	STAINLESS STEEL	N/A	NA/
5	1	SNAPNRACK, ULTRA RAIL MOUNT THRU PRC, CLEAR	0.066	ALUMINUM 6005-T5	34.8	37.7
6	1	SNAPNRACK, ULTRA RAIL MOUNT TAPPED PRC, CLEAR	0.057	ALUMINUM 6005-T5	34.8	37.7
7	1	SNAPNRACK, SCREW, LAG, 5/16IN X 4-1/2IN, SS	0.092	STAINLESS STEEL	55	95
8	1	SNAPNRACK, WASHER, 5/16IN, EPDM	0.010	STAINLESS STEEL AND EPDM	N/A	N/A

PE SIGNATURE:

[Signature]

PE DATE:

10-06-2021

DESCRIPTION:

ASSEMBLY, UR SPEEDSEAL FOOT

DRAWING NUMBER:

SNR-DC-00480

REV:

C

SUNRUN INSTALLATION SERVICES INC.
DBA SNAPNRACK

775 FIERO LANE, SUITE 200
SAN LUIS OBISPO, CA 93401
CONTACT@SNAPNRACK.COM

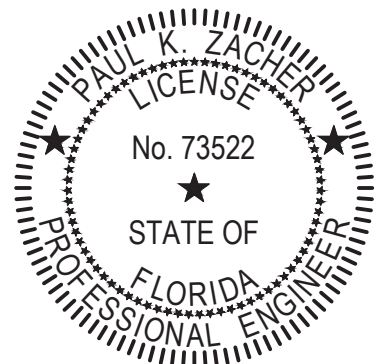
UNITS:
IN, LB, DEG
[MM, KG, DEG]

DATE:
7/21/2021

SHEET SIZE:
11 IN X 17 IN

SCALE:
NTS

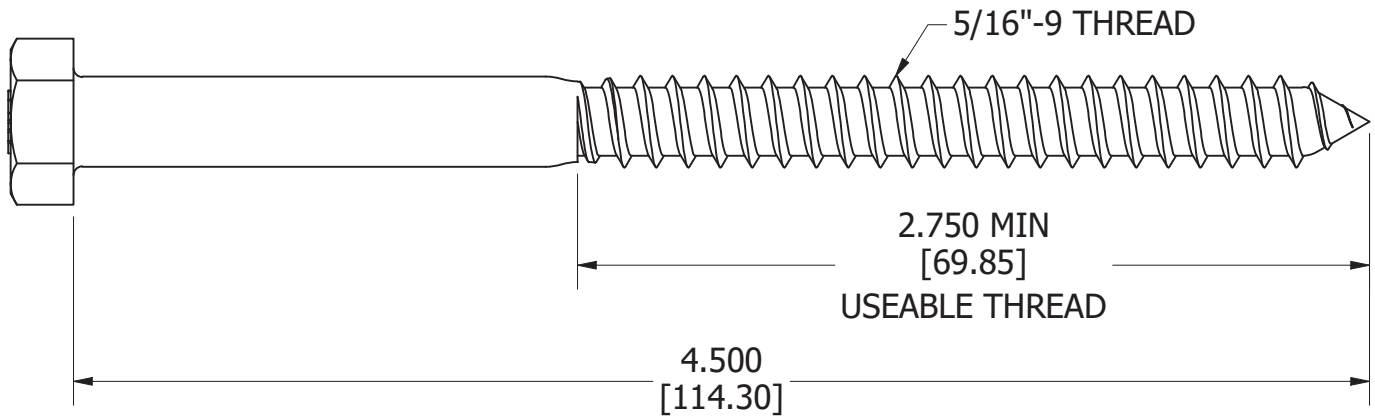
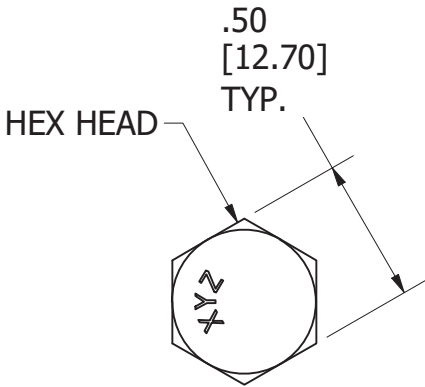
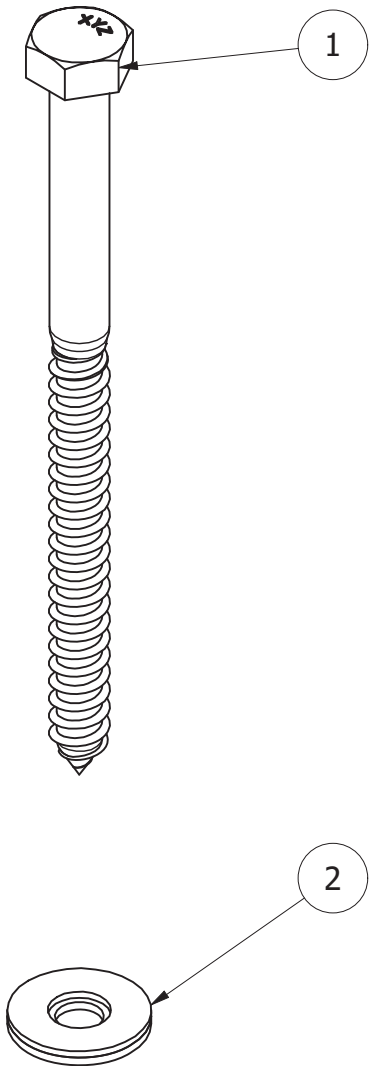
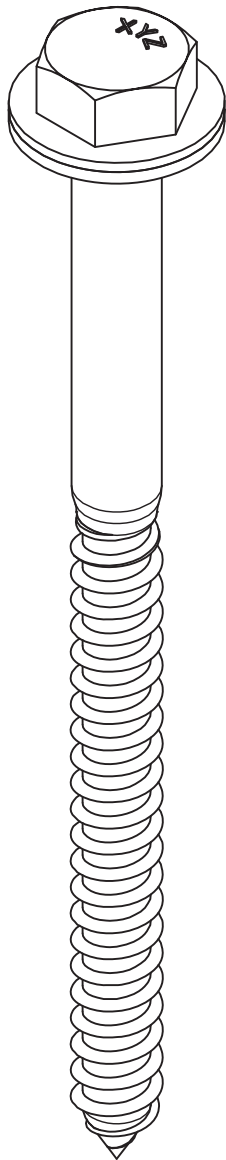
SHEET NUMBER:
1 OF 10



LAG MATERIAL: 18-8 STAINLESS STEEL, MIN YIELD 55 KSI, MIN ULTIMATE 95 KSI

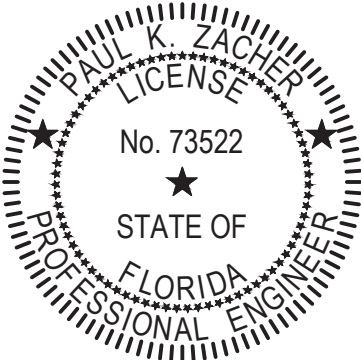
WASHER MATERIAL: STAINLESS STEEL AND EPDM

REVISION:		
A	12/28/2020	NEW ITEM BDP
B	6/14/2021	RL UPDATE DR
C	7/21/2021	RAIL NOTE DR



PRODUCT REVISED
as complying with the Florida
Building Code
NOA-No. 21-0823.05
Expiration Date 04/22/2026
By *[Signature]*
Miami-Dade Product Control

PARTS LIST		
ITEM	QTY	DESCRIPTION
1	1	SNAPNRACK, SCREW, LAG, 5/16IN X 4-1/2IN, SS
2	1	SNAPNRACK, WASHER, 5/16IN, EPDM



PE SIGNATURE: <i>[Signature]</i>		PE DATE: 10-06-2021	DESCRIPTION: SNAPNRACK, SEALING WASHER LAG, 4-1-2IN, SS			DRAWING NUMBER: SNR-DC-00480		REV: C
SUNRUN INSTALLATION SERVICES INC. DBA SNAPNRACK		775 FIERO LANE, SUITE 200 SAN LUIS OBISPO, CA 93401 CONTACT@SNAPNRACK.COM	UNITS: IN, LB, DEG [MM, KG, DEG]	DATE: 7/21/2021	SHEET SIZE: 11 IN X 17 IN	SCALE: NTS	SHEET NUMBER: 2 OF 10	

Snapnack UR Speedseal Foot for Composition Roof Mounting

Refer to Snapnack Engineering Charts for applicable rail spans.

Pilot hole 3/16"Ø

5/16"Ø S.S. lag screw must embed a min. of 2 1/2" into structural member

Refer to Snapnack Installation Manual for 5/16"Ø hardware torque specifications

Snapnack Speedseal Foot can mount in any orientation on the roof.

Structural Member Specifications:
Minimum wood grade = SPF #2
Minimum specific gravity = 0.42

Allowable fastener uplift = 728.6 lbs
Allowable fastener lateral = 250 lbs

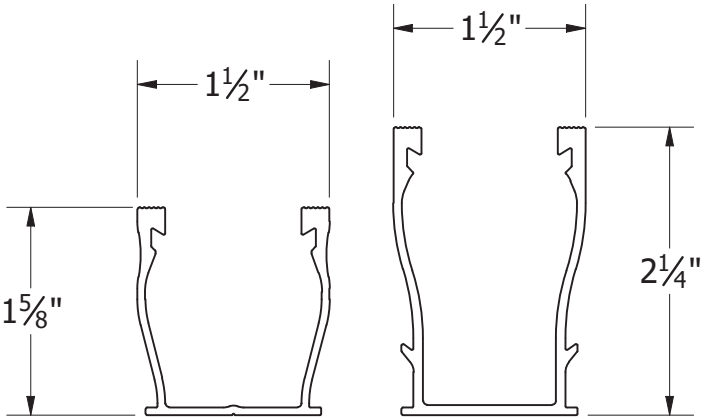
Minimum fastener edge distance = 0.5"
Minimum fastener end distance = 2.2"

Module height off roof, range:

UR-40: 3 3/8" - 4 3/8"
UR-60: 4" - 5"

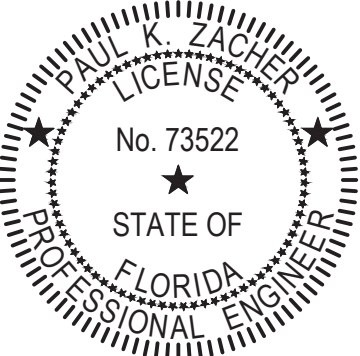
2 1/2" min. embedment into wood member

Penetration Detail



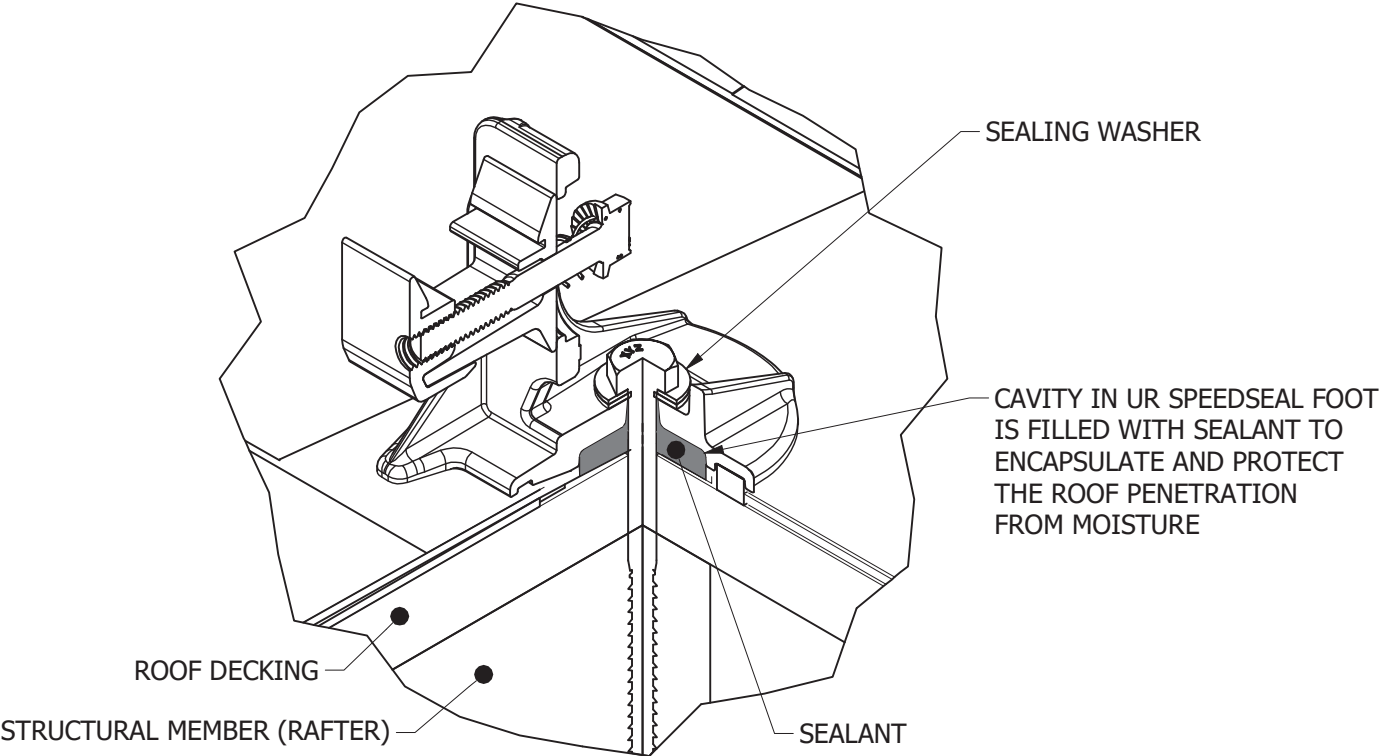
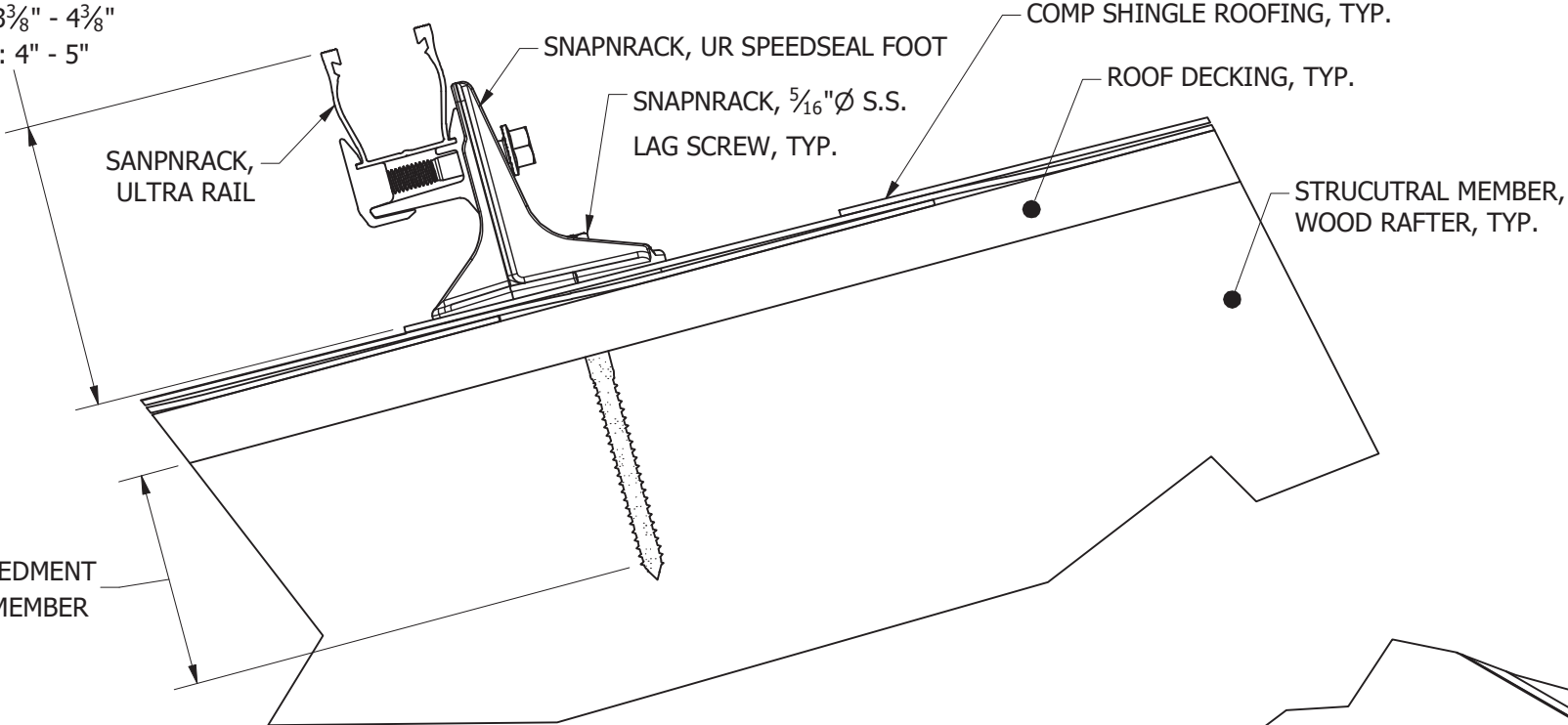
UR-40 Rail | UR-60 Rail
for use with Snapnack Ultra Series Rails

Product revised as complying with the Florida Building Code
NOA-No. 21-0823.05
Expiration Date 04/22/2026
By [Signature]
Miami-Dade Product Control



PE SIGNATURE: [Signature]		PE DATE: 10-06-2021	DESCRIPTION: ATTACHMENT DETAIL, UR SPEEDSEAL FOOT			DRAWING NUMBER: SNR-DC-00480		REV: C
SUNRUN INSTALLATION SERVICES INC. DBA SNAPNRACK		775 FIERO LANE, SUITE 200 SAN LUIS OBISPO, CA 93401 CONTACT@SNAPNRACK.COM	UNITS: IN, LB, DEG [MM, KG, DEG]	DATE: 7/21/2021	SHEET SIZE: 11 IN X 17 IN	SCALE: NTS	SHEET NUMBER: 3 OF 10	

REVISION:		
A	12/28/2020	NEW ITEM BDP
B	6/14/2021	RL UPDATE DR
C	7/21/2021	RAIL NOTE DR

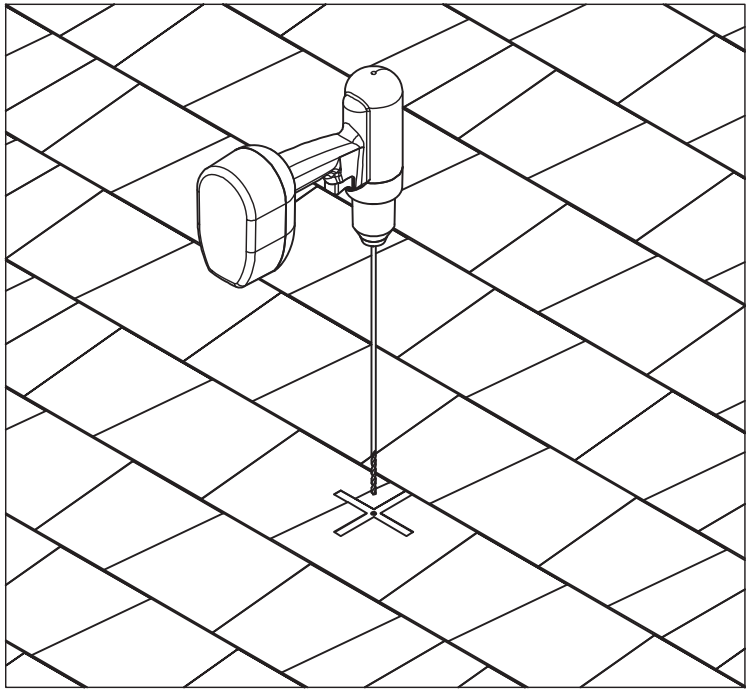


REQUIRED TOOLS:

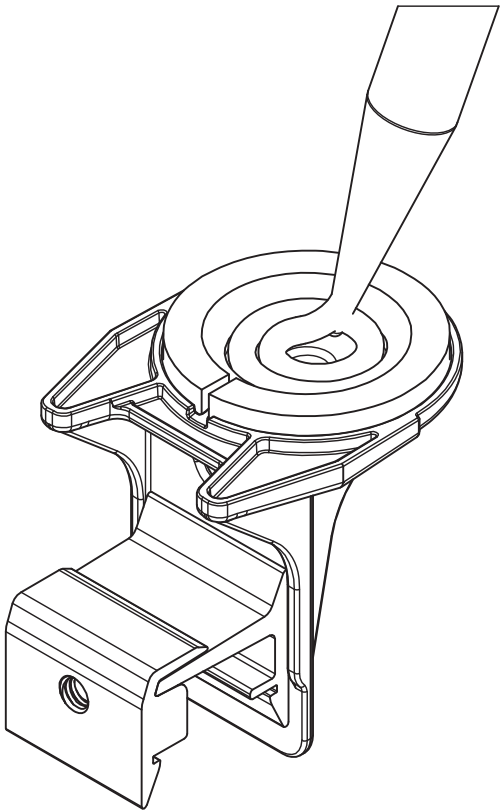
- HAMMER OR STUD FINDER
- TORQUE WRENCH
- ROOF MARKING CRAYON
- SOCKET WRENCH
- DRILL WITH 3/16" PILOT DRILL BIT
- 1/2" SOCKET
- MIAMI-DADE APPROVED ROOF SEALANT

REVISION:

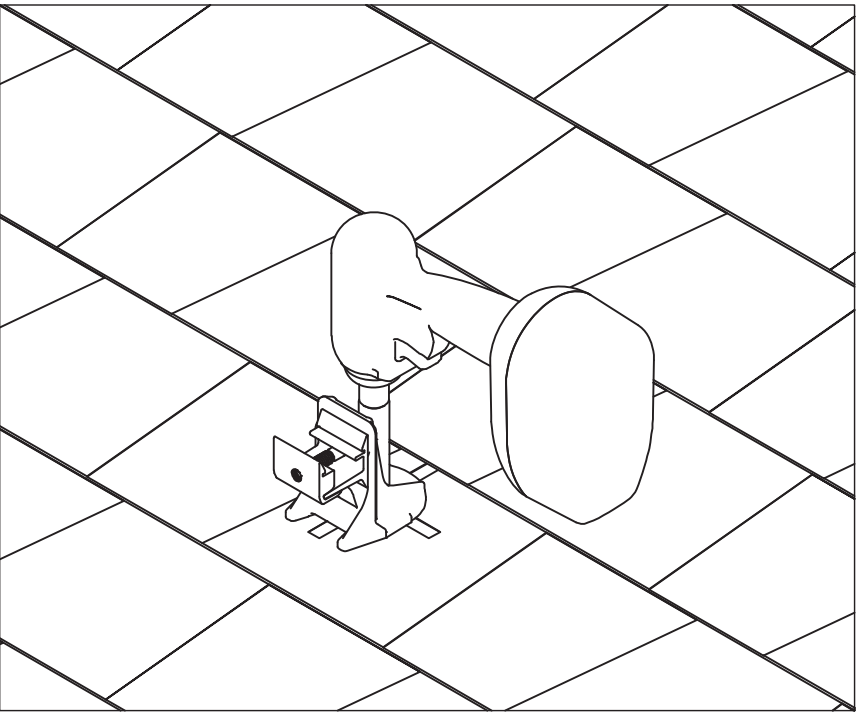
A	12/28/2020	NEW ITEM	BDP
B	6/14/2021	RL UPDATE	DR
C	7/21/2021	RAIL NOTE	DR




STEP 1:
USING ROOF ATTACHMENT LOCATIONS DRAWN DURING SYSTEM LAYOUT, DRILL A PILOT HOLE THROUGH THE ROOFING MATERIAL INTO THE ROOF FRAMING MEMBER. PILOT HOLE SHOULD BE LOCATED 1.5" - 3" FROM EDGE OF SHINGLE COURSE ABOVE. SPEEDSEAL FOOT SHOULD NEVER BE INSTALLED ACROSS TWO SHINGLE COURSES.

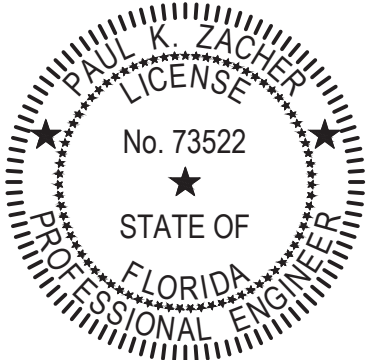


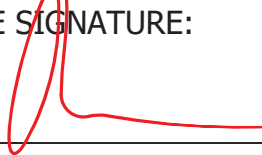
STEP 2:
FILL CAVITY ON BOTTOM OF SPEEDSEAL FOOT CREATED BY SEALANT RING WITH MIAMI-DADE APPROVED ROOF SEALANT, AS WELL AS THE PILOT HOLE TO ENSURE A WATER TIGHT SEAL. REMOVE ANY DIRT OR DEBRIS FROM ROOF SURFACE BEFORE FOOT IS INSTALLED. ALL MISSED PILOT HOLES SHOULD BE PROPERLY SEALED BEFORE FOOT IS INSTALLED.



STEP 3:
INSERT SEALING LAG SCREW THROUGH SPEEDSEAL FOOT, THEN DRIVE LAG SCREW FOR MINIMUM 2.5" EMBEDMENT IN TO THE ROOF FRAMING MEMBER. ROOF SEALANT SHOULD SEEP OUT FROM THE CAVITY LOCATED UNDERNEATH THE SPEEDSEAL FOOT, WHICH ENSURES THAT A SUFFICIENT AMOUNT OF ROOF SEALANT HAS BEEN APPLIED. IF NO SEALANT IS SEEN, REMOVE FOOT AND ADD MORE SEALANT BEFORE REINSTALLING. IF USING AN IMPACT DRIVER, FINISH TIGHTING LAG SCREW WITH A HAND WRENCH TO PREVENT FOOT FROM ROTATING.

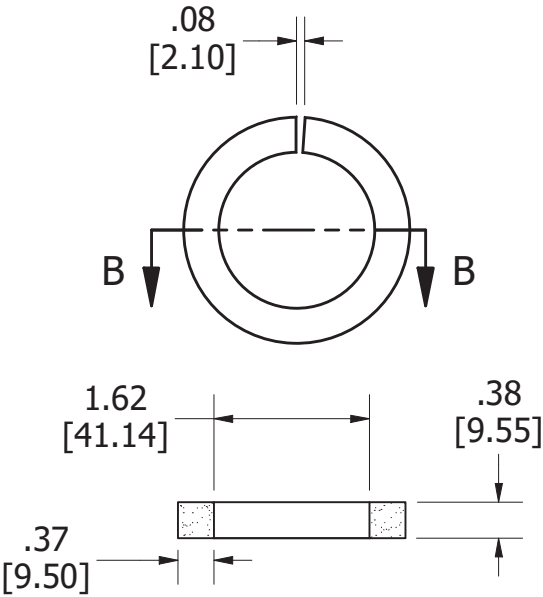
PRODUCT REVISED
as complying with the Florida
Building Code
NOA-No. 21-0823.05
Expiration Date 04/22/2026
By 
Miami-Dade Product Control



PE SIGNATURE: 		PE DATE: 10-06-2021	DESCRIPTION: INSTALLATION PROCEDURE, UR SPEEDSEAL FOOT			DRAWING NUMBER: SNR-DC-00480		REV: C
SUNRUN INSTALLATION SERVICES INC. DBA SNAPNRACK		775 FIERO LANE, SUITE 200 SAN LUIS OBISPO, CA 93401 CONTACT@SNAPNRACK.COM	UNITS: IN, LB, DEG [MM, KG, DEG]	DATE: 7/21/2021	SHEET SIZE: 11 IN X 17 IN	SCALE: NTS	SHEET NUMBER: 4 OF 10	

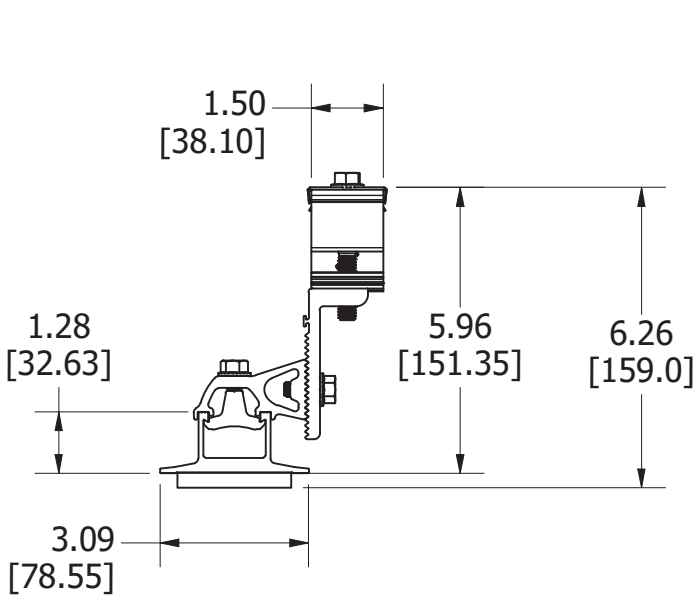
REVISION:		
A	12/28/2020	NEW ITEM BDP
B	6/14/2021	RL UPDATE DR
C	7/21/2021	RAIL NOTE DR

PRODUCT REVISED
as complying with the Florida
Building Code
NOA-No. 21-0823.05
Expiration Date 04/22/2026
By *[Signature]*
Miami-Dade Product Control

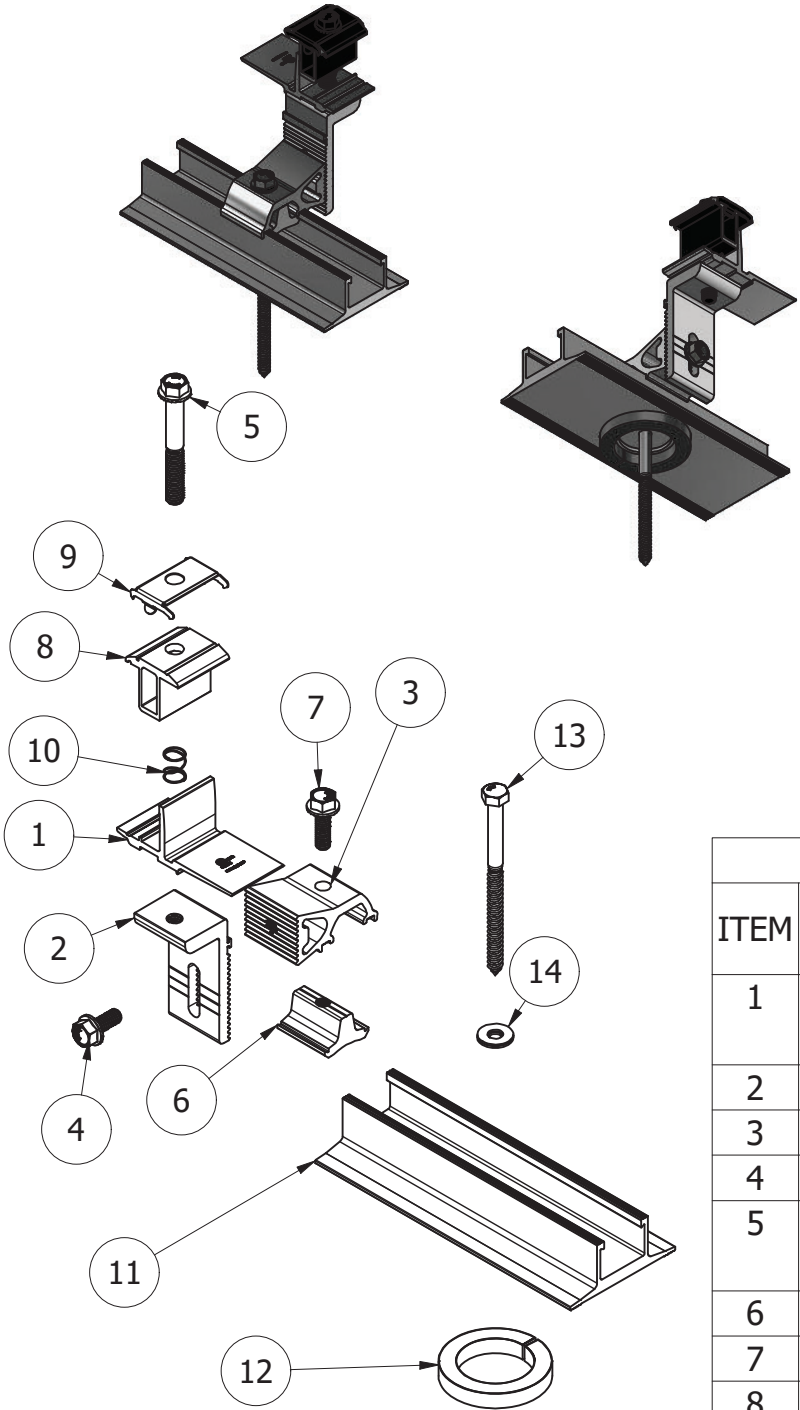
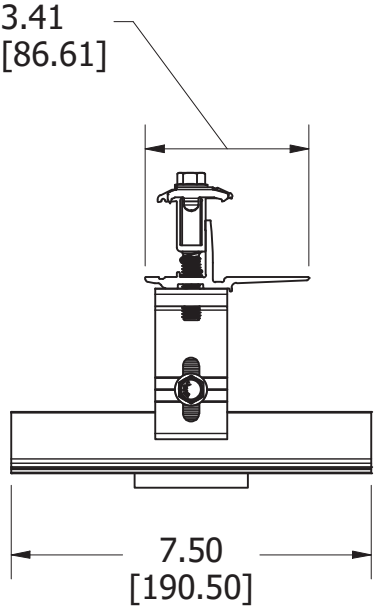


SECTION B-B

DAM DIMENSIONS



MOUNT DIMENSIONS



EXPLODED

PARTS LIST						
ITEM	QTY	DESCRIPTION	MASS (LBM)	MATERIAL	MINIMUM YIELD (KSI)	MINIMUM ULTIMATE (KSI)
1	1	SNAPNRACK, RL UNIVERSAL, MOUNT BOTTOM, MILL	0.092	ALUMINUM 6005-T5	34.8	37.7
2	1	SNAPNRACK, RL UNIVERSAL, LEVELER, MILL	0.160	ALUMINUM 6005-T5	34.8	37.7
3	1	SNAPNRACK, RL UNIVERSAL, RISER, MILL	0.152	ALUMINUM 6005-T5	34.8	37.7
4	1	BOLT, FLANGE, 5-16IN-18 X 3-4IN, CLEAR, SS	0.033	STAINLESS STEEL	55	95
5	1	BOLT, FLANGE, SERRATED, 3/8IN-16 X 2-3/4IN, 1/2IN TRIM HEAD, 1.2IN THREAD, BLACK, SS	0.099	STAINLESS STEEL	55	95
6	1	SNAPNRACK, DROP IN/ROCK IN CHANNEL NUT	0.065	ALUMINUM 6005-T5	34.8	37.7
7	1	BOLT, FLANGE, SERRATED, 5/16IN-18 X 1IN, SS	0.039	STAINLESS STEEL	55	95
8	1	SNAPNRACK, RL UNIVERSAL, MOUNT TOP, BLACK	0.069	ALUMINUM 6005-T5	34.8	37.7
9	1	SNAPNRACK, RL UNIVERSAL, BONDING CLIP	0.014	HALF HARD STAINLESS STEEL	N/A	N/A
10	1	SNAPNRACK, RL UNIVERSAL, MOUNT SPRING, SS	0.001	STAINLESS STEEL	N/A	N/A
11	1	SNAPNRACK, SPEEDTRACK, 7-1/2IN, MILL	0.636	ALUMINIUM 6005-T5	34.8	37.7
12	1	SNAPNRACK, SPEED LINE, GASKET, TYPE 1, FOAM, BLACK	0.002	CLOSED CELL FOAM 1231 BU BL ELASTOMERIC BLEND	N/A	N/A
13	1	SNAPNRACK, SCREW, LAG, 5/16IN X 4-1/2IN, SS	0.092	STAINLESS STEEL	55	95
14	1	SNAPNRACK, WASHER, 5/16IN, EPDM	0.010	STAINLESS STEEL AND EPDM	N/A	N/A

PE SIGNATURE:

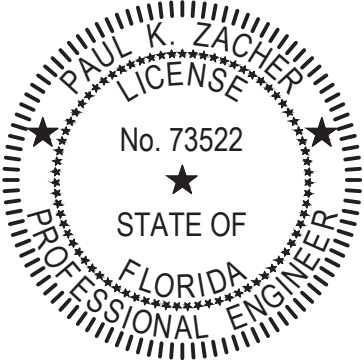
10-06-2021

ASSEMBLY, RL UNIVERSAL MOUNT

SNR-DC-00480

DRAWING NUMBER:

REV: C



SUNRUN INSTALLATION SERVICES INC.
DBA SNAPNRACK

775 FIERO LANE, SUITE 200
SAN LUIS OBISPO, CA 93401
CONTACT@SNAPNRACK.COM

UNITS:
IN, LB, DEG
[MM, KG, DEG]

DATE:
7/21/2021

SHEET SIZE:
11 IN X 17 IN

SCALE:
NTS

SHEET NUMBER:
5 OF 10

SNAPRACK RL UNIVERSAL SPEEDSEAL TRACK COMPOSITION
ROOF MOUNTING

PILOT HOLE 3/16"Ø

EMBED Ø5/16" LAG SCREW 2-1/2" INTO THE ROOF
STRUCTURAL MEMBER / RAFTER

FOR TORQUE SPECIFICATIONS SEE INSTALLATION MANUAL

MINIMUM WOOD GRADE OF STRUCTURAL MEMBER = SPF#2
MINIMUM SPECIFIC GRAVITY = 0.42

ALLOWABLE FASTENER UPLIFT = 491.6 LBS
ALLOWABLE FASTENER LATERAL = 250 LBS

MINIMUM FASTENER EDGE DISTANCE = 0.5"
MINIMUM FASTENER END DISTANCE = 2.2"

Ø5/16" S.S. LAG SCREW

SEALING WASHER

SPEEDSEAL TRACK

ROOFING
MATERIAL

ROOF SHEATHING

RAFTER

SEALANT

DETAIL A

A

COMPLETED INSTALLATION
SECTION VIEW

Ø5/16" S.S. LAG SCREW
2-1/2" MINIMUM EMBEDMENT

WASHER

SPEEDSEAL TRACK

ROOF RAFTER (TYP.)
ROOF ATTACHMENTS SHALL
BE EMBEDDED INTO
ROOF RAFTERS OR OTHER
STRUCTURAL MEMBERS

ROOF SHEATHING, UNDERLAYMENT,
AND ROOFING MATERIAL (TYP.)

TRACK SHOULD
BE INSTALLED
PARALLEL TO RAFTER

ROOFING MATERIAL

SPEEDSEAL
TRACK

ROOF DECKING

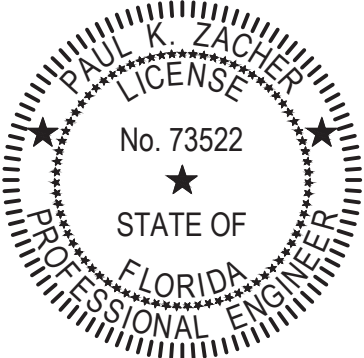
ROOFING
MATERIAL

2-1/2" MIN. EMBEDMENT
INTO RAFTER OR
STRUCTURAL MEMBER

COMPLETED INSTALLATION

REVISION:		
A	12/28/2020	NEW ITEM BDP
B	6/14/2021	RL UPDATE DR
C	7/21/2021	RAIL NOTE DR

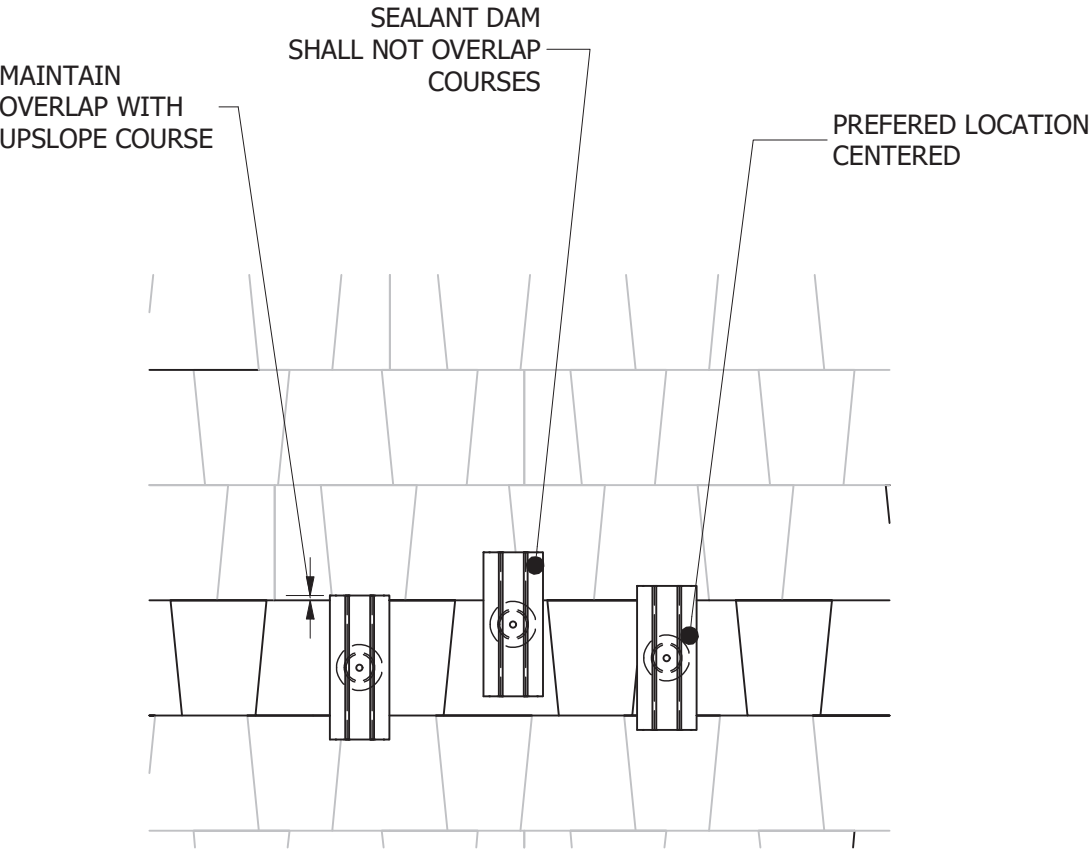
PRODUCT REVISED
as complying with the Florida
Building Code
NOA-No. 21-0823.05
Expiration Date 04/22/2026
By *R. P. [Signature]*
Miami-Dade Product Control



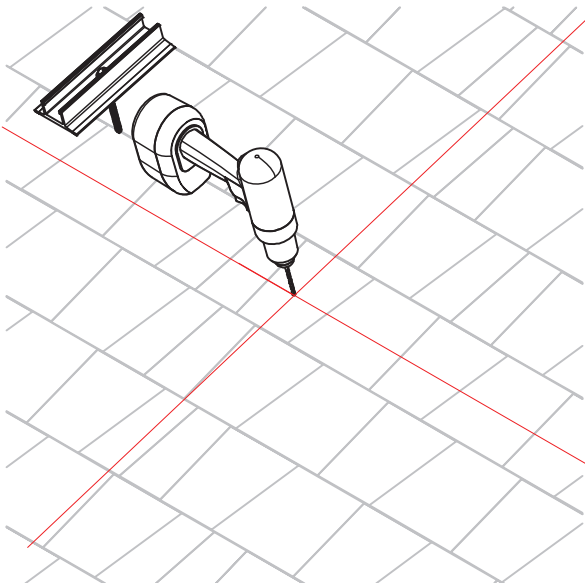
PE SIGNATURE: <i>[Signature]</i>		PE DATE: 10-06-2021	DESCRIPTION: ATTACHMENT DETAIL, RL UNIVERSAL SPEEDSEAL TRACK			DRAWING NUMBER: SNR-DC-00480		REV: C
SUNRUN INSTALLATION SERVICES INC. DBA SNAPRACK		775 FIERO LANE, SUITE 200 SAN LUIS OBISPO, CA 93401 CONTACT@SNAPNRACK.COM	UNITS: IN, LB, DEG [MM, KG, DEG]	DATE: 7/21/2021	SHEET SIZE: 11 IN X 17 IN	SCALE: NTS	SHEET NUMBER: 6 OF 10	

- REQUIRED TOOLS:**
- HAMMER OR STUD FINDER
 - TORQUE WRENCH
 - ROOF MARKING CRAYON
 - SOCKET WRENCH
 - DRILL WITH 3/16" PILOT DRILL BIT
 - 1/2" SOCKET
 - MIAMI-DADE APPROVED ROOF SEALANT

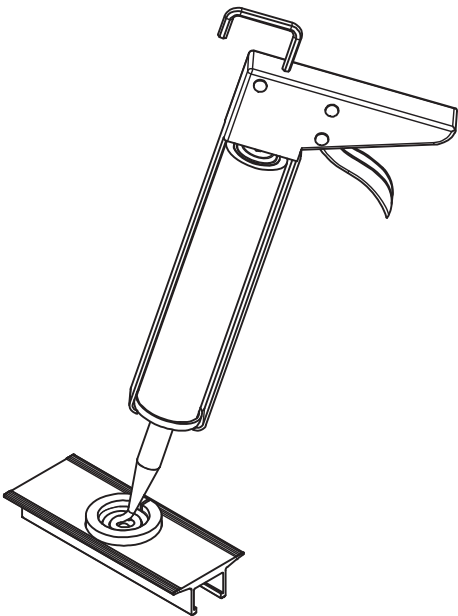
REVISION:		
A	12/28/2020	NEW ITEM BDP
B	6/14/2021	RL UPDATE DR
C	7/21/2021	RAIL NOTE DR



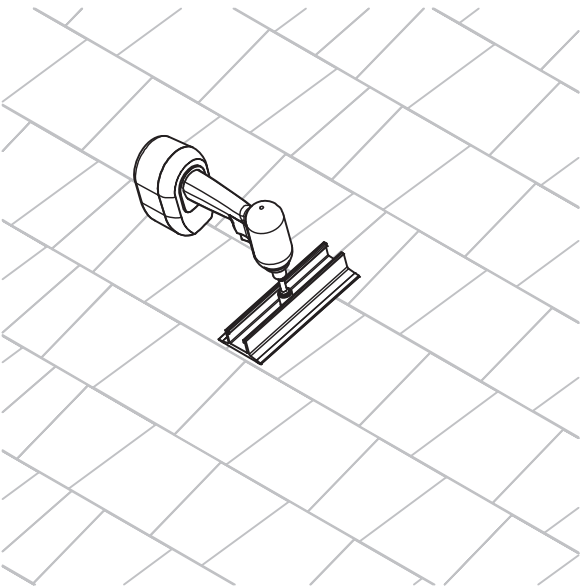
STEP 1:
POSITION SPEEDSEAL TRACK. TRACK MUST BE POSITIONED WITH THE SEALANT DAM ENTIRELY ON ONE COURSE OF COMPOSITION. THE TRACK SHOULD MAINTAIN AN OVERLAP WITH THE UPSLOPE COURSE.



STEP 2:
USING THE SPEEDSEAL TRACK AS A TEMPLATE, DRILL A PILOT HOLE INTO THE RAFTER WITH A 3/16" DRILL BIT.




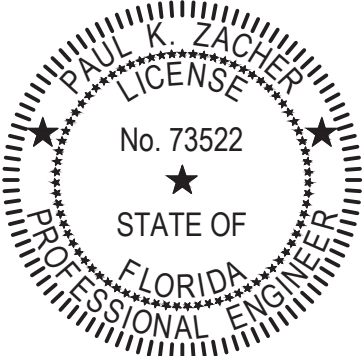
STEP 3:
TURN SPEEDSEAL TRACK OVER AND FILL DAM WITH MIAMI-DADE APPROVED ROOF SEALANT.




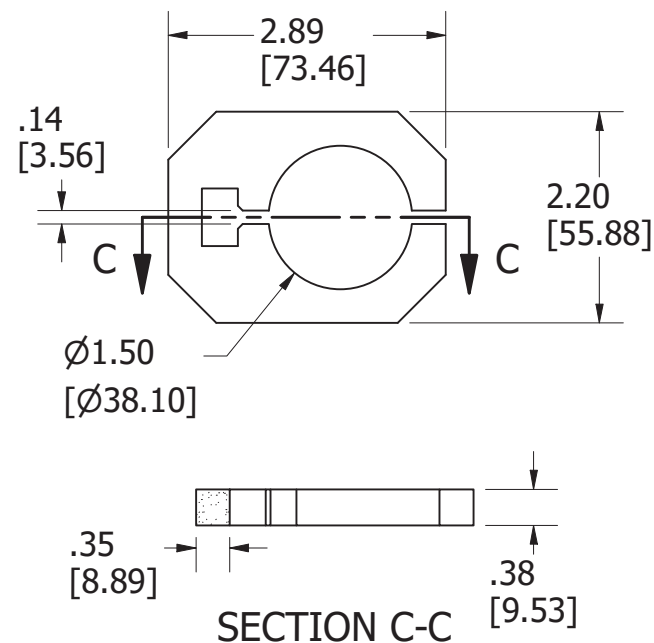
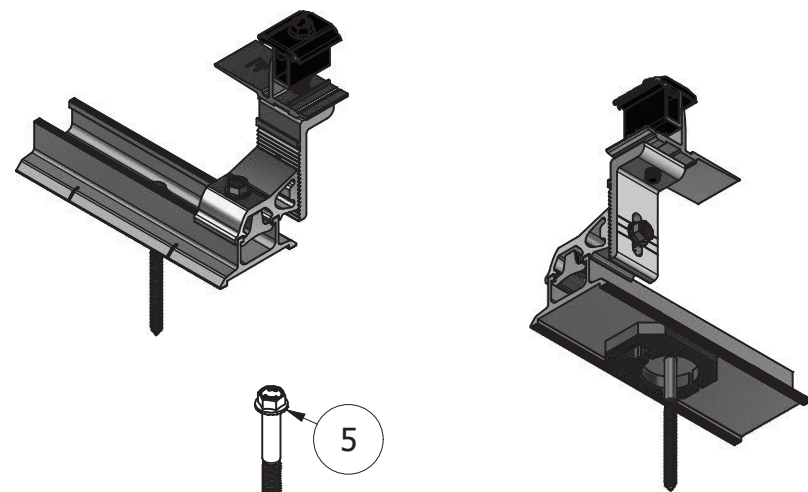
STEP 4:
ATTACH SPEEDSEAL TRACK TO ROOF USING THE 5/16" SS LAG SCREW AND SEALING WASHER.

NOTE: ROOF SEALANT SHOULD BE EXPELLED FROM THE UNDERSIDE OF THE TRACK AS IT IS INSTALLED TO ASSURE THE PROPER AMOUNT OF ROOF SEALANT HAS BEEN APPLIED. IF NO SEALANT IS EXPELLED, REMOVE TRACK AND ADD MORE SEALNT TO THE CAVITY THEN REINSTALL ON ROOF.

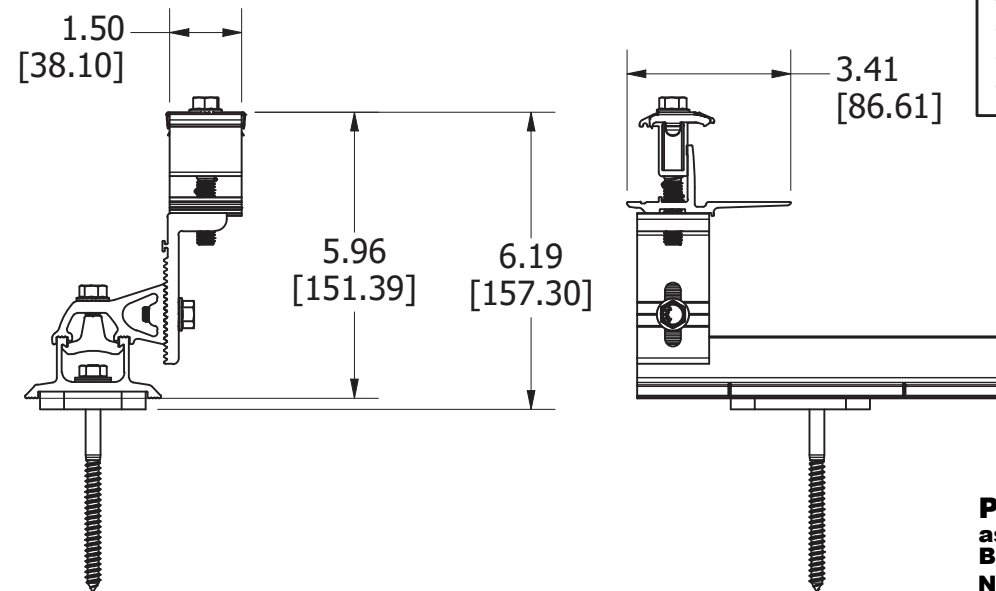
PRODUCT REVISED
as complying with the Florida Building Code
NOA-No. 21-0823.05
Expiration Date 04/22/2026
By 
Miami-Dade Product Control



PE SIGNATURE: 		PE DATE: 10-06-2021		DESCRIPTION: INSTALLATION PROCEDURE, RL UNIVERSAL SPEEDSEAL TRACK			DRAWING NUMBER: SNR-DC-00480		REV: C
SUNRUN INSTALLATION SERVICES INC. DBA SNAPNRACK		775 FIERO LANE, SUITE 200 SAN LUIS OBISPO, CA 93401 CONTACT@SNAPNRACK.COM		UNITS: IN, LB, DEG [MM, KG, DEG]	DATE: 7/21/2021	SHEET SIZE: 11 IN X 17 IN	SCALE: NTS	SHEET NUMBER: 7 OF 10	




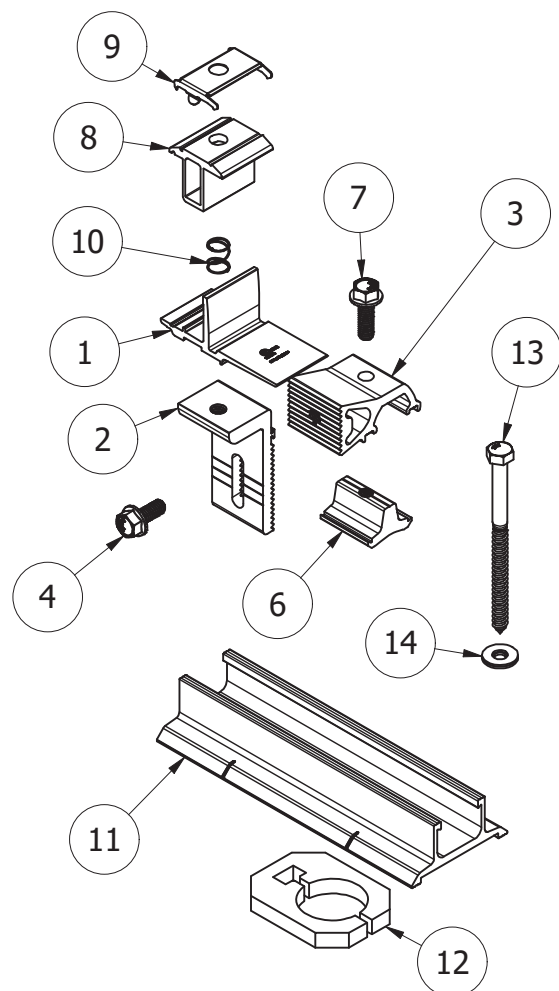
DAM DIMENSIONS



MOUNT WITH DAM DIMENSIONS

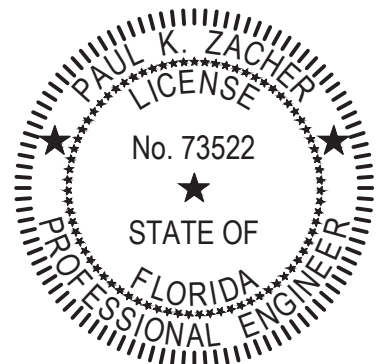
REVISION:		
A	12/28/2020	NEW ITEM BDP
B	6/14/2021	RL UPDATE DR
C	7/21/2021	RAIL NOTE DR


PRODUCT REVISED
as complying with the Florida
Building Code
NOA-No. 21-0823.05
Expiration Date 04/22/2026
By 
Miami-Dade Product Control



EXPLODED

PARTS LIST							
ITEM	QTY	DESCRIPTION	MASS (LBM)	MATERIAL	MINIMUM YIELD (KSI)	MINIMUM ULTIMATE (KSI)	
1	1	SNAPNRACK, RL UNIVERSAL, MOUNT BOTTOM, MILL	0.092	ALUMINUM 6005-T5	34.8	37.7	
2	1	SNAPNRACK, RL UNIVERSAL, LEVELER, MILL	0.160	ALUMINUM 6005-T5	34.8	37.7	
3	1	SNAPNRACK, RL UNIVERSAL, RISER, MILL	0.152	ALUMINUM 6005-T5	34.8	37.7	
4	1	BOLT, FLANGE, 5-16IN-18 X 3-4IN, CLEAR, SS	0.033	STAINLESS STEEL	55	95	
5	1	BOLT, FLANGE, SERRATED, 3/8IN-16 X 2-3/4IN, 1/2IN TRIM HEAD, 1.2IN THREAD, BLACK, SS	0.099	STAINLESS STEEL	55	95	
6	1	SNAPNRACK, DROP IN/ROCK IN CHANNEL NUT	0.065	ALUMINUM 6005-T5	34.8	37.7	
7	1	BOLT, FLANGE, SERRATED, 5/16IN-18 X 1IN, SS	0.039	STAINLESS STEEL	55	95	
8	1	SNAPNRACK, RL UNIVERSAL, MOUNT TOP, BLACK	0.069	ALUMINUM 6005-T5	34.8	37.7	
9	1	SNAPNRACK, RL UNIVERSAL, BONDING CLIP	0.014	HALF HARD STAINLESS STEEL	N/A	N/A	
10	1	SNAPNRACK, RL UNIVERSAL, MOUNT SPRING, SS	0.001	STAINLESS STEEL	N/A	N/A	
11	1	SNAPNRACK, SPEEDSEAL TRACK, 7-1-2IN, MILL	0.563	ALUMINUM 6005-T5	34.8	37.7	
12	1	SNAPNRACK, SPEEDSEAL TRACK, SEALANT DAM	0.003	CLOSED CELL FOAM 1231 BU BL ELASTOMERIC BLEND	N/A	N/A	
13	1	SNAPNRACK, SCREW, LAG, 5/16IN X 4-1/2IN, SS	0.092	STAINLESS STEEL	55	95	
14	1	SNAPNRACK, WASHER, 5/16IN, EPDM	0.010	STAINLESS STEEL AND EPDM	N/A	N/A	



PE SIGNATURE: 	PE DATE: 10-06-2021	DESCRIPTION: ASSEMBLY, RL UNIVERSAL MOUNT	DRAWING NUMBER: SNR-DC-00480	REV: C		
SUNRUN INSTALLATION SERVICES INC. DBA SNAPNRACK	775 FIERO LANE, SUITE 200 SAN LUIS OBISPO, CA 93401 CONTACT@SNAPNRACK.COM	UNITS: IN, LB, DEG [MM, KG, DEG]	DATE: 7/21/2021	SHEET SIZE: 11 IN X 17 IN	SCALE: 	SHEET NUMBER: 8 OF 10

SNAPNRACK RL UNIVERSAL SPEEDSEAL TRACK
COMPOSITION ROOF MOUNTING

PILOT HOLE $\frac{3}{16}$ "

EMBED $\varnothing\frac{5}{16}$ " LAG SCREW 2-1/2" INTO THE ROOF
STRUCTURAL MEMBER / RAFTER

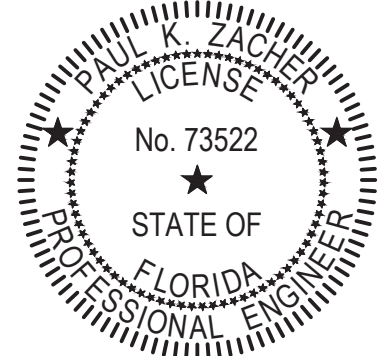
FOR TORQUE SPECIFICATIONS SEE
INSTALLATION MANUAL

MINIMUM WOOD GRADE OF STRUCTURAL
MEMBER = SPF#2
MINIMUM SPECIFIC GRAVITY = 0.42

ALLOWABLE FASTENER UPLIFT = 463.7 LBS
ALLOWABLE FASTENER LATERAL = 250 LBS

MINIMUM FASTENER EDGE DISTANCE = 0.5"
MINIMUM FASTENER END DISTANCE = 2.2"

ROOF RAFTER (TYP.)
ROOF ATTACHMENTS SHALL
BE EMBEDDED INTO
ROOF RAFTERS OR OTHER
STRUCTURAL MEMBERS



$\varnothing\frac{5}{16}$ " S.S. LAG SCREW

SPEEDSEAL TRACK

SEALING WASHER

ROOFING
MATERIAL

ROOF SHEATHING

RAFTER

$\varnothing\frac{5}{16}$ " S.S. LAG SCREW

WASHER

SPEEDSEAL TRACK

SEALANT

DETAIL B

COMPLETED INSTALLATION
SECTION VIEW

ROOFING MATERIAL

ROOF DECKING

ROOFING
MATERIAL

PILOT HOLE
CENTER OF COURSE
ROOF SHEATHING, UNDERLAYMENT,
AND ROOFING MATERIAL (TYP.)

PRODUCT REVISED
as complying with the Florida
Building Code
NOA-No. 21-0823.05

Expiration Date 04/22/2026

By
Miami-Dade Product Control

COMPLETED INSTALLATION

PE SIGNATURE:

PE DATE:

10-06-2021

DESCRIPTION:

ATTACHMENT DETAIL, RL UNIVERSAL SPEEDSEAL TRACK, V2

DRAWING NUMBER:

SNR-DC-00480

REV:

C

SUNRUN INSTALLATION SERVICES INC.
DBA SNAPNRACK

775 FIERO LANE, SUITE 200
SAN LUIS OBISPO, CA 93401
CONTACT@SNAPNRACK.COM

UNITS:
IN, LB, DEG
[MM, KG, DEG]

DATE:
7/21/2021

SHEET SIZE:
11 IN X 17 IN

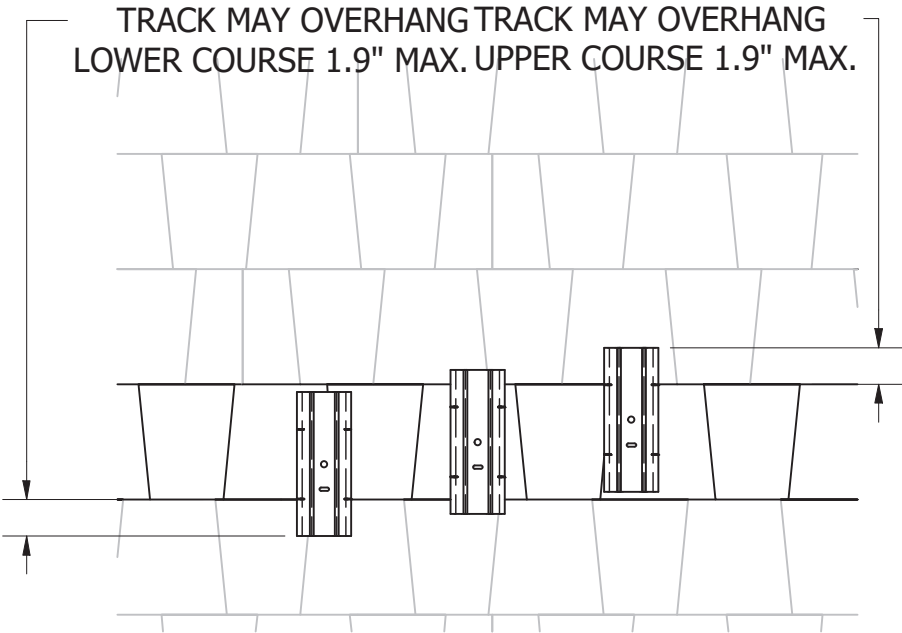
SCALE:

SHEET NUMBER:
9 OF 10

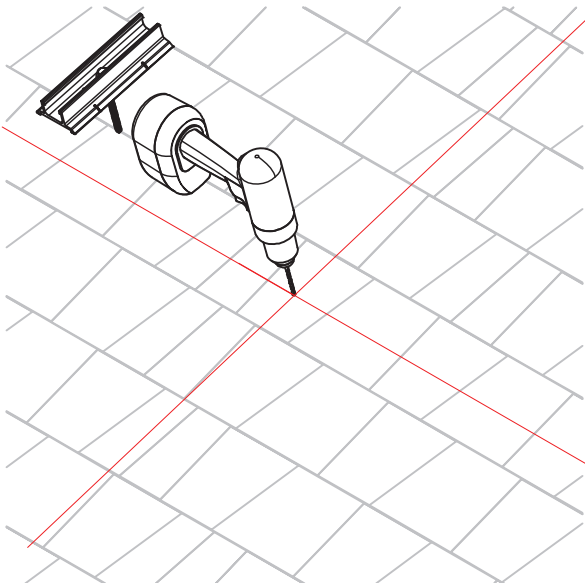
REQUIRED TOOLS:

- HAMMER OR STUD FINDER
- TORQUE WRENCH
- ROOF MARKING CRAYON
- SOCKET WRENCH
- DRILL WITH 3/16" PILOT DRILL BIT
- 1/2" SOCKET
- MIAMI-DADE APPROVED ROOF SEALANT

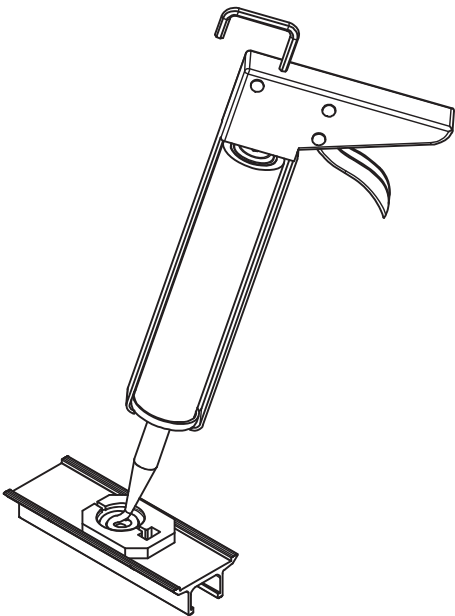
REVISION:			
A	12/28/2020	NEW ITEM	BDP
B	6/14/2021	RL UPDATE	DR
C	7/21/2021	RAIL NOTE	DR



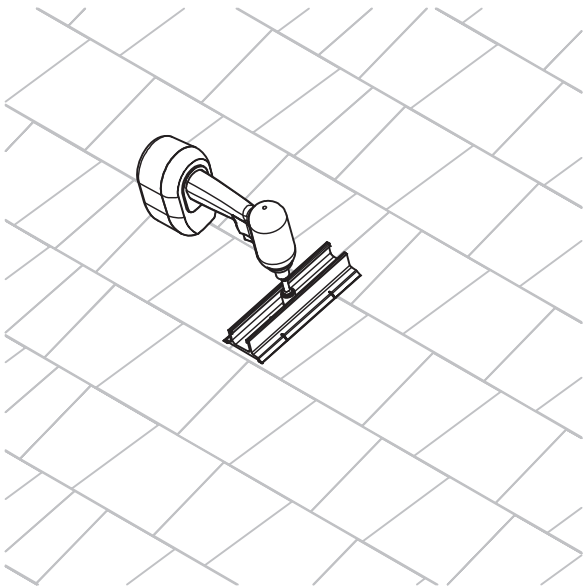
STEP 1:
POSITION SPEEDSEAL TRACK. TRACK MUST BE POSITIONED WITH THE SEALANT DAM ENTIRELY ON ONE COURSE OF COMPOSITION. THE LOCATION MARKS ON THE TRACK SHOULD BE ON A SINGLE COURSE.



STEP 2:
USING THE SPEEDSEAL TRACK AS A TEMPLATE, DRILL A PILOT HOLE INTO THE RAFTER WITH A 3/16" DRILL BIT.




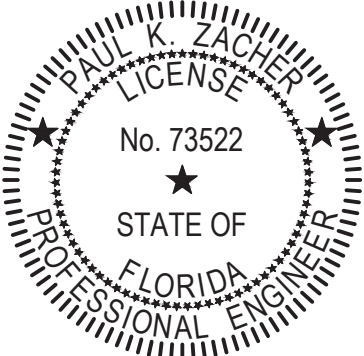
STEP 3:
TURN SPEEDSEAL TRACK OVER AND FILL DAM WITH MIAMI-DADE APPROVED ROOF SEALANT.




STEP 4:
ATTACH SPEEDSEAL TRACK TO ROOF USING THE 5/16" SS LAG SCREW AND SEALING WASHER.

NOTE: ROOF SEALANT SHOULD BE EXPELLED FROM THE VENT ON TOP OF THE TRACK AS IT IS INSTALLED TO ASSURE THE PROPER AMOUNT OF ROOF SEALANT HAS BEEN APPLIED. IF NO SEALANT IS EXPELLED, REMOVE TRACK AND ADD MORE SEALNT TO THE CAVITY THEN REINSTALL ON ROOF.

PRODUCT REVISED
as complying with the Florida
Building Code
NOA-No. 21-0823.05
Expiration Date 04/22/2026
By 
Miami-Dade Product Control



PE SIGNATURE: 		PE DATE: 10-06-2021	DESCRIPTION: INSTALLATION PROCEDURE, RL UNIVERSAL SPEEDSEAL TRACK			DRAWING NUMBER: SNR-DC-00480		REV: C
SUNRUN INSTALLATION SERVICES INC. DBA SNAPNRACK		775 FIERO LANE, SUITE 200 SAN LUIS OBISPO, CA 93401 CONTACT@SNAPNRACK.COM	UNITS: IN, LB, DEG [MM, KG, DEG]	DATE: 7/21/2021	SHEET SIZE: 11 IN X 17 IN	SCALE:	SHEET NUMBER: 10 OF 10	