



DEPARTMENT OF REGULATORY AND ECONOMIC RESOURCES (RER)
BOARD AND CODE ADMINISTRATION DIVISION

MIAMI-DADE COUNTY
PRODUCT CONTROL SECTION
11805 SW 26 Street, Room 208
Miami, Florida 33175-2474
T (786) 315-2590 F (786) 315-2599

www.miamidade.gov/economy

NOTICE OF ACCEPTANCE (NOA)

Energy Labs, Inc.
1695 Cactus Road
San Diego, CA 92154

SCOPE:

This NOA is being issued under the applicable rules and regulations governing the use of construction materials. The documentation submitted has been reviewed and accepted by Miami-Dade County RER- Product Control Section to be used in Miami Dade County and other areas where allowed by the Authority Having Jurisdiction (AHJ).

This NOA shall not be valid after the expiration date stated below. The Miami-Dade County Product Control Section (In Miami Dade County) and/or the AHJ (in areas other than Miami Dade County) reserve the right to have this product or material tested for quality assurance purposes. If this product or material fails to perform in the accepted manner, the manufacturer will incur the expense of such testing and the AHJ may immediately revoke, modify, or suspend the use of such product or material within their jurisdiction. RER reserves the right to revoke this acceptance if it is determined by Miami-Dade County Product Control Section that this product or material fails to meet the requirements of the applicable building code.

This product is approved as described herein and has been designed to comply with the High Velocity Hurricane Zone of the Florida Building Code.

DESCRIPTION: Air Handling Unit

APPROVAL DOCUMENT: Drawing No. 08-03269, titled " Air Handling Equipment ", sheets 1 through 7 of 7, prepared by Luis R. Lomas, P.E., last revision #D, dated 10/11/2021, signed and sealed by Luis R. Lomas, P.E., on 10/11/2021, bearing the Miami-Dade County Product Control Revision stamp with the Notice of Acceptance number and the expiration date by the Miami-Dade County Product Control Section.

MISSILE IMPACT RATING: Large and Small Missile Impact Resistant

LABELING: Each unit shall bear a permanent label with the manufacturer's name or logo, Tijuana, Baja California, Mexico and the following statement: "Miami-Dade County Product Control Approved", unless otherwise noted herein.

RENEWAL of this NOA shall be considered after a renewal application has been filed and there has been no change in the applicable building code negatively affecting the performance of this product.

TERMINATION of this NOA will occur after the expiration date or if there has been a revision or change in the materials, use, and/or manufacture of the product or process. Misuse of this NOA as an endorsement of any product, for sales, advertising or any other purposes shall automatically terminate this NOA. Failure to comply with any section of this NOA shall be cause for termination and removal of NOA.

ADVERTISEMENT: The NOA number preceded by the words Miami-Dade County, Florida, and followed by the expiration date may be displayed in advertising literature. If any portion of the NOA is displayed, then it shall be done in its entirety.

INSPECTION: A copy of this entire NOA shall be provided to the user by the manufacturer or its distributors and shall be available for inspection at the job site at the request of the Building Official.

This NOA revises NOA #20-0302.01 and consists of this page 1, evidence submitted pages E-1, E-2 & E-3 as well as approval document mentioned above.

The submitted documentation was reviewed by **Helmy A. Makar, P.E., M.S.**



Helmy A. Makar
12/23/2021

NOA No. 21-1117.05
Expiration Date: 04/16/2025
Approval Date: 12/23/2021
Page 1

NOTICE OF ACCEPTANCE: EVIDENCE SUBMITTED

1. EVIDENCE SUBMITTED UNDER PREVIOUS APPROVAL #14-0616.04

A. DRAWINGS

1. *Drawing No. NL-0028, titled "Air Handling Equipment", sheets 1 through 7 of 7, prepared by Luis R. Lomas, P.E., dated 04/13/2014, last revision #A, signed and sealed by Luis R. Lomas, P.E., on 10/23/2014.*

B. TESTS

1. *Test reports on 1) Uniform Static Air Pressure Test, per FBC TAS 202-94 2) Large Missile Impact Test per FBC, TAS 201-94, 3) Cyclic Wind Pressure per FBC, TAS 203-94 along with marked-up drawings of Air Handling Unit, prepared by National Certified Testing Laboratories, Test Report No. NCTL-210-3856-01, dated 12/03/2013, signed and sealed by Gerard J. Ferrara, P.E.*

C. CALCULATIONS

1. *None.*

D. QUALITY ASSURANCE

1. *By Miami-Dade County Department of Regulatory and Economic Resources.*

E. MATERIAL CERTIFICATIONS

1. *Die Drawings.*

F. STATEMENTS

1. *Statement letter of conformance with FBC 2010 Edition, signed and sealed by Luis R. Lomas, P.E.*

2. EVIDENCE SUBMITTED UNDER PREVIOUS APPROVAL #17-0608.01

A. DRAWINGS

1. *Drawing No. NL-0028, titled "Air Handling Equipment", sheets 1 through 7 of 7, prepared by Luis R. Lomas, P.E., dated 04/13/2014, last revision #B, signed and sealed by Luis R. Lomas, P.E., on 05/12/2017.*

B. TESTS

1. *None.*

C. CALCULATIONS

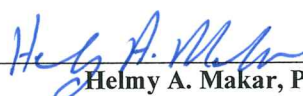
1. *None.*

D. QUALITY ASSURANCE

1. *By Miami-Dade County Department of Regulatory and Economic Resources.*

E. MATERIAL CERTIFICATIONS

1. *None.*



Helmy A. Makar, P.E., M.S.
Product Control Section Supervisor
NOA No. 21-1117.05
Expiration Date: 04/16/2025
Approval Date: 12/23/2021

Energy Labs, Inc.

NOTICE OF ACCEPTANCE: EVIDENCE SUBMITTED

3. EVIDENCE SUBMITTED UNDER PREVIOUS APPROVAL #18-0821.01

A. DRAWINGS

1. *Drawing No. 08-03269, titled " Air Handling Equipment ", sheets 1 through 7 of 7, prepared by Luis R. Lomas, P.E., last revision #C, dated 05/03/2018, signed and sealed by Luis R. Lomas, P.E., on 06/25/2018.*

B. TESTS

1. *None.*

C. CALCULATIONS

1. *None.*

D. QUALITY ASSURANCE

1. *By Miami-Dade County Department of Regulatory and Economic Resources.*

E. MATERIAL CERTIFICATIONS

1. *None.*

4. EVIDENCE SUBMITTED UNDER PREVIOUS APPROVAL #20-0302.01

A. DRAWINGS

1. *None.*

B. TESTS

1. *None.*

C. CALCULATIONS

1. *None.*

D. QUALITY ASSURANCE

1. *By Miami-Dade County Department of Regulatory and Economic Resources.*

E. MATERIAL CERTIFICATIONS

1. *None.*

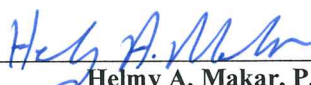
5. NEW EVIDENCE SUBMITTED

A. DRAWINGS

1. *Drawing No. 08-03269, titled " Air Handling Equipment ", sheets 1 through 7 of 7, prepared by Luis R. Lomas, P.E., last revision #D, dated 10/11/2021, signed and sealed by Luis R. Lomas, P.E., on 10/11/2021.*

B. TESTS

1. *None.*



Helmy A. Makar, P.E., M.S.
Product Control Section Supervisor
NOA No. 21-1117.05
Expiration Date: 04/16/2025
Approval Date: 12/23/2021

Energy Labs, Inc.

NOTICE OF ACCEPTANCE: EVIDENCE SUBMITTED

C. CALCULATIONS

1. None.

D. QUALITY ASSURANCE

1. By Miami-Dade County Department of Regulatory and Economic Resources.

E. MATERIAL CERTIFICATIONS

1. None.



Helmy A. Makar, P.E., M.S.
Product Control Section Supervisor
NOA No. 21-1117.05
Expiration Date: 04/16/2025
Approval Date: 12/23/2021

NOTES:

1. THE PRODUCT SHOWN HEREIN IS DESIGNED AND MANUFACTURED TO COMPLY WITH REQUIREMENTS OF THE 2020 FLORIDA BUILDING CODE, 7TH EDITION INCLUDING THE HVHZ.
2. CONCRETE STRUCTURE TO BE DESIGNED TO PROPERLY TRANSFER ALL LOADS TO STRUCTURE. CONCRETE STRUCTURE IS THE RESPONSIBILITY OF THE ARCHITECT OR ENGINEER OF RECORD.
3. APPROVED IMPACT PROTECTIVE SYSTEM IS NOT REQUIRED FOR THIS PRODUCT IN WIND BORNE DEBRIS REGIONS.
4. ALL FASTENERS TO BE CORROSION RESISTANT.
5. RIGID FOAM INSULATION THERMAL AND ACOUSTICAL PROPERTIES MEET 3 POUND DENSITY RATING DUAL DENSITY ASSEMBLY MEETS EROSION REQUIREMENTS OF UL 181 FACING AIRSTREAM AND FIRE HAZARD CLASSIFICATION OF 25/50 (PER ASTM E84 AND UL723).
6. STANDARD INNER CASING PANELS ARE SOLID 0.040" ALUMINUM 3003 OR 5052, 20GA 304/316 STAINLESS STEEL, OR 20GA GALVANIZED STEEL (MIN) WHICH MAY BE USED IN ANY COMBINATION AS REQUIRED THROUGHOUT AIR HANDLER UNIT CASING.
7. STANDARD OUTER CASING PANELS ARE SOLID 0.050" ALUMINUM 3003 OR 5052, 18GA 304/316 STAINLESS STEEL, OR 18GA GALVANIZED STEEL (MIN) WHICH MAY BE USED IN ANY COMBINATION AS REQUIRED THROUGHOUT AIR HANDLER UNIT CASING.
8. OUTER ANGLES ARE 5 1/2" X 5 1/2". INNER ANGLES ARE 1 1/2" X 1 1/2".
9. CONNECT OUTSIDE WALL TO BASE FRAME USING 7/8" X 1 3/8" 14GA GALVANIZED, OR 304/316 S.S. ANGLE.
10. CONNECT INSIDE WALL TO BASE FRAME USING 2" X 3" 14GA GALVANIZED, OR 304/316 S.S. ANGLE.
11. ALL JOINTS OF STRUCTURAL STEEL MEMBERS ARE CONTINUOUSLY ARC WELDED.
12. UNIT BASE AND CROSS MEMBERS ARE FULLY WELDED TO STRUCTURAL C-CHANNELS CROSS MEMBERS ARE LOCATED 24" MAX O.C.
13. FLOOR PANELS ARE 14GA GALVANIZED STEEL BRIGHT OR 304/316 SS, MAXIMUM FLOOR PANEL WIDTH IS 24".
14. ANCHORING OF BASE TO BUILDING IS NOT PART OF THIS APPROVAL AND IT IS THE RESPONSIBILITY OF THE ARCHITECT OR ENGINEER OF RECORD.

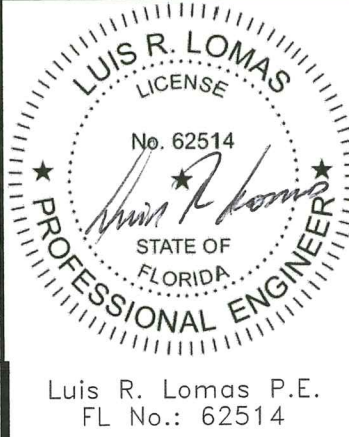
REVISIONS			
REV	DESCRIPTION	DATE	APPROVED
A	AS REQUESTED PER MIAMI-DADE	9/23/14	R.L.
B	REVISED NOTE 1 AND ADDRESS	05/12/17	R.L.
C	ADD STEEL AND CHANGE DWG NUMBER	05/03/18	R.L.
D	REVISED PER NEW CODE	10/11/2021	R.L.

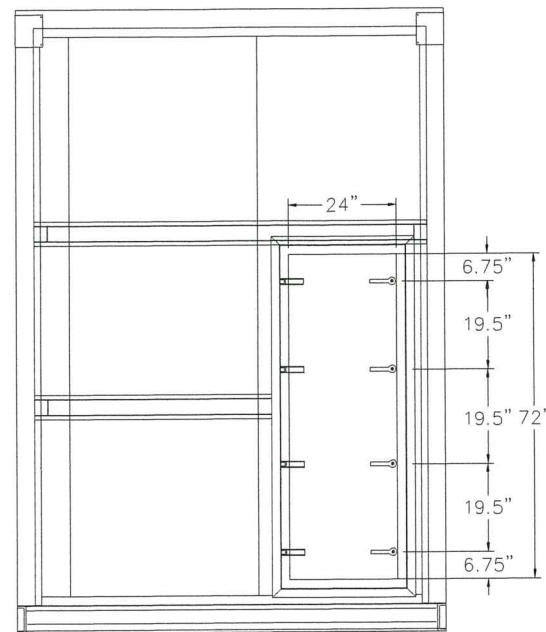
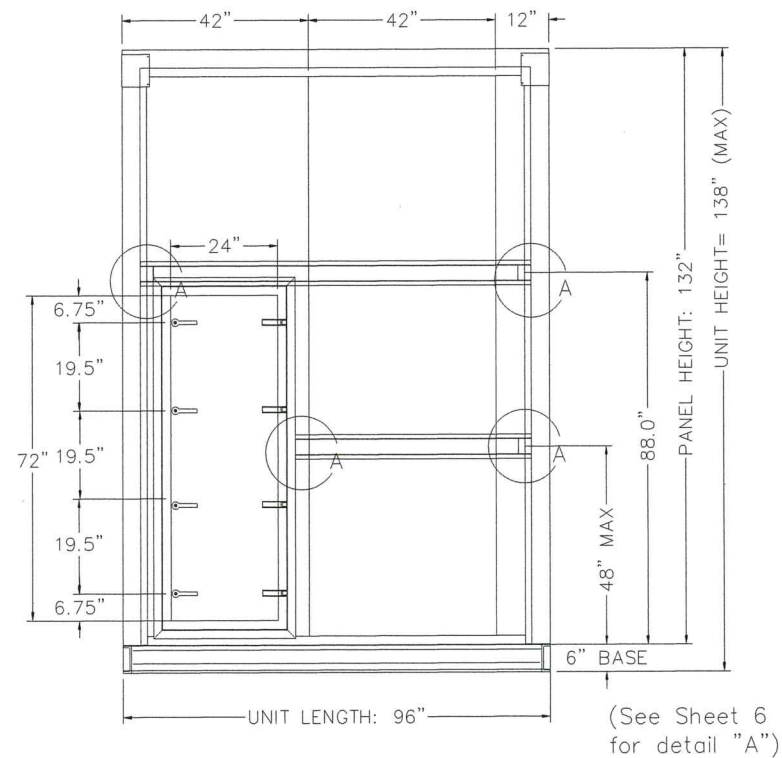
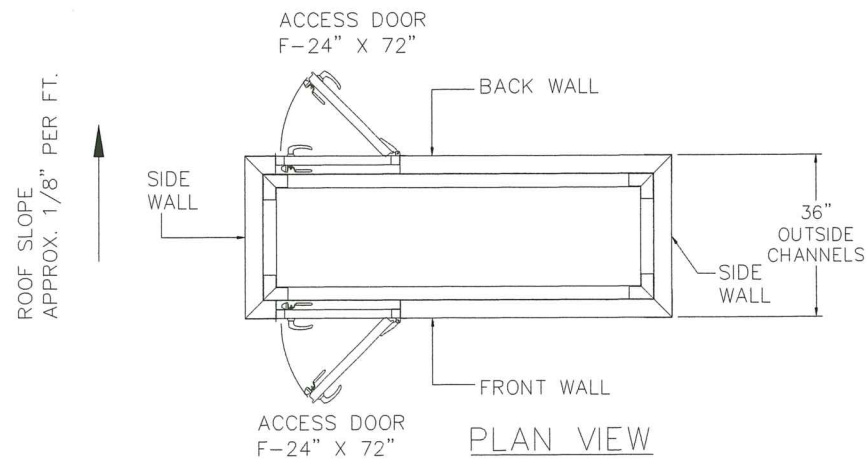
TABLE OF CONTENTS	
SHEET NO.	DESCRIPTION
1	NOTES
2	PANEL ASSEMBLY
3 - 4	BASE CONSTRUCTION
5	DOOR DETAIL
6	CHANNEL DETAIL
7	B.O.M.

PRODUCT REVISED
as complying with the Florida
Building Code
Acceptance No. 21-1117.05
Expiration Date 04/16/2025
By *Heidi H. Miller*
Miami Dade Product Control

ENERGY LABS, INC. 1695 CACTUS ROAD SAN DIEGO, CA 92154			
AIR HANDLING EQUIPMENT			
NOTES			
DRAWN: AGR		DWG NO. 08-03269	
SCALE NTS		DATE 05/03/18	REV D
SHEET 1 OF 7			
L. ROBERTO LOMAS P.E. 1432 WOODFORD RD LEWISVILLE, NC 27023 434-688-0609 rlomas@rlomaspe.com			

SIGNED: 10/11/2021





AIR HANDLING ASSEMBLY

WALL PANEL RATING

DESIGN PRESSURE RATING	IMPACT RATING
±100.0PSF	LARGE AND SMALL MISSILE IMPACT

ROOF PANEL RATING

DESIGN PRESSURE RATING	IMPACT RATING
±50.0PSF	LARGE AND SMALL MISSILE IMPACT

PRODUCT REVISED
as complying with the Florida
Building Code
Acceptance No. 21-1117.05
Expiration Date 04/16/2025
By *H. G. A. M. M.*
Miami Data Product Control

ENERGY LABS, INC.
1695 CACTUS ROAD
SAN DIEGO, CA 92154

AIR HANDLING EQUIPMENT

PANEL ASSEMBLY

DRAWN: AGR	DWG NO. 08-03269	REV D
SCALE NTS	DATE 05/03/18	SHEET 2 OF 7
L. ROBERTO LOMAS P.E. 1432 WOODFORD RD LEWISVILLE, NC 27023 434-688-0609 rlomas@rlomaspe.com		



Luis R. Lomas P.E.
FL No.: 62514

REVISIONS

REV	DESCRIPTION	DATE	APPROVED
A	AS REQUESTED PER MIAMI-DADE	9/23/14	R.L.
B	REVISED NOTE 1 AND ADDRESS	05/12/17	R.L.
C	ADD STEEL AND CHANGE DWG NUMBER	05/03/18	R.L.
D	REVISED PER NEW CODE	10/11/2021	R.L.

APPROVED MAX. SIZE FOR PANELS

EXTERIOR LINER	INTERIOR LINER
.050" ALUMINUM 3003 OR 5052	.040" ALUMINUM 3003 OR 5052
18GA 304/316 SS	20GA 304/316 SS
18GA GALVANIZED	20GA GALVANIZED
42" X 132"	42" X 132"
12" X 132"	12" X 132"

FASTENERS

PANELS SEAMS SECURED WITH 1/4" - 14 X 1" SELF DRILLING SCREWS SPACED EVERY 6" O.C. MAX. OUTSIDE THE UNIT
PANELS SEAMS SECURED WITH 1/4" - 14 X 1" SELF DRILLING SCREWS SPACED EVERY 8" O.C. MAX. INSIDE THE UNIT

UNIT BASE

FULLY WELDED 6", 8", 10" & 12" STRUCTURAL CHANNEL SPECS
STEEL PERIMETER BASE WITH INTERMEDIATE TUBULAR AND CROSS SUPPORT AT 24" O.C. 4" THICK INSULATION FOAM. (FOR REFERENCE SEE SHEET 4 of 7)

UNIT FLOORS

INNER FLOOR IS 14GA. GALVANIZED STEEL BRIGHT OR 304/316 S.S.
OUTER FLOOR IS 20GA. GALVANIZED STEEL BRIGHT OR 304/316 S.S.

UNIT FRAME WORK

14GA G-90 PAINTED GALVANIZED STEEL OR 304/316 S.S.
HORIZONTAL SUPPORT LOCATED 48" MAX. O.C.

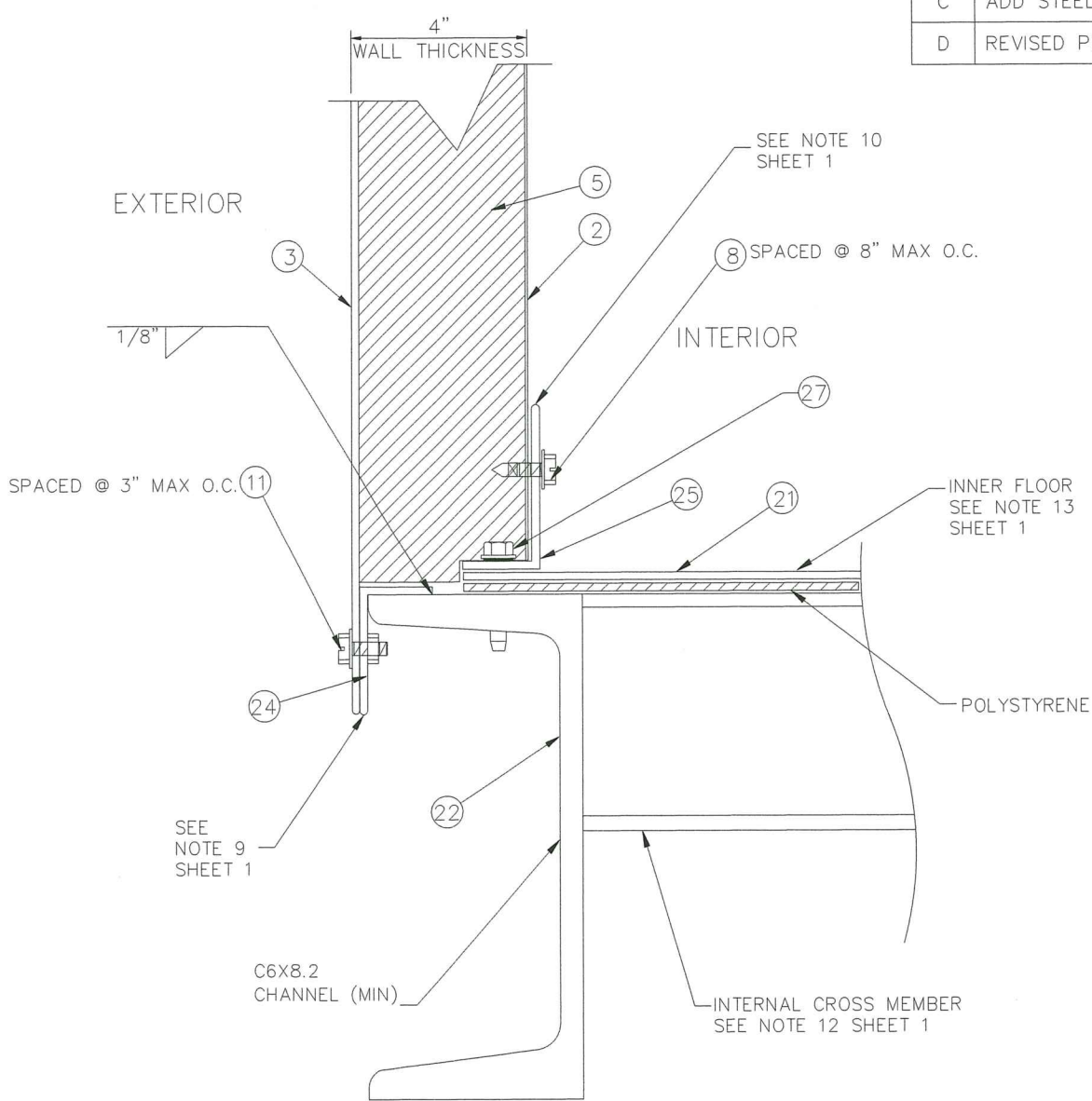
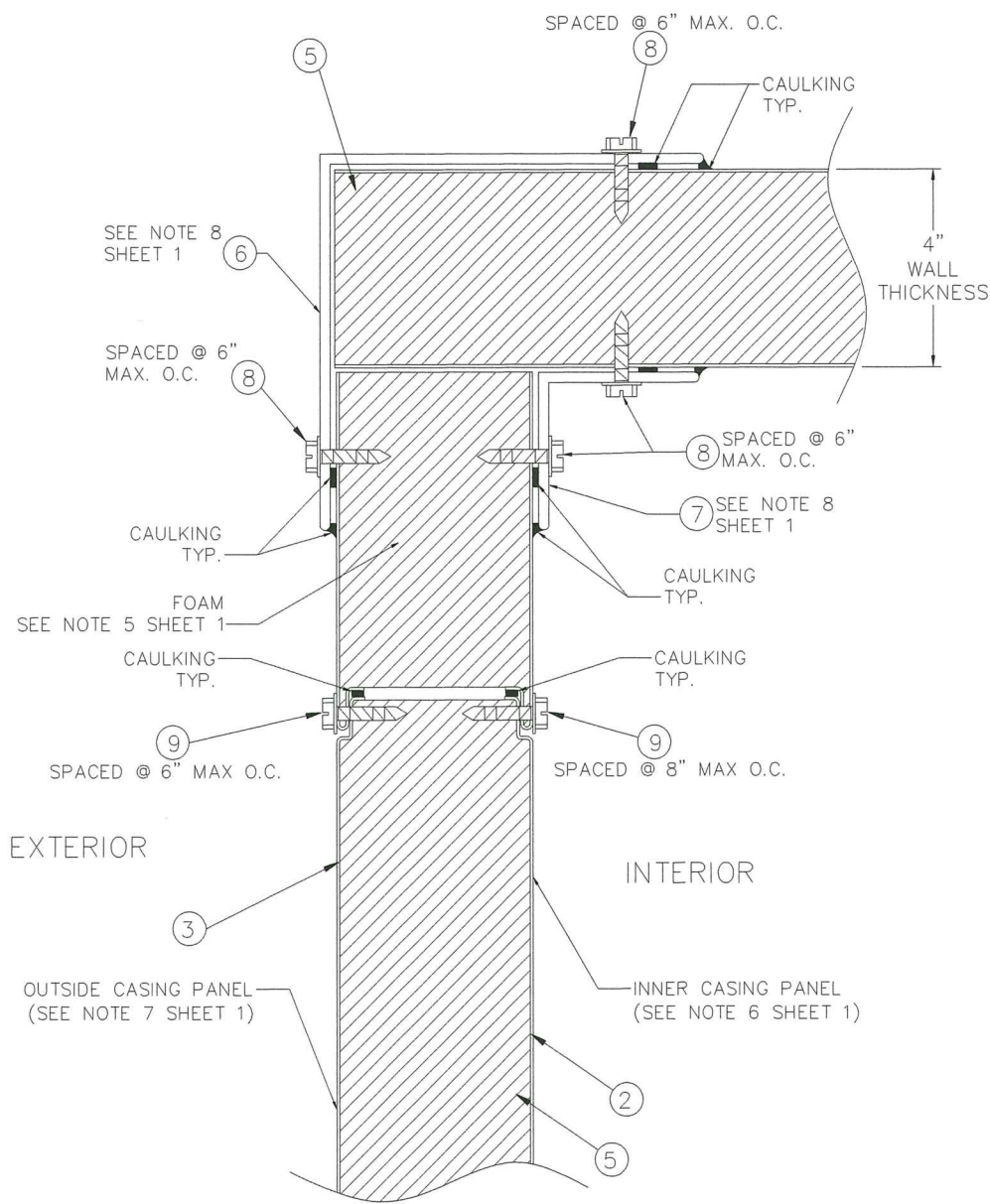
ACCESS DOORS (24" X 72")

INNER	OUTER
0.040" MIN. ALUMINUM 3003	0.050" MIN. ALUMINUM 3003
20GA MIN. 304/316 S.S.	18GA MIN. 304/316 S.S.
20GA MIN. GALVANIZED	18GA MIN. GALVANIZED

HARDWARE: ADJUSTABLE NON-CORROSIVE LATCHES

SIGNED: 10/11/2021

REVISIONS			
REV	DESCRIPTION	DATE	APPROVED
A	AS REQUESTED PER MIAMI-DADE	9/23/14	R.L.
B	REVISED NOTE 1 AND ADDRESS	05/12/17	R.L.
C	ADD STEEL AND CHANGE DWG NUMBER	05/03/18	R.L.
D	REVISED PER NEW CODE	10/11/2021	R.L.



SIGNED: 10/11/2021

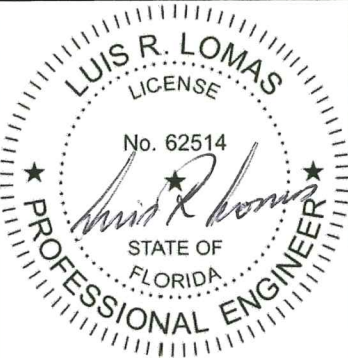
PRODUCT REVISED
as complying with the Florida
Building Code
Acceptance No. 21-1117-05
Expiration Date 04/16/2025
By: *Heidi A. McLean*
Miami Dade Product Control

ENERGY LABS, INC.
1695 CACTUS ROAD
SAN DIEGO, CA 92154

AIR HANDLING EQUIPMENT
BASE CONSTRUCTION

DRAWN: AGR	DWG NO. 08-03269	REV D
SCALE NTS	DATE 05/03/18	SHEET 3 OF 7

L. ROBERTO LOMAS P.E.
1432 WOODFORD RD LEWISVILLE, NC 27023
434-688-0609 rllomas@lrlomaspe.com



Luis R. Lomas P.E.
FL No.: 62514

LOCATED @ 1/8"
FROM EACH CORNER
AND 8.0" O.C.
THEREAFTER.

27

21

FLOOR PANEL
SEE NOTE 13
SHEET 1

TUBULAR CROSS MEMBER
SEE NOTE 12
SHEET 1

POLYSTYRENE LAYER
INSULATION FOAM

UNIT BASE FRAME PERIMETER
SEE NOTE 11
SHEET 1

LIFTING LUG
WELDED TO
C-CHANNEL BASE.

UNIT WALL
(REF)

LIFTING LUG
(TYP)

3/8"

Ø 1 3/8" Hole.

Max 24" width

FLOOR PANEL
SEE NOTE 13
SHEET 1

27

23

TUBULAR MEMBER

UNIT BASE FRAME
PERIMETER
SEE NOTE 11
SHEET 1

22

FOAM CORE

SHEET METAL LINER

1/4-14 x 1 1/4"
SELF DRILL SCREW
EVERY 8" o/c

BASE CROSS SECTION

REVISIONS

REV	DESCRIPTION	DATE	APPROVED
A	AS REQUESTED PER MIAMI-DADE	9/23/14	R.L.
B	REVISED NOTE 1 AND ADDRESS	05/12/17	R.L.
C	ADD STEEL AND CHANGE DWG NUMBER	05/03/18	R.L.
D	REVISED PER NEW CODE	10/11/2021	R.L.

TYPICAL LIFTING LUG

SIGNED: 10/11/2021

PRODUCT REVISED
as complying with the Florida
Building Code
Acceptance No. 21-1117-05
Expiration Date 04/16/2025
By *Heg A. M...*
Miami Dade Product Control

ENERGY LABS, INC.

1695 CACTUS ROAD
SAN DIEGO, CA 92154

AIR HANDLING EQUIPMENT

BASE CONSTRUCTION

DRAWN:
AGR

DWG NO.

08-03269

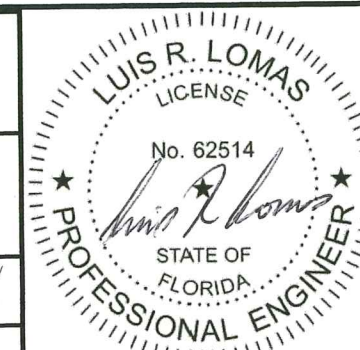
REV
D

SCALE NTS

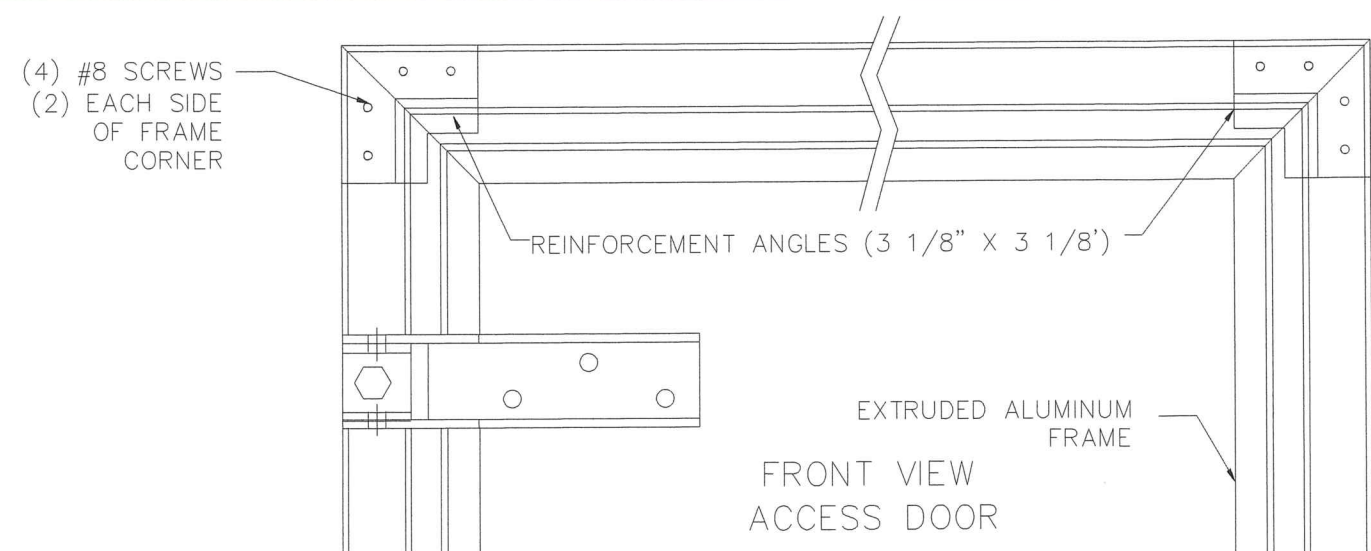
DATE 05/03/18

SHEET 4 OF 7

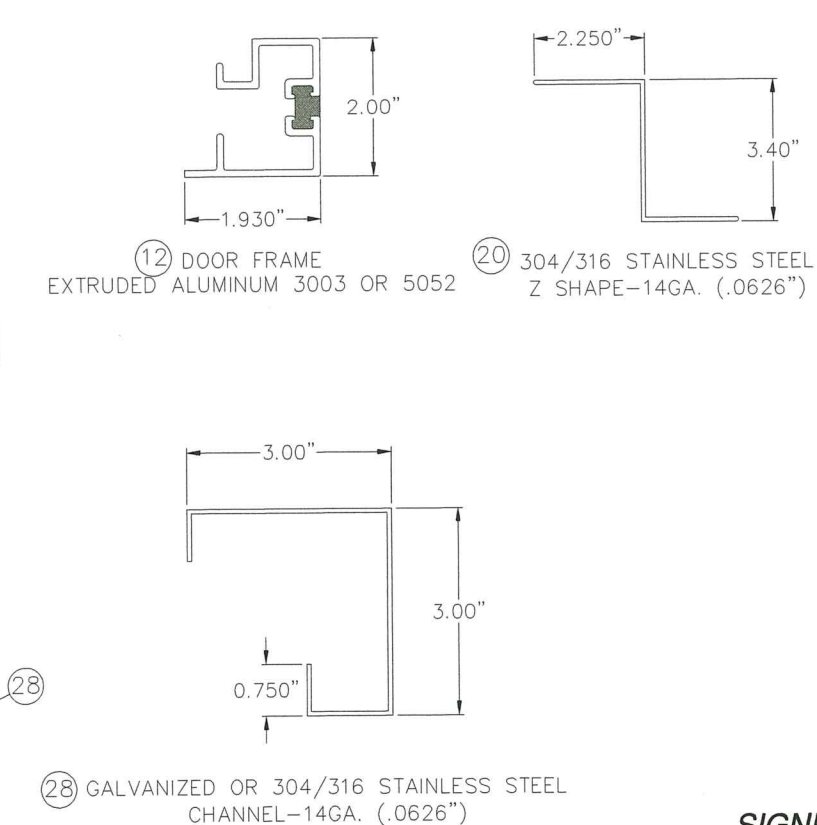
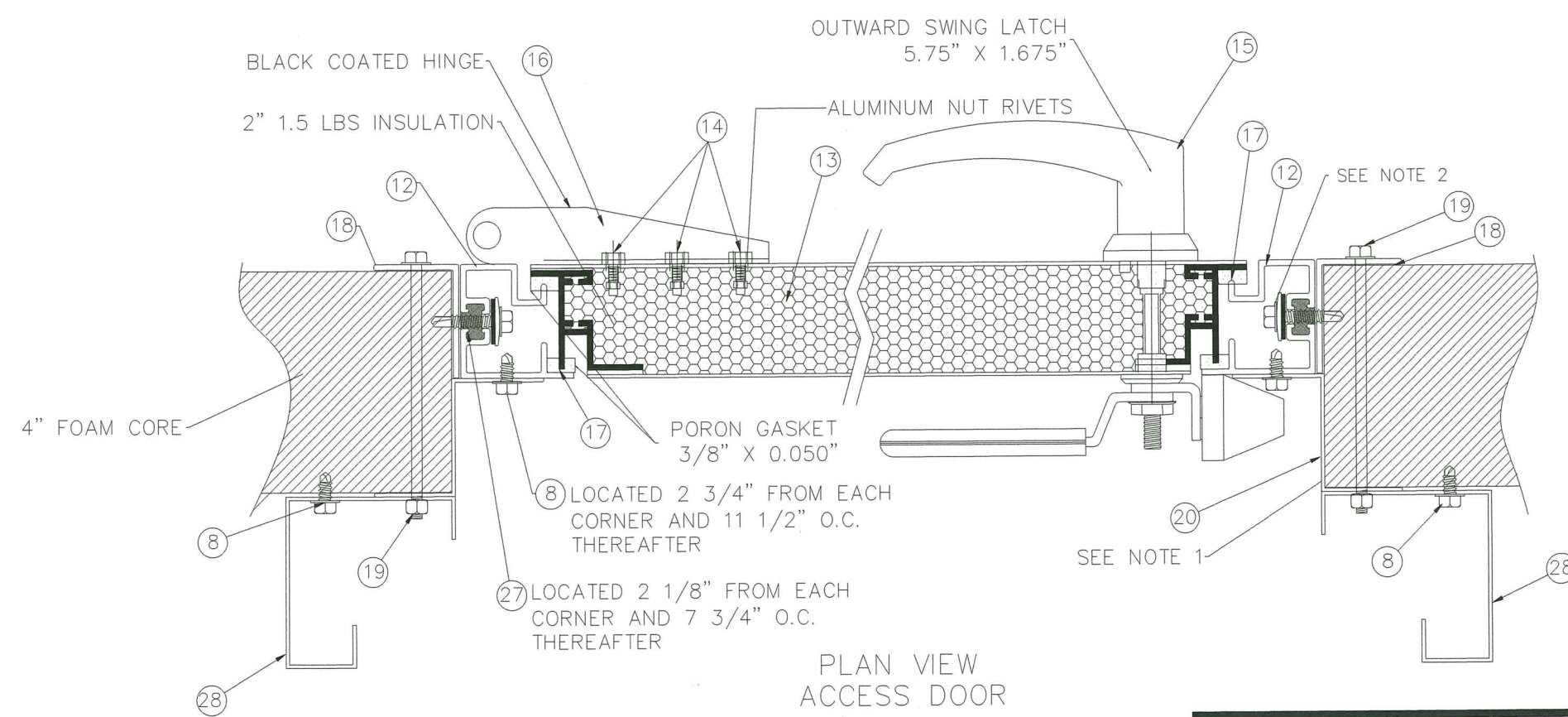
L. ROBERTO LOMAS P.E.
1432 WOODFORD RD LEWISVILLE, NC 27023
434-688-0609 rllomas@rlomaspe.com



Luis R. Lomas P.E.
FL No.: 62514



REVISIONS			
REV	DESCRIPTION	DATE	APPROVED
A	AS REQUESTED PER MIAMI-DADE	9/23/14	R.L.
B	REVISED NOTE 1 AND ADDRESS	05/12/17	R.L.
C	ADD STEEL AND CHANGE DWG NUMBER	05/03/18	R.L.
D	REVISED PER NEW CODE	10/11/2021	R.L.

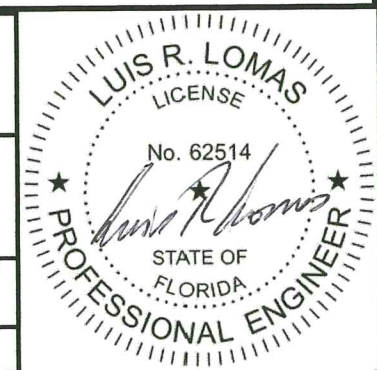


- NOTES:
- 1.- USE VERTICAL BRACE ON DOOR OPENING, ATTACH BRACE AT BOTTOM TO FLOOR AND AT TOP TO HORIZONTAL HAT CHANNEL.
 - 2.- USE 1/4-14x 1 1/4" SELF DRILL SCREW (P/N 75-SCWH-14-114) AND 1/4" NEOPRENE WASHER (P/N 75-W-14-BN1458) TO ATTACH DOOR FRAME TO SIDE WALL PANEL.

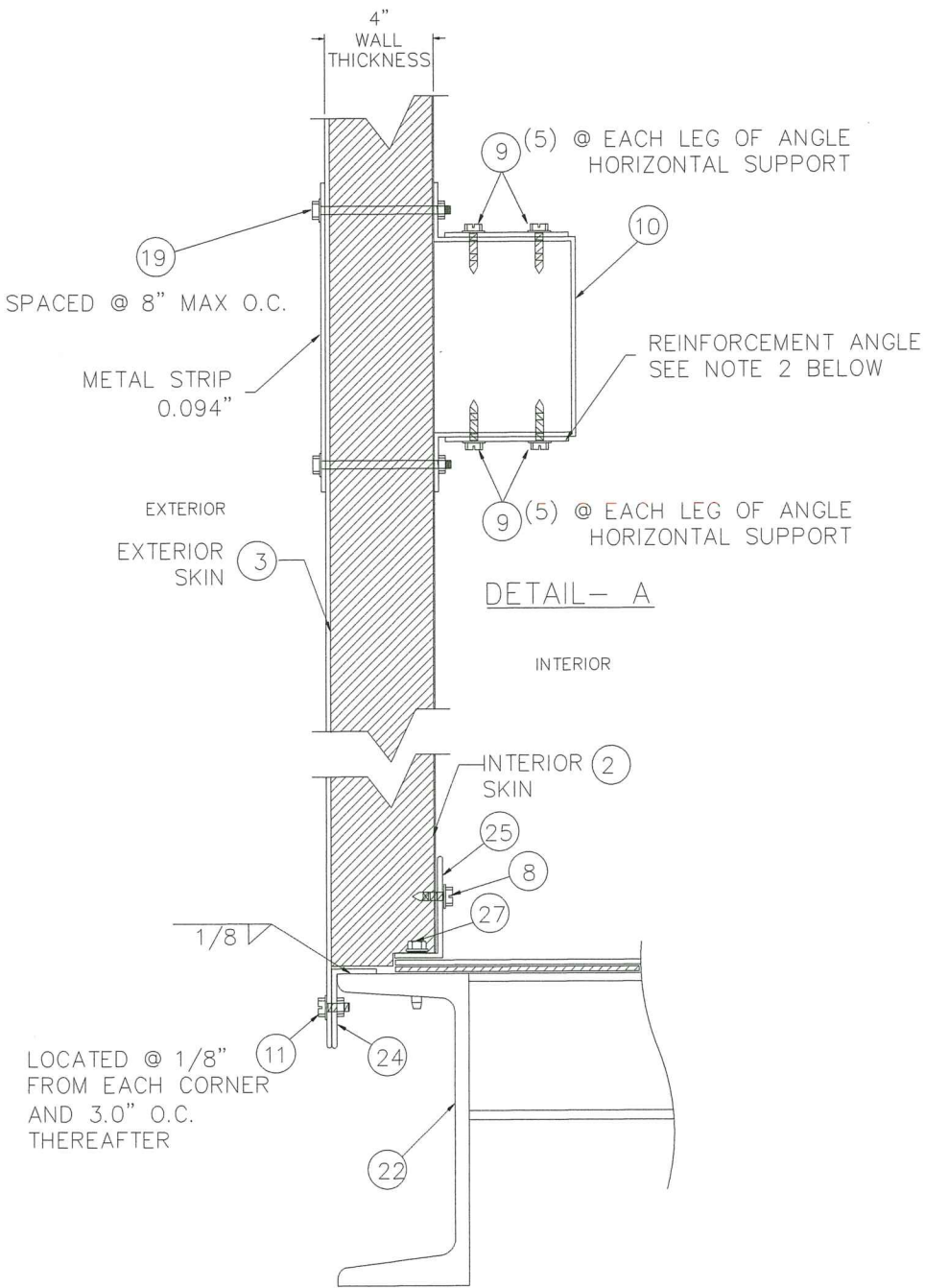
PRODUCT REVISED
as complying with the Florida
Building Code
Acceptance No. 21-1117.05
Expiration Date 04/16/2025
By *Heidi A. Miller*
Miami Dade Product Control

ENERGY LABS, INC. 1695 CACTUS ROAD SAN DIEGO, CA 92154			
AIR HANDLING EQUIPMENT			
DOOR DETAIL			
DRAWN: AGR	DWG NO. 08-03269	REV D	
SCALE NTS	DATE 05/03/18	SHEET 5 OF 7	
L. ROBERTO LOMAS P.E. 1432 WOODFORD RD LEWISVILLE, NC 27023 434-688-0609 rllomas@rlomaspe.com			

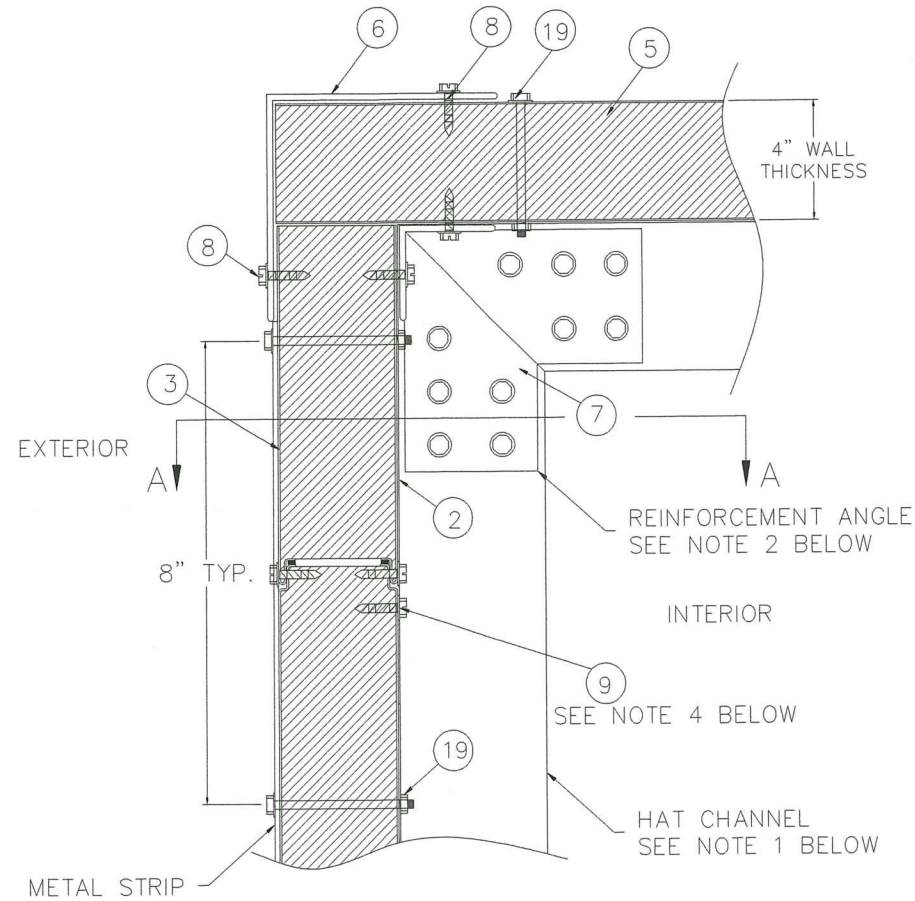
SIGNED: 10/11/2021



Luis R. Lomas P.E.
FL No.: 62514



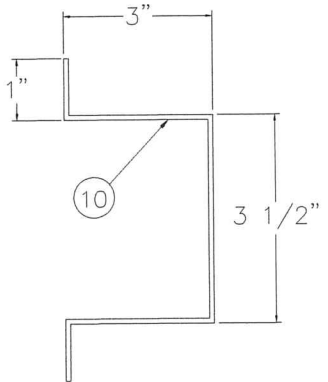
SECTION A-A



WALL CORNER DETAILS
AT HAT CHANNEL
LOCATION

- NOTES:
1. HAT CHANNEL MATERIAL 12GA GALV. BRT. OR 304/316 S.S.
 2. LOCATE REINFORCEMENT ANGLE ON TOP AND BOTTOM OF HAT CHANNEL AT EACH CORNER.
 3. ATTACH HAT CHANNEL TO FOAM PANEL USING ITEM #19.
 4. AN ADDITIONAL SCREW, ITEM #9, SECURES HAT CHANNEL TO INTERIOR SKIN AT EACH PANEL SEAM AND 6.0" O.C.

REVISIONS			
REV	DESCRIPTION	DATE	APPROVED
A	AS REQUESTED PER MIAMI-DADE	9/23/14	R.L.
B	REVISED NOTE 1 AND ADDRESS	05/12/17	R.L.
C	ADD STEEL AND CHANGE DWG NUMBER	05/03/18	R.L.
D	REVISED PER NEW CODE	10/11/2021	R.L.

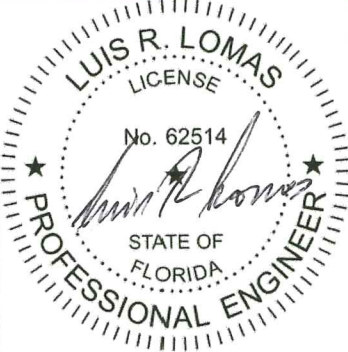


HAT CHANNEL DETAIL

SIGNED: 10/11/2021

PRODUCT REVISED
as complying with the Florida
Building Code
Acceptance No. 21-1117-05
Expiration Date 04/16/2025
By *Heidi A. [Signature]*
Miami Dade Product Control

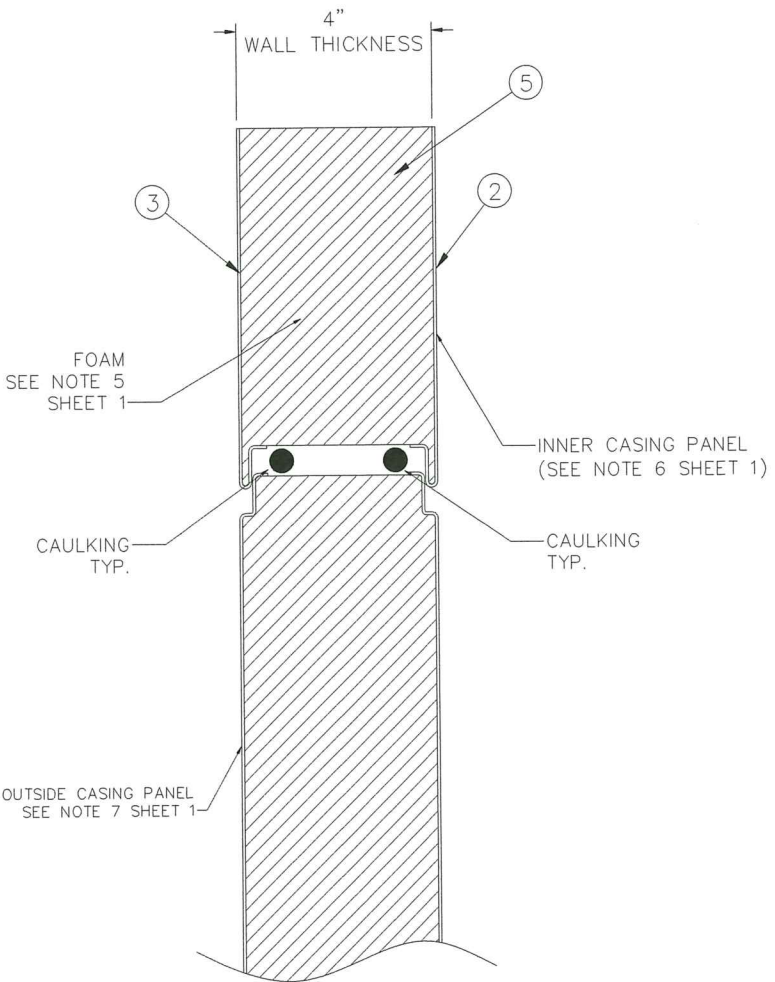
ENERGY LABS, INC. 1695 CACTUS ROAD SAN DIEGO, CA 92154			
AIR HANDLING EQUIPMENT HAT CHANNEL DETAIL			
DRAWN: AGR	DWG NO. 08-03269	REV D	
SCALE NTS	DATE 05/03/18	SHEET 6 OF 7	
L. ROBERTO LOMAS P.E. 1432 WOODFORD RD LEWISVILLE, NC 27023 434-688-0609 rlomas@rlomaspe.com			



Luis R. Lomas P.E.
FL No.: 62514

BILL OF MATERIALS		
ITEM NO.:	DESCRIPTION	MANUFACTURER
1	ASSEMBLY	ENERGY LABS
2	PANEL, 42" X 132" - 0.050" EXT/0.040" INT.-5052 ALUMINUM, 18GA EXT/20GA INT.- 304/316 S.S. OR GALVANIZED	ENERGY LABS
3	PANEL, 42" X 132" - 0.050" EXT/0.040" INT.-5052 ALUMINUM, 18GA EXT/20GA INT.- 304/316 S.S. OR GALVANIZED	ENERGY LABS
4	PANEL, 12" X 132" - 0.050" EXT/0.040" INT.-5052 ALUMINUM, 18GA EXT/20GA INT.- 304/316 S.S. OR GALVANIZED	ENERGY LABS
5	4" RIGID FOAM INSULATION - 2.5LB DENSITY, R=28.4	R-MAX
6	14 GAUGE GALVANIZED STEEL ANGLE (G-90)- 5-1/2" X 5-1/2" (OUTER)	ENERGY LABS
7	14 GAUGE GALVANIZED STEEL ANGLE (G-90)- 1-1/2" X 1-1/2" (INNER)	ENERGY LABS
8	1/4" - 14 X 3/4" SELF DRILLING SCREW	DUNCAN BOLT COMPANY
9	1/4" - 14 X 1" SELF DRILLING SCREW	DUNCAN BOLT COMPANY
10	12 GAUGE GALVANIZED HAT CHANNEL (G-90)- 3-1/2" X 3" X 1"	ENERGY LABS
11	1/4"-20 X 1/2" BOLT AND 1/4" -20 NUT	DUNCAN BOLT COMPANY
12	EXTRUDED ALUMINUM 3003 OR 5052 DOOR FRAME	FRONTIER ALUMINUM
13	2" FIBERGLASS INSULATION PANEL DOOR 24" X 72" GALVANIZED, ALUMINUM 3003 OR 304 S.S.	ENERGY LABS
14	ALUMINUM RIVET NUTS	PURCHASE
15	OUTWARD SWING LATCH	ALLEGIS CORP.
16	304 STAINLESS STEEL HINGES	ALLEGIS CORP.
17	PORON GASKET	TRIMLOC
18	14 GAUGE G-90 GALVANIZED STEEL DOOR ANGLE	ENERGY LABS
19	1/4" -20 X 5" BOLT & 1/4" -20 NUT	DUNCAN BOLT COMPANY
20	14 GAUGE G-90 OR 304/316 S.S. "Z" SHAPE- 3.40" X 2.25"	ENERGY LABS
21	14 GAUGE GALVANIZED OR 304/316 STAINLESS STEEL FLOOR PANEL	ENERGY LABS
22	C-6, 8, 10 & 12 STRUCTURAL C-CHANNEL	ENERGY LABS
23	2" RIGID FOAM INSULATION- 3LB DENSITY, R=28.4	R-MAX
24	7/8" X 1-3/8" 14 GAUGE STEEL AND 304/316 STAINLESS STEEL ANGLE	ENERGY LABS
25	2" X 3" 14GA STEEL ANGLE OR 304/316 STAINLESS STEEL	ENERGY LABS
26	DOOR BACKING-0.063" ALUMINUM 3003 OR 5052	FRONTIER ALUMINUM
27	1/4" - 14 X 1-1/4" SELF DRILLING SCREW	DUNCAN BOLT COMPANY
28	14GA G-90 GALVANIZED OR 304/316 S.S. STEEL CHANNELS 3" X 3"	ENERGY LABS

REVISIONS			
REV	DESCRIPTION	DATE	APPROVED
A	AS REQUESTED PER MIAMI-DADE	9/23/14	R.L.
B	REVISED NOTE 1 AND ADDRESS	05/12/17	R.L.
C	ADD STEEL AND CHANGE DWG NUMBER	05/03/18	R.L.
D	REVISED PER NEW CODE	10/11/2021	R.L.



Panel Seam Connection Detail

SIGNED: 10/11/2021

<div>PRODUCT REVISED as complying with the Florida Building Code Acceptance No 21-1117.05 Expiration Date 04/16/2025 By <i>Heidi A. Miller</i> Miami Dade Product Control</div>	ENERGY LABS, INC. 1695 CACTUS ROAD SAN DIEGO, CA 92154		<div>LUIS R. LOMAS LICENSE No. 62514 STATE OF FLORIDA PROFESSIONAL ENGINEER</div> <div>Luis R. Lomas P.E. FL No.: 62514</div>	
	AIR HANDLING EQUIPMENT			
	BILL OF MATERIALS			
	DRAWN: AGR	DWG NO. 08-03269		REV D
	SCALE NTS	DATE 05/03/18		SHEET 7 OF 7
L. ROBERTO LOMAS P.E. 1432 WOODFORD RD LEWISVILLE, NC 27023 434-688-0609 rllomas@rlomaspe.com				