



DEPARTMENT OF REGULATORY AND ECONOMIC RESOURCES (RER)
BOARD AND CODE ADMINISTRATION DIVISION

NOTICE OF ACCEPTANCE (NOA)

MIAMI-DADE COUNTY
PRODUCT CONTROL SECTION
11805 SW 26 Street, Room 208
Miami, Florida 33175-2474
T (786) 315-2590 F (786) 315-2599
www.miamidade.gov/economy

Tri-Built Materials Group, LLC
P.O. Box 70
Rutherford, NJ 07070

SCOPE:

This NOA is being issued under the applicable rules and regulations governing the use of construction materials. The documentation submitted has been reviewed and accepted by Miami-Dade County RER-Product Control Section to be used in Miami-Dade County and other areas where allowed by the Authority Having Jurisdiction (AHJ).

This NOA shall not be valid after the expiration date stated below. The Miami-Dade County Product Control Section (In Miami-Dade County) and/or the AHJ (in areas other than Miami-Dade County) reserve the right to have this product or material tested for quality assurance purposes. If this product or material fails to perform in the accepted manner, the manufacturer will incur the expense of such testing and the AHJ may immediately revoke, modify, or suspend the use of such product or material within their jurisdiction. RER reserves the right to revoke this acceptance if it is determined by Miami-Dade County Product Control Section that this product or material fails to meet the requirements of the applicable building code.

This product is approved as described herein and has been designed to comply with the Florida Building Code, including the High Velocity Hurricane Zone.

DESCRIPTION: Hurricane Zone and Personnel Series TBG and TBA Steel and Aluminum Roof Hatch

APPROVAL DOCUMENT: Drawing titled "Roof Hatch, Hurricane Zone and Personnel Series Single Door, Single Wall Curb, Single-Point and Two-Point Latch", sheets 1 through 16 of 16, dated 03/17/2017, prepared by Tri-Built Materials Group, LLC, signed and sealed by Wayne K. Helmila, P.E. on 11/16/2021, bearing the Miami-Dade County Product Control revision stamp with the Notice of Acceptance number and expiration date by the Miami-Dade County Product Control Section.

MISSILE IMPACT RATING: Large and Small Missile Impact Resistant

LABELING: Each unit shall bear a permanent label with the manufacturer's name or logo, city, state and following statement: "Miami-Dade County Product Control Approved", unless otherwise noted herein.

RENEWAL of this NOA shall be considered after a renewal application has been filed and there has been no change in the applicable building code negatively affecting the performance of this product.

TERMINATION of this NOA will occur after the expiration date or if there has been a revision or change in the materials, use, and/or manufacture of the product or process. Misuse of this NOA as an endorsement of any product, for sales, advertising or any other purposes shall automatically terminate this NOA. Failure to comply with any section of this NOA shall be cause for termination and removal of NOA.

ADVERTISEMENT: The NOA number preceded by the words Miami-Dade County, Florida, and followed by the expiration date may be displayed in advertising literature. If any portion of the NOA is displayed, then it shall be done in its entirety.

INSPECTION: A copy of this entire NOA shall be provided to the user by the manufacturer or its distributors and shall be available for inspection at the job site at the request of the Building Official.

This NOA **renews** and **revises** **NOA # 18-0110.06** and consists of this page 1 and evidence pages E-1, E-2, E-3, E-4 and E-5, as well as approval document mentioned above.

The submitted documentation was reviewed by **Carlos M. Utrera, P.E.**



NOA No. 21-1201.03
Expiration Date: May 25, 2027
Approval Date: January 27, 2022
Page 1

NOTICE OF ACCEPTANCE: EVIDENCE SUBMITTED

1. EVIDENCE SUBMITTED UNDER PREVIOUS NOA's

A. DRAWINGS “Submitted under NOA #17-0703.04”

1. Drawing No. **Door Hatch Assembly**, titled “Roof Hatch, Hurricane Zone Series Single Door, Single Wall Curb, Single Point and Two Point Latch”, sheets 1 through 16 of 16, 06/22/2017, prepared by Tri-Built Materials Group, LLC, signed and sealed by Wayne K. Helmila, P.E.

B. TESTS “Submitted under NOA #17-0207.13”

1. Test report on 1) Air Infiltration Test, per FBC, TAS 202-94
2) Uniform Static Air Pressure Test, Loading per FBC TAS 202-94
3) Water Resistance Test, per FBC, TAS 202-94
4) Large Missile Impact Test per FBC, TAS 201-94,
5) Cyclic Wind Pressure Test per FBC, TAS 203-94,
along with marked-up drawings and installation diagram of Model RHHA48X48S1T Aluminum Roof Hatch/Single Door, prepared by Element Materials Technology, Test Report No. **ESP023828P-A4848N.2A Rev2**, dated 10/18/2016, signed and sealed by Jason R. Steen, P.E.
2. Test report on 1) Air Infiltration Test, per FBC, TAS 202-94
2) Uniform Static Air Pressure Test, Loading per FBC TAS 202-94
3) Water Resistance Test, per FBC, TAS 202-94
4) Large Missile Impact Test per FBC, TAS 201-94,
5) Cyclic Wind Pressure Test per FBC, TAS 203-94,
along with marked-up drawings and installation diagram of Model RHHG48X48S1T Galvaneal A653 Roof Hatch/Single Door, prepared by Element Materials Technology, Test Report No. **ESP023828P-G4848N.3A Rev2**, dated 10/18/2016, signed and sealed by Jason R. Steen, P.E.
3. Test report on 1) Air Infiltration Test, per FBC, TAS 202-94
2) Uniform Static Air Pressure Test, Loading per FBC TAS 202-94
3) Water Resistance Test, per FBC, TAS 202-94
4) Large Missile Impact Test per FBC, TAS 201-94,
5) Cyclic Wind Pressure Test per FBC, TAS 203-94,
along with marked-up drawings and installation diagram of Model RHHG30X96S1T Galvaneal A653 Roof Hatch/Single Door, prepared by Element Materials Technology, Test Report No. **ESP023828P-G3096N.1A Rev2**, dated 10/18/2016, signed and sealed by Jason R. Steen, P.E.



Carlos M. Utrera, P.E.
Product Control Examiner
NOA No. 21-1201.03
Expiration Date: May 25, 2027
Approval Date: January 27, 2022

NOTICE OF ACCEPTANCE: EVIDENCE SUBMITTED

B. TESTS “Submitted under NOA #17-0207.13” (Continued)

4. Test report on 1) Air Infiltration Test, per FBC, TAS 202-94
2) Uniform Static Air Pressure Test, Loading per FBC TAS 202-94
3) Water Resistance Test, per FBC, TAS 202-94
4) Large Missile Impact Test per FBC, TAS 201-94,
5) Cyclic Wind Pressure Test per FBC, TAS 203-94,
along with marked-up drawings and installation diagram of Model RHHA30X96S1T Aluminum Roof Hatch/Single Door, prepared by Element Materials Technology, Test Report No. **ESP023828P-A3096N.4A Rev2**, dated 10/18/2016, signed and sealed by Jason R. Steen, P.E.

C. CALCULATIONS “Submitted under NOA #17-0207.13”

1. Anchoring calculations prepared by Rice Engineering, dated 12/29/2016, signed and sealed by Wayne K. Helmila, P.E.

D. QUALITY ASSURANCE

1. Miami-Dade Department of Regulatory and Economic Resources (RER).

E. MATERIAL CERTIFICATIONS

1. Notice of Acceptance issued to Firestone Building Products Company, LLC for their Firestone Polyisocyanurate Foam Insulation, approved on 05/09/2013 and expiring on 06/05/2018.
2. UL Certification #BRYX.R13184 issued to Diversifoam Products Inc. for their EPS foam plastic insulation.

F. STATEMENTS “Submitted under NOA #17-0207.13”

1. Statement letter of code conformance to 5th edition (2014) FBC issued by Rice Engineering, dated 01/18/2017, signed and sealed by Wayne K. Helmila, P.E.
2. Statement letter of no financial interest issued by Rice Engineering, dated 01/18/2017, signed and sealed by Wayne K. Helmila, P.E.



Carlos M. Utrera, P.E.
Product Control Examiner
NOA No. 21-1201.03
Expiration Date: May 25, 2027
Approval Date: January 27, 2022

NOTICE OF ACCEPTANCE: EVIDENCE SUBMITTED

2. EVIDENCE SUBMITTED UNDER NOA # 18-0110.06

A. DRAWINGS

1. None.

B. TESTS

1. None.

C. CALCULATIONS

1. None.

D. QUALITY ASSURANCE

1. Miami-Dade Department of Regulatory and Economic Resources (RER).

E. MATERIAL CERTIFICATIONS

1. None.

F. STATEMENTS

1. Statement letter of code conformance to **FBC 6th Edition (2017)**, dated December 19, 2017, issued by Rice Engineering, signed and sealed by Wayne K. Helmila, P.E.



Carlos M. Utrera, P.E.
Product Control Examiner
NOA No. 21-1201.03
Expiration Date: May 25, 2027
Approval Date: January 27, 2022

NOTICE OF ACCEPTANCE: EVIDENCE SUBMITTED

3. NEW EVIDENCE SUBMITTED

A. DRAWINGS

1. Drawing titled "Roof Hatch, Hurricane Zone and Personnel Series Single Door, Single Wall Curb, Single-Point and Two-Point Latch", sheets 1 through 16 of 16, dated 03/17/2017, prepared by Tri-Built Materials Group, LLC, signed and sealed by Wayne K. Helmila, P.E. on 11/16/2021.

B. TESTS "*Submitted under NOA # 21-1201.01*"

1. Test report on 1) Air Infiltration Test, per FBC, TAS 202-94
2) Uniform Static Air Pressure Test, Loading per FBC TAS 202-94
3) Water Resistance Test, per FBC, TAS 202-94
4) Large Missile Impact Test per FBC, TAS 201-94 (Level E, 80 ft/sec),
5) Cyclic Wind Pressure Test per FBC, TAS 203-94,
along with marked-up drawings and installation diagram of Model RHHA48X48S1T Aluminum Roof Hatch/Single Door, prepared by Element Materials Technology, Test Report No. **ESP023828P-A4848N.2A Rev3**, dated 10/18/2016, revised on 10/12/2021, signed and sealed by Jason R. Steen, P.E.
2. Test report on 1) Air Infiltration Test, per FBC, TAS 202-94
2) Uniform Static Air Pressure Test, Loading per FBC TAS 202-94
3) Water Resistance Test, per FBC, TAS 202-94
4) Large Missile Impact Test per FBC, TAS 201-94 (Level E, 80 ft/sec),
5) Cyclic Wind Pressure Test per FBC, TAS 203-94,
along with marked-up drawings and installation diagram of Model A3096 Aluminum Roof Hatch/Single Door, prepared by Intertek, Test Report No. **M5878.01-201-18 R0**, dated 08/09/2021, signed and sealed by Vinu J. Abraham, P.E.
3. Test report on 1) Air Infiltration Test, per FBC, TAS 202-94
2) Uniform Static Air Pressure Test, Loading per FBC TAS 202-94
3) Water Resistance Test, per FBC, TAS 202-94
4) Large Missile Impact Test per FBC, TAS 201-94 (Level E, 80 ft/sec),
5) Cyclic Wind Pressure Test per FBC, TAS 203-94,
along with marked-up drawings and installation diagram of Model G3096 Galvannealed Roof Hatch/Single Door, prepared by Intertek, Test Report No. **M5880.01-201-18 R0**, dated 08/09/2021, signed and sealed by Vinu J. Abraham, P.E.



Carlos M. Utrera, P.E.
Product Control Examiner
NOA No. 21-1201.03
Expiration Date: May 25, 2027
Approval Date: January 27, 2022

NOTICE OF ACCEPTANCE: EVIDENCE SUBMITTED

B. TESTS (Continued)

4. Test report on 1) Air Infiltration Test, per FBC, TAS 202-94
2) Uniform Static Air Pressure Test, Loading per FBC TAS 202-94
3) Water Resistance Test, per FBC, TAS 202-94
4) Large Missile Impact Test per FBC, TAS 201-94 (Level E, 80 ft/sec),
5) Cyclic Wind Pressure Test per FBC, TAS 203-94,
along with marked-up drawings and installation diagram of Model RHHA30X96S1T Aluminum Roof Hatch/Single Door, prepared by Element Materials Technology, Test Report No. **ESP023828P-A3096N.4A Rev3**, dated 10/18/2016, revised on 10/12/2021, signed and sealed by Jason R. Steen, P.E.

C. CALCULATIONS “Submitted under NOA # 21-1201.01”

1. Anchoring calculations prepared by Rice Engineering, dated 11/05/2021, signed and sealed by Wayne K. Helmila, P.E.

D. QUALITY ASSURANCE

1. Miami-Dade Department of Regulatory and Economic Resources (RER).

E. MATERIAL CERTIFICATIONS

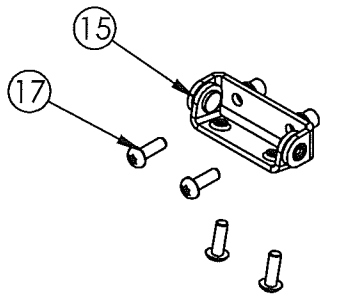
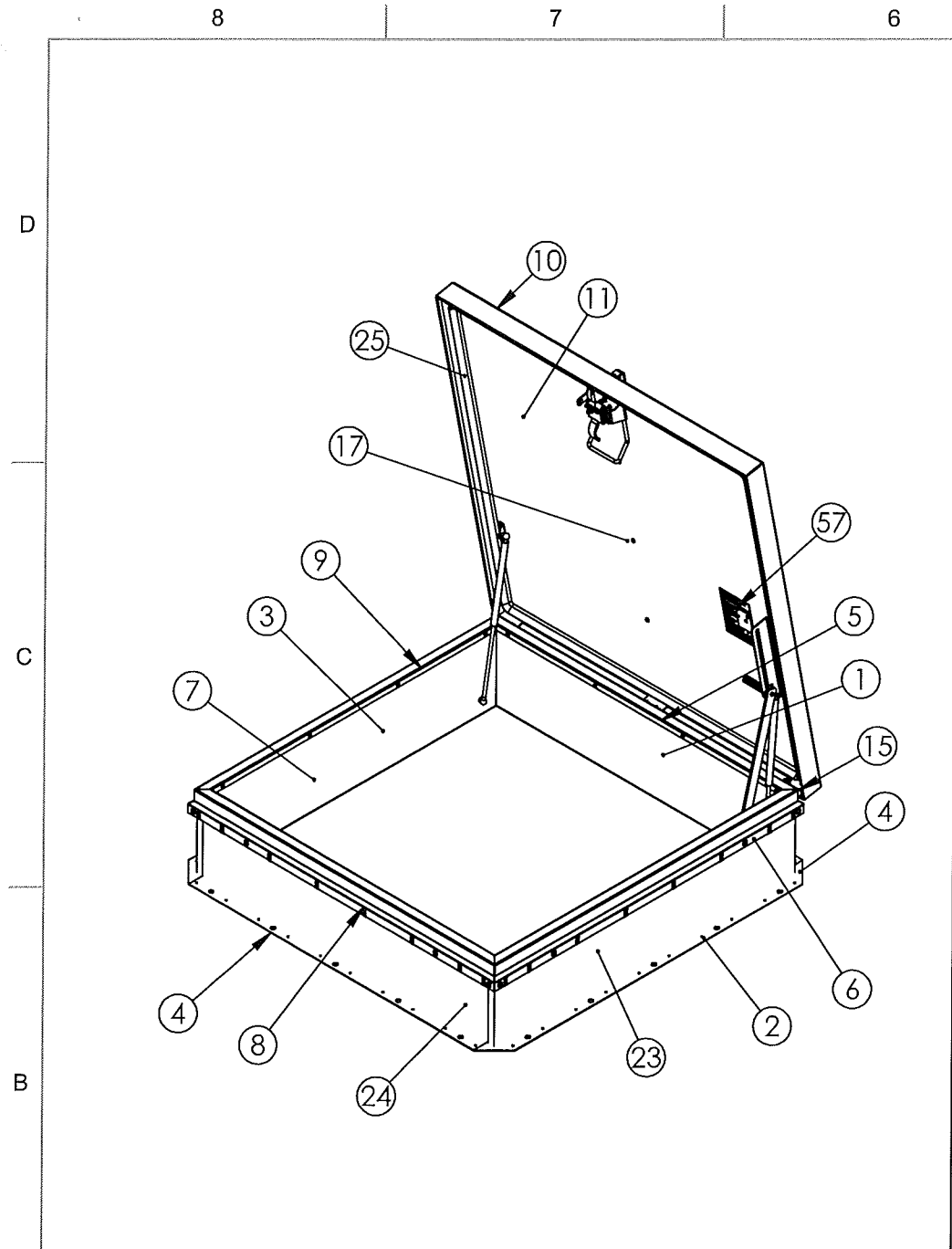
1. None.

F. STATEMENTS

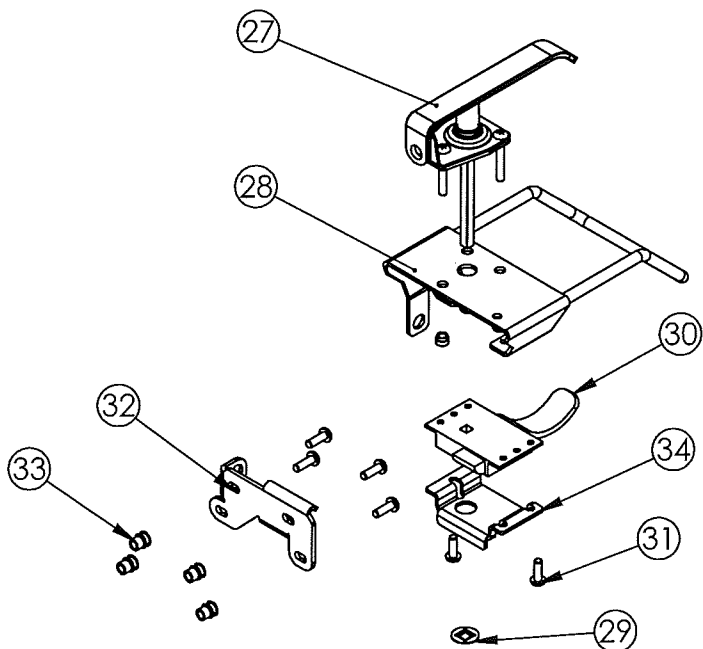
1. Statement letter of code conformance to 7th edition (2020) of the FBC, issued by Rice Engineering, dated 11/15/2021, signed and sealed by Wayne K. Helmila, P.E.
2. Statement letter of no financial interest, issued by Rice Engineering, dated 11/15/2021, signed and sealed by Wayne K. Helmila, P.E.



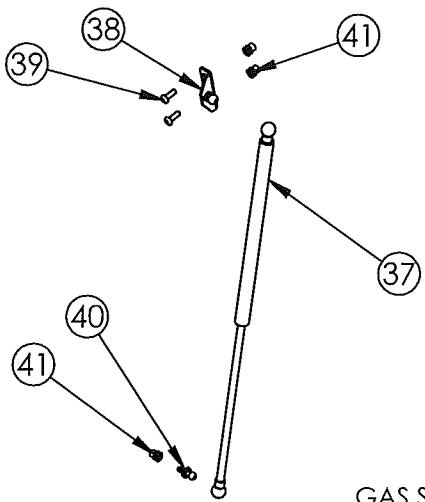
Carlos M. Utrera, P.E.
Product Control Examiner
NOA No. 21-1201.03
Expiration Date: May 25, 2027
Approval Date: January 27, 2022



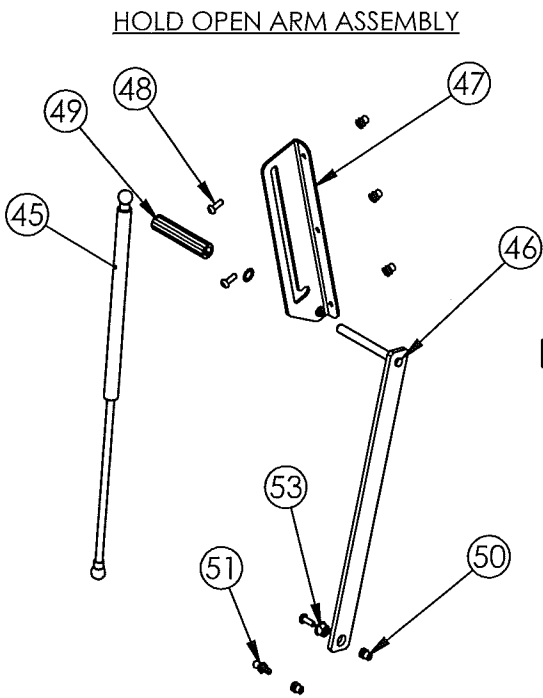
HINGE ASSEMBLY



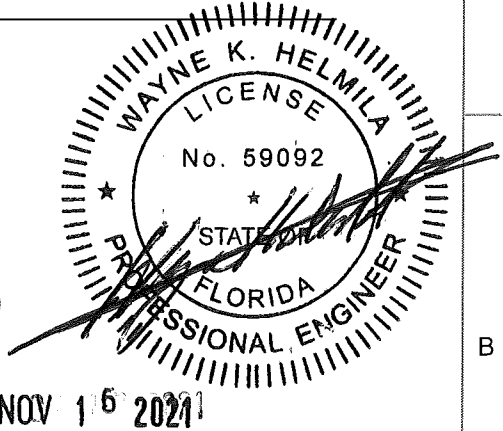
SINGLE POINT LATCH ASSEMBLY



GAS SPRING ASSEMBLY



HOLD OPEN ARM ASSEMBLY



RICE
ENGINEERING
105 School Creek Trail
Luxemburg, WI 54217
Phone: (920) 617-1042
Fax: (920) 617-1100
www.rice-inc.com
Florida Firm No: F-01000005061
Certificate of Authorization: #9090
Wayne K. Helmila
Registration No: 59092

PRODUCT REVISED
as complying with the Florida
Building Code
NOA-No. 21-1201.03
Expiration Date 05/25/2027
By *[Signature]*
Miami-Dade Product Control

DESIGN PRESSURE RATING	IMPACT RATING	WATER FILTRATION
+/- 70 PSF	LARGE MISSILE IMPACT	100%DP WITH ZERO WATER FILTRATION

REVISIONS			
REV	DESCRIPTION	DATE	APPROVED
A	INITIAL RELEASE	10/10/16	IMT
B	ADDED HINGE DETAIL PG. 1; ADDED DETAIL VIEW TITLES PG. 1; UPDATED MAT'L, PG. 6,7,8; NOTE 7 PG. 1 TO READ 'ALUMINUM DESIGN MANUAL' ACRONYMS PG. 2; ADDED MODEL# NOTE PG.2	3/17/17	IMT
C	CORRECTED TYPOS, REMOVED NOTCHES FROM LATCH STIFFENER	11/9/21	AMB

Tri-Built

TITLE: Roof Hatch, Hurricane Zone Series
Single Door, Single Wall Curb
Single Point Latch

	NAME	DATE	SIZE	DWG. NO.	REV
DRAWN	DKL	10/10/2016	B	DOOR HATCH ASSEMBLY	C
RELEASED	IMT	3/21/2017	WEIGHT: Weight	SHEET 01 OF 16	

	8	7	6	5	4	3	2	1
	ITEM	QTY.	PART NUMBER	DESCRIPTION				
			CURB ASSEMBLY					
	1	1	CurbHinge	CURB - HINGE SIDE				
	2	1	CurbBottom	CURB - BOTTOM SIDE				
	3	1	CurbTop	CURB - TOP SIDE				
	4	1	CurbLatch	CURB - LATCH SIDE				
			CAP FLASH ASSEMBLY					
	5	1	CflshHinge	CAP FLASH - HINGE SIDE				
	6	1	CflshBtm	CAP FLASH - BOTTOM SIDE				
	7	1	CflshTop	CAP FLASH - TOP SIDE				
	8	1	CflshLatch	CAP FLASH - LATCH SIDE				
	9	22	28544	BUTTON HD TORX SCREW, 1/4 x .75, 3 PT, (ZPS)				
			COVER ASSEMBLY					
	10	1	Cover	COVER				
	11	1	Liner	COVER LINER				
	12	2	Stiffener Side	STIFFENER - TOP/BOTTOM				
	13	1	Stiffer Latch	STIFFENER - LATCH SIDE				
	14	1	Stiffener Mid	STIFFENER - MIDDLE				
	15	3	28719	ASSY, HINGE, (ZPS)				
	17	20	28544	BUTTON HD TORX SCREW, 1/4 x .75, 3 PT, (ZPS)				
	18	9	4359	RIVNUT, 1/4-20, .027-.165 GRIP				
	19	1	29898	BRKT, SUPPORT, HINGE, (ZPS)				
			INSULATION AND GASKET					
	23	2	RHInsulationTopBottom	INSULATION, 1" POLY ISO R-6				
	24	2	RHInsulationLatchHinge	INSULATION, 1" POLY ISO R-6				
	25	1	RHGasketCover	GASKET, RH, (EPDM), 1.125" x 0.655" CLOSED CELL FOAM				
			LATCH ASSEMBLY - SINGLE POINT					
	27	1	29860	HDL, PADLOCKING, STL, (ZPS)				
	28	1	29870	HANDLE				
	29	1	29903	NUT, PUSH, TINNERMAN, 5/16 SQ, (BLK PHOS)				
	30	1	1297	LATCH, SLAM, (ZPS)				
	31	7	28544	BUTTON HD TORX SCREW, 1/4 x .75, 3 PT, (ZPS)				
	32	1	30336	BRKT, LATCH CATCH				
	33	4	4359	RIVNUT, 1/4-20, .027-.165 GRIP (ALUM)				
	34	1	30337	BRKT, LATCH, SUPPORT				

	ITEM	QTY	PART NUMBER	DESCRIPTION
			GAS SPRING ASSEMBLY	
	37	1	29880	GAS SPRING, 56 LBF
	37	1	29881	GAS SPRING, 112 LBF
	38	1	29878	BRKT, BALL STUD, SPG, (ZPS)
	39	2	28544	BUTTON HD TORX SCREW, 1/4 x .75, 3 PT, (ZPS)
	40	1	29879	BALL STUD, 10MM, 1/4-20, (ZPS)
	41	3	4359	RIVNUT, 1/4-20, .027-.165 GRIP (ALUM)
			LIFTING/HINGE SUPPORT ASSEMBLY	
	43	1	29880	GAS SPRING, 56 LBF
	43	1	29881	GAS SPRING, 112 LBF
	46	1	29863	ARM, HOA, STL, (ZPS)
	47	1	29890	BRKT, HOA/SPG, (ZPS)
	48	4	28544	BUTTON HD TORX SCREW, 1/4 x .75, 3 PT, (ZPS)
	49	1	2934	HDL, RED GRIP, (VINYL)
	50	5	4359	RIVNUT, 1/4-20, .027-.165 GRIP (ALUM)
	51	1	29879	BALL STUD, 10MM, 1/4-20, (ZPS)
	53	1	29895	BEARING, HOA, (ZPS)
			LABELS & MISC.	
	56	1	29905	LABEL, 4" x 6", MODEL NUMBER
	57	1	29906	LABEL, HANDLE RELEASE
	58	1	29907	LABEL, INSTALLATION, 5X7,
	59	-	-	2" FIBERGLASS TAPE
	60	-	28096	SILICONE

STANDARD MODEL NUMBERS:

TBG3630 TBA3630
TBG3636 TBA3636
TBG3054 TBA3054
TBG4848 TBA4848

NOTE:

NUMBER OF ANCHORS RANGES
BETWEEN 2 AND 4 PER SPACING
DIMENSIONS ON SHEET 4.

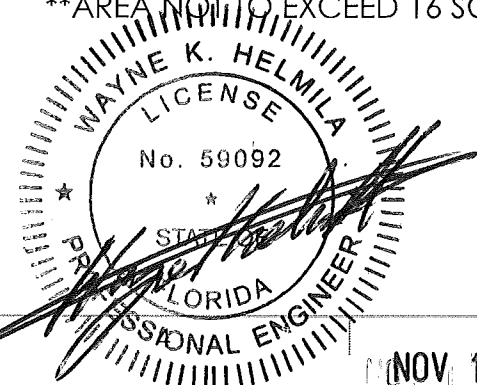
CUSTOM MODEL NUMBERS:

TBA W X* L (WHERE W = 18" - 48" AND L = 18" - 60")**
TBG W X* L (WHERE W = 18" - 48" AND L = 18" - 60")**
*X OMITTED ON NON-FRACTIONAL WIDTH AND LENGTHS
**AREA NOT TO EXCEED 16 SQ. FT.

RICE
ENGINEERING

105 School Creek Trail
Luxemburg, WI 54217
Phone: (920) 617-1042
Fax: (920) 617-1100
www.rice-inc.com

Florida Firm No: F-01000005061
Certificate of Authorization: #9090
Wayne K. Helmila
Registration No: 59092



Tri-Built			TITLE: Roof Hatch, Hurricane Zone Series Single Door, Single Wall Curb Single Point Latch		
NAME	DATE	SIZE	DWG. NO.	REV	
DRAWN	DKL	10/10/2016	B	DOOR HATCH ASSEMBLY	
RELEASED	IMT	3/21/2017	C		
WEIGHT: Weight			SHEET 02 OF 16		

- 1 MATERIAL THICKNESS TO BE DIFFERENT ON STEEL AND ALUMINUM MODELS
2 QTY VARIES PER HATCH SIZE
3 REQUIRED ON ALUMINUM VERNONS
4 NOT REQUIRED ON ALUMINUM VERNONS
5 NOT SHOWN ON ASSEMBLY

PRODUCT REVISED
as complying with the Florida
Building Code
NOA-No. 21-1201.03
Expiration Date 05/25/2027
By *[Signature]*
Miami-Dade Product Control

NOV 16 2021

8

7

6

5

4

3

2

1

D

C

B

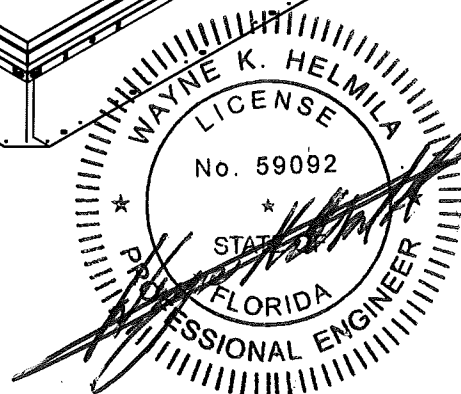
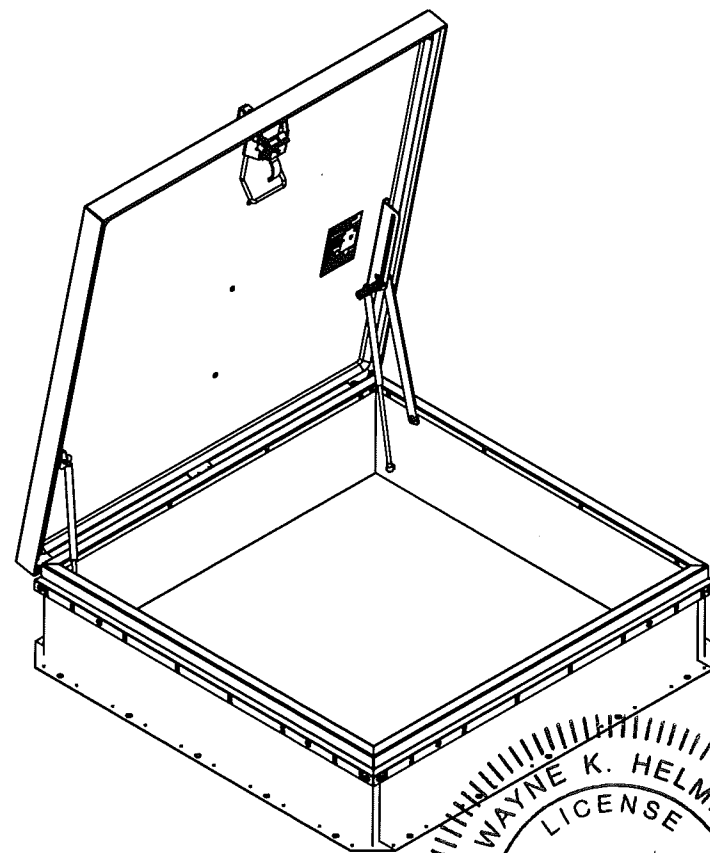
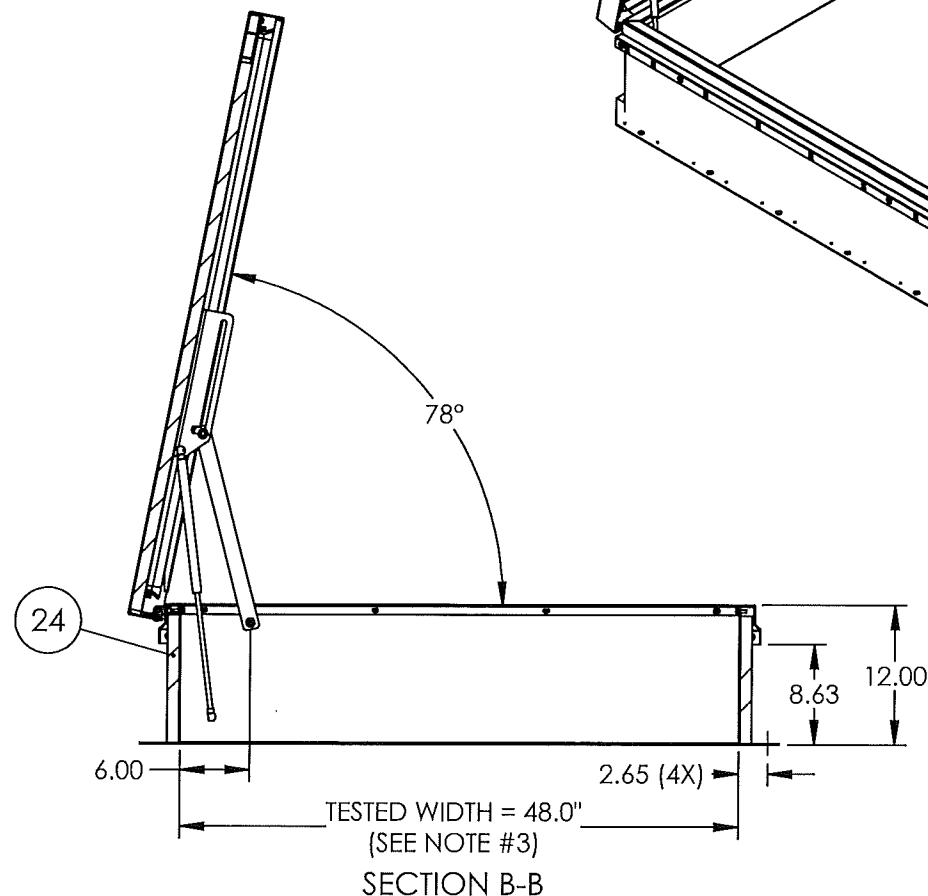
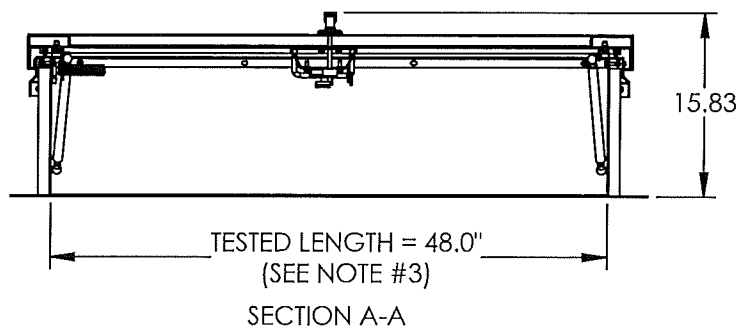
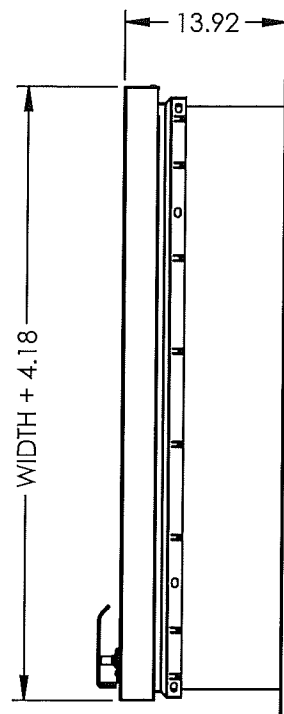
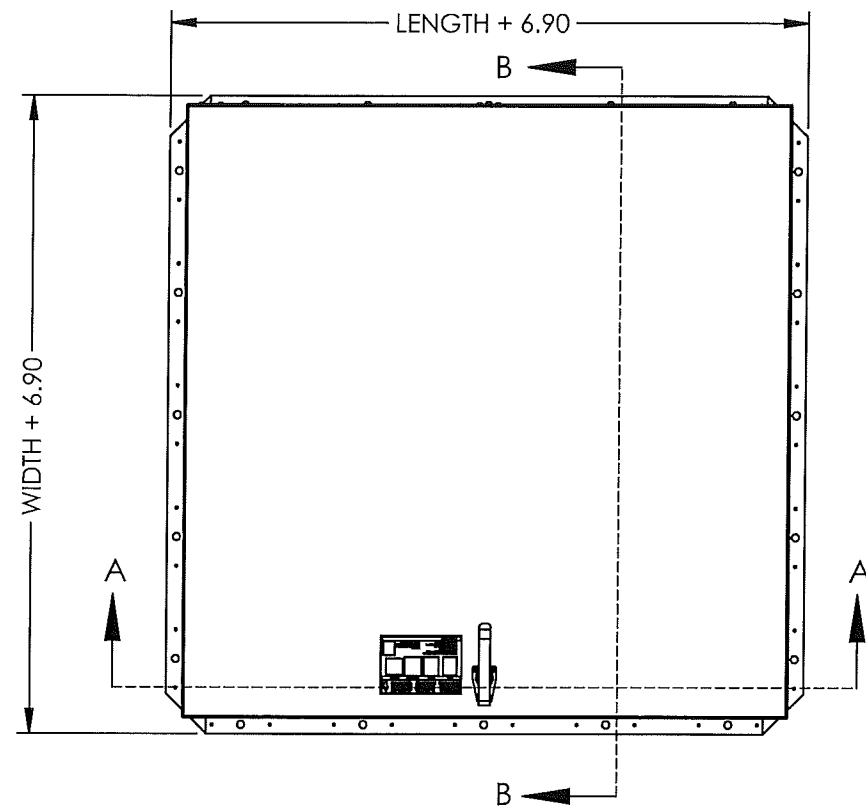
A

D

C

B

A



NOV 16 2021

RICE
ENGINEERING

105 School Creek Trail
Luxemburg, WI 54217
Phone: (920) 617-1042
Fax: (920) 617-1100
www.rice-inc.com

Florida Firm No: F-01000005061
Certificate of Authorization: #9090
Wayne K. Helmla
Registration No: 59092

Building Code: FBC 2020 — Project No: F20-12228

PRODUCT REVISED
as complying with the Florida
Building Code

NOA-No. 21-1201.03

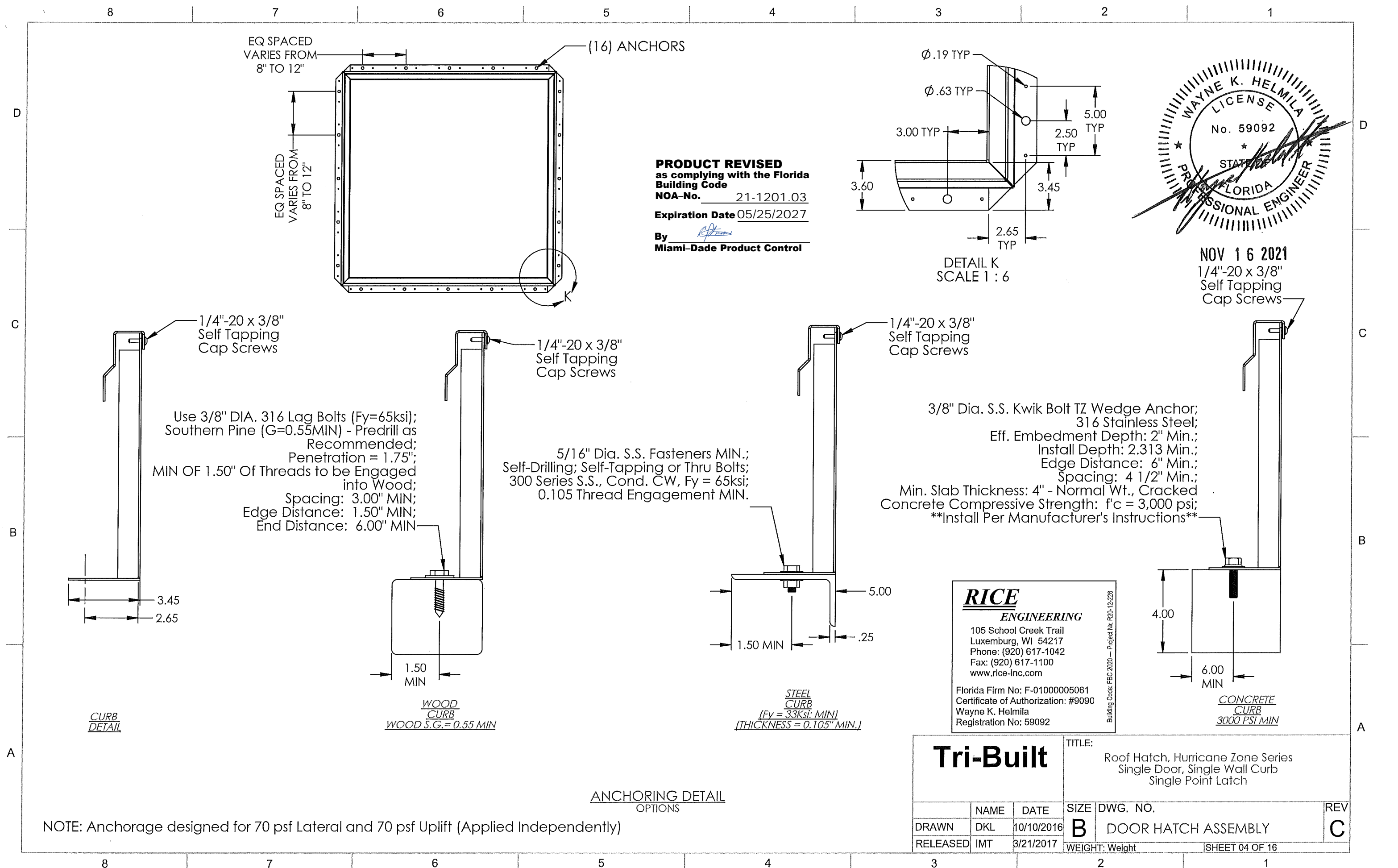
Expiration Date 05/25/2027

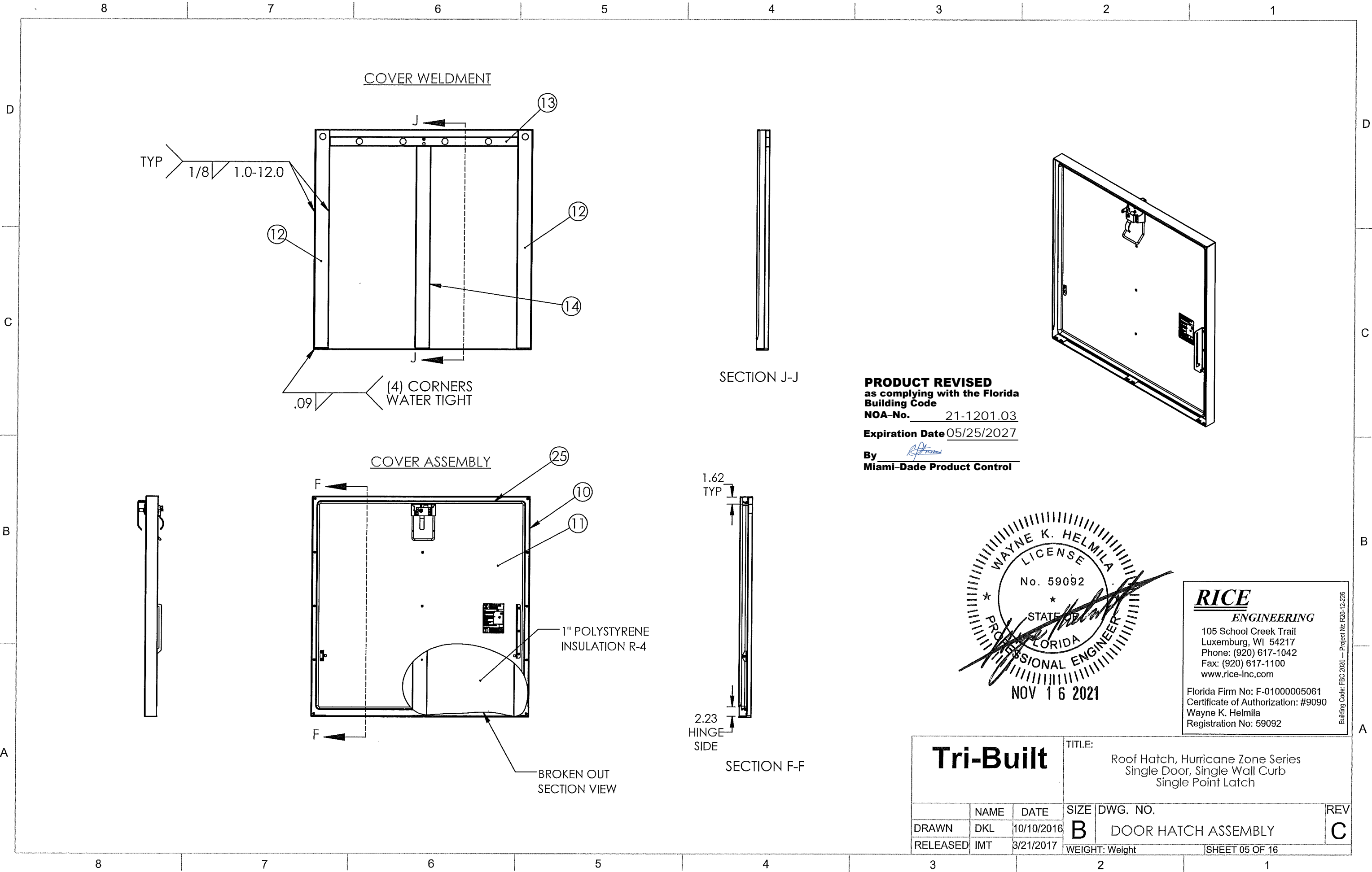
By 
Miami-Dade Product Control

Tri-Built

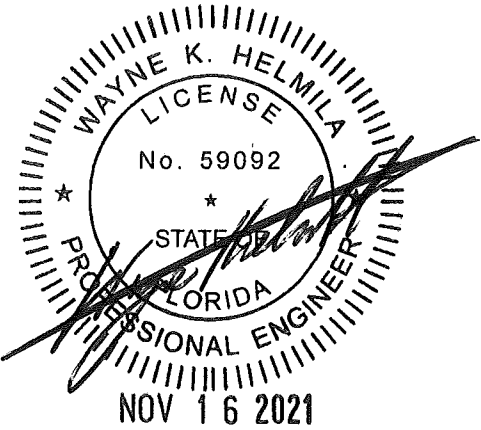
TITLE:
Roof Hatch, Hurricane Zone Series
Single Door, Single Wall Curb
Single Point Latch

	NAME	DATE	SIZE	DWG. NO.	REV
DRAWN	DKL	10/10/2016	B	DOOR HATCH ASSEMBLY	C
RELEASED	IMT	3/21/2017			
			WEIGHT: Weight		





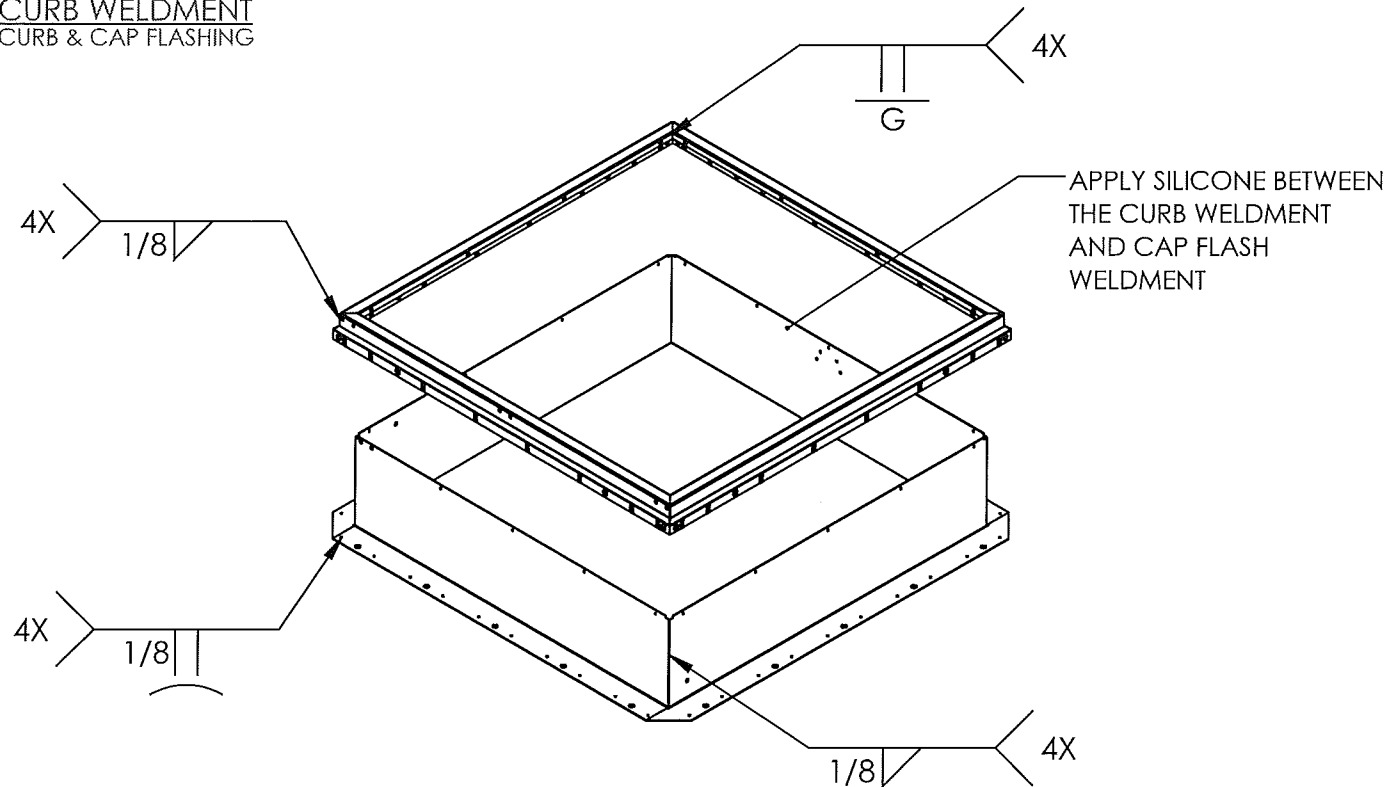
PRODUCT REVISED
as complying with the Florida
Building Code
NOA-No. 21-1201.03
Expiration Date 05/25/2027
By *[Signature]*
Miami-Dade Product Control



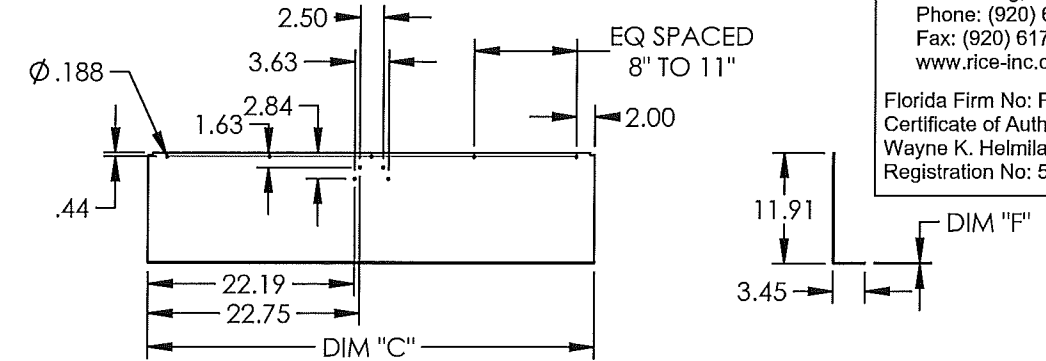
RICE
ENGINEERING
105 School Creek Trail
Luxemburg, WI 54217
Phone: (920) 617-1042
Fax: (920) 617-1100
www.rice-inc.com
Florida Firm No: F-01000005061
Certificate of Authorization: #9090
Wayne K. Helmila
Registration No: 59092

Tri-Built			TITLE: Roof Hatch, Hurricane Zone Series Single Door, Single Wall Curb Single Point Latch		
	NAME	DATE	SIZE	DWG. NO.	REV
DRAWN	DKL	10/10/2016	B	DOOR HATCH ASSEMBLY	C
RELEASED	IMT	3/21/2017	WEIGHT: Weight		SHEET 05 OF 16

CURB WELDMENT CURB & CAP FLASHING



LATCH CURB



RICE ENGINEERING

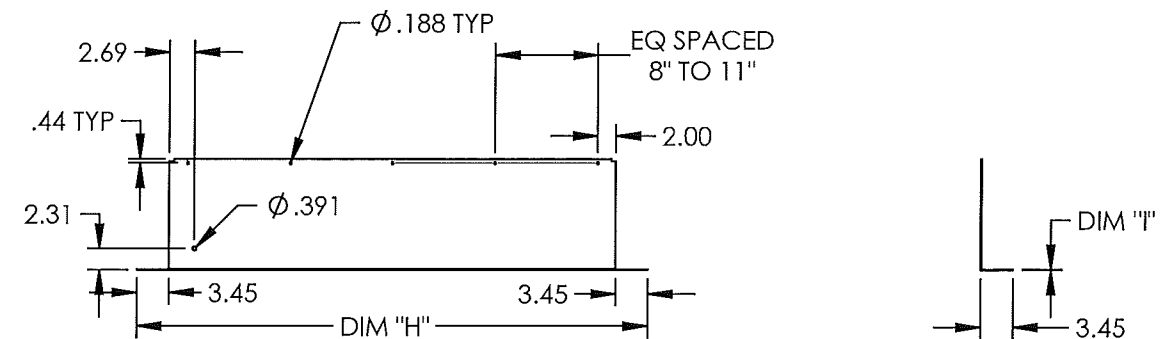
105 School Creek Trail
Luxemburg, WI 54217
Phone: (920) 617-1042
Fax: (920) 617-1100
www.rice-inc.com

Florida Firm No: F-01000005061
Certificate of Authorization: #9090
Wayne K. Helmila
Registration No: 59092

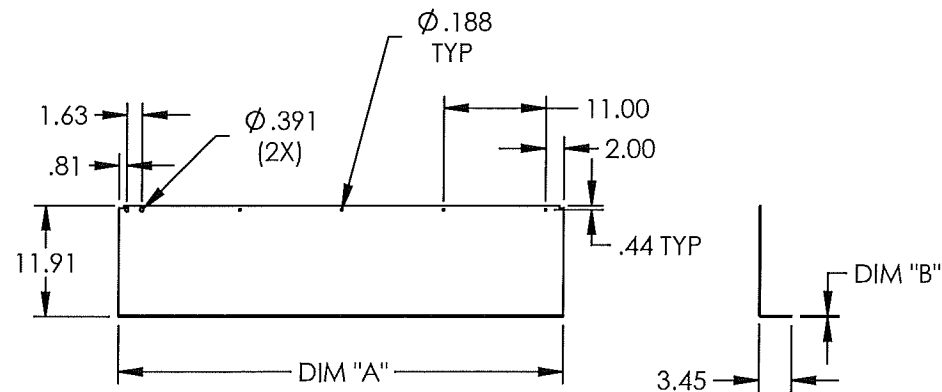
Building Code: FBC 2020 --- Project Nr: R20-12-226

HATCH MATERIAL	DIM "C"	DIM "D"	DIM "E"	DIM "F"
GALVANEAL A653, 33KSI MIN	LENGTH	LENGTH/2 - 1.25	0.218	.075 (14GA)
ALUMINUM 3003-H14	LENGTH	LENGTH/2 - 1.25	0.391	.090 (11GA)

TOP & BOTTOM CURB



HINGE CURB



PRODUCT REVISED as complying with the Florida Building Code

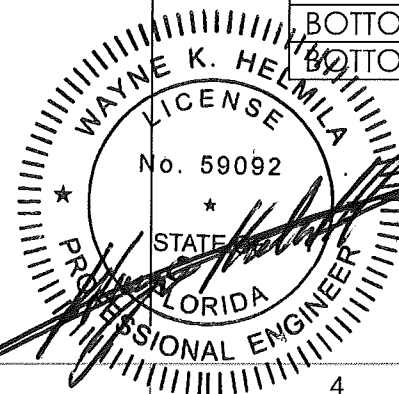
NOA-No. 21-1201.03

Expiration Date 05/25/2027

By *[Signature]*
Miami-Dade Product Control

CURB	HATCH MATERIAL	DIM "H"	DIM "I"
TOP CURB	GALVANEAL A653, 33KSI MIN	WIDTH + 6.9	.075 (14GA)
TOP CURB	ALUMINUM 3003-H14	WIDTH + 6.9	.090 (11GA)
BOTTOM CURB	GALVANEAL A653, 33KSI MIN	WIDTH + 6.9	.075 (14GA)
BOTTOM CURB	ALUMINUM 3003-H14	WIDTH + 6.9	.090 (11GA)

HATCH MATERIAL	DIM "A"	DIM "B"
GALVANEAL A653, 33KSI MIN	LENGTH	.075 (14GA)
ALUMINUM 3003-H14	LENGTH	.090 (11GA)



NOV 16 2021

Tri-Built

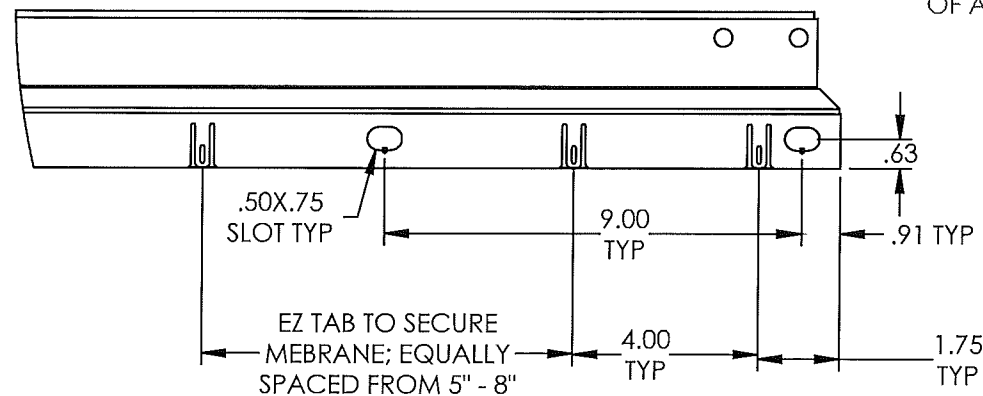
TITLE:

Roof Hatch, Hurricane Zone Series
Single Door, Single Wall Curb
Single Point Latch

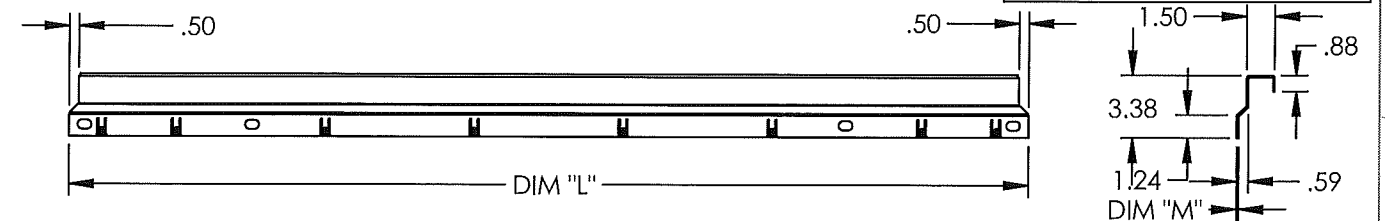
NAME	DATE	SIZE	DWG. NO.	REV
DRAWN DKL	10/10/2016	B	DOOR HATCH ASSEMBLY	C
RELEASED IMT	3/21/2017	WEIGHT: Weight	SHEET 06 OF 16	

CAP FLASHING TYP
EZ TAB LOCATIONS
AND SAFETY RAIL
MOUNTING HOLES

NOTE:
EZ TAB AND SAFETY RAIL
MOUNTING HOLE DIMENSIONS
ARE TYPICAL FROM BOTH ENDS
OF ALL TYPES OF CAP FLASH.



LATCH CAP FLASHING

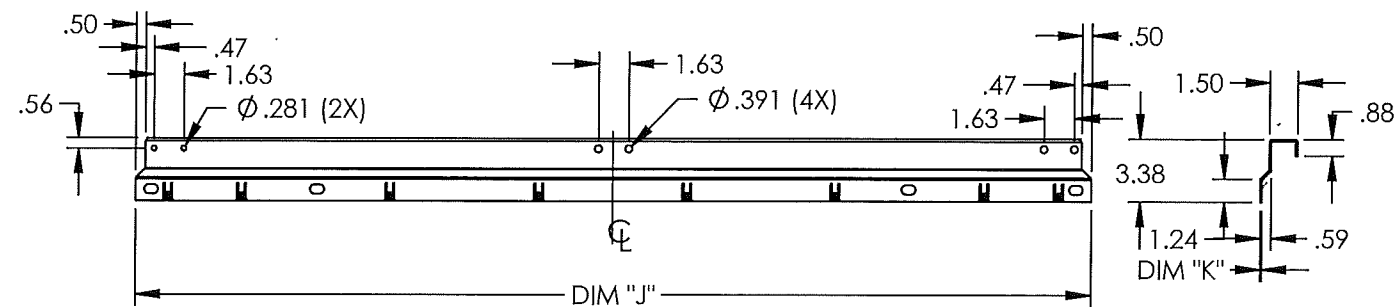


HATCH MATERIAL	DIM "L"	DIM "M"
GALVANEAL A653, 33KSI MIN	LENGTH + 3.51	.075 (14GA)
ALUMINUM 3003-H14	LENGTH + 3.51	.090 (11GA)

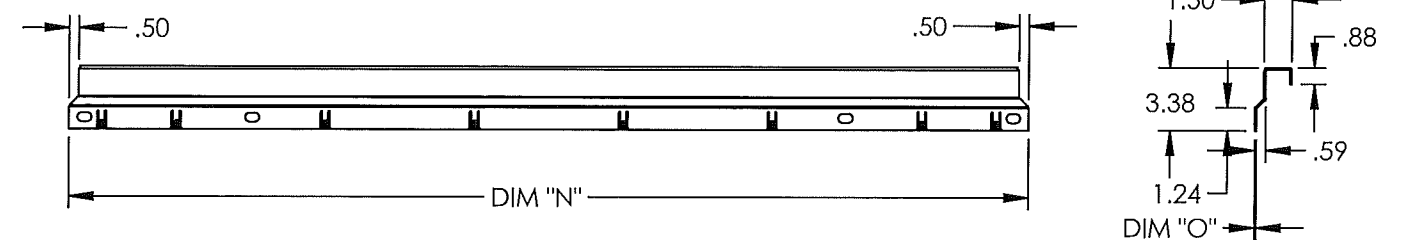
PRODUCT REVISED
as complying with the Florida
Building Code
NOA-No. 21-1201.03
Expiration Date 05/25/2027

By *[Signature]*
Miami-Dade Product Control

HINGE CAP FLASHING

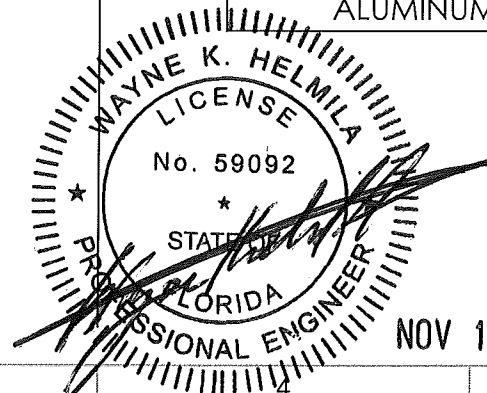


TOP & BOTTOM CAP FLASHING



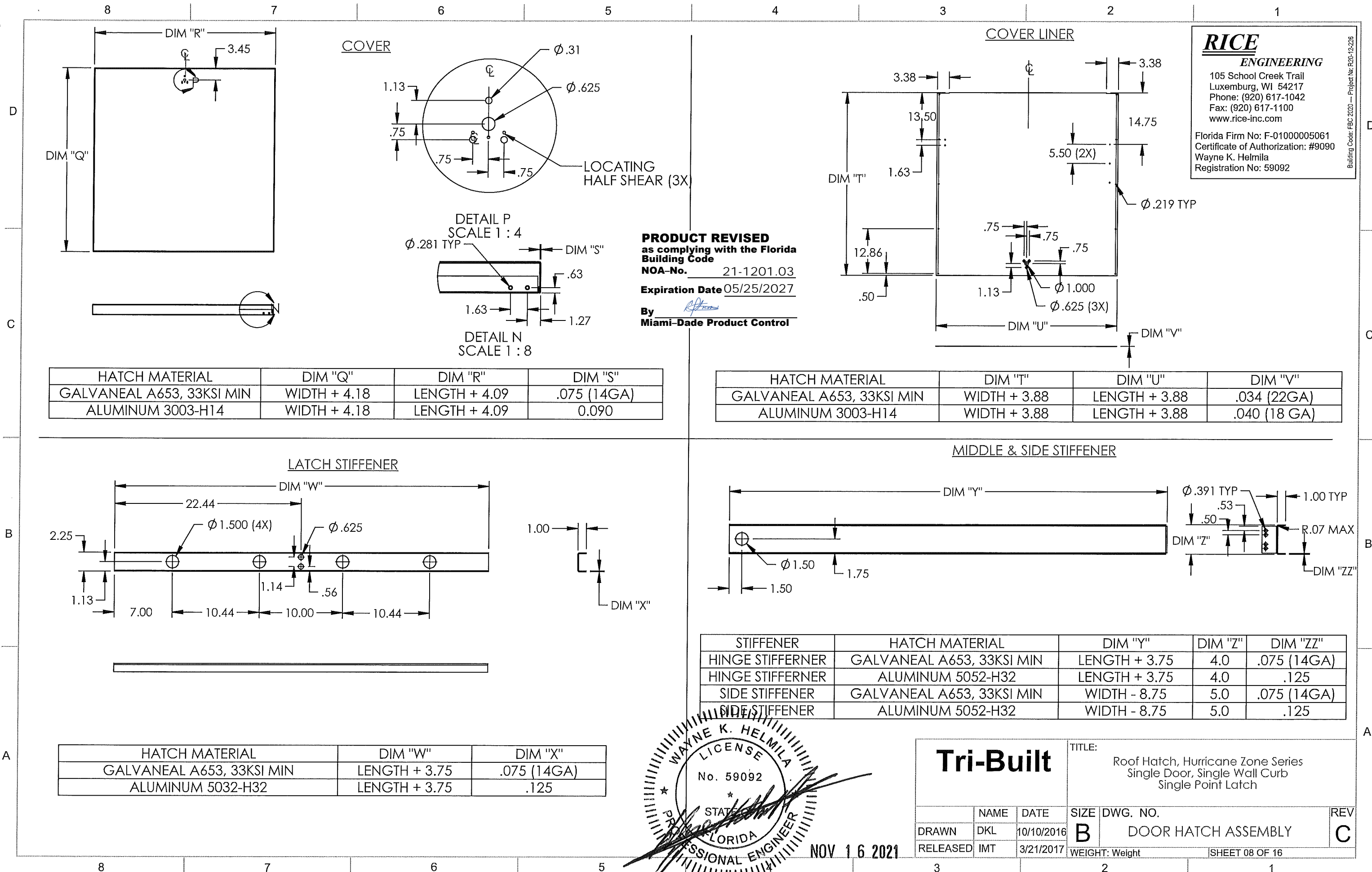
HATCH MATERIAL	DIM "N"	DIM "O"
GALVANEAL A653, 33KSI MIN	WIDTH + 3.56	.075 (14GA)
ALUMINUM 3003-H14	WIDTH + 3.56	.090 (11GA)

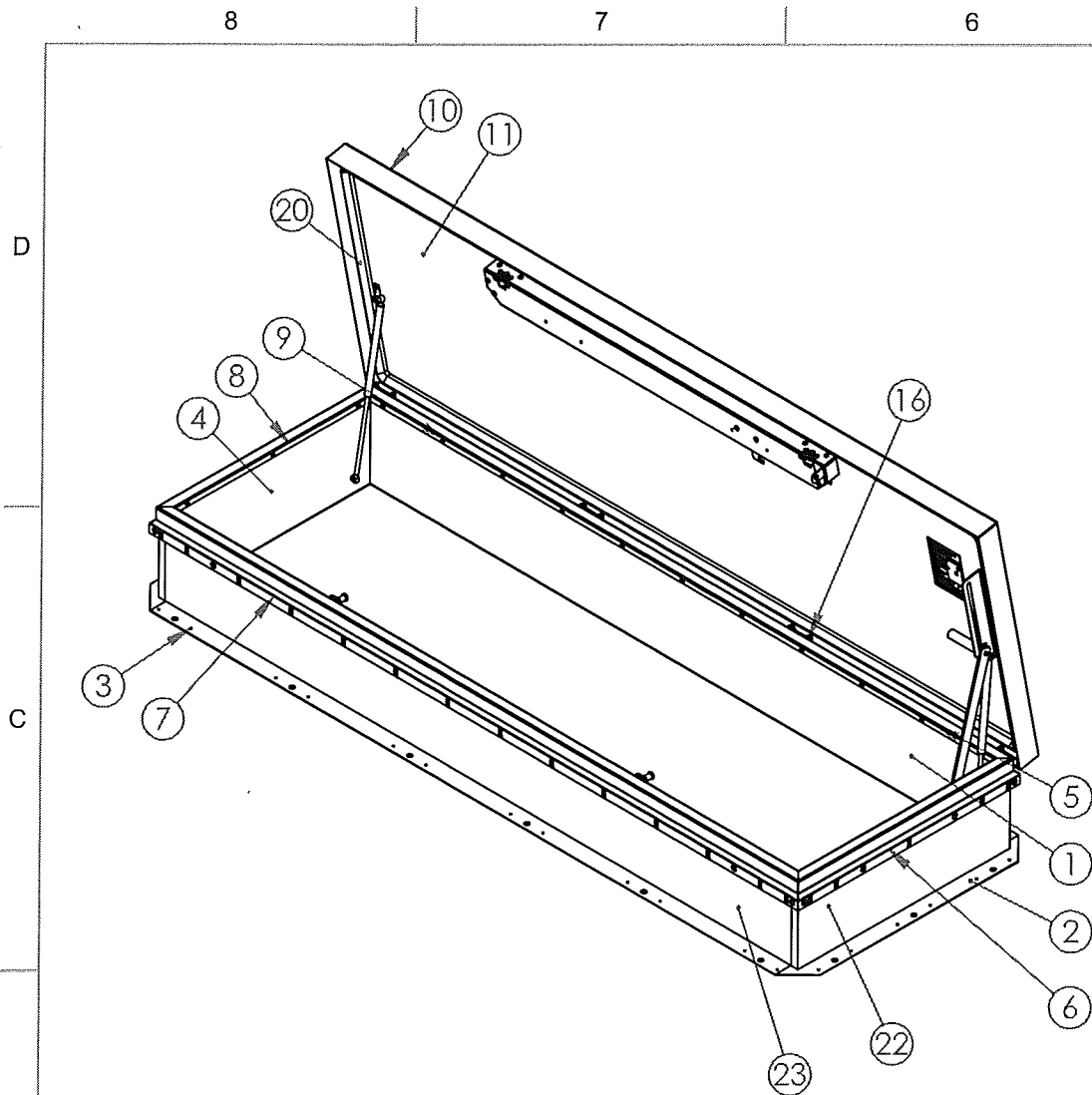
HATCH MATERIAL	DIM "J"	DIM "K"
GALVANEAL A653, 33KSI MIN	LENGTH + 3.51	.075 (14GA)
ALUMINUM 3003-H14	LENGTH + 3.51	.090 (11GA)



Tri-Built

TITLE:			Roof Hatch, Hurricane Zone Series Single Door, Single Wall Curb Single Point Latch		
SIZE	DWG. NO.			REV	
B	DOOR HATCH ASSEMBLY			C	
WEIGHT: Weight			SHEET 07 OF 16		





RICE
ENGINEERING

105 School Creek Trail
Luxemburg, WI 54217
Phone: (920) 617-1042
Fax: (920) 617-1100
www.rice-inc.com

Florida Firm No: F-01000005061
Certificate of Authorization: #9090
Wayne K. Helmila
Registration No: 59092

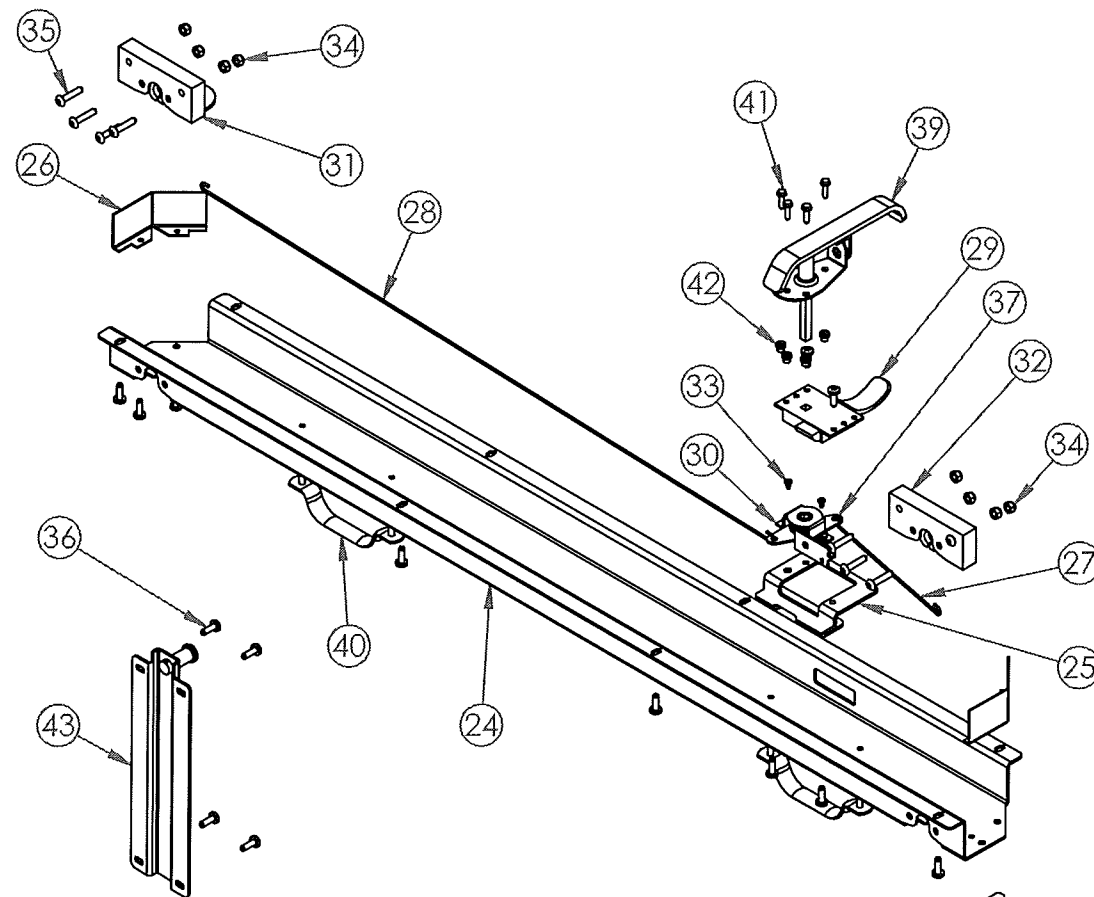
Building Code: FBC 2020 — Project Nr: R20-12-225

PRODUCT REVISED
as complying with the Florida
Building Code

NOA-No. 21-1201.03

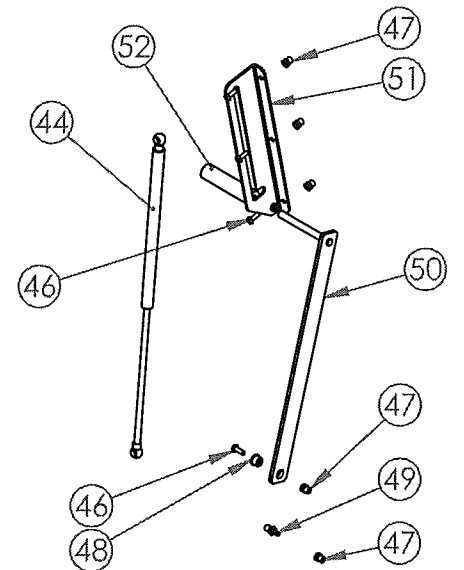
Expiration Date 05/25/2027

By *[Signature]*
Miami-Dade Product Control

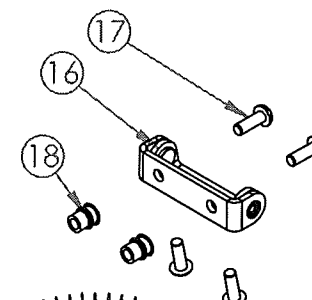


2-POINT LATCH ASSEMBLY

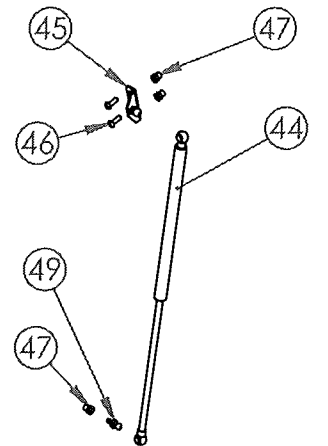
HOLD OPEN ARM ASSEMBLY



HINGE ASSEMBLY

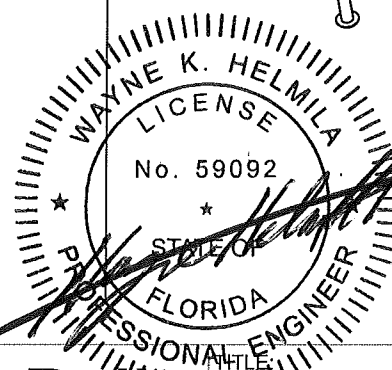


GAS SPRING ASSEMBLY



- 1) THE DESIGN CONTAINED HEREIN IS DESIGNED AND TESTED IN ACCORDANCE WITH THE FLORIDA BUILDING CODE; TEST PROTOCOLS: TAS-201, TAS-202, TAS-203
- 2) THE SHORT-TERM LOAD FACTOR HAS NOT BEEN USED
- 3) PRODUCT APPROVED UP TO AN INSIDE AREA OF 20.00 SF (WIDTH * LENGTH ≤ 20.00 SF)
- 4) ATTACHMENT TO STRUCTURE SHALL MEET THE FOLLOWING ALLOWABLE LOAD CONDITIONS. THE VALUES PROVIDED ASSUME THE ATTACHMENT DIRECTLY TO THE STRUCTURAL ELEMENTS WITHOUT SPACE. ALLOWABLE MINIMUM LOAD VALUES PULLOUT: 1400 LBS. SHEAR 654 LB.
- 5) USE THE FASTENER MANUFACTURES RECOMMENDED SAFETY FACTOR. IF DIFFERENT CONDITIONS EXIST, CONTACT NYSTROM OR A FLORIDA LICENSED ENGINEER FOR A CONSULTATION
- 6) ALL LABELS TO BE LOCATED IN APPROXIMATE LOCATIONS AS SHOWN
- 7) PROTECTION BETWEEN ALUMINUM & DISSIMILAR MATERIALS MUST BE PROVIDED PER ALUMINUM DESIGN MANUAL

DESIGN PRESSURE RATING	IMPACT RATING	WATER FILTRATION
+/- 70 PSF	LARGE MISSILE IMPACT	100%DP WITH ZERO WATER FILTRATION



NOV 16 2021


Tri-Built

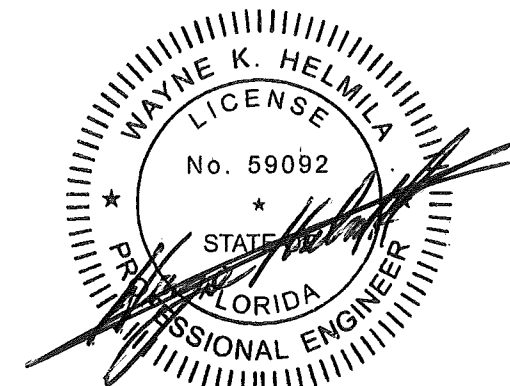
Roof Hatch, Personnel Series,
Single Door, Single Wall Curb
Two Point Latch

	NAME	DATE	SIZE	DWG. NO.	REV
DRAWN	AMB	8/17/2021	B	Two Point Latch Door Hatch Assembly	A
RELEASED	AMB	11/10/2021			
			WEIGHT: Weight	SHEET 09 OF 16	

ITEM	QTY.	PART#	DESCRIPTION
		CURB ASSEMBLY	
1	1	CurbHinge	CURB - HINGE SIDE
2	1	CurbBottom	CURB - BOTTOM SIDE
3	1	CurbTop	CURB - TOP SIDE
4	1	CurbLatch	CURB - LATCH SIDE
		CAP FLASH ASSEMBLY	
5	1	CflashHinge	CAP FLASH - HINGE SIDE
6	1	CflashBottom	CAP FLASH - BOTTOM SIDE
7	1	CflashTop	CAP FLASH - TOP SIDE
8	1	CflashLatch	CAP FLASH - LATCH SIDE
9	12	28544	BUTTON HEAD MACHINE SCREW, 1/4-20 x .75, (ZPS)
		COVER ASSEMBLY	
10	1	Cover	COVER
11	1	Liner	COVER LINER
12	1	StiffenerHinge	STIFFENER - HINGE SIDE
13	2	StiffenerWidth	STIFFENER - SIDES
14	1	StiffenerLatch	STIFFENER - LATCH SIDE
15	1	StiffenerMid	STIFFENER - MIDDLE
16	4	28719	ASSY, HINGE (ZPS)
17	16	28544	BUTTON HD TORX SCREW, 1/4 X .75, 3PT, (ZPS)
18	5	4359	RIVNUT, 1/4-20, .027-.165 GRIP
19	1	29898	BRKT, SUPPORT, HINGE, (ZPS)
		INSULATION AND GASKET	
20	2	6650	COVER GASKET, RH (EPDM),1.125" x 0.655 CLOSED CELL FOAM
21	12	RHInsulationCover	INSULATION, COVER (POLYSTYRENE R=4.0)
22	1	RHInsulationTopBottom	INSULATION, 1" POLYISO, R-6
23	2	RHInsulationHingeLatch	INSULATION, 1" POLYISO, R-6
		LATCH ASSEMBLY	
24	1	28908	LATCH HOUSING, 2-POINT, RH, (ZPS)
25	1	28910	LATCH CASE BRKT, 2-POINT, RH, (ZPS)
26	2	28909	LATCH HOUSING COVER,2-POINT, RH, (ZPS)
27	1	28938	LATCH ROD, SHORT, 2-POINT, RH, (ZPS)
28	1	28913	LATCH ROD,LONG, 2-POINT, RH, (ZPS)
29	1	1297	LATCH, SLAM, ZINC COATED,
30	1	28916	LATCH CENTER CASE, 2-POINT, RH, (ZPS)
31	1	6618	ROTARY, TOP, LEFT HAND, (ZPS)
32	1	6617	ROTARY, BTM, RIGHT HAND, (ZPS)
33	2	28939	BHMS, 10-32x5/16 Self Tread, (ZPS)
34	8	2944	NUT, HEX, LOCK, NYLON, 1/4-20, (ZPS)
35	8	28677	BUTTON HEAD MACHINE SCREW, 1/4-20 x 1.25, (ZPS)
36	17	28221	BUTTON HEAD MACHINE SCREW, 1/4-20 x .75, (ZPS)
37	1	29183	LATCH STOP,2PT MOD, (ZPS)
38	2	29674	BRACKET, PADLOCK, COVER, (ZPS)
39	1	28923	HDL, PADLOCKING, STL, SHORT, (ZPS)
41	4	2846	HEX WASHER HEAD TEK SCREW, 10-16 x .75, 3 PT, (ZPS)
42	4	6507	RIVNUT, 10-24, .020-.130 GRIP, (ZPS)
43	2	28835	STRIKER WDMT, CURB RH, (ZPS)

ITEM	QTY.	PART #	DESCRIPTION
		GAS SPRING/HOA ASSEMBLIES	
<u>44</u>	-	30268	GAS SPRING, 150N
<u>44</u>	-	29880	GAS SPRING, 250N
<u>44</u>	-	29881	GAS SPRING, 500N
<u>44</u>	-	30269	GAS SPRING, 600N
45	1	29878	BRKT, BALL STUD, SPG, (ZPS)
46	6	28221	BUTTON HD TORX MACHINE SCREW, 1/4 X .75, (ZPS)
47	8	4359	RIVNUT, 1/4-20, .027-.165 GRIP (ALUM)
48	1	29895	BEARING, HOA, (ZPS)
49	2	29879	BRKT, BALL STUD, SPG, (ZPS)
50	1	29863	ARM, HOA, STL, (ZPS)
51	1	29890	BRKT, HOA/SPG, (ZPS)
52	1	2934	HDL, RED GRIP, (VINYL)
		LABELS & MISC.	
<u>64</u>	-	3021	PAINT, POWDER
<u>65</u>	1	26504	LABEL, MADE IN THE USA
<u>66</u>	1	3114	LABEL, LOGO, LARGE
<u>67</u>	2	3036	LABEL, CAUTION, HANDLE
<u>68</u>	1	1851	LABEL, RELEASE HANDLE
<u>69</u>	1	28883	LABEL, PRODUCT APPROVED (ALUMINUM FOIL)
<u>71</u>	-	28096	SILICONE

PRODUCT REVISED
as complying with the Florida
Building Code
NOA-No. 21-1201.03
Expiration Date 05/25/2027
By 
Miami-Ada Product Control



NOV 16 2021

RICE
ENGINEERING

105 School Creek Trail
Luxemburg, WI 54217
Phone: (920) 617-1042
Fax: (920) 617-1100
www.rice-inc.com

Florida Firm No: F-01000005061
Certificate of Authorization: #9090
Wayne K. Helmila
Registration No: 59092

Building Code: FBC 2020 -- Project No: R20-12-226

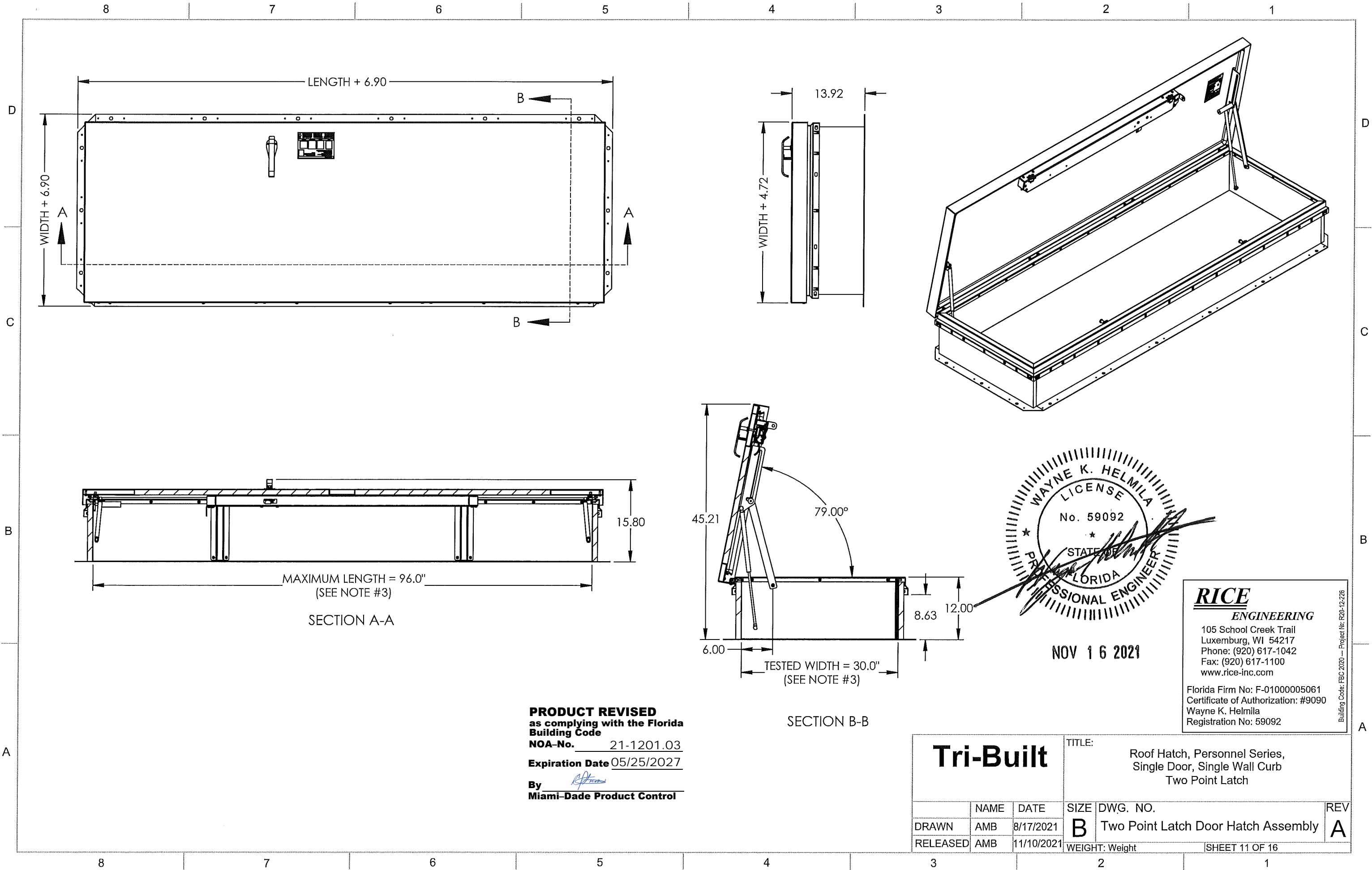
- 1 MATERIAL THICKNESS TO BE DIFFERENT ON STEEL AND ALUMINUM MODELS
- 2 SPRING QTY AND TYPE VARIES PER HATCH SIZE TO MEET \leq 30 LBS COVER OPENING PRESSURE
- 3 REQUIRED ON ALUMINUM VERSIONS
- 4 NOT REQUIRED ON ALUMINUM VERSIONS
- 5 NOT SHOWN ON ASSEMBLY

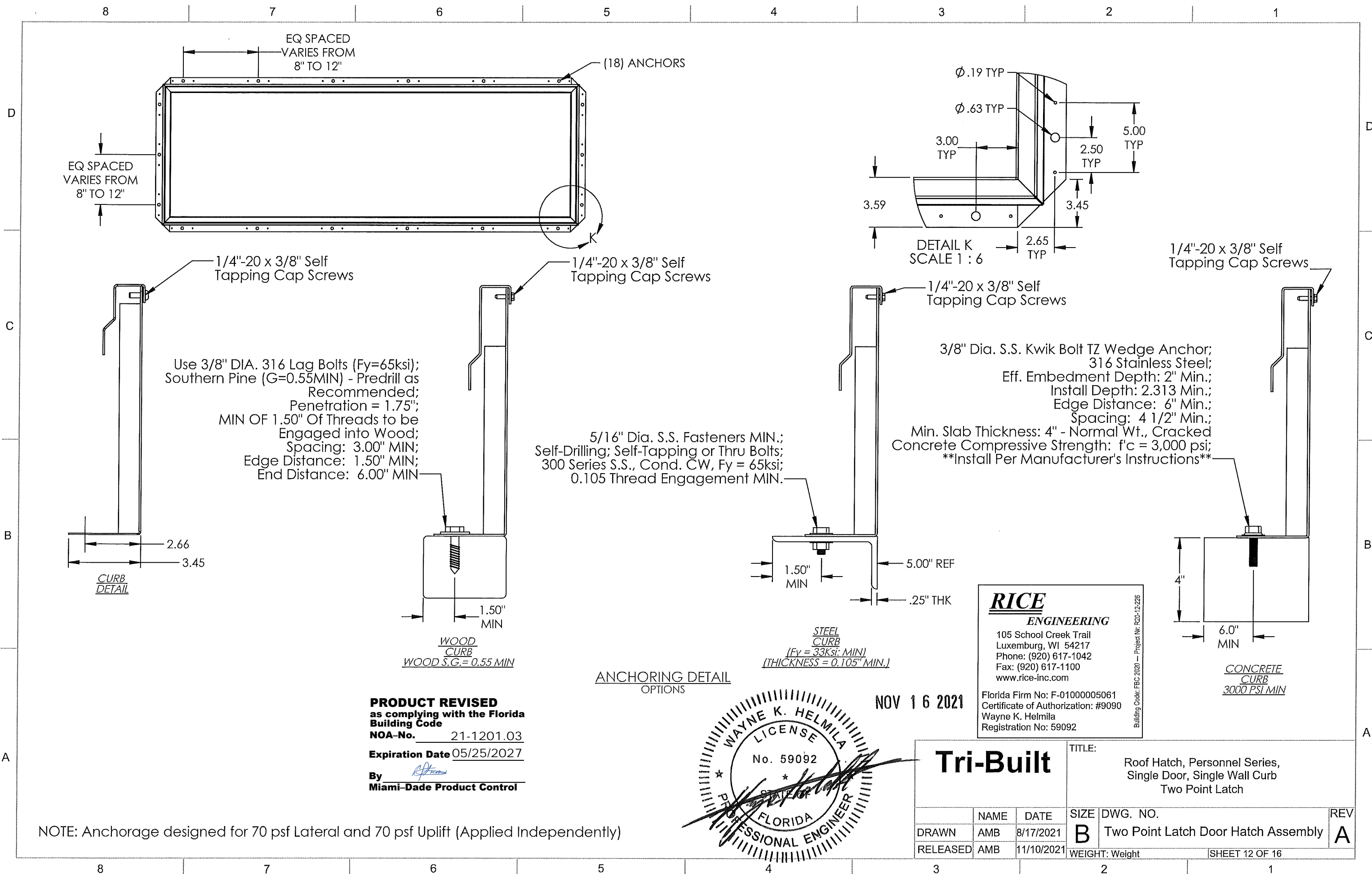
STANDARD MODEL NUMBERS:
TBG3096 TBA3096
TBG3672 TBA3672
TBG3072 TBA3072

CUSTOM MODEL NUMBERS:
TBG W X* L (WHERE W = 18" - 48" AND L = 60.25" - 96")*
TBA W X* L (WHERE W = 18" - 48" AND L = 60.25" - 96")*
*"X" OMITTED ON NON-FRACTION WIDTH AND LENGTH
**AREA NOT TO EXCEED 20 SQ. FT.

NOTES:
NUMBER OF ANCHORS RANGES BETWEEN 2
AND 6 PER SPACING DIMENSIONS ON SHEET 12.

<h1>Tri-Built</h1>			TITLE: Roof Hatch, Personnel Series, Single Door, Single Wall Curb Two Point Latch		
			SIZE	DWG. NO.	REV
	NAME	DATE	B	Two Point Latch Door Hatch Assembly	A
DRAWN	AMB	8/17/2021			
RELEASED	AMB	11/10/2021	WEIGHT: Weight (SHEET 10 OF 16)		





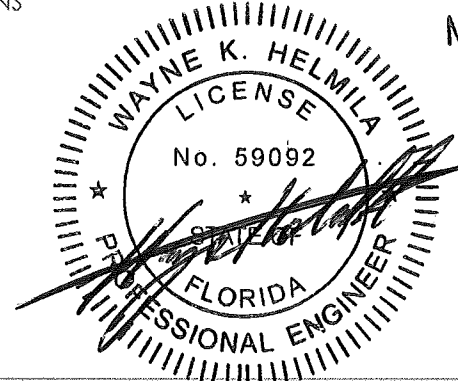
Use 3/8" DIA. 316 Lag Bolts (Fy=65ksi);
Southern Pine (G=0.55MIN) - Pre-drill as
Recommended;
Penetration = 1.75";
MIN OF 1.50" Of Threads to be
Engaged into Wood;
Spacing: 3.00" MIN;
Edge Distance: 1.50" MIN;
End Distance: 6.00" MIN

5/16" Dia. S.S. Fasteners MIN.;
Self-Drilling; Self-Tapping or Thru Bolts;
300 Series S.S., Cond. CW, Fy = 65ksi;
0.105 Thread Engagement MIN.

3/8" Dia. S.S. Kwik Bolt TZ Wedge Anchor;
316 Stainless Steel;
Eff. Embedment Depth: 2" Min.;
Install Depth: 2.313 Min.;
Edge Distance: 6" Min.;
Spacing: 4 1/2" Min.;
Min. Slab Thickness: 4" - Normal Wt., Cracked
Concrete Compressive Strength: f'c = 3,000 psi;
Install Per Manufacturer's Instructions

PRODUCT REVISED
as complying with the Florida
Building Code
NOA-No. 21-1201.03
Expiration Date 05/25/2027
By *[Signature]*
Miami-Dade Product Control

ANCHORING DETAIL
OPTIONS

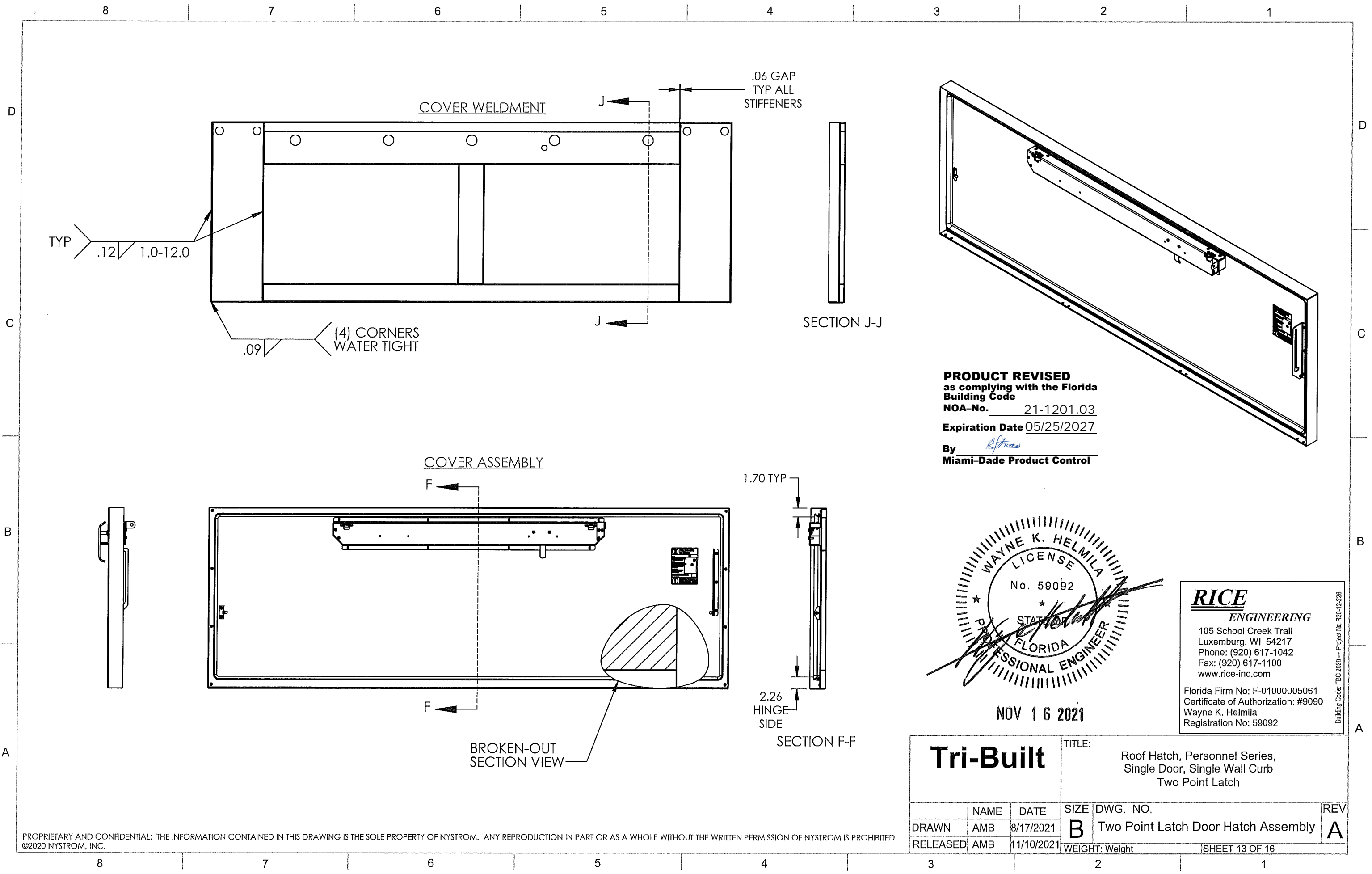


NOV 16 2021

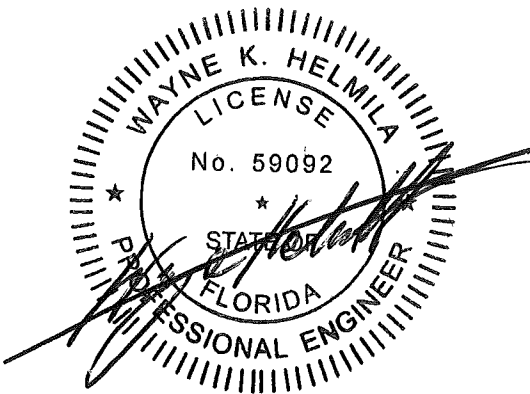
RICE
ENGINEERING
105 School Creek Trail
Luxemburg, WI 54217
Phone: (920) 617-1042
Fax: (920) 617-1100
www.rice-inc.com
Florida Firm No: F-01000005061
Certificate of Authorization: #9090
Wayne K. Helmila
Registration No: 59092

Tri-Built			TITLE: Roof Hatch, Personnel Series, Single Door, Single Wall Curb Two Point Latch		
	NAME	DATE	SIZE	DWG. NO.	REV
DRAWN	AMB	8/17/2021	B	Two Point Latch Door Hatch Assembly	A
RELEASED	AMB	11/10/2021			
			WEIGHT: Weight		SHEET 12 OF 16

NOTE: Anchorage designed for 70 psf Lateral and 70 psf Uplift (Applied Independently)



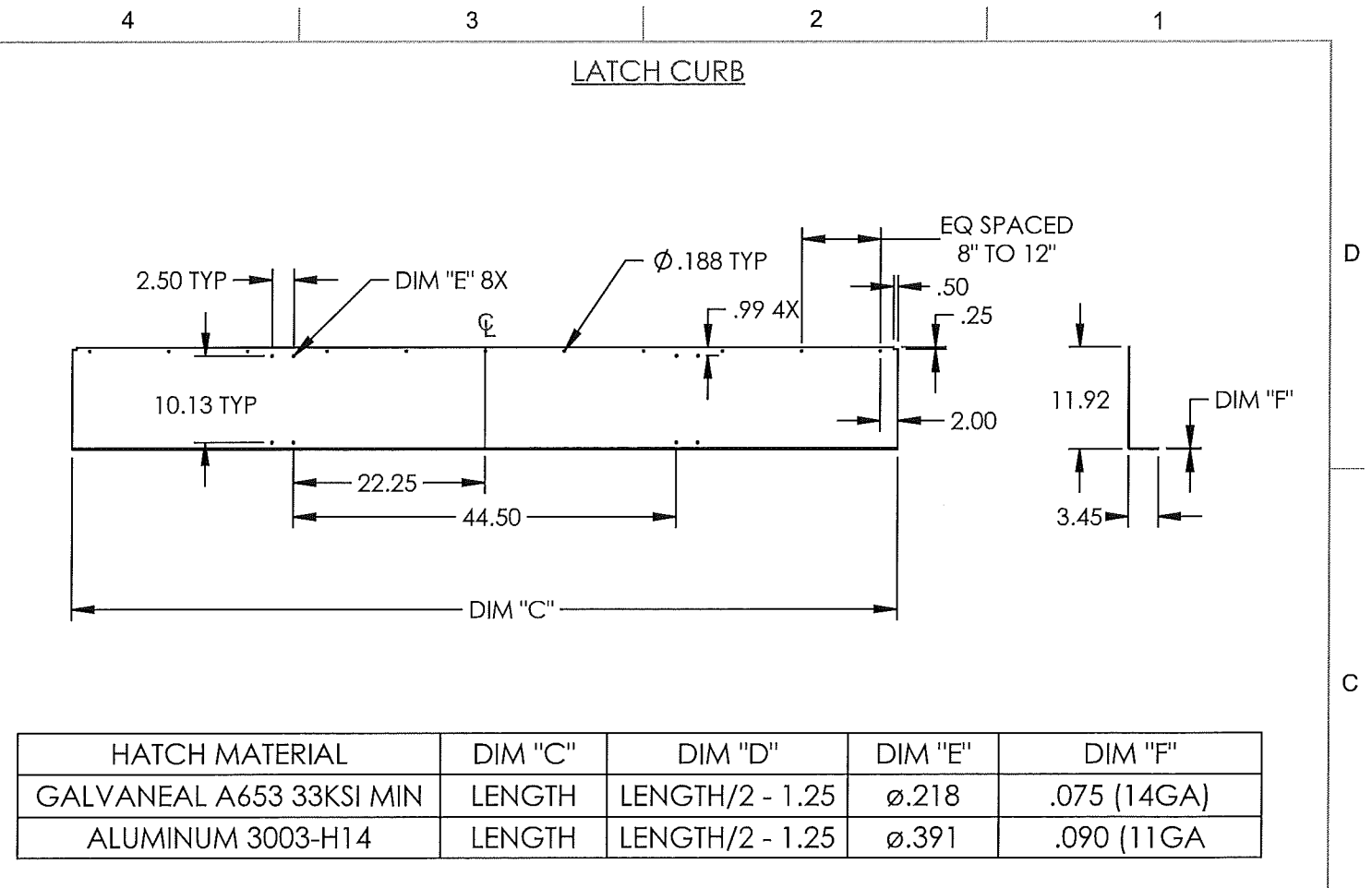
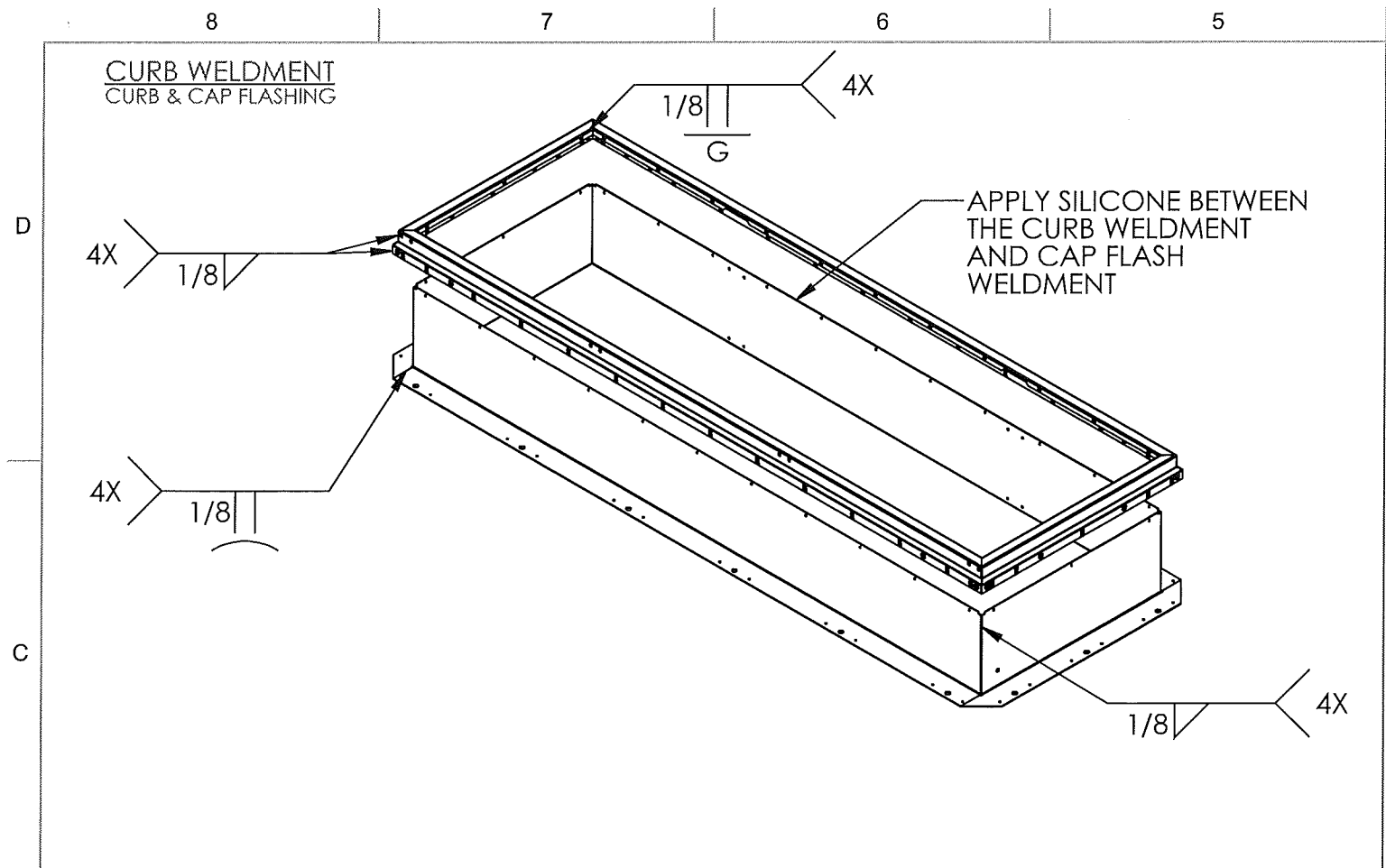
PRODUCT REVISED
as complying with the Florida
Building Code
NOA-No. 21-1201.03
Expiration Date 05/25/2027
By *[Signature]*
Miami-Dade Product Control



NOV 16 2021

RICE
ENGINEERING
105 School Creek Trail
Luxemburg, WI 54217
Phone: (920) 617-1042
Fax: (920) 617-1100
www.rice-inc.com
Florida Firm No: F-01000005061
Certificate of Authorization: #9090
Wayne K. Helmila
Registration No: 59092

Tri-Built			TITLE: Roof Hatch, Personnel Series, Single Door, Single Wall Curb Two Point Latch		
NAME	DATE	SIZE	DWG. NO.	REV	
DRAWN AMB	8/17/2021	B	Two Point Latch Door Hatch Assembly	A	
RELEASED AMB	11/10/2021	WEIGHT: Weight		SHEET 13 OF 16	



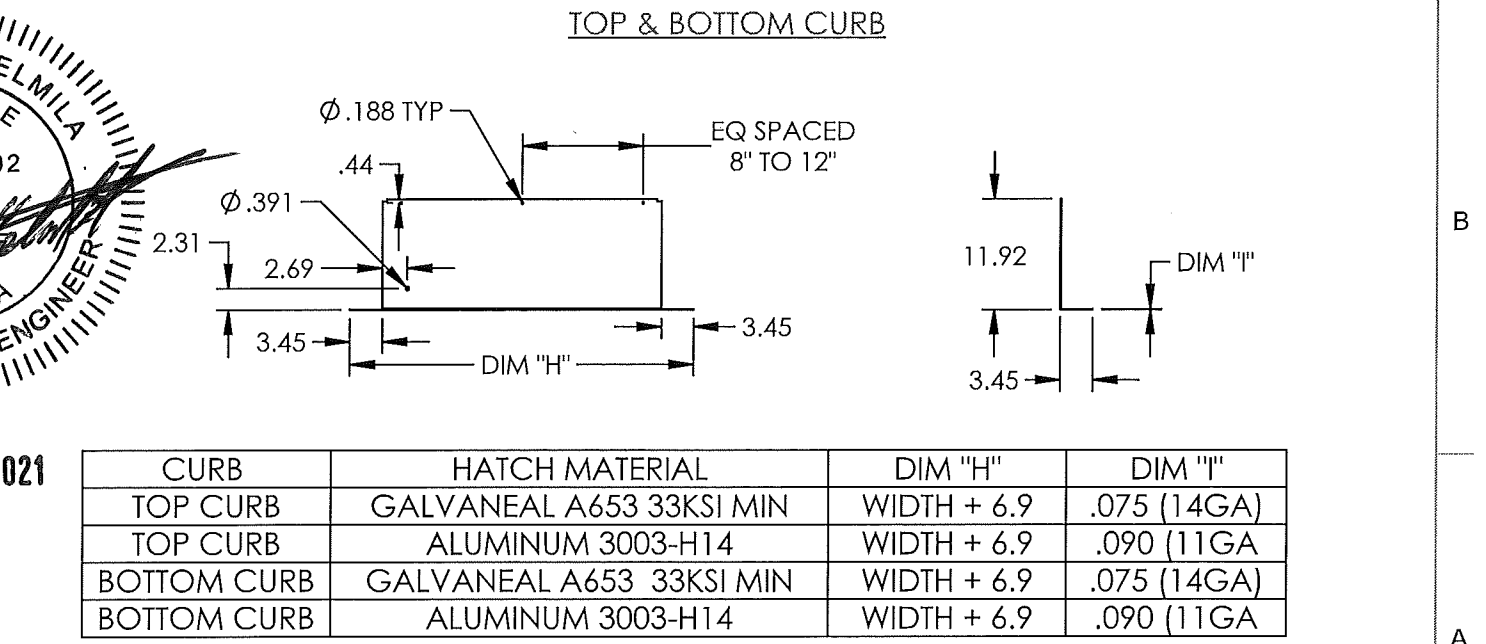
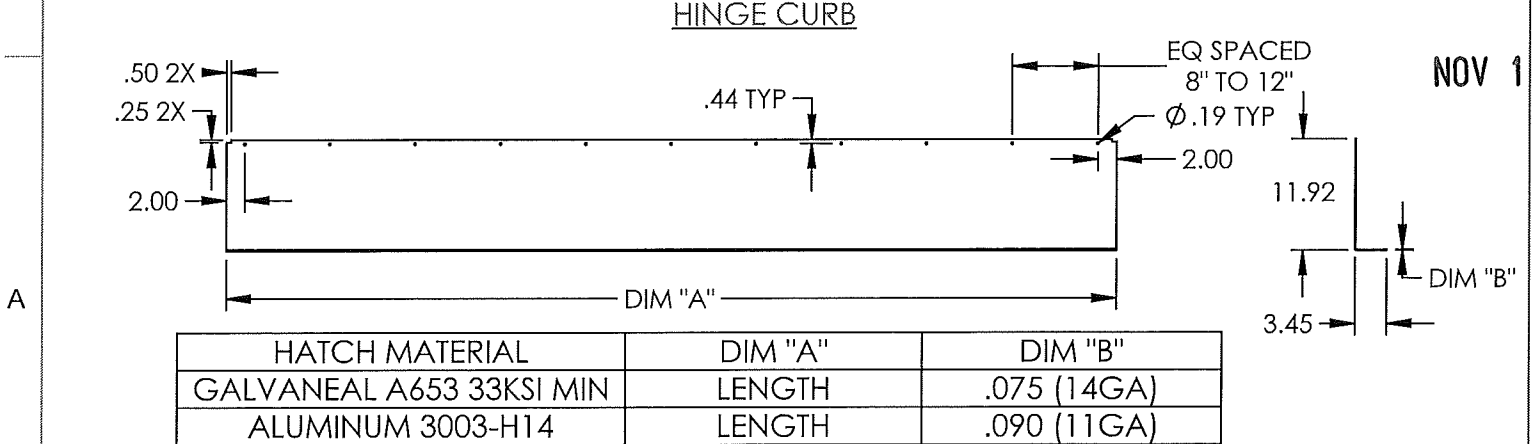
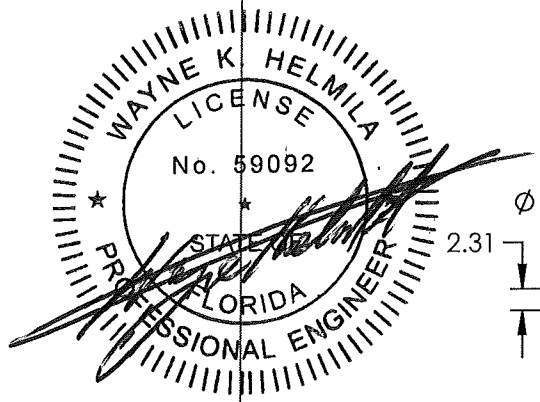
RICE
ENGINEERING

105 School Creek Trail
Luxemburg, WI 54217
Phone: (920) 617-1042
Fax: (920) 617-1100
www.rice-inc.com

Florida Firm No: F-01000005061
Certificate of Authorization: #9090
Wayne K. Helmila
Registration No: 59092

Building Code: FBC 2020 — Project No: P20-12-228

PRODUCT REVISED
as complying with the Florida
Building Code
NOA-No. 21-1201.03
Expiration Date 05/25/2027
By *[Signature]*
Miami-Dade Product Control



TITLE: Roof Hatch, Personnel Series, Single Door, Single Wall Curb Two Point Latch

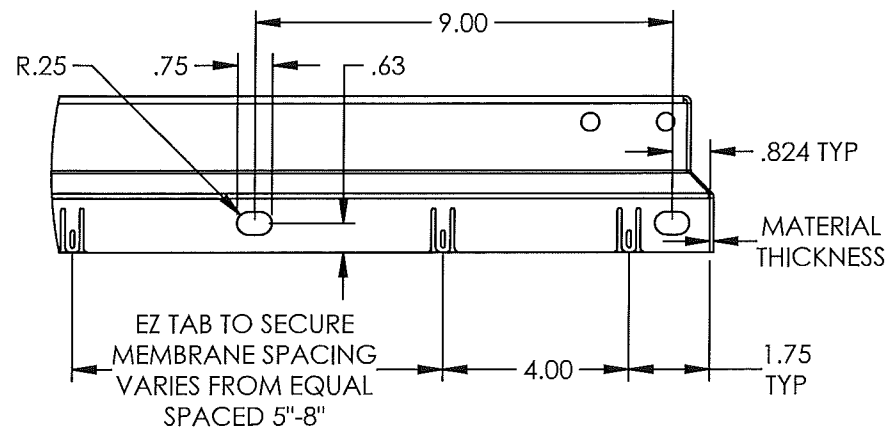
NAME	DATE	SIZE	DWG. NO.	REV
DRAWN AMB	8/17/2021	B	Two Point Latch Door Hatch Assembly	A
RELEASED AMB	11/10/2021			

WEIGHT: Weight

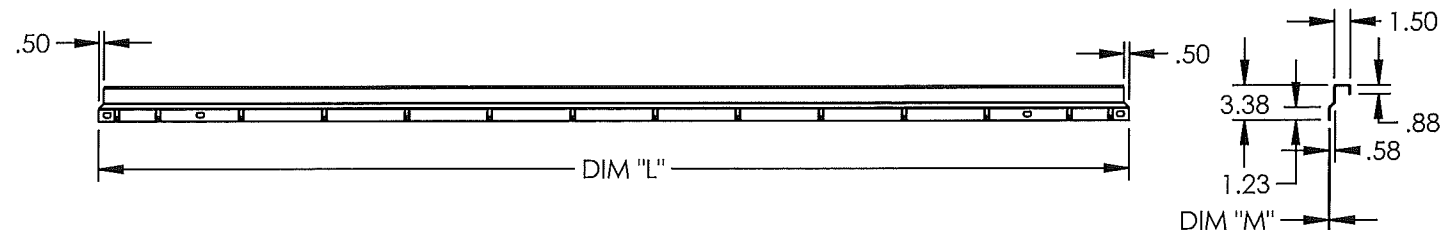
SHEET 14 OF 16

CAP FLASHING TYP EZ TAB LOCATIONS

NOTE:
EZ TAB DIMENTIONS ARE TYP
FROM BOTH ENDS OF
ALL TYPES OF CAP FLASH.



LATCH CAP FLASHING



HATCH MATERIAL	DIM "L"	DIM "M"
GALVANEAL A653, 33KSI MIN	LENGTH + 3.51	.075 (14GA)
3003 ALUMINUM-H14	LENGTH + 3.51	.090 (11GA)

RICE ENGINEERING

105 School Creek Trail
Luxemburg, WI 54217
Phone: (920) 617-1042
Fax: (920) 617-1100
www.rice-inc.com

Florida Firm No: F-01000005061
Certificate of Authorization: #9090
Wayne K. Helmila
Registration No: 59092

Building Code: FBC 2020 - Project No: R20-12-226

HINGE CAP FLASHING

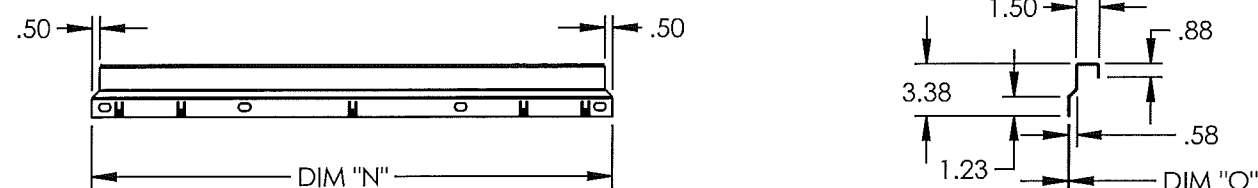
PRODUCT REVISED
as complying with the Florida
Building Code

NOA-No. 21-1201.03

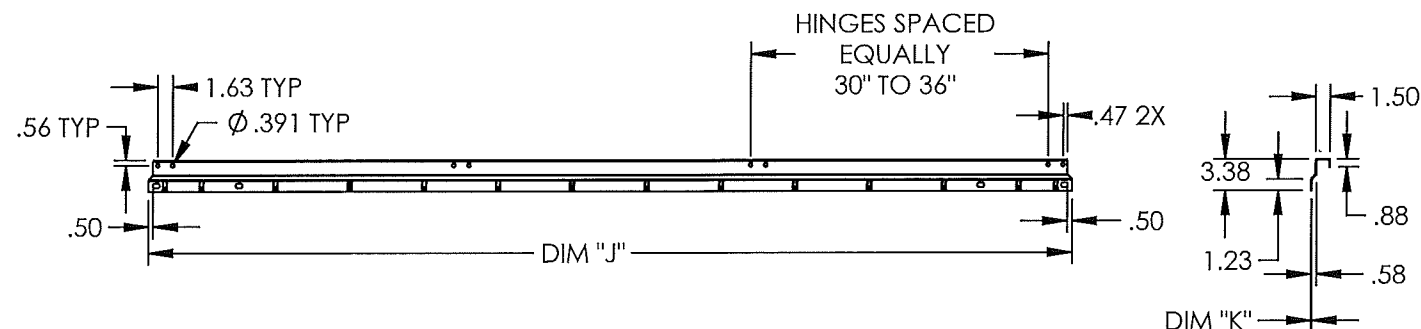
Expiration Date 05/25/2027

By *[Signature]*
Miami-Dade Product Control

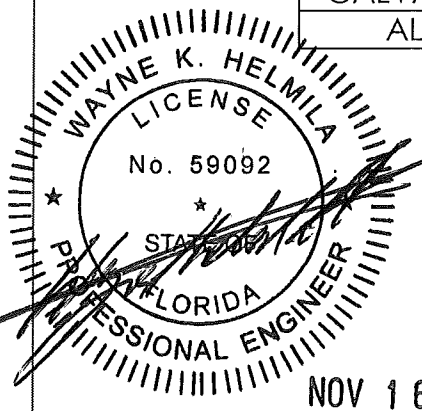
TOP & BOTTOM CAP FLASHING



HATCH MATERIAL	DIM "N"	DIM "O"
GALVANEAL A653, 33KSI MIN	WIDTH + 3.56	.075 (14GA)
ALUMINUM 3003-H14	WIDTH + 3.56	.090 (11GA)



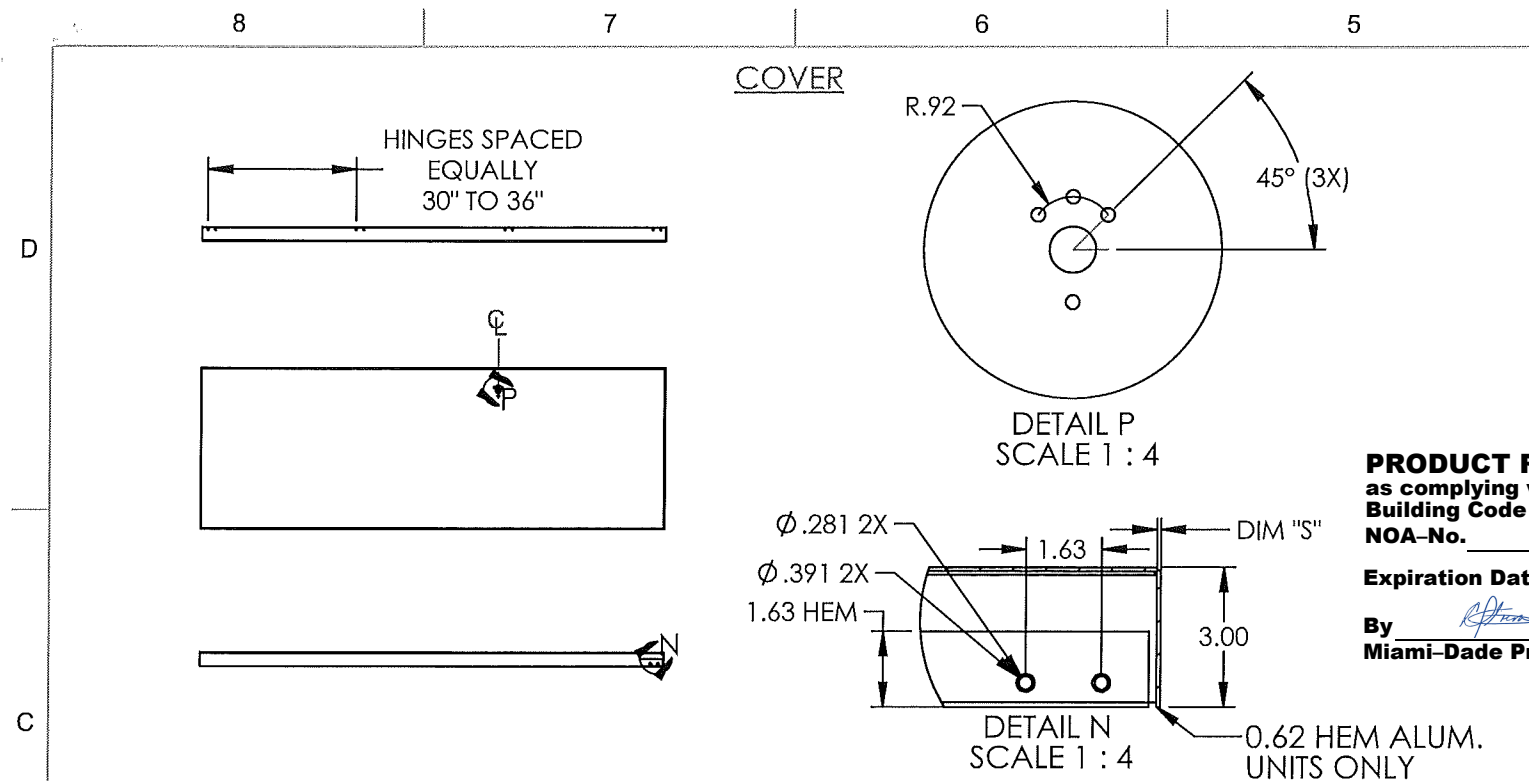
HATCH MATERIAL	DIM "J"	DIM "K"
GALVANEAL A653, 33KSI MIN	LENGTH + 3.51	.075 (14GA)
ALUMINUM 3003-H14	LENGTH + 3.51	.090 (11GA)



Tri-Built

TITLE:
Roof Hatch, Personnel Series,
Single Door, Single Wall Curb
Two Point Latch

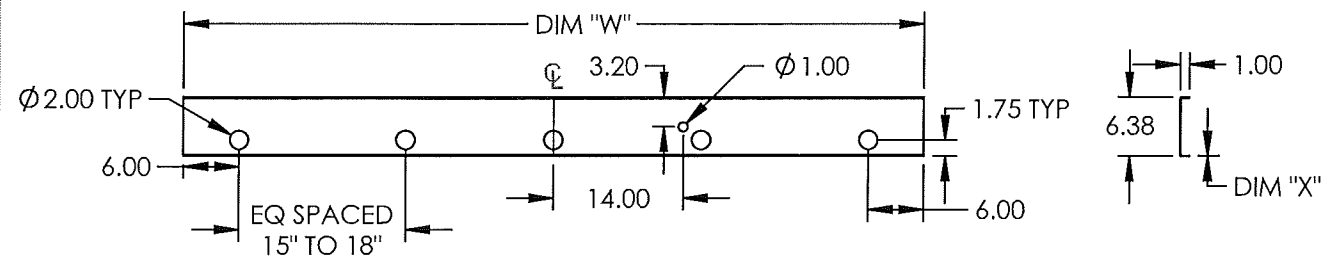
NAME	DATE	SIZE	DWG. NO.	REV
DRAWN AMB	8/17/2021	B	Two Point Latch Door Hatch Assembly	A
RELEASED AMB	11/10/2021	WEIGHT: Weight	SHEET 15 OF 16	



PRODUCT REVISED
as complying with the Florida
Building Code
NOA-No. 21-1201.03
Expiration Date 05/25/2027
By *R. Helmla*
Miami-Dade Product Control

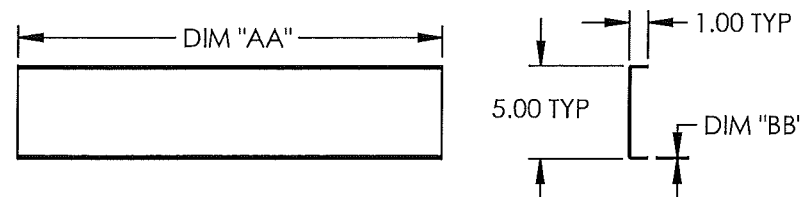
HATCH MATERIAL	DIM "Q"	DIM "R"	DIM "S"
GALVANEAL A653, 33KSI MIN	WIDTH + 4.72	LENGTH + 4.09	.075 (14GA)
ALUMINUM 3003-H14	WIDTH + 4.72	LENGTH + 4.09	0.090

LATCH STIFFENER

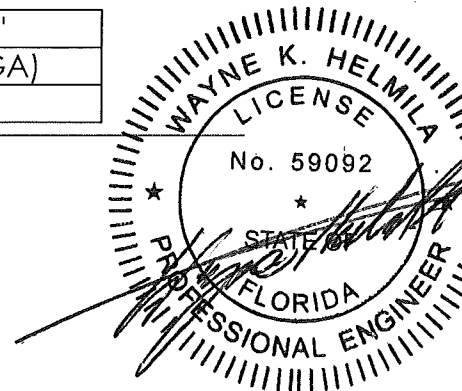


HATCH MATERIAL	DIM "W"	DIM "X"
GALVANEAL A653, 33 KSI MIN	LENGTH - 16.125	.075 (14GA)
ALUMINUM 5052-H32	LENGTH - 16.125	.125

MIDDLE STIFFENER



HATCH MATERIAL	DIM "AA"	DIM "BB"
GALVANEAL A653, 33 KSI MIN	WIDTH - 7.125	.075 (14GA)
ALUMINUM 5052-H32	WIDTH - 7.125	.125



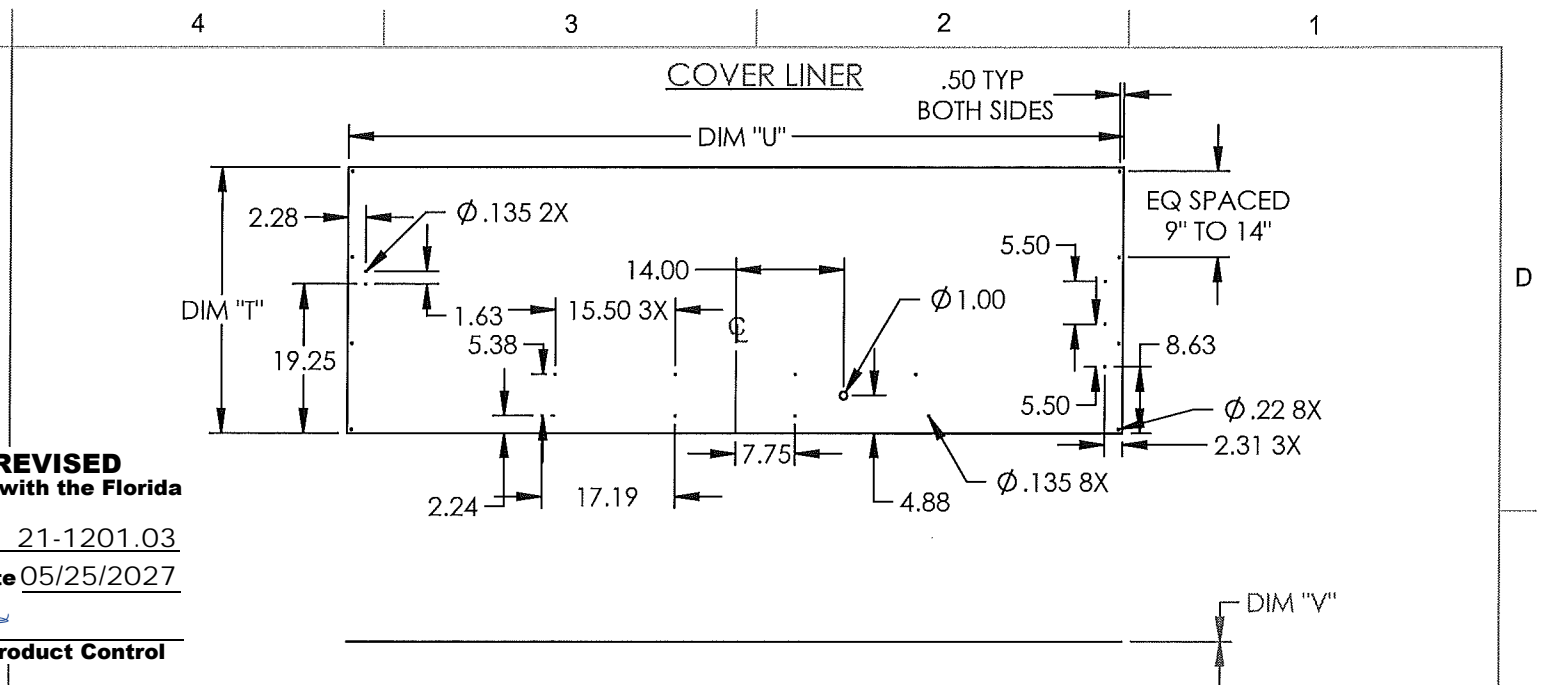
NOV 16 2021

RICE
ENGINEERING

105 School Creek Trail
Luxemburg, WI 54217
Phone: (920) 617-1042
Fax: (920) 617-1100
www.rice-inc.com

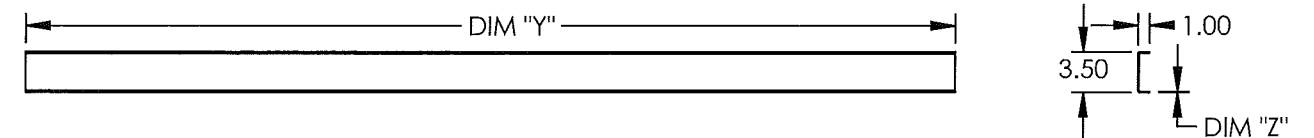
Florida Firm No: F-01000005061
Certificate of Authorization: #9090
Wayne K. Helmla
Registration No: 59092

Building Code: FBC 2020 - Project No: R20-12-226



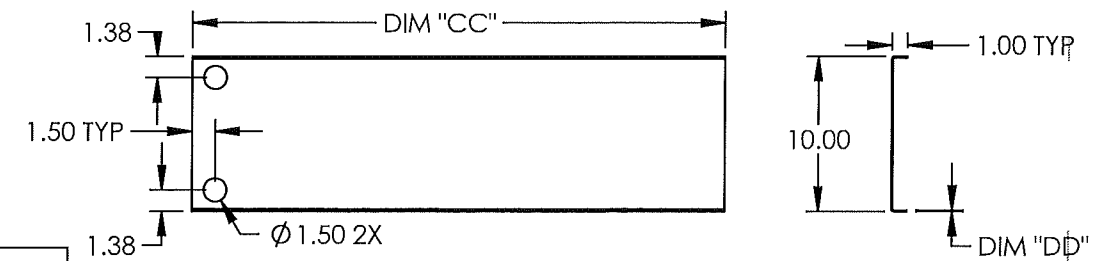
HATCH MATERIAL	DIM "T"	DIM "U"	DIM "V"
GALVANEAL A653, 33KSI MIN	WIDTH + 4.375	LENGTH + 3.875	0.034 (21 GA)
ALUMINUM 3003-H14	WIDTH + 4.375	LENGTH + 3.875	0.040

HINGE STIFFENER



HATCH MATERIAL	DIM "Y"	DIM "Z"
GALVANEAL A653, 33KSI MIN	LENGTH - 16.125	.075 (14GA)
ALUMINUM 5052-H32	LENGTH - 16.125	.125

SIDE STIFFENER



HATCH MATERIAL	DIM "CC"	DIM "DD"
GALVANEAL A653, 33 KSI MIN	WIDTH + 4.375	.075 (14GA)
ALUMINUM 5052-H32	WIDTH + 4.375	.125

Tri-Built

TITLE:
Roof Hatch, Personnel Series,
Single Door, Single Wall Curb
Two Point Latch

NAME	DATE	SIZE	DWG. NO.	REV
DRAWN: AMB	8/17/2021	B	Two Point Latch Door Hatch Assembly	A
RELEASED: AMB	11/10/2021	WEIGHT: Weight		

PROPRIETARY AND CONFIDENTIAL: THE INFORMATION CONTAINED IN THIS DRAWING IS THE SOLE PROPERTY OF NYSTROM. ANY REPRODUCTION IN PART OR AS A WHOLE WITHOUT THE WRITTEN PERMISSION OF NYSTROM IS PROHIBITED.
©2020 NYSTROM, INC.

SHEET 16 OF 16