



DEPARTMENT OF REGULATORY AND ECONOMIC RESOURCES (RER)
BOARD AND CODE ADMINISTRATION DIVISION

NOTICE OF ACCEPTANCE (NOA)

MIAMI-DADE COUNTY
PRODUCT CONTROL SECTION
11805 SW 26 Street, Room 208
Miami, Florida 33175-2474
T (786) 315-2590 F (786) 315-2599
www.miamidade.gov/building

Novum Structures, LLC.
W126 N8585 Westbrook Crossing
Menomonee Falls, WI 53051

SCOPE:

This NOA is being issued under the applicable rules and regulations governing the use of construction materials. The documentation submitted has been reviewed and accepted by Miami-Dade County RER - Product Control Section to be used in Miami Dade County and other areas where allowed by the Authority Having Jurisdiction (AHJ).

This NOA shall not be valid after the expiration date stated below. The Miami-Dade County Product Control Section (In Miami-Dade County) and/ or the AHJ (in areas other than Miami-Dade County) reserve the right to have this product or material tested for quality assurance purposes. If this product or material fails to perform in the accepted manner, the manufacturer will incur the expense of such testing and the AHJ may immediately revoke, modify, or suspend the use of such product or material within their jurisdiction. RER reserves the right to revoke this acceptance if it is determined by Miami-Dade County Product Control Section that this product or material fails to meet the requirements of the applicable building code.

This product is approved as described herein and has been designed to comply with the Florida Building Code, including the High Velocity Hurricane Zone.

DESCRIPTION: Series "HG02 Point Supported Glass (PSG)" Steel Vertical Curtain Wall System – L.M.I.

APPROVAL DOCUMENT: Drawing No. 15-1005V, titled "Novum's Point Supported Glass System HG02 Vertical Wall System", sheets 1 through 17 of 17, dated 10/22/15, 09/28/16 and 04/10/17, with revision #2 dated 10/21/20, prepared by Computerized Structural Design, Inc., signed and sealed by Mahmoud Maamouri, P.E., bearing the Miami-Dade County Product Control Renewal stamp with the Notice of Acceptance number and expiration date by the Miami-Dade County Product Control Section.

MISSILE IMPACT RATING: Large and Small Missile Impact Resistant

LABELING: Each unit shall bear a permanent label with the manufacturer's name or logo, Veitshoechheim, Germany, series, and following statement: "Miami-Dade County Product Control Approved", unless otherwise noted herein.

RENEWAL of this NOA shall be considered after a renewal application has been filed and there has been no change in the applicable building code negatively affecting the performance of this product.

TERMINATION of this NOA will occur after the expiration date or if there has been a revision or change in the materials, use, and/ or manufacture of the product or process. Misuse of this NOA as an endorsement of any product, for sales, advertising or any other purposes shall automatically terminate this NOA. Failure to comply with any section of this NOA shall be cause for termination and removal of NOA.

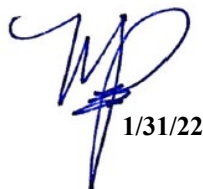
ADVERTISEMENT: The NOA number preceded by the words Miami-Dade County, Florida, and followed by the expiration date may be displayed in advertising literature. If any portion of the NOA is displayed, then it shall be done in its entirety.

INSPECTION: A copy of this entire NOA shall be provided to the user by the manufacturer or its distributors and shall be available for inspection at the job site at the request of the Building Official.

This NOA **renews** NOA No. 20-1116.07 and consists of this page 1 and evidence pages E-1, E-2 and E-3, as well as approval document mentioned above.

The submitted documentation was reviewed by **Manuel Perez, P.E.**




1/31/22

NOA No. 21-1228.09
Expiration Date: June 01, 2027
Approval Date: February 10, 2022
Page 1

NOTICE OF ACCEPTANCE: EVIDENCE SUBMITTED

1. EVIDENCE SUBMITTED UNDER PREVIOUS NOA's

A. DRAWINGS

1. Manufacturer's die drawings and sections.
(Submitted under NOA No. 17-0227.13)
2. Drawing No. **15-1005V**, titled "Novum's Point Supported Glass System: HG02 Vertical Wall System", sheets 1 thru 17 of 17, dated 10/22/15, 09/28/16 and 4/10/17, with revision #2 dated 10/21/20, prepared by Computerized Structural Design, Inc., signed and sealed by Mahmoud Maamouri, P.E.
(Submitted under NOA No. 20-1116.07)

B. TESTS

1. Test reports on: 1) Air Infiltration Test, per FBC, TAS 202-94
2) Uniform Static Air Pressure Test, Loading per FBC, TAS 202-94
3) Water Resistance Test, per FBC, TAS 202-94
4) Large Missile Impact Test per FBC, TAS 201-94
5) Cyclic Wind Pressure Loading per FBC, TAS 203-94
along with marked-up drawings and installation diagram of a point supported system, prepared by Intertek/Architectural Testing, Inc., Test Report No. **ATI-F2797.04-450-18**, dated 12/14/16, signed and sealed by Charles L. Anderson, P.E.
(Submitted under NOA No. 17-0227.13)

C. CALCULATIONS

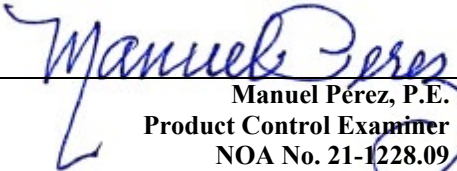
1. Anchor calculations and structural analysis, complying with **FBC 7th Edition (2020)**, dated 10/22/20, prepared by Computerized Structural Design, Inc., signed, sealed by Mahmoud Maamouri, P.E.
(Submitted under NOA No. 20-1116.07)
2. Glazing complies with **ASTM E1300-04**

D. QUALITY ASSURANCE

1. Miami-Dade Department of Regulatory and Economic Resources (RER).

E. MATERIAL CERTIFICATIONS

1. Notice of Acceptance No. **18-0725.11** issued to **Kuraray America, Inc.** for their "**Kuraray SentryGlas[®] Xtra[™] (SGX[™]) Clear Glass Interlayer**" dated 05/23/19, expiring on 05/23/24.


Manuel Pérez, P.E.
Product Control Examiner
NOA No. 21-1228.09
Expiration Date: June 01, 2027
Approval Date: February 10, 2022

Novum Structures, LLC.


NOTICE OF ACCEPTANCE: EVIDENCE SUBMITTED

1. EVIDENCE SUBMITTED UNDER PREVIOUS NOA's (CONTINUED)
F. STATEMENTS

1. Statement letter of conformance, complying with **FBC 7th Edition (2020)**, dated November 3, 2020, issued by Computerized Structural Design, Inc. signed and sealed by Mahmoud Maamouri, P.E.
(Submitted under NOA No. 20-1116.07)
2. Notification of Successor Engineer for manufacturer's NOA document per **Section 61G15-27.001** of the **Florida Administrative Code**, notifying original engineer that the successor engineer is assuming full professional and legal responsibility for all engineering documents pertaining to this NOA, dated November 3, 2020, signed and sealed by Mahmoud Maamouri, P.E.
(Submitted under NOA No. 20-1116.07)
3. Laboratory compliance letter for Test Report No. **ATI-F2797.04-450-18**, dated 01/20/17, issued by Intertek/Architectural Testing, Inc., signed and sealed by Charles L. Anderson, P.E.
(Submitted under NOA No. 17-0227.13)
4. Proposal No. **15-2234** issued to Novum Structures, LLC by the Product Control Section, dated January 11, 2016, signed by Manuel Perez, P.E.
(Submitted under NOA No. 17-0227.13)

G. OTHERS

1. Notice of Acceptance No. **19-0110.11**, issued to Novum Structures, LLC for their Series "HG02 Point Supported Glass (PSG)" Steel Vertical Curtain Wall System – L.M.I., approved on 02/28/19 and expiring on 06/01/22.


Manuel Perez, P.E.
Product Control Examiner
NOA No. 21-1228.09
Expiration Date: June 01, 2027
Approval Date: February 10, 2022

Novum Structures, LLC.

NOTICE OF ACCEPTANCE: EVIDENCE SUBMITTED

2. NEW EVIDENCE SUBMITTED

A. DRAWINGS

1. None.

B. TESTS

1. None

C. CALCULATIONS

1. None.

D. QUALITY ASSURANCE

1. Miami-Dade Department of Regulatory and Economic Resources (RER)

E. MATERIAL CERTIFICATIONS


1. Notice of Acceptance No. **18-0725.11** issued to **Kuraray America, Inc.** for their “**Kuraray SentryGlas® Xtra™ (SGX™) Clear Glass Interlayer**” dated 05/23/19, expiring on 05/23/24.

F. STATEMENTS

1. None.

G. OTHERS

1. Notice of Acceptance No. **20-1116.07**, issued to Novum Structures, LLC for their Series “HG02 Point Supported Glass (PSG)” Steel Vertical Curtain Wall System – L.M.I., approved on 03/11/21 and expiring on 06/01/22.


Manuel Pérez, P.E.
Product Control Examiner
NOA No. 21-1228.09
Expiration Date: June 01, 2027
Approval Date: February 10, 2022

NOVUM'S POINT SUPPORTED GLASS SYSTEM: HG02 VERTICAL WALL SYSTEM

SYSTEM DESCRIPTION

The Novum PSG Vertical Wall System, HG02, (HG = Hurricane Glass) that was tested for Miami-Dade NOA consists simply of insulating glass, rotules, and silicone joints. A perimeter channel is also a tested part of the system. In some instances the channel is required for both support and weather seal. In other cases it acts only as a weather seal.

The glass is fully tempered, laminated, and insulated with an air space of 0.71" (18mm) in between the inner and outer laminated lites of the unit. The (2) outer pieces of glass are 0.25" (6mm) thick. The laminate is 0.090" (2.28mm) thick Kurary Sentry Glass. The (2) inner pieces of glass are 0.375" (10mm) thick. Therefore the overall thickness is 2.15" (54.5mm). Refer to page 2 of 17 for description of glass edge seals.

The RB62-16 rotules are stainless steel fixtures that consist of a rotating head and 16mm diameter threaded rod that allow it to be mounted through a hole in the glass and, in turn, fastened to a support structure using the threaded rod. The silicone joints consist of an extruded silicone profile pushed into the 1.0" (25 mm) wide space between adjoining glass panels, and acts as a backer. This profile fills about 60% of the depth of the joint. The outer 40% of the space is filled with Dow Corning 795 silicone sealant which produces the weather tight seal.

The steel glazing arms and support HSS framework used in the test is not part of the "system". On future projects using HG02, the glazing arms and steel support framework is not governed by this NOA except as follows:

Minimum thickness of support system to be 3/16" minimum and other dimensions to be determined via appropriate stress checks according to AISC Steel Construction Manual and/or other applicable codes, designed by a licensed professional and submitted for review and inspection by the Authority Having Jurisdiction (AHJ).

Deflection of support framing not to exceed L/180.

This NOA system pertains to the glass, rotule, glazing channel & sealant joints only.



INDEX OF DRAWINGS

SHEET NO.	DESCRIPTION
1 OF 17	COVER SHEET
2 OF 17	DESIGN PARAMETERS & LIMITS OF USE
3 OF 17	TYPE "A" PANEL ELEVATION
4 OF 17	TYPE "A" PANEL PLAN
5 OF 17	TYPE "B" & "C" PANELS PLAN & ELEVATION
6 OF 17	PERIMETER GASKET & ROTULE DETAIL
7 OF 17	INTERIOR GASKET & ROTULE DETAIL
8 OF 17	PERIMETER GLAZING CHANNEL DETAIL
9 OF 17	PERIMETER GLAZING CHANNEL WITH DEAD LOAD SETTING BLOCK
10 OF 17	PERIMETER GASKET DETAIL
11 OF 17	GLAZING CHANNEL SPLICE DETAILS
12 OF 17	FABRICATION DRAWING: SILICONE GASKET
13 OF 17	FABRICATION DRAWING: ARROW SHIM
14 OF 17	FABRICATION DRAWING: GLAZING CHANNEL & SETTING CHAIR
15 OF 17	FABRICATION DRAWING: ROTULE ASSEMBLY
16 OF 17	FABRICATION DRAWING: ROTULE COMPONENTS
17 OF 17	FABRICATION DRAWING: ROTULE COMPONENTS

DESIGN PARAMETERS

FLORIDA BUILDING CODE 2020/2

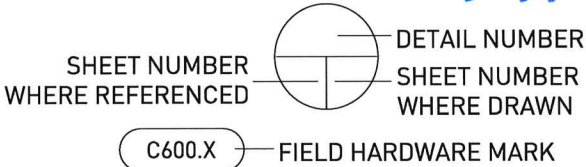
TEST REPORT: F2797.04-450-18, ISSUED BY INTERTEK/ARCHITECTURAL TESTING, INC.

Design Pressure Rating	Impact Rating
+133 PSF, -133 PSF	Large and Small Missile Impact

TAS-201 - IMPACT TEST PROCEDURES
TAS-202 - AIR LEAKAGE, WATER PENETRATION & STRUCTURAL PERFORMANCE TEST PROCEDURES
TAS-203 - CYCLING TEST PROCEDURES

ASTM STANDARDS
E283 - AIR INFILTRATION TEST PROCEDURE
E330 - STRUCTURAL PERFORMANCE TEST PROCEDURES
E331 - WATER PENETRATION; STATIC & DYNAMIC, TEST PROCEDURES
E1886 - MISSILE IMPACT & CYCLIC PRESSURE TESTING - LEVEL A & LEVEL D, TEST PROCEDURE
E1996 - HURRICANE DEBRIS IMPACT TESTING PROCEDURES

SYMBOLS



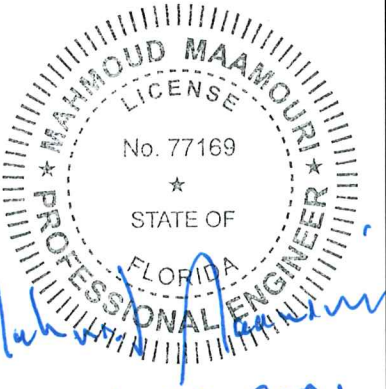
ABBREVIATIONS

NS = NEAR SIDE
FS = FAR SIDE
MK. = MARK NUMBER
TYP. = TYPICAL
SIM. = SIMILAR
OPP. = OPPOSITE HAND
SYM. = SYMETRICAL
U.N.O. = UNLESS NOTED OTHERWISE
C.L. = CENTER LINE
RHS = RIGHT HAND SIDE
LHS = LEFT HAND SIDE

PRODUCT RENEWED
as complying with the Florida Building Code
NOA-No. **21-1228.09**
Expiration Date: **06/01/2027**
By: *Manuel Perez*
Miami-Dade Product Control

PRODUCT REVISED
as complying with the Florida Building Code
NOA-No. **20-1116.07**
Expiration Date: **06/01/2022**
By: *Manuel Perez*
Miami-Dade Product Control

COMPUTERIZED STRUCTURAL
DESIGN, INC.
8989 North Port Washington Road
Milwaukee, WI 53217
(414) 351-5588
EB-0001982
MAHMOUD MAAMOURI
PE # 77169



2	21OCT20	ZJM	SWK
UPDATED TO 2020 FBC			
1	13DEC18	SWK	SWK
UPDATED FOR 2017 FBC			
REV. NO.	DATE	DWG. BY	CHK. BY

Novum Structures LLC
W126 N8585 Westbrook Crossing
Menomonee Falls, WI 53051 USA
T 262.255.5561
www.novumstructures.com
info@novumstructures.com

NOVUM

PROJECT:
NOVUM'S PSG GLASS
SYSTEM: HG02
VERTICAL WALL

DRAWING DESCRIPTION:
COVER SHEET

DRAWN BY:	FAR	DATE:	22OCT15
CHECKED BY:	BJJ	APPROVED BY:	BJJ
SCALE:	N.T.S.	PROJECT MANAGER:	LA

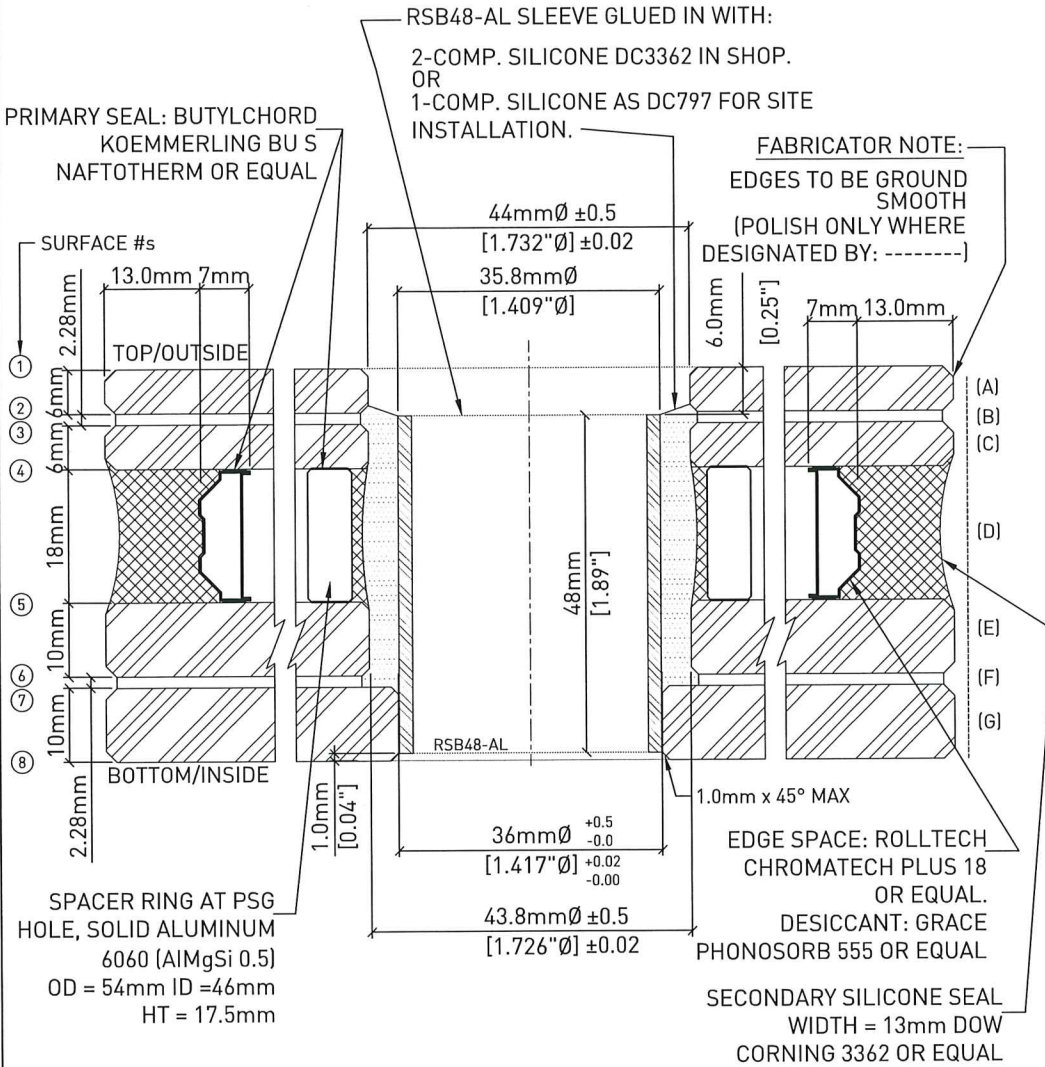
PROJECT NUMBER:
15-1005V

SHEET NUMBER:
1 OF 17

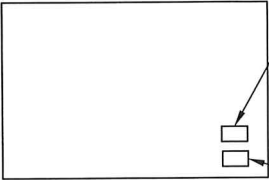
GLASS MAKE-UP:

2.15" (54.5mm) INSULATING GLASS CONSISTING OF:

- 1/4" (6mm) FULLY TEMPERED CLEAR
- 0.090" (2.28mm) 1-PLY SGP CLEAR Kuraray SentryGlas® Interlayer
- 1/4" (6mm) FULLY TEMPERED CLEAR
- 0.71" (18mm) AIR SPACE
- 3/8" (10mm) FULLY TEMPERED CLEAR
- 0.090" (2.28mm) 1-PLY SGP CLEAR Kuraray SentryGlas® Interlayer
- 3/8" (10mm) FULLY TEMPERED CLEAR

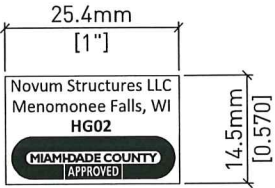


GLASS LABELING:



PLACEMENT OF
NOVUM NOA LABEL JUST
ABOVE TEMPERING NOTE
(SEE ABOVE FOR ACTUAL
NOTE, TEXT, AND DIMENSION)

PLACEMENT OF
TEMPERING NOTE
TO BE IN LOWER
RIGHT-HAND CORNER
OF PANEL (TYPICAL)

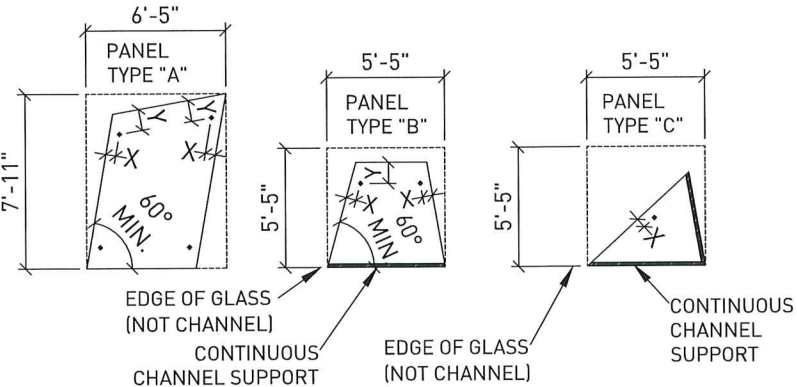


SEALANTS:
DOW CORNING #795 SILICONE FOR ALL JOINTS
DOW CORNING #799 CLEAR SILICONE FOR SEALING THE ROTULE TO THE GLASS

Limitations For Use

- 1) Maximum imposed design load of 133 psf when system is used as a vertical wall (<15° from vertical). This is based on a factor of safety of 1.5 against breakage at 200 psf. Dead load of glass is not considered part of an imposed load (i.e.; glass can allowably handle 133 psf normal to its surface plus the weight of the glass).
 - 2) Glass sizes for test
-
- PANEL TYPE "A": 6'-5" x 7'-11", 4-rotule support, continuous channel support.
- PANEL TYPE "B": 5'-5" x 5'-5", 2-rotules and linear support, continuous channel support.
- PANEL TYPE "C": 5'-5" x 4'-11.5", 1-rotule and linear support, continuous channel support.
- 3) Maximum rectangular panel side length as defined in diagrams below:
 - a) Panel type "A" is a panel with 4-rotule support: 6'-5" maximum width x 7'-11" maximum length
 - b) Panel type "B" is a panel with 2-rotules and linear support along 1 glass edge: 5'-5" maximum width x 5'-5" maximum length
 - c) Panel type "C" is a panel with 1-rotule and linear support along 2 glass edges: 5'-5" maximum width x 5'-5" maximum length
 - 4) Maximum span between supports (i.e., distance between adjacent rotule centers or between rotule center and channel supported glass edge).
 - a) For Panel type "A", the maximum span: is 5'-6" in short direction, and 6'-0" in long direction.
 - b) For Panel type "B", the maximum span: is 4'-5.5" in short direction, and 4'-6" in long direction
 - c) For Panel type "C", the maximum span: is 4'-5.5" in short direction, and 4'-11.5" in long direction
 - 5) The maximum distance from center of rotule to edge of glass measured perpendicular to the glass edge, is as follows:
At the closest glass edge, the maximum distance (X) can be, is 5.5". At the second closest glass edge, the distance (Y) can be is 11.5".

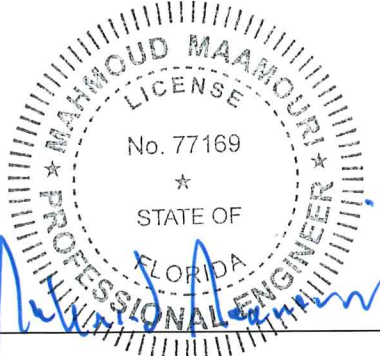
6) All polygonal shapes (including triangles, squares rhombuse trapezoids, and parallelograms) meeting the above limitations and having an overall size that fits entirely within the foot print of the rectangular test panel dimensions, are acceptable. All interior angles of non-triangular polygons must must be 60° or greater. Triangles have no angular limitations. Below are examples of panel geometric possibilities. Many other possibilities are not shown.



- 7) Large missile testing was done and therefore the system may be used for enclosures and there is no restriction as to what elevation from the ground.
- 8) The Novum Hurricane PSG system that pertaining to this NOA consists simply of the insulating glass, rotules, and silicone joints. A perimeter channel is also a tested part of the system. The steel support arms and any support framework is not part of the "system". On future projects using HG02, the support arms and steel support framework will be designed using conventional analysis methods and appropriate material design and building codes. It will not be subject to NOA testing or approval.
- 9) Support framing must not deflect more than L/180 per FBC section 1616.3.1 (6).
- 10) This system can only be used for Risk Category I, II and III plus Category IV above 30'-0". It cannot be used for Risk Category IV below 30'-0".

PRODUCT RENEWED
as complying with the Florida
Building Code
NOA-No. **21-1228.09**
Expiration Date: **06/01/2027**
By: *Manuel Perez*
Miami-Dade Product Control

PRODUCT REVISED
as complying with the Florida
Building Code
NOA-No. **20-1116.07**
Expiration Date: **06/01/2022**
By: *Manuel Perez*
Miami-Dade Product Control



COMPUTERIZED STRUCTURAL
DESIGN, INC.
8989 North Port Washington Road
Milwaukee, WI 53217
(414) 351-5588
EB-0001982
MAHMOUD MAAMOURI
PE # 77169

19FEB21 JTG SWK
UPDATED LIMIT 10
21OCT20 ZJM SWK
ADDED REFERENCE TO 1616.3.1 (6)
ADDED NOTE #10
REV. NO. DATE DWG. BY CHK. BY
Novum Structures LLC
W126 N8585 Westbrook Crossing
Menomonee Falls, WI 53051 USA
T 262.255.5561
www.novumstructures.com
info@novumstructures.com

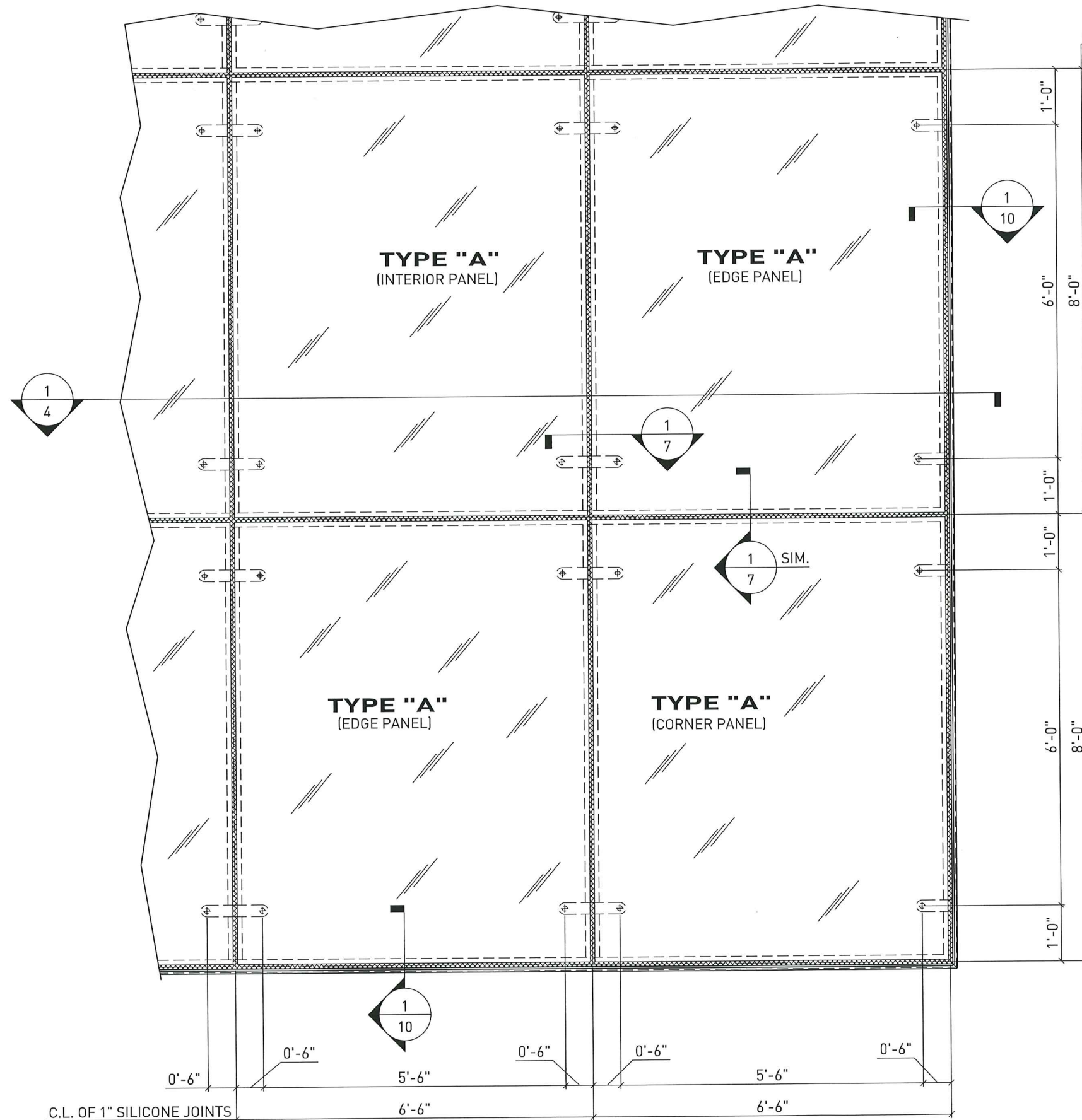
NOVUM

PROJECT
NOVUM'S PSG GLASS
SYSTEM: HG02
VERTICAL WALL

DRAWING DESCRIPTION:
DESIGN PARAMETERS
& LIMITS OF USE

DRAWN BY: FAR DATE: 22OCT15
CHECKED BY: BJJ APPROVED BY: BJJ
SCALE: N.T.S. PROJECT MANAGER: LA
PROJECT NUMBER:
15-1005V

SHEET NUMBER:
2 OF 17



TYPE "A" PANELS ARE ALWAYS SUPPORTED BY (4) ROTULES.
TYPE "A" PANELS MAY BE INTERIOR, EDGE, OR CORNER PANELS AS SHOWN HERE.

FRONT ELEVATION
TYPE "A" PANELS
(MAX. PANEL SIZE SHOWN)



PRODUCT RENEWED
as complying with the Florida Building Code
NOA-No. 21-1228.09
Expiration Date: 06/01/2027
By: *Manuel Perez*
Miami-Dade Product Control

PRODUCT REVISED
as complying with the Florida Building Code
NOA-No. 20-1116.07
Expiration Date: 06/01/2022
By: *Manuel Perez*
Miami-Dade Product Control

COMPUTERIZED STRUCTURAL DESIGN, INC.
8989 North Port Washington Road
Milwaukee, WI 53217
(414) 351-5588
EB-0001982
MAHMOUD MAAMOURI
P.E. # 77169

REV. NO.	DATE	DWG. BY	CHK. BY

Novum Structures LLC
W126 N8585 Westbrook Crossing
Menomonee Falls, WI 53051 USA
T 262.255.5561
www.novumstructures.com
info@novumstructures.com

NOVUM

PROJECT:
NOVUM'S PSG GLASS
SYSTEM: HG02
VERTICAL WALL

DRAWING DESCRIPTION:
TYPE "A" PANEL
ELEVATION

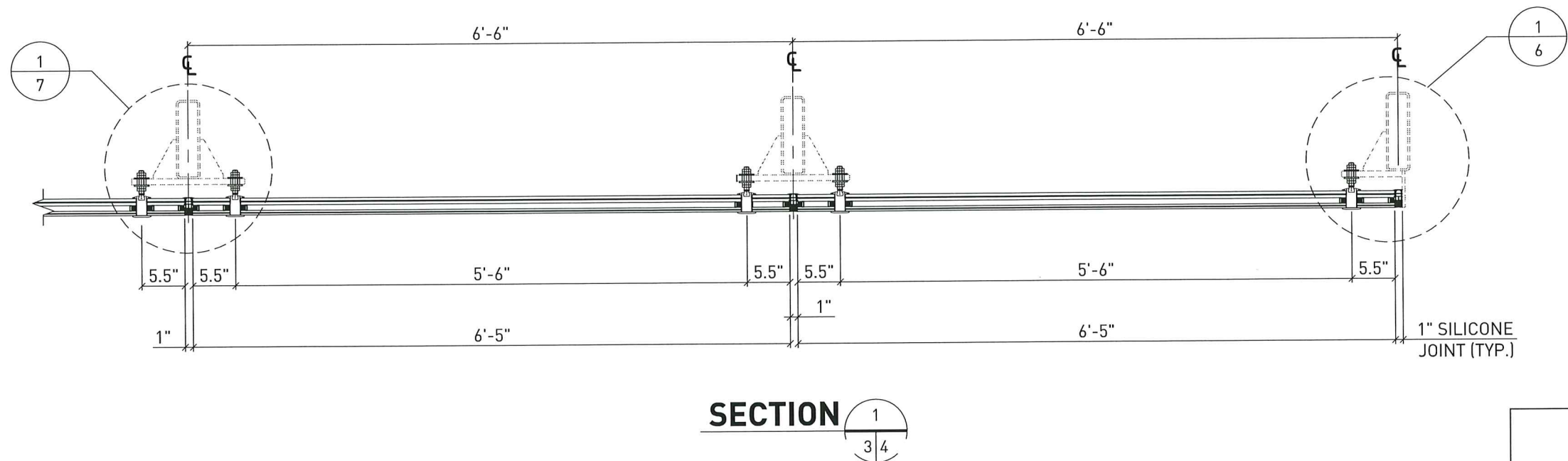
DRAWN BY:	DATE:
FAR	22OCT15

CHECKED BY:	APPROVED BY:
US	US

SCALE:	PROJECT MANAGER:
1"=12"	TK

PROJECT NUMBER:
15-1005V

SHEET NUMBER:
3 OF 17



SECTION 1/3 4

MAHMOUD MAAMOURI
LICENSE
No. 77169
STATE OF
FLORIDA
PROFESSIONAL ENGINEER
2-22-2021

PRODUCT RENEWED
as complying with the Florida
Building Code
NOA-No. **21-1228.09**
Expiration Date: **06/01/2027**
By: *Manuel Perez*
Miami-Dade Product Control

PRODUCT REVISED
as complying with the Florida
Building Code
NOA-No. **20-1116.07**
Expiration Date: **06/01/2022**
By: *Manuel Perez*
Miami-Dade Product Control

COMPUTERIZED STRUCTURAL
DESIGN, INC.
8989 North Port Washington Road
Milwaukee, WI 53217
(414) 351-5588
EB-0001982
MAHMOUD MAAMOURI
P.E. # 77169

REVISION COMMENTS			
REV. NO.	DATE	DWG. BY	CHK. BY

Novum Structures LLC
W126 N8585 Westbrook Crossing
Menomonee Falls, WI 53051 USA
T 262.255.5561
www.novumstructures.com
info@novumstructures.com

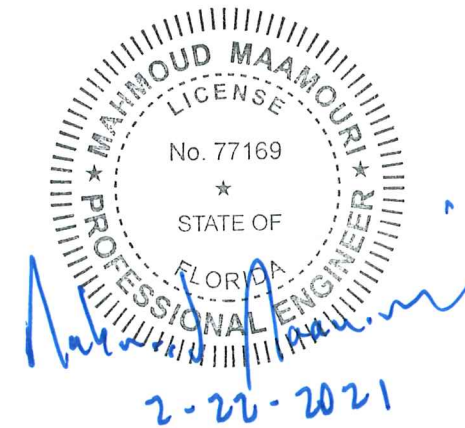
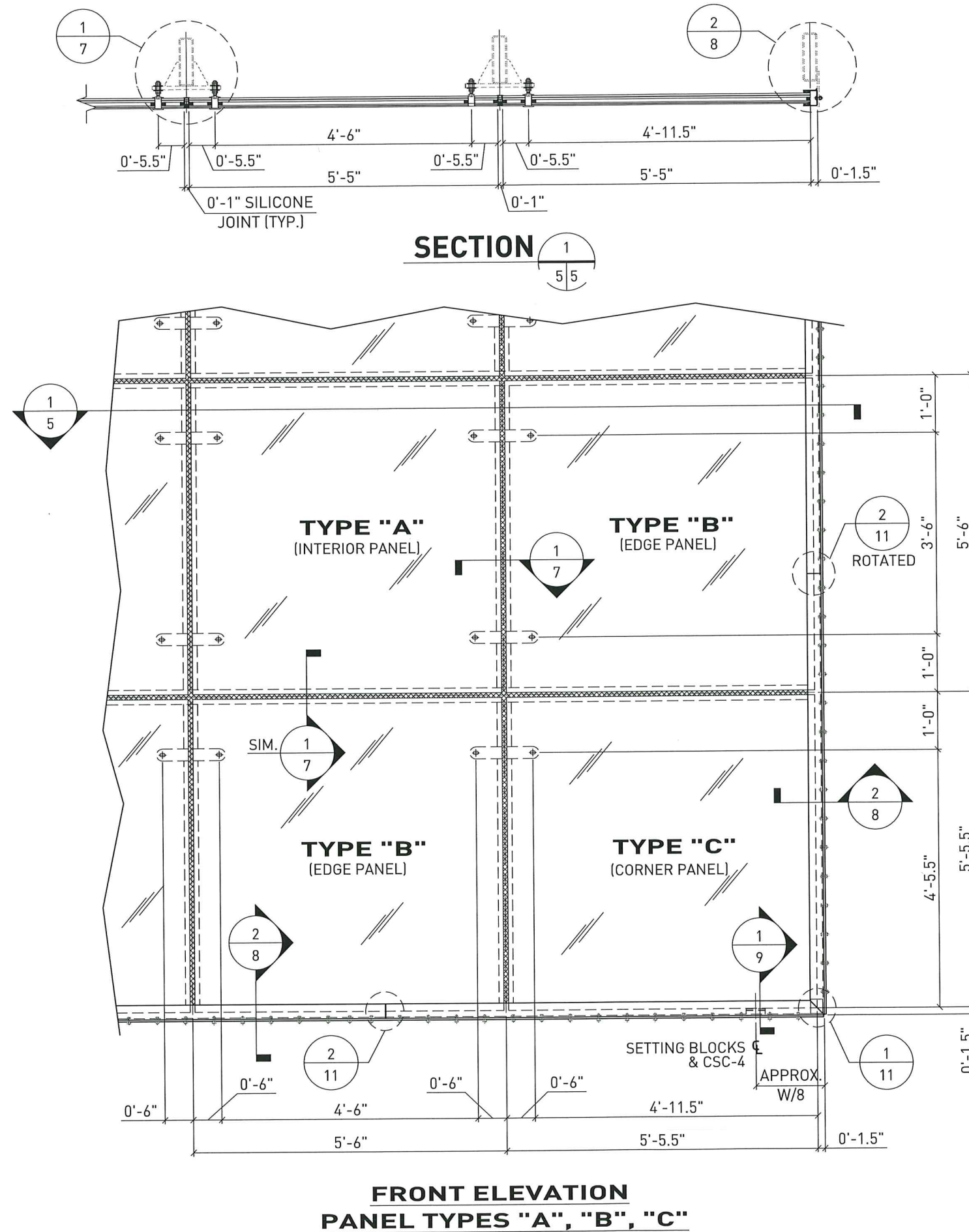
NOVUM

PROJECT:
NOVUM'S PSG GLASS
SYSTEM: HG02
VERTICAL WALL

DRAWING DESCRIPTION:
TYPE "A" PANEL PLAN

DRAWN BY:	FAR	DATE:	22OCT15
CHECKED BY:	US	APPROVED BY:	US
SCALE:	1 1/2 = 12	PROJECT MANAGER:	TK
PROJECT NUMBER:	15-1005V		

SHEET NUMBER:
4 OF 17



TYPE "B" PANELS ARE ALWAYS SUPPORTED BY (2) ROTULES AND A GLAZING CHANNEL AT THE OPPOSITE EDGE. THEREFORE TYPE "B" PANELS ARE ALWAYS EDGE PANELS.

TYPE "C" PANELS ARE ALWAYS SUPPORTED BY (1) ROTULE AND (2) GLAZING CHANNELS ALONG THE (2) OPPOSITE GLASS EDGES. THEREFORE TYPE "C" PANELS ARE ALWAYS CORNER PANELS.

MAXIMUM PANEL SIZES ARE SHOWN HERE FOR TYPES "B" & "C".

PRODUCT RENEWED
as complying with the Florida Building Code
NOA-No. 21-1228.09
Expiration Date: 06/01/2027
By: *Manuel Perez*
Miami-Dade Product Control

PRODUCT REVISED
as complying with the Florida Building Code
NOA-No. 20-1116.07
Expiration Date: 06/01/2022
By: *Manuel Perez*
Miami-Dade Product Control

COMPUTERIZED STRUCTURAL DESIGN, INC.
8989 North Port Washington Road
Milwaukee, WI 53217
(414) 351-5588
EB-0001982
MAHMOUD MAAMOURI
P.E. # 77169

REVISION COMMENTS

REV. NO.	DATE	DWG. BY	CHK. BY

Novum Structures LLC
W126 N8585 Westbrook Crossing
Menomonee Falls, WI 53051 USA
T 262.255.5561
www.novumstructures.com
info@novumstructures.com

NOVUM

PROJECT:
NOVUM'S PSG GLASS
SYSTEM: HG02
VERTICAL WALL

DRAWING DESCRIPTION:
TYPE "B" & "C" PANELS
PLAN & ELEVATION

DRAWN BY: FAR	DATE: 28SEP16
CHECKED BY: US	APPROVED BY: US
SCALE: 1"=12"	PROJECT MANAGER: TK
PROJECT NUMBER: 15-1005V	
SHEET NUMBER: 5 OF 17	

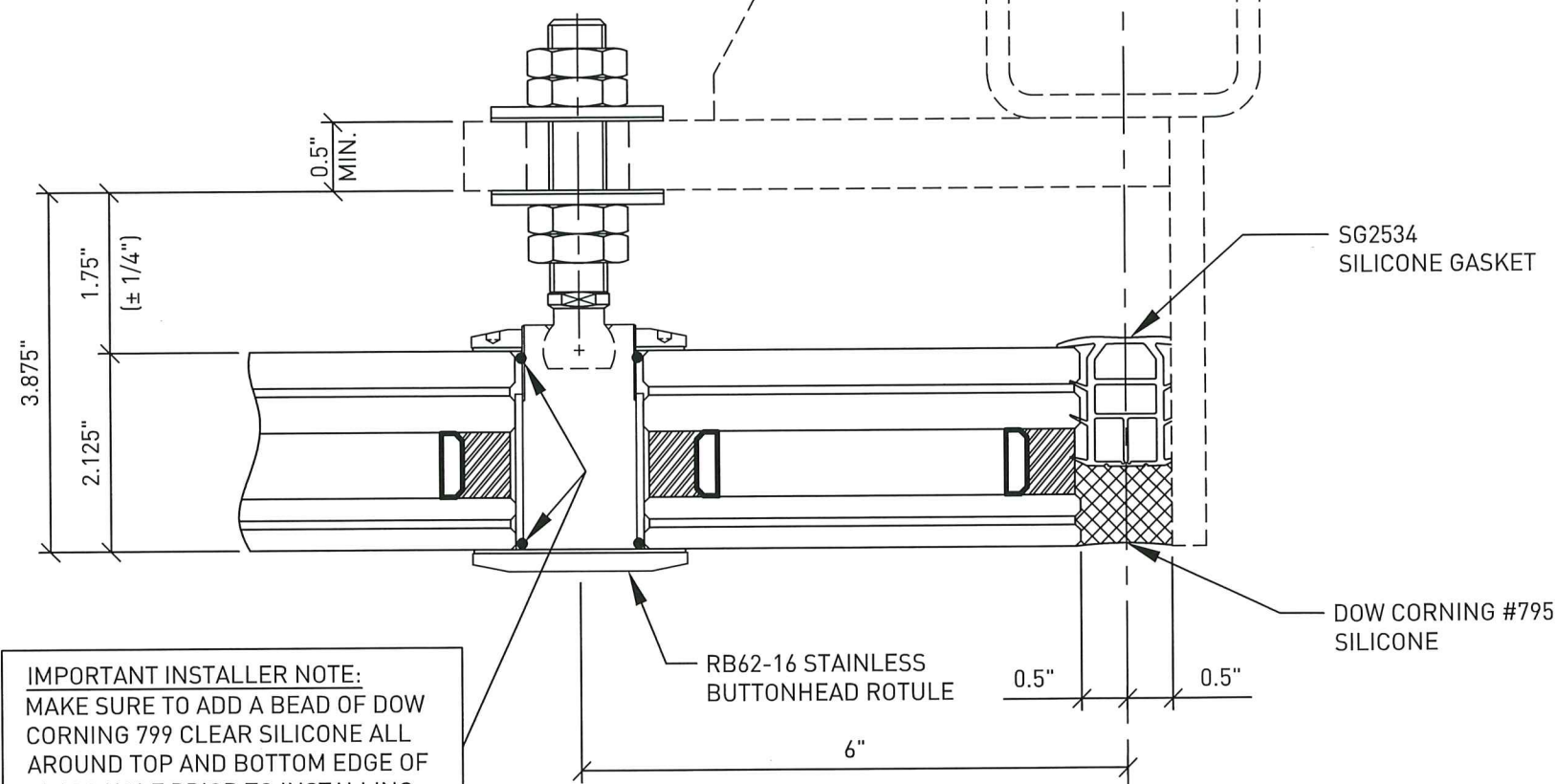
COMPUTERIZED STRUCTURAL
DESIGN, INC.
8989 North Port Washington Road
Milwaukee, WI 53217
(414) 351-5588
EB-0001982
MAHMOUD MAAMOURI
PE # 77169

The support system (dashed lines) is not governed by this NOA except as follows:

Minimum thickness of support system to be 3/16" minimum and other dimensions to be determined via appropriate stress checks according to AISC Steel Construction Manual and/or other applicable codes, designed by a licensed professional and submitted for review and inspection by the Authority Having Jurisdiction (AHJ).

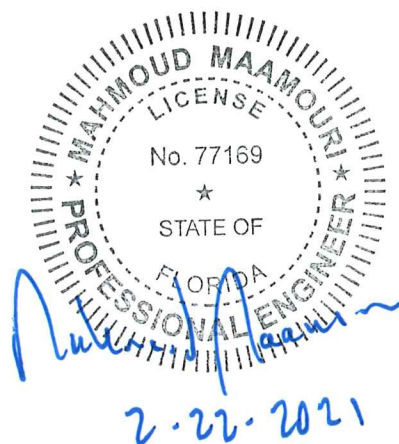
Deflection of support framing not to exceed L/180.

This NOA system pertains to the glass, rotule, glazing channel & sealant joints only. (solid lines)



IMPORTANT INSTALLER NOTE:
MAKE SURE TO ADD A BEAD OF DOW CORNING 799 CLEAR SILICONE ALL AROUND TOP AND BOTTOM EDGE OF GLASS HOLE PRIOR TO INSTALLING THE BUTTONHEAD ROTULE FOR WEATHER SEAL.

SECTION 1
4 6



PRODUCT RENEWED
as complying with the Florida
Building Code
NOA-No. **21-1228.09**
Expiration Date: **06/01/2027**
By: *Manuel Perez*
Miami-Dade Product Control

PRODUCT REVISED
as complying with the Florida
Building Code
NOA-No. **20-1116.07**
Expiration Date: **06/01/2022**
By: *Manuel Perez*
Miami-Dade Product Control

REVISION COMMENTS			
REV. NO.	DATE	DWG. BY	CHK. BY

Novum Structures LLC
W126 N8585 Westbrook Crossing
Menomonee Falls, WI 53051 USA
T 262.255.5561
www.novumstructures.com
info@novumstructures.com

NOVUM

PROJECT:
NOVUM'S PSG GLASS
SYSTEM: HG02
VERTICAL WALL

DRAWING DESCRIPTION:
PERIMETER GASKET
AND ROTULE DETAIL

DRAWN BY:	DTC	DATE:	10APR17
CHECKED BY:	SWK	APPROVED BY:	SWK
SCALE:	6 = 12	PROJECT MANAGER:	TK
PROJECT NUMBER:	15-1005V		

SHEET NUMBER:
6 OF 17

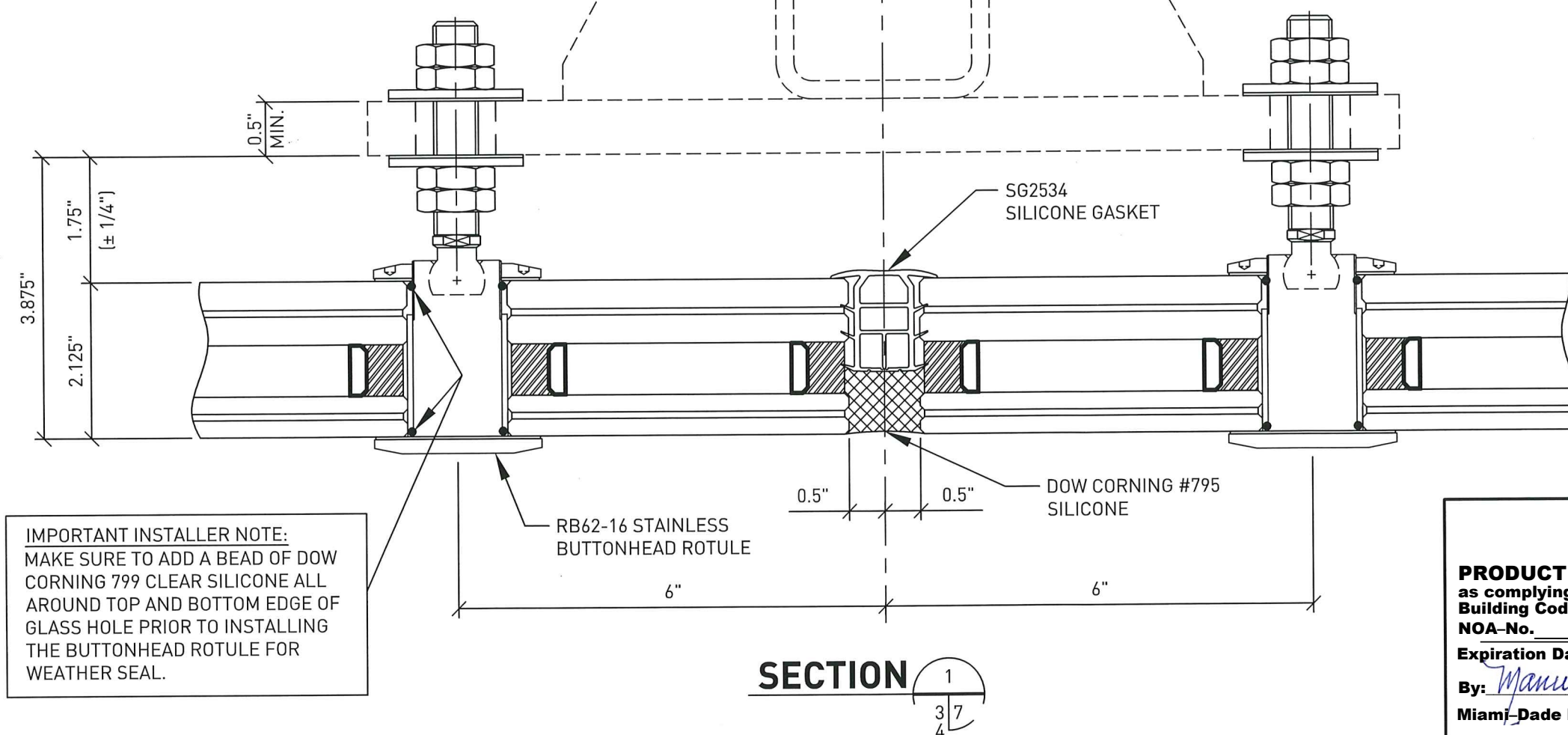
COMPUTERIZED STRUCTURAL
DESIGN, INC.
8989 North Port Washington Road
Milwaukee, WI 53217
(414) 351-5588
EB-0001982
MAHMOUD MAAMOURI
P.E. # 77169

The support system (dashed lines) is not governed by this NOA except as follows:

Minimum thickness of support system to be 3/16" minimum and other dimensions to be determined via appropriate stress checks according to AISC Steel Construction Manual and/or other applicable codes, designed by a licensed professional and submitted for review and inspection by the Authority Having Jurisdiction (AHJ).

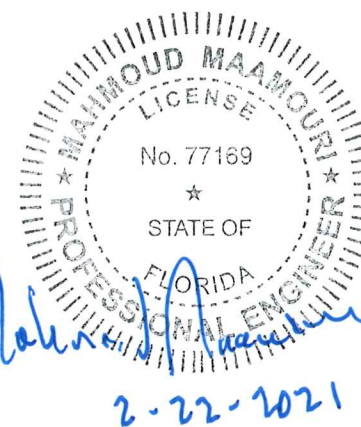
Deflection of support framing not to exceed L/180.

This NOA system pertains to the glass, rotule, glazing channel & sealant joints only. (solid lines)



IMPORTANT INSTALLER NOTE:
MAKE SURE TO ADD A BEAD OF DOW CORNING 799 CLEAR SILICONE ALL AROUND TOP AND BOTTOM EDGE OF GLASS HOLE PRIOR TO INSTALLING THE BUTTONHEAD ROTULE FOR WEATHER SEAL.

SECTION 1
3/4



PRODUCT RENEWED
as complying with the Florida
Building Code
NOA-No. **21-1228.09**
Expiration Date: **06/01/2027**
By: *Manuel Perez*
Miami-Dade Product Control

PRODUCT REVISED
as complying with the Florida
Building Code
NOA-No. **20-1116.07**
Expiration Date: **06/01/2022**
By: *Manuel Perez*
Miami-Dade Product Control

REVISION COMMENTS			
REV. NO.	DATE	DWG. BY	CHK. BY

Novum Structures LLC
W126 N8585 Westbrook Crossing
Menomonee Falls, WI 53051 USA
T 262.255.5561
www.novumstructures.com
info@novumstructures.com

NOVUM

PROJECT:
NOVUM'S PSG GLASS
SYSTEM: HG02
VERTICAL WALL

DRAWING DESCRIPTION:
INTERIOR GASKET AND
ROTULE DETAIL

DRAWN BY:	DTC	DATE:	10APR17
CHECKED BY:	SWK	APPROVED BY:	SWK
SCALE:	6 = 12	PROJECT MANAGER:	TK

PROJECT NUMBER:
15-1005V

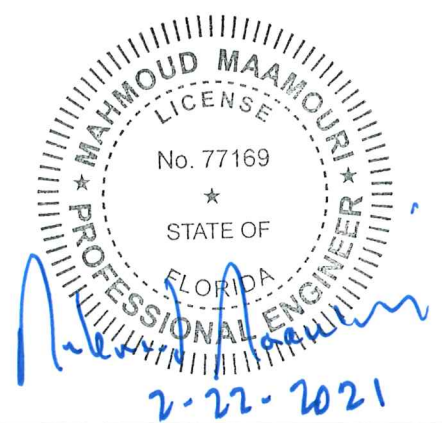
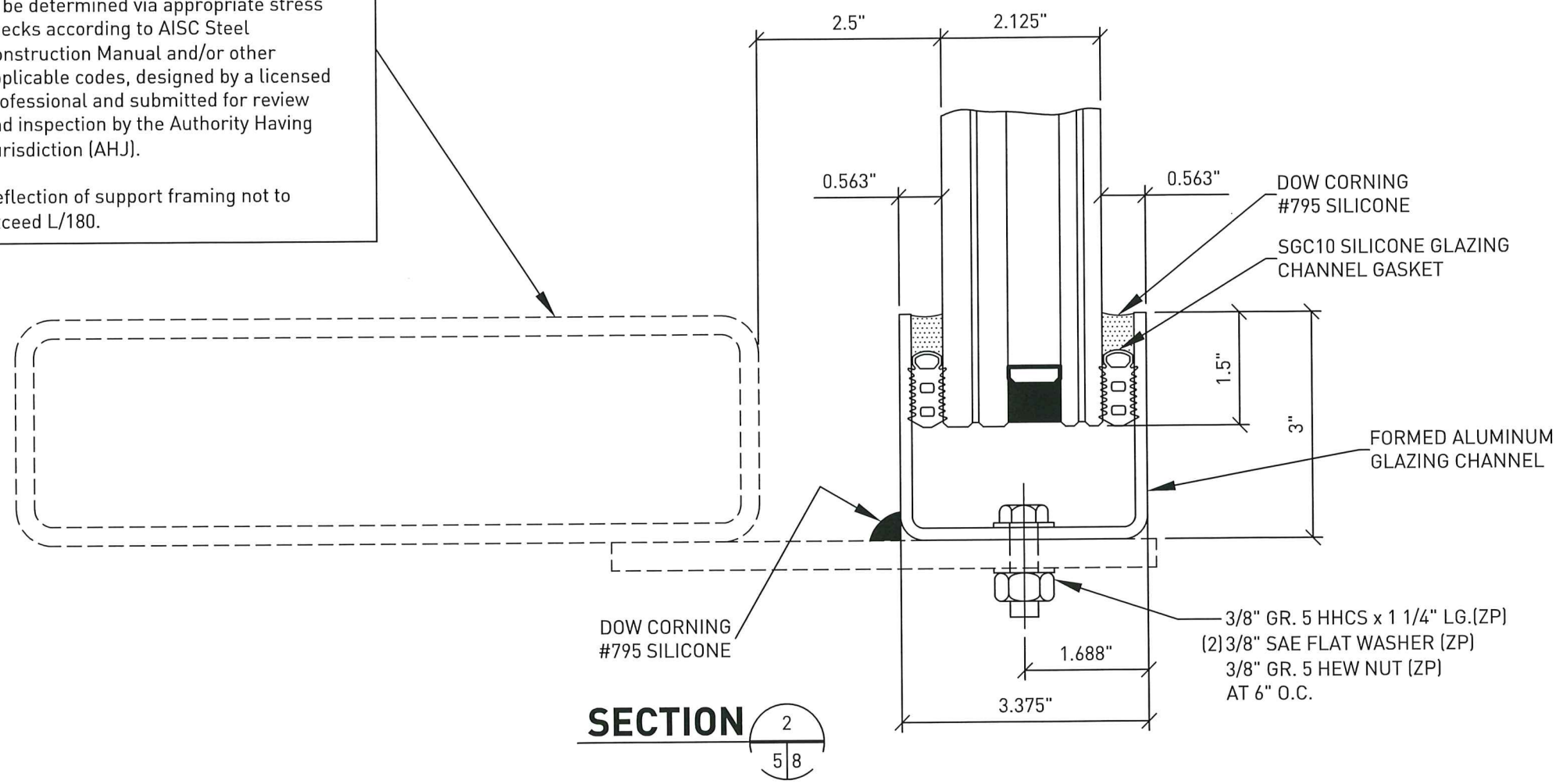
SHEET NUMBER:
7 OF 17

This NOA system pertains to the glass, rotule, glazing channel & sealant joints only. (solid lines)

The support system (dashed lines) is not governed by this NOA except as follows:

Minimum thickness of support system to be 3/16" minimum and other dimensions to be determined via appropriate stress checks according to AISC Steel Construction Manual and/or other applicable codes, designed by a licensed professional and submitted for review and inspection by the Authority Having Jurisdiction (AHJ).

Deflection of support framing not to exceed L/180.



PRODUCT RENEWED
as complying with the Florida Building Code
NOA-No. **21-1228.09**
Expiration Date: **06/01/2027**
By: *Manuel Perez*
Miami-Dade Product Control

PRODUCT REVISED
as complying with the Florida Building Code
NOA-No. **20-1116.07**
Expiration Date: **06/01/2022**
By: *Manuel Perez*
Miami-Dade Product Control

COMPUTERIZED STRUCTURAL DESIGN, INC.
8989 North Port Washington Road
Milwaukee, WI 53217
(414) 351-5588
EB-0001982
MAHMOUD MAAMOURI
PE # 77169

REVISION COMMENTS			
REV. NO.	DATE	DWG. BY	CHK. BY

Novum Structures LLC
W126 N8585 Westbrook Crossing
Menomonee Falls, WI 53051 USA
T 262.255.5561
www.novumstructures.com
info@novumstructures.com

NOVUM

PROJECT:
NOVUM'S PSG GLASS
SYSTEM: HG02
VERTICAL WALL

DRAWING DESCRIPTION:
PERIMETER GLAZING CHANNEL DETAIL

DRAWN BY:	DATE:
DTC	10APR17

CHECKED BY:	APPROVED BY:
SWK	SWK

SCALE:	PROJECT MANAGER:
6 = 12	TK

PROJECT NUMBER:
15-1005V

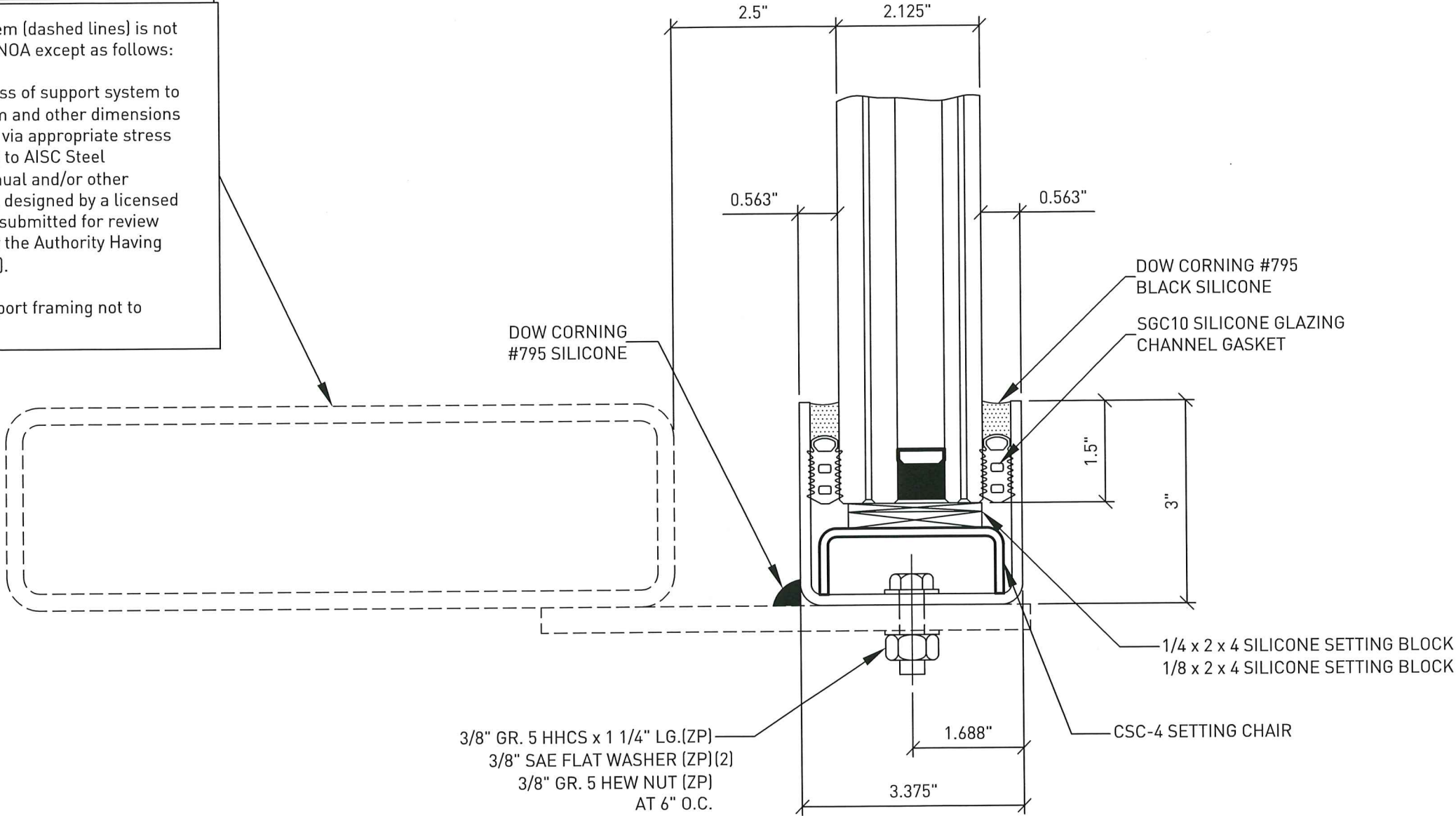
SHEET NUMBER:
8 OF 17

This NOA system pertains to the glass, rotule, glazing channel & sealant joints only. (solid lines)

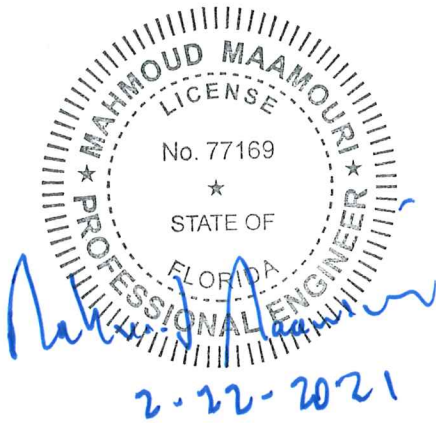
The support system (dashed lines) is not governed by this NOA except as follows:

Minimum thickness of support system to be 3/16" minimum and other dimensions to be determined via appropriate stress checks according to AISC Steel Construction Manual and/or other applicable codes, designed by a licensed professional and submitted for review and inspection by the Authority Having Jurisdiction (AHJ).

Deflection of support framing not to exceed L/180.



SECTION 1
59



PRODUCT RENEWED
as complying with the Florida
Building Code
NOA-No. **21-1228.09**
Expiration Date: **06/01/2027**
By: *Manuel Perez*
Miami-Dade Product Control

PRODUCT REVISED
as complying with the Florida
Building Code
NOA-No. **20-1116.07**
Expiration Date: **06/01/2022**
By: *Manuel Perez*
Miami-Dade Product Control

COMPUTERIZED STRUCTURAL
DESIGN, INC.
8989 North Port Washington Road
Milwaukee, WI 53217
(414) 351-5588
EB-0001982
MAHMOUD MAAMOURI
PE # 77169

REVISION COMMENTS			
REV.NO.	DATE	DWG.BY	CHK.BY

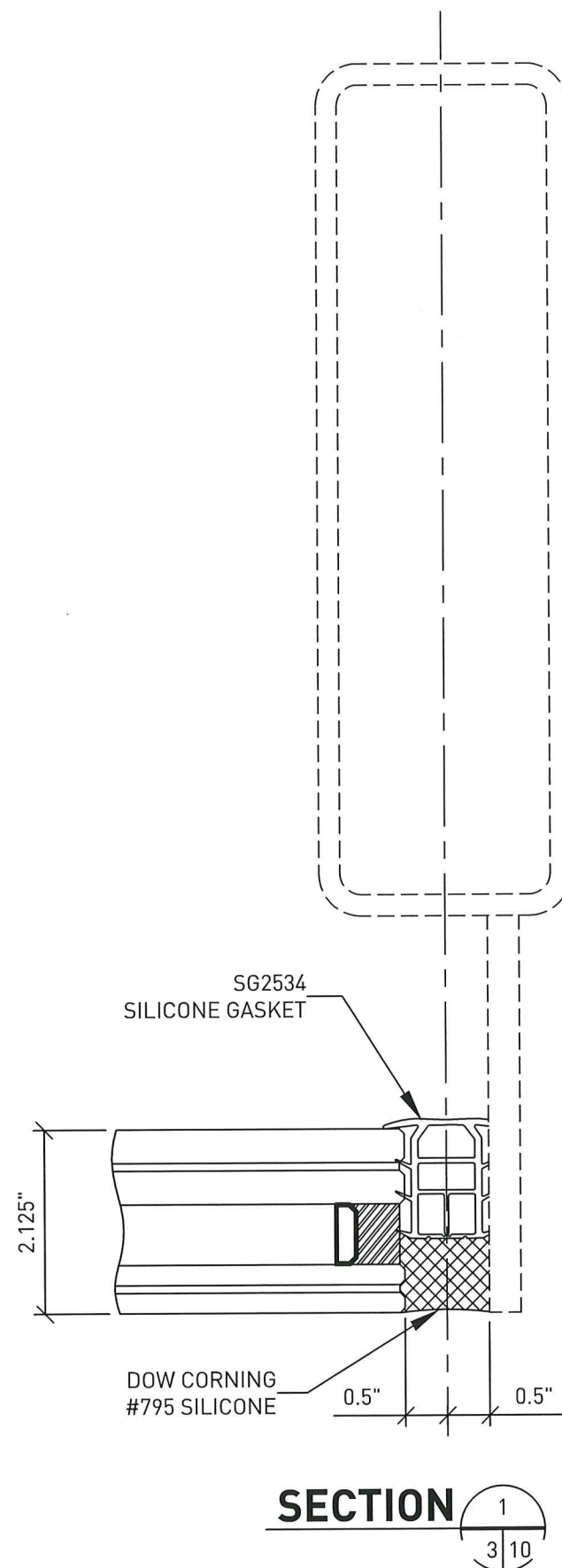
Novum Structures LLC
W126 N8585 Westbrook Crossing
Menomonee Falls, WI 53051 USA
T 262.255.5561
www.novumstructures.com
info@novumstructures.com

NOVUM

PROJECT:
NOVUM'S PSG GLASS
SYSTEM: HG02
VERTICAL WALL

DRAWING DESCRIPTION:
PERIMETER GLAZING
CHANNEL WITH DEAD
LOAD SETTING BLOCK

DRAWN BY:	DTC	DATE:	10APR17
CHECKED BY:	SWK	APPROVED BY:	SWK
SCALE:	6 = 12	PROJECT MANAGER:	TK
PROJECT NUMBER:	15-1005V		
SHEET NUMBER:	9 OF 17		

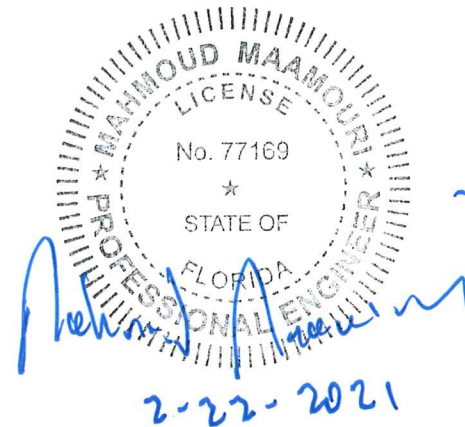


The support system (dashed lines) is not governed by this NOA except as follows:

Minimum thickness of support system to be 3/16" minimum and other dimensions to be determined via appropriate stress checks according to AISC Steel Construction Manual and/or other applicable codes, designed by a licensed professional and submitted for review and inspection by the Authority Having Jurisdiction (AHJ).

Deflection of support framing not to exceed L/180.

This NOA system pertains to the glass, rotule, glazing channel & sealant joints only. (solid lines)



PRODUCT RENEWED
as complying with the Florida Building Code
NOA-No. **21-1228.09**
Expiration Date: **06/01/2027**
By: *Manuel Perez*
Miami-Dade Product Control

PRODUCT REVISED
as complying with the Florida Building Code
NOA-No. **20-1116.07**
Expiration Date: **06/01/2022**
By: *Manuel Perez*
Miami-Dade Product Control

COMPUTERIZED STRUCTURAL DESIGN, INC.
8989 North Port Washington Road
Milwaukee, WI 53217
(414) 351-5588
EB-0001982
MAHMOUD MAAMOURI
PE # 77169

REVISION COMMENTS			
REV. NO.	DATE	DWG. BY	CHK. BY

Novum Structures LLC
W126 N8585 Westbrook Crossing
Menomonee Falls, WI 53051 USA
T 262.255.5561
www.novumstructures.com
info@novumstructures.com

NOVUM

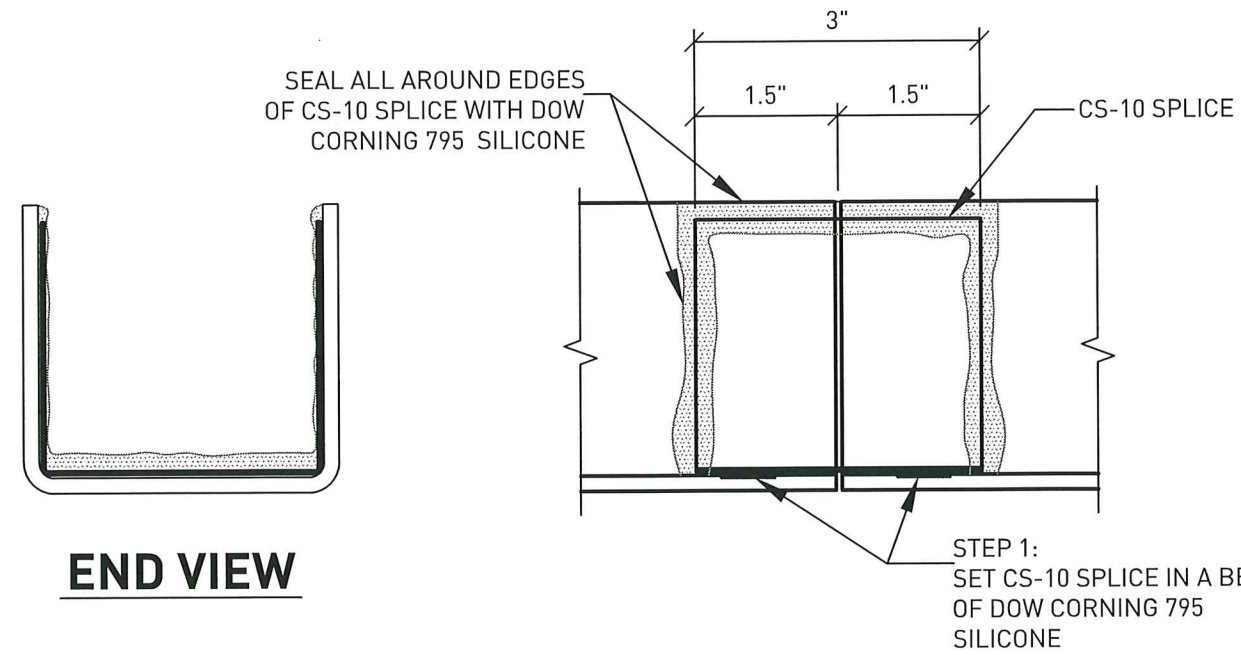
PROJECT:
NOVUM'S PSG GLASS
SYSTEM: HG02
VERTICAL WALL

DRAWING DESCRIPTION:
PERIMETER GASKET DETAIL

DRAWN BY:	DTC	DATE:	10APR17
CHECKED BY:	SWK	APPROVED BY:	SWK
SCALE:	6 = 12	PROJECT MANAGER:	TK

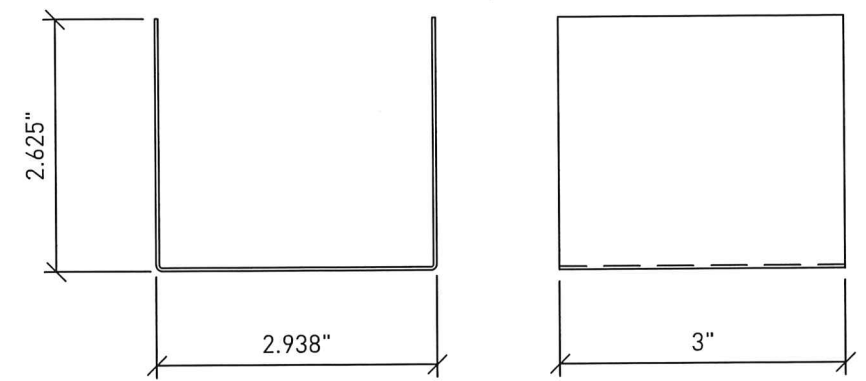
PROJECT NUMBER:
15-1005V

SHEET NUMBER:
10 OF 17



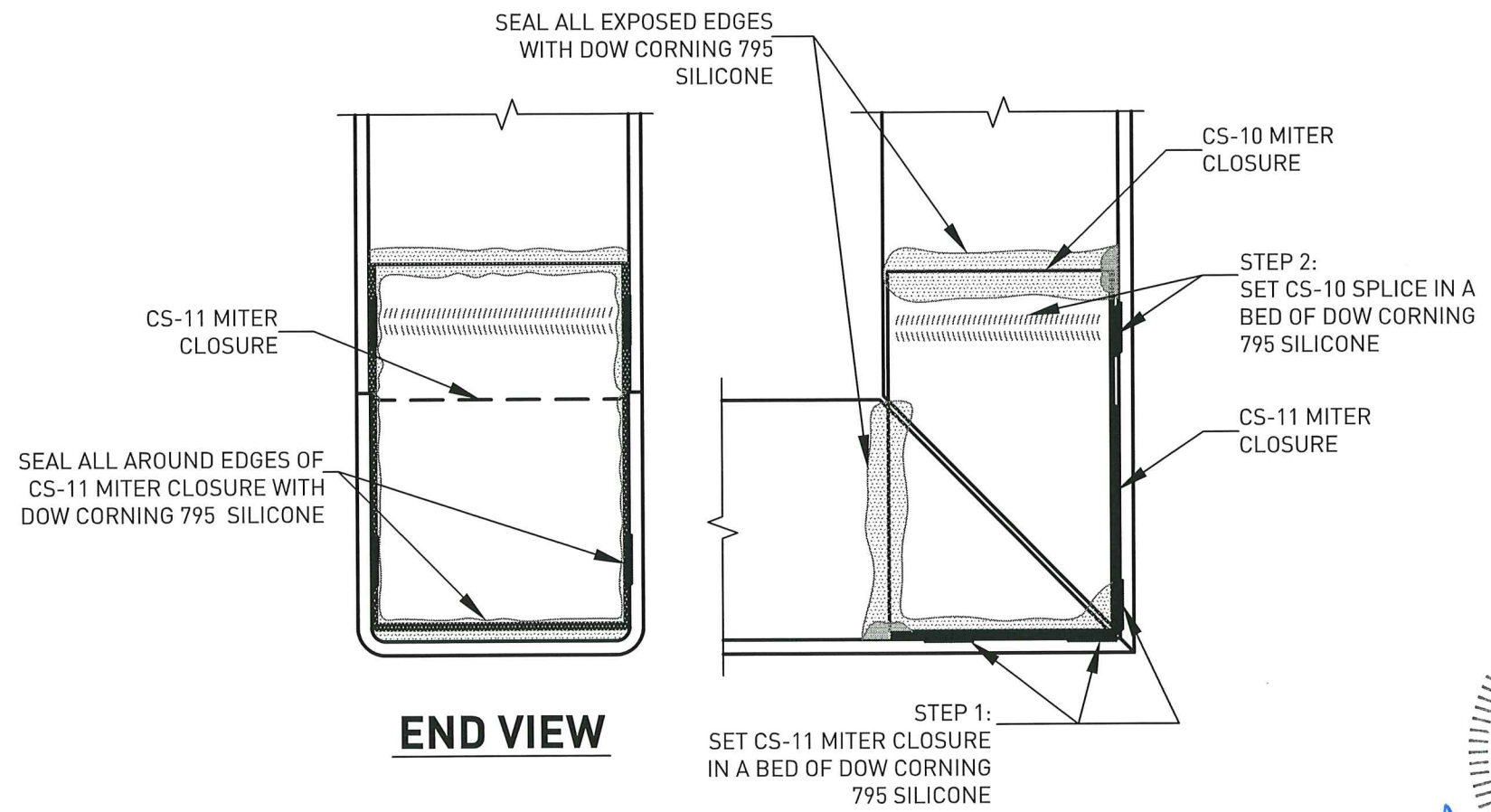
END VIEW

DETAIL 2
5 | 11



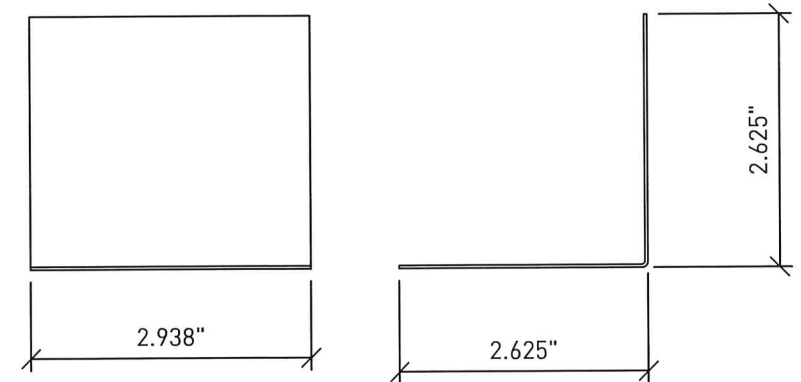
CS-10 SPLICE

0.032" BENT ANGLE
MILL FINISH
3003 T5 ALUMINUM



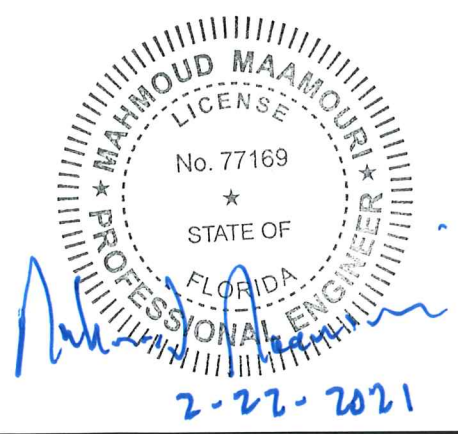
END VIEW

DETAIL 1
5 | 11



CS-11 MITER CLOSURE

0.032" BENT ANGLE
MILL FINISH
3003 T5 ALUMINUM



PRODUCT RENEWED
as complying with the Florida
Building Code
NOA-No. 21-1228.09
Expiration Date: 06/01/2027
By: *Manuel Perez*
Miami-Dade Product Control

PRODUCT REVISED
as complying with the Florida
Building Code
NOA-No. 20-1116.07
Expiration Date: 06/01/2022
By: *Manuel Perez*
Miami-Dade Product Control

COMPUTERIZED STRUCTURAL DESIGN, INC. 8989 North Port Washington Road Milwaukee, WI 53217 (414) 351-5588 EB-0001982 MAHMOUD MAAMOURI PE # 77169											
<div> <div>REVISION COMMENTS</div> <table> <tr> <th>REV.NO.</th><th>DATE</th><th>DWG.BY</th><th>CHK.BY</th></tr> <tr> <td> </td><td> </td><td> </td><td> </td></tr> </table> </div>				REV.NO.	DATE	DWG.BY	CHK.BY				
REV.NO.	DATE	DWG.BY	CHK.BY								
Novum Structures LLC W126 N8585 Westbrook Crossing Menomonee Falls, WI 53051 USA T 262.255.5561 www.novumstructures.com info@novumstructures.com											
NOVUM											
PROJECT: NOVUM'S PSG GLASS SYSTEM: HG02 VERTICAL WALL											
DRAWING DESCRIPTION: GLAZING CHANNEL SPLICE DETAILS											
DRAWN BY: DTC	DATE: 10APR17										
CHECKED BY: SWK	APPROVED BY: SWK										
SCALE: 6 = 12	PROJECT MANAGER: TK										
PROJECT NUMBER: 15-1005V											
SHEET NUMBER: 11 OF 17											

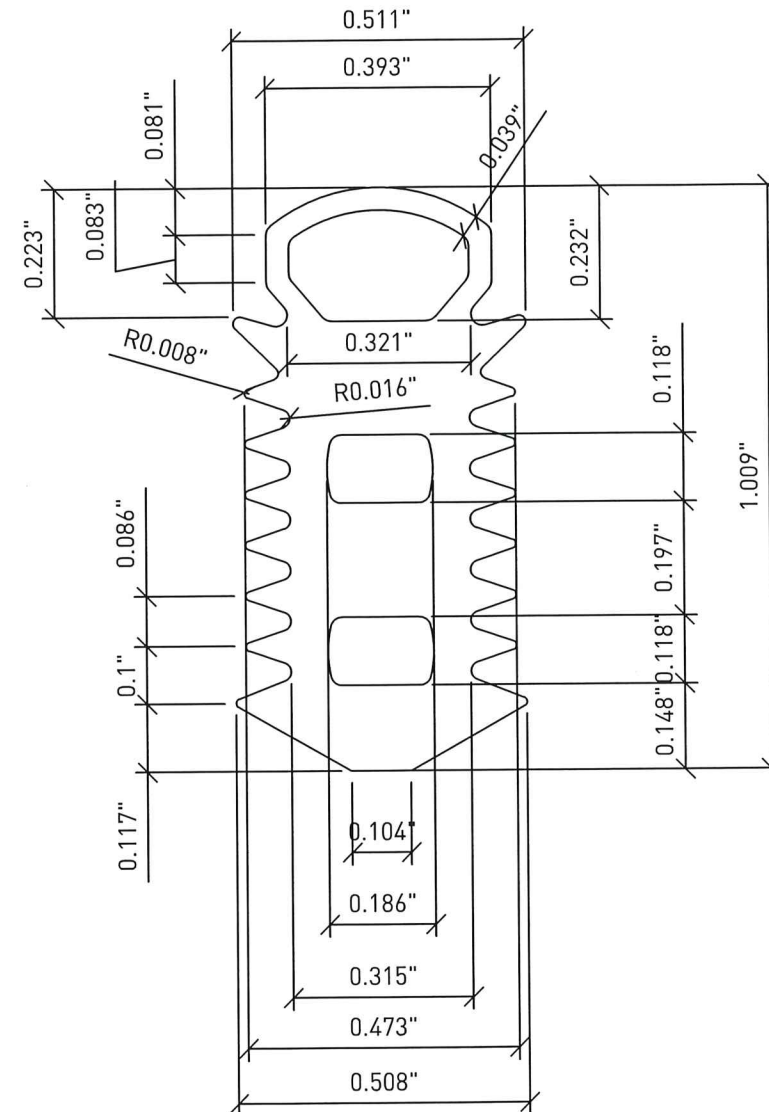
Novum Structures LLC
W126 N8585 Westbrook Crossing
Menomonee Falls, WI 53051 US
T 262.255.5561
www.novumstructures.com
info@novumstructures.com

PROJECT:
NOVUM'S PSG GLASS
SYSTEM: HG02
VERTICAL WALL

DRAWN BY: DTC	DATE: 10APR17
CHECKED BY: SWK	APPROVED BY: SWK
SCALE: AS NOTED	PROJECT MANAGER: TK
PROJECT NUMBER: 15-1005V	



PRODUCT REVISED
as complying with the Florida
Building Code
NOA-No. 20-1116.07
Expiration Date: 06/01/2022
By: Manuel Perez
Miami-Dade Product Control



SGC10 EXTRUDED SILICONE ARROW SHIM

SCALE = 3X

PRODUCT RENEWED
as complying with the Florida
Building Code
NOA-No. **21-1228.09**
Expiration Date: **06/01/2027**
By: *Manuel Perez*
Miami-Dade Product Control

PRODUCT REVISED
as complying with the Florida
Building Code
NOA-No. **20-1116.07**
Expiration Date: **06/01/2022**
By: *Manuel Perez*
Miami-Dade Product Control

COMPUTERIZED STRUCTURAL
DESIGN, INC.
8989 North Port Washington Road
Milwaukee, WI 53217
(414) 351-5588
EP-0001982
MAHMOUD MAAMOURI
PE # 77169

REVISION COMMENTS			
REV. NO.	DATE	DWG. BY	CHK. BY

Novum Structures LLC
W126 N8585 Westbrook Crossing
Menomonee Falls, WI 53051 USA
T 262.255.5561
www.novumstructures.com
info@novumstructures.com

NOVUM

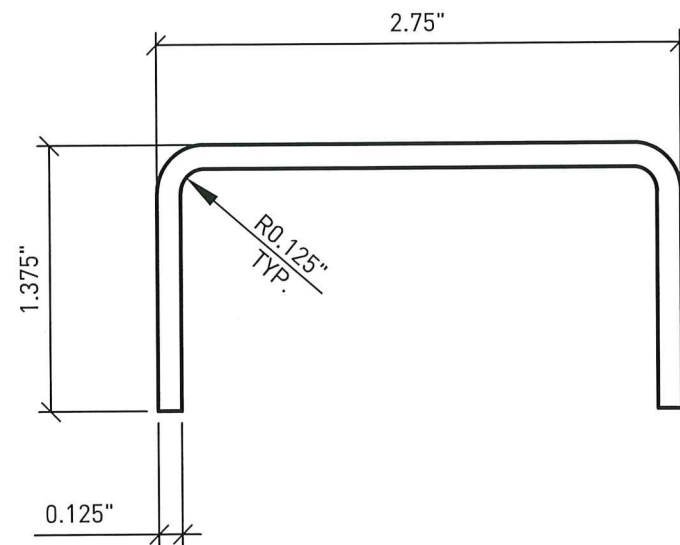
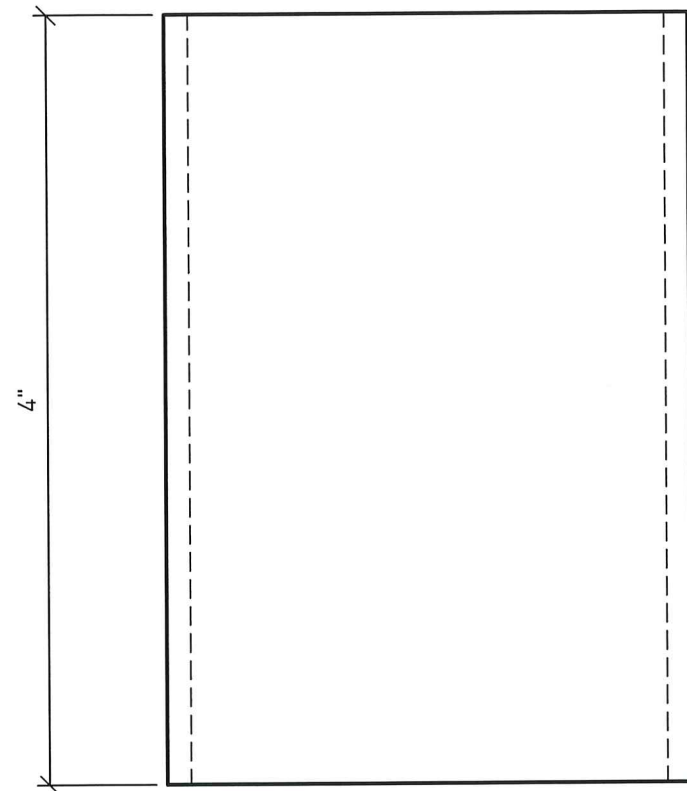
PROJECT:
NOVUM'S PSG GLASS
SYSTEM: HG02
VERTICAL WALL

DRAWING DESCRIPTION:
FABRICATION DRAWING:
ARROW SHIM

DRAWN BY:	DTC	DATE:	10APR17
CHECKED BY:	SWK	APPROVED BY:	SWK
SCALE:	AS NOTED	PROJECT MANAGER:	TK

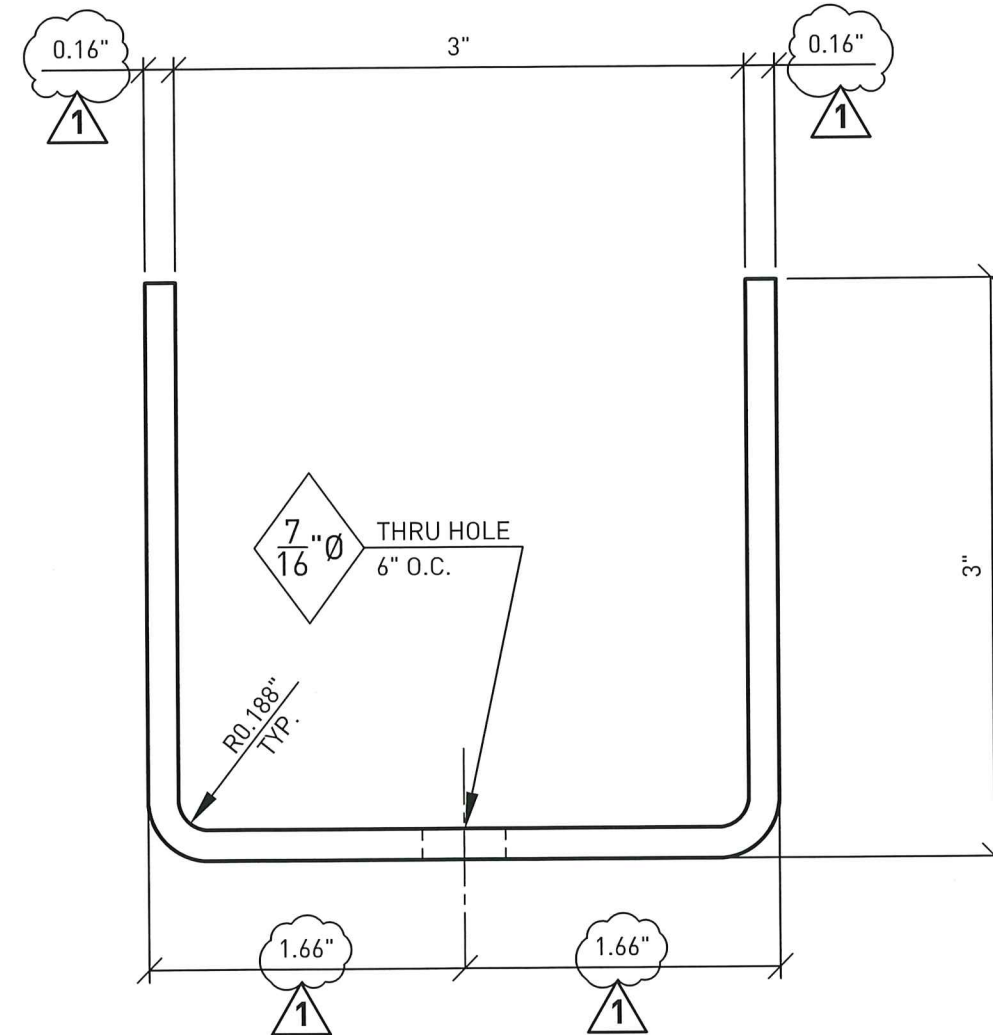
PROJECT NUMBER:
15-1005V

SHEET NUMBER:
13 OF 17



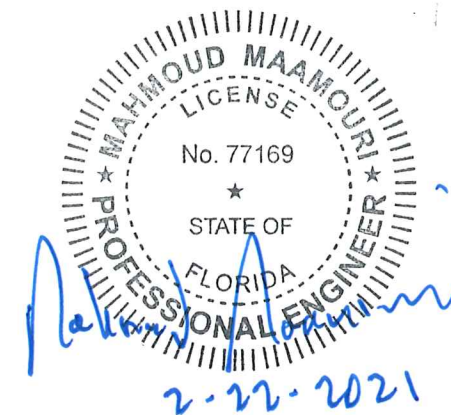
CDC-4 SETTING CHAIR

MATERIAL : 0.125" 5052-H32 ALUMINUM



GLAZING CHANNEL

MATERIAL : 6061-T6
CHANNEL LENGTHS VARY



PRODUCT RENEWED
as complying with the Florida
Building Code
NOA-No. 21-1228.09
Expiration Date: 06/01/2027
By: *Manuel Perez*
Miami-Dade Product Control

PRODUCT REVISED
as complying with the Florida
Building Code
NOA-No. 20-1116.07
Expiration Date: 06/01/2022
By: *Manuel Perez*
Miami-Dade Product Control

COMPUTERIZED STRUCTURAL
DESIGN, INC.
8989 North Port Washington Road
Milwaukee, WI 53217
(414) 351-5588
EP-0001982
MAHMOUD MAAMOURI
PE, # 77169

21OCT20 ZJM SWK
CORRECTED CHANNEL THICKNESS &
MATERIAL TO MATCH TEST
REV. NO. DATE DWG. BY CHK. BY

Novum Structures LLC
W126 N8585 Westbrook Crossing
Menomonee Falls, WI 53051 USA
T 262.255.5561
www.novumstructures.com
info@novumstructures.com

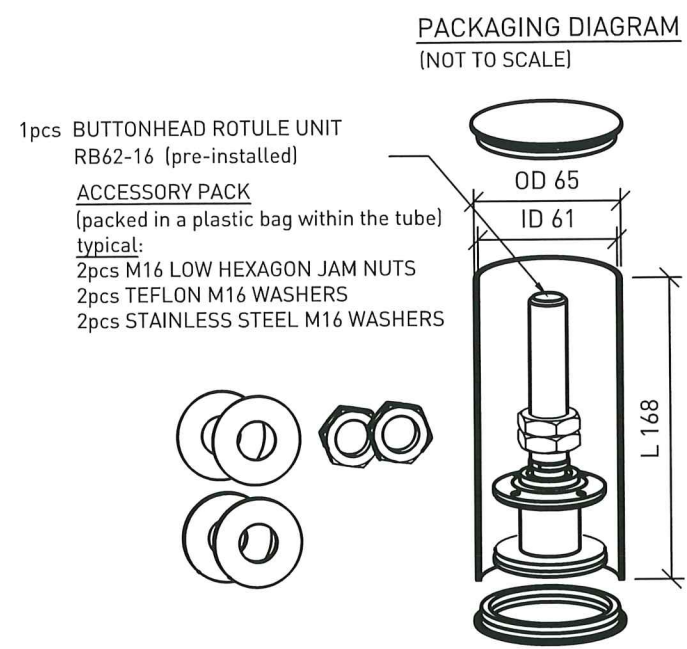
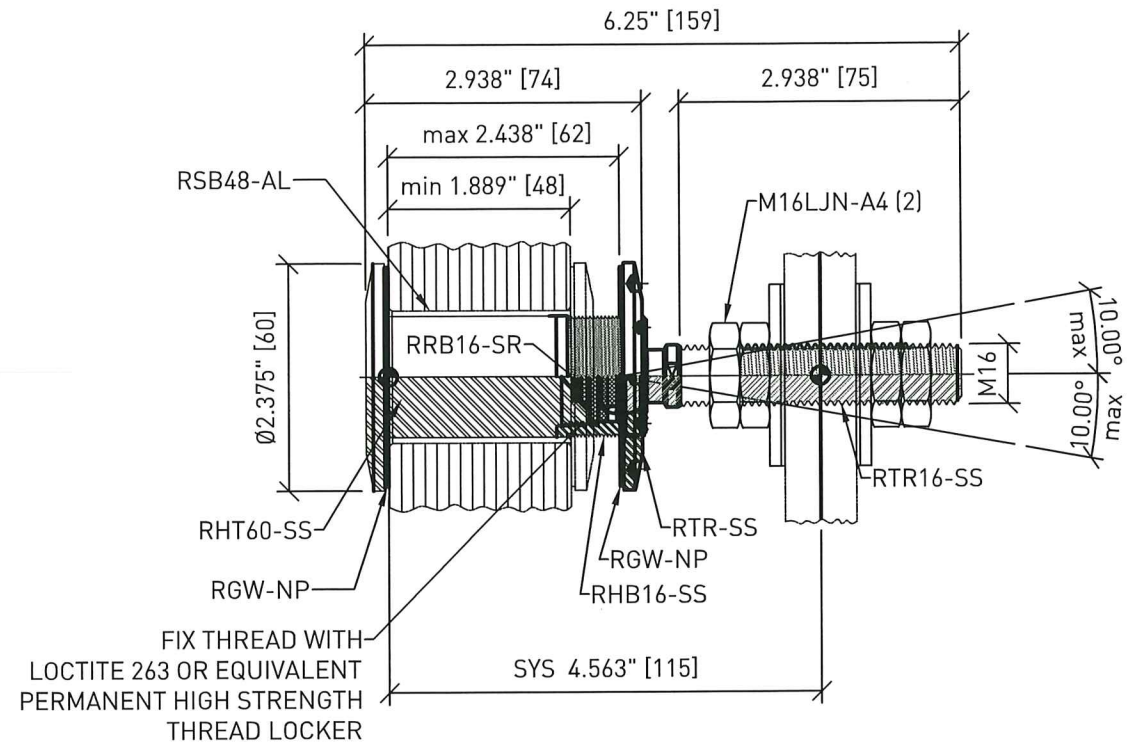
NOVUM

PROJECT:
NOVUM'S PSG GLASS
SYSTEM: HG02
VERTICAL WALL

DRAWING DESCRIPTION:
FABRICATION DRAWING:
GLAZING CHANNEL
AND SETTING CHAIR

DRAWN BY: DTC DATE: 10APR17
CHECKED BY: SWK APPROVED BY: SWK
SCALE: AS NOTED PROJECT MANAGER: TK
PROJECT NUMBER: 15-1005V

SHEET NUMBER:
14 OF 17

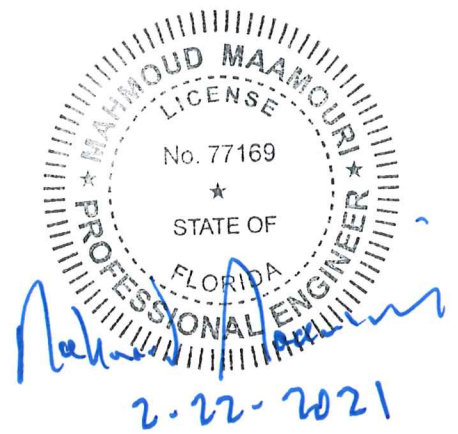


OVERVIEW REQUIRED
SINGLE PARTS

PART NAME	RHT60-SS	RSB48-AL	RGW-NP	RRB16SR	RHB16-SS	RTR-SS	RTR16-SS	M16LJN-A4	RW16-SS	RW16-TP
DRAWING-No.	17 OF 17	16 OF 17	16 OF 17	16 OF 17	16 OF 17	16 OF 17	17 OF 17	-	17 OF 17	17 OF 17
	PRE-INSTALLED PARTS BY FABRICATOR								ENCLOSED PARTS BY FABRICATOR	
VIEW										

REQUIRED PART LIST

DWG-No.	PART	QTY.	DESCRIPTION	MATERIAL REFERENCE (see comp. dwg)
17 OF 17	RHT60-SS	1	ROTULE HEAD TOP	316SS
16 OF 17	RSB48-AL	1	BUTTONHEAD ROTULE SLEEVE	AA6061-T6 ACC. TO ASTM B210
16 OF 17	RHB16-SS	1	M16 ROTULE HEAD BASE	316SS
16 OF 17	RRB16-SR	1	ROTULE ROD BUSHING	SILICONE OR EPDM RUBBER
17 OF 17	RTR16-SS	1	20MMØ BALL JOINT HEAD w/ M16x75 THREADED ROD	316SS
16 OF 17	RGW-NP	2	GLASS CONTACT WASHER	NYLON, BLACK
16 OF 17	RTR-SS	1	TIGHTENING RING	316SS
17 OF 17	RW16-TP	2	TEFLON M16 WASHER	PTFE TEFLON - WHITE
17 OF 17	RW16-SS	2	STAINLESS STEEL M16 WASHER	316SS
-	M16LJN-A4	4	M16 LOW HEXAGON JAM NUT	DIN934 / ISO 4035-A4



PRODUCT RENEWED
as complying with the Florida
Building Code
NOA-No. **21-1228.09**
Expiration Date: **06/01/2027**
By: *Manuel Perez*
Miami-Dade Product Control

PRODUCT REVISED
as complying with the Florida
Building Code
NOA-No. **20-1116.07**
Expiration Date: **06/01/2022**
By: *Manuel Perez*
Miami-Dade Product Control

COMPUTERIZED STRUCTURAL
DESIGN, INC.
8989 North Port Washington Road
Milwaukee, WI 53217
(414) 351-5588
EB-0001982
MAHMOUD MAAMOURI
PE # 77169

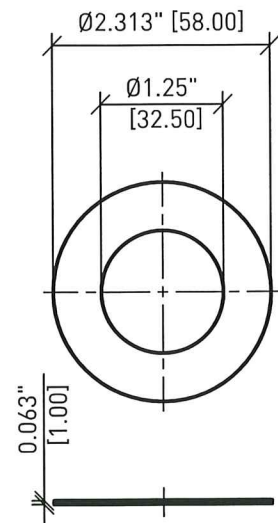
REVISION COMMENTS
REV.NO. DATE DWG.BY CHK.BY

Novum Structures LLC
W126 N8585 Westbrook Crossing
Menomonee Falls, WI 53051 USA
T 262.255.5561
www.novumstructures.com
info@novumstructures.com

NOVUM

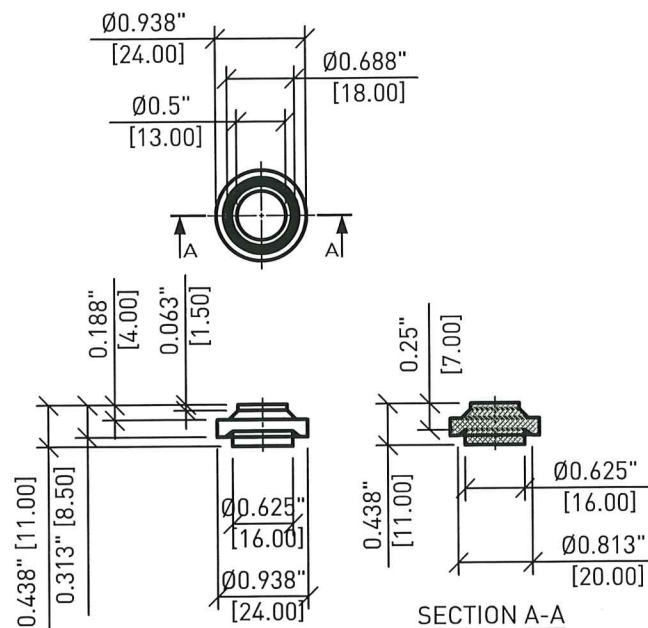
DRAWING DESCRIPTION:
FABRICATION DRAWING:
ROTULE ASSEMBLY

DRAWN BY: DTC DATE: 10APR17
CHECKED BY: SWK APPROVED BY: SWK
SCALE: 6 = 12 PROJECT MANAGER: TK
PROJECT NUMBER: 15-1005V
SHEET NUMBER: 15 OF 17



GLASS CONTACT WASHER

(RGW-NP)
MATERIAL: NYLON SHORE A70-90

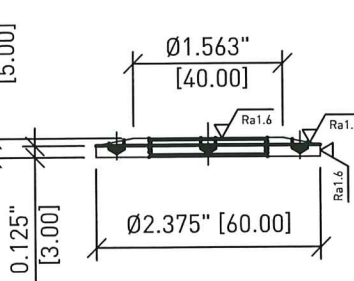
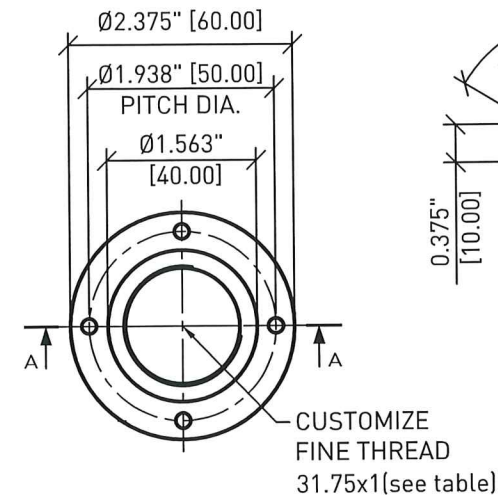
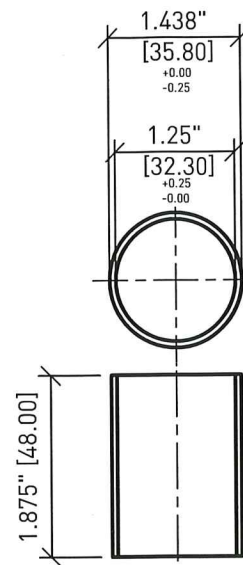


ROTULE ROD BUSHING

(RRB16-SR)
MATERIAL: SILICONE OR EPDM RUBBER
SHORE A50-50 HARDNESS

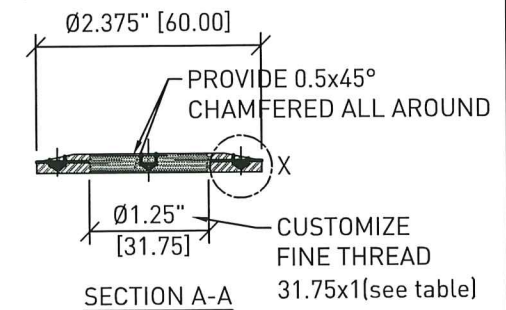
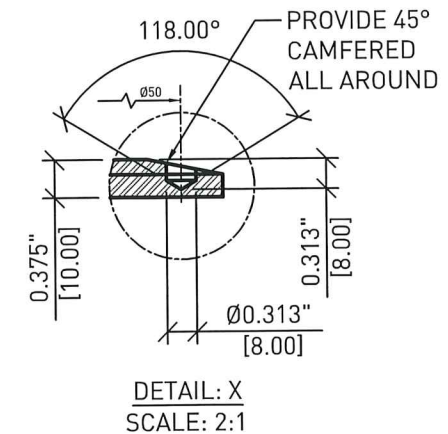
ROTULE SLEEVE

(RS848-AL)
MATERIAL: AA6061-T6 ACC. TO ASTM B210
OR EN AW 6063 T6 ATT. TO EN755



TIGHTENING RING

(RTR-SS)
MATERIAL: ASTM A276 TYPE 316 SS OR
ASTM A240 S31600 OR 1.4401
ACC. TO EN 10088-3 OR 10088-5
YIELD > 205MPa (30 ksi)
TENSILE > 515MPa (75 ksi)



FINISH: $\sqrt{Ra\ 6.3}$

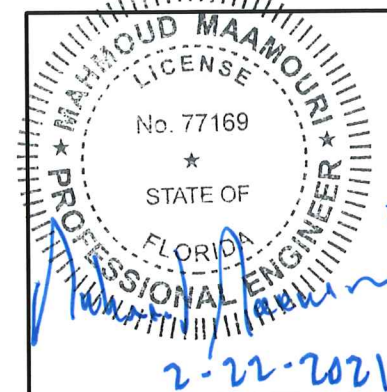
ALL EDGES CHAMFERED
(FOR ALL OF BURSE)

THREAD TABLE (Dimension: mm)

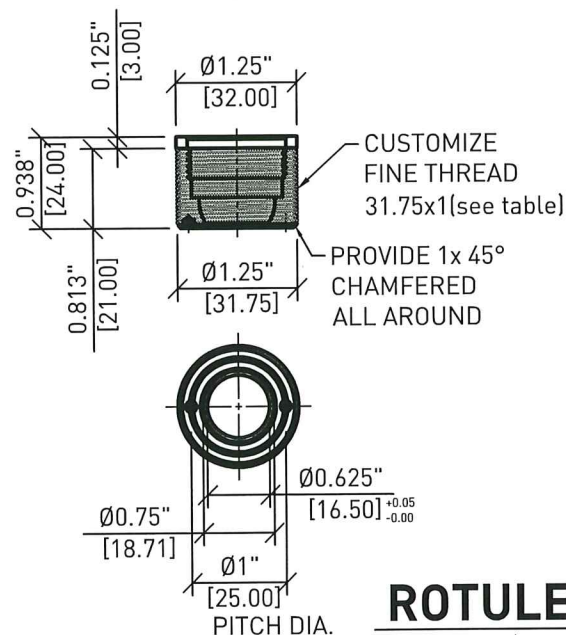
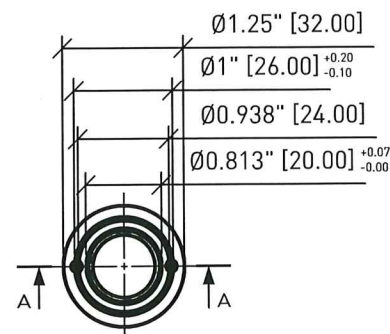
SIZE	31.750
PITCH	1.000
PITCH DIA.	max 31.270 min 31.100
MINOR DIA.	max 30.903 min 30.667
MAJOR DIA.	31.750
THREAD HEIGHT	0.866

THREAD TOLERANCES
ARE PER DIN ISO 13: 6H

PRODUCT RENEWED
as complying with the Florida
Building Code
NOA-No. **21-1228.09**
Expiration Date: **06/01/2027**
By: *Manuel Fern*
Miami-Dade Product Control

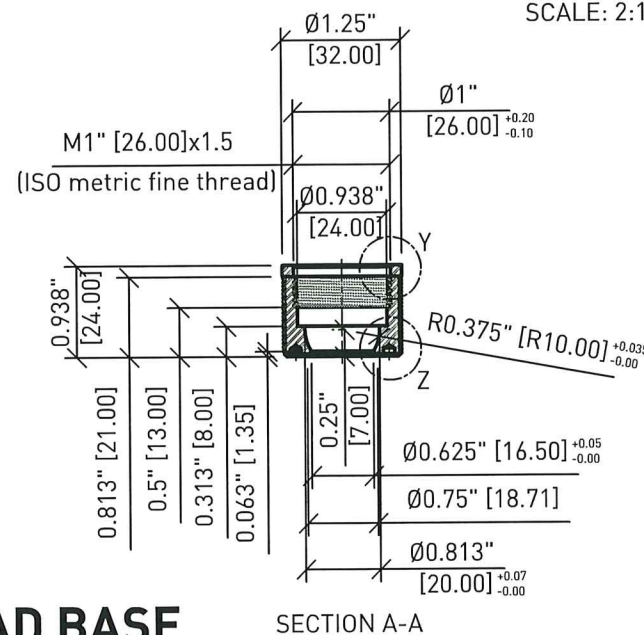
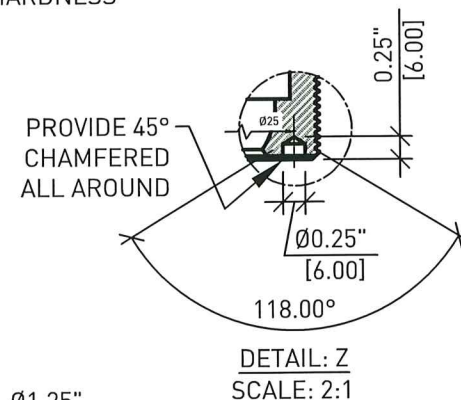
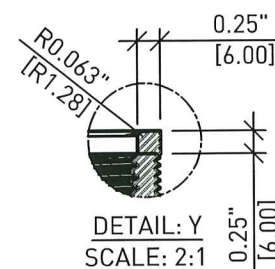


PRODUCT REVISED
as complying with the Florida
Building Code
NOA-No. **20-1116.07**
Expiration Date: **06/01/2022**
By: *Manuel Fern*
Miami-Dade Product Control



ROTULE HEAD BASE

(RHB16-SS)
MATERIAL: ASTM A276 TYPE 316 SS OR
1.4401 ACC. TO EN 10088-3 OR
10088-5 YIELD > 205MPa (30 ksi)
TENSILE > 515MPa (75 ksi)



FINISH: $\sqrt{Ra\ 3.2}$

ALL EDGES CHAMFERED $\sqrt{L-0.1}$

THREAD TABLE (Dimension: mm)

SIZE	31.750
PITCH	1.000
PITCH DIA.	max 31.074 min 30.949
MINOR DIA.	max 30.497 min 30.333
MAJOR DIA.	max 31.724 min 31.544
THREAD HEIGHT	0.866

THREAD TOLERANCES
ARE PER DIN ISO 13: 6g

COMPUTERIZED STRUCTURAL
DESIGN, INC.
8989 North Port Washington Road
Milwaukee, WI 53217
(414) 351-5588
EB-0001882
MAHMOUD MAAMOURI
PE # 77169

REVISION COMMENTS
REV.NO. DATE DWG.BY CHK.BY

Novum Structures LLC
W126 N8585 Westbrook Crossing
Menomonee Falls, WI 53051 USA
T 262.255.5561
www.novumstructures.com
info@novumstructures.com

NOVUM

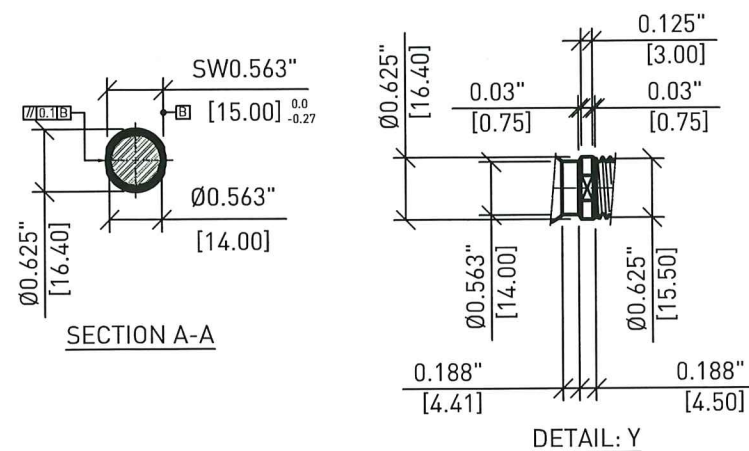
PROJECT:
NOVUM'S PSG GLASS
SYSTEM: HG02
VERTICAL WALL

DRAWING DESCRIPTION:
FABRICATION DRAWING:
ROTULE COMPONENTS

DRAWN BY: DTC DATE: 10APR17
CHECKED BY: SWK APPROVED BY: SWK
SCALE: 6 = 12 PROJECT MANAGER: TK

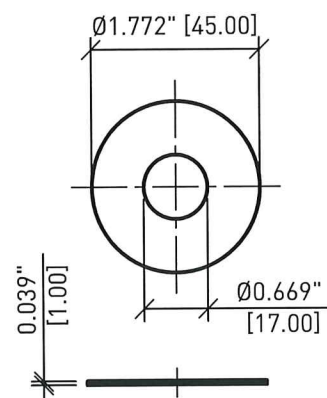
PROJECT NUMBER:
15-1005V

SHEET NUMBER:
16 OF 17



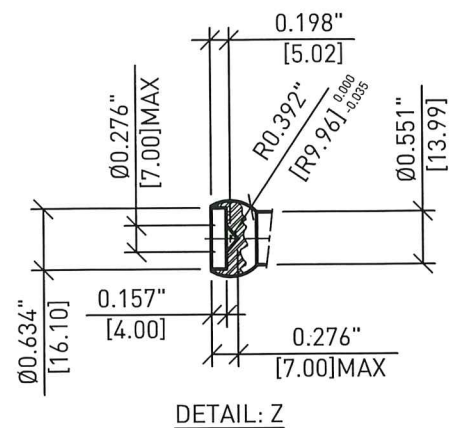
(RTR16-SS)

MATERIAL: ASTM A276 TYPE 316 SS OR
1.4401 ACC. TO EN 10088-3 OR
10088-5 YIELD > 205MPa (30 ksi)
TENSILE > 515MPa (75 ksi)



(RW16-TP)

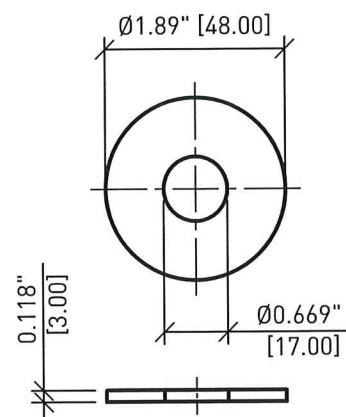
MATERIAL: PTFE (TEFLON)



FINISH: $\sqrt{\text{Ra } 3.2}$

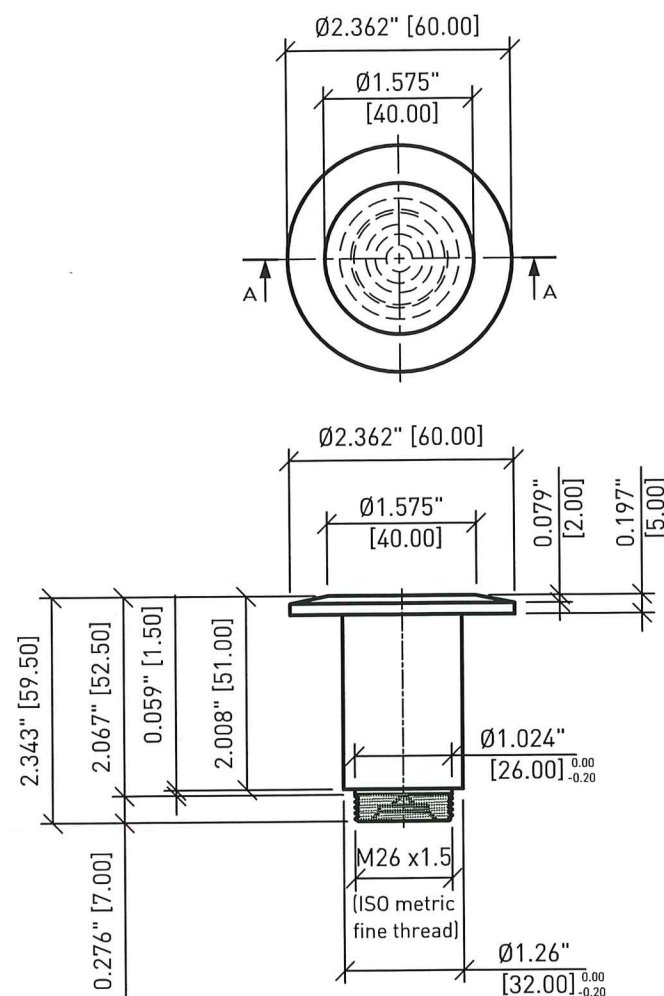
ALL EDGES CHAMFERED

THREAD TOLERANCES
ARE PER DIN ISO 13: 6g



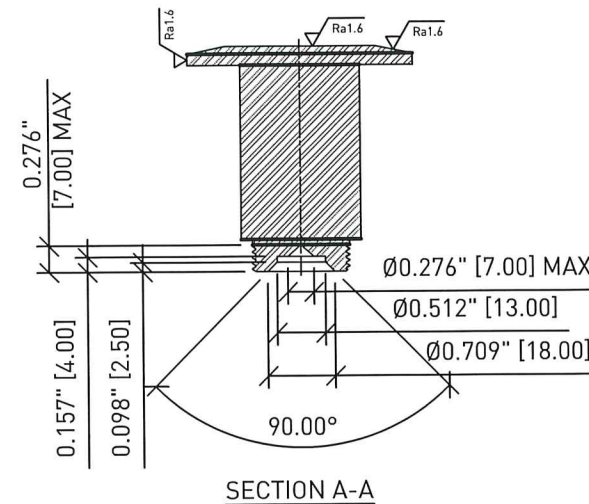
(RW16-SS)

MATERIAL: ASTM A276 TYPE 316 SS OR
ASTM A240 S31600 OR 1.4401
ACC. TO EN 10088-3 OR 10088-5
YIELD > 205MPa (30 ksi)
TENSILE > 515MPa (75 ksi)



(RHT60-SS)

MATERIAL: ASTM A276 TYPE 316 SS OR
ASTM A240 S31600 OR 1.4401
ACC. TO EN 10088-3 OR 10088-5
YIELD > 205MPa (30 ksi)
TENSILE > 515MPa (75 ksi)



FINISH: $\sqrt{\text{Ra } 6.3}$

ALL EDGES CHAMFERED

THREAD TOLERANCES
ARE PER DIN ISO 13: 6g

<div style="display: flex; align-items: center;"> <div style="border: 1px solid black; width: 30px; height: 30px; margin-right: 5px;"></div> <div style="border: 1px solid black; width: 100px; height: 30px;"></div> <div style="border: 1px solid black; width: 50px; height: 30px;"></div> <div style="border: 1px solid black; width: 50px; height: 30px;"></div> </div>			
REVISION COMMENTS			
REV.NO.	DATE	DWG.BY	CHK.BY

Novum Structures LLC
W126 N8585 Westbrook Crossing
Menomonee Falls, WI 53051 USA
T 262.255.5561
www.novumstructures.com
info@novumstructures.com

NOVUM

PROJECT:
NOVUM'S PSG GLASS
SYSTEM: HG02
VERTICAL WALL

DRAWING DESCRIPTION:
FABRICATION DRAWING:
ROTULE COMPONENTS

DRAWN BY: DTC	DATE: 10APR17
CHECKED BY: SWK	APPROVED BY: SWK
SCALE: 6 = 12	PROJECT MANAGER: TK

PROJECT NUMBER: 15-1005V

SHEET NUMBER:
17 OF 17

