



DEPARTMENT OF REGULATORY AND ECONOMIC RESOURCES (RER)
BOARD AND CODE ADMINISTRATION DIVISION

NOTICE OF ACCEPTANCE (NOA)

MIAMI-DADE COUNTY
PRODUCT CONTROL SECTION

11805 SW 26 Street, Room 208
Miami, Florida 33175-2474
T (786) 315-2590 F (786) 315-2599

www.miamidade.gov/building

**Wausau Window and Wall Systems,
A Division of Apogee Wausau Group, Inc.
7800 International Drive
Wausau, WI 54401**

SCOPE:

This NOA is being issued under the applicable rules and regulations governing the use of construction materials. The documentation submitted has been reviewed and accepted by Miami-Dade County RER - Product Control Section to be used in Miami Dade County and other areas where allowed by the Authority Having Jurisdiction (AHJ).

This NOA shall not be valid after the expiration date stated below. The Miami-Dade County Product Control Section (In Miami-Dade County) and/ or the AHJ (in areas other than Miami-Dade County) reserve the right to have this product or material tested for quality assurance purposes. If this product or material fails to perform in the accepted manner, the manufacturer will incur the expense of such testing and the AHJ may immediately revoke, modify, or suspend the use of such product or material within their jurisdiction. RER reserves the right to revoke this acceptance if it is determined by Miami-Dade County Product Control Section that this product or material fails to meet the requirements of the applicable building code.

This product is approved as described herein and has been designed to comply with the Florida Building Code, including the High Velocity Hurricane Zone.

DESCRIPTION: Series "3250 HP" Aluminum Fixed Window – L.M.I.

APPROVAL DOCUMENT: Drawing No. **1084**, titled "3250 HP Fixed Window (Large Missile Impact)", sheets 1 through 3 of 3, dated 01/07/02, with revision C1 dated 12/15/16, prepared by W. W. Schaefer Engineering & Consulting, P.A., signed and sealed by Warren W. Schaefer, P.E., bearing the Miami-Dade County Product Control Renewal stamp with the Notice of Acceptance number and expiration date by the Miami-Dade County Product Control Section.

MISSILE IMPACT RATING: Large and Small Missile Impact Resistant

LABELING: Each unit shall bear a permanent label with the manufacturer's name or logo, city, state, series, and following statement: "Miami-Dade County Product Control Approved", unless otherwise noted herein.

RENEWAL of this NOA shall be considered after a renewal application has been filed and there has been no change in the applicable building code negatively affecting the performance of this product.

TERMINATION of this NOA will occur after the expiration date or if there has been a revision or change in the materials, use, and/ or manufacture of the product or process. Misuse of this NOA as an endorsement of any product, for sales, advertising or any other purposes shall automatically terminate this NOA. Failure to comply with any section of this NOA shall be cause for termination and removal of NOA.

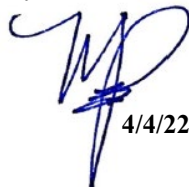
ADVERTISEMENT: The NOA number preceded by the words Miami-Dade County, Florida, and followed by the expiration date may be displayed in advertising literature. If any portion of the NOA is displayed, then it shall be done in its entirety.

INSPECTION: A copy of this entire NOA shall be provided to the user by the manufacturer or its distributors and shall be available for inspection at the job site at the request of the Building Official.

This NOA **renews NOA No. 18-0808.09** and consists of this page 1 and evidence pages E-1, E-2 and E-3, as well as approval document mentioned above.

The submitted documentation was reviewed by **Manuel Perez, P.E.**




4/4/22

NOA No. 22-0317.04
Expiration Date: April 25, 2027
Approval Date: April 14, 2022
Page 1

NOTICE OF ACCEPTANCE: EVIDENCE SUBMITTED

1. EVIDENCE SUBMITTED UNDER PREVIOUS NOA's

A. DRAWINGS

1. Manufacturer's die drawings and sections.
(Submitted under NOA No. 02-0215.11)
2. Drawing No. **1084**, titled "3250 HP Fixed Window (Large Missile Impact)", sheets 1 through 3 of 3, dated 01/07/02, with revision C1 dated 12/15/16, prepared by W. W. Schaefer Engineering & Consulting, P.A., signed and sealed by Warren W. Schaefer, P.E.
(Submitted under NOA No. 17.0111.02)

B. TESTS

1. Test reports on: 1) Air Infiltration Test, per FBC, TAS 202-94
2) Uniform Static Air Pressure Test, Loading per FBC, TAS 202-94
3) Water Resistance Test, per FBC, TAS 202-94
4) Large Missile Impact Test per FBC, TAS 201-94
5) Small Missile Impact Test per FBC, TAS 201-94
6) Cyclic Wind Pressure Loading per FBC, TAS 203-94
7) Forced Entry Test, per FBC 2411.3.2.1, and TAS 202-94
along with marked-up drawings and installation diagram of an aluminum casement and fixed window, prepared by Quast Consulting & Testing, Inc., Test Report No. **QCT11-2310.01** for specimens **1** and **2**, dated 02/20/12, signed and sealed by Brian M. Sasman, P.E.
(Submitted under NOA No. 12-0416.07)
2. Test reports on: 1) Air Infiltration Test, per FBC, TAS 202-94
2) Uniform Static Air Pressure Test, Loading per FBC, TAS 202-94
3) Water Resistance Test, per FBC, TAS 202-94
4) Large Missile Impact Test per FBC, TAS 201-94
5) Cyclic Wind Pressure Loading per FBC, TAS 203-94
6) Forced Entry Test, per FBC 2411.3.2.1, and TAS 202-94
along with marked-up drawings and installation diagram of 6 specimens each consisting of three-panel configuration of aluminum fixed and casement windows, each 146" wide and 72" high, prepared by Architectural Testing, Inc., Test Report No. **ATI-06-30280.01**, dated 01/22/02, signed and sealed by Allen N. Reeves, P.E.
(Submitted under NOA No. 02-0215.11)


Manuel Pérez, P.E.
Product Control Examiner
NOA No. 22-0317.04
Expiration Date: April 25, 2027
Approval Date: April 14, 2022

Wausau Window and Wall Systems, A Division of Apogee Wausau Group, Inc.

NOTICE OF ACCEPTANCE: EVIDENCE SUBMITTED

1. EVIDENCE SUBMITTED UNDER PREVIOUS NOA's (CONTINUED)

C. CALCULATIONS

1. Anchor verification calculations and structural analysis, complying with **FBC 5th Edition (2014)**, dated 01/21/02 and revised on 12/15/16, prepared by W. W. Schaefer Engineering & Consulting, P.A., signed and sealed by Warren W. Schaefer, P.E.
(Submitted under NOA No. 17.0111.02)
2. Glazing complies with **ASTM E1300-09**

D. QUALITY ASSURANCE

1. Miami-Dade Department of Regulatory and Economic Resources (RER).

E. MATERIAL CERTIFICATIONS


1. Notice of Acceptance No. **17-0712.04** issued to **Eastman Chemical Company (MA)** for their "**Saflex HP Clear or Color Glass Interlayers**" dated 09/07/17, expiring on 04/14/18.

F. STATEMENTS

1. Statement letter of conformance, complying with **FBC 6th Edition (2017)**, dated August 02, 2018, issued by W.W. Schaefer Engineering & Consulting, P.A., signed and sealed by Warren W. Schaefer, P.E.
(Submitted under NOA No. 18-0808.09)
2. Statement letter of no financial interest dated 12/15/16, issued by W. W. Schaefer Engineering & Consulting, P.A., signed and sealed by Warren W. Schaefer, P.E.
(Submitted under NOA No. 17-0111.02)
3. Laboratory compliance letter for Test Report No. **QCT11-2310.01**, dated 02/20/12, issued by Quast Consulting & Testing, Inc., signed and sealed by Brian M. Sasman, P.E.
(Submitted under NOA No. 12-0416.07)
4. Laboratory revision letter for Test Report No. **ATI-06-30280.01**, dated 03/06/02, issued by Architectural Testing, Inc., signed and sealed by Allen N. Reeves, P.E.
(Submitted under NOA No. 02-0215.11)

G. OTHERS

1. Notice of Acceptance No. **17-0111.02**, issued to Wausau Window and Wall Systems, A Division of Apogee Wausau Group, Inc. for their Series "3250 HP" Aluminum Fixed Window - L.M.I., approved on 02/23/17 and expiring on 04/25/22.


Manuel Pérez, P.E.
Product Control Examiner
NOA No. 22-0317.04
Expiration Date: April 25, 2027
Approval Date: April 14, 2022

Wausau Window and Wall Systems, A Division of Apogee Wausau Group, Inc.

NOTICE OF ACCEPTANCE: EVIDENCE SUBMITTED

2. NEW EVIDENCE SUBMITTED

A. DRAWINGS

1. None.

B. TESTS

1. None

C. CALCULATIONS

1. None

D. QUALITY ASSURANCE

1. Miami-Dade Department of Regulatory and Economic Resources (RER)

E. MATERIAL CERTIFICATIONS


1. Notice of Acceptance No. **20-0622.02** issued to **Eastman Chemical Company (MA)** for their “**Saflex HP Clear or Color Glass Interlayers**” dated 08/06/20, expiring on 04/14/23.

F. STATEMENTS

1. Statement letter of conformance, complying with **FBC 7th Edition (2020)**, dated March 17, 2022, issued by W.W. Schaefer Engineering & Consulting, P.A., signed and sealed by Warren W. Schaefer, P.E.

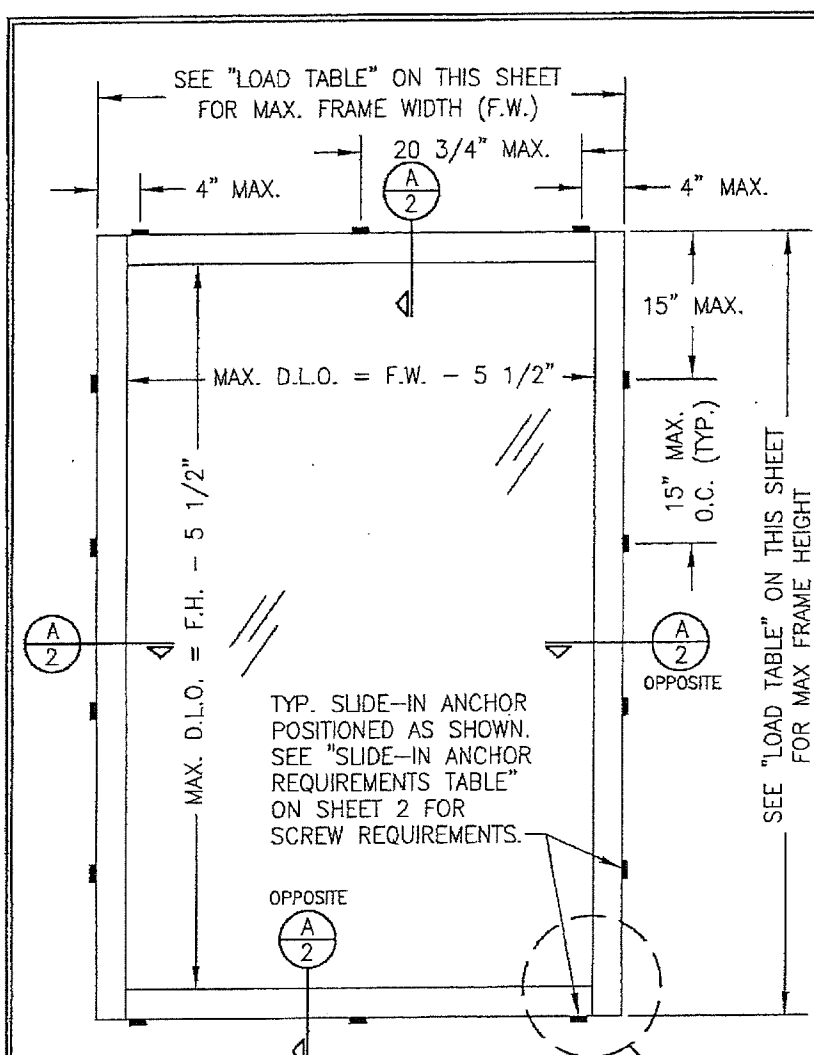
G. OTHERS

1. Notice of Acceptance No. **18-0808.09**, issued to Wausau Window and Wall Systems, A Division of Apogee Wausau Group, Inc. for their Series “3250 HP” Aluminum Fixed Window - L.M.I., approved on 09/20/18 and expiring on 04/25/22.

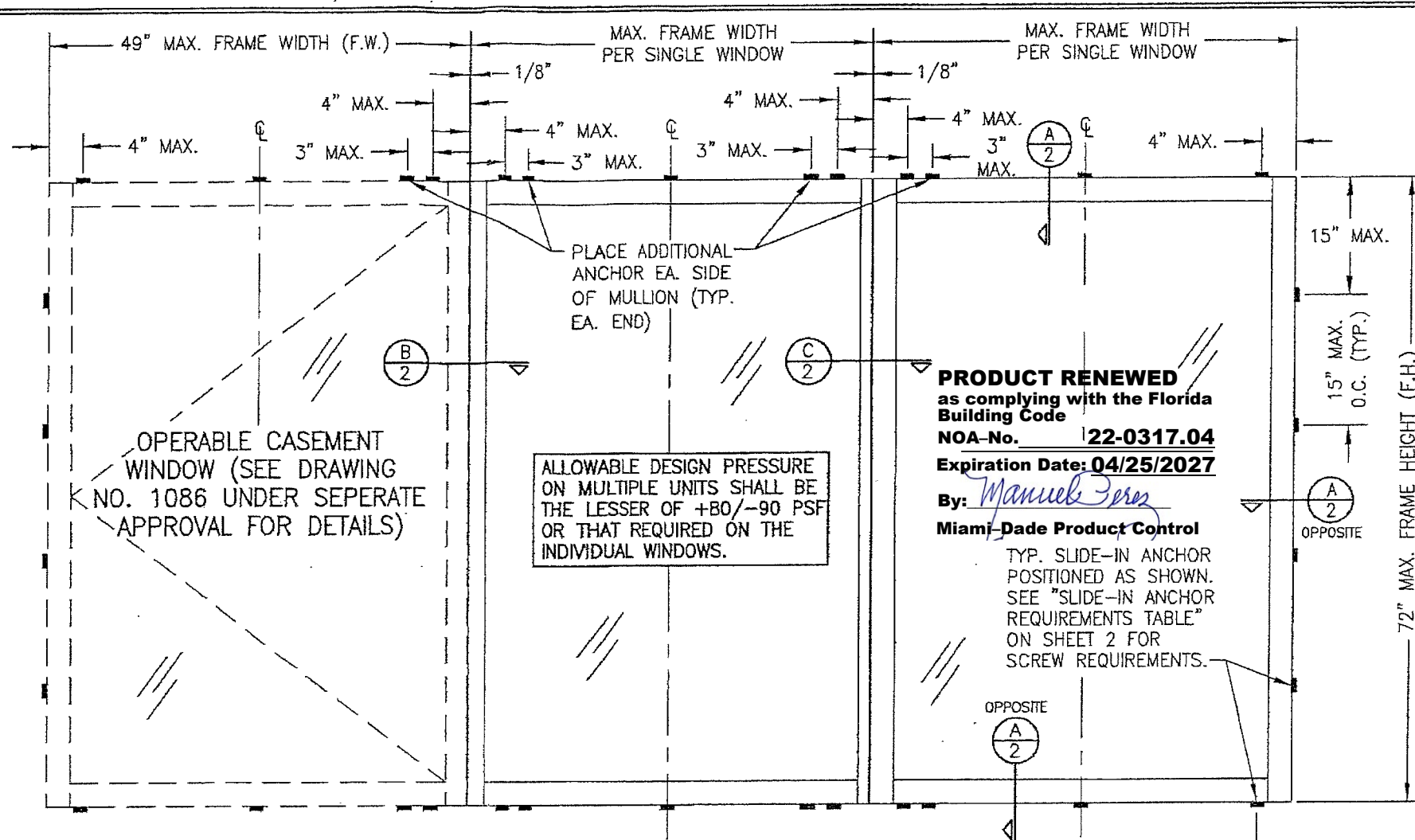


Manuel Pérez, P.E.
Product Control Examiner
NOA No. 22-0317.04

Expiration Date: April 25, 2027
Approval Date: April 14, 2022



EXTERIOR ELEVATION
SINGLE FIXED WINDOW
SCALE: 3/4"=1'-0"



EXTERIOR ELEVATION
MULTIPLE FIXED AND CASEMENT WINDOWS
(MORE THAN THREE WINDOWS MAY BE COMBINED HORIZONTALLY)
SEE OTHER ELEVATION FOR FIXED WINDOW DETAILS
SCALE: 3/4"=1'-0"

GENERAL NOTES:

1. THIS PRODUCT HAS BEEN TESTED, ANALYZED & APPROVED FOR DESIGN PRESSURES NOT TO EXCEED THOSE SHOWN IN THE "ALLOWABLE DESIGN PRESSURE TABLE(S)".
2. OPENINGS, BUCKING & BUCKING FASTENERS MUST BE PROPERLY DESIGNED & INSTALLED TO TRANSFER WIND LOADS TO THE STRUCTURE.
3. ALL HARDWARE & FASTENERS SHALL BE IN ACCORDANCE WITH THESE DRAWINGS & SHALL NOT VARY UNLESS SPECIFICALLY MENTIONED ON THE DRAWINGS. SPECIFIED ANCHOR EMBED TO BASE MATERIAL SHALL BE BEYOND WALL FINISH OR STUCCO.
4. THE DETAILS & SPECIFICATIONS SHOWN HEREIN REPRESENT THE PRODUCTS TESTED & PROPOSED FOR CONFORMANCE WITH THE FLORIDA BUILDING CODE PROTOCOLS TAS-201, 202 & 203 FOR LARGE MISSILE IMPACT PRODUCTS.
5. THIS PRODUCT HAS BEEN DESIGNED IN ACCORDANCE WITH AND MEETS THE REQUIREMENTS OF THE FLORIDA BUILDING CODE (FBC) INCLUDING HIGH VELOCITY HURRICANE ZONES (HVHZ).
6. IMPACT SHUTTERS ARE NOT REQUIRED WITH THIS PRODUCT.
7. ALL ANCHORS SECURING PRODUCT FRAMES TO PRESSURE TREATED BUCKS OR WOOD FRAMING SHALL BE CAPABLE OF RESISTING CORROSION CAUSED BY THE PRESSURE TREATING CHEMICALS IN THE WOOD.
8. DETERMINE THE POSITIVE & NEGATIVE DESIGN LOADS TO USE WHEN REFERENCING THESE DOCUMENTS IN ACCORDANCE WITH THE GOVERNING CODE AND GOVERNING WIND VELOCITY. FOR WIND LOAD CALCULATIONS IN ACCORDANCE WITH THE FLORIDA BUILDING CODE, A DIRECTIONALITY FACTOR OF $K_d = 0.85$ MAY BE APPLIED PER THE ASCE-7 STANDARD.
9. NO INCREASE IN ALLOWABLE STRESS HAS BEEN USED IN THE CERTIFICATION OF THIS PRODUCT. WIND LOAD DURATION FACTOR $C_d = 1.6$ WAS USED FOR WOOD SCREW ANALYSIS ONLY.
10. MATERIALS, INCLUDING BUT NOT LIMITED TO STEEL SCREWS, THAT COME INTO CONTACT WITH OTHER DISSIMILAR MATERIALS SHALL MEET THE REQUIREMENTS OF FLORIDA BUILDING CODE.

ALLOWABLE DESIGN PRESSURE												
(1) SHORT DIMENSION	DESIGN LOAD CAPACITY (POSITIVE & NEGATIVE PSF)											
	POS.	NEG.	POS.	NEG.	POS.	NEG.	POS.	NEG.	POS.	NEG.	POS.	NEG.
30"	80.0	90.0	80.0	90.0	80.0	90.0	80.0	90.0	80.0	90.0	80.0	90.0
36"	80.0	90.0	80.0	90.0	80.0	90.0	80.0	90.0	80.0	90.0	80.0	90.0
42"	80.0	90.0	80.0	90.0	80.0	90.0	80.0	90.0	80.0	90.0	80.0	90.0
49"	80.0	90.0	80.0	90.0	80.0	90.0	80.0	90.0	80.0	90.0	80.0	90.0
54"	72.6	81.7	72.6	81.7	72.6	81.7	72.6	81.7	72.6	81.7	72.6	81.7
59"	66.4	74.7	66.4	74.7	66.4	74.7	66.4	74.7	66.4	74.7	66.4	74.7
(1) LONG DIMENSION	59	65	72"	84"	98	117						

TABLE NOTES:

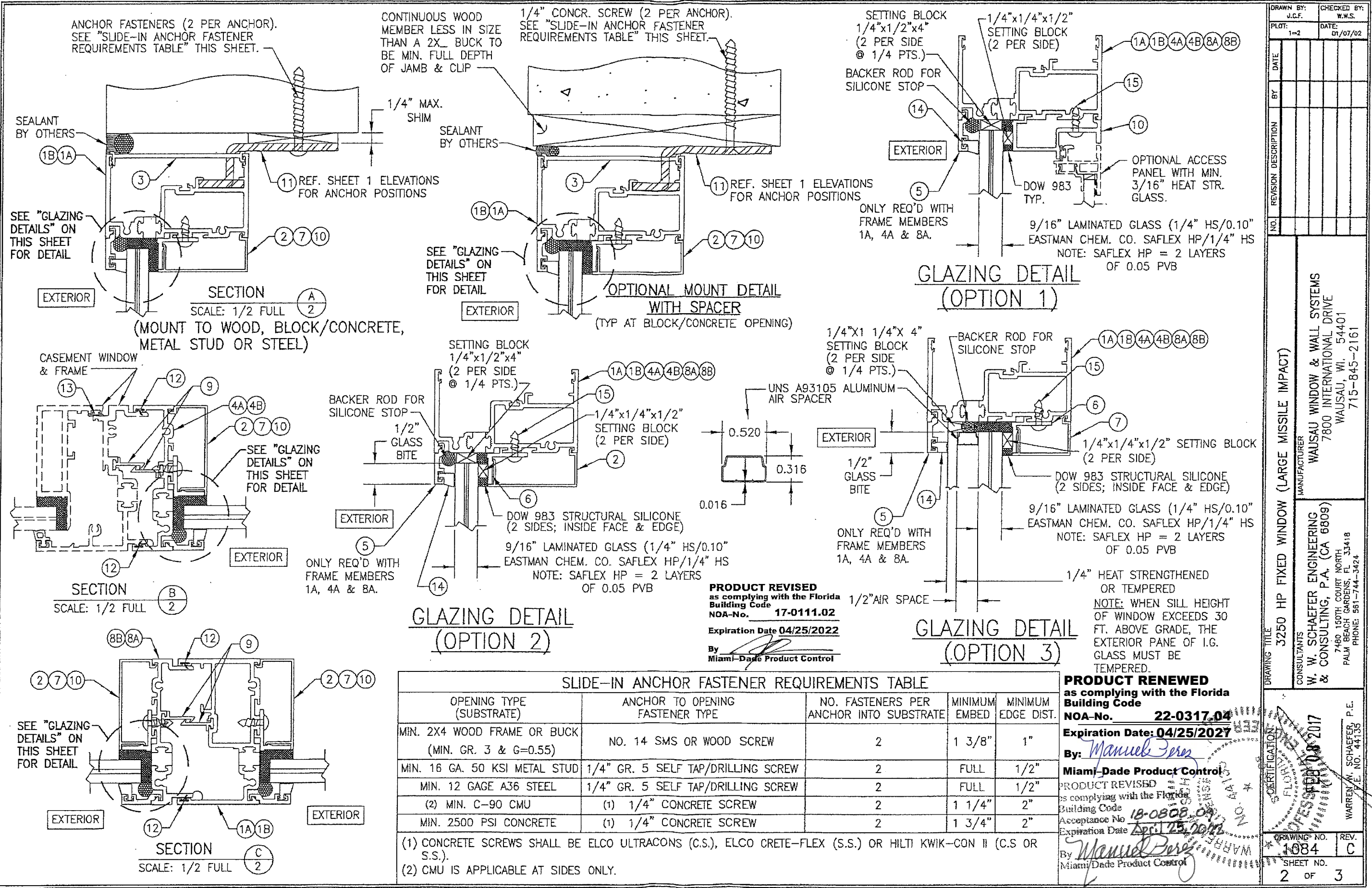
- (1) ALL WINDOW DIMENSION VALUES SHOWN ARE $\pm 1/2$ " & ARE FRAME (F.H. & F.W.) DIMENSIONS
- (2) THOSE SIZES WITH LOADS LISTED ARE MAXIMUM ALLOWABLE SIZES AT THAT LOAD. IF NO LOAD IS LISTED FOR A GIVEN SIZE, THAT SIZE EXCEEDS ALLOWABLE AND IS NOT ACCEPTABLE.

NOTE: WHEN DIRECT MOUNTING TO A BLOCK/ CONCRETE OPENING WITH CONCR. SCREWS, THE HEAD & SILL MUST BE CONCRETE, THE SIDES MAY BE BLOCK OR CONCRETE.

PRODUCT REVISED
complying with the Florida
Building Code
Acceptance No. 18-0808.09
Expiration Date April 25, 2012
By *Manuel Perez*
Miami Dade Product Control

PRODUCT REVISED
as complying with the Florida
Building Code
NOA-No. 17-0111.02
Expiration Date 04/25/2022
By *Manuel Perez*
Miami Dade Product Control

DRAWN BY: J.C.F.		CHECKED BY: W.W.S.	
PLOT: 1-16		DATE: 01/07/02	
BY: J.C.F.	DATE: 08/10/05	BY: W.W.S.	DATE: 08/19/11
REVISION DESCRIPTION	NO. 1	REVISION DESCRIPTION	NO. 1
A2	ADDED MULLION END ANCHORS & REDUCED FRAME ANCHOR SPACING TO 15"	B1	UPDATE PER CURRENT STANDARDS
		C1	UPDATE PER CURRENT STANDARDS
<p>3250 HP FIXED WINDOW (LARGE MISSILE IMPACT)</p> <p>MANUFACTURER: WAUSAU WINDOW & WALL SYSTEMS 7800 INTERNATIONAL DRIVE WAUSAU, WI. 54401 715-845-2161</p> <p>CONSULTANTS: W. W. SCHAEFER ENGINEERING & CONSULTING, P.A. (CA 6809) 7480 150TH COURT NORTH PALM BEACH GARDENS, FL 33418 PHONE: 561-744-3424</p> <p>WARREN W. SCHAEFER, P.E. P.E. NO. 44135</p>			
DRAWING NO. 1084		REV. C	
SHEET NO. 1		OF 3	



SLIDE-IN ANCHOR FASTENER REQUIREMENTS TABLE				
OPENING TYPE (SUBSTRATE)	ANCHOR TO OPENING FASTENER TYPE	NO. FASTENERS PER ANCHOR INTO SUBSTRATE	MINIMUM EMBED	MINIMUM EDGE DIST.
MIN. 2X4 WOOD FRAME OR BUCK (MIN. GR. 3 & G=0.55)	NO. 14 SMS OR WOOD SCREW	2	1 3/8"	1"
MIN. 16 GA. 50 KSI METAL STUD	1/4" GR. 5 SELF TAP/DRILLING SCREW	2	FULL	1/2"
MIN. 12 GAGE A36 STEEL	1/4" GR. 5 SELF TAP/DRILLING SCREW	2	FULL	1/2"
(2) MIN. C-90 CMU	(1) 1/4" CONCRETE SCREW	2	1 1/4"	2"
MIN. 2500 PSI CONCRETE	(1) 1/4" CONCRETE SCREW	2	1 3/4"	2"
(1) CONCRETE SCREWS SHALL BE ELCO ULTRACONS (C.S.), ELCO CRETE-FLEX (S.S.) OR HILTI KWIK-CON II (C.S. OR S.S.).				
(2) CMU IS APPLICABLE AT SIDES ONLY.				

DRAWN BY: J.C.F.
CHECKED BY: W.W.S.
PLOT: 1-2
DATE: 01/07/02

REVISION DESCRIPTION
NO. 1
DATE
BY
REVISION DESCRIPTION
NO. 1
DATE
BY

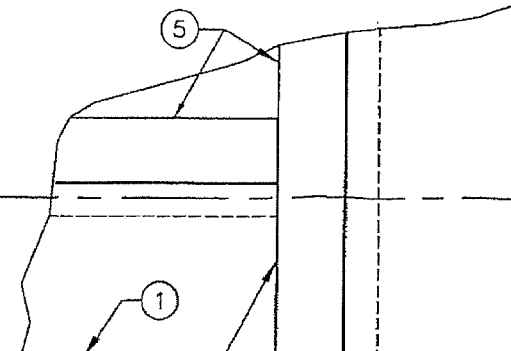
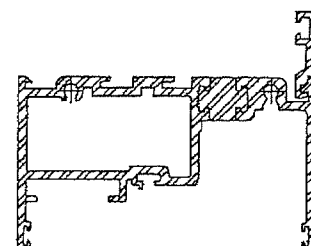
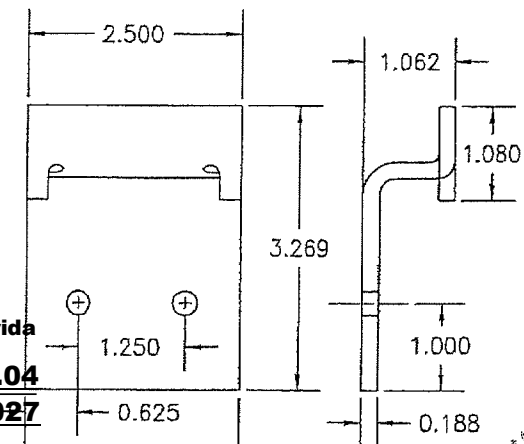
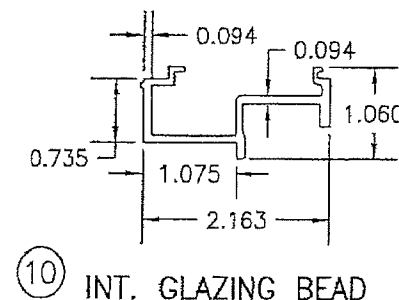
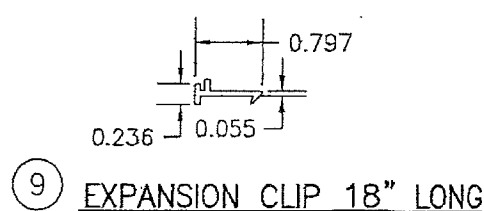
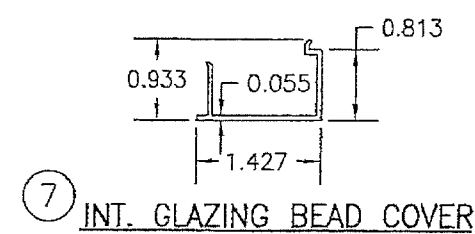
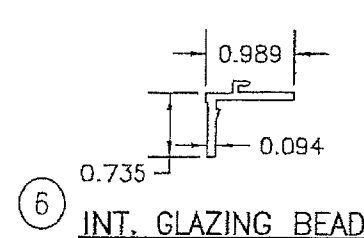
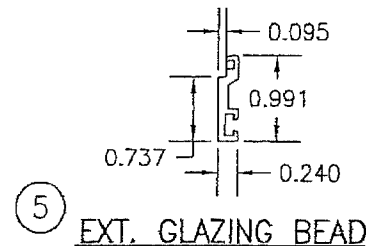
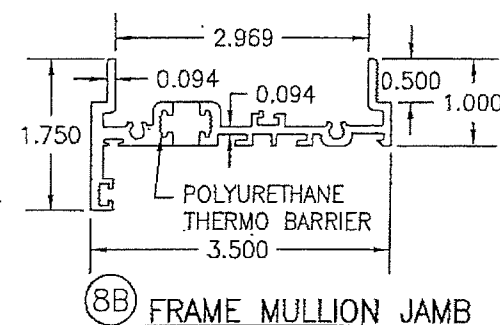
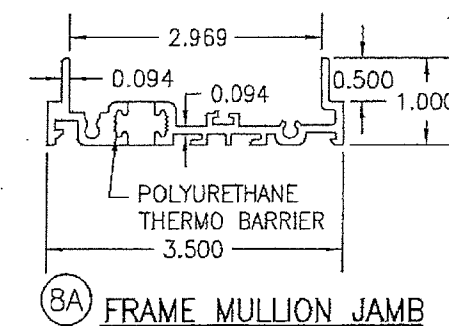
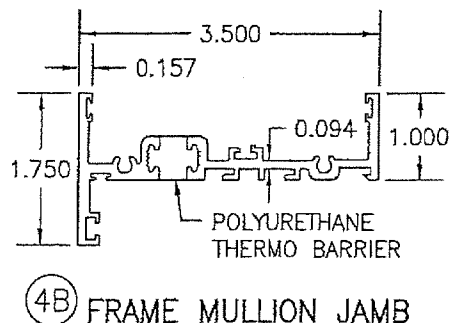
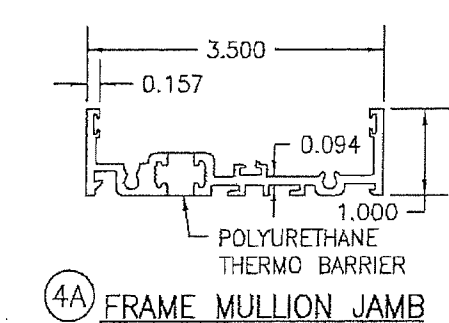
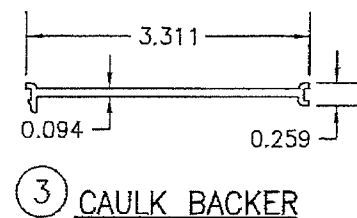
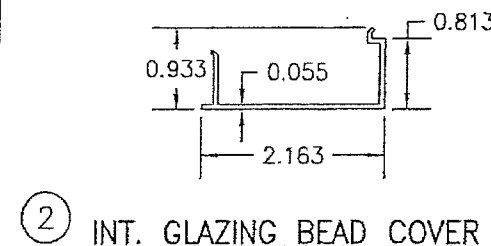
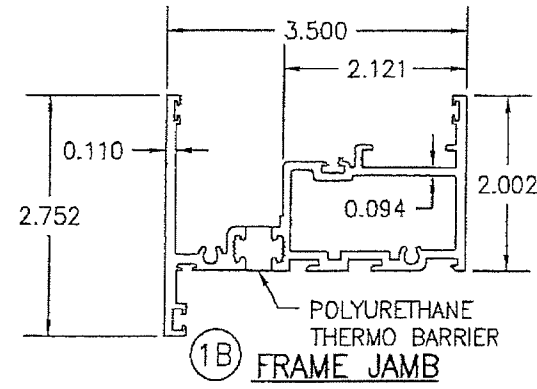
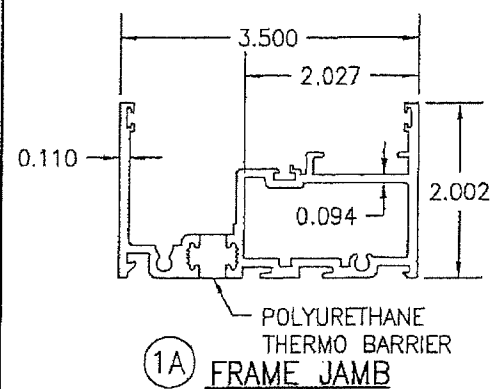
DRAWING TITLE
3250 HP FIXED WINDOW (LARGE MISSILE IMPACT)

MANUFACTURER
WAUSAU WINDOW & WALL SYSTEMS
7800 INTERNATIONAL DRIVE
WAUSAU, WI. 54401
715-845-2161

CONSULTANTS
W. W. SCHAEFER ENGINEERING & CONSULTING, P.A. (CA 6809)
7460 150TH COURT NORTH
PALM BEACH GARDENS, FL 33418
PHONE: 561-744-3424

CERTIFICATION
DESIGNED BY: Warren W. Schaefer, P.E.
NO. 44135
DATE: 08/20/17

DRAWING NO. 1084
REV. C
SHEET NO. 2 OF 3



SCHNEE-MOREHEAD SEALANT #SM5504
AT EXTERIOR PORTION OF JOINT
BETWEEN FRAME MEMBERS.

FRAME CORNER DETAIL
OUTSIDE VIEW

ITEM #	PART	ITEM DESCRIPTION	MANUFACTURER/NOTES
PARTS			
1A	313052	MAIN FRAME JAMB	6063-T6 ALUMINUM
1B	313109	OPTIONAL MAIN FRAME JAMB	6063-T6 ALUMINUM
2	805672	INTERIOR GLAZING BEAD COVER	6063-T6 ALUMINUM
3	445	CAULK BACKER (LENGTH OF JAMB, NOTCHED FOR ANCHOR)	PVC
4A	313050	FRAME JAMB AT FIXED TO CASEMENT MULLION	6063-T6 ALUMINUM
4B	313105	OPTIONAL FRAME JAMB AT FIXED TO CASEMENT MULLION	6063-T6 ALUMINUM
5	805669	EXTERIOR GLAZING BEAD	6063-T6 ALUMINUM
6	805670	INTERIOR GLAZING BEAD	6063-T6 ALUMINUM
7	805676	INTERIOR GLAZING BEAD COVER	6063-T6 ALUMINUM
8A	313056	FRAME JAMB AT FIXED TO FIXED MULLION	6063-T6 ALUMINUM
8B	313107	OPTIONAL FRAME JAMB AT FIXED TO FIXED MULLION	6063-T6 ALUMINUM
9	907290	EXPANSION CLIP 18" LONG @ MIDSPAN OF MULL.	6063-T6 ALUMINUM
10	805674	INTERIOR GLAZING BEAD (USED WITH OPTIONAL INT. PANEL)	6063-T6 ALUMINUM
11	134790	SLIDE-IN ANCHOR	7 GA. ZINC PLATED STEEL
SEALS & SEALANTS			
12	9680	WEATHER STRIP	RIGID PVC ALCRYN/CLIM-TECH.
13	9989	BULB GASKET	THERMO PLASTIC/ULTRA FAB
14	6676	SOLID GLAZING GASKET	SILICONE/TREMCO
FASTENERS			
15	-	#10-32 X 5/8" S.S. PH (2/GLAZING BEAD @ 1/4 PTS.)	

PRODUCT REVISED
as complying with the Florida
Building Code
NOA-No. **17-0111.02**
Expiration Date **04/25/2022**
By *Manuel Perez*
Miami-Dade Product Control

PRODUCT RENEWED
as complying with the Florida
Building Code
NOA-No. **22-0317.04**
Expiration Date: **04/25/2027**
By: *Manuel Perez*
Miami-Dade Product Control

#10-14 X 1 1/2" S.S. PH SMS
INTO FRAME SCREW SPLINES
(2 PER FRAME CORNER)

PRODUCT REVISED
as complying with the Florida
Building Code
Acceptance No. **18-0808.09**
Expiration Date **APR 25, 2022**
By *Manuel Perez*
Miami-Dade Product Control

DRAWN BY: J.C.F.		CHECKED BY: W.W.S.	
PLOT: 1=2		DATE: 01/07/02	
DATE	BY	REVISION DESCRIPTION	NO.
DRAWING TITLE: 3250 HP FIXED WINDOW (LARGE MISSILE IMPACT) MANUFACTURER: WAUSAU WINDOW & WALL SYSTEMS 7800 INTERNATIONAL DRIVE WAUSAU, WI. 54401 715-845-2161 CONSULTANTS: W. W. SCHAEFER ENGINEERING & CONSULTING, P.A. (CA 6809) 7480 180TH COURT NORTH PALM BEACH GARDENS, FL 33418 PHONE: 561-744-3424 P.E. W. W. SCHAEFER LICENSE NO. 144135			
SHEET NO. 3 OF 3		REV. C	