



DEPARTMENT OF REGULATORY AND ECONOMIC RESOURCES (RER)  
BOARD AND CODE ADMINISTRATION DIVISION  
**NOTICE OF ACCEPTANCE (NOA)**

MIAMI-DADE COUNTY  
PRODUCT CONTROL SECTION  
11805 SW 26 Street, Room 208  
Miami, Florida 33175-2474  
T (786) 315-2590 F (786) 315-2599  
[www.miamidade.gov/economy](http://www.miamidade.gov/economy)

EDM USA, Inc.  
7125 NW 6<sup>th</sup> Avenue  
Miami, FL 33154

**SCOPE:** This NOA is being issued under the applicable rules and regulations governing the use of construction materials. The documentation submitted has been reviewed and accepted by Miami-Dade County RER-Product Control Section to be used in Miami Dade County and other areas where allowed by the Authority Having Jurisdiction (AHJ).

This NOA shall not be valid after the expiration date stated below. The Miami-Dade County Product Control Section (In Miami Dade County) and/or the AHJ (in areas other than Miami Dade County) reserve the right to have this product or material tested for quality assurance purposes. If this product or material fails to perform in the accepted manner, the manufacturer will incur the expense of such testing and the AHJ may immediately revoke, modify, or suspend the use of such product or material within their jurisdiction. RER reserves the right to revoke this acceptance if it is determined by Miami-Dade County Product Control Section that this product or material fails to meet the requirements of the applicable building code.

This product is approved as described herein and has been designed to comply with the Florida Building Code, including the High Velocity Hurricane Zone.

**DESCRIPTION: Stone Performance Aluminum Honeycomb-Stone Wall Panel System**

**APPROVAL DOCUMENT:** Drawing No. **20-28973**, titled "Stone Performance Aluminum Honeycomb-Stone Exterior Panels", sheets 1 through 4 of 4, dated 10/19/2020, prepared by Engineering Express, signed and sealed by Frank L. Bennardo, P.E., bearing the Miami-Dade County Product Control renewal stamp with the Notice of Acceptance number and expiration date by the Miami-Dade County Product Control Section.

**MISSILE IMPACT RATING: Large and Small Missile Impact Resistant**

**LABELING:** A permanent label with the manufacturer's name or logo, manufacturing plant's city and state, model/series, and the statement reading 'Miami-Dade County Product Control Approved' is to be located on each panel.

**RENEWAL** of this NOA shall be considered after a renewal application has been filed and there has been no change in the applicable building code negatively affecting the performance of this product.

**TERMINATION** of this NOA will occur after the expiration date or if there has been a revision or change in the materials, use, and/or manufacture of the product or process. Misuse of this NOA as an endorsement of any product, for sales, advertising or any other purposes shall automatically terminate this NOA. Failure to comply with any section of this NOA shall be cause for termination and removal of NOA.

**ADVERTISEMENT:** The NOA number preceded by the words Miami-Dade County, Florida, and followed by the expiration date may be displayed in advertising literature. If any portion of the NOA is displayed, then it shall be done in its entirety.

**INSPECTION:** A copy of this entire NOA shall be provided to the user by the manufacturer or its distributors and shall be available for inspection at the job site at the request of the Building Official.

This NOA **renews NOA # 20-1104.22** and consists of this page 1, evidence pages E-1, E-2 and E-3, as well as approval document mentioned above.

The submitted documentation was reviewed by **Carlos M. Utrera, P.E.**



NOA No 22-0608.01  
Expiration Date: September 7, 2027  
Approval Date: July 7, 2022  
Page 1

**NOTICE OF ACCEPTANCE: EVIDENCE SUBMITTED**

**1. Evidence submitted under NOA #17-0426.05**

**A. DRAWINGS**

1. Drawing No. **15-2780**, titled "Stone Performance Aluminum Honeycomb-Stone Exterior Panels", sheets 1 through 4 of 4, dated 01/31/2017, prepared by Engineering Express, signed and sealed by Frank L. Bennardo, P.E. on 08/11/2017.

**B. TESTS**

1. Test reports on 1) Air Infiltration Test, per FBC, TAS 202-94  
2) Uniform Static Air Pressure Test, Loading per FBC TAS 202-94  
3) Water Resistance Test, per FBC, TAS 202-94  
along with marked-up drawings and installation diagram of the Stone Performance Panels, prepared by Hurricane Engineering & Testing, Inc., Test Report No. **HETI-16-5105**, dated 12/30/2016, signed and sealed by Rafael E. Droz-Seda, P.E.
2. Test reports on 1) Large Missile Impact Test per FBC, TAS 201-94  
2) Cyclic Wind Pressure Loading per FBC, TAS 203-94  
along with marked-up drawings and installation diagram of the Stone Performance Panels, prepared by Hurricane Engineering & Testing, Inc., Test Report No. **HETI-16-5106**, dated 12/30/2016, signed and sealed by Rafael E. Droz-Seda, P.E.
3. Test report on Tensile Test per ASTM E8-15a of Stud Galvanized Steel, prepared by Hurricane Engineering & Testing, Inc., Test Report No. **HETI-16-T333**, dated 12/29/2016, signed and sealed by Rafael E. Droz-Seda, P.E.
4. Test report on Self-Ignition Temperature of Plastics per ASTM D1929-14 and Rate of Burning of Plastics per ASTM D635-14 of Stone Performance Panels, prepared by Hurricane Engineering & Testing, Inc., Test Report No. **HETI-16-F307**, dated 12/20/2016, signed and sealed by Rafael E. Droz-Seda, P.E.
5. Test report on Surface Burning Characteristics of Building Materials per ASTM E84-16 of Stone Cladded Honeycomb Panels, prepared by Commercial Testing Company, Test Report No. **16-12331**, dated 12/16/2016, signed by Dewane Jackson.

**C. CALCULATIONS**

1. Anchor verification calculations prepared by Engineering Express, dated 03/13/2017, signed and sealed by Frank L. Bennardo, P.E.

**D. MATERIAL CERTIFICATIONS**

1. None.

**E. QUALITY ASSURANCE**

1. Miami-Dade Department of Regulatory and Economic Resources (RER)



---

**Carlos M. Utrera, P.E.**  
**Product Control Examiner**  
**NOA No 22-0608.01**  
**Expiration Date: September 7, 2027**  
**Approval Date: July 7, 2022**

**NOTICE OF ACCEPTANCE: EVIDENCE SUBMITTED**

**F. STATEMENTS**

1. Drawing statement of code conformance to the 5<sup>th</sup> Edition (2014) and 6<sup>th</sup> Edition (2017) FBC issued by Engineering Express, dated 01/31/2017, signed and sealed by Frank L. Bennardo, P.E. on 08/11/2017.
2. Statement letter of no financial interest issued by Engineering Express, dated 03/13/2017, signed and sealed by Frank L. Bennardo, P.E.
3. Distributor agreement dated 06/08/2017.

**2. Evidence submitted under NOA # 18-0123.14**

**A. DRAWINGS**

1. Drawing No. **15-2780**, titled “Stone Performance Aluminum Honeycomb-Stone Exterior Panels”, sheets 1 through 4 of 4, dated 01/31/2017, prepared by Engineering Express, signed and sealed by Frank L. Bennardo, P.E. on 01/11/2018.

**B. TESTS**

1. None.

**C. CALCULATIONS**

1. None.

**D. MATERIAL CERTIFICATIONS**

1. None.

**E. QUALITY ASSURANCE**

1. Miami-Dade Department of Regulatory and Economic Resources (RER)

**F. STATEMENTS**

1. Request letter to change the stone description callouts, dated 01/17/2018 and signed and sealed by Frank L. Bennardo, P.E.



---

**Carlos M. Utrera, P.E.**  
**Product Control Examiner**  
**NOA No 22-0608.01**  
**Expiration Date: September 7, 2027**  
**Approval Date: July 7, 2022**

**NOTICE OF ACCEPTANCE: EVIDENCE SUBMITTED**

**3. Evidence submitted under NOA # 20-1104.22 and new evidence**

**A. DRAWINGS**

1. Drawing No. **20-28973**, titled “Stone Performance Aluminum Honeycomb-Stone Exterior Panels”, sheets 1 through 4 of 4, dated 10/19/2020, prepared by Engineering Express, signed and sealed by Frank L. Bennardo, P.E.

**B. TESTS**

1. None.

**C. CALCULATIONS**

1. None.

**D. MATERIAL CERTIFICATIONS**

1. None.

**E. QUALITY ASSURANCE**

1. Miami-Dade Department of Regulatory and Economic Resources (RER).

**F. STATEMENTS**

1. Statement letter of code conformance to the 7<sup>th</sup> Edition (2020) FBC issued by Engineering Express, dated 05/27/2022, signed and sealed by Frank L. Bennardo, P.E.
2. Statement letter of no financial interest issued by Engineering Express, dated 09/08/2020, signed and sealed by Frank L. Bennardo, P.E.



---

**Carlos M. Utrera, P.E.**  
**Product Control Examiner**  
**NOA No 22-0608.01**  
**Expiration Date: September 7, 2027**  
**Approval Date: July 7, 2022**

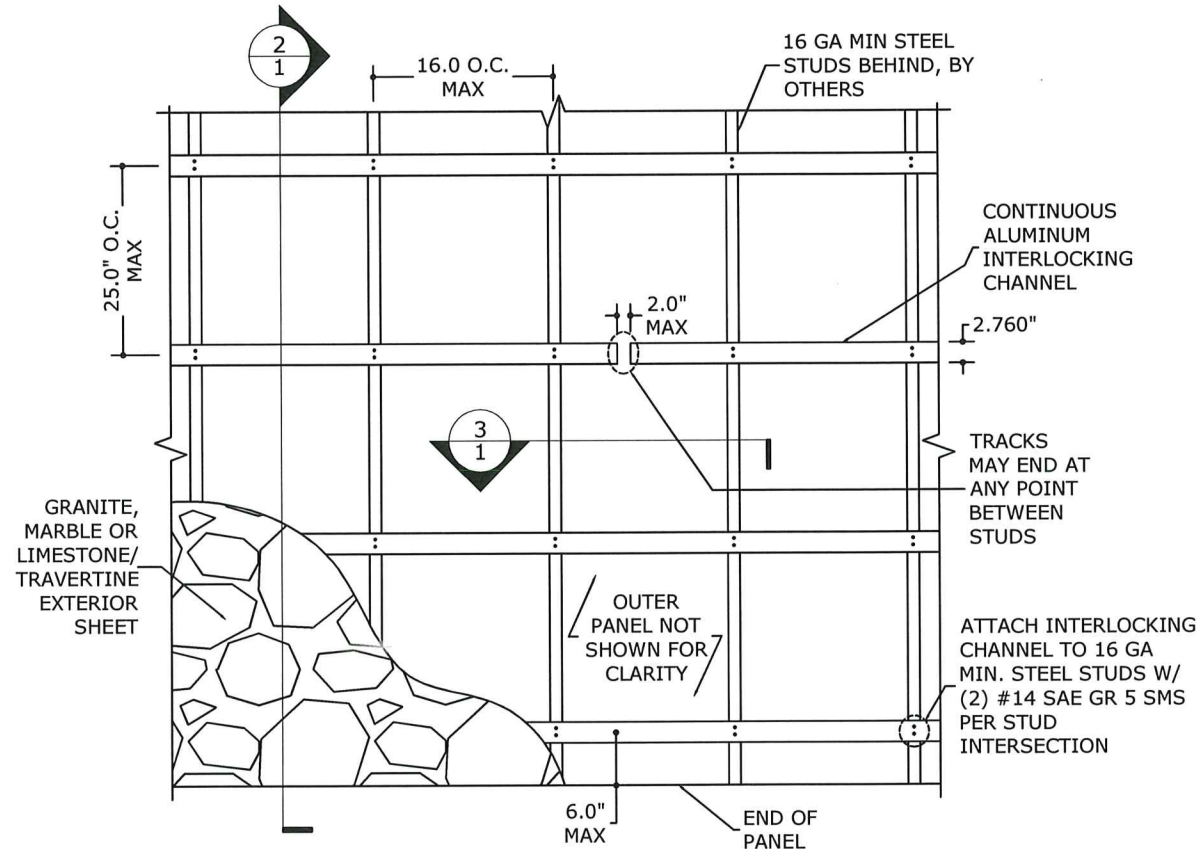


C:\Users\colby\Engineering\Express\Production - Documents\Projects\20-28973 - NOA 18-0123.14 - Aluminum Honeycomb - Stone Exterior Panels\WIP\2020\FBC\50 - 20-28973 - NOA 18-0123.14 - DWG.dwg  
10/19/2020 - 3:00pm colby

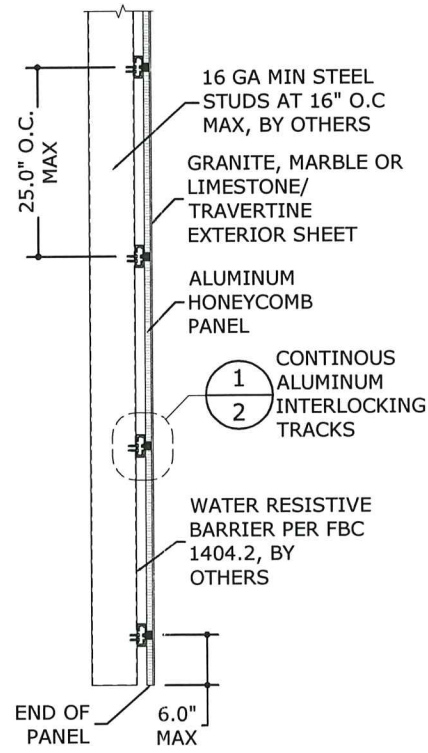
# STONE PERFORMANCE

## ALUMINUM HONEYCOMB - STONE EXTERIOR PANELS

(GRANITE, MARBLE & LIMESTONE/TRAVERTINE)



1 PANEL SUPPORT ELEMENTS  
1 SCALE: NTS OUTSIDE ELEVATION

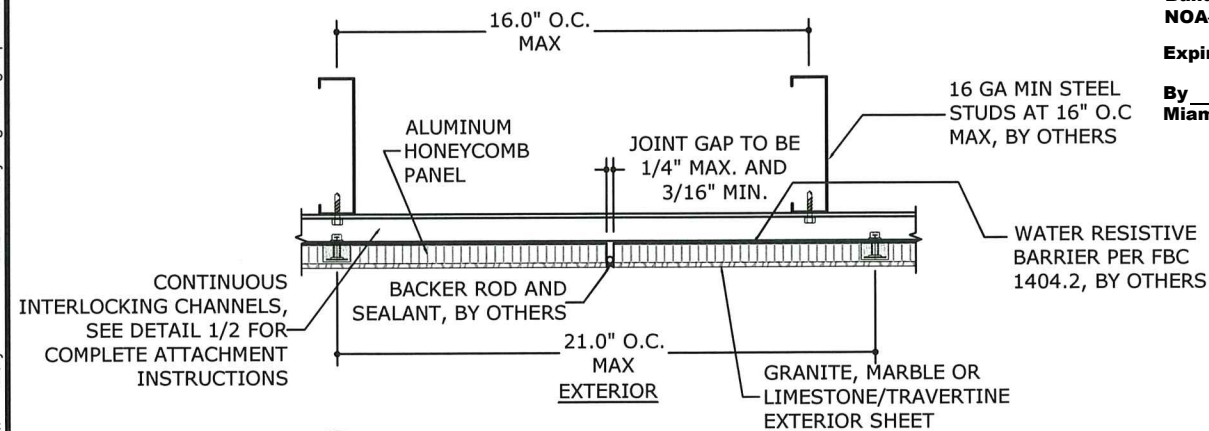


2 PANEL SUPPORT ELEMENTS  
1 SCALE: NTS SECTION VIEW

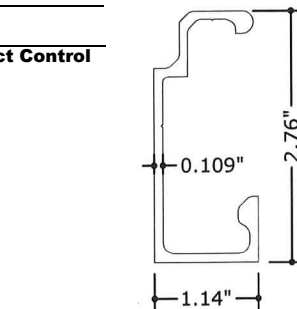
**PRODUCT RENEWED**  
as complying with the Florida  
Building Code  
NOA-No. 22-0608.01

Expiration Date 09/07/2027

By *Frank L. Bennardo*  
Miami-Dade Product Control



3 PANEL SUPPORT ELEMENTS  
1 SCALE: NTS SECTION VIEW



INTERLOCKING CHANNEL  
SCALE: NTS 6063-T5 ALUMINUM

**PRODUCT REVISED**  
as complying with the Florida  
Building Code  
NOA-No. 20-1104.22  
Expiration Date 09/07/2022  
By *Frank L. Bennardo*  
Miami-Dade Product Control

### DESIGN NOTES:

THE ALLOWABLE DESIGN PRESSURES LISTED BELOW WERE DETERMINED PER TEST REPORT #S HETI-16-5105, & HETI-16-5106 BY HURRICANE ENGINEERING AND TESTING, INC. PER TAS 201, 202 AND 203 TEST STANDARDS:

**MAXIMUM DESIGN PRESSURES (ASD):**  
+100 PSF / -100 PSF

### GENERAL NOTES:

- THIS DOCUMENT SHALL NOT BE USED OR REPRODUCED WITHOUT THE ORIGINAL SIGNATURE & RAISED SEAL OF FRANK L. BENNARDO, P.E. ALTERATIONS, ADDITIONS OR OTHER MARKINGS TO THIS DOCUMENT ARE NOT PERMITTED AND INVALIDATE OUR CERTIFICATION. PHOTOCOPIES AND UNSEALED DOCUMENTS ARE NOT TO BE ACCEPTED.
- THIS STRUCTURE HAS BEEN DESIGNED AND SHALL BE FABRICATED IN ACCORDANCE WITH THE STRUCTURAL PROVISIONS OF THE FLORIDA BUILDING CODE SEVENTH EDITION (2020). CONTRACTOR SHALL INVESTIGATE AND CONFORM TO ALL LOCAL BUILDING CODE AMENDMENTS WHICH MAY APPLY AND GOVERN. DESIGN CRITERIA OR SPANS BEYOND STATED HEREIN MAY REQUIRE ADDITIONAL SITE SPECIFIC SEALED ENGINEERING.
- NO 33-1/3% INCREASE IN ALLOWABLE STRESS HAS BEEN USED IN THE DESIGN OF THIS SYSTEM. WIND LOAD DURATION FACTOR  $C_d=1.6$  HAS BEEN USED FOR WOOD ANCHOR DESIGN.
- THE ARCHITECT/ENGINEER OF RECORD FOR THE PROJECT SUPERSTRUCTURE WITH WHICH THIS DESIGN IS USED SHALL BE RESPONSIBLE FOR THE INTEGRITY OF ALL SUPPORTING SURFACES TO THIS DESIGN WHICH SHALL BE COORDINATED BY THE PERMITTING CONTRACTOR.
- THE SYSTEM DETAILED HEREIN IS GENERIC AND DOES NOT PROVIDE INFORMATION FOR A SPECIFIC SITE. FOR SITE CONDITIONS DIFFERENT FROM THE CONDITIONS DETAILED HEREIN, A LICENSED ENGINEER OR REGISTERED ARCHITECT SHALL PREPARE SITE SPECIFIC DOCUMENTS FOR USE IN CONJUNCTION WITH THIS DOCUMENT.
- THE CONTRACTOR SHALL CAREFULLY CONSIDER POSSIBLE IMPOSING LOADS ON HOST STRUCTURE, INCLUDING BUT NOT LIMITED TO ANY CONCENTRATED LOADS WHICH MAY JUSTIFY GREATER DESIGN CRITERIA. THESE ADDITIONAL LOADS SHALL BE PROPERLY ANALYZED BY A LICENSED ENGINEER OR REGISTERED ARCHITECT.
- ALL FASTENERS TO BE #14 OR GREATER SAE GRADE 5 UNLESS NOTED OTHERWISE. FASTENERS SHALL BE CADMIUM-PLATED OR OTHERWISE CORROSION-RESISTANT MATERIAL AND SHALL COMPLY WITH "SPECIFICATIONS FOR ALUMINUM STRUCTURES" SECTION J.3.1 BY THE ALUMINUM ASSOCIATION, INC., & ANY APPLICABLE FEDERAL, STATE, AND/OR LOCAL CODES.
- FOR ALUMINUM MEMBERS ALL ANCHORS SHALL BE SPACED WITH 2xDIAMETER END DISTANCE AND 2.5xDIAMETER MIN. SPACING TO ADJACENT ANCHORS, UNLESS NOTED OTHERWISE.
- ANCHORS SHALL BE INSTALLED IN ACCORDANCE WITH MANUFACTURERS' RECOMMENDATIONS. MINIMUM EMBEDMENT SHALL BE AS NOTED HEREIN.
- ALL CONCRETE ANCHORS SHALL BE INSTALLED TO NON-CRACKED CONCRETE ONLY.
- THE CONTRACTOR IS RESPONSIBLE TO INSULATE ALL MEMBERS FROM DISSIMILAR MATERIALS TO PREVENT ELECTROLYSIS.
- ALL ALUMINUM SHALL BE 6063-T5 ALLOY AND TEMPER UNLESS NOTED OTHERWISE.
- ALL CONCRETE HOST STRUCTURE SHALL HAVE A COMPRESSIVE STRENGTH OF 3 KSI MINIMUM, U.N.O.
- ALL CONCRETE BLOCK HOST STRUCTURES SHALL CONFORM TO ASTM C-90.
- ALL STEEL HOST STRUCTURES SHALL BE 16 GA MINIMUM AND SHALL HAVE A MINIMUM YIELD STRENGTH OF  $F_y = 56$  KSI.
- ENGINEER SEAL AFFIXED HERETO VALIDATES STRUCTURAL DESIGN AS SHOWN ONLY. USE OF THIS SPECIFICATION BY CONTRACTOR, et. al. INDEMNIFIES & SAVES HARMLESS THIS ENGINEER FOR ALL COST & DAMAGES INCLUDING LEGAL FEES & APPELATE FEES RESULTING FROM MATERIAL FABRICATION, SYSTEM ERECTION, & CONSTRUCTION PRACTICES BEYOND THAT WHICH IS CALLED FOR BY LOCAL, STATE, & FEDERAL CODES & FROM DEVIATIONS OF THIS PLAN.
- EXCEPT AS EXPRESSLY PROVIDED HEREIN, NO ADDITIONAL CERTIFICATIONS OR AFFIRMATIONS ARE INTENDED.
- ALTERATIONS, ADDITIONS, OR OTHER MARKINGS TO THIS DOCUMENT ARE NOT PERMITTED AND INVALIDATE THIS CERTIFICATION.

**AIR INFILTRATION NOTE:** FOR CURTAIN WALL APPLICATIONS WITH ATTACHMENTS DIRECTLY TO STUD WALL FRAMING THIS PRODUCT REQUIRES SEPARATE CERTIFICATION (BY OTHERS) TO MEET THE MINIMUM AIR INFILTRATION REQUIREMENTS OF FBC ENERGY SECTION C402.4.3. FOR PANEL INSTALLATIONS IN FRONT OF 3/4" PLYWOOD, MASONRY OR CONCRETE THIS PRODUCT DOES MEET THE MINIMUM AIR INFILTRATION REQUIREMENTS AND MAY BE INSTALLED PER THE DETAILS HEREIN

VISIT [ECALC.IO/28973](https://www.ecalc.io/28973)

FOR SITE SPECIFIC DEVIATIONS  
& MORE INFORMATION ABOUT THIS DOCUMENT  
OR SCAN THIS QR CODE

VISIT [ENGINEERINGEXPRESS.COM/STORE](https://www.engineeringexpress.com/store)  
FOR ADDITIONAL PLANS, REPORTS & RESOURCES



FRANK BENNARDO, PE  
PE# 0046549 CA# 9885

10/19/2020

VALID ONLY WITH ORIGINAL ENGINEER SEAL

ENGINEERING EXPRESS  
CORPORATE OFFICE:  
160 SW 12th AVE, SUITE 106  
DEERFIELD BEACH, FL 33442  
(954) 354-0660 | (866) 396-9999  
TEAM@ENGINEERINGEXPRESS.COM  
ENGINEERINGEXPRESS.COM

EDM USA, INC.  
7125 NW 6TH AVENUE  
MIAMI, FL  
(646) 237-7158

HONEYCOMB-CORE STONE PANEL  
MIAMI-DADE NOTICE OF ACCEPTANCE  
FBC SEVENTH EDITION (2020)

REMARKS	DATE	DRWN	CHKD
INIT ISSUE	01/31/17	RWN	FLB
2020 FBC	10/19/20	CCB	RWN

COPYRIGHT ENGINEERING EXPRESS®

20-28973

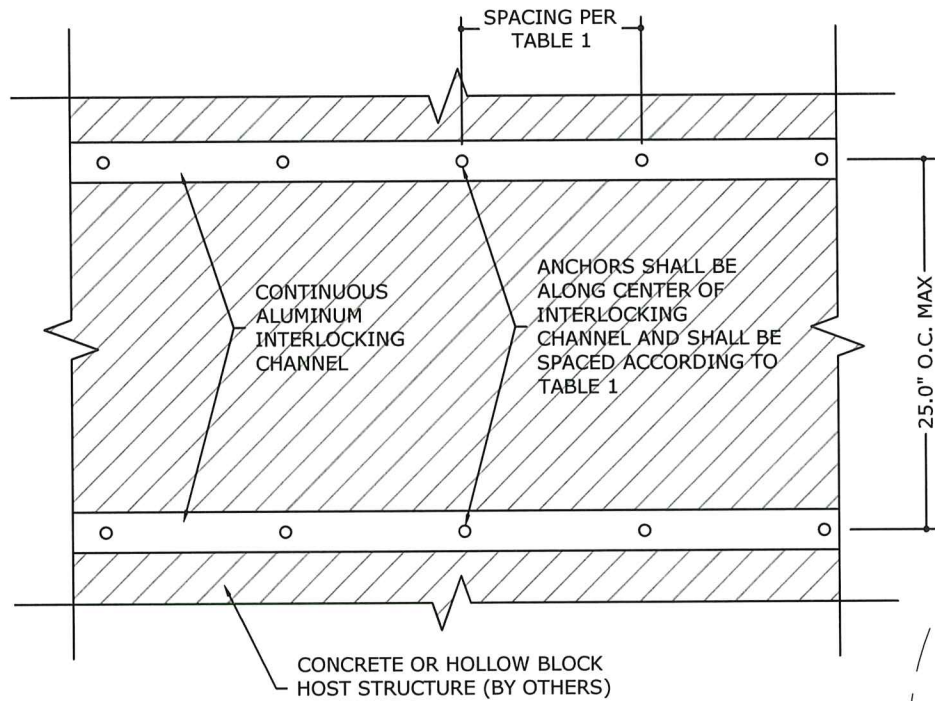
SCALE: NTS UNLESS NOTED

OF 4

1

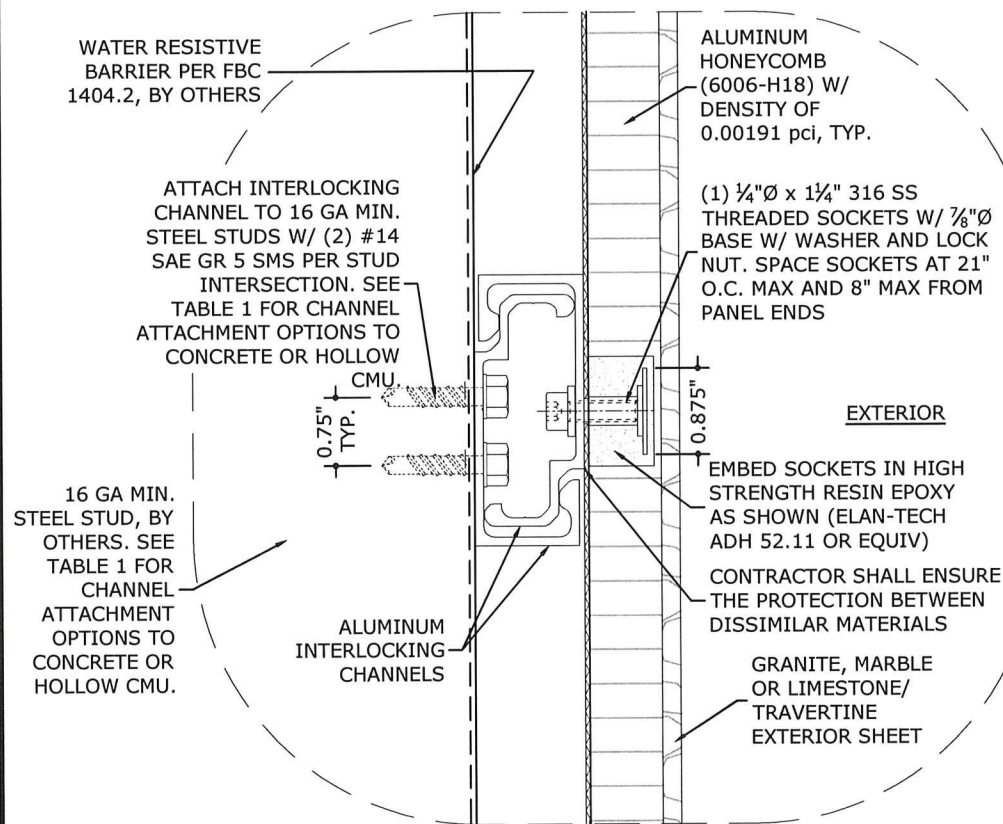


C:\Users\colby\Engineering\Express\Production - Documents\Projects\20-28973 - NOA 18-0123.14 - Aluminum Honeycomb - Stone Exterior Panels\WP2020 FBC150 - 20-28973 - NOA18-0123.14 - DWG.dwg  
10/19/2020 - 3:00pm colby



### INTERLOCKING CHANNEL TO CONCRETE OR HOLLOW BLOCK

SCALE: NTS OUTSIDE ELEVATION

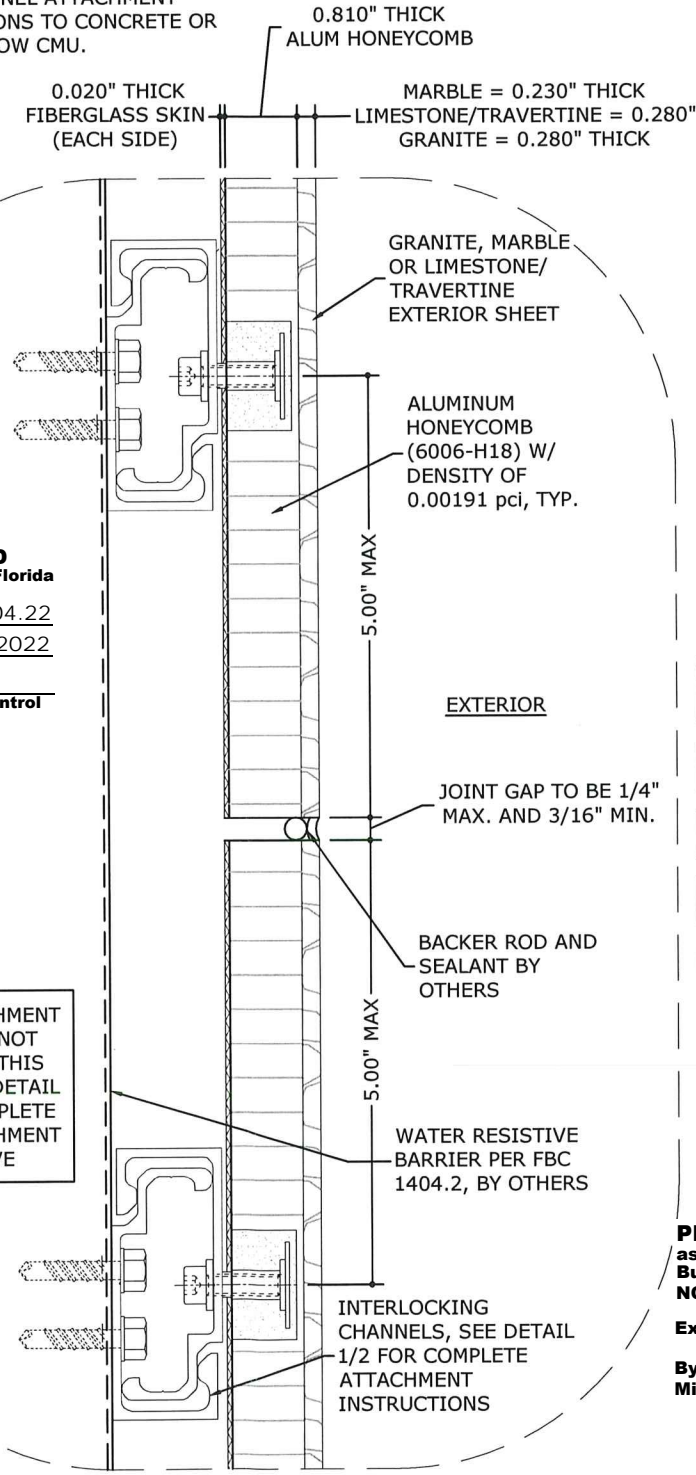


### PANEL TO STUD ATTACHMENT, TYP.

SCALE: NTS SECTION DETAIL

THE DETAILS CONTAINED ON THIS SHEET ARE INTENDED TO DEPICT COMMON SCENARIOS FOR PANEL INSTALLATIONS. FIELD CONDITIONS MAY DIFFER AND ARE STILL APPROVED THROUGH THIS DOCUMENT AS LONG AS THE MINIMUM REQUIREMENTS CONTAINED HEREIN ARE FOLLOWED.

16 GA MIN. STEEL STUD, BY OTHERS. SEE TABLE 1 FOR CHANNEL ATTACHMENT OPTIONS TO CONCRETE OR HOLLOW CMU.



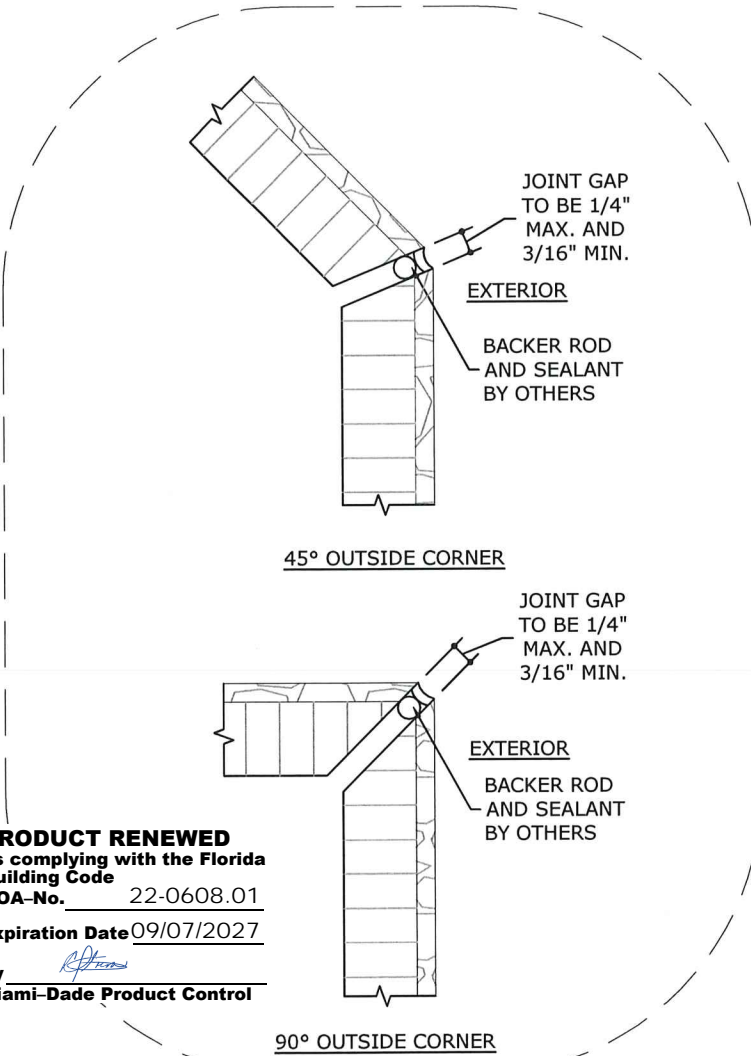
### PANEL JOINT CONNECTION, TYP.

SCALE: NTS SECTION DETAIL

TABLE 1: ALUMINUM INTERLOCKING CHANNEL TO SUBSTRATE ATTACHMENT

HOST SUBSTRATE (BY OTHERS)	ANCHOR TYPE	ANCHOR SPACING
16 GA MIN STEEL STUDS (56 KSI MIN STEEL)	#14 SAE GR 5 SMS	(2) PER STUD
2.85 KSI MIN CONCRETE †	3/16" ITW TAPCON W/ 1-3/4" EMBED. AND 1" MIN. EDGE DISTANCE OR 3/16" DEWALT ULTRACON W/ 1-3/4" EMBED. AND 1" MIN. EDGE DISTANCE	12" O.C. ALONG INTERLOCKING CHANNEL
MEDIUM WEIGHT HOLLOW CONCRETE BLOCK †	1/4" ITW TAPCON W/ 1-1/4" EMBED. AND 2-1/2" MIN. EDGE DISTANCE OR 1/4" DEWALT ULTRACON W/ 1-1/4" EMBED. AND 2-1/2" MIN. EDGE DISTANCE	6" O.C. ALONG INTERLOCKING CHANNEL

† SEE DETAIL 4/2 FOR CHANNEL TO CONCRETE OR HOLLOW BLOCK DIRECTIVE (CMU MUST CONFORM TO ASTM C90)



### CORNER DETAILS, TYP.

SCALE: NTS SECTION DETAIL

**PRODUCT REVISED**  
as complying with the Florida Building Code  
NOA-No. 20-1104.22  
Expiration Date 09/07/2022  
By Miami-Dade Product Control

**PRODUCT RENEWED**  
as complying with the Florida Building Code  
NOA-No. 22-0608.01  
Expiration Date 09/07/2027  
By Miami-Dade Product Control

FRANK BENNARDO, PE  
PE# 0046549 CA# 9885

10/19/2020

VALID ONLY WITH ORIGINAL ENGINEER SEAL

STATE OF FLORIDA  
PROFESSIONAL ENGINEER  
CORPORATE OFFICE:  
160 SW 12th AVE, SUITE 106  
DEERFIELD BEACH, FL 33442  
(954) 354-0660 | (866) 396-9999  
TEAM@ENGINEERINGEXPRESS.COM  
ENGINEERINGEXPRESS.COM

EDM USA, INC.  
7125 NW 6TH AVENUE  
MIAMI, FL  
(646) 237-7158

HONEYCOMB-CORE STONE PANEL  
MIAMI-DADE NOTICE OF ACCEPTANCE  
FBC SEVENTH EDITION (2020)

REMARKS	DATE	DRWN	CHKD
INITIALS	01/31/17	RWN	FLB
2020 FBC	10/19/20	CCB	RWN

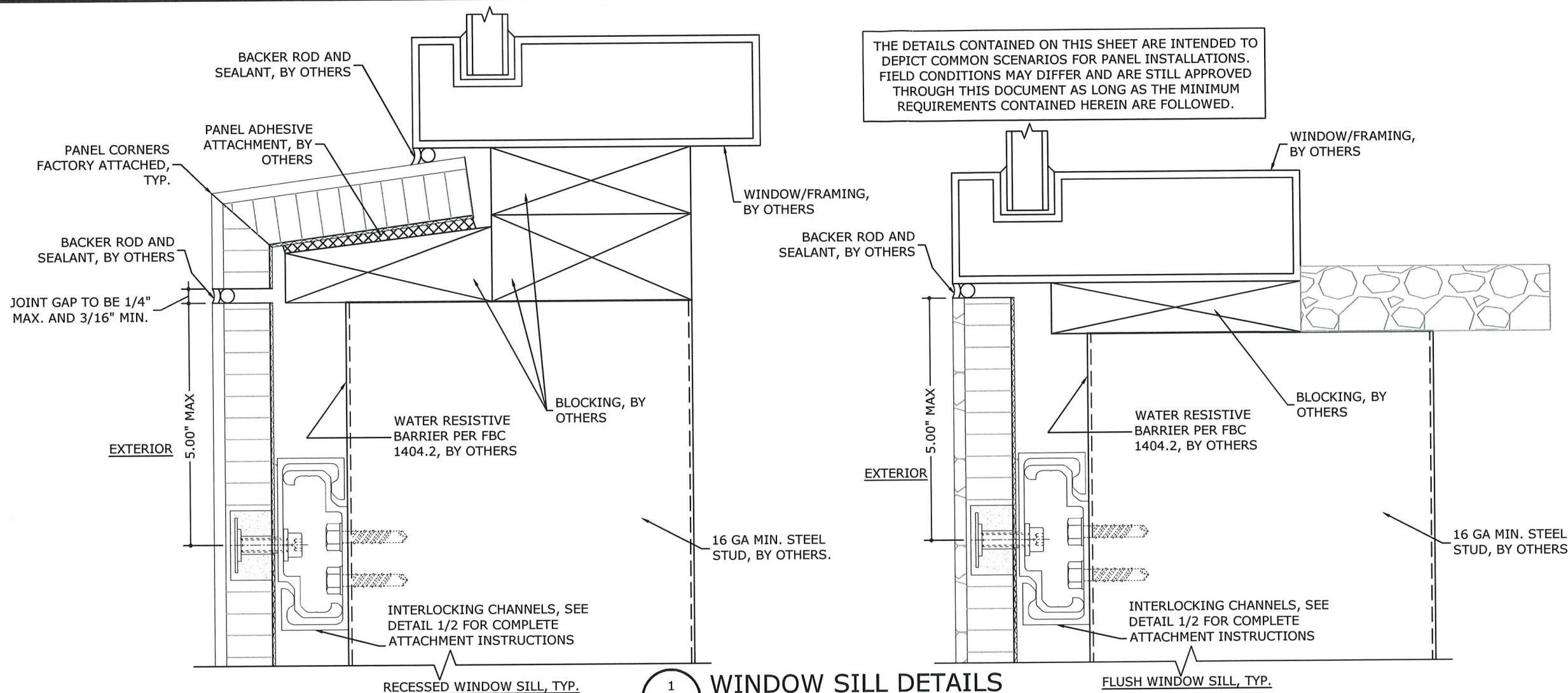
COPYRIGHT ENGINEERING EXPRESS®

20-28973

SCALE: NTS UNLESS NOTED

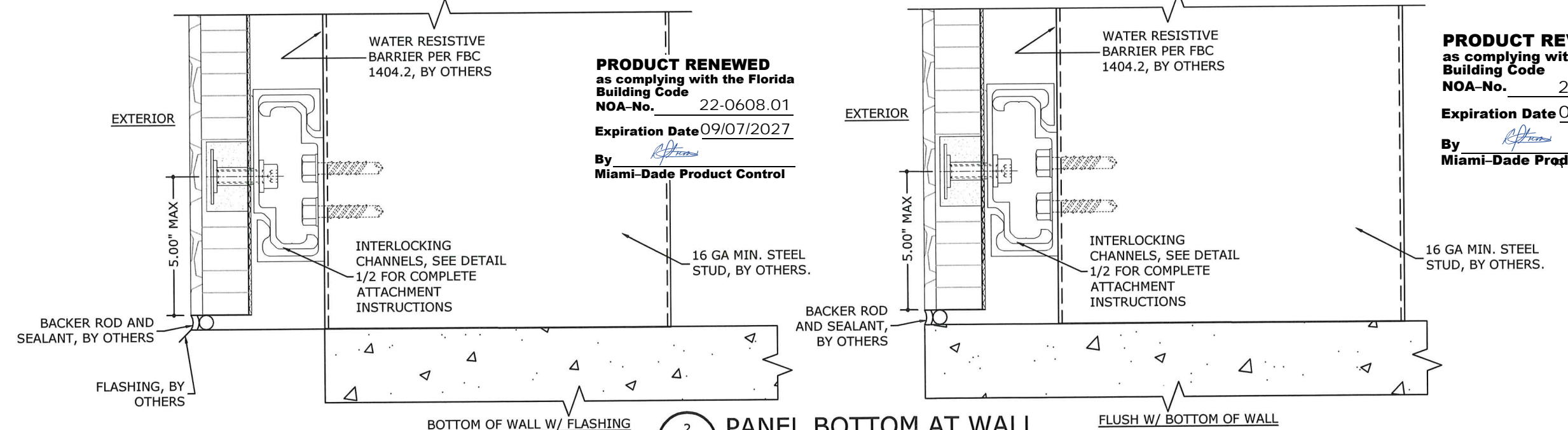


C:\Users\colby\Engineering\Express\Production - Documents\Projects\20-28973 - NOA 18-0123.14 - Aluminum Honeycomb - Stone Exterior Panels\WP2020 FBC50 - 20-28973 - NOA18-0123.14 - DWG.dwg  
10/19/2020 - 3:00pm colby



THE DETAILS CONTAINED ON THIS SHEET ARE INTENDED TO DEPICT COMMON SCENARIOS FOR PANEL INSTALLATIONS. FIELD CONDITIONS MAY DIFFER AND ARE STILL APPROVED THROUGH THIS DOCUMENT AS LONG AS THE MINIMUM REQUIREMENTS CONTAINED HEREIN ARE FOLLOWED.

1 WINDOW SILL DETAILS  
3 SCALE: NTS SECTION DETAIL



**PRODUCT RENEWED**  
as complying with the Florida  
Building Code  
NOA-No. 22-0608.01  
Expiration Date 09/07/2027  
By *[Signature]*  
Miami-Dade Product Control

**PRODUCT REVISED**  
as complying with the Florida  
Building Code  
NOA-No. 20-1104.22  
Expiration Date 09/07/2022  
By *[Signature]*  
Miami-Dade Product Control



ENGINEERING EXPRESS®  
CORPORATE OFFICE:  
160 SW 12th AVE, SUITE 106  
DEERFIELD BEACH, FL 33442  
(954) 354-0660 | (866) 396-9999  
TEAM@ENGINEERINGEXPRESS.COM  
ENGINEERINGEXPRESS.COM

EDM USA, INC.  
7125 NW 6TH AVENUE  
MIAMI, FL  
(646) 237-7158  
HONEYCOMB-CORE STONE PANEL  
MIAMI-DADE NOTICE OF ACCEPTANCE  
FBC SEVENTH EDITION (2020)

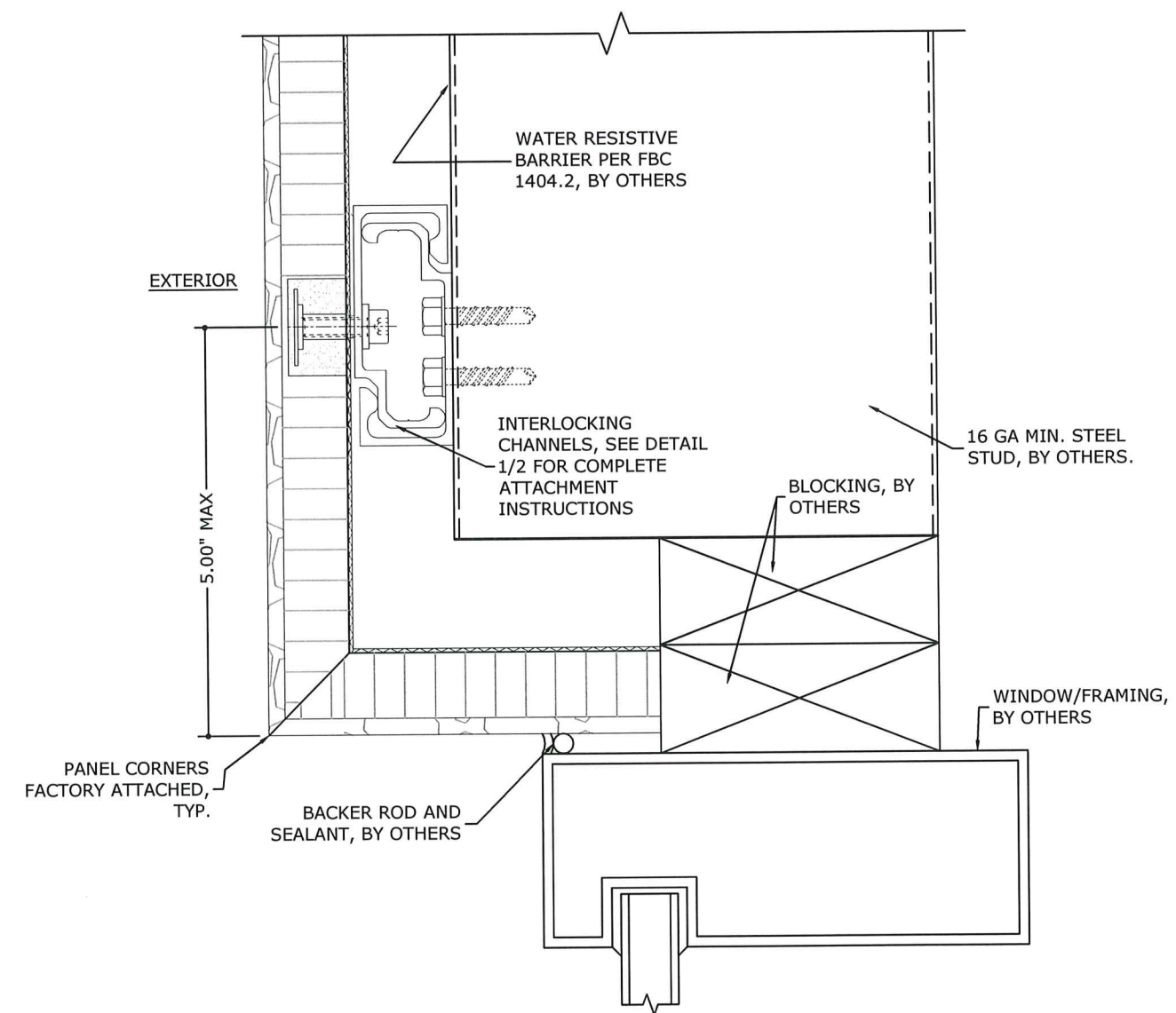
REMARKS	DRWN	CHKD	DATE
INIT ISSUE	RWN	FLB	01/31/17
2020 FBC	CCB	RWN	10/19/20

THIS DOCUMENT IS THE PROPERTY OF ENGINEERING EXPRESS. IT SHALL NOT BE REPRODUCED IN WHOLE OR PART WITHOUT WRITTEN CONSENT OF ENGINEERING EXPRESS. ALTERATIONS, ADDITIONS, OR OTHER MARKINGS TO THIS DOCUMENT ARE NOT PERMITTED AND INVALIDATE OUR CERTIFICATION.

COPYRIGHT ENGINEERING EXPRESS®  
20-28973

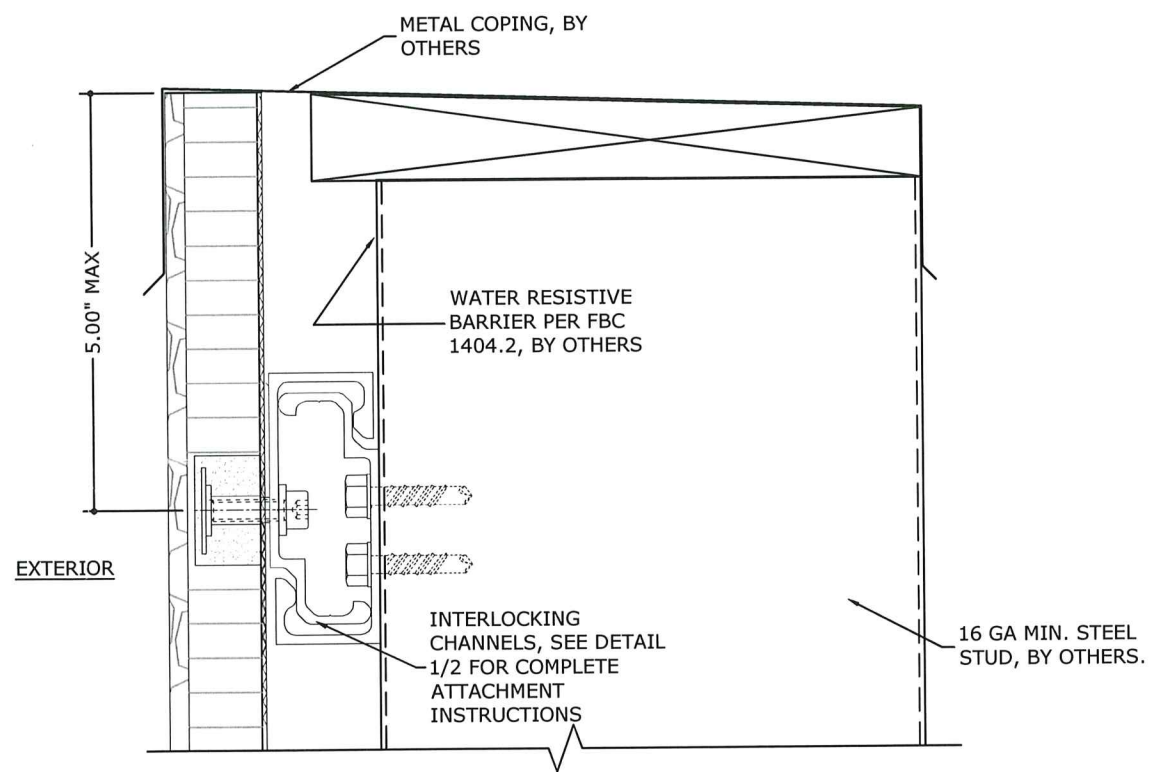
SCALE: NTS UNLESS NOTED

10/19/2020 - 3:00pm colby C:\Users\colby\Engineering Express\Production - Documents\Projects\20-28973 - NOA 18-0123.14 - Aluminum Honeycomb - Stone Exterior Panels\WP12020 FBC150 - 20-28973 - NOA18-0123.14 - DWG.dwg



1 WINDOW HEADER DETAIL, TYP.  
SCALE: NTS SECTION DETAIL

THE DETAILS CONTAINED ON THIS SHEET ARE INTENDED TO DEPICT COMMON SCENARIOS FOR PANEL INSTALLATIONS. FIELD CONDITIONS MAY DIFFER AND ARE STILL APPROVED THROUGH THIS DOCUMENT AS LONG AS THE MINIMUM REQUIREMENTS CONTAINED HEREIN ARE FOLLOWED.



2 COPING DETAIL, TYP.  
SCALE: NTS SECTION DETAIL

**PRODUCT RENEWED**  
as complying with the Florida  
Building Code  
NOA-No. 22-0608.01  
Expiration Date 09/07/2027  
By *[Signature]*  
Miami-Dade Product Control

**PRODUCT REVISED**  
as complying with the Florida  
Building Code  
NOA-No. 20-1104.22  
Expiration Date 09/07/2022  
By *[Signature]*  
Miami-Dade Product Control

FRANK BENNARDO, PE  
PE# 0046549 CA# 9885  
10/19/2020  
VALID ONLY WITH ORIGINAL ENGINEER SEAL  
ENGINEERING EXPRESS  
FLORIDA PROFESSIONAL ENGINEER  
CORPORATE OFFICE: SUITE 106  
160 SW 12th AVE, SUITE 106  
DEERFIELD BEACH, FL 33442  
(954) 354-0660 | (866) 396-9999  
TEAM@ENGINEERINGEXPRESS.COM  
ENGINEERINGEXPRESS.COM

EDM USA, INC.  
7125 NW 6TH AVENUE  
MIAMI, FL  
(646) 237-7158  
HONEYCOMB-CORE STONE PANEL  
MIAMI-DADE NOTICE OF ACCEPTANCE  
FBC SEVENTH EDITION (2020)

REMARKS	DRWN	CHKD	DATE
INITIALS	RWN	FLB	01/31/17
2020 FBC	CCB	RWN	10/19/20

THIS DOCUMENT IS THE PROPERTY OF ENGINEERING EXPRESS, AND SHALL NOT BE REPRODUCED IN WHOLE OR PART WITHOUT WRITTEN CONSENT OF ENGINEERING EXPRESS. ALTERATIONS, ADDITIONS, OR OTHER MARKINGS TO THIS DOCUMENT ARE NOT PERMITTED AND INVALIDATE OUR CERTIFICATION.

COPYRIGHT ENGINEERING EXPRESS®

20-28973

SCALE: NTS UNLESS NOTED

4

4