



DEPARTMENT OF REGULATORY AND ECONOMIC RESOURCES (RER)
BOARD AND CODE ADMINISTRATION DIVISION

NOTICE OF ACCEPTANCE (NOA)

MIAMI-DADE COUNTY
PRODUCT CONTROL SECTION
11805 SW 26 Street, Room 208
Miami, Florida 33175-2474
T (786) 315-2590 F (786) 315-2599
www.miamidade.gov/economy

FastPlank, Inc.
4115 72nd Avenue S.E.
Calgary, Alberta, T2C 2G5

SCOPE:

This NOA is being issued under the applicable rules and regulations governing the use of construction materials. The documentation submitted has been reviewed and accepted by Miami-Dade County RER-Product Control Section to be used in Miami-Dade County and other areas where allowed by the Authority Having Jurisdiction (AHJ).

This NOA shall not be valid after the expiration date stated below. The Miami-Dade County Product Control Section (In Miami-Dade County) and/or the AHJ (in areas other than Miami-Dade County) reserve the right to have this product or material tested for quality assurance purposes. If this product or material fails to perform in the accepted manner, the manufacturer will incur the expense of such testing and the AHJ may immediately revoke, modify, or suspend the use of such product or material within their jurisdiction. RER reserves the right to revoke this acceptance if it is determined by Miami-Dade County Product Control Section that this product or material fails to meet the requirements of the applicable building code.

This product is approved as described herein and has been designed to comply with the Florida Building Code, including the High Velocity Hurricane Zone.

DESCRIPTION: FastPlank 6" and 4" V-Notch Aluminum Siding Systems

APPROVAL DOCUMENT: Drawing No. **0093**, titled "FastPlank Systems Assembly Details in Florida HVHZ", sheets 1 through 8 of 8, dated 08/19/2022, prepared by the Boca Engineering Co., signed and sealed by Christopher W.C. Bowness, P.E., bearing the Miami-Dade County Product Control approval stamp with the Notice of Acceptance number and approval date by the Miami-Dade County Product Control Section.

MISSILE IMPACT RATING: Large and Small Missile Impact Resistant

LABELING: A permanent label with the manufacturer's name or logo, manufacturing plant's city and state, model/series, and the statement reading 'Miami-Dade County Product Control Approved' is to be located on each panel.

RENEWAL of this NOA shall be considered after a renewal application has been filed and there has been no change in the applicable building code negatively affecting the performance of this product.

TERMINATION of this NOA will occur after the expiration date or if there has been a revision or change in the materials, use, and/or manufacture of the product or process. Misuse of this NOA as an endorsement of any product, for sales, advertising or any other purposes shall automatically terminate this NOA. Failure to comply with any section of this NOA shall be cause for termination and removal of NOA.

ADVERTISEMENT: The NOA number preceded by the words Miami-Dade County, Florida, and followed by the expiration date may be displayed in advertising literature. If any portion of the NOA is displayed, then it shall be done in its entirety.

INSPECTION: A copy of this entire NOA shall be provided to the user by the manufacturer or its distributors and shall be available for inspection at the job site at the request of the Building Official.

This NOA consists of this page 1 and evidence page E-1, as well as approval document mentioned above.

The submitted documentation was reviewed by **Carlos M. Utrera, P.E.**



NOA No. 22-0615.01
Expiration Date: April 6, 2028
Approval Date: April 6, 2023
Page 1

NOTICE OF ACCEPTANCE: EVIDENCE SUBMITTED

A. DRAWINGS

1. Drawing No. **0093**, titled “Fastplank Systems Assembly Details in Florida HVHZ”, sheets 1 through 8 of 8, dated 08/19/2022, prepared by the Boca Engineering Co., signed and sealed by Christopher W.C. Bowness, P.E.

B. TESTS

1. Test reports on 1) Uniform Static Air Pressure Test, Loading per FBC TAS 202-94
2) Large Missile Impact Test per FBC, TAS 201-94
3) Cyclic Wind Pressure Loading per FBC, TAS 203-94
along with marked-up drawings of 6” Aluminum FastPlank Siding, prepared by Intertek, Test Report No. **104352869COQ-003A**, dated 10/14/2021, signed and sealed by Tyler Westerling, P.E.

C. CALCULATIONS

1. Stud deflection and fastener withdrawal calculations, prepared by Boca Engineering Co., dated 07/20/2022, signed and sealed by Christopher W.C. Bowness, P.E.

D. QUALITY ASSURANCE

1. Miami-Dade Department of Regulatory and Economic Resources (RER).

E. MATERIAL CERTIFICATIONS

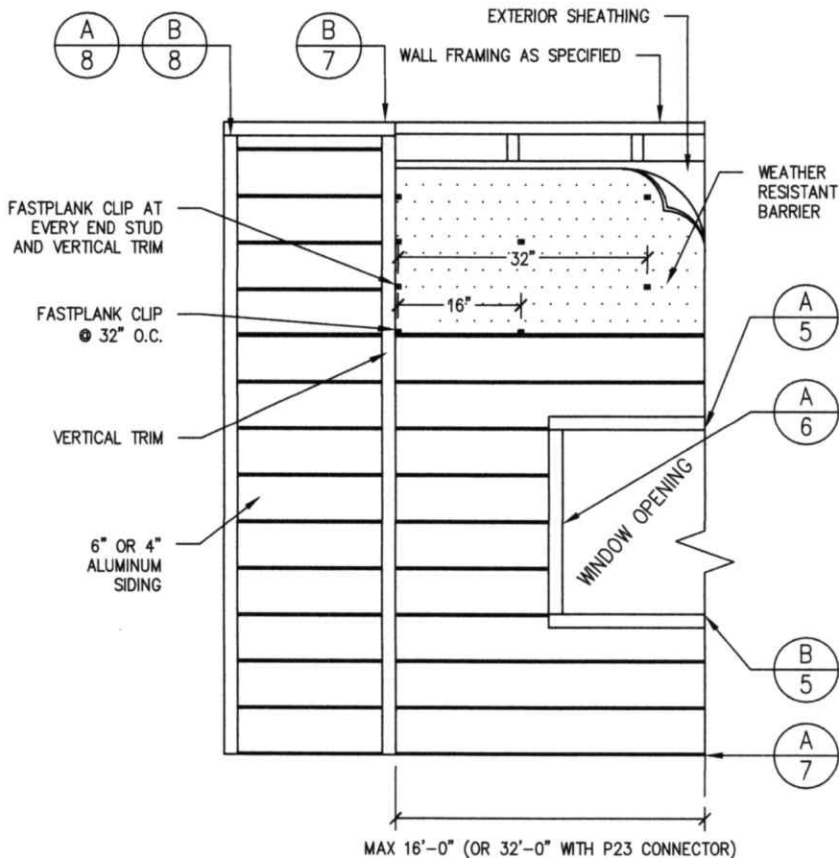
1. None.

F. STATEMENTS

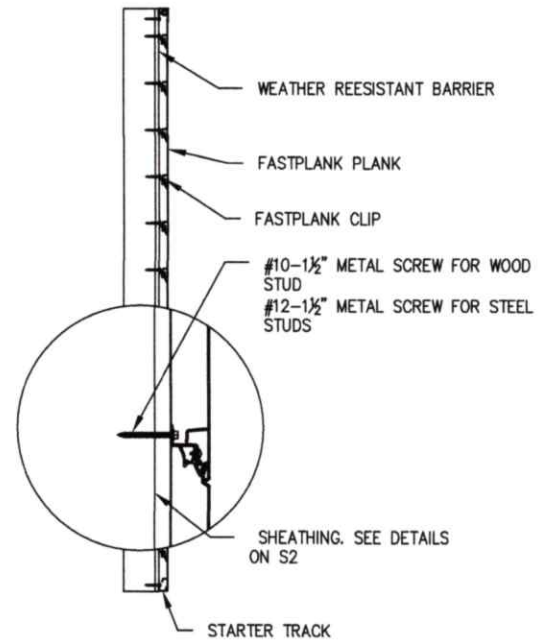
1. Statement letter of code conformance to the 7th edition (2020) of the FBC and of no financial interest issued by Boca Engineering Co., dated 07/25/2022, signed and sealed by Christopher W.C. Bowness, P.E.
3. Distributor agreement dated 03/13/2023.



Carlos M. Utrera, P.E.
Product Control Examiner
NOA No. 22-0615.01
Expiration Date: April 6, 2028
Approval Date: April 6, 2023



WALL ELEVATION
NOT-TO-SCALE



FASTPLANK ELEVATION
NOT-TO-SCALE

TEST NOTES:

1. DESIGN PRESSURE: +/- 90psf.
2. LARGE MISSILE IMPACT RESISTANT.

PRODUCT APPROVED
as complying with the Florida
Building Code

NOA-No. 22-0615.01

Approval Date 04/06/2023

By *[Signature]*
Miami-Dade Product Control

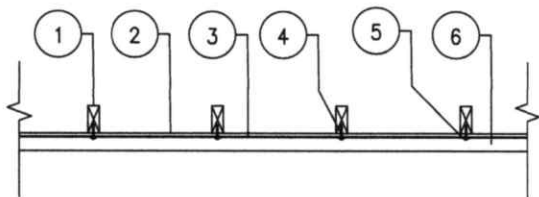


0		2022/08/19	FOR PUBLICATION	CB
REV	DATE	ISSUE		APP
CLIENT:		PROJECT:		TITLE:
FASTPLANK INC.		FASTPLANK SYSTEMS 4115 72nd AVE SE, CALGARY, AB T2C 2G5		FASTPLANK SYSTEMS ASSEMBLY DETAILS IN FLORIDA HIGH VELOCITY HURRICANE ZONE (HVHZ)
DATE	DRAWING NO.	DES	DRN	CHK
AUGUST 19, 2022	0093-1 PG 1 OF 8	CB	LI	CB



BOCA ENGINEERING
STRUCTURAL AND CIVIL ENGINEERS

#203-1001 CLOVERDALE AVE, VICTORIA BC
V8X 4C9 778-265-1507
INFO@BOCAENGINEERING.COM
WWW.BOCAENGINEERING.COM



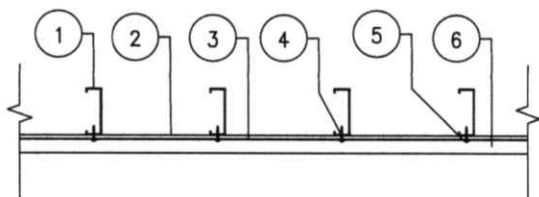
A
2
FASTPLANK OVER WOOD STUDS
NOT-TO-SCALE
DEFLECTION LIMIT OF L/180. MAXIMUM WALL HEIGHT OF 10-FEET

LIGHT-FRAMED STUD WALL INSTALLATION INTERIOR TO EXTERIOR

1	MIN. 2x4 SPF No.2 WOOD STUDS @ 16" O.C.
2	MIN. 7/16" PLYWOOD SHEATHING.
3	WATER RESISTIVE BARRIER TO FBC 1404.2.
4	#10-16 x 1 1/2" HEX WASHER HEAD SCREW W/ GASKET @ EACH CLIP @ 32" O.C.
5	FASTPLANK CLIP @ 32" O.C HORIZONTALLY AND @ EVERY END STUD AND VERTICAL TRIM
6	FASTPLANK SIDING

NOTE:

1. INTERIOR FINISH AND INSULATION NOT SHOWN. FOR CLARITY.
2. FLASHING: (NOT SHOWN) FLASHING PER 2020 FBC 1405.4 AT ALL PENETRATIONS.



B
2
FASTPLANK OVER STEEL STUDS
NOT-TO-SCALE
DEFLECTION LIMIT OF L/180. MAXIMUM WALL HEIGHT OF 10-FEET

LIGHT-FRAMED STUD WALL INSTALLATION INTERIOR TO EXTERIOR

1	MIN 1 5/8"x6 18GA 33ksi STEEL STUDS @ 16" O.C.
2	MIN. 7/16" PLYWOOD SHEATHING.
3	WATER RESISTIVE BARRIER TO FBC 1404.2.
4	#12-16 x 1 1/2" HEX WASHER HEAD SCREW W/ GASKET @ EACH CLIP @ 32" O.C.
5	FASTPLANK CLIP @ 32" O.C HORIZONTALLY AND @ EVERY END STUD AND VERTICAL TRIM
6	FASTPLANK SIDING

NOTE:

1. INTERIOR FINISH AND INSULATION NOT SHOWN. FOR CLARITY.
2. FLASHING: (NOT SHOWN) FLASHING PER 2020 FBC 1405.4 AT ALL PENETRATIONS.

TESTING AND CODE COMPLIANCE

1. THE SIDING PRODUCT ASSEMBLY SHOWN IS DESIGNED TO COMPLY WITH THE 7TH EDITION (2020) FLORIDA BUILDING CODE (FBC) HVHZ AND HAS BEEN EVALUATED ACCORDING TO THE FOLLOWING TEST STANDARDS FOR IMPACT, WIND PRESSURE: TAS 201-94, TAS 202-94, TAS 203-94. THE ASSEMBLY HAS SUCCESSFULLY BEEN TESTED TO AN ASD DESIGN PRESSURE OF 90 psf.
2. THE STRUCTURAL FRAMING AND SHEATHING SHALL BE DESIGNED AND ANCHORED TO PROVIDE LATERAL BRACING AND PROPERLY TRANSFER ALL LOADS TO THE STRUCTURE. FRAMING DESIGN AND INSTALLATION IS THE RESPONSIBILITY OF THE ENGINEER OR ARCHITECT OF RECORD FOR THE PROJECT OF INSTALLATION.
3. THESE DRAWINGS APPLY TO THE TESTING ASSEMBLY ONLY AND DO NOT IMPLY THAT THE SIGNATORY ENGINEER IS THE DESIGNER OF RECORD FOR ANY FUTURE CONSTRUCTION ON WHICH THEY ARE USED.
4. SOME NON-STRUCTURAL COMPONENTS NOT SHOWN AND DO NOT IMPACT STRENGTH FOR ATTACHMENT. TO BE INSTALLED PER CODE AND MAY INCLUDE: FLASHING, INTERIOR INSULATION, INTERIOR FINISH.

INSTALLATION

THE INSTALLATION DETAILS DESCRIBED ARE OF THE LABORATORY TESTED ASSEMBLY AND MAY NOT REFLECT ACTUAL CONDITIONS FOR A SPECIFIC SITE. IF SITE CONDITIONS DEViate FROM THE REQUIREMENTS DETAILED HEREIN, THE LICENSED ENGINEER OR ARCHITECT PREPARED SITE-SPECIFIC DOCUMENTS SHALL BE USED.

SHEATHING

1. PLYWOOD SHEATHING TO CONFORM TO US DOC PS1-09 OR PS2-10 U.N.O.

FASTENERS

1. WOOD SCREWS TO CONFORM TO ASME B18.6.1 U.N.O
2. METAL SCREWS TO CONFORM TO ASTM C1513

FRAMING

1. METAL FRAMING MEMBERS MINIMUM 18 GAUGE U.N.O., 33ksi, COMPLIANCE WITH ANSI S100-16
2. WOOD FRAMING MIN. 2x4 S.G. 0.42, COMPLIANCE WITH US DOC PS20-05

ALUMINUM

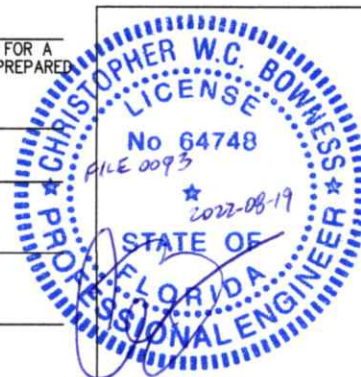
1. ALUMINUM TO CONFORM TO AAMA1402-09, GRADE 6063-T6

PRODUCT APPROVED
as complying with the Florida
Building Code


NOA-No. 22-0615.01

Approval Date 04/06/2023

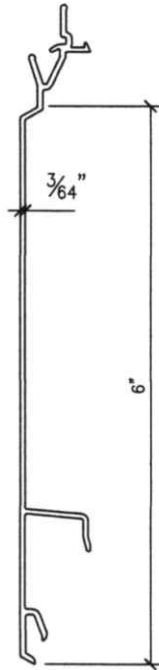
By *[Signature]*
Miami-Dade Product Control



CLIENT:	PROJECT:	TITLE:
FASTPLANK INC.	FASTPLANK SYSTEMS 4115 72nd AVE SE, CALGARY, AB T2C 2G5	FASTPLANK SYSTEMS ASSEMBLY DETAILS IN FLORIDA HIGH VELOCITY HURRICANE ZONE (HVHZ)
DATE	DRAWING NO.	DES
AUGUST 19, 2022	0093-2 PG 2 OF 8	CB
		DRN
		LI
		CHK
		CB

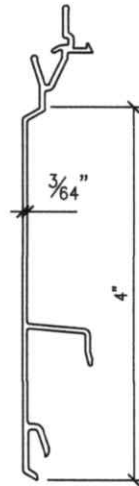
0	2022/08/19	FOR PUBLICATION	CB
REV	DATE	ISSUE	APP
 BOCA ENGINEERING STRUCTURAL AND CIVIL ENGINEERS #203-1001 CLOVERDALE AVE, VICTORIA BC V8X 4C9 778-265-1507 INFO@BOCAENGINEERING.COM WWW.BOCAENGINEERING.COM			

P26V



PLANK LENGTH: 16'-0"

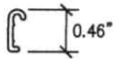
P24V



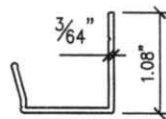
PLANK LENGTH: 16'-0"

FASTPLANK V-NOTCH SIDING PLANKS
NOT-TO-SCALE

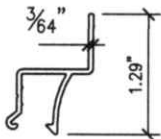
P23

FASTPLANK CONNECTOR
NOT-TO-SCALE

P41

PERFORATED STARTER TRACK
NOT-TO-SCALE

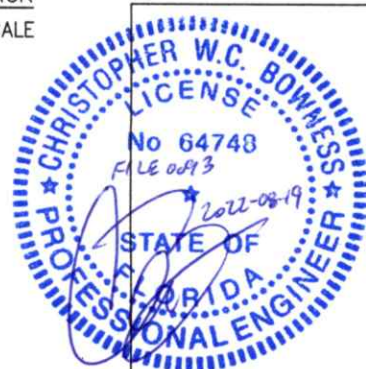
P22


FASTPLANK CLIP
NOT-TO-SCALE

PRODUCT APPROVED
as complying with the Florida
Building Code
NOA-No. 22-0615.01

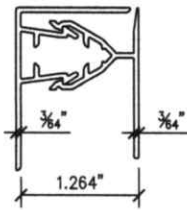
Approval Date 04/06/2023

By *[Signature]*
Miami-Dade Product Control



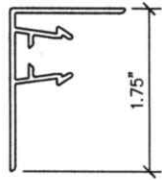
CLIENT: FASTPLANK INC.	PROJECT: FASTPLANK SYSTEMS 4115 72nd AVE SE, CALGARY, AB T2C 2G5	TITLE: FASTPLANK SYSTEMS ASSEMBLY DETAILS IN FLORIDA HIGH VELOCITY HURRICANE ZONE (HVHZ)	0 REV	2022/08/19 DATE	FOR PUBLICATION ISSUE	CB APP
DATE AUGUST 19, 2022	DRAWING NO. 0093-3 PG 3 OF 8	DES CB	DRN LI	CHK CB	 <p>BOCA ENGINEERING STRUCTURAL AND CIVIL ENGINEERS #203-1001 CLOVERDALE AVE, VICTORIA BC V8X 4C9 778-265-1507 INFO@BOCAENGINEERING.COM WWW.BOCAENGINEERING.COM</p>	

ASSEMBLY



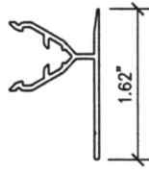
P11

TOP CAP

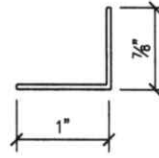


P11T

BACKPLATE



P11B



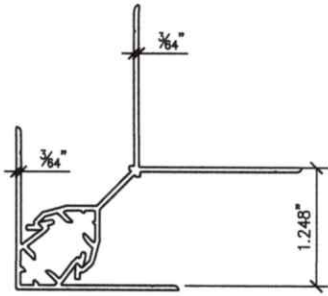
P30 SPACER
NOT-TO-SCALE

A
4

P11 J-TRIM CLIP
NOT-TO-SCALE

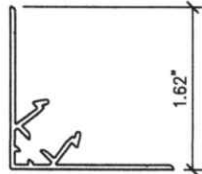
D
4

ASSEMBLY



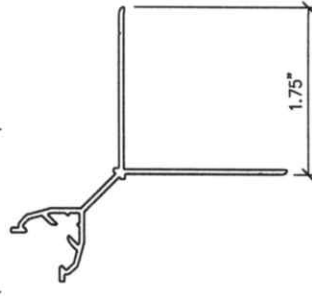
P10

TOP CAP



P10M

BACKPLATE

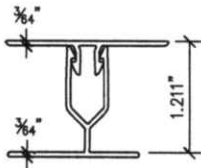


P10F

C
4

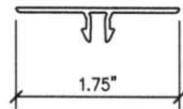
P10 INSIDE/OUTSIDE CORNER
NOT-TO-SCALE

ASSEMBLY



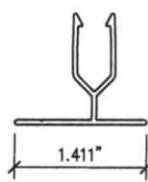
P12

TOP CAP



P12B

BACKPLATE



P12T

B
4


P12 VERTICAL TRIM
NOT-TO-SCALE

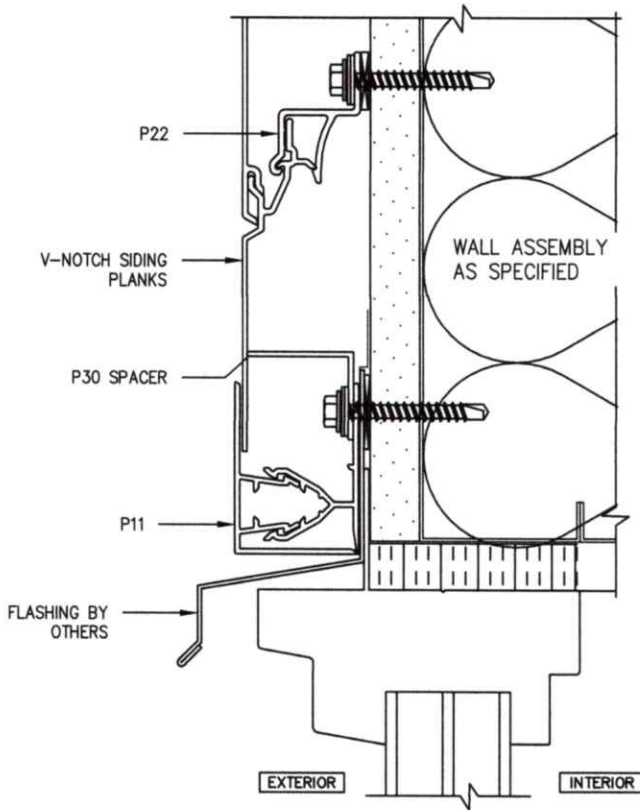
PRODUCT APPROVED
as complying with the Florida
Building Code
NOA-No. 22-0615.01

Approval Date 04/06/2023

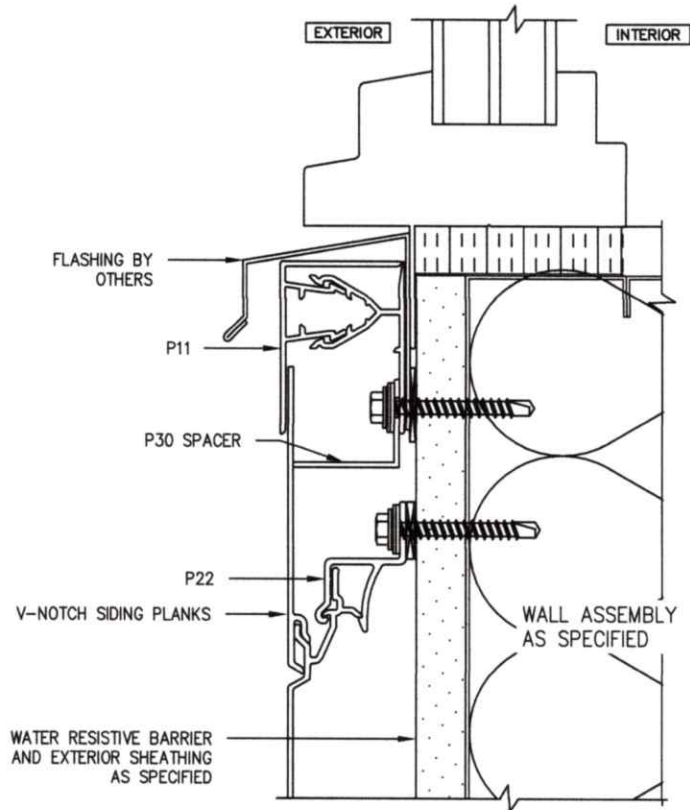
By *[Signature]*
Miami-Dade Product Control



CLIENT: FASTPLANK INC.	PROJECT: FASTPLANK SYSTEMS 4115 72nd AVE SE, CALGARY, AB T2C 2G5	TITLE: FASTPLANK SYSTEMS ASSEMBLY DETAILS IN FLORIDA HIGH VELOCITY HURRICANE ZONE (HVHZ)	0 REV	2022/08/19 DATE	FOR PUBLICATION ISSUE	CB APP
DATE AUGUST 19, 2022	DRAWING NO. 0093-4 PG 4 OF 8	DES CB	DRN LI	CHK CB	 <p>BOCA ENGINEERING STRUCTURAL AND CIVIL ENGINEERS #203-1001 CLOVERDALE AVE, VICTORIA BC V8X 4C9 778-265-1507 INFO@BOCAENGINEERING.COM WWW.BOCAENGINEERING.COM</p>	



A
5 FASTPLANK @ TOP OF WINDOW OPENING
NOT-TO-SCALE

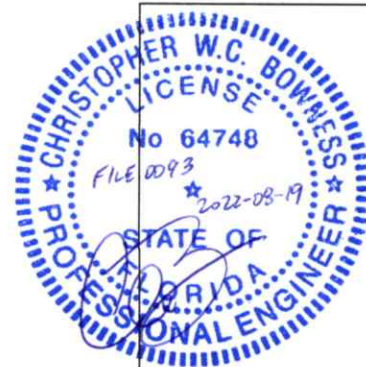


B
5 FASTPLANK @ BOTTOM OF WINDOW OPENING
NOT-TO-SCALE

PRODUCT APPROVED
as complying with the Florida
Building Code
NOA-No. 22-0615.01

Approval Date 04/06/2023

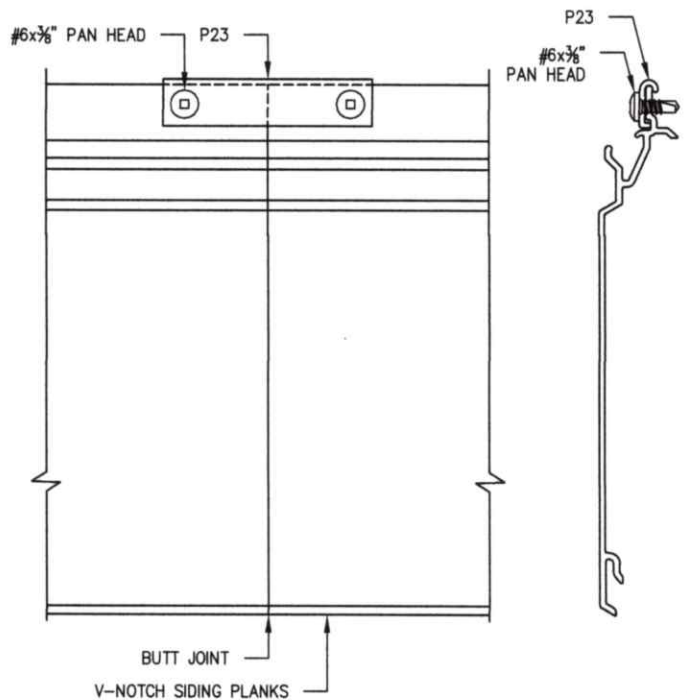
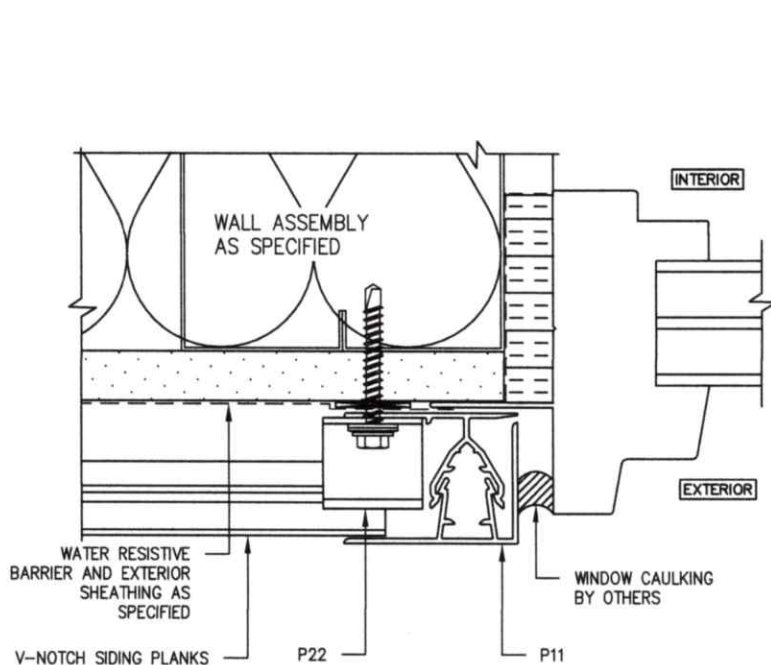
By *[Signature]*
Miami-Dade Product Control



CLIENT:		PROJECT:		TITLE:		REV		DATE		FOR PUBLICATION		ISSUE		APP	
FASTPLANK INC.		FASTPLANK SYSTEMS 4115 72nd AVE SE, CALGARY, AB T2C 2G5		FASTPLANK SYSTEMS ASSEMBLY DETAILS IN FLORIDA HIGH VELOCITY HURRICANE ZONE (HVHZ)		0		2022/08/19						CB	
DATE		DRAWING NO.		DES		DRN		CHK							
AUGUST 19, 2022		0093-5 PG 5 OF 8		CB		LI		CB							



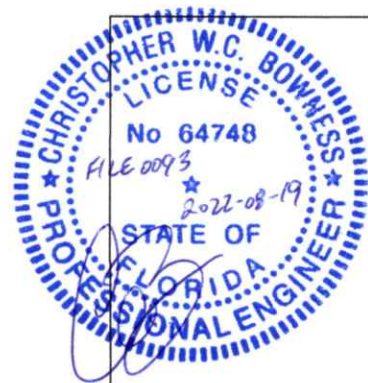
BOCA ENGINEERING
STRUCTURAL AND CIVIL ENGINEERS
#203-1001 CLOVERDALE AVE, VICTORIA BC
V8X 4C9 778-265-1507
INFO@BOCAENGINEERING.COM
WWW.BOCAENGINEERING.COM



A FASTPLANK @ WINDOW JAMB
6 NOT-TO-SCALE

B FASTPLANK P23 CONNECTOR
6 NOT-TO-SCALE

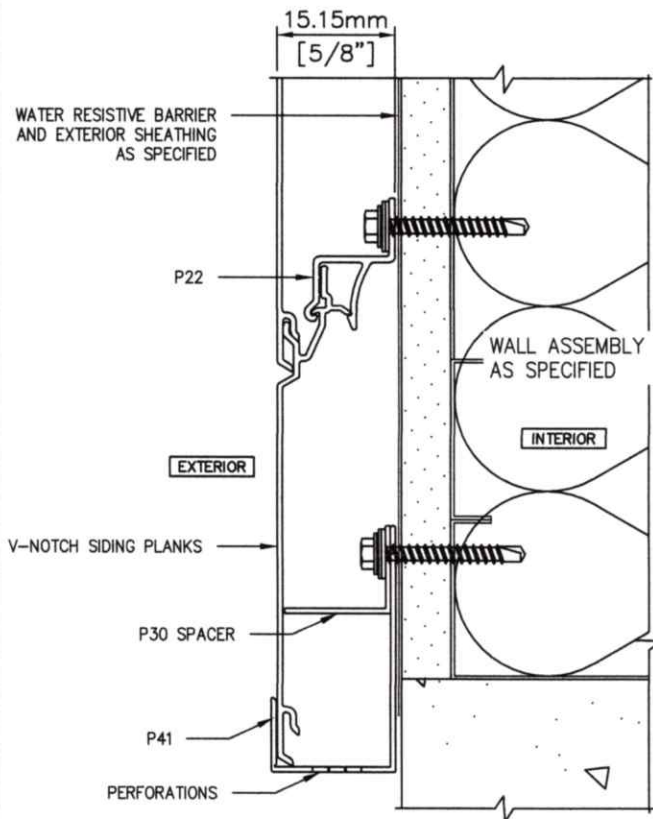
PRODUCT APPROVED
as complying with the Florida
Building Code
NOA-No. 22-0615.01
Approval Date 04/06/2023
By *R. H. Hines*
Miami-Dade Product Control



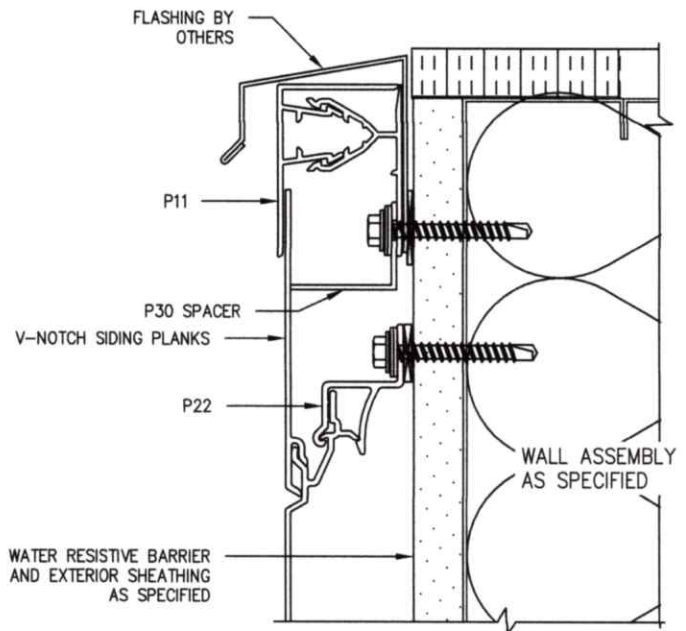
CLIENT:		PROJECT:		TITLE:		0	2022/08/19	FOR PUBLICATION	CB
FASTPLANK INC.		FASTPLANK SYSTEMS 4115 72nd AVE SE, CALGARY, AB T2C 2G5		FASTPLANK SYSTEMS ASSEMBLY DETAILS IN FLORIDA HIGH VELOCITY HURRICANE ZONE (HVHZ)		REV	DATE	ISSUE	APP
DATE		DRAWING NO.		DES	DRN	CHK			
AUGUST 19, 2022		0093-6 PG 6 OF 8		CB	LI	CB			



BOCA ENGINEERING
STRUCTURAL AND CIVIL ENGINEERS
#203-1001 CLOVERDALE AVE, VICTORIA BC
V8X 4C9 778-265-1507
INFO@BOCAENGINEERING.COM
WWW.BOCAENGINEERING.COM



A
7
STARTER TRIM DETAIL
NOT-TO-SCALE



B
7
2-PC J TRIM TOP OF WALL TERMINATION
NOT-TO-SCALE

PRODUCT APPROVED
as complying with the Florida
Building Code
NOA-No. 22-0615.01

Approval Date 04/06/2023

By *[Signature]*
Miami-Dade Product Control



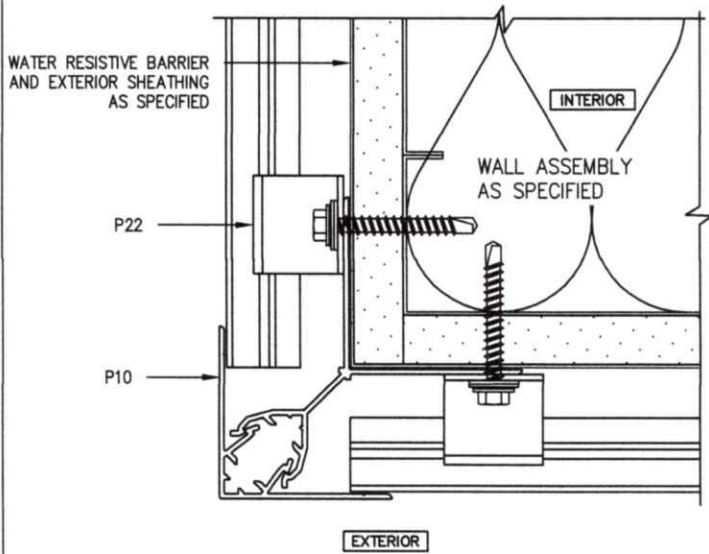
CLIENT: FASTPLANK INC.	PROJECT: FASTPLANK SYSTEMS 4115 72nd AVE SE, CALGARY, AB T2C 2G5	TITLE: FASTPLANK SYSTEMS ASSEMBLY DETAILS IN FLORIDA HIGH VELOCITY HURRICANE ZONE (HVHZ)
DATE AUGUST 19, 2022	DRAWING NO. 0093-7 PG 7 OF 8	DES CB
		DRN LI
		CHK CB

0	2022/08/19	FOR PUBLICATION	CB
REV	DATE	ISSUE	APP

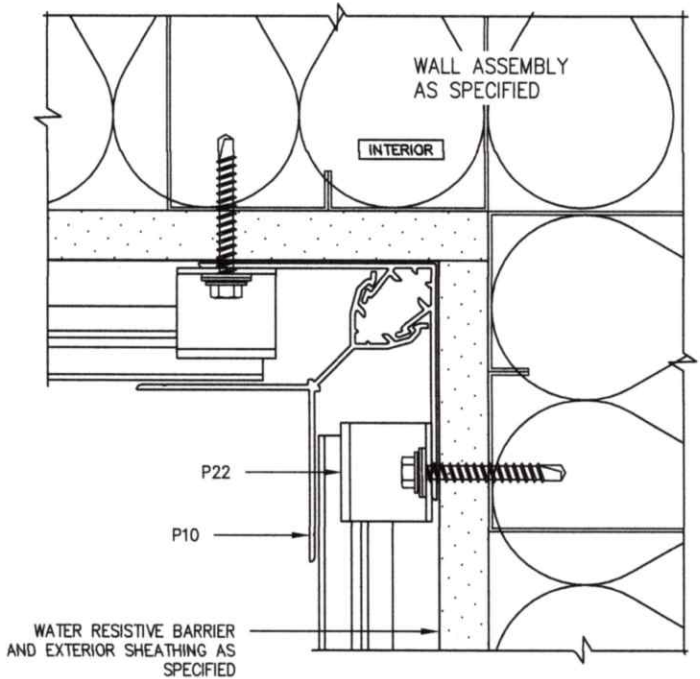


BOCA ENGINEERING
STRUCTURAL AND CIVIL ENGINEERS

#203-1001 CLOVERDALE AVE, VICTORIA BC
V8X 4C9 778-265-1507
INFO@BOCAENGINEERING.COM
WWW.BOCAENGINEERING.COM



A
8 OUTSIDE CORNER TRIM DETAIL
NOT-TO-SCALE



B
8 INSIDE CORNER TRIM DETAIL
NOT-TO-SCALE


PRODUCT APPROVED
as complying with the Florida
Building Code

NOA-No. 22-0615.01

Approval Date 04/06/2023

By *[Signature]*
Miami-Dade Product Control



CLIENT: FASTPLANK INC.	PROJECT: FASTPLANK SYSTEMS 4115 72nd AVE SE, CALGARY, AB T2C 2G5	TITLE: FASTPLANK SYSTEMS ASSEMBLY DETAILS IN FLORIDA HIGH VELOCITY HURRICANE ZONE (HVHZ)	0 2022/08/19 FOR PUBLICATION CB	
			REV DATE ISSUE APP	
DATE AUGUST 19, 2022	DRAWING NO. 0093-8 PG 8 OF 8	DES CB	DRN LI	CHK CB
 BOCA ENGINEERING STRUCTURAL AND CIVIL ENGINEERS #203-1001 CLOVERDALE AVE, VICTORIA BC V8X 4C9 778-265-1507 INFO@BOCAENGINEERING.COM WWW.BOCAENGINEERING.COM				