



DEPARTMENT OF REGULATORY AND ECONOMIC RESOURCES (RER)
BOARD AND CODE ADMINISTRATION DIVISION

NOTICE OF ACCEPTANCE (NOA)

MIAMI-DADE COUNTY
PRODUCT CONTROL SECTION
11805 SW 26 Street, Room 208
Miami, Florida 33175-2474
T (786) 315-2590 F (786) 315-2599
www.miamidade.gov/economy

Greenheck Fan Corporation
1110 Greenheck Drive (PO Box 410)
Schofield, WI 54476

SCOPE:

This NOA is being issued under the applicable rules and regulations governing the use of construction materials. The documentation submitted has been reviewed and accepted by Miami-Dade County RER-Product Control Section to be used in Miami Dade County and other areas where allowed by the Authority Having Jurisdiction (AHJ).

This NOA shall not be valid after the expiration date stated below. The Miami-Dade County Product Control Section (In Miami Dade County) and/or the AHJ (in areas other than Miami Dade County) reserve the right to have this product or material tested for quality assurance purposes. If this product or material fails to perform in the accepted manner, the manufacturer will incur the expense of such testing and the AHJ may immediately revoke, modify, or suspend the use of such product or material within their jurisdiction. RER reserves the right to revoke this acceptance, if it is determined by Miami-Dade County Product Control Section that this product or material fails to meet the requirements of the applicable building code.

This product is approved as described herein and has been designed to comply with the Florida Building Code, including the High Velocity Hurricane Zone.

DESCRIPTION: Series FJC and USF Steel Rooftop Fans

APPROVAL DOCUMENT: Drawing No. **FJC-2001 Rev B**, titled "USF/FJC 306-324 Fan", sheets 1 through 9 of 9, dated 09/2020, prepared by Greenheck Fan Corporation, signed and sealed by Wayne K. Helmila, P.E., bearing the Miami-Dade County Product Control renewal stamp with the Notice of Acceptance number and expiration date by the Miami-Dade County Product Control Section.

MISSILE IMPACT RATING: Large and Small Missile Impact Resistant

LABELING: Each unit shall bear a permanent label with the manufacturer's name or logo, city, state, model/series, and following statement: "Miami-Dade County Product Control Approved", unless otherwise noted herein.

RENEWAL of this NOA shall be considered after a renewal application has been filed and there has been no change in the applicable building code negatively affecting the performance of this product.

TERMINATION of this NOA will occur after the expiration date or if there has been a revision or change in the materials, use, and/or manufacture of the product or process. Misuse of this NOA as an endorsement of any product, for sales, advertising or any other purposes shall automatically terminate this NOA. Failure to comply with any section of this NOA shall be cause for termination and removal of NOA.

ADVERTISEMENT: The NOA number preceded by the words Miami-Dade County, Florida, and followed by the expiration date may be displayed in advertising literature. If any portion of the NOA is displayed, then it shall be done in its entirety.

INSPECTION: A copy of this entire NOA shall be provided to the user by the manufacturer or its distributors and shall be available for inspection at the job site at the request of the Building Official.

This NOA **renews NOA # 20-1123.08** and consists of this page 1 and evidence pages E-1, E-2 and E-3, as well as approval document mentioned above.

The submitted documentation was reviewed by **Carlos M. Utrera, P.E.**



NOA No. 22-0729.06
Expiration Date: July 27, 2027
Approval Date: September 1, 2022
Page 1

NOTICE OF ACCEPTANCE: EVIDENCE SUBMITTED

1. Evidence submitted under previous NOA #17-0307.01

A. DRAWINGS

1. Drawing No. **FJC-2001**, titled “USF/FJC 306-324 Fans”, sheets 1 through 9 of 9, dated 05/2017, prepared by Greenheck Fan Corporation, signed and sealed by Wayne K. Helmila, P.E.

B. TESTS

1. Test reports on
 - 1) Uniform Static Air Pressure Test, Loading per FBC TAS 202-94
 - 2) Large Missile Impact Test per FBC, TAS 201-94
 - 3) Tension Testing of Metallic Materials per ASTM E8-16a
 - 4) Conducting Strength Tests of Panels for Building Construction (Section 14 Modified) per ASTM E72-15along with marked-up drawings and installation diagram of Models USF-324, USF-306 and FJC-324 fans with direct mount, equipment supports, spring isolators, curb cab inlet box, prepared by Architectural Testing, Inc., Test Report No. **102707515MID-002R1**, dated 12/22/2016, with revision 1 dated 01/18/2017, signed and sealed by Joseph A. Reed, P.E.

C. CALCULATIONS

1. Anchor verification calculations prepared by Rice Engineering, dated 01/12/2017, signed and sealed by Wayne K. Helmila, P.E.

D. QUALITY ASSURANCE

1. Miami-Dade Department of Regulatory and Economic Resources (RER)

E. MATERIAL CERTIFICATIONS

1. None.

F. STATEMENTS

1. Statement letter of code conformance to the 5th Edition (2014) FBC issued by Rice Engineering, dated 01/10/2017, signed and sealed by Wayne K. Helmila, P.E.
2. Statement letter of code conformance to 2010 FBC issued by Rice Engineering, dated 01/10/2017, signed and sealed by Wayne K. Helmila, P.E.



Carlos M. Utrera, P.E.
Product Control Examiner
NOA No. 22-0729.06
Expiration Date: July 27, 2027
Approval Date: September 1, 2022

NOTICE OF ACCEPTANCE: EVIDENCE SUBMITTED

2. Evidence submitted under previous approval

A. DRAWINGS

1. None.

B. TESTS

1. None.

C. CALCULATIONS

1. None.

D. QUALITY ASSURANCE

1. Miami-Dade Department of Regulatory and Economic Resources (RER).

E. MATERIAL CERTIFICATIONS

1. None.

F. STATEMENTS

1. Statement letter of code conformance to the 6th Edition (2017) FBC issued by Rice Engineering, dated 12/04/2017, signed and sealed by Wayne K. Helmila, P.E.



Carlos M. Utrera, P.E.
Product Control Examiner
NOA No. 22-0729.06
Expiration Date: July 27, 2027
Approval Date: September 1, 2022

NOTICE OF ACCEPTANCE: EVIDENCE SUBMITTED

3. New evidence submitted

A. DRAWINGS

1. Drawing No. **FJC-2001 Rev B**, titled “USF/FJC 306-324 Fan”, sheets 1 through 9 of 9, dated 09/2020, prepared by Greenheck Fan Corporation, signed and sealed by Wayne K. Helmila, P.E.

B. TESTS

1. None.

C. CALCULATIONS

1. None.

D. QUALITY ASSURANCE

1. Miami-Dade Department of Regulatory and Economic Resources (RER).

E. MATERIAL CERTIFICATIONS

1. None.

F. STATEMENTS

1. Statement letter of code conformance to the 7th Edition (2020) of the FBC, issued by Rice Engineering, dated 04/25/2022, signed and sealed by Wayne K. Helmila, P.E.
2. Statement letter of code conformance to the 7th Edition (2020) FBC issued by Rice Engineering, dated SEP 24, 2020, signed and sealed by Wayne K. Helmila, P.E.
3. Statement letter dated OCT 20, 2020 by Greenheck, Inc, for removal of equipment mount support configuration, signed by Mark VanderKooy, Product Dev. Engineer.



Carlos M. Utrera, P.E.
Product Control Examiner
NOA No. 22-0729.06
Expiration Date: July 27, 2027
Approval Date: September 1, 2022

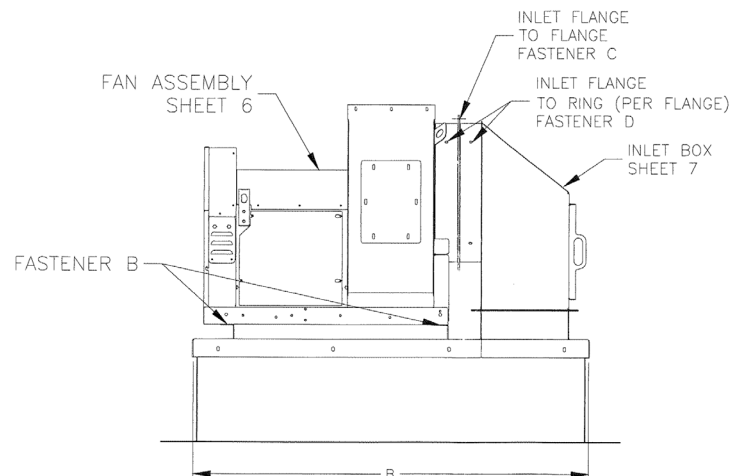
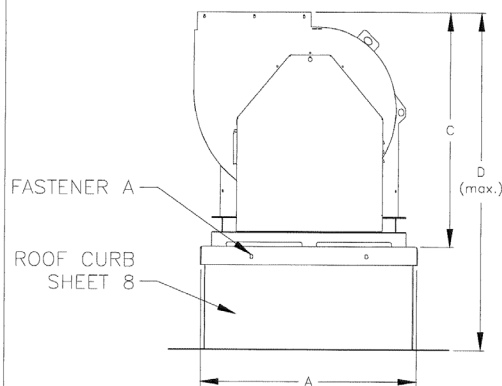
DESIGN LIMITS:
Max Design Load: ± 90 psf (4.3 Kpa)
Max Overall Enclosure W x L: 45.0 X 77.0 (1143 X 2489 mm)
Max Overall Height: 49.06 in (1246 mm)

PRODUCT REVISED
as complying with the Florida
Building Code
NOA-No. **20-1123.08**
Expiration Date **07/27/2022**
By Isang I. Chanh
Miami-Dade Product Control

	FASTENER A		FASTENER B		FASTENER C		FASTENER D									
UNIT	DESCRIPTION	QTY.	DESCRIPTION	QTY.	DESCRIPTION	QTY.	DESCRIPTION	QTY.								
FJC-306	THREAD CUTTING CREW, INDENTED HEXAGON WASHER HEAD, 5/16" - 18X1.25, TYPE-23, MECHANICAL	10	CAP SCREW, HEXAGON HEAD, 5/16" - 18X1, GROUP 2, ZINC PLATED	4	CAP SCREW, HEXAGON HEAD, 1/4" - 20X1, GROUP 2, ZINC PLATED	8	SHEET METAL SCREW, INDENTED HEXAGON WASHER HEAD, #12 - 11X.625 ZINC PLATED, TYPE-A, W/ETHYLENE PROPYLENE DIENE MONOMER	4								
FJC-307			FLAT		FLAT											
FJC-308			WASHER, .083X.375X.875, ZINC PLATED		WASHER, .051X.312X.734 ZINC PLATED											
FJC-309			LOCK		LOCK											
FJC-310			WASHER, .313, MECHANICALLY ZINC PLATED		WASHER, .25, MECHANICALLY ZINC PLATED											
FJC-312		12	NUT, HEXAGON, .313 - 18, GROUP 2, ZINC PLATED		NUT, HEXAGON, .25 - 20, GROUP 2, ZINC PLATED											
FJC-313		14														
FJC-315																
FJC-316																
FJC-318		16														
FJC-320																
FJC-322																
FJC-324																

ALL DIMENSIONS ARE IN INCHES

UNIT	A	B	C	(max.)	WEIGHT (LBS.)
FJC-306	22.0	47.0	27.45	51.56	222
FJC-307					
FJC-308					
FJC-309					
FJC-310					
FJC-312	25.0	49.0	28.57	52.68	249
FJC-313	27.0	51.0	30.86	54.97	278
FJC-315	30.0	55.0	33.62	57.73	325
FJC-316	32.0	58.0	36.37	60.48	371
FJC-318	35.0	63.0	39.59	63.70	423
FJC-320	38.0	67.0	42.80	66.91	496
FJC-322	41.0	72.0	46.93	71.04	566
FJC-324	45.0	77.0	51.06	75.17	662

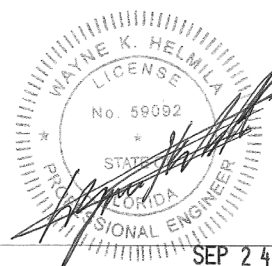


NOTES:

- MODEL FJC-300 HAS BEEN SUCCESSFULLY TESTED IN ACCORDANCE WITH MIAMI DADE TEST PROTOCOL TAS-201 (LARGE MISSILE IMPACT), AND TAS-202 (STATIC LOADING).
- ROOF STRUCTURE MUST BE DESIGNED TO WITHSTAND THE WEIGHT AND LOADING TRANSMITTED BY LABORATORY EXHAUST FAN. FASTENERS SHALL BE SPECIFIED AND INSTALLED AS DETAILED.
- DESIGN, TESTING, AND INSTALLATION CONFORMS TO FLORIDA BUILDING CODE.
- DESIGN PRESSURE = +/- 90 PSF LARGE MISSILE IMPACT RESISTANT.
- TESTED FOR AREAS INCLUDING HIGH VELOCITY HURRICANE ZONES.
- THESE FANS HAVE NOT BEEN TESTED FOR WIND DRIVEN RAIN TEST PER FLORIDA BUILDING CODE, TAS-100 (A)-95.
- THIS APPROVAL IS FOR THE STRUCTURAL CAPACITY AND IMPACT RATING OF THE EXTERIOR HOUSING ONLY, IT DOES NOT INCLUDE ANY INTERIOR MECHANISM OR ELECTRICAL PART.

PRODUCT RENEWED
as complying with the Florida
Building Code
NOA-No. **22-0729.06**
Expiration Date **07/27/2027**
By Wayne K. Helmila
Miami-Dade Product Control

RICE
ENGINEERING
105 School Creek Trail
Luxemburg, WI 54217
Phone 920-617-1042
Fax 920-617-1100
www.rice-inc.com
Florida Firm No. F-01000005081
Certificate of Authorization #9090
Wayne K. Helmila
Registration No. 59092



 P.O. BOX 410 SCHOFIELD, WISCONSIN 54476-0410 TITLE FJC 306-324 CURB CAB INLET BOX ASSEMBLY SHEET 1 OF 9	DRAWN BY WOTRUBA DATE 09/2020 SUPERSEDES SCALE 1/10 CAD DRAWING NO. FJC-2001	ICCD ENG. REF. NOA TESTING B

SEP 24 2020

DESIGN LIMITS:

Max Design Load: ± 90 psf (4.3 Kpa)

Max Overall Enclosure W x L: 45.43 X 50.41 (1154 X 1280 mm)

Max Overall Height: 49.06 in (1246 mm)

PRODUCT REVISED
as complying with the Florida
Building Code
NOA-No. **20-1123.08**

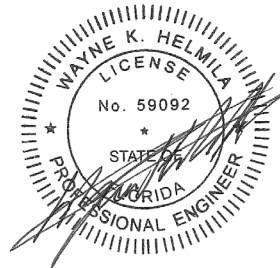
Expiration Date **07/27/2022**

By Isang I. Chan
Miami-Dade Product Control

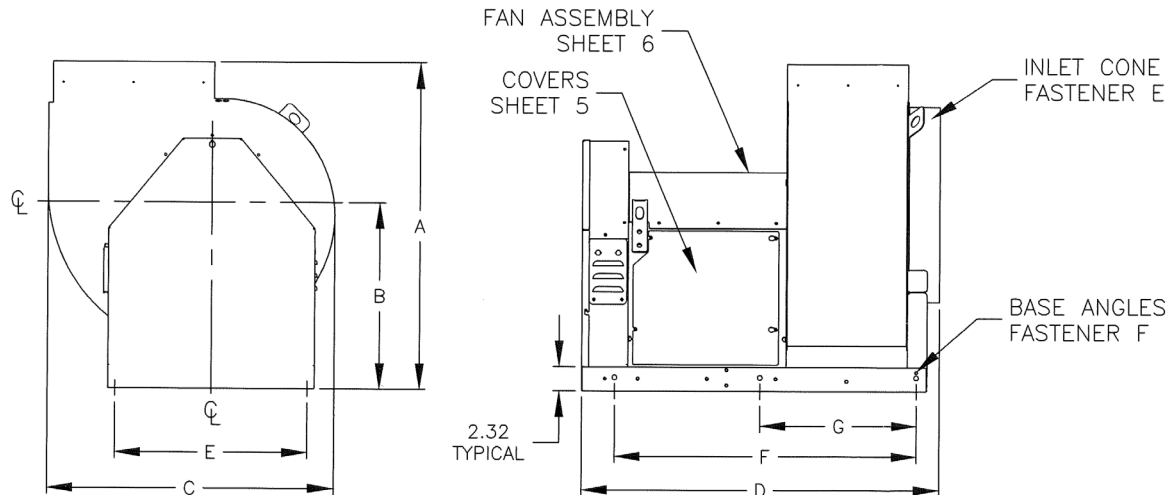
RICE
ENGINEERING

105 School Creek Trail
Luxemburg, WI 54217
Phone 920-617-1042
Fax 920-617-1100
www.rice-inc.com

Florida Firm No. F-01000005081
Certificate of Authorization #9090
Wayne K. Helmila
Registration No. 59092



SEP 24 2020



PRODUCT RENEWED
as complying with the Florida
Building Code
NOA-No. **22-0729.06**

Expiration Date **07/27/2027**

By R. P. [Signature]
Miami-Dade Product Control

BASE ANGLE MATERIAL
14 GA. COLD ROLLED STEEL
DRAWN STEEL
Fymin=26Ksi

ALL DIMENSIONS ARE IN INCHES

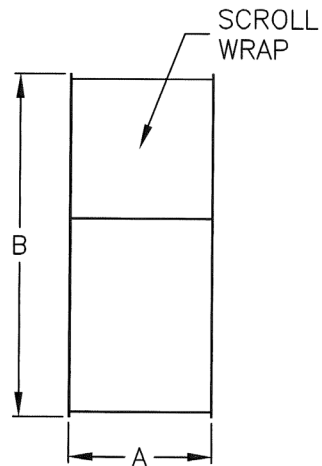
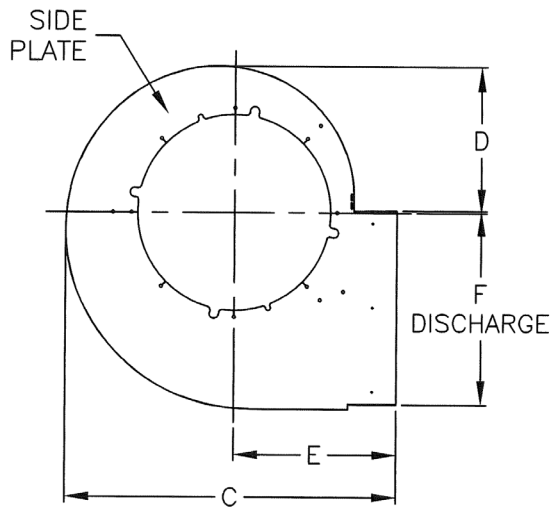
UNIT	MOUNTING HOLES							WEIGHT (LBS.)
	A	B	C	D	E	F	G	
USF/FJC-306								
USF/FJC-307								
USF/FJC-308	25.45	14.77	19.97	30.98	13.92	25.54	13.14	88
USF/FJC-309								
USF/FJC-310								
USF/FJC-312	26.57		23.15	31.03		25.60	13.20	99
USF/FJC-313	28.86	16.27	25.43	32.89	15.59	27.45	14.18	115
USF/FJC-315	31.62	18.07	28.15	35.12	17.60	29.68	15.36	136
USF/FJC-316	34.37	19.87	30.88	37.35	19.61	31.91	16.54	167
USF/FJC-318	37.59	21.97	34.06	40.19	21.96	34.51	17.92	192
USF/FJC-320	40.80	24.07	37.25	43.05	24.30	37.11	19.29	235
USF/FJC-322	44.93	26.77	41.34	46.73	27.32	40.46	21.06	272
USF/FJC-324	49.06	29.47	45.43	50.41	30.33	43.80	22.83	330

UNIT	FASTENER E		FASTENER F	
	DESCRIPTION	QTY.	DESCRIPTION	QTY.
USF/FJC-306				
USF/FJC-307				
USF/FJC-308	CAP SCREW, HEXAGON, HEAD, 1/4"-20X1, GROUP 2, ZINC PLATED			14
USF/FJC-309				
USF/FJC-310				
USF/FJC-312	FLAT WASHER, .051X.312X.734, ZINC PLATED	8	THREAD ROLLING SCREW, SLOTTED INDENTED HEX WASHER HEAD, 1/4"-20X.5 ZINC PLATED/WAX	
USF/FJC-313				
USF/FJC-315	LOCK WASHER, .25, MECHANICALLY ZINC PLATED			16
USF/FJC-316				
USF/FJC-318				
USF/FJC-320	NUT, U., .25-20, GROUP 2, BLACK			
USF/FJC-322				
USF/FJC-324				18

NOTES:

1. MODELS USF-300 & FJC-300 HAS BEEN SUCCESSFULLY TESTED IN ACCORDANCE WITH MIAMI-DADE TEST PROTOCOL TAS-201 (LARGE MISSILE IMPACT), AND TAS-202 (STATIC LOADING).
2. ROOF STRUCTURE MUST BE DESIGNED TO WITHSTAND THE WEIGHT AND LOADING TRANSMITTED BY EXHAUST FAN. FASTENERS SHALL BE SPECIFIED AND INSTALLED AS DETAILED.
3. DESIGN, TESTING, AND INSTALLATION CONFORMS TO FLORIDA BUILDING CODE.
4. DESIGN PRESSURE = +/- 90 PSF LARGE MISSILE IMPACT RESISTANT.
5. TESTED FOR AREAS INCLUDING HIGH VELOCITY HURRICANE ZONES.
6. THESE FANS HAVE NOT BEEN TESTED FOR WIND DRIVEN RAIN TEST PER FLORIDA BUILDING CODE, TAS-100 (A)-95.
7. THIS APPROVAL IS FOR THE STRUCTURAL CAPACITY AND IMPACT RATING OF THE EXTERIOR HOUSING ONLY. IT DOES NOT INCLUDE ANY INTERIOR MECHANISM OR ELECTRICAL PART.

 P.O. BOX 410 SCHOFIELD, WISCONSIN 54476-0410 TITLE USF/FJC 306-324 FAN SHEET 2 OF 9	DRAWN BY WOTRUBA	ECG
	DATE 09/2020	ENG. REF.
	SUPERSEDES	NOA TESTING
	SCALE 1/10	CAD DRAWING NO.
		FJC-2001

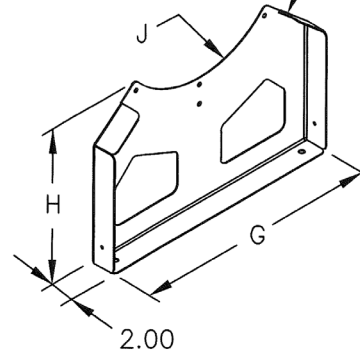


PRODUCT RENEWED
as complying with the Florida
Building Code
NOA-No. 22-0729.06

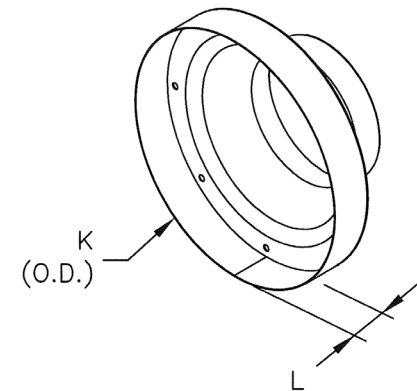
Expiration Date 07/27/2027

By *[Signature]*
Miami-Dade Product Control

DRIVE
FRAME



INLET CONE



PRODUCT REVISED
as complying with the Florida
Building Code
NOA-No. 20-1123.08

Expiration Date 07/27/2022

By *[Signature]*
Miami-Dade Product Control

UNIT	A	B	C	D	E	F	SIDE PLATE	SCROLL WRAP
USF/FJC-306								
USF/FJC-307								
USF/FJC-308	9.80	20.06	20.71	8.60	10.68	11.16		
USF/FJC-309								
USF/FJC-310								
USF/FJC-312	9.86	23.25	23.42	9.95	11.80	13.00	14 GA. COLD ROLLED STEEL DRAWN STEEL Fymin=26Ksi	18 GA. COLD ROLLED STEEL DRAWN STEEL Fymin=27Ksi
USF/FJC-313	10.85	25.52	25.35	10.92	12.59	14.32		
USF/FJC-315	12.02	28.25	27.67	12.08	13.55	15.90		
USF/FJC-316	13.20	30.97	29.99	13.24	14.50	17.48		
USF/FJC-318	14.58	34.16	32.69	14.59	15.61	19.33		
USF/FJC-320	15.95	37.34	35.40	15.94	16.73	21.17		
USF/FJC-322	17.72	41.43	38.88	17.68	18.16	23.54		
USF/FJC-324	19.49	45.52	42.35	19.42	19.59	25.92		

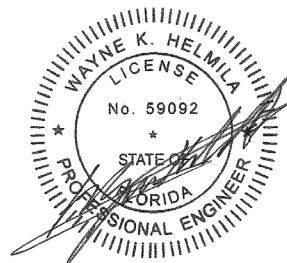
UNIT	G	H	J	DRIVE FRAME
USF/FJC-306				
USF/FJC-307				
USF/FJC-308	16.42	10.82	5.75	
USF/FJC-309				
USF/FJC-310				
USF/FJC-312	16.41	10.30	6.57	14 GA. COLD ROLLED STEEL DRAWN STEEL Fymin=26Ksi
USF/FJC-313	18.09	11.37	7.24	
USF/FJC-315	20.10	12.65	8.04	
USF/FJC-316	22.11	13.93	8.84	
USF/FJC-318	24.46	15.43	9.78	
USF/FJC-320	26.80	16.92	10.72	
USF/FJC-322	29.82	18.85	11.93	
USF/FJC-324	32.83	20.77	13.13	

UNIT	K	L	INLET CONE
USF/FJC-306			
USF/FJC-307			
USF/FJC-308	13.23		
USF/FJC-309			
USF/FJC-310			
USF/FJC-312	15.43	3.00	14 GA. COLD ROLLED STEEL DRAWN STEEL Fymin=26Ksi
USF/FJC-313	17.00		
USF/FJC-315	18.89		
USF/FJC-316	20.78		
USF/FJC-318	22.99		
USF/FJC-320	25.19		
USF/FJC-322	28.02		
USF/FJC-324	30.86		

RICE
ENGINEERING

105 School Creek Trail
Luxemburg, WI 54217
Phone 920-617 1042
Fax 920-617-1100
www.rice-inc.com

Florida Firm No. F-01000005081
Certificate of Authorization #9090
Wayne K. Helmila
Registration No. 59092



GREENHECK P.O. BOX 410 SCHOFIELD, WISCONSIN 54476-0410 TITLE USF/FJC 306-324 FAN MATERIALS SHEET 3 OF 9	DRAWN BY WOTRUBA	ECD
	DATE 09/2020	SCL REF. NOA TESTING
	SCALE 1/10	
	CAD DRAWING FILE FJC-2001	

ALL DIMENSIONS ARE IN INCHES

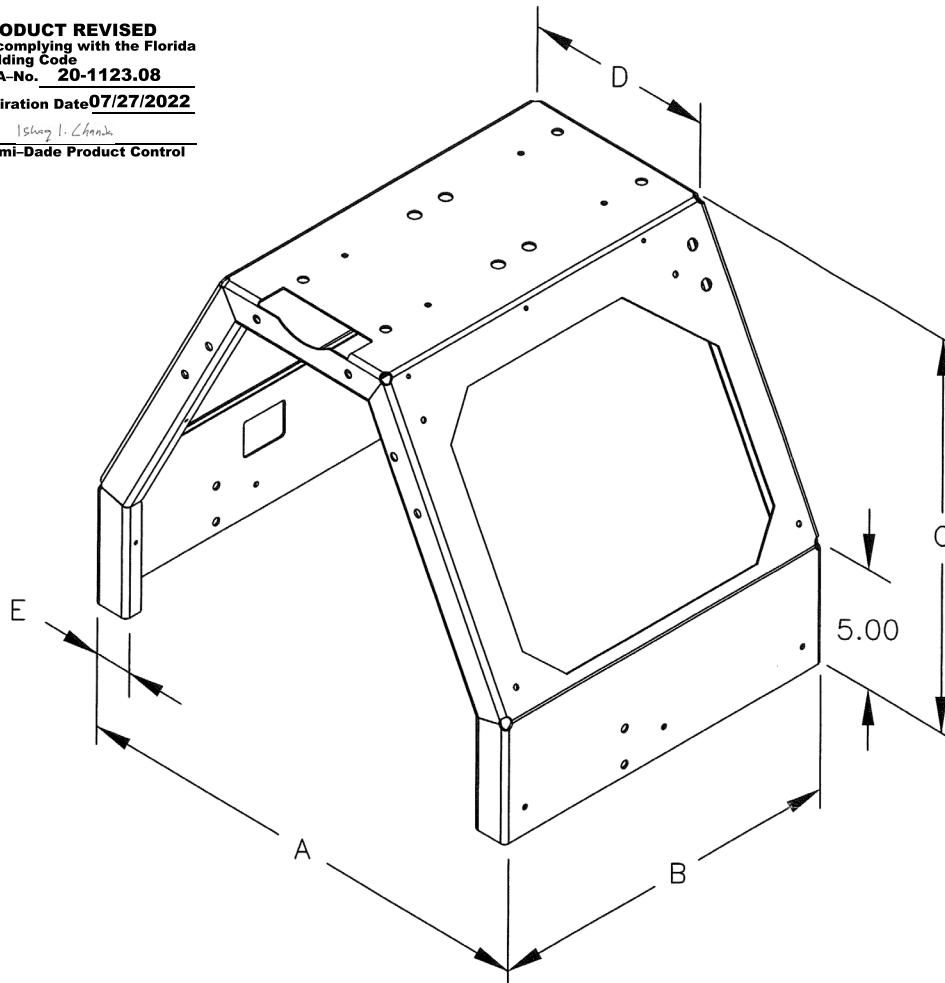
SEP 24 2020

PRODUCT REVISED
as complying with the Florida
Building Code

NOA-No. **20-1123.08**

Expiration Date **07/27/2022**

By Ismael L. Chandra
Miami-Dade Product Control



ALL DIMENSIONS ARE IN INCHES

UNIT	A	B	C	D	E	MATERIAL
USF/FJC-306	16.42	13.575	13.32	7.75	1.50	14 GA. COLD ROLLED STEEL DRAWN STEEL Fymin=26Ksi
USF/FJC-307						
USF/FJC-308						
USF/FJC-309						
USF/FJC-310						
USF/FJC-312			13.19	7.89		
USF/FJC-313	18.09	14.45	14.69	8.00		
USF/FJC-315	20.10	15.50	16.49	8.14		
USF/FJC-316	22.11	16.55	18.29	8.23	2.00	
USF/FJC-318	24.46	17.78	20.39	8.43		
USF/FJC-320	26.80	19.00	22.49	8.59		
USF/FJC-322	29.82	20.58	25.19	8.79		
USF/FJC-324	32.83	22.15	27.89	9.00		

PRODUCT RENEWED
as complying with the Florida
Building Code

NOA-No. 22-0729.06

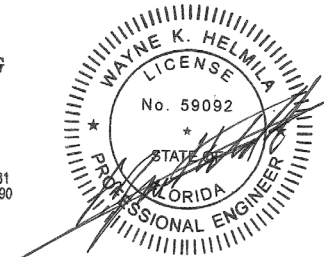
Expiration Date 07/27/2027

By [Signature]
Miami-Dade Product Control

RICE
ENGINEERING

105 School Creek Trail
Luxemburg, WI 54217
Phone 920-617 1042
Fax 920-617-1100
www.rice-inc.com

Florida Firm No. F-01000005081
Certificate of Authorization #9090
Wayne K. Helmila
Registration No. 59092



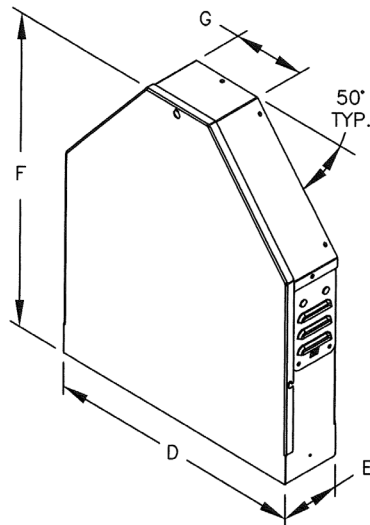
SEP 24 2020

 P.O. BOX 410 SCHOFIELD, WISCONSIN 54476-0410	DRAWN BY	ECD
	WOTRUBA	
	DATE	ENG. REF.
	09/2020	
TITLE USF/FJC 306-324 PEDESTAL DIMENSIONS SHEET 4 OF 9	SUPERSEDES	NOA TESTING
	SCALE	
	1/10	
	CAD DRAWING NO.	FJC-2001

ALL DIMENSIONS ARE IN INCHES

UNIT	D	E	F	G	MATERIAL
USF/FJC-306	16.57	4.50	20.20	5.08	18 GA. COLD ROLLED STEEL DRAWN STEEL Fymin=27Ksi
USF/FJC-307					
USF/FJC-308					
USF/FJC-309					
USF/FJC-310					
USF/FJC-312	18.25		22.00	5.35	
USF/FJC-313					
USF/FJC-315	20.26	4.74	24.15	5.68	
USF/FJC-316	22.27		26.30	6.01	
USF/FJC-318	24.61		28.81	6.39	
USF/FJC-320	26.96	5.00	31.32	6.78	
USF/FJC-322	29.97	5.34	34.55	7.27	
USF/FJC-324	32.99	5.68	37.78	7.76	

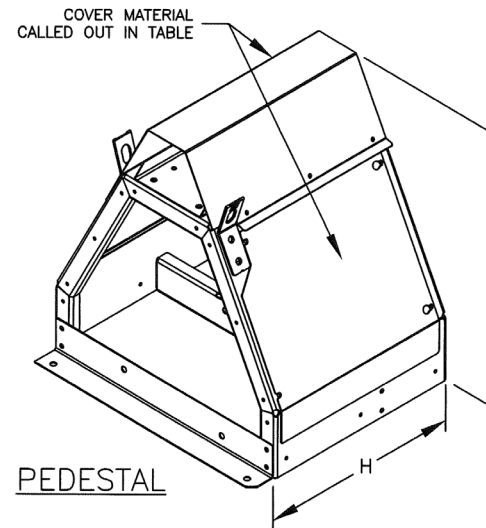
UNIT	H	J	MATERIAL
USF/FJC-306	13.575	17.78	14 GA. COLD ROLLED STEEL DRAWN STEEL Fymin=26KSI
USF/FJC-307			
USF/FJC-308			
USF/FJC-309			
USF/FJC-310			
USF/FJC-312	14.45	19.28	
USF/FJC-313			
USF/FJC-315	15.50	21.08	
USF/FJC-316	16.55	22.88	
USF/FJC-318	17.78	24.98	
USF/FJC-320	19.00	27.55	
USF/FJC-322	20.58	30.25	
USF/FJC-324	22.15	32.95	



WEATHERHOOD

PRODUCT REVISED
as complying with the Florida
Building Code
NOA-No. 20-1123.08
Expiration Date 07/27/2022
By Isang I. Llanza
Miami-Dade Product Control

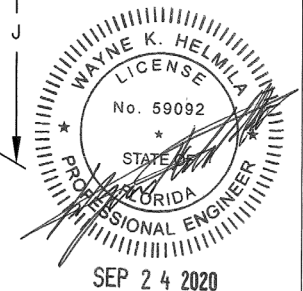
PRODUCT RENEWED
as complying with the Florida
Building Code
NOA-No. 22-0729.06
Expiration Date 07/27/2027
By [Signature]
Miami-Dade Product Control



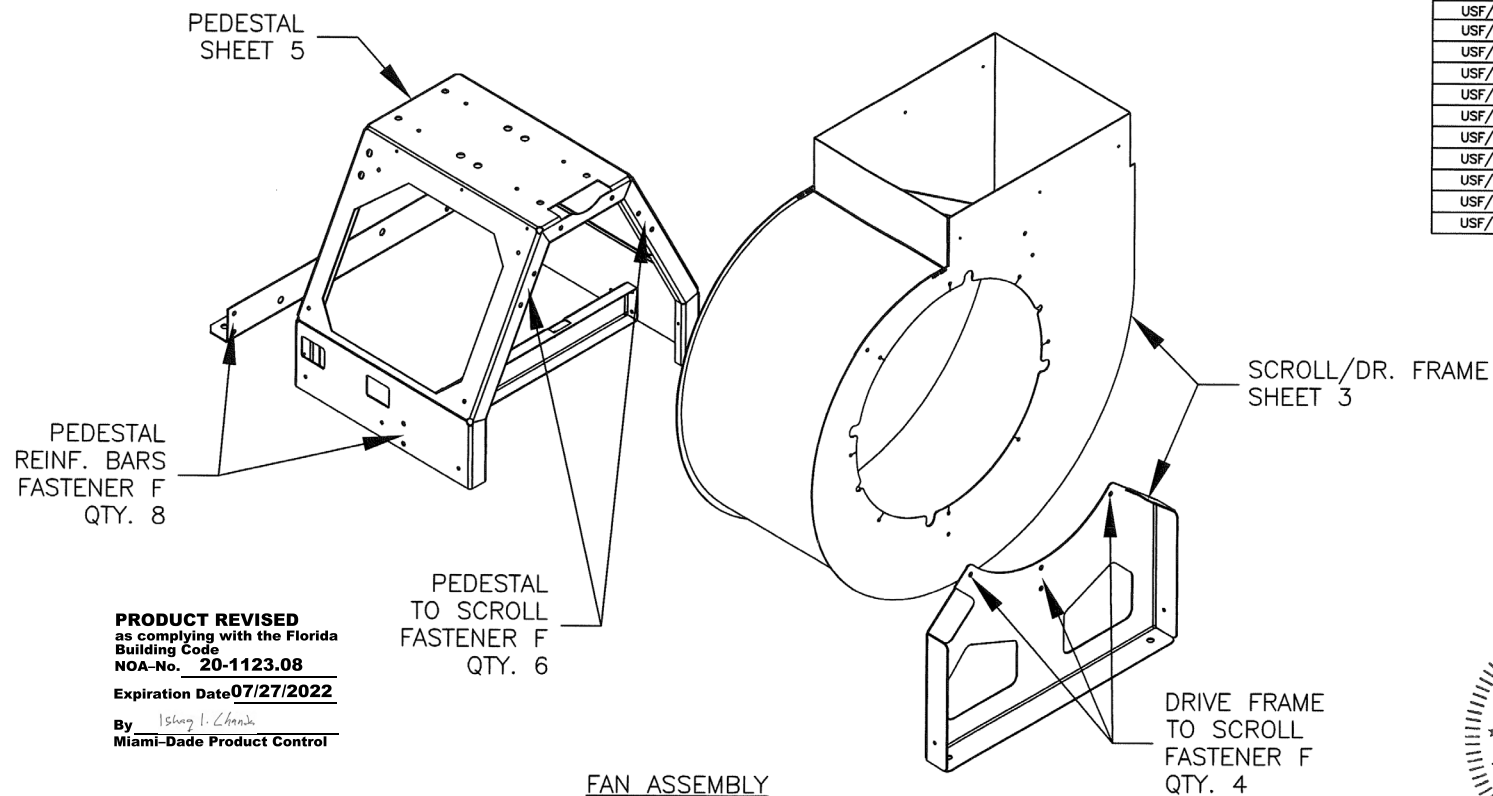
PEDESTAL

RICE
ENGINEERING
105 School Creek Trail
Luxemburg, WI 54217
Phone 920-617 1042
Fax 920-617-1100
www.rice-inc.com

Florida Firm No. F-01000005081
Certificate of Authorization #9090
Wayne K. Helmila
Registration No. 59092



GREENHECK P.O. BOX 410 SCHOFIELD, WISCONSIN 54476-0410 TITLE: USF/FJC 306-324 ENCLOSURE DIMENSIONS SHEET 5 OF 9	DRAWN BY	ECD
	DATE	DATE REF.
	SUPERSEDES	NOA TESTING
	SCALE	
1/10 CAB DRAWING NCL		FJC-2001

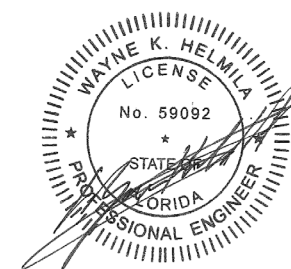


UNIT	FASTENER F DESCRIPTION
USF/FJC-306	TREAD ROLLING SCREW, SLOTTED INDENTED HEX WASHER HEAD, 1/4"-20X.5 ZINC PLATED/WAX
USF/FJC-307	
USF/FJC-308	
USF/FJC-309	
USF/FJC-310	
USF/FJC-312	
USF/FJC-313	
USF/FJC-315	
USF/FJC-316	
USF/FJC-318	
USF/FJC-320	
USF/FJC-322	
USF/FJC-324	

RICE **ENGINEERING**

105 School Creek Trail
Luxemburg, WI 54217
Phone 920-617-1042
Fax 920-617-1100
www.rice-inc.com

Florida Firm No. F-01000005081
Certificate of Authorization #9090
Wayne K. Helmila
Registration No. 59092



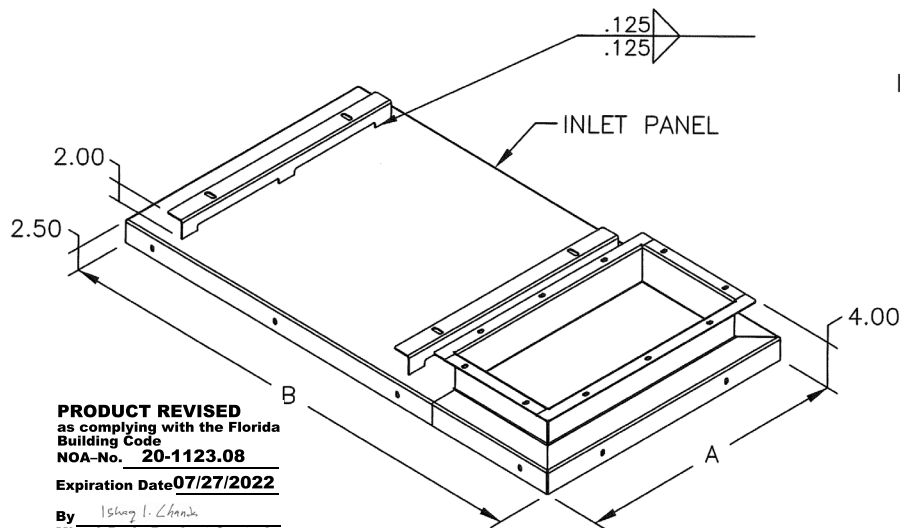
SEP 24 2020

PRODUCT REVISED
as complying with the Florida
Building Code
NOA-No. **20-1123.08**
Expiration Date **07/27/2022**
By Isang L. L. L. L.
Miami-Dade Product Control

PRODUCT RENEWED
as complying with the Florida
Building Code
NOA-No. 22-0729.06
Expiration Date 07/27/2027
By R. J. F.
Miami-Dade Product Control

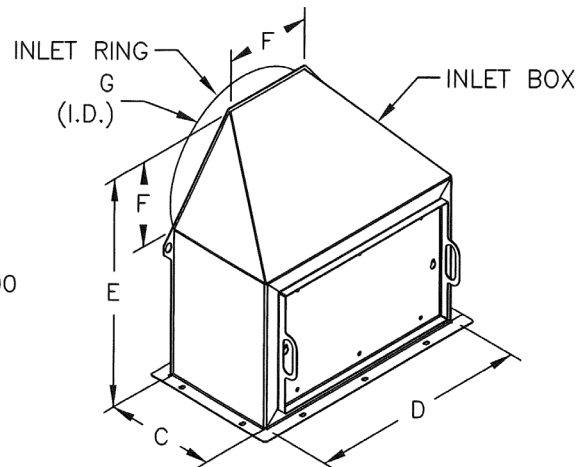
GREENHECK P.O. BOX 410 SCHOFIELD, WISCONSIN 54476-0410 TITLE USF/FJC 306-324 FAN ASSEMBLY SHEET 6 OF 9	DRAWN BY WOTRUBA	ECO
	DATE 09/2020	ENG. REF.
	SUPERSEDES	NOA TESTING
	SCALE 1/10 CADD DRAWING NCL	

FJC-2001

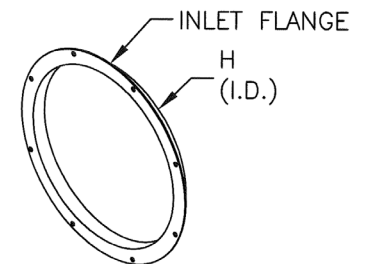


PRODUCT REVISED
as complying with the Florida
Building Code
NOA-No. **20-1123.08**
Expiration Date **07/27/2022**
By *Isang I. Chan*
Miami-Dade Product Control

UNIT	A	B	INLET PANEL
FJC-306			12 GA. HOT ROLLED STEEL COMMERCIAL STEEL Fymin=43Ksi (ALL PARTS)
FJC-307			
FJC-308	22.00	47.00	
FJC-309			
FJC-310			
FJC-312	25.00	49.00	
FJC-313	27.00	51.00	
FJC-315	30.00	55.00	
FJC-316	32.00	58.00	
FJC-318	35.00	63.00	
FJC-320	38.00	67.00	
FJC-322	41.00	72.00	
FJC-324	45.00	77.00	



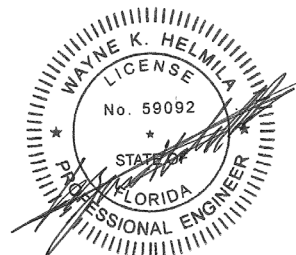
UNIT	C	D	E	F	G	INLET BOX	INLET RING
FJC-306						14 GA. COLD ROLLED STEEL DRAWN STEEL Fymin=26Ksi	12 GA. HOT ROLLED STEEL COMMERCIAL STEEL Fymin=43Ksi
FJC-307							
FJC-308	9.00	16.00	19.38	6.61	13.08		
FJC-309							
FJC-310							
FJC-312	10.00	19.00	20.49	7.71	15.29		
FJC-313	11.00	21.00	22.77	8.50	16.86		
FJC-315	12.00	24.00	25.52	9.45	18.75		
FJC-316	13.00	26.00	28.26	10.39	20.64		
FJC-318	15.00	29.00	31.46	11.49	22.84		
FJC-320	16.00	32.00	34.67	12.60	25.05		
FJC-322	18.00	35.00	38.78	14.01	27.88		
FJC-324	19.00	39.00	42.90	15.43	30.72		



UNIT	H	INLET FLANGE
FJC-306		1.50x1.50x .125 HRS
FJC-307		
FJC-308	12.60	
FJC-309		
FJC-310		
FJC-312	14.80	
FJC-313	16.38	
FJC-315	18.27	
FJC-316	20.16	
FJC-318	22.36	
FJC-320	24.57	
FJC-322	27.40	
FJC-324	30.23	

PRODUCT RENEWED
as complying with the Florida
Building Code
NOA-No. **22-0729.06**
Expiration Date **07/27/2027**
By *Wayne K. Helmila*
Miami-Dade Product Control

RICE
ENGINEERING
105 School Creek Trail
Luxemburg, WI 54217
Phone 920-617-1042
Fax 920-617-1100
www.rice-inc.com
Florida Firm No. F-01000005081
Certificate of Authorization #9090
Wayne K. Helmila
Registration No. 59092



 P.O. BOX 410 SCHOFIELD, WISCONSIN 54476-0410 FJC 306-324 CURB CAP INLET BOX MATERIALS SHEET 7 OF 9	DRAWN BY WOTRUBA	ECG
	DATE 09/2020	ENCL. REF.
	SUPERSEDES	NOA TESTING
	SCALE 1/10	CAD DRAWING NCL
FJC-2001		

ALL DIMENSIONS ARE IN INCHES

SEP 24 2020

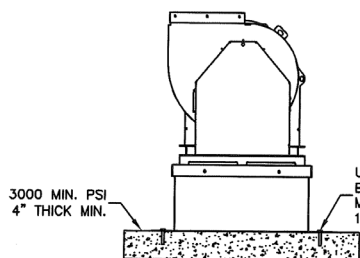
ANCHORAGE INTO CONCRETE:
 USE 3/8" DIA. SS
 KWIK BOLT TZ WEDGE ANCHOR
 316 STAINLESS STEEL
 EFF. EMBEDMENT DEPTH: 2" MIN.
 INSTALL DEPTH: 2.313" MIN.
 EDGE DISTANCE: 6" MIN.
 SPACING: 4 1/2" MIN.
 MIN. SLAP THK: 4" NORMAL WT., CRACKED
 COMPRESSIVE STRENGTH: F'C=3000 PSI
 INSTALL PER MANUFACTURER'S INSTRUCTIONS

ANCHORAGE INTO STEEL:
 USE 5/16" DIA. SS FASTENERS
 SELF DRILLING/SELF TAPPING
 FASTENERS OR THRU BOLTS
 300 SERIES S.S., COND, CW,
 FY = 65 KSI
 0.105" THK ENG. (MIN)
 STEEL: FY = 33 KSI (MIN)

ANCHORAGE INTO WOOD:
 USE 1/2" DIA. SS LAG BOLTS (FY = 65 KSI)
 SOUTHERN PINE (G = 0.55 MIN)
 PREDRILL AS RECOMMENDED
 PENETRATION = 1.75"
 1.50" OF THREADS TO BE ENGAGED INTO WOOD (MIN)
 SPACING: 3.00" MIN.
 EDGE DISTANCE: 1.00" MIN.
 END DISTANCE: 6.00" MIN.

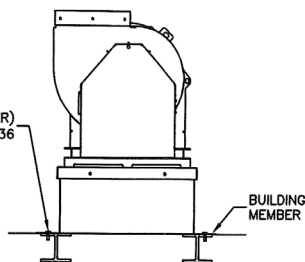
ALL DIMENSIONS ARE IN INCHES

UNIT	Concrete Deck Anchoring		Steel Anchoring-Thru Bolts		Timber Anchoring		Steel Anchoring-Self Drill/Tap	
	END FASTENERS	SIDE FASTENERS	END FASTENERS	SIDE FASTENERS	END FASTENERS	SIDE FASTENERS	END FASTENERS	SIDE FASTENERS
FJC-306	2	5	3	6	3	6	3	6
FJC-307								
FJC-308								
FJC-309								
FJC-310	3	6	4	7	4	8	4	7
FJC-312								
FJC-313								
FJC-315								
FJC-316								
FJC-318								
FJC-320								
FJC-322								
FJC-324								



CONCRETE DECK ANCHORING

5/16" DIA. 300 SERIES SS BOLT (OR BETTER)
 0.105" THREAD ENGAGEMENT MIN. INTO A36



STEEL ANCHORING - THRU BOLTS

PRODUCT RENEWED
 as complying with the Florida
 Building Code
 NOA-No. 22-0729.06

Expiration Date 07/27/2022

By *[Signature]*
 Miami-Dade Product Control

PRODUCT REVISED
 as complying with the Florida
 Building Code
 NOA-No. 20-1123.08

Expiration Date 07/27/2022

By *[Signature]*
 Miami-Dade Product Control

RICE
ENGINEERING

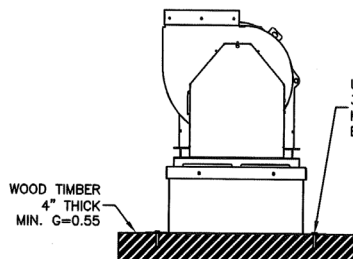
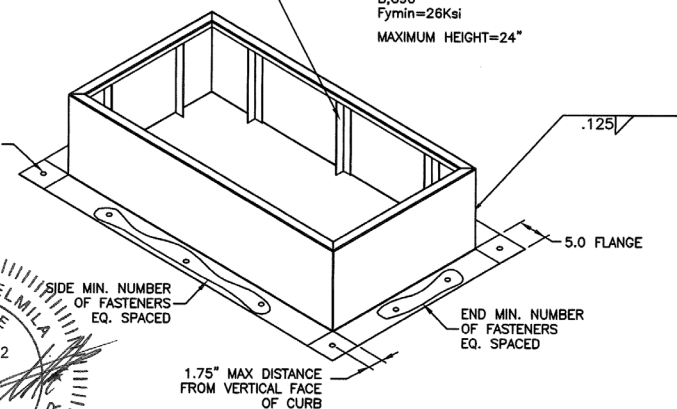
105 School Creek Trail
 Luxemburg, WI 54217
 Phone 920-617-1042
 Fax 920-617-1100
 www.rice-inc.com

Florida Firm No. F-01000005081
 Certificate of Authorization #9090
 Wayne K. Helmila
 Registration No. 59092

ONE FASTENER
 IN EACH CORNER

REINFORCING ANGLES
 1.25" FLANGES

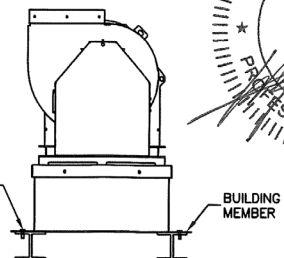
ROOF CURB MATERIAL
 14 GA. GALVANIZED,
 FORMING STEEL TYPE
 B, G90
 Fymin=26Ksi
 MAXIMUM HEIGHT=24"



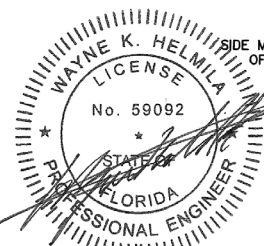
TIMBER ANCHORING

USE 1/2" DIA. (OR BETTER)
 316 SS LAG BOLTS
 MIN. 1.50" OF THREADS TO BE
 ENGAGED INTO WOOD

5/16" DIA. SELF TAPPING SCREW (OR BETTER)
 0.105" MIN. THREAD ENGAGEMENT



STEEL ANCHORING-Self DRILL/TAP FASTENERS



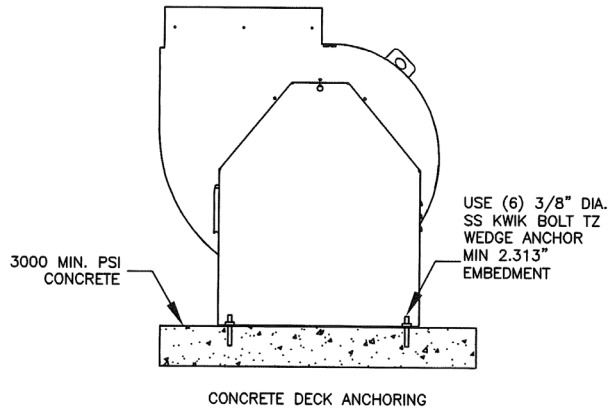
SEP 24 2020

GREENHECK
 P.O. BOX 410 SCHOFIELD, WISCONSIN 54476-0410

TITLE
 FJC 306-324
 CURB INSTALLATION
 SHEET 8 OF 9

DRAWN BY
 WOTRUBA
 DATE
 09/2020
 SUPERSEDES
 SCALE
 1/10
 CAT DRAWING NO.
 NOA TESTING

FJC-2001



CONCRETE DECK ANCHORING

PRODUCT RENEWED
as complying with the Florida
Building Code
NOA-No. 22-0729.06

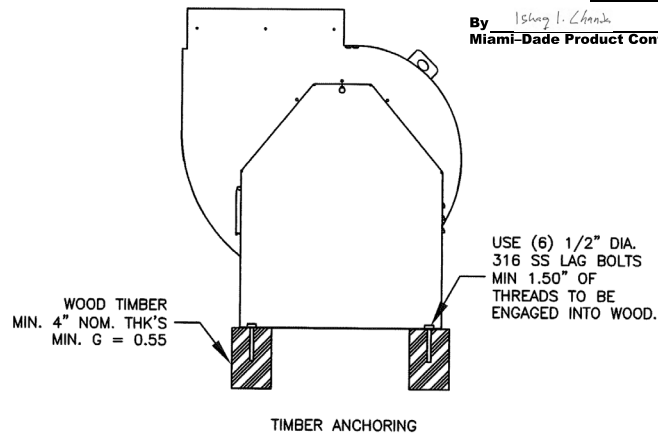
Expiration Date 07/27/2027

By [Signature]
Miami-Dade Product Control

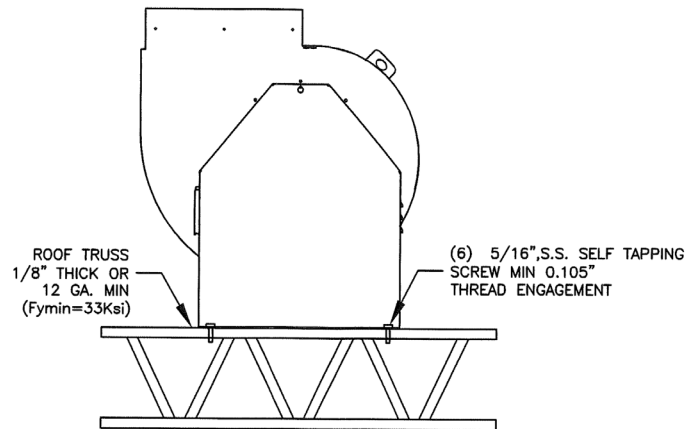
PRODUCT REVISED
as complying with the Florida
Building Code
NOA-No. 20-1123.08

Expiration Date 07/27/2022

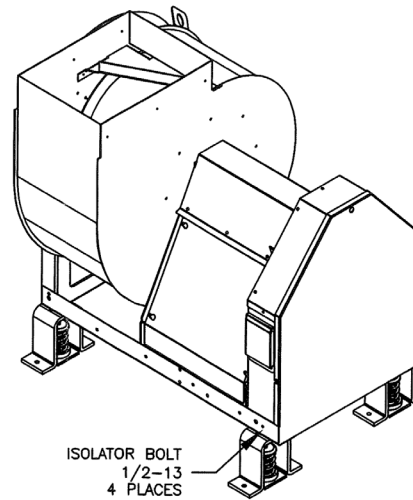
By [Signature]
Miami-Dade Product Control



TIMBER ANCHORING



STEEL ANCHORING

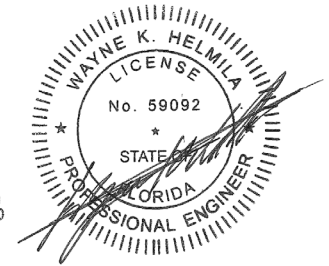


DIRECT MOUNT

RICE
ENGINEERING

105 School Creek Trail
Luxemburg, WI 54217
Phone 920-617-1042
Fax 920-617-1100
www.rice-inc.com

Florida Firm No. F-01000005081
Certificate of Authorization #9090
Wayne K. Helmila
Registration No. 59092



SEP 24 2020

ANCHORAGE INTO CONCRETE:
USE 3/8" DIA. SS KWIK BOLT TZ WEDGE ANCHOR
316 STAINLESS STEEL
EFF. EMBEDMENT DEPTH: 2" MIN.
INSTALL DEPTH: 2.313" MIN.
EDGE DISTANCE: 6" MIN.
SPACING: 4 1/2" MIN.
MIN. SLAP THK: 4" NORMAL WT., CRACKED
COMPRESSIVE STRENGTH: F'C=3000 PSI
INSTALL PER MANUFACTURER'S INSTRUCTIONS

ANCHORAGE INTO STEEL:
USE 5/16" DIA. SS FASTENERS
SELF DRILLING/SELF TAPPING FASTENERS OR THRU BOLTS
300 SERIES S.S., COND, CW,
FY = 65 KSI
0.105" THK ENG. (MIN)

ANCHORAGE INTO WOOD:
USE 1/2" DIA. SS LAG BOLTS (FY = 65 KSI)
SOUTHERN PINE (G = 0.55 MIN)
PREDRILL AS RECOMMENDED
PENETRATION = 1.75"
MIN. OF 1.50" OF THREADS TO BE ENGAGED INTO WOOD
SPACING: 3.00" MIN.
EDGE DISTANCE: 1.00" MIN.
END DISTANCE: 6.00" MIN.

 P.O. BOX 410 SCHOFIELD, WISCONSIN 54476-0410	DRAWN BY WOTRUBA	ECD
	DATE 05/2017	ENG. REF.
	SUPERSEDES	NOA TESTING
	SCALE 1/10 CAB DRAWING NO.	B

TITLE
 USF 306-324
 INSTALLATION
 SHEET 9 OF 9

FJC-2001