



DEPARTMENT OF REGULATORY AND ECONOMIC RESOURCES (RER)
BOARD AND CODE ADMINISTRATION DIVISION

NOTICE OF ACCEPTANCE (NOA)

MIAMI-DADE COUNTY
PRODUCT CONTROL SECTION
11805 SW 26 Street, Room 208
Miami, Florida 33175-2474
T (786) 315-2590 F (786) 315-2599
www.miamidade.gov/economy

Fiandre
Via Raici, 112
Castellano, Italy 42014

SCOPE: This NOA is being issued under the applicable rules and regulations governing the use of construction materials. The documentation submitted has been reviewed and accepted by Miami-Dade County RER-Product Control Section to be used in Miami Dade County and other areas where allowed by the Authority Having Jurisdiction (AHJ).

This NOA shall not be valid after the expiration date stated below. The Miami-Dade County Product Control Section (In Miami Dade County) and/or the AHJ (in areas other than Miami Dade County) reserve the right to have this product or material tested for quality assurance purposes. If this product or material fails to perform in the accepted manner, the manufacturer will incur the expense of such testing and the AHJ may immediately revoke, modify, or suspend the use of such product or material within their jurisdiction. RER reserves the right to revoke this acceptance if it is determined by Miami-Dade County Product Control Section that this product or material fails to meet the requirements of the applicable building code.

This product is approved as described herein and has been designed to comply with the Florida Building Code, including the High Velocity Hurricane Zone.

DESCRIPTION: Series GHS MAXI-10 Porcelain-Ceramic Ventilated Façade System

APPROVAL DOCUMENT: Drawing No. **GHSMAXI10-N1**, titled "Fiandre GHS MAXI-10 Series Ceramic Composite Panel System", sheets 1 through 8 of 8, dated 07/31/2018, with revision 1 dated 10/07/2022, prepared by Wolters Engineering, Inc., signed and sealed by Scott Wolters, P.E., bearing the Miami-Dade County Product Control revision stamp with the Notice of Acceptance number and approval date by the Miami-Dade County Product Control Section.

MISSILE IMPACT RATING: Large and Small Missile Impact Resistant

LABELING: Each unit shall bear a permanent label with the manufacturer's name or logo, city, state, model/series, and following statement: "Miami-Dade County Product Control Approved", unless otherwise noted herein.

RENEWAL of this NOA shall be considered after a renewal application has been filed and there has been no change in the applicable building code negatively affecting the performance of this product.

TERMINATION of this NOA will occur after the expiration date or if there has been a revision or change in the materials, use, and/or manufacture of the product or process. Misuse of this NOA as an endorsement of any product, for sales, advertising or any other purposes shall automatically terminate this NOA. Failure to comply with any section of this NOA shall be cause for termination and removal of NOA.

ADVERTISEMENT: The NOA number preceded by the words Miami-Dade County, Florida, and followed by the expiration date may be displayed in advertising literature. If any portion of the NOA is displayed, then it shall be done in its entirety.

INSPECTION: A copy of this entire NOA shall be provided to the user by the manufacturer or its distributors and shall be available for inspection at the job site at the request of the Building Official. This NOA **revises NOA # 18-0924.03** and consists of this page 1 and evidence pages E-1 and E-2, as well as approval document mentioned above.

The submitted documentation was reviewed by **Carlos M. Utrera, P.E.**



NOA No. 22-1011.06
Expiration Date: April 25, 2024
Approval Date: November 3, 2022
Page 1

NOTICE OF ACCEPTANCE: EVIDENCE SUBMITTED

1. Evidence submitted under NOA # 18-0924.03

A. DRAWINGS

1. Drawing No. **GHSMAXI10-N1**, titled “Fiandre GHS MAXI-10 Series Ceramic Composite Panel System”, sheets 1 through 8 of 8, dated 07/31/2018, prepared by Wolters Engineering, Inc., signed and sealed by Scott Wolters, P.E. on 05/14/2019.

B. TESTS “Submitted under NOA # 18-0924.01”

1. Test reports on
 - 1) Air Infiltration Test, per FBC, TAS 202-94
 - 2) Uniform Static Air Pressure Test, Loading per FBC TAS 202-94
 - 3) Water Resistance Test, per FBC, TAS 202-94
 - 4) Cyclic Wind Pressure Loading per FBC, TAS 203-94along with marked-up drawings of the GHS MAXI-10 Ventilated Façade System, prepared by Intertek, Test Report No. **H5589.01-109-18**, dated 04/16/2018, revised on 02/18/2019, signed and sealed by Daniel C. Culbert, P.E.

C. CALCULATIONS “Submitted under NOA # 18-0924.01”

1. Anchoring verification calculation prepared by Wolters Engineering, Inc., dated 08/01/2018, signed and sealed by Scott Wolters, P.E.

D. QUALITY ASSURANCE

1. Miami-Dade Department of Regulatory and Economic Resources (RER)

E. MATERIAL CERTIFICATIONS “Submitted under NOA # 18-0924.01”

1. Test report on Self-Ignition Temperature per ASTM D1929-12 on the Synthetic Fiber Tile Reinforcement Mesh, prepared by Intertek, Test Report No. **J2163.01-106-18 R0**, dated 01/10/2019, signed and sealed by Gary T. Hartman, P.E.
2. Test reports on Surface Burning Characteristics per ASTM E84-16 on the Porcelain Ceramic Tile, prepared by QAI Laboratories, Test Report No. **RJ5185F-1-REV1**, dated 12/27/2016, revised on 02/19/2019 signed and sealed by V. Andrew Tan, P.E.

F. STATEMENTS “Submitted under NOA # 18-0924.01”

1. Statement letter of code conformance to the 6th edition (2017) FBC issued by Wolters Engineering, Inc., dated 08/02/2018, signed and sealed by Scott Wolters, P.E.
2. Statement letter of no financial interest issued by Wolters Engineering, Inc., dated 08/02/2018, signed and sealed by Scott Wolters, P.E.
3. Private label agreement dated 08/01/2018.



Carlos M. Utrera, P.E.
Product Control Examiner
NOA No. 22-1011.06
Expiration Date: April 25, 2024
Approval Date: November 3, 2022

NOTICE OF ACCEPTANCE: EVIDENCE SUBMITTED

2. New evidence submitted

A. DRAWINGS

1. Drawing No. **GHSMAXI10-N1**, titled “Fiandre GHS MAXI-10 Series Ceramic Composite Panel System”, sheets 1 through 8 of 8, dated 07/31/2018, with revision 1 dated 10/07/2022, prepared by Wolters Engineering, Inc., signed and sealed by Scott Wolters, P.E.

B. TESTS

1. None.

C. CALCULATIONS

1. None.

D. QUALITY ASSURANCE

1. Miami-Dade Department of Regulatory and Economic Resources (RER).

E. MATERIAL CERTIFICATIONS

1. None.

F. STATEMENTS

1. Statement letter of code conformance to the 7th edition (2020) of the FBC, issued by Wolters Engineering, Inc., dated 10/07/2022, signed and sealed by Scott Wolters, P.E.



Carlos M. Utrera, P.E.
Product Control Examiner
NOA No. 22-1011.06
Expiration Date: April 25, 2024
Approval Date: November 3, 2022

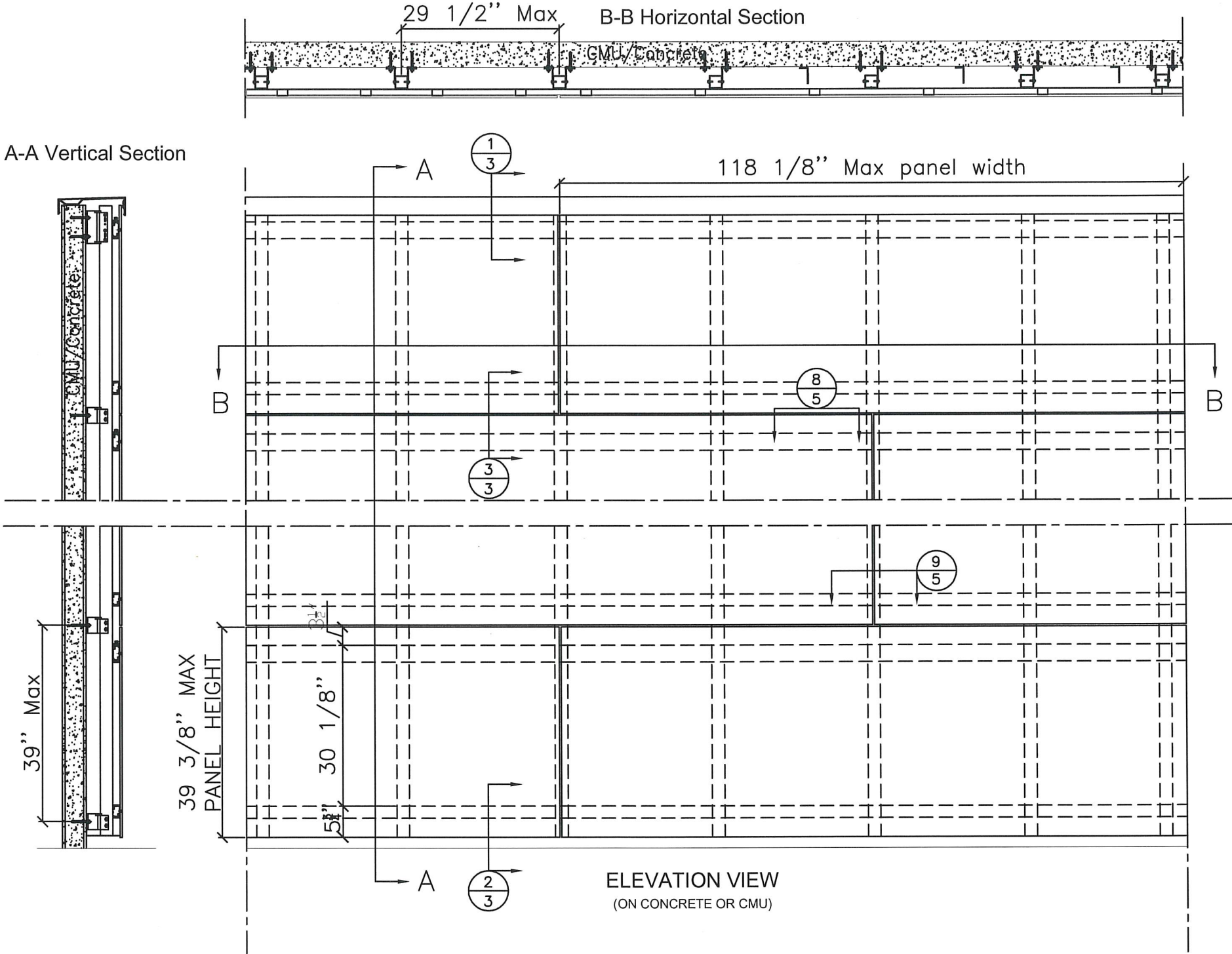
FIANDRE GHS MAXI-10 SERIES
CERAMIC COMPOSITE PANEL SYSTEM

NOTE:

1. THE PRODUCT SHOWN HEREIN IS DESIGNED AND MANUFACTURED TO COMPLY WITH ALL OF THE REQUIREMENTS OF THE 7TH EDITION (2020) FLORIDA BUILDING CODE, FOR USE INSIDE AND OUTSIDE THE HIGH VELOCITY HURRICANE ZONE (HVHZ),
2. THIS PRODUCT IS NOT APPROVED FOR IMPACT RESISTANCE AS A STAND ALONE PRODUCT. IN THE HVHZ OR WINDBORNE DEBRIS REGIONS. IT MAY ONLY BE INSTALLED OVER IMPACT RESISTENT SUBSTRATES MEETING THE REQUIREMENTS OF FBC SECTION 1626.
3. WATER RESISTIVE BARRIERS AND FLASHING MUST BE INSTALLED WHERE REQUIRED FOR FBC SECTIONS 1404.2 AND 1405.4.
4. THE DESIGN OF THE SUBSTRATE IS THE RESPONSIBILITY OF THE ENGINEER OF RECORD OR OTHER SPECIALTY ENGINEER, AND IS NOT A PART OF THIS APPROVAL THE SUBSTRATE MUST SAFELY TRASMIT THE LOADS APPLIED TO THIS SYSTEM TO THE BUILDING STRUCTURE.
5. ANCHOR TYPE, SIZE, SPACING AND EMBEDMENT SHALL BE AS INDICATED IN THIS APPROVAL. ANCHOR EMBEDMENT TO SUBSTRATE SHALL BE BEYOND WALL DRESSING OR STUCCO.
6. FASTENERS INSTALLED IN METAL STUDS SHALL BE OF SUFFICIENT LENGTH TO FULLY PENETRATE THE METAL PLUS THREE ADDITIONAL THREADS BEYOND.
7. ALL FASTENERS PENETRATING INTO PRESSURE TREATED WOOD SHALL BE CAPABLE OF PREVENTING CORROSION DUE TO REACTION WITH PRESSURE TREATING CHEMICALS.
8. SHIM AS REQUIRED AT EACH INSTALLATION ANCHOR WITH LOAD BEARING SHIM. SHIM WHERE SPACE OF 1/16" OR GREATER OCCURS.
9. DISSIMILAR MATERIALS THAT COME INTO CONTACT SHALL BE PROTECTED TO PREVENT GALVANIC REACTIONS.
10. MOLDED, 3/8" (10 mm) THICK BY 39-3/8" (1000 mm) WIDE BY 118-1/8" (3000 mm) LONG WITH A SYNTHETIC FIBER REINFORCEMENT MESH ADHERED TO THE BACK OF THE PANEL

DESIGN PRESSURE RATING
+/- 89 PSF

ANCHOR SCHEDULE			
BASE MATERIAL	FASTENER TYPE	EMBEDMENT (MIN)	EDGE DISTANCE (MIN)
METAL STUD (16 ga 50ksf min)	1/4" Elco BI-Flex	See note #6 above	1/2"
CONCRETE (3000 psi min)	3/8" hilti KB3	2 1/2"	3"
CMU (ASTM 90 min)	3/8" hilti KB3	2 1/2"	6"



PRODUCT REVISED
as complying with the Florida Building Code
NOA-No. 22-1011.06
Expiration Date 04/25/2024
By *[Signature]*
Miami-Dade Product Control

REV. - DATE

10/7/22

REVISION - DESCRIPTION

1 2020 CODE UPDATE

FIANDRE

ARCHITECTURAL SURFACES

SCOTT WOLTERS

FL PE# 62354

WOLTERS ENGINEERING

(COA# 27194)

15211 97TH ROAD N

WEST PALM BEACH, FL 33412

(561) 225-1982

Fiandre

Via Raici, 112, 42014

Castellarano (Reggio Emilia), Italy

Tel: 0536 819611

www.granitifiandre.com

SCOTT WOLTERS

FL PE# 62354

STATE OF FLORIDA

PROFESSIONAL ENGINEER

06107 2022

Date

7/31/18

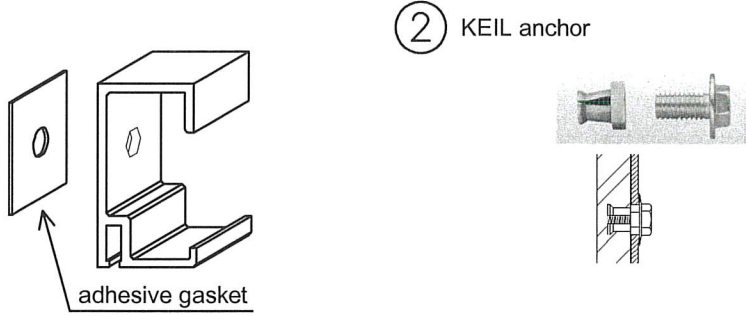
Name

GHS MAXI10-N1

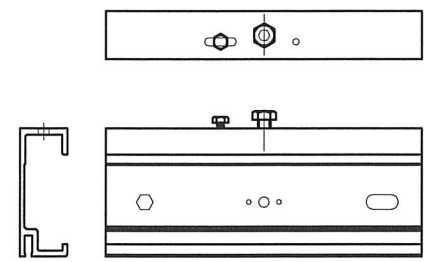
Sheet

1 of 8

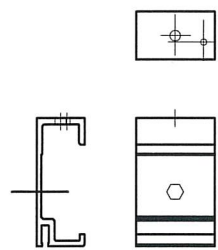
PANEL CONSTRUCTION



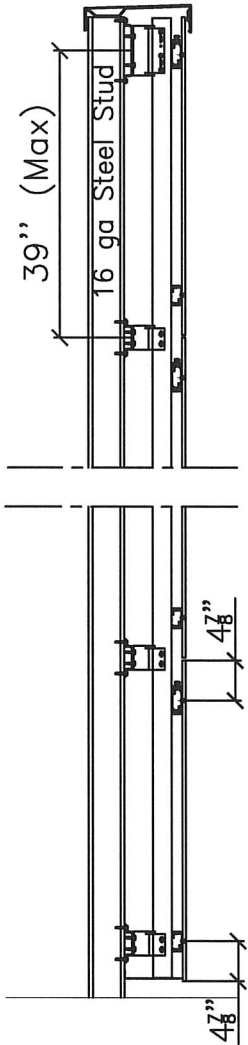
①A Primary Load-bearing C-clamp



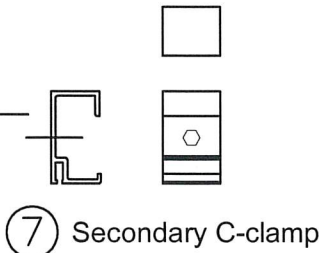
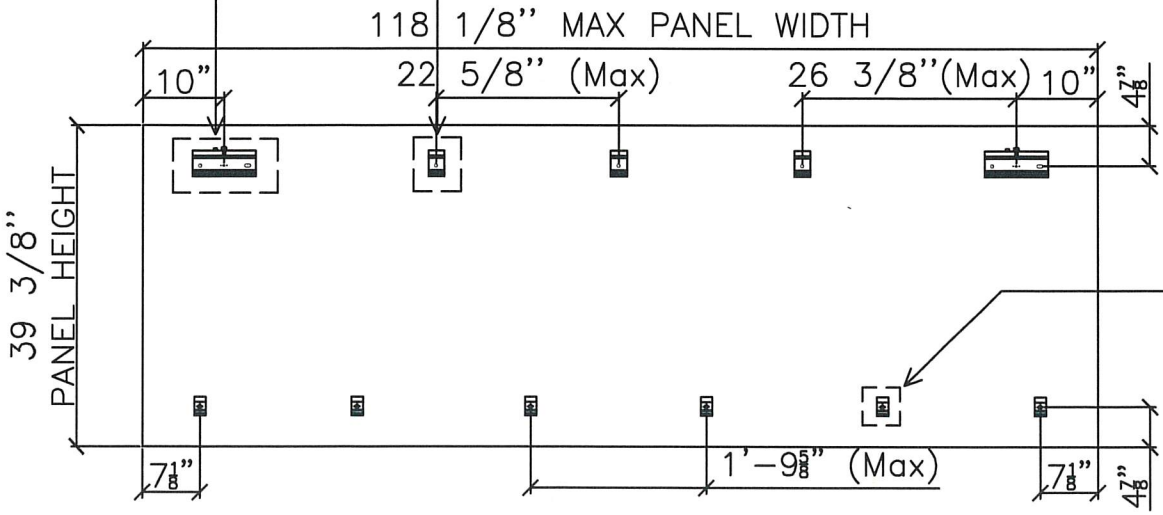
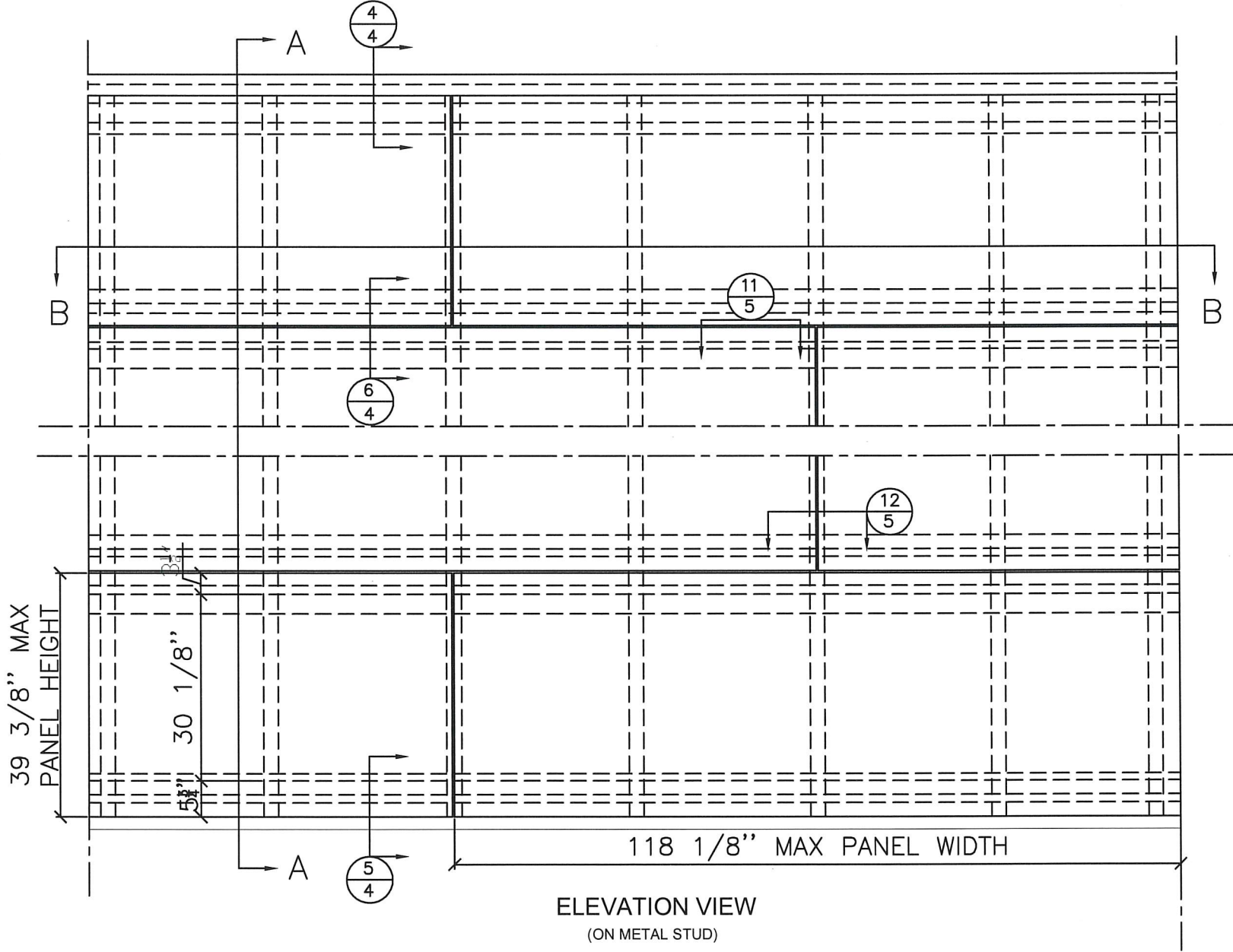
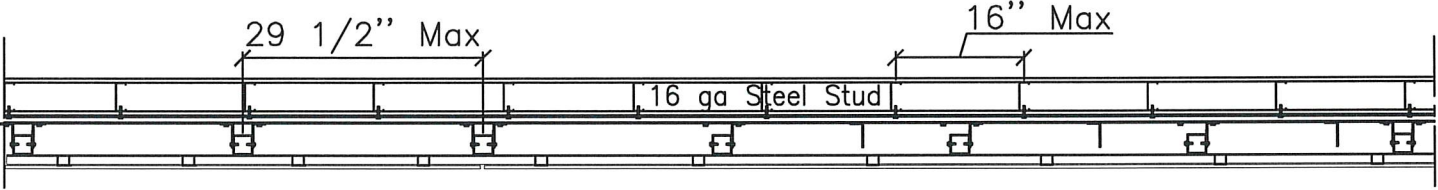
①B Primary C-clamp



A-A Vertical Section



B-B Horizontal Section



PRODUCT REVISED
as complying with the Florida
Building Code
NOA-No. 22-1011.06
Expiration Date 04/25/2024
By *[Signature]*
Miami-Dade Product Control

REV. - DATE	REVISION - DESCRIPTION
10/7/22	2020 CODE UPDATE
1	

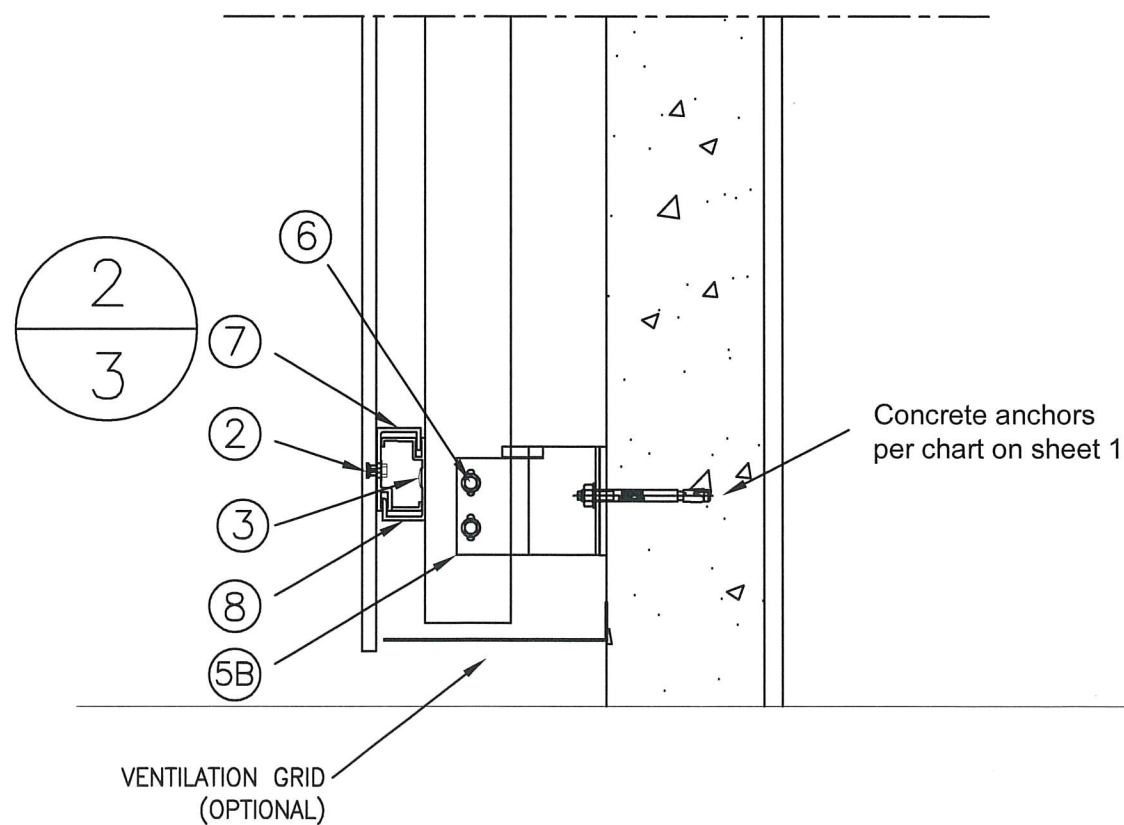
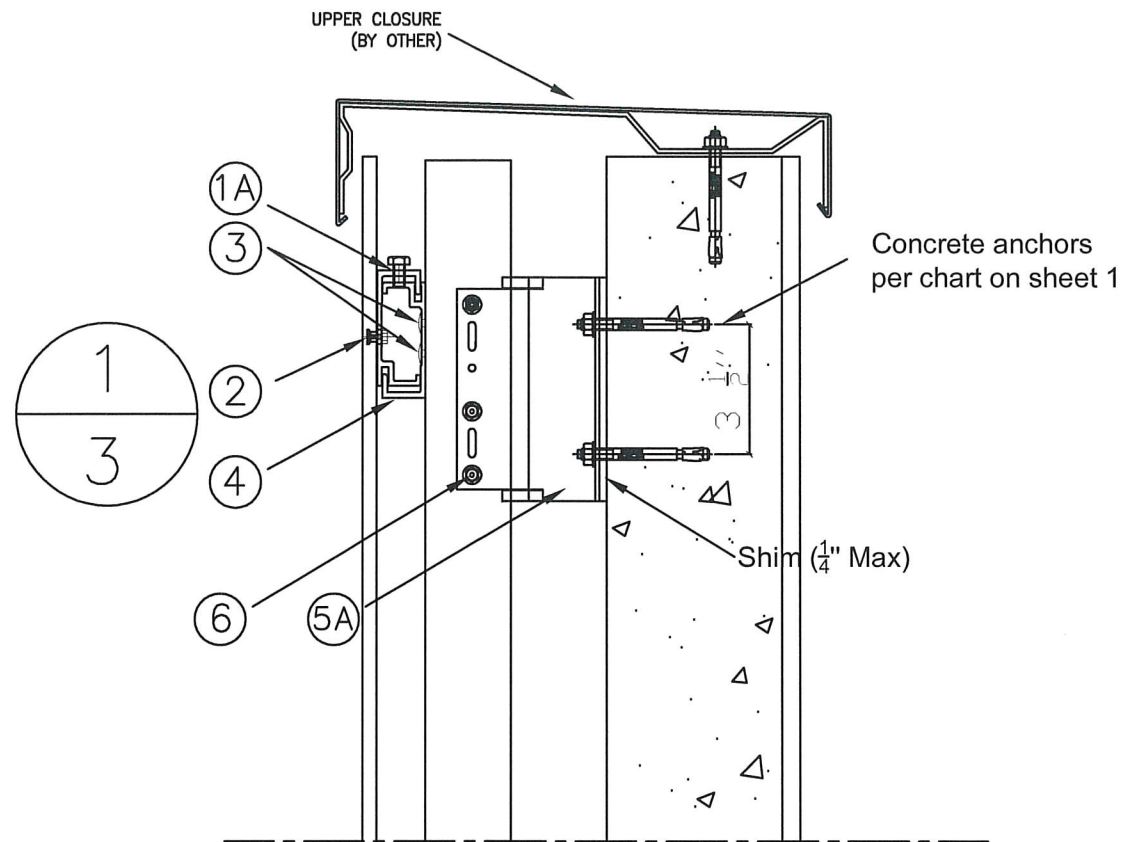
FIANDRE
ARCHITECTURAL SURFACES

Via Raici, 112, 42014
Castellarano (Reggio Emilia), Italy
Tel: 0536 819611
www.granitifiandre.com

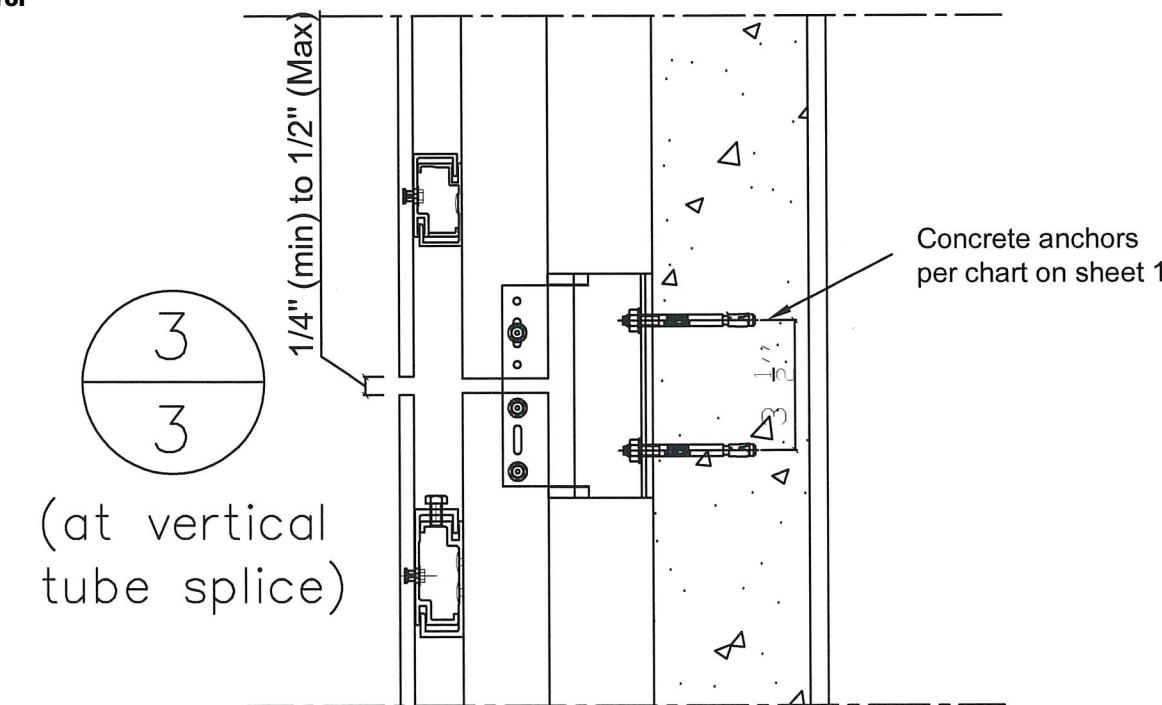
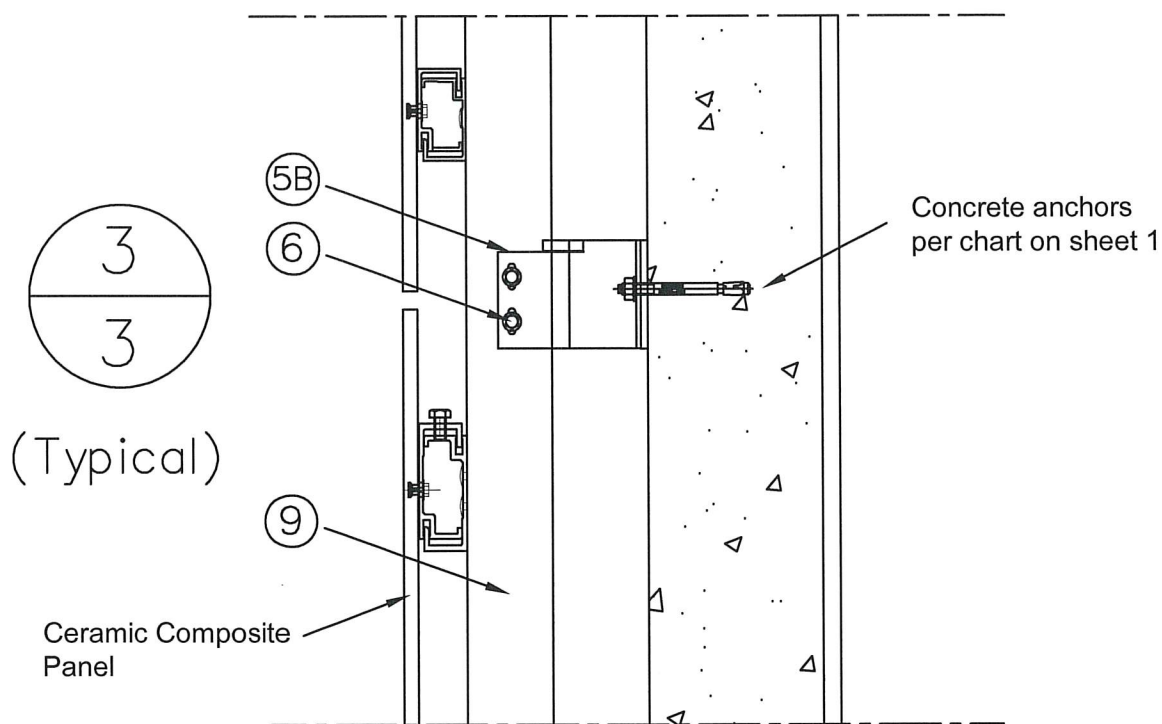
SCOTT WOLTERS
FL PE# 62354

WOLTERS ENGINEERING
(COA# 27194)
15211 97TH ROAD N
WEST PALM BEACH, FL 33412
(561) 225-1982

Date 7/31/18
Name GHSMAXI10-N1
Sheet 2 of 8



PRODUCT REVISED
as complying with the Florida
Building Code
NOA-No. 22-1011.06
Expiration Date 04/25/2024
By *[Signature]*
Miami-Dade Product Control



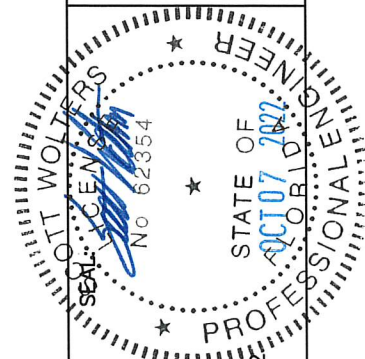
REV. - DATE	REVISION - DESCRIPTION
10/7/22	2020 CODE UPDATE

1					
---	--	--	--	--	--

FIANDRE
ARCHITECTURAL SURFACES

Tel: 0536 819611
www.granitfiandre.com

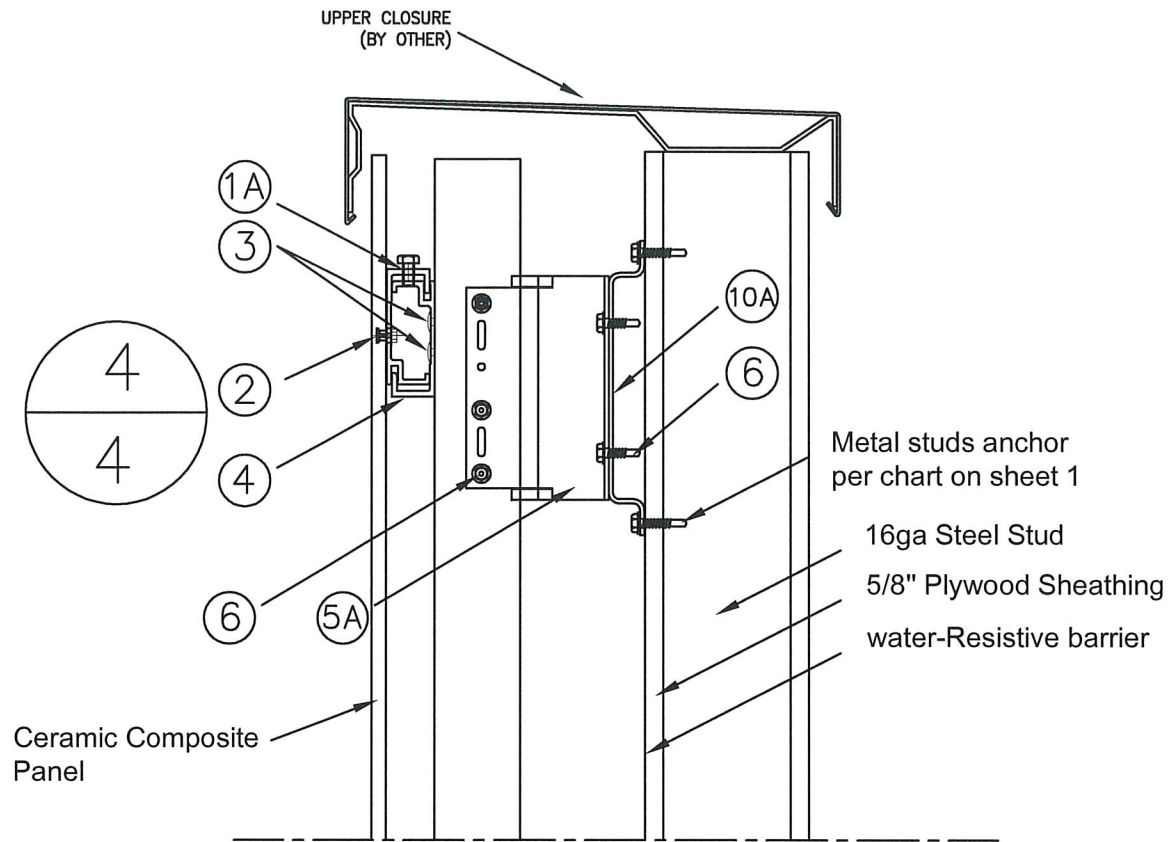
Fiandre
Via Raici, 112, 42014
Castellarano (Reggio Emilia), Italy



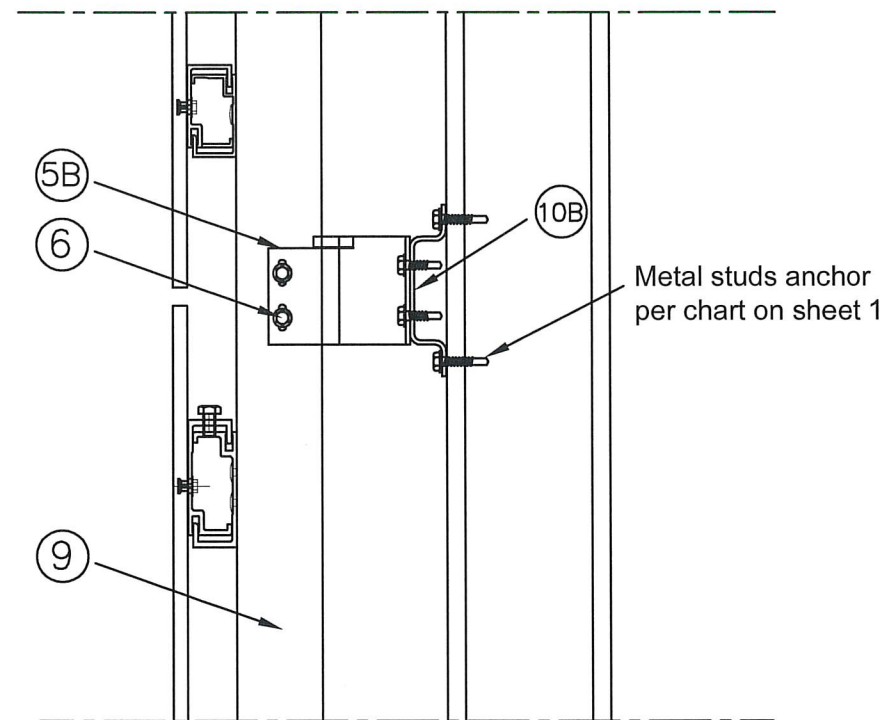
SCOTT WALTERS
FL PE # 62354

WALTERS ENGINEERING
(COA # 27194)
15211 97TH ROAD N
WEST PALM BEACH, FL 33412
(561) 225-1982

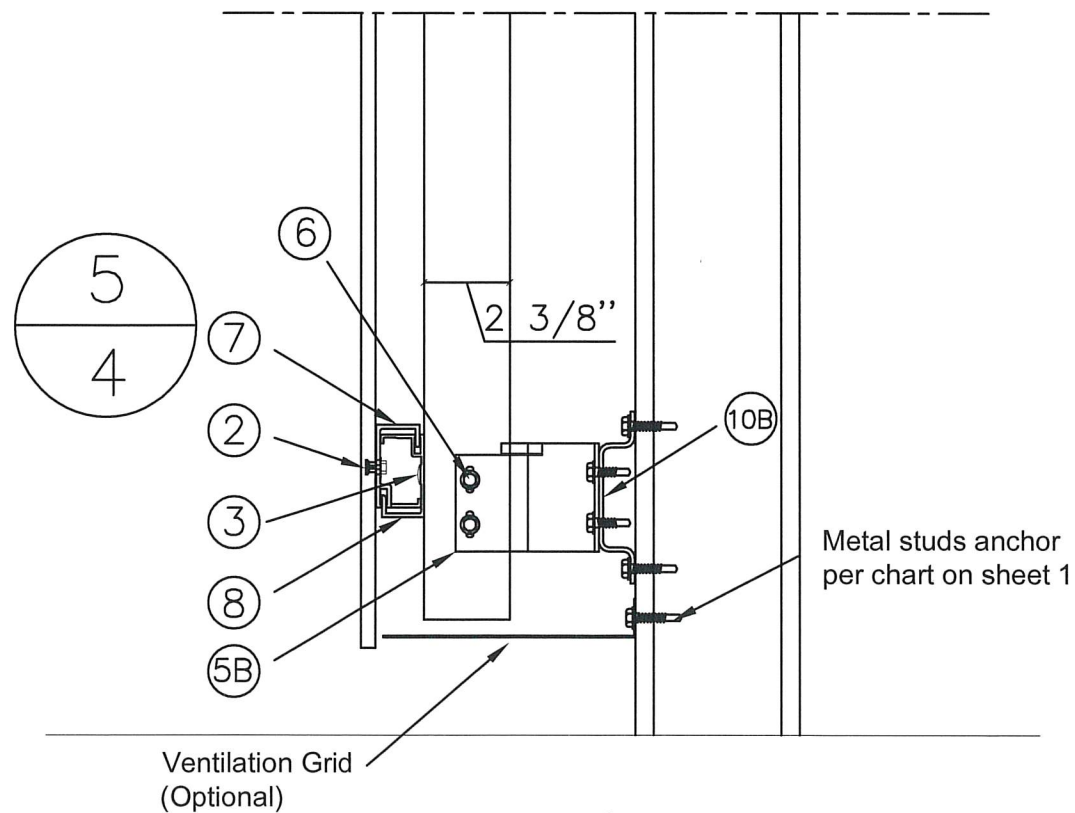
Date	7/31/18
Name	GHSMAXI10-N1
Sheet	3 of 8



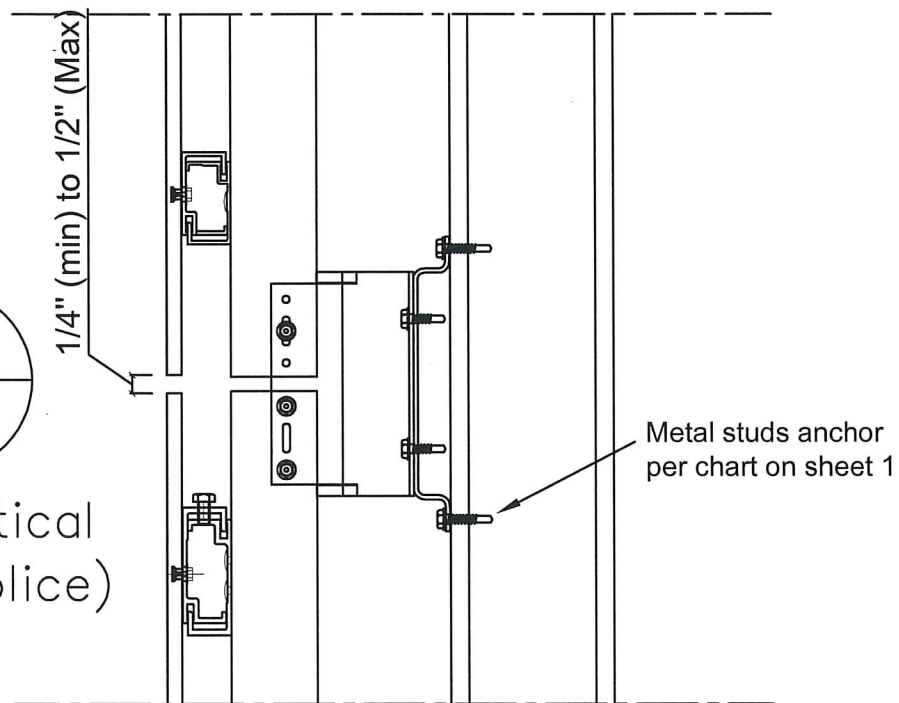
6
4
(Typical)



PRODUCT REVISED
 as complying with the Florida
 Building Code
 NOA-No. 22-1011.06
 Expiration Date 04/25/2024
 By *R. J. [Signature]*
 Miami-Dade Product Control



6
4
(at vertical tube splice)

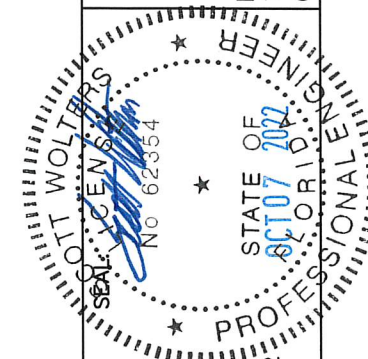


REV. - DATE	REVISION - DESCRIPTION
10/7/22	
1	2020 CODE UPDATE

FIANDRE
 ARCHITECTURAL SURFACES

Tel: 0536 819611
 www.granitifiandre.com

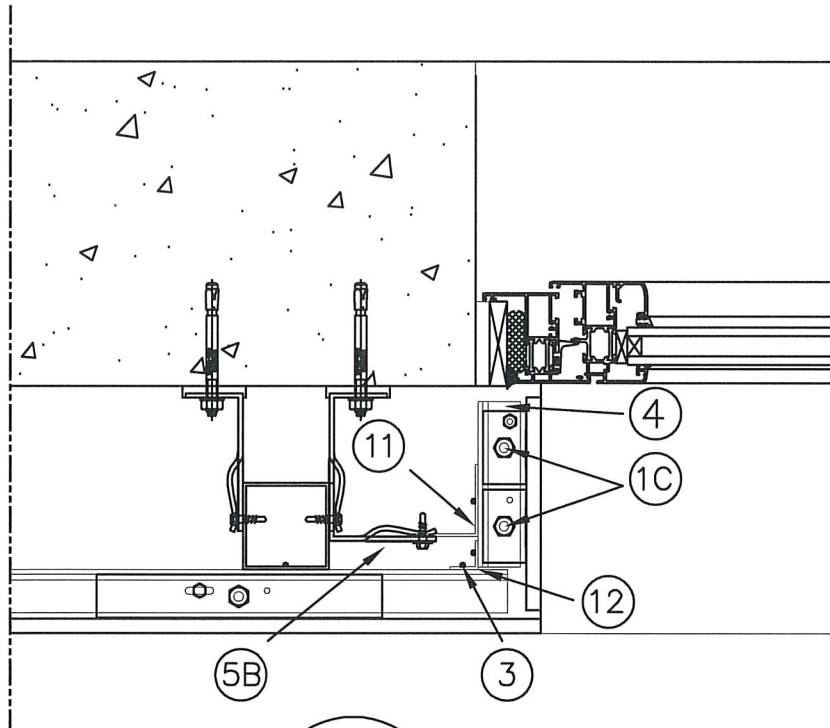
Fiandre
 Via Raici, 112, 42014
 Castellarano (Reggio Emilia), Italy



SCOTT WALTERS
 FL PE# 62354

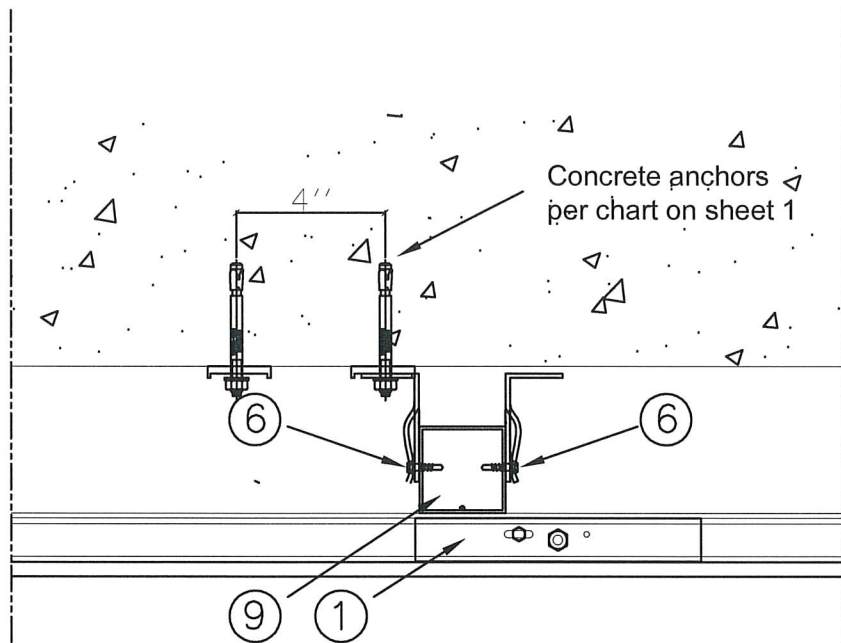
WALTERS ENGINEERING
 (COA# 27194)
 15211 97TH ROAD N
 WEST PALM BEACH, FL 33412
 (561) 225-1982

Date	7/31/18
Name	GHSMAI10-N1
Sheet	4 of 8

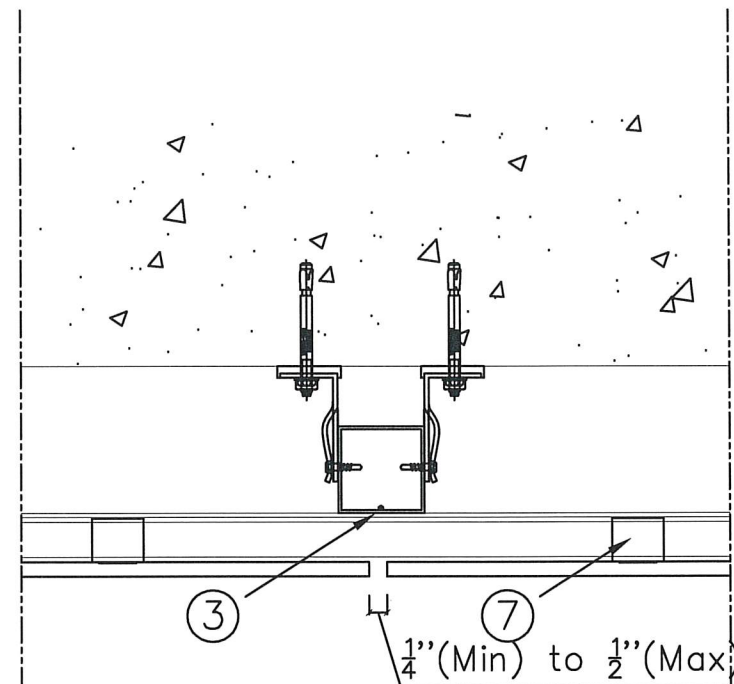


7
5

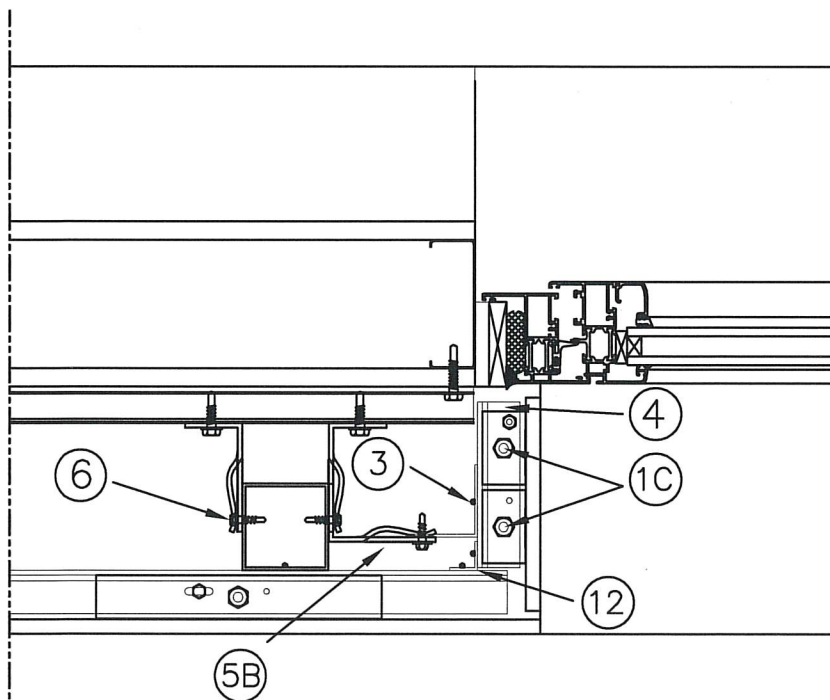
PRODUCT REVISED
as complying with the Florida
Building Code
NOA-No. 22-1011.06
Expiration Date 04/25/2024
By *[Signature]*
Miami-Dade Product Control



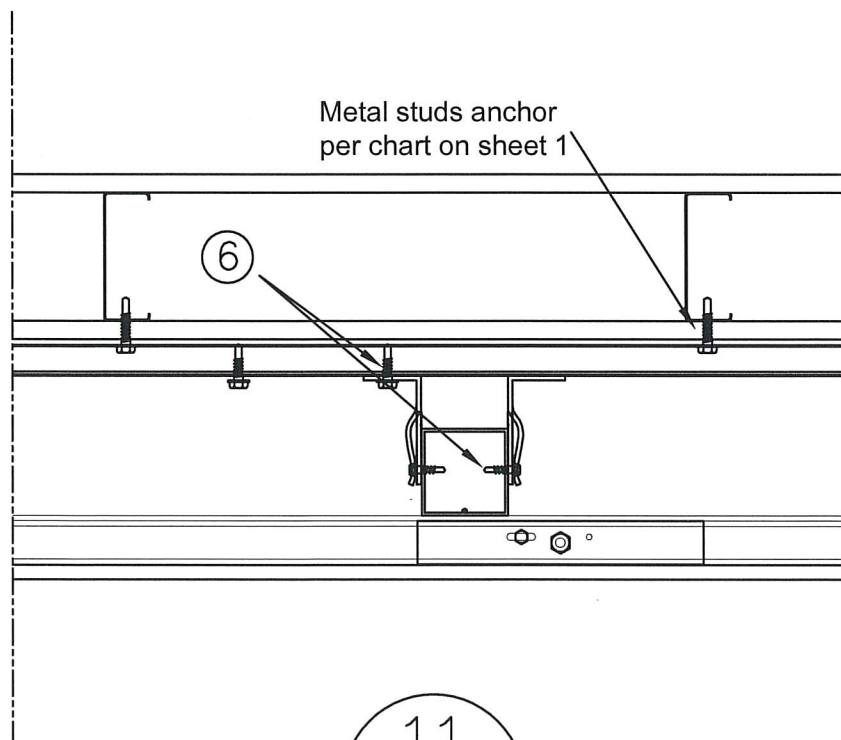
8
5



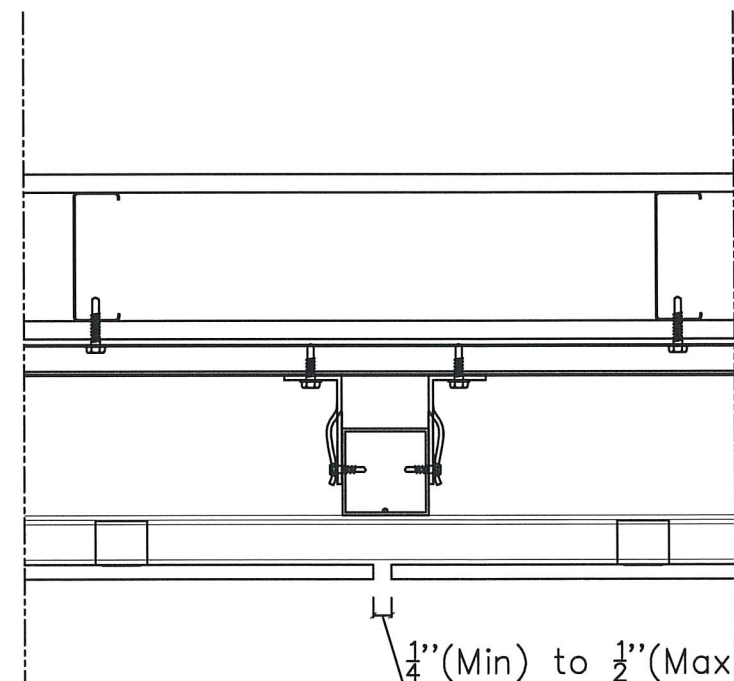
9
5



10
5

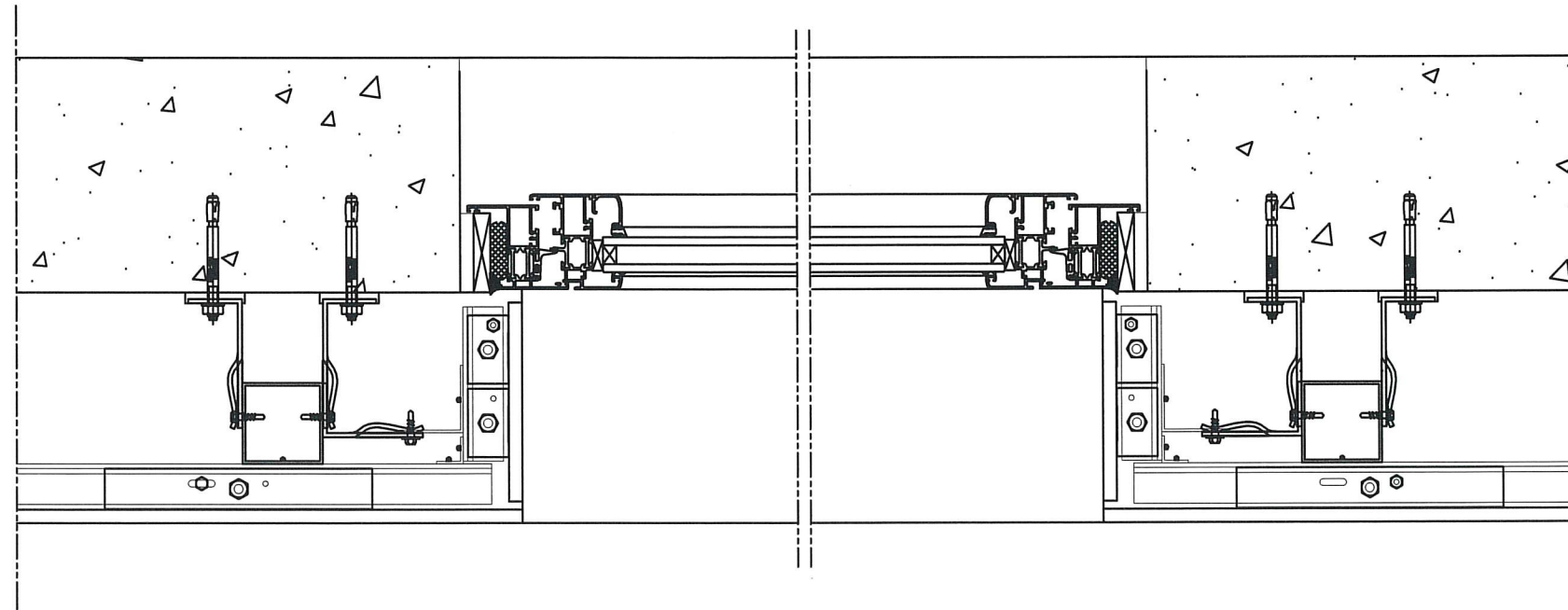


11
5



12
5

Date		7/31/18	
Name		GHSMAXI10-N1	
Sheet		5 of 8	
SCOTT WOLTERS FL PE# 62354		WOLTERS ENGINEERING (COA# 27194) 15211 97TH ROAD N WEST PALM BEACH, FL 33412 (561) 225-1982	
		 FIANDRE ARCHITECTURAL SURFACES	
Fianдре Via Raici, 112, 42014 Castellarano (Reggio Emilia), Italy		Tel: 0536 819611 www.granitifiandre.com	
REVISION - DESCRIPTION		REV. - DATE	
1 2020 CODE UPDATE		10/7/22	



SCOTT WOLTERS
FL PE# 62354

WOLTERS ENGINEERING
(COA# 27194)
15211 97TH ROAD
WEST PALM BEACH, FL
(561) 225-1982

Date	7/31/18
Name	GHSMAXI10-N1
Sheet	6 of 8

FIANDRE
ARCHITECTURAL SURFACES

Flandre
Via Raici, 112, 42014
Castellarano (Reggio Emilia), Italy
Tel: 0536 819611
www.grantifiandre.com

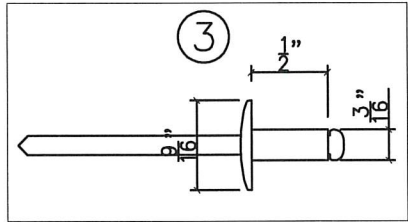
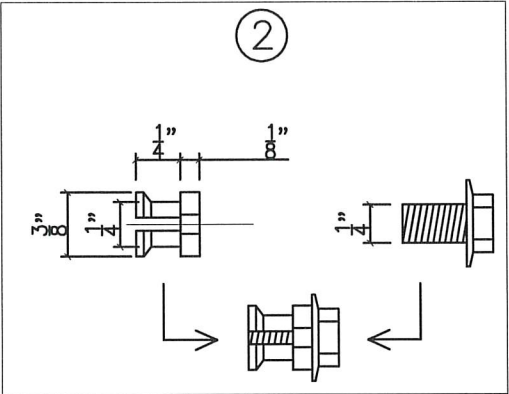
REVISION - DESCRIPTION

1	2020 CODE UPDATE
	REVISION - I

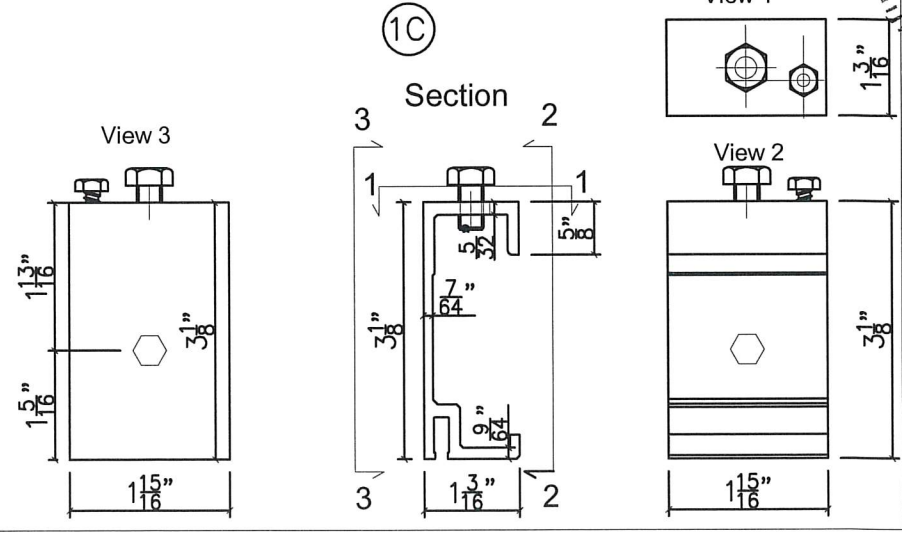
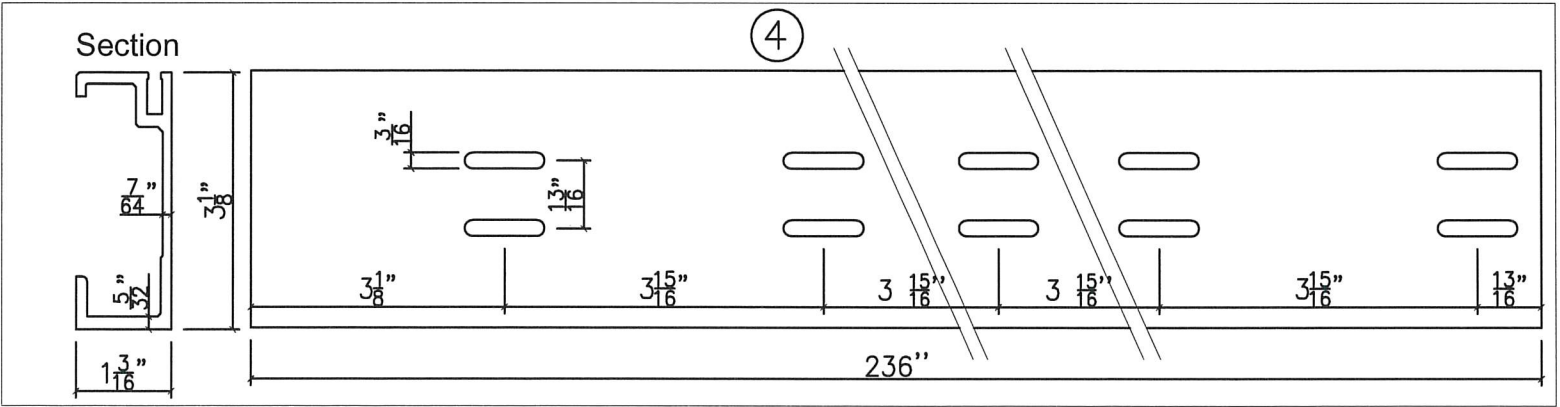
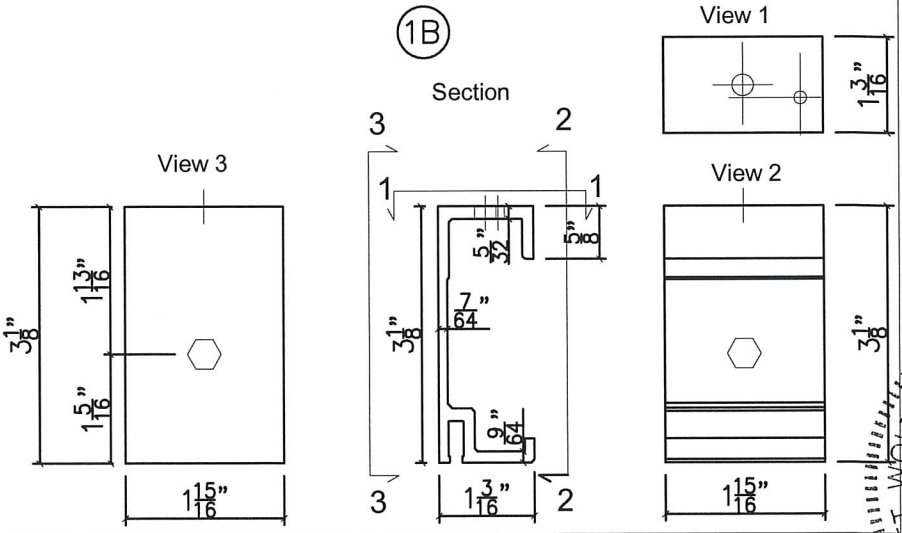
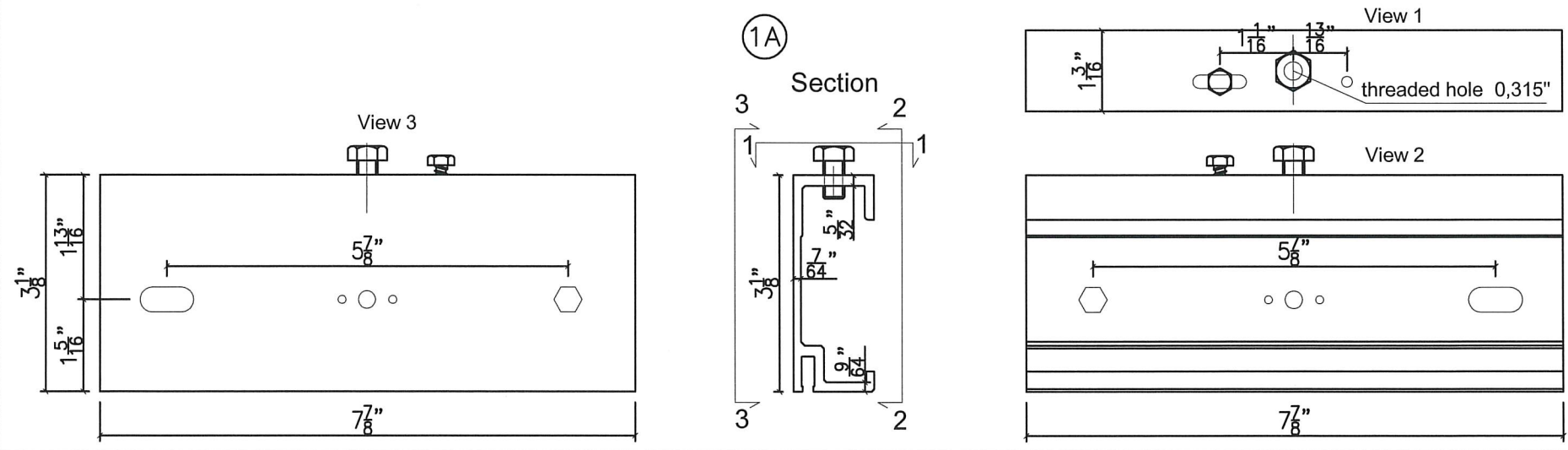
REV. - DATE

10/7/22

ID#	PART N.	ITEM DESCRIPTION	MANUFACTURER	MATERIAL	NOTES
1A		Primary C-clamp	GRANITECH	Al Alloy 6060 T6	Black painted 7 ⁷ / ₈ " long with setting bolt
1B		Primary C-clamp	GRANITECH	Al Alloy 6060 T6	Black painted 1 ¹⁵ / ₁₆ " long
1C		Primary C-clamp	GRANITECH	Al Alloy 6060 T6	Black painted 1 ¹⁵ / ₁₆ " long with setting bolt
2		Undercut anchor KH	KEIL Befestigungstechnik GmbH	Stainless steel	Anchorage depth 0,276" (7 mm - KH7,0)
3		Rivet	FAR	Stainless steel	3/16" (4,8/12x14 mm)
4		Primary C-rail	GRANITECH	Al Alloy 6060 T6	Black painted
5A		L-Bracket	GRANITECH	Al Alloy 6060 T6	Black painted 6 ¹ / ₈ " long
5B		L-Bracket	GRANITECH	Al Alloy 6060 T6	Black painted 2 ¹⁵ / ₁₆ " long
6		Bi-Flex 300 Series	ELCO	Stainless steel	Self-drilling screw
7		Secondary C-clamp	GRANITECH	Al Alloy 6060 T6	Black painted
8		Secondary C-rail	GRANITECH	Al Alloy 6060 T6	Black painted
9		Vertical square profile	GRANITECH	Al Alloy 6060 T6	Black painted 2 ³ / ₈ " x 2 ³ / ₈ " x ¹ / ₁₆ "
10A		Horizontal Hat Channel	GRANITECH	Al Alloy 6060 T6	Black painted 4 ³ / ₄ " x 1" x ¹ / ₈ "
10B		Horizontal Hat Channel	GRANITECH	Al Alloy 6060 T6	Black painted 8 ¹ / ₈ " x 1" x ¹ / ₈ "
11		L-Profile	GRANITECH	Al Alloy 6060 T6	Black painted 1 ¹⁵ / ₁₆ " x 1 ¹⁵ / ₁₆ " x ¹ / ₁₆ "
12		L-Profile	GRANITECH	Al Alloy 6060 T6	Black painted ¹³ / ₁₆ " x ¹³ / ₁₆ " x ¹ / ₁₆ "



PRODUCT REVISED
as complying with the Florida
Building Code
NOA-No. 22-1011.06
Expiration Date 04/25/2024
By *[Signature]*
Miami-Dade Product Control



REV. - DATE
10/7/22

REVISION - DESCRIPTION
1 2020 CODE UPDATE

FIANDRE
ARCHITECTURAL SURFACES

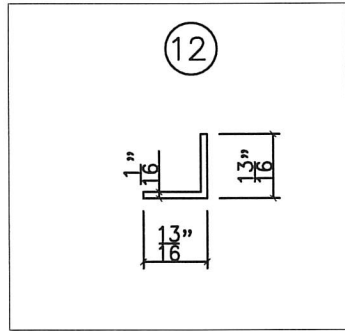
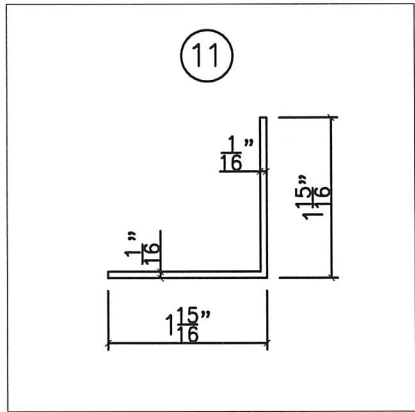
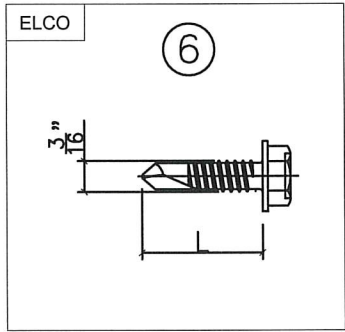
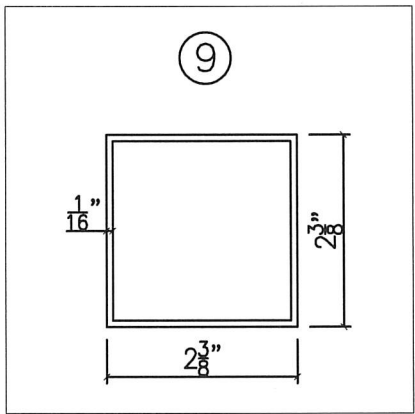
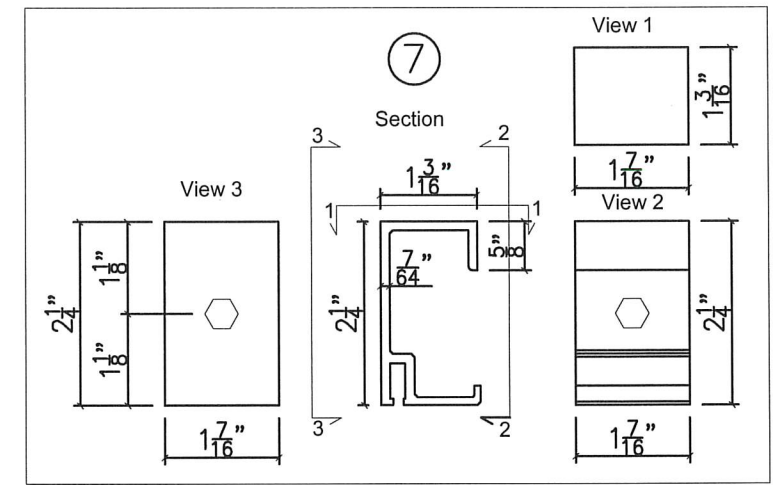
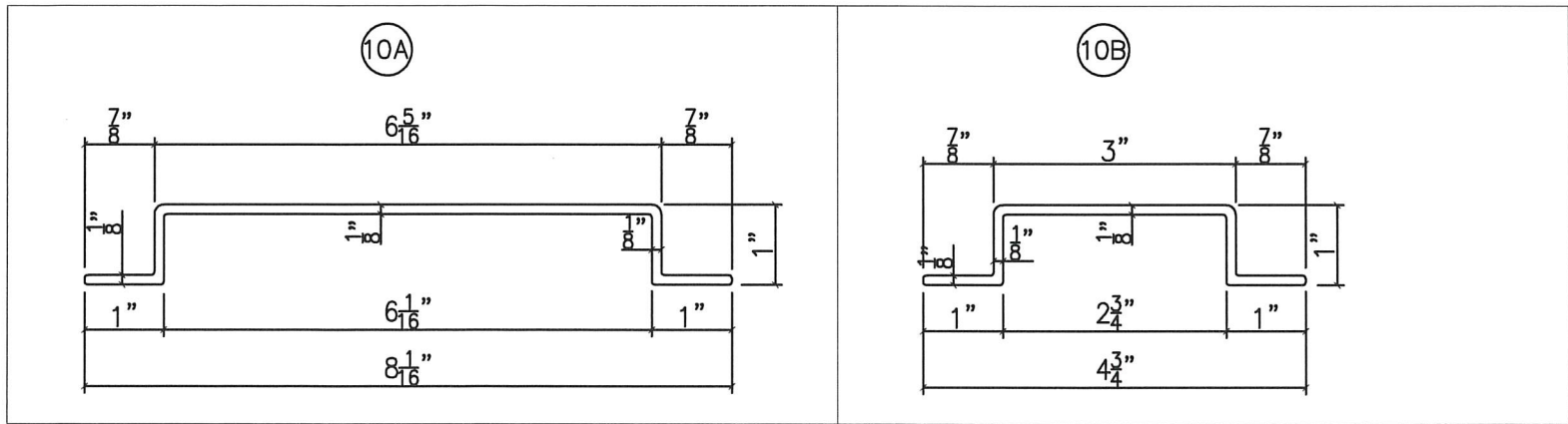
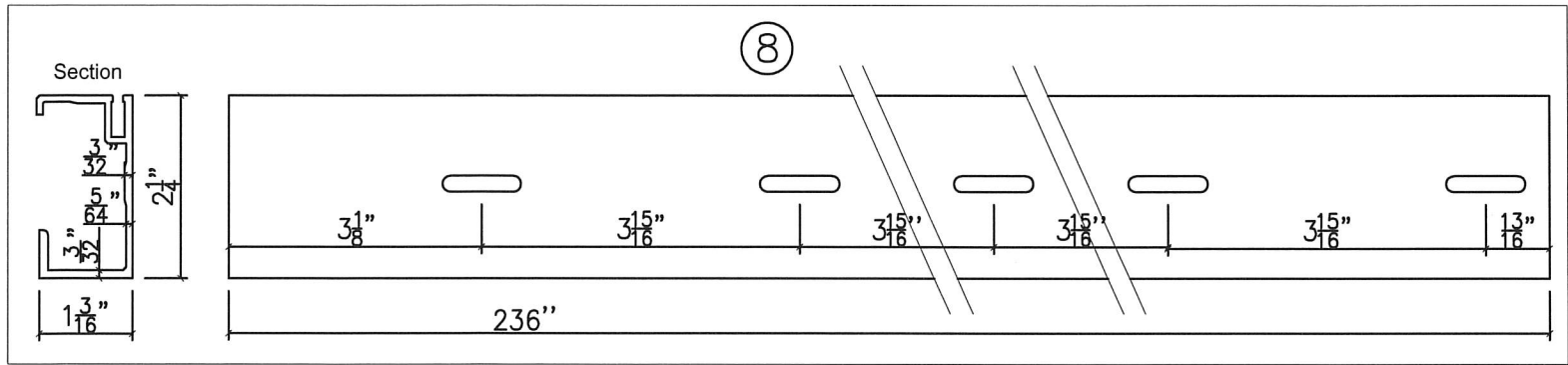
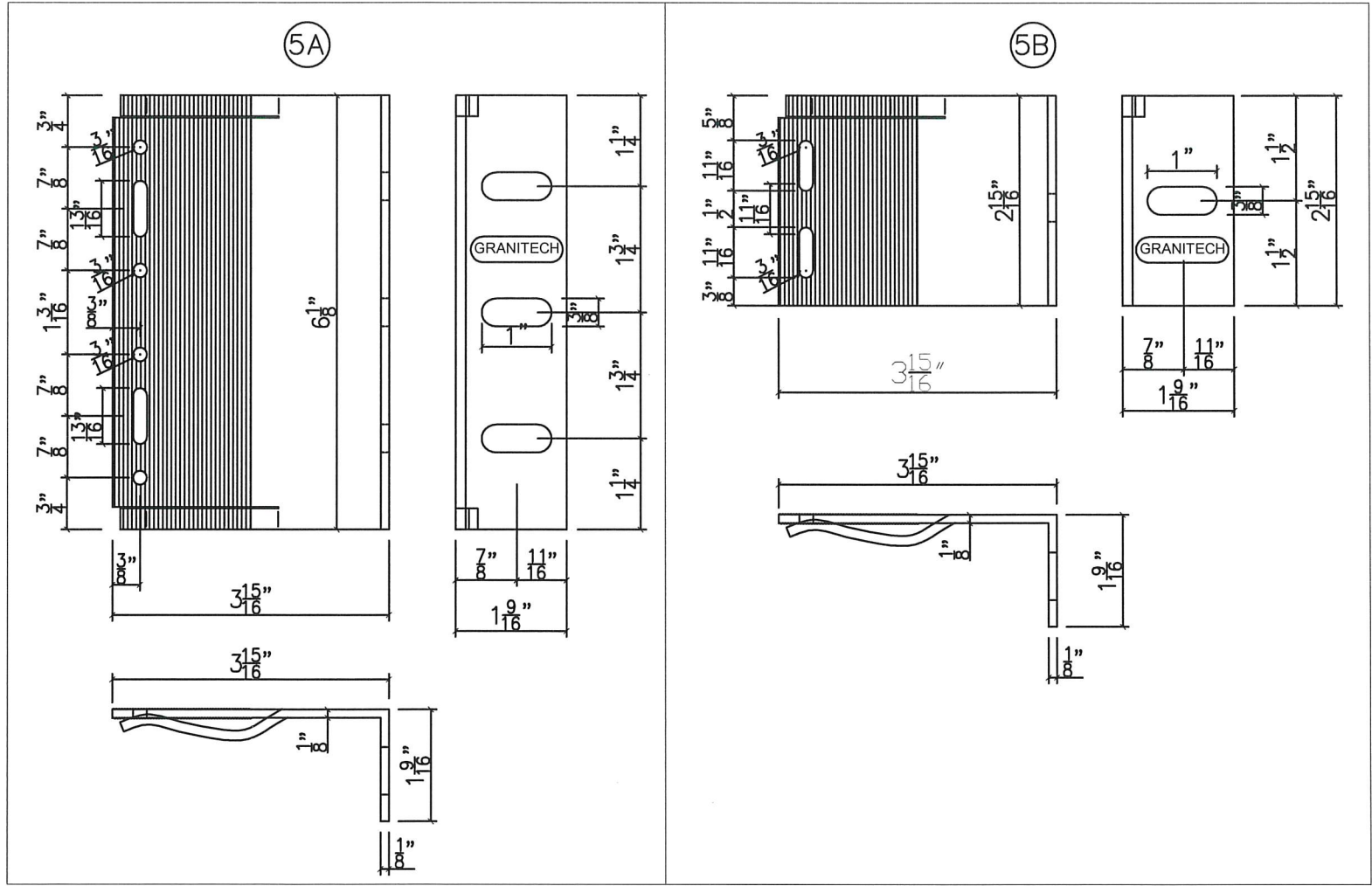
Tel: 0536 819611
www.granitifiandre.com

Via Raici, 112, 42014
Castellarano (Reggio Emilia), Italy

SCOTT WOLTERS
FL PE# 62354

WOLTERS ENGINEERING
(COA# 27194)
15211 97TH ROAD N
WEST PALM BEACH, FL 33412
(561) 225-1982

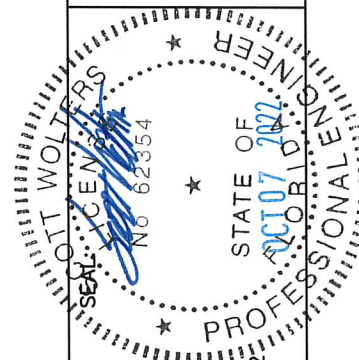
Date 7/31/18
Name GHSMAXI10-N1
Sheet 7 of 8



PRODUCT REVISED
as complying with the Florida
Building Code
NOA-No. 22-1011.06
Expiration Date 04/25/2024
By *R. J. [Signature]*
Miami-Dade Product Control

REV. - DATE	REVISION - DESCRIPTION
10/7/22	
1	2020 CODE UPDATE

FIANDRE
ARCHITECTURAL SURFACES
Via Raici, 112, 42014
Castellarano (Reggio Emilia), Italy
Tel: 0536 819611
www.granitifiandre.com



SCOTT WALTERS
FL PE# 62354
WALTERS ENGINEERING
(COA# 27194)
15211 97TH ROAD N
WEST PALM BEACH, FL 33412
(561) 225-1982

Date	7/31/18
Name	GHSMAXI10-N1
Sheet	8 of 8