



DEPARTMENT OF REGULATORY AND ECONOMIC RESOURCES (RER)
BOARD AND CODE ADMINISTRATION DIVISION

NOTICE OF ACCEPTANCE (NOA)

MIAMI-DADE COUNTY
PRODUCT CONTROL SECTION
11805 SW 26 Street, Room 208
Miami, Florida 33175-2474
T (786) 315-2590 F (786) 315-2599
www.miamidade.gov/economy

Reliable Products

1300 Enterprise Road
(P.O. Box 580)
Geneva, AL 36340

SCOPE: This NOA is being issued under the applicable rules and regulations governing the use of construction materials. The documentation submitted has been reviewed and accepted by Miami-Dade County RER-Product Control Section to be used in Miami-Dade County and other areas where allowed by the Authority Having Jurisdiction (AHJ).

This NOA shall not be valid after the expiration date stated below. The Miami-Dade County Product Control Section (In Miami-Dade County) and/ or the AHJ (in areas other than Miami-Dade County) reserve the right to have this product or material tested for quality assurance purposes. If this product or material fails to perform in the accepted manner, the manufacturer will incur the expense of such testing and the AHJ may immediately revoke, modify, or suspend the use of such product or material within their jurisdiction. RER reserves the right to revoke this acceptance if it is determined by Miami-Dade County Product Control Section that this product or material fails to meet the requirements of the applicable building code.

This product is approved as described herein and has been designed to comply with the Florida Building Code, including the High Velocity Hurricane Zone.

DESCRIPTION: Model 4375DC Aluminum Louver

APPROVAL DOCUMENT: Drawing No. **60-022136-00D**, titled "4375DC Louver", sheets 1 through 11 of 11, dated 11/11/2008, with revision **A** dated 03/07/2018, prepared by Reliable Products, signed and sealed by Melissa M. Massar, P.E., bearing the Miami-Dade County Product Control renewal stamp with the Notice of Acceptance number and expiration date by the Miami-Dade County Product Control Section.

MISSILE IMPACT RATING: Large and Small Missile Impact Resistant

LABELING: Each unit shall bear a permanent label with the manufacturer's name or logo, Geneva, AL and Juarez, Mexico, model/ series, and following statement: "Miami-Dade County Product Control Approved", unless otherwise noted herein.

LIMITATION: This louver is to be installed in a location where the room behind the louver is designed to drain water penetrating into the room, and the room will house water resistant/ water proof equipment, components, or supplies.

RENEWAL of this NOA shall be considered after a renewal application has been filed and there has been no change in the applicable building code negatively affecting the performance of this product.

TERMINATION of this NOA will occur after the expiration date or if there has been a revision or change in the materials, use, and/ or manufacture of the product or process. Misuse of this NOA as an endorsement of any product, for sales, advertising or any other purposes shall automatically terminate this NOA. Failure to comply with any section of this NOA shall be cause for termination and removal of NOA.

ADVERTISEMENT: The NOA number preceded by the words Miami-Dade County, Florida, and followed by the expiration date may be displayed in advertising literature. If any portion of the NOA is displayed, then it shall be done in its entirety.

INSPECTION: A copy of this entire NOA shall be provided to the user by the manufacturer or its distributors and shall be available for inspection at the job site at the request of the Building Official.

This NOA **renews NOA # 20-0909.09** and consists of this page 1 and evidence pages E-1, E-2 and E-3, as well as approval document mentioned above.

The submitted documentation was reviewed by **Carlos M. Utrera, P.E.**



NOA-No. 22-1215.06
Expiration Date: January 03, 2028
Approval Date: December 29, 2022
Page 1

Reliable Products

NOTICE OF ACCEPTANCE: EVIDENCE SUBMITTED

1. EVIDENCE SUBMITTED UNDER PREVIOUS NOAs

A. DRAWINGS “Submitted under NOA # 08-1202.04”

1. Drawing No. **60-022136-01D, 02D, 03D, 04B, 05B**, titled “4375DC Louver”, sheets 1 through 5 of 5, dated 11/11/2008, prepared by Reliable Products, signed and sealed by Daniel J. Rau, P.E.

B. TESTS “Submitted under NOA # 07-0621.07”

1. Test reports on 1) Uniform Static Air Pressure Test, Loading per FBC TAS 202-94
2) Large Missile Impact Test per FBC, TAS 201-94
3) Cyclic Wind Pressure Loading per FBC, TAS 203-94
along with marked-up drawings and installation diagram of 4375DC Test Louver, prepared by National Certified Testing Laboratories, Test Report No. **210-3377-1**, dated 03/19/2007, signed and sealed by Gerard J. Ferrara, P.E.

C. CALCULATIONS “Submitted under NOA # 07-0621.07”

1. Louver and anchor calculations prepared, dated 05/14/2007 and 11/20/2007, signed and sealed by Daniel J. Rau, P.E.

D. QUALITY ASSURANCE

1. Miami-Dade Department of Regulatory and Economic Resources (RER).

E. MATERIAL CERTIFICATIONS “Submitted under NOA # 12-0816.02”

1. Test report on impact test of an ELF375DXD louver per AMCA 540, prepared, Test Report No. **053012E**, dated 05/30/2012, signed and sealed by Daniel J. Rau, P.E.

F. STATEMENTS “Submitted under NOA # 13-0219.09”

1. Statement letter of code conformance to 2010 FBC issued, dated 02/06/2013, signed and sealed by Daniel J. Rau, P.E.
2. No financial interest letter issued, dated 02/06/2013, signed and sealed by Daniel J. Rau, P.E.
3. Private label agreement dated 02/05/2013.



Carlos M. Utrera, P.E.
Product Control Examiner
NOA-No. 22-1215.06

Expiration Date: January 03, 2028
Approval Date: December 29, 2022

Reliable Products

NOTICE OF ACCEPTANCE: EVIDENCE SUBMITTED

2. EVIDENCE SUBMITTED UNDER PREVIOUS NOA's

A. DRAWINGS “Submitted under NOA # 17-0222.01”

1. Drawing No. **60-022136-00D**, titled “4375DC Louver”, sheets 1 through 11 of 11, dated 11/11/2008, with revision **A** dated 03/07/2018, prepared by Reliable Products, signed and sealed by Melissa M. Massar, P.E.

B. TESTS “Submitted under NOA # 18-0201.08”

1. Test reports on
 - 1) Uniform Static Air Pressure Test, Loading per FBC TAS 202-94
 - 2) Large Missile Impact Test per FBC, TAS 201-94
 - 3) Cyclic Wind Pressure Loading per FBC, TAS 203-94along with marked-up drawings and installation diagram of ELF375DXD Test Louver, prepared by National Certified Testing Laboratories, Inc., Test Report No. **NCTL-210-4090-01**, dated 12/07/2017, signed and sealed by Douglas J. McDougall, P.E.

C. CALCULATIONS “Submitted under NOA # 18-0201.08”

1. Louver wind load review prepared, dated 03/08/2018, signed and sealed by Melissa M. Massar, P.E.

D. QUALITY ASSURANCE

1. Miami-Dade Department of Regulatory and Economic Resources (RER)

E. MATERIAL CERTIFICATIONS

1. None.

D. STATEMENTS “Submitted under NOA # 18-0201.08”

1. Statement letter of code conformance to the 6th edition (2017) FBC issued, dated 03/08/2018, signed and sealed by Melissa M. Massar, P.E.
2. Statement letter of no financial interest issued, dated 03/08/2018, signed and sealed by Melissa M. Massar, P.E.
3. Laboratory compliance letter for Test Report No. **NCTL-210-4090-01**, issued by National Certified Testing Laboratories, Inc., dated 12/07/2017, signed and sealed by Douglas J. McDougall, P.E.



Carlos M. Utrera, P.E.
Product Control Examiner
NOA-No. 22-1215.06

Expiration Date: January 03, 2028
Approval Date: December 29, 2022

Reliable Products

NOTICE OF ACCEPTANCE: EVIDENCE SUBMITTED

3. EVIDENCE SUBMITTED UNDER NOA # 17-0222.01 AND # 20-0909.09

A. DRAWINGS

1. Drawing No. **60-022136-00D**, titled “4375DC Louver”, sheets 1 through 11 of 11, dated 11/11/2008, with revision **A** dated 03/07/2018, prepared by Reliable Products, signed and sealed by Melissa M. Massar, P.E.

B. TESTS

1. None.

C. CALCULATIONS

1. None.

D. QUALITY ASSURANCE

1. Miami-Dade Department of Regulatory and Economic Resources (RER).

E. MATERIAL CERTIFICATIONS

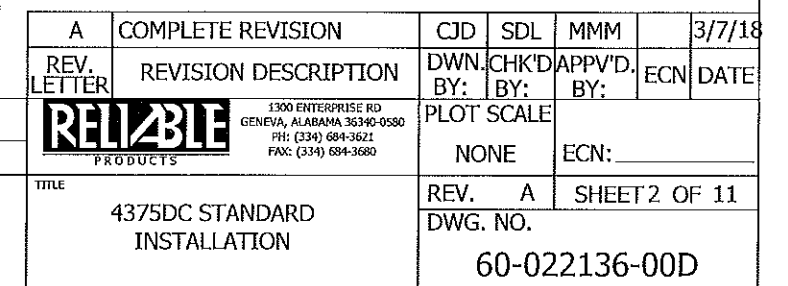
1. None.

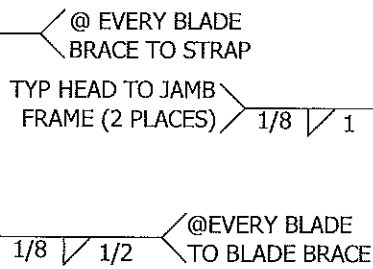
F. STATEMENTS

1. Statement letter of code conformance to the 7th edition (2020) FBC issued by Reliable Products, dated 08/25/2020, signed and sealed by Melissa M. Massar, P.E.
2. Statement letter of no changes and not been affected by any changes in the 2020 FBC issued by Reliable Products, dated 08/25/2020, signed and sealed by Melissa M. Massar, P.E.

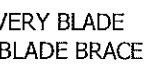


Carlos M. Utrera, P.E.
Product Control Examiner
NOA-No. 22-1215.06
Expiration Date: January 03, 2028
Approval Date: December 29, 2022

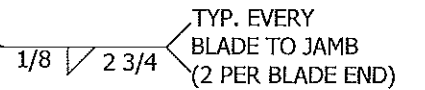




REAR VIEW



REAR VIEW



REAR VIEW



REAR VIEW



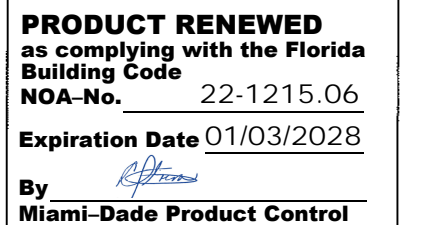
REAR VIEW

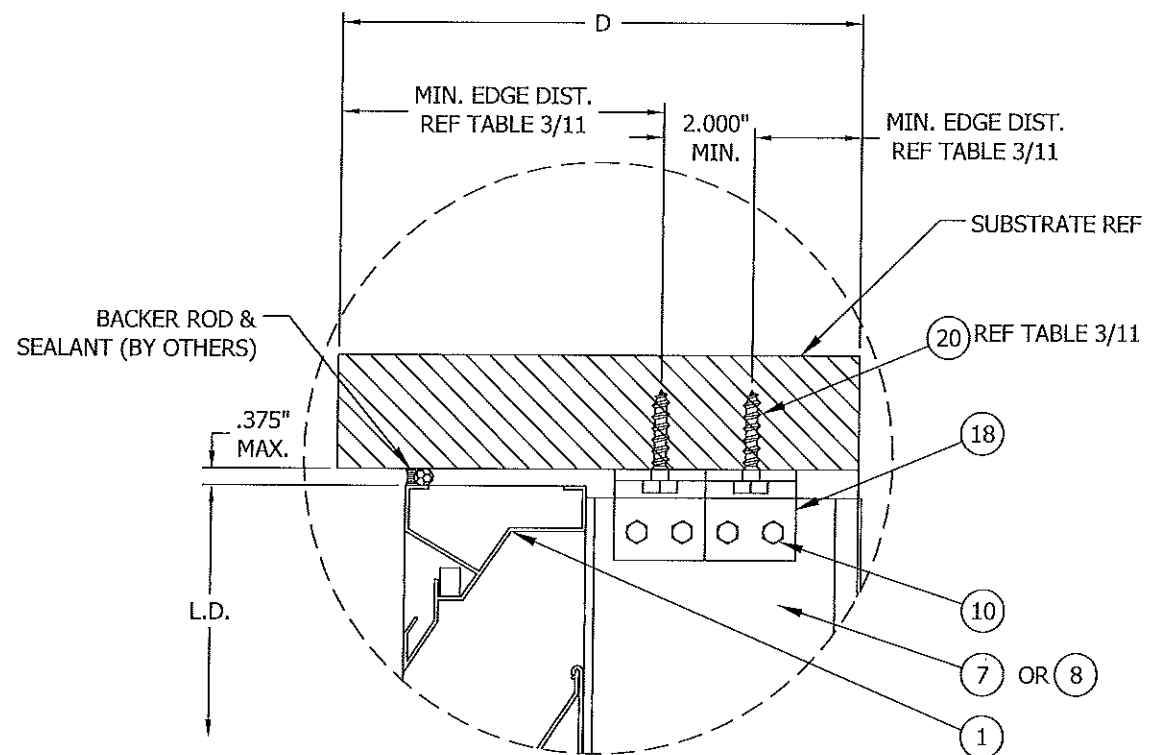
DWN. BY: VMA	CHK. BY: DJR	APPV'D BY: DJR	APPV'D BY:
DATE: 11/3/08	DATE: 11/11/08	DATE: 11/11/08	DATE:

ASSEMBLY 'A' CONNECTION DETAILS

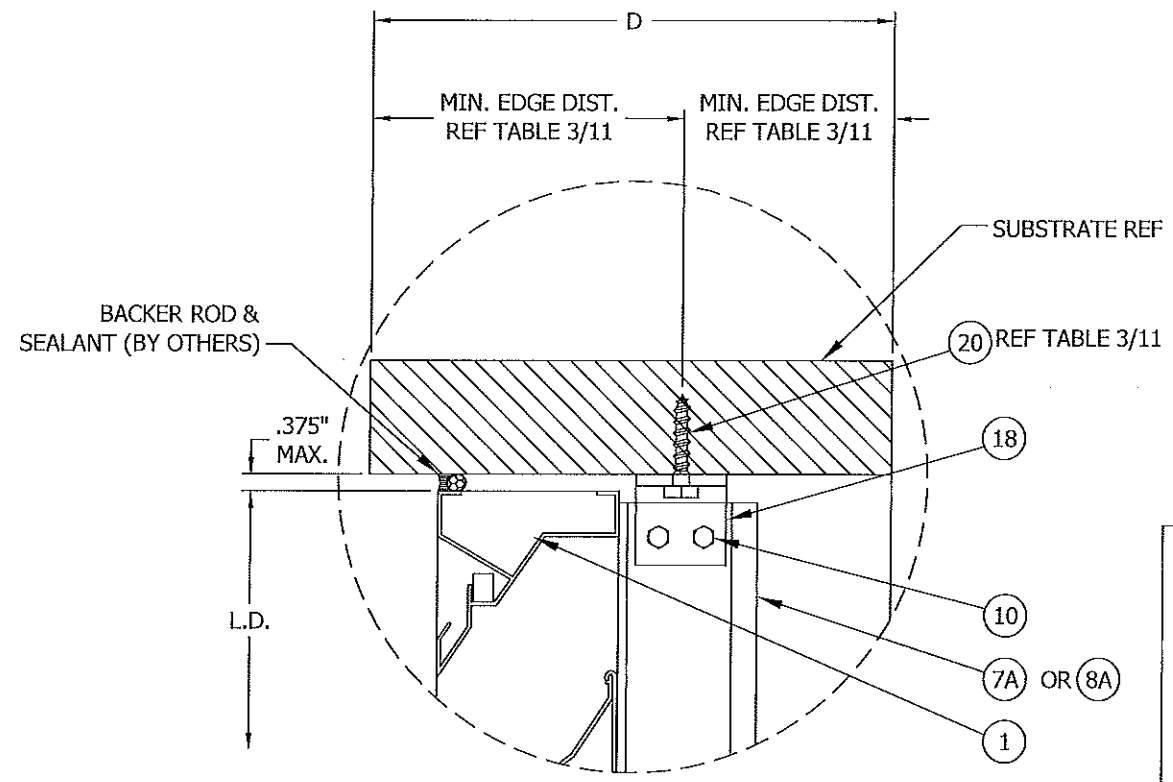
DETAILS

RELIABLE
PRODUCTS

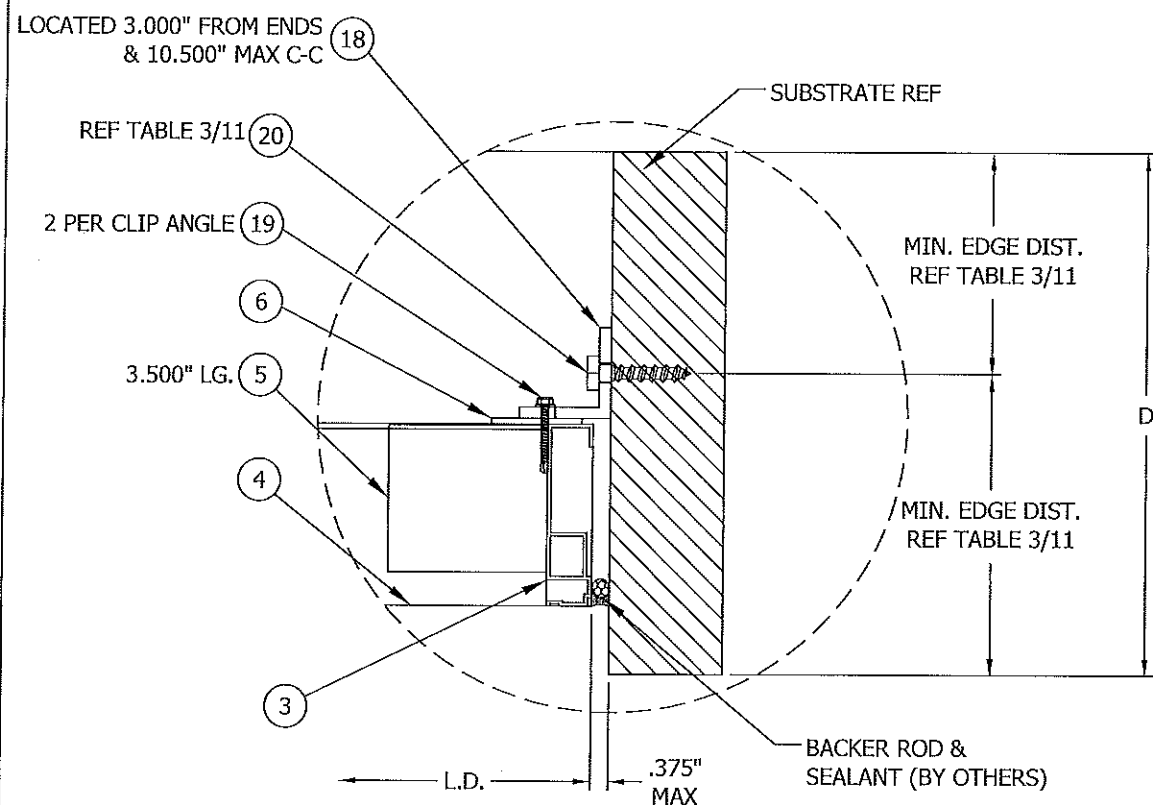




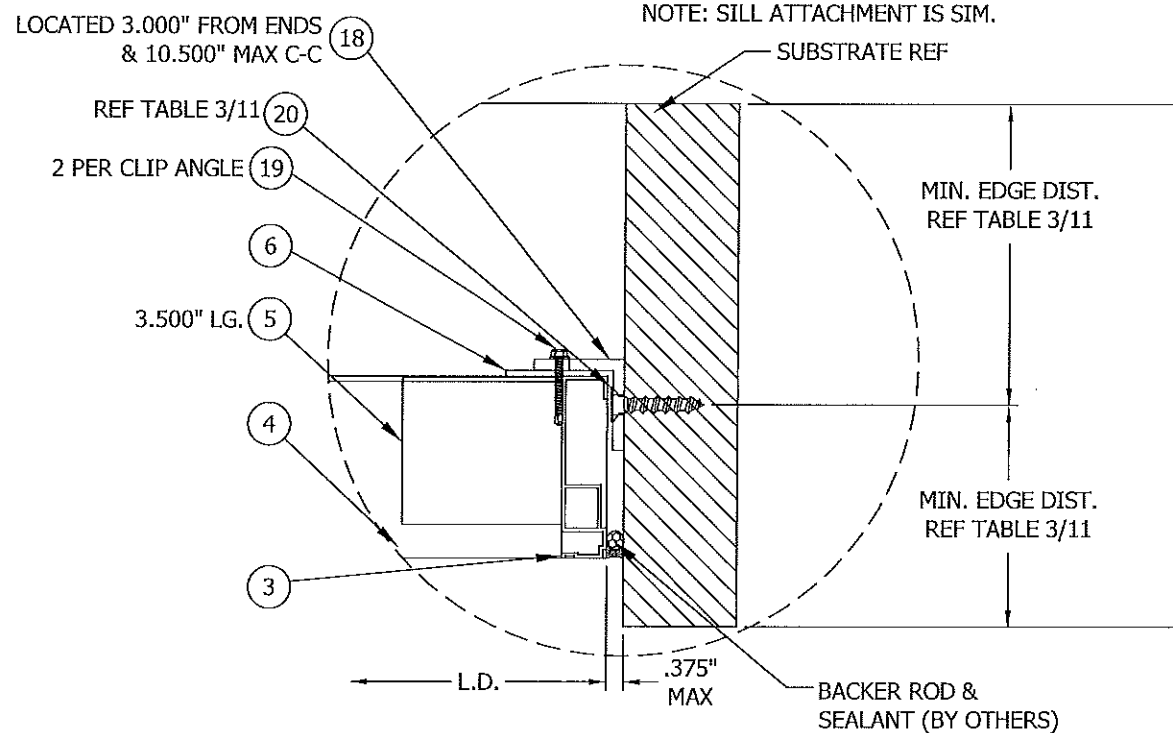
6 HEAD ATTACHMENT W/ 466 SUPPORT DETAIL
 02 N.T.S.
 WHEN HEIGHT > 60.000"
 NOTE: SILL ATTACHMENT IS SIM.



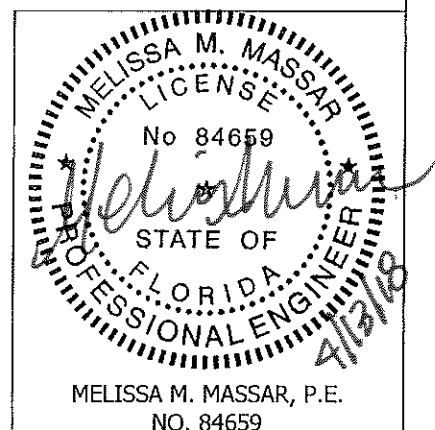
7 HEAD ATTACHMENT W/ 468 SUPPORT DETAIL
 02 N.T.S.
 WHEN HEIGHT ≤ 60.000"
 NOTE: SILL ATTACHMENT IS SIM.



8 JAMB ATTACHMENT DETAIL
 02 N.T.S.

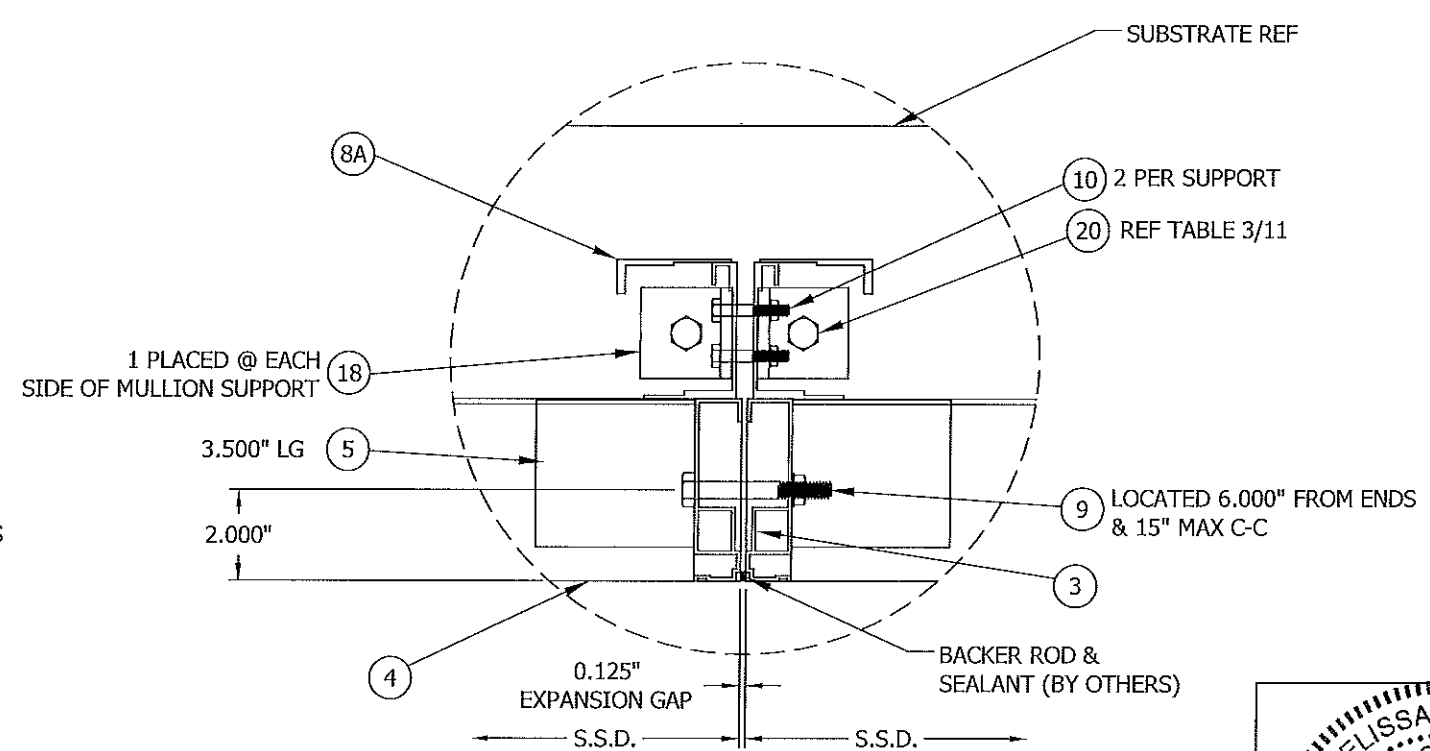


9 ALTERNATE JAMB ATTACHMENT DETAIL
 02 N.T.S.



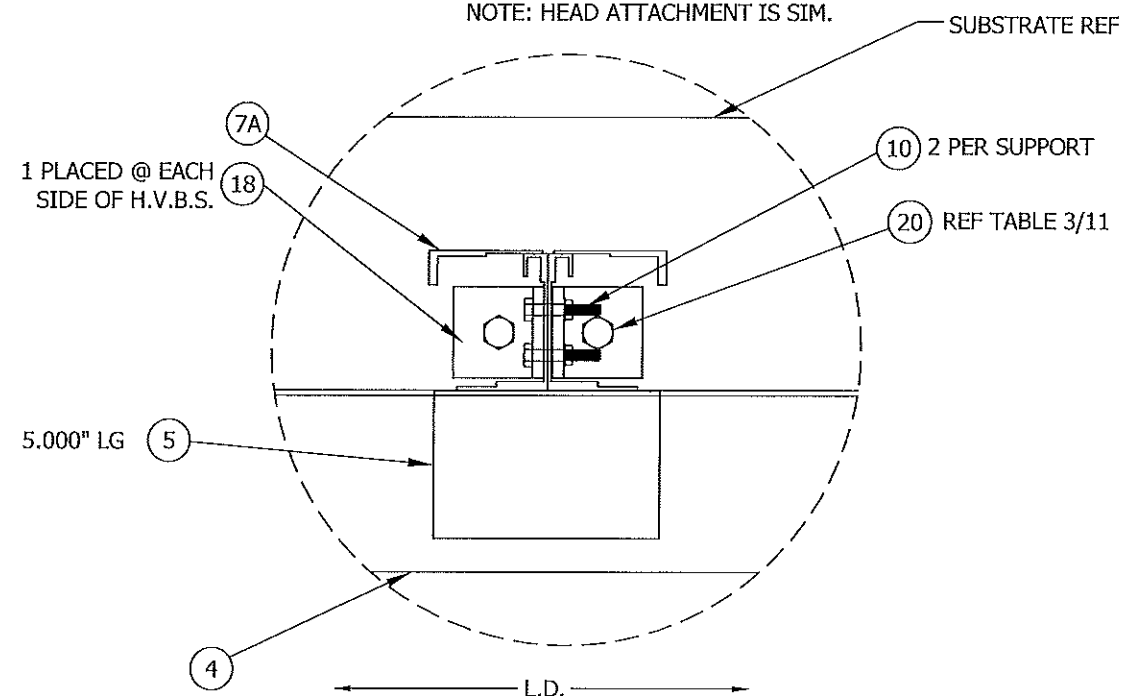
PRODUCT RENEWED
 as complying with the Florida
 Building Code
 NOA-No. 22-1215.06
 Expiration Date 01/03/2028
 By *[Signature]*
 Miami-Dade Product Control

TOLERANCES		DWN. BY: VMA	CHK. BY: DJR	APPV'D BY: DJR	APPV'D. BY:	<div>LETTER</div> <div><div>RELIABLE</div><div>PRODUCTS</div></div> <div>1300 ENTERPRISE RD GENEVA, ALABAMA 36340-0580 PH: (334) 684-3621 FAX: (334) 684-3660</div>		DT: DT:	DT: DT:
DECIMAL DIMENSIONS: 3 PLACE .XXX ±.010 2 PLACE .XX ±.020		DATE: 11/3/08	DATE: 11/11/08	DATE: 11/11/08	DATE:	PLOT SCALE		NONE	ECN: _____
FRACTION DIMENSIONS ±1/16 ANGLE DIMENSIONS ±2° USE WIQ-007 & 008 UNLESS SPECIFIED OTHERWISE		ASSEMBLY 'A' ATTACHMENT DETAILS				TITLE		REV. A	SHEET 4 OF 11
						4375DC STANDARD INSTALLATION		DWG. NO. 60-022136-00D	




11 468 MULLION ATTACHMENT DETAIL

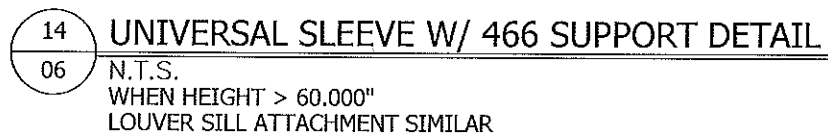
02 N.T.S.
WHEN HEIGHT $\leq 60.000''$
NOTE: HEAD ATTACHMENT IS SIM.



13 468 H.V.B.S. ATTACHMENT DETAIL


N.T.S.
WHEN HEIGHT $\leq 60.000''$
NOTE: HEAD ATTACHMENT IS SIM.

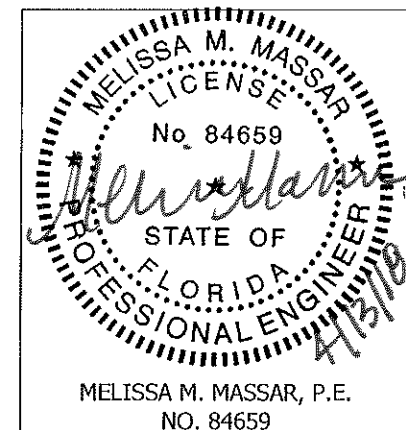
A	COMPLETE REVISION	CJD	SDL	MMM		3/7/18
REV. LETTER	REVISION DESCRIPTION	DWN. BY:	CHK'D BY:	APPV'D. BY:	ECN	DATE
 <p>1300 ENTERPRISE RD GENEVA, ALABAMA 36340-0580 PH: (334) 684-3621 FAX: (334) 684-3680</p>		PLOT SCALE				
		NONE		ECN: _____		
TITLE		REV. A		SHEET 5 OF 11		
4375DC STANDARD INSTALLATION		DWG. NO.		60-022136-00D		



DWN. BY: VMA DATE: 11/3/08	CHK. BY: DJR DATE: 11/11/08	APPV'D. BY: DJR DATE: 11/11/08	APPV'D. BY: DATE:
----------------------------------	-----------------------------------	--------------------------------------	-------------------------

ASSEMBLY 'B' CONNECTION DETAILS

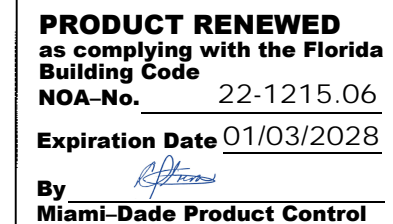
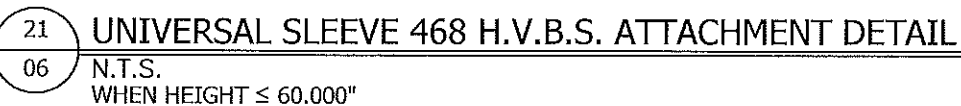
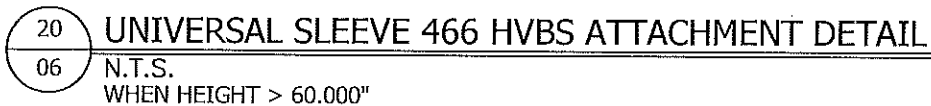
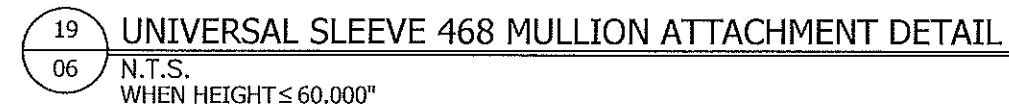
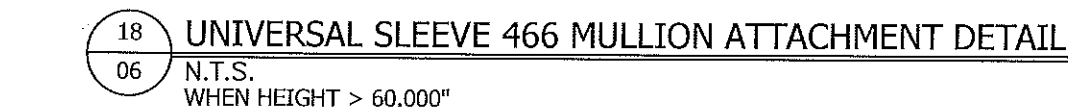
A		COMPLETE REVISION		CJD	SDL	MMM		3/7/18
REV. LETTER	REVISION DESCRIPTION			DWN. BY:	CHK'D BY:	APP'V'D. BY:	ECN	DATE
		1300 ENTERPRISE RD GENEA, ALABAMA 36340-0580 PH: (334) 694-3621 FAX: (334) 694-3680		PLOT SCALE		NONE		
TITLE		4375DC STANDARD INSTALLATION		REV. A		SHEET 7 OF 11		
				DWG. NO.		60-022136-00D		




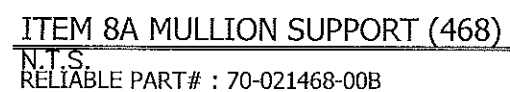
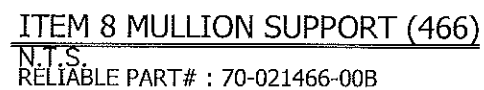
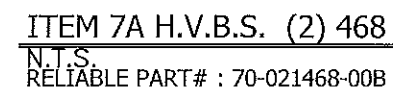
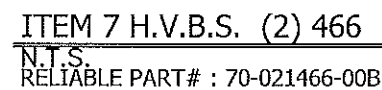
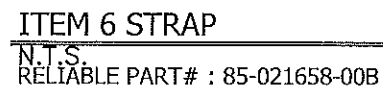
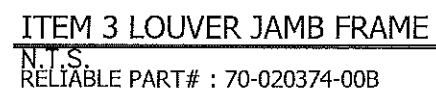
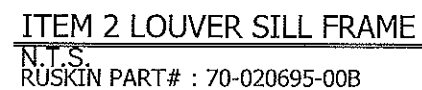
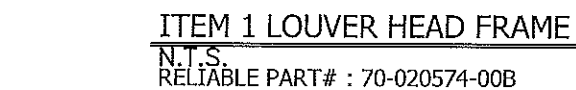
PRODUCT RENEWED
as complying with the Florida
Building Code
NOA-No. 22-1215.06


Expiration Date 01/03/2028

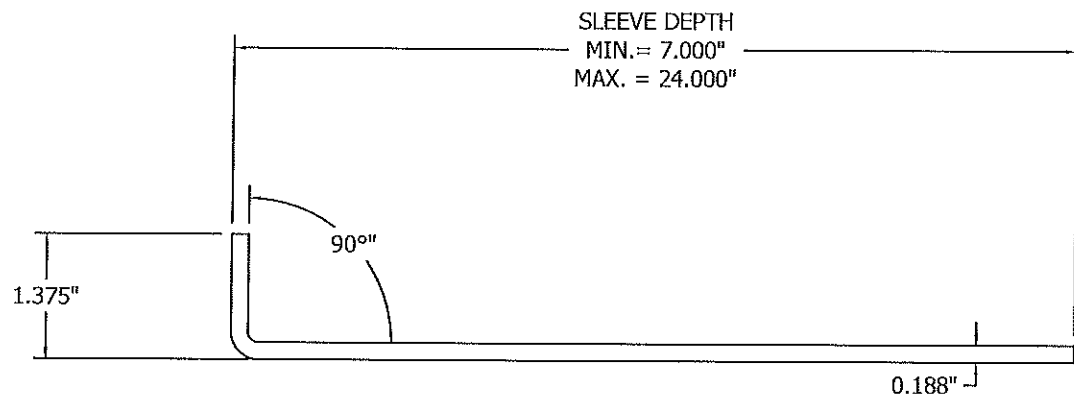
By 
Miami-Dade Product Control



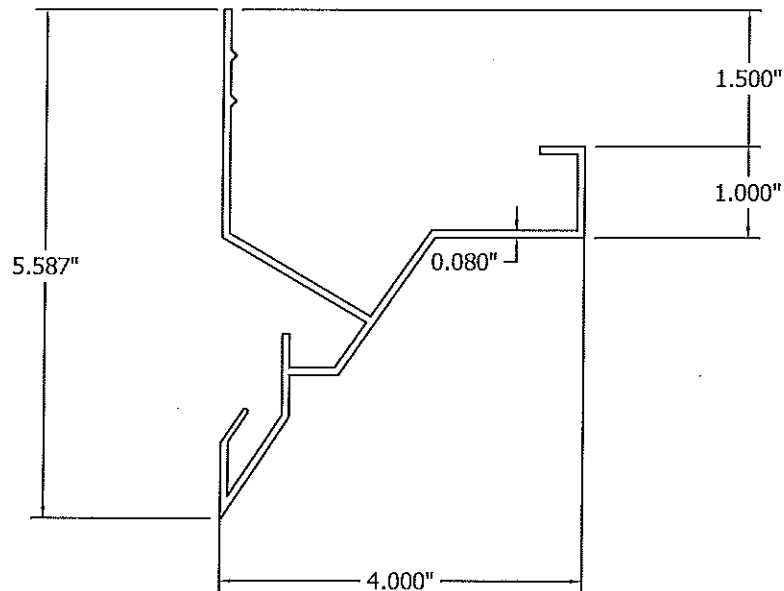
A	COMPLETE REVISION	CJD	SDL	MMM		3/7/18
REV. LETTER	REVISION DESCRIPTION	DWN. BY:	CHK'D BY:	APPV'D BY:	ECN	DATE
 <p>1300 ENTERPRISE RD GENEVA, ALABAMA 36540-0580 PH: (334) 684-3621 FAX: (334) 684-3680</p>		PLOT SCALE				
		NONE		ECN: _____		
TITLE		REV. A		SHEET 8 OF 11		
4375DC STANDARD INSTALLATION		DWG. NO.		60-022136-00D		



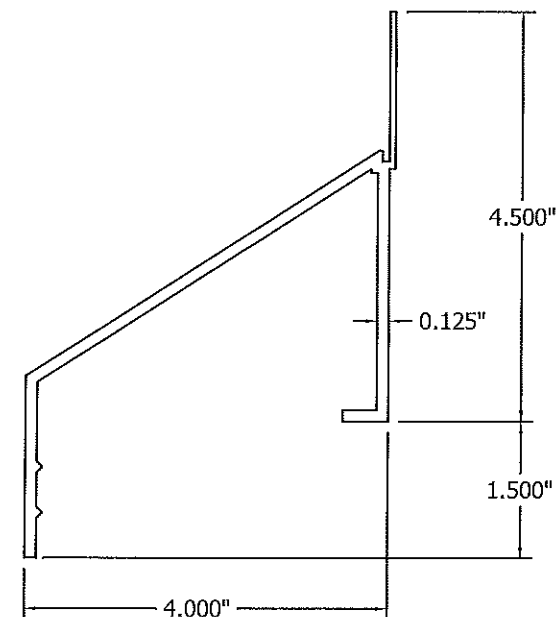
A	COMPLETE REVISION	CJD	SDL	MMM		3/7/18
REV. LETTER	REVISION DESCRIPTION	DWN. BY:	CHK'D BY:	APPV'D. BY:	ECN	DATE
 <div> 1300 ENTERPRISE RD GENEVA, ALABAMA 36340-0580 PH: (334) 684-3621 FAX: (334) 684-3680 </div>		PLOT SCALE				
		NONE		ECN: _____		
TITLE	4375DC STANDARD INSTALLATION		REV. A		SHEET 9 OF 11	
		DWG. NO. 60-022136-00D				



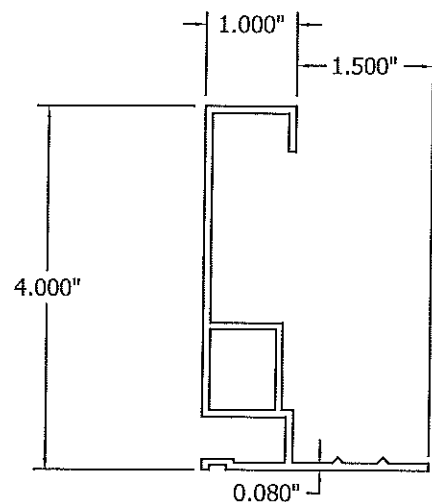
ITEM 11 FRONT FLANGE UNIVERSAL SLEEVE
N.T.S.



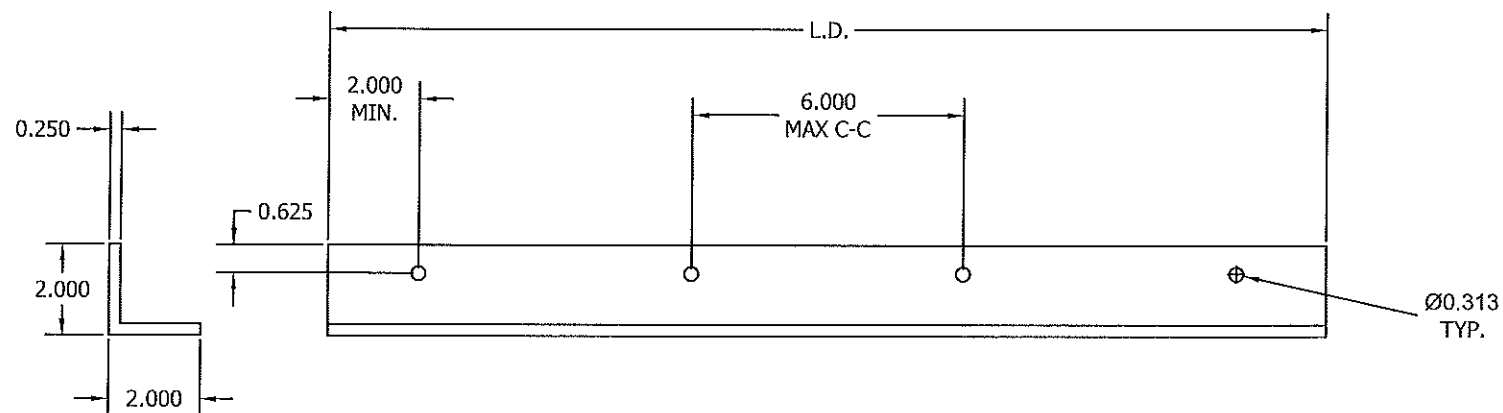
ITEM 12 LOUVER HEAD FRAME W/ INTEGRAL FLANGE
N.T.S.
RELIABLE PART# : 70-020641-00B
OPTIONAL



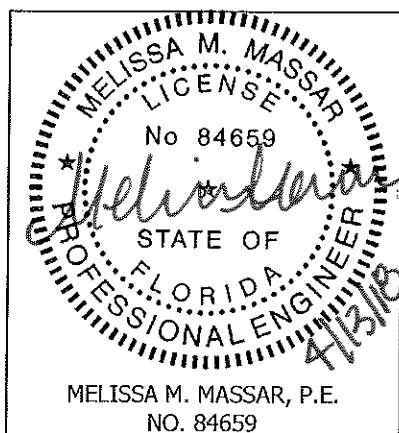
ITEM 13 LOUVER SILL FRAME W/ INTEGRAL FLANGE
N.T.S.
RUSKIN PART# : 70-020836-00B
OPTIONAL



ITEM 14 LOUVER JAMB FRAME W/ INTEGRAL FLANGE
N.T.S.
RELIABLE PART# : 70-020404-00B
OPTIONAL



ITEM 15 CONT. RETAINING ANGLE
N.T.S.



PRODUCT RENEWED
as complying with the Florida
Building Code
NOA-No. 22-1215.06
Expiration Date 01/03/2028
By *[Signature]*
Miami-Dade Product Control


TOLERANCES
DECIMAL DIMENSIONS:
3 PLACE .XXX ±.010
2 PLACE .XX ±.020
FRACTION DIMENSIONS: ±1/16
ANGLE DIMENSIONS ±2°
USE VVIQ-007 & 008
UNLESS SPECIFIED OTHERWISE

DWN. BY: VMA DATE: 11/3/08	CHK. BY: DJR DATE: 11/11/08	APPV'D. BY: DJR DATE: 11/11/08	APPV'D. BY: DATE:
PARTS			

A	COMPLETE REVISION	CJD	SDL	MMM	3/7/18
REV. LETTER	REVISION DESCRIPTION	DWN. BY:	CHK'D BY:	APPV'D. BY:	ECN DATE
RELIABLE PRODUCTS <small>1300 ENTERPRISE RD GENEVA, ALABAMA 36540-0580 PH: (334) 684-3621 FAX: (334) 684-3680</small>		PLOT SCALE		ECN: _____	
TITLE		REV. A		SHEET 10 OF 11	
4375DC STANDARD INSTALLATION		DWG. NO.		60-022136-00D	



NOTE: * COUNTER SUNK PHILLIPS FLAT HEAD ANCHORS MAY BE USED

A		COMPLETE REVISION		CJD	SDL	MMM	3/7/18	
REV. LETTER		REVISION DESCRIPTION		DWN. BY:	CHK'D BY:	APP'V'D. BY:	ECN	DATE
		1300 ENTERPRISE RD GENEVA, ALABAMA 36340-0580 PH: (334) 684-3621 FAX: (334) 684-3680		PLOT SCALE		NONE		
TITLE		4375DC STANDARD INSTALLATION		REV. A		SHEET 11 OF 11		
				DWG. NO.		60-022136-00D		