



DEPARTMENT OF REGULATORY AND ECONOMIC RESOURCES (RER)  
BOARD AND CODE ADMINISTRATION DIVISION

## NOTICE OF ACCEPTANCE (NOA)

MIAMI-DADE COUNTY  
PRODUCT CONTROL SECTION  
11805 SW 26 Street, Room 208  
Miami, Florida 33175-2474  
T (786) 315-2590 F (786) 315-2599

[www.miamidade.gov/economy](http://www.miamidade.gov/economy)

**International Door, Inc.**  
**8001 Ronda Drive**  
**Canton, MI 48187**

**SCOPE:** This NOA is being issued under the applicable rules and regulations governing the use of construction materials. The documentation submitted has been reviewed and accepted by Miami-Dade County RER-Product Control Section to be used in Miami Dade County and other areas where allowed by the Authority Having Jurisdiction (AHJ).

This NOA shall not be valid after the expiration date stated below. The Miami-Dade County Product Control Section (In Miami Dade County) and/or the AHJ (in areas other than Miami Dade County) reserve the right to have this product or material tested for quality assurance purposes. If this product or material fails to perform in the accepted manner, the manufacturer will incur the expense of such testing and the AHJ may immediately revoke, modify, or suspend the use of such product or material within their jurisdiction. RER reserves the right to revoke this acceptance if it is determined by Miami-Dade County Product Control Section that this product or material fails to meet the requirements of the applicable building code.

This product is approved as described herein and has been designed to comply with the Florida Building Code, including the High Velocity Hurricane Zone.

**DESCRIPTION: Model "HVVHZZFF120" Four-Fold Steel Garage Door - up to 16'-0" Wide x 16'-0" High, with Impact Resistant Windows**

**APPROVAL DOCUMENT:** Drawing No. **19-ID-2311**, titled "Model #HVVHZZFF120 Four-Fold Door", sheets 1 through 12 of 12, dated 02/27/2019, with last revision dated 11/07/2019, prepared by International Door, Inc., signed and sealed by Gordon D. Thomas, P.E., bearing the Miami-Dade County Product Control revision stamp with the Notice of Acceptance number and expiration date by the Miami-Dade County Product Control Section.

**MISSILE IMPACT RATING: Large and Small Missile Impact Resistant**

**LABELING:** A permanent label with the manufacturer's name or logo, manufacturing address, model number, the positive and negative design pressure rating, indicate impact rated if applicable, installation instruction drawing reference number, approval number (NOA), the applicable test standards, and the statement reading 'Miami-Dade County Product Control Approved' is to be located on the door's side track, bottom angle, or inner surface of a panel.

**RENEWAL** of this NOA shall be considered after a renewal application has been filed and there has been no change in the applicable building code negatively affecting the performance of this product.

**TERMINATION** of this NOA will occur after the expiration date or if there has been a revision or change in the materials, use, and/or manufacture of the product or process. Misuse of this NOA as an endorsement of any product, for sales, advertising or any other purposes shall automatically terminate this NOA. Failure to comply with any section of this NOA shall be cause for termination and removal of NOA.

**ADVERTISEMENT:** The NOA number preceded by the words Miami-Dade County, Florida, and followed by the expiration date may be displayed in advertising literature. If any portion of the NOA is displayed, then it shall be done in its entirety.

**INSPECTION:** A copy of this entire NOA shall be provided to the user by the manufacturer or its distributors and shall be available for inspection at the job site at the request of the Building Official.

This NOA **revises NOA # 20-0506.01** and consists of this page 1 and evidence pages E-1, E-2 and E-3, as well as approval document mentioned above.

The submitted documentation was reviewed by **Carlos M. Utrera, P.E.**



**NOA No 23-0119.07**  
**Expiration Date: June 18, 2025**  
**Approval Date: February 9, 2023**  
**Page 1**

**International Door, Inc.**

**NOTICE OF ACCEPTANCE: EVIDENCE SUBMITTED**

**1. EVIDENCE SUBMITTED UNDER PREVIOUS NOA's**

**A. DRAWINGS**

1. Drawing No. **13-ID-2140**, titled "Hurricane Four-Fold", sheets 1 through 12 of 12, dated 08/23/2013, with revision #3, dated 01/31/15, prepared by International Door, Inc., signed and sealed by Gordon D. Thomas, P.E.

**B. TESTS**

1. Test reports on 1) Uniform Static Air Pressure Test, Loading per FBC TAS 202-94  
2) Large Missile Impact Test per FBC, TAS 201-94  
3) Cyclic Wind Pressure Loading per FBC, TAS 203-94  
4) Forced Entry Test, per FBC, TAS 202-94  
along with marked-up drawings and installation diagram of a 16'-0" x 17'-0", 14ga steel garage door Model MU-1 with impact resistant windows, prepared by American Test Lab of South Florida, Test Report No. **ATLSF 1212.01-14**, dated 03/28/14, signed and sealed by Stephen W. Warter, P.E.

**C. CALCULATIONS**

1. Anchor calculations prepared by Gordon D. Thomas, dated 03/30/15, signed and sealed by Gordon D. Thomas, P.E.

**D. QUALITY ASSURANCE**

1. Miami-Dade Department of Regulatory and Economic Resources (RER)

**E. MATERIAL CERTIFICATIONS**

1. Notice of Acceptance No. **11-0624.02** issued to **E.I. DuPont DeNemours & Co., Inc.** for their **DuPont SentryGlas® Interlayer**, dated on 08/25/11, expiring on 01/14/17.
2. Test report on Tensile Strength of 14 gage steel sheet samples per **ASTM E8**, prepared by **QC Metallurgical, Inc.**, test report # **14CM-284**, dated 04/03/14, signed by Frank Grate.

**F. STATEMENTS**

1. Statement letter of code conformance to the **FBC-2010, FBC 5<sup>th</sup> Edition (2014)** and of no financial interest, issued by Gordon D. Thomas, dated 03/30/15, signed and sealed by Gordon D. Thomas, P.E.

**G. OTHERS**

1. None.



---

**Carlos M. Utrera, P.E.**  
**Product Control Examiner**  
**NOA No 23-0119.07**  
**Expiration Date: June 18, 2025**  
**Approval Date: February 9, 2023**

**International Door, Inc.**

**NOTICE OF ACCEPTANCE: EVIDENCE SUBMITTED**

**2. EVIDENCE SUBMITTED UNDER NOA #18-1128.12**

**A. DRAWINGS**

1. Drawing No. **13-ID-2140**, titled “Hurricane Four-Fold”, sheets 1 through 12 of 12, dated 08/23/13, with revision #3, dated 01/31/15, prepared by International Door, Inc., signed and sealed by Gordon D. Thomas, P.E.

**B. TESTS**

1. None.

**C. CALCULATIONS**

1. None

**D. QUALITY ASSURANCE**

1. Miami-Dade Department of Regulatory and Economic Resources (RER)

**E. MATERIAL CERTIFICATIONS**

1. Notice of Acceptance No. **17-0808.02** issued to **Kuraray America, Inc.** for their “SentryGlas® (Clear and White) Glass Interlayers” dated 12/28/17, expiring on 07/04/23.

**F. STATEMENTS**

1. Statement letter of code conformance to the **FBC 6<sup>th</sup> Edition (2017)** and of no financial interest, dated 11/02/18, issued, signed and sealed by Gordon Thomas, P.E.

**G. OTHERS**

1. Notice of Acceptance No. **14-1006.07**, issued to International Door, Inc. for their IDI Hurricane Four-Fold Steel Garage Door up to 16’-0” Wide x 17’-0” High w/Impact Resistant Windows, approved on 06/18/15 and expiring on 06/18/20.



---

**Carlos M. Utrera, P.E.**  
**Product Control Examiner**  
**NOA No 23-0119.07**  
**Expiration Date: June 18, 2025**  
**Approval Date: February 9, 2023**

**NOTICE OF ACCEPTANCE: EVIDENCE SUBMITTED**

**3. EVIDENCE SUBMITTED UNDER NOA # 19-1001.14 AND NEW**

**A. DRAWINGS**

1. Drawing No. **19-ID-2311**, titled “Model #HVHZFF120 Four-Fold Door”, sheets 1 through 12 of 12, dated 02/27/2019, with last revision dated 11/07/2019, prepared by International Door, Inc., signed and sealed by Gordon D. Thomas, P.E.

**B. TESTS**

1. Test reports on 1) Uniform Static Air Pressure Test, Loading per FBC TAS 202-94  
2) Large Missile Impact Test per FBC, TAS 201-94 (Level E, 80fps)  
3) Cyclic Wind Pressure Loading per FBC, TAS 203-94  
4) Forced Entry Test, per FBC, TAS 202-94  
along with marked-up drawings and installation diagram of a 16’-0” x 16’-0”, 14ga steel garage door Model #HVHZFF120 with impact resistant windows, prepared by American Test Lab of South Florida, Test Report No. **ATLSF 0523.01-19**, dated 07/31/2019, signed and sealed by Frank E. Grate, P.E.

**C. CALCULATIONS**

1. Anchor calculations prepared by Gordon D. Thomas, dated 09/12/2019, signed and sealed by Gordon D. Thomas, P.E.

**D. QUALITY ASSURANCE**

1. Miami-Dade Department of Regulatory and Economic Resources (RER).

**E. MATERIAL CERTIFICATIONS**

1. None.

**F. STATEMENTS**

1. Statement letter of code conformance to the 7<sup>th</sup> edition (2020) of the FBC, issued by Gordon D. Thomas, P.E., dated 01/16/2023, signed and sealed by Gordon D. Thomas, P.E.



---

**Carlos M. Utrera, P.E.**  
**Product Control Examiner**  
**NOA No 23-0119.07**  
**Expiration Date: June 18, 2025**  
**Approval Date: February 9, 2023**

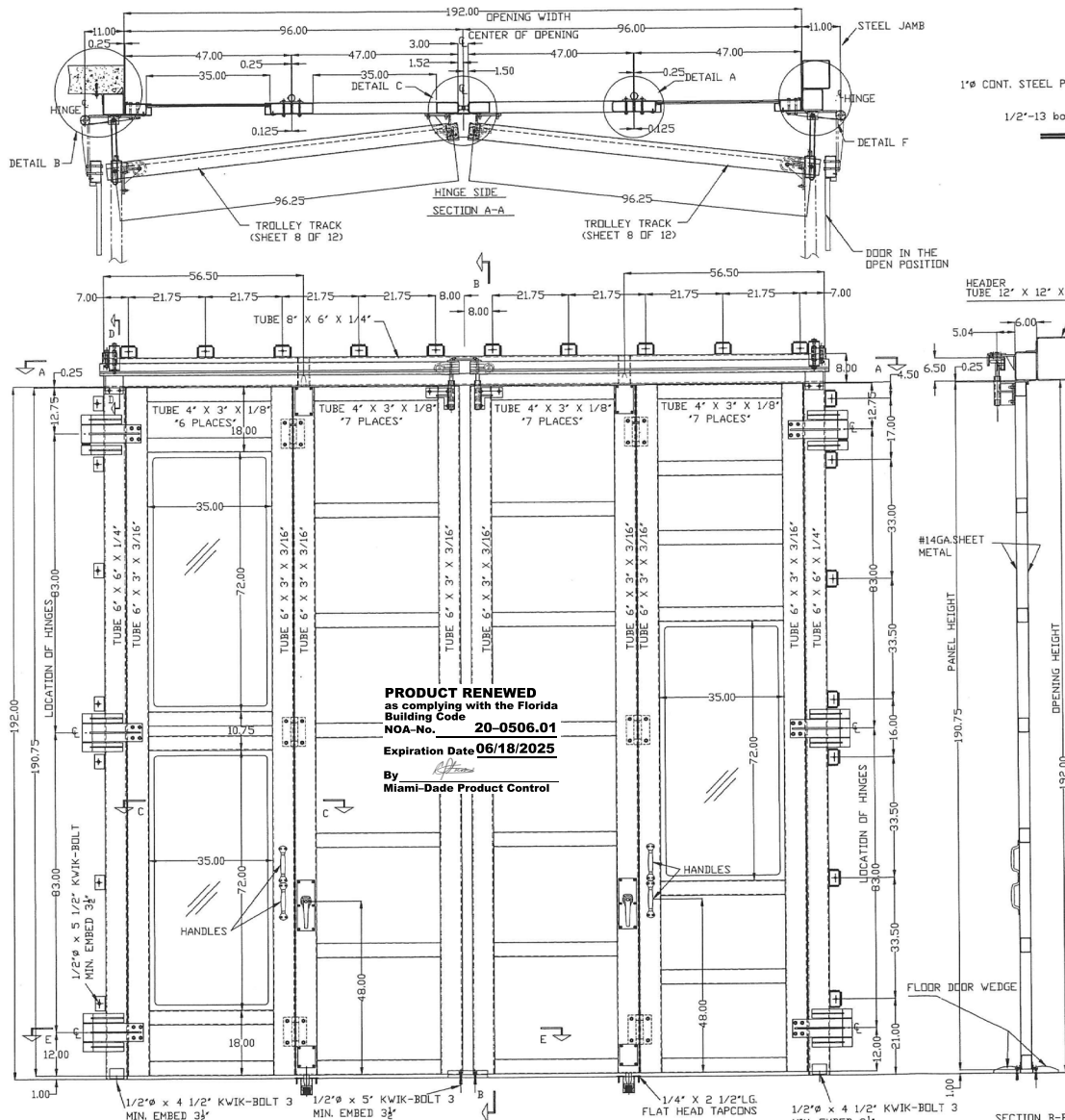


**PRODUCT REVISED**  
as complying with the Florida  
Building Code  
NOA-No. 23-0119.07

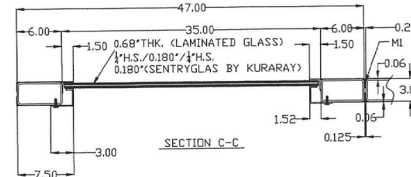
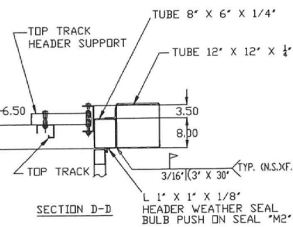
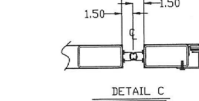
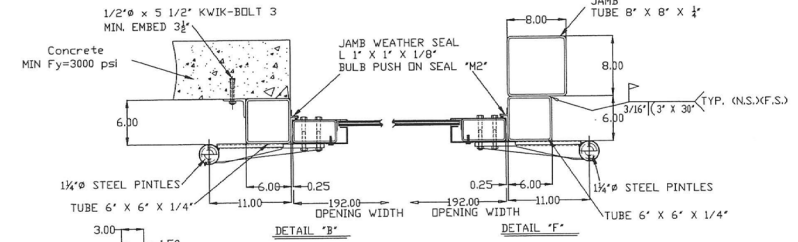
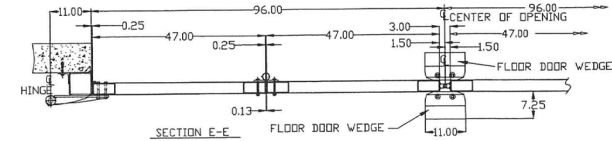
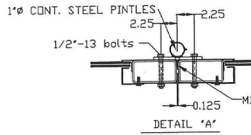
Expiration Date 06/18/2025

By *[Signature]*  
Miami-Dade Product Control

DESIGN PRESSURE RATING	IMPACT RATING
+/-120 PSF	LARGE AND SMALL MISSILE IMPACT
NOTE: THIS SYSTEM WAS NOT TESTED FOR WATER INFILTRATION AND IS TO BE INSTALLED ONLY WHERE THE WATER REQUIREMENT IS NOT NEEDED	

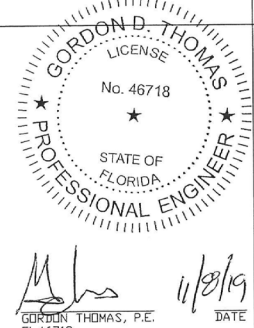



**PRODUCT RENEWED**  
as complying with the Florida  
Building Code  
NOA-No. 20-0506.01  
Expiration Date 06/18/2025  
By *[Signature]*  
Miami-Dade Product Control



NOTE 1: WHEN MOUNTING TO AN OPENING WITH CONCRETE JAMBS & HEADER, ATTACH CLIP ANGLES TO OPENING WITH WEDGE ANCHORS (SEE SHEET 1, DETAIL B)  
NOTE 2: WHEN MOUNTING TO AN OPENING WITH STEEL JAMBS & HEADER, WELD CLIP ANGLES TO DOOR FRAME AND OPENING, OR WELD DIRECTLY TO JAMBS STEEL AS SHOWN ON THIS SHEET (SEE SHEET 5 FOR WELD DETAILS)

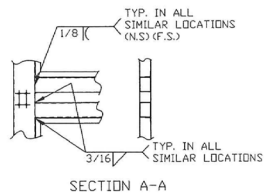
**PRODUCT REVISED**  
as complying with the Florida  
Building Code  
NOA-No. 19-1001.14  
Expiration Date 06/18/2020  
By *[Signature]*  
Miami-Dade Product Control



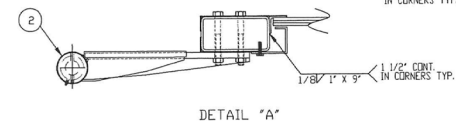
11/7/19	BH	REVISED PER DADE COUNTY COMMENTS	
9/4/19	BH	REVISED PER DADE COUNTY CHECKLIST & TEST LAB CORRECTIONS	
3/19/19	RB	ISSUED FOR TEST LAB REVIEW	
9/8/19	RB	MAILED FOR REVIEW	
REV	DATE	BY	DESCRIPTION
	INTERNATIONAL DOOR, INC.		
	(734) 459-3000		
	8001 RONDA DR. CANTON, MICHIGAN 48107		
	PROJECT:		
	MODEL #HVH2FF120		
HIGH VELOCITY HURRICANE ZONE (120PSF)			
FOUR-FOLD DOOR			

DRAWING TITLE:	
GENERAL ARRANGEMENT FOR FOUR FOLD DOORS	
DOOR# HVH2FF120	OPENING SIZE 16'-0" x 16'-0"
ARCH.	
CONTR.	
DRAWN: RB	DATE 2/27/19
CHECKED: CMH	DWG NO. 19-ID-2311
APPROVED:	CUSTOMER NO.
	SHEET 1 OF 12

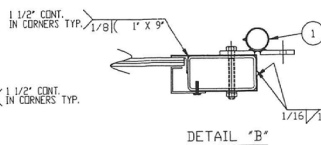
INTERIOR ELEVATION  
(1) REQ'D - FOUR FOLD DOOR (AS SHOWN)



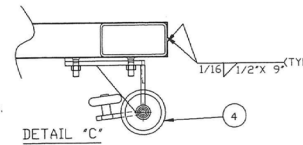
SECTION A-A



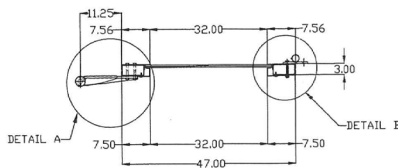
DETAIL 'A'



DETAIL 'B'

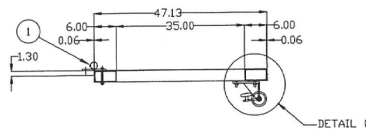


DETAIL 'C'



DETAIL A

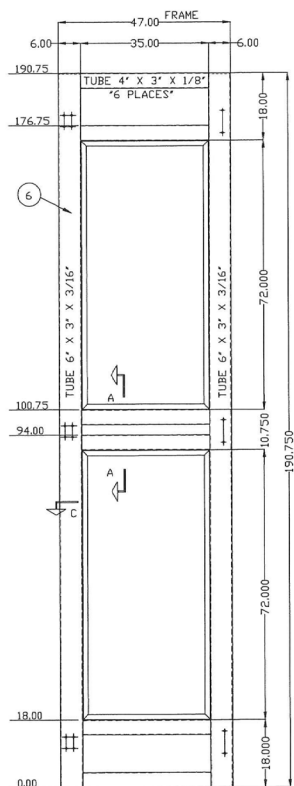
DETAIL B



DETAIL C

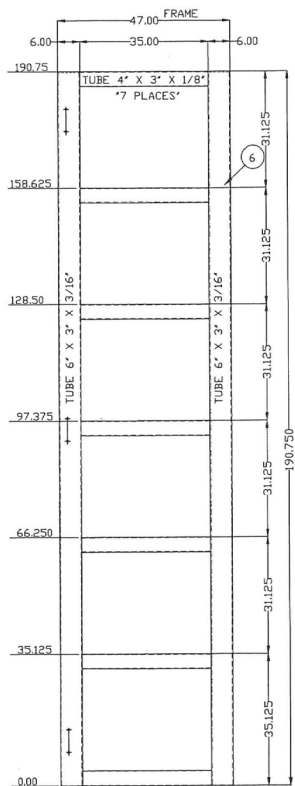
**PRODUCT REVISED**  
as complying with the Florida  
Building Code  
NOA-No. 23-0119.07  
Expiration Date 06/18/2025  
By *[Signature]*  
Miami-Dade Product Control

ITEM#	PART NUMBER	DESCRIPTION
1		MID HINGES
2		JAMB HINGES
3		CREMONE BOLT
4		TOP TROLLEY
5		#14GA. SHEET METAL
6		TUBE FRAMING



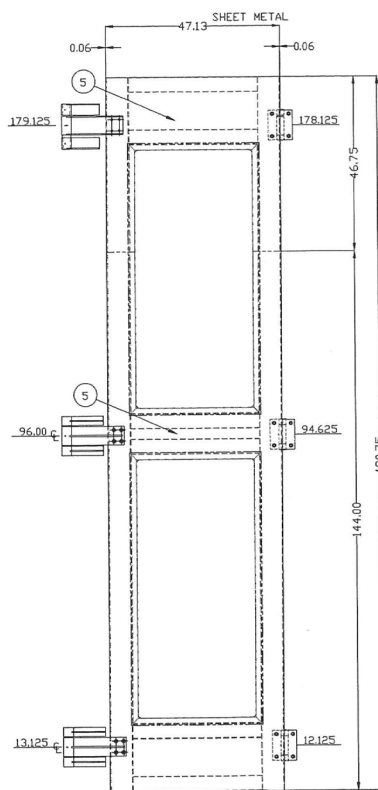
LH 'JAMB' PANEL SECTION

INSIDE SURFACE UP  
SHEET METAL NOT SHOWN FOR CLARITY



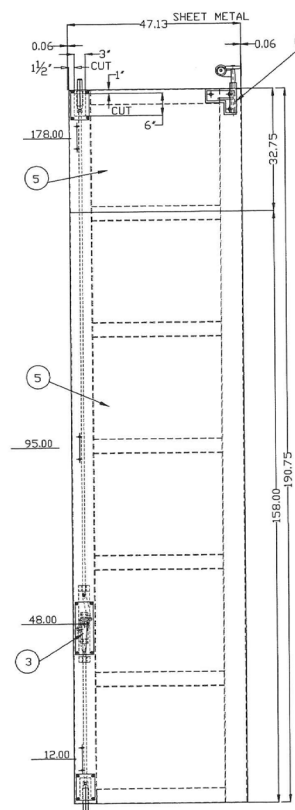
LH 'MIDDLE' PANEL SECTION

INSIDE SURFACE UP  
SHEET METAL NOT SHOWN FOR CLARITY



LH 'JAMB' PANEL SECTION

INSIDE SURFACE UP

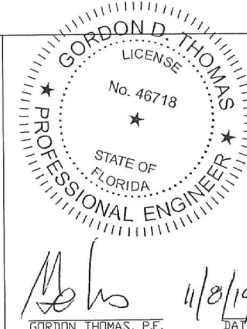



LH 'MIDDLE' PANEL SECTION

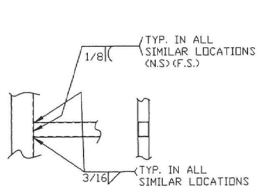
INSIDE SURFACE UP

**PRODUCT RENEWED**  
as complying with the Florida  
Building Code  
NOA-No. 20-0506.01  
Expiration Date 06/18/2025  
By *[Signature]*  
Miami-Dade Product Control

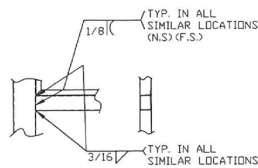
**PRODUCT REVISED**  
as complying with the Florida  
Building Code  
NOA-No. 19-1001.14  
Expiration Date 06/18/2020  
By *[Signature]*  
Miami-Dade Product Control



11/7/19	BH	REVISED PER DADE COUNTY COMMENTS	
9/4/19	BH	REVISED PER DADE COUNTY CHECKLIST & TEST LAB CORRECTIONS	
3/19/19	RB	ISSUED FOR TEST LAB REVIEW	
3/8/19	RB	E MAILED FOR REVIEW	
REV	DATE	BY	DESCRIPTION
INTERNATIONAL DOOR, INC.			
(734) 459-3000			
		8001 RONDA DR. CANTON, MICHIGAN 48187	
PROJECT:			
MODEL #HVHZFF120			
HIGH VELOCITY HURRICANE ZONE (120PSF)			
FOUR-FOLD DOOR			
DRAWING TITLE:			
LH PANEL FRAMING WITH TWO WINDOWS & NO WINDOWS			
DOOR# HVHZFF120		OPENING SIZE 16'-0" x 16'-0"	
ARCH.			
CONTR.			
DRAWN: RB		DATE 2/27/19	DWG NO. 19-ID-2311
CHECKED: CMH		CUSTOMER NO.	SHEET 2 OF 12
APPROVED:			

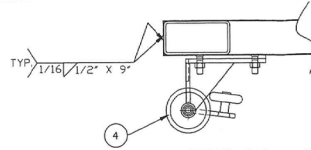


SECTION A-A

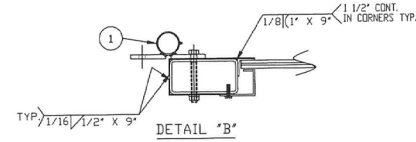


SECTION B-B

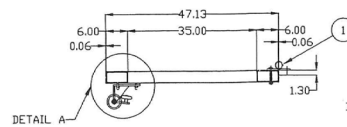
**PRODUCT REVISED**  
as complying with the Florida  
Building Code  
NOA-No. 23-0119.07  
Expiration Date 06/18/2025  
By *[Signature]*  
Miami-Dade Product Control



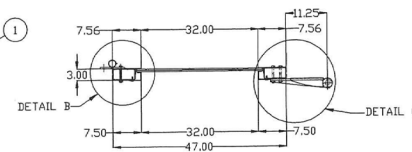
DETAIL "A"



DETAIL "B"

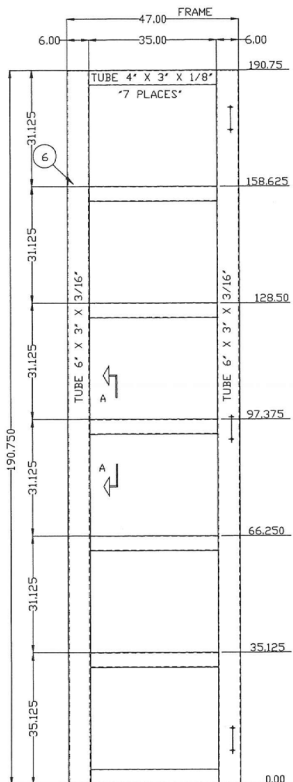


DETAIL A

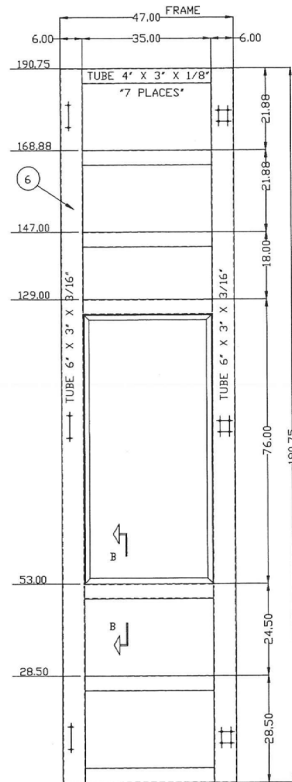


DETAIL B

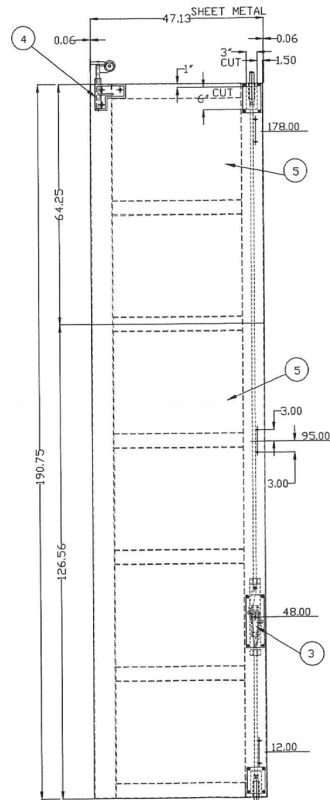
DETAIL C



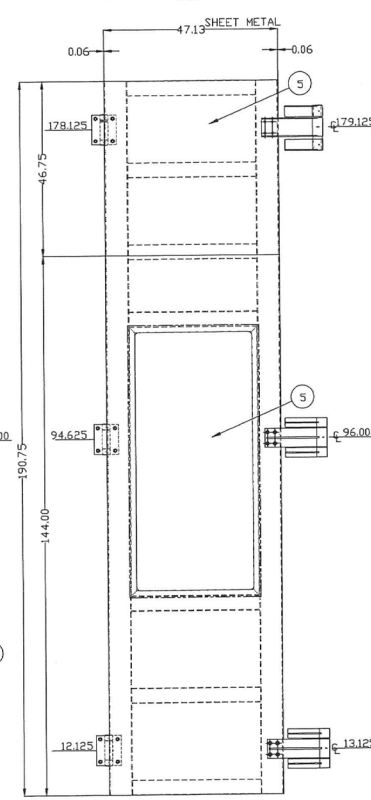
RH "MIDDLE" PANEL SECTION  
INSIDE SURFACE UP  
SHEET METAL NOT SHOWN FOR CLARITY



RH "JAMB" PANEL SECTION  
INSIDE SURFACE UP  
SHEET METAL NOT SHOWN FOR CLARITY



RH "MIDDLE" PANEL SECTION  
INSIDE SURFACE UP

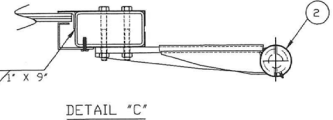


RH "JAMB" PANEL SECTION  
INSIDE SURFACE UP

ITEM#	PART NUMBER	DESCRIPTION
1		MID HINGES
2		JAMB HINGES
3		CREMONE BOLT
4		TOP TROLLEY
5		#14GA. SHEET METAL
6		TUBE FRAMING

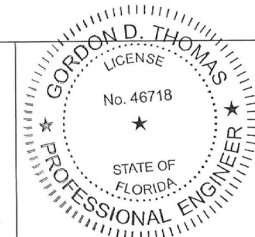
**PRODUCT RENEWED**  
as complying with the Florida  
Building Code  
NOA-No. 20-0506.01  
Expiration Date 06/18/2025

By *[Signature]*  
Miami-Dade Product Control



DETAIL "C"

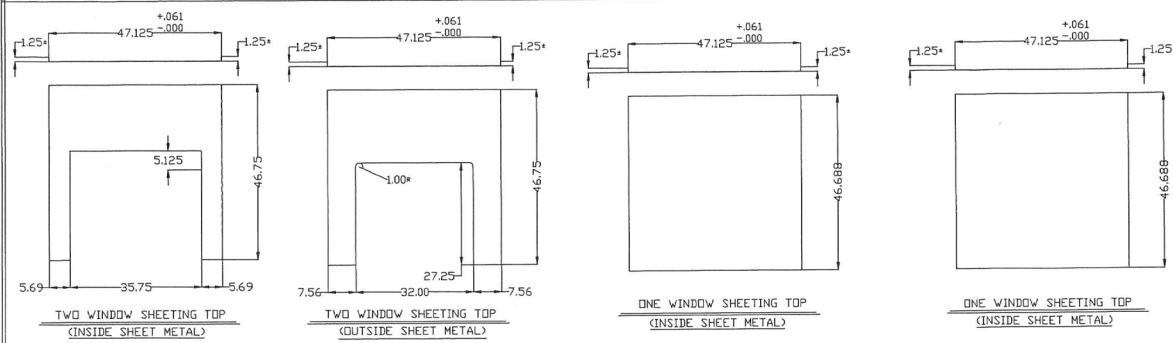
**PRODUCT REVISED**  
as complying with the Florida  
Building Code  
NOA-No. 19-1001.14  
Expiration Date 06/18/2020  
By *[Signature]*  
Miami-Dade Product Control



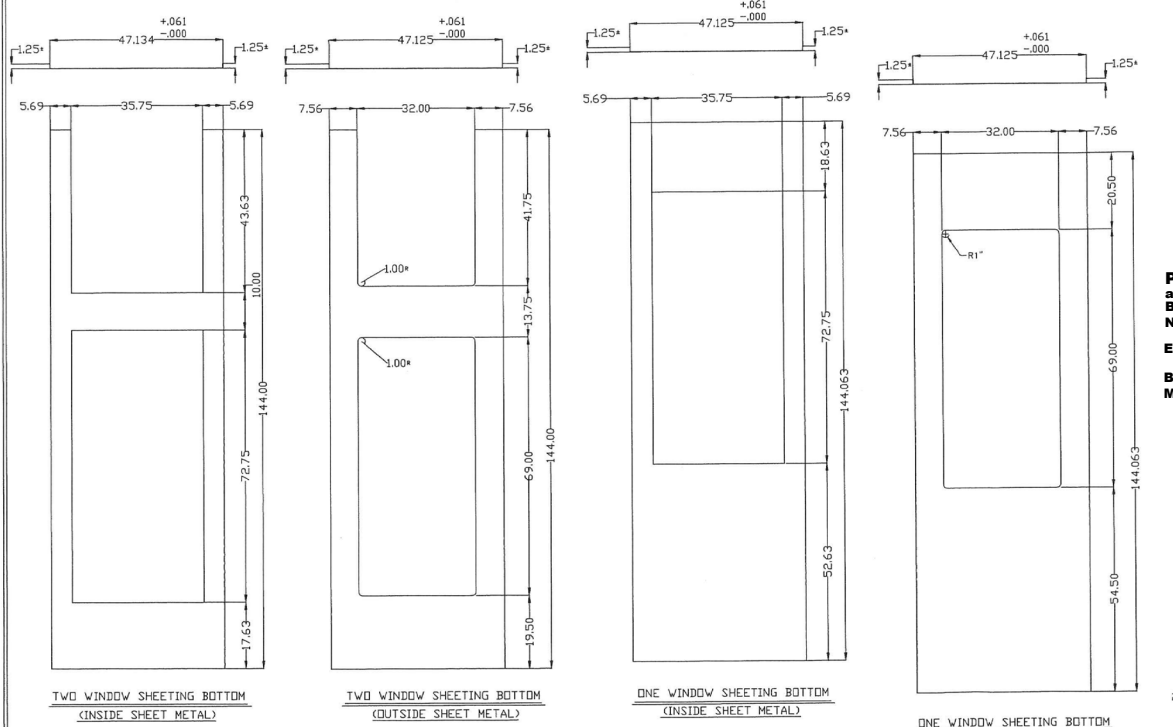
*[Signature]* 1/8/19  
GORDON THOMAS, P.E.  
FL 46718  
DATE

REV	DATE	BY	DESCRIPTION
11/7/19	BH		REVISED PER DADE COUNTY COMMENTS
9/4/19	BH		REVISED PER DADE COUNTY CHECKLIST & TEST LAB CORRECTIONS
3/19/19	RB		ISSUED FOR TEST LAB REVIEW
3/8/19	RB		E MAILED FOR REVIEW
DESCRIPTION			
INTERNATIONAL DOOR, INC.			
8001 RONDA DR. CANTON, MICHIGAN 48187			
PROJECT:			
MODEL #HVHZFF120			
HIGH VELOCITY HURRICANE ZONE (120PSF)			
FOUR-FOLD DOOR			
DRAWING TITLE:			
RH PANEL FRAMING WITH ONE WINDOW & NO WINDOWS			
DOOR# HVHZFF120			
OPENING SIZE 16'-0" x 16'-0"			
ARCH.			
CONTR.			
DRAWN: RB	DATE 2/27/19	DWG No.	19-ID-2311
CHECKED: CMH	CUSTOMER NO.	SHEET	3 OF 12
APPROVED:			





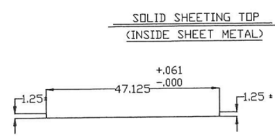
**PRODUCT RENEWED**  
 as complying with the Florida  
 Building Code  
 NOA-No. **20-0506.01**  
 Expiration Date **06/18/2025**  
 By *[Signature]*  
 Miami-Dade Product Control



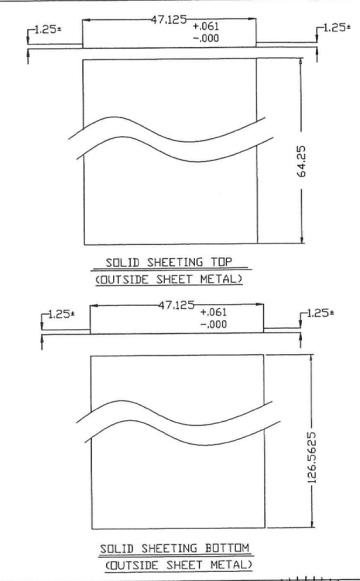
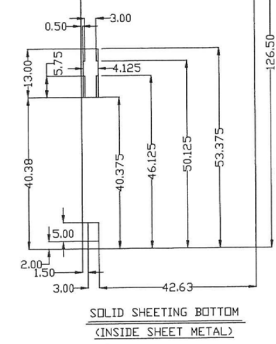
SHOP NOTE: EXTERIOR SHEET METAL WAS WELDED AROUND THE ENTIRE PERIMETER HORIZONTAL & VERTICAL FROM THE INSIDE OF THE FRAME WITH 0.125" WIDE X 1.5" LONG FILLET WELD SPACED AT 6" O.C.

SHOP NOTE: INTERIOR SHEET METAL WAS WELDED AROUND THE ENTIRE PERIMETER HORIZONTAL & VERTICAL FRAME MEMBERS WITH 0.125" WIDE X 1.5" LONG FILLET WELDS AT 6" O.C. AND .25" DIA. PLUG WELD TO HORIZONTAL AND VERTICAL FRAME MEMBERS AT 10" O.C.

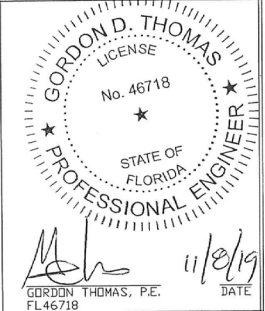
NOTE:  
 ALL SHEET METAL #14GAGE  
 ASTM A569 - (Fy MIN = 44 KSI)  
 WITH GRAY PRIMER




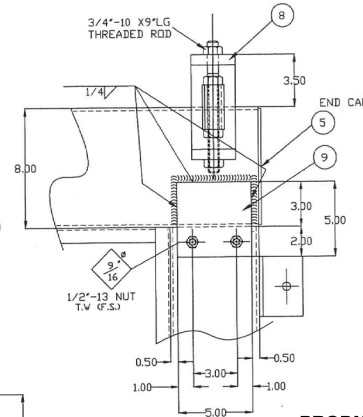
**PRODUCT REVISED**  
 as complying with the Florida  
 Building Code  
 NOA-No. **23-0119.07**  
 Expiration Date **06/18/2025**  
 By *[Signature]*  
 Miami-Dade Product Control



**PRODUCT REVISED**  
 as complying with the Florida  
 Building Code  
 NOA-No. **19-1001.14**  
 Expiration Date **06/18/2020**  
 By *[Signature]*  
 Miami-Dade Product Control



11/7/19	BH	REVISED PER DADE COUNTY COMMENTS	
9/4/19	BH	REVISED PER DADE COUNTY CHECKLIST & TEST LAB CORRECTIONS	
3/19/19	RB	ISSUED FOR TEST LAB REVIEW	
3/8/19	RB	MAILED FOR REVIEW	
REV	DATE	BY	DESCRIPTION
			
INTERNATIONAL DOOR, INC. (734) 459-3000			
8001 RONDA DR.		CANTON, MICHIGAN 48187	
PROJECT:			
MODEL #HVHZFF120 HIGH VELOCITY HURRICANE ZONE (120PSF) FOUR-FOLD DOOR			
DRAWING TITLE:			
DOOR# HVHZFF120		SHEET METAL DETAILS	
ARCH:		OPENING SIZE 16'-0" x 16'-0"	
CONTR.			
DRAWN: RB		DATE	DWG NO.
		2/27/19	19-ID-2311
CHECKED: CMH		CUSTOMER NO.	
APPROVED:		SHEET	4 OF 12



ITEM#	PART NUMBER	DESCRIPTION
1	TS 6"x6"x1/4"	JAMB TUBE
2	TS 8"x6"x1/4"	HEADER TUBE
3	L 1' X 1' X 1/8"	JAMB WEATHER ANGLE
4	L 1' X 1' X 1/8"	HEADER WEATHER ANGLE
5	#12GA. 6" X 8"	END CAP
6	L 3' X 3' X 1/4" X 4"	CLIP ANGLE
7	L 3' X 3' X 1/4" X 4"	CLIP ANGLE
8		END TRACK HANGER
9	1/4" X 5" X 5"	CORNER JOINT PLATE
10		CREMONE BOLT GUIDE
11		CREMONE BOLT KEEPER
12		FLOOR WEDGE
13	6"x6"x1/2"x9	TOP TRACK CENTER SUPPORT (SHEET 8 OUT OF 12)

GORDON D. THOMAS  
LICENSE  
No. 46718  
STATE OF  
FLORIDA  
PROFESSIONAL ENGINEER

*GDT* 11/8/19  
GORDON THOMAS, P.E. DATE

NOTE 1: WHEN MOUNTING TO AN OPENING WITH CONCRETE JAMBS & HEADER, ATTACH CLIP ANGLES TO OPENING WITH WEDGE ANCHORS (SEE SHEET 1, DETAIL B)

NOTE 2: WHEN MOUNTING TO AN OPENING WITH STEEL JAMBS & HEADER, WELD CLIP ANGLES TO DOOR FRAME AND OPENING OR WELD DIRECTLY TO JAMBS STEEL AS SHOWN ON THIS SHEET

MAKE SURE SEAMS OF TUBE ARE ON OPPOSITE SIDE OF HINGE

JAMB SEAL ANGLE WITH RUBBER PUSH ON SEAL

JAMB SEAL ANGLE WITH RUBBER PUSH ON SEAL

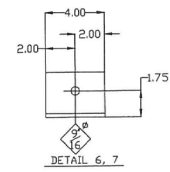
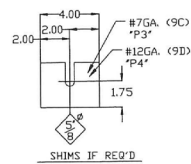
TYP. 3 SIDES TOP & BOTTOM HINGE WELD TO FRAME JAMB ALL (6) HINGES

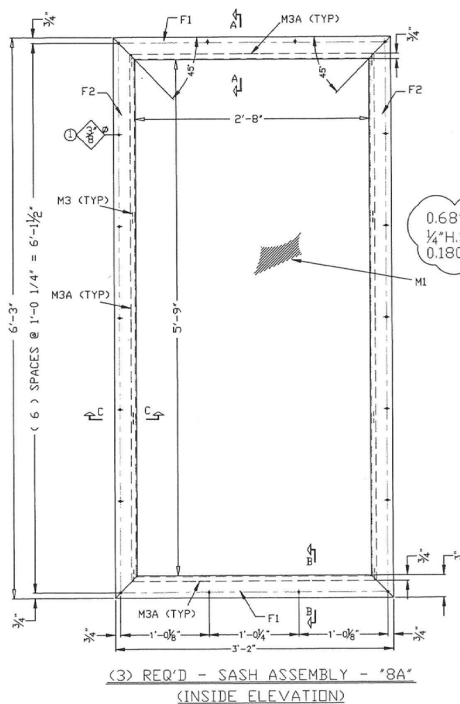
1/2" x 5 1/2" KWIK ANCHOR

1/2" x 4 1/2" HILTI KWIK BOLT 3

INTERIOR ELEVATION

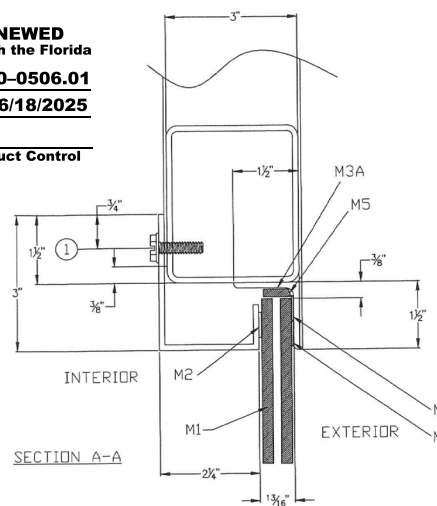
PRODUCT REVISED  
as complying with the Florida  
Building Code  
NOA-No. 23-0119-07  
Expiration Date 06/18/2025  
By *R.P. Torres*  
Miami-Dade Product Control





NOTE:  
INTERIOR WINDOW FRAME  
#12GA. ASTM A569  
EXTERIOR WINDOW FRAME  
#12GA. ASTM A569

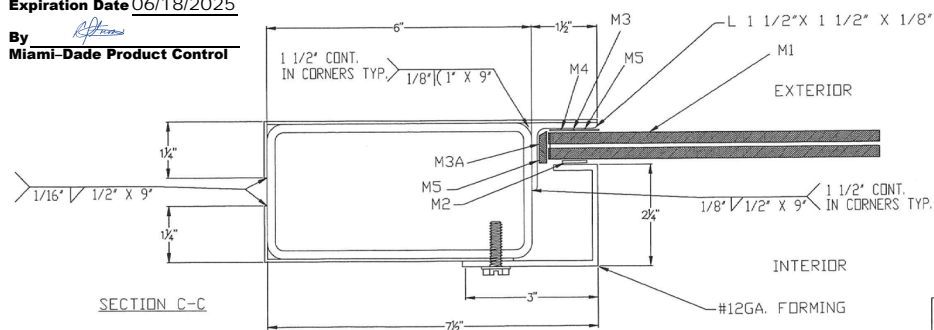
**PRODUCT RENEWED**  
as complying with the Florida  
Building Code  
NOA-No. **20-0506.01**  
Expiration Date **06/18/2025**  
By *[Signature]*  
**Miami-Dade Product Control**



TOTAL QTY.	UNIT QTY.	MARK	DESCRIPTION
3	1	8A	SASH ASSEMBLY
6	2	F1	FORMING #12GA. X 5 5/8" X 3'-2"
6	2	F2	FORMING #12GA. X 5 5/8" X 6'-3"
3	1	M1	0.68" THK. (LAMINATED GLASS) 1/4" HEAT STRENGTHENED / 0.180" SENTRYGLAS BY KURARAY / 1/4" HEAT STRENGTHENED SIZE X 34 1/4" X 71 1/4"
1	M2		MCMASTER FOM SEALING TAPE (BUTYL TAPE) 1/8" X 1/2" X 26YARDS #75875A662
3	8	M3	80 +/-5 DUDMETER EPDM SETTING BLOCKS 0.250" THICK X 0.475" WIDE AND CUT TO ~ 1/2"
3	5	M3A	80 +/-5 DUDMETER EPDM SETTING BLOCKS 2" LONG 0.477" WIDE X 0.165" THICK MANUFACTURED BY GLAZING RUBBER PRODUCTS, INC.
	M4		DOWSIL 1200 DS SPRAY
	M5		DOWSIL 795 SILCONE SEALANT
3	1	8A	INSIDE SASH ASSEMBLY
54	18	(1)	5/16"-18 X 1" L.G. (ST.S.) PLATED (TYPE F)

**PRODUCT REVISED**  
as complying with the Florida  
Building Code  
NOA-No. **23-0119.07**  
Expiration Date **06/18/2025**

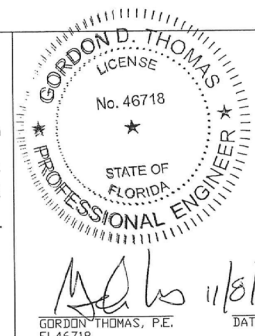
By *[Signature]*  
**Miami-Dade Product Control**



DETAIL OF WINDOW SASH  
(12 GA. FORMING)

SEALANT AND GLASS INSTALLATION NOTE:  
(1) CLEAN SURFACES THOROUGHLY  
(2) TO PRIME THE STEEL WITH DOWSIL 1200 DS SPRAY (M4).  
(3) APPLY (M5) SEALANT TO THE STEEL AND THE SETTING BLOCKS (M3) TO BE PUSHED INTO THE SEALANT, (1) AT EACH CORNER AND (2) EQUALLY SPACED ALONG EACH VERTICAL LEG.  
(4) SETTING BLOCKS (M3A) TO BE PLACED AT BOTTOM LEG WHERE THE GLASS WILL BE RESTING.  
(5) SETTING BLOCKS (M3A) TO BE INSERTED BETWEEN THE GLASS AND THE STEEL FRAME ALONG EACH SIDE TO KEEP THE GLASS FROM COMING IN CONTACT WITH THE STEEL.  
(6) SEALANT (M5) INJECTED BETWEEN THE GLASS AND THE STEEL, ON ALL 4 SIDES.  
(7) TO PROVIDE AND APPLY CONTINUOUS RAW OF THE BUTYL GLAZING TAPE TO THE GLAZING FRAME  
(8) THE FRAME IS SET INTO PLACE AND ATTACH TO THE STEEL PANEL WITH THE SCREWS PROVIDED  
(9) ON THE EXTERIOR SIDE, THE EXCESS SEALANT TO BE REMOVED AND THE JOINT TO BE TOOLED.

**PRODUCT REVISED**  
as complying with the Florida  
Building Code  
NOA-No. **19-1001.14**  
Expiration Date **06/18/2020**  
By *[Signature]*  
**Miami-Dade Product Control**

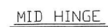


11/7/19	BH	REVISED PER DADE COUNTY COMMENTS
9/4/19	BH	REVISED PER DADE COUNTY CHECKLIST & TEST LAB CORRECTIONS
3/19/19	RB	ISSUED FOR TEST LAB REVIEW
3/8/19	RB	E MAILED FOR REVIEW
DATE	BY	DESCRIPTION
		INTERNATIONAL DOOR, INC. (734) 459-3000 8001 RONDA DR. CANTON, MICHIGAN 48187 PROJECT: MODEL #HVHZFF120 HIGH VELOCITY HURRICANE ZONE (120PSF) FOUR-FOLD DOOR
		DRAWING TITLE: WINDOW FRAME DETAILS
		DOOR# HVHZFF120 OPENING SIZE 16'-0" x 16'-0"
		ARCH: CONTR: DRAWN: RB DATE 2/27/19 DWG No. 19-ID-2311 CHECKED: CMH CUSTOMER NO. SHEET 6 OF 12 APPROVED:

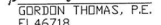





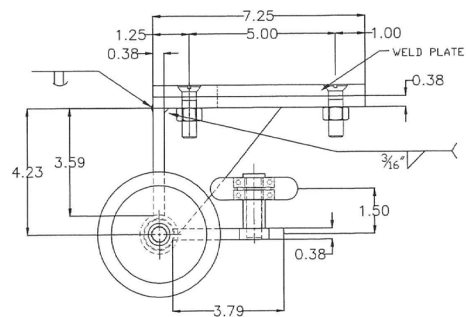
By   
Miami-Dade Product Control



By [Signature]  
Miami-Dade Product Control



11/7/19	BH	REVISED PER DADE COUNTY COMMENTS	
9/4/19	BH	REVISED PER DADE COUNTY CHECKLIST & TEST LAB CORRECTIONS	
3/8/19	RB	ISSUED FOR TEST LAB REVIEW	
3/8/19	RB	MAILED FOR REVIEW	
REV	DATE	BY	DESCRIPTION
<div></div> <div><div>INTERNATIONAL ROUNDOOR, INC. (734) 459-3000 8001 RONDA DR. CANTON, MICHIGAN 48187</div><div>PROJECT:</div><div>MODEL #HVHZFF120 HIGH VELOCITY HURRICANE ZONE (120PSF) FOUR-FOLD DOOR</div></div>			
DRAWING TITLE:			
JAMB & MID HINGE DETAILS			
DOOR# HVHZFF120		OPENING SIZE 16'-0" x 16'-0"	
ARCH.			
CONTR.			
DRAWN: RB		DATE 2/27/19	DWG NO. 19-ID-2311
CHECKED: CMH			
APPROVED:		CUSTOMER NO.	SHEET 7 OF 12



**PRODUCT REVISED**  
as complying with the Florida  
Building Code  
NOA-No. 23-0119.07

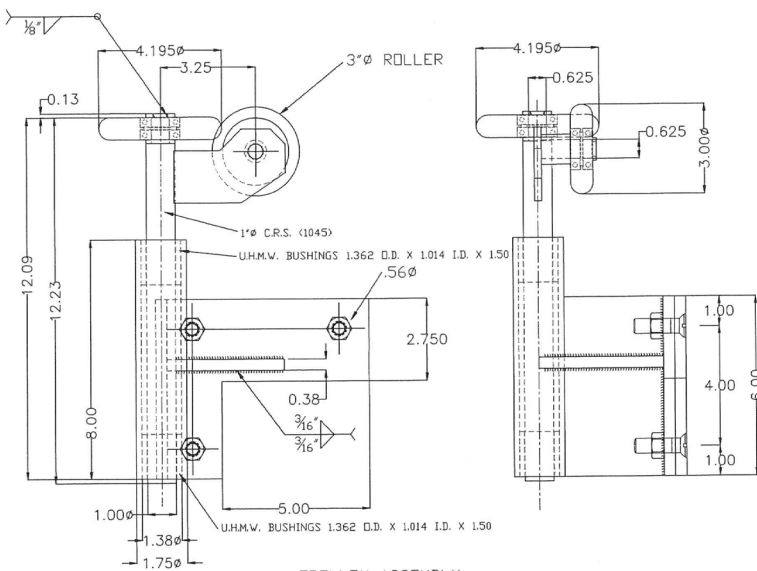
Expiration Date 06/18/2025

By *[Signature]*  
Miami-Dade Product Control

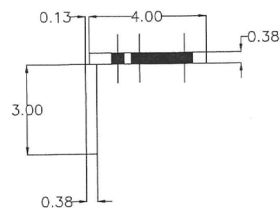
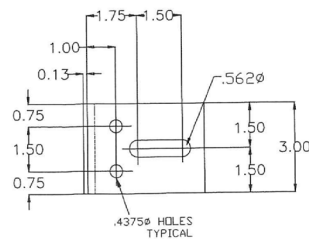
**PRODUCT RENEWED**  
as complying with the Florida  
Building Code  
NOA-No. 20-0506.01

Expiration Date 06/18/2025

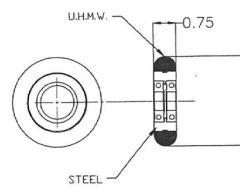
By *[Signature]*  
Miami-Dade Product Control



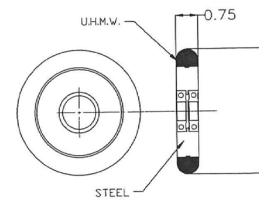
TROLLEY ASSEMBLY



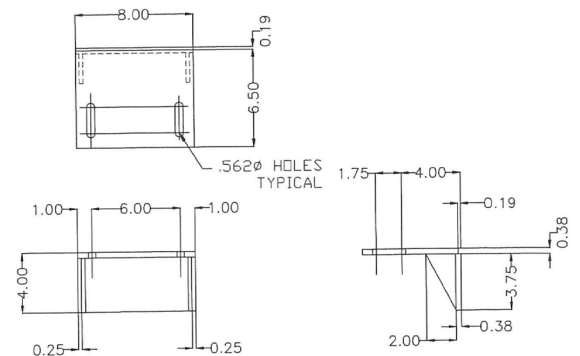
TROLLEY ROLLER SUPPORT



TOP ROLLER



TOP ROLLER

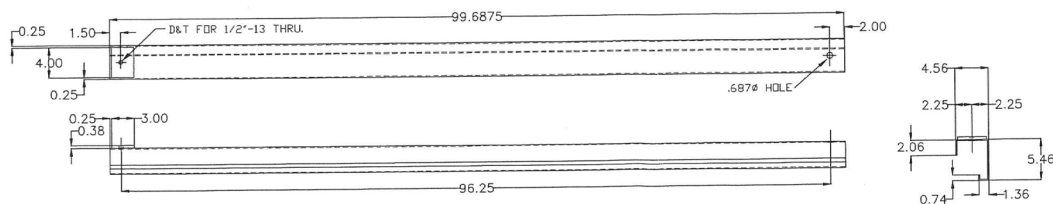
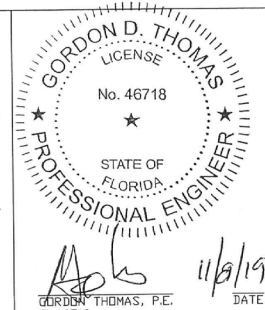


TOP TRACK CENTER SUPPORT

**PRODUCT REVISED**  
as complying with the Florida  
Building Code  
NOA-No. 19-1001.14

Expiration Date 06/18/2020

By *[Signature]*  
Miami-Dade Product Control

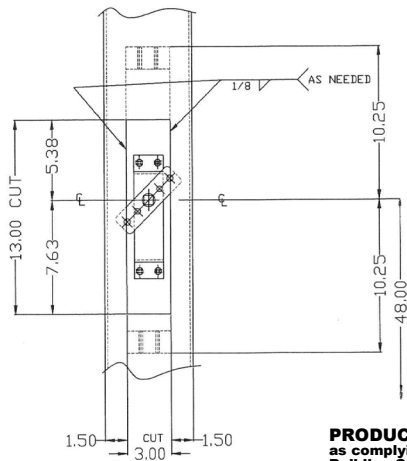


TOP TRACK

11/7/19	BH	REVISED PER DADE COUNTY COMMENTS	
9/4/19	BH	REVISED PER DADE COUNTY CHECKLIST & TEST LAB CORRECTIONS	
3/19/19	RB	ISSUED FOR TEST LAB REVIEW	
3/8/19	RB	E MAILED FOR REVIEW	
REV	DATE	BY	DESCRIPTION
INTERNATIONAL DOOR, INC.			
(734) 459-3000			
8001 RONDA DR. CANTON, MICHIGAN 48187			
PROJECT:			
MODEL #HVHZFF120			
HIGH VELOCITY HURRICANE ZONE (120PSF)			
FOUR-FOLD DOOR			
DRAWING TITLE:			
ROLLER ASSEMBLY			
DOOR# HVHZFF120			
OPENING SIZE 16'-0" x 16'-0"			
ARCH.			
CONTR.			
DRAWN: RB		DATE 2/27/19	DWG NO. 19-ID-2311
CHECKED: CMH		CUSTOMER NO.	SHEET 8 OF 12
APPROVED:			





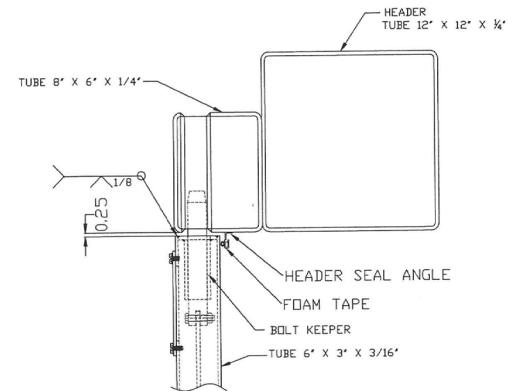
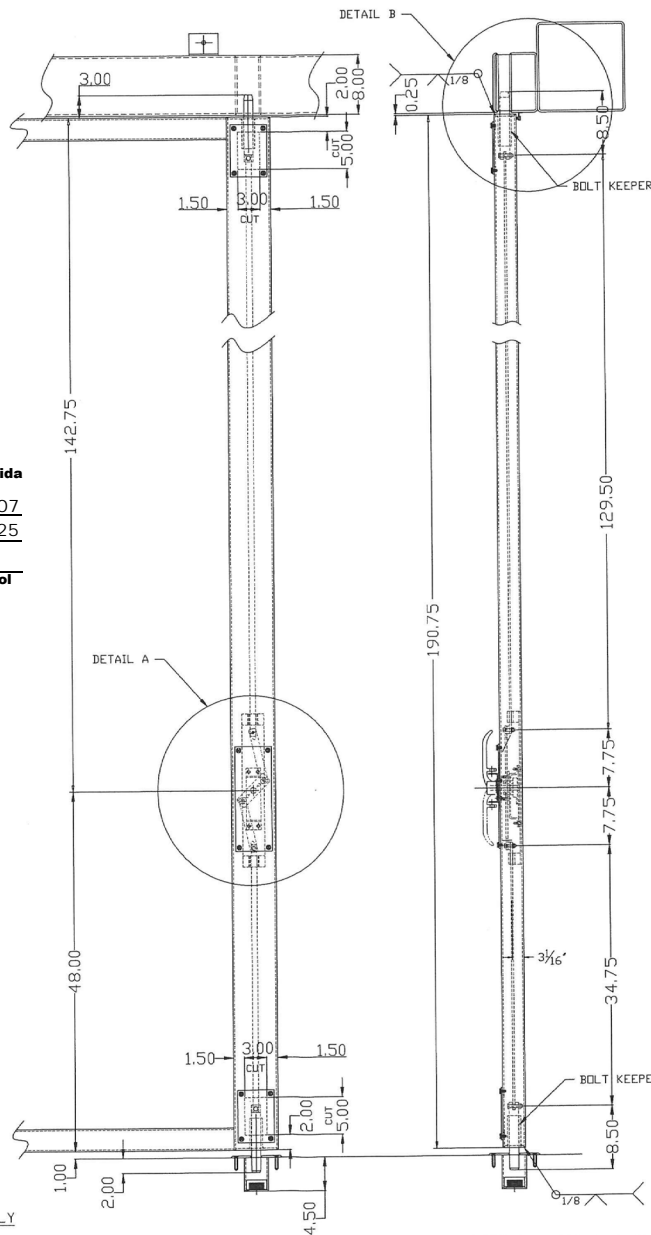
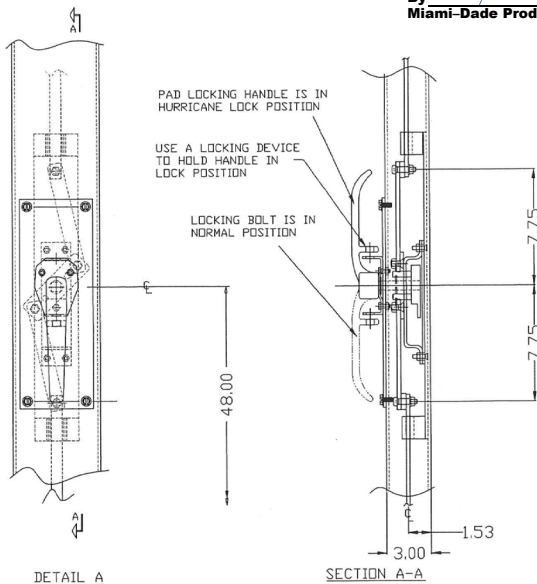


NO COVER PLATE, HANDLE, LINKS

**PRODUCT REVISED**  
as complying with the Florida  
Building Code  
NOA-No. 23-0119.07

Expiration Date 06/18/2025

By [Signature]  
Miami-Dade Product Control



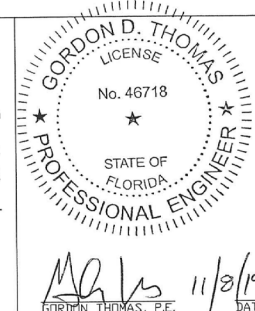
**PRODUCT RENEWED**  
as complying with the Florida  
Building Code  
NOA-No. 20-0506.01  
Expiration Date 06/18/2025


By [Signature]  
Miami-Dade Product Control

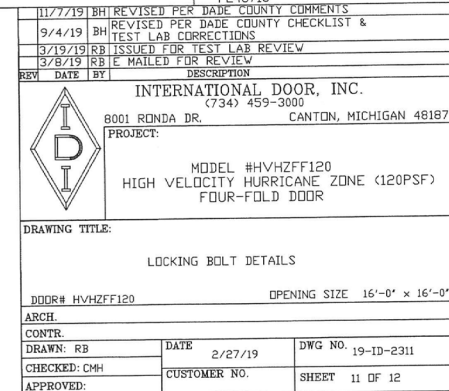
**PRODUCT REVISED**  
as complying with the Florida  
Building Code  
NOA-No. 19-1001.14

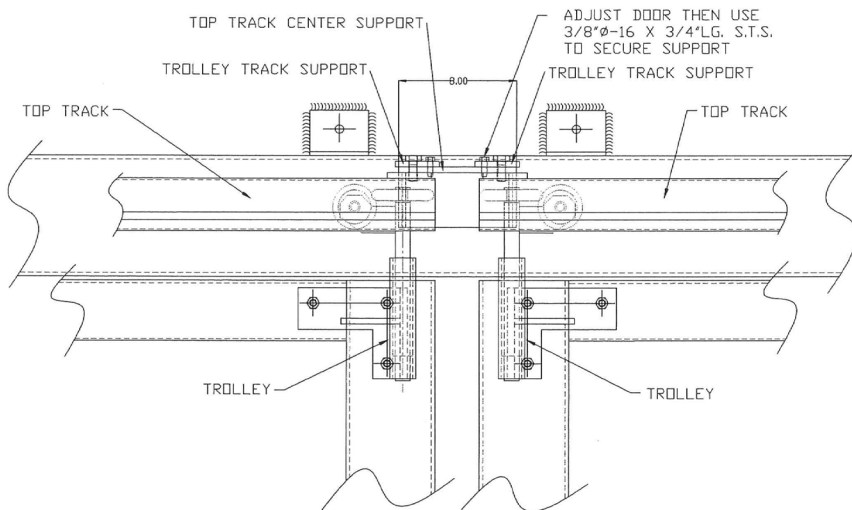
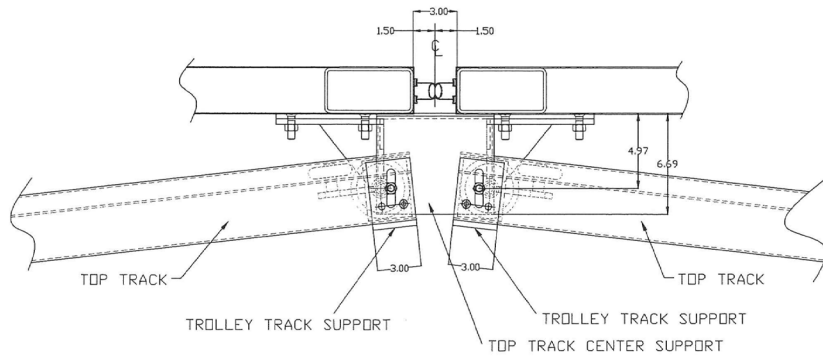
Expiration Date 06/18/2020

By [Signature]  
Miami-Dade Product Control

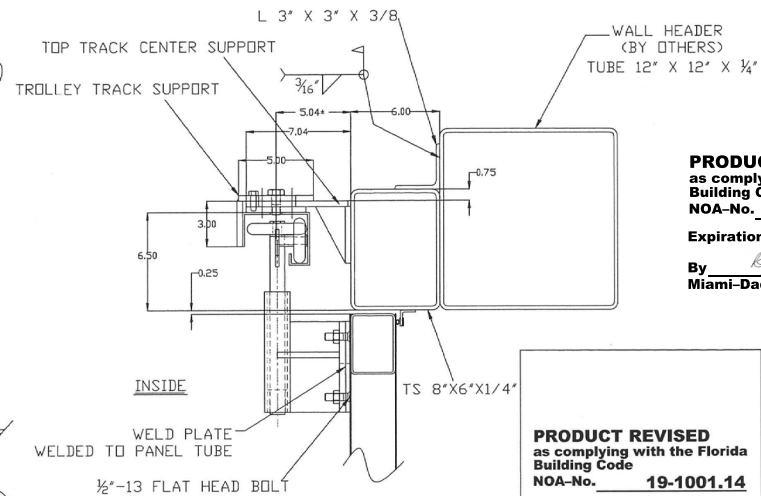


	11/7/19	BH	REVISED PER DADE COUNTY COMMENTS
	9/4/19	BH	REVISED PER DADE COUNTY CHECKLIST & TEST LAB CORRECTIONS
	3/19/19	RB	ISSUED FOR TEST LAB REVIEW
	3/8/19	RB	E MAILED FOR REVIEW
REV	DATE	BY	DESCRIPTION
<div></div> <div>INTERNATIONAL DOOR, INC. (734) 459-3000 8001 RONDA DR. CANTON, MICHIGAN 48187 PROJECT:  MODEL #HVHZFF120 HIGH VELOCITY HURRICANE ZONE (120PSF) FOUR-FOLD DOOR</div>			
DRAWING TITLE:  LOCKING BOLT ASSEMBLY			
DOOR# HVHZFF120 OPENING SIZE 16'-0" x 16'-0"			
ARCH.			
CONTR.			
DRAWN: RB		DATE	2/27/19
CHECKED: CMH		DWG NO.	19-ID-2311
APPROVED:		CUSTOMER NO.	SHEET 10 OF 12





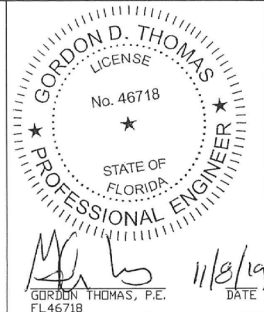
DOOR TROLLEY  
(DOOR SHOWN IN CLOSED POSITION)



**PRODUCT RENEWED**  
as complying with the Florida  
Building Code  
NOA-No. **20-0506.01**  
Expiration Date **06/18/2025**  
By *[Signature]*  
Miami-Dade Product Control

**PRODUCT REVISED**  
as complying with the Florida  
Building Code  
NOA-No. **23-0119.07**  
Expiration Date **06/18/2025**  
By *[Signature]*  
Miami-Dade Product Control

**PRODUCT REVISED**  
as complying with the Florida  
Building Code  
NOA-No. **19-1001.14**  
Expiration Date **06/18/2020**  
By *[Signature]*  
Miami-Dade Product Control



11/7/19	BH	REVISED PER DADE COUNTY COMMENTS	
9/4/19	BH	REVISED PER DADE COUNTY CHECKLIST & TEST LAB CORRECTIONS	
3/19/19	RB	ISSUED FOR TEST LAB REVIEW	
3/8/19	RB	E MAILED FOR REVIEW	
REV	DATE	BY	DESCRIPTION
			
INTERNATIONAL DOOR, INC. (734) 459-3000			
8001 RONDA DR.		CANTON, MICHIGAN 48187	
PROJECT:			
MODEL #HVHZFF120 HIGH VELOCITY HURRICANE ZONE (120PSF) FOUR-FOLD DOOR			
DRAWING TITLE:			
Top Track Layout			
DOOR# HVHZFF120		OPENING SIZE 16'-0" x 16'-0"	
ARCH.			
CONTR.			
DRAWN: RB		DATE 2/27/19	DWG NO. 19-ID-2311
CHECKED: CMH		CUSTOMER NO.	
APPROVED:		SHEET 12 OF 12	