



DEPARTMENT OF REGULATORY AND ECONOMIC RESOURCES (RER)
BOARD AND CODE ADMINISTRATION DIVISION

NOTICE OF ACCEPTANCE (NOA)

MIAMI-DADE COUNTY
PRODUCT CONTROL SECTION
11805 SW 26 Street, Room 208
Miami, Florida 33175-2474
T (786) 315-2590 F (786) 315-2599
www.miamidade.gov/economy

Nu-Vue Industries, Inc.
1055 East 29th Street
Hialeah, Florida 33013

SCOPE: This NOA is being issued under the applicable rules and regulations governing the use of construction materials. The documentation submitted has been reviewed and accepted by Miami-Dade County RER-Product Control Section to be used in Miami Dade County and other areas where allowed by the Authority Having Jurisdiction (AHJ).

This NOA shall not be valid after the expiration date stated below. The Miami-Dade County Product Control Section (In Miami Dade County) and/or the AHJ (in areas other than Miami Dade County) reserve the right to have this product or material tested for quality assurance purposes. If this product or material fails to perform in the accepted manner, the manufacturer will incur the expense of such testing and the AHJ may immediately revoke, modify, or suspend the use of such product or material within their jurisdiction. RER reserves the right to revoke this acceptance if it is determined by Miami-Dade County Product Control Section that this product or material fails to meet the requirements of the applicable building code.

This product is approved as described herein and has been designed to comply with the Florida Building Code, including the High Velocity Hurricane Zone.

DESCRIPTION: Series NVSNP, NV/NVTH, NVTHS, NVHC, NVSTA and NVHTA Steel Wood Connectors

APPROVAL DOCUMENT: Drawing No. **JA-1958.1-22**, titled "NOA No. 20-0526.05 Revision", sheets 1 through 5 of 5, dated 01/18/2023, prepared by Javad Ahmad PE, Inc., signed and sealed by Javad Ahmad, P.E. on 04/11/2023, bearing the Miami-Dade County Product Control revision stamp with the Notice of Acceptance number and expiration date by the Miami-Dade County Product Control Section.

MISSILE IMPACT RATING: None

LABELING: A permanent mark with the manufacturer's name, acronym or logo is to be located on each unit. A permanent label with the manufacturer's name or logo, city, state, model/series, and the statement reading 'Miami-Dade County Product Control Approved' is to be located on each packaging carton.

RENEWAL of this NOA shall be considered after a renewal application has been filed and there has been no change in the applicable building code negatively affecting the performance of this product.

TERMINATION of this NOA will occur after the expiration date or if there has been a revision or change in the materials, use, and/or manufacture of the product or process. Misuse of this NOA as an endorsement of any product, for sales, advertising or any other purposes shall automatically terminate this NOA. Failure to comply with any section of this NOA shall be cause for termination and removal of NOA.

ADVERTISEMENT: The NOA number preceded by the words Miami-Dade County, Florida, and followed by the expiration date may be displayed in advertising literature. If any portion of the NOA is displayed, then it shall be done in its entirety.

INSPECTION: A copy of this entire NOA shall be provided to the user by the manufacturer or its distributors and shall be available for inspection at the job site at the request of the Building Official.

This NOA **revises NOA # 20-0526.05** and consists of this page 1 and evidence pages E-1, E-2, E-3 and E-4, as well as approval document mentioned above.

The submitted documentation was reviewed by **Carlos M. Utrera, P.E.**



NOA No. 23-0210.01
Expiration Date: July 30, 2025
Approval Date: May 11, 2023
Page 1

NOTICE OF ACCEPTANCE: EVIDENCE SUBMITTED

1. EVIDENCE SUBMITTED UNDER PREVIOUS NOAs

A. DRAWINGS “Submitted under NOA #15-0507.03”

1. Drawing No. NU-5, titled “Skewed Nail Plate, NV358 & NV458 with Double NVTH Straps, NVTH/NVTHS Anchors & NVHC Hurricane Clips and NVSTA & NVHTA Heavy Duty Anchors with Seat”, sheets 1 through 4 of 4, dated 04/15/2015, prepared by Nu-Vue Industries, Inc., signed and sealed by Vipin N. Tolat, P.E.

B. TESTS “Submitted under NOA # 04-0510.03”

Test reports on wood connectors per ASTM D1761 by Product Testing, Inc., signed and sealed by C. R. Caudel, P.E.

	<u>Report No.</u>	<u>Wood Connector</u>	<u>Direction</u>	<u>Date</u>
1.	PT # 03-4482	NVSNP3	Downward	09/15/03
2.	PT # 03-4625	NVHCL/R	Up& Sideways	01/21/04
3.	PT # 04-4641	NVSTA-24H	Up& Sideways	03/17/04
4.	PT # 04-4698	NVTH24	Up& Sideways	04/15/04
5.	PT # 03-4590	NVTH26/NV458	Sideways	12/31/03
6.	PT # 04-4642	NVHTA-24H	Up& Sideways	03/22/04
7.	PT # 03-4543	NVTH20/NV358	Up& Sideways	12/19/03

C. CALCULATIONS “Submitted under NOA # 09-0721.05”

1. Report of Design Capacities, dated 06/30/2009, sheets 1 through 12 of 12, prepared, signed and sealed by Vipin N. Tolat, P.E.

“Submitted under NOA # 04-0510.03”

2. Report of Design Capacities dated 04/27/2004, sheet 1 through 12, prepared, signed and sealed by Vipin N. Tolat, P.E.

D. QUALITY ASSURANCE

1. Miami-Dade Department of Regulatory and Economic Resources (RER)

E. MATERIAL CERTIFICATIONS

1. None.

F. STATEMENT “Submitted under NOA #15-0507.03”

1. Statement letter of code conformance to 2010 and 5th (2014) edition of the FBC, issued by Vipin N. Tolat, P.E., dated 04/29/2015, signed and sealed by Vipin N. Tolat, P.E.

“Submitted under NOA # 09-0721.05”

2. Statement letter of code conformance, no financial interest and no change of product, dated 07/08/2009, issued, signed and sealed by Vipin N. Tolat, P.E.



Carlos M. Utrera, P.E.
Product Control Examiner
NOA No. 23-0210.01
Expiration Date: July 30, 2025
Approval Date: May 11, 2023

NOTICE OF ACCEPTANCE: EVIDENCE SUBMITTED

2. EVIDENCE SUBMITTED UNDER NOA # 17-0802.07

A. DRAWINGS

1. Drawing No. NU-5, titled “Skewed Nail Plate, NV358 & NV458 with Double NVTH Straps, NVTH/NVTHS Anchors & NVHC Hurricane Clips and NVSTA & NVHTA Heavy Duty Anchors with Seat”, sheets 1 through 4 of 4, dated 07/17/2017, prepared by Nu-Vue Industries, Inc., signed and sealed by Vipin N. Tolat, P.E.

B. TESTS

1. None.

C. CALCULATIONS

1. None.

D. QUALITY ASSURANCE

1. Miami-Dade Department of Regulatory and Economic Resources (RER)

E. MATERIAL CERTIFICATIONS

1. None.

F. STATEMENT

1. Statement letter of code conformance to the 5th Edition (2014) and 6th Edition (2017) FBC, issued by Vipin N. Tolat, P.E., dated 07/25/2017, signed and sealed by Vipin N. Tolat, P.E.



Carlos M. Utrera, P.E.
Product Control Examiner
NOA No. 23-0210.01
Expiration Date: July 30, 2025
Approval Date: May 11, 2023

NOTICE OF ACCEPTANCE: EVIDENCE SUBMITTED

3. EVIDENCE SUBMITTED UNDER NOA # 20-0526.05

A. DRAWINGS

1. Drawing No. NU-5, titled “Skewed Nail Plate, NV358 & NV458 with Double NVTH Straps, NVTH/NVTHS Anchors & NVHC Hurricane Clips and NVSTA & NVHTA Heavy Duty Anchors with Seat”, sheets 1 through 4 of 4, dated 06/25/2020, prepared by Nu-Vue Industries, Inc., signed and sealed by Vipin N. Tolat, P.E.

B. TESTS

1. Verification calculations for compliance with the ASTM D7147-05 and ASTM D7147-11, prepared by Vipin N. Tolat, P.E. dated 05/18/2020, signed and sealed by Vipin N. Tolat, P.E.

C. CALCULATIONS

1. None.

D. QUALITY ASSURANCE

1. Miami-Dade Department of Regulatory and Economic Resources (RER)

E. MATERIAL CERTIFICATIONS

1. None.

F. STATEMENT

1. Statement letter of code conformance to the 6th Edition (2017) and the 7th Edition (2020) FBC and of no financial interest, issued by Vipin N. Tolat, P.E., dated 06/25/2020, signed and sealed by Vipin N. Tolat, P.E.



Carlos M. Utrera, P.E.
Product Control Examiner
NOA No. 23-0210.01
Expiration Date: July 30, 2025
Approval Date: May 11, 2023

NOTICE OF ACCEPTANCE: EVIDENCE SUBMITTED

4. NEW EVIDENCE SUBMITTED

A. DRAWINGS

1. Drawing No. **JA-1958.1-22**, titled “NOA No. 20-0526.05 Revision”, sheets 1 through 5 of 5, dated 01/18/2023, prepared by Javad Ahmad PE, Inc., signed and sealed by Javad Ahmad, P.E. on 04/11/2023.

B. TESTS

1. None.

C. CALCULATIONS

1. Allowable loads calculations, prepared by Javad Ahmad PE, Inc., dated 04/11/2023, signed and sealed by Javad Ahmad, P.E.

D. QUALITY ASSURANCE

1. Miami-Dade Department of Regulatory and Economic Resources (RER).

E. MATERIAL CERTIFICATIONS

1. None.

F. STATEMENT

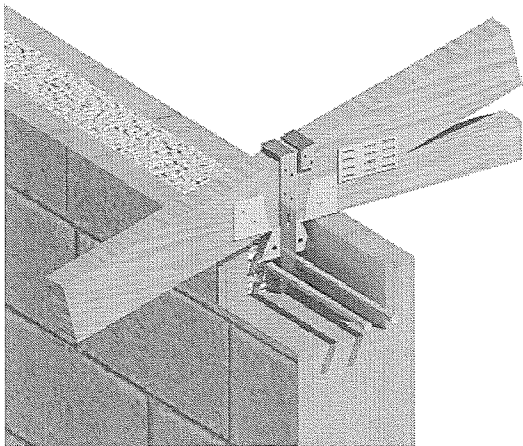
1. Statement letter of code conformance to the 7th Edition (2020) of the FBC and of no financial interest, issued by Javad Ahmad PE, Inc., dated 02/03/2023, signed and sealed by Javad Ahmad, P.E.



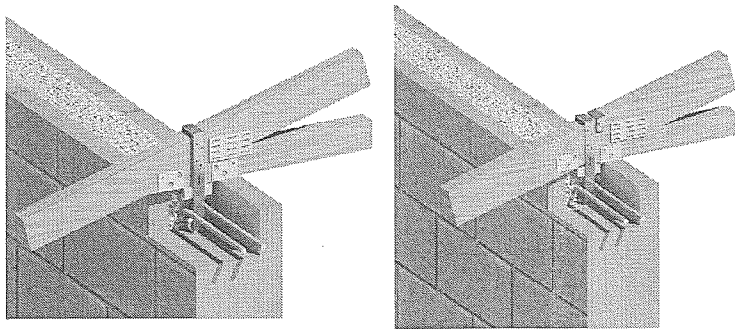
Carlos M. Utrera, P.E.
Product Control Examiner
NOA No. 23-0210.01
Expiration Date: July 30, 2025
Approval Date: May 11, 2023

1055 EAST 29TH HIALEAH, FL 33013, TEL. 305-694-0397

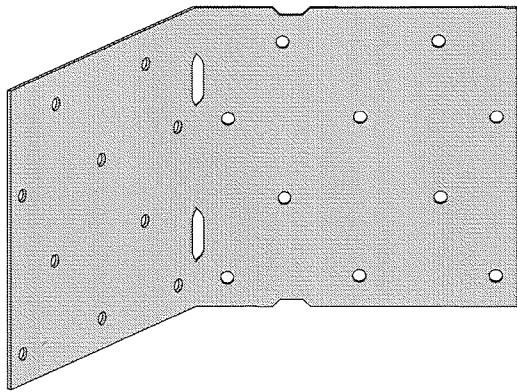
18G SEATS WITH 14G NVTH STRAPS



HEAVY DUTY ANCHORS WITH 14G
DOUBLE NVTH STRAPS



SKEWED NAIL PLATE



NVHCR / NVHCL
HURRICANE CLIPS

TRUSS ANCHORS AND RIVETED TRUSS ANCHORS

MATERIAL

1. WOOD
WOOD MEMBERS MUST BE S.P. NO. 1, SPECIFIC GRAVITY 0.55 OR AN APPROVED MEMBER WITH AN EQUIVALENT GRADE. DESIGN LOADS FOR OTHER SPECIES SHALL BE ADJUSTED PER NDS 2018. WOOD MEMBERS SHALL HAVE A MOISTURE CONTENT NOT EXCEEDING 19 PERCENT (16 PERCENT FOR STRUCTURAL ENGINEERED LUMBER). WOOD MEMBERS MUST BE USED UNDER CONTINUOUSLY DRY CONDITIONS AND WHERE SUSTAINED TEMPERATURES ARE LIMITED TO 100° F.
2. PRESERVATIVE AND FIRE RETARDANT WOOD
CONNECTORS OR FASTENERS USED IN CONTACT WITH PRESERVATIVE-TREATED AND FIRE-RETARDANT-TREATED WOOD SHALL BE IN ACCORDANCE WITH SECTION 2304.10.5.
3. NAIL
NAILS SHALL MEET THE REQUIREMENTS IN TABLE AND THE REQUIREMENTS SPECIFIED IN ASTM F 1667.
4. GFCMU MASONRY
MATERIAL AND QUALITY OF MASONRY CONSTRUCTION MUST COMPLY WITH THE APPLICABLE SECTIONS OF FBC 2020. MINIMUM CONCRETE OR GROUT COMPRESSIVE STRENGTH SHALL BE 1500 PSI. CONCRETE MASONRY SHALL COMPLY WITH ASTM C90
5. CONCRETE
MINIMUM CONCRETE COMPRESSIVE STRENGTH SHALL BE 2500 PSI.
6. STEEL
CONNECTOR STEEL SHALL CONFORM TO ASTM A653 SS GRADE 33, MIN. YIELD 33 KSI, MIN. TENSILE STRENGTH 45 KSI AND MIN. GALVANIZED COATING OF G 60 PER ASTM A653.

GENERAL NOTES:

1. ALLOWABLE LOADS AND ALL FASTENERS ARE BASED ON NATIONAL DESIGN SPECIFICATIONS (NDS) FOR WOOD CONSTRUCTION 2018.
2. DESIGN LOADS ARE BASED ON SOUTHERN YELLOW PINE WOOD SPECIES WITH A SPECIFIC GRAVITY OF 0.55. ALLOWABLE LOADS FOR OTHER SPECIES OR CONDITIONS MUST BE ADJUSTED ACCORDING TO NDS 2018.
3. THIS CATALOG REFLECTS DESIGN CHANGES AND DESIGN ADJUSTMENTS TO SOME NU-VUE PRODUCTS. THE TABLES AND NOTES IN THIS CATALOG SUPERCEDE ALL PREVIOUS DOCUMENTS. NU-VUE RESERVES THE RIGHT TO CHANGE DESIGN SPECIFICATIONS WITHOUT NOTICE AND IS NOT LIABLE FOR SUCH CHANGES.
4. DESIGN LOADS DO NOT INCLUDE 33% INCREASE FOR STEEL AND CONCRETE.
5. ALLOWABLE UPLIFT LOADS HAVE BEEN ADJUSTED FOR LOAD DURATION FACTOR CD OF 1.6. APPLICABLE TO WIND AND EARTHQUAKE LOAD PER NDS 2018.
6. DESIGN CONFORMS TO 2020 EDITION OF FLORIDA BUILDING CODE.
7. COMBINED LOAD OF UPLIFT, L1 AND L2 SHALL SATISFY THE FOLLOWING EQUATION.
$$\frac{\text{ACTUAL UPLIFT}}{\text{ALLOWABLE UPLIFT}} + \frac{\text{ACTUAL L1}}{\text{ALLOWABLE L1}} + \frac{\text{ACTUAL L2}}{\text{ALLOWABLE L2}} \leq 1.0$$
8. ALL TESTS HAVE BEEN CONDUCTED IN ACCORDANCE WITH ASTM D-1761.
9. THE DESIGN LOADS LISTED ARE BASED ON THE LEAST VALUE OF THE FOLLOWING:
 1. THE LOWEST ULTIMATE LOAD DIVIDED BY THREE.
 2. THE LOWEST LOAD PRODUCING 1/8" DEFLECTION.
 3. CALCULATIONS BASED ON NDS, AISI AND OTHER APPLICABLE CODES.

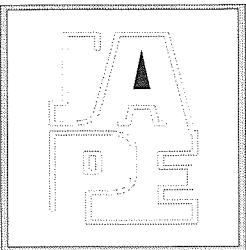
REFERENCES:

1. AISC 360-16
2. AISI S100-16
3. FBC 2020
4. ACI 318-19

PRODUCT REVISED
as complying with the Florida
Building Code
NOA-No. 23-0210.01

Expiration Date 07/30/2025

By K. Huns
Miami-Dade Product Control



JAVAD AHMAD PE, inc

8800 NW 23rd St, Miami FL

33172

Ph: (305) 424-8001

support@ja-pe.com

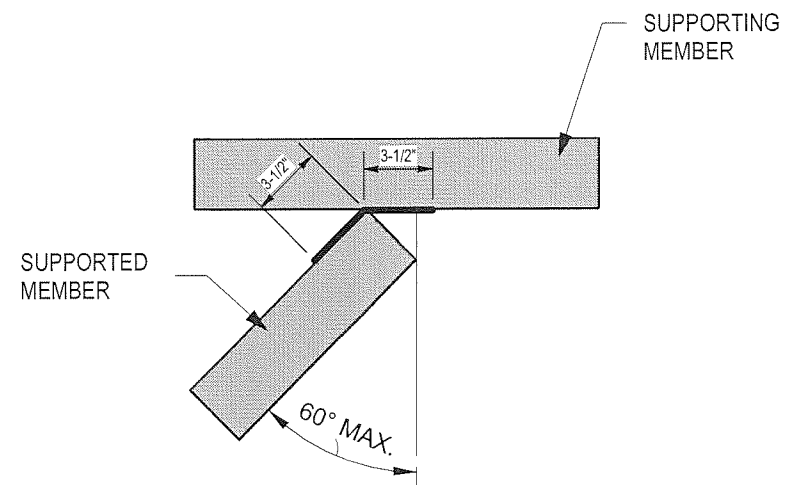
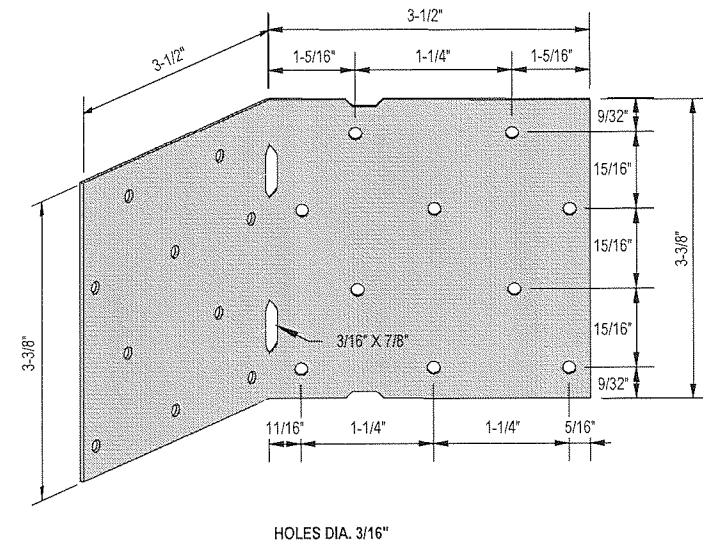
CONSULTING • STRUCTURAL DESIGN • FACADES • BUILDING ENVELOPE • SYSTEM DESIGN • PRODUCT APPROVALS

[illegible]

18/01/2023	date:	AS INDICATED	BVS	BS	DRAWING NO. 7A-1958 1-22
	scale:	1:1	1:1	1:1	

Eng: JAVAD AHMAD
CIVIL
FLA PE #70592
01/01/2023
STATE OF FLORIDA

NVSNP3



NVSNP3 INSTALLATION

TABLE 1
SKEWED NAIL PLATE

PRODUCT CODE	STEEL GAUGE	FASTENERS	ALLOWABLE LOADS (lbs.)	
		EACH END	GRAVITY	UPLIFT
NVSNP3	16	(6) 8d X 1-1/2"	570	570

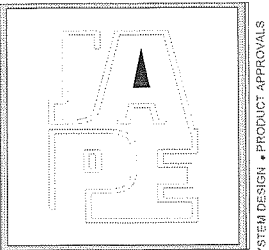
NOTES:

1. SEE GENERAL NOTES, SHEET 1.
2. USE 6 NAIL HOLES IN EACH FLANGE.
3. DO NOT BEND NAIL PLATE MORE THAN ONCE.
4. SUPPORTING MEMBER SHALL BE IN THE ACUTE ANGLE SIDE WITH OTHER FLANGE BEHIND THE END OF SUPPORTED MEMBER (SEE SKETCH).

PRODUCT REVISED
as complying with the Florida
Building Code
NOA-No. 23-0210.01

Expiration Date 07/30/2025

By 
Miami-Dade Product Control



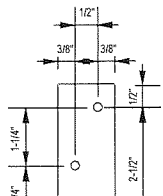
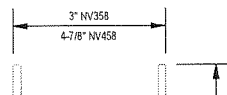
JAVAD AHMAD PE, inc
8800 NW 23rd St, Miami FL
33172
Ph: (305) 424-8001
support@ja-pe.com

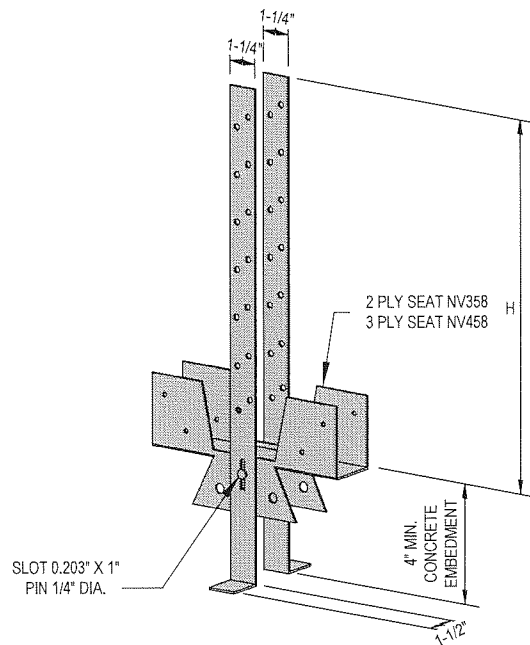
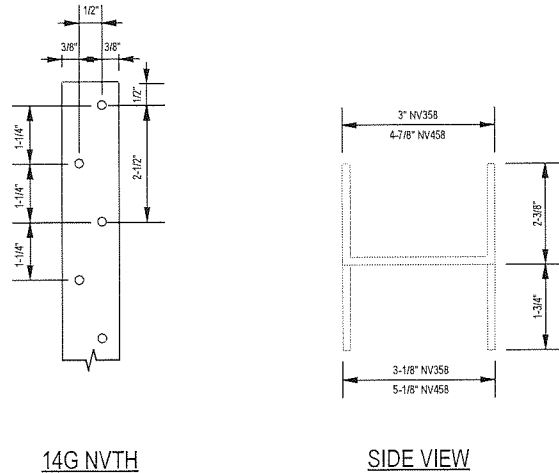
[illegible]

NV358 & NV458

TABLE 2
NV358 - 14G DOUBLE NVTH STRAPS WITH 2 PLY 18G SEAT

ASSEMBLY PRODUCT CODE	14G STRAP PRODUCT CODE	DIMENSION H (in.)	TOTAL NO. OF FASTENERS IN 2 STRAPS 10d X 3"	TOTAL NO. OF FASTENERS IN SEAT 10d X 3"	ALLOWABLE LOADS (lbs.)		
					UPLIFT	L1	L2
NV358-12	NVTH16	12	8	8	2245	1961	1839
NV358-14	NVTH18	14	10	8	2525	2206	2068
NV358-16	NVTH20	16	12	8	2806	2452	2298
NV358-20	NVTH24	20	14	8	3086	2697	2528
NV358-22	NVTH26	22	16	8	3367	2942	2758
NV358-24	NVTH28	24					
NV358-26	NVTH30	26					
NV358-32	NVTH36	32					
NV358-44	NVTH48	44					

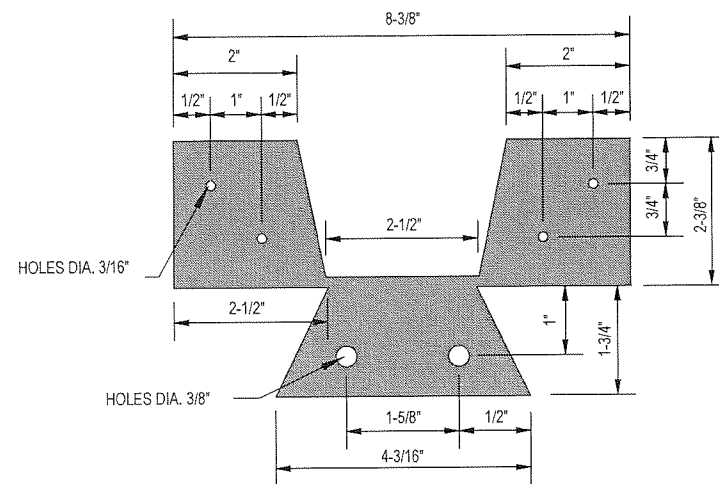


NOTES:

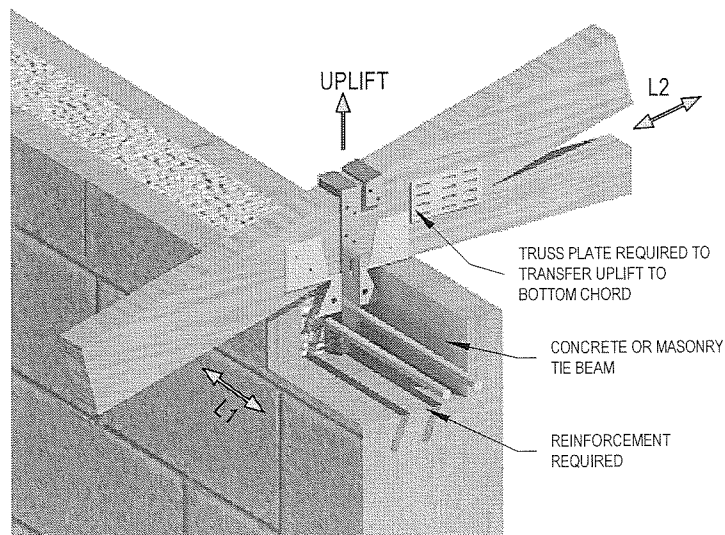
1. MINIMUM 4" EMBEDMENT INTO CONCRETE.
2. NAILS ARE NECESSARY IN STRAPS AND SEAT TO ACHIEVE DESIGN LOADS.
3. NAILS THROUGH CHORDS SHALL NOT FORCE THE TRUSS PLATE ON THE OPPOSITE SIDE.
4. FOR GENERAL NOTES, SEE SHEET 1.

TABLE 3
NV458 - 14G DOUBLE NVTH STRAPS WITH 3 PLY 18G SEAT

ASSEMBLY PRODUCT CODE	14G STRAP PRODUCT CODE	DIMENSION H (in.)	TOTAL NO. OF FASTENERS IN 2 STRAPS 10d X 3"	TOTAL NO. OF FASTENERS IN SEAT 10d X 3"	ALLOWABLE LOADS (lbs.)		
					UPLIFT	L1	L2
NV458-12	NVTH16	12	8	8	2245	2783	2078
NV458-14	NVTH18	14	10	8	2525	3131	2338
NV458-16	NVTH20	16	12	8	2806	3479	2597
NV458-20	NVTH24	20	14	8	3086	3827	2857
NV458-22	NVTH26	22	16	8	3367	4175	3117
NV458-24	NVTH28	24					
NV458-26	NVTH30	26					
NV458-32	NVTH36	32					
NV458-44	NVTH48	44					



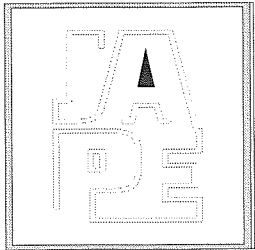
NV358 & NV458
18G SEAT DETAIL



PRODUCT REVISED
as complying with the Florida
Building Code
NOA-No. 23-0210.01

Expiration Date 07/30/2025

By 
Miami-Dade Product Control



JAVAD AHMAD PE, inc

8800 NW 23rd St, Miami FL

33172

Ph: (305) 424-8001

support@ja-pe.com

CONSULTING • STRUCTURAL DESIGN • FACADES • BUILDING ENVELOPE • SYSTEM DESIGN • PRODUCT APPROVALS

CLIENT: NIJ-VUE INDUSTRIES, INC.

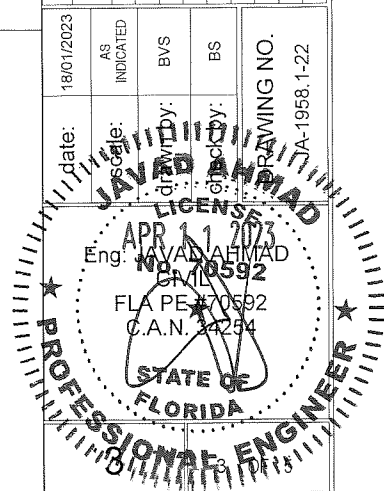
PROJECT:

NOA NO. 20-0526.05 REVISION

[illegible]

13/01/2023	AS INDICATED	BVS	BS	
date:	scale:	drawn by:	checked by:	drawing NO.

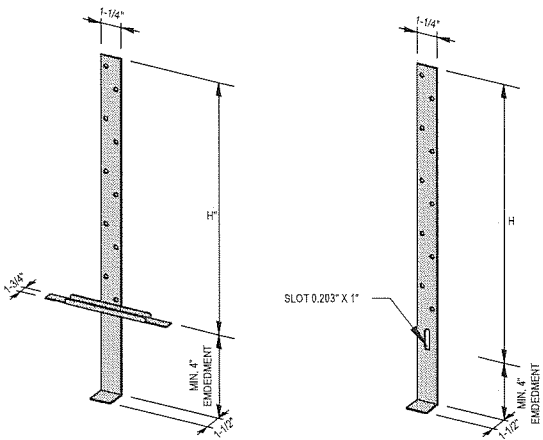
JAVAD AHMAD
LICENSEE
 APR 11 2023
 Eng. JAVAD AHMAD
 C.N. 70592
 FLA PE 70592
 C.A.N. 34254
 STATE OF
 FLORIDA



NVHCR/L & NVTH / NVTHS

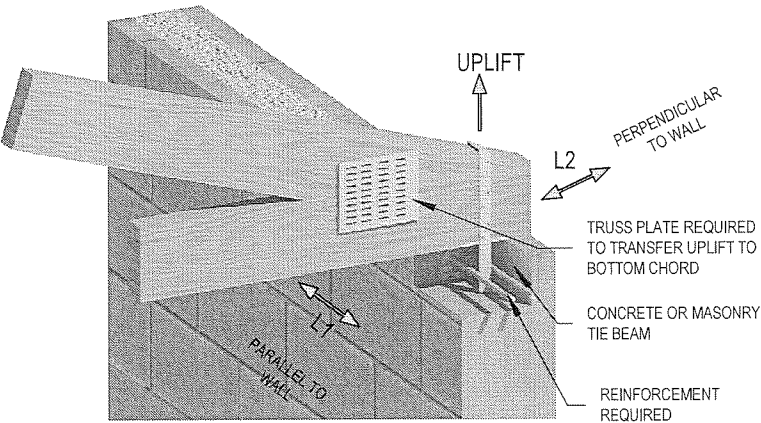
TABLE 4
HURRICANE CLIPS

PRODUCT CODE	DESCRIPTION	GAUGE	FASTNERS 10d X 1-1/2"		ALLOWABLE LOADS (lbs)		
			HEADER	JOIST	UPLIFT	L1	L2
NVHCR	HURRICANE CLIP - RIGHT	18	6	6	525	253	333
NVHCL	HURRICANE CLIP - LEFT	18	6	6	525	253	333

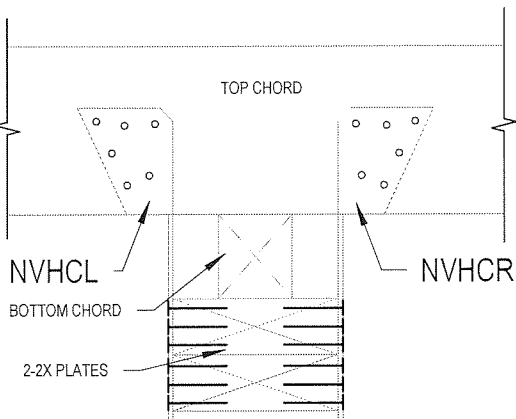


NVTHS

NVTH



TYPICAL NVTH/NVTHS INSTALLATION



CROSS-SECTION

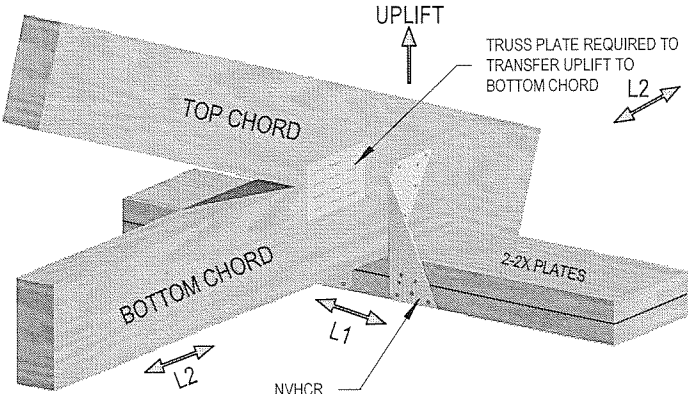
NOTES:

1. SEE GENERAL NOTES, SHEET 1.
2. FOR UPLIFT, USE TWO CLIPS, ONE ON EACH SIDE TO COMPLY WITH SECTION 2321.7 OF THE FBC

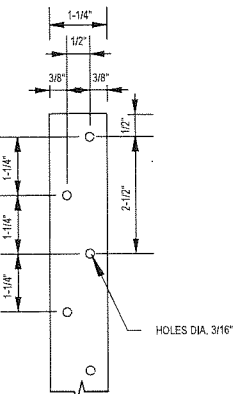
TABLE 5
TRUSS ANCHORS NVTH & RIVETED TRUSS ANCHORS WITH SEAT NVTHS

PRODUCT CODE		H	GAUGE	
			LENGTH(IN)	SEAT STRAP
NVTH-16	NVTHS-212	12	18	14
NVTH-18	NVTHS-214	14	18	14
NVTH-20	NVTHS-216	16	18	14
NVTH-22	NVTHS-218	18	18	14
NVTH-24	NVTHS-220	20	18	14
NVTH-26	NVTHS-222	22	18	14
NVTH-28	NVTHS-224	24	18	14
NVTH-30	NVTHS-226	26	18	14
NVTH-36	NVTHS-232	32	18	14
NVTH-48	NVTHS-244	44	18	14

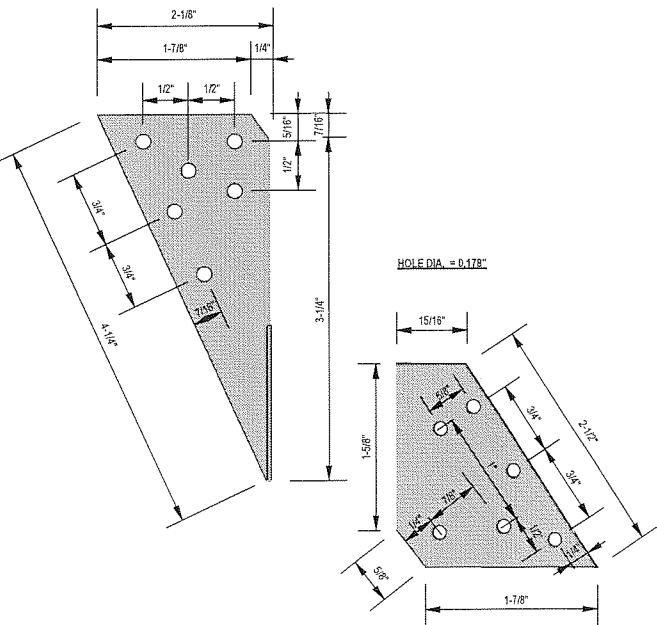
NO. OF FASTNERS IN EACH STRAP 10d x1-1/2"	MAXIMUM UPLIFT LOADS (lbs)		
	UPLIFT	L1	L2
5	1032	560	525
6	1222	671	630
7	1275	783	735
8	1329	783	735
9	1383	783	735
10	1437	783	735
11	1490	783	735
12	1544	783	735
13	1598	783	735



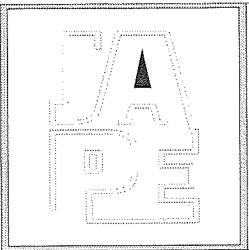
TYPICAL NVHCR/L INSTALLATION



NVTH, NVTHS FRONT VIEW



PRODUCT REVISED
as complying with the Florida
Building Code
NOA-No. 23-0210.01
Expiration Date 07/30/2025
By [Signature]
Miami-Dade Product Control



JAVAD AHMAD PE, inc
8800 NW 23rd St, Miami FL
33172
Ph: (305) 424-8001
support@ja-pe.com

CLIENT :	NU-VUE INDUSTRIES, INC
PROJECT :	
	NOA NO. 20-0526.05 REVISION

REVISION	DESCRIPTION	
	BY	DATE
No.		

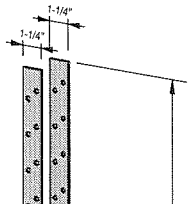
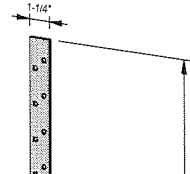
18/01/2023
date: AS INDICATED
scale: BVS
drawn by: BS
checked by: BS
drawing NO. JA-1958.1-22
JAVAD AHMAD
Eng: JAVAD AHMAD
No. 70592
FLA PE 70592
C.A.N. 34254
APR 11 2023
STATE OF FLORIDA
PROFESSIONAL ENGINEER

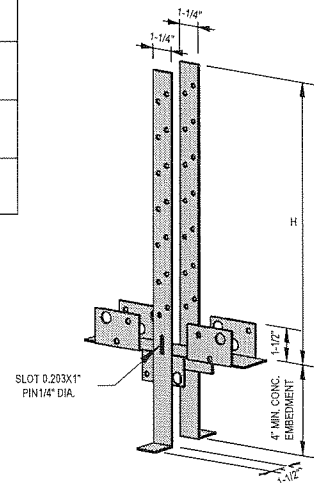
NVSTA & NVHTA

TABLE 6

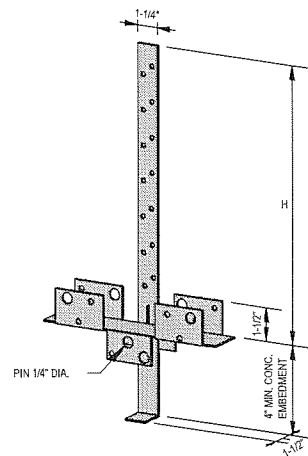
NVSTA - HEAVY DUTY ANCHORS WITH 14G NVTH STRAPS AND 1 PLY 20G SEAT

ASSEMBLY PRODUCT CODE	14G STRAP PRODUCT CODE	DIMENSION H (in.)	TOTAL NO. OF FASTENERS IN STRAP 10d X 1-1/2"	TOTAL NO. OF FASTENERS IN 20 GA. SEAT 10d X 1-1/2"	ALLOWABLE LOADS (lbs.)		
					UPLIFT*	L1*	L2*
NVSTA-12H	NVTH16	12	5	6	1308	700	1049
NVSTA-14H	NVTH18	14	6	6	1426	760	1144
NVSTA-16H	NVTH20	16	7	6	1545	823	1239
NVSTA-20H	NVTH24	20	8	6	1664	887	1335
NVSTA-22H	NVTH26	22	9	6	1783	950	1430
NVSTA-24H	NVTH28	24					
NVSTA-26H	NVTH30	26					
NVSTA-32H	NVTH36	32					
NVSTA-44H	NVTH48	44					

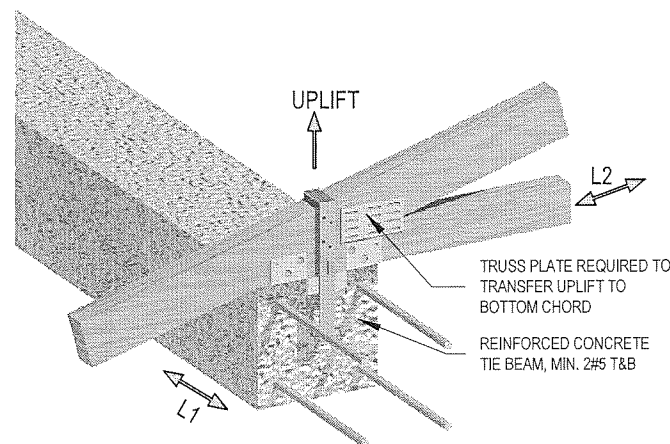





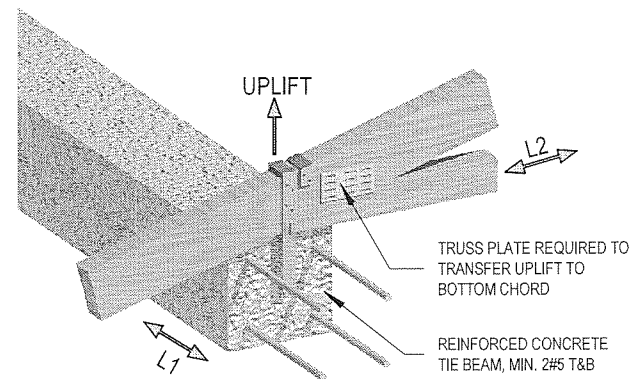
NVHTA WITH 14G DOUBLE
NVTH STRAP



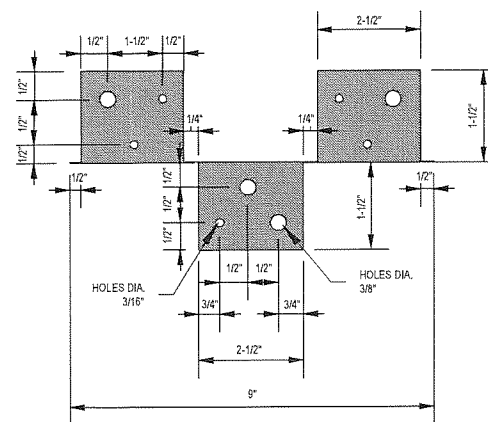
NVSTA WITH 14G SINGLE NVTH STRAP



NVSTA 12H TO 44H INSTALLATION



NVHTA
12H TO 44H INSTALLATION

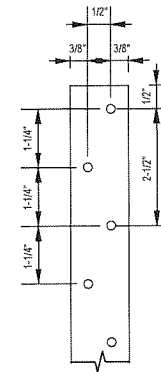


20 GA. SEAT

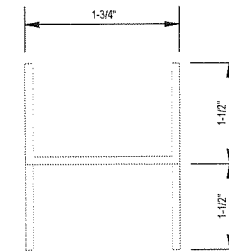
TABLE 7

NVHTA - HEAVY DUTY ANCHORS WITH 14G DOUBLE NVTH STRAPS AND 1 PLY 20G SEAT

ASSEMBLY PRODUCT CODE	14G STRAP PRODUCT CODE	DIMENSION H (in.)	TOTAL NO. OF FASTENERS IN STRAP 10d X 1-1/2"	TOTAL NO. OF FASTENERS IN 20 GA. SEAT 10d X 1-1/2"	ALLOWABLE LOADS (lbs.)			
					UPLIFT*	UPLIFT**	L1*	L2*
NVHTA-12H	NVTH16	12	10	6	1772	2078	1050	1450
NVHTA-14H	NVTH18	14	12	6	1994	2338	1181	1631
NVHTA-16H	NVTH20	16	14	6	2215	2598	1312	1812
NVHTA-20H	NVTH24	20	16	6	2437	2858	1444	1994
NVHTA-22H	NVTH26	22	18	6	2658	3117	1575	2175
NVHTA-24H	NVTH28	24						
NVHTA-26H	NVTH30	26						
NVHTA-32H	NVTH36	32						
NVHTA-44H	NVTH48	44						



14G NVTH
FRONT VIEW



SIDE VIEW
20 GA. SEAT

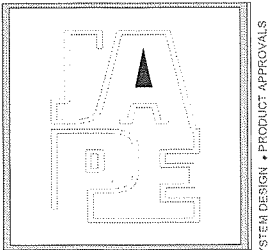
NOTES:

1. SEE GENERAL NOTES, SHEET 1.
2. NAILS ARE NECESSARY IN STRAPS AND SEAT TO ACHIEVE DESIGN LOADS.
3. NAILS THROUGH CHORDS SHALL NOT FORCE THE TRUSS PLATE.
4. **FOR HIGHER UPLIFT LOADS, CONCRETE SHALL BE 3000PSI.
5. *BASED ON MINIMUM 2500 PSI CONCRETE.

PRODUCT REVISED
as complying with the Florida
Building Code
NOA-No. 23-0210.01

Expiration Date 07/30/2025

By 
Miami-Dade Product Control



JAVAD AHMAD PE, inc

8800 NW 23rd St, Miami FL

33172

Ph: (305) 424-8001

support@ja-pe.com

CONSULTING • STRUCTURAL DESIGN • FACADES • BUILDING ENVELOPE • SYSTEM DESIGN • PRODUCT APPROVALS

CLIENT :
NU-VUE INDUSTRIES, INC
PROJECT :
NOA NO. 20-0526.05 REVISION

[illegible]

16/01/2023	AS INDICATED	BVS	BS	EXPIRING NO.: 1958-1-22
date:	scale:	of	by:	

JAVAD AHMAD
 LICENSE
 No. 00592
 CML
 FLA REG. # 0592
 C.A. # 84254
 APR 11 2023
 STATE OF
 FLORIDA
 PROFESSIONAL ENGINEER