



DEPARTMENT OF REGULATORY AND ECONOMIC RESOURCES (RER)
BOARD AND CODE ADMINISTRATION DIVISION

MIAMI-DADE COUNTY
PRODUCT CONTROL SECTION
11805 SW 26 Street, Room 208
Miami, Florida 33175-2474
T (786) 315-2590 F (786) 315-2599

www.miamidade.gov/economy

NOTICE OF ACCEPTANCE (NOA)

N.R. Architectural Products, Inc.
4348 Westroads Drive
West Palm Beach, Florida 33407

SCOPE:

This NOA is being issued under the applicable rules and regulations governing the use of construction materials. The documentation submitted has been reviewed and accepted by Miami-Dade County RER-Product Control Section to be used in Miami Dade County and other areas where allowed by the Authority Having Jurisdiction (AHJ).

This NOA shall not be valid after the expiration date stated below. The Miami-Dade County Product Control Section (In Miami Dade County) and/or the AHJ (in areas other than Miami Dade County) reserve the right to have this product or material tested for quality assurance purposes. If this product or material fails to perform in the accepted manner, the manufacturer will incur the expense of such testing and the AHJ may immediately revoke, modify, or suspend the use of such product or material within their jurisdiction. RER reserves the right to revoke this acceptance, if it is determined by Miami-Dade County Product Control Section that this product or material fails to meet the requirements of the applicable building code.

This product is approved as described herein, and has been designed to comply with the High Velocity Hurricane Zone of the Florida Building Code.

DESCRIPTION: Postless Inclined Glass Railing System

APPROVAL DOCUMENT: Drawing No. AD16-08, titled "Postless Inclined Glass Railing W/ Laminated Glass", sheets 1 through 7 of 7, prepared by MCY Engineering, Inc., dated May 04, 2023, signed and sealed by Yiping Wang, P.E., on May 05, 2023, bearing Miami-Dade County Product Control Revision stamp with the Notice of Acceptance number and the expiration date by the Miami-Dade County Product Control Section.

MISSILE IMPACT RATING: Small Missile Impact

LABELING: Each unit shall bear a permanent label with the manufacturer's name or logo, city, state and the following statement: "Miami-Dade County Product Control Approved", unless otherwise noted herein.

RENEWAL of this NOA shall be considered after a renewal application has been filed and there has been no change in the applicable building code negatively affecting the performance of this product.

TERMINATION of this NOA will occur after the expiration date or if there has been a revision or change in the materials, use, and/or manufacture of the product or process. Misuse of this NOA as an endorsement of any product, for sales, advertising or any other purposes shall automatically terminate this NOA. Failure to comply with any section of this NOA shall be cause for termination and removal of NOA.

ADVERTISEMENT: The NOA number preceded by the words Miami-Dade County, Florida, and followed by the expiration date may be displayed in advertising literature. If any portion of the NOA is displayed, then it shall be done in its entirety.

INSPECTION: A copy of this entire NOA shall be provided to the user by the manufacturer or its distributors and shall be available for inspection at the job site at the request of the Building Official. The structural adequacy of the supporting structures is not part of this approval & shall be reviewed by the corresponding Building Dept.

This NOA revises and renews NOA #16-0502.06 and consists of this page 1, evidence submitted pages E-1 and E-2 as well as approval document mentioned above.

The submitted documentation was reviewed by **Helmy A. Makar, P.E., M.S.**

MIAMI-DADE COUNTY
APPROVED

Helmy A. Makar
06/22/2023

NOA No. 23-0523.02
Expiration Date: 06/22/2028
Approval Date: 06/22/2023
Page 1

NOTICE OF ACCEPTANCE: EVIDENCE SUBMITTED

1. EVIDENCE SUBMITTED UNDER PREVIOUS APPROVAL #16-0502.06

A. DRAWINGS

1. Drawing No. AD16-08, titled "*Postless Inclined Glass Railing W/ Laminated Glass*", sheets 1 through 7 of 7, prepared by MCY Engineering, Inc., dated April 01, 2016, signed and sealed by Yiping Wang, P.E.

B. TESTS

1. Test Report No. **BT-NR-16-001B**, by Blackwater Testing, Inc., dated April 14, 2016, signed and sealed by Yamil Gerardo Kuri, P.E., testing Postless Inclined Glass Railing for concentrated and distributed loads per FBC 1618.4.6, Impacts per ANSI Z97.1, Small Missile Impact TAS 201-94, Static Wind Load per TAS 202-94.
2. Test Report No. **BT-NR-15-004**, by Blackwater Testing, Inc., dated December 10, 2015, signed and sealed by Yamil Gerardo Kuri, P.E., testing Postless Inclined Glass Railing for concentrated and distributed loads per FBC 1618.4.6, Impacts per ANSI Z97.1, Small Missile Impact TAS 201-94, Static Wind Load per TAS 202-94.
3. Test Report No. **BT-NR-17-002**, by Blackwater Testing, Inc., dated May 05, 2017, signed and sealed by Constantin Bortes, P.E., testing Postless Inclined Glass Railing for concentrated and distributed loads per FBC 1618.4.6, Impacts per ANSI Z97.1, Small Missile Impact TAS 201-94, Static Wind Load per TAS 202-94.

C. CALCULATIONS


1. Calculation titled "Postless Inclined Glass Railing w/Laminated Glass – Small Missile Impact", 67 sheets, dated May 09, 2017, prepared by MCY Engineering, Inc., signed and sealed by Yiping Wang, P.E.

D. QUALITY ASSURANCE

1. By Miami-Dade County Department of Regulatory and Economic Resources (RER).

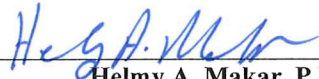
E. MATERIAL CERTIFICATIONS

1. None.

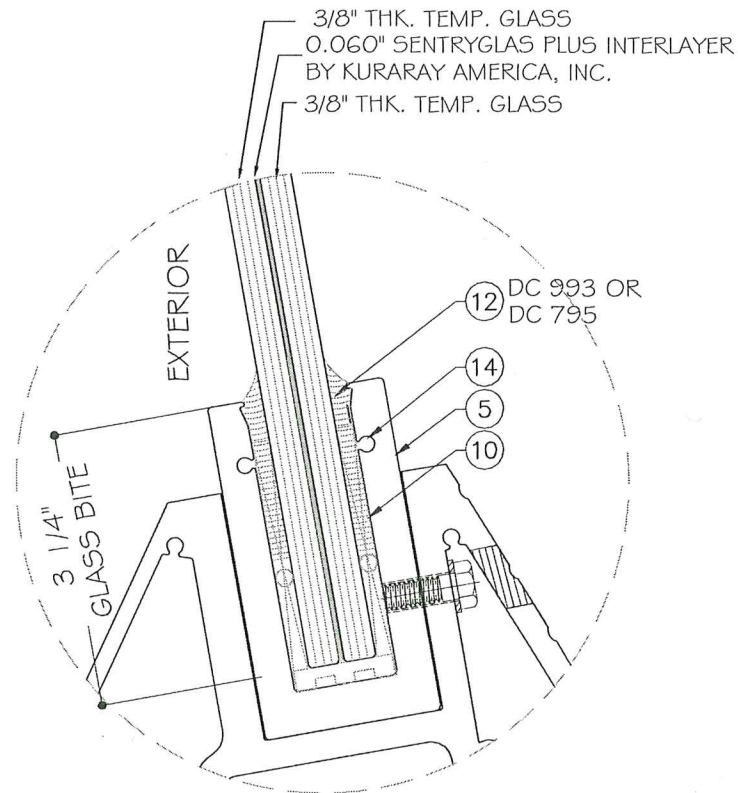

Helmy A. Makar, P.E., M.S.
Product Control Section Supervisor
NOA No. 23-0523.02
Expiration Date: 06/22/2028
Approval Date: 06/22/2023

NOTICE OF ACCEPTANCE: EVIDENCE SUBMITTED

- 2. NEW EVIDENCE SUBMITTED
- A. DRAWINGS
 - 1. Drawing No. AD16-08, titled “*Postless Inclined Glass Railing W/ Laminated Glass*”, sheets 1 through 7 of 7, prepared by MCY Engineering, Inc., dated May 04, 2023, signed and sealed by Yiping Wang, P.E., on May 05, 2023.
- B. TESTS
 - 1. None.
- C. CALCULATIONS
 - 1. Calculation titled “ *Postless Inclined Glass Railing w/Laminated Glass – Small Missile Impact* ”, 67 sheets, dated May 05, 2023, prepared by MCY Engineering, Inc., signed and sealed by Yiping Wang, P.E., on May 05, 2023.
- D. QUALITY ASSURANCE
 - 1. By Miami-Dade County Department of Regulatory and Economic Resources (RER).
- E. MATERIAL CERTIFICATIONS
 - 1. None.



Helmy A. Makar, P.E., M.S.
Product Control Section Supervisor
NOA No. 23-0523.02
Expiration Date: 06/22/2028
Approval Date: 06/22/2023



GL-1

1 3/16" NOMINAL OVERALL
LAMINATED GLASS

NOTE:
GLASS COMPLIES WITH ASTM E1300-09
(3 SEC. GUSTS).

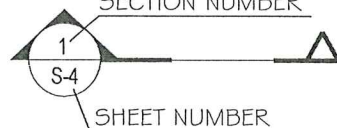
POSTLESS INCLINED GLASS RAILING W/ LAMINATED GLASS

- THIS PRODUCT HAS BEEN DESIGNED AND TESTED TO COMPLY WITH THE REQUIREMENTS OF THE 7TH FLORIDA BUILDING CODE (2020) INCLUDING HIGH VELOCITY HURRICANE ZONE (HVHZ).
- PRODUCT IS RATED FOR SMALL MISSILE IMPACT.
- ANCHORS SHALL BE AS LISTED, SPACED AS SHOWN ON DETAILS. ANCHORS EMBEDMENT TO BASE MATERIAL SHALL BE BEYOND WALL DRESSING OR STUCCO.
- ANCHORING OR LOADING CONDITIONS NOT SHOWN IN THESE DETAILS ARE NOT PART OF THIS APPROVAL.
- METAL STRUCTURES NOT BY N.R. ARCHITECTURAL PRODUCTS, INC. MUST SUPPORT LOADS IMPOSED BY RAILING SYSTEM AND TRANSFER THEM TO THE BUILDING STRUCTURE.
- MATERIALS INCLUDING BUT NOT LIMITED TO STEEL/METAL SCREWS THAT COME INTO CONTACT WITH OTHER DISSIMILAR MATERIALS SHALL MEET THE REQUIREMENTS OF THE 7TH FLORIDA BUILDING CODE (2020) SECTION AS APPLICABLE.
- THE DESIGN LOADS SHOWN IN THIS DOCUMENT ARE ALLOWABLE DESIGN LOADS. ULTIMATE DESIGN LOAD OBTAINED FROM ASCE 7-16, MULTIPLY BY 0.6, SHALL BE LESS THAN OR EQUAL TO MAX. ALLOWABLE DESIGN LOAD IN THIS DOCUMENT.

TESTED WITH ANSI Z97.1

SMALL MISSILE IMPACT

ABBREVIATIONS AND SYMBOLS	
D.L.O. - DAYLITE OPENING	SECTION NUMBER
LG. - LONG	
O.C. - ON CENTER	
TEMP. - TEMPERED	
THK. - THICKNESS	
W/ - WITH	
W/O - WITHOUT	
	SHEET NUMBER



MIAMI-DADE COUNTY
PRODUCT REVISED
 as complying with the Florida
 Building Code
 Acceptance No. 23-0523.02
 Expiration Date 06/22/2028
 By *[Signature]*
 Miami Dade Product Control

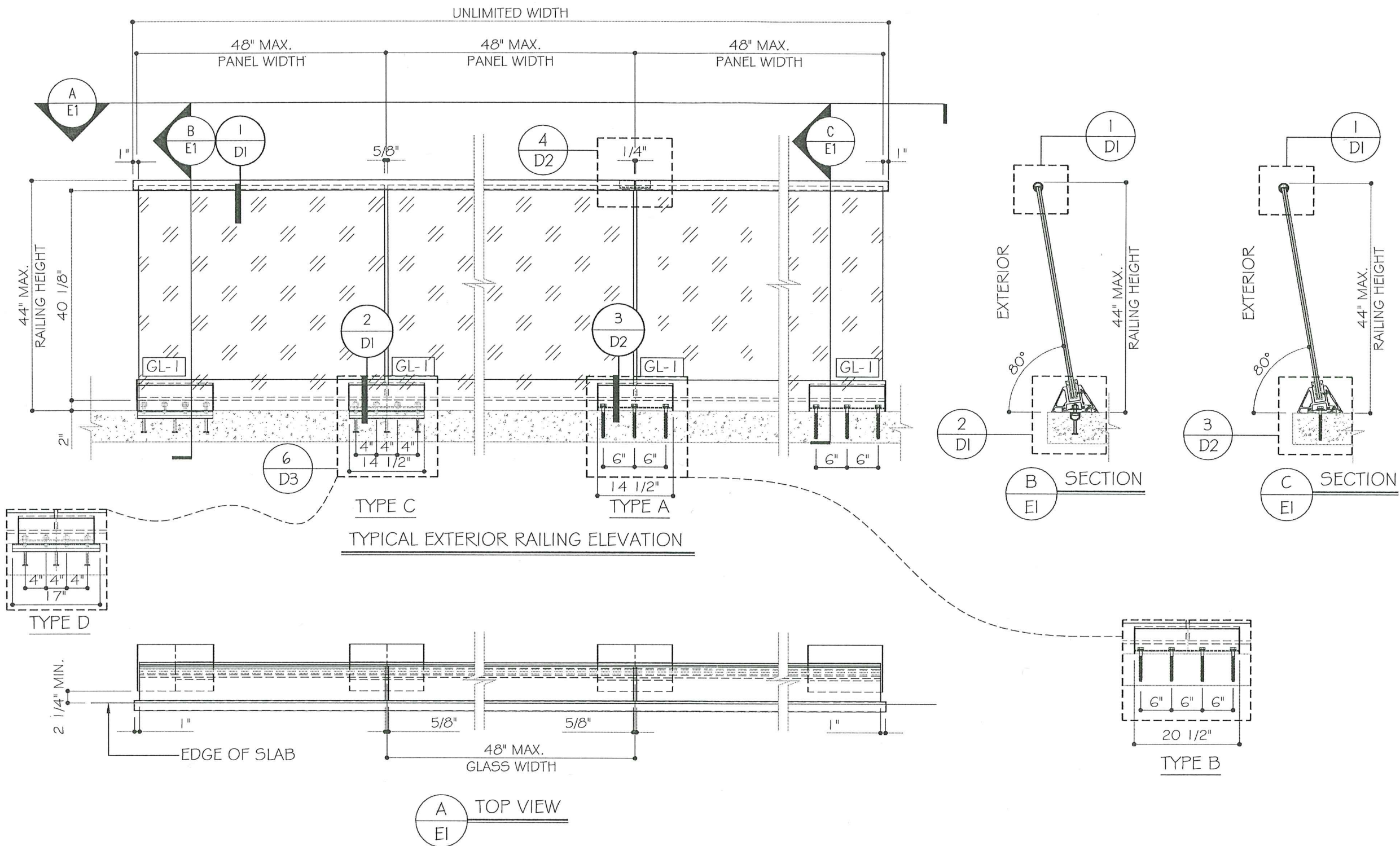
YIPING WANG, E.
 FLORIDA REGISTRATION
 No. 55983
 C.A.N. 55983
 STATE OF FLORIDA
 PROFESSIONAL ENGINEER
 May 5, 2023

COVER
 DATE 05/04/2023
 SCALE AS SHOWN
 DRAWN T.G.
 PROJECT 23-077
 DRAWING NO.
 AD16-08
 1 OF 7

POSTLESS INCLINED GLASS RAILING W/ LAMINATED GLASS (S.M.I.)
N.R. ARCHITECTURAL PRODUCTS, INC.
 4348 WESTROADS DRIVE
 RIVIERA BEACH, FL 33407
 TEL: (561) 844-1121 FAX: (561) 844-6131

MCY ENGINEERING, INC.
 GLAZING CONSULTANTS
 12781 MIRAMAR PARKWAY #301 P: 305.271 0117
 MIRAMAR FL 33027 F: 305.588 5224
 www.MCYEngineering.com MCY@mcyengineering.com

NO.	DATE	DESCRIPTION
1.	05.04.23	RENEWAL



ALLOWABLE DESIGN LOAD			
(FOR SIZES SHOWN ABOVE OR SMALLER) AS PERMITTED BY FBC WITH ANCHOR TYPE OPTIONS			
TYPE A	TYPE B	TYPE C	TYPE D
+100.0 psf -100.0 psf	+126.0 psf -126.0 psf	+112.0 psf -112.0 psf	+122.0 psf -122.0 psf
SEE SHEET D2		SEE SHEET D1 & D3	

MIAMI-DADE COUNTY

PRODUCT REVISED
as complying with the Florida
Building Code
Acceptance No. 23-0523.02
Expiration Date 06/22/2024

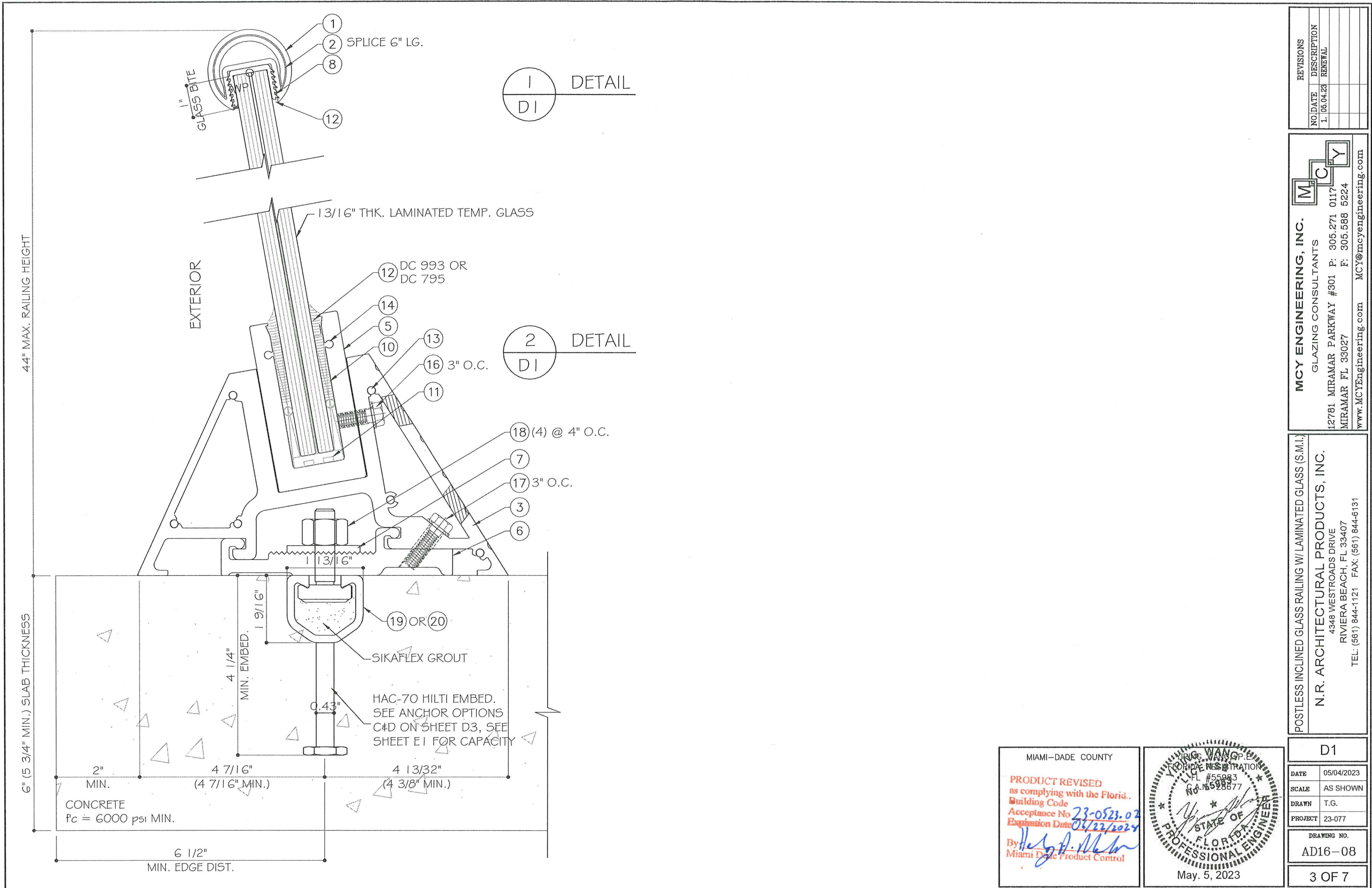
By *[Signature]*
Miami Dade Product Control

YIPING WANG, E.
FLORIDA REGISTRATION
#55983
C.A.N. 55983

[Signature]
STATE OF
FLORIDA
PROFESSIONAL ENGINEER

May. 5, 2023

REVISIONS NO. DATE DESCRIPTION 1. 05.04.23 RENEWAL	
MCY ENGINEERING, INC. GLAZING CONSULTANTS 12761 MIRAMAR PARKWAY #301 P: 305.271 0117 MIRAMAR FL 33027 F: 305.588 5224 www.MCYEngineering.com MCY@mcyengineering.com	
POSTLESS INCLINED GLASS RAILING W/ LAMINATED GLASS (S.M.I.) N.R. ARCHITECTURAL PRODUCTS, INC. 4348 WESTROADS DRIVE RIVIERA BEACH, FL 33407 TEL: (561) 844-1121 FAX: (561) 844-6131	
E1	
DATE	05/04/2023
SCALE	AS SHOWN
DRAWN	T.G.
PROJECT	23-077
DRAWING NO. AD16-08	
2 OF 7	



REVISIONS	
NO.	DATE
1	05.04.23
RENEWAL	

MCY

ENGINEERING, INC.

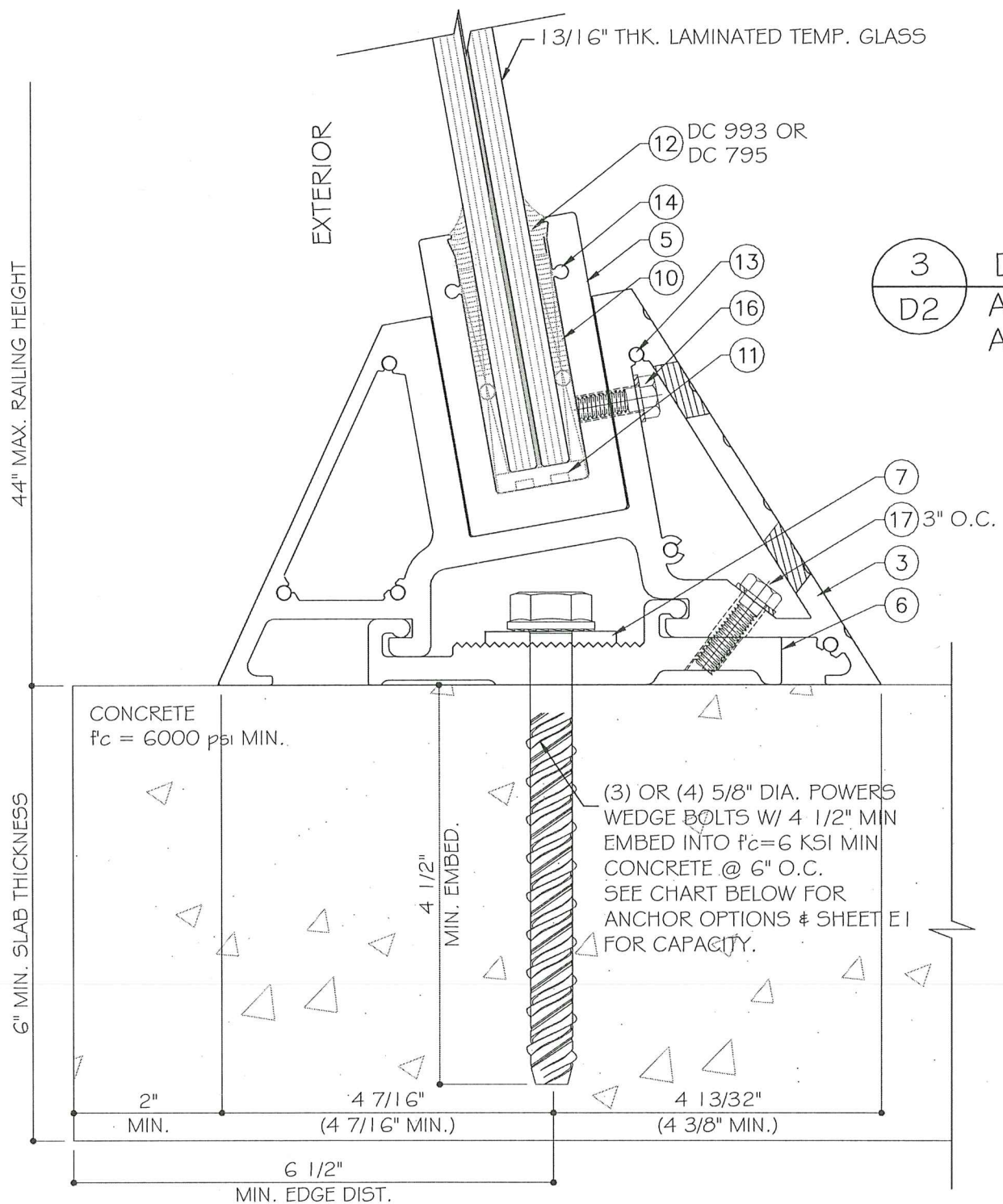
GLAZING CONSULTANTS
12781 MIRAMAR PARKWAY #301 P: 305.271 0117
MIRAMAR FL 33027 F: 305.588 5224
www.MCYEngineering.com MCY@mcyengineering.com

POSTLESS INCLINED GLASS RAILING W/ LAMINATED GLASS (S.M.I.)
N.R. ARCHITECTURAL PRODUCTS, INC.
4348 WESTROADS DRIVE
RIVIERA BEACH, FL 33407
TEL: (561) 844-1121 FAX: (561) 844-6131

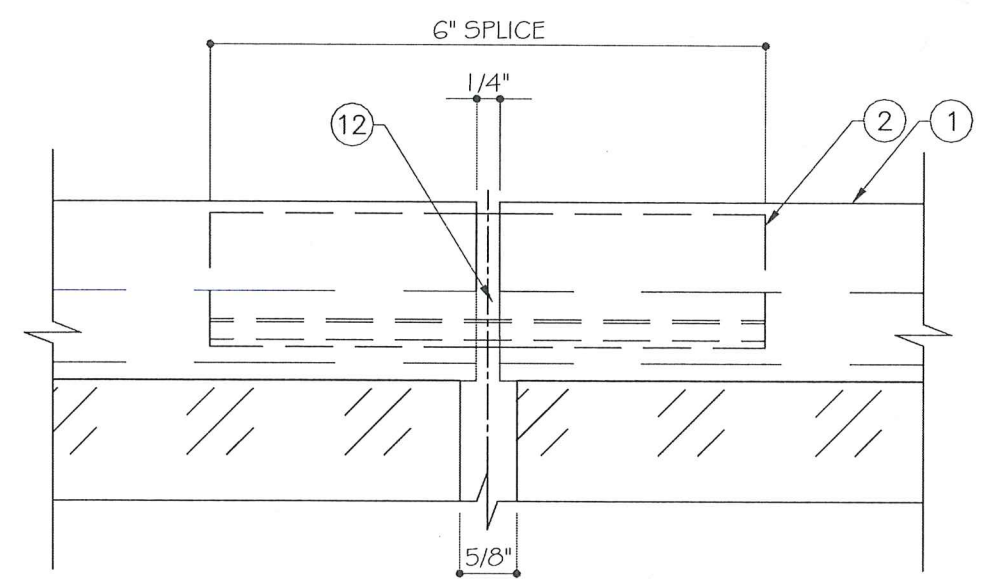
MIAMI-DADE COUNTY
PRODUCT REVISED
as complying with the Florida..
Building Code
Acceptance No 23-0523.02
Expiration Date 06/22/2024
By: *[Signature]*
Miami Dade Product Control

YONG WANG
Professional Engineer
FL #55983
No. 1559877
May 5, 2023

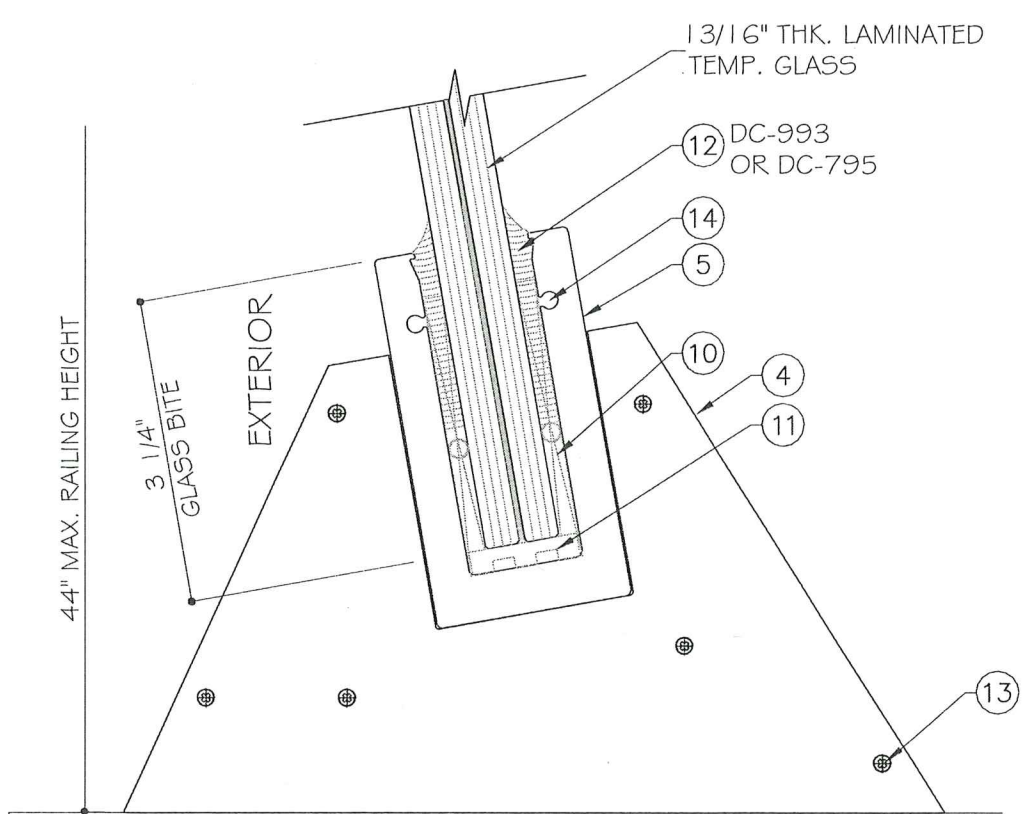
D1	
DATE	05/04/2023
SCALE	AS SHOWN
DRAWN	T.G.
PROJECT	23-077
DRAWING NO.	
AD16-08	
3 OF 7	



3
D2
DETAIL
ANCHOR TYPE A
ANCHOR TYPE B



TOP RAILING
SPLICE DETAIL 4
D2



5
D2
DETAIL
END PANEL
CLOSURE

ANCHOR TYPE	ITEM ③ #⑥ LENGTH	# OF ANCHORS PER CHANNEL	ANCHOR SPACING
A	14 1/2"	3	6"
B	20 1/2"	4	6"

MIAMI-DADE COUNTY
PRODUCT REVISED
 as complying with the Florida Building Code
 Acceptance No. 23-0523-02
 Expiration Date 06/23/2024
 By: *[Signature]*
 Miami Dade County Control

YONG WANG
 LICENSED PROFESSIONAL ENGINEER
 FL #55983
 No. 15598677
 STATE OF FLORIDA
 May 5, 2023

REVISIONS	
NO.	DATE DESCRIPTION
1.	05.04.23 RENEWAL

MCY ENGINEERING, INC.
 GLAZING CONSULTANTS
 12781 MIRAMAR PARKWAY #301 P: 305.271 0117
 MIRAMAR FL 33027 F: 305.588 5224
 www.MCYEngineering.com MCY@mcyengineering.com

N.R. ARCHITECTURAL PRODUCTS, INC.
 4348 WESTROADS DRIVE
 RIVIERA BEACH, FL 33407
 TEL: (561) 844-1121 FAX: (561) 844-6131

POSTLESS INCLINED GLASS RAILING W/ LAMINATED GLASS (S.M.I.)

D2

DATE	05/04/2023
SCALE	AS SHOWN
DRAWN	T.G.
PROJECT	23-077

DRAWING NO.
AD16-08

4 OF 7

MCY ENGINEERING, INC.
GLAZING CONSULTANTS
12781 MIRAMAR PARKWAY #301 P: 305.271 0117
MIRAMAR FL 33027 F: 305.588 5224

D3	
DATE	05/04/2023
SCALE	AS SHOWN
DRAWN	T.G.
PROJECT	23-077
DRAWING NO.	
AD16-08	
5 OF 7	

1.79"

1.58"

4.25"

14.50" MIN.

1.25"

6.00"

6.00"

1.25"

TYPE C (19) HILTI HAC-70 103/368 F SP. B

(19) OR SEE CH FOR CAPAC

1.79"

1.58"

4.25"

17.00" MIN.

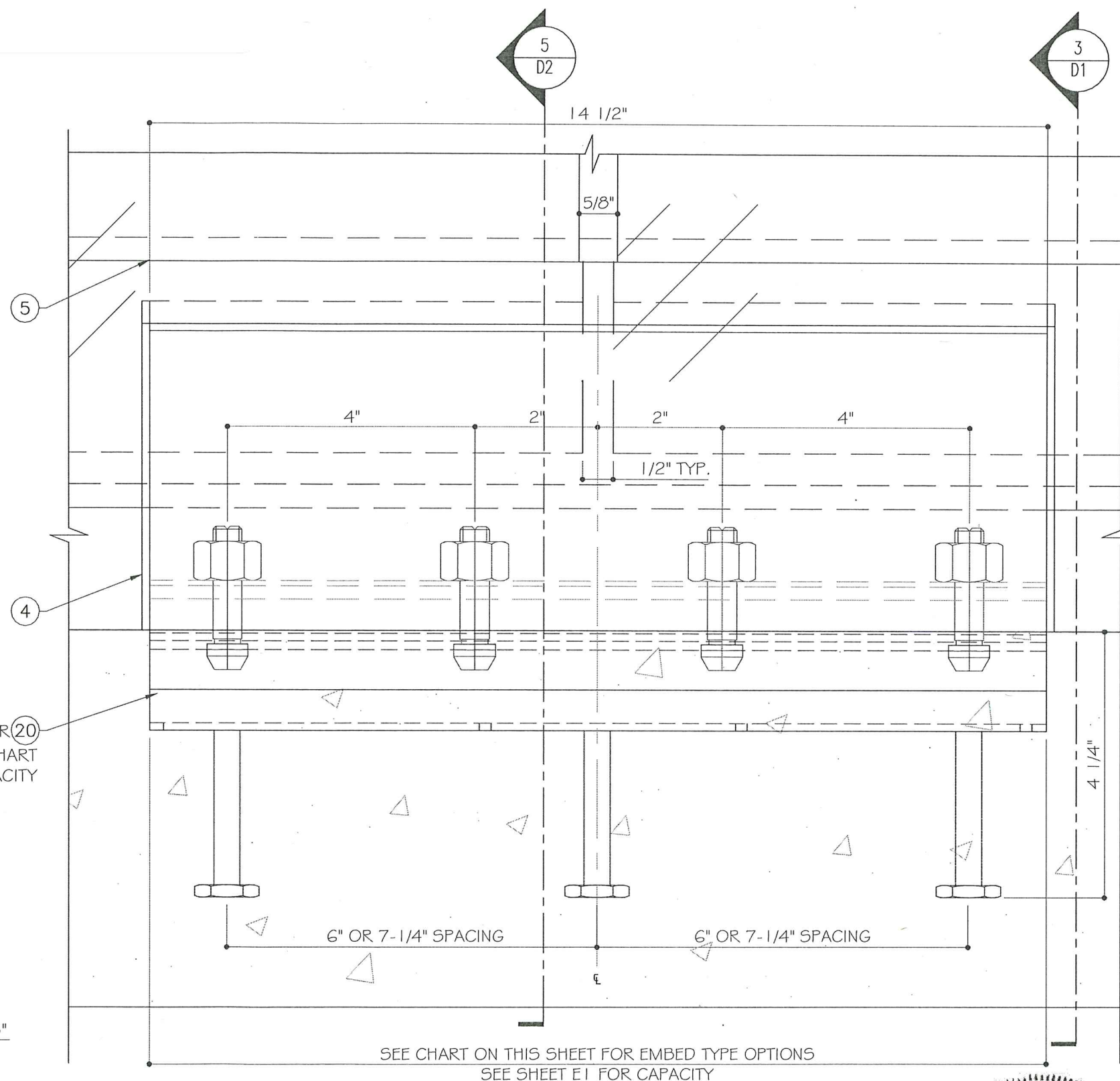
1.25"

7.25"

7.25"

1.25"

TYPE D (20) HILTI HAC-70 103/430 F SP. B

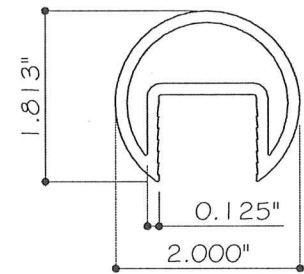


6	DETAIL
D3	ANCHOR TYPE C
	ANCHOR TYPE D

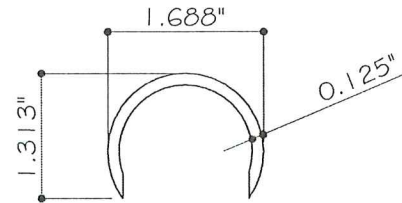
MIAMI-DADE COUNTY

PRODUCT REVISED
as complying with the Florida
Building Code
Acceptance No. 23-05230
Expiration Date 06/22/2021

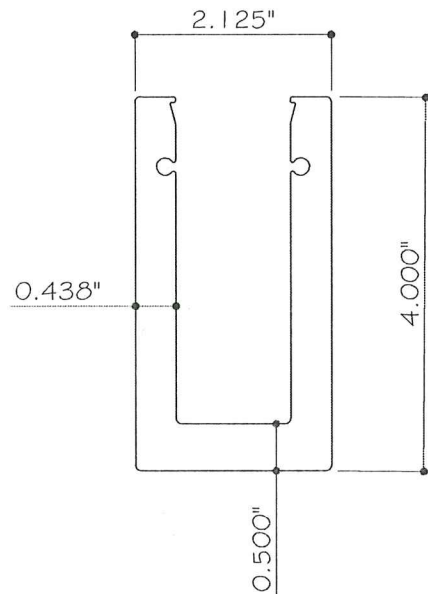
By [Signature]
Miami-Dade Product Control



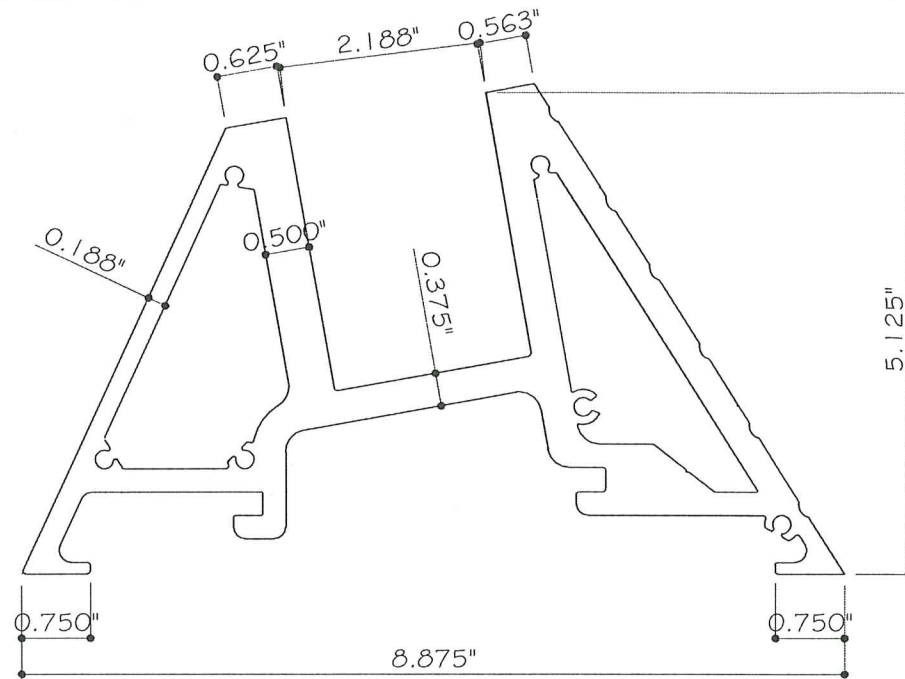
1 RAIL CAP
JSR-001 6063-T5



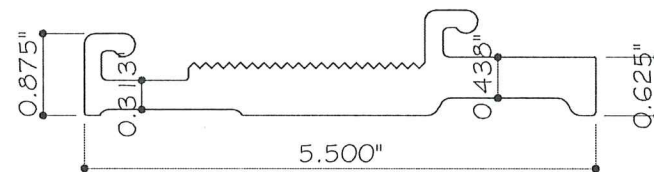
2 ALUM. SPLICE SLEEVE
JSR-002 6063-T5



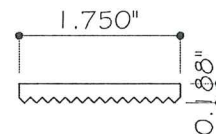
5 SHOE
JSR-005 6061-T6



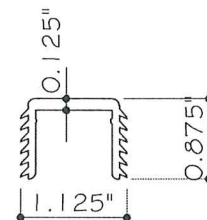
3 ANCHOR BRACKET
JSR-003 6061-T6



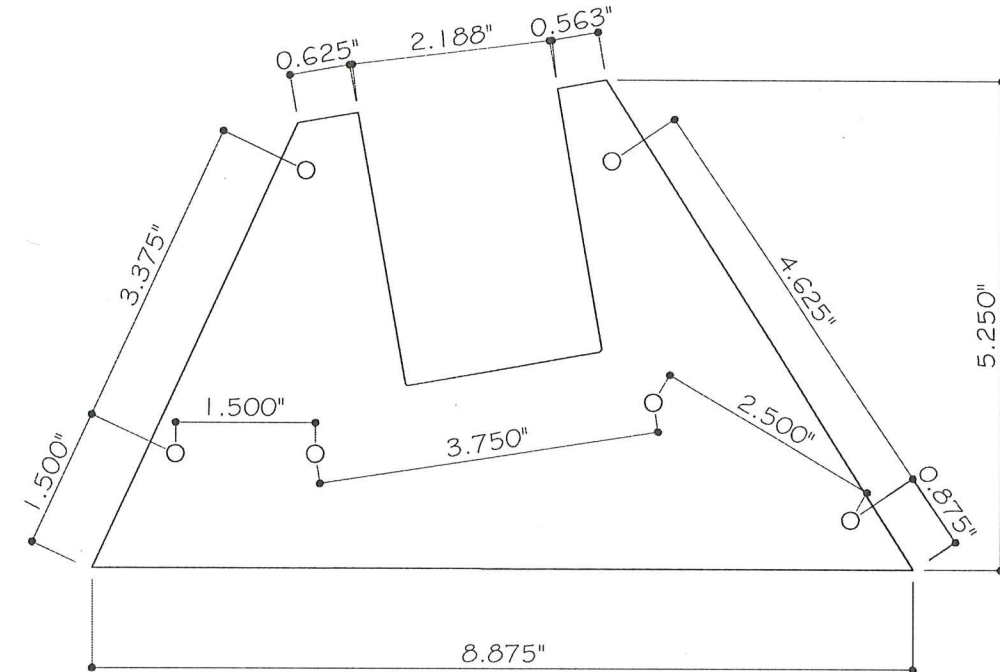
6 BASE
JSR-006 6061-T6



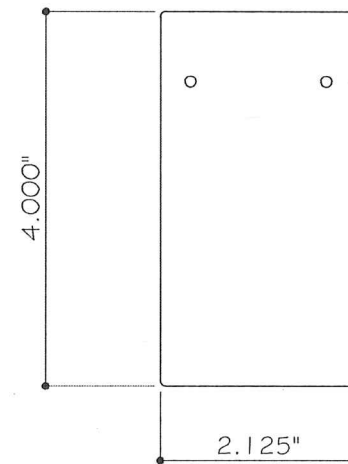
7 SERRATED WASHER
JSR-007 6061-T6



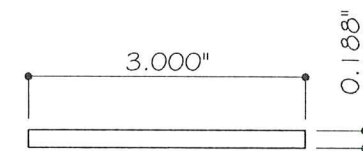
8 SILICONE GASKET
GT-04 SILICONE



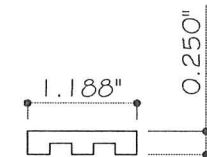
4 END CAP (1/4" THK.)
JSR-008 6063-T5



9 END CAP (1/8" THK.)
JSR-009 6063-T5



10 3/16" X 3" X 4" LG. SPACER
SB-01 SILICONE



11 1 3/16" X 4" X 1/4" THK. SETTING BLOCK
SB-02 SILICONE

REVISIONS		
NO.	DATE	DESCRIPTION
1	05.04.23	RENEWAL

MCY ENGINEERING, INC.
GLAZING CONSULTANTS
12781 MIRAMAR PARKWAY #301 P: 305.271 0117
MIRAMAR FL 33027 F: 305.588 5224
www.MCYEngineering.com MCY@mcyengineering.com

POSTLESS INCLINED GLASS RAILING W/ LAMINATED GLASS (S.M.I.)
N.R. ARCHITECTURAL PRODUCTS, INC.
4348 WESTROADS DRIVE
RIVIERA BEACH, FL 33407
TEL: (561) 844-1121 FAX: (561) 844-6131

PARTS

DATE	05/04/2023
SCALE	AS SHOWN
DRAWN	T.G.
PROJECT	23-077

DRAWING NO.

AD16-08

6 OF 7

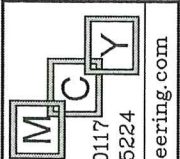
MIAMI-DADE COUNTY
PRODUCT REVISED
as complying with the Florida
Building Code
Acceptance No 22-0523.02
Expiration Date 06/22/2024
By *Heidi A. Miller*
Miami-Dade Product Control

YONG WANG, P.E.
FL #55983
No. 155987
STATE OF FLORIDA
PROFESSIONAL ENGINEER
May 5, 2023

BILL OF MATERIALS

ITEM #	PROFILE	DESCRIPTION	MATERIAL	MANUFACTURER/REMARKS
1	JSR-001	RAIL CAP (16'-0" MAX.), SPLICE GAP 1/4" MIN.	ALUM. 6063-T5	LB ALUMINUM BERHAD
2	JSR-002	ALUMINUM SPLICE SLEEVE	ALUM. 6063-T5	LB ALUMINUM BERHAD, 6" LG.
3	JSR-003	ANCHOR BRACKET	ALUM. 6061-T6	LB ALUMINUM BERHAD, 14 1/2" LG.
4	JSR-008	END CAP, 1/4" THK. AT EACH ANCHOR BRACKET(JSR-003) END	ALUM. 6063-T5	LB ALUMINUM BERHAD
5	JSR-005	SHOE, 4" TYPICAL, 1/2" GAP	ALUM. 6061-T6	LB ALUMINUM BERHAD
6	JSR-006	BASE	ALUM. 6061-T6	LB ALUMINUM BERHAD, 14 1/2" LG.
7	JSR-007	SERRATED WASHER	ALUM. 6061-T6	LB ALUMINUM BERHAD, 14 1/2" LG.
8	GT-04	SILICONE GASKET	SILICONE	-
9	JSR-009	END CAP, 4" X2 1/4" X 1/8" THK. AT EACH SHOE (JSR-005) END	ALUM. 6005-T5	LB ALUMINUM BERHAD
10	SB-01	3" X 4" X 3/16" THK. SPACER	SILICONE	(8) PER GLASS
11	SB-02	1 3/16" X 1/4" THK. X 4" SETTING BLOCK	SILICONE	(2) PER GLASS AT 1/4 POINT
12	DC-795/DC-993	DOW CORNING DC-795 BLACK OR DOW CORNING DC-993 BLACK	SILICONE	DOW CORNING
13	ZGO-01	#12 X 3/4" FH SMS (S.S. 316) SELF-TAPPING SCREW (END CAP AND BRACKET)	ST/ST	-
14	ZGO-02	#8 X 3/4" FH SMS (S.S. 316) SELF-TAPPING SCREW (END CAP AND SHOE)	ST/ST	-
15	-	#10mm FROTH ROD	POLYETHENE	-
16	LS-01	STAINLESS STEEL BOLT M8 X 25 (S.S. 316)	ST/ST	(4) PER ANCHOR BRACKET @ 3" O.C.
		STAINLESS STEEL FLAT WASHER 8 (S.S. 316)	ST/ST	
		STAINLESS STEEL SPRING WASHER 8 (S.S. 316) AND FLAT WASHER	ST/ST	
17	LS-02	STAINLESS STEEL BOLT M8 X 30 (S.S. 316)	ST/ST	(4) PER ANCHOR BRACKET @ 3" O.C. 2-3/4" FROM EACH END
		STAINLESS STEEL FLAT WASHER 8 (S.S. 316)	ST/ST	
		STAINLESS STEEL SPRING WASHER 8 (S.S. 316) AND FLAT WASHER	ST/ST	
18	LS-03	T-BOLT M16 X 50 HBC-C GRADE 4.6, HBC-C-E GRADE 8.8 OR HBC-E-N SS	-	(4) PER BASE (JSR-006) @ 4" O.C.
		STAINLESS STEEL NUT M16 (S.S. 316)	ST/ST	
19	HAC-70 103/368	HILTI HAC-70 103/368 F SP. B CHANNEL	GALVANIZED STEEL	HILTI
20	HAC-70 103/430	HILTI HAC-70 103/430 F SP. B CHANNEL	GALVANIZED STEEL	HILTI

REVISIONS		
NO.	DATE	DESCRIPTION
1.	05.04.23	RENEWAL



MCY ENGINEERING, INC.
GLAZING CONSULTANTS

12781 MIRAMAR PARKWAY #301 P: 305.271 0117
MIRAMAR FL 33027 F: 305.588 5224
www.MCYEngineering.com MCY@mcyengineering.com

POSTLESS INCLINED GLASS RAILING W/ LAMINATED GLASS (S.M.I.)

N.R. ARCHITECTURAL PRODUCTS, INC.
4346 WESTROADS DRIVE
RIVIERA BEACH, FL 33407
TEL: (561) 844-1121 FAX: (561) 844-6131

MIAMI-DADE COUNTY

PRODUCT REVISED
as complying with the Florida
Building Code
Acceptance No. 23-0523.02
Expiration Date 06/22/2024

By 
Miami Dade Product Control



May. 5, 2023

BOM	
DATE	05/04/2023
SCALE	AS SHOWN
DRAWN	T.G.
PROJECT	23-077
DRAWING NO. AD16-08	
7 OF 7	