



DEPARTMENT OF REGULATORY AND ECONOMIC RESOURCES (RER)  
BOARD AND CODE ADMINISTRATION DIVISION

## NOTICE OF ACCEPTANCE (NOA)

MIAMI-DADE COUNTY  
PRODUCT CONTROL SECTION

11805 SW 26 Street, Room 208  
Miami, Florida 33175-2474  
T (786) 315-2590 F (786) 315-2599

[www.miamidade.gov/economy](http://www.miamidade.gov/economy)

**Montecarlo Doors, Inc.**  
**4440 PGA Blvd, Suite #600**  
**Palm Beach Garden, FL 33410**

### SCOPE:

This NOA is being issued under the applicable rules and regulations governing the use of construction materials. The documentation submitted has been reviewed and accepted by Miami-Dade County RER -Product Control Section to be used in Miami Dade County and other areas where allowed by the Authority Having Jurisdiction (AHJ).

This NOA shall not be valid after the expiration date stated below. The Miami-Dade County Product Control Section (In Miami Dade County) and/or the AHJ (in areas other than Miami Dade County) reserve the right to have this product or material tested for quality assurance purposes. If this product or material fails to perform in the accepted manner, the manufacturer will incur the expense of such testing and the AHJ may immediately revoke, modify, or suspend the use of such product or material within their jurisdiction. RER reserves the right to revoke this acceptance, if it is determined by Miami-Dade County Product Control Section that this product or material fails to meet the requirements of the applicable building code.

This product is approved as described herein and has been designed to comply with the Florida Building Code, including the High Velocity Hurricane Zone.

### DESCRIPTION: "Montecarlo" Series 10' Fixed Glazed Wood Windows

**APPROVAL DOCUMENT:** Drawing No. **H582-0907-11**, titled "10' Fixed Glazed Wood Windows" sheets 1 through 5 of 5, dated 12/14/12, prepared by Wolters Engineering Inc., signed and sealed by Scott Wolters, P.E. on 02/09/18, bearing the Miami-Dade County Product Control Renewal stamp with the Notice of Acceptance number and expiration date by the Miami-Dade County Product Control Section.

### MISSILE IMPACT RATING: Large and Small Missile Impact Resistant

#### Limitations:

1. Fixed Windows may be mulled (See sheet **2**) to Montecarlo Doors (under separate approvals) as Transom or Sidelites, lower design pressure of Fixed Transom or Fixed Sidelites or Doors shall control.
2. 1x and 2x wood buck shall be min. 0.5 SG.

**LABELING:** Each unit shall bear a permanent label with the manufacturer name or logo, **Medelin, Colombia** and series and following statement: "Miami-Dade County Product Control Approved", noted herein.

**RENEWAL** of this NOA shall be considered after a renewal application has been filed and there has been no change in the applicable building code negatively affecting the performance of this product.

**TERMINATION** of this NOA will occur after the expiration date or if there has been a revision or change in the materials, use, and/or manufacture of the product or process. Misuse of this NOA as an endorsement of any product, for sales, advertising or any other purposes shall automatically terminate this NOA. Failure to comply with any section of this NOA shall be cause for termination and removal of NOA.

**ADVERTISEMENT:** The NOA number preceded by the words Miami-Dade County, Florida, and followed by the expiration date may be displayed in advertising literature. If any portion of the NOA is displayed, then it shall be done in its entirety.

**INSPECTION:** A copy of this entire NOA shall be provided to the user by the manufacturer or its distributors and shall be available for inspection at the job site at the request of the Building Official.

This NOA **renews # 21-0510.08** consists of this page 1 and evidence pages E-1, E-2, E-3 and E-4, as well as approval document mentioned above.

The submitted documentation was reviewed by **Ishaq I. Chanda, P.E.**



*Ishaq I. Chanda*

NOA No. 23-0623.07  
Expiration Date: April 04, 2024  
Approval Date: July 13, 2023  
Page 1

**NOTICE OF ACCEPTANCE: EVIDENCE SUBMITTED**

**1. EVIDENCE SUBMITTED UNDER PREVIOUS NOA'S**

**A. DRAWINGS**

1. Manufacturer's parts drawings and sections.
2. Drawing No. **H582-0907-11**, titled "Mahogany Direct Sets (L.M.I.)", sheets 1 through 5 of 5, dated APR 04, 2013, prepared by Wolters Engineering Inc., signed and sealed by Scott Wolters, P. E.

**B. TESTS**

1. Test reports on: 1) Air Infiltration Test, per FBC, TAS 202-94  
2) Uniform Static Air Pressure Test, Loading per FBC TAS 202-94  
3) Water Resistance Test, per FBC, TAS 202-94  
4) Large Missile Impact Test per FBC, TAS 201-94  
5) Cyclic Wind Pressure Loading per FBC, TAS 203-94  
6) Forced Entry Test, per FBC 2411 3.2.1, TAS 202-94

along with marked-up drawings and installation diagram of outswing wood glass door w/ Transom and Outswing wood doors w/sidelites, direct set shaped glazed wood Fixed Windows and Half Round and Arch shapes double opaque/glazed doors, prepared by Hurricane Testing Lab, LLC, Test Report No. **HTL-0582-0402-11**, dated 10/31/11 and revised on 11/19/12, signed and sealed by Vinu J. Abraham, P. E. (Hurricane Testing Lab, now has been acquired by Architectural Testing)

Note: This test report has been revised by an addendum letter dated Jan 31, 2013, issued by Architectural Testing, signed and sealed by Vinu J. Abraham, P. E.

**C. CALCULATIONS**

1. Anchor verification calculations and structural analysis, complying with FBC-2010, prepared by Wolters Engineering Inc., dated May 04, 2012, and last revised on DEC 07, 2012, signed and sealed by Scott Wolters, P. E.
2. Glazing complies w/ ASTM E-1300-02 & -04

**D. QUALITY ASSURANCE**

1. Miami Dade Department of Regulatory and Economic Resources (RER).

**E. MATERIAL CERTIFICATIONS**

1. Notice of Acceptance No. **11-0624.02** issued to E.I. DuPont DeNemours & Co., Inc. for their "**DuPont Sentry Glass ®**", expiring on 01/14/17.
2. Notice of Acceptance No. **08-0709.04** issued to Nebula Glass Int'l. dba Glasslam for their "**Safety Plus II ®**", expiring on 08/17/13.

**F. STATEMENTS**

1. Statement letter of conformance and letter of no financial interest, dated May 04, 2012, prepared by Wolters Engineering Inc., signed and sealed by Scott Wolters, P. E.
2. Lab compliance as part of the above referenced test report, including letter dated August 24, 2011, issued by Hurricane Testing Lab.

*Ishaq I. Chanda*

---

**Ishaq I. Chanda, P.E.**  
**Product Control Unit Supervisor**  
**NOA No. 23-0623.07**  
**Expiration Date: April 04, 2024**  
**Approval Date: July 13, 2023**

**Montecarlo Doors, Inc.**

**NOTICE OF ACCEPTANCE: EVIDENCE SUBMITTED**

**G. OTHER**

1. Test proposal dated Sep 23, 2010, approved by BCCO.
2. Distribution agreement dated April 11, 2012, between Maderas De Occidente, Colombia(manufacturer) and Montecarlo Doors, Inc, USA (distributor), signed by Ms. Adriana Maria Velez Posad and Juan D. Gomez, respectively on behalf of their companies.

**2. EVIDENDCE SUBMITTED under previous approval**

**A. DRAWINGS**

1. Drawing No. **H582-0907-11**, titled “10’ Fixed Glazed Wood Windows”, sheets 1 through 5 of 5, dated 12/14/12, prepared by Wolters Engineering Inc., signed and sealed by Scott Wolters, P. E. on 02/09/18.

**B. TESTS**

1. None.

**C. CALCULATIONS**

1. None.

**D. QUALITY ASSURANCE**

1. Miami Dade Department of Regulatory and Economic Resources (RER).

**E. MATERIAL CERTIFICATIONS**

1. Notice of Acceptance No. **17-0808.02** issued to Kuraray America, Inc. for their “**Sentry Glas® (Clear and White) Interlayer**”, expiring on 07/04/23.
2. Notice of Acceptance No. **16-0208.12** issued to Polymer Extrusion Laboratory, dba Glasslam for their “**Glasslam Safety Plus II ® Glass Interlayer**”, expiring on 08/07/18.

**F. STATEMENTS**

1. Statement letter of conformance to **FBC 6<sup>th</sup> Edition (2017)**, dated 02/09/18, prepared by Wolters Engineering Inc., signed and sealed by Scott Wolters, P. E.

**G. OTHER**

1. This NOA revises NOA #12-0509.03, expiring on 04/04/18.
2. Distribution agreement dated 04/23/18 between MCD Design SAS, Colombia(manufacturer) and Montecarlo Doors, Inc, USA (distributor), signed by Pablo Madrid and Juan D. Gomez, respectively on behalf of their companies.

*Ishaq I. Chanda*

---

**Ishaq I. Chanda, P.E.**  
**Product Control Unit Supervisor**  
**NOA No. 23-0623.07**  
**Expiration Date: April 04, 2024**  
**Approval Date: July 13, 2023**

**NOTICE OF ACCEPTANCE: EVIDENCE SUBMITTED**

**2. EVIDENCE SUBMITTED**

**A. DRAWINGS**

1. None.

**B. TESTS**

1. None.

**C. CALCULATIONS**

1. None.

**D. QUALITY ASSURANCE**

1. Miami-Dade Department of Regulatory and Economic Resources (RER).

**E. MATERIAL CERTIFICATIONS**

1. Notice of Acceptance No. **20-0915.19** issued to **Kuraray America, Inc.** for their “SentryGlas® (Clear and White) Glass Interlayers” dated 11/19/20, expiring on 07/04/23.
2. Notice of Acceptance No. **18-0619.01** issued to **Polymer Extrusion Technology, Inc.** dba Glasslam for their “Glasslam Safety-Plus II Glass Interlayer” dated 07/26/18, expiring on 08/07/23.

**F. STATEMENTS**

1. Statement letter of conformance, complying with **FBC 7<sup>th</sup> Edition (2020)**, dated April 29, 2021, issued by Wolters Engineering, Inc., signed and sealed by Scott Wolters, P.E.

**G. OTHERS**

Notice of Acceptance No. **17-0210.03**, issued to Montecarlo Doors, Inc. for their “Montecarlo” Series 10’ Fixed Glazed Wood Windows, approved on 05/31/18 and expiring on 04/04/23.

*Ishaq I. Chanda*

---

**Ishaq I. Chanda, P.E.**  
**Product Control Unit Supervisor**  
**NOA No. 23-0623.07**  
**Expiration Date: April 04, 2024**  
**Approval Date: July 13, 2023**

**NOTICE OF ACCEPTANCE: EVIDENCE SUBMITTED**

**3. NEW EVIDENCE SUBMITTED**

**A. DRAWINGS**

1. Drawing No. **H582-0907-11**, titled “10’ Fixed Glazed Wood Windows”, sheets 1 through 5 of 5, dated 12/14/12, prepared by Wolters Engineering Inc., signed and sealed by Scott Wolters, P. E. on 02/09/18.

Note: This is one year renewal with no change, subjected to verification test.

**B. TESTS**

1. None.

**C. CALCULATIONS**

2. None.

**D. QUALITY ASSURANCE**

1. Miami Dade Department of Regulatory and Economic Resources (RER).

**E. MATERIAL CERTIFICATIONS**

1. Notice of Acceptance No. **22-1116.01** issued to **Kuraray America, Inc.** (Former E.I. DuPont DE Nemours & Co., Inc. for the “**Sentry Glass ® (Clear and White) Glass Interlayers**”, expiring on 07/04/28.
2. Notice of Acceptance No. **23-0523.01** issued to Polymer Extrusion Laboratory, dba Glasslam for their “**Glasslam Safety Plus II ® Glass Interlayer**”, expiring on 08/07/28.

**F. STATEMENTS**

1. Statement letter of conformance to **FBC 2023 (8<sup>th</sup> Edition)**, dated July 05, 2023, prepared by Wolters Engineering Inc., signed and sealed by Scott Wolters, P. E.
2. Statement letter of conformance, complying with **FBC 7<sup>th</sup> Edition (2020)**, dated April 29, 2021, issued by Wolters Engineering, Inc., signed and sealed by Scott Wolters, P.E. (submitted under previous approval)
3. Statement letter dated June 9<sup>th</sup> issued by Montecarlo Doors, Inc., requesting one year Renewal, signed by Juan Gomez, sales manager.
4. Statement letter dated July 05, 2023. Issued by Intertek Lab of an upcoming verification test, scheduled for Montecarlo Doors, Inc., signed by Dan Carroll, Regional Manager.

**G. OTHER**

1. This NOA **renews NOA #21-0510.08**, (subjected to verification test), expiring on 04/04/24.
2. Test proposal for one hybrid mock-up test, submitted by Intertek Lab, approved by RER via e-mail dated 06/09/23 by Ishaq I. Chanda, P.E.
3. Distribution agreement dated 04/23/18 between MCD Design SAS, Colombia(manufacturer) and Montecarlo Doors, Inc, USA (distributor), signed by Pablo Madrid and Juan D. Gomez, respectively on behalf of their companies (submitted under previous approval).

*Ishaq I. Chanda*

\_\_\_\_\_  
**Ishaq I. Chanda, P.E.**  
**Product Control Unit Supervisor**  
**NOA No. 23-0623.07**  
**Expiration Date: April 04, 2024**  
**Approval Date: July 13, 2023**

1. THIS APPROVAL APPLIES TO SINGLE (O) IMPACT RESISTANT DIRECT SET FIXED LITE WINDOWS USED AS STAND-ALONE PRODUCTS OR AS TRANSOMS/SIDELITES WITH DOORS (SEE SEPARATE MONTECARLO APPROVAL FOR DOORS). ANY SHAPE DIRECT SET IS ALLOWED PROVIDED THAT IT FITS WITHIN THE MAXIMUM OVERALL SIZES OF 98 5/8" X 48" OR 48" X 98 5/8". RECTANGULAR DIRECT SET SIDELITES ARE ALLOWED UP TO 49 3/4" WIDE X 122 1/8" TALL.
2. ALLOWABLE DESIGN PRESSURE: +/-50 PSF
3. GLAZING AS SHOWN IN DETAILS A/2 OR B/2 SHALL BE USED IN DIRECT SET UNITS.
4. DIRECT-SET TRANSOM MAY BE MULLED OVER SINGLE OR DOUBLE PANEL DOORS ONLY (SEE SEPARATE MONTECARLO APPROVAL FOR DOORS).

5. THIS PRODUCT HAS BEEN DESIGNED AND TESTED TO TAS 201, 202, AND 203 PROTOCOLS IN ACCORDANCE WITH THE REQUIREMENTS OF THE FLORIDA BUILDING CODE (FBC) INCLUDING THE HIGH VELOCITY HURRICANE ZONE.

7. 1x OR 2x WOOD OR MASONRY OPENINGS, BUCKS, AND BUCK FASTENERS, BY OTHERS, SHALL BE PROPERLY DESIGNED AND INSTALLED TO TRANSFER LOADS TO THE STRUCTURE.

9. ALL FASTENERS PENETRATING INTO PRESSURE TREATED WOOD SHALL BE CAPABLE OF PREVENTING CORROSION DUE TO REACTION WITH PRESSURE TREATMENT CHEMICALS.

10. DISSIMILAR MATERIALS THAT COME INTO CONTACT SHALL BE PROTECTED TO PREVENT REACTIONS IN ACCORDANCE WITH FBC CHAPTERS 20 AND 23.

11. A WIND LOAD DURATION FACTOR  $C_d = 1.6$  WAS USED FOR THE ANALYSIS OF WOOD SCREWS ONLY.

12. THE MAHOGANY FIXED LITES LISTED IN THIS APPROVAL ARE  
CONSTRUCTED OF A NATURALLY DURABLE SPECIES IN COMPLIANCE  
WITH FBC SECT. 2326.2.1. OTHER NATURALLY DURABLE WOOD  
SPECIES OF EQUAL OR GREATER DENSITY AND EQUAL OR GREATER  
MODULUS OF ELASTICITY MAY BE SUBSTITUTED  
FOR ALL WOOD COMPONENTS.

13. COMPOSITE MEMBERS ARE FORMED BY JOINING PIECES AS SHOWN IN PART DRAWINGS WITH TITEBOND II FRANKLIN INTERNATIONAL WOOD GLUE.

14. WOOD SPECIES: CARAPA GUIANENSIS MAHOAGANY.  
Min. E=  $1.9 \times 10^6$  Psi  
Min. Fy= 15,500 Psi  
Min. S.G.= 0.56


15. PLYWOOD: CDX PLYWOOD.  
Min. E=  $1.1 \times 10^6$  Psi  
Min. Fy= 5,700 Psi  
Min. S.G.= 0.53

ALLOWABLE  
DESIGN PRESSURE:  
+50 / -50 PSF

1. THROUGH 5, NOT USED  
 6. GLASS: SEE GLAZING DETAILS ON SHEET 2  
 7. NOT USED  
 8. 2"x6"x $\frac{1}{8}$ " ALUMINUM 6063-T6 VERTICAL OR HORIZONTAL MULLION WITH 6"x8"x $\frac{1}{4}$ "  
 CONT.  $\frac{1}{4}$ " ELECTRODE FILLET WELDED ALUMINUM END PLATES  
 9. AND 10, NOT USED  
 11. GLASS STOP:  $\frac{3}{8}$ " X 1" SOLID MAHOGANY  
 12. THROUGH 16, NOT USED  
 17. 4d X 1  $\frac{1}{4}$ " FINISHING NAIL 1" FROM CORNERS AND SPACED 2 $\frac{1}{2}$ " O.C. FASTENING GLASS STOPS  
 TO PANELS.  
 18. AND 19, NOT USED  
 20. No. 10 X 2  $\frac{1}{2}$ " PFHSMs (3 PER CORNER), TYP.  
 21. THROUGH 33, NOT USED  
 34. 1  $\frac{3}{4}$ " X 5  $\frac{1}{4}$ " DIRECT SET FRAME  
     A. DIRECT SET - HEAD EYEBROW, MAHOGANY AND PLYWOOD  
     B. DIRECT SET - HEAD ARCH, MAHOGANY AND PLYWOOD  
     C. TYPICAL DIRECT SET FRAME, SOLID MAHOGANY  
 35.  $\frac{1}{4}$ " X 2 $\frac{3}{4}$ " PFHSDSMS FASTENING JAMBS AND DS TO MULLION MAX 8" O.C.  
 36. PERIMETER SEALANT: SIKAFLEX 15 LM

**PRODUCT RENEWED**  
as complying with the Florida  
**Building Code**  
**NOA-No.** 23-0623.07  
**Expiration Date** 04/04/2024  
**By** Ishay L. Chande  
**Miami-Dade Product Control**

**PRODUCT REVISED**  
as complying with the Florida  
Building Code  
NOA-No. 21-0510.08  
Expiration Date: 04/04/2023  
By: Manuel Perez  
Miami-Dade Product Control

**PRODUCT REVISED**  
as complying with the Florida  
Building Code  
NOA-No. 17-0210.03  
Expiration Date 04/04/2023  
By   
Miami-Dade Product Control

SCOTT WOLTERS  
FLPE# 62354

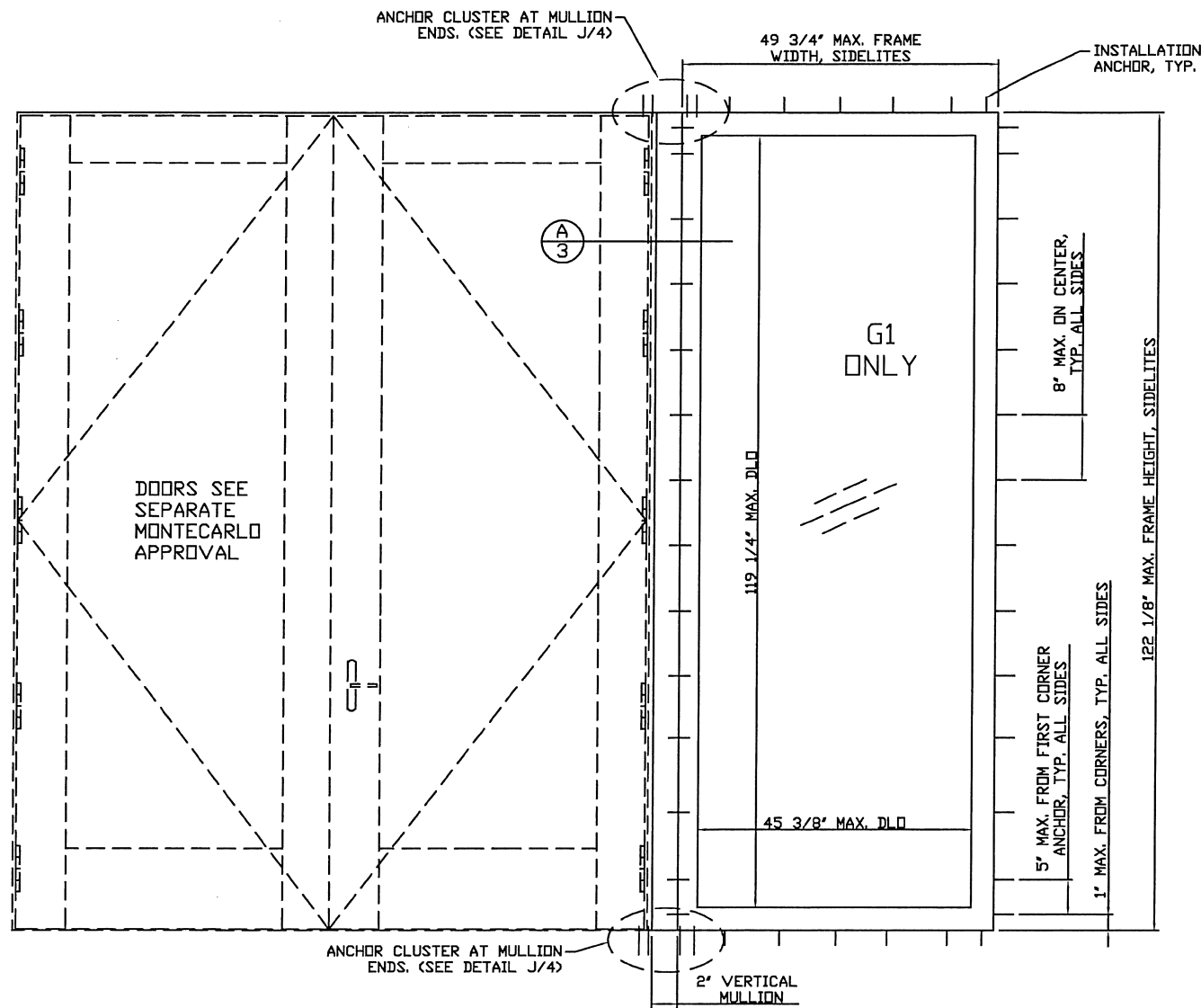
WOLTERS ENGINEERING, INC.  
(COA# 27194)  
15211 97TH ROAD N  
WEST PALM BEACH, FL 33412  
FEB 09, 2018

PROFESSIONAL ENGINEER

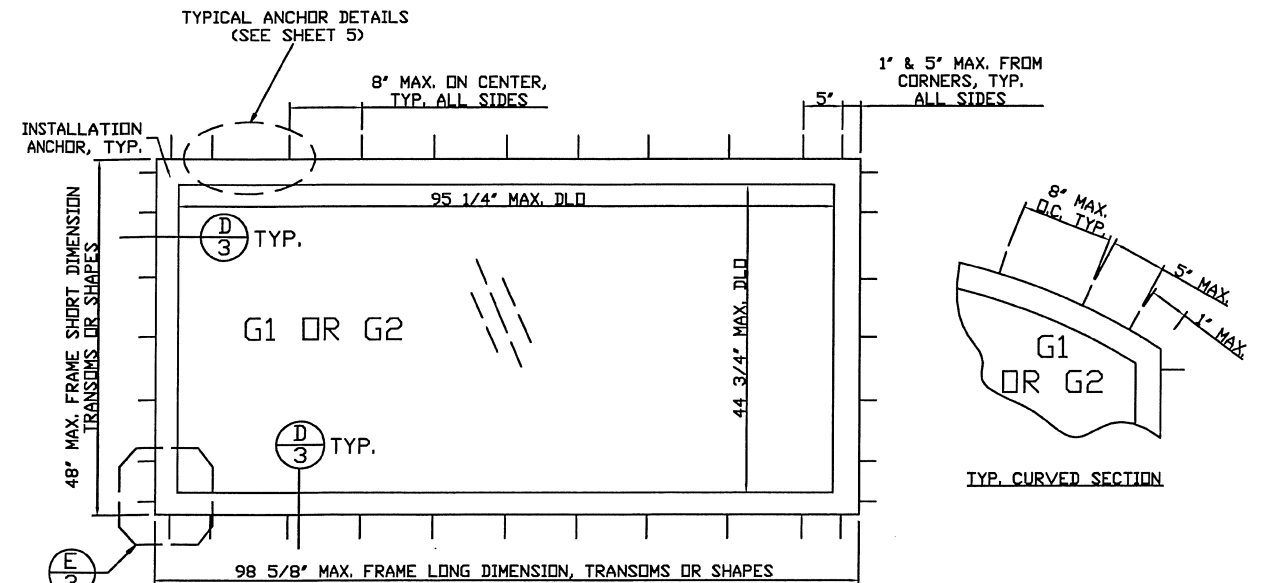
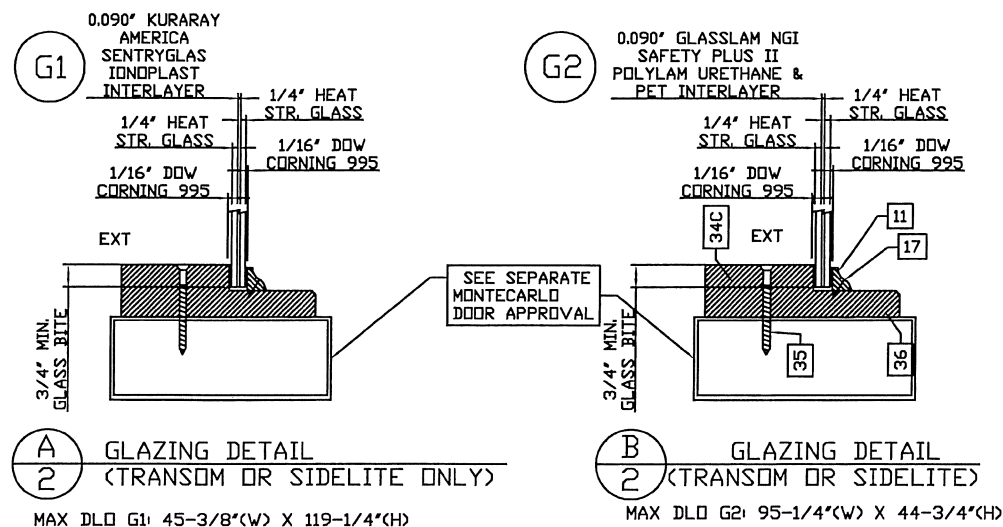
10' Fixed Glazed Wood Windows	
-------------------------------	--

**Montecarlo Doors**  
4440 PGA Boulevard, Suite 600  
Palm Beach Gardens, FL 33410  
PHONE: 561.623.5303  
FAX: 561.594.1720  
[www.montecarlodoors.com](http://www.montecarlodoors.com)

DRAWING #	H582-0907-1
SCALE:	NTS
SHEET 1 of 5	



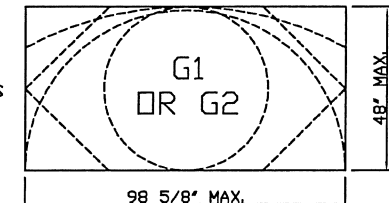
ELEVATION 1: TYP. MAX. SIZES AND ANCHORAGE SPACING, RECTANGULAR SIDELITES



ELEVATION 2: TYP. MAX. SIZES AND ANCHORAGE SPACING, TRANSOMS AND SHAPES

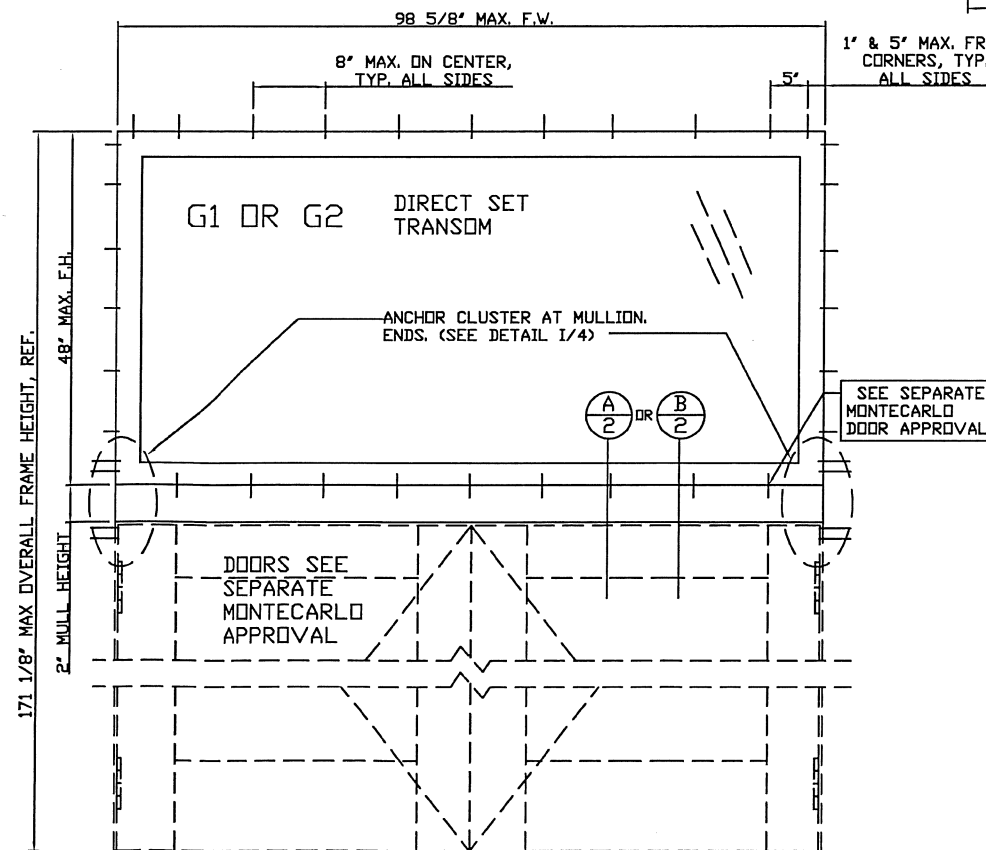
**PRODUCT RENEWED**  
as complying with the Florida  
Building Code  
NOA-No. 23-0623.07  
Expiration Date 04/04/2024  
By Ishaq I. Chande  
Miami-Dade Product Control

NOTE: ELEVATION 1 ABOVE APPLIES TO ANY SHAPE THAT FITS WITHIN MAX. SIZES SHOWN, FOR EXAMPLE:

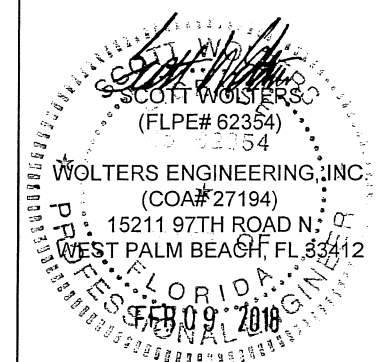


**PRODUCT REVISED**  
as complying with the Florida  
Building Code  
NOA-No. 21-0510.08  
Expiration Date: 04/04/2023  
By: Manuel Torres  
Miami-Dade Product Control

**PRODUCT REVISED**  
as complying with the Florida  
Building Code  
NOA-No. 17-0210.03  
Expiration Date 04/04/2023  
By: [Signature]  
Miami-Dade Product Control



ELEVATION 3: TRANSOM TO DOOR  
NOTE: FOR MAX. SIZES AND ANCHORAGE OF DIRECT SET, SEE ELEV. 1 ABOVE. ANY SHAPE WITH A FLAT SILL THE FULL WIDTH OF THE DOOR, SUCH AS BUT NOT LIMITED TO EYEBROWS, ARCHES, HALF CIRCLES, TRIANGLES, TRAPEZOIDS, DOGHOUSES, ETC., MAY BE USED AS TRANSOMS.



REV.	DATE	DESCRIPTION	BY
0	10/12/2011	ORIGINAL RELEASE	LAT
	12/14/2012	REV'D PER MIAMI-DADE REVIEW	SFW

10' Fixed Glazed Wood Windows

Montecarlo Doors

4440 PGA Boulevard, Suite 600  
Palm Beach Gardens, FL 33410  
PHONE: 561.623.5303  
FAX: 561.594.1720  
www.montecarlodoors.com

DRAWING #

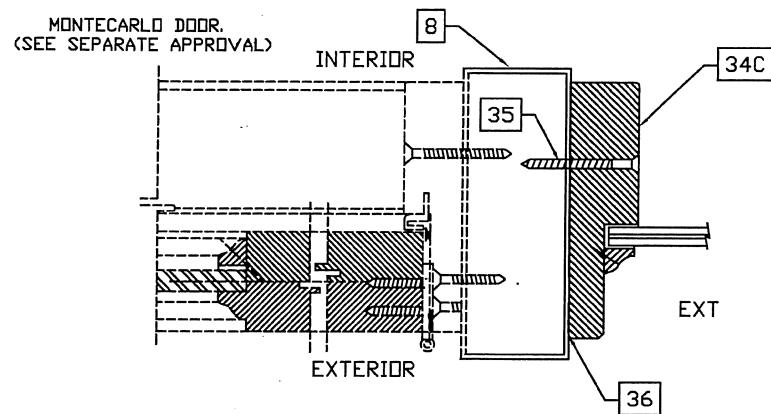
H582-0907-11

SCALE:

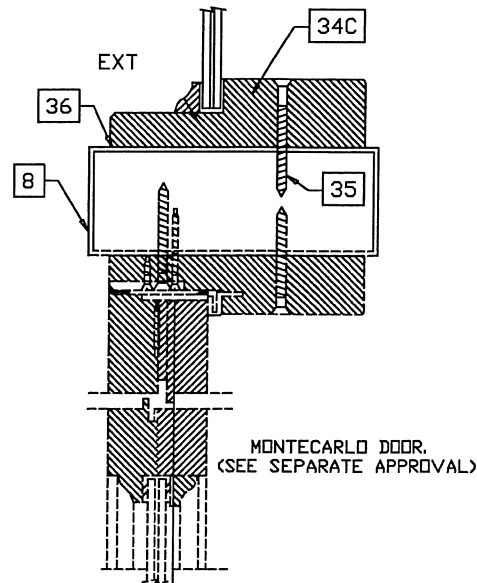
NTS

SHEET

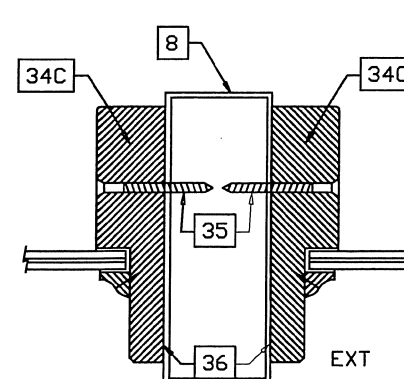
2 of 5



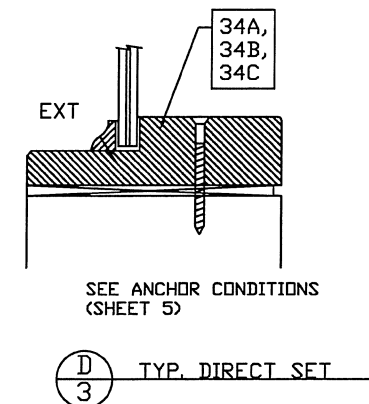
**A**  
3 VERTICAL  
MULLION DETAIL



**B**  
3 HORIZONTAL  
MULLION DETAIL



**C**  
3 VERTICAL  
MULLION DETAIL



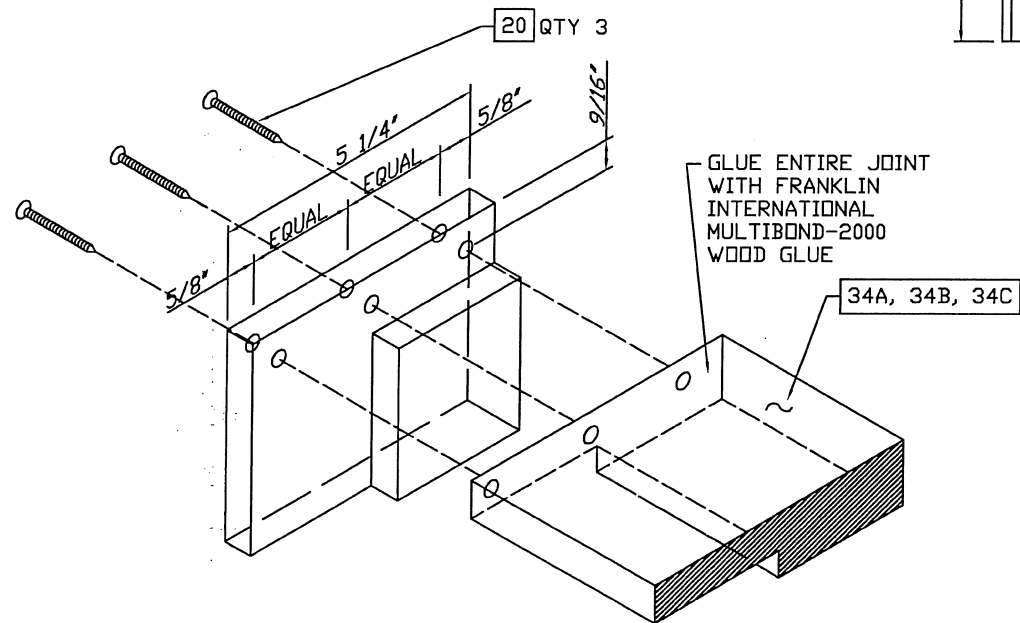
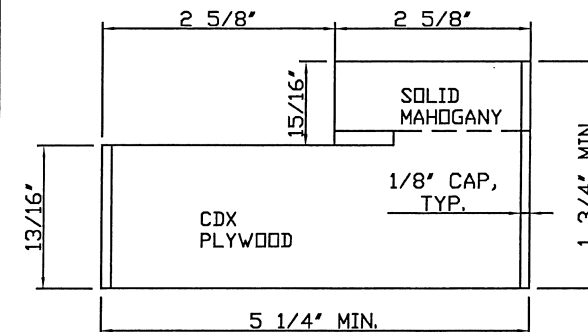
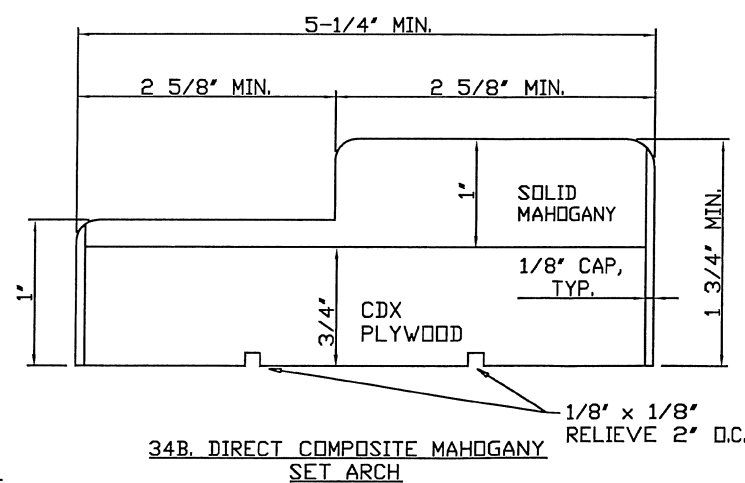
**D**  
3 TYP. DIRECT SET

**PRODUCT RENEWED**  
as complying with the Florida  
Building Code  
NOA-No. 23-0623.07  
Expiration Date 04/04/2024

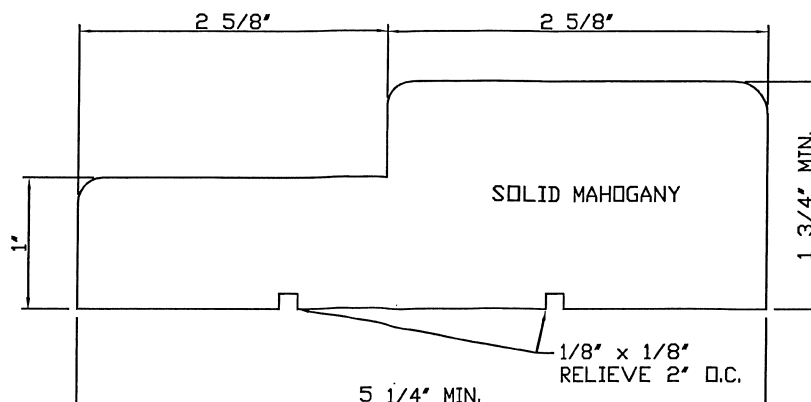
By *Isaac I. Chandra*  
Miami-Dade Product Control

**PRODUCT REVISED**  
as complying with the Florida  
Building Code  
NOA-No. 21-0510.08  
Expiration Date: 04/04/2023  
By: *Manuel Torres*  
Miami-Dade Product Control

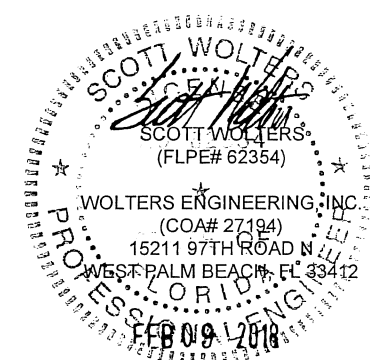
WOOD PROPERTIES	
MAHOGANY	
Min. E	= 1.9x10 <sup>6</sup> Psi
Min. Fy	= 15,500 Psi
Min. S.G.	= 0.56
PLYWOOD	
Min. E	= 1.1x10 <sup>6</sup> Psi
Min. Fy	= 5,700 Psi
Min. S.G.	= 0.53



**E**  
3 TYP. FRAME CORNER DETAIL  
(ALL FRAME MEMBERS TO BE SCREWED AT ALL CORNERS)  
SCALE: NTS



**PRODUCT REVISED**  
as complying with the Florida  
Building Code  
NOA-No. 17-0210.03  
Expiration Date 04/04/2023  
By *[Signature]*  
Miami-Dade Product Control



REV.	DATE	DESCRIPTION	BY
0	10/12/2011	ORIGINAL RELEASE	LAT
	12/14/2012	REV'D PER MIAMI-DADE REVIEW	SFW
10' Fixed Glazed Wood Windows			
<b>Montecarlo Doors</b> 4440 PGA Boulevard, Suite 600 Palm Beach Gardens, FL 33410 PHONE: 561.623.5303 FAX: 561.594.1720 www.montecarlodoors.com			
DRAWING # H582-0907-11			SCALE: NTS
SHEET 3 of 5			

REV.	DATE	DESCRIPTION	BY
0	10/12/2011	ORIGINAL RELEASE	LAT
	12/14/2012	REV'D PER MIAMI-DADE REVIEW	SFV

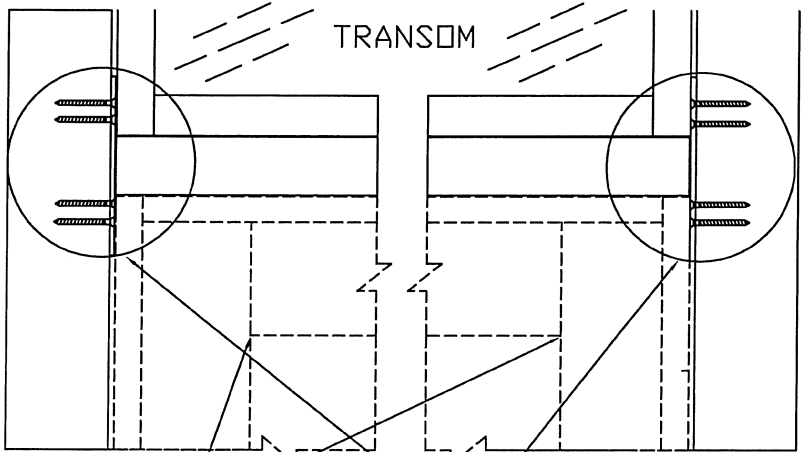
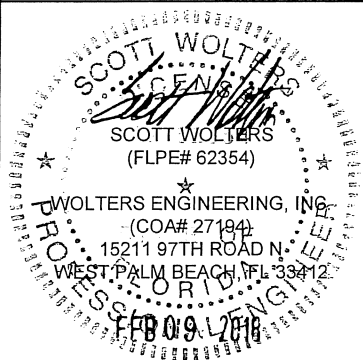
10' Fixed Glazed Wood Windows

<b>Montecarlo Doors</b> 4440 PGA Boulevard, Suite 600 Palm Beach Gardens, FL 33410 PHONE: 561.623.5303 FAX: 561.594.1720 www.montecarlodoors.com	DRAWING # <b>H582-0907-11</b> SCALE: <b>NTS</b> <b>SHEET</b> 4 of 5
---	---

**PRODUCT RENEWED**  
as complying with the Florida  
Building Code  
NOA-No. 23-0623.07  
Expiration Date 04/04/2024  
By Ishaq I. Chande  
Miami-Dade Product Control

**PRODUCT REVISED**  
as complying with the Florida  
Building Code  
NOA-No. 21-0510.08  
Expiration Date: 04/04/2023  
By: Manuel Perez  
Miami-Dade Product Control

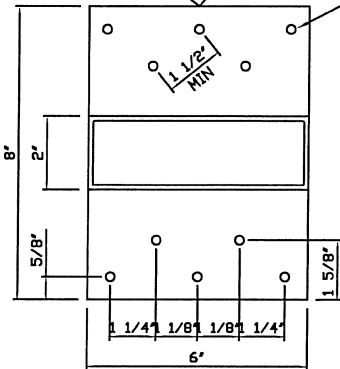
**PRODUCT REVISED**  
as complying with the Florida  
Building Code  
NOA-No. 17-0210.03  
Expiration Date 04/04/2023  
By [Signature]  
Miami-Dade Product Control



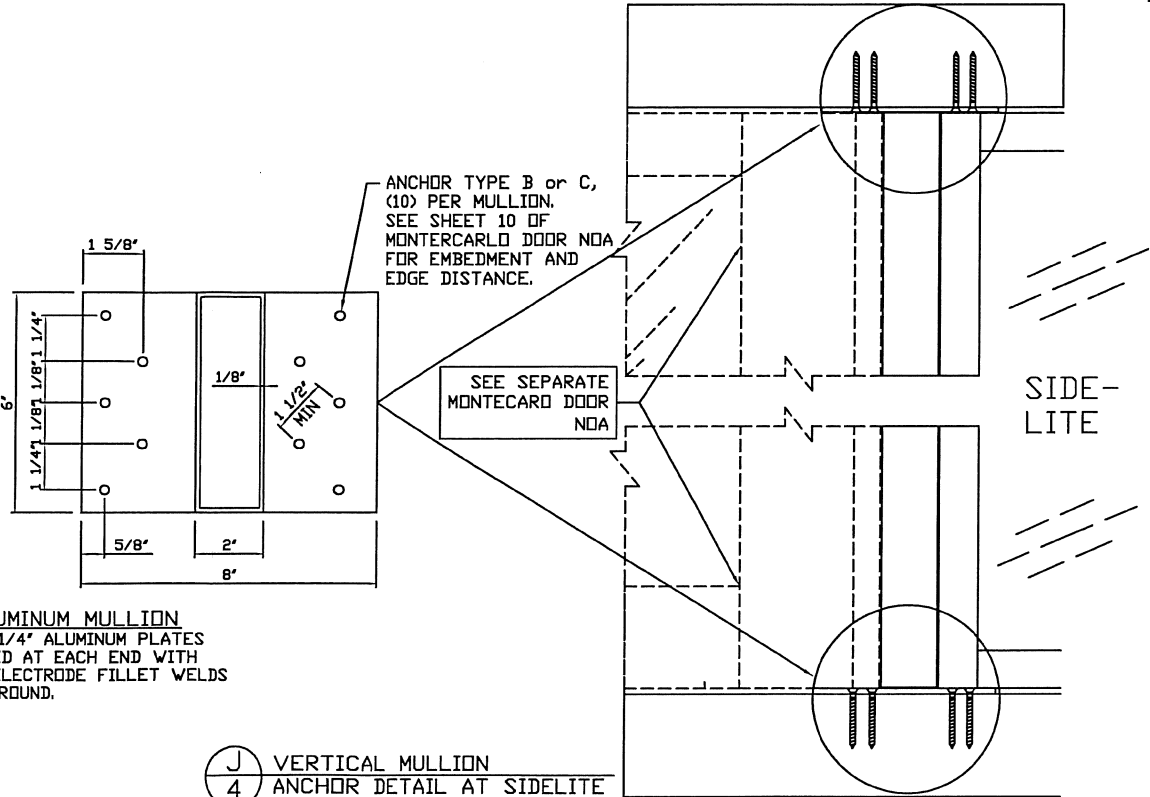
SEE SEPARATE  
MONTECARLO DOOR NOA

8. ALUMINUM MULLION  
WITH 1/4" ALUMINUM PLATES  
WELDED AT EACH END WITH  
1/4" ELECTRODE FILLET WELDS  
ALL AROUND.

ANCHOR TYPE B,C, or D,  
(10) PER MULLION.  
SEE SHEET 10 OF  
MONTECARLO DOOR NOA FOR  
EMBEDMENT AND EDGE  
DISTANCE.



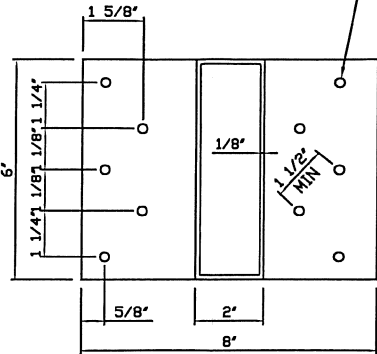
**I**  
4 HORIZONTAL MULLION  
ANCHOR DETAIL AT TRANSOM



ANCHOR TYPE B or C,  
(10) PER MULLION.  
SEE SHEET 10 OF  
MONTECARLO DOOR NOA  
FOR EMBEDMENT AND  
EDGE DISTANCE.

SEE SEPARATE  
MONTECARLO DOOR  
NOA

8. ALUMINUM MULLION  
WITH 1/4" ALUMINUM PLATES  
WELDED AT EACH END WITH  
1/4" ELECTRODE FILLET WELDS  
ALL AROUND.

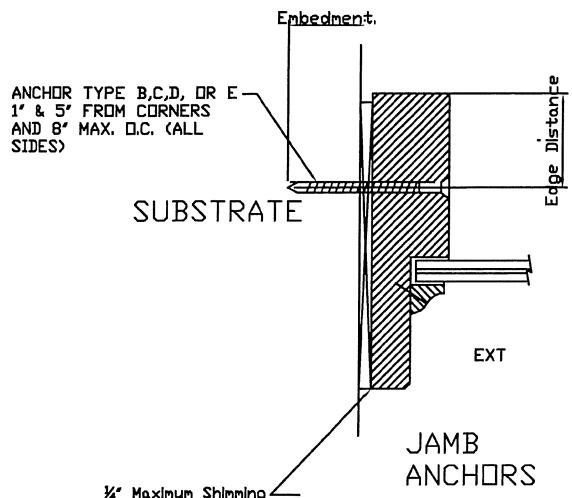


**J**  
4 VERTICAL MULLION  
ANCHOR DETAIL AT SIDELITE

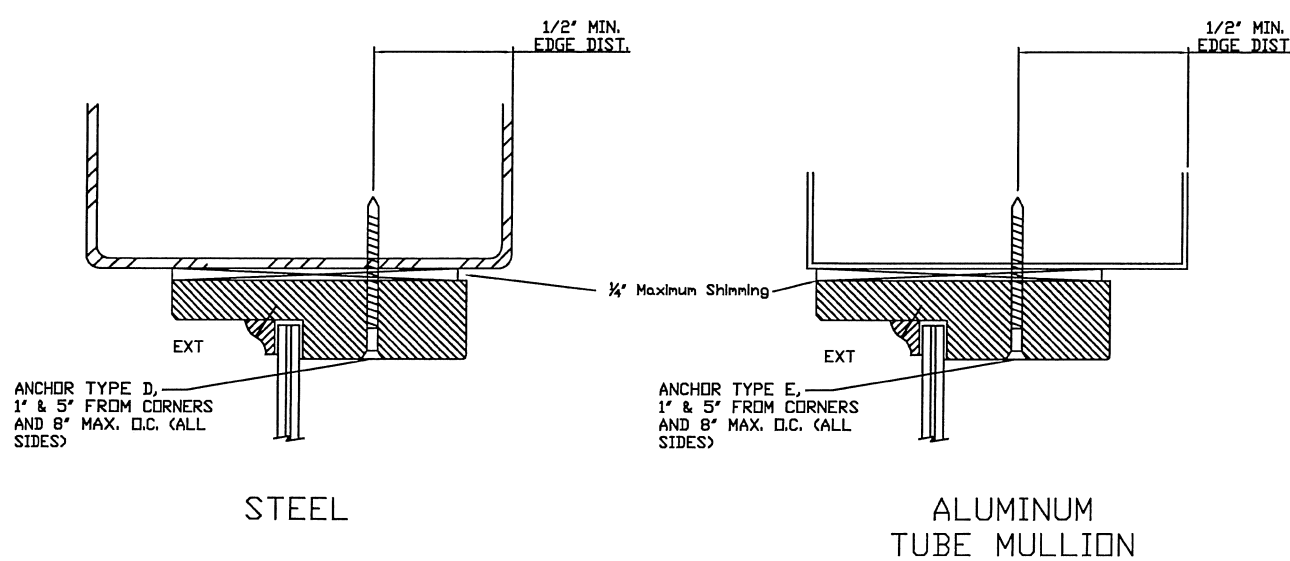
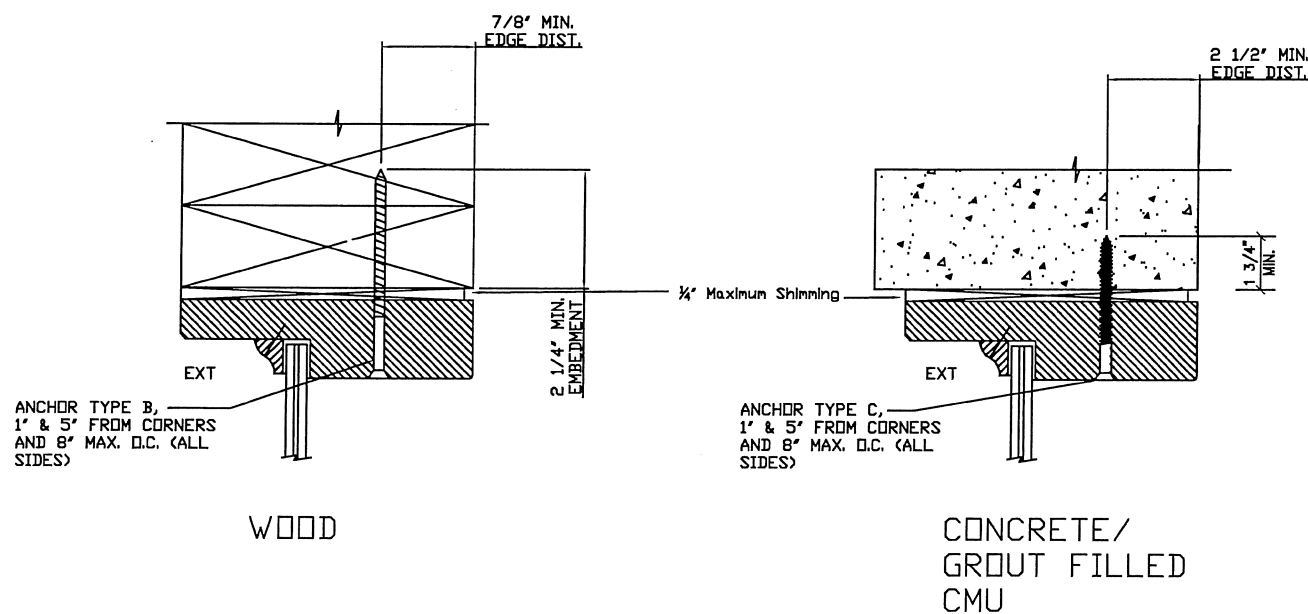
TYPICAL ANCHORS

WOOD (2 1/4" MIN.)	- TYPE A -	#12 X 3-3/4" PFHMS WITH 2-1/4" EMBEDMENT AND 7/8" EDGE DISTANCE.
WOOD (2 1/4" MIN.)	- TYPE B -	1/4" X 3-3/4" PFHMS WITH 2-1/4" EMBEDMENT AND 1" EDGE DISTANCE.
CONCRETE (3000 PSI MIN.)	- TYPE C -	1/4" DIA. FH ITW TAPCON OR ELCO ULTRACON DIRECTLY INTO CONCRETE OR THRU WOOD BUCK INTO CONCRETE WITH 1-3/4" MIN. EMBEDMENT AND 2-1/2" MIN. EDGE DISTANCE.
CMU (ASTM 90)	- TYPE C -	1/4" DIA. FH ITW TAPCON OR ELCO ULTRACON DIRECTLY INTO GROUT FILLED CMU OR THRU WOOD BUCK INTO CMU WITH 1-3/4" MIN. EMBEDMENT AND 2-1/2" MIN. EDGE DISTANCE.
STEEL (16 Ga. 33 KSI MIN.)	- TYPE D -	1/4" DIA. FH F-TYPE (GR. 5) THREAD FORMING SCREW WITH FULL EMBEDMENT AND 1/2" MIN. EDGE DISTANCE
ALUM. TUBE MULLION (1/8" MIN., 6063-T5)	- TYPE E -	1/4" DIA. FH SHEET METAL SCREW WITH FULL EMBEDMENT AND 1/2" MIN. EDGE DISTANCE

TYPICAL ANCHOR CONDITIONS

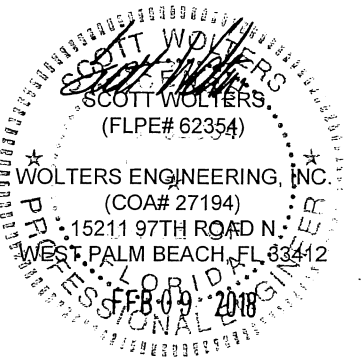


**PRODUCT RENEWED**  
as complying with the Florida  
Building Code  
NOA-No. 23-0623.07  
Expiration Date 04/04/2024  
By Ishag I. Chande  
Miami-Dade Product Control



**PRODUCT REVISED**  
as complying with the Florida  
Building Code  
NOA-No. 21-0510.08  
Expiration Date: 04/04/2023  
By: Manuel Fernandez  
Miami-Dade Product Control

**PRODUCT REVISED**  
as complying with the Florida  
Building Code  
NOA-No. 17-0210.03  
Expiration Date 04/04/2023  
By: [Signature]  
Miami-Dade Product Control



Montecarlo Doors  
4440 PGA Boulevard, Suite 600  
Palm Beach Gardens, FL 33410  
PHONE: 561.623.5303  
FAX: 561.594.1720  
www.montecarlodoors.com

DRAWING #  
H582-0907-11  
SCALE: NTS  
SHEET  
5 of 5

10' Fixed Glazed Wood Windows