



DEPARTMENT OF REGULATORY AND ECONOMIC RESOURCES (RER)
BOARD AND CODE ADMINISTRATION DIVISION
NOTICE OF ACCEPTANCE (NOA)

MIAMI-DADE COUNTY
PRODUCT CONTROL SECTION
11805 SW 26 Street, Room 208
Miami, Florida 33175-2474
T (786) 315-2590 F (786) 315-2599
www.miamidade.gov/economy

Montecarlo Doors, Inc.
4440 PGA Blvd, Suite #600
Palm Beach Garden, FL 33410

SCOPE:

This NOA is being issued under the applicable rules and regulations governing the use of construction materials. The documentation submitted has been reviewed and accepted by Miami-Dade County RER -Product Control Section to be used in Miami Dade County and other areas where allowed by the Authority Having Jurisdiction (AHJ).

This NOA shall not be valid after the expiration date stated below. The Miami-Dade County Product Control Section (In Miami Dade County) and/or the AHJ (in areas other than Miami Dade County) reserve the right to have this product or material tested for quality assurance purposes. If this product or material fails to perform in the accepted manner, the manufacturer will incur the expense of such testing and the AHJ may immediately revoke, modify, or suspend the use of such product or material within their jurisdiction. RER reserves the right to revoke this acceptance, if it is determined by Miami-Dade County Product Control Section that this product or material fails to meet the requirements of the applicable building code.

This product is approved as described herein and has been designed to comply with the Florida Building Code, including the High Velocity Hurricane Zone.

DESCRIPTION: "Montecarlo" Series Outswing Opaque Wood Doors-L.M.I.

APPROVAL DOCUMENT: Drawing No. **H582-0907-11P**, titled "Mahogany Outswing Entrance Doors (L.M.I.)", sheets 1 through 11 of 11, dated 10/12/2011 and last revised on MAR 05, 2018, prepared by Wolters Engineering Inc., signed and sealed by Scott Wolters, P.E., bearing the Miami-Dade County Product Control Renewal stamp with the Notice of Acceptance number and expiration date by the Miami-Dade County Product Control Section.

MISSILE IMPACT RATING: Large and Small Missile Impact Resistant

Limitations:

1. See Design Pressure in sheet **1**. Door may be horizontally or vertically mulled (See sheets **3** & **8** for mullion clip and anchors) to Montecarlo's Transom or Sidelites (under separate approvals to be reviewed by AHJ). When door is mulled, lower design pressure of door or Transom or door or Sidelites may control for entire assembly.
2. All anchors at door headers and jambs are in double rows. See Meeting Stiles anchor clusters in sheets **3** & **10**.

LABELING: Each unit shall bear a permanent label with the manufacturer name or logo, **Medelin, Colombia** and series and following statement: "Miami-Dade County Product Control Approved", noted herein.

RENEWAL of this NOA shall be considered after a renewal application has been filed and there has been no change in the applicable building code negatively affecting the performance of this product.

TERMINATION of this NOA will occur after the expiration date or if there has been a revision or change in the materials, use, and/or manufacture of the product or process. Misuse of this NOA as an endorsement of any product, for sales, advertising or any other purposes shall automatically terminate this NOA. Failure to comply with any section of this NOA shall be cause for termination and removal of NOA.

ADVERTISEMENT: The NOA number preceded by the words Miami-Dade County, Florida, and followed by the expiration date may be displayed in advertising literature. If any portion of the NOA is displayed, then it shall be done in its entirety.

INSPECTION: A copy of this entire NOA shall be provided to the user by the manufacturer or its distributors and shall be available for inspection at the job site at the request of the Building Official.

This NOA **renews #21-0520.09** consists of this page 1 and evidence pages E-1, E-2, E-3 & E-4, as well as approval document mentioned above.

The submitted documentation was reviewed by **Ishaq I. Chanda, P.E.**



Ishaq I. Chanda

NOA No. 23-0623.08
Expiration Date: April 04, 2024
Approval Date: July 13, 2023
Page 1

NOTICE OF ACCEPTANCE: EVIDENCE SUBMITTED

1. Evidence submitted under previous approvals

A. DRAWINGS

1. Manufacturer's parts drawings and sections
2. Drawing No. **H582-0907-11P**, titled "Mahogany Outswing Entrance Doors (L.M.I.)", sheets 1 through 11 of 11, dated APR 04, 2013, prepared by Wolters Engineering Inc., signed and sealed by Scott Wolters, P. E.

B. TESTS (submitted under file #12-1218.06)

1. Test reports on:
 - 1) Air Infiltration Test, per FBC, TAS 202-94
 - 2) Uniform Static Air Pressure Test, Loading per FBC TAS 202-94
 - 3) Water Resistance Test, per FBC, TAS 202-94
 - 4) Large Missile Impact Test per FBC, TAS 201-94
 - 5) Cyclic Wind Pressure Loading per FBC, TAS 203-94
 - 6) Forced Entry Test, per FBC 2411 3.2.1, TAS 202-94

along with marked-up drawings and installation diagram of outswing wood glass door w/ Transom and Outswing wood doors w/sidelites, Half Round and Arch shapes double opaque/glazed doors & shaped glazed wood transoms , prepared by Hurricane Testing Lab, LLC, Test Report No. **HTL-0582-0402-11**, dated 10/31/11 and revised on 11/19/12, signed and sealed by Vinu J. Abraham, P. E. (Hurricane Testing Lab, now has been acquired by Architectural Testing)

Note: This test report has been revised by an addendum letter dated Jan 31, 2013, issued by Architectural Testing, signed and sealed by Vinu J. Abraham, P. E.

C. CALCULATIONS

1. Anchor verification calculations and structural analysis, complying with FBC-2010, prepared by Wolters Engineering Inc., dated May 04, 2012 and last revised on DEC 07, 2012, signed and sealed by Scott Wolters, P. E.

D. QUALITY ASSURANCE

1. Miami Dade Department of Regulatory and Economic Resources (RER).

E. MATERIAL CERTIFICATIONS

1. None

F. STATEMENTS

1. Statement letter of conformance and letter of no financial interest, dated May 04, 2012, prepared by Wolters Engineering Inc., signed and sealed by Scott Wolters, P. E.
2. Lab compliance as part of the above referenced test report, including letter dated August 24, 2011, issued by Hurricane Testing Lab.

G. OTHER

1. Test proposal dated Sep 23, 2010, approved by BCCO.
2. Distribution agreement dated April 11, 2012, between Madera's De Occident, Colombia(manufacturer) and Montecarlo Doors, Inc, USA (distributor), signed by Ms. Adriana Maria Velez Posad and Juan D. Gomez, respectively on behalf of their companies.

Ishaq I. Chanda

Ishaq I. Chanda, P.E.
Product Control Unit Supervisor
NOA No. 23-0623.08
Expiration Date: April 04, 2024
Approval Date: July 13, 2023

NOTICE OF ACCEPTANCE: EVIDENCE SUBMITTED

2. Evidence submitted under previous approval

A. DRAWINGS

1. Drawing No. **H582-0907-11P**, titled “Mahogany Outswing Entrance Doors (L.M.I.)”, sheets 1 through 11 of 11, dated 10/12/2011 and last revised on MAR 05, 2018, prepared by Wolters Engineering Inc., signed and sealed by Scott Wolters, P.E.

B. TESTS

1. None.

C. CALCULATIONS

1. None.

D. QUALITY ASSURANCE

1. Miami Dade Department of Regulatory and Economic Resources (RER).

E. MATERIAL CERTIFICATIONS

1. None.

F. STATEMENTS

1. Statement letter of conformance to **FBC 2017 (6th Edition)**, dated MAR 05, 2018, prepared by Wolters Engineering Inc., signed and sealed by Scott Wolters, P. E.

G. OTHER

1. This NOA **revises & renews #12-1218.06**, expiring 04/04/2023.
2. Distribution agreement dated April 23, 2018, between MCD Design SAS, Colombia (manufacturer) and Montecarlo Doors, Inc, USA (distributor), signed by Mr. Pablo Madrid and Juan D. Gomez, respectively on behalf of their companies.

Ishaq I. Chanda

Ishaq I. Chanda, P.E.
Product Control Unit Supervisor
NOA No. 23-0623.08
Expiration Date: April 04, 2024
Approval Date: July 13, 2023

NOTICE OF ACCEPTANCE: EVIDENCE SUBMITTED

3. New Evidence submitted

A. DRAWINGS

1. Drawing No. **H582-0907-11P**, titled “Mahogany Outswing Entrance Doors (L.M.I.)”, sheets 1 through 11 of 11, dated 10/12/2011 and last revised on MAR 05, 2018, prepared by Wolters Engineering Inc., signed and sealed by Scott Wolters, P.E.
Note: this revision is for FBC 2020 (7th edition) updates, only.

B. TESTS

1. None.

C. CALCULATIONS

1. None.

D. QUALITY ASSURANCE

1. Miami Dade Department of Regulatory and Economic Resources (RER).

E. MATERIAL CERTIFICATIONS

1. None.

F. STATEMENTS

1. Statement letter of conformance to **FBC 2020 (7th Edition)**, dated APR 29, 2021, prepared by Wolters Engineering Inc., signed and sealed by Scott Wolters, P. E.

G. OTHER

1. This NOA revises **#17-0210.04**, expiring 04/04/2023.
2. Distribution agreement dated April 23, 2018, between MCD Design SAS, Colombia (manufacturer) and Montecarlo Doors, Inc, USA (distributor), signed by Mr. Pablo Madrid and Juan D. Gomez, respectively on their company's behalf. (Submitted under file **#17-0210.04**).

Ishaq I. Chanda

Ishaq I. Chanda, P.E.
Product Control Unit Supervisor
NOA No. 23-0623.08
Expiration Date: April 04, 2024
Approval Date: July 13, 2023

NOTICE OF ACCEPTANCE: EVIDENCE SUBMITTED

4. New Evidence submitted.

A. DRAWINGS

1. Drawing No. **H582-0907-11P**, titled “Mahogany Outswing Entrance Doors (L.M.I.)”, sheets 1 through 11 of 11, dated 10/12/2011 and last revised on MAR 05, 2018, prepared by Wolters Engineering Inc., signed and sealed by Scott Wolters, P.E.

Note: This is one year renewal, subjected to verification test.

B. TESTS

1. None.

C. CALCULATIONS

1. None.

D. QUALITY ASSURANCE

1. Miami Dade Department of Regulatory and Economic Resources (RER).

E. MATERIAL CERTIFICATIONS

1. None.

F. STATEMENTS

1. Statement letter of conformance **FBC 2023 (8th Edition)**, dated July 05, 2023, prepared by Wolters Engineering Inc., signed and sealed by Scott Wolters, P. E.
2. Statement letter of conformance to **FBC 2020 (7th Edition)**, dated APR 29, 2021, prepared by Wolters Engineering Inc., signed and sealed by Scott Wolters, P. E.(submitted previous NOA).
3. Statement letter dated June 9th issued by Montecarlo Doors, Inc., requesting one year Renewal, signed by Juan Gomez, sales manager.
4. Statement letter dated July 05, 2023. Issued by Intertek Lab of an upcoming verification test, scheduled for Montecarlo Doors, Inc., signed by Dan Carroll, Regional Manager.

G. OTHER

1. This NOA conditionally **renews #21-0510.09**, (subjected to verification test), expiring 04/04/2024.
2. Test proposal for one hybrid mock-up test, submitted by Intertek Lab, approved by RER via e-mail dated 06/09/23 by Ishaq I. Chanda, P.E.
3. Distribution agreement dated April 23, 2018, between MCD Design SAS, Colombia (manufacturer) and Montecarlo Doors, Inc, USA (distributor), signed by Mr. Pablo Madrid and Juan D. Gomez, respectively on behalf of their companies (submitted previous NOA(s)).

Ishaq I. Chanda

Ishaq I. Chanda, P.E.
Product Control Unit Supervisor
NOA No. 23-0623.08
Expiration Date: April 04, 2024
Approval Date: July 13, 2023

MATERIALS LIST

1. HEAD AND JAMB RABBETED & KERFED MAHOGANY
- A. 1³/₈" X 5¹/₄" HEAD - ARCH TOP AND EYEBROW, MAHOGANY AND PLYWOOD
- B. 1¹/₄" X 5¹/₄" TYPICAL HEAD AND JAMB, SOLID MAHOGANY
2. ACTIVE LEAF LOCKING HARDWARE OPTIONS:
- A. HOPPE HLS9000 5-POINT MULTIPOINT DOOR BOLT SYSTEM WITH LEVER HANDLE & STRIKE AT 36" ABOVE BASE OF DOOR AND SHOOT BOLT MORTISED INTO DOOR PANEL WITH TOP AND BOTTOM STRIKES.
- B. CONVENTIONAL SCHLAGE B60N 619 CYLINDER LOCK & DEAD BOLT @ 36" & 48¹/₂" ABOVE BASE OF DOOR (WITH 3B FLUSH BOLTS AT TOP AND BOTTOM).
3. INACTIVE LEAF FLUSH BOLT OPTIONS:
- A. HOPPE DOUBLE ACTING FLUSH BOLT WITH TOP & BOTTOM STRIKES
- B. HAGER 6³/₄" MANUAL FLUSH BOLTS AT THE TOP AND BOTTOM OF DOOR WITH TOP & BOTTOM STRIKES
4. HAGER #1193 SOLID BRASS BALL BEARING HINGES 4¹/₂" X 4¹/₂" X 3³/₈" THICK
5. STRIKES: HEAD AND SILL STRIKE PLATE 1" THICK STEEL 2" X 6⁵/₈".
6. GLASS: SEE GLAZING DETAILS ON SHEET 2.
7. 5³/₄" X 1⁵/₈" 6063 - T5 - ALUMINUM BUMPER THRESHOLD.
8. 2"x6"x1" ALUMINUM 6063-T6 MULLION WITH 6"x8"x1" CONT. FILLET WELDED END PLATES.
9. 2⁵/₈" x 5¹/₄" COMPOSITE MAHOGANY STILE.
10. RAILS:
- A. 5³/₄" X 2¹/₄" COMPOSITE MAHOGANY TOP RAIL - EYEBROW DOOR.
- B. 5" X 2³/₈" COMPOSITE MAHOGANY MEETING RAIL.
- C. NOT USED
- D. 5¹/₄" X 2¹/₄" COMPOSITE MAHOGANY TOP RAIL.
- E. 10¹/₂" X 2⁵/₈" COMPOSITE MAHOGANY TYPICAL BOTTOM RAIL.
- F. 5¹/₄" X 2¹/₄" SOLID MAHOGANY TOP RAIL - ARCH.
- G. 10" X 2³/₈" COMPOSITE MAHOGANY MEETING RAIL - LARGE.
11. GLASS STOP: 1" X 1" SOLID MAHOGANY
12. ASTRAGALS:
- A. TYPICAL ASTRAGAL: 2" X 4⁵/₈" PLYWOOD AND MAHOGANY WITH 2¹/₄" RABBIT ON INACTIVE SIDE AND 2⁵/₈" RABBIT ON ACTIVE SIDE.
- B. EXTERIOR ASTRAGAL: 3¹/₂" X 1" SOLID MAHOGANY.
13. WEATHER STRIP:
- A. 1" Q-LON QDS-650.
- B. PILE WEATHERSTRIPPING: 1" FINSEAL WITH 1" HIGH PILE.
- C. MD BUILDING PRODUCTS ALL CLIMATE WEATHERSTRIPPING TAPE #63628.
14. TOP / BOTTOM DOOR GUIDE REINFORCING: 1" THK. STAINLESS STEEL.
- A. TYPICAL 10¹/₂" X 1¹/₂" AT TOP AND BOTTOM OF EACH DOOR.
- B. CONTINUOUS REINFORCING FROM THE END OF THE TOP 14A TO 75" FROM THE BOTTOM OF THE DOOR, FASTENED AT 5" O/C WITH PART #21. (REQUIRED AT ARCH-TOP DOORS ONLY).
15. 5/8" X 6" MAHOGANY DOWEL.
16. DOW CORNING 995 SILICONE.
17. 4d X 1¹/₄" FINISHING NAIL 1" FROM CORNERS AND SPACED 2¹/₂" O.C. FASTENING GLASS STOPS TO PANELS.
18. NOT USED
19. NOT USED
20. No. 10 x 2¹/₄" PFHSMs (3 PER CORNER). TYP.
21. No. 10 x 2" PFHSMs FASTENING REINF. TO DOOR RAIL.
22. No. 10 x 3" PFHSMs FASTENING STRIKE PLATE TO HEAD AND THRESHOLD. (2 PER PLATE)
23. No. 12 x 3" PFHSMs FASTENING STRIKE PLATE TO HEAD/THRESHOLD & BUCK. (SCREWS PENETRATE THROUGH HEAD/THRESHOLD & INTO SUBSTRATE 1¹/₂". 2 PER PLATE.
24. NOT USED
25. NOT USED.
26. No. 10 x 2" PFHSMs ASTRAGAL (1" FROM EACH END, BALANCE @ 10" O/C, STAGGERED.)
27. No. 12 x 1" PFHSMs FASTENING HINGE TO JAMB (2 PER HINGE)
28. No. 12 x 2³/₄" PFHSMs FASTENING HINGE TO JAMB (2 PER HINGE), FASTENERS MUST PENETRATE MIN. 1¹/₄" INTO WOOD.
29. No. 12 x 1¹/₄" PFHSMs FASTENING HINGE TO PANELS. (4 PER HINGES)
30. NOT USED
31. 1/4" x 3³/₄" PFHSMs WITH 2¹/₄" EMBED INTO WOOD, POSITIONED AS SHOWN ON ELEVATION VIEWS AND SECTIONS
32. No. 12 x 3¹/₄" PFHSMs 2¹/₄" EMBED.
33. NOT USED
34. NOT USED
35. 1" x 2³/₄" PFHSDSMS FASTNEING JAMBS AND DS MAX 8" O.C. TO MULLION.
36. PERIMETER SEALANT: SIKAFLEX 15 LM.
37. FULL LENGTH 3"x2"x0.090" ALUMINUM CHANNEL AT THRESHOLD FASTENERS. SEE ANCHOR CONDITIONS ON SHEET 10.
38. WOOD SPECIES: CARAPA GUIANESIS MAHOGANY
39. PLYWOOD: CDX PLYWOOD

GENERAL NOTES, MAHOGANY OUTSWING ENTRANCE DOORS, LARGE MISSILE IMPACT:

1. THIS APPROVAL APPLIES TO SINGLE (X) AND DOUBLE (XX) LEAF IMPACT RESISTANT OUTSWING MAHOGANY DOORS WITH OR WITHOUT DIRECT-SET SIDELITES OR TRANSOMS (SEE SEPARATE MONTECARLO APPROVAL FOR DIRECT-SET FIXED LITES).
- ANY COMBINATION OF SINGLE DOORS, DOUBLE DOORS, AND/OR DIRECT-SET SIDELITES MAY BE MULLED TOGETHER WITH 2x6x1/8" MULLIONS WITH WELDED END PLATES AS SHOWN HEREIN.
2. ALLOWABLE DESIGN PRESSURE: +/-50 PSF
3. ALL CONNECTIONS BETWEEN RAIL/STILE AND RAISED PANEL ARE AS SHOWN IN DETAIL A/2, AND ALL HARDWARE TYPES IN THE MATERIALS LIST TO THE LEFT MAY BE USED IN ANY DOOR CONFIGURATION SHOWN ON SHEET 2 PER DLO LIMITATION
4. DIRECT-SET TRANSOM (SEE SEPARATE MONTECARLO APPROVAL) MAY BE MULLED OVER X OR XX DOORS ONLY. TRANSOM CANNOT BE USED OVER SIDELITE OR OVER DOOR-SIDELITE ASSEMBLIES. ANY SHAPE DIRECT SET TRANSOM MAY BE USED.
5. THESE DOORS HAVE BEEN DESIGNED AND TESTED TO TAS 201, 202, AND 203 PROTOCOLS IN ACCORDANCE WITH THE REQUIREMENTS OF THE FLORIDA BUILDING CODE (FBC) INCLUDING THE HIGH VELOCITY HURRICANE ZONE.
6. THIS PRODUCT AS SHOWN HEREIN IS LARGE AND SMALL MISSILE IMPACT RATED, SHUTTERS ARE NOT REQUIRED.
7. 1X OR 2x WOOD OR MASONRY OPENINGS, BUCKS, AND BUCK FASTENERS, BY OTHERS, SHALL BE PROPERLY DESIGNED AND INSTALLED TO TRANSFER LOADS TO THE STRUCTURE.
8. ANCHOR TYPE, SIZE, SPACING, AND EMBEDMENT SHALL BE AS INDICATED IN THIS APPROVAL. ANCHOR EMBEDMENT TO SUBSTRATE SHALL BE BEYOND WALL DRESSING OR STUCCO.
9. ALL FASTENERS PENETRATING INTO PRESSURE TREATED WOOD SHALL BE CAPABLE OF PREVENTING CORROSION DUE TO REACTION WITH PRESSURE TREATMENT CHEMICALS.
10. DISSIMILAR MATERIALS THAT COME INTO CONTACT SHALL BE PROTECTED TO PREVENT REACTIONS IN ACCORDANCE WITH FBC CHAPTERS 20 AND 23.
11. A WIND LOAD DURATION FACTOR Cd = 1.6 WAS USED FOR THE ANALYSIS OF WOOD SCREWS ONLY.
12. THE MAHOGANY DOORS LISTED IN THIS APPROVAL ARE CONSTRUCTED OF A NATURALLY DURABLE SPECIES IN COMPLIANCE WITH FBC SECT. 2326.2.1. OTHER NATURALLY DURABLE WOOD SPECIES OF EQUAL OR GREATER DENSITY MAY BE SUBSTITUTED FOR ALL WOOD COMPONENTS.
13. COMPOSITE MEMBERS ARE FORMED BY JOINING PIECES AS SHOWN IN PART DRAWINGS WITH TITEBOND II FRANKLIN INTERNATIONAL WOOD GLUE
14. MEMBERS NOTCHED AS NEEDED TO FIT HARDWARE
15. ALL HARDWARE SEALED WITH CLEAR GE SILICONE I WINDOW AND DOOR CAULK

PRODUCT RENEWED
as complying with the Florida
Building Code

NOA-No. 23-0623.08

Expiration Date 04/04/2024

By Ishag I. Chank
Miami-Dade Product Control

ALLOWABLE
DESIGN PRESSURE:
+50 / -50 PSF

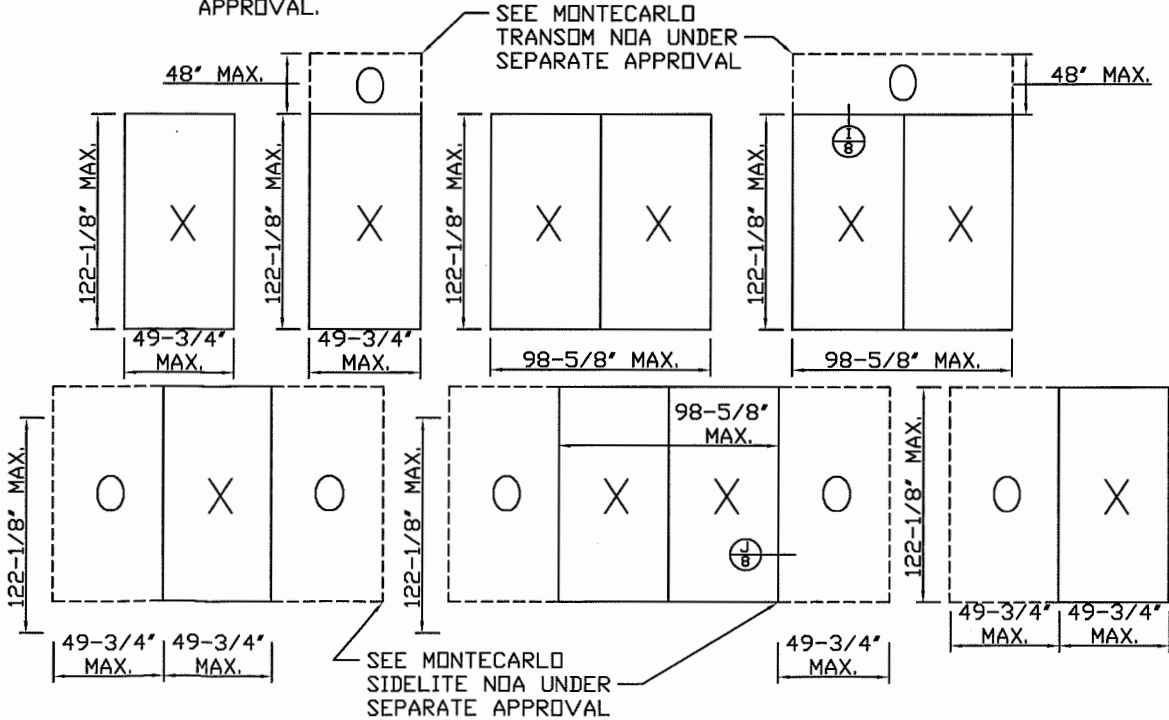
PRODUCT REVISED
as complying with the Florida
Building Code

NOA-No. 21-0510.09

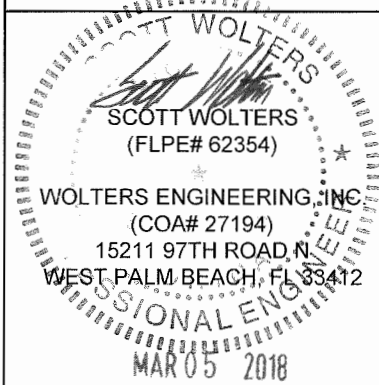
Expiration Date 04/04/2023

By Ishag I. Chank
Miami-Dade Product Control

EXAMPLE ALLOWABLE CONFIGURATIONS. (SEE GEN. NOTE 1 ABOVE)
SEE SHEETS 3-5 FOR SIZE LIMITATIONS.
NOTE: 'X' UNITS ARE ACTIVE OR INACTIVE DOOR PANELS AND
MAY SWING LEFT OR RIGHT. 'O' UNITS ARE OPTIONAL DIRECT
SET FIXED LITE TRANSOMS OR SIDELITES, NOT PART OF THIS
APPROVAL.

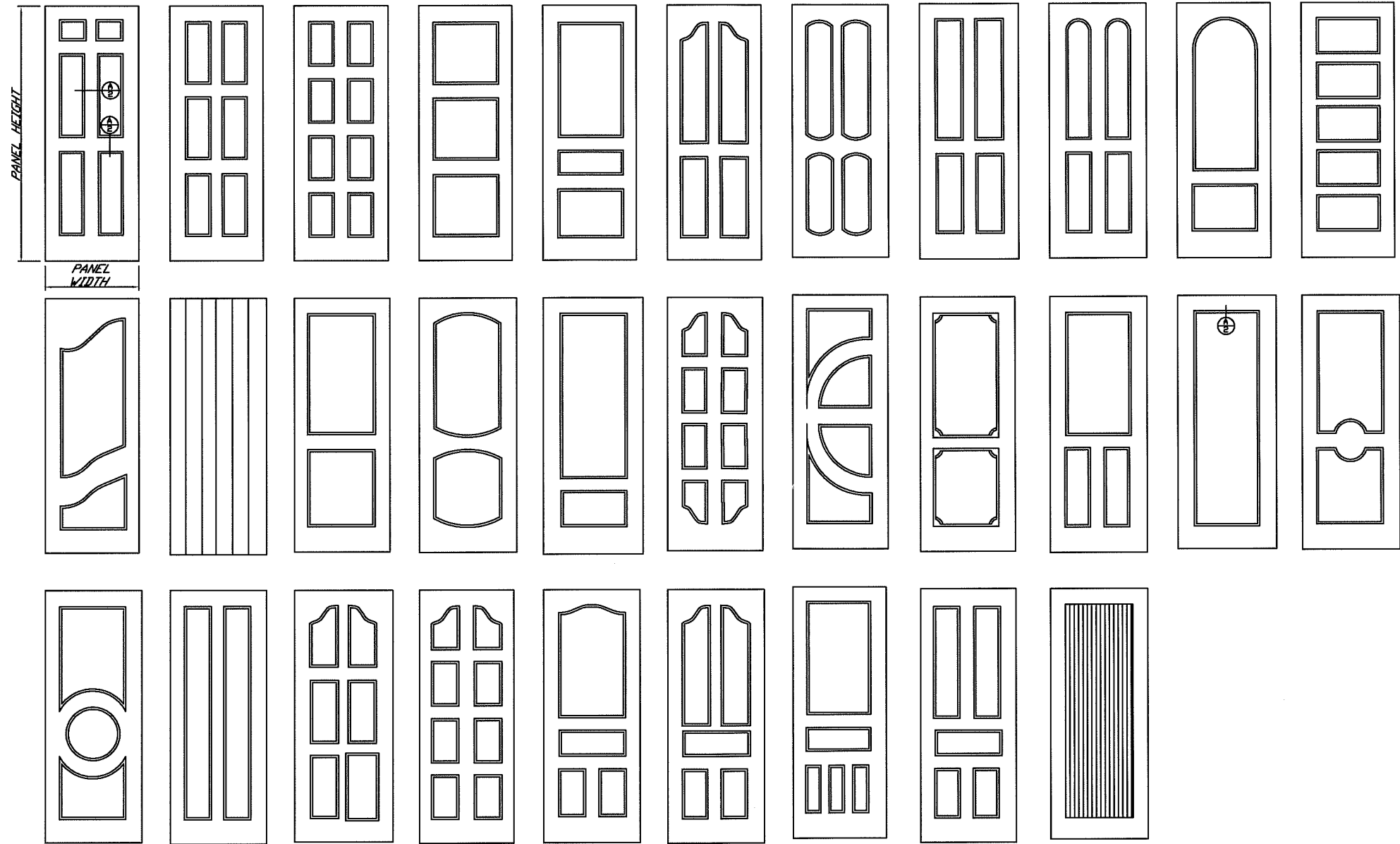


PRODUCT REVISED
as complying with the Florida
Building Code
Acceptance No. 17-0210.04
Expiration Date APR 04 2023
Ishag I. Chank
Miami-Dade Product Control



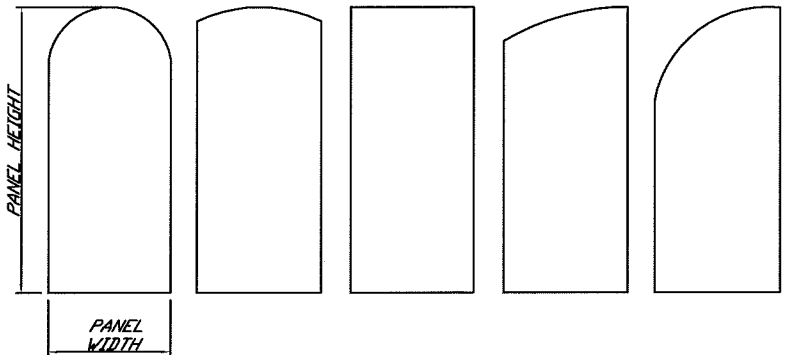
BY	LAT	AVR		
DESCRIPTION	ORIGINAL RELEASE	SHOW ONLY PANELS & ADD -P TO TITLE		
DATE	10/12/2011	11/9/2012		
REV.	0	1		
Mahogany Outswing Entrance Doors				
Large Missile Impact				
Montecarlo Doors				
4440 PGA Boulevard, Suite 600 Palm Beach Gardens, FL 33410 PHONE: 561.623.5303 FAX: 561.594.1720 www.montecarlodoors.com				
DRAWING # H582-0907-11-P				
SCALE: NTS				
SHEET 1 of 11				

SOLID WOOD RAISED PANEL DOOR CONFIGURATION OPTIONS

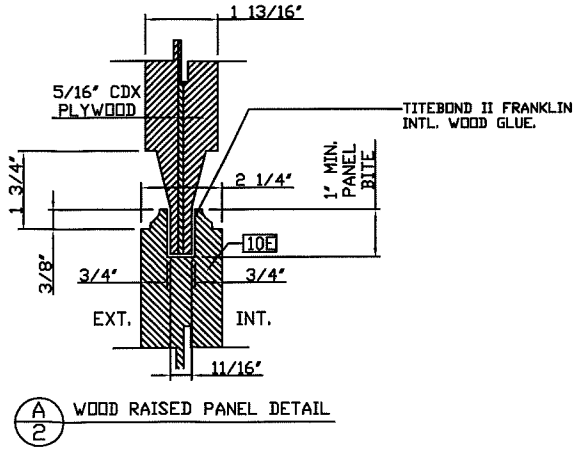


MAX. PANEL WIDTH = 48"
MAX. PANEL HEIGHT = 120-3/4"

ALLOWABLE SOLID WOOD
DOOR PANEL TOP SHAPES:



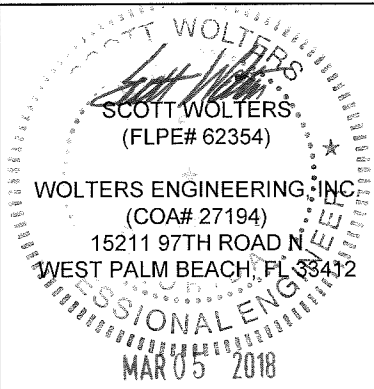
MAX. PANEL WIDTH = 48"
MAX. PANEL HEIGHT = 120-3/4"



PRODUCT RENEWED
as complying with the Florida
Building Code
NOA-No. 23-0623.08
Expiration Date 04/04/2024
By Ishag I. Chande
Miami-Dade Product Control

PRODUCT REVISED
as complying with the Florida
Building Code
NOA-No. 21-0510.09
Expiration Date 04/04/2023
By Ishag I. Chande
Miami-Dade Product Control

PRODUCT REVISED
as complying with the Florida
Building Code
Acceptance No. 17-0210-04
Expiration Date 4/14/23
By Ishag I. Chande
Miami-Dade Product Control



BY	DATE	DESCRIPTION	REV.
LAT	10/12/2011	ORIGINAL RELEASE	0
AWR	11/9/2012	SHOW ONLY PANELS & ADD -P TO TITLE	1

Mahogany Outswing Entrance Doors

Large Missile Impact

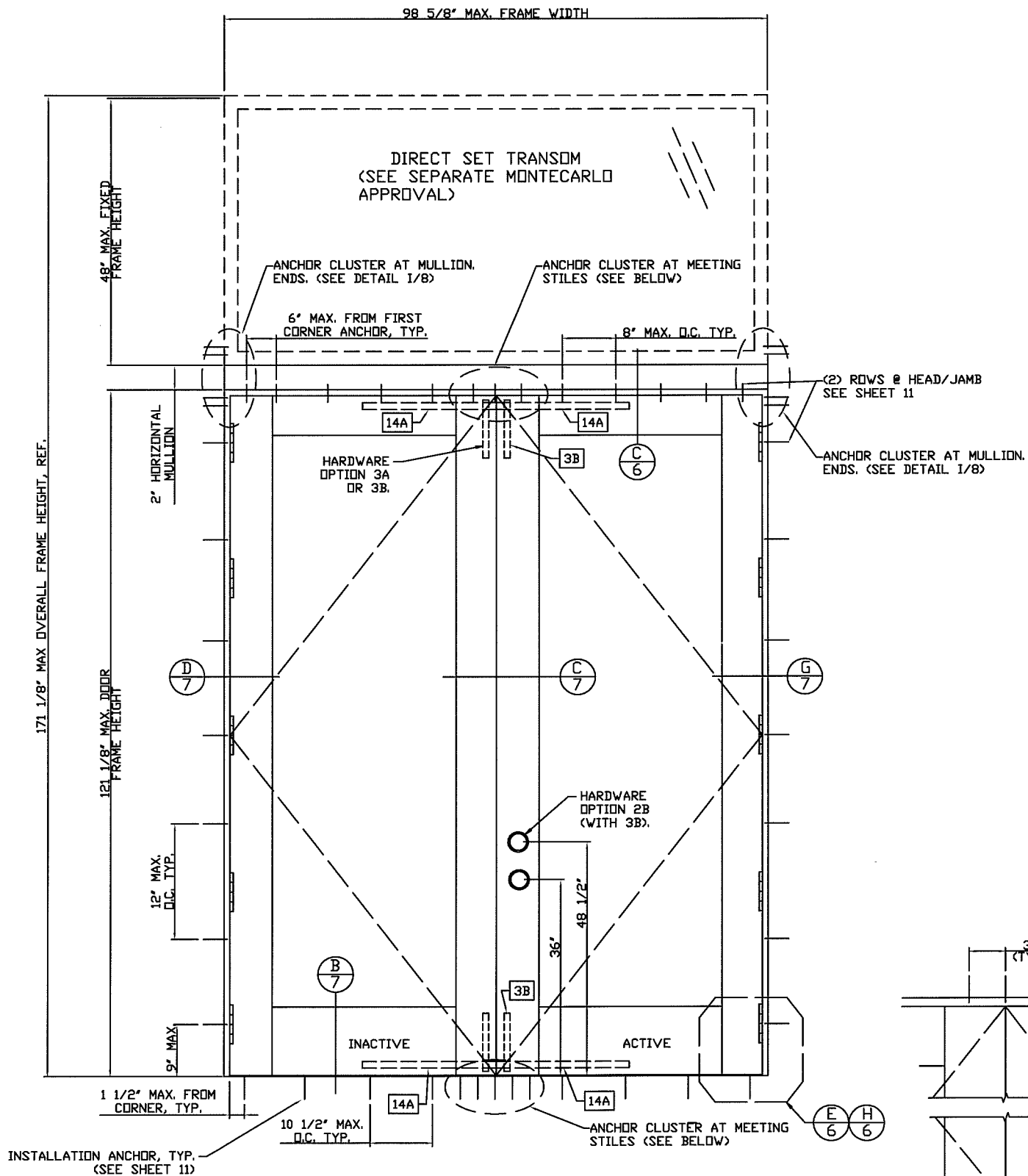
Montecarlo Doors
4440 PCA Boulevard, Suite 600
Palm Beach Gardens, FL 33410
PHONE: 561.623.5303
FAX: 561.594.1720
www.montecarlodoors.com

DRAWING # H582-0907-11-P

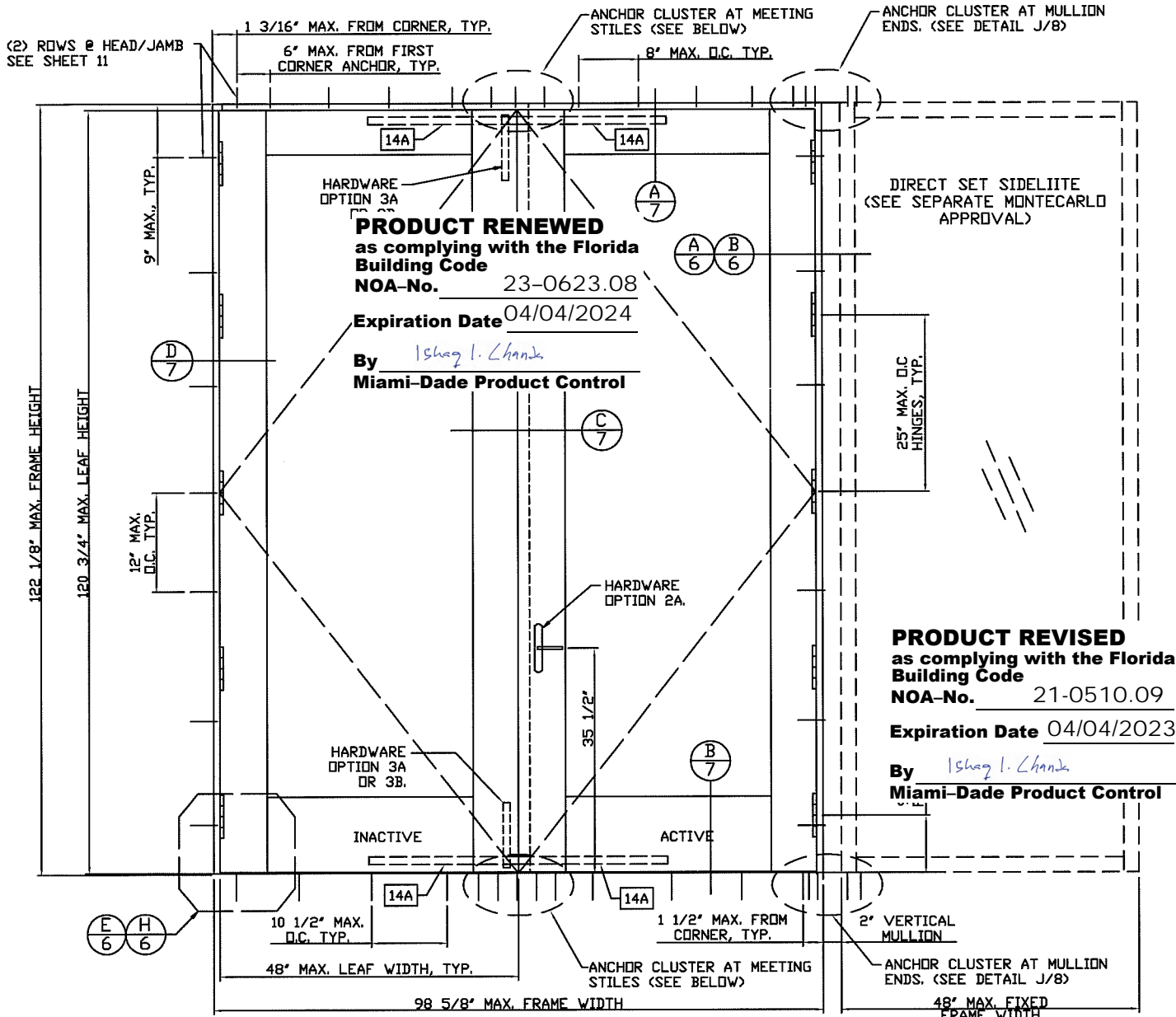
SCALE: NTS

SHEET 2 of 11

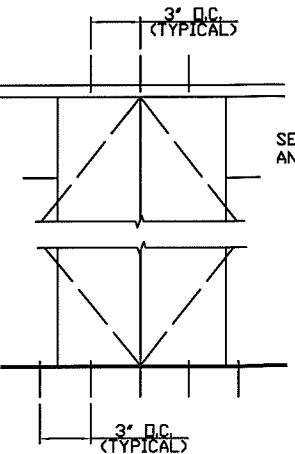
NOTE: EGRESS DOORS MUST MEET FBC REQUIREMENTS TO BE REVIEWED BY BLDG OFFICIAL



ELEVATION 2: DOUBLE DOORS
(WITH OR WITHOUT TRANSOM)
NOTE: FOR DOOR MAX. SIZES AND SPACINGS SEE ELEVATION 1, THIS SHEET



ELEVATION 1: DOUBLE DOORS
(WITH OR WITHOUT SIDELITES)
NOTE: MAX. SIZES AND ANCHOR AND HINGE SPACING SHOWN ABOVE TYPICAL TO ALL DOUBLE DOORS.

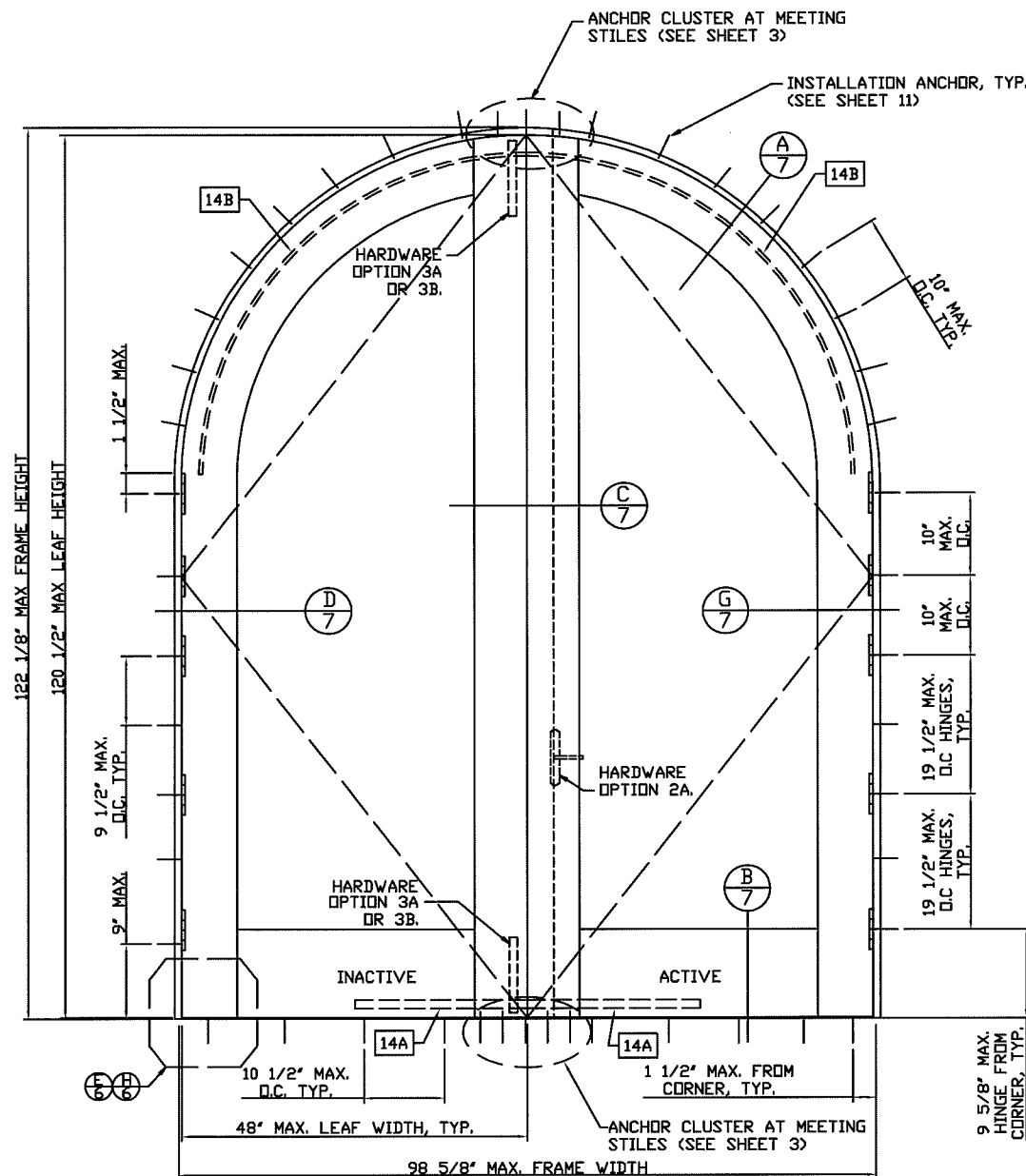


- ANCHOR CLUSTERS AT MEETING STILES
SEE SHEET 11 FOR FASTENER TYPE, SPACING, EMBEDMENT, AND EDGE DISTANCE REQUIREMENTS.
- HEAD:
- WOOD - (1) ROW OF (3) TYPE A
 - CONCRETE - (2) ROWS OF (2) TYPE C
 - CMU - (2) ROWS OF (2) TYPE C
 - STEEL - (2) ROWS OF (2) TYPE D
 - ALUMINUM - (2) ROWS OF (2) TYPE E
- SILL:
- WOOD - (5) TYPE B
 - CONCRETE - (4) TYPE C
 - STEEL - (4) TYPE D
 - ALUMINUM - (4) TYPE E

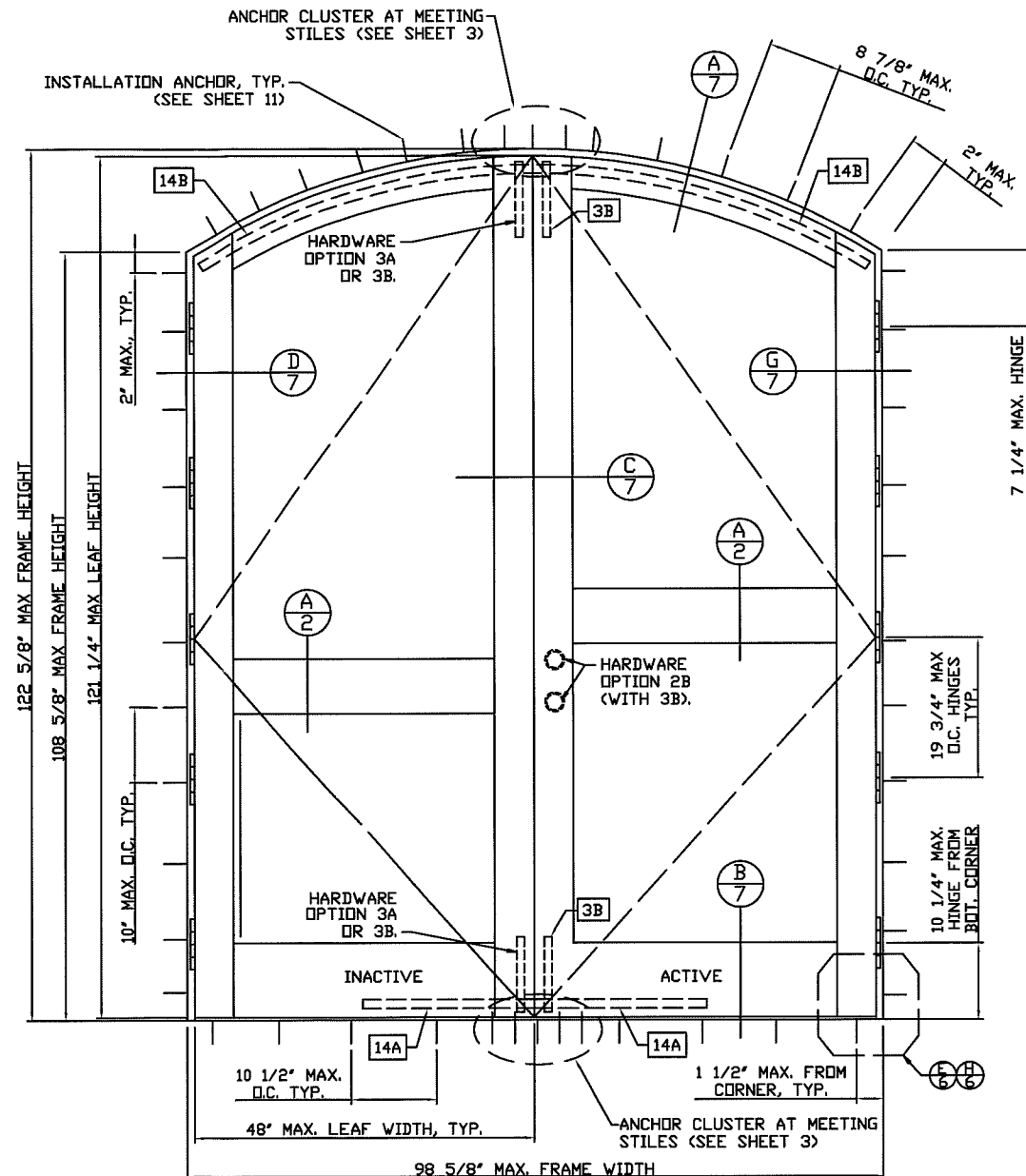
PRODUCT REVISED
as complying with the Florida
Building Code
Acceptance No. 17-6210-04
Expiration Date 4/14/23
By Ishag I. Chank
Miami-Dade Product Control

SCOTT WOLTERS
(FLPE# 62354)
WOLTERS ENGINEERING, INC.
(COA# 27194)
15211 97TH ROAD N
WEST PALM BEACH, FL 33412
MAR 05 2018

BY	LAT	AVR
DESCRIPTION	DATE	REV.
ORIGINAL RELEASE	10/12/2011	0
SHOW ONLY PANELS & ADD -P TO TITLE	11/9/2012	1
Mahogany Outswing Entrance Doors		
Large Missile Impact		
Montecarlo Doors 4440 PGA Boulevard, Suite 600 Palm Beach Gardens, FL 33410 PHONE: 561.623.5303 FAX: 561.594.1720 www.montecarlodoors.com		
DRAWING #	H582-0907-11-P	
SCALE	NTS	
SHEET	3 of 11	



ELEVATION: DOUBLE DOORS WITH ARCH TOP



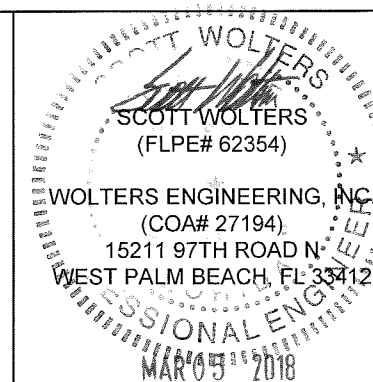
ELEVATION: DOUBLE DOORS WITH EYEBROW TOP
(MAX. SIZES AND SPACINGS SHOWN TYP. FOR SINGLE OR DOUBLE LEAF EYEBROW TOP DOOR)

NOTE: FOR TYP. LOCK/HANDLE LOCATIONS, SEE SHEET 3.
NOTE: EGRESS DOORS MUST MEET FBC REQUIREMENTS TO BE REVIEWED BY BLDG OFFICIAL

PRODUCT RENEWED
as complying with the Florida
Building Code
NOA-No. 23-0623.08
Expiration Date 04/04/2024
By Ishag I. Chank
Miami-Dade Product Control

PRODUCT REVISED
as complying with the Florida
Building Code
NOA-No. 21-0510.09
Expiration Date 04/04/2023
By Ishag I. Chank
Miami-Dade Product Control

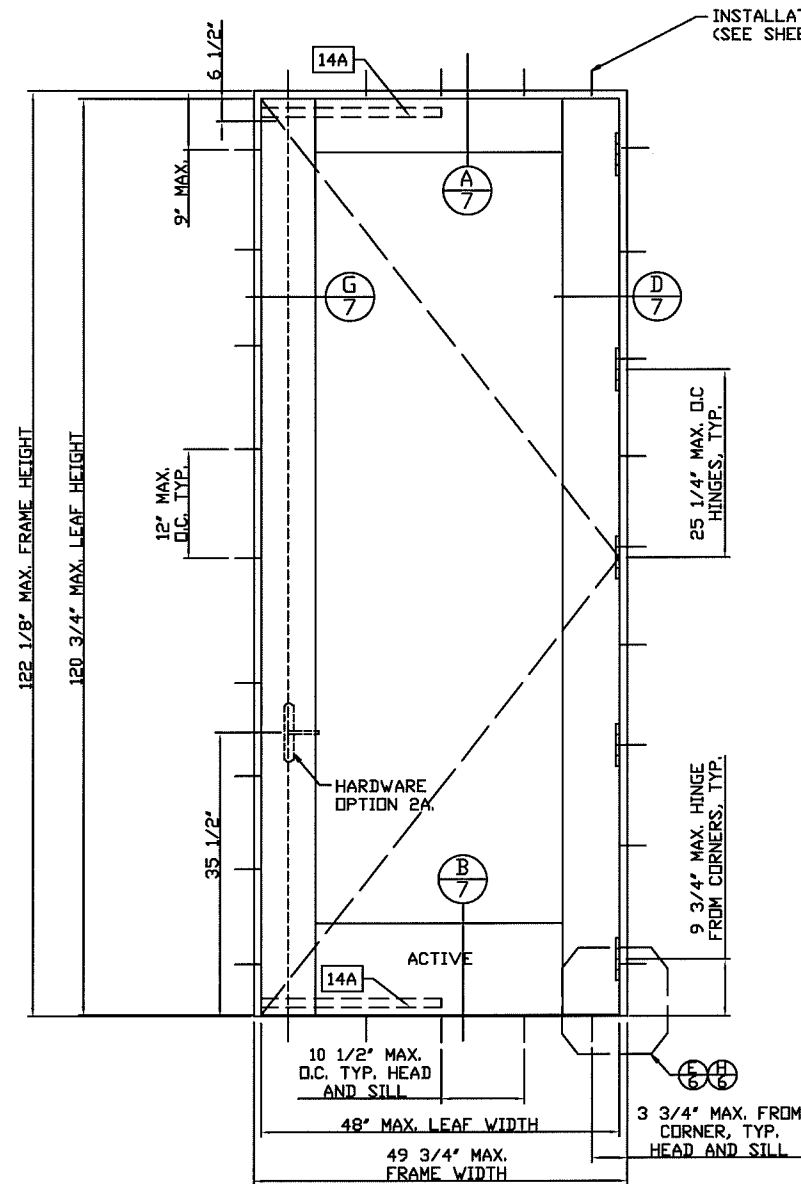
PRODUCT REVISED
as complying with the Florida
Building Code
Acceptance No. 17-0210.04
Expiration Date 4/4/23
By Ishag I. Chank
Miami-Dade Product Control



REV.	DATE	DESCRIPTION	BY
0	10/12/2011	ORIGINAL RELEASE	LAT
1	11/9/2012	SHOW ONLY GLAZING & ADD -G TO TITLE	AVR

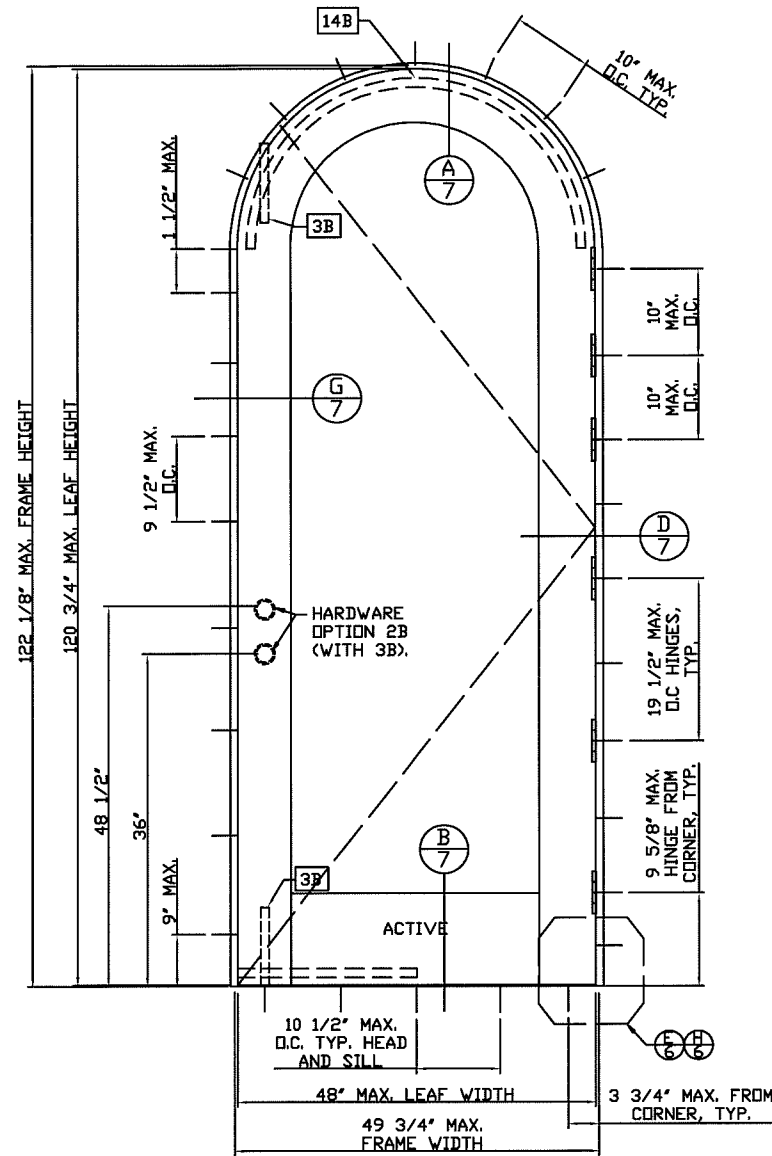
Mahogany Outswing Entrance Doors	
Large Missile Impact	

Montecarlo Doors 4440 PGA Boulevard, Suite 600 Palm Beach Gardens, FL 33410 PHONE: 561.623.5303 FAX: 561.594.1720 www.montecarlodoors.com	DRAWING # H582-0907-11-P SCALE: NTS SHEET 4 of 11
---	---



ELEVATION: SINGLE DOOR
 NOTE: MAX. SIZES AND ANCHOR AND HINGE SPACING SHOWN ABOVE TYPICAL TO ALL SINGLE DOORS WITH OR WITHOUT DIRECT SET SIDELITES OR TRANSOMS (SEE SHEET 1)

NOTE: EGRESS DOORS MUST MEET FBC REQUIREMENTS TO BE REVIEWED BY BLDG OFFICIAL



ELEVATION: SINGLE DOOR WITH ARCH TOP

PRODUCT RENEWED
 as complying with the Florida Building Code
 NOA-No. 23-0623.08
 Expiration Date 04/04/2024
 By Ishag I. Chande
 Miami-Dade Product Control

PRODUCT REVISED
 as complying with the Florida Building Code
 NOA-No. 21-0510.09
 Expiration Date 04/04/2023
 By Ishag I. Chande
 Miami-Dade Product Control

PRODUCT REVISED
 as complying with the Florida Building Code
 Acceptance No. 17-0210.04
 Expiration Date 11/12/23
 By Ishag I. Chande
 Miami-Dade Product Control

REV.	DATE	DESCRIPTION	BY
0	10/12/2011	ORIGINAL RELEASE	LAT
1	11/9/2012	SHOW ONLY GLAZING & ADD -G TO TITLE	AVR

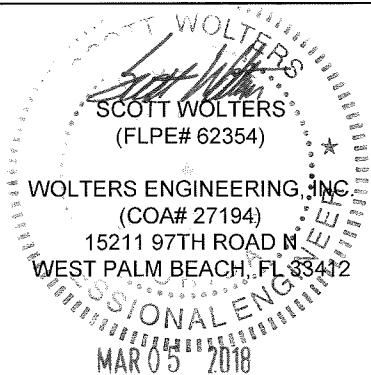
Mahogany Outswing Entrance Doors
 Large Missile Impact

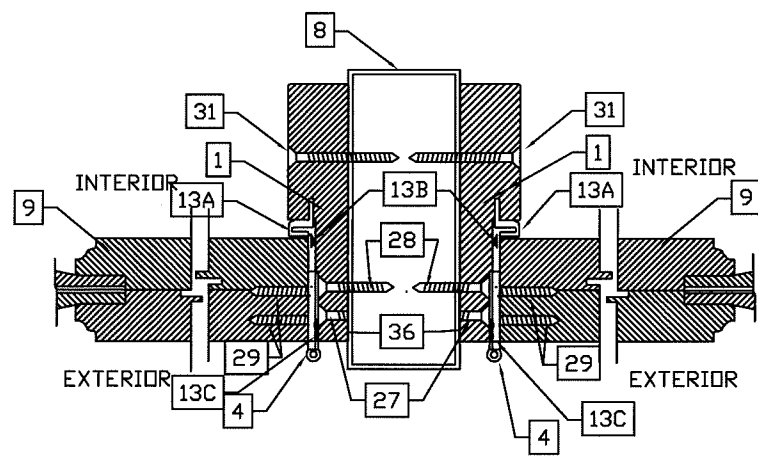
Montecarlo Doors
 4440 PCA Boulevard, Suite 600
 Palm Beach Gardens, FL 33410
 PHONE: 561.623.5303
 FAX: 561.594.1720
 www.montecarlodoors.com

DRAWING # H582-0907-11-P

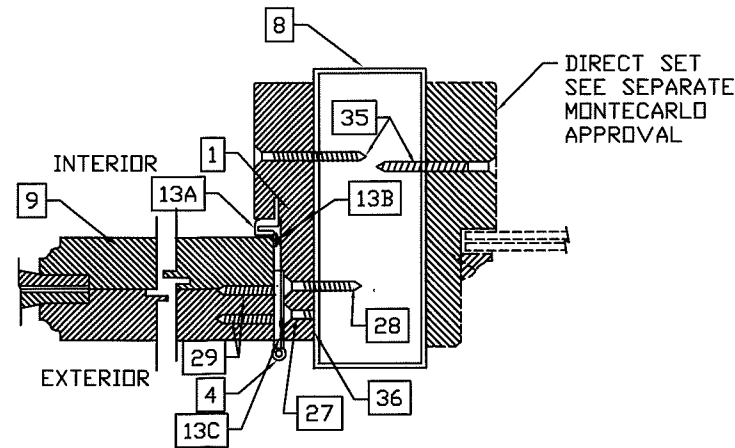
SCALE: NTS

SHEET 5 of 11

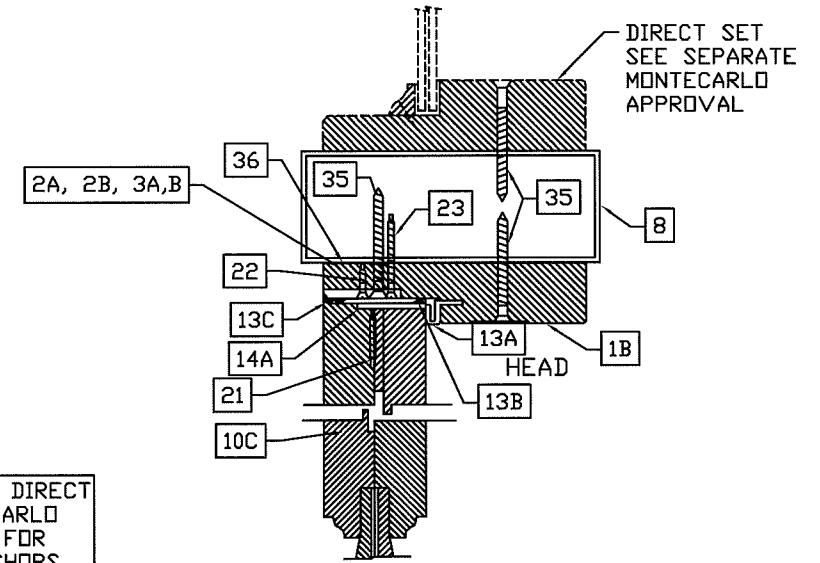




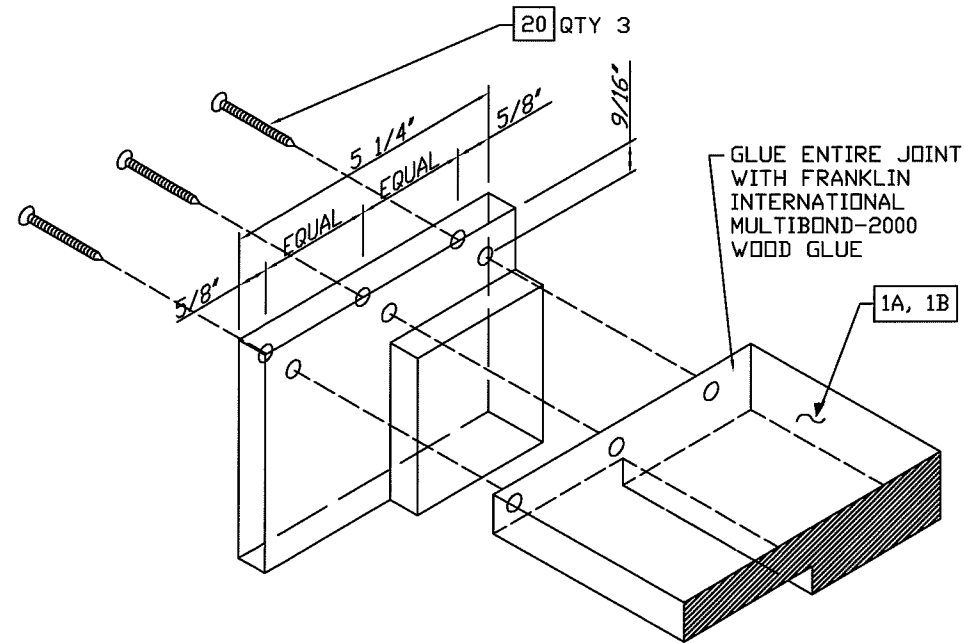
A MULLION DETAIL
6 (DOOR-DOOR)



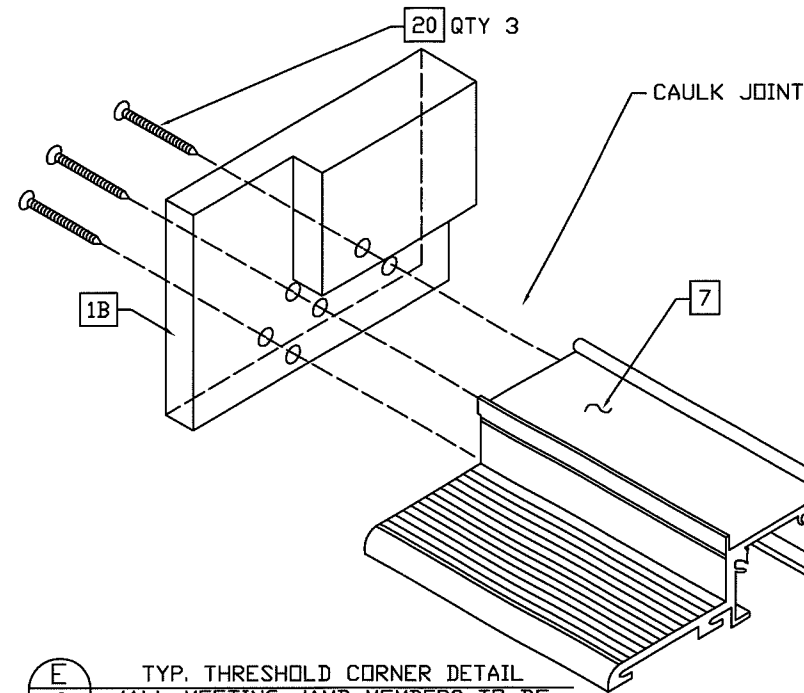
B MULLION DETAIL
6 (DOOR-SIDELITE)



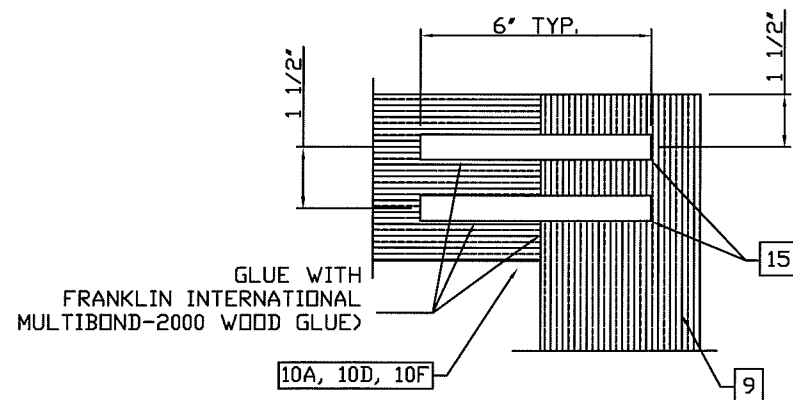
C TRANSOM MULLION
6 DETAIL



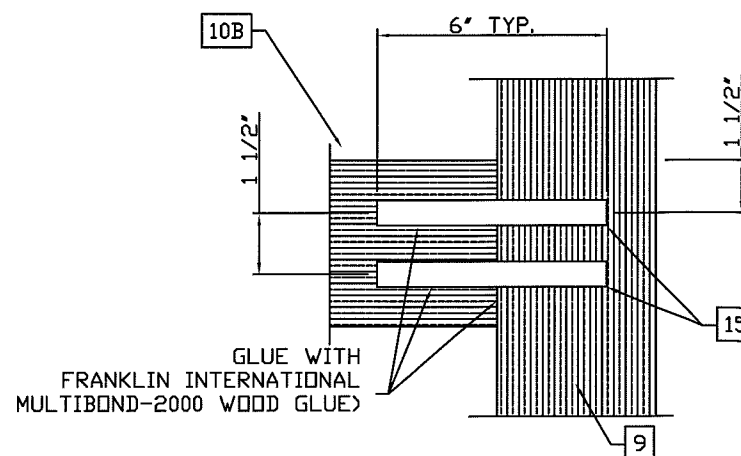
D TYP. FRAME CORNER DETAIL
6 (ALL MEETING JAMBS TO BE SCREWED AT ALL CORNERS)
SCALE: NTS



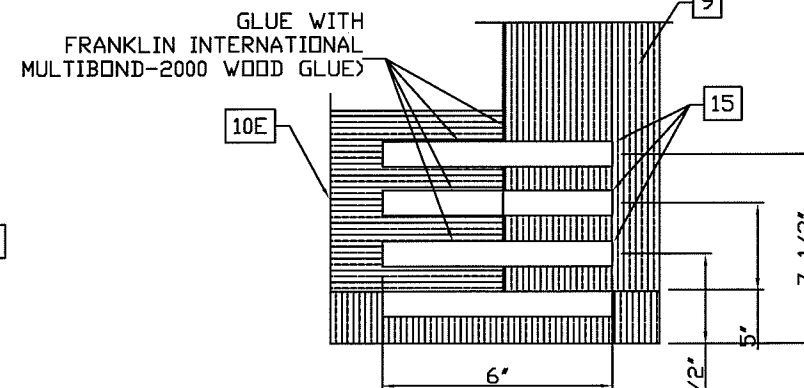
E TYP. THRESHOLD CORNER DETAIL
6 (ALL MEETING JAMB MEMBERS TO BE SCREWED AT ALL CORNERS)
SCALE: NTS



F TYP. TOP RAIL ASSEMBLY DETAIL
6 SCALE: NTS



G TYP. MEETING RAIL ASSEMBLY DETAIL
6 SCALE: NTS



H TYP. BOTTOM RAIL ASSEMBLY DETAIL
6 SCALE: NTS

SEE SEPARATE DIRECT
SET MONTECARLO
APPROVAL FOR
MULLION ANCHORS.

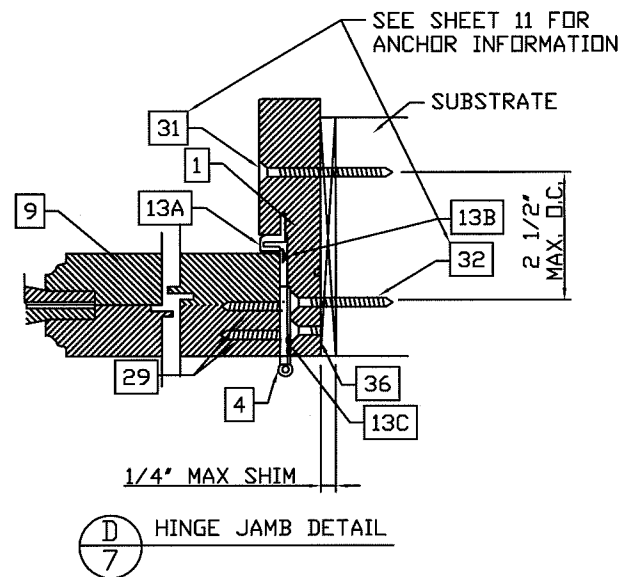
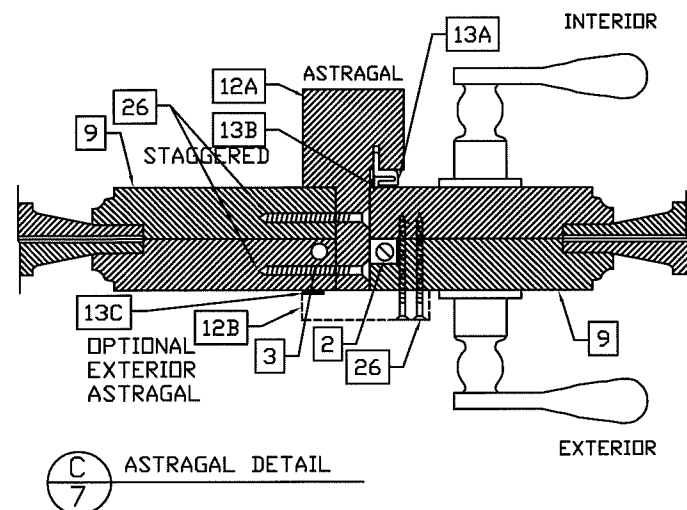
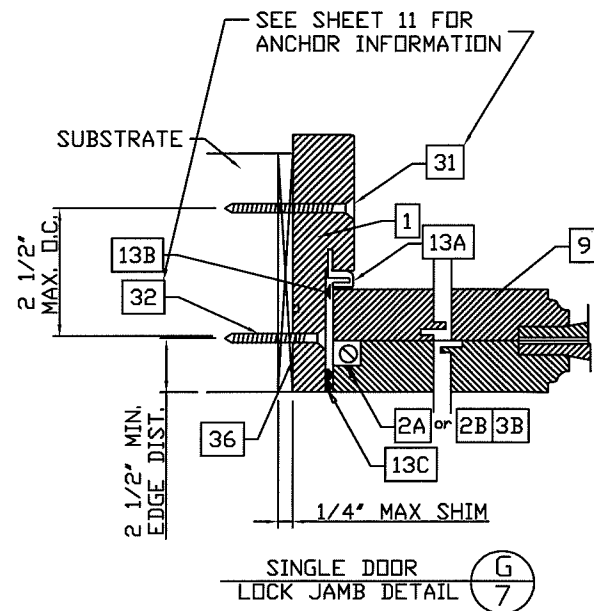
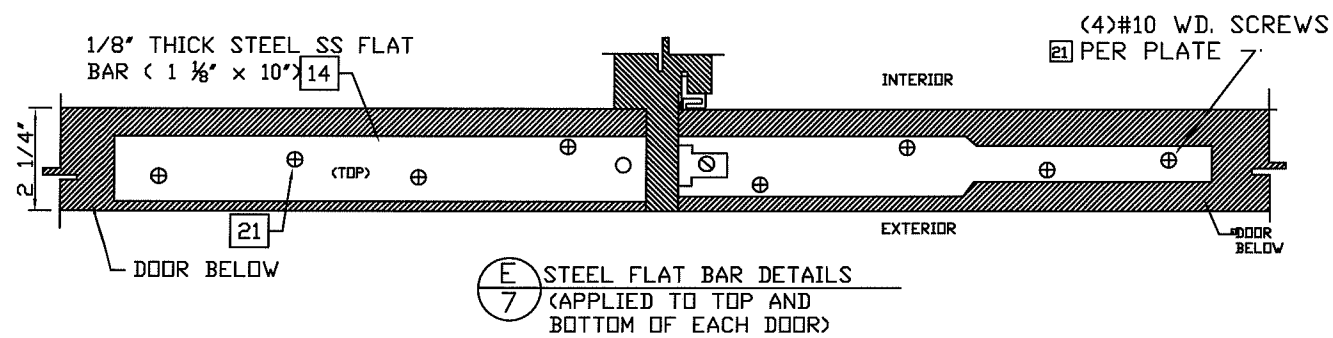
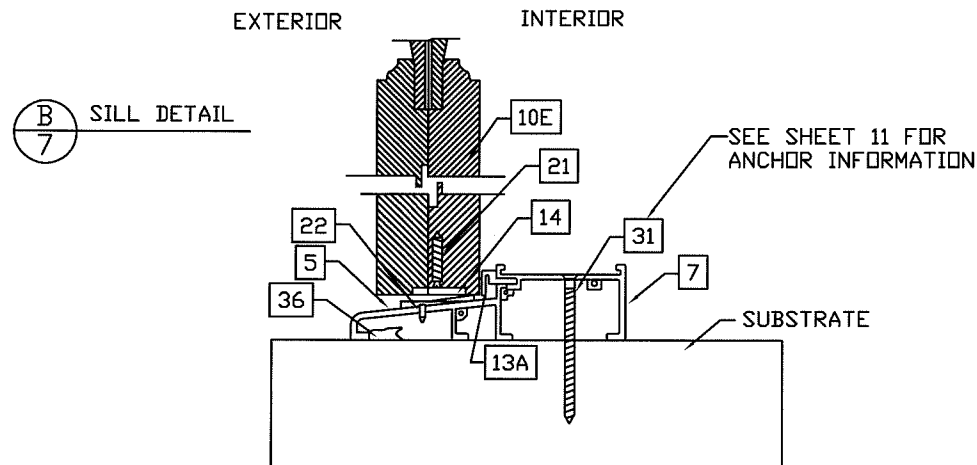
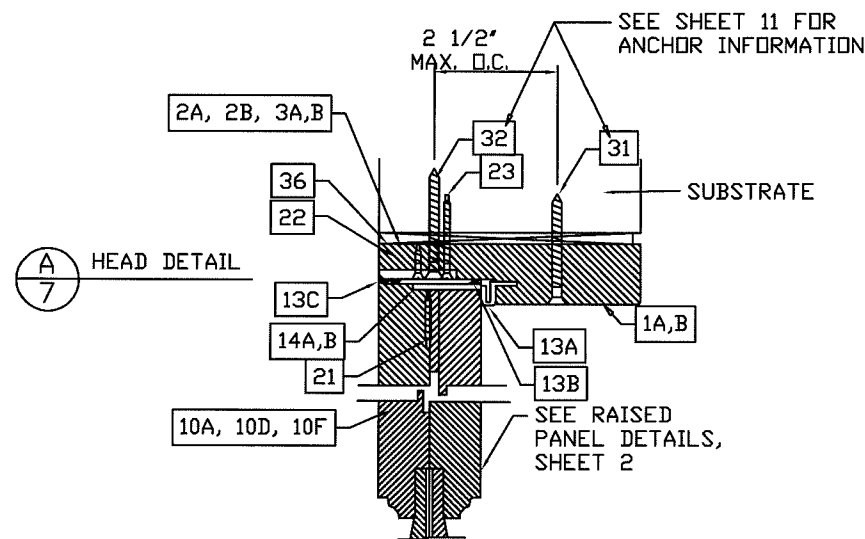
PRODUCT RENEWED
as complying with the Florida
Building Code
NOA-No. 23-0623.08
Expiration Date 04/04/2024
By Ishag I. Chande
Miami-Dade Product Control

PRODUCT REVISED
as complying with the Florida
Building Code
NOA-No. 21-0510.09
Expiration Date 04/04/2023
By Ishag I. Chande
Miami-Dade Product Control

PRODUCT REVISED
as complying with the Florida
Building Code
Acceptance No. 17-0210.04
Expiration Date 4/4/23
By Ishag I. Chande
Miami-Dade Product Control

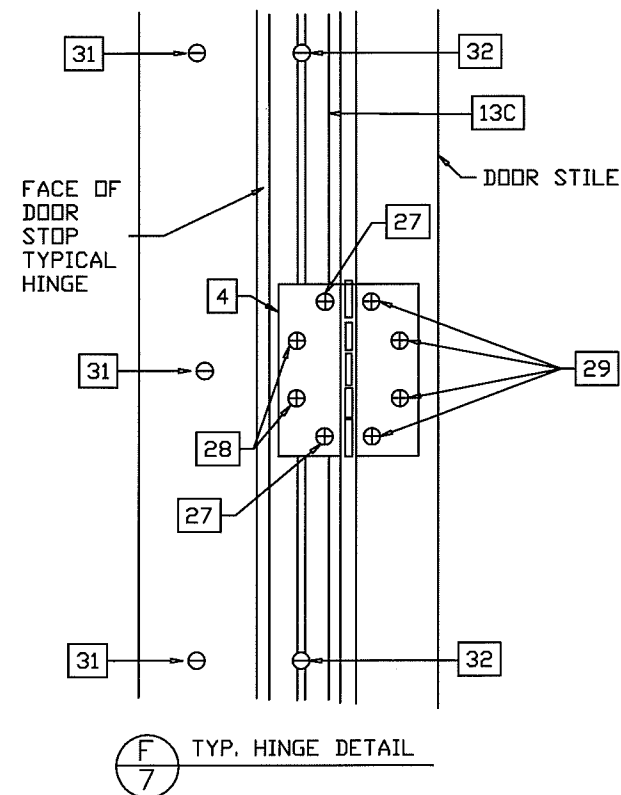
SCOTT WOLTERS
SCOTT WOLTERS
(FLPE# 62354)
WOLTERS ENGINEERING, INC.
(COA# 27194)
15211 97TH ROAD N
WEST PALM BEACH, FL 33412
MAR 05 2018

BY	LAT	AVR
DESCRIPTION	DATE	REV.
ORIGINAL RELEASE	10/12/2011	0
SHOW ONLY PANELS & ADD -P TO TITLE	11/9/2012	1
Mahogany Outswing Entrance Doors		
Large Missile Impact		
Montecarlo Doors	4440 PGA Boulevard, Suite 600 Palm Beach Gardens, FL 33410 PHONE: 561.623.5303 FAX: 561.594.1720 www.montecarlodoors.com	
DRAWING #	H582-0907-11-P	
SCALE	NTS	
SHEET	6 of 11	



PRODUCT RENEWED
as complying with the Florida
Building Code
NOA-No. 23-0623.08
Expiration Date 04/04/2024
By Ishag I. Chank
Miami-Dade Product Control

PRODUCT REVISED
as complying with the Florida
Building Code
Acceptance No. 17-0210.04
Expiration Date 4/14/23
By Ishag I. Chank
Miami-Dade Product Control

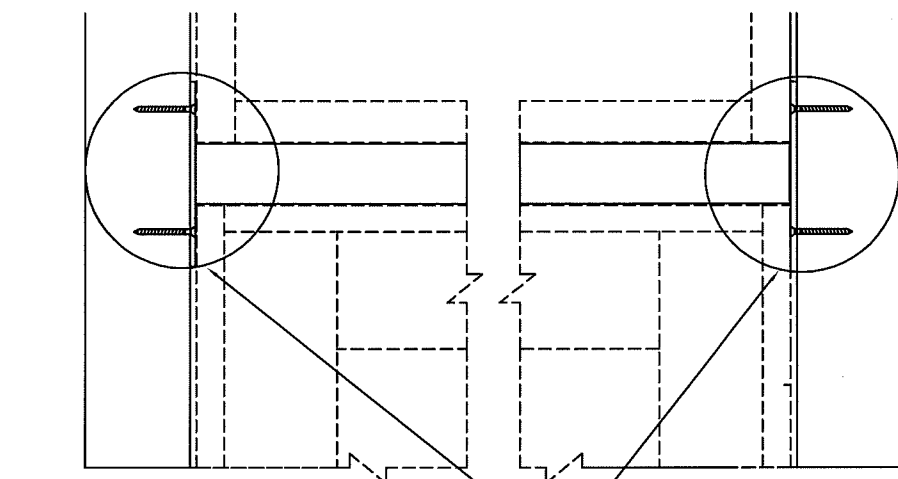


PRODUCT REVISED
as complying with the Florida
Building Code
NOA-No. 21-0510.09
Expiration Date 04/04/2023
By Ishag I. Chank
Miami-Dade Product Control

SCOTT WOLTERS
(FLPE# 62354)
WOLTERS ENGINEERING, INC.
(COA# 27194)
15211 97TH ROAD N
WEST PALM BEACH, FL 33412
MAR 05 2018

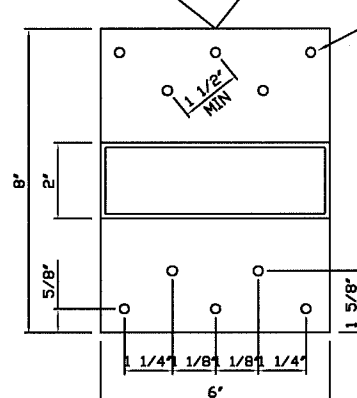
REV.	DATE	DESCRIPTION	BY
0	10/12/2011	ORIGINAL RELEASE	LAT
1	11/9/2012	SHOW ONLY PANELS & ADD -P TO TITLE	AVR

Mahogany Outswing Entrance Doors		Large Missile Impact	
Montecarlo Doors		4440 PGA Boulevard, Suite 600 Palm Beach Gardens, FL 33410 PHONE: 561.623.5303 FAX: 561.594.1720 www.montecarlodoors.com	
DRAWING #		H582-0907-11-P	
SCALE		NTS	
SHEET		7 of 11	

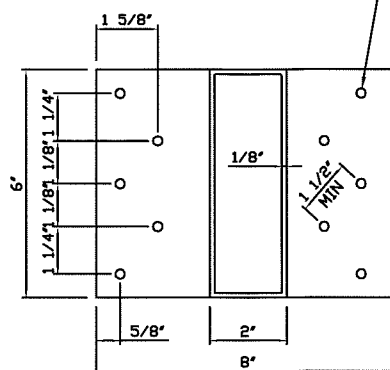


8. ALUMINUM MULLION
WITH 1/4" ALUMINUM PLATES
WELDED AT EACH END WITH
1/4" ELECTRODE FILLET WELDS
ALL AROUND.

1
8 HORIZONTAL MULLION
ANCHOR DETAIL



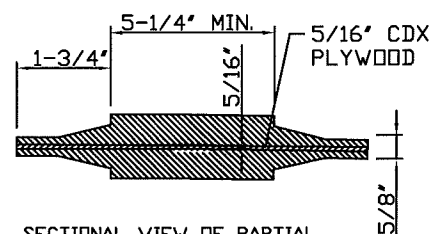
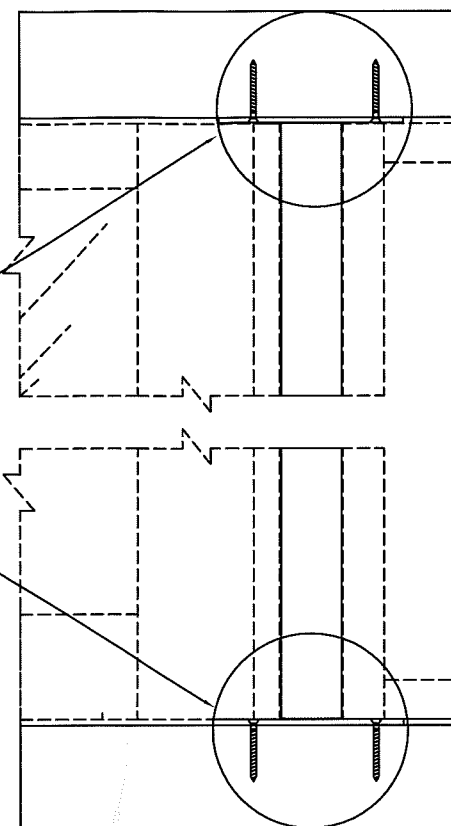
ANCHOR TYPE B,C, or D,
(10) PER MULLION.
SEE SHEET 11 FOR
EMBEDMENT AND EDGE
DISTANCE.



8. ALUMINUM MULLION
WITH 1/4" ALUMINUM PLATES
WELDED AT EACH END WITH
1/4" ELECTRODE FILLET WELDS
ALL AROUND.

J
8 VERTICAL MULLION
ANCHOR DETAIL

ANCHOR TYPE B or C,
(10) PER MULLION.
SEE SHEET 11 FOR
EMBEDMENT AND EDGE
DISTANCE.



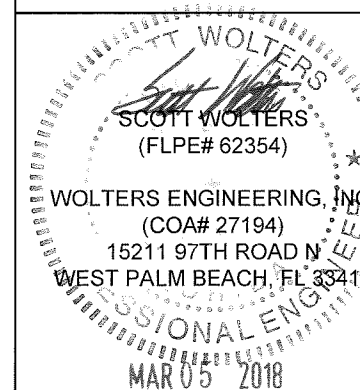
SECTIONAL VIEW OF PARTIAL
RAISED PANEL & CONSTRUCTION

NOTE: ALL COMPOSITE PARTS ARE
CONSTRUCTED WITH TITEBOND II
FRANKLIN INTERNATIONAL WOOD GLUE

PRODUCT RENEWED
as complying with the Florida
Building Code
NOA-No. 23-0623.08
Expiration Date 04/04/2024
By Ishag I. Chande
Miami-Dade Product Control

PRODUCT REVISED
as complying with the Florida
Building Code
NOA-No. 21-0510.09
Expiration Date 04/04/2023
By Ishag I. Chande
Miami-Dade Product Control

PRODUCT REVISED
as complying with the Florida
Building Code
Acceptance No. 17-0210-04
Expiration Date 4/4/23
By Ishag I. Chande
Miami-Dade Product Control

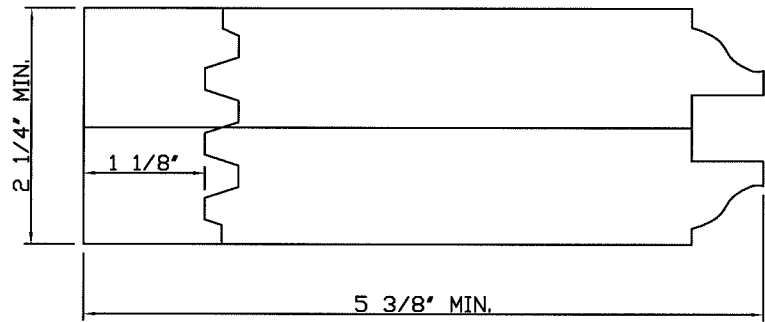


REV.	DATE	DESCRIPTION	BY
1	11/9/2012	SHOW ONLY PANELS & ADD -P TO TITLE	AWR
0	10/12/2011	ORIGINAL RELEASE	LAT

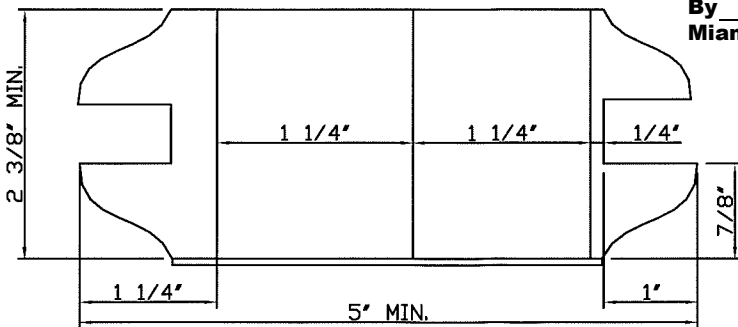
Montecarlo Doors	4440 PGA Boulevard, Suite 600 Palm Beach Gardens, FL 33410 PHONE: 561.623.5303 FAX: 561.594.1720 www.montecarlodoors.com
DRAWING #	H582-0907-11-P
SCALE	NTS
SHEET	8 of 11

Mahogany Outswing Entrance Doors Large Missile Impact

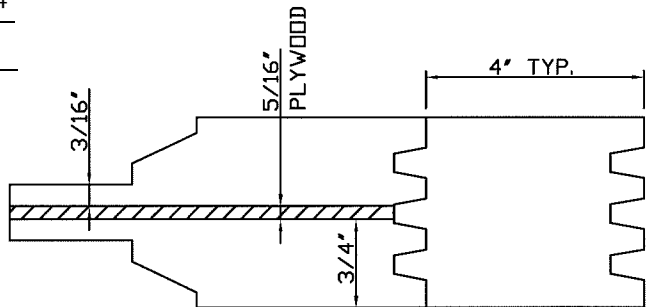
PRODUCT RENEWED
as complying with the Florida
Building Code
NOA-No. 23-0623.08
Expiration Date 04/04/2024
By Ishag I. Chank
Miami-Dade Product Control



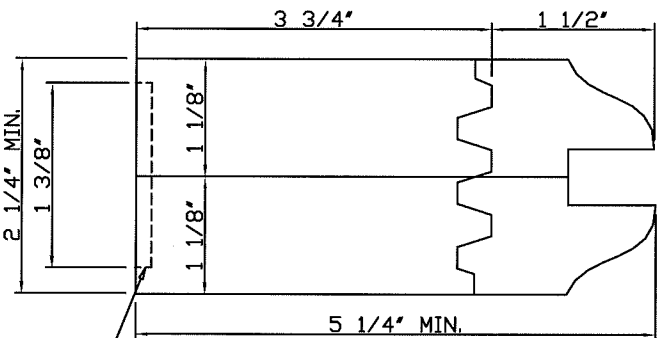
10A. TOP RAIL - EYEBROW DOOR
(COMPOSITE MAHOGANY)



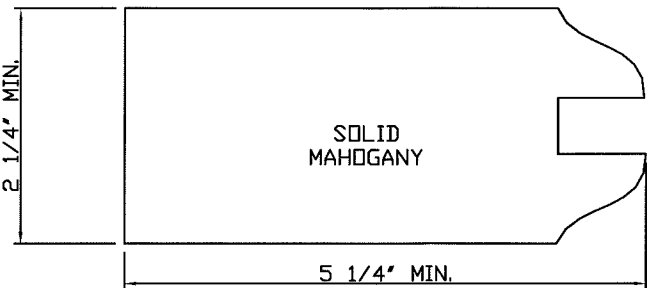
10B. MEETING RAIL - REGULAR
(COMPOSITE MAHOGANY)



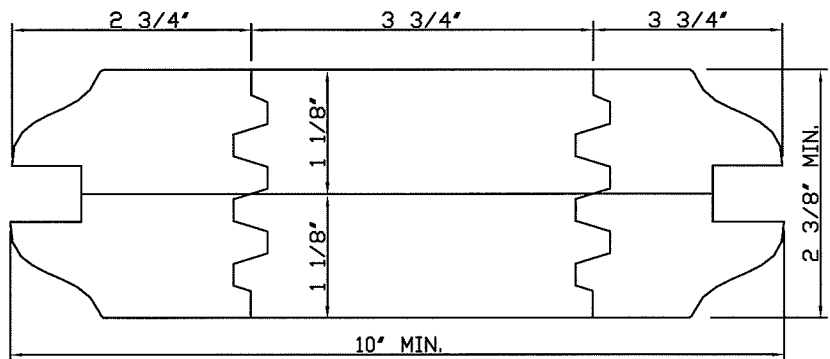
RP. WOOD PANEL



10D. TOP RAIL - WOOD
(COMPOSITE MAHOGANY)

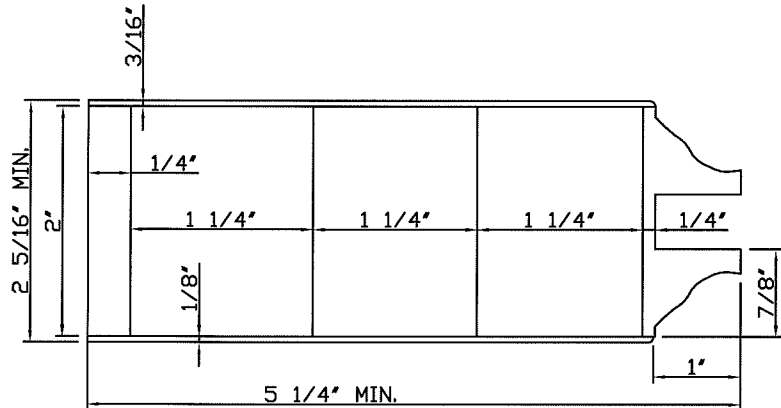


10F. TOP RAIL - ARCH



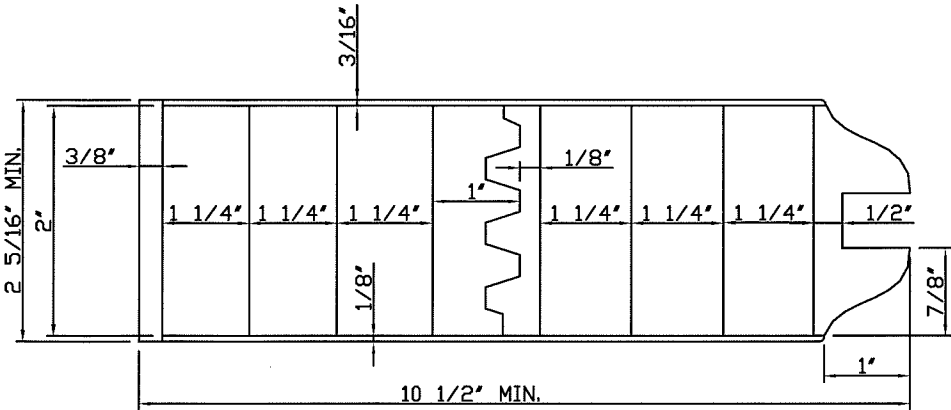
10G. MEETING RAIL - LARGE
(COMPOSITE MAHOGANY)

NOTCHED AT
REINFORCEMENT
PLATE LOC.

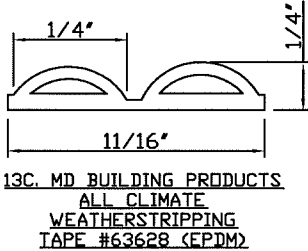
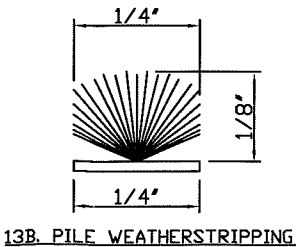
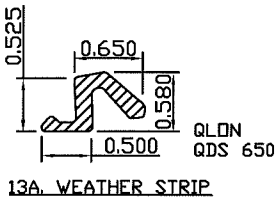
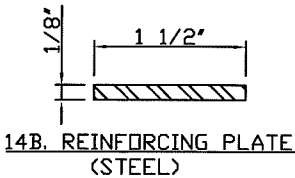


9. TYPICAL STILE
(COMPOSITE MAHOGANY)

WOOD PROPERTIES	
MAHOGANY	
Min. E	= 1.9x10 ⁶ Psi
Min. Fy	= 15,500 Psi
Min. S.G.	= 0.56
PLYWOOD	
Min. E	= 1.1x10 ⁶ Psi
Min. Fy	= 5,700 Psi
Min. S.G.	= 0.53



10E. TYPICAL BOTTOM RAIL
(COMPOSITE MAHOGANY)



PRODUCT REVISED
as complying with the Florida
Building Code
NOA-No. 21-0510.09
Expiration Date 04/04/2023
By Ishag I. Chank
Miami-Dade Product Control

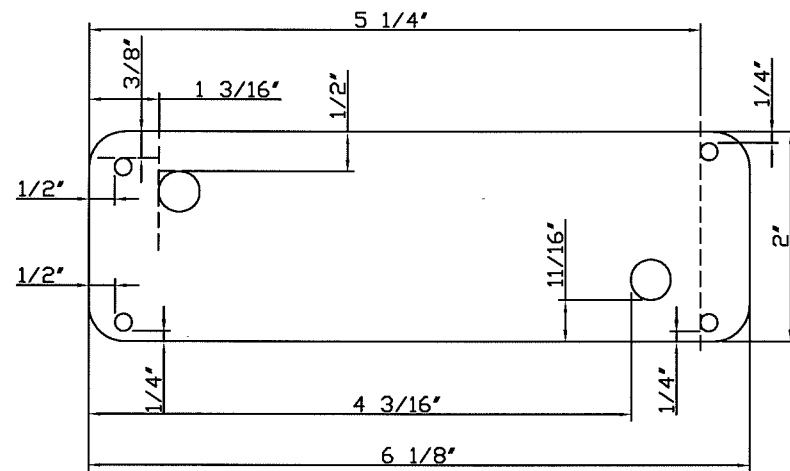
PRODUCT REVISED
as complying with the Florida
Building Code
Acceptance No. 17-0210.04
Expiration Date 04/04/23
By Ishag I. Chank
Miami-Dade Product Control

SCOTT WOLTERS
(FLPE# 62354)
WOLTERS ENGINEERING, INC.
(COA# 27194)
15211 97TH ROAD N
WEST PALM BEACH, FL 33412
MAR 05 2018

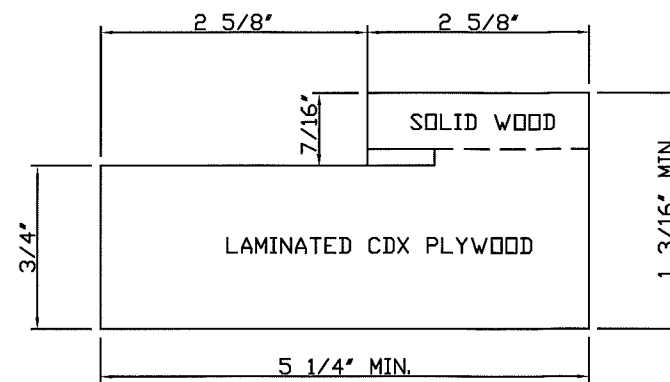
REV.	DATE	DESCRIPTION	BY
0	10/12/2011	ORIGINAL RELEASE	LAT
1	11/9/2012	SHOW ONLY PANELS & ADD -P TO TITLE	AVR

Montecarlo Doors	4440 PGA Boulevard, Suite 600 Palm Beach Gardens, FL 33410 PHONE: 561.623.5303 FAX: 561.594.1720 www.montecarlodoors.com
DRAWING #	H582-0907-11-P
SCALE	NTS
SHEET	9 of 11

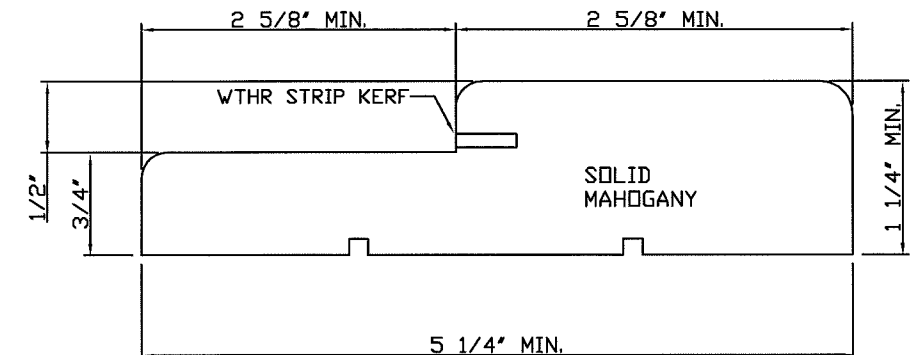
Mahogany Outswing Entrance Doors
Large Missile Impact



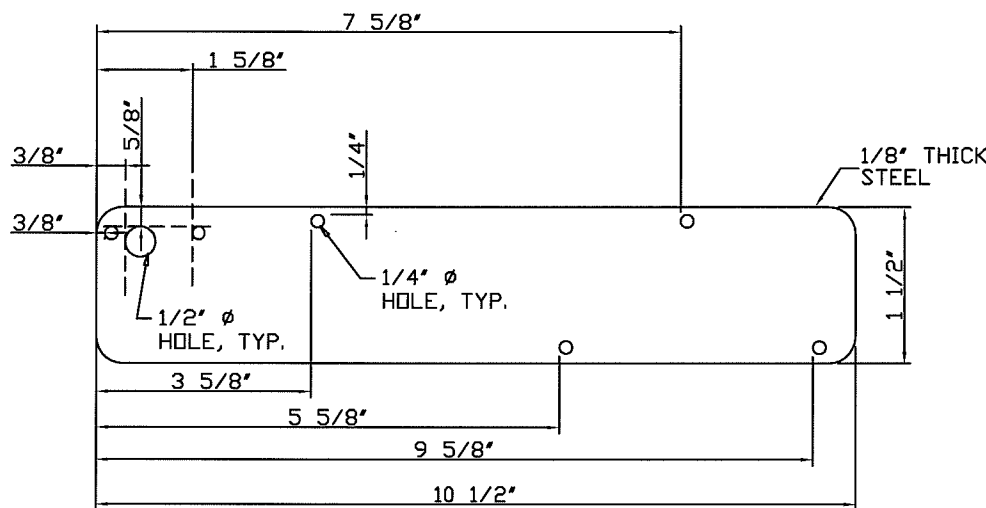
5. 1/8" STEEL STRIKE PLATES AT HEAD & THRESHOLD
PAIR OF DOORS - QTY: 2
SINGLE DOOR - QTY: 2



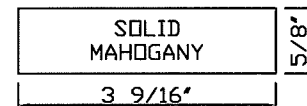
1A. HEAD FOR ARCH TOP AND EYEBROW



1B. HEAD/JAMB

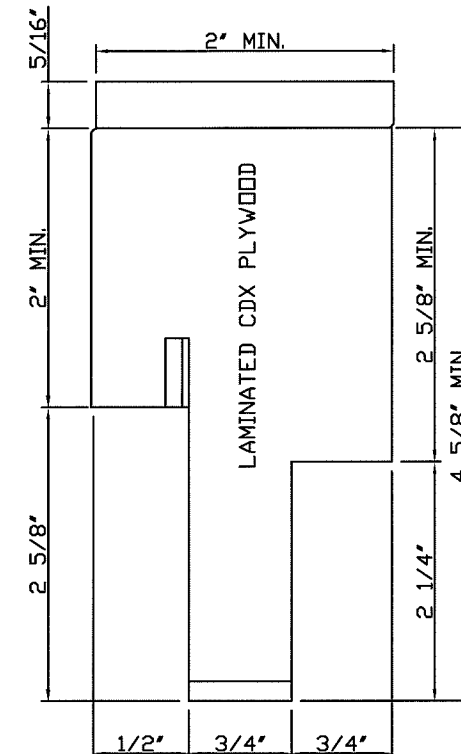


14A. TYPICAL TOP/BOTTOM DOOR GUIDE REINFORCING
2 PER DOOR LEAF, 1 @ TOP, 1 @ BOTTOM



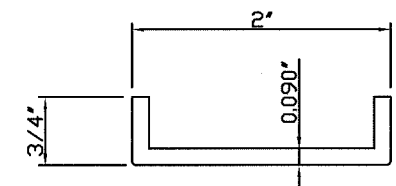
12B. EXTERIOR ASTRAGAL

WOOD PROPERTIES	
MAHOGANY	
Min. E	= 1.9x10 ⁶ Psi
Min. Fy	= 15,500 Psi
Min. S.G.	= 0.56
PLYWOOD	
Min. E	= 1.1x10 ⁶ Psi
Min. Fy	= 5,700 Psi
Min. S.G.	= 0.53



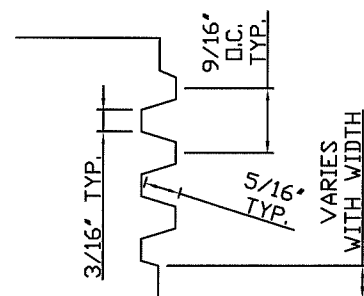
12A. ASTRAGAL

PRODUCT RENEWED
as complying with the Florida
Building Code
NOA-No. 23-0623.08
Expiration Date 04/04/2024
By Ishag I. Chande
Miami-Dade Product Control

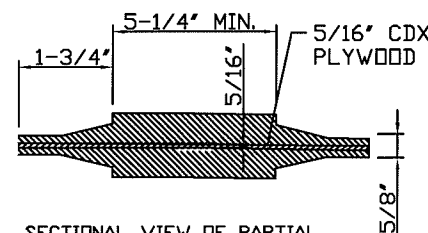


37. ALUMINUM CHANNEL

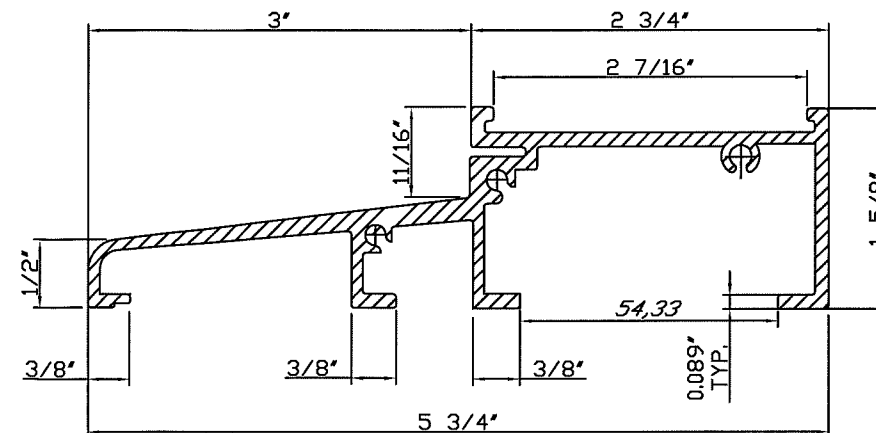
PRODUCT REVISED
as complying with the Florida
Building Code
NOA-No. 21-0510.09
Expiration Date 04/04/2023
By Ishag I. Chande
Miami-Dade Product Control



FINGER JOINT DETAIL

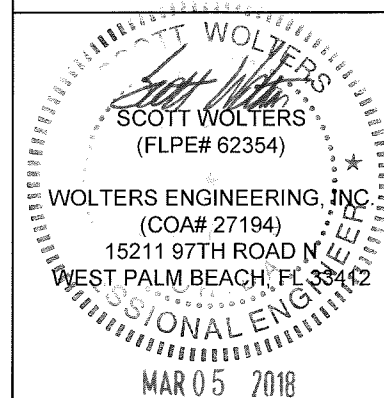


SECTIONAL VIEW OF PARTIAL
RAISED PANEL & CONSTRUCTION



7. ALUMINUM THRESHOLD
(6063-T5)

PRODUCT REVISED
as complying with the Florida
Building Code
Acceptance No. 17-0210.04
Expiration Date 4/4/23
By Ishag I. Chande
Miami-Dade Product Control



Mahogany Outswing Entrance Doors Large Missile Impact

Montecarlo Doors
4440 PGA Boulevard, Suite 600
Palm Beach Gardens, FL 33410
PHONE: 561.623.5303
FAX: 561.594.1720
www.montecarlodoors.com

DRAWING # H582-0907-11-P

SCALE: NTS

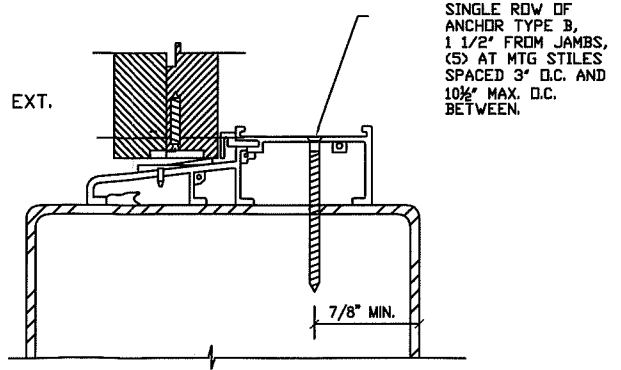
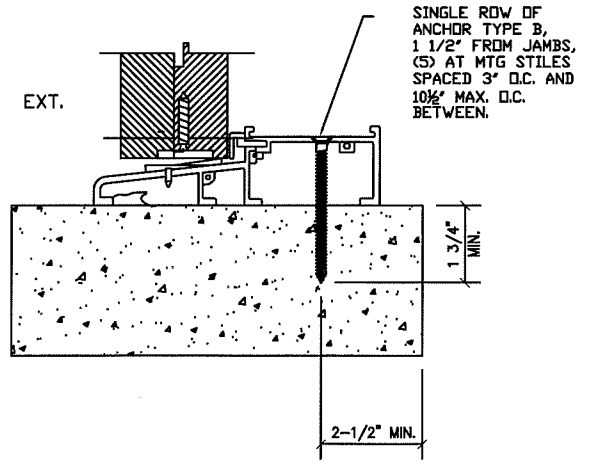
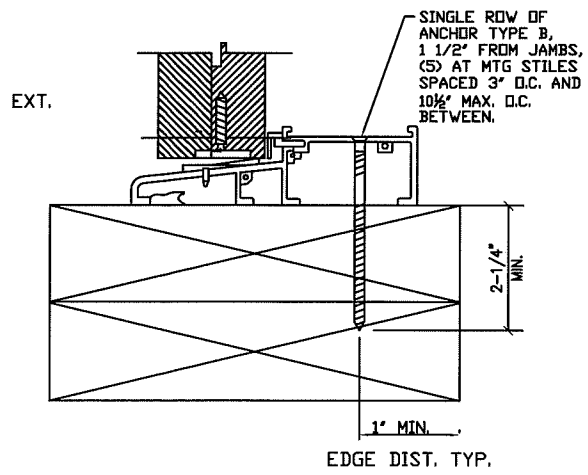
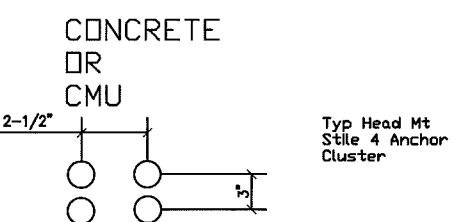
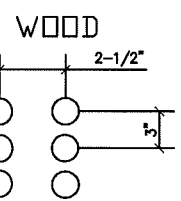
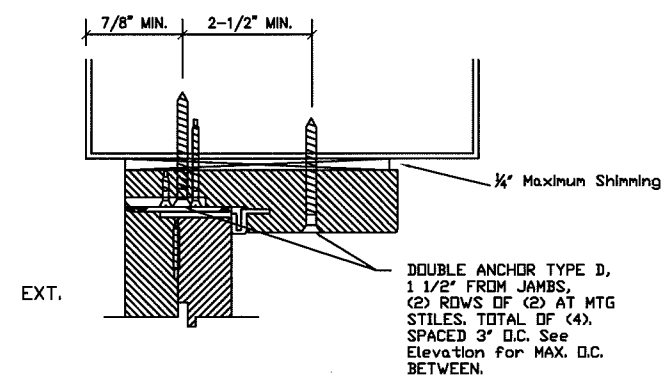
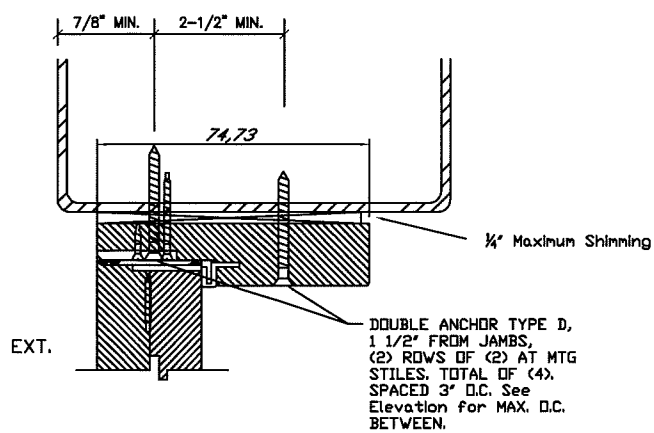
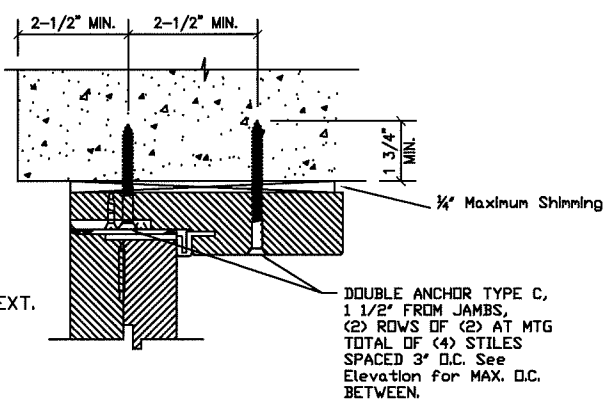
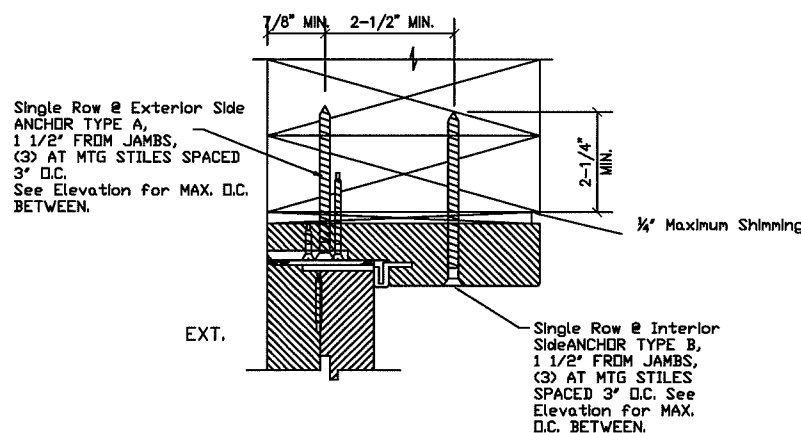
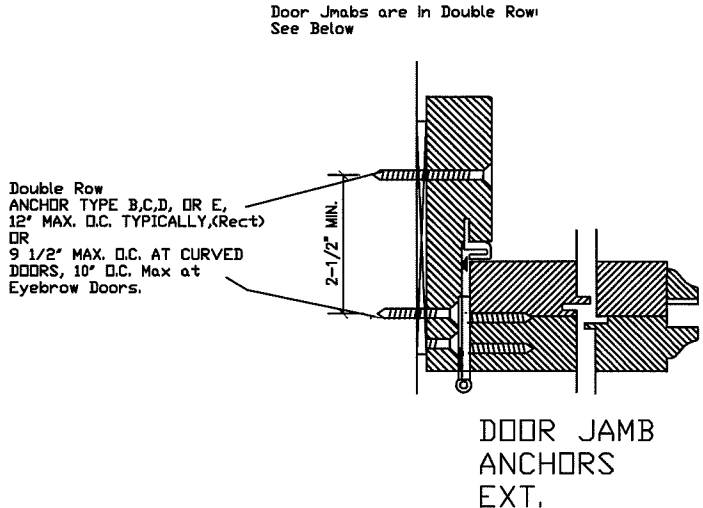
SHEET
10 of 11

TYPICAL ANCHORS

- WOOD (2 1/4" MIN.) - TYPE A - #12 X 3-3/4" PFHMS WITH 2-1/4" EMBEDMENT AND 7/8" EDGE DISTANCE.
- WOOD (2 1/4" MIN.) - TYPE B - 1/4" X 3-3/4" PFHMS WITH 2-1/4" EMBEDMENT AND 1" EDGE DISTANCE.
- CONCRETE (3000 PSI MIN) - TYPE C - 1/4" DIA. FH ITW TAPCON OR ELCO ULTRACON DIRECTLY INTO CONCRETE OR THRU WOOD BUCK INTO CONCRETE WITH 1-3/4" MIN. EMBEDMENT AND 2-1/2" MIN EDGE DISTANCE.
- CMU (ASTM 90) - TYPE C - 1/4" DIA. FH ITW TAPCON OR ELCO ULTRACON DIRECTLY INTO GROUT FILLED CMU OR THRU WOOD BUCK INTO CMU WITH 1-3/4" MIN. EMBEDMENT AND 2-1/2" MIN EDGE DISTANCE.
- STEEL (16 Ga 33 KSI MIN) - TYPE D - 1/4" DIA. FH F-TYPE (GR. 5) THREAD FORMING SCREW WITH FULL EMBEDMENT AND 1/2" MIN EDGE DISTANCE
- ALUM TUBE MULLION (1/8" MIN, 6063-T5) - TYPE E - 1/4" DIA. FH SHEET METAL SCREW WITH FULL EMBEDMENT AND 1/2" MIN EDGE DISTANCE

TYPICAL ANCHOR CONDITIONS

PRODUCT RENEWED
as complying with the Florida Building Code
NOA-No. 23-0623.08
Expiration Date 04/04/2024
By Ishag I. Chande
Miami-Dade Product Control



PRODUCT REVISED
as complying with the Florida Building Code
NOA-No. 21-0510.09
Expiration Date 04/04/2023
By Ishag I. Chande
Miami-Dade Product Control

PRODUCT REVISED
as complying with the Florida Building Code
Acceptance No 17-0210.04
Expiration Date 4/4/23
By Ishag I. Chande
Miami-Dade Product Control

SCOTT WOLTERS
(FLPE# 62354)

WOLTERS ENGINEERING, INC
(COA# 27194)
15211 97TH ROAD N
WEST PALM BEACH, FL 33412

MAR 05 2018

Mahogany Outswing Entrance Doors
Large Missile Impact

Montecarlo Doors
4440 PCA Boulevard, Suite 600
Palm Beach Gardens, FL 33410
PHONE: 561.623.5303
FAX: 561.594.1720
www.montecarlodoors.com

DRAWING # H582-0907-11-P

SCALE: NTS

SHEET 11 of 11