



DEPARTMENT OF REGULATORY AND ECONOMIC RESOURCES (RER)
BOARD AND CODE ADMINISTRATION DIVISION

NOTICE OF ACCEPTANCE (NOA)

MIAMI-DADE COUNTY
PRODUCT CONTROL SECTION
11805 SW 26 Street, Room 208
Miami, Florida 33175-2474
T (786) 315-2590 F (786) 315-2599
www.miamidade.gov/economy

Air Balance, a division of Mestek, Inc.
450 Riverside Drive
Wyalusing, PA 18853

SCOPE: This NOA is being issued under the applicable rules and regulations governing the use of construction materials. The documentation submitted has been reviewed and accepted by Miami-Dade County RER-Product Control Section to be used in Miami Dade County and other areas where allowed by the Authority Having Jurisdiction (AHJ).

This NOA shall not be valid after the expiration date stated below. The Miami-Dade County Product Control Section (In Miami Dade County) and/or the AHJ (in areas other than Miami Dade County) reserve the right to have this product or material tested for quality assurance purposes. If this product or material fails to perform in the accepted manner, the manufacturer will incur the expense of such testing and the AHJ may immediately revoke, modify, or suspend the use of such product or material within their jurisdiction. RER reserves the right to revoke this acceptance if it is determined by Miami-Dade County Product Control Section that this product or material fails to meet the requirements of the applicable building code.

This product is approved as described herein and has been designed to comply with the Florida Building Code, including the High Velocity Hurricane Zone.

DESCRIPTION: Model A520 5" Aluminum Louver System

APPROVAL DOCUMENT: Drawing No. 1686, titled "A520 Impact Louver System", sheets 1 through 10 of 10, dated 07/23/2009, with revision C1 dated 03/14/2019, prepared by W. W. Schaefer Engineering & Consulting, P.A., signed and sealed by Warren. W. Schaefer, P.E., bearing the Miami-Dade County Product Control revision stamp with the Notice of Acceptance number and expiration date by the Miami-Dade County Product Control Section.

MISSILE IMPACT RATING: Large and Small Missile Impact Resistant

LABELING: Each unit shall bear a permanent label with the manufacturer's name or logo, city, state, model/series, and following statement: "Miami-Dade County Product Control Approved", unless otherwise noted herein.

RENEWAL of this NOA shall be considered after a renewal application has been filed and there has been no change in the applicable building code negatively affecting the performance of this product.

TERMINATION of this NOA will occur after the expiration date or if there has been a revision or change in the materials, use, and/or manufacture of the product or process. Misuse of this NOA as an endorsement of any product, for sales, advertising or any other purposes shall automatically terminate this NOA. Failure to comply with any section of this NOA shall be cause for termination and removal of NOA.

ADVERTISEMENT: The NOA number preceded by the words Miami-Dade County, Florida, and followed by the expiration date may be displayed in advertising literature. If any portion of the NOA is displayed, then it shall be done in its entirety.

INSPECTION: A copy of this entire NOA shall be provided to the user by the manufacturer or its distributors and shall be available for inspection at the job site at the request of the Building Official.

This NOA revises NOA # 20-0622.24 and consists of this page 1 and evidence pages E-1, E-2 and E-3, as well as approval document mentioned above.

The submitted documentation was reviewed by **Helmy A. Makar, P.E., M.S.**



Helmy A. Makar
08/17/2023

NOA No. 23-0713.05
Expiration Date: 01/06/2025
Approval Date: 08/17/2023
Page 1

NOTICE OF ACCEPTANCE: EVIDENCE SUBMITTED

1. Evidence submitted under previous NOAs

A. DRAWINGS “Submitted under NOA # 12-0105.02”

1. Drawing No. 1686, titled “A-520 Impact Louver System”, sheets 1 through 10 of 10, dated 07/23/2009, with revision A1 dated 11/08/2011, prepared by W. W. Schaefer Engineering & Consulting, P.A., signed and sealed by Warren W. Schaefer, P.E.

B. TESTS “Submitted under NOA # 09-1015.09”

1. Test reports on: 1) Uniform Static Air Pressure Test, Loading per FBC TAS 202-94
2) Large Missile Impact Test per FBC, TAS 201-94
3) Cyclic Wind Pressure Loading per FBC, TAS 203-94
along with marked-up drawings and installation diagram, of “EA-52 Aluminum Louver Systems”, prepared by Hurricane Test Laboratory, Inc., Report No. 0198-0305-09, dated 09/29/2009, signed and sealed by Vinu J. Abraham, P.E.
2. Test reports on: 1) Uniform Static Air Pressure Test, Loading per FBC TAS 202-94
2) Large Missile Impact Test per FBC, TAS 201-94
3) Cyclic Wind Pressure Loading per FBC, TAS 203-94
along with marked-up drawings and installation diagram, of “EA-52 Aluminum Louver Systems”, prepared by Hurricane Test Laboratory, Inc., Report No. 0198-0715-09, dated 09/30/2009, signed and sealed by Vinu J. Abraham, P.E.

C. CALCULATIONS “Submitted under NOA # 14-0513.09”

1. Wood screw calculations prepared by W.W. Schaefer Engineering & Consulting, P.A., dated 04/14/2014, signed and sealed by Warren W. Schaefer, P.E.
“Submitted under NOA # 09-1015.09”
2. Structural calculations prepared by W.W. Schaefer Engineering & Consulting, P.A., dated 10/06/2009, signed and sealed by Warren W. Schaefer, P.E.

D. QUALITY ASSURANCE

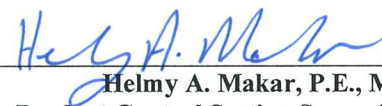
1. Miami-Dade Department of Regulatory and Economic Resources (RER)

E. MATERIAL CERTIFICATIONS

1. None.

F. STATEMENTS “Submitted under NOA # 14-0513.09”

1. Statement letter of code conformance to 2010 and 5th edition (2014) FBC issued by W. W. Schaefer Engineering & Consulting, P.A., dated 04/14/2014, signed and sealed by Warren W. Schaefer, P.E.
2. No financial interest letter issued by W. W. Schaefer Engineering & Consulting, P.A., dated 04/14/2014, signed and sealed by Warren W. Schaefer, P.E.
“Submitted under NOA # 12-0105.02”
3. Private label agreement dated 12/21/2011.



Helmy A. Makar, P.E., M.S.
Product Control Section Supervisor
NOA No. 23-0713.05
Expiration Date: 01/06/2025
Approval Date: 08/17/2023

NOTICE OF ACCEPTANCE: EVIDENCE SUBMITTED

2. Evidence submitted under NOA # 17-0713.16

A. DRAWINGS

1. Drawing No. **1686**, titled "A520 Impact Louver System", sheets 1 through 10 of 10, dated 07/23/2009, with revision B1 dated 07/05/2017, prepared by W. W. Schaefer Engineering & Consulting, P.A., signed and sealed by Warren W. Schaefer, P.E.

B. TESTS

1. None.

C. CALCULATIONS

1. None.

D. QUALITY ASSURANCE

1. Miami-Dade Department of Regulatory and Economic Resources (RER)

E. MATERIAL CERTIFICATIONS

1. None.

F. STATEMENTS

1. Statement letter of code conformance to the 5th Edition (2014) and 6th Edition (2017) FBC issued by W. W. Schaefer Engineering & Consulting, P.A., dated 07/05/2017, signed and sealed by Warren W. Schaefer, P.E.
2. Company name change request letter issued by W.W. Schaefer Engineering & Consulting, P.A., dated 07/05/2017, signed by Warren W. Schaefer, P.E.

3. Evidence Submitted under NOA # 20-0622.24

A. DRAWINGS "*Submitted under NOA # 19-0401.03*"

1. Drawing No. **1686**, titled "A520 Impact Louver System", sheets 1 through 10 of 10, dated 07/23/2009, with revision C1 dated 03/14/2019, prepared by W. W. Schaefer Engineering & Consulting, P.A., signed and sealed by Warren W. Schaefer, P.E.

B. TESTS

1. None.

C. CALCULATIONS


1. None.

D. QUALITY ASSURANCE

1. Miami-Dade Department of Regulatory and Economic Resources (RER)

E. MATERIAL CERTIFICATIONS

1. None.



Helmy A. Makar, P.E., M.S.
Product Control Section Supervisor
NOA No. 23-0713.05
Expiration Date: 01/06/2025
Approval Date: 08/17/2023

NOTICE OF ACCEPTANCE: EVIDENCE SUBMITTED

F. STATEMENTS

1. Statement letter of code conformance to the 6th edition (2017) and 7th edition (2020) of the FBC issued by W. W. Schaefer Engineering & Consulting, P.A., dated 06/03/2020, signed and sealed by Warren W. Schaefer, P.E.

“Submitted under NOA # 19-0401.03”

2. Statement letter of no financial interest issued by W. W. Schaefer Engineering & Consulting, P.A., dated 03/14/2019, signed and sealed by Warren W. Schaefer, P.E.

4. NEW EVIDENCE SUBMITTED

A. DRAWINGS

1. None.

B. TESTS

1. None.

C. CALCULATIONS

1. None.

D. QUALITY ASSURANCE


1. Miami-Dade County Department of Regulatory and Economic Resources (RER)

E. MATERIAL CERTIFICATIONS

1. None.

F. STATEMENTS

1. Statement letter of code conformance to the 7th edition (2020) and the 8th edition (2023) of the FBC issued by W. W. Schaefer Engineering & Consulting, P.A., dated 07/01/2023, signed and sealed by Warren W. Schaefer, P.E.



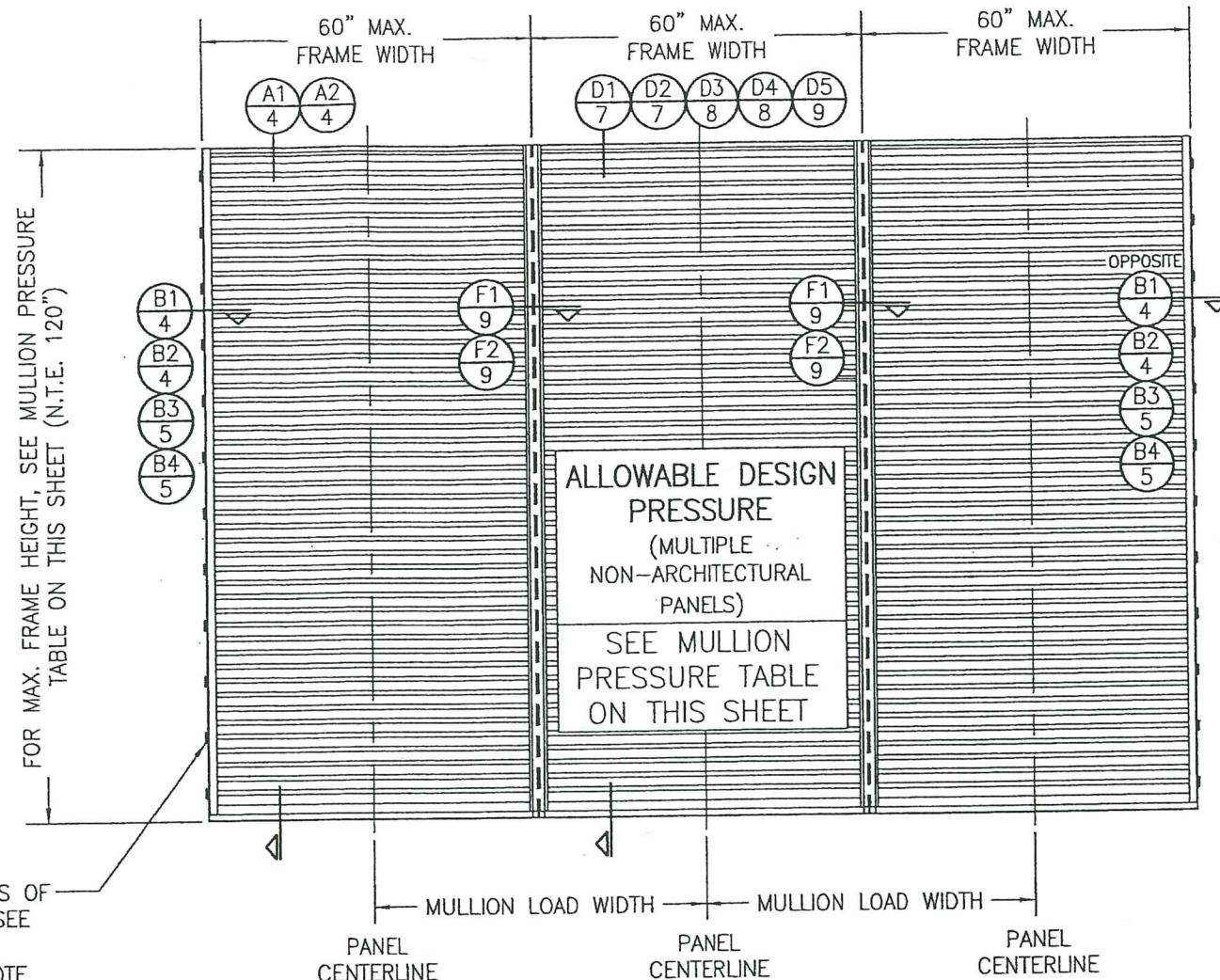
Helmy A. Makar, P.E., M.S.
Product Control Section Supervisor
NOA No. 23-0713.05
Expiration Date: 01/06/2025
Approval Date: 08/17/2023

MULLION ALLOWABLE DESIGN PRESSURE (NON-ARCHITECTURAL LOUVERS)

MAXIMUM MULLION SPAN (IN.)	MAXIMUM LOAD WIDTH (IN.)	ALLOWABLE PRESSURE (+/- PSF)		
		WITH NO TUBE MULLION	WITH 4"x3"x3/16" TUBE MULLION	WITH 4"x3"x1/4" TUBE MULLION
120	60	30.6	46.1	61.4
	54	34.0	51.2	68.3
	48	38.3	57.6	76.8
	42	43.7	65.8	87.8
	36	51.0	76.8	102.4
	30	61.2	92.2	120.0
	24	76.5	115.2	120.0
108	18	102.0	120.0	120.0
	60	42.0	63.2	84.3
	54	46.6	70.2	93.6
	48	52.5	79.0	105.3
	42	60.0	90.3	120.0
	36	70.0	105.3	120.0
	30	84.0	120.0	120.0
96	24	104.9	120.0	120.0
	18	120.0	120.0	120.0
	60	56.3	90.0	120.0
	54	62.5	100.0	120.0
	48	70.3	112.5	120.0
	42	80.4	120.0	120.0
	36	93.8	120.0	120.0
84	30	112.5	120.0	120.0
	24	120.0	120.0	120.0
	60	64.3	120.0	120.0
	54	71.4	120.0	120.0
	48	80.4	120.0	120.0
	42	91.8	120.0	120.0
	36	107.1	120.0	120.0
72	30	120.0	120.0	120.0
	60	75.0	120.0	120.0
	54	83.3	120.0	120.0
	48	93.8	120.0	120.0
	42	107.1	120.0	120.0
	36	120.0	120.0	120.0
	60	90.0	120.0	120.0
60	54	100.0	120.0	120.0
	48	112.5	120.0	120.0
	42	120.0	120.0	120.0
48	60	112.5	120.0	120.0
	54	120.0	120.0	120.0
42	60	120.0	120.0	120.0

NOTES:
1. SEE ELEVATION FOR DIMENSIONING OF LOAD WIDTH.
2. ALLOWABLE UNIT PRESSURE SHALL BE THE LESSER OF THE PRESSURE SHOWN IN THIS TABLE & THAT SPECIFIED FOR THE INDIVIDUAL LOUVER PANEL.

FOR LOCATIONS OF JAMB CLIPS, SEE SINGLE PANEL ELEVATION (NOTE THAT FRAME SPLICE DOES NOT APPLY TO MULLED UNITS)

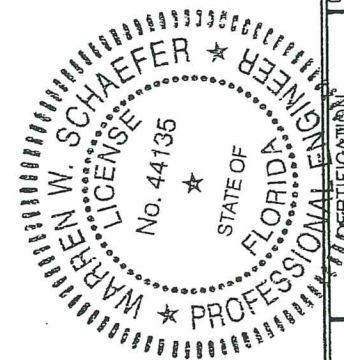


EXTERIOR ELEVATION:
MULTIPLE LOUVER PANELS
(NON-ARCHITECTURAL)
SCALE: 1/2" = 1'-0"
(3 PANEL UNIT SHOWN; MORE THAN 3 PANELS MAY BE MULLED/STACKED HORIZONTALLY)

PRODUCT REVISED
as complying with the Florida
Building Code
NOA-No. 20-0622.24
Expiration Date 01/06/2025
By [Signature]
Miami-Dade Product Control

PRODUCT RENEWED
as complying with the Florida
Building Code
NOA-No. 19-0401.03
Expiration Date 01/06/2025
By [Signature]
Miami-Dade Product Control

PRODUCT REVISED
as complying with the Florida
Building Code
Acceptance No. 23-0713.05
Expiration Date 01/06/2025
By [Signature]
Miami-Dade Product Control

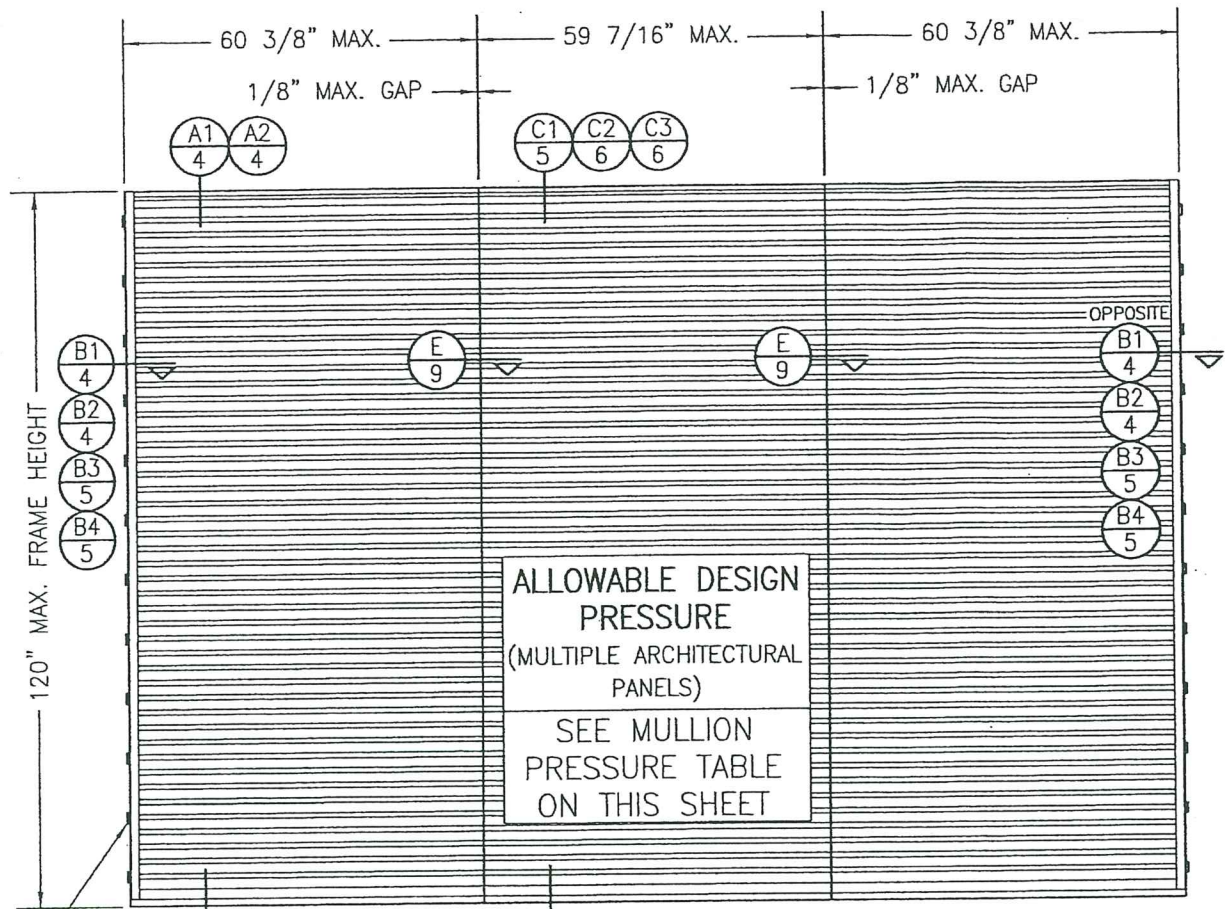


DRAWN BY: W.R.M.		CHECKED BY: W.W.S.	
PLOT: 1=24		DATE: 07/23/09	
DATE	BY	REVISION DESCRIPTION	NO.
DRAWING TITLE: A520 IMPACT LOUVER SYSTEM			
MANUFACTURER: AIR BALANCE: A DIVISION OF MESTEK, INC.		CONSULTANTS: W. W. SCHAEFER ENGINEERING & CONSULTING, P.A. (CA 6809)	
450 RIVERSIDE DRIVE		7480 150TH COURT NORTH	
WYALUSING, PA 18853		PALM BEACH GARDENS, FL 33418	
570-746-1888		PHONE: 561-744-3424	
MAY 21 2019		WARREN W. SCHAEFER, P.E.	
DRAWING NO. 1686		REV. C	
SHEET NO. 2 OF 10			

MULLION ALLOWABLE
DESIGN PRESSURE
(ARCHITECTURAL
LOUVERS)

MAXIMUM MULLION SPAN (IN.)	MAXIMUM LOAD WIDTH (IN.)	ALLOWABLE PRESSURE (+/- PSF)
120	60	61.4
	54	68.3
	48	76.8
	42	87.8
	36	102.4
108	30	120.0
	60	84.3
	54	93.6
	48	105.3
96	42	120.0
	60	120.0

NOTES:
1. SEE ELEVATION FOR DIMENSIONING
OF LOAD WIDTH.
2. ALLOWABLE UNIT PRESSURE SHALL
BE THE LESSER OF THE PRESSURE
SHOWN IN THIS TABLE & THAT
SPECIFIED FOR THE INDIVIDUAL
LOUVER PANEL



FOR LOCATIONS OF JAMB CLIPS,
SEE SINGLE PANEL ELEVATION
(NOTE THAT FRAME SPLICE
DOES NOT APPLY TO MULLED
UNITS)

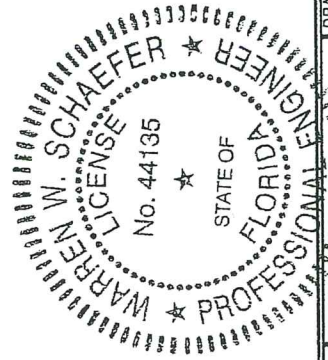
EXTERIOR ELEVATION:
MULTIPLE LOUVER PANELS
(ARCHITECTURAL)
SCALE: 1/2" = 1'-0"

(3 PANEL UNIT SHOWN; MORE THAN
3 PANELS MAY BE MULLED/STACKED
HORIZONTALLY)

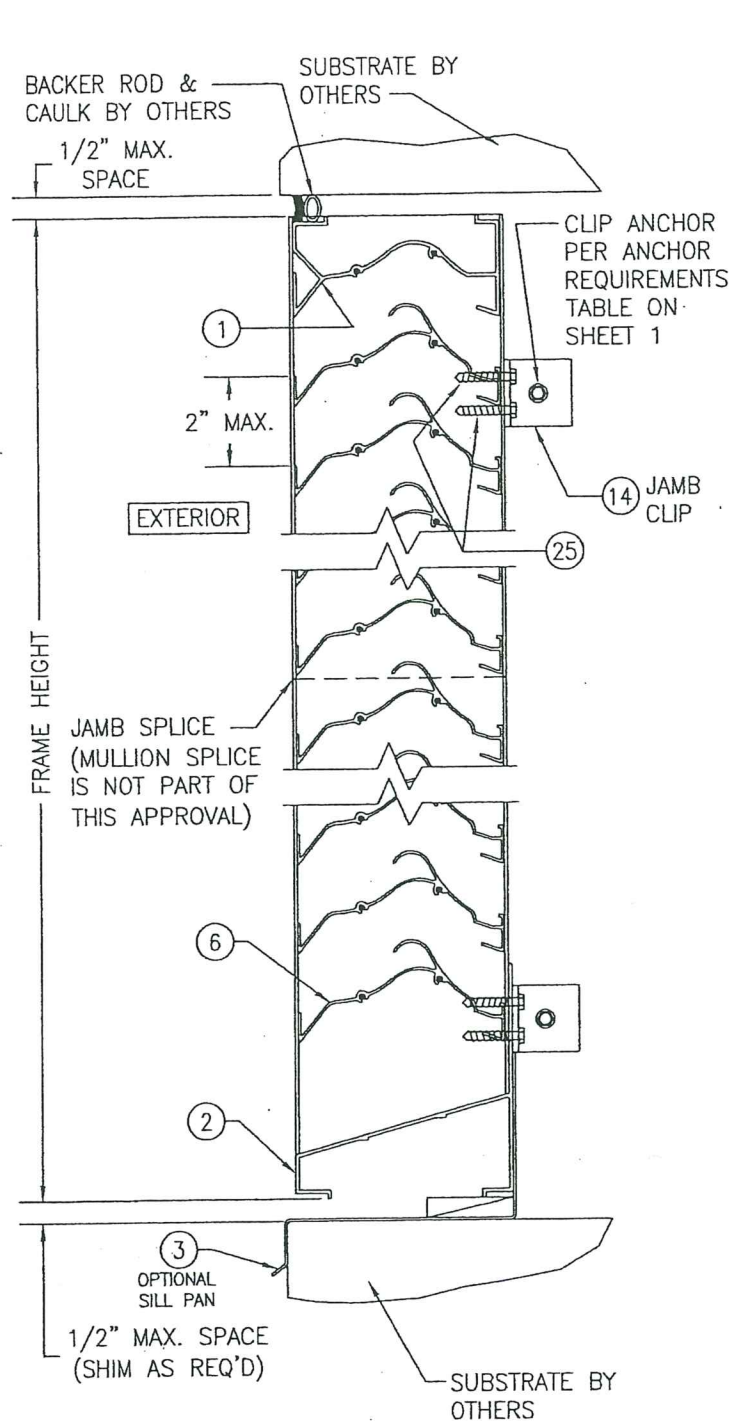
PRODUCT REVISED
as complying with the Florida
Building Code
Acceptance No. 23-0713.05
Expiration Date 01/06/2025
By *H. G. Miller*
Miami-Dade Product Control

PRODUCT REVISED
as complying with the Florida
Building Code
NOA-No. 20-0622.24
Expiration Date 01/06/2025
By *R. J. Miller*
Miami-Dade Product Control

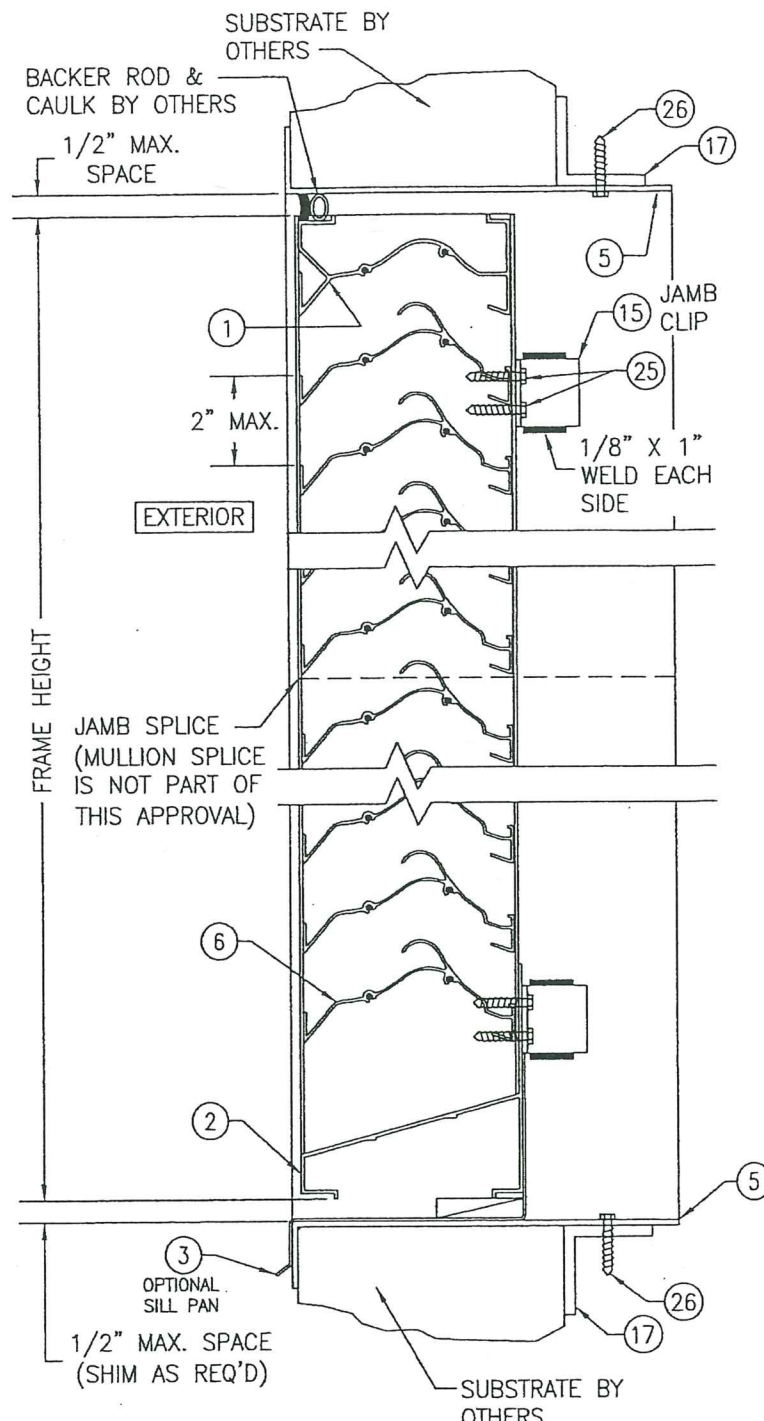
PRODUCT RENEWED
as complying with the Florida
Building Code
NOA-No. 19-0401.03
Expiration Date 01/06/2025
By *R. J. Miller*
Miami-Dade Product Control



DRAWING TITLE A520 IMPACT LOUVER SYSTEM		DRAWN BY: W.R.M.		CHECKED BY: W.W.S.	
CONSULTANTS W. W. SCHAEFER ENGINEERING & CONSULTING, P.A. (CA 6809) 7480 150TH COURT NORTH PALM BEACH GARDENS, FL 33418 PHONE: 561-744-3424		PLOT: 1-24		DATE: 07/23/09	
MANUFACTURER AIR BALANCE: A DIVISION OF MESTEK, INC. 450 RIVERSIDE DRIVE WYALUSING, PA 18853 570-746-1888		DATE		BY	
REVISION DESCRIPTION		NO.		REV.	
MAY 21 2019					
DRAWING NO. 1686		REV. C		SHEET NO. 3 OF 10	




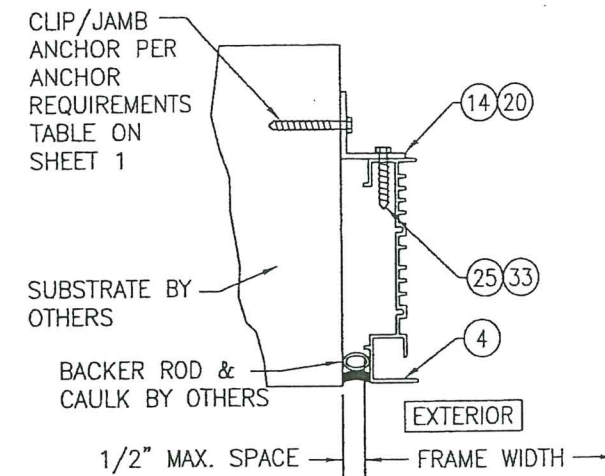
SECTION A1
SCALE: 1/2 FULL 4



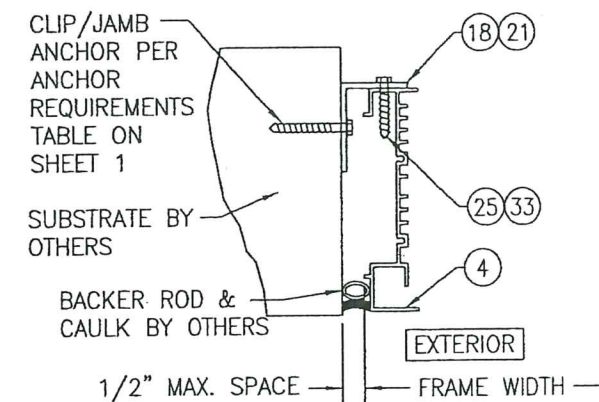
SECTION A2
SCALE: 1/2 FULL 4
(SLEEVE MOUNT)

PRODUCT REVISED
as complying with the Florida
Building Code
Acceptance No. 23-0713.05
Expiration Date 07/06/2025
By Hefz A. Mohr
Miami Design Product Control


PRODUCT REVISED
as complying with the Florida
Building Code
NOA-No. 20-0622.24
Expiration Date 01/06/2025
By 
Miami-Dade Product Control

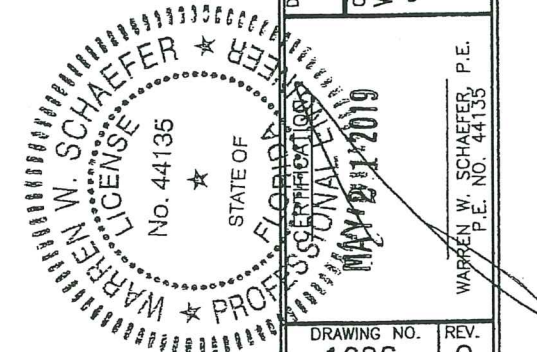


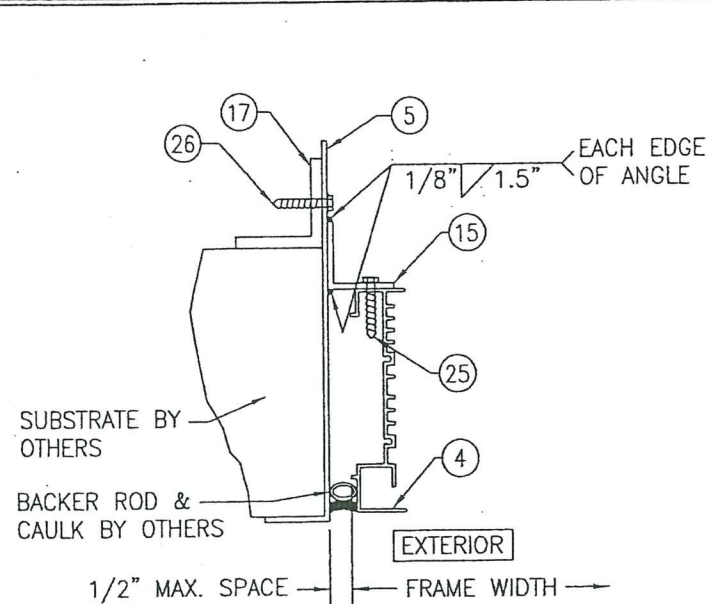
SECTION B1
4
SCALE: 1/2" FULL
(NO SLEEVE & CLIPS TURNED OUT)



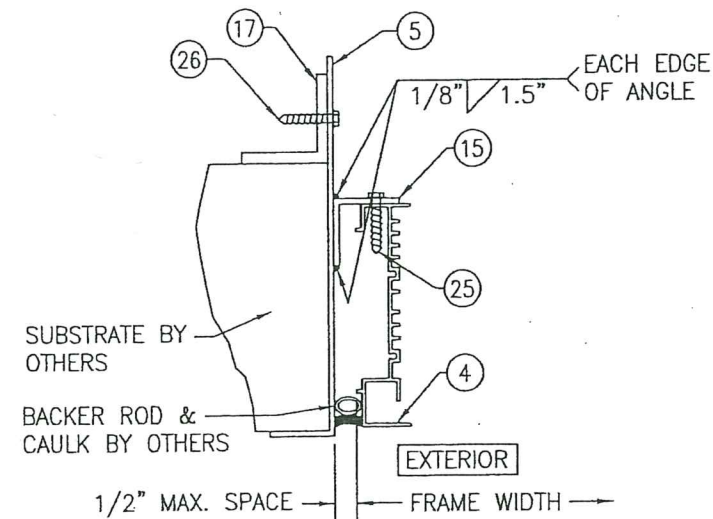
SECTION B2
4
SCALE: 1/2 FULL
(NO SLEEVE & CLIPS TURNED IN)

PRODUCT RENEWED
as complying with the Florida
Building Code
NOA-No. 19-0401.03
Expiration Date 01/06/2025
By 
Miami-Dade Product Control

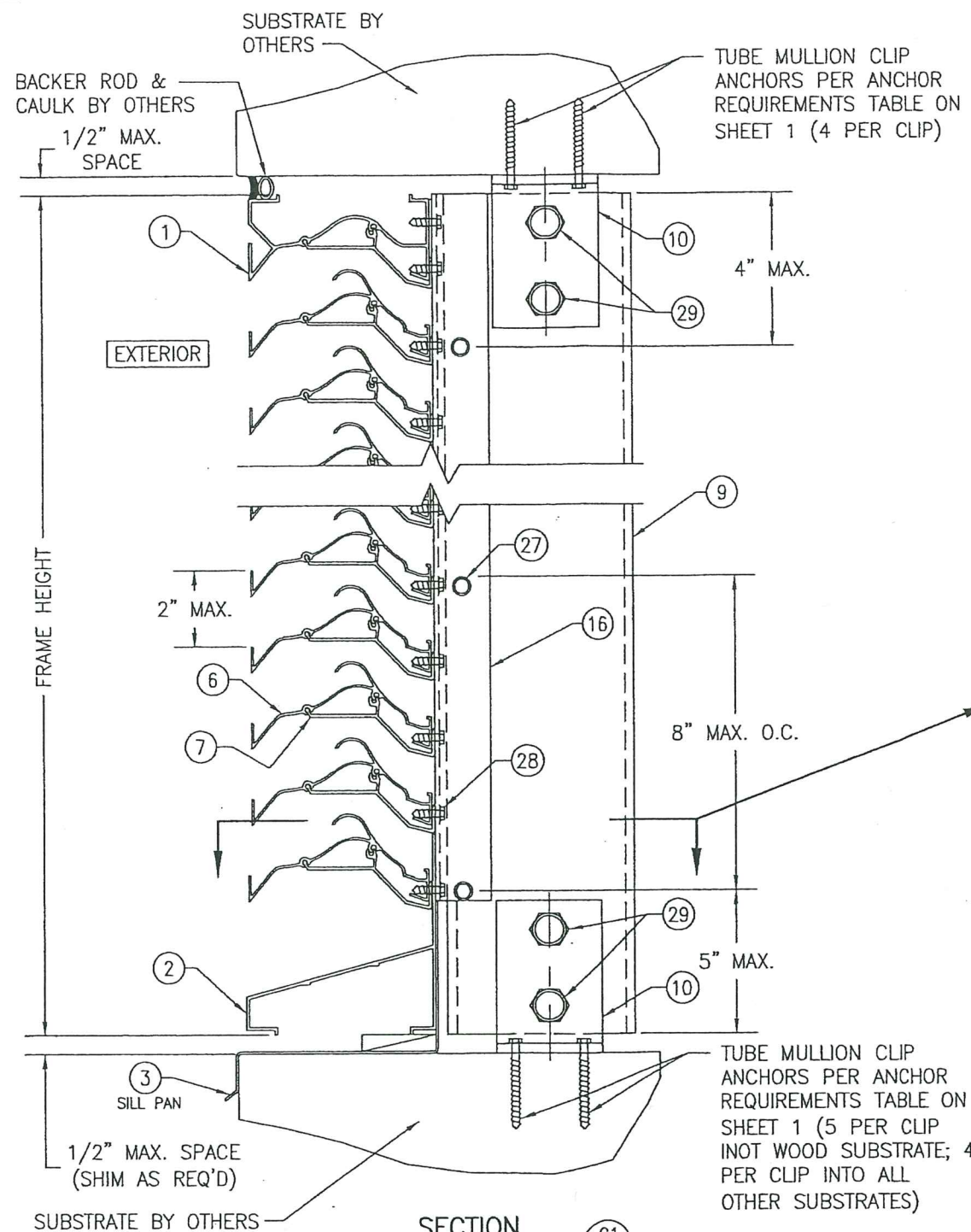
[illegible]



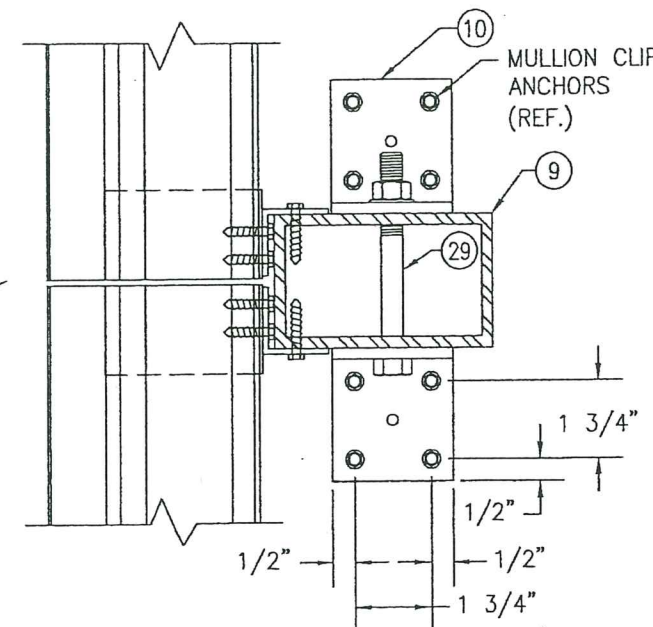
SECTION B3
SCALE: 1/2 FULL
(WITH SLEEVE & CLIPS TURNED OUT)



SECTION B4
SCALE: 1/2 FULL
(WITH SLEEVE & CLIPS TURNED IN)



(ARCHITECTURAL LOUVER WITHOUT PERIMETER SLEEVE; INSTALLED INTO WOOD, STEEL, ALUMINUM, OR METAL STUD SUBSTRATE)



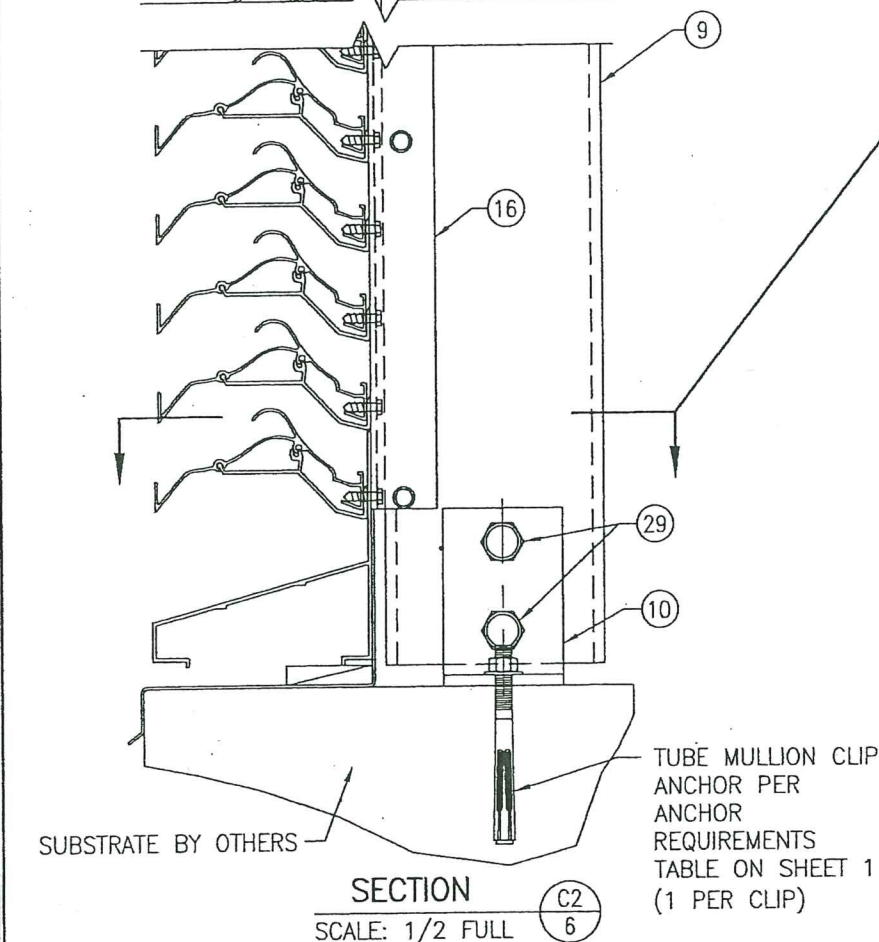
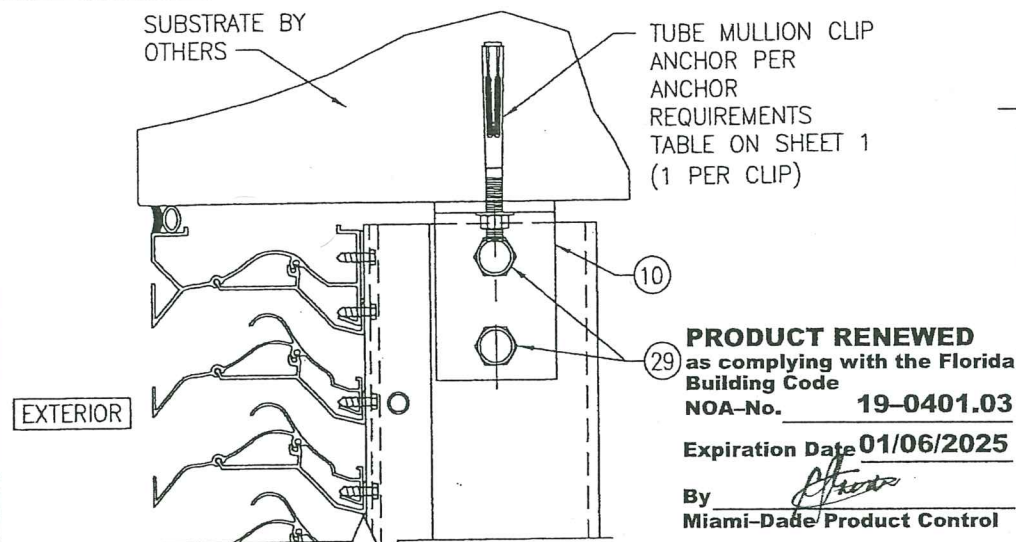
(FOR DETAIL NOT SHOWN, SEE SECTION E/9)

PRODUCT REVISED
as complying with the Florida
Building Code
NOA-No. **20-0622.24**
Expiration Date **01/06/2025**
By *[Signature]*
Miami-Dade Product Control

PRODUCT RENEWED
as complying with the Florida
Building Code
NOA-No. **19-0401.03**
Expiration Date **01/06/2025**
By *[Signature]*
Miami-Dade Product Control

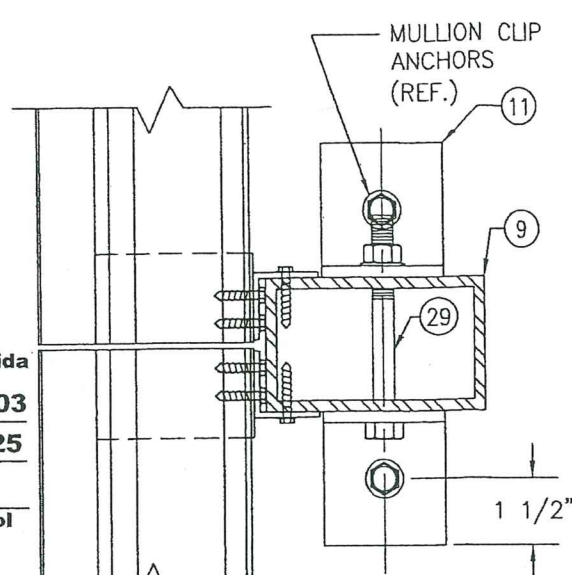


DRAWN BY: W.R.M.	CHECKED BY: W.W.S.
PLOT: 1-4	DATE: 07/23/09
DATE	BY
REVISION DESCRIPTION	NO.
<p>DRAWING TITLE: A520 IMPACT LOUVER SYSTEM</p> <p>MANUFACTURER: AIR BALANCE; A DIVISION OF MESTEK, INC. 450 RIVERSIDE DRIVE WYALUSING, PA 18853 570-746-1888</p> <p>CONSULTANTS: W. SCHAEFER ENGINEERING & CONSULTING, P.A. (CA 6809) 7480 150TH COURT NORTH PALM BEACH GARDENS, FL 33418 PHONE: 561-744-3424</p> <p>RENEWAL DATE: MAY 21 2019</p> <p>WARREN W. SCHAEFER, P.E. P.E. NO. 44135</p>	
DRAWING NO. 1686	REV. C
SHEET NO. 5	OF 10

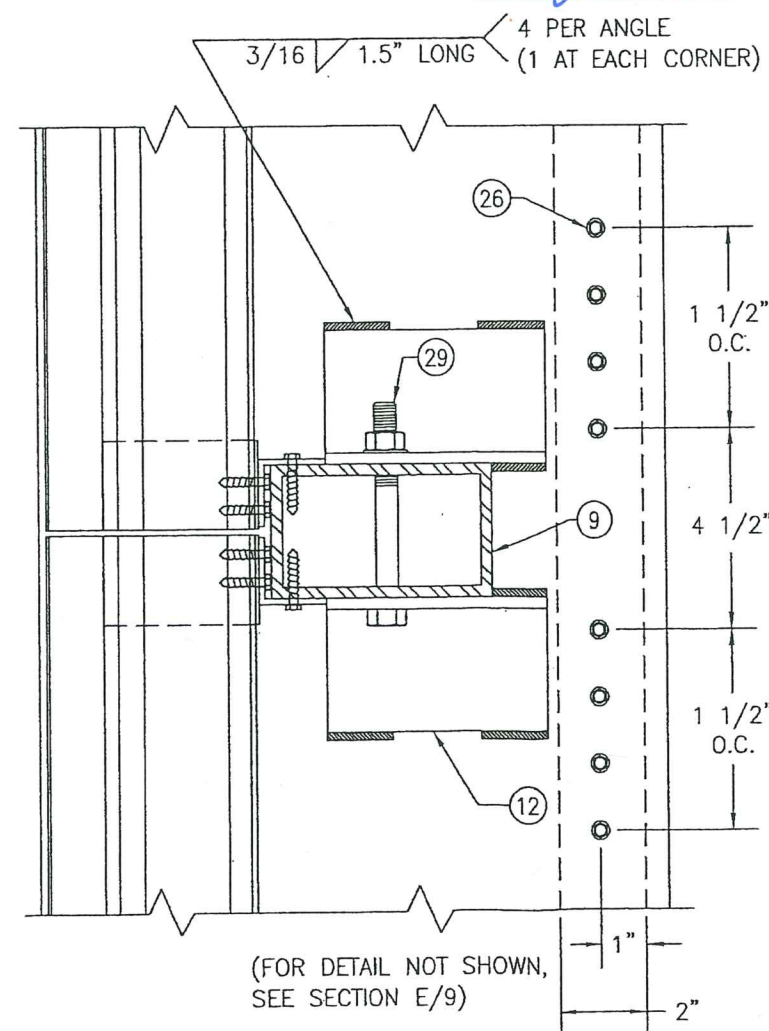


(ARCHITECTURAL LOUVER WITHOUT PERIMETER SLEEVE; INSTALLED INTO CONCRETE SUBSTRATE)
 (FOR DETAIL NOT SHOWN, SEE SECTION C1/5)

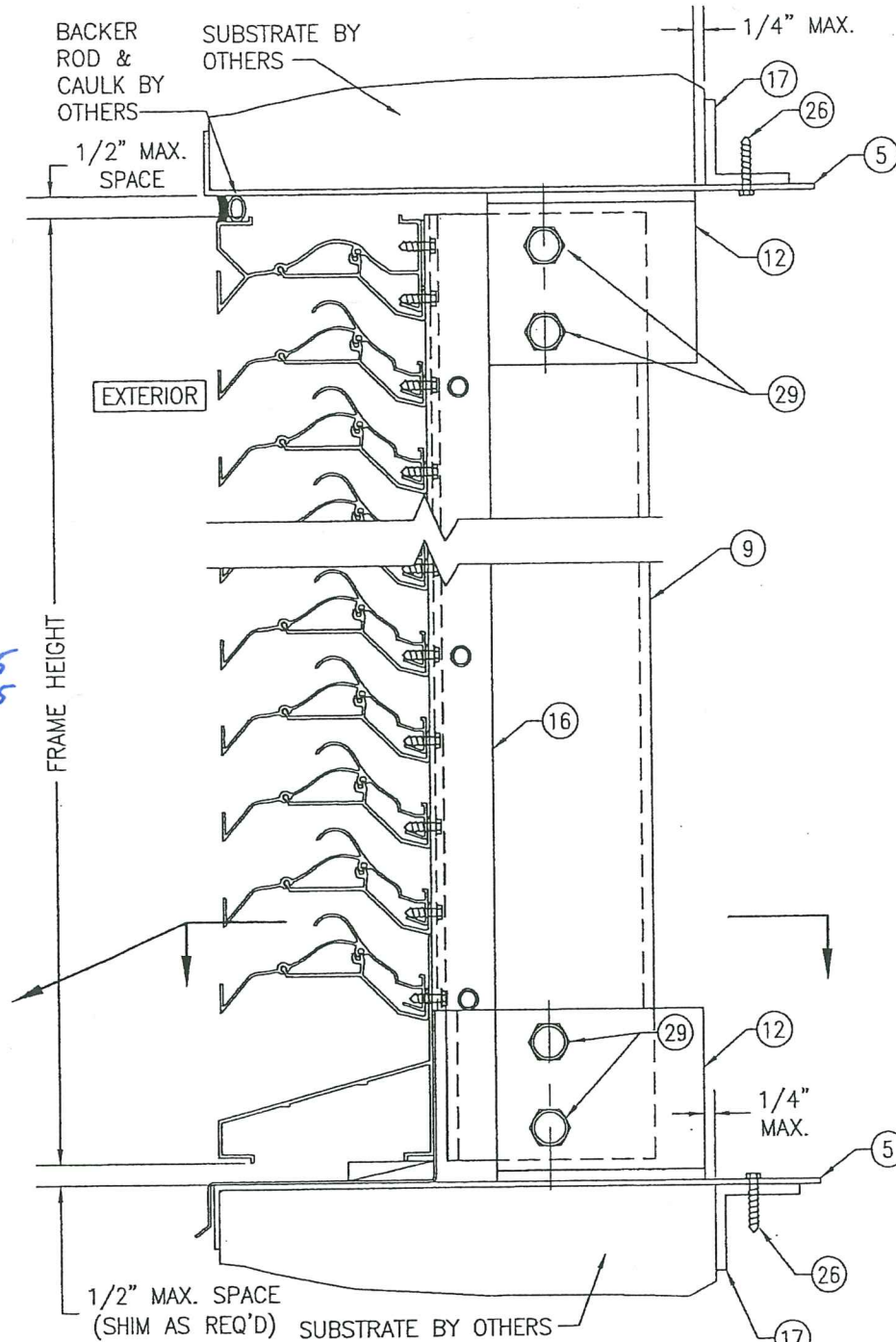
PRODUCT REVISED
 as complying with the Florida Building Code
 NOA-No. **20-0622.24**
 Expiration Date **01/06/2025**
 By *[Signature]*
 Miami-Dade Product Control



(FOR DETAIL NOT SHOWN, SEE SECTION E/9)
PRODUCT REVISED
 as complying with the Florida Building Code
 Acceptance No. **23-0713.05**
 Expiration Date **01/06/2025**
 By *[Signature]*
 Miami-Dade Product Control



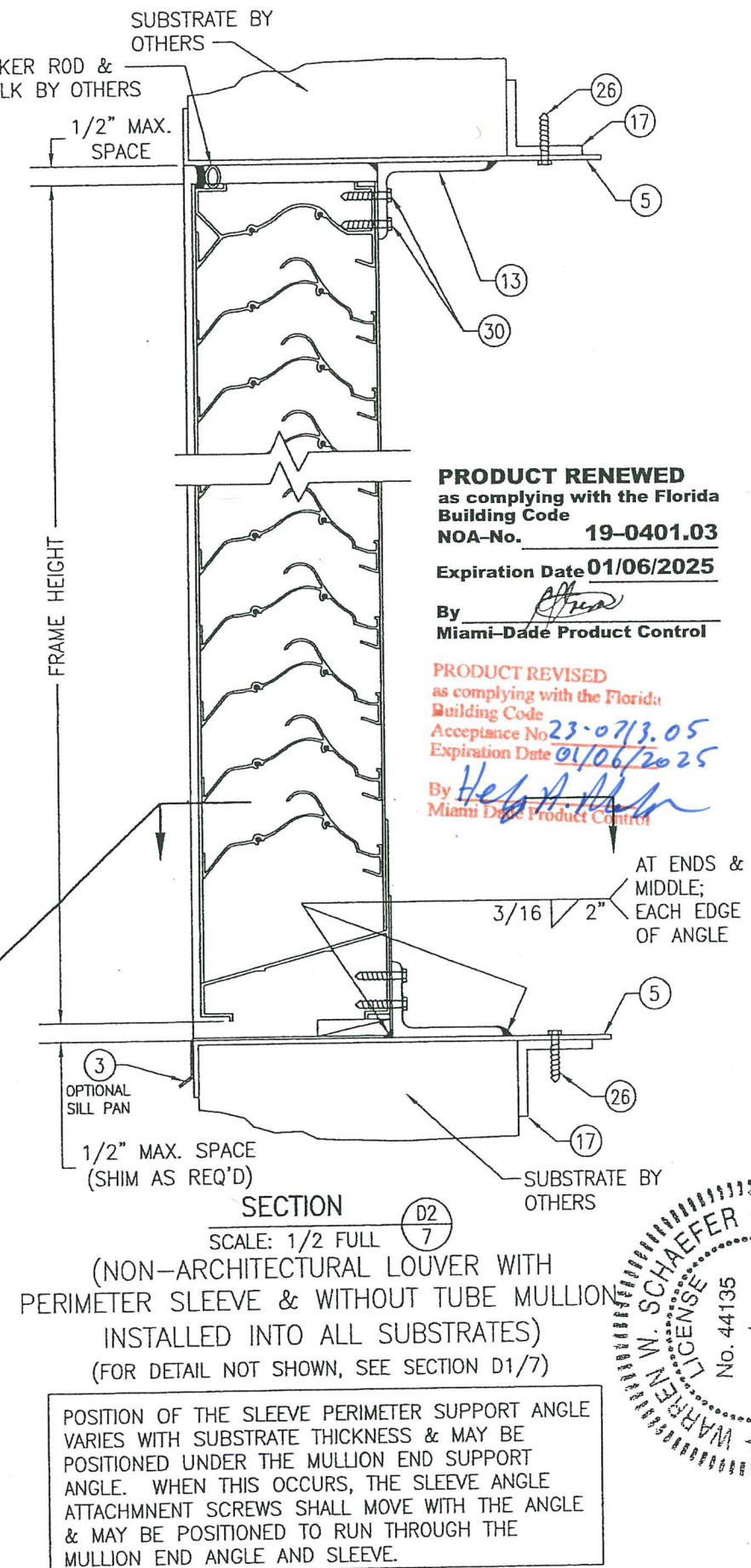
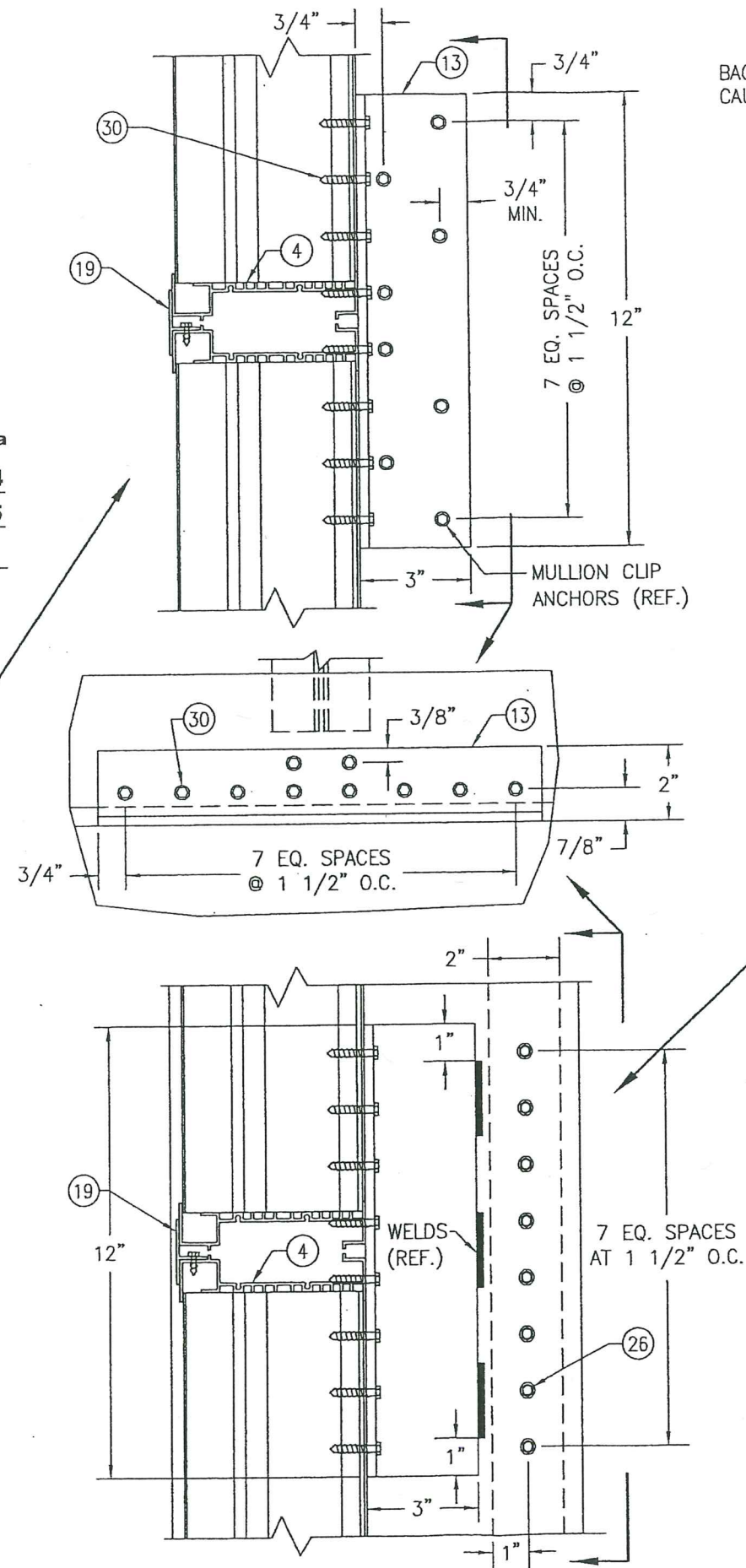
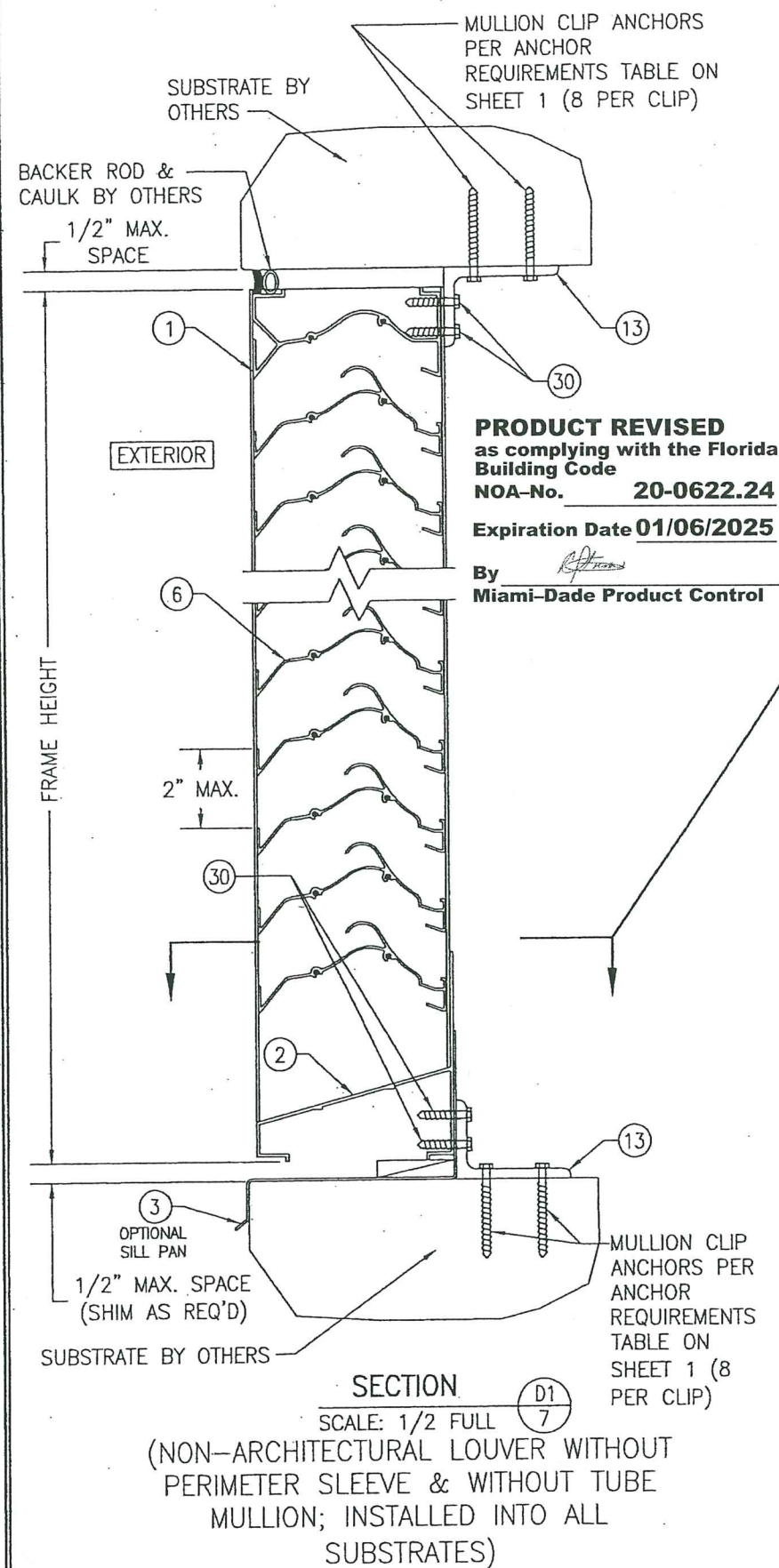
(FOR DETAIL NOT SHOWN, SEE SECTION E/9)



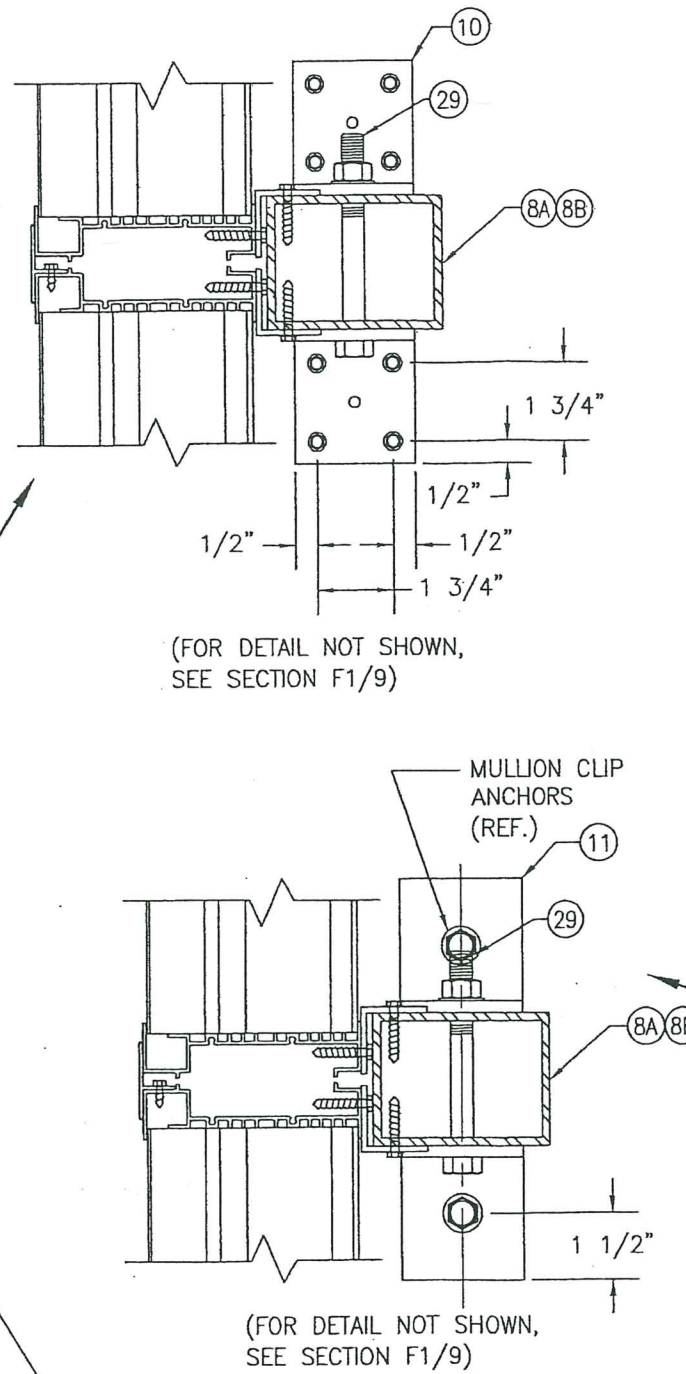
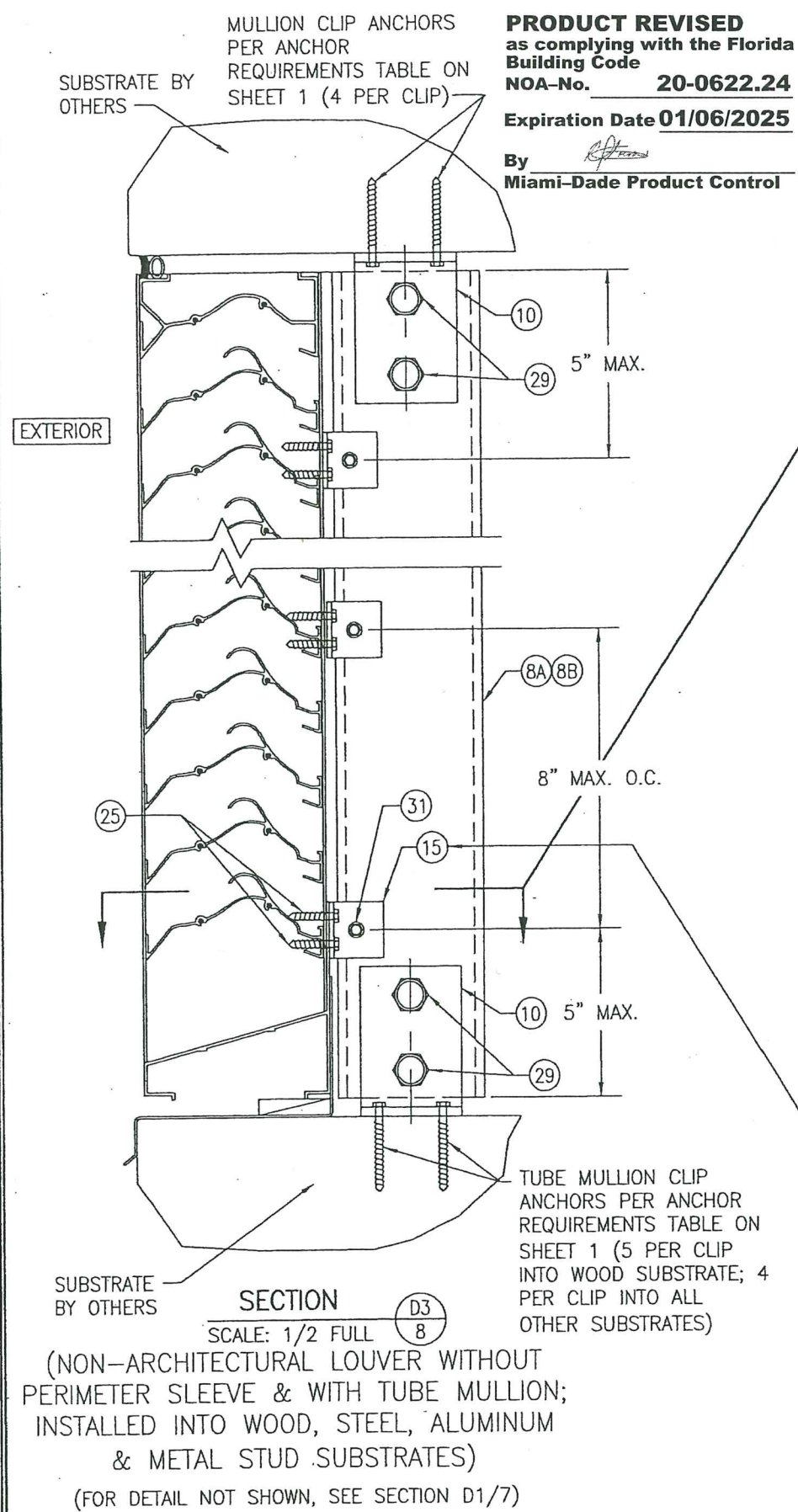
SECTION C3
 SCALE: 1/2 FULL
 6
 (ARCHITECTURAL LOUVER WITH PERIMETER SLEEVE; INSTALLED INTO ALL SUBSTRATES)
 (FOR DETAIL NOT SHOWN, SEE SECTION C1/5)

POSITION OF THE SLEEVE PERIMETER SUPPORT ANGLE VARIES WITH SUBSTRATE THICKNESS & MAY BE POSITIONED UNDER THE MULLION END SUPPORT ANGLE. WHEN THIS OCCURS, THE SLEEVE ANGLE ATTACHMENT SCREWS SHALL MOVE WITH THE ANGLE & MAY BE POSITIONED TO RUN THROUGH THE MULLION END ANGLE AND SLEEVE.

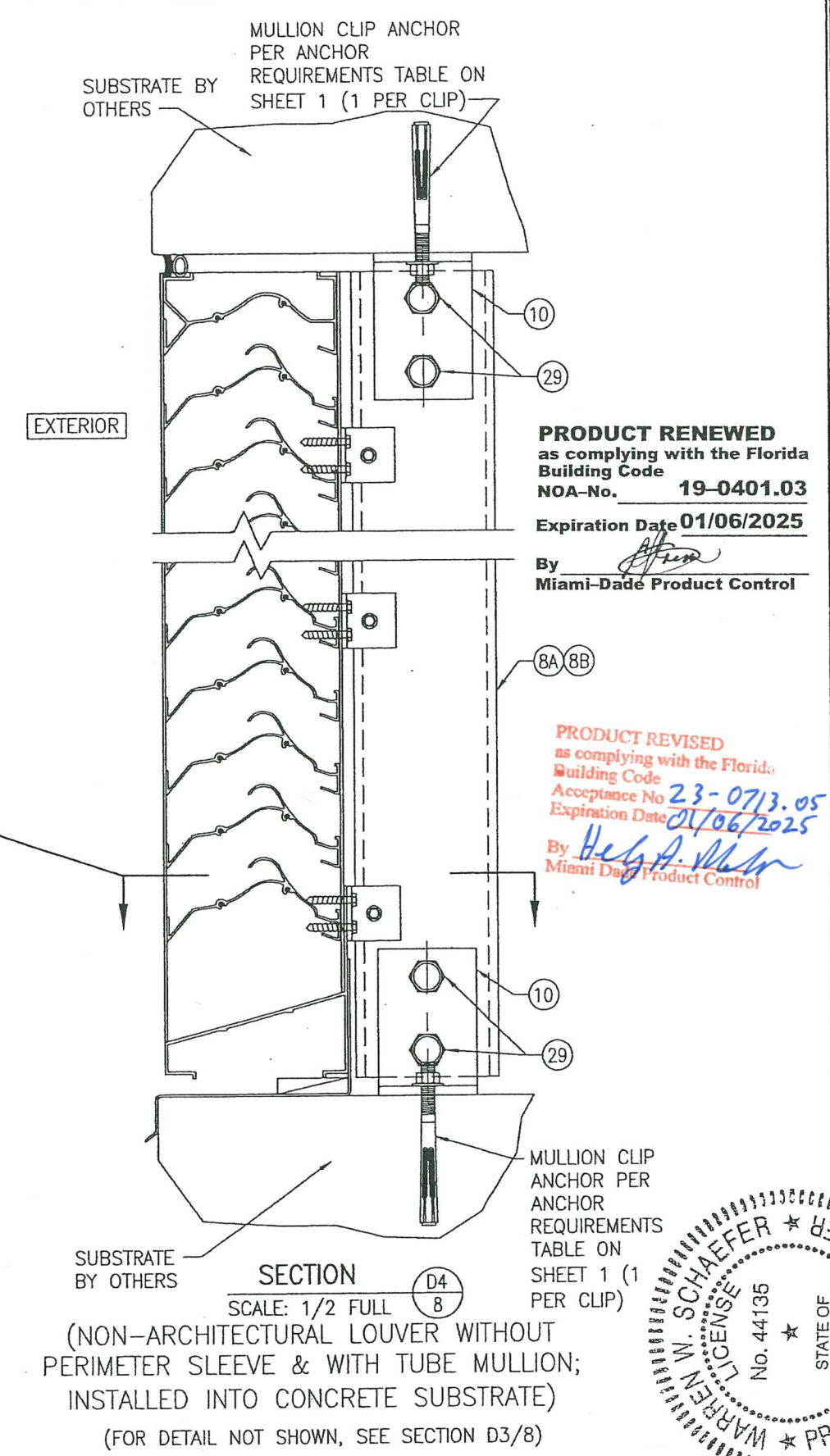
DRAWN BY: W.R.M.	CHECKED BY: W.W.S.
PLOT: 1=4	DATE: 07/23/09
DATE	BY
REVISION DESCRIPTION	NO.
MANUFACTURER AIR BALANCE: A DIVISION OF MESTEK, INC. 450 RIVERSIDE DRIVE WYALUSING, PA 18853 570-746-1888	
CONSULTANTS W. W. SCHAEFER ENGINEERING & CONSULTING, P.A. (CA 6809) 7480 150TH COURT NORTH PALM BEACH GARDENS, FL 33418 PHONE: 561-744-3424	
DRAWING TITLE	CONSULTANTS
A520 IMPACT LOUVER SYSTEM	
STATE OF FLORIDA	PROFESSIONAL ENGINEER
W. W. SCHAEFER, P.E.	1686
DRAWING NO.	REV.
6	C
SHEET NO. 6 OF 10	



DRAWN BY: W.R.M.	CHECKED BY: W.W.S.
PLOT: 1=4	DATE: 07/23/09
DATE	BY
REVISION DESCRIPTION	
NO.	
<p>DRAWING TITLE: A520 IMPACT LOUVER SYSTEM</p> <p>MANUFACTURER: AIR BALANCE; A DIVISION OF MESTEK, INC. 450 RIVERSIDE DRIVE WYALUSING, PA 18853 570-746-1888</p> <p>CONSULTANTS: W. SCHAEFER ENGINEERING & CONSULTING, P.A. (CA 6809) 7480 150TH COURT NORTH PALM BEACH GARDENS, FL 33418 PHONE: 561-744-3424</p> <p>PROFESSIONAL SEAL: W. SCHAEFER, P.E. No. 44135</p>	
DRAWING NO. 1686	REV. C
SHEET NO. 7	OF 10

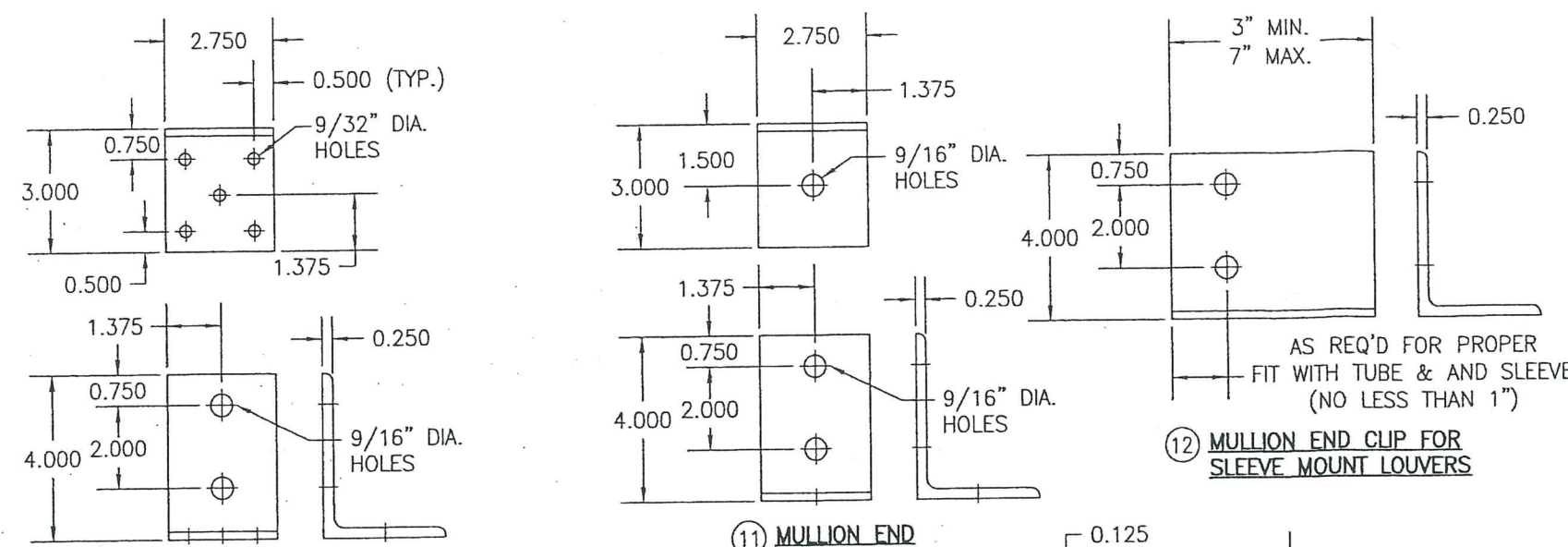


OPTION: USE A CONTINUOUS 1 1/2" X 1 1/2" X 1/8" 6063-T5 ALUMINUM ANGLE IN LIEU OF INDIVIDUAL ANGLES PART #15. ATTACH CONTINUOUS ANGLE TO TUBE MULLION WITH 1/4-14 X 3/4" SELF TAP/DRILL SCREW WITHIN 5" OF TUBE ENDS & 8" MAX. O.C. ATTACH CONTINUOUS ANGLE TO LOUVER FRAME WITH 1/4-14 X 3/4" SELF TAP/DRILL SCREWS WITHIN 5" OF FRAME ENDS & 4" O.C.



DRAWN BY: W.R.M.	CHECKED BY: W.W.S.
PLOT: 1-4	DATE: 07/23/09
DATE	BY
REVISION DESCRIPTION	
NO.	
DRAWING TITLE: A520 IMPACT LOUVER SYSTEM	
CONSULTANTS: W. W. SCHAEFER ENGINEERING & CONSULTING, P.A. (CA 6809)	MANUFACTURER: AIR BALANCE: A DIVISION OF MESTEK, INC.
7480 150TH COURT NORTH PALM BEACH GARDENS, FL 33418 PHONE: 561-744-3424	450 RIVERSIDE DRIVE WYALUSING, PA 18853 570-746-1888
STATE OF FLORIDA WARREN W. SCHAEFER LICENSE No. 44135 P.E. NO. 44135	
DRAWING NO. 1686	REV. C
SHEET NO. 8 OF 10	

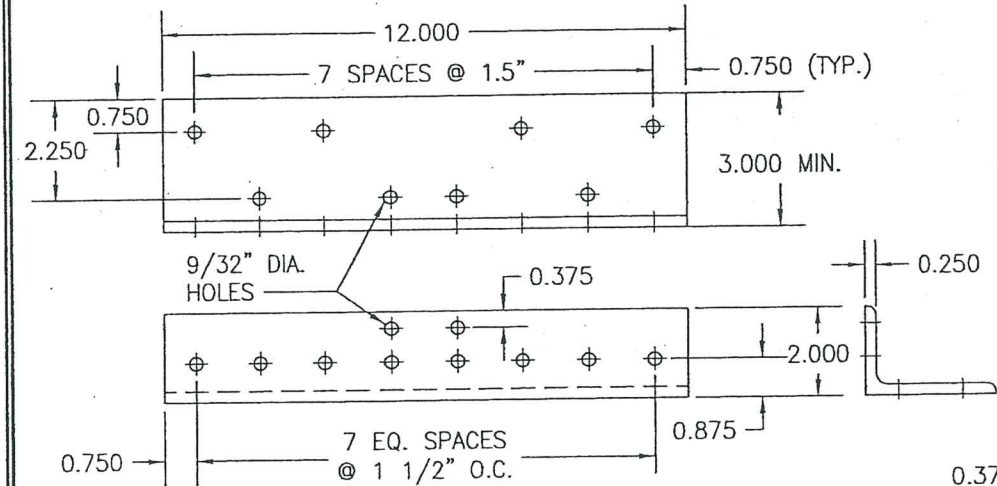
PRODUCT RENEWED
as complying with the Florida
Building Code
NOA-No. 19-0401.03
Expiration Date 01/06/2025
By [Signature]
Miami-Dade Product Control



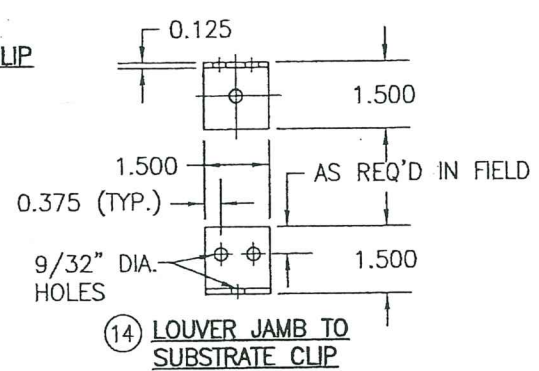
10 MULLION END INSTALLATION CLIP

11 MULLION END INSTALLATION CLIP

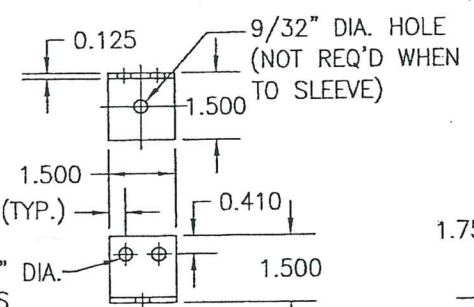
12 MULLION END CLIP FOR SLEEVE MOUNT LOUVERS



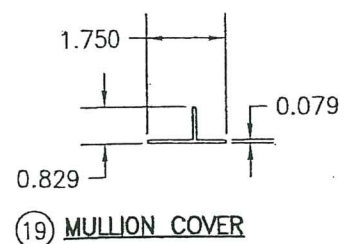
13 MULLION END INSTALLATION CLIP



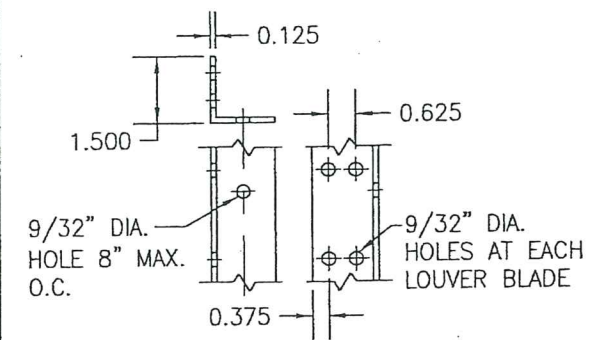
14 LOUVER JAMB TO SUBSTRATE CLIP



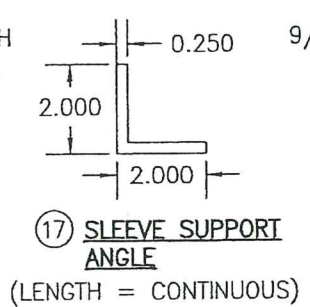
15 SLEEVE OR TUBE MULLION TO LOUVER JAMB CLIP



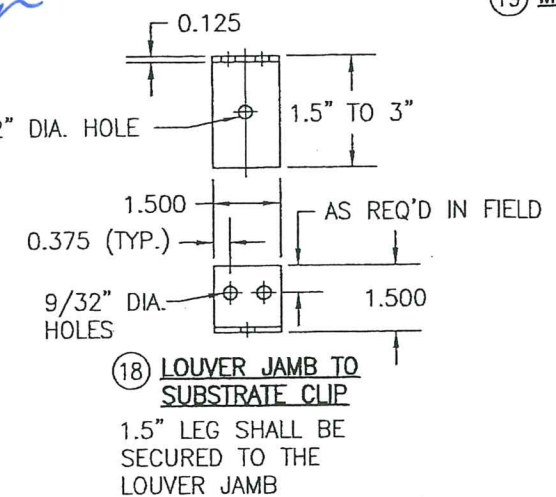
19 MULLION COVER



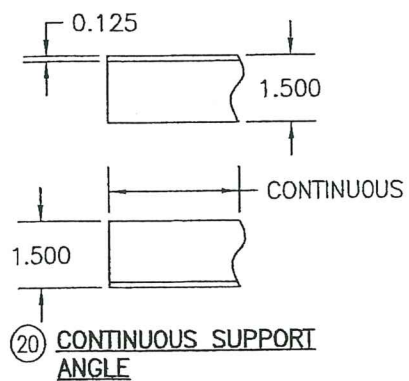
16 TUBE MULLION TO LOUVER BLADE ANGLE (ARCHITECTURAL LOUVER) (LENGTH = CONTINUOUS)



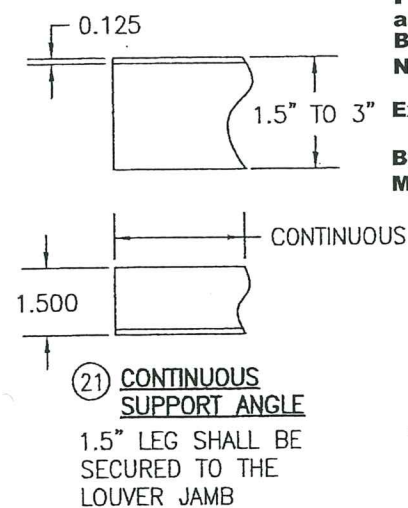
17 SLEEVE SUPPORT ANGLE (LENGTH = CONTINUOUS)



18 LOUVER JAMB TO SUBSTRATE CLIP 1.5\"/>



20 CONTINUOUS SUPPORT ANGLE



21 CONTINUOUS SUPPORT ANGLE 1.5\"/>

ITEM #	ITEM DESCRIPTION	MANUFACTURER/NOTES
PARTS		
1	HEAD	6063-T6 ALUMINUM
2	SILL	6063-T6 ALUMINUM
3	SILL PAN	6063-T5 ALUMINUM
4	JAMB	6063-T6 ALUMINUM
5	SLEEVE	5052-H32 ALUMINUM
6	BLADE	6063-T6 ALUMINUM
7	BLADE SUPPORT BRACKET	6063-T6 ALUMINUM
8A	TUBE MULLION (USED WITH NON-ARCHITECTURAL LOUVERS)	6063-T6 OR 6061-T6 ALUMINUM
8B	TUBE MULLION (USED WITH NON-ARCHITECTURAL LOUVERS)	6063-T6 OR 6061-T6 ALUMINUM
9	TUBE MULLION (USED WITH ARCHITECTURAL LOUVERS)	6063-T6 OR 6061-T6 ALUMINUM
10	MULLION END INSTALLATION CLIP	6061-T6 ALUMINUM
11	MULLION END INSTALLATION CLIP	6061-T6 ALUMINUM
12	MULLION END CLIP FOR SLEEVE MOUNT LOUVERS	6061-T6 ALUMINUM
13	MULLION END INSTALLATION CLIP	6061-T6 ALUMINUM
14	LOUVER JAMB TO SUBSTRATE CLIP	6063-T5 ALUMINUM
15	SLEEVE OR TUBE MULLION TO LOUVER JAMB CLIP	6063-T5 ALUMINUM (WITHIN 4\"/>

PRODUCT REVISED
as complying with the Florida Building Code
NOA-No. **20-0622.24**
Expiration Date **01/06/2025**
By *[Signature]*
Miami-Dade Product Control

PRODUCT RENEWED
as complying with the Florida Building Code
NOA-No. **19-0401.03**
Expiration Date **01/06/2025**
By *[Signature]*
Miami-Dade Product Control

DRAWN BY: W.R.M.		CHECKED BY: W.W.S.	
PLOT: 1=4		DATE: 07/23/09	
DATE	BY	REVISION DESCRIPTION	NO.
<p>DRAWING TITLE: A520 IMPACT LOUVER SYSTEM</p> <p>MANUFACTURER: AIR BALANCE; A DIVISION OF MESTEK, INC.</p> <p>CONSULTANTS: W. W. SCHAEFER ENGINEERING & CONSULTING, P.A. (CA 6809)</p> <p>7480 150TH COURT NORTH PALM BEACH GARDENS, FL 33418 PHONE: 561-744-3424</p> <p>DATE: MAY 21 2019</p> <p>WARREN W. SCHAEFER, P.E. P.E. NO. 44135</p>			
DRAWING NO. 1686		REV. C	
SHEET NO. 10		OF 10	