



DEPARTMENT OF REGULATORY AND ECONOMIC RESOURCES (RER)
BOARD AND CODE ADMINISTRATION DIVISION

MIAMI-DADE COUNTY
PRODUCT CONTROL SECTION
11805 SW 26 Street, Room 208
Miami, Florida 33175-2474
T (786) 315-2590 F (786) 315-2599

www.miamidade.gov/economy

NOTICE OF ACCEPTANCE (NOA)

Mesocore, LLC
3715 Fiscal Court
Riviera Beach, FL 33404

SCOPE:

This NOA is being issued under the applicable rules and regulations governing the use of construction materials. The documentation submitted has been reviewed and accepted by Miami-Dade County RER- Product Control Section to be used in Miami Dade County and other areas where allowed by the Authority Having Jurisdiction (AHJ).

This NOA shall not be valid after the expiration date stated below. The Miami-Dade County Product Control Section (In Miami Dade County) and/or the AHJ (in areas other than Miami Dade County) reserve the right to have this product or material tested for quality assurance purposes. If this product or material fails to perform in the accepted manner, the manufacturer will incur the expense of such testing and the AHJ may immediately revoke, modify, or suspend the use of such product or material within their jurisdiction. RER reserves the right to revoke this acceptance if it is determined by Miami-Dade County Product Control Section that this product or material fails to meet the requirements of the applicable building code.

This product is approved as described herein and has been designed to comply with the High Velocity Hurricane Zone of the Florida Building Code.

DESCRIPTION: Modular Building Wall Sandwich Panel

APPROVAL DOCUMENT: Drawing No. 1947, titled "Modular Building Wall Sandwich Panel" sheets 1 through 3 of 3, prepared by W. W. Schaefer Engineering & Consulting, P.A., signed and sealed by Warren W. Schaefer, P.E., on May 21, 2019 bearing the Miami-Dade County Product Control Revision stamp with the Notice of Acceptance number and the expiration date by the Miami-Dade County Product Control Section.

MISSILE IMPACT RATING: Large and Small Missile Impact Resistant

LABELING: Each panel shall bear a permanent label with the manufacturer's name or logo, city, state and the following statement: "Miami-Dade County Product Control Approved", unless otherwise noted herein.

RENEWAL of this NOA shall be considered after a renewal application has been filed and there has been no change in the applicable building code negatively affecting the performance of this product.

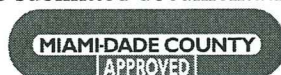
TERMINATION of this NOA will occur after the expiration date or if there has been a revision or change in the materials, use, and/or manufacture of the product or process. Misuse of this NOA as an endorsement of any product, for sales, advertising or any other purposes shall automatically terminate this NOA. Failure to comply with any section of this NOA shall be cause for termination and removal of NOA.

ADVERTISEMENT: The NOA number preceded by the words Miami-Dade County, Florida, and followed by the expiration date may be displayed in advertising literature. If any portion of the NOA is displayed, then it shall be done in its entirety.

INSPECTION: A copy of this entire NOA shall be provided to the user by the manufacturer or its distributors and shall be available for inspection at the job site at the request of the Building Official.

This NOA revises NOA # 20-0622.10 and consists of this page 1, evidence submitted pages E-1 & E-2, as well as approval document mentioned above.

The submitted documentation was reviewed by **Helmy A. Makar, P.E., M.S.**

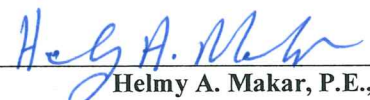


Helmy A. Makar
08/24/2023

NOA No. 23-0713.23
Expiration Date: 10/17/2024
Approval Date: 08/24/2023
Page 1

NOTICE OF ACCEPTANCE: EVIDENCE SUBMITTED

- 1. EVIDENCE SUBMITTED UNDER PREVIOUS APPROVAL 19-0723.03**
 - A. DRAWINGS**
 1. *Drawing No. 1947, titled "Modular Building Wall Sandwich Panel" sheets 1 through 3 of 3, prepared by W. W. Schaefer Engineering & Consulting, P.A., signed and sealed by Warren W. Schaefer, P.E., on May 21, 2019.*
 - B. TESTS**
 1. *Test report on Large Missile Impact, Cyclic Wind Pressure and Uniform Static Air Pressure Tests on Modular Building Wall Sandwich Panel, prepared by Intertek, Report No. J3970.01-450-18 R0, dated 06/07/19, signed and sealed by Vinu J. Abraham, P.E.*
 - C. CALCULATIONS**
 1. *None.*
 - D. QUALITY ASSURANCE**
 1. *By Miami-Dade County Department of Regulatory and Economic Resources.*
 - E. MATERIAL CERTIFICATIONS**
 1. *Technical data and specifications.*
 - F. STATEMENTS**
 1. *FBC, 2017 Edition Compliance Letter from W. W. Schaefer Engineering & Consulting, P.A., dated 03/21/2019, signed & sealed by Warren W. Schaefer, P.E.*
- 2. EVIDENCE SUBMITTED UNDER PREVIOUS APPROVAL 20-0622.10**
 - A. DRAWINGS**
 1. *None.*
 - B. TESTS**
 1. *None.*
 - C. CALCULATIONS**
 1. *None.*
 - D. QUALITY ASSURANCE**
 1. *By Miami-Dade County Department of Regulatory and Economic Resources.*
 - E. MATERIAL CERTIFICATIONS**
 1. *None.*
 - F. STATEMENTS**
 1. *FBC, 2020 Edition Compliance Letter from W. W. Schaefer Engineering & Consulting, P.A., dated 06/04/2020, signed & sealed by Warren W. Schaefer, P.E.*



Helmy A. Makar, P.E., M.S.
Product Control Section Supervisor
NOA No. 23-0713.23
Expiration Date: 10/17/2024
Approval Date: 08/24/2023

Mesocore, LLC

NOTICE OF ACCEPTANCE: EVIDENCE SUBMITTED

3. NEW EVIDENCE SUBMITTED

A. DRAWINGS

1. *None.*

B. TESTS

1. *None.*

C. CALCULATIONS

1. *None.*

D. QUALITY ASSURANCE

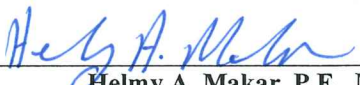
1. *By Miami-Dade County Department of Regulatory and Economic Resources.*

E. MATERIAL CERTIFICATIONS

1. *None.*

F. STATEMENTS

1. *FBC, 2020 Edition and 2023 Edition Compliance Letter from W. W. Schaefer Engineering & Consulting, P.A., dated 07/01/2023, signed & sealed by Warren W. Schaefer, P.E.*



Helmy A. Makar, P.E., M.S.
Product Control Section Supervisor
NOA No. 23-0713.23
Expiration Date: 10/17/2024
Approval Date: 08/24/2023

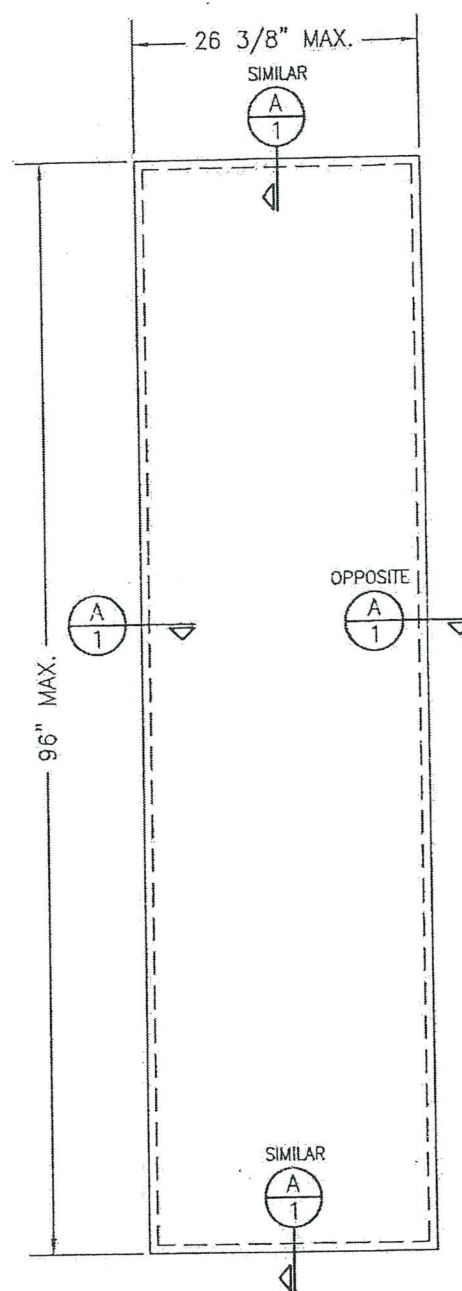
GENERAL NOTES:

1. THIS PRODUCT HAS BEEN TESTED, ANALYZED & APPROVED FOR DESIGN PRESSURES NOT TO EXCEED THOSE SHOWN IN THE "ALLOWABLE DESIGN PRESSURE TABLE(S)".
2. IT SHALL BE THE RESPONSIBILITY OF THE PERMIT HOLDER TO VERIFY THE STRUCTURAL INTEGRITY OF ALL STRUCTURE TO SUPPORT THE LOADS SUPERIMPOSED BY THE PANELS.
3. ONLY THE PANELS ARE PART OF THIS APPROVAL. ALL SUPPORTING FRAMING MEMBERS & OTHER BUILDING COMPONENTS ARE NOT PART OF THIS APPROVAL AND SHALL BE DESIGNED UNDER SEPARATE CERTIFICATION AND/OR APPROVAL.
4. ALL SUPPORT FRAMING SHALL BE MIN. 1.75" X 1.75" STEEL TUBES WITH MINIMUM WALL THICKNESS OF 0.083" ($F_y = \text{MIN. } 36 \text{ KSI}$).
5. MAXIMUM ALLOWABLE DEFLECTION FOR THE WALL ASSEMBLY SHALL BE $L/240$.
6. DETAILS HERE-IN SHOW INTENT TO PREVENT WATER INFILTRATION INTO & BEHIND THE SYSTEM. IT SHALL BE THE INSTALLERS RESPONSIBILITY TO INSURE THAT THE SYSTEM IS WATER TIGHT.
7. THE DETAILS & SPECIFICATIONS SHOWN HEREIN REPRESENT THE PRODUCT TESTED & PROPOSED FOR CONFORMANCE WITH THE FLORIDA BUILDING CODE PROTOCOLS TAS-201, 202 & 203 FOR LARGE & SMALL MISSILE IMPACT PRODUCTS.
8. THIS PRODUCT HAS BEEN DESIGNED IN ACCORDANCE WITH AND MEETS THE REQUIREMENTS OF THE FLORIDA BUILDING CODE (FBC) INCLUDING HIGH VELOCITY HURRICANE ZONES (HVHZ).
9. THE WALL PANEL SECTIONS ARE NOT MEANT TO SUPPORT DIAPHRAGM ACTION OF THE WALL ASSEMBLY/SYSTEM. THE STRUCTURAL FRAMING AND MAIN BODY CONTAINER OF THE MODULAR BUILDING SHALL BE CAPABLE OF FULLY SUPPORTING DIAPHRAGM ACTION WITHOUT ASSISTANCE FROM THE WALL PANELS.
10. DETERMINE THE POSITIVE & NEGATIVE DESIGN LOADS TO USE WHEN REFERENCING THESE DOCUMENTS IN ACCORDANCE WITH THE GOVERNING CODE AND GOVERNING WIND VELOCITY. FOR WIND LOAD CALCULATIONS IN ACCORDANCE WITH THE FLORIDA BUILDING CODE, A DIRECTIONALITY FACTOR OF $K_d = 0.85$ MAY BE APPLIED PER THE ASCE-7 STANDARD.
11. INDIVIDUAL PANEL SIZES ARE LIMITED AS SHOWN HERE-IN. ANY INCREASE IN PANEL DIMENSIONS GREATER THAN THOSE SHOWN SHALL BE SUBJECT TO SEPARATE JOB SPECIFIC REVIEW AND CERTIFICATION.
12. ONCE MODULAR BUILDING INSTALLATION IS COMPLETE, THE WALL SURFACE SHALL BE FINISH PAINTED INSIDE & OUT WITH A COATING AS REQUIRED TO FORM A PERMANENT SEAL. COATINGS SHALL BE IN COMPLIANCE WITH ALL APPLICABLE MAG. BOARD SPECIFICATIONS.

PANEL SECTION CONSTRUCTION

1. FOAM IS CUT AND ROUTED AS REQUIRED TO FIT STRUCTURAL FRAMING OPENINGS.
2. AT EACH THE INTERIOR & EXTERIOR, MIN. 1/16" THICK FIBERGLASS SCRIM MADE UP OF MIN. 1 LAYER OF 20 OZ. 0.035" FIBERS WITH A 1/4" SQUARE GRID PATTERN IS ADHERED TO THE EPS FOAM AND MAG. BOARD WITH MOISTURE CURE POLYURETHANE GLUE.
3. AT EACH THE INTERIOR-& EXTERIOR, MAGNESIUM OXIDE BOARD (MAG. BOARD) IS APPLIED TO THE FIBERGLASS SCRIM PER NO. 2 ABOVE.

FOR ALL PANEL INSTALLATION DETAILS, SEE OTHER DRAWING SHEETS.



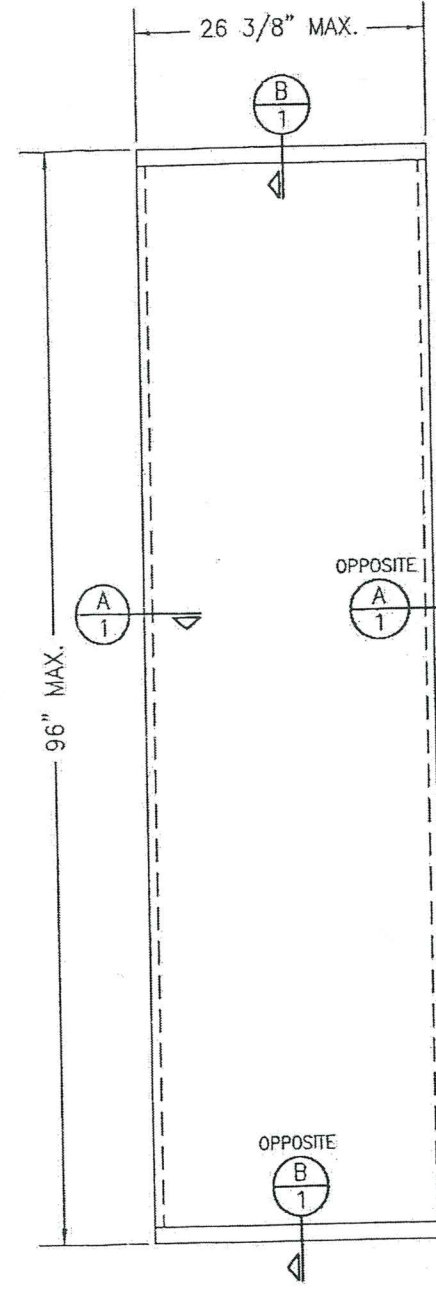
TYPICAL PANEL SECTION
WHEN ALL EDGES ARE
TRAPPED WITHIN STEEL TUBE
FRAMING

SCALE: 3/4" = 1'-0"

NOTE: PANEL LONG DIMENSION MAY BE
HORIZONTAL OR VERTICAL.

ALLOWABLE PANEL DESIGN PRESSURE

+70/-70 PSF



TYPICAL PANEL SECTION WHEN
TOP &/OR BOTTOM EDGE IS
TRAPPED WITHIN EXTRUDED
ALUMINUM CHANNEL

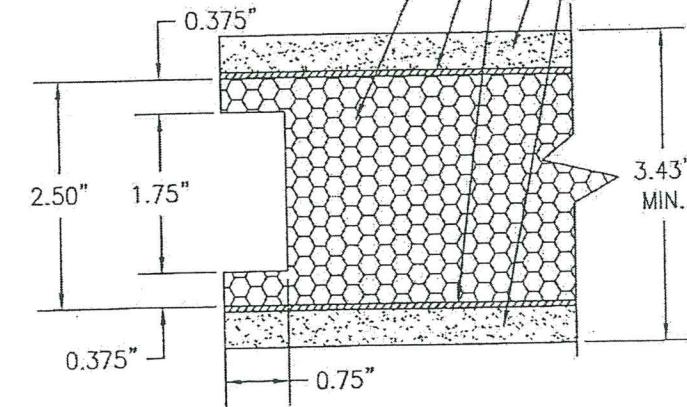
SCALE: 3/4" = 1'-0"

NOTE: PANEL LONG DIMENSION MAY BE
HORIZONTAL OR VERTICAL.

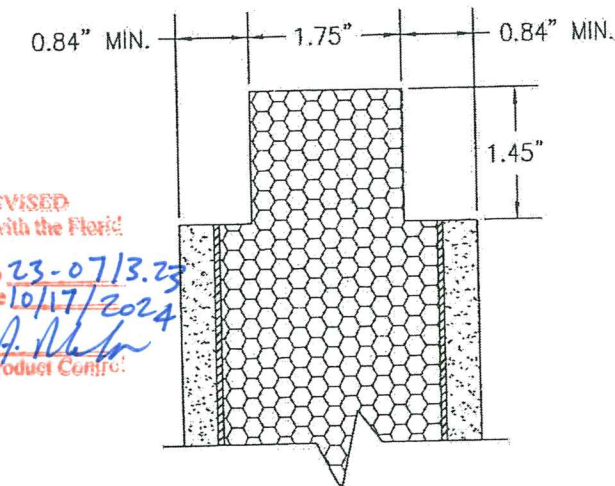
MIN. 0.40" (10mm) THICK MAGNESIUM OXIDE
BOARD (JET PRODUCTS JETBOARD SHEATHING
OR MAGNUM BOARD PRODUCTS MAGNUM BOARD)

MIN. 0.065" THICK 20 OZ WEIGHT
FIBERGLASS SCRIM

2.5" THICK 2 LB. EXPANDED
POLYSTYRENE EPS FOAM



SECTION A
SCALE: 1/2 FULL



SECTION B
SCALE: 1/2 FULL

(FOR ALL PANEL DIMENSIONING &
INFORMATION NOT SHOWN, SEE SECTION A(1))

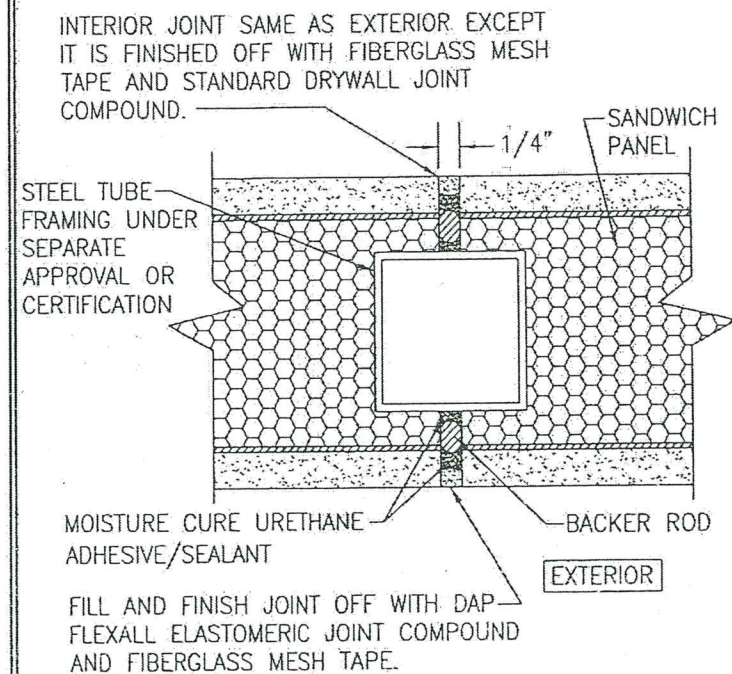
PRODUCT REVISED
as complying with the Florida
Building Code
Acceptance No. 23-0713.23
Expiration Date 10/17/2024
By *Heidi A. Miller*
Miami Dade Product Control

Approved as complying with the
Florida Building Code
Date 10/17/2019
NOA# 19-0723.03
Miami Dade Product Control
By *Heidi A. Miller*

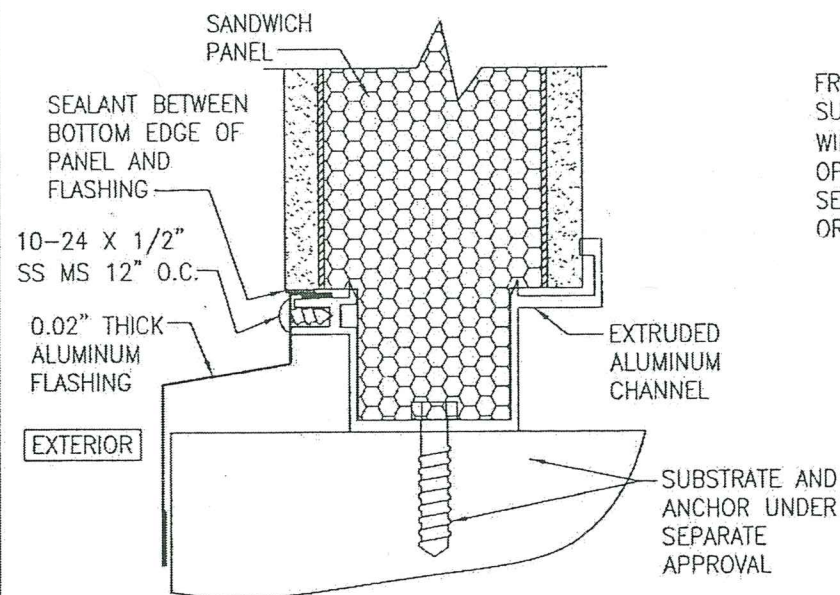
PRODUCT REVISED
as complying with the Florida
Building Code
Acceptance No. 20-0622.10
Expiration Date 10/17/2024
By *Heidi A. Miller*
Miami Dade Product Control

THESE DRAWINGS ARE APPLICABLE ONLY TO THE PRODUCT
SPECIFIED. THEY MAY NOT BE USED FOR THE ASSEMBLY
AND/OR INSTALLATION OF ANY OTHER PRODUCT NOR MAY
THEY BE USED FOR RATIONAL AND/OR LOCAL APPROVAL
OF ANY PRODUCT NOT PRODUCED BY THE MANUFACTURER
STATED ON THESE DRAWINGS.

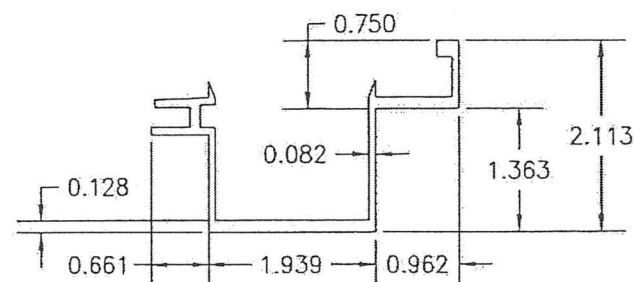
DRAWN BY: W.W.S.		CHECKED BY: W.W.S.	
PLOT: 1-16		DATE: 03/18/19	
NO.	REVISION DESCRIPTION	BY	DATE
DRAWING TITLE: MODULAR BUILDING WALL SANDWICH PANEL			
MANUFACTURER: MESOCORE, LLC 2715 FISCAL COURT RIVIERA BEACH, FL 33404 561-881-9552		CONSULTANTS: W. SCHAEFER ENGINEERING & CONSULTING, P.A. (CA 6809) 7480 150TH COURT NORTH PALM BEACH GARDENS, FL 33418 PHONE: 561-744-3424	
DRAWING NO. 1947		REV. 1 OF 3	



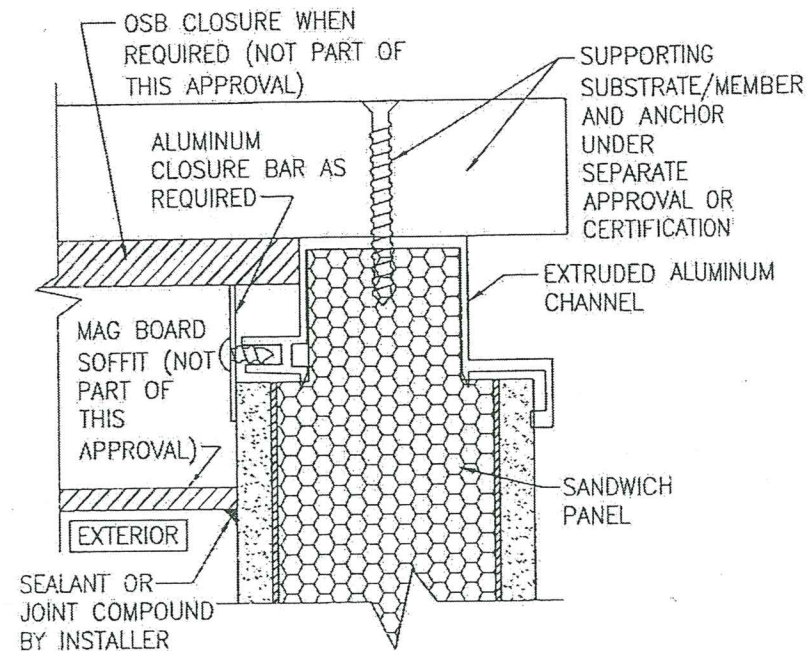
**TYPICAL DETAIL AT INTERMEDIATE
SUPPORT FRAMING**
(HORIZONTAL & VERTICAL JOINTS)



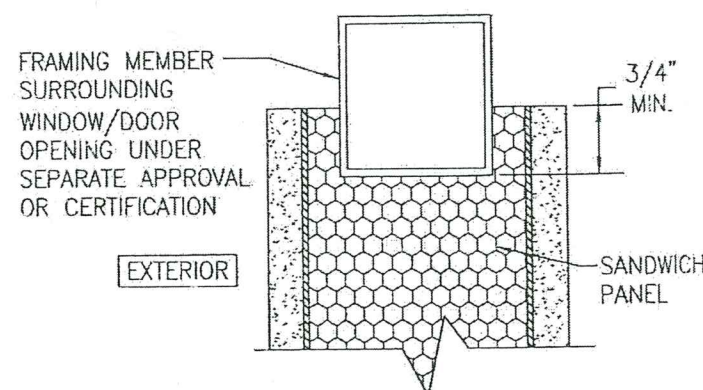
TYPICAL DETAIL AT BASE OF WALL



EXTRUDED ALUMINUM CHANNEL

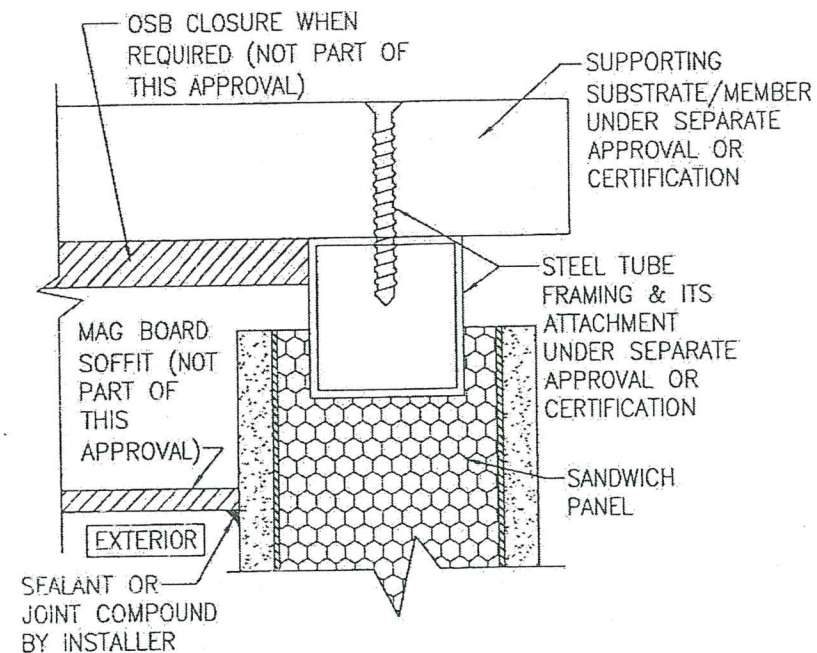


TYPICAL DETAIL AT TOP OF WALL



TYPICAL DETAIL AT WINDOW/DOOR OPENING
(WINDOW SILL IS SHOWN. JAMBS & HEAD OF WINDOW/DOOR OPENING ARE THE SAME)

WINDOW/DOOR OPENING NOTE:
INSTALLATION OF WINDOWS AND DOORS IS NOT PART OF THIS APPROVAL. WINDOW AND DOOR INSTALLATION AND ALL METHODS OF FINISHING AROUND WINDOWS AND DOORS SHALL BE PART OF THE MODULAR BUILDING APPROVAL/CERTIFICATION OR BE SUBJECT TO JOB SPECIFIC REVIEW AND CERTIFICATION. IT SHALL BE NOTED THAT IN ALL FBC REQUIRED IMPACT ZONES, ALL WINDOWS AND DOORS SHALL EITHER BE FBC IMPACT APPROVED OR PROTECTED BY FBC IMPACT APPROVED SHUTTERS. WHETHER IMPACT OR NON-IMPACT, ALL WINDOWS AND DOORS SHALL HOLD AN APPLICABLE FLORIDA APPROVAL OR DADE COUNTY NOA.

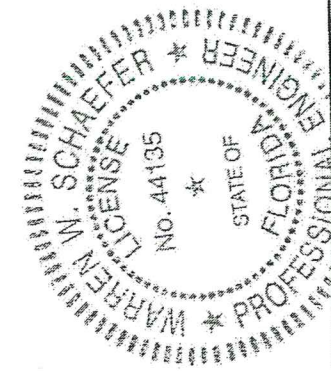


**TYPICAL ALTERNATE DETAIL AT
TOP OF WALL**

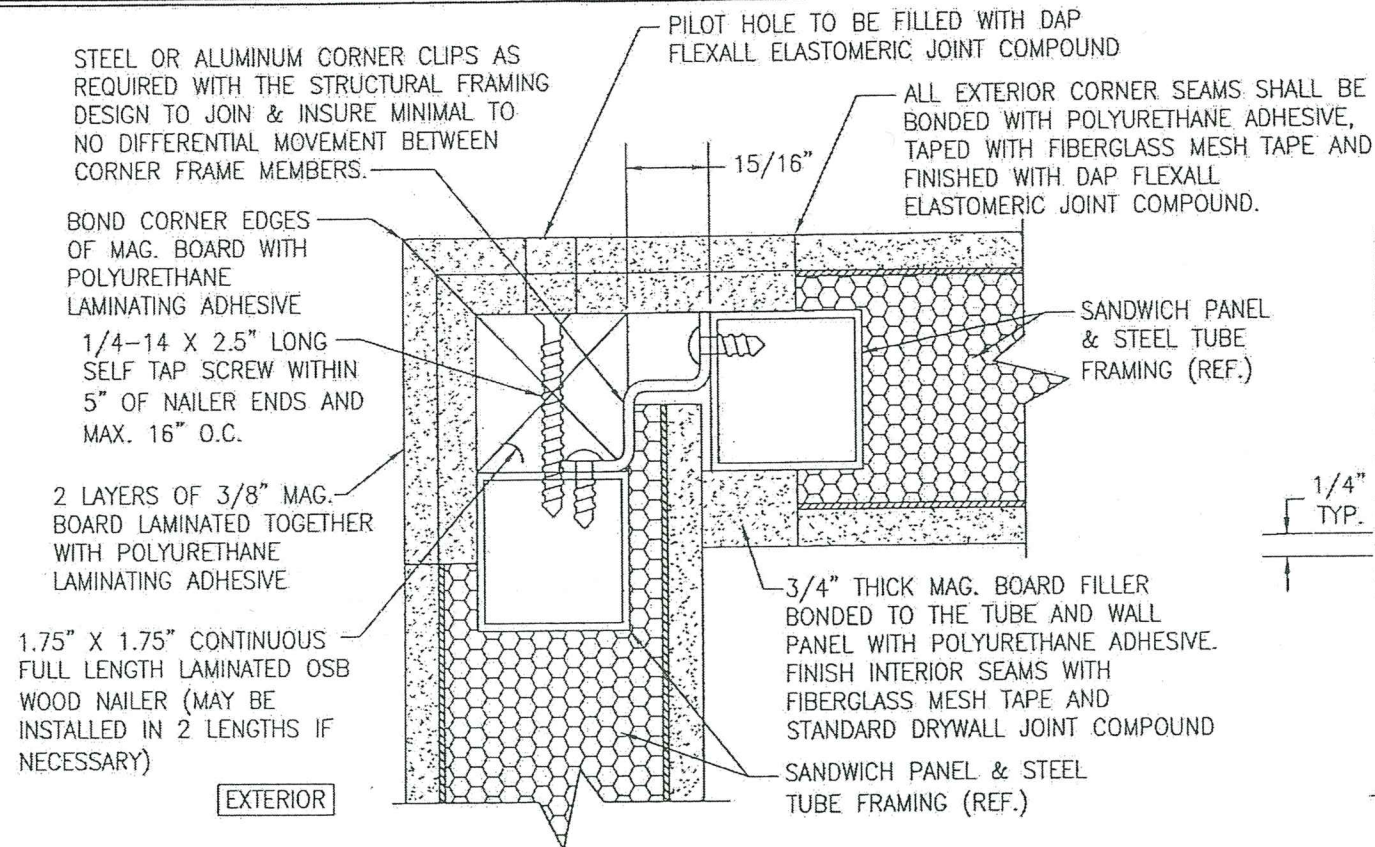
PRODUCT REVISED
as complying with the Florida
Building Code
Acceptance No. **23-0713.23**
Expiration Date **10/17/2024**
By **Heidi A. Mohr**
Miami Dade Product Control

PRODUCT REVISED
as complying with the Florida
Building Code
Acceptance No. **20-0622.10**
Expiration Date **10/17/2024**
By **Heidi A. Mohr**
Miami Dade Product Control

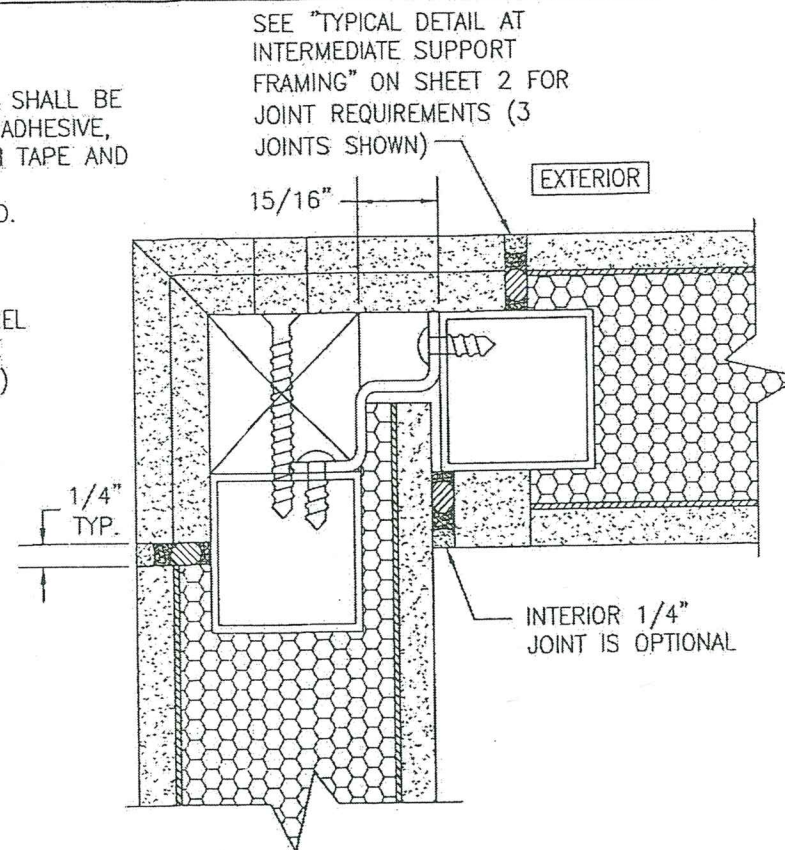
Approved as complying with the
Florida Building Code
Date **10/17/2019**
NOA# **19-0723.03**
Miami Dade Product Control
By **Heidi A. Mohr**



DRAWN BY: W.W.S.		CHECKED BY: W.W.S.	
PLOT: 1=2		DATE: 03/18/19	
DATE	BY	REVISION DESCRIPTION	NO.
DRAWING TITLE MODULAR BUILDING WALL SANDWICH PANEL			
MANUFACTURER MESOCORE, LLC 2715 FISCAL COURT RIVIERA BEACH, FL 33404 561-881-9552		CONSULTANTS W. W. SCHAEFER ENGINEERING & CONSULTING, P.A. (CA 6809) 7480 150TH COURT NORTH PALM BEACH GARDENS, FL 33418 PHONE: 561-744-3424	
CERTIFICATION MAY 21 2019		WARREN W. SCHAEFER, P.E. P.E. NO. 44135	
DRAWING NO. 1947		REV.	
SHEET NO. 2		OF 3	



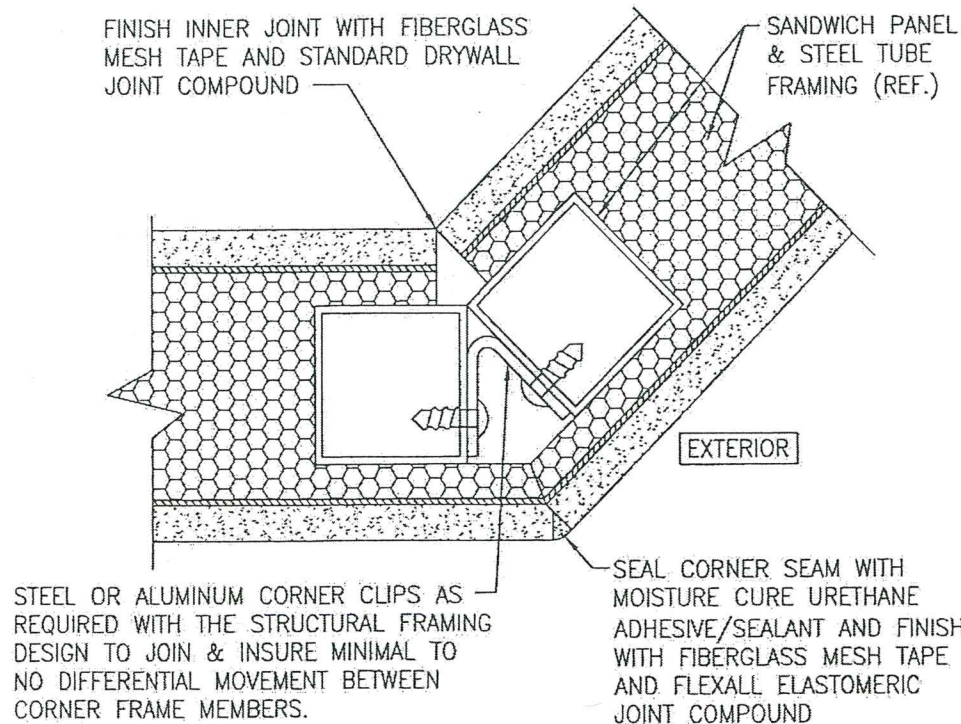
**TYPICAL 90 DEG. CORNER DETAIL
(OPTION 1 WITH NO SEALANT JOINTS)**



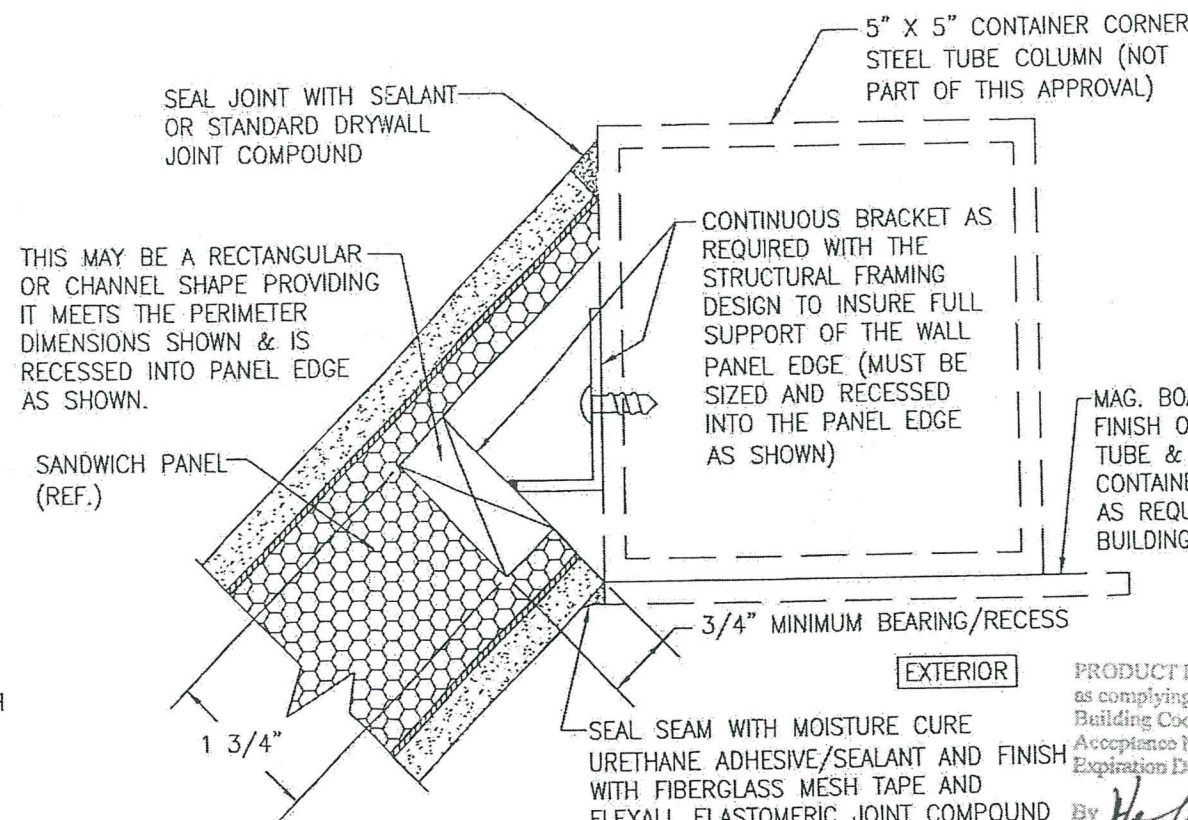
**TYPICAL 90 DEG. CORNER DETAIL
(OPTION 2 WITH SEALANT JOINTS)**
(FOR DETAIL NOT SHOWN, SEE OTHER 90 DEG. CORNER DETAIL ON THIS SHEET.)

PRODUCT REVISED
as complying with the Florida
Building Code
Acceptance No. 23-0713.23
Expiration Date 10/17/2024
By *H. A. Maher*
Miami Data Product Control

Approved as complying with the
Florida Building Code
Date 10/17/2019
NOA# 19-0723.03
Miami Data Product Control
By *H. A. Maher*

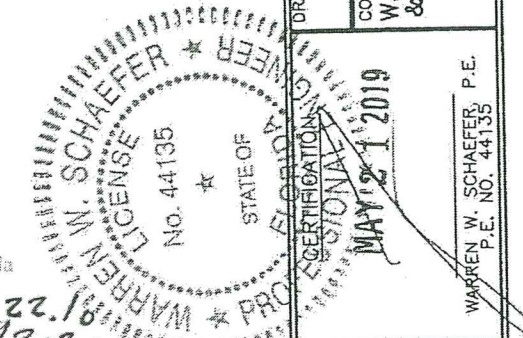


45 DEG. OUTER CORNER DETAIL



45 DEG. INNER CORNER DETAIL

PRODUCT REVISED
as complying with the Florida
Building Code
Acceptance No. 20-0622.18
Expiration Date 10/17/2024
By *H. A. Maher*
Miami Data Product Control



DRAWN BY: W.W.S.	CHECKED BY: W.W.S.
PLOT: 1-2	DATE: 03/18/19
DATE	BY
REVISION DESCRIPTION	NO.
DRAWING TITLE MODULAR BUILDING WALL SANDWICH PANEL	
MANUFACTURER MESOCORE, LLC 2715 FISCAL COURT RIVIERA BEACH, FL 33404 561-881-9552	
CONSULTANTS W. W. SCHAEFER ENGINEERING & CONSULTING, P.A. (CA 6809) 7480 150TH COURT NORTH PALM BEACH GARDENS, FL 33418 PHONE: 561-744-3424	
DRAWING NO. 1947	
SHEET NO. 3 OF 3	