



DEPARTMENT OF REGULATORY AND ECONOMIC RESOURCES (RER)
BOARD AND CODE ADMINISTRATION DIVISION

NOTICE OF ACCEPTANCE (NOA)

MIAMI-DADE COUNTY
PRODUCT CONTROL SECTION

11805 SW 26 Street, Room 208
Miami, Florida 33175-2474
T (786) 315-2590 F (786) 315-2599

www.miamidade.gov/economy

The Bilco Company
P.O. Box 1203
New Haven, CT 06505

SCOPE:

This NOA is being issued under the applicable rules and regulations governing the use of construction materials. The documentation submitted has been reviewed and accepted by Miami-Dade County RER-Product Control Section to be used in Miami-Dade County and other areas where allowed by the Authority Having Jurisdiction (AHJ).

This NOA shall not be valid after the expiration date stated below. The Miami-Dade County Product Control Section (In Miami-Dade County) and/ or the AHJ (in areas other than Miami-Dade County) reserve the right to have this product or material tested for quality assurance purposes. If this product or material fails to perform in the accepted manner, the manufacturer will incur the expense of such testing and the AHJ may immediately revoke, modify, or suspend the use of such product or material within their jurisdiction. RER reserves the right to revoke this acceptance if it is determined by Miami-Dade County Product Control Section that this product or material fails to meet the requirements of the applicable building code.

This product is approved as described herein and has been designed to comply with the Florida Building Code, including the High Velocity Hurricane Zone.

DESCRIPTION: Series S/HZ Steel and Aluminum Roof Hatch

APPROVAL DOCUMENT: Drawing titled "S/HZ Door Assy", sheets 1 through 13 of 13, dated 09/01/2019, with revision F dated 09/23/2020, prepared by The Bilco Company, signed and sealed by Hermes F. Norero, P.E. on 09/28/2023, bearing the Miami-Dade County Product Control revision stamp with the Notice of Acceptance number and expiration date by the Miami-Dade County Product Control Section.

MISSILE IMPACT RATING: Large and Small Missile Impact Resistant

LABELING: A permanent label with the manufacturer's name or logo, city, state, model/series and following statement: "Miami-Dade County Product Control Approved", is to be located on each unit.

RENEWAL of this NOA shall be considered after a renewal application has been filed and there has been no change in the applicable building code negatively affecting the performance of this product.

TERMINATION of this NOA will occur after the expiration date or if there has been a revision or change in the materials, use, and/ or manufacture of the product or process. Misuse of this NOA as an endorsement of any product, for sales, advertising or any other purposes shall automatically terminate this NOA. Failure to comply with any section of this NOA shall be cause for termination and removal of NOA.

ADVERTISEMENT: The NOA number preceded by the words Miami-Dade County, Florida, and followed by the expiration date may be displayed in advertising literature. If any portion of the NOA is displayed, then it shall be done in its entirety.

INSPECTION: A copy of this entire NOA shall be provided to the user by the manufacturer or its distributors and shall be available for inspection at the job site at the request of the Building Official.

This NOA **revises NOA # 20-1104.24** and consists of this page 1 and evidence pages E-1, E-2, E-3, E-4, E-5 and E-6, as well as approval document mentioned above.

The submitted documentation was reviewed by **Carlos M. Utrera, P.E.**



NOA No. 23-0815.19
Expiration Date: December 2, 2024
Approval Date: November 2, 2023
Page 1

NOTICE OF ACCEPTANCE: EVIDENCE SUBMITTED

1. Evidence submitted under previous NOA's

A. DRAWINGS “Submitted under NOA # 11-0722.10”

1. Drawing titled “S/NB Door Assembly”, Sheets 1 through 10 of 10, dated 10/15/2009, with last revision dated 07/07/2011, prepared by The Bilco Company, signed and sealed by Mark A. De Stefano, P.E.

B. TESTS “Submitted under NOA # 08-1219.01”

1. Test report on 1) Air Infiltration Test, per FBC, TAS 202-94
2) Uniform Static Air Pressure Test, Loading per FBC TAS 202-94
3) Water Resistance Test, per FBC, TAS 202-94
4) Large Missile Impact Test per FBC, TAS 201-94,
5) Cyclic Wind Pressure Test per FBC, TAS 203-94,
along with marked-up drawings and installation diagram of Series NB50/20 Aluminum and Steel Roof Scuttle, prepared by Certified Testing Laboratories, Test Report No. **1862W**, dated 11/18/2008, signed and sealed by Ramesh Patel, P.E.
2. Test report on 1) Air Infiltration Test, per FBC, TAS 202-94
2) Uniform Static Air Pressure Test, Loading per FBC TAS 202-94
3) Water Resistance Test, per FBC, TAS 202-94
4) Large Missile Impact Test per FBC, TAS 201-94,
5) Cyclic Wind Pressure Test per FBC, TAS 203-94,
along with marked-up drawings and installation diagram of Series S50/20 Aluminum and Steel Roof Scuttle, prepared by Certified Testing Laboratories, Test Report No. **1862W-1**, dated 11/18/2008, signed and sealed by Ramesh Patel, P.E.
3. Addendum to Test Reports No. **CTLA 1862W/W-1** on Uniform Static Air Pressure Test, Loading per FBC TAS 202-94 and Forced Entry Resistance Test, per FBC, TAS 202-94, dated 03/11/2009, signed and sealed by Ramesh Patel, P.E.

C. CALCULATIONS “Submitted under NOA # 08-1219.01”

1. Structural calculations prepared by De Stefano Engineering Group PL, dated 01/15/2009, signed and sealed by Mark A. de Stefano, P.E.

D. QUALITY ASSURANCE

1. Miami-Dade Department of Regulatory and Economic Resources (RER)

E. MATERIAL CERTIFICATIONS

1. None.

F. STATEMENTS “Submitted under NOA # 14-0708.07”

1. Statement letter of code conformance to 5th edition (2014) FBC issued by De Stefano Engineering Group PL, dated 11/06/2014, signed and sealed by Mark A. de Stefano, P.E.
2. Distributor agreement dated 12/12/2014.
“Submitted under NOA # 08-1219.01”
3. No financial interest letter issued by De Stefano Engineering Group PL, dated 12/08/2008, signed and sealed by Mark A. de Stefano, P.E.



Carlos M. Utrera, P.E.
Product Control Examiner
NOA No. 23-0815.19
Expiration Date: December 2, 2024
Approval Date: November 2, 2023

NOTICE OF ACCEPTANCE: EVIDENCE SUBMITTED

2. Evidence submitted under NOA #18-0226.04

A. DRAWINGS

1. None.

B. TESTS

1. None.

C. CALCULATIONS

1. None.

D. QUALITY ASSURANCE

1. Miami-Dade Department of Regulatory and Economic Resources (RER)

E. MATERIAL CERTIFICATIONS

1. None.

F. STATEMENTS

1. Statement letter of code conformance to **FBC 6th Edition (2017)**, dated February 14, 2018, issued and prepared by De Stefano Engineering Group PL, signed and sealed by Mark A. de Stefano, P.E.



Carlos M. Utrera, P.E.
Product Control Examiner
NOA No. 23-0815.19
Expiration Date: December 2, 2024
Approval Date: November 2, 2023

NOTICE OF ACCEPTANCE: EVIDENCE SUBMITTED

3. Evidence submitted under NOA # 19-1029.10

A. DRAWINGS

1. Drawing titled “S/HZ Door Assy”, sheets 1 through 13 of 13, dated 09/01/2019, with revision E dated 11/20/2019, prepared by The Bilco Company, signed and sealed by Hermes F. Norero, P.E. on 12/05/2019.

B. TESTS

1. Test report on 1) Air Infiltration Test, per FBC, TAS 202-94
2) Uniform Static Air Pressure Test, Loading per FBC TAS 202-94
3) Water Resistance Test, per FBC, TAS 202-94
4) Large Missile Impact Test per FBC, TAS 201-94
5) Cyclic Wind Pressure Test per FBC, TAS 203-94
6) Forced Entry Resistance Test, per FBC, TAS 202-94
along with marked-up drawings and installation diagram of a S-50 (36”x 30”) Aluminum Roof Hatch/Single Door, prepared by Element Materials Technology, Test Report No. **ESP031195P.1Rev S-50**, dated 09/04/2019, with revision dated 11/19/2019, signed and sealed by Jason R. Steen, P.E.
2. Test report on 1) Air Infiltration Test, per FBC, TAS 202-94
2) Uniform Static Air Pressure Test, Loading per FBC TAS 202-94
3) Water Resistance Test, per FBC, TAS 202-94
4) Large Missile Impact Test per FBC, TAS 201-94
5) Cyclic Wind Pressure Test per FBC, TAS 203-94
6) Forced Entry Resistance Test, per FBC, TAS 202-94
along with marked-up drawings and installation diagram of a S-20 (36”x 30”) Steel Roof Hatch/Single Door, prepared by Element Materials Technology, Test Report No. **ESP031195P.2Rev S-20**, dated 09/07/2019, with revision dated 11/19/2019, signed and sealed by Jason R. Steen, P.E.
3. Test report on 1) Air Infiltration Test, per FBC, TAS 202-94
2) Uniform Static Air Pressure Test, Loading per FBC TAS 202-94
3) Water Resistance Test, per FBC, TAS 202-94
4) Large Missile Impact Test per FBC, TAS 201-94
5) Cyclic Wind Pressure Test per FBC, TAS 203-94
6) Forced Entry Resistance Test, per FBC, TAS 202-94
along with marked-up drawings and installation diagram of a F-50HZ (48”x 48”) Aluminum Roof Hatch/Single Door, prepared by Element Materials Technology, Test Report No. **ESP031195P.3Rev F-50HZ**, dated 09/10/2019, with revision dated 11/19/2019, signed and sealed by Jason R. Steen, P.E.



Carlos M. Utrera, P.E.
Product Control Examiner
NOA No. 23-0815.19
Expiration Date: December 2, 2024
Approval Date: November 2, 2023

NOTICE OF ACCEPTANCE: EVIDENCE SUBMITTED

B. TESTS (Continued)

4. Test report on 1) Air Infiltration Test, per FBC, TAS 202-94
2) Uniform Static Air Pressure Test, Loading per FBC TAS 202-94
3) Water Resistance Test, per FBC, TAS 202-94
4) Large Missile Impact Test per FBC, TAS 201-94
5) Cyclic Wind Pressure Test per FBC, TAS 203-94
6) Forced Entry Resistance Test, per FBC, TAS 202-94
along with marked-up drawings and installation diagram of a F-20HZ (48"x 48") Steel Roof Hatch/Single Door, prepared by Element Materials Technology, Test Report No. **ESP031195P.4Rev F-20HZ**, dated 09/10/2019, with revision dated 11/19/2019, signed and sealed by Jason R. Steen, P.E.
5. Test report on 1) Air Infiltration Test, per FBC, TAS 202-94
2) Uniform Static Air Pressure Test, Loading per FBC TAS 202-94
3) Water Resistance Test, per FBC, TAS 202-94
4) Large Missile Impact Test per FBC, TAS 201-94
5) Cyclic Wind Pressure Test per FBC, TAS 203-94
6) Forced Entry Resistance Test, per FBC, TAS 202-94
along with marked-up drawings and installation diagram of a L-50HZ (30"x96") Aluminum Roof Hatch/Single Door, prepared by Element Materials Technology, Test Report No. **ESP031195P.5Rev L-50HZ**, dated 09/13/2019, with revision dated 11/19/2019, signed and sealed by Jason R. Steen, P.E.
6. Test report on 1) Air Infiltration Test, per FBC, TAS 202-94
2) Uniform Static Air Pressure Test, Loading per FBC TAS 202-94
3) Water Resistance Test, per FBC, TAS 202-94
4) Large Missile Impact Test per FBC, TAS 201-94
5) Cyclic Wind Pressure Test per FBC, TAS 203-94
6) Forced Entry Resistance Test, per FBC, TAS 202-94
along with marked-up drawings and installation diagram of a L-20HZ (30"x96") Steel Roof Hatch/Single Door, prepared by Element Materials Technology, Test Report No. **ESP031195P.6Rev L-20HZ**, dated 09/13/2019, with revision dated 11/19/2019, signed and sealed by Jason R. Steen, P.E.



Carlos M. Utrera, P.E.
Product Control Examiner
NOA No. 23-0815.19
Expiration Date: December 2, 2024
Approval Date: November 2, 2023

NOTICE OF ACCEPTANCE: EVIDENCE SUBMITTED

C. CALCULATIONS

1. Product evaluation report prepared by Building Drops, Inc., dated 10/23/2019, signed and sealed by Hemes F. Norero, P.E.

D. QUALITY ASSURANCE

1. Miami-Dade Department of Regulatory and Economic Resources (RER)

E. MATERIAL CERTIFICATIONS

1. Notice of Acceptance No. **18-0523.03** issued to Blue Ridged Fiberboard, Inc., for their **Structodek High Density Fiberboard Roof Insulation**, approved on 09/06/2018 and expiring on 09/18/2013.

F. STATEMENTS

1. Statement letter of code conformance to the 6th edition (2017) FBC issued by Building Drops, Inc., dated 10/21/2019, signed and sealed by Hermes F. Norero, P.E.



Carlos M. Utrera, P.E.
Product Control Examiner
NOA No. 23-0815.19
Expiration Date: December 2, 2024
Approval Date: November 2, 2023

NOTICE OF ACCEPTANCE: EVIDENCE SUBMITTED

4. Evidence submitted under NOA # 20-1104.24 and new

A. DRAWINGS

1. Drawing titled “S/HZ Door Assy”, sheets 1 through 13 of 13, dated 09/01/2019, with revision F dated 09/23/2020, prepared by The Bilco Company, signed and sealed by Hermes F. Norero, P.E. on 09/28/2023.

B. TESTS

1. None.

C. CALCULATIONS

1. None.

D. QUALITY ASSURANCE

1. Miami-Dade Department of Regulatory and Economic Resources (RER)

E. MATERIAL CERTIFICATIONS

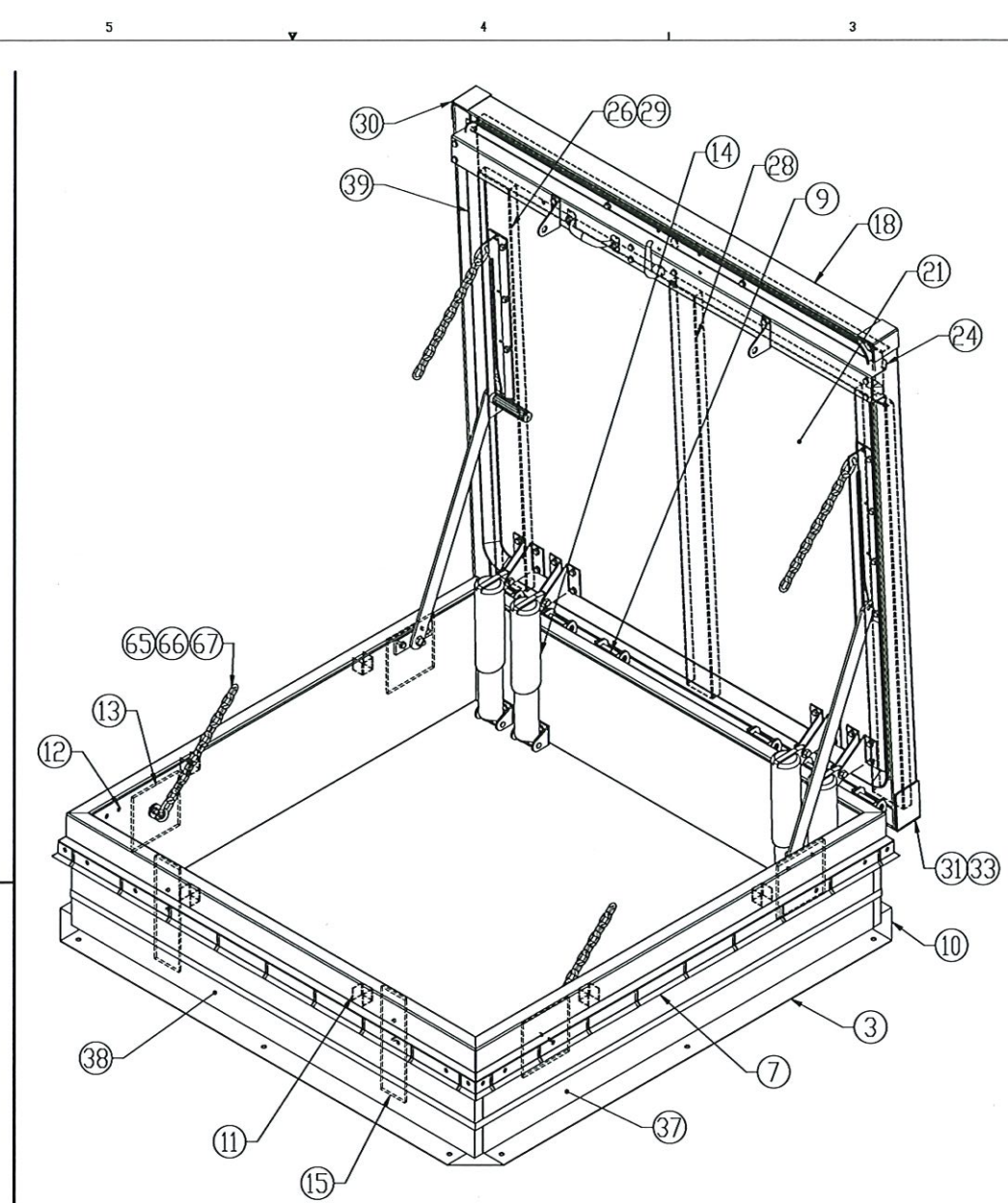
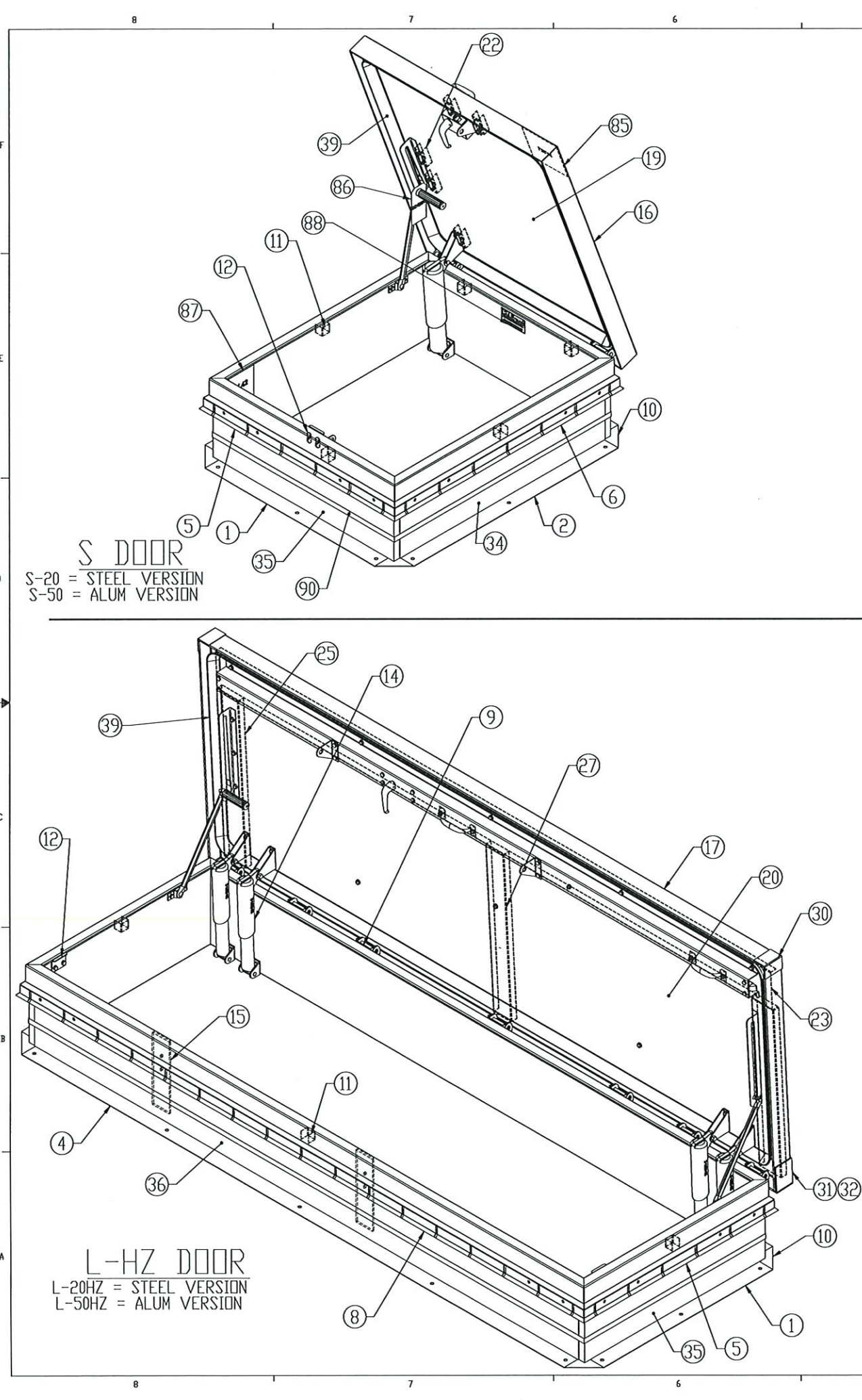
1. None.

F. STATEMENTS

1. Statement letter of code conformance to the 8th edition (2023) of the FBC and of no financial interest, issued by Building Drops, Inc., dated 06/16/2023, signed and sealed by Hermes F. Norero, P.E.
2. Statement letter of code conformance to the 7th edition (2020) FBC and of no financial interest issued by Building Drops, Inc., dated 09/15/2020, signed and sealed by Hermes F. Norero, P.E.



Carlos M. Utrera, P.E.
Product Control Examiner
NOA No. 23-0815.19
Expiration Date: December 2, 2024
Approval Date: November 2, 2023



- NOTES:
- 1) THE DESIGNS CONTAINED HEREIN ARE DESIGNED AND TESTED IN ACCORDANCE WITH THE 2023 FLORIDA BUILDING CODE: TEST PROTOCOL TAS-201, TAS-202, TAS-203.
 - 2) THE SHORT TERM LOAD FACTOR HAS NOT BEEN USED.
 - 3) FOR THE S-DOOR; PRODUCT APPROVED UP TO AN INSIDE AREA OF 7.5 SF (WIDTH X LENGTH ≤ 7.5 SF). CUSTOM SIZED DOORS ARE NAMED SS-TYPE DOORS.
 - 4) FOR THE F-HZ DOOR; PRODUCT APPROVED UP TO AN INSIDE AREA OF 16 SF (WIDTH X LENGTH ≤ 16 SF). CUSTOMER SIZED DOORS ARE NAMED SS-HZ TYPE DOORS.
 - 5) FOR THE L-HZ DOOR; PRODUCT APPROVED UP TO AN INSIDE AREA OF 20 SF (WIDTH X LENGTH ≤ 20 SF). CUSTOM SIZED DOORS ARE NAMED SS-HZ TYPE DOORS.
 - 6) IF DIFFERENT CONDITIONS EXIST OTHER THAN SHOWN ON THIS DOCUMENT THEN PLEASE CONTACT BILCO OR A FLORIDA LICENSED ENGINEER FOR CONSULTATION.
 - 7) ALL LABELS TO BE LOCATED IN APPROXIMATE LOCATIONS AS SHOWN.

S-TYPE DOOR		
DESIGN PRESSURE RATING	IMPACT RATING	WATER PENETRATION
+/- 100 PSF	LARGE MISSILE IMPACT	100% DP WITH ZERO WATER PENETRATION

F-HZ TYPE DOOR		
DESIGN PRESSURE RATING	IMPACT RATING	WATER PENETRATION
+/- 70 PSF	LARGE MISSILE IMPACT	100% DP WITH ZERO WATER PENETRATION

L-HZ TYPE DOOR		
DESIGN PRESSURE RATING	IMPACT RATING	WATER PENETRATION
+/- 70 PSF	LARGE MISSILE IMPACT	100% DP WITH ZERO WATER PENETRATION

F-HZ DOOR
F-20HZ = STEEL VERSION
F-50HZ = ALUM VERSION

PRODUCT REVISED
as complying with the Florida Building Code
NOA-No. 23-0815.19
Expiration Date 12/02/2024
By *[Signature]*
Miami-Dade Product Control

F	2020 FBC UPDATE	SIM	09-23-20
E	CORRECT ITEM 77 & 78 BOLT LENGTH	DJC	11-20-19
D	UPDATE NOTES	DJC	10-23-19
C	ADD ALUM (50) VERSIONS TO BOM	DJC	10-22-19
B	ADD NOTES & ANCHORING OPTIONS	DJC	10-18-19
A	NEW RELEASE	DJC	10-04-19
REV.	DESCRIPTION	BY	DATE

UNLESS OTHERWISE SPECIFIED:
UNLESS OTHERWISE SPECIFIED
REMOVE ALL BURRS & SHARP
CORNERS
DIMENSION TOLERANCES
X.XXX +/- .010
X.XX +/- .015
X.X +/- .030
ANGLES +/- 2°
FRACTIONS +/- 1/32
INTERPRET GEOMETRIC
TOLERANCING PER:

NAME/#	DATE
DRAWN DJC	9/01/19
DRG. AUTHOR DJC	
DRG. ECR	
O.A.	

3RD-ANGLE PROJECTION

DO NOT SCALE DRAWING

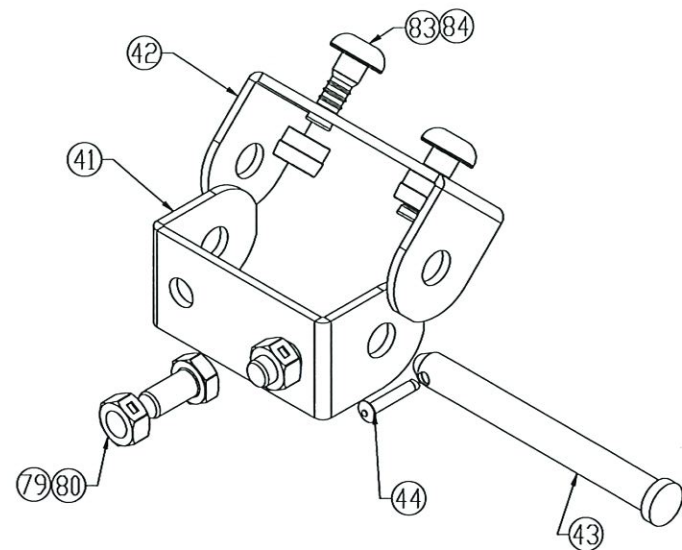
THE BILCO COMPANY
P.O. Box 1203
(203) 934-6363
www.bilco.com
New Haven, Connecticut 06505
Fax (203) 933-8478
e-mail: bilco@bilco.com

S & HZ DOOR ASSY
ISOMETRIC VIEWS

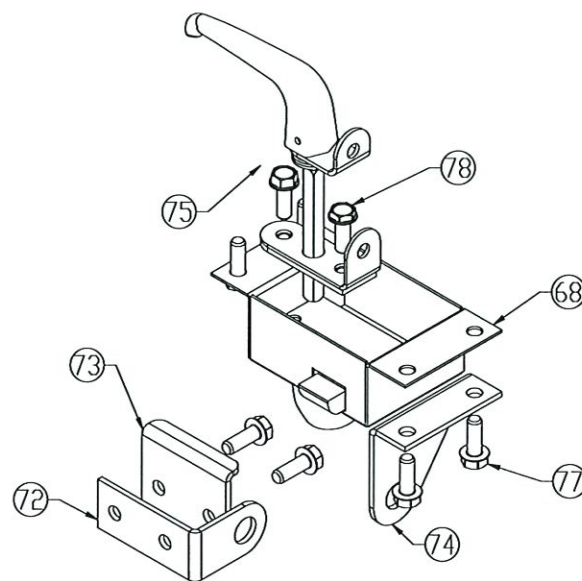
SIZE	DWG. NO.	REV
B	S/HZ DOOR ASSY	F

SCALE: NTS WEIGHT: SHEET 1 OF 13

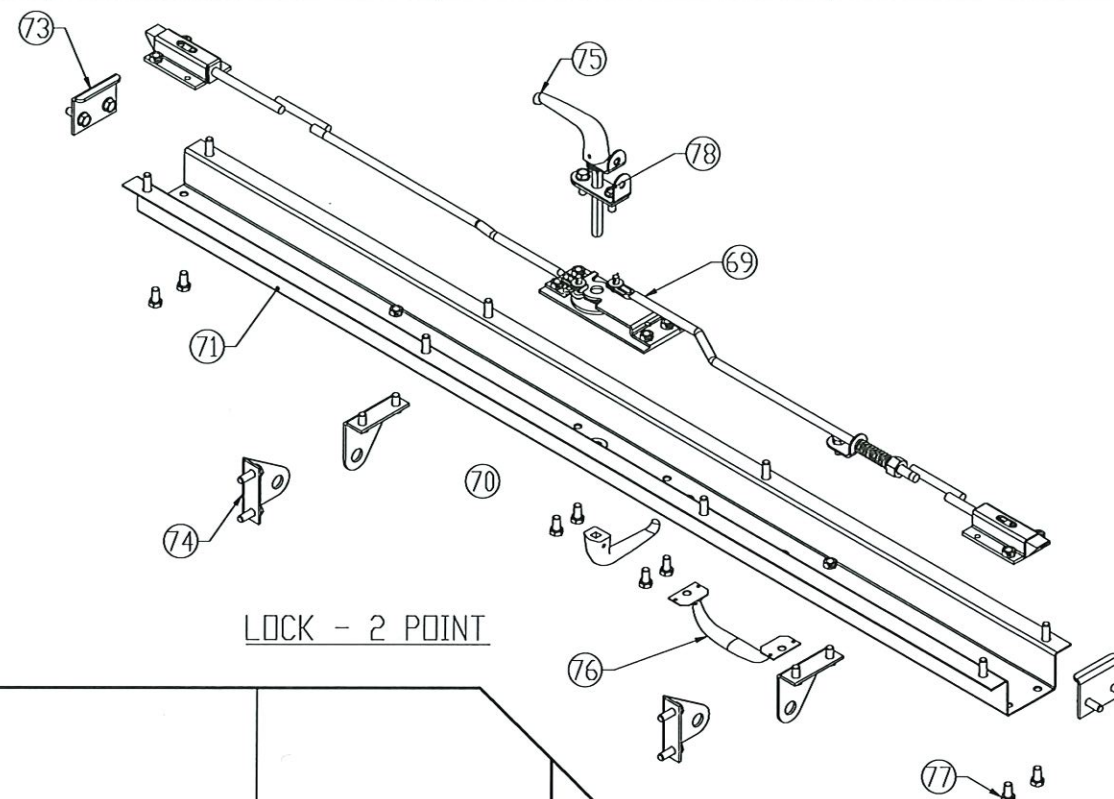
HERMES F. NORERO, P.E.
FLORIDA P.E. NO. 73778
BUILDING DROPS, INC
398 E. DANIA BEACH BLVD. #338
DANIA BEACH, FL 33004
FBPE CERT. OF AUTHORIZATION NO. 29578



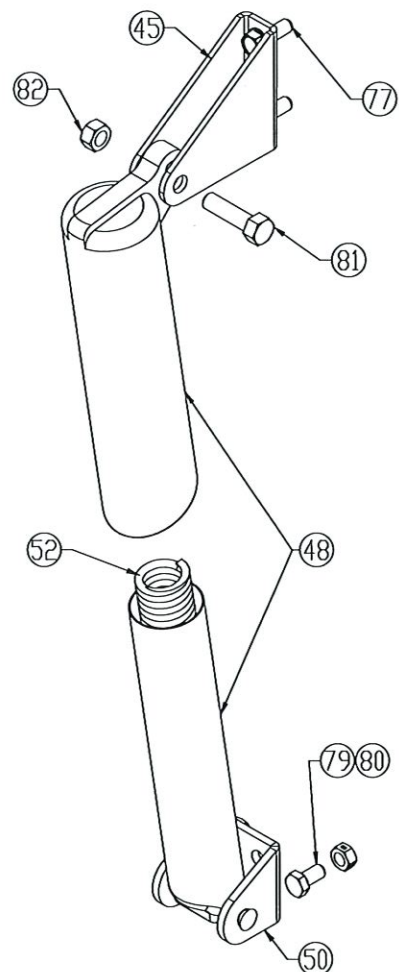
HINGE



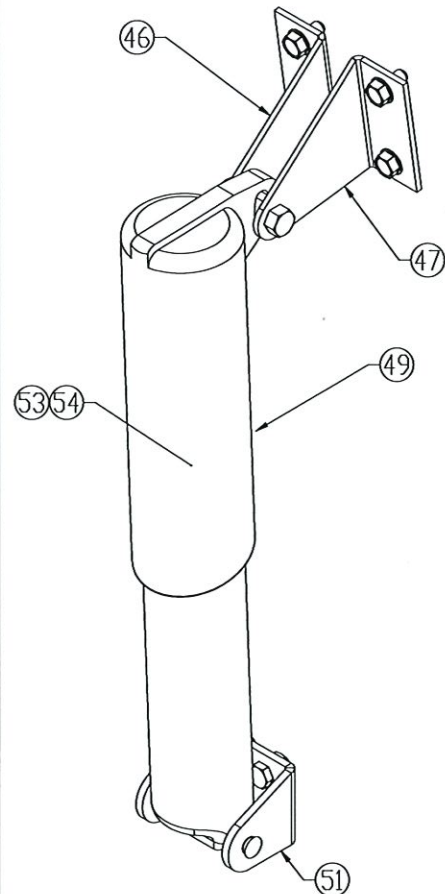
LOCK - SINGLE POINT



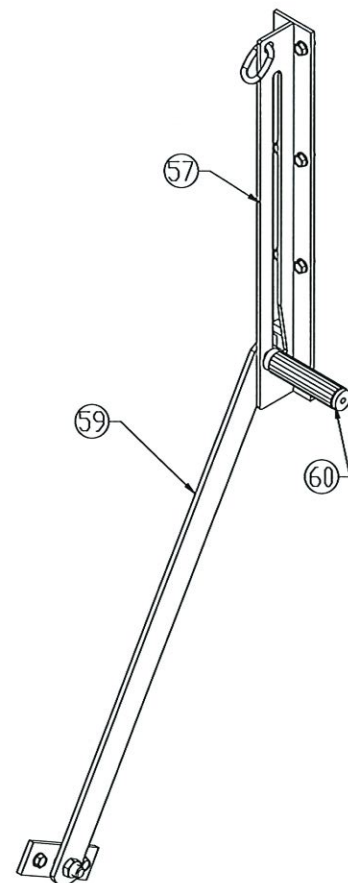
LOCK - 2 POINT



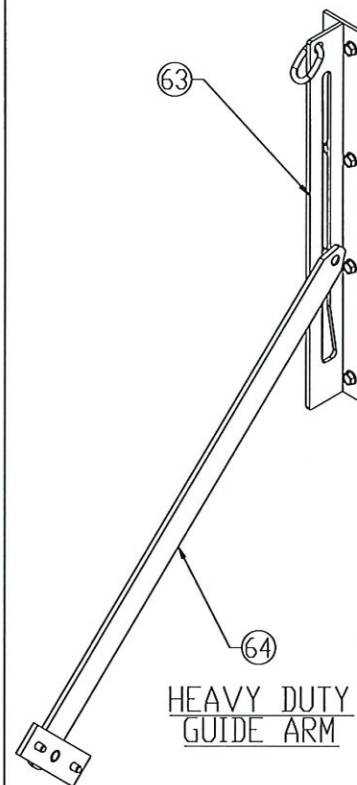
STANDARD
LIFTING MECHANISM



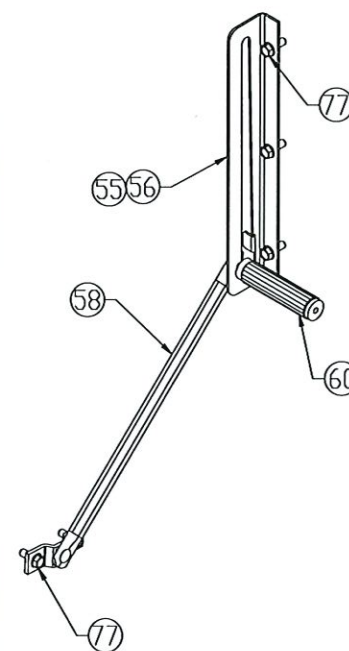
HEAVY DUTY
LIFTING MECHANISM



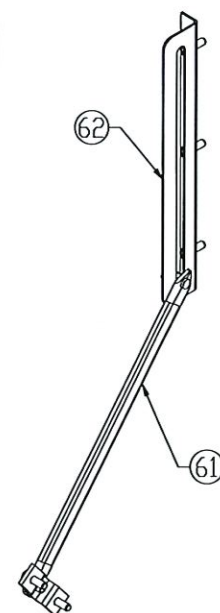
HEAVY DUTY
HOLD OPEN ARM



HEAVY DUTY
GUIDE ARM

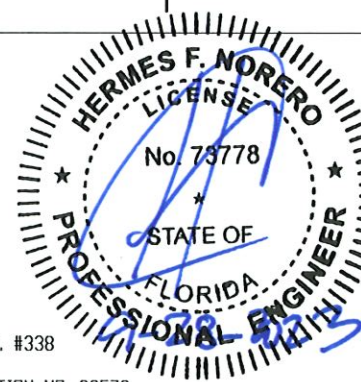


STANDARD
HOLD OPEN ARM



STANDARD
GUIDE ARM

HERMES F. NORERO, P.E.
FLORIDA P.E. NO. 73778
BUILDING DROPS, INC
398 E. DANIA BEACH BLVD. #338
DANIA BEACH, FL 33004
FBPE CERT. OF AUTHORIZATION NO. 29578



UNLESS OTHERWISE SPECIFIED:

UNLESS OTHERWISE SPECIFIED:
REMOVE ALL BURRS & SHARP
CORNERS
DIMENSION TOLERANCES
X.XXX +/- .010
X.XX +/- .015
X.X +/- .030
ANGLES +/- 2°
FRACTIONS +/- 1/32
INTERPRET GEOMETRIC
TOLERANCING PER:

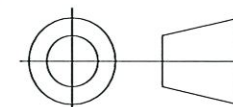
MATERIAL

FINISH

DO NOT SCALE DRAWING

NAME/#	DATE
DRAWN DJC	9/01/19
ORG. AUTHOR DJC	
ORG. ECR	
D.A.	

3RD-ANGLE PROJECTION



THE BILCO COMPANY
P.O. Box 1203 New Haven, Connecticut 06505
(203) 934-6363 Fax (203) 933-8478
www.bilco.com e-mail: bilco@bilco.com

TITLE:
S & HZ DOOR ASSY
ISOMETRIC VIEWS, SUB-ASSY

SIZE	DWG. NO.	REV
B	S/HZ DOOR ASSY	F
SCALE: NTS	WEIGHT:	SHEET 2 OF 13

PRODUCT REVISED
as complying with the Florida
Building Code
NOA-No. 23-0815.19

Expiration Date 12/02/2024


By *[Signature]*
Miami-Dade Product Control

ITEM NO.		PART NO.	DESCRIPTION	S-20	S-50	F-20HZ	F-50HZ	L-20HZ	L-50HZ
FRAME									
KEY	1	SD504A	FRAME-RS 30" FORMED, SEE SHEET 8	2	2	-	-	2	2
KEY	2	SD505A	FRAME-RS 36" FORMED, SEE SHEET 8	2	2	-	-	-	-
KEY	3	SD540	FRAME-RS 48" FORMED, SEE SHEET 8	-	-	4	4	-	-
KEY	4	SD523	FRAME-RS 96" FORMED, SEE SHEET 8	-	-	-	-	2	2
KEY	5	SD506	FLASHING-RS 30" FORMED, SEE SHEET 9	2	2	-	-	2	2
KEY	6	SD507	FLASHING-RS 36" FORMED, SEE SHEET 9	2	2	-	-	-	-
KEY	7	SD542	FLASHING-RS 48" FORMED, SEE SHEET 9	-	-	4	4	-	-
KEY	8	SD525	FLASHING-RS 96" FORMED, SEE SHEET 9	-	-	2	2	-	-
	9	SD1196	BUP-HINGE	-	-	-	6	-	7
KEY	10	SD1649	FRM-CORNER STANDARD	4	4	4	4	4	4
KEY	11	SD15	SPACER-FRAME & FLASHING	5	5	8	8	8	8
	12	SD165	NUT-WELD, 5/16-18	2	2	4	4	4	4
	13	SD537	BUP-1/4" X 5 3/4" X 5 3/4"	-	-	4	4	-	-
KEY	14	SD549	STIFF-FRAME FORMED 1 1/4" X 2 1/2" X 11	-	-	2	2	2	2
	15	SD536AL	PLATE-REINF 1/4" X 3" X 11"	-	-	-	2	-	2
COVER									
KEY	16	SD502	COVER-RS, S, FORMED, SEE SHEET 10	1	1	-	-	-	-
KEY	17	SD516	COVER-RS, L, FORMED, SEE SHEET 10	-	-	-	-	1	1
KEY	18	SD1642	COVER-RS, F, FORMED, SEE SHEET 10	-	-	1	1	-	-
KEY	19	SD521	LINER-RS, S, SEE SHEET 10	1	1	-	-	-	-
KEY	20	SD577	LINER-RS, L, SEE SHEET 10	-	-	-	-	1	1
KEY	21	SD1643	LINER-RS, F, SEE SHEET 10	-	-	1	1	-	-
KEY	22	SD36	SPACER-COVER, SEE SHEET 10	5	5	-	-	-	-
KEY	23	SD534-1	STIFFENER-COVER, 6", L, FORMED, SEE SHEET 10	-	-	-	-	1	1
KEY	24	SD534	STIFFENER-COVER, 6", F, FORMED, SEE SHEET 10	-	-	1	1	-	-
KEY	25	SD1644-1	STIFFENER-COVER, 4", L, FORMED, SEE SHEET 10	-	-	-	-	2	2
KEY	26	SD1644	STIFFENER-COVER, 4", F, FORMED, SEE SHEET 10	-	-	2	2	-	-
KEY	27	SD1645-1	STIFFENER-COVER, 3 1/4", L, FORMED, SEE SHEET 10	-	-	-	-	7	5
KEY	28	SD1645	STIFFENER-COVER, 3 1/4", F, FORMED, SEE SHEET 10	-	-	5	5	-	-
KEY	29	SD1646	BUP-COVER, 1/4", F	-	-	2	2	-	-
	30	SD206	CORNER-COVER STIFFENER 2", ALUM	-	-	-	2	-	2
	31	SD1675	CORNER-COVER END STIFFENER 3/16", ALUM	-	-	-	1	-	1
	32	SD1675-1	CORNER-COVER END STIFFENER 3/16", L, ALUM	-	-	-	-	-	1
	33	SD1675-2	CORNER-COVER END STIFFENER 3/16", F, ALUM	-	-	-	1	-	-
INSULATION & GASKET									
	34	SD16-2	FIBERBOARD 1" X 9 1/2" X 36 1/4"	2	2	-	-	-	-
	35	SD16-1	FIBERBOARD 1" X 9 1/2" X 32"	2	2	-	-	2	2
	36	SD16	FIBERBOARD 1" X 9 1/2" X 96"	-	-	-	-	2	2
	37	SD16-4	FIBERBOARD 1" X 9 1/2" X 48"	-	-	2	2	-	-
	38	SD16-5	FIBERBOARD 1" X 9 1/2" X 50"	-	-	2	2	-	-
	39	SD4026	GASKET-EPDM	11 FT	11 FT	16 FT	16 FT	22 FT	22 FT
	40	SD2	FIBERGLASS COVER INSULATION	11 SQ FT	11 SQ FT	16 SQ FT	16 SQ FT	22 SQ FT	22 SQ FT
HINGE									
*	41	SD14-P	HINGE-RS FRAME PLATED	2	-	6	-	7	-
		SD14SS	HINGE-RS FRAME 316SS	-	2	-	6	-	7
	42	SD13-P	HINGE-RS COVER PLATED	2	-	6	-	7	-
		SD13SS	HINGE-RS COVER 316SS	-	2	-	6	-	7
	43	SD12-Y	PIN-HINGE 3/8" X 3 1/2", .368/.374 DIA., PLATED	2	-	6	-	7	-
		SD12SS	PIN-HINGE 3/8" X 3 1/2", .368/.374 DIA., 316SS	-	2	-	6	-	7
	44	SD96A	RIVET-HINGE PIN 1/8" DIA. STEEL	2	-	6	-	7	-
		SD96SS	RIVET-HINGE PIN 1/8" DIA. SS	-	2	-	6	-	7
LIFTING MECHANISM									
	45	SD685	BRACKET-SPRING HOUSING, PLATED	1	1	-	-	4	2
	46	SD7L-P	BRACKET-LH, SPRING HOUSING, PLATED	-	-	4	2	-	-
	47	SD7R-P	BRACKET-RH, SPRING HOUSING, PLATED	-	-	4	2	-	-
	48	SD4100-1	TUBES-SMALL LIFT MECH. ASSM COMP.	-	1	4	2	4	2
	49	SD4101-1	TUBES-LARGE LIFT MECH. ASSM COMP.	1	-	-	-	-	-
	50	SD4083-W	BRACKET-SPRING SM W/PIN	-	1	4	2	4	2
	51	SD4086-W	BRACKET-SPRING LG W/PIN	1	-	-	-	-	-
	52	SD20	SPRING-220#	-	-	-	2	4	2
		SD20LT	SPRING-190#	-	1	-	-	-	-
	53	SD65	SPRING-360#	1	-	-	-	-	-
	54	SD85	SPRING-280#	-	-	4	-	-	-

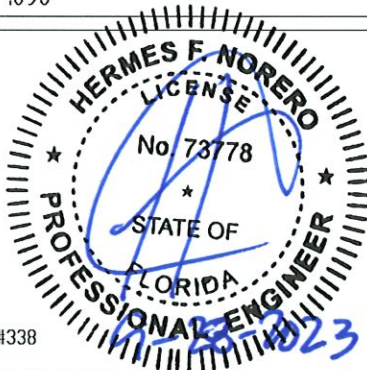
ITEM NO.		PART NO.	DESCRIPTION	S-20	S-50	F-20HZ	F-50HZ	L-20HZ	L-50HZ
HOLD OPEN & GUIDE ARMS									
	55	SD548L	BRACKET-ARM, 14 1/4" & 18 7/8" W/ DETENT LH PLATED	-	-	-	-	1	1
	56	SD562L	BRACKET-ARM, 70°, 14 1/4" W/ DETENT LH PLATED	1	1	-	-	-	-
	57	SD752L-P	TRACK-ARM RS HEAVY DUTY 24" PLATED	-	-	1	1	-	-
	58	SD3445-P	HOA-RS LH PLATED, 14 1/4"	1	1	-	-	1	1
	59	SD1625L-P	HOA-RS, 24" HD LH ARM ASSY, PLATED	-	-	1	1	-	-
	60	SD4	HANDLE-GRIP RED VINYL G-2R7	1	1	1	1	1	1
	61	SD4820-P	GUIDE-ARM RS 14 1/4" ASSM PLATED	-	-	-	-	1	1
	62	SD1-P	BRACKET-GUIDE ARM FORMED PLATED	-	-	-	-	1	1
	63	SD1625U-P	GUIDE-RS, 24" HD ARM ASSY, PLATED	-	-	1	1	-	-
	64	SD752G-P	TRACK-ARM RS HEAVY DUTY 24" PLATED	-	-	1	1	-	-
	65	SD240	CHAIN-3/16", PROOF COIL, GALVANIZED	-	-	10 FT	10 FT	-	-
	66	SD241	INK-LAP 1/4" GALVANIZED	-	-	4	4	-	-
	67	SD59-P	BRACKET-EYE, PLATED	-	-	2	2	-	-
LOCK									
	68	SD41-2	LOCK-BOX SINGLE PT. ASSM PLATED	1	1	-	-	-	-
	69	SD66X	LOCK-HANSEN 2 POINT ASSM STEEL	-	-	1	1	1	1
	70	SD517-2	F LOCK BOX FORMED	-	-	1	1	1	1
	71	SD517-1	L LOCK BOX FORMED	-	-	-	-	1	1
	72	SD49A-P	HASP-PADLOCK PLATED	1	1	-	-	-	-
	73	SD49B-P	STRIKE-PADLOCK PLATED	1	1	-	-	2	2
	74	SD50-P	HASP-RS COVER PLATED	1	1	4	4	4	4
	75	SD709	HANDLE ASSEMBLY - RS	1	1	1	1	1	1
	76	SD86-P	HANDLE-GRIP, PLATED	-	-	1	1	2	2
HARDWARE									
	77	SD21-Y	SCREW-TAPTITE 5/16-18 X 5/8" YELLOW CHRMT	13	13	48	48	50	50
	78	SD21-I-Y	SCREW-TAPTITE LOW 5/16-18 X 5/8" YELLOW CHRMT	1	1	1	1	1	1
	79	SD27-Y	SCREW-HHCS 5/16-18 X 5/8" YELLOW CHRMT	6	-	20	-	22	-
		SD27/316	SCREW-HHCS 5/16-18 X 5/8" 316SS	-	6	-	20	-	22
	80	SD18-Y	NUT-HEX LOCK 5/16-18 YELLOW CHRMT	6	-	20	-	22	-
		SD529	NUT-HEX 5/16-18 ALUM	-	6	-	20	-	22
	81	SD234	BOLT-HH STOP THREAD 3/8-16 X 1 3/8" YELLOW CHRMT	1	1	4	2	4	2
	82	SD185-Y	NUT-HEX LOCK 3/8-16 YELLOW CHRMT	1	1	4	2	4	2
	83	SD94-Y	AVDEL-BOLT 2621-1004 YELLOW CHRMT	4	-	12	-	14	-
		SD94SS	AVDEL-BOLT #6 2801-1006 ALUM	-	4	-	12	-	14
	84	SD95-Y	AVDEL-COLLAR HUCKBOLT YELLOW CHRMT	4	-	12	-	14	-
		SD95SS	AVDEL-COLLAR HUCKBOLT ALUM	-	4	-	12	-	14
LABELS & MISC.									
	85	LBL41	LABEL-BIL CLIP/INSTALL INSTRUCTIONS	1	1	1	1	1	1
	86	SD129C	TAG-HOA ENGLISH & FRENCH	1	1	1	1	1	1
	87	LBL42	LABEL-OPERATION & MAINTENANCE	1	1	1	1	1	1
	88	LBL520	LABEL-SERIAL NUMBER, PATENTS	1	1	1	1	1	1
*	89	SD1030	RED OXIDE PRIMER	A/R	A/R	A/R	A/R	A/R	A/R
	90	SD125	3/4" FIBERGLASS TAPE	12 FT	12 FT	15 FT	15 FT	15 FT	15 FT
*	91	SD1901	GREASE-SHELL ALVANIA EP2	A/R	A/R	A/R	A/R	A/R	A/R

NOT SHOWN ON ASSEMBLY

NOTE: S-20, L-20HZ & F-20HZ STEEL VERSION SHOWN

FOR S-50, L-50HZ & F-50HZ ALUMINUM VERSION,
THE ITEM NUMBERS WITH  INDICATOR
SYMBOL INCREASE IN MATERIAL THICKNESS
FROM .075" TO .090"

HERMES F. NORERO, P.E.
FLORIDA P.E. NO. 73778
BUILDING DROPS, INC
398 E. DANIA BEACH BLVD. #338
DANIA BEACH, FL 33004
FBPE CERT. OF AUTHORIZATION NO. 29578



UNLESS OTHERWISE SPECIFIED:

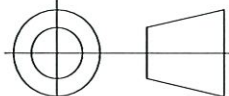
UNLESS OTHERWISE SPECIFIED
REMOVE ALL BURRS & SHARP
CORNERS
DIMENSION TOLERANCES
xxxx +/- .010
xxx +/- .015
xx +/- .030
ANGLES +/- 2°
FRACTIONS +/- 1/32

INTERPRET GEOMETRIC
TOLERANCING PER:

MATERIAL

FINISH

DO NOT SCALE DRAWING

	NAME/#	DATE
DRAWN	DJC	9/01/19
ORG. AUTHOR	DJC	
ORG. ECR		
D.A.		
3RD-ANGLE PROJECTION		
		

THE BILCO COMPANY
P.O. Box 1203 New Haven, Connecticut 06505
(203) 934-6363 Fax (203) 933-8478
www.bilco.com e-mail: bilco@bilco.com

TITLE:
S & HZ DOOR ASSY
BILL OF MATERIALS

SIZE	DWG. NO.	REV
B	S/HZ DOOR ASSY	F
SCALE: 1:6	WEIGHT:	SHEET 3 OF 13

STANDARD MODEL NUMBERS:

S-20 36X30 S-50 36X30
E-20HZ 36X36 E-50HZ 36X36
NB-20HZ 30X54 NB-50HZ 30X54
F-20HZ 48X48 F-50HZ 48X48
L-20HZ 30X96 L-50HZ 30X96

CUSTOM MODEL SIZE NUMBERS:

SS-20 W X L
(WHERE W = 18" -36" AND L=18" -30" **
SS-50 W X L
(WHERE W = 18" -36" AND L=18" -30" **
**AREA NOT TO EXCEED 7.5 SQ. FT.

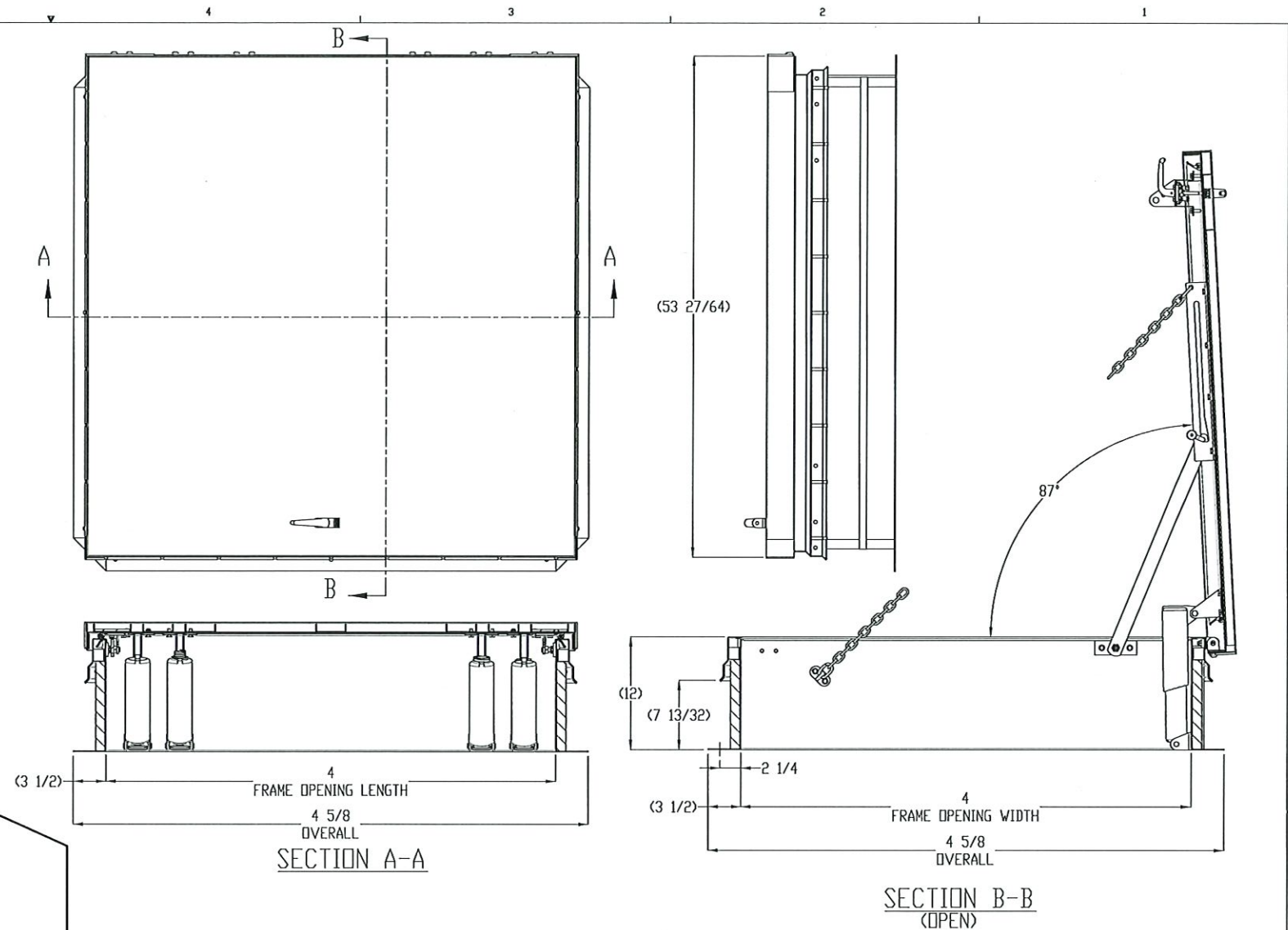
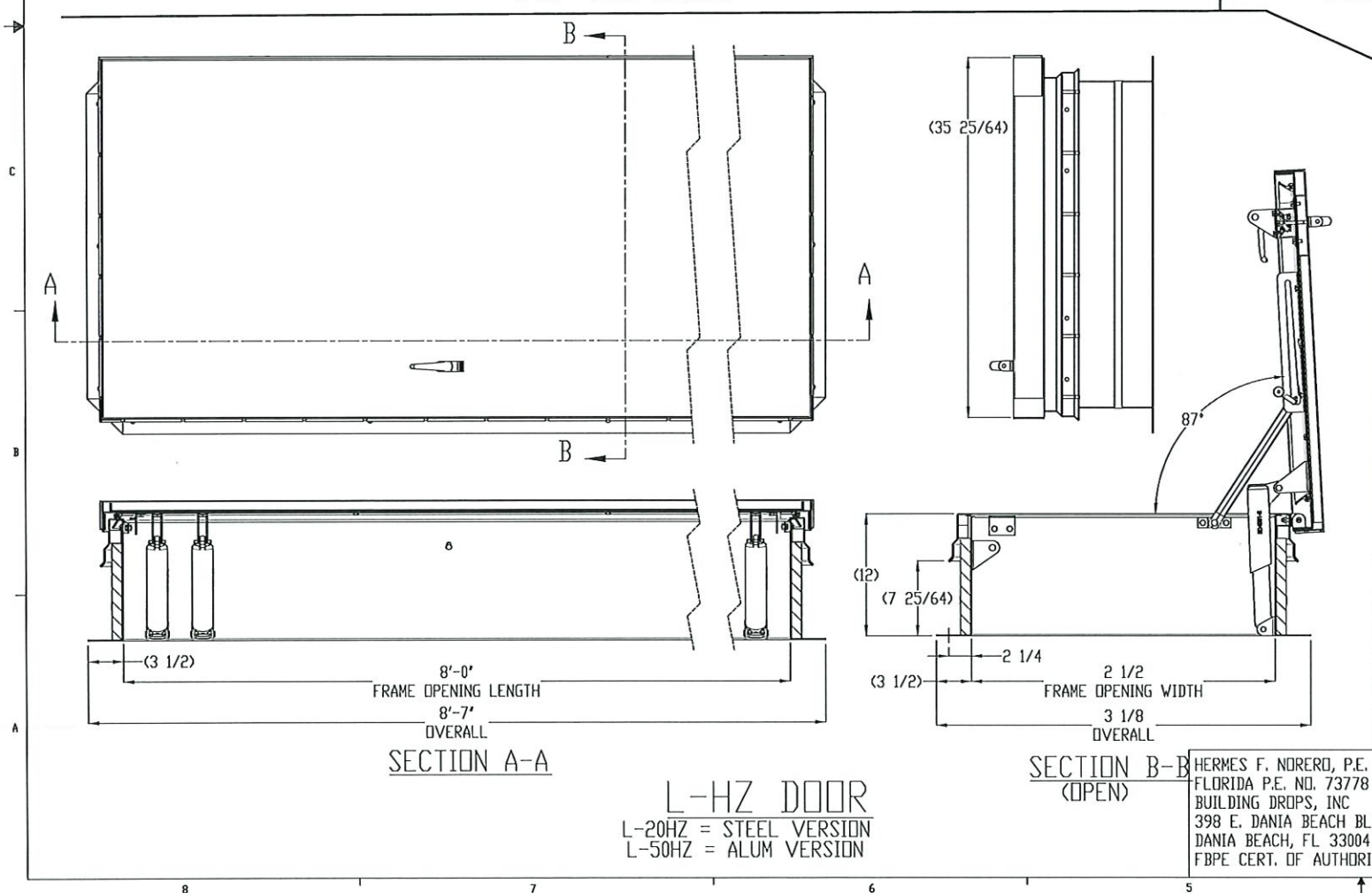
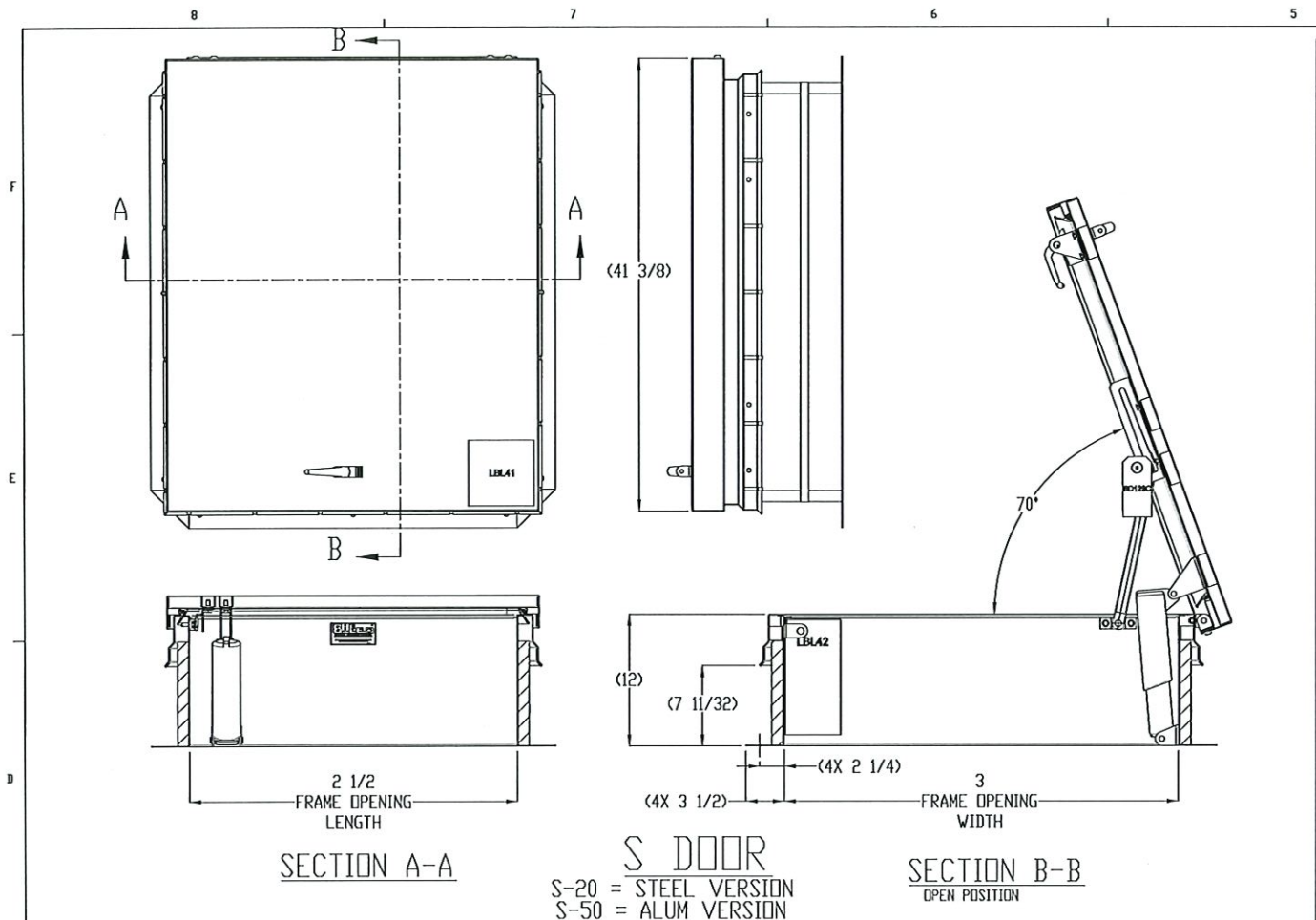
SS-20HZ W X L
(WHERE W = 18" -48" AND L = 18" - 96")***
SS-50HZ W X L
(WHERE W = 18" -48" AND L = 18" - 96")***
***AREA NOT TO EXCEED 20 SQ. FT.

FOR CUSTOM MODEL SIZES, QUANTITIES OF
STIFFENERS AND HINGES WILL BE ADJUSTED
PROPORTIONALLY TO THE AREA SIZE OF
THE HATCH. ALSO QUANTITY AND
SELECTION OF LIFTING MECHANISMS WILL
BE ADJUSTED ACCORDING TO WEIGHT
AND SIZE OF COVER.

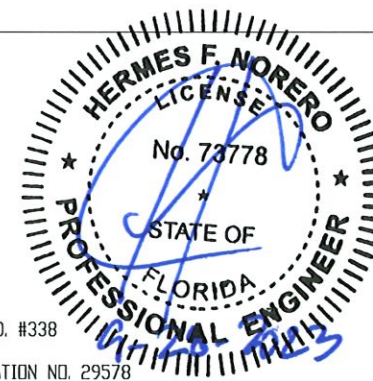
PRODUCT REVISED
as complying with the Florida
Building Code
NOA-No. 23-0815.19

Expiration Date 12/02/2024

By 
Miami-Dade Product Control



PRODUCT REVISED
as complying with the Florida
Building Code
NOA-No. 23-0815.19
Expiration Date 12/02/2024
By *[Signature]*
Miami-Dade Product Control

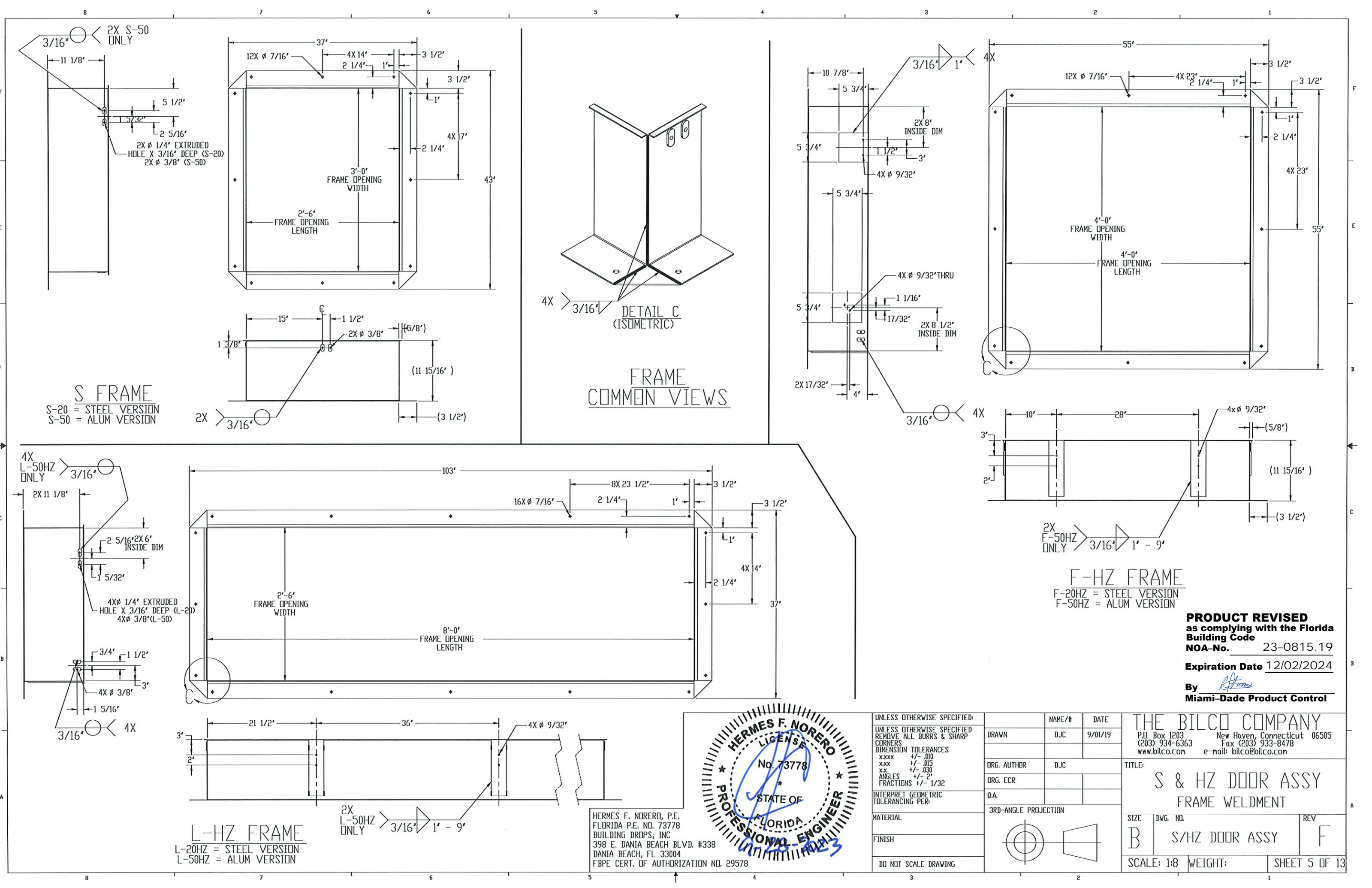


UNLESS OTHERWISE SPECIFIED:
UNLESS OTHERWISE SPECIFIED
REMOVE ALL BURRS & SHARP
CORNERS
DIMENSION TOLERANCES
xxxx +/- .010
xxx +/- .015
xx +/- .030
xx ANGLES +/- 2°
FRACTIONS +/- 1/32
INTERPRET GEOMETRIC
TOLERANCING PER:
MATERIAL
FINISH
DO NOT SCALE DRAWING

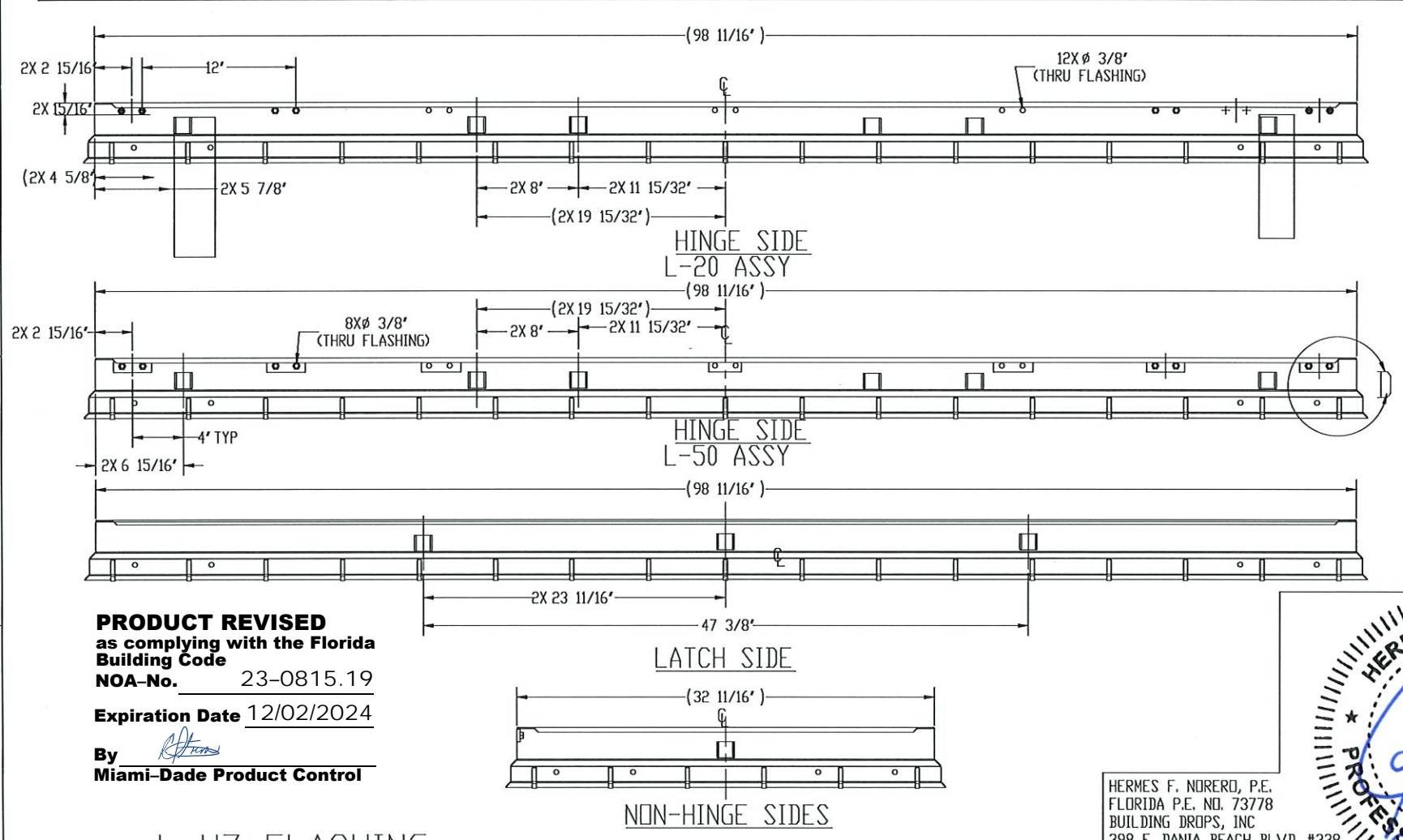
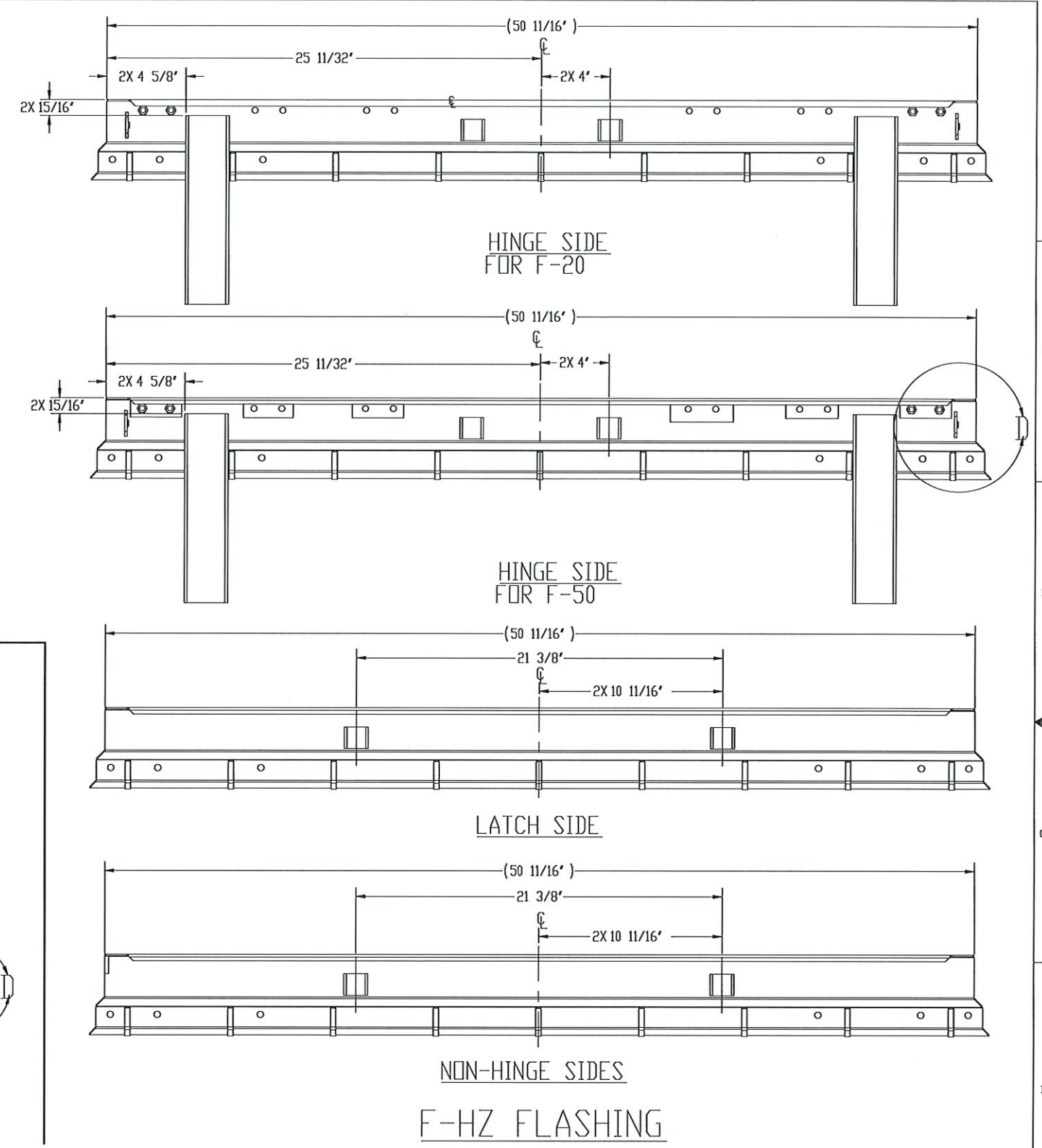
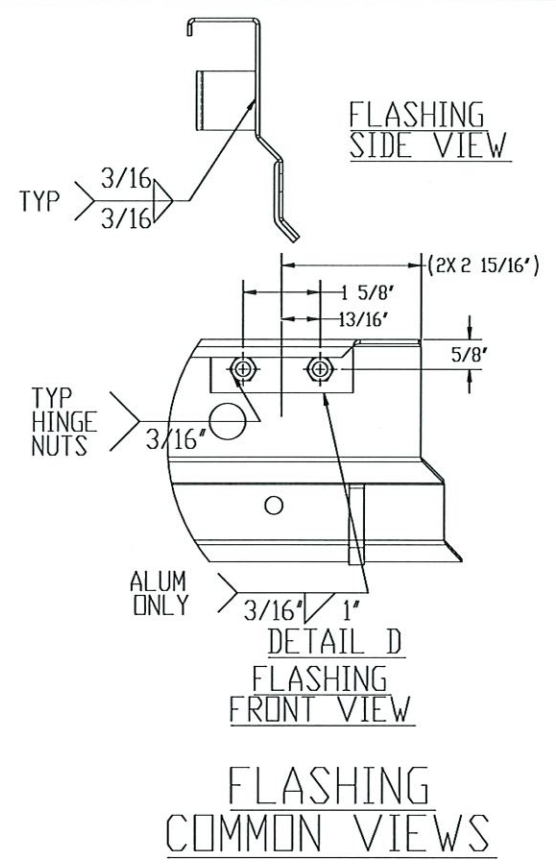
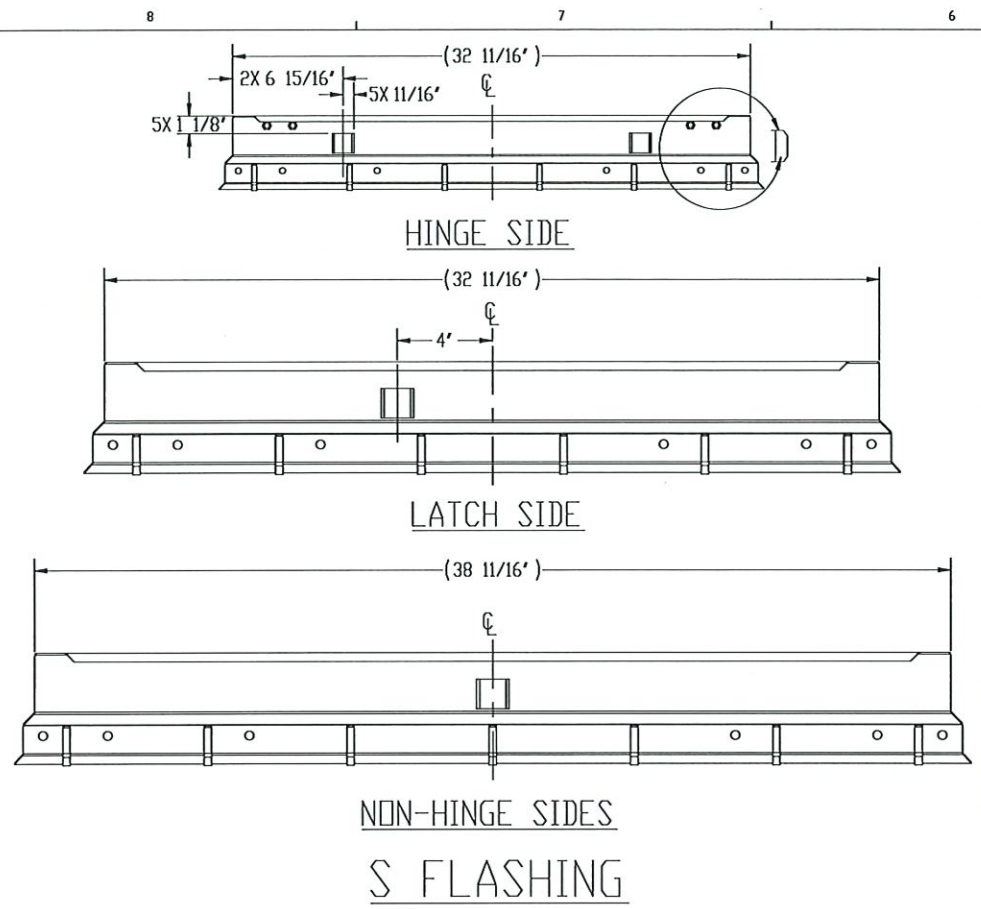
NAME/#	DATE
DRAWN DJC	9/01/19
ORG. AUTHOR DJC	
ORG. ECR	
O.A.	
3RD-ANGLE PROJECTION	

THE BILCO COMPANY P.O. Box 1203 New Haven, Connecticut 06505 (203) 934-6363 Fax (203) 933-8478 www.bilco.com e-mail: bilco@bilco.com		
TITLE: S & HZ DOOR ASSY OVERALL VIEW LAYOUTS		
SIZE B	DWG. NO. S/HZ DOOR ASSY	REV F
SCALE: 1:8	WEIGHT:	SHEET 4 OF 13

HERMES F. NORERO, P.E.
FLORIDA P.E. NO. 73778
BUILDING DROPS, INC
398 E. DANIA BEACH BLVD. #338
DANIA BEACH, FL 33004
FBPE CERT. OF AUTHORIZATION NO. 29578



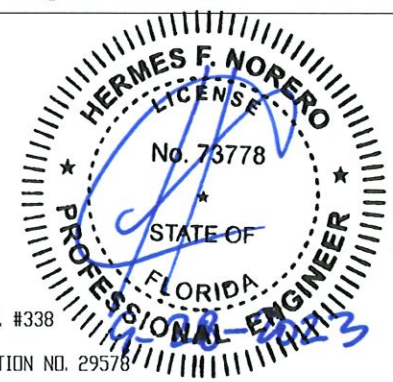
PRODUCT REVISED
 as complying with the Florida
 Building Code
 NOA-No. 23-0815.19
 Expiration Date 12/02/2024
 By *[Signature]*
 Miami-Dade Product Control



PRODUCT REVISED
as complying with the Florida
Building Code
NOA-No. 23-0815.19
Expiration Date 12/02/2024
By *[Signature]*
Miami-Dade Product Control

L-HZ FLASHING

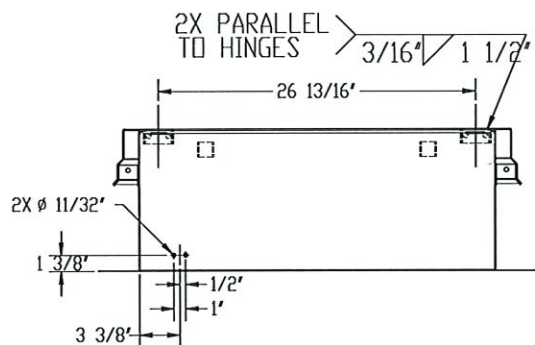
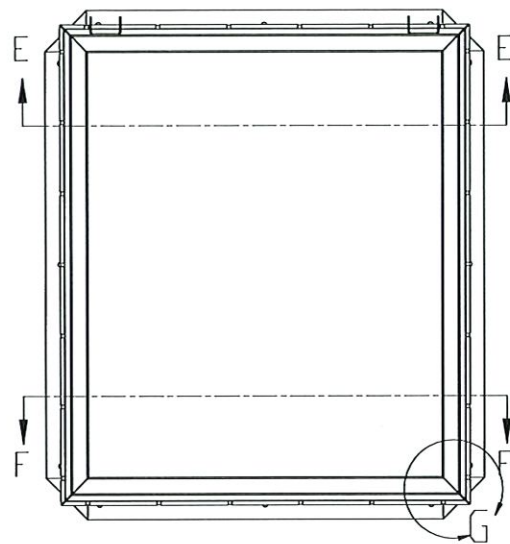
HERMES F. NORERO, P.E.
FLORIDA P.E. NO. 73778
BUILDING DROPS, INC
398 E. DANIA BEACH BLVD. #338
DANIA BEACH, FL 33004
FBPE CERT. OF AUTHORIZATION NO. 29578



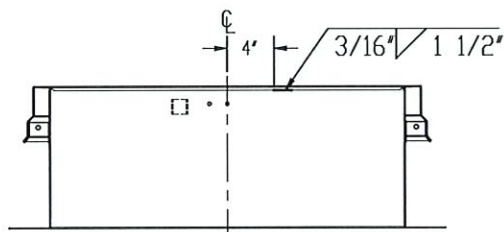
UNLESS OTHERWISE SPECIFIED:
UNLESS OTHERWISE SPECIFIED
REMOVE ALL BURRS & SHARP
CORNERS
DIMENSION TOLERANCES
X.XXX +/- .010
XXX +/- .015
XX +/- .030
X +/- .2
ANGLES +/- 2°
FRACTIONS +/- 1/32
INTERPRET GEOMETRIC
TOLERANCING PER:
MATERIAL
FINISH
DO NOT SCALE DRAWING

NAME/#	DATE
DRAWN DJC	9/01/19
ORG. AUTHOR DJC	
ORG. ECR	
D.A.	
3RD-ANGLE PROJECTION	

THE BILCO COMPANY			06505
P.O. Box 1203 (203) 934-6363 www.bilco.com		New Haven, Connecticut Fax (203) 933-8478 e-mail: bilco@bilco.com	
TITLE: S & HZ DOOR ASSY FLASHING WELDMENT			
SIZE B	DWG. NO. S/HZ DOOR ASSY	REV F	
SCALE: 1:6		WEIGHT:	SHEET 6 OF 13



SECTION E-E
HINGE SIDE



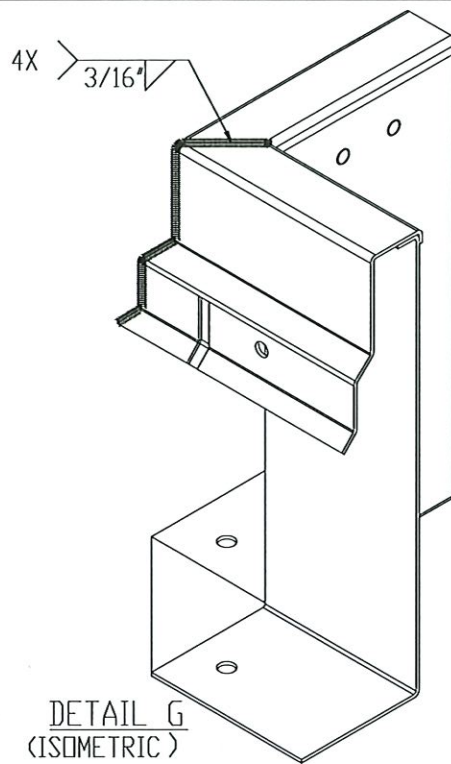
SECTION F-F
LATCH SIDE

S FRAME/FLASHING
WELDMENT

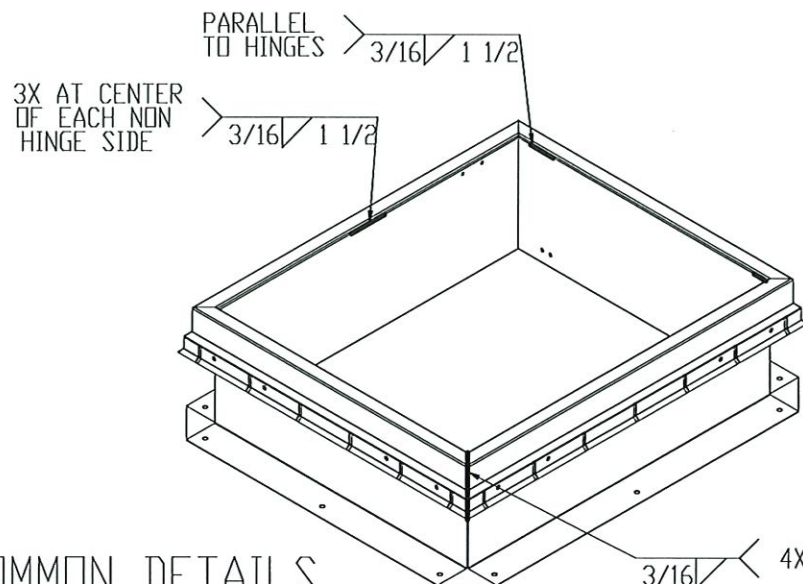
PRODUCT REVISED
as complying with the Florida
Building Code
NOA-No. 23-0815.19

Expiration Date 12/02/2024

By *[Signature]*
Miami-Dade Product Control

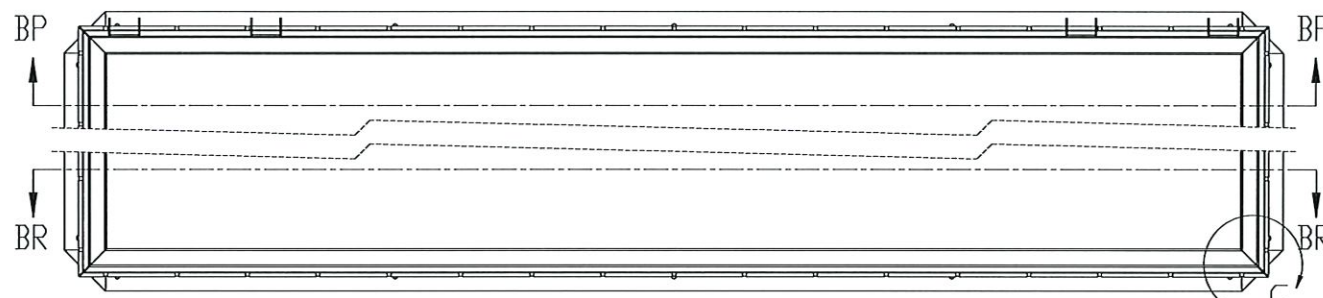


DETAIL G
(ISOMETRIC)

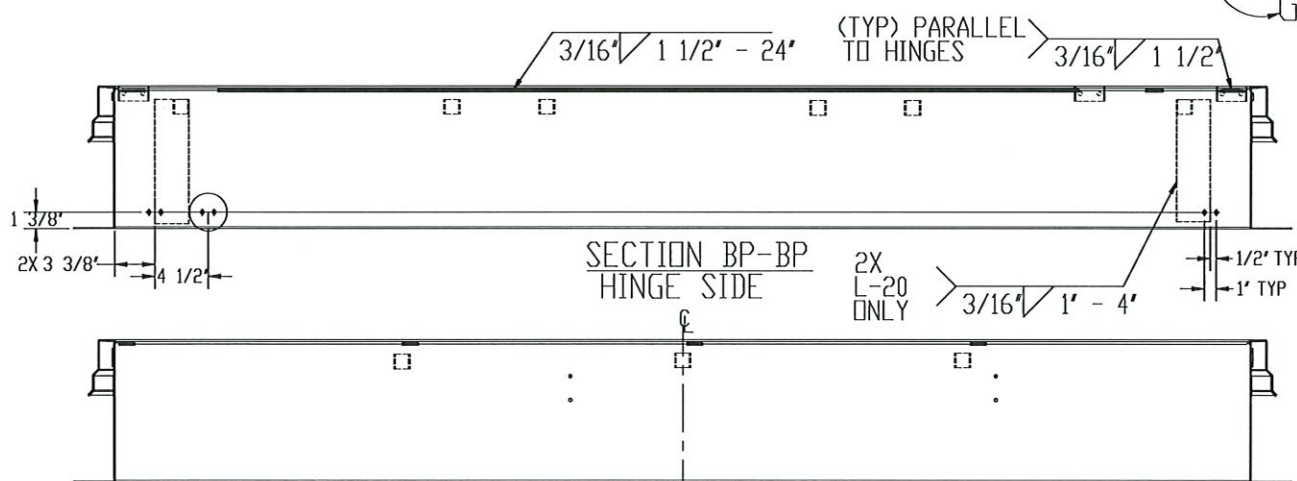


COMMON DETAILS
FRAME/FLASHING
WELDMENT

WELD DETAIL
FRAME & FLASHING
'S' MODEL SHOWN



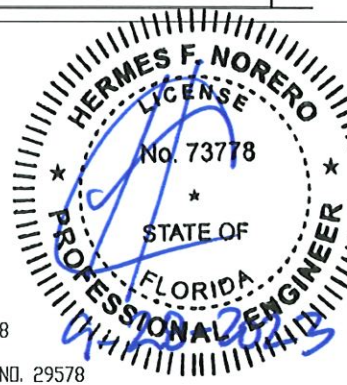
SECTION BP-BP
HINGE SIDE



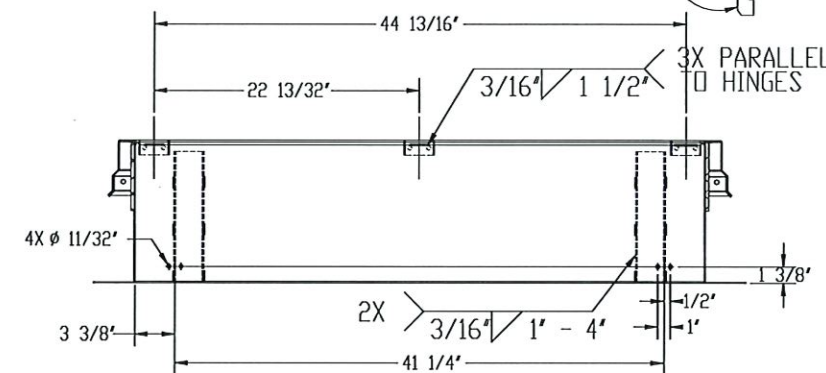
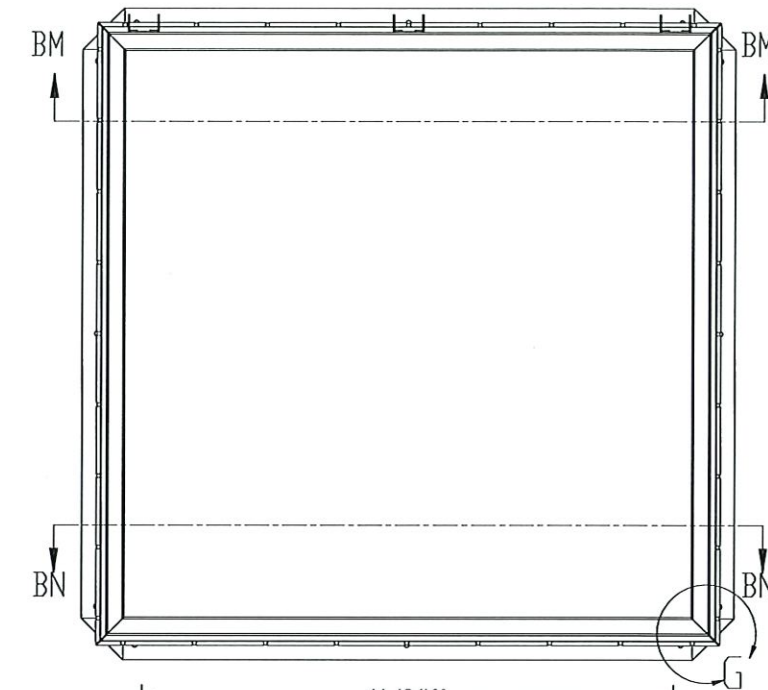
SECTION BR-BR
LATCH SIDE

L-HZ FRAME/FLASHING
WELDMENT

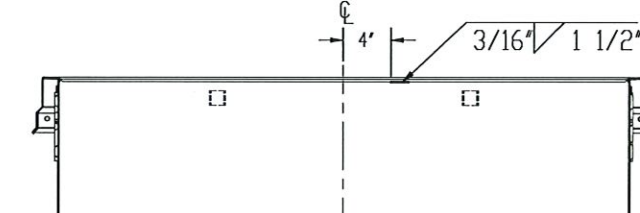
HERMES F. NORERO, P.E.
FLORIDA P.E. NO. 73778
BUILDING DROPS, INC
398 E. DANIA BEACH BLVD. #338
DANIA BEACH, FL 33004
FBPE CERT. OF AUTHORIZATION NO. 29578



UNLESS OTHERWISE SPECIFIED:
UNLESS OTHERWISE SPECIFIED
REMOVE ALL BURRS & SHARP
CORNERS
DIMENSION TOLERANCES
x.xxx +/- .010
xxx +/- .015
xx +/- .030
ANGLES +/- 2°
FRACTIONS +/- 1/32
INTERPRET GEOMETRIC
TOLERANCING PER:
MATERIAL
FINISH
DO NOT SCALE DRAWING

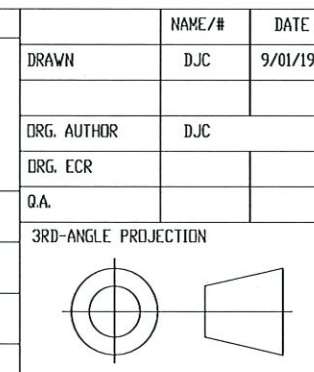


SECTION BM-BM
HINGE SIDE



SECTION BN-BN
LATCH SIDE

F-HZ FRAME/FLASHING
WELDMENT

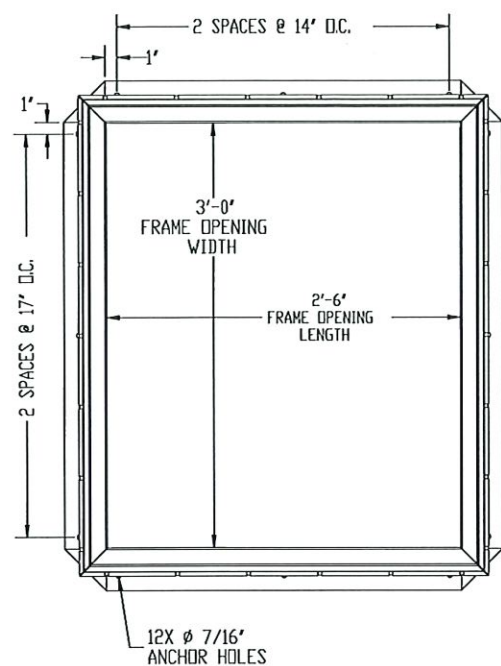


THE BILCO COMPANY
P.O. Box 1203 New Haven, Connecticut 06505
(203) 934-6363 Fax (203) 933-8478
www.bilco.com e-mail: bilco@bilco.com

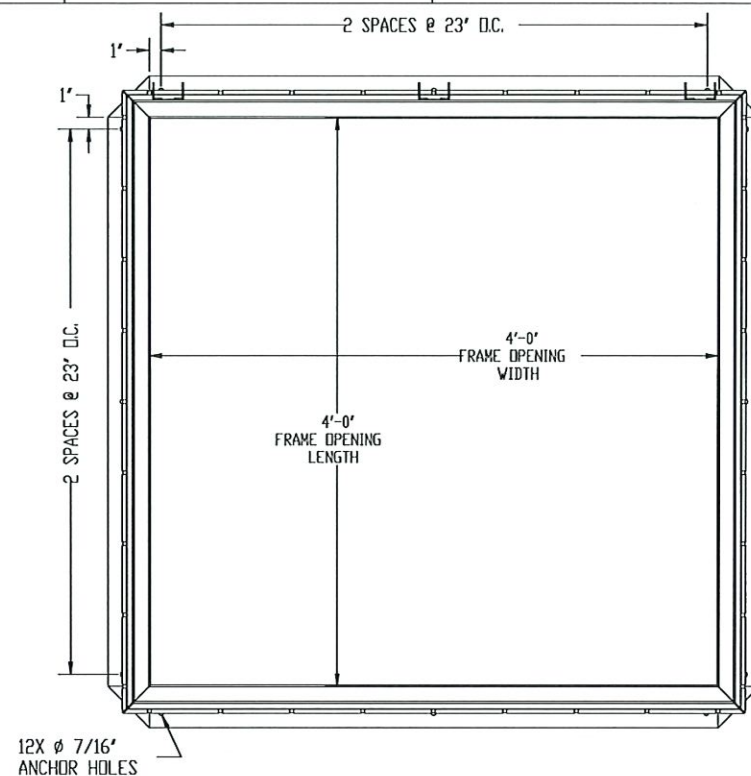
TITLE:
**S & HZ DOOR ASSY
FRAME/FLASHING WELMENT**

SIZE	DWG. NO.	REV
B	S/HZ DOOR ASSY	F

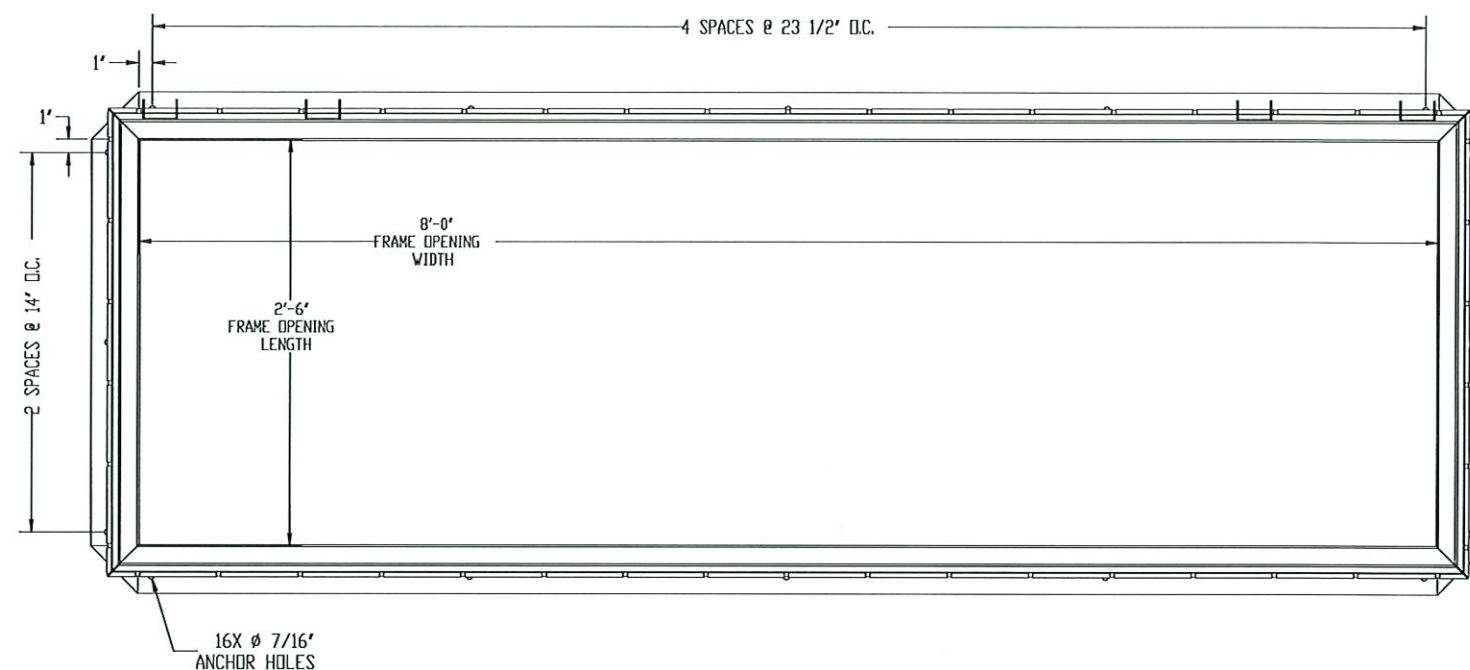
SCALE: 1:8 WEIGHT: SHEET 7 OF 13



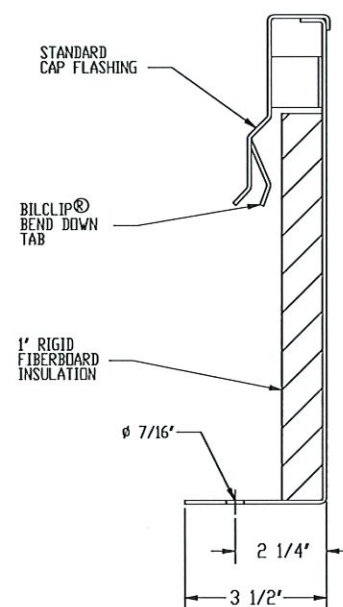
S ANCHOR LAYOUT



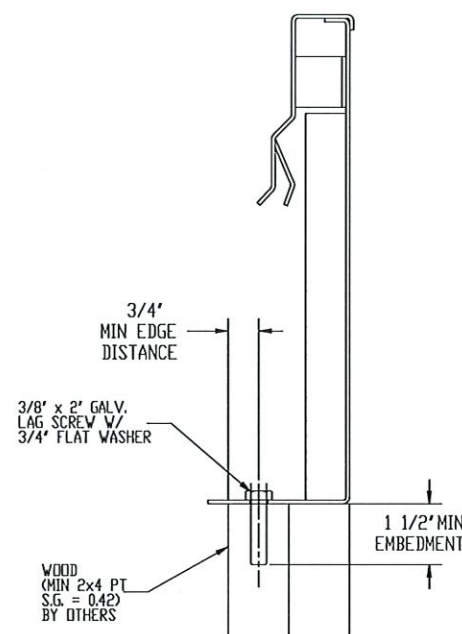
F-HZ ANCHOR LAYOUT



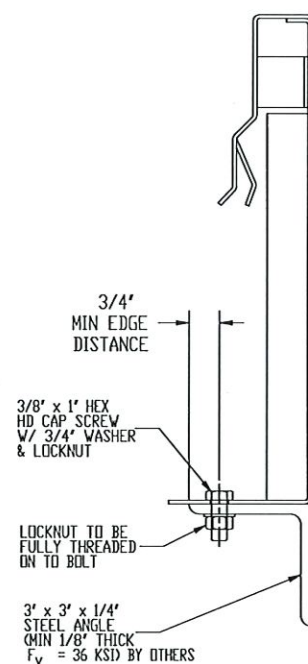
L-HZ ANCHOR LAYOUT



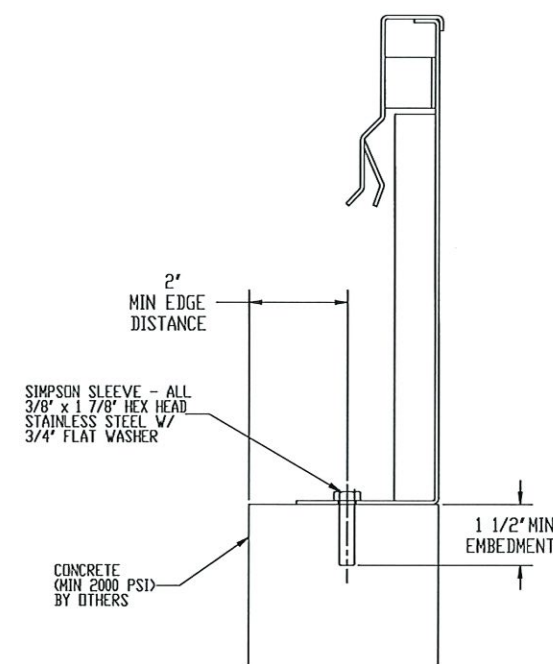
STANDARD 12" CURB



WOOD CURB



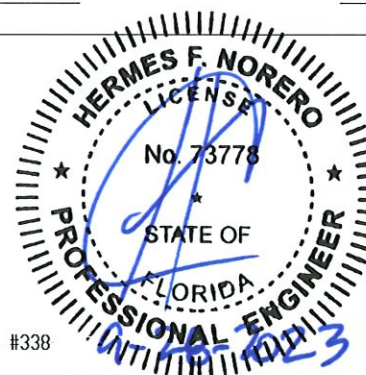
STEEL CURB



CONCRETE CURB

ANCHORING OPTIONS

HERMES F. NORERO, P.E.
FLORIDA P.E. NO. 73778
BUILDING DROPS, INC
398 E. DANIA BEACH BLVD. #338
DANIA BEACH, FL 33004
FBPE CERT. OF AUTHORIZATION NO. 29578



UNLESS OTHERWISE SPECIFIED:

UNLESS OTHERWISE SPECIFIED
REMOVE ALL BURRS & SHARP
CORNERS
DIMENSION TOLERANCES
xxxx +/- .010
xxx +/- .015
xx +/- .030
ANGLES
FRACTIONS +/- 1/32

INTERPRET GEOMETRIC
TOLERANCING PER:

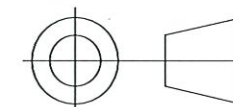
MATERIAL

FINISH

DO NOT SCALE DRAWING

	NAME/#	DATE
DRAWN	DJC	9/01/19
ORG. AUTHOR	DJC	
ORG. ECR		
Q.A.		

3RD-ANGLE PROJECTION



THE BILCO COMPANY
P.O. Box 1203 New Haven, Connecticut 06505
(203) 934-6363 Fax (203) 933-8478
www.bilco.com e-mail: bilco@bilco.com

TITLE:
S & HZ DOOR ASSY
ANCHORING OPTIONS

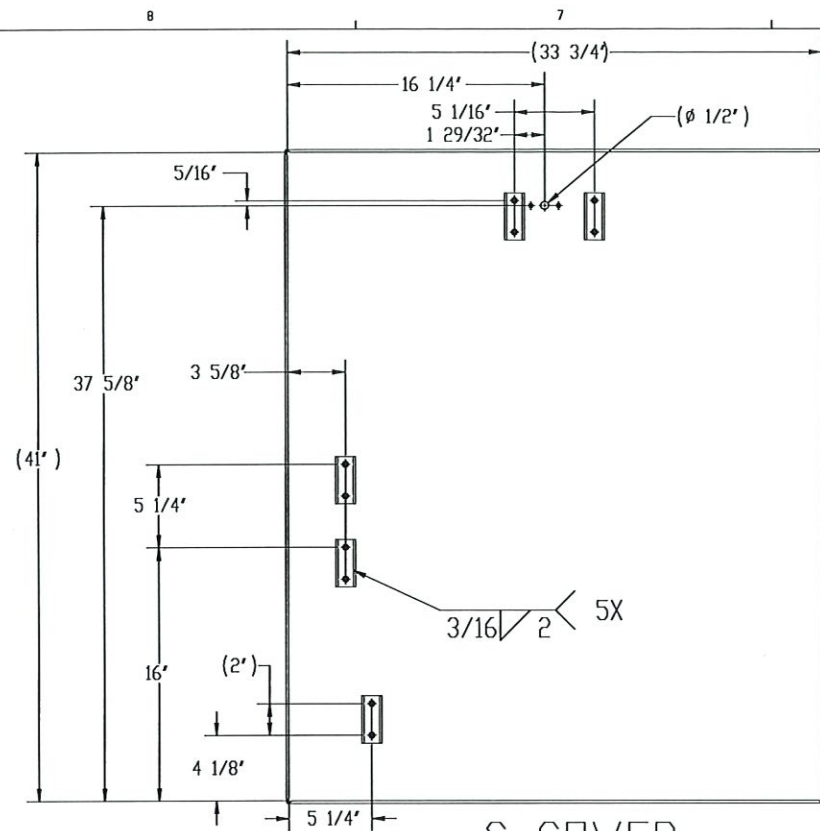
SIZE	DWG. NO.	REV
B	S/HZ DOOR ASSY	F

SCALE: 1:7 WEIGHT: SHEET 8 OF 13

PRODUCT REVISED
as complying with the Florida
Building Code
NOA-No. 23-0815.19

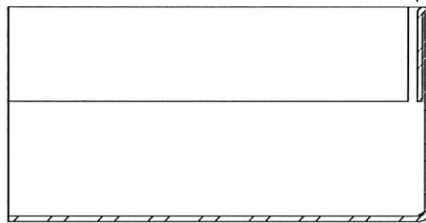
Expiration Date 12/02/2024

By *[Signature]*
Miami-Dade Product Control

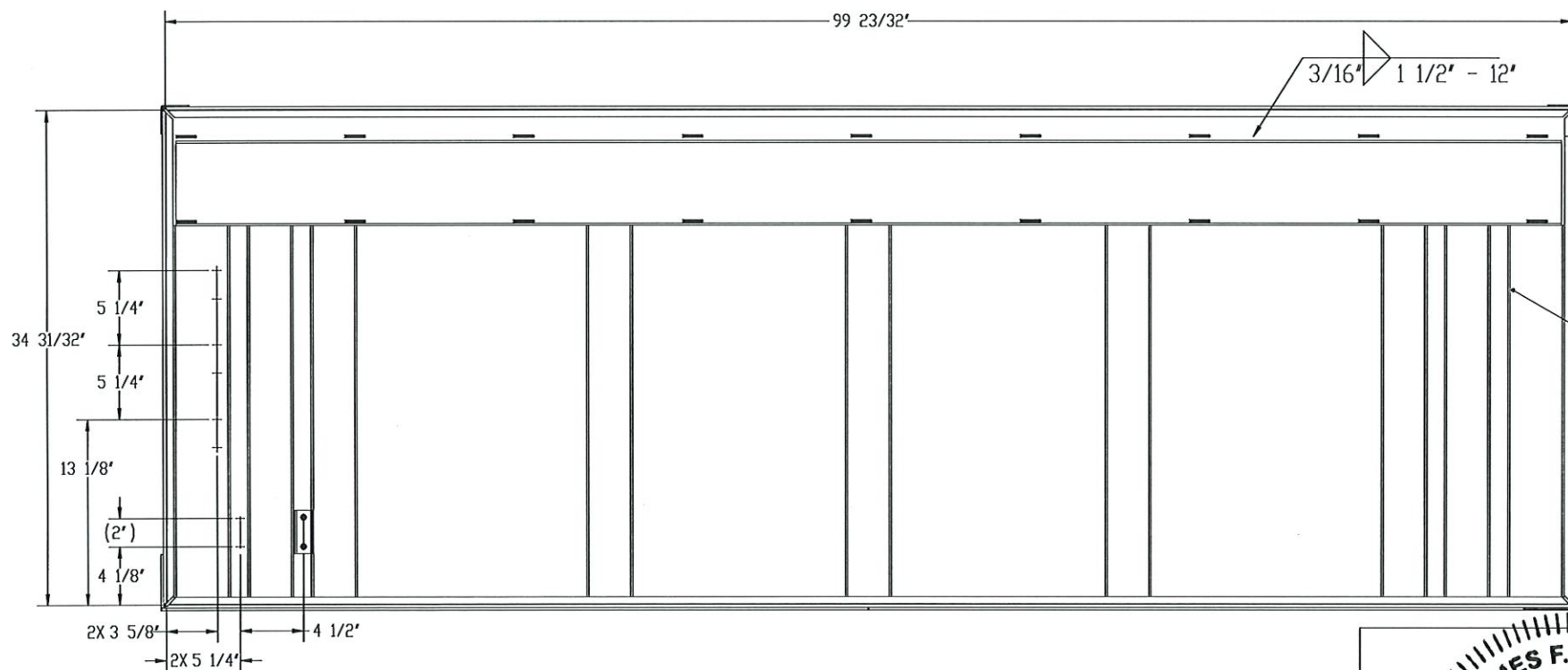


S COVER
 S-20 = STEEL VERSION
 S-50 = ALUM VERSION

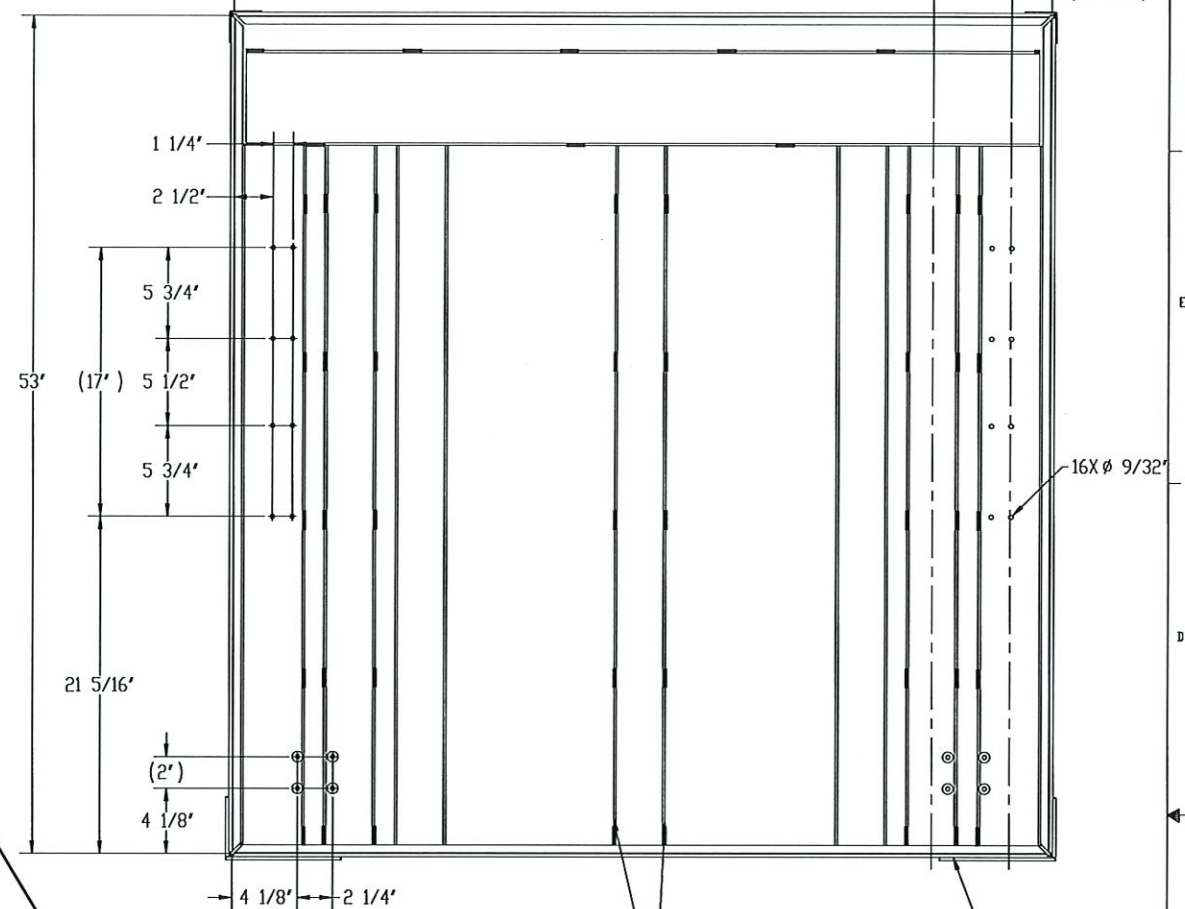
NOTE: WHEN LOCATING SD36 COVER SPACER AND EPDM GASKET, INSIDE DIMENSIONS ARE MEASURED FROM THIS TYPICAL SURFACE ON COVER.



COVER END VIEW



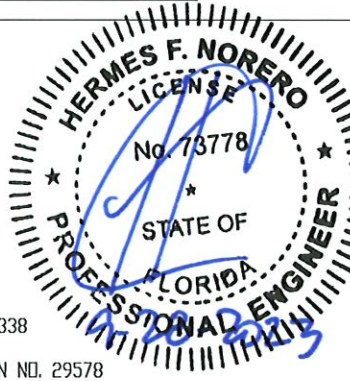
L-HZ COVER
 L-20HZ = STEEL VERSION
 L-50HZ = ALUM VERSION



F-HZ COVER
 F-20HZ = STEEL VERSION
 F-50HZ = ALUM VERSION

PRODUCT REVISED
 as complying with the Florida Building Code
 NOA-No. 23-0815.19
 Expiration Date 12/02/2024
 By *[Signature]*
 Miami-Dade Product Control

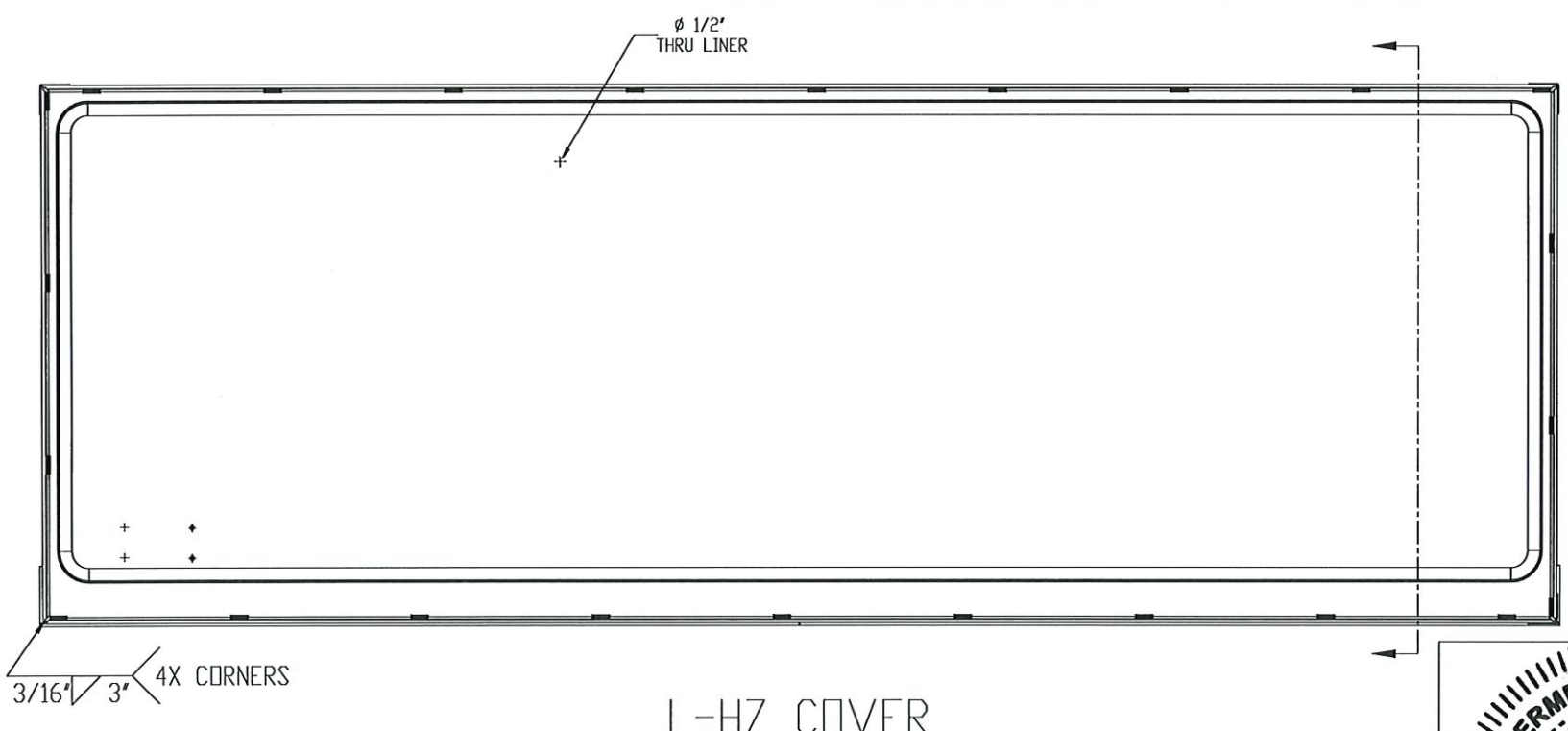
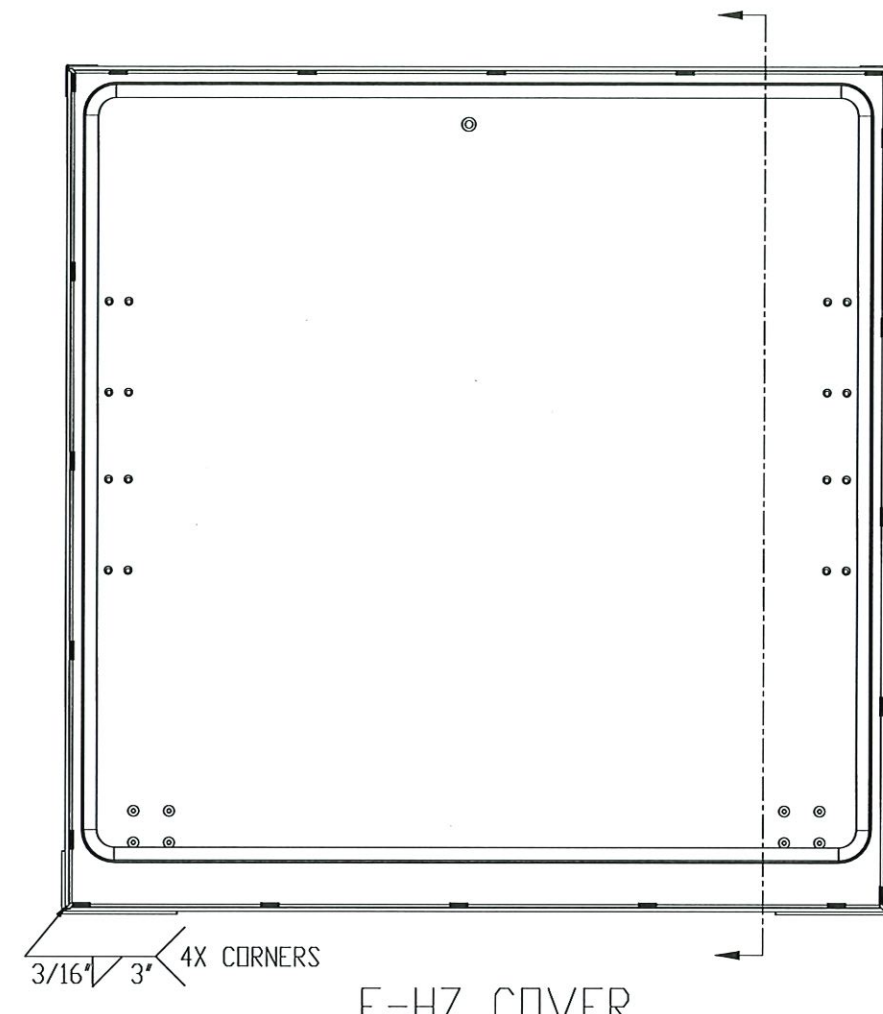
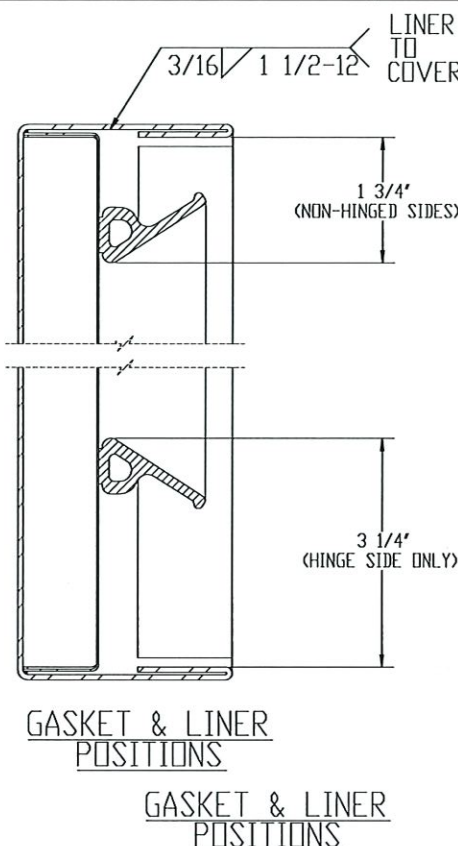
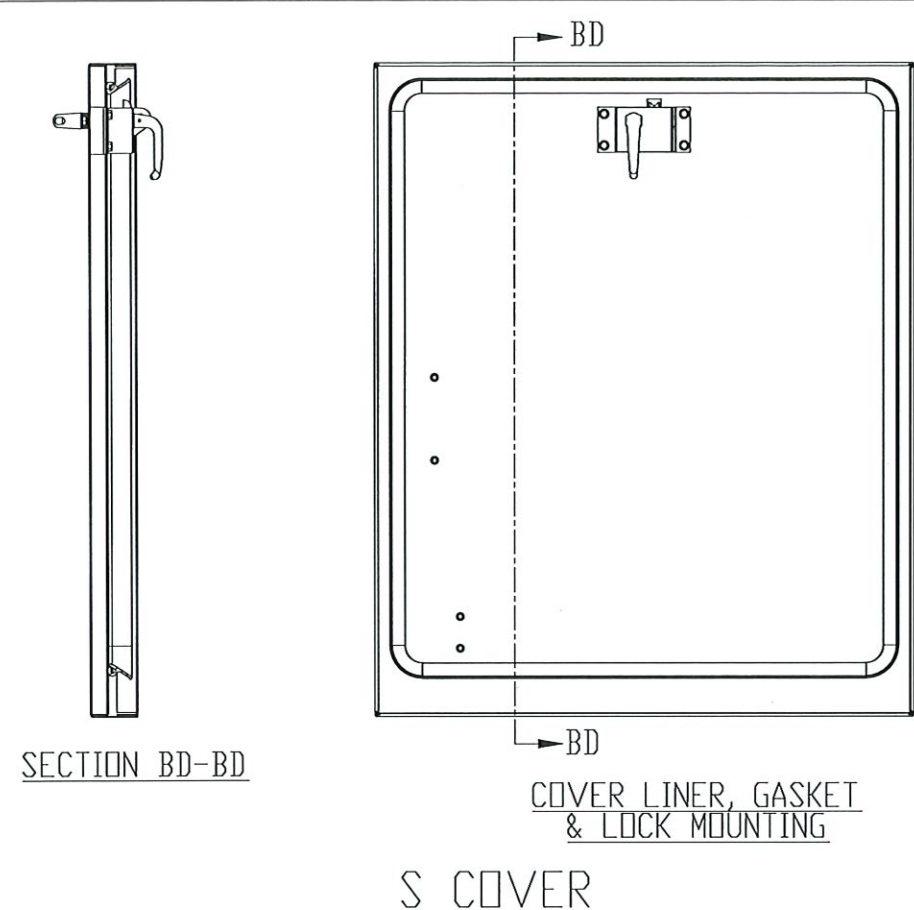
HERMES F. NORERO, P.E.
 FLORIDA P.E. NO. 73778
 BUILDING DROPS, INC.
 398 E. DANIA BEACH BLVD. #338
 DANIA BEACH, FL 33004
 FBPE CERT. OF AUTHORIZATION NO. 29578



UNLESS OTHERWISE SPECIFIED:
 UNLESS OTHERWISE SPECIFIED REMOVE ALL BURRS & SHARP CORNERS
 DIMENSION TOLERANCES
 XXXX +/- .010
 XXX +/- .015
 XX +/- .030
 ANGLES +/- 2"
 FRACTIONS +/- 1/32
 INTERPRET GEOMETRIC TOLERANCING PER:
 MATERIAL
 FINISH
 DO NOT SCALE DRAWING

NAME/#	DATE
DRAWN DJC	9/01/19
ORG. AUTHOR DJC	
ORG. ECR	
D.A.	
3RD-ANGLE PROJECTION	

THE BILCO COMPANY P.O. Box 1203 New Haven, Connecticut 06505 (203) 934-6363 Fax (203) 933-8478 www.bilco.com e-mail: bilco@bilco.com		
TITLE: S & HZ DOOR ASSY COVER WELDMENT		
SIZE B	DWG. NO. S/HZ DOOR ASSY	REV F
SCALE: 1:6	WEIGHT:	SHEET 9 OF 13

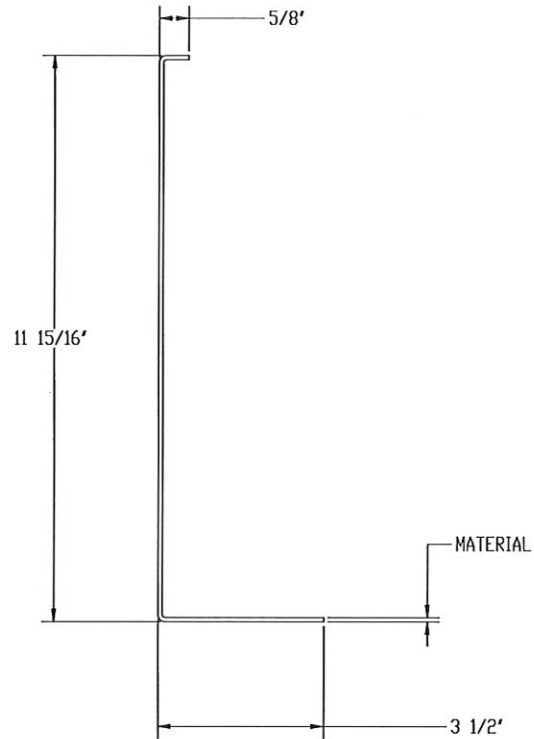
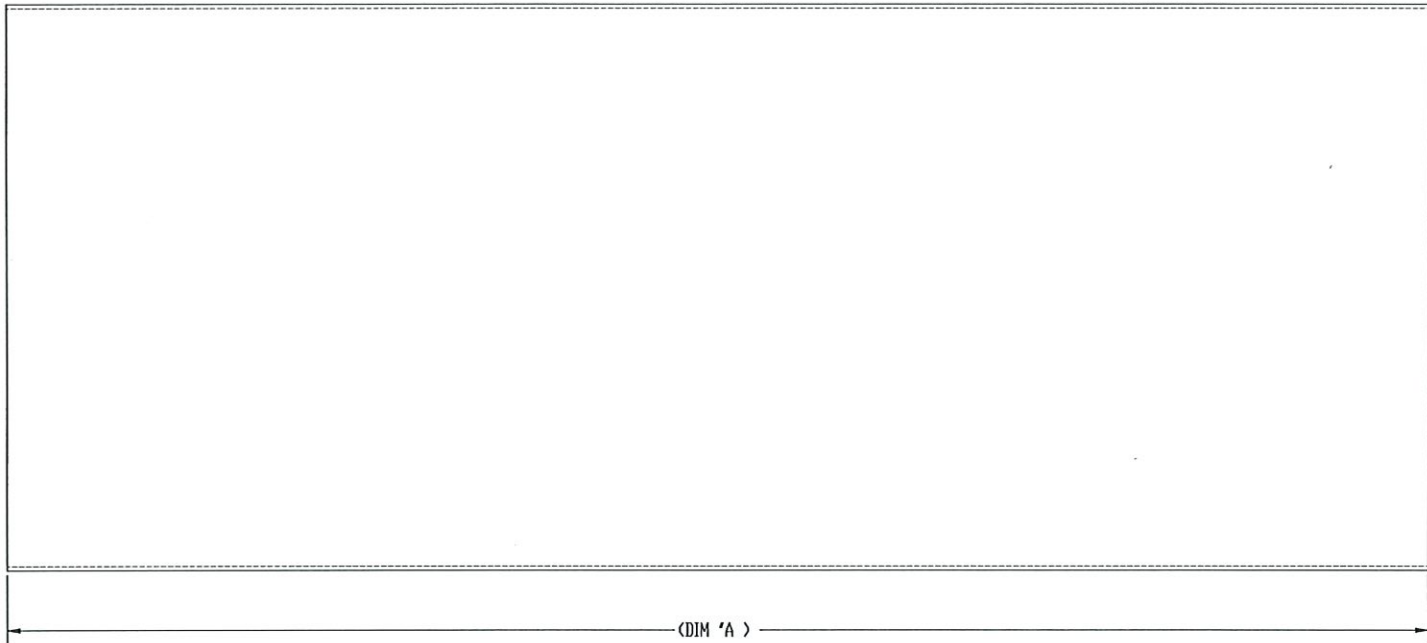


PRODUCT REVISED
 as complying with the Florida
 Building Code
 NOA-No. 23-0815.19
 Expiration Date 12/02/2024
 By *R. J. [Signature]*
 Miami-Dade Product Control

HERMES F. NORERO
 LICENSE
 No. 73778
 STATE OF FLORIDA
 PROFESSIONAL ENGINEER
 11/18/2023

HERMES F. NORERO, P.E.
 FLORIDA P.E. NO. 73778
 BUILDING DROPS, INC
 398 E. DANIA BEACH BLVD. #338
 DANIA BEACH, FL 33004
 FBPE CERT. OF AUTHORIZATION NO. 29578


UNLESS OTHERWISE SPECIFIED: REMOVE ALL BURRS & SHARP CORNERS DIMENSION TOLERANCES xxx +/- .010 xxx +/- .015 xx +/- .030 ANGLES +/- 2° FRACTIONS +/- 1/32		NAME/#	DATE	THE BILCO COMPANY P.O. Box 1203 New Haven, Connecticut 06505 (203) 934-6363 Fax (203) 933-8478 www.bilco.com e-mail: bilco@bilco.com	
DRAWN		DJC	9/01/19		
ORG. AUTHOR		DJC			
ORG. ECR					
D.A.				TITLE: S & HZ DOOR ASSY COVER LINER WELDMENT	
3RD-ANGLE PROJECTION					
MATERIAL				SIZE	DWG. NO.
FINISH				B	S/HZ DOOR ASSY
DO NOT SCALE DRAWING				SCALE: 1:6	WEIGHT: SHEET 10 OF 13



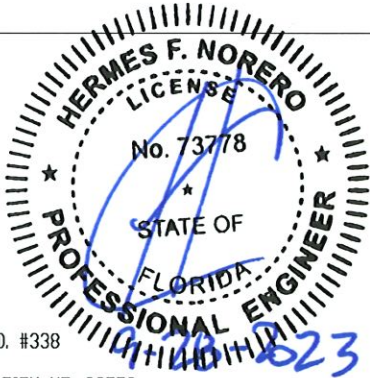
UNIT	PART NO.	MATERIAL	DIM "A"
S & L	SD504A	14 GA. (.075") GALV STEEL	30"
S	SD505A	14 GA. (.075") GALV STEEL	36"
S & L	SD504A-AL	11 GA. (.090) 3003 H14 ALUM	30"
S	SD505A-AL	11 GA. (.090) 3003 H14 ALUM	36"
F	SD540	14 GA. (.075") GALV STEEL	48"
F	SD540AL	11 GA. (.090") 3003 H14 ALUM	48"
L	SD523	14 GA. (.075") GALV STEEL	96"
L	SD523AL	11 GA. (.090") 3003 H14 ALUM	96"

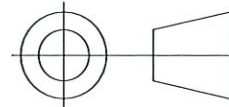
FRAME

- NOTES:
1. MATERIAL MUST BE ABLE TO BEND 180 BACK UPON ITSELF WITHOUT FRACTURE AND FLATNESS CRITICAL DIAGONAL MEASUREMENT IS $\pm 1/32"$, CORNERS MUST BE 90°.

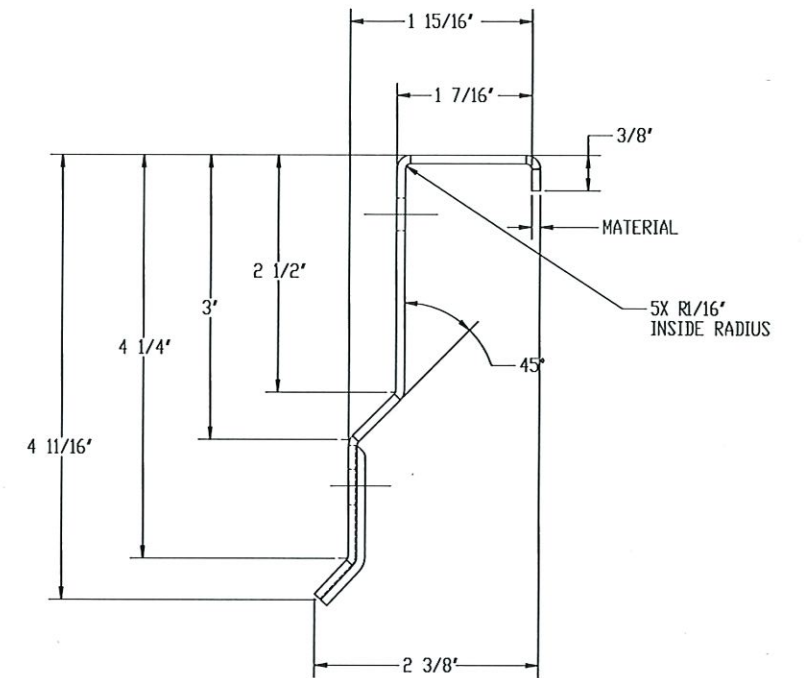
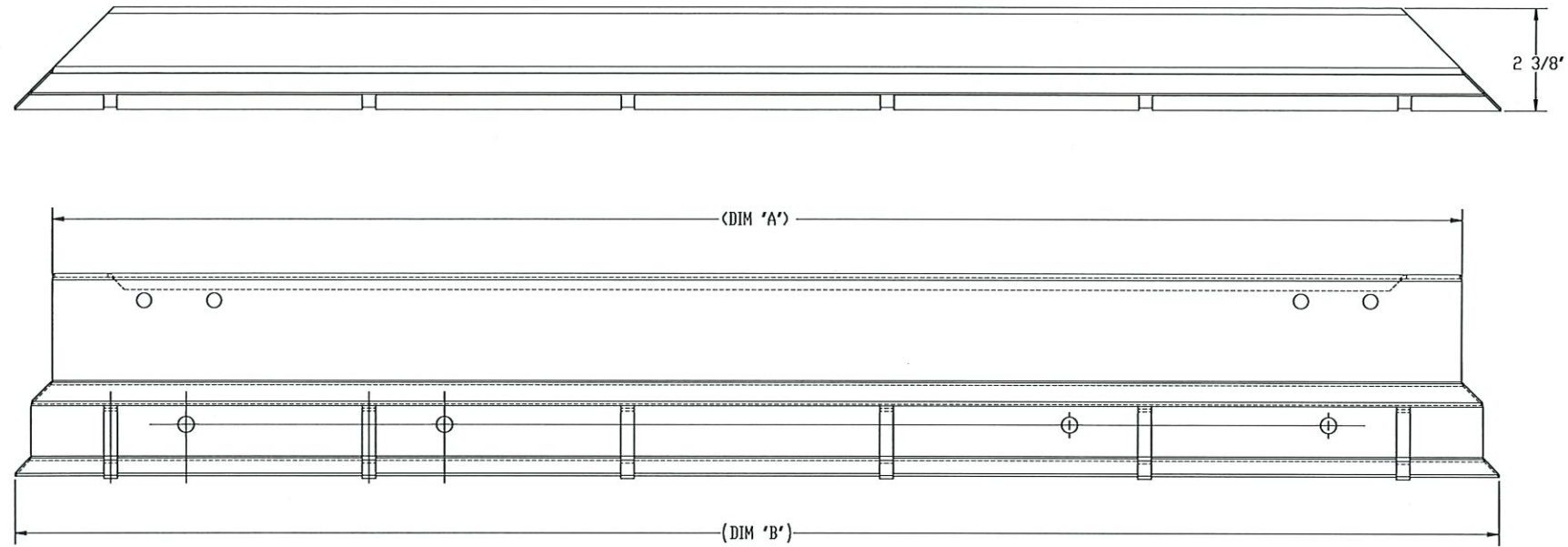
PRODUCT REVISED
as complying with the Florida
Building Code
NOA-No. 23-0815.19
Expiration Date 12/02/2024
By 
Miami-Dade Product Control

HERMES F. NORERO, P.E.
FLORIDA P.E. NO. 73778
BUILDING DROPS, INC
398 E. DANIA BEACH BLVD. #338
DANIA BEACH, FL 33004
FBPE CERT. OF AUTHORIZATION NO. 29578



UNLESS OTHERWISE SPECIFIED:		NAME/#		DATE	
UNLESS OTHERWISE SPECIFIED REMOVE ALL BURRS & SHARP CORNERS		DRAWN		DJC 9/01/19	
DIMENSION TOLERANCES					
XXXX +/- .010					
XXXX +/- .015					
XX +/- .030		ORG. AUTHOR		DJC	
ANGLES +/- 2°		ORG. ECR			
FRACTIONS +/- 1/32					
INTERPRET GEOMETRIC TOLERANCING PER:		O.A.			
MATERIAL		3RD-ANGLE PROJECTION			
FINISH					
DO NOT SCALE DRAWING					

THE BILCO COMPANY					
P.O. Box 1203		New Haven, Connecticut 06505			
(203) 934-6363		Fax (203) 933-8478			
www.bilco.com		e-mail: bilco@bilco.com			
TITLE: S & HZ DOOR ASSY FRAME/CURB					
SIZE	DWG. NO.				REV
B	S/HZ DOOR ASSY				F
SCALE: 1:2		WEIGHT:		SHEET 11 OF 13	

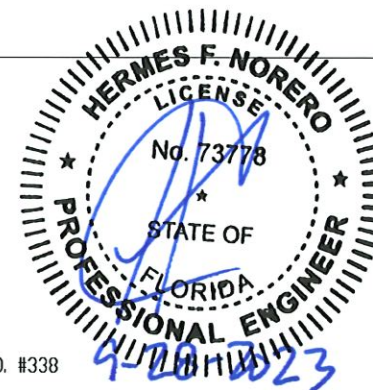


UNIT	PART NO.	MATERIAL	DIM "A"	DIM "B"
S & L	SD506	14 GA. (.075") GALV STEEL	32 11/16"	34 7/16"
S & L	SD506AL	11 GA. (.090") 3003 H14 ALUM	32 11/16"	34 7/16"
S	SD507	14 GA. (.075") GALV STEEL	38 11/16"	40 7/16"
S	SD507AL	11 GA. (.090") 3003 H14 ALUM	38 11/16"	40 7/16"
F	SD542	14 GA. (.075") GALV STEEL	50 11/16"	52 7/16"
F	SD542AL	11 GA. (.090") 3003 H14 ALUM	50 11/16"	52 7/16"
L	SD525	14 GA. (.075") GALV STEEL	98 11/16"	100 7/16"
L	SD525AL	11 GA. (.090") 3003 H14 ALUM	98 11/16"	100 7/16"

FLASHING

PRODUCT REVISED
as complying with the Florida
Building Code
NOA-No. 23-0815.19
Expiration Date 12/02/2024
By *[Signature]*
Miami-Dade Product Control

HERMES F. NORERO, P.E.
FLORIDA P.E. NO. 73778
BUILDING DROPS, INC
398 E. DANIA BEACH BLVD. #338
DANIA BEACH, FL 33004
FBPE CERT. OF AUTHORIZATION NO. 29578



UNLESS OTHERWISE SPECIFIED:

UNLESS OTHERWISE SPECIFIED
REMOVE ALL BURRS & SHARP
CORNERS

DIMENSION TOLERANCES

xxxx +/- .010
xxx +/- .015
xx +/- .030
ANGLES +/- 2°
FRACTIONS +/- 1/32

INTERPRET GEOMETRIC
TOLERANCING PER:

MATERIAL

FINISH

DO NOT SCALE DRAWING

NAME/#

DATE

DRAWN

DJC

9/01/19

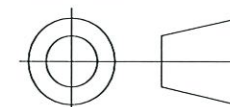
ORG. AUTHOR

DJC

ORG. ECR

O.A.

3RD-ANGLE PROJECTION



THE BILCO COMPANY

P.O. Box 1203 New Haven, Connecticut 06505
(203) 934-6363 Fax (203) 933-8478
www.bilco.com e-mail: bilco@bilco.com

TITLE:

S & HZ DOOR ASSY
FLASHING

SIZE

DWG. NO.

REV

B

S/HZ DOOR ASSY

F

SCALE: 1:2

WEIGHT:

SHEET 12 OF 13

