



DEPARTMENT OF REGULATORY AND ECONOMIC RESOURCES (RER)  
BOARD AND CODE ADMINISTRATION DIVISION

## NOTICE OF ACCEPTANCE (NOA)

MIAMI-DADE COUNTY  
PRODUCT CONTROL SECTION

11805 SW 26 Street, Room 208  
Miami, Florida 33175-2474  
T (786) 315-2590 F (786) 315-2599

[www.miamidade.gov/building](http://www.miamidade.gov/building)

Glasstra Group, Inc.

PO Box 146, Catano, PR 00963

Calle. 4 ESQ A-7, Urb. Las Palmas - Catano, PR 00962

### SCOPE:

This NOA is being issued under the applicable rules and regulations governing the use of construction materials. The documentation submitted has been reviewed and accepted by Miami-Dade County RER - Product Control Section to be used in Miami Dade County and other areas where allowed by the Authority Having Jurisdiction (AHJ).

This NOA shall not be valid after the expiration date stated below. The Miami-Dade County Product Control Section (In Miami Dade County) and/or the AHJ (in areas other than Miami Dade County) reserve the right to have this product or material tested for quality assurance purposes. If this product or material fails to perform in the accepted manner, the manufacturer will incur the expense of such testing and the AHJ may immediately revoke, modify, or suspend the use of such product or material within their jurisdiction. RER reserves the right to revoke this acceptance if it is determined by Miami-Dade County Product Control Section that this product or material fails to meet the requirements of the applicable building code.

This product is approved as described herein and has been designed to comply with the Florida Building Code, including the High Velocity Hurricane Zone.

**DESCRIPTION: Series "V-8000-45" Outswing Aluminum Casement Window – L.M.I.**

**APPROVAL DOCUMENT:** Drawing No. **23-163**, titled "Series V-8000-45 Aluminum Casement Window", sheets 1 through 7 of 7, dated 08/09/2023, with revision **1** dated 08/09/2023, prepared by Tilteco, Inc., signed and sealed by Walter A. Tillit Jr., P.E., bearing the Miami-Dade County Product Control Section Revision stamp with the Notice of Acceptance number and expiration date by the Miami-Dade County Product Control Section.

**MISSILE IMPACT RATING: Large and Small Missile Impact Resistant.**

**LABELING:** Each unit shall bear a permanent label with the manufacturer's name or logo, city, state, model/series, and following statement: "Miami-Dade County Product Control Approved", unless otherwise noted herein.

**RENEWAL** of this NOA shall be considered after a renewal application has been filed and there has been no change in the applicable building code negatively affecting the performance of this product.

**TERMINATION** of this NOA will occur after the expiration date or if there has been a revision or change in the materials, use, and/or manufacture of the product or process. Misuse of this NOA as an endorsement of any product, for sales, advertising or any other purposes shall automatically terminate this NOA. Failure to comply with any section of this NOA shall be cause for termination and removal of NOA.

**ADVERTISEMENT:** The NOA number preceded by the words Miami-Dade County, Florida, and followed by the expiration date may be displayed in advertising literature. If any portion of the NOA is displayed, then it shall be done in its entirety.

**INSPECTION:** A copy of this entire NOA shall be provided to the user by the manufacturer or its distributors and shall be available for inspection at the job site at the request of the Building Official.

This NOA **revises** and **renews** NOA No. **20-0813.15** and consists of this page 1 and evidence page E-1 and E-2, as well as approval document mentioned above.

The submitted documentation was reviewed by **Sifang Zhao, P.E.**



*S. Zhao*  
11/09/2023

NOA No. 23-0823.09  
Expiration Date: October 25, 2028  
Approval Date: November 09, 2023  
Page 1

**NOTICE OF ACCEPTANCE: EVIDENCE SUBMITTED**

**1. EVIDENCE SUBMITTED UNDER PREVIOUS NOA's**

**A. DRAWINGS**

1. Manufacturer's die drawings and sections. ( ***Submitted under NOA No.17-1207.06***)
2. Drawing No. 20-140, titled "Series V-8000-45 Aluminum Casement Window", sheets 1 through 7 of 7, dated 06/26/2020, with revision 1 dated 06/26/2020, prepared by Tilteco, Inc., signed and sealed by Walter A. Tillit Jr., P.E.

**B. TESTS**

1. Test reports on: 1) Air Infiltration Test, per FBC, TAS 202-94  
2) Uniform Static Air Pressure Test, Loading per FBC, TAS 202-94  
3) Water Resistance Test, per FBC, TAS 202-94  
4) Large Missile Impact Test per FBC, TAS 201-94  
5) Cyclic Wind Pressure Loading per FBC, TAS 203-94  
6) Forced Entry Test, per FBC 2411.3.2.1, and TAS 202-94  
along with marked-up drawings and installation diagram of an outswing aluminum casement window, prepared by American Test Lab of South Florida, Test Report No. **0524.01-17**, dated 09/25/18, signed and sealed by Stephen Warter, P.E.

**C. CALCULATIONS**

1. Anchor verification calculations and structural analysis, complying with **FBC 6<sup>th</sup> Edition (2017)**, dated 05/03/17 and 09/25/18, prepared by Tilteco, Inc., signed and sealed by Walter A. Tillit Jr., P.E.
2. Glazing complies with **ASTM E1300-09**

**D. QUALITY ASSURANCE**

1. Miami-Dade Department of Regulatory and Economic Resources (RER).

**E. MATERIAL CERTIFICATIONS**


1. NOA No. **17-1114.14** issued to **Kuraray America, Inc.** for their "**Trosifol® Ultraclear, Clear and Color PVB Glass Interlayers**", expiring on 07/08/19.

**F. STATEMENTS**

1. Statement letter of conformance, complying with **FBC 7<sup>th</sup> Edition (2020)**, and of no financial interest, dated July 06, 2020, issued by Tilteco, Inc., signed and sealed by Walter A. Tillit Jr., P.E.
2. Laboratory compliance letters for Test Report No. **0524.01-17**, dated 09/25/18, issued by American Test Lab of South Florida, signed and sealed by Stephen Warter, P.E.

**G. OTHERS**

1. NOA No. **17-1207.06**, issued to Glasstra Manufacturing, Inc. for their Series "V-8000-45" Outswing Aluminum Casement Window – L.M.I., approved on 10/25/2018 and expiring on 10/25/2023.

  
\_\_\_\_\_  
Sifang Zhao, P.E.  
Product Control Examiner  
NOA No. 23-0823.09  
Expiration Date: October 25, 2028  
Approval Date: November 09, 2023

**Glasstra Group, LLC.**

**NOTICE OF ACCEPTANCE: EVIDENCE SUBMITTED**

**2. EVIDENCE SUBMITTED UNDER PREVIOUS NOA's**

**A. DRAWINGS**

1. Drawing No. 23-163, titled "Series V-8000-45 Aluminum Casement Window", sheets 1 through 7 of 7, dated 08/09/2023, with revision 1 dated 08/09/2023, prepared by Tilteco, Inc., signed and sealed by Walter A. Tillit Jr., P.E.

**B. TESTS**

1. None.

**C. CALCULATIONS**

1. None.

**D. QUALITY ASSURANCE**

1. Miami-Dade Department of Regulatory and Economic Resources (RER).

**E. MATERIAL CERTIFICATIONS**

1. NOA No. **23-0717.28** issued to **Kuraray America, Inc.** for their "**Trosifol® Ultraclear, Clear and Color PVB Glass Interlayers**", expiring on 07/08/24.

**F. STATEMENTS**

1. Statement of "Certificate of Merger" for name change from "Glasstra Manufacturing, Inc" to "Glasstra Group LLC" dated January 01, 2020 from Department of State, Puerto Rico.
2. Statement letter of conformance, complying with **FBC 8<sup>th</sup> Edition (2020)**, and of no financial interest, dated August 09, 2023, issued by Tilteco, Inc., signed and sealed by Walter A. Tillit Jr., P.E.

**G. OTHERS**

1. NOA No. **20-0813.15**, issued to Glasstra Manufacturing, Inc. for their Series "V-8000-45" Outswing Aluminum Casement Window – L.M.I., approved on 10/25/2018 and expiring on 10/25/2023.



---


Sifang Zhao, P.E.  
Product Control Examiner  
NOA No. 23-0823.09  
Expiration Date: October 25, 2028  
Approval Date: November 09, 2023

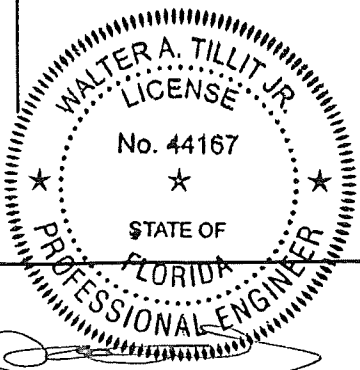
GENERAL NOTES:


1. SERIES V-8000-45 CASEMENT WINDOW, SHOWN ON THIS PRODUCT APPROVAL DOCUMENT (P.A.D.) HAS BEEN VERIFIED FOR COMPLIANCE IN ACCORDANCE WITH THE 2020 (7th EDITION) AND 2023 (8th EDITION) OF THE FLORIDA BUILDING CODE. SERIES V-8000-45 CASEMENT WINDOW MAY BE INSTALLED AT HIGH VELOCITY HURRICANE ZONES.
- DESIGN WIND LOADS SHALL BE DETERMINED AS PER SECTION 1620 OF THE ABOVE MENTIONED CODE, USING ASCE 7-16 (FBC 2020) & ASCE 7-22 (FBC 2023) AND SHALL NOT EXCEED THE MAXIMUM (A.S.D.) DESIGN PRESSURE RATINGS INDICATED ON NOTE 2 BELOW.
- IN ORDER TO VERIFY THE ABOVE CONDITION, ULTIMATE DESIGN WIND LOADS DETERMINED PER ASCE 7-16 AND ASCE 7-22 SHALL BE FIRST REDUCED TO A.S.D. DESIGN WIND LOADS BY MULTIPLYING THEM BY 0.6 IN ORDER TO COMPARE THESE W/ MAX. (A.S.D.) DESIGN PRESSURE RATINGS INDICATED ON NOTE 2 BELOW.
- IN ORDER TO VERIFY THAT ANCHORS ON THIS P.A.D., AS TESTED, WERE NOT OVERSTRESSED, A 33% INCREASE IN ALLOWABLE STRESS FOR WIND LOADS WAS NOT USED IN THEIR ANALYSIS. FASTENERS SPACING IN WOOD HAS BEEN DETERMINED IN ACCORDANCE WITH N.D.S. 2018.
- THIS PRODUCT'S ADEQUACY FOR IMPACT AND WIND RESISTANCE HAS BEEN VERIFIED IN ACCORDANCE WITH SECTION 1626 OF THE ABOVE MENTIONED CODE AS PER PROTOCOLS TAS-201, TAS-202, TAS-203, PER AMERICAN TESTING LAB REPORT #0524.01-17 AND AS PER SUBMITTED STRUCTURAL CALCULATIONS, PERFORMED AS PER SECTION 1616 OF THE FLORIDA BUILDING CODE.
2. MAXIMUM A.S.D. DESIGN PRESSURE RATINGS FOR THIS WINDOW SHALL BE ±75.0 psf.
3. SERIES V-8000-45 CASEMENT WINDOW WILL NOT REQUIRE A HURRICANE PROTECTION DEVICE.
4. SERIES V-8000-45 CASEMENT WINDOW ARE APPROVED FOR AIR AND WATER INFILTRATION.
5. SERIES V-8000-45 CASEMENT WINDOW SHALL COMPLY WITH SECTION 2406 OF THE FLORIDA BUILDING CODE.
6. ALL COMPONENTS FOR THIS PRODUCT SHALL BE AS PER BILL OF MATERIAL & COMPONENTS SHEETS 2 & 3.
7. ALL SCREWS USED FOR ASSEMBLY CONNECTIONS (METAL TO METAL) TO BE STAINLESS STEEL 410 AISI SERIES & SHALL COMPLY W/ FLORIDA BUILDING CODE SECTION 2411.3.3.4.
8. WOOD BUCKS BY OTHERS, MUST BE SOUTHERN PINE #2, G=0.55, AND SHALL COMPLY WITH SECTIONS 2411.3.3.3 & 2326 OF THE FLORIDA BUILDING CODE.
- (8.1) 2X WOOD BUCKS MUST BE PROPERLY ANCHORED TO EXISTING STRUCTURE TO TRANSFER LOADS TO IT. ANCHORAGE IS INDEPENDENT OF WINDOW FRAME ANCHORAGE. WINDOW FRAME MUST BE SEPARATELY ANCHORED TO 2X WOOD BUCK FOLLOWING DETAILS ON THIS DRAWING.
- (8.2) 1X WOOD BUCK (OR ANY WOOD BUCK LESS THAN 2X) MUST BE PROPERLY ANCHORED TO EXISTING STRUCTURE TO TRANSFER LOADS TO IT. WINDOW FRAME ANCHOR SHALL BE USED TO ATTACH 1X WOOD BUCK TO EXISTING STRUCTURE BY DRIVING ANCHOR THRU BOTH WINDOW FRAME & 1X WOOD BUCK INTO EXISTING STRUCTURE W/ PROPER EMBEDMENT AND EDGE DISTANCE AS SHOWN ON THIS DRAWING.

9. ANCHOR NOTES: EMBEDMENT AND EDGE DISTANCE ARE BEYOND ANY FINISH.
- (A) TO EXISTING POURED CONCRETE: (MIN. f'c = 3000 psi)  
- 1/4"Ø TAPCON ANCHOR W/ 1 3/4" MIN. EMBEDMENT, 4" MIN. EDGE DISTANCE & 4" MIN. SPACING, AS MANUFACTURED BY ITW/BUILDEX, INC. (COMPONENT 18). SEE NOTE 8.
- (B) TO EXISTING A.S.T.M. C-90 CONCRETE BLOCK WALL.  
- 1/4"Ø TAPCON ANCHOR W/ 1" MIN. EMBEDMENT, 4" MIN. EDGE DISTANCE & 4" MIN. SPACING, AS MANUFACTURED BY ITW/BUILDEX, INC. (COMPONENT 18). SEE NOTE 8.
- (C) TO EXISTING 2xP.T. WOOD BUCK, OR WOOD STRUCTURE MIN. EDGE DISTANCE (E.D.)=1" & 2" MIN.SPACING.  
- #12 WOOD SCREWS W/ 1 1/2" MIN. PENETRATION, 1" MIN. EDGE DISTANCE & 3" MIN. SPACING. AS MANUFACTURED BY TEDDY DIAZ, (COMPONENT 18B). SEE NOTE 8.
- (D) TO EXISTING MIN. 1/8" THICK ALUMINUM TUBE (6063-T5 ALLOY) MIN. EDGE DISTANCE (E.D.) = 1" & 2" MIN. SPACING.  
- 1/4"Ø-14 TEK SCREW, AS MANUFACTURED BY ITW/BUILDEX, INC. (COMPONENT 18A). THREADS SHALL GO THRU THE TUBE THICKNESS. W/ MIN. (3) THREADS BEYOND.
- (E) TO EXISTING MIN. 1/8" THICK STEEL MEMBER (ASTM A-500, A-653 OR A-36) MIN. EDGE DISTANCE (E.D.) = 1/2" & 2" MIN. SPACING.  
- 1/4"Ø-14 TEK SCREW, AS MANUFACTURED BY ITW/BUILDEX, INC. (COMPONENT 18A). THREADS SHALL GO THRU THE FULL TUBE THICKNESS. W/ MIN. (3) THREADS BEYOND.
10. PROVIDE 1/4" MAX. LOAD BEARING SHIM SPACE (TYP.).
11. (a) THIS P.A.D. PREPARED BY THIS ENGINEER IS GENERIC AND DOES NOT PROVIDE INFORMATION FOR A SITE SPECIFIC PROJECT; I.e. WHERE THE SITE CONDITIONS DEVIATE FROM THE P.A.D.
- (b) CONTRACTOR TO BE RESPONSIBLE FOR THE SELECTION, PURCHASE AND INSTALLATION INCLUDING LIFE SAFETY OF THIS PRODUCT, BASED ON THIS P.A.D., PROVIDED HE/SHE DOES NOT DEVIATE FROM THE CONDITIONS DETAILED ON THIS DOCUMENT. CONSTRUCTION SAFETY AT SITE IS THE CONTRACTOR'S RESPONSIBILITY.
- (c) THIS P.A.D. WILL BE CONSIDERED INVALID IF ALTERED BY ANY MEANS.
- (d) ORIGINAL P.A.D. SHALL BEAR THE DATE AND ORIGINAL SEAL AND SIGNATURE OF THE PROFESSIONAL ENGINEER OF RECORD THAT PREPARED IT.
12. SERIES V-8000-45 CASEMENT WINDOW MANUFACTURER'S LABEL SHALL BE PLACED ON A READILY VISIBLE LOCATION. ONE LABEL SHALL BE PLACED FOR EVERY UNIT. LABEL SHALL COMPLY W/ SECTION 1709.5 OF THE FLORIDA BUILDING CODE.

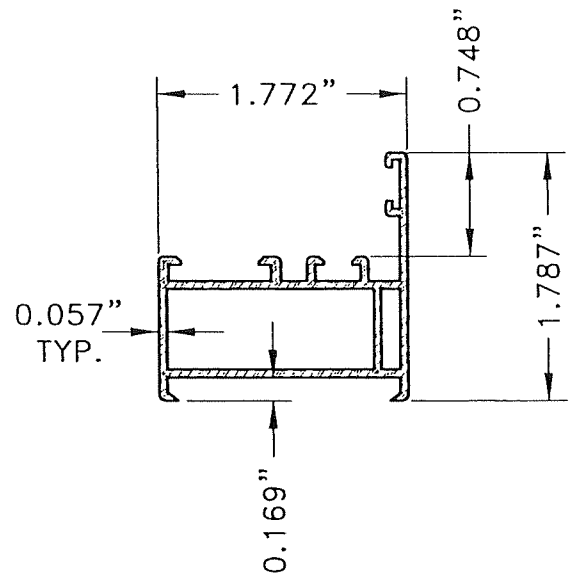
THIS DRAWING SHALL ONLY BE USED TO OBTAIN PERMITS IN THE STATE OF FLORIDA

PRODUCT REVISED  
as complying with the Florida  
Building Code  
NOA-No. 23-0823.09  
Expiration Date 10/25/2028  
By   
Miami-Dade Product Control

WALTER A. TILLIT JR.  
LICENSE  
No. 44167  
★  
STATE OF  
FLORIDA  
PROFESSIONAL ENGINEER  
  
P.E. SEAL/SIGNATURE/DATE

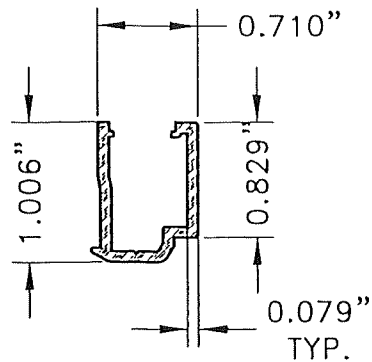
©2023 TILTECO, INC.  
  
TILLIT TESTING & ENGINEERING COMPANY  
6355 N.W. 36th. St., Ste. 305, VIRGINIA GARDENS, FL 33166  
Phone : (305)871-1530 . Fax : (305)871-1531  
CA-0006719  
WALTER A. TILLIT Jr. P.E.  
FLORIDA Lic. # 44167

FLORIDA BUILDING CODE (HIGH VELOCITY HURRICANE ZONE)					
SERIES V-8000-45 ALUMINUM CASEMENT WINDOW					
GLASSTRA GROUP, LLC PO BOX 146, Cataño, PR. 00963: Calle 4 ESQ. A-7, Urb. Las Palmas Cataño PR. 00962					
REV. NO	DESCRIPTION	DATE	REV. NO	DESCRIPTION	DATE
1	OLD 20-140	8/9/2023	3		
2			4		
Y.M. DRAWN BY: 8/9/2023 DATE: 23-163 DRAWING No. SHEET 1 OF 7					



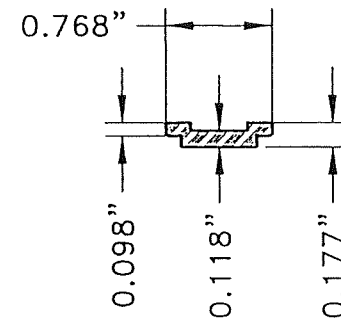
1

FRAME



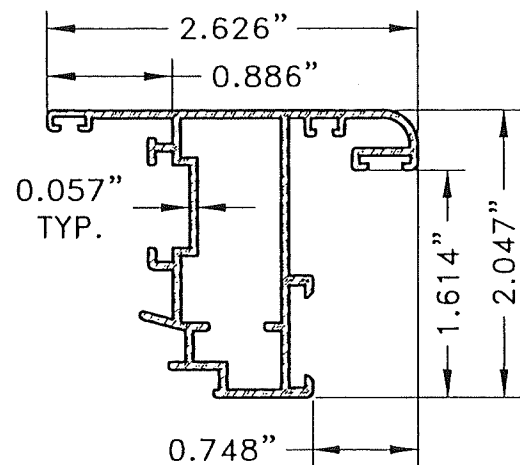
3

GLASS STOP



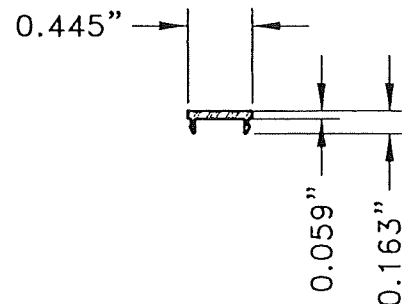
5

BAR



2

VENT FRAME

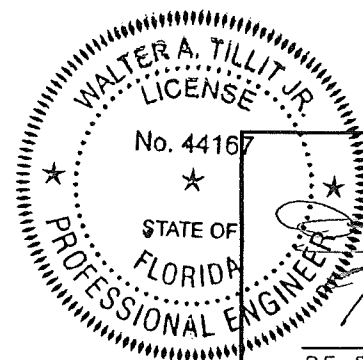


4

SNAP IN

**PRODUCT REVISED**  
as complying with the Florida  
Building Code  
NOA-No. 23-0823.09  
Expiration Date 10/25/2028  
By *[Signature]*  
Miami-Dade Product Control

**COMPONENTS**  
SCALE 3/4"=1"



P.E. SEAL/SIGNATURE/DATE

FLORIDA BUILDING CODE (HIGH VELOCITY HURRICANE ZONE)

©2023 TILTECO, INC.  
**TILTECO INC.**  
TILLIT TESTING & ENGINEERING COMPANY  
6355 N.W. 36th St., Ste. 305, VIRGINIA GARDENS, FL 33166  
Phone : (305)871-1530 ; Fax : (305)871-1531  
CA-0006719  
WALTER A. TILLIT Jr. P.E.  
FLORIDA Lic. # 44167

SERIES V-8000-45 ALUMINUM CASEMENT  
WINDOW

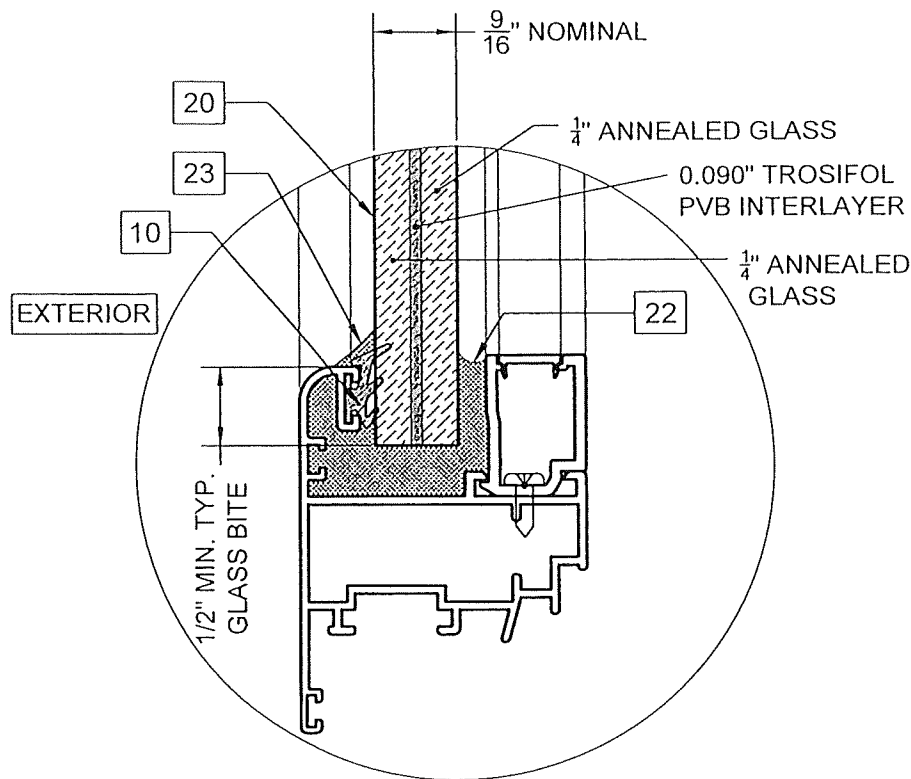
**GLASSTRA GROUP, LLC**  
PO BOX 146, Coláho, PR. 00963;  
Calle 4 ESO. A-7, Urb. Las Palmas  
Coláho PR. 00962

REV. NO	DESCRIPTION	DATE	REV. No	DESCRIPTION	DATE
1	OLD 20-140	8/9/2023	3		
2			4		


Y.M.  
DRAWN BY:  
8/9/2023  
DATE:  
**23-163**  
DRAWING No.  
SHEET 2 OF 7

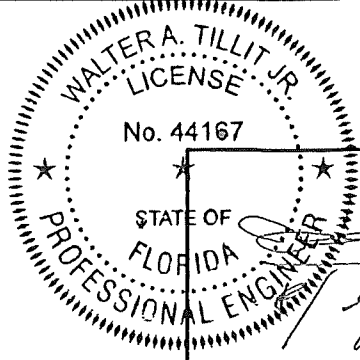


BILL OF MATERIAL			
ITEM	PART NO.	DESCRIPTION	MANF. / SUPPLIES / REMAKS
[1]	8015	FRAME	ALUMINUM ALLOY 6063-T5
[2]	8077	VENT FRAME	ALUMINUM ALLOY 6063-T5
[3]	16054	GLASS STOP	ALUMINUM ALLOY 6063-T5
[4]	15609	SILL RISE SNAP-IN	ALUMINUM ALLOY 6063-T5
[5]	7013	BAR	ALUMINUM ALLOY 6063-T5
[5B]	4549	BAR	ALUMINUM ALLOY 6063-T5
[6]	A497960B	E-312 GASKET	EPDM, BY GALIPAN
[7]	A497607B	400-D GASKET	EPDM, BY GALIPAN
[8]	A497580B	3553 GASKET	PVC, BY TECONCOM
[9]	W4222	FRICTION ADJUSTER ARM	SS W/ BRASS SHOE, BY REGENT
[10]	A497054B	T-503 GASKET	EPDM, BY TECONCOM
[11B]	A497647B	WEEP HOLE COVER	NYLON, BY GALIPAN
[12]	A400050B	FRAME CORNER LOCK	ZAMAK, BY MASTER
[13]	A497465B	SQUARE ALIGNMENT	PVC, BY GALIPAN
[14]	A400050B	VENT CORNER LOCK	ZAMAK, BY MASTER
[15]	A497800B	ALIGNMENT BRACKET	SS, BY GALIPAN
[16]	A497074	HINGES	ALUMINUM/POLIAMIDA+STEEL, BY MASTER
[17]	179-067 / 208-043	IMPACT CUSTODIAL LOCK + KEEPER	ALUMINUM BRONZE ALLOY, BY BRONZE CRAFT
[17A]	162-201 - 202 / 208-043	IMPACT CAM HANDLE + KEEPER	ALUMINUM BRONZE ALLOY, BY BRONZE CRAFT
[17B]	A400001 / A400002 / A400003	MULTIPOINT LOCK	BY GALIPAN
[17C]	A497999A	KEEPER	BY ROTO
[18]	—	1/4"Ø TAPCON ANCHOR	BY ITW/BUILDEX
[18A]	—	1/4"Ø TEK SCREW	BY ITW/BUILDEX
[18B]	—	#12 x 4" SS PAN HEAD WOOD SCREW	TEDDY DIAZ
[19]	—	PH # 8 X 3/4" ZP	TEDDY DIAZ
[20]	—	9/16" NOMINAL LAMINATED GLASS W/ 1/4" ANNEALED GLASS+0.090" TROSIFOL PVB INTERLAYER BY KURARAY + 1/4" ANNEALED GLASS	GLASS
[21]	—	795 PERIMETER SEALANT	DOW CORNING
[22]	—	995 STRUCTURAL SILICONE	DOW CORNING
[23]	—	ADDITIONAL 1199 EXTERIOR SILICONE GLAZING SEALANT TO [22]	DOW CORNING



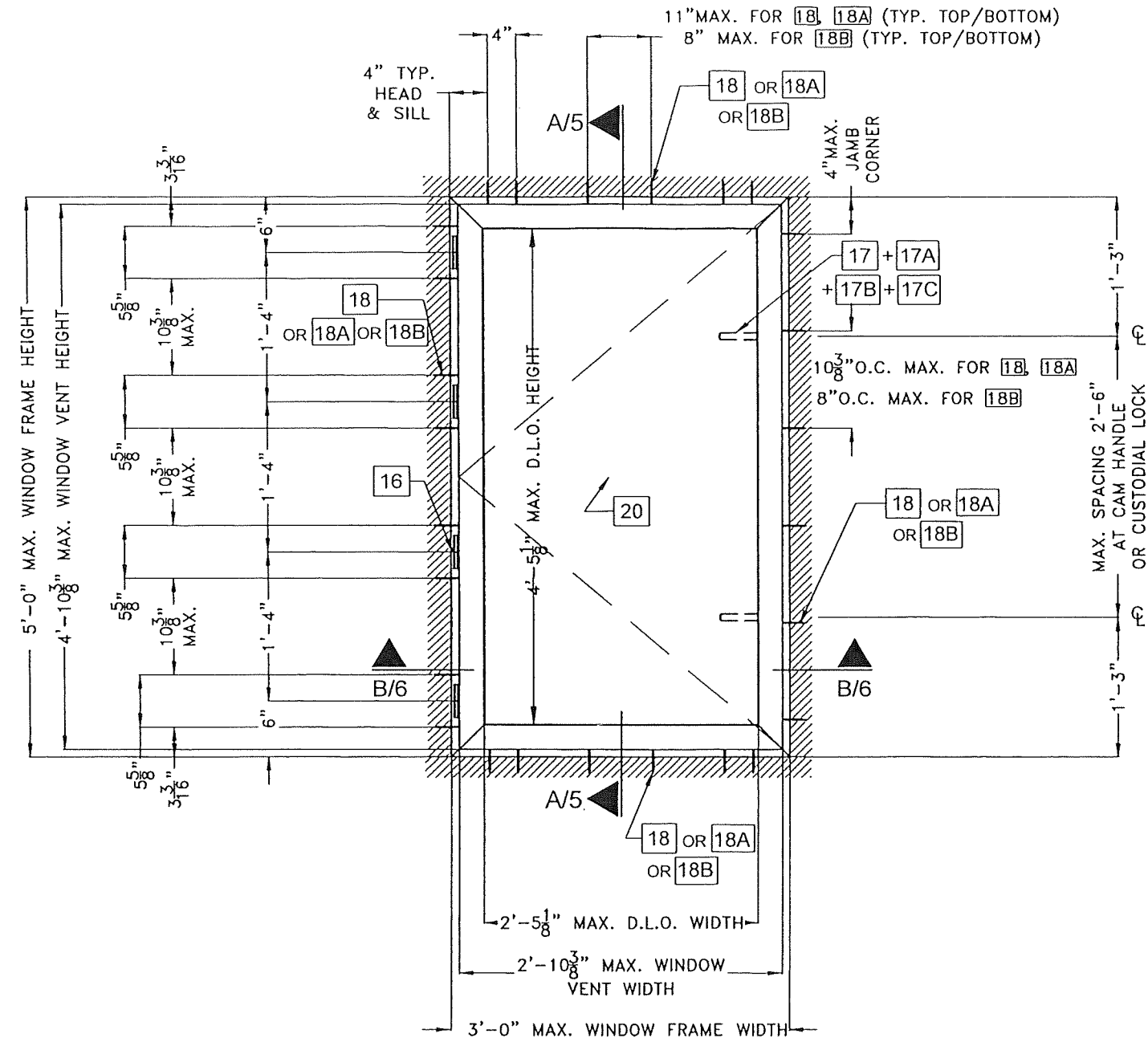
WET GLAZED  
GLASS [20]  
GLAZING DETAIL  
SCALE 3/4"=1"

**PRODUCT REVISED**  
as complying with the Florida  
Building Code  
NOA-No. 23-0823.09  
Expiration Date 10/25/2028  
By   
Miami-Dade Product Control



FLORIDA BUILDING CODE (HIGH VELOCITY HURRICANE ZONE)

©2023 TILTECO, INC.		SERIES V-8000-45 ALUMINUM CASEMENT WINDOW		Y.M. DRAWN BY:	
<b>TILTECO inc.</b> TILLIT TESTING & ENGINEERING COMPANY 6355 N.W. 36th. St., Ste. 305, VIRGINIA GARDENS, FL 33166 Phone : (305)871-1530 . Fax : (305)871-1531 CA-0006719 WALTER A. TILLIT Jr. P.E. FLORIDA Lic. # 44167		<b>GLASSTRA GROUP, LLC</b> PO BOX 146, Colón, PR. 00963; Calle 4 ESQ. A-7, Urb. Las Palmas Colón PR. 00962		8/9/2023 DATE:	
P.E. SEAL/SIGNATURE/DATE		23-163 DRAWING No.		SHEET 3 OF 7	
REV. NO	DESCRIPTION	DATE	REV. No	DESCRIPTION	DATE
1	OLD 20-140	8/9/2023	3		
2			4		



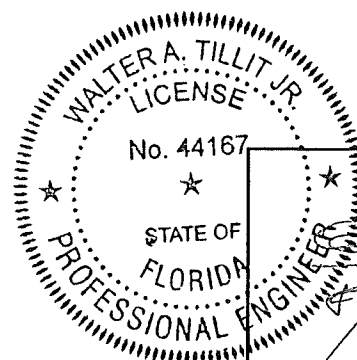
**TYPICAL EXTERIOR ELEVATION**

SCALE 3/4"=1'-0"

**PRODUCT REVISED**  
as complying with the Florida  
Building Code  
NOA-No. 23-0823.09

Expiration Date 10/25/2028

By *[Signature]*  
Miami-Dade Product Control



P.E. SEAL/SIGNATURE/DATE

FLORIDA BUILDING CODE (HIGH VELOCITY HURRICANE ZONE)

©2023 TILTECO, INC.



TILLIT TESTING & ENGINEERING COMPANY  
6355 N.W. 36th St., Ste. 305, VIRGINIA GARDENS, FL 33166  
Phone : (305)871-1530 . Fax : (305)871-1531  
CA-0006719  
WALTER A. TILLIT Jr. P.E.  
FLORIDA Lic. # 44167

SERIES V-8000-45 ALUMINUM CASEMENT  
WINDOW

GLASSTRA GROUP, LLC

PO BOX 146, Cataño, PR. 00963:  
Calle 4 ESQ. A-7, Urb. Las Palmas  
Cataño PR. 00962

Y.M.  
DRAWN BY:

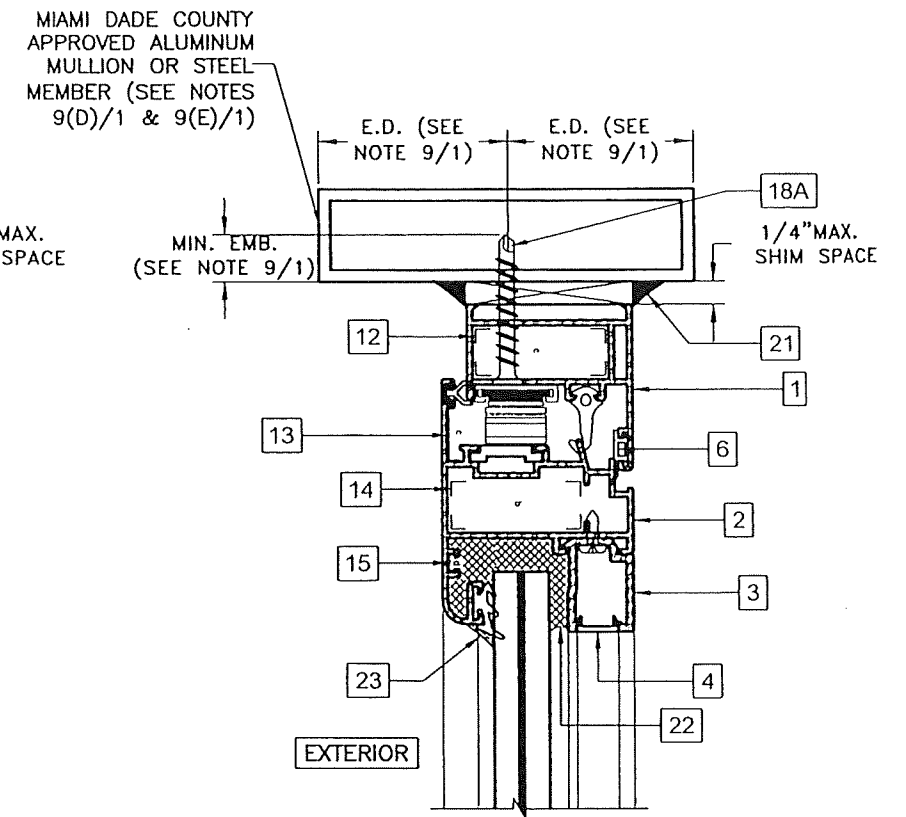
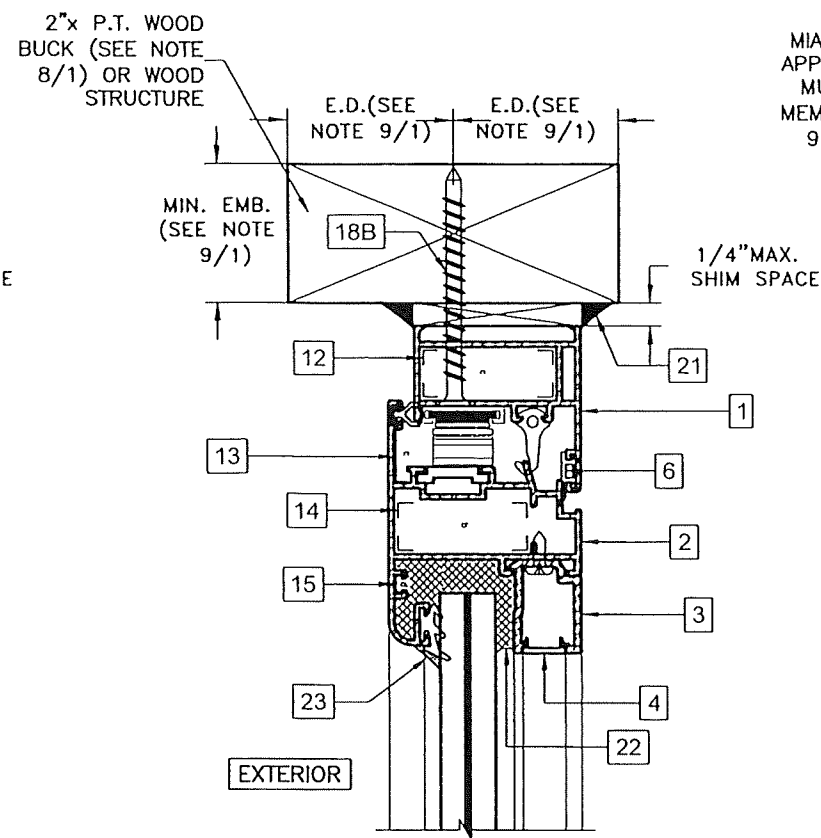
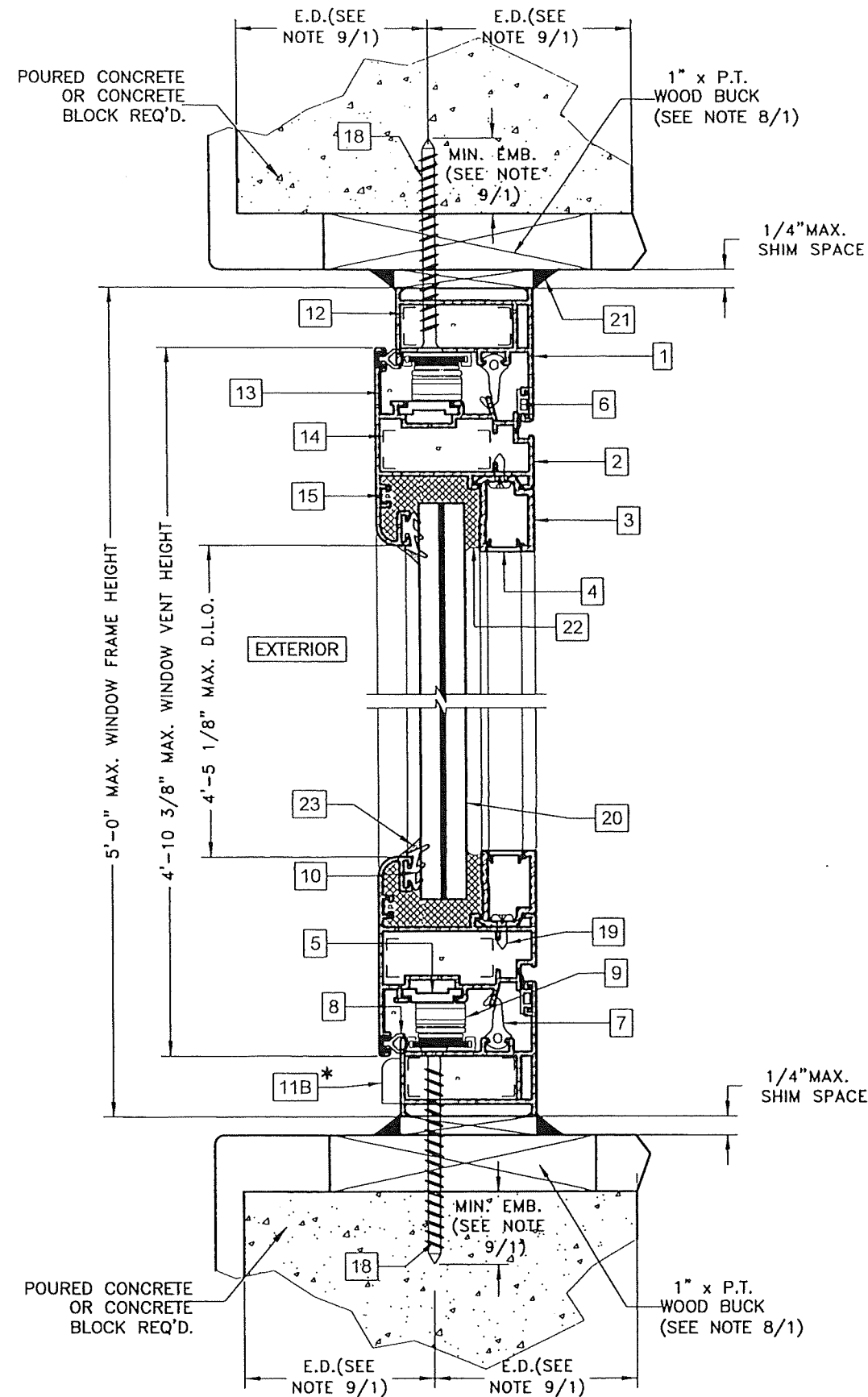
8/9/2023  
DATE:

23-163

DRAWING No.


REV. NO	DESCRIPTION	DATE	REV. No	DESCRIPTION	DATE
1	OLD 20-140	8/9/2023	3		
2			4		

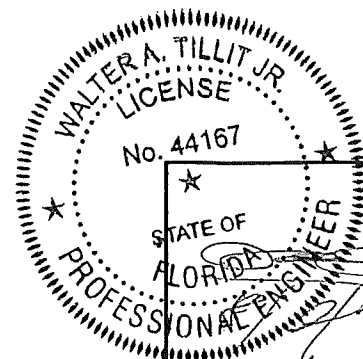
SHEET 4 OF 7



**SECTION A-A**  
SCALE 1/2"=1"

\* WEEP HOLES: (2) 1.110" LONG x 0.199" HIGH OBLONG SLOTS, EA. W/ ONE-HALF OF A 3/16" DRILL HOLE ALONG THE BOTTOM EDGE 0.700" FROM THE LEFT END SLOT IN THE EXTERIOR WALL OF THE FRAME SILL, 7 3/4" AND 28 15/16" O.C. FROM THE LEFT SIDE OF THE FRAME.

**PRODUCT REVISED**  
as complying with the Florida  
Building Code  
NOA-No. 23-0823.09  
Expiration Date 10/25/2028  
By   
Miami-Dade Product Control



FLORIDA BUILDING CODE (HIGH VELOCITY HURRICANE ZONE)

©2023 TILTECO, INC.  
**TILTECO inc.**  
TILLIT TESTING & ENGINEERING COMPANY  
6355 N.W. 36th St., Ste. 305, VIRGINIA GARDENS, FL 33166  
Phone : (305)871-1530 • Fax : (305)871-1531  
CA-0006719  
WALTER A. TILLIT Jr. P.E.  
FLORIDA Lic. # 44167

**SERIES V-8000-45 ALUMINUM CASEMENT WINDOW**

**GLASSTRA GROUP, LLC**  
PO BOX 146, Cataño, PR. 00963;  
Calle 4 ESQ. A-7, Urb. Las Palmas  
Cataño PR. 00962

Y.M.  
DRAWN BY:

8/9/2023  
DATE:

**23-163**

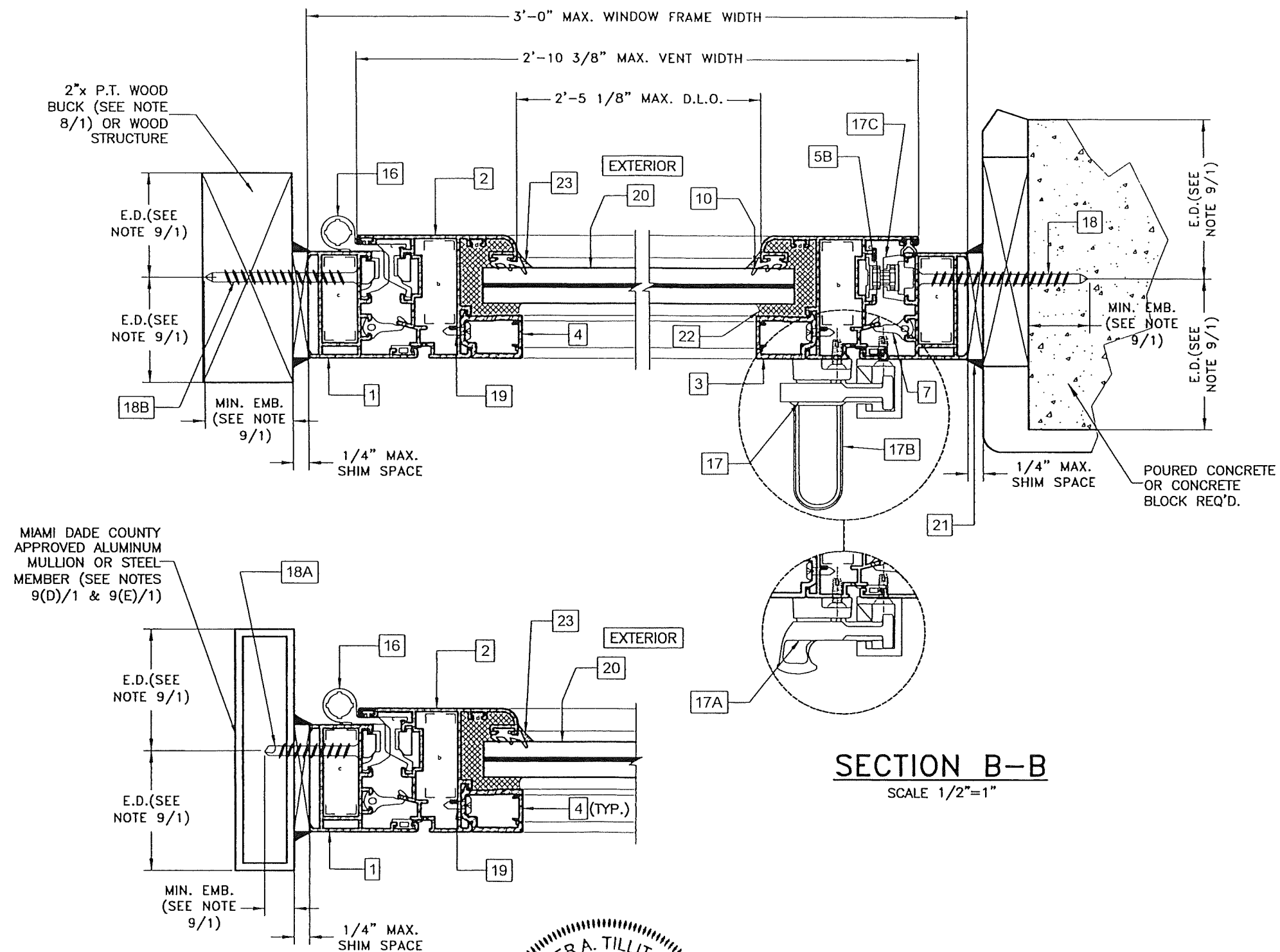
DRAWING No.

REV. NO	DESCRIPTION	DATE	REV. No	DESCRIPTION	DATE
1	OLD 20-140	8/9/2023	3		
2			4		

SHEET 5 OF 7

P.E. SEAL/SIGNATURE/DATE





**PRODUCT REVISED**  
as complying with the Florida  
Building Code  
NOA-No. 23-0823.09  
Expiration Date 10/25/2028  
By *[Signature]*  
Miami-Dade Product Control

WALTER A. TILLIT JR.  
LICENSE  
No. 44167  
STATE OF FLORIDA  
PROFESSIONAL ENGINEER  
P.E. SEAL/SIGNATURE/DATE

FLORIDA BUILDING CODE (HIGH VELOCITY HURRICANE ZONE)

©2023 TILTECO, INC.

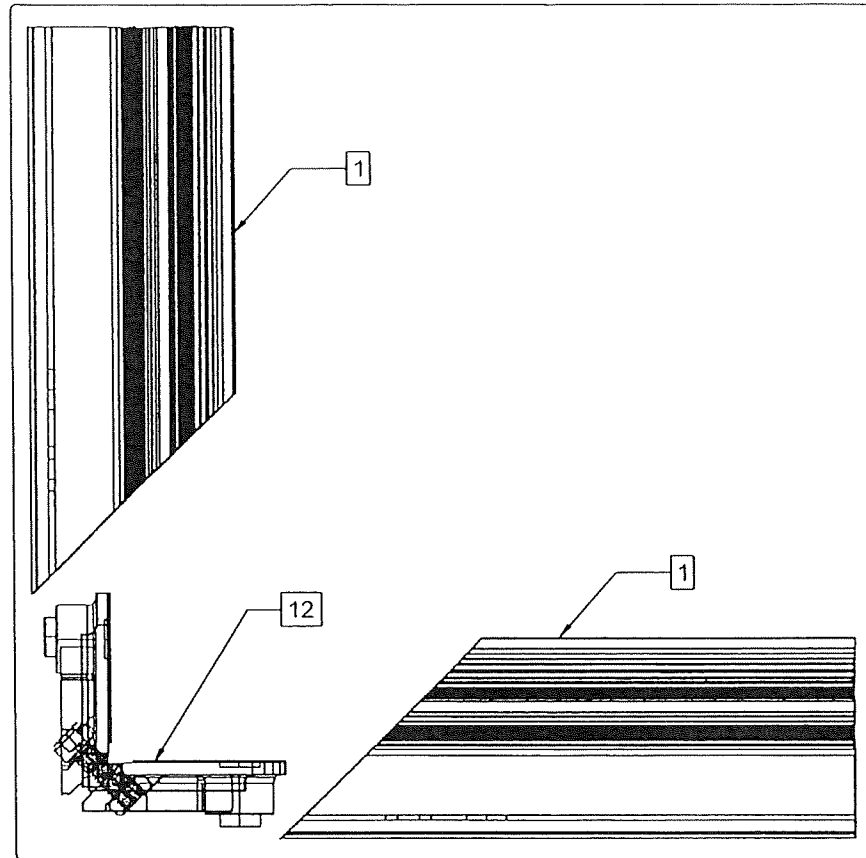
**TILTECO INC.**  
TILLIT TESTING & ENGINEERING COMPANY  
6355 N.W. 36th. St., Ste. 305, VIRGINIA GARDENS, FL 33166  
Phone : (305)871-1530 . Fax : (305)871-1531  
CA-0006719  
WALTER A. TILLIT Jr. P.E.  
FLORIDA Lic. # 44167

SERIES V-8000-45 ALUMINUM CASEMENT WINDOW

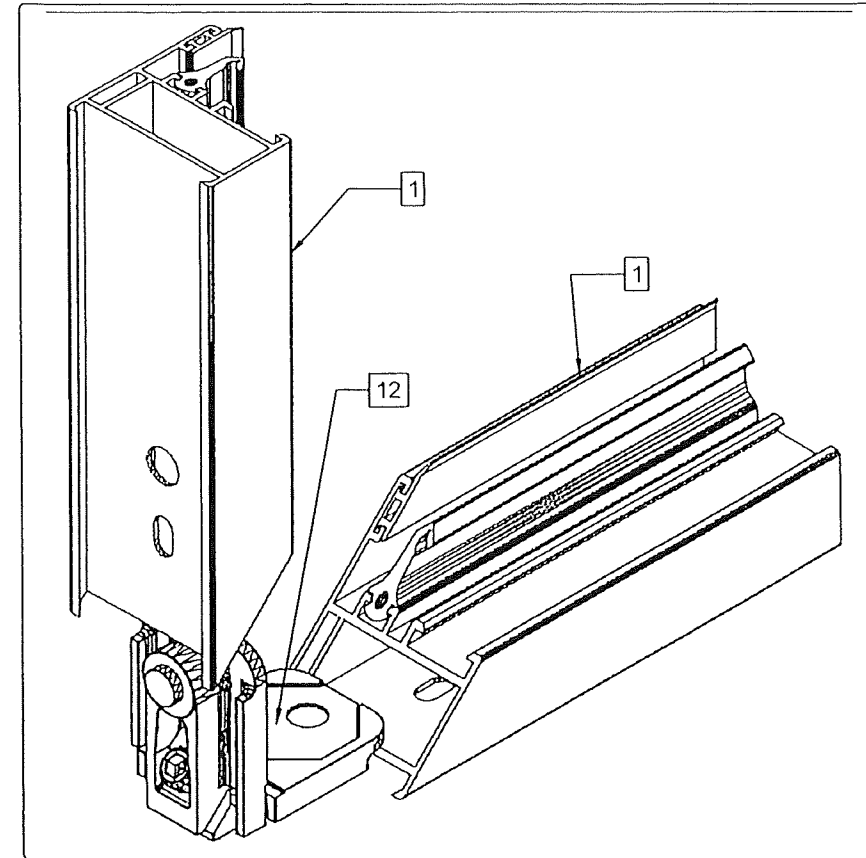
**GLASSTRA GROUP, LLC**  
PO BOX 146, Cataño, PR. 00963:  
Calle 4 ESQ. A-7, Urb. Las Palmas  
Cataño PR. 00962

REV. NO	DESCRIPTION	DATE	REV. No	DESCRIPTION	DATE
1	OLD 20-140	8/9/2023	3		
2			4		

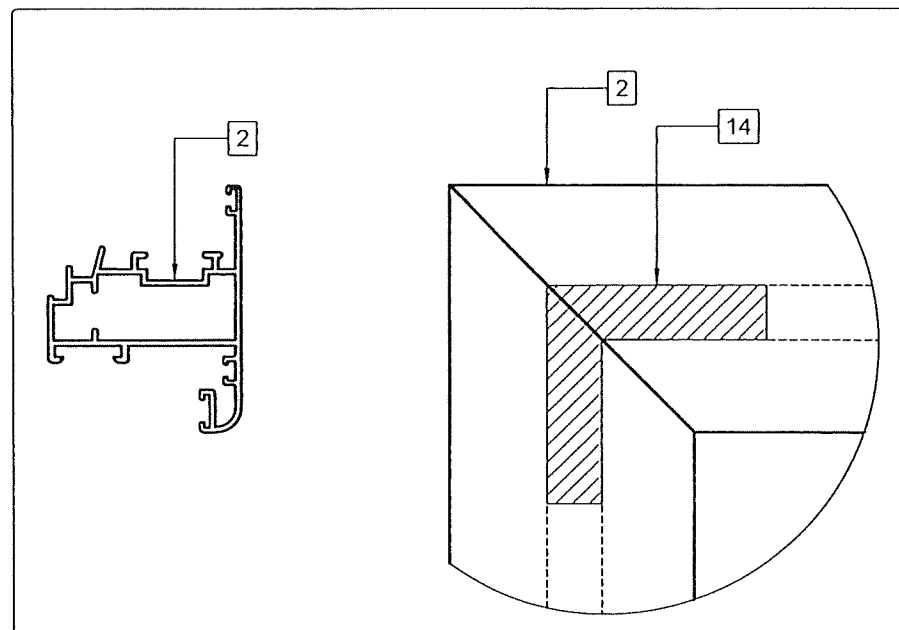
Y.M.  
DRAWN BY:  
8/9/2023  
DATE:  
**23-163**  
DRAWING No.  
SHEET 6 OF 7



FRAME ASSEMBLY DETAIL



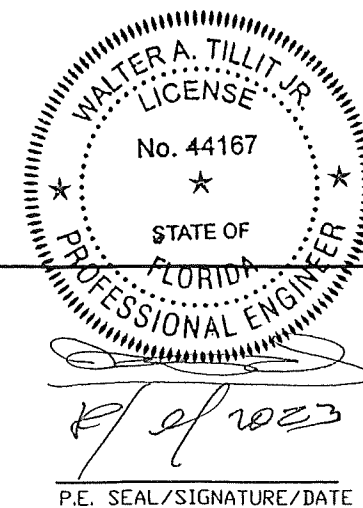
FRAME ASSEMBLY DETAIL



VENT FRAME ASSEMBLY DETAIL

## CORNER DETAILS

SCALE 1/2"=1"



FLORIDA BUILDING CODE (HIGH VELOCITY HURRICANE ZONE)

**PRODUCT REVISED**  
as complying with the Florida  
Building Code  
NOA-No. 23-0823.09

Expiration Date 10/25/2028

By   
Miami-Dade Product Control

©2023 TILTECO, INC.

**TILTECO INC.**  
TILLIT TESTING & ENGINEERING COMPANY  
6355 N.W. 36th St., Ste. 305, VIRGINIA GARDENS, FL 33166  
Phone : (305)871-1530 . Fax : (305)871-1531  
CA-0006719  
WALTER A. TILLIT Jr. P.E.  
FLORIDA Lic. # 44167

SERIES V-8000-45 ALUMINUM CASEMENT  
WINDOW

GLASSTRA GROUP, LLC

PO BOX 146, Cataño, PR. 00963:  
Calle 4 ESQ. A-7, Urb. Las Palmas  
Cataño PR. 00962

Y.M.  
DRAWN BY:

8/9/2023  
DATE:

23-163

DRAWING No.

SHEET 7 OF 7

REV. NO	DESCRIPTION	DATE	REV. No	DESCRIPTION	DATE
1	OLD 20-140	8/9/2023	3		
2			4		