



DEPARTMENT OF REGULATORY AND ECONOMIC RESOURCES (RER)
BOARD AND CODE ADMINISTRATION DIVISION

NOTICE OF ACCEPTANCE (NOA)

MIAMI-DADE COUNTY
PRODUCT CONTROL SECTION

11805 SW 26 Street, Room 208
Miami, Florida 33175-2474
T (786) 315-2590 F (786) 315-2599

www.miamidade.gov/economy

Daybar Industries Limited
50 West Drive
Brampton, Ontario, Canada L6T2J4

SCOPE:

This NOA is being issued under the applicable rules and regulations governing the use of construction materials. The documentation submitted has been reviewed and accepted by Miami-Dade County RER -Product Control Section to be used in Miami Dade County and other areas where allowed by the Authority Having Jurisdiction (AHJ).

This NOA shall not be valid after the expiration date stated below. The Miami-Dade County Product Control Section (In Miami Dade County) and/or the AHJ (in areas other than Miami Dade County) reserve the right to have this product or material tested for quality assurance purposes. If this product or material fails to perform in the accepted manner, the manufacturer will incur the expense of such testing and the AHJ may immediately revoke, modify, or suspend the use of such product or material within their jurisdiction. RER reserves the right to revoke this acceptance, if it is determined by Miami-Dade County Product Control Section that this product or material fails to meet the requirements of the applicable building code.

This product is approved as described herein and has been designed to comply with the Florida Building Code, including the High Velocity Hurricane Zone.

DESCRIPTION: Series "LS-18" Outswing Commercial Steel (Galvanneal or Stainless) Doors w/ 16 ga Frames & w/wo Panic Exit Device-LM Impact

APPROVAL DOCUMENT: Drawing No. **23-168** (former #**20-143**), titled "Double & Single LS18 Outswing Commercial Galvanneal or Stainless-Steel Doors w/ Series"AS"16 ga Steel frames", sheets 1 through 3, 3A and 4 thru 19 of 19 prepared by Tilteco Inc, dated 07/06/20 and last revised on 08/09/23 signed and sealed by Walter A. Tillit Jr., P. E., bearing the Miami-Dade County Product Control Revision stamp with the Notice of Acceptance number and expiration date by the Miami-Dade County Product Control Section.

MISSILE IMPACT RATING: Large and Small Missile Impact Resistant

Limitations:

1. See Design Pressure Ratings in sheets **2**, **3** and **3A**.
2. Lexan vision lites are limited per sheet **8**.
3. Min edge distance required for ITW 3/16" Tapcon (item #22) is 2-5/8" and for Power 5/16-18 caulk-in anchor is 3-3/4".

LABELING: Each unit shall bear a permanent label with the manufacturer's name or logo, Brampton, Ontario and series and following statement: "Miami-Dade County Product Control Approved", noted herein.

RENEWAL of this NOA shall be considered after a renewal application has been filed and there has been no change in the applicable building code negatively affecting the performance of this product.

TERMINATION of this NOA will occur after the expiration date or if there has been a revision or change in the materials, use, and/or manufacture of the product or process. Misuse of this NOA as an endorsement of any product, for sales, advertising or any other purposes shall automatically terminate this NOA. Failure to comply with any section of this NOA shall be cause for termination and removal of NOA.

ADVERTISEMENT: The NOA number preceded by the words Miami-Dade County, Florida, and followed by the expiration date may be displayed in advertising literature. If any portion of the NOA is displayed, then it shall be done in its entirety.

INSPECTION: A copy of this entire NOA shall be provided to the user by the manufacturer or its distributors and shall be available for inspection at the job site at the request of the Building Official.

This NOA **revises** NOA # **21-0203.07** and consists of this page 1 and evidence pages E-1, E-2, E-3 & E-4, as well as approval document mentioned above.

The submitted documentation was reviewed by **Ishaq I. Chanda, P.E.**



Ishaq I. Chanda

NOA No. 23-0823.12
Expiration Date: April 07, 2026
Approval Date: October 05, 2023
Page 1

NOTICE OF ACCEPTANCE: EVIDENCE SUBMITTED

1. Evidence submitted under previous approvals

A. DRAWINGS

1. Manufacturer's parts and sections drawings (see reference below).
2. Drawing No **15-050** (former **#12-010 Rev 1**), titled "Double & Single LS18 Outswing Commercial Galvanneal or Stainless-Steel Doors w/ Series"AS"16 ga Steel frames", sheets 1 through 3, 3A and 4 thru 19 of 19 prepared by Tilteco Inc, dtd 03/27/15, signed & sealed by Walter A. Tillit Jr., P. E.
Note: This revision is FBC 2014 with no change.

B. TESTS (submitted under file #16-0330.11)

1. Test reports on
 - 1) Air Infiltration Test, per FBC, TAS 202-94 (except sp# 7 louver)
 - 2) Uniform Static Air Pressure Test, Loading per FBC, TAS 202-94
 - 3) Water Resistant Test, per FBC, TAS 202-94 (except sp# 7 louver)
 - 4) Large Missile Impact Test per FBC, TAS 201-94
 - 5) Cyclic Wind Pressure Loading per FBC, TAS 203-94
 - 6) Forced Entry Test, per FBC 2411.3.2.1 (b) and TAS 202-94

Along with marked-up drawings and installation diagram of double outswing steel door, prepared by Certified Testing Laboratories, Test Report No. **CTLA 3079W** dated 02/20/16, signed and sealed by Ramesh Patel, P.E.

Along with marked-up drawings and installation diagram of outswing steel door, prepared by Hurricane Testing Laboratory, LLC, Test Report No. **HTL-0279-0719-03** dated 07-16 thru 08-18-2003 for specimen 1, 2, 3, 7 & 7EMB, signed and sealed by Vinu J. Abraham, P.E. Submitted under files **#15-0427.02/#12-0216.08/# 10-0217.05/#09-0323.21**) Original test conducted per SFBC PA 201, 202 and 203-94

Note: The above test report has been revised with addendum letters dated Dec 16, 2004 and a revised marked-up drawing issued on 12-15-2004 by Fenestration testing lab, signed and sealed by Vinu J. Abraham, P.E.

C. CALCULATIONS (submitted under file ##15-0427.02)

1. Anchor Verification Calculations, complying w/ FBC-2014, dated 12-02-15, prepared by Tilteco, Inc., signed and sealed by Walter A. Tillit Jr., P. E.

D. QUALITY ASSURANCE

1. Miami Dade Department of Regulatory and Economic Resources (RER).

E. MATERIAL CERTIFICATIONS

1. Tensile Test report No. Job#0279-0719-03, dated March 02, 2004, issued by Q C Metallurgical, Inc, per ASTM E-8, signed & sealed by Frank E. Grate, P.E. (transferred from file **# 10-0217.05**)
2. Notice of Acceptance No. **11-0920.07** issued to Dyplast Product, LLC (Former Apache Products Company) for "EPS-Expanded Polystyrene Insulation", expiring on 01/11/17.
3. Notice of Acceptance No. **15-0915.08**, issued to SABIC Innovative Plastic US, LLC (Former G.E. Plastic) for "Lexan Sheet Product", expiring on 07/17/2018.

F. STATEMENTS

1. Statement letter of compliance to FBC-2014, dated APR 07, 2015, issued by Tilteco Inc., signed and sealed by Walter A. Tillit Jr., P. E. (submitted under file **##15-0427.02**)
2. Facsimile correspondence dtd Nov. 14, 2005 from DAYBAR, requesting substitution of Stainless Steel in lieu of Galvanneal Steel & BCCO response dated 11/23/05.

Ishaq I. Chanda

Ishaq I. Chanda, P.E.
Product Control Unit Supervisor
NOA No. 23-0823.12
Expiration Date: April 07, 2026
Approval Date: October 05, 2023

NOTICE OF ACCEPTANCE: EVIDENCE SUBMITTED

G. OTHER

1. This NOA **renews** NOA #**15-0427.02**, expiring 04/07/21.
2. Verification test proposal approved by RER dated 04/07/15.
3. Manufacturer/Distributor agreement between Daybar Industries Limited, Canada and Daybar Southeast Manufacturing, N. Key Largo, USA, signed by Mark Dodson and David Ball, respective officials of the companies.

2. Evidence submitted under previous approval

A. DRAWINGS

1. Drawing No **17-086 Rev1** (former #**15-050 Rev 1**), titled “Double & Single LS18 Outswing Commercial Galvanneal or Stainless-Steel Doors w/ Series”AS”16 ga Steel frames”, sheets 1 through 3, 3A and 4 thru 19 of 19 prepared by Tilteco Inc, dated 07/21/17, signed and sealed by Walter A. Tillit Jr., P. E.

Note: This revision consists of general notes#1, 4, 5 and 12 changes, in compliance of FBC 2017 edition.

B. TESTS

1. None.

C. CALCULATIONS

1. None.

D. QUALITY ASSURANCE

1. Miami Dade Department of Regulatory and Economic Resources (RER).

E. MATERIAL CERTIFICATIONS

1. Notice of Acceptance No. **16-1129.05** issued to Dyplast Product, LLC (Former Apache Products Company) for “E and R Board Expanded Polystyrene Rigid Foam Insulation”, expiring on 01/11/22.

F. STATEMENTS

1. Statement letters of conformance to FBC 2017(**6th** Edition), prepared by Tilteco Inc., dated 07/21/17, signed & sealed by Walter A. Tillit Jr., P. E.
2. Statement letter of general notes revision only, in compliance with FBC 2017 edition, prepared by Tilteco Inc., dated 07/21/17, signed & sealed by Walter A. Tillit Jr., P. E.

G. OTHER

1. This NOA **revises** NOA # **17-0829.08**, expiring 04/07/2021.

Ishaq I. Chanda

Ishaq I. Chanda, P.E.
Product Control Unit Supervisor
NOA No. 23-0823.12
Expiration Date: April 07, 2026
Approval Date: October 05, 2023

NOTICE OF ACCEPTANCE: EVIDENCE SUBMITTED

3. Evidence submitted under previous approval

A. DRAWINGS

1. Drawing No. **20-143** (former #**17-086 Rev 1**), titled “Double & Single LS18 Outswing Commercial Galvanneal or Stainless-Steel Doors w/ Series”AS”16 ga Steel frames”, sheets 1 through 3, 3A and 4 thru 19 of 19 prepared by Tilteco Inc, dated 07/06/20, signed and sealed by Walter A. Tillit Jr., P. E.

B. TESTS

1. None

C. CALCULATIONS

1. None

D. QUALITY ASSURANCE

1. Miami Dade Department of Regulatory and Economic Resources (RER).

E. MATERIAL CERTIFICATIONS

1. Notice of Acceptance No. **16-1129.05** issued to Dyplast Product, LLC (Former Apache Products Company) for “E and R Board Expanded Polystyrene Rigid Foam Insulation”, expiring on 01/11/22.

F. STATEMENTS

1. Statement letters of renewal without change and conformance to FBC 2020 (**7th** Edition), prepared by Tilteco Inc., dated 01/21/21, signed & sealed by Walter A. Tillit Jr., P.E.
2. Noa Renewal request without change, dated 01/25/21, issued by Daybar Industries, signed by Mark Dodson, President.
3. Statement letters of conformance to FBC 2020 (**7th** Edition), prepared by Tilteco Inc., dated 07/06/20, signed & sealed by Walter A. Tillit Jr., P.E. (submitted under file # **20-0813.11**).

G. OTHER

1. This NOA **revises NOA # 20-0813.11**, expiring 04/07/2026.

Ishaq I. Chanda

Ishaq I. Chanda, P.E.
Product Control Unit Supervisor
NOA No. 23-0823.12
Expiration Date: April 07, 2026
Approval Date: October 05, 2023

NOTICE OF ACCEPTANCE: EVIDENCE SUBMITTED

4. New Evidence submitted

A. DRAWINGS

1. Drawing No. **23-168** (former #**20-143**), titled “Double & Single LS18 Outswing Commercial Galvanneal or Stainless-Steel Doors w/ Series”AS”16 ga Steel frames”, sheets 1 through 3, 3A and 4 thru 19 of 19 prepared by Tilteco Inc, dated 07/06/20 and last revised on 08/09/23 signed and sealed by Walter A. Tillit Jr., P. E.

B. TESTS

1. None

C. CALCULATIONS

1. None

D. QUALITY ASSURANCE

1. Miami Dade Department of Regulatory and Economic Resources (RER).

E. MATERIAL CERTIFICATIONS

1. Notice of Acceptance No. **22-0627.04** issued to King Insulation, LLC (Former Dyplast Product, LLC) for “E and R Board Expanded Polystyrene Rigid Foam Insulation”, expiring on 01/11/27.

F. STATEMENTS

1. Statement letters of conformance to FBC 2023 (**8th** Edition), prepared by Tilteco Inc., dated 08/09/23, signed & sealed by Walter A. Tillit Jr., P.E
2. Statement letters of renewal without change and conformance to FBC 2020 (**7th** Edition), prepared by Tilteco Inc., dated 01/21/21, signed & sealed by Walter A. Tillit Jr., P.E. (submitted under file # **21-0203.07**)

G. OTHER

1. This NOA revises NOA # **21-0203.07** and updates to FBC 2023, expiring 04/07/2026.

Ishaq I. Chanda

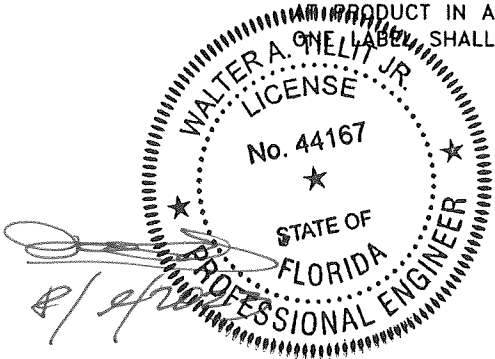
Ishaq I. Chanda, P.E.
Product Control Unit Supervisor
NOA No. 23-0823.12
Expiration Date: April 07, 2026
Approval Date: October 05, 2023

SHEETS CONTENT:

- SHEET #1 INDEX, COVER SHEET & GENERAL NOTES
SHEET #2 ASSEMBLY ELEVATIONS No 1, 2, 3.
SHEET #3 ASSEMBLY ELEVATIONS No 7, 7-EMB.
SHEET #3A MAX. DESIGN PRESSURE RATING (psf.) SCHEDULE.
SHEET #4 OPTIONAL EMBOSSED DOOR SHEET CONFIGURATIONS.
SHEET #5 HORIZONTAL SECTIONS A-A & B-B.
SHEET #6 HORIZONTAL SECTIONS C-C & C'-C'.
SHEET #7 VERTICAL SECTIONS D-D, E, F, G, H, I AND HORIZONTAL SECTION J-J
SHEET #8 DAYBAR & AIR LOUVERS VISION LITE DETAILS.
SHEET #9 FRAME SECTIONS, & REINFORCINGS DETAILS AND THRESHOLD DETAIL
SHEET #10 TYPICAL DOOR SECTION, "Z" ASTRAGAL & ASA STRIKE REINFORCING
SHEET #11 MULLION INSTALLATION DETAILS.
SHEET #12 SURFACE BOLT INSTALLATION AND DETAILS.
SHEET #13 DOOR TOP AND BOTTOM TYPICAL END CHANNEL DETAIL.
DOOR SURFACE CLOSER REINFORCEMENT DETAIL.
DOOR SURFACE CLOSER AND END CHANNEL ASSEMBLY.
SHEET #14 DOOR SNAP IN TOP CAP DETAILS.
SHEET #15 HINGE BAR REINFORCING FOR DOOR.
ANSI #A115.1 #86 MORTISE LOCK/RIM PANIC REINFORCING
DOOR SURFACE BOLT REINFORCING DETAIL.
SHEET #16 #161 CYLINDRICAL LOCK AND DEAD BOLT REINFORCEMENT DETAIL.
SHEET #17 ANCHOR DETAILS.
SHEET #18 ANCHOR SCHEDULE.
WIRE ANCHOR DETAIL.
2 PIECE COMBINATION STUD ANCHOR DETAIL.
EMA BUTTERFLY ANCHOR DETAIL.
SHEET #19 BILL OF MATERIALS.

PRODUCT REVISED
as complying with the Florida
Building Code
NOA-No. 23-0823.12
Expiration Date 04/07/2026
By Ishag I. Chanda
Miami-Dade Product Control

THIS DRAWING SHALL ONLY BE USED TO
OBTAIN PERMITS IN THE STATE OF FLORIDA



GENERAL NOTES AND SPECIFICATIONS:

1. DOUBLE & SINGLE SERIES LS18 FLUSH/EMBOSSED OUTSWING COMMERCIAL STEEL DOOR W/SERIES "AS" FRAME, SHOWN ON THIS PRODUCT APPROVAL DOCUMENT (P.A.D.) HAS BEEN VERIFIED FOR CODE COMPLIANCE IN ACCORDANCE WITH THE 2020 (7th EDITION) AND 2023 (8th EDITION) OF THE FLORIDA BUILDING CODE. DOOR MAY BE INSTALLED AT HIGH VELOCITY HURRICANE ZONES.

DESIGN WIND LOADS SHALL BE DETERMINED AS PER SECTIONS 1620 OF THE ABOVE MENTIONED CODE, USING ASCE 7-16 (FBC 2020) AND ASCE 7-22 (FBC 2023) SHALL NOT EXCEED THE MAXIMUM (A.S.D.) DESIGN PRESSURE RATINGS INDICATED ON SHEETS 2, 3 & 3A.

IN ORDER TO VERIFY THE ABOVE CONDITION, ULTIMATE DESIGN WIND LOADS DETERMINED PER ASCE 7-16 & ASCE 7-22 SHALL BE FIRST REDUCED TO A.S.D. DESIGN WIND LOADS BY MULTIPLYING THEM BY 0.6 IN ORDER TO COMPARE THESE W/ MAX. (A.S.D.) DESIGN PRESSURE RATINGS INDICATED ON SHEETS 2, 3 & 3A.

THIS DOOR'S ADEQUACY FOR WIND AND IMPACT LOAD HAS BEEN VERIFIED IN ACCORDANCE WITH SECTION 1626 OF THE ABOVE MENTIONED CODE AS PER PROTOCOLS TAS-201, TAS-202, TAS-203 AS PER HTL LAB REPORT #0279-0719-03 AND AS PER SUBMITTED STRUCTURAL CALCULATIONS, PERFORMED AS PER SECTION 1616 OF THE FLORIDA BUILDING CODE.

2. ALL COMPONENTS SHALL BE AS SPECIFIED ON APPLICABLE DETAIL SHEETS AND AT BILL OF MATERIALS (SHEET 19) OF THIS DRAWING.

3. COMPLIANCE OF EGRESS / ESCAPE REQUIREMENTS OF THESE DOORS PER FBC TO BE DETERMINED BY BUILDING OFFICIALS ON A CASE-BY-CASE BASIS.

4. ALL SCREWS USED FOR ASSEMBLY CONNECTIONS (METAL TO METAL) TO BE STAINLESS STEEL 304 OR 316 AISI SERIES OR CORROSION RESISTANT COATED CARBON STEEL AS PER DIN 50018 WITH 50 ksi YIELD POINT AND 90 ksi TENSILE STRENGTH & SHALL COMPLY W/ FLORIDA BUILDING CODE SECTION 2411.3.3.4.

5. ALL WELDING TO CONFORM W/AMERICAN WELDING SOCIETY A.W.S. D.1.3 AND D-19.0 REGULATIONS WITH E60XX ELECTRODES, FOR GALVANNEAL MATERIAL, AND W/AMERICAN WELDING SOCIETY A.W.S. D.1.6 REGULATIONS W/ E-308 ELECTRODES (FU=80k.s.i.) FOR STAINLESS STEEL MATERIAL

6. ALL ANCHORS FOR DOOR FRAME CONNECTIONS TO EXISTING STRUCTURE SHALL BE AS SPECIFIED ON SHEET 17 OF THIS DRAWING. MAXIMUM ANCHORS SPACINGS SHALL BE AS PER SCHEDULE ON SHEET 18 AND ELEVATIONS ON SHEETS 2 & 3 OF THIS DRAWING. SEE SHEET 2, 3 & 7 FOR THRESHOLD ANCHORS, AND SHEET 11 FOR MULLION ANCHORS.

7. PROVIDE MAX. LOAD BEARING SHIM SPACE AS INDICATED ON SHEETS 5, 6, 7 & 17 OF 19.

8. THIS DOOR WILL NOT REQUIRE A HURRICANE PROTECTION DEVICE.

9. THESE DOOR ASSEMBLIES ARE APPROVED FOR WATER AND AIR INFILTRATION AS PER TESTING INDICATED ON NOTE 1, AND SHALL BE LIMITED TO DESIGN PRESSURE RATINGS INDICATED ON SHEETS 2, 3 & 3A.

10. PROVIDE SPECIFIED SEALANT AT ALL DOOR FRAME, THRESHOLD AND VISION LITE COMPONENTS INDICATED ON THIS DRAWING.

11. (a) THIS PRODUCT APPROVAL DOCUMENT (P.A.D.) PREPARED BY THIS ENGINEER IS GENERIC AND DOES NOT PROVIDE INFORMATION FOR A SITE SPECIFIC PROJECT; i.e. WHERE THE SITE CONDITIONS DEVIATE FROM THE P.A.D.

(b) CONTRACTOR TO BE RESPONSIBLE FOR THE SELECTION, PURCHASE AND INSTALLATION INCLUDING LIFE SAFETY OF THIS PRODUCT, BASED ON THIS P.A.D., PROVIDED HE/SHE DOES NOT DEVIATE FROM THE CONDITIONS DETAILED ON THIS DOCUMENT. CONSTRUCTION SAFETY AT SITE IS THE CONTRACTOR'S RESPONSIBILITY.

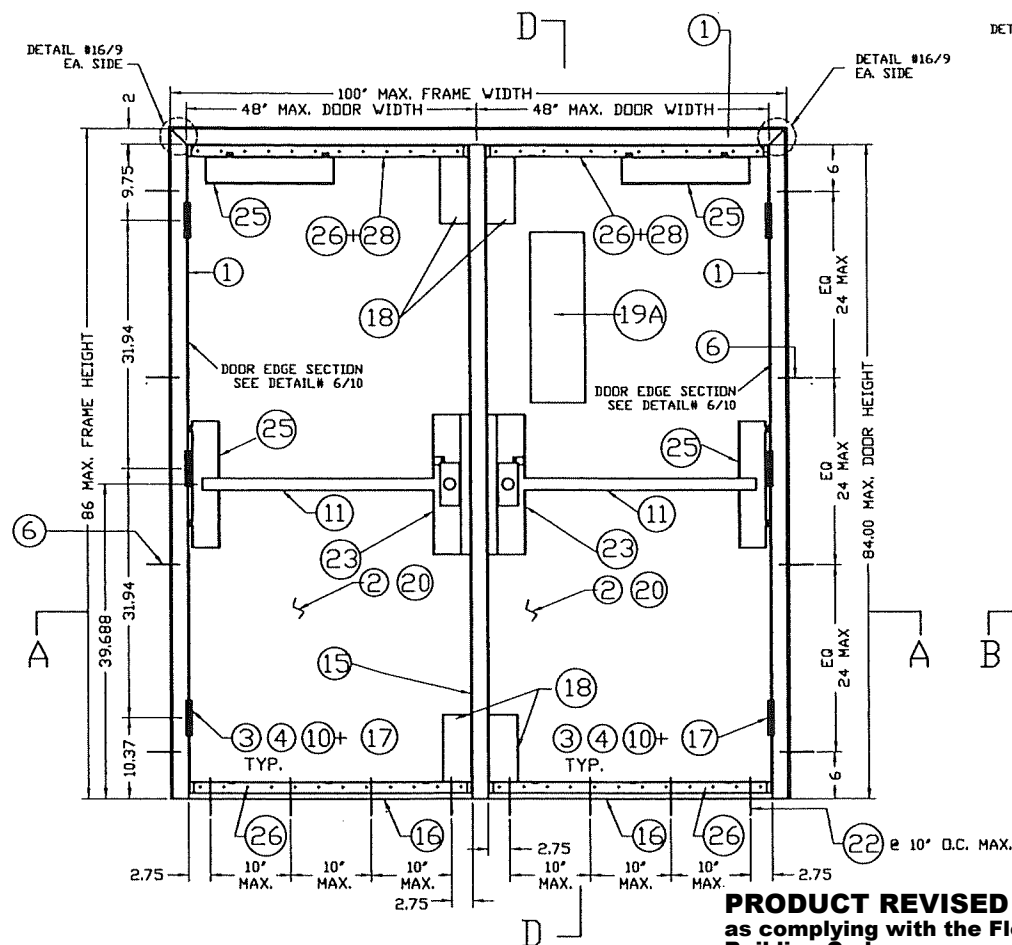
(c) THIS PRODUCT APPROVAL DOCUMENT (P.A.D.) WILL BE CONSIDERED INVALID IF ALTERED BY ANY MEANS.

(d) ORIGINAL P.A.D SHALL BEAR THE DATE, SEAL AND SIGNATURE OF THE PROFESSIONAL ENGINEER OF RECORD THAT PREPARED IT.

12. PRODUCT MANUFACTURER'S LABEL SHALL BE LOCATED ON A READILY VISIBLE LOCATION
PRODUCT IN ACCORDANCE WITH SECTION 1709.5 OF THE FLORIDA BUILDING CODE.
ONE LABEL SHALL BE PLACED FOR EVERY OPENING.

FLORIDA BUILDING CODE (HIGH VELOCITY HURRICANE ZONE)

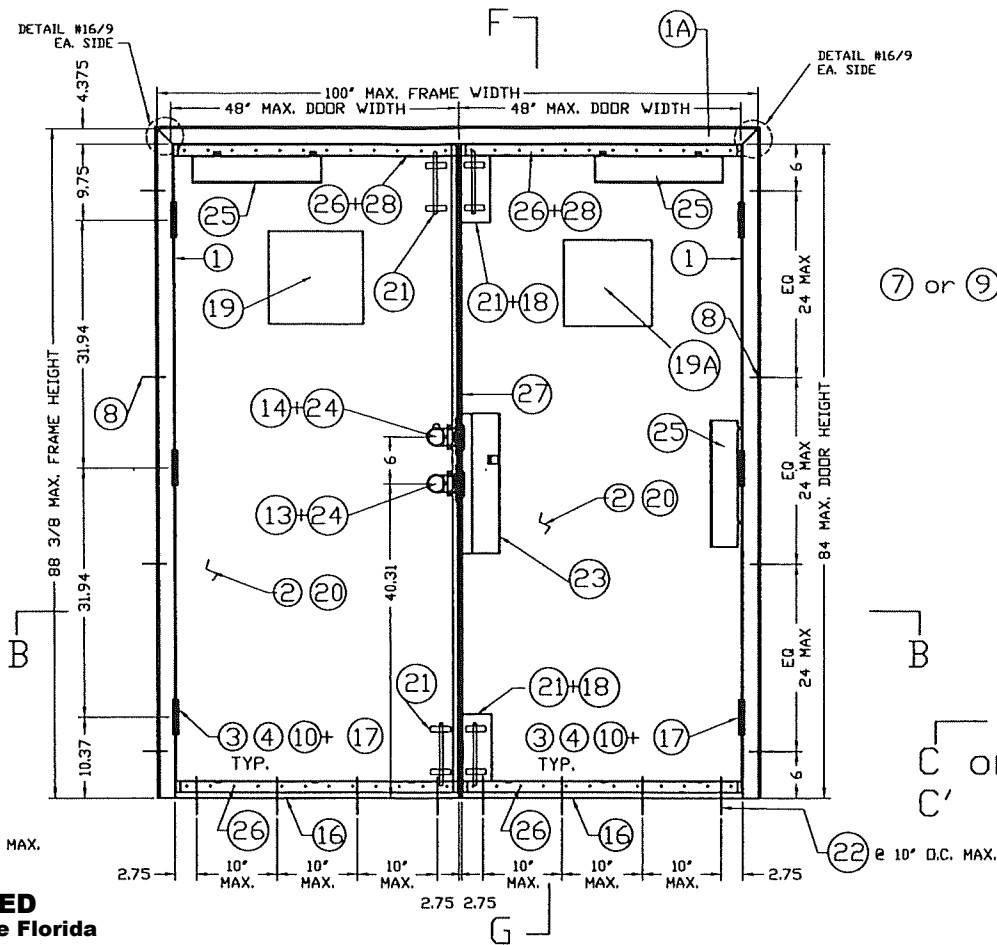
©2023 TILTECO, INC.		DOUBLE & SINGLE SERIES LS18 OUTSWING COMMERCIAL GALVANNEAL OR STAINLESS STEEL DOOR W/ SERIES "AS" 16 GAGE GALVANNEAL OR STAINLESS STEEL FRAME FLUSH, EMBOSSED & GLAZED ASSEMBLIES - L.M.		DRAWN BY: Y.M.	
TILTECO inc.		DAYBAR INDUSTRIES LTD		8/9/2023 DATE	
TILLIT TESTING & ENGINEERING COMPANY 6355N.W. 36th. St. Ste. 305, VIRGINIA GARDENS, FL 33166 Phone : (305)871-1530 . Fax : (305)871-1531 e-mail: tilteco@aol.com CA-0006719 WALTER A. TILLIT Jr. P.E. FLORIDA Lic. # 44167		50 WEST DRIVE, BRAMPTON, ON CANADA, L6T 2J4 TEL: 905 625-8000 FAX: 905 625-4204		23-168 DRAWING No	
REV. No	DESCRIPTION	DATE	REV. No	DESCRIPTION	DATE
1	OLD 20-143	8/9/2023	3		
2			4		
					SHEET 1 OF 19



ASSEMBLY #1, * INTERIOR ELEVATION
PAIR OF OUTSWING DOORS
WALL CONDITION: MASONRY
ANCHORS: WIRE (6) DETAIL #21
VON DUPRIN 98/99L TRIM SERIES RIM EXIT (11)
AT BOTH DOORS

4 1/2" HAGER MODEL #BB1168 STEEL BUTT HINGE AND
4 1/2" STANLEY MODEL #FB168 STEEL BUTT HINGE (10)
VON DUPRIN 9954 REMOVABLE MULLION (15)
(FOR DOUBLE DOOR ONLY)
DOOR CORE ITEM (20) EXPANDED POLYSTYRENE OR HONEYCOMB
PAPER FULL FLUSH
VISION LITE MODEL VLF-EZ-IG (19A) BY AIR LOUVERS, INC.,
W/ 1/2" LEXAN GLAZING SET IN DOW CORNING #995
STRUCTURAL SILICONE W/ 7" x 22" DOOR CUT-OUT
NARROWLITE (5"x20" D.L.O.)

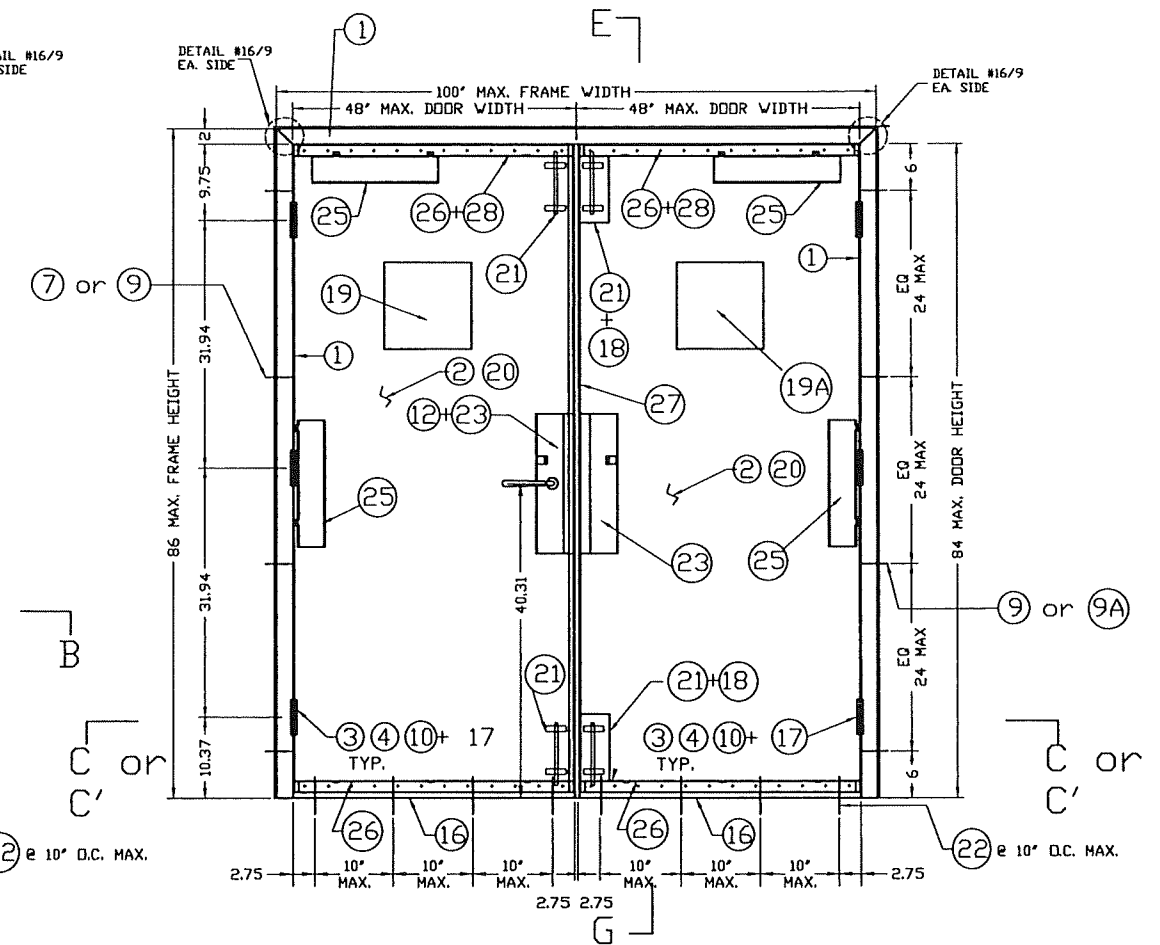
MAX. A.S.D. DESIGN PRESSURE RATINGS (OUTSWING SINGLE & DOUBLE DOORS W/ VON DUPRIN RIM PANIC DEVICES)	
POSITIVE	+70 PSF
NEGATIVE	-65 PSF



ASSEMBLY #2, * INTERIOR ELEVATION
PAIR OF OUTSWING DOORS
WALL CONDITION: MASONRY

ANCHORS: EMA EXISTING MASONRY ANCHOR DET. #22
SERIES CYLINDRICAL LOCK (13) +SCH-B SERIES DEAD BOLT (14)
HAGER #275D SURFACE BOLTS (21) (TOP & BOTTOM) AT
TWO DOORS
4 1/2" HAGER MODEL #BB1279 STEEL BUTT HINGE AND
4 1/2" STANLEY MODEL #FB179 STEEL BUTT HINGE (10)
"Z" ASTRAGAL (27) W/ ASA STRIKE
FOR CYLINDRICAL LOCK AND DEAD BOLT STRIKE
DOOR CORE (20) EXPANDED POLYSTYRENE OR HONEYCOMB PAPER
FULL FLUSH
VISION LITE MODEL VLF-EZ-IG (19A) BY AIR LOUVERS, INC.,
W/ 1/2" LEXAN GLAZING SET IN DOW CORNING #995
STRUCTURAL SILICONE W/ 12" x 12" DOOR CUT-OUT
NARROWLITE (10"x10" D.L.O.), AND DAYBAR VISION LITE (19)
WITH 3/8" LEXAN GLAZING SET IN DOW CORNING #995
STRUCTURAL SILICONE W/ 11 1/8" x 11 1/8" DOOR
CUT-OUT NARROWLITE (9 3/4"x9 3/4" D.L.O.)

MAX. A.S.D. DESIGN PRESSURE RATINGS (OUTSWING SINGLE DOOR W/ TWO SURFACE BOLTS & DOUBLE DOORS W/ FOUR SURFACE BOLTS)	
POSITIVE	+65 PSF
NEGATIVE	-65 PSF



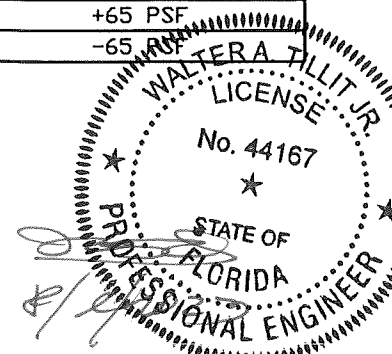
ASSEMBLY #3, * INTERIOR ELEVATION
PAIR OF OUTSWING DOORS
WALL CONDITION: WOOD STUDS

ANCHORS: 2 PIECE COMBINATION STUD ANCHOR (7) DETAIL #20
OR CARRIAGE BOLT (9A) W/ EMA (DET. #22A) OR WOOD SCREW
LAG BOLT (9) W/ EMA (DET. #22B)
SCH-L 9000 SERIES MORTISE LOCK (12) (W/ DEAD BOLT INCLUDED)
HAGER #275D SURFACE BOLTS (21) (TOP & BOTTOM) AT TWO DOORS
4 1/2" HAGER MODEL #BB1279 STEEL BUTT HINGE AND
4 1/2" STANLEY MODEL #FB179 STEEL BUTT HINGE (10)
"Z" ASTRAGAL (27) W/ ASA STRIKE FOR MORTISE LOCK
DOOR CORE (20) EXPANDED POLYSTYRENE OR HONEYCOMB PAPER
FULL FLUSH
VISION LITE MODEL VLF-EZ-IG (19A) BY AIR LOUVERS, INC.,
W/ 1/2" LEXAN GLAZING SET IN DOW CORNING #995
STRUCTURAL SILICONE W/ 12" x 12" DOOR CUT-OUT
NARROWLITE (10"x10" D.L.O.), AND DAYBAR VISION LITE (19)
WITH 3/8" LEXAN GLAZING SET IN DOW CORNING #995
STRUCTURAL SILICONE W/ 11 1/8" x 11 1/8" DOOR
CUT-OUT NARROWLITE (9 3/4"x9 3/4" D.L.O.)

MAX. A.S.D. DESIGN PRESSURE RATINGS (OUTSWING SINGLE DOOR W/ TWO SURFACE BOLTS & DOUBLE DOORS W/ FOUR SURFACE BOLTS)	
POSITIVE	+65 PSF
NEGATIVE	-65 PSF

ASSEMBLY ELEVATIONS # 1, 2 & 3
SEE SECTIONS ON SHEETS 5, 6 & 7

- SEE SHEET 3A FOR MAXIMUM A.S.D. DESIGN PRESSURE RATING
SCHEDULE FOR ASSEMBLY COMBINATIONS.



FLORIDA BUILDING CODE (HIGH VELOCITY HURRICANE ZONE)

©2023 TILTECO, INC.		DOUBLE & SINGLE SERIES LS18 OUTSWING COMMERCIAL GALVANNEAL OR STAINLESS STEEL DOOR W/ SERIES "AS" 16 GAGE GALVANNEAL OR STAINLESS STEEL FRAME FLUSH, EMBOSSED & GLAZED ASSEMBLIES - L.M.		DRAWN BY: Y.M.
TILTECO inc. TILLIT TESTING & ENGINEERING COMPANY 6355N.W. 36th St., Ste. 305, VIRGINIA GARDENS, FL 33166 Phone: (305)871-1530 Fax: (305)871-1531 e-mail: tilteco@aol.com CA-0006719 WALTER A. TILLIT Jr. P.E. FLORIDA Lic. # 44167		DAYBAR INDUSTRIES LTD 50 WEST DRIVE, BRAMPTON, ON CANADA, L6T 2J4 TEL: 905 625-8000 FAX: 905 625-4204		8/9/2023 DATE
REV. No		DESCRIPTION		DATE
1		OLD 20-143		8/9/2023
2				
				23-168 DRAWING No
				SHEET 2 OF 19

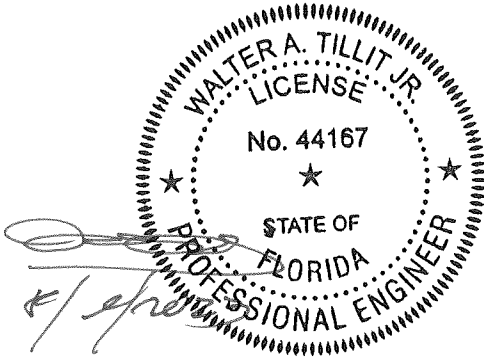
MAX. A.S.D. DESIGN PRESSURE RATING (psf.) SCHEDULE FOR INSTALLATIONS COMBINING ASSEMBLIES #1 THRU #7-EMB BETWEEN EACH OTHER FOR A GIVEN ANCHOR JAMB TYPE *

ITEM (SEE SHEET 19)	ANCHOR SPECIFICATIONS AT JAMBS *	ASSEMBLY #1 (SEE SHEET 2)	ASSEMBLY #2 (SEE SHEET 2)	ASSEMBLY #3 (SEE SHEET 2)	ASSEMBLY #7 (SEE SHEET 3)	ASSEMBLY #7-EMB (SEE SHEET 3)
6	0.157" DIA.x9 1/2" LONG WIRE ANCHOR (SEE DETAIL 21/17)	+70, -65	+65, -65	+65, -65	+65, -53.3	+65, -53.3
7	2 PIECE COMBINATION STUD ANCHOR (SEE DETAIL 20/17)	+65, -65	+65, -65	+65, -65	+65, -53.3	+65, -53.3
8	EXISTING MASONRY ANCHOR & E.M.A. (SEE DETAIL 22/17)	+65, -65	+65, -65	+65, -65	+65, -53.3	+65, -53.3
9	EXISTING WOOD BUCK ANCHOR W/WOOD SCREW LAG BOLT & E.M.A. (SEE DETAIL 22A/17)	+65, -65	+65, -65	+65, -65	+65, -53.3	+65, -53.3
9A	EXISTING WOOD BUCK ANCHOR W/ STEEL CARRIAGE BOLT & E.M.A. (SEE DETAIL 22B/17)	+65, -65	+65, -65	+65, -65	+65, -53.3	+65, -53.3
9B	CHANNEL IRON THROUGH BOLTING W/3/8" x 3 1/2" STEEL FLAT HEAD MACHINE SCREW & E.M.A. (SEE DETAIL 23A/17)	+65, -53.3	+65, -53.3	+65, -53.3	+65, -53.3	+65, -53.3
9C	CHANNEL IRON W/3/8" STITCH WELD (SEE DETAIL 23B/17)	+65, -53.3	+65, -53.3	+65, -53.3	+65, -53.3	+65, -53.3

* NOTES ON FRAME HEAD REQUIREMENTS

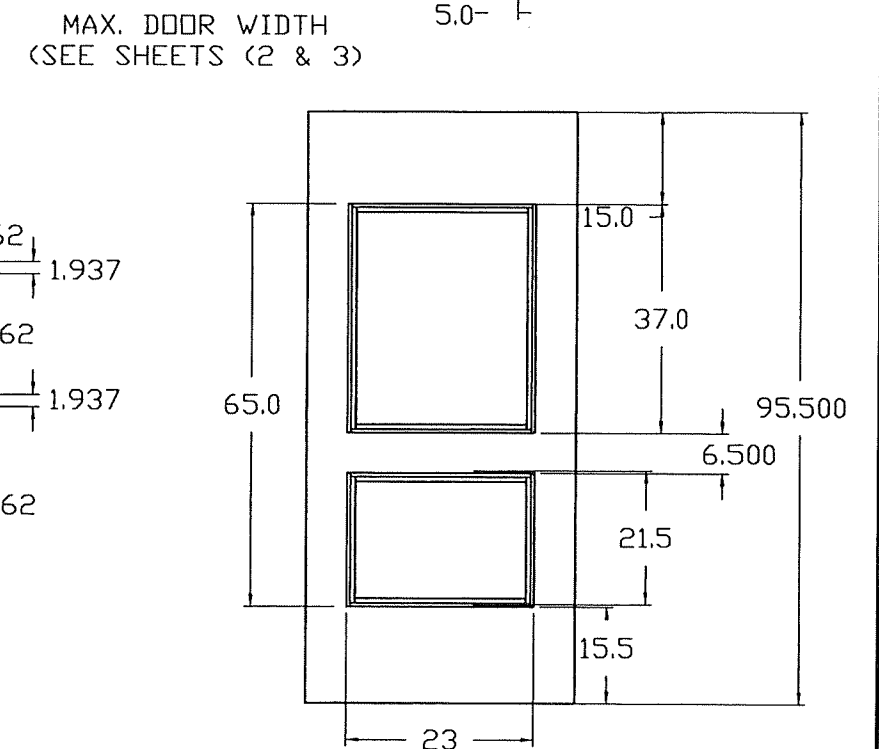
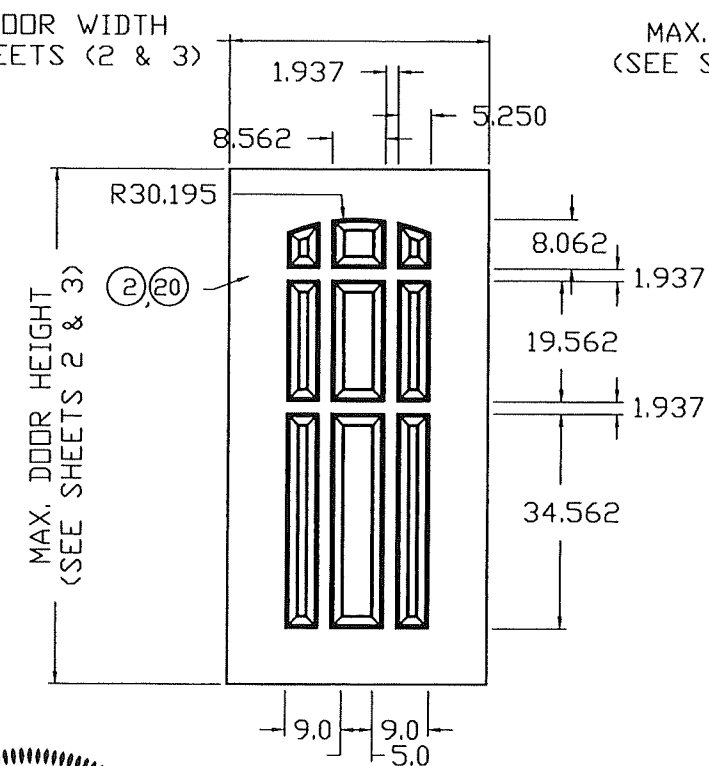
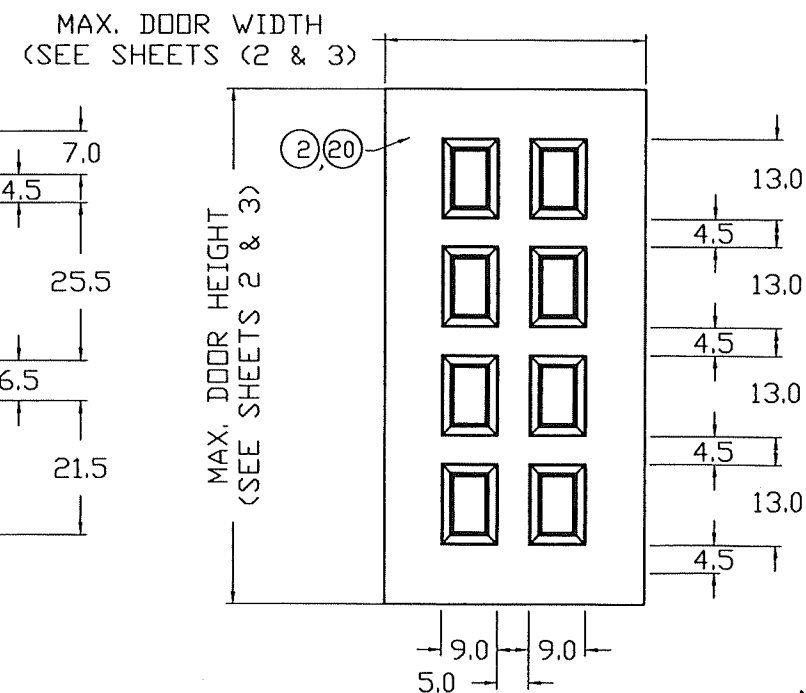
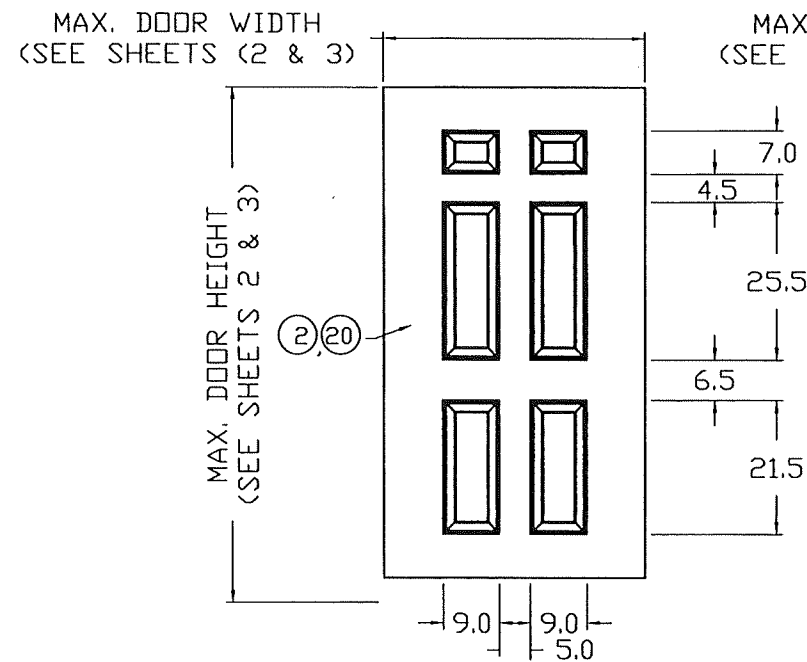
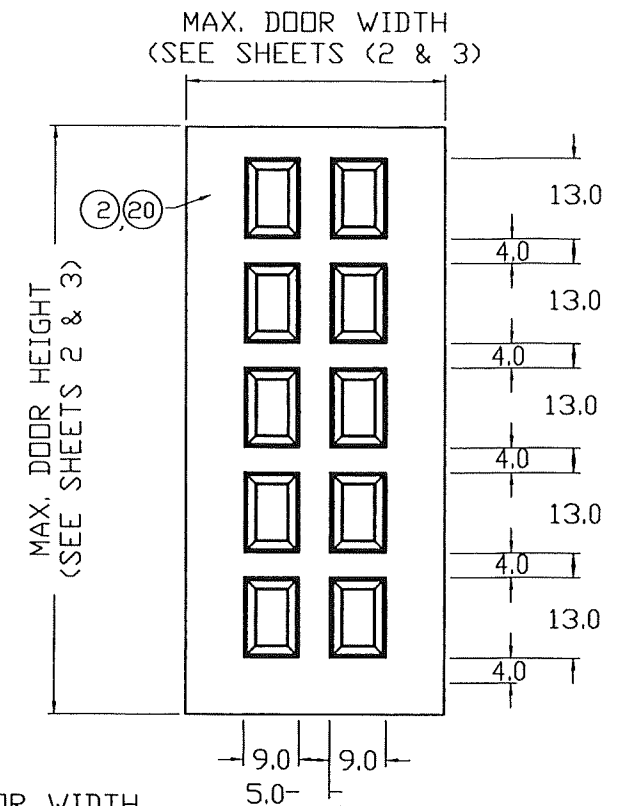
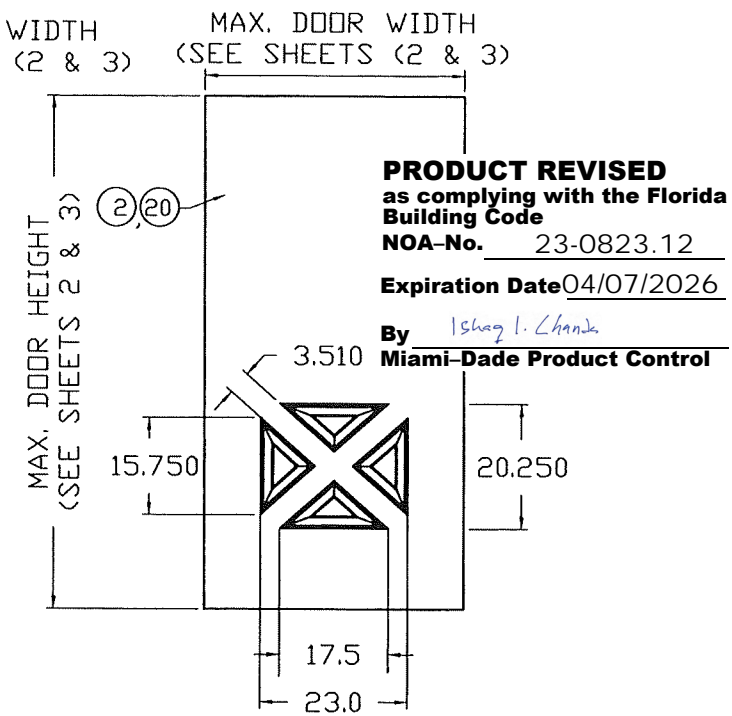
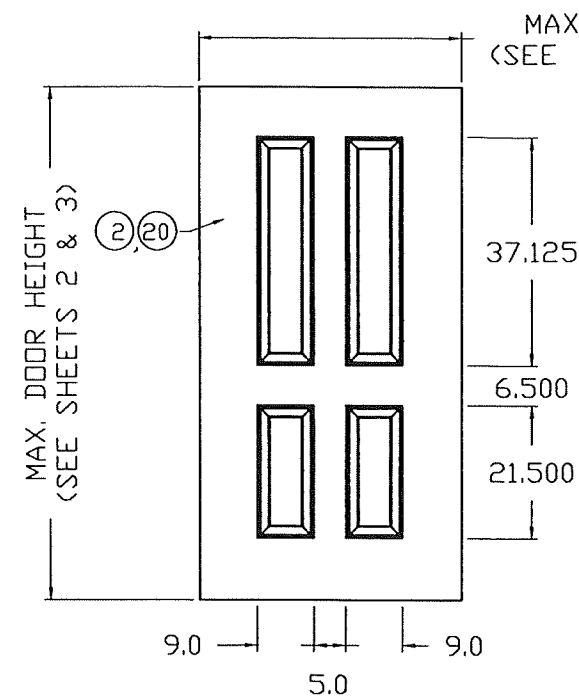
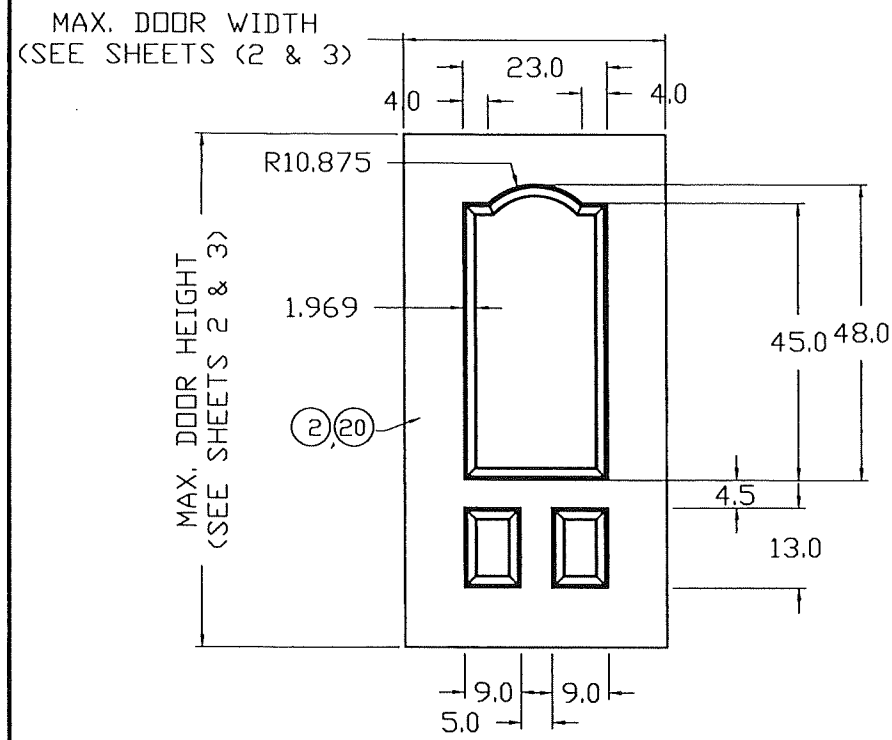
1. FOR SINGLE & DOUBLE DOORS INSTALLED AT WOOD FRAME BUILDINGS, DOOR HEADS SHALL BE CONTINUOUSLY RETAINED BY EXISTING BUILDINGS WOOD HEADER FOLLOWING DETAILS AS PER SECTION E, SHEET 7.
2. FOR SINGLE & DOUBLE DOORS INSTALLED AT STEEL FRAME BUILDINGS, DOOR HEADS SHALL BE CONTINUOUSLY WELDED TO EXISTING BUILDINGS STEEL FRAME HEADER FOLLOWING DETAILS AS PER SECTION H, SHEET 7 & DETAIL 23B ON SHEET 17.
3. FOR SINGLE & DOUBLE DOORS INSTALLED AT CONCRETE /MASONRY BUILDINGS, DOOR HEADS NEED NOT BE ATTACHED TO EXISTING BUILDINGS HEADER. APPLICABLE TO SECTIONS D & F, SHEET 7.

PRODUCT REVISED
as complying with the Florida
Building Code
NOA-No. 23-0823.12
Expiration Date04/07/2026
By Ishag I. Chank
Miami-Dade Product Control



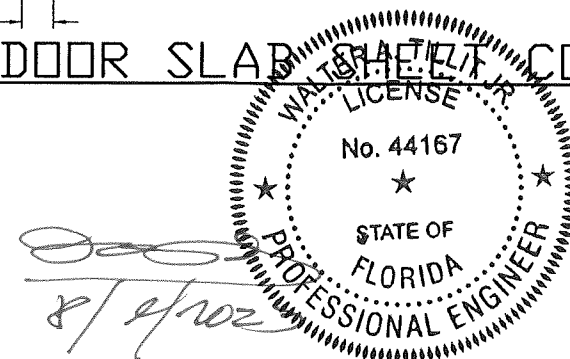
FLORIDA BUILDING CODE (HIGH VELOCITY HURRICANE ZONE)

©2023 TILTECO, INC.		DOUBLE & SINGLE SERIES LS18 OUTSWING COMMERCIAL GALVANNEAL OR STAINLESS STEEL DOOR W/ SERIES "AS" 16 GAGE GALVANNEAL OR STAINLESS STEEL FRAME FLUSH, EMBOSSED & GLAZED ASSEMBLIES - L.M.		DRAWN BY: Y.M.	
TILTECO INC. TILLIT TESTING & ENGINEERING COMPANY 6355N.W. 36th. St., Ste. 305, VIRGINIA GARDENS, FL 33186 Phone : (305)871-1530 Fax : (305)871-1531 e-mail: tilteco@aol.com CA-0006719 WALTER A. TILLIT Jr. P.E. FLORIDA Lic. # 44167		DAYBAR INDUSTRIES LTD 50 WEST DRIVE, BRAMPTON, ON CANADA, L6T 2J4 TEL: 905 625-8000 FAX: 905 625-4204		8/9/2023 DATE	
				23-168 DRAWING No	
REV. No	DESCRIPTION	DATE	REV. No	DESCRIPTION	DATE
1	OLD 20-143	8/9/2023	3		
2			4		
				SHEET 3A OF 19	



OPTIONAL EMBOSSED DOOR SLAB CONFIGURATIONS

NOTE:
EMBOSSED DOORS PERMITTED IN
SINGLES & PAIRS LIMITED TO DESIGN
PRESSURES NOTED FOR EACH ASSEMBLY



FLORIDA BUILDING CODE (HIGH VELOCITY HURRICANE ZONE)

©2023 TILTECO, INC.

TILTECO INC.

TILLIT TESTING & ENGINEERING COMPANY
6355 N.W. 36th St., Ste. 305, VIRGINIA GARDENS, FL 33166
Phone: (305) 871-1530 • Fax: (305) 871-1531
e-mail: tilteco@aol.com
CA-0006719
WALTER A. TILLIT Jr. P.E.
FLORIDA Lic. # 44167

DOUBLE & SINGLE SERIES LS18 OUTSWING COMMERCIAL
GALVANNEAL OR STAINLESS STEEL DOOR W/ SERIES "AS"
16 GAGE GALVANNEAL OR STAINLESS STEEL FRAME
FLUSH, EMBOSSED & GLAZED ASSEMBLIES - L.M.

DAYBAR INDUSTRIES LTD

50 WEST DRIVE, BRAMPTON,
ON CANADA, L6T 2J4
TEL: 905 625-8000
FAX: 905 625-4204

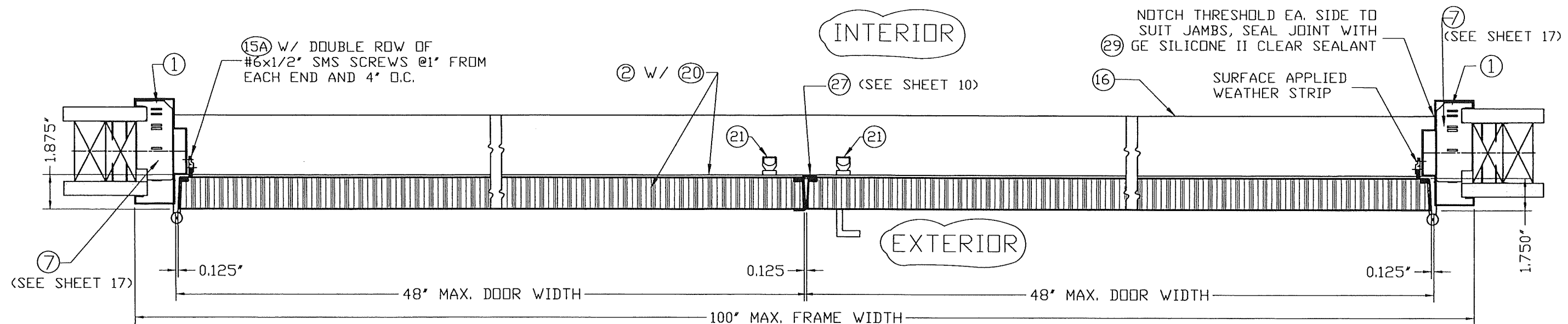
DRAWN BY:
Y.M.

8/9/2023
DATE

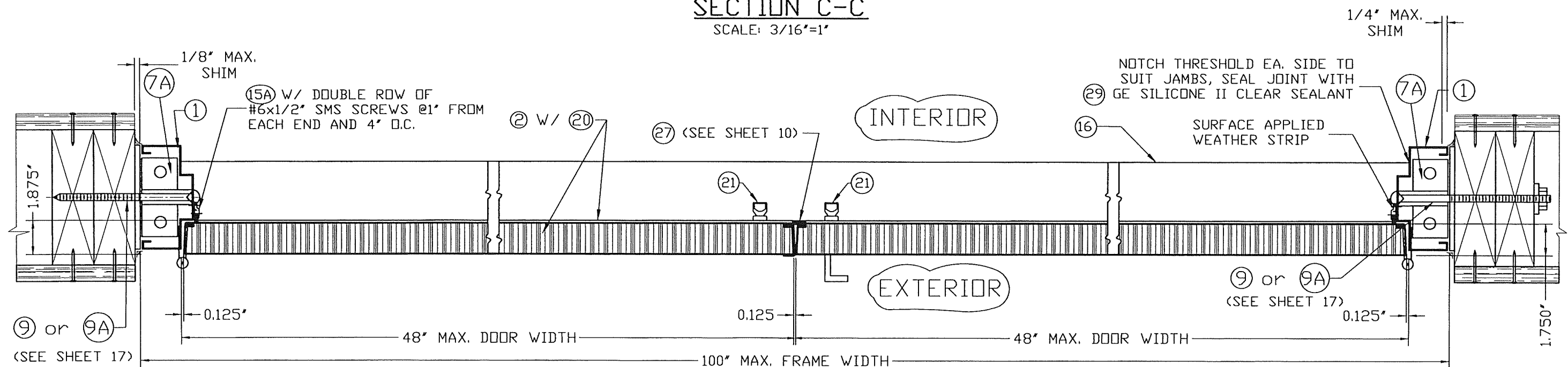
23-168
DRAWING No

SHEET 4 OF 19

REV. No	DESCRIPTION	DATE	REV. No	DESCRIPTION	DATE
1	OLD 20-143	8/9/2023	3		
2			4		

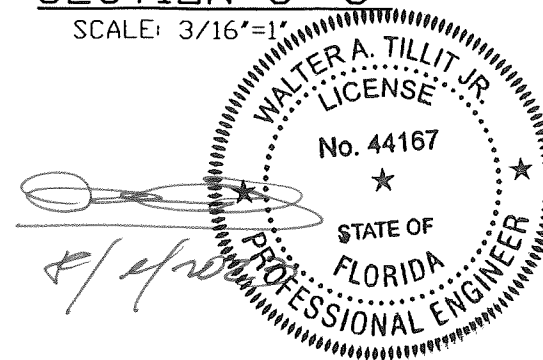


SECTION C-C
SCALE: 3/16"=1"



PRODUCT REVISED
as complying with the Florida
Building Code
NOA-No. 23-0823.12
Expiration Date 04/07/2026
By *Ishag I. Chande*
Miami-Dade Product Control

SECTION C'-C'
SCALE: 3/16"=1"



FLORIDA BUILDING CODE (HIGH VELOCITY HURRICANE ZONE)

©2023 TILTECO, INC.

TILTECO INC.

TILLIT TESTING & ENGINEERING COMPANY

6355 W.W. 36th St., Ste. 305, VIRGINIA GARDENS, FL 33166

Phone : (305)871-1530 Fax : (305)871-1531

e-mail: tilteco@aol.com

CA-0006719

WALTER A. TILLIT Jr. P.E.

FLORIDA Lic. # 44167

DOUBLE & SINGLE SERIES LS18 OUTSWING COMMERCIAL GALVANNEAL OR STAINLESS STEEL DOOR W/ SERIES "AS" 16 GAGE GALVANNEAL OR STAINLESS STEEL FRAME FLUSH, EMBOSSED & GLAZED ASSEMBLIES - L.M.

DAYBAR INDUSTRIES LTD

50 WEST DRIVE, BRAMPTON, ON CANADA, L6T 2J4

TEL: 905 625-8000

FAX: 905 625-4204

REV. No

DESCRIPTION

DATE

REV. No

DESCRIPTION

DATE

1

OLD 20-143

8/9/2023

3

2

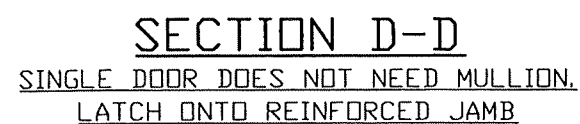
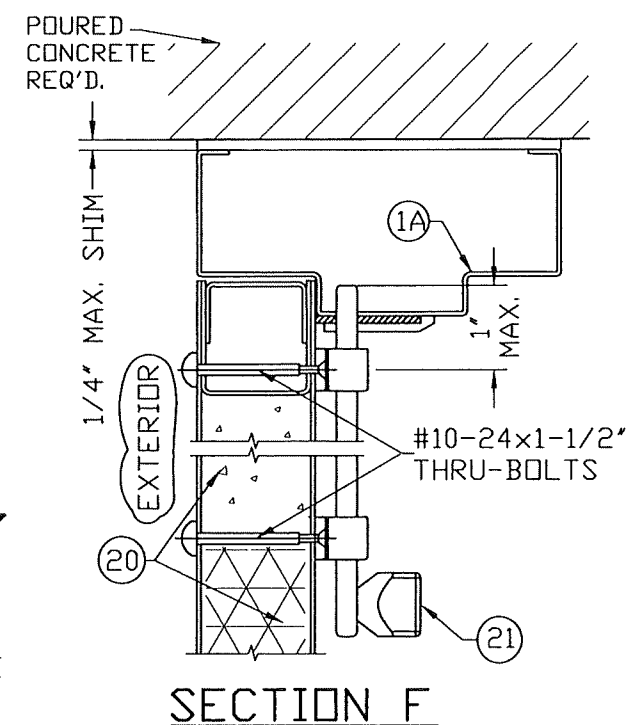
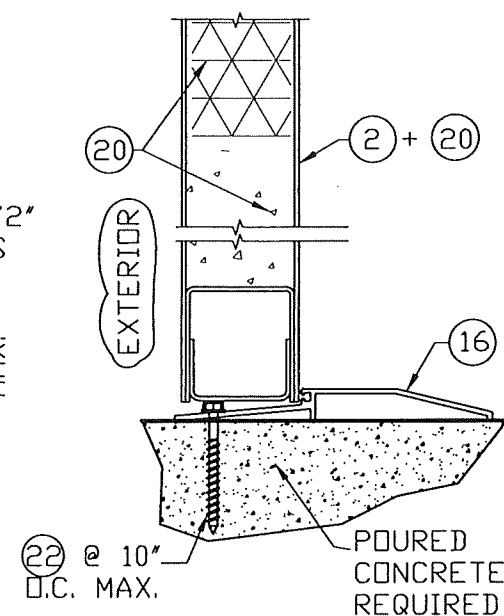
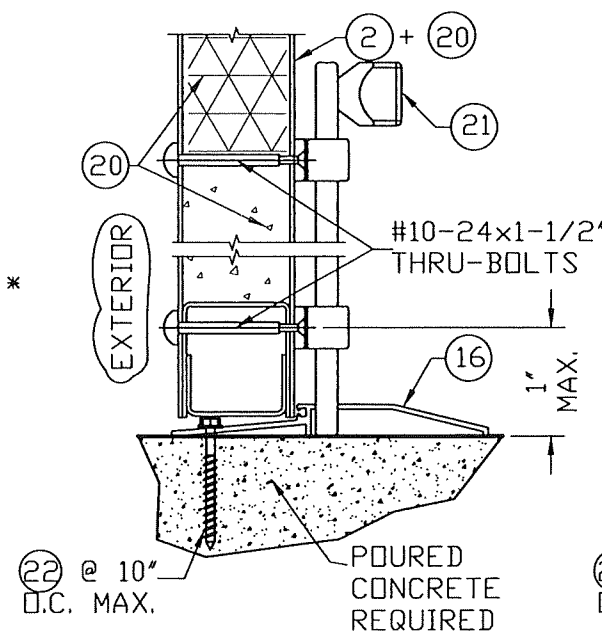
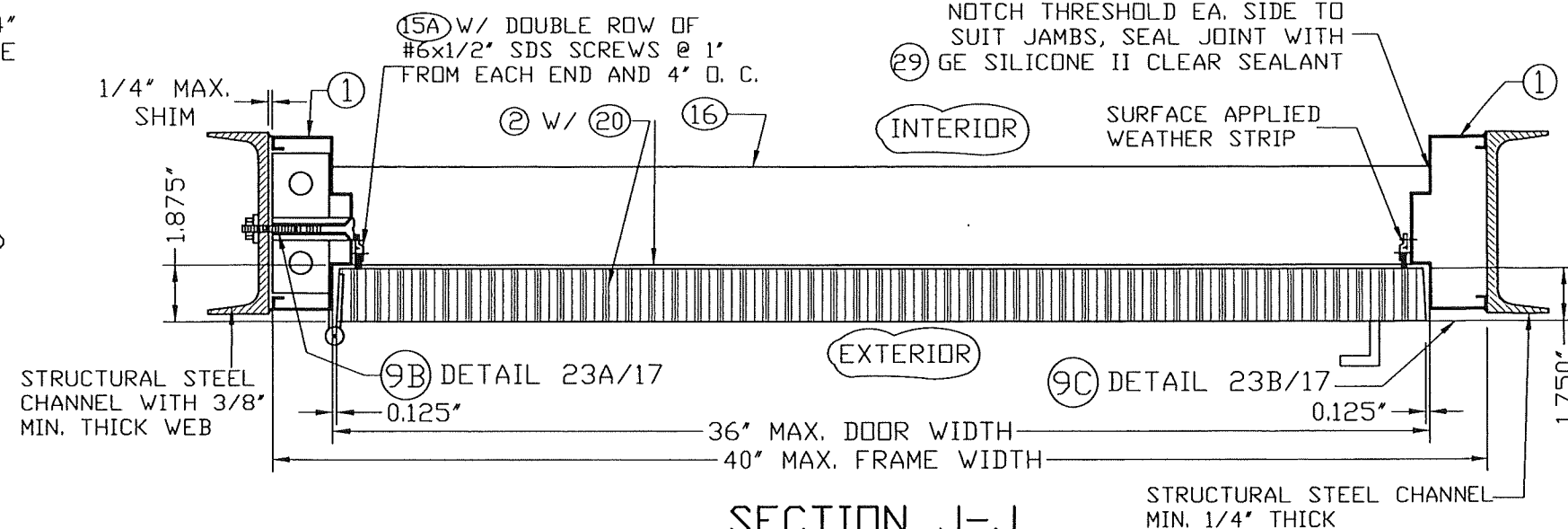
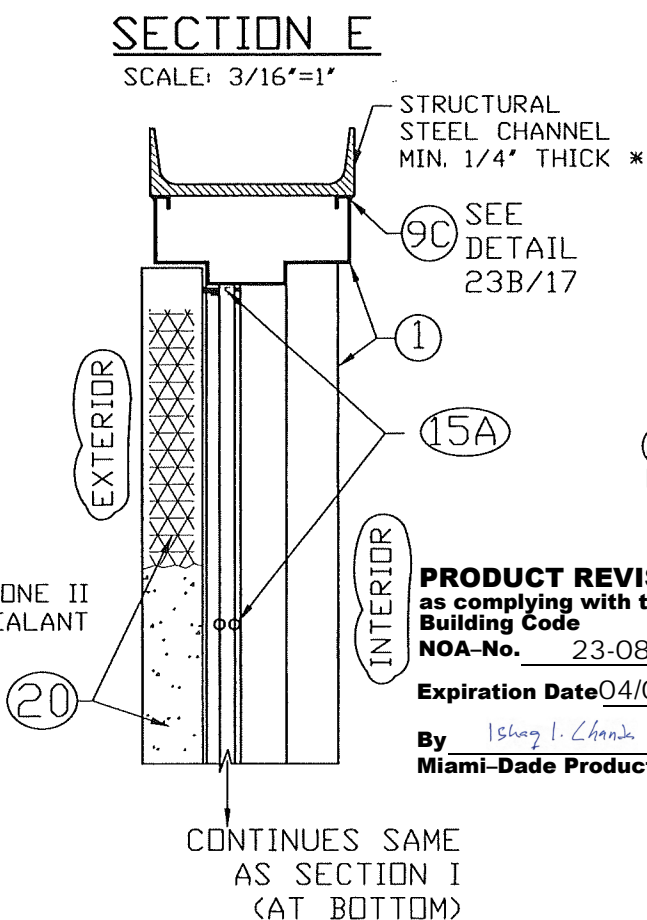
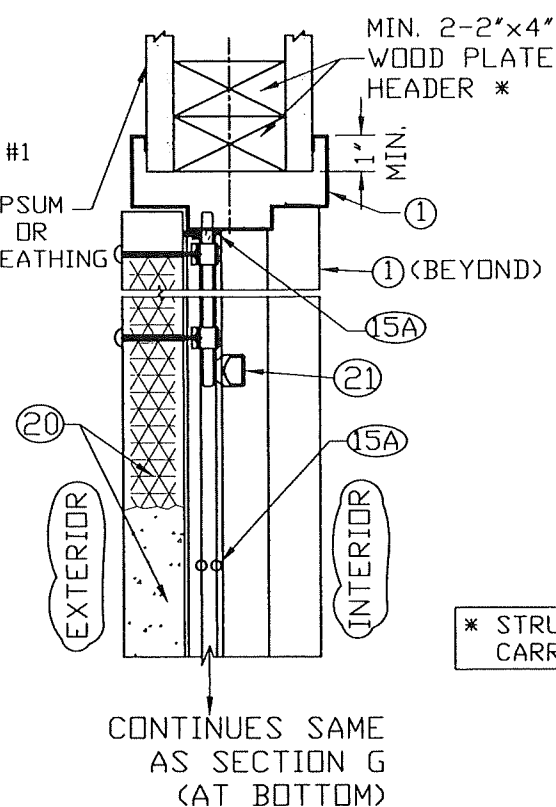
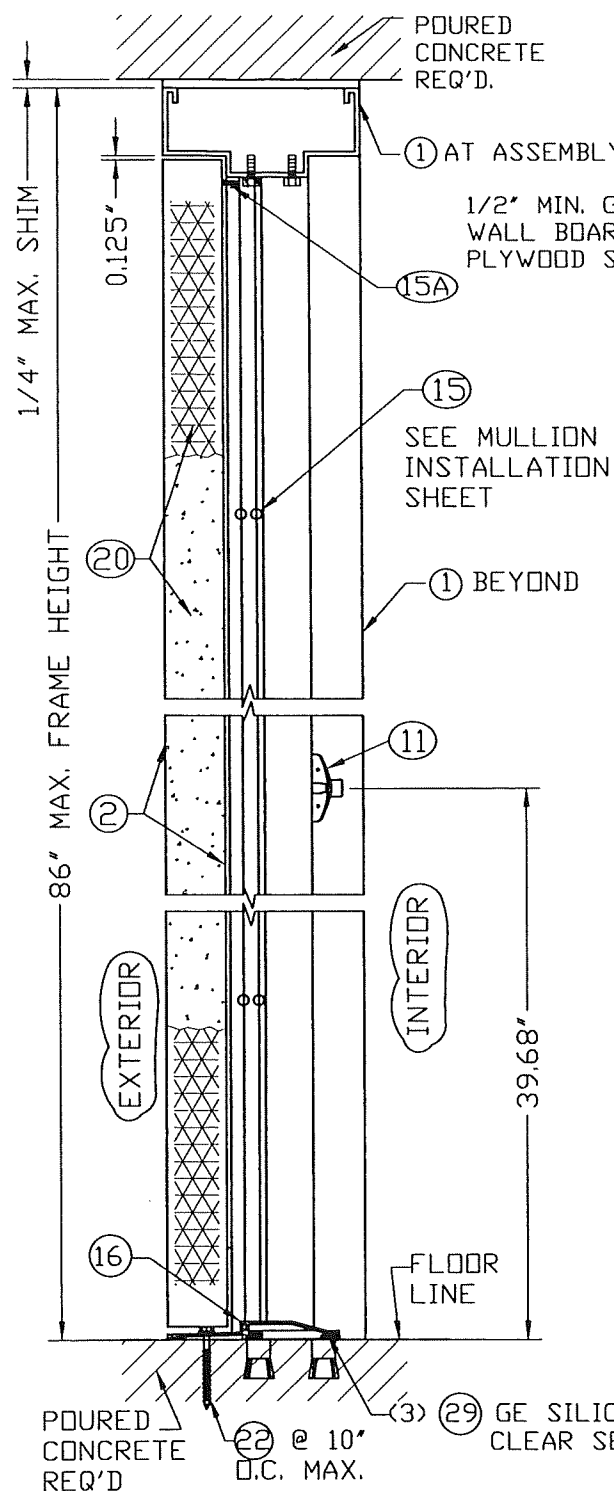
4

DRAWN BY: Y.M.

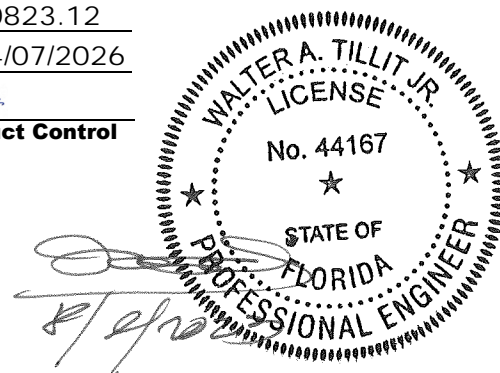
8/9/2023 DATE

23-168 DRAWING No


SHEET 6 OF 19

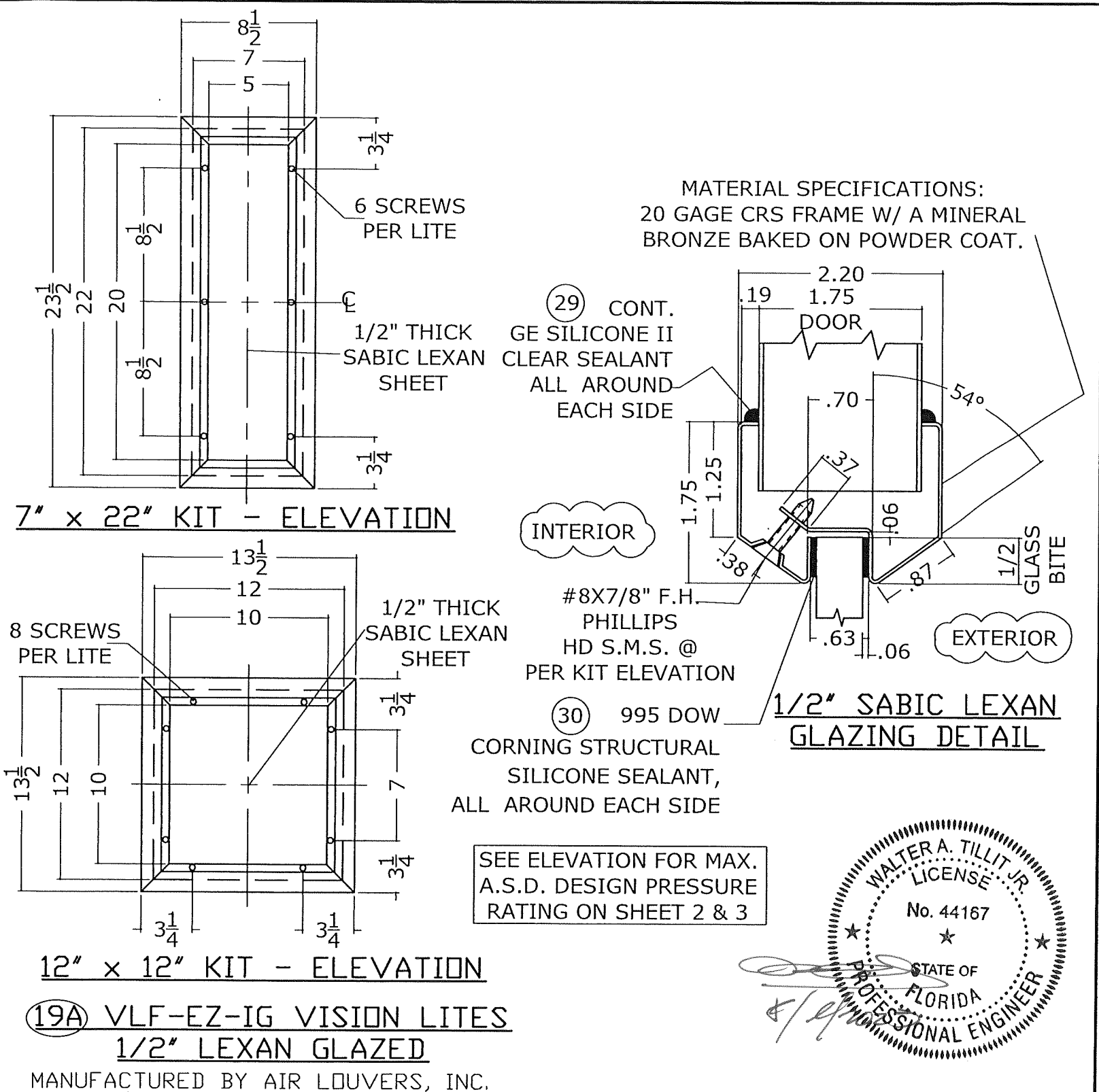
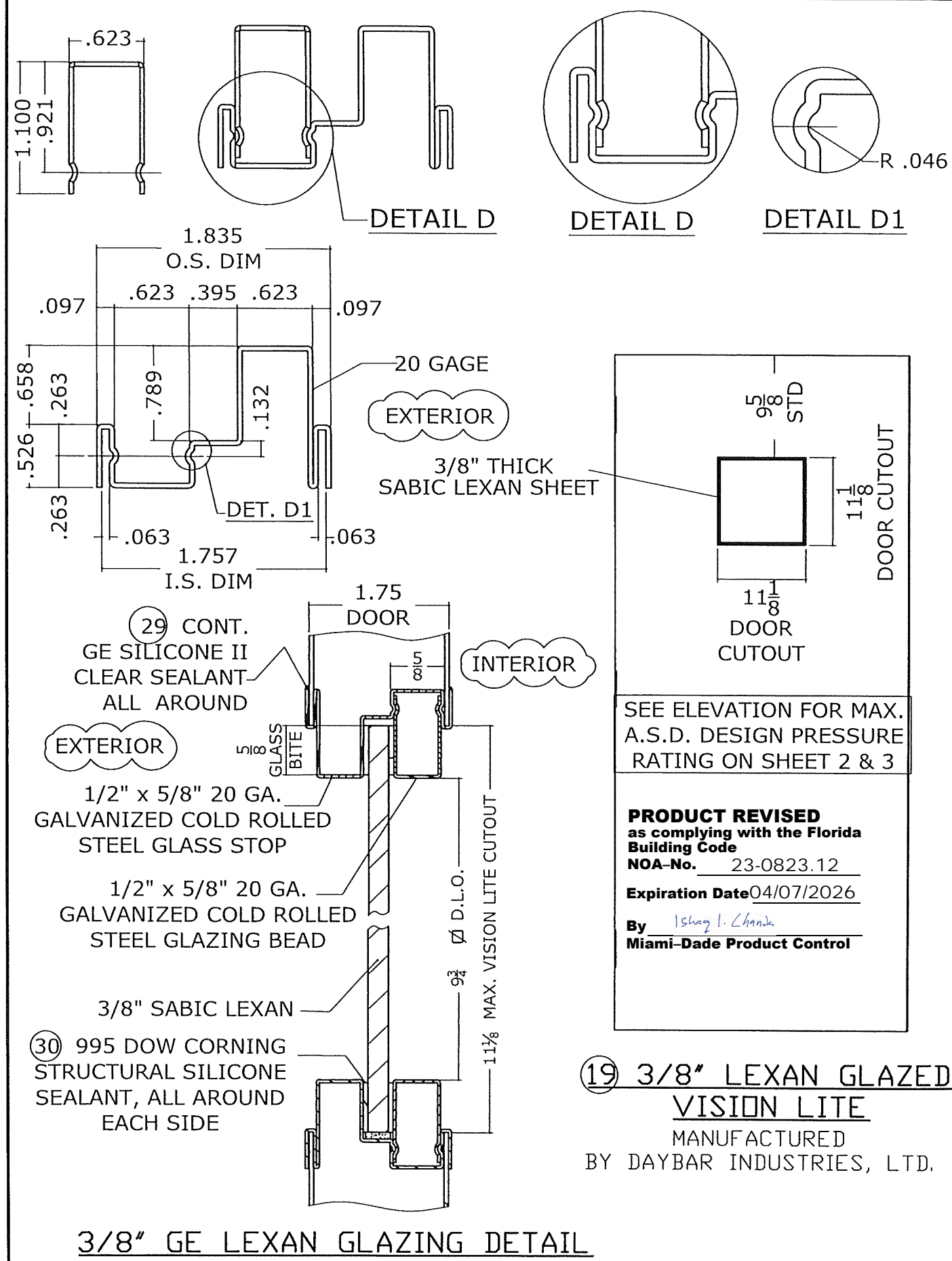


PRODUCT REVISED
as complying with the Florida
Building Code
NOA-No. 23-0823.12
Expiration Date 04/07/2026
By Isaac L. Chande
Miami-Dade Product Control



FLORIDA BUILDING CODE (HIGH VELOCITY HURRICANE ZONE)

<p>©2023 TILTECO, INC.</p> <div style="text-align: center;">  <p>TILTECO Inc.</p> </div> <p>TILLIT TESTING & ENGINEERING COMPANY 6355N.W. 36th. St. Ste. 305, VIRGINIA GARDENS, FL 33166 Phone : (305)871-1530 . Fax : (305)871-1531 e-mail: tilteco@aol.com CA-0006719 WALTER A. TILLIT Jr. P.E. FLORIDA Lic. # 44167</p>	<p>DOUBLE & SINGLE SERIES LS18 OUTSWING COMMERCIAL GALVANNEAL OR STAINLESS STEEL DOOR W/ SERIES "AS" 16 GAGE GALVANNEAL OR STAINLESS STEEL FRAME FLUSH, EMBOSSED & GLAZED ASSEMBLIES - L.M.</p> <p>DAYBAR INDUSTRIES LTD 50 WEST DRIVE, BRAMPTON, ON CANADA, L6T 2J4 TEL: 905 625-8000 FAX: 905 625-4204</p>	<p>DRAWN BY: Y.M.</p>
		<p>8/9/2023 DATE</p>
		<p>23-168 DRAWING No</p>
		<p>SHEET 7 OF 19</p>



FLORIDA BUILDING CODE (HIGH VELOCITY HURRICANE ZONE)

©2023 TILTECO, INC.

TILTECO INC.

TILLIT TESTING & ENGINEERING COMPANY
6355N.W. 36th. St., Ste. 305, VIRGINIA GARDENS, FL 33166
Phone : (305)871-1530 . Fax : (305)871-1531
e-mail: tilteco@aol.com
CA-0006719
WALTER A. TILLIT Jr. P.E.
FLORIDA Lic. # 44167

DOUBLE & SINGLE SERIES LS18 OUTSWING COMMERCIAL GALVANNEAL OR STAINLESS STEEL DOOR W/ SERIES "AS" 16 GAGE GALVANNEAL OR STAINLESS STEEL FRAME FLUSH, EMBOSSED & GLAZED ASSEMBLIES - L.M.

DAYBAR INDUSTRIES LTD
50 WEST DRIVE, BRAMPTON, ON CANADA, L6T 2J4
TEL: 905 625-8000
FAX: 905 625-4204

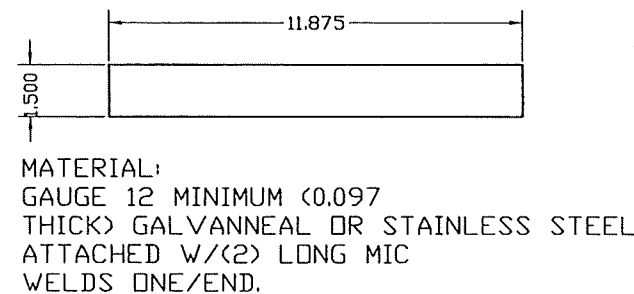
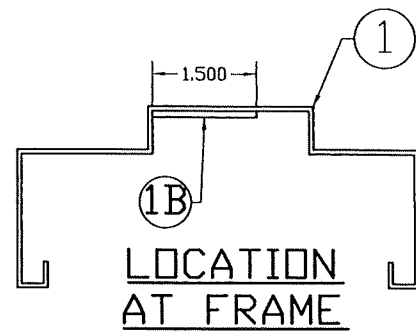
DRAWN BY: Y.M.

8/9/2023 DATE

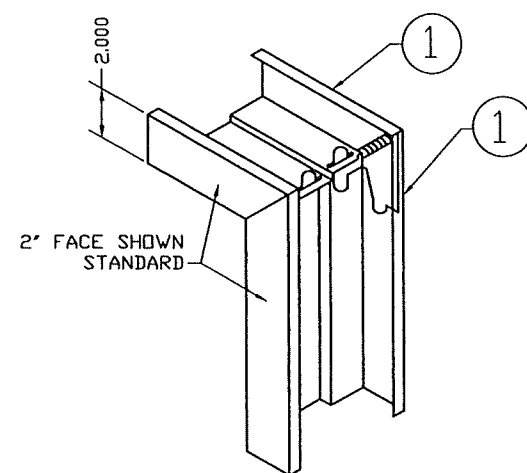
23-168
DRAWING No

SHEET 8 OF 19

REV. No	DESCRIPTION	DATE	REV. No	DESCRIPTION	DATE
1	OLD 20-143	8/9/2023	3		
2			4		

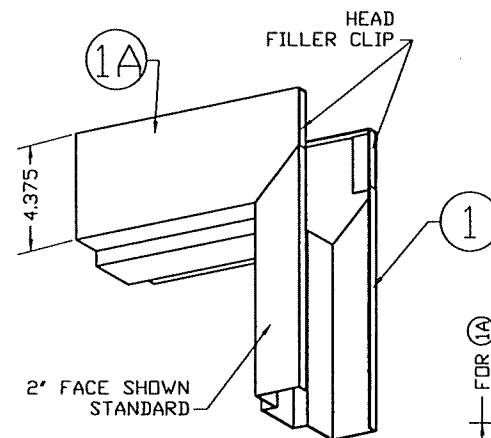


1B SURFACE STRIKE REINFORCING



1. DIE MITERED CORNER CONT. WELDED INSIDE FACES & AT RETURNS
2. CAULK COMPLETE INSIDE CORNER WITH 29 GE SILICONE II

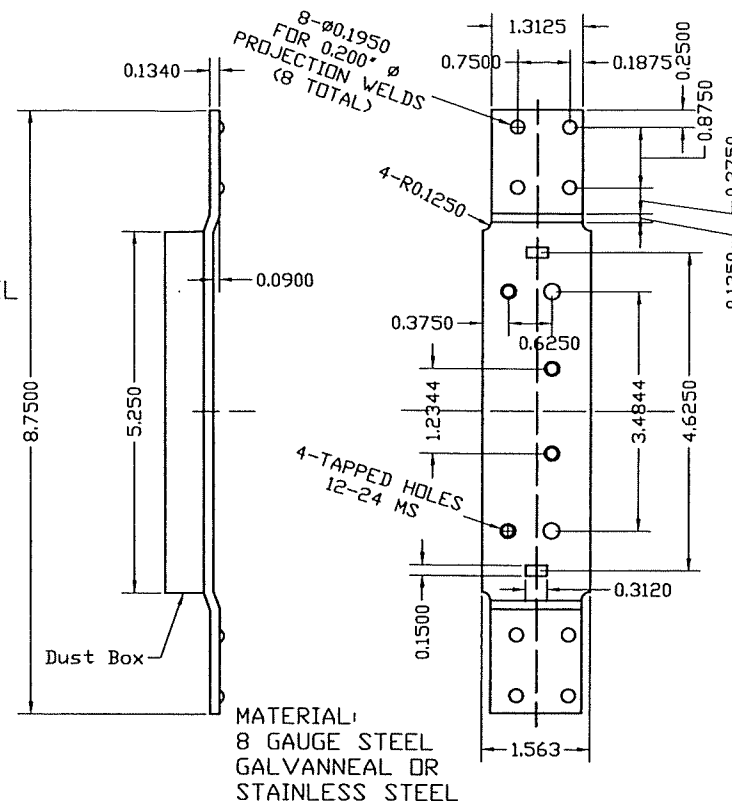
DETAIL 16
TYPICAL WELDED CORNER



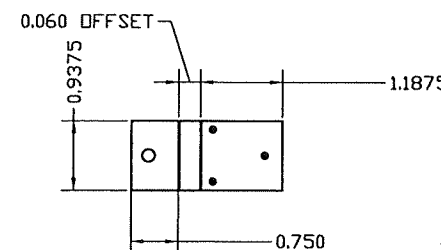
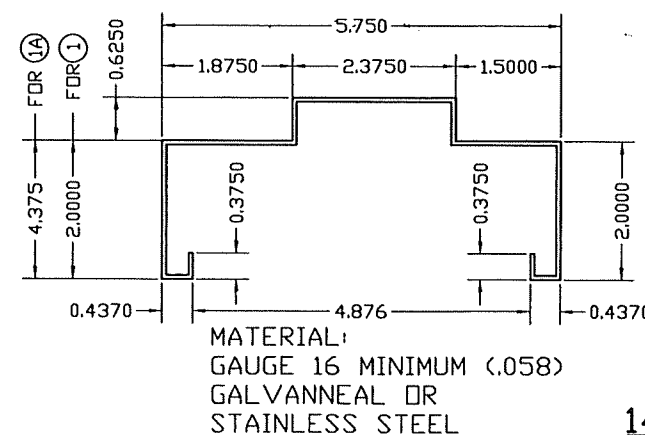
1 TYPICAL JAMB & HEAD SECTION

1A OPTIONAL HEAD SECTION

FRAME SECTIONS AND REINFORCING DETAILS



3 4 1/2" FRAME DOOR HINGE REINFORCING DETAIL

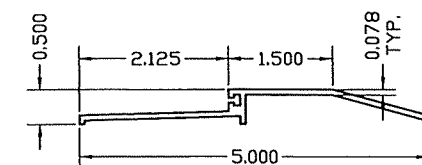


5 4 7/8" STRIKE REINFORCEMENT FOR FRAME DETAIL

ATTACHED W/(4) 3/16" ϕ PROJECTION WELDS.

DEAD LOCK STRIKE TAB
14 GA (.074) MIN GALVANNEAL OR STAINLESS STEEL

ATTACHED TO STRIKE JAMB W/ (3) 1/8" ϕ PROJECTION WELDS.



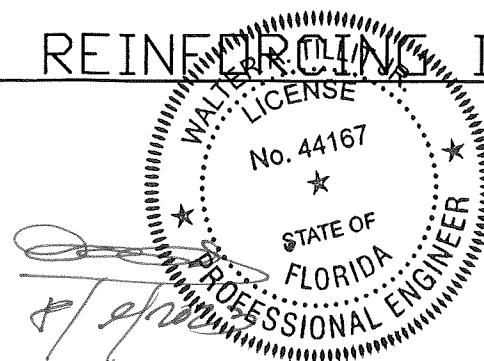
16 EXTRUDED ALUMINUM THRESHOLD NGP #950NA

PRODUCT REVISED
as complying with the Florida
Building Code

NOA-No. 23-0823.12

Expiration Date 04/07/2026

By *Ishag I. Chande*
Miami-Dade Product Control



©2023 TILTECO, INC.

TILTECO INC.

TILLIT TESTING & ENGINEERING COMPANY
6355N.W. 36th St., Ste. 305, VIRGINIA GARDENS, FL 33166
Phone: (305)871-1530 Fax: (305)871-1531
e-mail: tilteco@aol.com
CA-0006719
WALTER A. TILLIT Jr. P.E.
FLORIDA Lic. # 44167

FLORIDA BUILDING CODE (HIGH VELOCITY HURRICANE ZONE)

DOUBLE & SINGLE SERIES LS18 OUTSWING COMMERCIAL GALVANNEAL OR STAINLESS STEEL DOOR W/ SERIES "AS" 16 GAGE GALVANNEAL OR STAINLESS STEEL FRAME FLUSH, EMBOSSED & GLAZED ASSEMBLIES - L.M.

DAYBAR INDUSTRIES LTD

50 WEST DRIVE, BRAMPTON,
ON CANADA, L6T 2J4
TEL: 905 625-8000
FAX: 905 625-4204

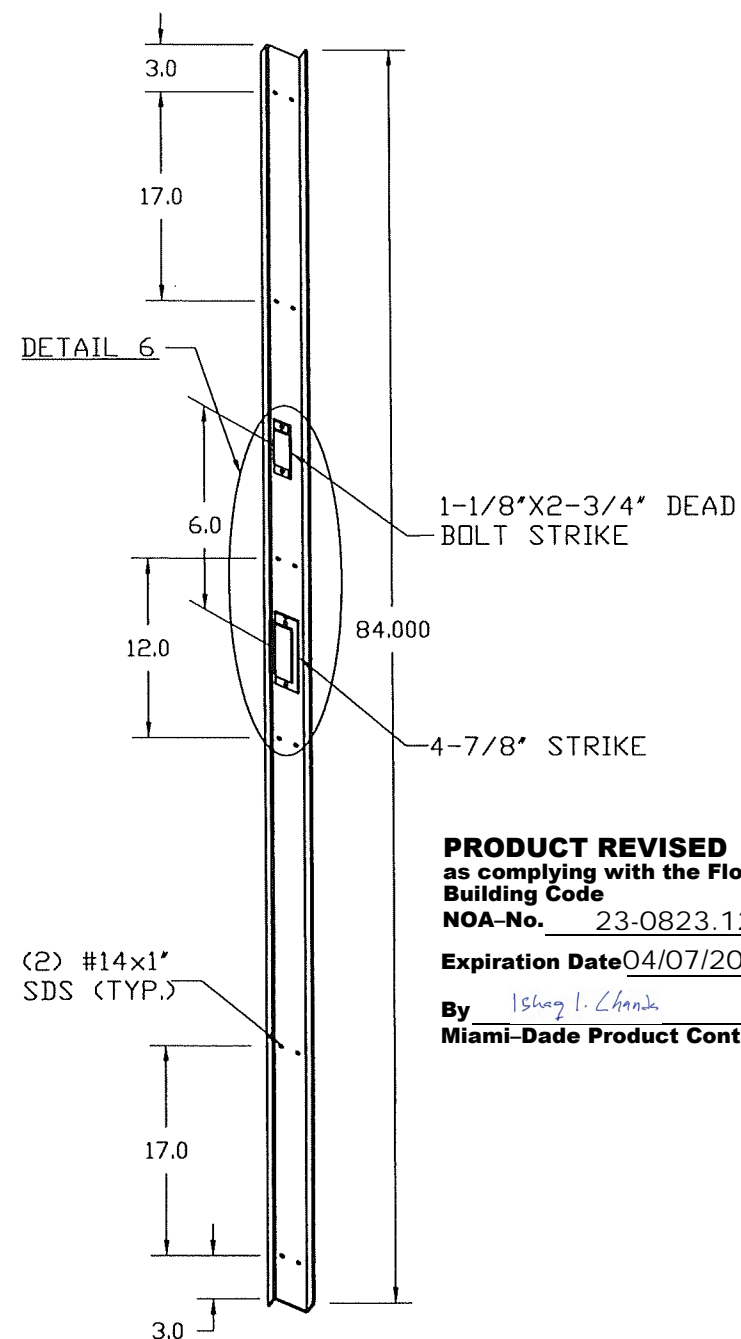
DRAWN BY:
Y.M.

8/9/2023
DATE

23-168
DRAWING No

REV. No	DESCRIPTION	DATE	REV. No	DESCRIPTION	DATE
1	OLD 20-143	8/9/2023	3		
2			4		

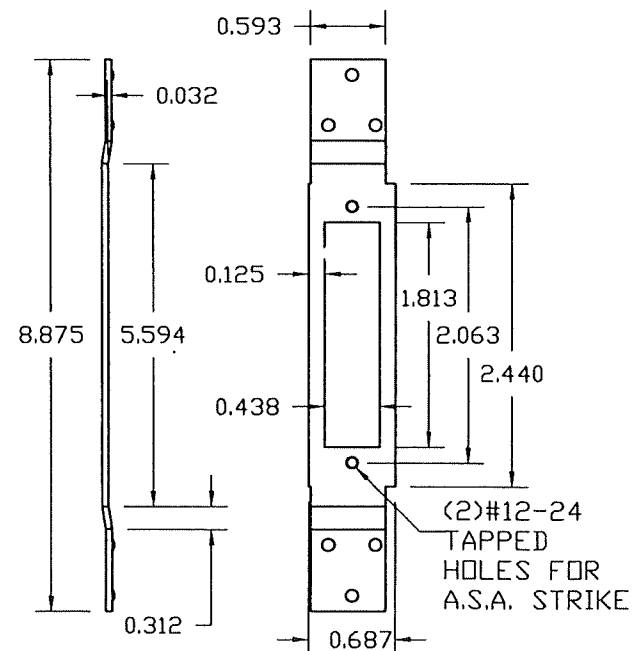
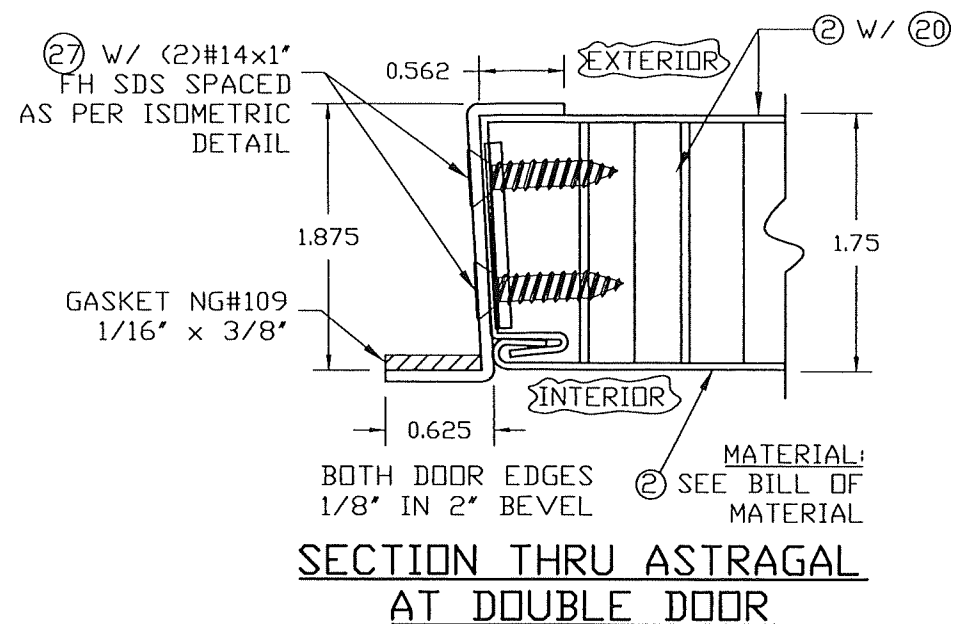
SHEET 9 OF 19



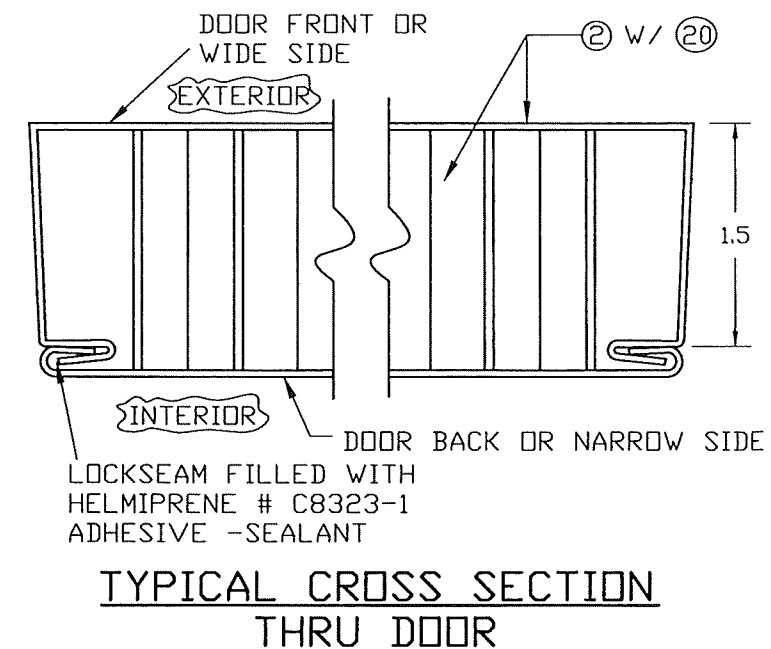
PRODUCT REVISED
as complying with the Florida
Building Code
NOA-No. 23-0823.12
Expiration Date 04/07/2026
By *Ishaq I. Chande*
Miami-Dade Product Control

(27) "Z" ASTRAGAL ISOMETRIC DETAIL

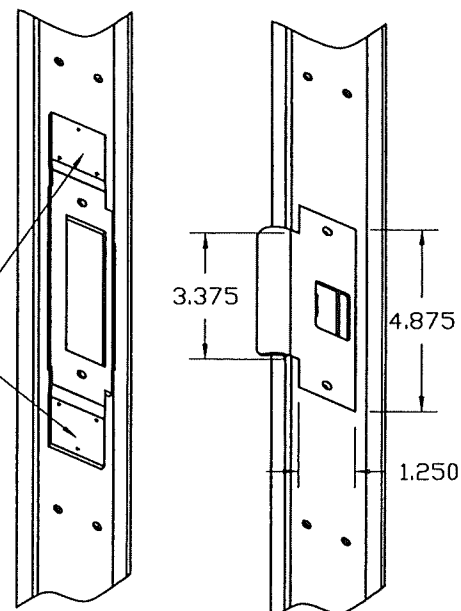
MATERIAL:
0.075" THICK
GALVANNEAL STEEL
OR STAINLESS
STEEL



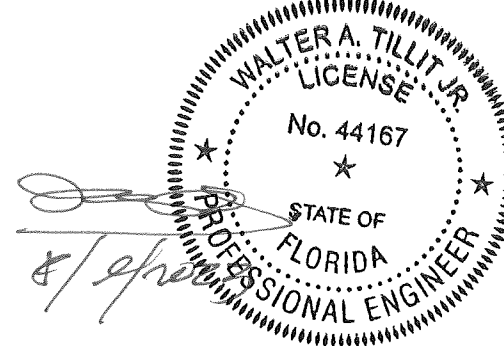
12 GAGE GALVANNEAL STEEL OR STAINLESS STEEL ASA 1299 STRIKE REINFORCEMENT FOR ASTRAGAL



12GA. GALVANNEAL
OR STAINLESS
STEEL ASA
STRIKE REINFORCEMENT
3x1/8" PROJECTION
WELD EACH SIDE

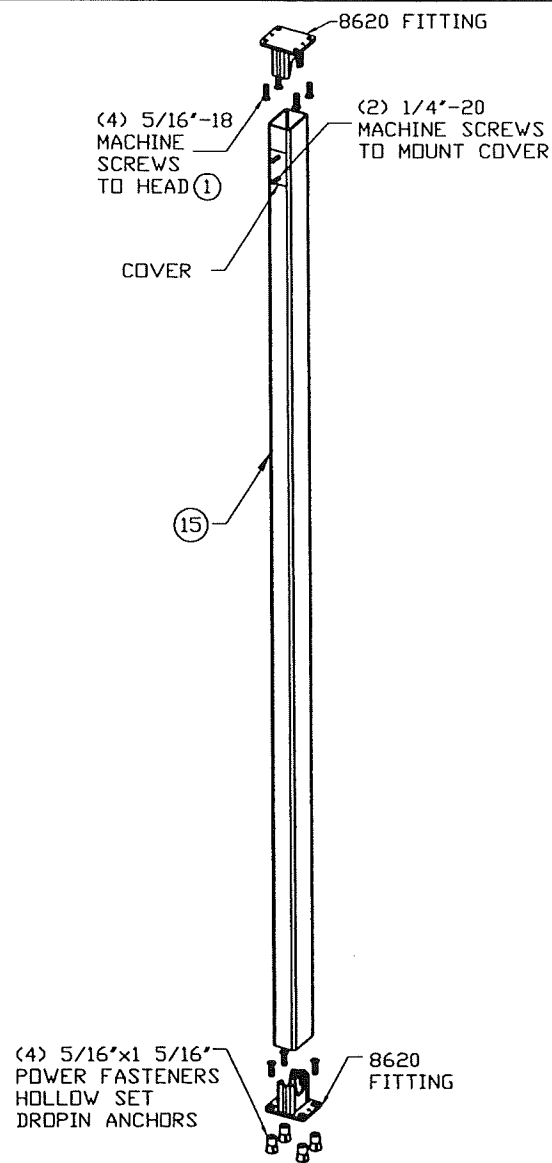


DETAIL 6

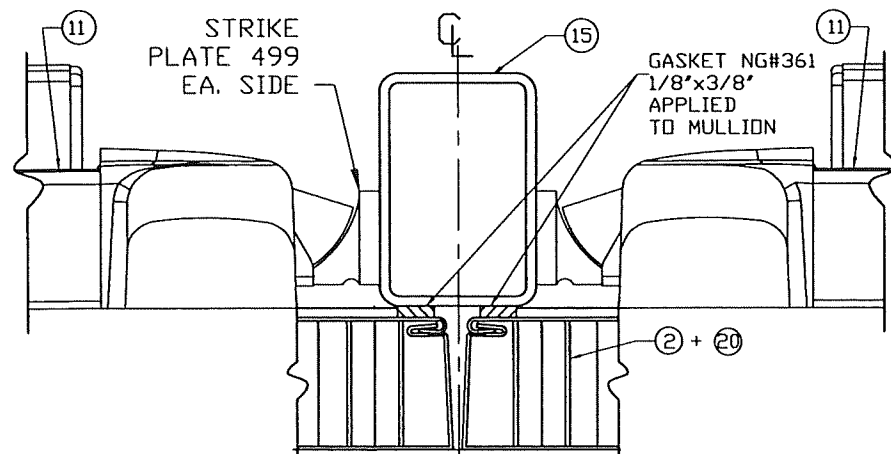


FLORIDA BUILDING CODE (HIGH VELOCITY HURRICANE ZONE)

TILTECO INC. <small>TILLIT TESTING & ENGINEERING COMPANY 6355N.W. 36th St., Ste. 305, VIRGINIA GARDENS, FL 33166 Phone: (305)871-1530, Fax: (305)871-1531 e-mail: tilteco@aol.com CA-0006719 WALTER A. TILLIT Jr. P.E. FLORIDA Lic. # 44167</small>		<small>DOUBLE & SINGLE SERIES LS18 OUTSWING COMMERCIAL GALVANNEAL OR STAINLESS STEEL DOOR W/ SERIES "AS" 16 GAGE GALVANNEAL OR STAINLESS STEEL FRAME FLUSH, EMBOSSED & GLAZED ASSEMBLIES - L.M.</small> DAYBAR INDUSTRIES LTD <small>50 WEST DRIVE, BRAMPTON, ON CANADA, L6T 2J4 TEL: 905 625-8000 FAX: 905 625-4204</small>		DRAWN BY: Y.M.
				8/9/2023 DATE
REV. No. 1 DESCRIPTION: OLD 20-143 DATE: 8/9/2023		REV. No. 3 DESCRIPTION: DATE:		23-168 DRAWING No
REV. No. 2 DESCRIPTION: DATE:		REV. No. 4 DESCRIPTION: DATE:		SHEET 10 OF 19



ISOMETRIC

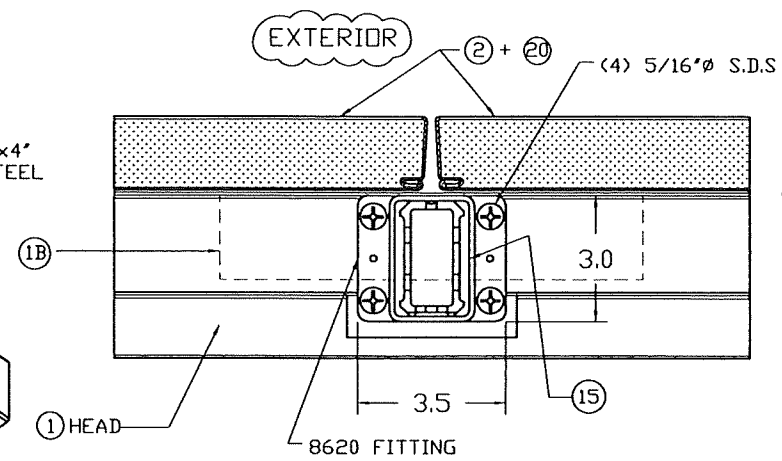
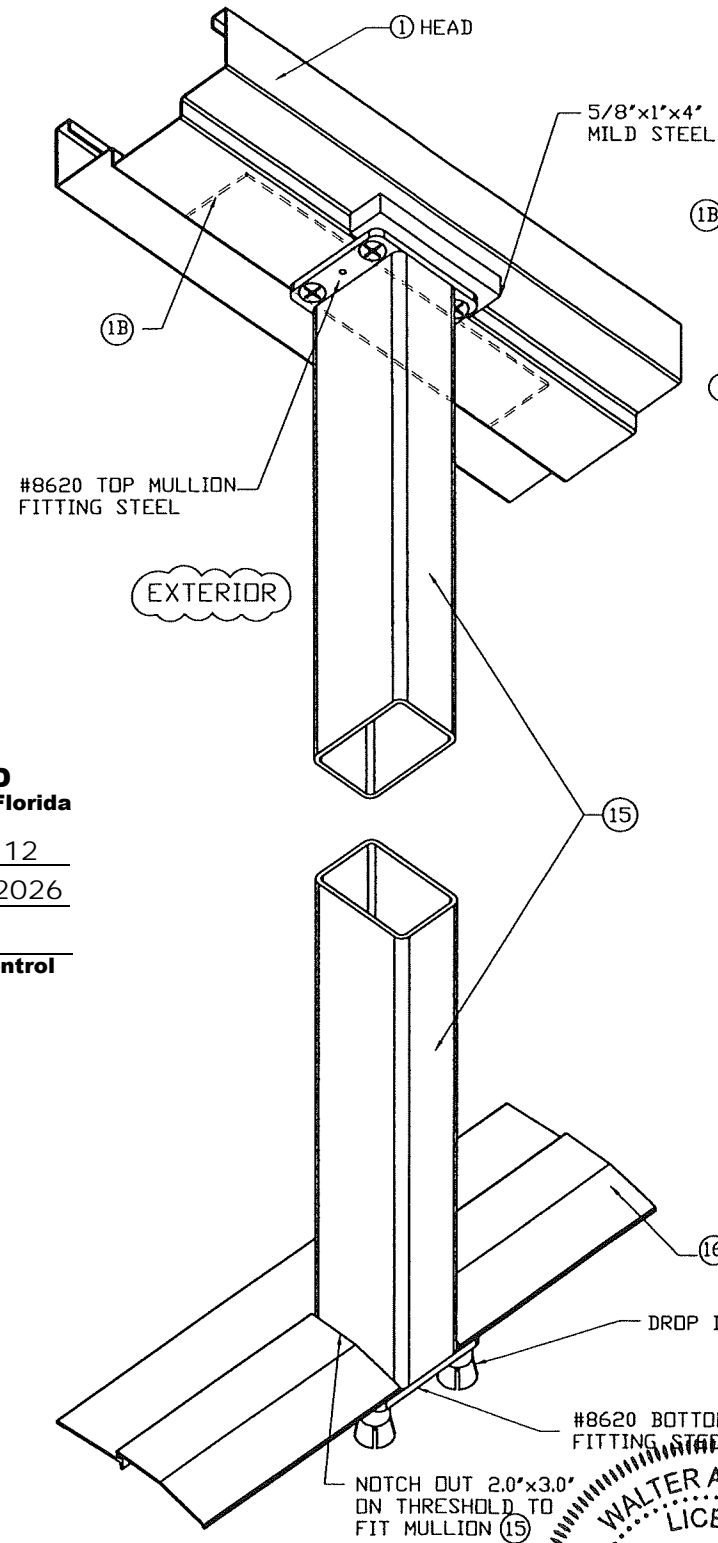


MULLION/DOOR SEAL

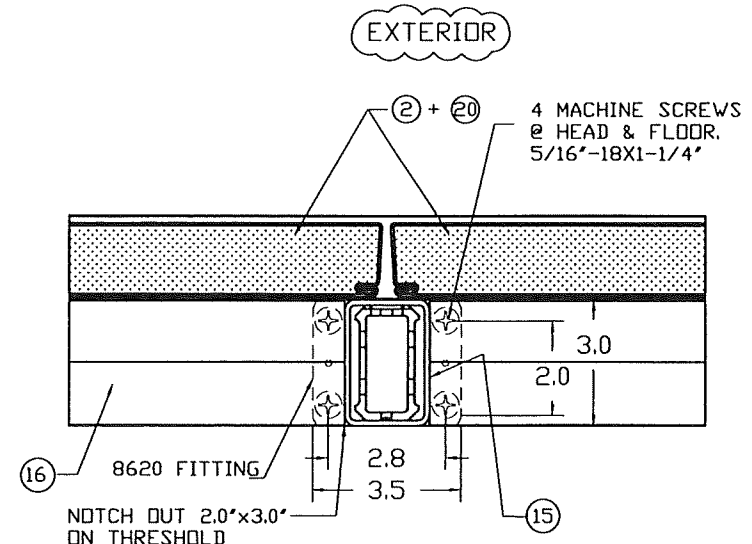
(15) MULLION BODY
0.125 THK. WALL
A 500 GRADE B STEEL

PRODUCT REVISED
as complying with the Florida
Building Code
NOA-No. 23-0823.12
Expiration Date 04/07/2026
By *Ishag I. Chanda*
Miami-Dade Product Control

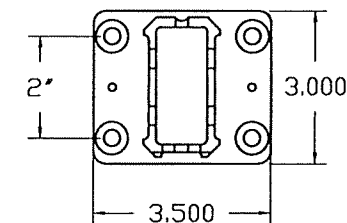
(15) VON DUPRIN SERIES 9954
(W/ 499 STRIKE PLATE)
MULLION INSTALLATION



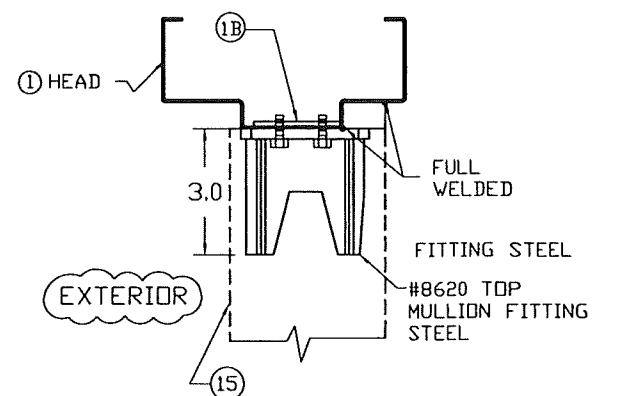
CONNECTION AT TOP (PLAN)



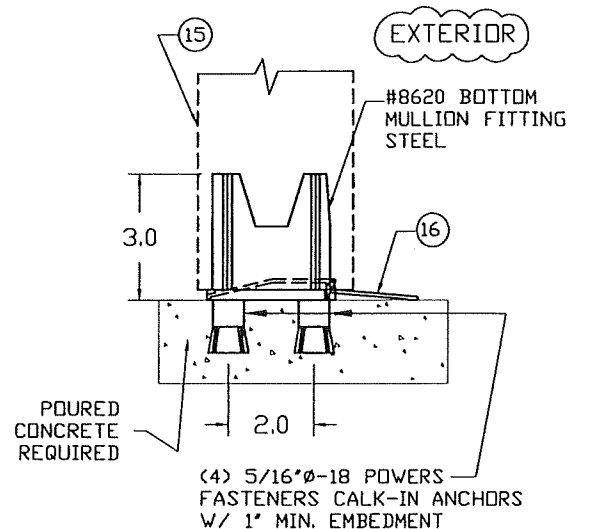
CONNECTION AT BOTTOM (PLAN)



MULLION FITTING
8620 STEEL



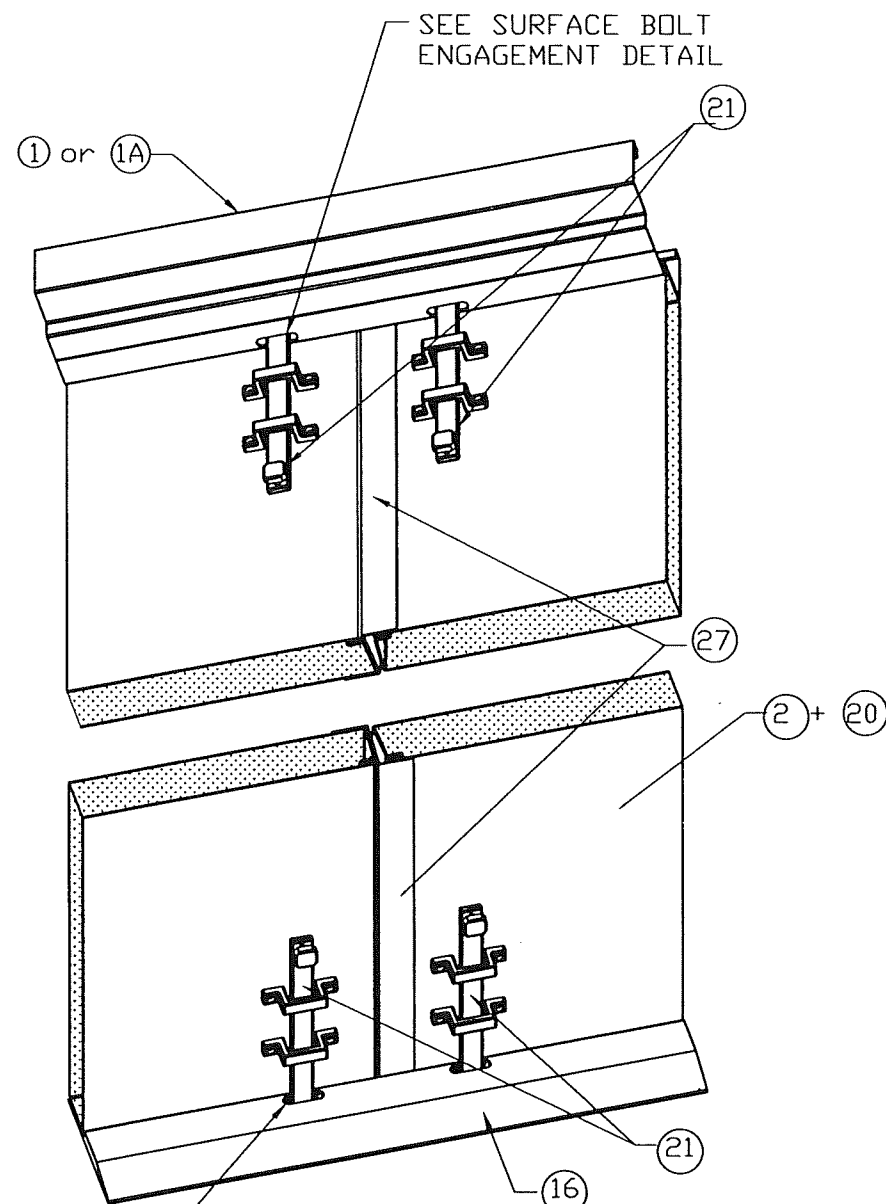
SECTION



SECTION

FLORIDA BUILDING CODE (HIGH VELOCITY HURRICANE ZONE)

<div>©2023 TILTECO, INC.</div> <div><div>TILTECO INC.</div><div>TILLIT TESTING & ENGINEERING COMPANY 6355N.W. 36th St., Ste. 305, VIRGINIA GARDENS, FL 33166 Phone : (305)871-1530 • Fax : (305)871-1531 e-mail: tilteco@aol.com CA-0006719 WALTER A. TILLIT Jr. P.E. FLORIDA Lic. # 44167</div></div>		<div>DOUBLE & SINGLE SERIES LS18 OUTSWING COMMERCIAL GALVANNEAL OR STAINLESS STEEL DOOR W/ SERIES "AS" 16 GAGE GALVANNEAL OR STAINLESS STEEL FRAME FLUSH, EMBOSSED & GLAZED ASSEMBLIES - L.M.</div> <div>DAYBAR INDUSTRIES LTD 50 WEST DRIVE, BRAMPTON, ON CANADA, L6T 2J4 TEL: 905 625-8000 FAX: 905 625-4204</div>		<div>DRAWN BY: Y.M.</div> <div>8/9/2023 DATE</div> <div>23-168 DRAWING No</div>																			
<table><tr><td>REV. No</td><td>DESCRIPTION</td><td>DATE</td><td>REV. No</td><td>DESCRIPTION</td><td>DATE</td></tr><tr><td>1</td><td>OLD 20-143</td><td>8/9/2023</td><td>3</td><td></td><td></td></tr><tr><td>2</td><td></td><td></td><td>4</td><td></td><td></td></tr></table>		REV. No	DESCRIPTION	DATE	REV. No	DESCRIPTION	DATE	1	OLD 20-143	8/9/2023	3			2			4					SHEET 11 OF 19	
REV. No	DESCRIPTION	DATE	REV. No	DESCRIPTION	DATE																		
1	OLD 20-143	8/9/2023	3																				
2			4																				

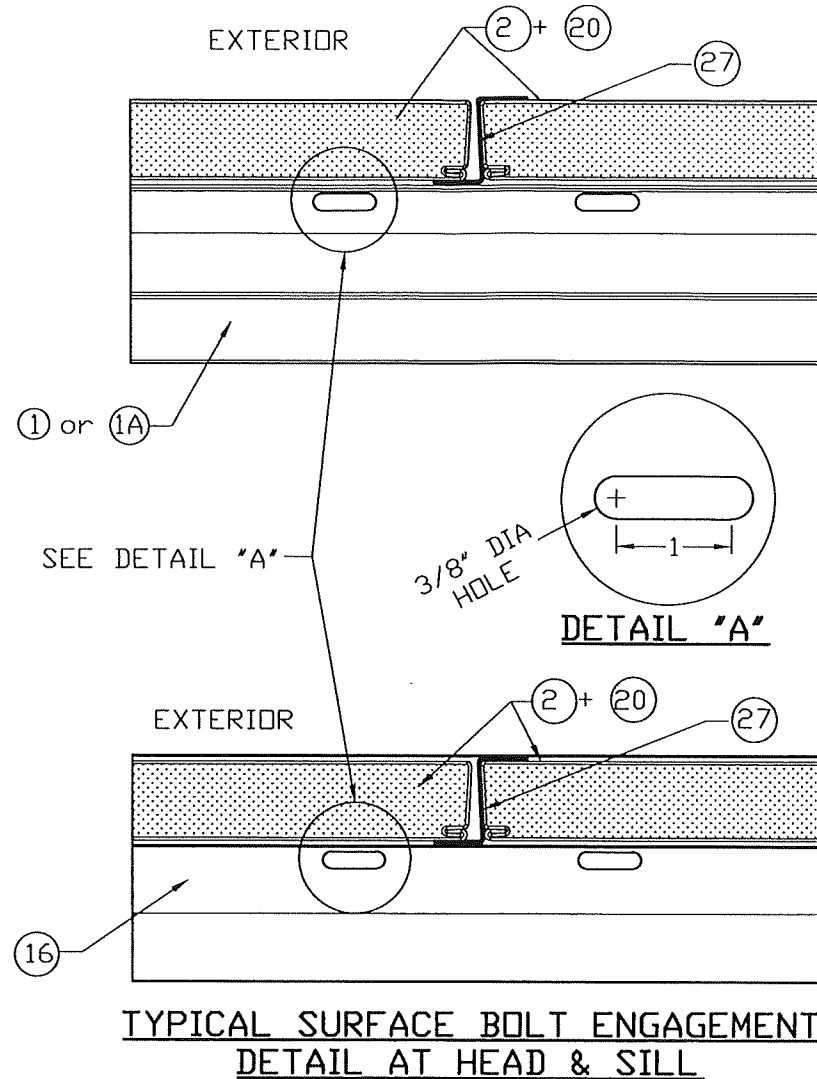


SEE SURFACE BOLT ENGAGEMENT DETAIL

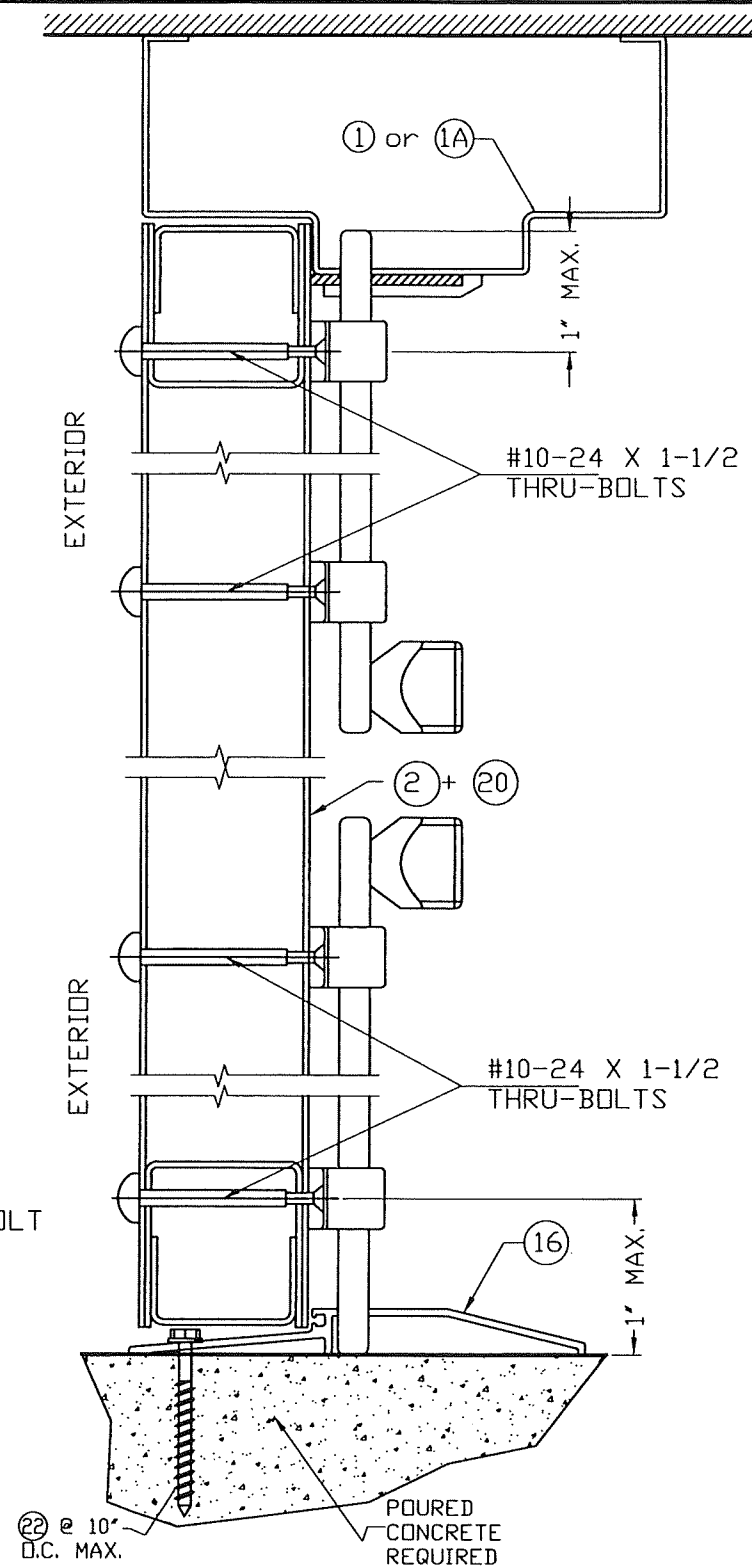
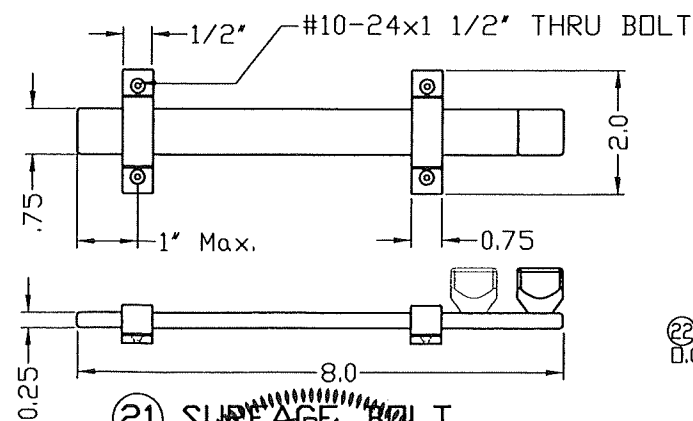
**SURFACE BOLT INSTALLATION
AT DOOR W/ ASTRAGAL (INTERIOR VIEW)**

NOTE:
SURFACE BOLT
MANUFACTURER-HAGER
MODEL #275D
MATERIAL-STEEL
FINISH US26D

21 8" #275D HAGER SURFACE BOLT



PRODUCT REVISED
as complying with the Florida
Building Code
NOA-No. 23-0823.12
Expiration Date 04/07/2026
By *Ishag I. Chanda*
Miami-Dade Product Control



FLORIDA BUILDING CODE (HIGH VELOCITY HURRICANE ZONE)

©2023 TILTECO, INC.

TILTECO INC.

TILLIT TESTING & ENGINEERING COMPANY
6355N.W. 36th. St., Ste. 305, VIRGINIA GARDENS, FL 33166
Phone : (305)871-1530 . Fax : (305)871-1531
e-mail: tilteco@aol.com
CA-0006719
WALTER A. TILLIT Jr., P.E.
FLORIDA Lic. # 44167

DOUBLE & SINGLE SERIES LS18 OUTSWING COMMERCIAL GALVANNEAL OR STAINLESS STEEL DOOR W/ SERIES "AS" 16 GAGE GALVANNEAL OR STAINLESS STEEL FRAME FLUSH, EMBOSSED & GLAZED ASSEMBLIES - L.M.

DAYBAR INDUSTRIES LTD
50 WEST DRIVE, BRAMPTON,
ON CANADA, L6T 2J4
TEL: 905 625-8000
FAX: 905 625-4204

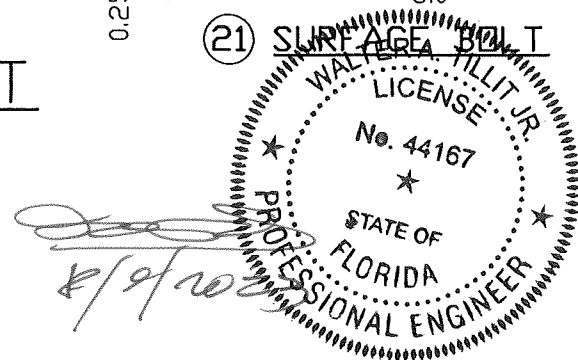
REV. No	DESCRIPTION	DATE	REV. No	DESCRIPTION	DATE
1	OLD 20-143	8/9/2023	3		
2			4		

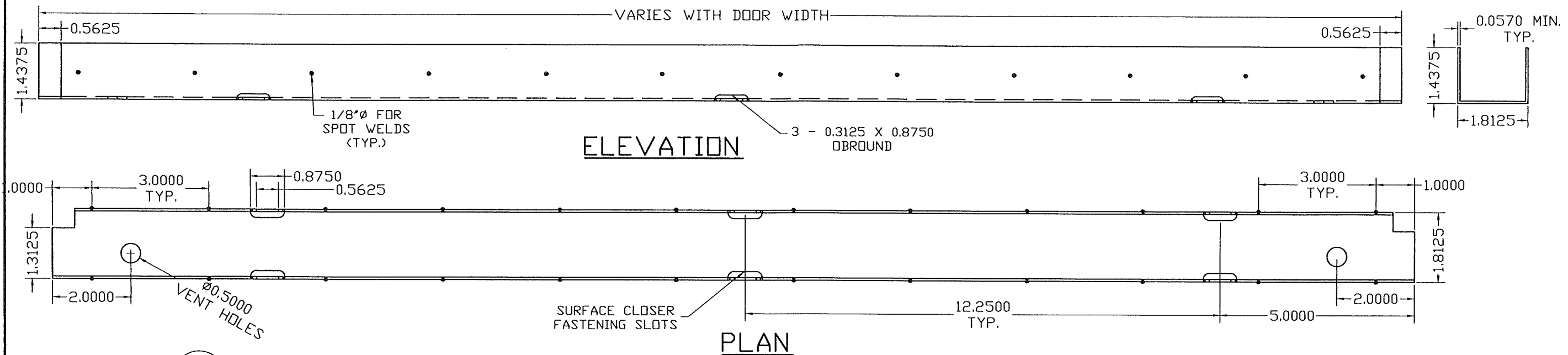
DRAWN BY:
Y.M.

8/9/2023
DATE

23-168
DRAWING No

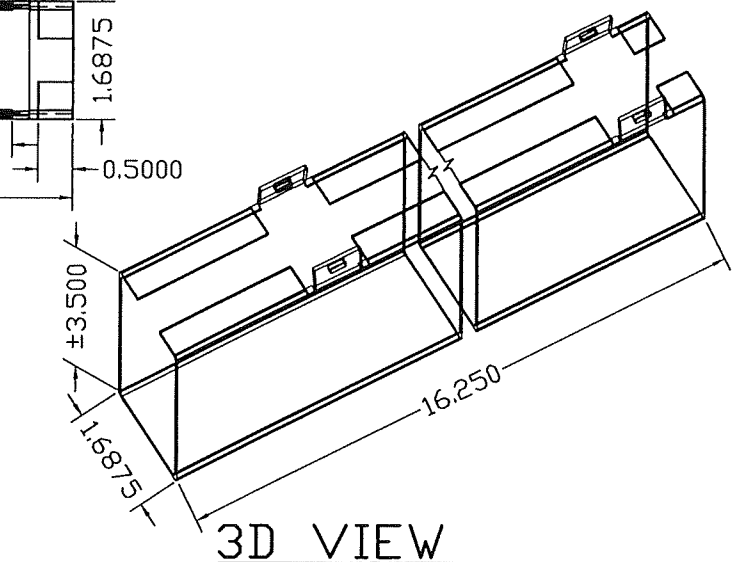
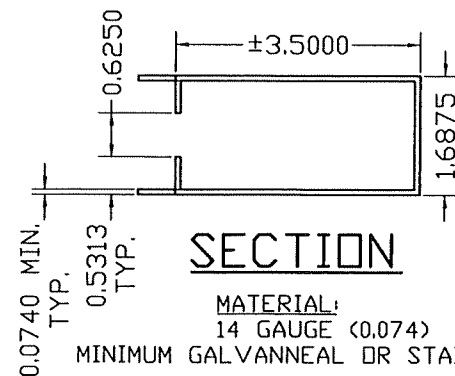
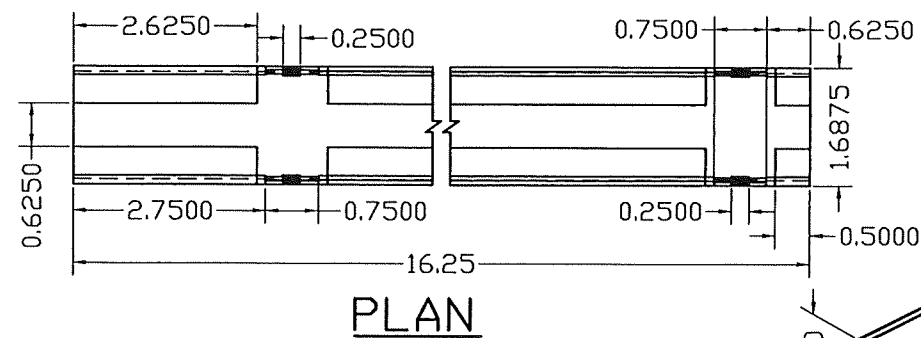
SHEET 12 OF 19





26 DOOR TOP AND BOTTOM TYPICAL END CHANNEL DETAIL

MATERIAL:
16 GAUGE (0.057) MINIMUM
GALVANNEAL STEEL OR STAINLESS STEEL



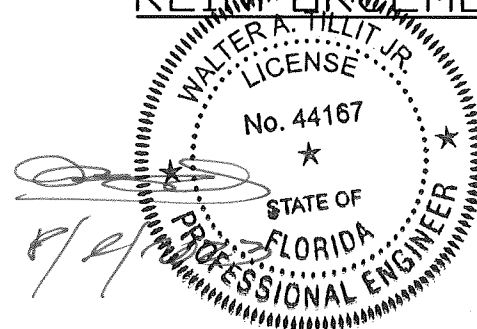
LAMINATED TO EACH FACE OF DOOR
W/ CONTACT ADHESIVE (HELHIBOND 8326-1)
AT HINGE EDGE AND TOP END CHANNEL.

25 DOOR SURFACE CLOSER REINFORCEMENT DETAIL

FLORIDA BUILDING CODE (HIGH VELOCITY HURRICANE ZONE)

DOOR SURFACE CLOSER & END CHANNEL ASSEMBLY

PRODUCT REVISED
as complying with the Florida
Building Code
NOA-No. 23-0823.12
Expiration Date 04/07/2026
By *Ishag I. Chanda*
Miami-Dade Product Control



©2023 TILTECO, INC.

TILTECO INC.

TILLIT TESTING & ENGINEERING COMPANY
6355 N.W. 36th St., Ste. 305, VIRGINIA GARDENS, FL 33166
Phone: (305) 871-1530 Fax: (305) 871-1531
e-mail: tilteco@aol.com
CA-0006719
WALTER A. TILLIT Jr. P.E.
FLORIDA Lic. # 44167

DOUBLE & SINGLE SERIES LS18 OUTSWING COMMERCIAL
GALVANNEAL OR STAINLESS STEEL DOOR W/ SERIES "AS"
16 GAGE GALVANNEAL OR STAINLESS STEEL FRAME
FLUSH, EMBOSSED & GLAZED ASSEMBLIES - L.M.

DAYBAR INDUSTRIES LTD
50 WEST DRIVE, BRAMPTON,
ON CANADA, L6T 2J4
TEL: 905 625-8000
FAX: 905 625-4204

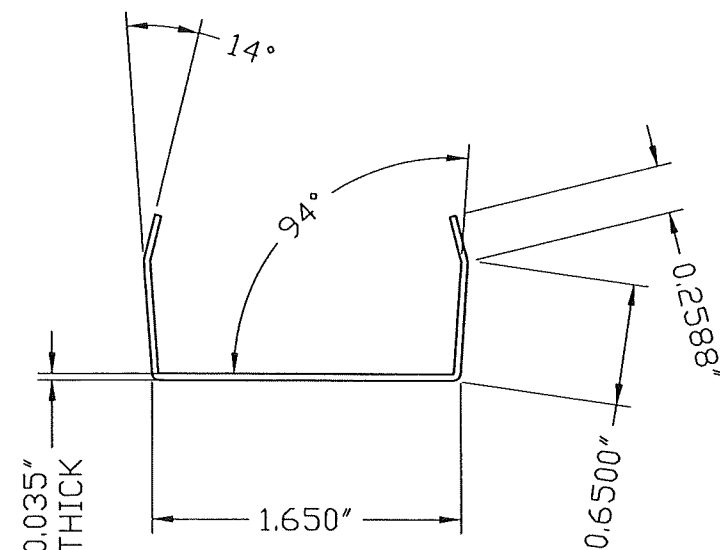
REV. No	DESCRIPTION	DATE	REV. No	DESCRIPTION	DATE
1	OLD 20-143	8/9/2023	3		
2			4		

DRAWN BY:
Y.M.

8/9/2023
DATE

23-168
DRAWING No

SHEET 13 OF 19

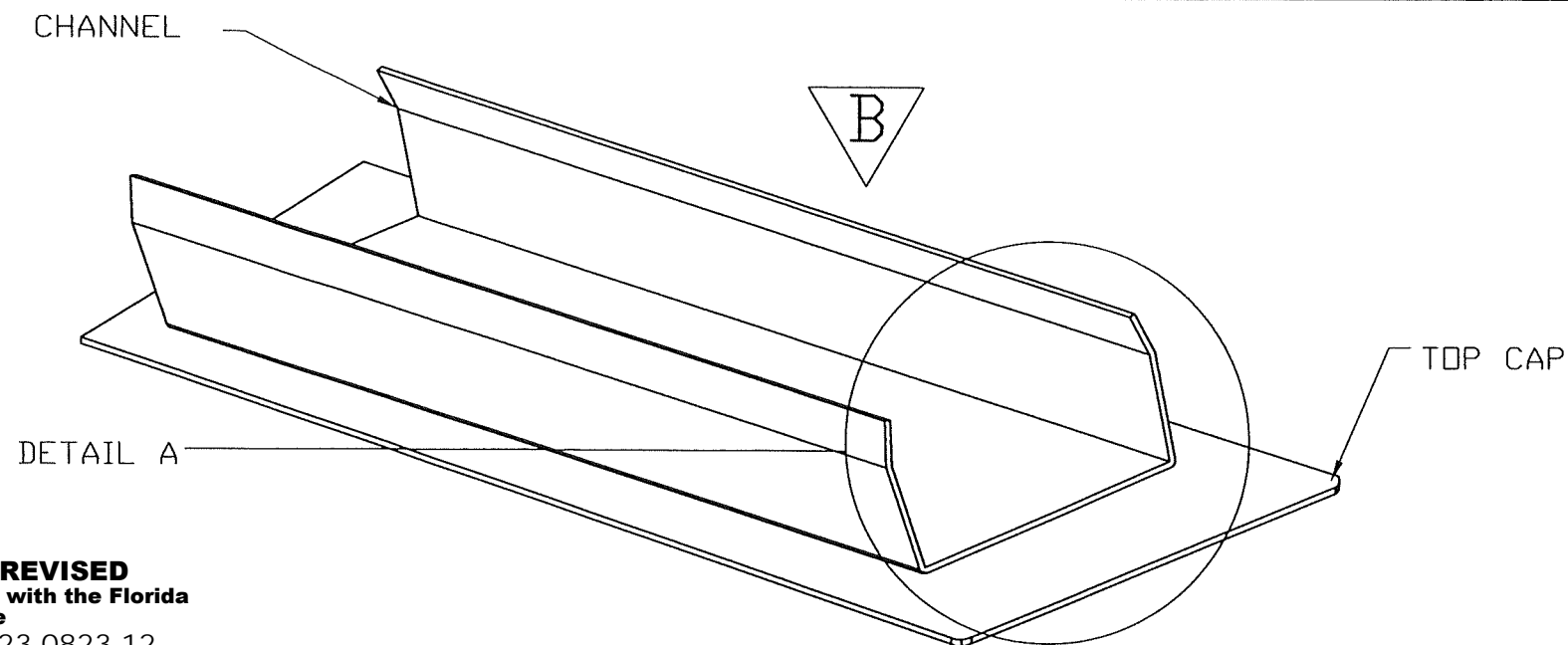


DETAIL A
SNAP IN CHANNEL

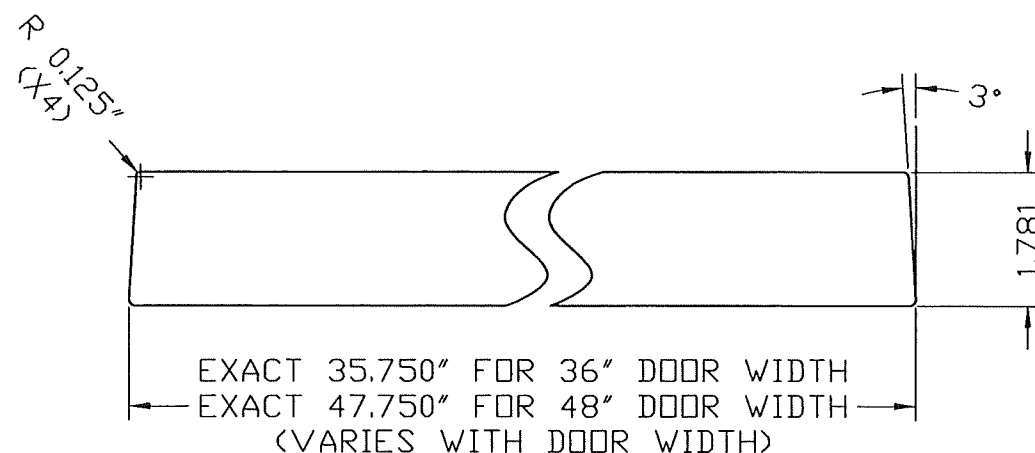
PRODUCT REVISED
as complying with the Florida
Building Code
NOA-No. 23-0823.12

Expiration Date 04/07/2026

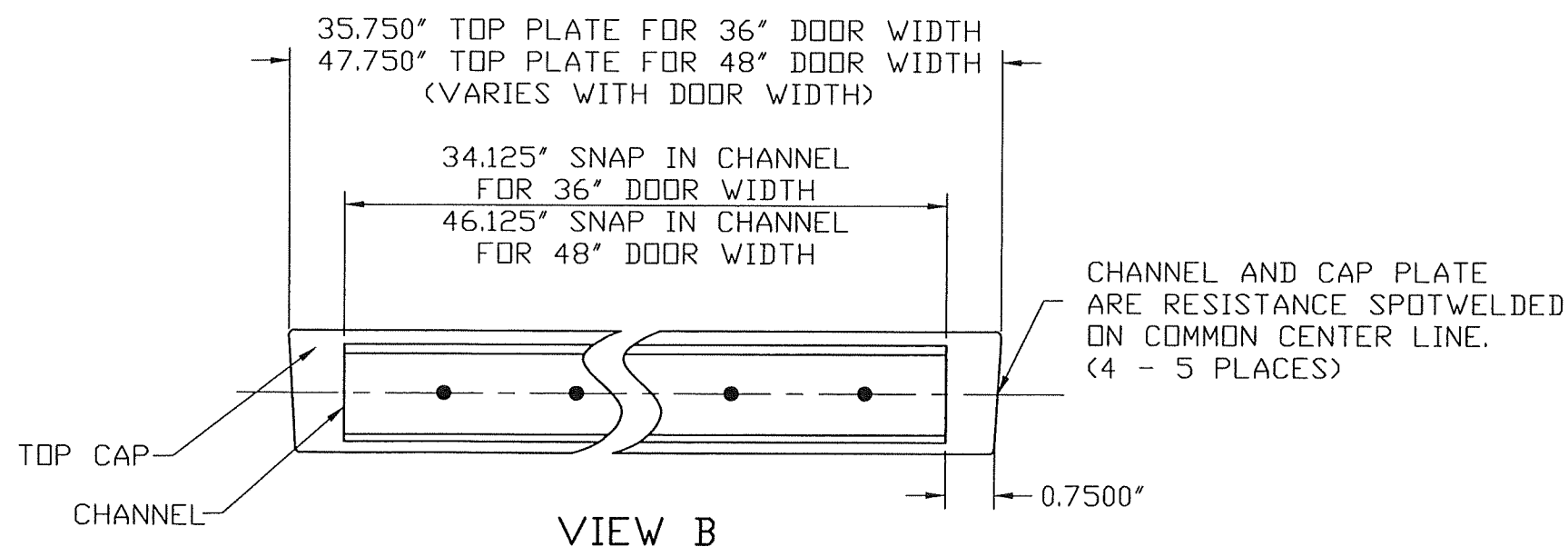
By Ishag I. Chande
Miami-Dade Product Control



ASSEMBLY (ISOMETRIC)
(SNAP IN CHANNEL WITH TOP CAP)



STANDARD TOP CAP



VIEW B

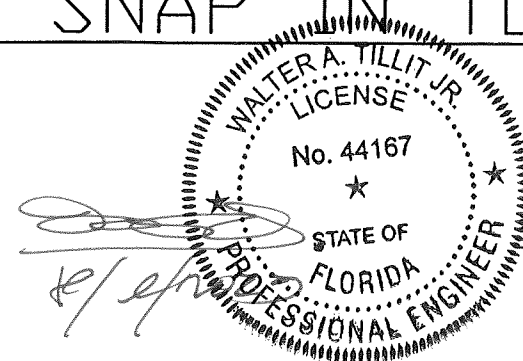
MATERIAL: 20 GA GALVANNEAL STEEL ASTM A-653,
A-60 OR STAINLESS STEEL FOR BOTH PIECES.

INSTALLATION OPTIONS:

(A) CAULK AND PRESSFIT

(B) CAULK, PRESSFIT AND TACK WELD

28 DOOR SNAP IN TOP CAP DETAIL



FLORIDA BUILDING CODE (HIGH VELOCITY HURRICANE ZONE)

©2023 TILTECO, INC.
TILTECO INC.
TILLIT TESTING & ENGINEERING COMPANY
6355N.W. 36th. St. Ste. 305, VIRGINIA GARDENS, FL 33166
Phone : (305)871-1530 . Fax : (305)871-1531
e-mail: tilteco@aol.com
CA-0006719
WALTER A. TILLIT Jr. P.E.
FLORIDA Lic. # 44167

DOUBLE & SINGLE SERIES LS18 OUTSWING COMMERCIAL
GALVANNEAL OR STAINLESS STEEL DOOR W/ SERIES "AS"
16 GAGE GALVANNEAL OR STAINLESS STEEL FRAME
FLUSH, EMBOSSED & GLAZED ASSEMBLIES - L.M.

DAYBAR INDUSTRIES LTD

50 WEST DRIVE, BRAMPTON,
ON CANADA, L6T 2J4
TEL: 905 625-8000
FAX: 905 625-4204

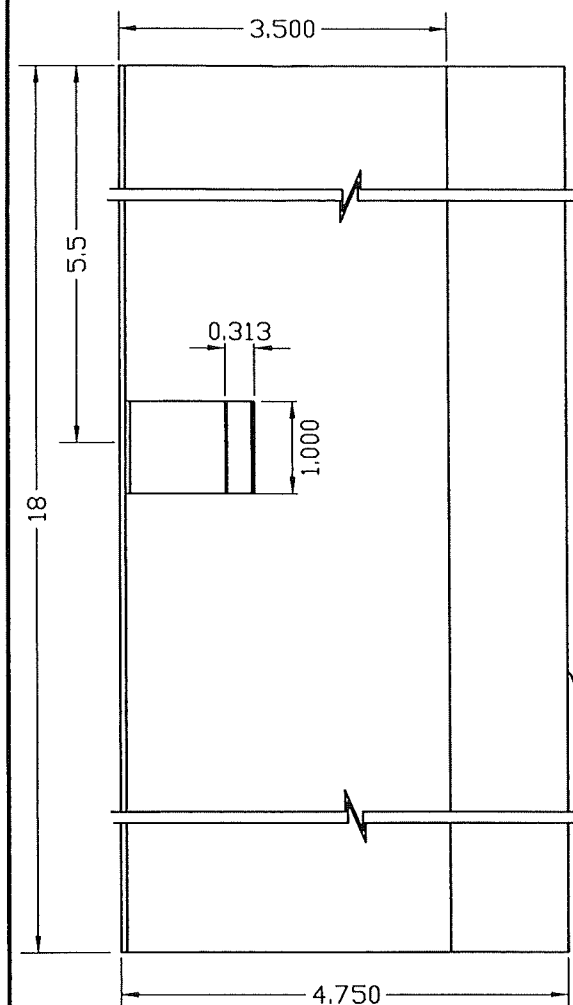
DRAWN BY:
Y.M.

8/9/2023
DATE

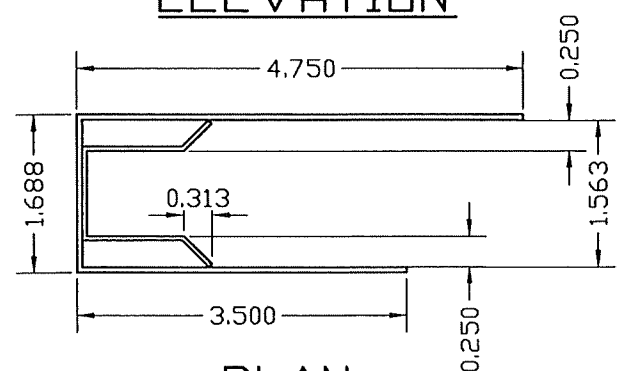
23-168
DRAWING No

REV. No	DESCRIPTION	DATE	REV. No	DESCRIPTION	DATE
1	OLD 20-143	8/9/2023	3		
2			4		

SHEET 14 OF 19



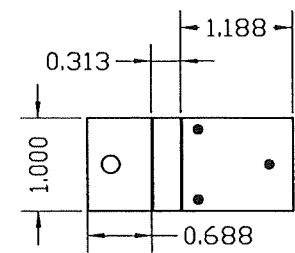
ELEVATION



PLAN

MATERIAL:
ALL GALVANNEAL STEEL OR
STAINLESS STEEL

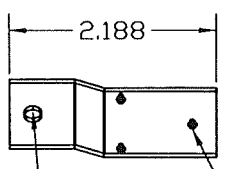
**(23) ANSI #A115.1 #86 MORTISE
LOCK (12) /RIM PANIC (11) REINFORCING**



**DOOR EDGE
MOUNTING TAB**

14 GA (0.074) MIN GALVANNEAL
STEEL OR STAINLESS STEEL

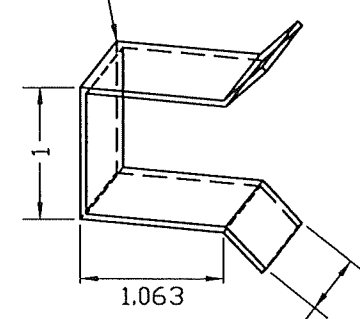
#12-24
SCREW



(3) 1/8"φ
PROJECTION
WELDS

GAGE 14 (0.074) MINIMUM
RP REINFORCING SAME AS #86.
LESS LOCK CLIP & MOUNTING
TABS, GLUE W /CONTACT
ADHESIVE TO DOOR FACE

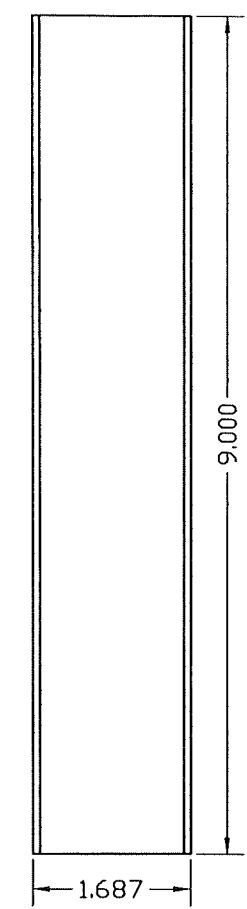
LOCK CLIP-18GA (0.045)
MIN. ONLY VALID FOR
ASSEMBLY WHERE
APPLICABLE



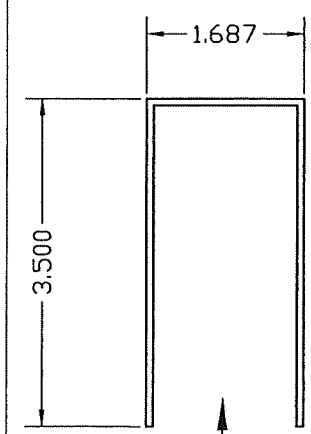
PRODUCT REVISED
as complying with the Florida
Building Code
NOA-No. 23-0823.12

Expiration Date 04/07/2026

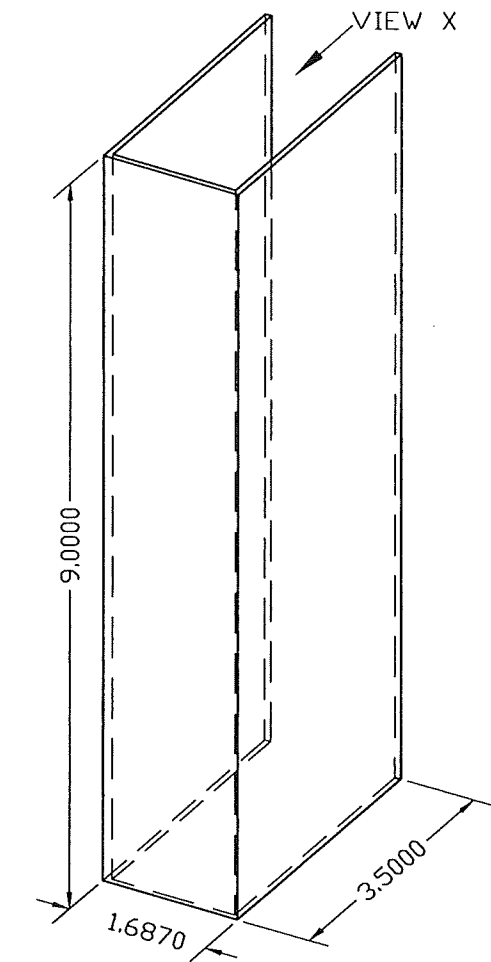
By *Ismael L. Chande*
Miami-Dade Product Control



VIEW X



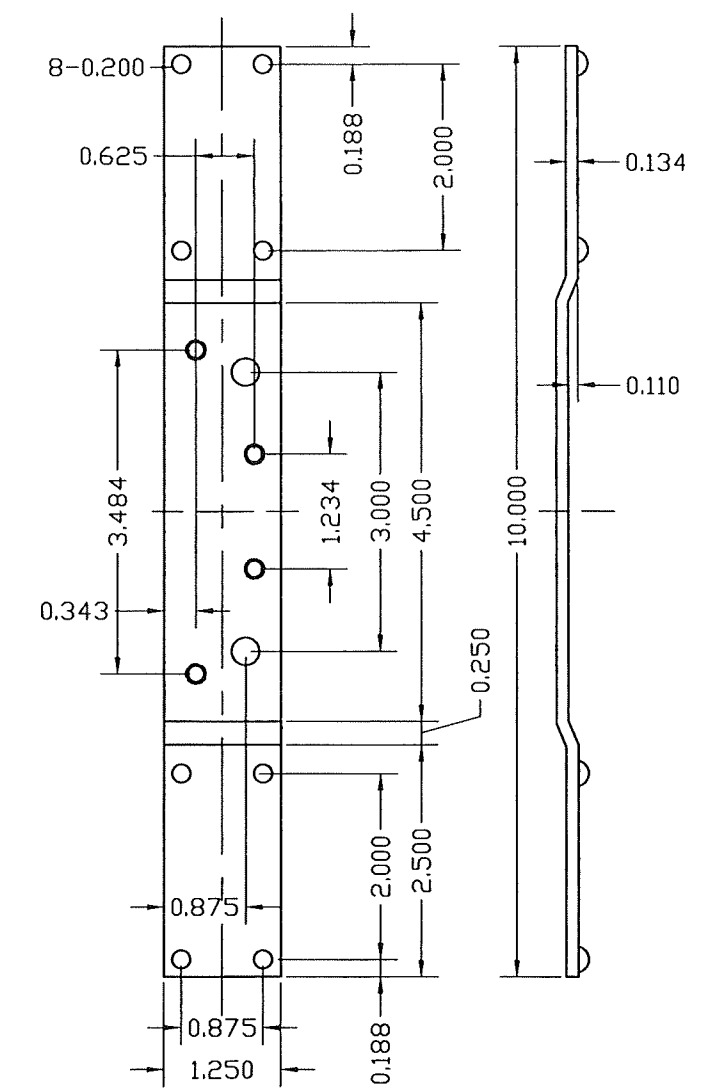
VIEW X



3D VIEW

MATERIAL:
14 GAUGE (0.074) MINIMUM
GALVANNEAL STEEL OR STAINLESS
STEEL, GLUED TO DOOR AT HEAD &
SILL USING HEMILBOND 8320-1
CONTACT ADHESIVE.

**(18) DOOR SURFACE
BOLT REINFORCING
DETAIL**



**(17) 4 1/2" HINGE BAR
REINFORCING FOR DOOR**

MATERIAL:
8 GAUGE
GALVANNEAL STEEL OR
STAINLESS STEEL

FLORIDA BUILDING CODE (HIGH VELOCITY HURRICANE ZONE)

©2023 TILTECO, INC.

TILTECO INC.

TILLIT TESTING & ENGINEERING COMPANY
6355N.W. 36th St., Ste. 305, VIRGINIA GARDENS, FL 33166
Phone : (305)871-1530 . Fax : (305)871-1531
e-mail: tilteco@aol.com
CA-0006719
WALTER A. TILLIT Jr., P.E.
FLORIDA Lic. # 44167

DOUBLE & SINGLE SERIES LS18 OUTSWING COMMERCIAL
GALVANNEAL OR STAINLESS STEEL DOOR W/ SERIES "AS"
16 GAGE GALVANNEAL OR STAINLESS STEEL FRAME
FLUSH, EMBOSSED & GLAZED ASSEMBLIES - L.M.

DAYBAR INDUSTRIES LTD
50 WEST DRIVE, BRAMPTON,
ON CANADA, L6T 2J4
TEL: 905 625-8000
FAX: 905 625-4204

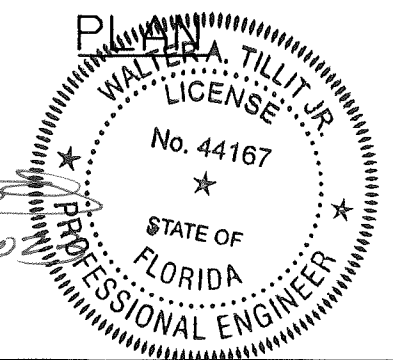
REV. No	DESCRIPTION	DATE	REV. No	DESCRIPTION	DATE
1	OLD 20-143	8/9/2023	3		
2			4		

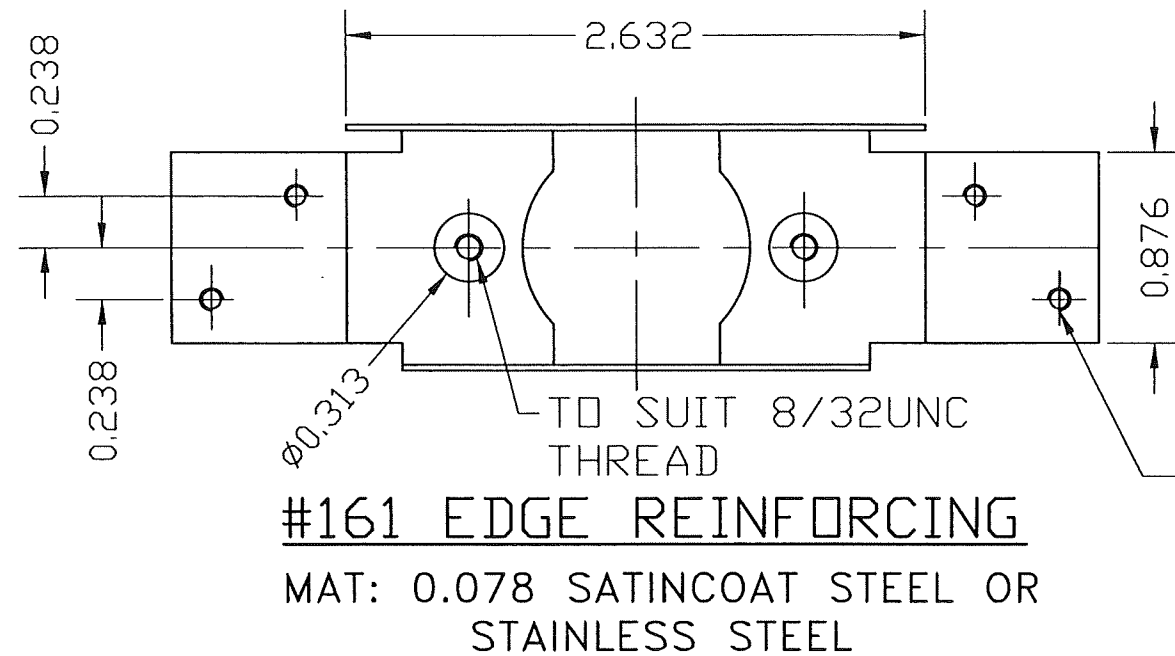
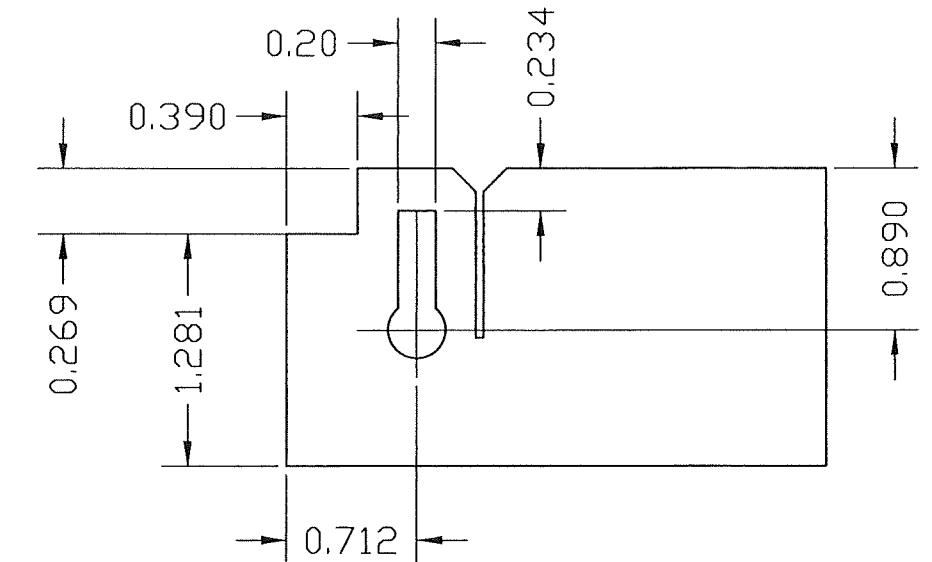
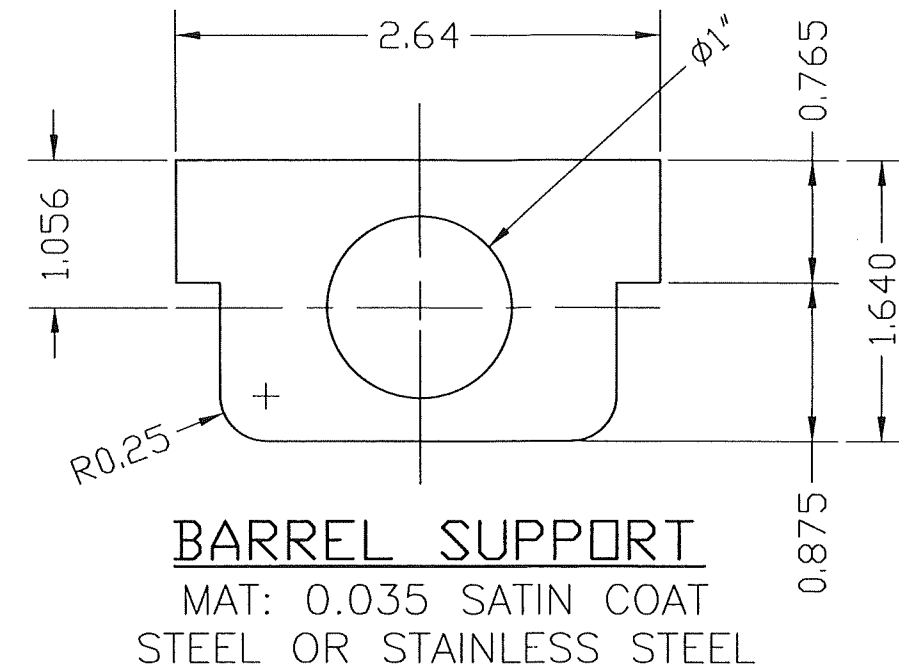
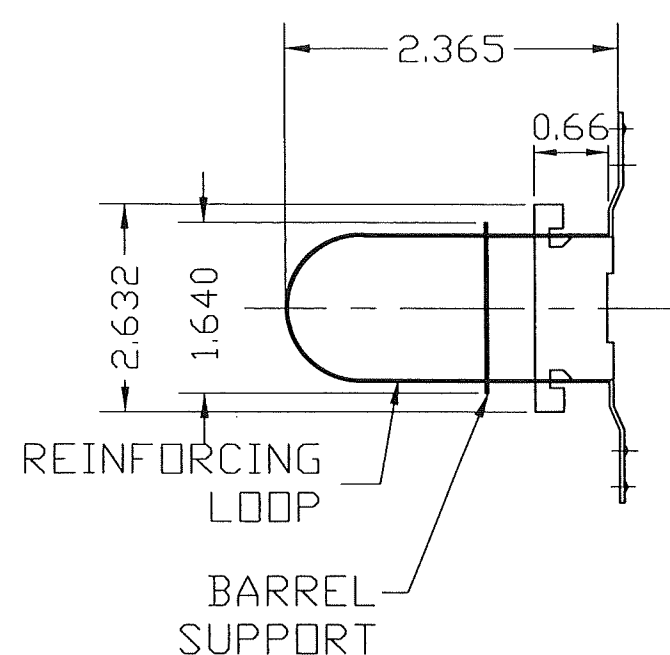
DRAWN BY:
Y.M.

8/9/2023
DATE

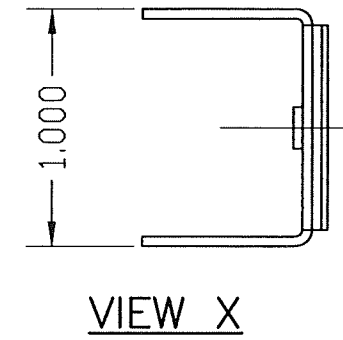
23-168
DRAWING No

SHEET 15 OF 19



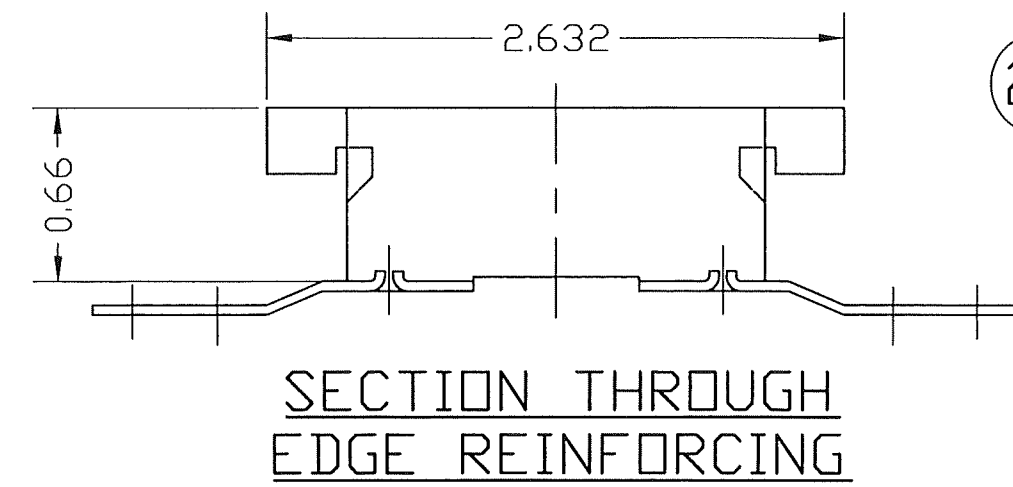


(4) 1/16"Ø PROJECTION WELDS

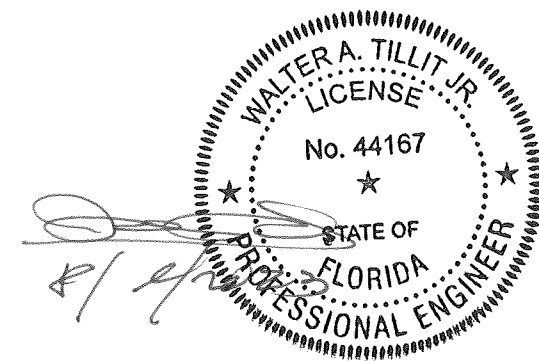


REINFORCING LOOP
MAT: 0.035 SATIN COAT STEEL OR STAINLESS STEEL

PRODUCT REVISED
as complying with the Florida Building Code
NOA-No. 23-0823.12
Expiration Date 04/07/2026
By *Ishag I. Chande*
Miami-Dade Product Control



(24) #161 CYLINDRICAL LOCK AND DEAD BOLT REINFORCEMENT DETAIL



FLORIDA BUILDING CODE (HIGH VELOCITY HURRICANE ZONE)

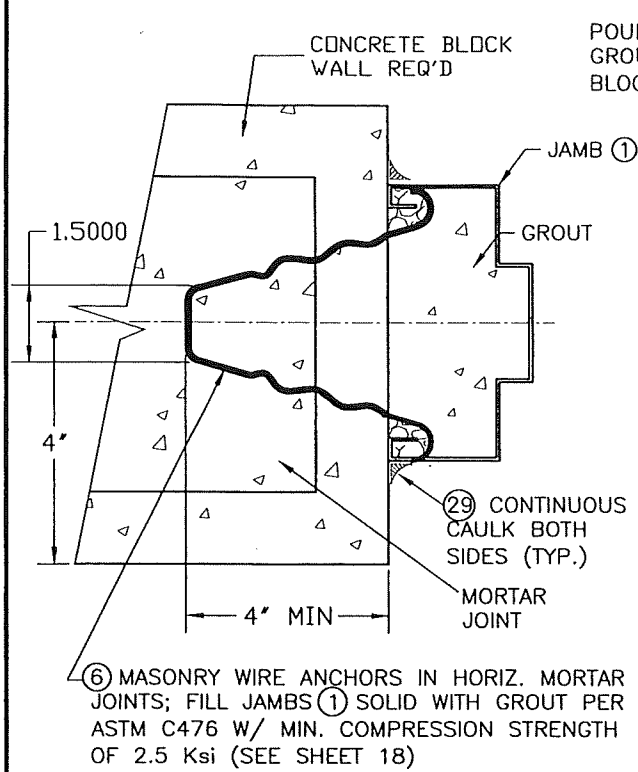
©2023 TILTECO, INC.

TILTECO INC.

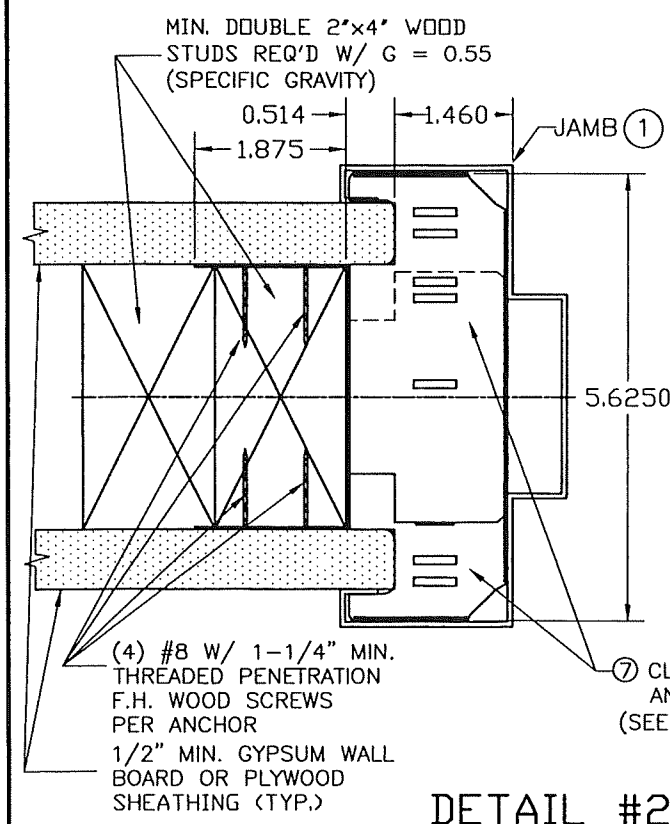
TILLIT TESTING & ENGINEERING COMPANY
6355 N.W. 36th St., Ste. 305, VIRGINIA GARDENS, FL 33166
Phone: (305) 871-1530 • Fax: (305) 871-1531
e-mail: tilteco@aol.com
CA-0006719
WALTER A. TILLIT JR. P.E.
FLORIDA Lic. # 44167

DOUBLE & SINGLE SERIES LS18 OUTSWING COMMERCIAL GALVANNEAL OR STAINLESS STEEL DOOR W/ SERIES "AS" 16 GAGE GALVANNEAL OR STAINLESS STEEL FRAME FLUSH, EMBOSSED & GLAZED ASSEMBLIES - L.M.					
DAYBAR INDUSTRIES LTD 50 WEST DRIVE, BRAMPTON, ON CANADA, L6T 2J4 TEL: 905 625-8000 FAX: 905 625-4204					
REV. No	DESCRIPTION	DATE	REV. No	DESCRIPTION	DATE
1	OLD 20-143	8/9/2023	3		
2			4		

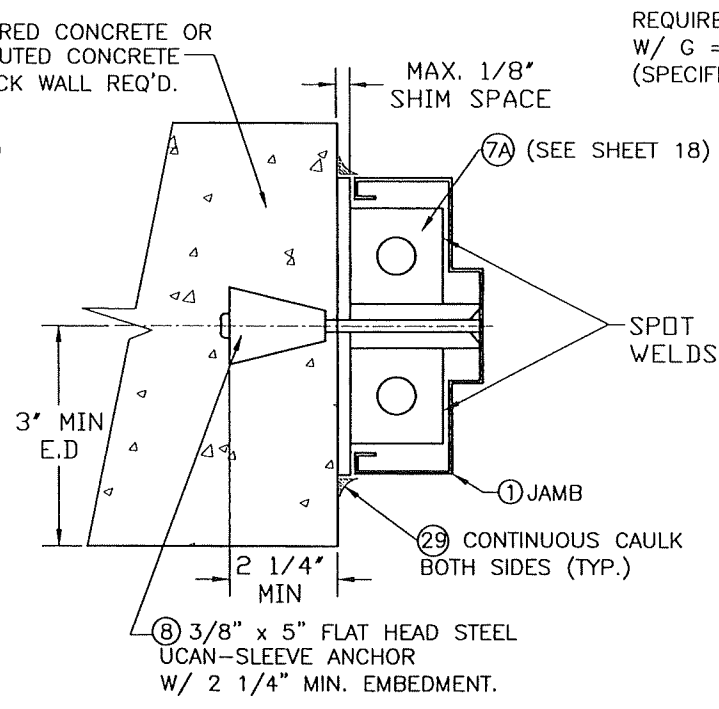
DRAWN BY: Y.M.
8/9/2023
DATE
23-168
DRAWING No
SHEET 16 OF 19



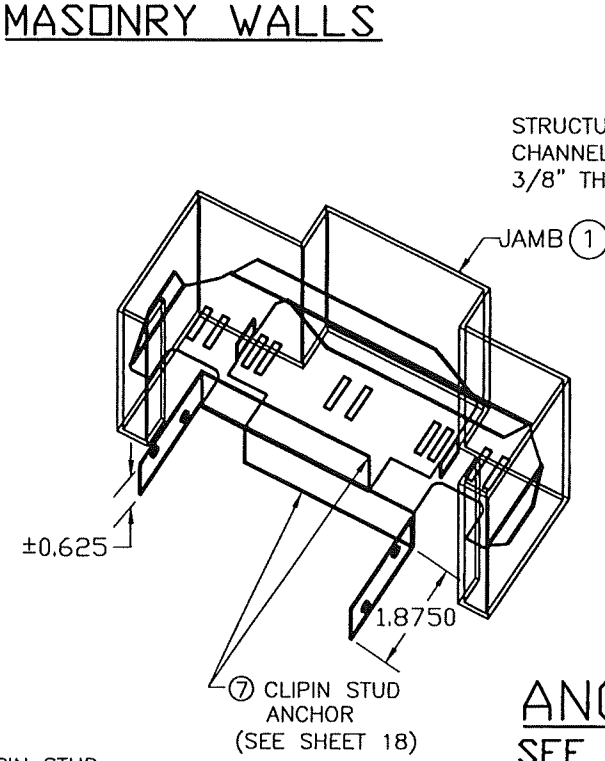
DETAIL #21
WIRE ANCHOR (6)
INSTALLATION TO
MASONRY WALLS



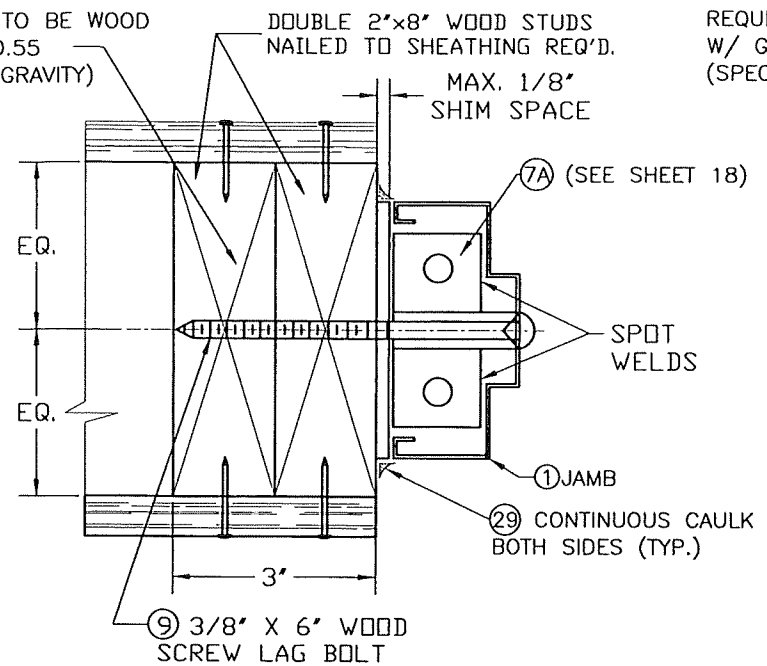
DETAIL #20
INSTALLATION OF 2 PIECE COMBINATION
STUD ANCHOR (7) INTO WOOD FRAME WALLS



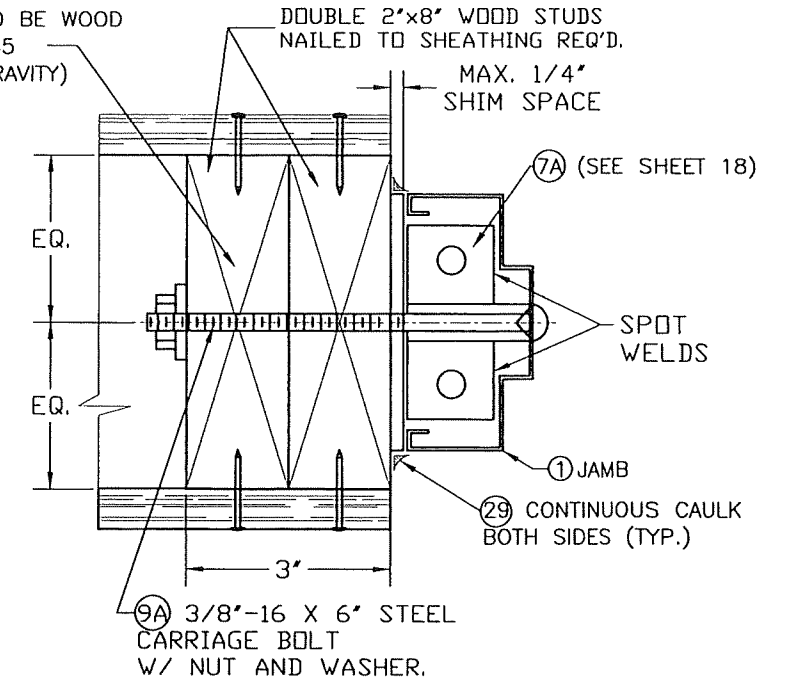
DETAIL #22
INSTALLATION OF UCAN
SLEEVE ANCHORS (8) TO
MASONRY WALLS



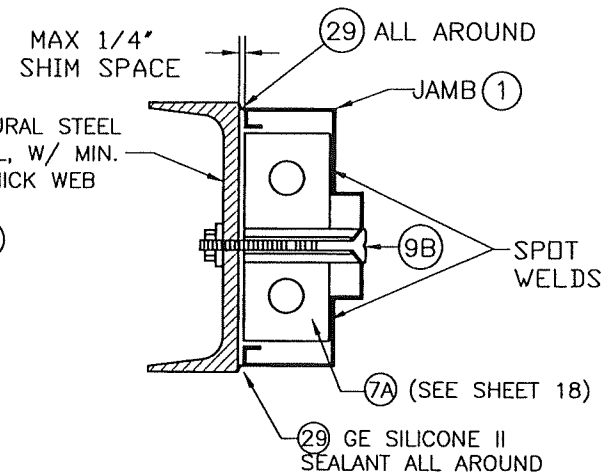
DETAIL #23A
INSTALLATION OF 3/8 inch
F.H. M.S. (9B) TO STEEL CHANNEL



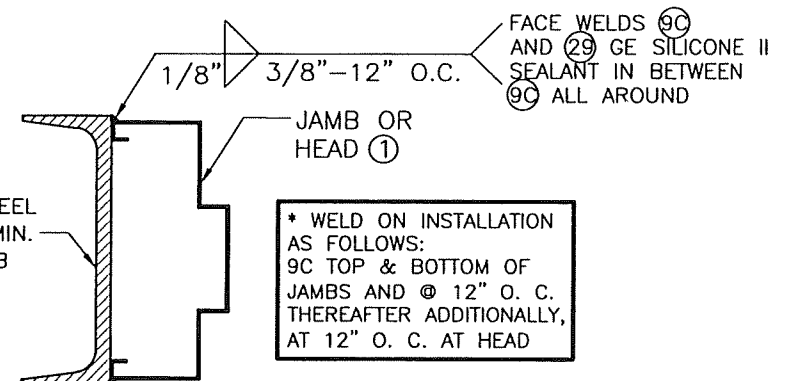
DETAIL #22A
INSTALLATION OF 3/8 inch LAG
SCREW (9) TO WOOD FRAME WALLS



DETAIL #22B
INSTALLATION OF 3/8 inch LAG
BOLT (9A) TO WOOD FRAME WALLS

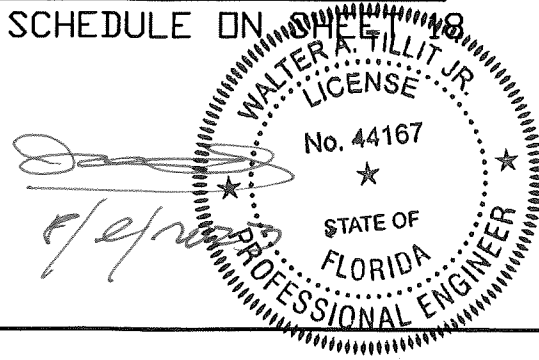


DETAIL #23B
INSTALLATION OF JAMB (1) TO
STEEL CHANNEL THRU WELDING (9C)



* WELD ON INSTALLATION AS FOLLOWS:
 9C TOP & BOTTOM OF JAMBS AND @ 12" O. C. THEREAFTER ADDITIONALLY, AT 12" O. C. AT HEAD

ANCHOR DETAILS:
 SEE SCHEDULE ON SHEET 18



FLORIDA BUILDING CODE (HIGH VELOCITY HURRICANE ZONE)

©2023 TILTECO, INC.

TILTECO INC.

TILLIT TESTING & ENGINEERING COMPANY
 6355N.W. 36th. St., Ste. 305, VIRGINIA GARDENS, FL 33166
 Phone : (305)871-1530 . Fax : (305)871-1531
 e-mail: tilteco@aol.com
 CA-0006719
 WALTER A. TILLIT Jr. P.E.
 FLORIDA Lic. # 44167

DOUBLE & SINGLE SERIES LS18 OUTSWING COMMERCIAL GALVANNEAL OR STAINLESS STEEL DOOR W/ SERIES "AS" 16 GAGE GALVANNEAL OR STAINLESS STEEL FRAME FLUSH, EMBOSSED & GLAZED ASSEMBLIES - L.M.

DAYBAR INDUSTRIES LTD
 50 WEST DRIVE, BRAMPTON, ON CANADA, L6T 2J4
 TEL: 905 625-8000
 FAX: 905 625-4204

REV. No	DESCRIPTION	DATE	REV. No	DESCRIPTION	DATE
1	OLD 20-143	8/9/2023	3		
2			4		

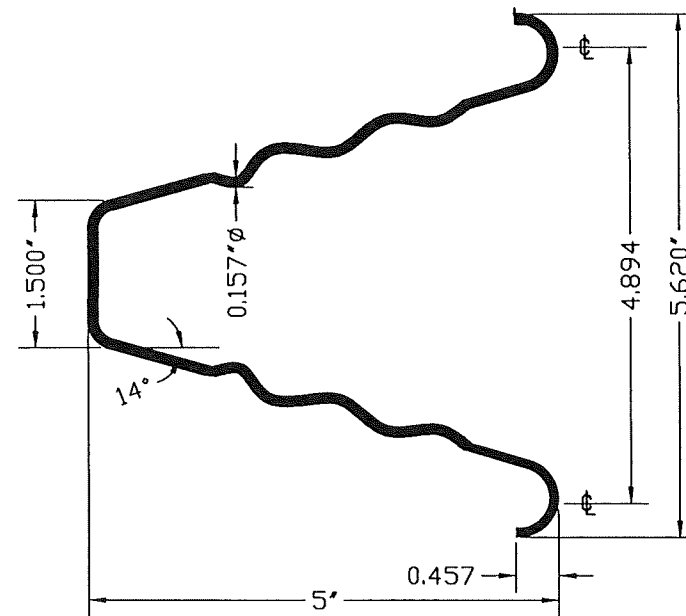
DRAWN BY:
 Y.M.

8/9/2023
 DATE

23-168
 DRAWING No

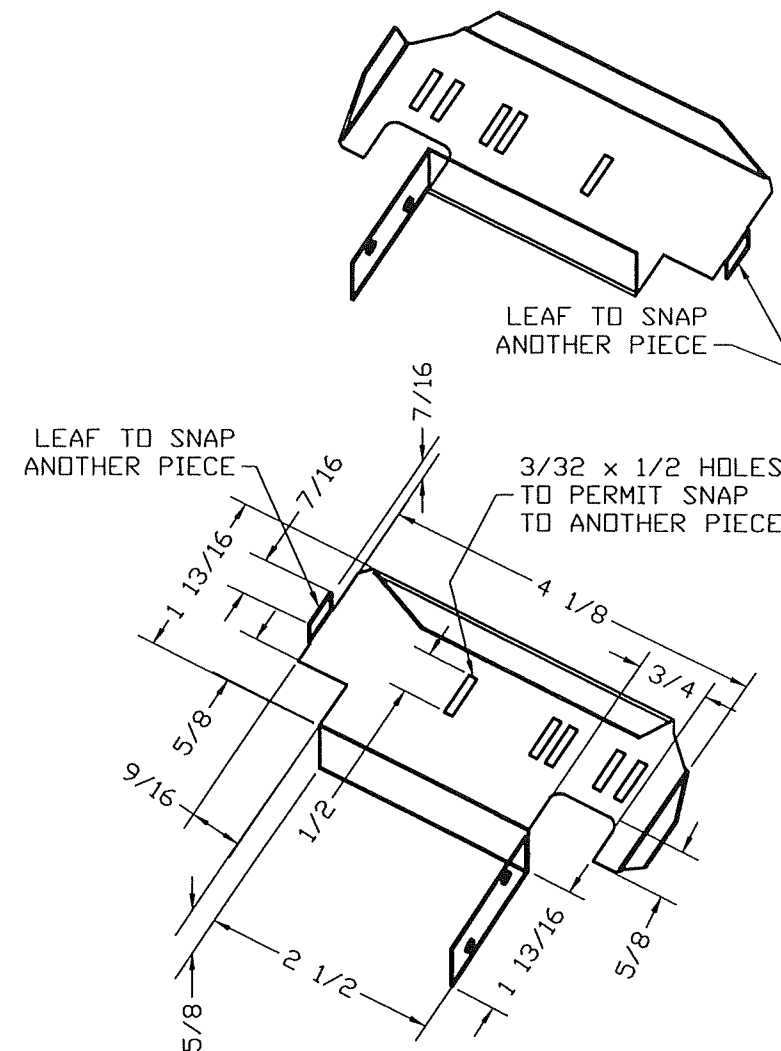
SHEET 17 OF 19

PRODUCT REVISED
 as complying with the Florida Building Code
 NOA-No. 23-0823.12
 Expiration Date 04/07/2026
 By *Ishag I. Chande*
 Miami-Dade Product Control



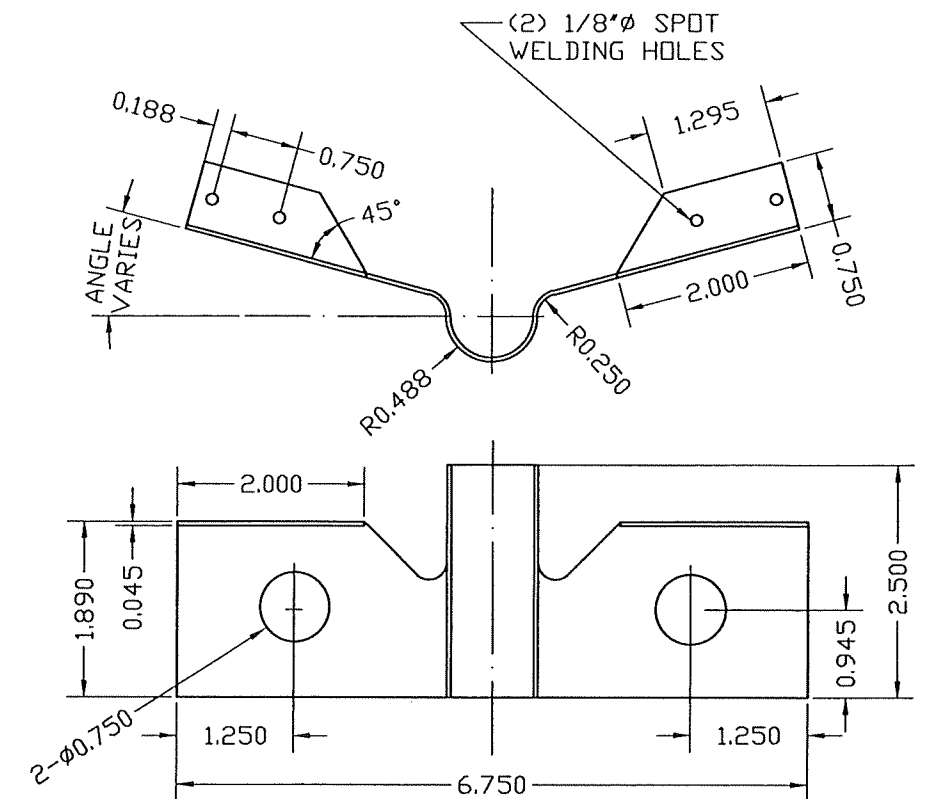
**⑥ WIRE ANCHOR
FOR DETAIL #21/17**

STEEL WIRE ANCHORS
(0.157" DIA, 9 1/2" LONG) IN HORIZ.
Fu Min.=95.9 Ksi, Fy Min.=40.2 Ksi



**⑦ 2 PIECE COMBINATION STUD
ANCHOR FOR DETAIL #20/17**

CLIPIN STUD ANCHOR MATERIAL:
GAUGE 20 (0.035) ASTM A-653,
A-60 GALVANNEALED STEEL.

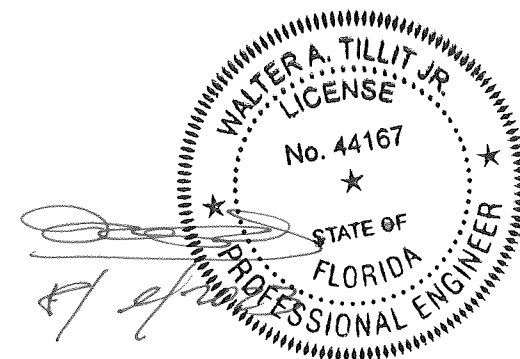


**⑦A EMA BUTTERFLY ANCHOR (PART #PT1-008)
FOR DETAILS 22/17, 22A/17, 22B/17 & 23A/17**
MATERIAL: 18 GA SATIN COAT

PRODUCT REVISED
as complying with the Florida
Building Code
NOA-No. 23-0823.12

Expiration Date 04/07/2026

By *Ishag I. Chandra*
Miami-Dade Product Control



FLORIDA BUILDING CODE (HIGH VELOCITY HURRICANE ZONE)

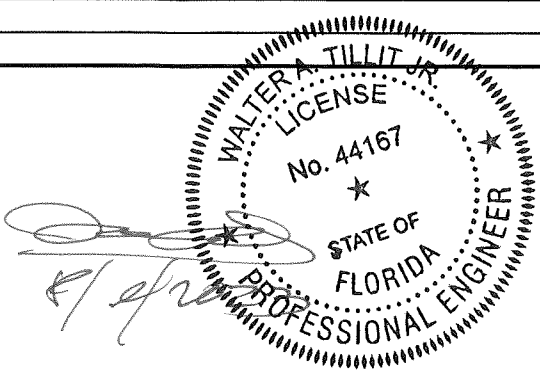
©2023 TILTECO, INC. TILLIT TESTING & ENGINEERING COMPANY 6355 N.W. 36th St., Ste. 305, VIRGINIA GARDENS, FL 33166 Phone: (305) 871-1530 Fax: (305) 871-1531 e-mail: tilteco@aol.com CA-0006719 WALTER A. TILLIT Jr. P.E. FLORIDA Lic. # 44167			DOUBLE & SINGLE SERIES LS18 OUTSWING COMMERCIAL GALVANNEAL OR STAINLESS STEEL DOOR W/ SERIES "AS" 16 GAGE GALVANNEAL OR STAINLESS STEEL FRAME FLUSH, EMBOSSED & GLAZED ASSEMBLIES - L.M.			DRAWN BY: Y.M.	
DAYBAR INDUSTRIES LTD 50 WEST DRIVE, BRAMPTON, ON CANADA, L6T 2J4 TEL: 905 625-8000 FAX: 905 625-4204			8/9/2023 DATE			23-168 DRAWING No	
REV. No	DESCRIPTION	DATE	REV. No	DESCRIPTION	DATE	SHEET 18 OF 19	
1	OLD 20-143	8/9/2023	3				
2			4				

BILL OF MATERIALS:

ITEM	QTY	DESCRIPTION	MATERIAL	SIZE AND SPEC'S
1	1	16 GAUGE JAMB/ HEAD FRAME SERIES 'AS'	16 GAUGE .058 MINIMUM. ALL COMPONENTS OF THIS ITEM, I.e., HEAD, JAMBS, REINFORCEMENTS AND ANCHORS ARE COMMERCIAL GALVANIZED STEEL (TYPE B), ASTM A653/A653M, COATING DESIGNATION A40, KNOWN COMMERCIALLY AS PAINTABLE GALVANNEAL W/ MIN. TENSILE STRENGTH 52 KSI, MIN. YIELD STRENGTH 45 KSI, ELONGATION 40% OR STAINLESS STEEL*	5 3/4' DEPTH X 2' FACE X .058' MIN THICK (SEE SHEET 9)
1A	1	16 GAUGE OPTIONAL HEAD FRAME SERIES 'AS'	SAME AS ITEM 1	5 3/4' DEPTH X 4 3/8' FACE X .058' MIN THICK (SEE SHEET 9)
1B	1	SURFACE STRIKE REINFORCING	12 GAGE GALVANNEAL STEEL OR STAINLESS STEEL*	12 GAGE (0.097' MIN.) x 1.500' x 11.875' LONG, SEE DETAIL ON SHEET 9.
2	1	18 GAUGE FLUSH/EMBOSSD DOOR COMMERCIAL W/ CORE (20)	18 GAUGE .045 MINIMUM. ALL COMPONENTS OF THIS ITEM, I.e. FACE SHEETS, INTERNAL COMPONENTS AND REINFORCEMENTS ARE GALVANIZED STEEL CONFORMING TO ASTM A924, TO ASTM A653/A653M, COMMERCIAL STEEL (TYPE B), COATING DESIGNATION A40, KNOWN COMMERCIALLY AS PAINTABLE GALVANNEAL W/TENSILE STRENGTH 60 KSI, AND YIELD STRENGTH MIN. 45 KSI, ELONGATION 40% OR STAINLESS STEEL*	1 3/4' THICK X .045 MIN, SEE SHEET 4, 5, 6 & 7.
3	3	8 GAUGE DOOR HINGE REINFORCING	GALVANNEAL STEEL OR STAINLESS STEEL*	1 1/4' X 10' X 8 GAUGE
4	3	8 GAUGE FRAME HINGE REINFORCING	GALVANNEAL STEEL OR STAINLESS STEEL*	1 1/2' X 8 3/4' X 8 GAUGE
5	1	STRIKE REINFORCING (FRAME)	GALVANNEAL STEEL OR STAINLESS STEEL*	1 3/8' X 7 5/16' X 14 GAUGE (.072 MIN)
6	AS REQ'D	WIRE MASONRY FRAME ANCHORS	STEEL W/ MIN. YIELD STRENGTH = 40.2KSI AND MIN. TENSILE STRENGTH = 95.9 KSI	9 1/2' LONG X 0.157' MIN. DIAMETER.
7	AS REQ'D	CLIPIN STUD ANCHORS (2 PIECE COMBINATION)	STEEL, ASTM A-653, A-60 GALVANNEAL	1 7/8' X 5 5/8' X 20 GAUGE (.035 MIN) W/ (4)#8 X 1 5/8' WOOD SCREWS
7A	AS REQ'D	EMA BUTTERFLY ANCHOR (PART #PT1-008)	STEEL	18 GAUGE STEEL SATIN COAT.
8	AS REQ'D	EMA ANCHOR BOLTS	STEEL, W/ Fy = 45,000 psi.	3/8' X 5' STEEL UCAN-SLEEVE ANCHOR
9	AS REQ'D	WOOD SCREW LAG BOLT	STEEL, W/ Fy = 45,000 psi.	3/8' x 6"
9A	AS REQ'D	CARRIAGE ANCHOR BOLT	STEEL, W/ Fy = 45,000 psi.	3/8"-16 X 6" STEEL CARRIAGE BOLT C/W NUT AND WASHER, PER ASTM A-307
9B	AS REQ'D	F.H. M.S. TO STEEL CHANNEL THROUGH BOLTING	STEEL, W/ Fy = 45,000 psi.	3/8' X 3 1/2' STEEL F.H. M.S., PER ASTM A-307
9C	AS REQ'D	STEEL CHANNEL WELDING	E60XX ELECTRODE FOR GALVANNEAL STEEL,E-308 ELECTRODES FOR STAINLESS STEEL*	WELD ON INSTALLATION, MIN. 1/8"x3/8" STITCH WELD
10	3	HINGES-HAGER BB1279, BB1168HD OR STANLEY FBB179, FBB168	STEEL	4.5' X 4.5' STANDARD WEIGHT (.134 THICK), ATTACHED TO FRAME W/(4) 12-24x1/2' FHMS.
11	1	RIM EXIT: VON DUPRIN 98/99L X CYC X TRIM W/ 499 STRIKE PLATE	AS PER MANUFACTURER'S CATALOG	RIM EXIT ATTACHED TO DOOR W/(4) 1/4-20x1' MS. (2) STRIKE PLATES EA. MULLION
12	1	MORTISE LOCK: SCHLAGE-L9000 SERIES W/ DEAD BOLT	AS PER MANUFACTURER'S CATALOG	MORTISE LOCK ATTACHED W/(2) #12-24x1/2' SREWS.
13	1	CYLINDRICAL LOCK: - SCHLAGE D SERIES	AS PER MANUFACTURER'S CATALOG	ATTACHED TO STRIKE PLATE W/(2) 12-24x1/2' SCREWS.
14	1	DEAD BOLT: - SCHLAGE B SERIES	AS PER MANUFACTURER'S CATALOG	ATTACHED TO STRIKE PLATE W/(2) 8-32x1/2' SCREWS
15	1	VON DUPRIN #9954 REMOVABLE MULLION	0.125' THICK A 500 GRADE B STEEL	SECURED TO 499 STRIKE PLATE WITH (8) 5/16"-18x1"(MIN.) MACHINE SCREWS.
15A	1	WEATHER STRIP (NATIONAL GUARD PRODUCTS #120NA)	NEOPRENE	SECURED WITH DOUBLE ROW OF #6x1/2" SMS SCREWS @ 1' FROM EACH END AND 4" O.C. (AS PREDRILLED BY MANUFACTURER)
16	1	THRESHOLD (NATIONAL GUARD PRODUCTS #950NA)	EXTRUDED ALUMINUM (6063-T5 ALLOY)	5' x 0.500' x 0.080' THICK, ATTACHED TO SLAB W/ 3/16"x 1 3/4' F. H. TAPCON ANCHORS W/ 1 1/4' MIN. EMBEDMENT LOCATED @ 2 3/4' FROM EACH END AND 10' O. C.
17	1	4 1/2" HINGE BAR REINFORCING FOR DOOR	GALVANNEAL STEEL OR STAINLESS STEEL*	1.25' x 10' x 0.134' MIN. THICK
18	1	DOOR SURFACE BOLT REINFORCING	GALVANNEAL STEEL OR STAINLESS STEEL*	14 GAGE (0.074") x 1.687' x 3.500' x 9.000' LONG.
19	AS REQ'D	3/8" LEXAN VISION LITE	AS PER MANUFACTURER (DAYBAR INDUSTRIES, LTD)	SEE SHEET 8 FOR DETAILS & COMPONENTS
19A	AS REQ'D	1/2" LEXAN VLF-EZ-IG VISION LITE	AS PER MANUFACTURER (AIR LOUVERS, INC.)	SEE SHEET 8 FOR DETAILS & COMPONENTS
20	1	0.75" THICK EXPANDED POLYSTYRENE DOOR CORE OR 3/4" CELL PAPER HONEYCOMB.	0.75" THICK DOOR CORE: EXPANDED POLYSTYRENE SOLID SLAB RIGID BOARD TYPE I, PCF COMFORMING TO ASTM C578 BY DYPLAST PRODUCTS LLC, OR 3/4" CELL PAPER HONEYCOMB.	BONDED TO FACE SHEET WITH CONTACT ADHESIVE HELMIBOND # 8320-1 APPLICATION RATE OF 7 GRAMS PER SQUARE FOOT ON ALL CORES
21	4	8' LONG # 275 D HAGER SURFACE BOLT	STEEL W/ US26D FINISH	ENGAGED TO THE DOOR AT TOP AND BOTTOM TO HEADER & THRESHOLD RESPECTIVELY & FASTENED TO DOOR W/ (4) #10-24 x 1 1/2" THRU BOLT EACH CONNECTION.
22	AS REQ'D	TAPCON ANCHORS	STEEL	3/16' x 1 3/4'
23	1	MORTISE LOCK AND RIM PANIC DEVICE REINFORCEMENT	0.074' MIN. THICK GALVANNEAL STEEL OR STAINLESS STEEL*	SEE SHEET 15 FOR SUBCONJUNTS
24	1	#161 CYLINDRICAL LOCK AND DEAD BOLT REINFORCEMENT	SATIN COAT STEEL OR STAINLESS STEEL*	SEE SHEET 16 FOR DETAILS
25	1	DOOR SURFACE CLOSER REINFORCEMENT	0.074' MIN. THICK GALVANNEAL STEEL OR STAINLESS STEEL*	14 GAGE (0.074' MIN.) x 3 1/2' x 1.6875 x 16.250' LONG.
26	1	DOOR TOP/ BOTTOM END CHANNEL	16 GAGE GALVANNEAL STEEL OR STAINLESS STEEL*	16 GAGE (0.057' MIN.) x 1.8125' x 1.4375.
27	1	"Z" ASTRAGAL	0.075' MIN. THICK A 500 GRADE B GALVANNEAL STEEL OR STAINLESS STEEL*	0.075' MIN. THICK x 2.00' x (2)0.625' x 84' LONG.
28	1	DOOR SNAP IN TOP CAP	20 GAGE GALVANNEAL STEEL ASTM A-653, A-60 OR STAINLESS STEEL*	SEE SHEET 14 FOR SIZES
29	AS REQ'D	CAULKING: GE SILICONE II	N/A	
30	AS REQ'D	995 DDW CORNING STRUCTURAL SILICONE	N/A	

PRODUCT REVISED
as complying with the Florida
Building Code
NOA-No. 23-0823.12
Expiration Date 04/07/2026
By Ishag I. Chande
Miami-Dade Product Control

* AISI 304 SERIES STAINLESS STEEL WITH Fy =45.75 Ksi
AND Fu= 101.38 Ksi



FLORIDA BUILDING CODE (HIGH VELOCITY HURRICANE ZONE)

©2023 TILTECO, INC.		DOUBLE & SINGLE SERIES LS18 OUTSWING COMMERCIAL GALVANNEAL OR STAINLESS STEEL DOOR W/ SERIES "AS" 16 GAGE GALVANNEAL OR STAINLESS STEEL FRAME FLUSH, EMBOSSD & GLAZED ASSEMBLIES - L.M.		DRAWN BY: Y.M.	
TILTECO INC. TILLIT TESTING & ENGINEERING COMPANY 6355N.W. 36th. St., Ste. 305, VIRGINIA GARDENS, FL 33166 Phone : (305)871-1530 . Fax : (305)871-1531 e-mail: tilteco@aol.com CA-0006719 WALTER A. TILLIT Jr. P.E. FLORIDA Lic. # 44167		DAYBAR INDUSTRIES LTD 50 WEST DRIVE, BRAMPTON, ON CANADA, L6T 2J4 TEL: 905 625-8000 FAX: 905 625-4204		8/9/2023 DATE	
				23-168 DRAWING No	
REV. No	DESCRIPTION	DATE	REV. No	DESCRIPTION	DATE
1	OLD 20-143	8/9/2023	3		
2			4		
				SHEET 19 OF 19	