



DEPARTMENT OF REGULATORY AND ECONOMIC RESOURCES (RER)  
BOARD AND CODE ADMINISTRATION DIVISION

## NOTICE OF ACCEPTANCE (NOA)

MIAMI-DADE COUNTY  
PRODUCT CONTROL SECTION

11805 SW 26 Street, Room 208  
Miami, Florida 33175-2474  
T (786) 315-2590 F (786) 315-2599

[www.miamidade.gov/economy](http://www.miamidade.gov/economy)

**Daybar Industries Limited**  
**50 West Drive**  
**Brampton, Ontario, Canada L6T2J4**

### SCOPE:

This NOA is being issued under the applicable rules and regulations governing the use of construction materials. The documentation submitted has been reviewed and accepted by Miami-Dade County RER -Product Control Section to be used in Miami Dade County and other areas where allowed by the Authority Having Jurisdiction (AHJ).

This NOA shall not be valid after the expiration date stated below. The Miami-Dade County Product Control Section (In Miami Dade County) and/or the AHJ (in areas other than Miami Dade County) reserve the right to have this product or material tested for quality assurance purposes. If this product or material fails to perform in the accepted manner, the manufacturer will incur the expense of such testing and the AHJ may immediately revoke, modify, or suspend the use of such product or material within their jurisdiction. RER reserves the right to revoke this acceptance, if it is determined by Miami-Dade County Product Control Section that this product or material fails to meet the requirements of the applicable building code.

This product is approved as described herein and has been designed to comply with the Florida Building Code, including the High Velocity Hurricane Zone.

**DESCRIPTION: Series "LS-20GA" Outswing Single Commercial Steel (Galvanneal or Stainless) Doors w/ 18ga Frames & w/wo Rim Panic Exit Device-LM Impact**

**APPROVAL DOCUMENT:** Drawing No **23-169** (Former **20-144**), titled "Single LS20GA Flush Commercial Steel Outswing Door w/ 18 ga Steel frames", sheets 1 through 14 of 14 prepared by Tilteco Inc, dated 07/06/2020 and last revised on 08/09/23, signed and sealed by Walter A. Tillit Jr., P. E., bearing the Miami-Dade County Product Control revision stamp with the Notice of Acceptance number and expiration date by the Miami-Dade County Product Control Section.

**MISSILE IMPACT RATING: Large and Small Missile Impact Resistant**

### Limitations:

1. See Design Pressure Ratings in sheets **2**. See Jambs anchor OC spacing for **case 1 or 2** in sheet **3** and installation details on sheet **13** for each case.
2. Min required Steel tensile yield=45 ksi and tensile ultimate Fu= 50.5 ksi and for Stainless Steel tensile yield=54.5 ksi and tensile ultimate Fu= 94.4 ksi for doors and/or frames.

**LABELING:** Each unit shall bear a permanent label with the manufacturer's name or logo, Brampton, Ontario and series and following statement: "Miami-Dade County Product Control Approved", noted herein.

**RENEWAL** of this NOA shall be considered after a renewal application has been filed and there has been no change in the applicable building code negatively affecting the performance of this product.

**TERMINATION** of this NOA will occur after the expiration date or if there has been a revision or change in the materials, use, and/or manufacture of the product or process. Misuse of this NOA as an endorsement of any product, for sales, advertising or any other purposes shall automatically terminate this NOA. Failure to comply with any section of this NOA shall be cause for termination and removal of NOA.

**ADVERTISEMENT:** The NOA number preceded by the words Miami-Dade County, Florida, and followed by the expiration date may be displayed in advertising literature. If any portion of the NOA is displayed, then it shall be done in its entirety.

**INSPECTION:** A copy of this entire NOA shall be provided to the user by the manufacturer or its distributors and shall be available for inspection at the job site at the request of the Building Official.

This NOA **revises NOA # 21-1013.01** and consists of this page 1 and evidence pages E-1, E-2, E-3, E-4 & E-5, as well as approval document mentioned above.

The submitted documentation was reviewed by **Ishaq I. Chanda, P.E.**



*Ishaq I. Chanda*

**NOA No. 23-0823.14**  
**Expiration Date: January 19, 2027**  
**Approval Date: October 05, 2023**  
**Page 1**

**NOTICE OF ACCEPTANCE: EVIDENCE SUBMITTED**

**1. Evidence submitted under previous approvals**

**A. DRAWINGS**

1. Manufacturer's parts and sections drawings (see below).
2. Drawing No **15-261**, titled "Single LS20GA Flush Commercial Steel Outswing Door w/ 18 ga Steel frames", sheets 1 through thru 14 of 14 prepared by Tilteco Inc, dated 12/20/16, signed and sealed by Walter A. Tillit Jr., P. E.

**B. TESTS (submitted under file #16-1018.06)**

1. Test reports on
  - 1) Air Infiltration Test, per FBC, TAS 202-94
  - 2) Uniform Static Air Pressure Test, Loading per FBC, TAS 202-94
  - 3) Water Resistant Test, per FBC, TAS 202-94
  - 4) Large Missile Impact Test per FBC, TAS 201-94
  - 5) Cyclic Wind Pressure Loading per FBC, TAS 203-94
  - 6) Forced Entry Test, per FBC 2411.3.2.1 (b) and TAS 202-94

Along with marked-up drawings and installation diagram of Single outswing steel doors, prepared by Fenestration Testing Laboratory, Inc., Test Report No. **FTL8974** dated 10/03/16, signed and sealed by Idamis Ortega, P.E.

(Note: This test report has been revised by an addendum dated 12/17/16 has been issued by test lab)

**C. CALCULATIONS**

1. Anchor Verification Calculations, complying w/ FBC-2014, dated 10-10-16, prepared by Tilteco, Inc., signed and sealed by Walter A. Tillit Jr., P. E.

**D. QUALITY ASSURANCE**

1. Miami Dade Department of Regulatory and Economic Resources (RER).

**E. MATERIAL CERTIFICATIONS**

1. Tensile Test per ASTM E370-14, test report No. **FTL 9135**, dated 08/16/16, issued by Fenestration Testing Laboratory, signed and sealed by Idamis Ortega, P.E.
2. Notice of Acceptance No. **11-0920.07** issued to Dyplast Product, LLC (Former Apache Products Company) for "EPS-Expanded Polystyrene Insulation", expiring on 01/11/17.

**F. STATEMENTS**

1. Statement letter of compliance to FBC-2014 and "No financial interest", dated 10/11/16, issued by Tilteco Inc., signed and sealed by Walter A. Tillit Jr., P. E.

*Ishaq I. Chanda*

---

**Ishaq I. Chanda, P.E.**  
**Product Control Unit Supervisor**  
**NOA No. 23-0823.14**  
**Expiration Date: January 19, 2027**  
**Approval Date: October 05, 2023**

**NOTICE OF ACCEPTANCE: EVIDENCE SUBMITTED**

**G. OTHER**

1. Test proposal#15-2115 approved by RER dated 01/20/16.
2. Manufacturer/Distributor agreement dated 09/21/16 between Daybar Industries Limited, Canada and Daybar Southeast Manufacturing, N. Key Largo, USA, signed by Mark Dodson and David Ball, respective officials of the companies.

**2. Evidence submitted previous approval**

**A. DRAWINGS**

1. Drawing No **17-083** (Former **15-261**), titled “Single LS20GA Flush Commercial Steel Outswing Door w/ 18 ga Steel frames”, sheets 1 through 14 of 14 prepared by Tilteco Inc, dated 07/20/17, signed and sealed by Walter A. Tillit Jr., P. E.  
Note: This revision consists of general notes#1, 4, 5 and 12 changes, in compliance of FBC 2017 edition.

**B. TESTS**

1. None

**C. CALCULATIONS**

1. None

**D. QUALITY ASSURANCE**

1. Miami Dade Department of Regulatory and Economic Resources (RER).

**E. MATERIAL CERTIFICATIONS**

1. Notice of Acceptance No. **16-1129.05** issued to Dyplast Product, LLC (Former Apache Products Company) for “E and R Board Expanded Polystyrene Rigid Foam Insulation”, expiring on 01/11/22.

**F. STATEMENTS**

1. Statement letters of conformance to FBC 2017(**6th** Edition), prepared by Tilteco Inc., dated 07/20/17, signed & sealed by Walter A. Tillit Jr., P. E.
2. Statement letter of general notes revision only, in compliance with FBC 2017 edition, prepared by Tilteco Inc., dated 07/20/17, signed & sealed by Walter A. Tillit Jr., P. E.

**G. OTHER**

1. This NOA revises NOA # **16-1018.06**, expiring 01/19/22.

*Ishaq I. Chanda*

---

**Ishaq I. Chanda, P.E.**  
**Product Control Unit Supervisor**  
**NOA No. 23-0823.14**  
**Expiration Date: January 19, 2027**  
**Approval Date: October 05, 2023**

**NOTICE OF ACCEPTANCE: EVIDENCE SUBMITTED**

**3. Evidence submitted under previous approval**

**A. DRAWINGS**

1. Drawing No **20-144** (Former **17-083**), titled “Single LS20GA Flush Commercial Steel Outswing Door w/ 18 ga Steel frames”, sheets 1 through 14 of 14 prepared by Tilteco Inc, dated 07/06/2020, signed and sealed by Walter A. Tillit Jr., P. E.

Note: This revision consists of general notes changes, in compliance with the FBC 2020 edition.

**B. TESTS**

1. None

**C. CALCULATIONS**

1. None

**D. QUALITY ASSURANCE**

1. Miami Dade Department of Regulatory and Economic Resources (RER).

**E. MATERIAL CERTIFICATIONS**

1. Notice of Acceptance No. **16-1129.05** issued to Dyplast Product, LLC (Former Apache Products Company) for “E and R Board Expanded Polystyrene Rigid Foam Insulation”, expiring on 01/11/22.

**F. STATEMENTS**

1. Statement letters of conformance to FBC 2020 (**7th** Edition), prepared by Tilteco Inc., dated 07/06/20, signed & sealed by Walter A. Tillit Jr., P. E.

**G. OTHER**

1. This NOA revises NOA # **17-0829.09**, expiring 01/19/22.

*Ishaq I. Chanda*

---

**Ishaq I. Chanda, P.E.**  
**Product Control Unit Supervisor**  
**NOA No. 23-0823.14**  
**Expiration Date: January 19, 2027**  
**Approval Date: October 05, 2023**

**NOTICE OF ACCEPTANCE: EVIDENCE SUBMITTED**

**4. Evidence submitted under previous approval**

**A. DRAWINGS**

1. Drawing No **20-144** (Former **17-083**), titled “Single LS20GA Flush Commercial Steel Outswing Door w/ 18 ga Steel frames”, sheets 1 through 14 of 14 prepared by Tilteco Inc, dated 07/06/2020, signed and sealed by Walter A. Tillit Jr., P. E.

Note: This renewal is with no change.

**B. TESTS**

1. None

**C. CALCULATIONS**

1. None

**D. QUALITY ASSURANCE**

1. Miami Dade Department of Regulatory and Economic Resources (RER).

**E. MATERIAL CERTIFICATIONS**

1. Notice of Acceptance No. **16-1129.05** issued to Dyplast Product, LLC (Former Apache Products Company) for “E and R Board Expanded Polystyrene Rigid Foam Insulation”, expiring on 01/11/22.

**F. STATEMENTS**

1. Statement letters of conformance to FBC 2020(**7th** Edition) and renewal, prepared by Tilteco Inc., dated 09/15/20, signed & sealed by Walter A. Tillit Jr., P. E.
2. Statement letter dated 09/30/21 request for renewal with no change, signed by Mark Dodson, President, Daybar Industries, Limited.

**G. OTHER**

1. This NOA **renews** NOA # **20-0813.12**, expiring 01/19/27.
2. Manufacturer/Distributor agreement dated 10/28/21 between Daybar Industries Limited, Canada and Daybar Southeast Manufacturing, Inc., USA, signed by Mark Dodson (President) and Garry Van Zeist (Div. Manager), respective officials of the companies.

*Ishaq I. Chanda*

---

**Ishaq I. Chanda, P.E.**  
**Product Control Unit Supervisor**  
**NOA No. 23-0823.14**  
**Expiration Date: January 19, 2027**  
**Approval Date: October 05, 2023**

**NOTICE OF ACCEPTANCE: EVIDENCE SUBMITTED**

**4. New Evidence submitted**

**A. DRAWINGS**

1. Drawing No **23-169** (Former **20-144**), titled “Single LS20GA Flush Commercial Steel Outswing Door w/ 18 ga Steel frames”, sheets 1 through thru 14 of 14 prepared by Tilteco Inc, dated 07/06/2020 and last revised on 08/09/23, signed and sealed by Walter A. Tillit Jr., P. E.

**B. TESTS**

1. None

**C. CALCULATIONS**

1. None

**D. QUALITY ASSURANCE**

1. Miami Dade Department of Regulatory and Economic Resources (RER).

**E. MATERIAL CERTIFICATIONS**

1. Notice of Acceptance No. **22-0627.04** issued to King Insulation, LLC (Former Dyplast Product, LLC) for “E and R Board Expanded Polystyrene Rigid Foam Insulation”, expiring on 01/11/27.

**F. STATEMENTS**

1. Statement letters of conformance to FBC 2023(**8th** Edition), prepared by Tilteco Inc., dated 08/09/23, signed & sealed by Walter A. Tillit Jr., P. E.
2. Statement letters of conformance to FBC 2020(**7th** Edition) and renewal, prepared by Tilteco Inc., dated 09/15/20, signed & sealed by Walter A. Tillit Jr., P. E.

**G. OTHER**

1. This NOA revises NOA # **21-1013.01** and updates to FBC 2023, expiring 01/19/27.
2. Manufacturer/Distributor agreement dated 10/28/21 between Daybar Industries Limited, Canada and Daybar Southeast Manufacturing, Inc., USA, signed by Mark Dodson (President) and Garry Van Zeist (Div. Manager), respective officials of the companies.

*Ishaq I. Chanda*

---

**Ishaq I. Chanda, P.E.**  
**Product Control Unit Supervisor**  
**NOA No. 23-0823.14**  
**Expiration Date: January 19, 2027**  
**Approval Date: October 05, 2023**



GENERAL NOTES AND SPECIFICATIONS:

1. SERIES LS20GA FLUSH COMMERCIAL STEEL OUTSWING DOOR SHOWN ON THIS PRODUCT APPROVAL DOCUMENT (P.A.D.) HAS BEEN VERIFIED FOR CODE COMPLIANCE IN ACCORDANCE WITH THE 2020 (7th EDITION) AND 2023 (8th EDITION) OF THE FLORIDA BUILDING CODE. DOOR MAY BE INSTALLED AT HIGH VELOCITY HURRICANE ZONES.

DESIGN WIND LOADS SHALL BE DETERMINED AS PER SECTION 1620 OF THE ABOVE MENTIONED CODE, USING ASCE 7-16 (FBC 2020) AND ASCE 7-22 (FBC 2023) AND SHALL NOT EXCEED THE MAXIMUM (A.S.D.) DESIGN PRESSURE RATINGS INDICATED ON SHEET 2.

IN ORDER TO VERIFY THE ABOVE CONDITION, ULTIMATE DESIGN WIND LOADS DETERMINED PER ASCE 7-16 & ASCE 7-22 SHALL BE FIRST REDUCED TO A.S.D. DESIGN WIND LOADS BY MULTIPLYING THEM BY 0.6 IN ORDER TO COMPARE THESE W/ MAX. (A.S.D.) DESIGN PRESSURE RATINGS INDICATED ON SHEET 2.

THIS DOOR'S ADEQUACY FOR WIND AND IMPACT LOAD HAS BEEN VERIFIED IN ACCORDANCE WITH SECTION 1626 OF THE ABOVE MENTIONED CODE AS PER PROTOCOLS TAS-201, TAS-202, TAS-203 AS PER FENESTRATION TESTING LABORATORY, INC. REPORT # 8974, AND AS PER SUBMITTED STRUCTURAL CALCULATIONS, PERFORMED AS PER SECTION 1616 OF THE FLORIDA BUILDING CODE.

2. ALL COMPONENTS SHALL BE AS SPECIFIED ON APPLICABLE DETAIL SHEETS AND AT BILL OF MATERIALS (SHEET 5) OF THIS DRAWING.

3. COMPLIANCE OF EGRESS / ESCAPE REQUIREMENTS OF THESE DOORS PER FLORIDA BUILDING CODE TO BE DETERMINED BY BUILDING OFFICIALS ON A CASE-BY-CASE BASIS.

4. ALL SCREWS USED FOR ASSEMBLY CONNECTIONS (METAL TO METAL) TO BE STAINLESS STEEL 304 OR 316 AISI SERIES OR CORROSION RESISTANT COATED CARBON STEEL AS PER DIN 50018 WITH 50 ksi YIELD POINT AND 90 ksi TENSILE STRENGTH & SHALL COMPLY W/ FLORIDA BUILDING CODE SECTION 2411.3.3.4.

5. ALL WELDING TO CONFORM W/AMERICAN WELDING SOCIETY A.W.S. D.1.3 AND D-19.0 REGULATIONS WITH E60XX ELECTRODES, FOR GALVANNEAL MATERIAL, AND W/AMERICAN WELDING SOCIETY A.W.S. D.1.6 REGULATIONS W/ E-308 ELECTRODES (FU=80k.s.i.) FOR STAINLESS STEEL MATERIAL

6. ALL ANCHORS FOR DOOR FRAME CONNECTIONS TO EXISTING STRUCTURE SHALL BE AS SPECIFIED ON SHEET 13 OF THIS DRAWING. MAXIMUM ANCHORS SPACINGS SHALL BE AS PER ELEVATIONS ON SHEET 3 OF THIS DRAWING.

7. PROVIDE MAX. LOAD BEARING SHIM SPACE AS INDICATED ON SHEET 13.

8. THIS DOOR WILL NOT REQUIRE A HURRICANE PROTECTION DEVICE.

9. THESE DOOR ASSEMBLIES ARE APPROVED FOR WATER AND AIR INFILTRATION AS PER TESTING INDICATED ON GENERAL NOTE 1, AND SHALL BE LIMITED TO DESIGN PRESSURE RATINGS INDICATED ON SHEET 2.

10. PROVIDE SPECIFIED SEALANT AT ALL DOOR FRAME & THRESHOLD COMPONENTS INDICATED ON THIS DRAWING.

11. ALL EXISTING WALLS (STRUCTURE) WHERE DOOR IS TO BE INSTALLED MUST BE BUILT IN ACCORDANCE WITH THE FLORIDA BUILDING CODE AND SHALL BE DESIGNED TO SUSTAIN THE SUPERIMPOSED LOADS TRANSFERRED BY THE DOOR SYSTEM.

12. PERMIT HOLDER SHALL VERIFY THE ADEQUACY OF THE EXISTING STRUCTURE TO SUSTAIN THE SUPERIMPOSED LOADS TRANSFERRED BY THESE DOORS.

13. (a) THIS PRODUCT APPROVAL DOCUMENT (P.A.D.) PREPARED BY THIS ENGINEER IS GENERIC AND DOES NOT PROVIDE INFORMATION FOR A SITE SPECIFIC PROJECT; i.e. WHERE THE SITE CONDITIONS DEVIATE FROM THE P.A.D.

(b) CONTRACTOR TO BE RESPONSIBLE FOR THE SELECTION, PURCHASE AND INSTALLATION INCLUDING LIFE SAFETY OF THIS PRODUCT, BASED ON THIS P.A.D., PROVIDED HE/SHE DOES NOT DEVIATE FROM THE CONDITIONS DETAILED ON THIS DOCUMENT. CONSTRUCTION SAFETY AT SITE IS THE CONTRACTOR'S RESPONSIBILITY.

(c) THIS PRODUCT APPROVAL DOCUMENT (P.A.D.) WILL BE CONSIDERED INVALID IF ALTERED BY ANY MEANS.

(d) ORIGINAL P.A.D SHALL BEAR THE DATE, SEAL AND SIGNATURE OF THE PROFESSIONAL ENGINEER OF RECORD THAT PREPARED IT.

14. PRODUCT MANUFACTURER'S LABEL SHALL BE LOCATED ON A READILY VISIBLE LOCATION AT PRODUCT IN ACCORDANCE WITH SECTION 1709.5 OF THE FLORIDA BUILDING CODE. ONE LABEL SHALL BE PLACED FOR EVERY OPENING.

15. EXPANDED POLYSTYRENE CORE SHALL BE RIGID BOARD TYPE 1 PCF CONFORMING TO ASTM C578 BY DYPLAST PRODUCTS LLC, W/ CURRENT MIAMI DADE COUNTY PRODUCT CONTROL APPROVAL (NOA).

SHEETS CONTENT:

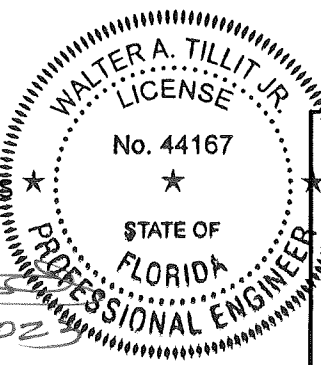
SHEET #1	INDEX, COVER SHEET & GENERAL NOTES.
SHEET #2	ASSEMBLY ELEVATIONS.
SHEET #3	ANCHOR ELEVATIONS.
SHEET #4	OPTIONAL EMBOSSED DOOR SLAB.
SHEET #5	BILL OF MATERIALS.
SHEETS #6-#8	COMPONENTS.
SHEET #9	VERTICAL SECTIONS.
SHEETS #10-12	HORIZONTAL SECTIONS AT HARDWARE.
SHEET #13	ANCHOR SECTIONS.
SHEET #14	DOOR SURFACE CLOSER REINFORCEMENT AND END CHANNEL ASSEMBLY DETAIL + CORNER DETAILS.

PRODUCT REVISED  
as complying with the Florida  
Building Code  
NOA-No. 23-0823.14

Expiration Date01/09/2027

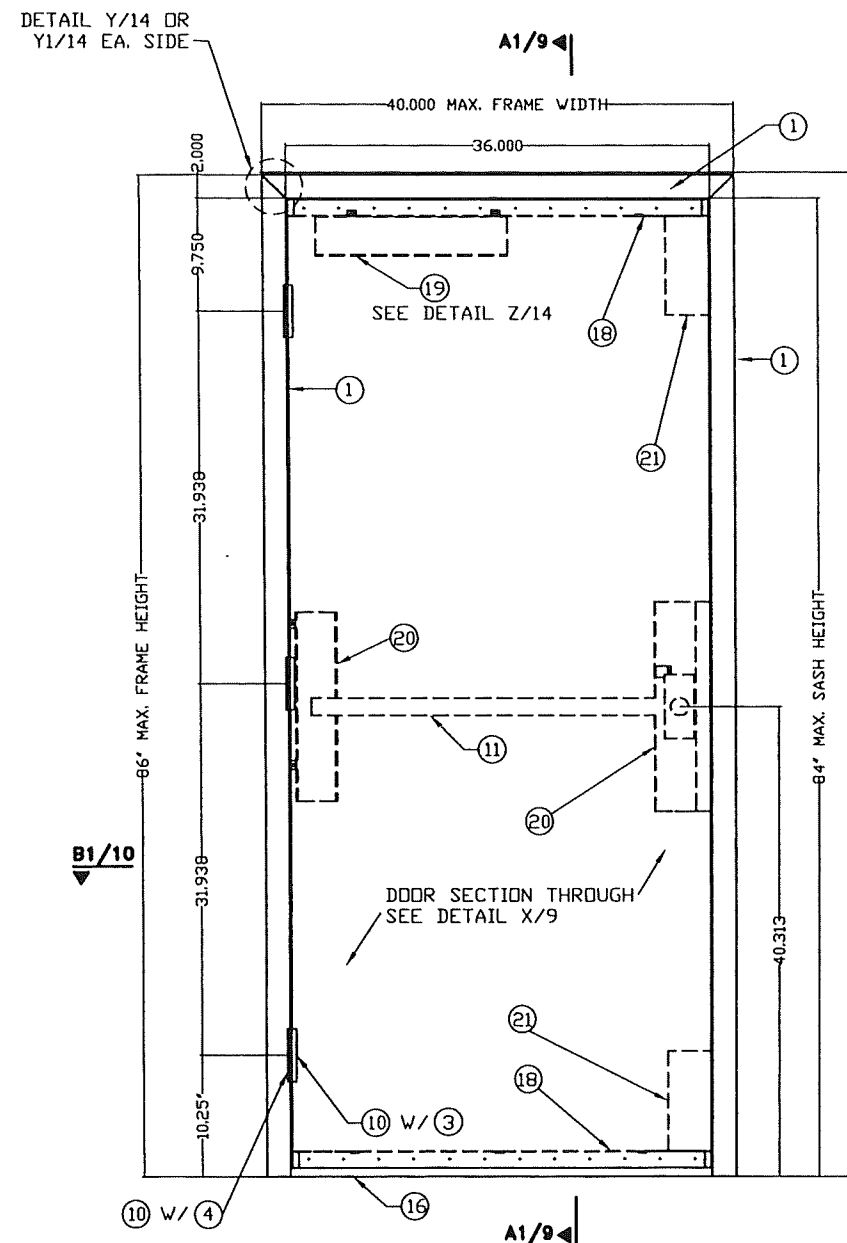
By Ishag I. Chande  
Miami-Dade Product Control

THIS DRAWING SHALL ONLY BE USED TO  
OBTAIN PERMITS IN THE STATE OF FLORIDA



FLORIDA BUILDING CODE (HIGH VELOCITY HURRICANE ZONE)

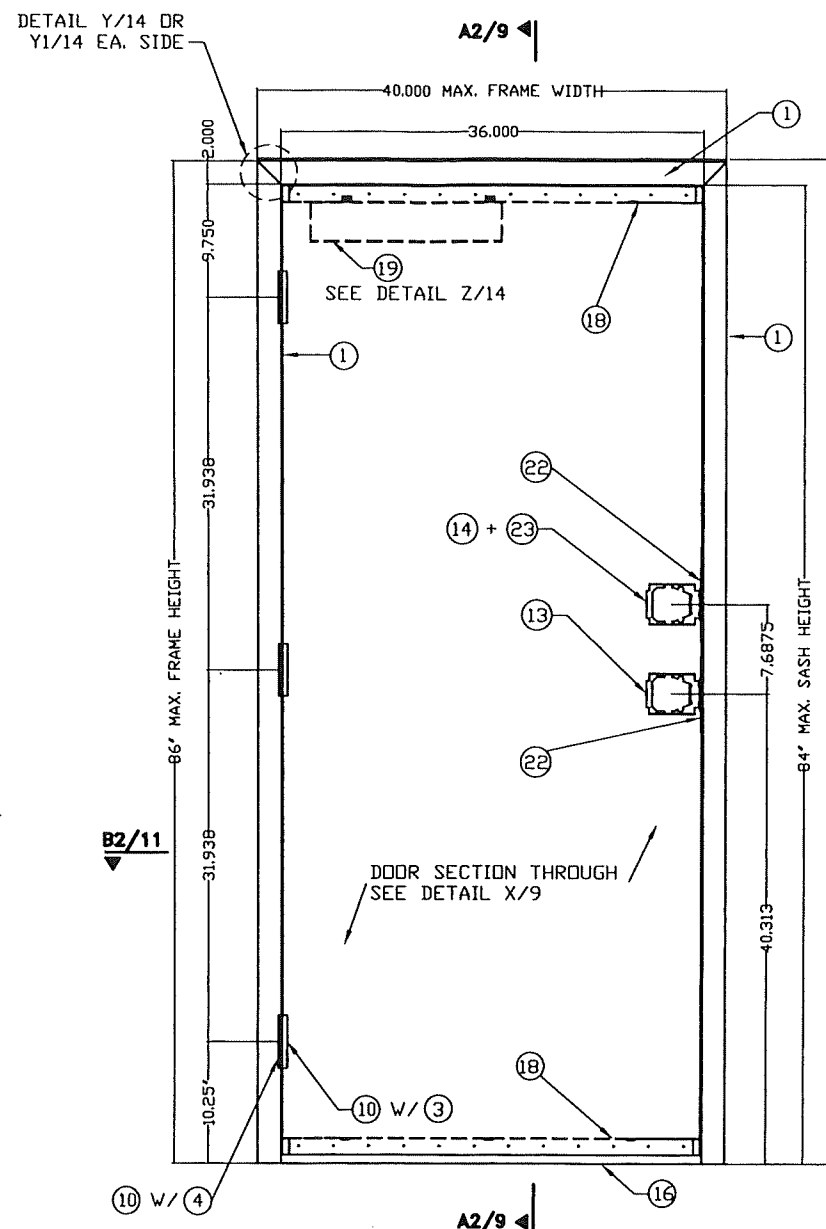
©2023 TILTECO, INC.		SERIES LS20GA FLUSH COMMERCIAL STEEL OUTSWING DOOR W/SERIES "AS" 18GA STEEL FRAME		DRAWN BY: Y.M.	
TILTECO INC.		DAYBAR INDUSTRIES LTD		8/9/2023 DATE	
TILLIT TESTING & ENGINEERING COMPANY 3355N.W. 36th. St., Ste. 305, VIRGINIA GARDENS, FL 33166 Phone : (305)871-1530 . Fax : (305)871-1531 e-mail: tilteco@aol.com CA-0006719 WALTER A. TILLIT Jr., P.E. FLORIDA Lic. # 44167		50 WEST DRIVE, BRAMPTON, ON CANADA, L6T 2J4 TEL: 905 625-8000 FAX: 905 625-4204		23-169 DRAWING No	
REV. No	DESCRIPTION	DATE	REV. No	DESCRIPTION	DATE
1	OLD 20-144	8/9/2023	3		
2			4		
SHEET 1 OF 14					



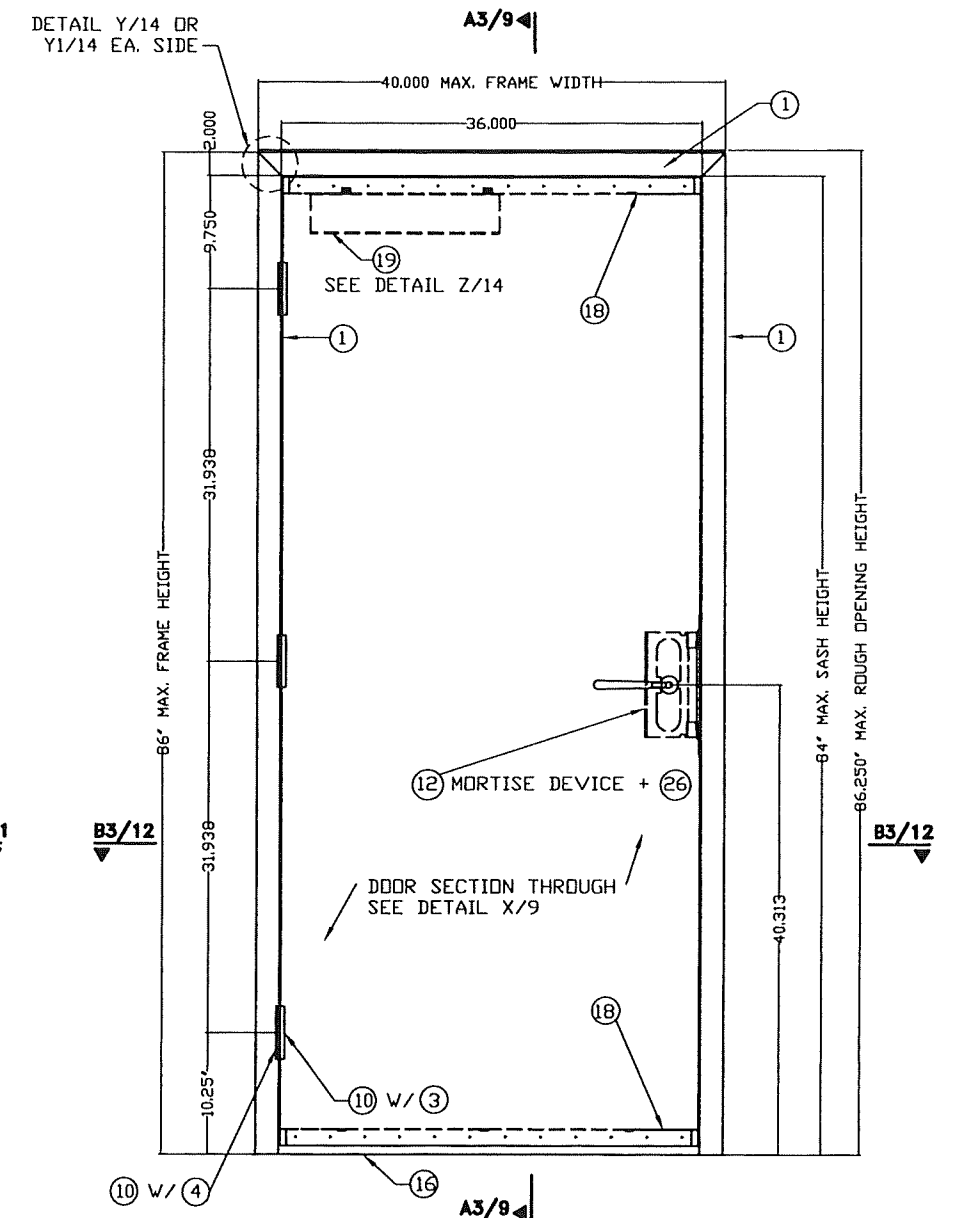
EXTERIOR ELEVATION (OUTSWING) DOOR  
VON DUPRIN RIM EXIT

**PRODUCT REVISED**  
as complying with the Florida  
Building Code  
NOA-No. 23-0823.14  
Expiration Date 01/09/2027  
By *Ishag I. Chanda*  
Miami-Dade Product Control

A.S.D. DESIGN LOAD  
+75.0 psf, -75.0 psf

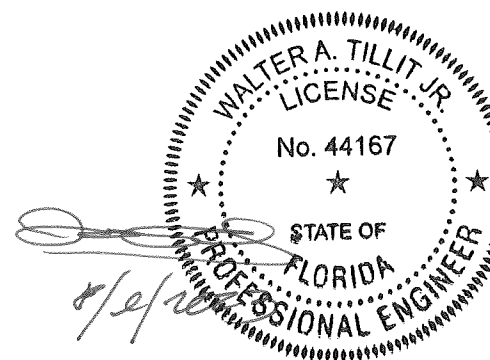


EXTERIOR ELEVATION (OUTSWING) DOOR  
CYLINDRICAL LOCK + DEAD BOLT



EXTERIOR ELEVATION (OUTSWING) DOOR  
MORTISE DEVICE

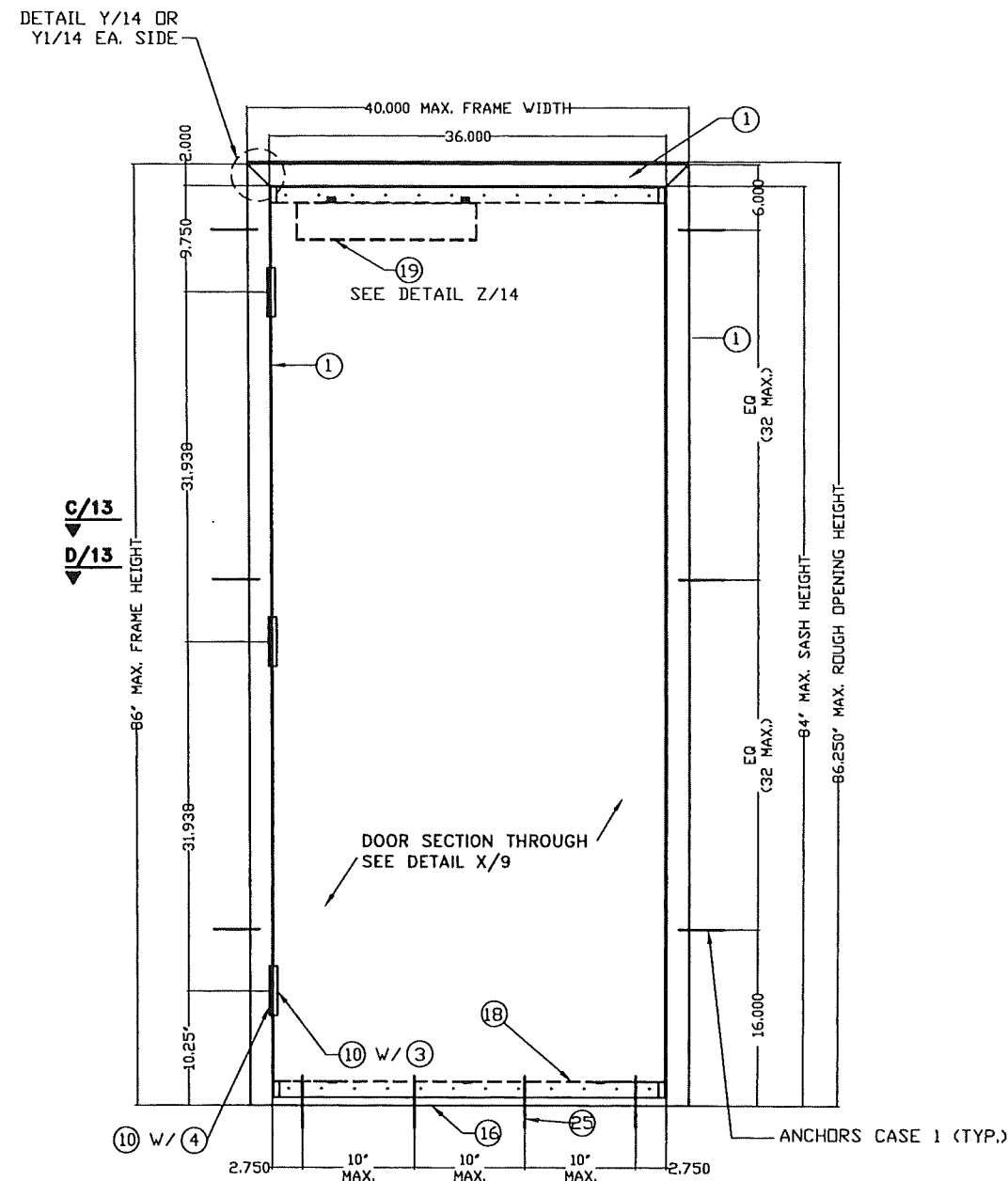
FLORIDA BUILDING CODE (HIGH VELOCITY HURRICANE ZONE)



©2023 TILTECO, INC.  
**TILTECO INC.**  
TILLIT TESTING & ENGINEERING COMPANY  
6355 N.W. 36th St., Ste. 305, VIRGINIA GARDENS, FL 33166  
Phone : (305)871-1530 . Fax : (305)871-1531  
e-mail: tilteco@aol.com  
CA-0006719  
WALTER A. TILLIT Jr. P.E.  
FLORIDA Lic. # 44167

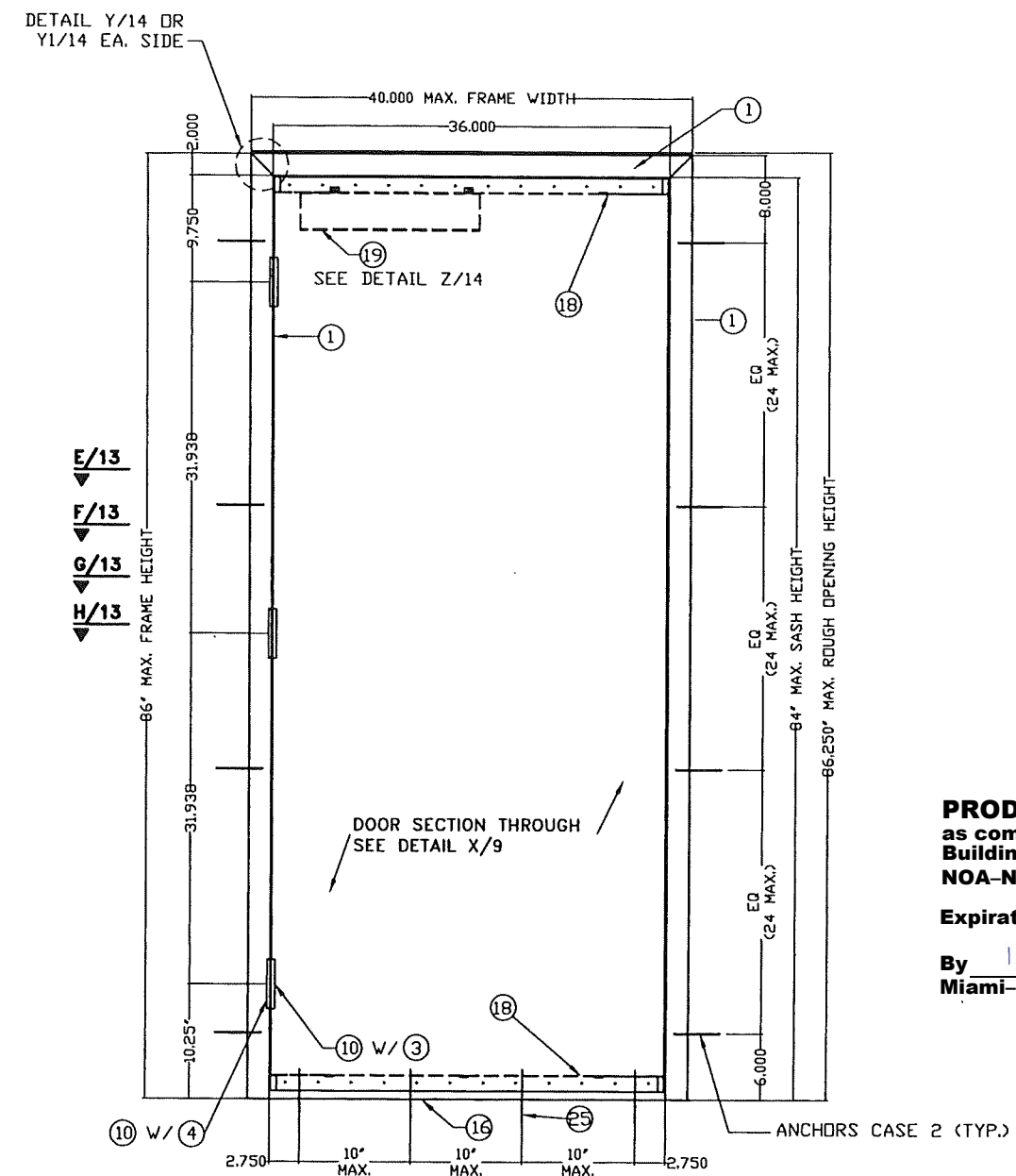
SERIES LS20GA FLUSH COMMERCIAL STEEL OUTSWING DOOR W/SERIES "AS" 18GA STEEL FRAME				DRAWN BY: Y.M.	
DAYBAR INDUSTRIES LTD 50 WEST DRIVE, BRAMPTON, ON CANADA, L6T 2J4 TEL: 905 625-8000 FAX: 905 625-4204				8/9/2023 DATE	
REV. No. DESCRIPTION DATE				23-169 DRAWING No	
1	OLD 20-144	8/9/2023	3	SHEET 2 OF 14	
2			4		





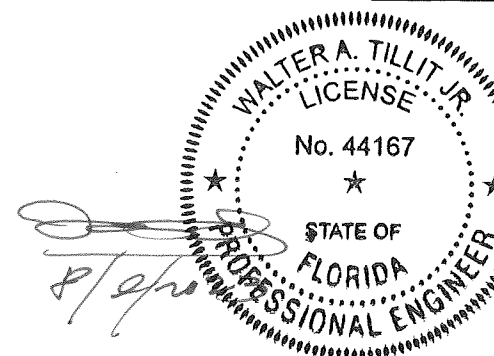
EXTERIOR ELEVATION (OUTSWING) DOOR  
CASE 1 (SEE SHEET 13)

# ANCHORAGE INSTALLATION DETAILS AT JAMBS



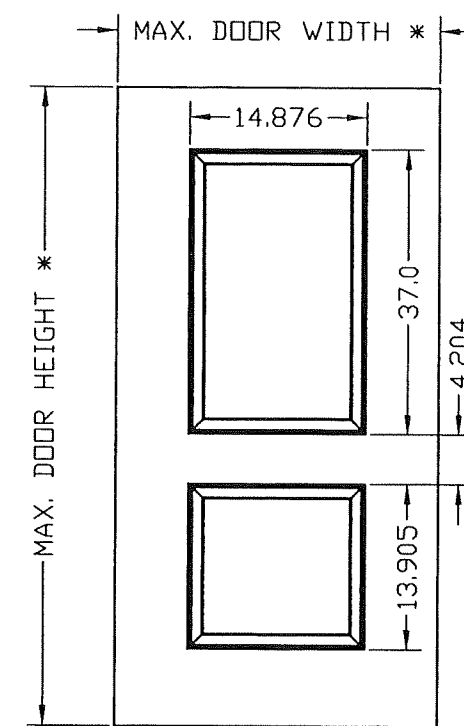
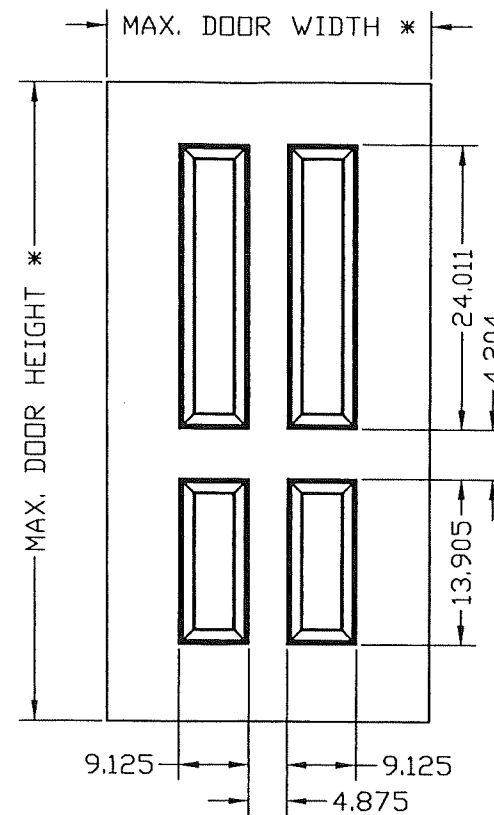
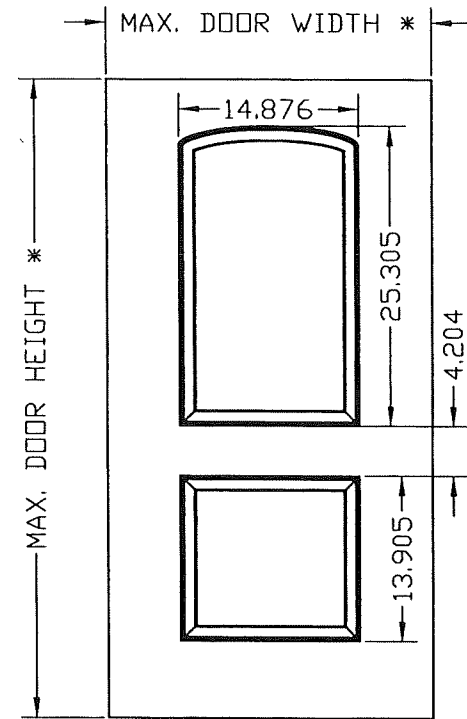
EXTERIOR ELEVATION (OUTSWING) DOOR  
CASE 2 (SEE SHEET 13)

**PRODUCT REVISED**  
as complying with the Florida  
Building Code  
NOA-No. 23-0823.14  
Expiration Date 01/09/2027  
By Ishag I. Chah  
Miami-Dade Product Control

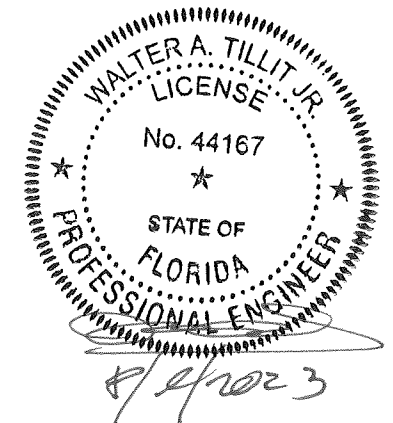
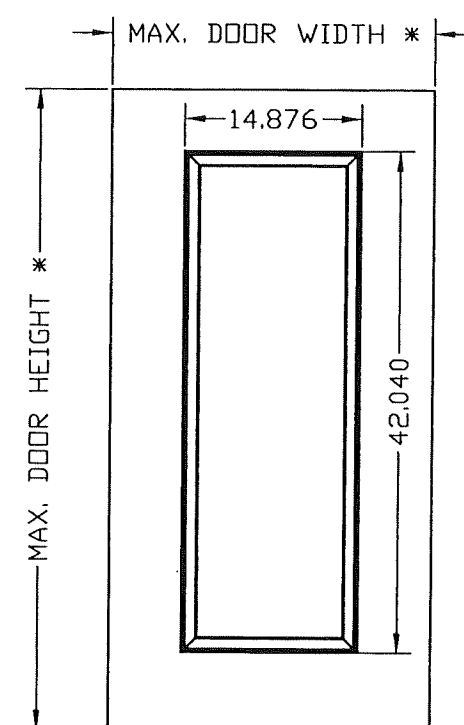
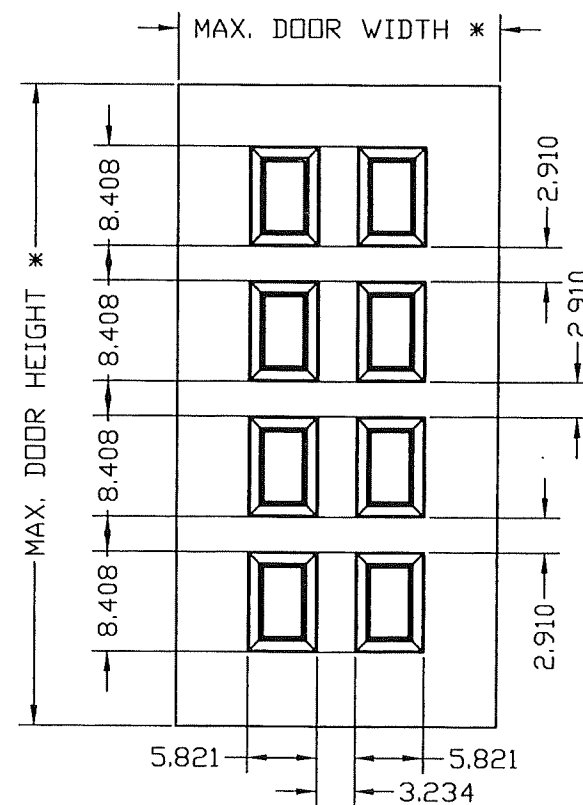
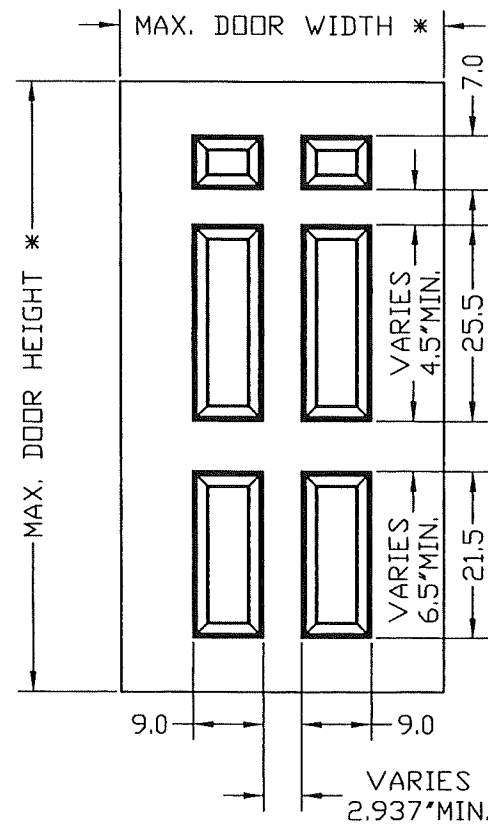


FLORIDA BUILDING CODE (HIGH VELOCITY HURRICANE ZONE)

©2023 TILTECO, INC.		SERIES LS20GA FLUSH COMMERCIAL STEEL OUTSWING DOOR W/SERIES "AS" 18GA STEEL FRAME		DRAWN BY: Y.M.	
TILTECO INC.		DAYBAR INDUSTRIES LTD		8/9/2023 DATE	
TILLIT TESTING & ENGINEERING COMPANY 6355 N.W. 36th St., Ste. 305, VIRGINIA GARDENS, FL 33166 Phone: (305) 871-1530 Fax: (305) 871-1531 e-mail: tiltco@aol.com CA-0006719 WALTER A. TILLIT Jr. P.E. FLORIDA Lic. # 44167		50 WEST DRIVE, BRAMPTON, ON CANADA, L6T 2J4 TEL: 905 625-8000 FAX: 905 625-4204		23-169 DRAWING No	
REV. No	DESCRIPTION	DATE	REV. No	DESCRIPTION	DATE
1	OLD 20-144	8/9/2023	3		
2			4		
					SHEET 3 OF 14



**PRODUCT REVISED**  
as complying with the Florida  
Building Code  
NOA-No. 23-0823.14  
Expiration Date 01/09/2027  
By Ishag I. Chande  
Miami-Dade Product Control



\* SEE SHEET 2

## OPTIONAL EMBOSSED DOOR ELEVATIONS

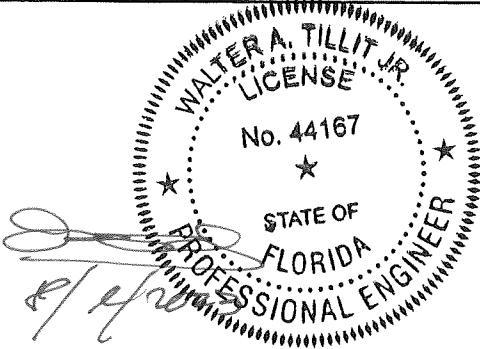
FLORIDA BUILDING CODE (HIGH VELOCITY HURRICANE ZONE)

©2023 TILTECO, INC. <b>TILTECO Inc.</b> TILLIT TESTING & ENGINEERING COMPANY 6355 N.W. 36th, St., Ste. 305, VIRGINIA GARDENS, FL 33166 Phone : (305) 871-1530 Fax : (305) 871-1531 e-mail: tilteco@aol.com CA-0006719 WALTER A. TILLIT Jr. P.E. FLORIDA Lic. # 44167		SERIES LS20GA FLUSH COMMERCIAL STEEL OUTSWING DOOR W/SERIES "AS" 18GA STEEL FRAME		DRAWN BY: Y.M.	
		DAYBAR INDUSTRIES LTD 50 WEST DRIVE, BRAMPTON, ON CANADA, L6T 2J4 TEL: 905 625-8000 FAX: 905 625-4204		8/9/2023 DATE	
REV. No	DESCRIPTION	DATE	REV. No	DESCRIPTION	DATE
1	OLD 20-144	8/9/2023	3		
2			4		
					23-169 DRAWING No
					SHEET 4 OF 14

BILL OF MATERIALS OUTSWING DOOR:

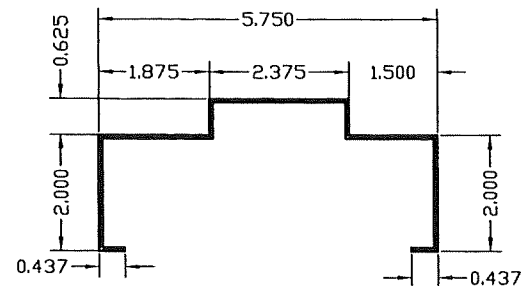
ITEM	DESCRIPTION	BASIC DIMENSIONS, MATERIAL OR ADDITIONAL DETAILS
1, 1A	18 GAUGE WELDED FRAME	AS 5 3/4" JAMB DEPTH X 2" FACE X .042" MIN GALVANNEAL FOR ① (Fu=52Ksi, Fy=45Ksi) OR STAINLESS STEEL (Fu=94.9 Ksi, Fy=54.5 Ksi) FOR ①A, OF SAME DIMENSIONS
2	20 GAUGE FLUSH DOOR COMMERCIAL STEEL	1 3/4" THICK X (.032 MIN) GALVANNEAL (Fu=60Ksi, Fy=45Ksi); C/W PAPER HONEY COMB OR NOA APPROVED STYRENE CORE
3	HINGE REINFORCINGS (DOOR)	1 1/4" X 10" X 10 GAUGE GALVANNEAL (.134 MIN)
4	HINGE REINFORCINGS (FRAME)	1 1/2" X 8 3/4" X 10 GAUGE GALVANNEAL (.134 MIN)
5	STRIKE REINFORCINGS (FRAME)	1 3/8" X 7 5/16" X 14 GAUGE GALVANNEAL (.072 MIN)
6	WIRE MASONRY FRAME ANCHOR	9 1/2" LONG X 10 GAUGE (.134 MIN) Fu=95.9 Ksi Fy=40.2 Ksi
7	2 PIECE SNAP-IN STUD ANCHOR	1 13/16" X 4 1/8" X 20 GAUGE GALVANNEAL (.032 MIN), SNAPPED TO ACHIEVE 5 5/8" TOTAL DEPTH
8	EMA ANCHOR BOLTS	3/8" X 5" STEEL UNICAN-SLEEVE ANCHOR, 2 1/4" EMBEDMENT & 3" MIN. E.D.
8A	EMA BUTTERFLY ANCHOR (PART #PT1-008)	18 GAUGE (0.042") STEEL SATIN COAT
9	LAG SCREW	3/8"ØX6" LAG SCREW
10	HINGES-HAGER BB1191	4.5" X 4.5" STANDARD WEIGHT (.134 THICK)
11	RIM EXIT: VON DUPRIM 98/99 SERIES	N/A
12	MORTISE DEVICE: SCHLAGE L9000 SERIES	N/A
13	CYLINDRICAL LOCK: SCHLAGE D SERIES	N/A
14	DEAD BOLT: SCHLAGE B SERIES	N/A
15	WEATHER STRIP: NATIONAL GUARD PRODUCTS #120NA	SECURED WITH DOUBLE ROW OF #6 X 1/2" SMS SCREWS @ 1" FROM EA. END & BALANCE @ 4" O.C.
16	THRESHOLD: NATIONAL GUARD PRODUCTS #950NA	EXTRUDED ALUMINUM 6063-T6, 0.078" THK. W/ NEOPRENE BULB
17	CAULKING: GE SILICONE II	N/A
18	DOOR END CHANNEL REINFORCEMENT	16 GAGE GALVANNEAL STEEL
19	DOOR SURFACE CLOSER REINFORCEMENT	14 GAGE (0.072" MIN.) x 3 1/2" x 1.6875 x 16.250" LONG. GALVANNEAL.
20	RP REINFORCING	14 GAGE (0.072" MIN.) GALVANNEAL
21	RIM PANIC SURFACE BOLT REINFORCING	14 GAGE (0.072" MIN.) GALVANNEAL
22	#161 LOCK EDGE REINFORCING	16 GAGE (0.051" MIN.)
23	DEAD LOCK STRIKE TAB	14 GAGE (0.072" MIN.) GALVANNEAL, ATTACHED TO STRIKE JAMB W/(3) 1/8"Ø PROJECTION WELDS
25	THRESHOLD ANCHOR	1/4"Ø ULTRACONS BY ELCO CONSTRUCTION PRODUCTS , 1 3/4" MIN. EMBEDMENT & 3" MIN. E.D @ f'c=3ksi CONCRETE SILL
26	MORTISE LOCK REINFORCEMENT	ANSI #A115.1 #86, 0.072"MIN.
28	Z ANCHOR	18 GAGE (0.042") GALVANNEAL, W/ Fy= 33Ksi, Fu= 44Ksi
29	T STRAP ANCHOR DAYBAR # PT1-001A	18 GAGE (0.042") GALVANNEAL, W/ Fy= 33Ksi, Fu= 44Ksi

**PRODUCT REVISED**  
 as complying with the Florida  
 Building Code  
 NOA-No. 23-0823.14  
 Expiration Date 01/09/2027  
 By Ishaq I. Chande  
 Miami-Dade Product Control



FLORIDA BUILDING CODE (HIGH VELOCITY HURRICANE ZONE)					
©2023 TILTECO, INC.  TILLIT TESTING & ENGINEERING COMPANY 6355N.W. 36th. St., Ste. 305, VIRGINIA GARDENS, FL 33166 Phone : (305)871-1530 . Fax : (305)871-1531 e-mail: tilteco@aol.com CA-0006719 WALTER A. TILLIT Jr. P.E. FLORIDA Lic. # 44167			SERIES LS20GA FLUSH COMMERCIAL STEEL OUTSWING DOOR W/SERIES "AS" 18GA STEEL FRAME DAYBAR INDUSTRIES LTD 50 WEST DRIVE, BRAMPTON, ON CANADA, L6T 2J4 TEL: 905 625-8000 FAX: 905 625-4204		DRAWN BY: Y.M.
					8/9/2023 DATE
					23-169 DRAWING No
REV. No	DESCRIPTION	DATE	REV. No	DESCRIPTION	DATE
1	OLD 20-144	8/9/2023	3		
2			4		
					SHEET 5 OF 14



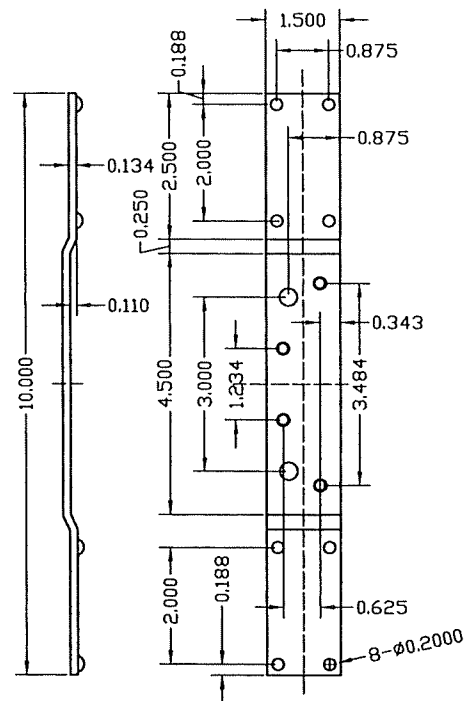


# ① AS 5 3/4" TYPICAL SECTION THROUGH

MATERIAL:  
GAUGE 18 (0.042)  
MINIMUM GALVANNEAL

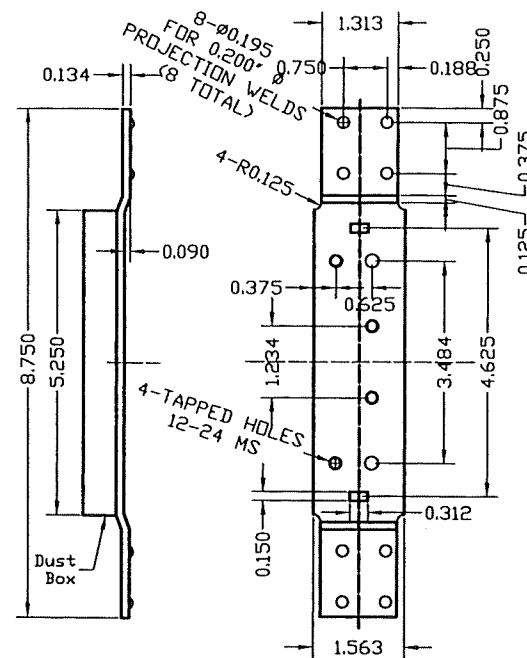
# ①A AS 5 3/4" TYPICAL SECTION THROUGH

MATERIAL:  
GAUGE 18 (0.042)  
MINIMUM STAINLESS STEEL



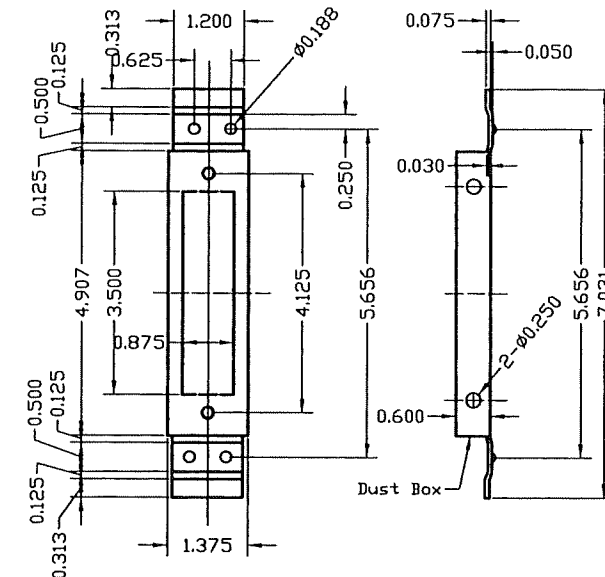
# ③ DOOR HINGE REINFORCING

MATERIAL:  
GAUGE 10 (0.134) MINIMUM  
GALVANNEAL



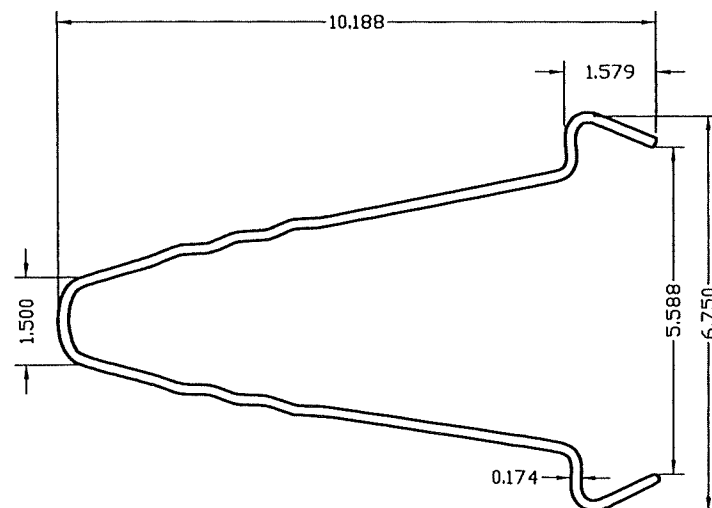
# ④ 4 1/2" FRAME HINGE REINFORCING

MATERIAL:  
GAUGE 10 (0.134) MINIMUM  
GALVANNEAL



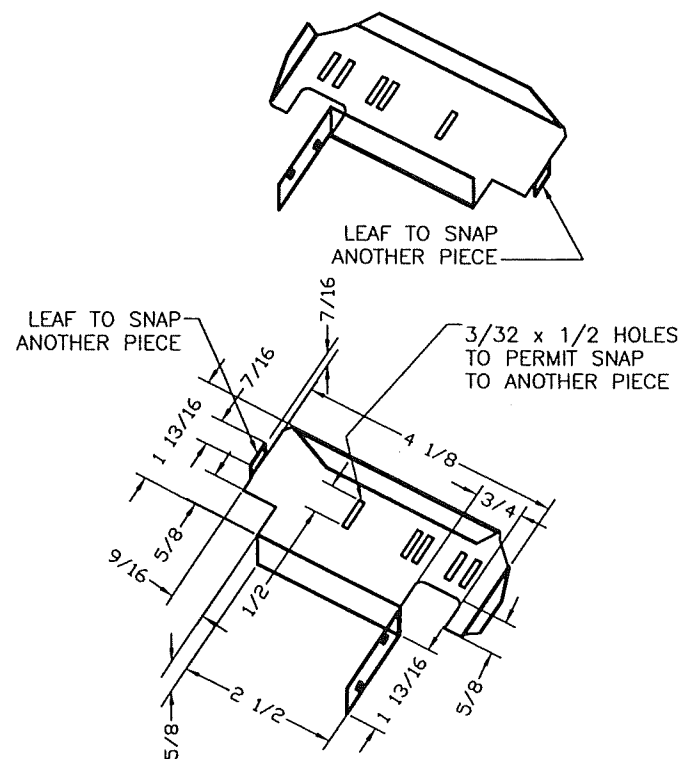
# ⑤ 4 7/8" STRIKE REINFORCEMENT FOR FRAME

MATERIAL:  
GAUGE 12 (0.072) MINIMUM  
GALVANNEAL



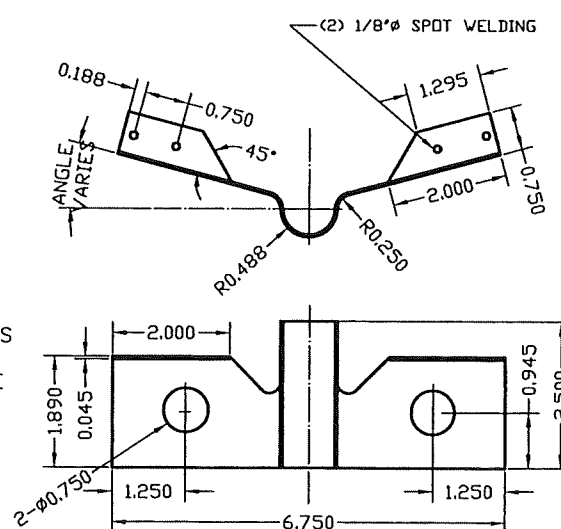
# ⑥ WIRE ANCHOR

STEEL WIRE ANCHORS  
(0.134" DIA, 10 GAGE, 18 5/8"  
EMBEDMENT LENGTH)  
IN HORIZ.



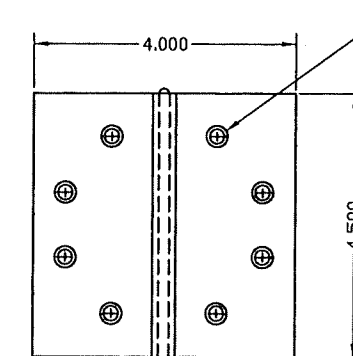
# ⑦ 2 PIECE SNAP-IN STUD ANCHOR

CLIPIN STUD ANCHOR MATERIAL:  
GAUGE 20 (0.032) ASTM A-653,  
GALVANNEALED STEEL.

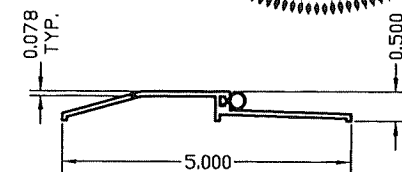
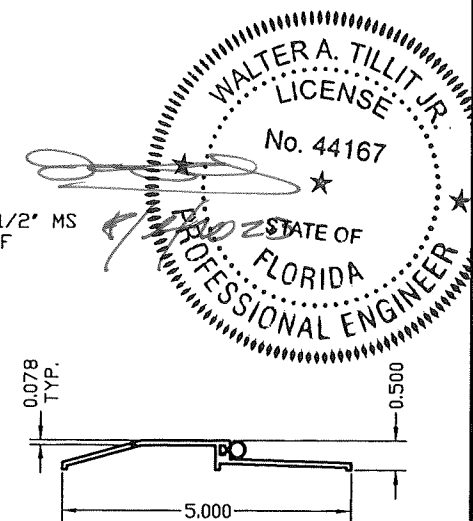


# ⑧A EMA BUTTERFLY ANCHOR (PART #PT1-008)

MATERIAL: 18 GA (0.042") SATIN  
COAT



# ⑩ HINGES-HAGER BB1279 t=0.134" THICK



# ⑩ EXTRUDED ALUMINUM THRESHOLD NGP #950NA W/ NEOPRENE BULB

FLORIDA BUILDING CODE (HIGH VELOCITY HURRICANE ZONE)

PRODUCT REVISED  
as complying with the Florida  
Building Code  
NOA-No. 23-0823.14

Expiration Date 01/09/2027

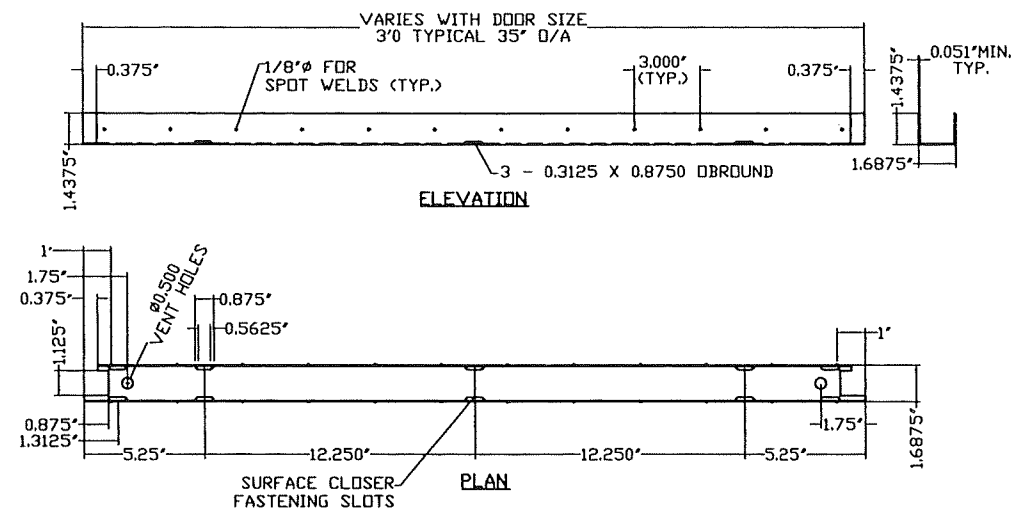
By Ishag I. Chank  
Miami-Dade Product Control

©2023 TILTECO, INC.

**TILTECO INC.**

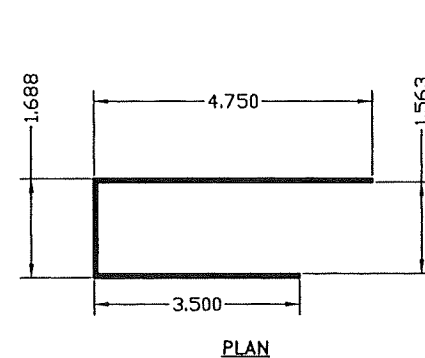
TILLIT TESTING & ENGINEERING COMPANY  
6355N.W. 36th. St., Ste. 305, VIRGINIA GARDENS, FL 33166  
Phone : (305)871-1530 . Fax : (305)871-1531  
e-mail: tilteco@aol.com  
CA-0006719  
WALTER A. TILLIT Jr. P.E.  
FLORIDA Lic. # 44167

SERIES LS20GA FLUSH COMMERCIAL STEEL OUTSWING DOOR W/SERIES "AS" 18GA STEEL FRAME						DRAWN BY: Y.M.	
DAYBAR INDUSTRIES LTD						8/9/2023 DATE	
50 WEST DRIVE, BRAMPTON, ON CANADA, L6T 2J4 TEL: 905 625-8000 FAX: 905 625-4204						23-169 DRAWING No	
REV. No	DESCRIPTION	DATE	REV. No	DESCRIPTION	DATE	SHEET 6 OF 14	
1	OLD 20-144	8/9/2023	3				
2			4				

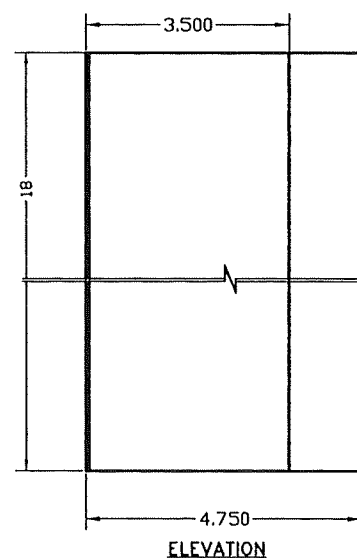


### 18 DOOR END CHANNEL REINFORCEMENT

**MATERIAL:**  
16 GAUGE (0.051) MINIMUM  
GALVANNEAL



### 20 RP REINFORCING

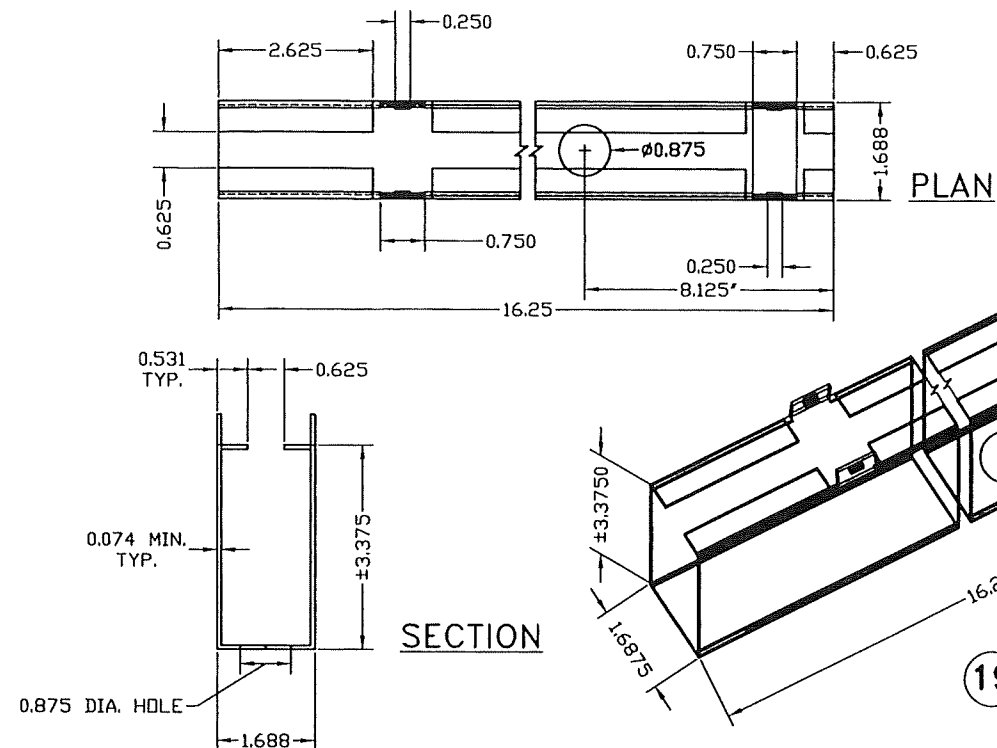
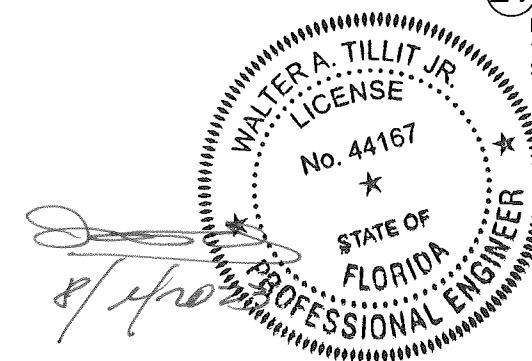


GAGE 14 (0.074) MINIMUM  
RP REINFORCING  
GALVANNEAL

**PRODUCT REVISED**  
as complying with the Florida  
Building Code  
NOA-No. 23-0823.14

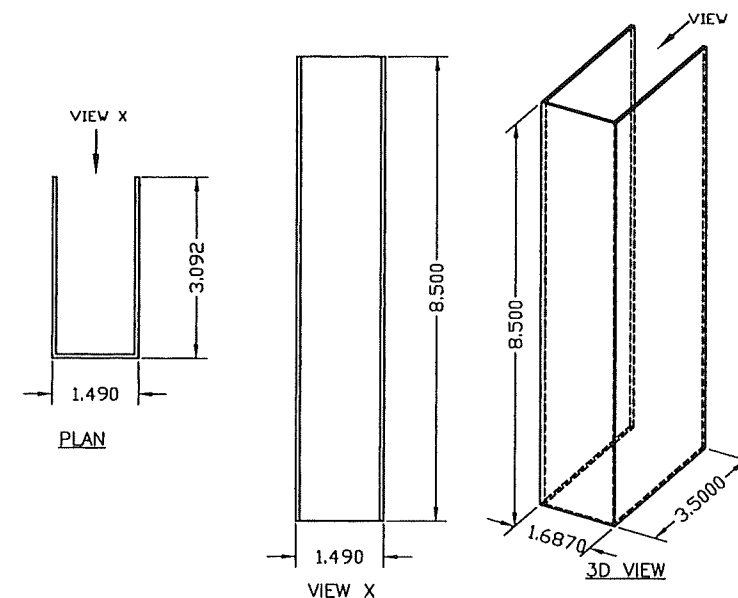
Expiration Date 01/09/2027

By Ishag I. Chande  
Miami-Dade Product Control



### 19 DOOR SURFACE CLOSER REINFORCING

**MATERIAL:**  
14 GAUGE (0.072)  
MINIMUM GALVANNEAL



### 21 RIM PANIC SURFACE BOLT REINFORCING

**MATERIAL:**  
14 GAUGE (0.072) MINIMUM GALVANNEAL, GLUED TO DOOR AT HEAD &  
SILL USING HEMIBOND 8320-1 CONTACT ADHESIVE.

FLORIDA BUILDING CODE (HIGH VELOCITY HURRICANE ZONE)

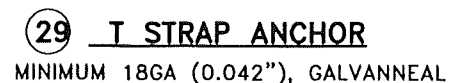
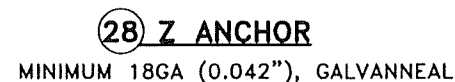
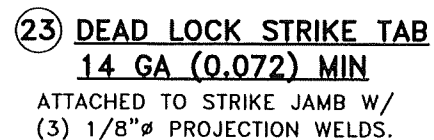
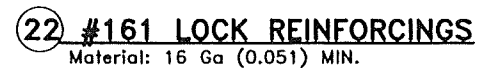
©2023 TILTECO, INC.

**TILTECO INC.**

TILLIT TESTING & ENGINEERING COMPANY  
6355N.W. 36th. St., Ste. 305, VIRGINIA GARDENS, FL 33166  
Phone : (305)871-1530 • Fax : (305)871-1531  
e-mail: tilteco@aol.com  
CA-0006719  
WALTER A. TILLIT Jr. P.E.  
FLORIDA Lic. # 44167

SERIES LS20GA FLUSH COMMERCIAL STEEL OUTSWING DOOR W/SERIES "AS" 18GA STEEL FRAME						DRAWN BY: Y.M.
DAYBAR INDUSTRIES LTD 50 WEST DRIVE, BRAMPTON, ON CANADA, L6T 2J4 TEL: 905 625-8000 FAX: 905 625-4204						8/9/2023 DATE
REV. No DESCRIPTION DATE REV. No DESCRIPTION DATE						23-169 DRAWING No
1	OLD 20-144	8/9/2023	3			SHEET 7 OF 14
2			4			





By Ishag I. Chank  
Miami-Dade Product Control

©2023 TILTECO, INC.



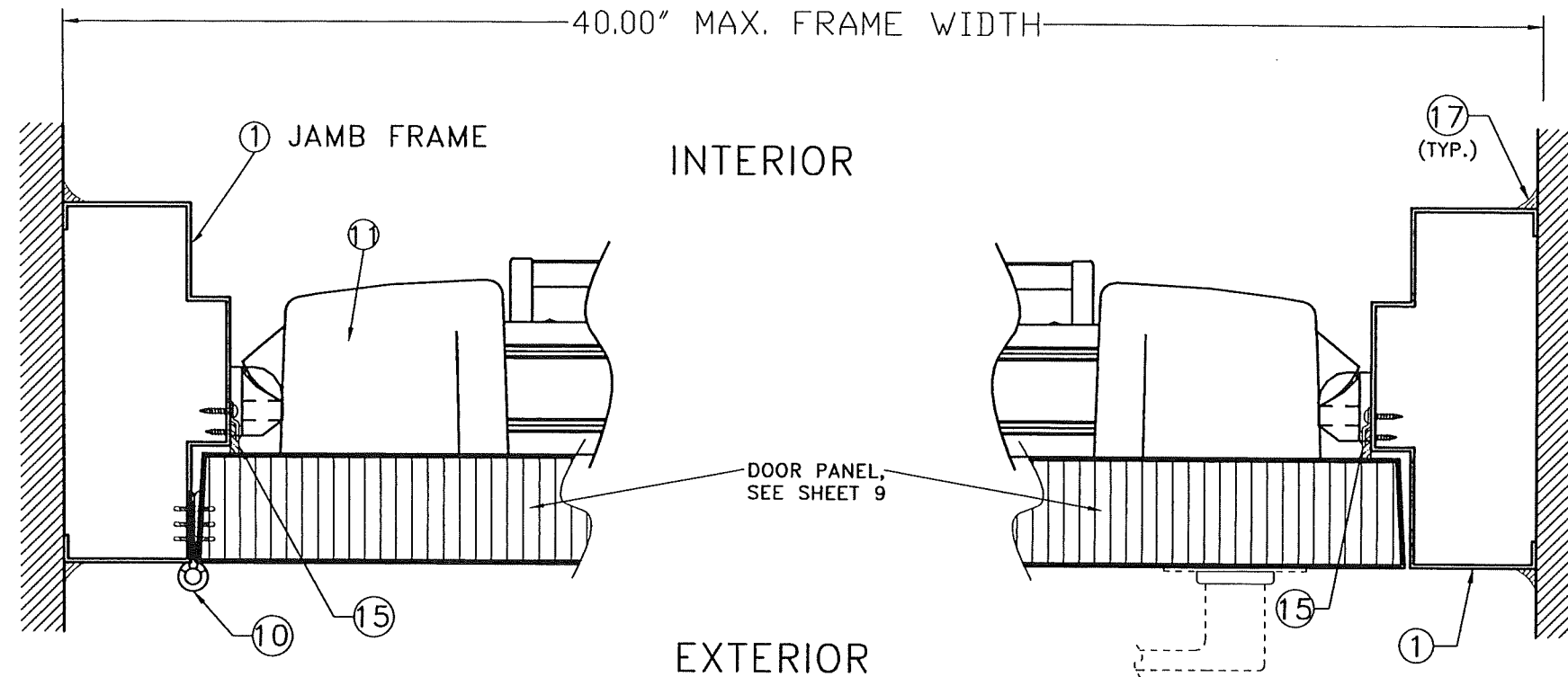
**TILTECO INC.**

**TILLIT TESTING & ENGINEERING COMPANY**  
6355N.W. 36th, St., Ste. 305, VIRGINIA GARDENS, FL 33167  
Phone : (305)871-1530 . Fax : (305)871-1531  
e-mail: [tilteco@aol.com](mailto:tilteco@aol.com)  
CA-0006719  
WALTER A. TILLIT Jr. P.E.  
FLORIDA Lic. # 44167

DRAWING No					
REV. No	DESCRIPTION	DATE	REV. No	DESCRIPTION	DATE
1	OLD 20-144	8/9/2023	3		
2			4		
SHEET 8 OF 14					

SHEET 8 OF 14



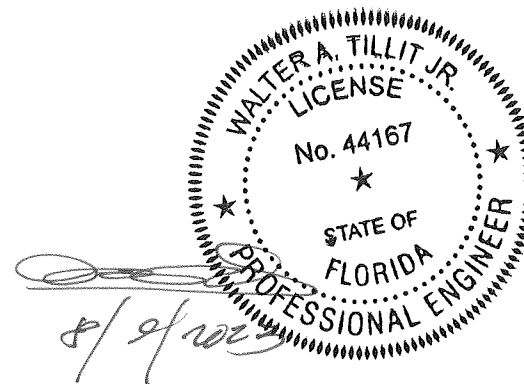


# SECTION B1-B1

**PRODUCT REVISED**  
as complying with the Florida  
Building Code  
NOA-No. 23-0823.14

Expiration Date 01/09/2027

By Ishag I. Chank  
Miami-Dade Product Control



## FLORIDA BUILDING CODE (HIGH VELOCITY HURRICANE ZONE)

©2023 TILTECO, INC.

TILTECO INC.

TILLIT TESTING & ENGINEERING COMPANY

6355N.W. 36th. St., Ste. 305, VIRGINIA GARDENS, FL 33166

Phone : (305)871-1530 . Fax : (305)871-1531

e-mail: tilteco@aol.com

CA-0006719

WALTER A. TILLIT Jr. P.E.

FLORIDA Lic. # 44167

SERIES LS20GA FLUSH COMMERCIAL

STEEL OUTSWING DOOR W/SERIES "AS"

18GA STEEL FRAME

DAYBAR INDUSTRIES LTD

50 WEST DRIVE, BRAMPTON,

ON CANADA, L6T 2J4

TEL: 905 625-8000 FAX: 905 625-4204

REV. No	DESCRIPTION	DATE	REV. No	DESCRIPTION	DATE
1	OLD 20-144	8/9/2023	3		
2			4		

DRAWN BY:  
Y.M.

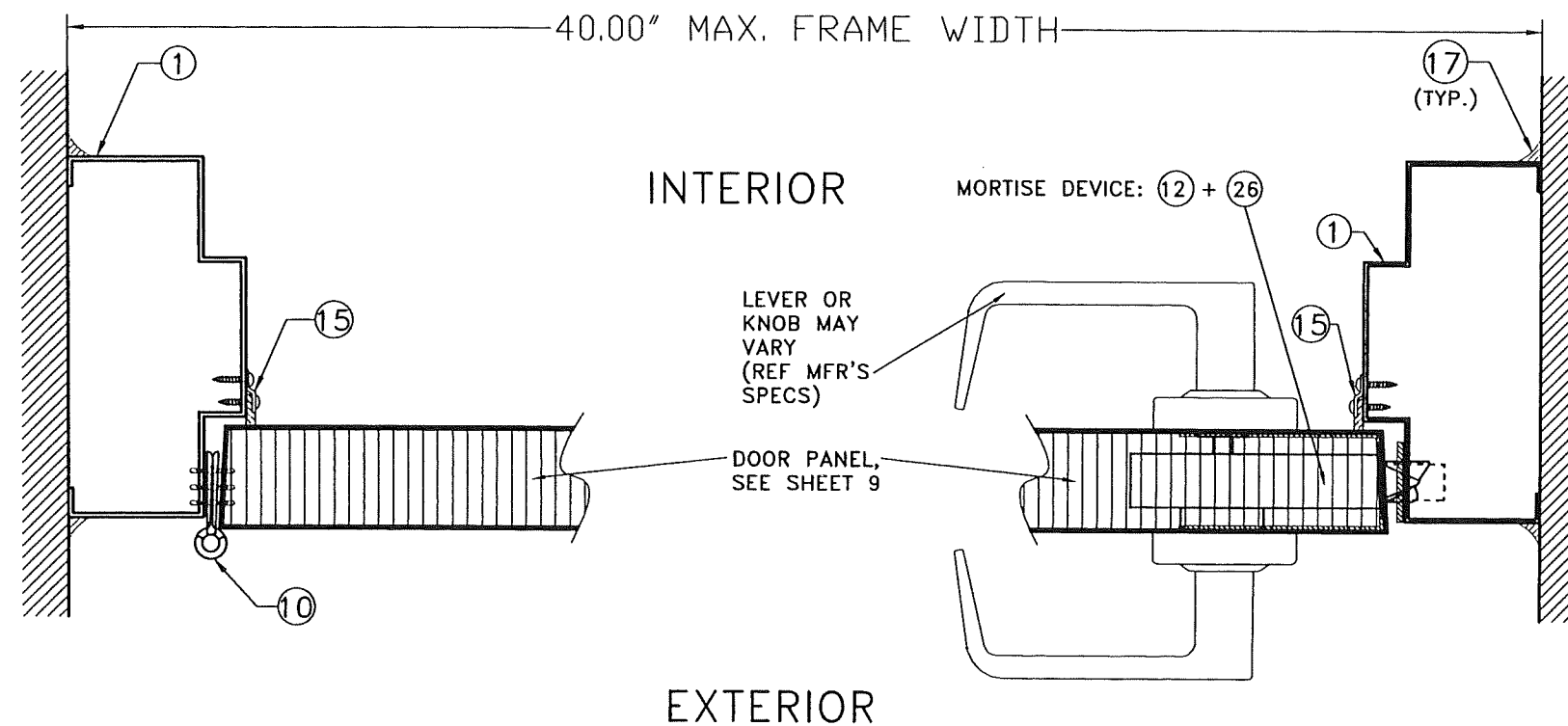
8/9/2023  
DATE

23-169  
DRAWING No

SHEET 10 OF 14

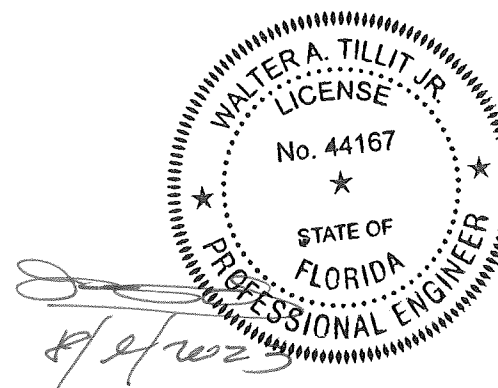







# SECTION B3-B3

**PRODUCT REVISED**  
as complying with the Florida  
Building Code  
NOA-No. 23-0823.14  
Expiration Date 01/09/2027  
By Ishaq I. Chande  
Miami-Dade Product Control



FLORIDA BUILDING CODE (HIGH VELOCITY HURRICANE ZONE)

©2023 TILTECO, INC.



TILLIT TESTING & ENGINEERING COMPANY  
6355N.W. 36th. St., Ste. 305, VIRGINIA GARDENS, FL 33166  
Phone : (305)871-1530 , Fax : (305)871-1531  
e-mail: tilteco@aol.com  
CA-0006719  
WALTER A. TILLIT Jr. P.E.  
FLORIDA Lic. # 44167

SERIES LS20GA FLUSH COMMERCIAL  
STEEL OUTSWING DOOR W/SERIES "AS"  
18GA STEEL FRAME

DRAWN BY:  
Y.M.

DAYBAR INDUSTRIES LTD

50 WEST DRIVE, BRAMPTON,  
ON CANADA, L6T 2J4  
TEL: 905 625-8000 FAX: 905 625-4204

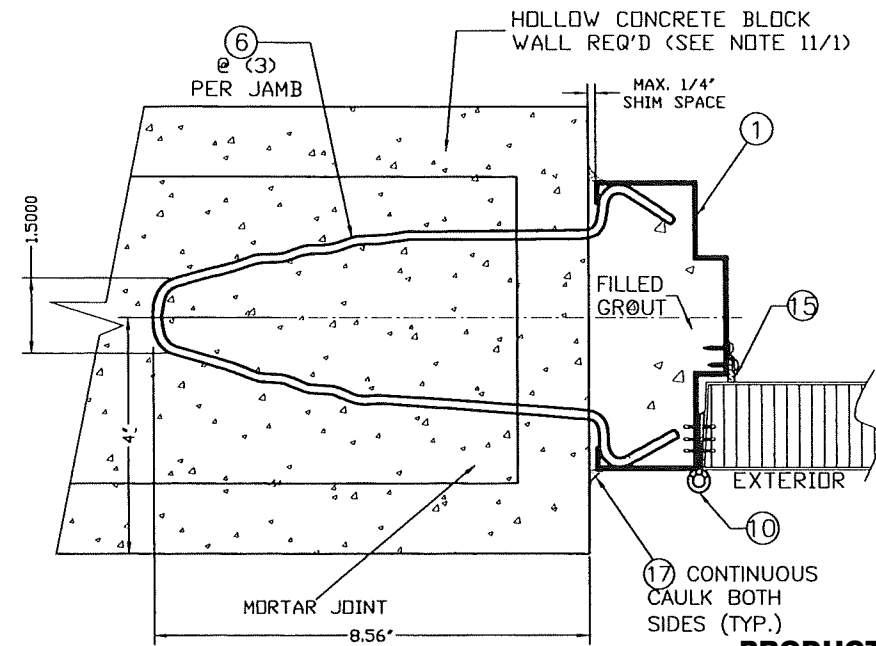
8/9/2023  
DATE

23-169  
DRAWING No

REV. No	DESCRIPTION	DATE	REV. No	DESCRIPTION	DATE
1	OLD 20-144	8/9/2023	3		
2			4		

SHEET 12 OF 14



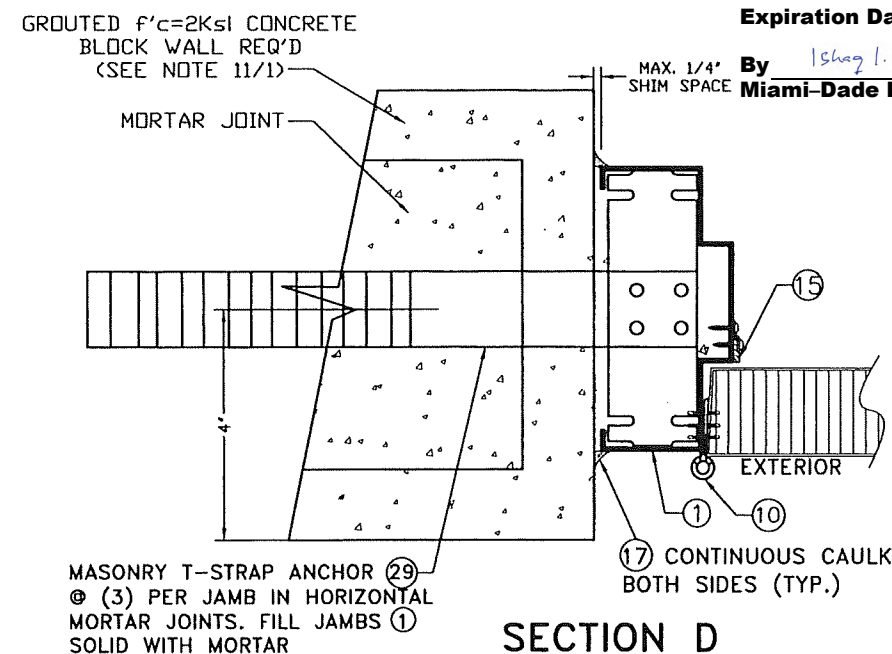


**SECTION C**

**PRODUCT REVISED**  
as complying with the Florida  
Building Code  
NOA-No. 23-0823.14

Expiration Date 01/09/2027

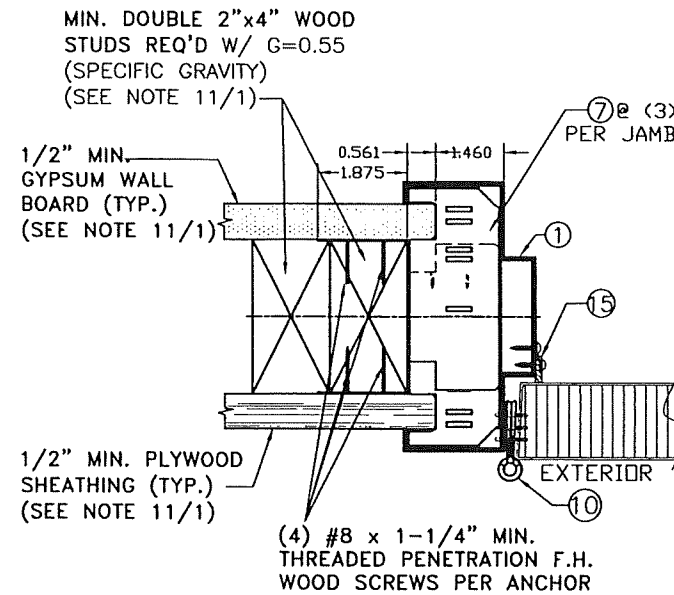
By *Ishaq I. Chande*  
**Miami-Dade Product Control**



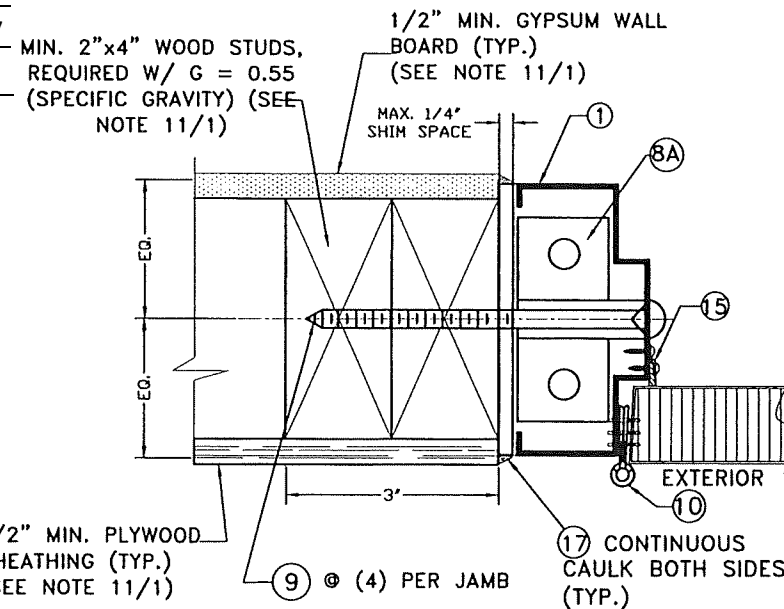
**SECTION D**

**CASE 1**

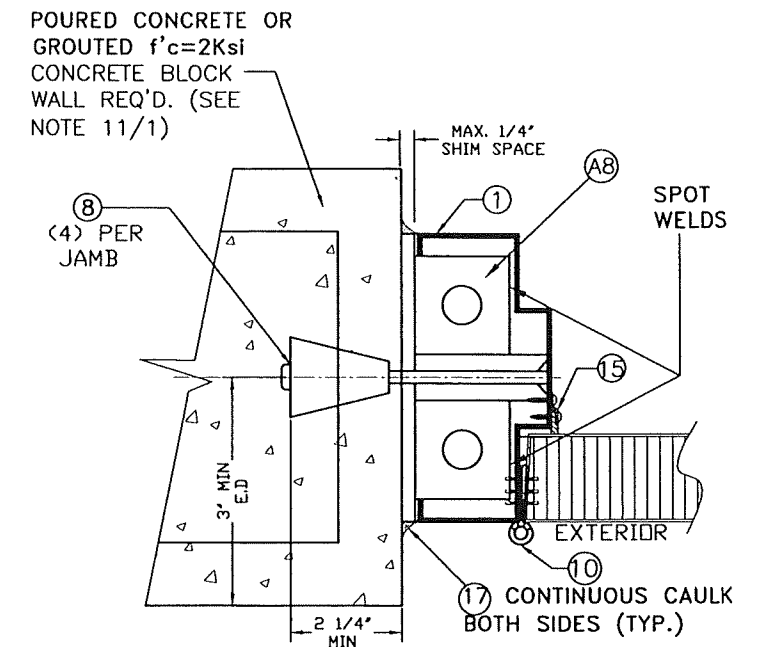
## ANCHORAGE DETAIL AT JAMBS



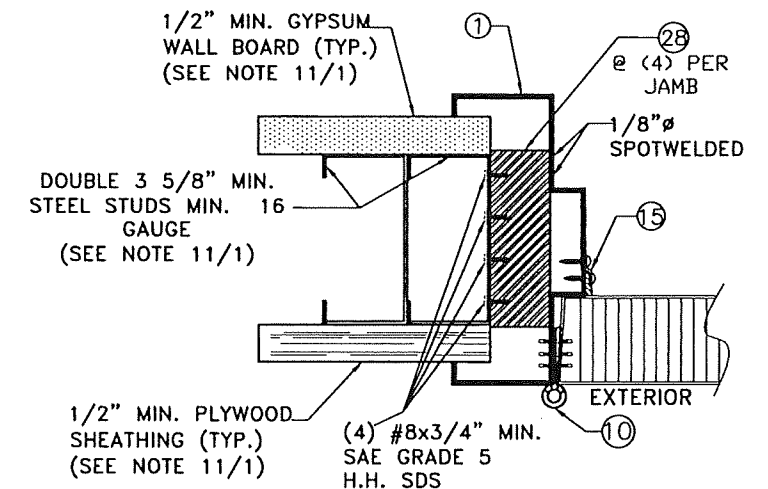
**SECTION E**



**SECTION G**



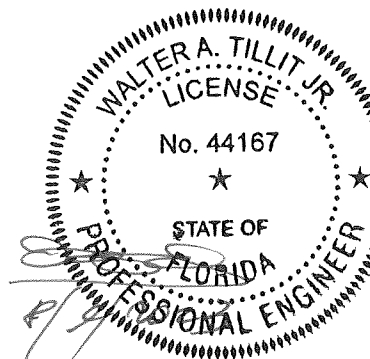
**SECTION F**



**SECTION H**

**CASE 2**

**FLORIDA BUILDING CODE (HIGH VELOCITY HURRICANE ZONE)**

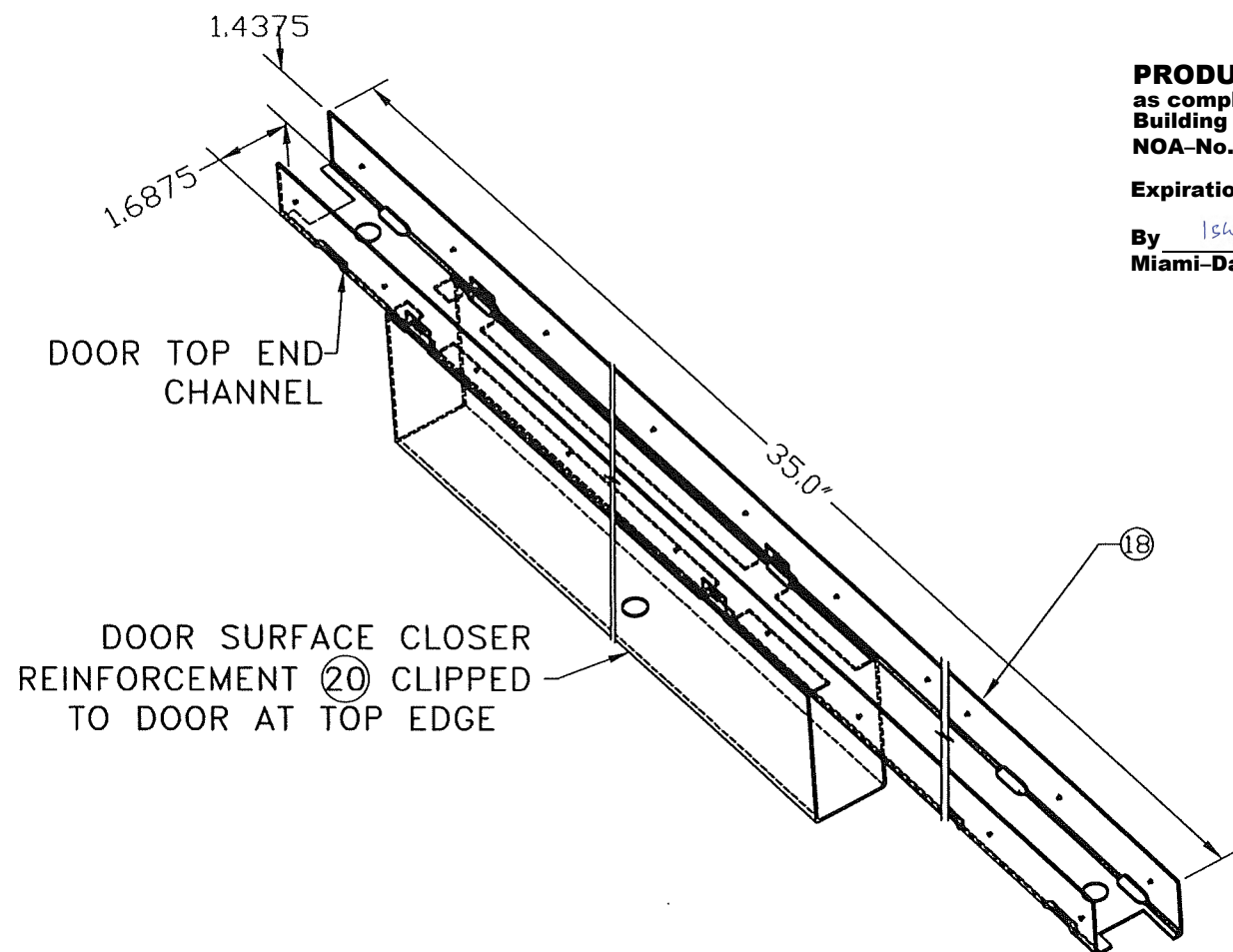


©2023 TILTECO, INC.

**TILTECO INC.**

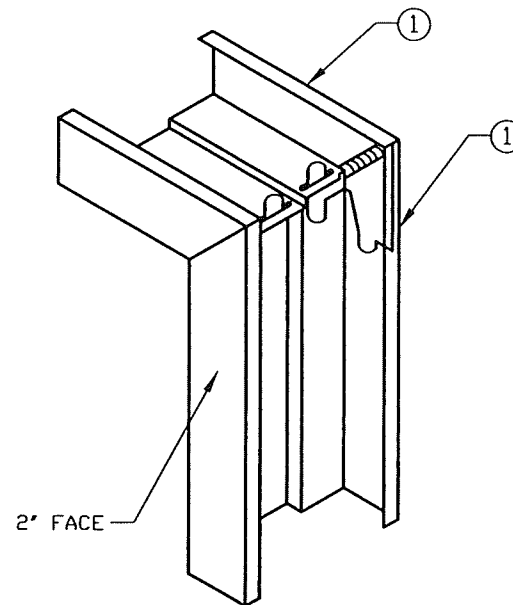
TILLIT TESTING & ENGINEERING COMPANY  
6355 N.W. 36th St., Ste. 305, VIRGINIA GARDENS, FL 33166  
Phone: (305) 871-1530, Fax: (305) 871-1531  
e-mail: tilteco@aol.com  
CA-0006719  
WALTER A. TILLIT Jr. P.E.  
FLORIDA Lic. # 44167

SERIES LS20GA FLUSH COMMERCIAL STEEL OUTSWING DOOR W/SERIES "AS" 18GA STEEL FRAME			DRAWN BY: Y.M.		
DAYBAR INDUSTRIES LTD			8/9/2023 DATE		
50 WEST DRIVE, BRAMPTON, ON CANADA, L6T 2J4 TEL: 905 625-8000 FAX: 905 625-4204			23-169 DRAWING No		
REV. No	DESCRIPTION	DATE	REV. No	DESCRIPTION	DATE
1	OLD 20-144	8/9/2023	3		
2			4		



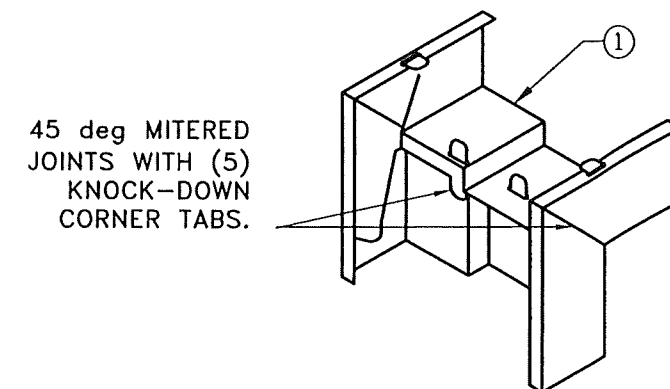
**DOOR SURFACE CLOSER REINFORCEMENT (20)  
AND END CHANNEL (18) ASSEMBLY DETAIL  
DETAIL Z**

**PRODUCT REVISED**  
as complying with the Florida  
Building Code  
NOA-No. 23-0823.14  
Expiration Date 01/09/2027  
By Ishag I. Chande  
Miami-Dade Product Control



1. DIEMITERED CORNER CONT. WELDED INSIDE FACES & AT RETURNS
2. CAULK COMPLETE INSIDE CORNER WITH GE SILICONE II (17)

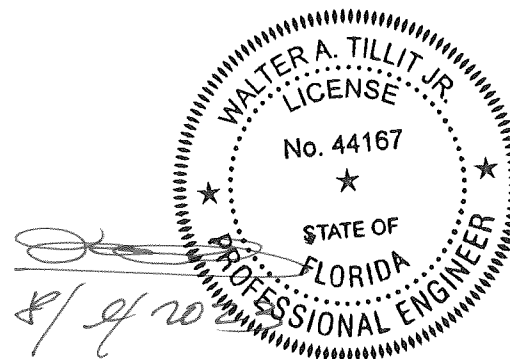
**DETAIL Y**



FRAME CORNER:  
KD 3 PIECE ASSEMBLED  
AND CAULKED W/ (17)

**DETAIL Y1**

**CORNER DETAILS Y, Y1**



**FLORIDA BUILDING CODE (HIGH VELOCITY HURRICANE ZONE)**

©2023 TILTECO, INC.		SERIES LS20GA FLUSH COMMERCIAL STEEL OUTSWING DOOR W/SERIES "AS" 18GA STEEL FRAME		DRAWN BY: Y.M.	
<b>TILTECO INC.</b> <small>TILLIT TESTING &amp; ENGINEERING COMPANY          6355N.W. 36th. St., Ste. 305, VIRGINIA GARDENS, FL 33166          Phone : (305)871-1530 . Fax : (305)871-1531          e-mail: tilteco@aol.com          CA-0006719          WALTER A. TILLIT Jr. P.E.          FLORIDA Lic. # 44167</small>		<b>DAYBAR INDUSTRIES LTD</b> <small>50 WEST DRIVE, BRAMPTON,          ON CANADA, L6T 2J4          TEL: 905 625-8000 FAX: 905 625-4204</small>		8/9/2023 DATE	
REV. No	DESCRIPTION	DATE	REV. No	DESCRIPTION	DATE
1	OLD 20-144	8/9/2023	3		
2			4		
				23-169 DRAWING No	
				SHEET 14 OF 14	