



DEPARTMENT OF REGULATORY AND ECONOMIC RESOURCES (RER)  
BOARD AND CODE ADMINISTRATION DIVISION

## NOTICE OF ACCEPTANCE (NOA)

MIAMI-DADE COUNTY  
PRODUCT CONTROL SECTION  
11805 SW 26 Street, Room 208  
Miami, Florida 33175-2474  
T (786) 315-2590 F (786) 315-2599  
[www.miamidadegov/economy](http://www.miamidadegov/economy)

**Haas Door Company**  
**320 Sycamore Street**  
**Wauseon, OH 43567**

**SCOPE:** This NOA is being issued under the applicable rules and regulations governing the use of construction materials. The documentation submitted has been reviewed and accepted by Miami-Dade County RER-Product Control Section to be used in Miami-Dade County and other areas, where allowed by the Authority Having Jurisdiction (AHJ).

This NOA shall not be valid after the expiration date stated below. The Miami-Dade County Product Control Section (In Miami-Dade County) and/ or the AHJ (in areas other than Miami-Dade County) reserve the right to have this product or material tested for quality assurance purposes. If this product or material fails to perform in the accepted manner, the manufacturer will incur the expense of such testing and the AHJ may immediately revoke, modify, or suspend the use of such product or material within their jurisdiction. RER reserves the right to revoke this acceptance if it is determined by Miami-Dade County Product Control Section that this product or material fails to meet the requirements of the applicable building code.

This product is approved as described herein and has been designed to comply with the Florida Building Code, including the High Velocity Hurricane Zone.

### DESCRIPTION:

**Series HT 600, 700, 800 & 2000 Insulated Steel Sectional Garage Door up to 9ft.-2in. Wide**

**APPROVAL DOCUMENT:** Drawing No. **WL-0600-0110-08-65-65M-D**, titled "9'-2" HT 600, 700, 2000 & 800 Steel Series HVHZ Wind Load Sectional Door", sheets 1 through 3 of 3, dated 12/01/2014, with revision C dated 10/12/2020, prepared by Haas Door Company, signed and sealed by John E. Scates, P.E., bearing the Miami-Dade County Product Control revision stamp with the Notice of Acceptance number and expiration date by the Miami-Dade County Product Control Section.

**MISSILE IMPACT RATING: Large and Small Missile Impact Resistant**

**LABELING:** A permanent label with the manufacturer's name or logo, manufacturing address, model number, the positive and negative design pressure rating, indicate impact rated if applicable, installation instruction drawing reference number, approval number (NOA), the applicable test standards, and the statement reading 'Miami-Dade County Product Control Approved' is to be located on the door's sidetrack, bottom angle, or inner surface of a panel.

**RENEWAL** of this NOA shall be considered after a renewal application has been filed and there has been no change in the applicable building code negatively affecting the performance of this product.

**TERMINATION** of this NOA will occur after the expiration date or if there has been a revision or change in the materials, use, and/ or manufacture of the product or process. Misuse of this NOA as an endorsement of any product, for sales, advertising or any other purposes shall automatically terminate this NOA. Failure to comply with any section of this NOA shall be cause for termination and removal of NOA.

**ADVERTISEMENT:** The NOA number preceded by the words Miami-Dade County, Florida, and followed by the expiration date may be displayed in advertising literature. If any portion of the NOA is displayed, then it shall be done in its entirety.

**INSPECTION:** A copy of this entire NOA shall be provided to the user by the manufacturer or its distributors and shall be available for inspection at the job site at the request of the Building Official.

This NOA **revises NOA # 20-1104.05** and consists of this page 1 and evidence pages E-1, E-2 and E-3, as well as approval document mentioned above.

The submitted documentation was reviewed by **Carlos M. Utrera, P.E.**



**NOA-No. 23-0830.07**  
**Expiration Date: February 11, 2026**  
**Approval Date: October 19, 2023**  
**Page 1**

**NOTICE OF ACCEPTANCE: EVIDENCE SUBMITTED**

**1. EVIDENCE SUBMITTED UNDER PREVIOUS NOA's**

**A. DRAWINGS “Submitted under NOA #17-0313.06”**

1. Drawing No. **WL-0600-0110-08-65-65-50M-D**, titled “9’-2” HT 600, 700, 2000 & 800 Steel Series HVHZ Wind Load Sectional Door”, sheets 1 through 3 of 3, dated 12/01/2014, with revision **A** dated 01/20/2017, prepared by Haas Door Company, signed and sealed by Thomas D. Sullivan, P.E.

**B. TESTS “Submitted under NOA #15-0721.09”**

1. Test reports on
  - 1) Uniform Static Air Pressure Test, Loading per FBC TAS 202-94
  - 2) Large Missile Impact Test per FBC, TAS 201-94
  - 3) Cyclic Wind Pressure Loading per FBC, TAS 203-94
  - 4) Forced Entry Resistance Test, per TAS 202-94along with marked-up drawings and installation diagram of 9’-2" wide x 8" height HT 600 Series Sectional Steel Garage Doors, prepared by Intertek/ATI, Test Report No. **E1289.01-550-18**, dated 12/05/2014, signed and sealed by Justin P. McDonald, P.E.
2. Test report on Tensile Test per ASTM E8, of steel sheets, prepared by Intertek/ATI, Test Report No. **E1289.11-106-18**, dated 12/12/2014, signed and sealed by Gary T. Hartman, P.E.
3. Test report on Salt Spray per ASTM B117 of coated metal steel panels, prepared by Intertek/ATI, Test Report No. **E1289.10-106-18**, dated 11/24/2014, signed and sealed by Gary T. Hartman, P.E.

**C. CALCULATIONS “Submitted under NOA #15-0721.09”**

1. Anchor calculations prepared by JB&B Engineering Consultants, LLC, dated 07/01/2015, signed and sealed by Thomas D. Sullivan, P.E.

**D. QUALITY ASSURANCE**

1. Miami-Dade Department of Regulatory and Economic Resources (RER).

**E. MATERIAL CERTIFICATIONS “Submitted under NOA #17-0313.06”**

1. Test report on Surface Burning Characteristics of the Rubitherm WP 19669 polyurethane foam insulation per ASTM E84, prepared by QAI Laboratories, Test Reports No. **RJ5251F-1** and **RJ5251F-2**, both dated 01/26/2017, signed and sealed by V. Andrew Tan, P.E.
2. Test report on Ignition Temperature of Plastics of the Rubitherm WP 19669 polyurethane foam insulation per ASTM D1929, prepared by QAI Laboratories, Test Report No. **RJ5255F-1**, dated 02/02/2017, signed and sealed by V. Andrew Tan, P.E.



---

**Carlos M. Utrera, P.E.**  
**Product Control Examiner**  
**NOA-No. 23-0830.07**  
**Expiration Date: February 11, 2026**  
**Approval Date: October 19, 2023**

**Haas Door Company**

**NOTICE OF ACCEPTANCE: EVIDENCE SUBMITTED**

**F. STATEMENTS “Submitted under NOA #17-0313.06”**

1. Statement letter of code conformance to the 5<sup>th</sup> edition (2014) FBC issued by JB&B Engineering Consultants, LLC, dated 02/27/2017, signed and sealed by Thomas D. Sullivan, P.E.
2. Statement letter of no financial interest issued by JB&B Engineering Consultants, LLC, dated 02/27/2017, signed and sealed by Thomas D. Sullivan, P.E.

**2. EVIDENCE SUBMITTED UNDER PREVIOUS NOA-No. 17-1023.09**

**A. DRAWINGS**

1. Drawing No. **WL-0600-0110-08-65-65M-D**, titled “9’-2” HT 600, 700, 2000 & 800 Steel Series HVHZ Wind Load Sectional Door”, sheets 1 through 3 of 3, dated 12/01/2014, with revision **B** dated 10/25/2017, prepared by Haas Door Company, signed and sealed by John E. Scates, P.E.

**B. TESTS**

1. None.

**C. CALCULATIONS**

1. Anchor calculations, dated 10/27/2017, prepared, signed and sealed by John E. Scates, P.E.

**D. QUALITY ASSURANCE**

1. Miami-Dade Department of Regulatory and Economic Resources (RER).

**E. MATERIAL CERTIFICATIONS**

1. None.

**F. STATEMENTS**

1. Statement letter of code conformance to **6<sup>th</sup> Edition (2017) FBC**, dated 10/25/2017, prepared, signed and sealed by John E. Scates, P.E.
2. Statement letter of no financial interest, dated 10/27/2017, issued, signed and sealed by John E. Scates, P.E.



**Carlos M. Utrera, P.E.**  
**Product Control Examiner**  
**NOA-No. 23-0830.07**

**Expiration Date: February 11, 2026**  
**Approval Date: October 19, 2023**

**NOTICE OF ACCEPTANCE: EVIDENCE SUBMITTED**

**3. EVIDENCE SUBMITTED UNDER NOA # 20-1104.05 AND NEW**

**A. DRAWINGS**

1. Drawing No. **WL-0600-0110-08-65-65M-D**, titled “9’-2” HT 600, 700, 2000 & 800 Steel Series HVHZ Wind Load Sectional Door”, sheets 1 through 3 of 3, dated 12/01/2014, with revision **C** dated 10/20/2020, prepared by Haas Door Company, signed and sealed by John E. Scates, P.E.

**B. TESTS**

1. None.

**C. CALCULATIONS**

1. None.

**D. QUALITY ASSURANCE**

1. Miami-Dade Department of Regulatory and Economic Resources (RER).

**E. MATERIAL CERTIFICATIONS**

1. None.

**F. STATEMENTS**

1. Statement letter of code conformance to 8<sup>th</sup> edition (2023) of the FBC, dated 06/27/2023, prepared, signed and sealed by John E. Scates, P.E.
2. Statement letter of no financial interest, dated 06/27/2023, issued, signed and sealed by John E. Scates, P.E.
3. Statement letter of code conformance to 7<sup>th</sup> edition (2020) of the FBC, dated 10/20/2020, prepared, signed and sealed by John E. Scates, P.E.
4. Statement letter of no financial interest, dated 10/20/2020, issued, signed and sealed by John E. Scates, P.E.

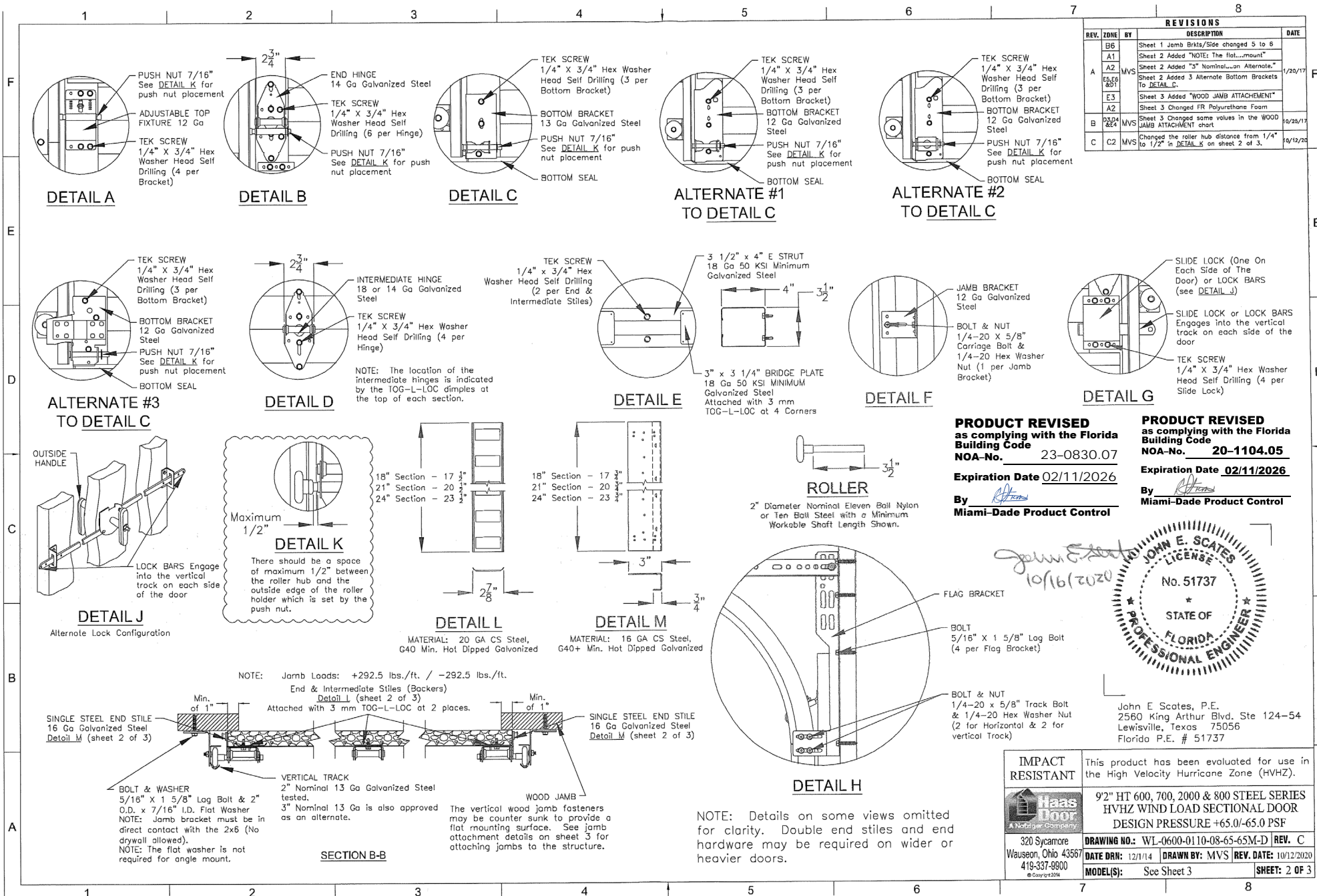


---

**Carlos M. Utrera, P.E.**  
**Product Control Examiner**  
**NOA-No. 23-0830.07**  
**Expiration Date: February 11, 2026**  
**Approval Date: October 19, 2023**







REVISIONS					DATE
REV.	ZONE	BY	DESCRIPTION		
B6			Sheet 1 Jamb Brkts/Side changed 5 to 6		
A1			Sheet 2 Added "NOTE: The flat...mount"		
A2			Sheet 2 Added "3" Nominal...an Alternate"	1/20/17	
E5, E6, E8, E9			Sheet 2 Added 3 Alternate Bottom Brackets To DETAIL C.		
E3			Sheet 3 Added "WOOD JAMB ATTACHMENT"		
A2			Sheet 3 Changed FR Polyurethane Foam		
B3, B4, B5			Sheet 3 Changed some values in the WOOD JAMB ATTACHMENT sheet	10/25/17	
C	C2	MVS	Changed the roller hub distance from 1/4" to 1/2" in DETAIL K on sheet 2 of 3.	10/12/20	

**PRODUCT REVISED**  
as complying with the Florida  
Building Code  
NOA-No. 23-0830.07

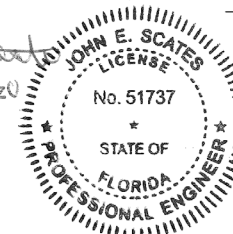
Expiration Date 02/11/2026

By *[Signature]*  
Miami-Dade Product Control

**PRODUCT REVISED**  
as complying with the Florida  
Building Code  
NOA-No. 20-1104.05

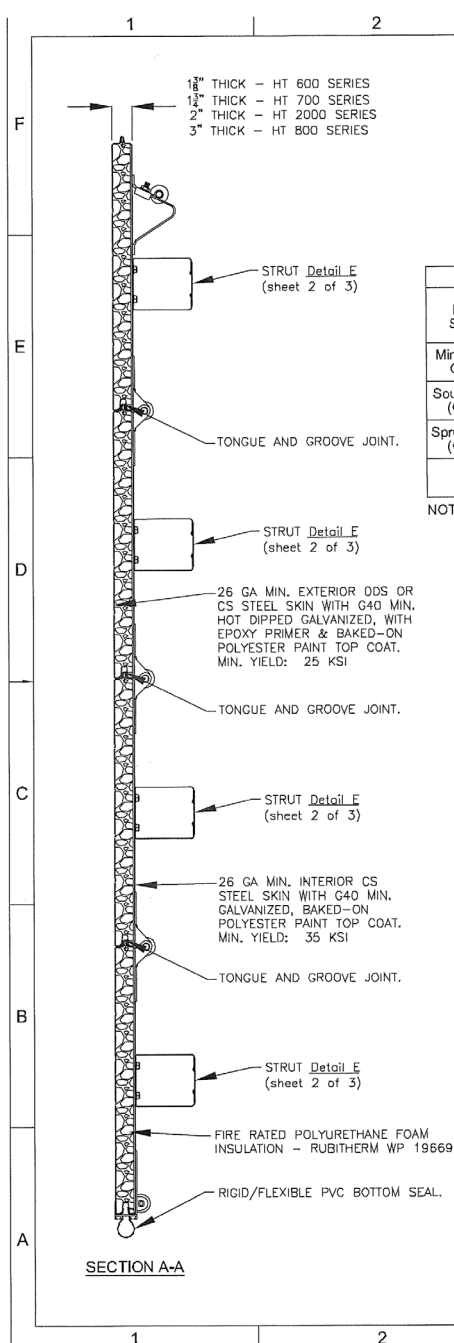
Expiration Date 02/11/2026

By *[Signature]*  
Miami-Dade Product Control



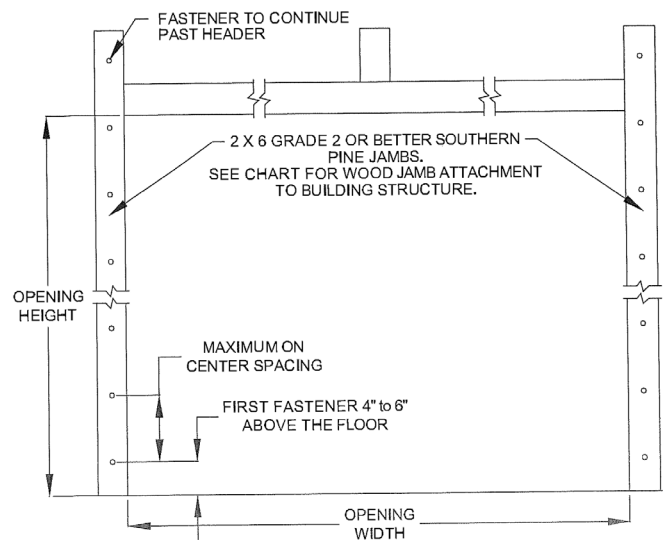
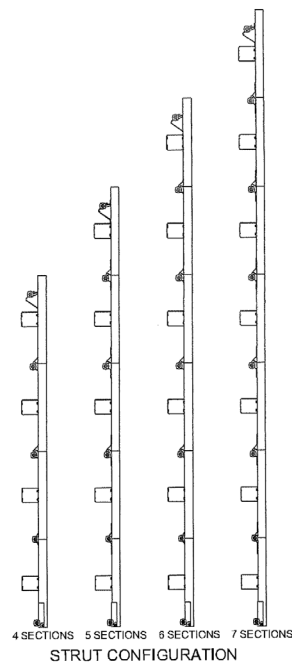
John E. Scates, P.E.  
2560 John Arthur Blvd. Ste. 124-54  
Lewisville, Texas 75056  
Florida P.E. # 51737

<b>IMPACT RESISTANT</b>  320 Sycamore Wauseon, Ohio 43087 419-337-9900 <small>© Copyright 2014</small>	This product has been evaluated for use in the High Velocity Hurricane Zone (HVHZ).		
	92" HT 600, 700, 2000 & 800 STEEL SERIES HVHZ WIND LOAD SECTIONAL DOOR DESIGN PRESSURE +65.0/-65.0 PSF		
	<b>DRAWING NO.:</b> WL-0600-0110-08-65-M-D	<b>REV. C</b>	
	<b>DATE DRN:</b> 12/1/14	<b>DRAWN BY:</b> MVS	<b>REV. DATE:</b> 10/12/2020
	<b>MODEL(S):</b> See Sheet 3		<b>SHEET: 2 OF 3</b>



WOOD JAMB ATTACHMENT						
Building Structure	Fastener Type	Minimum Embedment	Minimum Edge Distance	Minimum on Center Spacing	Maximum on Center Spacing	Allowable Tension Load
Min. 2000 PSI Concrete	Tapcon 1/4" w/ 1" OD washer	1 3/4"	2 1/2"	4"	16"	443 #
Southern Pine (G = 0.55)	5/16" Lag w/ 1 1/8" OD washer	1 1/2"	1 1/2"	4"	16"	607 #
Spruce Pine Fir (G = 0.42)	5/16" Lag w/ 1 1/8" OD washer	1 1/2"	1 1/2"	4"	16"	431 #

NOTE: 2X6 mounted to the wall must be Southern Pine Grade 2 or better.



## MODEL NUMBERS

### MODEL NUMBERS AVAILABLE

HT\_14 & 2\_14 SERIES  
HT\_16 & 2\_16 SERIES  
HT\_32 & 2\_32 SERIES  
HT\_33 & 2\_33 SERIES  
HT\_10 & 2\_10 SERIES  
HT\_12 & 2\_12 SERIES  
HT\_60 & 2\_60 SERIES  
HT\_61 & 2\_61 SERIES  
HT\_63 & 2\_63 SERIES  
HT\_64 & 2\_64 SERIES  
HT\_70 & 2\_70 SERIES  
HT\_71 & 2\_71 SERIES  
HT\_72 & 2\_72 SERIES  
HT\_73 & 2\_73 SERIES  
HT\_74 & 2\_74 SERIES  
HT\_80 & 2\_80 SERIES  
HT\_81 & 2\_81 SERIES  
HT\_82 & 2\_82 SERIES  
HT\_90 & 2\_90 SERIES

REVISIONS			
REV.	ZONE	BY	DESCRIPTION
B6			Sheet 1 Jamb Brkts/Side changed 5 to 8
A1			Sheet 2 Added "NOTE: The flat...mount"
A2			Sheet 2 Added "3" Nominal...an Alternate."
E3, E8 & E1			Sheet 2 Added 3 Alternate Bottom Brackets To DETAIL C.
E3			Sheet 3 Added "WOOD JAMB ATTACHMENT"
A2			Sheet 3 Changed FR Polyurethane Foam
B3, B4 & E4			Sheet 3 Changed some values in the WOOD JAMB ATTACHMENT chart
C2			Changed the roller hub distance from 1/4" to 1/2" in DETAIL E on sheet 2 of 3.

**PRODUCT REVISED**  
as complying with the Florida  
Building Code  
NOA-No. 23-0830.07

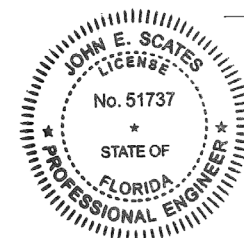
Expiration Date 02/11/2026

By *[Signature]*  
Miami-Dade Product Control

**PRODUCT REVISED**  
as complying with the Florida  
Building Code  
NOA-No. 20-1104.05

Expiration Date 02/11/2026

By *[Signature]*  
Miami-Dade Product Control



*John E. Scates*  
10/16/2020

John E. Scates, P.E.  
2560 King Arthur Blvd. Ste 124-54  
Lewisville, Texas 75056  
Florida P.E. # 51737

IMPACT RESISTANT	This product has been evaluated for use in the High Velocity Hurricane Zone (HVHZ).
<b>Haas Door</b> A Nottzger Company	92" HT 600, 700, 2000 & 800 STEEL SERIES HVHZ WIND LOAD SECTIONAL DOOR DESIGN PRESSURE +65.0/-65.0 PSF
320 Sycamore Wauseon, Ohio 43567 419-337-9800 © Copyright 2016	DRAWING NO.: WL-0600-0110-08-65-65M-D REV. C DATE DRN: 12/1/14 DRAWN BY: MYS REV. DATE: 10/12/2020 MODEL(S): See Sheet 3 SHEET: 3 OF 3