



DEPARTMENT OF REGULATORY AND ECONOMIC RESOURCES (RER)
 BOARD AND CODE ADMINISTRATION DIVISION
NOTICE OF ACCEPTANCE (NOA)

Next Door Company
4005 E. 10th Court
Hialeah, Fl. 33013

SCOPE:

This NOA is being issued under the applicable rules and regulations governing the use of construction materials. The documentation submitted has been reviewed and accepted by Miami-Dade County RER -Product Control Section to be used in Miami Dade County and other areas where allowed by the Authority Having Jurisdiction (AHJ).

This NOA shall not be valid after the expiration date stated below. The Miami-Dade County Product Control Section (In Miami Dade County) and/or the AHJ (in areas other than Miami Dade County) reserve the right to have this product or material tested for quality assurance purposes. If this product or material fails to perform in the accepted manner, the manufacturer will incur the expense of such testing and the AHJ may immediately revoke, modify, or suspend the use of such product or material within their jurisdiction. RER reserves the right to revoke this acceptance, if it is determined by Miami-Dade County Product Control Section that this product or material fails to meet the requirements of the applicable building code.

This product is approved as described herein and has been designed to comply with the Florida Building Code, including the High Velocity Hurricane Zone.

DESCRIPTION: Series” S-808-IL” Outswing Louvered Steel Doors-Impact

APPROVAL DOCUMENT: Drawing No. **W10-35 Rev J** titled “Series “S-808-IL” Outswing Louvered Steel Door (LMI)” Sheets 1 through 6 of 6, prepared by Al-Farooq Corporation, dated 06-03-10 and last revised on AUG 30, 2023, signed and sealed by Jalal Farooq, P. E. bearing the Miami-Dade County Product Control Revision stamp with the Notice of Acceptance number and expiration date by the Miami-Dade County Product Control Section.

MISSILE IMPACT RATING: Large and Small Missile Impact Resistant

Limitation:

1. Not approved where Air and Water infiltration requirements are needed.
2. Door and louver shall meet min yield and ultimate strength per sheet 5.

LABELING: Each unit shall bear a permanent label with the manufacturer's name or logo, city, state and series and following statement: "Miami-Dade County Product Control Approved", unless otherwise noted herein.

RENEWAL of this NOA shall be considered after a renewal application has been filed and there has been no change in the applicable building code negatively affecting the performance of this product.

TERMINATION of this NOA will occur after the expiration date or if there has been a revision or change in the materials, use, and/or manufacture of the product or process. Misuse of this NOA as an endorsement of any product, for sales, advertising or any other purposes shall automatically terminate this NOA. Failure to comply with any section of this NOA shall be cause for termination and removal of NOA.

ADVERTISEMENT: The NOA number preceded by the words Miami-Dade County, Florida, and followed by the expiration date may be displayed in advertising literature. If any portion of the NOA is displayed, then it shall be done in its entirety.

INSPECTION: A copy of this entire NOA shall be provided to the user by the manufacturer or its distributors and shall be available for inspection at the job site at the request of the Building Official.

This NOA **revises NOA #21-0504.08** and consists of this page 1 and evidence pages E-1, E-2, E-3, E-4 & E-5, as well as approval document mentioned above.

The submitted documentation was reviewed by **Ishaq I. Chanda, P.E.**



Ishaq I. Chanda

NOA No. 23-0913.10
Expiration Date: January 13, 2026
Approval Date: October 12, 2023
 Page 1

NOTICE OF ACCEPTANCE: EVIDENCE SUBMITTED

1. Evidence submitted under previous approvals

A. DRAWINGS

1. Manufacturer's die drawings and sections (submitted under files #see below)
2. Drawing No. **W10-35 Rev F** titled "Series "S-808-IL" Outswing Louvered Steel Door (LMI)" Sheets 1 through 6 of 6, prepared by Al-Farooq Corporation, dated 06-03-10 and last revised on APR 15, 2015, P.E.

B. TESTS (submitted under files #14-0911.02/#12-0229.03/#10-0727.02)

1. Test reports on
 - 1) Air Infiltration Test, per FBC TAS 202-94 (Not Performed)
 - 2) Uniform Static Air Pressure Test Loading per FBCTAS 202-94
 - 3) Water Resistance Test, per FBC TAS 202-94 (Not Performed)
 - 4) Forced Entry Resistance Test, per FBC TAS 202-94
 - 5) Large Missile Impact Test, FBC TAS 201-94
 - 6) Cyclic Loading Test, per FBC TAS 203-94

Along with installation diagram of double outswing Louvered steel door, marked-up by Fenestration Testing Laboratories, Inc. Test Reports Nos. **FTL 6167 (FTL09009)** and **FTL 6267 (FTL10049)**, dated 04/28/10, signed and sealed by Jorge A. Causo, P.E.

Note: This test report has been revised by an addendum letter dated Dec. 10, 2010, issued by Fenestration Testing Lab, signed and sealed by Jorge A. Causo, P.E.

C. CALCULATIONS

1. Anchor verification calculations and structural analysis, complying with FBC-2014, prepared by Al Farooq Corporation, dated 07/02/14 and last revised on JAN14, 2015, signed and sealed by Javad Ahmad, P.E.
2. Glazing complies w/ ASTM E-1300-02, -04 & -09

D. QUALITY ASSURANCE

1. Miami Dade Department of Regulatory and Economic Resources (RER).

E. MATERIAL CERTIFICATIONS

1. Tensile Test report No. **6167 (FTL09009)** Sp #A-1 dated 04/14/10 per ASTM A-3705 for steel face sheet, prepared by Fenestration Testing lab, signed & sealed by Carlos Rionda, P.E.
2. Notice of Acceptance No. **06-1228.07** issued to Carpenter Company for "EPS-Expanded Polystyrene Insulation", expiring on 04/11/17
3. Test Report No. **3145021COQ-004**, dated March 28, 2008, issued by Intertek. to Next Door Company for "RA-24" Batt Fiberglass Insulation for "Self Ignition Temperature Test" per ASTM E-84-08 for smoke density & Flame spread and Test Report No. **3145021COQ-005**, dated March 28, 2008 for "Surface Burning Characteristics" per ASTM D-1929.
4. Test Report No. **3145021COQ-006**, dated March 28, 2008, issued by Intertek. to Next Door Company for "RA-24" Batt Fiberglass Insulation for "Rate of Burning" per ASTM D-635-06.

Ishaq I. Chanda

Ishaq I. Chanda, P.E.
Product Control Unit Supervisor
NOA No. 23-0913.10
Expiration Date: January 13, 2026
Approval Date: October 12, 2023

NOTICE OF ACCEPTANCE: EVIDENCE SUBMITTED

F. STATEMENTS

1. Statement letter of conformance to FBC 2014(5th edition) and “renewal with No change”, prepared by Al Farooq Corporation, dated 07/21/15, signed and sealed by Javad Ahmad, P.E
2. Statement letter of conformance to FBC 2014(5th edition) and letter of no financial interest, prepared by Al Farooq Corporation, dated 06/30/14, signed and sealed by Javad Ahmad, P.E.
3. Lab compliance as part of the above referenced test report.

G. OTHER

1. This NOA **renews** NOA #12-0229.03, expiring on January 13, 2021.

2. Evidence submitted under previous NOA.

A. DRAWINGS

1. Drawing No. **W10-35 Rev G** titled “Series “S-808-IL” Outswing Louvered Steel Door (LMI)” Sheets 1 through 6 of 6, prepared by Al-Farooq Corporation, dated 06-03-10 and last revised on JAN 25, 2018, signed and sealed by Javad Ahmad, P. E.

B. TESTS

1. None.

C. CALCULATIONS

1. Anchor verification calculations and structural analysis, complying with **FBC 2017** (6th Edition), prepared by Al-Farooq Corporation, dated 01/25/18, signed and sealed by Javad Ahmad, P. E.

D. QUALITY ASSURANCE

1. Miami Dade Department of Regulatory and Economic Resources (RER).

E. MATERIAL CERTIFICATIONS

1. None.

F. STATEMENTS

1. Statement letter of conformance to **FBC 6th Edition (2017)** and of no financial interest, prepared by Al Farooq Corporation, dated 12/29/17, signed and sealed by Javad Ahmad, P.E.
2. Statement of lab compliance, as part of test report.

G. OTHER

1. This NOA **revises** NOA # 15-0728.04, expiring 01/13/21.

Ishaq I. Chanda

Ishaq I. Chanda, P.E.
Product Control Unit Supervisor
NOA No. 23-0913.10
Expiration Date: January 13, 2026
Approval Date: October 12, 2023

NOTICE OF ACCEPTANCE: EVIDENCE SUBMITTED

3. Evidence submitted under previous approval.

A. DRAWINGS

1. Drawing No. **W10-35 Rev H** titled “Series “S-808-IL” Outswing Louvered Steel Door (LMI)” Sheets 1 through 6 of 6, prepared by Al-Farooq Corporation, dated 06-03-10 and last revised on 09/04/2020, signed and sealed by Jalal Farooq, P. E.

B. TESTS

1. None.

C. CALCULATIONS

1. Anchor verification calculations and structural analysis, complying with **FBC 2020** (7th Edition), prepared by Al-Farooq Corporation, dated 09/04/20, signed and sealed by Jalal Farooq, P. E.

D. QUALITY ASSURANCE

1. Miami Dade Department of Regulatory and Economic Resources (RER).

E. MATERIAL CERTIFICATIONS

1. None.

F. STATEMENTS

1. Statement letter of conformance to **FBC 7th Edition (2020)** and of no financial interest, prepared by Al Farooq Corporation, dated 09/04/20, signed and sealed by Jalal Farooq, P.E.
2. Statement of lab compliance, as part of test report.

G. OTHER

1. This NOA **revises & renews NOA # 18-0205.10**, expiring 01/13/26.

Ishaq I. Chanda

Ishaq I. Chanda, P.E.
Product Control Unit Supervisor
NOA No. 23-0913.10
Expiration Date: January 13, 2026
Approval Date: October 12, 2023

NOTICE OF ACCEPTANCE: EVIDENCE SUBMITTED

4. Evidence submitted under previous approval.

A. DRAWINGS

1. Drawing No. **W10-35 Rev I** titled “Series “S-808-IL” Outswing Louvered Steel Door (LMI)” Sheets 1 through 6 of 6, prepared by Al-Farooq Corporation, dated 06-03-10 and last revised on 05/30/2021, signed and sealed by Jalal Farooq, P. E.

B. TESTS

1. None.

C. CALCULATIONS (submitted under previous approval)

1. None.

D. QUALITY ASSURANCE

1. Miami Dade Department of Regulatory and Economic Resources (RER).

E. MATERIAL CERTIFICATIONS

1. None.

F. STATEMENTS

1. Statement letter of conformance to **FBC 7th Edition (2020)**, prepared by Al Farooq Corporation, dated 05/30/21, signed and sealed by Jalal Farooq, P.E.

G. OTHER

1. This NOA **revises NOA # 20-0910.03**, expiring 01/13/26.

Ishaq I. Chanda

Ishaq I. Chanda, P.E.
Product Control Unit Supervisor
NOA No. 23-0913.10
Expiration Date: January 13, 2026
Approval Date: October 12, 2023

NOTICE OF ACCEPTANCE: EVIDENCE SUBMITTED

5. New Evidence submitted.

A. DRAWINGS

1. Drawing No. **W10-35 Rev J** titled “Series “S-808-IL” Outswing Louvered Steel Door (LMI)” Sheets 1 through 6 of 6, prepared by Al-Farooq Corporation, dated 06-03-10 and last revised on AUG 30, 2023, signed and sealed by Jalal Farooq, P. E.

B. TESTS

1. None.

C. CALCULATIONS (submitted under previous approval)

1. None.

D. QUALITY ASSURANCE

1. Miami Dade Department of Regulatory and Economic Resources (RER).

E. MATERIAL CERTIFICATIONS

1. None.

F. STATEMENTS

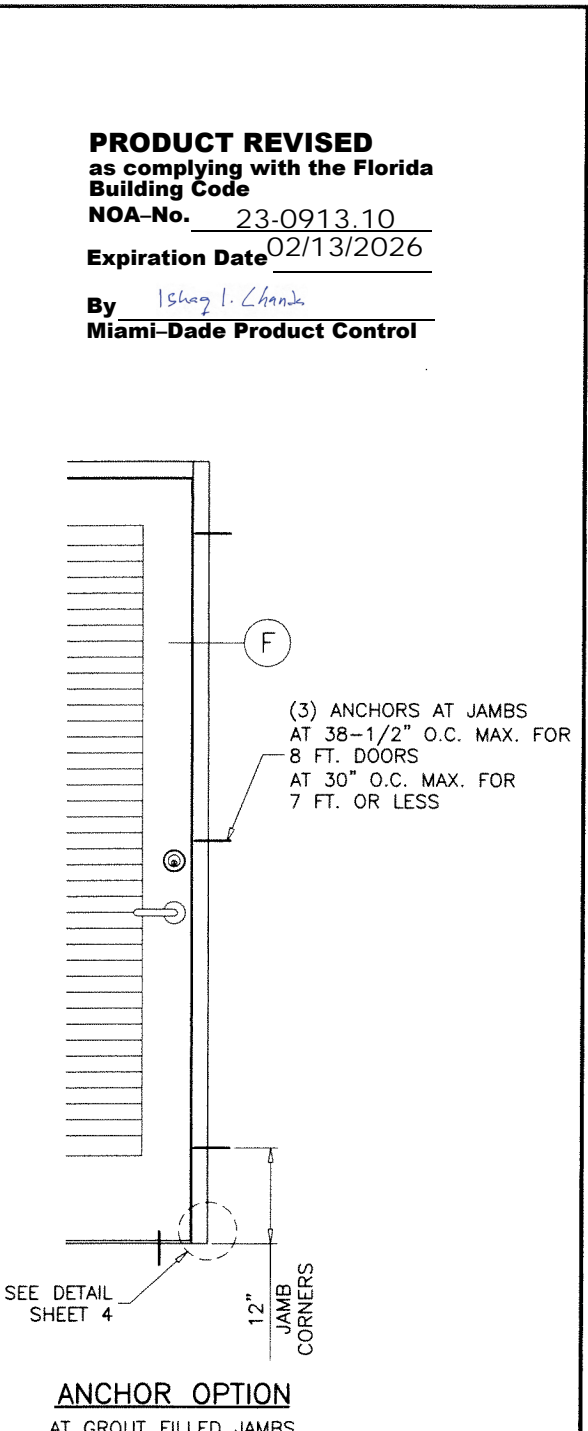
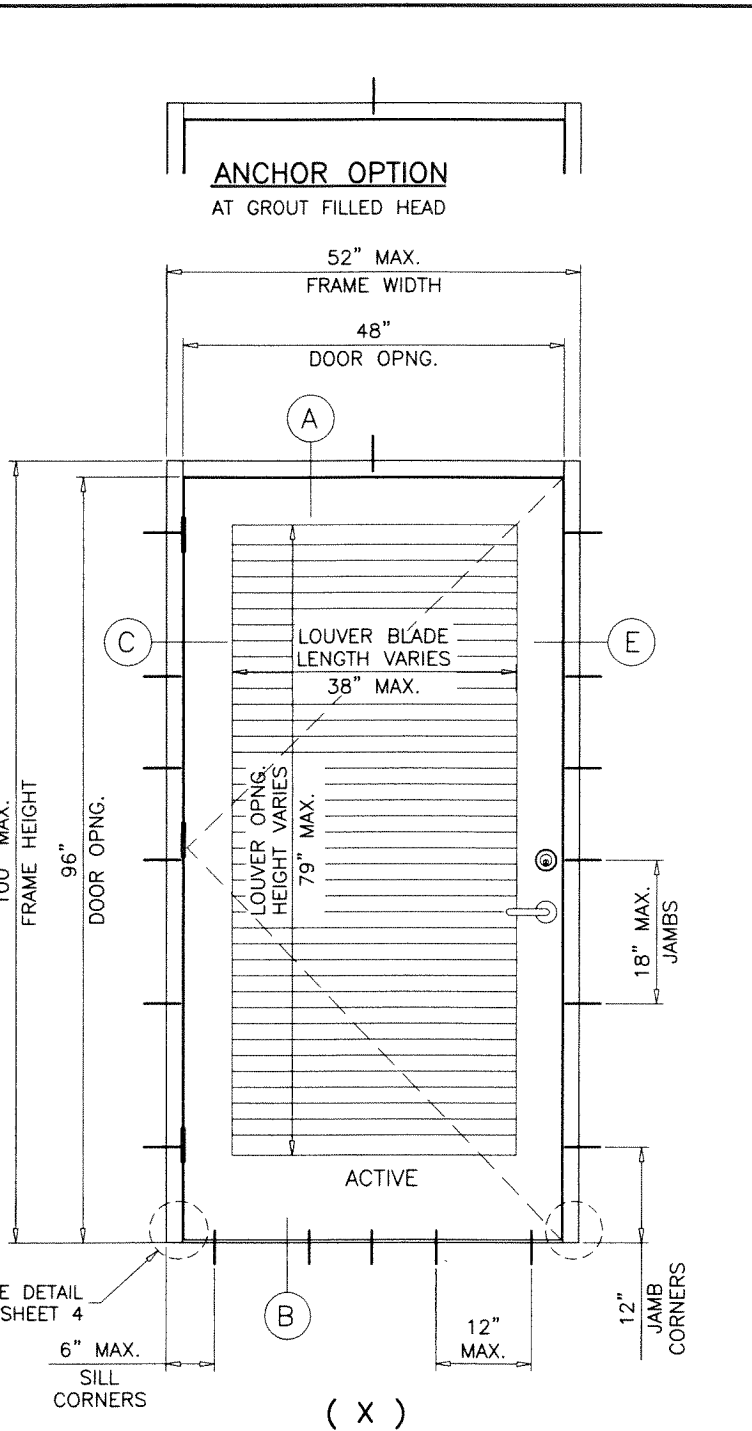
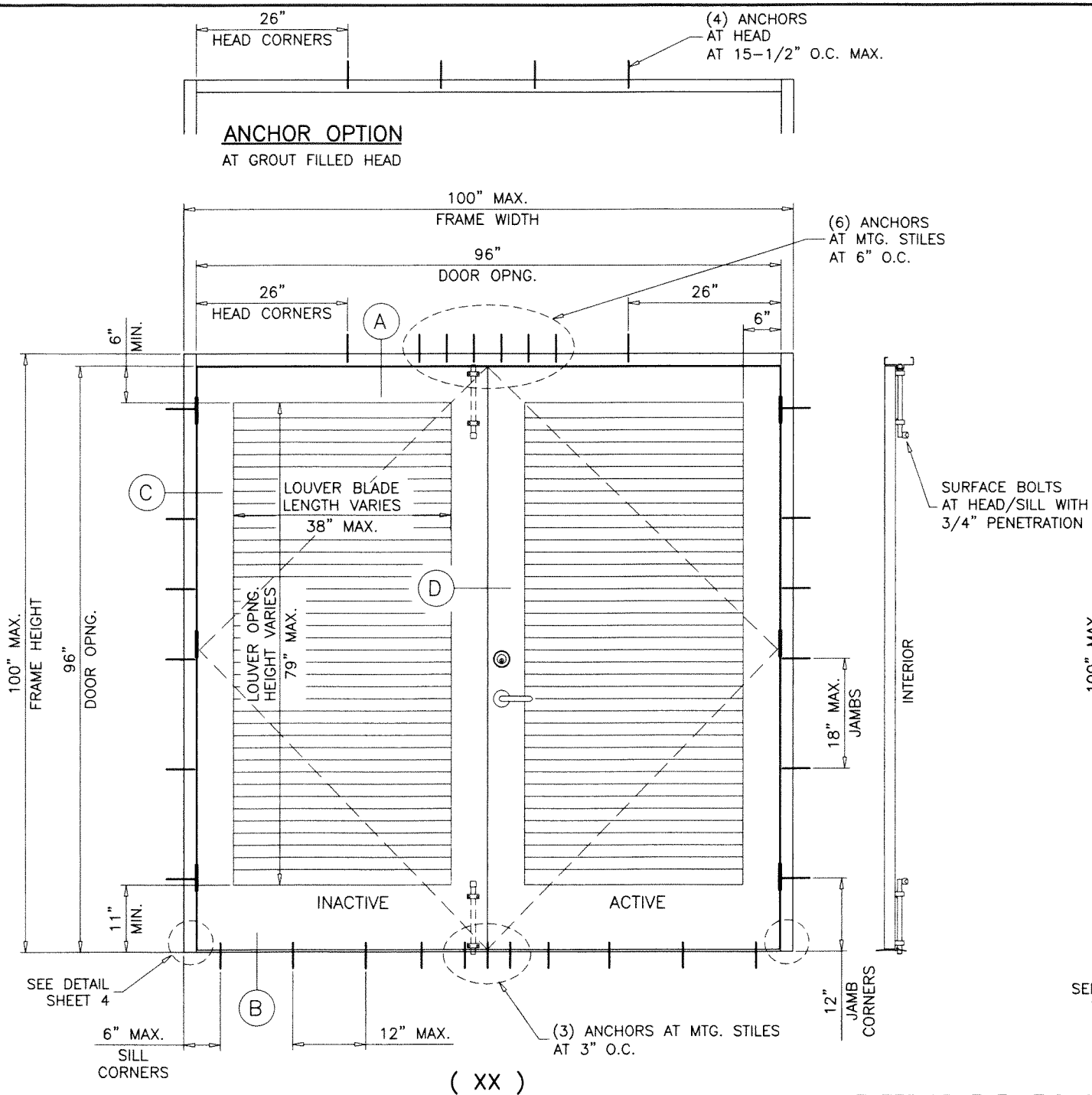
1. Statement letter of conformance to **FBC 8th Edition (2023)** and of no financial interest, prepared by Al Farooq Corporation, dated 09/06/23, signed and sealed by Jalal Farooq, P.E.
2. Statement letter of conformance to **FBC 7th Edition (2020)**, prepared by Al Farooq Corporation, dated 05/30/21, signed and sealed by Jalal Farooq, P.E.

G. OTHER

1. This NOA **revises NOA # 21-0504.08** and updates to FBC 2023, expiring 01/13/26.

Ishaq I. Chanda

Ishaq I. Chanda, P.E.
Product Control Unit Supervisor
NOA No. 23-0913.10
Expiration Date: January 13, 2026
Approval Date: October 12, 2023



TYPICAL EXTERIOR ELEVATIONS

THESE DOORS ARE RATED FOR LARGE & SMALL MISSILE IMPACT. SHUTTERS ARE NOT REQUIRED.

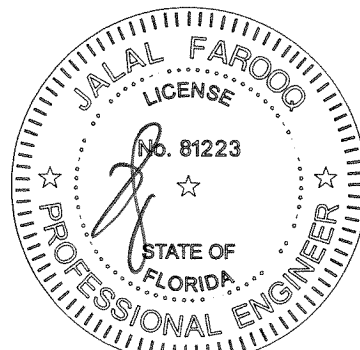
**SERIES-8080-IL
OUT-SWING LOUVERED STEEL DOOR**

DOORS NOT APPROVED FOR INSTALLATIONS WHERE AIR AND WATER INFILTRATION RESISTANCE IS REQUIRED.
SEE SHEET 6 FOR VARIOUS FRAME SIZE OPTIONS.
FRAME JAMB TRIM (WIDTH) = 1-1/4" TO 2"
FRAME JAMB DEPTH = 4-3/4" TO 8-3/4"
FRAME HEAD TRIM (WIDTH) = 1-1/4" TO 4"
HEAD/JAMB DEPTH TO BE MATCHED, TRIM MAY VARY.

THIS PRODUCT HAS BEEN DESIGNED AND TESTED TO COMPLY WITH THE REQUIREMENTS OF THE 2020 (7TH EDITION)/2023 (8TH EDITION) FLORIDA BUILDING CODE INCLUDING HIGH VELOCITY HURRICANE ZONE (HVHZ).
ANCHORS SHALL BE CORROSION RESISTANT, SPACED AS SHOWN ON DETAILS AND INSTALLED PER MANUF'S INSTRUCTIONS. SPECIFIED EMBEDMENT TO BASE MATERIAL SHALL BE BEYOND WALL DRESSING OR STUCCO.
ALL SHIMS TO BE HIGH IMPACT, NON-METALLIC AND NON-COMPRESSIBLE.
MATERIALS INCLUDING BUT NOT LIMITED TO STEEL/METAL SCREWS, THAT COME INTO CONTACT WITH OTHER DISSIMILAR MATERIALS SHALL MEET THE REQUIREMENTS OF THE 2020/2023 FLORIDA BLDG. CODE & ADOPTED STANDARDS.
THIS PRODUCT APPROVAL IS GENERIC AND DOES NOT PROVIDE INFORMATION FOR A SITE SPECIFIC PROJECT, I.E. LIFE SAFETY OF THIS PRODUCT, ADEQUACY OF STRUCTURE RECEIVING THIS PRODUCT AND SEALING AROUND OPENING FOR WATER INFILTRATION RESISTANCE ETC.
CONDITIONS NOT SHOWN IN THIS DRAWING ARE TO BE ANALYZED SEPARATELY, AND TO BE REVIEWED BY BUILDING OFFICIAL.
DESIGN LOADS SHOWN ARE BASED ON 'ALLOWABLE STRESS DESIGN (ASD)'.

**MAXIMUM DESIGN LOAD RATING = + 70.0 PSF
(FOR SIZES SHOWN ABOVE OR SMALLER) - 70.0 PSF
AS LIMITED BY CODE**

NOTE:
EGRESS REQUIREMENTS TO BE REVIEWED BY BUILDING OFFICIAL.



AUG 30 2023

PRODUCT REVISED
as complying with the Florida Building Code
NOA-No. 23-0913.10
Expiration Date 02/13/2026
By *Ishag I. Chande*
Miami-Dade Product Control

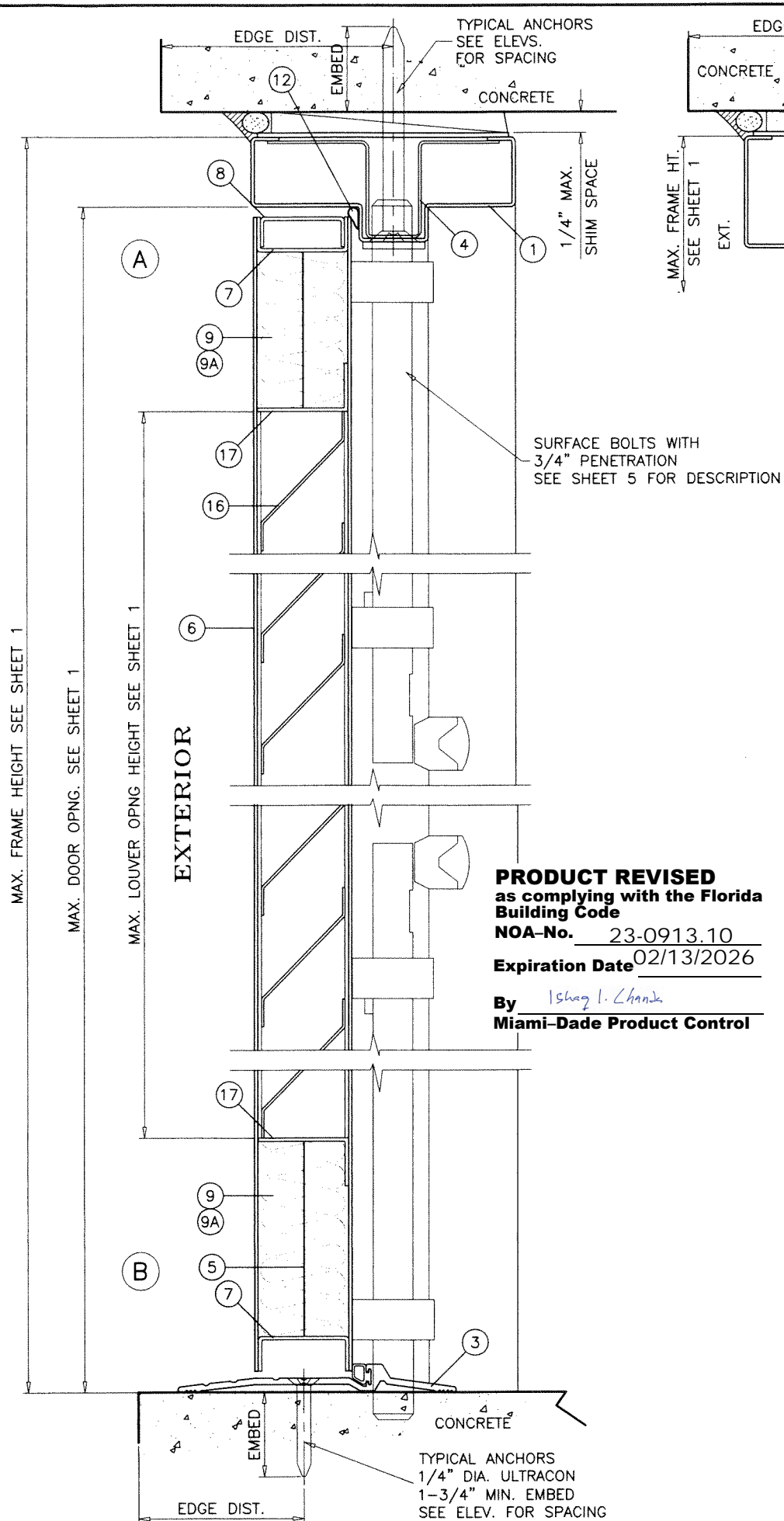
afcc
AL-FAROOQ CORPORATION
ENGINEERS & PRODUCT DEVELOPMENT
9360 SUNSET DRIVE, SUITE 220 (C.A.N. 3538)
MIAMI, FLORIDA 33173
TEL. (305) 264-8100 FAX. (305) 262-6978
COMP-ANL\W10-35NDC

S-8080-IL OUT-SWING LOUVERED STEEL DOOR (L.M.I.)
Next Door Company
4005 E 10th Court
Hialeah, FL. 33013
Tel. (954) 772-6666 Fax. (954) 772-8466

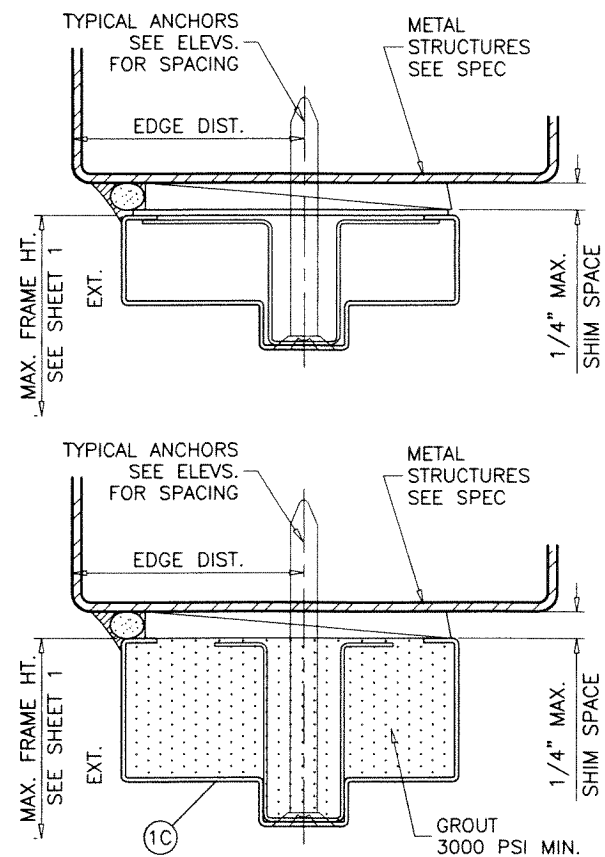
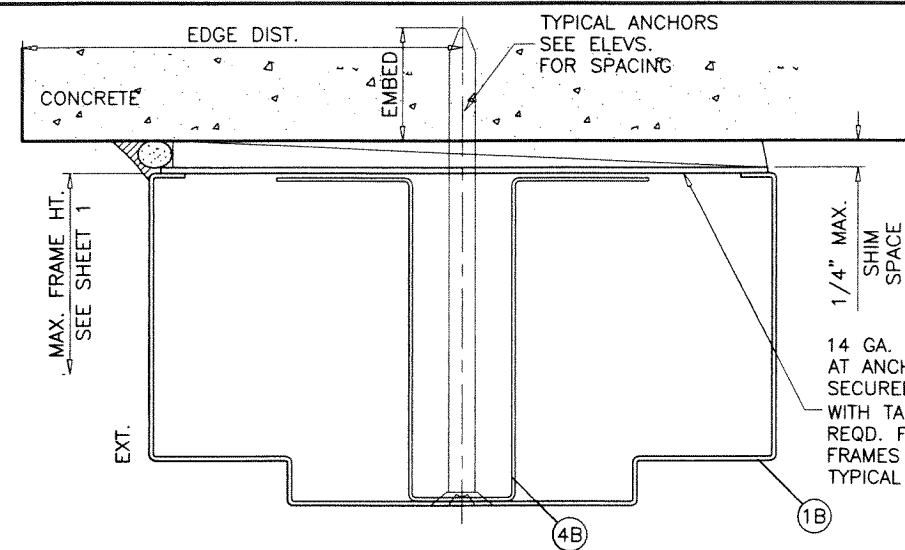
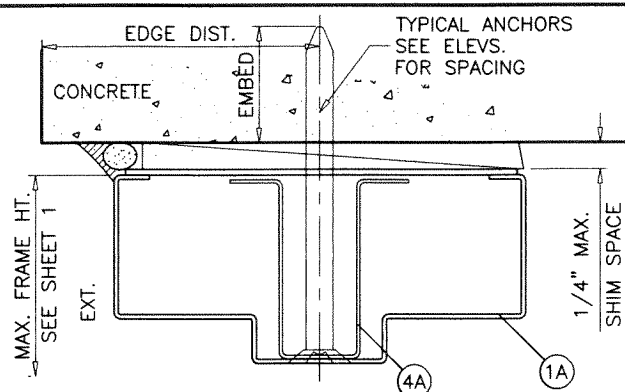
no	date	description	by
G	01.10.18	UPDATED TO 2017 FBC	
H	07.30.20	UPDATED TO 2020 FBC	
I	04.27.21	MANUF. ADDRESS REV.	
J	08.28.23	UPDATED TO 2023 FBC	

date: 06-03-10
scale: 1/2"=1'-0"
dr. by: TARIQ
chk. by:

drawing no.
W10-35
sheet 1 of 6



PRODUCT REVISED
 as complying with the Florida
 Building Code
 NOA-No. 23-0913.10
 Expiration Date 02/13/2026
 By *Ishag I. Chank*
 Miami-Dade Product Control



GROUT FILLED HEAD OPTION
 ANCHOR PLATES NOT REQUIRED FOR GROUTED FRAMES

METAL STRUCTURES NOT BY 'NEXT DOOR CO.'
 MUST SUPPORT LOADS IMPOSED BY DOOR SYSTEM AND
 TRANSFER THEM TO THE BUILDING STRUCTURE.

TYPICAL ANCHORS @ HEAD/JAMB: SEE ELEV. FOR SPACING

3/8" DIA. HLC SLEEVE ANCHOR BY 'HILTI'
 DIRECTLY INTO $f_c=3000$ PSI CONCRETE, 3-1/2" MIN. EDGE DIST.
 DIRECTLY INTO $f_c=2000$ PSI MASONRY BLOCK, 4" MIN. EDGE DIST.
 1-1/4" MIN. EMBED INTO CONCRETE (HEAD/JAMBS)
 1-1/4" MIN. EMBED INTO GROUT FILLED BLOCK (JAMBS)

3/8" DIA. SUP-R-SLEEVE ANCHOR BY 'MKT'
 DIRECTLY INTO $f_c=3500$ PSI CONCRETE (HEAD/JAMBS)
 3-3/4" MIN. EDGE DISTANCE
 1-1/4" MIN. EMBED

3/8" DIA. SLEEVE ANCHOR BY 'WEJ-IT'
 DIRECTLY INTO $f_c=4000$ PSI CONCRETE, 2-1/2" MIN. EDGE DIST.
 DIRECTLY INTO $f_c=2000$ PSI MASONRY BLOCK, 3-3/4" MIN. EDGE DIST.
 2-1/2" MIN. EMBED INTO CONCRETE (HEAD/JAMBS)
 1-1/2" MIN. EMBED INTO GROUT FILLED BLOCK (JAMBS)

3/8" DIA. POWER-BOLT BY 'DEWALT'
 DIRECTLY INTO $f_c=3000$ PSI CONCRETE, 3" MIN. EDGE DIST.
 DIRECTLY INTO $f_c=2000$ PSI MASONRY BLOCK, 3" MIN. EDGE DIST.
 2-1/2" MIN. EMBED INTO CONCRETE (HEAD/JAMBS)
 2" MIN. EMBED INTO GROUT FILLED BLOCK (JAMBS)

3/8" DIA. SMS OR MACHINE BOLTS (MIN. GRADE 2 CRS)
 INTO METAL STRUCTURES (STEEL OR ALUMINUM 1/8" MIN. THICK.)
 STEEL : $F_y = 36$ KSI MIN.
 ALUMINUM : 6063-T6 MIN.
 (STEEL IN CONTACT WITH ALUMINUM TO BE PLATED OR PAINTED)

TYPICAL ANCHORS @ THRESHOLD ONLY:

1/4" DIA. ULTRACON+ BY 'DEWALT' ($F_u=164$ KSI, $F_y=148$ KSI)
 DIRECTLY INTO $f_c=3000$ PSI CONCRETE
 2-1/2" MIN. EDGE DISTANCE
 1-3/4" MIN. EMBED

CONCRETE AT HEAD, SILL OR JAMBS MIN. $f_c =$ SEE APPLICABLE ANCHOR

SEALANT:
 ALL JOINTS AND CORNERS SEALED WITH SILICONE.

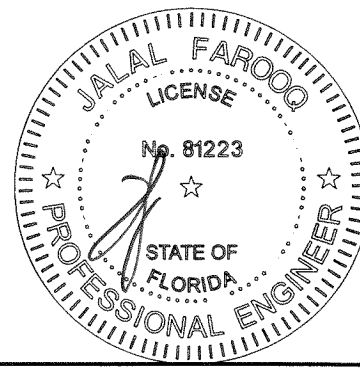
af c
AL-FAROOQ CORPORATION
 ENGINEERS & PRODUCT DEVELOPMENT
 9360 SUNSET DRIVE, SUITE 220
 MIAMI, FLORIDA 33173 (C.A.N. 3538)
 TEL. (305) 264-8100 FAX. (305) 262-6978
 COMP-ANL\W10-35INDC

S-8080-IL OUT-SWING LOUVERED STEEL DOOR (L.M.I.)
Next Door Company
 4005 E 10th Court
 Hialeah, FL. 33013
 Tel. (954) 772-6666 Fax. (954) 772-8466

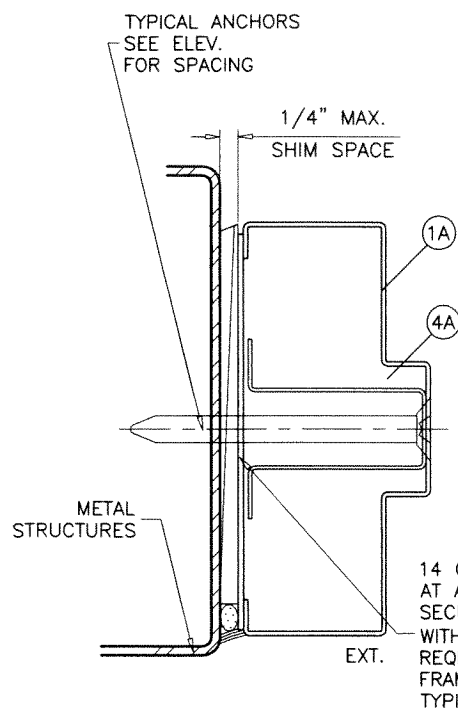
no.	date	by	description
G	01.10.18		DESCRIPTION TO 2017 FBC
H	07.30.20		UPDATED TO 2020 FBC
I	04.27.21		MANUF. ADDRESS REV.
J	08.28.23		NO CHANGE THIS SHEET

date: 06-03-10
 scale: 3/8" = 1"
 dr. by: TARIQ
 chk. by:

drawing no.
W10-35
 sheet 2 of 6

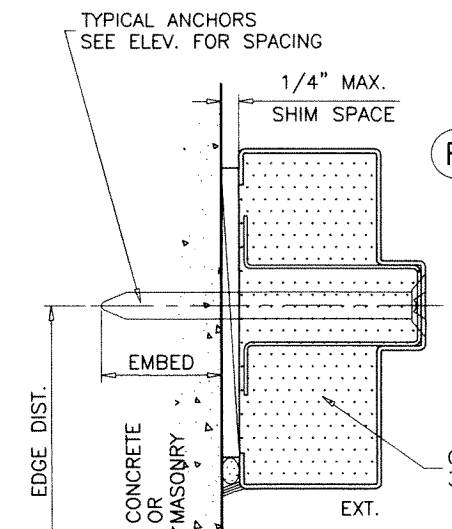
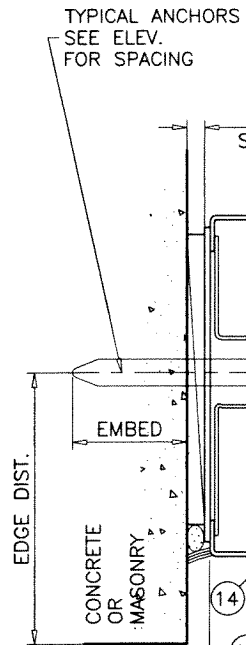
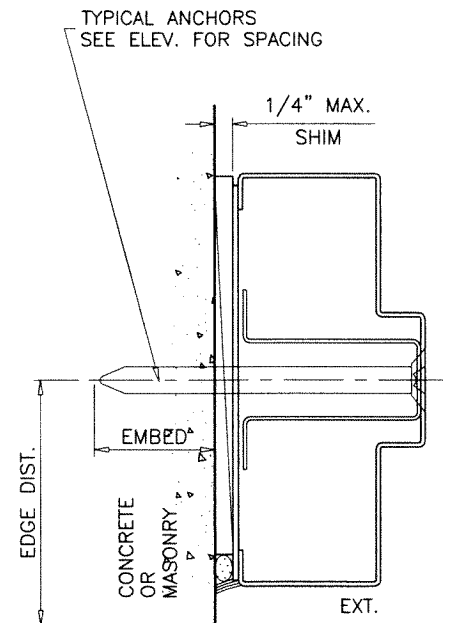
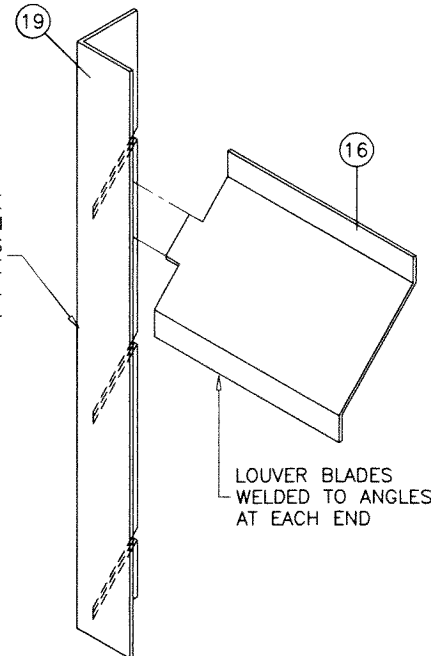


AUG 30 2023

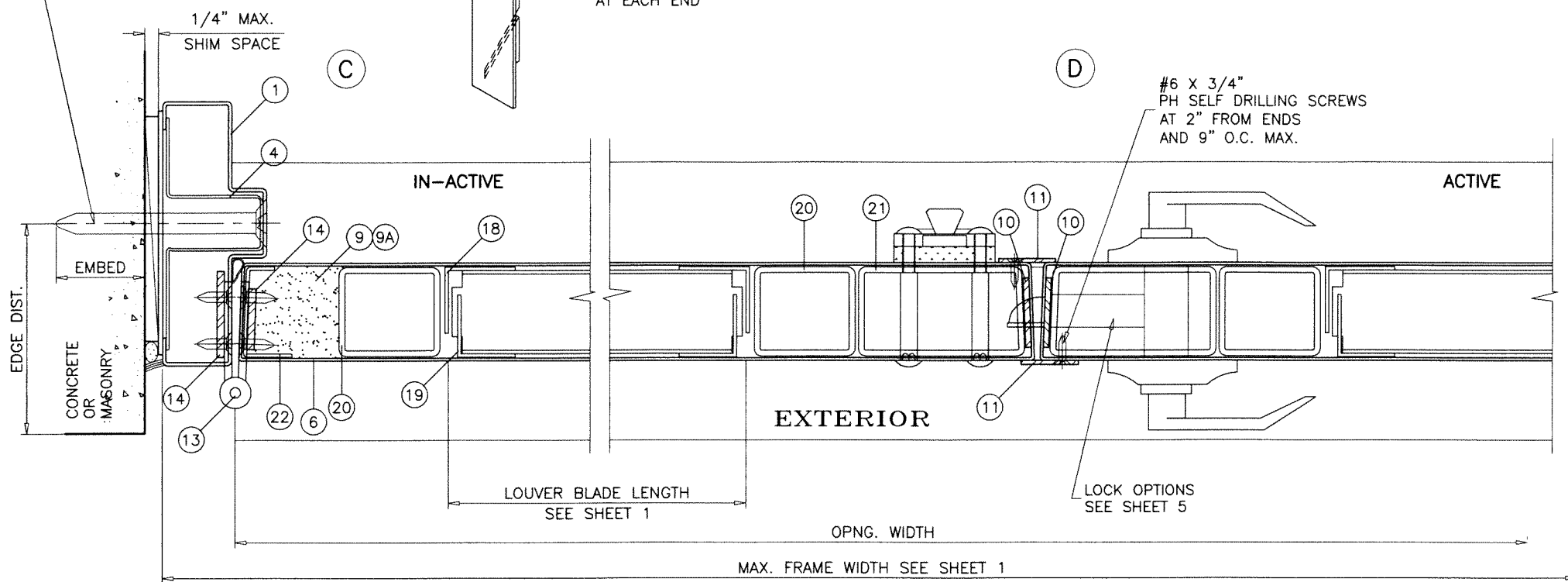


14 GA. X 3" LONG STEEL PLATE AT ANCHOR LOCATIONS SECURED TO FRAME WITH TACK WELDS (2) PER SIDE REQD. FOR NON-GROUTED FRAMES ONLY TYPICAL

NOTCHED LOUVER ANGLE ATTACHED TO DOOR SKIN WITH SPOT WELDS WELDING ELECTRODE E6013 FOR STEEL E308L-16 FOR ST. STEEL

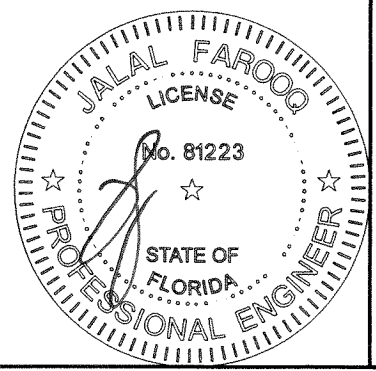


GROUT FILLED JAMBS OPTION
ANCHOR PLATES NOT REQUIRED FOR GROUTED FRAMES



PRODUCT REVISED
as complying with the Florida Building Code
NOA-No. 23-0913.10
Expiration Date 02/13/2026
By *Ishag I. Chande*
Miami-Dade Product Control

AUG 30 2020



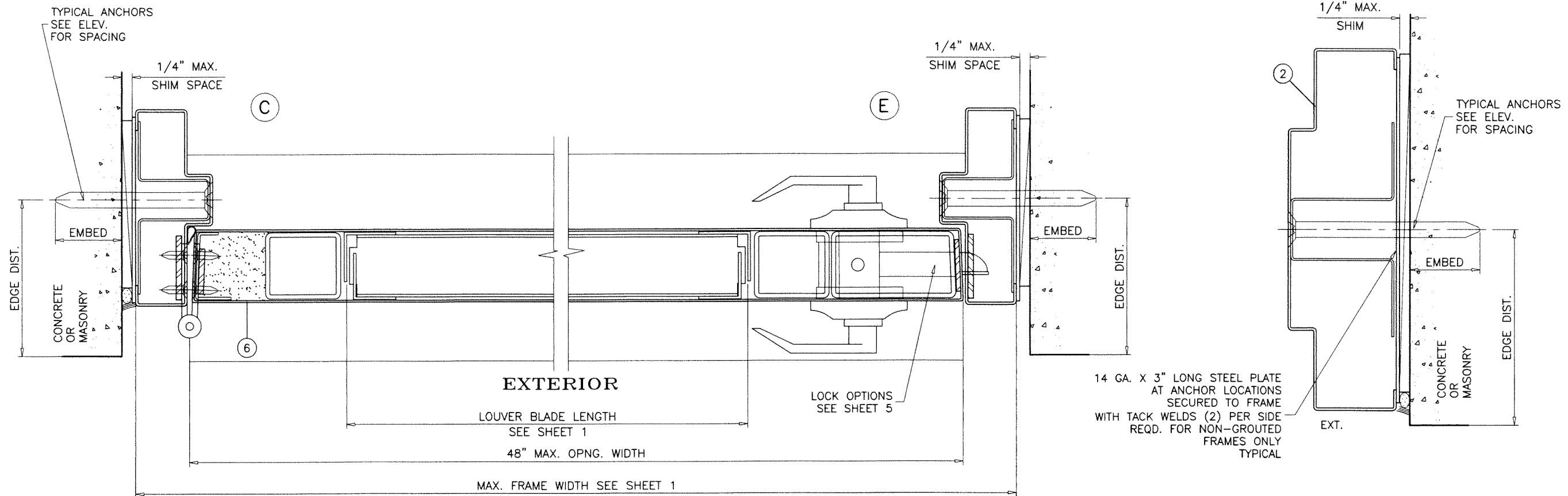
af c
AL-FAROOQ CORPORATION
ENGINEERS & PRODUCT DEVELOPMENT
9360 SUNSET DRIVE, SUITE 220
MIAMI, FLORIDA 33173 (C.A.N. 3538)
TEL. (305) 264-8100 FAX. (305) 262-6978
COMP-ANL W10-35NDC

S-8080-IL OUT-SWING LOUVERED STEEL DOOR (L.M.I.)
Next Door Company
4005 E 10th Court
Hialeah, FL. 33013
Tel. (954) 772-6666 Fax. (954) 772-8466

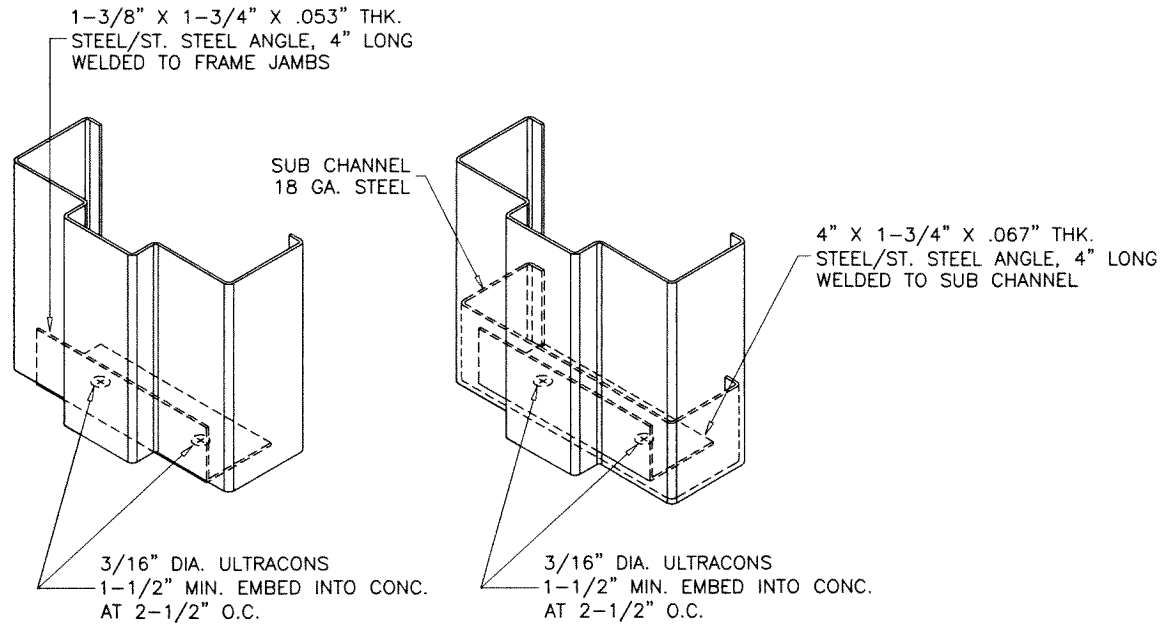
no	date	description
G	01.10.18	UPDATED TO 2017 FBC
H	07.30.20	EDITORIAL CHANGES
I	04.27.21	MANUF. ADDRESS REV.
J	08.28.23	NO CHANGE THIS SHEET

date: 06-03-10
scale: 3/8" = 1"
dr. by: TARIQ
chk. by:

drawing no.
W10-35
sheet 3 of 6

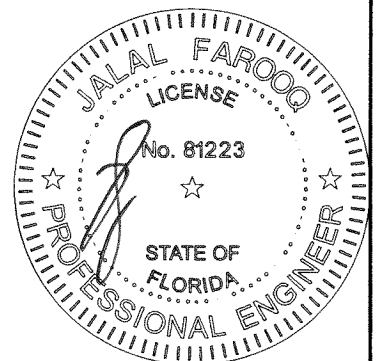


PRODUCT REVISED
 as complying with the Florida Building Code
 NOA-No. 23-0913.10
 Expiration Date 02/13/2026
 By Ishag I. Chande
 Miami-Dade Product Control



BOTTOM CORNER ANCHORS DETAIL

AUG 30 2023



af c
AL-FAROOQ CORPORATION
 ENGINEERS & PRODUCT DEVELOPMENT
 9360 SUNSET DRIVE, SUITE 220
 MIAMI, FLORIDA 33173 (C.A.N. 3538)
 TEL. (305) 264-8100 FAX. (305) 262-6978
 COMP-ANL\W10-35NDC

S-8080-IL OUT-SWING LOUVERED STEEL DOOR (L.M.I.)
Next Door Company
 4005 E 10th Court
 Hialeah, FL. 33013
 Tel. (954) 772-6666 Fax. (954) 772-8466

no	date	by	description
G	01.10.18		UPDATED TO 2017 FBC
H	07.30.20		EDITORIAL CHANGES
I	04.27.21		MANUF. ADDRESS REV.
J	08.28.23		NO CHANGE THIS SHEET

date: 06-03-10
 scale: 3/8" = 1"
 dr. by: FAROQ
 chk. by:

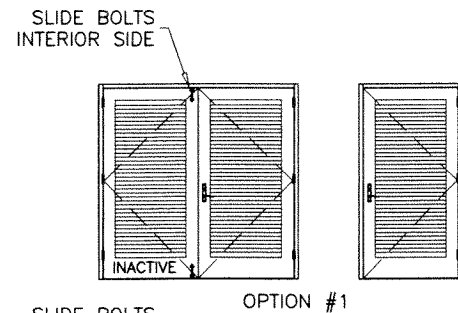
drawing no.
W10-35
 sheet 4 of 6

LOCK OPTIONS:

ACTIVE LEAF:

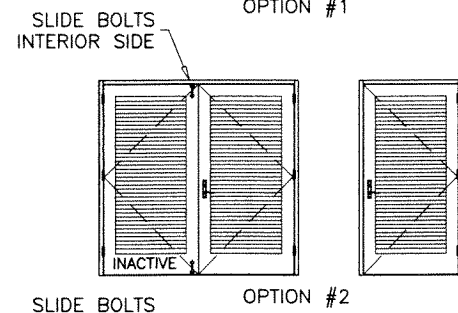
OPTION #1:

'SCHLAGE' L SERIES MORTISE LOCK (FUNCTION MUST INCLUDE DEADBOLT) MOUNTED 38" FROM FINISHED FLOOR TO CENTERLINE OF STRIKE



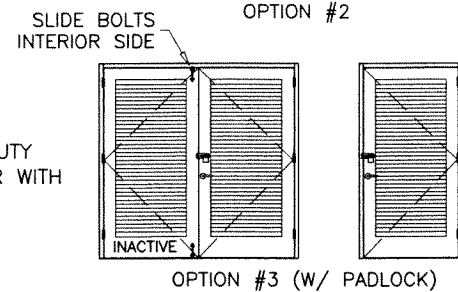
OPTION #2:

'YALE' 8800 SERIES MORTISE LOCK (FUNCTION MUST INCLUDE DEADBOLT) MOUNTED 38" FROM FINISHED FLOOR TO CENTERLINE OF STRIKE



OPTION #3:

'YALE' 5400LN SERIES CYLINDRICAL LOCK (PASSAGE) AT 38" FROM FINISHED FLOOR. 'STANLEY' 941 SURFACE MOUNTED HEAVY DUTY HINGE HASPS AT 48" FROM FINISHED FLOOR WITH 'BEST' 41B SERIES PADLOCK.



INACTIVE LEAF

'MCKINNEY' SB12HD SURFACE BOLT MANUALLY OPERATED 12" LONG SLIDE BOLT AT TOP AND BOTTOM OF LEAF ASA STRIKE 4-7/8" X 1-1/4" X 1/16" MOUNTED 38" FROM FINISHED FLOOR TO CENTERLINE OF STRIKE.

NOTE: TOP AND BOTTOM SURFACE BOLTS MUST BE ENGAGED DURING PERIODS OF HURRICANE WARNING.

TYPICAL EXTERIOR ELEVATIONS
(SEE SHEET 1 FOR MAX. SIZE)

ITEM NO.	PART NO.	QUANTITY	DESCRIPTION	MATERIAL	MANF./SUPPLIER/REMARKS
1	-	AS REQD.	FRAME HEAD/JAMB (4-3/4" X 1-1/4")	STEEL/ST. STL.	16 GA. (.053") MIN. Fy=47.1 KSI, Fu=56.6 KSI
1A	-	AS REQD.	FRAME HEAD/JAMB (5-3/4" X 2")	STEEL/ST. STL.	16 GA. (.053") MIN. Fy=47.1 KSI, Fu=56.6 KSI
1B	-	AS REQD.	FRAME HEAD/JAMB (8-3/4" X 4")	STEEL/ST. STL.	16 GA. (.053") MIN. Fy=47.1 KSI, Fu=56.6 KSI
1C	-	AS REQD.	FRAME HEAD/JAMB (4-3/4" X 2")	STEEL/ST. STL.	16 GA. (.053") MIN. Fy=47.1 KSI, Fu=56.6 KSI
2	-	AS REQD.	FRAME JAMB (8-3/4" X 2")	STEEL/ST. STL.	16 GA. (.053") MIN. Fy=47.1 KSI, Fu=56.6 KSI
3	2005AT	1	THRESHOLD	ALUMINIUM	PEMKO
4	-	AS REQD.	BOLT SPACER (1-1/4" FRAME)	STEEL/ST. STL.	18 GA.
4A	-	AS REQD.	BOLT SPACER (2" FRAME)	STEEL/ST. STL.	18 GA.
4B	-	AS REQD.	BOLT SPACER (4" FRAME)	STEEL/ST. STL.	18 GA.
5	-	AS REQD.	HAT STIFFENER IN PAIRS	STEEL/ST. STL.	22 GA.
6	-	-	DOOR	STEEL/ST. STL.	16 GA. (.053") MIN. Fy=47.1 KSI, Fu=56.6 KSI
7	-	2/ LEAF	TOP AND BOTTOM RAIL CHANNEL (FULL LENGTH)	STEEL/ST. STL.	7/8 X 1-21/32 X 7/8 X 14 GA.
8	-	1/ LEAF	TOP RAIL CAP (FULL LENGTH)	STEEL/ST. STL.	3/4 X 1-1/2 X 3/4 X 16 GA.
9	-	1	POLYSTYRENE	EPS	CARPENTER CO. W/ CURRENT NOA
9A	-	1	THERMAL INSULATION	-	OWENS CORNING RA-24 BATT
10	-	2/ LOCK	SPACER	STEEL/ST. STL.	12 GA.
11	-	-	FLAT BAR ASTRAGAL	STEEL/ST. STL.	12 GA.
12	S88	AS REQD.	FRAME W'STRIPPING	VINYL	PEMKO
13	-	3/ LEAF	MORTISE HINGES	STEEL	-
14	-	2/ HINGE	HINGE REINFORCEMENT (FRAME/DOOR)	STEEL/ST. STL.	1-1/4" X 10" X 7 GA.
16	-	AS REQD.	Z LOUVER BLADE	STEEL/ST. STL.	16 GA. (.053") MIN. Fy=49.0 KSI, Fu=53.1 KSI
17	-	2/ LEAF	LOUVER ANGLE (HORIZ.)	STEEL/ST. STL.	16 GA. (.053") MIN. Fy=49.0 KSI, Fu=53.1 KSI
18	-	2/ LEAF	LOUVER ANGLE (VERT.)	STEEL/ST. STL.	16 GA. (.053") MIN. Fy=49.0 KSI, Fu=53.1 KSI
19	-	2/ LEAF	LOUVER ANGLE (NOTCHED)	STEEL/ST. STL.	16 GA. (.053") MIN. Fy=49.0 KSI, Fu=53.1 KSI
20	-	2/ LEAF	HINGE STILE REINFORCEMENT TUBE, FULL LENGTH	STEEL/ST. STL.	12 GA. (.100") MIN. Fy=49.0 KSI, Fu=53.1 KSI
21	-	1/ LEAF	MTG. STILE REINFORCEMENT TUBE, FULL LENGTH	STEEL/ST. STL.	12 GA. (.100") MIN. Fy=49.0 KSI, Fu=53.1 KSI
22	-	1/ LEAF	EDGE REINFORCEMENT	STEEL/ST. STL.	14 GA.

ST. STEEL MIN. Fy = 51.9 KSI
ST. STEEL MIN. Fu = 86.7 KSI

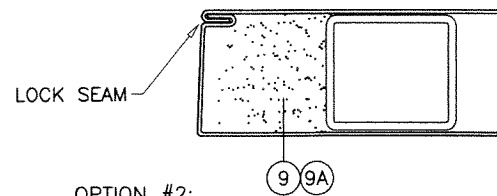
HINGES:

MORTISE HINGES 3 PER LEAF AT 7-1/4" FROM TOP TO CL OF HINGE, AT 12-1/4" FROM BOTTOM TO CL OF HINGE, CENTER HINGE EQUALLY SPACED FROM TOP & BOTTOM HINGE FASTENED WITH #12-24 X 1/2" FH MACHINE SCREWS FOUR PER HASP(LEAF).

DOOR EDGE CONSTRUCTION OPTIONS:

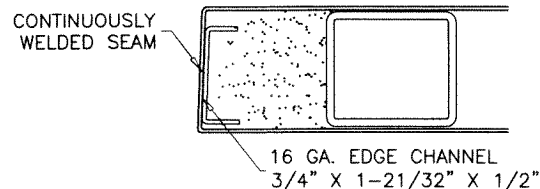
OPTION #1:

LOCK SEAM EDGE CONSTRUCTION



OPTION #2:

BUTT SEAM EDGE CONSTRUCTION



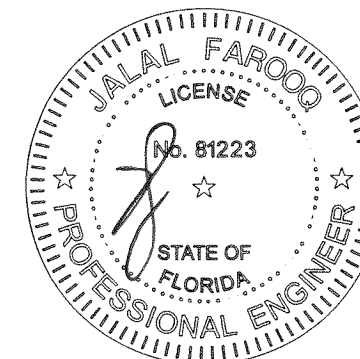
PRODUCT REVISED
as complying with the Florida Building Code

NOA-No. 23-0913.10

Expiration Date 02/13/2026

By Ishag I. Chank
Miami-Dade Product Control

AUG 30 2023



AL-FAROOQ CORPORATION
ENGINEERS & PRODUCT DEVELOPMENT
9360 SUNSET DRIVE, SUITE 220
MIAMI, FLORIDA 33173 (C.A.N. 3538)
TEL. (305) 264-8100 FAX. (305) 262-6978
COMP-ANL\W10-35NDC

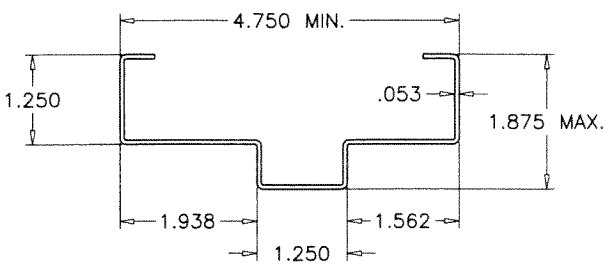
S-8080-IL OUT-SWING LOUVERED STEEL DOOR (L.M.I.)
Next Door Company
4005 E 10th Court
Hialeah, FL. 33013
Tel. (954) 772-6666 Fax. (954) 772-8466

no	date	by	description
C	01.10.18		UPDATED TO 2017 FBC
H	07.30.20		EDITORIAL CHANGES
I	04.27.21		MANUF. ADDRESS REV.
J	08.28.23		NO CHANGE THIS SHEET

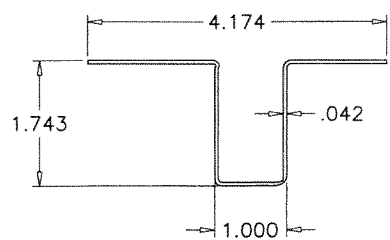
date: 06-03-10
scale: 3/8" = 1"
dr. by: FARIQ
chk. by:

drawing no.
W10-35

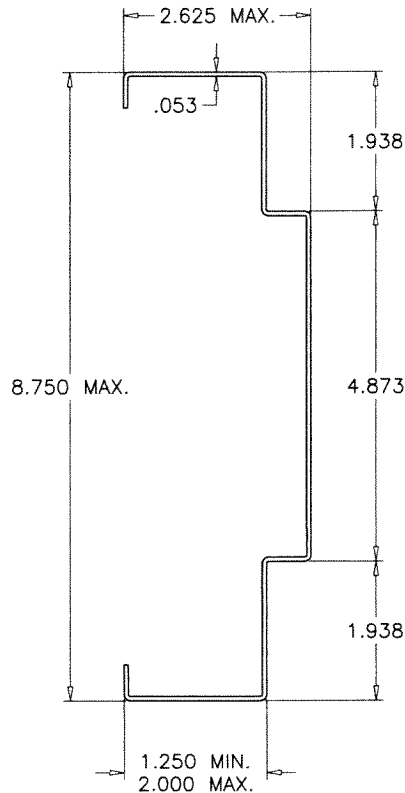
sheet 5 of 6



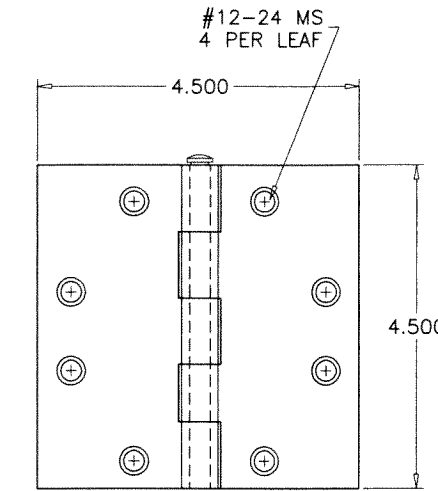
① FRAME HEAD/JAMB



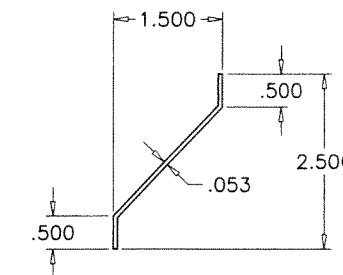
④ BOLT SPACER



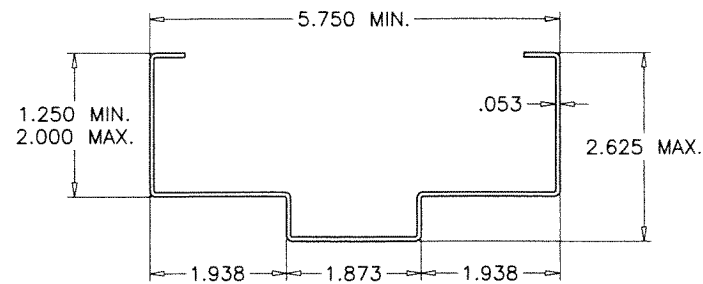
② FRAME JAMB



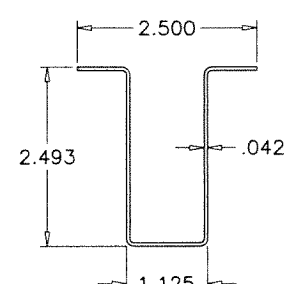
⑬ .134" THICK HINGE



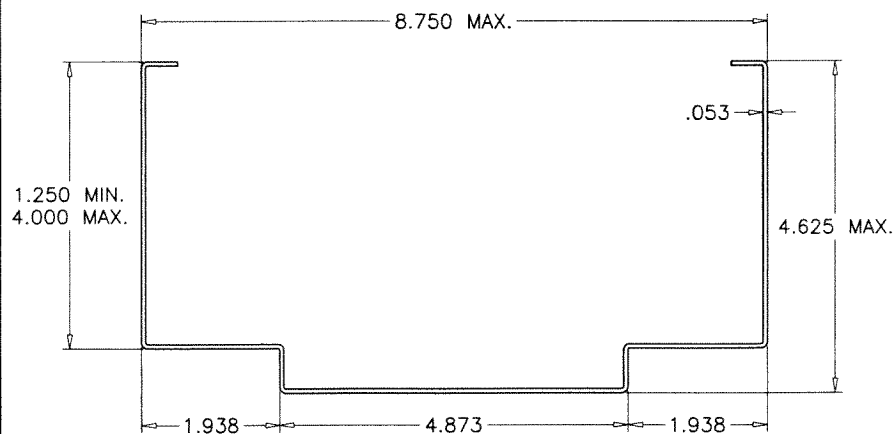
⑯ LOUVER BLADE



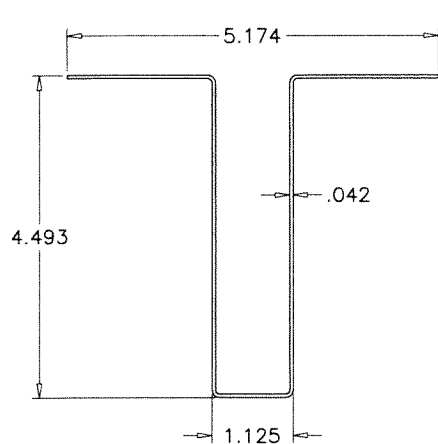
①A FRAME HEAD/JAMB



④A BOLT SPACER

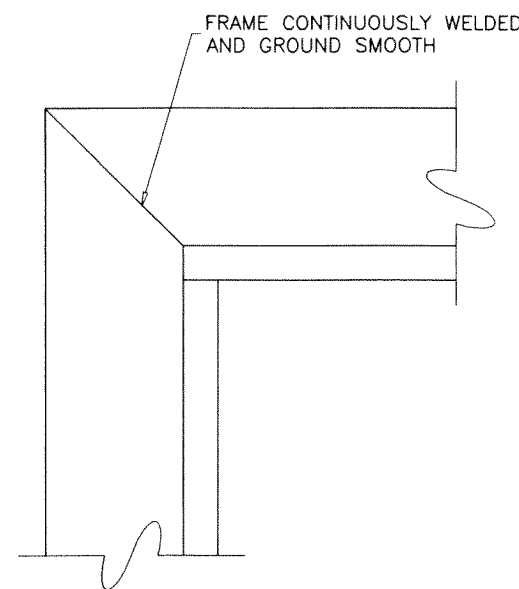


①B FRAME HEAD

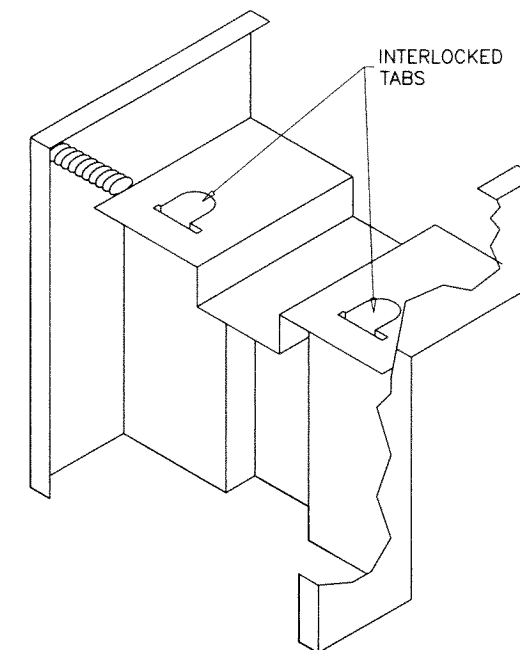


④B BOLT SPACER

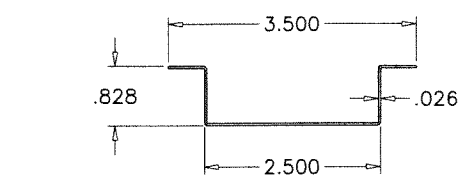
PRODUCT REVISED
 as complying with the Florida
 Building Code
 NOA-No. 23-0913.10
 Expiration Date 02/13/2026
 By Ishtayq I. Chank
 Miami-Dade Product Control



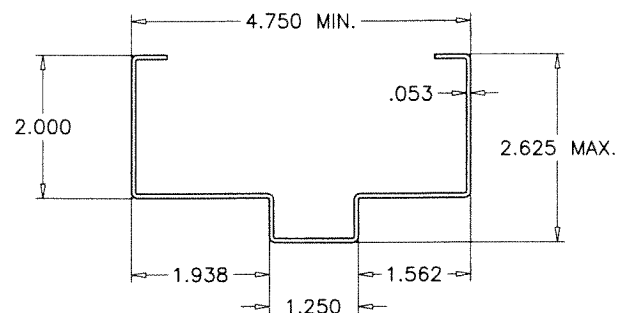
FRAME CORNERS



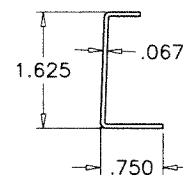
INTERLOCKED TABS



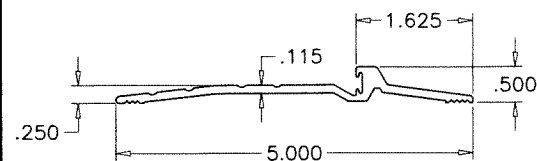
⑤ HAT CHANNEL REINFORCING



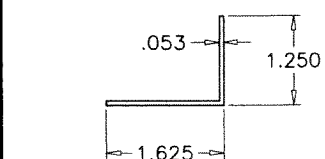
①C FRAME HEAD/JAMB (GROUT FILLED)



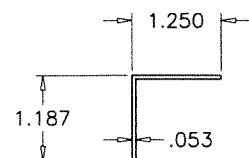
②② EDGE REINF.



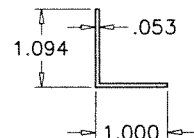
③ BUMPER THRESHOLD



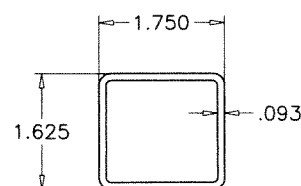
⑰ LOUVER ANGLE (HORIZ.)



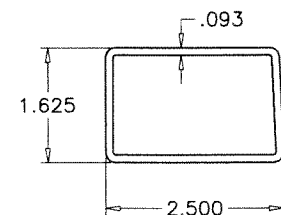
⑱ LOUVER ANGLE (VERT.)



⑲ LOUVER ANGLE (NOTCHED)

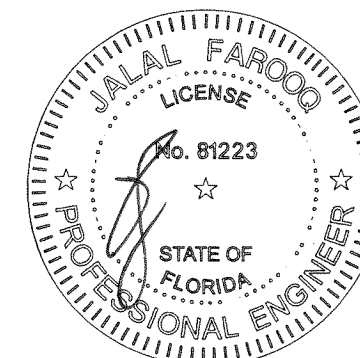


⑳ HINGE STILE REINF.



㉑ MTG. STILE REINF.

AUG 30 2021



af c
AL-FAROOQ CORPORATION
 ENGINEERS & PRODUCT DEVELOPMENT
 9360 SUNSET DRIVE, SUITE 220
 MIAMI, FLORIDA 33173 (C.A.N. 3538)
 TEL. (305) 264-8100 FAX. (305) 262-6978
 COMP-ANL W10-35NDC

S-8080-IL OUT-SWING LOUVERED STEEL DOOR (L.M.I.)
Next Door Company
 4005 E 10th Court
 Hialeah, FL. 33013
 Tel. (954) 772-6666 Fax. (954) 772-8466

no	date	by	description
G	01.10.18		UPDATED TO 2017 FBC
H	07.30.20		EDITORIAL CHANGES
I	04.27.21		MANUF. ADDRESS REV.
J	08.28.23		NO CHANGE THIS SHEET

date: 06-03-10
 scale: 3/8" = 1"
 dr. by: TARIQ
 chk. by:

drawing no.
W10-35

sheet 6 of 6