



DEPARTMENT OF REGULATORY AND ECONOMIC RESOURCES (RER)  
BOARD AND CODE ADMINISTRATION DIVISION

## NOTICE OF ACCEPTANCE (NOA)

MIAMI-DADE COUNTY  
PRODUCT CONTROL SECTION

11805 SW 26 Street, Room 208  
Miami, Florida 33175-2474  
T (786) 315-2590 F (786) 315-2599

[www.miamidade.gov/building](http://www.miamidade.gov/building)

**Roatan Mahogany USA, Inc.**  
**7005 N. Waterway Drive, Ste. 302**  
**Miami, FL 33155**

### SCOPE:

This NOA is being issued under the applicable rules and regulations governing the use of construction materials. The documentation submitted has been reviewed and accepted by Miami-Dade County RER - Product Control Section to be used in Miami Dade County and other areas where allowed by the Authority Having Jurisdiction (AHJ).

This NOA shall not be valid after the expiration date stated below. The Miami-Dade County Product Control Section (In Miami-Dade County) and/or the AHJ (in areas other than Miami-Dade County) reserve the right to have this product or material tested for quality assurance purposes. If this product or material fails to perform in the accepted manner, the manufacturer will incur the expense of such testing and the AHJ may immediately revoke, modify, or suspend the use of such product or material within their jurisdiction. RER reserves the right to revoke this acceptance if it is determined by Miami-Dade County Product Control Section that this product or material fails to meet the requirements of the applicable building code.

This product is approved as described herein and has been designed to comply with the Florida Building Code, including the High Velocity Hurricane Zone.

**DESCRIPTION: Series "Roatan Swietenia" Wood Single Hung Window - L.M.I.**

**APPROVAL DOCUMENT:** Drawing No. **23-155**, titled "Roatan Swietenia Series – Single Hung Windows", sheets 1 through 9 of 9, dated 09/04/23, prepared by PPMF Inc., signed and sealed by Pedro M. De Figueiredo, P.E., bearing the Miami-Dade County Product Control Revision stamp with the Notice of Acceptance number and expiration date by the Miami-Dade County Product Control Section.

**MISSILE IMPACT RATING: Large and Small Missile Impact Resistant**

**LABELING:** Each unit shall bear a permanent label with the manufacturer's name or logo, city, state, model/series, and following statement: "Miami-Dade County Product Control Approved", unless otherwise noted herein.

**RENEWAL** of this NOA shall be considered after a renewal application has been filed and there has been no change in the applicable building code negatively affecting the performance of this product.

**TERMINATION** of this NOA will occur after the expiration date or if there has been a revision or change in the materials, use, and/or manufacture of the product or process. Misuse of this NOA as an endorsement of any product, for sales, advertising or any other purposes shall automatically terminate this NOA. Failure to comply with any section of this NOA shall be cause for termination and removal of NOA.

**ADVERTISEMENT:** The NOA number preceded by the words Miami-Dade County, Florida, and followed by the expiration date may be displayed in advertising literature. If any portion of the NOA is displayed, then it shall be done in its entirety.

**INSPECTION:** A copy of this entire NOA shall be provided to the user by the manufacturer or its distributors and shall be available for inspection at the job site at the request of the Building Official.

This NOA revises **NOA No. 20-1013.15** and consists of this page 1 and evidence pages E-1, E-2 and E-3, as well as approval document mentioned above.

The submitted documentation was reviewed by **Manuel Perez, P.E.**



11/6/23

**NOA No. 23-0928.31**  
**Expiration Date: October 30, 2024**  
**Approval Date: November 16, 2023**  
**Page 1**

**NOTICE OF ACCEPTANCE: EVIDENCE SUBMITTED**

**1. EVIDENCE SUBMITTED UNDER PREVIOUS NOA's**

**A. DRAWINGS**

1. Manufacturer's die drawings and sections.  
*(Submitted under NOA No. 14-0828.02)*
2. Drawing No. **20-152**, titled "Roatan Swietenia Series – Single Hung Windows", sheets 1 through 9 of 9, dated 09/10/20 prepared by PPMF Inc., signed and sealed by Pedro M. De Figueiredo, P.E.  
*(Submitted under NOA No. 20-1013.15)*

**B. TESTS**

1. Test reports on: 1) Air Infiltration Test, per FBC TAS 202-94  
2) Uniform Static Air Pressure Test, Loading per FBC TAS 202-94  
3) Water Resistance Test, per FBC TAS 202-94  
4) Large Missile Impact Test per FBC, TAS 201-94  
5) Cyclic Wind Pressure Loading per FBC, TAS 203-94  
6) Forced Entry Test, per FBC 2411.3.2.1, and TAS 202-94  
along with marked-up drawings and installation diagram of a wood single hung window, prepared by Fenestration Testing Laboratory, Inc., Test Report No. **FTL-7791**, dated 07/02/14, signed and sealed by Idalmis Ortega, P.E.  
*(Submitted under NOA No. 14-0828.02)*

**C. CALCULATIONS**

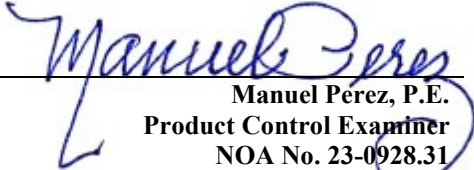
1. Anchor verification calculations and structural analysis, complying with FBC 5<sup>th</sup> Edition (2014), dated 08/02/14, prepared by EngCo, Inc., signed and sealed by Pedro M. De Figueiredo, P.E.  
*(Submitted under NOA No. 14-0828.02)*
2. Glazing complies with **ASTM E1300-98**.

**D. QUALITY ASSURANCE**

1. Miami-Dade Department of Regulatory and Economic Resources (RER)

**E. MATERIAL CERTIFICATIONS**

1. Notice of Acceptance No. **18-0619.01** issued to **Polymer Extrusion Technology, Inc. dba Glasslam** for their "**Glasslam Safety-Plus II Glass Interlayer**" dated 07/26/18, expiring on 08/07/23.

  
Manuel Perez, P.E.  
Product Control Examiner  
NOA No. 23-0928.31  
Expiration Date: October 30, 2024  
Approval Date: November 16, 2023

**Roatan Mahogany USA, Inc.**

**NOTICE OF ACCEPTANCE: EVIDENCE SUBMITTED**

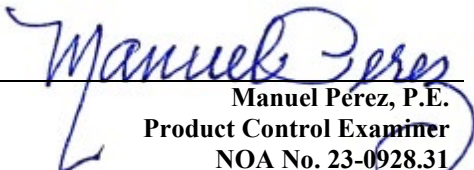
**1. EVIDENCE SUBMITTED UNDER PREVIOUS NOA's (CONTINUED)**

**F. STATEMENTS**

1. Statement letter of conformance, complying with **FBC 7<sup>th</sup> Edition (2020)**, and of no financial interest, dated September 10, 2020, issued by PPMF Inc., signed and sealed by Pedro M. De Figueiredo, P.E.  
*(Submitted under NOA No. 20-1013.15)*

**G. OTHERS**

1. Notice of Acceptance No. **19-0808.03**, issued to Roatan Mahogany USA, Inc. for their Series "Roatan Swietenia" Wood Single Hung Window – L.M.I., approved on 08/22/19 and expiring on 10/30/24.

  
Manuel Pérez, P.E.  
Product Control Examiner  
NOA No. 23-0928.31  
Expiration Date: October 30, 2024  
Approval Date: November 16, 2023

**Roatan Mahogany USA, Inc.**

**NOTICE OF ACCEPTANCE: EVIDENCE SUBMITTED**

**2. NEW EVIDENCE SUBMITTED**

**A. DRAWINGS**

1. Drawing No. **23-155**, titled “Roatan Swietenia Series - Single Hung Windows”, sheets 1 through 9 of 9, dated, dated 09/04/23, prepared by PPMF Inc., signed and sealed by Pedro M. De Figueiredo, P.E.

**B. TESTS**

1. None.

**C. CALCULATIONS**

1. None.

**D. QUALITY ASSURANCE**

1. Miami-Dade Department of Regulatory and Economic Resources (RER)

**E. MATERIAL CERTIFICATIONS**


1. Notice of Acceptance No. **23-0523.01** issued to **Polymer Extrusion Technology, Inc.** dba Glasslam for their “**Glasslam Safety-Plus II Glass Interlayer**” dated 06/15/23, expiring on 08/07/28.

**F. STATEMENTS**

1. Statement letter of conformance, complying with **FBC 8<sup>th</sup> Edition (2023)**, and of no financial interest, dated September 04, 2023, issued by PPMF Inc., signed and sealed by Pedro M. De Figueiredo, P.E.

**G. OTHERS**

1. Notice of Acceptance No. **20-1013.15**, issued to Roatan Mahogany USA, Inc. for their Series “Swietenia” Wood Single Hung Window – L.M.I., approved on 01/07/21 and expiring on 10/30/24.

  
Manuel Pérez, P.E.  
Product Control Examiner  
NOA No. 23-0928.31  
Expiration Date: October 30, 2024  
Approval Date: November 16, 2023

GENERAL NOTES:

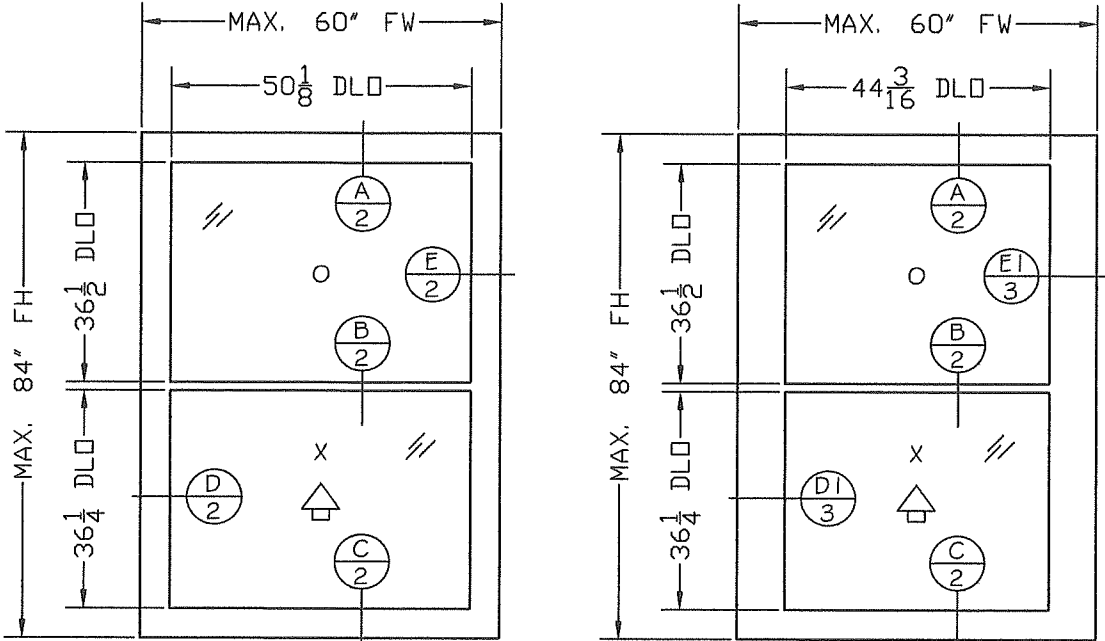
FLORIDA BUILDING CODE 2023 - 8th EDITION - HVHZ  
LARGE & SMALL MISSILE IMPACT RATED

- 1- DEFINITION: THIS PRODUCT IS A MAHOGANY GLAZED SINGLE HUNG WINDOW; DESIGNED, CONSTRUCTED AND ERECTED TO ENCLOSE AN AREA, PROVIDING PROTECTION FROM HURRICANE FORCE WINDS WITHIN THE ALLOWABLE DESIGNED PRESSURES AND LIMITATIONS STATED IN THIS APPROVAL.
- 2- CODE: THIS PRODUCT HAS BEEN TESTED AND DESIGNED IN ACCORDANCE WITH THE FLORIDA BUILDING CODE, HIGH VELOCITY HURRICANE ZONES (HVHZ).
- 3- POSTING: A PERMANENT LEGIBLE DECAL SHALL BE PLACED AT A READILY VISIBLE LOCATION STATING THE FOLLOWING:  
  
"ROATAN MAHOGANY USA, INC.- MIAMI - FLORIDA  
ROATAN SWIETENIA SERIES - SINGLE HUNG WINDOW  
LARGE MISSILE IMPACT RESISTANT  
MIAMI-DADE COUNTY PRODUCT APPROVED"
- 4- LOADS: DESIGNED LOAD CALCULATED BASED ON THE ASCE 7-22 AND PROVIDED BY A PROFESSIONAL ARCHITECT OR ENGINEER FOR EACH SPECIFIC PROJECT. THE CALCULATED DESIGNED PRESSURE MUST NOT EXCEED THE ALLOWABLE PRESSURES HERE IN SPECIFIED. THE DESIGN PRESSURES, AS DETERMINED FROM ASCE 7-22, ARE TO BE MULTIPLIED BY 0.6
- 5- MATERIAL: ALL WOOD MATERIAL TO BE FABRICATED FROM KILN DRIED MAHOGANY OR ANY COMPARABLE WOOD WITH SPECIFIC GRAVITY EQUAL OR GREATER THAN 0.45.
- 6- FASTENERS: ASSEMBLY SCREWS AND ANCHORS SHALL BE AS SPECIFIED IN THE CURRENT SET OF DRAWINGS. INSTALLATION AND LOADS AS PER THIS APPROVAL.
- 7- USE: IT SHALL BE THE RESPONSIBILITY OF THE CONTRACTOR, ARCHITECT OR ENGINEER OF RECORD TO VERIFY THE FOLLOWING:  
7.1- THE STABILITY OF THE STRUCTURE WHERE THE SHUTTER IS TO BE ATTACHED INSURING PROPER ANCHORAGE.  
7.2- THE SITE SPECIFIC PROJECT CRITERIA,SUCH AS BUT NOT LIMITED TO,WINDLOADS, LOCAL CODE REQUIREMENTS, DESIGNED PRESSURES ETC.  
7.3- THAT THIS APPROVAL IS ADEQUATE TO THE SPECIFIC PROJECT.
- 8- DISSIMILAR MATERIALS: MATERIALS, INCLUDING BUT NOT LIMITED TO STEEL, THAT COME IN CONTACT WITH OTHER DISSIMILAR MATERIALS SHALL MEET THE REQUIREMENTS FLORIDA BUILDING CODE.

ROATAN SWIETENIA SERIES

SINGLE HUNG WINDOW  
LARGE AND SMALL IMPACT RESISTANT  
ALLOWABLE PRESSURE RATING:

SEE SHEETS 4 AND 5 FOR PRESSURE RATINGS USING DIRECT AND I X INSTALLATIONS



SINGLE HUNG WITH  
CONCEALED BALANCE SYSTEM

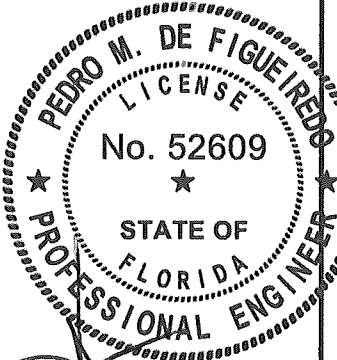
SINGLE HUNG WITH  
WEIGHT AND CHAIN SYSTEM

TEST PERFORMANCE :

TAS 202 (93 PSF), 201 (LARGE MISSILE) AND 203 (93 PSF)  
ASTM E2068 - OPERATING FORCE  
ASTM E283 - AIR INFILTRATION 6.24 PSF - 0.02 cfm/sq.ft  
ASTM E331 - WATER RESISTANCE TEST 13.95 PSF  
ASTM F588 - FORCE ENTRY TEST

TABLE OF CONTENTS:

SHEET	CONTENTS
1 OF 9	TABLE OF CONTENTS, GENERAL NOTES, TEST PERFORMANCE, ELEVATIONS AND PRESSURES
2 OF 9	SECTIONS DETAILS
3 OF 9	SECTIONS DETAILS
4 OF 9	TYPICAL FRAMING ANCHORAGE DETAILS AND ANCHORAGE LAY-OUT (FOR DIRECT INSTALLATION)
5 OF 9	TYPICAL FRAMING ANCHORAGE DETAILS AND ANCHORAGE LAY-OUT (FOR I X INSTALLATION)
6 OF 9	HARDWARE LAY-OUT
7 OF 9	COMPONENTS
8 OF 9	COMPONENTS, BILL OF MATERIALS, GLAZING OPTIONS
9 OF 9	FRAME AND SASH ASSEMBLY



Pedro De Figueiredo  
PE 52609  
09/04/2023



PRODUCT CATEGORY: WINDOWS - SINGLE HUNG  
PRODUCT MATERIAL: WOOD / GLASS  
IMPACT RATING: LARGE & SMALL MISSILE  
ROATAN SWIETENIA SERIES  
SINGLE HUNG WINDOWS

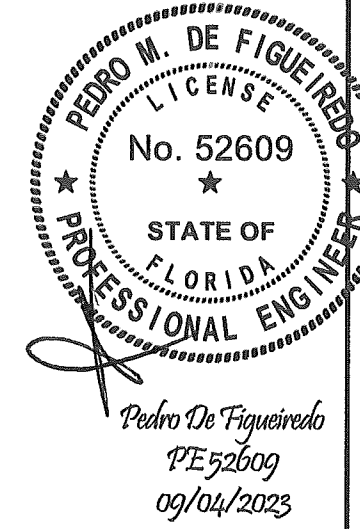
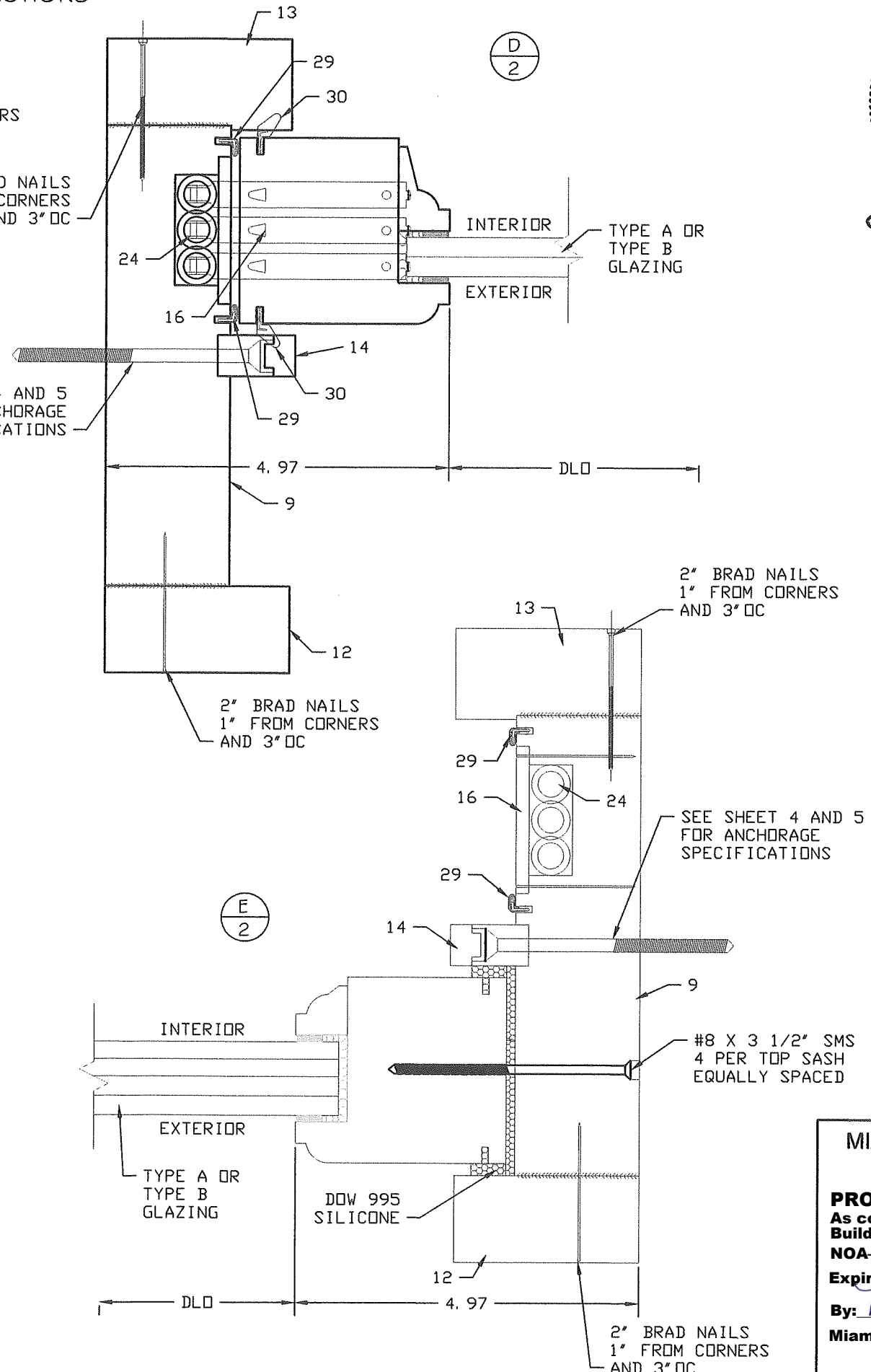
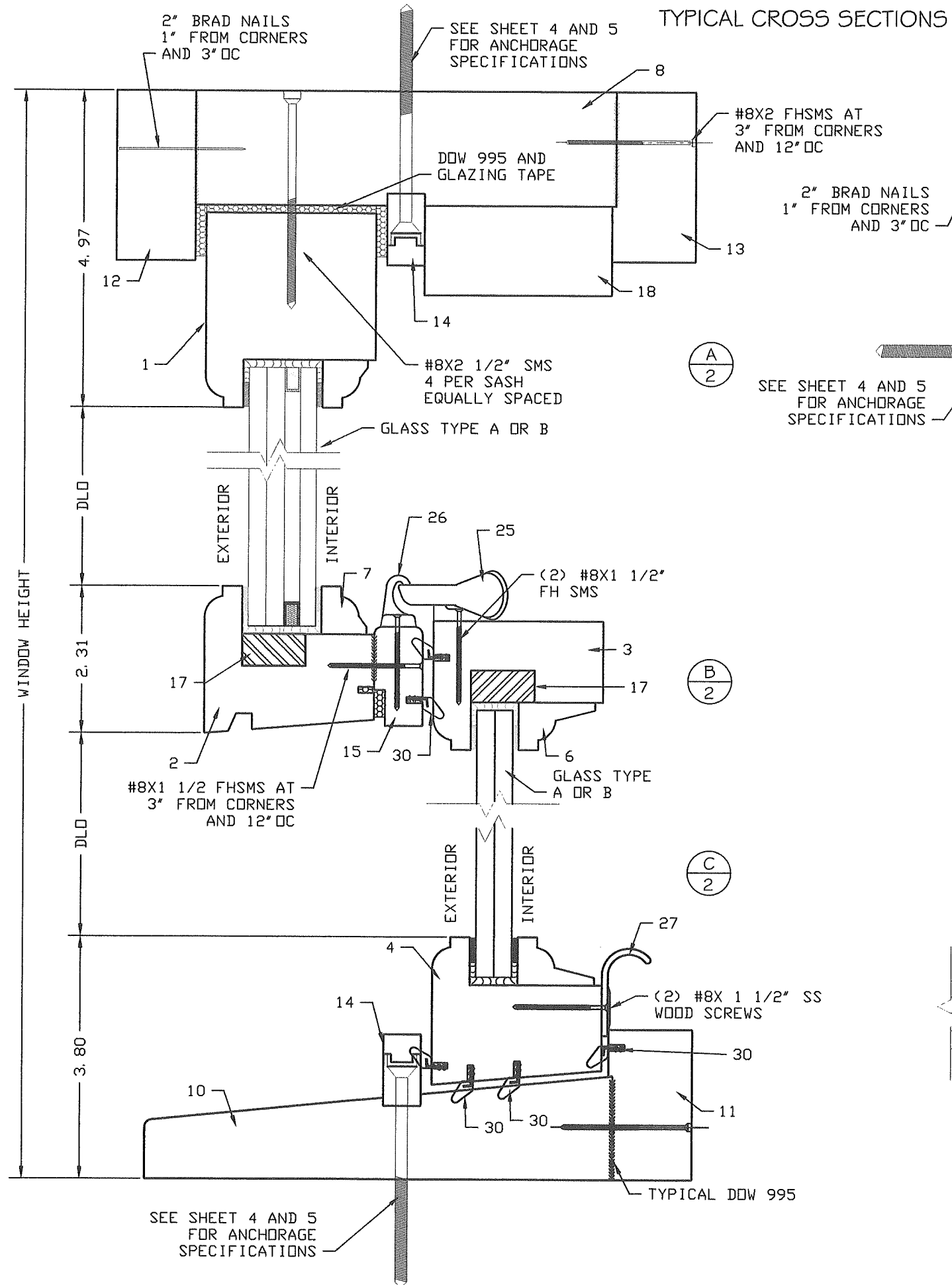
MANUFACTURER:  
ROATAN  
MAHOGANY USA INC.  
7005 N. WATERWAY DR. 302  
MIAMI FLORIDA 33155

MIAMI-DADE BCCO:

**PRODUCT REVISED**  
As complying with the Florida  
Building Code  
NOA-No. **23-0928.31**  
Expiration Date: **10/30/2024**  
By: *Manuel Perez*  
**Miami-Dade Product Control**

SCALE:  
NA  
DATE:  
09/04/2023  
DRAWING #  
23-155  
SHEET  
1 OF 9





ENGINEERING SERVICES - CA 32459  
9715 W. BROWARD BLVD.  
PLANTATION, FL 33324  
PPMIF@AOL.COM  
ENGINEER SEAL  
PEDRO DE FIGUEIREDO  
PE 52609

PRODUCT CATEGORY: WINDOWS - SINGLE HUNG  
PRODUCT MATERIAL: WOOD / GLASS  
IMPACT RATING: LARGE & SMALL MISSILE  
**ROATAN SWIETENIA SERIES**  
SINGLE HUNG WINDOWS

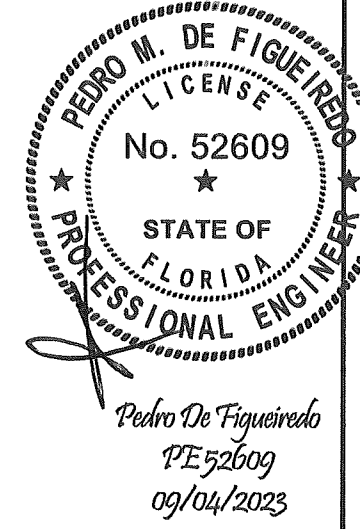
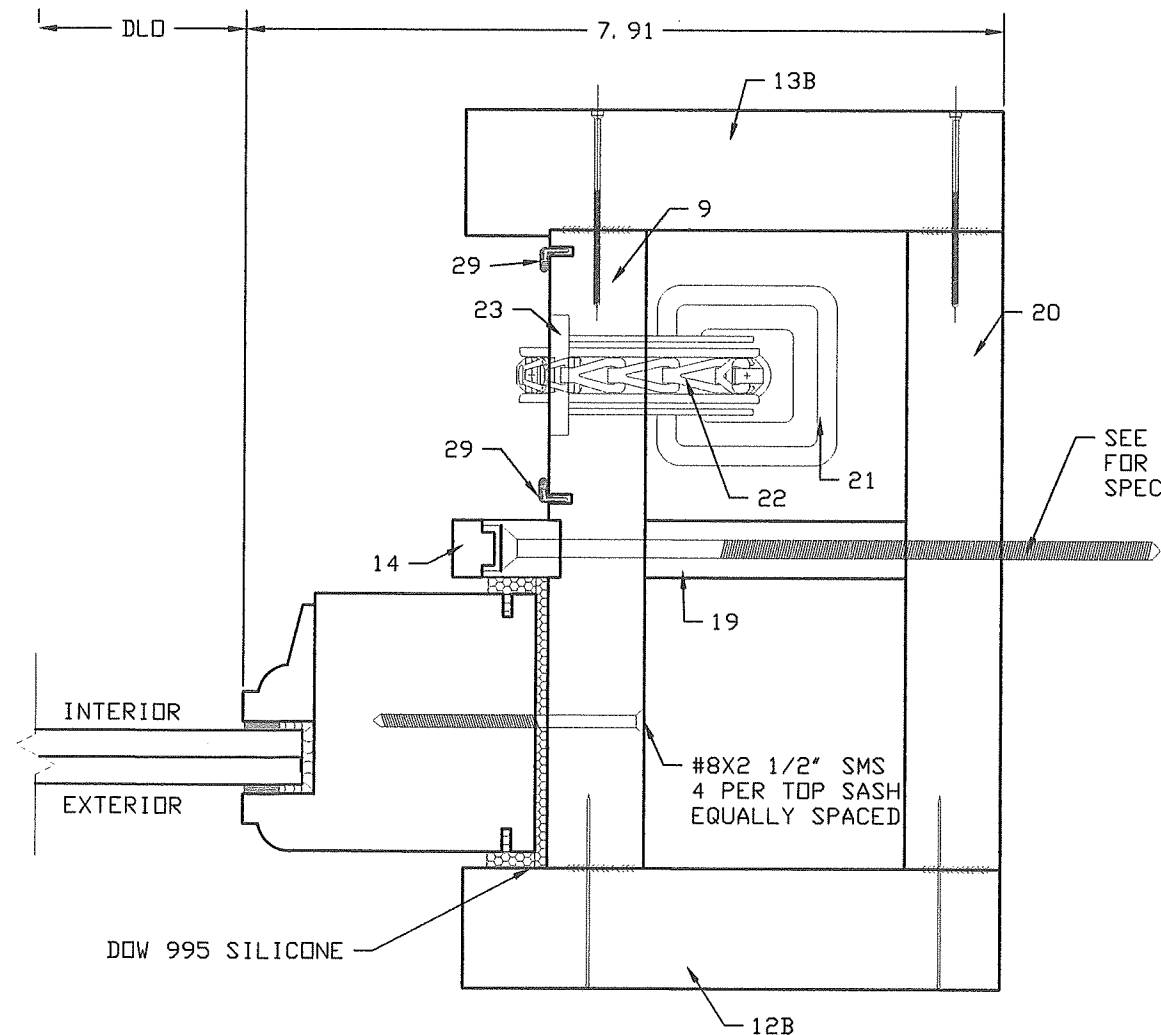
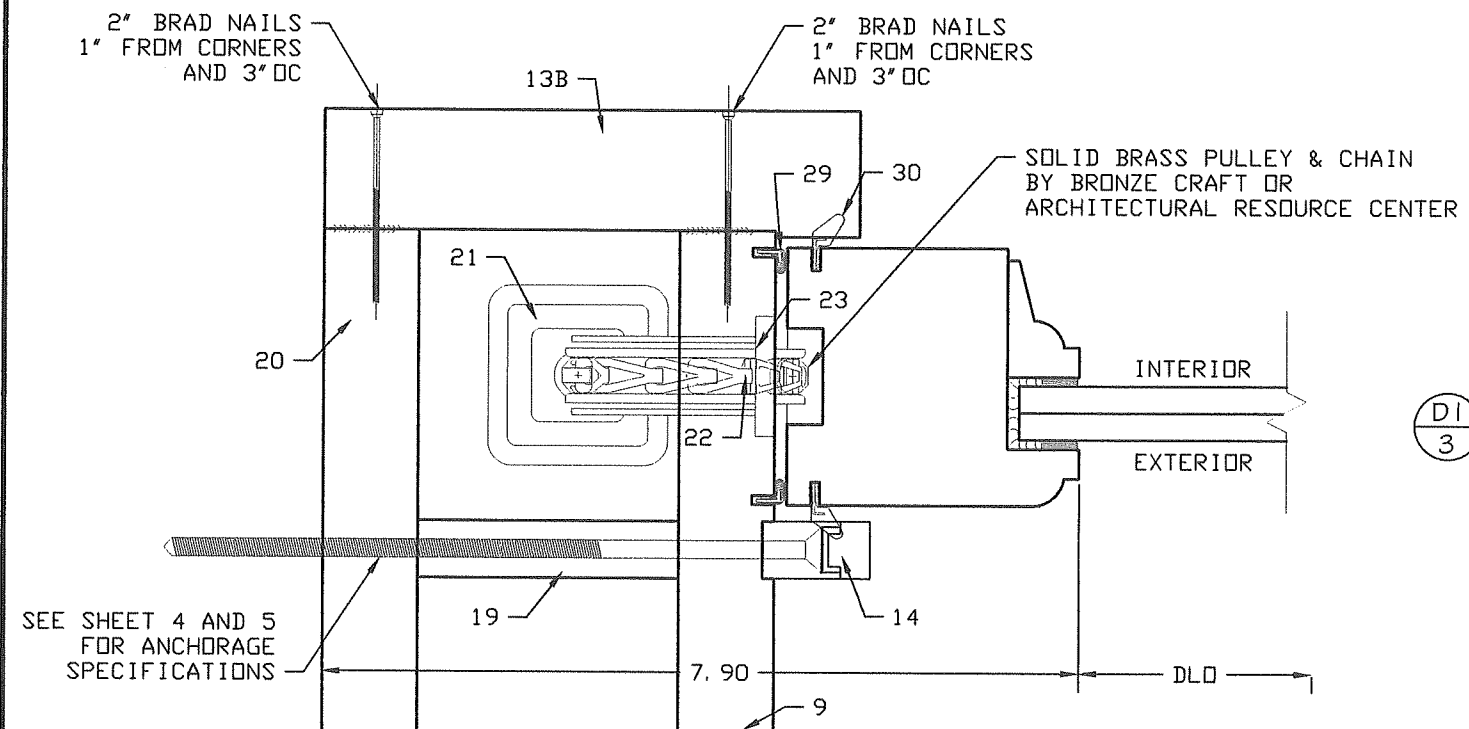
MANUFACTURER:  
**ROATAN**  
MAHOGANY USA INC.  
7005 N. WATERWAY DR. 302  
MIAMI FLORIDA 33155

MIAMI-DADE BCCO:

**PRODUCT REVISED**  
As complying with the Florida  
Building Code  
NOA-No. **23-0928.31**  
Expiration Date: **10/30/2024**  
By: *Manuel Torres*  
**Miami-Dade Product Control**

SCALE:  
NA  
DATE:  
09/04/2023  
DRAWING #  
23-155  
SHEET  
2 OF 9

TYPICAL CROSS SECTIONS



ENGINEERING SERVICES - CA 32459  
9715 W. BROWARD BLVD.  
PLANTATION, FL 33324  
PPMIF@AOL.COM  
ENGINEER SEAL  
PEDRO DE FIGUEIREDO  
PE 52609

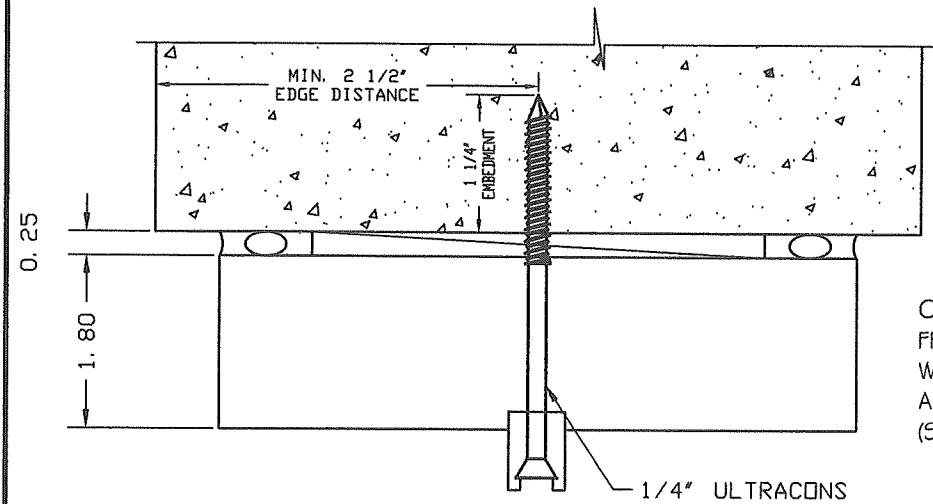
PRODUCT CATEGORY: WINDOWS - SINGLE HUNG  
PRODUCT MATERIAL: WOOD / GLASS  
IMPACT RATING: LARGE & SMALL MISSILE  
**ROATAN SWIETENIA SERIES**  
SINGLE HUNG WINDOWS

MANUFACTURER:  
**ROATAN**  
MAHOGANY USA INC.  
7005 N. WATERWAY DR. 302  
MIAMI FLORIDA 33155

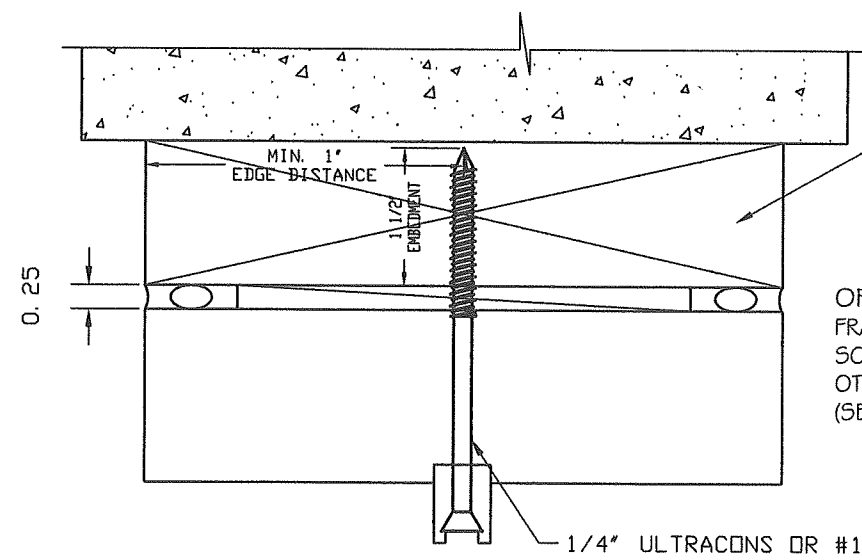
MIAMI-DADE BCCO:  
**PRODUCT REVISED**  
As complying with the Florida  
Building Code  
NOA-No. **23-0928.31**  
Expiration Date: **10/30/2024**  
By: *Manuel Torres*  
**Miami-Dade Product Control**

SCALE:  
NA  
DATE:  
09/04/2023  
DRAWING #  
23-155  
SHEET  
3 OF 9

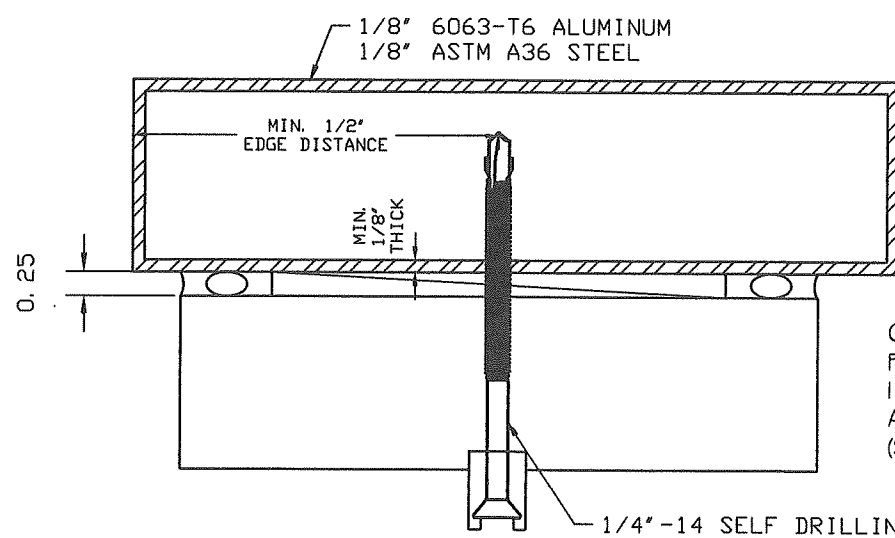
TYPICAL ANCHORAGE DETAILS  
(FOR DIRECT INSTALLATIONS)  
ALLOWABLE PRESSURE RATING:  $\pm 93$  PSF



OPTION 1  
FRAME WITH MAXIMUM 1/4" SHIM AND SECURED  
W/ 1/4" ULTRACONS BY ELCO WITH 1 1/4" MIN. EMBEDMENT  
AND 2 1/2" E.D. INTO GF MASONRY OR 3000 PSI CONCRETE  
(SEE TYPICAL ANCHORAGE LAY-OUT)

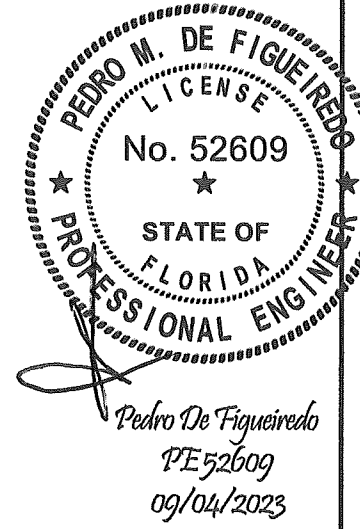
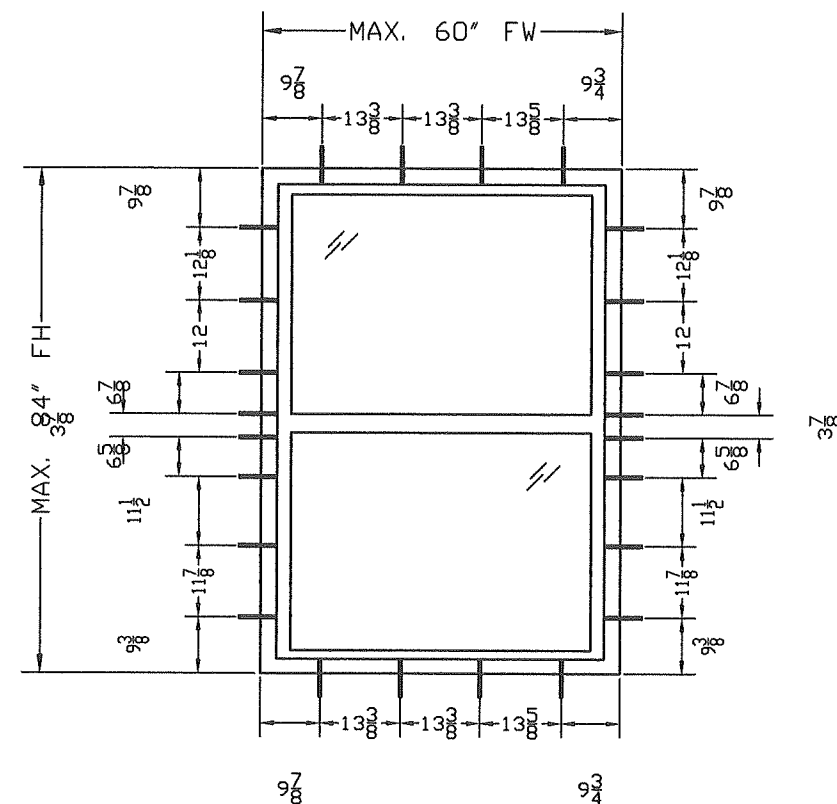


OPTION 2  
FRAME WITH MAXIMUM 1/4" SHIM SECURED W/ #14 SS WOOD  
SCREWS OR 1/4" ULTRACONS INTO 2X PT CONT. WOOD BUCK BY  
OTHERS 1 1/2" MIN. EMBEDMENT INTO WOOD (SG=.55)  
(SEE TYPICAL ANCHORS LAY-OUT)



OPTION 3  
FRAME WITH MAXIMUM 1/4" SHIM SECURED W/  
1/4"-14 HWH GR 5 SELF DRILLING SCREWS INTO MIN. 1/8"  
A36 STEEL OR 1/8" 6063-T6 ALUMINUM  
(SEE TYPICAL ANCHOR LAY-OUT)

TYPICAL ANCHORAGE LAY-OUT  
(DIRECT INSTALLATIONS)  
ALLOWABLE PRESSURE RATING:  $\pm 93$  PSF



ENGINEERING SERVICES - CA 32459  
9715 W. BROWARD BLVD.  
PLANTATION, FL 33324  
PPMF@AOL.COM  
ENGINEER SEAL  
PEDRO DE FIGUEIREDO  
FE 52609



PRODUCT CATEGORY: WINDOWS - SINGLE HUNG  
PRODUCT MATERIAL: WOOD / GLASS  
IMPACT RATING: LARGE & SMALL MISSILE  
**ROATAN SWIETENIA SERIES**  
SINGLE HUNG WINDOWS

MANUFACTURER:  
**ROATAN**  
MAHOGANY USA INC.  
7005 N. WATERWAY DR. 302  
MIAMI FLORIDA 33155

MIAMI-DADE BCCO:

**PRODUCT REVISED**  
As complying with the Florida  
Building Code  
NOA-No. **23-0928.31**  
Expiration Date: **10/30/2024**  
By: *Manuel Torres*  
**Miami-Dade Product Control**

SCALE:  
NA  
DATE:  
09/04/2023  
DRAWING #  
23-155  
SHEET  
4 OF 9



0.25

MIN. 2 1/2" EDGE DISTANCE

1 1/4" EMBEDMENT

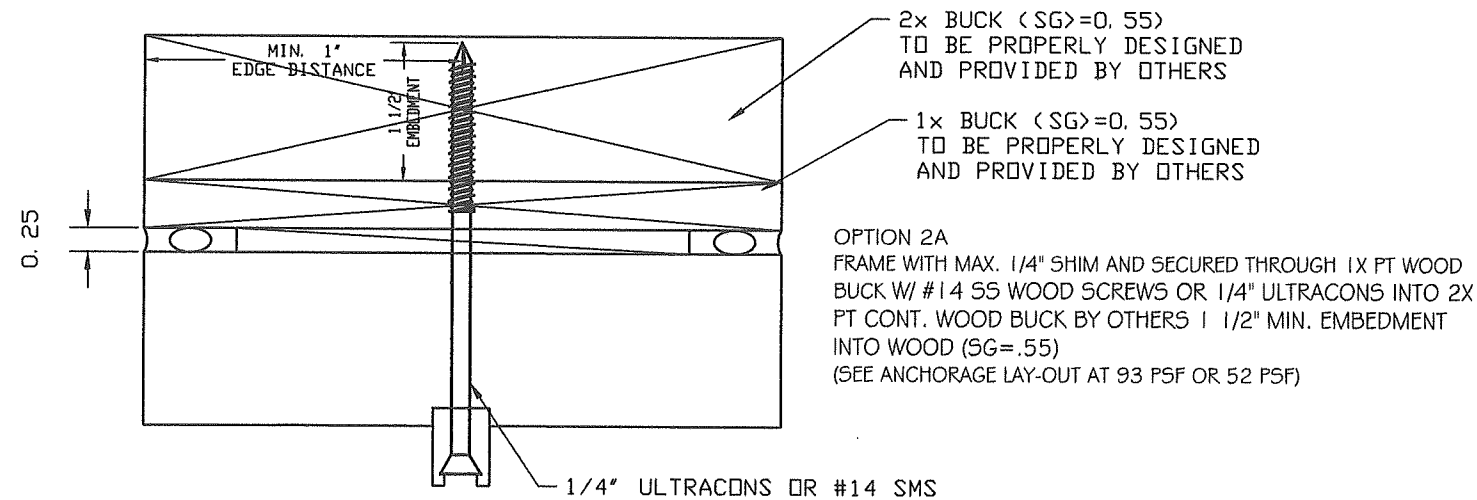
1x BUCK (SG>=0.55)  
TO BE PROPERLY DESIGNED  
AND PROVIDED BY OTHERS

OPTION 1A  
FRAME WITH MAX. 1/4" SHIM AND SECURED THROUGH 1x PT WOOD  
BUCK W/ 1/4" ULTRACONS BY ELCO WITH 1 1/4" MIN. EMBEDMENT  
AND 2 1/2" E.D. INTO GF MASONRY OR 3000 PSI CONCRETE  
(SEE ANCHORAGE LAY-OUT AT 93 PSF OR 52 PSF)

1/4" ULTRACONS

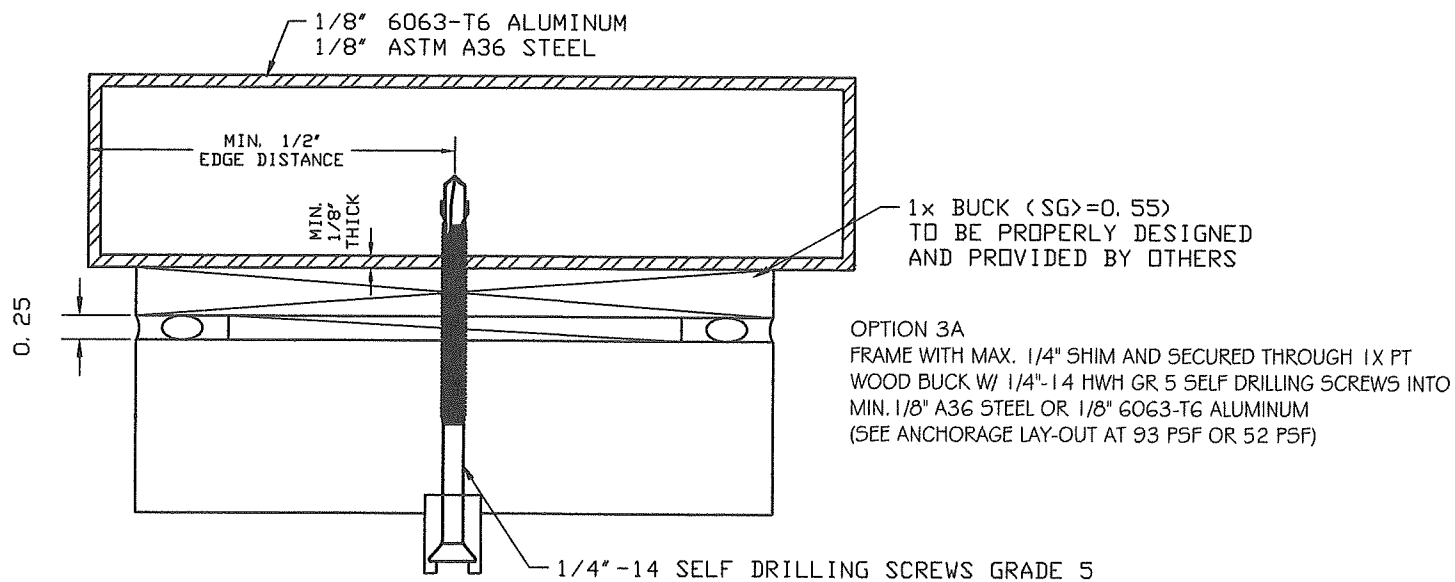
OPTION 1A  
FRAME WITH MAX. 1/4" SHIM AND SECURED THROUGH 1X PT WOOD  
BUCK W/ 1/4" ULTRACONS BY ELCO WITH 1 1/4" MIN. EMBEDMENT  
AND 2 1/2" E.D. INTO GF MASONRY OR 3000 PSI CONCRETE  
(SEE ANCHORAGE LAY-OUT AT 93 PSF OR 52 PSF)

— 1/4" ULTRACONS



OPTION 2A  
FRAME WITH MAX. 1/4" SHIM AND SECURED THROUGH 1X PT WOOD  
BUCK W/ #14 SS WOOD SCREWS OR 1/4" ULTRACONS INTO 2X  
PT CONT. WOOD BUCK BY OTHERS | 1/2" MIN. EMBEDMENT  
INTO WOOD (SG= .55)  
(SEE ANCHORAGE LAY-OUT AT 93 PSF OR 52 PSF)

- 1/4" ULTRACONS OR #14 SMS

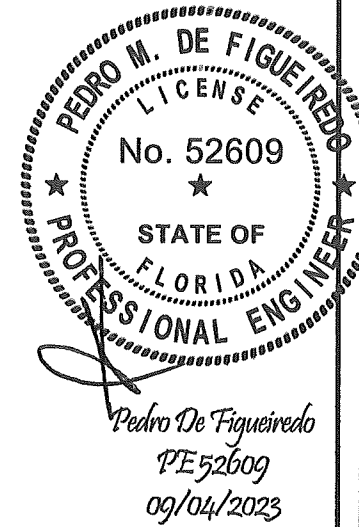


OPTION 3A  
FRAME WITH MAX. 1/4" SHIM AND SECURED THROUGH 1X PT  
WOOD BUCK W/ 1/4" 14 HWH GR 5 SELF DRILLING SCREWS INTO  
MIN. 1/8" A36 STEEL OR 1/8" 6063-T6 ALUMINUM  
(SEE ANCHORAGE LAY-OUT AT 93 P5F OR 52 P5F)

— 1/4" -14 SELF DRILLING SCREWS GRADE 5

[illegible]

Technical drawing of a rectangular panel, likely a door or window frame, showing dimensions and labels. The drawing includes a central rectangular area with two diagonal lines (//) indicating a break or continuation. The overall dimensions are labeled as MAX. 84" FH (Front Height) and MAX. 60" FW (Front Width). The drawing is divided into sections by vertical and horizontal lines, with dimensions provided for each section. The vertical dimensions on the left and right are 9 7/8, 11 1/2, 11 7/8, 12, 12 1/8, 16 5/8, and 9 7/8. The horizontal dimensions at the top and bottom are 9 7/8, 13 3/8, 13 3/8, 13 5/8, and 9 3/4. The drawing is oriented vertically on the page.



ENGINEERING SERVICES - CA 32459  
9715 W. BROWARD BLVD.  
PLANTATION, FL 33324  
PPMF@AOL.COM  
ENGINEER SEAL  
PEDRO DE FIGUEIREDO  
PE 52609



PRODUCT CATEGORY: WINDOWS - SINGLE HUNG  
PRODUCT MATERIAL: WOOD / GLASS  
IMPACT RATING: LARGE & SMALL MISSILE

# ROATAN SWIETENIA SERIES

SINGLE HUNG WINDOWS

MANUFACTURER:  
**ROATAN**  
MAHOGANY USA INC.  
7005 N. WATERWAY DR. 302  
MIAMI FLORIDA 33155

MIAMI-DADE BCCO:

**PRODUCT REVISED**  
As complying with the Florida  
Building Code

NOA-No. 23-0928.31

**Expiration Date: 10/30/2024**

By: Manuel Torres

**By:** [Signature]  
**Miami-Dade Product Control**

\_\_\_\_\_

MANUFACTURER:

ROATAN  
MAHOAGANY

MAHOAGANY USA INC.  
7005 N. WATERWAY DR. 302  
MIAMI FLORIDA 33155

SCALE:

NA

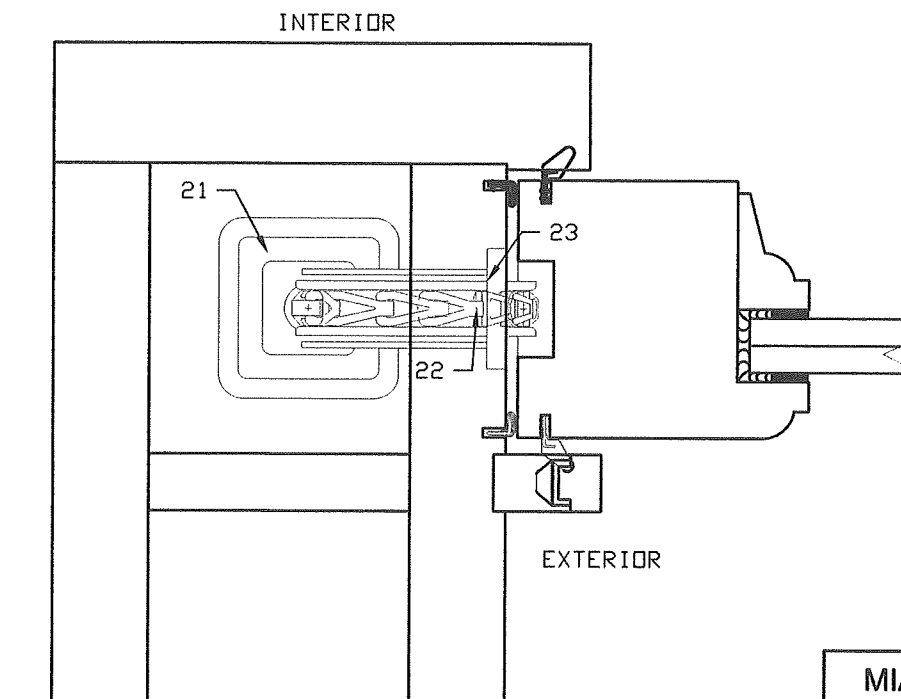
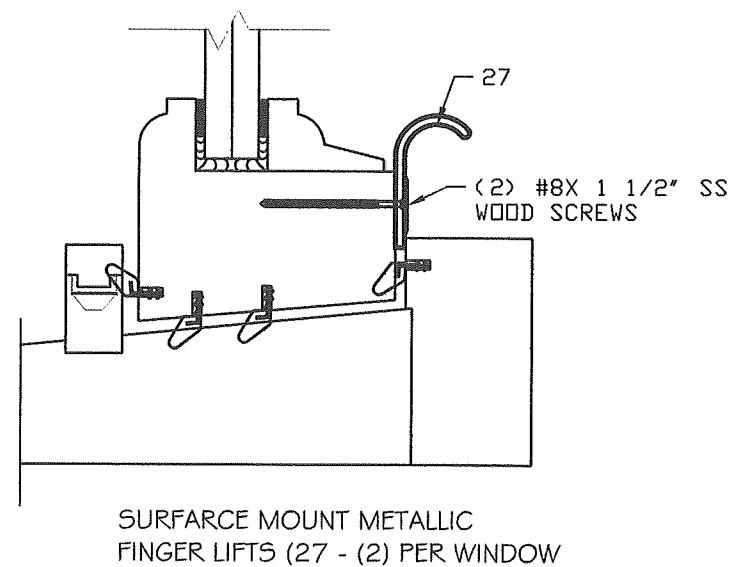
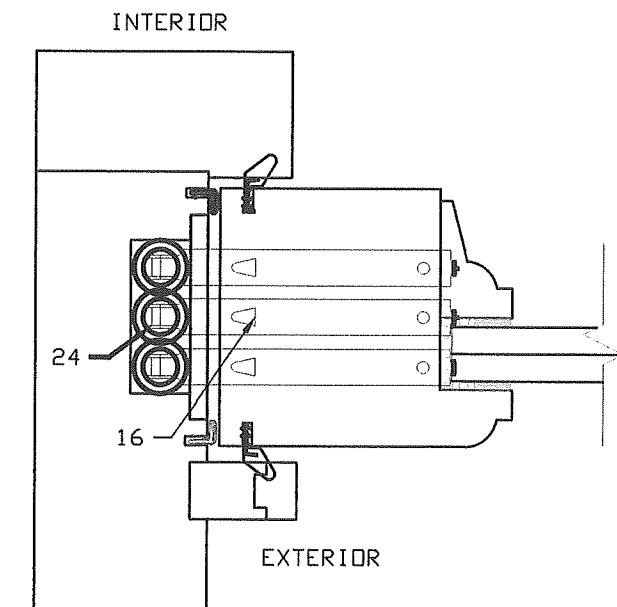
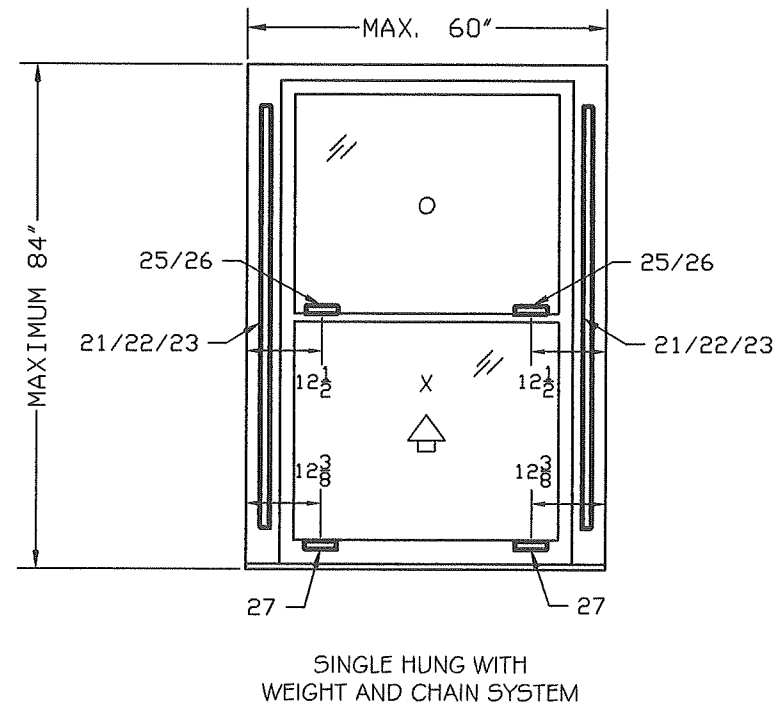
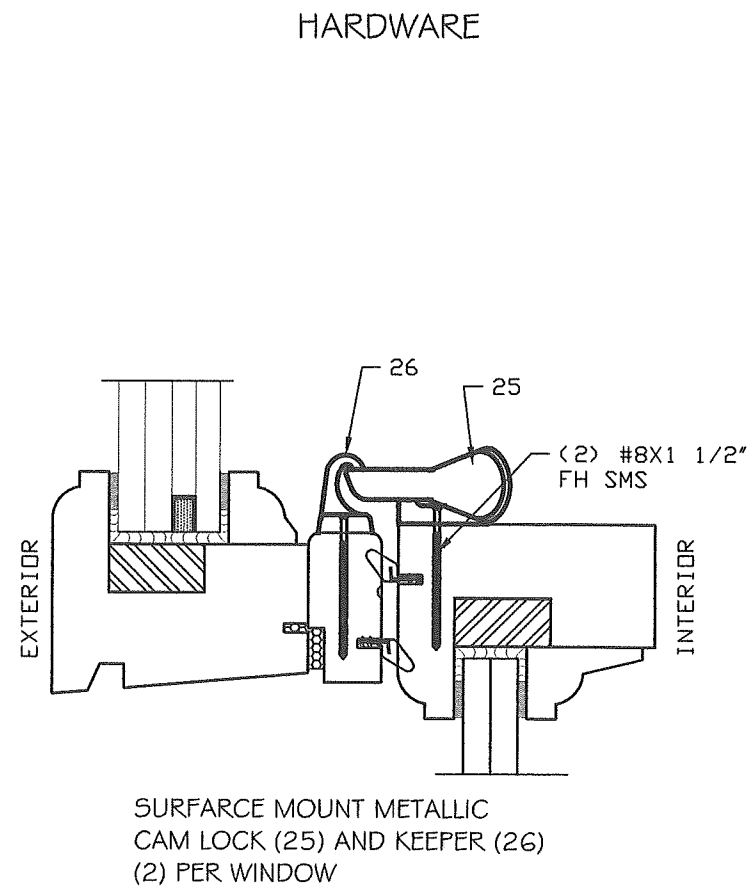
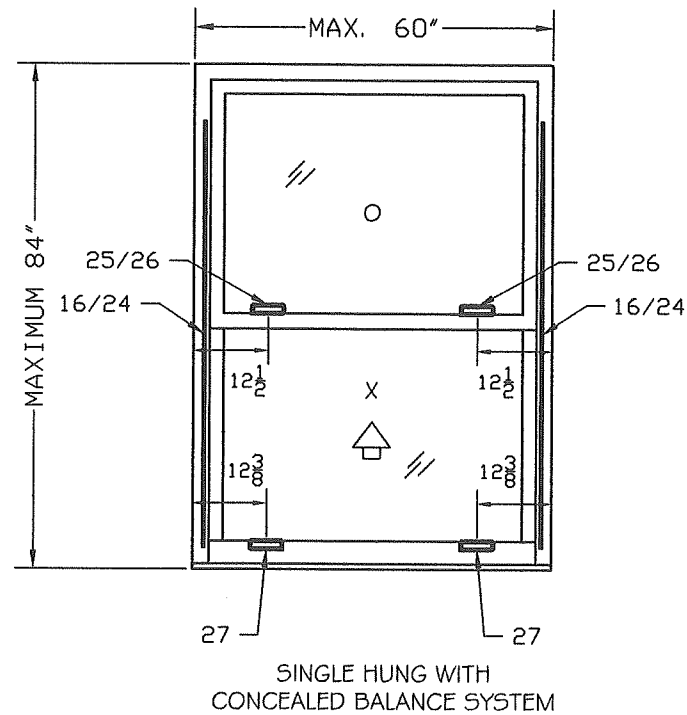
DATE: \_\_\_\_\_

04/2023

AWING #  
R-155

SHEET

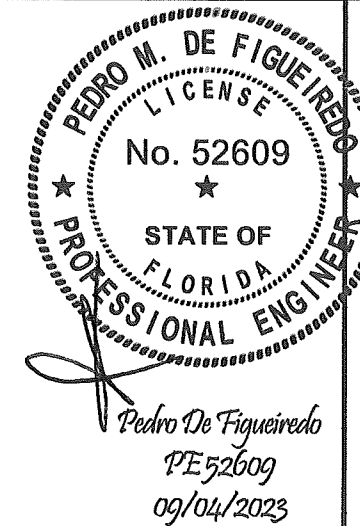
PRODUCT CATEGORY: WINDOWS - SINGLE HUNG  
PRODUCT MATERIAL: WOOD / GLASS  
IMPACT RATING: LARGE & SMALL MISSILE  
BOATANCIA METENIA CERBI



SPIRAL BALANCES WITH SHOE CLIPS ONE PER SIDE ATTACHED TO FRAME W (1) #8X2 FH SMS, SHOE CLIP TO VENT WITH (2) #6X1 1/2" FH DRYWALL SCREWS AND (1) #8 X 1 1/2" FH SMS  
NOTE: QUANTITY OF CONCEALED BALANCES FUNCTION OF WINDOW SIZES AND TO BE DETERMINED BY THE MANUFACTURER AS PER JOB BASIS

SOLID BRASS PULLEY & CHAIN BY BRONZE CRAFT OR ARCHITECTURAL RESOURCE CENTER ONE PER EACH SIDE ATTACHED WITH (2) #6X1 FH DRYWALL SCREWS

NOTE: TYPE OF WEIGHT FUNCTION OF WINDOW SIZES AND TO BE DETERMINED BY THE MANUFACTURER AS PER JOB BASIS



ENGINEERING SERVICES - CA 32459  
9715 W. BROWARD BLVD.  
PLANTATION, FL 33324  
PPMIF@AOL.COM  
ENGINEER SEAL  
PEDRO DE FIGUEIREDO  
PE 52609

PRODUCT CATEGORY: WINDOWS - SINGLE HUNG  
PRODUCT MATERIAL: WOOD / GLASS  
IMPACT RATING: LARGE & SMALL MISSILE  
**ROATAN SWIETENIA SERIES**  
SINGLE HUNG WINDOWS

MANUFACTURER:  
**ROATAN**  
MAHOGANY USA INC.  
7005 N. WATERWAY DR. 302  
MIAMI FLORIDA 33155

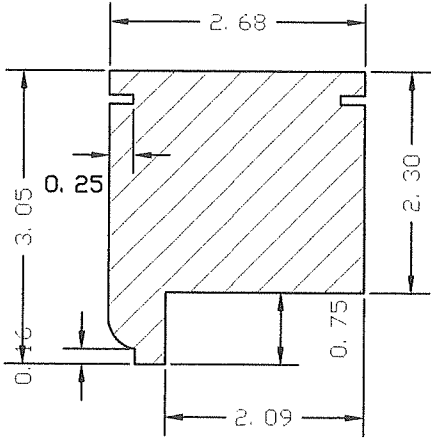
MIAMI-DADE BCCO:

**PRODUCT REVISED**  
As complying with the Florida Building Code  
NOA-No. **23-0928.31**  
Expiration Date: **10/30/2024**  
By: *Manuel Perez*  
**Miami-Dade Product Control**

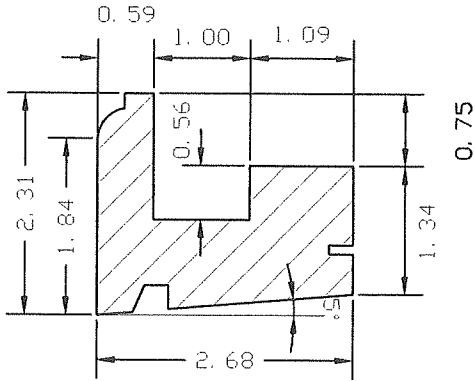
SCALE:  
NA  
DATE:  
09/04/2023  
DRAWING #  
23-155  
SHEET  
6 OF 9



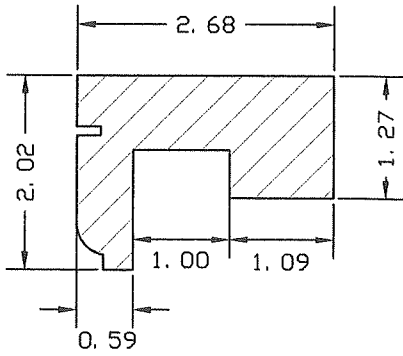
PRODUCT COMPONENTS



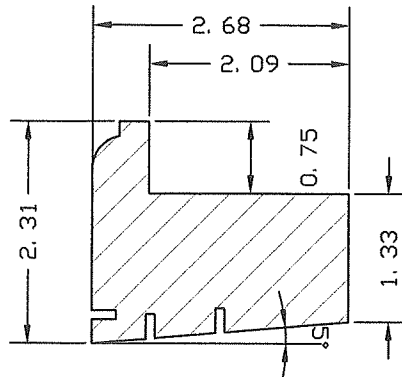
1- TOP RAIL INACTIVE SLAB



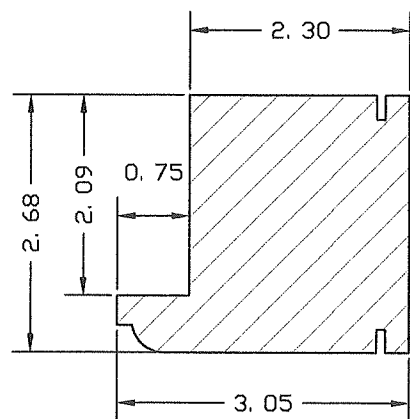
2- BOTTOM RAIL INACTIVE SLAB



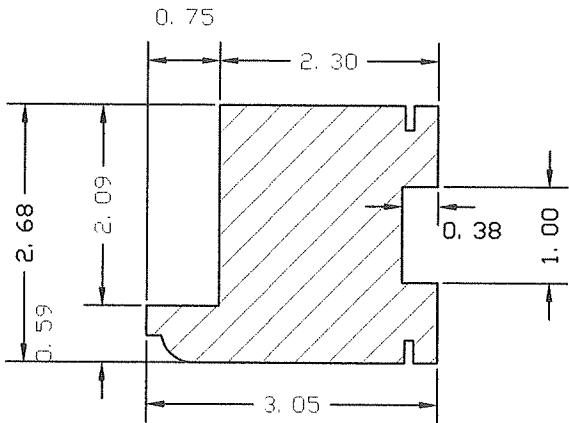
3- TOP RAIL ACTIVE SLAB



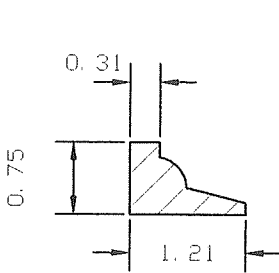
4- BOTTOM RAIL ACTIVE SLAB



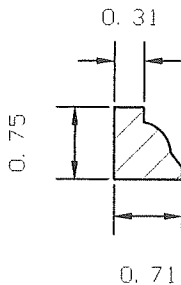
5- STILE FOR ACTIVE & INACTIVE SLABS  
(CONCEALED BALANCES)



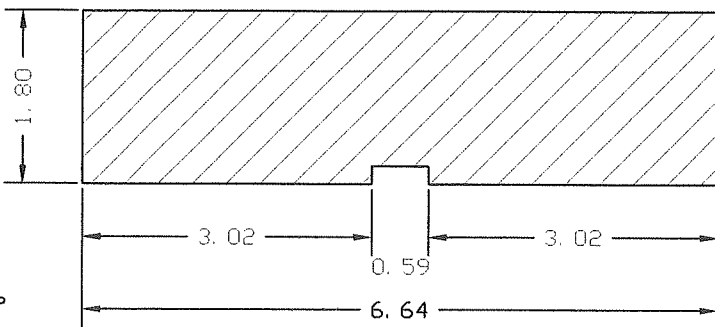
5B- STILE FOR ACTIVE SLABS  
(CHAIN & WEIGHT)



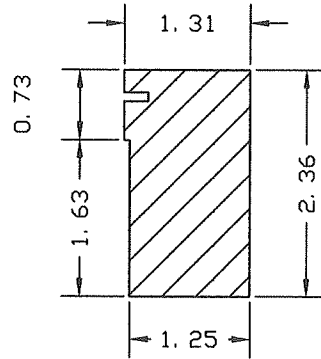
6- INTERIOR GLASS STOP  
FOR USE WITH  
GLASS OPTION A



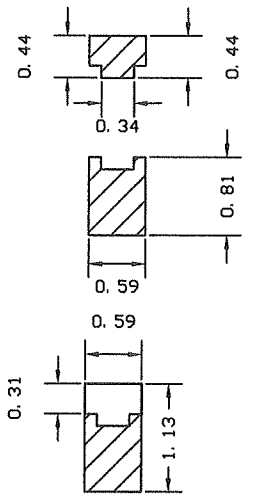
7- INTERIOR GLASS STOP  
FOR USE WITH  
GLASS OPTION B



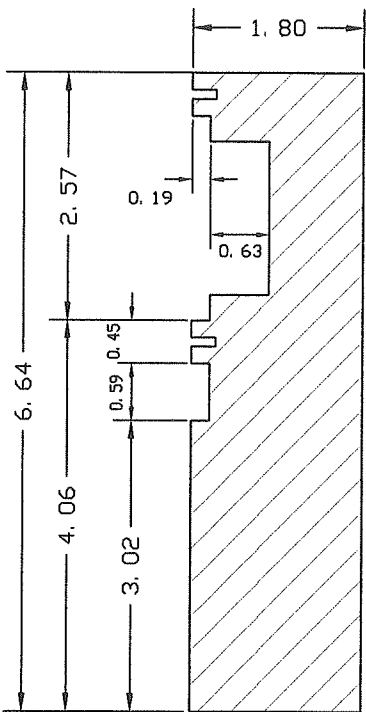
8- HEADER JAMB



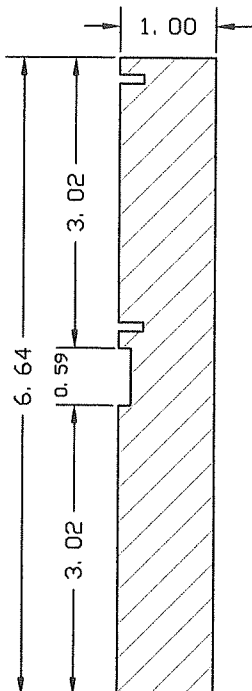
11- THRESHOLD CAP



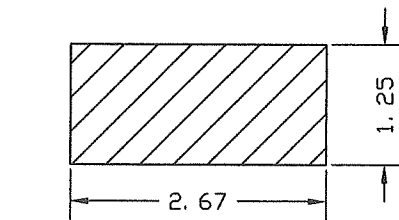
14- TRACK GUIDE & CAP



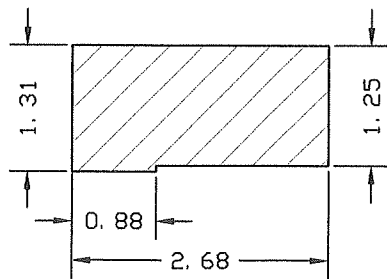
9- SIDE JAMB



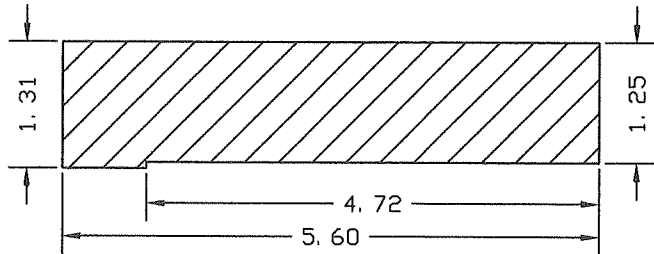
9B- SIDE JAMB  
WEIGHT & CHAIN



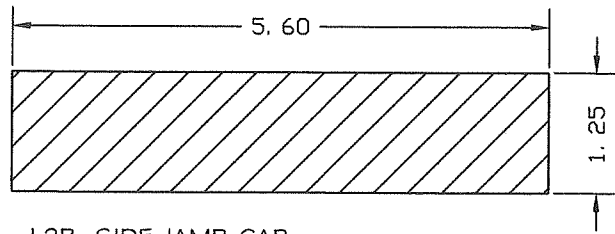
12- SIDE JAMB & HEADER CAP  
EXTERIOR SIDE



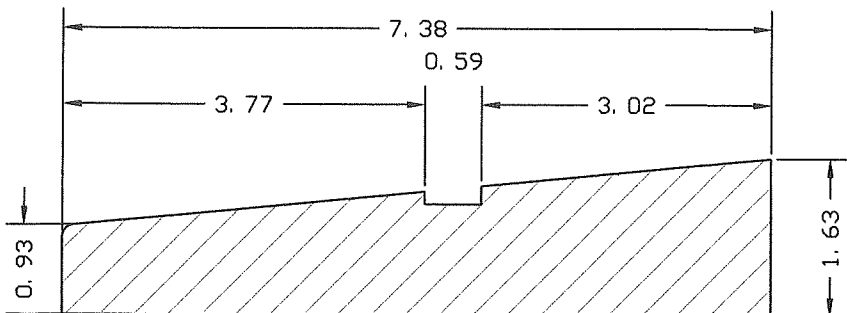
13- SIDE JAMB & HEADER CAP  
INTERIOR SIDE



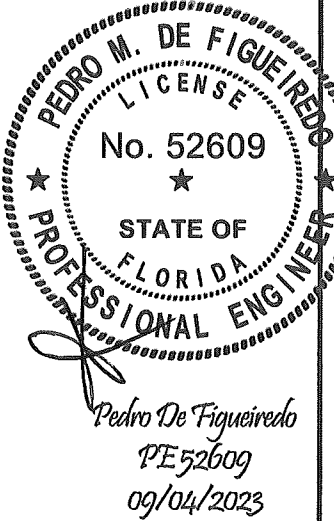
13B- SIDE JAMB CAP  
INTERIOR SIDE



12B- SIDE JAMB CAP  
EXTERIOR SIDE



10- THRESHOLD



PRODUCT CATEGORY: WINDOWS - SINGLE HUNG  
PRODUCT MATERIAL: WOOD / GLASS  
IMPACT RATING: LARGE & SMALL MISSILE  
**ROATAN SWIETENIA SERIES**  
SINGLE HUNG WINDOWS

MANUFACTURER:  
**ROATAN**  
MAHOGANY USA INC.  
7005 N. WATERWAY DR. 302  
MIAMI FLORIDA 33155

MIAMI-DADE BCCO:

**PRODUCT REVISED**  
As complying with the Florida  
Building Code

NOA-No. **23-0928.31**

Expiration Date: **10/30/2024**

By: *Manuel Torres*  
**Miami-Dade Product Control**

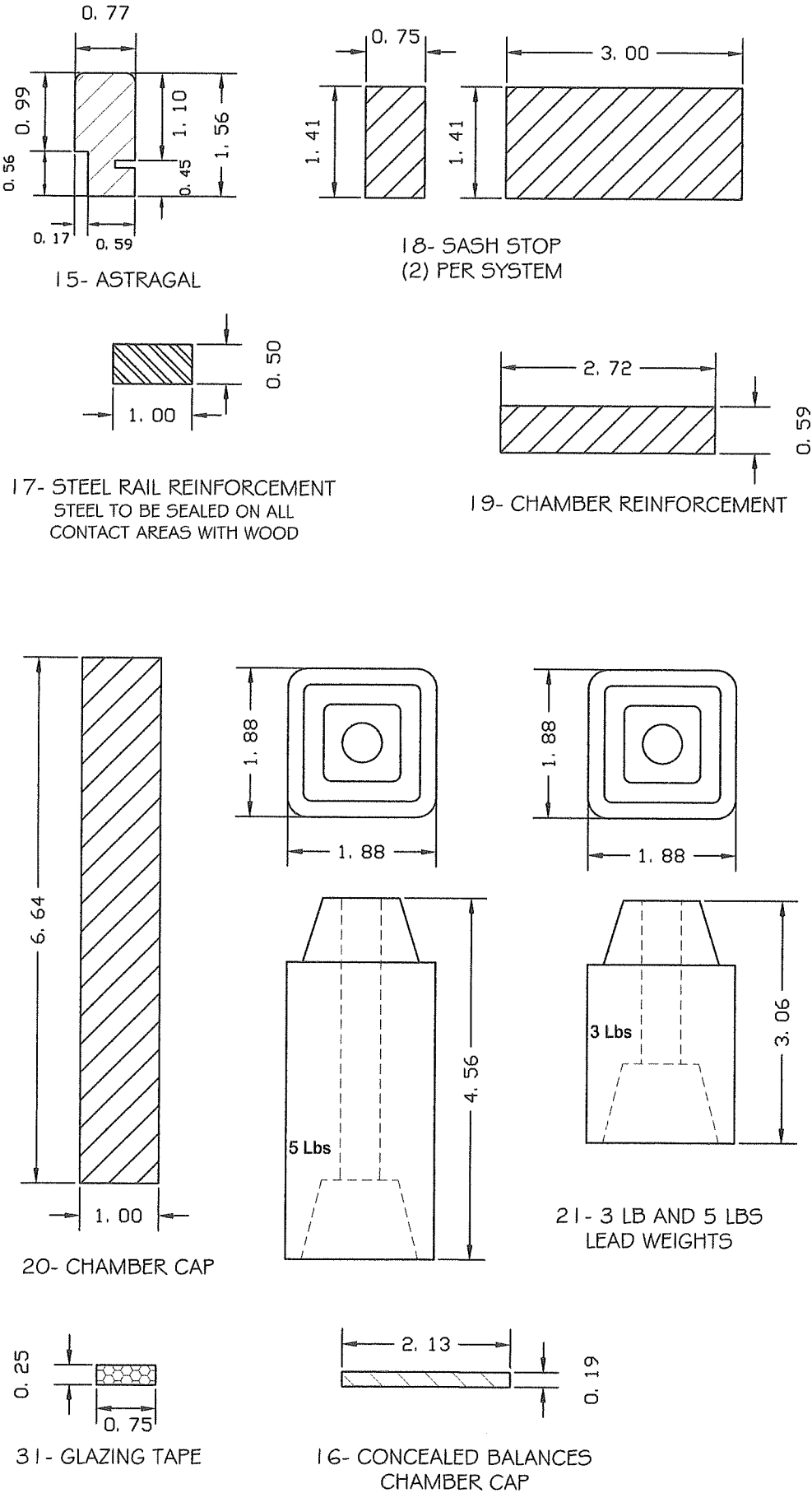
SCALE:  
NA

DATE:  
09/04/2023

DRAWING #  
23-155

SHEET  
7 OF 9

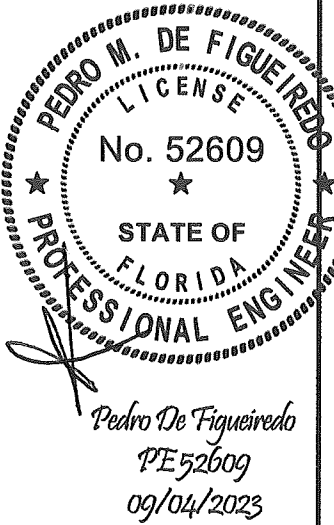
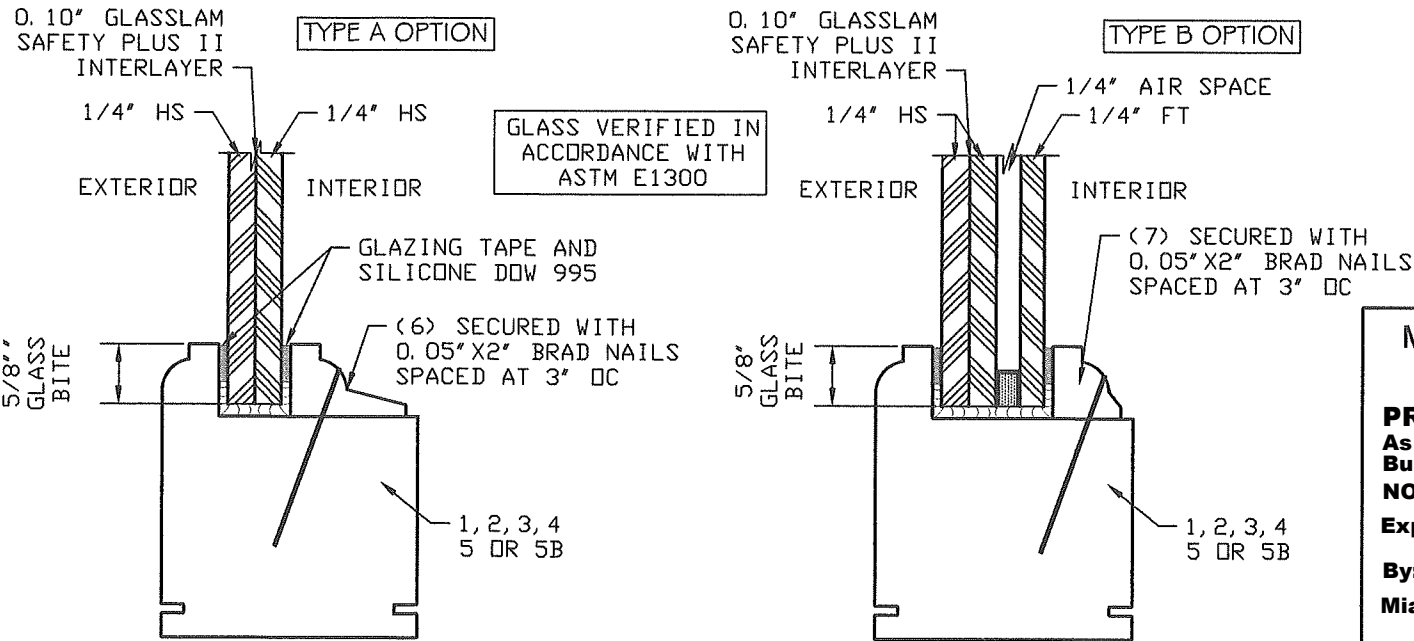
PRODUCT COMPONENTS



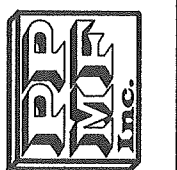
BILL OF MATERIALS

ITEM	DESCRIPTION	MATERIAL / MANUFACTURER / NOTES
1	TOP RAIL INACTIVE SLAB	MAHOGANY / CEDAR / ROATAN
2	BOTTOM RAIL INACTIVE SLAB	MAHOGANY / CEDAR / ROATAN
3	TOP RAIL ACTIVE SLAB	MAHOGANY / CEDAR / ROATAN
4	BOTTOM RAIL ACTIVE SLAB	MAHOGANY / CEDAR / ROATAN
5	STILE SLABS (CONC. BALANCE)	MAHOGANY / CEDAR / ROATAN
5B	STILE ACTIVE SLAB (CHAIN & WEIGHT)	MAHOGANY / CEDAR / ROATAN
6	INT. GLASS STOP FOR USE W/ GLASS OPT. A	MAHOGANY / CEDAR / ROATAN
7	INT. GLASS STOP FOR USE W/ GLASS OPT. B	MAHOGANY / CEDAR / ROATAN
8	HEADER JAMB	MAHOGANY / CEDAR / ROATAN
9	SIDE JAMB (CONC. BALANCE)	MAHOGANY / CEDAR / ROATAN
9B	SIDE JAMB (CHAIN & WEIGHT)	MAHOGANY / CEDAR / ROATAN
10	THRESHOLD	MAHOGANY / CEDAR / ROATAN
11	THRESHOLD CAP	MAHOGANY / CEDAR / ROATAN
12	JAMB CAP SIDE & HEADER	MAHOGANY / CEDAR / ROATAN
12B	JAMB CAP EXTERIOR SIDE (WEIGHT & CHAIN))	MAHOGANY / CEDAR / ROATAN
13	JAMB CAP SIDE & HEADER INTERIOR SIDE (CONC. BAL.)	MAHOGANY / CEDAR / ROATAN
14	TRACK GUIDE CAP	MAHOGANY / CEDAR / ROATAN
15	ASTRAGAL	MAHOGANY / CEDAR / ROATAN
16	CONCEALED BALANCES CHAMBER CAP	MAHOGANY / CEDAR / ROATAN
17	1"X1/2" BAR REINFORCEMENT	STEEL / OTHERS
18	SASH STOP	MAHOGANY / CEDAR / ROATAN
19	CHAMBER REINFORCEMENT	SCHLEGEL
20	CHAMBER CAP	SCHLEGEL
21	LEAD WEIGHTS	LEAD / ARC
22	SOLID CHAIN #45	STEEL / ARC
23	SASH PULLEY	BRONZE / ARC OR BRONZE CRAFT
24	SPIRAL CONCEALED BALANCE	STRYBUC, AMESBURY, SWISCO
25	SWEEP LOCK	BRONZE / ARC OR BRONZE CRAFT
26	HEAVY DUTY KEEPER	BRONZE / ARC OR BRONZE CRAFT
27	FINGER LIFT	BRONZE / ARC OR BRONZE CRAFT
28	SPIRAL CONCEALED BALANCE CLIP	STRYBUC
29	COMPRESSURE SEALER QEZD 100 BRONZE	POLYTHYLENE / SCHLEGEL
30	COMPRESSURE SEALER QEZD 320 BRONZE	POLYTHYLENE / SCHLEGEL
31	GLAZING TAPE	POLYTHYLENE / SCHLEGEL

TYPICAL GLAZING OPTIONS



ENGINEERING SERVICES - CA 32459  
9715 W. BROWARD BLVD.  
PLANTATION, FL 33324  
PPMIF@AOL.COM  
ENGINEER SEAL  
PEDRO DE FIGUEIREDO  
PE 52609



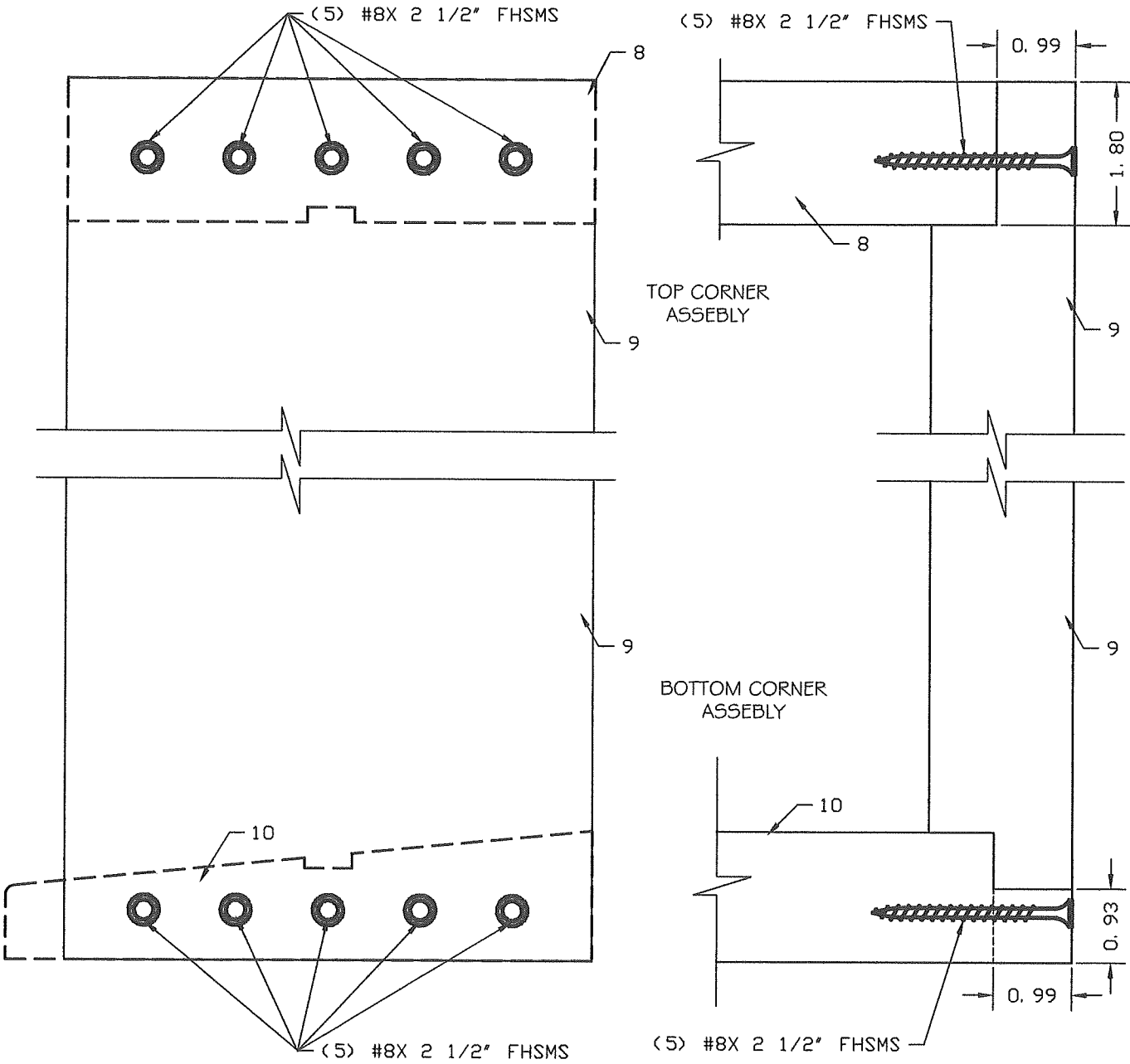
PRODUCT CATEGORY: WINDOWS - SINGLE HUNG  
PRODUCT MATERIAL: WOOD / GLASS  
IMPACT RATING: LARGE & SMALL MISSILE  
ROATAN SWIETENIA SERIES  
SINGLE HUNG WINDOWS

MANUFACTURER:  
ROATAN  
MAHOGANY USA INC.  
7005 N. WATERWAY DR. 302  
MIAMI FLORIDA 33155

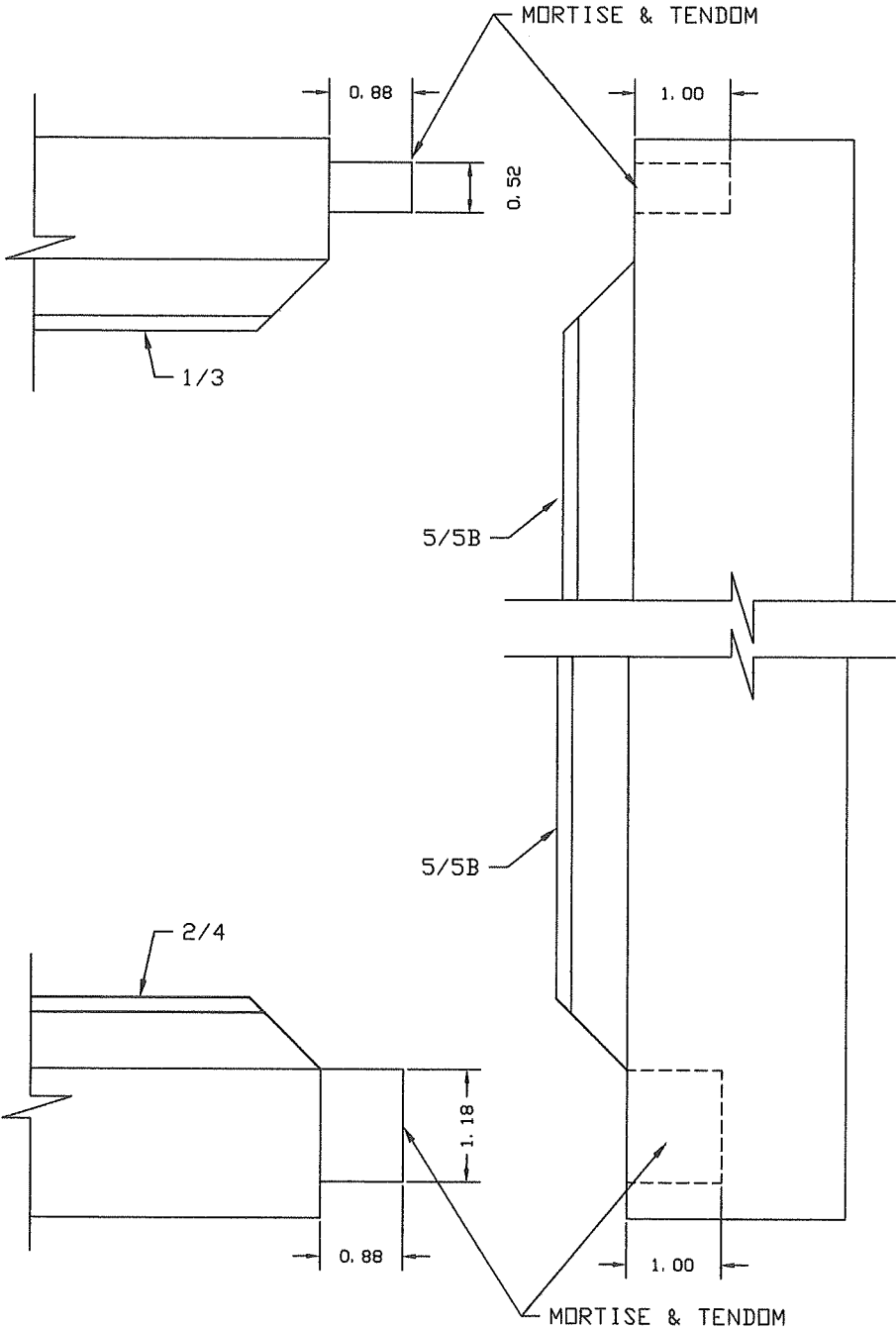
SCALE:  
NA  
DATE:  
09/04/2023  
DRAWING #  
23-155  
SHEET  
8 OF 9



FRAME ASSEMBLY



SASH ASSEMBLY



**PEDRO M. DE FIGUEIREDO**  
LICENSE  
No. 52609  
STATE OF  
FLORIDA  
PROFESSIONAL ENGINEER

*Pedro De Figueiredo*  
PE 52609  
09/04/2023

ENGINEERING SERVICES - CA 32459  
9715 W. BROWARD BLVD.  
PLANTATION, FL 33324  
PPMIF@AOL.COM  
ENGINEER SEAL  
PEDRO DE FIGUEIREDO  
PE 52609

**PPMIF**  
INC.

PRODUCT CATEGORY: WINDOWS - SINGLE HUNG  
PRODUCT MATERIAL: WOOD / GLASS  
IMPACT RATING: LARGE & SMALL MISSILE  
**ROATAN SWIETENIA SERIES**  
SINGLE HUNG WINDOWS

MANUFACTURER:  
**ROATAN**  
MAHOGANY USA INC.  
7005 N. WATERWAY DR. 302  
MIAMI FLORIDA 33155

MIAMI-DADE BCCO:  
**PRODUCT REVISED**  
As complying with the Florida  
Building Code  
NOA-No. **23-0928.31**  
Expiration Date: **10/30/2024**  
By: *Manuel Torres*  
**Miami-Dade Product Control**

SCALE:  
NA  
DATE:  
09/04/2023  
DRAWING #  
23-155  
SHEET  
9 OF 9