



DEPARTMENT OF REGULATORY AND ECONOMIC RESOURCES (RER)
BOARD AND CODE ADMINISTRATION DIVISION

NOTICE OF ACCEPTANCE (NOA)

MIAMI-DADE COUNTY
PRODUCT CONTROL SECTION

11805 SW 26 Street, Room 208
Miami, Florida 33175-2474
T (786) 315-2590 F (786) 315-2599

www.miamidade.gov/building

Roatan Mahogany USA, Inc.
7005 N. Waterway Drive, Ste. 302
Miami, FL 33155

SCOPE:

This NOA is being issued under the applicable rules and regulations governing the use of construction materials. The documentation submitted has been reviewed and accepted by Miami-Dade County RER - Product Control Section to be used in Miami Dade County and other areas where allowed by the Authority Having Jurisdiction (AHJ).

This NOA shall not be valid after the expiration date stated below. The Miami-Dade County Product Control Section (In Miami-Dade County) and/or the AHJ (in areas other than Miami-Dade County) reserve the right to have this product or material tested for quality assurance purposes. If this product or material fails to perform in the accepted manner, the manufacturer will incur the expense of such testing and the AHJ may immediately revoke, modify, or suspend the use of such product or material within their jurisdiction. RER reserves the right to revoke this acceptance if it is determined by Miami-Dade County Product Control Section that this product or material fails to meet the requirements of the applicable building code.

This product is approved as described herein and has been designed to comply with the Florida Building Code, including the High Velocity Hurricane Zone.

DESCRIPTION: Series "Swietenia Direct Set" Wood Fixed Window - L.M.I.

APPROVAL DOCUMENT: Drawing No. **23-161**, titled "Swietenia Series Window - Storefront / Direct Set Window", sheets 1 through 5 of 5, dated 09/07/23, prepared by PPMF Inc., signed and sealed by Pedro M. De Figueiredo, P.E., bearing the Miami-Dade County Product Control Revision stamp with the Notice of Acceptance number and expiration date by the Miami-Dade County Product Control Section.

MISSILE IMPACT RATING: Large and Small Missile Impact Resistant

LABELING: Each unit shall bear a permanent label with the manufacturer's name or logo, city, state, model/series, and following statement: "Miami-Dade County Product Control Approved", unless otherwise noted herein.

RENEWAL of this NOA shall be considered after a renewal application has been filed and there has been no change in the applicable building code negatively affecting the performance of this product.

TERMINATION of this NOA will occur after the expiration date or if there has been a revision or change in the materials, use, and/or manufacture of the product or process. Misuse of this NOA as an endorsement of any product, for sales, advertising or any other purposes shall automatically terminate this NOA. Failure to comply with any section of this NOA shall be cause for termination and removal of NOA.

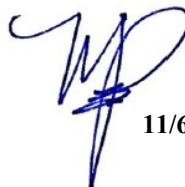
ADVERTISEMENT: The NOA number preceded by the words Miami-Dade County, Florida, and followed by the expiration date may be displayed in advertising literature. If any portion of the NOA is displayed, then it shall be done in its entirety.

INSPECTION: A copy of this entire NOA shall be provided to the user by the manufacturer or its distributors and shall be available for inspection at the job site at the request of the Building Official.

This NOA revises **NOA No. 20-1013.16** and consists of this page 1 and evidence pages E-1, E-2 and E-3, as well as approval document mentioned above.

The submitted documentation was reviewed by **Manuel Perez, P.E.**




11/6/23

NOA No. 23-0928.32
Expiration Date: January 23, 2025
Approval Date: November 16, 2023
Page 1

NOTICE OF ACCEPTANCE: EVIDENCE SUBMITTED

1. EVIDENCE SUBMITTED UNDER PREVIOUS NOA's

A. DRAWINGS

1. Manufacturer's die drawings and sections.
(Submitted under NOA No. 19-1210.03)
2. Drawing No. **20-151**, titled "Swietenia Series Window – Storefront / Direct Set Window", sheets 1 through 5 of 5, dated 09/10/20 prepared by PPMF Inc., signed and sealed by Pedro M. De Figueiredo, P.E.
(Submitted under NOA No. 20-1013.16)

B. TESTS

1. Test reports on: 1) Air Infiltration Test, per FBC TAS 202-94
2) Uniform Static Air Pressure Test, Loading per FBC TAS 202-94
3) Water Resistance Test, per FBC TAS 202-94
4) Large Missile Impact Test per FBC, TAS 201-94
5) Cyclic Wind Pressure Loading per FBC, TAS 203-94
6) Forced Entry Test, per FBC 2411.3.2.1, and TAS 202-94
7) Drop Test (400 ft-lb), per FBC 1618.4.6.3, and ANSI Z97.1.
along with marked-up drawings and installation diagram of a series "Swietenia" wood fixed window, prepared by Fenestration Testing Laboratory, Inc., Test Report No. **10736**, dated 09/17/19, signed and sealed by Idalmis Ortega, P.E.
(Submitted under NOA No. 19-1210.03)

C. CALCULATIONS

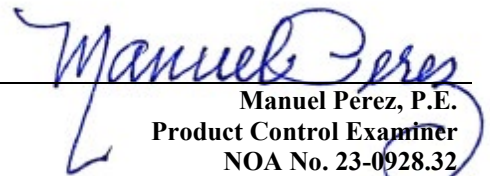
1. Anchor verification calculations and structural analysis, complying with FBC 6th Edition (2017), dated 11/14/19, prepared by PPMF, Inc., signed and sealed by Pedro M. De Figueiredo, P.E.
(Submitted under NOA No. 19-1210.03)
2. Glazing complies with **ASTM E1300-09/12**.

D. QUALITY ASSURANCE

1. Miami-Dade Department of Regulatory and Economic Resources (RER)

E. MATERIAL CERTIFICATIONS

1. Notice of Acceptance No. **18-0619.01** issued to **Polymer Extrusion Technology, Inc. dba Glasslam** for their "**Glasslam Safety-Plus II Glass Interlayer**" dated 07/26/18, expiring on 08/07/23.


Manuel Perez, P.E.
Product Control Examiner
NOA No. 23-0928.32
Expiration Date: January 23, 2025
Approval Date: November 16, 2023

Roatan Mahogany USA, Inc.

NOTICE OF ACCEPTANCE: EVIDENCE SUBMITTED


1. EVIDENCE SUBMITTED UNDER PREVIOUS NOA's (CONTINUED)

F. STATEMENTS

1. Statement letter of conformance, complying with **FBC 7th Edition (2020)**, and of no financial interest, dated September 10, 2020, issued by PPMF Inc., signed and sealed by Pedro M. De Figueiredo, P.E.
(Submitted under NOA No. 20-1013.16)

G. OTHERS

1. Notice of Acceptance No. **19-1210.03**, issued to Roatan Mahogany USA, Inc. for their Series "Swietenia Direct Set" Wood Fixed Window – L.M.I., approved on 01/23/20 and expiring on 01/23/25.


Manuel Pérez, P.E.
Product Control Examiner
NOA No. 23-0928.32
Expiration Date: January 23, 2025
Approval Date: November 16, 2023

Roatan Mahogany USA, Inc.

NOTICE OF ACCEPTANCE: EVIDENCE SUBMITTED

2. NEW EVIDENCE SUBMITTED

A. DRAWINGS

1. Drawing No. **23-161**, titled “Swietenia Series Window - Storefront / Direct Set Window”, sheets 1 through 5 of 5, dated, dated 09/07/23, prepared by PPMF Inc., signed and sealed by Pedro M. De Figueiredo, P.E.

B. TESTS

1. None.

C. CALCULATIONS

1. None.

D. QUALITY ASSURANCE

1. Miami-Dade Department of Regulatory and Economic Resources (RER)

E. MATERIAL CERTIFICATIONS


1. Notice of Acceptance No. **23-0523.01** issued to **Polymer Extrusion Technology, Inc.** dba Glasslam for their “**Glasslam Safety-Plus II Glass Interlayer**” dated 06/15/23, expiring on 08/07/28.

F. STATEMENTS

1. Statement letter of conformance, complying with **FBC 8th Edition (2023)**, and of no financial interest, dated September 07, 2023, issued by PPMF Inc., signed and sealed by Pedro M. De Figueiredo, P.E.

G. OTHERS

1. Notice of Acceptance No. **20-1013.16**, issued to Roatan Mahogany USA, Inc. for their Series “Swietenia Direct Set” Wood Fixed Window – L.M.I., approved on 01/07/21 and expiring on 01/23/25.


Manuel Pérez, P.E.
Product Control Examiner
NOA No. 23-0928.32
Expiration Date: January 23, 2025
Approval Date: November 16, 2023

GENERAL NOTES:

FLORIDA BUILDING CODE 2023 - 8th EDITION - HVHZ
LARGE & SMALL MISSILE IMPACT RATED

- 1- DEFINITION: THIS PRODUCT IS A FIXED MAHOGANY WINDOW;
DESIGNED, CONSTRUCTED AND ERECTED TO ENCLOSE AN AREA,
PROVIDING PROTECTION FROM HURRICANE FORCE WINDS WITHIN
THE ALLOWABLE DESIGNED PRESSURES AND LIMITATIONS STATED IN
THIS APPROVAL.
- 2- CODE: THIS PRODUCT HAS BEEN TESTED AND DESIGNED IN
ACCORDANCE WITH THE FLORIDA BUILDING CODE, HIGH VELOCITY
HURRICANE ZONES (HVHZ).
- 3- POSTING: A PERMANENT LEGIBLE DECAL SHALL BE PLACED AT A
READILY VISIBLE LOCATION STATING THE FOLLOWING:
- "ROATAN MAHOGANY USA, INC.- MIAMI - FLORIDA
LARGE MISSILE IMPACT RESISTANT
SWIETENIA SERIES
STOREFRONT / DIRECT SET WINDOW
MIAMI-DADE COUNTY PRODUCT APPROVED"
- 4- LOADS: DESIGNED LOAD CALCULATED BASED ON THE ASCE 7-22 AND
PROVIDED BY A PROFESSIONAL ARCHITECT OR ENGINEER FOR EACH
SPECIFIC PROJECT. THE CALCULATED DESIGNED PRESSURE MUST NOT
EXCEED THE ALLOWABLE PRESSURES HERE IN SPECIFIED. THE DESIGN
PRESSURES, AS DETERMINED FROM ASCE 7-22, ARE TO BE MULTIPLE
BY 0.6.
- 5- MATERIAL: ALL WOOD MATERIAL TO BE FABRICATED FROM KILN
DRIED MAHOGANY OR AS NOTED.
- 6- FASTENERS: ASSEMBLY SCREWS AND ANCHORS SHALL BE AS
SPECIFIED IN THE CURRENT SET OF DRAWINGS. INSTALLATION AND
LOADS AS PER THIS APPROVAL.
- 7- USE: IT SHALL BE THE RESPONSIBILITY OF THE CONTRACTOR,
ARCHITECT OR ENGINEER OF RECORD TO VERIFY THE FOLLOWING:
- 7.1- THE STABILITY OF THE STRUCTURE WHERE THE SHUTTER IS TO
BE ATTACHED INSURING PROPER ANCHORAGE.
- 7.2- THE SITE SPECIFIC PROJECT CRITERIA, SUCH AS BUT NOT LIMITED
TO, WINDLOADS, LOCAL CODE REQUIREMENTS, DESIGNED
PRESSURES ETC.
- 7.3- THAT THIS APPROVAL IS ADEQUATE TO THE SPECIFIC PROJECT.

TABLE OF CONTENTS:

SHEET	CONTENTS
1 OF 5	TYPICAL ELEVATIONS, DESIGN RATING, GENERAL NOTES
2 OF 5	TYPICAL CROSS SECTIONS, CONFIGURATIONS
3 OF 5	TYPICAL FRAME ANCHORAGE
4 OF 5	PRODUCT COMPONENTS AND BILL OF MATERIALS GLAZING OPTIONS
5 OF 5	2X6 AND 1X6 WOOD BUCK DESIGN

TYPICAL ELEVATIONS

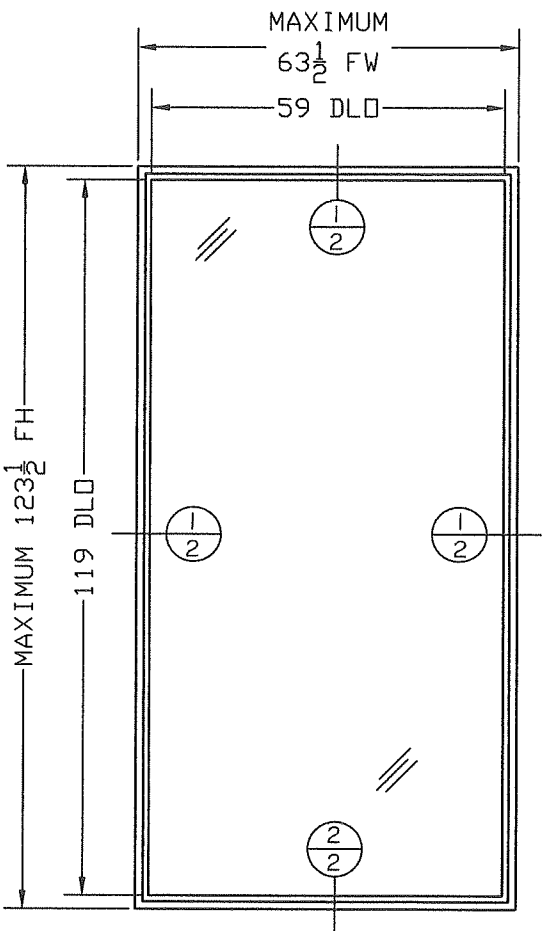
DESIGNED PRESSURE RATING

$P_d = \pm 70 \text{ PSF}$

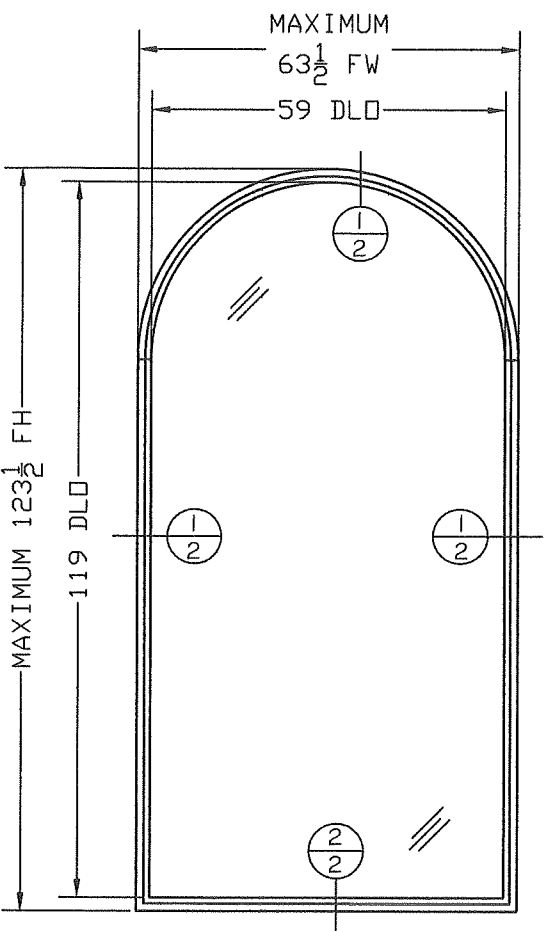
MAXIMUM FRAME SIZES

FINISHED WIDTH: FW= 63 1/2"

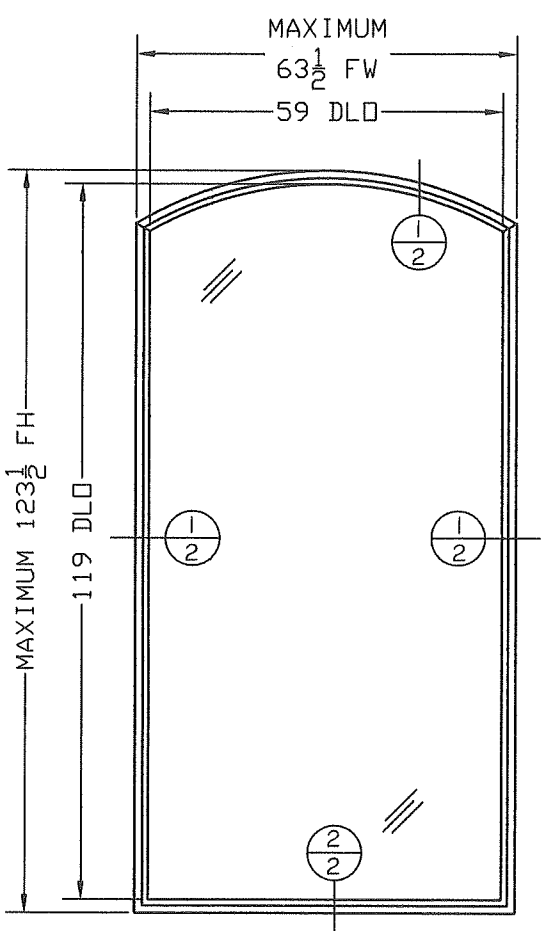
FINISHED HEIGHT: FH= 123 1/2"



TYPE 1
SQUARE
CONFIGURATION



TYPE 2
FULL ARCH
CONFIGURATION



TYPE 3
ELLIPTICAL
CONFIGURATION

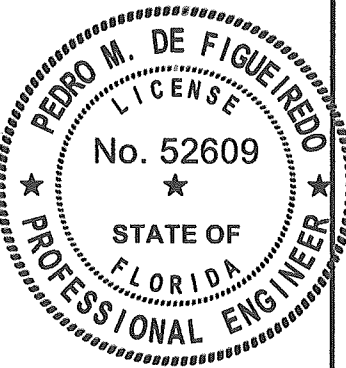
LEGEND
FH - FINISHED HEIGHT
FW - FINISHED WIDTH
DLO- DAY LIGHT OPENING

WOOD TYPE:
VERNACULAR NAME: GENUINE MAHOGANY
SCIENTIFIC NAME: SWIETENIA MACROPHYLLA G. KING
FAMILY: MELIACEAE
MINIMUM SPECIFIC GRAVITY: 0.45

** WOOD SPECIES WITH GREATER OR EQUAL SPECIFIC GRAVITY THAN 0.45 ARE ACCEPTABLE AS
ALTERNATE DOOR MATERIAL

GLASS TYPE (SEE SHEET 4 OF 5):
TYPE G1 - 9/16" LAMINATED LARGE MISSILE IMPACT
TYPE G2 - 1 3/16" IG LAMINATED LARGE MISSILE IMPACT

Pedro De Figueiredo
PE 52609
09/07/2023



PRODUCT CATEGORY: WINDOWS - FIXED
PRODUCT MATERIAL: WOOD / GLASS
IMPACT RATING: LARGE & SMALL MISSILE
SWIETENIA SERIES WINDOW
STOREFRONT / DIRECT SET WINDOW

MANUFACTURER:
ROATAN
MAHOGANY USA INC.
7005 N. WATERWAY DR. 302
MIAMI FLORIDA 33155

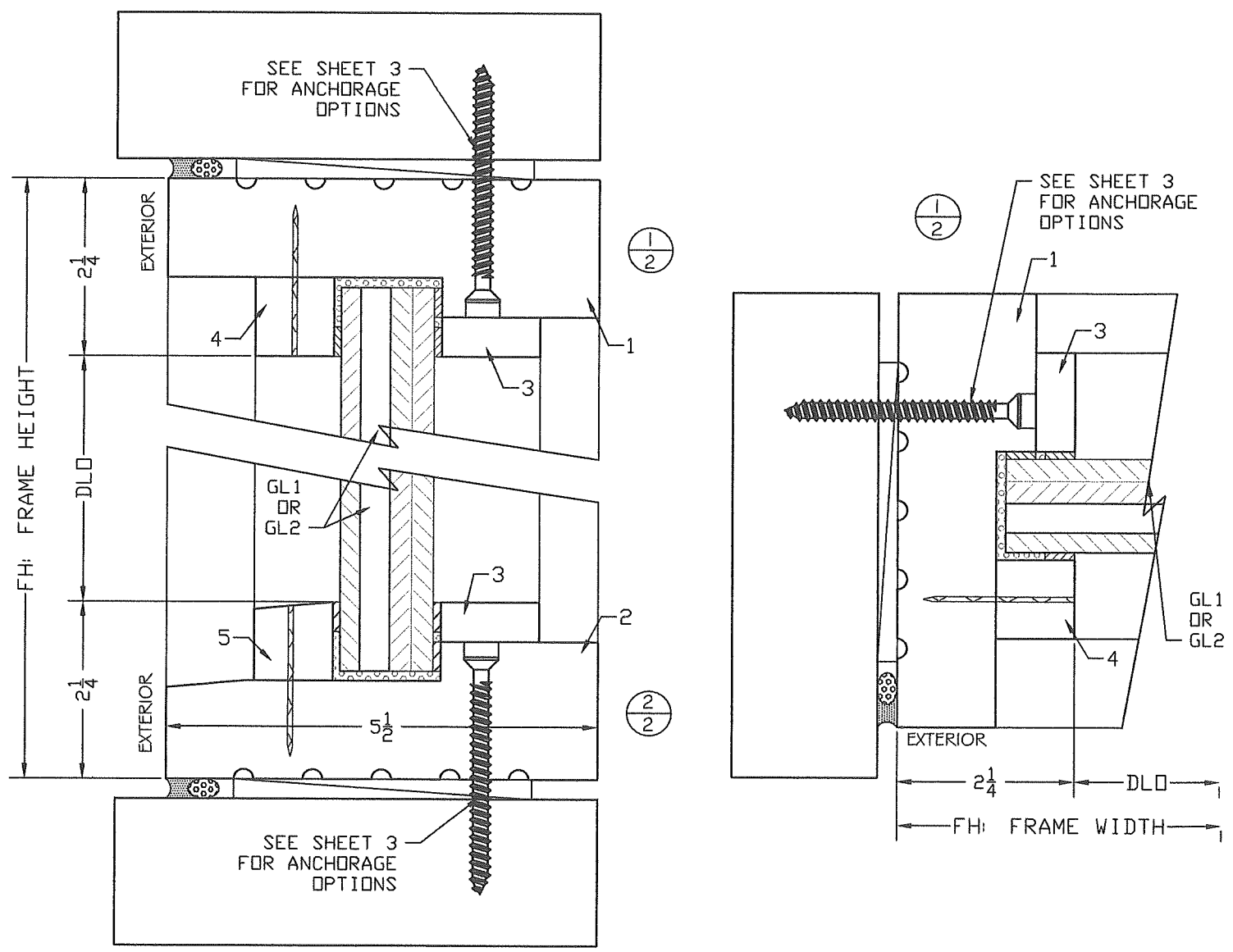
MIAMI-DADE BCCO:

PRODUCT REVISED
As complying with the Florida
Building Code
NOA-No. **23-0928.32**
Expiration Date: **01/23/2025**

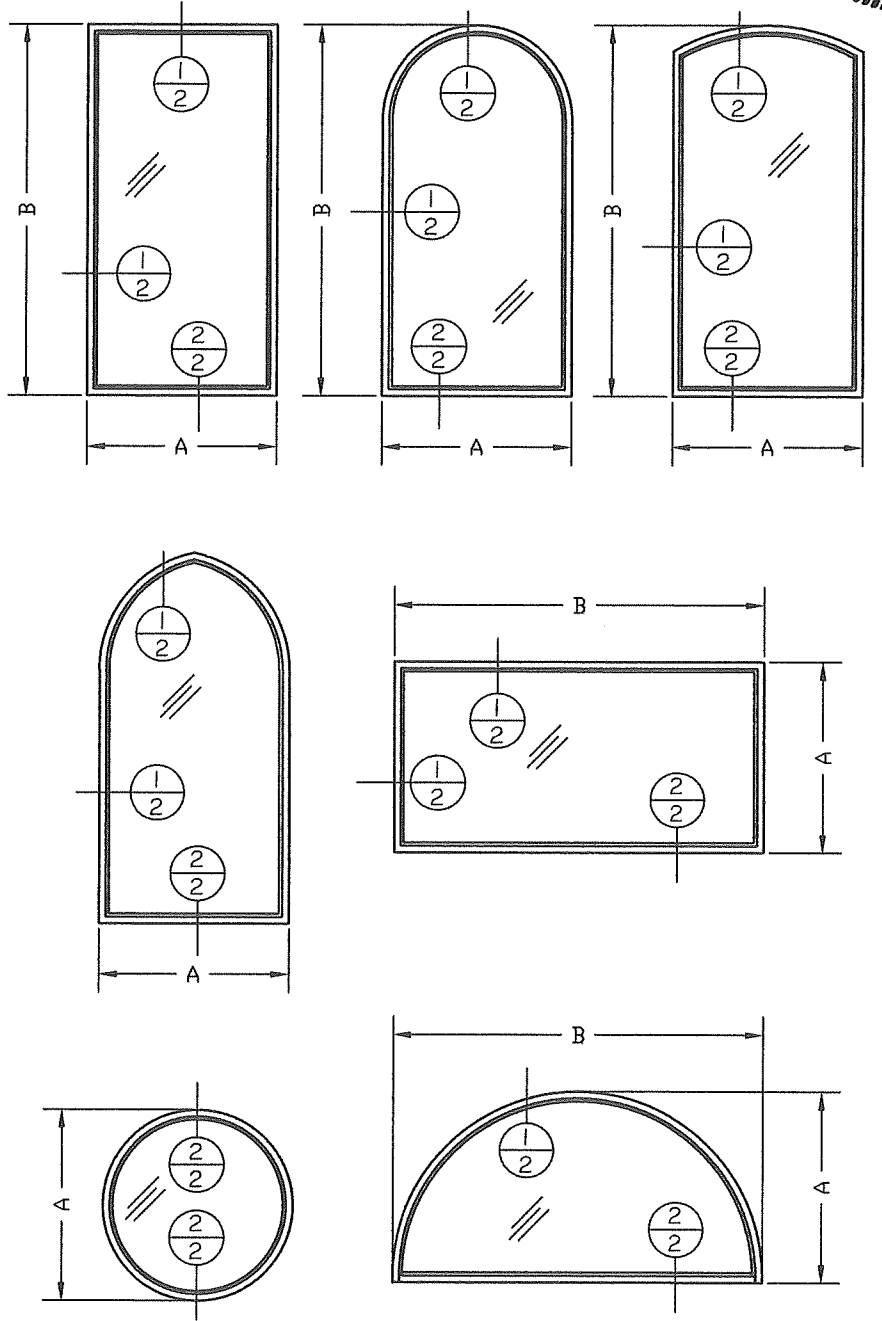
By: *Manuel Perez*
Miami-Dade Product Control

SCALE:
NA
DATE:
09/07/2023
DRAWING #
23-161
SHEET
1 OF 5

TYPICAL CROSS SECTIONS



OPTIONAL CONFIGURATIONS



Pedro De Figueiredo
PE 52609
09/07/2023

PEDRO M. DE FIGUEIREDO
LICENSE
No. 52609
STATE OF
FLORIDA
PROFESSIONAL ENGINEER

ENGINEERING SERVICES - CA 32459
9715 W. BROWARD BLVD.
PLANTATION, FL 33324
PPMF@AOL.COM
ENGINEER SEAL
PEDRO DE FIGUEIREDO
PE 52609



PRODUCT CATEGORY: WINDOWS - FIXED
PRODUCT MATERIAL: WOOD / GLASS
IMPACT RATING: LARGE & SMALL MISSILE
SWITENIA SERIES WINDOW
STOREFRONT / DIRECT SET WINDOW

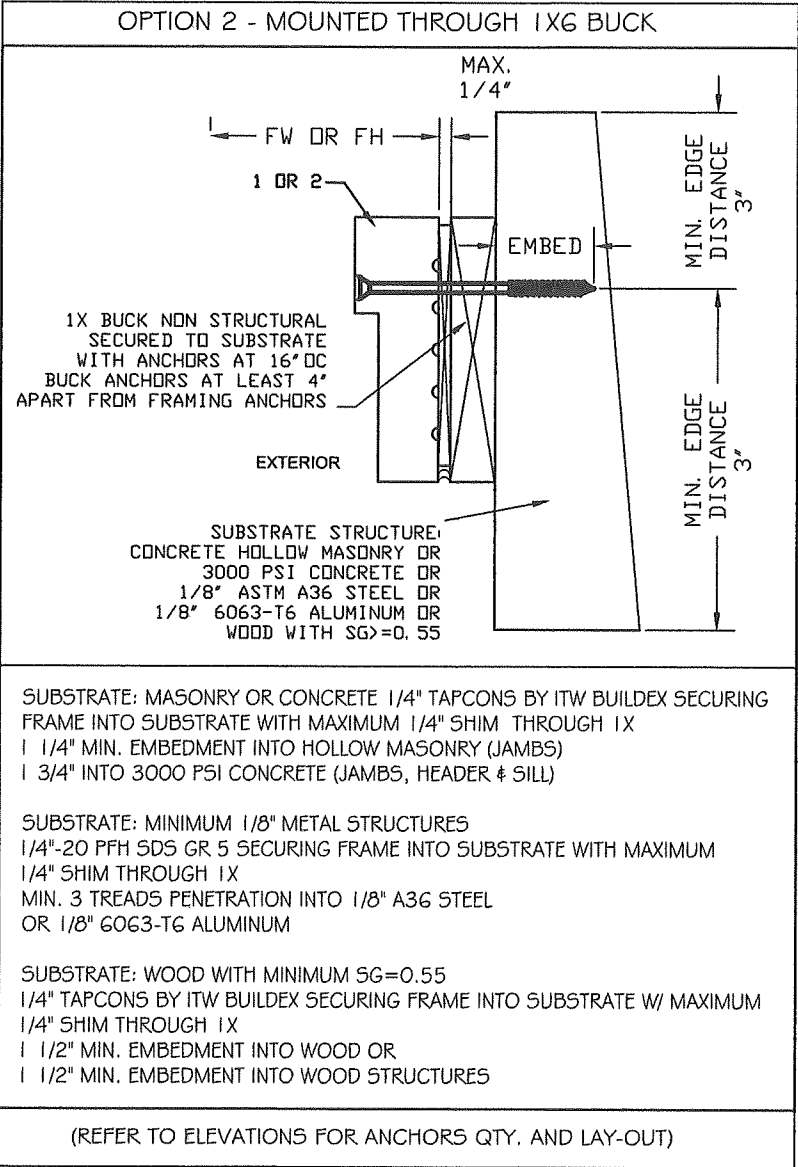
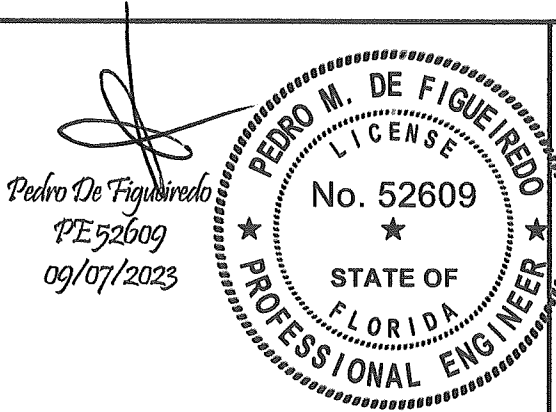
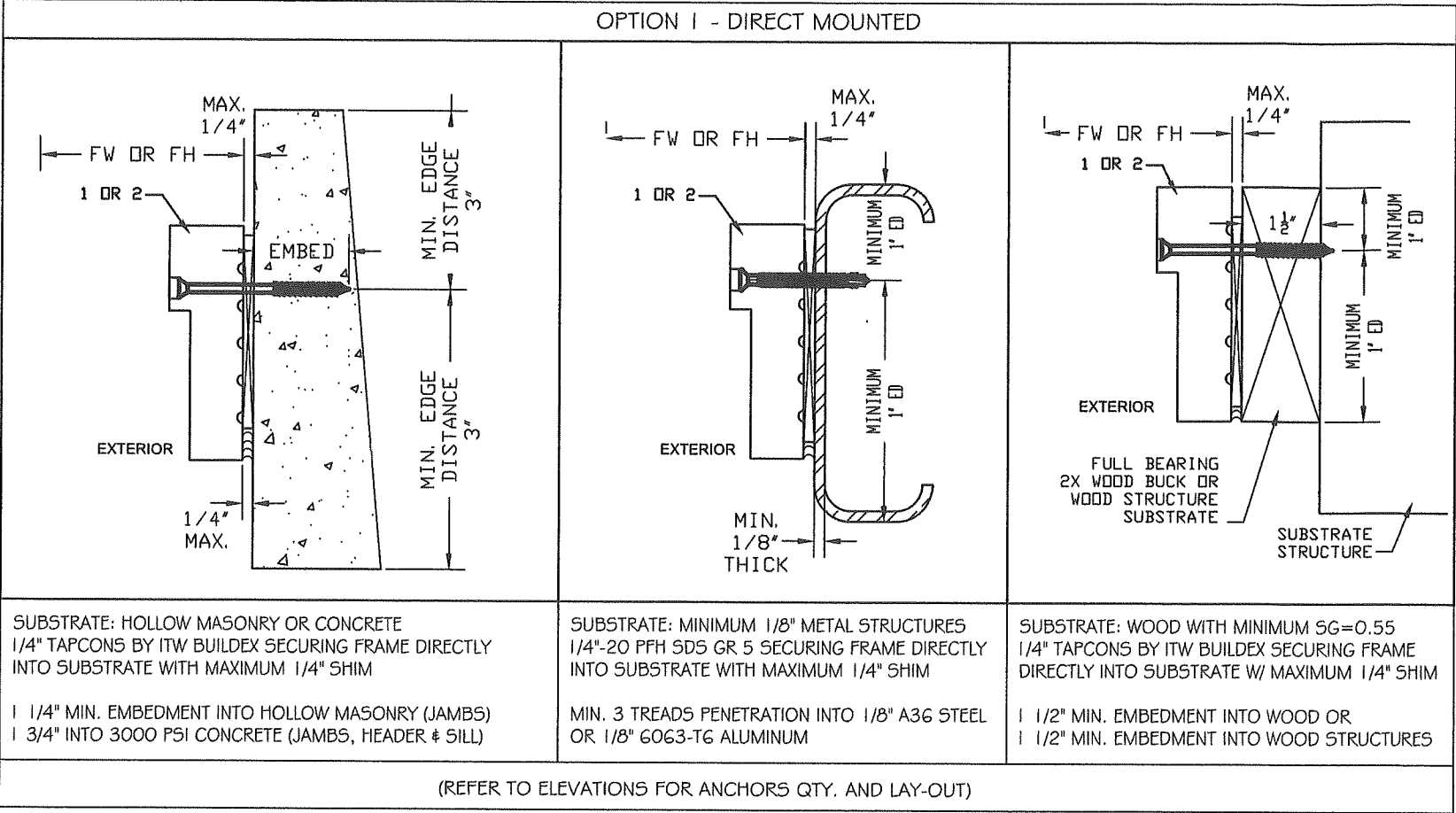
MANUFACTURER:
ROATAN
MAHOGANY USA INC.
7005 N. WATERWAY DR. 302
MIAMI FLORIDA 33155

MAXIMUM FRAME SIZES SHALL NOT EXCEED
SHORT DIMENSION: A= 63 1/2"
LARGE DIMENSION: B= 123 1/2"

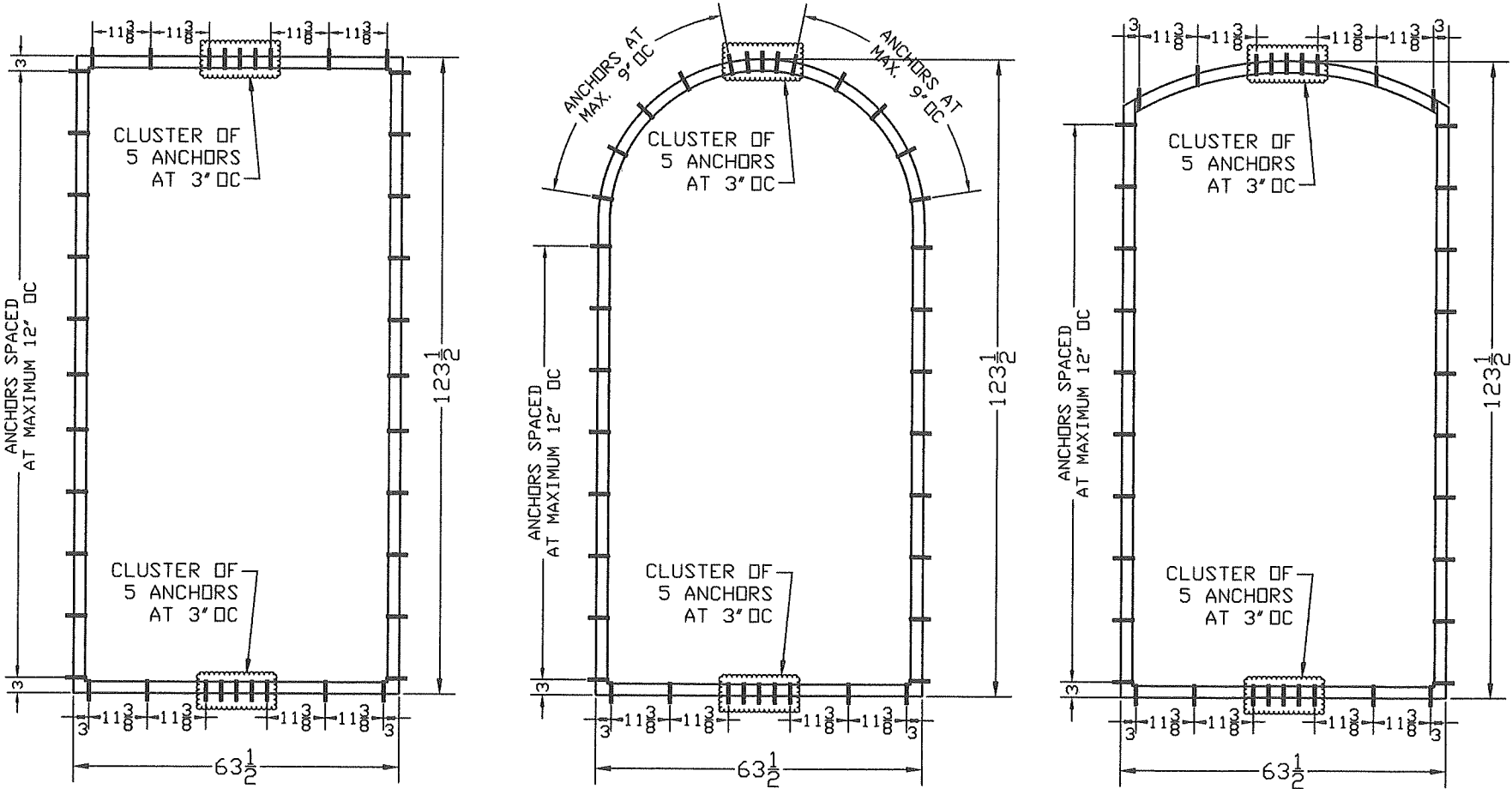
PRODUCT REVISED
As complying with the Florida
Building Code
NOA-No. **23-0928.32**
Expiration Date: **01/23/2025**
By: *Manuel Perez*
Miami-Dade Product Control

SCALE:
NA
DATE:
09/07/2023
DRAWING #
23-161
SHEET
2 OF 5

TYPICAL FRAME ANCHORAGE



TYPICAL ELEVATIONS ANCHORAGE LAY-OUT



MIAMI-DADE BCCO:

PRODUCT REVISED
As complying with the Florida Building Code
NOA-No. **23-0928.32**
Expiration Date: **01/23/2025**
By: *Manuel Perez*
Miami-Dade Product Control

ENGINEERING SERVICES - CA 32459
9715 W. BROWARD BLVD.
PLANTATION, FL 33324
PPMF@AOL.COM
ENGINEER SEAL
PEDRO DE FIGUEIREDO
PE 52609

PRODUCT CATEGORY: WINDOWS - FIXED
PRODUCT MATERIAL: WOOD / GLASS
IMPACT RATING: LARGE & SMALL MISSILE
SWITENIA SERIES WINDOW
STOREFRONT / DIRECT SET WINDOW

MANUFACTURER:
ROATAN
MAHOGANY USA INC.
7005 N. WATERWAY DR. 302
MIAMI FLORIDA 33155

SCALE:
NA

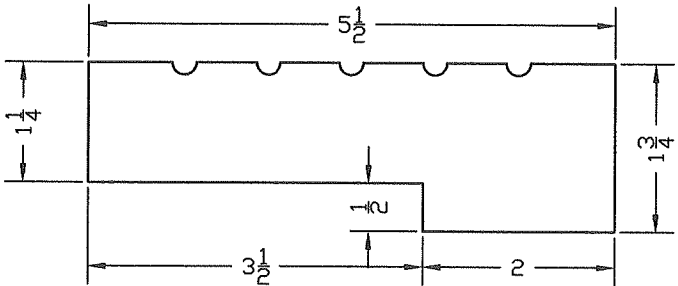
DATE:
09/07/2023

DRAWING #
23-161

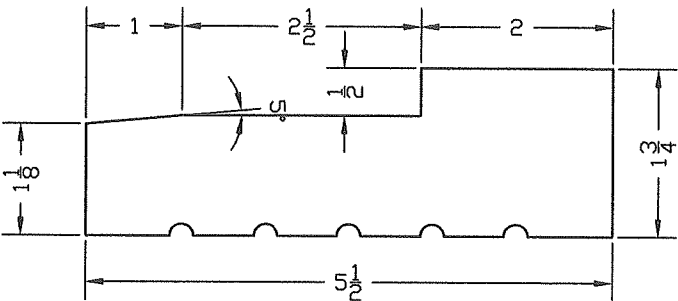
SHEET
3 OF 5

PRODUCT COMPONENTS AND BILL OF MATERIALS

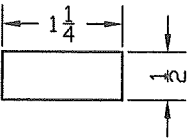
FRAME PARTS



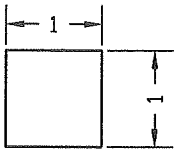
1- JAMBS AND HEADER



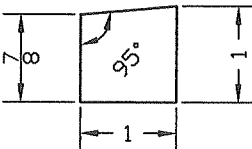
2- SILL



3- INTERIOR GLAZING STOP

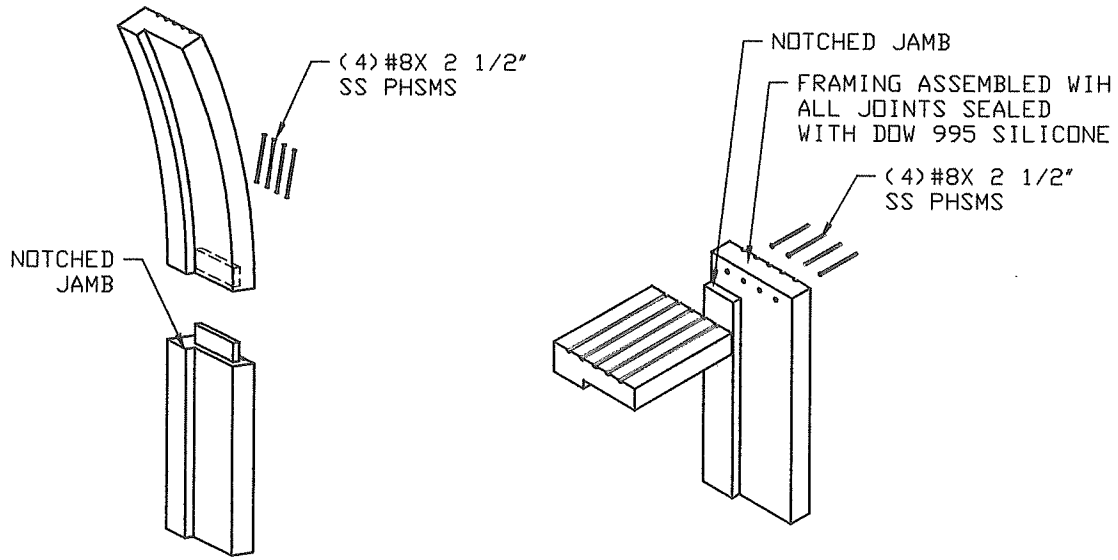


4- EXTERIOR GLAZING STOP JAMBS AND HEADER



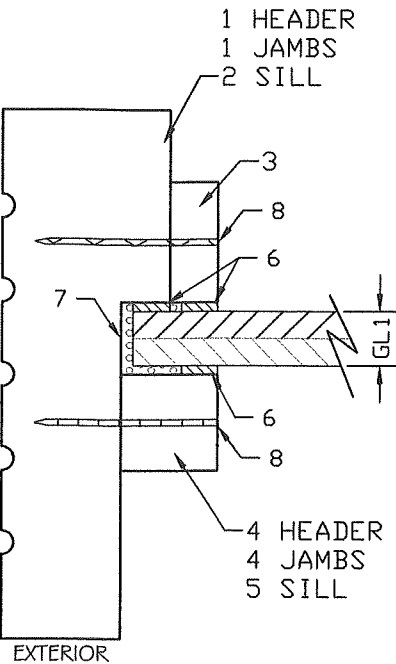
5- EXTERIOR GLAZING STOP SILL

TYPICAL CORNER FRAMING CONSTRUCTION

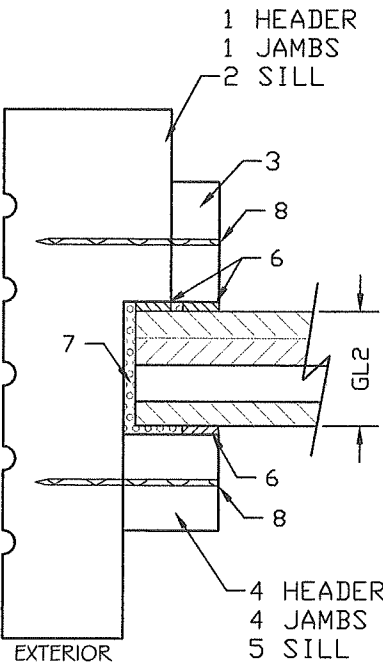


NOTE: AFTER FRAMING ASSEMBLAGE ALL JOINTS ARE TO BE SEALED WITH DOW 995 SILICONE.

GLAZING OPTIONS



GL1- 9/16" IMPACT GLASS COMPOSED OF:
1/4" HS OUTER LITE
0.10" GLASSLAM SAFETY PLUS II INTERLAYER
1/4" HS INNER LITE
MINIMUM GLAZING BITE: 3/4"



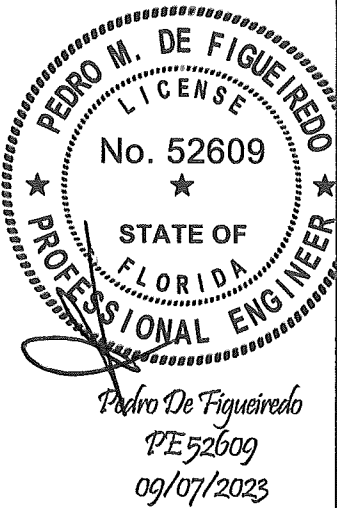
GL2- 1 3/16" IG IMPACT GLASS COMPOSED OF:
1/4" FULLY TEMPERED OUTER LITE
3/8" AIR SPACE WITH LAMATEK SIR SPACER
9/16" LAMINATED G1 LAMINATED GLAZING
MINIMUM GLAZING BITE: 3/4"

6- 1/8" X 3/8" LAMATEK GLAZING TAPE
7- DOW 995 SILICONE
8- 18GA X 2" BRAD NAILS SPACED AT 3"OC

BILL OF MATERIALS

ITEM#	DESCRIPTION	SIZE	REMARKS
1	JAMBS AND HEADER FRAMING	1.75" X 5.50"	** MAHOGANY
2	SILL FRAMING	1.75" X 5.50"	** MAHOGANY
3	INTERIOR GLAZING STOP	1.25" X 0.50"	** MAHOGANY
4	EXTERIOR GLAZING STOP	1.00" X 1.00"	** MAHOGANY
5	EXTERIOR GLAZING STOP SILL	1.00" X 1.00"	** MAHOGANY
6	GLAZING TAPE	----	LAMATEK
7	STRUCTURAL SILICONE	----	DOW 995
8	BRAD NAILS	18GA X 2"	---
GL1	1 3/16" IG IMPACT GLASS	60.5" X 120.5"	GLASSLAM INTERLAYER
GL2	9/16" IMPACT GLASS	60.5" X 120.5"	GLASSLAM INTERLAYER

** GENUINE MAHOGANY, SWietenia macrophylla G. KING OR EQUIVALENT WITH MINIMUM 0.45 SG



PRODUCT CATEGORY: WINDOWS - FIXED
PRODUCT MATERIAL: WOOD / GLASS
IMPACT RATING: LARGE & SMALL MISSILE
SWietenia SERIES WINDOW
STOREFRONT / DIRECT SET WINDOW

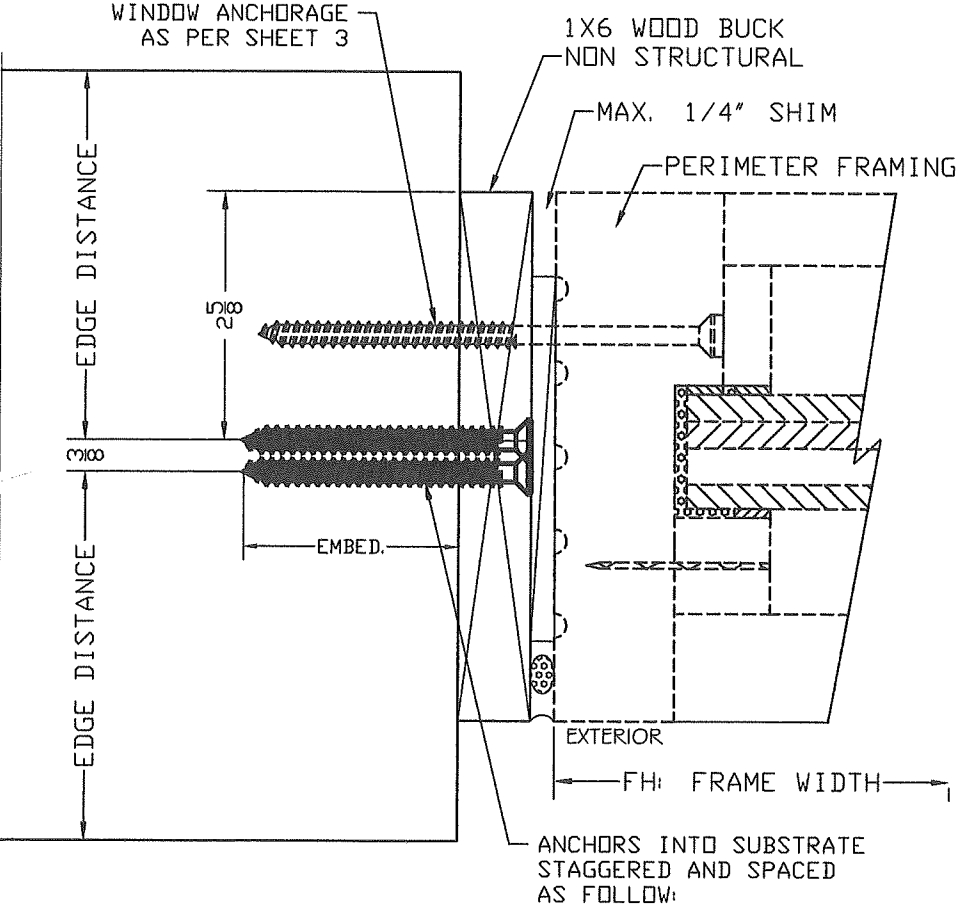
MANUFACTURER:
ROATAN
MAHOGANY USA INC.
7005 N. WATERWAY DR. 302
MIAMI FLORIDA 33155

MIAMI-DADE BCCO:

PRODUCT REVISED
As complying with the Florida Building Code
NOA-No. **23-0928.32**
Expiration Date: **01/23/2025**
By: *Manuel Perez*
Miami-Dade Product Control

SCALE: NA
DATE: 09/07/2023
DRAWING # 23-161
SHEET 4 OF 5

1X6 AND 2X6 WOOD BUCK TYPICAL ANCHORAGE



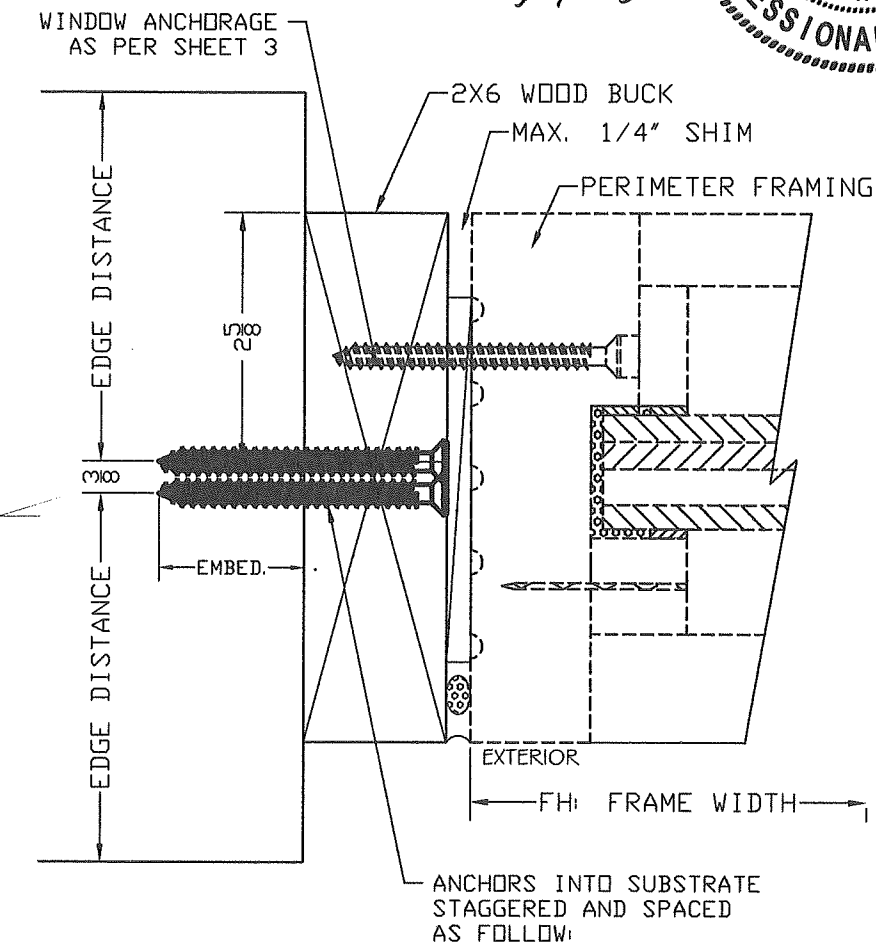
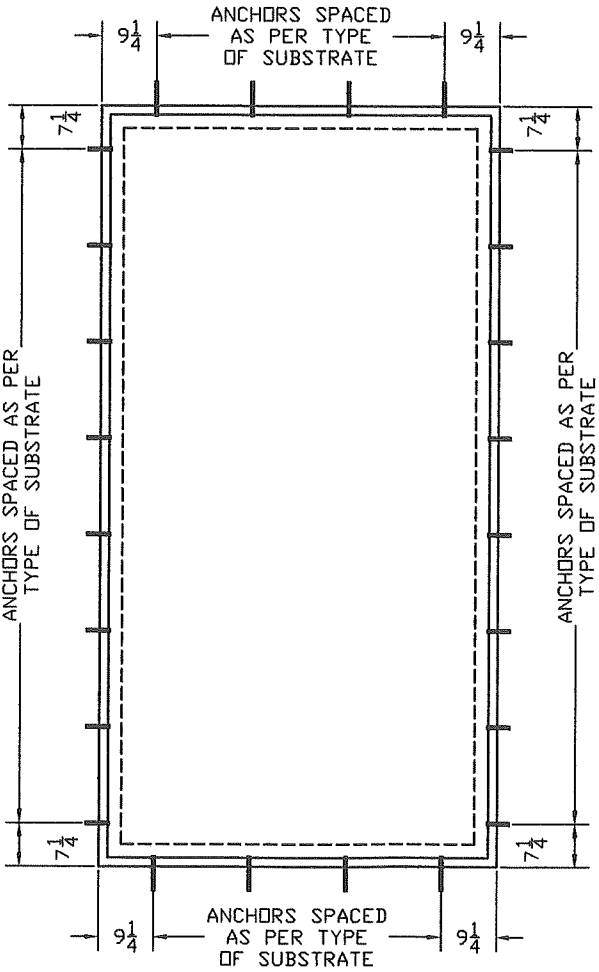
WOOD WINDOW FRAME SECURED DIRECTLY INTO SUBSTRATE

1/4" TAPCONS BY ITW BUILDEX SECURING 1X6 WOOD BUCK DIRECTLY INTO HOLLOW CMU - 16" OC

1/4" TAPCONS BY ITW BUILDEX SECURING 1X6 WOOD BUCK DIRECTLY 3000 PSI CONCRETE - 16" OC

1/4" TAPCONS BY ITW BUILDEX SECURING WOOD BUCK DIRECTLY WOOD STRUCTURE (SG<0.55) - 16" OC

1/4"-20 SD5 GRADE 5 SECURING WOOD BUCK DIRECTLY METAL STRUCTURE (SG<0.55) - 16" OC



WOOD WINDOW FRAME SECURED TO 2X6 WOOD BUCK

1/4" TAPCONS BY ITW BUILDEX SECURING WOOD BUCK DIRECTLY INTO HOLLOW CMU - 8" OC

1/4" TAPCONS BY ITW BUILDEX SECURING WOOD BUCK DIRECTLY 3000 PSI CONCRETE - 16" OC

1/4" TAPCONS BY ITW BUILDEX SECURING WOOD BUCK DIRECTLY WOOD STRUCTURE (SG<0.55) - 16" OC

1/4"-20 SD5 GRADE 5 SECURING WOOD BUCK DIRECTLY METAL STRUCTURE (SG<0.55) - 16" OC

Pedro De Figueiredo
PE 52609
09/07/2023

PEDRO M. DE FIGUEIREDO
LICENSE
No. 52609
STATE OF
FLORIDA
PROFESSIONAL ENGINEER



PRODUCT CATEGORY: WINDOWS - FIXED
PRODUCT MATERIAL: WOOD / GLASS
IMPACT RATING: LARGE & SMALL MISSILE
SWITENIA SERIES WINDOW
STOREFRONT / DIRECT SET WINDOW

MANUFACTURER:
ROATAN
MAHOGANY USA INC.
7005 N. WATERWAY DR. 302
MIAMI FLORIDA 33155

MIAMI-DADE BCCO:

PRODUCT REVISED
As complying with the Florida
Building Code
NOA-No. **23-0928.32**
Expiration Date: **01/23/2025**
By: *Manuel Perez*
Miami-Dade Product Control

SCALE:
NA

DATE:
09/07/2023

DRAWING #
23-161

SHEET
5 OF 5