



MIAMI-DADE COUNTY  
PRODUCT CONTROL SECTION  
11805 SW 26 Street, Room 208  
Miami, Florida 33175-2474  
T (786) 315-2590 F (786) 315-2599  
[www.miamidade.gov/economy](http://www.miamidade.gov/economy)

DEPARTMENT OF REGULATORY AND ECONOMIC RESOURCES (RER)  
BOARD AND CODE ADMINISTRATION DIVISION  
**NOTICE OF ACCEPTANCE (NOA)**

**Clopay Corporation**  
**8585 Duke Boulevard**  
**Mason, OH 45040**

**SCOPE:**

This NOA is being issued under the applicable rules and regulations governing the use of construction materials. The documentation submitted has been reviewed and accepted by Miami-Dade County RER-Product Control Section to be used in Miami Dade County and other areas where allowed by the Authority Having Jurisdiction (AHJ).

This NOA shall not be valid after the expiration date stated below. The Miami-Dade County Product Control Section (Miami Dade County) and/or the AHJ (in areas other than Miami Dade County) reserve the right to have this product or material tested for quality assurance purposes. If this product or material fails to perform in the accepted manner, the manufacturer will incur the expense of such testing and the AHJ may immediately revoke, modify, or suspend the use of product or material within their jurisdiction. RER reserves the right to revoke this acceptance, if it is determined by Miami Dade County Product Control Section that this product or material fails to meet the requirements of the applicable building code.

This product is approved as described herein, and has been designed to comply with the Florida Building Code, including High Velocity Hurricane Zone.

**DESCRIPTION: Commercial 1-3/4" Intellicore Insulated W6 DP36 Steel Sectional Garage Door up to 14'-2" Wide w/ Optional Impact Resistant Lites**

**APPROVAL DOCUMENT:** Drawing No. **104043**, titled "1-3/4" Intellicore Doors up to 14'2"W", sheets 1 through 3 of 3, dated 04/21/2014, with revision 10 dated 09/06/2023, prepared by Clopay Corporation, signed and sealed by Mark Westerfield, P.E., on 09/14/2023, bearing the Miami-Dade County Product Control revision stamp with the Notice of Acceptance number and expiration date by the Miami-Dade County Product Control Section.

**MISSILE IMPACT RATING: Large and Small Missile Impact Resistant**

**LABELING:** A permanent label with the manufacturer's name or logo, manufacturing address, model number, the positive and negative design pressure rating, indicate impact rated if applicable, installation instruction drawing reference number, approval number (NOA), the applicable test standards, and the statement reading 'Miami-Dade County Product Control Approved' is to be located on the door's side track, bottom angle, or inner surface of a panel.

**RENEWAL** of this NOA shall be considered after a renewal application has been filed and there has been no change in the applicable building code negatively affecting the performance of this product.

**TERMINATION** of this NOA will occur after the expiration date or if there has been a revision or change in the materials, use, and/or manufacture of the product or process. Misuse of this NOA as an endorsement of any product, for sales, advertising or any other purposes shall automatically terminate this NOA. Failure to comply with any section of this NOA shall be cause for termination and removal of NOA.

**ADVERTISEMENT:** The NOA number preceded by the words Miami-Dade County, Florida, and followed by the expiration date may be displayed in advertising literature. If any portion of the NOA is displayed, then it shall be done in its entirety.

**INSPECTION:** A copy of this entire NOA shall be provided to the user by the manufacturer or its distributors and shall be available for inspection at the job site at the request of the Building Official.

This NOA revises NOA #20-0922.38 and consists of this page 1 and evidence pages E-1, E-2 and E-3, as well as approval document mentioned above.

The submitted documentation was reviewed by **Helmy A. Makar, P.E., M.S.**



*Helmy A. Makar*  
11/02/2023

NOA No 23-0928.40  
Expiration Date: 07/10/2024  
Approval Date: 11/02/2023  
Page 1

**NOTICE OF ACCEPTANCE: EVIDENCE SUBMITTED**

**1. Evidence submitted under previous NOA's**

**A. DRAWINGS**

1. Drawing No. **104043**, titled "1-3/4" Intellicore Doors up to 14'2"W", sheets 1 through 3 of 3, dated 04/21/2014, with revision 07 dated 2/2015, prepared by Clopay Building Products Company, signed and sealed by Mark Westerfield, P.E.  
*"Submitted under NOA #15-0225.23"*
2. Drawing No. **104043**, titled "1-3/4" Intellicore Doors up to 14'2"W", sheets 1 through 3 of 3, dated 04/21/2014, with revision 8 dated 7/2017, prepared by Clopay Building Products Company, signed and sealed by Mark Westerfield, P.E.  
*"Submitted under NOA # 17-0809.15"*
3. Drawing No. **104043**, titled "1-3/4" Intellicore Doors up to 14'2"W", sheets 1 through 3 of 3, dated 04/21/2014, with revision 8 dated 7/2017, prepared by Clopay Building Products Company, signed and sealed by Mark Westerfield, P.E. on 05/06/2019.  
*"Submitted under NOA # 19-0514.02"*

**B. TESTS**

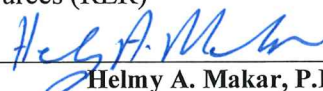
1. Test reports on 1) Uniform Static Air Pressure Test, Loading per FBC TAS 202-94  
2) Large Missile Impact Test per FBC, TAS 201-94  
3) Cyclic Wind Pressure Loading per FBC, TAS 203-94  
4) Forced Entry Test, per FBC, TAS 202-94  
5) Tensile Test per ASTM E8  
Along with marked-up drawings and installation diagram of 14'2"x 8', 27ga steel garage door Model 3717W6 with Lexan MR10 windows, prepared by American Test Lab, Inc., Test Report No. **ATLNC 0203.01-14**, dated 02/20/2014 and Addendum to Test Report No. **ATLNC 0203.01-14**, dated 06/05/2014, signed and sealed by David W. Johnson, P.E.  
*"Submitted under NOA # 14-0505.10"*
2. Test reports on 1) Uniform Static Air Pressure Test, Loading per FBC TAS 202-94  
2) Large Missile Impact Test per FBC, TAS 201-94  
3) Cyclic Wind Pressure Loading per FBC, TAS 203-94  
4) Forced Entry Test, per FBC, TAS 202-94  
5) Tensile Test per ASTM E8  
Along with marked-up drawings and installation diagram of 16'2"x 8', 27ga steel garage door Model GD2LPW8 with MAK SL and/or MAK 15 windows, prepared by American Test Lab, Inc., Test Report No. **ATLNC 1105-01-13**, dated 01/14/2014, signed and sealed by David W. Johnson, P.E.  
*"Submitted under NOA # 14-0505.10"*
3. Test report on Salt Spray per ASTM B117 of painted G40 galvanized coated panels, prepared by Stork Materials Technology, Test Report No. **30160-04-63365**, dated 01/26/2005, signed by John D. Lee, P.E. *"Submitted under NOA # 14-0505.10"*

**C. CALCULATIONS**

1. Jamb anchor calculations prepared by Clopay Building Products Company, dated 04/17/2014, signed and sealed by Mark Westerfield, P.E. *"Submitted under NOA # 14-0505.10"*

**D. QUALITY ASSURANCE**

1. Miami-Dade Department of Regulatory and Economic Resources (RER)

  
\_\_\_\_\_  
Helmy A. Makar, P.E., M.S.  
Product Control Section Supervisor  
NOA No 23-0928.40  
Expiration Date: 07/10/2024  
Approval Date: 11/02/2023



**NOTICE OF ACCEPTANCE: EVIDENCE SUBMITTED**

**E. MATERIAL CERTIFICATIONS**

1. Notice of Acceptance No. **15-0915.08** issued to SABIC Innovative Plastics, US LLC for their Lexan Polycarbonate Sheet Products, approved on 12/10/2015, expiring on 07/17/2018.
2. Notice of Acceptance No. **17-0410.01** issued to Covestro LLC for their Makrolon Polycarbonate Sheets, approved on 06/08/2017, expiring on 08/27/2022.
3. Test report on Surface Burning Characteristics, per ASTM E84 of the polyurethane, Test Report No. **100585112SAT-001A**, prepared by Intertek Testing Services, NA, Inc., dated 12/13/2011, signed by Servando Romo.

**F. STATEMENTS**

1. Statement letter of code conformance with the 2010 and the 5<sup>th</sup> edition (2014) FBC issued by Clopay Building Products Company, dated 02/18/2015, signed and sealed by Scott Hamilton, P.E. ***"Submitted under NOA #15-0225.23"***
2. Statement letters of code conformance to 2010 FBC and no financial interest, both issued by Clopay Building Products Company, dated 04/23/2014, signed and sealed by Mark Westerfield, P.E. ***"Submitted under NOA # 14-0505.10"***
3. Statement letter of code conformance to 2010, 5<sup>th</sup> Edition (2014) and 6<sup>th</sup> Edition (2017) FBC issued by Clopay Building Products Company, dated 08/02/2017, signed and sealed by Mark Westerfield, P.E. ***"Submitted under NOA # 17-0809.15"***
4. Statement letter of code conformance to 6<sup>th</sup> edition (2017) FBC and Statement letter of no financial interest issued by Clopay Building Products Company, dated 05/06/2019, signed and sealed by Mark Westerfield, P.E. ***"Submitted under NOA # 19-0514.02"***

**2. EVIDENCE SUBMITTED UNDER PREVIOUS APPROVAL # 20-0922.38**

**A. DRAWINGS**

1. Drawing No. **104043**, titled "1-3/4" Intellicore Doors up to 14'2"W", sheets 1 through 3 of 3, dated 04/21/2014, with revision 9 dated 08/28/2020, prepared by Clopay Building Products Company, signed and sealed by Mark Westerfield, P.E.

**B. TESTS**

1. None.

**C. CALCULATIONS**

1. None.

**D. QUALITY ASSURANCE**


1. Miami-Dade Department of Regulatory and Economic Resources (RER)

**E. MATERIAL CERTIFICATIONS**

1. None.

**F. STATEMENTS**

1. Statement letter of code conformance to 7<sup>th</sup> edition (2020) FBC and Statement letter of no financial interest issued by Clopay Building Products Company, dated 09/15/2020, signed and sealed by Mark Westerfield, P.E.

  
\_\_\_\_\_  
**Helmy A. Makar, P.E., M.S.**  
**Product Control Section Supervisor**  
**NOA No 23-0928.40**  
**Expiration Date: 07/10/2024**  
**Approval Date: 11/02/2023**

**NOTICE OF ACCEPTANCE: EVIDENCE SUBMITTED**

**3. NEW EVIDENCE SUBMITTED**

**A. DRAWINGS**

- 1. Drawing No. 104043, titled "1-3/4" Intellicore Doors up to 14'2"W", sheets 1 through 3 of 3, dated 04/21/2014, with revision 10 dated 09/06/2023, prepared by Clopay Corporation, signed and sealed by Mark Westerfield, P.E., on 09/14/2023.*

**B. TESTS**

- 1. None.*

**C. CALCULATIONS**

- 1. None.*

**C. QUALITY ASSURANCE**


- 1. Miami-Dade Department of Regulatory and Economic Resources (RER)*

**E. MATERIAL CERTIFICATIONS**

- 1. None.*

**F. STATEMENTS**

- 1. Statement letter of code conformance to 7<sup>th</sup> edition (2020) and 8<sup>TH</sup> Edition 92023) of the FBC issued by Clopay Corporation, dated 09/15/2023, signed and sealed by Mark Westerfield, P.E.*

  
\_\_\_\_\_  
Helmy A. Makar, P.E., M.S.  
Product Control Section Supervisor  
NOA No 23-0928.40  
Expiration Date: 07/10/2024  
Approval Date: 11/02/2023



CLOPAY / IDEAL / HOLMES  
3717 / C7X17 / -- / 27GA 1.75" THICK MINOR RIB  
3718 / C7X18 / -- / 27GA 1.75" THICK FLUSH  
3720 / C7X20 / 240U / 27GA 2" THICK MINOR RIB  
3722 / COX22 / -- / 20GA 2" THICK FLUSH  
3724 / C7X24 / 244U / 24GA 2" THICK MINOR RIB

SHEET:  
1 OF 3

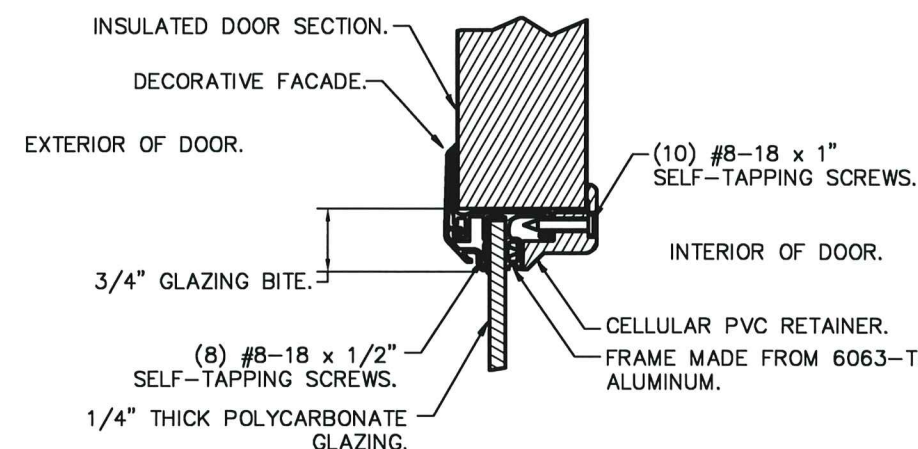
REVISIONS

REV. NO.	ZONE:	DATE:	ECN NO.	APPVD:	DESCRIPTION
04	-	4/21/14	-	MWW	REVISED LAYOUT; ADDED IMPACT RESISTANT LITES.
05	-	5/30/14	-	-	MAT. NOTES & GLASS BITE ADDED IMPACT WINDOW CROSS SECTION
06	-	6/13/14	-	-	CLARIFY IMPACT WINDOW FASTENER SIZE AND QUANTITY
07	-	2/2015	-	SH	ADDED CODE COMPLIANCE STATEMENT.
08	-	7/2017	-	SH	UPDATED CODE COMPLIANCE STATEMENT TO ADD 6TH EDITION FBC.
09	-	8/28/20	-	SH	UPDATED TITLE BLOCK AND CODE COMPLIANCE STATEMENT TO 7TH
10	-	9/6/23	-	JDW	UPDATED CODE COMPLIANCE STATEMENT TO ADD 8TH EDITION FBC.

IMPACT-RESISTANT CONSTRUCTION:

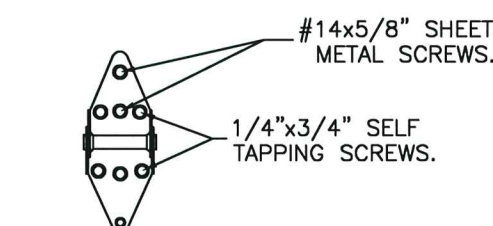
SOLID DOORS (NO GLAZING) OR DOORS WITH OPTIONAL IMPACT-RESISTANT GLAZING ARE IMPACT-RESISTANT. OPTIONAL IMPACT RESISTANT ASSEMBLY CONSISTS OF ALUMINUM FRONT FRAME AND SABIC IP LEXAN 9034 (VERSIONS ALSO APPROVED: MR10, 9030, 90318, 90316, 90317, 90311, 90314, 90355) OR BAYER MAKROLON GP (VERSIONS ALSO APPROVED: SL, AR, 15), APPROVED CC1 PLASTICS IN ACCORDANCE WITH IBC/FBC 2606 AND APPROVED C1 PLASTICS IN ACCORDANCE WITH FBC 2612. THE ENTIRE DOOR ASSEMBLY INSTALLED IN COMPLIANCE WITH THIS SECTION MEETS THE WIND LOAD REQUIREMENTS OF THE FLORIDA BUILDING CODE AND INTERNATIONAL BUILDING CODE AND IS LARGE- AND SMALL-MISSILE IMPACT RESISTANT.

SECTION B-B (IMPACT-RESISTANT GLAZING OPTION)



IMPACT-RESISTANT GLAZING DETAILS

DOOR HEIGHT 'A'	NUMBER OF SECTIONS
UP TO 8'-0"	4
8'-3" THRU 10'-0"	5
10'-3" THRU 12'-0"	6
12'-3" THRU 14'-0"	7
14'-3" THRU 16'-0"	8
16'-3" THRU 18'-0"	9



14 GA. (MIN.) INTERMEDIATE HINGE  
VIEW "C"

SNAP LATCH ENGAGES  
ONTO VERTICAL TRACK.  
ONE SNAP LATCH ON  
EACH SIDE OF DOOR.

OUTSIDE  
KEYED  
HANDLE.

INSIDE HANDLE

OUTSIDE KEYED LOCK WITH  
SNAP LATCH LOCK OPTION.

OUTSIDE  
HANDLE.

LOCK BAR  
ENGAGES IN  
TRACK ON  
EACH SIDE  
OF DOOR.

OUTSIDE KEYED LOCK WITH  
LOCK BAR LOCKING.

DESIGN LOADS: +36.0 P.S.F. & -40.0 P.S.F.

Unless Stated Otherwise  
TOLERANCES are  
.0 = ±.031  
.00 = ±.015  
.000 = ±.005  
.0000 = ±.001  
Degrees = ±1/2°

Unless Stated Otherwise  
DIMENSIONS ARE IN INCHES.

**Clopay**  
CORPORATION

8585 Duke Boulevard  
Mason, OH 45040 USA  
Tel. No. 513-770-4800  
Fax No. 513-770-4853

DESCRIPTION: 1-3/4" INTELLICORE DOORS UP TO 14'2"W (SEE TABLE)

DRAWN BY: SH

DATE: 2/10/14

SCALE: NTS

DWG. B

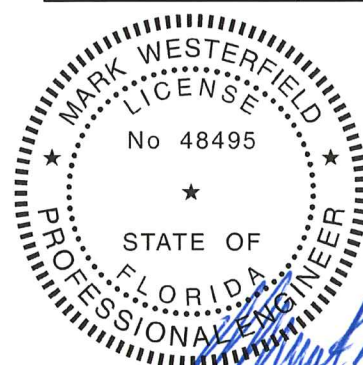
CHECKED BY: MWW

DATE: 4/21/14

SHEET 1 OF 3

DWG. NO.: 104043

VER: M-D



DESIGN ENGINEER:  
MARK WESTERFIELD, P.E.  
FLORIDA P.E. #48495

PRODUCT REVISED  
as complying with the Florida  
Building Code  
Acceptance No. 23-0928.40  
Expiration Date 07/10/2024  
By *Heidi A. McLean*  
Miami Data Product Control

MANUFACTURING PRODUCT CODE

C-DSIU-1D477

PART NO.: N/A

WINDLOAD RATING

W6 DP36



CLOPAY / IDEAL / HOLMES  
3717 / C7X17 / -- / 27GA 1.75" THICK MINOR RIB  
3718 / C7X18 / -- / 27GA 1.75" THICK FLUSH  
3720 / C7X20 / 240U / 27GA 2" THICK MINOR RIB  
3722 / COX22 / -- / 20GA 2" THICK FLUSH  
3724 / C7X24 / 244U / 24GA 2" THICK MINOR RIB

SHEET:  
2 OF 3

REVISIONS

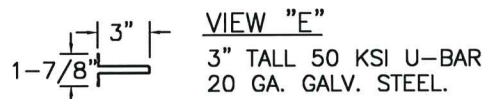
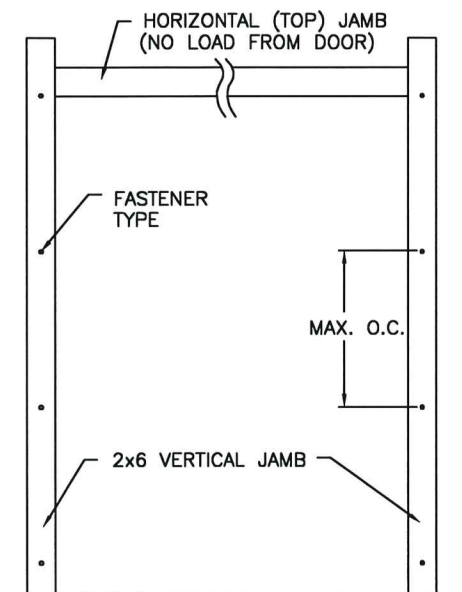
REV. NO.	ZONE:	DATE:	ECN NO.	APPVD:	DESCRIPTION
10	-	-	-	-	SEE REVISION HISTORY ON SHEET ONE.

JAMB TO SUPPORTING STRUCTURE ATTACHMENT

NOTES:

1. ALL THE LOAD FROM THE DOOR IS TRANSFERRED TO THE TRACK AND THEN FROM THE TRACK TO THE 2x6 VERTICAL SYP (GRADE #2 OR BETTER) JAMBS. NO LOAD FROM THE DOOR IS TRANSFERRED TO THE HORIZONTAL (TOP) JAMB.
2. EACH VERTICAL JAMB SEES A MAXIMUM DESIGN LOAD OF +252 LB & -280 LB. PER LINEAR FOOT OF JAMB.
3. ALL JAMB FASTENERS MAY BE (BUT ARE NOT REQUIRED TO BE) COUNTERSUNK TO PROVIDE A FLUSH MOUNTING SURFACE.
4. A 1/3 STRESS INCREASE FOR WIND LOAD WAS NOT USED IN THE CALCULATION OF ALLOWABLE LOADS FOR ANCHORS AND FASTENERS FOR STEEL, CONCRETE AND MASONRY.

NOTE: 2x6 WOOD JAMBS ARE NOT REQUIRED WITH CONTINUOUS ANGLE MOUNT TRACK. HOWEVER, IF DESIRED ON STEEL JAMBS OR CONCRETE OR BLOCK WALLS, APPROVED FASTENERS AS DETAILED BELOW SHOULD BE INCREASED IN LENGTH BY 1-1/2" AND INSTALLED DIRECTLY THROUGH THE ANGLE AND 2x6 WOOD JAMBS INTO THE STEEL JAMBS OR CONCRETE OR BLOCK WALLS. ANCHORS CAN BE (BUT ARE NOT REQUIRED TO BE) COUNTERSUNK TO PROVIDE A FLUSH MOUNTING SURFACE. CONTINUOUS ANGLE TRACK CAN BE ANCHORED DIRECTLY TO GROUT REINFORCED BLOCK WALL OR 3,000 PSI MIN. CONCRETE COLUMN OR STEEL JAMBS.

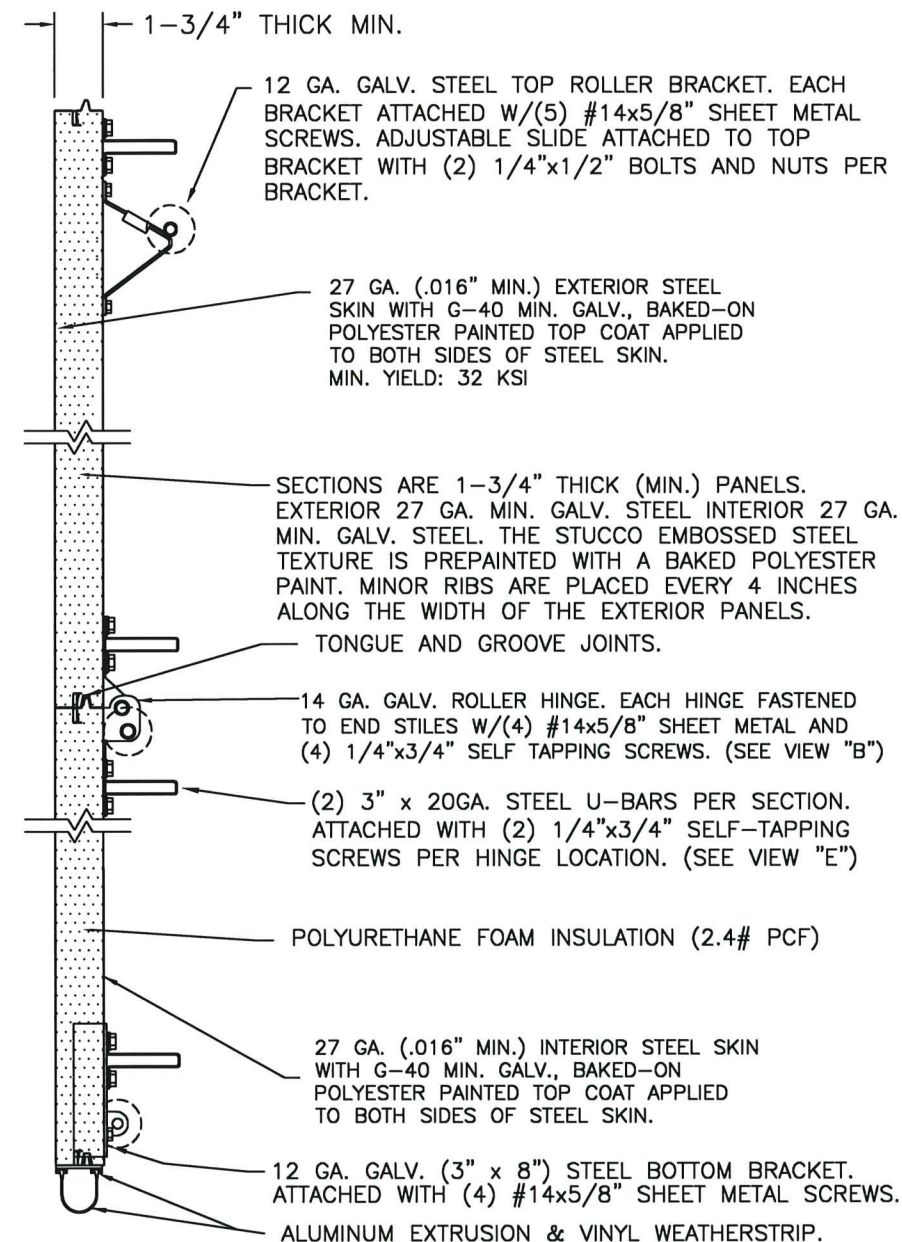


PRODUCT REVISED  
as complying with the Florida  
Building Code  
Acceptance No. 23-0924.40  
Expiration Date 07/19/2024  
By *[Signature]*  
Miami Data Product Control

FASTENER ATTACHMENT TO SUPPORTING STRUCTURE SCHEDULES

BUILDING TYPE	FASTENER TYPE	MAXIMUM ON-CENTER DISTANCE BETWEEN FASTENERS*	STEEL WASHERS REQUIRED?
HOLLOW BLOCK WALL	1/4" x 1-1/4" MIN. EMBED ULTRACON CONCRETE ANCHOR	6-1/2"	1" O.D.
GROUT FILLED BLOCK WALL	1/4" x 1-3/4" MIN. EMBED ULTRACON CONCRETE ANCHOR	10-3/4"	1" O.D.
2000 PSI MIN. CONCRETE	1/4" x 1" MIN. EMBED ULTRACON CONCRETE ANCHOR	9-1/2"	1" O.D.
2000 PSI MIN. CONCRETE	1/4" x 1" MIN. EMBED TAPCON CONCRETE ANCHOR	8"	1" O.D.
2000 PSI MIN. CONCRETE	3/8" x 1-3/4" MIN. EMBED WEJ-IT ANKR TITE SLEEVE ANCHOR	20"	INCLUDED
4000 PSI MIN. CONCRETE	3/8" x 1-3/4" MIN. EMBED WEJ-IT ANKR TITE SLEEVE ANCHOR	24"	INCLUDED
WOOD FRAME (SYP 0.55 SG)	1/2" x 3" LAG SCREW (ASTM A307, GRADE A) 1-5/8" EMBED INTO STRUCTURE	21-1/2"	1" O.D.
14GA STEEL (0.060" MIN.)	1/4"-14 x 1" ITW BUILDDEX TEKS SELF-DRILLING FASTENER	9"	1" O.D.
12GA STEEL (0.105" MIN.)	1/4"-14 x 1" ITW BUILDDEX TEKS SELF-DRILLING FASTENER	15-3/4"	1" O.D.
1/8" STEEL	1/4"-14 x 1" ITW BUILDDEX TEKS SELF-DRILLING FASTENER	18-3/4"	1" O.D.

\* FIRST (BOTTOM) ANCHOR STARTING AT NO MORE THAN HALF OF THE MAXIMUM ON-CENTER DISTANCE. HIGHEST ANCHOR INSTALLED AT LEAST AS HIGH AS THE DOOR OPENING.  
CLOPAY DOES NOT SUPPLY JAMB ATTACHMENT FASTENERS.  
MINIMUM DISTANCE BETWEEN CENTER OF ANCHOR AND EDGE OF CONCRETE BLOCK: 2-1/2", EXCLUDING STUCCO THICKNESS.



SECTION A-A (SIDE VIEW)

DESIGN LOADS: +36.0 P.S.F. & -40.0 P.S.F.

Unless Stated Otherwise  
TOLERANCES are  
.0 = ±.031  
.00 = ±.015  
.000 = ±.005  
.0000 = ±.001  
Degrees = ±1/2°  
Unless Stated Otherwise  
DIMENSIONS ARE IN INCHES.

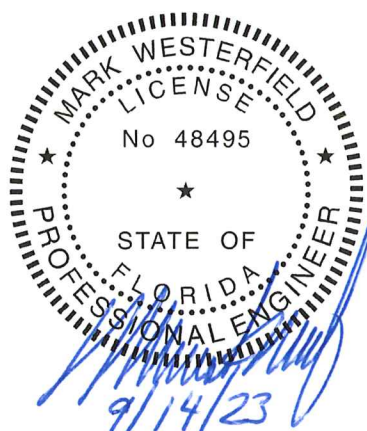
**Clopay**  
CORPORATION  
8585 Duke Boulevard  
Mason, OH 45040 USA  
Tel. No. 513-770-4800  
Fax No. 513-770-4853

DESCRIPTION: 1-3/4" INTELICORE DOORS UP TO 14'2"W (SEE TABLE)

DRAWN BY: SH DATE: 2/10/14 SCALE: NTS DWG. B  
CHECKED BY: MWW DATE: 4/21/14 SHEET 2 OF 3  
DWG. NO.: 104043 VER: M-D

MANUFACTURING PRODUCT CODE  
C-DSIU-1D477  
PART NO.: N/A

WINDLOAD RATING  
W6 DP36



DESIGN ENGINEER:  
MARK WESTERFIELD, P.E.  
FLORIDA P.E. #48495



CLOPAY / IDEAL / HOLMES  
3717 / C7X17 / -- / 27GA 1.75" THICK MINOR RIB  
3718 / C7X18 / -- / 27GA 1.75" THICK FLUSH  
3720 / C7X20 / 240U / 27GA 2" THICK MINOR RIB  
3722 / COX22 / -- / 20GA 2" THICK FLUSH  
3724 / C7X24 / 244U / 24GA 2" THICK MINOR RIB

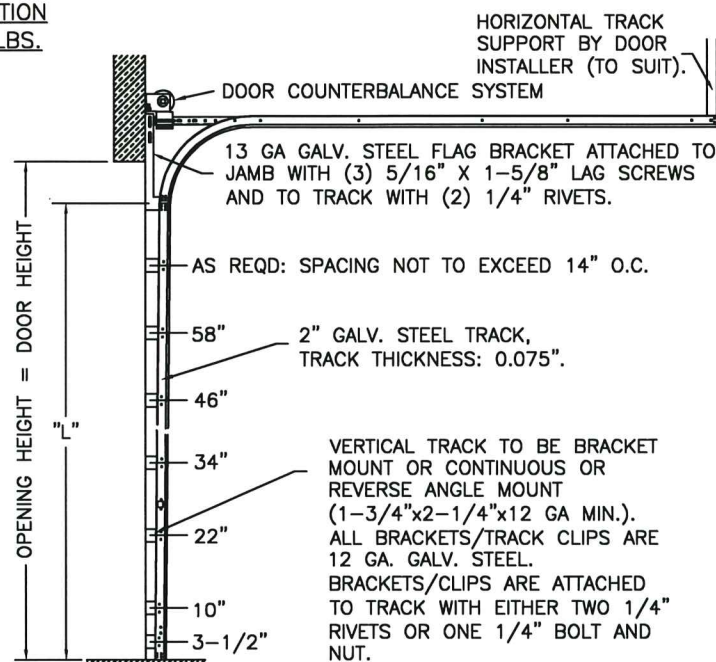
SHEET  
3 OF 3

REVISIONS

REV. NO.	ZONE:	DATE:	ECN NO.	APPVD:	DESCRIPTION
10	-	-	-	-	SEE REVISION HISTORY ON SHEET ONE.

2" TRACK CONFIGURATION  
DOORS UP TO 800 LBS.

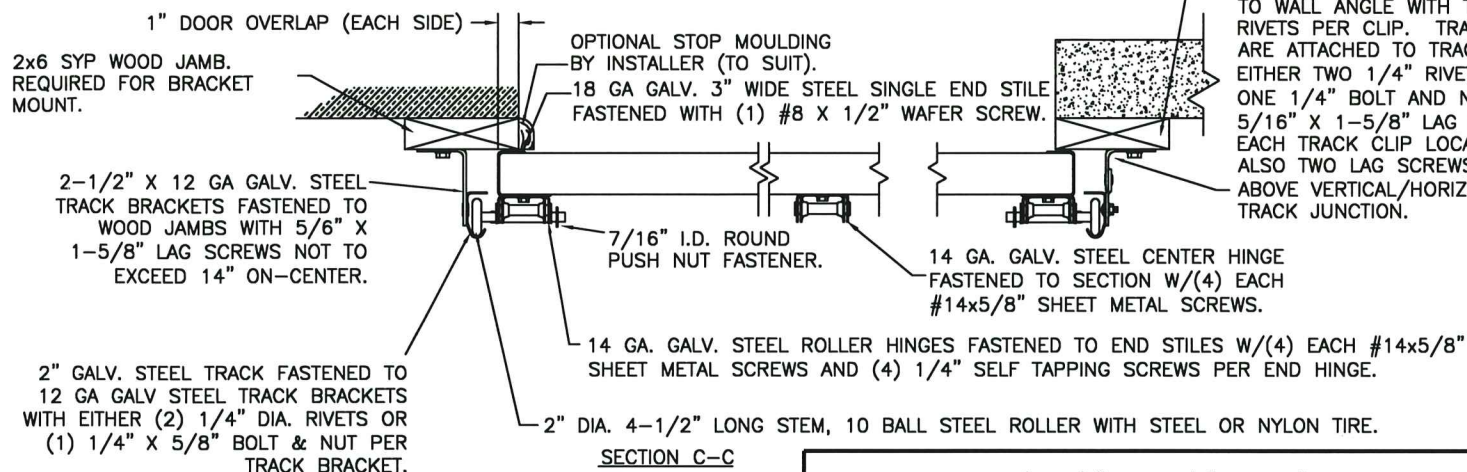
NOTE DOUBLE TRACK  
HEADROOM, HI-LIFT TRACK,  
FOLLOW-THE- ROOF  
TRACK, AND VERTICAL LIFT  
TRACK ARE AVAILABLE  
OPTIONS.  
TRACK CONFIGURATION  
ABOVE THE DOOR OPENING  
DOES NOT AFFECT THE  
WIND LOAD RATING.



DOOR HEIGHT	"L"
6'-6"	70"
7'-0"	76"
7'-6"	82"
8'-0"	88"
8'-6"	94"
9'-0"	100"
9'-6"	106"
10'-0"	112"
10'-6"	118"
11'-0"	124"
11'-6"	130"
12'-0"	136"
12'-6"	142"
13'-0"	148"
13'-6"	154"
14'-0"	160"
14'-6"	166"
15'-0"	172"
15'-6"	178"
16'-0"	184"
16'-6"	190"
17'-0"	196"
17'-6"	202"
18'-0"	208"

JAMB CONFIGURATION  
DOORS UP TO 800 LBS.

BRACKET MOUNT JAMB CONFIGURATION



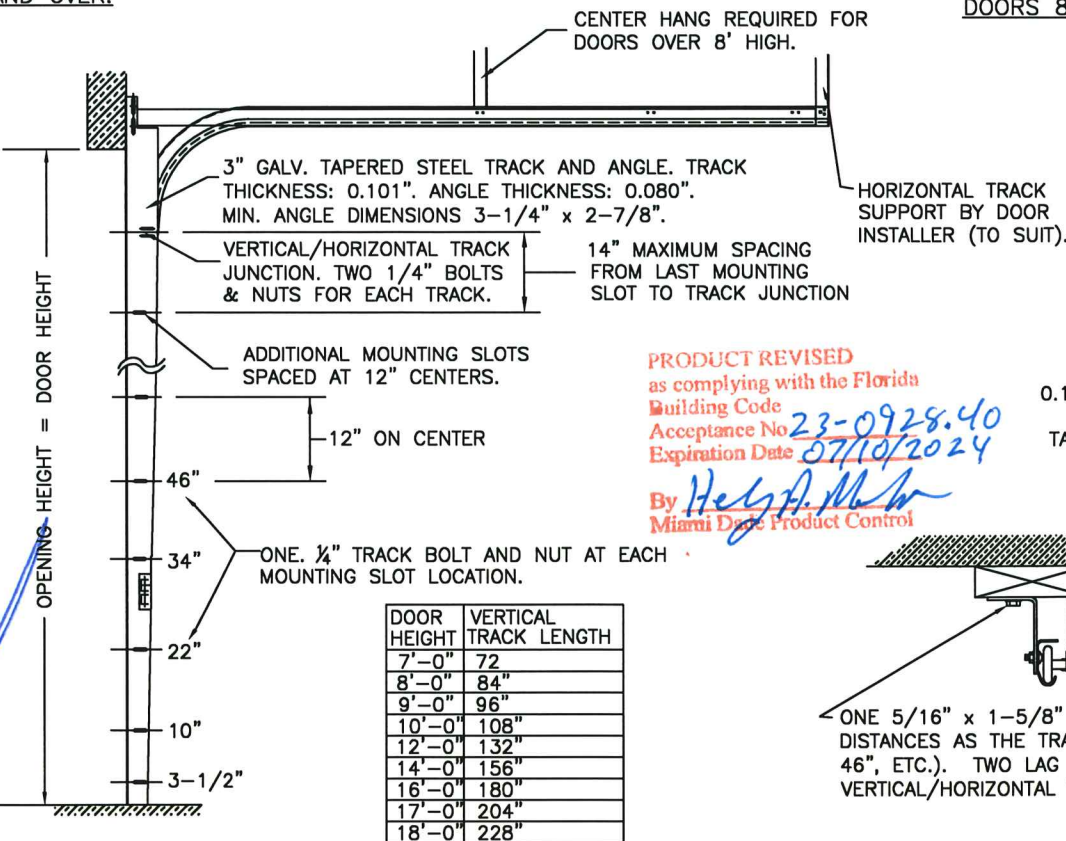
ANGLE MOUNT JAMB CONFIGURATION

2x6 SYP JAMB (IF PRESENT;  
SEE JAMB NOTES ON SHEET 2).

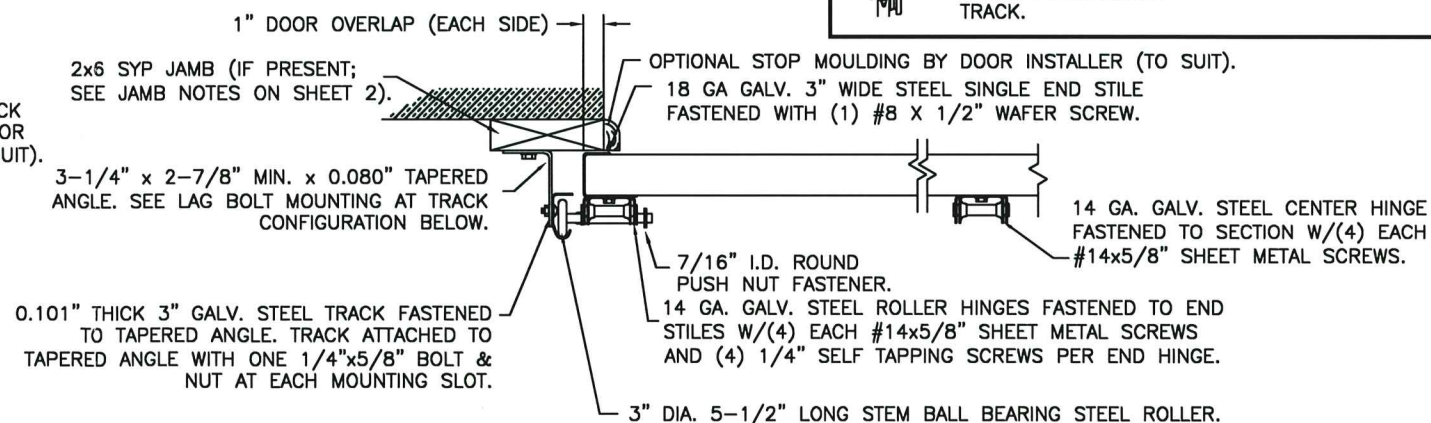
VERTICAL TRACK TO BE  
CONTINUOUS OR REVERSE ANGLE.  
12 GA. TRACK CLIPS ATTACHED  
TO WALL ANGLE WITH TWO 1/4"  
RIVETS PER CLIP. TRACK CLIPS  
ARE ATTACHED TO TRACK WITH  
EITHER TWO 1/4" RIVETS OR  
ONE 1/4" BOLT AND NUT. ONE  
5/16" X 1-5/8" LAG SCREW AT  
EACH TRACK CLIP LOCATION.  
ALSO TWO LAG SCREWS LOCATED  
ABOVE VERTICAL/HORIZONTAL  
TRACK JUNCTION.

3" TRACK CONFIGURATION  
DOORS 800 LBS AND OVER.

NOTE DOUBLE TRACK  
HEADROOM, HI-LIFT TRACK,  
FOLLOW-THE- ROOF  
TRACK, AND VERTICAL LIFT  
TRACK ARE AVAILABLE  
OPTIONS.  
TRACK CONFIGURATION  
ABOVE THE DOOR OPENING  
DOES NOT AFFECT THE  
WIND LOAD RATING.



JAMB CONFIGURATION  
DOORS 800 LBS AND OVER.



DOUBLE TRACK  
LOW HEADROOM OPTION  
(AVAIL. FOR BOTH 2" AND 3" TRACK)



DESIGN ENGINEER:  
MARK WESTERFIELD, P.E.  
FLORIDA P.E. #48495

Unless Stated Otherwise  
TOLERANCES are  
.0 = ±.031  
.00 = ±.015  
.000 = ±.005  
.0000 = ±.001  
Degrees = ±1/2°  
Unless Stated Otherwise  
DIMENSIONS ARE IN INCHES.

**Clopay**  
CORPORATION  
8585 Duke Boulevard  
Mason, OH 45040 USA  
Tel. No. 513-770-4800  
Fax No. 513-770-4853

DESCRIPTION: 1-3/4" INTELLICORE DOORS UP TO 14'2"W (SEE TABLE)  
DRAWN BY: SH DATE: 2/10/14 SCALE: NTS DWG. B  
CHECKED BY: MWW DATE: 4/21/14 SHEET 3 OF 3  
DWG. NO.: 104043 VER: M-D

MANUFACTURING PRODUCT CODE  
C-DSIU-1D477  
PART NO.: N/A

WINDLOAD RATING  
W6 DP36